

Microsoft

Exam Questions AZ-400

Microsoft Azure DevOps Solutions (beta)



NEW QUESTION 1

- (Topic 4)

Your team uses Azure Pipelines to deploy applications.

You need to ensure that when a failure occurs during the build or release process, all the team members are notified by using Microsoft Teams. The solution must minimize development effort.

What should you do?

- A. Install the Azure Boards app for Teams and configure a subscription to receive notifications in a channel.
- B. Use Azure Automation to connect to the Azure DevOps REST API and notify the team members.
- C. Use an Azure function to connect to the Azure DevOps REST API and notify the team members.
- D. Install the Azure Pipelines app for Teams and configure a subscription to receive notifications in a channel.

Answer: D

NEW QUESTION 2

SIMULATION - (Topic 4)

You need to create an instance of Azure Application Insights named az400-9940427-main and configure the instance to receive telemetry data from an Azure web app named az400- 9940427-main.

To complete this task, sign in to the Microsoft Azure portal.

- A. Mastered
- B. Not Mastered

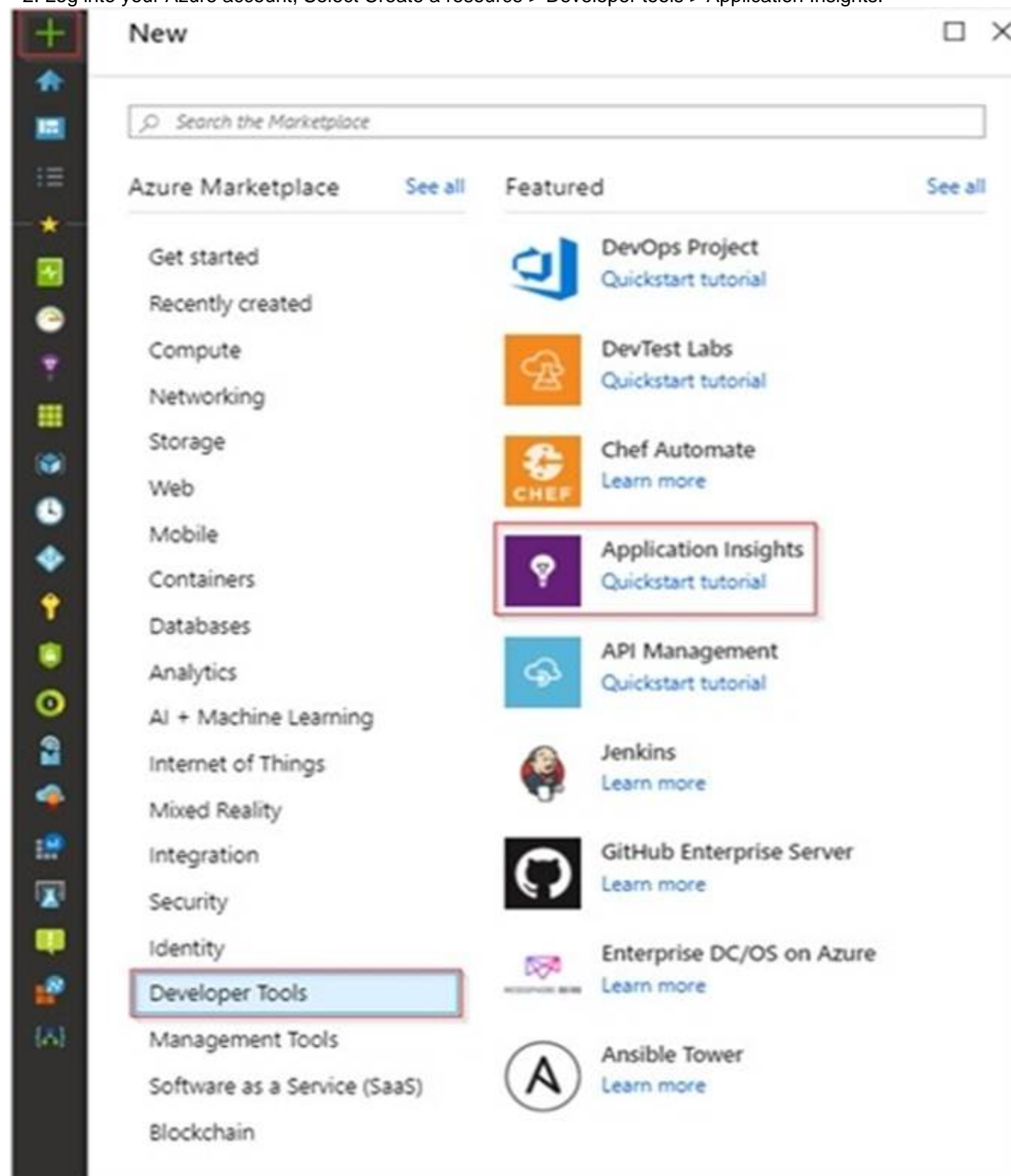
Answer: A

Explanation:

Step 1: Create an instance of Azure Application Insights

* 1. Open Microsoft Azure Portal

* 2. Log into your Azure account, Select Create a resource > Developer tools > Application Insights.

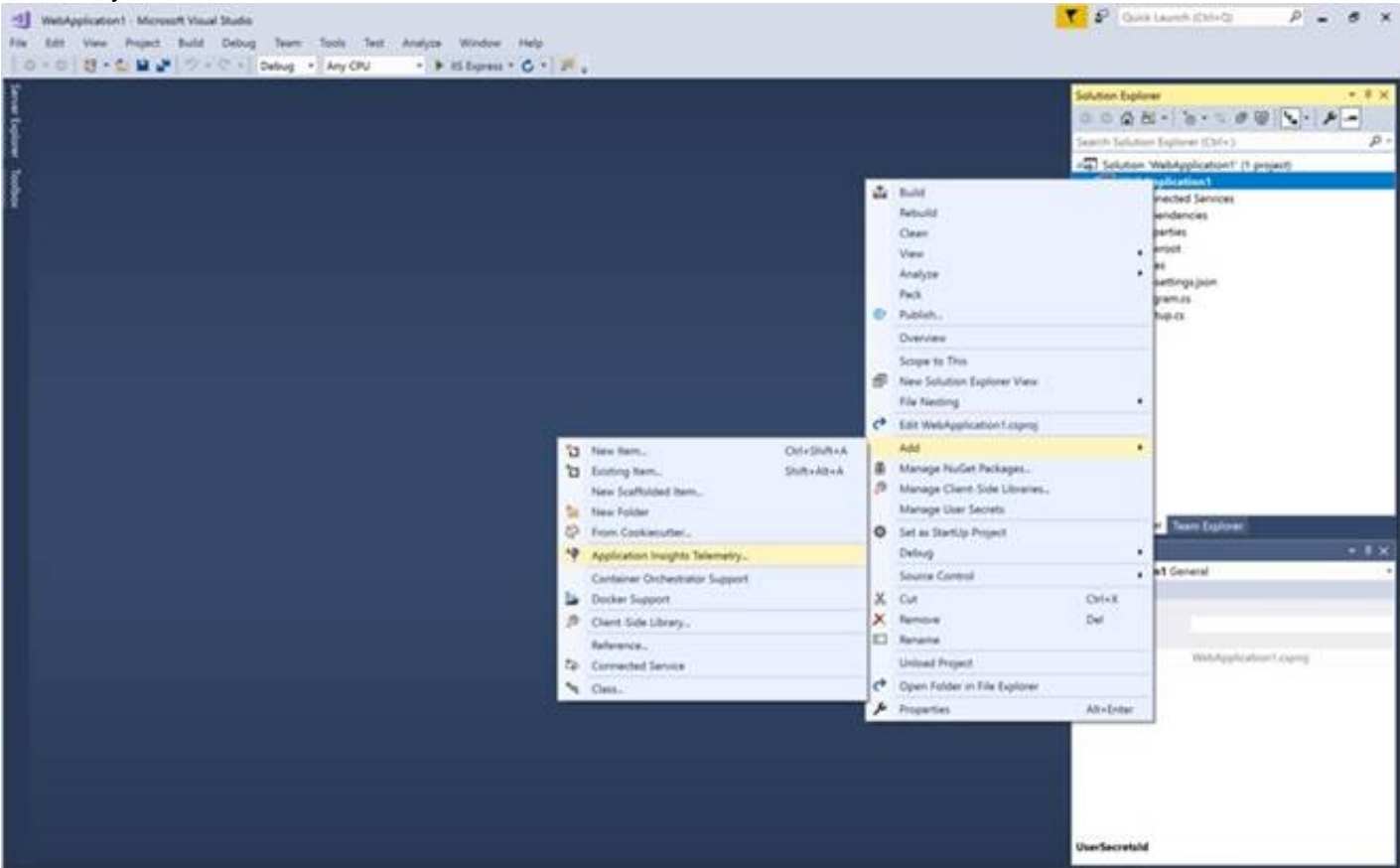


* 3. Enter the following settings, and then select Review + create. Name: az400-9940427-main

Step 2: Configure App Insights SDK

* 4. Open your ASP.NET Core Web App project in Visual Studio > Right-click on the AppName in the Solution Explorer > Select Add > Application Insights

Telemetry.



- * 5. Click the Get Started button
 - * 6. Select your account and subscription > Select the Existing resource you created in the Azure portal > Click Register.
- References:

<https://docs.microsoft.com/bs-latn-ba/azure/azure-monitor/learn/dotnetcore-quick-start?view=vs-2017>

NEW QUESTION 3

DRAG DROP - (Topic 4)

You have an Azure DevOps pipeline that is used to deploy a Node.js app.

You need to ensure that the dependencies are cached between builds.

How should you configure the deployment YAML? To answer, drag the appropriate values to the correct targets. Each value may be used once, more than once, or not at all. You may need to drag the split bar between panes or scroll to view content.

NOTE Each correct selection is worth one point.

Values

always()

build.sh

eq(variables.CACHE_RESTORED, 'true')

integrationtest.sh

ne(variables.CACHE_RESTORED, 'true')

npm install

Answer Area

```
inputs:
  key: 'npm | "$(Agent.OS)" | package-lock.json'
  restoreKeys: |
    npm | "$(Agent.OS)"
  path: $(npm_config_cache)
  cacheHitVar: CACHE_RESTORED

- script:
  condition:
```

- A. Mastered
- B. Not Mastered

Answer: A

Explanation:

Values

always()

build.sh

eq(variables.CACHE_RESTORED, 'true')

integrationtest.sh

ne(variables.CACHE_RESTORED, 'true')

npm install

Answer Area

```
inputs:
  key: 'npm | "$(Agent.OS)" | package-lock.json'
  restoreKeys: |
    npm | "$(Agent.OS)"
  path: $(npm_config_cache)
  cacheHitVar: CACHE_RESTORED

- script:
  condition:
```

NEW QUESTION 4

HOTSPOT - (Topic 4)

HOTSPOT

You need to create deployment files for an Azure Kubernetes Service (AKS) cluster. The deployments must meet the provisioning storage requirements shown in the following table.

Deployment	Requirement
Deployment 1	Use files stored on an SMB-based share from the container's file system.
Deployment 2	Use files on a managed disk from the container's file system.
Deployment 3	Securely access X.509 certificates from the container's file system.

Which resource type should you use for each deployment? To answer, select the appropriate options in the answer area.
 NOTE: Each correct selection is worth one point.

Deployment 1:

▼

azurekeyvault-flexvolume
 blobfuse-flexvol
 kubernetes.io/azure-disk
 kubernetes.io/azure-file
 volume.beta.kubernetes.io/storage-provisioner

Deployment 2:

▼

azurekeyvault-flexvolume
 blobfuse-flexvol
 kubernetes.io/azure-disk
 kubernetes.io/azure-file
 volume.beta.kubernetes.io/storage-provisioner

Deployment 3:

▼

azurekeyvault-flexvolume
 blobfuse-flexvol
 kubernetes.io/azure-disk
 kubernetes.io/azure-file
 volume.beta.kubernetes.io/storage-provisioner

- A. Mastered
- B. Not Mastered

Answer: A

Explanation:

Deployment 1: Kubernetes.io/azure-file
 You can use Azure Files to connect using the Server Message Block (SMB) protocol. Deployment 2: Kubernetes.io/azure-disk
 Deployment 3: azurekeyvault-flexvolume
 azurekeyvault-flexvolume: Key Vault FlexVolume: Seamlessly integrate your key management systems with Kubernetes. Secrets, keys, and certificates in a key management system become a volume accessible to pods. Once the volume is mounted, its data is available directly in the container filesystem for your application.

NEW QUESTION 5
 HOTSPOT - (Topic 4)

You have a project in Azure DevOps that includes two users named User1 and User2. You plan to use Azure Monitor to manage logs. You need to ensure that the users can perform the actions shown in following the table.

User	Action
User1	<ul style="list-style-type: none"> Create private monitoring dashboards. Search usage data for an Azure Monitor workspace.
User2	<ul style="list-style-type: none"> View autoscale settings. View alert activities and settings.

The solution must follow the principle of least privilege.
 Which role should you assign to each user? To answer select the appropriate options in the answer area.
 NOTE: Each correct selection is worth one point.

Answer Area

User1:
 Log Analytics Reader
 Monitoring Contributor
 Monitoring Metrics Publisher
 Monitoring Reader

User2:
 Log Analytics Reader
 Monitoring Contributor
 Monitoring Metrics Publisher
 Monitoring Reader

- A. Mastered
- B. Not Mastered

Answer: A

Explanation:

Answer Area

User1:
 Log Analytics Reader
 Monitoring Contributor
 Monitoring Metrics Publisher
 Monitoring Reader

User2:
 Log Analytics Reader
 Monitoring Contributor
 Monitoring Metrics Publisher
 Monitoring Reader

NEW QUESTION 6

- (Topic 4)

You have an Azure subscription that contains an Azure pipeline named Pipeline1 and a GitHub repository named Repo1, Repo1 contains Bicep modules. Pipeline1 deploys Azure resources by using the Bicep modules. You need to ensure that all releases comply with Azure Policy before they are deployed to production. What should you do?

- A. Configure a deployment gate for Pipeline' include the Azure DevOps Security and compliance assessment task.
- B. Create an Azure DevOps build runs on the creation of a pull request assesses the code tor compliance.
- C. To Pipeline1, add a step that runs a What If deployment before the deployment step.
- D. Configure a deployment gate for Pipeline' that uses Azure Automation to run a What If deployment

Answer: A

NEW QUESTION 7

- (Topic 4)

Your company has a project in Azure DevOps for a new application. The application will be deployed to several Azure virtual machines that run Windows Server 2022. You need to recommend a deployment strategy for the virtual machines. The strategy must meet the following requirements:

- Ensure that the virtual machines maintain a consistent configuration.
- Minimize administrative effort to configure the virtual machines. What should you include in the recommendation?

- A. Azure Resource Manager templates and the PowerShell Desired State Configuration (DSC) extension for Windows
- B. Deployment YAML and Azure pipeline deployment groups
- C. Azure Resource Manager templates and the Custom Script Extension for Windows
- D. Deployment YAML and Azure pipeline stage templates

Answer: C

NEW QUESTION 8

HOTSPOT - (Topic 4)

You have a project in Azure DevOps that contains a Continuous Integration/Continuous Deployment (CI/CD) pipeline. You need to enable detailed logging by defining a pipeline variable. How should you configure the variable? To answer, select the appropriate options in the answer area. NOTE: Each correct selection is worth one point.

Answer Area

- A. Mastered
- B. Not Mastered

Answer: A

Explanation:

Answer Area



NEW QUESTION 9

DRAG DROP - (Topic 4)

You have an Azure Repos repository that contains large PSD files. You need to configure Get LFS to manage all the files. How should you complete the script? To answer, drag the appropriate access levels to the correct groups. Each access level may be used once, more than once, or not at all. You may need to drag the split bar between panes or scroll to view content. NOTE: Each correct selection is worth one point.



- A. Mastered
- B. Not Mastered

Answer: A

Explanation:



NEW QUESTION 10

HOTSPOT - (Topic 4)

Your company uses Team Foundation Server 2013 (TFS 2013). You plan to migrate to Azure DevOps. You need to recommend a migration strategy that meets the following requirements:

- ? Preserves the dates of Team Foundation Version Control changesets
- ? Preserves the changes dates of work items revisions
- ? Minimizes migration effort
- ? Migrates all TFS artifacts

What should you recommend? To answer, select the appropriate options in the answer area.

NOTE: Each correct selection is worth one point.

On the TFS server:

Install the TFS Java SDK. Upgrade TFS to the most recent RTW release. Upgrade to the most recent version of PowerShell Core.

To perform the migration:

Copy the assets manually. Use public API-based tools. Use the TFS Database Import Service. Use the TFS Integration Platform.

- A. Mastered
- B. Not Mastered

Answer: A

Explanation:

Box 1: Upgrade TFS to the most recent RTM release.

One of the major prerequisites for migrating your Team Foundation Server database is to get your database schema version as close as possible to what is currently deployed in Azure DevOps Services.

Box 2: Use the TFS Database Import Service

In Phase 3 of your migration project, you will work on upgrading your Team Foundation Server to one of the supported versions for the Database Import Service in Azure DevOps Services.

References: Team Foundation Server to Azure DevOps Services Migration Guide

NEW QUESTION 10

- (Topic 4)

You have multiple teams that work on multiple projects in Azure DevOps.

You need to plan and manage the consumers and producers for each project. The solution must provide an overview of all the projects.

What should you do?

- A. Install the Dependency Tracker extension and create dependencies for each project.
- B. Add a Parent or Child link to the feature or user story for the items of each project.
- C. Add a Predecessor or Successor link to the feature or user story for the items of each project.
- D. Create a custom query to show the consumers and producers and add a widget to a dashboard.

Answer: A

NEW QUESTION 15

- (Topic 4)

You use GitHub for source control.

A file that contains sensitive data is committed accidentally to the Get repository of a project.

You need to delete the file and its history from the repository.

Which two tools can you use? Each correct answer presents a complete solution. NOTE: Each correct selection is worth one point.

- A. the git filter-branch command
- B. BFG Repo-Cleaner
- C. the git rebase command
- D. GitHub Desktop

Answer: AB

Explanation:

To entirely remove unwanted files from a repository's history you can use either the git filter-branch command or the BFG Repo-Cleaner open source tool.

Reference:

<https://docs.github.com/en/github/authenticating-to-github/keeping-your-account-and-data-secure/removing-sensitive-data-from-a-repository>

NEW QUESTION 17

- (Topic 4)

You have an Azure DevOps organization named Contoso and an Azure subscription. The subscription contains an Azure virtual machine scale set named VMSS1 and an Azure Standard Load Balancer named LB1. LB1 distributes incoming requests across VMSS1 instances.

You use Azure DevOps to build a web app named App1 and deploy App1 to VMSS1. App1 is accessible via HTTPS only and configured to require mutual authentication by using a client certificate.

You need to recommend a solution for implementing a health check of App1. The solution must meet the following requirements:

- Identify whether individual instances of VMSS1 are eligible for an upgrade operation.
- Minimize administrative effort.

What should you include in the recommendation?

- A. the Custom Script Extension
- B. the Application Health extension
- C. Azure Monitor autoscale
- D. an Azure Load Balancer health probe

Answer: B

Explanation:

<https://docs.microsoft.com/en-us/azure/virtual-machine-scale-sets/virtual-machine-scale-sets-health-extension#when-to-use-the-application-health-extension>

NEW QUESTION 22

- (Topic 4)

You have an Azure DevOps organization named Contoso.

You need to recommend an authentication mechanism that meets the following requirements:

- Supports authentication from Get
- Minimizes the need to provide credentials during authentication What should you recommend?

- A. managed identities in Azure Active Directory (Azure AD)
- B. personal access tokens (PATs) in Azure DevOps
- C. user accounts in Azure Active Directory (Azure AD)
- D. Alternate credentials in Azure DevOps

Answer: B

Explanation:

Personal access tokens (PATs) give you access to Azure DevOps and Team Foundation Server (TFS), without using your username and password directly. These tokens have an expiration date from when they're created. You can restrict the scope of the data they can access. Use PATs to authenticate if you don't already have SSH keys set up on your system or if you need to restrict the permissions that are granted by the credential.

Reference:

<https://docs.microsoft.com/en-us/azure/devops/repos/git/auth-overview>

NEW QUESTION 23

- (Topic 4)

You store source code in a Git repository in Azure repos. You use a third-party continuous integration (CI) tool to control builds.

What will Azure DevOps use to authenticate with the tool?

- A. certificate authentication
- B. a personal access token (PAT)
- C. a Shared Access Signature (SAS) token
- D. NTLM authentication

Answer: B

Explanation:

Personal access tokens (PATs) give you access to Azure DevOps and Team Foundation Server (TFS), without using your username and password directly.

Reference:

<https://docs.microsoft.com/en-us/azure/devops/repos/git/auth-overview>

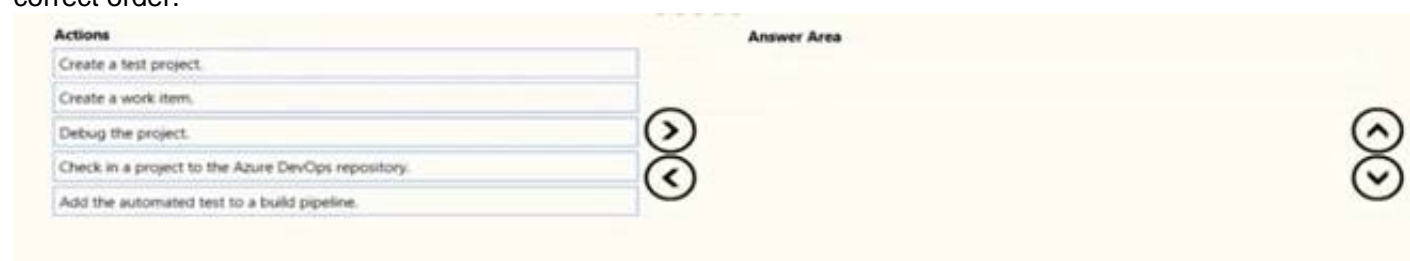
NEW QUESTION 26

DRAG DROP - (Topic 4)

You have a protect in Azure DevOps.

You need to associate an automated test to a test case.

Which three actions should you perform in sequence? To answer, move the appropriate actions from the list of actions to the answer area and arrange them in the correct order.



- A. Mastered
- B. Not Mastered

Answer: A

Explanation:

The process to associate an automated test with a test case is:

? Create a test project containing your automated test. What types of tests are supported?

? Check your test project into an Azure DevOps or Team Foundation Server (TFS) repository.

? Create a build pipeline for your project, ensuring that it contains the automated test. What are the differences if I am still using a XAML build?

? Use Visual Studio Enterprise or Professional 2017 or a later version to associate the automated test with a test case as shown below. The test case must have been added to a test plan that uses the build you just defined.

NEW QUESTION 30

- (Topic 4)

Your company uses Azure DevOps for the build pipelines and deployment pipelines of Java based projects. You need to recommend a strategy for managing technical debt.

Which two actions should you include in the recommendation? Each correct answer presents part of the solution

NOTE: Each correct selection is worth one point.

- A. Integrate Azure DevOps and SonarQube.
- B. Integrates Azure DevOps and Azure DevTest Labs.
- C. Configure post-deployment approvals in the deployment pipeline.
- D. Configure pre-deployment approvals in the deployment pipeline.

Answer: AC

NEW QUESTION 32

- (Topic 4)

You have a private distribution group that contains provisioned and unprovisioned devices.

You need to distribute a new iOS application to the distribution group by using Microsoft Visual Studio App Center.

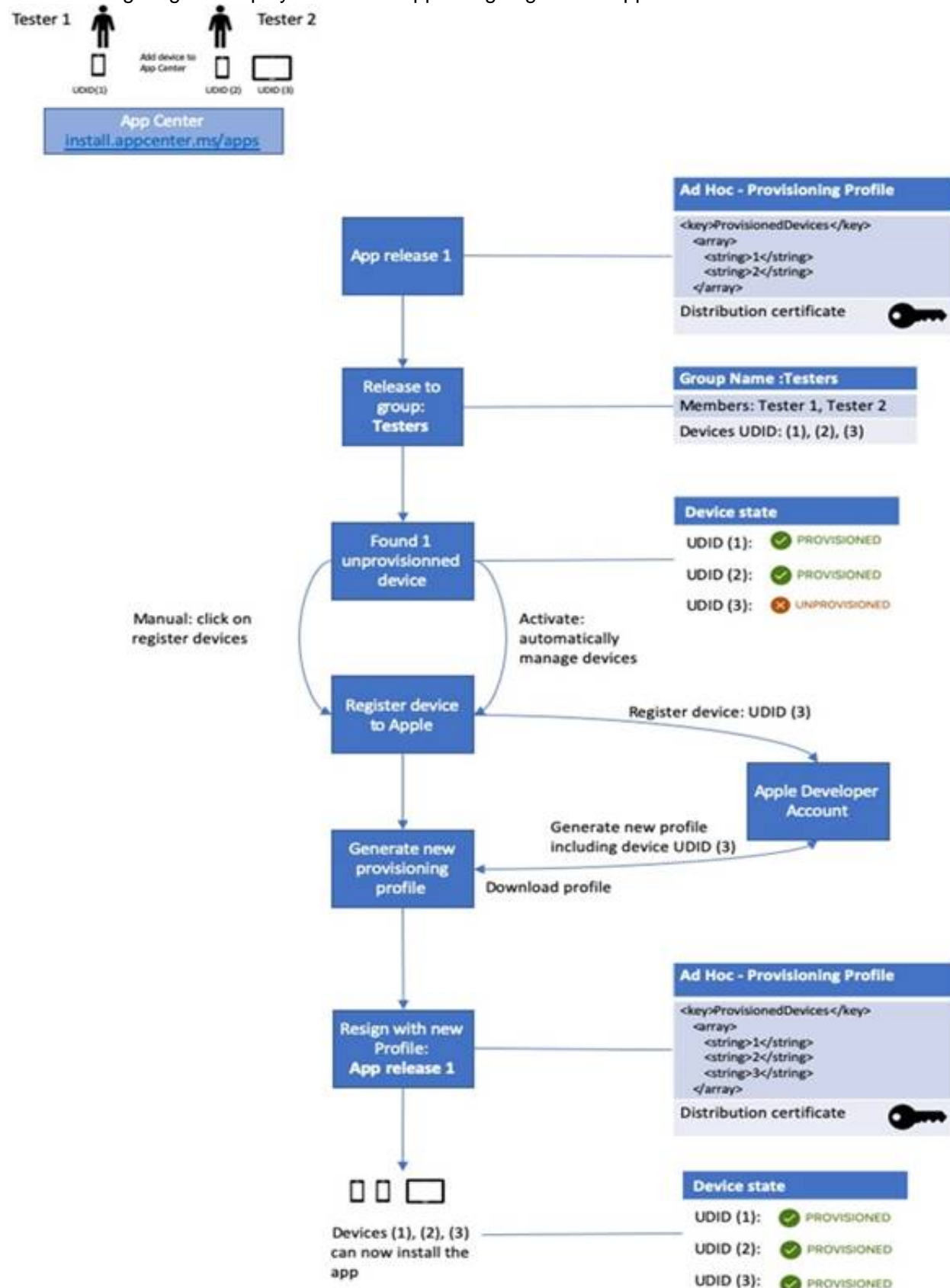
What should you do?

- A. Select Register devices and sign my app.
- B. Generate a new .p12 file for each device.
- C. Create an active subscription in App Center Test.
- D. Add the device owner to the collaborators group.

Answer: A

Explanation:

The following diagram displays the entire app re-signing flow in App Center.



Reference:

<https://docs.microsoft.com/en-us/appcenter/distribution/auto-provisioning>

NEW QUESTION 36

- (Topic 4)

Note: This question is part of a series of questions that present the same scenario. Each question in the series contains a unique solution that might meet the stated goals. Some question sets might have more than one correct solution, while others might not have a correct solution.

After you answer a question in this section, you will NOT be able to return to it. As a result, these questions will not appear in the review screen.

You manage a project in Azure DevOps.

You need to prevent the configuration of the project from changing over time. Solution: Perform a Subscription Health scan when packages are created. Does this meet the goal?

- A. Yes
- B. No

Answer: B

Explanation:

Instead implement Continuous Assurance for the project.

Note: The Subscription Security health check features in AzSK contains a set of scripts that examines a subscription and flags off security issues, misconfigurations or obsolete artifacts/settings which can put your subscription at higher risk.

Reference:

<https://azsk.azurewebsites.net/04-Continuous-Assurance/Readme.html>

NEW QUESTION 39

- (Topic 4)

Note: This Question Is part of a series of questions that present the same scenario. Each question in the series contains a unique solution that might meet the stated goals. Some question sets might have more than one correct solution, while others might not have a correct solution.

After you answer a question in this section, you will NOT be able to return to it. As a result these questions will not appear in the review screen.

You company has a prefect in Azure DevOps for a new web application.

You need to ensure that when code is checked in, a build runs automatically.

Solution: From the Triggers tab of the build pipeline, you selected Batch changes while a build is in progress

Does this meet the goal?

- A. Yes
- B. No

Answer: B

NEW QUESTION 40

HOTSPOT - (Topic 4)

Your company uses a Git source-code repository.

You plan to implement GitFlow as a workflow strategy.

You need to identify which branch types are used for production code and preproduction code in the strategy.

Which branch type should you identify for each code type? To answer, select the appropriate options in the answer area.

NOTE: Each correct selection is worth one point.

Answer Area

Production code:	<div>Master Feature Develop</div>
Preproduction code:	<div>Master Feature Develop</div>

- A. Mastered
- B. Not Mastered

Answer: A

Explanation:

Box 1: Master

The Master branch contains production code. All development code is merged into master in sometime.

Box 2: Develop

The Develop branch contains pre-production code. When the features are finished then they are merged into develop.

NEW QUESTION 42

- (Topic 4)

Note: This question is part of a series of questions that present the same scenario. Each question in the series contains a unique solution that might meet the stated goals. Some question sets might have more than one correct solution, while others might not have a correct solution.

After you answer a question in this section, you will NOT be able to return to it. As a result, these questions will not appear in the review screen.

You have an approval process that contains a condition. The condition requires that releases be approved by a team leader before they are deployed.

You have a policy stating that approvals must occur within eight hours.

You discover that deployment fail if the approvals take longer than two hours.

You need to ensure that the deployments only fail if the approvals take longer than eight hours.

Solution: From Pre-deployment conditions, you modify the Time between re-evaluation of gates option.

Does this meet the goal?

- A. Yes
- B. No

Answer: B

Explanation:

References: <https://docs.microsoft.com/en-us/azure/devops/pipelines/release/approvals/gates>

NEW QUESTION 45

- (Topic 4)

You have an Azure DevOps organization named Contoso and an Azure subscription. The subscription contains an Azure virtual machine scale set named VMSS1 that is configured for auto scaling.

You have a project m Azure DevOps named Project 1. Project! is used to build a web app named App1 and deploy App1 to VMSS1.

You need to ensure that an email alert is generated whenever VMSS1 scales in or out. Solution: From Azure Monitor, configure the auto scale settings.

Does this meet the goal?

- A. Yes
- B. No

Answer: B

NEW QUESTION 49

- (Topic 4)

Note: This question is part of a series of questions that present the same scenario. Each question in the series contains a unique solution that might meet the stated goals. Some question sets might have more than one correct solution, while others might not have a correct solution.

After you answer a question in this section, you will NOT be able to return to it. As a result, these questions will not appear in the review screen.

The lead developer at your company reports that adding new application features takes longer than expected due to a large accumulated technical debt.

You need to recommend changes to reduce the accumulated technical debt. Solution: You recommend reducing the code complexity.

Does this meet the goal?

- A. Yes
- B. No

Answer: A

Explanation:

Reference:

<https://dzone.com/articles/fight-through-the-pain-how-to-deal-with-technical>

NEW QUESTION 50

HOTSPOT - (Topic 4)

You have an Azure subscription that contains an Azure key vault named Vault1. an Azure pipeline named Pipeline1, and an Azure SQL database named DB1.

Pipeline1 is used to deploy an app that will authenticate to DB1 by using a password.

You need to store the password in Vault1. The solution must ensure that the password can be accessed by Pipeline1.

What should you do? To answer, select the appropriate options in the answer area. NOTE: Each correct selection is worth one point.

Answer Area

Store the password as a:

Grant Pipeline1 access to Vault1 by modifying the:

- A. Mastered
- B. Not Mastered

Answer: A

Explanation:

Answer Area

Store the password as a:

Grant Pipeline1 access to Vault1 by modifying the:

NEW QUESTION 54

DRAG DROP - (Topic 4)

You need to recommend a solution for deploying charts by using Helm and Title to Azure Kubemets Service (AKS) in an RBAC-enabled cluster.

Which three commands should you recommend be run m sequence? To answer, move the appropriate commands from the list of commands to the answer area and arrange them in the correct order.

Commands

helm install

kubectl create

helm completion

helm init

helm serve

Answer Area

- A. Mastered
B. Not Mastered

Answer: A

Explanation:

Step 1: Kubectl create

You can add a service account to Tiller using the --service-account <NAME> flag while you're configuring Helm (step 2 below). As a prerequisite, you'll have to create a role binding which specifies a role and a service account name that have been set up in advance.

Example: Service account with cluster-admin role

\$ kubectl create -f rbac-config.yaml serviceaccount "tiller" created clusterrolebinding "tiller" created

\$ helm init --service-account tiller

Step 2: helm init

To deploy a basic Tiller into an AKS cluster, use the helm init command.

Step 3: helm install

To install charts with Helm, use the helm install command and specify the name of the chart to install.

References:

<https://docs.microsoft.com/en-us/azure/aks/kubernetes-helm> https://docs.helm.sh/using_helm/#tiller-namespaces-and-rbac

NEW QUESTION 58

- (Topic 4)

Your company has a project in Azure DevOps for a new web application. The company identifies security as one of the highest priorities.

You need to recommend a solution to minimize the likelihood that infrastructure credentials will be leaked.

What should you recommend?

- A. Add a Run Inline Azure PowerShell task to the pipeline.
B. Add a PowerShell task to the pipeline and run Set-AzureKeyVaultSecret.
C. Add a Azurre Key Vault task to the pipeline.
D. Add Azure Key Vault references to Azure Resource Manger templates.

Answer: B

Explanation:

Azure Key Vault provides a way to securely store credentials and other keys and secrets. The Set-AzureKeyVaultSecret cmdlet creates or updates a secret in a key vault in Azure Key Vault.

References:

<https://docs.microsoft.com/en-us/powershell/module/azurerm.keyvault/set-azurekeyvaultsecret>

NEW QUESTION 61

DRAG DROP - (Topic 4)

You have an Azure subscription that contains a resources group named RG1. RG1 contains the following resources:

- Four Azure virtual machines that run Windows Server and have Internet Information Services (IIS) installed
- SQL Server on an Azure virtual machine
- An Azure Load Balancer

You need to deploy an application to the virtual machines in RG1 by using Azure Pipelines. Which four actions should you perform in sequence? To answer, move the appropriate

actions from the List of actions to the answer area and arrange them in the correct order.

Actions

Execute the pipeline.

Create an agent pool.

Add the Puppet Agent extension to the virtual machines.

Create a deployment group.

Add and configure a deployment group job for the pipeline.

Answer Area

- A. Mastered
B. Not Mastered

Answer: A

Explanation:

Step 1: Create an agent pool

Azure Pipelines provides a pre-defined agent pool named Azure Pipelines with Microsoft- hosted agents.

Step 2: Create a deployment group

Deployment groups make it easy to define logical groups of target machines for deployment, and install the required agent on each machine.

Step 3: Execute the Azure Pipelines Agent extension to the virtual machines Install the Azure Pipelines Agent Azure VM extension

Step 4: Add and configure a deployment group job for the pipeline

Tasks that you define in a deployment group job run on some or all of the target servers, depending on the arguments you specify for the tasks and the job itself.

NEW QUESTION 64

HOTSPOT - (Topic 4)

You currently use JIRA, Jenkins, and Octopus as part of your DevOps processes. You plan to use Azure DevOps to replace these tools.

Which Azure DevOps service should you use to replace each tool? To answer, select the appropriate options in the answer area.

NOTE: Each correct selection is worth one point.

JIRA:

Jenkins:

Octopus:

- A. Mastered
- B. Not Mastered

Answer: A

Explanation:

JIRA- BoardJenkins- Build PipelinesOctopus- Release pipelines

NEW QUESTION 67

- (Topic 4)

Note: This question is part of a series of questions that present the same scenario. Each question in the series contains a unique solution that might meet the stated goals. Some question sets might have more than one correct solution, while others might not have a correct solution.

After you answer a question in this section, you will NOT be able to return to it. As a result, these questions will not appear in the review screen.

Your company has a project in Azure DevOps for a new web application. You need to ensure that when code is checked in, a build runs automatically.

Solution: From the Pre-deployment conditions settings of the release pipeline, you select After stage.

Does this meet the goal?

- A. Yes
- B. No

Answer: B

Explanation:

Instead, In Visual Designer you enable continuous integration (CI) by:

? Select the Triggers tab.

? Enable Continuous integration.

References:

<https://docs.microsoft.com/en-us/azure/devops/pipelines/get-started-designer>

NEW QUESTION 70

- (Topic 4)

You manage an Azure web app that supports an e-commerce website.

You need to increase the logging level when the web app exceeds normal usage patterns. The solution must minimize administrative overhead.

Which two resources should you include in the solution? Each correct answer presents part of the solution.

NOTE: Each correct selection is worth one point.

- A. an Azure Automation run book
- B. an Azure Monitor alert that has a dynamic threshold
- C. an Azure Monitor alert that has a static threshold
- D. the Azure Monitor auto scale settings
- E. an Azure Monitor alert that uses an action group that has an email action

Answer: AB

Explanation:

A: You can use Azure Monitor to monitor base-level metrics and logs for most services in Azure. You can call Azure Automation run books by using action groups or by using classic alerts to automate tasks based on alerts.

B: Metric Alert with Dynamic Thresholds detection leverages advanced machine learning (ML) to learn metrics' historical behavior, identify patterns and anomalies that indicate possible service issues. It

provides support of both a simple UI and operations at scale by allowing users to configure alert rules through the Azure Resource Manager API, in a fully automated manner. Reference:

<https://docs.microsoft.com/en-us/azure/azure-monitor/platform/alerts-dynamic-thresholds>

<https://docs.microsoft.com/en-us/azure/automation/automation-create-alert-triggered-runbook>

NEW QUESTION 72

- (Topic 4)

You have an Azure virtual machine that is monitored by using Azure Monitor. The virtual machine has the Azure Log Analytics agent installed.

You plan to deploy the Service Map solution from Azure Marketplace.

What should you deploy to the virtual machine to support the Service Map solution?

- A. the Telegraf agent
- B. the Azure Monitor agent
- C. the Dependency agent
- D. the Windows Azure diagnostics extension (WAD)

Answer: C

NEW QUESTION 77

- (Topic 4)

Note: This question is part of a series of questions that present the same scenario. Each question in the series contains a unique solution that might meet the stated goals. Some question sets might have more than one correct solution, while others might not have a correct solution.

After you answer a question in this section, you will NOT be able to return to it as a result, these questions will not appear in the review screen.

You have an Azure pipeline that is used to deploy a web app. The pipeline includes a test suite named TestSuite1. TestSuite1 is used to validate the operations of the web app.

TestSuite1 fails intermittently.

You identify that the failures are unrelated to changes in the source code and execution environment.

You need to minimize troubleshooting effort for the TestSuite1 failures. Solution: You enable Test Impact Analysis (TIA).

Does this meet the goal?

- A. Yes
- B. No

Answer: B

NEW QUESTION 79

- (Topic 4)

Note: This question is part of a series of questions that present the same scenario. Each question in the series contains a unique solution that might meet the stated goals. Some question sets might have more than one correct solution, while others might not have a correct solution.

After you answer a question in this section, you will NOT be able to return to it. As a result, these questions will not appear in the review screen.

You plan to update the Azure DevOps strategy of your company.

You need to identify the following issues as they occur during the company's development process:

? Licensing violations

? Prohibited libraries

Solution: You implement automated security testing.

Does this meet the goal?

- A. Yes
- B. No

Answer: B

Explanation:

Instead use implement continuous integration.

Note: WhiteSource is the leader in continuous open source software security and compliance management. WhiteSource integrates into your build process, irrespective of your programming languages, build tools, or development environments. It works automatically, continuously, and silently in the background, checking the security, licensing, and quality of your open source components against WhiteSource constantly-updated denitive database of open source repositories.

Reference: <https://azuredevopslabs.com/labs/vstsextend/whitesource/>

NEW QUESTION 82

- (Topic 4)

Note: This question is part of a series of questions that present the same scenario. Each question in the series contains a unique solution that might meet the stated goals. Some question sets might have more than one correct solution, while others might not have a correct solution.

After you answer a question in this section, you will NOT be able to return to it. As a result, these questions will not appear in the review screen.

The lead developer at your company reports that adding new application features takes longer than expected due to a large accumulated technical debt.

You need to recommend changes to reduce the accumulated technical debt. Solution: You recommend reducing the code coupling and the dependency cycles?

Does this meet the goal?

- A. Yes
- B. No

Answer: B

Explanation:

Instead reduce the code complexity.

Note: Technical debt is the accumulation of sub-optimal technical decisions made over the lifetime of an application. Eventually, it gets harder and harder to change things: it's the 'sand in the gears' that sees IT initiatives grind to a halt.

Reference:

<https://dzone.com/articles/fight-through-the-pain-how-to-deal-with-technical> <https://www.devopsgroup.com/blog/five-ways-devops-helps-with-technical-debt/>

NEW QUESTION 83

- (Topic 4)

You have an Azure DevOps project that contains a build pipeline. The build pipeline uses approximately 50 open source libraries.

You need to ensure that all the open source libraries comply with your company's licensing standards.

Which service should you use?

- A. Ansible
- B. Maven
- C. WhiteSource Bolt
- D. Helm

Answer: C

Explanation:

WhiteSource provides WhiteSource Bolt, a lightweight open source security and management solution developed specifically for integration with Azure DevOps and Azure DevOps Server.

Note: WhiteSource is the leader in continuous open source software security and compliance management. WhiteSource integrates into your build process, irrespective of your programming languages, build tools, or development environments. It works automatically, continuously, and silently in the background, checking the security, licensing, and quality of your open source components against WhiteSource constantly-updated denitive database of open source repositories.

Note: Blackduck would also be a good answer, but it is not an option here. Reference:

<https://www.azuredevopslabs.com/labs/vstsextend/whitesource/>

NEW QUESTION 84

DRAG DROP - (Topic 4)

Your company has a project in Azure DevOps.

You plan to create a release pipeline that will deploy resources by using Azure Resource Manager templates. The templates will reference secrets stored in Azure Key Vault.

You need to recommend a solution for accessing the secrets stored in the key vault during deployments. The solution must use the principle of least privilege.

What should you include in the recommendation? To answer, drag the appropriate configurations to the correct targets. Each configuration may be used once, more than once, or not at all. You may need to drag the split bar between panes or scroll to view content.

NOTE: Each correct selection is worth one point.

Configurations

Answer Area

A Key Vault access policy

Enable key vaults for template deployment by using:

A Key Vault advanced access policy

Restrict access to the secrets in Key Vault by using:

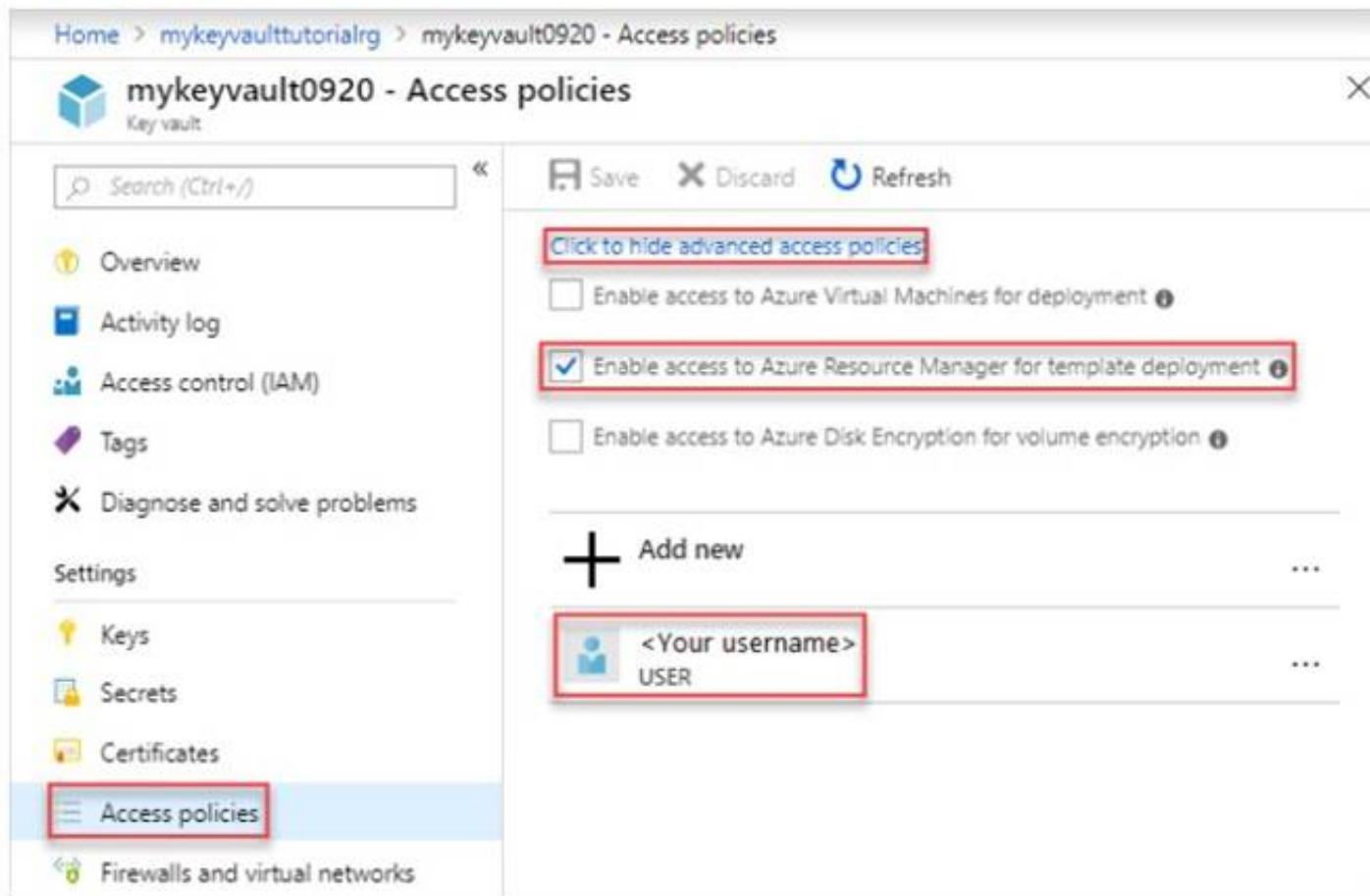
RBAC

- A. Mastered
- B. Not Mastered

Answer: A

Explanation:

Box 1: A key Vault advanced access policy



Box 2: RBAC

Management plane access control uses RBAC.

The management plane consists of operations that affect the key vault itself, such as:

- ? Creating or deleting a key vault.
- ? Getting a list of vaults in a subscription.
- ? Retrieving Key Vault properties (such as SKU and tags).
- ? Setting Key Vault access policies that control user and application access to keys and secrets.

References: <https://docs.microsoft.com/en-us/azure/azure-resource-manager/resource-manager-tutorial-use-key-vault>

NEW QUESTION 85

- (Topic 4)

You are integrating Azure Pipelines and Microsoft Teams. You install the Azure Pipelines app in Microsoft Teams.

You have an Azure DevOps organization named Contoso that contains a project name Project1.

You subscribe to Project1 in Microsoft Teams.

You need to ensure that you only receive events about failed builds in Microsoft Teams. What should you do first?

- A. From Microsoft Teams, run @azure pipelines subscribe https://dev.azure.com/Contoso/Project1.
- B. From Azure Pipelines, add a Publish Build Artifacts task to Project1.
- C. From Microsoft Teams, run @azure pipelines subscriptions.
- D. From Azure Pipelines, enable continuous integration for Project1.

Answer: A

Explanation:

To start monitoring all pipelines in a project, use the following command inside a channel:

@azure pipelines subscribe [project url]

The project URL can be to any page within your project (except URLs to pipelines). For example:

@azure pipelines subscribe https://dev.azure.com/myorg/myproject/ Reference:

<https://docs.microsoft.com/en-us/azure/devops/pipelines/integrations/microsoft-teams>

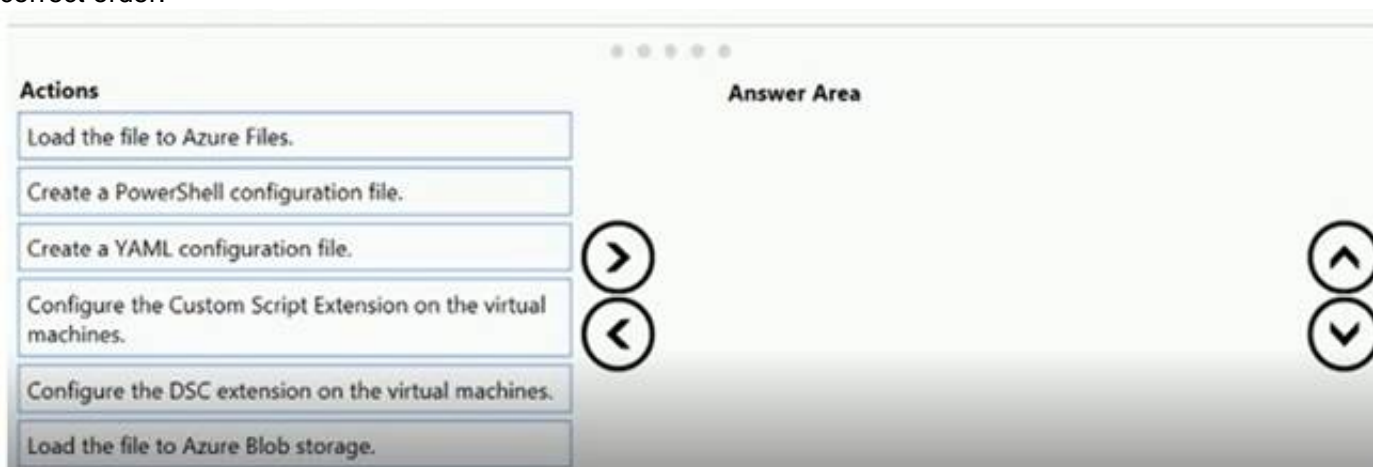
NEW QUESTION 87

DRAG DROP - (Topic 4)

You are deploying a new application that uses Azure virtual machines.

You plan to use the Desired State Configuration (DSC) extension on the virtual machines. You need to ensure that the virtual machines always have the same Windows features installed.

Which three actions should you perform in sequence? To answer, move the appropriate actions from the list of actions to the answer area and arrange them in the correct order.



- A. Mastered
- B. Not Mastered

Answer: A

Explanation:

Step 1: Create a PowerShell configuration file
You create a simple PowerShell DSC configuration file.
Step 2: Load the file to Azure Blob storage
Package and publish the module to a publically accessible blob container URL
Step 3: Configure the Custom Script Extension on the virtual machines.
The Custom Script Extension downloads and executes scripts on Azure virtual machines.

NEW QUESTION 92

- (Topic 4)

You manage an Azure web app that supports an e-commerce website.
You need to increase the logging level when the web app exceeds normal usage patterns. The solution must minimize administrative overhead.
Which two resources should you include in the solution? Each correct answer presents part of the solution.
NOTE: Each correct selection is worth one point.

- A. an Azure Monitor alert that has a dynamic threshold
- B. an Azure Automation runbook
- C. an Azure Monitor alert that uses an action group that has an email action
- D. the Azure Monitor autoscale settings
- E. an Azure Monitor alert that has a static threshold

Answer: BC

NEW QUESTION 97

DRAG DROP - (Topic 4)

You are configuring the settings of a new Git repository in Azure Repos.
You need to ensure that pull requests in a branch meet the following criteria before they are merged:
? Committed code must compile successfully.
? Pull requests must have a Quality Gate status of Passed in SonarCloud.
Which policy type should you configure for each requirement? To answer, drag the appropriate policy types to the correct requirements. Each policy type may be used once, more than once, or not at all. You may need to drag the split bar between panes or scroll to view content.
NOTE: Each correct selection is worth one point.

Policy Types	
A build policy	Committed code must compile successfully: <input type="text"/>
A check-in policy	Pull requests must have a Quality Gate status of Passed in SonarCloud: <input type="text"/>
A status policy	

- A. Mastered
- B. Not Mastered

Answer: A

Explanation:

Box 1: A check-in policy
Administrators of Team Foundation version control can add check-in policy requirements. These check-in policies require the user to take actions when they conduct a check-in to source control.
By default, the following check-in policy types are available:
? Builds Requires that the last build was successful before a check-in.
? Code Analysis Requires that code analysis is run before check-in.
? Work Items Requires that one or more work items be associated with the check-in.
Box 2: Build policy

NEW QUESTION 99

- (Topic 4)

You use Azure SQL Database Intelligent Insights and Azure Application Insights for monitoring.
You need to write ad-hoc queries against the monitoring data. Which query language should you use?

- A. Kusto Query Language (KQL)
- B. PL/pgSQL
- C. PL/SQL
- D. Transact-SQL

Answer: A

Explanation:

Azure Monitor Logs is based on Azure Data Explorer, and log queries are written using the same Kusto query language (KQL). This is a rich language designed to be easy to read and author, and you

should be able to start using it with minimal guidance. Reference:
<https://docs.microsoft.com/en-us/azure/azure-monitor/log-query/log-query-overview>

NEW QUESTION 100

DRAG DROP - (Topic 4)

You have an Azure Repos Git repository named repo1.

You need to ensure that you can authenticate to repo1 by using SSH.

Which four actions should you perform in sequence? To answer, move the appropriate actions from the list of actions to the answer area and arrange them in the correct order.

Actions	Answer Area
Add the SSH private key.	
Save the SSH key to the root of repo1.	
Sign in to Azure DevOps.	
Create SSH keys by using ssh-keygen.	
Add the SSH public key.	
Clone repo1.	

- A. Mastered
- B. Not Mastered

Answer: A

Explanation:

Actions	Answer Area
Add the SSH private key.	Sign in to Azure DevOps.
Save the SSH key to the root of repo1.	Create SSH keys by using ssh-keygen.
Sign in to Azure DevOps.	Add the SSH public key.
Create SSH keys by using ssh-keygen.	Clone repo1.
Add the SSH public key.	
Clone repo1.	

NEW QUESTION 104

- (Topic 4)

Your company uses Azure Artifacts for package management.

You need to configure an upstream source in Azure Artifacts for Python packages. Which repository type should you use as an upstream source?

- A. PyPI
- B. npmjs.org
- C. Maven Central
- D. third-party trusted Python

Answer: A

Explanation:

Get started with Python packages in Azure Artifacts Create a feed

? Select Artifacts (in the left navigation of your Azure DevOps project).

? On the Artifacts page, select Create Feed.

? In the Create new feed dialog box:

? In the Name field, give the feed a name.

PyPI is the default repository name for twine, which is a tool for publishing Python packages. Reference:

<https://docs.microsoft.com/en-us/azure/devops/artifacts/quickstarts/python-packages>

NEW QUESTION 108

- (Topic 4)

Note: This question is part of a series of questions that present the same scenario. Each question in the series contains a unique solution that might meet the stated goals. Some question sets might have more than one correct solution, while others might not have a correct solution.

After you answer a question in this section, you will NOT be able to return to it. As a result, these questions will not appear in the review screen.

You manage a project in Azure DevOps.

You need to prevent the configuration of the project from changing over time. Solution: Add a code coverage step to the build pipelines.

Does this meet the goal?

- A. Yes
- B. No

Answer: B

Explanation:

Instead implement Continuous Assurance for the project.

Reference:

<https://azsk.azurewebsites.net/04-Continous-Assurance/Readme.html>

NEW QUESTION 111

HOTSPOT - (Topic 4)

You manage build and release pipelines by using Azure DevOps. Your entire managed environment resides in Azure.

You need to configure a service endpoint for accessing Azure Key Vault secrets. The solution must meet the following requirements:

? Ensure that the secrets are retrieved by Azure DevOps.

? Avoid persisting credentials and tokens in Azure DevOps.

How should you configure the service endpoint? To answer, select the appropriate options in the answer area.

NOTE: Each correct selection is worth one point.

Service connection type:	<div><div></div><div>Azure Resource Manager</div><div>Generic service</div><div>Team Foundation Server / Azure Pipelines service connection</div></div>
Authentication/authorization method for the connection:	<div><div></div><div>Azure Active Directory OAuth 2.0</div><div>Grant authorization</div><div>Managed Service Identity Authentication</div></div>

- A. Mastered
- B. Not Mastered

Answer: A

Explanation:

Box 1: Azure Pipelines service connection

Box 2: Managed Service Identity Authentication

The managed identities for Azure resources feature in Azure Active Directory (Azure AD) provides Azure services with an automatically managed identity in Azure AD. You can use the identity to authenticate to any service that supports Azure AD authentication, including Key Vault, without any credentials in your code.

NEW QUESTION 115

- (Topic 4)

You have an existing build pipeline in Azure Pipelines.

You need to use incremental builds without purging the environment between pipeline executions.

What should you use?

- A. a File Transform task
- B. a self-hosted agent
- C. Microsoft-hosted parallel jobs

Answer: B

Explanation:

When you run a pipeline on a self-hosted agent, by default, none of the subdirectories are cleaned in between two consecutive runs. As a result, you can do incremental builds and deployments, provided that tasks are implemented to make use of that. You can override this behavior using the workspace setting on the job.

Reference:

<https://docs.microsoft.com/en-us/azure/devops/pipelines/process/phases>

NEW QUESTION 116

- (Topic 4)

You have an Azure Automation account that contains a webbook. The webbook is used to configure the application infrastructure of an Azure subscription.

You have a project in Azure DevOps named Project1. Project1 contains a repository that stores code for the webbook.

You need to ensure that every committed change to the code will update automatically and publish the webbook to Azure Automation.

What should you configure?

- A. the Connections settings for the Automation account
- B. the Service hooks settings for Project1
- C. the Source control settings for the Automation account
- D. the Service connections settings for Project1

Answer: C

NEW QUESTION 120

DRAG DROP - (Topic 4)

You are implementing a package management solution for a Node.js application by using Azure Artifacts.

You need to configure the development environment to connect to the package repository. The solution must minimize the likelihood that credentials will be leaked.

Which file should you use to configure each connection? To answer, drag the appropriate files to the correct connections. Each file may be used once, more than once, or not at all. You may need to drag the split bar between panes or scroll to view content

NOTE: Each correct selection is worth one point.

Files

The .npmrc file in the project

The .npmrc file in the user's home folder

The Package.json file in the project

The Project.json file in the project

Answer Area

Registry information:

File

Credentials:

File

- A. Mastered
- B. Not Mastered

Answer: A

Explanation:

All Azure Artifacts feeds require authentication, so you'll need to store credentials for the feed before you can install or publish packages. npm uses .npmrc configuration files to store feed URLs and credentials. Azure DevOps Services recommends using two .npmrc files.

Feed registry information: The .npmrc file in the project

One .npmrc should live at the root of your git repo adjacent to your project's package.json. It should contain a "registry" line for your feed and it should not contain credentials since it will be checked into git.

Credentials: The .npmrc file in the user's home folder

On your development machine, you will also have a .npmrc in \$home for Linux or Mac systems or \$env.HOME for win systems. This .npmrc should contain credentials for all of the registries that you need to connect to. The NPM client will look at your project's .npmrc, discover the registry, and fetch matching credentials from \$home/.npmrc or \$env.HOME/.npmrc.

References:

<https://docs.microsoft.com/en-us/azure/devops/artifacts/npm/npmrc?view=azure-devops&tabs=windows>

NEW QUESTION 122

DRAG DROP - (Topic 4)

You have an Azure subscription that uses Azure Monitor and contains a Log Analytics workspace.

You have an encryption key.

You need to configure Azure Monitor to use the key to encrypt log data

Actions

Grant the system-assigned managed identity Certificate permissions for the key vault.

Create an Azure key vault and store the key.

Configure the key vault properties for the cluster.

Grant the system-assigned managed identity Key permissions for the key vault.

Create an Azure Monitor Logs dedicated cluster that has a system-assigned managed identity.

Link the Log Analytics workspace to the cluster.

Answer Area

1

2

3

4

5

- A. Mastered
- B. Not Mastered

Answer: A

Explanation:

Actions

Grant the system-assigned managed identity Certificate permissions for the key vault.

Create an Azure key vault and store the key.

Configure the key vault properties for the cluster.

Grant the system-assigned managed identity Key permissions for the key vault.

Create an Azure Monitor Logs dedicated cluster that has a system-assigned managed identity.

Link the Log Analytics workspace to the cluster.

Answer Area

1 Create an Azure key vault and store the key.

2 Configure the key vault properties for the cluster.

3 Grant the system-assigned managed identity Key permissions for the key vault.

4 Create an Azure Monitor Logs dedicated cluster that has a system-assigned managed identity.

5 Link the Log Analytics workspace to the cluster.

NEW QUESTION 123

DRAG DROP - (Topic 4)

You have an Azure Kubermets Service (AKS) implementation that is RBAC-enabled

You plan to use Azure Container Instances as a hosted development environment to run containers in the AKS implementation.

You need to conjure Azure Container Instances as a hosted environment for running me containers in AKS. Which three actions should you perform m sequence?

To answer, move the appropriate actions from the list of actions to the answer area and arrange them in the correct order.

Actions

Answer Area

Run helm init.

Run az aks install-connector.

Create a YAML file.

Run az role assignment create

Run kubectl apply.

- A. Mastered
B. Not Mastered

Answer: A

Explanation:

Step 1: Create a YAML file.

If your AKS cluster is RBAC-enabled, you must create a service account and role binding for use with Tiller. To create a service account and role binding, create a file named rbac- virtual-kubelet.yaml

Step 2: Run kubectl apply.

Apply the service account and binding with kubectl apply and specify your rbac-virtual- kubelet.yaml file.

Step 3: Run helm init.

Configure Helm to use the tiller service account: helm init --service-account tiller

You can now continue to installing the Virtual Kubelet into your AKS cluster. References: <https://docs.microsoft.com/en-us/azure/aks/virtual-kubelet>

NEW QUESTION 124

DRAG DROP - (Topic 4)

You need to use Azure Automation State Configuration to manage the ongoing consistency of virtual machine configurations.

Which five actions should you perform in sequence? To answer, move the appropriate actions from the list of actions to the answer area and arrange them in the correct order.

NOTE: More than one order of answer choices is correct. You will receive credit for any of the orders you select.

Actions

Answer Area

Onboard the virtual machines to Azure Automation State Configuration.

Check the compliance status of the node.

Create a management group.

Assign the node configuration.

Compile a configuration into a node configuration.

Upload a configuration to Azure Automation State Configuration.

Assign tags to the virtual machines.

- A. Mastered
B. Not Mastered

Answer: A

Explanation:

Step 1: Assign the node configuration.

You create a simple DSC configuration that ensures either the presence or absence of the Web-Server Windows Feature (IIS), depending on how you assign nodes.

Step 2: Upload a configuration to Azure Automation State Configuration. You import the configuration into the Automation account.

Step 3: Compiling a configuration into a node configuration Compiling a configuration in Azure Automation

Before you can apply a desired state to a node, a DSC configuration defining that state must be compiled into one or more node configurations (MOF document),

and placed on the Automation DSC Pull Server.

Step 4: Onboard the virtual machines to Azure State Configuration

Onboarding an Azure VM for management with Azure Automation State Configuration

Step 5: Check the compliance status of the node.

Viewing reports for managed nodes. Each time Azure Automation State Configuration performs a consistency check on a managed node, the node sends a status report back to the pull server. You can view these reports on the page for that node.

On the blade for an individual report, you can see the following status information for the corresponding consistency check:

The report status — whether the node is "Compliant", the configuration "Failed", or the node is "Not Compliant" (when the node is in ApplyandMonitor mode and the machine is not in the desired state).

References: <https://docs.microsoft.com/en-us/azure/automation/automation-dsc-getting-started>

NEW QUESTION 128

- (Topic 4)

You have a private GitHub repository.

You need to display the commit status of the repository on Azure Boards. What should you do first?

- A. Create a GitHub action in GitHub.
- B. Add the Azure Pipelines app to the GitHub repository.
- C. Configure multi-factor authentication (MFA) for your GitHub account.
- D. Add the Azure Boards app to the repository.

Answer: D

Explanation:

To connect Azure Boards to GitHub.com, connect and configure from Azure Boards. Or, alternatively, install and configure the Azure Boards app from GitHub. Both methods have been streamlined and support authenticating and operating via the app rather than an individual.

Note (see step 4 below): Add a GitHub connection:

? Sign into Azure Boards.

? Choose (1) Project Settings, choose (2) GitHub connections and then (3) Connect your GitHub account.

? If this is your first time connecting to GitHub from Azure Boards, you will be asked

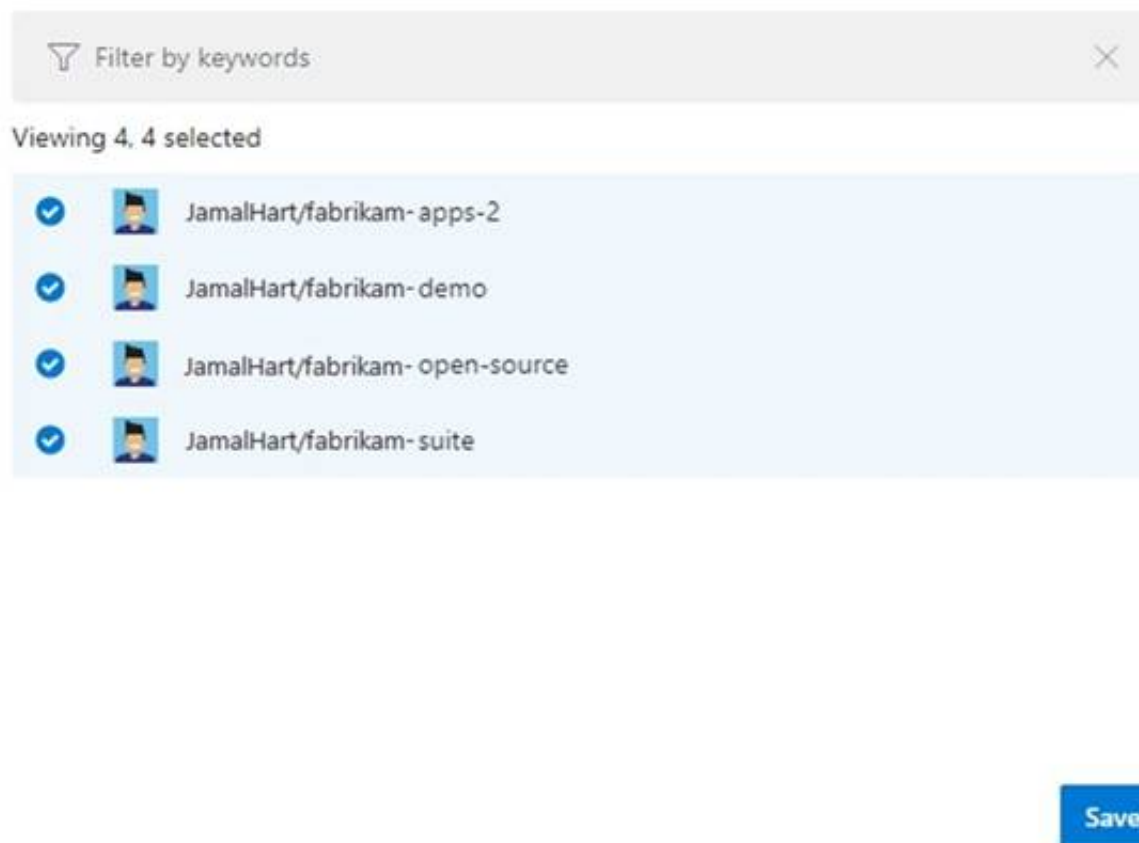
to sign in using your GitHub credentials. Choose an account for which you are an administrator for the repositories you want to connect to.

? The Add GitHub Repositories dialog automatically displays and selects all

GitHub.com repositories for which you are an administrator. Unselect any repositories that you don't want to participate in the integration.

Add GitHub repositories

Add the GitHub repositories you want to use with your Azure Boards.



Reference:

<https://docs.microsoft.com/en-us/azure/devops/boards/github/connect-to-github>

NEW QUESTION 131

- (Topic 4)

Your company has a project in Azure DevOps for a new application. The application will be deployed to several Azure virtual machines that run Windows Server 2016.

You need to recommend a deployment strategy for the virtual machines. The strategy must meet the following requirements:

- Ensure that the virtual machines maintain a consistent configuration.
- Minimize administrative effort to configure the virtual machines What should you include in the recommendation?

- A. Deployment YAML and Azure pipeline stage templates
- B. Azure Resource Manager templates and the Custom Script Extension for Windows
- C. Azure Resource Manager templates and the PowerShell Desired State Configuration (DSC) extension for Windows
- D. Deployment YAML and Azure pipeline deployment groups

Answer: C

Explanation:

The Custom Script Extension downloads and executes scripts on Azure virtual machines. This extension is useful for post deployment configuration, software installation, or any other configuration or management tasks. Scripts can be downloaded from Azure storage or GitHub, or provided to the Azure portal at extension run time. The Custom Script Extension integrates with Azure Resource Manager templates, and can be run using the Azure CLI, PowerShell, Azure portal, or the Azure Virtual Machine REST API.

References:

<https://docs.microsoft.com/en-us/azure/virtual-machines/extensions/custom-script-windows>

NEW QUESTION 133

DRAG DROP - (Topic 4)

You are implementing a new project in Azure DevOps.

You need to assess the performance of the protect. The solution must identity the following metrics:

- How long it takes to complete a work item
- * The percentage of defects found in production

Which DevOps KPI should you review for each metric? To answer drag the appropriate KPIs to the correct metric. Each KPI may be used once, more than once, or not at all. You may need to drag the spirt bar between panes or scroll to view content.


NOTE Each correct selection is worth one point.



- A. Mastered
- B. Not Mastered

Answer: A

Explanation:



NEW QUESTION 136

- (Topic 4)

You have a GitHub repository that is integrated with Azure Boards Azure Boards has a work item that has the number 715.

You need to ensure that when you commit source code in GitHub, the work item is updated automatically. What should you include in the commit comments?

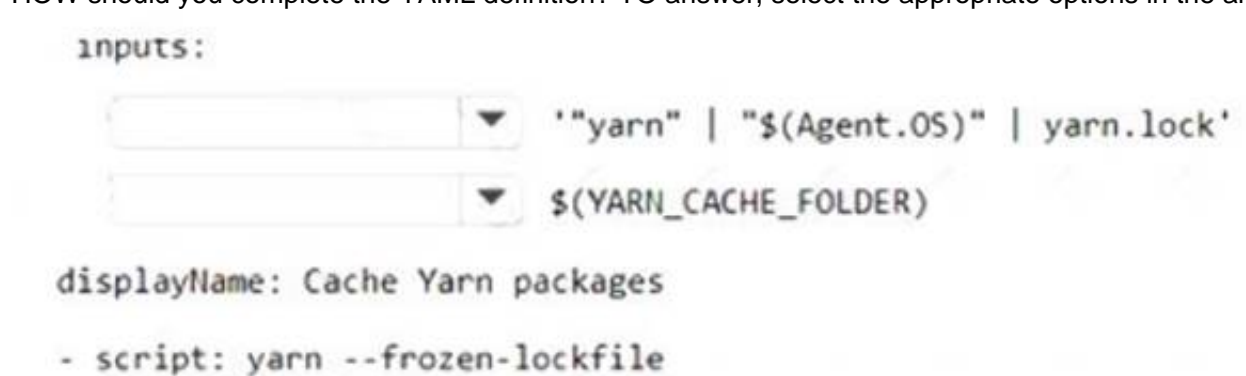
- A. @714
- B. =715
- C. the URL of the work item
- D. AB#715

Answer: B

NEW QUESTION 141

FILL IN THE BLANK - (Topic 4)

You have an Azure subscription that contains Azure DevOps build pipelines. You to implement pipeline caching by using the cache task HOW should you complete the YAML definition? TO answer, select the appropriate options in the answer area.



- A. Mastered
- B. Not Mastered

Answer: A

Explanation:

inputs:

key: "yarn" | "\$(Agent.OS)" | yarn.lock'
 path: \$(YARN_CACHE_FOLDER)

displayName: Cache Yarn packages

- script: yarn --frozen-lockfile

NEW QUESTION 146

- (Topic 4)

You have an Azure DevOps project that contains a build pipeline. The build pipeline uses approximately 50 open source libraries.

You need to ensure that all the open source libraries comply with your company's licensing standards.

Which service should you use?

- A. NuGet
- B. Maven
- C. Black Duck
- D. Helm

Answer: C

Explanation:

Secure and Manage Open Source Software

Black Duck helps organizations identify and mitigate open source security, license compliance and code-quality risks across application and container portfolios.

Black Duck Hub and its plugin for Team Foundation Server (TFS) allows you to automatically find and fix open source security vulnerabilities during the build process, so you can proactively manage risk. The integration allows you to receive alerts and fail builds when any Black Duck Hub policy violations are met.

Note: WhiteSource would also be a good answer, but it is not an option here. Reference:

<https://marketplace.visualstudio.com/items?itemName=black-duck-software.hub-tfs>

NEW QUESTION 151

DRAG DROP - (Topic 4)

As part of your application build process, you need to deploy a group of resources to Azure by using an Azure Resource Manager template located on GitHub.

Which three action should you perform in sequence? To answer, move the appropriate actions from the list of actions to the answer area and arrange them in the correct order.

Actions	Answer Area
Create a package.	
Add an Azure Resource Group Deployment task.	
Create a job agent.	
Create a release pipeline.	
Set the template parameters.	

➔

- A. Mastered
- B. Not Mastered

Answer: A

Explanation:

Step 1: Create a release pipeline You need to create a new pipeline.

You can integrate Azure Resource Manager templates (ARM templates) with Azure Pipelines for continuous integration and continuous deployment (CI/CD).

Step 2: Add an Azure Resource Group Deployment task Step 3: Set the template parameters

NEW QUESTION 155

- (Topic 4)

You have an Azure subscription. The subscription contains virtual machines that run either Windows Server or Linux.

You plan to use Prometheus to monitor performance metrics. You need to integrate Prometheus and Azure Monitor.

Which two actions should you perform? Each correct answer presents part of the solution. NOTE: Each correct selection is worth one point.

- A. Install a Prometheus server on a Windows virtual machine in Azure.
- B. On each virtual machine, expose the metrics endpoint.
- C. On each virtual machine, enable the Azure Diagnostics extension.
- D. On each virtual machine, enable the containerized agent for Azure Monitor.
- E. Expose a virtual network service endpoint for Azure Storage.
- F. Install a Prometheus server on a Linux virtual machine in Azure.

Answer: AB

NEW QUESTION 157

HOTSPOT - (Topic 4)

You have an application named App1 that has a custom domain of app.contoso.com. You create a test in Azure Application Insights as shown in the following exhibit.

Create test

^ Basic Information

* Test name

availability

Learn more about configuring tests against applications hosted behind a firewall

Test type

URL ping test

* URL ⓘ

https://app.contoso.com

Parse dependent requests ⓘ

☒

Enable retries for availability test failures. ⓘ

☐

Test frequency ⓘ

5 minutes

✓ Test locations

4 location(s) configured

^ Success criteria

Test Timeout ⓘ

30 seconds

☒ HTTP response ⓘ

Status code must equal

200

☒ Content match ⓘ

Content must contain

Copyright Contoso

✓ Alerts

Enabled

Create

Use the drop-down menus to select the answer choice that completes each statement based on the information presented in the graphic.
NOTE: Each correct selection is worth one point.

The test will execute [answer choice].

every 30 seconds at a random location

every 30 seconds per location

every five minutes at a random location

every five minutes per location

The test will pass if [answer choice] within 30 seconds.

App1 responds to an ICMP ping

the HTML of App1 and the HTML from URLs in <a> tags load

all the HTML, JavaScripts, and images of App1 load

- A. Mastered
- B. Not Mastered

Answer: A

Explanation:

Box 1: every five minutes at a random location
Test frequency: Sets how often the test is run from each test location. With a default frequency of five minutes and five test locations, your site is tested on average every minute.
Box 2:
Parse dependent requests: Test requests images, scripts, style files, and other files that are part of the web page under test. The recorded response time includes the time taken to get these files. The test fails if any of these resources cannot be successfully downloaded within the timeout for the whole test.

NEW QUESTION 159

DRAG DROP - (Topic 4)
Your company plans to deploy an application to the following endpoints:
? Ten virtual machines hosted in Azure
? Ten virtual machines hosted in an on-premises data center environment
All the virtual machines have the Azure Pipelines agent.
You need to implement a release strategy for deploying the application to the endpoints. What should you recommend using to deploy the application to the endpoints? To answer, drag the appropriate components to the correct endpoints. Each component may be used once, more than once, or not at all. You may need to drag the split bar between panes or scroll to view content.
NOTE: Each correct selection is worth one point.

Components	Answer Area
A deployment group	
A management group	Ten virtual machines hosted in Azure: <div></div>
A resource group	Ten virtual machines hosted in an on-premises data center environment: <div></div>
Application roles	

- A. Mastered
- B. Not Mastered

Answer: A

Explanation:

Box 1: A deployment group
When authoring an Azure Pipelines or TFS Release pipeline, you can specify the deployment targets for a job using a deployment group.
If the target machines are Azure VMs, you can quickly and easily prepare them by installing the Azure Pipelines Agent Azure VM extension on each of the VMs, or by using the Azure Resource Group Deployment task in your release pipeline to create a deployment group dynamically.
Box 2: A deployment group
References: <https://docs.microsoft.com/en-us/azure/devops/pipelines/release/deployment-groups>

NEW QUESTION 161

- (Topic 4)
You have several Azure Active Directory (Azure AD) accounts.
You need to ensure that users use multi-factor authentication (MFA) to access Azure apps from untrusted networks.
What should you configure in Azure AD?

- A. access reviews
- B. managed identities
- C. entitlement management
- D. conditional access

Answer: D

Explanation:

You can configure a Conditional Access policy that requires MFA for access from untrusted networks.

Reference:

<https://docs.microsoft.com/en-us/azure/active-directory/conditional-access/howto-conditional-access-policy-all-users-mfa>

NEW QUESTION 163

DRAG DROP - (Topic 4)

You need to find and isolate shared code. The shared code will be maintained in a series of packages.

Which three actions should you perform in sequence? To answer, move the appropriate actions from the list of actions to the answer area and arrange them in the correct order.

Actions	Answer Area
Group the related components.	
Assign ownership to each component group.	
Create a dependency graph for the application.	
Identify the most common language used.	
Rewrite the components in the most common language.	

- A. Mastered
- B. Not Mastered

Answer: A

Explanation:

Step 1: Create a dependency graph for the application

By linking work items and other objects, you can track related work, dependencies, and changes made over time. All links are defined with a specific link type. For example, you can use Parent/Child links to link work items to support a hierarchical tree structure. Whereas, the Commit and Branch link types support links between work items and commits and branches, respectively.

Step 2: Group the related components.

Packages enable you to share code across your organization: you can compose a large product, develop multiple products based on a common shared framework, or create and share reusable components and libraries.

Step 3: Assign ownership to each component group References:

<https://docs.microsoft.com/en-us/azure/devops/boards/queries/link-work-items-support-traceability?view=azure-devops&tabs=new-web-form> <https://docs.microsoft.com/en-us/visualstudio/releases/notes/tfs2017-relnotes>

NEW QUESTION 167

- (Topic 4)

You are designing the development process for your company.

You need to recommend a solution for continuous inspection of the company's code base to locate common code patterns that are known to be problematic.

What should you include in the recommendation?

- A. Microsoft Visual Studio test plans
- B. Gradle wrapper scripts
- C. SonarCloud analysis
- D. the JavaScript task runner

Answer: C

Explanation:

SonarCloud is a cloud service offered by SonarSource and based on SonarQube.

SonarQube is a widely

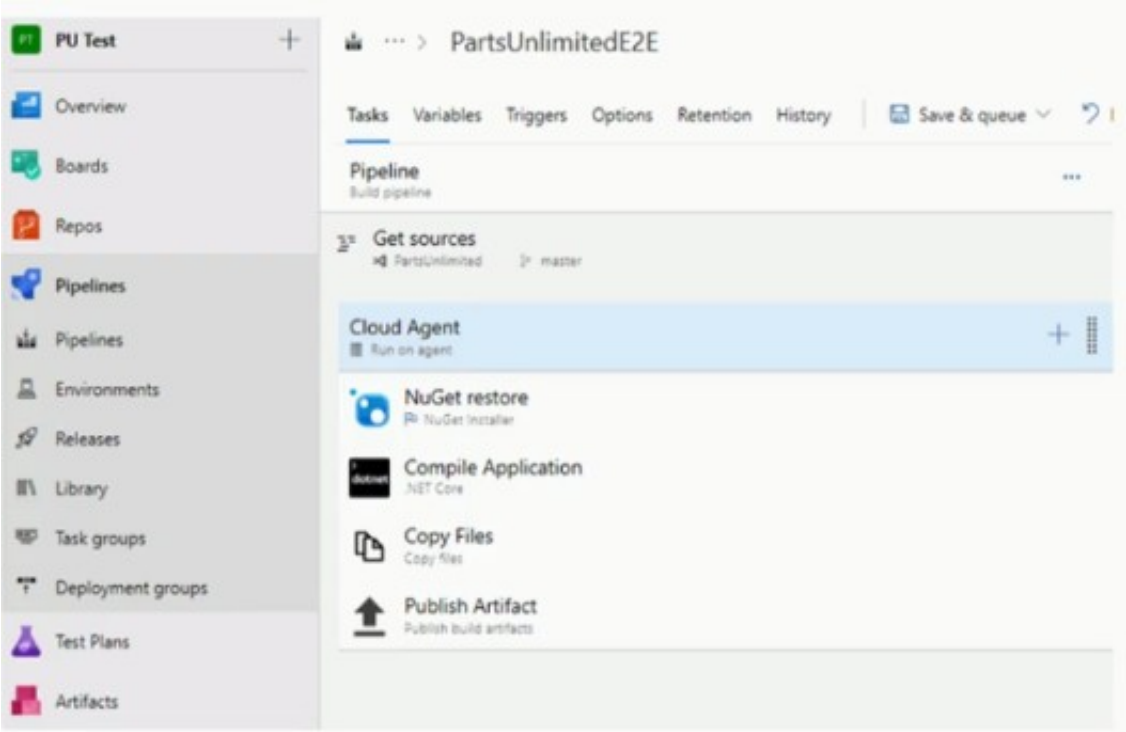
adopted open source platform to inspect continuously the quality of source code and detect bugs, vulnerabilities and code smells in more than 20 different languages.

Note: The SonarCloud Azure DevOps extension brings everything you need to have your projects analyzed on SonarCloud very quickly.

NEW QUESTION 172

HOTSPOT - (Topic 4)

You have the Azure DevOps pipeline shown in the following exhibit.



Use the drop-down menus to select the answer choice that completes each statement based on the information presented in the graphic.

Answer Area

The pipeline has job(s).

The pipeline has task(s).

- A. Mastered
- B. Not Mastered

Answer: A

Explanation:

Box 1: 1
The Cloud agent job only.
Box 2: 4
The pipelines has the four tasks: NuGet restore, Compile Application, Copy Files, and Publish Artifact.

NEW QUESTION 175

DRAG DROP - (Topic 4)
You use GitHub Enterprise Server as a source code repository. You create an Azure DevOps organization named Contoso.
In the Contoso organization, you create a project named Project 1.
You need to link GitHub commits, pull requests, and issues to the work items of Project 1. The solution must use OAuth-based authentication
Which three actions should you perform in sequence? To answer, move the appropriate actions from the list of actions to the answer area and arrange them in the correct order.

Actions

- From Project Settings in Azure DevOps, create a service hook subscription.
- From Organization settings in Azure DevOps, add an OAuth configuration.
- From Developer settings in GitHub Enterprise Server, register a new OAuth app.
- From Project Settings in Azure DevOps, add a GitHub connection.
- From Developer settings in GitHub Enterprise Server, generate a private key.
- From Organization settings in Azure DevOps, connect to Azure Active Directory (Azure AD).

Answer Area

- A. Mastered
- B. Not Mastered

Answer: A

Explanation:

Step 1: From Developer settings in GitHub Enterprise Server, register a new OAuth app. If you plan to use OAuth to connect Azure DevOps Services or Azure DevOps Server with your GitHub Enterprise Server, you first need to register the application as an OAuth App
Step 2: Organization settings in Azure DevOps, add an OAuth configuration Register your OAuth configuration in Azure DevOps Services.
Note:
? Sign into the web portal for Azure DevOps Services.
? Add the GitHub Enterprise Oauth configuration to your organization.
? Open Organization settings>Oauth configurations, and choose Add Oauth configuration.
? Fill in the form that appears, and then choose Create.
Step 3: From Project Settings in Azure DevOps, add a GitHub connection. Connect Azure DevOps Services to GitHub Enterprise Server
Choose the Azure DevOps logo to open Projects, and then choose the Azure Boards project you want to configure to connect to your GitHub Enterprise repositories.

Choose (1) Project Settings, choose (2) GitHub connections and then (3) Click here to connect to your GitHub Enterprise organization.

NEW QUESTION 178

HOTSPOT - (Topic 4)

Your company uses Azure DevOps for Get source control.

You have a project in Azure DevOps named Contoso App that contains the following repositories:

? <https://dev.azure.com/contoso/contoso-app/core-api>

? <https://dev.azure.com/contoso/contoso-app/core-spa>

? <https://dev.azure.com/contoso/contoso-app/core-db>

You need to ensure that developers receive Slack notifications when there are pull requests created for Contoso App.

What should you run in Slack? To answer, select the appropriate options in the answer area.

NOTE: Each correct selection is worth one point.

/azrepos

▼

feedback
signin
subscribe
subscriptions

▼

<https://dev.azure.com/contoso/contoso-app>
<https://dev.azure.com/contoso/contoso-app/core-api>
<https://dev.azure.com/contoso/contoso-app/core-db>
<https://dev.azure.com/contoso/contoso-app/core-spa>

- A. Mastered
- B. Not Mastered

Answer: A

Explanation:

Box 1: subscribe

To start monitoring all Get repositories in a project, use the following slash command inside a channel:

/azrepos subscribe [project ur1]

Box 2: <https://dev.azure.com/contoso/contoso-app>

You can also monitor a specific repository using the following command:

/azrepos subscribe [repository ur1]

The repository URL can be to any page within your repository that has your repository name.

For example, for Get repositories, use:

/azrepos subscribe https://dev.azure.com/myorg/myproject/_git/myrepository

NEW QUESTION 182

DRAG DROP - (Topic 4)

You have a web app named App1 that is hosted on multiple servers. App1 uses Application Insights in Azure Monitor.

You need to compare the dairy CPU usage from the last week for all servers.

How should you complete the query? To answer, drag the appropriate values to the correct targets. Each value may be used once, more than once, or not at all.

You may need to drag the split bar between panes or scroll to view content

NOTE: Each correct selection is worth one point.

Values

bin(timestamp,id)

bin(timestamp,ih)

project timechart

render chart

render timechart

Answer Area

```
...
performanceCounters
| where counter == "% Processor Time"
| where timestamp >= ago(7d)
| summarize avg(value) by cloud_RoleInstance,
|
...
```

- A. Mastered
- B. Not Mastered

Answer: A

Explanation:

<https://docs.microsoft.com/en-us/azure/azure-monitor/app/performance-counters>

NEW QUESTION 187

- (Topic 4)

You are designing a YAML template for use with Azure Pipelines. The template Will include the Outputfile parameter.

Which two methods can you use to reference the parameter? Each correct answer presents a complete solution.

NOTE: Each correct selection is worth one point.

- A. `$(parameters['outputfile'])`
- B. `${parameters.outputfile}`
- C. `$(parameters.outputfile)`
- D. `$(parameters[outputfile])`
- E. `${parameters['outputfile']}`

- A. Option A
- B. Option B
- C. Option C
- D. Option D
- E. Option E

Answer: CD

NEW QUESTION 189

- (Topic 4)
Your company is building a new solution in Java.
The company currently uses a SonarQube server to analyze the code of .NET solutions. You need to analyze and monitor the code quality of the Java solution.
Which task types should you add to the build pipeline?

- A. Chef
- B. Gradle
- C. Octopus
- D. Gulp

Answer: B

Explanation:
SonarQube is a set of static analyzers that can be used to identify areas of improvement in your code. It allows you to analyze the technical debt in your project and keep track of it in the future. With Maven and Gradle build tasks, you can run SonarQube analysis with minimal setup in a new or existing Azure DevOps Services build task.
References:
<https://docs.microsoft.com/en-us/azure/devops/java/sonarqube?view=azure-devops>

NEW QUESTION 194

DRAG DROP - (Topic 4)
You are planning projects for three customers. Each customer's preferred process for work items is shown in the following table.

Customer name	Preferred process
Litware, Inc.	Track product backlog items (PBIs) and bugs on the Kanban board. Break the PBIs down into tasks on the task board.
Contoso, Ltd.	Track user stories and bugs on the Kanban board. Track the bugs and tasks on the task board.
A. Datum Corporation	Track requirements, change requests, risks, and reviews.

The customers all plan to use Azure DevOps for work item management.
Which work item process should you use for each customer? To answer, drag the appropriate work item process to the correct customers. Each work item process may be used once, more than once, or not at all. You may need to drag the split bar between panes or scroll to view content.
NOTE: Each correct selection is worth one point.

Processes	Answer Area
<div>Agile</div>	Litware <div></div>
<div>CMMI</div>	Contoso: <div></div>
<div>Scrum</div>	A. Datum: <div></div>
<div>XP</div>	

- A. Mastered
B. Not Mastered

Answer: A

Explanation:

Box 1: Scrum

Choose Scrum when your team practices Scrum. This process works great if you want to track product backlog items (PBIs) and bugs on the Kanban board, or break PBIs and bugs down into tasks on the taskboard.

Box 2: Agile

Choose Agile when your team uses Agile planning methods, including Scrum, and tracks development and test activities separately. This process works great if you want to track user stories and (optionally) bugs on the Kanban board, or track bugs and tasks on the taskboard.

Box 3: CMMI

Choose CMMI when your team follows more formal project methods that require a framework for process improvement and an auditable record of decisions. With this process, you can track requirements, change requests, risks, and reviews.

NEW QUESTION 195

- (Topic 4)

You have project in Azure DevOps.

You create the following template named Template1.yml.

```
steps:
- script: npm install
- script: yarn install
- script: npm run compile
```

You create the following pipeline named File1.yml.

```
parameters:
usersteps:
- task: MyTask@1
- script: echo Done
```

You need to ensure that Template1.yml runs before File1.yml. How should you update File1.yml?

- A. `parameters: usersteps: extends: template: template1.yml - task: MyTask@1 - script: echo Done`
- B. `extends: template: template1.yml parameters: usersteps: - task: MyTask@1 - script: echo Done`
- C. `parameters: usersteps: - template: template1.yml - task: MyTask@1 - script: echo Done`
- D. `template: template1.yml parameters: usersteps: - task: MyTask@1 - script: echo Done`

- A. Option A
B. Option B
C. Option C

D. Option D

Answer: B

NEW QUESTION 196

- (Topic 4)

You are automating the testing process for your company. You need to automate UI testing of a web application. Which framework should you use?

- A. JaCoco
- B. Playwright
- C. Xamarin.UITest
- D. Microsoft.CodeAnalysis

Answer: B

Explanation:

Performing user interface (UI) testing as part of the release pipeline is a great way of detecting unexpected changes, and need not be difficult. Selenium can be used to test your website during a continuous deployment release and test automation.

References:

<https://docs.microsoft.com/en-us/azure/devops/pipelines/test/continuous-test-selenium?view=azure-devops>

NEW QUESTION 200

SIMULATION - (Topic 4)

You need to ensure that an Azure web app named az400-9940427-main supports rolling upgrades. The solution must ensure that only 10 percent of users who connect to az400- 9940427-main use update versions of the app.

The solution must minimize administrative effort.

To complete this task, sign in to the Microsoft Azure portal.

- A. Mastered
- B. Not Mastered

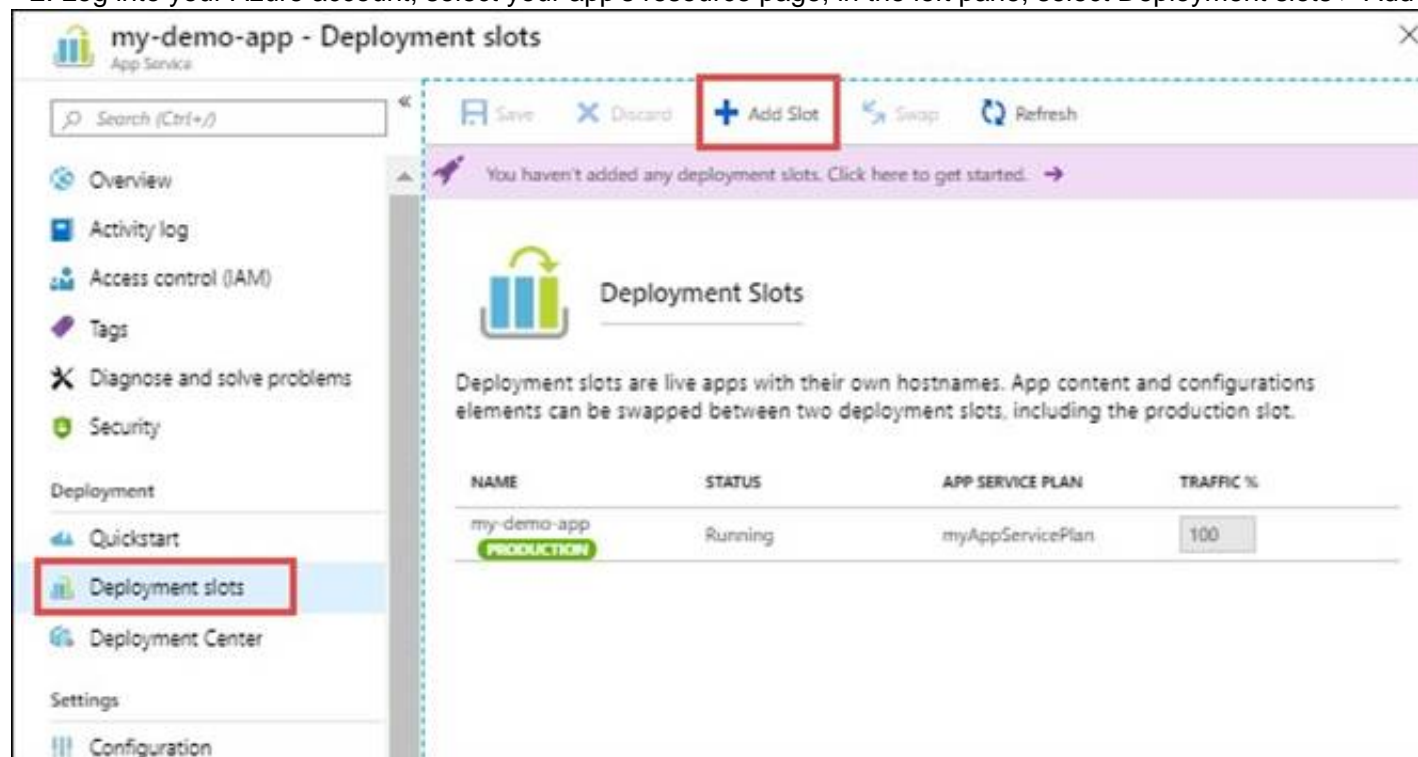
Answer: A

Explanation:

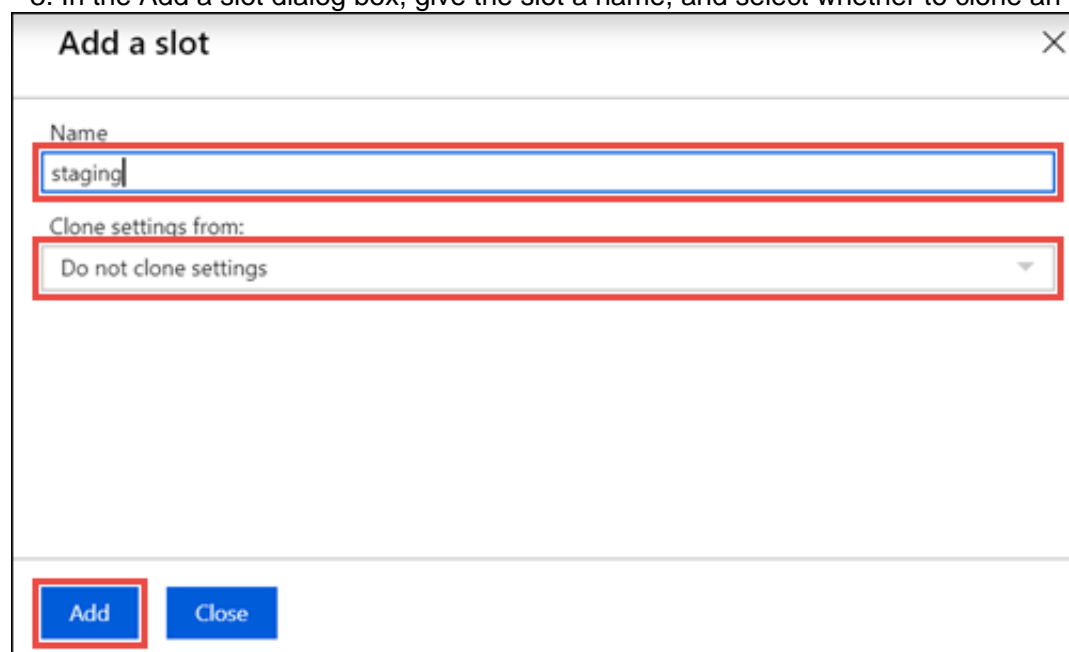
Set up staging environments in Azure App Service

* 1. Open Microsoft Azure Portal

* 2. Log into your Azure account, select your app's resource page, in the left pane, select Deployment slots > Add Slot.

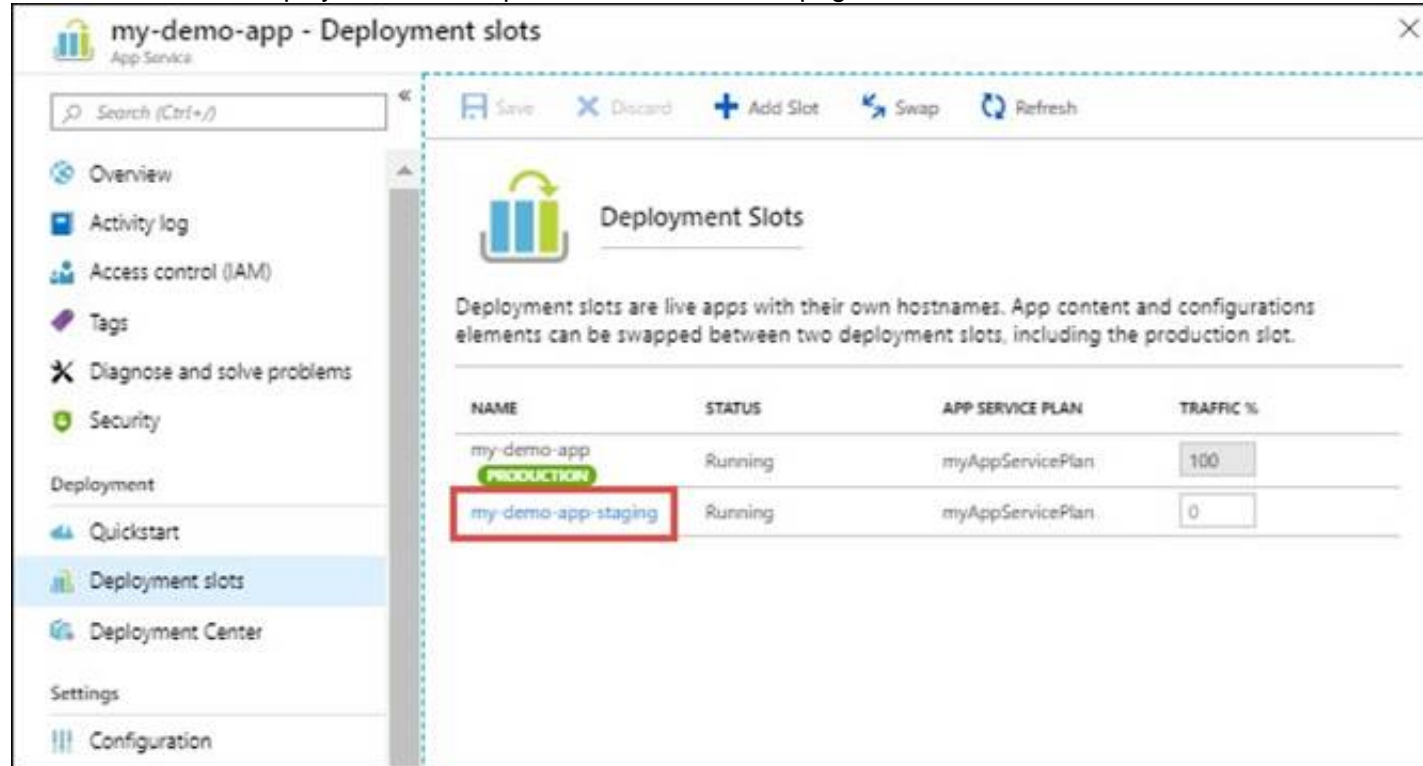


* 3. In the Add a slot dialog box, give the slot a name, and select whether to clone an app configuration from another deployment slot. Select Add to continue.



* 4. After the slot is added, select Close to close the dialog box. The new slot is now shown on the Deployment slots page. By default, Traffic % is set to 0 for the new slot, with all customer traffic routed to the production slot.

* 5. Select the new deployment slot to open that slot's resource page.



* 6. Change TRAFFIC % to 10 References:

<https://docs.microsoft.com/en-us/azure/app-service/deploy-staging-slots>

NEW QUESTION 203

- (Topic 4)

Note: This question is part of a series les of questions that present the same scenario. Each question in the series contains a unique solution that might meet the stated goals. Some question sets might have more than one correct solution, while others might not have a correct solution.

After you answer a question m this section, you will NOT be able to return to it As a result, these questions will not appear in the review screen

You integrate a cloud-hosted Jenkins server and a new Azure Dev Ops deployment. You need Azure Dev Ops lo send a notification to Jenkins when a developer commits changes to a branch in Azure Repos.

Solution: You create an email subscription to an Azure DevOps notification. Does this meet the goal?

- A. Yes
- B. NO

Answer: B

Explanation:

You can create a service hook for Azure DevOps Services and TFS with Jenkins.

References:

<https://docs.microsoft.com/en-us/azure/devops/service-hooks/services/jenkins>

NEW QUESTION 205

- (Topic 4)

You are building an ASP.NET Core application.

You plan to create an application utilization baseline by capturing telemetry data.

You need to add code to the application to capture the telemetry data. The solution must minimize the costs of storing the telemetry data.

Which two actions should you perform? Each correct answer presents part of the solution. NOTE: Each correct selection is worth one point.

- A. Add the <InitialSamplingPercentage>99</InitialSamplingPercentage> parameter to the ApplicationInsights.config file.
- B. From the code of the application, enable adaptive sampling.
- C. From the code of the application, add Azure Application Insights telemetry.
- D. Add the <MaxTelemetryItemsPerSecond>5</MaxTelemetryItemsPerSecond> parameter to the ApplicationInsights.config file.
- E. From the code of the application, disable adaptive sampling.

Answer: CE

Explanation:

"Fixed-rate sampling reduces the volume of telemetry sent from both your ASP.NET or ASP.NET Core or Java server and from your users' browsers. You set the rate. The client and server will synchronize their sampling so that, in Search, you can navigate between related page views and requests."

<https://docs.microsoft.com/en-us/azure/azure-monitor/app/sampling>

<https://docs.microsoft.com/en-us/azure/azure-monitor/app/asp-net-core> <https://docs.microsoft.com/en-us/azure/azure-monitor/app/sampling#configuring-adaptive-sampling-for-aspnet-core-applications>

NEW QUESTION 209

DRAG DROP - (Topic 3)

You need to configure authentication for App1. The solution must support the planned changes.

Which three actions should you perform in sequence? To answer, move all actions from the list of actions to the answer area and arrange them in the correct order.

Actions Commands Cmdlets Statements

Answer Area

Create an app.

Add a secret.

Create a credential.

Configure the ID and secret for App1.

Create a managed service identity.

⬅️

➡️

⬆️

⬆️

- A. Mastered
- B. Not Mastered

Answer: A

Explanation:
Woodgrove Bank plans to implement the following changes to the identity environment:
? Configure App1 to use a service principal.

NEW QUESTION 213
- (Topic 3)
You need to configure Azure Pipelines to control App2 builds. Which authentication method should you use?

- A. Windows NTLM
- B. certificate
- C. SAML
- D. personal access token (PAT)

Answer: D

Explanation:
Scenario: Deploy App2 to an Azure virtual machine named VM1.
A personal access token (PAT) is used as an alternate password to authenticate into Azure DevOps.
Reference:
<https://docs.microsoft.com/en-us/azure/devops/organizations/accounts/use-personal-access-tokens-to-authenticate>

NEW QUESTION 215
DRAG DROP - (Topic 3)
You need to replace the existing DevOps tools to support the planned changes.
What should you use? To answer, drag the appropriate tools to the correct targets. Each tool may be used once, more than once, or not at all. You may need to drag the split bar between panes or scroll to view content.
NOTE: Each correct selection is worth one point.

Tools

Answer Area

Azure Boards

Azure Artifacts

GitHub Actions

Azure Pipelines

Azure Test Plans

GitHub repositories

Trello:

Bamboo:

BitBucket:

Tool

Tool

Tool

- A. Mastered
- B. Not Mastered

Answer: A

Explanation:

Box 1: Azure Boards
Azure Boards can be used to track work with Kanban boards, backlogs, team dashboards, and custom reporting
You can create multiple Trello boards, which are spaces to store tasks (for different work contexts, or even private boards)
You can easily share Trello boards with another person.

Box 2: Azure Pipelines
You can use Bamboo to implement CI/CD (Continuous Integration and Continuous Delivery) for a simple Azure function app using Atlassian Bamboo. Bamboo does continuous delivery of the project from source code to deployment. It has stages including Build, Test and Deploy.
Software teams in every industry are upgrading their continuous delivery pipeline with Bamboo. Easy build import from popular open source tools, user and group import from JIRA, seamless integration with Bitbucket, and native support for Git, Hg, and SVN means you'll be building and deploying like a champ.

Box 3: GitHub repositories
Bitbucket can be used as the Git repository, but you can use any other Git repository (Like TFS Git) for source control of the code.

NEW QUESTION 219

HOTSPOT - (Topic 3)
You need to configure the alert for VM1. The solution must meet the technical requirements.
Which two settings should you configure? To answer, select the appropriate settings in the answer area.
NOTE: Each correct selection is worth one point.

Alert logic

Threshold ⓘ
Static Dynamic

Operator ⓘ
Greater than ▾

Aggregation type * ⓘ
Average ▾

Threshold value * ⓘ
% ▾

Condition preview

Whenever the average percentage cpu is greater than <logic undefined> %

Evaluated based on

Aggregation granularity (Period) * ⓘ
5 minutes ▾

Frequency of evaluation ⓘ
Every 1 Minute ▾

- A. Mastered
- B. Not Mastered

Answer: A

Explanation:
Setting 1: Threshold value Set to 80 %
Scenario: An Azure Monitor alert for VM1 must be configured to meet the following requirements:
? Be triggerred when average CPU usage exceeds 80 percent for 15 minutes.
? Calculate CPU usage averages once every minute.
Setting 2: Aggregation granularity Set to 15 minutes.

NEW QUESTION 220

HOTSPOT - (Topic 2)
How should you configure the filters for the Project5 trigger? To answer, select the appropriate option in the answer area.
NOTE: Each correct selection is worth one point.

Set a ▾ /folder1.

branch filter to exclude

branch filter to include

path filter to exclude

path filter to include

Set a ▾ /.

branch filter to exclude

branch filter to include

path filter to exclude

path filter to include

@

- A. Mastered
- B. Not Mastered

Answer: A

Explanation:

Project5 will contain a Git repository in Azure Reports and a continuous integration trigger that will initiate a build in response to any change except for changes within /folder1 of the repository.

Scenario:
References: <https://docs.microsoft.com/en-us/azure/devops/pipelines/build/triggers>

NEW QUESTION 223

DRAG DROP - (Topic 2)

You need to recommend a procedure to implement the build agent for Project1.
Which three actions should you recommend be performed in sequence? To answer, move the appropriate actions from the list of actions to the answer area and arrange them in the correct order.

Actions

Sign in to Azure DevOps by using an account that is assigned the Administrator service connection security role.

Install the Azure Pipelines agent on on-premises virtual machine.

Create a personal access token in the Azure DevOps organization of Contoso.

Install and register the Azure Pipelines agent on an Azure virtual machine.

Sign in to Azure DevOps by using an account that is assigned the agent pool administrator role.

Answer Area

- A. Mastered
- B. Not Mastered

Answer: A

Explanation:

Scenario:

Project 1	Project1 will provide support for incremental builds and third-party SDK components
-----------	-------------------------------------------------------------------------------------

Step 1: Sign in to Azure Develops by using an account that is assigned the Administrator service connection security role.
Note: Under Agent Phase, click Deploy Service Fabric Application. Click Docker Settings and then click Configure Docker settings. In Registry Credentials Source, select Azure Resource Manager Service Connection. Then select your Azure subscription.
Step 2: Create a personal access token..
A personal access token or PAT is required so that a machine can join the pool created with the Agent Pools (read, manage) scope.
Step 3: Install and register the Azure Pipelines agent on an Azure virtual machine.
By running a Azure Pipeline agent in the cluster, we make it possible to test any service, regardless of type.
References:
<https://docs.microsoft.com/en-us/azure/service-fabric/service-fabric-tutorial-deploy-container-app-with-cicd-vsts>
<https://mohitgoyal.co/2019/01/10/run-azure-devops-private-agents-in-kubernetes-clusters/>

NEW QUESTION 224

HOTSPOT - (Topic 1)

HOTSPOT

You are using PowerShell to administer Azure Log Analytics workspaces. You need to list the available workspaces and their properties.
How should you complete the command? To answer, select the appropriate options in the answer area.
NOTE: Each correct selection is worth one point.

Get-AzResource

Get-AzResourceGroup

Get-AzResourceProvider

-ResourceGroupName

-ResourceId

-ResourceType

Microsoft.OperationalInsights/workspaces - ExpandProperties

- A. Mastered
- B. Not Mastered

Answer: A

Explanation:

Box 1: Get-AzResource

Use the following command to examine the access control mode for all workspaces in the subscription:
PowerShell
Get-Az Resource -Resource Type Microsoft.OperationalInsights/workspaces -Expand Properties | for each {s.Name + " " +
\$_.Properties.features.enableLogAccessUsingOnlyResourcePermissions Box 2: -Resource Type

NEW QUESTION 229

DRAG DROP - (Topic 2)

You need to configure Azure Automation for the computers in Pool7.
Which three actions should you perform in sequence? To answer, move the appropriate actions from the list of actions to the answer area and arrange them in the correct order.

Run the New-AzureRmResourceGroupDeployment Azure PowerShell cmdlet.

Create an Azure Resource Manager template file that has an extension of .json.

Run the Import-AzureRmAutomationDscConfiguration Azure PowerShell cmdlet.

Run the Start-AzureRmAutomationDscCompilationJob Azure PowerShell cmdlet.

Create a Desired State Configuration (DSC) configuration file that has an extension of .ps1.

1

2

3

⬆

⬆

⬆

⬆

⬆

- A. Mastered
- B. Not Mastered

Answer: A

Explanation:

Run the New-AzureRmResourceGroupDeployment Azure PowerShell cmdlet.

Create an Azure Resource Manager template file that has an extension of .json.

Run the Import-AzureRmAutomationDscConfiguration Azure PowerShell cmdlet.

Run the Start-AzureRmAutomationDscCompilationJob Azure PowerShell cmdlet.

Create a Desired State Configuration (DSC) configuration file that has an extension of .ps1.

1

2

3

⬆

⬆

⬆

⬆

⬆

Create a Desired State Configuration (DSC) configuration file that has an extension of .ps1.

Run the Import-AzureRmAutomationDscConfiguration Azure PowerShell cmdlet.

Run the Start-AzureRmAutomationDscCompilationJob Azure PowerShell cmdlet.

⬆

⬆

⬆

NEW QUESTION 231

HOTSPOT - (Topic 1)

HOTSPOT

You have an Azure virtual machine named VM1 that runs Linux.
You plan to deploy the Desired State Configuration (DSC) extension to VM1. You need to grant the Log Analytics agent the appropriate directory permissions.
How should you complete the command? To answer, select the appropriate options in the answer area.
NOTE: Each correct selection is worth one point.

setfacl -m u:omsagent:

r

x

rx

rwx

/lib

/etc

/tmp

/usr

- A. Mastered

B. Not Mastered

Answer: A

Explanation:

Box 1: rwx

The Log Analytics agent for Linux runs as the omsagent user. To grant >write permission to the omsagent user, run the command `setfacl -m u:omsagent:rwx /tmp`.

Box 2: /tmp

Deploying DSC to a Linux node uses the /tmp folder.

NEW QUESTION 235

- (Topic 4)

Your company uses GitHub for source control. The company has a team that performs code reviews.

You need to automate the assignment of the code reviews. The solution must meet the following requirements:

Prioritize the assignment of code reviews to team members who have the fewest outstanding assignments.

Ensure that each team member performs an equal number of code reviews in any 30-day period.

Prevent the assignment of code reviews to the team leader.

Which two actions should you perform? Each correct answer presents part of the solution. NOTE: Each correct selection is worth one point.

A. Clear Never assign certain team members.

B. Select If assigning team members, don't notify the entire team.

C. Select Never assign certain team members.

D. Set Routing algorithm to Round robin.

E. Set Routing algorithm to Load balance.

Answer: AE

Explanation:

A: To always skip certain members of the team, select Never assign certain team members. Then, select one or more team members you'd like to always skip. In this case select the team leader.

E: The load balance algorithm chooses reviewers based on each member's total number of recent review requests and considers the number of outstanding reviews for each member. The load balance algorithm tries to ensure that each team member reviews an equal number of pull requests in any 30day period.

Reference:

<https://docs.github.com/en/organizations/organizing-members-into-teams/managing-code-review-assignment-for-your-team>

NEW QUESTION 236

SIMULATION - (Topic 4)

You plan to deploy a runbook that will create Azure AD user accounts.

You need to ensure that runbooks can run the Azure PowerShell cmdlets for Azure Active Directory.

To complete this task, sign in to the Microsoft Azure portal.

A. Mastered

B. Not Mastered

Answer: A

Explanation:

Azure Automation now ships with the Azure PowerShell module of version 0.8.6, which introduced the ability to non-interactively authenticate to Azure using OrgId (Azure Active Directory user) credential-based authentication. Using the steps below, you can set up Azure Automation to talk to Azure using this authentication type.

Step 1: Find the Azure Active Directory associated with the Azure subscription to manage:

* 1. Log in to the Azure portal as the service administrator for the Azure subscription you want to manage using Azure Automation. You can find this user by logging in to the Azure portal as any user with access to this Azure subscription, then clicking Settings, then Administrators.



* 2. Note the name of the directory associated with the Azure subscription you want to manage. You can find this directory by clicking Settings, then Subscriptions.



Step 2: Create an Azure Active Directory user in the directory associated with the Azure subscription to manage:
You can skip this step if you already have an Azure Active Directory user in this directory. and plan to use this OrgId to manage Azure.

* 1. In the Azure portal click on Active Directory service.

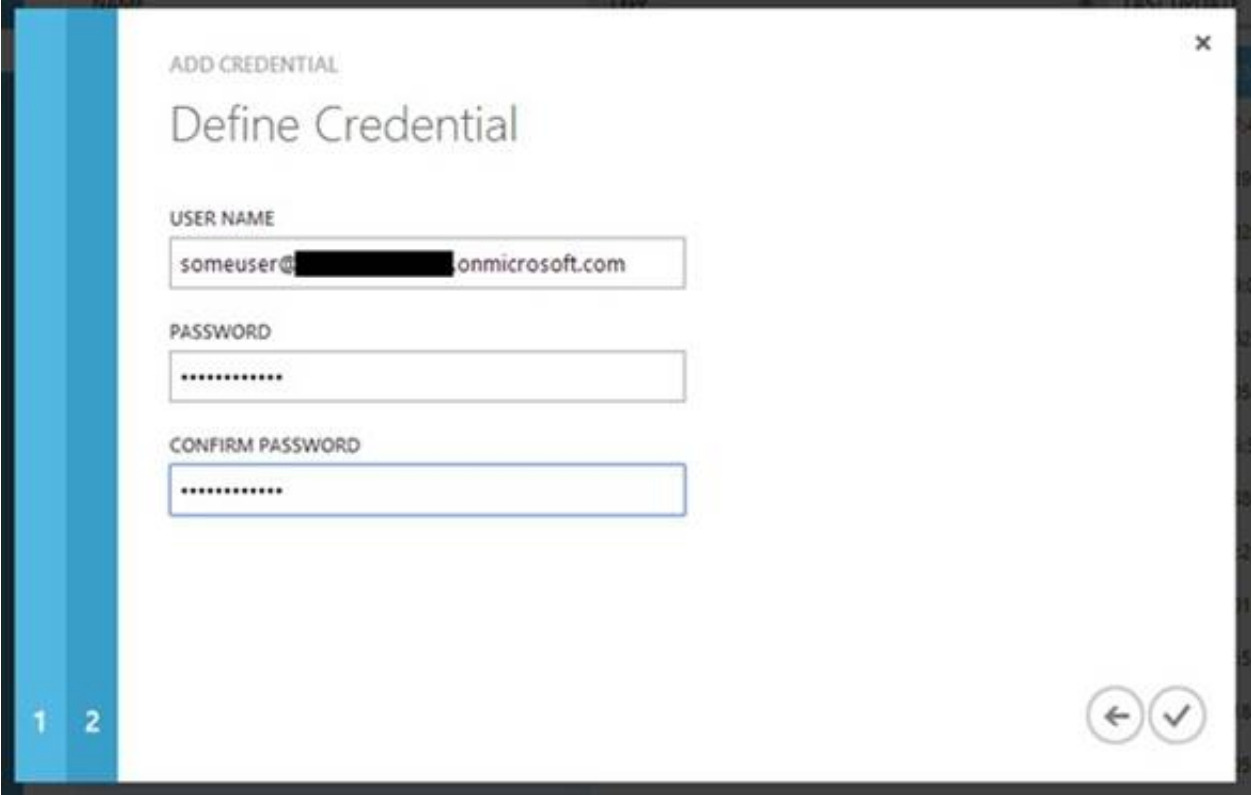


- * 2. Click the directory name that is associated with this Azure subscription.
 - * 3. Click on the Users tab and then click the Add User button.
 - * 4. For type of user, select "New user in your organization." Enter a username for the user to create.
 - * 5. Fill out the user's profile. For role, pick "User." Don't enable multi-factor authentication. Multi-factor accounts cannot be used with Azure Automation.
 - * 6. Click Create.
 - * 7. Jot down the full username (including part after @ symbol) and temporary password.
- Step 3: Allow this Azure Active Directory user to manage this Azure subscription.
- * 1. Click on Settings (bottom Azure tab under StorSimple)



- * 2. Click Administrators
- * 3. Click the Add button. Type the full user name (including part after @ symbol) of the Azure Active Directory user you want to set up to manage Azure. For subscriptions, choose the Azure subscriptions you want this user to be able to manage. Click the check mark.

Step 4: Configure Azure Automation to use this Azure Active Directory user to manage this Azure subscription
 Create an Azure Automation credential asset containing the username and password of the Azure Active Directory user that you have just created. You can create a credential asset in Azure Automation by clicking into an Automation Account and then clicking the Assets tab, then the Add Setting button.



Note: Once you have set up the Azure Active Directory credential in Azure and Azure Automation, you can now manage Azure from Azure Automation runbooks using this credential.
 References:
<https://azure.microsoft.com/sv-se/blog/azure-automation-authenticating-to-azure-using-azure-active-directory/>

NEW QUESTION 241
 HOTSPOT - (Topic 4)

You are designing YAML-based Azure pipelines for the apps shown in the following table.

Name	Platform	Release requirements
App1	Azure virtual machine	Replace a fixed set of existing instances of the previous version of App1 with instances of the new version of the app in each iteration.
App2	Azure Kubernetes Service (AKS) cluster	Roll out a limited deployment of the new version of App2 to validate the functionality of the app. Once testing is successful, expand the rollout.

You need to configure the YAML strategy value for each app. The solution must minimize app downtime.
 Which value should you configure for each app? To answer, select the appropriate options in the answer area.
 NOTE: Each correct selection is worth one point.

App1:

▼

canary

rolling

runonce

App2:

▼

canary

rolling

runonce

- A. Mastered
- B. Not Mastered

Answer: A

Explanation:
 App1: rolling
 A rolling deployment replaces instances of the previous version of an application with instances of the new version of the application on a fixed set of virtual machines (rolling set) in each iteration.
 App2: canary
 Canary deployment strategy is an advanced deployment strategy that helps mitigate the risk involved in rolling out new versions of applications. By using this strategy, you can roll out the changes to a small subset of servers first. As you gain more confidence in the new version, you can release it to more servers in your infrastructure and route more traffic to it.

NEW QUESTION 242

- (Topic 4)

Your company plans to use an agile approach to software development

You need to recommend an application to provide communication between members of the development team who work in locations around the world. The application must meet the following requirements:

- Provide the ability to isolate the members of efferent project teams into separate communication channels and to keep a history of the chats within those channels.
- Be available on Windows 10, Mac OS, iOS, and Android operating systems.
- Provide the ability to add external contractors and suppliers to projects.
- Integrate directly with Azure DevOps. What should you recommend?

- A. Octopus
- B. Bamboo
- C. Microsoft Project
- D. Slack

Answer: D

Explanation:

Slack is a popular team collaboration service that helps teams be more productive by keeping all communications in one place and easily searchable from virtually anywhere. All your messages, your files, and everything from Twitter, Dropbox, Google Docs, Azure DevOps, and more all together. Slack also has fully native apps for iOS and Android to give you the full functionality of Slack wherever you go.

Integrated with Azure DevOps

This integration keeps your team informed of activity happening in its Azure DevOps projects. With this integration, code check-ins, pull requests, work item updates, and build events show up directly in your team's Slack channel.

Note: Microsoft Teams would also be a correct answer, but it is not an option here. References:

<https://marketplace.visualstudio.com/items?itemName=ms-vsts.vss-services-slack>

NEW QUESTION 243

HOTSPOT - (Topic 4)

You use Get for source control.

You need to optimize the performance of a repository. The solution must meet the following requirements:

? Permanently remove all items referenced only in the ref log.

? Remove history that is NOT in any current branch.

How should you complete the command? To answer, select the appropriate options in the answer area.

git

gc

reflog

reset

stash

git

gc

init

reflog

reset

expire --expire-unreachable=now --all

--prune=

all

now

reset

true

- A. Mastered
- B. Not Mastered

Answer: A

Explanation:



NEW QUESTION 248

HOTSPOT - (Topic 4)

You use Azure Pipelines to manage the build and deployment of apps.

You are planning the release strategies for a new app. You need to choose strategies for the following scenarios:

- Releases will be made available to users who are grouped by their tolerance for software faults.
- Code will be deployed to enable functionality that will be available in later releases of the app.
- When a new release occurs, the existing deployment will remain active to minimize recovery time if a return to the previous version is required.

Answer Area

Releases will be made available to users who are grouped by their tolerance for software faults:	<div>Progressive exposure</div> <div>Blue/green</div> <div>Feature flags</div>
Code will be deployed to enable functionality that will be available in later releases of the app:	<div>Progressive exposure</div> <div>Blue/green</div> <div>Feature flags</div>
When a new release occurs, the existing deployment will remain active to minimize recovery time if a return to the previous version is required:	<div>Progressive exposure</div> <div>Blue/green</div> <div>Feature flags</div>

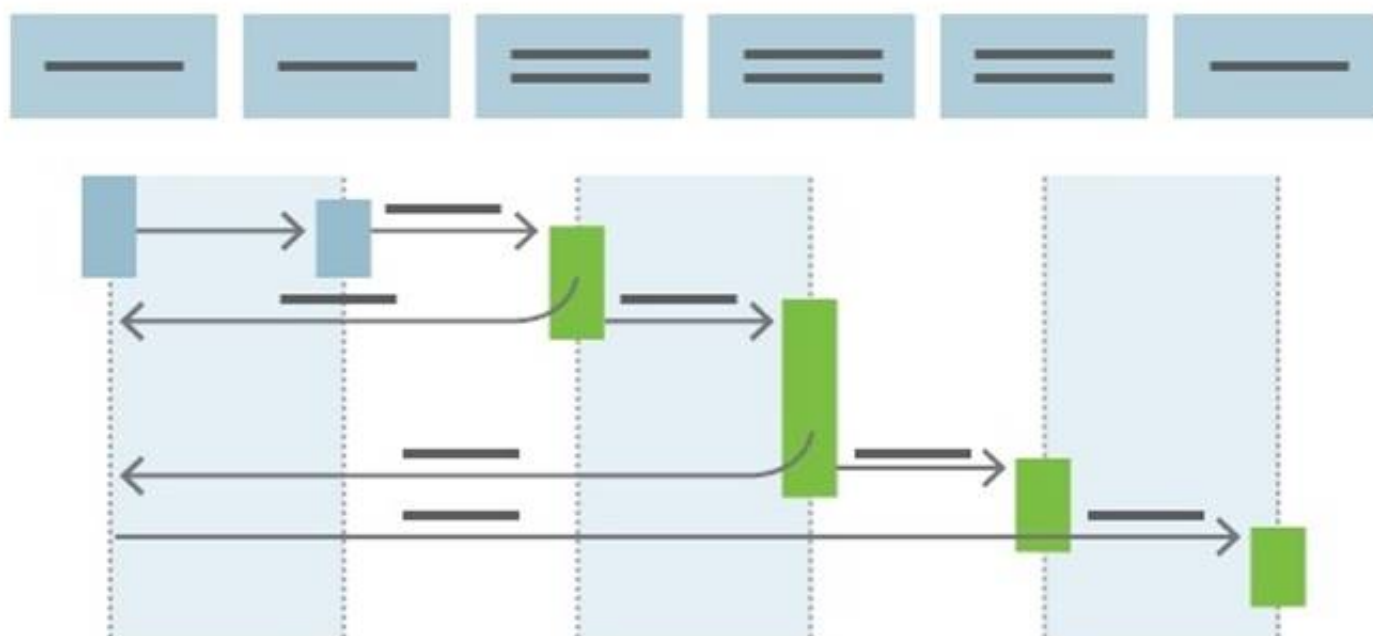
- A. Mastered
 B. Not Mastered

Answer: A

Explanation:

Box 1: Progressive exposure

Continuous Delivery may sequence multiple deployment “rings” for progressive exposure (also known as “controlling the blast radius”). Progressive exposure groups users who get to try new releases to monitor their experience in “rings.” The first deployment ring is often a “canary” used to test new versions in production before a broader rollout. CD automates deployment from one ring to the next and may optionally depend on an approval step, in which a decision maker signs off on the changes electronically. CD may create an auditable record of the approval in order to satisfy regulatory procedures or other control objectives.



Box 2: Feature flags

Feature flags support a customer-first DevOps mindset, to enable (expose) and disable (hide) features in a solution, even before they are complete and ready for release.

Box 3: Blue/green

Blue/green deployments which means that instead of replacing the previous version (here we refer to this version as blue), we bring up the new version (here referred to as the green version) next to the existing version, but not expose it to the actual users right away. On the condition of having successfully validated that the green version works correctly, we will promote this version to the public version by changing the routing configuration without downtime. If something is wrong with the green version we can revert back without users every noticing interruptions.

NEW QUESTION 250

- (Topic 4)

After you answer a question in this section, you will NOT be able to return to it As a result, these questions will not appear in the review screen.

You use Azure Pipelines to build and test a React js application You have a pipeline that has a single job.

You discover that installing JavaScript packages from npm takes approximately five minutes each time you run the pipeline.

You need to recommend a solution to reduce the pipeline execution time. Solution: You recommend enabling pipeline caching.

Does this meet the goal?

A. Yes

B. No

Answer: A

Explanation:

npm-cache is a command line utility that caches dependencies installed via npm, bower, jspm and composer.

It is useful for build processes that run [npm|bower|composer|jspm] install every time as part of their build process. Since dependencies don't change often, this often means slower build times. npm-cache helps alleviate this problem by caching previously installed dependencies on the build machine.

Reference: <https://www.npmjs.com/package/npm-cache>

NEW QUESTION 255

- (Topic 4)

You have an Azure DevOps project that uses many package feeds.

You need to simplify the project by using a single feed that stores packages produced by your company and packages consumed from remote feeds. The solution must support public feeds and authenticated feeds.

What should you enable in DevOps?

A. Universal Packages

B. views in Azure Artifacts

C. upstream sources

D. a symbol server

Answer: C

NEW QUESTION 256

HOTSPOT - (Topic 4)

You have a virtual machine that runs Windows Server 2019 and is managed by using Desired State Configuration (DSC).

You have the following DSC configuration.

```
configuration WebConfiguration
{

    File WebsiteContent {
        Ensure          = 'Present'
        SourcePath       = 'c:\test\index.htm'
        DestinationPath  = 'c:\inetpub\wwwroot'
        DependsOn        = '[WindowsFeature]Web-Server'
    }

    WindowsFeature Web-Server
    {
        Ensure = 'Present'
        Name    = 'Web-Server'
    }
}
```

You have the following Local Configuration Manager (LCM) configuration.

```
LocalConfigurationManager
{
    ConfigurationMode = "ApplyAndMonitor"
    RefreshFrequencyMins = 30
    ConfigurationModeFrequencyMins = 60
    RefreshMode = 'Push'
}
```

For each of the following statements, select Yes if the statement is true. Otherwise, select No.

NOTE: Each correct selection is worth one point.

Statements	Yes	No
The Index.htm file will be copied to the C:\Test folder before the Web-Server Windows feature is installed.	<input type="radio"/>	<input type="radio"/>
If manual changes are made to the configuration of the virtual machine, the configuration will reapply automatically.	<input type="radio"/>	<input type="radio"/>
If the Web-Server Windows feature is uninstalled from the virtual machine, the discrepancy will be reported in a log entry within 60 minutes.	<input type="radio"/>	<input type="radio"/>

- A. Mastered
- B. Not Mastered

Answer: A

Explanation:

No "Dependson are defined" No "Mode is Apply and Monitor"
Yes "Configuration Mode FreqMin : 60 "

Configuration Mode Freq Min:How often, in minutes, the current configuration is checked and applied. This property is ignored if the Configuration Mode property is set to Apply Only.

[https://docs.microsoft.com/en-us/powershell/dsc/managing-nodes/metaconfig?view=dsc- 1.1](https://docs.microsoft.com/en-us/powershell/dsc/managing-nodes/metaconfig?view=dsc-1.1)

[https://docs.microsoft.com/en-us/powershell/dsc/configurations/resource-depends- on?view=dsc-1.1](https://docs.microsoft.com/en-us/powershell/dsc/configurations/resource-depends-on?view=dsc-1.1)

NEW QUESTION 259

- (Topic 4)

You plan to create an image that will contain a .NET Core application.

You have a Dockerfile file that contains the following code. (Line numbers are included for reference only.)

```
01 FROM microsoft/dotnet:2.1-sdk
02 COPY ./
03 RUN dotnet publish -c Release -o out
04 FROM microsoft/dotnet:2.1-sdk
05 COPY -from=0 /out /
06 WORKDIR /
07 ENTRYPOINT ["dotnet", "appl.dll"]
```

You need to ensure that the image is as small as possible when the image is built. Which line should you modify in the file?

- A. 1
- B. 3
- C. 4
- D. 7

Answer: C

Explanation:

<https://github.com/dotnet/dotnet-docker/blob/master/samples/dotnetapp/README.md>

NEW QUESTION 264

- (Topic 4)

You are designing a strategy to monitor the baseline metrics of Azure virtual machines that run Windows Server. You need to collect detailed data about the processes running in the guest operating system. Which two agents should you deploy? Each correct answer presents part of the solution. NOTE: Each correct selection is worth one point.

- A. the Dependency agent
- B. the Azure Network Watcher Agent for Windows
- C. the Telegraf agent
- D. the Azure Log Analytics agent

Answer: AD

Explanation:

The following table provide a quick comparison of the Azure Monitor agents for Windows.

	Azure Monitor agent (preview)	Diagnostics extension (WAD)	Log Analytics agent	Dependency agent
Environments supported	Azure	Azure	Azure Other cloud On-premises	Azure Other cloud On-premises
Agent requirements	None	None	None	Requires Log Analytics agent
Data collected	Event Logs Performance	Event Logs ETW events Performance File based logs IIS logs .NET app logs Crash dumps Agent diagnostics logs	Event Logs Performance File based logs IIS logs Insights and solutions Other services	Process dependencies Network connection metrics
Data sent to	Azure Monitor Logs Azure Monitor Metrics	Azure Storage Azure Monitor Metrics Event Hub	Azure Monitor Logs	Azure Monitor Logs (through Log Analytics agent)

Reference:
<https://docs.microsoft.com/en-us/azure/azure-monitor/platform/agents-overview>

NEW QUESTION 266

- (Topic 4)

You have a project in Azure DevOps named Project1. Project1 contains a build pipeline named Pipe1 that builds an application named Appl. You have an agent pool named Pool1 that contains a Windows Server 2019-based self-hosted agent. Pipe1 uses Pool1. You plan to implement another project named Project2. Project2 will have a build pipeline named Pipe2 that builds an application named App2. App1 and App2 have conflicting dependencies. You need to minimize the possibility that the two build pipelines will conflict with each other. The solution must minimize infrastructure costs. What should you do?

- A. Create two container jobs.
- B. Change the self-hosted agent to use Red Hat Enterprise Linux (RHEL) 9.
- C. Add another self-hosted agent
- D. Add a Docker Compose task to the build pipelines.

Answer: A

NEW QUESTION 268

- (Topic 4)

You have an Azure subscription that contains multiple Azure services. You need to send an SMS alert when scheduled maintenance is planned for the Azure services. Which two actions should you perform? Each correct answer presents part of the solution. NOTE: Each correct selection is worth one point.

- A. Create an Azure Service Health alert.
- B. Enable Azure Security Center.
- C. Create and configure an action group
- D. Create and configure an Azure Monitor alert rule

Answer: AD

NEW QUESTION 270

- (Topic 4)

You manage code by using GitHub. You need to ensure that repository owners are notified if a new vulnerable dependency or malware is found in their repository. What should you do?

- A. Configure branch protection rules for each repository.
- B. Configure Dependabot alerts.
- C. Configure CodeQL scanning actions.
- D. Subscribe all the repository owners to the GitHub Advisory Database.

Answer: B

NEW QUESTION 274

DRAG DROP - (Topic 4)

You use Azure Pipelines to automate Continuous Integration/Continuous Deployment (CI/CD) for an Azure web app named WebApp1. You configure an Azure Monitor alert that is triggered when WebApp1 generates an error. You need to configure the alert to forward details of the error to a third-party system. The solution must minimize administrative effort. Which three actions should you perform in sequence? To answer, move the appropriate actions from the list of actions to the answer area and arrange them in the correct order.

Actions

Answer Area

- Select the Recurrence trigger.
- Create an Azure event hub.
- Create an Azure logic app.
- Select the HTTP request trigger.
- Update the action group in Azure Monitor.
- Select the Sliding Window trigger.



- A. Mastered
- B. Not Mastered

Answer: A

Explanation:

Graphical user interface,
text, application
Description automatically generated
Box 1: Create an Azure logic app.
Box 2: Select the HTTP request trigger.
Box 3: Updated the action group in Azure Monitor.

NEW QUESTION 278

SIMULATION - (Topic 4)

You have an Azure function hosted in an App Service plan named az400-9940427-func1. You need to configure az400-9940427-func1 to upgrade the functions automatically whenever new code is committed to the master branch of <https://github.com/Azure-Samples/functions-quickstart>. To complete this task, sign in to the Microsoft Azure portal.

- A. Mastered
- B. Not Mastered

Answer: A

Explanation:

- * 1. Open Microsoft Azure Portal
- * 2. Log into your Azure account, select App Services in the Azure portal left navigation, and then select configure az400-9940427-func1.
- * 3. On the app page, select Deployment Center in the left menu.
- * 4. On the Build provider page, select Azure Pipelines (Preview), and then select Continue.
- * 5. On the Configure page, in the Code section:
For GitHub, drop down and select the Organization, Repository, and Branch you want to deploy continuously.
- * 6. Select Continue.
- * 7. On the Test page, choose whether to enable load tests, and then select Continue.
- * 8. Depending on your App Service plan pricing tier, you may see a Deploy to staging page. Choose whether to enable deployment slots, and then select Continue.
- * 9. After you configure the build provider, review the settings on the Summary page, and then select Finish.

References:

<https://docs.microsoft.com/en-us/azure/app-service/deploy-continuous-deployment>

NEW QUESTION 281

- (Topic 4)

You use GitHub for source control of .NET applications. You need to deploy a documentation solution that meets the following requirements:
? Documents will be written in Markdown as developers make code changes
? Changes to the documents will trigger the recompilation of a static website.
? Users will access the documents from the static websites
? Documents will be stored in a GitHub repository
Which two tools can you use to compile the website? Each correct answer presents a complete solution.

- A. Jekyll
- B. Medium
- C. caret
- D. WordPress
- E. Doc FX

Answer: AD

Explanation:

A. Jekyll is a static site generator that can be used to generate a static website from Markdown files stored in a GitHub repository. Jekyll supports the use of Markdown for writing documentation, and it can automatically recompile the website whenever changes are made to the documentation.

* E. Doc FX is another tool that can be used to compile a static website from Markdown files stored in a GitHub repository. It is an open-source tool that can be used to generate API documentation, reference documentation, and other types of documentation from source code and other files. Doc FX supports the use of Markdown for writing documentation and it can automatically recompile the website whenever changes are made to the documentation.

NEW QUESTION 284

HOTSPOT - (Topic 4)

You have an Azure subscription that contains the resources shown in the following table.

Name	Type
DF1	Azure Data Factory
SQL1	Azure SQL Database
KV1	Azure Key Vault

You plan to create a linked service in DF1. The linked service will connect to SQL1 by using Microsoft SQL Server authentication. The password for the SQL Server login will be stored in KV1.

You need to configure DF1 to retrieve the password when the data factory connects to SQL1. The solution must use the principle of least privilege.

How should you configure DF1? To answer, select the appropriate options in the answer area.

NOTE: Each correct selection is worth one point.

Permission type:

Key

Secret

Certificate

Access method:

Access policy

Service endpoint policy

Role-based access control (RBAC)

- A. Mastered
- B. Not Mastered

Answer: A

Explanation:

Box 1: Secret

Store credential in Azure Key Vault by reference secret stored in key vault.

To reference a credential stored in Azure Key Vault, you need to:

? Retrieve data factory managed identity

? Grant the managed identity access to your Azure Key Vault. In your key vault -> Access policies -> Add Access Policy, search this managed identity to grant Get permission in Secret permissions dropdown. It allows this designated factory to access secret in key vault.

? Create a linked service pointing to your Azure Key Vault.

? Create data store linked service, inside which reference the corresponding secret stored in key vault.

Box 2: Access policy

NEW QUESTION 288

- (Topic 4)

You need to configure GitHub to use Azure Active Directory (Azure AD) for authentication. What should you do first?

- A. Create a conditional access policy in Azure AD.
- B. Modify the Security settings of the GitHub organization.
- C. Create an Azure Active Directory B2C (Azure AD B2C) tenant.
- D. Register GitHub in Azure AD.

Answer: D

Explanation:

When you connect to a Git repository from your Git client for the first time, the credential manager prompts for credentials. Provide your Microsoft account or Azure AD credentials.

Note: Git Credential Managers simplify authentication with your Azure Repos Git repositories. Credential managers let you use the same credentials that you use for the

Azure DevOps Services web portal. Credential managers support multi-factor authentication through Microsoft account or Azure Active Directory (Azure AD). Besides supporting multi-factor authentication with Azure Repos, credential managers also support two-factor authentication with GitHub repositories.
 Reference:
<https://docs.microsoft.com/en-us/azure/devops/repos/git/set-up-credential-managers>

NEW QUESTION 289

- (Topic 4)

Your company has a project in Azure DevOps for a new web application. The company uses Service Now for change management. You need to ensure that a change request is processed before any components can be deployed to the production environment. What are two ways to integrate into the Azure DevOps release pipeline? Each correct answer presents a complete solution.
 NOTE: Each correct selection is worth one point.

- A. Define a deployment control that invokes the Service Now SOAP API.
- B. Define a post deployment gate after the deployment to the QA stage.
- C. Define a deployment control that invokes the ServiceNow REST API.
- D. Define a pre deployment gate before the deployment to the Prod stage.

Answer: AB

Explanation:

<https://docs.microsoft.com/en-us/azure/devops/pipelines/release/approvals/servicenow?view=azure-devops>

NEW QUESTION 291

DRAG DROP - (Topic 4)

You provision an Azure Kubernetes Service (AKS) cluster that has RBAC enabled. You have a Helm chart for a client application. You need to configure Helm and Tiller on the cluster and install the chart. Which three commands should you recommend be run in sequence? To answer, move the appropriate commands from the list of commands to the answer area and arrange them in the correct order.

Commands	Answer Area
helm install	
kubectl create	
helm completion	
helm init	
helm serve	

- A. Mastered
- B. Not Mastered

Answer: A

Explanation:

Step 1: Kubectl create

You can add a service account to Tiller using the --service-account <NAME> flag while you're configuring Helm (step 2 below). As a prerequisite, you'll have to create a role binding which specifies a role and a service account name that have been set up in advance.

Example: Service account with cluster-admin role

\$ kubectl create -f rbac-config.yaml serviceaccount "tiller" created clusterrolebinding "tiller" created

\$ helm init --service-account tiller

Step 2: helm init

To deploy a basic Tiller into an AKS cluster, use the helm init command.

Step 3: helm install

To install charts with Helm, use the helm install command and specify the name of the chart to install.

References:

<https://docs.microsoft.com/en-us/azure/aks/kubernetes-helm> https://docs.helm.sh/using_helm/#tiller-namespaces-and-rbac

NEW QUESTION 294

- (Topic 4)

Note: This question is part of a series of questions that present the same scenario. Each question in the series contains a unique solution that might meet the stated goals. Some question sets might have more than one correct solution, while others might not have a correct solution.

After you answer a question in this section, you will NOT be able to return to it as a result, these questions will not appear in the review screen.

You have an Azure pipeline that is used to deploy a web app. The pipeline includes a test suite named TestSuite1. TestSuite1 is used to validate the operations of the web app.

TestSuite1 fails intermittently.

You identify that the failures are unrelated to changes in the source code and execution environment.

You need to minimize troubleshooting effort for the TestSuite1 failures. Solution: You implement the Test Results Trend widget.

Does this meet the goal?

- A. Yes
- B. No

Answer: B

NEW QUESTION 295

- (Topic 4)

Note: This question is part of a series of questions that present the same scenario. Each question in the series contains a unique solution that might meet the stated goals. Some question sets might have more than one correct solution, while others might not have a correct solution.

After you answer a question in this section, you will NOT be able to return to it as a result, these questions will not appear in the review screen.

You have an Azure pipeline that is used to deploy a web app. The pipeline includes a test suite named TestSuite1. TestSuite1 is used to validate the operations of the web app.

TestSuite1 fails intermittently.

You identify that the failures are unrelated to changes in the source code and execution environment.

You need to minimize troubleshooting effort for the TestSuite1 failures. Solution: You enable flaky test management.

Does this meet the goal?

- A. Yes
- B. No

Answer: A

NEW QUESTION 296

- (Topic 4)

Your company implements an Agile development methodology. You plan to implement retrospectives at the end of each sprint.

Which three questions should you include? Each correct answer presents part of the solution.

NOTE: Each correct selection is worth one point.

- A. Who performed well?
- B. Who should have performed better?
- C. What could have gone better?
- D. What went well?
- E. What should we try next?

Answer: CDE

Explanation:

<https://www.scrum.org/resources/what-is-a-sprint-retrospective>

NEW QUESTION 298

- (Topic 4)

During a code review, you discover many quality issues. Many modules contain unused variables and empty catch Modes. You need to recommend a solution to improve the quality o' the code. What should you recommend?

- A. In a Gradle build task, select Run Checkstyle.
- B. In an Xcode build task, select Use xcpretty from Advanced
- C. In a Grunt build task, select Enabled from Control Options.
- D. In a Maven build task, select Run PMD.

Answer: D

Explanation:

PMD is a source code analyzer. It finds common programming flaws like unused variables, empty catch blocks, unnecessary object creation, and so forth.

There is an Apache Maven PMD Plugin which allows you to automatically run the PMD code analysis tool on your project's source code and generate a site report with its results. References: <https://pmd.github.io/>

NEW QUESTION 303

HOTSPOT - (Topic 4)

You use Azure DevOps to manage the build and deployment of an app named App1. You have a release pipeline that deploys a virtual machine named VM1.

You plan to monitor the release pipeline by using Azure Monitor

You need to create an alert to monitor the performance of VM1. The alert must be triggered when the average CPU usage exceeds 70 percent for five minutes.

The alert must calculate the average once every minute.

How should you configure the alert rule? To answer, select the appropriate options in the answer area.

Answer Area

Aggregation granularity (Period):	<div>1 minute</div> <div>5 minutes</div>
Threshold value:	<div>Static</div> <div>Dynamic</div>
Operator:	<div>Greater than</div> <div>Greater than or equal to</div> <div>Less than or equal to</div> <div>Less than</div>

- A. Mastered
- B. Not Mastered

Answer: A

Explanation:

Box 1: 5 minutes

The alert must calculate the average once every minute.

Note: We [Microsoft] recommend choosing an Aggregation granularity (Period) that is larger than the Frequency of evaluation, to reduce the likelihood of missing the first

evaluation of added time series Box 2: Static

Box 3: Greater than

Example, say you have an App Service plan for your website. You want to monitor CPU usage on multiple instances running your web site/app. You can do that using a metric alert rule as follows:

? Target resource: myAppServicePlan

? Metric: Percentage CPU

? Condition Type: Static

? Dimensions

? Instance = InstanceName1, InstanceName2

? Time Aggregation: Average

? Period: Over the last 5 mins

? Frequency: 1 min

? Operator: GreaterThan

? Threshold: 70

? Like before, this rule monitors if the average CPU usage for the last 5 minutes exceeds 70%.

? Aggregation granularity

NEW QUESTION 307

SIMULATION - (Topic 4)

You need to configure a virtual machine named VM1 to securely access stored secrets in an Azure Key Vault named az400-11566895-kv.

To complete this task, sign in to the Microsoft Azure portal.

A. Mastered

B. Not Mastered

Answer: A

Explanation:

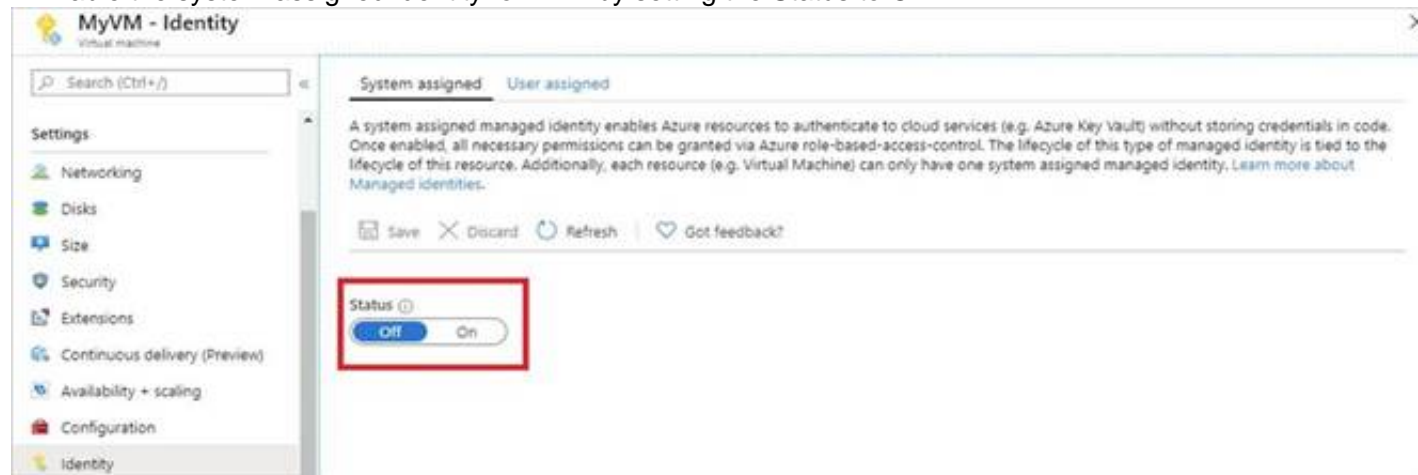
You can use a system-assigned managed identity for a Windows virtual machine (VM) to access Azure Key Vault.

? Sign in to Azure portal

? Locate virtual machine VM1.

? Select Identity

? Enable the system-assigned identity for VM1 by setting the Status to On.



Note: Enabling a system-assigned managed identity is a one-click experience. You can either enable it during the creation of a VM or in the properties of an existing VM.

NEW QUESTION 310

- (Topic 4)

Your company uses Azure DevOps to manage the build and release processes for applications.

You use a Git repository for applications source control.

You plan to create a new branch from an existing pull request. Later, you plan to merge the new branch and the target branch of the pull request.

You need to use a pull request action to create the new branch. The solution must ensure that the branch uses only a portion of the code in the pull request.

Which pull request action should you use?

A. Set as default branch

B. Approve with suggestions

C. Cherry-pick

D. Reactivate

E. Revert

Answer: C

Explanation:

Cherry-pick a pull request

To copy changes made in a pull request to another branch in your repo, follow these steps:

? In a completed pull request, select Cherry-pick, or for an active pull request, select Cherry-pick from the ... menu. Cherry-picking a pull request in this way creates a new branch with the copied changes. Merge into a target branch in a second pull request.

? In Target branch, enter the branch you want to merge the copied changes.

? In Topic branch name, enter a new branch to contain the copied changes, then select Cherry-pick.

? Select Create pull request to merge the topic branch into the target branch to complete the cherry-pick.

Reference:

<https://docs.microsoft.com/en-us/azure/devops/repos/git/pull-requests>

NEW QUESTION 313

SIMULATION - (Topic 4)

You have a web app that connects to an Azure SQL Database named db1.

You need to configure db1 to send Query Store runtime statistics to Azure Log Analytics. To complete this task, sign in to the Microsoft Azure portal.

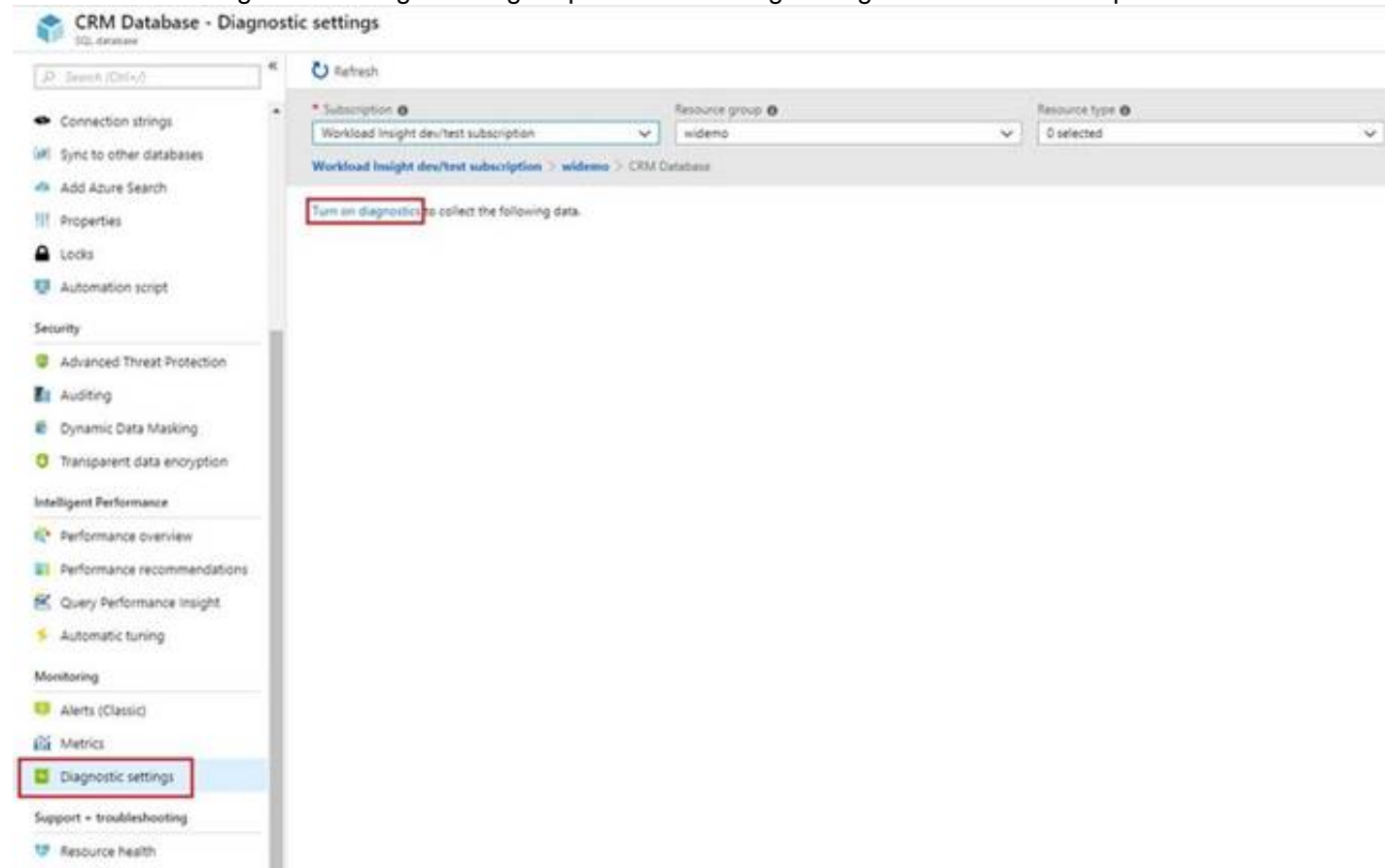
A.

Answer: Seesolutionbelow.

Explanation:

To enable streaming of diagnostic telemetry for a single or a pooled database, follow these steps:

- * 1. Go to Azure SQL database resource.
- * 2. Select Diagnostics settings.
- * 3. Select Turn on diagnostics if no previous settings exist, or select Edit setting to edit a previous setting. You can create up to three parallel connections to stream diagnostic telemetry.
- * 4. Select Add diagnostic setting to configure parallel streaming of diagnostics data to multiple resources.



- * 5. Enter a setting name for your own reference.
- * 6. Select a destination resource for the streaming diagnostics data: Archive to storage account, Stream to an event hub, or Send to Log Analytics.
- * 7. For the standard, event-based monitoring experience, select the following check boxes for database diagnostics log telemetry: QueryStoreRuntimeStatistics

Diagnostics settings

Save
Discard
Delete

Name
service

☐ Archive to a storage account

☐ Stream to an event hub

☒ Send to Log Analytics

Subscription
Workload Insight dev/test subscription

Log Analytics Workspace
sqlanalytics356 (westcentralus)

LOG

☒ SQLInsights

☒ AutomaticTuning

☒ QueryStoreRuntimeStatistics

☒ QueryStoreWaitStatistics

☒ Errors

☒ DatabaseWaitStatistics

☒ Timeouts

☒ Blocks

☒ Deadlocks

METRIC

☒ Basic

- * 8. For an advanced, one-minute-based monitoring experience, select the check box for Basic metrics.
- * 9. Select Save.

NEW QUESTION 318

- (Topic 4)

You have a build pipeline in Azure Pipelines. You create a Slack App Integration.

You need to send build notifications to a Slack channel named #Development. What should you do first?

- A. Configure a service connection.
- B. Create a service hook subscription.
- C. Create a project-level notification.
- D. Create a global notification.

Answer: B

Explanation:

Create a service hook for Azure DevOps with Slack to post messages to Slack in response to events in your Azure DevOps organization, such as completed builds, code changes, pull requests, releases, work items changes, and more.

Note:

- * 1. Go to your project Service Hooks page: https://{orgName}/{project_name}/_settings/serviceHooksSelect Create Subscription.
- * 3. Choose the types of events you want to appear in your Slack channel.
- * 4. Paste the Web Hook URL from the Slack integration that you created and select Finish.
- * 5. Now, when the event you configured occurs in your project, a notification appears in your team's Slack channel.

Reference:

<https://docs.microsoft.com/en-us/azure/devops/service-hooks/services/slack>

NEW QUESTION 321

- (Topic 4)

You have a containerized solution that runs in Azure Container Instances. The solution contains a frontend container named App1 and a backend container named DB1. DB1 loads a large amount of data during startup.

You need to verify that DB1 can handle incoming requests before users can submit requests to Appl.

What should you configure?

- A. a liveness probe
- B. an Azure Load Balancer health probe

- C. a readiness probe
- D. a performance log

Answer: C

Explanation:

For containerized applications that serve traffic, you might want to verify that your container is ready to handle incoming requests. Azure Container Instances supports readiness probes to include configurations so that your container can't be accessed under certain conditions.

Reference:

<https://docs.microsoft.com/en-us/azure/container-instances/container-instances-readiness-probe>

NEW QUESTION 323

.....

Thank You for Trying Our Product

We offer two products:

1st - We have Practice Tests Software with Actual Exam Questions

2nd - Questions and Answers in PDF Format

AZ-400 Practice Exam Features:

- * AZ-400 Questions and Answers Updated Frequently
- * AZ-400 Practice Questions Verified by Expert Senior Certified Staff
- * AZ-400 Most Realistic Questions that Guarantee you a Pass on Your First Try
- * AZ-400 Practice Test Questions in Multiple Choice Formats and Updates for 1 Year

100% Actual & Verified — Instant Download, Please Click
[Order The AZ-400 Practice Test Here](#)