

Cisco

Exam Questions 200-901

Developing Applications and Automating Workflows using Cisco Core Platforms (DEVASC)



NEW QUESTION 1

- (Exam Topic 2)

A developer needs a list of clients connected to a specific device in a Meraki network. After making a REST API call, the developer receives an unfamiliar response code. Which Cisco DevNet resource should be used to identify the meaning of the response code?

- A. API documentation
- B. Sandbox
- C. Learning Labs
- D. Code Exchange

Answer: A

NEW QUESTION 2

- (Exam Topic 2)

Which protocol runs over TCP port 22?

- A. SSH
- B. HTTP
- C. Telnet
- D. NETCONF

Answer: A

NEW QUESTION 3

- (Exam Topic 2)

Drag and drop the code from the bottom onto the box where the code is missing in the Python script to complete a function to return all the clients on a network by using the Cisco Meraki Dashboard API. Not all options are used.

```
import requests
import json
url = 'https://dashboard.meraki.com/api/v0/'
headers = {' ': '0110c4e1b8a1',
            'Content-Type': ' '}
orgs = json.loads(requests.get(url+'organizations', headers=headers).text)

for org in orgs:
    nets = json.loads(requests.get(url+'organizations/'+org['id']+'/networks',
    headers=headers).text)
    for net in nets:
        clients = json.loads(requests.get(
            url+ ' /'+net['id']+' / ',
            headers=headers).text)
        for client in clients:
            print(client['ip'])
```

client

application/json

application/xml

clients

X-Cisco-Meraki-API-Key

networks

Authorization: Bearer

- A. Mastered
- B. Not Mastered

Answer: A

Explanation:

```
import requests
import json
url = 'https://dashboard.meraki.com/api/v0/'
headers = {'X-Cisco-Meraki-API-Key': '0110c4e1b8a1',
           'Content-Type': 'application/json'}
orgs = json.loads(requests.get(url+'organizations', headers=headers).text)

for org in orgs:
    nets = json.loads(requests.get(url+'organizations/'+org['id']+'/networks',
                                   headers=headers).text)
    for net in nets:
        clients = json.loads(requests.get(
            url+'clients/'+net['id']+'/networks',
            headers=headers).text)
        for client in clients:
            print(client['ip'])
```

client	
application/xml	
Authorization: Bearer	

NEW QUESTION 4

- (Exam Topic 2)

Access to the management interface of devices must be restricted by using SSH and HTTPS. Which two ports must be included in the ACLs for the protocols to work? (Choose two.)

- A. 22
- B. 23
- C. 80
- D. 443
- E. 880

Answer: AD

NEW QUESTION 5

- (Exam Topic 2)

A company wants to accelerate the adoption of technologies that will simplify its operations. Staff have different skill levels and are looking for a single site to find easy-to-consume beginner, intermediate, and advanced multidomain use cases. Which site should be used?

- A. DevNet Ecosystem Exchange
- B. DevNet Automation Exchange
- C. DevNet Creations
- D. DevNet Support Forum

Answer: D

NEW QUESTION 6

- (Exam Topic 2)

Refer to the exhibit.

```
import requests
from requests.auth import HTTPBasicAuth
from config import url, username, password
response = requests.login(url, auth=HTTPBasicAuth (username, password), verify=False)
print response.status_code
```

The script returns an output of 401. To use the supplied URL, an HTTP GET request must be sent with an Authorization header. The header value is a Base64 encoded concatenation of the username and password. Which action must be taken to return an output of 200?

- A. Change the verify=False setting in the request to verify=True to enable HTTP Basic authentication
- B. Modify the method from LOGIN to GET and supply the username ;password value as JSON payload
- C. Verify that the username and password values imported from the configuration file are still valid.
- D. Insert an Authorization header with the values username password from the supplied configuration file.

Answer: C

NEW QUESTION 7

- (Exam Topic 2)

Before which process is code review performed when version control is used?

- A. Branching code
- B. Merge of code
- C. Checkout of code
- D. Committing code

Answer: D

NEW QUESTION 8

- (Exam Topic 2)

What is the purpose of a MAC address on a network device?

- A. unique network address that identifies the network interface of a device
- B. unique network interlace address that is provided by the DHCP server
- C. unique hardware address that identifies the network interface of a device
- D. unique hardware interface address that is provided by the central switch

Answer: C

NEW QUESTION 9

- (Exam Topic 2)

A new application is being developed with specific platform requirements. The platform and application deployment and the ongoing platform management must be fully automated. The application includes a large database component that has significant disk I/O requirements. Which application deployment type meets the requirements?

- A. Python virtual environment
- B. virtual machine
- C. bare metal
- D. container

Answer: B

NEW QUESTION 10

- (Exam Topic 2)

What is a benefit of test-driven development?

- A. early customer involvement
- B. increased code quality
- C. faster releases that have minimal features
- D. strict adherence to product requirements

Answer: D

NEW QUESTION 10

- (Exam Topic 2)

In which two ways is an application characterized when interacting with a webhook? (Choose two.)

- A. codec
- B. receiver
- C. transaction monitor
- D. processor
- E. listener

Answer: BE

NEW QUESTION 11

- (Exam Topic 2)

Drag and drop the code snippets from the bottom into the Python script to write API output to a csv file. Not all options are used.

```
#!/usr/bin/env python3
import csv
import json
import 
#Create a request to grab info in api
response = requests.  ('http://api.zippopotam.us/us/80301')

try:
    with open('80301.json', 'w') as outfile:
        json.dump(response.json(), outfile)
    print(  .json())
except Exception as e:
    print(e)

with open('80301.csv', 'w') as outfile:
    json.dump(response.json(), outfile)
print(response.  )
```

- A. Mastered
B. Not Mastered

Answer: A

Explanation:

Graphical user interface, text, application Description automatically generated

NEW QUESTION 13

- (Exam Topic 2)

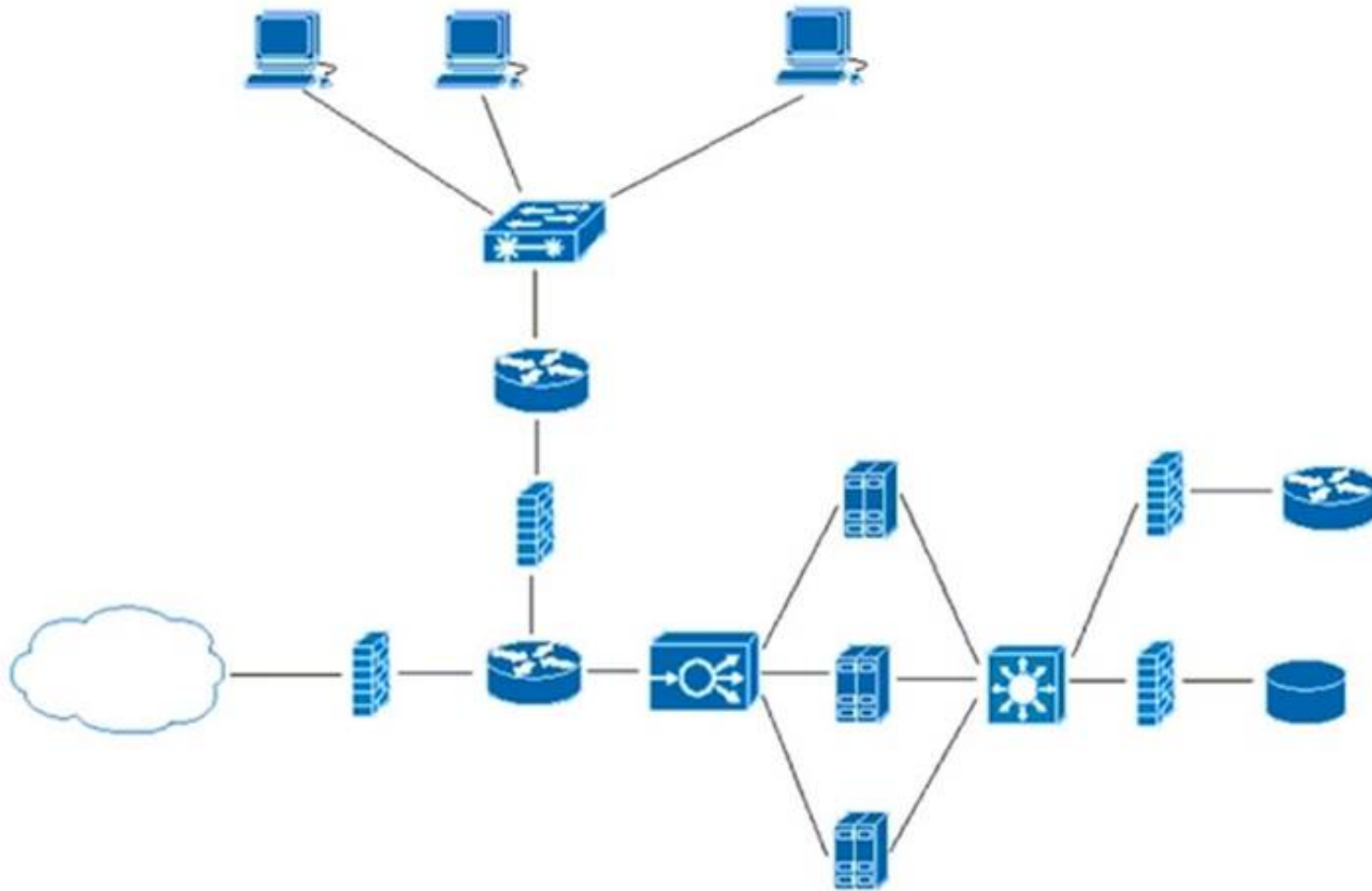
A developer is trying to retrieve data over a REST API. The API server responds with an HTTP client error response code. After investigating the response the developer realizes the response has a Retry-After header. What is the root cause of this error?

- A. The REST service is unreachable at the time of the REST request
B. Too many requests were sent to the REST service in a given amount of time.
C. An appliance limited the rate of requests to the transport layer.
D. An appliance limited the rate of requests to the application layer

Answer: B

NEW QUESTION 18

- (Exam Topic 2)



Refer to the exhibit. What does the load balancer enable in the network topology?

- A. hosted application to access Internet services
- B. external requests to be routed to the application servers
- C. workstations to access the Internet
- D. application to access the database server

Answer: C

NEW QUESTION 23

- (Exam Topic 2)

What is the function of IP address in networking?

- A. specifies the type of traffic that is allowed to roam on a network
- B. represents the unique ID that is assigned to one host on a network
- C. specifies resource's location and the mechanism to retrieve it
- D. represents a network connection on specific devices

Answer: B

NEW QUESTION 27

- (Exam Topic 2)

Refer to the exhibit.

```
# base image
FROM alpine

# Install python and pip
RUN apk add --update py2-pip

# Install python modules needed by the python app
COPY requirements.txt /usr/src/app/
RUN pip install --no-cache-dir -r /usr/src/app/requirements.txt

#copy local files for the app to run
COPY app.py /usr/src/app/
COPY templates/index.html /usr/src/app/templates/

EXPOSE 8080

#run the application
CMD ["python", "/usr/src/app/app.py"]
```

Which function does the EXPOSE line perform when building an image from this Dockerfile?

- A. Local port 8080 of the container that launched with this docker image is accessible from co-hosted containers and external clients.
- B. Local port 8080 is not reachable at all because no IP address is specified along with the EXPOSE command of the Dockerfile.
- C. Local port 8080 is accessible from other containers running on the same docker host as the container that launched with this docker image.
- D. Local port 8080 of the container that launched with this docker image is accessible to external clients.

Answer: C

Explanation:

By default, the EXPOSE instruction does not expose the container's ports to be accessible from the host. In other words, it only makes the stated ports available for inter-container interaction.

Whereas publishing a port using either -P or -p exposes it, exposing a port using EXPOSE or --expose does not publish it.

So, while exposed ports can only be accessed internally, published ports can be accessible by external containers and services.

<https://www.whitesourcesoftware.com/free-developer-tools/blog/docker-expose-port/>

NEW QUESTION 28

- (Exam Topic 2)

A new application is being developed that must be hardware independent. The application includes an administrative component which is accessed using a Windows desktop GUI. Installation and management of the environment must be fully automated. Which application deployment type meets the requirements?

- A. bare metal
- B. virtual Python environment
- C. container
- D. virtual machine

Answer: C

NEW QUESTION 33

- (Exam Topic 2)

Drag and drop the code from the bottom onto the box where the code is missing in the Bash script to complete the missing assignment.

```
#!/bin/bash

[ ] = 'date +%b-%d-%y'
[ ] = /home/usr/path/backup-$BACKUPTIME.tar.gz
[ ] = /home/usr/path/data_folder

tar -cpzf $DESTINATION $SOURCEFOLDER
```

BACKUPTIME

SOURCEFOLDER

DESTINATION

- A. Mastered
- B. Not Mastered

Answer: A

Explanation:

```
#!/bin/bash

BACKUPTIME = 'date +%b-%d-%y'
DESTINATION = /home/usr/path/backup-$BACKUPTIME.tar.gz
SOURCEFOLDER = /home/usr/path/data_folder

tar -cpzf $DESTINATION $SOURCEFOLDER
```

BACKUPTIME

SOURCEFOLDER

DESTINATION

NEW QUESTION 36

- (Exam Topic 2)

Refer to the exhibit.

user_manager.py

```
1 import psycopg2
2 import json, sys
3
4 # Load config file
5 config = None
6 with open('config.json') as config_file:
7     config = json.load(config_file)
8 if not config:
9     print("Error loading configuration file.")
10    sys.exit(1)
11
12 connection = psycopg2.connect(
13     database="users",
14     host=config["DB_USER"], user=config["DB_USER"], password=config["DB_PWD"]
15 )
16 connection.set_session()
17
18 def has_admin_role(username):
19     with connection.cursor() as cursor:
20         query = 'SELECT admin_role FROM users WHERE username = {0}'
21         cursor.execute(query.format(username))
22         result = cursor.fetchone()
23     return result
24
25 has_admin_role("ops.shared")
```

config.json

```
1 {
2     "DB_USER": "pguser",
3     "DB_PWD": "@123Qwer%4",
4     "DB_HOST": "devnetdb.example.com"
5 }
```

An engineer must check the admin rights of users on a database regularly and prepares the Python script to automate the process. The script connects to the database and runs a query. What is a security issue about the secrets in the code that relates to secret protection?

- A. They must be stored in configuration files if there is a possibility of leakage.
- B. They must be Base64-encoded if stored in the user database.
- C. They must be encrypted if stored in the user database.
- D. They must be stored in configuration files if no authentication will be used.

Answer: D

NEW QUESTION 39

- (Exam Topic 2)

Which tool is used to block all traffic to the domain by using a single API call?

- A. Cisco ISE
- B. Cisco Firepower
- C. Cisco AMP
- D. Cisco Umbrella

Answer: B

NEW QUESTION 41

- (Exam Topic 2)

Refer to the exhibit.

List Messages

Lists all messages in a room. Each message will include content attachments if present.

The list sorts the messages in descending order by creation date.

Long result sets will be split into pages.

GET /v1/messages

Query Parameters

roomId
string Required
List messages in a room, by ID.

parentId
string
List messages with a parent, by ID.

Try itExample

RequestResponse

```
https://webexapis.com/v1/messages?roomId=Y2lzY29zcGFyazovL3VzL1JPT00vYmJjZWl5YWQtdNDNmMS0zYjU4LTkxNDctZjE0YmIwYzRkMTU0&parentId=Y2lzY29zcGFyazovL3VzL01FU1NBR0UvZW11ZTl1ZjA1N2RhMS0xMWU5LTg2NTgtZTkzYzNiODZjZmFm&mentionedPeople=Y2lzY29zcGFyazovL3VzL1BFT1BMRS8yNDlmNzRkOS1kYjhhLTQxY2EtODk2Yi04NzllZDI0MGFjNTM&before=2016-04-21T19:01:55.966Z&beforeMessage=Y2lzY29zcGFyazovL3VzL01FU1NBR0UvOTJkYjNiZTA1NDNiZC0xMWU2LTlhZTkzZGQ1YjNkZmM1NjVj&max=100
```

A developer needs to automatically retrieve all of the messages of a Webex room with the roomId of HY2l2Y292cGFyazovL3Vz397748444YjU5NjAtNTk0Zj0xMWVhLTk0Mj". Using the Webex API documentation shown, drag and drop the code snippets from below onto the code to complete the Python script to list all of the messages in the room. Not all options are used.

```
import requests

webex_token = "NDA2OGV...f0-4434-a696-84fee4047e0a"

room_id = "Y2l2Y292cGF...jU5NjAtNTk0Zi0xMWVhLTk0Mj"

url = "https://webexapis.com/v1/" + " " + " = " + " "

payload = {}
headers = {
    'Authorization': 'Bearer ' + " "
}

response = requests.request("GET", url, headers=headers, data = payload)

print(response.text.encode('utf8'))
```

webex_tokenroomroom_id

messages?roomIdmessages

- A. Mastered
- B. Not Mastered

Answer: A

Explanation:
Graphical user interface Description automatically generated with medium confidence

NEW QUESTION 44
- (Exam Topic 2)
What are two benefits of using VLANs? (Choose two.)

- A. limits the devices that can join the network
- B. segments the broadcast domain
- C. extends the broadcast domain
- D. allows all network devices to be accessible from any host on the network
- E. enables the logical grouping of devices that belong to different Layer 2 devices

Answer: BE

NEW QUESTION 48
- (Exam Topic 2)
Refer to the exhibit.

```
FROM nginx

ARG DELAY="30"
ENV INITIAL_DELAY=${DELAY}

ENTRYPOINT ["/bin/sh"]

CMD ["-c", "/bin/sleep ${INITIAL_DELAY} && nginx -g 'daemon off;']
```

Which command, including arguments, is executed when the container starts?

- A. /bin/sh -c "/bin/sleep 30 && nginx -g 'daemon off;'"
- B. /bin/sh -c "/bin/sleep 10 && nginx -g 'daemon off;'"
- C. /bin/bash -c "/bin/sleep 30 && nginx -g 'daemon off;'"
- D. /bin/sh -c "/bin/sleep 30" && nginx -g 'daemon off;'

Answer: A

NEW QUESTION 49

- (Exam Topic 2)

An engineer must configure Cisco Nexus devices and wants to automate this workflow. The engineer enables the Cisco NX-OS REST API to configure the devices by using an Ansible playbook. Before running the code, which resource must be used to verify that the code works correctly?

- A. Cisco NX-OS SDK
- B. Cisco Learning Labs
- C. Cisco Code Exchange
- D. Cisco Modeling Labs

Answer: A

NEW QUESTION 53

- (Exam Topic 2)

Refer to the exhibit.

Local File Attachments

To send local file attachments, simply post a message by including your access token in the Authorization header and the path to your local file with the files parameter. Optionally, you can also include a plain-text message with the attachment by using the text parameter. When uploading files directly from your local filesystem, your request will need to be a multipart/form-data request rather than JSON

```
curl --request POST \
  --form "files=@/home/desktop/example.png;type=image/png" \
  --form "roomId=Y21zY2....." \
  --form "text=example attached" \
  https://webexapis.com/v1/messages
```

A developer needs to upload a local file by using the REST API. The developer gathers information according to the documentation and sends the request by using the cURL command in the exhibit but gets an error code. Which action should be followed to get valid response?

- A. change content type as JSON
- B. add the authorization header with the access token
- C. add a username-password combination to request command
- D. change request method as GET

Answer: B

Explanation:

Reference: <https://developer.webex.com/docs/api/basics>

NEW QUESTION 57

- (Exam Topic 2)

Which implementation creates a group of devices on one or more LANs that are configured to communicate as if they were attached to the same wire?

- A. WLAN
- B. VLAN
- C. IPsec
- D. HSRP

Answer: B

NEW QUESTION 61

- (Exam Topic 2)

A developer created a new secure API and is testing the functionality locally. The API was added to a container for further testing, and other team members and applications need to connect to the API. Which command exposes the API in the container as port 8443 and allows connections external to the host?

- A. docker run -p 127.0.0.1:80:8443/tcp myapiservice
- B. docker run -p 0.0.0.0:443:8443/tcp myapiservice
- C. docker run -p 0.0.0.0:8443:443/tcp myapiservice
- D. docker run -p 127.0.0.1:443:8443/tcp myapiservice

Answer: C

NEW QUESTION 62

- (Exam Topic 2)

What is a benefit of organizing into modules?

- A. improves collaboration of the development team
- B. makes it easier to deal with large and complex systems
- C. enables the code to be broken down into layers
- D. enables the inclusion of more programming languages in the code

Answer: B

Explanation:

From Wikipedia (https://en.wikipedia.org/wiki/Modular_programming) "Modular programming is closely related to structured programming and object-oriented programming, all having the same goal of facilitating the construction of large software programs and systems by decomposition into smaller pieces."

NEW QUESTION 63

- (Exam Topic 2)

```
HTTP/1.1 200 OK
Date: Mon, 27 Jul 2009 12:28:53 GMT
Server: nginx
Last-Modified: Wed, 22 Jan 2020 19:15:56 GMT
Content-Length: 88
Content-Type: application/json
Connection: keep-alive

{
  "id": "y123987jdkl",
  "status": "online",
  "type": "switch"
}
```

Which data is specified in the response header?

- A. {"id": "y123987jdkl". HTTP/1.1 200 OK"status: "online", "type": "switch"}
- B. HTTP/1.1 200 OK
- C. "type", "switch"
- D. Content-Type

Answer: B

NEW QUESTION 67

- (Exam Topic 1)

Drag and drop the characteristics from the left onto the corresponding software development methodologies on the right?

The focus is on advanced planning and outcome prediction.

Users receive functional software and can provide feedback after the product is available.

The timeline is followed and feedback is gathered before product completion.

Developers respond to requirement changes throughout the development process.

Agile

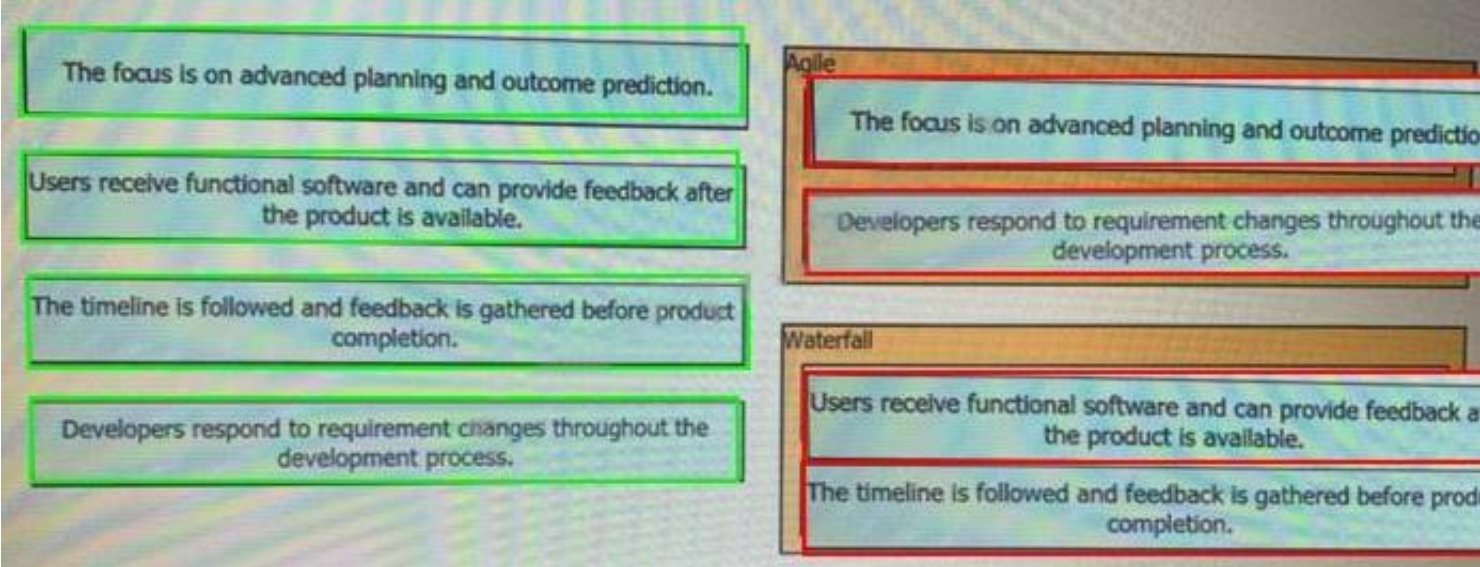
Waterfall

A. Mastered

B. Not Mastered

Answer: A

Explanation:



NEW QUESTION 68

- (Exam Topic 1)

What is a function of the default gateway in a network?

- A. to drop traffic that is destined to the default gateway
- B. to drop traffic that is not destined to the default gateway
- C. to forward traffic to the same subnet
- D. to forward traffic to different subnets

Answer: D

NEW QUESTION 69

- (Exam Topic 1)

Drag and drop the capability on the left onto the Cisco compute management platform that supports the capability on the right.

Multi-Cloud automation and orchestration platform for Cisco and third-party servers, networks, storage, and converged infrastructure.	UCS Manager
Software as a Service Platform that enables Cisco infrastructure management, automation and orchestration from anywhere.	UCS Director
Embedded software that enables Cisco server, fabric, and storage provisioning.	Intersight

- A. Mastered
- B. Not Mastered

Answer: A

Explanation:

Multi-Cloud automation and orchestration platform for Cisco and third-party servers, networks, storage, and converged infrastructure.	Embedded software that enables Cisco server, fabric, and storage provisioning.
Software as a Service Platform that enables Cisco infrastructure management, automation and orchestration from anywhere.	Multi-Cloud automation and orchestration platform for Cisco and third-party servers, networks, storage, and converged infrastructure.
Embedded software that enables Cisco server, fabric, and storage provisioning.	Software as a Service Platform that enables Cisco infrastructure management, automation and orchestration from anywhere.

NEW QUESTION 73

- (Exam Topic 1)

Which action does the Git command git merge allow the development to perform?

- A. Combine multiple sequence of commits into one unified history.
- B. Push changes to the remote repository
- C. Switch between branches
- D. Create, list, rename, and delete branches

Answer: A

Explanation:

Reference: <https://www.atlassian.com/git/tutorials/using-branches/git-merge>

NEW QUESTION 77

- (Exam Topic 1)

What are two characteristics of Bare Metal environments that are related to application deployment? (Choose two.)

- A. Provide the hypervisor to host virtual servers
- B. Specifically designed for container-based workloads.
- C. Provides workloads with access to hardware features
- D. Suitable for legacy application that do not support virtualization
- E. Not compatible with other cloud services such as PaaS or SaaS offerings.

Answer: CD

NEW QUESTION 81

- (Exam Topic 1)

Which service provides a directory lookup for IP addresses and host names?

- A. DNS
- B. DHCP
- C. SNMP
- D. NAT

Answer: A

NEW QUESTION 86

- (Exam Topic 1)

Which CI/CD tool is an automation tool used to build, test, and deploy software?

- A. Nagios
- B. Gradle
- C. Jenkins
- D. Git

Answer: C

Explanation:

Reference:

<https://www.infoworld.com/article/3271126/what-is-cicd-continuous-integration-and-continuous-delivery-expla>

NEW QUESTION 88

- (Exam Topic 1)

Refer to the exhibit.

```
$ diff -u5 fish.py cat.py
--- fish.py      2020-01-02 09:41:02.840000000 +0100
+++ cat.py       2020-01-02 09:41:06.8859999800 +0100
@@ -160,11 +160,12 @@

     @single_request_timeout.setter
     def single_request_timeout(self, value):
         """The timeout (seconds) for a single HTTP REST API request."""
         check_type(value, int, optional=True)
-        assert value is None or value > 0
+        if value is not None and value <= 0:
+            raise ValueError("single_request_timeout must be positive integer")
         self._single_request_timeout = value

     @property
     def wait_on_rate_limit(self)
         """Automatic rate-limit handling.
```

The output of a unified diff when comparing two versions of a python script is shown. Which two “single_request_timeout ()”

- A.
- ```

file: cat.py

160
161 @single_request_timeout.setter
162 def single_request_timeout(self, value):
163 """The timeout (seconds) for a single HTTP REST API request."""
164 check_type(value, int, optional=True)
165 assert value is None or value > 0
166 if value is not None and value <= 0:
167 raise ValueError("single_request_timeout must be positive integer")
168 self._single_request_timeout = value
169

```
- B.
- ```

file: fish.py

160
161 @single_request_timeout.setter
162 def single_request_timeout(self, value):
163     """The timeout (seconds) for a single HTTP REST API request."""
164     check_type(value, int, optional=True)
165     assert value is None or value > 0
166     self._single_request_timeout = value
167

```
- C.
- ```

file: cat.py

160
161 @single_request_timeout.setter
162 def single_request_timeout(self, value):
163 """The timeout (seconds) for a single HTTP REST API request."""
164 check_type(value, int, optional=True)
165 if value is not None and value <= 0:
166 raise ValueError("single_request_timeout must be positive integer")
167 self._single_request_timeout = value
168
169

```
- D.
- ```

file: fish.py

160
161 @single_request_timeout.setter
162 def single_request_timeout(self, value):
163     """The timeout (seconds) for a single HTTP REST API request."""
164     check_type(value, int, optional=True)
165     self._single_request_timeout = value

```
- E.
- ```

file: cat.py

172
173 @single_request_timeout.setter
174 def single_request_timeout(self, value):
175 """The timeout (seconds) for a single HTTP REST API request."""
176 check_type(value, int, optional=True)
177 if value is not None and value <= 0:
178 raise ValueError("single_request_timeout must be positive integer")
179 self._single_request_timeout = value
180

```

- F. Option A  
 G. Option B  
 H. Option C  
 I. Option D  
 J. Option E

Answer: BC

#### NEW QUESTION 89

- (Exam Topic 1)

Drag and Drop the GIT commands from the left onto the right that add modified local files to a remote repository. Not all options are used

|                                 |                   |
|---------------------------------|-------------------|
| git push                        | Git command one   |
| git add .                       | Git command two   |
| git checkout -b "new branch"    | Git command three |
| git commit -m "this is my edit" |                   |
| git pull                        |                   |

- A. Mastered  
B. Not Mastered

**Answer:** A

**Explanation:**

git add .  
git commit -m "this is my edit" git push

**NEW QUESTION 93**

- (Exam Topic 1)

Refer to the exhibit.

```
#!/bin/bash
read ndir
while [-d "$ndir"]
do
cd $ndir
done
mkdir $ndir
```

What is the action of the Bash script that is shown?

- A. The script waits until input is entered  
B. If the directory exists, the script goes into it until there is no directory with the same name, then it creates a new directory.  
C. The script goes into the directory called "\$ndir" and makes a new directory called "\$ndir"  
D. The script waits until input is entered, then it goes into the directory entered and creates a new directory with the same name.  
E. For all directories in the current folder  
F. The script goes into directory and makes a new directory.

**Answer:** A

**NEW QUESTION 95**

- (Exam Topic 1)

Which two items are Cisco DevNet resources? (Choose two.)

- A. TAC support  
B. Bitbucket  
C. Sandbox  
D. Software research  
E. API Documentation

**Answer:** CE

**Explanation:**

Reference: <https://developer.cisco.com/>

**NEW QUESTION 99**

- (Exam Topic 1)

Which two statements describe the role of an artifact repository in a CI/CD pipeline? (Choose two.)

- A. An artifact repository allows to compare and merge changes in the source code of files involved in a build process.  
B. An artifact repository is needed only for CI/CD pipeline executed on a public cloud infrastructure.  
C. An artifact repository provides traceability, search, and management of binary files.  
D. An artifact repository is needed only for managing open source software.  
E. An artifact repository stores files needed and generated during the build process.

**Answer:** CE

#### NEW QUESTION 102

- (Exam Topic 1)

Which description of a default gateway is true?

- A. It is a device that receives IP packets that have no explicit next-hop in the routing table.
- B. It is a feature that translates between public and private addresses.
- C. It is a security feature that denies certain traffic.
- D. It is a device that receives Layer 2 frames with an unknown destination address.

**Answer:** A

#### Explanation:

Refe

<https://www.certificationkits.com/cisco-certification/ccna-articles/cisco-ccna-intro-to-routing-basics/cisco-ccna>

#### NEW QUESTION 107

- (Exam Topic 1)

what is an advantage of a version control system?

- A. forces the practice of trunk-based development
- B. prevents over-writing code or configuration files
- C. facilitates resolving conflicts when merging code
- D. ensures that unit tests are written

**Answer:** C

#### NEW QUESTION 111

- (Exam Topic 1)

What operation is performed with YANG model-driven programmability in NX-OS?

- A. configure a device with native and OpenConfig-based models
- B. send CLI commands to a device and retrieve output in JSON format
- C. run Linux commands natively on the device
- D. bootstrap a device that has a factory-default configuration

**Answer:** A

#### Explanation:

Reference:

<https://www.cisco.com/c/en/us/products/collateral/switches/nexus-9000-series-switches/white-paper-c11-74151>

#### NEW QUESTION 112

- (Exam Topic 1)

Drag and drop the network automation interfaces from the left onto the transport protocols that they support on the right. Not all options are used.

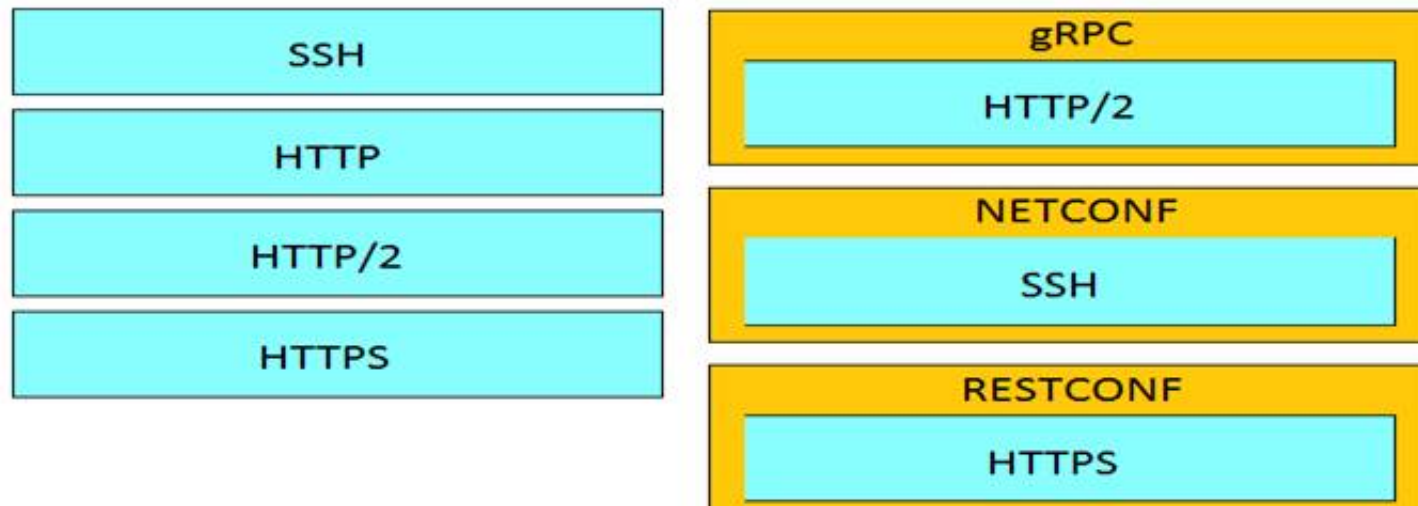
|        |          |
|--------|----------|
| SSH    | gRPC     |
| HTTP   |          |
| HTTP/2 | NETCONF  |
| HTTPS  |          |
|        | RESTCONF |
|        |          |

- A. Mastered
- B. Not Mastered

**Answer:** A

#### Explanation:





#### NEW QUESTION 115

- (Exam Topic 1)

Refer to the exhibit.

#### HTTP REQUEST

**POST** /organizations/ {organizationId}/networks

#### PARAMETERS

##### name

The name of the new network.

##### type

The type of the new network. Valid types are wireless, appliance, switch, systemsManager, camera, cellularGateway, or a space-separated list of those for a combined network.

##### tags

A space-separated list of tags to be applied to the network.

##### timeZone

The timezone of the network. For a list of allowed timezones, please see the 'TZ' column in the table in [this article](#).

##### copyFromNetworkId

The ID of the network to copy configuration from. Other provided parameters will override the copied configuration, except type which must match this network's type exactly.

##### disableMyMerakiCom

Disables the local device status pages ([my.meraki.com](#), [ap.meraki.com](#), [switch.meraki.com](#), [wired.meraki.com](#)). Optional (defaults to false).

##### disableRemoteStatusPage

Disables access to the device status page ([http://\[device's LAN IP\]](#)). Optional. Can only be set if disableMyMerakiCom is set to false.

```
base_url = https://api.meraki.com/api/v0
org_id = 123456789
api_key = 1098hadpfsiapsf8ahf8ohp
network_name = "New Network"
requests.<item 1> (
 <item 2> + "/" + org_id + "/" + <item 4>,
 headers = {
 "X-Cisco-Meraki-API-Key": "<item 5>",
 "Content-Type": "<item 6>"
 },
 <item 7>=json.dumps ({ "name": <item 8>,
 "type": "wireless switch"
 })
)
```

Drag and drop the code from the left onto the item numbers on the right to complete the Meraki python script shown in the exhibit.

|                  |          |
|------------------|----------|
| base_url         | <item 1> |
| network_name     | <item 2> |
| data             | <item 3> |
| post             | <item 4> |
| application/json | <item 5> |
| networks         | <item 6> |
| api_key          | <item 7> |
| organizations    | <item 8> |

- A. Mastered
- B. Not Mastered

Answer: A

Explanation:

1 – D, 2 – A, 3 – H, 4 – F, 5 – G, 6 – E, 7 – C, 8 – B

NEW QUESTION 116

- (Exam Topic 1)

Which status code is used by a REST API to indicate that the submitted payload is incorrect?

- A. A.-400B.403C.405D.429

Answer: A

Explanation:

Reference:

<https://community.cisco.com/t5/application-centric/apic-rest-api-produces-inconsistent-response/td-p/2758230>

NEW QUESTION 120

- (Exam Topic 1)

Which two elements are foundational principles of DevOps? (Choose two.)

- A. designing applications as microservices
- B. encouraging containers for the deployment of applications
- C. organizing cross-functional teams over organizational silos
- D. optimizing the cost of infrastructures
- E. automating over documenting

Answer: CE

NEW QUESTION 121

- (Exam Topic 1)

Which statement about authentication a RESTCONF API session with a router that runs Cisco IOS XE software is true?

- A. OAuth must be used.
- B. A token must be retrieved and the associated string must be embedded in the X-Auth-Token header.
- C. Basic authentication must be used.
- D. No authentication is required.

Answer: C

NEW QUESTION 122

- (Exam Topic 1)



An application calls a REST API and expects a result set of more than 550 records, but each time the call is made, only 25 are returned. Which feature limits the amount of data that is returned by the API?

- A. pagination
- B. payload limit
- C. rate limiting
- D. service timeouts

Answer: A

NEW QUESTION 127

- (Exam Topic 1)

Which statement describes the benefit of using functions in programming?

- A. Functions allow problems to be split into simpler, smaller groups, and reduce code repetition, which makes the code easier to read.
- B. Functions ensure that a developer understands the inner logic contained before using them as part of a script or application.
- C. Functions create the implementation of secret and encrypted algorithms.
- D. Functions store mutable values within a script 01 application.

Answer: A

NEW QUESTION 129

- (Exam Topic 1)

Drag and drop the requests from the left into the correct order on the right to create and check the path trace between two devices using Cisco DNA center API.

|                                                                             |        |
|-----------------------------------------------------------------------------|--------|
| GET /api/v1/flow-analysis/{flowAnalysisId}                                  | Step 1 |
| POST /api/v1/flow-analysis                                                  | Step 2 |
| POST /api/system/v1/auth/token                                              | Step 3 |
| GET /api/v1/network-device/ and choose IP of source and destination devices | Step 4 |

- A. Mastered
- B. Not Mastered

Answer: A

Explanation:

1 – C, 2 – D, 3 – B, 4 - A

NEW QUESTION 132

- (Exam Topic 1)

Drag and drop elements of the RESTCONF protocol stack from the left onto the correct description on the right. Not all elements on the left are used.

|                               |            |
|-------------------------------|------------|
| <data>                        | content    |
| XML or JSON                   | operations |
| SSH                           | transport  |
| <rpc>, <rpc-reply>            |            |
| GET, POST, PUT, PATCH, DELETE |            |
| HTTPS                         |            |

- A. Mastered
- B. Not Mastered

Answer: A

Explanation:

1 – B, 2 – E, 3 - F

Reference:

[https://www.cisco.com/c/en/us/td/docs/ios-xml/ios/prog/configuration/169/b\\_169\\_programmability\\_cg/restconf](https://www.cisco.com/c/en/us/td/docs/ios-xml/ios/prog/configuration/169/b_169_programmability_cg/restconf)

#### NEW QUESTION 137

- (Exam Topic 1)

Which two statements describe the advantages of using a version control system? (Choose two.)

- A. It allows for branching and merging so that different tasks are worked on in isolation before they are merged into a feature or master branch.
- B. It allows multiple engineers to work against the same code and configuration files and manage differences and conflicts.
- C. It provides tooling to automate application builds and infrastructure provisioning.
- D. It allows developers to write effective unit tests.
- E. It provides a system to track User Stories and allocate to backlogs.

**Answer:** AB

#### NEW QUESTION 141

- (Exam Topic 1)

What is the purpose of a firewall in application deployment?

- A. adds TLS support to an application that does not support it natively
- B. forwards traffic to a pool of instances of the application
- C. provides translation for an application's hostname to its IP address
- D. limits traffic to only ports required by the application

**Answer:** D

#### NEW QUESTION 142

- (Exam Topic 1)

Which two protocols are used to apply a configuration change on a Cisco IOS XE device? (Choose two)

- A. CCX
- B. RESTCONF
- C. NETCONF
- D. HSRP
- E. CDP

**Answer:** BC

#### NEW QUESTION 144

- (Exam Topic 1)

Drag and drop the Python code from the left onto the correct step on the right to call a REST API.

|                                                                                                                                                                                                                                                |                                                                   |
|------------------------------------------------------------------------------------------------------------------------------------------------------------------------------------------------------------------------------------------------|-------------------------------------------------------------------|
| <pre>response = requests.post(url, data=json.dumps(payload), \ headers=header, verify=False)</pre>                                                                                                                                             | Step 1 – Import the correct libraries.                            |
| <pre>ticket = r_json["Token"] print(ticket)</pre>                                                                                                                                                                                              | Step 2 – Declare the necessary variable.                          |
| <pre>(_json = response.json() print(r_json)</pre>                                                                                                                                                                                              | Step 3 – Send the HTTP Request.                                   |
| <pre>import requests import json</pre>                                                                                                                                                                                                         | Step 4 – Format and display the response in JSON readable format. |
| <pre>controller = 'devnetapi.cisco.com/sandbox/dnacenter' url = 'https://' + controller + '/dna/system/api/v1/auth/token' payload = { 'username': 'devnetuser', 'password': 'pa55word' } header = { 'Content-type': 'application/json' }</pre> | Step 5 – Parse the response to display the Service Ticket.        |

- A. Mastered
- B. Not Mastered

**Answer:** A

**Explanation:**

|                                                                                                                                                                                                                                                |                                                                                                                                                                                                                                                |
|------------------------------------------------------------------------------------------------------------------------------------------------------------------------------------------------------------------------------------------------|------------------------------------------------------------------------------------------------------------------------------------------------------------------------------------------------------------------------------------------------|
| <pre>response = requests.post(url, data=json.dumps(payload), \ headers=header, verify=False)</pre>                                                                                                                                             | <pre>import requests import json</pre>                                                                                                                                                                                                         |
| <pre>ticket = r_json["Token"] print (ticket)</pre>                                                                                                                                                                                             | <pre>controller = 'devnetapi.cisco.com/sandbox/dnacenter' url = 'https://' + controller + '/dna/system/api/v1/auth/token' payload = { 'username': 'devnetuser', 'password': 'pa55word' } header = { 'Content-type': 'application/json' }</pre> |
| <pre>(_json = response.json() print(r_json)</pre>                                                                                                                                                                                              | <pre>response = requests.post(url, data=json.dumps(payload), \ headers=header, verify=False)</pre>                                                                                                                                             |
| <pre>import requests import json</pre>                                                                                                                                                                                                         | <pre>(_json = response.json() print(r_json)</pre>                                                                                                                                                                                              |
| <pre>controller = 'devnetapi.cisco.com/sandbox/dnacenter' url = 'https://' + controller + '/dna/system/api/v1/auth/token' payload = { 'username': 'devnetuser', 'password': 'pa55word' } header = { 'Content-type': 'application/json' }</pre> | <pre>ticket = r_json["Token"] print (ticket)</pre>                                                                                                                                                                                             |

NEW QUESTION 147

- (Exam Topic 1)  
Refer to the exhibit.

```
#!/bin/bash
<item 1>='date +%b-%d-%y'

<item 2>=/home/usr/path/backup-$BACKUPTIME.tar.gz

<item 3>=/home/usr/path/data_folder

tar -cpzf $DESTINATION $SOURCEFOLDER
```

Drag and drop the variables from the left onto the item numbers on the right that match the missing assignments in the exhibit.

|              |          |
|--------------|----------|
| BACKUPTIME   | <item 1> |
| SOURCEFOLDER | <item 2> |
| DESTINATION  | <item 3> |

- A. Mastered
- B. Not Mastered

Answer: A

Explanation:

1 – A, 2 – C, 3 – B

Reference: <https://medium.com/@fotios.floros/linux-backup-script-1722cc9c2bf6> (use tar in order to create your backup file)

NEW QUESTION 150

- (Exam Topic 1)  
Drag and drop the descriptions from the left onto correct application deployment models on the right.



|                                                                                               |                |
|-----------------------------------------------------------------------------------------------|----------------|
| provides a low-latency compute capability close to the data source                            | Public Cloud   |
| environment where you pay only for the resources that you consume                             |                |
| offers a self-service, elastic compute environment from a dedicated set of physical resources |                |
| provides an approach for overflow traffic to burst out to meet peak demands                   | Private Cloud  |
| shared compute platform that is offered over the Internet                                     |                |
|                                                                                               | Hybrid Cloud   |
|                                                                                               |                |
|                                                                                               | Edge Computing |
|                                                                                               |                |

- A. Mastered
- B. Not Mastered

Answer: A

Explanation:  
1 – B, 2 – E, 3 – C, 4 – D, 5 – A

NEW QUESTION 151  
- (Exam Topic 1)  
Drag and drop the Docker file instructions from the onto correct descriptions on the right. Not all options are used.

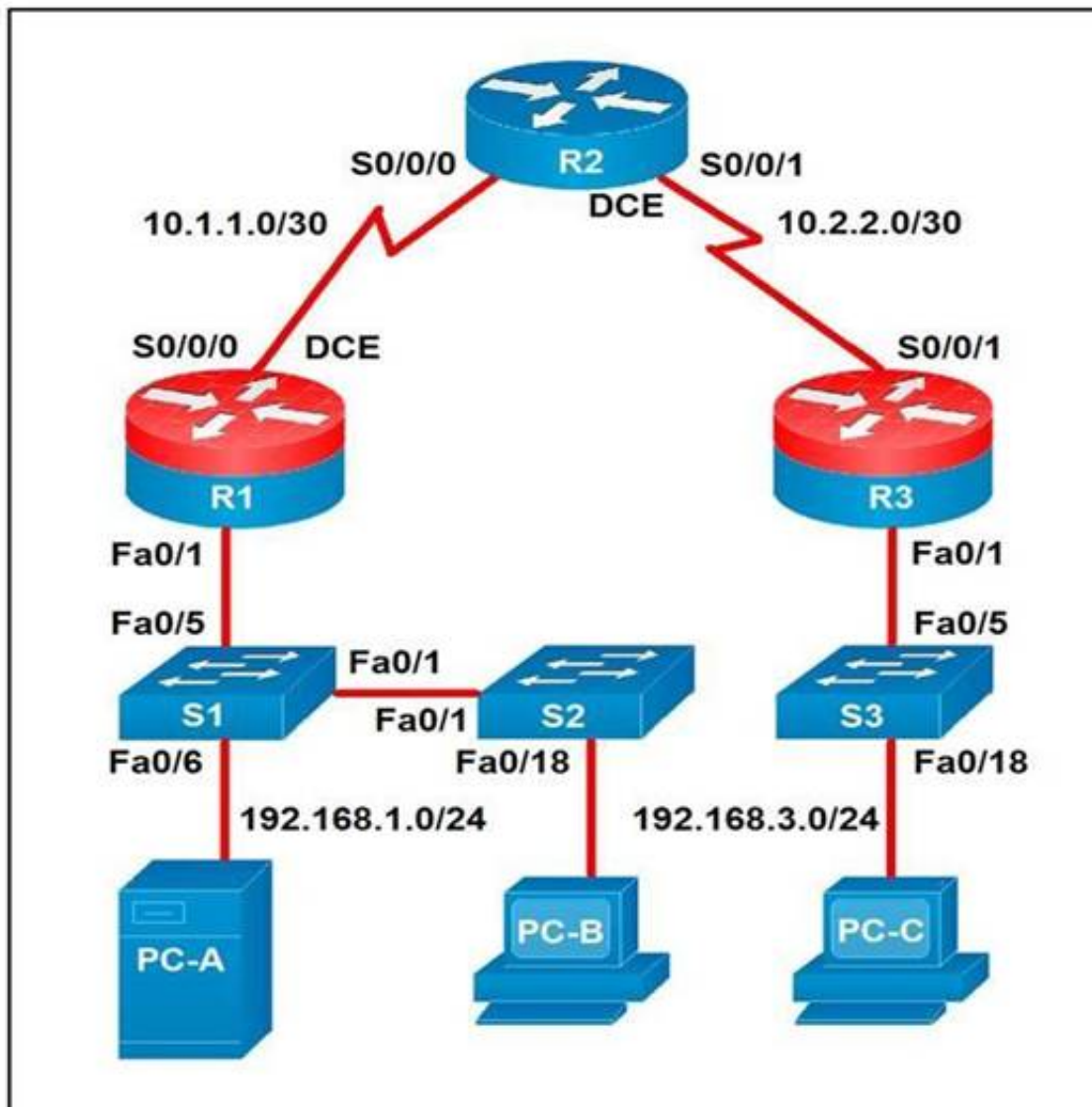
|                                                             |                                                                                       |
|-------------------------------------------------------------|---------------------------------------------------------------------------------------|
| FROM ubuntu:12.04                                           | informs Docker that the container listens on the specified network port(s) at runtime |
| VOLUME["/var/www","/var/log/apache2","/etc/apache2"]        | creates a mount point with the specified name                                         |
| RUN apt-get update && apt-get install -y -force-yes apache2 | configures a container that runs as an executable                                     |
| ENTRYPOINT["/usr/sbin/apache2ctl","-D","FOREGROUND"]        | must be the first instruction in the Docker file                                      |
| EXPOSE 1521                                                 |                                                                                       |

- A. Mastered
- B. Not Mastered

Answer: A

Explanation:  
1 – E, 2 – B, 3 – D, 4 – A

NEW QUESTION 153  
- (Exam Topic 1)  
Refer to the exhibit.



Which two statements about the network diagram are true? (Choose two.)

- A. PC-A and PC-B are in the same subnet.
- B. One of the routers has two connected serial interfaces.
- C. The subnet of PC-C can contain 256 hosts.
- D. R1 and R3 are in the same subnet.
- E. The subnet address of PC-B has 18 bits dedicated to the network portion.

**Answer:** BC

#### NEW QUESTION 155

- (Exam Topic 1)

On which port does NETCONF operate by default?

- A. 23
- B. 443
- C. 822
- D. 830

**Answer:** D

#### NEW QUESTION 157

- (Exam Topic 1)

Which platform is run directly using a hypervisor?

- A. Virtual
- B. Bare metal systems
- C. Containers
- D. Applications

**Answer:** C

#### NEW QUESTION 162

- (Exam Topic 1)

What is the benefit of edge computing?

- A. It reduces network latency by moving processing closer to the data source.
- B. It simplifies security as devices and processing are brought closer together
- C. It removes the need for centralized data processing.
- D. It reduces data velocity from devices or other data sources.

**Answer:** A

#### Explanation:

Reference: <https://blogs.cisco.com/networking/time-to-get-serious-about-edge-computing>



**NEW QUESTION 164**

- (Exam Topic 1)

Which two NETCONF operations cover the RESTCONF GET operation? (Choose two.)

- A. <get>
- B. <edit>
- C. <get-update>
- D. <modify-config>
- E. <get-config>

**Answer:** AE

**Explanation:**

Reference:

<https://www.cisco.com/c/en/us/support/docs/storage-networking/management/200933-YANG-NETCONF-Conf>

**NEW QUESTION 165**

- (Exam Topic 1)

Which two use cases are supported by Meraki APIs? (Choose two.)

- A. Retrieve live streams from a Meraki Camera.
- B. Build a custom Captive Portal for Mobile Apps.
- C. Configure network devices via the Dashboard API.
- D. Build location-aware apps from Wi-Fi and LoRaWAN devices.
- E. Deploy applications onto the devices.

**Answer:** BC

**NEW QUESTION 167**

- (Exam Topic 1)

Package updates from a local server fail to download. However, the same updates work when a much slower external repository is used. Why are local updates failing?

- A. The update utility is trying to use a proxy to access the internal resource.
- B. The Internet connection is too slow.
- C. The Internet is down at the moment, which causes the local server to not be able to respond.
- D. The server is running out of disk space.

**Answer:** A

**NEW QUESTION 170**

- (Exam Topic 1)

Refer to the exhibit.

```
$ pyang -f tree Cisco-IOS-XE-native.yang
module: Cisco-IOS-XE-native
 +--rw native
 +--rw logging
 +--rw monitor|
 +--rw severity? logging-level-type

$ curl --insecure -v -X PATCH \
 "https://ios-xe-mgmt-latest.cisco.com:9443/restconf/data/Cisco-IOS-XE-native:native" \
 -H 'Authorization: Basic 2GV2ZWxvcGVyOkMxc2NvMTIzNDU=' -H 'Accept: application/yang-data+json' \
 -H 'Content-Type: application/yang-data+json' \
 -d '{ "Cisco-IOS-XE-native:native" : { "logging" : { "monitor" : { "severity" : "alerts" }} } }'
> ...
< ...
< HTTP/1.1 204 No Content
```

The definition of the YANG module and a RESTCONF query sent to a Cisco Ioc XE device is shown. Which statement is correct if the RESTCONF interface responds with a 204 status code?

- A. The query failed at retrieving the logging seventy level.
- B. The query failed to set the logging seventy level due to an invalid path.
- C. The query retrieved the logging seventy level.
- D. The query updated the logging seventy level or created it if not present on the device.

**Answer:** D

**Explanation:**

Reference:

[https://www.cisco.com/c/en/us/td/docs/ios-xml/ios/prog/configuration/1611/b\\_1611\\_programmability\\_cg/restco](https://www.cisco.com/c/en/us/td/docs/ios-xml/ios/prog/configuration/1611/b_1611_programmability_cg/restco)

**NEW QUESTION 171**

- (Exam Topic 1)

How is a branch called "my-bug-fix" started to develop a fix needed in a product?

- A. git branch -b my-bug-fix
- B. git checkout -b my-bug-fix
- C. git checkout my-bug-fix
- D. git branch my-bug-fix

**Answer:** B

#### NEW QUESTION 172

- (Exam Topic 1)

Which line is an example of the start of a chunk from a unified diff?

- A. @@ -90,88 +20191008T1349@@
- B. @@ -20191007T1200 +88,90 @@
- C. @@ -20191007T1200 +20191008T1349@@
- D. @@ -88,10 +88,6 @@

**Answer:** D

#### Explanation:

Reference:

<https://unix.stackexchange.com/questions/252927/what-do-the-numbers-in-the-line-mean-in-output-of-diff>

#### NEW QUESTION 177

- (Exam Topic 1)

Refer to the exhibit.

```

- hosts: CISCO_ROUTER_01
 gather_facts: true
 connection: network_cli

 tasks:
 - name: show conf
 ios_command:
 commands:
 - show conf
 register: config

 - name: save output to /etc/ansible/configs
 copy:
 content: "{{ config.stdout[0] }}"
 dest: "/etc/ansible/configs/show_conf_{{ inventory_hostname }}.txt"
```

What is the result of executing this Ansible playbook?

- A. The playbook copies a new start-up configuration to CISCO\_ROUTER\_01.
- B. The playbook backs up the running configuration of CISCO\_ROUTER\_01.
- C. The playbook backs up the start-up configuration of CISCO\_ROUTER\_01.
- D. The playbook copies a new running configuration to CISCO\_ROUTER\_01.

**Answer:** C

#### NEW QUESTION 179

- (Exam Topic 1)

Users cannot access a webserver and after the traffic is captured, the capture tool shows an ICMP packet that reports "time exceeded in-transit". What is the cause of this webserver access issue?

- A. A router along the path is misrouting the packets in a wrong direction.
- B. A router along the path has the wrong time.
- C. The server is too far away and the packets require too much time to reach it
- D. The server is too loaded and the connection could not be handled in time

**Answer:** A

#### NEW QUESTION 182

- (Exam Topic 1)

A company has written a script that creates a log bundle from the Cisco DNA Center every day. The script runs without error and the bundles are produced. However, when the script is run during business hours, report poor voice quality of phones calls. What explains this behavior?

- A. The application is running in the Voice VLAN and causes delays and jitter in the subnet.
- B. The speed and duplex settings in Cisco DNA Center are set incorrectly, which causes the transfer to be too slow.
- C. 9 The script is written in a low-level programming language where there is no memory safet
- D. This causes a buffer overflow and disruption on the network.
- E. Generating the logs causes the CPU on the network controller to spike, which causes delays in forwarding the voice IP packets.

**Answer:** D

### NEW QUESTION 183

- (Exam Topic 3)

Drag and drop the code from the bottom onto the box where the code is missing to authenticate with the Cisco DNA Center REST API by using basic authentication. Then generate a token for later use. Not all options are used.

```
import requests
from requests.auth import HTTPBasicAuth

BASE_URL = 'https://sandboxdnac2.cisco.com'
AUTH_URL = '/dna/system/api/v1/'
USERNAME = 'admin'
PASSWORD = 'qwer1234!'

response = requests. (BASE_URL + AUTH_URL,
 auth=HTTPBasicAuth(,))
token = response.json()['Token']
print(token)
```

- |            |             |          |     |
|------------|-------------|----------|-----|
| auth/basic | /auth/token | post     | get |
| USERNAME   | Token       | PASSWORD |     |

- A. Mastered  
 B. Not Mastered

Answer: A

Explanation:

```
import requests
from requests.auth import HTTPBasicAuth

BASE_URL = 'https://sandboxdnac2.cisco.com'
AUTH_URL = '/dna/system/api/v1/'
USERNAME = 'admin'
PASSWORD = 'qwer1234!'

response = requests. (BASE_URL + AUTH_URL,
 auth=HTTPBasicAuth(,))
token = response.json()['Token']
print(token)
```

- |            |             |          |     |
|------------|-------------|----------|-----|
| auth/basic | /auth/token | post     | get |
| USERNAME   | Token       | PASSWORD |     |

### NEW QUESTION 186

- (Exam Topic 3)

When a Cisco IOS XE networking device is configured by using RESTCONF, what is the default data encoding method?

- A. application/yaml-data+json  
 B. application/yang-data+json  
 C. application/xml-data+json  
 D. application/json-data+xml

Answer: D

### NEW QUESTION 191

- (Exam Topic 3)  
Which HTTP method is used by webhooks and notifies a listener about an event change?

- A. PUT
- B. POST
- C. PATCH
- D. GET

Answer: B

NEW QUESTION 193

- (Exam Topic 3)  
A file in a local Git repository has been updated and issued the git add . command. The git diff command has been run to compare the changes to the previous commit, but nothing shows. Which action identifies the problem?

- A. Run the git add . command again in the correct subdirectory to ensure changes added to the staging area.
- B. Run the git commit command before the differences are compared to receive the end state of the code.
- C. Run the git status command to see the differences between current and previous code review stages.
- D. Run the git diff --staged command to compare the code added to the staging area.

Answer: D

NEW QUESTION 197

- (Exam Topic 3)

```
user@host1:~/tmp$ cat Dockerfile
Dockerfile to install traceroute
FROM ubuntu
MAINTAINER User One (userone@cisco.com)
RUN apt-get update && apt-get install traceroute
```

Refer to the exhibit. Drag and drop the Dockerfile contents from the left onto the functions on the right that create a container image to run traceroute to track network path to specific targets. Not all options are used.

|                                 |                                                  |
|---------------------------------|--------------------------------------------------|
| document author                 | FROM ubuntu                                      |
| command to execute              | MAINTAINER User One (userone@cisco.com)          |
| initializes a new build stage   | RUN apt-get update && apt-get install traceroute |
| copies new files or directories |                                                  |
| sets the userid                 |                                                  |

- A. Mastered
- B. Not Mastered

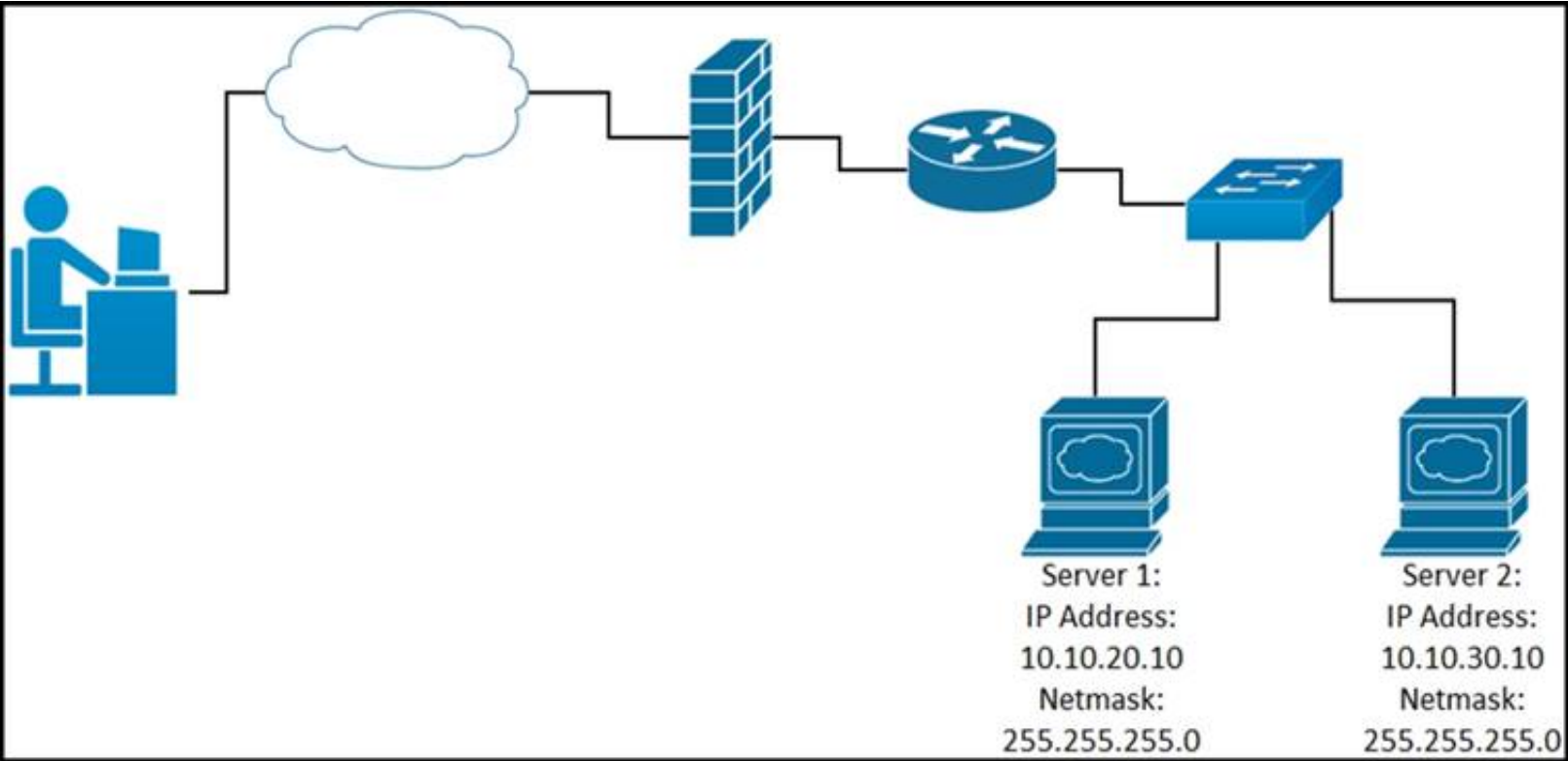
Answer: A

Explanation:



|                                 |                               |
|---------------------------------|-------------------------------|
| document author                 | initializes a new build stage |
| command to execute              | document author               |
| initializes a new build stage   | command to execute            |
| copies new files or directories |                               |
| sets the userid                 |                               |

**NEW QUESTION 199**  
 - (Exam Topic 3)  
 Refer to the exhibit.



While developing a Cisco Webex bot, an application reaches the public IP address of the firewall, but traffic is forwarded to the IP address of server 1 instead of the IP address of server 2. What causes this issue?

- A. The proxy server that rewrites traffic is misconfigured.
- B. The router is sending the traffic to server 1 instead of server 2.
- C. The switch is forwarding IP traffic to the wrong VLAN.
- D. NAT is misconfigured on the firewall.

**Answer:** D

**NEW QUESTION 200**  
 - (Exam Topic 3)  
 Drag and drop characteristics from the left onto the infrastructure management methodologies on the right.



exposes RESTCONF as Northbound API

uses REST as Northbound API

supported by standards such as YANG models

Integrates to ITSM tools using Westbound APIs

Device Level

Controller Level

- A. Mastered
- B. Not Mastered

Answer: A

Explanation:

exposes RESTCONF as Northbound API

uses REST as Northbound API

supported by standards such as YANG models

Integrates to ITSM tools using Westbound APIs

Device Level

exposes RESTCONF as Northbound API

supported by standards such as YANG models

Controller Level

uses REST as Northbound API

Integrates to ITSM tools using Westbound APIs

NEW QUESTION 201

- (Exam Topic 3)

A team of developers is responsible for a network orchestration application in the company. The responsibilities also include: developing and improving the application in a continuous manner deployment of the application and management of CI/CD frameworks monitoring the usage and problems and managing the performance improvements Which principle best describes this DevOps practice?

- A. responsible for IT operations
- B. automation of processes
- C. end-to-end responsibility
- D. quality assurance checks

Answer: C

NEW QUESTION 202

- (Exam Topic 3)

Drag and drop the API characteristics from the left onto the categories on the right.

|                                                   |      |
|---------------------------------------------------|------|
| The API is seen as a function call.               | REST |
| There is communication between server and client. |      |
| It follows a resource-oriented model.             |      |
| The API can be stateless.                         | RPC  |
|                                                   |      |

- A. Mastered
- B. Not Mastered

Answer: A

Explanation:  
Graphical user interface, application Description automatically generated

NEW QUESTION 207  
- (Exam Topic 3)  
Drag and drop the functions from the left onto the networking devices on the right.

|                                                      |               |
|------------------------------------------------------|---------------|
| forwards by default                                  | load balancer |
| distributes unicast traffic over devices             | switch        |
| uses traffic inspection to make forwarding decisions | firewall      |
| distributes multicast traffic over devices           | router        |

- A. Mastered
- B. Not Mastered

Answer: A

Explanation:

|                                                      |                                                      |
|------------------------------------------------------|------------------------------------------------------|
| forwards by default                                  | forwards by default                                  |
| distributes unicast traffic over devices             | distributes unicast traffic over devices             |
| uses traffic inspection to make forwarding decisions | uses traffic inspection to make forwarding decisions |
| distributes multicast traffic over devices           | distributes multicast traffic over devices           |

NEW QUESTION 212  
- (Exam Topic 3)  
Which IP service synchronizes the time across devices?

- A. DNS
- B. NTP
- C. SNMP
- D. NAT

Answer: B

NEW QUESTION 215  
- (Exam Topic 3)

```

param0: Workflow1
param1:
 list:
 - name: VLAN_ID
 value: '198'
param2: 0
```

Refer to the exhibit. The YAML shown contains an object "param0" that is equal to "Workflow1", a second object "param1" that contains an object called "list" which contains an array of two objects, "name" (equal to "VLAN\_ID") and "value" (equal to a text value "198"), and finally a third object "param2" that is equal to "0". What is the equivalent message in JSON data format?

A. [

```
 "param0"="Workflow1";
 "param1"=
 "list"=
 ["name"="VLAN_ID";
 "value"="198"]
 "param2"=0
]
```

B. {

```
 "param0": "Workflow1";
 "param1": {
 "list":
 [
 { "name": "VLAN_ID";
 "value": "198" }
]
 },
 "param2": 0
}
```

C. [

```
 "param0": "Workflow1",
 "param1": {
 "list":
 {
 ["name": "VLAN_ID",
 "value": "198"]
 }
 },
 "param2": 0
]
```

D. {

```
 "param0": "Workflow1",
 "param1": {
 "list":
 [
 { "name": "VLAN_ID",
 "value": "198" }
]
 },
 "param2": 0
}
```

**Answer:** D

**NEW QUESTION 216**

- (Exam Topic 3)



```

HTTPS/1.1 201 Created
Date: Tue, 08 Nov 2020 09:37:27 GMT
Server: example-server
Location: https://example.com/restconf/data\
 example-jukebox/library/dogbreed=Australian%20Cattle%20Dog
Last Modified: Tue 08 Nov 2020 09:37:27 GMT
ETag: "s1878124t4c"

```

Refer to the exhibit. Which RESTCONF request results in this response?

A.

```

GET /restconf/data/example-jukebox:jukebox/library HTTP/1.1
Host: example.com
Content-Type: application/yang-data-json

{
 "Example-jukebox:dogbreed" : [
 {
 "name" : "Australian Cattle Dog"
 }
]
}

```

B.

```

CONFIG /restconf/data/example-jukebox:jukebox/library HTTP/1.1
Host: example.com
Content-Type: application/yang-data-json

{
 "Example-jukebox:dogbreed" : [
 {
 "name" : "Australian Cattle Dog"
 }
]
}

```

C.

```

PUT /restconf/data/example-jukebox:jukebox/library HTTP/1.1
Host: example.com
Content-Type: application/yang-data-json

{
 "Example-jukebox:dogbreed" : [
 {
 "name" : "Australian Cattle Dog"
 }
]
}

```

D.

```

POST /restconf/data/example-jukebox:jukebox/library HTTP/1.1
Host: example.com
Content-Type: application/yang-data+json

{
 "Example:dogbreed" : [
 {
 "name" : "Australian Cattle Dog"
 }
]
}

```

**Answer: D**

#### NEW QUESTION 220

- (Exam Topic 3)

Which action do webhooks enable an application to perform?

A. Increase the request rate limit.

- B. Populate the application with restricted data.
- C. Receive real-time data.
- D. Implement a push model.

**Answer: D**

**Explanation:**

Simplifying the wording: Webhook enables the app to ( push or receive real time) . The clients should receive real time but the app pushes.

**NEW QUESTION 221**

- (Exam Topic 3)

A developer creates a program in which an object maintains a list of classes based on the observer pattern. The classes are dependent on the object. Whenever the state of the object changes, it notifies the dependent classes directly through callbacks. Which advantage of the observer pattern offers minimum dependencies and maximum flexibility between dependent objects or classes?

- A. tight coupling
- B. cohesion
- C. mediation
- D. loose coupling

**Answer: D**

**NEW QUESTION 223**

- (Exam Topic 3)

```
--- functions.py 2020-09-26 14:26:25.000000000 -0600
--- new.py 2020-09-26 14:26:10.000000000 -0600
@@ -21,7 -21,7 @@
def print_devices_info(devices):
 # Print id, hostname and management IP
 for item in devices:
- print(item['id'], item['hostname'], item['managementIpAddress'])
- print(item['id'], item['hostname'])

 # Get Authentication token
def get_dnac_jwt_token():
@@ -66,9 -66,15 @@
 response = get_devices_list(headers, {})
 print_devices_info(response)

- # print devices list filtered by hostname
- print('\nPrinting device list filtered by hostname ...')
- query_string_params = {'hostname': 'CSR1Kv-01.devnet.local'}
- response = get_devices_list(headers, query_string_params)
- print_devices_info(response)
-
- # print devices list filtered by platform Id
- print('\nPrinting device list filtered by platform id...')
- query_string_params = {'platformId': 'C9500-40X'}
- query_string_params = {'platformId': 'AIR-AP1141N-A-K9'}
- response = get_devices_list(headers, query_string_params)
- print_devices_info(response)
```

Refer to the exhibit. An engineer is comparing two files by using the unified diff format. Which code snippet belongs to the new.py file?

- A. 

```
77 query_string_params = {'platformId':
'AIR-AP1141N-A-K9'}
```
- B. 

```
21 print(item['id'], item['hostname'])
```
- C. 

```
24 print(item['id'], item['hostname'],
item['managementIpAddress'])
```
- D. 

```
66 # print devices list filtered by
hostname
67 print('\nPrinting device list
filtered by hostname ...')
68 query_string_params = {'hostname':
'CSR1Kv-01.devnet.local'}
69 response = get_devices_list
(headers, query_string_params)
70 print_devices_info(response)
```

**Answer: A**

**NEW QUESTION 224**

- (Exam Topic 3)

Which OWASP threat takes advantage of a web application that the user has already authenticated to execute an attack?

- A. phishing
- B. DoS
- C. brute force attack
- D. CSRF

Answer: D

Explanation:

Cross-Site Request Forgery (CSRF) is an attack that forces an end user to execute unwanted actions on a web application in which they're currently authenticated.  
<https://owasp.org/www-community/attacks/csrf>

NEW QUESTION 229

- (Exam Topic 3)

Which solution reduces costs from MPLS, improves application performance, and simplifies operations?

- A. Cisco NSO
- B. Cisco SD-WAN
- C. Cisco ACI
- D. Cisco DNA Center

Answer: B

NEW QUESTION 230

- (Exam Topic 3)

Drag and drop the characteristics from the left onto the corresponding categories on the right to compare RESTful and RPC APIs.

Answer Area

stateless

session-based

must use HTTP

sometimes uses HTTP

RESTful

RPC

- A. Mastered
- B. Not Mastered

Answer: A

Explanation:

stateless

session-based

must use HTTP

sometimes uses HTTP

RESTful

stateless

sometimes uses HTTP

RPC

session-based

must use HTTP

NEW QUESTION 232

- (Exam Topic 3)



```
1 URL: https://example.com/restconf/data/Cisco-IOS-XE-native:native/logging/monitor
2 Method: POST
3
4 Headers: {'Content-type': 'application/yang-data+json', 'Accept': 'application/yang-data+json,
* application/yang-data.errors+json'}
5
6 Body:
7
8 {
9 "severity": "alerts"
10 }
```

Refer to the exhibit. Which HTTP code is returned after the RESTCONF query is executed?

- A. 201
- B. 204
- C. 302
- D. 304

**Answer:** A

#### NEW QUESTION 237

- (Exam Topic 3)

A developer attempts to refactor and improve the application code. It is noticed that the code contains several pieces of key information that could be a security threat if this code is accessible by those who are not authorized to this data. Which approach addresses the security concerns noticed by the developer?

- A. Host the application code on a machine located in a secure data center.
- B. Utilize environment variables for username and password details.
- C. Rely on the security teams' goodwill to not give access to those who do not need it.
- D. Move the hardware that the application is deployed on to a secure location.

**Answer:** B

#### NEW QUESTION 239

- (Exam Topic 3)

Refer to the exhibit.

```
import requests

base url = f"https://webexapis.com/v1/people"

headers = {
 "Accept": "application/json"
}

person email = 'customer@company.com'
url = f"{base url}?email={person email}"

response = requests.request("GET", url, headers=headers)

if response.status code == 200 :
 print(f"OK - Added {person email}")
else:
 print(f"ERROR CODE {response.status code}")
```

A collaboration engineer has developed a script to automate the gathering of information by providing the email address of the individual. When the engineer tests the script, a 401 error is received. Which command fixes the script?

- A. Add "Authorization": "Bearer <WEBEX\_TOKEN>" to the headers
- B. Add "Authentication": "Basic <WEBEX\_TOKEN>" in the base\_url after "https://".
- C. Add "<Authorization>:<password>@" in the base\_url after "https://".
- D. Add "Authentication": "Bearer <WEBEX\_TOKEN>" to the headers

**Answer:** A

#### NEW QUESTION 243

- (Exam Topic 3)

```
import requests
def main():
 def getCreds():
 user = input('User: ')
 pwd = Getpass('Pass: ')
 return (user,pwd)

 def login(ipaddr,user,pwd):
 url = "https://{ipaddr}/api/aaaLogin.json".format(ipaddr=ipaddr)
 data = '{"aaaUser":{"attributes":{"name":"{user}s","pwd":"{pwd}s"}}}'
 + '{"pwd":pwd,"user":user}'
 response = requests.post(url,data=data,verify=False)
 cookie = response.headers['Set-Cookie']
 return cookie

 def getstuff(ipaddr,cookie):
 headers = {"Cookie":cookie}
 url = "https://{ipaddr}/api/node/class/fvTenant.json".format(ipaddr=ipaddr)
 response = requests.get(url,headers=headers,verify=False)
 grouplist = []
 for x in response.json()["imdata"]:
 grouplist.append(x["fvTenant"]["attributes"]["name"])
 return ','.join(grouplist)

 ipaddr = "192.168.255.2"
 user,pwd = getCreds()
 token = login(ipaddr,user,pwd)
 return getstuff(ipaddr,cookie)

if __name__ == '__main__':
 result = main()
 print(result)
```

Refer to the exhibit. Which action does the script perform?

- A. It queries user credentials from Cisco IOS XE devices.
- B. It retrieves device identification from Cisco DNA Center.
- C. It exports SSID information from Meraki dashboard.
- D. It collects group information from ACI.

**Answer: D**

#### NEW QUESTION 248

- (Exam Topic 3)

Refer to the exhibit.

```
module ietf-interface {
 namespace "urn:ietf:params:xml:ns:yang:ietf-interfaces";
 prefix if;
 import ietf-yang-types {
 prefix yang;
 }
 container interfaces-state {
 list interface {
 key "name";
 leaf name {
 type string;
 }
 leaf admin-status {
 type enumeration {
 enum up {
 value 1;
 }
 enum down {
 value 2;
 }
 enum testing {
 value 3;
 }
 }
 }
 leaf if-index {
 type int32 {
 range "1..2147483647"
 }
 }
 container statistics {
 leaf in-octets {
 type yang:counter64;
 }
 leaf in-unicast-pkts {
 type yang:counter64;
 }
 }
 }
 }
}
```

Which XML snippet has interface information that conforms to the YANG model?

A. Text Description automatically generatedB.

```
<interfaces-state
xmlns="urn:ietf:params:xml:ns:yang:ietf-interfaces"
xmlns:if="urn:ietf:params:xml:ns:yang:ietf-interfaces">
 <interface name="GigabitEthernet1">
 <admin-status>1</admin-status>
 <if-index>1</if-index>
 <statistics>
 <in-octets>408164820</in-octets>
 <in-unicast-pkts>728061</in-unicast-pkts>
 </statistics>
 </interface>
</interfaces-state>
```

Text

Description automatically generated

```
<interfaces-state
xmlns="urn:ietf:params:xml:ns:yang:ietf-interfaces"
xmlns:if="urn:ietf:params:xml:ns:yang:ietf-interfaces">
 <interface>
 <name>GigabitEthernet1</name>
 <admin-status>up</admin-status>
 <if-index>1</if-index>
 <in-octets>408164820</in-octets>
 <in-unicast-pkts>728061</in-unicast-pkts>
 </interface>
</interfaces-state>
```

B. Text Description automatically generated



```
<interfaces-state
xmlns="urn:ietf:params:xml:ns:yang:ietf-interfaces"
xmlns:if="urn:ietf:params:xml:ns:yang:ietf-interfaces">
 <interface>
 <name>GigabitEthernet1</name>
 <admin-status>up</admin-status>
 <if-index>1</if-index>
 <statistics>
 <in-octets>408164820</in-octets>
 <in-unicast-pkts>728061</in-unicast-pkts>
 </statistics>
 </interface>
</interfaces-state>
```

C. Text Description automatically generated

```
<interfaces-state
xmlns="urn:ietf:params:xml:ns:yang:ietf-interfaces"
xmlns:if="urn:ietf:params:xml:ns:yang:ietf-interfaces">
 <interface>
 <name>GigabitEthernet1</name>
 <admin-status>1</admin-status>>
 <if-index>1</if-index>
 <statistics>
 <in-octets>408164820</in-octets>
 <in-unicast-pkts>728061</in-unicast-pkts>
 </statistics>
 </interface>
</interfaces-state>
```

**Answer:** C

**Explanation:**

<https://datatracker.ietf.org/doc/id/draft-ietf-netmod-interfaces-cfg-01.txt> <admin-status>up</admin-status>

#### NEW QUESTION 249

- (Exam Topic 3)

Which tool provides a testing environment to run tests on network devices and perform network automation scenarios?

- A. Visual Studio Code
- B. Cisco VIRL
- C. pyATS
- D. Cisco Packet Tracer

**Answer:** B

#### NEW QUESTION 250

- (Exam Topic 3)

```
import requests
from requests.auth import HTTPBasicAuth

user= "user"
password= "PASSWORD"

token=requests.post('https://<DNAC ADRESS>/dna/system/api/v1/auth/token',
)
```

Refer to the exhibit. A developer must use a token to collect data from Cisco DNA Center API and prepares a Python script to send requests. Which line of code needs to be placed on the snippet where the code is missing to obtain a token from the Cisco DNA Center API?

- A. token=BasicAuth('user','password'))
- B. auth=BasicAuth('user','password'))
- C. auth=HTTPBasicAuth(user,password))
- D. token=HTTPBasicAuth(user,password))

**Answer:** C

#### NEW QUESTION 251

- (Exam Topic 2)

What is a benefit of using functions in the code for the development process?

- A. better user experience in the end product
- B. improves code performance
- C. easier to compile the code
- D. faster code development

**Answer:** D

**Explanation:**

<https://www.techwalla.com/articles/the-advantages-disadvantages-of-using-functions-procedures-in-computer-p>

#### NEW QUESTION 255

- (Exam Topic 2)

Refer to the exhibit.

```
import requests, sys
from config import user, password

url = "http://restconf.devnet.com:9443/api/running/interfaces"
headers =
response = requests.put(url, auth=(user, password), headers=headers,
verify=False)
print(response.text)
```

A network engineer wants to use an API to update information about device interfaces. The network devices are deployed in a Cisco DevNet Sandbox and have running interfaces. Which line of code needs to be placed in the snippet where the code is missing?

- A. {'Content-Type': 'application/yang.data+xml', 'Accept': 'application/yang.data+xml'}
- B. {'Content-Type': 'application/yang.data+yaml', 'Accept': 'application/yang.data+yaml'}
- C. {'Content-Type': 'application/restconf.data+json', 'Accept': 'application/ restconf.data+json'}
- D. {'Content-Type': 'application/yang.data+utf8', 'Accept': 'application/ restconf.data+utf8'}

**Answer:** C

#### NEW QUESTION 258

- (Exam Topic 2)

In test-driven development, what are two of the green bar patterns? (Choose two.)

- A. another test
- B. break
- C. triangulate
- D. starter test
- E. fake it

**Answer:** CE

**Explanation:**

<https://blog.baudson.de/blog/test-driven-development-green-bar-patterns>

#### NEW QUESTION 262

- (Exam Topic 2)

What is a benefit of a model-driven approach for infrastructure automation?

- A. enforces the generation of all automation scripts through the modeling environment
- B. provides a small learning curve and helps system administrators with limited coding experience
- C. ensures that system administrators gain a good understanding of coding and expand their experience and capabilities
- D. enables a user to understand a declarative language to translate the model into an actionable script

**Answer:** A

#### NEW QUESTION 263

- (Exam Topic 3)

Drag and drop the code from the bottom onto the box where the code is missing to construct a Python script that calls a REST API request. The Python script retrieves a list of tasks from a to-do list for effective project management purposes. Not all options are used.

```
import requests

response = .get('https://todolist.example.com/tasks/')

if .status_code != 200:
 raise ApiError('GET /tasks/ {}'.format(response.))

for item in response.json():
 print('{} {}'.format(item['id'], ['summary']))
```







- A. Mastered  
 B. Not Mastered

Answer: A

Explanation:

```
import requests

response = .get('https://todolist.example.com/tasks/')

if .status_code != 200:
 raise ApiError('GET /tasks/ {}'.format(response.))

for item in response.json():
 print('{} {}'.format(item['id'], ['summary']))
```







NEW QUESTION 267  
 - (Exam Topic 3)





Refer to the exhibit. Drag and drop the code from the bottom onto the box where the code is missing to construct a request that generates a security token and gets a list of network devices. Not all options are used.

```
import json, requests, urllib3
from requests.auth import HTTPBasicAuth
from config import host, username, password

headers = { 'content-type': "application/json", 'x-auth-token': "" }
def dna_api_auth(host, username, password):
 url = "https://{}/api/system/v1/auth/token".format(host)
 response = .post(url, auth=HTTPBasicAuth(username, password),
 headers=headers, verify=False)
 return response.json()["Token"]

def list_dna_devices(token):
 url = "https://{}/api/v1/network-device".format(host)
 headers["x-auth-token"] = token
 response = requests.get(url, headers=headers, verify=False)
 data = .json()
 for item in data['response']:
 print(item["hostname"])

token = (host, username, password)
 (token)
```

- |          |                  |              |          |
|----------|------------------|--------------|----------|
| response | reply            | dna_api_auth | requests |
| json     | list_dna_devices | list devices |          |

- A. Mastered  
 B. Not Mastered

Answer: A

Explanation:

```
import json, requests, urllib3
from requests.auth import HTTPBasicAuth
from config import host, username, password

headers = { 'content-type': "application/json", 'x-auth-token': "" }
def dna_api_auth(host, username, password):
 url = "https://{}/api/system/v1/auth/token".format(host)
 response = requests.post(url, auth=HTTPBasicAuth(username, password),
 headers=headers, verify=False)
 return response.json()["Token"]

def list_dna_devices(token):
 url = "https://{}/api/v1/network-device".format(host)
 headers["x-auth-token"] = token
 response = requests.get(url, headers=headers, verify=False)
 data = response.json()
 for item in data['response']:
 print(item["hostname"])

token = dna_api_auth(host, username, password)
list_dna_devices(token)
```

|          |                  |              |          |
|----------|------------------|--------------|----------|
| response | reply            | dna_api_auth | requests |
| json     | list_dna_devices | list devices |          |

#### NEW QUESTION 272

- (Exam Topic 3)

A developer has addressed a bug that was found in the production code of an application. A separate file named 'bug427896191v\_fix' has been created with the changes to the code. Which Git command must be used to incorporate the bug fix into the production code?

- A. git rebase
- B. git cat-file
- C. git merge-file
- D. git bisect

**Answer: C**

#### NEW QUESTION 275

- (Exam Topic 3)

Which two commands download and execute an Apache web server container in Docker with a port binding 8080 in the container to 80 on the host? (Choose two.)

- A. docker pull apache
- B. docker run -p 8080:80 httpd
- C. docker run -p 80:8080 httpd
- D. docker pull httpd
- E. docker pull https

**Answer: CD**

#### NEW QUESTION 278

- (Exam Topic 3)

What is a benefit of version control?

- A. prevents two users from working on the same file
- B. keeps track of all changes to the files
- C. prevents the sharing of files
- D. keeps the list of data types used in the files

**Answer: B**

#### NEW QUESTION 283

- (Exam Topic 3)

Refer to the exhibit.

```
workstation:Network admin$ ls
PROD TEST
workstation:Network admin$ ls ./TEST
config.txt
workstation:Network admin$
```

A network engineer must copy the “config.txt” file from directory TEST to directory PROD. The copied file must also be renamed into “current.txt”. Which command must be used to accomplish these tasks?

- A. cp ./PROD/current.txt ./TEST/config.txt
- B. cp ./TESTi/current.txt ./PROD/config.txt
- C. cp ./PROD/config.txt ./TEST/current.txt
- D. cp ./TEST/config.txt ./PROD/current.txt

**Answer:** D

#### NEW QUESTION 288

- (Exam Topic 3)

Which Python function is used to parse a string that contains JSON data into a Python dictionary?

- A. json.dumps()
- B. json.to\_json()
- C. json.parse()
- D. json.loads()

**Answer:** D

#### Explanation:

loads() function is present in python built-in 'json' module. This function is used to parse the JSON string.

#### NEW QUESTION 291

- (Exam Topic 3)

Drag and drop the steps from the left into order on the right to create a common CI/CD pipeline process. Not all options are used.

|          |        |
|----------|--------|
| Build    | step 1 |
| Commit   | step 2 |
| Deploy   | step 3 |
| Evaluate | step 4 |
| Test     |        |
| Regress  |        |

- A. Mastered
- B. Not Mastered

**Answer:** A

#### Explanation:

|          |        |
|----------|--------|
| Build    | Commit |
| Commit   | Build  |
| Deploy   | Test   |
| Evaluate | Deploy |
| Test     |        |
| Regress  |        |

#### NEW QUESTION 296

- (Exam Topic 3)



A group of software developers wants to improve its collaboration with the operations team. The group wants to deliver release-ready code that merges code changes back to the main branch and runs the automated testing as often as possible. Which DevOps concept does this scenario represent?

- A. continuous delivery
- B. version control
- C. continuous integration
- D. continuous deployment

**Answer: C**

#### NEW QUESTION 300

- (Exam Topic 3)

Which standard supported by Cisco IOS XE and Cisco NX-OS is used for automating the configuration of multiple devices across a network?

- A. SNMP – YANG
- B. SYSLOG – YANG
- C. CLI – YANG
- D. NETCONF – YANG

**Answer: D**

#### NEW QUESTION 301

- (Exam Topic 3)

A developer plans to deploy a new application that will use an API to implement automated data collection from Webex with these requirements:

The application was created by using the request library. Requires HTTP basic authentication.

Provides data in JSON or XML formats.

Which Cisco DevNet resource helps the developer with how to use the API?

- A. DevNet sandbox
- B. API documentation
- C. forums
- D. DevNet code exchange

**Answer: B**

#### NEW QUESTION 303

- (Exam Topic 3)

What is a feature of XML compared to other data formats?

- A. It uses tags to define the structure.
- B. It uses parenthesis for key-value pairs.
- C. It uses indentation to define the structure.
- D. It uses namespaces for list representation.

**Answer: A**

#### NEW QUESTION 305

- (Exam Topic 3)

Which two details are captured from the subnet mask? (Choose two.)

- A. portion of an IP address that refers to the subnet
- B. default gateway of the host
- C. unique number ID assigned to the host
- D. part of an IP address that refers to the host
- E. network connection of a host or interface

**Answer: AD**

#### NEW QUESTION 310

- (Exam Topic 3)

A developer creates an application that must provide an encrypted connection or API keys. The keys will be used to communicate with a REST API. Which command must be used for the secure connection?

- A. curl-X PUSH 'http://username.app.com/endpoint/?api\_key=12345abcdef'
- B. curl -v 'ftp://username.app.com/endpoint/?api\_key=12345abcdef'
- C. curl -X GET 'https://username.app.com/endpoint/?api\_key=12345abcdef'
- D. curl-X GET 'http://username.app.com/endpoint/?api\_key=12345abcdef'

**Answer: C**

#### NEW QUESTION 315

- (Exam Topic 3)

A developer writes an application that refines data in temporary secure file storage hosted on the public cloud. Data will be deleted after processing and does not contain any private information. What is the advantage that a public cloud deployment provides to the developer?

- A. high security with encryption
- B. ease in infrastructure management

- C. flexible development
- D. bespoke services

**Answer:** B

**NEW QUESTION 317**

- (Exam Topic 3)

Which protocol runs over TCP port 830?

- A. NETCONF
- B. Telnet
- C. RESTCONF
- D. HTTP

**Answer:** A

**NEW QUESTION 321**

- (Exam Topic 3)

What are two benefits of implementing common data structures when working with APIs in remote systems? (Choose two.)

- A. ensures that developers are limited to using one data schema type
- B. prevents multivendor interoperability
- C. improves security in RESTful web services
- D. enforces standardized data structures
- E. leverages code that is easily managed and reused

**Answer:** BE

**NEW QUESTION 324**

- (Exam Topic 3)

Refer to the exhibit.

```
cd ~/development/project01
mkdir info
cd info
[REDACTED]
cp ./requirements.txt ~/Documents/backup/requirements.txt
```

A developer just finished testing a Python script and wants to save the list of packages and versions installed on the current machine. The developer must make sure that it will not cause any issues if tested on another device due to different library versions. Which line of code needs to be placed on the snippet where the code is missing?

- A. pip freeze 2> requirements.txt
- B. pip freeze > requirements.txt
- C. pip freeze => requirements.txt
- D. pip freeze | requirements.txt

**Answer:** B

**Explanation:**

pip freeze requirements.txt ile ilgili görsel sonucu The most common command is pip freeze > requirements. txt , which records an environment's current package list into requirements. txt. If you want to install the dependencies in a virtual environment, create and activate that environment first, then use the Install from requirements.

**NEW QUESTION 329**

- (Exam Topic 3)

POST

/v1/meetings

Body Parameters

title

string Required

Meeting title. The title can be a maximum of 128 characters long.

agenda

string

Meeting agenda. The agenda can be a maximum of 2500 characters long.

password

string

Meeting password. Must conform to the site's password complexity settings. Read [password management](#) for details. If not specified, a random password conforming to the site's password rules will be generated automatically.

start

string Required

Date and time for the start of meeting in any [ISO 8601](#) compliant format. start cannot be before current date and time or after end. Duration between start and end cannot be shorter than 10 minutes or longer than 24 hours.

end

string Required

Date and time for the end of meeting in any [ISO 8601](#) compliant format. end cannot be before current date and time or before start. Duration between start and end cannot be shorter than 10 minutes or longer than 24 hours.

Refer to the exhibit. A bespoke meeting booking system must be integrated with Cisco Webex so that meetings are created automatically. Drag and drop the code from the bottom onto the box where the code is missing to create a sample meeting. Not all options are used.

import requests, json

= 'eyJhbGc ... yJbN8'

headers = {

'Authorization': f'Bearer {token}',

'Content-Type': 'application/json'

}

payload = {

"title": "DevNet Webex Discussion",

"password": "AGrtgl234",

"start": "2020-11-10T15:00:00Z",

"end": "2020-11-10T17:00:00Z",

"enabledAutoRecordMeeting": False,

"allowAnyUserToBeCoHost": False

}

response = requests.request(" ", f'{BASE\_URL}/ ',

headers=headers, data=json.dumps( ),

print(response.text.encode('utf8'))

payload

PUT

token

vl/meeting

vl/meetings

POST

- A. Mastered
- B. Not Mastered

Answer: A

Explanation:



```
import requests, json

token = 'eyJhbGc ... yJbN8'

headers = {
 'Authorization': f'Bearer {token}',
 'Content-Type': 'application/json'
}

payload = {
 "title": "DevNet Webex Discussion",
 "password": "AGrtgl234",
 "start": "2020-11-10T15:00:00Z",
 "end": "2020-11-10T17:00:00Z",
 "enabledAutoRecordMeeting": False,
 "allowAnyUserToBeCoHost": False
}

response = requests.request("POST", f'{BASE_URL}/vl/meetings',
 headers=headers, data=json.dumps(payload))
print(response.text.encode('utf8'))
```

|            |             |       |
|------------|-------------|-------|
| payload    | PUT         | token |
| vl/meeting | vl/meetings | POST  |

#### NEW QUESTION 332

.....

## Thank You for Trying Our Product

### We offer two products:

1st - We have Practice Tests Software with Actual Exam Questions

2nd - Questions and Answers in PDF Format

### 200-901 Practice Exam Features:

- \* 200-901 Questions and Answers Updated Frequently
- \* 200-901 Practice Questions Verified by Expert Senior Certified Staff
- \* 200-901 Most Realistic Questions that Guarantee you a Pass on Your First Try
- \* 200-901 Practice Test Questions in Multiple Choice Formats and Updates for 1 Year

**100% Actual & Verified — Instant Download, Please Click**  
**[Order The 200-901 Practice Test Here](#)**