



Microsoft

Exam Questions AZ-800

Administering Windows Server Hybrid Core Infrastructure

About ExamBible

[Your Partner of IT Exam](#)

Found in 1998

ExamBible is a company specialized on providing high quality IT exam practice study materials, especially Cisco CCNA, CCDA, CCNP, CCIE, Checkpoint CCSE, CompTIA A+, Network+ certification practice exams and so on. We guarantee that the candidates will not only pass any IT exam at the first attempt but also get profound understanding about the certificates they have got. There are so many alike companies in this industry, however, ExamBible has its unique advantages that other companies could not achieve.

Our Advances

* 99.9% Uptime

All examinations will be up to date.

* 24/7 Quality Support

We will provide service round the clock.

* 100% Pass Rate

Our guarantee that you will pass the exam.

* Unique Gurantee

If you do not pass the exam at the first time, we will not only arrange FULL REFUND for you, but also provide you another exam of your claim, ABSOLUTELY FREE!

NEW QUESTION 1

SIMULATION - (Topic 4)

Task2

You need to ensure that the Azure file share named share1 can sync to on-premises servers.

The required source files are located in a folder named \\dc1.contoso.com\install. You do NOT need to specify the on-premises servers at this time.

- A. Mastered
- B. Not Mastered

Answer: A

Explanation:

One possible solution to ensure that the Azure file share named share1 can sync to on-premises servers is to use Azure File Sync. Azure File Sync allows you to centralize your file shares in Azure Files without giving up the flexibility, performance, and compatibility of an on-premises file server. It does this by transforming your Windows Servers into a quick cache of your Azure file share. You can use any protocol available on Windows Server to access your data locally (including SMB, NFS, and FTPS) and you can have as many caches as you need across the world1.

Here are the steps to configure Azure File Sync for the Azure file share named share1 and the source files located in a folder named \\dc1.contoso.com\install:

? On the Azure portal, create a Storage Sync Service in the same region as your storage account that contains the Azure file share named share1. For more information on how to create a Storage Sync Service, see [How to deploy Azure File Sync](#).

? On the on-premises server that hosts the folder named \\dc1.contoso.com\install, install the Azure File Sync agent. For more information on how to install the Azure File Sync agent, see [Install the Azure File Sync agent](#).

? On the on-premises server, register the server with the Storage Sync Service that you created in the first step. For more information on how to register a server with a Storage Sync Service, see [Register/unregister a server with Storage Sync Service](#).

? On the Azure portal, create a sync group that defines the sync topology for a set of files. In the sync group, select the Azure file share named share1 as the cloud endpoint and the folder named \\dc1.contoso.com\install as the server endpoint.

For more information on how to create a sync group, see [Create a sync group and monitor sync progress](#). You can monitor the sync progress on the Azure portal or on the on-premises server. For more information on how to monitor sync progress, see [\[Monitor sync progress\]](#).

Once the initial sync is complete, you can add more on-premises servers to the same sync group to sync and cache the content locally. You can also enable cloud tiering to optimize the storage space on the on-premises servers by tiering infrequently accessed or older files to Azure Files.

NEW QUESTION 2

SIMULATION - (Topic 4)

Task 12

You need to create a Group Policy Object (GPO) named GPO1 that only applies to a group named MemberServers.

- A. Mastered
- B. Not Mastered

Answer: A

Explanation:

To create a GPO named GPO1 that only applies to a group named MemberServers, you can follow these steps:

? On a domain controller or a computer that has the Remote Server Administration Tools (RSAT) installed, open Group Policy Management from the Administrative Tools menu or by typing gpmmc.msc in the Run box.

? In the left pane, expand your domain and right-click on Group Policy Objects.

Select New to create a new GPO.

? In the New GPO dialog box, enter GPO1 as the Name of the new GPO and click OK. You can also optionally select a source GPO to copy the settings from.

? Right-click on the new GPO and select Edit to open the Group Policy Management Editor. Here, you can configure the settings that you want to apply to the group

under the Computer Configuration and User Configuration nodes. For more information on how to edit a GPO, see [Edit a Group Policy Object](#).

? Close the Group Policy Management Editor and return to the Group Policy Management console. Right-click on the new GPO and select Scope. Here, you can specify the scope of management for the GPO, such as the links, security filtering, and WMI filtering.

? Under the Security Filtering section, click on Authenticated Users and then click on Remove. This will remove the default permission granted to all authenticated users and computers to apply the GPO.

? Click on Add and then type the name of the group that you want to apply the GPO to, such as MemberServers. Click OK to add the group to the security filter. You can also click on Advanced to browse the list of groups available in the domain.

? Optionally, you can also configure the WMI Filtering section to further filter the GPO based on the Windows Management Instrumentation (WMI) queries. For more information on how to use WMI filtering, see [Filter the scope of a GPO by using WMI filters](#).

? To link the GPO to an organizational unit (OU) or a domain, right-click on the OU or the domain in the left pane and select Link an Existing GPO. Select the GPO that you created, such as GPO1, and click OK. You can also change the order of preference by using the Move Up and Move Down buttons.

? Wait for the changes to replicate to other domain controllers. You can also force the update of the GPO by using the gpupdate /force command on the domain controller or the client computers. For more information on how to update a GPO, see [Update a Group Policy Object](#).

Now, you have created a GPO named GPO1 that only applies to a group named MemberServers. You can verify the GPO application by using the gpresult /r command on a member server and checking the Applied Group Policy Objects entry. You can also use the Group Policy Results wizard in the Group Policy Management console to generate a report of the GPO application for a specific computer or user. For more information on how to use the Group Policy Results wizard, see [Use the Group Policy Results Wizard](#).

NEW QUESTION 3

SIMULATION - (Topic 4)

Task 11

You need to ensure that all DHCP clients that get an IP address from SRV1 will be configured to use DC1 as a DNS server.

- A. Mastered
- B. Not Mastered

Answer: A

Explanation:

One possible solution to ensure that all DHCP clients that get an IP address from SRV1 will be configured to use DC1 as a DNS server is to use the DHCP scope options. DHCP scope options are settings that apply to all DHCP clients that obtain an IP address from a specific scope. You can use the DHCP scope options to specify the DNS server IP address, as well as other parameters such as the default gateway, the domain name, and the DNS suffix. Here are the steps to configure the DHCP scope options on SRV1:

? On SRV1, open DNS Manager from the Administrative Tools menu or by typing dnsmgmt.msc in the Run box.

? In the left pane, expand your DHCP server and click on IPv4.

? In the right pane, right-click on the scope that you want to configure and select Properties.

? In the Scope Properties dialog box, click on the DNS tab.

? Check the box Enable DNS dynamic updates according to the settings below. This option allows the DHCP server to register and update the DNS records for the DHCP clients.

? Select the option Always dynamically update DNS records. This option ensures that the DHCP server updates both the A and PTR records for the DHCP clients, regardless of whether they request or support dynamic updates.

? Check the box Discard A and PTR records when lease is deleted. This option allows the DHCP server to delete the DNS records for the DHCP clients when their leases expire or are released.

? Check the box Dynamically update DNS records for DHCP clients that do not request updates. This option allows the DHCP server to update the DNS records for the DHCP clients that do not support dynamic updates, such as legacy or non-Windows clients.

? In the DNS servers section, click on the Add button to add a new DNS server IP address.

? In the Add Server dialog box, enter the IP address of DC1, which is the DNS server that you want to use for the DHCP clients, and click Add.

? Click OK to close the Add Server dialog box and return to the Scope Properties dialog box.

? Click OK to apply the changes and close the Scope Properties dialog box.

Now, all DHCP clients that get an IP address from SRV1 will be configured to use DC1 as a DNS server. You can verify the DNS configuration by using the ipconfig /all command on a DHCP client computer and checking the DNS Servers entry. You can also check the DNS records for the DHCP clients by using the DNS Manager console on DC1.

NEW QUESTION 4

SIMULATION - (Topic 4)

Task 8

You need to create an Active Directory Domain Services (AD DS) site named Site2 that is associated to an IP address range of 192.168.2.0 to 192.168.2.255.

A. Mastered

B. Not Mastered

Answer: A

Explanation:

To create an AD DS site named Site2 that is associated to an IP address range of 192.168.2.0 to 192.168.2.255, you can follow these steps:

? On a domain controller or a computer that has the Remote Server Administration

Tools (RSAT) installed, open Active Directory Sites and Services from the Administrative Tools menu or by typing dssite.msc in the Run box.

? In the left pane, right-click on Sites and select New Site.

? In the New Object - Site dialog box, enter Site2 as the Name of the new site.

Select a site link to associate the new site with, such as DEFAULTIPSITELINK, and click OK. You can also create a new site link if you want to customize the replication frequency and schedule between the sites. For more information on how to create a site link, see Create a Site Link.

? In the left pane, right-click on Subnets and select New Subnet.

? In the New Object - Subnet dialog box, enter 192.168.2.0/24 as the Prefix of the subnet. This notation represents the IP address range of 192.168.2.0 to 192.168.2.255 with a subnet mask of 255.255.255.0. Select Site2 as the Site object to associate the subnet with, and click OK.

? Wait for the changes to replicate to other domain controllers. You can verify the site and subnet creation by checking the Sites and Subnets containers in Active Directory Sites and Services.

Now, you have created an AD DS site named Site2 that is associated to an IP address range of 192.168.2.0 to 192.168.2.255. You can add domain controllers to the new site and configure the site links and site link bridges to optimize the replication topology.

NEW QUESTION 5

SIMULATION - (Topic 4)

Task 3

You need to configure SRV1 as a DNS server. SRV1 must be able resolve names from the contoso.com domain by using DC1. All other names must be resolved by using the root hint servers.

A. Mastered

B. Not Mastered

Answer: A

Explanation:

One possible solution to configure SRV1 as a DNS server that can resolve names from the contoso.com domain by using DC1 and all other names by using the root hint servers is to use conditional forwarding. Conditional forwarding allows a DNS server to forward queries for a specific domain name to another DNS server, while using the normal forwarding or root hint servers for other queries. Here are the steps to configure conditional forwarding on SRV1:

? On SRV1, open DNS Manager from the Administrative Tools menu or by typing dnsmgmt.msc in the Run box.

? In the left pane, right-click on Conditional Forwarders and select New Conditional Forwarder.

? In the New Conditional Forwarder dialog box, enter contoso.com as the DNS Domain name.

? In the IP addresses of the master servers box, enter the IP address of DC1, which is the DNS server for the contoso.com domain. You can also click on Resolve to verify the name resolution of DC1.

? Optionally, you can check the box Store this conditional forwarder in Active Directory, and replicate it as follows if you want to store and replicate the conditional forwarder in AD DS. You can also select the replication scope from the drop-down list.

? Click OK to create the conditional forwarder.

Now, SRV1 will forward any queries for the contoso.com domain to DC1, and use the root hint servers for any other queries. You can test the name resolution by using

the nslookup command on SRV1 or another computer that uses SRV1 as its DNS server. For example, you can run the following commands:

```
nslookup www.contoso.com nslookup www.microsoft.com
```

The first command should return the IP address of www.contoso.com from DC1, and the second command should return the IP address of www.microsoft.com from a root hint server.

NEW QUESTION 6

SIMULATION - (Topic 4)

Task 4

You need to register SRV1 to sync Azure file shares. The registration must use the 34646045 Storage Sync Service.

The required source files are located in a folder named \\dc1.contoso.com\install.

You do NOT need to configure file share synchronization at this time and you do NOT need to update the agent.

- A. Mastered
- B. Not Mastered

Answer: A

Explanation:

One possible solution to register SRV1 to sync Azure file shares using the 34646045 Storage Sync Service is to use the Register-AzStorageSyncServer cmdlet from the Az.StorageSync module. This cmdlet establishes a trust relationship between the server

and the Storage Sync Service, which is required for creating server endpoints and syncing files. Here are the steps to register SRV1

using the cmdlet:

? On SRV1, open PowerShell as an administrator and run the following command to

install the Az.StorageSync module if it is not already installed: `Install-Module -Name Az.StorageSync`

? Run the following command to import the Az.StorageSync module:

```
Import-Module -Name Az.StorageSync
```

? Run the following command to sign in to your Azure account and select the subscription that contains the 34646045 Storage Sync Service:

```
Connect-AzAccount
```

```
Select-AzSubscription -SubscriptionId <your-subscription-id>
```

? Run the following command to register SRV1 with the 34646045 Storage Sync Service. You need to specify the resource group name and the Storage Sync Service name as parameters:

```
Register-AzStorageSyncServer -ResourceGroupName <your-resource-group-name> -StorageSyncServiceName 34646045
```

? Wait for the registration to complete. You can verify the registration status by

checking the Registered servers tab on the Azure portal or by running the following command:

```
Get-AzStorageSyncServer -ResourceGroupName <your-resource-group-name> -StorageSyncServiceName 34646045
```

Now, SRV1 is registered with the 34646045 Storage Sync Service and ready to sync Azure file shares. You can create server endpoints on SRV1 and cloud endpoints on the Azure file shares to define the sync topology.

NEW QUESTION 7

SIMULATION - (Topic 4)

Task 5

You need to ensure that a DHCP scope named scope1 on SRV1 can service client requests.

- A. Mastered
- B. Not Mastered

Answer: A

Explanation:

One possible solution to ensure that a DHCP scope named scope1 on SRV1 can service client requests is to activate the scope on the DHCP server. A scope must be activated before it can assign IP addresses to DHCP clients. To activate a DHCP scope on SRV1, perform the following steps:

? On SRV1, open DNS Manager from the Administrative Tools menu or by typing `dnsmgmt.msc` in the Run box.

? In the left pane, expand your DHCP server and click on IPv4.

? In the right pane, right-click on the scope that you want to activate, such as scope1, and select Activate.

? Wait for the scope to be activated. You can verify the activation status by checking the icon next to the scope name. A green arrow indicates that the scope is active, while a red arrow indicates that the scope is inactive.

Now, the DHCP scope named scope1 on SRV1 can service client requests and lease IP addresses to DHCP clients. You can test the DHCP service by using the `ipconfig`

`/renew` command on a DHCP client computer that is connected to the same subnet as the scope.

NEW QUESTION 8

SIMULATION - (Topic 4)

Task 6

You need to ensure that you can manage DC1 by using Windows Admin Center on SRV1. The required source files are located in a folder named \\dc1.contoso.com\install.

- A. Mastered
- B. Not Mastered

Answer: A

Explanation:

One possible solution to ensure that you can manage DC1 by using Windows Admin Center on SRV1 is to install Windows Admin Center on SRV1 and add DC1 as a managed server. Windows Admin Center is a web-based management tool that allows you to manage servers, clusters, Windows PCs, and Azure virtual machines (VMs) from a single interface. Here are the steps to install Windows Admin Center on SRV1 and add DC1 as a managed server:

? On SRV1, open a web browser and go to the folder named

\\dc1.contoso.com\install. Download the Windows Admin Center installer file (WindowsAdminCenter.msi) and save it to a local folder, such as C:\Temp.

? Run the Windows Admin Center installer file and follow the installation wizard. You

can choose to install Windows Admin Center as a desktop app or as a service. For more information on how to install Windows Admin Center, see Install Windows

Admin Center.

? After the installation is complete, launch Windows Admin Center from the Start menu or the desktop shortcut. If you installed Windows Admin Center as a service, you can access it from a web browser by using the URL <https://localhost:6516> or <https://<SRV1>:6516>, where <SRV1> is the name or IP address of SRV1.

? On the Windows Admin Center dashboard, click Add to add a new connection.

Select Server as the connection type and enter the name or IP address of DC1 in the Server name field. Optionally, you can specify the display name, description, and tags for the connection. Click Submit to add DC1 as a managed server.

? On the Windows Admin Center dashboard, you should see DC1 listed under the

Servers section. Click on DC1 to open the server overview page. From here, you can manage various aspects of DC1, such as roles and features, certificates, devices, events, files, firewall, processes, registry, services, and more. For more information on how to use Windows Admin Center to manage servers, see [Manage servers with Windows Admin Center](#).

Now, you can manage DC1 by using Windows Admin Center on SRV1. You can also add more servers or other types of connections to Windows Admin Center and manage them from the same interface

NEW QUESTION 9

- (Topic 3)

You have an Azure subscription that contains a virtual machine named VM1 as shown in the following exhibit.



The subscription has the disks shown in the following table.

| Name | Resource group | Location | Availability zone |
|-------|----------------|------------|-------------------|
| Disk1 | RG1 | East US | None |
| Disk2 | RG2 | East US | 1 |
| Disk3 | RG1 | Central US | None |
| Disk4 | RG1 | Central US | 1 |

Which disks can you attach as data disks to VM1?

- A. Disk2 only
- B. Disk4 only
- C. Disk1 and Disk2 only
- D. Disk2 and Disk4 only
- E. Disk1, Disk3, and Disk4 only
- F. Disk1, Disk2, Disk3. and Disk4

Answer: C

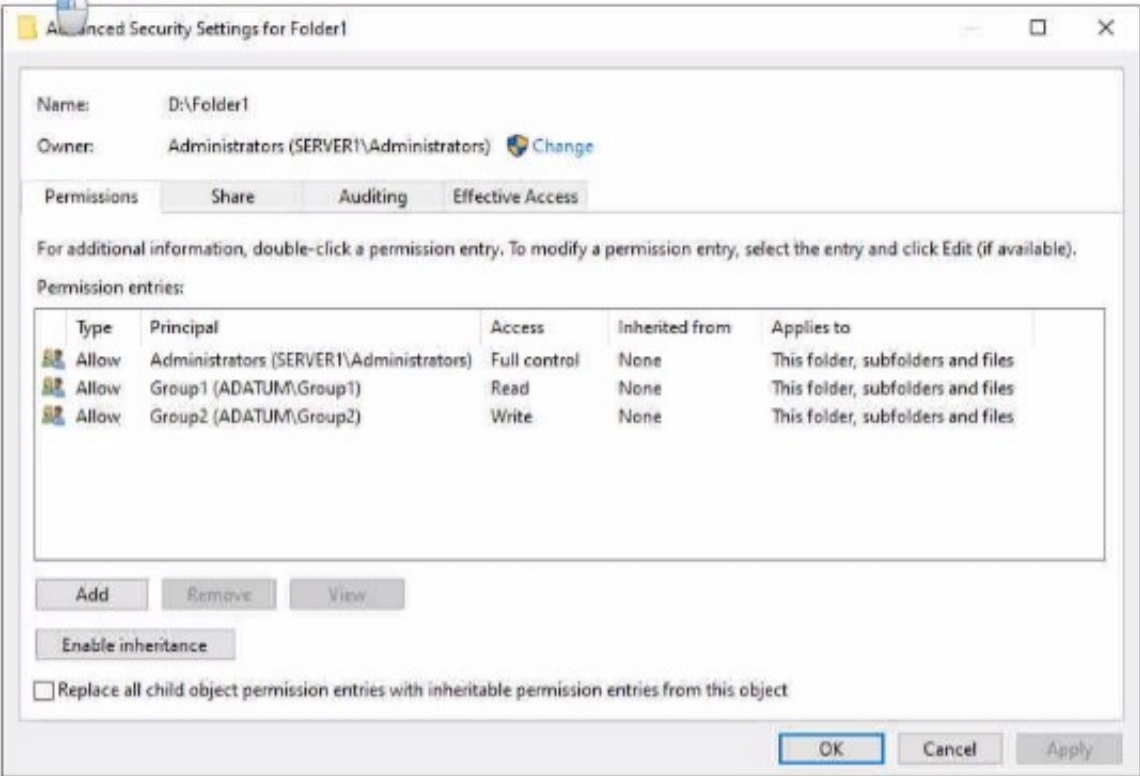
NEW QUESTION 10

HOTSPOT - (Topic 3)

Your network contains an Active Directory Domain Services (AD DS) domain named adatum.com The domain contains a server named Server1 and the users shown In the following table.

| Name | Member of |
|-------|-----------|
| User1 | Group1 |
| User2 | Group2 |
| User3 | Group3 |

Server1 contains a folder named D:\Folder1. The advanced security settings for Folder 1 are configured as shown in the Permissions exhibit. (Click the Permissions tab.)



Folder1 is shared by using the following configurations

| Group | Permission |
|--------|----------------------|
| Group1 | Allow - Change |
| Group3 | Allow - Full Control |

Path : D:\Folder1
Name : Share1
ShareType : FileSystemDirectory
FolderEnumerationMode : Unrestricted

Answer Area

| Statements | Yes | No |
|---------------------------------------------------------------|-----------------------|-----------------------|
| User1 can read the files in Share1. | <input type="radio"/> | <input type="radio"/> |
| User3 can delete files in Share1. | <input type="radio"/> | <input type="radio"/> |
| If User2 connects to \\Server1.adatum.com from File Explorer, | <input type="radio"/> | <input type="radio"/> |

- A. Mastered
- B. Not Mastered

Answer: A

Explanation:

Answer Area

| Statements | Yes | No |
|---------------------------------------------------------------|----------------------------------|----------------------------------|
| User1 can read the files in Share1. | <input checked="" type="radio"/> | <input type="radio"/> |
| User3 can delete files in Share1. | <input checked="" type="radio"/> | <input type="radio"/> |
| If User2 connects to \\Server1.adatum.com from File Explorer, | <input type="radio"/> | <input checked="" type="radio"/> |

NEW QUESTION 10

HOTSPOT - (Topic 3)

You have a Windows Server container host named Server1.
You start the containers on Server1 as shown in the following table.

| Name | Image | Uses Hyper-V isolation | Process running on container |
|------------|---------------|------------------------|------------------------------|
| Container1 | microsoft/iis | No | ProcessA |
| Container2 | microsoft/iis | No | ProcessB |
| Container3 | microsoft/iis | Yes | ProcessC |
| Container4 | microsoft/iis | Yes | ProcessD |

You need to validate the status of ProcessA and ProcessC.
Where can you verify that ProcessA and ProcessC are in a running state? To answer, select the appropriate options in the answer area.
NOTE: Each correct selection is worth one point.

Answer Area

ProcessA:

ProcessC:

- A. Mastered
- B. Not Mastered

Answer: A

Explanation:

Answer Area

ProcessA:

ProcessC:

NEW QUESTION 15

- (Topic 3)

You have an Active Directory Domain Services (AD DS) domain. The domain contains three servers named Server 1, Server2, and Server3 that run Windows Server. You sign in to Server1 by using a domain account and start a remote PowerShell session to Server2. From the remote PowerShell session, you attempt to access a resource on Server3. but access to the resource is denied. You need to ensure that your credentials are passed from Server1 to Server3. The solution must minimize administrative effort. What should you do?

- A. Configure Kerberos constrained delegation.
- B. Configure Just Enough Administration (JEA).
- C. Configure selective authentication for the domain.
- D. Disable the Enforce user logon restrictions policy setting for the domain.

Answer: A

NEW QUESTION 19

- (Topic 3)

Your network contains an Active Directory Domain Services (AD DS) domain- The domain contains 10 servers that run Windows Server. The servers have static IP addresses. You plan to use DHCP to assign IP addresses to the servers. You need to ensure that each server always receives the same IP address. Which type of identifier should you use to create a DHCP reservation for each server?

- A. universally unique identifier (UUID)
- B. fully qualified domain name (FQDN)
- C. NetBIOS name
- D. MAC address

Answer: D

Explanation:

Reference:

<https://docs.microsoft.com/en-us/powershell/module/dhcpserver/add-dhcpserverv4reservation?view=windowsserver2022-ps>

NEW QUESTION 23

- (Topic 3)

You have an Azure virtual machine named VM1 that runs Windows Server and has the following configurations:

- ? Size: D2s_v4
- ? Operating system disk: 127-GiB standard SSD
- ? Data disk 128-GiB standard SSD
- ? Virtual machine generation: Gen 2
- You plan to perform the following changes to VM1:
- ? Change the virtual machine size to D4s_v4.
- ? Detach the data disk.
- ? Add a new standard SSD.

Which changes require downtime for VM1?

- A. Detaching the data disk only and adding a new standard SSD.
- B. Detaching the data disk only.
- C. Changing the virtual machine size only.
- D. Adding a new standard SSD only.

Answer: C

Explanation:

Data disks can be added and detached without requiring downtime. Changing the VM size requires the VM to be restarted.

NEW QUESTION 26

DRAG DROP - (Topic 3)

Your network contains a single domain Active Directory Domain Services (AD DS) forest named contoso.com. The forest contains a single Active Directory site. You plan to deploy a read only domain controller (RODC) to a new datacenter on a server named Server1. A user named User1 is a member of the local Administrators group on Server1.

You need to recommend a deployment plan that meets the following requirements:

? Ensures that a user named User1 can perform the RODC installation on Server1

? Ensures that you can control the AD DS replication schedule to the Server1

? Ensures that Server1 is in a new site named RemoteSite1

? Uses the principle of least privilege

Which three actions should you recommend performing in sequence? To answer, move the appropriate actions from the list of actions to the answer area and arrange them in the correct order.

| Actions | Answer Area |
|--------------------------------------------------------------------------------------------|-------------|
| Instruct User1 to run the Active Directory Domain Services installation Wizard on Server1. | |
| Create a site and a subnet. | |
| Create a site link. | |
| Pre-create an RODC account. | |
| Add User1 to the Contoso\Administrators group. | |

- A. Mastered
- B. Not Mastered

Answer: A

Explanation:

Box 1.

We need to create a site and subnet for the remote site. The new site will be added to the Default IP Site Link so we don't need to create a new site link. You configure the replication schedule on the site link.

Box 2.

When we pre-create an RODC account, we can specify who is allowed to attach the server to the prestaged account. This means that the User1 does not need to be added to the Domain Admins group.

Box3.

User1 can connect the RODC to the prestaged account by running the AD DS installation wizard.

NEW QUESTION 31

- (Topic 3)

Your network contains an on-premises Active Directory Domain Services (AD DS) domain named contoso.com. The domain contains three servers that run Windows Server and have the Hyper-V server role installed. Each server has a Switch Embedded Teaming (SET) team.

You need to verify that Remote Direct Memory Access (RDMA) and required Windows Server settings are configured properly on each server to support a failover cluster.

What should you use?

- A. the validate-DCB cmdlet
- B. Server Manager
- C. the Get-NetAdapter cmdlet
- D. Failover Cluster Manager

Answer: A

NEW QUESTION 35

- (Topic 3)

You have an Azure virtual machine named VM1 that runs Windows Server. You have an Azure subscription that has Microsoft Defender for Cloud enabled.

You need to ensure that you can use the Azure Policy guest configuration feature to manage VM1.

What should you do?

- A. Add the PowerShell Desired State Configuration (DSC) extension to VM1.
- B. Configure VM1 to use a user-assigned managed identity.
- C. Configure VM1 to use a system-assigned managed identity.
- D. Add the Custom Script Extension to VM1.

Answer: C

Explanation:
Reference:
<https://docs.microsoft.com/en-us/azure/virtual-machines/extensions/guest-configuration>

NEW QUESTION 40

HOTSPOT - (Topic 3)

You have an onpremises DNS server named Server1 that runs Windows Server. Server 1 hosts a DNS zone named fabrikam.com
You have an Azure subscription that contains the resources shown in the following table.

| Name | Type | Description |
|-------------|------------------|----------------------------------------------------------------------------|
| Vnet1 | Virtual network | Connects to the on-premises network by using a Site-to-Site VPN |
| VM1 | Virtual machine | Runs Windows Server and has the DNS Server role installed |
| contoso.com | Private DNS zone | Linked to Vnet1 |
| contoso.com | Public DNS zone | Contains the DNS records of all the platform as a service (PaaS) resources |

Answer Area

On Vnet1:

Configure VM1 to forward requests for the contoso.com zone to the public DNS zone.
Configure Vnet1 to use a custom DNS server that is set to the Azure-provided DNS at 168.63.129.16.
Configure VM1 to forward requests for the contoso.com zone to the Azure-provided DNS at 168.63.129.16.

On the on-premises network:

Configure forwarding for the contoso.com zone to VM1.
Configure forwarding for the contoso.com zone to the public DNS zone.
Configure forwarding for the contoso.com zone to the Azure-provided DNS at 168.63.129.16.

- A. Mastered
- B. Not Mastered

Answer: A

Explanation:

Answer Area

On Vnet1:

Configure VM1 to forward requests for the contoso.com zone to the public DNS zone.
Configure Vnet1 to use a custom DNS server that is set to the Azure-provided DNS at 168.63.129.16.
Configure VM1 to forward requests for the contoso.com zone to the Azure-provided DNS at 168.63.129.16.

On the on-premises network:

Configure forwarding for the contoso.com zone to VM1,
Configure forwarding for the contoso.com zone to the public DNS zone.
Configure forwarding for the contoso.com zone to the Azure-provided DNS at 168.63.129.16.

NEW QUESTION 42

- (Topic 3)

You have an Active Directory domain that contains a file server named Server1. Server1 runs Windows Server and includes the file shares shown in the following table.

| Share Name | Path |
|-----------------|-------------------------|
| Users | D:\Users |
| Accounts | D:\Dept\Accounts |
| Marketing | D:\Dept\Marketing |
| CustomerService | D:\Dept\CustomerService |

When users login to the network they receive the following network drive mappings.

- H: maps to Wserver1\users\%UserName%
- G: maps to \\server1%\Department%

You need to limit the amount of space consumed by user's on Server!. The solution must meet the following requirements:

- Prevent users using more than 5GB of space on their H: drive
- Prevent Accounts department users from using more than 10GB of space on the G: drive
- Prevent Marketing department users from using more than 15GB of space on the G: drive
- Prevent Customer Service department users from using more than 2GB of space on the G: drive
- Minimize administrative effort What should you use?

- A. File Server Resource Manager (FSRM) quotas
- B. Storage tiering

- C. NTFS Disk quotas
- D. Group Policy Preferences

Answer: A

NEW QUESTION 44

- (Topic 3)

You have an on-premises Active Directory Domain Services (AD DS) domain named contoso.com that syncs with Azure AD by using A2zure AD Connect.

You enable password protection for contoso.com.

You need to prevent users from including the word Contoso as part of their password. What should you use?

- A. the Azure Active Directory admin center
- B. Active Directory Users and Computers
- C. Synchronization Service Manager
- D. Windows Admin Center

Answer: D

NEW QUESTION 49

DRAG DROP - (Topic 3)

Your network contains two Active Directory Domain Services (AD DS) forests named contoso.com and fabrikam.com. Contoso.com contains three child domains named amer.contoso.com, apac.contoso.com, and emea.contoso.com. Fabrikam.com contains a child domain named apac.fabrikam.com. A bidirectional forest trust exists between contoso.com and fabrikam.com.

You need to provide users in the contoso.com forest with access to the resources in the fabrikam.com forest. The solution must meet the following requirements:

- Users in contoso.com must only be added directly to groups in the contoso.com forest.
- Permissions to access the resources in fabrikam.com must only be granted directly to groups in the fabrikam.com forest.
- The number of groups must be minimized.

Which type of groups should you use to organize the users and to assign permissions? To answer, drag the appropriate group types to the correct requirements.

Each group type may be used once, more than once, or not at all. You may need to drag the split bar between panes or scroll to view content.

NOTE: Each correct selection is worth one point.

| Group types | Answer Area |
|---------------|------------------------------------------|
| Domain global | Organize users: <input type="text"/> |
| Domain local | Assign permissions: <input type="text"/> |
| Universal | |

- A. Mastered
- B. Not Mastered

Answer: A

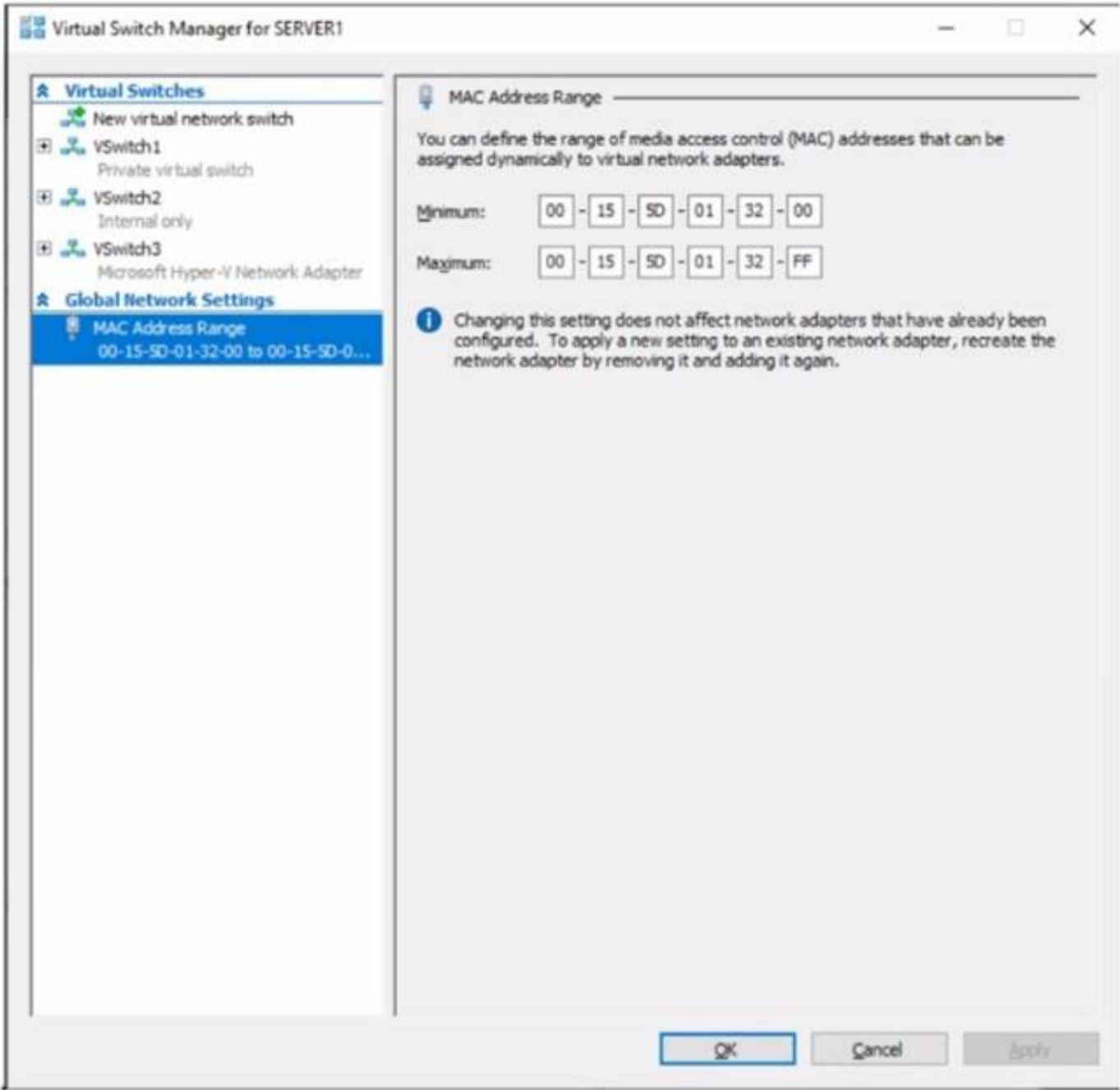
Explanation:

| Group types | Answer Area |
|---------------|------------------------------------------------------------|
| Domain global | Organize users: <input type="text" value="Domain local"/> |
| Domain local | Assign permissions: <input type="text" value="Universal"/> |
| Universal | |

NEW QUESTION 51

HOTSPOT - (Topic 3)

You have a server named Server1 that runs Windows Server. Server1 has a single network interface and the Hyper-V virtual switches shown in the following exhibit.



Use the drop-down menus to select the answer choice that completes each statement based on the information presented in the graphic.
NOTE: Each correct selection is worth one point.

Answer Area

On Server1, you can create additional [answer choice].

private and internal virtual switches only

internal virtual switches only

private virtual switches only

private and internal virtual switches only

private, internal, and external virtual switches

Server1 can access network shares on virtual machines that are connected to [answer choice].

VSwitch1, VSwitch2, or VSwitch3

VSwitch2 only

VSwitch3 only

VSwitch1 or VSwitch2 only

VSwitch2 or VSwitch3 only

VSwitch1, VSwitch2, or VSwitch3

- A. Mastered
- B. Not Mastered

Answer: A

Explanation:

Answer Area

On Server1, you can create additional [answer choice].

private and internal virtual switches only

internal virtual switches only

private virtual switches only

private and internal virtual switches only

private, internal, and external virtual switches

Server1 can access network shares on virtual machines that are connected to [answer choice].

VSwitch1, VSwitch2, or VSwitch3

VSwitch2 only

VSwitch3 only

VSwitch1 or VSwitch2 only

VSwitch2 or VSwitch3 only

VSwitch1, VSwitch2, or VSwitch3

NEW QUESTION 53
- (Topic 3)

You have an on-premises server named Server 1 that runs Windows Server. You have an Azure subscription that contains a virtual network named VNet1. You need to connect Server1 to VNet1 by using Azure Network Adapter. What should you use?

- A. the Azure portal

- B. Azure AD Connect
- C. Device Manager
- D. Windows Admin Center

Answer: B

NEW QUESTION 55

DRAG DROP - (Topic 3)

You have a server named Server1 that runs Windows Server and has the Hyper V server role installed. Server1 hosts a virtual machine named VM1.

Server1 has an NVMe storage device. The device is currently assigned to VM1 by using Discrete Device Assignment.

You need to make the device available to Server1.

Which four actions should you perform in sequence? To answer, move the appropriate actions from the list of actions to the answer area and arrange them in the correct order.

Actions

From Server1, stop VM1.

From Server1, run the Remove-VMAssignableDevice cmdlet.

From Server1, run the Mount-VMHostAssignableDevice cmdlet.

From Server1, enable the device by using Device Manager.

From VM1, disable the device by using Device Manager.

Answer Area

>

<

- A. Mastered
- B. Not Mastered

Answer: A

Explanation:

Actions

From Server1, stop VM1.

From Server1, run the Remove-VMAssignableDevice cmdlet.

From Server1, run the Mount-VMHostAssignableDevice cmdlet.

From Server1, enable the device by using Device Manager.

From VM1, disable the device by using Device Manager.

Answer Area

From Server1, stop VM1.

From Server1, run the Remove-VMAssignableDevice cmdlet.

From Server1, run the Mount-VMHostAssignableDevice cmdlet.

From Server1, enable the device by using Device Manager.

NEW QUESTION 56

- (Topic 3)

Note: This question is part of a series of questions that present the same scenario. Each question in the series contains a unique solution that might meet the stated goals. Some question sets might have more than one correct solution, while others might not have a correct solution.

After you answer a question in this section, you will NOT be able to return to it. As a result, these questions will not appear in the review screen.

Your network contains an Active Directory Domain Services (AD DS) forest. The forest contains three Active Directory sites named Site1, Site2, and Site3. Each site contains two domain controllers. The sites are connected by using DEFAULTIPSITELINK.

You open a new branch office that contains only client computers.

You need to ensure that the client computers in the new office are primarily authenticated by the domain controllers in Site1.

Solution: You create a new site named Site4 and associate Site4 to DEFAULTSITELINK. Does this meet the goal?

- A. Yes
- B. No

Answer: B

NEW QUESTION 57

- (Topic 3)

You have an Azure virtual machine named VM1 that runs Windows Server.

You need to ensure that administrators request access to VM1 before establishing a Remote Desktop connection.

What should you configure?

- A. Azure Front Door
- B. Microsoft Defender for Cloud
- C. Azure AD Privileged Identity Management (PIM)
- D. a network security group (NSG)

Answer: B

NEW QUESTION 58

DRAG DROP - (Topic 3)

You create an Azure virtual machine named Server1 that runs Windows Server. Server1 has the disk configuration shown in the following exhibit.

Disk Management

File Action View Help

| Volume | Layout | Type | File System | Status | Capacity | Free Spa... | % Free |
|----------------------|--------|-------|-------------|---------------|----------|-------------|--------|
| System Reserved | Simple | Basic | NTFS | Healthy (S... | 500 MB | 465 MB | 93 % |
| Temporary Storage... | Simple | Basic | NTFS | Healthy (P... | 8.00 GB | 7.28 GB | 91 % |

Actions

Shut down Server1.

Start Server1.

Create and attach a new data disk.

Create a new simple volume.

Create a new spanned volume.

Initialize the disk.

Answer Area

>

<

>

<

- A. Mastered
- B. Not Mastered

Answer: A

Explanation:

Actions

Shut down Server1.

Start Server1.

Create and attach a new data disk.

Create a new simple volume.

Create a new spanned volume.

Initialize the disk.

Answer Area

>

<

>

<

Start Server1.

Create and attach a new data disk.

Shut down Server1.

NEW QUESTION 59

HOTSPOT - (Topic 3)

You have a Windows Server container host named Server1 and an Azure subscription. You deploy an Azure container registry named Registry1 to the subscription.

On Server1, you create a container image named image1. You need to store imager in Registry1.

Which command should you run on Server1 ? To answer, select the appropriate options in the answer area.

NOTE: Each correct selection is worth one point.

Answer Area

docker

azcopy

xcopy

git

export

import

pull

push

Registry1.Azurecr.io /image1

- A. Mastered
- B. Not Mastered

Answer: A

Explanation:

Answer Area

docker

azcopy

xcopy

git

export

import

pull

push

Registry1.Azurecr.io /image1

NEW QUESTION 63

DRAG DROP - (Topic 3)

You have a disaggregated cluster deployment. The deployment contains a scale-out file server (SOFS) cluster that runs Windows Server and a compute duster that has the Hyper- V role enabled.

You need to implement Storage Quality of Service (QoS). The solution must ensure that you can control the bandwidth usage between the SOFS cluster and the Hyper-V cluster.

Which cmdlet should you run on each cluster? To answer, drag the appropriate cmdlets to the correct clusters. Each cmdlet may be used once, more than once, or not at all. You may need to drag the split bar between panes or scroll to view content.

NOTE: Each correct selection is worth one point.



- A. Mastered
- B. Not Mastered

Answer: A

Explanation:



NEW QUESTION 65

- (Topic 3)

You have an Azure subscription that contains the following resources:

- An Azure Log Analytics workspace
- An Azure Automation account
- Azure Arc.

You have an on-premises server named Server1 that is onboarded to Azure Arc. You need to manage Microsoft updates on Server1 by using Azure Arc.

Which two actions should you perform? Each correct answer presents part of the solution. NOTE: Each correct selection is worth one point.

- A. Add Microsoft Sentinel to the Log Analytics workspace
- B. On Server1, install the Azure Monitor agent
- C. From the Automation account, enable Update Management for Server1.
- D. From the Virtual machines data source of the Log Analytics workspace, connect Server1.

Answer: BC

Explanation:

Reference:

<https://docs.microsoft.com/en-us/azure/cloud-adoption-framework/manage/hybrid/server/best-practices/arc-update-management>

NEW QUESTION 69

- (Topic 3)

You have a server named Server1 that runs Windows Server.

You plan to host applications in Windows containers.

You need to configure Server1 to run containers. What should you install?

- A. Windows Admin Center
- B. the Windows Subsystem for Linux
- C. Docker
- D. Hyper-V

Answer: C

NEW QUESTION 70

HOTSPOT - (Topic 3)

You have a Windows Server container host named Server1 that has a single disk. On Server1, you plan to start the containers shown in the following table.

| Name | Description |
|------------|-----------------------------------------------------------------------------------------------------------------------------------------------|
| Container1 | Container1 is a Windows container that contains a web app in development. The container must NOT share a kernel with other containers. |
| Container2 | Container2 is a Linux container that runs a web app. The container requires two static IP addresses. |
| Container3 | Container3 is a Windows container that runs a database. The container requires a static IP address. |

Which isolation mode can you use for each container? To answer, select the appropriate options in the answer area.
 NOTE: Each correct selection is worth one point.

Container1:

| |
|----------------------------------------|
| |
| Hyper-V isolation only |
| Process isolation only |
| Hyper-V isolation or process isolation |

Container2:

| |
|----------------------------------------|
| |
| Hyper-V isolation only |
| Process isolation only |
| Hyper-V isolation or process isolation |

Container3:

| |
|----------------------------------------|
| |
| Hyper-V isolation only |
| Process isolation only |
| Hyper-V isolation or process isolation |

A. Mastered
 B. Not Mastered

Answer: A

Explanation:

Container1:

| |
|----------------------------------------|
| |
| Hyper-V isolation only |
| Process isolation only |
| Hyper-V isolation or process isolation |

Container2:

| |
|----------------------------------------|
| |
| Hyper-V isolation only |
| Process isolation only |
| Hyper-V isolation or process isolation |

Container3:

| |
|----------------------------------------|
| |
| Hyper-V isolation only |
| Process isolation only |
| Hyper-V isolation or process isolation |

HOTSPOT - (Topic 3)

Your network contains an Active Directory Domain Services (AD DS) domain named contoso.com.

The network contains the servers shown in the following table.

| Name | Role | Domain/workgroup | Operating system |
|---------|----------------------------------------------|------------------|---------------------|
| DC1 | Active Directory Domain Services, DNS Server | contoso.com | Windows Server |
| Server1 | DHCP Server | contoso.com | Windows Server |
| Server2 | None | contoso.com | Windows Server Core |
| Server3 | None | Workgroup1 | Windows Server Core |


You plan to implement IP Address Management (IPAM).

You need to use the Group Policy based provisioning method for managed servers. The solution must support server discovery.

What should you do? To answer, select the appropriate options in the answer area. NOTE: Each correct selection is worth one point.

Answer Area

Server on which to deploy the IPAM server role: 


Servers that must be provisioned for IPAM: 


- A. Mastered
- B. Not Mastered

Answer: A

Explanation:

Answer Area

Server on which to deploy the IPAM server role: 

Servers that must be provisioned for IPAM: 

NEW QUESTION 76

- (Topic 3)

You have an on-premises server named Server1 that runs Windows Server. You have an Azure virtual network that contains an Azure virtual network gateway.

You need to connect only Server1 to the Azure virtual network. What should you use?

- A. Azure Network Adapter
- B. a Site-to-Site VPN
- C. an ExpressRoute circuit
- D. Azure Extended Network

Answer: B

Explanation:

Reference:

<https://docs.microsoft.com/en-us/windows-server/manage/windows-admin-center/azure/use-azure-network-adapter>

NEW QUESTION 78

HOTSPOT - (Topic 3)

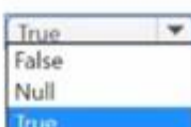
Your on-premises network contains a single-domain Active Directory Domain Services (AD DS) forest. You have an Azure AD tenant named contoso.com. The AD DS forest syncs with the Azure AD tenant by using Azure AD Connect.


You need to ensure that users in the forest that have a custom attribute of NoSync are excluded from synchronization.

How should you configure the Azure AD Connect cloudFiltered attribute, and which tool should you use? To answer, select the appropriate options in the answer area.

NOTE: Each correct selection is worth one point.

Answer Area

Attribute: 

Tool: 

Answer:

Answer Area

Attribute:

TrueFalseNullTrue

Tool:

Synchronization Rules EditorADSI EditSynchronization Rules EditorThe Microsoft Azure AD Connect wizard

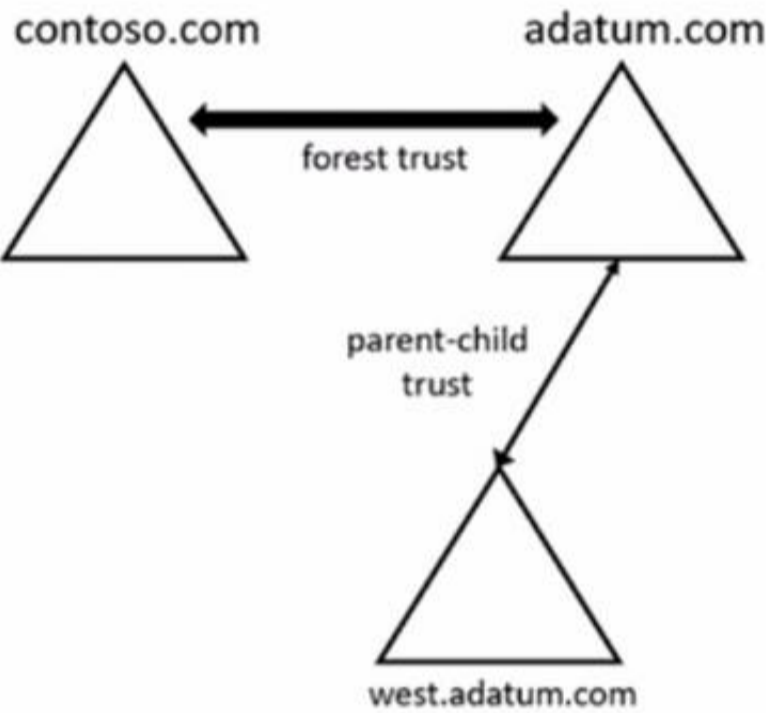
- A. Mastered
- B. Not Mastered

Answer: A

NEW QUESTION 83

HOTSPOT - (Topic 3)

Your network contains two Active Directory Domain Services (AD DS) forests as shown in the following exhibit.



The forests contain the domain controllers shown in the following table.

| Name | Domain | Global catalog | Schema master |
|------|-----------------|----------------|---------------|
| DC1 | adatum.com | Yes | Yes |
| DC2 | adatum.com | No | No |
| DC3 | west.adatum.com | Yes | No |
| DC4 | contoso.com | Yes | Yes |

You perform the following actions on DO:

- Create a user named User1.
- Extend the schema with a new attribute named Attributed

To which domain controllers are User1 and Attribute1 replicated? To answer, select the appropriate options in the answer area.

NOTE: Each correct selection is worth one point.

Answer Area

User1:

DC2 onlyDC2 onlyDC3 onlyDC2 and DC3 onlyDC3 and DC4 onlyDC2, DC3, and DC4

Attribute1:

DC2, DC3, and DC4DC2 onlyDC4 onlyDC2 and DC3 onlyDC2, DC3, and DC4

Answer:

Answer Area

User1:

Attribute1:

- A. Mastered
B. Not Mastered

Answer: A

NEW QUESTION 84

DRAG DROP - (Topic 3)

You deploy a single-domain Active Directory Domain Services (AD DS) forest named contoso.com.

You deploy a server to the domain and configure the server to run a service.

You need to ensure that the service can use a group managed service account (gMSA) to authenticate.

Which three PowerShell cmdlets should you run in sequence? To answer, move the appropriate cmdlets from the list of cmdlets to the answer area and arrange them in the correct order.

Cmdlets

Answer Area

Add-ADComputerServiceAccount

Set-KdsConfiguration

Add-ADGroupMember

Add-KdsRootKey

New-ADServiceAccount

Install-ADServiceAccount

- A. Mastered
B. Not Mastered

Answer: A

Explanation:

Cmdlets

Answer Area

Add-ADComputerServiceAccount

Set-KdsConfiguration

Add-ADGroupMember

Add-KdsRootKey

New-ADServiceAccount

Install-ADServiceAccount

NEW QUESTION 85

- (Topic 3)

Your network contains a multi-site Active Directory Domain Services (AD DS) forest. Each Active Directory site is connected by using manually configured site links and automatically generated connections.

You need to minimize the convergence time for changes to Active Directory. What should you do?

- A. For each site link, modify the options attribute.
B. For each site link, modify the site link costs.
C. For each site link, modify the replication schedule.
D. Create a site link bridge that contains all the site links.

Answer: C

Explanation:

Reference:

<https://docs.microsoft.com/en-us/windows-server/identity/ad-ds/plan/determining-the-interval>

NEW QUESTION 88

- (Topic 3)

Your network contains a Active Directory Domain Service (AD DS) forest named contoso.com. The forest root domain contains a server named server1. contoso.com.

A two-way forest trust exists between the contoso.com forest and an AD DS forest named fabrikam.com. The fabrikam.com forest contains 10 child domains.

You need to ensure that only the members of a group named fabrikam\Group1 can authenticate to server1.contoso.com.

What should you do first?

- A. Change the trust to a one-way external trust.
- B. Add fabrikam\Group1 to the local Users group on server1.contoso.com.
- C. Enable SID filtering for the trust.
- D. Enable Selective authentication for the trust.

Answer: B

NEW QUESTION 89

- (Topic 3)

Your on-premises network contains an Active Directory domain named contoso.com. You have an Azure AD tenant. You plan to sync contoso.com with the Azure AD tenant by using Azure AD Connect cloud sync. You need to create an account that will be used by Azure AD Connect cloud sync. Which type of account should you create?

- A. system-assigned managed identity
- B. group managed service account (gMSA)
- C. user
- D. InetOrgPerson

Answer: C

NEW QUESTION 94

HOTSPOT - (Topic 3)

Your network contains a two-domain on-premises Active Directory Domain Services (AD DS) forest named Contoso.com. The forest contains the domain controllers shown in the following table.

| Name | Description | Domain | Active Directory site |
|-------|----------------------------------------------|-------------------|-----------------------|
| DC1 | Forest-wide and domain-wide FSMO role holder | contoso.com | Hub |
| DC2 | Domain-wide FSMO role holder | child.contoso.com | Site1 |
| RODC3 | Read-only domain controller (RODC) | contoso.com | Site2 |

You create an Active Directory site named Site3. Site1, Site2 and Site3 each has a dedicated site link to the Hub site.

In Site3, you install a new server named Server1.

You need to promote Server1 to an ROOC in child.contoso.com by using the install from Media (IFM) option. The solution must minimize network traffic.

What should you do? To answer select the appropriate options in the answer area. NOTE: Each correct selection is worth one point.

Answer Area

Server to use to create the IFM source:

Tool to use to create the IFM source:

- A. Mastered
- B. Not Mastered

Answer: A

Explanation:

Answer Area

Server to use to create the IFM source:

Tool to use to create the IFM source:

NEW QUESTION 95

- (Topic 3)

You have an Azure Active Directory Domain Services (Azure AD DS) domain named contoso.com.

You need to provide an administrator with the ability to manage Group Policy Objects (GPOs). The solution must use the principle of least privilege.

To which group should you add the administrator?

- A. AAD DC Administrators
- B. Domain Admins
- C. Schema Admins
- D. Enterprise Admins
- E. Group Policy Creator Owners

Answer: B

Explanation:

Only the Domain Admins group and the Enterprise Admins group can fully manage GPOs. Members of the Group Policy Creator Owners group can create new GPOs but they can't link the GPOs to sites, the domain or OUs and they cannot manage existing GPOs.

NEW QUESTION 98

- (Topic 3)

Your network contains an Active Directory Domain Services (AD DS) domain named contoso.com.

You need to identify which server is the PDC emulator for the domain.

Solution: From Active Directory Sites and Services, you right-click Default-First-Site-Name in the console tree, and then select Properties.

Does this meet the goal?

- A. Yes
- B. No

Answer: B

NEW QUESTION 100

- (Topic 3)

You have an Azure virtual machine named VM1 that runs Windows Server.

You need to configure the management of VM1 to meet the following requirements:

- Require administrators to request access to VM1 before establishing a Remote Desktop connection.
- Limit access to VM1 from specific source IP addresses.
- Limit access to VM1 to a specific management port. What should you configure?

- A. a network security group (NSG)
- B. Azure Active Directory (Azure AD) Privileged Identity Management (PIM)
- C. Azure Front Door
- D. Microsoft Defender for Cloud

Answer: D

Explanation:

Reference:

<https://docs.microsoft.com/en-us/azure/defender-fo>

NEW QUESTION 103

HOTSPOT - (Topic 3)

You have a server named Server1 that runs Windows Server and has the Hyper-V server role installed.

You need to limit which Hyper-V module cmdlets helpdesk users can use when administering Server 1 remotely.

You configure Just Enough Administration (JEA) and successfully build the role capabilities and session configuration files.

How should you complete the PowerShell command? To answer, select the appropriate options in the answer area.

NOTE: Each correct selection is worth one point.

Answer Area



- A. Mastered
- B. Not Mastered

Answer: A

Explanation:

Answer Area



NEW QUESTION 104

- (Topic 3)

Your network contains an Active Directory Domain Services (AD DS) domain.
You plan to use Active Directory Administrative Center to create a new user named User1. Which two attributes are required to create User1? Each correct answer presents part of the solution.
NOTE: Each correct selection is worth one point.

- A. Password
- B. Profile path
- C. User SamAccountName logon
- D. Full name
- E. First name
- F. User UPN logon

Answer: AC

NEW QUESTION 107

- (Topic 3)
You have five file servers that run Windows Server.
You need to block users from uploading video files that have the .mov extension to shared folders on the file servers. All other types of files must be allowed. The solution must minimize administrative effort.
What should you create?

- A. a Dynamic Access Control central access policy
- B. a file screen
- C. a Dynamic Access Control central access rule
- D. a data loss prevention (DLP) policy

Answer: B

Explanation:
Reference:
<https://docs.microsoft.com/en-us/windows-server/storage/fsrm/file-screening-management>

NEW QUESTION 112

DRAG DROP - (Topic 3)
You have an on-premises server named Server 1 that runs Windows Server. Server 1 contains a file share named Share 1.
You have an Azure subscription. You perform the following actions:
• Deploy Azure File Sync
• Install the Azure File Sync agent on Server1.
• Register Server1 with Azure File Sync
You need to ensure that you can add Share1 as an Azure File Sync server endpoint. Which three actions should you perform in sequence? To answer, move the appropriate actions from the list of actions to the answer area and arrange them in the correct order.

Actions

Deploy the Azure Connected Machine agent.

Deploy an Azure VPN gateway.

Create a private endpoint.

Create an Azure Storage account.

Create an Azure file share.

Create a sync group.

Answer Area

>

<

^

v

- A. Mastered
- B. Not Mastered

Answer: A

Explanation:

Actions

Deploy the Azure Connected Machine agent.

Deploy an Azure VPN gateway.

Create a private endpoint.

Create an Azure Storage account.

Create an Azure file share.

Create a sync group.

Answer Area

>

<

Create an Azure Storage account.

Create an Azure file share.

Create a sync group.

^

v

NEW QUESTION 116

HOTSPOT - (Topic 3)
You have a Windows Server 2022 container host named Host1 and a container registry that contains the container images shown in the following table.

| Name | Container base image OS version |
|--------|---------------------------------|
| Image1 | Windows Server 2022 |
| Image2 | Windows Server 2019 |

You need to run the containers on Host1
Which isolation mode can you use for each image? To answer, select the appropriate options in the answer area.
NOTE: Each correct selection is worth one point.

Answer Area

Image1:

Hyper-V isolation or process isolation

Hyper-V isolation only

Process isolation only

Hyper-V isolation or process isolation

Image2:

Hyper-V isolation only

Hyper-V isolation only

Process isolation only

Hyper-V isolation or process isolation

Answer:

Answer Area

Image1:

Hyper-V isolation or process isolation

Hyper-V isolation only

Process isolation only

Hyper-V isolation or process isolation

Image2:

Hyper-V isolation only

Hyper-V isolation only

Process isolation only

Hyper-V isolation or process isolation

- A. Mastered
- B. Not Mastered

Answer: A

NEW QUESTION 121

HOTSPOT - (Topic 3)

Your network contains an Azure AD Domain Services domain named contoso.com.
You need to configure a password policy for the local user accounts on the Azure virtual machines joined to contoso.com.
What should you do? To answer, select the appropriate options in the answer area. NOTE: Each correct selection is worth one point.

Answer Area

Sign in by using a user account that is a member of the:

AAD DC Administrators group

AAD DC Administrators group

Administrators group

Domain Admins group

Use a Group Policy Object (GPO) linked to the:

AADDC Users organizational unit (OU)

AADDC Computers organizational unit (OU)

AADDC Users organizational unit (OU)

Computers container

Answer:

Answer Area

Sign in by using a user account that is a member of the:

AAD DC Administrators group

AAD DC Administrators group

Administrators group

Domain Admins group

Use a Group Policy Object (GPO) linked to the:

AADDC Users organizational unit (OU)

AADDC Computers organizational unit (OU)

AADDC Users organizational unit (OU)

Computers container

- A. Mastered
- B. Not Mastered

Answer: A

NEW QUESTION 122

- (Topic 3)

Note: This question is part of a series of questions that present the same scenario. Each question in the series contains a unique solution that might meet the stated goals. Some question sets might have more than one correct solution, while others might not have a correct solution.

After you answer a question in this section, you will NOT be able to return to it. As a result, these questions will not appear in the review screen.

You are planning the deployment of DNS to a new network.

You have three internal DNS servers as shown in the following table.

| Name | Location | IP address | Local DNS zone |
|---------|----------|------------|--------------------|
| Server1 | Montreal | 10.0.1.10 | contoso.local |
| Server2 | Toronto | 10.0.2.10 | east.contoso.local |
| Server3 | Seattle | 10.0.3.10 | west.contoso.local |

The contoso.local zone contains zone delegations for east.contoso.local and west.contoso.local. All the DNS servers use root hints. You need to ensure that all the DNS servers can resolve the names of all the internal namespaces and internet hosts. Solution: On Server2 and Server3, you configure a conditional forwarder for contoso.local. Does this meet the goal?

- A. Yes
- B. No

Answer: B

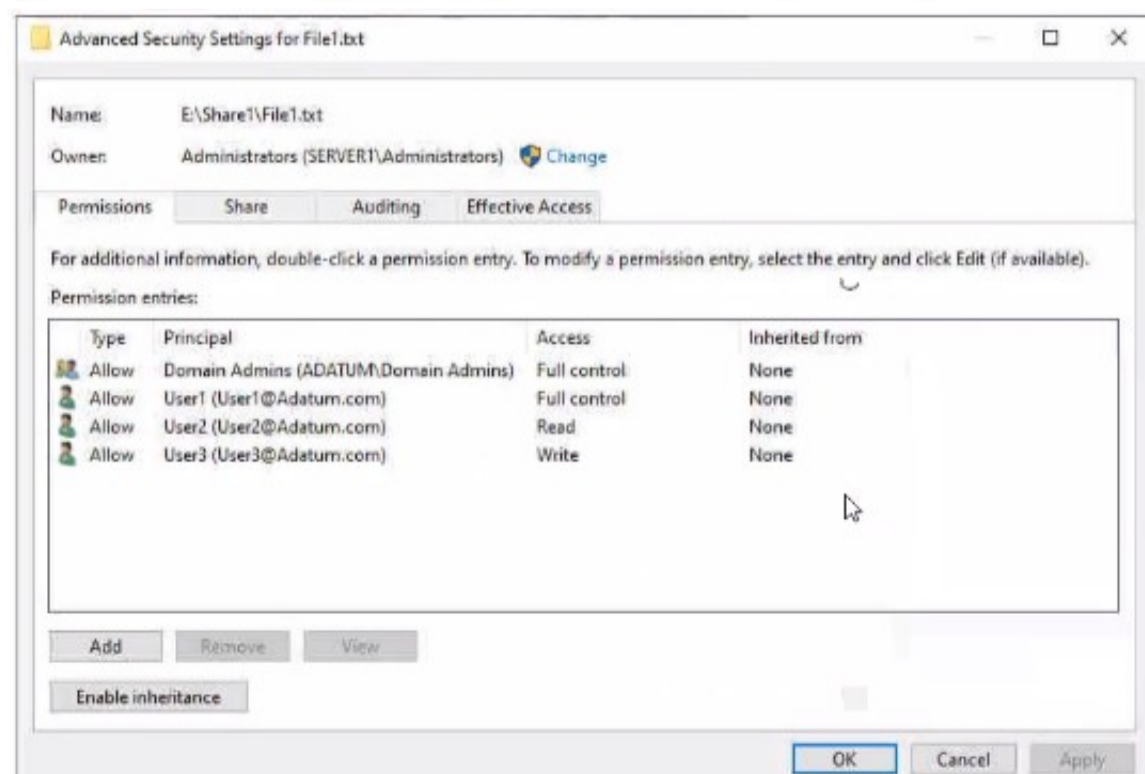
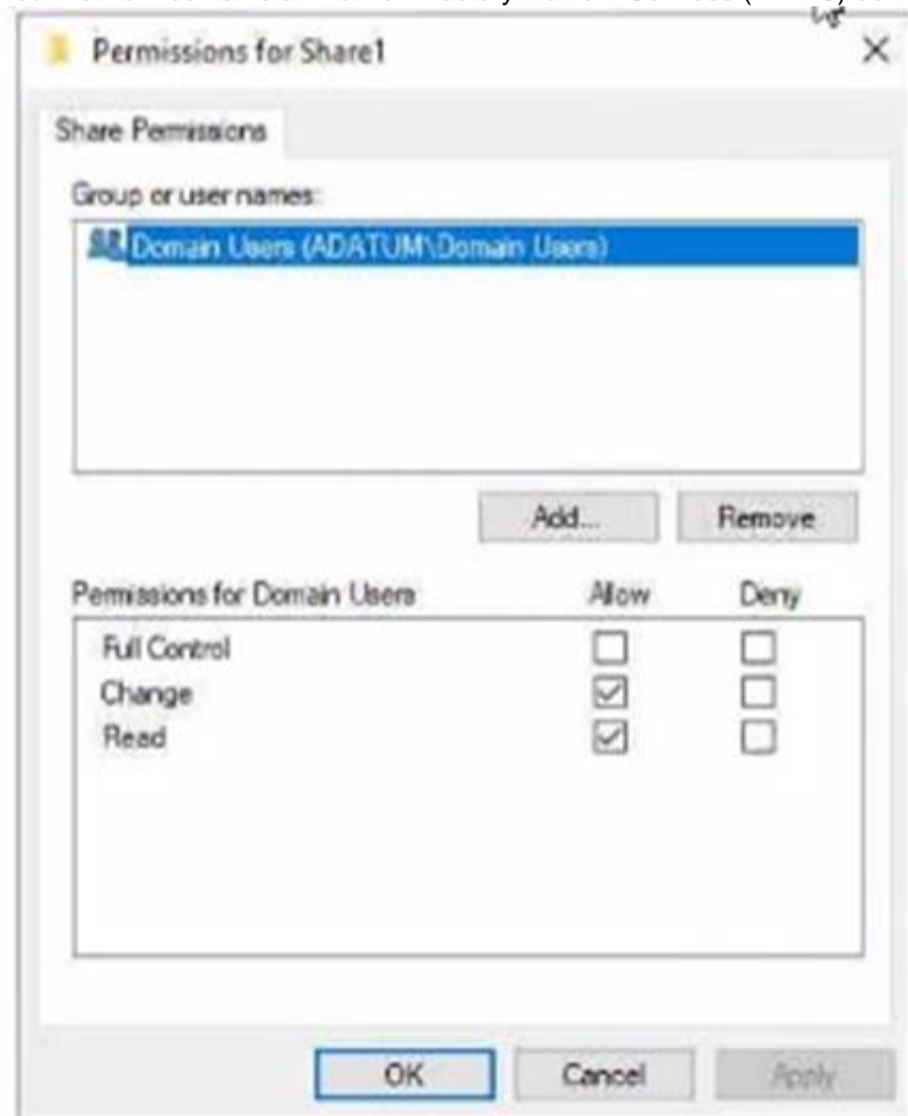
Explanation:

[https://docs.microsoft.com/en-us/previous-versions/windows/it-pro/windows-server-2008-r2-and-2008/cc794735\(v=ws.10\)](https://docs.microsoft.com/en-us/previous-versions/windows/it-pro/windows-server-2008-r2-and-2008/cc794735(v=ws.10))

NEW QUESTION 124

HOTSPOT - (Topic 3)

Your network contains an Active Directory Domain Services (AD DS) domain named adatum.com.



The domain contains a 'He server named Server1 and three users named User1. User2 and User), Server1 contains a shared folder named Share1 tha1 has the following configurations:

ShareState : Online
AvailabilityType : NonClustered
FolderEnumerationMode : AccessBased
CachingMode : Manual
LeasingMode : Full
SubInstance : Default
CompressData : False
ContinuouslyAvailable : False
EncryptData : False
Name : Share1
Path : E:\Share1
ShadowCopy : False

The share permissions for Share1 are configured as shown in the Share Permissions exhibit. (Click the Share Permissions tab.)
Share! contains a file named File1.txt. The advanced security settings for File1.txt are configured as shown in the File Permissions exhibit. (Click the File Permissions tab.)
For each of the following statements, select Yes if the statement is true. Otherwise, select No.
NOTE: f ach correct selection is worth one point.

Answer Area

| Statements | Yes | No |
|------------------------------------------------------------------------------------------------|-----------------------|-----------------------|
| When User1 connects to \\Server1.adatum.com\Share1\, the user can take ownership of File1.txt. | <input type="radio"/> | <input type="radio"/> |
| When User2 connects to \\Server1.adatum.com\Share1\, File1.txt is visible. | <input type="radio"/> | <input type="radio"/> |
| When User3 connects to \\Server1.adatum.com\Share1\, File1.txt is visible. | <input type="radio"/> | <input type="radio"/> |

- A. Mastered
- B. Not Mastered

Answer: A

Explanation:

Answer Area

| Statements | Yes | No |
|------------------------------------------------------------------------------------------------|----------------------------------|----------------------------------|
| When User1 connects to \\Server1.adatum.com\Share1\, the user can take ownership of File1.txt. | <input type="radio"/> | <input checked="" type="radio"/> |
| When User2 connects to \\Server1.adatum.com\Share1\, File1.txt is visible. | <input checked="" type="radio"/> | <input type="radio"/> |
| When User3 connects to \\Server1.adatum.com\Share1\, File1.txt is visible. | <input type="radio"/> | <input checked="" type="radio"/> |

NEW QUESTION 126

HOTSPOT - (Topic 3)

Your network contains an Active Directory Domain Services (AD DS) domain named contoso.com. The domain contains the VPN servers shown in the following table.

| Name | IP address |
|------|---------------|
| VPN1 | 172.16.0.254 |
| VPN2 | 131.10.15.254 |
| VPN3 | 10.10.0.254 |

You have a server named NPS1 that has Network Policy Server (NPS) installed. NPS1 has the following RADIUS clients:

| | |
|-----------------------|-------------------|
| Name | : NPSClient1 |
| Address | : 172.16.0.254 |
| AuthAttributeRequired | : False |
| SharedSecret | : Pa55w.rd |
| VendorName | : RADIUS Standard |
| Enabled | : False |

| | |
|-----------------------|-------------------|
| Name | : NPSClient2 |
| Address | : 131.10.15.254 |
| AuthAttributeRequired | : False |
| SharedSecret | : Pa55w.rd |
| VendorName | : RADIUS Standard |
| Enabled | : True |

| | |
|-----------------------|-------------------|
| Name | : NPSClient3 |
| Address | : 172.16.1.254 |
| AuthAttributeRequired | : False |
| SharedSecret | : Pa55w.rd |
| VendorName | : RADIUS Standard |
| Enabled | : True |

VPN1, VPN2, and VPN3 use NPS1 for RADIUS authentication. All the users in contoso.com are allowed to establish VPN connections. For each of the following statements, select Yes If the statement is true. Otherwise, select No. NOTE: Each correct selection is worth one point.

Answer Area

| Statements | Yes | No |
|---------------------------------------------------------------------------------------------------|-----------------------|-----------------------|
| The contoso.com users can authenticate successfully when they establish a VPN connection to VPN1. | <input type="radio"/> | <input type="radio"/> |
| The contoso.com users can authenticate successfully when they establish a VPN connection to VPN2. | <input type="radio"/> | <input type="radio"/> |
| The contoso.com users can authenticate successfully when they establish a VPN connection to VPN3. | <input type="radio"/> | <input type="radio"/> |

- A. Mastered
- B. Not Mastered

Answer: A

Explanation:

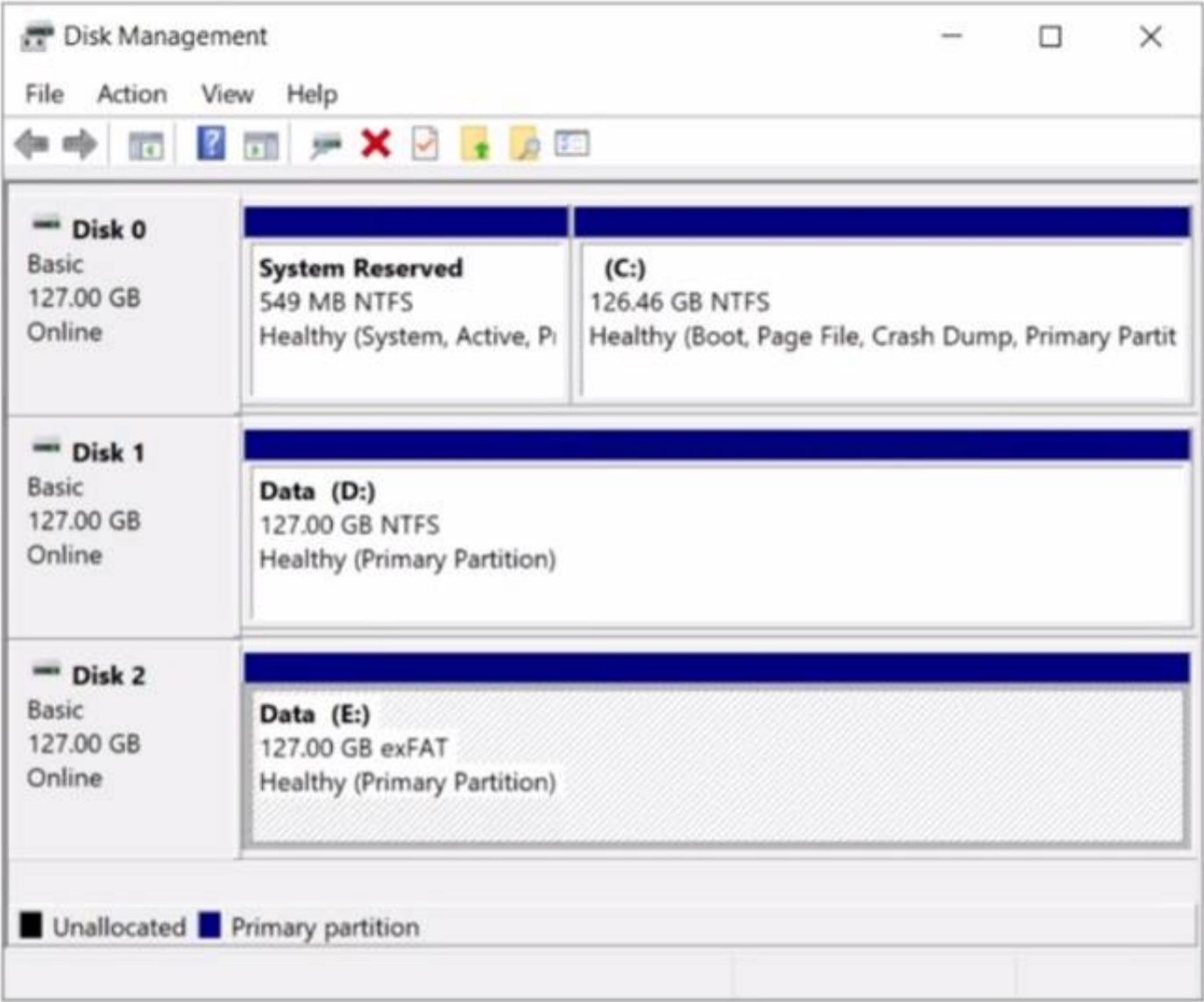
Answer Area

| Statements | Yes | No |
|---------------------------------------------------------------------------------------------------|----------------------------------|----------------------------------|
| The contoso.com users can authenticate successfully when they establish a VPN connection to VPN1. | <input type="radio"/> | <input checked="" type="radio"/> |
| The contoso.com users can authenticate successfully when they establish a VPN connection to VPN2. | <input checked="" type="radio"/> | <input type="radio"/> |
| The contoso.com users can authenticate successfully when they establish a VPN connection to VPN3. | <input type="radio"/> | <input checked="" type="radio"/> |

NEW QUESTION 129

- (Topic 3)

You have a server named Server1 that runs Windows Server. The disks on Server1 are configured as shown in the following exhibit.



You need to convert volume E to ReFS. The solution must meet the following requirements:

- Preserve the existing data on volume E.
- Minimize administrative effort. What should you do first?

- A. Take Disk 2 offline.
- B. Back up the data on volume E.
- C. Convert Disk 2 to a dynamic disk.
- D. Runconvert.exe.

Answer: B

NEW QUESTION 134

HOTSPOT - (Topic 3)

You have a server named Server1 that runs Windows Server. Server1 has a just-a-bunch- of-disks (JBOD) enclosure attached. You plan to create a storage pool on Server1 and a virtual disk that will use a mirror layout. You are considering whether to use a two-way or a three-way mirror layout. What is the minimum number of disks required for each type of mirror layout? To answer, select the appropriate options in the answer area. NOTE: Each correct selection is worth one point.

Answer Area

Two-way mirror:

1

2

3

4

5

6

Three-way mirror:

1

2

3

4

5

6

- A. Mastered
- B. Not Mastered

Answer: A

Explanation:

Answer Area

Two-way mirror:

1

2

3

4

5

6

Three-way mirror:

1

2

3

4

5

6

NEW QUESTION 136

- (Topic 3)
You plan to deploy a containerized application that requires .NET Core.
You need to create a container image for the application. The image must be as small as possible.
Which base image should you use?

- A. Nano Server
- B. Server Cote
- C. Windows Server
- D. Windows

Answer: A

Explanation:

Reference:
<https://techcommunity.microsoft.com/t5/containers/nano-server-x-server-core-x-server-which-base-image-is-the-right/ba-p/2835785>

NEW QUESTION 140

- (Topic 3)
Note: This question is part of a series of questions that present the same scenario. Each question in the series contains a unique solution that might meet the stated goals. Some question sets might have more than one correct solution, while others might not have a correct solution.
After you answer a question in this section, you will NOT be able to return to it. As a result, these questions will not appear in the review screen.
You are planning the deployment of DNS to a new network.
You have three internal DNS servers as shown in the following table.

| Name | Location | IP address | Local DNS zone |
|---------|----------|------------|--------------------|
| Server1 | Montreal | 10.0.1.10 | contoso.local |
| Server2 | Toronto | 10.0.2.10 | east.contoso.local |
| Server3 | Seattle | 10.0.3.10 | west.contoso.local |

The contoso.local zone contains zone delegations for east.contoso.local and west.contoso.local. All the DNS servers use root hints.
You need to ensure that all the DNS servers can resolve the names of all the internal namespaces and internet hosts.
Solution: You configure Server2 and Server3 to forward DNS requests to 10.0.1.10. Does this meet the goal?

- A. Yes
- B.

No

Answer: B

NEW QUESTION 145

- (Topic 3)

You have an on-premises server named Server1 that runs Windows Server. You have an Azure subscription that contains a virtual network named VNet1. You need to connect Server1 to VNet1 by using Azure Network Adapter. What should you use?

- A. Azure AD Connect
- B. Device Manager
- C. the Azure portal
- D. Windows Admin Center

Answer: D

NEW QUESTION 149

- (Topic 3)

Your network contains an Active Directory Domain Services (AD DS) domain. The domain contains the resources shown in the following table.

| Name | Description |
|---------|-----------------------------------|
| CLIENT1 | Client computer that runs Windows |
| DC1 | Domain controller |
| Server1 | File server |
| Server2 | File server |

You plan to replicate a volume from Server1 to Server2 by using Storage Replica. You need to configure Storage Replica. Where should you install Windows Admin Center?

- A. Server 1
- B. CLIENT1
- C. DC1
- D. Server2

Answer: A

NEW QUESTION 154

HOTSPOT - (Topic 3)

You have a server named Server1 that runs Windows Server and contains three volumes named C, D, and E. Files are stored on Server1 as shown in the following table.

| Name | On volume | Size |
|-------|-----------|--------|
| File1 | C | 500 KB |
| File2 | D | 10 KB |
| File3 | D | 1 MB |

For volume D, Data Deduplication is enabled and set to General purpose file server. You perform the following actions:

- Move File1 to volume D.
- Copy File2 to volume D and name the copy File4.
- Move File3 to volume E

For each of the following statements, select Yes if the statement is true. Otherwise, select No. NOTE: Each correct selection is worth one point.

| Answer Area | | | |
|---------------------------------------------------------|-----------------------|-----------------------|--|
| Statements | Yes | No | |
| File1 is deduplicated after the deduplication job runs. | <input type="radio"/> | <input type="radio"/> | |
| File3 is deduplicated after the deduplication job runs. | <input type="radio"/> | <input type="radio"/> | |
| File4 is deduplicated after the deduplication job runs. | <input type="radio"/> | <input type="radio"/> | |

- A. Mastered
- B. Not Mastered

Answer: A

Explanation:

| Answer Area | | | |
|---------------------------------------------------------|----------------------------------|----------------------------------|--|
| Statements | Yes | No | |
| File1 is deduplicated after the deduplication job runs. | <input type="radio"/> | <input checked="" type="radio"/> | |
| File3 is deduplicated after the deduplication job runs. | <input type="radio"/> | <input checked="" type="radio"/> | |
| File4 is deduplicated after the deduplication job runs. | <input checked="" type="radio"/> | <input type="radio"/> | |

NEW QUESTION 155

DRAG DROP - (Topic 2)

Which three actions should you perform in sequence to meet the security requirements for Webapp1? To answer, move the appropriate actions from the list of actions to the answer area and arrange them in the correct order.

Actions

Create a standalone managed service account (sMSA) in AD DS.

Configure the IIS application pool to run as Network Service.

Configure the IIS application pool to run as a specified user account.

Create a group managed service account (gMSA) in Active Directory.

Create a system-assigned managed identity in Azure AD.

Create a user-assigned managed identity in Azure AD.

Create the Key Distribution Services (KDS) root key in AD DS.

Answer Area

>

<

- A. Mastered
- B. Not Mastered

Answer: A

Explanation:

Actions

Create a standalone managed service account (sMSA) in AD DS.

Configure the IIS application pool to run as Network Service.

Configure the IIS application pool to run as a specified user account.

Create a group managed service account (gMSA) in Active Directory.

Create a system-assigned managed identity in Azure AD.

Create a user-assigned managed identity in Azure AD.

Create the Key Distribution Services (KDS) root key in AD DS.

Answer Area

Configure the IIS application pool to run as Network Service.

Create a group managed service account (gMSA) in Active Directory.

Create the Key Distribution Services (KDS) root key in AD DS.

NEW QUESTION 160

- (Topic 1)

You need to meet the technical requirements for Server1. Which users can currently perform the required tasks?

- A. Admin1 only
- B. Admin3 only
- C. Admin1 and Admin3 only
- D. Admin1 Admin2. and Admm3

Answer: C

NEW QUESTION 161

- (Topic 2)

You need to implement an availability solution for DHCP that meets the networking requirements.

Which two actions should you perform? Each correct answer presents part of the solution. NOTE: Each correct selection is worth one point.

- A. On DHCP1. create a scope that contains 25 percent of the IP addresses from Scope2.
- B. On the router in each office, configure a DHCP relay.
- C. DHCP2. configure a scope that contains 25 percent of the IP addresses from Scope 1 .
- D. On each DHCP server, install the Failover Clustering feature and add the DHCP clusterrole.
- E. On each DHCP scope, configure DHCP failover.

Answer: BE

Explanation:

Reference:

[https://docs.microsoft.com/en-us/previous-versions/windows/it-pro/windows-server-2012-r2-and-2012/hh831385\(v=ws.11\)](https://docs.microsoft.com/en-us/previous-versions/windows/it-pro/windows-server-2012-r2-and-2012/hh831385(v=ws.11))

NEW QUESTION 164

HOTSPOT - (Topic 1)

Which groups can you add to Group3 and Group5? To answer, select the appropriate options in the answer area.

NOTE: Each correct selection is worth one point.

Group3:

| Group6 only |
|--------------------------------------------|
| Group1 and Group2 only |
| Group1 and Group4 only |
| Group1, Group2, Group4, and Group5 only |
| Group1, Group2, Group4, Groups, and Group6 |

Group5:

| Group1 only |
|------------------------|
| Group4 only |
| Group6 only |
| Group2 and Group4 only |
| Group4 and Group6 only |

- A. Mastered
- B. Not Mastered

Answer: A

Explanation:

Group3:

| Group6 only |
|--------------------------------------------|
| Group1 and Group2 only |
| Group1 and Group4 only |
| Group1, Group2, Group4, and Group5 only |
| Group1, Group2, Group4, Groups, and Group6 |

Group5:

| Group1 only |
|------------------------|
| Group4 only |
| Group6 only |
| Group2 and Group4 only |
| Group4 and Group6 only |

NEW QUESTION 165

- (Topic 1)

You need to meet the technical requirements for VM3 On which volumes can you enable Data Deduplication?

- A. D and E only
- B. C, D, E, and F
- C. D only
- D. C and D only
- E. D, E, and F only

Answer: A

Explanation:

Reference:

<https://docs.microsoft.com/en-us/windows-server/storage/data-deduplication/interop>

NEW QUESTION 170

- (Topic 1)

You need to meet the technical requirements for the site links. Which users can perform the required tasks?

- A. Admin1 only
- B. Admin1 and Admin3 only
- C. Admin1 and Admin2 only
- D. Admin3 only
- E. Admin1, Admin2, and Admin3

Answer: C

Explanation:

Membership in the Enterprise Admins group or the Domain Admins group in the forest root domain is required.

NEW QUESTION 172

.....

Relate Links

100% Pass Your AZ-800 Exam with ExamBible Prep Materials

<https://www.exambible.com/AZ-800-exam/>

Contact us

We are proud of our high-quality customer service, which serves you around the clock 24/7.

Viste - <https://www.exambible.com/>