

# Cisco

## Exam Questions 350-601

Implementing and Operating Cisco Data Center Core Technologies



#### NEW QUESTION 1

Which product includes prebuilt templates that can be used to customize fabric deployments?

- A. Cisco ACI
- B. Cisco UCS Manger
- C. Cisco data Center Network Manger
- D. Cisco Tetration

**Answer: C**

#### Explanation:

<https://www.cisco.com/c/en/us/products/collateral/cloud-systems-management/prime-data-center-networkmanag>

[https://www.cisco.com/c/en/us/td/docs/switches/datacenter/sw/11\\_2\\_1/config\\_guide/lanfabric/b\\_dcnm\\_fabric\\_lan/template\\_usage.html](https://www.cisco.com/c/en/us/td/docs/switches/datacenter/sw/11_2_1/config_guide/lanfabric/b_dcnm_fabric_lan/template_usage.html)

#### NEW QUESTION 2

A company plans to migrate some of its services to the cloud. The company does not want to manage or control the underlying cloud infrastructure. It also wants to maintain control over the deployment of its applications and configuration settings of the application-hosting environment. Which cloud service model meets these requirements?

- A. Infrastructure as a Service
- B. Function as a Service
- C. Platform as a Service
- D. Software as a Service

**Answer: C**

#### NEW QUESTION 3

Which feature must be enabled to support the use of JSON and XML encoding when a Cisco Nexus 7000 series switch is deployed?

- A. NX-API
- B. LLDP
- C. Open Agent Container
- D. Bash shell

**Answer: A**

#### Explanation:

[https://www.cisco.com/c/en/us/td/docs/switches/datacenter/nexus7000/sw/programmability/guide/cisco\\_nexus7000\\_programmability\\_guide\\_8x/b-cisco-nexus7000-programmability-guide-8x\\_chapter\\_011.html](https://www.cisco.com/c/en/us/td/docs/switches/datacenter/nexus7000/sw/programmability/guide/cisco_nexus7000_programmability_guide_8x/b-cisco-nexus7000-programmability-guide-8x_chapter_011.html)

#### NEW QUESTION 4

An engineer deploys a custom Guest Shell rootfs on a Nexus 9000 Series Switch. Drag and drop the steps from the left into the order required to deploy the solution on the right. Not all options are used.

Customize the guest shell rootfs.	Step 1
Export the Guest Shell rootfs.	Step 2
Store it in a file server.	Step 3
Import the Guest Shell rootfs to other switches.	Step 4
Install the specific Guest Shell across devices simultaneously.	Step 5

- A. Mastered
- B. Not Mastered

**Answer: A**

#### Explanation:

A picture containing text Description automatically generated

<https://www.cisco.com/c/en/us/td/docs/switches/datacenter/nexus9000/sw/93x/programmability/guide/b-cisco-ne>

## Replicating the Guest Shell

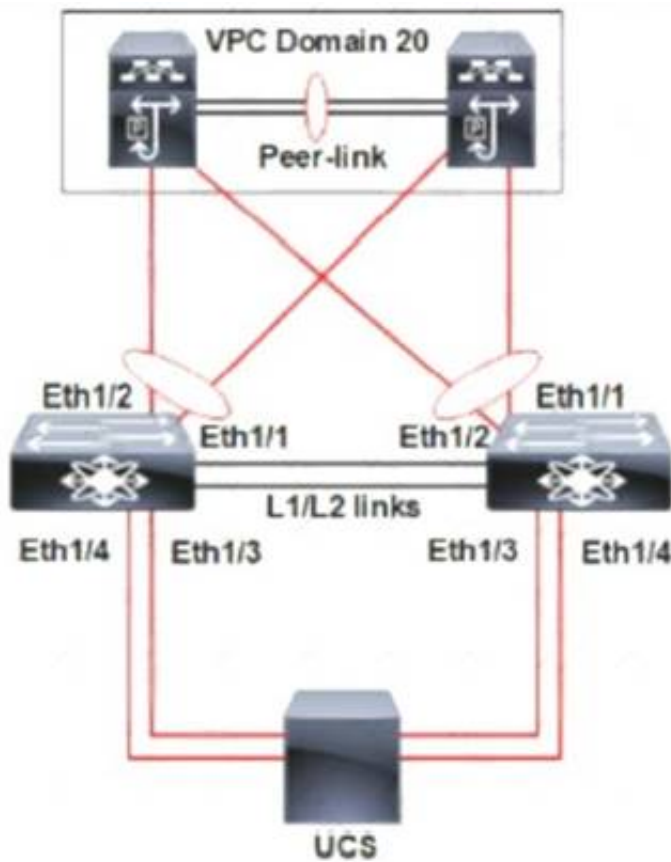
Beginning with Cisco NX-OS release 7.0(3)I7(1), a Guest Shell rootfs that is customized on one switch can be deployed onto multiple switches.

The approach is to <sup>1</sup>customize and then export the Guest Shell rootfs and store it on a file server. <sup>2</sup>A POAP script can <sup>3</sup>download (import) the Guest Shell rootfs to other switches and <sup>4</sup>install the specific Guest Shell across many devices simultaneously.

- Exporting Guest Shell rootfs
- Importing Guest Shell rootfs
- Importing YAML File
- show guestshell Command

### NEW QUESTION 5

Refer to the exhibit.



A pair of Cisco Nexus switches form a vPC. A new chassis is added to the pre-existing Cisco UCS domain. A new chassis must be discovered, and all links from the chassis to the LAN network must be established. Which set of actions accomplishes these requirements?

- ☐ Set the chassis discovery policy action to four links. Configure Eth1/3 and Eth1/4 as server ports. Acknowledge the chassis.
- ☒ Set the chassis discovery policy action to four links. Configure Eth1/1 and Eth1/2 as uplink Fibre Channel ports. Set the link group preference to None.
- ☐ Set the chassis discovery policy action to one link. Configure Eth1/1 and Eth1/2 as uplink Ethernet ports. Set the link group preference to Port Channel.
- ☐ Set the chassis discovery policy action to one link. Configure Eth1/3 and Eth1/4 as server ports. Acknowledge the chassis.

- A. Option A
- B. Option B
- C. Option C
- D. Option D

**Answer: C**

### NEW QUESTION 6

What is a recommended design choice in a topology for multipathing iSCSI traffic?

- A. single initiator to dual targets
- B. initiators and targets in separate subnets
- C. dual initiators to a single target with bonded interfaces
- D. two NICs bonded together on the initiator

**Answer:** A

**Explanation:**

[https://www.cisco.com/c/en/us/td/docs/switches/datacenter/nexus1000/sw/4\\_2\\_1\\_s\\_v\\_1\\_5\\_1/system\\_management/configuration/guide/n1000v\\_system/n1000v\\_system\\_13iscsi.html#wp1052813](https://www.cisco.com/c/en/us/td/docs/switches/datacenter/nexus1000/sw/4_2_1_s_v_1_5_1/system_management/configuration/guide/n1000v_system/n1000v_system_13iscsi.html#wp1052813)

**NEW QUESTION 7**

Refer to the exhibit.

```
FI-1# scope org /  
FI-1 /org # create maint-policy maintenance  
FI-1 /org/maint-policy* # set reboot-policy timer-automatic  
FI-1 /org/maint-policy* # set soft-shutdown-timer never
```

Which action must be taken before the maintenance policy can be committed?

- A. Set the soft shutdown timer to a specific time.
- B. Associate a service profile to the maintenance policy.
- C. Set the policy to apply the change on the next reboot.
- D. Specify a maintenance time by selecting a schedule.

**Answer:** D

**Explanation:**

[https://www.cisco.com/c/en/us/td/docs/unified\\_computing/ucs/ucs-manager/CLI-User-Guides/Admin-Management/3-1/b\\_Cisco\\_UCS\\_Manager\\_CLI\\_Administration\\_Mgmt\\_Guide\\_3\\_1/b\\_Cisco\\_UCS\\_Manager\\_CLI\\_Administration\\_Mgmt\\_Guide\\_3\\_1\\_chapter\\_01100.html](https://www.cisco.com/c/en/us/td/docs/unified_computing/ucs/ucs-manager/CLI-User-Guides/Admin-Management/3-1/b_Cisco_UCS_Manager_CLI_Administration_Mgmt_Guide_3_1/b_Cisco_UCS_Manager_CLI_Administration_Mgmt_Guide_3_1_chapter_01100.html)

**NEW QUESTION 8**

An engineer is implementing an import operation in Cisco UCS Manager. What is the impact of performing this operation?

- A. A configuration can be imported from a higher release to a lower release.
- B. Information can be modified on the management plane only.
- C. Only a configuration file that was exported from the same Cisco UCS Manager can be imported.
- D. An import operation can be scheduled.

**Answer:** B

**Explanation:**

The import function is available for all configuration, system configuration, and logical configuration files. You can perform an import while the system is up and running. An import operation modifies information on the management plane only. Some modifications caused by an import operation, such as a change to a vNIC assigned to a server, can cause a server reboot or other operations that disrupt traffic.

[https://www.cisco.com/en/US/docs/unified\\_computing/ucs/sw/gui/config/guide/141/UCSM\\_GUI\\_Configuration](https://www.cisco.com/en/US/docs/unified_computing/ucs/sw/gui/config/guide/141/UCSM_GUI_Configuration)

**NEW QUESTION 9**

A server engineer wants to control power uses on a Cisco UCS C-series rack server down to the component level. Which two components support specific power limits? (Choose two.)

- A. memory
- B. graphic card
- C. processor
- D. network controller
- E. storage controller

**Answer:** AC

**NEW QUESTION 10**

Which statement about the MAC address that the FCoE Initialization Protocol chooses for use by an E-Node in an FCoE implementation is true?

- A. The FCoE Initialization Protocol uses the burned-in MAC address of the converged network adapter for all FCoE operations.
- B. The FCoE Initialization protocol uses a 24-bit FC-MAP and concatenates a 24-bit Fibre Channel ID to create a fibric-provided MAC address.
- C. The FCoE Initialization Protocol uses 01.00.0C as the first 24 bits of the MAC address and appends a 24-bit Fibre Channel ID to derive a full 48-bit FCoE MAC address.
- D. FCoE does not use a MAC address
- E. The FCoE Initialization Protocol is used to acquire a Fibre Channel ID, and the address is used for all FCoE communications in the same way as Fibre Channel Protocol.

**Answer:** B

**Explanation:**

[https://www.cisco.com/c/en/us/td/docs/solutions/Enterprise/Data\\_Center/UF\\_FCoE\\_final.html#wp1154912](https://www.cisco.com/c/en/us/td/docs/solutions/Enterprise/Data_Center/UF_FCoE_final.html#wp1154912)

**NEW QUESTION 10**

A network engineer is deploying a cisco ALL-flash hyperflex solution. Which local storage configuration is required for the operating system and persistent logging?

- A. Two solid state drives
- B. Two SATA drives

- C. One SATA drive
- D. One solid state drive

**Answer:** D

#### NEW QUESTION 14

Which configuration generates a syslog message when CPU utilization is higher than 60%?

- A. event manager applet HIGH-CPUevent snmp oid 1.3.6.1.4.1.9.9.109.1.1.1.1.6.1 get-type exact entry-op gt 60 poll-interval 5 action 1.0 syslog priority notifications msg "cpu high"
- B. event manager applet HIGH-CPUevent snmp oid 1.3.6.1.4.1.9.9.109.1.1.1.1.6.1 get-type exact entry-op lt 60 poll-interval 5 action 1.0 syslog priority notifications msg "cpu high"
- C. event manager applet HIGH-CPUevent snmp oid 1.3.6.1.4.1.9.9.109.1.1.1.1.6.1 get-type next entry-op gt 60 poll-interval 5 action 1.0 syslog priority notifications msg "cpu high"
- D. event manager applet HIGH-CPUevent snmp oid 1.3.6.1.4.1.9.9.109.1.1.1.1.6.1 get-type next entry-op lt 60 poll-interval 5 action 1.0 syslog priority notifications msg "cpu high"

**Answer:** A

#### Explanation:

<https://www.cisco.com/c/en/us/support/docs/ip/internet-protocol-ip/200931-EEM-Subsystem-in-Order-to-Monitor-CPU-Tr.pdf>  
<https://blog.ipspace.net/2008/06/generate-snmp-trap-on-high-cpu-load.html>

#### NEW QUESTION 15

An engineer must implement a disaster recovery policy for the Cisco UCS infrastructure. The solution must meet these criteria:

- The Recovery Point Objective must be 48 hours.
- The backup must use encrypted transmission.
- The Recovery Time Objective must be 4 hours.

Which configuration set must be used in the scheduled backup to meet these requirements?

- ☒ Protocol: SFTP  
Schedule: Weekly
- ☐ Protocol: FTP  
Schedule: Bi-Weekly
- ☐ Protocol: TFTP  
Schedule: Bi-Weekly
- ☐ Protocol: SCP  
Schedule: Daily

- A. Option A
- B. Option B
- C. Option C
- D. Option D

**Answer:** D

#### NEW QUESTION 19

What happens to the default host firmware policy after a Cisco UCS Manager upgrade?

- A. It is updated to contain the firmware entries of all the components
- B. It is replaced by a new default policy without any firmware entries.
- C. It is assigned to all the service profiles that include a host firmware policy.
- D. It is set to match the host firmware policy.

**Answer:** B

#### Explanation:

[https://www.cisco.com/c/en/us/td/docs/unified\\_computing/ucs/ucs-manager/GUI-User-Guides/Firmware-Mgmt/](https://www.cisco.com/c/en/us/td/docs/unified_computing/ucs/ucs-manager/GUI-User-Guides/Firmware-Mgmt/)

#### NEW QUESTION 24

A network engineer plans to upgrade the firmware of a Cisco UCS B-Series chassis by using the Auto Install feature. Which component is upgraded during the infrastructure firmware upgrade stage?

- A. Cisco IMC
- B. Adapter
- C. I/O module
- D. BIOS

**Answer:** C

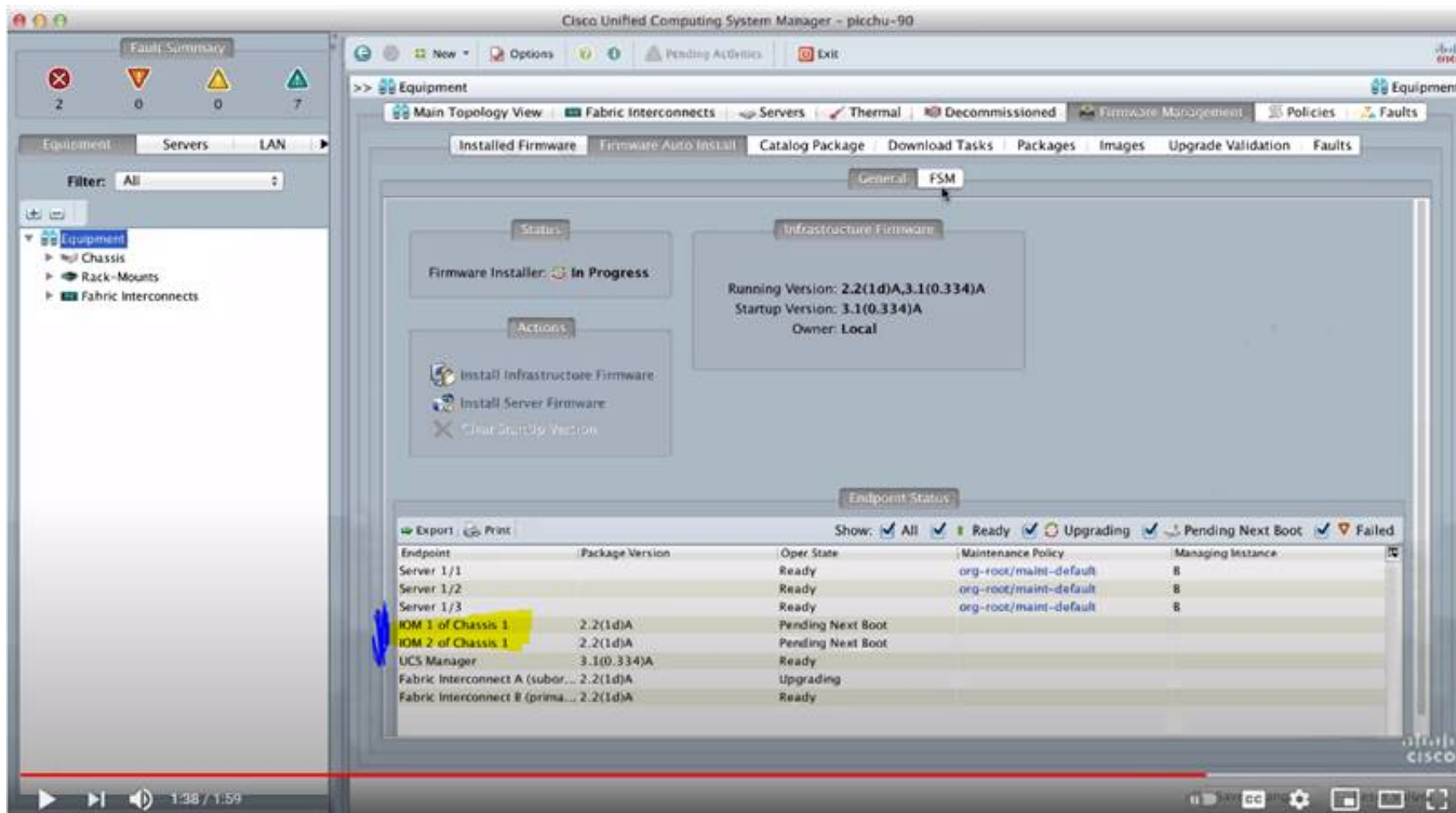
#### Explanation:

[https://www.cisco.com/c/en/us/td/docs/unified\\_computing/ucs/ucs-manager/GUI-User-Guides/Firmware-Mgmt/](https://www.cisco.com/c/en/us/td/docs/unified_computing/ucs/ucs-manager/GUI-User-Guides/Firmware-Mgmt/) <https://www.youtube.com/watch?v=g-4OgYigvRI>



## Direct Upgrade After Auto Install

During Auto Install, the startup version of the default infrastructure pack is configured. To **successfully complete a direct upgrade or activation of Cisco UCS Manager, Fabric Interconnects, and IOMs after Auto Install**, ensure that the startup version is cleared before starting direct upgrade or activation. If the startup version of the default infrastructure pack is configured, you cannot directly upgrade or activate Cisco UCS Manager, Fabric Interconnects, and IOMs. , provides detailed steps for clearing the startup version.



### NEW QUESTION 29

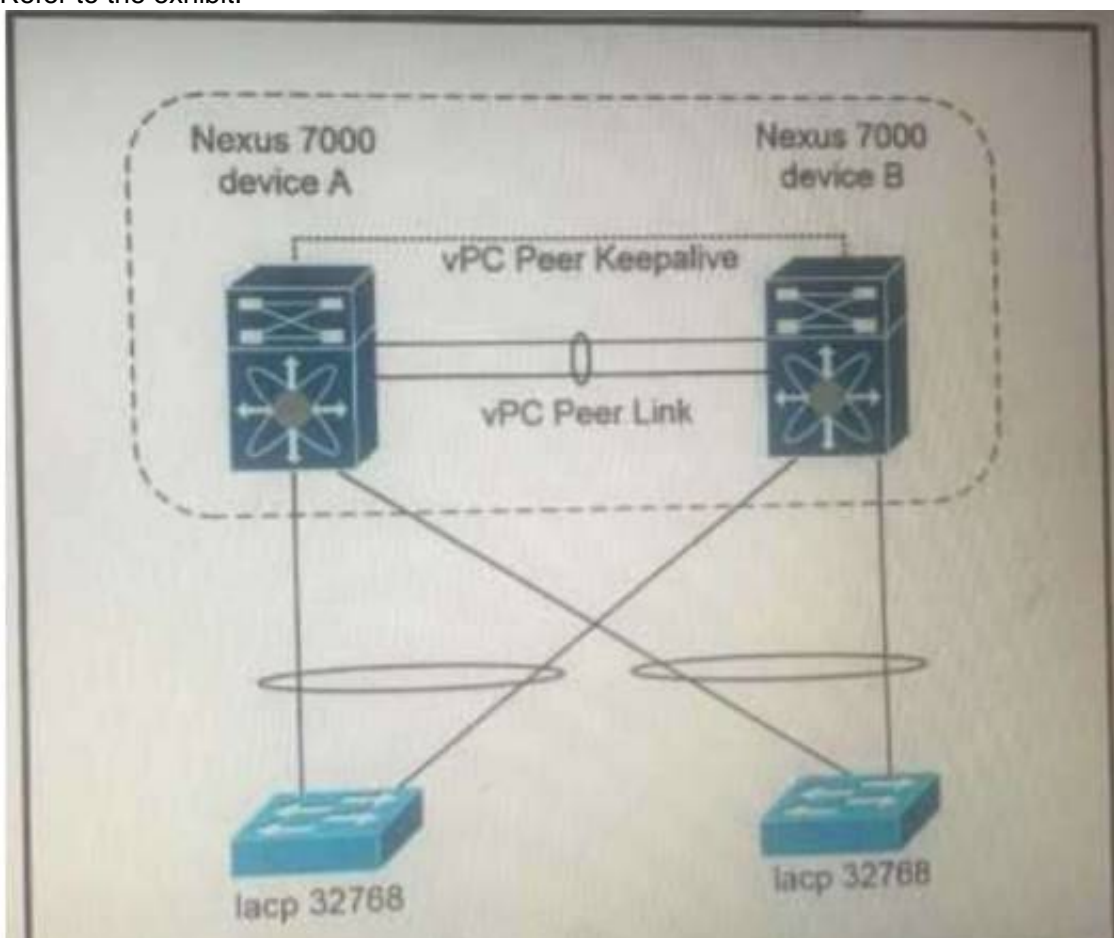
An engineer must configure a Cisco UCS blade system that is managed by Cisco UCS Manager. All four connected interfaces between the blade system and the fabric interconnects must be used. Additionally, the connectivity must tolerate any link failure between the I/O module and the fabric interconnects. Which action accomplishes these requirements?

- A. Configure port aggregation with LACP policy set to default
- B. Configure Firmware Auto Sync Server policy to Auto Acknowledge
- C. Configure Link Group Preference to Port Channel.
- D. Configure chassis/FEX discovery pokey action to four links

**Answer: D**

### NEW QUESTION 32

Refer to the exhibit.



Which configuration ensure that the cisco Nexus 7000 series switches are the primary devices for LACP?

- A. `N7K_A(config-vpc-domain)# system-priority 4000`  
`N7K_B(config-vpc-domain)# system-priority 4000`
- B. `N7K_A(config-vpc-domain)# system-priority 100`  
`N7K_B(config-vpc-domain)# system-priority 200`
- C. `N7K_A(config-vpc-domain)# system-priority 32768`  
`N7K_B(config-vpc-domain)# system-priority 32768`
- D. `N7K_A(config-vpc-domain)# role priority 1`  
`N7K_B(config-vpc-domain)# role priority 2`

- A. Option A  
B. Option B  
C. Option C  
D. Option D

**Answer:** C

#### NEW QUESTION 37

A server engineer wants to control power usage on a Cisco UCS C-Series rack server down to the component level. Which two components support specific power limits? (Choose two.)

- A. storage controller  
B. network controller  
C. processor  
D. graphic card  
E. memory

**Answer:** CE

#### Explanation:

[https://www.cisco.com/c/en/us/td/docs/unified\\_computing/ucs/c/sw/gui/config/guide/4\\_1/b\\_Cisco\\_UCS\\_C-serie](https://www.cisco.com/c/en/us/td/docs/unified_computing/ucs/c/sw/gui/config/guide/4_1/b_Cisco_UCS_C-serie)

#### NEW QUESTION 41

Due to a newly announced security advisory, a company has been Informed that they must update the configuration of 500 network devices that ate deployed n their network. The engineering team must assist the operations team to prepare for this update. The operations team does not have direct access to the network devices and must log in via a Linux server. This ls the first time that the team is making a network-wide configuration and must change all devices without first installing additional software on the network devices. The operations team is unfamiliar with automation and scripting technologies. Which automation tool must be used to accomplish this goal?

- A. Chef  
B. Ansible  
C. Puppet  
D. Saltstack

**Answer:** B

#### NEW QUESTION 45

Refer to Exhibit:

```
n9k2# guestshell
[guestshell@guestshell ~]$ python
Python 2.7.5 (default, Jun 17 2014, 18:11:42)
[GCC 4.8.2 20140120 (Red Hat 4.8.2-16)] on linux2
Type "help", "copyright", "credits" or "license" for more information.
>>>
```

An engineer must use the python module in the guest shell of the Cisco Nexus 9000 Series switch to shutdown port Ethernet 1/4 Which command set will accomplish this?

- ☐ from cli import \*  
cli("conf t")  
cli("interface eth1/4")  
cli("shutdown")
- ☐ from cli import \*  
cli("conf t ; interface eth1/4 ; shut")
- ☒ from cisco import cli  
cli("conf t ; interface eth1/4")  
cli("shutdown")
- ☐ from cisco import cli  
cli("conf t" ; "interface eth1/4" ; "shut")

- A. Option A
- B. Option B
- C. Option C
- D. Option D

Answer: B

Explanation:

When two or more commands are run individually, the state is not persistent from one command to subsequent commands.

In the following example, the second command fails because the state from the first command does not persist for the second command.

```
>>> cli("conf t")
>>> cli("interface eth4/1")
```

When two or more commands are run together, the state is persistent from one command to subsequent commands.

In the following example, the second command is successful because the state persists for the second and third commands.

```
>>> cli("conf t ; interface eth4/1 ; shut")
```

Note: Commands are separated with " ; " as shown in the example. The semicolon ( ; ) must be surrounded with single blank characters.

[https://www.cisco.com/c/en/us/td/docs/switches/datacenter/nexus9000/sw/7-x/programmability/guide/b\\_Cisco\\_Nexus\\_9000\\_Series\\_NX-OS\\_Programmability\\_Guide\\_7x/Python\\_API.html](https://www.cisco.com/c/en/us/td/docs/switches/datacenter/nexus9000/sw/7-x/programmability/guide/b_Cisco_Nexus_9000_Series_NX-OS_Programmability_Guide_7x/Python_API.html) <https://www.ciscolive.com/c/dam/r/ciscolive/apjc/docs/2016/pdf/DEVNET-1077.pdf>

#### NEW QUESTION 47

An engineer is configuring AAA authentication on an MDS 9000 switch. The LDAP server is located under the IP 10.10.2.2. The data sent to the LDAP server should be encrypted. Which command should be used to meet these requirements?

- A. ldap-server host 10.10.2.2 enable-ssl
- B. ldap-server 10.10.2.2 port 443
- C. ldap server host 10.10.2.2 key SSL\_KEY
- D. ldap-server 10.10.2.2 key SSL\_KEY

Answer: A

#### NEW QUESTION 52

An engineer must send JSON encoded telemetry data to an external collector. The transport mechanism must prevent tampering or forgery of the data. Which protocol accomplishes this goal?

- A. GPB
- B. HTTP
- C. gRPC
- D. DTLS

Answer: B

#### NEW QUESTION 56

An engineer must configure a VXLAN routing on a cisco Nexus 9000 series Switch. The engineer requires a solution where all the leaf switches have the same gateway MAC and IP address. Which configuration set accomplishes this task?

- A)



```
NX9K(config)# fabric forwarding anycast-gateway-mac AA:BB:AA:BB:AA:BB
NX9K(config)# interface VLAN-interface-nameNX9K(config-if)# fabric forwarding mode anycast-gateway
```

B)

```
NX9K(config)# fabric forwarding anycast-gateway-mac AA:BB:AA:BB:AA:BB
NX9K(config)# interface VLAN-interface-name
NX9K(config-if)# vrf member vrf-name
NX9K(config-if)# fabric forwarding mode anycast-gateway
```

C)

```
NX9K(config)# install feature-set fabric
NX9K(config)# feature-set fabric
NX9K(config)# fabric forwarding anycast-gateway-mac AA:BB:AA:BB:AA:BB
NX9K(config)# interface VLAN-interface-name
NX9K(config-if)# vrf member vrf-name
NX9K(config-if)# fabric forwarding mode anycast-gateway
```

D)

```
NX9K(config)# install feature-set fabric
NX9K(config)# feature-set fabric
NX9K(config)# fabric forwarding anycast-gateway-mac AA:BB:AA:BB:AA:BB
NX9K(config)# interface VLAN-interface-name
NX9K(config-if)# fabric forwarding mode anycast-gateway
```

- A. Option A
- B. Option B
- C. Option C
- D. Option D

**Answer: C**

#### NEW QUESTION 61

Refer to the exhibit.

```
Enter the configuration method. (console/gui) ? console

Enter the setup mode; setup newly or restore from backup.
(setup/restore) ? restore

NOTE:
  To configure Fabric interconnect using a backup file on
a remote server, you will need to setup management
interface.
  The management interface will be re-configured (if
necessary), based on information stored in the backup file.

Continue to restore this Fabric interconnect from a backup
file (yes/no) ? yes

Physical Switch Mgmt0 IPv4 address : 192.168.10.10
Physical Switch Mgmt0 IPv4 netmask : 255.255.255.0
IPv4 address of the default gateway : 192.168.10.1
Enter the protocol to get backup file (scp/ftp/tftp/sftp)
? scp
Enter the IP address of backup server: 20.10.20.10
Enter fully qualified backup file name: Backup.bak
Enter user ID: user
Enter password:
  Retrieved backup configuration file.
Configuration file - Ok
```

Which type of backup is required to restore a Cisco UCS configuration?

- A. system configuration
- B. all configuration
- C. logical configuration
- D. full state

**Answer: A**

#### Explanation:

[https://www.cisco.com/c/en/us/td/docs/unified\\_computing/ucs/sw/cli/config/guide/1-0-2/b\\_CLI\\_Config\\_Guide\\_](https://www.cisco.com/c/en/us/td/docs/unified_computing/ucs/sw/cli/config/guide/1-0-2/b_CLI_Config_Guide_)

The following example restores a system configuration from the Backup.bak file, which was retrieved from the 20.10.20.10 backup server using FTP:

```
Enter the configuration method. (console/gui) ? console

Enter the setup mode; setup newly or restore from backup. (setup/restore) ? restore

NOTE:
  To configure Fabric interconnect using a backup file on a remote server,
  you will need to setup management interface.
  The management interface will be re-configured (if necessary),
  based on information stored in the backup file.

Continue to restore this Fabric interconnect from a backup file (yes/no) ? yes

Physical Switch Mgmt0 IPv4 address : 192.168.10.10

Physical Switch Mgmt0 IPv4 netmask : 255.255.255.0

IPv4 address of the default gateway : 192.168.10.1

Enter the protocol to get backup file (scp/ftp/tftp/sftp) ? scp
Enter the IP address of backup server: 20.10.20.10
Enter fully qualified backup file name: Backup.bak
Enter user ID: user
Enter password:
  Retrieved backup configuration file.
  Configuration file - Ok
```

```
Cisco UCS 6100 Series Fabric Interconnect
UCS-A login:
```

#### NEW QUESTION 62

Which two statements describe modifying Cisco UCS user accounts? (Choose two.)

- A. Disabling a user account maintains all of the data in the Cisco UCS Fabric Interconnect.
- B. The admin account is used only to log on by using SSH.
- C. The password of the user account must contain a minimum of 10 characters.
- D. Local user accounts override the same account on a remote authentication server, such as TACACS, RADIUS, or LDAP.
- E. The password of the user account expires in 30 days.

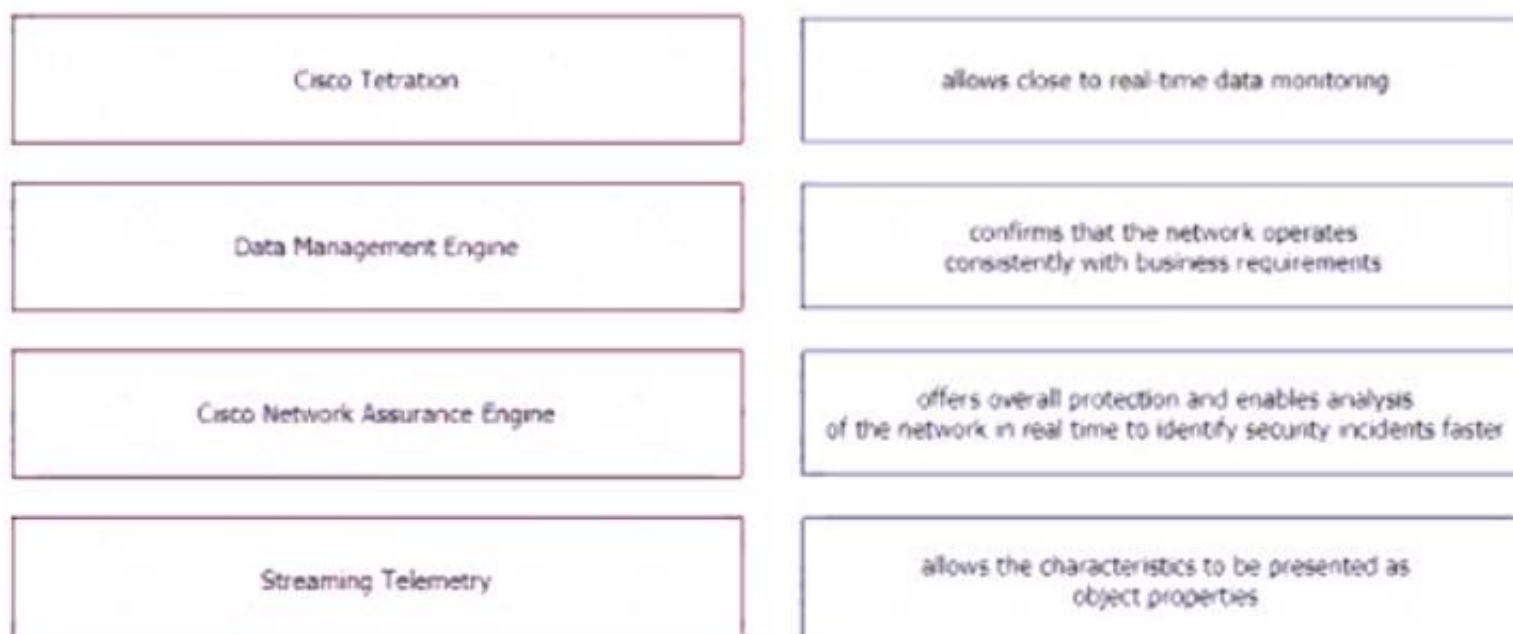
**Answer:** AD

#### Explanation:

[https://www.cisco.com/c/en/us/td/docs/unified\\_computing/ucs/ucs-manager/GUI-User-Guides/Admin-Managem](https://www.cisco.com/c/en/us/td/docs/unified_computing/ucs/ucs-manager/GUI-User-Guides/Admin-Managem)

#### NEW QUESTION 64

Drag and drop the network assurance concepts from the left onto the corresponding benefits on the right.



- A. Mastered
- B. Not Mastered

**Answer:** A

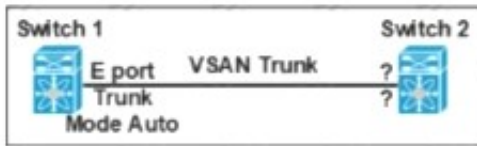
#### Explanation:

Diagram Description automatically generated

#### NEW QUESTION 66

Refer to the exhibit.





Which feature must be used to configure on switch 2 to establish a VSAN trunk between switch 1 and switch 2?

- A. F portTrunk Mode Passive
- B. E PortTrunk Mode On
- C. N PortTrunk Mode Active
- D. NP PortTrunk Mode Auto

**Answer: B**

#### NEW QUESTION 67

What is an advantage of NAS compared to SAN?

- A. It offers enhanced NFS features.
- B. It offers enhanced security features
- C. It functions in an existing IP environment.
- D. It provides lossless throughput.

**Answer: C**

#### NEW QUESTION 68

Refer to the exhibit.

```
Nexus# show vpc peer-keepalive | i Keepalive
--Keepalive interval : 1000 msec
--Keepalive timeout : 5 seconds
--Keepalive hold timeout : 3 seconds
--Keepalive vrf : management
--Keepalive udp port : 3200
--Keepalive tos : 192

Nexus# ethanalyzer local interface mgmt limit-captured-frames 1000

Capturing on mgmt0
2019-06-15 12:01:51.242597 192.168.254.11 -> 192.168.254.3 ICMP Echo (ping) request
2019-06-15 12:01:51.242860 192.168.254.3 -> 192.168.254.11 ICMP Echo (ping) reply
2019-06-15 11:50:15.975474 192.168.254.1 -> 192.168.254.3 TCP 47540 > bootps [SYN] Seq=0 Win=1024 Len=0 MSS=1460
2019-06-15 11:50:15.975547 192.168.254.3 -> 192.168.254.1 TCP 29 > 47540 [RST, A CK] Seq=1 Ack=1 Win=0 Len=0
2019-06-15 11:50:15.975564 192.168.254.1 -> 192.168.254.3 TCP 47540 > 44 [SYN] Seq=0 Win=1024 Len=0 MSS=1460
2019-06-15 11:50:15.975924 192.168.254.1 -> 192.168.254.3 TCP 47540 > discard [SYN] Seq=0 Win=1024 Len=0 MSS=1460
2019-06-15 11:50:15.976027 192.168.254.1 -> 192.168.254.3 TCP 47540 > 97 [SYN] Seq=0 Win=1024 Len=0 MSS=1460
2019-06-15 11:50:15.976381 192.168.254.1 -> 192.168.254.3 TCP 47540 > 35 [SYN] Seq=0 Win=1024 Len=0 MSS=1460
2019-06-15 11:50:16.661845 192.168.254.3 -> 192.168.254.4 UDP Source port: 3200 Destination port: 3200
2019-06-15 11:50:16.761147 00:8e:73:a2:41:13 -> 01:80:c2:00:00:00 STP Conf. Root = 8192/10/ec:e1:a9:df:6c:80 Cost = 22 Port = 0x8013
2019-06-15 11:50:16.853248 192.168.254.4 -> 192.168.254.3 UDP Source port: 3200 Destination port: 3200
2019-06-15 11:50:17.326253 192.168.254.1 -> 192.168.254.3 SSH Encrypted request packet len=52
2019-06-15 11:50:17.327313 192.168.254.3 -> 192.168.254.1 SSH Encrypted response packet len=1348
2019-06-15 11:50:17.377246 192.168.254.4 -> 239.255.70.83 UDP Source port: 7546 Destination port: 7546
2019-06-15 11:50:17.552215 192.168.254.1 -> 192.168.254.3 TCP 14139 > ssh [ACK] Seq=365 Ack=11277 Win=63546 Len=0
2019-06-15 11:50:17.661764 192.168.254.3 -> 192.168.254.4 UDP Source port: 3200 Destination port: 3200
2019-06-15 11:50:17.653242 192.168.254.4 -> 192.168.254.3 UDP Source port: 3200 Destination port: 3200
2019-06-15 11:50:17.872637 8c:60:4f:aa:c2:e1 -> 01:80:e7:00:00:0e LLDP Chassis : d = 8c:60:41:aa:c2:e1 Port Id = mgmt0 TTL = 120
2019-06-15 11:50:08.173056 192.168.256.3 -> 192.168.254.2 NTP NTP client
2019-06-15 11:50:08.173256 192.168.256.2 -> 192.168.254.3 NTP NTP server
```

A flapping link issue has been reported on the vPC keepalive link. A packet capture has been activated on the Cisco Nexus switch. What is the destination IP address of the vPC keepalive packets that are sent by the switch?

- A. 192.168.254.4
- B. 239.255.70.83
- C. 192.168.254.1
- D. 192.168.254.2

**Answer: A**

#### Explanation:

<https://www.cisco.com/c/en/us/td/docs/switches/datacenter/nexus3000/sw/interfaces/92x/b-cisco-nexus-3000-nx>

#### NEW QUESTION 69

An engineer must configure SAN connectivity in Cisco UCS manager. The requirement is to specify the WWPN of the storage array and set the zoning type to single initiator multiple targets. The engineer must also configure interrupt handling and queues of the vHBA interface. Which two Cisco UCS policies should be used to configure the settings? (Choose two.)

- A. storage connection policy

- B. SAN connectivity policy
- C. vHBA policy
- D. Fibre Channel adaptor policy
- E. boot policy

Answer: AD

NEW QUESTION 74

A cisco Nexus 9000 series switch experiences a startup configuration corruption. The engineer must implement a procedure to recover configuration file from the switch. Which command set must be used?

- A. \* 1. Copy the running-configuration to the startup configuration.\* 2. Clear the current configuration of the switch.\* 3. Restart the device.\* 4. Copy a previously saved configuration file to the running configuration.
- B. \* 1. Clear the current configuration of the switch\* 2. Restart the device.\* 3. Copy the running configuration to the startup configuration\* 4. Copy a previously saved configuration file to the running configuration
- C. \* 1. Clear the current configuration of the switch\* 2. Restart the device.\* 3. Copy a previously saved configuration file to the running-configuration\* 4. Copy the running-configuration to the startup configuration.
- D. \* 1.Restarting device.\* 2. Copy the running-configuration file to a remote server.\* 3. Clear the current configuration of the switch.\* 4. Copy the running configuration to the startup configuration

Answer: C

Explanation:

Problems, such as memory corruption, can occur that make it necessary for you to recover your configuration from a backed-up version. Each time that you enter a copy running-config startup-config command, a binary file is created and the ASCII file is updated. A valid binary configuration file reduces the overall boot time significantly. A binary file cannot be uploaded, but its contents can be used to overwrite the existing startup configuration. The write erase command clears the binary file.

SUMMARY STEPS

- \* 1. write erase
- \* 2. reload
- \* 3. copy configuration-file running-configuration
- \* 4. copy running-config startup-config <https://www.cisco.com/c/en/us/td/docs/switches/datacenter/nexus9000/sw/93x/fundamentals/configuration/guide>

NEW QUESTION 78

An engineer must perform a backup operation of the Cisco UCS system. The backup must be transferred to a secure location using UDP and must contain information about VLANs, VSANs, and other policies. Also, the operations team requires the backup file to be in a human-readable format. Which configuration set meets these requirements?

- A. Type: System configuration Protocol: SCP
- B. Type: Logical configuration Protocol: TFTP
- C. Type: All configuration Protocol: FTP
- D. Type: Full state Protocol: SFTP

Answer: B

NEW QUESTION 82

A network engineer must prevent data corruption due to cross fabric communication in an FCoE environment. Which configuration must be applied to the Cisco Nexus Unified Switches to achieve this objective?

- A. Switch(config)#fcoe fcmmap 0e,fc,2a
- B. Switch(config-if)# no fcoe fcf-priority 0
- C. Switch(config-if) # shutdown lan
- D. Switch(config) # no fcoe fcf-priority

Answer: A

Explanation:

2. switch(config)# fcoe fcmmap fabric-map

3. (Optional) switch(config)# no fcoe fcmmap fabric-map

DETAILED STEPS

	Command or Action	Purpose
Step 1	switch# configure terminal	Enters configuration mode.
Step 2	switch(config)# fcoe fcmmap fabric-map	Configures the global FC-Map. The default value is 0E.FC.00. The range is from 0E.FC.00 to 0E.FC.FF.
Step 3	switch(config)# no fcoe fcmmap fabric-map	(Optional) Resets the global FC-Map to the default value of 0E.FC.00.

This example shows how to configure the global FC-Map:

switch# configure terminal

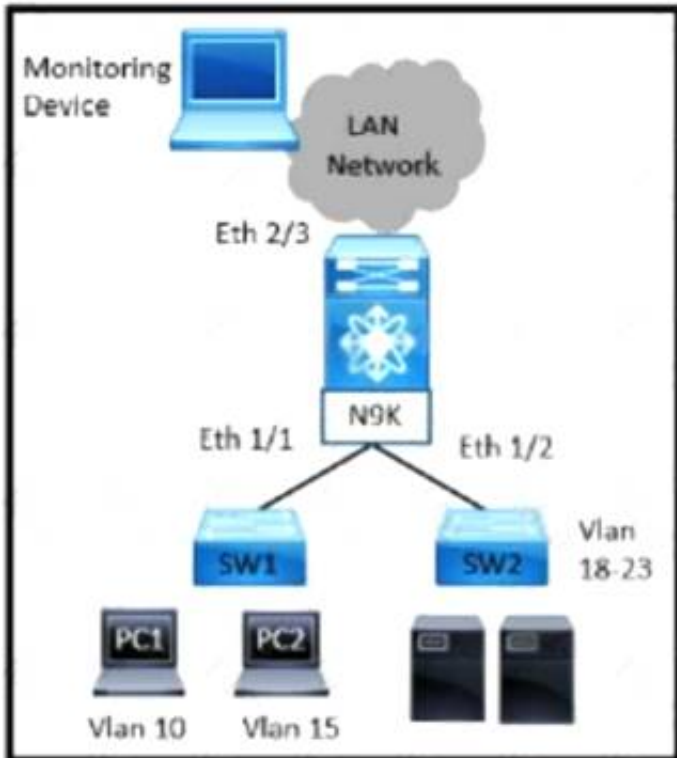
switch(config)# fcoe fcmmap 0e.fc.2a



[https://www.cisco.com/c/en/us/td/docs/switches/datacenter/nexus5000/sw/fcoe/b\\_Cisco\\_Nexus\\_5000\\_Series\\_NX-OS\\_Fibre\\_Channel\\_over\\_Ethernet\\_Configuration\\_Guide/Cisco\\_Nexus\\_5000\\_Series\\_NX-OS\\_Fibre\\_Channel\\_over\\_Ethernet\\_Configuration\\_Guide\\_chapter3.html](https://www.cisco.com/c/en/us/td/docs/switches/datacenter/nexus5000/sw/fcoe/b_Cisco_Nexus_5000_Series_NX-OS_Fibre_Channel_over_Ethernet_Configuration_Guide/Cisco_Nexus_5000_Series_NX-OS_Fibre_Channel_over_Ethernet_Configuration_Guide_chapter3.html)  
 You can prevent data corruption due to cross-fabric talk by configuring an FC-Map that identifies the Fibre Channel fabric for this Cisco Nexus device. When the FC-Map is configured, the switch discards the MAC addresses that are not part of the current fabric.  
 switch(config)# fcoe fcmf fabric-map Configures the global FC-Map. The default value is 0E.FC.00. The range is from 0E.FC.00 to 0E.FC.FF.  
[https://www.cisco.com/c/en/us/td/docs/switches/datacenter/nexus5000/sw/fcoe/513\\_n1\\_1/b\\_Cisco\\_n5k\\_fcoe\\_co](https://www.cisco.com/c/en/us/td/docs/switches/datacenter/nexus5000/sw/fcoe/513_n1_1/b_Cisco_n5k_fcoe_co)

### NEW QUESTION 83

Refer to the exhibit



A network administrator experiences these issues with the network:

- > PC1 is experiencing a buffering problem for video applications
- > The servers that are connected to SW2 are experiencing packet drops when they connect to the Internet

The engineer wants to configure the required traffic capture to investigate the issue further Which configuration must be implemented to monitor the traffic?

- ☒ N9K(config)# monitor session 5 rx  
 N9K(config)# monitor session 5 tx  
 N9K(config-monitor)# description Span\_session\_5  
 N9K(config-monitor)# source interface ethernet 1/1  
 N9K(config-monitor)# source interface ethernet 1/2  
 N9K(config-monitor)# destination interface ethernet 2/3
- ☐ N9K(config)# monitor session 5 tx  
 N9K(config-monitor)# description Span\_session\_5  
 N9K(config-monitor)# source interface ethernet 1/1  
 N9K(config-monitor)# source interface ethernet 1/2  
 N9K(config-monitor)# destination interface ethernet 2/3
- ☐ N9K(config)# monitor session 5 tx  
 N9K(config-monitor)# description Span\_session\_5  
 N9K(config-monitor)# source vlan 10-15 rx  
 N9K(config-monitor)# source interface ethernet 1/2  
 N9K(config-monitor)# destination interface ethernet 2/3
- ☒ N9K(config)# monitor session 5 rx  
 N9K(config-monitor)# description Span\_session\_5  
 N9K(config-monitor)# source vlan 10 rx  
 N9K(config-monitor)# source interface ethernet 1/2  
 N9K(config-monitor)# destination interface ethernet 2/3

- A. Option A
- B. Option B
- C. Option C
- D. Option D

Answer: D

### NEW QUESTION 86

An engineer must implement a VXLAN-based data center interconnect. The long-distance transport provided by a service provider is IP-based, supports a maximum MTU of 1554 bytes, and does not support outbound traffic replication. Which action must be taken to build the data center interconnect?

- A. Configure a route map to associate the IPs of the remote VTEPs.
- B. Create an IP access list and associate it with VNI to replicate traffic to remote VTEPs.
- C. Announce host reachability over BGP.

D. Implement BGP EVPN ingress replication.

**Answer:** D

#### NEW QUESTION 91

Which two statements describe the process of upgrading an EPLD on a Cisco MUS 9000 Series Switch? (Choose two)

- A. EPLDs are capable to be upgraded without replacing the hardware
- B. The CPLDs for all the modules on a switch must be upgraded at the same time
- C. An upgrade verification identifies the impact of each EPLD upgrade
- D. EPLDs are only capable to be upgraded to the latest F
- E. D image
- F. EPLD upgrades are capable to be completed without powering down the module during the upgrade

**Answer:** AC

#### NEW QUESTION 96

When a strict CoPP policy is implemented, which statement describes an event during which packets are dropped?

- A. Fifteen SSH sessions remain connected to the switch.
- B. A large system image is copied to a switch by using the default VRF.
- C. A ping sweep is performed on a network that is connected through a switch.
- D. A web server that is connected to a switch is affected by a DDoS attack.

**Answer:** B

#### Explanation:

A large image upload is more probable to generate that level of traffic.

15 SSH session would mean an average of 200pps per session, and they simply mention that the session remain connected, if there are no inputs in them they have 0pps and even a full config push would probably not require 200 packets total.

class copp-system-p-class-management set cos 2

police cir 3000 pps bc 32 packets conform transmit violate drop

[https://www.cisco.com/c/en/us/td/docs/switches/datacenter/nexus9000/sw/6-x/security/configuration/guide/b\\_Cisco\\_Nexus\\_9000\\_Series\\_NX-OS\\_Security\\_Configuration\\_Guide/b\\_Cisco\\_Nexus\\_9000\\_Series\\_NXOS\\_Security\\_Configuration\\_Guide\\_chapter\\_010001.html](https://www.cisco.com/c/en/us/td/docs/switches/datacenter/nexus9000/sw/6-x/security/configuration/guide/b_Cisco_Nexus_9000_Series_NX-OS_Security_Configuration_Guide/b_Cisco_Nexus_9000_Series_NXOS_Security_Configuration_Guide_chapter_010001.html)

#### NEW QUESTION 100

An engineer must add a new VRF (DC DC) to the network that runs with Multiprotocol Border Gateway Protocol (MP-BGP) and EVPN. The requirement for the new VRF is to allow communication of network

prefixes between PE1 and PE2. Which two sets of steps should be taken to complete the VRF configuration? (Choose two)

PE1: PE2:

```

vrf context DC1DC
rd 233:1
address-family ipv4 unicast
route-target import 233:1
route-target export 233:2
                    
```

PE1: PE2:

```

vrf context DC1DC
rd 233:1
address-family ipv4 unicast
route-target import 233:1
route-target export 233:2
                    
```

PE1: PE2:

```

vrf context DC1DC
rd 233:1
address-family ipv4 unicast
route-target import 233:1
route-target export 233:1
                    
```

PE1: PE2:

```

vrf context DC1DC
rd 233:1
address-family ipv4 unicast
route-target import 233:1
route-target export 233:1
                    
```

PE1: PE2:

```

vrf context DC1DC
rd 233:1
address-family ipv4 unicast
route-target import 233:2
route-target export 233:2
                    
```

- A. Option A
- B. Option B
- C. Option C
- D. Option D
- E. Option E

**Answer:** DE

#### NEW QUESTION 101

Which two features are used to allow a nondisruptive upgrade for the ISSU process? (Choose two.)

- A. connectivity management processor
- B. nonstop forwarding
- C. graceful restart
- D. stateful switchover
- E. advanced services license

**Answer:** BD

#### NEW QUESTION 103

Which two firmware packages are included in the Cisco UCS C-Series Rack-Mount UCS-Managed Server Software bundle? (Choose two.)

- A. system
- B. third-party
- C. PSU
- D. CIMC
- E. BIOS

**Answer:** DE

#### Explanation:

[https://www.cisco.com/c/en/us/td/docs/unified\\_computing/ucs/ucs-manager/GUI-User-Guides/Firmware-Mgmt/](https://www.cisco.com/c/en/us/td/docs/unified_computing/ucs/ucs-manager/GUI-User-Guides/Firmware-Mgmt/)

#### Cisco UCS C-Series Rack-Mount UCS-Managed Server Software Bundle

This bundle includes the following firmware images that are required to update components on rack-mount servers that have been integrated with and are managed by Cisco UCS Manager:

- CIMC firmware
- BIOS firmware
- Adapter firmware
- Storage controller firmware

#### NEW QUESTION 105

A network engineer is configuring the Cisco UCS service profile template with Ansible using this code.

```
hostname: 192.168.10.23
username: cisco
password: f718c4329405088301f6247ff982
name: DCE-CTRL
template_type: updating-template
uuid_pool: UUID-POOL
storage_profile: DCE-StgProf
maintenance_policy: default
server_pool: Container-Pool
host_firmware_package: 4.1(1a)
bios_policy: Docker
```

Which attribute must be used to apply the iSCSI initiator identifiers to all iSCSI vNICs for the service profiles derived from the service template?

- A. san\_connectivity\_policy
- B. iqn\_pool
- C. boot\_policy
- D. lan\_connectivrtty\_policy

**Answer:** B

#### NEW QUESTION 110

A customer requires a solution to orchestrate the configuration of storage arrays, firewalls, and Cisco ACI networking. Additionally, the orchestration product must support open automation and a service catalog. Which solution meets these requirements?

- A. Cisco UCS Director
- B. Cisco Intersight
- C. Cisco Data Center Network Manager
- D. Cisco Workload Optimization Manager

**Answer:** C

#### NEW QUESTION 111

The EPLD update of the supervisor module has been scheduled for several cisco MDS 9000 switches. What will be the impact of the update?

- A. All control plane traffic is stopped for the duration of the EPLD update and the switch remain operational for the duration of the upgrade.
- B. The redundant supervisor takes over while the EPLD update is in progress and there is no service disruption.
- C. All traffic is stopped for the duration of the EPLD update and the switch is rebooted after the upgrade is completed.
- D. The redundant supervisor takes over while the EPLD update is in progress and the switch is rebooted after the upgrade is completed.

**Answer:** C

**Explanation:**

An EPLD update of the supervisor module of fabric switches (Cisco MDS 9100, Cisco MDS 9200, and Cisco MDS 9300 Series switches) is disruptive since there is no redundant supervisor to take over while the update is in progress. All traffic through the system is stopped for the duration of the update and the switch is rebooted after the upgrade has completed. The update may take up to 30 minutes to complete.

[https://www.cisco.com/c/en/us/td/docs/switches/datacenter/mds9000/sw/6\\_2/release/notes/epld/epld\\_rn.html#pg](https://www.cisco.com/c/en/us/td/docs/switches/datacenter/mds9000/sw/6_2/release/notes/epld/epld_rn.html#pg)

**NEW QUESTION 116**

An engineer must configure a Nexus 7000 series switch for HSRP on VLAN 100. When fully functional, the router must be the active master. Which set of commands must be used to implement the scenario?

☐ feature hsrp  
interface vlan100  
ip address 10.1.1.2 255.255.255.0  
priority 120  
hsrp version 2  
hsrp 1000  
ip 10.1.1.1

☐ feature hsrp  
interface vlan100  
ip address 10.1.1.2 255.255.255.0  
priority 100  
hsrp version 2  
hsrp 1000  
ip 10.1.1.1

☐ feature-set hsrp  
interface vlan100  
ip address 10.1.1.2 255.255.255.0  
priority 110  
hsrp version 2  
hsrp 1000  
ip 10.1.1.1

☐ feature-set hsrp  
interface vlan100  
ip address 10.1.1.2 255.255.255.0  
priority 80  
hsrp version 2  
hsrp 1000  
ip 10.1.1.1

- A. Option A
- B. Option B
- C. Option C
- D. Option D

**Answer:** A

**NEW QUESTION 117**

A Cisco MDS 9000 series storage Switch has reloaded unexpectedly. Where does the engineer look for the latest core dump file?

- A. /mnt/core
- B. /mnt/pss
- C. /mnt/logs
- D. /mnt/recovery

**Answer:** B

**Explanation:**

Graphical user interface, text, application, email Description automatically generated



## Saving Cores

You can save cores (from the active supervisor module, the standby supervisor module, or any switching module) to an external CompactFlash (slot 0) or to a TFTP server in one of two ways:

- On demand—Copies a single file based on the provided process ID.
- Periodically—Copies core files periodically as configured by the user.

A new scheme overwrites any previously issued scheme. For example, if you perform another core log copy task, the cores are periodically saved to the new location or file.

## Saving the Last Core to Bootflash

This last core dump is automatically saved to bootflash in the `/mnt/pss/` partition before the switchover or reboot occurs. Three minutes after the supervisor module reboots, the saved last core is restored from the flash partition (`/mnt/pss`) back to its original RAM location. This restoration is a background process and is not visible to the user.

[https://www.cisco.com/c/en/us/td/docs/switches/datacenter/mds9000/sw/6\\_2/configuration/guides/system\\_management/nx-os/sysmgmt\\_cli\\_6-x/sys.html](https://www.cisco.com/c/en/us/td/docs/switches/datacenter/mds9000/sw/6_2/configuration/guides/system_management/nx-os/sysmgmt_cli_6-x/sys.html)  
[https://www.cisco.com/c/en/us/td/docs/switches/datacenter/mds9000/sw/6\\_2/configuration/guides/system\\_management/nx-os/sysmgmt\\_cli\\_6-x/sys.html#37039](https://www.cisco.com/c/en/us/td/docs/switches/datacenter/mds9000/sw/6_2/configuration/guides/system_management/nx-os/sysmgmt_cli_6-x/sys.html#37039)

### NEW QUESTION 122

Refer to the exhibit.

```
ACI-Leaf1# show ip route vrf DATACENTER:DC
10.20.1.0/24, ubest/mbest: 1/0, attached, direct, pervasive
    *via 10.0.8.65%overlay-1, [1/0], 4w3d, static
172.16.100.0/24, ubest/mbest: 1/0
    *via 10.1.168.95%overlay-1, [200/5], 3wod, bgp-132, internal, tag 132 (mpls-vpn)
172.16.99.0/24, ubest/mbest: 1/0
    *via 10.0.1.14, [20/0], 3wod, bgp-132, external, tag 200
```

Which two statements about the routing table of the leaf switch are true? (Choose two.)

- A. The next hop 10.0.1.14 for route 172.16.99.0/24 is the TEP address of a border leaf in ACI.
- B. 172.16.100.0/24 is a BD subnet in ACI.
- C. The next hop 10.0.8.65 for route 10.20.1.0./24 is the TEP address of a border leaf in ACI.
- D. The next hop 10.1.168.95 for route 172.16.100.0/24 is the TEP address of a border leaf in ACI.
- E. 10.20.1.0./24 is a BD subnet in ACI.

**Answer:** DE

### NEW QUESTION 125

Which component is disrupted when the cisco integrated Management controller is upgraded on a cisco UCS series server?

- A. Cisco UCS Manager
- B. SAN traffic
- C. KVM sessions
- D. Data traffic

**Answer:** C

### NEW QUESTION 126

An engineer performs a Firmware Auto Install upgrade through the Cisco UCS Manager. Which two Cisco UCS components are upgraded in the Install Server Firmware stage? (Choose two)

- A. Cisco UCS C-Series Rack-Mount Server
- B. I/O Modules
- C. Cisco UCS Manager
- D. Cisco UCS B-Series Blade Server
- E. Fabric Interconnects

**Answer:** BE

### NEW QUESTION 129

The Cisco Nexus switch Generic Online Diagnostics policy for a PortLoopback test requires 10 consecutive failures to error disable the port. The customer wants to change it to 5 consecutive failures. Which configuration applies the changes for module 1 only?

- ❖ Nexus(config)# event manager applet custom-PortLoopback override \_\_PortLoopback  
Nexus(config-applet)# event gold mod all test PortLoopback testing-type bootup consecutive-failure 5  
Nexus(config-applet)# action 1 publish-event
- ❖ Nexus(config)# event manager applet custom-PortLoopback override \_\_PortLoopback  
Nexus(config-applet)# event gold mod 1test PortLoopback testing-type bootup consecutive-failure 5  
Nexus(config-applet)# action 1 publish-event
- ❖ Nexus(config)# event manager applet custom-PortLoopback override \_\_PortLoopback  
Nexus(config-applet)# event gold mod all test PortLoopback testing-type monitoring consecutive-failure 5  
Nexus(config-applet)# action 1 policy-default
- ❖ Nexus(config)# event manager applet custom-PortLoopback override \_\_PortLoopback  
Nexus(config-applet)# event gold mod 1 test PortLoopback testing-type monitoring consecutive-failure 5  
Nexus(config-applet)# action 1 policy-default

- A. Option A
- B. Option B
- C. Option C
- D. Option D

**Answer: D**

**Explanation:**

“mod all” is incorrect. “mod 1test” is incorrect. “publish event” is incorrect. “mod 1 test” is correct. It is with “policy-default”.

[https://www.cisco.com/c/en/us/td/docs/switches/datacenter/nexus7000/sw/system-management/guide/b\\_Cisco\\_Nexus\\_7000\\_Series\\_NX-OS\\_System\\_Management\\_Configuration\\_Guide-RI/configuring\\_online\\_diagnostics.html](https://www.cisco.com/c/en/us/td/docs/switches/datacenter/nexus7000/sw/system-management/guide/b_Cisco_Nexus_7000_Series_NX-OS_System_Management_Configuration_Guide-RI/configuring_online_diagnostics.html)

[https://www.cisco.com/c/en/us/td/docs/switches/datacenter/nexus9000/sw/93x/system-management/bcisco-nexus-9000-series-nx-os-system-management-configuration-guide-93x/b-cisco-nexus-9000-seriesnxos-system-management-configuration-guide-93x\\_chapter\\_011010.html](https://www.cisco.com/c/en/us/td/docs/switches/datacenter/nexus9000/sw/93x/system-management/bcisco-nexus-9000-series-nx-os-system-management-configuration-guide-93x/b-cisco-nexus-9000-seriesnxos-system-management-configuration-guide-93x_chapter_011010.html)

<https://www.ciscolive.com/c/dam/r/ciscolive/us/docs/2017/pdf/BRKDCN-3234.pdf>

**NEW QUESTION 132**

A DNS server with IP address 192.168.1.1 is deployed in a data center A network engineer must configure a Cisco UCS Fabric Interconnect to use this DNS. Which configuration should be applied?

- ❖ **fiel-mgmt-A# scope system**  
**fiel-mgmt-A /system # create dns 192.168.1.1**  
**fiel-mgmt-A /system\* # commit-buffer**
- ❖ **fiel-mgmt-A# scope fabric-interconnect a**  
**fiel-mgmt-A /fabric-interconnect # set name 192.168.1.1**  
**fiel-mgmt-A /fabric-interconnect # scope system**  
**fiel-mgmt-A /system # commit-buffer**
- ❖ **fiel-mgmt-A# scope fabric-interconnect a**  
**fiel-mgmt-A /fabric-interconnect # set name 192.168.1.1**  
**fiel-mgmt-A /fabric-interconnect\* # commit-buffer**
- ❖ **fiel-mgmt-A# scope system**  
**fiel-mgmt-A /system # scope services**  
**fiel-mgmt-A /system/services # create dns 192.168.1.1**  
**fiel-mgmt-A /system/services\* # commit-buffer**

- A. Option A
- B. Option B
- C. Option C
- D. Option D

**Answer: D**

**NEW QUESTION 136**

A company must security harden its Cisco UCS C-Series servers. The security policy requires all out-of-band management to meet these requirements

- It must encrypt all traffic
- It must use nondefault ports
- It must provide private administrative sessions Which Cisco IMC corffiguratn meets the requirements?

```
data1# scope sol
data1 /sol # set enabled yes
data1 /sol *# set encrypted tls1.2
data1 /sol *# set port 3389
data1 /sol *# set session max 2
data1 /sol *# set deny-local yes

data1# scope cimc
data1 /cimc # set enabled yes
data1 /cimc *# set encrypted tls
data1 /cimc *# set kvm-port 1972
data1 /cimc *# set max-sessions 1
data1 /cimc *# set local-session deny

data1# scope oob
data1 /oob # set enabled no
data1 /oob *# set encrypted yes
data1 /oob *# set kvm-port 2068
data1 /oob *# set max-sessions 1
data1 /oob *# set local-access no

data1# scope kvm
data1 /kvm # set enabled yes
data1 /kvm *# set encrypted yes
data1 /kvm *# set kvm-port 3168
data1 /kvm *# set max-sessions 1
data1 /kvm *# set local-video no
```

- A. Option A
- B. Option B
- C. Option C
- D. Option D

**Answer: D**

#### NEW QUESTION 139

Which two actions should be performed before upgrading the infrastructure and firmware of multiple UCS blades? (Choose two)

- A. Verify if the bootflash on the fabric interconnects in the Cisco UCS has at least 15% available space
- B. Enable Smart Call Home feature during the firmware upgrade process
- C. Verify if the bootflash on the fabric interconnects in the Cisco UCS has at least 10% available space
- D. Run the Check Conformance feature to verify that all your components are running the compatible firmware version after the upgrade
- E. Get Full State and All Configuration backup files before beginning the upgrade

**Answer: DE**

#### NEW QUESTION 141

Refer to the exhibit.

```
OTV-Site1# show otv
OTV Overlay Information
Site Identifier 0000.0000.0111
Overlay interface Overlay200
VPN name: Overlay200
VPN state: UP
Extended vlans: 178 2500-2563 (Total:65)
Join interface(s): Eth1/2 (20.1.1.1)
Site vlan: 1999 (up)
AED-Capable: Yes
Capability: Unicast-Only
Is Adjacency Server: Yes
Adjacency Server(s): 20.1.1.1/20.2.1.1
```

A network engineer is setting up a multihomed OTV network. The first site has been set up with a primary and secondary adjacency server. Which configuration must be added on the remote OTV AEDs site?

- A. interface Overlay200 otv join-interface Ethernet1/2 otv extend-vlan 178, 2500-2563 otv use-adjacency-server 20.1.1.1 unicast-only
- B. interface Overlay200 otv join-interface Ethernet1/2 otv extend-vlan 178, 2500-2563 otv adjacency-server unicast-only
- C. interface Overlay200 otv join-interface Ethernet1/2 otv extend-vlan 178, 2500-2563
- D. interface Overlay200 otv join-interface Ethernet1/2 otv extend-vlan 178, 2500-2563 otv use-adjacency-server 20.1.1.1 20.2.1.1 unicast-only

**Answer: D**

#### NEW QUESTION 145

Refer to the exhibit.



```
N7K-1
spanning-tree vlan 1-10 priority 8192

vpc domain 100
  role priority 100
  peer-keepalive destination 10.1.1.2 source 10.1.1.1
vrf default
  delay restore 60
  peer-switch
  auto-recovery
  ip arp synchronize

N7K-2
spanning-tree vlan 1-10 priority 8192

vpc domain 100
  role priority 200
  peer-keepalive destination 10.1.1.1 source 10.1.1.2
vrf default
  delay restore 60
  peer-switch
  auto-recovery
  ip arp synchronize
```

The STP priority of N7K-1 and N7K-2 are the lowest in the network. Which statement describes STP on the vPC?

- A. N7K-1 appears as the STP root.
- B. N7K-2 appears as the STP root.
- C. N7K-1 and N7K-2 appear as a single STP root.
- D. N7K-1 preempts N7K-2 as the STP root.

**Answer:** C

#### NEW QUESTION 148

Cisco Nexus 9000 Series Switches are configured with LACP protocol and default aging timers. What is the impact on the LACP peer during an ISSU upgrade?

- A. The LACP peer connection terminates.
- B. The LACP peer session remains up.
- C. The LACP peer renegotiates the adjacency.
- D. The LACP peer connection resets.

**Answer:** B

#### Explanation:

[https://www.cisco.com/c/en/us/td/docs/switches/datacenter/nexus9000/sw/6-x/interfaces/configuration/guide/b\\_](https://www.cisco.com/c/en/us/td/docs/switches/datacenter/nexus9000/sw/6-x/interfaces/configuration/guide/b_ISSU_and_ungraceful_switchovers_are_not_supported_with_LACP_fast_timers.html) ISSU and ungraceful switchovers are not supported with LACP fast timers.

#### NEW QUESTION 151

Drag and drop the Hyperflex characteristics from the left onto the appropriate Hyper Hex node types on the right.



uses only SSD drives for caching

contains HDDs for the capacity layer

uses SSD drives or NVMe storage for caching

has SSD drives for the capacity layer

recommended for repeatable and sustainable high performance, especially for scenarios with a larger working set of data

recommended for capacity-sensitive solutions, lower budgets, and fewer performance-sensitive applications

Hybrid Node

All Flash Node

- A. Mastered
- B. Not Mastered

Answer: A

Explanation:

uses only SSD drives for caching

contains HDDs for the capacity layer

uses SSD drives or NVMe storage for caching

has SSD drives for the capacity layer

recommended for repeatable and sustainable high performance, especially for scenarios with a larger working set of data

recommended for capacity-sensitive solutions, lower budgets, and fewer performance-sensitive applications

Hybrid Node

uses only SSD drives for caching

contains HDDs for the capacity layer

recommended for capacity-sensitive solutions, lower budgets, and fewer performance-sensitive applications

All Flash Node

uses SSD drives or NVMe storage for caching

has SSD drives for the capacity layer

recommended for repeatable and sustainable high performance, especially for scenarios with a larger working set of data

NEW QUESTION 152  
Refer to the exhibit

```
MDS-B# show role
Role: network-admin
Description: Predefined Network Admin group. This role cannot be modified.
Vsan policy: permit (default)
-----
Rule    Type    Command-type    Feature
-----
1       permit  clear           *
2       permit  config          *
3       permit  debug           *
4       permit  exec            *
5       permit  show            *

Role: default-role
Description: This is a system defined role and applies to all users.
Vsan policy: permit (default)
-----
Rule    Type    Command-type    Feature
-----
1       permit  show            system
2       permit  show            snmp
3       permit  show            module
4       permit  show            hardware
5       permit  show            environment

Role: san-users
Description: SAN users
Vsan policy: permit (default)
-----
```

A network engineer created a new role to be assigned to the SAN users. The requirement is for users to have these characteristics:

- permitted to show access to the system, SNMP, module, and hardware information
- permitted to run debug zone and exec fcping commands
- restricted from accessing show feature environment command

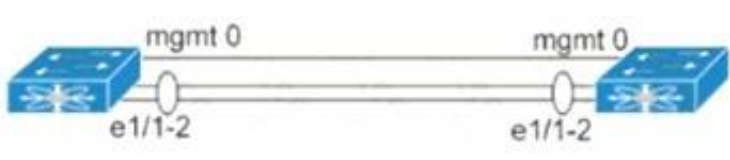
Which configuration set meets these requirements?

- A. Option A
- B. Option B
- C. Option C
- D. Option D

**Answer: D**

**NEW QUESTION 155**

Refer to the exhibit.



```

hostname N9K-1
vpc domain 100
  role priority 100
  peer-keepalive destination 10.10.10.2
interface port-channel100
  switchport mode trunk
  spanning-tree port type network
vpc peer-link
interface Ethernet1/1
  switchport mode trunk
interface Ethernet1/2
  switchport mode trunk
interface mgmt0
  vrf member management
  ip address 10.10.10.1/24

```

```

hostname N9K-2
vpc domain 100
  role priority 90
  peer-keepalive destination 10.10.10.1
interface port-channel100
  switchport mode trunk
  spanning-tree port type network
vpc peer-link
interface Ethernet1/1
  switchport mode trunk
interface Ethernet1/2
  switchport mode trunk
interface mgmt0
  vrf member management
  ip address 10.10.10.2/24

```

Which action completes the vPC domain implementation?

- A. Allow VLANs on the vPC peer link member interfaces.
- B. Include the VRF management on the vPC domain.
- C. Configure the system MAC on the vPC domain.
- D. Add the vPC member ports to the vPC channel group.

**Answer: D**

**NEW QUESTION 159**

Drag and drop the keywords onto the URL request to collect all the subnets configured under tenant Production using a REST API. Not all options are used.

https://{{apic\_ip}}/api/
/uni/tn-Production.json?

=
&

=fvSubenet

target-subtree-class

query-target-filter

query-target

children

subtree

class

mo

- A. Mastered  
 B. Not Mastered

Answer: A

**Explanation:**

Graphical user interface, text Description automatically generated

**NEW QUESTION 164**

An engineer installed a new Nexus switch with the mgm0interface in vrf management. Connectivity to the rest of the network needs to be tested from the guest shell of the NX-OS. Which command tests connectivity from the shell of the NX-OS?

- ☐ [guestshell@guestshell ~]\$ ping 173.37.145.84 vrf management
- ☐ [guestshell@guestshell ~]\$ chvrf management ping 173.37.145.84
- ☒ [guestshell@guestshell ~]\$ iping vrf management ip 173.37.145.84
- ☐ [guestshell@guestshell ~]\$ dohost "ping vrf management 173.37.145.84"

- A. Option A  
 B. Option B  
 C. Option C  
 D. Option D

Answer: B

**NEW QUESTION 166**

Refer to the exhibit.

```

N7Switch# sh run | section callhome
callhome
email-contact admin@acme.com
phone-contact +1-800-123-4567
streetaddress 111 Somestreet st. Sometown, Somewhere
destination-profile full_txt email-addr netadmin@acme.com
transport email smtp-server 192.168.1.25 port 25
transport email from N7Switch@acme.com
enable
alert-group Inventory user-def-cmd show logging last 100
N7Switch#
  
```

A network engineer is configuring the Smart Call Home feature on a Cisco Nexus Series Switch. An email must be generated that contains the last 100 lines of the log every time a new piece of hardware is inserted into the chassis. Which command must be added to the configuration to receive the email?

- A. alert-group Linecard-Hardware user-def-cmd show logging last 100
- B. destination-profile Operations alert-group Inventory
- C. destination-profile Operations message-level 2
- D. alert-group Operations user-def-cmd show logging last 100

Answer: A

**NEW QUESTION 171**

An engineer must perform a nondisruptive software upgrade on a dual supervisor Cisco Nexus 7000 series switch. What is the cause of the upgrade being disruptive?



- A. The show install all impact command is not issued before the upgrade
- B. The kickstart image is installed by using the Install all kickstart image system image command
- C. Attempt to simultaneously upgrade more than three cards
- D. Change to the configuration settings or the network connections during the upgrade process

**Answer:** D

#### NEW QUESTION 172

Refer to the exhibit.

```
NEXUS (config)# feature tacacs+
NEXUS (config)# tacacs-server timeout 5
NEXUS (config)# tacacs-server directed-request
NEXUS (config)# tacacs-server deadtime 0
NEXUS (config)# tacacs server host 10.1.50.20 port 49
NEXUS (config)# tacacs-server host 10.1.50.20 key 7 "Flwhg123" timeout 1
NEXUS (config)# aaa group server tacacs+ ISE
NEXUS (config-tacacs+)# server 10.1.50.20
NEXUS (config-tacacs+)# deadtime 10
NEXUS (config-tacacs+)# use-vrf management
NEXUS (config-tacacs+)# source-interface mgmt 0
NEXUS (config)# aaa authentication login default group ISE
```

What is the result of implementing this configuration?

- A. The TACACS+ server uses the type-6 encrypted format.
- B. The switch queries the TACACS+ server by using a clear text PAP login.
- C. The timeout value on the TACACS+ server is 10 seconds.
- D. The switch queries the TACACS+ server by using an encrypted text PAP login.

**Answer:** D

#### Explanation:

tacacs-server key

To configure a global TACACS+ shared secret key, use the tacacs-server key command. To remove a configured shared secret, use the no form of this command.

tacacs-server key [0 | 7] shared-secret Syntax Description

7 (Optional) Configures a preshared key specified in encrypted text to authenticate communication between the TACACS+ client and server.

By default, the Cisco NX-OS device uses Password Authentication Protocol (PAP) authentication between the Cisco NX-OS device and the remote server. If you enable CHAP, you need to configure your RADIUS or TACACS+ server to recognize the CHAP vendor-specific attributes (VSAs).

#### NEW QUESTION 177

An engineer must configure the HSRP protocol between two Cisco Nexus 9000 Series Switches This configuration is present on Nexus A.

```
! Nexus A
key chain NHRP-KEYS
key 1010
key-string 7 072a43795c1d0c4050883003163b3e2121a720361a021e11
accept-lifetime 00:00:00 Jan 01 2021 23:59:59 Aug 31 2021
send-lifetime 00:00:00 Jan 01 2021 23:59:59 Jul 31 2021
key 1020
key-string 7 086f43cd5c150c1702630203163b3e2221a520261a011a12
accept-lifetime 00:00:00 Jul 01 2021 23:59:59 Dec 31 2021
send-lifetime 00:00:00 Jul 01 2021 23:59:59 Dec 31 2021
interface ethernet 1/1
ip 209.165.200.226/27
hsrp 200
priority 201
ip 209.165.200.225
-- missing output --
no shutdown
```

The final HSRP configuration must meet these requirements

- > The HSRP communication must be secured on both switches
- > Both switches must support more than 300 groups

Which two commands must be added to the HSRP configuration on Nexus A to complete these requirements? (Choose two)

- A. hsrp version 1
- B. hsrp version 2
- C. authentication text 1020
- D. authenticate md5 key-chain NHRP-KEYS
- E. authentication text 1010

**Answer:** BD

#### NEW QUESTION 182

An engineer needs to connect Cisco UCS Fabric Interconnect (FI) to an external storage array. Due to budget limitations, the engineer must connect a Cisco UCS FI directly to an FC storage port. Which two actions must be taken to complete this connection? (Choose two.)



- A. Configure the fabric interconnect in FC switch mode.
- B. Set FC zoning to disabled when creating the VSAN
- C. Create a storage connection policy.
- D. Configure the fabric interconnect in end-host mode,
- E. Create the required VSAN in the SAN cloud.

**Answer:** AE

#### NEW QUESTION 184

What are two types of FC/FCoE oversubscription ratios? (Choose two.)

- A. server storage to end-node count
- B. port bandwidth to uplink bandwidth
- C. edge ISL bandwidth to core ISL bandwidth
- D. host bandwidth to storage bandwidth
- E. switch processing power to end-node processing power

**Answer:** CD

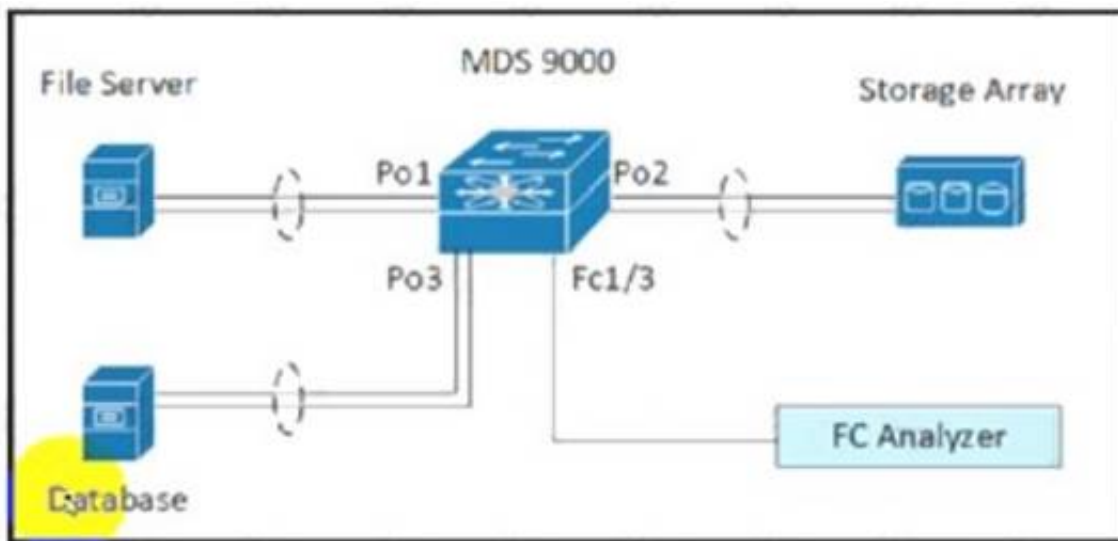
#### Explanation:

<https://www.ciscolive.com/c/dam/r/ciscolive/us/docs/2017/pdf/BRKDCN-1121.pdf>

[https://www.cisco.com/c/en/us/td/docs/switches/datacenter/nexus5000/sw/operations/n5k\\_fcoe\\_ops.html](https://www.cisco.com/c/en/us/td/docs/switches/datacenter/nexus5000/sw/operations/n5k_fcoe_ops.html)

#### NEW QUESTION 189

Refer to the exhibit.



```
interface port-channel 1
  channel mode active
interface port-channel 2
  channel mode active
interface fcl/1-2
  channel-group 1
  no shutdown
interface fcl/4-5
  channel-group 2
  no shutdown
interface fcl/7-8
  channel-group 3
  no shutdown
vsan database
  vsan 100 name fabricl
  vsan 100 interface port-channel 1
  vsan 100 interface port-channel 2
  vsan 100 interface port-channel 3
```

A storage engineer must monitor the traffic from the file server to the FC analyzer. The file server and the database use the same storage array. Which configuration must be applied to the Cisco MDS 9000 Series Switch to accomplish this goal?

- ☐ MDS-9000(config)# span session 1  
MDS-9000(config-span)# destination interface fc1/3  
MDS-9000(config-span)# source interface port-channel 1
- ☐ MDS-9000(config)# span session 1  
MDS-9000(config-span)# destination interface port-channel 2  
MDS-9000(config-span)# source interface vsan 100
- ☐ MDS-9000(config)# span session 1  
MDS-9000(config-span)# destination interface port-channel 2  
MDS-9000(config-span)# source interface fc1/1
- ☐ MDS-9000(config)# span session 1  
MDS-9000(config-span)# destination interface vsan 100  
MDS-9000(config-span)# source interface port-channel 1

- A. Option A
- B. Option B
- C. Option C
- D. Option D

Answer: B

#### NEW QUESTION 193

The VMM domain is integrated between Cisco APICs and vCenter using a distributed vSwitch. The traffic must be blocked between a subset of endpoints in an EPG based on specific VM attributes and the rest of the VMs in that EPG. Which set of actions blocks this traffic?

- ☐ 1. Set Allow Microsegmentation under the EPG VMM Domain Association to "True"  
2. Set Intra-EPG Isolation to "Enforced" for the EPG  
3. Set Intra-EPG Isolation to "Enforced" for the uSeg EPG
- ☐ 1. Set Allow Microsegmentation under the EPG VMM Domain Association to "True"  
2. Set Intra-EPG Isolation to "Unenforced" for the EPG  
3. Set Intra-EPG Isolation to "Unenforced" for the uSeg EPG
- ☐ 1. Set Allow Microsegmentation under the EPG VMM Domain Association to "False"  
2. Set Intra-EPG Isolation to "Unenforced" for the EPG  
3. Set Intra-EPG Isolation to "Enforced" for the uSeg EPG
- ☒ 1. Set Allow Microsegmentation under the EPG VMM Domain Association to "True"  
2. Set Intra-EPG Isolation to "Enforced" for the EPG  
3. Set Intra-EPG Isolation to "Unenforced" for the uSeg EPG

- A. Option A
- B. Option B
- C. Option C
- D. Option D

Answer: A

#### NEW QUESTION 197

An administrator needs to configure an automated policy to shut down a link when a given threshold is exceeded on MDS switch. Which feature needs to be used?

- A. Scheduler
- B. RMON
- C. EEM
- D. Call Home

Answer: C

#### Explanation:

[https://www.cisco.com/c/en/us/td/docs/switches/datacenter/mds9000/sw/6\\_2/configuration/guides/interfaces/nx-os/cli\\_interfaces/intf.html](https://www.cisco.com/c/en/us/td/docs/switches/datacenter/mds9000/sw/6_2/configuration/guides/interfaces/nx-os/cli_interfaces/intf.html)

#### NEW QUESTION 201

Refer to the exhibit.

```
<?xml version="1.0" encoding="UTF-8"?><imdata totalCount="1"><error  
code="403" text="Token was invalid (Error: Token timeout)"/></imdata>
```

An engineer configures a new application profile using REST API and receives this error message. Which method can be used before application profile can be configured?

- A. POST to aaaLogin
- B. POST to aaaRefresh
- C. POST to aaaLogout
- D. GET to aaaListDomains

Answer: A

#### Explanation:

[https://www.cisco.com/c/en/us/td/docs/switches/datacenter/aci/apic/sw/2-x/rest\\_cfg/2\\_1\\_x/b\\_Cisco\\_APIC\\_REST\\_API\\_Configuration\\_Guide/b\\_Cisco\\_APIC\\_REST\\_API\\_Configuration\\_Guide\\_chapter\\_01.html](https://www.cisco.com/c/en/us/td/docs/switches/datacenter/aci/apic/sw/2-x/rest_cfg/2_1_x/b_Cisco_APIC_REST_API_Configuration_Guide/b_Cisco_APIC_REST_API_Configuration_Guide_chapter_01.html)

#### Authentication

REST API username- and password-based authentication uses a special subset of request Universal Resource Identifiers (URIs), including **aaaLogin**, **aaaLogout**, and **aaaRefresh** as the DN targets of a POST operation. Their payloads contain a simple XML or JSON payload containing the MO representation of an **aaaUser** object with the attribute name and **pwd** defining the username and password: for example, **<aaaUser name='admin' pwd='password'/>**. The response to the POST operation will contain an authentication token as both a Set-Cookie header and an attribute to the **aaaLogin** object in the response named **token**, for which the XPath is **/imdata/aaaLogin/@token** if the encoding is XML. Subsequent operations on the REST API can use this token value as a cookie named **APIC-cookie** to authenticate future requests.

#### Subscription

The REST API supports the subscription to one or more MOs during your active API session. When any MO is created, changed, or deleted because of a user- or system-initiated action, an event is generated. If the event changes the data on any of the active subscribed queries, the APIC will send out a notification to the API client that created the subscription.

**NEW QUESTION 205**

What are two capabilities of the Cisco Network Assurance Engine? (Choose two.)

- A. It verifies the speed of network packet flows by using telemetry.
- B. It predicts the network load on a data center.
- C. It validates that devices comply with network security policies.
- D. It ensures that network performance meets an SLA.
- E. It predicts the impact of changes to the network.

**Answer:** CE

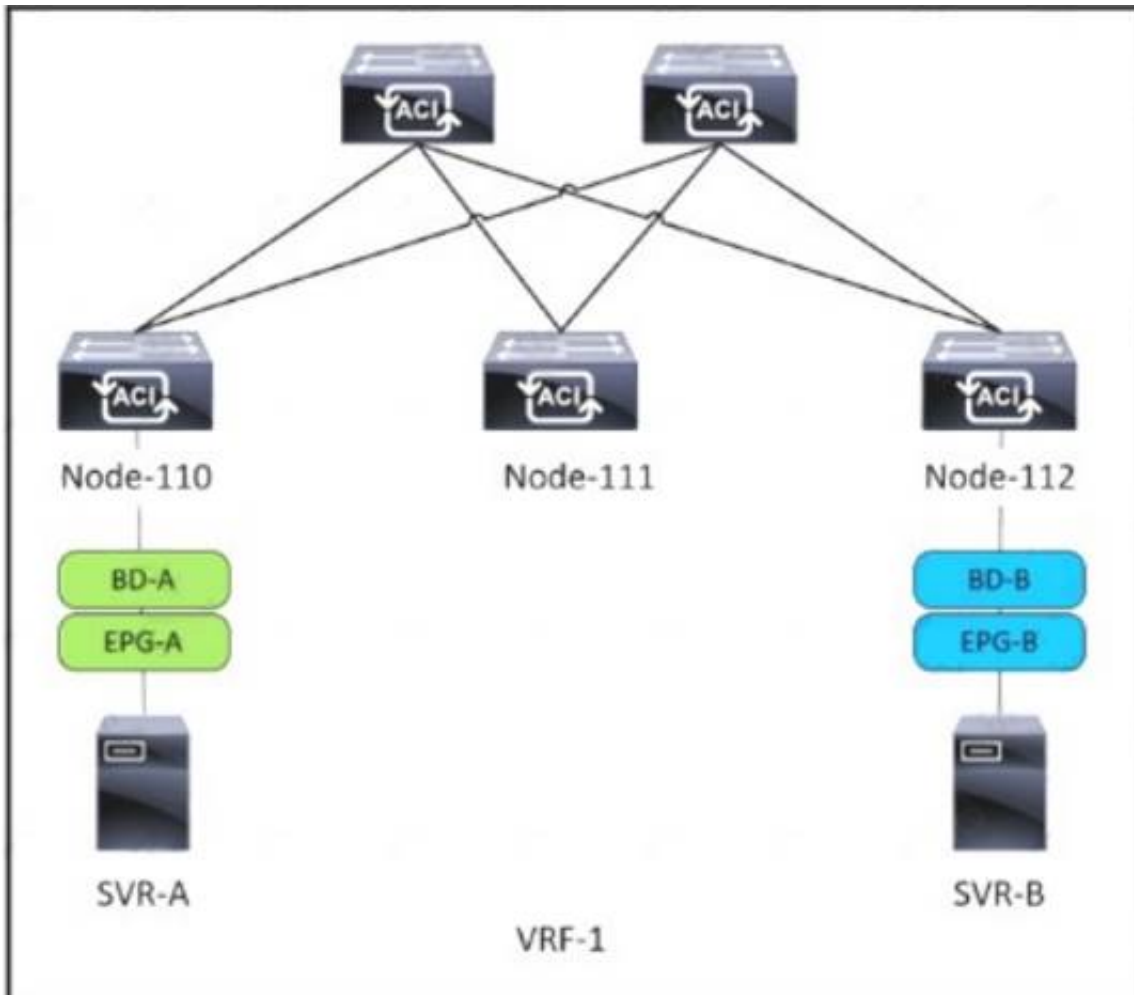
**Explanation:**

- Predict the impact of network changes
- Verify network-wide behavior
- Ensure network security policy and compliance

<https://www.cisco.com/c/en/us/products/collateral/data-center-analytics/network-assurance-engine/at-a-glance-c>

**NEW QUESTION 207**

Refer to the exhibit.



SVR-A in EPG-A/BD-A fails to reach SVR-B in EPG-B/BD-B. Which two conditions should be verified to analyze the traffic between the two EPGs? (Choose two.)

- A. A contract exists between EPG-A and EPG-B and allows the traffic.
- B. Limit Endpoint Learning is disabled on the bridge domain for EPG-B.
- C. SVR-B is learned as an endpoint in EPG-B from Node-112.
- D. EPG-A and EPG-B are excluded from the preferred group.
- E. The bridge domain for EPG-B floods ARP packets.

**Answer:** AC

**NEW QUESTION 210**

A network engineer must configure FCoE on an interface of a Cisco MDS 9000 Series Switch. It should be used for mapping between VLAN 600 and VSAN 6. Drag and drop the commands from the bottom into their implementation order in the FCoE configuration. Not all commands are used.

```

switch(config)# vlan 600
switch(config-vlan)# 
switch(config)# interface ethernet 1/2
switch(config-if)# switchport mode trunk
switch(config-if)# switchport trunk 
switch(config-if)# spanning-tree port type edge trunk
switch(config)# interface vfc 6
switch(config-if)# bind interface ethernet 1/2
switch(config)# vsan database
switch(config-vsan)# 
        
```

bind vsan 6

vsan 6 interface vfc 6

allowed vlan 1

allowed vlan 1,600

fcoe vsan 6

vsan 6 bind interface vfc 6



- A. Mastered
- B. Not Mastered

**Answer:** A

**Explanation:**

Graphical user interface, text Description automatically generated

**NEW QUESTION 215**

A network engineer must perform a backup and restore of the Cisco Nexus 5000 Series Switch configuration. The backup must be made to an external backup server. The only protocol permitted between the Cisco Nexus Series switch and the backup server is UDP. The backup must be used when the current working configuration of the switch gets corrupted. Which set of steps must be taken to meet these requirements?

- A. 1. Perform a running-config backup to an SFTP serve
- B. 2. Copy backup-config from the SFTP server to the running-config file.
- C. 1. Perform a startup-config backup to a TFTP serve
- D. 2. Copy backup-config from the backup server to the running-config file.
- E. 1. Perform a running-config backup to an SCP serve
- F. 2. Copy running-config in the boot flash to the running-config file.
- G. 1. Perform a startup-config backup to an FTP serve
- H. 2. Copy startup-config in the boot flash to the running-config file.

**Answer:** B

**Explanation:**

TFTP runs on UDP 69 = Is correct

**NEW QUESTION 217**

An engineer needs to make an XML backup of Cisco UCS Manager The backup should be transferred using an authenticated and encrypted tunnel and it should contain all system and service profiles configuration Which command must be implemented to meet these requirements?

- ☐ create file scp://user@host35/backups/all-config9.bak all-configuration
- ☐ copy startup-config scp://user@host35/backups/all-config9.bak all-configuration
- ☒ create backup scp://user@host35/backups/all-config9.bak all-configuration
- ☐ copy running-config scp://user@host35/backups/all-config9.bak all-configuration

- A. Option A
- B. Option B
- C. Option C
- D. Option D

**Answer:** C

**Explanation:**

[https://www.cisco.com/en/US/docs/unified\\_computing/ucs/sw/cli/config/guide/1.4.1/CLI\\_Config\\_Guide\\_1\\_4\\_1](https://www.cisco.com/en/US/docs/unified_computing/ucs/sw/cli/config/guide/1.4.1/CLI_Config_Guide_1_4_1)

The following example creates a disabled all-configuration backup operation for hostname host35 and commits the transaction:

```
UCS-A# scope system
UCS-A /system* # create backup scp://user@host35/backups/all-config9.bak all-configuration disabled
Password:
UCS-A /system* # commit-buffer
UCS-A /system #
```

**NEW QUESTION 222**

Host 1 is in VLAN 100 located is DataCenter 1 and Host2 is in VLAN200 located in DataCenter2. Which OTV VLAN mapping configuration allows Layer 2 connectivity between these two hosts?

- A. DC1:  
**interface Overlay1**  
**otv extend-vlan 100**  
**otv vlan mapping 100 to 200**
- DC2:  
**interface Overlay1**  
**otv extend-vlan 100**  
**otv vlan mapping 100 to 200**
- B. DC1:  
**interface Overlay1**  
**otv extend-vlan 100**  
**otv vlan mapping 100 to 200**
- DC2:  
**interface Overlay1**  
**otv extend-vlan 200**
- C. DC1:  
**interface Overlay1**  
**otv extend-vlan 100**
- DC2:  
**interface Overlay2**  
**otv extend-vlan 200**
- D. DC1:  
**interface Overlay1**  
**otv extend-vlan 100**
- DC2:  
**interface Overlay1**  
**otv extend-vlan 200**

- A. Option A  
 B. Option B  
 C. Option C  
 D. Option D

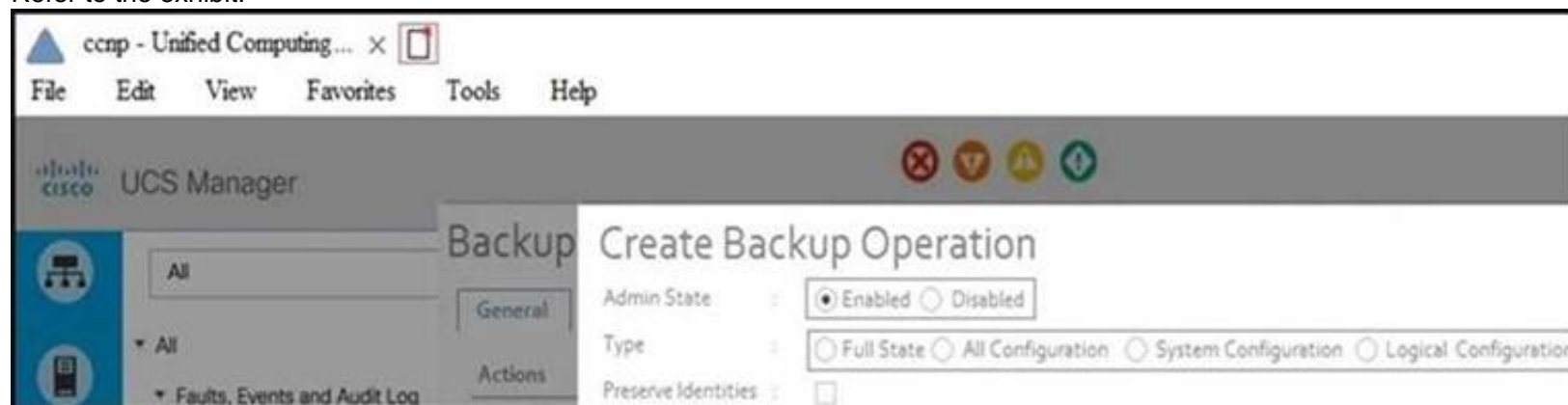
**Answer: B**

**Explanation:**

<https://www.cisco.com/c/en/us/support/docs/switches/nexus-7000-series-switches/200998-Nexus-7000-OTV-V>  
<https://www.cisco.com/c/en/us/support/docs/switches/nexus-7000-series-switches/200998-Nexus-7000-OTV-V>

**NEW QUESTION 224**

Refer to the exhibit.



Which backup operation type does not include the Preserve Identities feature?

- A. logical configuration  
 B. system configuration  
 C. full state  
 D. all configuration

**Answer:** C

**Explanation:**

This checkbox remains selected for All Configuration and System Configuration. Full State backup does not have Preserver Identity feature. All configs, logical and system backups seem to allow “preserve identities”:  
<https://books.google.pt/books?id=5VXUDwAAQBAJ&pg=PT699&lpg=PT699&dq=Preserve+Identities+feature+backup+ucs&source=bl&ots=daWxti4DV&sig=ACfU3U3X8UIPtS8EewzRIqTxqpyNVqOaNQ&hl=es419&sa=X&ved=2ahUKEwiYhtaxyMDqAhXFzIUkHXl8CzoQ6AEwC3oECAoQAQ#v=onepage&q=Preserve%20Identities%20feature%20backup%20ucs&f=false>

**NEW QUESTION 228**

An engineer changed a configuration and must perform a rollback. Which statement applies to a Cisco Nexus 5600 Series switch?

- A. Errors are skipped when an atomic rollback type is triggered.
- B. A user who is assigned to the network-operator user role can perform a rollback.
- C. The configuration rollback functionality is disabled when FCoE is enabled.
- D. A system checkpoint is generated automatically when the running configuration is saved to NVRAM.

**Answer:** C

**Explanation:**

[https://www.cisco.com/c/en/us/td/docs/switches/datacenter/nexus5000/sw/system\\_management/503\\_n1\\_1/cisco\\_n5k\\_system\\_mgmt\\_cg\\_rel\\_503\\_n1\\_1\\_chapter11.pdf](https://www.cisco.com/c/en/us/td/docs/switches/datacenter/nexus5000/sw/system_management/503_n1_1/cisco_n5k_system_mgmt_cg_rel_503_n1_1_chapter11.pdf)  
[https://www.google.com/url?sa=t&source=web&rct=j&url=https://www.cisco.com/c/en/us/td/docs/switches/datacenter/nexus5000/sw/system\\_management/503\\_n1\\_1/cisco\\_n5k\\_system\\_mgmt\\_cg\\_rel\\_503\\_n1\\_1\\_chapter11.pdf&ved=2ahUKEwjQ8ubTuK3xAhWm3jgGHZ9gB0oQFjAAegQIBRAC&usg=AOvVaw2j0nnvXiChAoVoxxX2Qx0g](https://www.google.com/url?sa=t&source=web&rct=j&url=https://www.cisco.com/c/en/us/td/docs/switches/datacenter/nexus5000/sw/system_management/503_n1_1/cisco_n5k_system_mgmt_cg_rel_503_n1_1_chapter11.pdf&ved=2ahUKEwjQ8ubTuK3xAhWm3jgGHZ9gB0oQFjAAegQIBRAC&usg=AOvVaw2j0nnvXiChAoVoxxX2Qx0g)

**NEW QUESTION 232**

An engineer must perform an initial configuration of VXLAN Tunnel End-Point functionality on the Cisco Nexus 9000 Series platform All the necessary features are already enabled on the switch Which configuration set must be used to accomplish this goal?

- ☒ NX9K(config)# interface loopback0  
NX9K(config-if)# ip address 10.10.10.11/32  
  
NX9K(config)# interface overlay0  
NX9K(config-if-overlay)# source-interface loopback0
- ☐ NX9K(config)# interface VLAN10  
NX9K(config-if-nve)# source-interface loopback0
- ☐ NX9K(config)# interface loopback0  
NX9K(config-if)# ip address 10.10.10.11/32  
  
NX9K(config)# interface tunnel1  
NX9K(config-if)# tunnel source loopback0  
  
NX9K(config)# interface ethernet1/1  
NX9K(config-if)# ip unnumbered loopback0
- ☐ NX9K(config)# interface loopback0  
NX9K(config-if)# ip address 10.10.10.11/32  
  
NX9K(config)# interface nve1  
NX9K(config-if-nve)# source-interface loopback0  
  
NX9K(config)# interface ethernet1/1  
NX9K(config-if)# ip unnumbered loopback0
- ☐ NX9K(config)# interface loopback0  
NX9K(config-if)# ip address 10.10.10.11/32  
  
NX9K(config)# interface VLAN10  
NX9K(config-if)# ip unnumbered loopback0  
  
NX9K(config)# interface nve1  
NX9K(config-if-nve)# source-interface loopback0

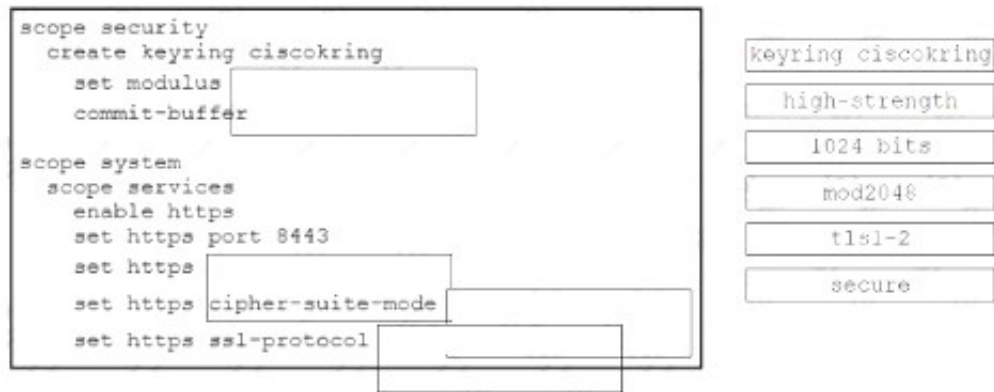
- A. Option A
- B. Option B
- C. Option C
- D. Option D

**Answer:** D

**NEW QUESTION 234**

An engineer must configure Cisco UCS Manager to accept only HTTPS connections that use TLS 1.2 The cipher security level must be high and the length of the keying key value must be 2048 bits Drag and drop the code snippets from the right onto the blanks in the code on the left to accomplish these goals Not all commands are used





- A. Mastered
- B. Not Mastered

**Answer:** A

**Explanation:**

Graphical user interface, application Description automatically generated

**NEW QUESTION 235**

An engineer must ensure fabric redundancy when implementing NPV mode on a Cisco MDS 9000 Series Switch. Which action enables fabric redundancy?

- A. Connect the NPV devices to multiple upstream switches.
- B. Add a port channel to upstream switches.
- C. Configure the NPV devices to use on external FLOGI database.
- D. Use TE ports to connect to upstream switches.

**Answer:** B

**NEW QUESTION 236**

Refer to the exhibit.

```
event manager applet local-backup
event cli match "copy running-config startup-config"
action 1 cli copy [ ] bootflash:/
current config.txt
action 2 syslog msg Configuration saved and copied to
bootflash
action 3 event-default
```

A network engineer must create an EEM script that saves a copy of the running configuration to bootflash and writes a message to syslog when a user saves the configuration to a Cisco Nexus 9000 Series Switch. Which command completes the configuration set?

- A. running-config
- B. policy-default
- C. syslog-config
- D. event-default

**Answer:** A

**NEW QUESTION 237**

An engineer must configuration a backup and restore of Cisco UCS Manager during the weekend maintenance windows. The configuration must be restored to its original state on Monday morning. The end users can make changes only to the Service Profile configuration. Which set of actions meets these requirements?

- A. Schedule a system backup to run at the start of every weekend and manually import the backup on Monday morning.
- B. Schedule a system backup to run at the start of every weekend and schedule the import of the backup to run on Monday morning
- C. Schedule a logical backup to run at the start of every weekend and manually import the backup on Monday morning.
- D. Schedule a logical backup to run at the start of every weekend and schedule the import of the backup to run on Monday morning.

**Answer:** B

**NEW QUESTION 241**

A POAP-enabled Cisco Nexus switch will not enter POAP mode. Which two conditions should be verified? (Choose two.)

- A. Bootflash must contain a special directory named POAP with poap.py file.
- B. The switch is in bootup process.
- C. No startup configuration is available.
- D. The license file is missing on the switch.
- E. No Cisco NX-OS image is present on the bootflash.

**Answer:** BC

**Explanation:**

POAP is an automatic provisioning and zero-touch deployment feature that assists device owners in the initial deployment and configuration of Nexus switches.

The feature works by checking for a local configuration script. If the script has been deleted, the switch has been reset to factory settings, or this is the first boot-up, the POAP daemon will connect to a preset list of servers to download an initial configuration file.

To perform this operation, the switch must first obtain an IP address from a local DHCP server. POAP configuration settings can also be passed through the DHCP response.

Which conditions should be verified, so they need to be TRUE. Like no startup (A) and bootup (B). C means that it needs to miss a license file and E means it needs to miss an NX-OS image.

**NEW QUESTION 244**

What is a benefit of independent resource scaling in Cisco HyperFlex hybrid architecture?

- A. flexible expansion of compute, caching, and capacity
- B. remote booting of converged servers
- C. multivendor converged node hardware support
- D. support for compute nodes with third-party storage

**Answer: D**

**NEW QUESTION 247**

Refer to the exhibit.

```
Start time: Mon Apr 15 09:23:01 2019
Last election time: Mon Apr 15 09:24:24 2019
A: UP, PRIMARY
B: UP, SUBORDINATE
A: memb state UP, lead state PRIMARY, mgmt services state: UP
B: memb state UP, lead state SUBORDINATE, mgmt services state: UP
heartbeat state PRIMARY_OK
INTERNAL NETWORK INTERFACES:
eth1, UP
eth2, UP
HA NOT READY
No device connected to this Fabric Interconnect
```

What be connected to clear the HA NOT READY status?

- A. server chassis
- B. network uplinks
- C. management ports
- D. Layer 1-Layer 2 ports

**Answer: A**

**NEW QUESTION 251**

A customer data center experiences bandwidth contention that affects the servers connected to the NPV enabled switch. The NPV switch is connected to the NPIV switch using two 10 Gb uplinks but the traffic originating from the connected hosts to the core switch exceeds the available bandwidth. The engineers decided to add a third uplink to the NPV server to increase the available bandwidth. Which set of commands must be used to provision the new uplink?

```
switch2(config)# npv auto-load-balance disruptive

! uplink to NPV Core
switch2(config-if)# switchport mode np

switch2(config)# port-channel load-balance ethernet source-dest-port

! uplink to NPV Core
switch2(config-if)# switchport mode np

switch2(config)# npv traffic-map server-interface

! uplink to NPV Core
switch2(config-if)# switchport mode npiv

switch2(config)# npv auto-load-balance

! uplink to NPV Core
switch2(config-if)# switchport mode npiv
```

- A. Option A
- B. Option B
- C. Option C
- D. Option D

**Answer: B**

**NEW QUESTION 254**

An engineer must allow communication between the APIC controller and an OpenStack OpFlex agent. The agent is running on a compute node directly plugged to a Cisco ACI leaf switch. The engineer must enable and extend Infra VLAN on the port facing the compute and extend the Infra VLAN to the host. Which action must be taken to meet these requirements?

- A. Enable the Infra VLAN on the Interface Profile policy
- B. Enable the Infra VLAN on the Attachable Access Entity Profile.
- C. Add the infra VLAN via the physical domain.
- D. Add the infra VLAN via the VMM domain.

**Answer: C**

**NEW QUESTION 257**

Refer to the exhibit.

```
int fc1/1-2
switchmode rate dedicated
channel-group 100 force
no shut

int san-port-channel 100
switchport trunk allowed vsan 1
switchport trunk allowed vsan add 100
```

An engineer is connecting a Cisco MDS 9700 Series Multilayer Director to a downstream Cisco Nexus 5672UP switch. Which command set must be used to complete the configuration?

A)

```
int san-port-channel 100
switchport mode te
switchport trunk mode off
channel mode on
```

B)

```
int san-port-channel 100
switchport mode te
switchport trunk mode auto
channel mode on
```

C)

```
int san-port-channel 100
switchport mode e
switchport trunk mode on
channel mode active
```

D)

```
int port-channel 100
switchport mode e
switchport trunk mode on
channel mode active
```

- A. Option A
- B. Option B
- C. Option C
- D. Option D

**Answer: A**

**NEW QUESTION 258**



An engineer is converting a Cisco MDS switch to support NPIV mode. What should be considered when implementing the solution?

- A. It must be enabled on VSAN 1 only.
- B. It must be enabled globally on all VSANs.
- C. It requires mapping of external interface traffic.
- D. It requires the FLOGI database to be disabled.

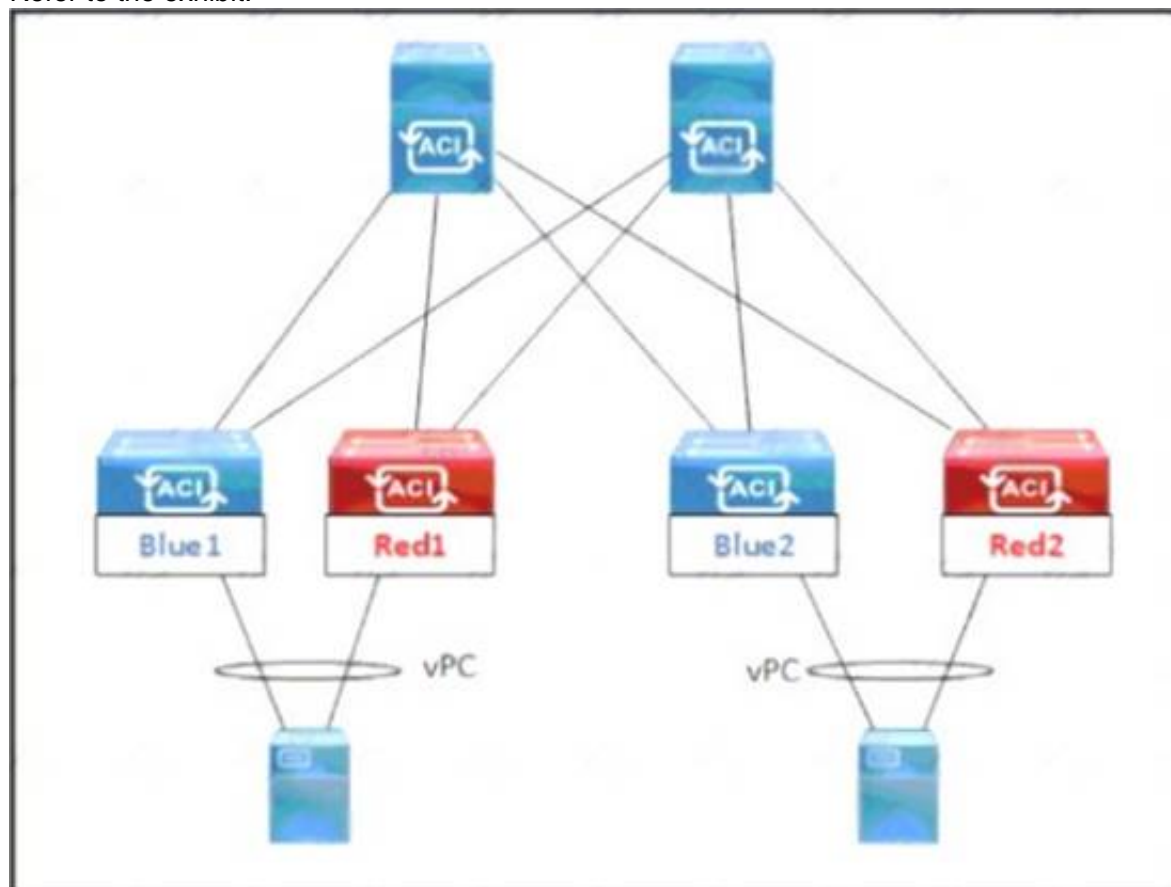
**Answer: B**

**Explanation:**

[https://www.cisco.com/c/en/us/td/docs/switches/datacenter/mds9000/sw/5\\_0/configuration/guides/int/nxos/cli\\_i](https://www.cisco.com/c/en/us/td/docs/switches/datacenter/mds9000/sw/5_0/configuration/guides/int/nxos/cli_i)

#### NEW QUESTION 261

Refer to the exhibit.



An engineer must schedule the firmware upgrade of the Red1 and Red2 leaf switches. The requirement is to keep the upgrade time to the minimum, avoid any service impact, and perform the parallel upgrade Which set of scheduler attributes must be used to meet these requirements?

- ☐ • Configure SchedulerPolicy1 for all four leaf switches Blue1, Blue2, Red1, and Red2.
- ☐ • Configure SchedulerPolicy1 and SchedulerPolicy2 with a one-time window trigger that has maximum concurrent nodes 1.
- ☐ • Configure SchedulerPolicy1 for leaf switches Blue1 and Red1, and SchedulerPolicy2 for leaf switches Blue2 and Red2.
- ☐ • Configure SchedulerPolicy1 and SchedulerPolicy2 with a one-time window trigger that has maximum concurrent nodes 2.
- ☐ • Configure SchedulerPolicy1 for all four leaf switches Blue1, Blue2, Red1, and Red2.
- ☐ • Configure SchedulerPolicy1 and SchedulerPolicy2 with a one-time window trigger that has maximum concurrent nodes 2.
- ☐ • Configure SchedulerPolicy1 for leaf switches Blue1 and Red1, and SchedulerPolicy2 for leaf switches Blue2 and Red2.
- ☐ • Configure SchedulerPolicy1 and SchedulerPolicy2 with a one-time window trigger that has maximum concurrent nodes 1.

- A. Option A
- B. Option B
- C. Option C
- D. Option D

**Answer: D**

#### NEW QUESTION 262

An engineer performs a Cisco UCS C480 ML M5 installation from a Cisco UCS Manager As a part of the design the server must perform an iSCSI boot from the storage array Which configuration must be performed in the SAN settings in the root organization to satisfy that condition?

- A. Implement a WWPN pool
- B. Create a virtual iSCSI vNIC
- C. Enable a host SAN pool
- D. Create an IQN suffix pool

**Answer: D**

#### NEW QUESTION 266

A customer has a requirement to deploy a cloud service and needs to have full control over the underlying OS, data and application. Which cloud model meets this requirement?

- A. PaaS
- B. MaaS
- C. IaaS
- D. SaaS

Answer: C

Explanation:

Traditional IT is responsible for Application, Data, Runtime, Middleware, OS, Virtualization, Servers, Storage, Networking. IaaS = Infrastructure as a Service - is responsible for OS, Virtualization, Servers, Storage, Networking. SaaS = Software as a Service - Software deployed by the cloud provider - is responsible for nothing. PaaS = Platform as a Service - Software can be deployed by the customer building their own application | is responsible for Data and Application.

NEW QUESTION 268

An engineer is configuring HTTPS access to Cisco UCS Manager. The engineer created a keyring and created the certificate request for the keyring. Cisco UCS Manager continues to receive untrusted messages from a Firefox browser and a Chrome browser. Which action must be taken as the next step in the HTTPS access configuration?

- A. Create a trusted point
- B. Sign the certificate using the Cisco UCS Manager.
- C. Obtain a validated certificate from Cisco
- D. Install a trusted certificate in the browser store

Answer: A

NEW QUESTION 271

A network engineer must configure a Fibre Channel interface on the Cisco MDS 9000 Series Switch. The configuration must meet these requirements:

- The interface must be disabled when the bit errors threshold is exceeded
- Buffer-to-buffer credits must be set to the maximum value
- The interface must have full bandwidth allocated for its port group

Which command set configures a Fibre Channel interface that meets these requirements?

- A. 

```
interface fc1/1
switchport bit-errors
switchport fcrxbbcredit 220 mode Fx
switchport rate-mode dedicated
```
- B. 

```
interface fc1/1
switchport ignore bit-errors
switchport fcrxbbcredit 255 mode Fx
no switchport rate-mode
```
- C. 

```
interface fc1/1
no switchport ignore bit-errors
switchport fcrxbbcredit 255 mode Fx
switchport rate-mode dedicated
```
- D. 

```
interface fc1/1
no switchport bit-errors
switchport fcrxbbcredit 220 mode Fx
no switchport rate-mode
```

Answer: A

NEW QUESTION 275

Drag and drop the characteristics from the left onto the NAS protocols on the right. Some characteristics are used more than once.

used to boot VHDX files

used to boot VMDK files

uses lease-based model for file locking

used to provide shared storage for hypervisors

NFS

SMB/CIFS

- A. Mastered
- B. Not Mastered

**Answer:** A

**Explanation:**

Diagram Description automatically generated

NFS:

- Used to boot VMDK files
- Uses lease-based model for file locking
- Used to provide shared storage for hypervisors SMB/CIFS:
- Used to boot VHDX files
- Used to provide shared storage for hypervisors

**NEW QUESTION 279**

An engineer has a primary fabric that is named UCS-A and a secondary fabric that is named UCS-B. A certificate request that has a subject name of sjc2016 for a keyring that is named kr2016 needs to be created. The cluster IP address is 10.68.68.68.

Which command set creates this certificate request?

- A. UCS-A # scope keyring kr2016UCS-A /keyring # create certreq 10.68.68.68 sjc2016UCS-A /keyring\* # commit-buffer
- B. UCS-B # scope keyring kr2016UCS-B /keyring # create certreq ip 10.68.68.68 subject-name sjc2016UCS-B /keyring\* # commit-both
- C. UCS-B# scope securityUCS-B /security # scope keyring kr2016UCS-B /security/keyring # set certreq 10.68.68.68 sjc2016UCS-B /security/keyring\* # commit-both
- D. UCS-A# scope securityUCS-A /security # scope keyring kr2016UCS-A /security/keyring # create certreq ip 10.68.68.68 subject-name sjc2016UCS-A /security/keyring\* # commit-buffer

**Answer:** D

**Explanation:**

[https://www.cisco.com/c/en/us/td/docs/unified\\_computing/ucs/ucs-manager/CLI-User-Guides/Admin-Management/4-0/b\\_Cisco\\_UCS\\_Manager\\_CLI\\_Administration\\_Mgmt\\_Guide\\_4-0/b\\_Cisco\\_UCS\\_Manager\\_CLI\\_Administration\\_Mgmt\\_Guide\\_4-0\\_chapter\\_0110.html](https://www.cisco.com/c/en/us/td/docs/unified_computing/ucs/ucs-manager/CLI-User-Guides/Admin-Management/4-0/b_Cisco_UCS_Manager_CLI_Administration_Mgmt_Guide_4-0/b_Cisco_UCS_Manager_CLI_Administration_Mgmt_Guide_4-0_chapter_0110.html)

**NEW QUESTION 282**

What is a characteristic of the NFS protocol?

- A. It is used for booting Cisco UCS B-Series servers.
- B. It is used to access a storage array at a block level.
- C. It uses UDP and HTTP as its transport.
- D. It uses remote procedure calls with TCP/IP for transport.

**Answer:** D

**NEW QUESTION 284**

An engineer must configure HTTPS secure management for Cisco UCS Manager using a key ring named kr2016 and a key size of 1024 bits. The environment consists of a primary fabric interconnect named UCS-A and a secondary fabric interconnect named UCS-B. Which command sequence must be used to accomplish this goal?

- ☐ UCS-B# scope security  
UCS-B /security # keyring kr2016  
UCS-B /security/keyring\* # set mod mod1024  
UCS-A /security/keyring\* # commit-buffer
- ☐ UCS-A# scope security  
UCS-A /security # create keyring kr2016  
UCS-A /security/keyring\* # set modulus mod1024  
UCS-A /security/keyring\* # commit-buffer
- ☐ UCS-B# scope security  
UCS-B /security # create keyring kr2016  
UCS-B /security/keyring\* # set size mod1024  
UCS-A /security/keyring\* # commit-buffer
- ☐ UCS-A# scope security  
UCS-A /security # keyring name kr2016  
UCS-A /security/keyring\* # set size 1024  
UCS-A /security/keyring\* # commit-buffer

- A. Option A
- B. Option B
- C. Option C
- D. Option D

**Answer:** B

**Explanation:**

[https://www.cisco.com/en/US/docs/unified\\_computing/ucs/sw/cli/config/guide/1.4.1/CLI\\_Config\\_Guide\\_1\\_4\\_1](https://www.cisco.com/en/US/docs/unified_computing/ucs/sw/cli/config/guide/1.4.1/CLI_Config_Guide_1_4_1)



```
UCS-A# scope security
UCS-A /security # create keyring kr220
UCS-A /security/keyring* # set modulus mod1024
UCS-A /security/keyring* # commit-buffer
UCS-A /security/keyring #
```

#### NEW QUESTION 286

A SAN administrator must Implement Infrastructure monitoring for the Fibre Channel storage environment. The storage environment consists of a standalone Cisco Nexus 9000 Series Switch and Cisco MDS 9000 Series Switches. The goal is to be able to visualize the SAN support VXLAN overlays and identify storage slow drain issues. Which monitoring solution accomplishes this task?

- A. Cisco Prime Infrastructure
- B. Cisco DCNM
- C. Cisco APIC
- D. Cisco Intersight

**Answer: B**

#### NEW QUESTION 287

An engineer implements SPAN configuration on an Nexus 5000 series switch. Which two commands are necessary to complete the SPAN session configuration? (Choose two)

```
N5K-Core# configure terminal
Enter configuration commands, one per line. End with CNTL/Z.
N5K-Core(config)# interface fc2/1
N5K-Core(config-if)# switchport speed 4000
N5K-Core(config-if)# no shutdown
N5K-Core(config)# interface fc2/2
N5K-Core(config-if)# no shutdown
N5K-Core(config)# monitor session 1
N5K-Core(config-monitor)# source interface fc2/1
N5K-Core(config-monitor)# destination interface fc2/2
N5K-Core(config-monitor)# no shutdown
```

- A. Configure the switchport monitor under interface fc2/2
- B. Configure the switchport mode SD under interface tc2/1.
- C. Configure switchport speed 4000 under interface fc2/2.
- D. Configure session type fc under monitor session 1.
- E. Configure the switchport mode SD under interface fc2/2.

**Answer: CE**

#### Explanation:

<https://www.cisco.com/c/en/us/td/docs/switches/datacenter/nexus5000/sw/configuration/guide/cli/CLIConfigurationGuide/Span.html>

#### NEW QUESTION 288

An engineer must configure a control plane policy on a Cisco Nexus 9000 Series Switch that is located at IP 192.168.20.1 that moots those requirements

- Only HTTP, RDP, and ICMP traffic is permitted from subnet 192.168.10.0/24.
- The committed information rate must be 54000 pps.
- The burst size must be 128 packets.
- Any other traffic must be dropped.

Drag and drop the code snippets from the bottom onto the blanks in the code on the top to complete the configuration. Not all code snippets are used

```
ip access-list permithosts
 permit tcp 192.168.10.0/24 
 permit tcp 192.168.10.0/24 host 192.168.20.1 eq 3389
 permit icmp 192.168.10.0/24 host 192.168.20.1

class-map type control-plane match-any hostsmap
 match 

policy-map type control-plane hostsmap
 
 police cir 54000 pps bc 128 packets
```

host 192.168.20.1 eq 443

class hostsmap

conform transmit violate drop

access-group name permithosts

class permithosts

conform transmit violate drop

- A. Mastered
- B. Not Mastered

**Answer: A**

**Explanation:**  
Text Description automatically generated

**NEW QUESTION 292**  
Refer to the exhibit.

```
ACI-Leaf1# show ip route vrf DATACENTER:DC

10.20.1.0/24, ubest/mbest: 1/o, attached, direct, pervasive

    *via 10.0.8.65%overlay-1, [1/o], 4w3d, static

172.16.100.0/24, ubest/mbest: 1/o

    *via 10.1.168.95%overlay-1, [200/5], 3wod, bgp-132, internal, tag 132 (mpls-vpn)

172.16.99.0/24, ubest/mbest: 1/o

    *via 10.0.1.14, [20/o], 3wod, bgp-132, external, tag 200
```

Which two statements describe the routing table of the leaf switch? (Choose two.)

- A. The next hop 10.0.8.65 for route 10.20.1.0/24 is the TEP address of a border leaf in ACI.
- B. The next hop 10.0.1.14 for route 172.16.99.0/24 is the TEP address of a border leaf in ACI.
- C. The next hop 10.1.168.95 for route 172.16.100.0/24 is the TEP address of a border leaf in ACI.
- D. 172.16.100.0/24 is a BD subnet in ACI.
- E. 10.20.1.0/24 is a BD subnet in ACI.

**Answer:** CE

**NEW QUESTION 297**  
Which NFS version uses the TCP protocol and needs only one IP port to run the service?

- A. NFSv1
- B. NFSv2
- C. NFSv3
- D. NFSv4

**Answer:** D

**NEW QUESTION 300**  
Refer to the exhibit.

Create Boot Policy

Name

Description

Reboot on Boot Order Change

☐

Enforce vNIC/vHBA/iSCSI Name

☒

Boot Mode

Legacy

UEFI

WARNINGS:

The type (primary/secondary) does not indicate a boot order presence.  
The effective order of boot devices within the same device class (LAN/Storage/iSCSI) is determined by PCIe bus scan order.  
If **Enforce vNIC/vHBA/iSCSI Name** is selected and the vNIC/vHBA/iSCSI does not exist, a config error will be reported.  
If it is not selected, the vNICs/vHBAs are selected if they exist, otherwise the vNIC/vHBA with the lowest PCIe bus scan order is used.

+ Local Devices

+ CIMC Mounted vMedia

+ vNICs

+ vHBAs

+ iSCSI vNICs

+ EFI Shell

Boot Order

+ - % Advanced Filter + Export Print

Name	Order	vNIC/vH	Type	LUN No	WWN	Slot No	Boot No
No data available							

Move Up

Move Down

Delete

An engineer installs a new Cisco UCS B-Series server. The requirement is to install an operating system on a LUN that is provided by the Fibre Channel storage array. Which two steps must be configured in the boot policy to accomplish this goal? (Choose two.)

- A. Disable Enforce vNIC^HBA/ISCSI Name
- B. Add Local CD/DVD and SAN Boot.
- C. Configure a SAN Boot Target with a WWPN
- D. Set Boot Order to External USB and LAN Boot
- E. Create (SCSI VNICS and add Local LUN

**Answer:** AD

#### NEW QUESTION 304

Which statement is true about upgrading the firmware on a Cisco MDS storage switch with dual supervisors?

- A. The standby supervisor must be offline before the firmware upgrade begins.
- B. Both supervisors load the new firmware and then the active supervisor reboots.
- C. Supervisors can be upgraded independently to test the new firmware.
- D. The new firmware is load on the standby supervisor first.

**Answer:** D

#### Explanation:

<https://www.cisco.com/c/en/us/support/docs/storage-networking/mds-9000-nx-os-san-os-software/118952-technote-mds9k-00.html#:~:text=On%20a%2095xx%20or%2097xx,becomes%20the%20new%20standby%20supervisor.>

#### NEW QUESTION 308

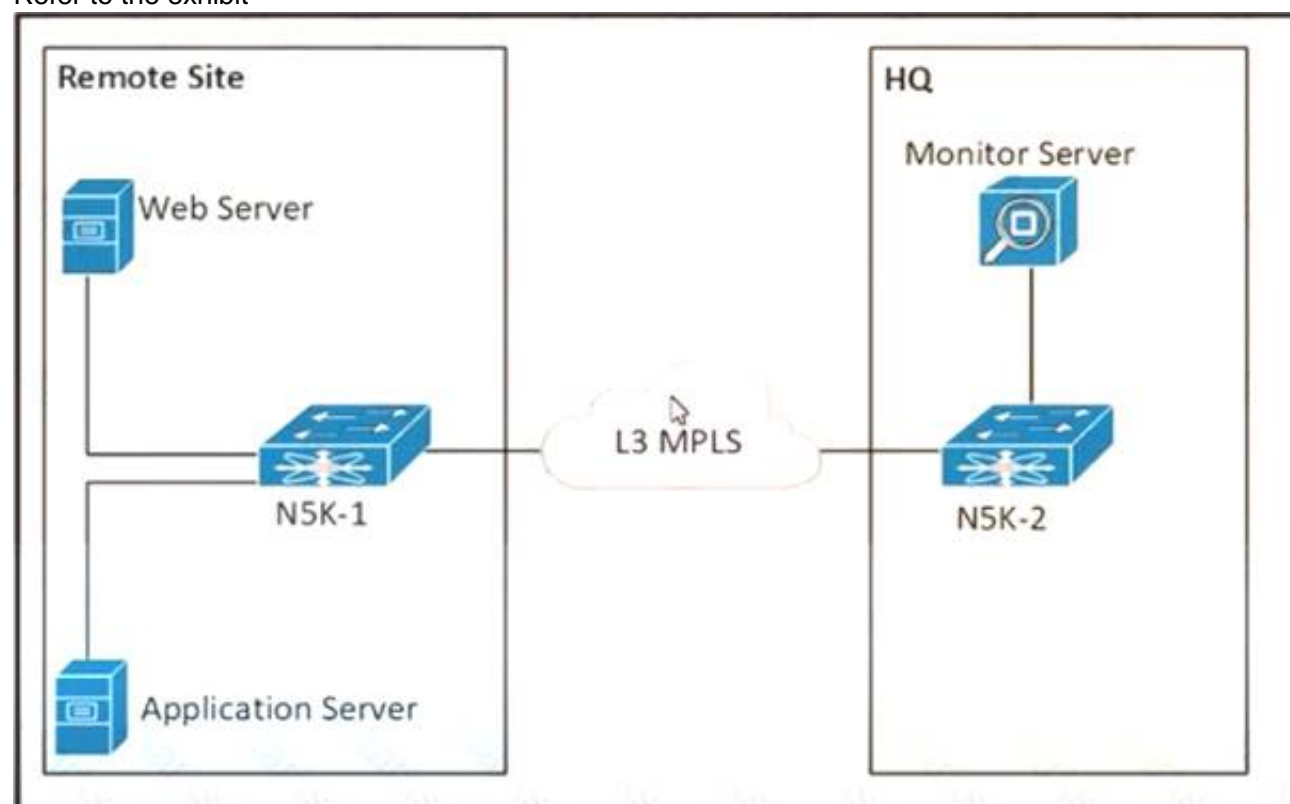
An engineer must generate a checkpoint of the running configuration on a Cisco Nexus Switch. The checkpoint file name must be called "before\_maintenance" and should be used for recovering the switch to its pre- maintenance state. The rollback of the checkpoint to running configuration should only occur if no errors occur. Which two configuration commands must be used to meet these requirements? (Choose two.)

- A. rollback checkpoint file before\_maintenance stop-at-first-failure
- B. rollback running-confli checkpoint before.maintenance
- C. checkpoint file before\_maintenance
- D. checkpoint before.maintenance
- E. rollback running-confli file before\_maintenance atomic

**Answer:** CE

#### NEW QUESTION 311

Refer to the exhibit



The communication between the web server and the application server experiences poor performance The network engineer must collect the traffic between the two servers, including the payload for more investigation The collected data must be sent from the remote site to the headquarters. Which action accomplishes this goal?

- A. Configure an ERSPAN session between N5K-1 and N5K-2.
- B. Configure a SPAN session between N5K-1 and N5K-2
- C. Configure SNMP on N5K-1 to send the data to the monitor server
- D. Configure NetFlow on N5K-1 to send the data to the monitor server

**Answer:** A

#### NEW QUESTION 315

An engineer must apply AAA configuration on a Cisco MDS 9000 Series Switch. The solution must meet these conditions:

- It must use a challenge-response authentication protocol that uses MD5 hashing with an incrementally changing identifier
- The RADIUS configuration must t>e automatically shared with other MDS switches in the environment.



The RADIUS server is already defined. Which command set completes the configuration?

- ☐ aaa authentication login pap enable  
 distribute radius  
 radius-server host 10.8.8.0 auth-port 1821
- ☐ aaa authentication login mschapv2 enable  
 radius propagate  
 radius authentication port 1821
- ☐ aaa authentication login chap enable  
 radius distribute  
 radius commit
- ☐ aaa authentication login mschap enable  
 radius commit  
 radius-server host 10.8.8.0

- A. Option A
- B. Option B
- C. Option C
- D. Option D

**Answer: C**

#### NEW QUESTION 317

An engineer is implementing FCoE. Which aspect of DCBXP on a Cisco Nexus switch affects this implementation?

- A. It uses the Cisco Fabric Services protocol to exchange parameters between two peer links.
- B. It always is enabled on 10/100-Mbps native Ethernet ports.
- C. It provides the authentication of peers on the Cisco Nexus switch.
- D. It requires that LLDP transmit and LLDP receive are enabled on the FCoE interface.

**Answer: D**

#### Explanation:

The Data Center Bridging Exchange Protocol (DCBXP) is an extension of LLDP. It is used to announce, exchange, and negotiate node parameters between peers. DCBXP parameters are packaged into a specific DCBXP TLV. This TLV is designed to provide an acknowledgement to the received LLDP packet. DCBXP is enabled by default, provided LLDP is enabled. DCBXP is disabled on ports where LLDP transmit or receive is disabled.  
[https://www.cisco.com/c/en/us/td/docs/switches/datacenter/nexus5000/sw/layer2/503\\_n2\\_1/b\\_Cisco\\_n5k\\_layer2](https://www.cisco.com/c/en/us/td/docs/switches/datacenter/nexus5000/sw/layer2/503_n2_1/b_Cisco_n5k_layer2)

#### NEW QUESTION 319

Refer to the exhibit.

```
Step 20 Enter no (no is the default) if you are satisfied with the configuration.

The following configuration will be applied:

switchname CiscoMDS
 interface mgmt0
   ip address 192.168.10.10
   subnetmask 255.255.255.0
   no shutdown
 ip default-gateway 192.168.10.1
 telnet server enable
 no ssh server enable
 no system default switchport shutdown
 system default switchport trunk mode on
 no zone default-zone permit vsan 1-4093
 zoneset distribute full vsan 1-4093
Would you like to edit the configuration? (yes/no) [n]: no

Step 21 Enter yes (yes is default) to use and save this configuration.

Use this configuration and save it? (yes/no) [y]: yes
```

An engineer is configuring a Cisco MDS 9000 Series Switch for the first time. After the initial setup process, the name server at IP 192.168.10.11 is missing from the configuration. Which set of actions completes the configuration?

- A. Enter no at step 21 and reinitialize the install
- B. Press the Esc key to access ROMMON mode.
- C. Enter no at step 21 and reload the switch
- D. Configure the advanced IP options.
- E. Enter yes at step 21 to edit the configuration

- F. Add the line dns-server 192.168.10.11.
- G. Enter yes at step 21 and log i
- H. Modify the startup configuration DNS

**Answer:** B

#### NEW QUESTION 321

An engineer must affirm the identity of the Cisco UCS Manager after a valid CA-signed keyring for HTTPS access is created. Which action completes the configuration?

- A. Set Cipher Suite Mode
- B. Create a trusted point
- C. Implement SSLv3
- D. Enable TLSv1.2

**Answer:** B

#### NEW QUESTION 326

Which mroute state is created when Bidirectional PIM is deployed at a site?

- A. MVPN Type-6
- B. \*,G
- C. MVPN Type-7
- D. S,G

**Answer:** B

#### Explanation:

Bidirectional PIM has been invented for networks where we have many sources and receivers talking to each other. PIM Sparse mode RP builds 2 entries \*, G and S, G but when we use PIM bidirectional mode, the RP will never build a S,G entry and, it only allow the \*,G entry.

[https://www.cisco.com/c/en/us/td/docs/ios-xml/ios/ipmulti\\_pim/configuration/xr-16-5/imc-pim-xr-16-5-book/im](https://www.cisco.com/c/en/us/td/docs/ios-xml/ios/ipmulti_pim/configuration/xr-16-5/imc-pim-xr-16-5-book/im) and <https://networklessons.com/multicast/multicast-bidirectional-pim>

#### NEW QUESTION 331

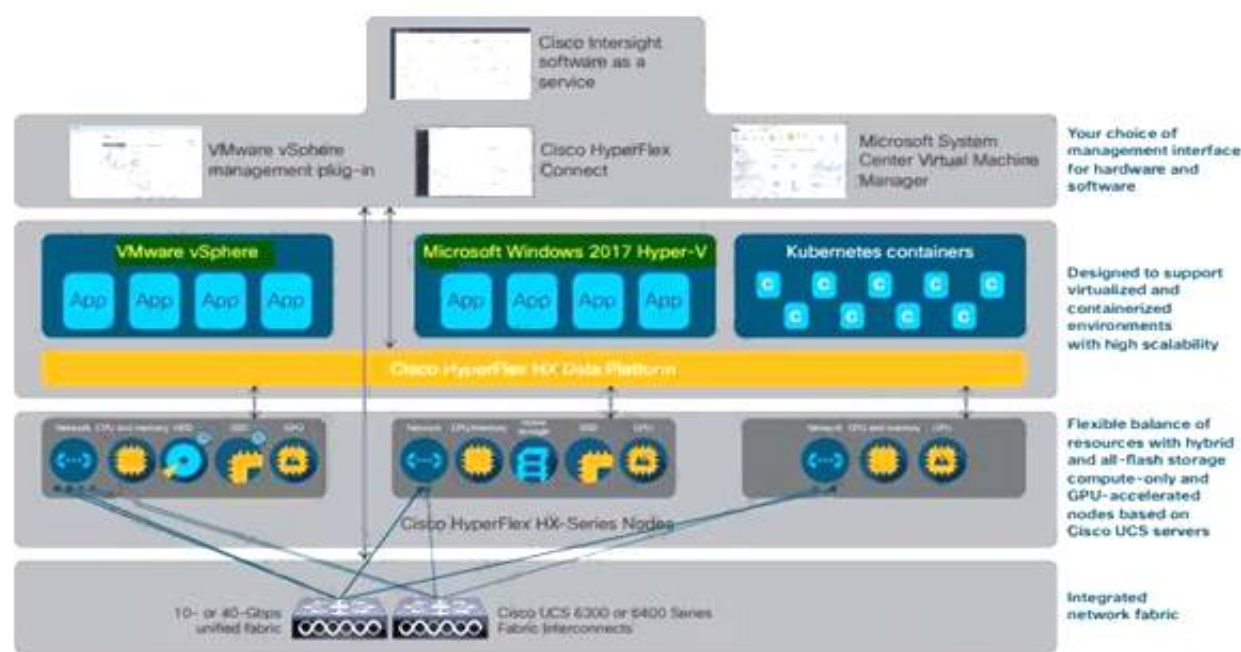
Which two hypervisors does Cisco HyperFlex support? (Choose two.)

- A. VMware vSphere
- B. Microsoft Hyper-V
- C. OpenStack
- D. Citrix XenServer
- E. RedHat KVM

**Answer:** AB

#### Explanation:

The Cisco HyperFlex platform is faster to deploy, simpler to manage, easier to scale, and ready to provide a unified pool of resources to power your business applications. You harness these resources with your choice of centralized management tools: Cisco Intersight™ software as a service, Cisco HyperFlex Connect, Microsoft System Center Virtual Machine Manager,



<https://www.cisco.com/c/dam/en/us/products/collateral/hyperconverged-infrastructure/hyperflex-hx-series/solution-overview-c22-736815.pdf>

#### NEW QUESTION 334

Refer to the exhibit.

```
N7K-1
interface Vlan165
  no shutdown
  no ip redirects
  ip address 10.16.165.2/27
  no ipv6 redirects
  hsrp version 2
  hsrp 165
    preempt
    priority 150
    ip 10.16.165.1

vpc domain 100
  role priority 100
  peer-keepalive destination 10.1.1.2 source 10.1.1.1
vrf default
  delay restore 60
  peer-gateway
  auto-recovery
  ip arp synchronize

N7K-2
interface Vlan165
  no shutdown
  no ip redirects
  ip address 10.16.165.3/27
  no ipv6 redirects
  hsrp version 2
  hsrp 165
    priority 50
    ip 10.16.165.1

vpc domain 100
  role priority 200
  peer-keepalive destination 10.1.1.1 source 10.1.1 2
vrf default
  delay restore 60
  peer-gateway
  auto-recovery
  ip arp synchronize
```

Which statement describes the default gateway configuration of the vPC?

- A. N7K-1 acts as the default gateway for all traffic.
- B. N7K-2 forwards traffic that is destined for the default gateway by using the peer link.
- C. N7K-2 acts as the default gateway for all traffic.
- D. Either switch can act as the active default gateway.

**Answer:** D

**Explanation:**

<https://community.cisco.com/t5/networking-documents/peer-gateway-feature-on-the-nexus-7000/ta-p/3113290>

#### NEW QUESTION 335

A small remote office is set to connect to the regional hub site via NSSA ASBR. Which type of LSA is sent to the remote office OSPF area?

- A. type 7 LSA
- B. type 3 LSA
- C. type 1 LSA
- D. type 5 LSA

**Answer:** A

#### NEW QUESTION 337

An engineer performs a set of configuration changes for the vPC domain using Session Manager. Which two commands are used to verify the configuration and apply the device changes when no errors are returned?

(Choose two)

- A. write
- B. verify
- C. commit
- D. checkpoint
- E. apply



**Answer:** BC

**Explanation:**

[https://www.cisco.com/c/en/us/td/docs/switches/datacenter/nexus9000/sw/6-x/system\\_management/configuration](https://www.cisco.com/c/en/us/td/docs/switches/datacenter/nexus9000/sw/6-x/system_management/configuration)

## Verifying a Session

Use the following command in session mode to verify a session:

Command	Purpose
<b>verify</b> [verbose] Example: switch(config-s)# verify	Verifies the configuration as a whole, based on the existing hardware and software configuration and resources. Cisco NX-OS returns an error if the configuration does not pass this verification.

## Committing a Session

Use the following command in session mode to commit a session:

Command	Purpose
<b>commit</b> [verbose] Example: switch(config-s)# commit	Validates the configuration changes made in the current session and applies valid changes to the device. If the validation fails, Cisco NX-OS reverts to the original configuration.

<https://www.cisco.com/c/en/us/td/docs/switches/datacenter/nexus5000/sw/configuration/guide/cli/CLIconfigura>

### NEW QUESTION 341

A company provides applications and database hosting services to multiple customers using isolated infrastructure-as-a-service services within the same data center environment. The environment is based on Cisco MDS 9000 Series Switches. The requirement is to manage the environment by using Fibre Channel Security Protocol and to enable user authentication when the centralized AAA server is unreachable All communication between the MDS switches and the remote servers must be encrypted. Which command set must be used to meet these requirements?

- ☒ **aaa group server radius RadiusServer1**  
**aaa authentication login default RadiusServer1**
- ☐ **aaa group server radius RadiusServer1**  
**aaa authentication dhchap default group RadiusServer1**
- ☐ **aaa group server tacacs+ TacacsServer1**  
**aaa authentication dhchap default group TacacsServer1**
- ☐ **aaa group server tacacs+ TacacsServer1**  
**aaa authentication login console TacacsServer1**

- A. Option A  
B. Option B  
C. Option C  
D. Option D

**Answer:** B

### NEW QUESTION 346

A DevOps engineer must implement a bash script to query a REST API and return the available methods. Which code snippet completes the script?

```
curl -i -X --missing code-- http://api.cisco.com:8080/api -u admin:xT41M5P3X425VOE71NB5D
```

- A. DELETE  
B. TRACE  
C. POST  
D. OPTIONS

**Answer:** C

### NEW QUESTION 350

Due to a domain name change at a customer site, a Cisco UCS cluster must be renamed. An engineer must recommend a solution to ensure that the Cisco UCS

Manager is available over HTTPS. Which action accomplishes this goal?

- A. Reinstall the cluster to generate the default key ring certificate
- B. Generate a new default key ring certificate from the Cisco UCS Manager
- C. Reboot the SSO component of the Cisco UCS Manager
- D. Regenerate the default key ring certificate manually

**Answer:** D

**Explanation:**

[https://www.cisco.com/c/en/us/td/docs/unified\\_computing/ucs/ucs-manager/GUI-User-Guides/Admin-Managem](https://www.cisco.com/c/en/us/td/docs/unified_computing/ucs/ucs-manager/GUI-User-Guides/Admin-Managem)

The default key ring certificate must be manually regenerated if the cluster name changes or the certificate expires.

#### NEW QUESTION 352

An engineer is deploying a VXLAN EVPN environment for a customer. The customers environment suffers from a large amount of flooding related to hosts attempting to resolve the MAC to IP mapping on the network segment. Which feature prevents this issue from happening in the future?

- A. anycast rendezvous point
- B. anycast gateway
- C. IP ARP SYNC
- D. IP ARP suppression

**Answer:** D

#### NEW QUESTION 354

An engineer wants to create a backup of Cisco UCS Manager for disaster recovery purposes. What are two characteristics of a full state backup of a Cisco UCS Manager database? (Choose two.)

- A. performs a complete binary dump of the database as a .txz file
- B. contains all of the configurations
- C. performs a complete binary dump of the database as a bin file
- D. performs a complete binary dump of the databases as a sql file
- E. contains all of the runtime states and statuses but not the configurations

**Answer:** AB

**Explanation:**

File: compressed file in .tar.gz format

<https://www.virtual-odyssey.com/2019/10/31/its-the-little-stuff-cisco-ucs-backups/> the file extension for bin in a cisco context is usually the OS.

tar files are used for backup. <https://peazip.github.io/tar-file-format.html>

#### NEW QUESTION 357

Which configuration implements static ingress replication?

- ☒ interface nve 1  
member vni 2100980  
ingress-replication protocol static  
peer-ip 10.0.0.4
- ☐ interface nve 1  
member vni 127772151  
ingress-replication protocol bgp
- ☐ interface nve 1  
member vni 3126980  
peer vtep 10.0.0.4  
ingress-replication protocol static  
peer-ip 10.0.0.4
- ☐ interface nve 1  
member vni 384233213  
peer vtep 10.0.0.4

- A. Option A
- B. Option B
- C. Option C
- D. Option D

**Answer:** A

**Explanation:**

"Configuring Static Ingress Replication" section here:

[https://www.cisco.com/c/en/us/td/docs/switches/datacenter/nexus9000/sw/7-x/vxlan/configuration/guide/b\\_Cisc](https://www.cisco.com/c/en/us/td/docs/switches/datacenter/nexus9000/sw/7-x/vxlan/configuration/guide/b_Cisc)

NEW QUESTION 358  
Refer to the exhibit.

```
switch# show radius-server
Global RADIUS shared secret:*****
retransmission count:5
timeout value:10
following RADIUS servers are configured:
  myradius.cisco.users.com:
    available for authentication on port:1812
    available for accounting on port:1813
  172.22.91.37:
    available for authentication on port:1812
    available for accounting on port:1813
    RADIUS shared secret:*****
  10.10.0.0:
    available for authentication on port:1812
    available for accounting on port:1813
    RADIUS shared secret:*****

switch# show radius-server groups
total number of groups:4
following RADIUS server groups are configured:
  group radius:
    server: all configured radius servers
  group Group1:
    server: Server3 on auth-port 1812, acct-port 1813
    server: Server5 on auth-port 1812, acct-port 1813
  group Group5:
```

A network engineer requires remote access via SSH to a Cisco MDS 9000 Series Switch. The solution must support secure access using the local user database when the RADIUS servers are unreachable from the switches. Which command meets these requirements?

- A. aaa authentication none
- B. aaa authentication login default group radius
- C. aaa authentication login default group local
- D. aaa authentication login default fallback error local

Answer: D

Explanation:

[https://www.cisco.com/c/en/us/td/docs/switches/datacenter/mds9000/sw/6\\_2/configuration/guides/security/nx-o](https://www.cisco.com/c/en/us/td/docs/switches/datacenter/mds9000/sw/6_2/configuration/guides/security/nx-o)

Configuring Fallback Mechanism for Authentication

You can enable/disable fallback to local database in case the remote authentication is set and all AAA servers are unreachable (authentication error). The fallback is set to local by default in case of an authentication error. You can disable this fallback for both console and ssh/telnet login. Disabling this fallback will tighten the security of authentication.

The following steps explain the fallback mechanism for authentication:

**Step 1** By default fallback will be enabled for both default/console login. The “sh run aaa all” command can be used to verify this.

**Step 2** Disabling fallback will print a warning message.

The CLI syntax and behavior is as follows:

	Command	Purpose
Step 1	switch# <b>config t</b> switch(config)#	Enters configuration mode.
Step 2	switch(config)# show run aaa all aaa authentication login default fallback error local aaa authentication login console fallback error local	Displays the default fallback behavior.
Step 3	switch(config)# <b>no aaa authentication login default fallback error local</b> WARNING!!! Disabling fallback can lock your switch.	Disables the fallback to local database for authentication. <b>Note</b> Replace default with console in this command to disable fallback to console.

NEW QUESTION 360  
Refer to the exhibit.

An engineer must set access to Cisco IMC. The access must be allowed by logging onto the https //datacenter local web page The configuration presented is on the Cisco UCS C240 Series Server Which set of commands completes the configuration?

A)



```
Server# scope cimc
Server /cimc # scope network
Server /cimc/network # set vlan-enabled yes
Server /cimc/network # set vlan-id 10
Server /cimc/network # set vlan-priority 32
Server /cimc/network # set dns-use-dhcp-enabled yes
Server /cimc/network # commit
```

B)

```
Server# scope cimc
Server /cimc # scope network
Server /cimc/network # set dhcp-enabled yes
Server /cimc/network # set v4-addr 192.168.1.10
Server /cimc/network # set v4-netmask 255.255.255.0
Server /cimc/network # set v4-gateway 192.168.1.12
Server /cimc/network # commit
```

C)

```
Server# scope cimc
Server /cimc # scope network
Server /cimc/network # set dhcp-enabled yes
Server /cimc/network # set v4-addr 192.168.1.10
Server /cimc/network # set v4-netmask 255.255.255.0
Server /cimc/network # set preferred-dns-server 192.168.3.20
Server /cimc/network # commit
```

D)

```
Server# scope cimc
Server /cimc # scope network
Server /cimc/network # set vlan-enabled yes
Server /cimc/network # set vlan-id 10
Server /cimc/network # set vlan-priority 32
Server /cimc/network # set preferred-dns-server 192.168.3.20
Server /cimc/network # commit
```

- A. Option A
- B. Option B
- C. Option C
- D. Option D

Answer: C

#### NEW QUESTION 365

Port security is enabled on a Cisco MDS 9000 series Switch. Which statement is true?

- A. Cisco Fabric Services must be disabled before enabling port security.
- B. Port security can be enabled only globally and affects all VSANs.
- C. Auto-learning is always enabled automatically when port security is enabled.
- D. Any devices currently logged in must be added manually to the device databased.

Answer: C

#### Explanation:

[https://www.cisco.com/c/en/us/td/docs/switches/datacenter/mds9000/sw/8\\_x/config/security/cisco\\_mds9000\\_security\\_config\\_guide\\_8x/configuring\\_port\\_security.html](https://www.cisco.com/c/en/us/td/docs/switches/datacenter/mds9000/sw/8_x/config/security/cisco_mds9000_security_config_guide_8x/configuring_port_security.html)

- **Active database:** The database currently enforced by the device. The port security feature requires all devices connecting to a switch to be part of the port security active database. The software uses this active database to enforce authorization.

## About Auto-Learning

You can instruct the switch to automatically learn (auto-learn) the port security configurations over a specified period. This feature allows any switch in the Cisco MDS 9000 Family to automatically learn about devices and switches that connect to it. Use this feature when you activate the port security feature for the first time as it saves tedious manual configuration for each port. You must configure auto-learning on a per-VSAN basis. If enabled, devices and switches that are allowed to connect to the switch are automatically learned, even if you have not configured any port access.

**When auto-learning is enabled,** learning happens for the devices or interfaces that were already logged into the switch and the new devices or interfaces that need to be logged in. Learned entries on a port are cleaned up after you shut down that port if auto-learning is still enabled.

Learning does not override the existing configured port security policies. So, for example, if an interface is configured to allow a specific pWWN, then auto-learning will not add a new entry to allow any other pWWN on that interface. All other pWWNs will be blocked even in auto-learning mode.

No entries are learned for a port in the shutdown state.

When you activate the port security feature, auto-learning is also automatically enabled.



**Note**

If you activate port security feature, auto-learning gets enabled by default. You cannot re-activate port security until auto-learning is disabled or deactivate and activate again.

## Port Security Activation

By default, the port security feature is not activated in any switch in the Cisco MDS 9000 Family.

By activating the port security feature, the following apply:

- Auto-learning is also automatically enabled, which means:
  - From this point, auto-learning happens for the devices or interfaces that were already logged into the switch and also for the new devices will login in future.
  - You cannot activate the database until you disable auto-learning.
- All the devices that are already logged in are learned and are added to the active database.
- All entries in the configured database are copied to the active database.

After the database is activated, subsequent device login is subject to the activated port bound WWN pairs, excluding the auto-learned entries. You must disable auto-learning before the auto-learned entries become activated.

**When you activate the port security feature, auto-learning is also automatically enabled.** You can choose to activate the port security feature and disable auto-learning.

### NEW QUESTION 367

Refer to the exhibit.

```
event manager applet ConfigMgmt
  event cli match "copy run start"
  action 1 syslog priority warnings msg Configuration Modified
```

An engineer logs all occurrences of a configuration being saved. The engineer must generate an additional log message when someone attempts to change the configuration for interface Ethernet 1/1. Which set of commands must be used to meet these requirements?

```
event manager applet ConfigMgmt
  event cli tag eth match "interface Ethernet1/1"
  event cli tag copy match "copy run start"
  event cli tag conf match "configure terminal"
  tag conf or eth or copy happens 2 in 3
  action 1 syslog priority warnings msg Configuration Modified
  action 2 event-default
```

☐ event manager applet ConfigMgmt  
event cli tag eth match "configure terminal ; interface Ethernet1/1"  
event cli tag copy match "copy run start"  
tag eth or copy happens 1 in 2  
action 1 syslog priority warnings msg Configuration Modified  
action 2 event-default

☐ event manager applet ConfigMgmt  
event cli tag eth match "interface Ethernet1/1"  
event cli tag copy match "copy run start"  
event cli tag conf match "configure terminal"  
tag conf and eth or copy happens 1 in 4294967295  
action 1 syslog priority warnings msg Configuration Modified

☐ event manager applet ConfigMgmt  
event cli tag eth match "configure terminal ; interface Ethernet1/1"  
event cli tag copy match "copy run start"  
tag eth and copy happens 1 in 2  
action 1 syslog priority warnings msg Configuration Modified

- A. Option A
- B. Option B
- C. Option C
- D. Option D

**Answer:** D

#### NEW QUESTION 372

Which file service protocol allows the files to appear locally mapped to the client and provides view, store, and update capabilities on a remote Linux-based storage repository that also serves as a distributed file system standard for NAS?

- A. NFS
- B. FTP
- C. iSCSI
- D. IFS

**Answer:** D

#### NEW QUESTION 376

An engineer is implementing NPV mode on a Cisco MDS 9000 Series Switch. Which action must be taken?

- A. The FCNS database must be disabled in the fabric.
- B. A port channel must be configured to the upstream switch.
- C. All switches in the fabric must be Cisco MDS switches.
- D. NPIV must be enabled on the upstream switch.

**Answer:** D

#### Explanation:

[https://www.cisco.com/c/en/us/td/docs/switches/datacenter/mds9000/sw/5\\_0/configuration/guides/int/nxos/cli\\_i](https://www.cisco.com/c/en/us/td/docs/switches/datacenter/mds9000/sw/5_0/configuration/guides/int/nxos/cli_i)

#### NEW QUESTION 378

A network engineer must implement RBAC on Cisco MDS 9000 Series Multilayer Switches.  
Drag and drop the Cisco MDS 9000 Series roles from the left onto the correct categories on the right.



san-operator	System Defined
global-admin	
server-admin	
storage-admin	
network-admin	User Defined
network-operator	

- A. Mastered
- B. Not Mastered

Answer: A

**Explanation:**  
Graphical user interface Description automatically generated with low confidence  
[https://www.cisco.com/c/en/us/td/docs/unified\\_computing/ucs/ucs-manager/GUI-User-Guides/Admin Management/3-1/b\\_Cisco\\_UCS\\_Admin\\_Mgmt\\_Guide\\_3\\_1/b\\_UCSM\\_Admin\\_Mgmt\\_Guide\\_chapter\\_01.html](https://www.cisco.com/c/en/us/td/docs/unified_computing/ucs/ucs-manager/GUI-User-Guides/Admin%20Management/3-1/b_Cisco_UCS_Admin_Mgmt_Guide_3_1/b_UCSM_Admin_Mgmt_Guide_chapter_01.html)  
[https://www.cisco.com/c/en/us/td/docs/switches/datacenter/mds9000/sw/8\\_x/config/security/cisco\\_mds9000\\_security\\_config\\_guide\\_8x/configuring\\_users\\_and\\_common\\_roles.html#con\\_1422305](https://www.cisco.com/c/en/us/td/docs/switches/datacenter/mds9000/sw/8_x/config/security/cisco_mds9000_security_config_guide_8x/configuring_users_and_common_roles.html#con_1422305)

NEW QUESTION 383  
.....

## Thank You for Trying Our Product

### We offer two products:

1st - We have Practice Tests Software with Actual Exam Questions

2nd - Questions and Answers in PDF Format

### 350-601 Practice Exam Features:

- \* 350-601 Questions and Answers Updated Frequently
- \* 350-601 Practice Questions Verified by Expert Senior Certified Staff
- \* 350-601 Most Realistic Questions that Guarantee you a Pass on Your First Try
- \* 350-601 Practice Test Questions in Multiple Choice Formats and Updates for 1 Year

**100% Actual & Verified — Instant Download, Please Click**  
**[Order The 350-601 Practice Test Here](#)**