



**HP**

## **Exam Questions HPE3-U01**

Aruba Certified Network Technician Exam(ACNT)

#### NEW QUESTION 1

Which organization is in charge of determining the International Standards?

- A. Institute of Electrical and Electronics Engineers
- B. Wi-Fi Alliance
- C. Federal Communications Commission
- D. Internet Engineering Task Force

**Answer:** D

#### NEW QUESTION 2

Which configurable switchport feature makes collisions impossible to occur?

- A. auto speed
- B. VLANs
- C. full-duplex
- D. half-duplex

**Answer:** C

#### NEW QUESTION 3

What are the differences between Local-based and Server-based management? (Select two.)

- A. server-based management cannot talk to the device's control plane, local-based can
- B. in local-based, the managed device is a client, while in server-based it is a server
- C. local-based management can use the device's console port, server-based cannot
- D. local-based management requires an on-premises network management appliance
- E. server-based management can monitor multiple devices at once, local-based cannot

**Answer:** BC

#### NEW QUESTION 4

Which organization provides certifications that ensure interoperability between WLAN vendors?

- A. Institute of Electrical and Electronics Engineers
- B. Federal Communications Commission
- C. Wi-Fi Alliance
- D. Internet Engineering Task Force

**Answer:** C

#### Explanation:

<https://www.wi-fi.org/certification>

#### NEW QUESTION 5

Which protocol provides logical addressing used for routing messages across the network towards their destination?

- A. Internet Protocol
- B. Transmission Control Protocol
- C. Wired Ethernet
- D. Link Layer Discovery Protocol

**Answer:** A

#### NEW QUESTION 6

What is the maximum recommended distance for a 1 Gbps Ethernet connection using Cat 6 UTP-based cabling between a host and the switch where it is plugged in?

- A. 50 meters (164 feet)
- B. 100 meters (328 feet)
- C. 300 meters (984 feet)
- D. 15 meters (49 feet)

**Answer:** B

#### NEW QUESTION 7

What are characteristics of Aruba Central? (Select two.)

- A. It must be deployed as an on-premises server.
- B. It manages networking equipment using SNMP.
- C. It manages networking equipment using HTTPs.
- D. It can manage third-party networking equipment.
- E. It is considered cloud-based network management.

Answer: DE

NEW QUESTION 8

How many addresses does the 255.255.252.0 provide?

- A. 16384
- B. 32768
- C. 8192
- D. 1024

Answer: D

NEW QUESTION 9

Refer to Exhibit.

Version	IHL	Type of Service	Total Length	
Identification			Flags	Fragment Offset
TTL		Protocol	Checksum	
Source IP Address				
Destination IP Address				
Options				

To which protocol does the header belong?

- A. Internet Protocol version 6
- B. User Datagram Protocol
- C. Ethernet Protocol
- D. Transmission Control Protocol
- E. Internet Protocol

Answer: A

NEW QUESTION 10

Why do clients run the Address Resolution Protocol (ARP)?

- A. To discover the destination address of the Layer 3 header of IP packets.
- B. To discover the source address of the Layer 3 header of IP packets.
- C. To discover the destination address of the Layer z header that encapsulates IP packets.
- D. To discover the source address of the Layer z header that encapsulates IP packets.

Answer: B

NEW QUESTION 10

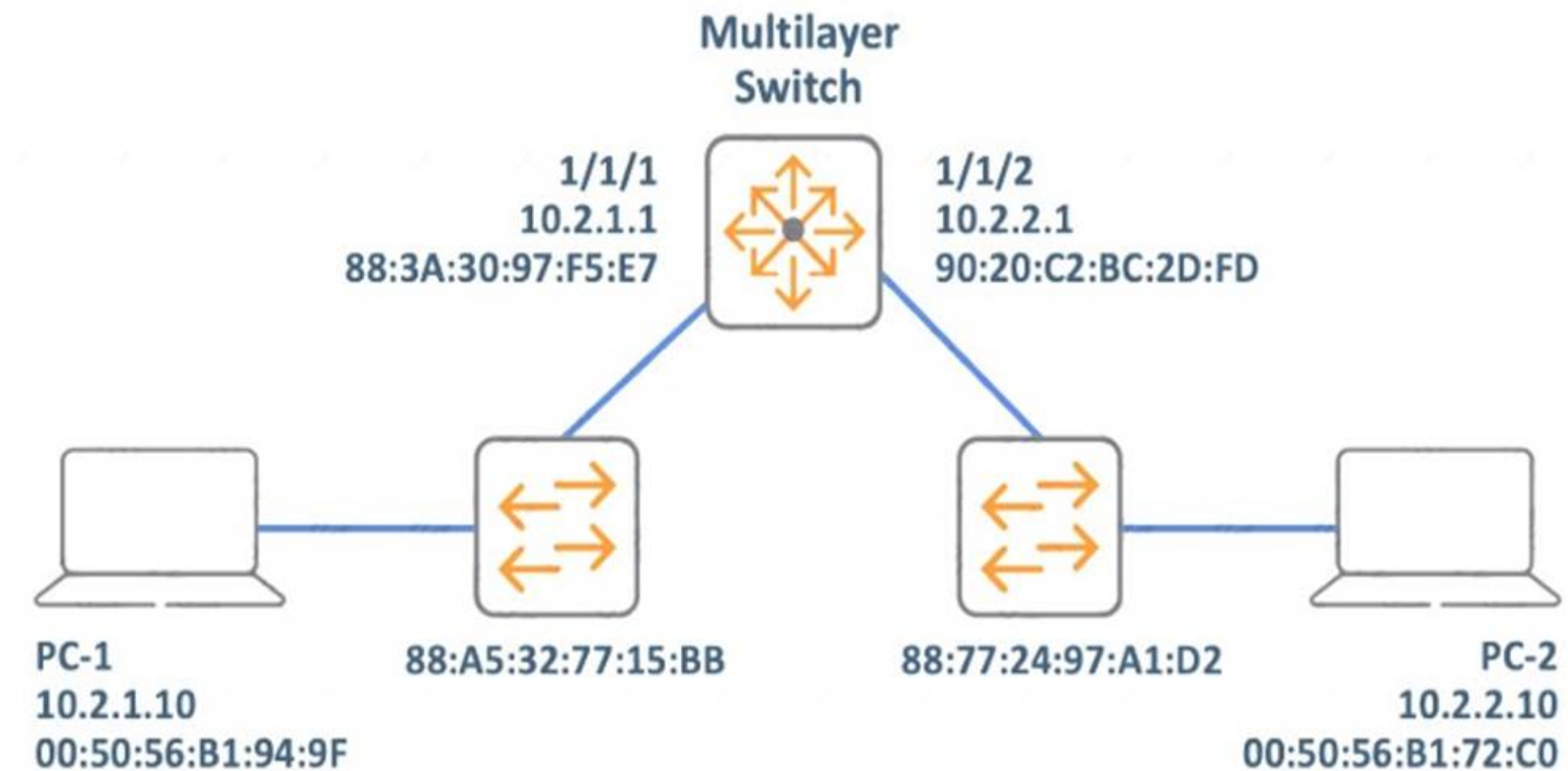
WhichOSImodel layer is in charge of creating data?

- A. Physical
- B. Transport
- C. Layer 4
- D. Layer 7

Answer: B

NEW QUESTION 14

Refer to exhibit:



PC-1 is sending a packet to PC-2. What are the Layer 2 and Layer 3 source addresses of the message when it is received by PC-2? (Select two.)

- A. source MAC is 90:20:C2:BC:2D:FD
- B. destination MAC is 88:77:24:97:A1:D2
- C. source IP is 10.2.1.10
- D. source MAC is 00:50:56:B1:94:9F
- E. source IP is 10.2.2.1

**Answer:** AB

#### NEW QUESTION 15

Before routers forward unicast packets, what information is compared with the unicast routing table entries?

- A. The source address of the IP header.
- B. The destination address of the Ethernet header.
- C. The destination address of the IP header.
- D. The source address of the Ethernet header.
- E. The inbound port the packet is received in.

**Answer:** B

#### NEW QUESTION 19

What is a true statement about wireless communications using Wi-Fi?

- A. Amplitude, phase, and frequency of radio waves are modulated to transmit data
- B. Wireless communications have a maximum range of 10 meters (30 feet)
- C. Amplitude, phase, and frequency of radio waves are modulated to increase range
- D. Wireless communications have a minimum range of 10 meters (30 feet)

**Answer:** C

#### NEW QUESTION 24

Which statements are true about Access Points? (Select two.)

- A. They use destination IP addresses to switch the packets.
- B. They bridge wireless frames to the wired network.
- C. They are used to interconnect wireless devices only.
- D. They offer wireless connectivity to endpoints.
- E. They only operate at Layer three of the OSI model.

**Answer:** AD

#### NEW QUESTION 27

Which Wi-Fi technology assists with data privacy on open networks?

- A. Simultaneous Authentications of Equals (5AE)
- B. Opportunistic Wireless Encryption (OWE)
- C. Commercial National Security Algorithm (CNSA)
- D. Wi-Fi Protected Access 2(WPA2)

Answer: D

### NEW QUESTION 32

Which unit of measurement is recommended for expressing radio frequency power due to its logarithmic nature?

- A. lumens
- B. decibel relative to isotrope (dBi)
- C. milliwatt (mW)
- D. decibel relative to milliwatt (dBm)

Answer: D

#### Explanation:

Decibel (dB)Decibel is a logarithmic unit of measure used to express the ratio of two values of the same measure. This unit is not included to the System International of units (SI), but it is widely used in communication systems and many other technical fields, as it allows to compare two values of any nature, provided that these values are expressed in the same unit.

Decibel is a decile of the main, larger unit — Bel. Bel is a common logarithm of the ratio of two energies. But in practice Bel was a far too big value, therefore its tenth part is used – decibel.

The logarithmic method of presentation of numbers often can be very useful, as it allows to replace multiplication with addition, division with subtraction, raising to power with multiplication, and extracting a root with the division.

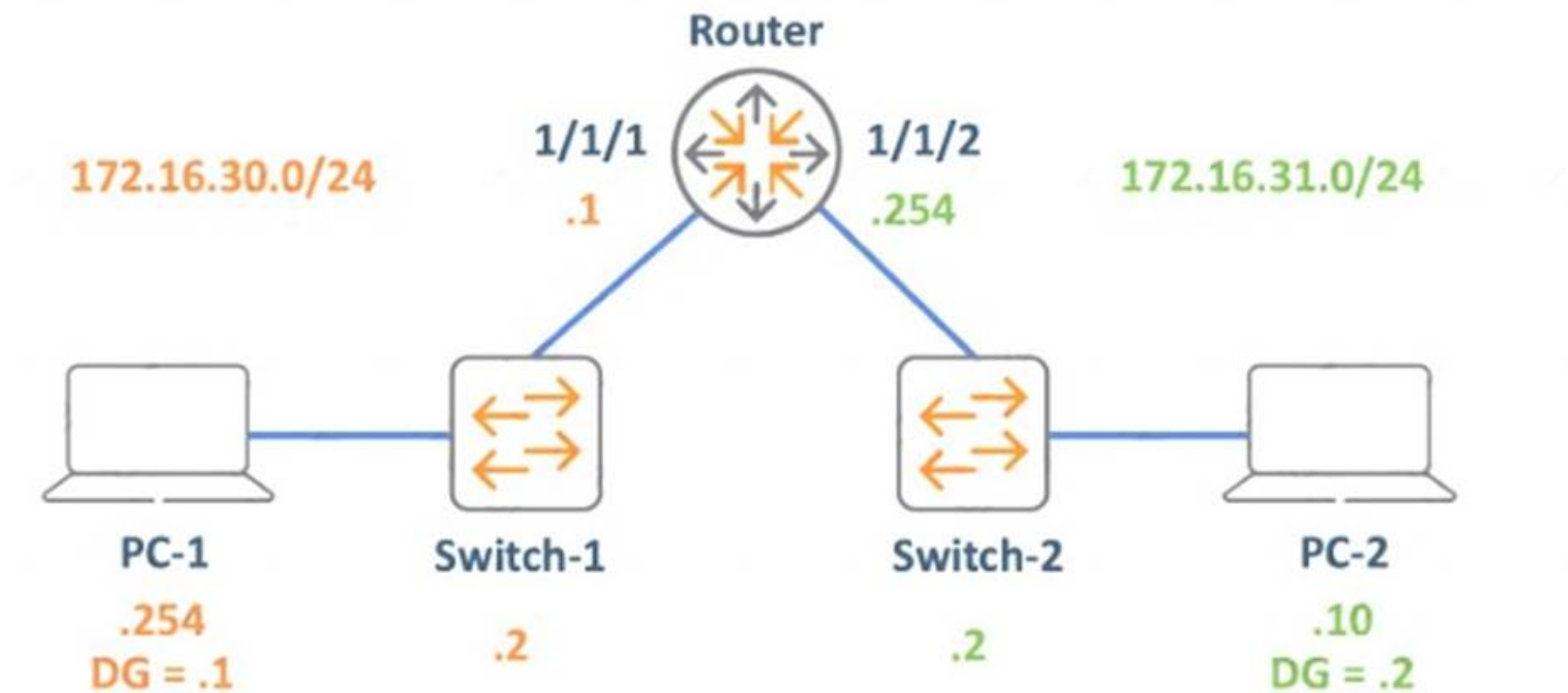
What is measured in dB in the MRFC:

- Gain constant
- Sound level
- Signal/noise ratio
- Signal attenuation

[https://en.cyclopedia.ifcg.ru/wiki/Radiofrequency\\_characteristics](https://en.cyclopedia.ifcg.ru/wiki/Radiofrequency_characteristics)

### NEW QUESTION 37

Refer to Exhibit.



The PCs are not able to successfully establish bidirectional communication. What change must you deploy to enable the communication between PC-1 and PC-2?

- A. change PC-1 's default gateway to 172.16.30.2
- B. change PC-1's IP address to 172.16.30.10
- C. change the Router's 1/1/1 interface IP to 172.16.30.254
- D. change PC-2's default gateway to 172.16.31.254

Answer: C

### NEW QUESTION 40

Exhibit:





What are valid configurable "Client VLAN Assignment" options for a Bridge-based WLAN in Aruba Central? (Select three.)

- A. native VLAN
- B. automatic VLAN
- C. hybrid VLAN
- D. static VLAN

**Answer:** D

#### NEW QUESTION 43

Which Wi-Fi frame announces the Service Set Identifier (SSID) to Basic Service Set Identifier (BSSID) mapping?

- A. association request
- B. probe request
- C. beacon
- D. network allocation vector

**Answer:** B

#### NEW QUESTION 48

.....

## Thank You for Trying Our Product

### We offer two products:

1st - We have Practice Tests Software with Actual Exam Questions

2nd - Questions and Answers in PDF Format

### HPE3-U01 Practice Exam Features:

- \* HPE3-U01 Questions and Answers Updated Frequently
- \* HPE3-U01 Practice Questions Verified by Expert Senior Certified Staff
- \* HPE3-U01 Most Realistic Questions that Guarantee you a Pass on Your FirstTry
- \* HPE3-U01 Practice Test Questions in Multiple Choice Formats and Updatesfor 1 Year

**100% Actual & Verified — Instant Download, Please Click**  
**[Order The HPE3-U01 Practice Test Here](#)**