

HP

Exam Questions HPE0-J68

HPE Storage Solutions



NEW QUESTION 1

- (Exam Topic 1)

Which tool is used to configure an HPE MSA 2052?

- A. InfoSight
- B. SMU
- C. CMC
- D. SSMC

Answer: A

NEW QUESTION 2

- (Exam Topic 1)

You deployed and configured an all-flash Nimble array. The customer wants to attach their Windows-based server to the array. Which HPE tool can you use on the host server to make the integration easier?

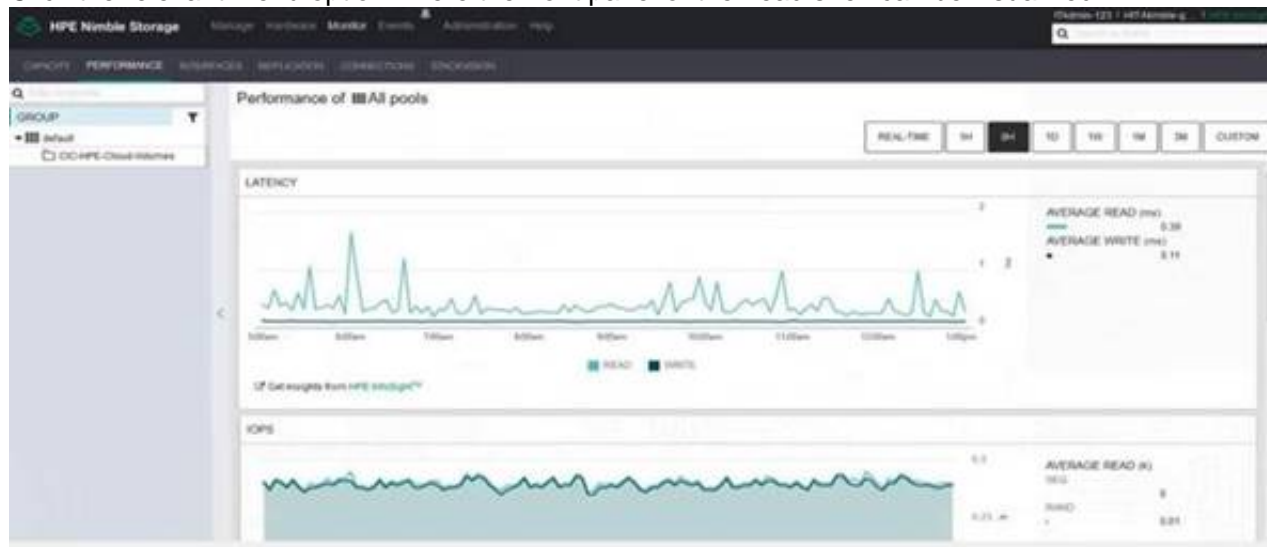
- A. StorServe Management Console
- B. Channel bonding
- C. Connection Manager
- D. Centralized Management Console

Answer: C

NEW QUESTION 3

- (Exam Topic 1)

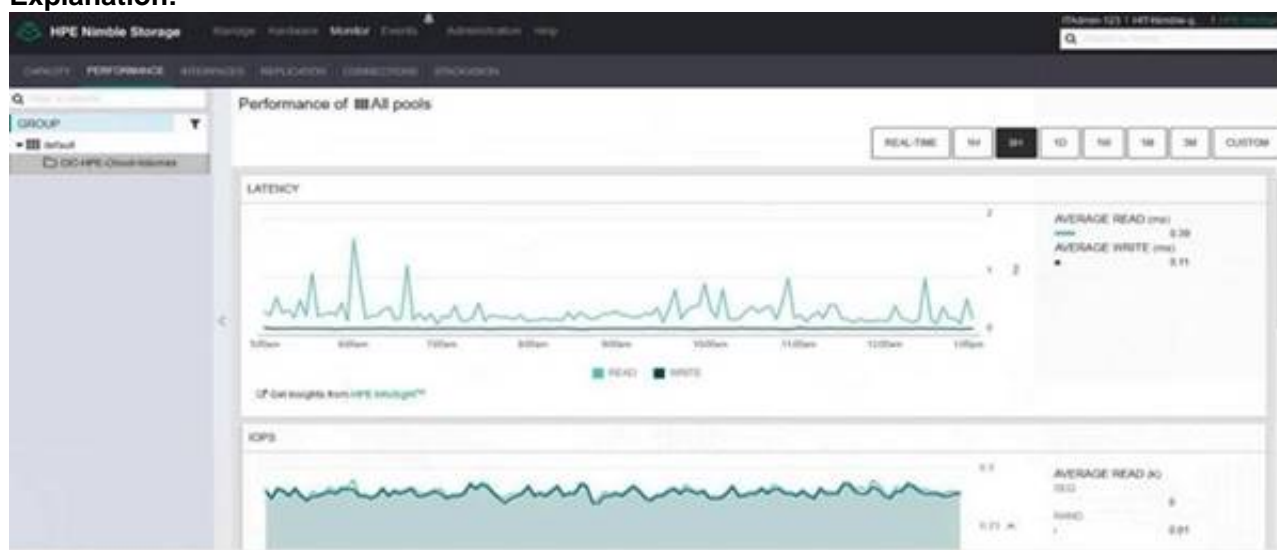
You are handing over the installed array to customer. The customer wants to review the amount of HDDs and SSDs in the system. Click the relevant menu option where the front panel of the head shelf can be visualized.



- A. Mastered
- B. Not Mastered

Answer: A

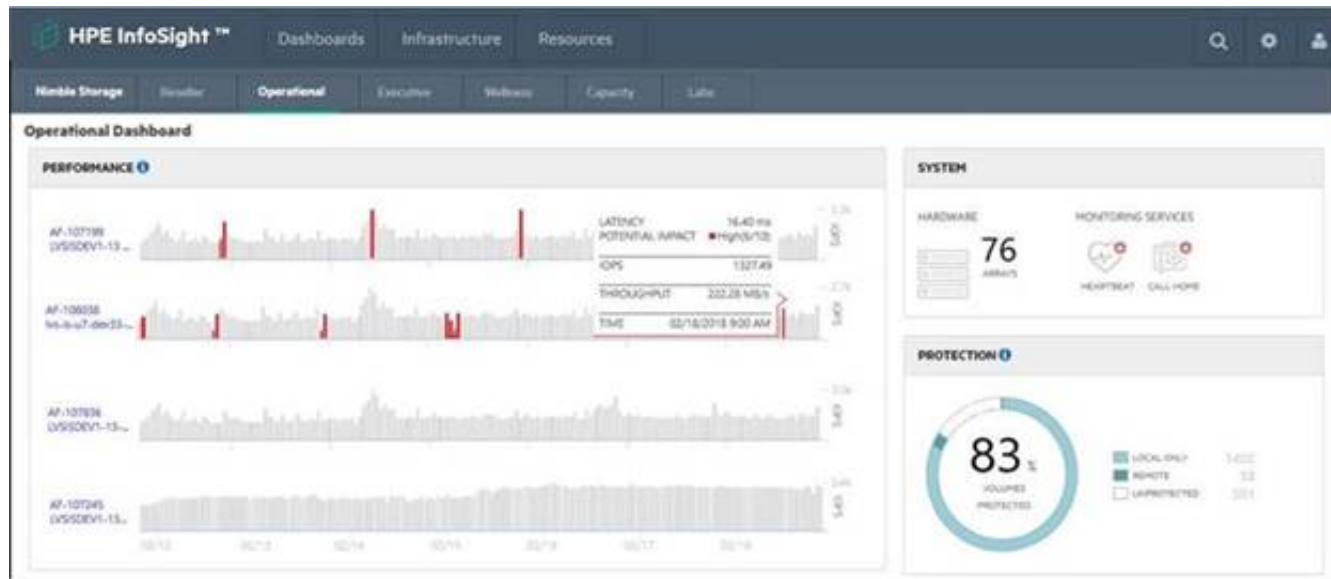
Explanation:



NEW QUESTION 4

- (Exam Topic 1)

A customer has a Nimble HF40 and needs to create a support ticket. Click the option in the InfoSight portal where the customer can perform this task.

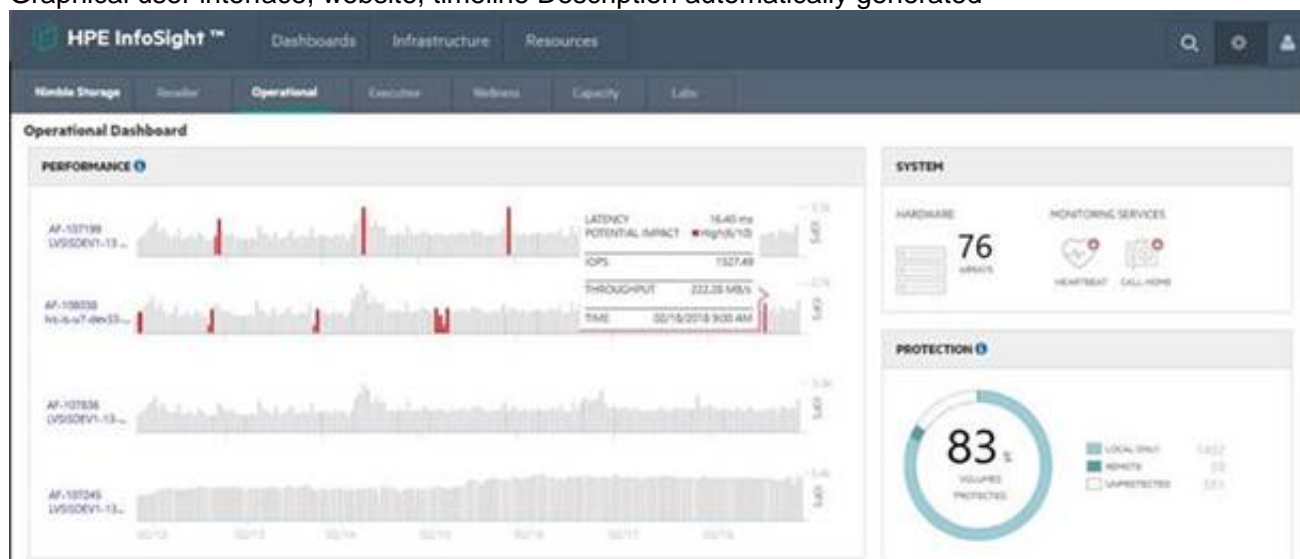


- A. Mastered
- B. Not Mastered

Answer: A

Explanation:

Graphical user interface, website, timeline Description automatically generated



NEW QUESTION 5

- (Exam Topic 1)

You have proposed a Primera array to a customer for new primary storage. The customer currently has an older 3PAR array that they will continue to use moving forward. The customer would like high availability configured.

Which RMC Peer Copy pre-requisites do you need to point out to the customer? (Choose two.)

- A. No license is required
- B. 2-port 10 Gb Ethernet Adapter (NIC) is required
- C. 4-port 1 Gb Ethernet Adapter (NIC) is required in each array
- D. RMC 6.2 is required
- E. Target drive type must match source drive type

Answer: CD

NEW QUESTION 6

- (Exam Topic 1)

A customer is purchasing an HPE MSA 2050 for a branch office. They will use it for critical data services. The customer is concerned that 64 snapshots will not be adequate as they grow.

What can be added to the array to address the customer's concerns?

- A. Advanced Data Services Suite license
- B. All-inclusive Multi-system license
- C. Virtual Copy license
- D. Adaptive Optimization license

Answer: D

NEW QUESTION 7

- (Exam Topic 1)

Match the feature to the appropriate C-Series DCNM license type.

Answer Area

SAN Essentials Edition		Bundled at no charge with the C-series switches
Advanced Edition		Provides configuration, real-time monitoring, and troubleshooting capabilities
		Switch/server-based license
		Historical performance monitoring for network traffic hotspot analysis

- A. Mastered
- B. Not Mastered

Answer: A

Explanation:

Graphical user interface, application Description automatically generated

NEW QUESTION 8

- (Exam Topic 1)

You are asked to review an installation plan for a new Primera storage array. The array will go into an existing environment that has been in production for over 4 years. It includes:

- > C7000s with Gen8 blades
- > 8Gb Brocade switches
- > a 3PAR 7400
- > an MSA that is used as a backup target

What should you use to find appropriate installation and planning guides?

- A. SAF Analyze and Collector
- B. Information Library
- C. NinjaSTARS
- D. SPOCK

Answer: D

NEW QUESTION 9

- (Exam Topic 1)

A customer is implementing an SAP HANA environment and is looking for an alternative to an entirely in-memory database. Which storage technology should you recommend?

- A. SAS SSD
- B. NVMe SSD
- C. NVMe SCM
- D. Intel Optane

Answer: D

NEW QUESTION 10

- (Exam Topic 1)

You are designing an HPE MSA iSCSI for a customer.

Which components are typically part of the solution? (Choose two.)

- A. Drives
- B. SFPs
- C. Service Processor
- D. All-inclusive Multi-system software
- E. Switch zones

Answer: AB

NEW QUESTION 10

- (Exam Topic 1)

You are designing a new enterprise array solution. The customer is interested in a caching tier that provides extremely low-latency and persistent storage at the same time. They also need to support more than 500GB.

Which technology should you recommend?

- A. DRAM
- B. SRAM
- C. NVMe SCM
- D. NAND SSD

Answer: D

NEW QUESTION 13

- (Exam Topic 1)

A customer is planning to replace their existing LTO-6 tape library with a new HPE StoreEver MSL2024 tape library. They want to reuse their existing LTO-6 tape cartridges for reads and writes.

What is the latest tape drive technology that will provide backward compatibility?

- A. LTO8
- B. LTO5
- C. LTO6
- D. LTO7

Answer: D

NEW QUESTION 15

- (Exam Topic 1)

A customer is deploying a new StoreOnce VSA solution.

How can the necessary storage capacity be added to the VSA? (Choose two.)

- A. Verify sufficient capacity LTUs are available
- B. Add a new virtual hard disk to the virtual machine
- C. The Cloud bank container needs to be configured once the VSA boots
- D. The Cloud bank container needs to be configured from the vCenter client

Answer: BD

NEW QUESTION 20

- (Exam Topic 1)

You are installing an HPE 3PAR StoreServ solution and need to integrate the array with the 3rd party monitoring application customer is using.

Which technology can be configured at 3PAR to support forwarding events from the array to the customer's monitoring application?

- A. IPMI
- B. NTP
- C. SNMPv3
- D. DMI

Answer: C

NEW QUESTION 24

- (Exam Topic 1)

A customer has the following requirements for a storage solution: VMware environment 20 of standard business data 400 TB of video archive files 10 GB iSCSI connectivity

They are most concerned with the cost of the solution.

Which HPE storage solution offers the lowest cost while meeting the customer requirements?

- A. HPE Nimble
- B. HPE SimpliVity
- C. HPE Primera
- D. HPE MSA

Answer: C

NEW QUESTION 26

- (Exam Topic 1)

A customer successfully implemented an HPE Primera solution.

Which tool can be used to verify achieved savings from deduplication and compression in the customer solution?

- A. NinjaSTARS
- B. 3PAR Service Processor
- C. NinjaCrawler
- D. StoreServ System Management Console

Answer: D

NEW QUESTION 27

- (Exam Topic 1)

You are designing a new storage environment for a customer. They need good performance, but need to keep costs to a minimum.

They have a very limited staff, and staff is concerned about learning new technologies. You plan to recommend a Nimble HF20 solution.

Which storage connectivity components should you recommend?

- A. FlexFabric switches, Nimble iSCSI card
- B. FC adapters for servers
- C. FC switches, Nimble FC card, FC adapters for servers
- D. Ethernet switches, Nimble iSCSI card, dedicated NICs for servers
- E. Ethernet switches, Nimble FC card, dedicated FC for servers

Answer: C

NEW QUESTION 29

- (Exam Topic 1)

Which tool is used to determine current compaction ratios on Primera arrays?

- A. WebUI
- B. Storage Management Utility (SMU)
- C. NinjaStars
- D. SSMC System Reporter

Answer: D

NEW QUESTION 32

- (Exam Topic 1)

A customer successfully implemented an HPE Primera solution.

Which tool can be used to verify performance counters, such as IOPS, match customer requirements?

- A. NinjaCrawler
- B. OneView
- C. Recovery Manager Central
- D. Primera on-node management GUI

Answer: D

NEW QUESTION 33

- (Exam Topic 1)

Refer to the exhibit.



You are designing a new Primera solution and demonstrating performance numbers to the customer. The customer reviews the configuration and requests a change to the configuration that will increase Random Write IOPS.

Which action will satisfy the customer request?

- A. Add more disks of smaller capacity
- B. Upgrade the HPE Primera base model
- C. Change to larger SSDs
- D. Add more FC Ports

Answer: C

NEW QUESTION 35

- (Exam Topic 1)

A customer runs their core application on an aging HPE 3PAR StoreServ 20000 Storage array. The application requires 100% availability.

Which HPE storage solution should you recommend?

- A. Nimble
- B. Nimble dHCI
- C. Primera
- D. MSA

Answer: C

NEW QUESTION 40

- (Exam Topic 1)

Which StoreOnce Gen4 features are included with the system software without additional licenses? (Choose two.)

- A. Encryption
- B. Cloud Bank
- C. Catalyst

- D. VTL/NAS replication
- E. Flexible I/O HBAs

Answer: CD

NEW QUESTION 45

- (Exam Topic 1)

A customer asks you for a recommendation on setting up their new StoreOnce appliance. They plan to use NetBackup and need the highest performance setup they can get. Their local hosts are connected via FC and the rest are connected via a WAN. Which backup target type should you recommend?

- A. VTL
- B. S3
- C. CIFS
- D. Catalyst

Answer: A

NEW QUESTION 48

- (Exam Topic 1)

Which of the following are part of the SimpliVity Data Virtualization Platform architecture? (Choose two.)

- A. Presentation Layer
- B. User Management Layer
- C. Security Layer
- D. Data Management Layer

Answer: AD

NEW QUESTION 52

- (Exam Topic 1)

A customer is planning to upgrade their HF40 controllers to support additional I/O requirements. To which model can they upgrade to meet their new requirements?

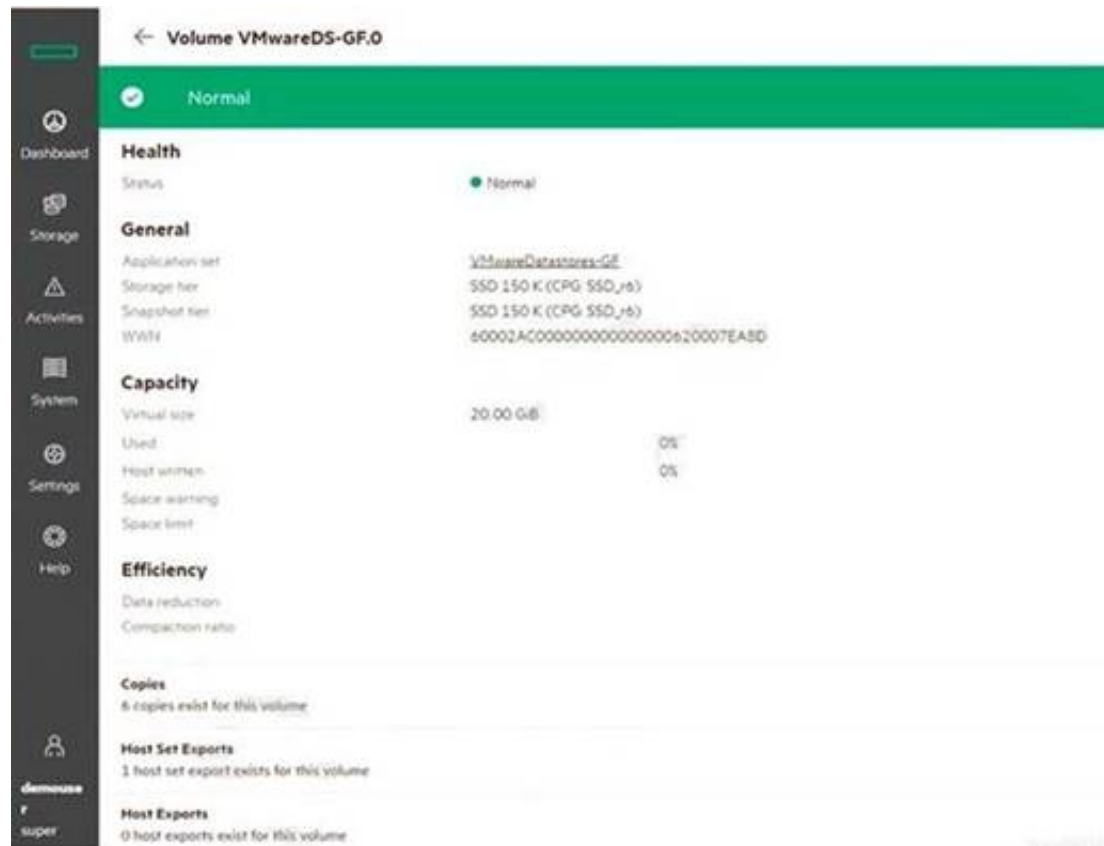
- A. AF60
- B. AF40
- C. HF60
- D. HF40C

Answer: D

NEW QUESTION 53

- (Exam Topic 1)

Refer to the exhibit.



The screenshot shows the HPE iSAF GUI for Volume VMwareDS-GF.0. The status is 'Normal'. The RAID level is 'RAID 5'. The volume size is 20.00 GB. The RAID level is 'RAID 5'.

You are configuring a new HPE array and verifying properties of a set of volumes. Which RAID level is used on the VMwareDatastores-GF volume?

- A. RAID 0
- B. RAID 6
- C. Triple Parity+
- D. RAID 5

Answer: D

NEW QUESTION 54

- (Exam Topic 1)

Select the correct initiation option for each HPE Primera function.

Answer Area

User Initiated		Stripe data across drives
Autonomic		Create Virtual Volumes
		Create Common Provisioning Groups
		Create RAID-6 Virtual Volumes
		Optional Performance Management
		Export LUNs

- A. Mastered
- B. Not Mastered

Answer: A

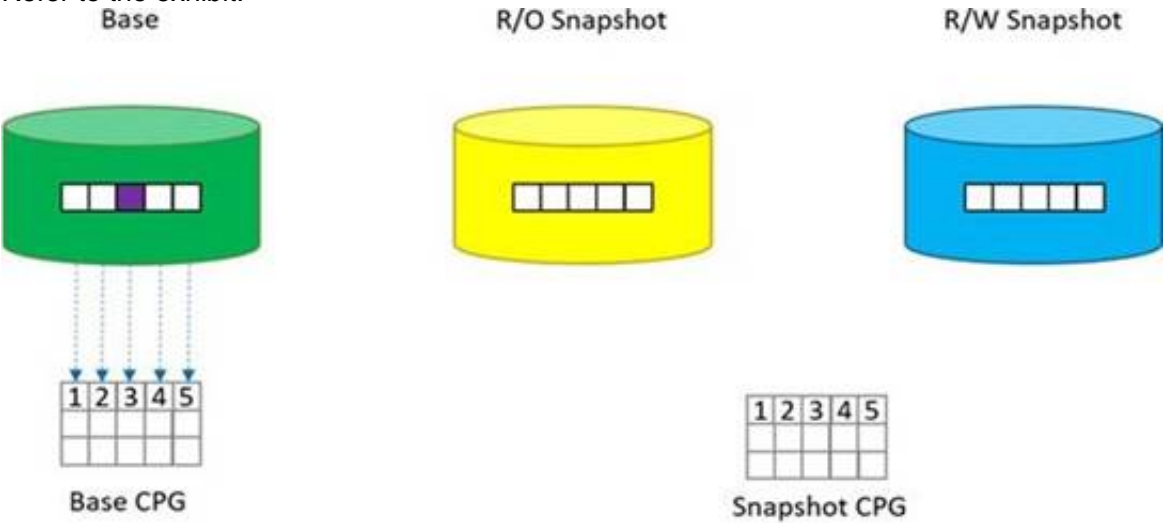
Explanation:

Graphical user interface, application Description automatically generated

NEW QUESTION 58

- (Exam Topic 1)

Refer to the exhibit.



You create two snapshots of a thin provisioned base volume in an HPE Primera. One snapshot is read only and the other is read-write. A write occurs at the location shown in in the diagram.

Place the actions on the left into the order they are taken on the right.

Action

Order

Copy block to snapshot CPG
Redirect the snapshots
Update the block with new data

- A. Mastered
- B. Not Mastered

Answer: A

Explanation:

A picture containing diagram Description automatically generated

NEW QUESTION 59

- (Exam Topic 1)

A customer has a VMware environment running vSphere 6.5. They are running DL380 Gen10 servers with HPE 82Q adapters connected through a HPE SN3000B switch to a Nimble HF40. They plan to upgrade the hypervisor.

What should they use to identify the latest firmware and compatibility information?

- A. SAN Health Diagnostics
- B. SPOCK
- C. OneView
- D. SAN Design Reference Guide

Answer: B

NEW QUESTION 60

- (Exam Topic 2)

Which feature enables a non-disruptive environment where host-based multi-pathing software is not affected in the event of a firmware upgrade?

- A. HPE 3PAR Access Guard
- B. HPE 3PAR Persistent Ports
- C. HPE 3PAR Persistent Cache
- D. HPE 3PAR MPIO

Answer: B

NEW QUESTION 62

- (Exam Topic 2)

A customer wants to implement a management and monitoring tool for an HPE B-series SAN switch environment. You plan to recommend the HPE SAN Network Advisor.

Which information about the customer's environment will help you to decide which edition to recommend?

- A. FCIP support
- B. Amount of used fabrics
- C. FCoE support
- D. Fabric OS version

Answer: B

Explanation:

– SAN Network Advisor is available in three types of bundles:• No-charge SAN Professional: Up to 300 switch ports, 2 fabrics, B-series Fabric OS only.• For-charge SAN Professional Plus: Up to 2560 switch ports and 36 fabrics.• For-charge SAN Enterprise: Up to 15000 switch ports and 100 fabrics. This bundle is required for B-series DC SANBackbone Director, SN8000B 8-Slot SAN Director and FICON management.

NEW QUESTION 66

- (Exam Topic 2)

Which SAN topology offers the highest centralized data access performance?

- A. Meshed
- B. Cascaded
- C. Core-Edge
- D. Ring

Answer: C

NEW QUESTION 69

- (Exam Topic 2)

A customer has deployed an HPE 3PAR StoreServ 8400 with two nodes and three additional disk enclosure .They want to expand the solution with two additional nodes and three additional disk enclosure ..What must you do to expand the customers solution?

- A. The new disks must be imported before the new nodes can be added
- B. The existing nodes need to be take Offline
- C. The system should be updated to the latest supported OS before the hardware expansion
- D. The new nodes and enclosure must be placed in an adjacent racks

Answer: C

NEW QUESTION 74

- (Exam Topic 2)

What advantage does the Unified API that is part of HPE's composable strategy provide?

- A. infrastructure lifecycle managed with standard programming code
- B. single portal for managing servers, networking, and storage
- C. write-back capability and instant cable warmth
- D. dedicated object storage platform

Answer: B

Explanation:

Unified API provides a single interface to discover, search, inventory, configure, provision, update, and diagnose the Composable Infrastructure. A single line of code enables full infrastructure programmability and can provision the infrastructure required for an application.

NEW QUESTION 77

- (Exam Topic 2)

Which built-in HPE 3PAR StoreServ technology reduces database transaction logs response time?

- A. Express Writes
- B. Adaptive Flash Cache
- C. Thin provisioning
- D. Thin Deduplication

Answer: B

NEW QUESTION 78

- (Exam Topic 2)

Which value does an HPE Nimble solution provide in addition to other HPE storage solutions

- A. All inclusive software licensing over 5 years and additional capacity upgrades
- B. Upfront option for free controller upgrade after 3 years
- C. Flat support pricing for all hardware components
- D. Tier 1 and tier 2 phone support

Answer: D

NEW QUESTION 80

- (Exam Topic 2)

Which functionality available in an HPE 3 Par StoreServ 8400 system that is not available in an HPE 3par Storesrve 7200

- A. Data at Rest Encryption
- B. Persistent Checksum end-to-end data integrity (correct)
- C. Adaptive optimization and dynamic Optimization
- D. Online import license

Answer: B

NEW QUESTION 81

- (Exam Topic 2)

A customer has a large deployment of HPE Synergy compute modules, HPE 3PAR StoreServ arrays, and HPE StoreOnce system in a single data center. They are concerned about the risk of data loss due to site disaster and seeks cost-effective offsite Disaster Recovery protection without the need to deploy a secondary site.

Which HPE solution should you recommend?

- A. HPE StoreOnce VSA
- B. HPE StoreOnce CloudBank
- C. HPE StoreOnce RMC
- D. HPE StoreOnce Catalyst

Answer: D

NEW QUESTION 83

- (Exam Topic 2)

What are two advantages of HPE Recovery Manager Central? (Select two.)

- A. Enables automatic transparent failover
- B. Less expensive than traditional backup
- C. Includes Peer Copy asynchronous replication
- D. Manual data provisioning and policy-based copy protection
- E. Integration capabilities utilizing HTML

Answer: BC

NEW QUESTION 87

- (Exam Topic 2)

A customer is evaluating an HPE 3PAR StoreServ system in a proof-of-concept project. The customer wants to receive emails about important storage system events and alerts.

What feature do you need to configure?

- A. HPE OneView integration
- B. Secure Service Agent
- C. Real-time Alert Processing
- D. Local Notification Service

Answer: D

NEW QUESTION 88

- (Exam Topic 2)

Which management interface uses four basic commands (Create ,read, update ad delete)to enable administrators to define ad radically simply management processes?

- A. Rest API
- B. WMI

- C. SMI-S
- D. WEBEM

Answer: A

NEW QUESTION 89

- (Exam Topic 2)

Which storage feature is supported by both the HPE StoreVirtual and the HPE 3PAR StoreServ storage, and is a key differentiator of HPE storage solutions in the industry?

- A. Network RAID
- B. Peer Motion
- C. virtual Copy
- D. Dynamic Optimization

Answer: B

NEW QUESTION 93

- (Exam Topic 2)

Which storage protocol is supported by virtual connect Flex-10?

- A. FCoE
- B. FC
- C. iSCSI
- D. FCIP

Answer: C

NEW QUESTION 94

- (Exam Topic 2)

Which 3PAR storeServ feature allow to host to continue I/O uninterrupted during a firmware update?

- A. Persistent Memory
- B. Persistent port (96)
- C. Peer persistenceD Persistent Cache

Answer: B

NEW QUESTION 95

- (Exam Topic 2)

You are presenting a Nimble solution based on CS3000 hardware to a customer. Which support advantage will be provided with this solution(select two)

- A. Customers always interact with a 3rd level support engineer ,when needed
- B. Customers only have to deploy a service processor for automating support tasks.
- C. Infosight handles the work of 1st and 2nd level support specialist Infosight offers predictive analytics and integration into HPE support center using insight Online.
- D. Infosight performs firmware and software updates without additional administrative support.

Answer: AC

NEW QUESTION 97

- (Exam Topic 2)

A customer has a 3PAR storeserv with FC and SSD drives who would like to improve the performance for random reads. Which 3PAR Storeserve feature would provide better read performance?

- A. Adaptive Flash Cache
- B. Deduplication
- C. Smart Cache
- D. Express Layout

Answer: A

NEW QUESTION 99

- (Exam Topic 2)

A customer uses Recovery manager central for Vmware (RMC-V).They need to ability to perform granular recovery of application item directly from backups...Which solution integrates with RMC-V to provide the desired requirements?

- A. Veeam Backup & Replication
- B. Netbackup
- C. StoreOnce cloudbank
- D. CommVault

Answer: A

NEW QUESTION 100

- (Exam Topic 2)

A customer asks for an integrated solution for their remote office with All-Flash storage and ease of management. Application-aware replication to their main office is an important requirement. Which HPE solution component should you discuss with the customer first?

- A. HPE SimpliVity 380
- B. HPE MSA 2052 Storage
- C. HPE Nimble CS1000 system
- D. HPE 3PAR StoreServ 8200

Answer: A

NEW QUESTION 102

- (Exam Topic 2)

You are designing a new HPE 3PAR StoreServ all-flash array for the customer.. Which ratio should you expect to have the highest efficiency?

- A. Read/write ratio
- B. Reclamation ratio
- C. Compaction Ratio
- D. Thin provisioning ratio

Answer: C

NEW QUESTION 105

- (Exam Topic 2)

A customer with an HPE 3PAR StoreServ needs to upgrade their aging backup solution to a more advanced solution using snapshots and deduplication. Which HPE products would meet the customer's needs? (Choose two.)

- A. HPE 3PAR File Persona
- B. HPE StoreEver
- C. HPE 3PAR Remote Copy
- D. HPE StoreOnce
- E. HPE Recovery Manager Central

Answer: DE

NEW QUESTION 109

- (Exam Topic 2)

A customer has an existing configuration consisting of first class and nearline SAS drive in an 8000 SFF enclosure. They add two SFF 8000enclosure that are fully populated with nearline drives to an existing HPE 3Par storeserv 8400 array. What should the customer do to optimize their storage configuration?

- A. Defrag the CPG and run align drive on their system
- B. Run tunesys and on the array (275)
- C. Enable space reclamation
- D. Create new CPG for the newly installed drivers

Answer: B

NEW QUESTION 110

- (Exam Topic 2)

A customer needs to upgrade their HPE storage environment, including driver and firmware levels and OS, to the latest version. Where can you find the needed information about supported versions?

- A. HPE Storage Assessment Foundry
- B. HPE SAN Design Reference Guide
- C. HPE OneView
- D. HPE SPOCK

Answer: D

NEW QUESTION 115

- (Exam Topic 2)

Which file protocols are commonly used in HPE StoreOnce environments? (Choose two.)

- A. CIFS
- B. NTFS
- C. VFS
- D. ZFS
- E. NFS

Answer: AE

NEW QUESTION 116

- (Exam Topic 2)

You are presenting the HPE StoreEver portfolio to a media agency. What advantage is offered when using LTFS?

- A. file management capabilities will be provided with tape cartridges
- B. WORM functionality for file, block and object storage access on tape

- C. file encryption with public and private key management
- D. file and block data management within an HPE HSM solution

Answer: A

NEW QUESTION 117

- (Exam Topic 2)

Which value does a Nimble solution provide in addition to other HPE storage solutions?

- A. Flat support pricing for all hardware components
- B. Future-proofed for newer technologies
- C. All-inclusive software licensing over 5 years and additional capacity upgrades
- D. Upfront option for free controller upgrade after 3 years

Answer: B

NEW QUESTION 120

- (Exam Topic 2)

What can move data directly from a snapshot to backup storage independent of backup server software?

- A. SSMC
- B. Virtual Lock
- C. CLI
- D. Express Protect

Answer: D

Explanation:

The Express Protect feature offers data protection by facilitating Express Protect of snapshots from HPE 3PAR StoreServ to HPE StoreOnce.

NEW QUESTION 124

- (Exam Topic 2)

A customer needs to be manually map out preferred paths within a multi-switch fabric, based on application ,priority ,and topology, while allowing failover to a non-preferred path if the preferred path fails, Which B-series FC switch functionality should be used to provide this?

- A. Quality of services
- B. Enhanced group management
- C. Frame filtering
- D. Traffic isolation Zones

Answer: D

NEW QUESTION 129

- (Exam Topic 2)

Which function is built into the HPE 3par OS and enable users to move data and workloads between array without impacting applications, users, or services?

- A. Peer persistence
- B. Adaptive optimization
- C. Peer motion
- D. Remote copy

Answer: A

NEW QUESTION 130

- (Exam Topic 2)

A customer has mission-critical applications that intermittently experience heavy disk I/O. The storage speed has the most impact on the application's performance. The customer does not want to dedicate SSD disks to these applications because additional performance is only needed periodically, and moving the volumes between tiers takes too long.

Which HPE StoreVirtual VSA feature can address this customer's challenge?

- A. Storage virtualization
- B. Space Reclamation
- C. Thin Provisioning
- D. Adaptive Optimization

Answer: D

NEW QUESTION 131

- (Exam Topic 2)

Which statement is correct when comparing functionalities of the AF,CF, and SF series in the nimble storage portfolio?

- A. Zero copy clone are unique feature of all flash array within the nimble portfolio
- B. SF series supports storage snapshots and replication using veeeam backup & replication CS and AF series support storage snapshot only.
- C. Inline deduplication for complete array capacity in combination with compression is offered by the AF and SF series only (67) need to check
- D. 99.9999% availability measured and guaranteed for AF and CF series arrays, SF series array offer 99.999% availability.

Answer: C

NEW QUESTION 135

- (Exam Topic 2)

You are planning a single-site Nimble solution with iSCSI connectivity. Two 10GbE SFP+ dual port NICs are included in the configuration. You designed an Intelligent Resilient Framework (IRF) stack with HPE FlexFabric 5900CP switches. Which statement is correct when discussing the IRF limits for this configuration?

- A. When connecting an iSCSI storage to an IRF stack, a minimum of four 10GbE ports must be used per switch.
- B. A maximum of two switches can be used in an IRF stack when connecting storage.
- C. In an IRF stack with storage connectivity, the 40GbE ports cannot be used.
- D. The used IRF ports for iSCSI traffic have to be configured as 10GbE converged ports.

Answer: A

NEW QUESTION 138

- (Exam Topic 2)

You are advising a customer on a new backup strategy to deploy HPE StoreOnce. What should you recommend to ensure the best storage utilization and performance?

- A. consolidate activity windows for housekeeping tasks
- B. size solution for a single backup device
- C. combine management and backup Ethernet traffic
- D. use separate backup targets for different data types

Answer: A

NEW QUESTION 139

- (Exam Topic 2)

Due to industry regulation a customer is required to store backup at a separate data center from the company's main data center. The customer application require fast backup and quick restore increase of data lose. Which solution allow the customer to meet both industry and application requirement?

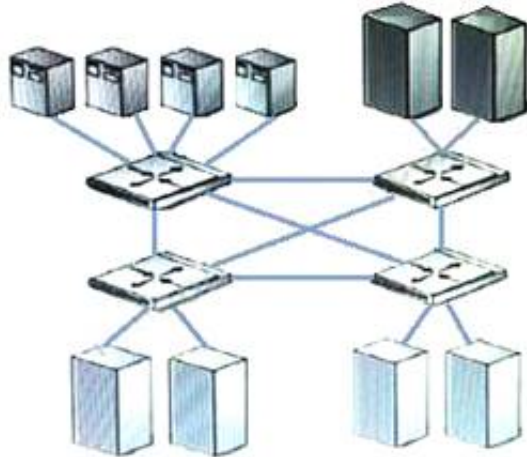
- A. HPE storeServe 3par in main and secondary data center with RCIP replication between arrays
- B. Nimble AF series in main data center and Nimble SF series in secondary data center
- C. HPE Storeserve 3Par in main data center HPE StoreOnce in secondary data center with RMC
- D. HPR StoreServ 3PAR in main data center and HPE StoreOnce in both main and secondary data center.

Answer: C

NEW QUESTION 143

- (Exam Topic 2)

Exhibit:



Which fabric design is shown?

- A. meshed
- B. single fabric
- C. cascaded
- D. core-edge

Answer: A

NEW QUESTION 144

- (Exam Topic 2)

An existing Nimble customer is interested in adding storage to their environment to store his Backups, but has a constrained budget and limited personal .The solution must scale to allow for substantial growth over the next five years?

- A. Nimble SF series
- B. Nimble AF series
- C. Nimble cloud volume
- D. Nimble CS series

Answer: B

NEW QUESTION 149

- (Exam Topic 2)

What has to taken into account when performing capacity planning for HPE Nimble storage using deduplication?

- A. Deduplication is performed on a per volume basic
- B. Deduplication is performed on a per array basic
- C. Deduplication is performed on a per application category basic
- D. Deduplication is performed on a per pool and block size basic

Answer: D

NEW QUESTION 150

- (Exam Topic 2)

You are adding a new host for an HPE 3PAR StoreServ proof-of-concept .In addition to the host name ,What is the minimum information that is required to create a host profile?

- A. Host Persona
- B. Host MAC
- C. Host set
- D. Host WWN

Answer: D

NEW QUESTION 155

- (Exam Topic 2)

What owns the physical drives in an HPE 3PAR StoreServ Express Layout?

- A. a logical disk
- B. a chunklet
- C. a single node
- D. a node pair

Answer: D

NEW QUESTION 156

- (Exam Topic 2)

A customer needs to store a large amount of unstructured data that must be queried quickly. Which type of storage meets the customer's needs?

- A. object
- B. hash
- C. file
- D. flash

Answer: A

NEW QUESTION 158

- (Exam Topic 2)

A customer is concerned about the business risks of non-compliance for long-term data protection, retention, immutability, and encryption on petabytes of data consisting of millions of objects in a global namespace across multiple geographic locations.

Which products should you recommend to the customer to address their concern? (Choose two.)

- A. HPE StoreOnce Systems
- B. HPE Complete Veeam
- C. HPE Complete iTernity iCAS
- D. HPE Scalify RING on HPE Apollo Servers
- E. HPE 3PAR StoreServ 9000

Answer: AC

NEW QUESTION 163

- (Exam Topic 2)

A customer need to update the local sever at each of their branches keep up with the increasing demand for High-performance storage. The customer cannot afford to move to SAN at each state. Which HPE storage technology can increase performance for this customer?

- A. Smart Path
- B. SmartCache
- C. Adaptive Flash Cache
- D. Persistent Cache

Answer: B

NEW QUESTION 168

- (Exam Topic 2)

A customer is planning to connect a new HPE 3PAR StoreServ system to its existing Synergy based composable infrastructure via direct-attach. Which tool would be used to manage the storage?

- A. HPE SAN Network Advisor

- B. HPE Synergy Image Streamer
- C. HPE Synergy Composer
- D. HPE InfoSight for 3PAR

Answer: C

NEW QUESTION 173

- (Exam Topic 2)

Where does HPE 3PAR StoreServ Data-at-Rest Encryption occur?

- A. ASIC
- B. physical disk
- C. processor
- D. host

Answer: B

NEW QUESTION 177

- (Exam Topic 2)

Match the type of storage found in today's market to the HPE storage solution optimized for that capacity?

- A. HPE 3PAR StoreServ - Block
- B. MSA - Block
- C. Nimble - Block
- D. Scalability - Object
- E. StoreEasy - File
- F. StoreVirtual - Block

Answer: A

NEW QUESTION 181

- (Exam Topic 2)

A customer has an HPE 3PAR StoreServ 8200 with eight 3.84 TB SSD's configured with RAID5 7+1. They plan to add four more 3.84 TB SSD's. What needs to be changed on the configuration once the new SSD's are installed?

- A. Reconfigure the cpg setsize as RAID6 6+2 and wait for tunesys to complete.
- B. Change the availability level from cage to magazine.
- C. Adjust the cpg growth value to match amount of SSD's.
- D. Change the cpg setsize to RAID5 5+1 and run tunesys.

Answer: D

NEW QUESTION 184

- (Exam Topic 2)

A customer has a new Nimble CS3000 21T storage systems and is facing latency issues for his 2TB ERP database. What would be a design approach to solve this issue ?

- A. Perform controller upgrade to a Nimbel CS3000 storage systems
- B. Add additional SSd drives as cache to the system and PIN the volume
- C. Enable storage tiering on the system and map the volume to the new tier
- D. Change RAID of the drives to RAID -1and setup quality of services for the volume

Answer: B

NEW QUESTION 187

- (Exam Topic 2)

An HPE 3PAR StoreServ 9000 All-Flash Array customer plans to deploy a secondary array 20 km away from their primary array to enable storage replication over a dark fibre. Their existing environment consists of one HPE Synergy Frame 12000, HPE SN6000B Fibre Channel Switches, HPE FlexFabric 5700 Switch Series, and HPE StoreOnce Systems.

Which HPE license is required to meet the customer's technical requirements?

- A. Intelligent Resilient Framework licenses
- B. HPE StoreOnce Replication
- C. Extended Fabric
- D. HPE 3PAR Remote Copy

Answer: D

NEW QUESTION 189

- (Exam Topic 2)

A customer need a backup solution to their virtualized environment .The backup solution must be agentless ,hypervise independent and integrated with HPE storage solutions. The solution must support Nimble snapshot and replication management. What products meets the customer requirement?

- A. HPE storeOnce Recovery manager central
- B. Commvault Simpana Intellisnap
- C. Micro Focus Data Protector
- D. Veem Backup and Replication

Answer: D

NEW QUESTION 191

- (Exam Topic 2)

Which statement describes HPE StoreVirtual Network RAID functionality?

- A. Redundancy is managed on a per-volume basis.
- B. With Network RAID 10+2 data is striped and mirrored across two or more storage systems.
- C. Network RAID 10 requires an even number of storage nodes.
- D. Volumes remain available if an odd number of nodes are available.

Answer: A

Explanation:

Redundancy is managed on a per volume basis to improve storage utilization and to remove any single point of failure.

NEW QUESTION 194

- (Exam Topic 2)

Which statement is true when defining object storage ?

- A. It is most suited for sharing files and characterized by volumes
- B. It is most suited for unstructured data and characterized by file share protocols like NFS
- C. It is most suited for unstructured data and characterized by containers or buckets
- D. suited for database It is most and characterized by containers or buckets

Answer: C

NEW QUESTION 196

- (Exam Topic 2)

What is used to migrate data between nodes in an HPE StoreVirtual VSA environment?

- A. Network RAID
- B. Peer Motion
- C. SmartClone
- D. Remote Copy

Answer: B

Explanation:

Integrated with HPE Recovery Manager Central for seamless data movement to StoreOnce Backup appliances and StoreOnce VSA, and bidirectional replication with 3PAR StoreServ arrays (Peer Copy).

NEW QUESTION 201

- (Exam Topic 2)

A customer need to server 40TB via file protocols including SMB and FTP to a board range of client operating system in one location .security protocol dictate that data must be encrypted with FIPS 140-2 compliance. Which HPE storage solution you recommend?

- A. HPE MSA 2052 storage with HPE StoreEasy 3850 Gateway
- B. HPE 3PAR 8200 using self-encrypting drive with 3PAR file persona
- C. HPE StoreOnce 5500with data in fight encryption .
- D. HPE XP7 storage with encryption ready disk adapters

Answer: B

NEW QUESTION 206

- (Exam Topic 2)

You have just completed a performance analysis of an HPE 3PAR StoreServ 8400 disk array with different tiers at a customer's site. After reviewing the performance metrics, you determine that they should install a new tier of SSD drives.

Which actions should you recommend they take to fully optimize the array? (Choose two.)

- A. Configure Adaptive Flash Cache.
- B. Configure scheduled tunesys tasks.
- C. Rebalance all flash drives between nodes 0 and 2.
- D. Configure Adaptive Optimization.
- E. Configure dedicated drives to enable Adaptive Flash Cache.

Answer: BD

NEW QUESTION 210

- (Exam Topic 2)

Which statement is correct when comparing functionalities of the AF and HF series in the Nimble storage portfolio? (Choose Two)

- A. Zero Copy Clones are a unique feature of All-Flash arrays within the Nimble Portfolio.
- B. >99.9999% availability is measured and guaranteed for AF and HF series arrays.
- C. HF series has a dedicated read cache and AF series does not have a dedicated reach cache.

D. HF series supports storage snapshots and replication using Veeam Backup & Replication, HF and AF series support storage snapshots only

Answer: BC

NEW QUESTION 215

.....

Thank You for Trying Our Product

We offer two products:

1st - We have Practice Tests Software with Actual Exam Questions

2nd - Questions and Answers in PDF Format

HPE0-J68 Practice Exam Features:

- * HPE0-J68 Questions and Answers Updated Frequently
- * HPE0-J68 Practice Questions Verified by Expert Senior Certified Staff
- * HPE0-J68 Most Realistic Questions that Guarantee you a Pass on Your FirstTry
- * HPE0-J68 Practice Test Questions in Multiple Choice Formats and Updatesfor 1 Year

100% Actual & Verified — Instant Download, Please Click
[Order The HPE0-J68 Practice Test Here](#)