

# Cisco

## Exam Questions 400-007

Cisco Certified Design Expert (CCDE v3.0) Written Exam



#### NEW QUESTION 1

Which solution component helps to achieve comprehensive threat protection and compliance for migration to multicloud SDX architectures?

- A. system-oriented architecture
- B. OSASE architecture
- C. platform-oriented architecture
- D. SASE architecture

**Answer: D**

#### NEW QUESTION 2

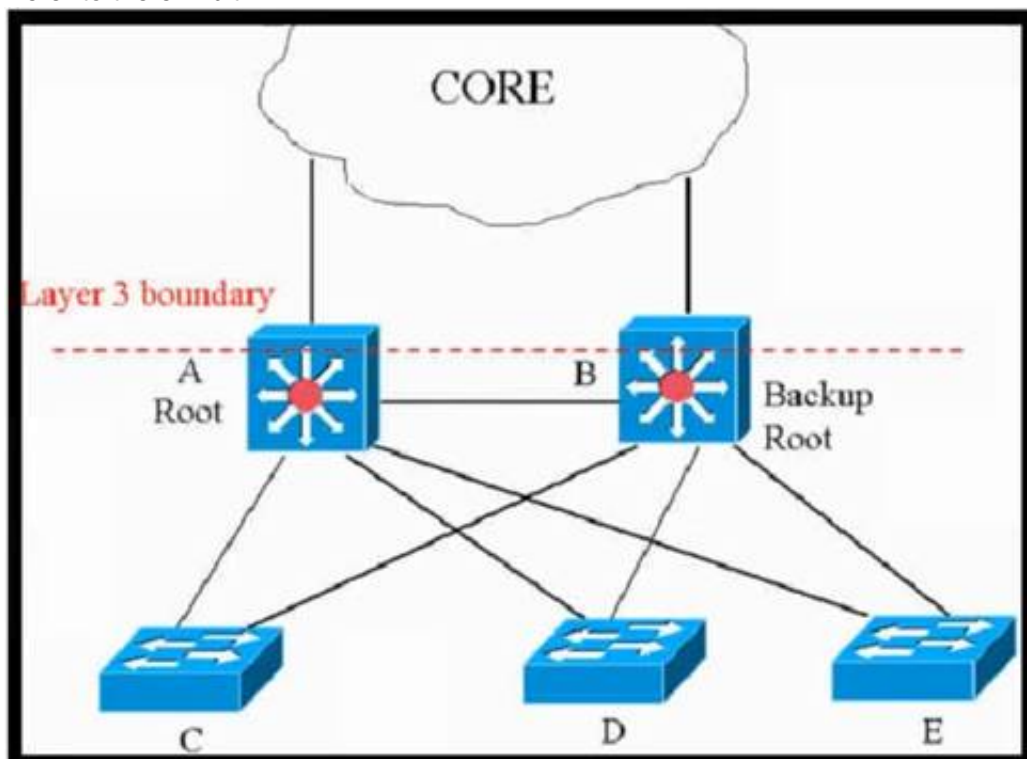
You have been tasked with designing a data center interconnect to provide business continuity. You want to encrypt the traffic over the DCI using IEEE 802.1AE MACsec to prevent the deployment of any firewall or IPS. Which two interconnect technologies support MACsec? (Choose two.)

- A. EoMPLS
- B. MPLS Layer 3 VPN
- C. DMVPN
- D. GET VPN
- E. KVPLS

**Answer: AE**

#### NEW QUESTION 3

Refer to the exhibit.



This network is running legacy STP 802.1d. Assuming "hello\_timer" is fixed to 2 seconds, which parameters can be modified to speed up convergence times after single link/node failure?

- A. The transit\_delay=5 and dpdu\_delay=20 are recommended values, considering helto\_timer=2 and specified
- B. Only the maximum\_transmission\_halt\_delay and diameter parameters are configurable parameters in 802. to speed up STP convergence process
- C. The max\_age and forward delay parameters can be adjusted to speed up STP convergence process.
- D. Only the transit\_delay and bpdu\_delay timers are configurable parameters in 802.1d to speed up STP convergence process.

**Answer: C**

#### NEW QUESTION 4

Drag and drop the end-to-end network virtualization elements from the left onto the correct network areas on the right.

Network Functions Virtualization (NFV)	Edge Control
IP Tunneling	option A
VRF	option B
MPLS + MP-BGP	Transport Virtualization
VLAN	option A
Service Containers	option B
	Service Virtualization
	option A
	option B

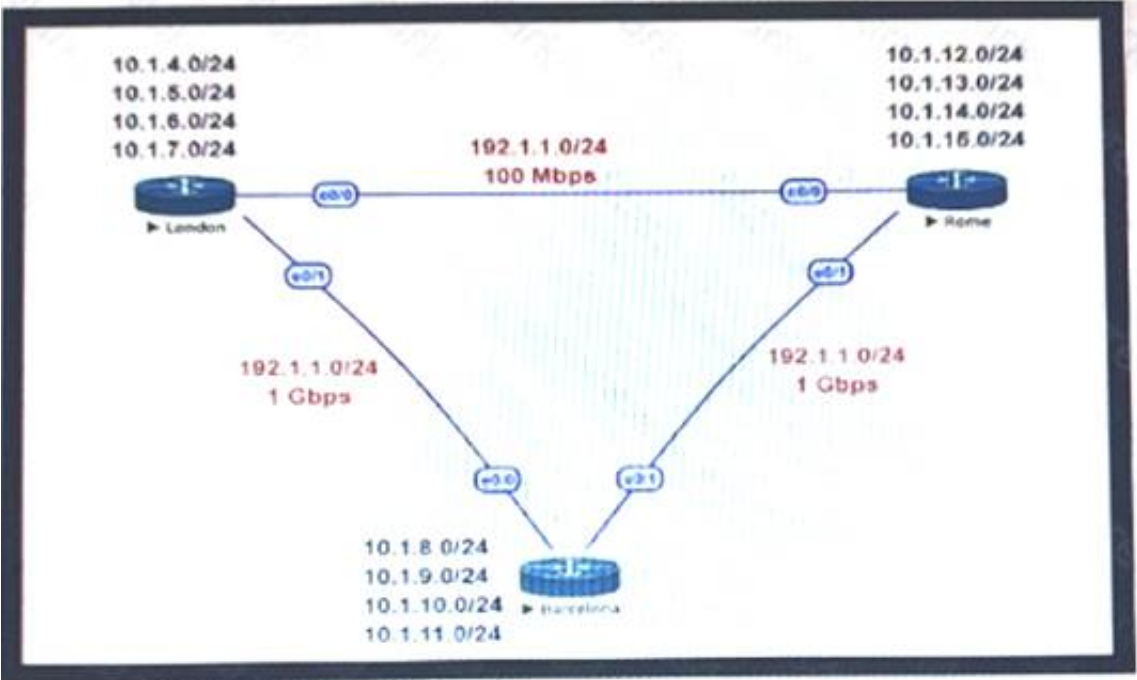
- A. Mastered
- B. Not Mastered

**Answer:** A

**Explanation:**  
 Graphical user interface Description automatically generated with medium confidence

**NEW QUESTION 5**

Refer to the exhibit.



This network is running OSPF as the routing protocol. The internal networks are being advertised in OSPF London and Rome are using the direct link to reach each other although the transfer rates are better via Barcelona Which OSPF design change allows OSPF to calculate the proper costs?

- A. Change the OSPF reference bandwidth to accommodate faster links.
- B. Filter the routes on the link between London and Rome
- C. Change the interface bandwidth on all the links.
- D. Implement OSPF summarisation to fix the issue

**Answer:** A

**NEW QUESTION 6**

Enterprise XYZ wants to implement fast convergence on their network and optimize timers for OSPF However they also want to prevent excess flooding of LSAs if there is a constantly flapping link on the network Which timers can help prevent excess flooding of LSAs for OSPF?

- A. OSPF propagation timers
- B. OSPF throttling timers
- C. OSPF delay timers
- D. OSPF flooding timers

**Answer:** B

**NEW QUESTION 7**

Refer to the exhibit.



Company XYZ BGP topology is as shown in the diagram. The interface on the LA router connected toward the 10.1.5.0/24 network is faulty and is going up and down, which affects the entire routing domain. Which routing technique can be used in the routing policy design so that the rest of the network is not affected by the flapping issue?

- A. Use route dampening on LA router for the 10.1.5.0/24 network so that it does not get propagated when it flaps up and down
- B. Use route filtering on Chicago router to block the 10.1.5.0/24 network from coming in from the LA router
- C. Use route filtering on LA router to block the 10.1.5.0/24 network from getting propagated toward Chicago and New York
- D. Use route aggregation on LA router to summarize the 10.1.4.0/24, 10.1.5.0/24, 10.1.6.0/24, and 10.1.7.0/24 networks toward Chicago

**Answer: D**

#### NEW QUESTION 8

Which technology supports antispoofing and does not have any impact on encryption performance regardless of packet size?

- A. MACsec
- B. IP source guard
- C. DHCP snooping with DAI
- D. IPsec

**Answer: A**

#### NEW QUESTION 9

Which two points must network designers consider when designing a new network design or when evaluating an existing network design to help them understand the high-level design direction with regards to the security aspects? (Choose two)

- A. Consider Business objectives and goals
- B. Consider organization's security policy standards
- C. Consider for only multi-site networks
- D. Consider for only new network technologies and components

**Answer: AB**

#### NEW QUESTION 10

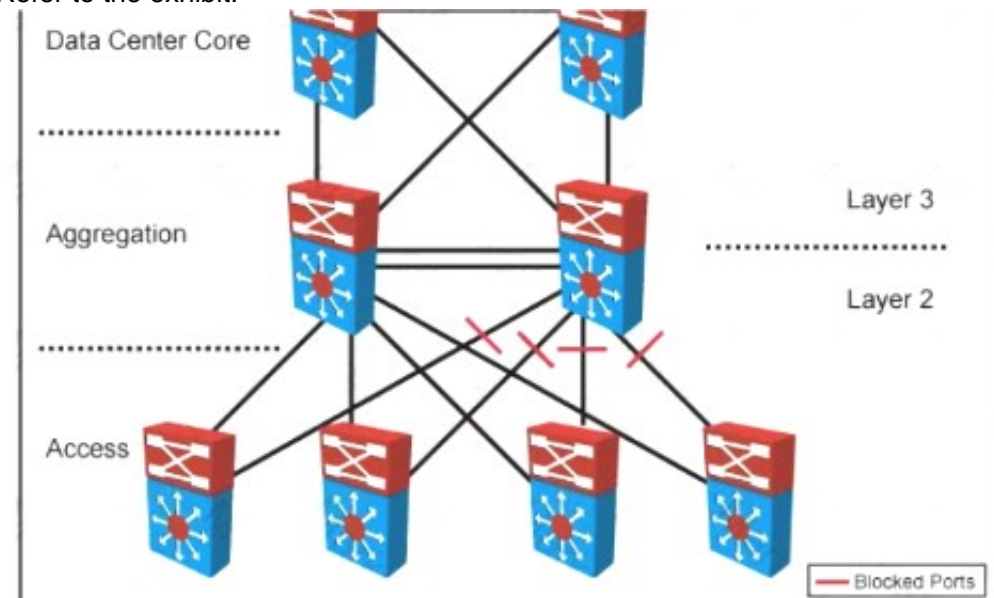
Which two features control multicast traffic in a VLAN environment? (Choose two)

- A. IGMP snooping
- B. MLD snooping
- C. RGMP
- D. PIM snooping
- E. pruning

**Answer: AB**

#### NEW QUESTION 10

Refer to the exhibit.



Your company designed a network to allow server VLANs to span all access switches in a data center. In the design, Layer 3 VLAN interfaces and HSRP are configured on the aggregation switches. Which two features improve STP stability within the network design? (Choose two.)

- A. BPDU guard on access ports

- B. BPDU guard on the aggregation switch downlinks toward access switches
- C. root guard on the aggregation switch downlinks toward access switches
- D. root guard on access ports
- E. edge port on access ports
- F. access switch pairs explicitly determined to be root and backup root bridges

**Answer:** AE

#### NEW QUESTION 13

You are using iSCSI to transfer files between a 10 Gigabit Ethernet storage system and a 1 Gigabit Ethernet server. The performance is only approximately 700 Mbps and output drops are occurring on the server switch port. Which action will improve performance in a cost-effective manner?

- A. Change the protocol to CIFS.
- B. Increase the queue to at least 1 GB
- C. Use a WRED random drop policy
- D. Enable the TCP Nagle algorithm on the receiver

**Answer:** A

#### NEW QUESTION 14

You are designing the routing design for two merging companies that have overlapping IP address space. Which of these must you consider when developing the routing and NAT design?

- A. Local to global NAT translation is done after routing
- B. Global to local NAT translation is done before routing.
- C. Local to global NAT translation is done before policy-based routing
- D. Global to local NAT translation is done after policy-based routing.

**Answer:** B

#### NEW QUESTION 17

Which two statements describe the usage of the IS-IS overload bit technique? (Choose two )

- A. If overload-bit is set on a Level 2 intermediate system, the other Level 2 intermediate systems in the topology will stop using the overloaded IS to forward Level 2 traffic. However, the intermediate system can still forward Level 1 traffic
- B. It can be set in intermediate systems (IS-IS routers) to prioritize control plane CSNP packets.
- C. It can be used to automatically synchronize the link-state database between Level 1 intermediate systems
- D. It can be set in intermediate systems (IS-IS routers) to avoid traffic black holes until routing protocols are fully converged after a reload operation.
- E. It can be set in intermediate systems (IS-IS routers) to attract transit traffic from other intermediate systems

**Answer:** AD

#### NEW QUESTION 22

A senior network designer suggests that you should improve network convergence times by reducing BGP timers between your CE router and the PE router of the service provider. Which two factors should you consider to adjust the timer values? (Choose two.)

- A. service provider agreement to support tuned timers
- B. manual updates to the peer groups
- C. service provider scheduling of changes to the PE
- D. number of routes on the CE router
- E. number of VRFs on the PE router

**Answer:** AD

#### NEW QUESTION 26

You are designing the QoS policy for a company that is running many TCP-based applications. The company is experiencing tail drops for these applications. The company wants to use a congestion avoidance technique for these applications. Which QoS strategy can be used to fulfill the requirement?

- A. weighted fair queuing
- B. weighted random early detection
- C. low-latency queuing
- D. first-in first-out

**Answer:** B

#### NEW QUESTION 30

The network designer needs to use GLOP IP addresses in order to make them unique within their ASN. Which multicast address range should be used?

- A. 232.0.0.0 to 232.255.255.255
- B. 233.0.0.0 to 233.255.255.255
- C. 239.0.0.0 to 239.255.255.255
- D. 224.0.0.0 to 224.255.255.255

**Answer:** B

#### NEW QUESTION 33



Which two protocols are used by SDN controllers to communicate with switches and routers? (Choose two )

- A. OpenFlash
- B. OpenFlow
- C. NetFlash
- D. Open vSwitch Database
- E. NetFlow

**Answer:** BD

#### NEW QUESTION 37

Company XYZ wants to redesign the Layer 2 part of their network and wants to use all available uplinks for increased performance. They also want to have end host reachability supporting conversational learning. However, due to design constraints, they cannot implement port-channel on the uplinks. Which other technique can be used to make sure the uplinks are in active/active state?

- A. TRILL
- B. LISP
- C. MSTP
- D. switch stack

**Answer:** B

#### NEW QUESTION 38

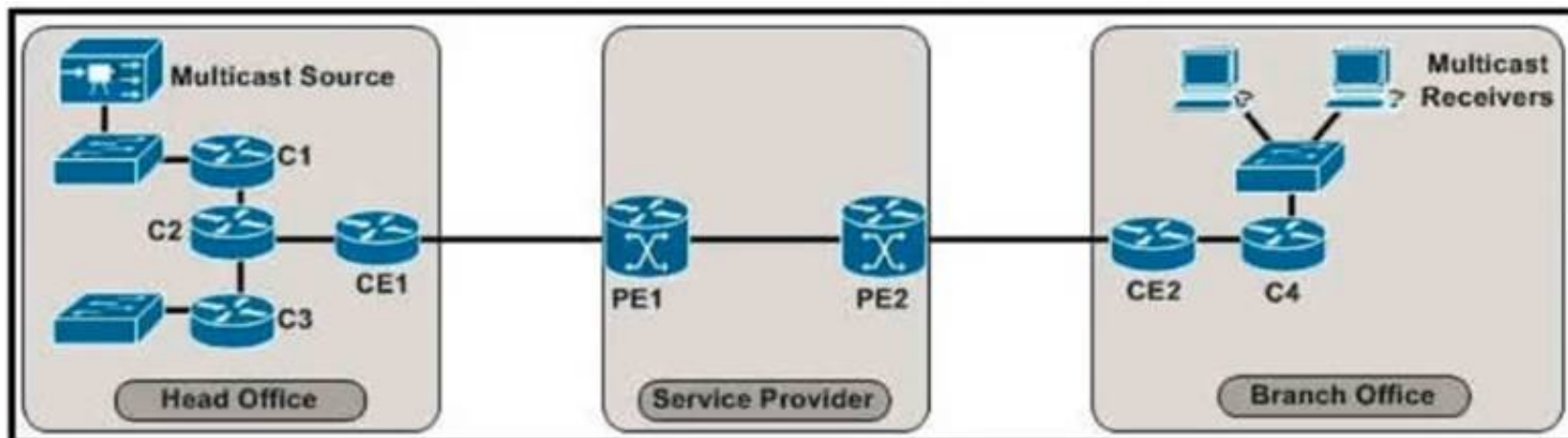
What is the most important operational driver in building a resilient and secure modular network design?

- A. Dependencies on hardware or software that is difficult to scale
- B. Minimize app downtime
- C. Reduce the frequency of failures requiring human intervention
- D. Increase time spent on developing new features

**Answer:** B

#### NEW QUESTION 43

Refer to the exhibit.



The enterprise customer wants to stream one-way video from their head office to eight branch offices using multicast. Their current service provider provides a Layer3 VPN solution and manages the CE routers, but they do not currently support multicast. Which solution quickly allows this multicast traffic to go through while allowing for future scalability?

- A. Enable a GRE tunnel between nodes CE1 and CE2
- B. Enable a GRE tunnel between nodes C2 and C4
- C. Enable a GRE tunnel between nodes C1 and C4
- D. Implement hub and spoke MPLS VPN over DMVPN (also known as 2547o DMVPN) between CE1 and CE2
- E. The service provider must provide a Draft Rosen solution to enable a GRE tunnel between nodes PE1 and PE2

**Answer:** B

#### NEW QUESTION 45

Company XYZ is running a redundant private WAN network using OSPF as the underlay protocol. The current design accommodates for redundancy in the network, but it is taking over 30 seconds for the network to reconverge upon failure. Which technique can be implemented in the design to detect such a failure in a subsecond?

- A. STP
- B. fate sharing
- C. OSPF LFA
- D. BFD
- E. flex links

**Answer:** D

#### NEW QUESTION 48

Which actions are performed at the distribution layer of the three-layer hierarchical network design model? (Choose two)

- A. Fast transport
- B. Reliability

- C. QoS classification and marking boundary
- D. Fault isolation
- E. Redundancy and load balancing

**Answer:** DE

#### NEW QUESTION 49

A product manufacturing organization is integrating cloud services into their IT solution. The IT team is working on the preparation phase of the implementation approach, which includes the Define Strategy step. This step defines the scope of IT, the application, and the service. What is one topic that should be considered in the Define Strategy step?

- A. financial and governance models
- B. innovate and align with business according to volume
- C. due diligence and financial scenarios
- D. contingency exit strategy steps

**Answer:** D

#### NEW QUESTION 51

Company XYZ is designing the network for IPv6 security and they have these design requirements:

- A switch or router must deny access to traffic from sources with addresses that are correct, but are topologically incorrect
- Devices must block Neighbor Discovery Protocol resolution for destination addresses that are not found in the binding table.

Which two IPv4 security features are recommended for this company? (Choose two)

- A. IPv6 DHCP Guard
- B. IPv6 Source Guard
- C. IPv6 Destination Guard
- D. IPv6 Prefix Guard
- E. IPv6 RA Guard

**Answer:** CD

#### Explanation:

[https://www.cisco.com/c/dam/global/ja\\_jp/td/docs/ios-xml/ios/ipv6\\_fhsec/configuration/xe-16/ip6f-xe-16-book](https://www.cisco.com/c/dam/global/ja_jp/td/docs/ios-xml/ios/ipv6_fhsec/configuration/xe-16/ip6f-xe-16-book).

#### NEW QUESTION 56

Which feature is supported by NETCONF but is not supported by SNMP?

- A. distinguishing between configuration data and operational data
- B. taking administrative actions
- C. collecting the status of specific fields
- D. changing the configuration of specific fields

**Answer:** A

#### NEW QUESTION 57

Company XYZ branch offices connect to the headquarter sites using two links, MPLS and Internet. The company wants to design the traffic flow so that voice traffic goes through the MPLS link and all other traffic uses either the MPLS link or the Internet link. Which technique can the company use in their design to ensure that the traffic is not process switched?

- A. policy-based routing
- B. virtual links
- C. visualization
- D. floating static route

**Answer:** A

#### NEW QUESTION 61

Which component of the SDN architecture automatically ensures that application traffic is routed according to policies established by network administrators?

- A. packet forwarding engine
- B. northbound API
- C. southbound API
- D. SDN controller

**Answer:** D

#### NEW QUESTION 64

While designing a switched topology, in which two options is UplinkFast recommended? (Choose two)

- A. when switches of different spanning-tree types are connected (for example, 802.1d connecting to 802.1w)
- B. 802.1d connecting to 802.1w
- C. on distribution layer switches
- D. when hello timers are changed to more aggressive values
- E. on access layer switches
- F. on the core switches

**Answer:** AD

**NEW QUESTION 69**

A software-defined networking (SDN) controller teams network topology information by using BGP link-state sessions with the route reflectors of an MPLS-enabled network. The controller then uses the topology information to apply on-demand traffic policies to the network through a protocol that is supported from all Layer 3 routers. Each policy is represented as a RIB entry in the control plane of the router. Which SDN model has been implemented?

- A. SDN centralized
- B. SDN traffic engineering
- C. SD-WAN
- D. SDN hybrid

**Answer:** B

**NEW QUESTION 71**

What are two examples of components that are part of an SDN architecture? (Choose two.)

- A. software plane
- B. control plane
- C. application plane
- D. management plane
- E. network plane

**Answer:** BD

**NEW QUESTION 73**

What are two advantages of controller-based networks versus traditional networks? (Choose two.)

- A. the ability to have forwarding tables at each device
- B. more flexible configuration per device
- C. more consistent device configuration
- D. programmatic APIs that are available per device
- E. the ability to configure the features for the network rather than per device

**Answer:** CE

**NEW QUESTION 74**

Which two application requirements are mandatory for traffic to receive proper treatment when placed in the priority queue? (Choose two.)

- A. small transactions (HTTP-like behavior)
- B. WRED drop treatment
- C. tolerance to packet loss
- D. intolerance to jitter
- E. TCP-based application

**Answer:** AD

**NEW QUESTION 79**

The Agile Manifesto is a document that defines the key values and principles behind the Agile philosophy and helps development teams work more efficiently and sustainably. Each of the four key values is split into two sections: a left-hand side and a right-hand side. In other words, though there is value in the items on the right, we value the items on the left more. What is one of the key values of the Agile Manifesto?

- A. comprehensive documentation over working software
- B. contract negotiation over customer collaboration
- C. individuals and interactions over processes and tools
- D. following a plan over responding to change

**Answer:** C

**NEW QUESTION 81**

Which two features are advantages of SD-WAN compared to MPLS-based connectivity? (Choose two.)

- A. uses FEC constructs for traffic forwarding, thereby improving efficiency
- B. separates infrastructure and policy
- C. uses policy-based forwarding of real-time traffic with less complexity
- D. unifies the WAN backbone
- E. manages failures through backup links

**Answer:** CD

**NEW QUESTION 82**

The SD-WAN architecture is composed of separate orchestration management, control, and data planes. Which activity happens at the orchestration plane?

- A. automatic onboarding of the SD-WAN routers into the SD-WAN overlay
- B. decision-making process on where traffic flows



- C. packet forwarding
- D. central configuration and monitoring

**Answer:** D

#### NEW QUESTION 85

Company XYZ wants to use the FCAPS ISO standard for network management design. The focus of the design should be to monitor and keep track of any performance issues by continuously collecting and analyzing statistical information to monitor, correct, and optimize any reduced responsiveness across the network. Which layer accomplishes this design requirement?

- A. fault management
- B. accounting management
- C. performance management
- D. security management

**Answer:** C

#### NEW QUESTION 89

A company requires an RPO of less than 10 seconds to ensure business continuity. Which technology should be deployed?

- A. geographically dispersed data centers with asynchronous replication
- B. a single data center with duplicated infrastructure, dual PSUs, and a UPS
- C. geographically dispersed data centers with synchronous replication
- D. a single data center with duplicated infrastructure and dual PSUs

**Answer:** C

#### NEW QUESTION 91

What are two descriptions of network optimization? (Choose two.)

- A. maintain high availability
- B. proactive network management
- C. network redesign
- D. network health maintenance
- E. identify network requirements

**Answer:** AD

#### NEW QUESTION 94

Which DCI technology utilizes a “flood and learn” technique to populate the Layer2 forwarding table?

- A. LISP
- B. OTV
- C. VPLS
- D. EVPN

**Answer:** C

#### NEW QUESTION 96

Company XYZ has two routing domains in their network, EIGRP and OSPF. The company wants to provide full reachability between the two domains by implementing redistribution on a router running both protocols. They need to design the redistribution in a way that the OSPF routers will see link costs added to external routes. How must the redistribution strategy be designed for this network?

- A. Redistribute using metric type 2 into OSPF.
- B. Redistribute using metric type 1 into OSPF.
- C. Redistribute using metric type 1 into EIGRP.
- D. Redistribute using metric type 2 into EIGRP.

**Answer:** B

#### Explanation:

[https://www.ciscopress.com/articles/article.asp?p=27573&seqNum=4#:~:text=Routes%20are%20redistributed%](https://www.ciscopress.com/articles/article.asp?p=27573&seqNum=4#:~:text=Routes%20are%20redistributed%20)

#### NEW QUESTION 99

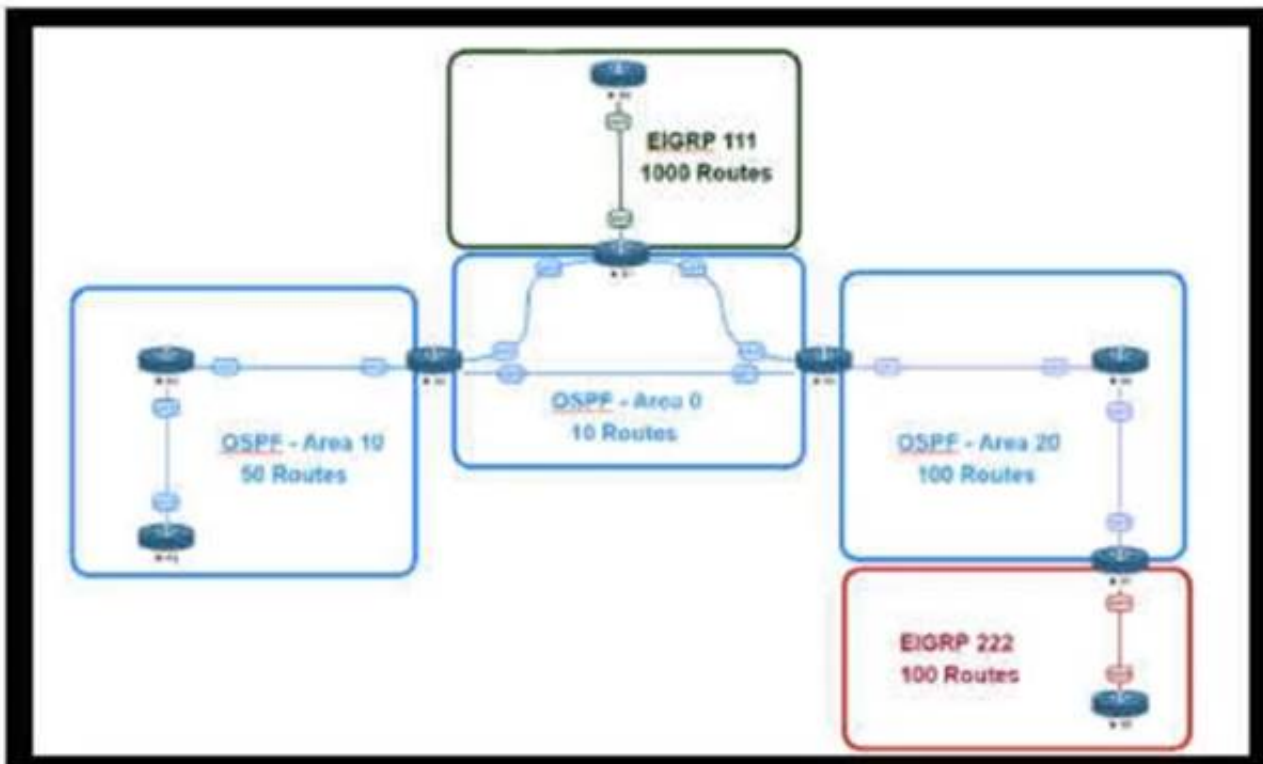
In the case of outsourced IT services, the RTO is defined within the SLA. Which two support terms are often included in the SLA by IT and other service providers? (Choose two.)

- A. network size and cost
- B. support availability
- C. network sustainability
- D. network reliability
- E. resolution time

**Answer:** BE

#### NEW QUESTION 100

Refer to the exhibit.



An engineer is designing a multiarea OSPF network for a client who also has a large EIGRP domain. EIGRP routes are getting redistributed into OSPF. OSPF area 20 has routers with limited memory and CPU resources. The engineer wants to block routes from EIGRP 111 from propagating into area 20 and allow EIGRP 222 routes to flow. In which OSPF area type fulfills this design requirement?

- A. area 20 as a stub area
- B. type 5 LSA filtering on the ASBR between EIGRP 111 and area 0
- C. area 20 as a NSSA area
- D. type 3 LSA filtering on the ABR between area 0 and area 20

**Answer: C**

#### NEW QUESTION 105

Which two advantages of using DWDM over traditional optical networks are true? (Choose two.)

- A. inherent topology flexibility and service protection provided without penalty through intelligent oversubscription of bandwidth reservation
- B. ability to expand bandwidth over existing optical infrastructure
- C. inherent topology flexibility with built-in service protection
- D. inherent topology flexibility with intelligent chromatic dispersion
- E. inherent topology flexibility with a service protection provided through a direct integration with an upper layer protocol

**Answer: BC**

#### NEW QUESTION 107

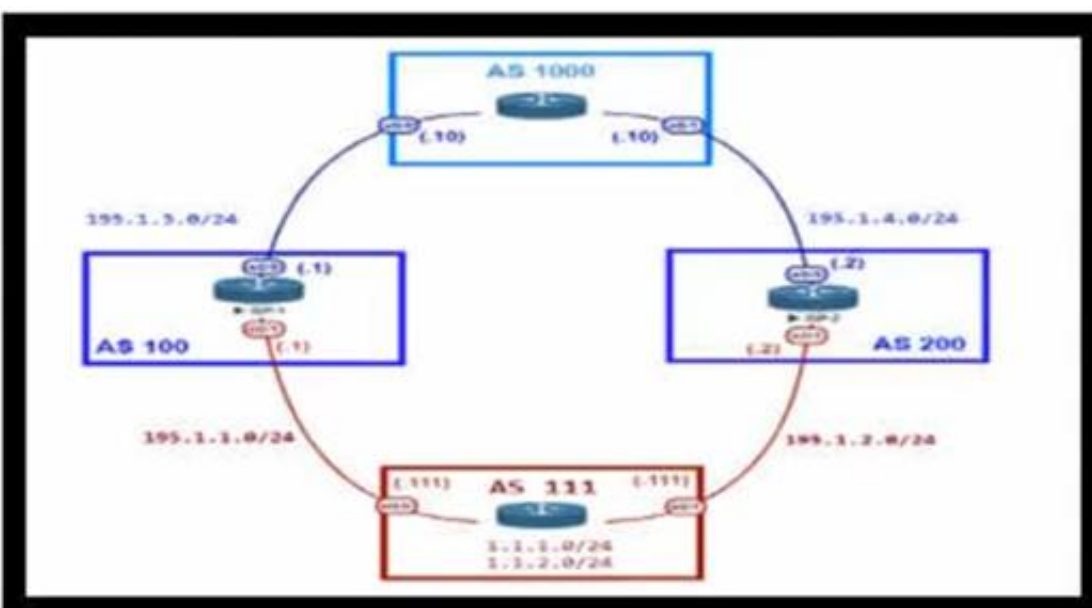
A BGP route reflector in the network is taking longer than expected to converge during large network changes. Troubleshooting shows that the router cannot handle all the TCP acknowledgements during route updates. Which action can be performed to tune the device performance?

- A. Increase the size of the hold queue.
- B. Increase the size of the large buffers.
- C. Decrease the size of the small buffers.
- D. Increase the keepalive timers for each BGP neighbor.

**Answer: A**

#### NEW QUESTION 112

Refer to the exhibit.



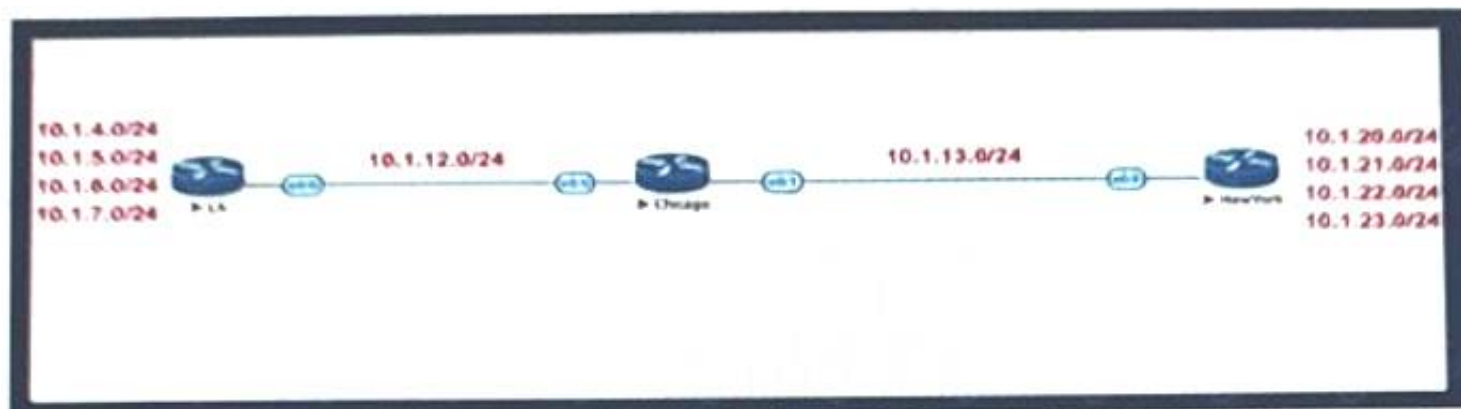
An engineer is designing the network for a multihomed customer running in AS 111. Does not have any other ASs connected to it. Which technology is more comprehensive to use in the design to make sure that the AS is not being used as a transit AS?

- A. Configure the AS-set attribute to allow only routes from AS 111 to be propagated to the neighbor ASs.
- B. Use the local preference attribute to configure your AS as a non-transit" AS.
- C. include an AS path access list to send routes to the neighboring ASs that only have AS 111 in the AS path field.
- D. Include a prefix list to only receive routes from neighboring ASs.

**Answer: C**

#### NEW QUESTION 115

Refer to the exhibit.



Company XYZ BGP topology is as shown in the diagram. The interface on the LA router connected toward the 10.1.5.0/24 network is faulty and is going up and down, which affects the entire routing domain. Which routing technique can the network administrator use so that the rest of the network is not affected by the flapping issue?

- A. The LA administrator should use route aggregation to summarize the 10.1.4.0/24, 10.1.5.0/24, 10.1.6.0/24, and 10.1.7.0/24 networks toward Chicago
- B. The LA administrator should use route dampening for the 10.1.5.0/24 network so that it does not get propagated when it flaps up and down.
- C. The LA administrator should use route filtering to block the 10.1.5.0/24 network from getting propagated toward Chicago and New York.
- D. The Chicago administrator should use route filtering to block the 10.1.5.0/24 network from coming in from the LA router.

**Answer: B**

#### NEW QUESTION 117

Company XYZ was not satisfied with the reconvergence time OSPF is taking. BFD was implemented to try to reduce the reconvergence time, but the network is still experiencing delays when having to reconverge. Which technology will improve the design?

- A. OSPF fast hellos
- B. BFD echo
- C. Change the protocol to BGP
- D. Change the OSPF hello and dead intervals

**Answer: B**

#### NEW QUESTION 120

An architect designs a multi-controller network architecture with these requirements:

- > Achieve fast failover to control traffic when controllers fail.
- > Reduce connectivity loss and enable smart recovery to improve the SDN survivability.
- > Improve connectivity by adding path diversity and capacity awareness for controllers.

Which control plane component of the multi-controller must be built to meet the requirements?

- A. control node reliability
- B. controller state consistency
- C. control path reliability
- D. controller clustering

**Answer: B**

#### NEW QUESTION 121

Company XYZ is designing their network using the three-layer hierarchical model. At which layer must the QoS design classify or mark the traffic?

- A. access
- B. core
- C. collapsed core
- D. distribution

**Answer: A**

#### NEW QUESTION 125

A service provider hires you to design its new managed CE offering to meet these requirements

- The CEs cannot run a routing protocol with the PE
- Provide the ability for equal or unequal ingress load balancing in dual-homed CE scenarios.
- Provide support for IPv6 customer routes
- Scale up to 250,000 CE devices per customer.
- Provide low operational management to scale customer growth.
- Utilize low-end (inexpensive) routing platforms for CE functionality. Which tunneling technology do you recommend?

- A. FlexVPN
- B. point-to-point GRE
- C. DMVPN
- D. LISP

Answer: D

NEW QUESTION 130

Which optimal use of interface dampening on a fast convergence network design is true?

- A. When occasional flaps of long duration occur
- B. when numerous adjacent flaps of very short duration occur
- C. when the router hardware is slower than the carrier delay down detection
- D. when the switch hardware is faster than the debounce timer down detection

Answer: B

NEW QUESTION 135

The network team in XYZ Corp wants to modernize their infrastructure and is evaluating an implementation and migration plan to allow integration MPLS-based, Layer 2 Ethernet services managed by a service provider to connect branches and remote offices. To decrease OpEx and improve response times when network components fail, XYZ Corp decided to acquire and deploy new routers. The network currently is operated over E1 leased lines (2 Mbps) with a managed CE service provided by the telco. Drag and drop the implementation steps from the left onto the corresponding targets on the right in the correct order.

Activation of the MPLS-based L2VPN service.	Step 1
Monitor performance of the Ethernet service for a predefined period of time.	Step 2
Decomission E1 leased line.	Step 3
Deployment of new branch routers.	Step 4
Test and validation of SLA parameters in the L2VPN.	Step 5
Migrate E1 to the new Ethernet service.	Step 6

- A. Mastered
- B. Not Mastered

Answer: A

Explanation:

Table Description automatically generated

NEW QUESTION 138

Which technology is an open-source infrastructure automation tool that automates repetitive tasks for users who work in networks such as cloud provisioning and intraservice orchestration?

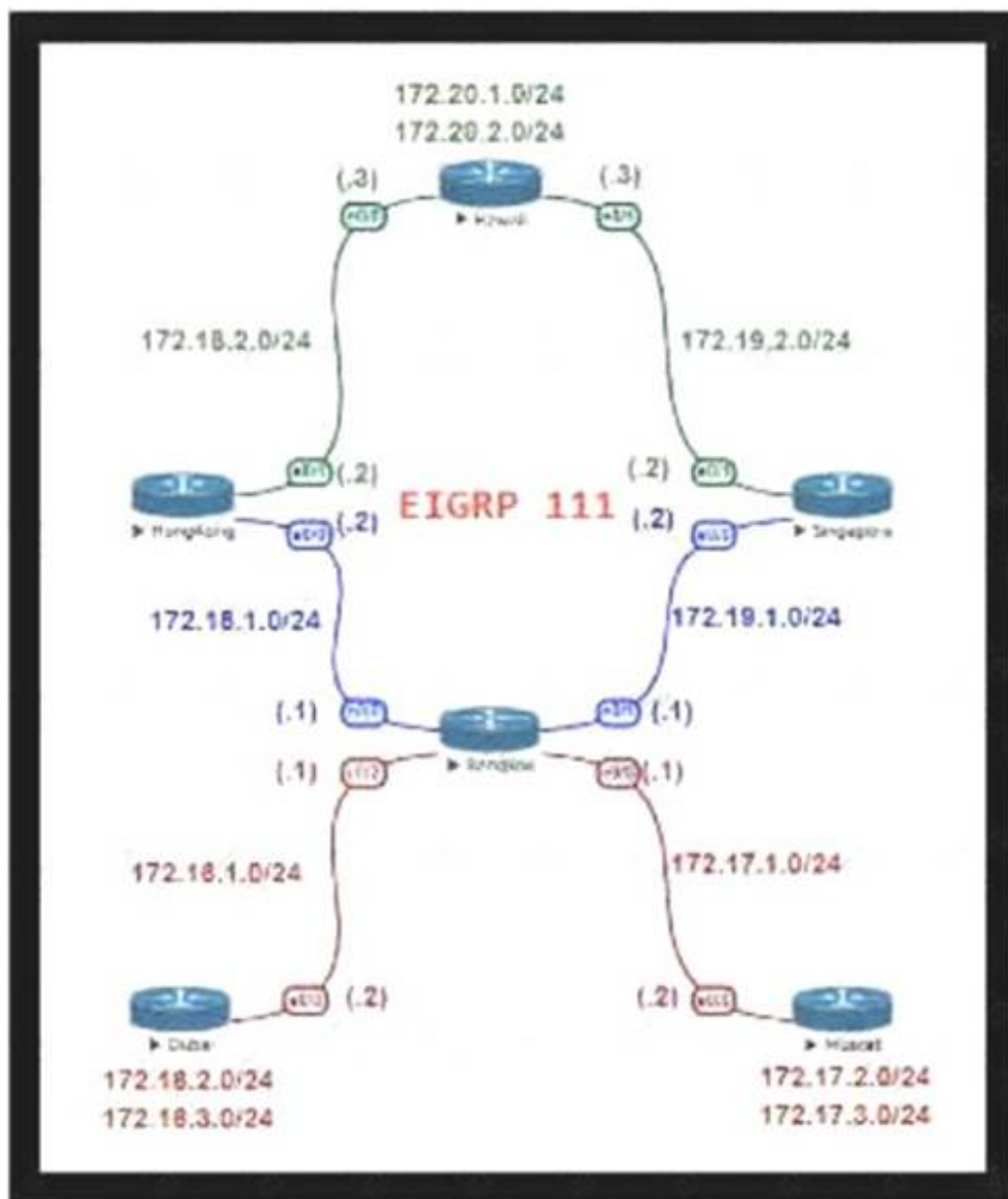
- A. Ansible
- B. Contrail
- C. Java
- D. Jinja2

Answer: A

NEW QUESTION 142

Refer to the exhibit.





For Company XYZ Bangkok is using ECMP to reach the 172 20 2 0/24 network The company wants a design that would allow them to forward traffic from 172 16 2 0/24 toward 172 20 2 0/24 via the Singapore router as the preferred route The rest of the traffic should continue to use ECMP Which technology fulfills this design requirement?

- A. policy-based routing
- B. route summarization
- C. unequal-cost load balancing using variance
- D. LFA

**Answer: A**

#### NEW QUESTION 147

What is an architectural framework created by ETSI that defines standards to decouple network functions from proprietary hardware-based appliances and have them run in software on standard x86 servers?

- A. NPIV
- B. NFVIS
- C. NFV
- D. VNF

**Answer: C**

#### NEW QUESTION 150

Organizations that embrace Zero Trust initiatives ranging from business policies to technology infrastructure can reap business and security benefits. Which two domains should be covered under Zero Trust initiatives? (Choose two)

- A. workload
- B. work domain
- C. workplace
- D. workgroup
- E. workspace

**Answer: AC**

#### NEW QUESTION 151

An enterprise requires MPLS connected branches to access cloud-based Microsoft 365 services over an SD-WAN solution. Internet access is available only at dual regional hub sites that are connected to the MPLS network. Which connectivity method provides an optimum access method to the cloud-based services if one ISP suffers loss or latency?

- A. Cloud onRamp gateway site
- B. Cloud onRamp SWG
- C. Cloud onRamp
- D. Cloud onRamp SaaS



**Answer:** D

**Explanation:**

<https://www.cisco.com/c/en/us/td/docs/routers/sdwan/configuration/cloudonramp/vedge-20-x/cloud-onramp-boo>

**NEW QUESTION 155**

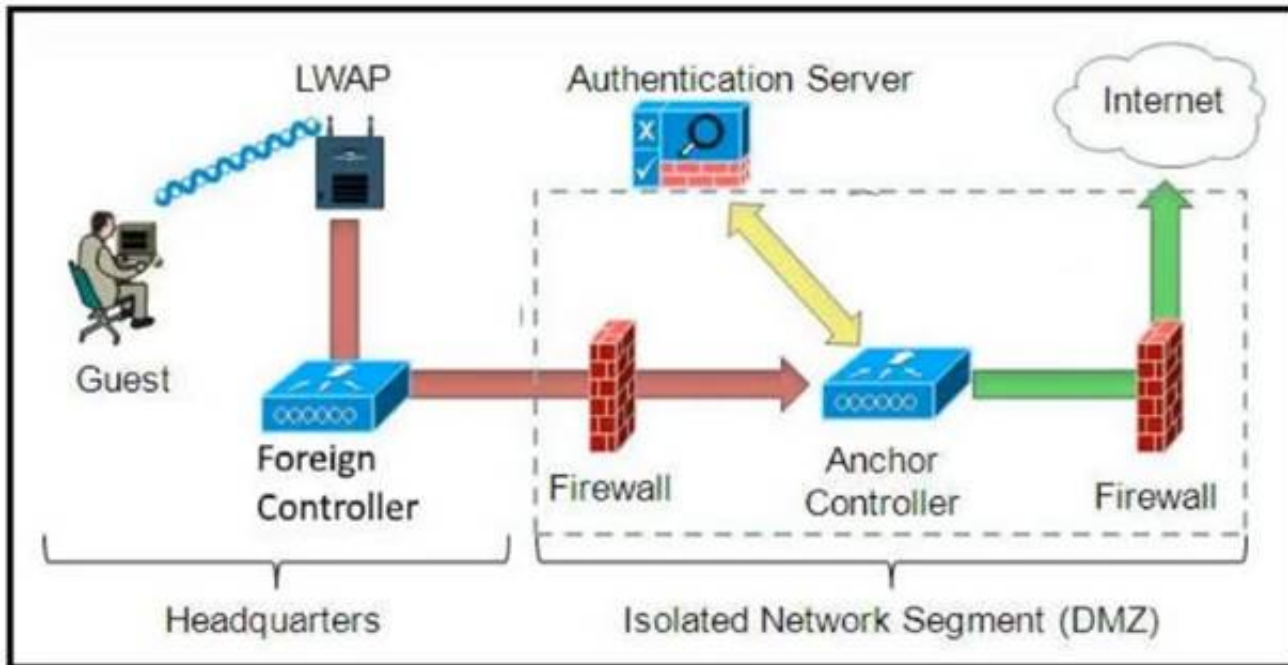
Which mechanism enables small, unmanaged switches to plug into ports of access switches without risking switch loops?

- A. PortFast
- B. UDLD
- C. Root guard
- D. BPDU guard

**Answer:** D

**NEW QUESTION 157**

Refer to the diagram.



Which solution must be used to send traffic from the foreign wireless LAN controller to the anchor wireless LAN controller?

- A. Send packets from the foreign controller to the anchor controller via Layer 3 MPLS VPN or VRF-Lite
- B. Send packets without encapsulation to the anchor controller over the routed network.
- C. Encapsulate packets into an EoIP tunnel and send them to the anchor controller.
- D. Send packets from the foreign controller to the anchor controller via IPinIP or IPsec tunnel.

**Answer:** C

**NEW QUESTION 160**

An enterprise wants to provide low-cost delivery of network systems that can be scaled on business demand, followed by an initiative to reduce capital expenses for new IT equipment. Which technology meets these goals?

- A. IaaS within a private cloud
- B. IaaS within an on-premises location
- C. PaaS within a public cloud
- D. SaaS within an on-premises location

**Answer:** C

**NEW QUESTION 163**

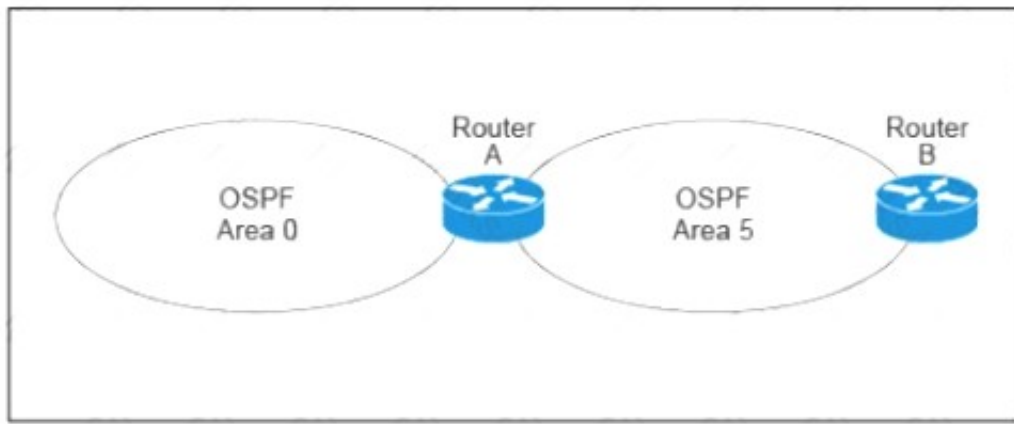
SDWAN networks capitalize the usage of broadband Internet links over traditional MPLS links to offer more cost benefits to enterprise customers. However, due to the insecure nature of the public Internet, it is mandatory to use encryption of traffic between any two SDWAN edge devices installed behind NAT gateways. Which overlay method can provide optimal transport over unreliable underlay networks that are behind NAT gateways?

- A. TLS
- B. DTLS
- C. IPsec
- D. GRE

**Answer:** C

**NEW QUESTION 164**

Refer to the exhibit.



A customer runs OSPF with Area 5 between its aggregation router and an internal router. When a network change occurs in the backbone, Area 5 starts having connectivity issues due to the SPF algorithm recalculating an abnormal number of times in Area 5. You are tasked to redesign this network to increase resiliency on the customer network with the caveat that Router B does not support the stub area. How can you accomplish this task\*?

- A. Increase the bandwidth on the connection between Router A and Router B
- B. Implement LSA filtering on the ABR, allowing summary routes and preventing more specific routes into Area 5
- C. Create a virtual link to Area 0 from Router B to the ABR
- D. Turn on LSA throttling on all devices in Area 5
- E. Set Area 5 to stubby at the ABR anyway

**Answer: B**

#### NEW QUESTION 168

An enterprise plans to evolve from a traditional WAN network to a software-defined WAN network. The existing devices have limited capability when it comes to virtualization. As the migration is carried out, enterprise applications and services must not experience any traffic impact. Which implementation plan can be used to accommodate this during the migration phase?

- A. Deploy controllers, deploy SD-WAN edge router
- B. In the data center, and migrate branch sites.
- C. Migrate data center WAN routers, migrate branch sites, and deploy SD-WAN edge routers.
- D. Migrate branch sites, migrate data center WAN routers, and deploy controllers.
- E. Deploy SD-WAN edge routers in the data center, deploy controllers, and migrate branch sites

**Answer: A**

#### NEW QUESTION 171

What best describes the difference between Automation and Orchestration?

- A. Automation refers to an automatic process for completing a single task and Orchestration refers to assembling and coordinating a set of tasks and conditions.
- B. Automation describes a hands-off configuration process while Orchestration refers to sets of automation tasks that require the network administrator to coordinate
- C. Automation refers to an automatic process for completing multiple tasks with conditions and Orchestration refers to executing tasks in parallel.
- D. Automation refers to scripting languages (Python, Ansible, etc.) and Orchestration refers to commercial products that control configuration deployment

**Answer: A**

#### NEW QUESTION 176

How must the queue sizes be designed to ensure that an application functions correctly?

- A. Each individual device queuing delay in the chain must be less than or equal to the application required delay.
- B. The queuing delay on every device in the chain must be exactly the same to the application required delay.
- C. The default queue sizes are good for any deployment as it compensates the serialization delay.
- D. The sum of the queuing delay of all devices plus serialization delay in the chain must be less than or equal to the application required delay.

**Answer: D**

#### NEW QUESTION 179

How can EIGRP topologies be designed to converge as fast as possible in the event of a point-to-point link failure?

- A. Limit the query domain by use of distribute lists.
- B. Build neighbor adjacencies in a triangulated fashion.
- C. Build neighbor adjacencies in squared fashion.
- D. Limit the query domain by use of summarization.
- E. Limit the query domain by use of default routes.

**Answer: D**

#### NEW QUESTION 181

Company XYZ is migrating their existing network to IPv6 and they must plan for Layer 2 and Layer 3 devices. Some of the access layer switches do not support IPv6, however, core and distribution switches fully support unicast and multicast routing. The company wants to minimize cost of the migration. Which migration strategy should be used in the design?

- A. The access layer switches must support IGMP snooping at a minimum
- B. Any switches that do not support IGM snooping must be replaced.

- C. Upgrade the nonsupporting switches Otherwise, it will cause an issue with the migration.
- D. Layer 2 switches will not affect the implementation of IPv6. They can be included in the design in their current state.
- E. The access layer switches must support DHCPv6. Any switches that do not support DHCPv6 must be replaced.

**Answer:** C

#### NEW QUESTION 183

Company XYZ has 30 sites running a legacy private WAN architecture that connects to the Internet via multiple high- speed connections The company is now redesigning their network and must comply with these design requirements :

- Use a private WAN strategy that allows the sites to connect to each other directly and caters for future expansion.
- Use the Internet as the underlay for the private WAN.
- Securely transfer the corporate data over the private WAN.

Which two technologies should be Incorporated into the design of this network? (Choose two.)

- A. S-VTI
- B. IPsec
- C. DMVPN
- D. GET VPN
- E. PPTP

**Answer:** BC

#### NEW QUESTION 186

SDN is still maturing Throughout the evolution of SDN which two things will play a key role in enabling a successful deployment and avoiding performance visibility gaps in the infrastructure? (Choose two.)

- A. rapid on-demand growth
- B. dynamic real-time change
- C. falling back to old behaviors
- D. peer-to-peer controller infrastructure
- E. integration of device context

**Answer:** BE

#### NEW QUESTION 187

A network security team uses a purpose-built tool to actively monitor the campus network, applications, and user activity. The team also analyzes enterprise telemetry data from IPFIX data records that are received from devices in the campus network. Which action can be taken based on the augmented data?

- A. reduction in time to detect and respond to threats
- B. integration with an incident response plan
- C. adoption and improvement of threat-detection response
- D. asset identification and grouping decisions

**Answer:** A

#### NEW QUESTION 191

Which network management framework can be used to develop a network architecture that contains business requirements analysis, gap analysis, and network diagrams as artifacts to be used for design and implementation later?

- A. TOG
- B. ITIL
- C. FCAPS
- D. Cobit

**Answer:** A

#### NEW QUESTION 196

The General Bank of Greece plans to upgrade its legacy end-of-life WAN network with a new flexible, manageable, and scalable solution. The mam requirements are ZTP support, end-to-end encryption application awareness and segmentation. The CTO states that the main goal of the bank is CAPEX reduction. Which WAN technology should be used for the solution?

- A. SD-branch
- B. DMVPN with PfR
- C. managed SD-WAN
- D. SD-WAN

**Answer:** C

#### NEW QUESTION 201

.....

## Thank You for Trying Our Product

### We offer two products:

1st - We have Practice Tests Software with Actual Exam Questions

2nd - Questions and Answers in PDF Format

### 400-007 Practice Exam Features:

- \* 400-007 Questions and Answers Updated Frequently
- \* 400-007 Practice Questions Verified by Expert Senior Certified Staff
- \* 400-007 Most Realistic Questions that Guarantee you a Pass on Your First Try
- \* 400-007 Practice Test Questions in Multiple Choice Formats and Updates for 1 Year

**100% Actual & Verified — Instant Download, Please Click**  
**[Order The 400-007 Practice Test Here](#)**