



**Microsoft**

## **Exam Questions AZ-800**

Administering Windows Server Hybrid Core Infrastructure

### NEW QUESTION 1

SIMULATION - (Topic 4)

Task 9

You plan to create group managed service accounts (gMSAs).

You need to configure the domain to support the creation of gMSAs.

- A. Mastered
- B. Not Mastered

**Answer:** A

#### Explanation:

To configure the domain to support the creation of gMSAs, you need to perform the following steps:

? On a domain controller or a computer that has the Remote Server Administration

Tools (RSAT) installed, open PowerShell as an administrator and run the following command to install the Active Directory module:

Install-WindowsFeature -Name RSAT-AD-PowerShell

? Run the following command to create a Key Distribution Service (KDS) root key, which is required for generating passwords for gMSAs. You only need to do this once per domain:

Add-KdsRootKey -EffectiveImmediately

? Wait for at least 10 hours for the KDS root key to replicate to all domain controllers in the domain. Alternatively, you can use the -EffectiveTime parameter to specify a past date and time for the KDS root key, but this is not recommended for security reasons. For more information, see Add-KdsRootKey.

? After the KDS root key is replicated, you can create and configure gMSAs using

the New-ADServiceAccount and Set-ADServiceAccount cmdlets. For more information, see Create a gMSA and Configure a gMSA.

### NEW QUESTION 2

SIMULATION - (Topic 4)

Task 3

You need to configure SRV1 as a DNS server. SRV1 must be able resolve names from the contoso.com domain by using DC1. All other names must be resolved by using the root hint servers.

- A. Mastered
- B. Not Mastered

**Answer:** A

#### Explanation:

One possible solution to configure SRV1 as a DNS server that can resolve names from the contoso.com domain by using DC1 and all other names by using the root hint servers is to use conditional forwarding. Conditional forwarding allows a DNS server to forward queries for a specific domain name to another DNS server, while using the normal forwarding or root hint servers for other queries. Here are the steps to configure conditional forwarding on SRV1:

? On SRV1, open DNS Manager from the Administrative Tools menu or by typing dnsmgmt.msc in the Run box.

? In the left pane, right-click on Conditional Forwarders and select New Conditional Forwarder.

? In the New Conditional Forwarder dialog box, enter contoso.com as the DNS Domain name.

? In the IP addresses of the master servers box, enter the IP address of DC1, which is the DNS server for the contoso.com domain. You can also click on Resolve to verify the name resolution of DC1.

? Optionally, you can check the box Store this conditional forwarder in Active Directory, and replicate it as follows if you want to store and replicate the conditional forwarder in AD DS. You can also select the replication scope from the drop-down list.

? Click OK to create the conditional forwarder.

Now, SRV1 will forward any queries for the contoso.com domain to DC1, and use the root hint servers for any other queries. You can test the name resolution by using

the nslookup command on SRV1 or another computer that uses SRV1 as its DNS server. For example, you can run the following commands:

nslookup www.contoso.com nslookup www.microsoft.com

The first command should return the IP address of www.contoso.com from DC1, and the second command should return the IP address of www.microsoft.com from a root hint server.

### NEW QUESTION 3

SIMULATION - (Topic 4)

Task 4

You need to register SRV1 to sync Azure file shares The registration must use the 34646045 Storage Sync Service.

The required source files are located in a folder named \\dc1.contoso.com\install.

You do NOT need to configure file share synchronization at this time and you do NOT need to update the agent.

- A. Mastered
- B. Not Mastered

**Answer:** A

#### Explanation:

One possible solution to register SRV1 to sync Azure file shares using the 34646045 Storage Sync Service is to use the Register-AzStorageSyncServer cmdlet from the Az.StorageSync module. This cmdlet establishes a trust relationship between the server

and the Storage Sync Service, which is required for creating server endpoints and syncing files. Here are the steps to register SRV1

using the cmdlet:

? On SRV1, open PowerShell as an administrator and run the following command to

install the Az.StorageSync module if it is not already installed: Install-Module -Name Az.StorageSync

? Run the following command to import the Az.StorageSync module:

Import-Module -Name Az.StorageSync

? Run the following command to sign in to your Azure account and select the subscription that contains the 34646045 Storage Sync Service:

Connect-AzAccount

Select-AzSubscription -SubscriptionId <your-subscription-id>

? Run the following command to register SRV1 with the 34646045 Storage Sync Service. You need to specify the resource group name and the Storage Sync Service name as parameters:  
Register-AzStorageSyncServer -ResourceGroupName <your-resource-group-name> -StorageSyncServiceName 34646045  
? Wait for the registration to complete. You can verify the registration status by checking the Registered servers tab on the Azure portal or by running the following command:  
Get-AzStorageSyncServer -ResourceGroupName <your-resource-group-name> -StorageSyncServiceName 34646045  
Now, SRV1 is registered with the 34646045 Storage Sync Service and ready to sync Azure file shares. You can create server endpoints on SRV1 and cloud endpoints on the Azure file shares to define the sync topology.

NEW QUESTION 4

HOTSPOT - (Topic 3)

Your network contains an Active Directory Domain Services (AD DS) forest named contoso.com. The forest contains a child domain named east.contoso.com and the servers shown in the following table.

Name	Domain	Description
DC1	contoso.com	Has the schema master, infrastructure master, and domain naming master roles
DC2	east.contoso.com	Has the PDC emulator and RID master roles and is a global catalog server
Server1	contoso.com	Has the File Server, DFS Namespaces, and DFS Replication server roles

You need to create a folder for the Central Store to manage Group Policy template files for the entire forest. What should you name the folder, and on which server should you create the folder? To answer, select the appropriate options in the answer area.  
NOTE: Each correct selection is worth one point.

Answer Area

Name: 

PolicyDefinitions

CentralDefinitions

PolicyDefinitions

TemplateDefinitions

Server: 

Server1 only

DC1 only

DC2 only

Server1 only

DC1 and DC2 only

DC1, DC2, and Server1

- A. Mastered
- B. Not Mastered

Answer: A

Explanation:

Answer Area

Name: 

PolicyDefinitions

CentralDefinitions

PolicyDefinitions

TemplateDefinitions

Server: 

Server1 only

DC1 only

DC2 only

Server1 only

DC1 and DC2 only

DC1, DC2, and Server1

NEW QUESTION 5

- (Topic 3)

Note: This question is part of a series of questions that present the same scenario. Each question in the series contains a unique solution that might meet the stated goals. Some question sets might have more than one correct solution, while others might not have a correct solution.  
After you answer a question in this section, you will NOT be able to return to it. As a result, these questions will not appear in the review screen.  
Your network contains an Active Directory Domain Services (AD DS) forest. The forest contains three Active Directory sites named Site1, Site2, and Site3. Each site contains two domain controllers. The sites are connected by using DEFAULTIPSITELINK.  
You open a new branch office that contains only client computers.  
You need to ensure that the client computers in the new office are primarily authenticated by the domain controllers in Site1.  
Solution: You create an organization unit (OU) that contains the client computers in the branch office. You configure the Try Next Closest Site Group Policy Object (GPO) setting in a GPO that is linked to the new OU.  
Does this meet the goal?

- A. Yes
- B. No

Answer: B

NEW QUESTION 6

- (Topic 3)

You have a server that runs Windows Server and contains a shared folder named UserData.  
You need to limit the amount of storage space that each user can consume in UserData. What should you use?

- A. Storage Spaces
- B. Work Folders
- C. Distributed File System (DFS) Namespaces
- D. File Server Resource Manager (FSRM)

**Answer:** D

**Explanation:**

Reference:  
<https://docs.microsoft.com/en-us/windows-server/storage/fsrm/fsrm-overview>

**NEW QUESTION 7**

- (Topic 3)

You have an Active Directory domain that contains a file server named Server1. Server1 runs Windows Server and includes the file shares shown in the following table.

Share Name	Path
Users	D:\Users
Accounts	D:\Dept\Accounts
Marketing	D:\Dept\Marketing
CustomerService	D:\Dept\CustomerService

When users login to the network they receive the following network drive mappings.

- H: maps to Wserver1\users\%UserName%
- G: maps to \\server1\%Department%

You need to limit the amount of space consumed by user's on Server!. The solution must meet the following requirements:

- Prevent users using more than 5GB of space on their H: drive
- Prevent Accounts department users from using more than 10GB of space on the G: drive
- Prevent Marketing department users from using more than 15GB of space on the G: drive
- Prevent Customer Service department users from using more than 2GB of space on the G: drive
- Minimize administrative effort What should you use?

- A. File Server Resource Manager (FSRM) quotas
- B. Storage tiering
- C. NTFS Disk quotas
- D. Group Policy Preferences

**Answer:** A

**NEW QUESTION 8**

- (Topic 3)

Your network contains an Active Directory Domain Services (AD DS) forest. The forest contains three domains. Each domain contains 10 domain controllers.

You plan to store a DNS zone in a custom Active Directory partition.

You need to create the Active Directory partition for the zone. The partition must replicate to only four of the domain controllers.

What should you use?

- A. DNS Manager
- B. New-ADObject
- C. dnscnd.exe
- D. Windows Admin Center

**Answer:** D

**NEW QUESTION 9**

HOTSPOT - (Topic 3)

You plan w deploy an Azure virtual machine that win run Windows Server. The virtual machine will host an Active Directory Domain Services (AD DS) domain controller and a drive named f: on a new virtual disk.

You need to configure storage for the virtual machine. The solution must meet the following requirements

- Maximize resiliency for AD DS.
- Prevent accidental data loss.

How should you configure the storage? To answer, select the appropriate options in the answer area.

NOTE: Each correct selection is worth one point.

Answer Area

Volume for the AD DS database:

Caching configuration for the volume that hosts the database:

Answer:

Answer Area

Volume for the AD DS database:

Caching configuration for the volume that hosts the database:

- A. Mastered
- B. Not Mastered

Answer: A

NEW QUESTION 10

- (Topic 3)

You have an on-premises server named Server 1 that runs Windows Server. You have an Azure subscription that contains a virtual network named VNet1. You need to connect Server1 to VNet1 by using Azure Network Adapter. What should you use?

- A. the Azure portal
- B. Azure AD Connect
- C. Device Manager
- D. Windows Admin Center

Answer: B

NEW QUESTION 10

- (Topic 3)

Note: This question is part of a series of questions that present the same scenario. Each question in the series contains a unique solution that might meet the stated goals. Some question sets might have more than one correct solution, while others might not have a correct solution. After you answer a question in this section, you will NOT be able to return to it. As a result, these questions will not appear in the review screen. Your network contains an Active Directory Domain Services (AD DS) forest. The forest contains three Active Directory sites named Site1, Site2, and Site3. Each site contains two domain controllers. The sites are connected by using DEFAULTSITELINK. You open a new branch office that contains only client computers. You need to ensure that the client computers in the new office are primarily authenticated by the domain controllers in Site1. Solution: You create a new site named Site4 and associate Site4 to DEFAULTSITELINK. Does this meet the goal?

- A. Yes
- B. No

Answer: B

NEW QUESTION 11

HOTSPOT - (Topic 3)

Your network contains an Active Directory Domain Services (AD DS) forest named contoso.com. The forest contains a child domain named east.contoso.com. in the contoso.com domain, you create two users named Admin1 and Admin2. You need to ensure that the users can perform the following tasks:

- Admin1 can create and manage Active Directory sites.
- Admin2 can deploy domain controller to the easl.conloso.com domain. The solution must use the principle of least privilege.

To which group should you add each user? To answer, select the appropriate options in the answer area.

NOTE Each correct selection is worth one point.

Answer Area

Admin1:

Admin2:





- B. Web Application Proxy
- C. Azure Relay
- D. Azure Application Gateway

**Answer:** C

#### NEW QUESTION 21

HOTSPOT - (Topic 3)

Your network contains an Active Directory Domain Services (AD DS) domain named contoso.com. The domain contains a server named Server1 that has the DFS Namespaces role service installed. Server1 hosts a domain-based Distributed File System (DFS) Namespace named Files.

The domain contains a file server named Server2. Server2 contains a shared folder named Share1. Share1 contains a subfolder named Folder1.

In the Files namespace, you create a folder named Folder1 that has a target of

\\Server2.contoso.com\Share1\Folder1.

You need to configure a logon script that will map drive letter M to Folder1. The solution must use the path of the DFS Namespace.

How should you complete the command to map the drive letter? To answer, select the appropriate options in the answer area.

NOTE: Each correct selection is worth one point.

Answer Area



- A. Mastered
- B. Not Mastered

**Answer:** A

**Explanation:**

Answer Area



#### NEW QUESTION 25

- (Topic 3)

You have an Azure subscription that contains the following resources:

- An Azure Log Analytics workspace
- An Azure Automation account
- Azure Arc.

You have an on-premises server named Server1 that is onboarded to Azure Arc. You need to manage Microsoft updates on Server1 by using Azure Arc.

Which two actions should you perform? Each correct answer presents part of the solution. NOTE: Each correct selection is worth one point.

- A. Add Microsoft Sentinel to the Log Analytics workspace
- B. On Server1, install the Azure Monitor agent
- C. From the Automation account, enable Update Management for Server1.
- D. From the Virtual machines data source of the Log Analytics workspace, connect Server1.

**Answer:** BC

**Explanation:**

Reference:

<https://docs.microsoft.com/en-us/azure/cloud-adoption-framework/manage/hybrid/server/best-practices/arc-update-management>

#### NEW QUESTION 28

HOTSPOT - (Topic 3)

You have a Windows Server container host named Server1 that has a single disk. On Server1, you plan to start the containers shown in the following table.

Name	Description
Container1	Container1 is a Windows container that contains a web app in development. The container must <b>NOT</b> share a kernel with other containers.
Container2	Container2 is a Linux container that runs a web app. The container requires two static IP addresses.
Container3	Container3 is a Windows container that runs a database. The container requires a static IP address.

Which isolation mode can you use for each container? To answer, select the appropriate options in the answer area.

NOTE: Each correct selection is worth one point.

Container1:

Hyper-V isolation only
Process isolation only
Hyper-V isolation or process isolation

Container2:

Hyper-V isolation only
Process isolation only
Hyper-V isolation or process isolation

Container3:

Hyper-V isolation only
Process isolation only
Hyper-V isolation or process isolation

- A. Mastered
- B. Not Mastered

Answer: A

Explanation:

Container1:

Hyper-V isolation only
Process isolation only
Hyper-V isolation or process isolation

Container2:

Hyper-V isolation only
Process isolation only
Hyper-V isolation or process isolation

Container3:

Hyper-V isolation only
Process isolation only
Hyper-V isolation or process isolation

#### NEW QUESTION 29

HOTSPOT - (Topic 3)

Your on-premises network contains a single-domain Active Directory Domain Services (AD DS) forest. You have an Azure AD tenant named contoso.com. The AD DS forest syncs with the Azure AD tenant by using Azure AD Connect.

You need to ensure that users in the forest that have a custom attribute of NoSync are excluded from synchronization.

How should you configure the Azure AD Connect cloudFiltered attribute, and which tool should you use? To answer, select the appropriate options in the answer area.

NOTE: Each correct selection is worth one point.



Answer Area

Attribute: 

True  
False  
Null  
True

Tool: 

Synchronization Rules Editor  
ADSI Edit  
Synchronization Rules Editor  
The Microsoft Azure AD Connect wizard

Answer:

Answer Area

Attribute: 

True  
False  
Null  
True

Tool: 

Synchronization Rules Editor  
ADSI Edit  
Synchronization Rules Editor  
The Microsoft Azure AD Connect wizard

- A. Mastered
- B. Not Mastered

Answer: A

NEW QUESTION 34

HOTSPOT - (Topic 3)

You have an Active Directory Domain Services (AD DS) domain that contains the member servers shown in the following table.

Name	Operating system	Data Deduplication role service
Server1	Windows Server 2019	Installed
Server2	Windows Server 2022	Not installed
Server3	Windows Server 2022	Installed

Server3 contains a data disk named Disk1 that has Data Deduplication installed. Disk1 contains the files shown in the following table.

Name	Size
File1.txt	5 KB
File2.docx	800 KB
File3.sys	2 MB
File4.bmp	5 GB

Server3 fails.  
You need to recover the files on Disk1.  
Which files can you recover if you attach Disk1 to Server 1, and which files can you recover if you attach Disk1 to Server2? To answer, select the appropriate options in the answer area.  
NOTE: Each correct selection is worth one point.

Answer Area

Server1: 

File1.txt only  
File1.txt only  
File1.txt and File2.docx only  
File1.txt and File3.sys only  
File1.txt, File2.docx, File3.sys, and File4.bmp  
No files can be recovered.

Server2: 

File1.txt and File2.docx only  
File1.txt only  
File1.txt and File2.docx only  
File1.txt and File3.sys only  
File1.txt, File2.docx, File3.sys, and File4.bmp  
No files can be recovered.

- A. Mastered
- B. Not Mastered

Answer: A

Explanation:

Answer Area

Server1:

File1.txt only

File1.txt only

File1.txt and File2.docx only

File1.txt and File3.sys only

File1.txt, File2.docx, File3.sys, and File4.bmp

No files can be recovered.

Server2:

File1.txt and File2.docx only

File1.txt only

File1.txt and File2.docx only

File1.txt and File3.sys only

File1.txt, File2.docx, File3.sys, and File4.bmp

No files can be recovered.

NEW QUESTION 37

DRAG DROP - (Topic 3)

You have a server named Server1.

You plan to use Storage Spaces to expand the storage available to Server1. You attach eight physical disks to Server1. Four disks are HDDs and four are SSDs. You need to create a volume on Server1 that will use the storage on all the new disks. The solution must provide the fastest read performance for frequently used files.

Which three actions should you perform in sequence? To answer, move the appropriate actions from the list of actions to the answer area and arrange them in the correct order.

Actions

Create a virtual disk.

Create each new disk into a dynamic disk.

Create a storage pool.

Create a spanned volume.

Create each new disk into a GPT disk.

Create a simple volume

Answer Area

>

<

- A. Mastered
- B. Not Mastered

Answer: A

Explanation:

Actions

Create a virtual disk.

Create each new disk into a dynamic disk.

Create a storage pool.

Create a spanned volume.

Create each new disk into a GPT disk.

Create a simple volume

Answer Area

Create a storage pool.

Create a virtual disk.

Create a simple volume

NEW QUESTION 41

- (Topic 3)

You have an on premises Active Directory Domain Services (AD DS) domain that syncs with an Azure Active Directory (Azure AD) tenant.

You plan to implement self-service password reset (SSPR) in Azure AD.

You need to ensure that users that reset their passwords by using SSPR can use the new password resources in the AD DS domain.

What should you do?

- A. Deploy the Azure AD Password Protection proxy service to the on premises network.
- B. Run the Microsoft Azure Active Directory Connect wizard and select Password writeback.
- C. Grant the Change password permission for the domain to the Azure AD Connect service account.

D. Grant the impersonate a client after authentication user right to the Azure AD Connect service account.

**Answer:** B

**Explanation:**

Reference:

<https://docs.microsoft.com/en-us/azure/active-directory/authentication/tutorial-enable-sspr- writeback>

**NEW QUESTION 43**

- (Topic 3)

You have two servers that have the Hyper-V server role installed. The servers are joined to a failover cluster both servers can connect to the same disk on an iSCSi storage device. You plan to use the iSCSI storage to store highly available Hyper-V virtual machines that will support live migration functionality. You need to configure a storage resource in the failover cluster to store the virtual machines.

What should you configure?

- A. a storage pool
- B. attributed File System (DFS) Replication
- C. a mirrored volume
- D. Cluster Shared volumes (CSV)

**Answer:** D

**NEW QUESTION 48**

- (Topic 3)

Your network contains an Active Directory Domain Services (AD DS) forest named contoso.com. The root domain contains the domain controllers shown in the following table.

Name	FSMO role
DC1	Domain naming master
DC2	RID master
DC3	PDC emulator
DC4	Schema master
DC5	Infrastructure master

A failure of which domain controller will prevent you from creating application partitions?

- A. DC1
- B. DC2
- C. DC3
- D. DC4
- E. DC5

**Answer:** A

**Explanation:**

Reference:

<https://docs.microsoft.com/en-us/troubleshoot/windows-server/identity/fsmo-roles>

**NEW QUESTION 52**

- (Topic 3)

Your on-premises network contains an Active Directory domain named contoso.com. You have an Azure AD tenant. You plan to sync contoso.com with the Azure AD tenant by using Azure AD Connect cloud sync. You need to create an account that will be used by Azure AD Connect cloud sync. Which type of account should you create?

- A. system-assigned managed identity
- B. group managed service account (gMSA)
- C. user
- D. InetOrgPerson

**Answer:** C

**NEW QUESTION 57**

- (Topic 3)

You have servers that run Windows Server 2022 as shown in the following table.

Name	Location	Description
Server1	On-premises	Hosts a Microsoft SQL Server 2019 instance
Server2	Azure	Contains the .NET SDK

Server2 contains a .NET app named App1.

You need to establish a WebSocket connection from App1 to the SQL Server instance on Server1. The solution must meet the following requirements:



- Minimize the number of network ports that must be open on the on-premises network firewall.
- Minimize administrative effort. What should you create first?

- A. an Azure Relay namespace
- B. an Azure VPN gateway
- C. a WFC relay connection
- D. a hybrid connection

**Answer:** D

#### NEW QUESTION 60

- (Topic 3)

Your network contains an Active Directory Domain Services (AD DS) domain. The domain contains the domain controllers shown in the following table.

Name	Description
DC1	PDC emulator, RID master, and global catalog server
DC2	Infrastructure master and domain naming master
DC3	Schema master
RODC1	Read-only domain controller (RODC)

You need to ensure that if an attacker compromises the computer account of RODC1, the attacker cannot view the Employee-Number AD DS attribute. Which partition should you modify?

- A. configuration
- B. global catalog
- C. domain
- D. schema

**Answer:** D

#### NEW QUESTION 63

- (Topic 3)

Your network contains an on -premises Active Directory Domain Services (AD DS) domain named contoso.com The domain contains the objects shown in the following table.

Name	Type
User1	User
Group1	Universal security group
Group2	Domain local security group
Computer1	Computer

You plan to sync contoso.com with an Azure Active Directory (Azure AD) tenant by using Azure AD Connect You need to ensure that all the objects can be used in Conditional Access policies What should you do?

- A. Change the scope of Group2 to Universal
- B. Clear the Configure device writeback option.
- C. Change the scope o' Group1 and Group2 to Global
- D. Select the Configure Hybrid Azure AD join option.

**Answer:** D

#### Explanation:

Hybrid Azure AD join needs to be configured to enable Computer1 to be used in Conditional Access Policies. Synchronized users, universal groups and domain local groups can be used in Conditional Access Policies.

#### NEW QUESTION 66

- (Topic 3)

Your company has a main office and a branch office. The two offices are connected by using a WAN link. Each office contains a firewall that filters WAN traffic. The network in the branch office contains 10 servers that run Windows Server. All servers are administered from the main office only.

You plan to manage the servers in the branch office by using a Windows Admin Center gateway.

On a server in the branch office, you install the Windows Admin Center gateway by using the defaults settings.

You need to configure the firewall in the branch office to allow the required inbound connection to the Windows Admin Center gateway.

Which inbound TCP port should you allow?

- A. 443
- B. 3389
- C. 5985
- D. 6516

**Answer:** A

#### NEW QUESTION 71

HOTSPOT - (Topic 3)

You have a Group Policy Object (GPO) named GPO1 that contains user settings only.



You plan to apply GPO1 to a global security group named Group1.  
You link GP01 to the domain, and you remove all the permissions granted to the Authenticated Users group.  
You need to configure permissions for GP01 to meet the following requirements.

- GPO1 must apply only to the users in Group 1.
- The solution must use the principle of least privilege

Answer Area

Group1:	<div>▼</div> <div>Apply group policy and Read</div> <div>Apply group policy only</div> <div>Read only</div>
Domain Computers:	<div>▼</div> <div>Apply group policy and Read</div> <div>Apply group policy only</div> <div>Read only</div>

- A. Mastered
- B. Not Mastered

Answer: A

Explanation:

Answer Area

Group1:	<div>▼</div> <div>Apply group policy and Read</div> <div>Apply group policy only</div> <div>Read only</div>
Domain Computers:	<div>▼</div> <div>Apply group policy and Read</div> <div>Apply group policy only</div> <div>Read only</div>

NEW QUESTION 72

DRAG DROP - (Topic 3)

You have a server named Server 1 that runs Windows Server and has the Hyper-V server role installed.  
Server1 hosts a virtual machine named VM1. Server1 has an NV Me storage device that is assigned to VM1 by using Discrete Device Assignment.  
You need to make the device available to the host.  
Which four actions should you perform in sequence? To answer, move the appropriate actions from the list of actions to the answer area and arrange them in the correct order.

Actions	Answer Area
From VM1, disable the device by using Device Manager.	
From Server1, stop VM1.	
From Server1, run the Remove-VMAssignableDevice cmdlet.	
From Server1, run the Mount-VMHostAssignableDevice cmdlet.	
From Server1, enable the device by using Device Manager.	

- A. Mastered
- B. Not Mastered

Answer: A

Explanation:

Actions	Answer Area
From VM1, disable the device by using Device Manager.	
From Server1, stop VM1.	
From Server1, run the Remove-VMAssignableDevice cmdlet.	
From Server1, run the Mount-VMHostAssignableDevice cmdlet.	
From Server1, enable the device by using Device Manager.	

NEW QUESTION 77

- (Topic 3)

Your network contains an Active Domain Services (AD DS) forest. The forest contains three domains. Each domain contains 10 domain controllers.  
You plan to store a DNS zone in a custom active Directory partition.  
You need to create the Active Directory partition for the zone. The partition replicate to only four of the domain controllers.  
What should you use?

- A. Active Directory Sites and Services
- B. Active Directory Administrator Center
- C. dnscmd.exe

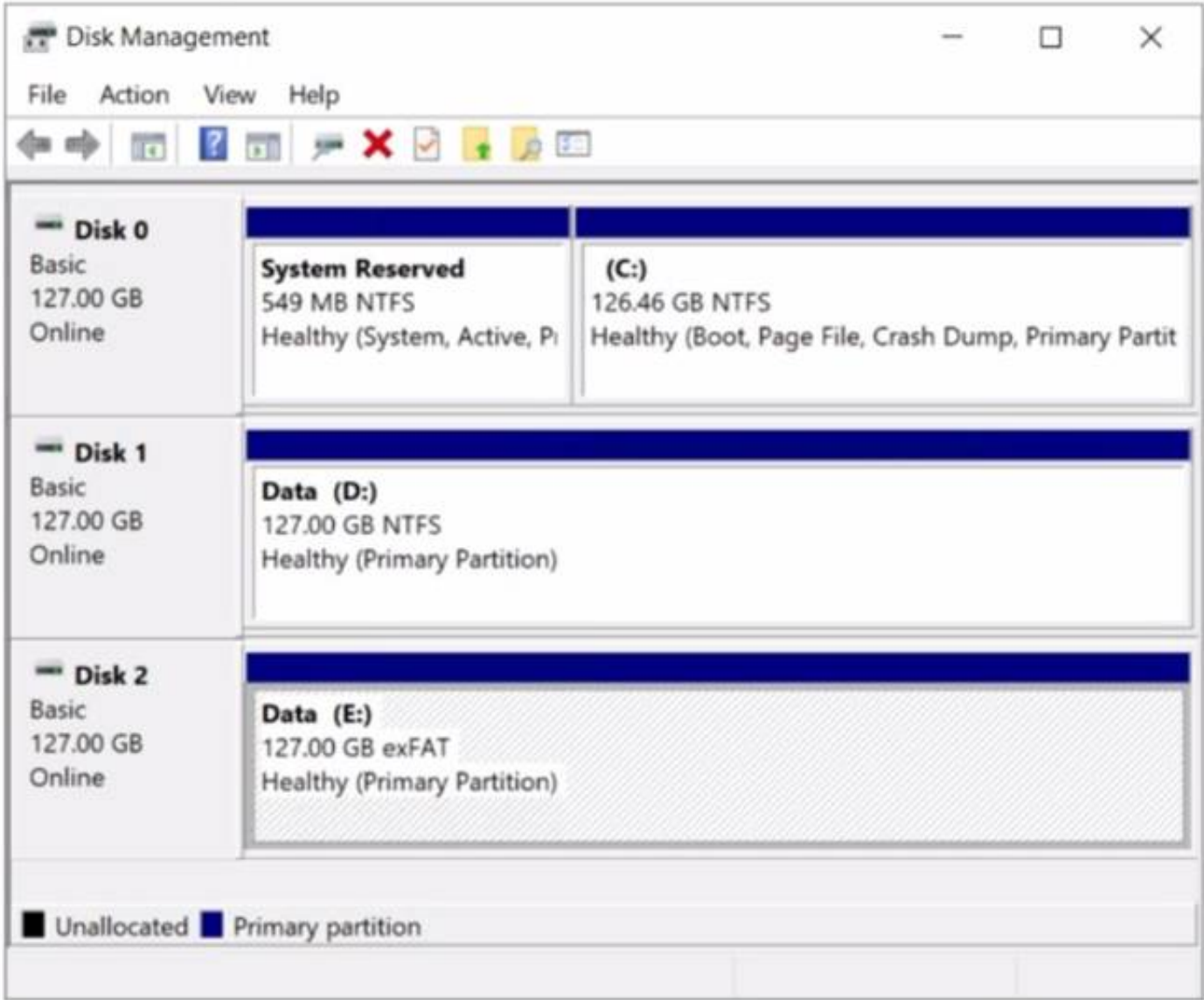
D. DNS Manager

Answer: B

NEW QUESTION 80

- (Topic 3)

You have a server named Server1 that runs Windows Server. The disks on Server1 are configured as shown in the following exhibit.



You need to convert volume E to ReFS. The solution must meet the following requirements:

- Preserve the existing data on volume E.
- Minimize administrative effort. What should you do first?

- A. Take Disk 2 offline.
- B. Back up the data on volume E.
- C. Convert Disk 2 to a dynamic disk.
- D. Runconvert.exe.

Answer: B

NEW QUESTION 85

DRAG DROP - (Topic 3)

Your network contains an Active Directory domain, a web app named App1, and a perimeter network. The perimeter network contains a server named Server1 that runs Windows Server.

You plan to provide external access to App1.

You need to implement the Web Application Proxy role service on Server1.

Which role should you add to Server1, and which role should you add to the network? To answer, drag the appropriate roles to the correct targets. Each role may be used once, more than once, or not at all. You may need to drag the split bar between panes or scroll to view content.

Roles

Active Directory Certificate Services

Active Directory Federation Services

Network Policy and Access Services

Remote Access

Answer Area

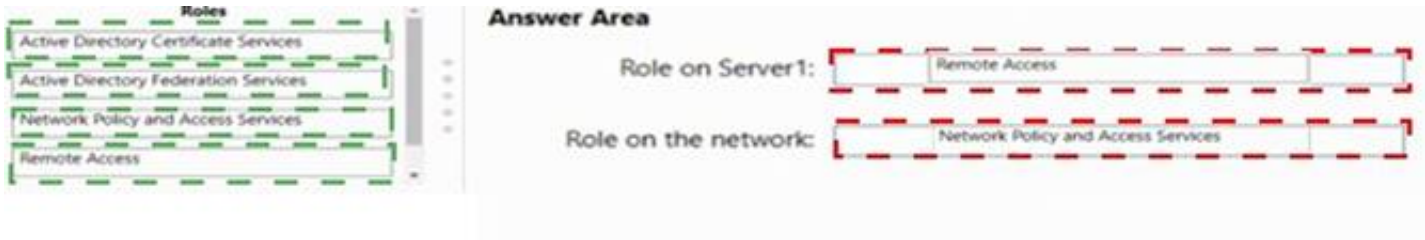
Role on Server1:

Role on the network:

- A. Mastered
- B. Not Mastered

Answer: A

Explanation:



NEW QUESTION 86

- (Topic 3)

You have an on-premises Active Directory Domain Services (AD DS) domain that syncs with an Azure Active Directory (Azure AD) tenant. The on-premises network is connected to Azure by using a Site-to-Site VPN. You have the DNS zones shown in the following table.

Name	Location	Description
contoso.com	A domain controller named DC1 on the on-premises network	Provides name resolution on-premises
fabrikam.com	An Azure private DNS zone	Provides name resolution for all Azure virtual networks

You need to ensure that names from fabrikam.com can be resolved from the on-premises network. Which two actions should you perform? Each correct answer presents part of the solution. NOTE: Each correct selection is worth one point.

- A. Create a conditional forwarder for fabrikam.com on DC1.
- B. Create a stub zone for fabrikam.com on DC1.
- C. Create a secondary zone for fabrikam.com on DC1.
- D. Deploy an Azure virtual machine that runs Windows Server.
- E. Modify the DNS Servers settings for the virtual network.
- F. Deploy an Azure virtual machine that runs Windows Server.
- G. Configure the virtual machine as a DNS forwarder.

Answer: AE

Explanation:

Reference:

<https://docs.microsoft.com/en-us/azure/private-link/private-endpoint-dns#on-premises-workloads-using-a-dns-forwarder>

NEW QUESTION 89

- (Topic 3)

You have an on-premises server named Server1 that runs Windows Server. You have an Azure subscription that contains a virtual network named VNet1. You need to connect Server1 to VNet1 by using Azure Network Adapter. What should you use?

- A. Azure AD Connect
- B. Device Manager
- C. the Azure portal
- D. Windows Admin Center

Answer: D

NEW QUESTION 94

- (Topic 3)

Your network contains an Active Directory Domain Services (AD DS) domain. The domain contains the resources shown in the following table.

Name	Description
CLIENT1	Client computer that runs Windows
DC1	Domain controller
Server1	File server
Server2	File server

You plan to replicate a volume from Server1 to Server2 by using Storage Replica. You need to configure Storage Replica. Where should you install Windows Admin Center?

- A. Server 1
- B. CLIENT1
- C. DC1
- D. Server2

Answer: A

NEW QUESTION 99

- (Topic 3)

You have a server named Server1 that runs Windows Server and contains two drives named C and D. Server1 hosts multiple file shares. You enable Data Deduplication on drive D and select the General purpose file server workload. You need to minimize the space consumed by files that were recently modified or deleted. What should you do?

- A. Run the set-dedupvolume cmdlet and configure the scrubbing job.



- B. Run the Set-DedupSchedule Cmdlet and configure a GarbageCollection job.
- C. Run the set-Dedupvoiume cmdlet and configure the InputOutputScale settings.
- D. Run the Set-DedupSchedule cmdlet and configure the optimization job.

Answer: B

NEW QUESTION 104

- (Topic 3)

You have servers that have the DNS Server role installed. The servers are configured as shown in the following table.

Name	Office	Local DNS zone	IP address
Server1	Paris	contoso.com	10.1.1.1
Server2	New York	None	10.2.2.2

All the client computers in the New York office use Server2 as the DNS server. You need to configure name resolution in the New York office to meet the following requirements:

- ? Ensure that the client computers in New York can resolve names from contoso.com.
- ? Ensure that Server2 forwards all DNS queries for internet hosts to 131.107.100.200.

The solution must NOT require modifications to Server1. Each correct answer presents part of the solution. NOTE: Each correct selection is worth one point.

- A. a forwarder
- B. a conditional forwarder
- C. a delegation
- D. a secondary zone
- E. a reverse lookup zone

Answer: AB

Explanation:

A conditional forwarder is required for contoso.com. A forwarder is required for all other domains.  
When you have a conditional forwarder and a forwarder configured, the conditional forwarder will be used for the specified domain.  
You could use a secondary zone for contoso.com but that would require a configuration change on Server1.

NEW QUESTION 107

HOTSPOT - (Topic 2)

You need to configure Azure File Sync to meet the file sharing requirements. What should you do? To answer, select the appropriate options in the answer area.

NOTE Each correct selection is worth one point.

Answer Area

Minimum number of sync groups to create:

1

2

3

4

Minimum number of Storage Sync Services to create:

1

2

3

4

- A. Mastered
- B. Not Mastered

Answer: A

Explanation:

Answer Area

Minimum number of sync groups to create:

1

2

3

4

Minimum number of Storage Sync Services to create:

1

2

3

4

NEW QUESTION 108

- (Topic 2)

You need to configure the Group Policy settings to ensure that the Azure Virtual Desktop session hosts meet the security requirements. What should you configure?

- A. security filtering for the link of GP04
- B. security filtering for the link of GPO1
- C. loopback processing in GPO4
- D. the Enforced property for the link of GP01
- E. loopback processing in GPO1



F. the Enforced property for the link of GP04

**Answer:** C

#### NEW QUESTION 109

HOTSPOT - (Topic 2)

You need to configure network communication between the Seattle and New York offices. The solution must meet the networking requirements. What should you configure? To answer, select the appropriate options in the answer area. NOTE: Each correct selection is worth one point.

On a Virtual WAN hub:

An ExpressRoute gateway
A virtual network gateway
An ExpressRoute circuit connection

In the offices:

An ExpressRoute circuit connection
A Site to-Site VPN
An Azure application gateway
An on premises data gateway

- A. Mastered
- B. Not Mastered

**Answer:** A

**Explanation:**

On a Virtual WAN hub:

An ExpressRoute gateway
A virtual network gateway
An ExpressRoute circuit connection

In the offices:

An ExpressRoute circuit connection
A Site to-Site VPN
An Azure application gateway
An on premises data gateway

#### NEW QUESTION 113

- (Topic 2)

What should you implement for the deployment of DC3?

- A. Azure Active Directory Domain Services (Azure AD DS)
- B. Azure AD Application Proxy
- C. an Azure virtual machine
- D. an Azure AD administrative unit

**Answer:** C

**Explanation:**

Create a domain controller named dc3.corp.fabrikam.com in Vnet1.

In a hybrid network, you can configure Azure virtual machines as domain controllers. The domain controllers in Azure communicate with the on-premises domain controllers in the same way that on-premises domain controllers communicate with each other.

#### NEW QUESTION 117

- (Topic 2)

You need to configure remote administration to meet the security requirements. What should you use?

- A. just in time (JIT) VM access
- B. Azure AD Privileged Identity Management (PIM)

- C. the Remote Desktop extension for Azure Cloud Services
- D. an Azure Bastion host

Answer: A

Explanation:

Reference:

<https://docs.microsoft.com/en-us/azure/defender-for-cloud/just-in-time-access-usage?tabs=jit-config-asc%2Cjit-request-asc>

NEW QUESTION 119

- (Topic 1)

You need to meet the technical requirements for VM2. What should you do?

- A. Implement shielded virtual machines.
- B. Enable the Guest services integration service.
- C. Implement Credential Guard.
- D. Enable enhanced session mode.

Answer: D

NEW QUESTION 124

- (Topic 1)

You need to meet the technical requirements for Server1. Which users can currently perform the required tasks?

- A. Admin1 only
- B. Admin3 only
- C. Admin1 and Admin3 only
- D. Admin1 Admin2. and Admm3

Answer: C

NEW QUESTION 125

HOTSPOT - (Topic 1)

You need to meet the technical requirements for VM1.

Which cmdlet should you run first? To answer, select the appropriate options in the answer area.

NOTE: Each correct selection is worth one point.

Answer Area

VM1

Set-VM

Set-VMBios

Set-VMHost

Set-VMFirmware

Set-VMProcessor

\$true

-NewVMName

-GuestControlledCacheTypes

-EnableHostResourceProtection

-ExposeVirtualizationExtensions

- A. Mastered
- B. Not Mastered

Answer: A

Explanation:

Graphical user interface, text, application Description automatically generated

NEW QUESTION 129

- (Topic 1)

You need to meet the technical requirements for VM3 On which volumes can you enable Data Deduplication?

- A. D and E only
- B. C, D, E, and F
- C. D only
- D. C and D only
- E. D, E, and F only

Answer: A

Explanation:

Reference:

<https://docs.microsoft.com/en-us/windows-server/storage/data-deduplication/interop>

NEW QUESTION 132

.....

## Thank You for Trying Our Product

### We offer two products:

1st - We have Practice Tests Software with Actual Exam Questions

2nd - Questons and Answers in PDF Format

### AZ-800 Practice Exam Features:

- \* AZ-800 Questions and Answers Updated Frequently
- \* AZ-800 Practice Questions Verified by Expert Senior Certified Staff
- \* AZ-800 Most Realistic Questions that Guarantee you a Pass on Your FirstTry
- \* AZ-800 Practice Test Questions in Multiple Choice Formats and Updatesfor 1 Year

**100% Actual & Verified — Instant Download, Please Click**  
**[Order The AZ-800 Practice Test Here](#)**