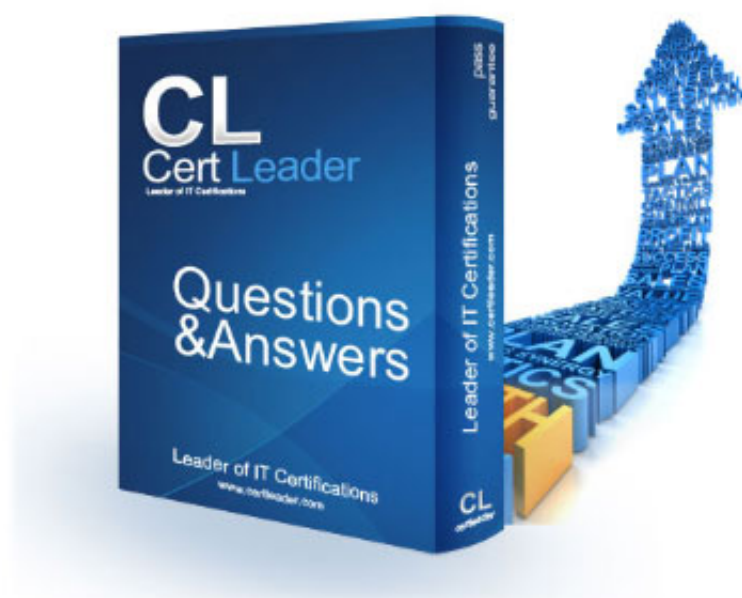


# 201 Dumps

## TMOS Administration

<https://www.certleader.com/201-dumps.html>



### NEW QUESTION 1

A BIG-IP Administrator notices that one of the servers that runs an application is NOT receiving any traffic. The BIG-IP Administrator examines the configuration status of the application and observes the displayed monitor configuration and affected Pool Member status.



What is the possible cause of this issue?

- A. The Node Health Monitor is NOT responding.
- B. The application is NOT responding with the expected Receive String.
- C. HTTP 1.1 is NOT appropriate for monitoring purposes.
- D. The BIG-IP device is NOT able to reach the Pool.

**Answer: A**

### NEW QUESTION 2

A BIG-IP Administrator defines a device Self IP . The Self IP is NOT reachable from the network. What should the BIG-IP Administrator verify first?

- A. The correct interface has been selected.
- B. The correct VLAN has been selected.
- C. Verify if auto last hop is disabled.
- D. The correct Trunk has been selected.

**Answer: B**

### NEW QUESTION 3

A BIG-IP Administrator uses backend servers to host multiple services per server. There are multiple virtual servers and pools defined, referencing the same backend servers.

Which load balancing algorithm is most appropriate to have an equal number of connections on each backend server?

- A. Least Connections (member)
- B. Least Connections (node)
- C. Predictive (member)
- D. Predictive (node)

**Answer: B**

#### Explanation:

The same set of servers provides multiple services, that is, using different ports to provide different services at the same time. The stem requirement is based on server connection balancing, not server + port, so it is node.

### NEW QUESTION 4

Refer to the exhibit.

The screenshot displays the BIG-IP configuration interface. At the top, the 'Destination Address/Mask' is set to 192.168.162.80, and the 'Service Port' is 443 with 'HTTPS' selected. The 'Notify Status to Virtual Address' checkbox is checked. The 'Availability' status is 'Available (Enabled)' with a green circle icon. The 'Synccookie Status' is 'Off'. Below this, the 'Configuration' tab is set to 'Basic'. On the left, a list of configuration sections includes 'Protocol', 'Protocol Profile (Client)', 'Protocol Profile (Server)', 'HTTP Profile', 'HTTP Proxy Connect Profile', 'FTP Profile', 'RTSP Profile', 'SSL Profile (Client)', and 'SSL Profile (Server)'. The 'SSL Profile (Client)' and 'SSL Profile (Server)' sections are expanded, showing a list of available profiles. In the 'Selected' column, 'clientssl' is chosen for the client profile and 'serverssl' for the server profile. In the 'Available' column, various other profiles like 'clientssl-insecure-compatible', 'clientssl-secure', 'clientsl2', 'crypto-server-default-clientsl', 'apm-default-serverssl', 'crypto-client-default-serverssl', 'pccip-default-serverssl', and 'serverssl' are listed.

A BIG-IP Administrator needs to deploy an application on the BIG-IP system to perform SSL offload and re-encrypt the traffic to pool members. During testing, users are unable to connect to the application. What must the BIG-IP Administrator do to resolve the issue?

- A. Remove the configured SSL Profile (Client)
- B. Configure Protocol Profile (Server) as splitsession-default-tcp
- C. Enable Forward Proxy in the SSL Profile (Client)
- D. Configure an SSL Profile (Server)

**Answer: D**

**Explanation:**

According to the requirements of the subject, the client and server must be configured with ssl profile.

**NEW QUESTION 5**

A BIG-IP Administrator receives an RMA replacement for a failed F5 device. The BIG-IP Administrator tries to restore a UCS taken from the previous device, but the restore fails. The following error appears in the /var/log/itm.

mcpd [\*\*\*J: \*\*\*\*\*»;0; License is not operational (expired or digital signature does not match contents.)

What should the BIG-IP Administrator do to avoid this error?

- A. Use the appropriate tmsh command with the no-license option
- B. Revoke the license prior to restoring
- C. Reactivate the license on the new device using the manual activation method
- D. Remove the license information from the UCS archive

**Answer: A**

**NEW QUESTION 6**

A BIG-IP Administrator needs to load a UCS file but must exclude the license file. How should the administrator perform this task?

- A. From the CLI with command U tmsh load /\$sys ucs <ucs filename> no-license
- B. From the GUI, select the UCS file, uncheck the license box, and click restore
- C. From the CLI with command (tmsh) « tmsh load /sys ucs <ucs filename> no-license
- D. From the GUI, select the UCS file and click restore

**Answer: A**

**NEW QUESTION 7**

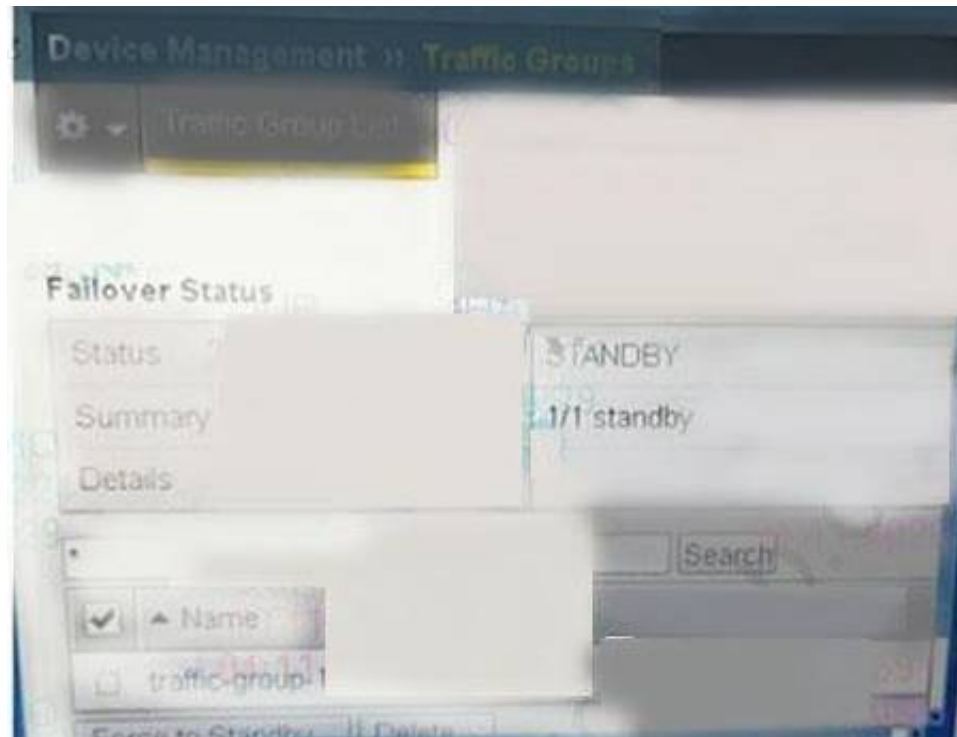
What is the status of a pool member when manual resume is enabled and a health check first fails and then passes?

- A. Offline (Disabled)
- B. Offline (Enabled)
- C. Available (Disabled)
- D. Available (Enabled)

**Answer:** A

#### NEW QUESTION 8

Refer to the exhibit.



A BIG-IP Administrator needs to fall over the active device. The administrator logs into the Configuration Utility and navigates to Device Management > Traffic Group. However, Force to Standby is greyed out. What is causing this issue?

- A. The BIG-IP Administrator is NOT logged into command line to fail over
- B. The BIG-IP Administrator is on the Standby Device
- C. The BIG-IP Administrator is logged in as root
- D. The BIG-IP Administrator is logged in as administrator

**Answer:** B

#### NEW QUESTION 9

Which statement is true concerning a functional iRule?

- A. iRules use a proprietary syntax language.
- B. iRules must contain at least one event declaration.
- C. iRules must contain at least one conditional statement.
- D. iRules must contain at least one pool assignment statement.

**Answer:** B

#### NEW QUESTION 10

What should the BIG-IP Administrator do to apply and activate a hotfix to a BIG-IP device that is currently running version 11.0.0 on active partition HD1.1?

- A. \* 1. confirm that 11.0.0 is installed on inactive partition HD1.2\* 2. apply a hotfix to partition HD 1.2\* 3. activate partition HD1.2
- B. \* 1. reactivate the license on partition HD1.1\* 2. apply a hotfix to partition HD1.1
- C. \* 1. activate partition HD1.2\* 2 confirm version 11.0.0 on partition HD1.2\* 3. install a hotfix on partition HD1.2
- D. \* 1. set partition HD1.2 active\* 2. apply a hotfix to partition HD1.2

**Answer:** A

#### NEW QUESTION 10

A site is load balancing to a pool of web servers. Which statement is true concerning BIG IP's ability to verify whether the web servers are functioning properly or not?

- A. Web server monitors can test the content of any page on the server.
- B. Web server monitors always verify the contents of the index.html page.
- C. Web server monitors can test whether the server's address is reachable, but cannot test a page's content.
- D. Web server monitors can test the content of static web pages, but cannot test pages that would require the web server to dynamically build content.

**Answer:** A

#### NEW QUESTION 11

Where is persistence mirroring configured?

- A. It is always enabled.
- B. It is part of a pool definition.
- C. It is part of a profile definition.

D. It is part of a virtual server definition.

**Answer:** C

**NEW QUESTION 14**

Which statement is true concerning the default communication between a redundant pair of BIG-IP devices?

- A. Communication between the systems cannot be effected by port lockdown settings.
- B. Data for both connection and persistence mirroring are shared through the same TCP connection.
- C. Regardless of the configuration, some data is communicated between the systems at regular intervals.
- D. Connection mirroring data is shared through the serial fail over cable unless network failover is enabled.

**Answer:** B

**NEW QUESTION 16**

A BIG-IP Administrator suspects that one of the BIG-IP device power supplies is experiencing power outages. Which log file should the BIG-IP Administrator check to verify the suspicion?

- A. /var /log/daemon.log
- B. /var/log/kern.log
- C. /var/log/ltn
- D. /var/log/audit

**Answer:** C

**NEW QUESTION 21**

The current status of a given pool member is unknown. Which condition could explain that state?

- A. The member has no monitor assigned to it.
- B. The member has a monitor assigned to it and the most recent monitor was successful.
- C. The member has a monitor assigned to it and the monitor did not succeed during the most recent timeout period.
- D. The member's node has a monitor assigned to it and the monitor did not succeed during the most recent timeout period.

**Answer:** A

**NEW QUESTION 25**

A site has six members in a pool. All of the servers have been designed, built, and configured with the same applications. It is known that each client's interactions vary significantly and can affect the performance of the servers. If traffic should be sent to all members on a regular basis, which loadbalancing mode is most effective if the goal is to maintain a relatively even load across all servers?

- A. Ratio
- B. Priority
- C. Observed
- D. Round Robin

**Answer:** C

**NEW QUESTION 28**

Which statement is true concerning iRule events?

- A. All iRule events relate to HTTP processes.
- B. All client traffic has data that could be used to trigger iRule events.
- C. All iRule events are appropriate at any point in the clientserver communication.
- D. If an iRule references an event that doesn't occur during the client's communication, the client's connection will be terminated prematurely.

**Answer:** B

**NEW QUESTION 33**

A set of servers is used for an FTP application as well as an HTTP website via separate BIG-IP Pools. The server support team reports that some servers are receiving a lot more traffic than others.

Which Load Balancing Method should the BIG-IP Administrator apply to even out the connection count?

- A. Ratio (Member)
- B. Least Connections (Member)
- C. Least Connections (Node)
- D. Ratio (Node)

**Answer:** C

**Explanation:**

The connection is required to be balanced, and the unit is the server and the application port is the unit, so it is node.

**NEW QUESTION 38**

The BIG-IP Administrator generates a qkview using "qkview -SO" and needs to transfer the output file via SCP. Which directory contains the output file?



- A. /var/log
- B. /var/tmp
- C. /var/local
- D. /var/config

**Answer:** B

#### NEW QUESTION 40

To increase available bandwidth of an existing Trunk, the BIG-IP Administrator is adding additional interfaces. Which command should the BIG-IP Administrator run from within bosh shell?

- A. tmsh create /net trunk trunk\_A interfaces add {1.3.1.4}
- B. tmsh create/sys trunk trunk\_A interfaces add {1.3.1.4}
- C. tmsh modify/sys trunk trunk^A interfaces add {1.3.1.4}
- D. tmsh modify /net trunk trunk\_A interfaces add {1.3.1.4}

**Answer:** D

#### NEW QUESTION 43

A BIG-IP device is configured with both an internal external and two Corporate VLANs. The virtual server has SNAT enabled and is set to listen on all VLANs Auto Last Hop is disabled. The Corporate users are on 10.0.0.0/24 and 172.16.0.0/12. The BIG-IP has a Self-IP on the 1.0.0.0.0/24 subnet. Internet users are able to access the virtual server. Only some of the Corporate users are able to connect to the virtual server A BIG-IP Administrator performs a tcpdump on the BIG-IP and verifies that traffic is arriving from users in 10.0.0.0/24. What should the BIG-IP Administrator do to correct this behaviour?

- A. Disable the server on the internal VLAN
- B. Add a static route for the 172.16.0.0/12 subnet
- C. Change the default route to point to the extra firewall
- D. Modify the default route of the servers to point to the BIG-IP device

**Answer:** B

#### NEW QUESTION 47

Which statement is true concerning SSL termination?

- A. A virtual server that has both ClientSSL and ServerSSL profiles can still support cookie persistence.
- B. Decrypting traffic at the BIG-IP allows the use of iRules for traffic management, but increases the load on the pool member.
- C. When any virtual server uses a ClientSSL profile, all SSL traffic sent to the BIG-IP is decrypted before it is forwarded to servers.
- D. If a virtual server has both a ClientSSL and ServerSSL profile, the pool members have less SSL processing than if the virtual server had only a ClientSSL profile.

**Answer:** A

#### NEW QUESTION 49

A site would like to ensure that a given web server's default page is being served correctly prior to sending it client traffic. They assigned the default HTTP monitor to the pool. What would the member status be if it sent an unexpected response to the GET request.?

- A. The pool member would be marked offline (red).
- B. The pool member would be marked online (green).
- C. The pool member would be marked unknown (blue).
- D. The pool member would alternate between red and green.

**Answer:** B

#### NEW QUESTION 53

A BIG-IP Administrator recently deployed an application Users are experiencing slow performance with the application on some remote networks. Which two modifications can the BIG-IP Administrator make to address this issue? (Choose two)

- A. Apply dest\_addr profile to the Virtual Server
- B. Apply f5-tcp-wan profile to the Virtual Server
- C. Apply f5-tcp-lan profile to the Virtual Server
- D. Apply source\_addr profile to the Virtual Server
- E. Apply fasti\_4 profile to the Virtual Server

**Answer:** BC

#### NEW QUESTION 56

A development team needs to apply a software fix and troubleshoot one of its servers. The BIG-IP Administrator needs to immediately remove all connections from the BIG-IP system to the back end server. The BIG-IP Administrator checks the Virtual Server configuration and finds that a persistence profile is assigned to it. What should the BIG-IP Administrator do to meet this requirement?

- A. Set the pool member to a Forced Offline state and manually delete existing connections through the command line.
- B. Set the pool member to a Forced Offline state.
- C. Set the pool member to a Disabled state.
- D. Set the pool member to a Disabled state and manually delete existing connections through the command line.

**Answer:** A

#### NEW QUESTION 61

When network failover is enabled, which of the following is true?

- A. The failover cable status is ignore
- B. Failover is determined by the network status only.
- C. Either a network failure or loss of voltage across the failover cable will cause a failover.
- D. A network failure will not cause a failover as long as there is a voltage across the failover cable.
- E. The presence or absence of voltage over the fail over cable takes precedence over network failover.

**Answer:** C

#### NEW QUESTION 65

A site has assigned the ICMP monitor to all nodes and a custom monitor, based on the HTTP template, to a pool of web servers. The HTTP based monitor is working in all cases. The ICMP monitor is failing for 2 of the pool member 5 nodes. All other settings are default. What is the status of the monitor is working in all cases?

- A. All pool members are up since the HTTPbased monitor is successful.
- B. All pool members are down since the ICMPbased monitor is failing in some cases.
- C. The pool members whose nodes are failing the ICMPbased monitor will be marked disabled.
- D. The pool members whose nodes are failing the ICMPbased monitor will be marked unavailable.

**Answer:** D

#### NEW QUESTION 67

A BIG-IP Administrator need to ensure that a pool member and down by the monitor the BIG-IP system sends existing connections to another be pool member. Which should the BIG-IP Administrator perform to meet this goal?

- A. Set Action on Service Down sing under the server configuration to reselect.
- B. Reconfigure the pool motor members as UP.
- C. Enable mirroring within the persistence profile.
- D. Set Action Service Down setting under the pool configuration to reselect.

**Answer:** D

#### NEW QUESTION 69

When using the setup utility to configure a redundant pair, you are asked to provide a "Failover Peer IP". Which address is this?

- A. an address of the other system in its management network
- B. an address of the other system in a redundant pair configuration
- C. an address on the current system used to listen for failover messages from the partner BIG-IP
- D. an address on the current system used to initiate mirroring and network failover heartbeat messages

**Answer:** B

#### NEW QUESTION 70

A BIG-IP Administrator finds the following log entry after a report of user issues connecting to a virtual server: 01010201: 2: Inet port exhaustion on 10.70.110.112 to 192.28.123.250:80 (proto 6)

How should the BIG-IP Administrator modify the SNAT pool that is associated with the virtual server?

- A. Remove the SNAT pool and apply SNAT Automap.
- B. Remove an IP address from the SNAT pool.
- C. Add an address to the SNAT pool.
- D. Increase the timeout of the SNAT addresses.

**Answer:** C

#### NEW QUESTION 72

Where is the loadbalancing mode specified?

- A. within the pool definition
- B. within the node definition
- C. within the virtual server definition
- D. within the pool member definition

**Answer:** A

#### NEW QUESTION 73

Which statement is true concerning cookie persistence?

- A. Cookie persistence allows persistence independent of IP addresses.
- B. Cookie persistence allows persistence even if the data are encrypted from client to pool member.
- C. Cookie persistence uses a cookie that stores the virtual server, pool name, and member IP address in clear text.
- D. If a client's browser accepts cookies, cookie persistence will always cause a cookie to be written to the client's file system.

**Answer:** A

#### NEW QUESTION 76

An application is configured so that the same pool member must be used for an entire session, as well as for HTTP and FTP traffic.

A user reports that a session has terminated, and the user must restart the session. The BIG-IP Administrator determines that the active BIG-IP device failed over to the standby BIG-IP device. Which configuration settings should the BIG-IP Administrator verify to ensure proper behaviour when BIG-IP failover occurs?

- A. cookie persistence and session timeout
- B. Stateful failover and Network Failover detection
- C. Persistence mirroring and Match Across Services
- D. syn-cookie insertion threshold and connection low-water mark

**Answer:** C

#### NEW QUESTION 79

A BIG-IP Administrator needs to restore an encrypted UCS archive from the command line using the TMSH utility.

Which TMSH command should the BIG-IP Administrator use to accomplish this?

- A. load/sys ucs <filepath> passphrase <password>
- B. load/sys config file <filepath> passphrase <password>
- C. load/sys config file <filepath>
- D. load/sys ucs <filepath> no-license

**Answer:** A

#### NEW QUESTION 83

What is the purpose of floating self-IP addresses?

- A. to define an address that grants administrative access to either system at any time
- B. to define an address that allows either system to initiate communication at any time
- C. to define an address that allows network devices to route traffic via a single IP address
- D. to define an address that gives network devices greater flexibility in choosing a path to forward traffic

**Answer:** C

#### NEW QUESTION 86

Refer to the exhibit.

	Status	Member	Address	Service Port
<input checked="" type="checkbox"/>	<input checked="" type="checkbox"/>	10.200.50.210:80	10.200.50.210	80
<input checked="" type="checkbox"/>	<input checked="" type="checkbox"/>	10.200.50.210:21	10.200.50.210	21
<input checked="" type="checkbox"/>	<input checked="" type="checkbox"/>	10.200.50.211:443	10.200.50.211	443
<input checked="" type="checkbox"/>	<input checked="" type="checkbox"/>	10.200.50.211:22	10.200.50.211	22

Enable Disable Force Offline Remove

A BIG-IP Administrator needs to configure health monitors for a newly configured server pool named Pool\_B.

Which health monitor settings will ensure that all pool members will be accurately marked as available or unavailable?

- A. HTTPS, HTTP, FTP, and ICMP, with the Availability Requirement of all health monitors
- B. HTTPS, HTTP, FTP, and SSH, with the Availability Requirement of at least one monitor
- C. HTTPS and HTTP with the Availability Requirement of at least one health monitor
- D. HTTPS, HTTP, FTP, and SSH with the Availability Requirement of all health monitors

**Answer:** B

#### Explanation:

From the port, the four members are HTTP, FTP, HTTPS, and SSH applications. If you want to monitor at the same time, you must configure at least one.

#### NEW QUESTION 88

A BIG-IP Administrator remotely connects to the appliance via out-of-band management using <https://mybigip.mycompany.net>. The management portal has been working all week. When the administrator attempts to login today, the connection times out. Which two aspects should the administrator verify? (Choose two)

- A. DNS is properly resolving the FQDN of the device.
- B. The device is NOT redirecting them to http.
- C. The administrator has the latest version of the web browser.
- D. Packet Filters on the device are blocking port 80.
- E. The administrator has TCP connectivity to the device.

**Answer:** AE



**NEW QUESTION 91**

A web server administrator informs the BIG-IP Administrator that web servers are overloaded. Starting next month, the BIG-IP device will terminate SSL to reduce web server load. The BIG-IP device is ready using client SSL client profile and Rules on HTTP level. What actions should the BIG-IP Administrators to achieve the desired configuration?

- A. Remove the server SSL profile and configure the Pool Members to use HTTP
- B. Remove the client SSL profile and configure the Pool Members to use HTTP
- C. Remove the client SSL profile and change the Virtual Server to accept HTTP
- D. Remove the server SSL profile and change the Virtual Server to accept HTTP traffic

**Answer:** A

**NEW QUESTION 96**

Assume a client's traffic is being processed only by a NAT; no SNAT or virtual server processing takes place. Also assume that the NAT definition specifies a NAT address and an origin address while all other settings are left at their defaults. If the origin server were to initiate traffic via the BIG-IP, what changes, if any, would take place when the BIG-IP processes such packets?

- A. The BIG-IP would drop the request since the traffic didn't arrive destined to the NAT address.
- B. The source address would not change, but the destination address would be changed to the NAT address.
- C. The source address would be changed to the NAT address and destination address would be left unchanged.
- D. The source address would not change, but the destination address would be changed to a self-IP of the BIG-IP.

**Answer:** C

**NEW QUESTION 98**

Refer to the exhibit.



A BIG-IP Administrator creates a new Virtual Server to load balance SSH traffic. Users are unable to log on to the servers. What should the BIG-IP Administrator do to resolve the issue?

- A. Set Protocol to UDP
- B. Set HTTP Profile to None
- C. Set Source Address to 10.1.1.2
- D. Set Destination Addresses/Mask to 0.0.0.0/0

**Answer:** B

**NEW QUESTION 100**

Assuming that systems are synchronized, which action could take place if the fail over cable is connected correctly and working properly, but the systems cannot communicate over the network due to external network problems?

- A. If network failover is enabled, the standby system will assume the active mode.
- B. Whether or not network failover is enabled, the standby system will stay in standby mode.
- C. Whether or not network failover is enabled, the standby system will assume the active mode.
- D. If network failover is enabled, the standby system will go into active mode but only until the network recovers.

**Answer:** B

**NEW QUESTION 105**

An LTM device has a virtual server mapped to [www.f5.com](http://www.f5.com) with a pool assigned. Users report that when browsing, they are periodically required to re-login to [resources/201.1.7.b.2\\_l.com](http://resources/201.1.7.b.2_l.com). The objects are defined as follows:

Virtual server. Destination 192.168.245.100:443 netmask 255.255.255.0 Persistence: SSL session persistence

Profiles: HTTP/TCP

Which persistence method should the BIG-IP Administrator apply to resolve this issue?

- A. Source address affinity
- B. hexadecimal
- C. SIP
- D. Destination address affinity

**Answer:** A

**NEW QUESTION 106**

A virtual server at 10.10.1.100:80 has the rule listed below applied.

```
when HTTP_REQUEST { if {[HTTP::uri] ends_with "htm" } { pool pool1 } else if {[HTTP::uri] ends_with "xt" } { pool pool2 }
```

If a user connects to <http://10.10.1.100/foo.txt> which pool will receive the request?

- A. pool1
- B. pool2
- C. Non
- D. The request will be dropped.
- E. Unknow
- F. The pool cannot be determined from the information provided.

**Answer:** B

**NEW QUESTION 107**

A BIG-IP Administrator wants to add the ASM Module to an HA pair of BIG-IP devices. The BIG-IP Administrator has already installed a new Add-On License on both devices in the HA pair. What should the BIG-IP Administrator do next to use the module?

- A. Provision the new module on both BIG-IP device's
- B. Synchronize both BIG-IP devices
- C. Reboot both BIG-IP devices
- D. Reactivate the Licenses on both BIG IP devices

**Answer:** A

**NEW QUESTION 109**

Monitors can be assigned to which three resources? (Choose three.)

- A. NATs
- B. pools
- C. iRules
- D. nodes
- E. SNATs
- F. pool members
- G. virtual servers

**Answer:** BDF

**NEW QUESTION 111**

A BIG-IP Administrator reviews the log files to determine the cause of a recent problem and finds the following entry.

Mar 27.07.58.48 local/BIG-IP notice mcpd {5140} 010707275 Pool member 172.16.20.1.10029 monitor status down.

What is the cause of this log message?

- A. The pool member has been disabled.
- B. The pool member has been marked as Down by the BIG-IP Administrator.
- C. The monitor attached to the pool member needs a higher timeout value.
- D. The monitor attached to the pool member has failed.

**Answer:** D

**NEW QUESTION 114**

A site wishes to perform source address translation on packets from some clients but not others. The determination is not based on the client's IP address, but on the virtual servers their packets arrive on. What could best accomplish this goal?

- A. A SNAT for all addresses could be defined, and then disable the SNAT processing for select VLANs.
- B. Some virtual servers could be associated with SNAT pools and others not associated with SNAT pools.
- C. The decision to perform source address translation is always based on VLA
- D. Thus, the goal cannot be achieved.
- E. The decision to perform source address translation is always based on a client's address (or network).Thus, this goal cannot be achieved.

**Answer:** B

**NEW QUESTION 115**

What is the purpose of MAC masquerading?

- A. to prevent ARP cache errors
- B. to minimize ARP entries on routers
- C. to minimize connection loss due to ARP cache refresh delays
- D. to allow both BIGIP devices to simultaneously use the same MAC address

**Answer:** C

**NEW QUESTION 116**

A node is a member of various pools and hosts different web applications. If a web application is unavailable, the BIG-IP appliance needs to mark the pool member down for that application pool. What should a BIG-IP Administrator deploy at the pool level to accomplish this?

- A. A UDP monitor with a custom interval/timeout
- B. A combination of ICMP + TCP monitor
- C. An HTTP monitor with custom send/receive strings
- D. A TCP monitor with a custom interval/timeout

**Answer:** C

**Explanation:**

Requiring all traffic to be HTTPS access requires HTTP requests to be redirected directly to HTTPS.

**NEW QUESTION 117**

A BIG-IP Administrator makes a configuration change to the BIG-IP device. Which file logs the message regarding the configuration change?

- A. /var/log/messages
- B. /var/log/audit
- C. /var/log/user.log
- D. /var/log/secure

**Answer:** B

**Explanation:**

About audit logging

Audit logging is an optional feature that togs messages whenever a BIG-IP® system object, such as a virtual server or a load balancing pool, is confined (that is, created, modified, or deleted). The BiGIP system logs the messages for these auditing events in the file /var/log/audit

There are three ways that objects can be configured

- By user action
- By system action
- By loading configuration data

Whenever an object is configured in one of these ways, the BIG-IP system logs a message to the audit log

**NEW QUESTION 122**

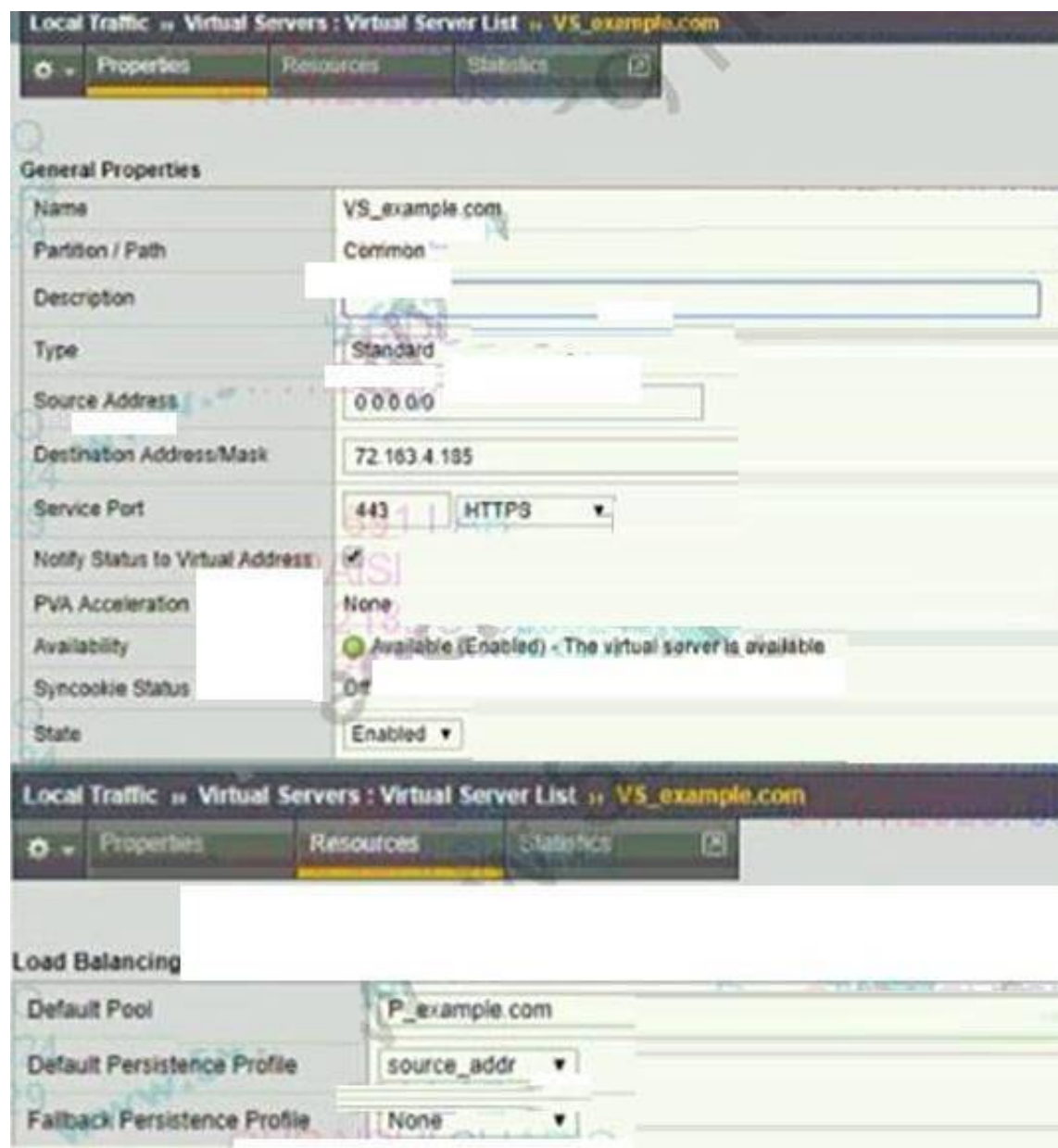
A site needs a virtual server that will use an iRule to parse HTTPS traffic based on HTTP header values. Which two profile types must be associated with such a virtual server? (Choose two.)

- A. TCP
- B. HTTP
- C. HTTPS
- D. ServerSSL

**Answer:** AB

**NEW QUESTION 124**

Refer to the exhibit.



An organization is reporting slow performance accessing their Intranet website, hosted in a public cloud. All employees use a single Proxy Server with the public IP of 104.219.110.168 to connect to the Internet. What should the BIG-IP Administrator of the Intranet website do to fix this issue?

- A. Change Source Address to 104.219.110.168/32
- B. Change Load Balancing Method to Least Connection
- C. Change Fallback Persistence Profile to source\_addr
- D. Change Default Persistence Profile to cookie

Answer: D

NEW QUESTION 126

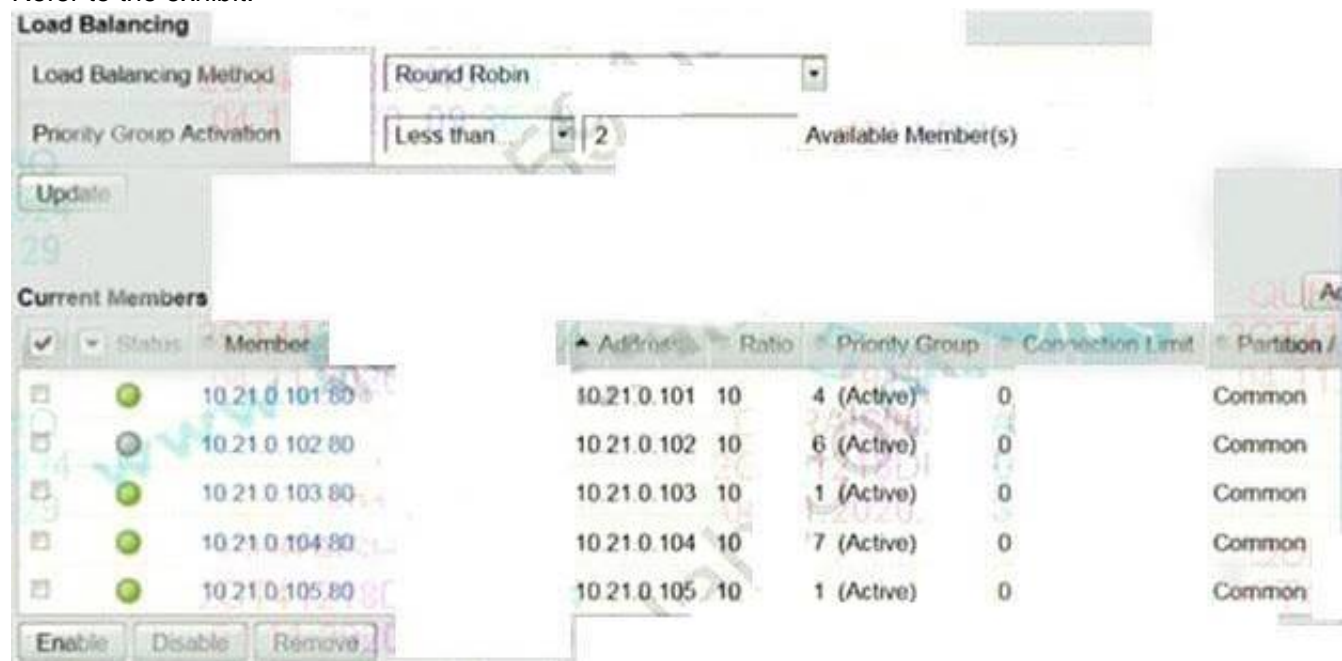
A BIG-IP Administrator needs to make sure that the automatic update check feature works properly. What must the administrator configure on the BIG-IP system?

- A. Update Check Schedule
- B. NTP servers
- C. DNS name servers
- D. SMTP servers

Answer: A

NEW QUESTION 130

Refer to the exhibit.



Which two pool members are eligible to receive new connections? (Choose two)

- A. 10.21.0.102.80
- B. 10.21.0.104.80



- C. 10.21.0.105.80
- D. 10.21.0.101.80
- E. 10.21.0.103.80

**Answer:** BD

#### NEW QUESTION 135

Refer to the exhibit

The BIG-IP Administrator is unable to access the management console via Self-IP 10.10 1.33 and port 443. What is the reason for this problem?

- A. Packet Filter needs to be configured to allow a source
- B. Self IP is configured to allow TCP All
- C. Self IP is configured to allow UDP 443
- D. Packet Filter is configured to allow port 443

**Answer:** C

#### NEW QUESTION 138

What is the purpose of provisioning?

- A. Provisioning allows modules that are not licensed to be fully tested.
- B. Provisioning allows modules that are licensed be granted appropriate resource levels.
- C. Provisioning allows the administrator to activate modules in nonstandard combinations.
- D. Provisioning allows the administrator to see what modules are licensed, but no user action is ever required.

**Answer:** B

#### NEW QUESTION 140

A BIG-IP Administrator needs to collect HTTP status code and HTTP method for traffic flowing through a virtual server. Which default profile provides this information?

- A. HTTP
- B. Analytics
- C. Request Adapt
- D. Statistics

**Answer:** A

#### NEW QUESTION 141

When initially configuring the BIG-IP system using the config utility, which two parameters can be set? (Choose two.)

- A. the netmask of the SCCP
- B. the IP address of the SCCP
- C. the port lockdown settings for the SCCP
- D. the netmask of the host via the management port
- E. the IP address of the host via the management port
- F. the port lockdown settings for the host via the management port

**Answer:** DE

#### NEW QUESTION 143

An ecommerce company is experiencing latency issues with online shops during Black Friday's peak season. The BIG-IP Administrator detects an overall high CPU load on the BIG-IP device and wants to move the top utilized Virtual Servers to a dedicated BIG-IP device.

Where should the BIG-IP Administrator determine the problematic Virtual Servers?

- A. System > Plattform
- B. Local Traffic > Virtual Servers > Virtual Server List
- C. Local Traffic > Network Map
- D. Statistics > Module Statistics > Local Traffic > Virtual Servers

**Answer:** D

#### NEW QUESTION 148

The interface 1.1 of the BIG-IP device has been connected to a link dedicated to traffic on VLAN 120. What should the BIG-IP Administrator do to receive traffic from the VLAN?

- A. Create a new VLAN object and set Customer Tag to 120
- B. Create a new VLAN object and assign the interface 1.1 untagged
- C. Create a new trunk object with interface 1.1 assigned
- D. Create a new trunk object and assign it to the VLAN

**Answer:** B

#### NEW QUESTION 153

How is MAC masquerading configured?

- A. Specify the desired MAC address for each VLAN for which you want this feature enabled.
- B. Specify the desired MAC address for each selfIP address for which you want this feature enabled.
- C. Specify the desired MAC address for each VLAN on the active system and synchronize the systems.
- D. Specify the desired MAC address for each floating selfIP address for which you want this feature enabled.

**Answer:** A

#### NEW QUESTION 155

A BIG-IP Administrator opens a case with F5 Support. The support engineer requests the BIG-IP appliance chassis serial number. Which TMSH command will provide this information?

- A. . list /sys software
- B. show /sys version
- C. list/sys diags
- D. show /sys hardware

**Answer:** D

#### NEW QUESTION 159

Which three properties can be assigned to nodes? (Choose three.)

- A. ratio values
- B. priority values
- C. health monitors
- D. connection limits
- E. loadbalancing mode

**Answer:** ACD

#### NEW QUESTION 162

Users are unable to reach an application. The BIG-IP Administrator checks the Configuration Utility and observes that the Virtual Server has a red diamond in front of the status. What is causing this issue?

- A. All pool members are down.
- B. The Virtual Server is receiving HTTPS traffic over HTTP virtual.
- C. The Virtual Server is disabled.
- D. All pool members have been disabled.

**Answer:** A

#### NEW QUESTION 164

A BIG-IP Administrator needs to view the CPU utilization of a particular Virtual Server. Which section of the Configuration Utility should the administrator use for this purpose?

- A. Statistics > Module Statistics > Local Traffic > Virtual Addresses
- B. Statistics > Module Statistics > Traffic Summary
- C. Statistics > Analytics > Process CPU Utilization
- D. Statistics > Module Statistics > Local Traffic > Virtual Servers

**Answer:** D

#### NEW QUESTION 167

Which log file should the BIG-IP Administrator check to determine if a specific user tried to log in to the BIG-IP Configuration by utility?

- A. /var/log/pam/tally/log
- B. /var/log/secure
- C. /var/log/trn
- D. /var/log/httpd

**Answer:** B

#### NEW QUESTION 172

The ICMP monitor has been assigned to all nodes. In addition, all pools have been assigned custom monitors. The pool is marked available. If a pool is marked available (green) which situation is sufficient to cause this?

- A. All of the pool member nodes are responding to the ICMP monitor as expected.
- B. Less than 50% of the pool member nodes responded to the ICMP echo request.
- C. All of the members of the pool have had their content updated recently and their responses no longer match the monitor.
- D. Over 25% of the pool members have had their content updated and it no longer matches the receive rule of the custom monitor.
- E. The other respond as expected.

**Answer:** D

#### NEW QUESTION 173

Refer to the exhibit.



According to the shown Configuration Utility stings What is the setting of the User Directory configuration under the Authentication submenu?

- A. Local
- B. Managed
- C. Remote-TACACS+
- D. Default system configuration

**Answer: C**

#### NEW QUESTION 175

Assume a virtual server has a ServerSSL profile. What SSL certificates are required on the pool members?

- A. No SSL certificates are required on the pool members.
- B. The pool members.SSL certificates must only exist.
- C. The pool members.SSL certificates must be issued from a certificate authority.
- D. The pool members.SSL certificates must be created within the company hosting the BIGIPs.

**Answer: B**

#### NEW QUESTION 180

The incoming client IP address is 195.64.45.52 and the last five connections have been sent to members A, C, E, D and B. Given the virtual server, pool, and persistence definitions and statistics shown in the above graphic, which member will be used for the next connection?

- A. 10.10.20.1:80
- B. 10.10.20.2:80
- C. 10.10.20.3:80
- D. 10.10.20.4:80
- E. 10.10.20.5:80
- F. It cannot be determined with the information given.

**Answer: C**

#### NEW QUESTION 184

As a part of the Setup Utility, the administrator sets the host name for the BIG IP. What would be the result if the two systems in a redundant pair were set to the same host name?

- A. Host names do not matter in redundant pair communication.
- B. In a redundant pair, the two systems will always have the same host nam
- C. The parameter is synchronized between the systems.
- D. The first time the systems are synchronized the receiving system will be assigned the same self-IP addresses as the source system.
- E. When the administrator attempts to access the configuration utility using the host name, they will always connect to the active system.

**Answer: C**

#### NEW QUESTION 187

Which VLANs must be enabled for a SNAT to perform as desired (translating only desired packets)?

- A. The SNAT must be enabled for all VLANs.
- B. The SNAT must be enabled for the VLANs where desired packets leave the BIG-IP.
- C. The SNAT must be enabled for the VLANs where desired packets arrive on the BIG-IP.
- D. The SNAT must be enabled for the VLANs where desired packets arrive and leave the BIG-IP.

**Answer: C**

#### NEW QUESTION 189

A BIG-IP Administrator is receiving intermittent reports from users that SSL connections to the BIG-IP device are failing. Upon checking the log files, the BIG-IP Administrator notices the following error message:

ere tmm<instance>[<pid>]: 01260008:3: SSL transaction (TPS) rate limit reached

After reviewing statistics, the BIG-IP Administrator notices there are a maximum of 1200 client-side SSL TPS and a maximum of 800 server-side SSL TPS.

What is the minimum SSL license limit capacity the BIG-IP Administrator should upgrade to handle this peak?

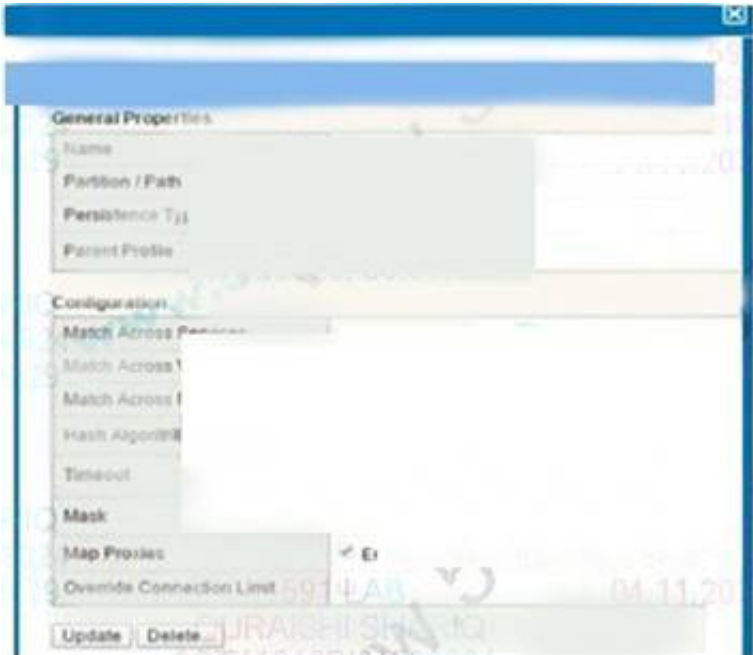
- A. 2000
- B. 400
- C. 800

D. 1200

**Answer:** D

#### NEW QUESTION 191

Refer to the exhibit.



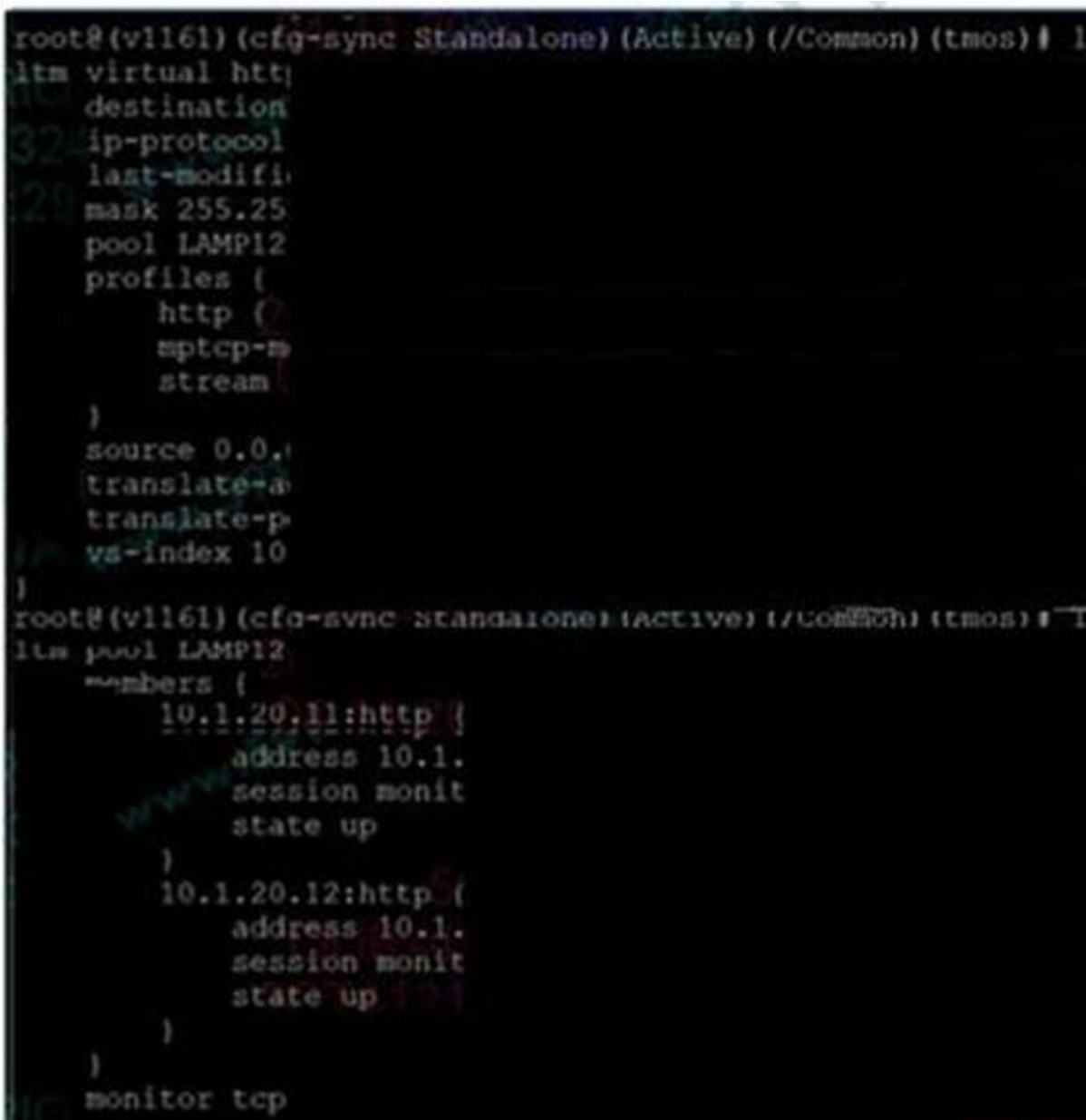
How long will the persistence record remain in the table?

- A. 180 seconds after the last packet
- B. 180 seconds after the initial table entry
- C. 300 seconds after the initial table entry
- D. 300 seconds after the last packet

**Answer:** D

#### NEW QUESTION 192

Refer to the exhibit.



A BIG-IP Administrator creates a new Virtual Server. The end user is unable to access the page. During troubleshooting, the administrator learns that the connection between the BIG-IP system and server is NOT set up correctly. What should the administrator do to solve this issue?

- A. Disable Address Translation
- B. Set Address Translation to Auto Map, configure a SNAT pool, and have pool members in the same subnet of the servers
- C. Set Address Translation to SNAT and configure a specific translation address
- D. Set Address Translation to SNAT and have self-IP configured in the same subnet of servers



**Answer:** C

**Explanation:**

The status of the pool can be seen that the members are all up, indicating that the network from F5 to the server is no problem, so there is no need to configure selfip on the same subnet. The monitor is normal but the access is not normal, you have to consider the problem of snat, you can configure automap or configure snat and specify snat ip.

**NEW QUESTION 194**

Assume a virtual server has a ServerSSL profile. What SSL certificates are required on the BIG-IP?

- A. No SSL certificates are required on the BIG-IP.
- B. The BIG-IP's SSL certificates must only exist.
- C. The BIG-IP's SSL certificates must be issued from a certificate authority.
- D. The BIG-IP's SSL certificates must be created within the company hosting the BIG-IPs.

**Answer:** A

**NEW QUESTION 195**

When configuring a Virtual Server to use an iRule with an HTTP\_REQUEST event, which lists required steps in a proper order to create all necessary objects?

- A. create profiles, create the iRule, create required pools, create the Virtual Server
- B. create the Virtual Server, create required pools, create the iRule, edit the Virtual Server
- C. create a custom HTTP profile, create required pools, create the Virtual Server, create the iRule
- D. create required pools, create a custom HTTP profile, create the iRule, create the Virtual Server

**Answer:** B

**NEW QUESTION 197**

How should a BIG-IP Administrator persistent sessions from being sent to a pool member so that the server administrator can perform maintenance?

- A. force the pool member offline
- B. disable the pool member
- C. add an additional monitor to the pool
- D. disable the virtual server

**Answer:** A

**NEW QUESTION 200**

A BIG-IP Administrator contacts F5 Support, which identifies a suspected hardware failure. Which information should the BIG-IP Administrator provide to F5 Support?

- A. Qkview, EUD output
- B. Qkview, UCS archive, core files
- C. Qkview, part numbers for failed components
- D. Qkview, packet capture, UCS archive

**Answer:** A

**NEW QUESTION 205**

A BIG-IP Administrator is making adjustments to an iRule and needs to identify which of the 235 virtual server configured on the BIG-IP device will be affected.

How should the administrator obtain this information in an effective way?

- A. Local Traffic > Virtual Server
- B. Local traffic Pools
- C. LOCAL Traffic > Network Map
- D. Local traffic > Rules

**Answer:** C

**NEW QUESTION 209**

Where is connection mirroring configured?

- A. It an option within a TCP profile.
- B. It is an optional feature of each pool.
- C. It is not configured; it is default behavior.
- D. It is an optional feature of each virtual server.

**Answer:** D

**NEW QUESTION 214**

When upgrading a BIG-IP redundant pair, what happens when one system has been updated but the other has not?

- A. Synching should not be performed.
- B. The first system to be updated will assume the Active role.

- C. This is not possible since both systems are updated simultaneously.  
D. The older system will issue SNMP traps indicating a communication error with the partner.

**Answer:** A

#### NEW QUESTION 218

Assuming there are open connections through an active system's NAT and a fail over occurs, by default, what happens to those connections?

- A. All open connections will be lost.  
B. All open connections will be maintained.  
C. The "Mirror" option must be chosen on the NAT and the setting synchronized prior to the connection establishment.  
D. Longlived connections such as Telnet and FTP will be maintained while shortlived connections such as HTTP will be lost.  
E. All open connections are lost, but new connections are initiated by the newly active BIG IP, resulting in minimal client downtime.

**Answer:** B

#### NEW QUESTION 220

Assume a client's traffic is being processed only by a NAT; no SNAT or virtual server processing takes place. Also assume that the NAT definition specifies a NAT address and an origin address while all other settings are left at their defaults. If a client were to initiate traffic to the NAT address, what changes, if any, would take place when the BIG-IP processes such packets?

- A. The source address would not change, but the destination address would be translated to the origin address.  
B. The destination address would not change, but the source address would be translated to the origin address.  
C. The source address would not change, but the destination address would be translated to the NAT's address.  
D. The destination address would not change, but the source address would be translated to the NAT's address.

**Answer:** A

#### NEW QUESTION 224

A virtual server is listening at 10.10.1.100:80 and has the following iRule associated with it:

```
when HTTP_REQUEST { if {[HTTP::uri] ends_with "txt" } { pool pool1 } elseif {[HTTP::uri] ends_with "php" } { pool pool2 }
```

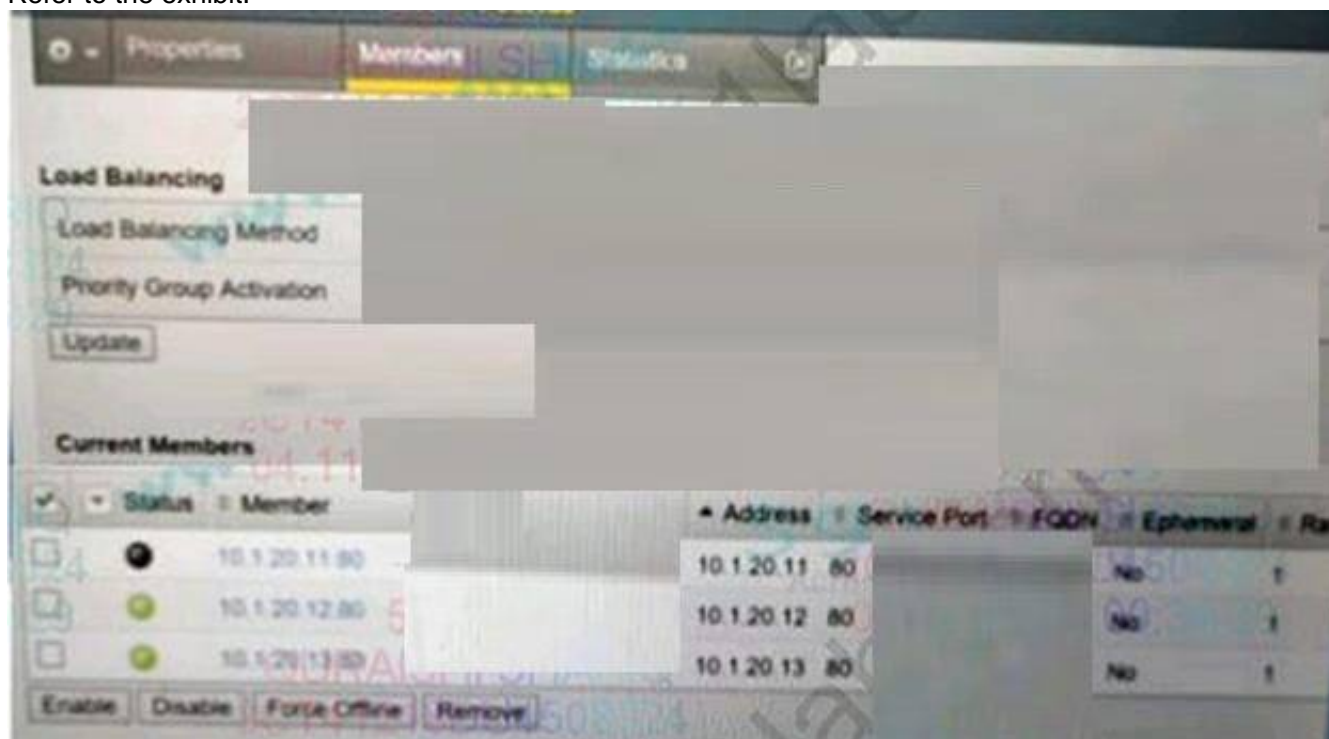
If a user connects to <http://10.10.1.100/foo.html>, which pool will receive the request?

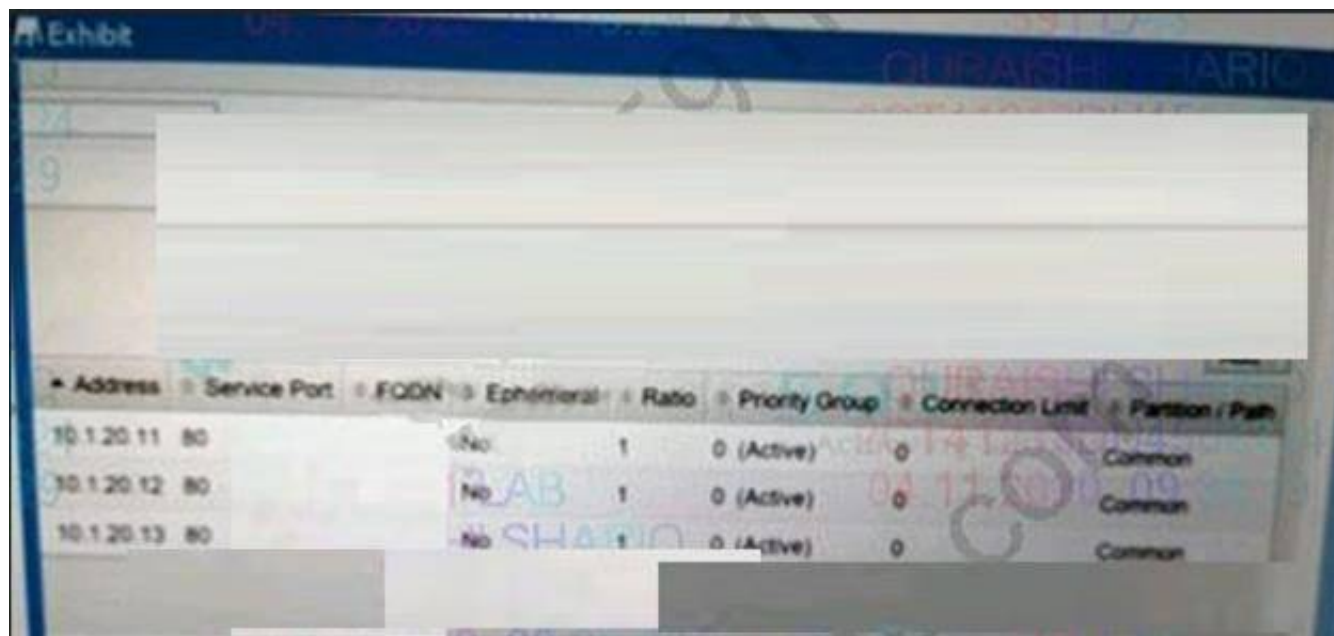
- A. pool1  
B. pool2  
C. Non  
D. The request will be dropped.  
E. Unknown  
F. The pool cannot be determined from the information provided.

**Answer:** D

#### NEW QUESTION 227

Refer to the exhibit.





Address	Service Port	FQDN	Ephemeral	Ratio	Priority Group	Connection Limit	Partition / Path
10.1.20.11	80		No	1	0 (Active)	0	Common
10.1.20.12	80		No	1	0 (Active)	0	Common
10.1.20.13	80		No	1	0 (Active)	0	Common

During maintenance, the BIG-IP Administrator manually disables a pool member as shown. What is the result?

- A. All pool members continue to process persistent connections
- B. All pool members stop accepting new connections.
- C. The disabled pool member stops processing persistent connections.
- D. The disabled pool member stops processing existing connections

**Answer: A**

#### NEW QUESTION 229

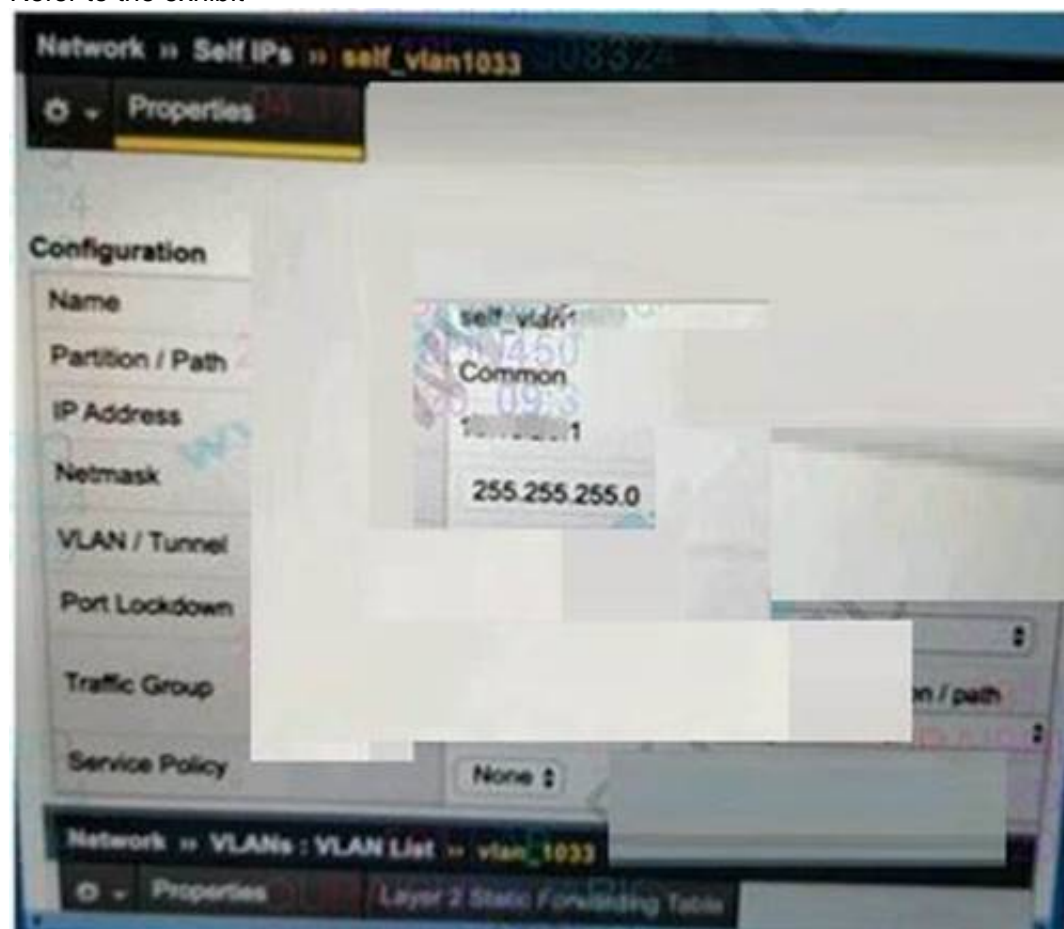
A BIG-IP Administrator needs to apply a health monitor for a pool of database servers named DB\_Pool that uses TCP port 1521. Where should the BIG-IP Administrator apply this monitor?

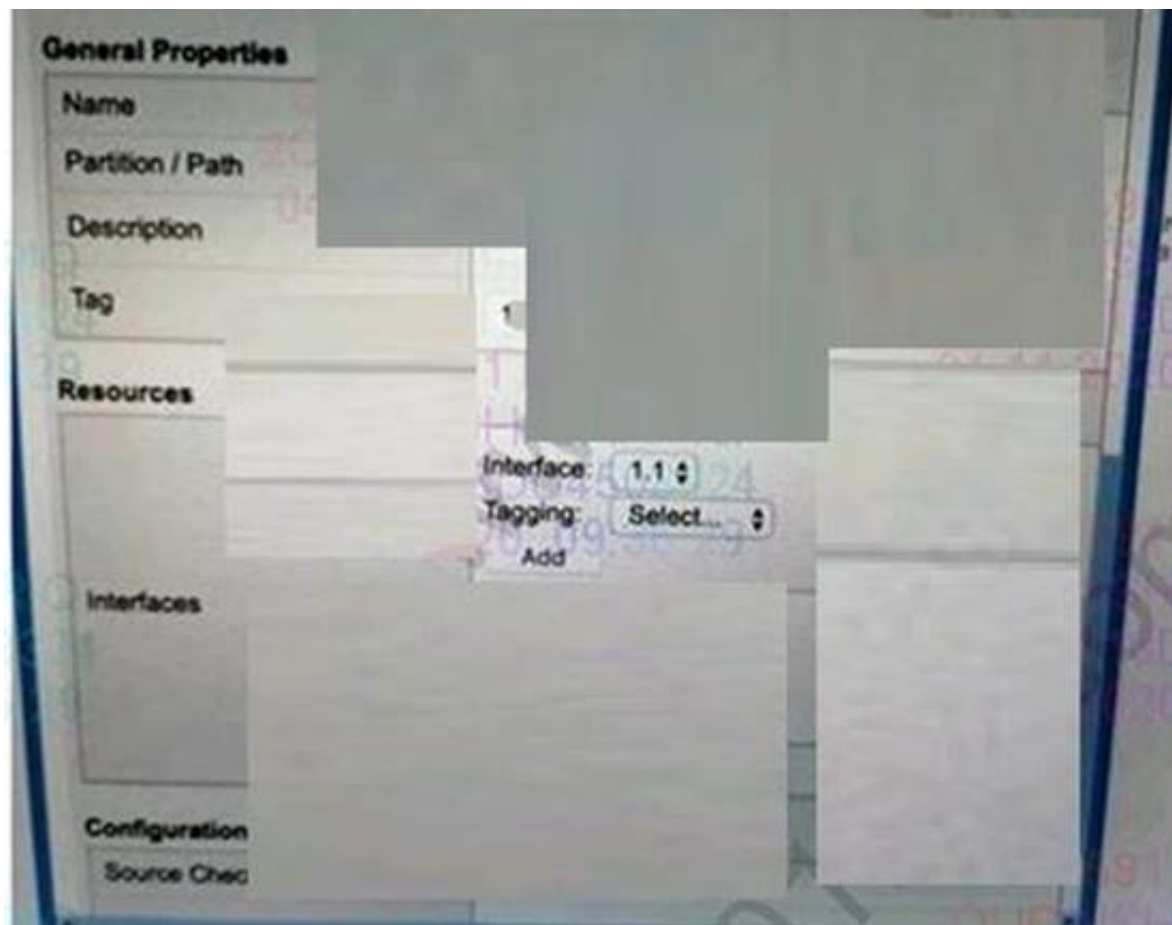
- A. Local Traffic > Profiles » Protocol > TCP
- B. Local Traffic > Nodes > Default Monitor
- C. Local Traffic > Pools > De Pool > Members
- D. Local Traffic > Pools > DB Pool > Properties

**Answer: D**

#### NEW QUESTION 230

Refer to the exhibit





The network team creates a new VLAN on the switches. The BIG-IP Administrator needs to create a configuration on the BIG-IP device. The BIG-IP Administrator creates a new VLAN and Self IP, but the servers on the new VLAN are NOT reachable from the BIG-IP device. Which action should the BIG-IP Administrators to resolve this issue?

- A. Set Port Lockdown of Set IP to Allow All
- B. Change Auto Last Hop to enabled
- C. Assign a physical interface to the new VLAN
- D. Create a Floating Set IP Address

**Answer: C**

#### NEW QUESTION 234

A user needs to determine known security vulnerabilities on an existing BIG-IP appliance and how to remediate these vulnerabilities. Which action should the BIG-IP Administrator recommend?

- A. Verify the TMOS version and review the release notes
- B. Create a UCS archive and upload to Health
- C. Create a UCS archive and open an F5 Support request
- D. Generate a view and upload to Heath

**Answer: D**

#### NEW QUESTION 236

The BIG-IP Administrator configures an HTTP monitor with a specific receive string. The status is marked 'down'. Which tool should the administrator use to identify the problem?

- A. Ping
- B. Health
- C. tcpdump
- D. ifconfig

**Answer: C**

#### NEW QUESTION 237

Refer to the exhibit

Name	IP Address	Port	Type
fwd_8080_vs	any	8080	Forwarding (IP)
fwd_vs	any	0 (Any)	Forwarding (IP)
host_8080_vs	1.1.1.0/24	8080	Standard
host_vs	1.1.1.1	0 (Any)	Standard

A connection is being established to IP 1.1.1.1 on port 8080. Which virtual server will handle the connection?

- A. fwd\_8080\_vs
- B. host\_vs
- C. host\_8080\_VS
- D. fwdvs

**Answer: B**

#### NEW QUESTION 240



Refer to the exhibit.

Which TMSH command generated this output?

- A. tmsl list /cm sync-status
- B. tmsl show /sys sync-status
- C. tmsl list /sys sync-status
- D. tmsl show /cm sync status

**Answer: D**

#### NEW QUESTION 241

Assuming other failover settings are at their default state, what would occur if the failover cable were to be disconnected for five seconds and then reconnected?

- A. As long as network communication is not lost, no change will occur.
- B. Nothin
- C. Failover due to loss of voltage will not occur if the voltage is lost for less than ten seconds.
- D. When the cable is disconnected, both systems will become activ
- E. When the voltage is restored, unit two will revert to standby mode.
- F. When the cable is disconnected, both systems will become activ
- G. When the voltage is restored, both systems will maintain active mode.

**Answer: C**

#### NEW QUESTION 245

Refer to the exhibit.



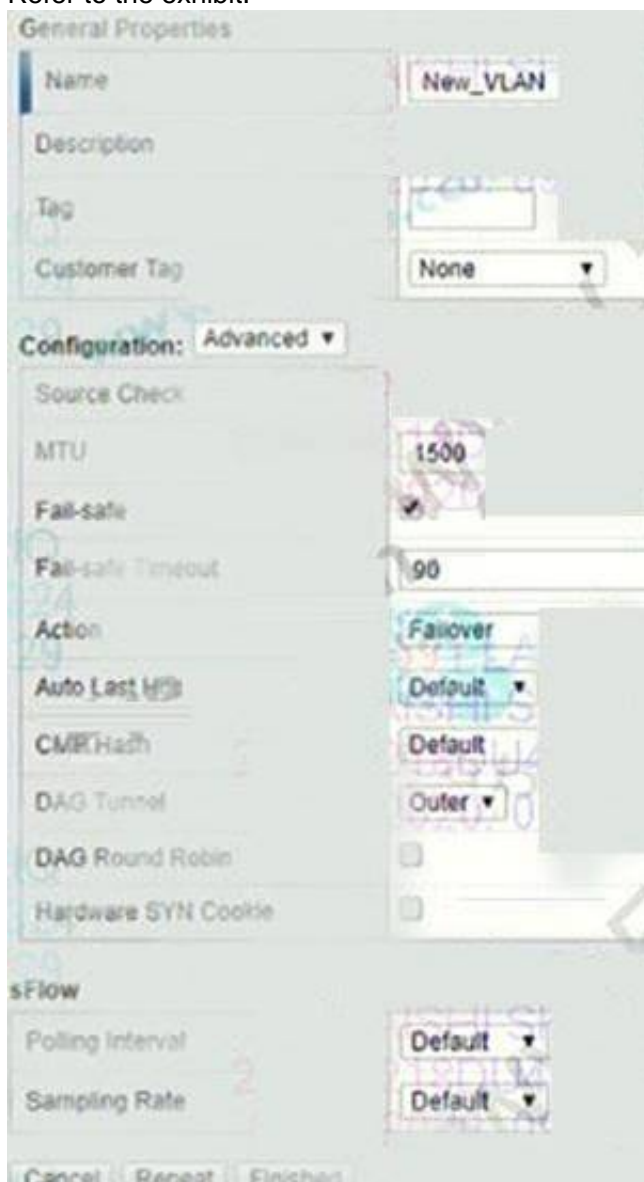
How many nodes are represented on the network map shown?

- A. Four
- B. Three
- C. One
- D. Two

**Answer: B**

#### NEW QUESTION 247

Refer to the exhibit.



A BIG-IP Administrator configures a new VLAN on an HA pair of devices that does NOT yet have any traffic. This action causes the assigned traffic group to fail

over to the standby device.  
Which VLAN setting should be changed to prevent this issue?

- A. Auto Last Hop
- B. Fail-safe
- C. Customer Tag
- D. Source Check

**Answer:** B

#### NEW QUESTION 248

Which two statements are true about NATs? (Choose two.)

- A. NATs support UDP, TCP, and ICMP traffic.
- B. NATs can be configured with mirroring enabled or disabled.
- C. NATs provide a one-to-one mapping between IP addresses.
- D. NATs provide a many-to-one mapping between IP addresses.

**Answer:** AC

#### NEW QUESTION 251

A BIG-IP Administrator needs to modify a virtual server that web offload web traffic compression tasks from the target server.  
Which two profiles must the BIG-IP Administrator apply to a virtual server to enable compression? (Choose two)

- A. Server SSL profile
- B. Stream profile
- C. Persistence profile
- D. HITP profile
- E. Compression profile

**Answer:** DE

#### NEW QUESTION 253

Which process or system can be monitored by the BIG-IP system and used as a failover trigger in a redundant pair configuration?

- A. bandwidth utilization
- B. duplicate IP address
- C. CPU utilization percentage
- D. VLAN communication ability

**Answer:** D

#### NEW QUESTION 258

For a given Virtual Server, the BIG-IP must perform SSL Offload and negotiate secure communication over TLSv1.2 only.  
What should the BIG-IP Administrator do to meet this requirement?

- A. Configure a custom SSL Profile (Client) and select no TLSv1 in the options list
- B. Configure a custom SSL Profile (Client) with a custom TLSV1.2 cipher string
- C. Configure a custom SSL Profile (Server) and select no TLSv1 in the options list
- D. Configure a custom SSL Profile (Server) with a custom TLSV1.2 cipher string

**Answer:** B

#### Explanation:

no TLSv1 only disables TLS1.0, TLS1.1 is still used and does not meet the requirements.

#### NEW QUESTION 261

Which statement accurately describes the difference between two loadbalancing modes specified as "member" and "node"?

- A. There is no difference; the two terms are referenced for backward compatibility purposes.
- B. When the loadbalancing choice references "node", priority group activation is unavailable.
- C. Loadbalancing options referencing "nodes" are available only when the pool members are defined for the "any" port.
- D. When the loadbalancing choice references "node", the addresses' parameters are used to make the loadbalancing choice rather than the member's parameters.

**Answer:** B

#### NEW QUESTION 265

A virtual server is defined using a source address based persistence profile. The last five connections were A, B, C, A, C . Given the conditions shown in the graphic, if a client with IP address 205.12.45.52 opens a connection to the virtual server, which member will be used for the connection?

- A. 10.10.20.1:80
- B. 10.10.20.2:80
- C. 10.10.20.3:80
- D. 10.10.20.4:80
- E. 10.10.20.5:80

**Answer:**

B

**NEW QUESTION 270**

A BIG-IP Administrator is creating a new Trunk on the BIG-IP device. What objects should be added to the new Trunk being created?

- A. Interfaces
- B. Network routes
- C. VLANs
- D. IP addresses

**Answer:** A

**Explanation:**

trunk is a portchannel, you need to add a physical interface.

**NEW QUESTION 271**

A BIG-IP Administrator needs to find which modules have been licensed for use on the BIG-IP system. In which section of the Configuration Utility can the BIG-IP Administrator find this information?

- A. System > Services
- B. System > Resource Provisioning
- C. System > Platform
- D. System > Support

**Answer:** B

**NEW QUESTION 273**

A virtual server is configured to offload SSL from a pool of backend servers. When users connect to the virtual server, they successfully establish an SSL connection but no content is displayed. A packet trace performed on the server shows that the server receives and responds to the request. What should a BIG-IP Administrator do to resolve the problem?

- A. enable Server SSL profile
- B. disable Server SSL profile
- C. disable SNAT
- D. enable SNAT

**Answer:** B

**NEW QUESTION 274**

A custom HTTP monitor is failing to a pool member 10.10.3.75:8080 that serves up www.example.com. A ping works to the pool member address. The SEND string that the monitor is using is: GET/HTTP/I./r/n/Host.www.example.com/r/n/Connection Close/r/n/r/n Which CLI tool syntax will show that the web server returns the correct HTTP response?

- A. curlhttp://10.10.10.3.75:8080/www.example.com/index.html
- B. curl-header 'Host:www.example.com' http://10.10.3.75:8080/
- C. tracepath 'http://www.example.com:80
- D. tracepath 10.10.3.75:8080 GET /index

**Answer:** B

**NEW QUESTION 276**

An IT support engineer needs to access and modify Virtual Servers in three partitions (Common /Banking and Dev) daily on a BIG-IP device. The company operates a Least Privilege access policy. What level of access does the IT support engineer need to ensure completion of daily roles?

- A. Manager in /common/Banking, and /Dev partitions
- B. Application Editor in /Common, /Banking, and /Dev partitions
- C. Manager in all partitions
- D. Application Editor in all partitions

**Answer:** A

**NEW QUESTION 280**

A BIG-IP Administrator has configured a BIG-IP cluster with remote user authentication against dcOl f5trn.com. Only local users can successfully log into the system. Configsync is also failing. Which two tools should the BIG-IP Administrator use to further investigate these issues? (Choose two)

- A. ntpq
- B. pam\_timestamp\_check
- C. passwd
- D. pwck
- E. dig

**Answer:** AC

**NEW QUESTION 283**

One of the two members of a device group has been decommissioned. The BIG-IP Administrator tries to delete the device group, but is unsuccessful. Prior to removing the device group, which action should be performed?

- A. Disable the device group
- B. Remove all members from the device group
- C. Remove the decommissioned device from the device group
- D. Make sure all members of the device group are in sync

**Answer:** B

#### NEW QUESTION 287

Which three statements describe a characteristic of profiles? (Choose three.)

- A. Default profiles cannot be created or deleted.
- B. Custom profiles are always based on a parent profile.
- C. A profile can be a child of one profile and a parent of another.
- D. All changes to parent profiles are propagated to their child profiles.
- E. While most virtual servers have at least one profile associated with them, it is not required.

**Answer:** ABC

#### NEW QUESTION 292

Which cookie persistence method requires the fewest configuration changes on the web servers to be implemented correctly?

- A. insert
- B. rewrite
- C. passive
- D. session

**Answer:** A

#### NEW QUESTION 295

Refer to the exhibit. The BIG-IP Administrator needs to avoid overloading any of the Pool Members with connections, when they become active. What should the BIG-IP Administrator configure to meet this requirement?

- A. Different Ratio for each member
- B. Same Priority Group to each member
- C. Action On Service Down to Reselect
- D. Slow Ramp Time to the Pool

**Answer:** D

#### NEW QUESTION 296

Which two statements describe differences between the active and standby systems? (Choose two.)

- A. Monitors are performed only by the active system.
- B. Failover triggers only cause changes on the active system.
- C. Virtual server addresses are hosted only by the active system.
- D. Configuration changes can only be made on the active system.
- E. Floating selfIP addresses are hosted only by the active system.

**Answer:** CE

#### NEW QUESTION 301

A BIG-IP Administrator needs to determine which pool members in a pool have been manually forced offline and are NOT accepting any new traffic. Which status icon indicates this?

- A)
- B)
- C)
- D)

- A. Option A
- B. Option B
- C. Option C
- D. Option D

**Answer:** A

#### NEW QUESTION 303

The BIG-IP Administrator needs to perform a BIG-IP device upgrade to the latest version of TMOS. Where can the administrator obtain F5 documentation on upgrade requirements?

- A. iHealth
- B. Network > Interfaces
- C. Local Traffic > Pools
- D. AsKFS
- E. Local Traffic > Virtual Servers



**Answer: C**

**NEW QUESTION 307**

A BIG-IP Administrator is configuring a pool with members who have differing capabilities. Connections to pool members must be load balanced appropriately. Which load balancing method should the BIG-IP Administrator use?

- A. Least Sessions
- B. Least Connections (member)
- C. Fastest (node)
- D. Weighted Least Connections (member)

**Answer: D**

**NEW QUESTION 312**

Which statement is true concerning SNATs using automap?

- A. Only specified self-IP addresses are used as automap addresses.
- B. SNATs using automap will translate all client addresses to an automap address.
- C. A SNAT using automap will preferentially use a floating self-IP over a nonfloating self-IP.
- D. A SNAT using automap can be used to translate the source address of all outgoing traffic to the same address regardless of which VLAN the traffic is sent through.

**Answer: C**

**NEW QUESTION 315**

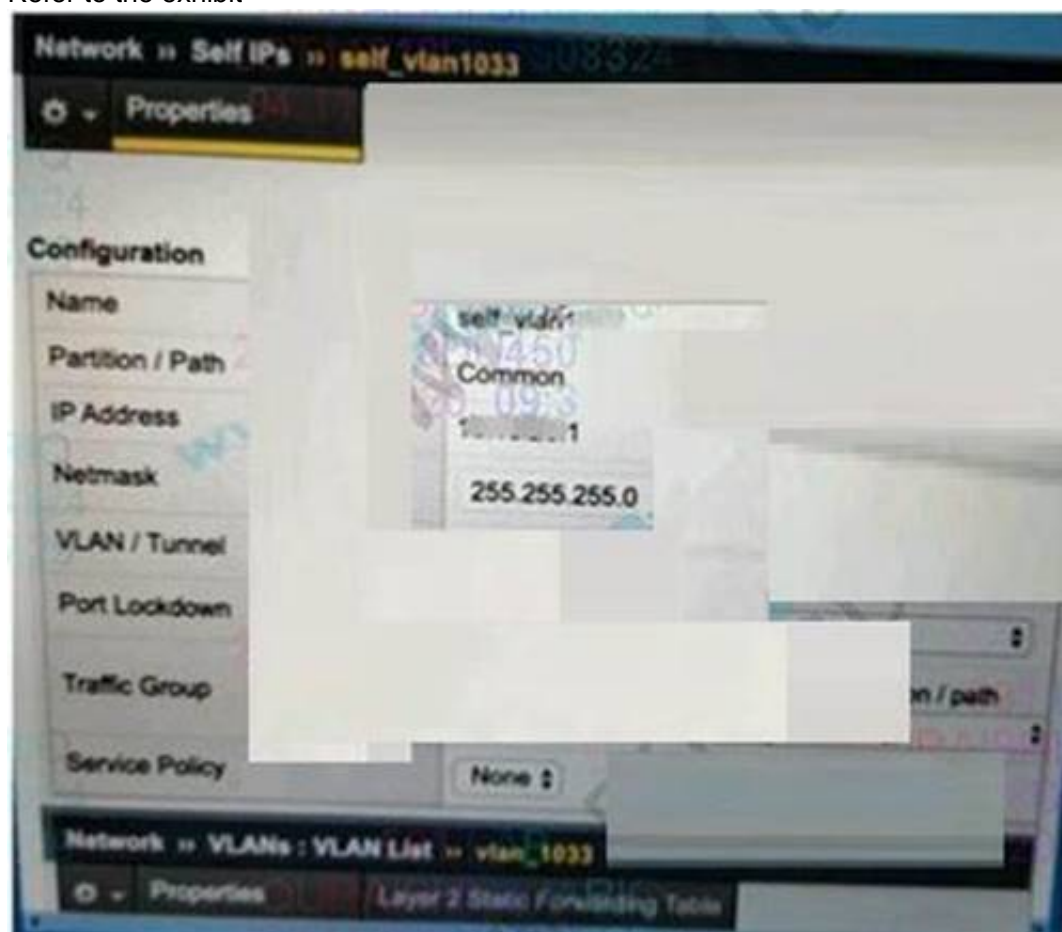
Which must be sent to the license server to generate a new license?

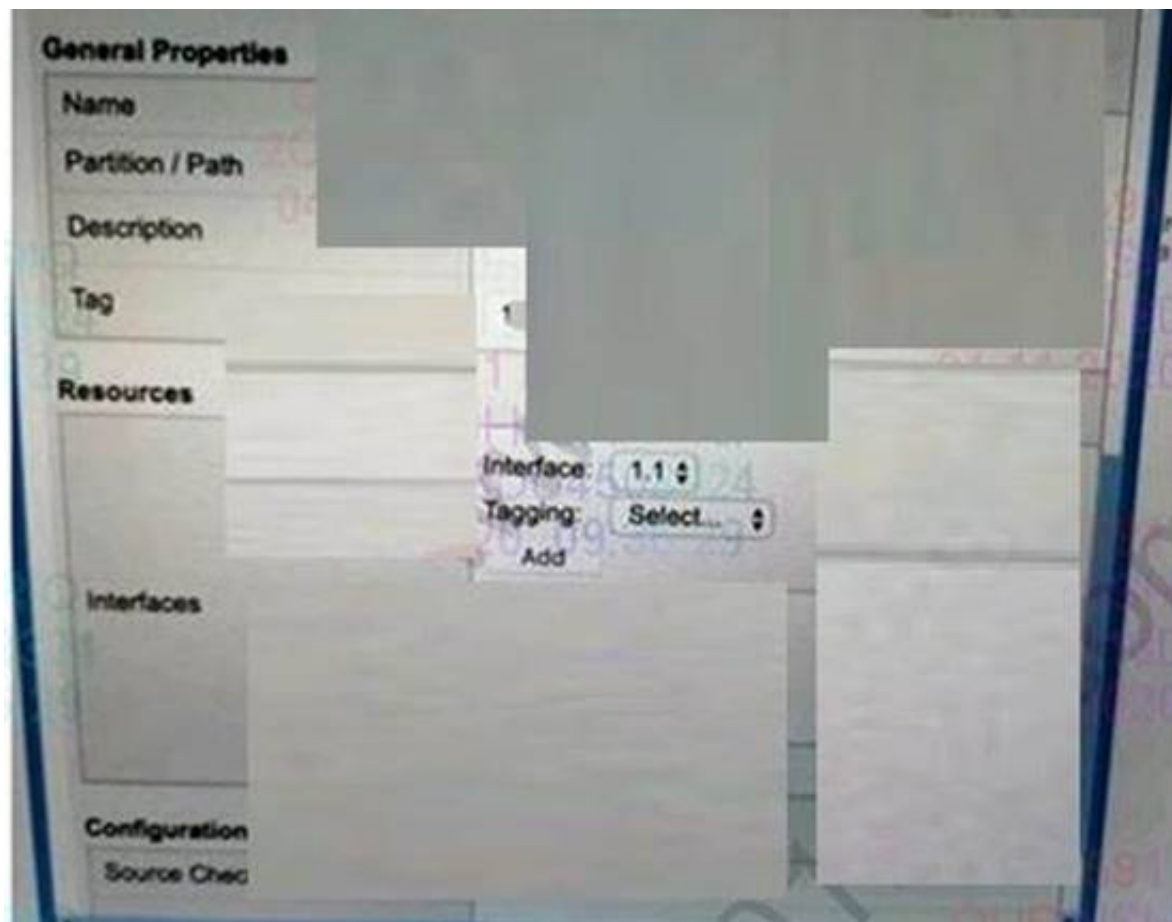
- A. the system's dossier
- B. the system's host name
- C. the system's base license
- D. the system's purchase order number

**Answer: A**

**NEW QUESTION 320**

Refer to the exhibit





The network team creates a new VLAN on the switches. The BIG-IP Administrator needs to create a configuration on the BIG-IP device. The BIG-IP Administrator creates a new VLAN and Self IP, but the servers on the new VLAN are NOT reachable from the BIG-IP device. Which action should the BIG-IP Administrators to resolve this issue?

- A. Set Port Lockdown of Set IP to Allow All
- B. Change Auto Last Hop to enabled
- C. Assign a physical interface to the new VLAN
- D. Create a Floating Set IP Address

**Answer: C**

#### NEW QUESTION 325

Which two statements are true about SNATs? (Choose two.)

- A. SNATs are enabled on all VLANs, by default.
- B. SNATs can be configured within a Profile definition.
- C. SNATs can be configured within a Virtual Server definition.
- D. SNAT's are enabled only on the VLAN where origin traffic arrives, by default.

**Answer: AC**

#### NEW QUESTION 327

A BIG-IP Administrator makes a configuration change to a Virtual Server on the Standby device of an HA pair. The HA pair is currently configured with Auto-Sync Enabled. What effect will the change have on the HA pair configuration?

- A. The change will be undone when Auto-Sync propagates the config to the HA pair.
- B. The change will be propagated next time a configuration change is made on the Active device.
- C. The change will be undone next time a configuration change is made on the Active device.
- D. The change will take effect when Auto-Sync propagates the config to the HA pair.

**Answer: D**

#### NEW QUESTION 331

A BIG-IP Administrator needs to install a HotFix on a standalone BIG-IP device, which has HD1.1 as the Active Boot Location. The BIG-IP Administrator has already re-activated the license and created an UCS archive of the configuration. In which sequence should the BIG-IP Administrator perform the remaining steps?

- A. Install HotFix in HD 1.1, Reboot the BIG-IP device
- B. Install UCS Archive
- C. Install HotFix in HD 1.2, Install base Image in HD 1.2, Activate HD1.2
- D. Install base Image in HD1.2, Install HotFix in HD1.2, Activate HD 1.2
- E. Activate HD 1.2, Install base image in HD 1.2. Install HotFix in HD 1.2

**Answer: C**

#### NEW QUESTION 333

What is required for a virtual server to support clients whose traffic arrives on the internal VLAN and pool members whose traffic arrives on the external VLAN?

- A. That support is never available.
- B. The virtual server must be enabled for both VLANs.
- C. The virtual server must be enabled on the internal VLAN.
- D. The virtual server must be enabled on the external VLAN.

**Answer:** C

**NEW QUESTION 335**

A BIG-IP Administrator applied the latest hotfix to an inactive boot location by mistake, and needs to downgrade back to the previous hotfix. What should the BIG-IP Administrator do to change the boot location to the previous hotfix?

- A. Uninstall the newest hotfix and reinstall the previous hotfix
- B. Reinstall the base version and install the previous hotfix
- C. Reinstall the previous hotfix and re-activate the license
- D. Uninstall the base version and restore the UCS

**Answer:** B

**NEW QUESTION 336**

.....

## Thank You for Trying Our Product

\* 100% Pass or Money Back

All our products come with a 90-day Money Back Guarantee.

\* One year free update

You can enjoy free update one year. 24x7 online support.

\* Trusted by Millions

We currently serve more than 30,000,000 customers.

\* Shop Securely

All transactions are protected by VeriSign!

**100% Pass Your 201 Exam with Our Prep Materials Via below:**

<https://www.certleader.com/201-dumps.html>