



Cisco

Exam Questions 300-430

Implementing Cisco Enterprise Wireless Networks (ENWLSI)

About ExamBible

[Your Partner of IT Exam](#)

Found in 1998

ExamBible is a company specialized on providing high quality IT exam practice study materials, especially Cisco CCNA, CCDA, CCNP, CCIE, Checkpoint CCSE, CompTIA A+, Network+ certification practice exams and so on. We guarantee that the candidates will not only pass any IT exam at the first attempt but also get profound understanding about the certificates they have got. There are so many alike companies in this industry, however, ExamBible has its unique advantages that other companies could not achieve.

Our Advances

* 99.9% Uptime

All examinations will be up to date.

* 24/7 Quality Support

We will provide service round the clock.

* 100% Pass Rate

Our guarantee that you will pass the exam.

* Unique Gurantee

If you do not pass the exam at the first time, we will not only arrange FULL REFUND for you, but also provide you another exam of your claim, ABSOLUTELY FREE!

NEW QUESTION 1

An engineer configures the wireless LAN controller to perform 802.1x user authentication. Which configuration must be enabled to ensure that client devices can connect to the wireless, even when WLC cannot communicate with the RADIUS?

- A. pre-authentication
- B. local EAP
- C. authentication caching
- D. Cisco Centralized Key Management

Answer: B

NEW QUESTION 2

Which feature on the Cisco Wireless LAN Controller must be present to support dynamic VLAN mapping?

- A. FlexConnect ACL
- B. VLAN name override
- C. CCKM/OKC
- D. AAA override

Answer: D

NEW QUESTION 3

An engineer must use Cisco AVC on a Cisco WLC to prioritize Cisco IP cameras that use the wireless network. Which element do you configure in a rule?

- A. permit-ACL
- B. WMM required
- C. mark
- D. rate-limit

Answer: C

NEW QUESTION 4

Which three properties are used for client profiling of wireless clients? (Choose three.)

- A. HTTP user agent
- B. DHCP
- C. MAC OUI
- D. hostname
- E. OS version
- F. IP address

Answer: ABC

NEW QUESTION 5

What is the difference between PIM sparse mode and PIM dense mode?

- A. Sparse mode supports only one switch
- B. Dense mode supports multiswitch networks.
- C. Sparse mode flood
- D. Dense mode uses distribution trees.
- E. Sparse mode uses distribution tree
- F. Dense mode floods.
- G. Sparse mode supports multiswitch network
- H. Dense mode supports only one switch.

Answer: C

NEW QUESTION 6

Refer to the exhibit.

802.11a(5 GHz) > Media

Voice

Video

Media

Call Admission Control (CAC)

Admission Control (ACM)

☒ Enabled

CAC Method 4

Load Based ▾

Max RF Bandwidth (5-85) (%)

75

Reserved Roaming Bandwidth (0-25) (%)

6

Expedited bandwidth

☐

SIP CAC Support 3

☐ Enabled

Per-Call SIP Bandwidth 2

SIP Codec

G.711 ▾

SIP Bandwidth (kbps)

64

SIP Voice Sample Interval (msecs)

20 ▾

Which two items must be supported on the VoWLAN phones to take full advantage of this WLAN configuration? (Choose two.)

- A. TSPEC
- B. SIFS
- C. 802.11e
- D. WMM
- E. APSD

Answer: CD

NEW QUESTION 7

An engineer must implement Cisco Identity-Based Networking Services at a remote site using ISE to dynamically assign groups of users to specific IP subnets. If the subnet assigned to a client is available at the remote site, then traffic must be offloaded locally, and subnets are unavailable at the remote site must be tunneled back to the WLC. Which feature meets these requirements?

- A. learn client IP address
- B. FlexConnect local authentication
- C. VLAN-based central switching
- D. central DHCP processing

Answer: C

NEW QUESTION 8

All APs are receiving multicast traffic, instead of only the APs that need it. What is the cause of this problem?

- A. The multicast group includes all APs
- B. The wrong multicast address was used
- C. The multicast group is assigned the wrong VLAN
- D. Multicast IGMP snooping is not enabled

Answer: D

NEW QUESTION 9

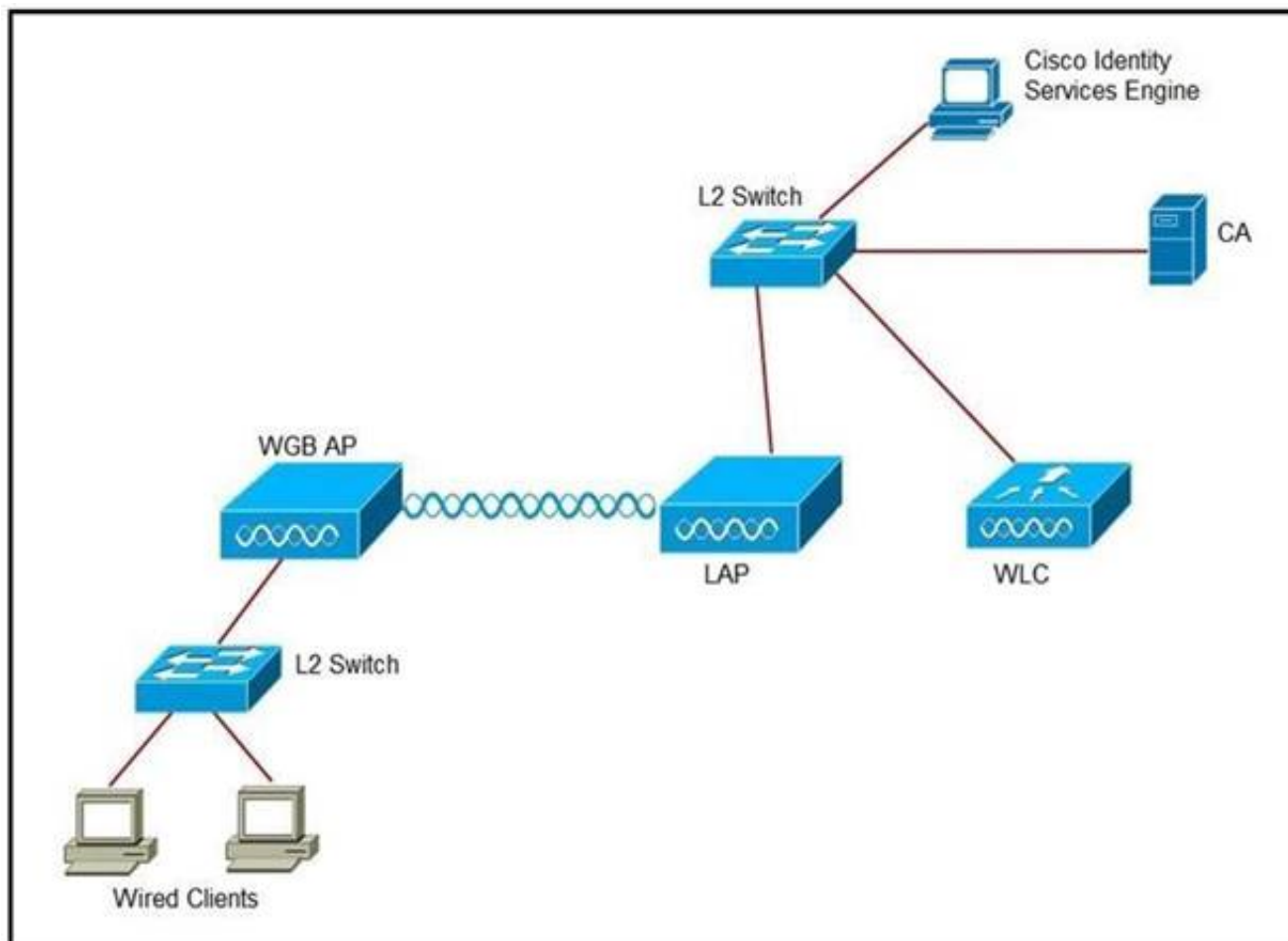
A network engineer observes a spike in controller CPU overhead and overall network utilization after multicast is enabled on a controller with 500 APs. Which feature connects the issue?

- A. controller IGMP snooping
- B. multicast AP multicast mode
- C. broadcast forwarding
- D. unicast AP multicast mode

Answer: B

NEW QUESTION 10

Refer to the exhibit. An engineer must connect a fork lift via a WGB to a wireless network and must authenticate the WGB certificate against the RADIUS server. Which three steps are required for this configuration? (Choose three.)



- A. Configure the certificate, WLAN, and radio interface on WGB.
- B. Configure the certificate on the WLC.
- C. Configure WLAN to authenticate using ISE.
- D. Configure the access point with the root certificate from ISE.
- E. Configure WGB as a network device in ISE.
- F. Configure a policy on ISE to allow devices to connect that validate the certificate.

Answer: ACF

NEW QUESTION 10

When using a Cisco Catalyst 9800 Series Wireless Controller, which statement about AutoQoS is true?

- A. It has a set of predefined profiles that you cannot modify further
- B. It matches traffic and assigns each matched packet to QoS groups
- C. It automates deployment of wired QoS and makes wireless QoS implementation easier
- D. It allows the output policy map to put specific QoS queues into specific subgroups

Answer: B

NEW QUESTION 14

An engineer must implement rogue containment for an SSID. What is the maximum number of APs that should be used for containment?

- A. 1
- B. 2
- C. 3
- D. 4

Answer: D

Explanation:

Reference: https://www.cisco.com/c/en/us/td/docs/wireless/technology/roguedetection_deploy/Rogue_Detection.html

NEW QUESTION 16

What is the maximum time range that can be viewed on the Cisco DNA Center issues and alarms page?

- A. 3 hours
- B. 24 hours
- C. 3 days
- D. 7 days

Answer: B

NEW QUESTION 18

An engineer is implementing a FlexConnect group for access points at a remote location using local switching but central DHCP. Which client feature becomes available only if this configuration is changed?

- A. multicast
- B. static IP
- C. fast roaming

D. mDNS

Answer: B

NEW QUESTION 19

What is the default NMSP echo interval between Cisco MSE and a Wireless LAN Controller?

- A. 10 seconds
- B. 15 seconds
- C. 30 seconds
- D. 60 seconds

Answer: B

Explanation:

Reference: https://www.cisco.com/en/US/docs/wireless/mse/3350/6.0/CAS/configuration/guide/msecg_ch4_CAS.html

NEW QUESTION 24

Where is Cisco Hyperlocation enabled on a Cisco Catalyst 9800 Series Wireless Controller web interface?

- A. Policy Profile
- B. AP Join Profile
- C. Flex Profile
- D. RF Profile

Answer: B

Explanation:

Reference: https://www.cisco.com/c/en/us/td/docs/wireless/controller/9800/config-guide/b_wl_16_10_cg/cisco-hyperlocation.html

NEW QUESTION 29

A customer is experiencing performance issues with its wireless network and asks a wireless engineer to provide information about all sources of interference and their impacts to the wireless network over the past few days. Where can the requested information be accessed?

- A. CleanAir reports on Cisco Prime Infrastructure
- B. Performance reports on Cisco Prime Infrastructure
- C. Interference Devices reports on Cisco Wireless LAN Controller
- D. Air Quality reports on Cisco Wireless LAN Controller

Answer: A

NEW QUESTION 31

An engineer is following the proper upgrade path to upgrade a Cisco AireOS WLC from version 7.3 to 8.9. Which two ACLs for Cisco CWA must be configured when upgrading from the specified codes? (Choose two.)

- A. Permit 0.0.0.0 0.0.0.0 UDP any any
- B. Permit 0.0.0.0 0.0.0.0 any DNS any
- C. Permit 0.0.0.0 0.0.0.0 UDP DNS any
- D. Permit 0.0.0.0 0.0.0.0 UDP any DNS
- E. Permit any any any

Answer: AD

NEW QUESTION 33

CMX Facebook Wi-Fi allows access to the network before authentication. Which two elements are available? (Choose two.)

- A. Allow HTTP traffic only before authentication and block all the traffic.
- B. Allow all the traffic before authentication and intercept HTTPS only.
- C. Allow HTTPs traffic only before authentication and block all other traffic.
- D. Allow all the traffic before authentication and intercept HTTP only.
- E. Allow SNMP traffic only before authentication and block all the traffic.

Answer: CD

Explanation:

Reference: https://www.cisco.com/c/en/us/td/docs/wireless/mse/8-0/CMX_Connect_Engage_Visitor_Connect/Guide/Cisco_CMX_Connect_Engage_Config_Guide_VC/CMX_Facebook_Wi-Fi.html

NEW QUESTION 37

Which three characteristics of a rogue AP pose a high security risk? (Choose three.)

- A. open authentication
- B. high RSSI
- C. foreign SSID
- D. accepts clients
- E. low RSSI

F. distant location

Answer: ACD

NEW QUESTION 39

An engineer must configure a Cisco WLC to support Cisco Aironet 600 Series OfficeExtend APs. Which two Layer 2 security options are supported in this environment? (Choose two.)

- A. Static WEP + 802.1X
- B. WPA+WPA2
- C. Static WEP
- D. CKIP
- E. 802.1X

Answer: BC

NEW QUESTION 44

Refer to the exhibit. An engineer is creating an ACL to restrict some traffic to the WLC CPU. Which selection must be made from the direction drop-down list?



Access Control Lists > Rules > New

Sequence	<input type="text"/>
Source	<input type="text" value="Any"/>
Destination	<input type="text" value="Any"/>
Protocol	<input type="text" value="Any"/>
DSCP	<input type="text" value="Any"/>
Direction	<input type="text" value="Any"/>
Action	<input type="text" value="Any"/>

- A. It must be Inbound because traffic goes to the WLC.
- B. Packet direction has no significance; it is always Any.
- C. It must be Outbound because it is traffic that is generated from the WLC.
- D. To have the complete list of options, the CPU ACL must be created only by the CLI.

Answer: A

NEW QUESTION 48

Branch wireless users report that they can no longer access services from head office but can access services locally at the site. New wireless users can associate to the wireless while the WAN is down. Which three elements (Cisco FlexConnect state, operation mode, and authentication method) are seen in this scenario? (Choose three.)

- A. authentication-local/switch-local
- B. WPA2 personal
- C. authentication-central/switch-central
- D. lightweight mode
- E. standalone mode
- F. WEB authentication

Answer: ABE

NEW QUESTION 53

An engineer is configuring multicast for wireless for an all-company video meeting on a network using EIGRP and BGP within a single domain from a single source. Which type of multicast routing should be implemented?

- A. Protocol Independent Multicast Dense Mode
- B. Source Specific Multicast
- C. Multicast Source Discovery Protocol
- D. Protocol Independent Multicast Sparse Mode

Answer: D

NEW QUESTION 56

An engineer configured a Cisco AireOS controller with two TACACS+ servers. The engineer notices that when the primary TACACS+ server fails, the WLC starts using the secondary server as expected, but the WLC does not use the primary server again until the secondary server fails or the controller is rebooted. Which cause of this issue is true?

- A. Fallback is enabled
- B. Fallback is disabled

- C. DNS query is disabled
- D. DNS query is enabled

Answer: B

NEW QUESTION 57

A Cisco WLC has been added to the network and Cisco ISE as a network device, but authentication is failing. Which configuration within the network device configuration should be verified?

- A. SNMP RO community
- B. device interface credentials
- C. device ID
- D. shared secret

Answer: D

NEW QUESTION 62

Refer to the exhibit. A network administrator deploys the DHCP profiler service in two ISE servers: 10.3.10.101 and 10.3.10.102. All BYOD devices connecting to WLAN on VLAN63 have been incorrectly profiled and are assigned as unknown profiled endpoints. Which action efficiently rectifies the issue according to Cisco recommendations?

```
(Cisco WLC) >show dhcp proxy
DHCP ProxyBehaviour: enabled
!
interface Vlan63
 ip address 10.10.63.252/22
 description Dot1x_BYOD
 no shutdown
!
```

- A. Nothing needed to be added on the Cisco WLC or VLAN interf
- B. The ISE configuration must be fixed.
- C. Disable DHCP proxy on the Cisco WLC.
- D. Disable DHCP proxy on the Cisco WLC and run the ip helper-address command under the VLAN interface to point to DHCP and the two ISE servers.
- E. Keep DHCP proxy enabled on the Cisco WLC and define helper-address under the VLAN interface to point to the two ISE servers.

Answer: C

NEW QUESTION 63

Which statement about the VideoStream/Multicast Direct feature is true?

- A. IP multicast traffic is reliable over WLAN by default as defined by the IEEE 802.11 wireless multicast delivery mechanism.
- B. Each VideoStream client acknowledges receiving a video IP multicast stream.
- C. It converts the unicast frame to a multicast frame over the air.
- D. It makes the delivery of the IP multicast stream less reliable over the air, but reliable over Ethernet.

Answer: B

Explanation:

Reference: https://www.cisco.com/c/en/us/td/docs/wireless/controller/8-1/configuration-guide/b_cg81/multicast_broadcast_setup.html

NEW QUESTION 65

Where is a Cisco OEAP enabled on a Cisco Catalyst 9800 Series Wireless Controller?

- A. RF Profile
- B. Flex Profile
- C. Policy Profile
- D. AP Join ProfileCorrect

Answer: B

Explanation:

Reference: https://www.cisco.com/c/en/us/td/docs/wireless/controller/9800/config-guide/b_wl_16_10_cg/flexconnect.html

NEW QUESTION 69

.....

Relate Links

100% Pass Your 300-430 Exam with ExamBible Prep Materials

<https://www.exambible.com/300-430-exam/>

Contact us

We are proud of our high-quality customer service, which serves you around the clock 24/7.

Viste - <https://www.exambible.com/>