

Microsoft

Exam Questions AZ-801

Configuring Windows Server Hybrid Advanced Services



NEW QUESTION 1

- (Exam Topic 3)

Your network contains an Active Directory Domain Services (AD DS) domain that has the Active Directory Recycle Bin enabled. The domain contains two domain controllers named DC1 and DC2. The system state of the domain controllers is backed up daily at 23:00 by using Windows Server Backup.

You have an organizational unit (OU) named ParisUsers that contains 1,000 users.

At 08:00, DC1 shuts down for hardware maintenance. The maintenance completes, but DC1 remains shut down.

At 09:00, an administrative error causes the manager attribute of each user in ParisUsers to be deleted. You need to recover the user account details as quickly as possible. The solution must minimize data loss.

Which three actions should you perform in sequence? To answer, move the appropriate actions from the list of actions to the answer area and arrange them in the correct order.

Actions	Answer Area
Start DC1 normally.	
Perform an authoritative restore on DC1.	
Recover all the user objects in the Active Directory Recycle Bin.	
Start DC1 by using the Last Known Good Configuration.	
Start DC1 in Directory Services Restore Mode.	
Perform a system state restore on DC1.	

- A. Mastered
- B. Not Mastered

Answer: A

Explanation:

Text, table Description automatically generated with medium confidence

NEW QUESTION 2

- (Exam Topic 3)

You have a failover cluster named Cluster1 that has the following configurations:

- > Number of nodes: 6
- > Quorum: Dynamic quorum
- > Witness: File share, Dynamic witness

What is the maximum number of nodes that can fail simultaneously while maintaining quorum?

- A. 1
- B. 2
- C. 3
- D. 4
- E. 5

Answer: C

Explanation:

Note this question is asking about nodes failing ‘simultaneously’, not nodes failing one after the other.

With six nodes and one witness, there are seven votes. To maintain quorum there needs to be four votes available (four votes is the majority of seven). This means that a minimum of three nodes plus the witness need to remain online for the cluster to function. Therefore, the maximum number of simultaneous failures is three.

Reference:

<https://docs.microsoft.com/en-us/windows-server/storage/storage-spaces/understand-quorum>

NEW QUESTION 3

- (Exam Topic 3)

You have two file servers named Server1 and Server2 that run Windows Server. Server1 contains a shared folder named Data. Data contains 10 TB of data.

You plan to decommission Server1.

You need to migrate the files from Data to a new shared folder on Server2. The solution must meet the following requirements:

- > Ensure that share, file, and folder permissions are copied.
- > After the initial copy occurs, ensure that changes in \\Server1\Data can be synced to the destination without initiating a full copy.
- > Minimize administrative effort.

What should you use?

- A. xcopy
- B. Storage Replica

- C. Storage Migration Service
- D. azcopy

Answer: C

Explanation:

Reference:
<https://docs.microsoft.com/en-us/windows-server/storage/storage-migration-service/overview#why-use-storage>

NEW QUESTION 4

- (Exam Topic 3)
You have a three-node failover cluster.
You need to run pre-scripts and post-scripts when Cluster-Aware Updating (CAU) runs. The solution must minimize administrative effort.
What should you use?

- A. Scheduled tasks
- B. Run profiles
- C. Azure Functions
- D. Windows Server Update Serveries (WSUS)

Answer: B

NEW QUESTION 5

- (Exam Topic 3)
You have an Azure virtual machine named VM1 that runs Windows Server.
When you attempt to install the Azure Performance Diagnostics extension on VM I, the installation fails. You need to identify the cause of the installation failure.
What are two possible ways to achieve the goal? Each correct answer presents a complete solution. NOTE: Each correct selection is worth one point.

- A. Sign in to VM1 and verify the WaAppAgentlog file.
- B. From the Azure portal, view the alerts for VM1.
- C. From the Azure portal, view the activity log for VM1.
- D. Sign into VM1 and verify the MonitoringAgentlog file.

Answer: AB

NEW QUESTION 6

- (Exam Topic 3)
Your network contains an Active Directory Domain Services (AD DS) domain named contoso.com. The domain contains the organizational units (OUs) shown in the following table.

Name	Contents
Domain Controllers	All the domain controllers in the domain
Domain Servers	All the servers that run Windows Server in the domain
Domain Client Computers	All the client computers that run Windows 10 in the domain
Domain Users	All the users in the domain

In the domain, you create the Group Policy Objects (GPOs) shown in the following table.

Name	IPsec setting
GPO1	Require authentication by using Kerberos V5 for inbound connections
GPO2	Request authentication by using Kerberos V5 for inbound connections
GPO3	Require authentication by using X.509 certificates for inbound connections
GPO4	Request authentication by using X.509 certificates for inbound connections

You need to implement IPsec authentication to ensure that only authenticated computer accounts can connect to the members in the domain. The solution must minimize administrative effort.
Which GPOs should you apply to the Domain Controllers OU and the Domain Servers OU? To answer, select the appropriate options in the answer area.
NOTE: Each correct selection is worth one point.

Answer Area

Domain Controllers:

GPO1

GPO2

GPO3

GPO4

Domain Servers:

GPO1

GPO2

GPO3

GPO4

A. Mastered

B. Not Mastered

Answer: A

Explanation:

Table Description automatically generated

Reference:

<https://docs.microsoft.com/en-us/windows/security/threat-protection/windows-firewall/configure-authentication->

NEW QUESTION 7

- (Exam Topic 3)

You have five Azure virtual machines. You have a dedicated Azure Storage account to collect performance data. You need to send the collected data directly to the Azure Storage account. What should you install on the virtual machines?

- A. the Telegraf agent
- B. the Azure Monitor agent
- C. the Dependency agent
- D. the Azure Diagnostics extension
- E. the Azure Connected Machine agent

Answer: D

NEW QUESTION 8

- (Exam Topic 3)

You have a server that runs Windows Server.

You plan to back up the server to an Azure Recovery Services vault once per week starting on the next Saturday.

You need to schedule the weekly backup and perform the initial backup as soon as possible.

In which order should you perform the actions? To answer, move all actions from the list of actions to the answer area and arrange them in the correct order.

Actions	Answer Area
Run the Register Server Wizard.	
From Microsoft Azure Backup, run the Schedule Backup Wizard.	
From Microsoft Azure Backup, run the Back Up Now Wizard.	
Download the Microsoft Azure Recovery Services (MARS) agent and the Vault Credentials file.	
Run the Microsoft Azure Recovery Services Agent Setup Wizard.	

- A. Mastered
- B. Not Mastered

Answer: A

Explanation:

Text Description automatically generated with medium confidence

Reference:

<https://docs.microsoft.com/en-us/azure/backup/install-mars-agent#download-the-mars-agent> <https://docs.microsoft.com/en-us/azure/backup/backup-windows-with-mars-agent>

NEW QUESTION 9

- (Exam Topic 3)

You have an on-premises server named Served that runs Windows Server. You have an Azure subscription. You plan to back up the files and folders on Server1 to Azure by using Azure Backup. You need to define how long the backups will be retained. What should you use to configure the retention?

- A. Backup center
- B. Windows Server Backup
- C. the Microsoft Azure Recovery Services (MARS) agent
- D. a Recovery Services vault

Answer: B

NEW QUESTION 10

- (Exam Topic 3)

You have three Azure virtual machines named VM1, VM2, and VM3 that host a multitier application. You plan to implement Azure Site Recovery.

You need to ensure that VM1, VM2, and VM3 fail over as a group. What should you configure?

- A. an availability zone
- B. a recovery plan
- C. an availability set

Answer: B

Explanation:
Reference:
<https://docs.microsoft.com/en-us/azure/site-recovery/site-recovery-overview>

NEW QUESTION 10

- (Exam Topic 3)
You have a server named Server1 that runs Windows Server.
On Server1, you create a Data Collector Set named CollectorSet1 based on the Basic template. You need to configure CollectorSet1 to meet the following requirements:

- Older performance counter logs must be overwritten by new ones.
- Performance counter logging must stop if there is less than 500 MB of free disk space.

What should you configure for each requirement? To answer, select the appropriate options in the answer area.
NOTE: Each correct selection is worth one point.

Older performance counter logs must be overwritten by new ones:

The Configuration properties

The Data Manager properties

The Performance Counter properties

Performance counter logging must stop if there is less than 500 MB of free disk space:

The Configuration properties

The Data Manager properties

The Performance Counter properties

- A. Mastered
- B. Not Mastered

Answer: A

Explanation:
Table Description automatically generated with medium confidence

NEW QUESTION 12

- (Exam Topic 3)
You have an Azure Active Directory Domain Services (Azure AD DS) domain named aadds.contoso.com. You have an Azure virtual network named Vnet1. Vnet1 contains two virtual machines named VM1 and VM2 that run Windows Server. VMI and VM2 are joined to aadds.contoso.com.
You create a new Azure virtual network named Vnet2. You add a new server named VM3 to Vnet2. When you attempt to join VM3 to aadds.contoso.com, you get an error message that the domain cannot be found.
You need to ensure that you can join VM3 toaadds.contoso.com.

Answer Area

Network configuration:

Add a subnet to Vnet1.

Add a subnet to Vnet2.

Add a private endpoint to Vnet2.

Configure virtual network peering between Vnet1 and Vnet2.

DNS configuration:

Add a custom DNS server to Vnet1.

Add a custom DNS server to Vnet2.

Create an Azure private DNS zone named aadds.contoso.com.

Add a virtual network link to an existing Azure private DNS zone.

- A. Mastered
- B. Not Mastered

Answer: A

Explanation:

Answer Area

Network configuration:

Add a subnet to Vnet1.

Add a subnet to Vnet2.

Add a private endpoint to Vnet2.

Configure virtual network peering between Vnet1 and Vnet2.

DNS configuration:

Add a custom DNS server to Vnet1.

Add a custom DNS server to Vnet2.

Create an Azure private DNS zone named aadds.contoso.com.

Add a virtual network link to an existing Azure private DNS zone.

NEW QUESTION 17

- (Exam Topic 3)
You deploy Azure Migrate to an on-premises network.
You have an on-premises physical server named Server1 that runs Windows Server and has the following configuration.
Operating system disk 600 GB
Data disc 3 TB
NIC Teaming: Enabled
Mobility service: installed
Windows Firewall: Enabled
Microsoft Defender Antivirus: Enabled
You need to ensure that you can use Azure Migrate to migrate Server1. Solution: You disable Microsoft Defender Antivirus on Server1.
Does this meet the goal?

- A. Yes
- B. No

Answer: B

NEW QUESTION 18

- (Exam Topic 3)
You have a server named Server1 that runs the Remote Desktop Session Host role service. Server1 has five custom applications installed. Users who sign in to Server1 report that the server is slow. Task Manager shows that the average CPU usage on Server1 is above 90 percent. You suspect that a custom application on Server1 is consuming excessive processor capacity.
You plan to create a Data Collector Set in Performance Monitor to gather performance statistics from Server1. You need to view the resources used by each of the five applications.
Which object should you add to the Data Collector Set?

- A. Processor information
- B. Processor
- C. Process
- D. Processor performance

Answer: C

NEW QUESTION 23

- (Exam Topic 3)
Your network contains an Active Directory Domain Services (AD DS) domain that has the Active Directory Recycle Bin enabled. All domain controllers are backed up daily.
You accidentally remove all the users from a domain group.
You need to get a list of the users that were previously in the group.
Which four actions should you perform in sequence from a domain controller? To answer, move the appropriate actions from the list of actions to the answer area and arrange them in the correct order.

Action

Mount Active Directory to port 51389.

View the membership of the group.

Restore the system state to an alternate location.

From the Deleted Objects container in Active Directory Administrative Center, run the Restore task.

From Active Directory Users and Computers, change the domain controller to localhost:51389.

Restore the group from the Active Directory Recycle Bin.

Answer Area

A. Mastered

B. Not Mastered

Answer: A

Explanation:

Graphical user interface, text, table Description automatically generated with medium confidence

Reference:

<http://sysadmindoc.blogspot.com/2018/10/mount-active-directory-database-from.html>

NEW QUESTION 27

- (Exam Topic 2)

Which domain controller should be online to meet the technical requirements for DC4?

- A. DC1
- B. DC2
- C. DC3

Answer: B

NEW QUESTION 28

- (Exam Topic 3)

Your network contains an Active Directory Domain Services (AD DS) domain. All domain members have Microsoft Defender Credential Guard with UEFI lockdown configured in the domain. You deploy a server named Server1 that runs Windows Server. You disable Credential Guard on Server1. You need to ensure that Server1 is MOST subject to Credential Guard restrictions. What should you do next?

- A. Run the Device Guard and Credential Guard hardware readiness tool
- B. Disable the Turn on Virtualization Based Security group policy setting
- C. Run dism and specify the /Disable-Feature and /FeatureName:IsolatedUserMode parameters

Answer: B

NEW QUESTION 32

- (Exam Topic 3)

You have an Azure subscription. The subscription contains a virtual machine named VM1 that runs Windows Server. The subscription contains the storage accounts shown in the following table.

Name	Performance	Premium account type	Redundancy
storage1	Standard	Not applicable	Geo-redundant storage (GRS)
storage2	Standard	Not applicable	Zone-redundant storage (ZRS)
storage3	Premium	Block blobs	Locally-redundant storage (LRS)
storage4	Premium	File shares	Locally-redundant storage (LRS)

You plan to enable boot diagnostics for VM1.

You need to configure storage for the boot diagnostics logs and snapshots. Which storage account should you use?

- A. storage1
- B. storage2
- C. storage3

Answer: C

NEW QUESTION 36

- (Exam Topic 3)

You have a Site-to-Site VPN between an on-premises network and an Azure VPN gateway. BGP is disabled for the Site-to-Site VPN.

You have an Azure virtual network named Vnet1 that contains a subnet named Subnet1. Subnet1 contains a virtual machine named Server1.

You can connect to Server1 from the on-premises network.

You extend the address space of Vnet1. You add a subnet named Subnet2 to Vnet1. Subnet2 uses the extended address space. You deploy an Azure virtual machine named Server2 to Subnet2.

You cannot connect to Server2 from the on-premises network. Server1 can connect to Server2. You need to ensure that you can connect to Subnet2 from the on-premises network.

What should you do?

- A. Add an additional Site-to-Site VPN between the on-premises network and Vnet1.
- B. Add a private endpoint to Subnet2.
- C. To Subnet2, add a route table that contains a user-defined route.
- D. Update the routing information on the on-premises routers.

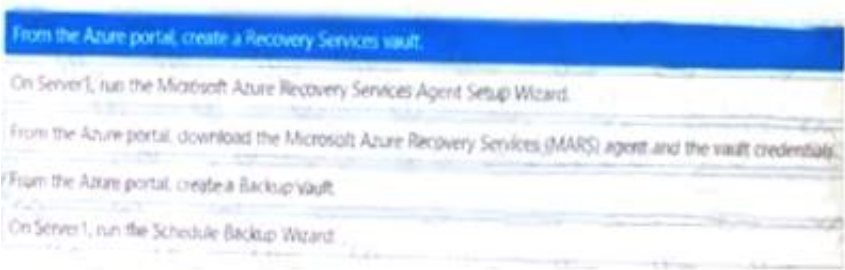
Answer: D

NEW QUESTION 37

- (Exam Topic 3)

You have an on-premises server named Server1 that runs Windows Server. You need to perform an on-demand backup of the files on Server1 by using Azure Backup.

Which five actions should you perform in sequence? To answer, move the appropriate actions from the list of actions to the answer area and arrange them in the correct order.



- A. Mastered
- B. Not Mastered

Answer: A

Explanation:
A picture containing text Description automatically generated

NEW QUESTION 40

- (Exam Topic 3)

You have three servers named Server1, Server2, Server3 that run Windows Server and have the Hyper-V server role installed.

You plan to create a hyper-converged cluster to host Hyper-V virtual machines. You need to ensure that you can store virtual machines in Storage Spaces Direct.

Which three actions should you perform in sequence? To answer, move the appropriate actions from the list of actions to the answer area and arrange them in the correct order.

Actions

Create a failover cluster.

Create a Distributed File System (DFS) namespace.

Enable Storage Spaces Direct.

Create a volume.

Add a Scale-Out File Server for application role.

Create a file share.

Answer Area

- A. Mastered
- B. Not Mastered

Answer: A

Explanation:
Graphical user interface, text, application Description automatically generated
Reference:
<https://docs.microsoft.com/en-us/system-center/vmm/s2d-hyper-converged?view=sc-vmm-2019>

NEW QUESTION 44

- (Exam Topic 3)

You have a Storage Spaces Direct configuration that has persistent memory and contains the data volumes shown in the following table.

Name	File system
Volume1	NTFS
Volume2	ReFS

You plan to add data volumes to Storage Spaces Direct as shown in the following table.

Name	File system
Volume3	NTFS
Volume4	ReFS

On which volumes can you use direct access (DAX)?

- A. Volume3 only
- B. Volume4 only
- C. Volume1 and Volume3 only
- D. Volume2 and Volume4 only
- E. Volume3 and Volume4 only

Answer: A

Explanation:

DAX can only be used on one volume and the volume has to be NTFS. You could configure DAX on Volume1 (although that would require reformatting the volume) or Volume3. However, 'Volume1 only' isn't an answer option so Volume3 is the correct answer. 'Volume1 and Volume3' is incorrect because of the single volume limitation. Reference:
<https://docs.microsoft.com/en-us/windows-server/storage/storage-spaces/persistent-memory-direct-access>

NEW QUESTION 49

- (Exam Topic 3)

You have three servers named Server1. Server1 and Server3 that run Windows Server and have the hyper V server role installed. Server 1 hosts an Azure Migrate appliance named Migrate1.

You plan to migrate virtual machines to Azure.

You need to ensure that any new virtual machines created on Server 1. Server2 and Server3 are available in Azure Migrate

What should you do?

- A. On Migrate1, add a discovery source.
- B. On the DNS server used by Migrate 1, create a GlobalName zone.
- C. On Migrate1, set the Startup Type of the Computer Browser service to Automatic
- D. On the network that has Migrate1 deployed, deploy a WINS server.

Answer: A

NEW QUESTION 54

- (Exam Topic 3)

Your network contains an Active Directory Domain Services (AD DS) domain. The domain contains a failover cluster named Cluster1.

You need to configure Cluster-Aware Updating (CAU) on the cluster by using Windows Admin Center (WAC).

Which three actions should you perform in sequence? To answer, move the appropriate actions from the list of actions to the answer area and arrange them in the correct order.

Actions

Enable CredSSP.

Add Cluster1 to WAC.

Add the Cluster-Aware Updating role.

Add a group managed service account (gMSA).

Add a WAC gateway.

Answer Area

- A. Mastered
- B. Not Mastered

Answer: A

Explanation:

Actions

Enable CredSSP.

Add Cluster1 to WAC.

Add the Cluster-Aware Updating role.

Add a group managed service account (gMSA).

Add a WAC gateway.

Answer Area

Add a group managed service account (gMSA).

Add Cluster1 to WAC.

Enable CredSSP.

NEW QUESTION 57

- (Exam Topic 3)

Note: This question is part of a series of questions that present the same scenario. Each question in the series contains a unique solution that might meet the stated goals. Some question sets might have more than one correct solution, while others might not have a correct solution.

After you answer a question in this section, you will NOT be able to return to it. As a result, these questions will not appear in the review screen.

Your network contains a single-domain Active Directory Domain Services (AD DS) forest named contoso.com. The functional level of the forest is Windows Server 2012 R2. All domain controllers run Windows Server 2012 R2.

Sysvol replicates by using the File Replication Service (FRS).

You plan to replace the existing domain controllers with new domain controllers that will run Windows Server 2022.

You need to ensure that you can add the first domain controller that runs Windows Server 2022. Solution: You upgrade the PDC emulator.

Does this meet the goal?

- A. Yes
- B. No

Answer: B

NEW QUESTION 62

- (Exam Topic 3)

You have two servers named Server1 and Server2 that run Windows Server. Both servers have the Hyper-V server role installed. Server1 hosts three virtual machines named VM1, VM2, and VM3. The virtual machines replicate to Server2. Server1 experiences a hardware failure. You need to bring VM1, VM2, and VM3 back online as soon as possible. From the Hyper-V Manager console on Server2, what should you run for each virtual machine?

- A. Start
- B. Move
- C. Unplanned Failover
- D. Planned Failover

Answer: C

Explanation:

Reference:
<https://docs.microsoft.com/en-us/windows-server/virtualization/hyper-v/manage/set-up-hyper-v-replica>

NEW QUESTION 64

- (Exam Topic 3)

You deploy Azure Migrate to an on-premises network. You have an on-premises physical server named Server1 that runs Windows Server and has the following configuration. Operating system disk 600 GB Data disc 3 TB NIC Teaming: Enabled Mobility service: installed Windows Firewall: Enabled Microsoft Defender Antivirus: Enabled You need to ensure that you can use Azure Migrate to migrate Server1. Solution: You disable Windows Firewall on Server1. Does this meet the goal?

- A. Yes
- B. No

Answer: B

NEW QUESTION 68

- (Exam Topic 3)

You need to create a Hyper-V hyper-converged cluster that stores virtual machines by using Storage Spaces. Which three actions should you perform in sequence? To answer, move the appropriate actions from the list of actions to the answer area and arrange them in the correct order.

Actions

Enable Storage Spaces Direct.

Add a Scale-Out File Server for application role.

Create a Distributed File System (DFS) namespace.

Create a failover cluster.

Create a file share.

Create a volume.

>

<

Answer Area

<

>

- A. Mastered
- B. Not Mastered

Answer: A

Explanation:

Actions

Enable Storage Spaces Direct.

Add a Scale-Out File Server for application role.

Create a Distributed File System (DFS) namespace.

Create a failover cluster.

Create a file share.

Create a volume.

>

<

Answer Area

Create a failover cluster.

Enable Storage Spaces Direct.

Create a volume.

<

>

NEW QUESTION 73

- (Exam Topic 3)

You have an Azure virtual machine named VM1. You enable Microsoft Defender SmartScreen on VM1. You need to ensure that the SmartScreen messages displayed to users are logged. What should you do?

- A. From a command prompt, run WinRM quickconfig.
- B. From the local Group Policy, modify the Advanced Audit Policy Configuration settings.
- C. From Event Viewer, enable the Debug log.

- D. From the Windows Security ap
- E. configure the Virus & threat protection settings.

Answer: C

Explanation:

Reference:
<https://docs.microsoft.com/en-us/windows/security/threat-protection/microsoft-defender-smartscreen/microsoft>

NEW QUESTION 76

- (Exam Topic 3)

Your on-premises network contains two subnets. The subnets contain servers that run Windows Server as shown in the following table.

Name	IP address
Server1	192.168.1.10
Server2	192.168.0.250
Server3	192.168.0.240
Server4	192.168.0.10

Server4 has the following IP configurations: Ethernet adapter Ethernet:

Connection-specific DNS Suffix . . . :

IPv4 Address : 192.168.0.10

Subnet Mask : 255.255.255.0

Default Gateway : 192.168.0.1

From Server4, you can ping Server1 and Server2 successfully. When you ping Server3, you get a Request timed out response.

From Server2, you can ping Server1 and Server3 successfully.

The misconfiguration of which component on Server3 can cause the Request timed out response?

- A. default gateway
- B. IP address
- C. subnet mask
- D. DNS server

Answer: C

NEW QUESTION 77

- (Exam Topic 3)

Your network contains an Active Directory Domain Services (AD DS) domain. The domain contains a print server named Server1. All printers are deployed to users by using a Group Policy Object (GPO) named GPO1.

You deploy a new server named Server2.

You need to decommission Server1. The solution must meet the following requirements:

- Migrate the shared printers to Server2 by using the Printer Migration Wizard.
- Ensure that the users use the printers on Server2.
- Minimize downtime for the users.

Which four actions should you perform in sequence? To answer, move the appropriate actions from the list of actions to the answer area and arrange them in the correct order.

Actions

Decommission Server1.

Import the printers on Server2.

Deploy Windows Server Hybrid Cloud Print.

Export the printers on Server1.

Update the service principal name (SPN) of each printer.

Modify GPO1.

Answer Area

- A. Mastered
- B. Not Mastered

Answer: A

Explanation:

Graphical user interface, text, application, email Description automatically generated

Reference:
<https://docs.microsoft.com/en-us/archive/blogs/canitpro/step-by-step-migrating-print-servers-from-windows-ser>

NEW QUESTION 78

- (Exam Topic 3)

You have a server named Server1 that runs Windows Server and has the Hyper-V server role installed. You import the Azure Migrate appliance as VM1.

You need to register VM1 with Azure Migrate.

What should you do in Azure Migrate? Each correct answer presents part of the solution.

NOTE: Each correct selection is worth one point.

- A. Create a project.
- B. Add a migration tool.
- C. Add an assessment tool.
- D. Generate a project key.
- E. Download the Azure Migrate installer script ZIP file.

Answer: ADE

Explanation:

Reference:
<https://docs.microsoft.com/en-us/azure/migrate/how-to-set-up-appliance-hyper-v>

NEW QUESTION 82

- (Exam Topic 3)
You have a failover cluster named Cluster1 that hosts an application named App1.
The General tab in App1 Properties is shown in the General exhibit (Click the General Tat) The failover tab in App1 Properties is shown in the failover exhibit (Click the Failover tab.)
Server 1 shuts down unexpectedly.
You need to ensure that when you start Server 1. App1 continues to run on Server2
Solution: From the General settings, you increase the priority of Server2 in the Preferred Owners list. Does this meet the goal?

- A. Yes
- B. NO

Answer: B

NEW QUESTION 84

- (Exam Topic 3)
You have a failover cluster named Cluster1 that contains the nodes shown in the following table.

Name	Server role
Node1	File Server
Node2	File Server
Node3	File Server

A File Server for general use cluster role named HAFS is configured as shown in the General exhibit (Click the General tab.)

Answer Area

If you select **Move**, and then **Best Possible Node**, HAFS will move to Node3.

☐

☐

If you stop and start Cluster1, HAFS will come online on Node1.

☐

☐

If you select **Move, Select Node**, and then **Node2**, HAFS will move to Node2.

☐

☐

- A. Mastered
- B. Not Mastered

Answer: A

Explanation:

Answer Area

If you select **Move**, and then **Best Possible Node**, HAFS will move to Node3.

☒

☐

If you stop and start Cluster1, HAFS will come online on Node1.

☐

☒

If you select **Move, Select Node**, and then **Node2**, HAFS will move to Node2.

☒

☐

NEW QUESTION 87

- (Exam Topic 3)
You have an on-premises Active Directory Domain Services (AD DS) domain that syncs with an Azure Active Directory (Azure AD) tenant.
The AD DS domain contains a domain controller named DC1. DC1 does NOT have internet access. You need to configure password security for on-premises users. The solution must meet the following requirements:

- > Prevent the users from using known weak passwords.
- > Prevent the users from using the company name in passwords.

What should you do? To answer, drag the appropriate configurations to the correct targets. Each configuration may be used once, more than once, or not at all. You may need to drag the split bar between panes or scroll to view content.
NOTE: Each correct selection is worth one point.

Configurations	Answer Area
Configure Azure AD Identity Protection.	On DC1: Configuration
Configure Azure AD Password Protection.	On a member server: Configuration
Install the Azure AD Pass-through Authentication Agent.	In Azure: Configuration
Install the Azure AD Password Protection DC agent.	
Install the Azure AD Password Protection proxy service.	

- A. Mastered
- B. Not Mastered

Answer: A

Explanation:

Reference:

<https://docs.microsoft.com/en-us/azure/active-directory/authentication/howto-password-ban-bad-on-premises-de>

NEW QUESTION 88

- (Exam Topic 3)

You have a server named Server1 that runs Windows Server and has the Hyper-V server role installed. You have a Hyper-V failover cluster named Cluster1. All servers are members of the same domain.

You need to ensure that you use Hyper-V Replica with Kerberos authentication on the default port to replicate virtual machines from Cluster1 to Server1.

What should you do on Server1?

- A. Add primary servers to the Hyper-V Replica Broker configuration.
- B. From Hyper-V Settings, select Enable incoming and outgoing live migrations
- C. From Windows Defender Firewall with Advanced Security, enable the Hyper-V Replica HTTPS Listener (TCP-In) rule.
- D. From Windows Defender Firewall with Advanced Security, enable the Hyper-V Replica HTTP Listener (TCP-In) rule.

Answer: D

Explanation:

Reference:

<https://docs.microsoft.com/en-us/windows-server/virtualization/hyper-v/manage/set-up-hyper-v-replica>

NEW QUESTION 90

- (Exam Topic 3)

You have an on-premises Active Directory Domain Services (AD DS) domain that syncs with an Azure Active Directory (Azure AD) tenant by using password hash synchronization.

You have a Microsoft 365 subscription. All devices are hybrid Azure AD-joined.

Users report that they must enter their password manually when accessing Microsoft 365 applications.

You need to reduce the number of times the users are prompted for their password when they access Microsoft 365 and Azure services.

What should you do?

- A. In Azure A
- B. configure a Conditional Access policy for the Microsoft Office 365 applications.
- C. In the DNS zone of the AD DS domain, create an autodiscover record.
- D. From Azure AD Connect, enable single sign-on (SSO).
- E. From Azure AD Connect, configure pass-through authentication.

Answer: C

Explanation:

Reference:

<https://docs.microsoft.com/en-us/azure/active-directory/hybrid/how-to-connect-sso-quick-start>

NEW QUESTION 95

- (Exam Topic 3)

You plan to deploy the Azure Monitor agent to 100 on-premises servers that run Windows Server. Which parameters should you provide when you install the agent?

- A. the client ID and the secret of an Azure service principal
- B. the name and the access key of an Azure Storage account
- C. a connection string for an Azure SQL database
- D. the ID and the key of an Azure Log Analytics workspace

Answer: D

Explanation:

Reference:

<https://docs.microsoft.com/en-us/windows-server/storage/storage-spaces/configure-azure-monitor>

NEW QUESTION 100

- (Exam Topic 3)

Note: This question is part of a series of questions that present the same scenario. Each question in the series contains a unique solution that might meet the stated goals. Some question sets might have more than one correct solution, while others might not have a correct solution.

After you answer a question in this section, you will NOT be able to return to it. As a result, these questions will not appear in the review screen.

You have a failover cluster named Cluster1 that hosts an application named App1.

The General tab in App1 Properties is shown in the General exhibit. (Click the General tab.)

App1 Properties

General Failover

App1

Name:

Preferred Owners
 Select the preferred owners for this clustered role. Use the buttons to list them in order from most preferred at the top to least preferred at the bottom.

☐ Server1 ☐ Server2

Priority: Medium

Status: Running

Node: Server2

OK Cancel Apply

The Failover tab in App1 Properties is shown in the Failover exhibit. (Click the Failover tab.)

App1 Properties

General Failover

Failover

Specify the number of times the Cluster service will attempt to restart or fail over the clustered role in the specified period.

If the clustered role fails more than the maximum in the specified period, it will be left in the failed state.

Maximum failures in the specified period:

Period (hours):

Failback

Specify whether the clustered role will automatically fail back to the most preferred owner (which is set on the General tab).

☐ Prevent failback

☒ Allow failback

☒ Immediately

☐ Failback between and hours

OK Cancel Apply

Server1 shuts down unexpectedly.

You need to ensure that when you start Server1, App1 continues to run on Server2. Solution: From the Failover settings, you select Prevent failback.

Does this meet the goal?

- A. Yes
- B. No

Answer: A

Explanation:

The Prevent failback setting will prevent the cluster failing back to Server1.

NEW QUESTION 104

- (Exam Topic 3)

You have an Azure subscription that has Microsoft Defender for Cloud enabled. You have 50 Azure virtual machines that run Windows Server.

You need to ensure that any security exploits detected on the virtual machines are forwarded to Defender for Cloud.

Which extension should you enable on the virtual machines?

- A. Vulnerability assessment for machines
- B. Microsoft Dependency agent
- C. Log Analytics agent for Azure VMs
- D. Guest Configuration agent

Answer: A

Explanation:

Reference:

<https://docs.microsoft.com/en-us/azure/defender-for-cloud/deploy-vulnerability-assessment-vm>

NEW QUESTION 108

- (Exam Topic 3)

You have an on-premises IIS web server that hosts a web app named Appl. You plan to migrate App1 to a container and run the container in Azure. You need to perform the following tasks:

- Export App1 to a ZIP file.
- Create a container image based on Appl.

The solution must minimize administrative effort.

Azure Migrate

The Azure portal

Web Deploy

Windows Admin Center

Windows Server Migration Tools

Answer Area

Export App1 to a ZIP file:

Tool

Create a container image with App1:

Tool

- A. Mastered
- B. Not Mastered

Answer: A

Explanation:

Azure Migrate Web deploy

NEW QUESTION 113

- (Exam Topic 3)

Note: This question is part of a series of questions that present the same scenario. Each question in the series contains a unique solution that might meet the stated goals. Some question sets might have more than one correct solution, while others might not have a correct solution.

After you answer a question in this section, you will NOT be able to return to it. As a result, these questions will not appear in the review screen.

Your network contains a single-domain Active Directory Domain Services (AD DS) forest named contoso.com. The functional level of the forest is Windows Server 2012 R2. All domain controllers run Windows Server 2012 R2.

Sysvol replicates by using the File Replication Service (FRS).

You plan to replace the existing domain controllers with new domain controllers that will run Windows Server 2022.

You need to ensure that you can add the first domain controller that runs Windows Server 2022. Solution: You run the Active Directory Migration Tool (ADMT).

Does this meet the goal?

- A. Yes
- B. No

Answer: B

NEW QUESTION 115

- (Exam Topic 3)

You have 200 Azure virtual machines.

You create a recovery plan in Azure Site Recovery to fail over all the virtual machines to an Azure region. The plan has three manual actions.

You need to replace one of the manual actions with an automated process. What should you use?

- A. an Azure Desired State Configuration (DSC) virtual machine extension

- B. an Azure Automation runbook
- C. an Azure PowerShell function
- D. a Custom Script Extension on the virtual machines

Answer: B

Explanation:

Reference:

<https://docs.microsoft.com/en-us/azure/site-recovery/recovery-plan-overview>

NEW QUESTION 118

- (Exam Topic 3)

You have two Azure Virtual machines that run Windows Server.

You plan to create a failover cluster that will host the virtual machines.

You need to configure an Azure Storage account that will be used by the cluster as a cloud witness. The solution must maximize resiliency.

Which type of redundancy should you configure for the storage account?

- A. Geo-zone-redundant storage (GZRS)
- B. Geo-redundant storage (GRS)
- C. Zone-redundant storage (ZRS)
- D. Locally-redundant storage (LRS)

Answer: C

NEW QUESTION 121

- (Exam Topic 3)

You have 100 Azure virtual machines that run Windows Server. The virtual machines are onboarded to Microsoft Defender for Cloud.

You need to shut down a virtual machine automatically if Microsoft Defender for Cloud generates the "Antimalware disabled in the virtual machine" alert for the virtual machine.

What should you use in Microsoft Defender for Cloud?

- A. a logic app
- B. a workbook
- C. a security policy
- D. adaptive network hardening

Answer: A

Explanation:

Reference:

<https://docs.microsoft.com/en-us/azure/defender-for-cloud/managing-and-responding-alerts>

NEW QUESTION 126

- (Exam Topic 3)

You have an Azure virtual machine named VM1.

You install an application on VM1, and then restart the virtual machine.

After the restart, you get the following error message: "Boot failure. Reboot and Select proper Boot Device or Insert Boot Media in selected Boot Device."

You need to mount the operating system disk offline from VM1 to a temporary virtual machine to troubleshoot the issue.

Which command should you run in Azure CLI?

- A. az vm repair create
- B. az vm boot-diagnostics enable
- C. az vm capture
- D. az vm disk attach

Answer: A

Explanation:

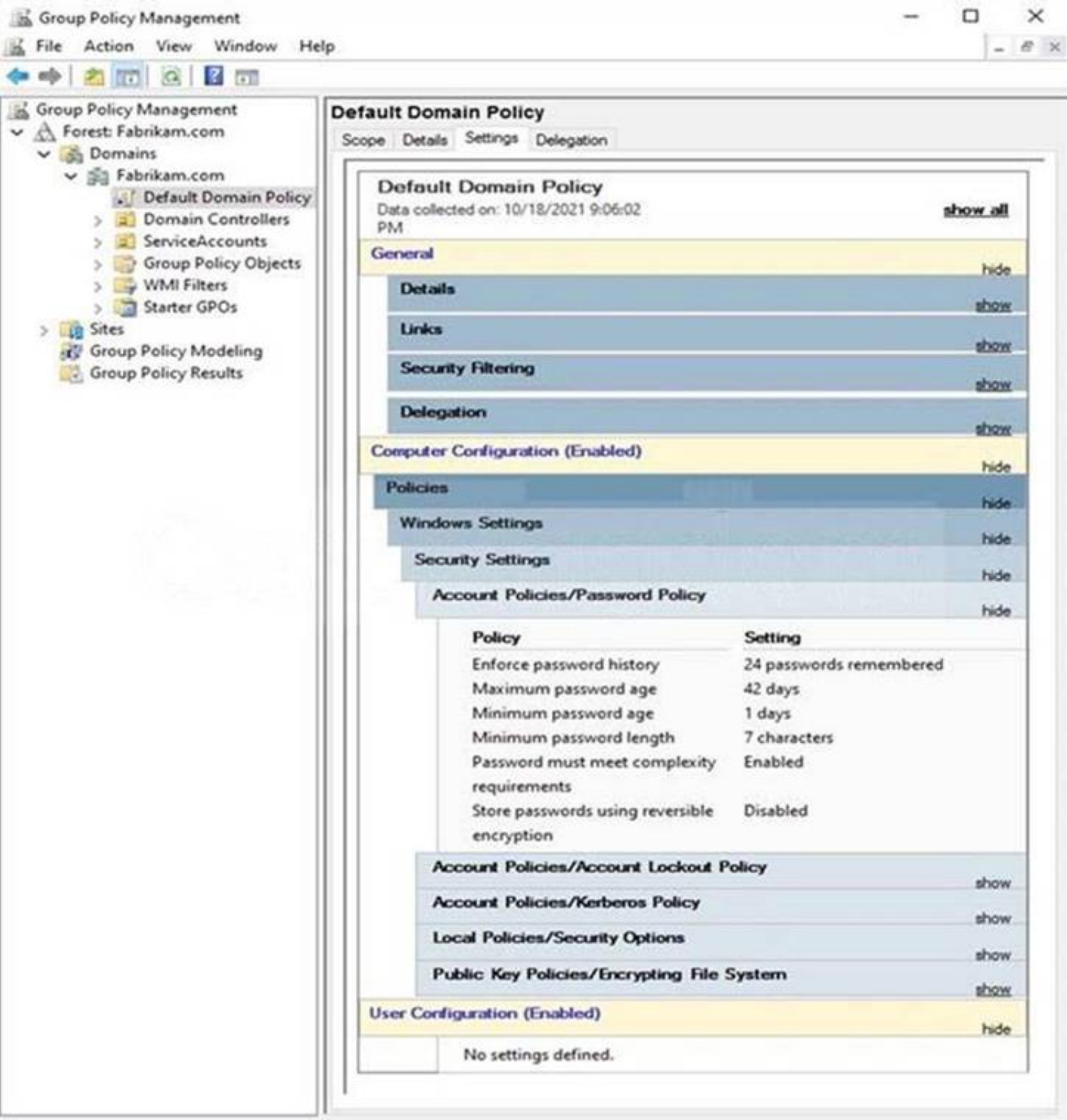
Reference:

<https://docs.microsoft.com/en-us/cli/azure/vm/repair?view=azure-cli-latest>

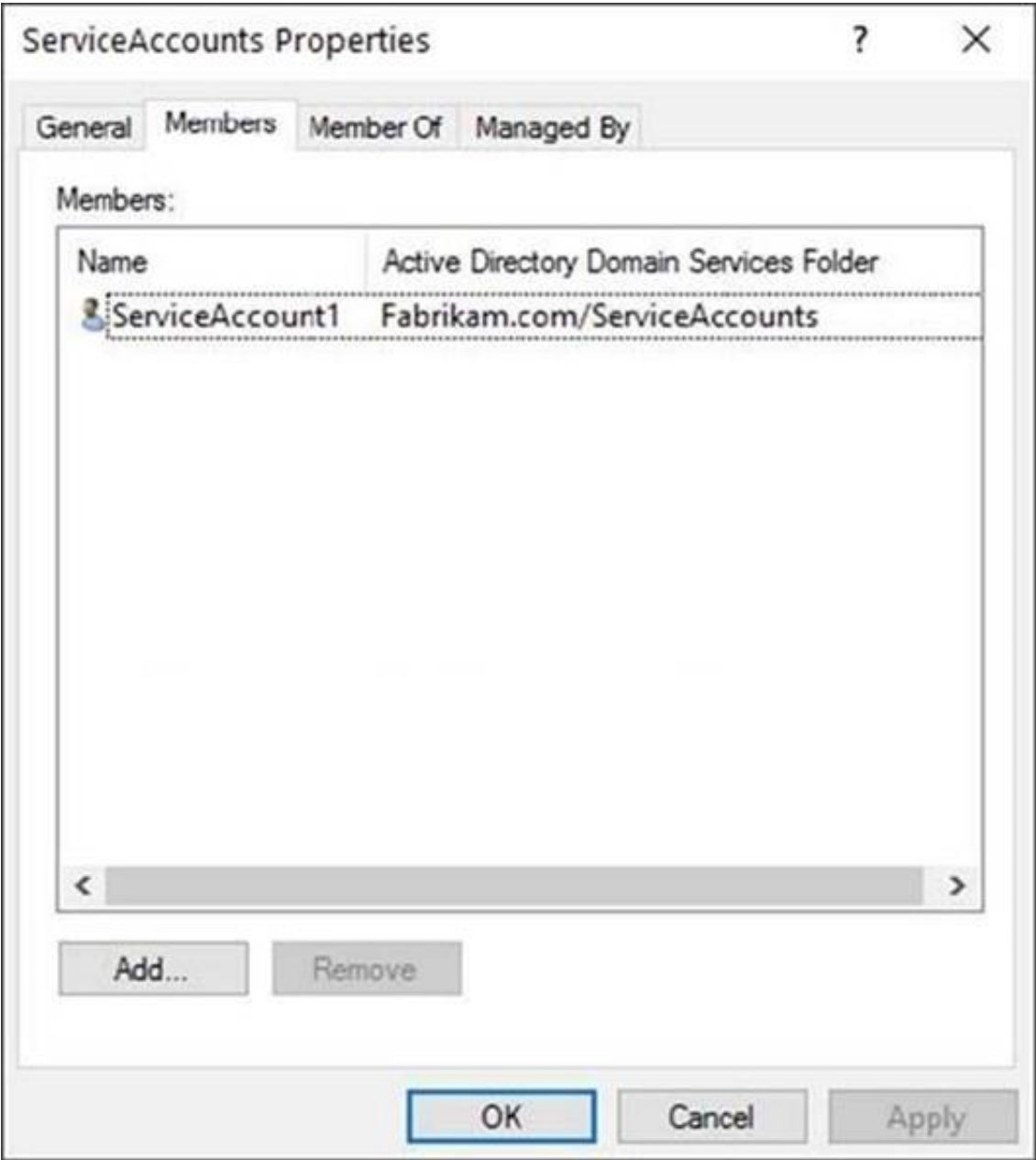
NEW QUESTION 130

- (Exam Topic 3)

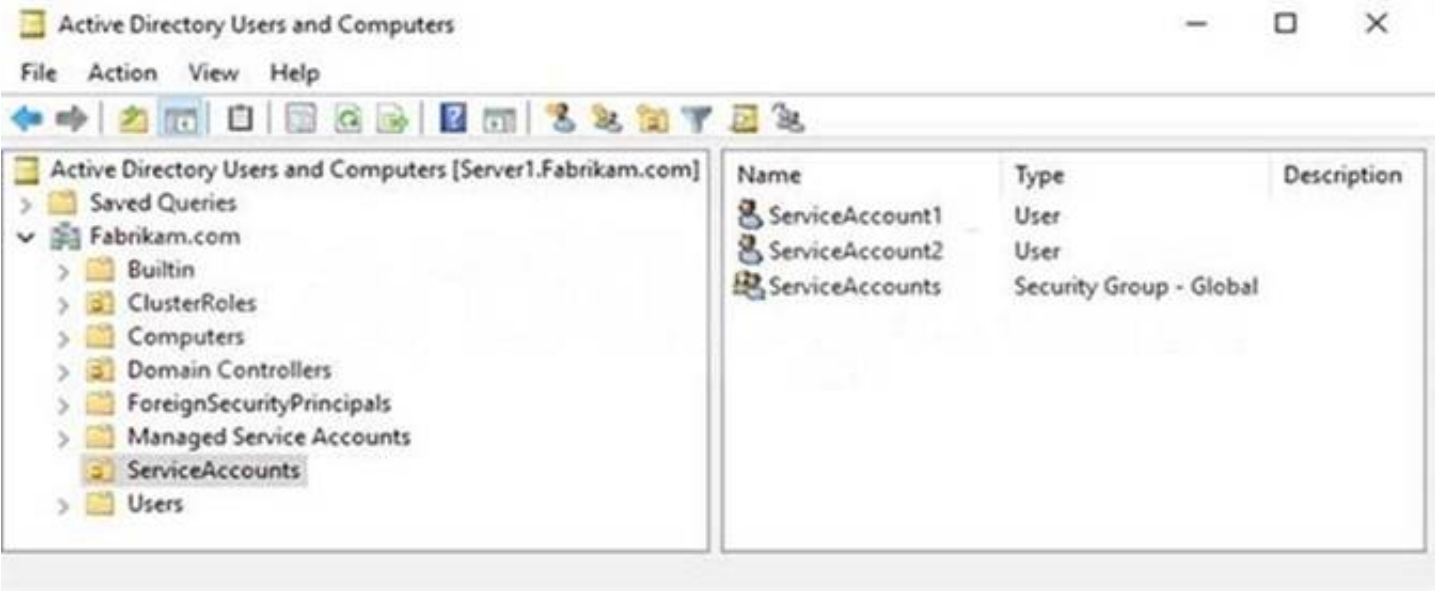
The Default Domain Policy Group Policy Object (GPO) is shown in the GPO exhibit. (Click the GPO tab.)



The members of a group named Service Accounts are shown in the Group exhibit. (Click the Group tab.)



An organizational unit (OU) named ServiceAccounts is shown in the OU exhibit. (Click the OU tab.)



You create a Password Settings Object (PSO) as shown in the PSO exhibit. (Click the PSO tab.)

Service Accounts Policy

TASKS

SECTIONS

Password Settings

Directly Applies To

Extensions

Password Settings

Name: Service Accounts Policy

Precedence: 10

☒ Enforce minimum password length

Minimum password length (characte... 16

☒ Enforce password history

Number of passwords remembered: 12

☒ Password must meet complexity requirements

☐ Store password using reversible encryption

☒ Protect from accidental deletion

Description:

☒ Enforce minimum password age

User cannot change the password... 1

☒ Enforce maximum password age

User must change the password af... 30

☒ Enforce account lockout policy:

Number of failed logon attempts allo... 5

Reset failed logon attempts count aft... 30

Account will be locked out

☒ For a duration of (mins): 60

☐ Until an administrator manually unlocks the a...

Directly Applies To

Name

Mail

ServiceAccounts

Add...

Remove

Extensions

More Information

OK

Cancel

For each of the following statements, select Yes if the statement is true. Otherwise, select No. NOTE: Each correct selection is worth one point.

Statements	Yes	No
The password of ServiceAccount1 must be at least 16 characters long.	<input type="radio"/>	<input type="radio"/>
The password of ServiceAccount2 must be at least 16 characters long.	<input type="radio"/>	<input type="radio"/>
Accounts that have the Service Accounts Policy applied can change their password to P@\$w0rd1.	<input type="radio"/>	<input type="radio"/>

- A. Mastered
- B. Not Mastered

Answer: A

Explanation:

A screenshot of a computer Description automatically generated with medium confidence

Reference:

<https://docs.microsoft.com/en-us/windows-server/identity/ad-ds/get-started/adac/introduction-to-active-directory>

NEW QUESTION 134

- (Exam Topic 2)

You need to configure BitLocker on Server4.

On which volumes can you turn on BitLocker, and on which volumes can you turn on auto-unlock? To answer, select the appropriate options in the answer area.

NOTE: Each correct selection is worth one point.

Answer Area

BitLocker:

D only

C and D only

D, E, and F only

C, D, E, and F

Auto-unlock:

D only

C and D only

D, E, and F only

C, D, E, and F

- A. Mastered
- B. Not Mastered

Answer: A

Explanation:

Reference:
<https://docs.microsoft.com/en-us/windows-server/storage/refs/refs-overview>
<https://docs.microsoft.com/en-us/powershell/module/bitlocker/enable-bitlockerautounlock?view=windowsserver>

NEW QUESTION 136

- (Exam Topic 1)
You are planning the data share migration to support the on-premises migration plan. What should you use to perform the migration?

- A. Storage Migration Service
- B. Microsoft File Server Migration Toolkit
- C. File Server Resource Manager (FSRM)
- D. Windows Server Migration Tools

Answer: A

Explanation:

Reference:
<https://docs.microsoft.com/en-us/windows-server/storage/storage-migration-service/migrate-data>

NEW QUESTION 140

- (Exam Topic 2)
You need to meet the technical requirements for Cluster2.
Which four actions should you perform in sequence before you can enable replication? To answer, move the appropriate actions from the list of actions to the answer area and arrange them in the correct order.

Actions

Create an Azure Recovery Services vault.

Install Azure Connected Machine agents.

Install and register Azure Site Recovery Providers.

Create and associate replication policies.

Create a Hyper-V site.

Answer Area

- A. Mastered
- B. Not Mastered

Answer: A

Explanation:

Text Description automatically generated
Reference:
<https://docs.microsoft.com/en-us/azure/site-recovery/hyper-v-azure-tutorial>

NEW QUESTION 141

- (Exam Topic 1)
You are remediating the firewall security risks to meet the security requirements. What should you configure to reduce the risks?

- A. a Group Policy Object (GPO)
- B. adaptive network hardening in Microsoft Defender for Cloud
- C. a network security group (NSG) in Sub1
- D. an Azure Firewall policy

Answer: A

Explanation:

Firewall rules configured in a Group Policy Object cannot be modified by local server administrators. Reference:
<https://docs.microsoft.com/en-us/windows/security/threat-protection/windows-firewall/create-an-inbound-port-r>

NEW QUESTION 146

- (Exam Topic 1)

You are planning the migration of APP3 and APP4 to support the Azure migration plan.

What should you do on Cluster1 and in Azure before you perform the migration? To answer, select the appropriate options in the answer area.

NOTE: Each correct selection is worth one point.

Answer Area

On Cluster1:

Configure Azure Network Adapter.

Create a Point-to-Site (P2S) VPN connection to Vnet1.

Import the Azure Migrate appliance.

Install the Azure File Sync agent.

Install the Windows Server Migration Tools.

In Azure:

Create a premium block blobs Azure Storage account.

Create a private endpoint.

Create a VPN gateway.

Create an Azure Migrate project.

- A. Mastered
- B. Not Mastered

Answer: A

Explanation:

Graphical user interface, text, application Description automatically generated
Reference:
<https://docs.microsoft.com/en-us/azure/migrate/tutorial-discover-hyper-v>

NEW QUESTION 151

- (Exam Topic 1)

You are planning the implementation of Cluster2 to support the on-premises migration plan. You need to ensure that the disks on Cluster2 meet the security requirements.

In which order should you perform the actions? To answer, move all actions from the list of actions to the answer area and arrange them in the correct order.

Actions

Add a disk resource to the cluster.

Enable BitLocker on the volume.

Update the BitLockerProtectorInfo property of the volume.

Create a Cluster Shared Volume (CSV).

Put the disk in maintenance mode.

Answer Area

- A. Mastered
- B. Not Mastered

Answer: A

Explanation:

Graphical user interface, text, application, table Description automatically generated
Reference:
<https://docs.microsoft.com/en-us/windows-server/failover-clustering/bitlocker-on-csv-in-ws-2022>

NEW QUESTION 156

- (Exam Topic 1)

You are planning the DHCP1 migration to support the DHCP migration plan.

Which two PowerShell cmdlets should you run on DHCP1, and which two PowerShell cmdlets should you run on DHCP2? To answer, drag the appropriate cmdlets to the correct servers. Each cmdlet may be used once, more than once, or not at all. You may need to drag the split bar between panes or scroll to view content.

NOTE: Each correct selection is worth one point.

Cmdlets	Answer Area
Add-DhcpServerInDC	DHCP1: Cmdlet
Add-DhcpServerv4Scope	Cmdlet
Export-DhcpServer	
Import-DhcpServer	DHCP2: Cmdlet
Remove-DhcpServerInDC	Cmdlet
Remove-DhcpServerv4Scope	

- A. Mastered
- B. Not Mastered

Answer: A

Explanation:

Graphical user interface, text, application, chat or text message Description automatically generated

Reference:

<https://theitbros.com/how-to-migrate-dhcp-to-windows-server-2016/>

NEW QUESTION 158

.....

Thank You for Trying Our Product

We offer two products:

1st - We have Practice Tests Software with Actual Exam Questions

2nd - Questions and Answers in PDF Format

AZ-801 Practice Exam Features:

- * AZ-801 Questions and Answers Updated Frequently
- * AZ-801 Practice Questions Verified by Expert Senior Certified Staff
- * AZ-801 Most Realistic Questions that Guarantee you a Pass on Your FirstTry
- * AZ-801 Practice Test Questions in Multiple Choice Formats and Updatesfor 1 Year

100% Actual & Verified — Instant Download, Please Click
[Order The AZ-801 Practice Test Here](#)