

# Cisco

## Exam Questions 200-901

Developing Applications and Automating Workflows using Cisco Core Platforms (DEVASC)



NEW QUESTION 1

- (Exam Topic 2)  
Which protocol runs over TCP port 22?

- A. SSH
- B. HTTP
- C. Telnet
- D. NETCONF

Answer: A

NEW QUESTION 2

- (Exam Topic 2)  
Drag and drop the Dockerfile instructions from the left onto the descriptions on the right. Not all options are used.

FROM ubuntu:12.04	informs Docker that the container listens on the specified network port(s) at runtime
VOLUME["/var/www","/var/log/apache2","/etc/apache2"]	creates a mount point with the specified name
RUN apt-get update && apt-get install -y -force-yes apache2	configures a container that runs as an executable
ENTRYPOINT["/usr/sbin/apache2ctl","-D","FOREGROUND"]	must be the first instruction in the Docker file
EXPOSE 1521	

- A. Mastered
- B. Not Mastered

Answer: A

Explanation:  
Diagram Description automatically generated

NEW QUESTION 3

- (Exam Topic 2)  
Refer to the exhibit.

```

1 import requests
2 import json
3
4 BASE_URL = "https://<IP Address>"
5 FIRST_URL = "/dna/intent/api/v1/network-device"
6 SECOND_URL = "/dna/intent/api/v1/network-device-poller/cli/read-request"
7 THIRD_URL = "/dna/intent/api/v1/task/{task_id}"
8 FOURTH_URL = "/dna/intent/api/v1/file/{file_id}"
9
10 headers = {"X-Auth-Token": "TOKEN", "Content-Type": "application/json"}
11
12 params = {"platformId": "C9500-40X"}
13 response = requests.get(BASE_URL + FIRST_URL, headers=headers, params=params)
14 devices = []
15 for device in response.json()["response"]:
16     devices.append(device["id"])
17
18     payload = {
19         "commands": ["show version", "show ip int brief"],
20         "deviceUuids": devices,
21         "timeout": 0,
22     }
23 response = requests.post(BASE_URL + SECOND_URL, data=json.dumps(payload),
24     · headers=headers)
25 task_id = response.json()["response"]["taskId"]
26 response = requests.get(BASE_URL + THIRD_URL.format(task_id=task_id),
27     · headers=headers)
28 progress_json = json.loads(response.json()["response"]["progress"])
29 file_id = progress_json("fileId")
30 response = requests.get(BASE_URL + FOURTH_URL.format(file_id=file_id),
31     · headers=headers)
32 file_json = response.json()
33 for cmd in file_json:
34     print(file_json[cmd]["commandResponses"]["SUCCESS"]["show ip int brief"])

```

A network engineer must collect information from the network using Cisco DNA Center APIs. The script must query for the devices with 'platformId' 'C9540-x' and then send commands to be executed. Which process is automated by the Python script?

- A. results gathering of the show version and show ip int brief commands
- B. output of show ip int brief command on devices of type C9500-40X
- C. execution information of the show version and show ip int brief commands
- D. list of executed commands on C9500-40X and the information of show ip int brief command

**Answer: B**

#### NEW QUESTION 4

- (Exam Topic 2)

Refer to the exhibit.

```

1 - hosts: servers
2   tasks:
3
4     - name: task1
5       systemd:
6         name: webexbot
7         state: stopped
8
9     - name: task2
10      apt:
11        name: teamsbot
12
13     - name: task3
14      apt:
15        name: webexbot
16        state: absent
17        purge: yes

```

A developer must integrate a bot with an internal communication app. The developer wants to replace the webexbot package with the teamsbot package by using Ansible and prepares a playbook. In the first two tasks, the playbook stops the webexbot and verifies that the teamsbot is installed. What is accomplished in the last task of the workflow when the developer runs the Ansible playbook?

- A. stops the webexbot service and uninstalls it and retains its configuration files
- B. installs the webexbot and retains the configuration files
- C. uninstalls the webexbot package and removes its configuration files
- D. searches whether the purge package is available in the repository and uninstalls the webexbot package

**Answer:** C

**NEW QUESTION 5**

- (Exam Topic 2)

A company wants to accelerate the adoption of technologies that will simplify its operations. Staff have different skill levels and are looking for a single site to find easy-to-consume beginner, intermediate, and advanced multidomain use cases. Which site should be used?

- A. DevNet Ecosystem Exchange
- B. DevNet Automation Exchange
- C. DevNet Creations
- D. DevNet Support Forum

**Answer:** D

**NEW QUESTION 6**

- (Exam Topic 2)

What are two functions of a routing table on a network device? (Choose two.)

- A. It lists entries more than two hops away.
- B. It lists the routes to a particular destination.
- C. It lists the routes to drop traffic.
- D. It lists hosts that are one hop away.
- E. It lists the static and dynamic entries.

**Answer:** BE

**NEW QUESTION 7**

- (Exam Topic 2)

What are two properties of private IP addresses? (Choose two.)

- A. They can be used to access the Internet directly.
- B. They are more secure than public IP addresses.
- C. They are not globally unique.
- D. They can be repeated within the same local network.
- E. They are controlled globally by an IP address registry.

**Answer:** BD

**NEW QUESTION 8**

- (Exam Topic 2)

While developing a real-Time VoIP application on a Cisco Webex platform, users report that their voice gets chopped or parts of the conversation drop out. Which network constraint is impacting the application?

- A. latency
- B. jitter
- C. capacity
- D. delay

**Answer:** B

**NEW QUESTION 9**

- (Exam Topic 2)

Before which process is code review performed when version control is used?

- A. Branching code
- B. Merge of code
- C. Checkout of code
- D. Committing code

**Answer:** D

**NEW QUESTION 10**

- (Exam Topic 2)

What is the purpose of a MAC address on a network device?

- A. unique network address that identifies the network interface of a device
- B. unique network interlace address that is provided by the DHCP server
- C. unique hardware address that identifies the network interface of a device
- D. unique hardware interface address that is provided by the central switch

**Answer:** C

**NEW QUESTION 10**

- (Exam Topic 2)

What are two considerations when selecting the "best route" for a network device to reach its destination? (Choose two.)

- A. MAC address
- B. metrics
- C. administrative distance
- D. IP address
- E. subnet mask

**Answer:** BC

#### NEW QUESTION 15

- (Exam Topic 2)

A new application is being developed with specific platform requirements. The platform and application deployment and the ongoing platform management must be fully automated. The application includes a large database component that has significant disk I/O requirements. Which application deployment type meets the requirements?

- A. Python virtual environment
- B. virtual machine
- C. bare metal
- D. container

**Answer:** B

#### NEW QUESTION 19

- (Exam Topic 2)

```
GET getNetworkHttpServers
https://api.meraki.com/api/v0/networks/:networkId/httpServers
List the HTTP servers for a network

AUTHORIZATION
API Key

This request is using an authorization helper from collection Meraki Dashboard
API
HEADERS
Accept
*/*
```

Refer to the exhibit. A developer is creating a Python script to obtain a list of HTTP servers on a network named office\_east by using the Cisco Meraki API. The request has these requirements:

- Must time out if the response is not received within 2 seconds.
- Must utilize client certificates and SSL certificate verification.
- Must utilize basic authentication that uses a username of admin and a password of cisco.
- Must save the response to an object named response.

Drag and drop the code snippets from the bottom onto the blanks in the code to meet the requirements. Not all options are used.

```
import requests
from requests.auth import HTTPBasicAuth
network = 'office east'
url = 'https://api.meraki.com/api/v0/networks/{}/httpServers'.format (network)
[ ] = requests.get(url=url, headers={ 'Accept': '*/*' },
verify='/etc/pki/tls/certs/ca.pem',
timeout= [ ] ,
[ ] = ('/etc/pki/tls/certs/client.pem',
'/etc/pki/tls/certs/client.key'),
auth= [ ] ('admin', 'cisco'))
response.status_code
```

token	response	2
HTTPTokenAuth	HTTPBasicAuth	cert

- A. Mastered
- B. Not Mastered

**Answer:** A

#### Explanation:

Text Description automatically generated

Reference:

<https://community.cisco.com/t5/networking-blogs/authenticating-rest-api-calls-to-dnac-getting-started/ba-p/3658>



#### NEW QUESTION 21

- (Exam Topic 2)

What is a benefit of test-driven development?

- A. early customer involvement
- B. increased code quality
- C. faster releases that have minimal features
- D. strict adherence to product requirements

**Answer:** D

#### NEW QUESTION 23

- (Exam Topic 2)

In which two ways is an application characterized when interacting with a webhook? (Choose two.)

- A. codec
- B. receiver
- C. transaction monitor
- D. processor
- E. listener

**Answer:** BE

#### NEW QUESTION 26

- (Exam Topic 2)

Drag and drop the code snippets from the bottom into the Python script to write API output to a csv file. Not all options are used.

```
#!/usr/bin/env python3
import csv
import json
import 
#Create a request to grab info in api
response = requests. ('http://api.zippopotam.us/us/80301')

try:
    with open('80301.json', 'w') as outfile:
        json.dump(response.json(), outfile)
    print(.json())
except Exception as e:
    print(e)

with open('80301.csv', 'w') as outfile:
    json.dump(response.json(), outfile)
print(response.)
```

- A. Mastered
- B. Not Mastered

**Answer:** A

#### Explanation:

Graphical user interface, text, application Description automatically generated

#### NEW QUESTION 29

- (Exam Topic 2)

What is the difference between YAML and JSON data structure?

- A. YAML uses spaces; JSON uses parentheses
- B. YAML uses indentation; JSON uses brackets and braces
- C. YAML uses brackets and braces; JSON uses indentation
- D. YAML uses parentheses; JSON uses spaces

**Answer:** A

#### NEW QUESTION 31

- (Exam Topic 2)

Refer to the exhibit.

```
SDK Documentation:

Class: Devices

Device List: get_device_list()
Get device: get_device_by_id(id)
Delete device: delete_device_by_id(id)
Device status: inventoryStatusDetail
Device Parameters:
    id
    upTime
    type
```

A Python script must delete all Cisco Catayst 9300 Series switches that have an uptime that is greater than 90 days The script must also query for the status of all the other devices Drag and drop the code from the bottom onto the bottom box the code is missing to complete the script Not at options are used

**Answer Area**

```
from dnacentersdk import DNACenterAPI

device_type = "Cisco Catalyst 9300 Switch"
api_session = DNACenterAPI(
    base_url="https://sandboxdnac.cisco.com",
    username="user",password="password"
)

devices = 

for device in devices:
    if int(device.upTime.split()[0]) > 90:
        if device.type == device type:
            output = 
            print(output)

        else:
            selected device = 
            output = 
            print (output)
```

- A. Mastered
- B. Not Mastered

**Answer:** A

**Explanation:**

Table Description automatically generated

**NEW QUESTION 33**

- (Exam Topic 2)

Refer to the exhibit.

```
1 #import dnac sdk
2 from dnacentersdk import DNACenterAPI
3 #connection to dnac
4
5 username = 'user1'
6 password = 'secret'
7 base_url = 'https://192.168.1.1'
8
9 dnac = DNACenterAPI(username=username, password=password, base_url=base_url,
10 • version='1.3.3', verify=False)
11
12 # Get list of ports on device using get all interfaces API call
13 port_list_1 = [item['portName'] for item in
14 • dnac.devices.get_all_interfaces()['response']]
15
16 if 'da4606c3-63ad-4ed4-8f35-6bfec7c2df04' in
17 item['deviceId']]
18
19 # Sort list items
20 port_list_1.sort()
21 # Check the number of ports on the device
22 print(f'The list of interfaces contains {len(port_list_1)} items.')
23
24 # Output
25 # The list of interfaces contains 38 items.
26
27
28 # Get list of interfaces using the get interface info by device id api call
29 port_list_2 = [item['portName'] for item in
30 • dnac.devices.get_interface_info_by_id('da4606c3-63ad-4ed4-8f35-
31 • 6bfec7c2df04')['response']]
32
33 # Sort list items
34 port_list_2.sort()
35 # Check the number of ports on the device
36 print(f'The list of interfaces contains {len(port_list_2)} items.')
37
38 # Output
39 # The list of interfaces contains 54 items.
```

An engineer writes a Python script that uses two different API calls to query Cisco DNA Center for the number of interfaces on a device. The engineer notices that the two API calls produce different results. Why are fewer interfaces returned for the same device when the 'get\_all\_interfaces' API call is used?

- A. times out
- B. rate limit
- C. pagination
- D. invalid password

**Answer: C**

#### NEW QUESTION 37

- (Exam Topic 2)

What are two benefits of model-driven programmability?

- A. model-driven APIs for abstraction and simplification
- B. single choice of transport, protocol, and encoding
- C. model-based, structured, and human friendly
- D. easier to design, deploy, and manage APIs
- E. models decoupled from transport, protocol, and encoding

**Answer: DE**

#### NEW QUESTION 42

- (Exam Topic 2)

Which Cisco platform provides organization-wide automation, security, policy enforcement, any agility across wired and wireless networks?

- A. Cisco ACI
- B. Cisco DNA Center
- C. Cisco Umbrella
- D. Cisco SD-WAN

**Answer: B**

#### NEW QUESTION 44

- (Exam Topic 2)

Refer to the exhibit.



```
# base image
FROM alpine

# Install python and pip
RUN apk add --update py2-pip

# Install python modules needed by the python app
COPY requirements.txt /usr/src/app/
RUN pip install --no-cache-dir -r /usr/src/app/requirements.txt

#copy local files for the app to run
COPY app.py /usr/src/app/
COPY templates/index.html /usr/src/app/templates/

EXPOSE 8080

#run the application
CMD ["python", "/usr/src/app/app.py"]
```

Which function does the EXPOSE line perform when building an image from this Dockerfile?

- A. Local port 8080 of the container that launched with this docker image is accessible from co-hosted containers and external clients.
- B. Local port 8080 is not reachable at all because no IP address is specified along with the EXPOSE command of the Dockerfile.
- C. Local port 8080 is accessible from other containers running on the same docker host as the container that launched with this docker image.
- D. Local port 8080 of the container that launched with this docker image is accessible to external clients.

**Answer: C**

**Explanation:**

By default, the EXPOSE instruction does not expose the container's ports to be accessible from the host. In other words, it only makes the stated ports available for inter-container interaction.

Whereas publishing a port using either -P or -p exposes it, exposing a port using EXPOSE or --expose does not publish it.

So, while exposed ports can only be accessed internally, published ports can be accessible by external containers and services.

<https://www.whitesourcesoftware.com/free-developer-tools/blog/docker-expose-port/>

**NEW QUESTION 48**

- (Exam Topic 2)

A new application is being developed that must be hardware independent. The application includes an administrative component which is accessed using a Windows desktop GUI. Installation and management of the environment must be fully automated. Which application deployment type meets the requirements?

- A. bare metal
- B. virtual Python environment
- C. container
- D. virtual machine

**Answer: C**

**NEW QUESTION 53**

- (Exam Topic 2)

Drag and drop the code from the bottom onto the box where the code is missing in the Bash script to complete the missing assignment.

```
#!/bin/bash

[ ] = 'date +%b-%d-%y'
[ ] = /home/usr/path/backup-$BACKUPTIME.tar.gz
[ ] = /home/usr/path/data_folder

tar -cpzf $DESTINATION $SOURCEFOLDER
```

BACKUPTIME

SOURCEFOLDER

DESTINATION

- A. Mastered
- B. Not Mastered

**Answer: A**

**Explanation:**

```
#!/bin/bash
```

```
BACKUPTIME = `date +%b-%d-%y`
```

```
DESTINATION = /home/usr/path/backup-$BACKUPTIME.tar.gz
```

```
SOURCEFOLDER = /home/usr/path/data_folder
```

```
tar -cpzf $DESTINATION $SOURCEFOLDER
```

```
BACKUPTIME
```

```
SOURCEFOLDER
```

```
DESTINATION
```

#### NEW QUESTION 56

- (Exam Topic 2)

Refer to the exhibit.

**user\_manager.py**

```
1 import psycopg2
2 import json, sys
3
4 # Load config file
5 config = None
6 with open('config.json') as config_file:
7     config = json.load(config_file)
8 if not config:
9     print("Error loading configuration file.")
10    sys.exit(1)
11
12 connection = psycopg2.connect(
13     database="users",
14     host=config["DB_USER"], user=config["DB_USER"], password=config["DB_PWD"]
15 )
16 connection.set_session()
17
18 def has_admin_role(username):
19     with connection.cursor() as cursor:
20         query = 'SELECT admin_role FROM users WHERE username = {0}'
21         cursor.execute(query.format(username))
22         result = cursor.fetchone()
23     return result
24
25 has_admin_role("ops.shared")
```

**config.json**

```
1 {
2     "DB_USER": "pguser",
3     "DB_PWD": "@123Qwer%4",
4     "DB_HOST": "devnetdb.example.com"
5 }
```

An engineer must check the admin rights of users on a database regularly and prepares the Python script to automate the process. The script connects to the database and runs a query. What is a security issue about the secrets in the code that relates to secret protection?

- A. They must be stored in configuration files if there is a possibility of leakage.
- B. They must be Base64-encoded if stored in the user database.
- C. They must be encrypted if stored in the user database.
- D. They must be stored in configuration files if no authentication will be used.

**Answer: D**

#### NEW QUESTION 57

- (Exam Topic 2)

Refer to the exhibit.

```
Code:
import requests

url = 'https://en.wikipedia.org/api/rest_v1/page/title/Cisco_Systems'
s = requests.Session()

def get_json(session=None, url="https://example.com"):
    try:
        if not session or type(session) is not requests.sessions.Session:
            raise Exception("Invalid session type")

        r = session.get(url)

        if r.status_code < 200 or r.status_code > 307:
            raise Exception("Status Code not within 2xx and 3xx")

        return r.json()

    except requests.exceptions.RequestException as e:
        raise e("Request failed")
    finally:
        session.close()

if __name__ == "__main__":
    items = get_json(session=s, url=url)
    [ ]

payload:
{'items': [{'title': 'Cisco Systems', 'page_id': 51746, 'rev': 930604297,
'tid': '58b40b30-20e7-11ea-a7a9-f1850c7cfe85', 'namespace': 0, 'user_id':
19450869, 'user_text': 'Dhruvh', 'timestamp': '2019-12-13T16:47:52Z', 'comment': '/* 1984-1995: Origins
and initial growth */', 'tags': [], 'restrictions': [], 'page_language':
'en', 'redirect': False}]}
```

Which command needs to be placed on the box where the code is missing to output the value of page\_id in the Python 3.7 script?

A)

```
print(items['items']['page_id'])
```

B)

```
print(items.get('items').get('page_id'))
```

C)

```
print(items.get('items')[0].get('page_id'))
```

D)

```
print(items['items']['page_id'].keys())
```

A. Option A

B. Option B

C. Option C

D. Option D

**Answer: C**

#### NEW QUESTION 60

- (Exam Topic 2)

A developer creates a script that configured multiple Cisco IOS XE devices in a corporate infrastructure. The internal test environment is unavailable, and no maintenance window is available to test on a low-priority production environment. Which resource is used to test the code before it is applied to the production environment?

A. Code Exchange

B. Cisco DevNet Learning Labs

C. Cisco DevNet Sandbox

D. Cisco Support

**Answer: C**

#### Explanation:

Reference: <https://developer.cisco.com/site/sandbox/>

#### NEW QUESTION 64

- (Exam Topic 2)

Drag and drop the code snippets from the bottom to the blanks in the code to complete the HTTP response. Not all options are used.



Request URL: http://www.example.com/

: GET

: 200 OK

Remote Address: [2606:2800:220:1:248:1893:25c8:1946]:80

Referrer Policy: strict-origin-when-cross-origin

Response Headersview source

Accept-Ranges: bytes

Age: 396561

Cache-Control: max-age=604800

: gzip

Content-Length: 648

: text/html; charset=UTF-8

Date: Sat, 20 Nov 2020 20:49:34 GMT

Etag: "3147526947+ident"

Expires: Sat, 21 Nov 2020 20:49:34 GMT

Last-Modified: Thu, 17 Oct 2019 07:18:26 GMT

Server: ECS (dna/63AA)

Vary: Accept-Encoding

X-Cache: HIT

Request Headersview source

Accept: text/html,application/xhtml+xml,application/xml;q=0.9,  
image/avif,image/webp,image/apng,\*/\*;q=0.8,application/signed-exchange;v=b3;q=0.9

Accept-Encoding: gzip, deflate

Accept-Language: en-US,en;q=0.9

Request Type	Request Control
Status Code	Content-Type
Request Method	Content Code
Content-Encoding	

- A. Mastered  
B. Not Mastered

**Answer:** A

**Explanation:**

Graphical user interface, text, application Description automatically generated

**NEW QUESTION 66**

- (Exam Topic 2)

Which platform is used to programmatically create a space and invite users for collaboration?

- A. Cisco Intersight  
B. Cisco Finesse  
C. Cisco Webex  
D. Cisco UCM

**Answer:** C

**NEW QUESTION 69**

- (Exam Topic 2)

Where is an IP packet routed if the packet does not match any routes in the routing table?

- A. firewall  
B. load balancer  
C. central switch  
D. default gateway

**Answer:** D

**NEW QUESTION 71**

- (Exam Topic 2)

Refer to the exhibit.



Returns the wireless lan controller info with given device ID:

```
{
  "response": {
    "adminEnabledPorts": [ 0 ],
    "apGroupName": "string",
    "deviceId": "string",
    "ethMacAddress": "string",
    "flexGroupName": "string",
    "id": "string",
    "instanceTenantId": "string",
    "instanceUuid": "string",
    "lagModeEnabled": true,
    "netconfEnabled": true,
    "wirelessLicenseInfo": "ADVANTAGE",
    "wirelessPackageInstalled": true
  },
  "version": "string"
}
```

Drag and drop the code from the bottom onto the blanks in the code to construct a cURL command using the Cisco DNA Center API. which will provide the details of a WLAN controller with Id af397748444. Not at options are used.

#### Answer Area

```
curl -L --request GET \
--url https://dna/intent/api/v1/ / / \
--header 'Content-Type: application/json' \
--header 'Accept:application/json'
```

network-device

id

wireless

wireless-info

controller

details

- A. Mastered
- B. Not Mastered

**Answer:** A

#### Explanation:

Diagram Description automatically generated

#### NEW QUESTION 76

- (Exam Topic 2)

Why is refactoring done during test-driven development?

- A. to enable larger objects and longer methods
- B. to improve maintainability and readability
- C. to ensure that the previous uses of the objects are explained
- D. to ensure the duplication of essential code

**Answer:** B

#### NEW QUESTION 81

- (Exam Topic 2)

What is a benefit of model-driven programmability?

- A. It addresses the static architecture of traditional networks being decentralized and complex.
- B. By modeling data, it ensures that vast quantities of data are usable for monitoring.
- C. It provides a programmatic and standards-based way of writing configurations to any network device.
- D. It simplifies management and operations by decoupling the networking hardware from its control mechanism.

**Answer:** D

#### NEW QUESTION 82

- (Exam Topic 2)

Which HTTP code group is issued when a request is received successfully, understood, and processed?

- A. 2xx
- B. 3xx
- C. 4xx
- D. 5xx

**Answer:** A

**Explanation:**

[https://www.w3.org/Protocols/rfc2616/rfc2616-sec10.html#:~:text=10.2%20Successful%20xx,received%2C%](https://www.w3.org/Protocols/rfc2616/rfc2616-sec10.html#:~:text=10.2%20Successful%20xx,received%2C%20)

**NEW QUESTION 83**

- (Exam Topic 2)

Refer to the exhibit.

**Local File Attachments**

To send local file attachments, simply post a message by including your access token in the Authorization header and the path to your local file with the files parameter. Optionally, you can also include a plain-text message with the attachment by using the text parameter. When uploading files directly from your local filesystem, your request will need to be a multipart/form-data request rather than JSON

```
curl --request POST \
  --form "files=@/home/desktop/example.png;type=image/png" \
  --form "roomId=Y21zY2....." \
  --form "text=example attached" \
  https://webexapis.com/v1/messages
```

A developer needs to upload a local file by using the REST API. The developer gathers information according to the documentation and sends the request by using the cURL command in the exhibit but gets an error code. Which action should be followed to get valid response?

- A. change content type as JSON
- B. add the authorization header with the access token
- C. add a username-password combination to request command
- D. change request method as GET

**Answer:** B

**Explanation:**

Reference: <https://developer.webex.com/docs/api/basics>

**NEW QUESTION 86**

- (Exam Topic 2)

What is a requirement when authenticating a RESTCONF API session with a router that runs Cisco IOS XE Software?

- A. No authentication is required.
- B. OAuth must be used.
- C. Basic authentication must be used.
- D. A token must be retrieved and the associated string must be embedded in the X-Auth-Token header.

**Answer:** C

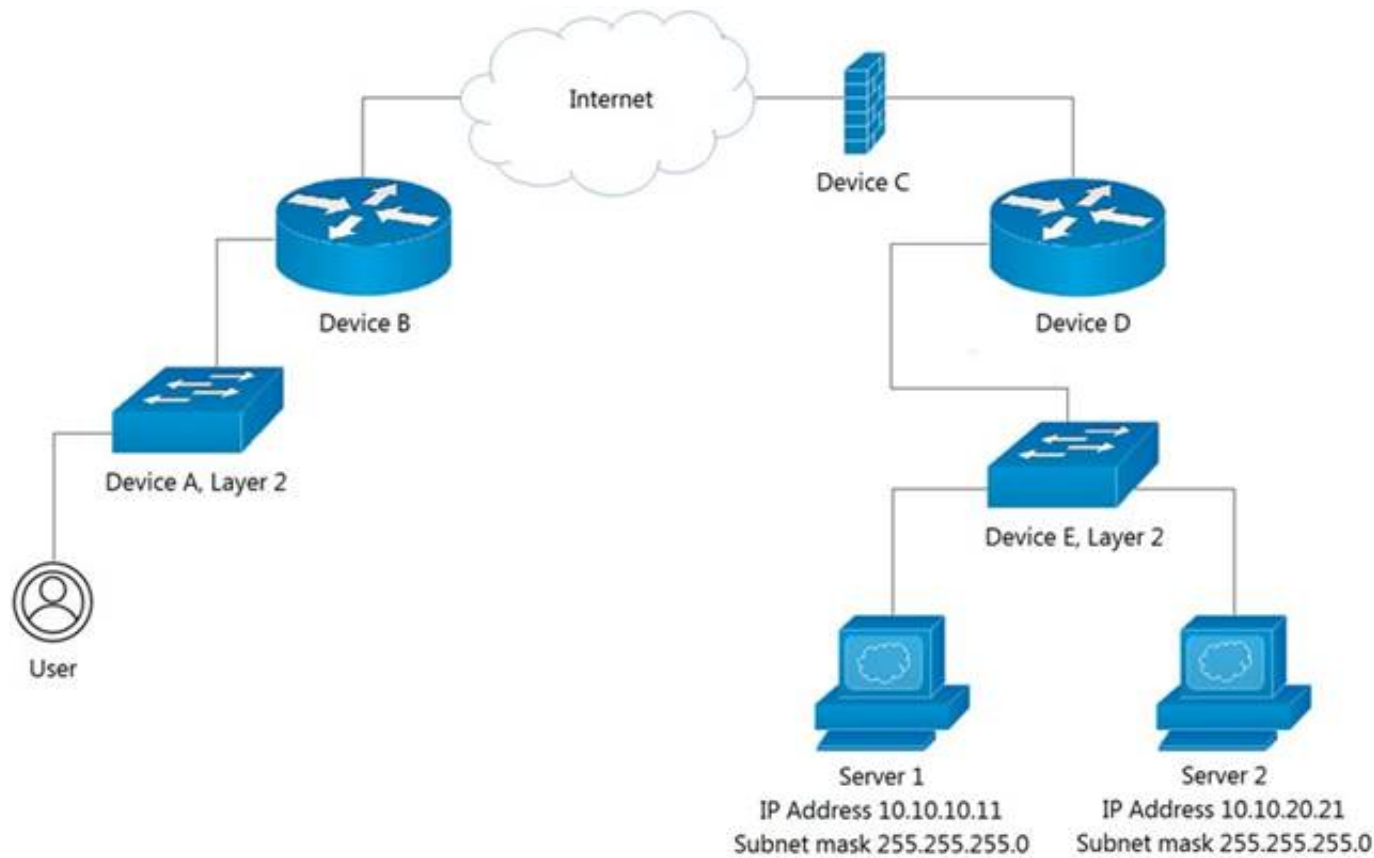
**Explanation:**

<https://www.cisco.com/c/en/us/td/docs/routers/csr1000/software/restapi/restapi/RESTAPIClient.html>

**NEW QUESTION 91**

- (Exam Topic 2)

Refer to the exhibit.



Which device limits traffic between server 1 and server 2?

- A. Device B
- B. Device C
- C. Device D
- D. Device E

**Answer: D**

#### NEW QUESTION 92

- (Exam Topic 2)

A developer is working on a feature for a new application. The changes in the existing branch named 'feat00304' must be integrated into a single commit with the current working primary branch named 'prodapp411926287'. Which git command must be used?

- A. git rebase --merge feat00304
- B. git merge --squash feat00304
- C. git push --rebase feat00304
- D. git checkout --squash feat00304

**Answer: B**

#### NEW QUESTION 95

- (Exam Topic 2)

Refer to the exhibit.

```

1  - hosts: servers
2    tasks:
3
4    - name: task1
5      apt:
6        name: apache2
7        state: absent
8
9    - name: task2
10     apt:
11       name: nginx
12       state: present
13
14    - name: task3
15     apt:
16       name: "*"
17       state: latest
  
```

A developer must check packages on web load balancers that use nginx packages. The developer updates the servers as required in Ansible inventory and prepares an Ansible playbook to automate this workflow on related servers. Which process is being automated by the Ansible playbook?

- A. verifying that nginx is installed only if apache2 is unavailable on the system, and then updating all the other packages
- B. verifying, without installing, that apache2 is unavailable and that nginx is installed, and then updating the repository to the latest version
- C. uninstalling the apache2 server, installing the nginx server, and then updating all the packages to the latest version
- D. installing nginx, uninstalling apache2, and then verifying that the package repository is at the latest version

**Answer:** B

#### NEW QUESTION 100

- (Exam Topic 2)

What is a difference between a synchronous API and an asynchronous API?

- A. An asynchronous API can make offline calls while synchronous APIs do not have this capability.
- B. Synchronous API calls are returned immediately while asynchronous calls do not guarantee an immediate response.
- C. Synchronous API calls require an authentication header to be sent while asynchronous calls do not require authentication.
- D. An asynchronous API can make a larger number of calls in a specified time period than a synchronous API.

**Answer:** B

#### Explanation:

Reference:

<https://stackoverflow.com/questions/36213948/what-is-the-difference-between-asynchronous-calls-and-callback>

#### NEW QUESTION 102

- (Exam Topic 2)

Refer to the exhibit.

```
1 #/bin/bash
2
3 curl https://cisco devnet.com/devnet-0.13.tar.gz -o /tmp/devnet.tar.gz
4 tar -zxvf /tmp/devnet.tar.gz
5 mkdir /tmp/devnet && pushd /tmp/devnet
6
7 ./configure && make && make install
8
9 systemctl enable devnet
10 systemctl start devnet
```

A network engineer works on a Cisco DevNet application that is available for download on the Cisco DevNet website. The engineer prepares a bash script to automate operations that relate to the application. Which workflow is being automated in the bash script?

- A. compilation and configuration of the Cisco DevNet application so that it must be started manually
- B. compilation, installation, and configuration of the Cisco DevNet application so that it starts automatically
- C. compilation and installation of the Cisco DevNet application for an autonomous deployment model
- D. installation and configuration of the Cisco DevNet application so that it starts manually

**Answer:** B

#### NEW QUESTION 106

- (Exam Topic 2)

Several teams at a company are developing a new CRM solution to track customer interactions with a goal of improving customer satisfaction and driving higher revenue. The proposed solution contains these components:

- MySQL database that stores data about customers
- HTML5 and JavaScript UI that runs on Apache
- REST API written in Python

What are two advantages of applying the MVC design pattern to the development of the solution? (Choose two.)

- A. to enable multiple views of the same data to be presented to different groups of users
- B. to provide separation between the view and the model by ensuring that all logic is separated out into the controller
- C. to ensure data consistency, which requires that changes to the view are also made to the model
- D. to ensure that only one instance of the data model can be created
- E. to provide only a single view of the data to ensure consistency

**Answer:** BD

#### NEW QUESTION 109

- (Exam Topic 2)

How are load balancers used in modern application deployment?

- A. Allow traffic to continue as new compute units are brought up and old compute units are taken down.
- B. Allow http and https traffic to continue as old compute units are discontinued before new units are brought up.
- C. Turn off traffic and take down compute units, then update and bring the compute units back up.
- D. Bring up new compute units, test the compute units, and switch the traffic from old units to new units.

**Answer:** D



### NEW QUESTION 113

- (Exam Topic 2)

Which implementation creates a group of devices on one or more LANs that are configured to communicate as if they were attached to the same wire?

- A. WLAN
- B. VLAN
- C. IPsec
- D. HSRP

**Answer: B**

### NEW QUESTION 114

- (Exam Topic 2)

Refer to the exhibit.

```

module ietf-ip {
  namespace "urn:ietf:params:xml:ns:yang:ietf-ip";
  prefix ip;
  import ietf-interfaces {
    prefix if;
  }
  augment "/if:interfaces/if:interface" {
    container ipv4 {
      leaf enabled {
        type boolean;
        default true;
      }
      list address {
        key "ip";
        leaf ip {
          type inet:ipv4-address-no-zone;
        }
        choice subnet {
          mandatory true;
          leaf prefix-length {
            type uint8 {
              range "0..32";
            }
          }
          leaf netmask {
            type yang:dotted-quad;
          }
        }
      }
    }
  }
}

module ietf-interfaces {
  namespace "urn:ietf:params:xml:ns:yang:ietf-interfaces";
  prefix if;
  typedef interface-ref {
    type leafref {
      path "/if:interfaces/if:interface/if:name";
    }
  }
  container interfaces {
    list interface {
      key "name";
      leaf name {
        type string;
      }
      leaf description {
        type string;
      }
      leaf type {
        type identityref {
          base interface-type;
        }
        mandatory true;
      }
      leaf enabled {
        type boolean;
        default "true";
      }
    }
  }
}

```

Which JSON snippet configures a new interface according to YANG model?

A)

```

{"ietf-interfaces:interface": {
  "name": "Loopback100",
  "enabled": true,
  "ietf-ip:ipv4": {
    "address": [
      {
        "ip": "10.255.254.1",
        "netmask": "255.255.255.0"
      }
    ]
  }
}

```

B)

```

{"ietf-interfaces": {
  interface: {
    "name": "Loopback100",
    "enabled": true,
    "ietf-ip": {
      ipv4: {
        "address": [
          {
            "ip": "10.255.254.1",
            "netmask": "255.255.255.0"
          }
        ]
      }
    }
  }
}

```

C)

```

{
  "interface" {
    "name": "Loopback100",
    "enabled": true,
    "ipv4": {
      "address": [
        {
          "ip": "10.255.254.1",
          "netmask": "255.255.255.0"
        }
      ]
    }
  }
}

```

D)

```
“ietf-interfaces:interface”: {  
  “name”: “Loopback100”,  
  “enabled”: true,  
  “ietf-ip:ipv4:address”: [  
    {  
      “ip”: “10.255.254.1”,  
      “netmask”: “255.255.255.0”  
    } ]  
}
```

- A. Option A
- B. Option B
- C. Option C
- D. Option D

**Answer: B****NEW QUESTION 118**

- (Exam Topic 2)

Refer to the exhibit.

```
<rpc message-id="101" xmlns="urn:ietf:params:xml:ns:Netconf:base:1.0">  
  <get-conflg>  
    <source>  
      <running/>  
    </source>  
    <filter>  
      <interfaces xmlns=" urn:ietf:params:xml:ns:yang:ietf-interfaces">  
        <interface>  
          <name/>  
        </interface>  
      </interfaces>  
    </filter>  
  </get-conflg>  
</rpc>
```

A network engineer uses model-driven programmability to monitor and perform changes on the network. The network engineer decides to use the NETCONF RPC message to complete one of their tasks. What is accomplished by sending the RPC message?

- A. The running-config of the device is returned.
- B. The name of each interface is reset to a default name.
- C. All the YANG capabilities supported by the device are returned.
- D. A list of interface names is returned.

**Answer: D****NEW QUESTION 123**

- (Exam Topic 2)

A developer created a new secure API and is testing the functionality locally. The API was added to a container for further testing, and other team members and applications need to connect to the API. Which command exposes the API in the container as port 8443 and allows connections external to the host?

- A. docker run -p 127.0.0.1:80:8443/tcp myapiservice
- B. docker run -p 0.0.0.0:443:8443/tcp myapiservice
- C. docker run -p 0.0.0.0:8443:443/tcp myapiservice
- D. docker run -p 127.0.0.1:443:8443/tcp myapiservice

**Answer: C****NEW QUESTION 128**

- (Exam Topic 2)

What is a benefit of organizing into modules?

- A. improves collaboration of the development team
- B. makes it easier to deal with large and complex systems
- C. enables the code to be broken down into layers
- D. enables the inclusion of more programming languages in the code

**Answer: B****Explanation:**

From Wikipedia ([https://en.wikipedia.org/wiki/Modular\\_programming](https://en.wikipedia.org/wiki/Modular_programming)) "Modular programming is closely related to structured programming and object-oriented programming, all having the same goal of facilitating the construction of large software programs and systems by decomposition into smaller pieces."

#### NEW QUESTION 132

- (Exam Topic 2)

What are two key capabilities of Cisco Finesse? (Choose two.)

- A. Finesse includes an RPC API that enables the development of custom gadgets.
- B. Agents access Finesse from a browser without needing to install or configure anything on the client machine.
- C. Finesse automatically collects telemetry data
- D. An OpenDNS utility is preconfigured and ready to use on Finesse.
- E. Gadget containers provide a seamless experience in a single user interface.

**Answer:** BE

#### NEW QUESTION 133

- (Exam Topic 2)

Which HTTP response code should be returned when the request is completed, but there is no content to send for the request?

- A. A.-100B.204C.302D.402

**Answer:** B

#### Explanation:

Reference: [https://developer.mozilla.org/en-US/docs/Web/HTTP/Status#successful\\_responses](https://developer.mozilla.org/en-US/docs/Web/HTTP/Status#successful_responses)

#### NEW QUESTION 134

- (Exam Topic 1)

What should a CI/CD pipeline aim to achieve?

- A. to allow manual testing before deployment
- B. to require minimal manual interaction
- C. to support new deployments on a fixed monthly schedule
- D. to provide a documented process for feedback

**Answer:** A

#### NEW QUESTION 135

- (Exam Topic 1)

A small company has 5 servers and 50 clients. What are two reasons an engineer should split this network into separate client and server subnets? (Choose two)

- A. Internet access to the servers will be denied on the router.
- B. A router will limit the traffic types between the clients and servers.
- C. Subnets will split domains to limit failures.
- D. A router will bridge the traffic between clients and servers.
- E. Subnets provide more IP address space for clients and servers.

**Answer:** AC

#### NEW QUESTION 138

- (Exam Topic 1)

A developer needs to prepare the file README.md in the working tree for the next commit operation using Git. Which command needs to be used to accomplish this?

- A. git add README.md staging
- B. git -a README.md
- C. git add README.md
- D. git commit README.md

**Answer:** C

#### Explanation:

Reference: <https://teamtreehouse.com/community/committing-the-readmemd-file-to-repository>

#### NEW QUESTION 141

- (Exam Topic 1)

Which action does the Git command git merge allow the development to perform?

- A. Combine multiple sequence of commits into one unified history.
- B. Push changes to the remote repository
- C. Switch between branches
- D. Create, list, rename, and delete branches

**Answer:** A

#### Explanation:

Reference: <https://www.atlassian.com/git/tutorials/using-branches/git-merge>

#### NEW QUESTION 145

- (Exam Topic 1)  
When using the Bash shell, how is the output of the devnet command saved to a file named "output.txt"?

- A. devnet & output.txt
- B. devnet > output.txt
- C. devnet < output.txt
- D. devnet | output.txt

Answer: B

Explanation:  
Reference: <https://askubuntu.com/questions/420981/how-do-i-save-terminal-output-to-a-file>

NEW QUESTION 150

- (Exam Topic 1)  
Which service provides a directory lookup for IP addresses and host names?

- A. DNS
- B. DHCP
- C. SNMP
- D. NAT

Answer: A

NEW QUESTION 151

- (Exam Topic 1)  
Drag and drop the element of the Finesse API on the left onto the description of its functionality on the right.

User	Represents a skill group in Unified CCE.
Dialog	Represents the current state of the system.
Media	Represents an agent, supervisor or administrator.
Queue	Represents a group of users.
Team	Represents a call and the participants if the media type is voice.
SystemInfo	Sends client-side logging to the Finesse Server.
ClientLogs	Represents a user's state in a non-voice Media Routing Domain.

- A. Mastered
- B. Not Mastered

Answer: A

Explanation:  
1 – D, 2 – F, 3 – A, 4 – E, 5 – B, 6 – G, 7 - C

NEW QUESTION 153

- (Exam Topic 1)  
Refer to the exhibit.



List the clients that have used this network in the timespan

#### HTTP REQUEST

GET /networks/ {networkId}/clients

#### PARAMETERS

t0

The beginning of the timespan for the data. The maximum lookback period is 31 days from today.

timespan

The timespan for which the information will be fetched. If specifying timespan, do not specify parameter t0. The value must be in seconds and be less than or equal to 31 days. The default is 1 day.

perPage

The number of entries per page returned. Acceptable range is 3 – 1000. Default is 10.

startingAfter

A token used by the server to indicate the start of the page. Often this is a timestamp or an ID but it is not limited to those. This parameter should not be defined by client applications. The link for the first, last, prev, or next page in the HTTP Link header should define it.

endingBefore

A token used by the server to indicate the end of the page. Often this is a timestamp or an ID but it is not limited to those. This parameter should not be defined by client applications. The link for the first, last, prev, or next page in the HTTP Link header should define it.

```
base_url = "https://api.meraki.com/api/v0"
network_id = "L_12345678910"
api_key = "1098hadpfsiapsf8ahf8ohp"
requests.<item 1> (
    <item 2> + "<item 3>/" + <item 4>, "<item 5>",
    headers = {
        "X-Cisco-Meraki-API-Key": <item 6> ,
        "Content-Type": "<item 7>"
    },
    <item 8>={"<item 9>":<item 10>})
```

Drag and drop the code from the left code from the left onto the item number on the right to complete the Meraki code to obtain a list of client which have used this network.

params	<item 1>
networks	<item 2>
timespan	<item 3>
get	<item 4>
432000	<item 5>
base_url	<item 6>
application/json	<item 7>
network_id	<item 8>
clients	<item 9>
api_key	<item 10>

- A. Mastered
- B. Not Mastered

Answer: A

Explanation:

1 - d, 2 - f, 3 - b, 4 - h, 5 - i, 6 – j, 7 - g, 8 - a, 9 - c, 10 - e

NEW QUESTION 157

- (Exam Topic 1)

Before which process is code review performed when version control is used?

- A. committing code
- B. branching code
- C. merge of code
- D. checkout of code

Answer: C

NEW QUESTION 159

- (Exam Topic 1)

Drag and drop the HTTP methods from the left onto their generally accepted corresponding create, read, update, and delete operations on the right.

DELETE	Create
GET	Read
PATCH	Update
POST	Update
PUT	Delete

- A. Mastered
- B. Not Mastered

Answer: A

Explanation:

1 – D, 2 – B, 3 – C, 4 – E, 5 – A

Reference:

<https://www.cisco.com/c/en/us/td/docs/cloud-systems-management/application-policy-infrastructure-controller-e>  
OR

Answer : Post  
Get Put Delete

NEW QUESTION 160

- (Exam Topic 1)

A Company is looking for cloud deployment which will use the on-premise infrastructure, is user self-service, and easy to scale. Which cloud solution should be selected for these requirements?

- A. multi
- B. public
- C. private
- D. hybrid

Answer: C

NEW QUESTION 162

- (Exam Topic 1)

Refer to the exhibit.



```
$ diff -u5 fish.py cat.py
--- fish.py      2020-01-02 09:41:02.840000000 +0100
+++ cat.py       2020-01-02 09:41:06.8859999800 +0100
@@ -160,11 +160,12 @@

    @single_request_timeout.setter
    def single_request_timeout(self, value):
        """The timeout (seconds) for a single HTTP REST API request."""
        check_type(value, int, optional=True)
-       assert value is None or value > 0
+       if value is not None and value <= 0:
+           raise ValueError("single_request_timeout must be positive integer")
        self._single_request_timeout = value

    @property
    def wait_on_rate_limit(self)
        """Automatic rate-limit handling.
```

The output of a unified diff when comparing two versions of a python script is shown. Which two "single\_request\_timeout ()"

A.

```
file: cat.py

160
161     @single_request_timeout.setter
162     def single_request_timeout(self, value):
163         """The timeout (seconds) for a single HTTP REST API request."""
164         check_type(value, int, optional=True)
165         assert value is None or value > 0
166         if value is not None and value <= 0:
167             raise ValueError("single_request_timeout must be positive integer")
168         self._single_request_timeout = value
169
```

B.

```
file: fish.py

160
161     @single_request_timeout.setter
162     def single_request_timeout(self, value):
163         """The timeout (seconds) for a single HTTP REST API request."""
164         check_type(value, int, optional=True)
165         assert value is None or value > 0
166         self._single_request_timeout = value
167
```

C.

```
file: cat.py

160
161     @single_request_timeout.setter
162     def single_request_timeout(self, value):
163         """The timeout (seconds) for a single HTTP REST API request."""
164         check_type(value, int, optional=True)
165         if value is not None and value <= 0:
166             raise ValueError("single_request_timeout must be positive integer")
167         self._single_request_timeout = value
168
169
```

D.

```
file: fish.py

160
161     @single_request_timeout.setter
162     def single_request_timeout(self, value):
163         """The timeout (seconds) for a single HTTP REST API request."""
164         check_type(value, int, optional=True)
165         self._single_request_timeout = value
```

E.

```
file: cat.py
172
173 @single_request_timeout.setter
174 def single_request_timeout(self, value):
175     """The timeout (seconds) for a single HTTP REST API request."""
176     check_type(value, int, optional=True)
177     if value is not None and value <= 0:
178         raise ValueError("single_request_timeout must be positive integer")
179     self._single_request_timeout = value
180
```

- F. Option A
- G. Option B
- H. Option C
- I. Option D
- J. Option E

**Answer:** BC

#### NEW QUESTION 165

- (Exam Topic 1)

A developer is writing an application that a REST API and the application requires a valid from the API which element of the response is used in the conditional check?

- A. URL
- B. Status code
- C. Link
- D. Body
- E. Headers

**Answer:** B

#### NEW QUESTION 167

- (Exam Topic 1)

Refer to the exhibit.

```
docker run -p 3000:5000 f877cbf2ff33
```

A process on the host wants to access the service running inside this Docker container. Which port is used to make a connection?

- A. only outbound connections between 3000 and 5000 are possible
- B. port 3000
- C. any port between 3000 and 5000
- D. port 5000

**Answer:** B

#### NEW QUESTION 170

- (Exam Topic 1)

Refer to the exhibit.

```
def process_devices(dnac, token):
    url = "https://{}/api/v1/network-device".format(dnac['host'])
    headers["x-auth-token"] = token
    response = requests.get(url, headers=headers, verify=False)
    data = response.json()
    for item in data['response']:
        print(item["hostname"], " ", item["managementIpAddress"])
```

What is the function of the python script?

- A. Count and print the total number of available devices.
- B. Iterate over a list of network devices and write all device names and management IP addresses to an output file.
- C. Iterate over a list of network devices and write all device type and associated management IP address.
- D. For each device that is returned, display the device and, for each device, print the device name and management IP address.
- E. Loop through the returned list of network devices and, for each device, print the device name management IP address.

**Answer:** E

#### NEW QUESTION 172

- (Exam Topic 1)

Refer to Exhibit.



```
<books>
  <science>
    <biology>10.00</biology>
    <geology>9.00</geology>
    <chemistry>8.00</chemistry>
  </science>
  <math>
    <calculus>20.00</calculus>
    <algebra>12.00</algebra>
  </math>
</books>
```

Which JSON is equivalent to the XML-encoded data.

A)

```
{
  "books": {
    "science": {
      "biology": "10.00",
      "geology": "9.00",
      "chemistry": "8.00"
    },
    "math": {
      "calculus": "20.00",
      "algebra": "12.00"
    }
  }
}
```

B)

```
[ {
  "books": {
    "science": {
      "biology": "10.00",
      "geology": "9.00",
      "chemistry": "8.00"
    },
    "math": {
      "calculus": "20.00",
      "algebra": "12.00"
    }
  }
} ]
```

C)

```
{
  "books": [
    "science", {
      "biology": "10.00",
      "geology": "9.00",
      "chemistry": "8.00"
    },
    "math", {
      "calculus": "20.00",
      "algebra": "12.00"
    }
  ]
}
```

D)

```
{
  "books": [
    "science": {
      "biology": "10.00",
      "geology": "9.00",
      "chemistry": "8.00"
    },
    "math": {
      "calculus": "20.00",
      "algebra": "12.00"
    }
  ]
}
```

- A. Option A
- B. Option B
- C. Option C
- D. Option D

Answer: A

NEW QUESTION 176

- (Exam Topic 1)

Users cannot access a webserver and after the traffic is captured, the capture too\* shows an ICMP packet that reports "communication administratively prohibited"  
What Is the cause of this webserver access Issue?

- A. An access list along the path is blocking the traffic
- B. The traffic is not allowed to be translated with NAT and dropped.
- C. Users must authenticate on the webserver to access It
- D. A router along the path is overloaded and thus dropping traffic

Answer: A

NEW QUESTION 179

- (Exam Topic 1)

Drag and Drop the GIT commands from the left onto the right that add modified local files to a remote repository. Not all options are used

git push	Git command one
git add .	Git command two
git checkout -b "new branch"	Git command three
git commit -m "this is my edit"	
git pull	

- A. Mastered
- B. Not Mastered

Answer: A

Explanation:

git add .  
git commit -m "this is my edit" git push

NEW QUESTION 184

- (Exam Topic 1)

Which principle is a value from the manifesto for Agile software development?

- A. adhering to a plan over responding to requirements
- B. detailed documentation over working software
- C. processes and tools over teams and inter actions
- D. customer collaboration over contract negotiation

**Answer:** D

**Explanation:**

Reference: [https://www.cisco.com/c/dam/global/en\\_hk/solutions/collaboration/files/agile\\_product\\_development.pdf](https://www.cisco.com/c/dam/global/en_hk/solutions/collaboration/files/agile_product_development.pdf)

#### **NEW QUESTION 186**

- (Exam Topic 1)

Which two concepts describe test-driven development? (Choose two.)

- A. It enables code refactoring.
- B. Write a test before writing code.
- C. Implementation is driven by incremental testing of release candidates.
- D. User acceptance testers development the test requirements.
- E. Tests are created when code is ready for release.

**Answer:** BC

**Explanation:**

[https://www.tutorialspoint.com/software\\_testing\\_dictionary/release\\_candidate.htm](https://www.tutorialspoint.com/software_testing_dictionary/release_candidate.htm)

#### **NEW QUESTION 189**

- (Exam Topic 1)

Which two items are Cisco DevNet resources? (Choose two.)

- A. TAC support
- B. Bitbucket
- C. Sandbox
- D. Software research
- E. API Documentation

**Answer:** CE

**Explanation:**

Reference: <https://developer.cisco.com/>

#### **NEW QUESTION 194**

- (Exam Topic 1)

In DNS, which record specifies an alias that refers to another name that ultimately resolves to an IP address?

- A. AAA
- B. SOA
- C. NS
- D. CNAME

**Answer:** D

**Explanation:**

Reference: <https://ns1.com/resources/dns-types-records-servers-and-queries>

#### **NEW QUESTION 196**

- (Exam Topic 1)

Refer to the exhibit.

### List Rooms

List rooms.

The `title` of the room for 1:1 rooms will be the display name of the other person.

By default, lists rooms to which the authenticated user belongs.

Long result sets will be split into [pages](#).

GET

`/v1/rooms`

#### Query Parameters

Name	Description
<code>teamId</code> string	List rooms associated with a team, by ID.
<code>type</code> string	List rooms by tape. <i>Possible values: direct, group</i>
<code>sortBy</code> string	Sort results. <i>Possible values: id, lastactivity, created</i>
<code>max</code> number	Limit the maximum number of rooms in the response.

Default: 100

Fill in the blank to complete the query parameter and value so that the result set is returned in reverse chronological order (most recent first) based on when message were entered.

HTTP GET /v1/rooms \_\_\_\_\_

- A. Mastered
- B. Not Mastered

Answer: A

Explanation:

HTTP GET /v1/rooms ?sortBy=lastactivity

NEW QUESTION 201

- (Exam Topic 1)

A function `my_func()` returns `True` when it executes normally. Which python snippet tests `my_func()`?

```
def test_func(self):  
    self.assertTrue(my_func())
```

```
def test_func(self):  
    self.assertRaises(my_func())
```

```
def test_func(self):  
    self.assertEqual(my_func(), '{true}')
```

```
def test_func(self):  
    self.assertFalse(my_func())
```

- A. Option A
- B. Option B
- C. Option C
- D. Option D



**Answer:** B

#### NEW QUESTION 206

- (Exam Topic 1)

Which two types of NAT are used in a network? (Choose two.)

- A. Static NAT
- B. Normal NAT
- C. Multicast NAT
- D. Dynamic NAT
- E. Router NAT

**Answer:** AD

#### Explanation:

Reference: <https://www.dummies.com/programming/networking/cisco/types-of-network-address-translation/>

#### NEW QUESTION 208

- (Exam Topic 1)

Which way should be used to safely the API keys?

- A. In an environment variable unique to the system database
- B. Encrypted in a configuration file that is separate from the code
- C. Encrypted in the code in a function
- D. Plain text in the code as a constant

**Answer:** B

#### NEW QUESTION 209

- (Exam Topic 1)

Fill in the blanks to complete the Bash script in which each file in a directory is renamed to its SHA256 hash?

```
TARGET_DIR=/usr/local/certs
for f in [ ] [ ]; do
    [ ] $f `openssl sha -sha256 -r < $f | cut -f1 -d' '`
done
```

- A. Mastered
- B. Not Mastered

**Answer:** A

#### Explanation:

Check below the answer exact.

```
TARGET_DIR=/usr/local/certs
for f in `ls [ ] $TARGET_DIR`; do
    mv [ ] $f `openssl sha -sha256 -r < $f | cut -f1 -d' '`
done
```

#### NEW QUESTION 214

- (Exam Topic 1)

Which two elements are foundational principles of DevOps? (Choose two.)

- A. designing applications as microservices
- B. encouraging containers for the deployment of applications
- C. organizing cross-functional teams over organizational silos
- D. optimizing the cost of infrastructures
- E. automating over documenting

**Answer:** CE

#### NEW QUESTION 219

- (Exam Topic 1)

Drag and drop the requests from the left into the correct order on the right to create and check the path trace between two devices using Cisco DNA center API.

GET /api/v1/flow-analysis/{flowAnalysisId}	Step 1
POST /api/v1/flow-analysis	Step 2
POST /api/system/v1/auth/token	Step 3
GET /api/v1/network-device/ and choose IP of source and destination devices	Step 4

- A. Mastered
- B. Not Mastered

Answer: A

Explanation:  
1 – C, 2 – D, 3 – B, 4 - A

NEW QUESTION 221  
- (Exam Topic 1)  
Refer to the exhibit.

HTTP REQUEST

POST /organizations/{organizationId}/networks

PARAMETERS

name

The name of the new network

type

The type of the new network. Valid types are wireless, appliance, switch, systemsManager, camera, cellularGateway, or a space-separated list of those for a combined network.

tags

A space-separated list of tags to be applied to the network

timeZone

The timezone of the network. For a list of allowed timezones, please see the 'TZ' column in the table in [this article](#).

copyFromNetworkId

The ID of the network to copy configuration from. Other provided parameters will override the copied configuration, except type which must match this network's type exactly.

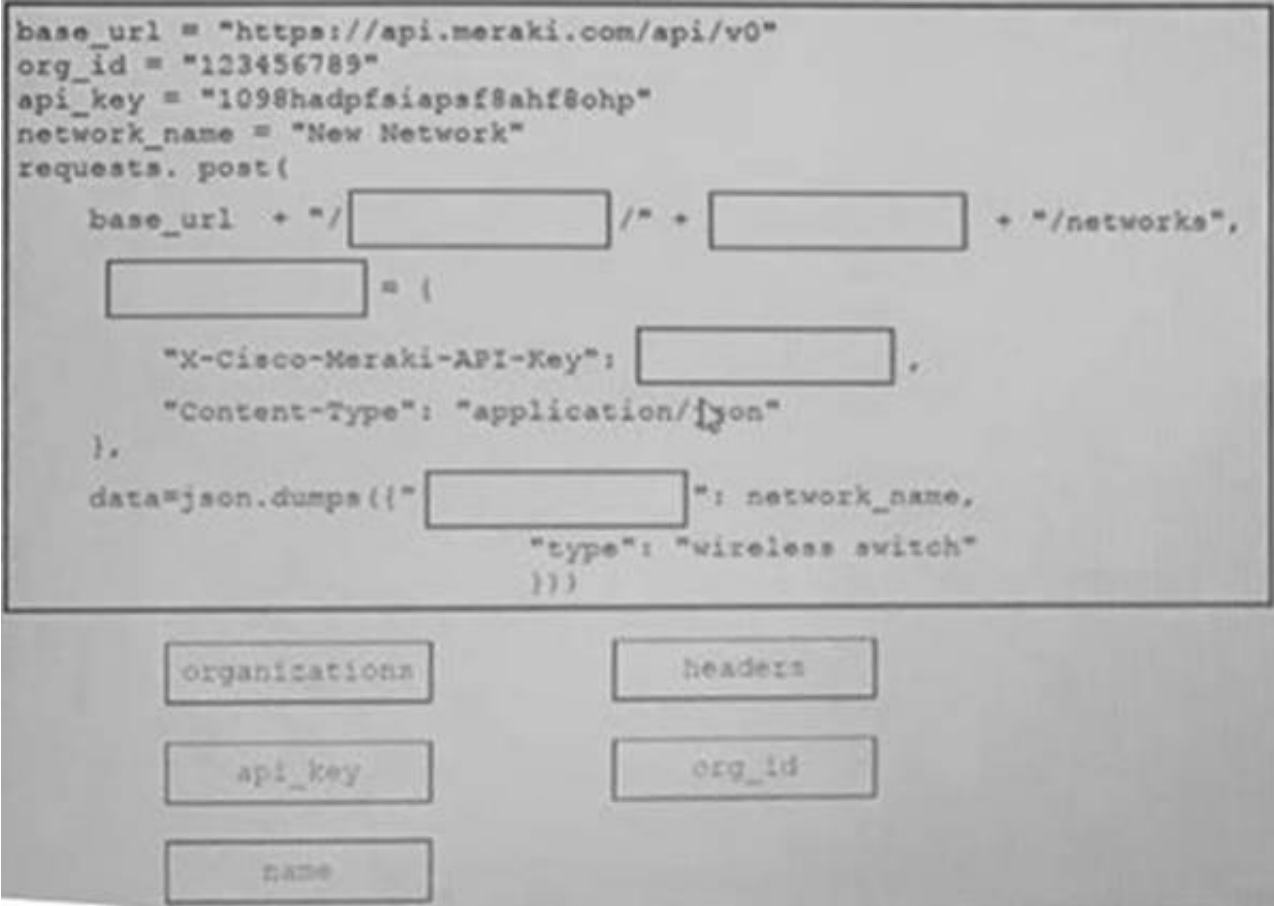
disableMyMerakiCom

Disables the local device status pages (my.meraki.com, ap.meraki.com, switch.meraki.com, wired.meraki.com). Optional (defaults to false)

disableRemoteStatusPage

Disables access to the device status page (http://[device's LAN IP]). Optional. Can only be set if

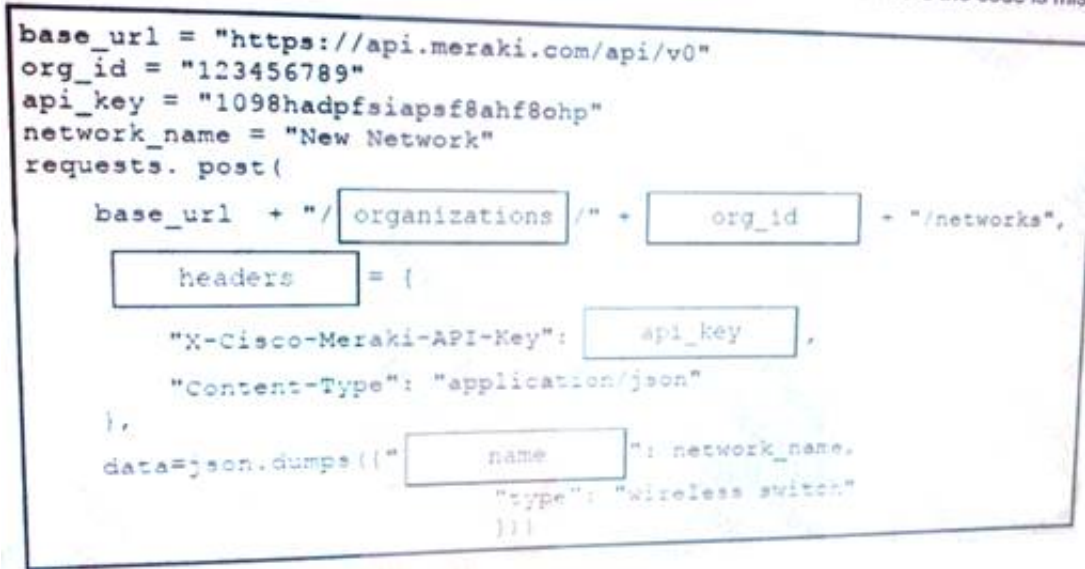
Drag and Drop the code from the bottom onto the box where the code is missing on the Meraki Python script to create a new network



- A. Mastered
- B. Not Mastered

Answer: A

Explanation:



NEW QUESTION 226

- (Exam Topic 1)

Drag and drop the network automation interfaces from the left onto the transport protocols that they support on the right.

SSH	gRPC
HTTP	
HTTP/2	NETCONF
HTTPS	RESTCONF

- A. Mastered
- B. Not Mastered



**Answer:** A

**Explanation:**

gRPC = C, NETCONF = A, RESTCONF = B, D OR

#### NEW QUESTION 231

- (Exam Topic 1)

Which type of threat occur when an attacker can send hostile data to an interpreter within an application?

- A. Cross-site scripting
- B. Sensitive data exposure
- C. Broken authentication
- D. Injection

**Answer:** D

**Explanation:**

Reference: [https://owasp.org/www-project-top-ten/OWASP\\_Top\\_Ten\\_2017/Top\\_10-2017\\_A1-Injection](https://owasp.org/www-project-top-ten/OWASP_Top_Ten_2017/Top_10-2017_A1-Injection)

#### NEW QUESTION 235

- (Exam Topic 1)

Drag and drop the Python code from the left onto the correct step on the right to call a REST API.

<pre>response = requests.post(url, data=json.dumps(payload), \ headers=header, verify=False)</pre>	Step 1 – Import the correct libraries.
<pre>ticket = r_json["Token"] print (ticket)</pre>	Step 2 – Declare the necessary variable.
<pre>(_json = response.json() print(r_json)</pre>	Step 3 – Send the HTTP Request.
<pre>import requests import json</pre>	Step 4 – Format and display the response in JSON readable format.
<pre>controller = 'devnetapi.cisco.com/sandbox/dnacenter' url = 'https://' + controller + '/dna/system/api/v1/auth/token' payload = { 'username': 'devnetuser', 'password': 'pa55word' } header = { 'Content-type': 'application/json' }</pre>	Step 5 – Parse the response to display the Service Ticket.

- A. Mastered
- B. Not Mastered

**Answer:** A

**Explanation:**

<pre>response = requests.post(url, data=json.dumps(payload), \ headers=header, verify=False)</pre>	<pre>import requests import json</pre>
<pre>ticket = r_json["Token"] print (ticket)</pre>	<pre>controller = 'devnetapi.cisco.com/sandbox/dnacenter' url = 'https://' + controller + '/dna/system/api/v1/auth/token' payload = { 'username': 'devnetuser', 'password': 'pa55word' } header = { 'Content-type': 'application/json' }</pre>
<pre>(_json = response.json() print(r_json)</pre>	<pre>response = requests.post(url, data=json.dumps(payload), \ headers=header, verify=False)</pre>
<pre>import requests import json</pre>	<pre>(_json = response.json() print(r_json)</pre>
<pre>controller = 'devnetapi.cisco.com/sandbox/dnacenter' url = 'https://' + controller + '/dna/system/api/v1/auth/token' payload = { 'username': 'devnetuser', 'password': 'pa55word' } header = { 'Content-type': 'application/json' }</pre>	<pre>ticket = r_json["Token"] print (ticket)</pre>



NEW QUESTION 236

- (Exam Topic 1)  
Refer to the exhibit.

```
#!/bin/bash
<item 1>='date +%b-%d-%y'

<item 2>=/home/usr/path/backup-$BACKUPTIME.tar.gz

<item 3>=/home/usr/path/data_folder

tar -cpzf $DESTINATION $SOURCEFOLDER
```

Drag and drop the variables from the left onto the item numbers on the right that match the missing assignments in the exhibit.

BACKUPTIME	<item 1>
SOURCEFOLDER	<item 2>
DESTINATION	<item 3>

- A. Mastered
- B. Not Mastered

Answer: A

Explanation:

1 – A, 2 – C, 3 – B  
Reference: <https://medium.com/@fotios.floros/linux-backup-script-1722cc9c2bf6> (use tar in order to create your backup file)

NEW QUESTION 241

- (Exam Topic 1)  
Which product provides network controller-level management features?

- A. Cisco DNA Center
- B. Cisco NX-OS
- C. Cisco UCS Manager
- D. Cisco ISE

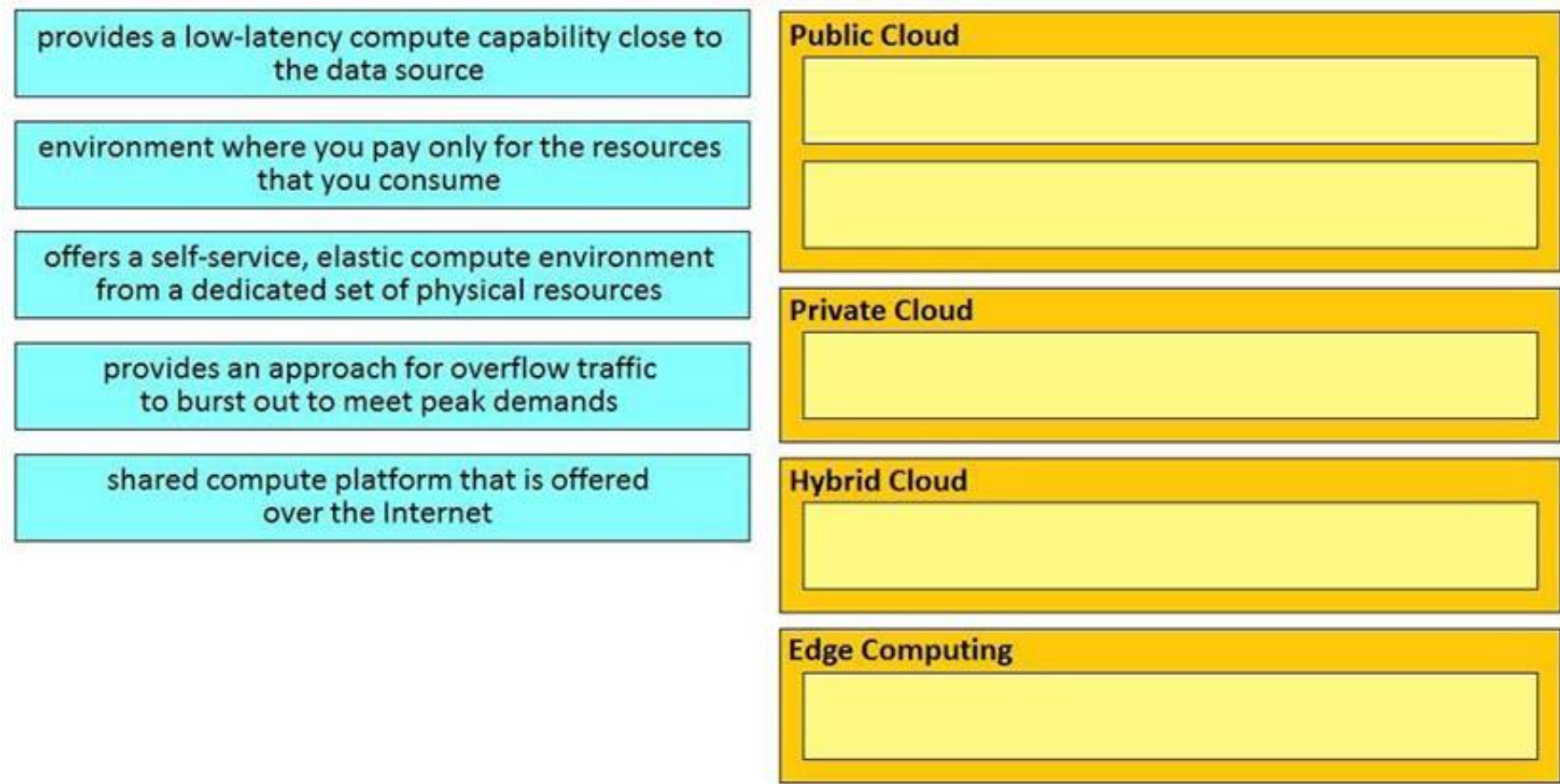
Answer: A

Explanation:

Reference: <https://www.cisco.com/c/en/us/products/cloud-systems-management/index.html>

NEW QUESTION 243

- (Exam Topic 1)  
Drag and drop the descriptions from the left onto correct application deployment models on the right.



- A. Mastered
- B. Not Mastered

Answer: A

Explanation:  
1 – B, 2 – E, 3 – C, 4 – D, 5 – A

NEW QUESTION 245  
- (Exam Topic 1)  
Which platform is run directly using a hypervisor?

- A. bare metal systems
- B. containers
- C. virtual machines
- D. applications

Answer: C

NEW QUESTION 246  
- (Exam Topic 1)  
Fill in the blanks to complete the cURL command that invokes a RESTful API to retrieve a resource in JSON format using OAuth.

```
curl -X [ ] -H "[ ]: application/json" \
-H "[ ]: Bearer AbCdEf123456" https://localhost/api/myresource
```

- A. Mastered
- B. Not Mastered

Answer: A

Explanation:

```
curl -X GET [ ] -H "Accept [ ]: application/json" \
-H "Authorization [ ]: Bearer AbCdEf123456" https://localhost/api/myresource
```

Reference: <https://webcache.googleusercontent.com/search?q=cache:Se6d2trvMsEJ:https://blogs.cisco.com/developer/secu>

NEW QUESTION 248  
- (Exam Topic 1)  
Fill in the blanks to complete the python script to request a service ticket using the APIC-EM rest API for the user “devnetuser”.

```
import requests
import json
controller = 'devnetapi.cisco.com/sandbox/apic_em'
url = "https://" + controller + "/api/va/ticket"
payload = { 'username': 'devnetuser', 'password': '371274739' }
header = { 'Content-type': 'application/json' }
response = requests.post(url, data=json.dumps(payload), \
headers=header, verify=False)
r_json = response.json()
print(r_json)
ticket = r_json["response"]["serviceTicket"]
print(ticket)
```

- A. Mastered
- B. Not Mastered

**Answer: A**

**Explanation:**

```
import requests
import json
controller = 'devnetapi.cisco.com/sandbox/apic_em'
url = "https://" + controller + "/api/va/ticket"
payload = { 'username': 'devnetuser', 'password': '371387657' }
header = { 'Content-type': 'application/json' }
response = requests.post(url, data=json.dumps(payload), \
headers=header, verify=False)
r_json = response.json()
print(r_json)
ticket = r_json["response"]["serviceTicket"]
print(ticket)
```

Reference: <https://developer.cisco.com/docs/apic-em/#!hello-world>

#### NEW QUESTION 249

- (Exam Topic 1)

On which port does NETCONF operate by default?

- A. 23
- B. 443
- C. 822
- D. 830

**Answer: D**

#### NEW QUESTION 253

- (Exam Topic 1)

Which platform is run directly using a hypervisor?

- A. Virtual
- B. Bare metal systems
- C. Containers
- D. Applications

**Answer: C**

#### NEW QUESTION 255

- (Exam Topic 1)

Drag and drop the network component names from the left onto the correct descriptions on the right. Not all options are used.

DNS server	contains a database of public IP addresses and their associated hostnames and often resolves or translates those names to IP addresses, as requested
firewall	enforces a set of rules about which data packets are allowed to enter or leave a network
reverse proxy	distributes network and application traffic across different servers
load balancer	retrieves resources on behalf of a client from one or more servers, then returns resources to the client, thus appearing as if they originated from the service itself
NAT gateway	

- A. Mastered  
B. Not Mastered

**Answer:** A

**Explanation:**

1 – A, 2 – B, 3 – D, 4 – C

#### NEW QUESTION 256

- (Exam Topic 1)

What is the first development task in test-driven development?

- A. Write code that implements a desired function.  
B. Write a failing test case for a desired function.  
C. Write a passing test case for existing code.  
D. Reverse engineer the code for a desired function.

**Answer:** B

**Explanation:**

Reference:

<https://technologyconversations.com/2013/12/20/test-driven-development-tdd-example-walkthrough/>

#### NEW QUESTION 260

- (Exam Topic 1)

Which two use cases are supported by Meraki APIs? (Choose two.)

- A. Retrieve live streams from a Meraki Camera.  
B. Build a custom Captive Portal for Mobile Apps.  
C. Configure network devices via the Dashboard API.  
D. Build location-aware apps from Wi-Fi and LoRaWAN devices.  
E. Deploy applications onto the devices.

**Answer:** BC

#### NEW QUESTION 261

- (Exam Topic 1)

Which two descriptions can be given to an application that is interacting with a webhook? (Choose two.)

- A. Processor  
B. Codec  
C. Listener  
D. Receiver  
E. Transaction monitor

**Answer:** CD

#### NEW QUESTION 263

- (Exam Topic 1)

Package updates from a local server fail to download. However, the same updates work when a much slower external repository is used. Why are local updates failing?

- A. The update utility is trying to use a proxy to access the internal resource.  
B. The Internet connection is too slow.  
C. The Internet is down at the moment, which causes the local server to not be able to respond.  
D. The server is running out of disk space.



Answer: A

#### NEW QUESTION 265

- (Exam Topic 1)

Refer to the exhibit.

```
def get_result()

    url = "https://sandboxdnac.cisco.com/dna/system/api/v1/auth/token"

    resp = requests.post(url, auth=HTTPBasicAuth(DNAC_USER, DNAC_PASSWORD))

    result = resp.json()['Token']

    return result
```

What does the python function do?

- A. It returns DNAC user and password.
- B. It returns HTTP Basic Authentication.
- C. It returns an authorization token.
- D. It reads a token from a local JSON file and posts the token to the DNAC URL.

Answer: C

#### NEW QUESTION 268

- (Exam Topic 1)

Refer to the exhibit.

```
$ pyang -f tree Cisco-IOS-XE-native.yang
module: Cisco-IOS-XE-native
  +--rw native
    +--rw logging
      +--rw monitor|
        +--rw severity?  logging-level-type

$ curl --insecure -v -X PATCH \
  "https://ios-xe-mgmt-latest.cisco.com:9443/restconf/data/Cisco-IOS-XE-native:native" \
  -H 'Authorization: Basic ZGV2ZWxvcGVyOkMxc2NvMTIzNDU=' -H 'Accept: application/yang-data+json' \
  -H 'Content-Type: application/yang-data+json' \
  -d '{ "Cisco-IOS-XE-native:native" : { "logging" : { "monitor" : { "severity" : "alerts" }} } }'
> ...
< ...
< HTTP/1.1 204 No Content
```

The definition of the YANG module and a RESTCONF query sent to a Cisco Ioc XE device is shown. Which statement is correct if the RESTCONF interface responds with a 204 status code?

- A. The query failed at retrieving the logging seventy level.
- B. The query failed to set the logging seventy level due to an invalid path.
- C. The query retrieved the logging seventy level.
- D. The query updated the logging seventy level or created it if not present on the device.

Answer: D

#### Explanation:

Reference:

[https://www.cisco.com/c/en/us/td/docs/ios-xml/ios/prog/configuration/1611/b\\_1611\\_programmability\\_cg/restco](https://www.cisco.com/c/en/us/td/docs/ios-xml/ios/prog/configuration/1611/b_1611_programmability_cg/restco)

#### NEW QUESTION 270

- (Exam Topic 1)

Refer to the exhibit.

```
json_string = """
{
    "researcher": {
        "name": "Ford Perfect",
        "species": "Betelgeusian",
        "relatives": [
            {
                "name": "Zaphod Beeblebrox",
                "species": "Betelgeusian"
            }
        ]
    }
}
"""

my_json = json.loads(json_string)
```

Which python data structure does my\_json contain?

- A. List
- B. Json
- C. Map
- D. Dict

**Answer:** D

**Explanation:**

Reference:

<https://stackoverflow.com/questions/34764979/loading-python-string-with-u-as-json?noredirect=1&lq=1>

#### NEW QUESTION 272

- (Exam Topic 1)

Which line is an example of the start of a chunk from a unified diff?

- A. @@ -90,88 +20191008T1349@@
- B. @@ -20191007T1200 +88,90 @@
- C. @@ -20191007T1200 +20191008T1349@@
- D. @@ -88,10 +88,6 @@

**Answer:** D

**Explanation:**

Reference:

<https://unix.stackexchange.com/questions/252927/what-do-the-numbers-in-the-line-mean-in-output-of-diff>

#### NEW QUESTION 275

- (Exam Topic 1)

A REST API service requires authentication based on the username and password. The user "john" has the password "384279060" and the Base64 encoding of those credentials is "am9objowMTIzNDU2Nzg=". Which method completes an authentication request?

- A. The header must include: Authorization: Bearer am9objowMTIzNDU2Nzg=
- B. The payload must include: Authorization: Bearer am9objowMTIzNDU2Nzg=
- C. The payload must include: Authorization: Basic am9objowMTIzNDU2Nzg=
- D. The header must include: Authorization: Basic am9objowMTIzNDU2Nzg=

**Answer:** D

#### NEW QUESTION 279

- (Exam Topic 1)

Refer to the exhibit.

```
---
- hosts: CISCO_ROUTER_01
  gather_facts: true
  connection: network_cli

  tasks:
    - name: show conf
      ios_command:
        commands:
          - show conf
      register: config

    - name: save output to /etc/ansible/configs
      copy:
        content: "{{ config.stdout[0] }}"
        dest: "/etc/ansible/configs/show_conf_{{ inventory_hostname }}.txt"
```

What is the result of executing this Ansible playbook?

- A. The playbook copies a new start-up configuration to CISCO\_ROUTER\_01.
- B. The playbook backs up the running configuration of CISCO\_ROUTER\_01.
- C. The playbook backs up the start-up configuration of CISCO\_ROUTER\_01.
- D. The playbook copies a new running configuration to CISCO\_ROUTER\_01.

**Answer: C**

#### NEW QUESTION 284

- (Exam Topic 1)

What are the two principles of an infrastructure as code environment? (Choose two)

- A. Complete complex systems must be able to be built from reusable infrastructure definitions.
- B. Environments must be provisioned consistently using the same inputs.
- C. Redeployments cause varying environment definitions.
- D. Service overlap is encouraged to cater for unique environment needs.
- E. Components are coupled, and definitions must be deployed for the environment to function.

**Answer: AB**

#### NEW QUESTION 287

- (Exam Topic 1)

A company has written a script that creates a log bundle from the Cisco DNA Center every day. The script runs without error and the bundles are produced. However, when the script is run during business hours, report poor voice quality of phones calls. What explains this behavior?

- A. The application is running in the Voice VLAN and causes delays and jitter in the subnet.
- B. The speed and duplex settings in Cisco DNA Center are set incorrectly, which causes the transfer to be too slow.
- C. The script is written in a low-level programming language where there is no memory safety.
- D. This causes a buffer overflow and disruption on the network.
- E. Generating the logs causes the CPU on the network controller to spike, which causes delays in forwarding the voice IP packets.

**Answer: D**

#### NEW QUESTION 290

- (Exam Topic 3)

Which HTTP method is used by webhooks and notifies a listener about an event change?

- A. PUT
- B. POST
- C. PATCH
- D. GET

**Answer: B**

#### NEW QUESTION 293

- (Exam Topic 3)

What is a characteristic of RPC APIs compared to REST APIs?

- A. Authentication is done over provisions for the service caller and vice versa for RPC API, and REST API uses HTTP headers for authentication.
- B. All communications between the client and server must be stateless for RPC API, and REST API is stateful.
- C. The architecture model for RPC API is resource-focused, and REST API is procedure-focused.
- D. The data payload must be in JSON format for RPC API, and REST API allows JSON and XML formats.

**Answer: A**

#### NEW QUESTION 298

- (Exam Topic 3)  
Which technology is responsible for matching a name to an IP address of an application running on a host?

- A. firewall
- B. proxy
- C. load balancer
- D. DNS

Answer: D

NEW QUESTION 299

- (Exam Topic 3)  
A developer is running an application that connects to the Cisco website and collects data. The application will be hosted in a local data center and the data will need to be collected on a frequent basis. The application client requires certain environmental variables to be set before the run. Which Bash command sets the environmental variables for a Linux system?

- A. `"cisco.com"=WEBSITE`
- B. `export lvar=23`
- C. `WEBSITE="cisco.com"`
- D. `export website="cisco.com"`

Answer: D

NEW QUESTION 300

- (Exam Topic 3)  
Drag and drop the capabilities from the left onto the Cisco Network Management Platforms that support the capabilities on the right.

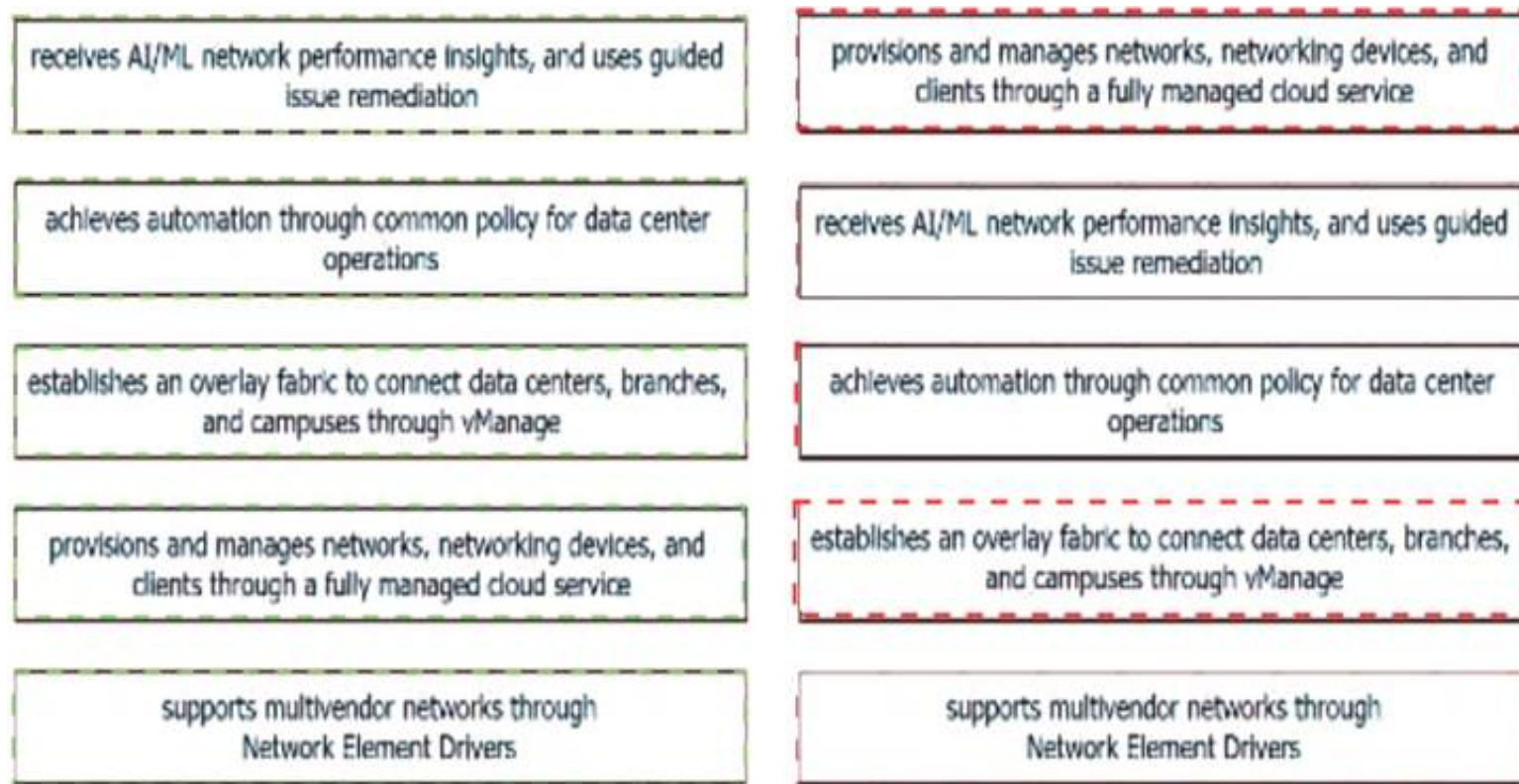
receives AI/ML network performance insights, and uses guided issue remediation	Meraki
achieves automation through common policy for data center operations	Cisco DNA Center
establishes an overlay fabric to connect data centers, branches, and campuses through vManage	ACI
provisions and manages networks, networking devices, and clients through a fully managed cloud service	Cisco SD-WAN
supports multivendor networks through Network Element Drivers	NSO

- A. Mastered
- B. Not Mastered

Answer: A

Explanation:





#### NEW QUESTION 301

- (Exam Topic 3)

What is the purpose of running tests before writing code in test-driven development?

- A. to find unexpected failures in the tests
- B. to demonstrate that the tests fail for expected reasons
- C. to ensure that the tests pass
- D. to provide proof of the work carried out

Answer: D

#### NEW QUESTION 303

- (Exam Topic 3)

A team of developers is responsible for a network orchestration application in the company. The responsibilities also include: developing and improving the application in a continuous manner deployment of the application and management of CI/CD frameworks monitoring the usage and problems and managing the performance improvements Which principle best describes this DevOps practice?

- A. responsible for IT operations
- B. automation of processes
- C. end-to-end responsibility
- D. quality assurance checks

Answer: C

#### NEW QUESTION 304

- (Exam Topic 3)

Drag and drop the code from the bottom onto the box where the code is missing to enable ports on a switch by using RESTCONF. Not all options are used.

```
def enable_function(if_name, if_status, if_type):
    headers = {'Accept': 'application/yang-data+json',
               'Content-Type': 'application/ ' }
    payload = {
        " ": {
            "name": if_name,
            "enabled": if_status,
            "type": if_type,
        }
    }
    = 'https://192.168.1.1:8443'
    restconf_url = '/restconf/data/ietf-interfaces:interfaces/interface'
    res = requests.put(f'{base_url}{restconf}={if_name}',
                       headers=headers, json=payload,
                       auth=('cisco', 'secret'), verify=False)

enable_function('Loopback1', true, ' ')
```

yang-data+json

application/xml

ietf-interfaces:interface

iana-if-type:softwareLoopback

base\_url

run\_function

iana-if-type:ethernetCsmacd

- A. Mastered  
 B. Not Mastered

Answer: A

Explanation:

```
def enable_function(if_name, if_status, if_type):
    headers = {'Accept': 'application/yang-data+json',
               'Content-Type': 'application/ yang-data+json ' }
    payload = {
        " ietf-interfaces:interface ": {
            "name": if_name,
            "enabled": if_status,
            "type": if_type,
        }
    }
    base_url = 'https://192.168.1.1:8443'
    restconf_url = '/restconf/data/ietf-interfaces:interfaces/interface'
    res = requests.put(f'{base_url}{restconf}={if_name}',
                       headers=headers, json=payload,
                       auth=('cisco', 'secret'), verify=False)

enable_function('Loopback1', true, ' iana-if-type:ethernetCsmacd ')
```

yang-data+json

application/xml

ietf-interfaces:interface

iana-if-type:softwareLoopback

base\_url

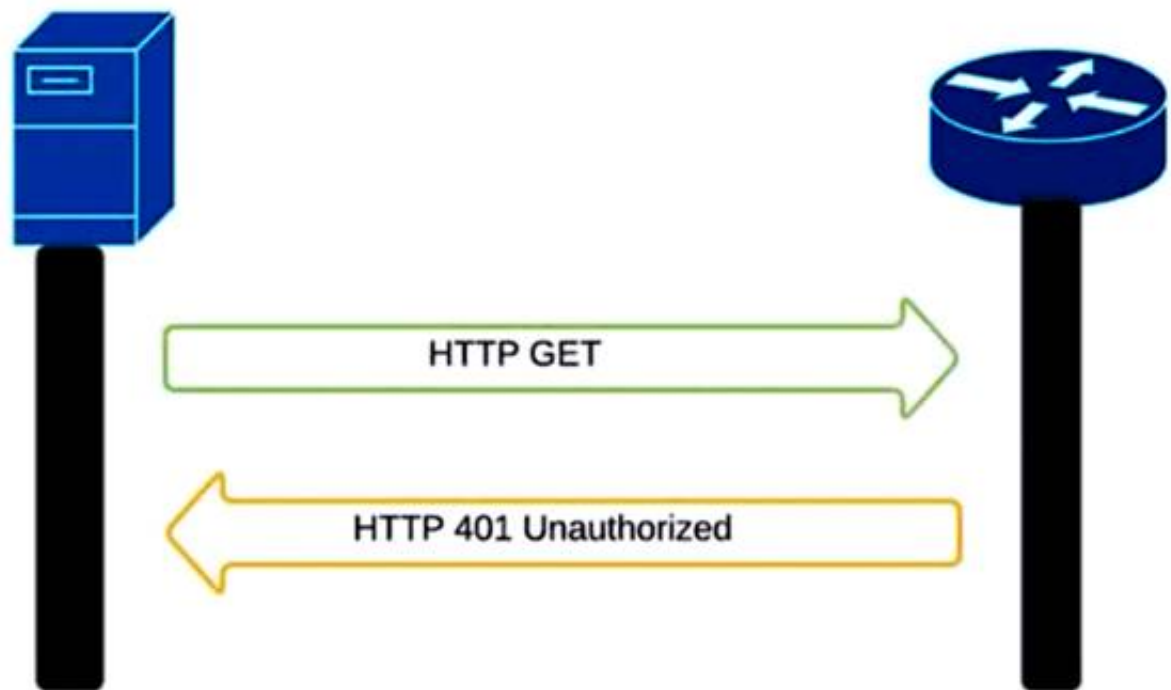
run\_function

iana-if-type:ethernetCsmacd

#### NEW QUESTION 306

- (Exam Topic 3)  
 Refer to the exhibit.

```
curl -i -k -X 'GET' 'https://172.18.110.64:443/restconf/data/Cisco-IOS-XE-native:native/hostname'
-H 'Accept: application/yang-data+json' \
-u 'cisco:cisco'
```



An administrator attempts to perform a GET operation by using the Cisco IOS XE RESTCONF API to return the hostname of a device. The sequence diagram in the exhibit illustrates the HTTP messages observed. Which change to the API request resolves the issue?

- A. Remove the -H 'Accept: application/yang-data+json' header.
- B. Replace -u cisco:cisco parameter with -u 'cisco:cisco'.
- C. Change the request method from -X 'GET' to -X 'POST'.
- D. Add the -H 'Content-Type: application/yang-data+json' header.

Answer: B

NEW QUESTION 311

- (Exam Topic 3)

A company deploys an application via containers in its local data center. As soon as the application goes into production, it starts to crash at specific hours of the day. After investigation, it is concluded that the crashes are due to too many users accessing the application simultaneously. The spikes must be addressed and allow for future growth without discarding the investment already made. Which deployment model must be used?

- A. hybrid cloud
- B. edge
- C. private cloud
- D. public cloud

Answer: A

NEW QUESTION 315

- (Exam Topic 3)

Drag and drop the API characteristics from the left onto the categories on the right.

The API is seen as a function call.

There is communication between server and client.

It follows a resource-oriented model.

The API can be stateless.

REST

RPC

- A. Mastered
- B. Not Mastered

Answer: A

Explanation:

Graphical user interface, application Description automatically generated

NEW QUESTION 317

- (Exam Topic 3)



```
import requests, json
url = https://sandboxdnac.cisco.com:443/dna/intent/api/v1/3daa70bdcd5b
headers = {
    'x-auth-token': 'eyJhbGc ... yJbN8',
    'Content-Type': 'application/json',
}
payload = {
    "settings": {
        "dhcpServer": ["172.30.200.5"],
        "dnsServer": {
            "domainName": "devnet.local",
            "primaryIpAddress": "172.30.200.6",
            "secondaryIpAddress": "172.30.200.7"},
        "syslogServer": {"ipAddresses": ["10.255.0.1"], "configureDnacIP": True}
    }
}
response = requests.request('POST', url, headers=headers, data=payload)
print(response.status_code)
```

Refer to the exhibit. A developer writes a script to create a new network by using the Cisco DNA Center API. After running the script for the first time, the developer observes that HTTP code 404 is printed to the console. Which action resolves the problem?

- A. The x-auth-token value must be changed to a valid token.
- B. The API URL must be changed with a valid URL.
- C. The requested payload must be fixed to include missing parts.
- D. Internal errors on the code of API server must be fixed.

**Answer: B**

#### NEW QUESTION 320

- (Exam Topic 3)

Which command reverses the last commit without changing the index file or the working tree position?

- A. git revert HEAD
- B. git reset --hard HEAD~3
- C. git reset --soft HEAD^
- D. git revert

**Answer: C**

#### NEW QUESTION 325

- (Exam Topic 3)

Which network constraint causes the performance of the application to decrease as the number of users accessing the application increases?

- A. latency
- B. loss
- C. bandwidth
- D. jitter

**Answer: C**

#### NEW QUESTION 329

- (Exam Topic 3)

A developer creates a program in which an object maintains a list of classes based on the observer pattern. The classes are dependent on the object. Whenever the state of the object changes, it notifies the dependent classes directly through callbacks. Which advantage of the observer pattern offers minimum dependencies and maximum flexibility between dependent objects or classes?

- A. tight coupling
- B. cohesion
- C. mediation
- D. loose coupling

**Answer: D**

#### NEW QUESTION 334

- (Exam Topic 3)



### CISCO SECURITY APIS

Introduction

- API Workflow
  - 1.) Find all events where Malwar...
  - 2.) Find Endpoint Details for Rem...
  - 3.) Nuke the Endpoint to Prevent...
  - 4.) Find samples in Threat Grid
  - 5.) Get all sample domains to an...
  - 6.) Check all domains against Inv...
  - 7.) For suspect domains get mor...
  - 8.) Enforce on bad Domains in U...
  - 9.) Research other Ransomware ...
  - Generate Authentication Token ...
  - Add custom intelligence Fee...
- NGFW
  - Generate Authentication Token
  - Access Policies
  - Access Rules
  - Access Rule Details
  - New Access Rule in Policy
  - New Bulk Access Rule in Policy

## Cisco Security APIs

The main goal of this collection to help the developer understand the various API capabilities of Cisco NGFW, Malware Protection, Threat Grid, ISE and Umbrella. It will cover useful API features for each of the products and how to properly use them. Simple workflow is also included in the collection to *Collect* all the characteristics/signatures of the possible attack using AMP. *Validate* the collected intelligence with Threat Grid and Umbrella. *Deploy* the intelligence to the NGFW, Umbrella and ISE to protect and contain the threat.

### API Workflow

**GET 1.) Find all events where Malware Executed**

`https://amp.dcloud.cisco.com/v1/events?connector_guid[]=&event_type[]=1107296272`

Get a listing of all the events for a specific computer when the quarantine failed

PARAMS

Refer to the exhibit. Drag and drop the code from the bottom onto the box where the code is missing to construct a Python script that calls a REST API request. Not all options are used.

```

import requests

[ ] = "https://fmc-hostname/api/fmc_tid/v1/domain//tid/source"

payload = {
    "name": "Threat Grid Ransomware DNS",
    "delivery": "url",
    "uri": "https://panacea.threatgrid.com/api/v3/feeds"+
    "/ransomware-dns 2017-12-08.stix?api_key=",
    "refresh": 1440,
    "version": "1.0.0",
    "params": {
        "selfSignedServerCertificate": "true",
        "hostnameVerifier": "allow_all"
    },
    "property": {
        "ttl": 90,
        "publish": true,
        "action": "monitor"
    }
}

headers = {
    'X-auth-access-token': 'access_token', ' [ ] ': 'application/json'
}

response = requests. [ ] ("POST", url,
    headers=headers, data = [ ] )
print(response.text.encode('utf8'))

```

url

Encoding

base\_url

Content-Type

post

request

payload

- A. Mastered  
B. Not Mastered

Answer: A

Explanation:

```
import requests

url = "https://fmc-hostname/api/fmc_tid/v1/domain//tid/source"
payload = {
    "name": "Threat Grid Ransomware DNS",
    "delivery": "url",
    "uri": "https://panacea.threatgrid.com/api/v3/feeds"+
    "/ransomware-dns 2017-12-08.stix?api_key=",
    "refresh": 1440,
    "version": "1.0.0",
    "params": {
        "selfSignedServerCertificate": "true",
        "hostnameVerifier": "allow_all"
    },
    "property": {
        "ttl": 90,
        "publish": true,
        "action": "monitor"
    }
}
headers = {
    'X-auth-access-token': 'access_token', 'Content-Type': 'application/json'
}

response = requests.request("POST", url,
    headers=headers, data = base_url )
print(response.text.encode('utf8'))
```

url	Encoding	base_url	Content-Type	post
request	payload			

### NEW QUESTION 335

- (Exam Topic 3)

```
--- functions.py 2020-09-26 14:26:25.000000000 -0600
--- new.py 2020-09-26 14:26:10.000000000 -0600
@@ -21,7 +21,7 @@
def print_devices_info(devices):
    # Print id, hostname and management IP
    for item in devices:
        print(item['id'], item['hostname'], item['managementIpAddress'])
        print(item['id'], item['hostname'])

    # Get Authentication token
    def get_dnac_jwt_token():
@@ -66,9 +66,15 @@
    response = get_devices_list(headers, {})
    print_devices_info(response)

    # print devices list filtered by hostname
    print('\nPrinting device list filtered by hostname ...')
    query_string_params = {'hostname': 'CSR1Kv-01.devnet.local'}
    response = get_devices_list(headers, query_string_params)
    print_devices_info(response)

    # print devices list filtered by platform Id
    print('\nPrinting device list filtered by platform id...')
    query_string_params = {'platformId': 'C9500-40X'}
    query_string_params = {'platformId': 'AIR-AP1141N-A-K9'}
    response = get_devices_list(headers, query_string_params)
    print_devices_info(response)
```

Refer to the exhibit. An engineer is comparing two files by using the unified diff format. Which code snippet belongs to the new.py file?

- A. 77 query\_string\_params = {'platformId': 'AIR-AP1141N-A-K9'}
- B. 21 print(item['id'], item['hostname'])
- C. 24 print(item['id'], item['hostname'], item['managementIpAddress'])
- D. 66 # print devices list filtered by hostname  
 67 print('\nPrinting device list filtered by hostname ...')  
 68 query\_string\_params = {'hostname': 'CSR1Kv-01.devnet.local'}  
 69 response = get\_devices\_list(headers, query\_string\_params)  
 70 print\_devices\_info(response)

Answer: A

NEW QUESTION 339

- (Exam Topic 3)

## SDK Documentation:

### OrganizationController:

```
get_organizations()  
get_network_device(dict)
```

### DevicesController:

```
get_network_devices(id)
```

### NetworksController:

```
get_organization_networks(dict)
```

Refer to the exhibit. A script must output details of all the Cisco Meraki MS220-BP switches across all organizations and networks. Drag and drop the code snippets from the bottom onto the boxes in the code to complete the script. Not all options are used.

```
from meraki_sdk.meraki_sdk_client import MerakiSdkClient  
from meraki_sdk.exceptions.api_exception import APIException  
  
api_key = "API_KEY"  
client = MerakiSdkClient(api_key)  
  
for org in   
    try:  
        options = {"organization id": org["id"]}  
        networks =   
        for network in networks:  
            devices =   
            for device in devices:  
                if device["model"] == "MS220-8P":  
                    options = {"network id": network["id"], "serial": device["serial"]}  
                    output =   
                    print(output)  
            except APIException as e:  
                pass
```

- A. Mastered
- B. Not Mastered

Answer: A

Explanation:



```
from meraki_sdk.meraki_sdk_client import MerakiSdkClient
from meraki_sdk.exceptions.api_exception import APIException

api_key = "API_KEY"
client = MerakiSdkClient(api_key)

for org in client.organizations.get_organizations():
    try:
        options = {"organization id": org["id"]}
        networks = client.networks.get_organization_networks(options)
        for network in networks:
            devices = client.devices.get_network_devices(network["id"])
            for device in devices:
                if device["model"] == "MS220-8P":
                    options = {"network id": network["id"], "serial": device["serial"]}
                    output = client.devices.get_network_device(options=options)
                    print(output)
            except APIException as e:
                pass
```

client.organizations.get\_organizations():

client.networks.get\_organization\_networks(api\_key)

client.networks.get\_organization\_networks(options)

client.devices.get\_network\_devices(network["id"])

client.devices.get\_network\_device(options=options)

client.devices.get\_network\_device(device["model"])

#### NEW QUESTION 341

- (Exam Topic 3)

```
1  - hosts: nxos_rtr
2  gather_facts: false
3  tasks:
4  - nxos_hsrp:
5    group: "{{ item.group }}"
6    vip: "{{ item.vip }}"
7    priority: 115
8    interface: "{{ item.interface }}"
9    preempt: enabled
10   auth_type: md5
11   auth_string: "s3cuR3"
12   version: 2
13   host: "{{ hostvars['rtr-1a']['ansible_ssh_host'] }}"
14 with_items:
15   - "{{ hsrp_groups }}"
16 delegate_to: "{{ hostvars['srv-1a']['ansible_ssh_host'] }}"
```

Refer to the exhibit. An engineer runs a network that consists of Cisco Nexus devices. The network is distributed between data centers in different locations. The switches are configured using standalone connections and a single point of failure. Which process is being automated by the Ansible playbook?

- A. enabling HSRP on the nxos\_rtr inventory host
- B. enabling HSRP on the rtr-1a inventory host
- C. executing HSRP configuration from the Ansible controller node
- D. executing HSRP configuration from the srv-1a inventory host

**Answer: B**

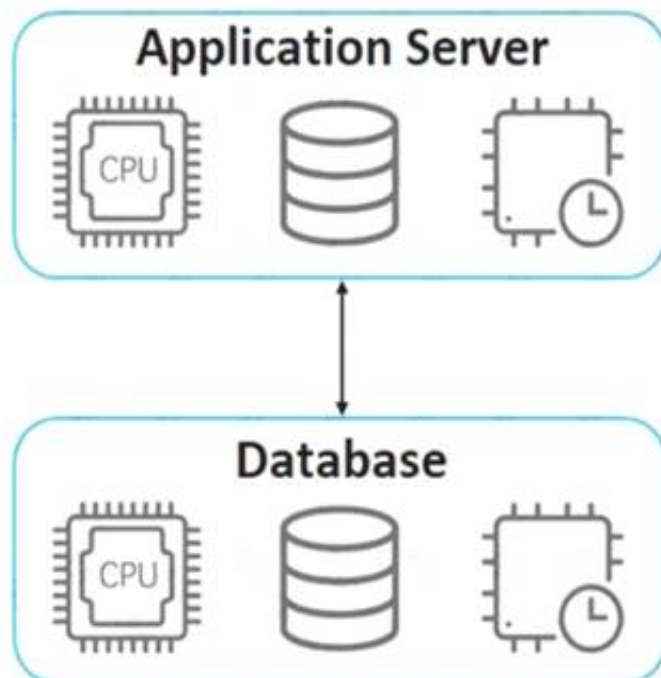
#### NEW QUESTION 342

- (Exam Topic 3)

Refer to the exhibit.



## Hypervisor



An application must be deployed on a server that has other applications installed. The server resources are to be allocated based on the deployment requirements. The OS for each application must be independent. Which type of deployment is used?

- A. hybrid
- B. virtual machines
- C. containers
- D. bare metal

**Answer:** B

### NEW QUESTION 345

- (Exam Topic 3)

What is a function of the default gateway in a network?

- A. to drop traffic that is destined to the default gateway
- B. to forward traffic to different subnets
- C. to forward traffic to the same subnet
- D. to drop traffic that is not destined to the default gateway

**Answer:** B

### NEW QUESTION 348

- (Exam Topic 3)

A developer creates a new application, but the application must be tested before being released to a customer. When a mobile phone that uses 4G is used to access the application, the request fails. Why does the connection to the application fail?

- A. The application is hosted on premises and VPN connectivity is required
- B. The application must be added to the production server before testing.
- C. The application must be moved to the cloud before testing is possible.
- D. The application connectivity is limited to HTTPS protocol.

**Answer:** A

### NEW QUESTION 349

- (Exam Topic 3)

Refer to the exhibit.

```
git clone git://git.kernel.org/.../git.git my.git
cd my.git
git branch -d -r origin/todo origin/html origin/man (1)
git branch -D test (2)
```

What does the command marked (2) do when it is run?

- A. It duplicates the test" branch.
- B. It deletes the "test" branch only if a new branch is created.
- C. It deletes the "test" branch.
- D. It does not delete the branch until it is merged.

**Answer:** C

### NEW QUESTION 351

- (Exam Topic 3)

```
import requests
def main():
    def getCreds():
        user = input('User: ')
        pwd = Getpass('Pass: ')
        return (user,pwd)

    def login(ipaddr,user,pwd):
        url = "https://{ipaddr}/api/aaaLogin.json".format(ipaddr=ipaddr)
        data = '{"aaaUser":{"attributes":{"name":"%(user)s","pwd":"%(pwd)s"}}}'
        + '{"pwd":pwd,"user":user}'
        response = requests.post(url,data=data,verify=False)
        cookie = response.headers['Set-Cookie']
        return cookie

    def getstuff(ipaddr,cookie):
        headers = {"Cookie":cookie}
        url = "https://{ipaddr}/api/node/class/fvTenant.json".format(ipaddr=ipaddr)
        response = requests.get(url,headers=headers,verify=False)
        grouplist = []
        for x in response.json()["imdata"]:
            grouplist.append(x["fvTenant"]["attributes"]["name"])
        return ','.join(grouplist)

    ipaddr = "192.168.255.2"
    user,pwd = getCreds()
    token = login(ipaddr,user,pwd)
    return getstuff(ipaddr,cookie)

if __name__ == '__main__':
    result = main()
    print(result)
```

Refer to the exhibit. Which action does the script perform?

- A. It queries user credentials from Cisco IOS XE devices.
- B. It retrieves device identification from Cisco DNA Center.
- C. It exports SSID information from Meraki dashboard.
- D. It collects group information from ACI.

**Answer: D**

#### NEW QUESTION 355

- (Exam Topic 3)

Which port does HTTPS use by default?

- A. 433
- B. 443
- C. 803
- D. 883

**Answer: B**

#### NEW QUESTION 357

- (Exam Topic 3)

Refer to the exhibit.

```
module ietf-interface {
  namespace "urn:ietf:params:xml:ns:yang:ietf-interfaces";
  prefix if;
  import ietf-yang-types {
    prefix yang;
  }
  container interfaces-state {
    list interface {
      key "name";
      leaf name {
        type string;
      }
      leaf admin-status {
        type enumeration {
          enum up {
            value 1;
          }
          enum down {
            value 2;
          }
          enum testing {
            value 3;
          }
        }
      }
      leaf if-index {
        type int32 {
          range "1..2147483647"
        }
      }
      container statistics {
        leaf in-octets {
          type yang:counter64;
        }
        leaf in-unicast-pkts {
          type yang:counter64;
        }
      }
    }
  }
}
```

Which XML snippet has interface information that conforms to the YANG model?

A. Text Description automatically generatedB.

```
<interfaces-state
xmlns="urn:ietf:params:xml:ns:yang:ietf-interfaces"
xmlns:if="urn:ietf:params:xml:ns:yang:ietf-interfaces">
  <interface name="GigabitEthernet1">
    <admin-status>1</admin-status>
    <if-index>1</if-index>
    <statistics>
      <in-octets>408164820</in-octets>
      <in-unicast-pkts>728061</in-unicast-pkts>
    </statistics>
  </interface>
</interfaces-state>
```

Text

Description automatically generated

```
<interfaces-state
xmlns="urn:ietf:params:xml:ns:yang:ietf-interfaces"
xmlns:if="urn:ietf:params:xml:ns:yang:ietf-interfaces">
  <interface>
    <name>GigabitEthernet1</name>
    <admin-status>up</admin-status>
    <if-index>1</if-index>
    <in-octets>408164820</in-octets>
    <in-unicast-pkts>728061</in-unicast-pkts>
  </interface>
</interfaces-state>
```

B. Text Description automatically generated



```
<interfaces-state
xmlns="urn:ietf:params:xml:ns:yang:ietf-interfaces"
xmlns:if="urn:ietf:params:xml:ns:yang:ietf-interfaces">
  <interface>
    <name>GigabitEthernet1</name>
    <admin-status>up</admin-status>
    <if-index>1</if-index>
    <statistics>
      <in-octets>408164820</in-octets>
      <in-unicast-pkts>728061</in-unicast-pkts>
    </statistics>
  </interface>
</interfaces-state>
```

C. Text Description automatically generated

```
<interfaces-state
xmlns="urn:ietf:params:xml:ns:yang:ietf-interfaces"
xmlns:if="urn:ietf:params:xml:ns:yang:ietf-interfaces">
  <interface>
    <name>GigabitEthernet1</name>
    <admin-status>1</admin-status>>
    <if-index>1</if-index>
    <statistics>
      <in-octets>408164820</in-octets>
      <in-unicast-pkts>728061</in-unicast-pkts>
    </statistics>
  </interface>
</interfaces-state>
```

**Answer:** C

**Explanation:**

<https://datatracker.ietf.org/doc/id/draft-ietf-netmod-interfaces-cfg-01.txt> <admin-status>up</admin-status>

#### NEW QUESTION 362

- (Exam Topic 3)

```
#!/bin/bash
apt-get update
apt-get -y install git
cd Code/Network_Config
mkdir PRODUCTION
cd PRODUCTION
touch state.yml
vi state.yml
```

Refer to the exhibit. A network engineer executes the bash script shown. Which two things are achieved by running the script? (Choose two.)

- A. A directory called PRODUCTION is created.
- B. The engineer changes to the parent directory.
- C. A YAML file is created.
- D. A YAML file is removed.
- E. A directory called state.yml is created.

**Answer:** AC

#### NEW QUESTION 366

- (Exam Topic 2)

What is a benefit of using functions in the code for the development process?

- A. better user experience in the end product
- B. improves code performance
- C. easier to compile the code
- D. faster code development

**Answer:** D

**Explanation:**



<https://www.techwalla.com/articles/the-advantages-disadvantages-of-using-functions-procedures-in-computer-p>

#### NEW QUESTION 371

- (Exam Topic 2)

What is the main purpose of a code review?

- A. To provide the technical lead visibility into all code
- B. To identify and review errors with the team
- C. To ensure that all code is checked in simultaneously
- D. To detect logical errors

**Answer: B**

#### NEW QUESTION 372

- (Exam Topic 2)

Refer to the exhibit.

```
import requests, sys
from config import user, password

url = "http://restconf.devnet.com:9443/api/running/interfaces"
headers = 
response = requests.put(url, auth=(user, password), headers=headers,
verify=False)
print(response.text)
```

A network engineer wants to use an API to update information about device interfaces. The network devices are deployed in a Cisco DevNet Sandbox and have running interfaces. Which line of code needs to be placed in the snippet where the code is missing?

- A. {'Content-Type': 'application/yang.data+xml', 'Accept': 'application/yang.data+xml'}
- B. {'Content-Type': 'application/yang.data+yaml', 'Accept': 'application/yang.data+yaml'}
- C. {'Content-Type': 'application/restconf.data+json', 'Accept': 'application/ restconf.data+json'}
- D. {'Content-Type': 'application/yang.data+utf8', 'Accept': 'application/ restconf.data+utf8'}

**Answer: C**

#### NEW QUESTION 373

- (Exam Topic 2)

What is a benefit of a model-driven approach for infrastructure automation?

- A. enforces the generation of all automation scripts through the modeling environment
- B. provides a small learning curve and helps system administrators with limited coding experience
- C. ensures that system administrators gain a good understanding of coding and expand their experience and capabilities
- D. enables a user to understand a declarative language to translate the model into an actionable script

**Answer: A**

#### NEW QUESTION 375

- (Exam Topic 2)

What is a benefit of using edge computing in an IoT implementation?

- A. low cost in network design
- B. low network design complexity
- C. high availability for network components
- D. high speed in data processing

**Answer: D**

#### NEW QUESTION 376

- (Exam Topic 2)

Drag and drop the code snippets from the bottom to the blanks in the code to test the API response through the Python unittest library. Not all options are used.

```
import unittest
import json
from apidogs import app

class TestsAPIDogs(unittest.TestCase):

    def setUp(self):
        self.app = app.test_client()

    # Check status response of API
    def test_status(self):
        resp =self.app.get('/dogs/all')
        status_code = response.
        self.assertEqual(status_code, )

    # Check for content type is in application/json
    def test_content_type(self):
        resp =self.app.get('/dogs/all')
        self.assertEqual(resp. , 'application/json')

    def test_item_not_exist(self):
        resp =self.app.get('/dogs?id= ')
        self.assertEqual(response.status code,404)
```

none	content	
status_code	200	content_type
403	status	

- A. Mastered  
B. Not Mastered

**Answer:** A

**Explanation:**

Graphical user interface, text Description automatically generated

**NEW QUESTION 380**

- (Exam Topic 2)

What is a capability of an agentless configuration management system?

- A. It requires managed hosts to have an interpreter for a high-level language such as Python or Ruby.  
B. It requires managed hosts to connect to a centralized host to receive updated configurations.  
C. It uses compiled languages as the basis of the domain-specific language to interface with managed hosts.  
D. It uses existing protocols to interface with the managed host.

**Answer:** D

**NEW QUESTION 382**

- (Exam Topic 3)

What is a comparison of YAML and JSON?

- A. YAML has a more consistent approach to representing data compared to JSON.  
B. JSON does not support comments and YAML does.  
C. YAML is a more verbose data structure compared to JSON.  
D. JSON has more common usage in configuration management tools compared to YAML.

**Answer:** B

**Explanation:**

Reference: <https://stackoverflow.com/questions/244777/can-comments-be-used-in-json>

Can I use comments in JSON? No, JSON is a data-only format. Comments in the form //, #, or /\* \*/, which are used in popular programming languages, are not allowed in JSON. You can add comments to JSON as custom JSON elements that will hold your comments, but these elements will still be data.

**NEW QUESTION 385**

- (Exam Topic 3)

Which Cisco platform is used to manage data center infrastructure through third-party tools and system integrations?

- A. Cisco DNA Center  
B. Cisco UCS Manager  
C. Cisco Intersight  
D. Cisco UCS Director

**Answer:** D

**NEW QUESTION 390**

- (Exam Topic 3)

A developer has addressed a bug that was found in the production code of an application. A separate file named 'bug427896191v\_fix" has been created with the changes to the code. Which Git command must be used to incorporate the bug fix into the production code?

- A. git rebase
- B. git cat-file
- C. git merge-file
- D. git bisert

**Answer:** C

**NEW QUESTION 395**

- (Exam Topic 3)

Which function does a router provide to a network?

- A. broadcast domain segmentation
- B. unique host on a Layer 3 network
- C. unique hardware address for every node on a LAN
- D. broadcast domain extension

**Answer:** B

**NEW QUESTION 396**

- (Exam Topic 3)

A customer's cloud services must:

Migrate services to another data center on demand. Save the operational state of the machine on demand. Support Windows and Linux GUIs.

Maximize hardware utilization.

Which type of deployment meets these requirements?

- A. bare metal
- B. container
- C. virtual machine
- D. Kubernetes

**Answer:** C

**NEW QUESTION 397**

- (Exam Topic 3)

What is a benefit of version control?

- A. prevents two users from working on the same file
- B. keeps track of all changes to the files
- C. prevents the sharing of files
- D. keeps the list of data types used in the files

**Answer:** B

**NEW QUESTION 400**

- (Exam Topic 3)

A developer is working on a new feature in a branch named 'newfeat123456789' and the current working primary branch is named 'prim987654321'. The developer requires a merge commit during a fast forward merge for record-keeping purposes. Which Git command must be used?

- A. git merge --no-ff newfeat123456789
- B. git commit --no-ff newfeat123456789
- C. git add --commit-ff newfeat123456789
- D. git reset --commit-ff newfeat123456789

**Answer:** A

**NEW QUESTION 404**

- (Exam Topic 3)

Which Python function is used to parse a string that contains JSON data into a Python dictionary?

- A. json.dumps()
- B. json.to\_json()
- C. json.parse()
- D. json.loads()

**Answer:** D

**Explanation:**

loads() function is present in python built-in 'json' module. This function is used to parse the JSON string.

**NEW QUESTION 405**

- (Exam Topic 3)

A group of software developers wants to improve its collaboration with the operations team. The group wants to deliver release-ready code that merges code changes back to the main branch and runs the automated testing as often as possible. Which DevOps concept does this scenario represent?

- A. continuous delivery
- B. version control
- C. continuous integration
- D. continuous deployment

**Answer: C**

**NEW QUESTION 409**

- (Exam Topic 3)

How does edge computing analyze sensitive data in the context of privacy control?

- A. locally instead of sending the data to the cloud for analysis
- B. locally or on the cloud depending on the configuration
- C. all at once by sending the data to the cloud
- D. locally on each node, and then sends the data to the cloud

**Answer: A**

**NEW QUESTION 410**

- (Exam Topic 3)

```
1 import requests
2 from requests.auth import HTTPBasicAuth
3 BASE_URL = 'https://<IP ADDRESS or FQDN>'
4 AUTH_URL = '/dna/system/api/v1/auth/token'
5 TOKEN = '<TOKEN>'
6
7 headers = {'X-Auth-Token': TOKEN, 'Content-Type': 'application/json'}
8
9 DEVICES_COUNT_URL = '/dna/intent/api/v1/network-device/count'
10 DEVICES_URL = '/dna/intent/api/v1/network-device'
11 DEVICES_BY_ID_URL = '/dna/intent/api/v1/network-device/'
12
13 def devices_func(headers):
14     response = requests.get(BASE_URL + DEVICES_COUNT_URL,
15                             headers = headers, verify=False)
16     return response.json()['response']
17
18 def devices_test(headers, query_string_params):
19     response = requests.get(BASE_URL + DEVICES_URL, headers = headers,
20                             params = query_string_params, verify=False)
21     return response.json()['response']
22
23 def devices_info(headers, device_id):
24     response = requests.get(BASE_URL + DEVICES_BY_ID_URL + device_id,
25                             headers = headers, verify=False)
26     return response.json()['response']
27
28 print(devices_func(headers))
29 print(devices_test(headers, {}))
30 print(devices_test(headers, {'hostname': 'CSR1Kv-01.devnet.local'}))
31 response = devices_test(headers, {'platformId': 'C9500-40X'})
32 print(devices_info(headers, response[0]['id']))
```

Refer to the exhibit. An engineer prepares a script to automate workflow by using Cisco DNA Center APIs to display:  
total count of devices

list of the network devices

information of one device with a hostname filter

What is displayed in the final step after the Python script is executed?

- A. information about a device of type C9500-40x.
- B. filtered results by the hostname and the platformId C9500-40X
- C. information about the test devices
- D. list of devices with platformId C9500-40x

**Answer: B**

**NEW QUESTION 412**

- (Exam Topic 3)

A company wants to automate the orders processed on its website using API. The network device that supports the solution must:

- support XML encoding
- support distributed transactions
- support YANG data models
- be support software redundancy



Which requirement prevents the use of RESTCONF for the solution?

- A. software redundancy
- B. YANG data models
- C. distributed transactions
- D. XML encoding

**Answer:** C

**NEW QUESTION 417**

- (Exam Topic 3)

Which standard supported by Cisco IOS XE and Cisco NX-OS is used for automating the configuration of multiple devices across a network?

- A. SNMP – YANG
- B. SYSLOG – YANG
- C. CLI – YANG
- D. NETCONF – YANG

**Answer:** D

**NEW QUESTION 422**

- (Exam Topic 3)

How are operations on REST APIs performed as compared to RPC APIs?

- A. In a REST API, operations are performed on an object (node) that is identified by a URL, but RPC APIs are operation-oriented.
- B. In a REST API, operations are performed on an external resource that is defined on the API, but the RCP APIs are resource-oriented.
- C. In a REST API, operations are performed on a platform that is identified by the URL, but RPC APIs are platform-oriented.
- D. In a REST API, operations are performed on an internal resource that is defined on the API, but RPC APIs are resource-oriented.

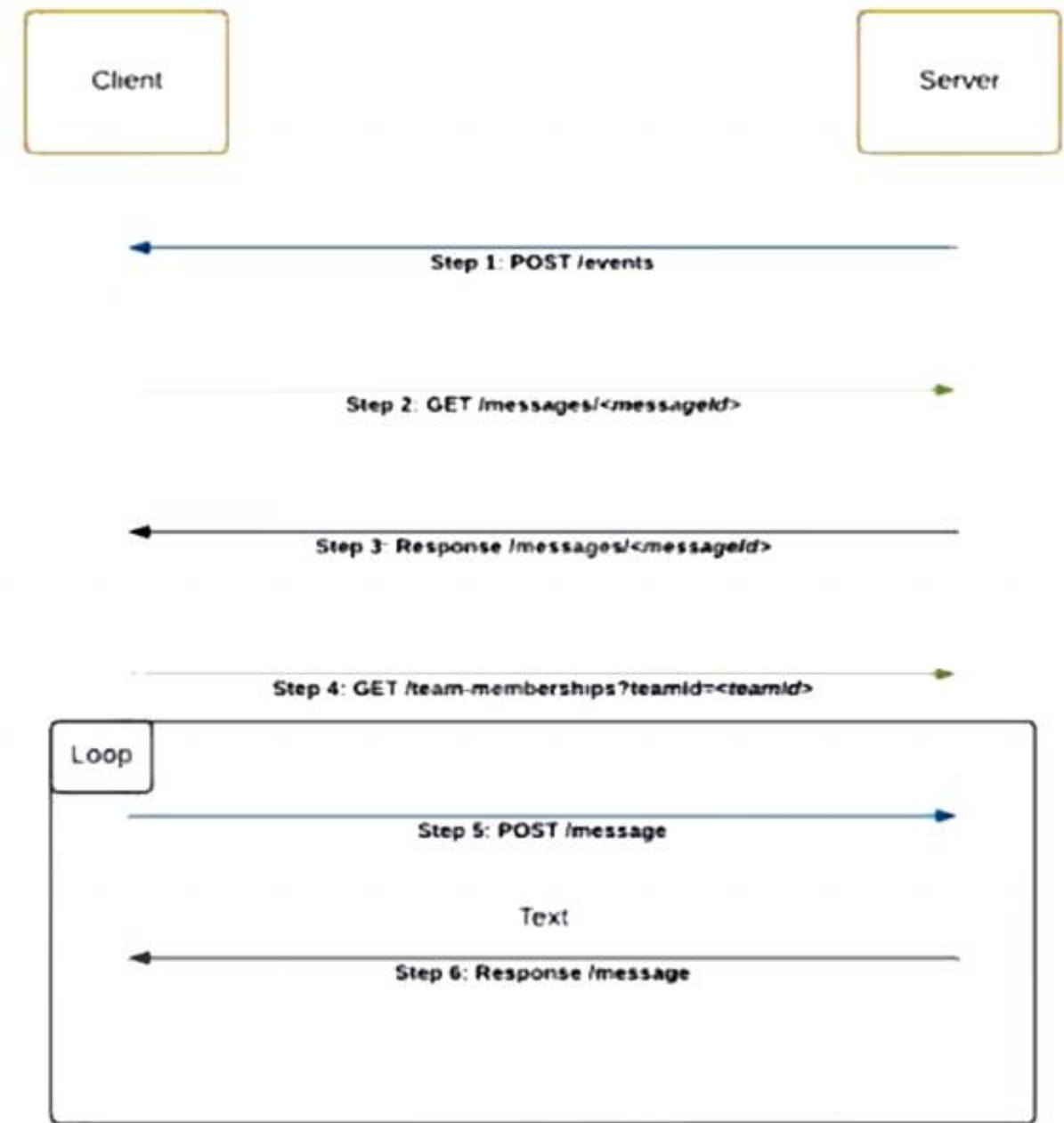
**Answer:** D

**Explanation:**

In a REST API, operations are performed on resources, which are accessed and manipulated using HTTP verbs such as GET, POST, PUT, and DELETE. These resources are identified by a URL and are defined within the API. For example, an API may define a resource called "customers", which can be accessed using the URL "http://api.example.com/customers". To retrieve a list of customers, the client could make a GET request to this URL. To create a new customer, the client could make a POST request to the same URL with the necessary data in the request body. In contrast, in an RPC API, operations are performed by making function calls. The client makes a request to the server, specifying the function to be called and any necessary parameters. The server then executes the function and returns the result to the client. RPC APIs are operation-oriented, meaning that the focus is on the function being called rather than the resource being accessed.

**NEW QUESTION 423**

- (Exam Topic 3)



Refer to the exhibit. Which code snippet represents the sequence.

- A. `@flask_app.route('/events', methods=['POST'])`  
`def webex_teams_webhook_events():`  
 `json_data = request.json['data']`  
 `response = requests.get(MESSAGE_URL +`  
`json_data['id'], headers=headers)`  
 `if response.json()['text'] == 'Alert':`  
 `response = requests.get(Team_MEMBERSHIPS_URL,`  
`headers=headers, params=params)`  
 `for info in response.json()['items']:`  
 `data = {'personId': info['personId'], 'text':`  
`'Alert'}`  
 `response = requests.post(MESSAGES_URL,`  
`headers=headers, params=params)`
- B. `@flask_app.route('/events', methods=['POST'])`  
`def webex_teams_webhook_events():`  
 `json_data = request.json['data']`  
 `if response.json()['text'] == 'Alert':`  
 `response = requests.get(MESSAGE_URL +`  
`json_data['id'], headers=headers)`  
 `response = requests.get(Team_MEMBERSHIPS_URL,`  
`headers=headers, params=params)`  
 `for info in response.json()['items']:`  
 `data = {'personId': info['personId'],`  
`'text': 'Alert'}`  
 `response = requests.post(MESSAGES_URL,`  
`headers=headers, params=params)`
- C. `@flask_app.route('/events', methods=['POST'])`  
`def webex_teams_webhook_events():`  
 `json_data = request.json['data']`  
 `response = requests.post(MESSAGE_URL +`  
`json_data['id'], headers=headers)`  
 `if response.json()['text'] == 'Alert':`  
 `for info in response.json()['items']:`  
 `response = requests.get(Team_MEMBERSHIPS_URL,`  
`headers=headers, params=params)`  
 `data = {'personId': info['personId'], 'text':`  
`'Alert'}`  
 `response = requests.get(MESSAGES_URL,`  
`headers=headers, params=params)`
- D. `@flask_app.route('/events', methods=['POST'])`  
`def webex_teams_webhook_events():`  
 `json_data = request.json['data']`  
 `response = requests.get(Team_MEMBERSHIPS_URL,`  
`headers=headers, params=params)`  
 `if response.json()['text'] == 'Alert':`  
 `response = requests.get(MESSAGE_URL +`  
`json_data['id'], headers=headers)`  
 `for info in response.json()['items']:`  
 `data = {'personId': info['personId'], 'text':`  
`'Alert'}`  
 `response = requests.post(MESSAGES_URL,`  
`headers=headers, params=params)`

Answer: C

#### NEW QUESTION 428

- (Exam Topic 3)

Which protocol is used for clock synchronization between network devices?

- A. FTP
- B. NNTP
- C. BGP
- D. NTP

**Answer:** D

#### Explanation:

Network Time Protocol (NTP) is an internet protocol used to synchronize with computer clock time sources in a network. It belongs to and is one of the oldest parts of the TCP/IP suite. The term NTP applies to both the protocol and the client-server programs that run on computers.

#### NEW QUESTION 432

- (Exam Topic 3)

Which two details are captured from the subnet mask? (Choose two.)

- A. portion of an IP address that refers to the subnet
- B. default gateway of the host
- C. unique number ID assigned to the host
- D. part of an IP address that refers to the host
- E. network connection of a host or interface

**Answer:** AD

#### NEW QUESTION 435

- (Exam Topic 3)

An engineer needs to collect information about 20,000 Bluetooth clients using the Cisco Meraki API. The API returns only 1,000 results. One of the HTTP response headers has the data:

Link: [https://api.meraki.com.info/api/v0/networks/ABC/bluetoothClients?perPage=1000&startingAfter=1000>;rel="n](https://api.meraki.com/info/api/v0/networks/ABC/bluetoothClients?perPage=1000&startingAfter=1000>;rel=n)

Which RFC is implemented by the API to apply the restriction?

- A. RFC 5988 – Web Linking
- B. RFC 5890 – Response Constraints
- C. RFC 5005 – Feed Paging and Archiving
- D. RFC 5446 – Content Limits

**Answer:** C

#### NEW QUESTION 437

- (Exam Topic 3)

Why would a developer compare a current version of code to a previous version?

- A. to provide the single source of truth
- B. to troubleshoot code failures
- C. to track who made a change
- D. to aid in collaboration

**Answer:** B

#### NEW QUESTION 441

- (Exam Topic 3)

An engineer prepares a set of Python scripts to interact with network devices. To avoid network performance issues, the engineer wants to run them in a test environment. Which resource must be used to monitor the live execution of code in an always-available environment?

- A. packet tracer
- B. learning labs
- C. sandbox
- D. code exchange

**Answer:** C

#### NEW QUESTION 445

- (Exam Topic 3)

What are two benefits of implementing common data structures when working with APIs in remote systems? (Choose two.)

- A. ensures that developers are limited to using one data schema type
- B. prevents multivendor interoperability
- C. improves security in RESTful web services
- D. enforces standardized data structures
- E. leverages code that is easily managed and reused

**Answer:** BE

#### NEW QUESTION 446

- (Exam Topic 3)  
Refer to the exhibit.

```
cd ~/development/project01
mkdir info
cd info
[REDACTED]
cp ./requirements.txt ~/Documents/backup/requirements.txt
```

A developer just finished testing a Python script and wants to save the list of packages and versions installed on the current machine. The developer must make sure that it will not cause any issues if tested on another device due to different library versions. Which line of code needs to be placed on the snippet where the code is missing?

- A. pip freeze 2> requirements.txt
- B. pip freeze > requirements.txt
- C. pip freeze => requirements.txt
- D. pip freeze | requirements.txt

**Answer:** B

**Explanation:**

pip freeze requirements.txt ile ilgili görsel sonucu The most common command is pip freeze > requirements.txt , which records an environment's current package list into requirements.txt. If you want to install the dependencies in a virtual environment, create and activate that environment first, then use the Install from requirements.

**NEW QUESTION 451**

- (Exam Topic 3)

What is the purpose of grouping devices in a VLAN?

- A. Devices communicate as if they are connected on the same wire.
- B. Multicast network traffic is limited to the VLAN connected devices.
- C. Unicast messages are limited to the clients connected on the same VLAN.
- D. Network traffic is load balanced between the devices connected to the VLAN.

**Answer:** B

**NEW QUESTION 452**

.....



## Thank You for Trying Our Product

### We offer two products:

1st - We have Practice Tests Software with Actual Exam Questions

2nd - Questions and Answers in PDF Format

### 200-901 Practice Exam Features:

- \* 200-901 Questions and Answers Updated Frequently
- \* 200-901 Practice Questions Verified by Expert Senior Certified Staff
- \* 200-901 Most Realistic Questions that Guarantee you a Pass on Your First Try
- \* 200-901 Practice Test Questions in Multiple Choice Formats and Updates for 1 Year

**100% Actual & Verified — Instant Download, Please Click**  
**[Order The 200-901 Practice Test Here](#)**