

# Cisco

## Exam Questions 500-220

Engineering Cisco Meraki Solutions



#### NEW QUESTION 1

One thousand concurrent users stream video to their laptops. A 30/70 split between 2.4 GHz and 5 GHz is used. Based on client count, how many APs (rounded to the nearest whole number) are needed?

- A. 26
- B. 28
- C. 30
- D. 32

**Answer: C**

#### NEW QUESTION 2

When an SSID is configured with Sign-On Splash page enabled, which two settings must be configured for unauthenticated clients to have full network access and not be allow listed? (Choose two.)

- A. Controller disconnection behavior
- B. Captive Portal strength
- C. Simultaneous logins
- D. Firewall & traffic shaping
- E. RADIUS for splash page settings

**Answer: AB**

#### NEW QUESTION 3

Which two actions can extend the video retention of a Cisco Meraki MV Smart Camera? (Choose two.)

- A. enabling audio compression
- B. installing an SSD memory extension
- C. enabling motion-based retention
- D. enabling maximum retention limit
- E. configuring a recording schedule

**Answer: CE**

#### NEW QUESTION 4

Refer to the exhibit.



For an AP that displays this alert, which network access control method must be in use?

- A. preshared key
- B. WPA2-enterprise with my RADIUS server
- C. splash page with my RADIUS server
- D. MAC-based access control with RADIUS server

**Answer: A**

#### NEW QUESTION 5

What is the best practice Systems Manager enrollment method when deploying corporate-owned iOS devices?

- A. manual
- B. Apple Configurator
- C. Sentry enrollment
- D. DEP

**Answer: B**

#### NEW QUESTION 6

Drag and drop the steps from the left into the sequence on the right to manage device control, according to Cisco Meraki best practice.

enroll	1
create profile	2
add settings profile	3
define tags	4
apply profile	5

- A. Mastered
- B. Not Mastered

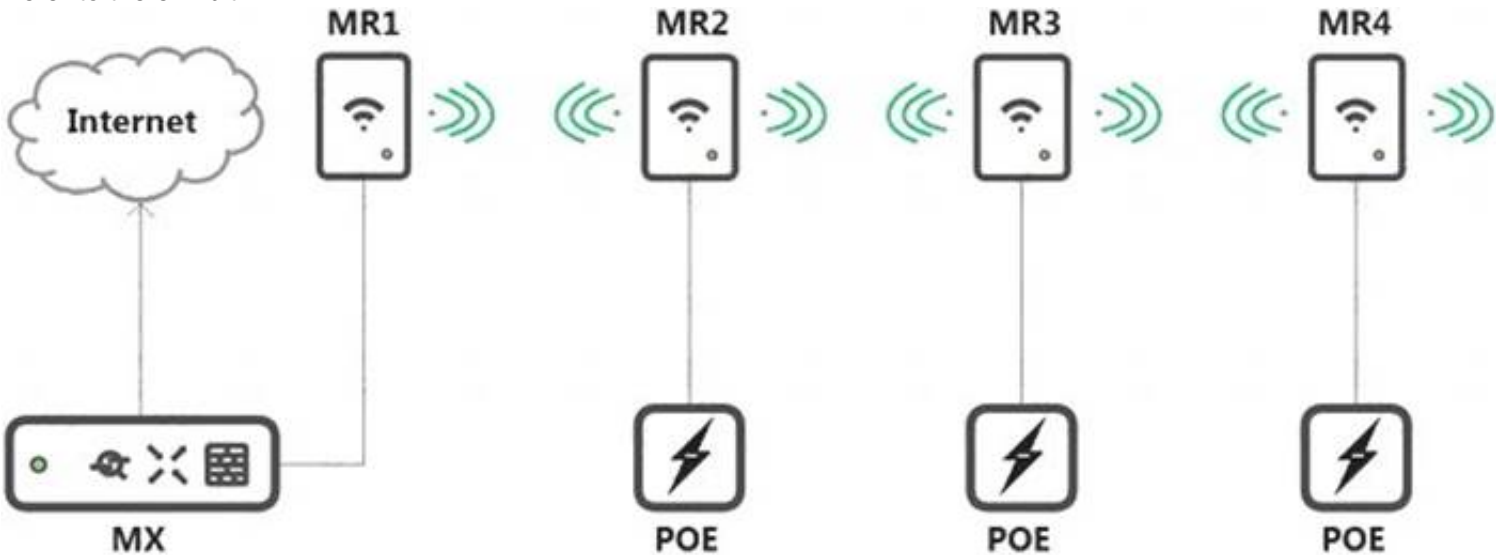
Answer: A

Explanation:

Table Description automatically generated with medium confidence

NEW QUESTION 7

Refer to the exhibit.



Which design recommendation should be considered?

- A. A 25-percent throughput loss occurs for every hop
- B. Cisco Meraki best practice recommends a 1-hop maximum.
- C. A 25-percent throughput loss occurs for every hop
- D. Cisco Meraki best practice recommends a 2-hop maximum.
- E. A 50-percent throughput loss occurs for every hop
- F. Cisco Meraki best practice recommends a 1-hop maximum.
- G. A 50-percent throughput loss occurs for every hop
- H. Cisco Meraki best practice recommends a 2-hop maximum.

Answer: A

NEW QUESTION 8

A customer wants to use Microsoft Azure to host corporate application servers.

Which feature does the customer get by using a vMX appliance rather than connecting directly to Azure by VPN?

- A. malware protection
- B. SD-WAN
- C. next-generation firewall
- D. intrusion prevention

Answer: C

NEW QUESTION 9

What occurs when a configuration change is made to an MX network that is bound to a configuration template?

- A. The configuration change in the bound network is combined with the template configuration inside the template.
- B. The more restrictive configuration is preferred.
- C. The configuration change in the bound network overrides the template configuration.
- D. The template configuration overrides the configuration change in the bound network.

Answer: A

NEW QUESTION 10

Refer to the exhibit.

Route table

SUBNET	NAME	TYPE	SORT BY
<input type="text" value="Search by subnet"/>	<input type="text" value="Search by name"/>	<input type="text" value="All"/>	<input type="text" value="Priority"/>
Subnet	Name	Type	Next hop
10.115.32.0/28	Store 1532 – appliance: MGMT	Meraki VPN: VLAN	Peer: Store 1532 – appliance
10.116.32.0/28	Store 1532 – appliance: DATA	Meraki VPN: VLAN	Peer: Store 1532 – appliance
192.39.2.28/32	External	BGP	10.128.124.62
192.168.70.8/29	MSP NOC	IPSec Peer	4.99.111.99
192.168.70.0/29	MSP NOC	IPSec Peer	4.100.99.100
192.39.228.0/24	External	BGP	10.128.124.62
192.168.0.0/16	External	BGP	10.128.124.62

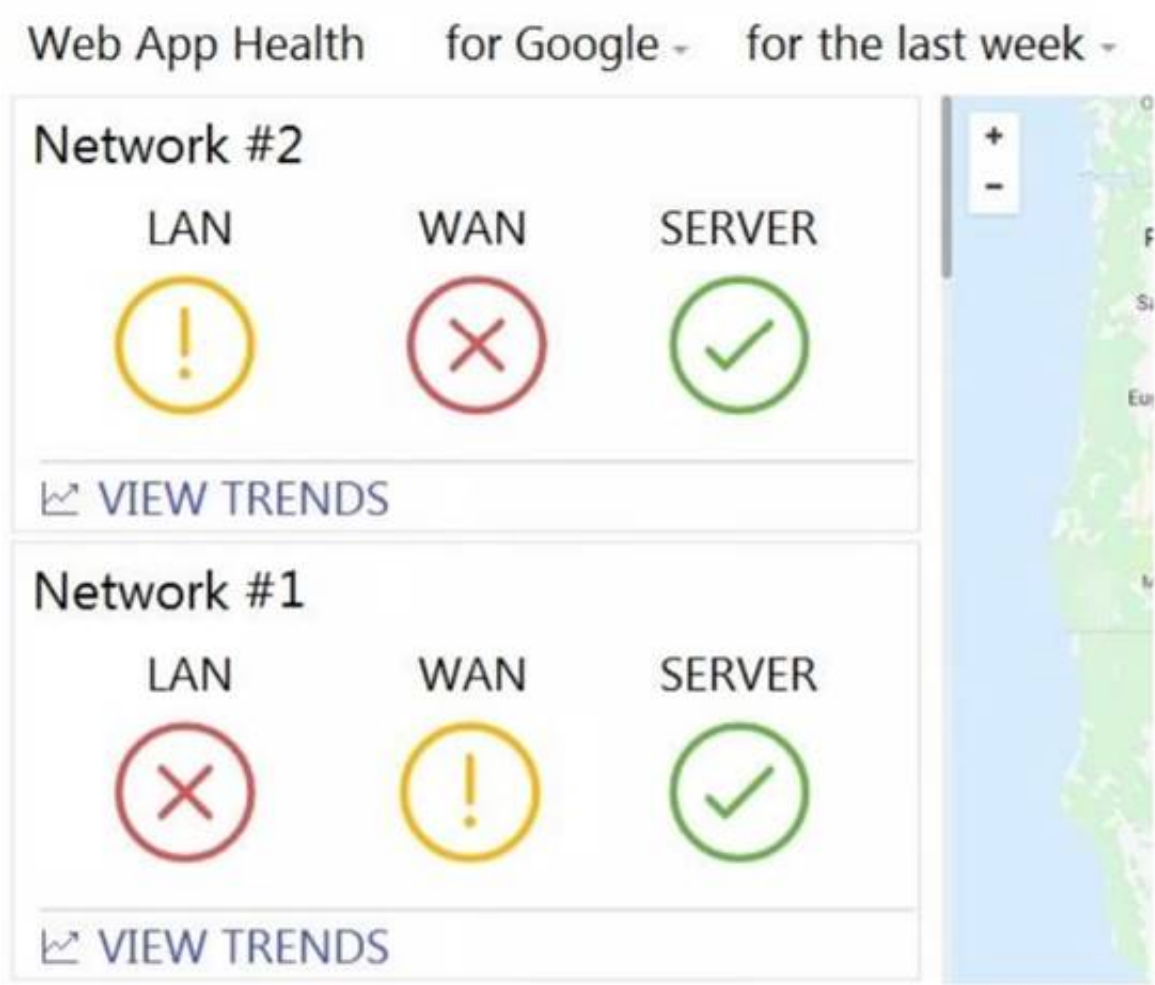
A packet arrives on the VPN concentrator with source IP 10.168.70.3 and destined for IP 10.116.32.4. What is the next hop for the packet, based on this concentrator routing table?

- A. The concentrator gateway (10.128.124.62) is the next hop.
- B. Not enough detail is available to determine the next hop.
- C. The packet is stopped.
- D. The Auto VPN peer “Store 1532 – appliance” is the next hop.

Answer: B

NEW QUESTION 10

Refer to the exhibit.



What are two outcomes reflected in the Web App Health application? (Choose two.)

- A. Users on both networks may be experiencing issues when attempting to reach Google.
- B. Network #1 could not load Google because of a remote server issue.
- C. Network #2 had better application performance than Network #1.
- D. Network #2 could not load Google because of a local client misconfiguration.
- E. Neither network recorded any server-side performance issues.

Answer: BE

NEW QUESTION 11

Which two features and functions are supported when using an MX appliance in Passthrough mode? (Choose two.)

- A. intrusion prevention
- B. site-to-site VPN
- C. secondary uplinks
- D. DHCP
- E. high availability

Answer: AB

NEW QUESTION 15

Refer to the exhibit.

Outbound rules	#	Policy	Protocol	Source	Src port	Destination	Dst port	Comment	Logging	Hits	Actions
		Allow	Any	Any	Any	Any	Any	Default rule	Enabled	2	
<a href="#">Add a rule</a>											

Which outcome occurs when logging is set to Enabled?

- A. Outbound flows are sent to a configured syslog server if a syslog sender is configured for flows.
- B. The hits counter within this section is now enabled.
- C. This firewall rule is now enabled.
- D. Inbound flows are sent to a configured syslog server if a syslog server configured for flows.

**Answer: D**

#### NEW QUESTION 18

Which type of authentication protocol is used when using OSPF on an MX appliance?

- A. MD5
- B. certificate
- C. plaintext
- D. SHA-1

**Answer: A**

#### NEW QUESTION 21

For which two reasons can an organization become “Out of License”? (Choose two.)

- A. licenses that are in the wrong network
- B. more hardware devices than device licenses
- C. expired device license
- D. licenses that do not match the serial numbers in the organization
- E. MR licenses that do not match the MR models in the organization

**Answer: BC**

#### NEW QUESTION 24

Refer to the exhibit.

Security Center		the last 2 weeks									
Search events		Filter 158 matching events									
Summary		Events									
Time	Type	Source	Destination	Disposition	Action	Details					
May 30 21:22:50	IDS Alert	Desktop [redacted] 10	a104-96-113-137 deploy.static.akamaitech nologies.com	Blocked	MALWARE-CNC	Win.Trojan.Cridex variant outbound connection					
May 30 21:22:46	IDS Alert	Desktop [redacted] 10	a104-96-113-137 deploy.static.akamaitech nologies.com	Blocked	MALWARE-CNC	MALWARE-CNC Win.Trojan.Cridex variant outbound connection					
May 30 21:22:46	IDS Alert	Desktop [redacted] 10	a104-96-113-137 deploy.static.akamaitech nologies.com	Blocked	MALWARE-CNC	Win.Trojan.Cridex variant outbound connection					
May 30 21:22:46	IDS Alert	Desktop [redacted] 10	a104-96-113-137 deploy.static.akamaitech nologies.com	Blocked	MALWARE-CNC	Win.Trojan.Cridex variant outbound connection					

Which IDS/IPS mode is the MX Security Appliance configured for?

- A. quarantine
- B. prevention
- C. detection
- D. blocking

**Answer: B**

#### NEW QUESTION 26

Which information is used to calculate whether a WAN link has high usage?

- A. data under Security & SD WAN > Appliance Status > Uplink > Live Data
- B. total historical throughput of an uplink
- C. total number of devices that are actively passing traffic
- D. value under Security & SD WAN > SD WAN & Traffic Shaping > Uplink Configuration

**Answer: D**

#### NEW QUESTION 28

A new application needs to be pushed to all iOS devices. Some devices report “NotNow” in the event log and do not install the application. What does the “NotNow” event indicate?

- A. The application requires the most recent iOS version.

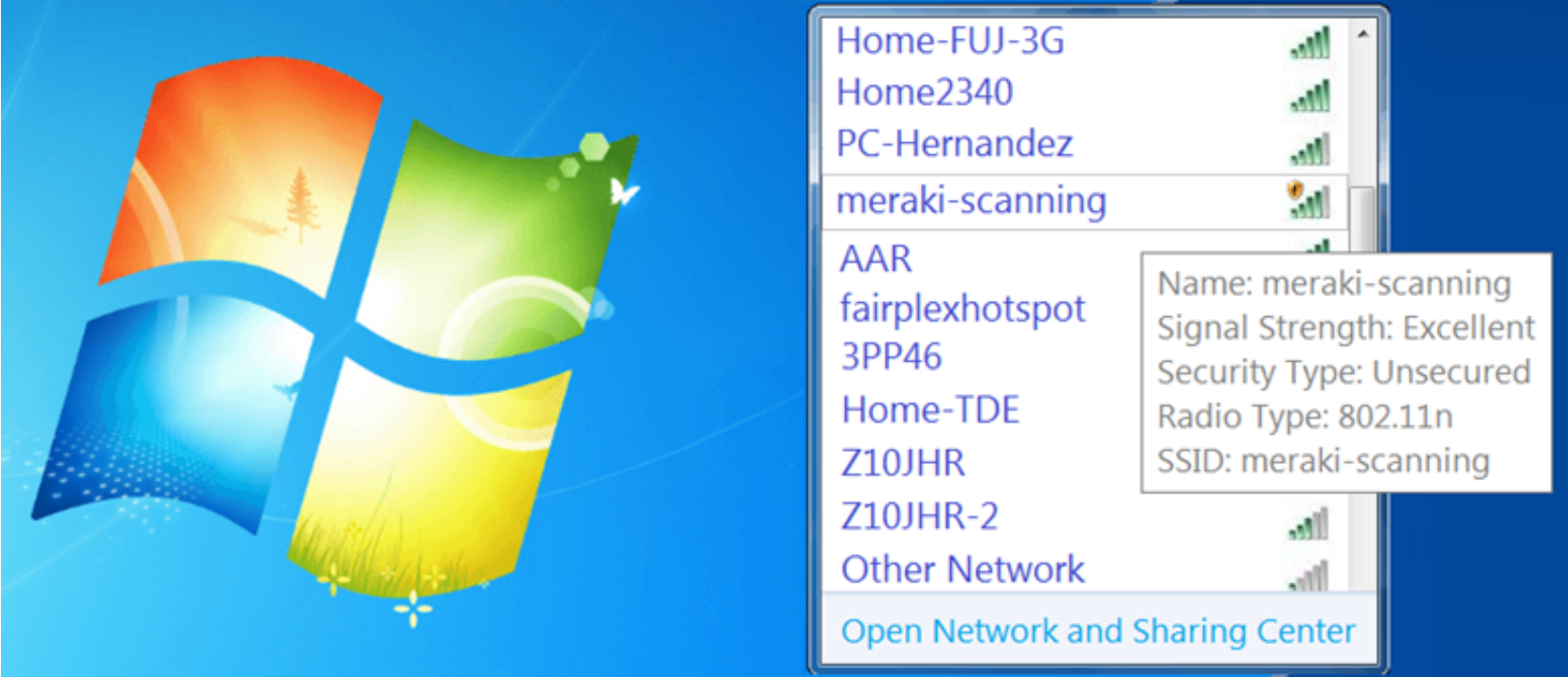


- B. The device is locked with a passcode.
- C. The device cannot connect to Apple servers.
- D. The device cannot connect to Cisco Meraki servers.

Answer: B

NEW QUESTION 32

Refer to the exhibit.



During a Meraki AP deployment, the default SSID that the exhibit shows is broadcast. What causes this behavior?

- A. An AP does not have a wired connection to the network.
- B. An AP cannot connect to the default gateway.
- C. An AP has never connected to the Meraki Cloud Controller.
- D. An AP has Site Survey mode enabled.

Answer: C

NEW QUESTION 36

When wireless SSIDs are configured in Dashboard, which setting on the Access Control page affects the ability of a 2.4 GHz only client device from associating to the WLAN for the first time?

- A. Content filtering
- B. Bridge mode
- C. 802.11r
- D. Dual band operating with Band Steering

Answer: D

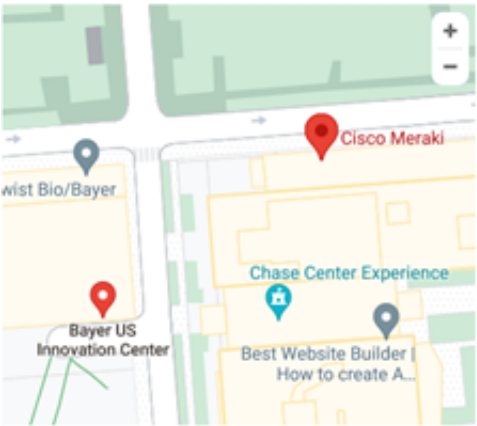
NEW QUESTION 40

The VPN concentrator is experiencing issues. Which action should be taken to ensure a stable environment?

● Corp MX 1

MX450

PRIMARY



ADDRESS

PRIMARY

Current master

SummaryUplink

Live data

Ports

	Internet	GbE				SFP				SFP+			
	1	3	5	7	9	11	13	15	17	19	21	23	25
Management													
	2	4	6	8	10	12	14	16	18	20	22	24	26

Historical data

for the last day

▼

Connectivity

08:00

12:00

16:00

- A. Add a deny any/any firewall rule to the end of the firewall rules.
- B. Remove the connection from Internet 1.
- C. Physically disconnect all LAN ports.
- D. Configure the MX appliance to Routed mode on the Addressing & VLANS page.

**Answer:** C

**NEW QUESTION 41**

What are two ways peers interact with ports that Auto VPN uses? (Choose two.)

- A. For IPsec tunneling, peers use high UDP ports within the 32768 to 61000 range.
- B. Peers contact the VPN registry at UDP port 9350.
- C. For IPsec tunneling, peers use high TCP ports within the 32768 to 61000 range.
- D. Peers contact the VPN registry at TCP port 9350.
- E. For IPsec tunneling, peers use UDP ports 500 and 4500.

**Answer:** BC

**NEW QUESTION 43**

Which Cisco Meraki product must be deployed in addition to Systems Manager so that Systems Manager Sentry enrollment can be used?

- A. MS Switch
- B. Meraki Insight
- C. MR Access Point
- D. MV Smart Camera

**Answer:** C

**NEW QUESTION 46**

What is a feature of distributed Layer 3 roaming?

- A. An MX Security Appliance is not required as a concentrator.
- B. An MX Security Appliance is required as a concentrator.
- C. All wireless client traffic can be split-tunneled.
- D. All wireless client traffic is tunneled.

**Answer:** A

**NEW QUESTION 51**

Which Cisco Meraki best practice method preserves complete historical network event logs?

- A. Configuring the preserved event number to maximize logging.
- B. Configuring the preserved event period to unlimited.
- C. Configuring a syslog server for the network.
- D. Configuring Dashboard logging to preserve only certain event types.

**Answer:** A

**NEW QUESTION 53**

Company iPads are enrolled in Systems Manager without supervision, and profiles are pushed through Systems Manager. Which outcome occurs when a user attempts to remove the “Meraki Management” profile on an iPad?

- A. The “Meraki Management” profile cannot be removed.
- B. The “Meraki Management” profile is removed and then pushed automatically by Systems Manager.
- C. The “Meraki Management” profile is remove
- D. All the profiles that Systems Manager pushed are also removed.
- E. The “Meraki Management” profile is remove
- F. All the profiles Systems Manager pushed remain.

**Answer:** C

**NEW QUESTION 58**

Which Meraki Dashboard menu section is accessed to enable Sentry enrollment on an SSID?

- A. Wireless > Configure > Access Control
- B. Wireless > Configure > Splash page
- C. Wireless > Configure > Firewall & Traffic Shaping
- D. Wireless > Configure > SSIDs

**Answer:** A

**NEW QUESTION 62**

Which requirement is needed to implement Fast Lane on Cisco Meraki APs?

- A. wireless profile installed on an Apple iOS device
- B. wireless profile installed on a Cisco iOS access point
- C. adaptive 802.11r disabled
- D. traffic shaping rule tagging traffic with a DSCP value of 46 to Apple.com

**Answer:** A

**NEW QUESTION 65**

.....



## Thank You for Trying Our Product

### We offer two products:

1st - We have Practice Tests Software with Actual Exam Questions

2nd - Questions and Answers in PDF Format

### 500-220 Practice Exam Features:

- \* 500-220 Questions and Answers Updated Frequently
- \* 500-220 Practice Questions Verified by Expert Senior Certified Staff
- \* 500-220 Most Realistic Questions that Guarantee you a Pass on Your First Try
- \* 500-220 Practice Test Questions in Multiple Choice Formats and Updates for 1 Year

**100% Actual & Verified — Instant Download, Please Click**  
**[Order The 500-220 Practice Test Here](#)**