

Microsoft

Exam Questions SC-300

Microsoft Identity and Access Administrator



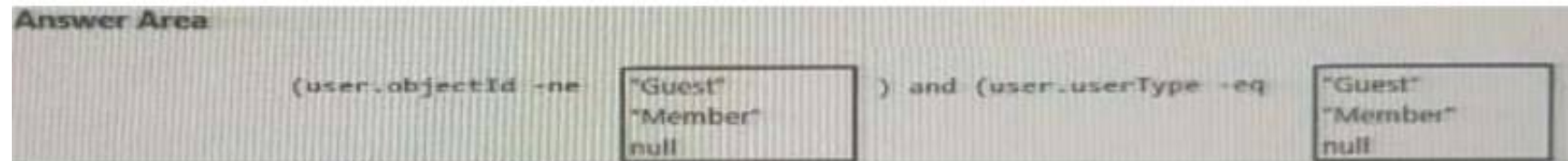
NEW QUESTION 1

- (Exam Topic 1)

You need to create the LWGroup1 group to meet the management requirements.

How should you complete the dynamic membership rule? To answer, drag the appropriate values to the correct targets. Each value may be used once, more than once, or not at all. You may need to drag the split bar between panes or scroll to view content.

NOTE: Each correct selection is worth one point.



- A. Mastered
- B. Not Mastered

Answer: A

Explanation:

Null "Member"

NEW QUESTION 2

- (Exam Topic 1)

You need to track application access assignments by using Identity Governance. The solution must meet the delegation requirements.

What should you do first?

- A. Modify the User consent settings for the enterprise applications.
- B. Create a catalog.
- C. Create a program.
- D. Modify the Admin consent requests settings for the enterprise applications.

Answer: B

Explanation:

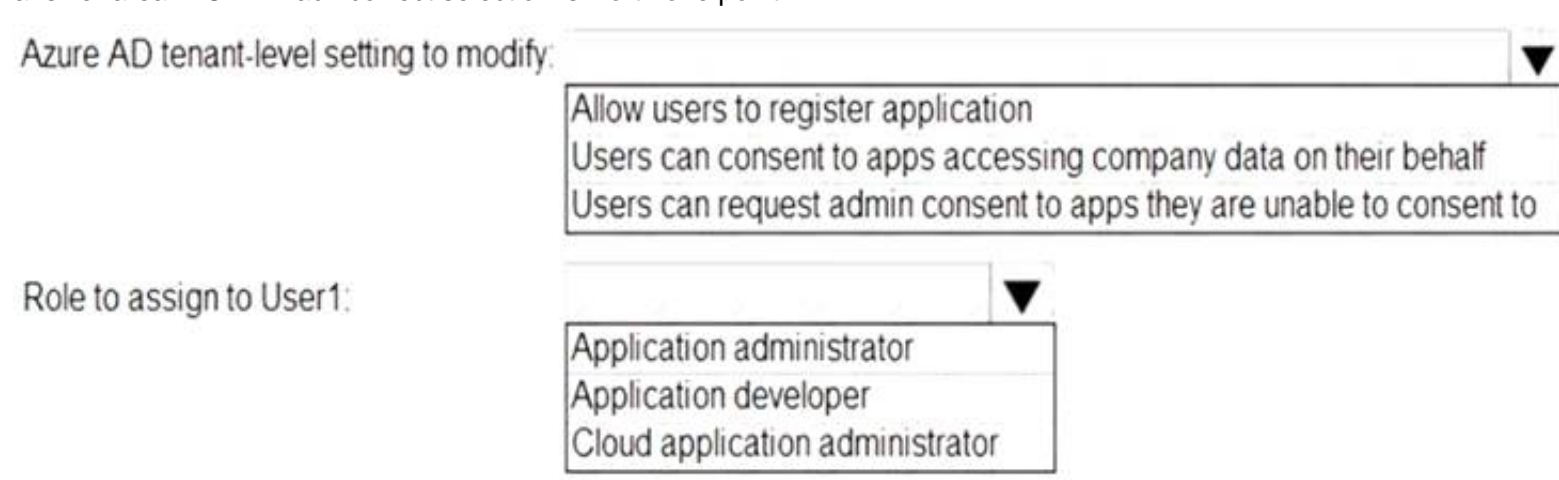
Reference:

<https://docs.microsoft.com/en-us/azure/active-directory/governance/entitlement-management-overview>

NEW QUESTION 3

- (Exam Topic 1)

You need to configure app registration in Azure AD to meet the delegation requirements. What should you do? To answer, select the appropriate options in the answer area. NOTE: Each correct selection is worth one point.



- A. Mastered
- B. Not Mastered

Answer: A

Explanation:

Graphical user interface, text Description automatically generated

Reference:

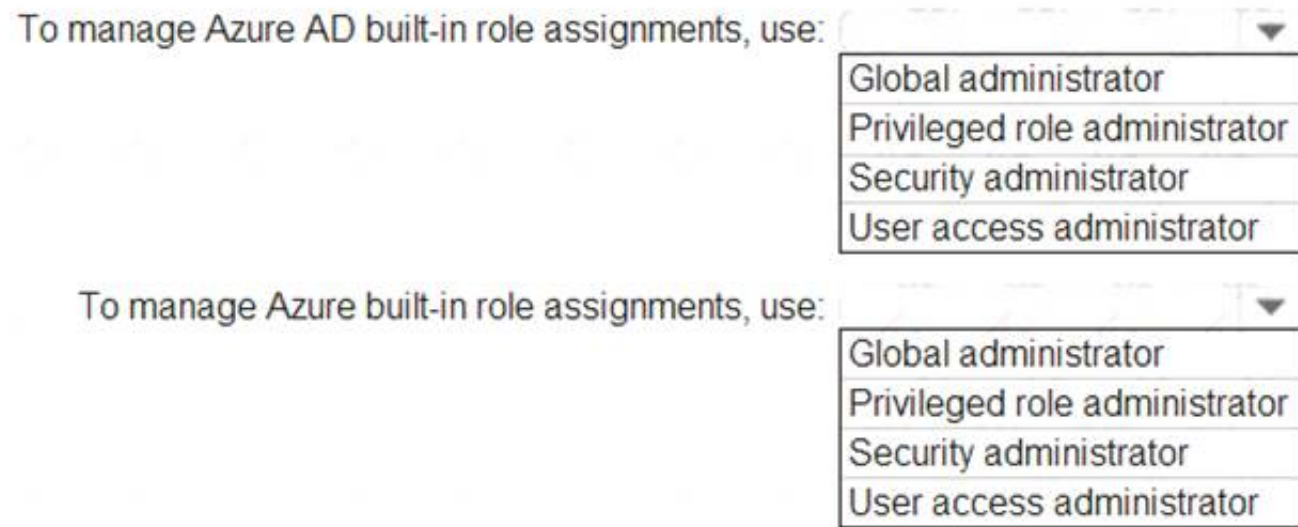
<https://docs.microsoft.com/en-us/azure/active-directory/roles/delegate-app-roles>

NEW QUESTION 4

- (Exam Topic 1)

You need to identify which roles to use for managing role assignments. The solution must meet the delegation requirements.

What should you do? To answer, select the appropriate options in the answer area. NOTE: Each correct selection is worth one point.



- A. Mastered
- B. Not Mastered

Answer: A

Explanation:

Reference:

<https://docs.microsoft.com/en-us/azure/role-based-access-control/role-assignments-portal> <https://docs.microsoft.com/en-us/azure/active-directory/roles/permissions-reference>

NEW QUESTION 5

- (Exam Topic 1)

You need to configure the detection of multi-staged attacks to meet the monitoring requirements. What should you do?

- A. Customize the Azure Sentinel rule logic.
- B. Create a workbook.
- C. Add Azure Sentinel data connectors.
- D. Add an Azure Sentinel playbook.

Answer: A

NEW QUESTION 6

- (Exam Topic 1)

You need to configure the detection of multi staged attacks to meet the monitoring requirements. What should you do?

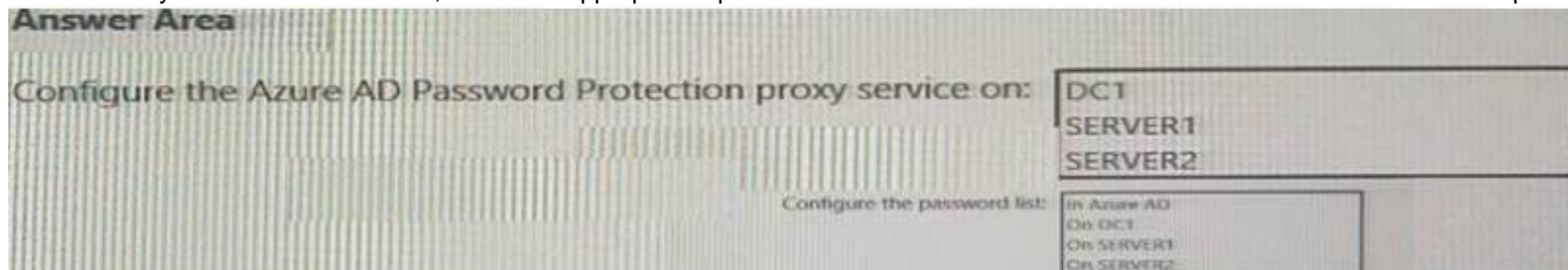
- A. Customize the Azure Sentinel rule logic.
- B. Create a workbook.
- C. Add an Azure Sentinel playbook.
- D. Add Azure Sentinel data connectors.

Answer: D

NEW QUESTION 7

- (Exam Topic 1)

You need to implement password restrictions to meet the authentication requirements. You install the Azure AD password Protection DC agent on DC1. What should you do next? To answer, select the appropriate options in the answer area. NOTE: Each correct selection is worth one point.



- A. Mastered
- B. Not Mastered

Answer: A

Explanation:

Server1 On DC1

NEW QUESTION 8

- (Exam Topic 2)

You create a Log Analytics workspace.

You need to implement the technical requirements for auditing. What should you configure in Azure AD?

- A. Company branding

- B. Diagnostics settings
- C. External Identities
- D. App registrations

Answer: B

Explanation:

Reference:
<https://docs.microsoft.com/en-us/azure/active-directory/reports-monitoring/overview-monitoring>

NEW QUESTION 9

- (Exam Topic 2)
You need to meet the planned changes and technical requirements for App1. What should you implement?

- A. a policy set in Microsoft Endpoint Manager
- B. an app configuratfon policy in Microsoft Endpoint Manager
- C. an app registration in Azure AD
- D. Azure AD Application Proxy

Answer: C

Explanation:

Reference:
<https://docs.microsoft.com/en-us/azure/active-directory/develop/quickstart-register-app>

NEW QUESTION 10

- (Exam Topic 2)
You need to implement the planned changes and technical requirements for the marketing department. What should you do? To answer, select the appropriate options in the answer area.
NOTE: Each correct selection is worth one point.

To configure user access:

An access package

An access review

A conditional access policy

To enable collaboration with fabrikam.com:

An accepted domain

A connected organization

A custom domain name

- A. Mastered
- B. Not Mastered

Answer: A

Explanation:

Reference:
<https://docs.microsoft.com/en-us/azure/active-directory/governance/entitlement-management-organization>

NEW QUESTION 10

- (Exam Topic 3)
You need to implement the planned changes for Package1. Which users can create and manage the access review?

- A. User3 only
- B. User4 only
- C. User5 only
- D. User3 and User4
- E. User3 and User5
- F. User4and User5

Answer: E

NEW QUESTION 12

- (Exam Topic 3)
You need to implement the planned changes for litware.com. What should you configure?

- A. Azure AD Connect cloud sync between the Azure AD tenant and litware.com
- B. Azure AD Connect to include the litware.com domain
- C. staging mode in Azure AD Connect for the litware.com domain

Answer: C

NEW QUESTION 13

- (Exam Topic 3)

You need implement the planned changes for application access to organizational data. What should you configure?

- A. authentication methods
- B. the User consent settings
- C. access packages
- D. an application proxy

Answer: B

NEW QUESTION 18

- (Exam Topic 3)

You need to resolve the recent security incident issues.

What should you configure for each incident? To answer, drag the appropriate policy types to the correct issues. Each policy type may be used once, more than once, or not at all. You may need to drag the split bar between panes or scroll to view content. NOTE: Each correct selection is worth one point.

Policy Types

An authentication method policy

A Conditional Access policy

A sign-in risk policy

A user risk policy

Answer Area

Leaked credentials:

A sign-in from a suspicious browser:

Resources accessed from an anonymous IP address:

- A. Mastered
- B. Not Mastered

Answer: A

Explanation:

Policy Types

An authentication method policy

A Conditional Access policy

A sign-in risk policy

A user risk policy

Answer Area

Leaked credentials: A user risk policy

A sign-in from a suspicious browser: A sign-in risk policy

Resources accessed from an anonymous IP address: A sign-in risk policy

NEW QUESTION 20

- (Exam Topic 3)

You need to modify the settings of the User administrator role to meet the technical requirements. Which two actions should you perform for the role? Each correct answer presents part of the solution. NOTE: Each correct selection is worth one point.

- A. Select Require justification on activation
- B. Set all assignments to Active
- C. Set all assignments to Eligible
- D. Modify the Expire eligible assignments after setting.
- E. Select Require ticket information on activation.

Answer: AB

NEW QUESTION 22

- (Exam Topic 4)

Your network contains an on-premises Active Directory Domain services (AD DS) domain that syncs with an Azure AD tenant. The AD DS domain contains the organizational units (OUs) shown in the following table.

Name	Description
OU1	Syncs with Azure AD
OU2	Does NOT sync with Azure AD

You need to create a break-glass account named BreakGlass.

Where should you create BreakGlass, and which role should you assign to BreakGlass? To answer, select the appropriate options in the answer area. NOTE: Each correct selection is worth one point.

Answer Area

Location:

Role:

- A. Mastered
- B. Not Mastered

Answer: A

Explanation:

Answer Area

Location:

Role:

NEW QUESTION 27

- (Exam Topic 4)

You have an Azure Active Directory (Azure AD) tenant that contains a user named User1. An administrator deletes User1.

You need to identify the following:

- How many days after the account of User1 is deleted can you restore the account?
- Which is the least privileged role that can be used to restore User1?

What should you identify? To answer, select the appropriate options in the answer area. NOTE: Each correct selection is worth one point.

Answer Area

Number of days:

Role:

- A. Mastered
- B. Not Mastered

Answer: A

Explanation:

Answer Area

Number of days:

Role:

NEW QUESTION 31

- (Exam Topic 4)

You have a Microsoft 365 tenant.

All users must use the Microsoft Authenticator app for multi-factor authentication (MFA) when accessing Microsoft 365 services.

Some users report that they received an MFA prompt on their Microsoft Authenticator app without initiating a sign-in request.

You need to block the users automatically when they report an MFA request that they did not initiate. Solution: From the Azure portal, you configure the Block/unblock users settings for multi-factor authentication (MFA).

Does this meet the goal?

- A. Yes
- B. No

Answer: B

Explanation:

You need to configure the fraud alert settings. Reference:

<https://docs.microsoft.com/en-us/azure/active-directory/authentication/howto-mfa-mfasettings>

NEW QUESTION 36

- (Exam Topic 4)

You have an Azure AD tenant that contains a user named User1. User1 needs to manage license assignments and reset user passwords. Which role should you assign to User1?

- A. License administrator
- B. Helpdesk administrator
- C. Billing administrator
- D. User administrator

Answer: D

NEW QUESTION 37

- (Exam Topic 4)

Your company requires that users request access before they can access corporate applications.

You register a new enterprise application named MyApp1 in Azure Active Directory (Azure AD) and configure single sign-on (SSO) for MyApp1.

Which settings should you configure next for MyApp1?

- A. Self-service
- B. Provisioning
- C. Roles and administrators
- D. Application proxy

Answer: A

Explanation:

Reference:

<https://docs.microsoft.com/en-us/azure/active-directory/manage-apps/manage-self-service-access>

NEW QUESTION 42

- (Exam Topic 4)

Your network contains an on-premises Active Directory domain that syncs to an Azure AD tenant. Users sign in to computers that run Windows 10 and are joined to the domain.

You plan to implement Azure AD Seamless Single Sign-On (Azure AD Seamless SSO). You need to configure the Windows 10 computers to support Azure AD Seamless SSO. What should you do?

- A. Modify the Local intranet zone settings
- B. Configure Sign-in options from the Settings app.
- C. Enable Enterprise State Roaming.
- D. Install the Azure AD Connect Authentication Agent.

Answer: B

- (Exam Topic 4)

After you answer a question in this section, you will NOT be able to return to it. As a result, these questions will not appear in the review screen.

You discover that when a user account is disabled in Active Directory, the disabled user can still authenticate to Azure AD for up to 30 minutes.

Solution: You configure Azure AD Password Protection. Does this meet the goal?

- A. Yes
B. No

NEW QUESTION 49

- (Exam Topic 4)

After you answer a question in this section, you will NOT be able to return to it. As a result, these questions will not appear in the review screen.

You have 100 IT administrators who are organized into 10 departments. You create the access review shown in the exhibit. (Click the Exhibit tab.)

Access reviews allow reviewers to attest to whether users still need to be in a role.

Start

Solution: You set Reviewers to Member (self).

A. Yes
B. No

NEW QUESTION 52

- (Exam Topic 4)

You have a Microsoft 365 E5 subscription.

You purchase the app governance add-on license. You need to enable app governance integration. Which portal should you use?

- A. the Microsoft Defender for Cloud Apps portal
- B. the Microsoft 365 admin center
- C. Microsoft 365 Defender
- D. the Azure Active Directory admin center
- E. the Microsoft Purview compliance portal

Answer: A

NEW QUESTION 57

- (Exam Topic 4)

You have an Azure AD tenant.

You perform the tasks shown in the following table.

Date	Task
March 1	Register four enterprise applications named App1, App2, App3, and App4.
March 15	From the tenant, update the following settings for App1: App roles, Users and groups, Client secret, and Self-service.
March 20	From the tenant, update the following settings for App2: App roles, Users and groups, Client secret, and Self-service.
March 25	From the tenant, update the following settings for App3: App roles, Users and groups, Client secret, and Self-service.
March 30	From the tenant, update the following settings for App4: App roles, Users and groups, Client secret, and Self-service.

On April 5, an administrator deletes App1, App2, App3, and App4.

You need to restore the apps and the settings.

Which apps can you restore on April 16, and which settings can you restore for App4 on April 16? To answer, select the appropriate options in the answer area.

NOTE: Each correct selection is worth one point.

Answer Area

Apps:

App4 settings:

- A. Mastered
- B. Not Mastered

Answer: A

Explanation:

A screenshot of a phone Description automatically generated

NEW QUESTION 62

- (Exam Topic 4)

You have a Microsoft 365 ES subscription that user Microsoft Defender for Cloud Apps and Yammer. You need prevent users from signing in to Yammer from high-risk locations.

What should you do in the Microsoft Defender for Cloud Apps portal?

- A. Create an access Policy.
- B. Create an activity policy.
- C. Unsanction Yammer.
- D. Create an anomaly detection policy.

Answer: A

NEW QUESTION 63

- (Exam Topic 4)

You have 2,500 users who are assigned Microsoft Office 365 Enterprise E3 licenses. The licenses are assigned to individual users.

From the Groups blade in the Azure Active Directory admin center, you assign Microsoft 365 Enterprise E5 licenses to the users.

You need to remove the Office 365 Enterprise E3 licenses from the users by using the least amount of administrative effort.

What should you use?

- A. the Administrative units blade in the Azure Active Directory admin center
- B. the Set-AzureAdUser cmdlet
- C. the Groups blade in the Azure Active Directory admin center
- D. the Sec-MsolUserLicense cmdlet

Answer: C

Explanation:

Reference:

<https://docs.microsoft.com/en-us/powershell/module/msonline/set-msoluserlicense?view=azureadps-1.0>

NEW QUESTION 65

- (Exam Topic 4)

Note: This question is part of a series of questions that present the same scenario. Each question in the series contains a unique solution that might meet the stated goals. Some question sets might have more than one correct solution, while others might not have a correct solution.

After you answer a question in this section, you will NOT be able to return to it as a result these questions will not appear in the review screen.

You have a Microsoft 365 ES subscription. You create a user named User1.

You need to ensure that User1 can update the status of identity Secure Score improvement actions. Solution: You assign the Security Operator role User1.

Does this meet the goal?

- A. Yes
- B. No

Answer: B

NEW QUESTION 68

- (Exam Topic 4)

You have an Azure AD tenant that contains the users shown in The following table.

Name	Role
User1	User Administrator
User2	Password Administrator
User3	Security Reader
User4	User

You enable self-service password reset (SSPR) for all the users and configure SSPR to require security questions as the only authentication method.

Which users must use security questions when resetting their password?

- A. User4 only
- B. User3 and User4 only
- C. User1 and User4 only
- D. User1, User3, and User4 only
- E. User1, User2, User3, and User4

Answer: B

NEW QUESTION 70

- (Exam Topic 4)

Your company purchases 2 new Microsoft 365 ES subscription and an app named App. You need to create a Microsoft Defender for Cloud Apps access policy for App1.

What should you do you first? (Choose Correct Answer based on Microsoft Identity and Access Administrator at microsoft.com)

- A. Configure a Token configuration for App1.
- B. Add an API permission for App.
- C. Configure a Conditional Access policy to use app-enforced restrictions.
- D. Configure a Conditional Access policy to use Conditional Access App Control.

Answer: C

Explanation:

<https://learn.microsoft.com/en-us/defender-cloud-apps/access-policy-aad>

To create a Microsoft Defender for Cloud Apps access policy for App1, you should configure a Conditional Access policy to use app-enforced restrictions. This will allow you to control access to your cloud apps based on conditions such as user, device, location, and app state. You can also use app-enforced restrictions to control access to your cloud apps based on the state of the app, such as whether it's running on a managed or unmanaged device.

NEW QUESTION 71

- (Exam Topic 4)

You have a Microsoft Exchange organization that uses an SMTP address space of contoso.com.

Several users use their contoso.com email address for self-service sign up to Azure Active Directory (Azure AD).

You gain global administrator privileges to the Azure AD tenant that contains the self-signed users.

You need to prevent the users from creating user accounts in the contoso.com Azure AD tenant for self-service sign-up to Microsoft 365 services.

Which PowerShell cmdlet should you run?

- A. Set-MsolCompanySettings
- B. Set-MsolDomainFederationSettings
- C. Update-MselfederatedDomain
- D. Set-MsolDomain

Answer: A

Explanation:

<https://docs.microsoft.com/en-us/azure/active-directory/enterprise-users/directory-self-service-signup>

NEW QUESTION 76

- (Exam Topic 4)

You have an Azure AD tenant named contoso.com that contains a group named All Company and has the following Identity Governance settings:

- Block external users from signing in to this directory: Yes
- Remove external user Yes
- Number of days before removing external user from this directory: 30

On March 1, 2022, you create an access package named Package1 that has the following settings:

- Resource roles

o Name: All Company

o Type: Group and Team o Role: Member

- Lifecycle

o Access package assignment expire: On date o Assignment expiration date: April 1, 2022

On March 1, 2022, you assign Package1 to the guest users shown in the following table.

Name	Email address
Guest1	guest1@outlook.com
Guest2	guest2@outlook.com

On March 2, 2022, you assign the Reports reader role to Guest1.

On April 1(2022, you invite a guest user named Guest3 to contoso.com. On April 4, 2022, you add Guest3 to the All Company group.

For each of the following statements, select Yes if the statement is true. Otherwise, select No. NOTE: Each correct selection is worth one point.

Answer Area

Statements	Yes	No
On May 5, 2022, the Guest1 account is in contoso.com.	<input type="radio"/>	<input type="radio"/>
On May 5, 2022, the Guest2 account is in contoso.com.	<input type="radio"/>	<input type="radio"/>
On May 5, 2022, the Guest3 account is in contoso.com.	<input type="radio"/>	<input type="radio"/>

- A. Mastered
- B. Not Mastered

Answer: A

Explanation:

A screenshot of a computer Description automatically generated

NEW QUESTION 79

- (Exam Topic 4)

You have an Azure AD tenant

You configure User consent settings to allow users to provide consent to apps from verified publishers. You need to ensure that the users can only provide consent to apps that require low impact permissions. What should you do?

- A. Create an access package.
- B. Configure permission classifications.
- C. Create an enterprise application collection.
- D. Create an access review.

Answer: B

NEW QUESTION 81

- (Exam Topic 4)

You have a Microsoft 365 E5 subscription.

Users authorize third-party cloud apps to access their data.

You need to configure an alert that will be triggered when an app requires high permissions and is authorized by more than 20 users.

Which type of policy should you create in the Microsoft Defender for Cloud Apps portal?

- A. anomaly detection policy
- B. OAuth app policy
- C. access policy
- D. activity policy

Answer: C

NEW QUESTION 82

- (Exam Topic 4)

You have a Microsoft 365 tenant.

In Azure Active Directory (Azure AD), you configure the terms of use.

You need to ensure that only users who accept the terms of use can access the resources in the tenant. Other users must be denied access.

What should you configure?

- A. an access policy in Microsoft Cloud App Security.
- B. Terms and conditions in Microsoft Endpoint Manager.
- C. a conditional access policy in Azure AD
- D. a compliance policy in Microsoft Endpoint Manager

Answer: C

Explanation:

Reference:

<https://docs.microsoft.com/en-us/azure/active-directory/conditional-access/terms-of-use>

NEW QUESTION 84

- (Exam Topic 4)

You have an Azure Active Directory (Azure AD) tenant that contains the following objects:

- A device named Device1
- Users named User1, User2, User3, User4, and User5
- Groups named Group1, Group2, Group3, Group4, and Group5 The groups are configured as shown in the following table.

Name	Type	Membership type	Members
Group1	Security	Assigned	User1, User3, Group2, Group3
Group2	Security	Dynamic User	User2
Group3	Security	Dynamic Device	Device1
Group4	Microsoft 365	Assigned	User4
Group5	Microsoft 365	Dynamic User	User5

To which groups can you assign a Microsoft Office 365 Enterprise E5 license directly?

- A. Group1 and Group4 only
- B. Group1, Group2, Group3, Group4, and Group5
- C. Group1 and Group2 only
- D. Group1 only
- E. Group1, Group2, Group4, and Group5 only

Answer: C

Explanation:

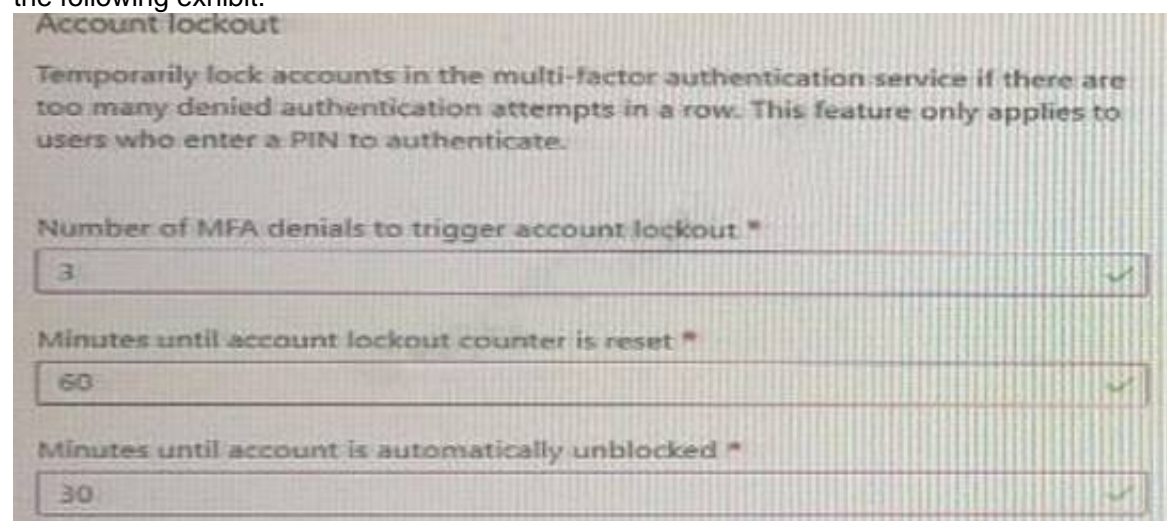
Reference:

<https://docs.microsoft.com/en-us/azure/active-directory/enterprise-users/licensing-group-advanced>

NEW QUESTION 85

- (Exam Topic 4)

You have an Azure Active Directory (Azure AD) tenant that has multi-factor authentication (MFA) enabled. The account lockout settings are configured as shown in the following exhibit.



Account lockout

Temporarily lock accounts in the multi-factor authentication service if there are too many denied authentication attempts in a row. This feature only applies to users who enter a PIN to authenticate.

Number of MFA denials to trigger account lockout *

3 ✓

Minutes until account lockout counter is reset *

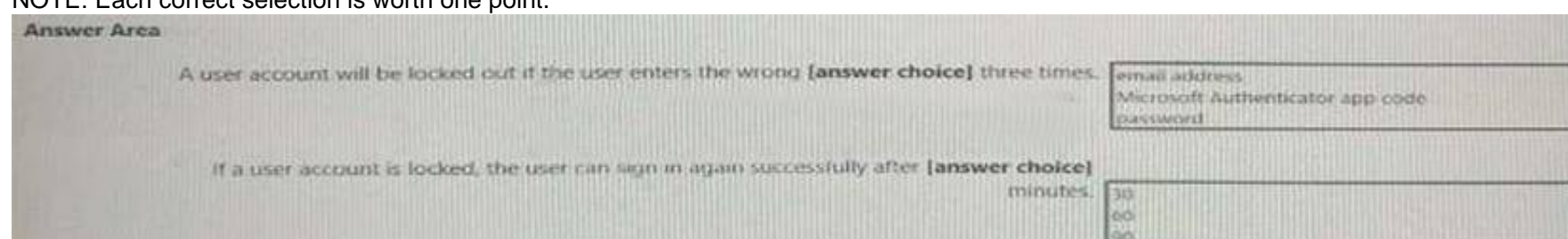
60 ✓

Minutes until account is automatically unblocked *

30 ✓

Use the drop-down menus to select the answer choice that completes each statement based on the information presented in the graphic.

NOTE: Each correct selection is worth one point.



Answer Area

A user account will be locked out if the user enters the wrong [answer choice] three times.

If a user account is locked, the user can sign in again successfully after [answer choice] minutes.

email address
Microsoft Authenticator app code
password

30
60
90

A. Mastered

B. Not Mastered

Answer: A

Explanation:

App code 60

<https://docs.microsoft.com/en-us/azure/active-directory/authentication/howto-mfa-mfasettings#account-logout>

NEW QUESTION 86

- (Exam Topic 4)

You have a Microsoft 365 tenant.

You need to identify users who have leaked credentials. The solution must meet the following requirements.

- Identify sign-ins by users who are suspected of having leaked credentials.
- Tag the sign-ins as a high risk event.
- Immediately enforce a control to mitigate the risk, while still allowing the user to access applications. What should you use? To answer, select the appropriate options in the answer area.

NOTE: Each correct selection is worth one point.

To classify leaked credentials as high-risk, use:

Azure Active Directory (Azure AD) Identity Protection
Azure Active Directory (Azure AD) Privileged Identity Management (PIM)
Identity Governance
Self-service password reset (SSPR)

To trigger remediation, use:

Client apps not using Modern authentication
Device state
Sign-in risk
User location
User risk

To mitigate the risk, select:

Apply app enforced restrictions
Block access
Grant access but require app protection policy
Grant access but require password change

A. Mastered

B. Not Mastered

Answer: A

Explanation:

Graphical user interface, text, application, email Description automatically generated

Reference:

<https://docs.microsoft.com/en-us/azure/active-directory/identity-protection/concept-identity-protection-risks>

NEW QUESTION 88

- (Exam Topic 4)

A user named User1 attempts to sign in to the tenant by entering the following incorrect passwords:

- > Pa55w0rd12
- > Pa55w0rd12
- > Pa55w0rd12
- > Pa55w.rd12
- > Pa55w.rd123
- > Pa55w.rd123
- > Pa55w.rd123
- > Pa55word12
- > Pa55word12
- > Pa55word12
- > Pa55w.rd12

You need to identify how many sign-in attempts were tracked for User1, and how User1 can unlock her account before the 300-second lockout duration expires.

What should identify? To answer, select the appropriate

NOTE: Each correct selection is worth one point.

Tracked sign-in attempts:

	▼
4	
5	
10	
11	

Unlock by:

	▼
Clearing the browser cache	
Signing in by using inPrivate browsing mode	
Performing a self-service password reset (SSPR)	

- A. Mastered
- B. Not Mastered

Answer: A

Explanation:
Graphical user interface, text, table Description automatically generated
Reference:
<https://docs.microsoft.com/en-us/azure/active-directory/authentication/howto-sspr-deployment>

NEW QUESTION 92

- (Exam Topic 4)
You have an Azure AD tenant that contains a user named User1. User1 is assigned the User Administrator role. You need to configure External collaboration settings for the tenant to meet the following requirements: |
*Guest users must be prevented from querying staff email addresses.
*Guest users must be able to access the tenant only if they are invited by User1.
Which three settings should you configure? To answer, select the appropriate settings in the answer area.

Guest user access restrictions:

Guest users have the same access as members (most inclusive)
Guest users have limited access to properties and memberships of directory objects
Guest user access is restricted to properties and memberships of their own directory objects (most restrictive)

Guest invite restrictions:

Anyone in the organization can invite guest users including guests and non-admins (most inclusive)
Member users and users assigned to specific admin roles can invite guest users including guests with member permissions
Only users assigned to specific admin roles can invite guest users
No one in the organization can invite guest users including admins (most restrictive)

Enable guest self-service sign up via user flows:

No
Yes

- A. Mastered
- B. Not Mastered

Answer: A

Explanation:
Box1 = User access is restricted to properties and memberships of their own directory objects (most restrictive). This setting ensures that guest users are prevented from querying staff email addresses and can access the tenant only if they are invited by User1.
Box2 = Only users assigned to specific admin roles can invite guest users. This setting ensures that guest users can access the tenant only if they are invited by User1.
Box3 = This setting enables guest users to sign up for the tenant only if they are invited by User1.

NEW QUESTION 95

- (Exam Topic 4)
You have a Microsoft 365 tenant.
All users must use the Microsoft Authenticator app for multi-factor authentication (MFA) when accessing Microsoft 365 services. Some users report that they received an MFA prompt on their Microsoft Authenticator app without initiating a sign-in request. You need to block the users automatically when they report an MFA request that they did not Initiate. Solution: From the Azure portal, you configure the Account lockout settings for multi-factor authentication (MFA).
Does this meet the goal?

- A. Yes
- B. No

Answer: B

Explanation:

You need to configure the fraud alert settings. Reference:
<https://docs.microsoft.com/en-us/azure/active-directory/authentication/howto-mfa-mfasettings>

NEW QUESTION 96

- (Exam Topic 4)
You have an Azure AD tenant that contains the users shown in the following table.

Name	User risk level
User1	Low
User2	Medium
User3	High

You have the Azure AD Identity Protection policies shown in the following table.

Type	Users	User risk	Sign-in risk	Controls
User risk policy	All users	Low and above	Unconfigured	Block access
Sign-in risk policy	All users	Unconfigured	High	Block access

You review the Risky users report and the Risky sign-ins report and perform actions for each user as shown in the following table.

User	Action
User1	Confirm user compromised
User2	Confirm sign-in safe
User3	Dismiss user risk
User2	Confirm user compromised

For each of the following statements, select Yes if the statement is true. Otherwise, select No. NOTE: Each correct selection is worth one point.
Answer Area

Statements	Yes	No
User1 can sign in by using multi-factor authentication (MFA).	<input type="radio"/>	<input type="radio"/>
User2 can sign in by using multi-factor authentication (MFA).	<input type="radio"/>	<input type="radio"/>
User3 can sign in from an anonymous IP address.	<input type="radio"/>	<input type="radio"/>

- A. Mastered
- B. Not Mastered

Answer: A

Explanation:

Answer Area

Statements	Yes	No
User1 can sign in by using multi-factor authentication (MFA).	<input type="radio"/>	<input checked="" type="radio"/>
User2 can sign in by using multi-factor authentication (MFA).	<input type="radio"/>	<input checked="" type="radio"/>
User3 can sign in from an anonymous IP address.	<input type="radio"/>	<input checked="" type="radio"/>

NEW QUESTION 100

- (Exam Topic 4)
You have an Azure subscription that uses Azure AD Privileged Identity Management (PIM). You need to identify users that are eligible for the Cloud Application Administrator role. Which blade in the Privileged Identity Management settings should you use?

- A. Azure resources
- B. Privileged access groups
- C. Review access
- D. Azure AD roles

Answer: D

NEW QUESTION 104

- (Exam Topic 4)

You have a Microsoft 365 E5 subscription that contains a Microsoft SharePoint Online site named Site!. Site! hosts PDF files. You need to prevent users from printing the files directly from Site!. Which type of policy should you create in the Microsoft Defender for Cloud Apps portal?

- A. activity policy
- B. file policy
- C. access policy
- D. session policy

Answer: D

NEW QUESTION 107

- (Exam Topic 4)

You have an Azure Active Directory (Azure AD) tenant that contains the objects shown in the following table.

Name	Type
User1	User
Guest1	Guest
Identity1	Managed identity

Which objects can you add as eligible in Azure Privileged identity Management (PIM) for an Azure AD role?

- A. User1 only
- B. User1 and Identity1 only
- C. User1, Guest1, and Identity
- D. User1 and Guest1 only

Answer: D

Explanation:

Reference:

<https://docs.microsoft.com/en-us/azure/active-directory/privileged-identity-management/pim-deployment-plan>

NEW QUESTION 108

- (Exam Topic 4)

You have an Azure AD tenant that uses Azure AD Identity Protection and contains the resources shown in the following table.

Name	Type	Configuration
Risk1	User risk policy	Users that have a high severity risk must reset their password upon next sign-in.
User1	User	Not applicable

Azure Multi-Factor Authentication (MFA) is enabled for all users. User1 triggers a medium severity alert that requires additional investigation. You need to force User1 to reset his password the next time he signs in. the solution must minimize administrative effort. What should you do?

- A. Configure a sign-in risk policy.
- B. Mark User1 as compromised.
- C. Reconfigure the user risk policy to trigger on medium or low severity.
- D. Reset the Azure MFA registration for User1.

Answer: B

NEW QUESTION 112

- (Exam Topic 4)

Note: This question is part of a series of questions that present the same scenario. Each question in the series contains a unique solution that might meet the stated goals. Some question sets might have more than one correct solution, while others might not have a correct solution. After you answer a question in this section, you will NOT be able to return to it. As a result, these questions will not appear in the review screen. You have a Microsoft 365 tenant. You have 100 IT administrators who are organized into 10 departments. You create the access review shown in the exhibit. (Click the Exhibit tab.)

Create an access review

Access reviews allow reviewers to attest to whether users still need to be in a role.

Review name *

Description

Start date *

Frequency

Duration (in days)

End ☐ ☒ Never ☐ End by ☐ Occurrences

Number of times

End date

Users

Scope ☒ Everyone

Review role membership (permanent and eligible) *

Application Administrator and 72 others

Reviewers

Reviewers

(Preview) Fallback reviewers

Upon completion settings

Start

You discover that all access review requests are received by Megan Bowen.

You need to ensure that the manager of each department receives the access reviews of their respective department.

Solution: You add each manager as a fallback reviewer. Does this meet the goal?

- A. Yes
- B. No

Answer: B

Explanation:

Reference:

<https://docs.microsoft.com/en-us/azure/active-directory/governance/create-access-review>

NEW QUESTION 115

- (Exam Topic 4)

You have an Azure Active Directory (Azure AD) tenant. You open the risk detections report.

Which risk detection type is classified as a user risk?

- A. impossible travel
- B. anonymous IP address
- C. atypical travel
- D. leaked credentials

Answer: D

Explanation:

Reference:

<https://docs.microsoft.com/en-us/azure/active-directory/identity-protection/concept-identity-protection-risks>

NEW QUESTION 116

- (Exam Topic 4)

You have a Microsoft 365 subscription. The subscription contains users that use Microsoft Outlook 2016 and Outlook 2013 clients. You need to implement tenant restrictions. The solution must minimize administrative effort. What should you do first?

- A. Upgrade the Outlook 2013 clients to Outlook 2016.
- B. Configure the Outlook 2013 clients to use modern authentication.
- C. Upgrade all the Outlook clients to Outlook 2019.
- D. From the Exchange admin center, configure Organization Sharing.

Answer: A

NEW QUESTION 120

- (Exam Topic 4)

You have an Azure Active Directory (Azure AD) tenant that contains the users shown in the following table.

Name	Type	Directory synced
User1	Member	Yes
User2	Member	No
User3	Guest	No

For which users can you configure the Job title property and the Usage location property in Azure AD? To answer, select the appropriate options in the answer area.

NOTE: Each correct selection is worth one point.

Answer Area

Job title property:

User2 only

User1 and User2 only

User2 and User3 only

User1, User2, and User3

Usage location property:

User2 only

User1 and User2 only

User2 and User3 only

User1, User2, and User3

- A. Mastered
- B. Not Mastered

Answer: A

Explanation:

Answer Area

Job title property:

User2 only

User1 and User2 only

User2 and User3 only

User1, User2, and User3

Usage location property:

User2 only

User1 and User2 only

User2 and User3 only

User1, User2, and User3

NEW QUESTION 125

- (Exam Topic 4)

Your company has an Azure Active Directory (Azure AD) tenant named contoso.com. The company has a business partner named Fabrikam, Inc. Fabrikam uses Azure AD and has two verified domain names of fabrikam.com and litwareinc.com. Both domain names are used for Fabrikam email addresses. You plan to create an access package named package1 that will be accessible only to the users at Fabrikam. You create a connected organization for Fabrikam. You need to ensure that the package1 will be accessible only to users who have fabrikam.com email addresses. What should you do? To answer, select the appropriate options in the answer area.

NOTE: Each correct selection is worth one point.

To allow access for users who have fabrikam.com email addresses, configure:

An access package assignment in Identity Governance

An access package policy in Identity Governance

A conditional access policy in Azure AD

The External collaboration settings in Azure AD

To block access for users who have litwareinc.com email addresses, configure:

An access package assignment in Identity Governance

An access package policy in Identity Governance

A conditional access policy in Azure AD

The External collaboration settings in Azure AD

- A. Mastered
- B. Not Mastered

Answer: A

Explanation:

Text Description automatically generated

Reference:

<https://docs.microsoft.com/en-us/azure/active-directory/governance/entitlement-management-access-package-re> <https://docs.microsoft.com/en-us/azure/active-directory/governance/entitlement-management-access-package-cr>

NEW QUESTION 127

- (Exam Topic 4)

A user named User1 receives an error message when attempting to access the Microsoft Defender for Cloud Apps portal.

You need to identify the cause of the error. The solution must minimize administrative effort. What should you use?

- A. Log Analytics
- B. sign-in logs
- C. audit logs
- D. provisioning logs

Answer: B

NEW QUESTION 128

- (Exam Topic 4)

You create a conditional access policy that blocks access when a user triggers a high-severity sign-in alert. You need to test the policy under the following conditions;

- A user signs in from another country.
- A user triggers a sign-in risk.

What should you use to complete the test?

- A. the Conditional Access What If tool
- B. sign-ins logs in Azure AD
- C. access reviews in Azure AD
- D. the activity logs in Microsoft Defender for Cloud Apps

Answer: A

NEW QUESTION 133

- (Exam Topic 4)

You have a Microsoft 365 E5 subscription that contains a Microsoft SharePoint Online site named Site1 and the users shown in the following table.

The users have the devices shown in the following table. You create the following two Conditional Access policies:

- Name: CAPolicy1
- Assignments

o Users or workload identities: Group 1

o Cloud apps or actions: Office 365 SharePoint Online o Conditions

Filter for devices: Exclude filtered devices from the policy Rule syntax: device.displayName -starts With "Device*"

o Access controls Grant: Block access

Session: 0 controls selected o Enable policy: On

- Name: CAPolicy2
- Assignments

o Users or workload identities: Group2

o Cloud apps or actions: Office 365 SharePoint Online o Conditions: 0 conditions selected

- Access controls

o Grant: Grant access

Require multifactor authentication o Session:

0 controls selected

- Enable policy: On

All users confirm that they can successfully authenticate using MFA.

For each of the following statements, select Yes if the statement is true. Otherwise, select No. NOTE: Each correct selection is worth one point.

Answer Area			
Statements		Yes	No
User1 can access Site1 from Device1.		<input type="radio"/>	<input type="radio"/>
User2 can access Site1 from Device2.		<input type="radio"/>	<input type="radio"/>
User3 can access Site1 from Device3.		<input type="radio"/>	<input type="radio"/>

- A. Mastered
- B. Not Mastered

Answer: A

Explanation:

A screenshot of a computer Description automatically generated

NEW QUESTION 134

- (Exam Topic 4)

You have an Azure Active Directory (Azure AD) tenant that contains the users shown in the following table.

Name	Role
User1	Conditional Access administrator
User2	Authentication administrator
User3	Security administrator
User4	Security operator

You plan to implement Azure AD Identity Protection.
 Which users can configure the user risk policy, and which users can view the risky users report? To answer, select the appropriate options in the answer area.
 NOTE: Each correct selection is worth one point.

Configure the user risk policy:

User3 only

User3 and User4 only

User1, User2, and User3 only

User1, User3, and User4 only

User1, User2, User3, and User4

View the risky users report:

User3 only

User3 and User4 only

User1, User2, and User3 only

User1, User3, and User4 only

User1, User2, User3, and User4

- A. Mastered
- B. Not Mastered

Answer: A

Explanation:
 Graphical user interface, text Description automatically generated
 Reference:
<https://docs.microsoft.com/en-us/azure/active-directory/identity-protection/overview-identity-protection>

NEW QUESTION 137

- (Exam Topic 4)
 You have an Azure subscription that contains an Azure SQL database named db1.
 You deploy an Azure App Service web app named App1 that provide product information to users that connect to App1 anonymously.
 You need to provide App1 with Access to db1. The solution must meet the following requirements:
 * Credentials must only be available to App1.
 * Administrative effort must be minimized. Which type of credentials should you use?

- A. a user-assigned managed identity
- B. an Azure AD user account
- C. A SQL Server account
- D. a system-assigned managed identity

Answer: D

NEW QUESTION 142

- (Exam Topic 4)
 You have a Microsoft 365 tenant.
 The Azure Active Directory (Azure AD) tenant syncs to an on-premises Active Directory domain. The domain contains the servers shown in the following table.

Name	Operating system	Configuration
Server1	Windows Server 2019	Domain controller
Server2	Windows Server 2019	Domain controller
Server3	Windows Server 2019	Azure AD Connect

The domain controllers are prevented from communicating to the internet. You implement Azure AD Password Protection on Server1 and Server2. You deploy a new server named Server4 that runs Windows Server 2019.
 You need to ensure that Azure AD Password Protection will continue to work if a single server fails. What should you implement on Server4?

- A. Azure AD Connect
- B. Azure AD Application Proxy
- C. Password Change Notification Service (PCNS)
- D. the Azure AD Password Protection proxy service

Answer: D

Explanation:
 Reference:
<https://docs.microsoft.com/en-us/azure/active-directory/authentication/howto-password-ban-bad-on-premisesdep>

NEW QUESTION 143

- (Exam Topic 4)
 You have a Microsoft 365 tenant.
 All users have mobile phones and laptops.

The users frequently work from remote locations that do not have Wi-Fi access or mobile phone connectivity. While working from the remote locations, the users connect their laptop to a wired network that has internet access.

You plan to implement multi-factor authentication (MFA).

Which MFA authentication method can the users use from the remote location?

- A. a notification through the Microsoft Authenticator app
- B. security questions
- C. voice
- D. an app password

Answer: A

Explanation:

Reference:

<https://docs.microsoft.com/en-us/azure/active-directory/authentication/concept-authentication-authenticator-app>

NEW QUESTION 146

- (Exam Topic 4)

You have an Azure Active Directory (Azure AD) tenant that contains the objects shown in the following table.

Name	Type	Directly assigned license
User1	User	None
User2	User	Microsoft Office 365 Enterprise E5
Group1	Security group	Microsoft Office 365 Enterprise E5
Group2	Microsoft 365 group	None
Group3	Mail-enabled security group	None

Which objects can you add as members to Group3?

- A. User2 and Group2 only
- B. User2, Group1, and Group2 only
- C. User1, User2, Group1 and Group2
- D. User1 and User2 only
- E. User2 only

Answer: E

Explanation:

Reference:

<https://bitsizedbytes.wordpress.com/2018/12/10/distribution-security-and-office-365-groups-nesting/>

NEW QUESTION 149

- (Exam Topic 4)

You have a Microsoft 365 tenant named contoso.com.

Guest user access is enabled.

Users are invited to collaborate with contoso.com as shown in the following table.

User email	User type	Invitation accepted	Shared resource
User1@outlook.com	Guest	No	Enterprise application
User2@fabrikam.com	Guest	Yes	Enterprise application

From the External collaboration settings in the Azure Active Directory admin center, you configure the Collaboration restrictions settings as shown in the following exhibit.

Collaboration restrictions

- ☐ Allow invitations to be sent to any domain (most inclusive)
- ☐ Deny invitations to the specified domains
- ☒ Allow invitations only to the specified domains (most restrictive)

 Delete



TARGET DOMAINS



Outlook.com

From a Microsoft SharePoint Online site, a user invites user3@adatum.com to the site.

For each of the following statements, select Yes if the statement is true. Otherwise, select No. NOTE: Each correct selection is worth one point.

Statements	Yes	No
User1 can accept the invitation and gain access to the enterprise application.	<input type="radio"/>	<input type="radio"/>
User2 can access the enterprise application.	<input type="radio"/>	<input type="radio"/>
User3 can accept the invitation and gain access to the SharePoint site.	<input type="radio"/>	<input type="radio"/>

- A. Mastered
- B. Not Mastered

Answer: A

Explanation:

Box 1: Yes
Invitations can only be sent to outlook.com. Therefore, User1 can accept the invitation and access the application.
Box 2: Yes
Invitations can only be sent to outlook.com. However, User2 has already received and accepted an invitation so User2 can access the application.
Box 3: No
Invitations can only be sent to outlook.com. Therefore, User3 will not receive an invitation.

NEW QUESTION 153

- (Exam Topic 4)
You have an Azure Ad tenant that contains the users show in the following table.

Name	Usage location	Department	Job title
User1	United States	Sales	Associate
User2	Finland	Sales	SalesRep
User3	Australia	Sales	Manager

You create a dynamic user group and configure the following rule syntax.
`user.usageLocation -in ["US","AU"] -and (user.department -eq "Sales") -and -not (user.jobTitle -eq "Manager") -or (user.jobTitle -eq "SalesRep")`

Which users will be added to the group?

- A. User1 only
- B. User2 only
- C. User3 only
- D. User1 and User2 only
- E. User1 and User3 only
- F. User1, User2, and User3

Answer: D

NEW QUESTION 154

- (Exam Topic 4)
You have an Azure Active Directory (Azure AD) tenant that contains three users named User1, User1, and User3,
You create a group named Group1. You add User2 and User3 to Group1.
You configure a role in Azure AD Privileged identity Management (PIM) as shown in the application administrator exhibit. (Click the application Administrator tab.)

Role setting details - Application Administrator

Privileged Identity Management | Azure AD roles

Edit

Activation

Setting	State
Activation maximum duration (hours)	5 hour(s)
Require justification on activation	Yes
Require ticket information on activation	No
Require approval to activate	Yes
Approvers	0 Member(s), 1 Group(s)

Assignment

Setting	State
Allow permanent eligible assignment	No
Expire eligible assignments after	3 month(s)
Allow permanent active assignment	No
Expire active assignments after	1 month(s)
Require Azure Multi-Factor Authentication on activation	No
Require justification on active assignment	Yes

Group1 is configured as the approver for the application administrator role. You configure User2to be eligible for the application administrator role. For User1, you add an assignment to the Application administrator role as shown in the Assignment exhibit. (Click Assignment tab)

Add assignments

Privileged Identity Management | Azure AD roles

Membership

Setting

Assignment type ⓘ

☒ Eligible

☐ Active

Maximum allowed eligible duration is 3 month(s).

Assignment starts *

01/01/2021

12:00:00 AM

Assignment ends *

01/31/2021

11:59:00 PM

For each of the following statement, select Yes if the statement is true, Otherwise, select No. NOTE: Each correct selection is worth one point.

Answer Area

Statements	Yes	No
User1 is assigned the Application administrator role automatically.	<input type="radio"/>	<input type="radio"/>
When User2 requests to be assigned the Application administrator role, only User3 can approve the request.	<input type="radio"/>	<input type="radio"/>
If a request by User1 to be assigned the Application administrator role is approved on January 31, 2021, at 23:00, User1 can use the role until February 1, 2021, at 04:00.	<input type="radio"/>	<input type="radio"/>

- A. Mastered
- B. Not Mastered

Answer: A

Explanation:

Answer Area

Statements	Yes	No
User1 is assigned the Application administrator role automatically.	<input checked="" type="radio"/>	<input type="radio"/>
When User2 requests to be assigned the Application administrator role, only User3 can approve the request.	<input checked="" type="radio"/>	<input type="radio"/>
If a request by User1 to be assigned the Application administrator role is approved on January 31, 2021, at 23:00, User1 can use the role until February 1, 2021, at 04:00.	<input type="radio"/>	<input checked="" type="radio"/>

Your company has a Microsoft 365 tenant.
All users have computers that run Windows 10 and are joined to the Azure Active Directory (Azure AD) tenant.
The company subscribes to a third-party cloud service named Service1. Service1 supports Azure AD authentication and authorization based on OAuth. Service1 is published to the Azure AD gallery.
You need to recommend a solution to ensure that the users can connect to Service1 without being prompted for authentication. The solution must ensure that the users can access Service1 only from Azure AD-joined computers. The solution must minimize administrative effort.
What should you recommend for each requirement? To answer, select the appropriate options in the answer area.
NOTE: Each correct selection is worth one point.

Ensure that the users can connect to Service1 without being prompted for authentication:

An app registration in Azure AD

Azure AD Application Proxy

An enterprise application in Azure AD

A managed identity in Azure AD

Ensure that the users can access Service1 only from the Azure AD-joined computers:

Azure AD Application Proxy

A compliance policy

A conditional access policy

An OAuth policy

- A. Mastered
- B. Not Mastered

Answer: A

Explanation:
Graphical user interface, text, application Description automatically generated
Reference:
<https://docs.microsoft.com/en-us/azure/active-directory/develop/active-directory-how-applications-are-added> <https://docs.microsoft.com/en-us/azure/active-directory/conditional-access/require-managed-devices>

NEW QUESTION 159

- (Exam Topic 4)
You have a Microsoft 365 E5 tenant. You purchase a cloud app named App1.
You need to enable real-time session-level monitoring of App1 by using Microsoft Cloud app Security.
Which four actions should you perform in sequence? To answer, move the appropriate actions from the list of actions to the answer area and arrange them in the correct order.

Actions

From Microsoft Cloud App Security, create a session policy.

Publish App1 in Azure Active Directory (Azure AD).

Create a conditional access policy that has session controls configured.

From Microsoft Cloud App Security, modify the Connected apps settings for App1.

Answer Area

- A. Mastered
- B. Not Mastered

Answer: A

Explanation:
A picture containing application Description automatically generated
Reference:
<https://docs.microsoft.com/en-us/cloud-app-security/proxy-deployment-any-app> <https://docs.microsoft.com/en-us/cloud-app-security/session-policy-aad>

NEW QUESTION 162

- (Exam Topic 4)
Note: This question is part of a series of questions that present the same scenario. Each question in the series contains a unique solution that might meet the stated goals. Some question sets might have more than one correct solution, while others might not have a correct solution.

After you answer a question in this section, you will NOT be able to return to it as a result, these questions will not appear in the review screen.
You have an Amazon Web Services (AWS) account, a Google Workspace subscription, and a GitHub account.
You deploy an Azure subscription and enable Microsoft 365 Defender.
You need to ensure that you can monitor OAuth authentication requests by using Microsoft Defender for Cloud Apps.
Solution: From the Microsoft 365 Defender portal, you add the Google Workspace app connector. Does this meet the goal?

- A. Yes
- B. No

Answer: B

NEW QUESTION 167

- (Exam Topic 4)

You have a Microsoft 365 tenant.

You need to ensure that you can view Azure Active Directory (Azure AD) audit log information by using Azure Monitor.

What should you do first?

- A. Run the Get-AzureADAuditDirectoryLogs cmdlet.
- B. Create an Azure AD workbook.
- C. Run the Set-AzureADTenantDetail cmdlet.
- D. Modify the Diagnostics settings for Azure AD.

Answer: D

NEW QUESTION 171

- (Exam Topic 4)

Your company has an Azure Active Directory (Azure AD) tenant named contosri.com. The company has the business partners shown in the following table.

Name	Description
Fabrikam, Inc.	An Azure AD tenant that has two verified domains named fabrikam.com and adatum.com
Litware, Inc.	A third-party identity provider that uses the domain names of litwareinc.com and contoso.com

users can request access by using package 1.

Users at Fabrikam and Litware use all their respective domain names for email addresses.

You plan to create an access package named package1 that will be accessible only to the Fabrikam and Litware users.

You need to configure connected organizations for Fabrikam and Litware so that any of their users can request access by using package1.

What is the minimum number of connected organizations that you should create?

- A. 1
- B. 2
- C. 3
- D. 4

Answer: C

NEW QUESTION 172

- (Exam Topic 4)

You have a Microsoft 365 tenant.

You configure a conditional access policy as shown in the Conditional Access policy exhibit. (Click the Conditional Access policy tab.)

Control user access based on conditional access policy to bring signals together, to make decisions, and enforce organizational policies. [Learn more](#)

Name *

Require MFA for all users ✓

Assignments

Users and groups ⓘ

All users >

Cloud apps or actions ⓘ

All cloud apps >

Conditions ⓘ

1 condition selected >

Access controls

Grant ⓘ

0 controls selected >

Session ⓘ

0 controls selected >

Enable policy

Report-only

On

Off

Create

Control user access enforcement to block or grant access. [Learn more](#)

Block access

Grant access

Require multi-factor authentication ⓘ

Require device to be marked as compliant ⓘ

Require Hybrid Azure AD joined device ⓘ

Require approved client app ⓘ
See list of approved client apps

Require app protection policy ⓘ
See list of policy protected client apps

Require password change (Preview) ⓘ

For multiple controls

Require all the selected controls

Require one of the selected controls

Select

You view the User administrator role settings as shown in the Role setting details exhibit. (Click the Role setting details tab.)

Privileged Identity Management > ContosoAzureAD > User Administrator >

Role setting details - User Administrator

Privileged Identity Management | Azure AD roles

Edit

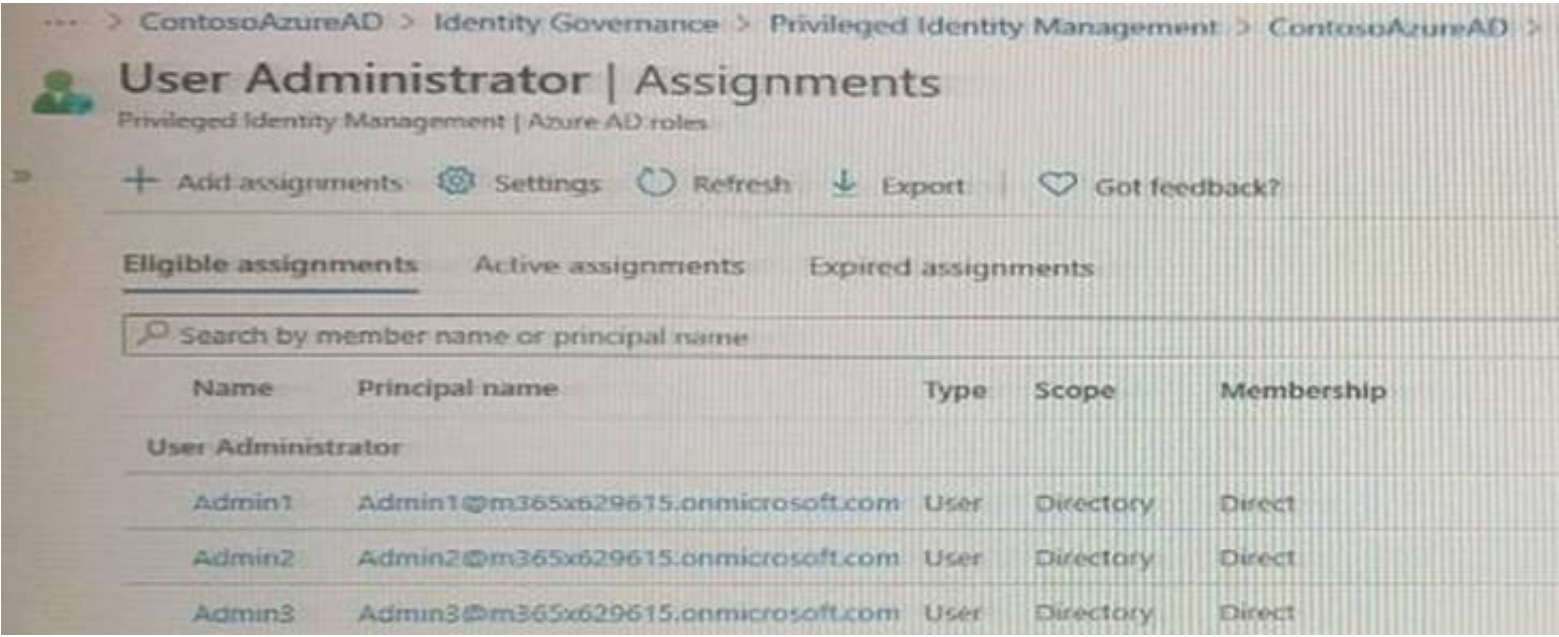
Activation

Setting	State
Activation maximum duration (hours)	8 hour(s)
Require justification on activation	Yes
Require ticket information on activation	No
On activation, require Azure MFA	Yes
Require approval to activate	Yes
Approvers	1 Member(s), 0 Group

Assignment

Setting	State
Allow permanent eligible assignment	No
Expire eligible assignments after	15 day(s)
Allow permanent active assignment	No
Expire active assignments after	1 month(s)
Require Azure Multi-Factor Authentication on active assignment	No
Require justification on active assignment	No

You view the User administrator role assignments as shown in the Role assignments exhibit. (Click the Role assignments tab.)



For each of the following statement, select Yes if the statement is true. Otherwise, select No. NOTE: Each correct selection is worth one point.

Answer Area		
Statements	Yes	No
Before Admin1 can perform a task that requires the User administrator role, an approver must approve the activation request.	<input type="radio"/>	<input type="radio"/>
Admin2 can request activation of the User administrator role for a period of two hours.	<input type="radio"/>	<input type="radio"/>
If Admin3 connects to the Azure Active Directory admin center, and then activates the User administrator role, Admin3 will be prompted to authenticate by using multi-factor authentication (MFA) twice.	<input type="radio"/>	<input type="radio"/>

- A. Mastered
- B. Not Mastered

Answer: A

Explanation:
 Yes Yes Yes

NEW QUESTION 175

- (Exam Topic 4)
 You have a Microsoft 365 tenant.
 All users have mobile phones and laptops.
 The users frequently work from remote locations that do not have Wi-Fi access or mobile phone connectivity. While working from the remote locations, the users connect their laptop to a wired network that has internet access.
 You plan to implement multi-factor authentication (MFA).
 Which MFA authentication method can the users use from the remote location?

- A. a notification through the Microsoft Authenticator app
- B. an app password
- C. Windows Hello for Business
- D. SMS

Answer: C

Explanation:
 In Windows 10, Windows Hello for Business replaces passwords with strong two-factor authentication on PCs and mobile devices. This authentication consists of a new type of user credential that is tied to a device and uses a biometric or PIN.
 After an initial two-step verification of the user during enrollment, Windows Hello is set up on the user's device and Windows asks the user to set a gesture, which can be a biometric, such as a fingerprint, or a PIN. The user provides the gesture to verify their identity. Windows then uses Windows Hello to authenticate users.
 Reference:
<https://docs.microsoft.com/en-us/azure/active-directory/authentication/concept-authentication-methods> <https://docs.microsoft.com/en-us/windows/security/identity-protection/hello-for-business/hello-overview>

NEW QUESTION 179

- (Exam Topic 4)
 You have the Azure resources show in the following table.

Name	Description
User1	User account
Group1	Security group that uses the Dynamic user membership type
VM1	Virtual machine with a system-assigned managed identity
App1	Enterprise application
RG1	Resource group

To Which identities can you assign the Contributor role for RG1?

- A. User1 only

- B. User1 and Group1 only
- C. User1 and VW1 only
- D. User1, VM1, and App1 only
- E. User1, Group1, Vm1, and App1

Answer: E

NEW QUESTION 181

- (Exam Topic 4)

You have an Azure AD tenant named contoso.com that has Email one-time passcode for guests set to Yes.

You invite the guest users shown in the following table.

Name	Email domain	Account type
Guest1	adatum.com	Azure AD account
Guest2	outlook.com	Microsoft account
Guest3	gmail.com	Personal Google account

Which users will receive a one-time passcode, and how long will the passcode be valid? To answer, select the appropriate options in the answer area.

NOTE: Each correct selection is worth one point.

Users:

Guest1 only

Guest2 only

Guest3 only

Guest1 and Guest2 only

Guest2 and Guest3 only

Guest1, Guest2, and Guest3

Valid for:

30 minutes

60 minutes

24 hours

48 hours

- A. Mastered
- B. Not Mastered

Answer: A

Explanation:

Users:

Guest1 only

Guest2 only

Guest3 only

Guest1 and Guest2 only

Guest2 and Guest3 only

Guest1, Guest2, and Guest3

Valid for:

30 minutes

60 minutes

24 hours

48 hours

NEW QUESTION 186

- (Exam Topic 4)

You have an Azure Active Directory (Azure AD) tenant named contoso.com that contains an Azure AD enterprise application named App1.

A contractor uses the credentials of user1@outlook.com.

You need to ensure that you can provide the contractor with access to App1. The contractor must be able to authenticate as user1@outlook.com.

What should you do?

- A. Run the New-AzADUser cmdlet.
- B. Configure the External collaboration settings.
- C. Add a WS-Fed identity provider.
- D. Create a guest user account in contoso.com.

Answer: D

Explanation:

Reference:

<https://docs.microsoft.com/en-us/azure/active-directory/external-identities/b2b-quickstart-add-guest-usersportal>

NEW QUESTION 188

- (Exam Topic 4)

You have an Azure Active Directory (Azure AD) tenant that contains cloud-based enterprise apps. You need to group related apps into categories in the My Apps portal.

What should you create?

- A. tags
- B. collections
- C. naming policies
- D. dynamic groups

Answer: B

Explanation:

Reference:

<https://support.microsoft.com/en-us/account-billing/customize-app-collections-in-the-my-apps-portal-2dae6b8a>

NEW QUESTION 192

- (Exam Topic 4)

You plan to deploy a new Azure AD tenant.

Which multifactor authentication (MFA) method will be enabled by default for the tenant?

- A. Microsoft Authenticator
- B. SMS
- C. voice call
- D. email OTP

Answer: B

NEW QUESTION 196

- (Exam Topic 4)

You have an Azure AD tenant

You open the risk detections report.

Which risk detection type is classified as a user risk?

- A. password spray
- B. anonymous IP address
- C. unfamiliar sign-in properties
- D. Azure AD threat intelligence

Answer: A

NEW QUESTION 199

- (Exam Topic 4)

You have a Microsoft 365 E5 subscription that contains a web app named App1. Guest users are regularly granted access to App1.

You need to ensure that the guest users that have NOT accessed App1 during the past 30 days have their access removed the solution must minimize administrative effort.

What should you configure?

- A. a compliance policy
- B. an access review for application access
- C. a guest access review
- D. a Conditional Access policy

Answer: C

NEW QUESTION 202

- (Exam Topic 4)

Your on-premises network contains an Active Directory domain that uses Azure AD Connect to sync with an Azure AD tenant. You need to configure Azure AD Connect to meet the following requirements:

- User sign-ins to Azure AD must be authenticated by an Active Directory domain controller.
- Active Directory domain users must be able to use Azure AD self-service password reset (SSPR). What should you use for each requirement? To answer, select the appropriate options in the answer area. NOTE: Each correct selection is worth one point.

Answer Area

Authentication by the domain controller: Federation with Active Directory Federation Services (AD FS)

SSPR: Password hash synchronization

- A. Mastered
- B. Not Mastered

Answer: A

Explanation:

Answer Area

Authentication by the domain controller: Federation with Active Directory Federation Services (AD FS)

SSPR: Password hash synchronization

NEW QUESTION 205

- (Exam Topic 4)

You have an Azure Active Directory (Azure AD) tenant that has the default App registrations settings. The tenant contains the users shown in the following table.

Name	Role
Admin1	Application administrator
Admin2	Application developer
Admin3	Cloud application administrator
User1	User

You purchase two cloud apps named App1 and App2. The global administrator registers App1 in Azure AD. You need to identify who can assign users to App1, and who can register App2 in Azure AD.

What should you identify? To answer, select the appropriate options in the answer area. NOTE: Each correct selection is worth one point.

Can assign users to App1:

Can register App2 in Azure AD:

- A. Mastered
- B. Not Mastered

Answer: A

Explanation:

Reference:

<https://docs.microsoft.com/en-us/azure/active-directory/manage-apps/add-application-portal-assign-users> <https://docs.microsoft.com/en-us/azure/active-directory/develop/active-directory-how-applications-are-added>

NEW QUESTION 210

- (Exam Topic 4)

You use Azure Monitor to analyze Azure Active Directory (Azure AD) activity logs.

You receive more than 100 email alerts each day for failed Azure AD user sign-in attempts. You need to ensure that a new security administrator receives the alerts instead of you. Solution: From Azure monitor, you modify the action group. Does this meet the goal?

- A. Yes
- B. No

Answer: B

NEW QUESTION 212

- (Exam Topic 4)

Your company has an Azure AD tenant that contains the users shown in the following table.

Name	Role
User1	Application administrator
User2	None
User3	Exchange administrator
User4	Cloud application administrator

You have the app registrations shown in the following table.

App name	Used by	Microsoft Graph permission
App1	User1	Calendars.Read of type Delegated
App2	User2	Calendars.Read of type Delegated Calendars.ReadWrite of type Application
App3	User3, User4	Calendars.Read of type Application

A company policy prevents changes to user permissions.

Which user can create appointments in the calendar of each user at the company?

- A. User1
- B. User2
- C. User3
- D. User4

Answer: B

NEW QUESTION 215

- (Exam Topic 4)

You have an Azure subscription.

You need to create two custom roles named Role1 and Role2. The solution must meet the following requirements:

- Users that are assigned Role1 can create or delete instances of Azure Container Apps.
- Users that are assigned Role2 can enforce adaptive network hardening rules.

Which resource provider permissions are required for each role? To answer, select the appropriate options in the answer area.

NOTE: Each correct selection is worth one point.

Answer Area

Role1:

Microsoft.App

Microsoft.Compute

Microsoft.Management

Microsoft.Security

Role2:

Microsoft.App

Microsoft.Compute

Microsoft.Network

Microsoft.Security

- A. Mastered
- B. Not Mastered

Answer: A

Explanation:

Answer Area



NEW QUESTION 216

- (Exam Topic 4)

You have a Microsoft 365 tenant.

The Sign-ins activity report shows that an external contractor signed in to the Exchange admin center. You need to review access to the Exchange admin center at the end of each month and block sign-ins if required.

What should you create?

- A. an access package that targets users outside your directory
- B. an access package that targets users in your directory
- C. a group-based access review that targets guest users
- D. an application-based access review that targets guest users

Answer: C

Explanation:

Reference:

<https://docs.microsoft.com/en-us/azure/active-directory/governance/access-reviews-overview>

NEW QUESTION 219

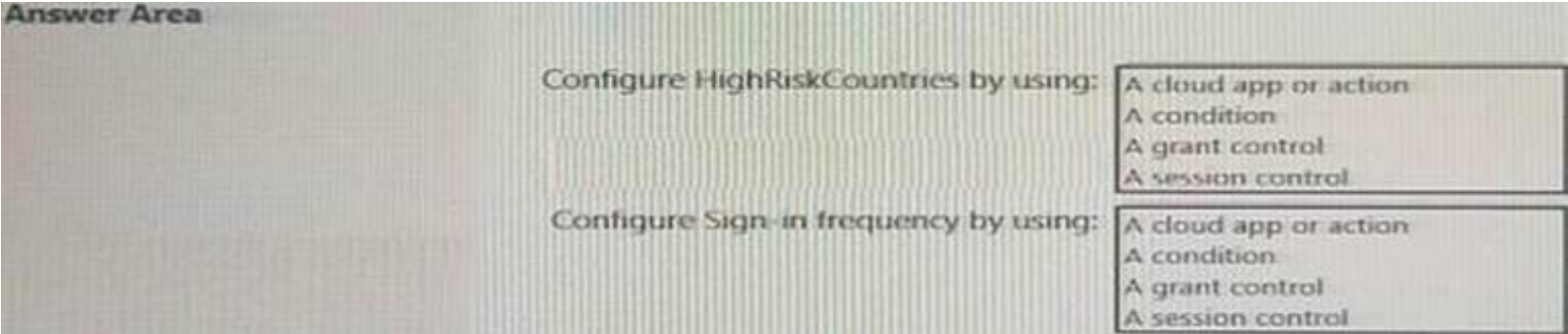
- (Exam Topic 4)

You have a Microsoft 36S tenant.

You create a named location named HighRiskCountries that contains a list of high-risk countries.

You need to limit the amount of time a user can stay authenticated when connecting from a high-risk country. What should you configure in a conditional access policy? To answer, select the appropriate options in the answer area.

NOTE: Each correct selection is worth one point.



- A. Mastered
- B. Not Mastered

Answer: A

Explanation:

Graphical user interface, text, application Description automatically generated

Reference:

<https://docs.microsoft.com/en-us/azure/active-directory/conditional-access/location-condition> <https://docs.microsoft.com/en-us/azure/active-directory/conditional-access/concept-conditional-access-session>

NEW QUESTION 220

- (Exam Topic 4)

You have an Azure Active Directory (Azure AD) tenant that contains the users shown in the following table.

Name	Type	Member of
User1	Member	Group1
User2	Member	Group1
User3	Guest	Group1

User1 is the owner of Group1.

You create an access review that has the following settings:

- Users to review: Members of a group
- Scope: Everyone
- Group: Group1
- Reviewers: Members (self)

Which users can perform access reviews for User3?

- A. User1, User2, and User3
- B. User3 only
- C. User1 only
- D. User1 and User2 only

Answer: B

NEW QUESTION 222

- (Exam Topic 4)

You have an Azure Active Directory (Azure AD) tenant named contoso.com.

You plan to bulk invite Azure AD business-to-business (B2B) collaboration users.

Which two parameters must you include when you create the bulk invite? Each correct answer presents part of the solution

NOTE: Each correct selection is worth one point.

- A. email address
- B. redirection URL
- C. username
- D. shared key
- E. password

Answer: AB

Explanation:

Reference:

<https://docs.microsoft.com/en-us/azure/active-directory/external-identities/tutorial-bulk-invite>

NEW QUESTION 226

- (Exam Topic 4)

You have a Microsoft 365 E5 subscription that contains a Microsoft SharePoint Online site named Site1. You need to ensure that users can request access to Site. the solution must meet the following requirements.

- Automatically approve requests from users based on their group membership.
- Automatically remove the access after 30 days What should you do?

- A. Create a Conditional Access policy.
- B. Create an access package.
- C. Configure Role settings in Azure AD Privileged Identity Management.
- D. Create a Microsoft Defender for Cloud Apps access policy.

Answer: B

NEW QUESTION 228

- (Exam Topic 4)

You have a Microsoft 365 ES subscription that contains a user named User1. User1 is eligible for the Application administrator role.

User1 needs to configure a new connector group for an application proxy. What should you to activate the role for User1?

- A. the Microsoft Defender for Cloud Apps portal
- B. the Microsoft 365 admin center
- C. the Azure Active Directory admin center
- D. the Microsoft 365 Defender portal

Answer: C

NEW QUESTION 232

- (Exam Topic 4)

You have a Microsoft 365 tenant.

You need to Identity users who have leaked credentials. The solution must meet the following requirements:

- Identity sign-ms by users who are suspected of having leaked credentials.
- Flag the sign-ins as a high-risk event.
- Immediately enforce a control to mitigate the risk, while still allowing the user to access applications. What should you use? To answer, select the appropriate options m the answer area.

To classify leaked credentials as high-risk, use:

Azure Active Directory (Azure AD) Identity Protection
Azure Active Directory (Azure AD) Privileged Identity Management (PIM)
Identity Governance
Self-service password reset (SSPR)

To trigger remediation, use:

Client apps not using Modern authentication
Device state
Sign-in risk
User location
User risk

To mitigate the risk, select:

Apply app enforced restrictions
Block access
Grant access but require app protection policy
Grant access but require password change

- A. Mastered
- B. Not Mastered

Answer: A

Explanation:

To classify leaked credentials as high-risk, use:

Azure Active Directory (Azure AD) Identity Protection
Azure Active Directory (Azure AD) Privileged Identity Management (PIM)
Identity Governance
Self-service password reset (SSPR)

To trigger remediation, use:

Client apps not using Modern authentication
Device state
Sign-in risk
User location
User risk

To mitigate the risk, select:

Apply app enforced restrictions
Block access
Grant access but require app protection policy
Grant access but require password change

NEW QUESTION 237

- (Exam Topic 4)

You have a Microsoft 365 E5 subscription that contains three users named User1, User2, and User3. You need to configure the users as shown in the following table.

User	Configuration
User1	<ul style="list-style-type: none">User administrator roleDevice Administrators roleIdentity Governance Administrator role
User2	<ul style="list-style-type: none">Records Management roleQuarantine Administrator role group
User3	<ul style="list-style-type: none">Endpoint Security Manager roleIntune Role Administrator role

Which portal should you use to configure each user? To answer, drag the appropriate portals to the correct users. Each portal may be used once, more than once, or not at all. You may need to drag the split bar between panes or scroll to view content.
NOTE: Each correct selection is worth one point.

Portals	Answer Area
Azure Active Directory admin center	
Exchange admin center	User1: <input type="text"/>
Microsoft 365 compliance center	User2: <input type="text"/>
Microsoft Endpoint Manager admin center	User3: <input type="text"/>
SharePoint admin center	

- A. Mastered
- B. Not Mastered

Answer: A

Explanation:
Graphical user interface, text, application Description automatically generated

NEW QUESTION 239
- (Exam Topic 4)
You have an Azure AD tenant that contains the users shown in the following table.

Name	Member of
User1	Group1
User2	Group2
User3	Group3

The tenant has the authentication methods shown in the following table.

Method	Target	Enabled
FIDO2	Group2	Yes
Microsoft Authenticator app	Group1	Yes
SMS	Group3	Yes

Which users will sign in to cloud apps by matching a number shown in the app with a number shown on their phone?

- A. User1 only
- B. User2 only
- C. User3 only
- D. User1 and User2 only
- E. User2 and User3 only

Answer: D

NEW QUESTION 241
- (Exam Topic 4)
You have an Azure AD tenant and an Azure web app named App1.
You need to provide guest users with self-service sign-up for App1. The solution must meet the following requirements:

- Guest users must be able to sign up by using a one-time password.
- The users must provide their first name, last name, city, and email address during the sign-up process. What should you configure in the Azure Active Directory admin center for each requirement? To answer, select the appropriate options in the answer area.

NOTE: Each correct selection is worth one point.

Answer Area

One-time password:

	▼
A linked subscription	
An identity provider	
Azure AD Privileged Identity Management (PIM)	
The External collaboration settings	

User details:

	▼
A user flow	
Access reviews	
An access package	
The tenant properties	

- A. Mastered
B. Not Mastered

Answer: A

Explanation:

Answer Area

One-time password:

	▼
A linked subscription	
An identity provider	
Azure AD Privileged Identity Management (PIM)	
The External collaboration settings	

User details:

	▼
A user flow	
Access reviews	
An access package	
The tenant properties	

NEW QUESTION 244

- (Exam Topic 4)

Note: This question is part of a series of questions that present the same scenario. Each question in the series contains a unique solution that might meet the stated goals. Some question sets might have more than one correct solution, while others might not have a correct solution.

After you answer a question in this section, you will NOT be able to return to it as a result these questions will not appear in the review screen.

You have a Microsoft 365 E5 subscription. You create a user named User1.

You need to ensure that User1 can update the status of identity Secure Score improvement actions. Solution: You assign the SharePoint Administrator role to User1

Does this meet the goal?

- A. Yes
B. No

Answer: B

NEW QUESTION 249

- (Exam Topic 4)

You have an Azure Active Directory (Azure AD) tenant named contoso.com.

You implement entitlement management to provide resource access to users at a company named Fabrikam, Inc. Fabrikam uses a domain named fabrikam.com.

Fabrikam users must be removed automatically from the tenant when access is no longer required. You need to configure the following settings:

- Block external user from signing in to this directory: No
- Remove external user: Yes
- Number of days before removing external user from this directory: 90

What should you configure on the Identity Governance blade?

- A. Access packages
B. Entitlement management settings
C. Terms of use
D. Access reviews setting

Answer: B

Explanation:

Reference:
<https://docs.microsoft.com/en-us/azure/active-directory/governance/entitlement-management-external-users>

NEW QUESTION 252

- (Exam Topic 4)
 You create a new Microsoft 365 E5 tenant.
 You need to ensure that when users connect to the Microsoft 365 portal from an anonymous IP address, they are prompted to use multi-factor authentication (MFA).
 What should you configure?

- A. a sign-in risk policy
- B. a user risk policy
- C. an MFA registration policy

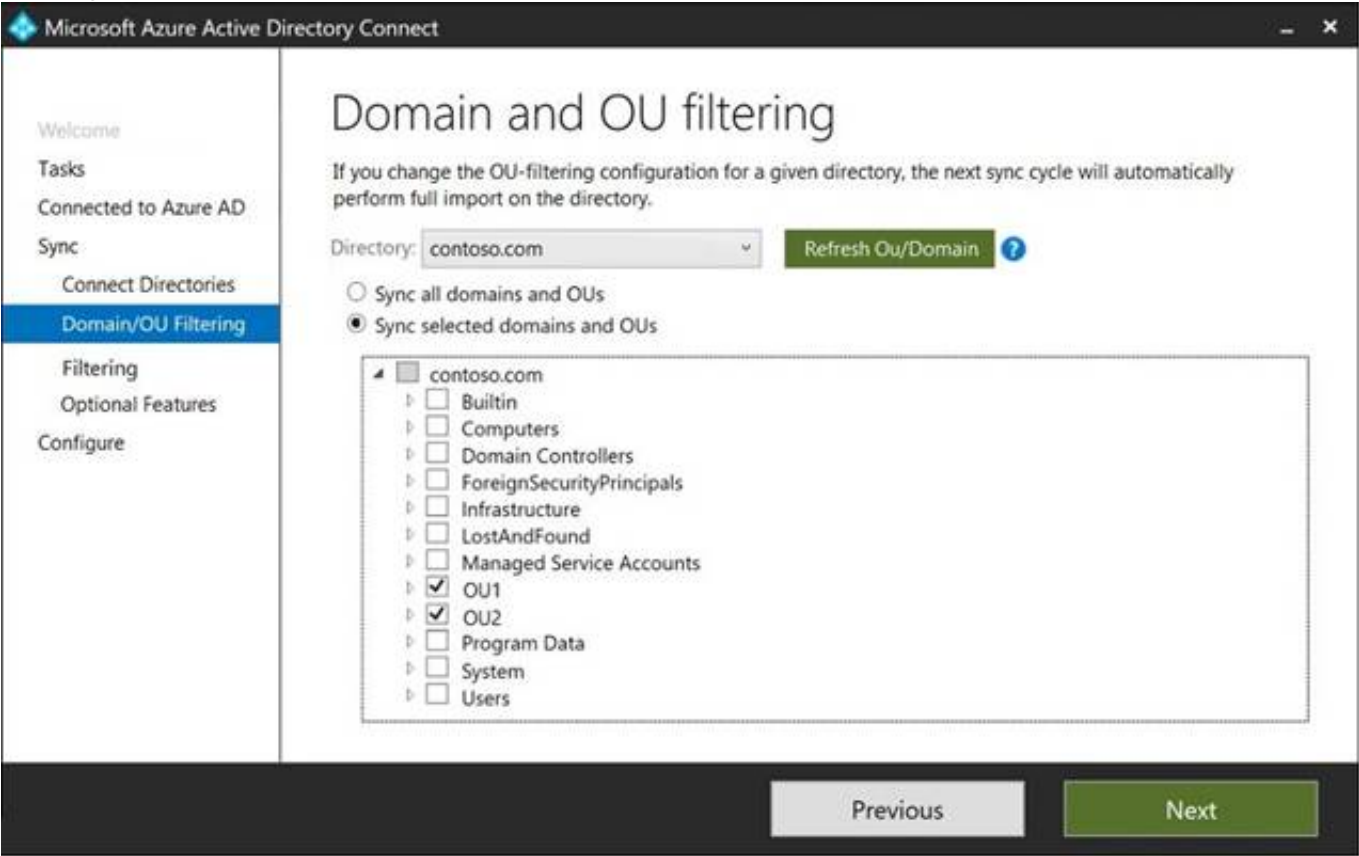
Answer: A

NEW QUESTION 253

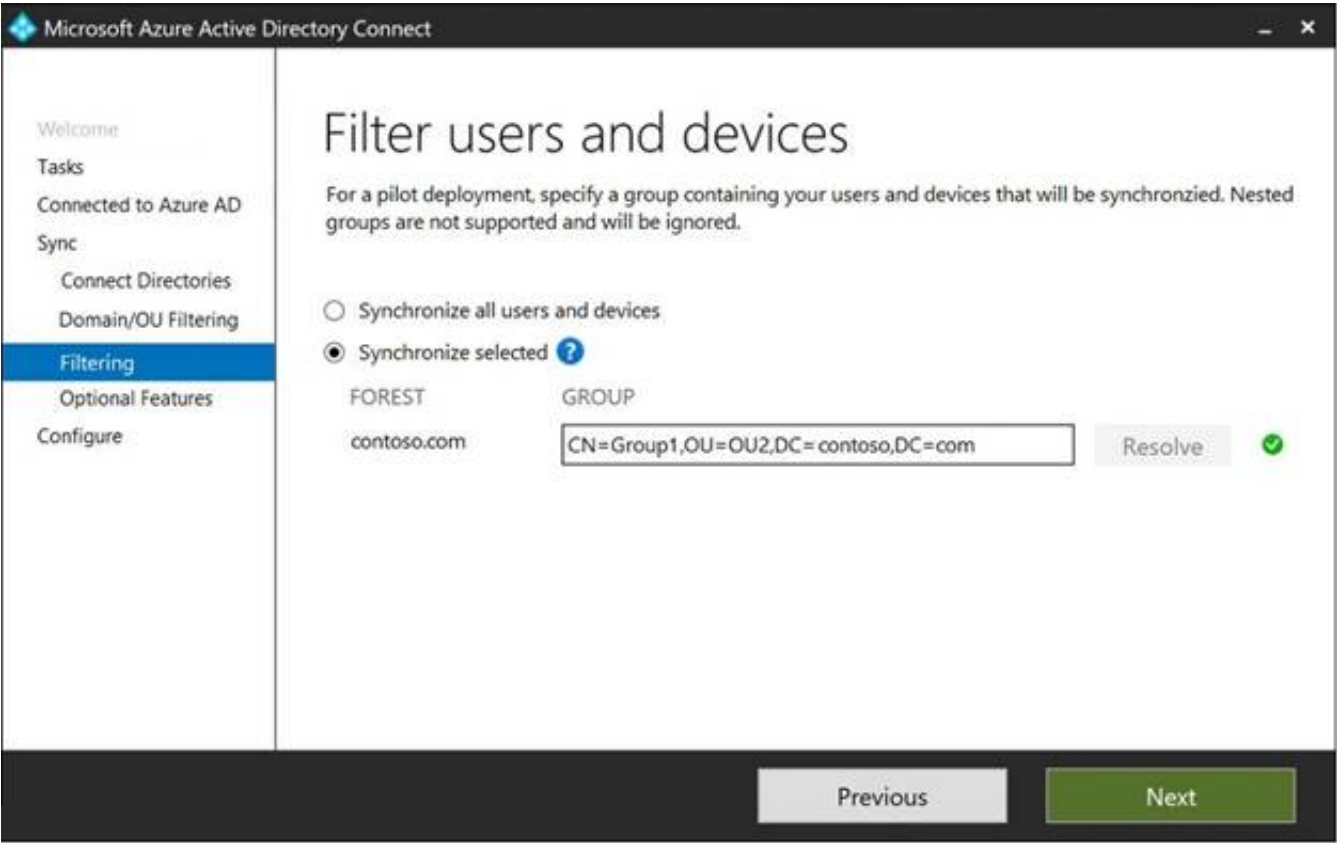
- (Exam Topic 4)
 Your network contains an on-premises Active Directory domain named contoso.com. The domain contains the objects shown in the following table.

Name	Type	In organizational unit (OU)	Description
User1	User	OU1	User1 is a member of Group1.
User2	User	OU1	User2 is not a member of any groups.
Group1	Security group	OU2	User1 and Group2 are members of Group1.
Group2	Security group	OU1	Group2 is a member of Group1.

You install Azure AD Connect. You configure the Domain and OU filtering settings as shown in the Domain and OU Filtering exhibit. (Click the Domain and OU Filtering tab.)



You configure the Filter users and devices settings as shown in the Filter Users and Devices exhibit. (Click the Filter Users and Devices tab.)



For each of the following statements, select Yes if the statement is true. Otherwise, select No.

Statements	Yes	No
User1 syncs to Azure AD.	<input type="radio"/>	<input type="radio"/>
User2 syncs to Azure AD.	<input type="radio"/>	<input type="radio"/>
Group2 syncs to Azure AD.	<input type="radio"/>	<input type="radio"/>

- A. Mastered
- B. Not Mastered

Answer: A

Explanation:

Graphical user interface, application Description automatically generated
Only direct members of Group1 are synced. Group2 will sync as it is a direct member of Group1 but the members of Group2 will not sync.
Reference:
<https://docs.microsoft.com/en-us/azure/active-directory/hybrid/how-to-connect-install-custom>

NEW QUESTION 257

- (Exam Topic 4)
You have an Azure Active Directory Premium P2 tenant. You create a Log Analytics workspace.
You need to ensure that you can view Azure Active Directory (Azure AD) audit log information by using Azure Monitor.
What should you do first?

- A. Run the Set-AzureADTenantDetail cmdlet.
- B. Create an Azure AD workbook.
- C. Modify the Diagnostics settings for Azure AD.
- D. Run the Get-AzureADAuditDirectoryLogs cmdlet.

Answer: D

Explanation:

Reference:
<https://docs.microsoft.com/en-us/azure/active-directory/reports-monitoring/howto-integrate-activity-logs-with-lo>

NEW QUESTION 262

- (Exam Topic 4)
You have a Microsoft 365 tenant and an Active Directory domain named adatum.com. You deploy Azure AD Connect by using the Express Settings.
You need to configure self-service password reset (SSPR) to meet the following requirements:
> When users reset their password, they must be prompted to respond to a mobile app notification or answer three predefined security questions.
> Passwords must be synced between the tenant and the domain regardless of where the password was reset.
What should you do? To answer, select the appropriate options in the answer area.
NOTE: Each correct selection is worth one point.

From the Password reset blade in the Azure Active Directory admin center, configure:

▼

Authentication methods
Notifications
Properties
Registration

From Azure AD Connect, enable:

▼

Federation with Active Directory Federation Services (AD FS)
Pass-through authentication
Password hash synchronization
Password writeback

- A. Mastered
B. Not Mastered

Answer: A

Explanation:

Graphical user interface, text, application Description automatically generated

Reference:

<https://docs.microsoft.com/en-us/azure/active-directory/authentication/howto-sspr-deployment> <https://docs.microsoft.com/en-us/azure/active-directory/authentication/concept-authentication-security-questions>

NEW QUESTION 263

- (Exam Topic 4)

You have a Microsoft 365 E5 subscription that contains three users named User1, User2, and User3. You have two Azure AD roles that have the Activation settings shown in the following table.

Name	Required justification on activation	Require approval to activate	Approvers
Role1	No	Yes	User1
Role2	Yes	No	None

The Azure AD roles have the Assignment settings shown in the following table.

Role	Allow permanent eligible assignment	Allow Permanent activate assignment	Require justification on active assignment
Role1	Yes	Yes	Yes
Role2	No	Yes	Yes

The Azure AD roles have the eligible users shown in the following table.

Role	Eligible assignment
Role1	User1, User2
Role2	User3

For each of the following statements, select Yes if the statement is true. Otherwise, select No. NOTE: Each correct selection is worth one point.

Answer Area

Statements	Yes	No
If User1 requests Role1, the request will be approved automatically.	<input type="radio"/>	<input type="radio"/>
User1 can approve the request of User3 for Role2.	<input type="radio"/>	<input type="radio"/>
User1 must provide justification to approve the request of User2 for Role1.	<input type="radio"/>	<input type="radio"/>

- A. Mastered
B. Not Mastered

Answer: A

Explanation:

Answer Area

Statements	Yes	No
If User1 requests Role1, the request will be approved automatically.	<input type="radio"/>	<input checked="" type="radio"/>
User1 can approve the request of User3 for Role2.	<input type="radio"/>	<input checked="" type="radio"/>
User1 must provide justification to approve the request of User2 for Role1.	<input checked="" type="radio"/>	<input type="radio"/>

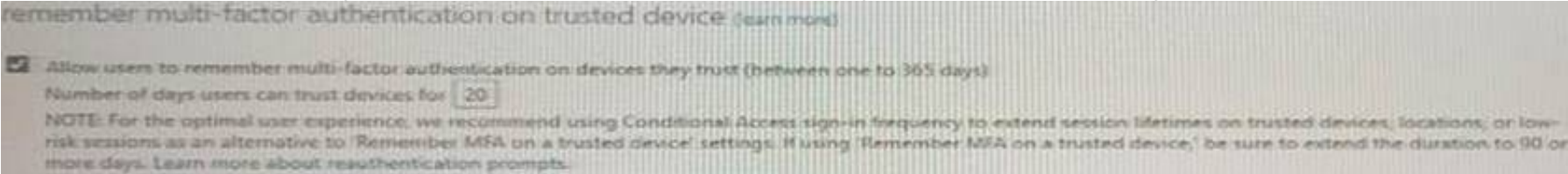
NEW QUESTION 266

- (Exam Topic 4)

You create the Azure Active Directory (Azure AD) users shown in the following table.

Name	Multi-factor auth status	Device
User1	Disabled	Device1
User2	Enabled	Device2
User3	Enforced	Device3

On February 1, 2021, you configure the multi-factor authentication (MFA) settings as shown in the following exhibit.



The users authentication to Azure AD on their devices as shown in the following table.

Date	User
February 2, 2021	User1
February 5, 2021	User2
February 21, 2021	User1

On February 26, 2021, what will the multi-factor auth status be for each user?

A)

Name	Multi-factor auth status
User1	Disabled
User2	Enabled
User3	Enforced

B)

Name	Multi-factor auth status
User1	Enabled
User2	Enabled
User3	Enabled

C)

Name	Multi-factor auth status
User1	Enforced
User2	Enforced
User3	Enforced

D)

Name	Multi-factor auth status
User1	Disabled
User2	Enforced
User3	Enforced

- A. Option A
- B. Option B
- C. Option C
- D. Option D

Answer: B

NEW QUESTION 267

- (Exam Topic 4)

You have an Azure subscription that contains the following virtual machine Name: VM1

Azure region: East US

System-assigned managed identity: Disabled

You create the managed identities shown in the following table.

Name	Location
Managed1	East US
Managed2	East US
Managed3	West US

You perform the following actions:

- Assign Managed1 to VM1.
- Create a resource group named RG1 in the West US region.

For each of the following statements, select Yes if the statement is true. Otherwise, select No. NOTE: Each correct selection is worth one point.

Answer Area

Statements	Yes	No
You can assign Managed2 to V1.	<input type="radio"/>	<input type="radio"/>
You can assign Managed3 to V1.	<input type="radio"/>	<input type="radio"/>
You can assign VM1 the Owner role for RG1.	<input type="radio"/>	<input type="radio"/>

- A. Mastered
B. Not Mastered

Answer: A

Explanation:

Answer Area

Statements	Yes	No
You can assign Managed2 to V1.	<input checked="" type="radio"/>	<input type="radio"/>
You can assign Managed3 to V1.	<input checked="" type="radio"/>	<input type="radio"/>
You can assign VM1 the Owner role for RG1.	<input type="radio"/>	<input checked="" type="radio"/>

NEW QUESTION 268

- (Exam Topic 4)

You have an on-premises Microsoft Exchange organization that uses an SMTP address space of contoso.com. You discover that users use their email address for self-service sign-up to Microsoft 365 services.

You need to gain global administrator privileges to the Azure Active Directory (Azure AD) tenant that contains the self-signed users.

Which four actions should you perform in sequence? To answer, move the appropriate actions from the list of actions to the answer area and arrange them in the correct order.

Actions

Sign in to the Microsoft 365 admin center.

Create a self-signed user account in the Azure AD tenant.

From the Microsoft 365 admin center, add the domain name.

Respond to the Become the admin message.

From the Microsoft 365 admin center, remove the domain name.

Create a TXT record in the contoso.com DNS zone.

Answer Area

⏪

⏩

⏴

⏵

- A. Mastered
B. Not Mastered

Answer: A

Explanation:

Reference:

<https://docs.microsoft.com/en-us/azure/active-directory/enterprise-users/domains-admin-takeover>

NEW QUESTION 270

- (Exam Topic 4)

You have a Microsoft 365 tenant.

You have an Active Directory domain that syncs to the Azure Active Directory (Azure AD) tenant. Users connect to the internet by using a hardware firewall at your company. The users authenticate to the firewall by using their Active Directory credentials.

You plan to manage access to external applications by using Azure AD.

You need to use the firewall logs to create a list of unmanaged external applications and the users who access them.

What should you use to gather the information?

- A. Cloud App Discovery in Microsoft Defender for Cloud Apps
- B. enterprise applications in Azure AD
- C. access reviews in Azure AD
- D. Application Insights in Azure Monitor

Answer: A

NEW QUESTION 273

.....

Thank You for Trying Our Product

We offer two products:

1st - We have Practice Tests Software with Actual Exam Questions

2nd - Questions and Answers in PDF Format

SC-300 Practice Exam Features:

- * SC-300 Questions and Answers Updated Frequently
- * SC-300 Practice Questions Verified by Expert Senior Certified Staff
- * SC-300 Most Realistic Questions that Guarantee you a Pass on Your FirstTry
- * SC-300 Practice Test Questions in Multiple Choice Formats and Updatesfor 1 Year

100% Actual & Verified — Instant Download, Please Click
[Order The SC-300 Practice Test Here](#)