

# Fortinet

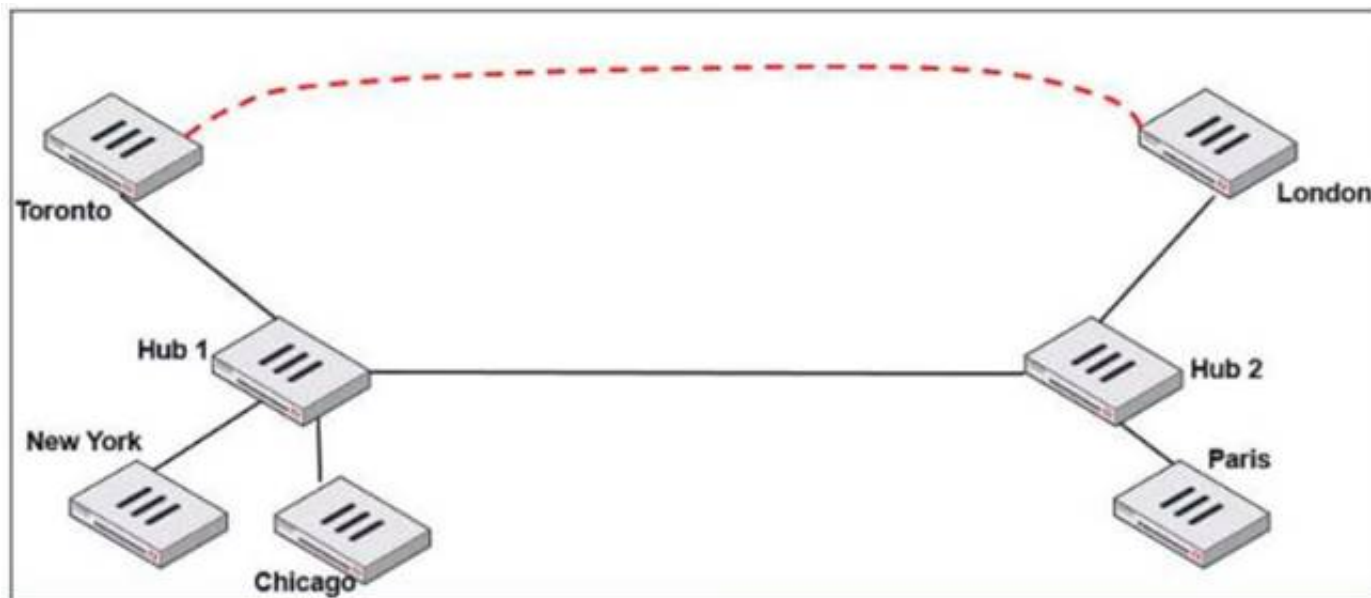
## Exam Questions NSE7\_SDW-7.0

Fortinet NSE 7 - SD-WAN 7.0



### NEW QUESTION 1

Refer to the exhibit.



Two hub-and-spoke groups are connected through a site-to-site IPsec VPN between Hub 1 and Hub 2. Which two configuration settings are required for Toronto and London spokes to establish an ADVPN shortcut? (Choose two.)

- A. On the hubs, auto-discovery-sender must be enabled on the IPsec VPNs to spokes.
- B. On the spokes, auto-discovery-receiver must be enabled on the IPsec VPN to the hub.
- C. auto-discovery-forwarder must be enabled on all IPsec VPNs.
- D. On the hubs, net-device must be enabled on all IPsec VPNs.

**Answer: AB**

### NEW QUESTION 2

Which are two benefits of using CLI templates in FortiManager? (Choose two.)

- A. You can reference meta fields.
- B. You can configure interfaces as SD-WAN members without having to remove references first.
- C. You can configure FortiManager to sync local configuration changes made on the managed device, to the CLI template.
- D. You can configure advanced CLI settings.

**Answer: AD**

### NEW QUESTION 3

Which two statements describe how IPsec phase 1 main mode is different from aggressive mode when performing IKE negotiation? (Choose two )

- A. A peer ID is included in the first packet from the initiator, along with suggested security policies.
- B. XAuth is enabled as an additional level of authentication, which requires a username and password.
- C. A total of six packets are exchanged between an initiator and a responder instead of three packets.
- D. The use of Diffie Hellman keys is limited by the responder and needs initiator acceptance.

**Answer: BC**

### NEW QUESTION 4

What does enabling the exchange-interface-ip setting enable FortiGate devices to exchange?

- A. The gateway address of their IPsec interfaces
- B. The tunnel ID of their IPsec interfaces
- C. The IP address of their IPsec interfaces
- D. The name of their IPsec interfaces

**Answer: C**

### NEW QUESTION 5

What is a benefit of using application steering in SD-WAN?

- A. The traffic always skips the regular policy routes.
- B. You steer traffic based on the detected application.
- C. You do not need to enable SSL inspection.
- D. You do not need to configure firewall policies that accept the SD-WAN traffic.

**Answer: B**

### NEW QUESTION 6

Which two statements about SLA targets and SD-WAN rules are true? (Choose two.)

- A. When configuring an SD-WAN rule, you can select multiple SLA targets of the same performance SLA.
- B. SD-WAN rules use SLA targets to check if the preferred members meet the SLA requirements.

- C. SLA targets are used only by SD-WAN rules that are configured with Lowest Cost (SLA) or Maximize Bandwidth (SLA) as strategy.  
D. Member metrics are measured only if an SLA target is configured.

**Answer:** BC

#### NEW QUESTION 7

What are two reasons for using FortiManager to organize and manage the network for a group of FortiGate devices? (Choose two )

- A. It simplifies the deployment and administration of SD-WAN on managed FortiGate devices.  
B. It improves SD-WAN performance on the managed FortiGate devices.  
C. It sends probe signals as health checks to the beacon servers on behalf of FortiGate.  
D. It acts as a policy compliance entity to review all managed FortiGate devices.  
E. It reduces WAN usage on FortiGate devices by acting as a local FortiGuard server.

**Answer:** AE

#### NEW QUESTION 8

Refer to the exhibit.

```
branch1_fgt # diagnose sys sdwan service 3

Service(3): Address Mode(IPV4) flags=0x200 use-shortcut-sla
  Gen(2), TOS(0x0/0x0), Protocol(0: 1->65535), Mode(priority), link-cost-factor(packet-
  loss), link-cost-threshold(0), health-check(VPN_PING)
  Members(3):
    1: Seq_num(3 T_INET_0_0), alive, packet loss: 2.000%, selected
    2: Seq_num(4 T_MPLS_0), alive, packet loss: 4.000%, selected
    3: Seq_num(5 T_INET_1_0), alive, packet loss: 12.000%, selected
  Src address(1):
    10.0.1.0-10.0.1.255

  Dst address(1):
    10.0.0.0-10.255.255.255

branch1_fgt (3) # show
config service
  edit 3
    set name "Corp"
    set mode priority
    set dst "Corp-net"
    set src "LAN-net"
    set health-check "VPN_PING"
    set link-cost-factor packet-loss
    set link-cost-threshold 0
    set priority-members 5 3 4
  next
end
```

The exhibit shows the SD-WAN rule status and configuration.

Based on the exhibit, which change in the measured packet loss will make T\_INET\_1\_0 the new preferred member?

- A. When all three members have the same packet loss.  
B. When T\_INET\_0\_0 has 4% packet loss.  
C. When T\_INET\_0\_0 has 12% packet loss.  
D. When T\_INET\_1\_0 has 4% packet loss.

**Answer:** A

#### NEW QUESTION 9

Exhibit A –



	#	Name	Type	Normalized Interface	Addressing Mode	IP/Netmask	Access
	▼ Physical (10)						
	1	port1	Physical	port1	Manual	203.0.113.1/255.255.255.2	PING
	2	port2	Physical	port2	Manual	203.0.113.9/255.255.255.2	PING
	3	port3	Physical	port3	Manual	0.0.0.0/0.0.0.0	
	4	port4	Physical	port4	Manual	172.16.0.9/255.255.255.24	PING
	5	port5	Physical	port5	Manual	10.0.2.254/255.255.255.0	PING
	6	port6	Physical	port6	Manual	0.0.0.0/0.0.0.0	
	7	port7	Physical	port7	Manual	0.0.0.0/0.0.0.0	
	8	port8	Physical	port8	Manual	0.0.0.0/0.0.0.0	
	9	port9	Physical	port9	Manual	0.0.0.0/0.0.0.0	
	10	port10	Physical	port10	Manual	192.168.0.32/255.255.255.	HTTPS, PING, SSH, HT
	▼ Aggregate (1)						
	11	fortilink	Aggregate		Manual	169.254.1.1/255.255.255.0	PING, Security Fabric C
	▼ Tunnel (3)						
	12	nat.root	Tunnel		Manual	0.0.0.0/0.0.0.0	
	13	i2t.root	Tunnel		Manual	0.0.0.0/0.0.0.0	
	14	ssl.root (SSL VPN interf	Tunnel		Manual	0.0.0.0/0.0.0.0	
	▼ EMAC VLAN (1)						
	15	vl_lan_ts	EMAC VLAN		Manual	10.0.102.1/255.255.255.0	PING
	▼ SD-WAN Zone (2)						
	16	virtual-wan-link	SD-WAN Zone				
	17	SASE	SD-WAN Zone	SASE			

	#	ID	Destination	Gateway	Interface	Distance	Priority	Status	Description
	▼ Static Route (2)								
	1	1	0.0.0.0/0.0.0.0	203.0.113.2	port1	10	0	Enable	
	2	2	0.0.0.0/0.0.0.0	203.0.113.10	port2	10	0	Enable	

Exhibit B –

	#	Name	From	To	Source	Destination	Schedule	Service
	1	Internet_Access	port5	port1	all	all	always	ALL
	▼ Implicit (2-2 / Total: 1)							
	2	Implicit Deny	any	any	all	all	always	ALL

Exhibit A shows the system interface with the static routes and exhibit B shows the firewall policies on the managed FortiGate. Based on the FortiGate configuration shown in the exhibits, what issue might you encounter when creating an SD-WAN zone for port1 and port2?

- A. port1 is assigned a manual IP address.
- B. port1 is referenced in a firewall policy.
- C. port2 is referenced in a static route.
- D. port1 and port2 are not administratively down.

Answer: B

NEW QUESTION 10

Refer to the exhibit.

```
FortiGate # diagnose sys session list

session info: proto=1 proto_state=00 duration=25 expire=34 timeout=0 flags=00000000
socktype=0 sockport=0 av_idx=0 use=3
origin-shaper=
reply-shaper=
per_ip_shaper=
class_id=0 ha_id=0 policy_dir=0 tunnel=/ vlan_cos=0/255
state=dirty may_dirty
statistic(bytes/packets/allow_err): org=84/1/1 reply=84/1/1 tuples=2
tx speed(Bps/kbps): 0/0 rx speed(Bps/kbps): 0/0
origin->sink: org pre->post, reply pre->post dev=5->4/4->5 gwy=192.168.73.2/10.0.1.10
hook=post dir=org act=snat 10.0.1.10:2246->8.8.8.8:8 (192.168.73.132:62662)
hook=pre dir=reply act=dnat 8.8.8.8:62662->192.168.73.132:0 (10.0.1.10:2246)
misc=0 policy_id=1 auth_info=0 chk_client_info=0 vd=0
serial=00000a2c tos=ff/ff app_list=0 app=0 url_cat=0
rpd_b_link_id= 80000000 rpd_b_svc_id=0 ngfwid=n/a
npu_state=0x040000
total session 1
```

Based on the exhibit, which statement about FortiGate re-evaluating traffic is true?

- A. The type of traffic defined and allowed on firewall policy ID 1 is UDP.
- B. FortiGate has terminated the session after a change on policy ID 1.
- C. Changes have been made on firewall policy ID 1 on FortiGate.
- D. Firewall policy ID 1 has source NAT disabled.

Answer: C

NEW QUESTION 10

What are two reasons why FortiGate would be unable to complete the zero-touch provisioning process? (Choose two.)

- A. The FortiGate cloud key has not been added to the FortiGate cloud portal.
- B. FortiDeploy has connected with FortiGate and provided the initial configuration to contact FortiManager
- C. The zero-touch provisioning process has completed internally, behind FortiGate.
- D. FortiGate has obtained a configuration from the platform template in FortiGate cloud.
- E. A factory reset performed on FortiGate.

**Answer:** AC

#### NEW QUESTION 15

Refer to the exhibits.

Exhibit A

Network Properties	
Service	Critical-DIA
Identity	
Device ID	FGVM01TM22000077
Device Name	branch1_fgt
Type	
Sub Type	sdwan
Type	event
Alerts	
Level	notice
General	
Log Description	SDWAN status
Log ID	0113022923
Message	Service prioritized by performance metric will be redirected in sequence order.
Sequence Number	2,1
Virtual Domain	root
Others	
Date/Time	23:57:29
Destination End User ID	3
Destination Endpoint ID	3
Device Time	2022-03-04 14:57:27
Event Time	1646434647595788893
Event Type	Service
Metric	latency
Service ID	1
Time Stamp	2022-03-04 23:57:29
Time Zone	-0800
UEBA Endpoint ID	3
UEBA User ID	3
logger	700030237

Exhibit B

branch1_fgt # diagnose sys sdwan member
Member(1): interface: port1, flags=0x0 , gateway: 192.2.0.2, priority: 0 1024, weight: 0
Member(2): interface: port2, flags=0x0 , gateway: 192.2.0.10, priority: 0 1024, weight: 0
config service
edit 1
set name "Critical-DIA"
set mode priority
set src "LAN-net"
set internet-service enable
set internet-service-app-ctrl 16354 41468 16920
set health-check "Level3_DNS"
set priority-members 1 2
next
end

Exhibit A shows an SD-WAN event log and exhibit B shows the member status and the SD-WAN rule configuration.

Based on the exhibits, which two statements are correct? (Choose two.)

- A. FortiGate updated the outgoing interface list on the rule so it prefers port2.
- B. Port2 has the highest member priority.
- C. Port2 has a lower latency than port1.
- D. SD-WAN rule ID 1 is set to lowest cost (SLA) mode.

**Answer:** AC

#### NEW QUESTION 16

Refer to the exhibit.

```
session info: proto=6 proto_state=11 duration=242 expire=3349 timeout=3600
flags=00000000 socktype=0 sockport=0 av_idx=0 use=4
origin-shaper=
reply-shaper=
per_ip_shaper=
class_id=0 ha_id=0 policy_dir=0 tunnel=/ vlan_cos=0/255
state=log dirty may_dirty ndr f00 app_valid
statistic(bytes/packets/allow_err): org=3421/20/1 reply=3777/17/1 tuples=3
tx speed(Bps/kbps): 0/0 rx speed(Bps/kbps): 0/0
orgin->sink: org pre->post, reply pre->post dev=7->3/3->7 gwy=0.0.0.0/0.0.0.0
hook=post dir=org act=snat 10.0.1.101:34676->128.66.0.1:22(192.2.0.1:34676)
hook=pre dir=reply act=dnat 128.66.0.1:22->192.2.0.1:34676(10.0.1.101:34676)
hook=post dir=reply act=noop 128.66.0.1:22->10.0.1.101:34676(0.0.0.0:0)
pos/(before,after) 0/(0,0), 0/(0,0)
misc=0 policy_id=2 pol_uuid_idx=14721 auth_info=0 chk_client_info=0 vd=0
serial=000032d9 tos=ff/ff app_list=2000 app=16060 url_cat=0
sdwan_mbr_seq=1 sdwan_service_id=2
rpdb_link_id=ff000002 rpdb_svc_id=0 ngfwid=n/a
npu_state=0x001008
```

Which statement explains the output shown in the exhibit?

- A. FortiGate performed standard FIB routing on the session.
- B. FortiGate will not re-evaluate the session following a firewall policy change.
- C. FortiGate used 192.2.0.1 as the gateway for the original direction of the traffic.
- D. FortiGate must re-evaluate the session due to routing change.

**Answer: D**

#### NEW QUESTION 18

Which diagnostic command can you use to show the configured SD-WAN zones and their assigned members?

- A. diagnose sys sdwan zone
- B. diagnose sys sdwan service
- C. diagnose sys sdwan member
- D. diagnose sys sdwan interface

**Answer: A**

#### NEW QUESTION 21

Refer to the exhibits.  
Exhibit A



### Edit Performance SLA

**Name** Level3\_DNS

**IP Version** IPv4 IPv6

**Probe Mode** Active Passive Prefer Passive

**Protocol** Ping TCP ECHO UDP ECHO HTTP TW

**Server**

**Participants** All SD-WAN Members Specify

port1  
port2  
2 Entries

**Enable Probe Packets** ☒

**SLA Targets** + Add Target

**Link Status**

**Interval**  Milliseconds

**Failure Before Inactive**  (max 3600)

**Restore Link After**  (max 3600)

**Action When Inactive**

**Update Static Route** ☒

**Cascade Interfaces** ☒

Exhibit B

```
branch1_fgt # diagnose sys sdwan member | grep port
Member(1): interface: port1, flags=0x0 , gateway: 192.2.0.2, priority: 0 1024, weight: 0
Member(2): interface: port2, flags=0x0 , gateway: 192.2.0.10, priority: 0 1024, weight: 0

branch1_fgt # get router info routing-table all | grep port
S*      0.0.0.0/0 [1/0] via 192.2.0.2, port1
         [1/0] via 192.2.0.10, port2
S       8.8.8.8/32 [10/0] via 192.2.0.11, port2
C       10.0.1.0/24 is directly connected, port5
S       172.16.0.0/16 [10/0] via 172.16.0.2, port4
C       172.16.0.0/29 is directly connected, port4
C       192.2.0.0/29 is directly connected, port1
C       192.2.0.8/29 is directly connected, port2
C       192.168.0.0/24 is directly connected, port10

branch1_fgt # diagnose sys sdwan health-check status Level3_DNS
Health Check(Level3_DNS):
Seq(1 port1): state(alive), packet-loss(0.000%) latency(1.919), jitter(0.137), bandwidth-
up(10238), bandwidth-dw(10238), bandwidth-bi(20476) sla_map=0x0
Seq(2 port2): state(alive), packet-loss(0.000%) latency(1.509), jitter(0.101), bandwidth-
up(10238), bandwidth-dw(10238), bandwidth-bi(20476) sla_map=0x0
```

Exhibit A shows the SD-WAN performance SLA and exhibit B shows the SD-WAN member status, the routing table, and the performance SLA status. If port2 is detected dead by FortiGate, what is the expected behavior?

- A. Port2 becomes alive after three successful probes are detected.
- B. FortiGate removes all static routes for port2.
- C. The administrator manually restores the static routes for port2, if port2 becomes alive.
- D. Host 8.8.8.8 is reachable through port1 and port2.

**Answer: B**

**Explanation:**

This is due to Update static route is enable which removes the static route entry referencing the interface if the interface is dead

**NEW QUESTION 23**

Refer to the exhibit.

```
branch1_fgt # diagnose sys sdwan service 3

Service(3): Address Mode(IPV4) flags=0x200 use-shortcut-sla
  Gen(5), TOS(0x0/0x0), Protocol(0: 1->65535), Mode(priority), link-cost-
factor(latency), link-cost-threshold(10), health-check(VPN_PING)
  Members(3):
    1: Seq_num(3 T_INET_0_0), alive, latency: 101.349, selected
    2: Seq_num(4 T_INET_1_0), alive, latency: 151.278, selected
    3: Seq_num(5 T_MPLS_0), alive, latency: 200.984, selected
  Src address(1):
    10.0.1.0-10.0.1.255

  Dst address(1):
    10.0.0.0-10.255.255.255

branch1_fgt (3) # show
config service
  edit 3
    set name "Corp"
    set mode priority
    set dst "Corp-net"
    set src "LAN-net"
    set health-check "VPN_PING"
    set priority-members 3 4 5
  next
end
```

The exhibit shows the SD-WAN rule status and configuration.

Based on the exhibit, which change in the measured latency will make T\_MPLS\_0 the new preferred member?

- A. When T\_INET\_0\_0 and T\_MPLS\_0 have the same latency.
- B. When T\_MPLS\_0 has a latency of 100 ms.
- C. When T\_INET\_0\_0 has a latency of 250 ms.
- D. When T\_MPLS\_0 has a latency of 80 ms.

**Answer: D****NEW QUESTION 27**

Refer to the exhibit.

```
config system sdwan
  set status enable
  set load-balance source-dest-ip-based
  config zone
    edit "virtual-wan-link"
    next
    edit "SASE"
    next
    edit "underlay"
    next
  end
  config members
    edit 1
      set interface "port1"
      set zone "underlay"
      set gateway 192.2.0.2
    next
    edit 2
      set interface "port2"
      set zone "underlay"
      set gateway 192.2.0.10
    next
  end
...
end
```

Which algorithm does SD-WAN use to distribute traffic that does not match any of the SD-WAN rules?

- A. All traffic from a source IP to a destination IP is sent to the same interface.
- B. All traffic from a source IP is sent to the same interface.
- C. All traffic from a source IP is sent to the most used interface.



D. All traffic from a source IP to a destination IP is sent to the least used interface.

**Answer:** A

### NEW QUESTION 31

Refer to the exhibits. Exhibit A

```
config system sdwan
  config health-check
    edit "Passive"
      set detect-mode passive
      set members 3 4
    next
  end
end

config system sdwan
  config service
    edit 1
      set name "Facebook-YouTube"
      set src "all"
      set internet-service enable
      set internet-service-app-ctrl 15832 31077
      set health-check "Passive"
      set priority-member 3 4
      set passive-measurement enable
    next
  end
end

branch1_fgt # get application name status | grep "id: 15832" -B1
app-name: "Facebook"
id: 15832

branch1_fgt # get application name status | grep "id: 31077" -B1
app-name: "YouTube"
id: 31077
```

Exhibit B

```
config firewall policy
  edit 1
    set name "DIA"
    set uuid b973e4ec-5f90-51ec-cadb-017c830d9418
    set srcintf "port5"
    set dstintf "underlay"
    set action accept
    set srcaddr "LAN-net"
    set dstaddr "all"
    set schedule "always"
    set service "ALL"
    set passive-wan-health-measurement enable
    set utm-status enable
    set ssl-ssh-profile "certificate-inspection"
    set application-list "default"
    set logtraffic all
    set auto-asic-offload disable
    set nat enable
  next
end

branch1_fgt # diagnose sys sdwan zone | grep underlay -A1
Zone underlay index=3
  members(2): 3(port1) 4(port2)
```

Exhibit A shows the SD-WAN performance SLA configuration, the SD-WAN rule configuration, and the application IDs of Facebook and YouTube. Exhibit B shows the firewall policy configuration and the underlay zone status.

Based on the exhibits, which two statements are correct about the health and performance of port1 and port2? (Choose two.)

- A. The performance is an average of the metrics measured for Facebook and YouTube traffic passing through the member.
- B. FortiGate is unable to measure jitter and packet loss on Facebook and YouTube traffic.
- C. FortiGate identifies the member as dead when there is no Facebook and YouTube traffic passing through the member.
- D. Non-TCP Facebook and YouTube traffic are not used for performance measurement.

**Answer:** AD

**Explanation:**

Study Guide 7.0, pages 88 - 89.

Study Guide 7.2, pages 103 - 104.

Another comment said "because without using application Control on the firewall policy, SDWAN can't work" but there is a app control "default" defined on config.

**NEW QUESTION 36**

Which two protocols in the IPsec suite are most used for authentication and encryption? (Choose two.)

- A. Encapsulating Security Payload (ESP)
- B. Secure Shell (SSH)
- C. Internet Key Exchange (IKE)
- D. Security Association (SA)

**Answer:** AC

**NEW QUESTION 41**

Which two tasks are part of using central VPN management? (Choose two.)

- A. You can configure full mesh, star, and dial-up VPN topologies.
- B. You must enable VPN zones for SD-WAN deployments.
- C. FortiManager installs VPN settings on both managed and external gateways.
- D. You configure VPN communities to define common IPsec settings shared by all VPN gateways.

**Answer:** AD

**NEW QUESTION 43**

Which statement is correct about SD-WAN and ADVPN?

- A. Routes for ADVPN shortcuts must be manually configured.
- B. SD-WAN can steer traffic to ADVPN shortcuts, established over IPsec overlays, configured as SD-WAN members.
- C. SD-WAN does not monitor the health and performance of ADVPN shortcuts.
- D. You must use IKEv2 on IPsec tunnels.

**Answer:** B

**NEW QUESTION 46**

Refer to the exhibit.

```
config system settings
    set firewall-session-dirty check-new
end
```

Based on the exhibit, which two actions does FortiGate perform on sessions after a firewall policy change? (Choose two.)

- A. FortiGate flushes all sessions.
- B. FortiGate terminates the old sessions.
- C. FortiGate does not change existing sessions.
- D. FortiGate evaluates new sessions.

**Answer:** CD

**Explanation:**

FortiGate not to flag existing impacted session as dirty by setting firewall-session-dirty to check new. The results is that FortiGate evaluates only new session against the new firewall policy.

**NEW QUESTION 51**

Refer to the exhibit.

```
# diagnose sys session list

session info: proto=6 proto_state=01 duration=39 expire=3593 timeout=3600 flags=00000000
socktype=0 sockport=0 av_idx=0 use=4
state=may_dirty npu
origin->sink: org pre->post, reply pre->post dev=7->5/5->7 gwy=10.10.10.1/10.9.31.160
hook=pre dir=org act=noop 10.9.31.160:7932->10.0.1.7:22(0.0.0.0:0)
hook=post dir=reply act=noop 10.0.1.7:22->10.9.31.160:7932(0.0.0.0:0)
pos/(before,after) 0/(0,0), 0/(0,0)
misc=0 policy_id=1 auth_info=0 chk_client_info=0 vd=0
serial=00045e02 tos=ff/ff app_list=0 app=0 url_cat=0
sdwan_mbr_seq=1 sdwan_service_id=1
rpd_b_link_id=80000000 rpd_b_svc_id=0 ngfwid=n/a
npu_state=0x4000c00
npu_info: flag=0x81/0x81, offload=8/8, ips_offload=0/0, epid=64/76, ipid=76/64,
vlan=0x0000/0x0000
vlifid=76/64, vtag_in=0x0000/0x0000 in_npu=1/1, out_npu=1/1, fwd_en=0/0, qid=2/2
reflect info 0:
dev=7->6/6->7
npu_state=0x4000800
npu_info: flag=0x00/0x81, offload=0/8, ips_offload=0/0, epid=0/76, ipid=0/65, vlan=0x0000/0x0000
vlifid=0/65, vtag_in=0x0000/0x0000 in_npu=0/1, out_npu=0/1, fwd_en=0/0, qid=0/2
total reflect session num: 1
total session 1

# diagnose netlink interface list

if=port1 family=00 type=1 index=5 mtu=1500 link=0 master=0
if=port2 family=00 type=1 index=6 mtu=1500 link=0 master=0
if=port3 family=00 type=1 index=7 mtu=1500 link=0 master=0
```

The exhibit shows the details of a session and the index numbers of some relevant interfaces on a FortiGate appliance that supports hardware offloading. Based on the information shown in the exhibits, which two statements about the session are true? (Choose two.)

- A. The reply direction of the asymmetric traffic flows from port2 to port3.
- B. The auxiliary session can be offloaded to hardware.
- C. The original direction of the symmetric traffic flows from port3 to port2.
- D. The main session cannot be offloaded to hardware.

**Answer:** AB

#### NEW QUESTION 52

Refer to the exhibit.

```
config router bgp
  set as 65000
  set router-id 10.1.0.1
  set ibgp-multipath enable
  set additional-path enable
  set additional-path-select 3
  config neighbor-group
    edit "Branches_INET_0"
      set interface "T_INET_0_0"
      set remote-as 65000
      set update-source "T_INET_0_0"
    next
    edit "Branches_INET_1"
      set interface "T_INET_1_0"
      set remote-as 65000
      set update-source "T_INET_1_0"
    next
    edit "Branches_MPLS"
      set interface "T_MPLS_0"
      set remote-as 65000
      set update-source "T_MPLS_0"
    next
  end
  config neighbor-range
    edit 1
      set prefix 10.201.1.0 255.255.255.0
      set neighbor-group "Branches_INET_0"
    next
    edit 2
      set prefix 10.202.1.0 255.255.255.0
      set neighbor-group "Branches_INET_1"
    next
    edit 3
      set prefix 10.203.1.0 255.255.255.0
      set neighbor-group "Branches_MPLS"
    next
  end
  ...
end
```

The exhibit shows the BGP configuration on the hub in a hub-and-spoke topology. The administrator wants BGP to advertise prefixes from spokes to other spokes over the IPsec overlays, including additional paths. However, when looking at the spoke routing table, the administrator does not see the prefixes from other spokes and the additional paths.

Based on the exhibit, which three settings must the administrator configure inside each BGP neighbor group so spokes can learn other spokes prefixes and their additional paths? (Choose three.)

- A. Set additional-path to send
- B. Enable route-reflector-client
- C. Set advertisement-interval to the number of additional paths to advertise
- D. Set adv-additional-path to the number of additional paths to advertise
- E. Enable soft-reconfiguration

**Answer:** ABD

#### NEW QUESTION 55

Which two statements about SD-WAN central management are true? (Choose two.)

- A. The objects are saved in the ADOM common object database.
- B. It does not support meta fields.
- C. It uses templates to configure SD-WAN on managed devices.
- D. It supports normalized interfaces for SD-WAN member configuration.

**Answer:** AC

#### Explanation:

Normalized interfaces are not supported for SD-WAN templates. You can create multiple SD-WAN zones and add interface members to the SD-WAN zones. You must bind the interface members by name to physical interfaces or VPN interfaces. <https://docs.fortinet.com/document/fortigate/7.0.0/sd-wan-new-features/794804/new-sd-wan-template>

#### NEW QUESTION 58

Refer to the exhibits. Exhibit A



```
branch1_fgt (3) # show
config service
  edit 3
    set name "Corp"
    set mode sla
    set dst "Corp-net"
    set src "LAN-net"
    config sla
      edit "VPN_PING"
        set id 1
      next
      edit "VPN_HTTP"
        set id 1
      next
    end
    set priority-members 3 4 5
    set gateway enable
  next
end
```

Exhibit B

```
branch1_fgt # diagnose sys sdwan service 3

Service(3): Address Mode(IPV4) flags=0x200 use-shortcut-sla
Gen(1), TOS(0x0/0x0), Protocol(0: 1->65535), Mode(sla), sla-compare-order
Members(2):
  1: Seq_num(5 T_MPLS_0), alive, sla(0x3), gid(0), cfg_order(2), cost(0), selected
  2: Seq_num(4 T_INET_1_0), alive, sla(0x1), gid(0), cfg_order(1), cost(0), selected
  3: Seq_num(3 T_INET_0_0), alive, sla(0x0), gid(0), cfg_order(0), cost(0), selected
Src address(1):
  10.0.1.0-10.0.1.255

Dst address(1):
  10.0.0.0-10.255.255.255

branch1_fgt # get router info routing-table all | grep T_
S      10.0.0.0/8 [1/0] via T_INET_0_0 tunnel 100.64.1.1
        [1/0] via T_INET_1_0 tunnel 100.64.1.9
S      10.201.1.254/32 [15/0] via T_INET_0_0 tunnel 100.64.1.1
S      10.202.1.254/32 [15/0] via T_INET_1_0 tunnel 100.64.1.9
S      10.203.1.254/32 [15/0] via T_MPLS_0 tunnel 172.16.1.5

branch1_fgt # diagnose sys sdwan member | grep T_
Member(3): interface: T_INET_0_0, flags=0x4 , gateway: 100.64.1.1, peer: 10.201.1.254,
priority: 0 1024, weight: 0
Member(4): interface: T_INET_1_0, flags=0x4 , gateway: 100.64.1.9, peer: 10.202.1.254,
priority: 0 1024, weight: 0
Member(5): interface: T_MPLS_0, flags=0x4 , gateway: 172.16.1.5, peer: 10.203.1.254,
priority: 0 1024, weight: 0
```

Exhibit A shows the configuration for an SD-WAN rule and exhibit B shows the respective rule status, the routing table, and the member status.

The administrator wants to understand the expected behavior for traffic matching the SD-WAN rule. Based on the exhibits, what can the administrator expect for traffic matching the SD-WAN rule?

- A. The traffic will be load balanced across all three overlays.
- B. The traffic will be routed over T\_INET\_0\_0.
- C. The traffic will be routed over T\_MPLS\_0.
- D. The traffic will be routed over T\_INET\_1\_0.

**Answer: D**

## NEW QUESTION 62

Refer to the exhibit.

```
id=20085 trace_id=847 func=print_pkt_detail line=5428 msg="vd-root:0 received a
packet(proto=6, 10.1.10.1:33920->74.125.195.93:443) from port3. flag [.], seq
2018554516, ack 4141536963, win 2238"
id=20085 trace_id=847 func=resolve_ip_tuple_fast line=5508 msg="Find an existing
session, id=000008c1, original direction"
id=20085 trace_id=847 func=shaper_handler line=821 msg="exceeded shaper limit, drop"
```

Which conclusion about the packet debug flow output is correct?

- A. The original traffic exceeded the maximum packets per second of the outgoing interface, and the packet was dropped.
- B. The reply traffic exceeded the maximum bandwidth configured in the traffic shaper, and the packet was dropped.

- C. The original traffic exceeded the maximum bandwidth of the outgoing interface, and the packet was dropped.
- D. The original traffic exceeded the maximum bandwidth configured in the traffic shaper, and the packet was dropped.

**Answer:** D

#### NEW QUESTION 65

Refer to the exhibits.

```
dcl_fgt # show vpn ipsec phase1-interface T_INET_1_0
config vpn ipsec phase1-interface
  edit "T_INET_1_0"
    set type dynamic
    set interface "port2"
    set ike-version 2
    set keylife 28800
    set peertype any
    set net-device disable
    set proposal aes128-sha256
    set add-route disable
    set psksecret ENC
GayzHJ/UhxCc9FYtwas5o4rkNCMjjNUEj4Q4f2NS6I65RIVF9zum6sJALsU9Cg+1jsXz3ZtIM+WNkHLsXkHqydgS
G/2x8Vp9Rcht6zKHPEctOcFVbaG+UeO3Rw41pmGP/Z3rIz3tdXJxfYSzKjRqggqahsmDovkrKRHTVFU1zA07Zt6W
iPL9co/Zf3cX+Qpnmm38MQ==
    next
  end
```

```
dcl_fgt # diagnose vpn tunnel list name T_INET_1_0_0
list ipsec tunnel by names in vd 0
-----
name=T_INET_1_0_0 ver=2 serial=7 100.64.1.9:0->192.2.0.9:0 tun_id=192.2.0.9 dst_mtu=0
dpd-link=on weight=1
bound_if=4 lgwy=static/1 tun=tunnel/255 mode=dial_inst/3 encap=none/8832
options[2280]=rgwy-chg frag-rfc run_state=0 accept_traffic=1 overlay_id=0
parent=T_INET_1_0 index=0
proxyid_num=1 child_num=0 refcnt=6 ilast=17 olast=23464 ad=/0
stat: rxp=0 txp=0 rxb=0 txb=0
dpd: mode=on-demand on=1 idle=20000ms retry=3 count=0 seqno=1
natt: mode=none draft=0 interval=0 remote_port=0
proxyid=T_INET_1_0_0 proto=0 sa=1 ref=2 serial=1 add-route
src: 0:0.0.0.0-255.255.255.255:0
dst: 0:10.0.1.0-10.0.1.255:0
SA: ref=3 options=20683 type=00 soft=0 mtu=1280 expire=972/0B replaywin=2048
seqno=1 esn=0 replaywin_lastseq=00000000 itn=0 qat=0 hash_search_len=1
life: type=01 bytes=0/0 timeout=1790/1800
dec: spi=02f9844e esp=aes key=16 7fb5011247248d3a45ac3d802d8c8d64
ah=sha1 key=20 bb217ce87ae060f27823b005005233811993a303
enc: spi=ffc6576a esp=aes key=16 825bddbc5c995feb70411a773867c2d0
ah=sha1 key=20 02db4176f7f21fae7d141526099a707f639893f1
dec:pkts/bytes=0/0, enc:pkts/bytes=0/0
```

Which two statements about the IPsec VPN configuration and the status of the IPsec VPN tunnel are true? (Choose two.)

- A. FortiGate does not install IPsec static routes for remote protected networks in the routing table.
- B. The phase 1 configuration supports the network-overlay setting.
- C. FortiGate facilitated the negotiation of the T\_INET\_1\_0\_0 ADVPN shortcut over T\_INET\_1\_0.
- D. Dead peer detection is disabled.

**Answer:** AB

#### NEW QUESTION 69

Refer to the exhibit.

```
branch1_fgt # diagnose sys sdwan service 1

Service(3): Address Mode(IPV4) flags=0x200 use-shortcut-sla
Gen(6), TOS(0x0/0x0), Protocol(0: 1->65535), Mode(manual)
Members(2):
  1: Seq_num(3 T_INET_0_0), alive, selected
  2: Seq_num(4 T_INET_1_0), alive, selected
Src address(1):
  10.0.1.0-10.0.1.255

Dst address(1):
  10.0.0.0-10.255.255.255

branch1_fgt # diagnose sys sdwan member | grep T_INET_
Member(3): interface: T_INET_0_0, flags=0x4 , gateway: 100.64.1.1, priority: 10 1024,
weight: 0
Member(4): interface: T_INET_1_0, flags=0x4 , gateway: 100.64.1.9, priority: 0 1024,
weight: 0

branch1_fgt # get router info routing-table all | grep T_INET_
S      10.0.0.0/8 [1/0] via T_INET_1_0 tunnel 100.64.1.9
```

An administrator is troubleshooting SD-WAN on FortiGate. A device behind branch1\_fgt generates traffic to the 10.0.0.0/8 network. The administrator expects the traffic to match SD-WAN rule ID 1 and be routed over T\_INET\_0\_0. However, the traffic is routed over T\_INET\_1\_0. Based on the output shown in the exhibit, which two reasons can cause the observed behavior? (Choose two.)

- A. The traffic matches a regular policy route configured with T\_INET\_1\_0 as the outgoing device.
- B. T\_INET\_1\_0 has a lower route priority value (higher priority) than T\_INET\_0\_0.
- C. T\_INET\_0\_0 does not have a valid route to the destination.
- D. T\_INET\_1\_0 has a higher member configuration priority than T\_INET\_0\_0.

**Answer:** AC

**Explanation:**

<https://community.fortinet.com/t5/FortiGate/Technical-Tip-Assigning-Priority-to-SD-WAN-Members-for-Defau>

#### NEW QUESTION 72

Which statement about using BGP for ADVPN is true?

- A. IBGP is preferred over EBGP, because IBGP preserves next hop information.
- B. You must use BGP to route traffic for both overlay and underlay links.
- C. You must configure BGP communities.
- D. You must configure AS path prepending.

**Answer:** A

#### NEW QUESTION 74

Refer to the exhibit.

```
# get router info routing-table all
...
B      10.0.2.0/24 [200/0] via 10.201.1.2 [3] (recursive via VPN0 tunnel 100.64.1.1), 00:00:54
        [200/0] via 10.202.1.2 [3] (recursive via VPN1 tunnel 100.64.1.9), 00:00:54
        [200/0] via 10.203.1.1 [3] (recursive via VPN2 tunnel 172.16.1.5), 00:00:54
...

```

The device exchanges routes using IBGP.

Which two statements are correct about the IBGP configuration and routing information on the device? (Choose two.)

- A. Each BGP route is three hops away from the destination.
- B. ibgp-multipath is disabled.
- C. additional-path is enabled.
- D. You can run the get router info routing-table database command to display the additional paths.

**Answer:** CD

#### NEW QUESTION 78

Which two statements are true about using SD-WAN to steer local-out traffic? (Choose two.)

- A. FortiGate does not consider the source address of the packet when matching an SD-WAN rule for local-out traffic.
- B. By default, local-out traffic does not use SD-WAN.
- C. By default, FortiGate does not check if the selected member has a valid route to the destination.
- D. You must configure each local-out feature individually, to use SD-WAN.

**Answer:** BD



NEW QUESTION 80  
Refer to the exhibit.

Edit Performance SLA

Name

VPN\_HTTP

IP Version

IPv4

IPv6

Probe Mode

Active

Passive

Prefer Passive

Protocol

Ping

TCP ECHO

UDP ECHO

HTTP

TWAMP

DNS

TCP

Server

10.1.0.7

Port

0

Participants

All SD-WAN Members

Specify

T\_INET\_0\_0

T\_INET\_1\_0

T\_MPLS\_0

3 Entries Selected

Enable Probe Packets

http-get

/

http-match

successfully

Based on the exhibit, which two statements are correct about the health of the selected members? (Choose two.)

- A. After FortiGate switches to active mode, FortiGate never fails back to passive monitoring.
- B. During passive monitoring, FortiGate can't detect dead members.
- C. FortiGate can offload the traffic that is subject to passive monitoring to hardware.
- D. FortiGate passively monitors the member if TCP traffic is passing through the member.

Answer: BD

NEW QUESTION 85  
.....



## Thank You for Trying Our Product

### We offer two products:

1st - We have Practice Tests Software with Actual Exam Questions

2nd - Questions and Answers in PDF Format

### NSE7\_SDW-7.0 Practice Exam Features:

- \* NSE7\_SDW-7.0 Questions and Answers Updated Frequently
- \* NSE7\_SDW-7.0 Practice Questions Verified by Expert Senior Certified Staff
- \* NSE7\_SDW-7.0 Most Realistic Questions that Guarantee you a Pass on Your FirstTry
- \* NSE7\_SDW-7.0 Practice Test Questions in Multiple Choice Formats and Updatesfor 1 Year

**100% Actual & Verified — Instant Download, Please Click**  
**[Order The NSE7\\_SDW-7.0 Practice Test Here](#)**