



# Snowflake

## Exam Questions SnowPro-Core

SnowPro Core Certification Exam

## About ExamBible

### *Your Partner of IT Exam*

## Found in 1998

ExamBible is a company specialized on providing high quality IT exam practice study materials, especially Cisco CCNA, CCDA, CCNP, CCIE, Checkpoint CCSE, CompTIA A+, Network+ certification practice exams and so on. We guarantee that the candidates will not only pass any IT exam at the first attempt but also get profound understanding about the certificates they have got. There are so many alike companies in this industry, however, ExamBible has its unique advantages that other companies could not achieve.

## Our Advances

### \* 99.9% Uptime

All examinations will be up to date.

### \* 24/7 Quality Support

We will provide service round the clock.

### \* 100% Pass Rate

Our guarantee that you will pass the exam.

### \* Unique Gurantee

If you do not pass the exam at the first time, we will not only arrange FULL REFUND for you, but also provide you another exam of your claim, ABSOLUTELY FREE!

#### NEW QUESTION 1

- (Exam Topic 1)

Which of the following statements would be used to export/unload data from Snowflake?

- A. COPY INTO @stage
- B. EXPORT TO @stage
- C. INSERT INTO @stage
- D. EXPORT\_TO\_STAGE(stage => @Wage, select => 'select \* from t1');

**Answer:** A

#### Explanation:

Reference: <https://docs.snowflake.com/en/user-guide/data-unload-considerations.html>

#### NEW QUESTION 2

- (Exam Topic 1)

Select the three types of tables that exist within Snowflake. Choose 3 answers

- A. Temporary
- B. Transient
- C. Provisioned
- D. Permanent

**Answer:** ABD

#### Explanation:

Reference: <https://community.snowflake.com/s/article/Making-Transient-table-by-Default>

#### NEW QUESTION 3

- (Exam Topic 1)

True or False: Snowflake bills for a minimum of five minutes each time a Virtual Warehouse is started.

- A. True
- B. False

**Answer:** B

#### Explanation:

Reference: <https://docs.snowflake.com/en/user-guide/credits.html>

#### NEW QUESTION 4

- (Exam Topic 1)

Which of the following accurately represents how a table fits into Snowflake's logical container hierarchy? Select one.

- A. Account -> Schema -> Database -> Table
- B. Account -> Database -> Schema -> Table
- C. Database -> Schema -> Table -> Account
- D. Database -> Table -> Schema -> Account

**Answer:** B

#### Explanation:

Reference: <https://docs.snowflake.com/en/sql-reference/ddl-database.html>

#### NEW QUESTION 5

- (Exam Topic 1)

The FLATEEN function is used to query which type of data in Snowflake?

- A. Structured data
- B. Semi-structured data
- C. Both of the above
- D. None of the above

**Answer:** B

#### Explanation:

Reference: <https://docs.snowflake.com/en/user-guide/querying-semistructured.html>

FLATTEN is used to unnest semi-structured data. Don't see an application for structured data as by definition it shouldn't be nested.

#### NEW QUESTION 6

- (Exam Topic 1)

A deterministic query is run at 8am, takes 5 minutes, and the results are cached. Which of the following statements are true?

Choose 2 answers

- A. The exact query will ALWAYS return the precomputed result set for the RESULT\_CACHE\_ACTIVE = time period

- B. The same exact query will return the precomputed results if the underlying data hasn't changed and the results were last accessed within the previous 24 hour period
- C. The same exact query will return the precomputed results even if the underlying data has changed as long as the results were last accessed within the previous
- D. The "24 hour" on the percomputed results gets renewed every time the exact query is executed

**Answer:** BD

**Explanation:**

The results cache will only be used if it's the same query AND the same role executing the query

**NEW QUESTION 7**

- (Exam Topic 1)

True or False: Micro-partition metadata enables some operations to be completed without requiring Compute.

- A. True
- B. False

**Answer:** A

**Explanation:**

Reference: <https://blog.ippon.tech/innovative-snowflake-features-caching/>

**NEW QUESTION 8**

- (Exam Topic 1)

The Query History in the Snowflake Web Interface (UI) is kept for approximately:

- A. 60 minutes
- B. 24 hours
- C. 14 days
- D. 30 days
- E. 1 year

**Answer:** C

**Explanation:**

Reference: [https://docs.snowflake.com/en/sql-reference/account-usage/query\\_history.html](https://docs.snowflake.com/en/sql-reference/account-usage/query_history.html)

**NEW QUESTION 9**

- (Exam Topic 1)

True or False: A customer using SnowSQL / native connectors will be unable be unable to able to also use the Snowflake Web interface (UI) unless access to the UI is explicitly granted by supported.

- A. True
- B. False

**Answer:** B

**Explanation:**

Reference: <https://docs.snowflake.com/en/user-guide/connecting.html>

**NEW QUESTION 10**

- (Exam Topic 1)

When loading data into Snowflake, the COPY command supports: Choose 2 answers

- A. Joins
- B. Fitters
- C. Data type conversions
- D. Column reordering
- E. Aggregates

**Answer:** CD

**NEW QUESTION 10**

- (Exam Topic 1)

Which of the following DML commands isn't supported by Snowflake?

- A. UPSERT
- B. MERGE
- C. UPDATE
- D. TRUNCATE TABLE

**Answer:** A

**Explanation:**

Reference: <https://docs.snowflake.com/en/sql-reference/sql-dml.html>

### NEW QUESTION 13

- (Exam Topic 1)

Which object allows you to limit the number of credits consumed within a Snowflake account? Select one.

- A. Account usage Tracking
- B. Resource Monitor
- C. Warehouse Limit Parameter
- D. Credit Consumption Tracker

**Answer:** B

#### **Explanation:**

The time travel data retention can be overwritten at the table level "When creating a table, schema, or database, the account default can be overridden using the DATA\_RETENTION\_TIME\_IN\_DAYS parameter in the command."

### NEW QUESTION 18

- (Exam Topic 1)

Which of the following objects is not covered by Time Travel?

- A. Tables
- B. Schemas
- C. Databases
- D. Stages

**Answer:** D

#### **Explanation:**

Reference: <https://docs.snowflake.com/en/user-guide/data-time-travel.html>

### NEW QUESTION 22

- (Exam Topic 1)

How a Snowpipe charges calculated?

- A. Per-second/per Warehouse size
- B. Per-second/per-core granularity
- C. Number of Pipes in account
- D. Total storage bucket size

**Answer:** B

#### **Explanation:**

Reference: <https://docs.snowflake.com/en/user-guide/data-load-snowpipe-billing.html>

### NEW QUESTION 25

- (Exam Topic 1)

Which of the following statements are true about Schemas in Snowflake? (Choose two.)

- A. A Schema may contain one or more Databases
- B. A Database may contain one or more Schemas
- C. A Schema is a logical grouping of Database Objects
- D. Each Schema is contained within a Warehouse

**Answer:** BC

#### **Explanation:**

Reference: <https://docs.snowflake.com/en/user-guide/data-sharing-multiple-db.html>

### NEW QUESTION 26

- (Exam Topic 1)

What privileges are required to create a task?

- A. The global privilege create task is required to create a new task.
- B. Tasks are created at the Application level and can only be created by the Account Admin role.
- C. Many Snowflake DDLs are metadata operations only, and create task DDL can be executed without virtual warehouse requirement or task specific grants.
- D. The role must have access to the target schema and the create task privilege on the schema itself.

**Answer:** D

#### **Explanation:**

All tasks in a simple tree must have the same task owner (i.e. a single role must have the OWNERSHIP privilege on all of the tasks in the tree). All tasks in a simple tree must exist in the same schema.

<https://docs.snowflake.com/en/user-guide/tasks-intro.html#creating-tasks>

### NEW QUESTION 31

- (Exam Topic 1)

True or False: Pipes can be suspended and resumed.

- A. True
- B. False

**Answer:** A

**Explanation:**

<https://docs.snowflake.com/en/user-guide/data-load-snowpipe-intro.html#pausing-or-resuming-pipes> Pausing or Resuming Pipes In addition to the pipe owner, a role that has the following minimum permissions can pause or resume the pipe:

**NEW QUESTION 33**

- (Exam Topic 1)

Which of the following are best practices for users with the SYSADMIN/ACCOUNTADMIN roles? Choose 3 answers

- A. Their default role should be set to SYSTEMADMIN (the lower of the two)
- B. They should not set up multi\_Factor Authentication (MFA)—as administrator they may need to change the MFA settings and those enrolled in MFA are unable to do so
- C. They should only access and 'step into' the ACCOUNTADMIN role temporarily, as needed to complete a specific operation
- D. They should ensure all database objects in the account are owned by the ACCOUNTADMIN role
- E. They should use the SYSADMIN role to perform administrative work on database objects

**Answer:** ACE

**NEW QUESTION 35**

- (Exam Topic 1)

True or False: Users are able to see the result sets of queries executed by other users that share their same role.

- A. True
- B. False

**Answer:** B

**Explanation:**

Reference: <https://docs.snowflake.com/en/user-guide/security-access-control-considerations.html>

**NEW QUESTION 36**

- (Exam Topic 1)

True or False: Each worksheet in the Snowflake Web Interface (UI) can be associated with different roles, databases, schemas, and Virtual Warehouses.

- A. True
- B. False

**Answer:** A

**Explanation:**

Reference: <https://docs.snowflake.com/en/user-guide/ui-worksheet.html>

**NEW QUESTION 37**

- (Exam Topic 1)

True or False: When data share is established between a Data Provider and a data Consumer, the Data Consumer can extend that data share to other Data Consumers.

- A. True
- B. False

**Answer:** B

**Explanation:**

Reference: <https://docs.snowflake.com/en/user-guide/data-sharing-intro.html>

**NEW QUESTION 39**

- (Exam Topic 1)

What is the minimum Snowflake edition that provides data sharing?

- A. Standard
- B. Premier
- C. Enterprise
- D. Business Critical Edition

**Answer:** A

**Explanation:**

Reference: <https://docs.snowflake.com/en/user-guide/intro-editions.html#data-sharing>

**NEW QUESTION 43**

- (Exam Topic 1)

The PUT command: (Choose two.)

- A. Automatically creates a File Format object
- B. Automatically uses the last Stage created
- C. Automatically compresses files using Gzip
- D. Automatically encrypts files

**Answer:** CD

**Explanation:**

Reference: <https://docs.snowflake.com/en/sql-reference/sql/put.html>

#### NEW QUESTION 48

- (Exam Topic 1)

When scaling out by adding clusters to a multi-cluster warehouse, you are primarily scaling for improved:

- A. Concurrency
- B. Performance

**Answer:** A

**Explanation:**

Reference: <https://docs.snowflake.com/en/user-guide/warehouses-multiclust.html>

#### NEW QUESTION 53

- (Exam Topic 1)

When scaling up Virtual Warehouse by increasing Virtual Warehouse t-shirt size, you are primarily scaling for improved:  
Select one.

- A. Concurrency
- B. Performance

**Answer:** B

**Explanation:**

Reference:

<https://docs.snowflake.com/en/user-guide/warehouses-considerations.html#warehouse-resizing-improves-perfor>

#### NEW QUESTION 54

- (Exam Topic 1)

Which of the following commands sets the Virtual Warehouse for a session?

- A. COPT WAREHOUSE FROM <<Config file> ;
- B. SET warehouse = <<warehouse name>>;
- C. USE WAREHOUSE <<warehouse name>>;
- D. USE VIRTUAL\_WAREHOUSE <<warehouse name>>;

**Answer:** C

**Explanation:**

Reference: <https://docs.snowflake.com/en/user-guide/warehouses-tasks.html>

#### NEW QUESTION 57

- (Exam Topic 1)

True or False: It is possible to query data from an Internal or named External stage without loading the data into Snowflake.

- A. True
- B. False

**Answer:** A

#### NEW QUESTION 60

- (Exam Topic 1)

True or False: You can resize a Virtual Warehouse while queries are running.

- A. True
- B. False

**Answer:** A

**Explanation:**

Reference: <https://docs.snowflake.com/en/user-guide/warehouses-tasks.html>

#### NEW QUESTION 62

- (Exam Topic 1)

True or False: Snowflake allows its customers to directly access the micro-partition files that make up its tables.

- A. True

B. False

**Answer:** B

#### NEW QUESTION 67

- (Exam Topic 1)

Which of the following commands are not blocking operations? Choose 2 answers

- A. UPDATE
- B. INSERT
- C. MERGE
- D. COPY

**Answer:** BD

#### NEW QUESTION 70

- (Exam Topic 1)

Which statement best describes Snowflake tables?

- A. Snowflake tables are logical representations of underlying physical data
- B. Snowflake tables are the physical instantiation of data loaded into Snowflake
- C. Snowflake tables require that clustering keys be defined to perform optimally
- D. Snowflake tables are owned by a user

**Answer:** A

#### Explanation:

Reference: <https://docs.snowflake.com/en/user-guide/tables-micro-partitions.html>

#### NEW QUESTION 75

- (Exam Topic 1)

Increasing the size of a Virtual Warehouse from an X-Small to an X-Large is an example of:

- A. Scaling rhythmically
- B. Scaling max
- C. Scaling out
- D. Scaling up

**Answer:** D

#### NEW QUESTION 77

- (Exam Topic 1)

If auto-suspend is enabled for a Virtual Warehouse, the Warehouse is automatically suspended when:

- A. All Snowflake sessions using the warehouse are terminated.
- B. The last query using the warehouse completes.
- C. There are no users logged into Snowflake.
- D. The Warehouse is inactive for a specified period of time.

**Answer:** D

#### Explanation:

Reference: <https://docs.snowflake.com/en/user-guide/warehouses-overview.html>

#### NEW QUESTION 82

- (Exam Topic 1)

To run a Multi-Cluster Warehouse in auto-scale mode, a user would:

- A. Configure the Maximum Clusters setting to "Auto-Scale"
- B. Set the Warehouse type to "Auto"
- C. Set the Minimum Clusters and Maximum Clusters settings to the same value
- D. Set the Minimum Clusters and Maximum Clusters settings to different values

**Answer:** D

#### Explanation:

Reference: [https://help.pentaho.com/Documentation/9.1/Products/Modify\\_Snowflake\\_warehouse](https://help.pentaho.com/Documentation/9.1/Products/Modify_Snowflake_warehouse)

#### NEW QUESTION 83

- (Exam Topic 1)

Which of the following are options when creating a virtual Warehouse? Choose 2 answers

- A. Auto-drop
- B. Auto-resize
- C. Auto-resume
- D. Auto-suspend

**Answer:** CD

**Explanation:**

Reference: [https://help.pentaho.com/Documentation/9.1/Products/Create\\_Snowflake\\_warehouse](https://help.pentaho.com/Documentation/9.1/Products/Create_Snowflake_warehouse) Reference: <https://www.analytics.today/blog/what-is-a-snowflake-virtual-warehouse>

**NEW QUESTION 85**

- (Exam Topic 1)

Which of the following statements is true of data loading? Select one.

- A. Resizing the virtual warehouse from x-Small to Small will process a single file twice as fast
- B. The "deal file size for loading is 16MB to match micro-partition size
- C. Marry files in the 10-IOOMB range tend to land In the 'sweet spot" for load parallelism Once loaded, there is no option to force a reload of an already loaded file

**Answer:** C

**NEW QUESTION 90**

- (Exam Topic 1)

What is the minimum Snowflake edition that provides multi-cluster warehouses and up to 90 days of Time Travel?

- A. Standard
- B. Premier
- C. Enterprise
- D. Business Critical Edition

**Answer:** C

**Explanation:**

Reference: <https://docs.snowflake.com/en/user-guide/intro-editions.html>

**NEW QUESTION 94**

- (Exam Topic 1)

True or False: When you create a custom role, it is a practice to immediately grant that role to ACCOUNTADMIN.

- A. True
- B. False

**Answer:** B

**NEW QUESTION 95**

- (Exam Topic 1)

True or False: Snowpipe via RFST API can only reference External Stages as source.

- A. True
- B. False

**Answer:** B

**Explanation:**

Reference: <https://community.snowflake.com/s/article/Making-Transient-table-by-Default>

**NEW QUESTION 97**

- (Exam Topic 1)

Which of the following statements describes a benefit of Snowflake's separation of compute and storage? (Choose all that apply.)

- A. Growth of storage and compute are tightly coupled together
- B. Storage expands without the requirement to add more compute
- C. Compute can be scaled up or down without the requirement to add more storage
- D. Multiple compute clusters can access stored data without contention

**Answer:** BCD

**Explanation:**

Reference:

<https://towardsdatascience.com/why-you-are-throwing-money-away-if-your-cloud-data-warehousedoesnt-separate-storage-and-compute-65d2dffd450f>

**NEW QUESTION 99**

- (Exam Topic 1)

Snowflake recommends, as a minimize, that all users with the following roles(s) should be enrolled in Multi-Factor Authentication (MFA): Select one:

- A. SECURITYADMIN, ACCOUNTADMIN, PUBLIC, SYSADMIN
- B. SECURITYADMIN ACCOUNTADMIN, SYSADMIN
- C. SECURITYADMIN, ACCOUNTADMIN

D. ACCOUNTADMIN

**Answer:** D

**Explanation:**

Reference: <https://docs.snowflake.com/en/user-guide/security-mfa.html>

#### NEW QUESTION 102

- (Exam Topic 1)

Each incremental increase in Virtual Warehouse size (e.g. Medium to Large) generally results in what? Select one.

- A. More micro-partitions
- B. Better query scheduling
- C. Double the numbers of servers In the compute duster
- D. Higher storage costs

**Answer:** C

#### NEW QUESTION 106

- (Exam Topic 1)

What is the minimum duration charged when starting a virtual warehouse?

- A. 1 second
- B. 1 minute
- C. 1 hour
- D. 1 day

**Answer:** B

#### NEW QUESTION 108

- (Exam Topic 1)

Which of the following items does the Cloud services Layer manage? Choose 4 answers

- A. user authentication
- B. Metadata
- C. Query compilation and optimization
- D. external blob storage
- E. Data security

**Answer:** ABCE

#### NEW QUESTION 111

- (Exam Topic 1)

What privileges are required to execute a task?

- A. To execute a task, you need the EXECUTE TASK.
- B. A task is an account-level object and can only be executed by the Account Admin role.
- C. Tasks run automatically and do run under any rote.
- D. Tasks are stored in a special database called the utility database and require EXECUTE TASK privilege in the utility database.

**Answer:** A

#### NEW QUESTION 115

- (Exam Topic 1)

True or False: A table in Snowflake can only be queried using the Virtual Warehouse that was used to load the data.

- A. True
- B. False

**Answer:** B

#### NEW QUESTION 120

- (Exam Topic 1)

True or False: Snowflake's data warehouse was built from the ground up for the cloud in lieu of using an existing database or a platform, like Hadoop, as a base.

- A. True
- B. False

**Answer:** B

**Explanation:**

Reference: <https://docs.snowflake.com/en/user-guide/intro-key-concepts.html>

#### NEW QUESTION 123

- (Exam Topic 1)

What command is used to load files into an Internal Stage within Snowflake? Select one.

- A. PUT
- B. COPY INTO
- C. TRANSFER
- D. INSERT

**Answer:** A

**Explanation:**

You must specify an internal stage in the PUT command when uploading files to Snowflake. You must specify the same stage in the COPY INTO <table> command when loading data into a table from the staged files.

**NEW QUESTION 126**

- (Exam Topic 1)

What is the maximum compressed row size in Snowflake?

- A. 8KB
- B. 16MB
- C. 50MB
- D. 4000GB

**Answer:** B

**Explanation:**

MAX size for compressed data for semi-structured data type is also 16 MB. That means if our table has a semi-structured data type column with 16MB data other columns will have NULL data.

**NEW QUESTION 128**

- (Exam Topic 1)

What happens when a Data Provider revokes privileges to a Share on an object in their source database?

- A. The object immediately becomes unavailable for all Data Consumers
- B. Any additional data arriving after this point in time will not be visible to Data Consumers
- C. The Data Consumers stop seeing data updates and become responsible for storage charges for the object
- D. A static copy of the object at the time the privilege was revoked is created In the Data Consumers' accounts

**Answer:** A

**NEW QUESTION 130**

- (Exam Topic 1)

True or False: The user has to specify which cluster a query will run on in multi-clustering Warehouse.

- A. True
- B. False

**Answer:** B

**Explanation:**

Reference: <https://docs.snowflake.com/en/user-guide/warehouses-multiclust.html>

**NEW QUESTION 134**

- (Exam Topic 1)

What is the minimum Snowflake edition that customers planning on storing protected information in Snowflake should consider for regulatory compliance?

- A. Standard
- B. Premier
- C. Enterprise
- D. Business Critical Edition

**Answer:** D

**Explanation:**

Reference: <https://docs.snowflake.com/en/user-guide/intro-editions.html>

**NEW QUESTION 137**

- (Exam Topic 2)

Which of the following Snowflake features provide continuous data protection automatically? (Select TWO).

- A. Internal stages
- B. Incremental backups
- C. Time Travel
- D. Zero-copy clones
- E. Fail-safe

**Answer:** CE

**Explanation:**

Time travel and fail safe are the two continuous data protection features support the recovery of data automatically.

Snowflake provides powerful CDP features for ensuring the maintenance and availability of your historical data (i.e. data that has been changed or deleted):

- Querying, cloning, and restoring historical data in tables, schemas, and databases for up to 90 days through Snowflake Time Travel.
- Disaster recovery of historical data (by Snowflake) through Snowflake Fail-safe. <https://docs.snowflake.com/en/user-guide/data-availability.html>

**NEW QUESTION 138**

- (Exam Topic 2)

Which of the following are benefits of micro-partitioning? (Select TWO)

- A. Micro-partitions cannot overlap in their range of values
- B. Micro-partitions are immutable objects that support the use of Time Travel.
- C. Micro-partitions can reduce the amount of I/O from object storage to virtual warehouses
- D. Rows are automatically stored in sorted order within micro-partitions
- E. Micro-partitions can be defined on a schema-by-schema basis

**Answer:** AD

**Explanation:**

<https://docs.snowflake.com/en/user-guide/tables-clustering-micropartitions.html>

**NEW QUESTION 143**

- (Exam Topic 2)

True or False: Loading data into Snowflake requires that source data files be no larger than 16MB.

- A. True
- B. False

**Answer:** B

**Explanation:**

By default, COPY INTO location statements separate table data into a set of output files to take advantage of parallel operations. The maximum size for each file is set using the MAX\_FILE\_SIZE copy option. The default value is 16777216 (16 MB) but can be increased to accommodate larger files. The maximum file size supported is 5 GB for Amazon S3, Google Cloud Storage, or Microsoft Azure stages. To unload data to a single output file (at the potential cost of decreased performance), specify the SINGLE = true copy option in your statement. You can optionally specify a name for the file in the path.

**NEW QUESTION 144**

- (Exam Topic 2)

Which of the following is a valid source for an external stage when the Snowflake account is located on Microsoft Azure?

- A. An FTP server with TLS encryption
- B. An HTTPS server with WebDAV
- C. A Google Cloud storage bucket
- D. A Windows server file share on Azure

**Answer:** C

**NEW QUESTION 146**

- (Exam Topic 2)

Which statement about billing applies to Snowflake credits?

- A. Credits are billed per-minute with a 60-minute minimum
- B. Credits are used to pay for cloud data storage usage
- C. Credits are consumed based on the number of credits billed for each hour that a warehouse runs
- D. Credits are consumed based on the warehouse size and the time the warehouse is running

**Answer:** D

**Explanation:**

Snowflake credits are used to pay for the consumption of resources on Snowflake. A Snowflake credit is a unit of measure, and it is consumed only when a customer is using resources, such as when a virtual warehouse is running, the cloud services layer is performing work, or serverless features are used.

<https://docs.snowflake.com/en/user-guide/what-are-credits.html>

**NEW QUESTION 150**

- (Exam Topic 2)

Which services does the Snowflake Cloud Services layer manage? (Select TWO).

- A. Compute resources
- B. Query execution
- C. Authentication
- D. Data storage
- E. Metadata

**Answer:** CE

**Explanation:**

<https://docs.snowflake.com/en/user-guide/intro-key-concepts.html>

The cloud services layer is a collection of services that coordinate activities across Snowflake. These services tie together all of the different components of Snowflake in order to process user requests, from login to query dispatch. The cloud services layer also runs on compute instances provisioned by Snowflake from the cloud provider.

Services managed in this layer include:

- > Authentication
- > Infrastructure management
- > Metadata management
- > Query parsing and optimization
- > Access control

#### NEW QUESTION 155

- (Exam Topic 2)

What feature can be used to reorganize a very large table on one or more columns?

- A. Micro-partitions
- B. Clustering keys
- C. Key partitions
- D. Clustered partitions

**Answer:** B

#### Explanation:

<https://docs.snowflake.com/en/user-guide/tables-clustering-keys.html>

#### NEW QUESTION 158

- (Exam Topic 2)

When reviewing the load for a warehouse using the load monitoring chart, the chart indicates that a high volume of Queries are always queuing in the warehouse. According to recommended best practice, what should be done to reduce the Queue volume? (Select TWO).

- A. Use multi-clustered warehousing to scale out warehouse capacity.
- B. Scale up the warehouse size to allow Queries to execute faster.
- C. Stop and start the warehouse to clear the queued queries
- D. Migrate some queries to a new warehouse to reduce load
- E. Limit user access to the warehouse so fewer queries are run against it.

**Answer:** AD

#### NEW QUESTION 159

- (Exam Topic 2)

What is a responsibility of Snowflake's virtual warehouses?

- A. Infrastructure management
- B. Metadata management
- C. Query execution
- D. Query parsing and optimization
- E. Management of the storage layer

**Answer:** C

#### NEW QUESTION 163

- (Exam Topic 2)

What features does Snowflake Time Travel enable?

- A. Querying data-related objects that were created within the past 365 days
- B. Restoring data-related objects that have been deleted within the past 90 days
- C. Conducting point-in-time analysis for BI reporting
- D. Analyzing data usage/manipulation over all periods of time

**Answer:** B

#### Explanation:

Snowflake Time Travel enables accessing historical data (i.e. data that has been changed or deleted) at any point within a defined period. It serves as a powerful tool for performing the following tasks:

- > Restoring data-related objects (tables, schemas, and databases) that might have been accidentally or intentionally deleted.
- > Duplicating and backing up data from key points in the past.
- > Analyzing data usage/manipulation over specified periods of time.

<https://docs.snowflake.com/en/user-guide/data-time-travel.html>

#### NEW QUESTION 164

- (Exam Topic 2)

Which copy INTO command outputs the data into one file?

- A. SINGLE=TRUE
- B. MAX\_FILE\_NUMBER=1
- C. FILE\_NUMBER=1
- D. MULTIPLE=FAISE

**Answer:** A

#### NEW QUESTION 166

- (Exam Topic 2)

A company's security audit requires generating a report listing all Snowflake logins (e.g.. date and user) within the last 90 days. Which of the following statements will return the required information?

- A. SELECT LAST\_SUCCESS\_LOGIN, LOGIN\_NAME FROM ACCOUNT\_USAGE.USERS;
- B. SELECT EVENT\_TIMESTAMP, USER\_NAME FROM table(information\_schema.login\_history\_by\_user())
- C. SELECT EVENT\_TIMESTAMP, USER\_NAME FROM ACCOUNT\_USAGE.ACCESS\_HISTORY;
- D. SELECT EVENT\_TIMESTAMP, USER\_NAME FROM ACCOUNT\_USAGE.LOGIN\_HISTORY;

**Answer:** D

#### NEW QUESTION 167

- (Exam Topic 2)

In which use cases does Snowflake apply egress charges?

- A. Data sharing within a specific region
- B. Query result retrieval
- C. Database replication
- D. Loading data into Snowflake

**Answer:** A

#### Explanation:

Cloud providers apply data egress charges in either of the following use cases:

- Data is transferred from one region to another within the same cloud platform.
- Data is transferred out of the cloud platform.

<https://docs.snowflake.com/en/user-guide/billing-data-transfer.html#:~:text=Cloud%20providers%20apply%20d>

#### NEW QUESTION 172

- (Exam Topic 2)

What is the purpose of an External Function?

- A. To call code that executes outside of Snowflake
- B. To run a function in another Snowflake database
- C. To share data in Snowflake with external parties
- D. To ingest data from on-premises data sources

**Answer:** A

#### Explanation:

<https://docs.snowflake.com/en/sql-reference/external-functions.html>

#### NEW QUESTION 177

- (Exam Topic 2)

Will data cached in a warehouse be lost when the warehouse is resized?

- A. Possibly, if the warehouse is resized to a smaller size and the cache no longer fits.
- B. Ye
- C. because the compute resource is replaced in its entirety with a new compute resource.
- D. N
- E. because the size of the cache is independent from the warehouse size
- F. Ye
- G. became the new compute resource will no longer have access to the cache encryption key

**Answer:** A

#### NEW QUESTION 181

- (Exam Topic 2)

Which of the following describes external functions in Snowflake?

- A. They are a type of User-defined Function (UDF).
- B. They contain their own SQL code.
- C. They call code that is stored inside of Snowflake.
- D. They can return multiple rows for each row received

**Answer:** A

#### Explanation:

External functions are user-defined functions that are stored and executed outside of Snowflake.

External functions make it easier to access external API services such as geocoders, machine learning models, and other custom code running outside of Snowflake. This feature eliminates the need to export and reimport data when using third-party services, significantly simplifying your data pipelines.

<https://docs.snowflake.com/en/sql-reference/external-functions.html#:~:text=External%20functions%20are%20>

#### NEW QUESTION 186

- (Exam Topic 2)

What is the MOST performant file format for loading data in Snowflake?

- A. CSV (Unzipped)
- B. Parquet
- C. CSV (Gzipped)
- D. ORC

**Answer:** A

#### NEW QUESTION 187

- (Exam Topic 2)

Which command can be used to load data into an internal stage?

- A. LOAD
- B. copy
- C. GET
- D. PUT

**Answer:** D

#### Explanation:

<https://medium.com/@divyanshsaxenaofficial/snowflake-loading-unloading-of-data-part-1-internal-stages-7121>

#### NEW QUESTION 189

- (Exam Topic 2)

A user has unloaded data from Snowflake to a stage

Which SQL command should be used to validate which data was loaded into the stage?

- A. list @file\_\_stage
- B. show @file\_\_stage
- C. view @file\_\_stage
- D. verify @file\_\_stage

**Answer:** A

#### NEW QUESTION 190

- (Exam Topic 2)

What happens when a virtual warehouse is resized?

- A. When increasing the size of an active warehouse the compute resource for all running and queued queries on the warehouse are affected
- B. When reducing the size of a warehouse the compute resources are removed only when they are no longer being used to execute any current statements.
- C. The warehouse will be suspended while the new compute resource is provisioned and will resume automatically once provisioning is complete.
- D. Users who are trying to use the warehouse will receive an error message until the resizing is complete

**Answer:** B

#### NEW QUESTION 192

- (Exam Topic 2)

What SQL command would be used to view all roles that were granted to user.1?

- A. show grants to user USER1;
- B. show grants of user USER1;
- C. describe user USER1;
- D. show grants on user USER1;

**Answer:** A

#### NEW QUESTION 197

- (Exam Topic 2)

Which of the following commands cannot be used within a reader account?

- A. CREATE SHARE
- B. ALTER WAREHOUSE
- C. DROP ROLE
- D. SHOW SCHEMAS
- E. DESCRIBE TABLE

**Answer:** B

#### Explanation:

A reader account is intended primarily for querying data shared by the provider of the account. Adding new data to the account and/or updating shared data in the account is not supported. Changing the configuration of virtual warehouses is also not permitted as those resources are owned and managed by the provider of the account which is sharing the data.

#### NEW QUESTION 199

- (Exam Topic 2)

Query compilation occurs in which architecture layer of the Snowflake Cloud Data Platform?

- A. Compute layer
- B. Storage layer
- C. Cloud infrastructure layer
- D. Cloud services layer

**Answer:** A

#### Explanation:

For query execution, Snowflake uses the Virtual Warehouse. The query processing layer is separated from the disk storage layer in the Snowflake data architecture. You can use the data from the storage layer to run queries in this layer

<https://www.projectpro.io/article/snowflake-architecture-what-does-snowflake-do/556#:~:text=Query%20Proce>

#### NEW QUESTION 204

- (Exam Topic 2)

What is the default character set used when loading CSV files into Snowflake?

- A. UTF-8
- B. UTF-16
- C. ISO S859-1
- D. ANSI\_X3.A

**Answer:** A

#### Explanation:

[https://docs.snowflake.com/en/user-guide/intro-summary-loading.html#:~:text=For%20delimited%20files%20\(](https://docs.snowflake.com/en/user-guide/intro-summary-loading.html#:~:text=For%20delimited%20files%20( For delimited files (CSV, TSV, etc.), the default character set is UTF-8. To use any other characters sets, you must explicitly specify the encoding to use for loading. For the list of supported character sets, see Supported Character Sets for Delimited Files (in this topic).) For delimited files (CSV, TSV, etc.), the default character set is UTF-8. To use any other characters sets, you must explicitly specify the encoding to use for loading. For the list of supported character sets, see Supported Character Sets for Delimited Files (in this topic).

#### NEW QUESTION 206

- (Exam Topic 2)

Which account \_\_\_\_ usage views are used to evaluate the details of dynamic data masking? (Select TWO)

- A. ROLES
- B. POLICY\_REFERENCES
- C. QUERY\_HISTORY
- D. RESOURCE\_MONITORS
- E. ACCESS\_HISTORY

**Answer:** BC

#### Explanation:

<https://docs.snowflake.com/en/user-guide/security-column-ddm-intro.html#:~:text=DESCRIBE%20MASKING>

#### NEW QUESTION 211

- (Exam Topic 2)

Which of the following compute resources or features are managed by Snowflake? (Select TWO).

- A. Execute a COPY command
- B. Updating data
- C. Snowpipe
- D. AUTOMATIC\_\_CLUSTERING
- E. Scaling up a warehouse

**Answer:** AD

#### NEW QUESTION 213

- (Exam Topic 2)

Which is the MINIMUM required Snowflake edition that a user must have if they want to use AWS/Azure Privatelink or Google Cloud Private Service Connect?

- A. Standard
- B. Premium
- C. Enterprise
- D. Business Critical

**Answer:** D

#### Explanation:

<https://docs.snowflake.com/en/user-guide/privatelink-azure.html>

#### NEW QUESTION 218

- (Exam Topic 2)

How would you determine the size of the virtual warehouse used for a task?

- A. Root task may be executed concurrently (i.
- B. multiple instances), it is recommended to leave some margins in the execution window to avoid missing instances of execution
- C. Querying (select) the size of the stream content would help determine the warehouse siz
- D. For example, if querying large stream content, use a larger warehouse size
- E. If using the stored procedure to execute multiple SQL statements, it's best to test run the stored procedure separately to size the compute resource first
- F. Since task infrastructure is based on running the task body on schedule, it's recommended to configure the virtual warehouse for automatic concurrency handling using Multi-cluster warehouse (MCW) to match the task schedule

**Answer:** C

#### NEW QUESTION 223

- (Exam Topic 2)

A user is loading JSON documents composed of a huge array containing multiple records into Snowflake. The user enables the strip outer\_array file format option. What does the STRIP\_OUTER\_ARRAY file format do?

- A. It removes the last element of the outer array.
- B. It removes the outer array structure and loads the records into separate table rows,
- C. It removes the trailing spaces in the last element of the outer array and loads the records into separate table columns
- D. It removes the NULL elements from the JSON object eliminating invalid data and enables the ability to load the records

**Answer:** B

#### Explanation:

Data Size Limitations

The VARIANT data type imposes a 16 MB size limit on individual rows.

For some semi-structured data formats (e.g. JSON), data sets are frequently a simple concatenation of multiple documents. The JSON output from some software is composed of a single huge array containing multiple records. There is no need to separate the documents with line breaks or commas, though both are supported.

If the data exceeds 16 MB, enable the STRIP\_OUTER\_ARRAY file format option for the COPY INTO

<table> command to remove the outer array structure and load the records into separate table rows:

copy into <table> from @~/<file>.json

file\_format = (type = 'JSON' strip\_outer\_array = true); <https://docs.snowflake.com/en/user-guide/semistructured-considerations.html>

#### NEW QUESTION 225

- (Exam Topic 2)

A user needs to create a materialized view in the schema MYDB.MYSCHEMA. Which statements will provide this access?

- A. GRANT ROLE MYROLE TO USER USER1;CREATE MATERIALIZED VIEW ON SCHEMA MYDB.MYSCHEMA TO ROLE MYROLE;
- B. GRANT ROLE MYROLE TO USER USER1;CREATE MATERIALIZED VIEW ON SCHEMA MYDB.MYSCHEMA TO USER USER1;
- C. GRANT ROLE MYROLE TO USER USER1;CREATE MATERIALIZED VIEW ON SCHEMA MYDB.MYSCHEMA TO USER1;
- D. GRANT ROLE MYROLE TO USER USER1;CREATE MATERIALIZED VIEW ON SCHEMA MYDB.MYSCHEMA TO MYROLE;

**Answer:** B

#### NEW QUESTION 230

- (Exam Topic 2)

Which Snowflake partner specializes in data catalog solutions?

- A. Alation
- B. DataRobot
- C. dbt
- D. Tableau

**Answer:** A

#### Explanation:

Alation provides Data Cataloging functionality. They state they are the 'One Place to Find, Understand, & Govern Data Across an Enterprise.

<https://docs.snowflake.com/en/user-guide/ecosystem-all.html>

#### NEW QUESTION 234

- (Exam Topic 2)

Which data type can be used to store geospatial data in Snowflake?

- A. Variant
- B. Object
- C. Geometry
- D. Geography

**Answer:** D

#### Explanation:

<https://docs.snowflake.com/en/sql-reference/data-types-geospatial.html#:~:text=have%20SRID%3D4326.-,Geos>

#### NEW QUESTION 239

- (Exam Topic 2)

What is a key feature of Snowflake architecture?

- A. Zero-copy cloning creates a mirror copy of a database that updates with the original

- B. Software updates are automatically applied on a quarterly basis
- C. Snowflake eliminates resource contention with its virtual warehouse implementation
- D. Multi-cluster warehouses allow users to run a query that spans across multiple clusters
- E. Snowflake automatically sorts DATE columns during ingest for fast retrieval by date

**Answer:** D

#### NEW QUESTION 242

- (Exam Topic 2)

What is the default File Format used in the COPY command if one is not specified?

- A. CSV
- B. JSON
- C. Parquet
- D. XML

**Answer:** A

#### Explanation:

Reference: <https://docs.snowflake.com/en/sql-reference/sql/copy-into-location.html>

#### NEW QUESTION 244

- (Exam Topic 2)

Which of the following indicates that it may be appropriate to use a clustering key for a table? (Select TWO).

- A. The table contains a column that has very low cardinality
- B. DML statements that are being issued against the table are blocked
- C. The table has a small number of micro-partitions
- D. Queries on the table are running slower than expected
- E. The clustering depth for the table is large

**Answer:** AE

#### NEW QUESTION 247

- (Exam Topic 2)

In the query profiler view for a query, which components represent areas that can be used to help optimize query performance? (Select TWO)

- A. Bytes scanned
- B. Bytes sent over the network
- C. Number of partitions scanned
- D. Percentage scanned from cache
- E. External bytes scanned

**Answer:** AC

#### NEW QUESTION 251

- (Exam Topic 2)

What tasks can be completed using the copy command? (Select TWO)

- A. Columns can be aggregated
- B. Columns can be joined with an existing table
- C. Columns can be reordered
- D. Columns can be omitted
- E. Data can be loaded without the need to spin up a virtual warehouse

**Answer:** CD

#### NEW QUESTION 256

- (Exam Topic 2)

Which data types does Snowflake support when querying semi-structured data? (Select TWO)

- A. VARIANT
- B. ARRAY
- C. VARCHAR
- D. XML
- E. BLOB

**Answer:** AB

#### Explanation:

<https://docs.snowflake.com/en/user-guide/semistructured-intro.html#label-loading-semi-structured-data>

A VARIANT stores semi-structured data in Snowflake. It can store a value of any other type, including OBJECT and ARRAY.

The maximum length of a VARIANT is 16 MB.

A Snowflake ARRAY is similar to an array in many other programming languages. An ARRAY contains 0 or more pieces of data. Each element is accessed by specifying its position in the array.

#### NEW QUESTION 257

- (Exam Topic 3)

Which command should be used to load data from a file, located in an external stage, into a table in Snowflake?

- A. INSERT
- B. PUT
- C. GET
- D. COPY

**Answer:** D

#### NEW QUESTION 259

- (Exam Topic 3)

Which of the following is an example of an operation that can be completed without requiring compute, assuming no queries have been executed previously?

- A. SELECT SUM (ORDER\_AMT) FROM SALES;
- B. SELECT AVG(ORDER\_QTY) FROM SALES;
- C. SELECT MIN(ORDER\_AMT) FROM SALES;
- D. SELECT ORDER\_AMT \* ORDER\_QTY FROM SALES;

**Answer:** B

#### NEW QUESTION 262

- (Exam Topic 3)

Which of the following features, associated with Continuous Data Protection (CDP), require additional Snowflake-provided data storage? (Choose two.)

- A. Tri-Secret Secure
- B. Time Travel
- C. Fail-safe
- D. Data encryption
- E. External stages

**Answer:** BC

#### NEW QUESTION 264

- (Exam Topic 3)

Which of the following are handled by the cloud services layer of the Snowflake architecture? (Choose two.)

- A. Query execution
- B. Data loading
- C. Time Travel data
- D. Security
- E. Authentication and access control

**Answer:** BD

#### NEW QUESTION 266

- (Exam Topic 3)

A user created a new worksheet within the Snowsight UI and wants to share this with teammates How can this worksheet be shared?

- A. Create a zero-copy clone of the worksheet and grant permissions to teammates
- B. Create a private Data Exchange so that any teammate can use the worksheet
- C. Share the worksheet with teammates within Snowsight
- D. Create a database and grant all permissions to teammates

**Answer:** C

#### NEW QUESTION 270

- (Exam Topic 3)

A single user of a virtual warehouse has set the warehouse to auto-resume and auto-suspend after 10 minutes. The warehouse is currently suspended and the user performs the following actions:

- \* 1. Runs a query that takes 3 minutes to complete
- \* 2. Leaves for 15 minutes
- \* 3. Returns and runs a query that takes 10 seconds to complete
- \* 4. Manually suspends the warehouse as soon as the last query was completed

When the user returns, how much billable compute time will have been consumed?

- A. 4 minutes
- B. 10 minutes
- C. 14 minutes
- D. 24 minutes

**Answer:** C

#### NEW QUESTION 274

- (Exam Topic 3)

Which Snowflake function will interpret an input string as a JSON document, and produce a VARIANT value?

- A. parse\_json()
- B. json\_extract\_path\_text()
- C. object\_construct()
- D. flatten

**Answer:** B

#### NEW QUESTION 278

- (Exam Topic 3)

What is the minimum Snowflake edition that has column-level security enabled?

- A. Standard
- B. Enterprise
- C. Business Critical
- D. Virtual Private Snowflake

**Answer:** B

#### NEW QUESTION 279

- (Exam Topic 3)

What are supported file formats for unloading data from Snowflake? (Choose three.)

- A. XML
- B. JSON
- C. Parquet
- D. ORC
- E. AVRO
- F. CSV

**Answer:** BCF

#### NEW QUESTION 282

- (Exam Topic 3)

Snowflake supports the use of external stages with which cloud platforms? (Choose three.)

- A. Amazon Web Services
- B. Docker
- C. IBM Cloud
- D. Microsoft Azure Cloud
- E. Google Cloud Platform
- F. Oracle Cloud

**Answer:** BDE

#### NEW QUESTION 283

- (Exam Topic 3)

Which of the following is the Snowflake Account\_Usage.Metering\_History view used for?

- A. Gathering the hourly credit usage for an account
- B. Compiling an account's average cloud services cost over the previous month
- C. Summarizing the throughput of Snowpipe costs for an account
- D. Calculating the funds left on an account's contract

**Answer:** A

#### NEW QUESTION 284

- (Exam Topic 3)

What type of query benefits the MOST from search optimization?

- A. A query that uses only disjunction (i.e., OR) predicates
- B. A query that includes analytical expressions
- C. A query that uses equality predicates or predicates that use IN
- D. A query that filters on semi-structured data types

**Answer:** C

#### Explanation:

Reference: <https://community.snowflake.com/s/article/Search-Optimization-When-How-To-Use>

#### NEW QUESTION 286

- (Exam Topic 3)

What effect does WAIT\_FOR\_COMPLETION = TRUE have when running an ALTER WAREHOUSE command and changing the warehouse size?

- A. The warehouse size does not change until all queries currently running in the warehouse have completed.
- B. The warehouse size does not change until all queries currently in the warehouse queue have completed.
- C. The warehouse size does not change until the warehouse is suspended and restarted.
- D. It does not return from the command until the warehouse has finished changing its size.

**Answer:** D

#### NEW QUESTION 290

- (Exam Topic 3)

Which statements are true concerning Snowflake's underlying cloud infrastructure? (Select THREE),

- A. Snowflake data and services are deployed in a single availability zone within a cloud provider's region.
- B. Snowflake data and services are available in a single cloud provider and a single region, the use of multiple cloud providers is not supported.
- C. Snowflake can be deployed in a customer's private cloud using the customer's own compute and storage resources for Snowflake compute and storage
- D. Snowflake uses the core compute and storage services of each cloud provider for its own compute and storage
- E. All three layers of Snowflake's architecture (storage, compute, and cloud services) are deployed and managed entirely on a selected cloud platform
- F. Snowflake data and services are deployed in at least three availability zones within a cloud provider's region

**Answer:** DEF

#### NEW QUESTION 293

- (Exam Topic 3)

Where can a user find and review the failed logins of a specific user for the past 30 days?

- A. The USERS view in ACCOUNT\_USAGE
- B. The LOGIN\_HISTORY view in ACCOUNT\_USAGE
- C. The ACCESS\_HISTORY view in ACCOUNT\_USAGE
- D. The SESSIONS view in ACCOUNT\_USAGE

**Answer:** B

#### NEW QUESTION 297

- (Exam Topic 3)

How often are the Account and Table master keys automatically rotated by Snowflake?

- A. 30 Days
- B. 60 Days
- C. 90 Days
- D. 365 Days.

**Answer:** D

#### NEW QUESTION 302

- (Exam Topic 3)

The following JSON is stored in a VARIANT column called src of the CAR\_SALES table:

```
{
  "customer": [
    {
      "address": "San Francisco, CA",
      "name": "Jane Doe"
    }
  ],
  "date": "2022-01-28",
  "dealership": "Town Auto Sales",
  "salesperson": {
    "id": "55"
  }
}
```

A user needs to extract the dealership information from the JSON. How can this be accomplished?

- A. select src:dealership from car\_sales;
- B. select src.dealership from car\_sales;
- C. select src:Dealership from car\_sales;
- D. select dealership from car\_sales;

**Answer:** A

#### NEW QUESTION 307

- (Exam Topic 3)

The Snowflake Search Optimization Services supports improved performance of which kind of query?

- A. Queries against large tables where frequent DML occurs
- B. Queries against tables larger than 1 TB
- C. Selective point lookup queries
- D. Queries against a subset of columns in a table

**Answer:** C

**Explanation:**

Reference:

[https://docs.snowflake.com/en/user-guide/search-optimization-service.html#:~:text=The%20search%20optimiza%20point,OBJECT%2C%20and%20ARRAY%20columns\)](https://docs.snowflake.com/en/user-guide/search-optimization-service.html#:~:text=The%20search%20optimiza%20point,OBJECT%2C%20and%20ARRAY%20columns))

**NEW QUESTION 309**

- (Exam Topic 3)

The first user assigned to a new account, ACCOUNTADMIN, should create at least one additional user with which administrative privilege?

- A. USERADMIN
- B. PUBLIC
- C. ORGADMIN
- D. SYSADMIN

**Answer:** D

**NEW QUESTION 312**

- (Exam Topic 3)

Credit charges for Snowflake virtual warehouses are calculated based on which of the following considerations? (Choose two.)

- A. The number of queries executed
- B. The number of active users assigned to the warehouse
- C. The size of the virtual warehouse
- D. The length of time the warehouse is running
- E. The duration of the queries that are executed

**Answer:** AD

**NEW QUESTION 316**

- (Exam Topic 3)

A data provider wants to share data with a consumer who does not have a Snowflake account. The provider creates a reader account for the consumer following these steps:

- \* 1. Created a user called "CONSUMER"
  - \* 2. Created a database to hold the share and an extra-small warehouse to query the data
  - \* 3. Granted the role PUBLIC the following privileges: Usage on the warehouse, database, and schema, and SELECT on all the objects in the share
- Based on this configuration what is true of the reader account?

- A. The reader account will automatically use the Standard edition of Snowflake.
- B. The reader account compute will be billed to the provider account.
- C. The reader account can clone data the provider has shared, but cannot re-share it.
- D. The reader account can create a copy of the shared data using CREATE TABLE AS...

**Answer:** C

**NEW QUESTION 321**

- (Exam Topic 3)

If 3 size Small virtual warehouse is made up of two servers, how many servers make up a Large warehouse?

- A. 4
- B. 8
- C. 16
- D. 32

**Answer:** B

**Explanation:**

Size specifies the amount of compute resources available per cluster in a warehouse. Snowflake supports the following warehouse sizes:

Warehouse Size	Credits / Hour	Credits / Second	Notes
X-Small	1	0.0003	Default size for warehouses created using <code>CREATE WAREHOUSE</code> .
Small	2	0.0006	
Medium	4	0.0011	
Large	8	0.0022	
X-Large	16	0.0044	Default for warehouses created in the web interface.
2X-Large	32	0.0089	
3X-Large	64	0.0178	
4X-Large	128	0.0356	
5X-Large	256	0.0711	Preview feature.
6X-Large	512	0.1422	Preview feature.

<https://docs.snowflake.com/en/user-guide/warehouses-overview.html>

#### NEW QUESTION 326

- (Exam Topic 3)

What is the purpose of multi-cluster virtual warehouses?

- A. To create separate data warehouses to increase query optimization
- B. To allow users the ability to choose the type of compute nodes that make up a virtual warehouse cluster
- C. To eliminate or reduce Queuing of concurrent queries
- D. To allow the warehouse to resize automatically

**Answer:** C

**Explanation:**

<https://docs.snowflake.com/en/user-guide/warehouses-multicloud.html#:~:text=Multi%2Dcluster%20warehous>

#### NEW QUESTION 327

- (Exam Topic 3)

How many resource monitors can be assigned at the account level?

- A. 1
- B. 2
- C. 3
- D. 4

**Answer:** A

#### NEW QUESTION 331

- (Exam Topic 3)

A company needs to read multiple terabytes of data for an initial load as part of a Snowflake migration. The company can control the number and size of CSV extract files.

How does Snowflake recommend maximizing the load performance?

- A. Use auto-ingest Snowpipes to load large files in a serverless model.
- B. Produce the largest files possible, reducing the overall number of files to process.
- C. Produce a larger number of smaller files and process the ingestion with size Small virtual warehouses.
- D. Use an external tool to issue batched row-by-row inserts within BEGIN TRANSACTION and COMMIT commands.

**Answer:** B

#### NEW QUESTION 333

- (Exam Topic 3)

A company needs to allow some users to see Personally Identifiable Information (PII) while limiting other users from seeing the full value of the PII. Which Snowflake feature will support this?

- A. Row access policies
- B. Data masking policies
- C. Data encryption
- D. Role based access control

**Answer:** B

#### NEW QUESTION 338

- (Exam Topic 3)

Which tasks are performed in the Snowflake Cloud Services layer? (Choose two.)

- A. Management of metadata
- B. Computing the data
- C. Maintaining Availability Zones
- D. Infrastructure security
- E. Parsing and optimizing queries

**Answer:** AE

#### NEW QUESTION 343

- (Exam Topic 3)

Network policies can be applied to which of the following Snowflake objects? (Choose two.)

- A. Roles
- B. Databases
- C. Warehouses
- D. Users
- E. Accounts

**Answer:** AD

#### NEW QUESTION 345

- (Exam Topic 3)

When loading data into Snowflake, how should the data be organized?

- A. Into single files with 100-250 MB of compressed data per file
- B. Into single files with 1-100 MB of compressed data per file
- C. Into files of maximum size of 1 GB of compressed data per file
- D. Into files of maximum size of 4 GB of compressed data per file

**Answer:** A

#### NEW QUESTION 349

- (Exam Topic 3)

Which of the following accurately describes shares?

- A. Tables, secure views, and secure UDFs can be shared
- B. Shares can be shared
- C. Data consumers can clone a new table from a share
- D. Access to a share cannot be revoked once granted

**Answer:** A

#### NEW QUESTION 352

- (Exam Topic 3)

Which command can be used to load data files into a Snowflake stage?

- A. JOIN
- B. COPY INTO
- C. PUT
- D. GET

**Answer:** C

#### NEW QUESTION 354

- (Exam Topic 3)

Which minimum Snowflake edition allows for a dedicated metadata store?

- A. Standard
- B. Enterprise
- C. Business Critical
- D. Virtual Private Snowflake

**Answer:** D

#### Explanation:

Reference: <https://docs.snowflake.com/en/user-guide/intro-editions.html>

#### NEW QUESTION 355

- (Exam Topic 3)

What is the minimum Snowflake edition required to use Dynamic Data Masking?

- A. Standard
- B. Enterprise
- C. Business Critical
- D. Virtual Private Snowflake (VPC)

Answer: D

#### NEW QUESTION 359

- (Exam Topic 3)

Users are responsible for data storage costs until what occurs?

- A. Data expires from Time Travel
- B. Data expires from Fail-safe
- C. Data is deleted from a table
- D. Data is truncated from a table

Answer: B

#### NEW QUESTION 364

- (Exam Topic 3)

What are best practice recommendations for using the ACCOUNTADMIN system-defined role in Snowflake? (Choose two.)

- A. Ensure all ACCOUNTADMIN roles use Multi-factor Authentication (MFA).
- B. All users granted ACCOUNTADMIN role must be owned by the ACCOUNTADMIN role.
- C. The ACCOUNTADMIN role must be granted to only one user.
- D. Assign the ACCOUNTADMIN role to at least two users, but as few as possible.
- E. All users granted ACCOUNTADMIN role must also be granted SECURITYADMIN role.

Answer: AD

#### NEW QUESTION 367

- (Exam Topic 3)

Which data types are supported by Snowflake when using semi-structured data? (Choose two.)

- A. VARIANT
- B. VARRAY
- C. STRUCT
- D. ARRAY
- E. QUEUE

Answer: AD

#### NEW QUESTION 370

- (Exam Topic 3)

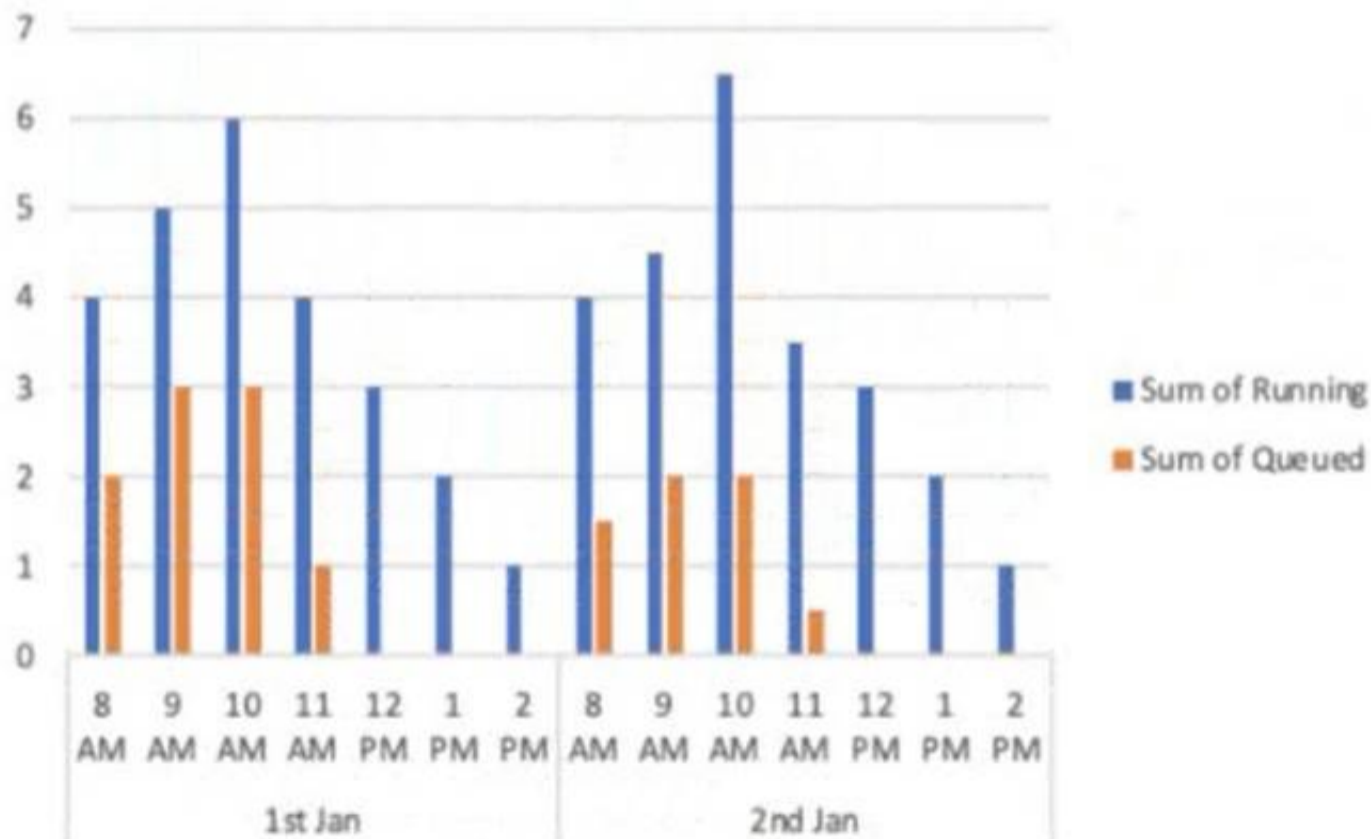
A virtual warehouse is created using the following command:

```
Create warehouse my_WH with warehouse_size = MEDIUM min_cluster_count = 1
```

```
max_cluster_count = 1
```

```
auto_suspend = 60 auto_resume = true;
```

The image below is a graphical representation of the warehouse utilization across two days.



What action should be taken to address this situation?

- A. Increase the warehouse size from Medium to 2XL.
- B. Increase the value for the parameter MAX\_CONCURRENCY\_LEVEL.
- C. Configure the warehouse to a multi-cluster warehouse.
- D. Lower the value of the parameter STATEMENT\_QUEUED\_TIMEOUT\_IN\_SECONDS.

Answer: B

#### NEW QUESTION 375

- (Exam Topic 3)

Why does Snowflake recommend file sizes of 100-250 MB compressed when loading data?

- A. Optimizes the virtual warehouse size and multi-cluster setting to economy mode
- B. Allows a user to import the files in a sequential order
- C. Increases the latency staging and accuracy when loading the data
- D. Allows optimization of parallel operations

**Answer:** D

#### NEW QUESTION 378

- (Exam Topic 3)

Which of the following objects can be directly restored using the UNDROP command? (Choose two.)

- A. Schema
- B. View
- C. Internal stage
- D. Table
- E. User
- F. Role

**Answer:** AD

#### NEW QUESTION 382

- (Exam Topic 3)

What privilege should a user be granted to change permissions for new objects in a managed access schema?

- A. Grant the OWNERSHIP privilege on the schema.
- B. Grant the OWNERSHIP privilege on the database.
- C. Grant the MANAGE GRANTS global privilege.
- D. Grant ALL privileges on the schema.

**Answer:** C

#### NEW QUESTION 385

- (Exam Topic 3)

Which SQL commands, when committed, will consume a stream and advance the stream offset? (Choose two.)

- A. UPDATE TABLE FROM STREAM
- B. SELECT FROM STREAM
- C. INSERT INTO TABLE SELECT FROM STREAM
- D. ALTER TABLE AS SELECT FROM STREAM
- E. BEGIN COMMIT

**Answer:** CD

#### NEW QUESTION 389

- (Exam Topic 3)

Which of the following are best practices for loading data into Snowflake? (Choose three.)

- A. Aim to produce data files that are between 100 MB and 250 MB in size, compressed.
- B. Load data from files in a cloud storage service in a different region or cloud platform from the service or region containing the Snowflake account, to save on cost.
- C. Enclose fields that contain delimiter characters in single or double quotes.
- D. Split large files into a greater number of smaller files to distribute the load among the compute resources in an active warehouse.
- E. When planning which warehouse(s) to use for data loading, start with the largest warehouse possible.
- F. Partition the staged data into large folders with random paths, allowing Snowflake to determine the bestway to load each file.

**Answer:** BCE

#### NEW QUESTION 394

- (Exam Topic 3)

How would a user run a multi-cluster warehouse in maximized mode?

- A. Configure the maximum clusters setting to "Maximum."
- B. Turn on the additional clusters manually after starting the warehouse.
- C. Set the minimum Clusters and maximum Clusters settings to the same value.
- D. Set the minimum clusters and maximum clusters settings to different values.

**Answer:** D

#### NEW QUESTION 397

- (Exam Topic 3)

Which Snowflake layer is always leveraged when accessing a query from the result cache?

- A. Metadata

- B. Data Storage
- C. Compute
- D. Cloud Services

**Answer:** D

#### NEW QUESTION 400

- (Exam Topic 3)

When loading data into Snowflake via Snowpipe what is the compressed file size recommendation?

- A. 10-50 MB
- B. 100-250 MB
- C. 300-500 MB
- D. 1000-1500 MB

**Answer:** B

#### NEW QUESTION 404

- (Exam Topic 3)

What occurs when a pipe is recreated using the CREATE OR REPLACE PIPE command?

- A. The Pipe load history is reset to empty.
- B. The REFRESH command is executed.
- C. The stage will be purged.
- D. The destination table is truncated.

**Answer:** B

#### NEW QUESTION 409

- (Exam Topic 3)

Which Snowflake feature will allow small volumes of data to continuously load into Snowflake and will incrementally make the data available for analysis?

- A. COPY INTO
- B. CREATE PIPE
- C. INSERT INTO
- D. TABLE STREAM

**Answer:** B

#### NEW QUESTION 414

- (Exam Topic 3)

How does Snowflake Fail-safe protect data in a permanent table?

- A. Fail-safe makes data available up to 1 day, recoverable by user operations.
- B. Fail-safe makes data available for 7 days, recoverable by user operations.
- C. Fail-safe makes data available for 7 days, recoverable only by Snowflake Support.
- D. Fail-safe makes data available up to 1 day, recoverable only by Snowflake Support.

**Answer:** C

#### NEW QUESTION 415

- (Exam Topic 3)

In a Snowflake role hierarchy, what is the top-level role?

- A. SYSADMIN
- B. ORGADMIN
- C. ACCOUNTADMIN
- D. SECURITYADMIN

**Answer:** B

#### NEW QUESTION 420

- (Exam Topic 3)

Which columns are part of the result set of the Snowflake LATERAL FLATTEN command? (Choose two.)

- A. CONTENT
- B. PATH
- C. BYTE\_SIZE
- D. INDEX
- E. DATATYPE

**Answer:** BC

#### NEW QUESTION 422

- (Exam Topic 3)

What are the correct parameters for time travel and fail-safe in the Snowflake Enterprise Edition?

- A. Default Time Travel Retention is set to 0 days.Maximum Time Travel Retention is 30 day
- B. Fail Safe retention time is 1 day.
- C. Default Time Travel Retention is set to 1 day.Maximum Time Travel Retention is 365 day
- D. Fail Safe retention time is 7 days.
- E. Default Time Travel Retention is set to 0 days.Maximum Time Travel Retention is 90 day
- F. Fail Safe retention time is 7 days.
- G. Default Time Travel Retention is set to 1 day.Maximum Time Travel Retention is 90 day
- H. Fail Safe retention time is 7 days.
- I. Default Time Travel Retention is set to 7 days.Maximum Time Travel Retention is 1 da
- J. Fail Safe retention time is 90 days.
- K. Default Time Travel Retention is set to 90 days.Maximum Time Travel Retention is 7 day
- L. Fail Safe retention time is 356 days.

**Answer:** D

#### NEW QUESTION 427

- (Exam Topic 3)

What impacts the credit consumption of maintaining a materialized view? (Choose two.)

- A. Whether or not it is also a secure view
- B. How often the underlying base table is queried
- C. How often the base table changes
- D. Whether the materialized view has a cluster key defined
- E. How often the materialized view is queried

**Answer:** DE

#### NEW QUESTION 429

- (Exam Topic 3)

What is the SNOWFLAKE.ACCOUNT\_USAGE view that contains information about which objects were read by queries within the last 365 days (1 year)?

- A. VIEWS\_HISTORY
- B. OBJECT\_HISTORY
- C. ACCESS\_HISTORY
- D. LOGIN\_HISTORY

**Answer:** C

#### NEW QUESTION 434

- (Exam Topic 3)

Which statements are correct concerning the leveraging of third-party data from the Snowflake Data Marketplace? (Choose two.)

- A. Data is live, ready-to-query, and can be personalized.
- B. Data needs to be loaded into a cloud provider as a consumer account.
- C. Data is not available for copying or moving to an individual Snowflake account.
- D. Data is available without copying or moving.
- E. Data transformations are required when combining Data Marketplace datasets with existing data in Snowflake.

**Answer:** AD

#### NEW QUESTION 437

- (Exam Topic 3)

Which of the following statements describes a schema in Snowflake?

- A. A logical grouping of objects that belongs to a single database
- B. A logical grouping of objects that belongs to multiple databases
- C. A named Snowflake object that includes all the information required to share a database
- D. A uniquely identified Snowflake account within a business entity

**Answer:** A

#### NEW QUESTION 438

- (Exam Topic 3)

Which of the following describes the Snowflake Cloud Services layer?

- A. Coordinates activities in the Snowflake account
- B. Executes queries submitted by the Snowflake account users
- C. Manages quotas on the Snowflake account storage
- D. Manages the virtual warehouse cache to speed up queries

**Answer:** A

#### NEW QUESTION 439

- (Exam Topic 3)

Which of the following statements describe features of Snowflake data caching? (Choose two.)

- A. When a virtual warehouse is suspended, the data cache is saved on the remote storage layer.
- B. When the data cache is full, the least-recently used data will be cleared to make room.
- C. A user can only access their own queries from the query result cache.
- D. A user must set USE\_METADATA\_CACHE to TRUE to use the metadata cache in queries.
- E. The RESULT\_SCAN table function can access and filter the contents of the query result cache.

**Answer:** BD

#### NEW QUESTION 444

.....

## Relate Links

**100% Pass Your SnowPro-Core Exam with ExamBible Prep Materials**

<https://www.exambible.com/SnowPro-Core-exam/>

## Contact us

We are proud of our high-quality customer service, which serves you around the clock 24/7.

Viste - <https://www.exambible.com/>