

AZ-800 Dumps

Administering Windows Server Hybrid Core Infrastructure

<https://www.certleader.com/AZ-800-dumps.html>



NEW QUESTION 1

SIMULATION - (Topic 4)

Task 8

You need to create an Active Directory Domain Services (AD DS) site named Site2 that is associated to an IP address range of 192.168.2.0 to 192.168.2.255.

- A. Mastered
- B. Not Mastered

Answer: A**Explanation:**

To create an AD DS site named Site2 that is associated to an IP address range of 192.168.2.0 to 192.168.2.255, you can follow these steps:

? On a domain controller or a computer that has the Remote Server Administration

Tools (RSAT) installed, open Active Directory Sites and Services from the Administrative Tools menu or by typing dssite.msc in the Run box.

? In the left pane, right-click on Sites and select New Site.

? In the New Object - Site dialog box, enter Site2 as the Name of the new site.

Select a site link to associate the new site with, such as DEFAULTIPSITELINK, and click OK. You can also create a new site link if you want to customize the replication frequency and schedule between the sites. For more information on how to create a site link, see Create a Site Link.

? In the left pane, right-click on Subnets and select New Subnet.

? In the New Object - Subnet dialog box, enter 192.168.2.0/24 as the Prefix of the subnet. This notation represents the IP address range of 192.168.2.0 to 192.168.2.255 with a subnet mask of 255.255.255.0. Select Site2 as the Site object to associate the subnet with, and click OK.

? Wait for the changes to replicate to other domain controllers. You can verify the site and subnet creation by checking the Sites and Subnets containers in Active Directory Sites and Services.

Now, you have created an AD DS site named Site2 that is associated to an IP address range of 192.168.2.0 to 192.168.2.255. You can add domain controllers to the new site and configure the site links and site link bridges to optimize the replication topology.

NEW QUESTION 2

SIMULATION - (Topic 4)

Task 4

You need to register SRV1 to sync Azure file shares The registration must use the 34646045 Storage Sync Service.

The required source files are located in a folder named \\dc1.contoso.com\install.

You do NOT need to configure file share synchronization at this time and you do NOT need to update the agent.

- A. Mastered
- B. Not Mastered

Answer: A**Explanation:**

One possible solution to register SRV1 to sync Azure file shares using the 34646045 Storage Sync Service is to use the Register-AzStorageSyncServer cmdlet from the Az.StorageSync module. This cmdlet establishes a trust relationship between the server

and the Storage Sync Service, which is required for creating server endpoints and syncing files. Here are the steps to register SRV1

using the cmdlet:

? On SRV1, open PowerShell as an administrator and run the following command to

install the Az.StorageSync module if it is not already installed: Install-Module -Name Az.StorageSync

? Run the following command to import the Az.StorageSync module:

Import-Module -Name Az.StorageSync

? Run the following command to sign in to your Azure account and select the subscription that contains the 34646045 Storage Sync Service:

Connect-AzAccount

Select-AzSubscription -SubscriptionId <your-subscription-id>

? Run the following command to register SRV1 with the 34646045 Storage Sync Service. You need to specify the resource group name and the Storage Sync Service name as parameters:

Register-AzStorageSyncServer -ResourceGroupName <your-resource-group-name> -StorageSyncServiceName 34646045

? Wait for the registration to complete. You can verify the registration status by

checking the Registered servers tab on the Azure portal or by running the following command:

Get-AzStorageSyncServer -ResourceGroupName <your-resource-group-name> -StorageSyncServiceName 34646045

Now, SRV1 is registered with the 34646045 Storage Sync Service and ready to sync Azure file shares. You can create server endpoints on SRV1 and cloud endpoints on the Azure file shares to define the sync topology.

NEW QUESTION 3

SIMULATION - (Topic 4)

Task 5

You need to ensure that a DHCP scope named scope1 on SRV1 can service client requests.

- A. Mastered
- B. Not Mastered

Answer: A**Explanation:**

One possible solution to ensure that a DHCP scope named scope1 on SRV1 can service client requests is to activate the scope on the DHCP server. A scope must be activated before it can assign IP addresses to DHCP clients. To activate a DHCP scope on SRV1, perform the following steps:

? On SRV1, open DNS Manager from the Administrative Tools menu or by typing dnsmgmt.msc in the Run box.

? In the left pane, expand your DHCP server and click on IPv4.

? In the right pane, right-click on the scope that you want to activate, such as scope1, and select Activate.

? Wait for the scope to be activated. You can verify the activation status by checking the icon next to the scope name. A green arrow indicates that the scope is active, while a red arrow indicates that the scope is inactive.

Now, the DHCP scope named scope1 on SRV1 can service client requests and lease IP addresses to DHCP clients. You can test the DHCP service by using the

ipconfig
/renew command on a DHCP client computer that is connected to the same subnet as the scope.

NEW QUESTION 4

- (Topic 3)

Note: This question is part of a series of questions that present the same scenario. Each question in the series contains a unique solution that might meet the stated goals. Some question sets might have more than one correct solution, while others might not have a correct solution.

After you answer a question in this section, you will NOT be able to return to it. As a result, these questions will not appear in the review screen.

Your network contains an Active Directory Domain Services (AD DS) domain named contoso.com.

You need to identify which server is the PDC emulator for the domain.

Solution: From Active Directory Domains and Trusts, you right-click Active Directory Domains and Trusts in the console tree, and then select Operations Master. Does this meet the goal?

- A. Yes
- B. No

Answer: B

NEW QUESTION 5

HOTSPOT - (Topic 3)

Your network contains an Active Directory Domain Services (AD DS) forest named contoso.com. The forest contains a child domain named east.contoso.com and the servers shown in the following table.

Name	Domain	Description
DC1	contoso.com	Has the schema master, infrastructure master, and domain naming master roles
DC2	east.contoso.com	Has the PDC emulator and RID master roles and is a global catalog server
Server1	contoso.com	Has the File Server, DFS Namespaces, and DFS Replication server roles

You need to create a folder for the Central Store to manage Group Policy template files for the entire forest.

What should you name the folder, and on which server should you create the folder? To answer, select the appropriate options in the answer area.

NOTE: Each correct selection is worth one point.

Answer Area

Name: These are the selections for Name:

- CentralDefinitions
- PolicyDefinitions**
- TemplateDefinitions

Server:

- DC1 only
- DC2 only
- Server1 only**
- DC1 and DC2 only
- DC1, DC2, and Server1

- A. Mastered
- B. Not Mastered

Answer: A

Explanation:

Answer Area

Name: These are the selections for Name:

- CentralDefinitions
- PolicyDefinitions**
- TemplateDefinitions

Server:

- DC1 only
- DC2 only
- Server1 only**
- DC1 and DC2 only
- DC1, DC2, and Server1

NEW QUESTION 6

HOTSPOT - (Topic 3)

Your on-premises network contains an Active Directory Domain Services (AD DS) domain.

The domain contains the servers shown in the following table.

The domain controllers do NOT have internet connectivity.

You plan to implement Azure AD Password Protection for the domain.

You need to deploy Azure AD Password Protection agents. The solution must meet the following requirements:

- All Azure AD Password Protection policies must be enforced.
- Agent updates must be applied automatically.
- Administrative effort must be minimized.

What should you do? To answer select the appropriate options in the answer area. NOTE: Each correct selection is worth one point.

Answer Area

Install the Azure AD Password Protection agent on: DC1 and DC2 only

Install the Azure AD Password Protection Proxy on: Server1

- A. Mastered
B. Not Mastered

Answer: A

Explanation:

Answer Area

Install the Azure AD Password Protection agent on: DC1 and DC2 only

Install the Azure AD Password Protection Proxy on: Server1

NEW QUESTION 7

HOTSPOT - (Topic 3)

You have an Active Directory Domain Services (AD DS) domain that contains a group named Group1.

You need to create a group managed service account (gMSA) named Account1. The solution must ensure that Group1 can use Account1.

How should you complete the script? To answer, select the appropriate options in the answer area,

NOTE: Each correct selection is worth one point.

Answer Area

New-ADServiceAccount
Add-ADComputerServiceAccount
Install-ADServiceAccount
New-ADObject
New-ADServiceAccount

"Account1" -DNSHostName "website.contoso.com" -

-PrincipalsAllowedToDelegateToAccount
AuthenticationPolicy
-Instance
-PrincipalsAllowedToDelegateToAccount
-PrincipalsAllowedToRetrieveManagedPassword

"Group1"

- A. Mastered
B. Not Mastered

Answer: A

Explanation:

Answer Area

New-ADServiceAccount
Add-ADComputerServiceAccount
Install-ADServiceAccount
New-ADObject
New-ADServiceAccount

"Account1" -DNSHostName "website.contoso.com" -

-PrincipalsAllowedToDelegateToAccount
AuthenticationPolicy
-Instance
-PrincipalsAllowedToDelegateToAccount
-PrincipalsAllowedToRetrieveManagedPassword

"Group1"

NEW QUESTION 8

HOTSPOT - (Topic 3)

You have a Windows Server container host named Server1.

You start the containers on Server1 as shown in the following table.

Name	Image	Uses Hyper-V isolation	Process running on container
Container1	microsoft/iis	No	ProcessA
Container2	microsoft/iis	No	ProcessB
Container3	microsoft/iis	Yes	ProcessC
Container4	microsoft/iis	Yes	ProcessD

You need to validate the status of ProcessA and ProcessC.

Where can you verify that ProcessA and ProcessC are in a running state? To answer, select the appropriate options in the answer area.

NOTE: Each correct selection is worth one point.

Answer Area

ProcessA: ▼
Container1 only
Container1 and Container2 only
Container1 and Server1 only
Container1, Container2, and Server1 only
All the containers and Server1

ProcessC: ▼
Container3 only
Container3 and Container4 only
Container3 and Server1 only
Container3, Container4, and Server1 only
All the containers and Server1

- A. Mastered
B. Not Mastered

Answer: A

Explanation:

Answer Area

ProcessA: ▼

ProcessC: ▼

NEW QUESTION 9

- (Topic 3)

Your network contains an Active Directory Domain Services (AD DS) domain named contoso.com. The domain contains two servers named Server1 and Server2. Server1 contains a disk named Disk2. Disk2 contains a folder named UserData. UserData is shared to the Domain Users group. Disk2 is configured for deduplication. Server1 is protected by using Azure Backup.

Server1 fails.

You connect Disk2 to Server2.

You need to ensure that you can access all the files on Disk2 as quickly as possible. What should you do?

- A. Create a storage pool.
B. Restore files from Azure Backup.
C. Install the File Server Resource Manager server role.
D. Install the Data Deduplication server role.

Answer: C

Explanation:

Reference:

<https://docs.microsoft.com/en-us/windows-server/storage/data-deduplication/overview>

NEW QUESTION 10

- (Topic 3)

Note: This question is part of a series of questions that present the same scenario. Each question in the series contains a unique solution that might meet the stated goals. Some question sets might have more than one correct solution, while others might not have a correct solution.

After you answer a question in this section, you will NOT be able to return to it. As a result, these questions will not appear in the review screen.

Your network contains an Active Directory Domain Services (AD DS) forest. The forest contains three Active Directory sites named Site1, Site2, and Site3. Each site contains two domain controllers. The sites are connected by using DEFAULTIPSITELINK.

You open a new branch office that contains only client computers.

You need to ensure that the client computers in the new office are primarily authenticated by the domain controllers in Site1.

Solution: You create an organization unit (OU) that contains the client computers in the branch office. You configure the Try Next Closest Site Group Policy Object (GPO) setting in a GPO that is linked to the new OU.

Does this meet the goal?

- A. Yes
B. No

Answer: B

NEW QUESTION 10

- (Topic 3)

You have a server that runs Windows Server and contains a shared folder named UserData.

You need to limit the amount of storage space that each user can consume in UserData. What should you use?

- A. Storage Spaces
B. Work Folders
C. Distributed File System (DFS) Namespaces
D. File Server Resource Manager (FSRM)

Answer: D

Explanation:

Reference:

<https://docs.microsoft.com/en-us/windows-server/storage/fsrm/fsrm-overview>

NEW QUESTION 11

- (Topic 3)

You have an Azure virtual machine named VM1 that has a private IP address only. You configure the Windows Admin Center extension on VM1.

You have an on-premises computer that runs Windows 11. You use the computer for server management.

You need to ensure that you can use Windows Admin Center from the Azure portal to manage VM1.

What should you configure?

- A. an Azure Bastion host on the virtual network that contains VM1.
- B. a VPN connection to the virtual network that contains VM1.
- C. a network security group (NSG) rule that allows inbound traffic on port 443.
- D. a private endpoint on the virtual network that contains VM1.

Answer: B

Explanation:

Reference:

<https://docs.microsoft.com/en-us/windows-server/manage/windows-admin-center/azure/manage-vm>

NEW QUESTION 13

- (Topic 3)

You have an Active Directory Domain Services (AD DS) domain. The domain contains three servers named Server 1, Server2, and Server3 that run Windows Server.

You sign in to Server1 by using a domain account and start a remote PowerShell session to Server2. From the remote PowerShell session, you attempt to access a resource on Server3. but access to the resource is denied.

You need to ensure that your credentials are passed from Server1 to Server3. The solution must minimize administrative effort. What should you do?

- A. Configure Kerberos constrained delegation.
- B. Configure Just Enough Administration (JEA).
- C. Configure selective authentication for the domain.
- D. Disable the Enforce user logon restrictions policy setting for the domain.

Answer: A

NEW QUESTION 15

HOTSPOT - (Topic 3)

Your on-premises network contains a server named Server1 and uses an IP address space of 192.168.10.0/24.

You have an Azure virtual network that contains a subnet named Subnet1. Subnet1 uses an IP address space of 192.168.10.0/24.

You need to migrate Server1 to Subnet1. You must use Azure Extended Network to maintain the existing IP address of Server1.

What is the minimum number of virtual machines that you should deploy? To answer, select the appropriate options in the answer area.

NOTE: Each correct selection is worth one point

Answer Area

Virtual machines that run Windows Server 2022 Azure Edition:

Virtual machines that run Windows Server 2019 or Windows Server 2022:

- A. Mastered
- B. Not Mastered

Answer: A

Explanation:

Answer Area

Virtual machines that run Windows Server 2022 Azure Edition:

Virtual machines that run Windows Server 2019 or Windows Server 2022:

NEW QUESTION 18

- (Topic 3)

You have an Azure virtual machine named VM1 that runs Windows Server and has the following configurations:

? Size: D2s_v4

? Operating system disk: 127-GiB standard SSD
? Data disk 128-GiB standard SSD
? Virtual machine generation: Gen 2
You plan to perform the following changes to VM1:
? Change the virtual machine size to D4s_v4.
? Detach the data disk.
? Add a new standard SSD.
Which changes require downtime for VM1?

- A. Detaching the data disk only and adding a new standard SSD.
- B. Detaching the data disk only.
- C. Changing the virtual machine size only.
- D. Adding a new standard SSD only.

Answer: C

Explanation:

Data disks can be added and detached without requiring downtime. Changing the VM size requires the VM to be restarted.

NEW QUESTION 20

HOTSPOT - (Topic 3)

You have an Azure subscription that contains a virtual network named VNet1. Vnet1 contains three subnets named Subnet1, Subnet2, and Subnet3. You deploy a virtual machine that has the following settings:

- Name: VM1
- Subnet: Subnet2
- Network interface name: NIC1
- Operating system: Windows Server 2022

You need to ensure that VM1 can route traffic between Subnet1 and Subnet3. The solution must minimize administrative effort.

What should you do? To answer, select the appropriate options in the answer area. NOTE: Each correct selection is worth one point.

Answer Area

From the Azure portal:

Associate a routing table with Subnet2.

Associate a routing table with Subnet2.

Attach two additional interfaces to VM1.

Enable IP forwarding for NIC1.

On VM1:

Install and configure a network controller.

Install and configure a network controller.

Install and configure Routing and Remote Access.

Run the route add command.

- A. Mastered
- B. Not Mastered

Answer: A

Explanation:

Answer Area

From the Azure portal:

Associate a routing table with Subnet2.

Associate a routing table with Subnet2.

Attach two additional interfaces to VM1.

Enable IP forwarding for NIC1.

On VM1:

Install and configure a network controller.

Install and configure a network controller.

Install and configure Routing and Remote Access.

Run the route add command.

NEW QUESTION 22

- (Topic 3)

You have a Windows Server container host named Server 1 and a container image named Image1.

You need to start a container from image1. The solution must run the container on a Hyper- V virtual machine.

Which parameter should you specify when you run the docker run command?

- A. --expose
- B. --privileged
- C. --runtime
- D. --entrypoint
- E. --isolation

Answer: D

Explanation:

Reference:

<https://docs.microsoft.com/en-us/virtualization/windowscontainers/manage-containers/hyperv-container>

NEW QUESTION 25

- (Topic 3)

Your network contains an Active Directory Domain Services (AD DS) forest. The forest contains three Active Directory sites named Site1, Site2, and Site3. Each site contains two domain controllers. The sites are connected by using DEFAULTIPSITELINK.

You open a new branch office that contains only client computers.

You need to ensure that the client computers in the new office are primarily authenticated by the domain controllers in Site1.

Solution: You create a new subnet object that is associated to Site1. Does this meet the goal?

- A. Yes
- B. No

Answer: B

NEW QUESTION 29

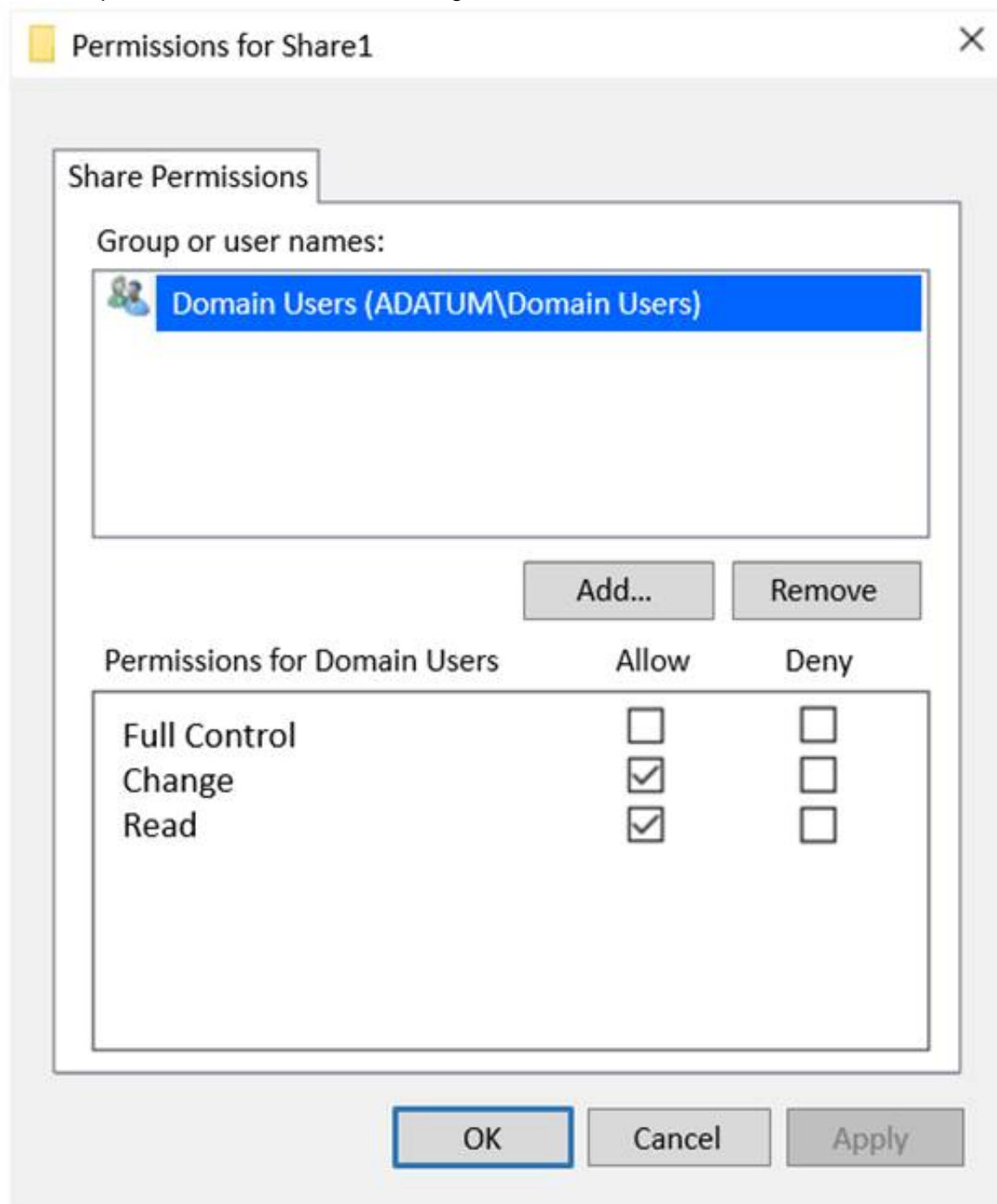
HOTSPOT - (Topic 3)

Your network contains an Active Directory Domain Services (AD DS) domain named adatum.com. The domain contains a file server named Server1 and three users named User1, User2, and User3.

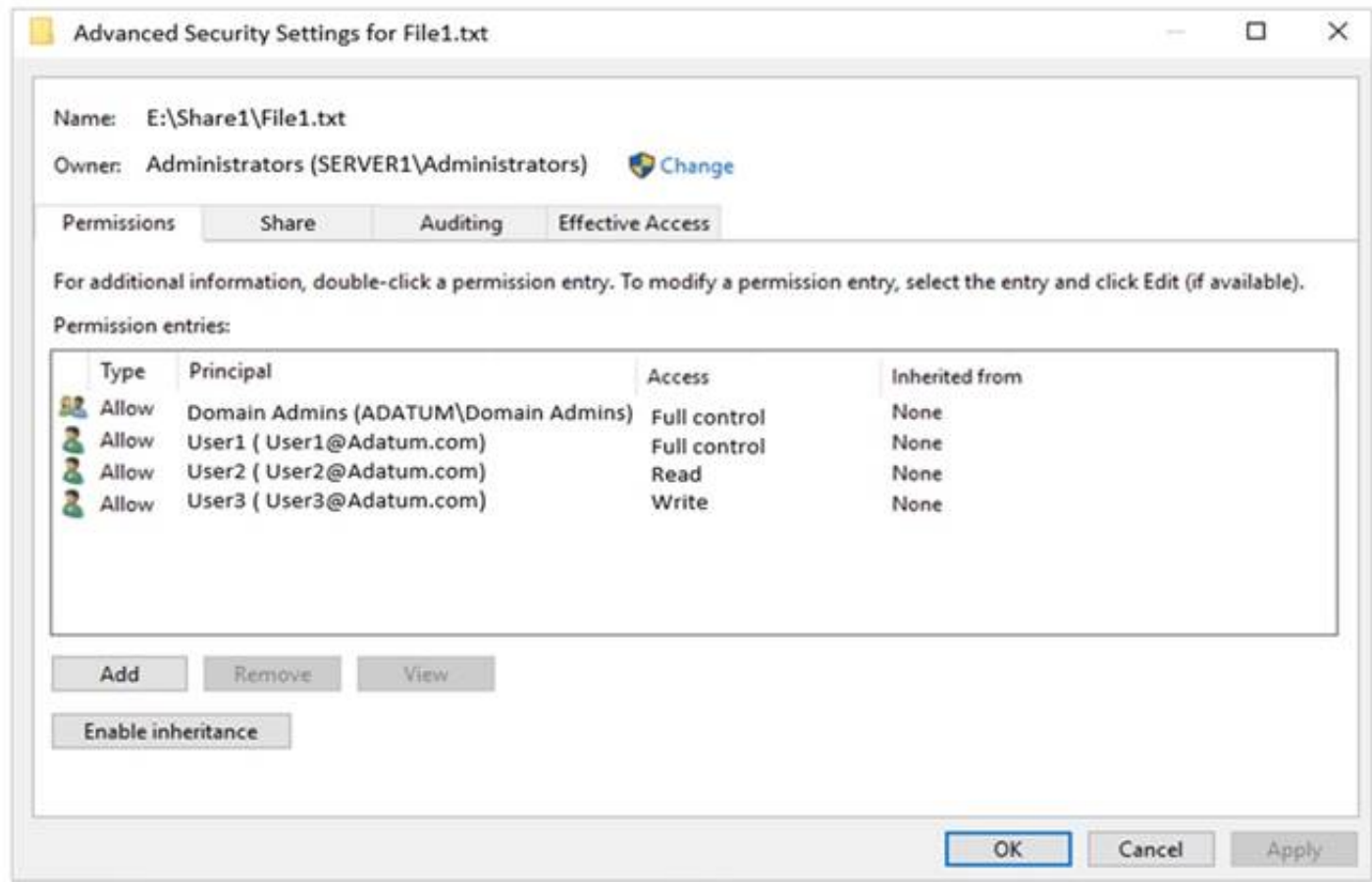
Server1 contains a shared folder named Share1 that has the following configurations:

```
ShareState           : Online
AvailabilityType     : NonClustered
FolderEnumerationMode : AccessBased
CachingMode          : Manual
LeasingMode           : Full
SmbInstance           : Default
CompressData          : False
ContinuouslyAvailable : False
EncryptData           : False
Name                  : Share1
Path                  : E:\Share1
ShadowCopy             : False
```

The share permissions for Share1 are configured as shown in the Share Permissions exhibit.



Share1 contains a file named File1.bxt. The share settings for File1.txt are configured as shown in the File Permissions exhibit.



For each of the following statements, select Yes if the statement is true. Otherwise, select No.
NOTE: Each correct selection is worth one point.

Statements	Yes	No
When User1 connects to \\Server1.adatum.com\Share1\, the user can take ownership of File1.txt.	<input type="checkbox"/>	<input type="checkbox"/>
When User2 connects to \\Server1.adatum.com\Share1\, File1.txt is visible.	<input type="checkbox"/>	<input type="checkbox"/>
When User3 connects to \\Server1.adatum.com\Share1\, File1.txt is visible.	<input type="checkbox"/>	<input type="checkbox"/>

- A. Mastered
- B. Not Mastered

Answer: A

Explanation:

Statements	Yes	No
When User1 connects to \\Server1.adatum.com\Share1\, the user can take ownership of File1.txt.	<input type="checkbox"/>	<input checked="" type="checkbox"/>
When User2 connects to \\Server1.adatum.com\Share1\, File1.txt is visible.	<input checked="" type="checkbox"/>	<input type="checkbox"/>
When User3 connects to \\Server1.adatum.com\Share1\, File1.txt is visible.	<input checked="" type="checkbox"/>	<input type="checkbox"/>

NEW QUESTION 33

- (Topic 3)
Your network contains a DHCP server.
You plan to add a new subnet and deploy Windows Server to the subnet. You need to use the server as a DHCP relay agent.
Which role should you install on the server?

- A. Network Policy and Access Services
- B. Remote Access
- C. Network Controller
- D. DHCP Server

Answer: B

NEW QUESTION 36

- (Topic 3)
You have an Azure virtual machine named VM1 that runs Windows Server. You have an Azure subscription that has Microsoft Defender for Cloud enabled.
You need to ensure that you can use the Azure Policy guest configuration feature to manage VM1.
What should you do?

- A. Add the PowerShell Desired State Configuration (DSC) extension to VM1.
B. Configure VM1 to use a user-assigned managed identity.
C. Configure VM1 to use a system-assigned managed identity.
D. Add the Custom Script Extension to VM1.

Answer: C

Explanation:

Reference:
<https://docs.microsoft.com/en-us/azure/virtual-machines/extensions/guest-configuration>

NEW QUESTION 39

DRAG DROP - (Topic 3)

You have a server named Server1 that has Windows Admin Center installed. The certificate used by Windows Admin Center was obtained from a certification authority (CA).

The certificate expires.

You need to replace the certificate.

Which three actions should you perform in sequence? To answer, move the appropriate actions from the list of actions to the answer area and arrange them in the correct order.

Actions

Copy the certificate thumbprint.

From Internet Information Services (IIS) Manager, bind a certificate.

Rerun Windows Admin Center Setup and select Change.

Rerun Windows Admin Center Setup and select Repair.

Rerun Windows Admin Center Setup and select Remove.

Answer Area

>

<

- A. Mastered
B. Not Mastered

Answer: A

Explanation:

Actions

Copy the certificate thumbprint.

From Internet Information Services (IIS) Manager, bind a certificate.

Rerun Windows Admin Center Setup and select Change.

Rerun Windows Admin Center Setup and select Repair.

Rerun Windows Admin Center Setup and select Remove.

Answer Area

From Internet Information Services (IIS) Manager, bind a certificate.

Copy the certificate thumbprint.

Rerun Windows Admin Center Setup and select Change.

NEW QUESTION 42

HOTSPOT - (Topic 3)

You have an onpremises DNS server named Server1 that runs Windows Server. Server 1 hosts a DNS zone named fabrikam.com
You have an Azure subscription that contains the resources shown in the following table.

Name	Type	Description
Vnet1	Virtual network	Connects to the on-premises network by using a Site-to-Site VPN
VM1	Virtual machine	Runs Windows Server and has the DNS Server role installed
contoso.com	Private DNS zone	Linked to Vnet1
contoso.com	Public DNS zone	Contains the DNS records of all the platform as a service (PaaS) resources

Answer Area

On Vnet1:

Configure VM1 to forward requests for the contoso.com zone to the public DNS zone.
Configure Vnet1 to use a custom DNS server that is set to the Azure-provided DNS at 168.63.129.16.
Configure VM1 to forward requests for the contoso.com zone to the Azure-provided DNS at 168.63.129.16.

On the on-premises network:

Configure forwarding for the contoso.com zone to VM1.
Configure forwarding for the contoso.com zone to the public DNS zone.
Configure forwarding for the contoso.com zone to the Azure-provided DNS at 168.63.129.16.

- A. Mastered
- B. Not Mastered

Answer: A

Explanation:

Answer Area

On Vnet1:

Configure VM1 to forward requests for the contoso.com zone to the public DNS zone.
Configure Vnet1 to use a custom DNS server that is set to the Azure-provided DNS at 168.63.129.16.
Configure VM1 to forward requests for the contoso.com zone to the Azure-provided DNS at 168.63.129.16.

On the on-premises network:

Configure forwarding for the contoso.com zone to VM1.
Configure forwarding for the contoso.com zone to the public DNS zone.
Configure forwarding for the contoso.com zone to the Azure-provided DNS at 168.63.129.16.

NEW QUESTION 43

- (Topic 3)

You have an Active Directory domain that contains a file server named Server1. Server1 runs Windows Server and includes the file shares shown in the following table.

Share Name	Path
Users	D:\Users
Accounts	D:\Dept\Accounts
Marketing	D:\Dept\Marketing
CustomerService	D:\Dept\CustomerService

When users login to the network they receive the following network drive mappings.

- H: maps to Wserver1\users\%UserName%
- G: maps to \\server1\%Department%

You need to limit the amount of space consumed by user's on Server!. The solution must meet the following requirements:

- Prevent users using more than 5GB of space on their H: drive
- Prevent Accounts department users from using more than 10GB of space on the G: drive
- Prevent Marketing department users from using more than 15GB of space on the G: drive
- Prevent Customer Service department users from using more than 2GB of space on the G: drive
- Minimize administrative effort What should you use?

- A. File Server Resource Manager (FSRM) quotas
- B. Storage tiering
- C. NTFS Disk quotas
- D. Group Policy Preferences

Answer: A

NEW QUESTION 47

- (Topic 3)

You have an on-premises Active Directory Domain Services (AD DS) domain that syncs with an Azure Active Directory (Azure AD) tenant Group writeback is

enabled in Azure AD Connect.
The AD DS domain contains a server named Server1. Server 1 contains a shared folder named share1.
You have an Azure Storage account named storage2 that uses Azure AD-based access control. The storage2 account contains a share named shared.
You need to create a security group that meets the following requirements:

- Can contain users from the AD DS domain
- Can be used to authorize user access to share 1 and share2.

What should you do?

- A. in the AD DS domain, create a universal security group
- B. in the Azure AD tenant create a security group that has assigned membership
- C. in the Azure AD Tenant create a security group that has dynamic membership.
- D. in the Azure AD tenant create a Microsoft 365 group

Answer: B

NEW QUESTION 50

HOTSPOT - (Topic 3)
You plan to deploy an Azure virtual machine that will run Windows Server. The virtual machine will host an Active Directory Domain Services (AD DS) domain controller and a drive named f: on a new virtual disk.
You need to configure storage for the virtual machine. The solution must meet the following requirements:

- Maximize resiliency for AD DS.
- Prevent accidental data loss.

How should you configure the storage? To answer, select the appropriate options in the answer area.
NOTE: Each correct selection is worth one point.



Answer:



- A. Mastered
- B. Not Mastered

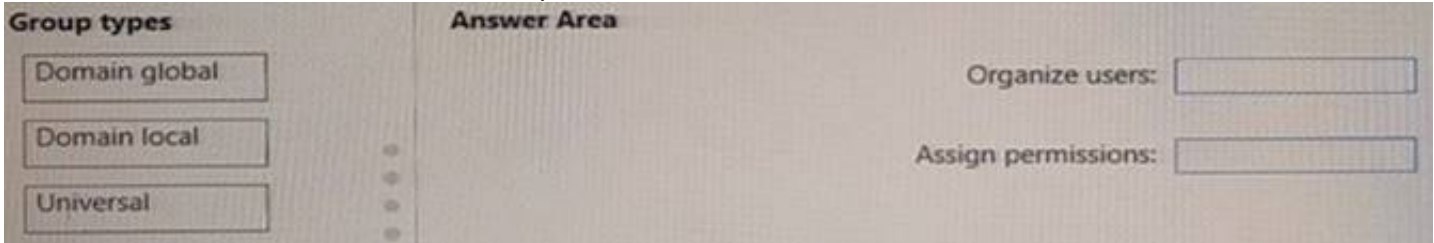
Answer: A

NEW QUESTION 53

DRAG DROP - (Topic 3)
Your network contains two Active Directory Domain Services (AD DS) forests named contoso.com and fabrikam.com. Contoso.com contains three child domains named amer.contoso.com, apac.contoso.com, and emea.contoso.com. Fabrikam.com contains a child domain named apac.fabrikam.com. A bidirectional forest trust exists between contoso.com and fabrikam.com.
You need to provide users in the contoso.com forest with access to the resources in the fabrikam.com forest. The solution must meet the following requirements:

- Users in contoso.com must only be added directly to groups in the contoso.com forest.
- Permissions to access the resources in fabrikam.com must only be granted directly to groups in the fabrikam.com forest.
- The number of groups must be minimized.

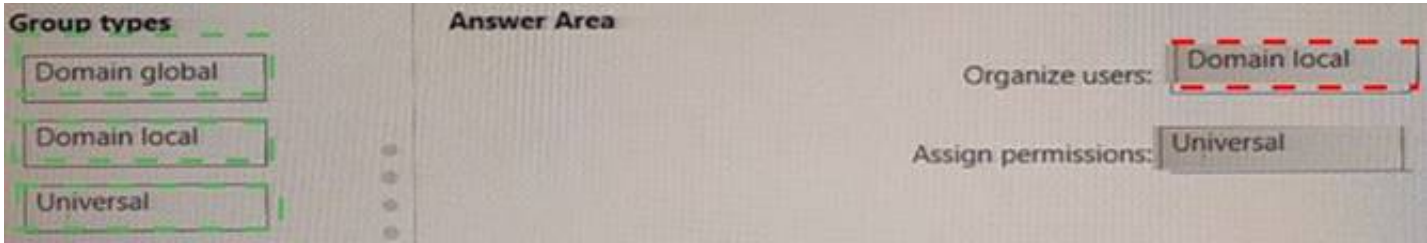
Which type of groups should you use to organize the users and to assign permissions? To answer, drag the appropriate group types to the correct requirements. Each group type may be used once, more than once, or not at all. You may need to drag the split bar between panes or scroll to view content.
NOTE: Each correct selection is worth one point.



- A. Mastered
- B. Not Mastered

Answer: A

Explanation:



NEW QUESTION 55

- (Topic 3)

You have a server named Host1 that has the Hyper-V server role installed. Host1 hosts a virtual machine named VM1. You have a management server named Server1 that runs Windows Server. You remotely manage Host1 from Server1 by using Hyper-V Manager. You need to ensure that you can access a USB hard drive connected to Server1 when you connect to VM1 by using Virtual Machine Connection. Which two actions should you perform? Each correct answer presents part of the solution. NOTE: Each correct selection is worth one point.

- A. From the Hyper-V Settings of Host1, select Allow enhanced session mode
- B. From Disk Management on Host1, attach a virtual hard disk.
- C. From Virtual Machine Connection, switch to a basic session.
- D. From Virtual Machine Connection select Show Options and then select the USB hard drive.
- E. From Disk Management on Host1, select Rescan Disks

Answer: AD

Explanation:

Reference:
<https://docs.microsoft.com/en-us/windows-server/virtualization/hyper-v/learn-more/use-local-resources-on-hyper-v-virtual-machine-with-vmconnect>

NEW QUESTION 56

DRAG DROP - (Topic 3)

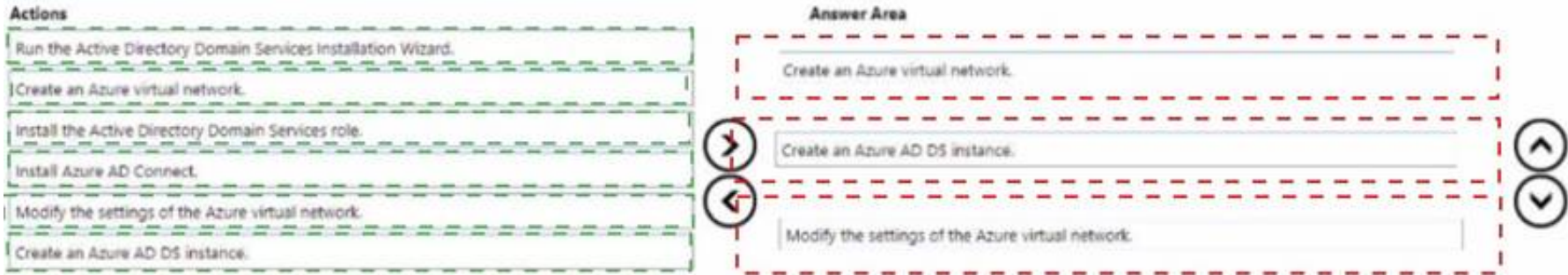
You create a new Azure subscription. You plan to deploy Azure Active Directory Domain Services (Azure AD DS) and Azure virtual machines. You need to ensure that the virtual machines can join Azure AD DS. Which three actions should perform in sequence? To answer, move the appropriate actions from the list of action of the answer area and arrange them in the correct order.



- A. Mastered
- B. Not Mastered

Answer: A

Explanation:



NEW QUESTION 57

- (Topic 3)

You have an on-premises server named Server 1 that runs Windows Server. You have an Azure subscription that contains a virtual network named VNet1. You need to connect Server1 to VNet1 by using Azure Network Adapter. What should you use?

- A. the Azure portal
- B. Azure AD Connect
- C. Device Manager
- D. Windows Admin Center

Answer: B

NEW QUESTION 61

HOTSPOT - (Topic 3)

Your network contains an Active Directory Domain Services (AD DS) forest named contoso.com. The forest contains a child domain named east.contoso.com. in the contoso.com domain, you create two users named Admin1 and Admin2. You need to ensure that the users can perform the following tasks:

- Admin1 can create and manage Active Directory sites.
- Admin2 can deploy domain controller to the easl.conloso.com domain. The solution must use the principle of least privilege.

To which group should you add each user? To answer, select the appropriate options in the answer area.

NOTE Each correct selection is worth one point.

Answer Area

Admin1:

Contoso\Administratoers

Contoso\Domain Admins

Contoso\Enterprise Admins

East\Administratoers

East\Domain Admins

Admin2:

Contoso\Administratoers

Contoso\Domain Admins

Contoso\Enterprise Admins

East\Administratoers

East\Domain Admins

- A. Mastered
- B. Not Mastered

Answer: A

Explanation:

Answer Area

Admin1:

Contoso\Enterprise Admins

Admin2:

East\Domain Admins

NEW QUESTION 62

- (Topic 3)
You have an Azure virtual machine named VM1 that runs Windows Server. You need to ensure that administrators request access to VM1 before establishing a Remote Desktop connection. What should you configure?

- A. Azure Front Door
- B. Microsoft Defender for Cloud
- C. Azure AD Privileged Identity Management (PIM)
- D. a network security group (NSG)

Answer: B

NEW QUESTION 63

DRAG DROP - (Topic 3)
You create an Azure virtual machine named Server1 that runs Windows Server. Server1 has the disk configuration shown in the following exhibit.

Disk Management

File Action View Help

Volume	Layout	Type	File System	Status	Capacity	Free Spa...	% Free
System Reserved	Simple	Basic	NTFS	Healthy (S...	500 MB	465 MB	93 %
Temporary Storage...	Simple	Basic	NTFS	Healthy (P...	8.00 GB	7.28 GB	91 %

Actions

Shut down Server1.

Start Server1.

Create and attach a new data disk.

Create a new simple volume.

Create a new spanned volume.

Initialize the disk.

Answer Area

>

<

>

<

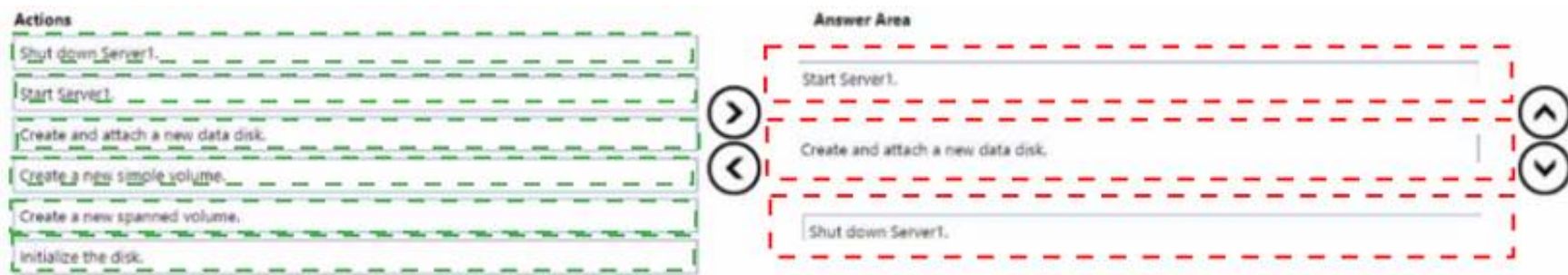
- A. Mastered
- B. Not Mastered

Answer: A

Explanation:

The Leader of IT Certification

visit - <https://www.certleader.com>



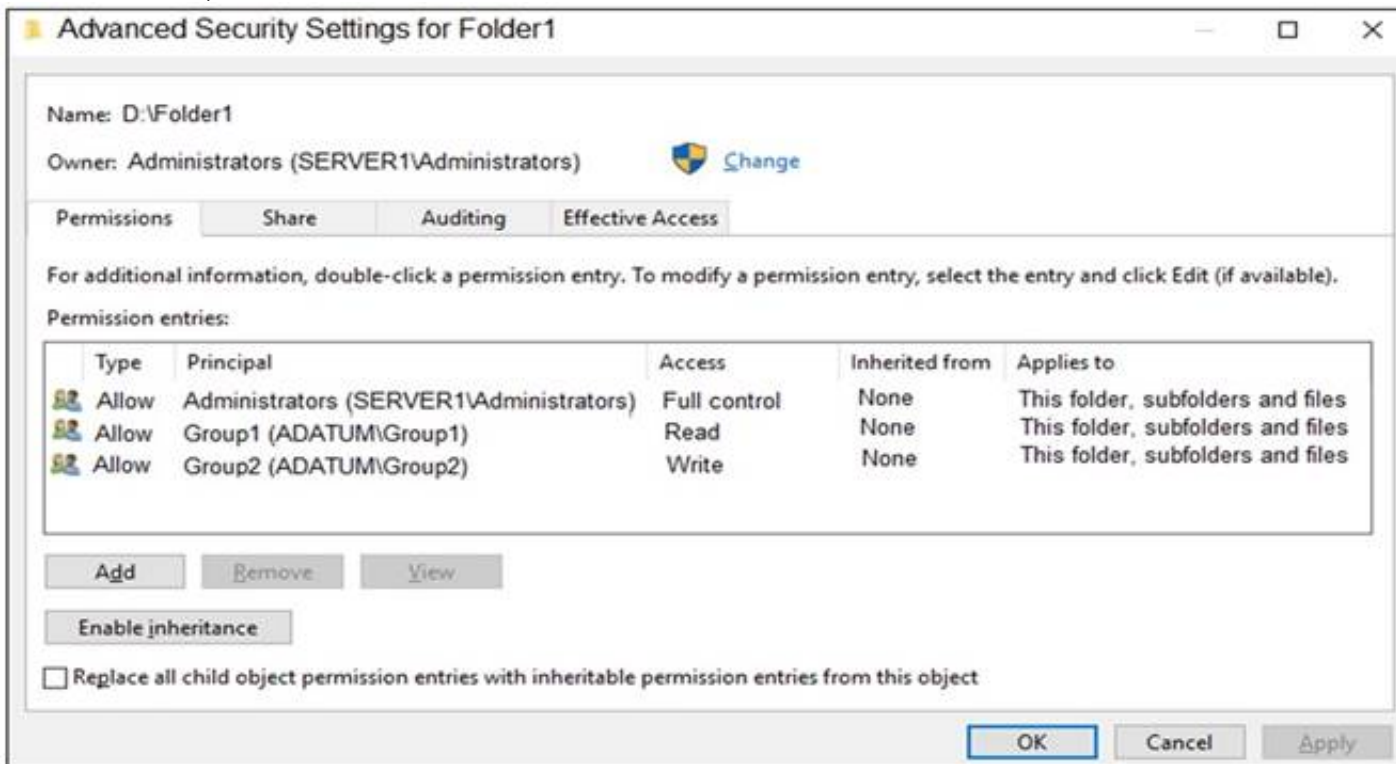
NEW QUESTION 65

HOTSPOT - (Topic 3)

Your network contains an Active Directory Domain Services (AD DS) domain named adatum.com. The domain contains a server named Server1 and the users shown in the following table.

Name	Member of
User1	Group1
User2	Group2
User3	Group3

Server1 contains a folder named D:\Folder1. The advanced security settings for Folder1 are configured as shown in the Permissions exhibit. (Click the Permissions tab.)



Folder1 is shared by using the following configurations:

```
Path           : D:\Folder1
Name           : Share1
ShareType      : FileSystemDirectory
FolderEnumerationMode : Unrestricted
```

The share permissions for Share1 are shown in the following table.

Group	Permission
Group1	Allow – Change
Group3	Allow – Full Control

For each of the following statements, select Yes if the statement is true. Otherwise, select No.

NOTE: Each correct selection is worth one point.

Statements	Yes	No
User1 can read the files in Share1.	<input type="radio"/>	<input type="radio"/>
User3 can delete files in Share1.	<input type="radio"/>	<input type="radio"/>
If User2 connects to \\Server1.adatum.com from File Explorer, Share1 will be listed.	<input type="radio"/>	<input type="radio"/>

- A. Mastered
B. Not Mastered

Answer: A

Explanation:

To access files in a shared folder, you need to be granted permissions on the folder (NTFS permissions) AND permissions on the share. The most restrictive permission of the folder permissions and share permissions apply.

Box 1: Yes

Group1 has Read access to Folder1 and Change access to Share1. Therefore, User1 can read the files in Share1.

Box 2: No

Group3 has Full Control access to Share1. However, Group3 has no permissions configured Folder1. Therefore, User3 cannot access the files in Share1.

Box 3: Yes

Group2 has write permission to Folder1. However, Group2 has no permission on Share1. Therefore, users in Group2 cannot access files in the shared folder.

Access Based Enumeration when enabled hides files and folders that users do not have permission to access. However, Access Based Enumeration is not enabled on Share1.

This is indicated by the FolderEnumerationMode – Unrestricted setting. Therefore, the share will be visible to User2 even though User2 cannot access the shared folder.

NEW QUESTION 68

HOTSPOT - (Topic 3)

You have 10 on-premises servers that run Windows Server.

You plan to use Azure Network Adapter to connect the servers to the resources in Azure.

Which prerequisites do you require on-premises and in Azure? To answer, select the appropriate options in the answer area.

NOTE: Each correct selection is worth one point.

To configure the on-premises servers, use:

Azure CLI
Routing and Remote Access
Server Manager
Windows Admin Center

To connect the Azure resources and Azure Network Server Manager Adapter, use:

Azure Bastion
Azure Firewall
An Azure virtual network gateway
A private endpoint
A public Azure Load Balancer

- A. Mastered
B. Not Mastered

Answer: A

Explanation:

To configure the on-premises servers, use:

Azure CLI

Routing and Remote Access

Server Manager

Windows Admin Center

To connect the Azure resources and Azure Network Server Manager Adapter, use:

Azure Bastion

Azure Firewall

An Azure virtual network gateway

A private endpoint

A public Azure Load Balancer

NEW QUESTION 71
HOTSPOT - (Topic 3)
Your network contains an Active Directory Domain Services (AD DS) domain named contoso.com. The domain contains a server named Server1 that has the DFS Namespaces role service installed. Server1 hosts a domain-based Distributed File System (DFS) Namespace named Files.
The domain contains a file server named Server2. Server2 contains a shared folder named Share1. Share1 contains a subfolder named Folder1.
In the Files namespace, you create a folder named Folder1 that has a target of \\Server2.contoso.com\Share1\Folder1.
You need to configure a logon script that will map drive letter M to Folder1. The solution must use the path of the DFS Namespace.
How should you complete the command to map the drive letter? To answer, select the appropriate options in the answer area.
NOTE: Each correct selection is worth one point.

Answer Area

net use W:

\\contoso.com

\\files.contoso.com

\\Server1.contoso.com

\\Server2.contoso.com

\\files\folder1

\\files\share1\folder1

\\folder1

\\share1\folder1

- A. Mastered
- B. Not Mastered

Answer: A

Explanation:

Answer Area

net use W:

\\contoso.com

\\files.contoso.com

\\Server1.contoso.com

\\Server2.contoso.com

\\files\folder1

\\files\share1\folder1

\\folder1

\\share1\folder1

NEW QUESTION 72
DRAG DROP - (Topic 3)
You create a new Azure subscription.
You plan to deploy Azure Active Directory Domain Services (Azure AD DS) and Azure virtual machines. The virtual machines will be joined to Azure AD DS.
You need to deploy Active Directory Domain Services (AD DS) to ensure that the virtual machines can be deployed and joined to Azure AD DS.
Which three actions should you perform in sequence? To answer, move the appropriate actions from the list of actions to the answer area and arrange them in the correct order.

Actions

Modify the settings of the Azure virtual network.

Install the Active Directory Domain Services role.

Install Azure AD Connect.

Create an Azure virtual network.

Create an Azure AD DS instance.

Run the Active Directory Domain Service installation Wizard.

Answer Area

>

<

- A. Mastered
- B. Not Mastered

Answer: A

Explanation:

Actions

Modify the settings of the Azure virtual network.

Install the Active Directory Domain Services role.

Install Azure AD Connect.

Create an Azure virtual network.

Create an Azure AD DS instance.

Run the Active Directory Domain Service installation Wizard.

Answer Area

Create an Azure virtual network.

Create an Azure AD DS instance.

Modify the settings of the Azure virtual network.

NEW QUESTION 73

- (Topic 3)

You have a server named Server1 that runs Windows Server.

You plan to host applications in Windows containers.

You need to configure Server1 to run containers. What should you install?

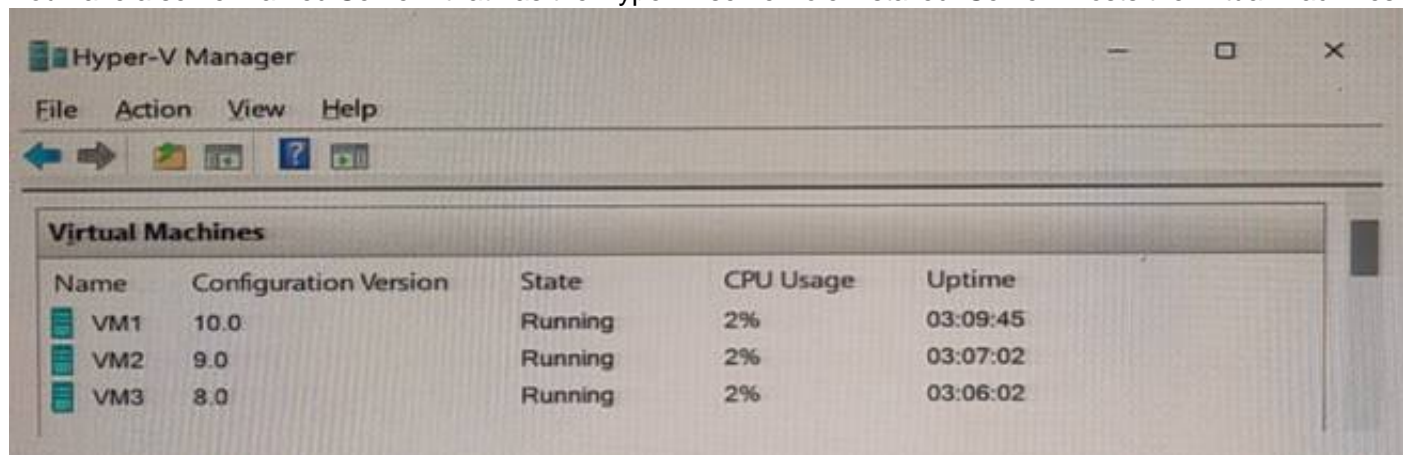
- A. Windows Admin Center
- B. the Windows Subsystem for Linux
- C. Docker
- D. Hyper-V

Answer: C

NEW QUESTION 74

HOTSPOT - (Topic 3)

You have a server named Server1 that has the Hyper-V server role installed. Server1 hosts the virtual machines shown in the following exhibit.



Name	Configuration Version	State	CPU Usage	Uptime
VM1	10.0	Running	2%	03:09:45
VM2	9.0	Running	2%	03:07:02
VM3	8.0	Running	2%	03:06:02

Use the drop-down menus to select the answer choice that completes each statement based on the information presented in the graphic.

NOTE: Each correct selection is worth one point.

Answer Area

[Answer choice] can have production checkpoints.

[Answer choice] can be hibernated.

- A. Mastered
- B. Not Mastered

Answer: A

Explanation:

Answer Area

[Answer choice] can have production checkpoints.

- Only VM1
- Only VM1
- Only VM1 and VM2
- VM1, VM2, and VM3

[Answer choice] can be hibernated.

- VM1, VM2, and VM3
- Only VM1
- Only VM1 and VM2
- VM1, VM2, and VM3

NEW QUESTION 79

HOTSPOT - (Topic 3)

Your network contains an Active Directory Domain Services (AD DS) domain named contoso.com.

The network contains the servers shown in the following table.

Name	Role	Domain/workgroup	Operating system
DC1	Active Directory Domain Services, DNS Server	contoso.com	Windows Server
Server1	DHCP Server	contoso.com	Windows Server
Server2	None	contoso.com	Windows Server Core
Server3	None	Workgroup1	Windows Server Core

You plan to implement IP Address Management (IPAM).

You need to use the Group Policy based provisioning method for managed servers. The solution must support server discovery.

What should you do? To answer, select the appropriate options in the answer area. NOTE: Each correct selection is worth one point.

Answer Area

Server on which to deploy the IPAM server role:

- Server2
- DC1
- Server1
- Server2
- Server3

Servers that must be provisioned for IPAM:

- DC1 and Server1
- DC1 and Server1
- DC1 and Server3
- Server1 and Server2
- Server2 and Server3

- A. Mastered
- B. Not Mastered

Answer: A

Explanation:

Answer Area

Server on which to deploy the IPAM server role: Server2

Servers that must be provisioned for IPAM: DC1 and Server1

NEW QUESTION 82

HOTSPOT - (Topic 3)

Your company has a main office and 10 branch offices that are connected by using WAN links. The network contains an Active Directory domain.

All users have laptops and regularly travel between offices. You plan to implement BranchCache in the branch offices.

In each branch office, you install a server that runs Windows Server and the BranchCache feature. You register the servers in Active Directory.

You need to configure the laptops to use the local BranchCache server automatically. The solution must minimize administrative effort.

Which two Group Policy settings should you configure? To answer, select the settings in the answer area.

NOTE: Each correct selection is worth one point.

Answer Area

Setting	State
Turn on BranchCache	Not configured
Set BranchCache Distributed Cache mode	Not configured
Set BranchCache Hosted Cache mode	Not configured
Enable Automatic Hosted Cache Discovery by Service Connection...	Not configured
Configure Hosted Cache Servers	Not configured
Configure BranchCache for network files	Not configured
Set percentage of disk space used for client computer cache	Not configured
Set age for segments in the data cache	Not configured
Configure Client BranchCache Version Support	Not configured

- A. Mastered

B. Not Mastered

Answer: A

Explanation:

--> Turn on BranchCache

--> Enable Automatic Hosted Cache Discovery by Service Connection ...

NEW QUESTION 85

- (Topic 3)

You have an Azure virtual machine named Served that runs a network management application. Server1 has the following network configurations:

- Network interface: Nic1
- IP address. 10.1.1.1/24
- Connected to: VnetVSubnet1

You need to connect Server1 to an additional subnet named Vnet1/Subnet2. What should you do?

- A. Modify the IP configurations of Nic1.
- B. Add a network interface to Server1.
- C. Add an IP configuration to Nic1.
- D. Create a private endpoint on Subnet2

Answer: D

NEW QUESTION 90

HOTSPOT - (Topic 3)

Your on-premises network contains a single-domain Active Directory Domain Services (AD DS) forest. You have an Azure AD tenant named contoso.com. The AD DS forest syncs with the Azure AD tenant by using Azure AD Connect.

You need to ensure that users in the forest that have a custom attribute of NoSync are excluded from synchronization.

How should you configure the Azure AD Connect cloudFiltered attribute, and which tool should you use? To answer, select the appropriate options in the answer area.

NOTE: Each correct selection is worth one point.

Answer Area

Attribute:

Tool:

Answer:

Answer Area

Attribute:

Tool:

- A. Mastered
- B. Not Mastered

Answer: A

NEW QUESTION 93

- (Topic 3)

Your network contains an Active Directory Domain Services (AD DS) domain.

You have a Group Policy Object (GPO) named GPO1 that contains Group Policy preferences.

You plan to link GPO1 to the domain.

You need to ensure that the preference in GPO1 apply only to domain member servers and NOT to domain controllers or client computers. All the other Group Policy settings in GPO1 must apply to all the computers. The solution must minimize administrative effort.

Which type of item level targeting should you use?

- A. Domain
- B. Operating System
- C. Security Group
- D. Environment Variable

Answer: B

Explanation:

Reference:

[https://docs.microsoft.com/en-us/previous-versions/windows/it-pro/windows-server-2012-r2-and-2012/dn789189\(v=ws.11\)#operating-system-targeting](https://docs.microsoft.com/en-us/previous-versions/windows/it-pro/windows-server-2012-r2-and-2012/dn789189(v=ws.11)#operating-system-targeting)

NEW QUESTION 94

HOTSPOT - (Topic 3)

You have an Active Directory Domain Services (AD DS) domain that contains the member servers shown in the following table.

Name	Operating system	Data Deduplication role service
Server1	Windows Server 2019	Installed
Server2	Windows Server 2022	Not installed
Server3	Windows Server 2022	Installed

Server3 contains a data disk named Disk1 that has Data Deduplication installed. Disk1 contains the files shown in the following table.

Name	Size
File1.txt	5 KB
File2.docx	800 KB
File3.sys	2 MB
File4.bmp	5 GB

Server3 fails.

You need to recover the files on Disk1.

Which files can you recover if you attach Disk1 to Server 1, and which files can you recover if you attach Disk1 to Server2? To answer, select the appropriate options in the answer area.

NOTE: Each correct selection is worth one point.

Answer Area

Server1:

File1.txt only

File1.txt only

File1.txt and File2.docx only

File1.txt and File3.sys only

File1.txt, File2.docx, File3.sys, and File4.bmp

No files can be recovered.

Server2:

File1.txt and File2.docx only

File1.txt only

File1.txt and File2.docx only

File1.txt and File3.sys only

File1.txt, File2.docx, File3.sys, and File4.bmp

No files can be recovered.

- A. Mastered
- B. Not Mastered

Answer: A

Explanation:

Answer Area

Server1:

File1.txt only

File1.txt only

File1.txt and File2.docx only

File1.txt and File3.sys only

File1.txt, File2.docx, File3.sys, and File4.bmp

No files can be recovered.

Server2:

File1.txt and File2.docx only

File1.txt only

File1.txt and File2.docx only

File1.txt and File3.sys only

File1.txt, File2.docx, File3.sys, and File4.bmp

No files can be recovered.

NEW QUESTION 98

DRAG DROP - (Topic 3)

You have a server named Server1.

You plan to use Storage Spaces to expand the storage available to Server1. You attach eight physical disks to Server1. Four disks are HDDs and four are SSDs. You need to create a volume on Server1 that will use the storage on all the new disks. The solution must provide the fastest read performance for frequently used files.

Which three actions should you perform in sequence? To answer, move the appropriate actions from the list of actions to the answer area and arrange them in the correct order.

Actions	Answer Area
Create a virtual disk.	
Convert each new disk into a dynamic disk.	
Create a storage pool.	
Create a spanned volume.	
Convert each new disk into a GPT disk.	
Create a simple volume	

- A. Mastered
B. Not Mastered

Answer: A

Explanation:

Actions	Answer Area
Create a virtual disk.	Create a storage pool.
Convert each new disk into a dynamic disk.	Create a virtual disk.
Create a storage pool.	Create a simple volume
Create a spanned volume.	
Convert each new disk into a GPT disk.	
Create a simple volume	

NEW QUESTION 100

- (Topic 3)

You have an on premises Active Directory Domain Services (AD DS) domain that syncs with an Azure Active Directory (Azure AD) tenant. You plan to implement self-service password reset (SSPR) in Azure AD. You need to ensure that users that reset their passwords by using SSPR can use the new password resources in the AD DS domain. What should you do?

- A. Deploy the Azure AD Password Protection proxy service to the on premises network.
B. Run the Microsoft Azure Active Directory Connect wizard and select Password writeback.
C. Grant the Change password permission for the domain to the Azure AD Connect service account.
D. Grant the impersonate a client after authentication user right to the Azure AD Connect service account.

Answer: B

Explanation:

Reference:

<https://docs.microsoft.com/en-us/azure/active-directory/authentication/tutorial-enable-sspr- writeback>

NEW QUESTION 103

- (Topic 3)

Your network contains a Active Directory Domain Service (AD DS) forest named contoso.com. The forest root domain contains a server named server1. contoso.com.

A two-way forest trust exists between the contoso.com forest and an AD DS forest named fabrikam.com. The fabrikam.com forest contains 10 child domains. You need to ensure that only the members of a group named fabrikam\Group1 can authenticate to server1.contoso.com. What should you do first?

- A. Change the trust to a one-way external trust.
B. Add fabrikam\Group1 to the local Users group on server1.contoso.com.
C. Enable SID filtering for the trust.
D. Enable Selective authentication for the trust.

Answer: B

NEW QUESTION 107

HOTSPOT - (Topic 3)

You have a file server named Server1 that runs Windows Server and contains the volumes shown in the following table.

Name	File system
C	NTFS
D	NTFS
E	REFS

On which volumes can you use BitLocker Drive Encryption (BitLocker) and disk quotas? To answer select the appropriate options in the answer area. NOTE Each correct selection is worth one point.

Answer Area

BitLocker:

- ☐ C only
- ☐ D only
- ☐ C and D only
- ☐ D and E only
- ☐ C, D, and E

Disk quotas:

- ☐ C only
- ☐ D only
- ☐ C and D only
- ☐ D and E only
- ☐ C, D, and E

- A. Mastered
- B. Not Mastered

Answer: A

Explanation:

Answer Area

BitLocker:

- ☐ C only
- ☐ D only
- ☐ C and D only
- ☒ D and E only
- ☐ C, D, and E

Disk quotas:

- ☐ C only
- ☐ D only
- ☒ C and D only
- ☒ D and E only
- ☐ C, D, and E

NEW QUESTION 112

- (Topic 3)

Your network contains an Active Directory Domain Services (AD DS) forest named contoso.com. The root domain contains the domain controllers shown in the following table.

Name	FSMO role
DC1	Domain naming master
DC2	RID master
DC3	PDC emulator
DC4	Schema master
DC5	Infrastructure master

A failure of which domain controller will prevent you from creating application partitions?

- A. DC1
- B. DC2
- C. DC3
- D. DC4
- E. DC5

Answer: A

Explanation:

Reference:

<https://docs.microsoft.com/en-us/troubleshoot/windows-server/identity/fsmo-roles>

NEW QUESTION 114

- (Topic 3)

You have an on-premises Active Directory Domain Services (AD DS) domain that syncs with an Azure Active Directory (Azure AD) tenant.

You have several Windows 10 devices that are Azure AD hybrid-joined.

You need to ensure that when users sign in to the devices, they can use Windows Hello for Business.

Which optional feature should you select in Azure AD Connect?

- A. Device writeback
- B. Group writeback
- C. Password writeback
- D. Directory extension attribute sync
- E. Azure AD app and attribute filtering

Answer: C

Explanation:

Reference:

<https://docs.microsoft.com/en-us/windows/security/identity-protection/hello-for-business/hello-hybrid-cert-trust-prereqs>

NEW QUESTION 119

- (Topic 3)

Your on-premises network contains an Active Directory domain named contoso.com. You have an Azure AD tenant. You plan to sync contoso.com with the Azure AD tenant by using Azure AD Connect cloud sync. You need to create an account that will be used by Azure AD Connect cloud sync. Which type of account should you create?

- A. system-assigned managed identity
- B. group managed service account (gMSA)
- C. user
- D. InetOrgPerson

Answer: C

NEW QUESTION 124

- (Topic 3)

You have servers that run Windows Server 2022 as shown in the following table.

Name	Location	Description
Server1	On-premises	Hosts a Microsoft SQL Server 2019 instance
Server2	Azure	Contains the .NET SDK

Server2 contains a .NET app named App1.

You need to establish a WebSocket connection from App1 to the SQL Server instance on Server1. The solution must meet the following requirements:

- Minimize the number of network ports that must be open on the on-premises network firewall.
- Minimize administrative effort. What should you create first?

- A. an Azure Relay namespace
- B. an Azure VPN gateway
- C. a WFC relay connection
- D. a hybrid connection

Answer: D

NEW QUESTION 127

- (Topic 3)

You have an Azure Active Directory Domain Services (Azure AD DS) domain named contoso.com.

You need to provide an administrator with the ability to manage Group Policy Objects (GPOs). The solution must use the principle of least privilege.

To which group should you add the administrator?

- A. AAD DC Administrators
- B. Domain Admins
- C. Schema Admins
- D. Enterprise Admins
- E. Group Policy Creator Owners

Answer: B

Explanation:

Only the Domain Admins group and the Enterprise Admins group can fully manage GPOs. Members of the Group Policy Creator Owners group can create new GPOs but they can't link the GPOs to sites, the domain or OUs and they cannot manage existing GPOs.

NEW QUESTION 131

- (Topic 3)

Your network contains an Active Directory Domain Services (AD DS) domain. The domain contains the domain controllers shown in the following table.

Name	Description
DC1	PDC emulator, RID master, and global catalog server
DC2	Infrastructure master and domain naming master
DC3	Schema master
RODC1	Read-only domain controller (RODC)

You need to ensure that if an attacker compromises the computer account of RODC1, the attacker cannot view the Employee-Number AD DS attribute. Which partition should you modify?

- A. configuration
- B. global catalog
- C. domain
- D. schema

Answer: D

NEW QUESTION 135

- (Topic 3)

You have an Azure virtual machine named VM1 that runs Windows Server.

You need to configure the management of VM1 to meet the following requirements:

- Require administrators to request access to VM1 before establishing a Remote Desktop connection.
 - Limit access to VM1 from specific source IP addresses.
 - Limit access to VM1 to a specific management port.
- What should you configure?

- A. a network security group (NSG)
- B. Azure Active Directory (Azure AD) Privileged Identity Management (PIM)
- C. Azure Front Door
- D. Microsoft Defender for Cloud

Answer: D

Explanation:

Reference:

<https://docs.microsoft.com/en-us/azure/defender-for-cloud>

NEW QUESTION 137

- (Topic 3)

Your network contains an on-premises Active Directory Domain Services (AD DS) domain named contoso.com. The domain contains three servers that run Windows Server and have the Hyper-V server role installed. Each server has a Switch Embedded Teaming (SET) team.

You need to verify that Remote Direct Memory Access (RDMA) and all the required Windows Server settings are configured properly on each server.

What should you use?

- A. Server Manager
- B. the validate-DCB cmdlet
- C. the Get-NetAdapter cmdlet
- D. Failover Cluster Manager

Answer: B

Explanation:

Reference: <https://github.com/Microsoft/Validate-DCB>

NEW QUESTION 138

HOTSPOT - (Topic 3)

You have on-premises servers that run Windows Server as shown in the following table.

Name	Local content
Server1	D:\Folder1\File1.docx
Server2	D:\Data1\File3.docx

You have an Azure file share named share1 that stores two files named File2.docx and File3.docx.

You create an Azure File Sync sync group that includes the following endpoints:

? share

? D:\Folder1 on Server1

? D:\Data1 on Server2

For each of the following statements, select Yes if the statement is true. Otherwise, select No.

NOTE: Each correct selection is worth one point.

Statements

Yes

No

You can create a file named File2.docx in D:\Folder1 on Server1.

☐☐

You can create a file named File1.docx in D:\Data1 on Server2.

☐☐

File3.docx will sync to Server1.

☐☐

- A. Mastered
B. Not Mastered

Answer: A

Explanation:

Statements

Yes

No

You can create a file named File2.docx in D:\Folder1 on Server1.

☒☐

You can create a file named File1.docx in D:\Data1 on Server2.

☒☐

File3.docx will sync to Server1.

☐☒

NEW QUESTION 141

HOTSPOT - (Topic 3)

You have an on-premises Active Directory Domain Services (AD DS) domain that syncs with an Azure Active Directory (Azure AD)

tenant

You have an on-premises web app named WebApp1 that only supports Kerberos authentication.

You need to ensure that users can access WebApp1 by using their Azure AD account. The solution must minimize administrative effort.

What should you configure? To answer, select the appropriate options in the answer area. NOTE: Each correct selection is worth one point.

Answer Area

In Azure AD:	<div><div>The Azure AD Application Proxy connector</div><div>The Azure AD Application Proxy service</div><div>Web Application Proxy</div></div>
On-premises:	<div><div>The Azure AD Application Proxy connector</div><div>The Azure AD Application Proxy service</div><div>Web Application Proxy</div></div>

- A. Mastered
B. Not Mastered

Answer: A

Explanation:

Answer Area

In Azure AD:	<div><div>The Azure AD Application Proxy connector</div><div>The Azure AD Application Proxy service</div><div>Web Application Proxy</div></div>
On-premises:	<div><div>The Azure AD Application Proxy connector</div><div>The Azure AD Application Proxy service</div><div>Web Application Proxy</div></div>

NEW QUESTION 143

- (Topic 3)

You have a server named Server1 that runs Windows Server. Server1 has the storage pools shown in the following table.

Name	Number of 7,200-RPM HDDs	Number of 10,000-RPM HDDs	Number of SSDs
Pool1	4	4	None
Pool2	None	2	2
Pool3	8	None	4

You plan to create a virtual disk named VDisk1 that will use storage tiers. Which pools can you use to create VDisk1?

- A. Pool2 and Pool3 only
- B. Pool 2only
- C. Pool only
- D. Pool, Pool2, and Pool3
- E. Pool1 and Pool2 only
- F. Pool1 and Pool3 only
- G. Pool3 only

Answer: A

Explanation:

Storage tiering requires both standard HDDs and SSDs. We cannot use Pool1 because it does not have any SSDs.

NEW QUESTION 148

HOTSPOT - (Topic 3)

Your network contains an Azure AD Domain Services domain named contoso.com.

You need to configure a password policy for the local user accounts on the Azure virtual machines joined to contoso.com.

What should you do? To answer, select the appropriate options in the answer area. NOTE: Each correct selection is worth one point.

Answer Area

Sign in by using a user account that is a member of the:

- AAD DC Administrators group
- AAD DC Administrators group
- Administrators group
- Domain Admins group

Use a Group Policy Object (GPO) linked to the:

- AADDC Users organizational unit (OU)
- AADDC Computers organizational unit (OU)
- AADDC Users organizational unit (OU)
- Computers container

Answer:

Answer Area

Sign in by using a user account that is a member of the:

- AAD DC Administrators group
- AAD DC Administrators group
- Administrators group
- Domain Admins group

Use a Group Policy Object (GPO) linked to the:

- AADDC Users organizational unit (OU)
- AADDC Computers organizational unit (OU)
- AADDC Users organizational unit (OU)
- Computers container

- A. Mastered
- B. Not Mastered

Answer: A

NEW QUESTION 152

- (Topic 3)

Your network contains an Active Directory Domain Services (AD DS) domain named contoso.com.

You need to identify which server is the PDC emulator for the domain. Solution: From a command prompt, you run netdom.exe query fsmo. Does this meet the goal?

- A. Yes
- B. No

Answer: A

Explanation:

Reference:

<https://activedirectorypro.com/how-to-check-fsmo-roles/>

NEW QUESTION 155

- (Topic 3)

You have an Azure subscription that contains the storage accounts shown in the following table.

Name	Location	File share	Blob container
storage1	West US	share1	None
storage2	West US	share2	container2
storage3	Central US	share3	None
storage4	Central US	share4	container4

In the West US Azure region, you create a storage sync service named SyncA. You plan to create a sync group named GroupA. What is the maximum number of cloud endpoints you can use with GroupA?

- A. 1
- B. 2
- C. 3
- D. 4

Answer: B

NEW QUESTION 158

HOTSPOT - (Topic 3)

You have a Group Policy Object (GPO) named GPO1 that contains user settings only.

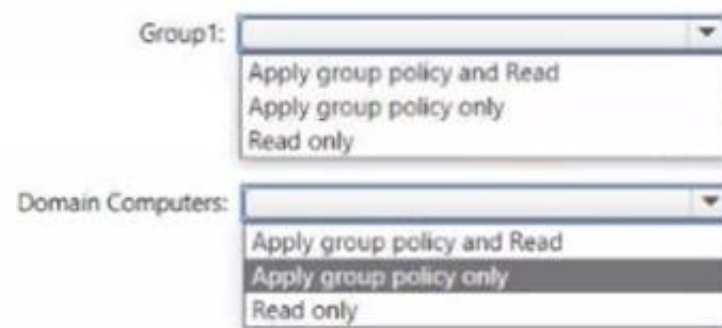
You plan to apply GPO1 to a global security group named Group1.

You link GP01 to the domain, and you remove all the permissions granted to the Authenticated Users group.

You need to configure permissions for GP01 to meet the following requirements.

- GPO1 must apply only to the users in Group 1.
- The solution must use the principle of least privilege

Answer Area



- A. Mastered
- B. Not Mastered

Answer: A

Explanation:

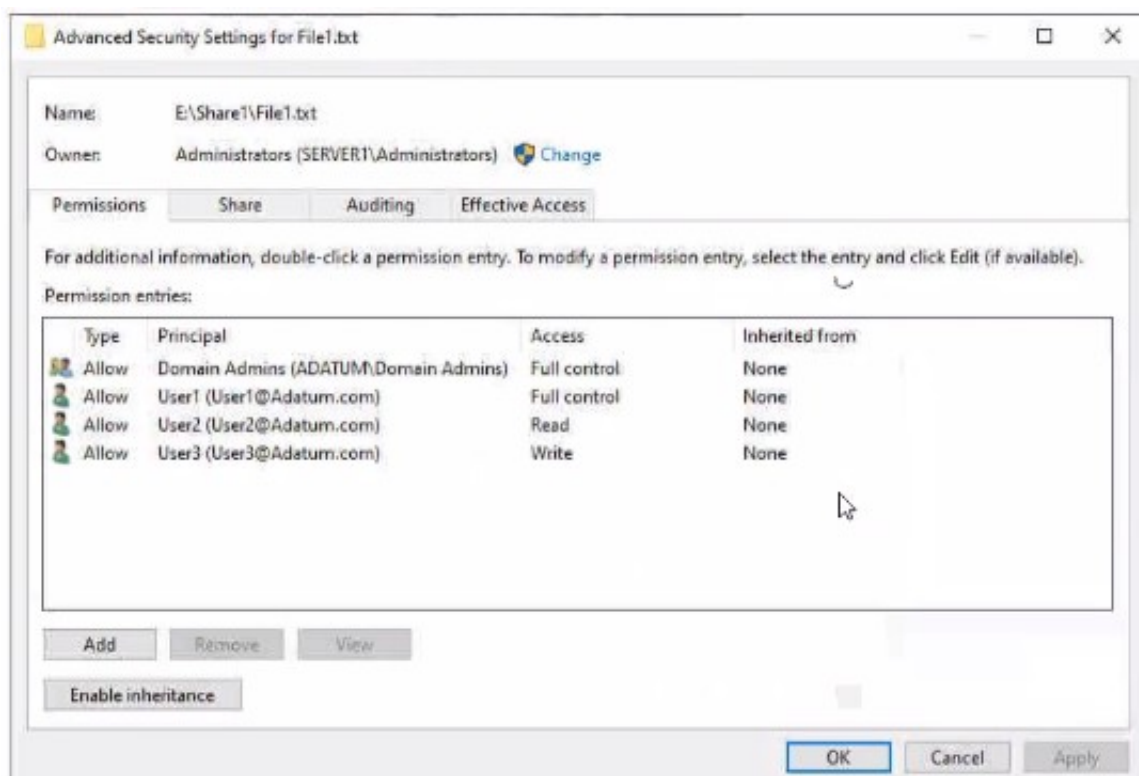
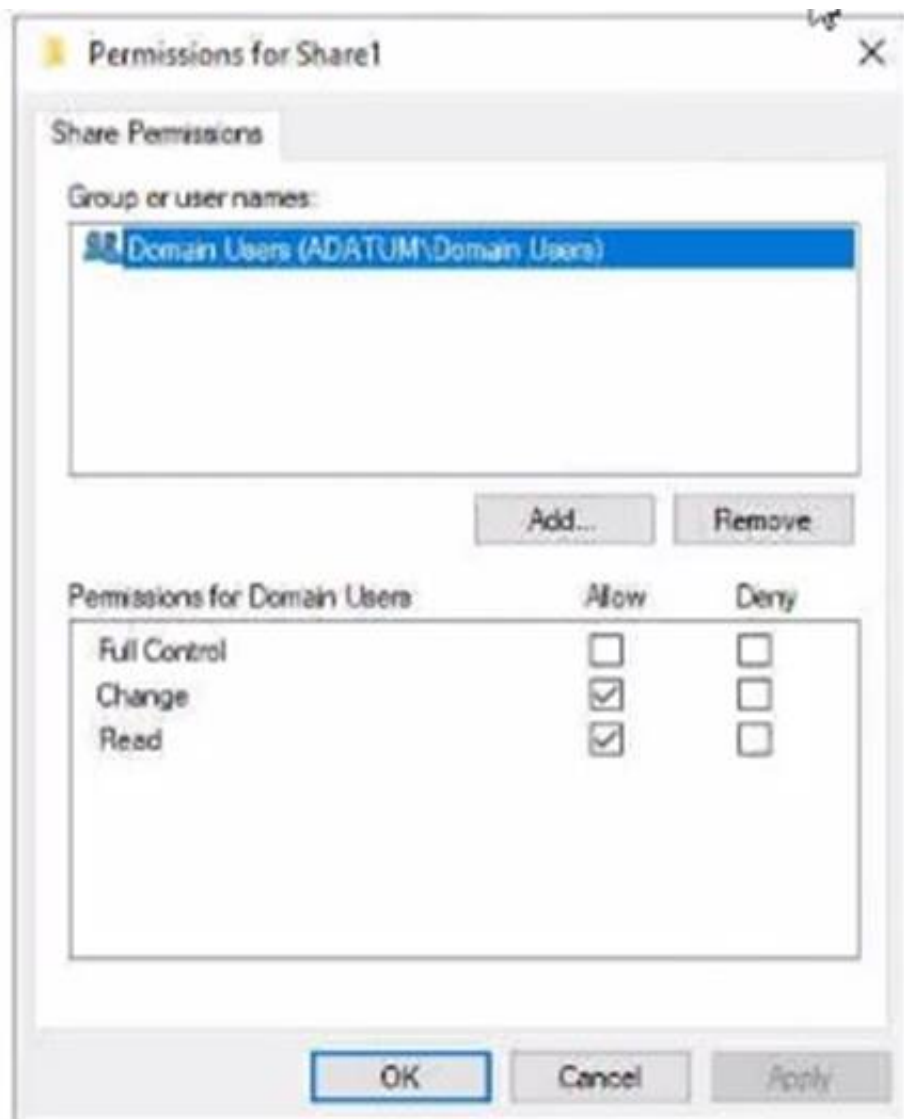
Answer Area



NEW QUESTION 159

HOTSPOT - (Topic 3)

Your network contains an Active Directory Domain Services (AD DS) domain named adatum.com.



The domain contains a 'He server named Server1 and three users named User1. User2 and User), Server1 contains a shared folder named Share1 tha1 has the following configurations:

```
ShareState      : Online
AvailabilityType : NonClustered
FolderEnumerationMode : AccessBased
CachingMode     : Manual
LeasingMode     : Full
SubInstance     : Default
CompressData    : False
ContinuouslyAvailable : False
EncryptData     : False
Name            : Share1
Path            : E:\Share1
ShadowCopy      : False
```

The share permissions for Share1 are configured as shown in the Share Permissions exhibit. (Click the Share Permissions tab.)

Share! contains a file named File1.txt. The advanced security settings for File1.txt are configured as shown in the File Permissions exhibit. (Click the File Permissions tab.)

For each of the following statements, select Yes if the statement is true. Otherwise, select No.

NOTE: f ach correct selection is worth one point.

Answer Area			
Statements	Yes	No	
When User1 connects to \\Server1.adatum.com\Share1\, the user can take ownership of File1.txt.	<input type="radio"/>	<input type="radio"/>	
When User2 connects to \\Server1.adatum.com\Share1\, File1.txt is visible.	<input type="radio"/>	<input type="radio"/>	
When User3 connects to \\Server1.adatum.com\Share1\, File1.txt is visible.	<input type="radio"/>	<input type="radio"/>	

- A. Mastered
- B. Not Mastered

Answer: A

Explanation:

Answer Area

Statements

When User1 connects to \\Server1.adatum.com\Share1\, the user can take ownership of File1.txt.

When User2 connects to \\Server1.adatum.com\Share1\, File1.txt is visible.

When User3 connects to \\Server1.adatum.com\Share1\, File1.txt is visible.

Yes

No

NEW QUESTION 160

- (Topic 3)

You have an on-premises Active Directory Domain Services (AD DS) domain that syncs with an Azure Active Directory (Azure AD) tenant. You plan deploy 100 new Azure virtual machines that will run Windows Server. You need to ensure that each new virtual machine is joined to the AD DS domain. What should you use?

- A. Azure AD Connect
- B. a Group Policy Object (GPO)
- C. an Azure Resource Manager (ARM) template
- D. an Azure management group

Answer: C

Explanation:

Reference:
<https://www.ludovicmedard.com/create-an-arm-template-of-a-virtual-machine-automatically-joined-to-a-domain/>

NEW QUESTION 162

DRAG DROP - (Topic 3)

You have a server named Server 1 that runs Windows Server and has the Hyper-V server role installed. Server1 hosts a virtual machine named VM1. Server1 has an NV Me storage device that is assigned to VM1 by using Discrete Device Assignment. You need to make the device available to the host. Which four actions should you perform in sequence? To answer, move the appropriate actions from the list of actions to the answer area and arrange them in the correct order.

Actions

From VM1, disable the device by using Device Manager.

From Server1, stop VM1.

From Server1, run the Remove-VMAssignableDevice cmdlet.

From Server1, run the Mount-VMHostAssignableDevice cmdlet.

From Server1, enable the device by using Device Manager.

Answer Area

- A. Mastered
- B. Not Mastered

Answer: A

Explanation:

Actions

From VM1, disable the device by using Device Manager.

From Server1, stop VM1.

From Server1, run the Remove-VMAssignableDevice cmdlet.

From Server1, run the Mount-VMHostAssignableDevice cmdlet.

From Server1, enable the device by using Device Manager.

Answer Area

From Server1, stop VM1.

From Server1, run the Remove-VMAssignableDevice cmdlet.

From Server1, run the Mount-VMHostAssignableDevice cmdlet.

From Server1, enable the device by using Device Manager.

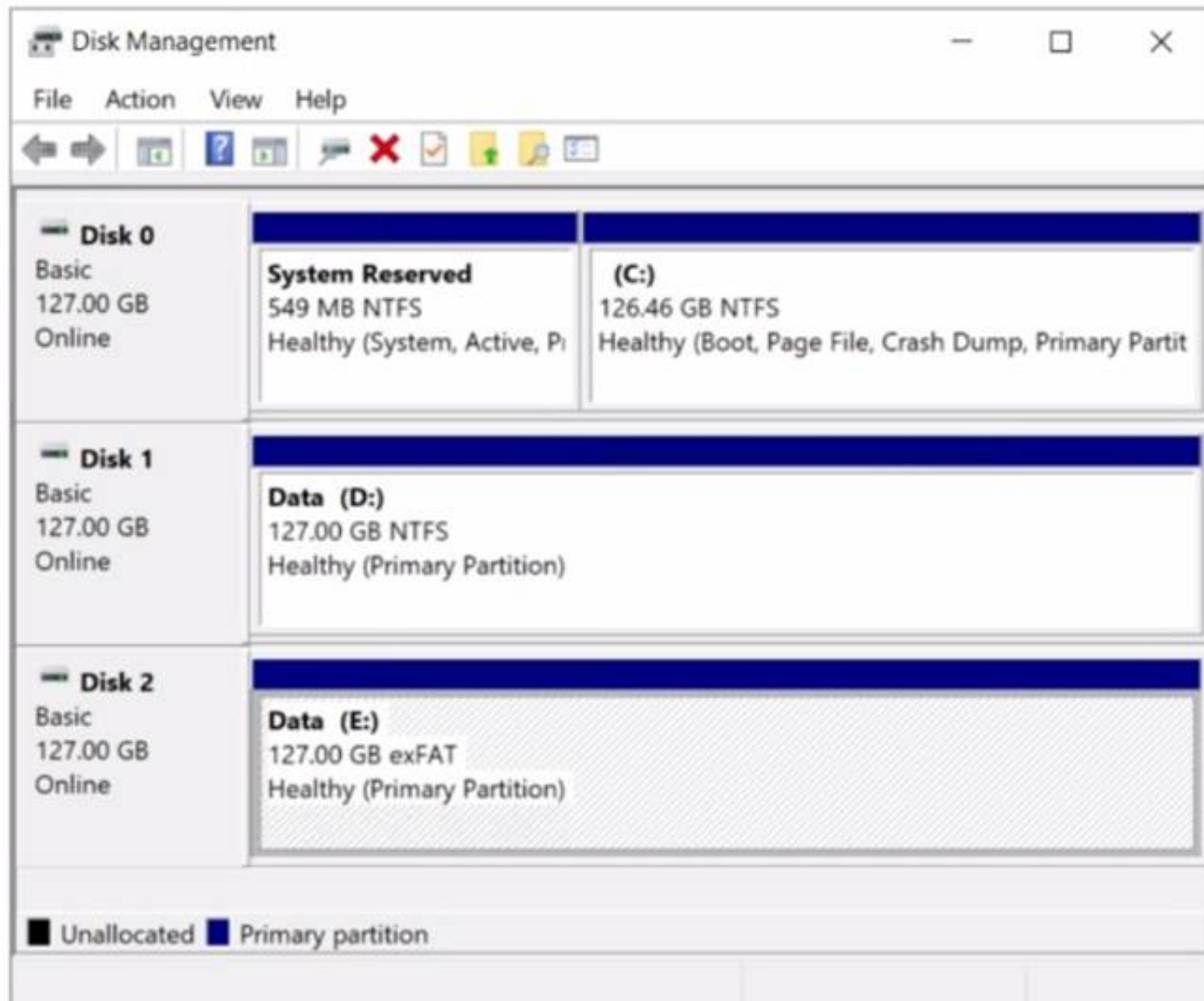
NEW QUESTION 167

- (Topic 3)

You have a server named Server1 that runs Windows Server. The disks on Server1 are configured as shown in the following exhibit.

The Leader of IT Certification

visit - <https://www.certleader.com>



You need to convert volume E to ReFS. The solution must meet the following requirements:

- Preserve the existing data on volume E.
- Minimize administrative effort. What should you do first?

- A. Take Disk 2 offline.
- B. Back up the data on volume E.
- C. Convert Disk 2 to a dynamic disk.
- D. Runconvert.exe.

Answer: B

NEW QUESTION 171

- (Topic 3)

You plan to deploy a containerized application that requires .NET Core.

You need to create a container image for the application. The image must be as small as possible.

Which base image should you use?

- A. Nano Server
- B. Server Cote
- C. Windows Server
- D. Windows

Answer: A

Explanation:

Reference:

<https://techcommunity.microsoft.com/t5/containers/nano-server-x-server-core-x-server-which-base-image-is-the-right/ba-p/2835785>

NEW QUESTION 173

- (Topic 3)

You have an on-premises Active Directory Domain Services (AD DS) domain that syncs with an Azure Active Directory (Azure AD) tenant. The on-premises network is connected to Azure by using a Site-to-Site VPN. You have the DNS zones shown in the following table.

Name	Location	Description
contoso.com	A domain controller named DC1 on the on-premises network	Provides name resolution on-premises
fabrikam.com	An Azure private DNS zone	Provides name resolution for all Azure virtual networks

You need to ensure that names from aDiifcam.com can be resolved from the on-premises network. Which two actions should you perform? Each correct answer presents part of the solution. NOTE: Each correct selection is worth one point.

- A. Create a conditional forwarder for fabrikam.com on DC1.
- B. Create a stub zone for fabrikam.com on DC1.
- C. Create a secondary zone for fabnlcam.com on DO.
- D. Deploy an Azure virtual machine that runs Windows Serve
- E. Modify the DNS Servers settings for the virtual network.
- F. Deploy an Azure virtual machine that runs Windows Serve
- G. Configure the virtual machine &s a DNS forwarder.

Answer: AE

Explanation:

Reference:

<https://docs.microsoft.com/en-us/azure/private-link/private-endpoint-dns#on-premises-workloads-using-a-dns-forwarder>

NEW QUESTION 177

- (Topic 3)

Note: This question is part of a series of questions that present the same scenario. Each question in the series contains a unique solution that might meet the stated goals. Some question sets might have more than one correct solution, while others might not have a correct solution.

After you answer a question in this section, you will NOT be able to return to it. As a result, these questions will not appear in the review screen.

You are planning the deployment of DNS to a new network.

You have three internal DNS servers as shown in the following table.

Name	Location	IP address	Local DNS zone
Server1	Montreal	10.0.1.10	contoso.local
Server2	Toronto	10.0.2.10	east.contoso.local
Server3	Seattle	10.0.3.10	west.contoso.local

The contoso.local zone contains zone delegations for east.contoso.local and west.contoso.local. All the DNS servers use root hints.

You need to ensure that all the DNS servers can resolve the names of all the internal namespaces and internet hosts.

Solution: You configure Server2 and Server3 to forward DNS requests to 10.0.1.10. Does this meet the goal?

A. Yes

B.

No

Answer: B

NEW QUESTION 181

- (Topic 3)

Your network contains an Active Directory Domain Services (AD DS) forest. The forest contains three Active Directory sites named Site1, Site2, and Site3. Each site contains two domain controllers. The sites are connected by using DEFAULTIPSITELINK.

You open a new branch office that contains only client computers.

You need to ensure that the client computers in the new office are primarily authenticated by the domain controllers in Site1.

Solution: You configure the Try Next Closest Site Group Policy Object (GPO) setting in a GPO that is linked to Site1.

Does this meet the goal?

A. Yes

B. No

Answer: B

NEW QUESTION 185

HOTSPOT - (Topic 3)

You have an Azure subscription that contains the storage accounts shown in the following table.

Name	Location	Kind	Container	File share
storage1	East US	StorageV2	cont1	share1
storage2	East US	BlockBlobStorage	cont2	<i>Not applicable</i>
storage3	East US	FileStorage	<i>Not applicable</i>	share3
storage4	Central US	StorageV2	cont4	share4

In the East US Azure region, you create a storage sync service named Synd. You need to create a sync group in Synd. Which storage accounts can you use, and what can you specify as the cloud endpoints? To answer, select the appropriate options in the answer area. NOTE: Each correct selection is worth one point.

Answer Area

Storage accounts:

storage1 and storage3 only
 storage1 only
 storage1 and storage3 only
 storage1 and storage4 only
 storage1, storage2, and storage3 only
 storage1, storage2, storage3, and storage4

Cloud endpoints:

share1 and share3 only
 cont1 and cont2 only
 share1 and share3 only
 cont1, cont2, and cont4 only
 share1, share3, and share4 only
 cont1, cont2, share1, and share3 only
 cont1, cont2, cont4, share1, share3, and share4

- A. Mastered
- B. Not Mastered

Answer: A

Explanation:

Answer Area

Storage accounts:

storage1 and storage3 only
 storage1 only
 storage1 and storage3 only
 storage1 and storage4 only
 storage1, storage2, and storage3 only
 storage1, storage2, storage3, and storage4

Cloud endpoints:

share1 and share3 only
 cont1 and cont2 only
 share1 and share3 only
 cont1, cont2, and cont4 only
 share1, share3, and share4 only
 cont1, cont2, share1, and share3 only
 cont1, cont2, cont4, share1, share3, and share4

NEW QUESTION 186

HOTSPOT - (Topic 3)

You have an on-premises server named Server1 that runs Windows Server and has internet connectivity.

You have an Azure subscription.

You need to monitor Server1 by using Azure Monitor.

Which resources should you create in the subscription, and what should you install on Server1? To answer, select the appropriate options in the answer area.

NOTE: Each correct selection is worth one point.

In the subscription, create:

An Azure Files storage account
A Log Analytics workspace
An Azure SQL database and a data collection rule
An Azure Blob Storage account and a data collection rule

On Server1, install:

The Azure Monitor agent
The Analytics gateway
The Device Health Attestation server role

- A. Mastered

B. Not Mastered

Answer: A

Explanation:

NEW QUESTION 187

HOTSPOT - (Topic 3)

Your network contains two Active Directory Domain Services (AD DS) forests named contoso.com and fabrikam.com. A two-way forest trust exists between the forests. Each forest contains a single domain. The domains contain the servers shown in the following table.

Name	Domain	Description
Server1	contoso.com	Hosts a Windows Admin Center gateway
Server2	fabrikam.com	Hosts resources that will be managed remotely by using Windows Admin Center on Server1

You need to configure resources based constrained delegation so that the users In contoso.com can use Windows Admin Center on Server) to connect to Server? How should you complete the command? To answer, select the appropriate options in the answer area.

NOTE: Each correct selection is worth one point.

Answer Area

Set-ADComputer -Identity

(Get-ADComputer server1.contoso.com)

(Get-ADComputer server2.fabrikam.com)

(Get-ADGroup 'Contoso\Domain Users')

(Get-ADGroup 'Fabrikam\Domain Users')

-PrincipalsAllowedToDelegateToAccount

(Get-ADComputer server1.contoso.com)

(Get-ADComputer server2.fabrikam.com)

(Get-ADGroup 'Contoso\Domain Users')

(Get-ADGroup 'Fabrikam\Domain Users')

- A. Mastered
- B. Not Mastered

Answer: A

Explanation:

Answer Area

Set-ADComputer -Identity

(Get-ADComputer server1.contoso.com)

(Get-ADComputer server2.fabrikam.com)

(Get-ADGroup 'Contoso\Domain Users')

(Get-ADGroup 'Fabrikam\Domain Users')

-PrincipalsAllowedToDelegateToAccount

(Get-ADComputer server1.contoso.com)

(Get-ADComputer server2.fabrikam.com)

(Get-ADGroup 'Contoso\Domain Users')

(Get-ADGroup 'Fabrikam\Domain Users')

NEW QUESTION 188

HOTSPOT - (Topic 3)

Your on-premises network contains an Active Directory domain named contoso.com and 500 servers that run Windows Server. All the servers are Azure Arc-enabled and joined to contoso.com.

You need to implement PowerShell Desired State Configuration (DSC) on all the servers. The solution must minimize administrative effort.

Where should you store the DSC scripts, and what should you use to apply DSC to the servers? To answer, select the appropriate options in the answer area. NOTE: Each correct selection is worth one point.

Answer Area

Store in:

An Azure Automation account

An Azure App Configuration store

An Azure Automation account

An Azure Policy definition

Use:

Guest configuration in Azure Policy

A Group Policy Object (GPO) in Active Directory Domain Services (AD DS)

Azure virtual machine extensions

Guest configuration in Azure Policy

- A. Mastered
- B. Not Mastered

Answer: A

Explanation:

Answer Area

Store in:

An Azure Automation account

An Azure App Configuration store

An Azure Automation account

An Azure Policy definition

Use:

Guest configuration in Azure Policy

A Group Policy Object (GPO) in Active Directory Domain Services (AD DS)

Azure virtual machine extensions

Guest configuration in Azure Policy

NEW QUESTION 191

- (Topic 3)

You have servers that have the DNS Server role installed. The servers are configured as shown in the following table.

Name	Office	Local DNS zone	IP address
Server1	Paris	contoso.com	10.1.1.1
Server2	New York	None	10.2.2.2

All the client computers in the New York office use Server2 as the DNS server. You need to configure name resolution in the New York office to meet the following requirements:

- ? Ensure that the client computers in New York can resolve names from contoso.com.
- ? Ensure that Server2 forwards all DNS queries for internet hosts to 131.107.100.200.

The solution must NOT require modifications to Server1. Each correct answer presents part of the solution. NOTE: Each correct selection is worth one point.

- A. a forwarder
- B. a conditional forwarder
- C. a delegation
- D. a secondary zone
- E. a reverse lookup zone

Answer: AB

Explanation:

A conditional forwarder is required for contoso.com. A forwarder is required for all other domains. When you have a conditional forwarder and a forwarder configured, the conditional forwarder will be used for the specified domain. You could use a secondary zone for contoso.com but that would require a configuration change on Server1.

NEW QUESTION 194

- (Topic 2)

You need to configure the Group Policy settings to ensure that the Azure Virtual Desktop session hosts meet the security requirements. What should you configure?

- A. security filtering for the link of GP04
- B. security filtering for the link of GPO1
- C. loopback processing in GPO4
- D. the Enforced property for the link of GP01
- E. loopback processing in GPO1
- F. the Enforced property for the link of GP04

Answer: C

NEW QUESTION 196

DRAG DROP - (Topic 2)

You need to meet the security requirements for passwords. Where should you configure the components for Azure AD Password Protection? To answer, drag the appropriate components to the correct locations. Each component may be used once, more than once, or not at all. You may need to drag the split bar between panes or scroll to view content.

NOTE Each correct selection is worth one point.

Locations	Answer Area
DC1 only	
All the domain controllers	
VM1 and VM2	
The Azure AD tenant	

The Azure AD Password Protection DC agent:	Location
The Azure AD Password Protection proxy service:	Location
A custom banned password list:	Location

- A. Mastered
- B. Not Mastered

Answer: A

Explanation:

Locations	Answer Area
DC1 only	
All the domain controllers	
VM1 and VM2	
The Azure AD tenant	

The Azure AD Password Protection DC agent:	All the domain controllers
The Azure AD Password Protection proxy service:	VM1 and VM2
A custom banned password list:	The Azure AD tenant

NEW QUESTION 200

- (Topic 2)

You are planning the implementation Azure Arc to support the planned changes. You need to configure the environment to support configuration management policies. What should you do?

- A. Hybrid Azure AD join all the servers.
- B. Create a hybrid runbook worker m Azure Automation.
- C. Deploy the Azure Connected Machine agent to all the servers.
- D. Deploy the Azure Monitor agent to all the servers.

Answer: C

Explanation:

Reference:

<https://docs.microsoft.com/en-us/azure/azure-arc/servers/plan-at-scale-deployment>

NEW QUESTION 202

- (Topic 2)

You need to implement an availability solution for DHCP that meets the networking requirements.

Which two actions should you perform? Each correct answer presents part of the solution. NOTE: Each correct selection is worth one point.

- A. On DHCP1. create a scope that contains 25 percent of the IP addresses from Scope2.
- B. On the router in each office, configure a DHCP relay.
- C. DHCP2. configure a scope that contains 25 percent of the IP addresses from Scope 1 .
- D. On each DHCP server, install the Failover Clustering feature and add the DHCP clusterrole.
- E. On each DHCP scope, configure DHCP failover.

Answer: BE

Explanation:

Reference:

[https://docs.microsoft.com/en-us/previous-versions/windows/it-pro/windows-server-2012-r2-and-2012/hh831385\(v=ws.11\)](https://docs.microsoft.com/en-us/previous-versions/windows/it-pro/windows-server-2012-r2-and-2012/hh831385(v=ws.11))

NEW QUESTION 207

HOTSPOT - (Topic 1)

Which groups can you add to Group3 and Group5? To answer, select the appropriate options in the answer area.

NOTE: Each correct selection is worth one point.

Group3:

Group6 only
Group1 and Group2 only
Group1 and Group4 only
Group1, Group2, Group4, and Group5 only
Group1, Group2, Group4, Groups, and Group6

Group5:

Group1 only
Group4 only
Group6 only
Group2 and Group4 only
Group4 and Group6 only

- A. Mastered
B. Not Mastered

Answer: A

Explanation:

Group3:

Group6 only
Group1 and Group2 only
Group1 and Group4 only
Group1, Group2, Group4, and Group5 only
Group1, Group2, Group4, Groups, and Group6

Group5:

Group1 only
Group4 only
Group6 only
Group2 and Group4 only
Group4 and Group6 only

NEW QUESTION 211

HOTSPOT - (Topic 1)

For each of the following statements, select Yes if the statement is true. Otherwise, select No.

NOTE: Each correct selection is worth one point.

Answer Area		
Statements	Yes	No
Admin1 must use a password that has at least 14 characters.	<input type="radio"/>	<input type="radio"/>
User1 must use a password that has at least 10 characters.	<input type="radio"/>	<input type="radio"/>
If Admin1 creates a new local user on Server1, the password for the new user must be at least eight characters.	<input type="radio"/>	<input type="radio"/>

- A. Mastered
B. Not Mastered

Answer: A

Explanation:

Answer Area

Statements	Yes	No
Admin1 must use a password that has at least 14 characters.	<input type="radio"/>	<input checked="" type="radio"/>
User1 must use a password that has at least 10 characters.	<input checked="" type="radio"/>	<input type="radio"/>
If Admin1 creates a new local user on Server1, the password for the new user must be at least eight characters.	<input type="radio"/>	<input checked="" type="radio"/>

NEW QUESTION 215
- (Topic 1)
You need to meet the technical requirements for User1. The solution must use the principle of least privilege. What should you do?

A. Add Users1 to the Server Operators group in contoso.com.
B. Create a delegation on contoso.com.
C. Add Users1 to the Account Operators group in contoso.com.
D. Create a delegation on OU3.

Answer: D

Explanation:
Reference:
<https://docs.microsoft.com/en-us/windows-server/identity/ad-ds/plan/delegating-administration-of-account-ous-and-resource-ous>

NEW QUESTION 216
HOTSPOT - (Topic 1)
You need to meet the technical requirements for VM1. Which cmdlet should you run first? To answer, select the appropriate options in the answer area. NOTE: Each correct selection is worth one point.

Answer Area

<div>Set-VM Set-VMBios Set-VMHost Set-VMFirmware Set-VMProcessor</div>	VM1	<div><div><div>-NewVMName -GuestControlledCacheTypes -EnableHostResourceProtection -ExposeVirtualizationExtensions</div></div></div>	\$true
--	-----	--	--------

- A. Mastered
B. Not Mastered

Answer: A

Explanation:
Graphical user interface, text, application Description automatically generated

NEW QUESTION 218
- (Topic 1)
You need to meet the technical requirements for VM3 On which volumes can you enable Data Deduplication?

- A. D and E only
B. C, D, E, and F
C. D only
D. C and D only
E. D, E, and F only

Answer: A

Explanation:
Reference:
<https://docs.microsoft.com/en-us/windows-server/storage/data-deduplication/interop>

NEW QUESTION 220
HOTSPOT - (Topic 1)
Which groups can you add lo Group3 and Groups? To answer, select the appropriate options in the answer area. NOTE Each correct selection is worth one point.

Answer Area

Group3:

Group6 only

Group1 and Group2 only

Group1 and Group4 only

Group1, Group2, Group4, and Group5 only

Group1, Group2, Group4, Group5, and Group6

Group5:

Group1 only

Group4 only

Group6 only

Group2 and Group4 only

Group4 and Group6 only

- A. Mastered
- B. Not Mastered

Answer: A

Explanation:

Answer Area

Group3:

Group6 only

Group1 and Group2 only

Group1 and Group4 only

Group1, Group2, Group4, and Group5 only

Group1, Group2, Group4, Group5, and Group6

Group5:

Group1 only

Group4 only

Group6 only

Group2 and Group4 only

Group4 and Group6 only

NEW QUESTION 225

.....

Thank You for Trying Our Product

* 100% Pass or Money Back

All our products come with a 90-day Money Back Guarantee.

* One year free update

You can enjoy free update one year. 24x7 online support.

* Trusted by Millions

We currently serve more than 30,000,000 customers.

* Shop Securely

All transactions are protected by VeriSign!

100% Pass Your AZ-800 Exam with Our Prep Materials Via below:

<https://www.certleader.com/AZ-800-dumps.html>