

CompTIA

Exam Questions CV0-003

CompTIA Cloud+ Certification Exam



NEW QUESTION 1

- (Topic 1)

A systems administrator has migrated an internal application to a public cloud. The new web server is running under a TLS connection and has the same TLS certificate as the internal application that is deployed. However, the IT department reports that only internal users who are using new versions of the OSs are able to load the application home page.

Which of the following is the MOST likely cause of the issue?

- A. The local firewall from older OSs is not allowing outbound connections
- B. The local firewall from older OSs is not allowing inbound connections
- C. The cloud web server is using a self-signed certificate that is not supported by older browsers
- D. The cloud web server is using strong ciphers that are not supported by older browsers

Answer: D

Explanation:

Ciphers are algorithms or methods that are used to encrypt and decrypt data for secure communication. Strong ciphers are ciphers that use high-level encryption techniques and keys to provide stronger security and protection for data. The cloud web server is using strong ciphers that are not supported by older browsers is the most likely cause of the issue of only internal users who are using new versions of the OSs being able to load the application home page after the administrator configured a redirect from HTTP to HTTPS on the web server. Older browsers may not support the strong ciphers used by the cloud web server for HTTPS connections, which can result in a failure to establish a secure connection and load the application home page. References: CompTIA Cloud+ Certification Exam Objectives, page 15, section 2.8

NEW QUESTION 2

- (Topic 1)

An organization has two businesses that are developing different software products. They are using a single cloud provider with multiple IaaS instances. The organization identifies that the tracking of costs for each business are inaccurate.

Which of the following is the BEST method for resolving this issue?

- A. Perform segregation of the VLAN and capture egress and ingress values of each network interface
- B. Tag each server with a dedicated cost and sum them based on the businesses
- C. Split the total monthly invoice equally between the businesses
- D. Create a dedicated subscription for the businesses to manage the costs

Answer: B

Explanation:

Tagging each server with a dedicated cost and summing them based on the businesses is the best method for resolving the issue of inaccurate cost tracking for different businesses that use multiple IaaS instances within a single cloud provider. Tagging can help identify and organize the servers based on various criteria, such as name, purpose, owner, or cost center. Tagging can also enable granular and accurate billing and reporting based on the tags. Summing the costs based on the businesses can help allocate and distribute the costs correctly and fairly among the different businesses. References: CompTIA Cloud+ Certification Exam Objectives, page 13, section 2.5

NEW QUESTION 3

- (Topic 1)

Which of the following cloud deployment models allows a company to have full control over its IT infrastructure?

- A. Private
- B. Cloud within a cloud
- C. Hybrid
- D. Public

Answer: A

Explanation:

A private cloud is a type of cloud deployment model that provides cloud services exclusively to a single organization or tenant. A private cloud allows a company to have full control over its IT infrastructure, as it can customize, configure, manage, and secure its own cloud environment according to its specific needs and preferences. A private cloud can also offer higher performance, reliability, and privacy than other cloud deployment models, as it does not share resources or data with other customers.

References: CompTIA Cloud+ Certification Exam Objectives, page 8, section 1.2 Reference: <https://www.sciencedirect.com/topics/computer-science/private-cloud>

NEW QUESTION 4

- (Topic 1)

A systems administrator disabled TLS 1.0 and 1.1, as well as RC4, 3DES, and AES-128 ciphers for TLS 1.2, on a web server. A client now reports being unable to access the web server, but the administrator verifies that the server is online, the web service is running, and other users can reach the server as well.

Which of the following should the administrator recommend the user do FIRST?

- A. Disable antivirus/anti-malware software
- B. Turn off the software firewall
- C. Establish a VPN tunnel between the computer and the web server
- D. Update the web browser to the latest version

Answer: D

Explanation:

Updating the web browser to the latest version is the first action that the user should do when experiencing a connection timeout error after the administrator configured a redirect from HTTP to HTTPS on the web server. Updating the web browser can ensure that it supports the latest security protocols and standards, such as TLS 1.2 or 1.3, which are required for HTTPS connections. If the web browser is outdated or incompatible with the security protocols or standards used by the web server, it may fail to establish a secure connection and result in a connection timeout error. References: CompTIA Cloud+ Certification Exam Objectives,

page 15, section 2.8

NEW QUESTION 5

- (Topic 1)

A SAN that holds VM files is running out of storage space.

Which of the following will BEST increase the amount of effective storage on the SAN?

- A. Enable encryption
- B. Increase IOPS
- C. Convert the SAN from RAID 50 to RAID 60
- D. Configure deduplication

Answer: D

Explanation:

Deduplication is a type of data compression technique that eliminates redundant or duplicate data blocks or segments in a storage system or device. Configuring deduplication can help increase the amount of effective storage on a SAN that holds VM files and is running out of storage space, as it can reduce the storage space consumption and increase the storage space utilization by storing only unique data blocks or segments. Configuring deduplication can also improve performance and efficiency, as it can speed up data transfer and backup processes and save network bandwidth and power consumption. References: CompTIA Cloud+ Certification Exam Objectives, page 9, section 1.4

NEW QUESTION 6

- (Topic 1)

After analyzing a web server's logs, a systems administrator sees that users are connecting to the company's application through HTTP instead of HTTPS. The administrator then configures a redirect from HTTP to HTTPS on the web server, and the application responds with a connection time-out message.

Which of the following should the administrator verify NEXT?

- A. The TLS certificate
- B. The firewall rules
- C. The concurrent connection limit
- D. The folder permissions

Answer: B

Explanation:

The firewall rules are the set of policies that define which traffic is allowed or denied between different network segments or devices. The firewall rules can affect the redirect from HTTP to HTTPS on the web server, as they can block or allow traffic based on ports and protocols. If the firewall rules are not configured properly to allow HTTPS traffic on port 443, the application may respond with a connection time-out message. The administrator should verify the firewall rules next to ensure that HTTPS traffic is permitted between the web server and its clients. References: CompTIA Cloud+ Certification Exam Objectives, page 15, section 2.8

NEW QUESTION 7

- (Topic 1)

The security team for a large corporation is investigating a data breach. The team members are all trying to do the same tasks but are interfering with each other's work. Which of the following did the team MOST likely forget to implement?

- A. Incident type categories
- B. A calling tree
- C. Change management
- D. Roles and responsibilities

Answer: D

Explanation:

Roles and responsibilities are definitions or descriptions of what each team member or stakeholder is expected to do or perform in a project or process. Roles and responsibilities can help clarify the scope, authority, and accountability of each team member or stakeholder and avoid any confusion or duplication of work. The security team most likely forgot to implement roles and responsibilities when investigating a data breach, as they are all trying to do the same tasks but are interfering with each other's work. Implementing roles and responsibilities can help improve efficiency and effectiveness, as it can ensure that each team member or stakeholder knows what tasks they need to do and how they need to coordinate with others. References: CompTIA Cloud+ Certification Exam Objectives, page 13, section 2.5

NEW QUESTION 8

- (Topic 1)

An organization is implementing a new requirement to facilitate users with faster downloads of corporate application content. At the same time, the organization is also expanding cloud regions.

Which of the following would be suitable to optimize the network for this requirement?

- A. Implement CDN for overall cloud application
- B. Implement auto-scaling of the compute resources
- C. Implement SR-IOV on the server instances
- D. Implement an application container solution

Answer: C

Explanation:

Reference: https://access.redhat.com/documentation/en-us/red_hat_openshift_platform/13/html/network_functions_virtualization_planning_and_configuration_guide/part-sriov-nfv-configuration

NEW QUESTION 9

- (Topic 1)

A systems administrator needs to convert ten physical servers to virtual.

Which of the following would be the MOST efficient conversion method for the administrator to use?

- A. Rebuild the servers from scratch
- B. Use the vendor's conversion tool
- C. Clone the hard drive
- D. Restore from backup

Answer: B

Explanation:

A vendor's conversion tool is a type of software or utility that automates and simplifies the process of converting physical servers to virtual machines by capturing the configuration and data of the physical servers and creating virtual disks and files for the virtual machines. Using the vendor's conversion tool can be the most efficient conversion method for a systems administrator to use to convert ten physical servers to virtual, as it can save time and effort by avoiding manual steps or errors involved in rebuilding, cloning, or restoring the physical servers to virtual machines. Using the vendor's conversion tool can also ensure compatibility and consistency, as it can match the hardware and software requirements and settings of the physical servers to the virtual machines.

References: CompTIA Cloud+ Certification Exam Objectives, page 10, section 1.5

NEW QUESTION 10

- (Topic 1)

A cloud administrator is switching hosting companies and using the same script that was previously used to deploy VMs in the new cloud. The script is returning errors that the command was not found.

Which of the following is the MOST likely cause of the script failure?

- A. Account mismatches
- B. IP address changes
- C. API version incompatibility
- D. Server name changes

Answer: C

Explanation:

An application programming interface (API) is a set of rules or protocols that defines how different systems or applications can communicate or interact with each other. An API version is a specific iteration or release of an API that may have different features or functionalities than previous or subsequent versions. API version incompatibility is the most likely cause of the script failure when switching hosting companies and using the same script that was previously used to deploy VMs in the new cloud, as it can result in errors or failures when trying to execute commands or functions that are not supported or recognized by the new cloud provider's API version. The issue can be resolved by updating or modifying the script to match the new cloud provider's API version.

References: CompTIA Cloud+ Certification Exam Objectives, page 13, section 2.5

NEW QUESTION 10

- (Topic 1)

A cloud administrator has built a new private cloud environment and needs to monitor all computer, storage, and network components of the environment.

Which of the following protocols would be MOST useful for this task?

- A. SMTP
- B. SCP
- C. SNMP
- D. SFTP

Answer: C

Explanation:

Simple Network Management Protocol (SNMP) is a protocol that enables monitoring and managing network devices and components in an IP network. SNMP can help monitor all computer, storage, and network components of a private cloud environment, as it can collect and report information about their status, performance, configuration, and events. SNMP can also help troubleshoot and optimize the private cloud environment, as it can detect and alert any issues or anomalies related to the network devices and components. References: CompTIA Cloud+ Certification Exam Objectives, page 15, section 2.8

NEW QUESTION 15

- (Topic 1)

A company wants to check its infrastructure and application for security issues regularly. Which of the following should the company implement?

- A. Performance testing
- B. Penetration testing
- C. Vulnerability testing
- D. Regression testing

Answer: C

Explanation:

Vulnerability testing is a type of testing that identifies and evaluates the weaknesses or flaws in a system or application that could be exploited by attackers. Vulnerability testing can help check the infrastructure and application for security issues regularly, as it can reveal the potential risks and exposures that may compromise the confidentiality, integrity, or availability of the system or application. Vulnerability testing can also help remediate or mitigate the vulnerabilities by providing recommendations or solutions to fix or reduce them. References: CompTIA Cloud+ Certification Exam Objectives, page 19, section 4.1

Reference: <https://pure.security/services/technical-assurance/external-penetration-testing/>

NEW QUESTION 18

- (Topic 1)

A company is switching from one cloud provider to another and needs to complete the migration as quickly as possible. Which of the following is the MOST important consideration to ensure a seamless migration?

- A. The cost of the environment
- B. The I/O of the storage
- C. Feature compatibility
- D. Network utilization

Answer: C

Explanation:

Feature compatibility is the degree to which the features or functionalities of a system or application are compatible or interoperable with another system or application. Feature compatibility is the most important consideration to ensure a seamless migration from one cloud provider to another, as it can affect the performance, reliability, and security of the system or application in the new cloud environment. Feature compatibility can also help complete the migration as quickly as possible, as it can reduce or eliminate the need for reconfiguration, customization, or testing of the system or application after the migration. References: CompTIA Cloud+ Certification Exam Objectives, page 18, section 3.5

NEW QUESTION 19

- (Topic 1)

A systems administrator notices that a piece of networking equipment is about to reach its end of support. Which of the following actions should the administrator recommend?

- A. Update the firmware
- B. Migrate the equipment to the cloud
- C. Update the OS
- D. Replace the equipment

Answer: D

Explanation:

Replacing the equipment is the best action to take when a piece of networking equipment is about to reach its end of support. End of support means that the vendor or manufacturer will no longer provide technical assistance, updates, patches, or fixes for the equipment, which can affect its functionality, performance, security, and compatibility. Replacing the equipment with a newer model that has ongoing support can prevent any issues or risks associated with using outdated equipment.

References: CompTIA Cloud+ Certification Exam Objectives, page 18, section 3.5

NEW QUESTION 22

- (Topic 1)

A global web-hosting company is concerned about the availability of its platform during an upcoming event. Web traffic is forecasted to increase substantially during the next week. The site contains mainly static content.

Which of the following solutions will assist with the increased workload?

- A. DoH
- B. WAF
- C. IPS
- D. CDN

Answer: D

Explanation:

A content delivery network (CDN) is a distributed network of servers that delivers web content to users based on their geographic location, origin server, and content delivery server. A CDN can assist with the increased workload caused by sudden continuous bursts of traffic, as it can reduce the load on the origin server by caching and serving static content from edge servers closer to the users. A CDN can also improve the performance and availability of web content delivery, as it can reduce latency, bandwidth consumption, and network congestion. References: CompTIA Cloud+ Certification Exam Objectives, page 12, section 2.2

Reference: <https://www.globaldots.com/content-delivery-network-explained>

NEW QUESTION 27

- (Topic 1)

A company has deployed a new cloud solution and is required to meet security compliance.

Which of the following will MOST likely be executed in the cloud solution to meet security requirements?

- A. Performance testing
- B. Regression testing
- C. Vulnerability testing
- D. Usability testing

Answer: C

Explanation:

Vulnerability testing is a type of security testing that identifies and evaluates the weaknesses or flaws in a system or service that could be exploited by attackers. Vulnerability testing can help meet security compliance requirements when deploying a new cloud solution, as it can reveal any potential security risks or gaps in the cloud environment and provide recommendations for remediation or mitigation. Vulnerability testing can also help improve security posture and performance, as it can prevent or reduce the impact of cyberattacks, data breaches, or service disruptions.

References: CompTIA Cloud+ Certification Exam Objectives, page 14, section 2.7

NEW QUESTION 31

- (Topic 1)

An organization will be deploying a web application in a public cloud with two web servers, two database servers, and a load balancer that is accessible over a single public IP.

Taking into account the gateway for this subnet and the potential to add two more web servers, which of the following will meet the minimum IP requirement?

- A. 192.168.1.0/26
- B. 192.168.1.0/27
- C. 192.168.1.0/28
- D. 192.168.1.0/29

Answer: C

Explanation:

A /28 subnet is a subnet that has a network prefix of 28 bits and a host prefix of 4 bits. A /28 subnet can support up to 16 hosts (14 usable hosts) and has a subnet mask of 255.255.255.240. Using a /28 subnet can meet the minimum IP requirement for deploying a web application in a public cloud with two web servers, two database servers, and a load balancer that is accessible over a single public IP, taking into account the gateway for this subnet and the potential to add two more web servers. Using a /28 subnet can provide enough host addresses for the current and future web servers, database servers, load balancer, and gateway, as well as allow for some growth or redundancy.

References: CompTIA Cloud+ Certification Exam Objectives, page 15, section 2.8

NEW QUESTION 34

- (Topic 1)

A systems administrator needs to configure a set of policies to protect the data to comply with mandatory regulations.

Which of the following should the administrator implement to ensure DLP efficiently prevents the exposure of sensitive data in a cloud environment?

- A. Integrity
- B. Versioning
- C. Classification
- D. Segmentation

Answer: C

Explanation:

Classification is a process of assigning labels or categories to data based on its sensitivity, value, or risk level. Classification can help implement data loss prevention (DLP) policies by identifying which data needs to be protected and how to protect it according to its classification level. Classification can also help comply with mandatory regulations by ensuring that data is handled and stored appropriately based on its legal or contractual requirements. Classification is essential for DLP to efficiently prevent the exposure of sensitive data in a cloud environment. References: CompTIA Cloud+ Certification Exam Objectives, page 14, section 2.7

NEW QUESTION 38

- (Topic 1)

A company needs to rehost its ERP system to complete a datacenter migration to the public cloud. The company has already migrated other systems and configured VPN connections.

Which of the following MOST likely needs to be analyzed before rehosting the ERP?

- A. Software
- B. Licensing
- C. Right-sizing
- D. The network

Answer: D

Explanation:

The network is the set of devices, connections, protocols, and configurations that enable communication and data transfer between different systems and applications. The network can affect the rehosting of an ERP system to complete a datacenter migration to the public cloud, as it can influence factors such as bandwidth, latency, availability, security, and compatibility. The network needs to be analyzed before rehosting the ERP system to ensure that the network requirements and specifications are met, the network performance and reliability are maintained or improved, and the network security and integrity are preserved or enhanced. References: CompTIA Cloud+ Certification Exam Objectives, page 18, section 3.5

NEW QUESTION 43

- (Topic 1)

A cloud administrator is reviewing a new application implementation document. The administrator needs to make sure all the known bugs and fixes are applied, and unwanted

ports and services are disabled.

Which of the following techniques would BEST help the administrator assess these business requirements?

- A. Performance testing
- B. Usability testing
- C. Vulnerability testing
- D. Regression testing

Answer: D

Explanation:

Regression testing is a type of software testing that verifies that existing features or functionalities of a system or application are not affected by any changes or updates made to it. Regression testing can help assess whether all the known bugs and fixes are applied and unwanted ports and services are disabled when reviewing a new application implementation document for a cloud deployment, as it can detect any errors or defects that may have been introduced or re-introduced after applying patches, updates, or configurations to the application. References: CompTIA Cloud+ Certification Exam Objectives, page 19, section 4.1

NEW QUESTION 44

- (Topic 1)

A cloud administrator is building a new VM for a network security appliance. The security appliance installer says the CPU clock speed does not meet the

requirements.

Which of the following will MOST likely solve the issue?

- A. Move the VM to a host with a faster CPU
- B. Add more vCPUs to the VM
- C. Enable CPU masking on the VM
- D. Enable hyperthreading on the virtual host

Answer: A

Explanation:

Moving the VM to a host with a faster CPU is the best way to solve the issue of the security appliance installer saying the CPU clock speed does not meet the requirements when building a new VM for a network security appliance. Moving the VM to a host with a faster CPU can ensure that the VM meets the minimum CPU clock speed requirement for the security appliance, as it can use the physical CPU resources of the host. Moving the VM to a host with a faster CPU can also improve the performance and reliability of the security appliance, as it can reduce latency, contention, and overhead.

References: CompTIA Cloud+ Certification Exam Objectives, page 11, section 1.6

NEW QUESTION 46

- (Topic 1)

A cloud administrator is setting up a DR site on a different zone of the same CSP. The application servers are replicated using the VM replication, and the database replication is set up using log shipping. Upon testing the DR site, the application servers are unable to access the database servers. The administrator has verified the systems are running and are accessible from the CSP portal.

Which of the following should the administrator do to fix this issue?

- A. Change the database application IP
- B. Create a database cluster between the primary site and the DR site
- C. Update the connection string
- D. Edit the DNS record at the DR site for the application servers

Answer: C

Explanation:

A connection string is a parameter that specifies how to connect to a database server or instance. A connection string typically includes information such as the server name, database name, user name, password, and other options. Updating the connection string is the best way to fix the issue of application servers being unable to access the database servers after setting up a DR site on a different zone of the same CSP and replicating the application and database servers using VM replication and log shipping. Updating the connection string can ensure that the application servers can connect to the correct database server or instance in the DR site, as the server name or IP address may have changed after the replication. References: CompTIA Cloud+ Certification Exam Objectives, page 10, section 1.5

NEW QUESTION 47

- (Topic 1)

A media company has made the decision to migrate a physical, internal file server to the cloud and use a web-based interface to access and manage the files. The users must be able to use their current corporate logins.

Which of the following is the MOST efficient way to achieve this goal?

- A. Deploy a VM in a cloud, attach storage, and copy the files across
- B. Use a SaaS service with a directory service federation
- C. Deploy a fileshare in a public cloud and copy the files across
- D. Copy the files to the object storage location in a public cloud

Answer: B

Explanation:

Software as a service (SaaS) is a type of cloud service model that provides software applications over the Internet that are hosted and managed by a cloud service provider. Directory service federation is a type of authentication mechanism that allows users to access multiple systems or applications across different domains or organizations with a single login credential. Using a SaaS service with a directory service federation can help migrate an internal file server to the cloud and use a web-based interface to access and manage the files, as it can eliminate the need for maintaining an on-premises file server and enable seamless and secure access to cloud-based files using the same corporate logins. References: CompTIA Cloud+ Certification Exam Objectives, page 8, section 1.2

NEW QUESTION 52

- (Topic 1)

An IaaS provider has numerous devices and services that are commissioned and decommissioned automatically on an ongoing basis. The cloud administrator needs to implement a solution that will help reduce administrative overhead.

Which of the following will accomplish this task?

- A. IPAM
- B. NAC
- C. NTP
- D. DNS

Answer: A

Explanation:

IP address management (IPAM) is a type of tool or system that automates and standardizes the allocation, tracking, and management of IP addresses in an IP network. IPAM can help reduce administrative overhead for an IaaS provider that has numerous devices and services that are commissioned and decommissioned automatically on an ongoing basis, as it can simplify and centralize the process of assigning and reclaiming IP addresses for different devices and services without manual intervention or errors. IPAM can also help optimize network performance and security, as it can monitor and report any issues or conflicts related to IP addresses. References: CompTIA Cloud+ Certification Exam Objectives, page 15, section 2.8

Reference: <https://www.infoblox.com/glossary/ipam-ip-address-management/>

NEW QUESTION 56

- (Topic 1)

A systems administrator recently upgraded the processors in a web application host. Upon the next login, the administrator sees a new alert regarding the license being out of compliance.

Which of the following licensing models is the application MOST likely using?

- A. Per device
- B. Per user
- C. Core-based
- D. Volume-based

Answer: C

Explanation:

Core-based licensing is a type of licensing model that charges based on the number of processor cores in a system or server. Core-based licensing is often used by software vendors to align their pricing with the performance and capacity of modern hardware. Core-based licensing can also enable customers to optimize their licensing costs by choosing the appropriate hardware configuration for their needs. Upgrading the processors in a web application host can affect the core-based licensing of the application, as it may increase the number of cores that need to be licensed. This can result in an alert regarding the license being out of compliance if the license is not updated accordingly. References: CompTIA Cloud+ Certification Exam Objectives, page 20, section 4.2

Reference: https://download.microsoft.com/download/3/d/4/3d42bdc2-6725-4b29-b75a-a5b04179958b/percorelicensing_definitions_vlbrief.pdf

NEW QUESTION 57

- (Topic 1)

A VDI administrator has received reports of poor application performance. Which of the following should the administrator troubleshoot FIRST?

- A. The network environment
- B. Container resources
- C. Client devices
- D. Server resources

Answer: A

Explanation:

The network environment is the set of network devices, connections, protocols, and configurations that enable communication and data transfer between different systems and applications. The network environment can affect the performance of a virtual desktop infrastructure (VDI) by influencing factors such as bandwidth, latency, jitter, packet loss, and congestion. Poor network performance can result in slow or unreliable application delivery, degraded user experience, and reduced productivity.

Therefore, troubleshooting the network environment should be the first step for a VDI administrator who receives reports of poor application performance.

References: CompTIA Cloud+ Certification Exam Objectives, page 17, section 3.4

NEW QUESTION 59

- (Topic 1)

A systems administrator is provisioning VMs in a cloud environment and has been told to select an OS build with the furthest end-of-life date.

Which of the following OS builds would be BEST for the systems administrator to use?

- A. Open-source
- B. LTS
- C. Canary
- D. Beta
- E. Stable

Answer: B

Explanation:

Long-term support (LTS) is a type of release cycle that provides extended support and maintenance for software products or operating systems. LTS releases typically have longer end-of-life dates than regular releases, as they receive security updates, bug fixes, and patches for several years after their initial release date. LTS releases can also offer higher stability, reliability, and compatibility than regular releases, as they undergo more testing and quality assurance processes before being released. LTS is the best OS build for a systems administrator to use when provisioning VMs in a cloud environment and being told to select an OS build with the furthest end-of-life date. References: CompTIA Cloud+ Certification Exam Objectives, page 11, section 1.6

NEW QUESTION 60

- (Topic 1)

A company just successfully completed a DR test and is ready to shut down its DR site and resume normal operations.

Which of the following actions should the cloud administrator take FIRST?

- A. Initiate a failover
- B. Restore backups
- C. Configure the network
- D. Perform a failback

Answer: D

Explanation:

A failback is a process of restoring or returning a system or service to its original state or location after a failure or disaster recovery event. Performing a failback is the first action that a cloud administrator should take after successfully completing a DR test and being ready to shut down its DR site and resume normal operations, as it can ensure that all data and configurations are synchronized and consistent between the primary site and the DR site before switching back to the primary site. Performing a failback can also help minimize downtime or disruption, as it can verify that all systems or services are functioning properly before resuming normal operations. References: CompTIA Cloud+ Certification Exam Objectives, page 10, section 1.5

NEW QUESTION 62

- (Topic 2)

A cloud administrator is managing an organization's infrastructure in a public cloud. All servers are currently located in a single virtual network with a single firewall that all traffic must pass through. Per security requirements, production, QA, and development servers should not be able to communicate directly with each other. Which of the following should an administrator perform to comply with the security requirement?

- A. Create separate virtual networks for production, QA, and development server
- B. Move the servers to the appropriate virtual network. Apply a network security group to each virtual network that denies all traffic except for the firewall.
- C. Create separate network security groups for production, QA, and development server
- D. Apply the network security groups on the appropriate production, QA, and development servers. Peer the networks together.
- E. Create separate virtual networks for production, QA, and development server
- F. Move the servers to the appropriate virtual network. Peer the networks together.
- G. Create separate network security groups for production, QA, and development server
- H. Peer the networks together. Create static routes for each network to the firewall.

Answer: A

Explanation:

These are the actions that the administrator should perform to comply with the security requirement of isolating production, QA, and development servers from each other in a public cloud environment:

? Create separate virtual networks for production, QA, and development servers: A virtual network is a logical isolation of network resources or systems within a cloud environment. Creating separate virtual networks for different types of servers can help to segregate them from each other and prevent direct communication or interference.

? Move the servers to the appropriate virtual network: Moving the servers to the appropriate virtual network can help to assign them to their respective roles and functions, as well as ensure that they follow the network policies and rules of their virtual network.

? Apply a network security group to each virtual network that denies all traffic except for the firewall: A network security group is a set of rules or policies that control and filter inbound and outbound network traffic for a virtual network or system. Applying a network security group to each virtual network that denies all traffic except for the firewall can help to enforce security and compliance by blocking any unauthorized or unwanted traffic between different types of servers, while allowing only necessary traffic through the firewall.

NEW QUESTION 63

- (Topic 2)

A systems administrator is deploying a new cloud application and needs to provision cloud services with minimal effort. The administrator wants to reduce the tasks required for maintenance, such as OS patching, VM and volume provisioning, and autoscaling configurations. Which of the following would be the BEST option to deploy the new application?

- A. A VM cluster
- B. Containers
- C. OS templates
- D. Serverless

Answer: D

Explanation:

Serverless is what would be the best option to deploy a new cloud application and provision cloud services with minimal effort while reducing the tasks required for maintenance such as OS patching, VM and volume provisioning, and autoscaling configurations. Serverless is a cloud service model that provides customers with a platform to run applications or functions without having to manage or provision any underlying infrastructure or resources, such as servers, storage, network, OS, etc. Serverless can provide benefits such as:

? Minimal effort: Serverless can reduce the effort required to deploy a new cloud application and provision cloud services by automating and abstracting away all the infrastructure or resource management or provisioning tasks from customers, and allowing them to focus only on writing code or logic for their applications or functions.

? Reduced maintenance: Serverless can reduce the tasks required for maintenance by handling all the infrastructure or resource maintenance tasks for customers, such as OS patching, VM and volume provisioning, autoscaling configurations, etc., and ensuring that they are always up-to-date and optimized.

NEW QUESTION 66

- (Topic 2)

Which of the following should be considered for capacity planning?

- A. Requirements, licensing, and trend analysis
- B. Laws and regulations
- C. Regions, clusters, and containers
- D. Hypervisors and scalability

Answer: A

Explanation:

These are the factors that should be considered for capacity planning in a cloud environment. Capacity planning is a process of estimating and allocating the necessary resources and performance to meet the current and future demands of cloud applications or services. Capacity planning can help to optimize costs, efficiency, and reliability of cloud resources or services. The factors that should be considered for capacity planning are:

? Requirements: These are the specifications or expectations of the cloud applications or services, such as functionality, availability, scalability, security, etc. Requirements can help to determine the type, amount, and quality of resources or services needed to meet the objectives and goals of the cloud applications or services.

? Licensing: This is the agreement or contract that grants customers the right to use or access certain cloud resources or services for a specific period or fee. Licensing can affect the cost, availability, and compliance of cloud resources or services. Licensing can help to determine the budget, duration, and scope of using or accessing cloud resources or services.

? Trend analysis: This is the technique of analyzing historical and current data to identify patterns, changes, or fluctuations in demand or usage of cloud resources or services. Trend analysis can help to predict and anticipate future demand or usage of cloud resources or services, as well as identify any opportunities or challenges that may arise.

NEW QUESTION 67

- (Topic 2)

A system administrator has provisioned a new web server. Which of the following, in combination, form the best practice to secure the server's OS? (Choose three.)

- A. Install TLS certificates on the server.
- B. Forward port 80 traffic to port 443.
- C. Disable TLS 1.0/1.1 and SSL.
- D. Disable password authentication.
- E. Enable SSH key access only.
- F. Provision the server in a separate VPC.
- G. Disable the superuser/administrator account.
- H. Restrict access on port 22 to the IP address of the administrator's workstation.

Answer: ADE

Explanation:

These are the best practices to secure the OS of a new web server that has been provisioned in a cloud environment:

? Install TLS certificates on the server: TLS (Transport Layer Security) certificates are digital documents that contain information such as identity, public key, expiration date, etc., that can be used to prove one's identity and establish secure communication over a network. Installing TLS certificates on the web server can encrypt and secure web traffic between the server and the clients, as well as prevent spoofing or impersonation attacks.

? Disable password authentication: Password authentication is a method of verifying and authenticating users or devices based on passwords or other credentials. Password authentication can be insecure or vulnerable to attacks such as brute force, dictionary, phishing, etc., especially if passwords are weak, reused, or compromised. Disabling password authentication can enhance security by preventing unauthorized or malicious access to the web server using passwords.

? Enable SSH key access only: SSH key access is a method of verifying and authenticating users or devices based on digital keys issued by a trusted authority. SSH key access can provide more security and convenience than password authentication, as it does not require users or devices to remember or enter passwords every time they access the web server. Enabling SSH key access only can ensure that only authorized or trusted users or devices can access the web server using keys.

NEW QUESTION 69

- (Topic 2)

Which of the following definitions of serverless computing BEST explains how it is different from using VMs?

- A. Serverless computing is a cloud-hosting service that utilizes infrastructure that is fully managed by the CSP.
- B. Serverless computing uses predictable billing and offers lower costs than VM compute services.
- C. Serverless computing is a scalable, highly available cloud service that uses SDN technologies.
- D. Serverless computing allows developers to focus on writing code and organizations to focus on business.

Answer: D

Explanation:

This is the best definition of serverless computing that explains how it is different from using VMs (Virtual Machines). Serverless computing is a cloud service model that provides customers with a platform to run applications or functions without having to manage or provision any underlying infrastructure or resources, such as servers, storage, network, OS, etc. Serverless computing is different from using VMs in the following ways:

? Serverless computing allows developers to focus on writing code and organizations to focus on business, rather than spending time and effort on managing or scaling VMs or other infrastructure components.

? Serverless computing is event-driven and pay-per-use, which means that applications or functions are executed only when triggered by a specific event or request, and customers are charged only for the resources consumed during the execution time.

? Serverless computing is more scalable and flexible than using VMs, as it can automatically adjust the capacity and performance of applications or functions according to demand or workload, without requiring any manual intervention or configuration.

NEW QUESTION 70

- (Topic 2)

After announcing a big sales promotion, an e-commerce company starts to experience a slow response on its platform that is hosted in a public cloud. When checking the resources involved, the systems administrator sees the following consumption:

VM	Memory used	CPU used	Network used
webserver01	89%	98%	12%
appserver01	45%	43%	13%
appserver02	43%	44%	15%
database01	55%	50%	60%

Considering all VMs were built from the same templates, which of the following actions should the administrator perform FIRST to speed up the response of the e-commerce platform?

- A. Spin up a new web server
- B. Spin up a new application server
- C. Add more memory to the web server
- D. Spin up a new database server

Answer: D

Explanation:

Spinning up a new web server is what the administrator should perform first to speed up the response of the e-commerce platform that is hosted in a public cloud and starts to experience a slow response after announcing a big sales promotion. A web server is a system or service that hosts and delivers web content, such as web pages, images, videos, etc., to clients over a network or internet connection. A web server can affect the response of an e-commerce platform by determining how fast it can process and serve web requests or responses from clients. Spinning up a new web server can speed up the response of an e-commerce platform by providing benefits such as:

? Scalability: Spinning up a new web server can increase the scalability of the e-commerce platform by adding more capacity or resources to handle the increased demand or load caused by the sales promotion, without affecting the existing web servers.

? Performance: Spinning up a new web server can improve the performance of the e-commerce platform by reducing the latency or overhead of processing and serving web requests or responses from clients, which may cause delays or errors.

NEW QUESTION 72

- (Topic 2)

A cloud solutions architect needs to determine the best strategy to deploy an application environment in production, given the following requirements:

No downtime

Instant switch to a new version using traffic control for all users

Which of the following deployment strategies would be the BEST solution?

- A. Hot site
- B. Blue-green
- C. Canary
- D. Rolling

Answer: B

Explanation:

Reference: <https://thenewstack.io/deployment-strategies/>

Blue-green is the best deployment strategy to deploy an application environment in production, given the requirements of no downtime and instant switch to a new version using traffic control for all users. Blue-green is a deployment strategy that involves having two identical environments, one running the current version of the application (blue) and one running the new version of the application (green). The traffic is directed to the blue environment by default, while the green environment is tested and verified. When the new version is ready to go live, the traffic is switched to the green environment using a router or load balancer, without any downtime or interruption. The blue environment can be kept as a backup or updated with the new version for future deployments.

NEW QUESTION 75

- (Topic 2)

A database analyst reports it takes two hours to perform a scheduled job after onboarding 10,000 new users to the system. The analyst made no changes to the scheduled job before or after onboarding the users. The database is hosted in an IaaS instance on a cloud provider. Which of the following should the cloud administrator evaluate to troubleshoot the performance of the job?

- A. The IaaS compute configurations, the capacity trend analysis reports, and the storage IOPS
- B. The hypervisor logs, the memory utilization of the hypervisor host, and the network throughput of the hypervisor
- C. The scheduled job logs for successes and failures, the time taken to execute the job, and the job schedule
- D. Migrating from IaaS to on premises, the network traffic between on-premises users and the IaaS instance, and the CPU utilization of the hypervisor host

Answer: A

Explanation:

To troubleshoot the performance of a scheduled job that takes two hours to run after onboarding 10,000 new users to a cloud-based system, the administrator should evaluate the IaaS compute configurations, the capacity trend analysis reports, and the storage IOPS. These factors can affect the performance of a database job in an IaaS instance on a cloud provider. The IaaS compute configurations include the CPU, memory, and network resources assigned to the instance. The capacity trend analysis reports show the historical and projected usage and demand of the resources. The storage IOPS (Input/Output Operations Per Second) measure the speed and performance of the disk storage. The administrator should check if these factors are sufficient, optimal, or need to be adjusted to improve the performance of the job.

NEW QUESTION 76

- (Topic 2)

A cloud administrator is reviewing the annual contracts for all hosted solutions. Upon review of the contract for the hosted mail solution, the administrator notes the monthly subscription rate has increased every year. The provider has been in place for ten years, and there is a large amount of data being hosted. Which of the following is a barrier to switching providers?

- A. Service-level agreement
- B. Vendor lock-in
- C. Memorandum of understanding
- D. Encrypted data

Answer: B

Explanation:

Vendor lock-in is a barrier to switching providers for a hosted mail solution that has increased its monthly subscription rate every year. Vendor lock-in is a situation where a customer becomes dependent on a vendor or provider for a product or service and faces difficulties or costs in switching to another vendor or provider. Vendor lock-in can occur due to various factors, such as proprietary technology, contractual obligations, data migration challenges, compatibility issues, etc. In this case, the customer may face vendor lock-in due to the large amount of data being hosted by the mail provider and the potential challenges or costs of transferring or migrating the data to another provider.

NEW QUESTION 80

- (Topic 2)

A cloud administrator has been using a custom VM deployment script. After three months of use, the script no longer joins the LDAP domain. The cloud administrator verifies the account has the correct permissions. Which of the following is the MOST likely cause of the failure?

- A. Incorrect encryption ciphers
- B. Broken trust relationship
- C. Invalid certificates
- D. Expired password

Answer: D

Explanation:

An expired password is the most likely cause of the failure of a custom VM deployment script that no longer joins the LDAP domain. LDAP (Lightweight Directory Access Protocol) is a protocol that allows access and management of directory services, such as user accounts, groups, permissions, etc., over a network. LDAP can be used to authenticate and authorize users or devices to access network resources or systems. An expired password is a password that has reached its validity period and needs to be changed or renewed. An expired password can prevent users or devices from joining or accessing an LDAP domain, as it may indicate that the account is inactive, compromised, or outdated.

NEW QUESTION 84

- (Topic 2)

A systems administrator has been asked to restore a VM from backup without changing the current VM's operating state. Which of the following restoration methods would BEST fit this scenario?

- A. Alternate location
- B. Rolling
- C. Storage live migration
- D. In-place

Answer: C

Explanation:

Storage live migration is the best restoration method to restore a VM from backup without changing the current VM's operating state. Storage live migration is a process of moving or transferring storage resources or data from one location to another without affecting or interrupting the operation or performance of the VMs that use them. Storage live migration can help to restore a VM from backup by copying the backup data to a new storage location and switching the VM's storage configuration to point to the new location, without requiring any downtime or reboot.

NEW QUESTION 86

- (Topic 2)

Users of an enterprise application, which is configured to use SSO, are experiencing slow connection times. Which of the following should be done to troubleshoot the issue?

- A. Perform a memory dump of the O
- B. Analyze the memory dump.Upgrade the host CPU to a higher clock speed CPU.
- C. Perform a packet capture during authenticatio
- D. Validate the load-balancing configuration.Analyze the network throughput of the load balancer.
- E. Analyze the storage system IOP
- F. Increase the storage system capacit
- G. Replace the storage system disks to SS
- H. Evaluate the OS ACL
- I. Upgrade the router firmware.Increase the memory of the router.

Answer: B

Explanation:

These are the steps that should be done to troubleshoot the issue of slow connection times for users of an enterprise application that is configured to use SSO (Single Sign-On). SSO is a feature that allows users to access multiple applications or services with one login credential, without having to authenticate separately for each application or service. SSO can improve user experience and security, but it may also introduce performance issues if not configured properly. To troubleshoot the issue, the administrator should perform a packet capture during authentication to analyze the network traffic and identify any delays or errors in the SSO process. The administrator should also validate the load-balancing configuration to ensure that the SSO requests are distributed evenly and efficiently among the available servers or instances. The administrator should also analyze the network throughput of the load balancer to check if there is any congestion or bottleneck that may affect the SSO performance.

NEW QUESTION 91

- (Topic 2)

A company has an in-house-developed application. The administrator wants to utilize cloud services for additional peak usage workloads. The application has a very unique stack of dependencies.

Which of the following cloud service subscription types would BEST meet these requirements?

- A. PaaS
- B. SaaS
- C. DBaaS
- D. IaaS

Answer: D

Explanation:

IaaS (Infrastructure as a Service) is a cloud service model that provides basic computing resources such as servers, storage, network, etc., to the customers. The customers have full control and flexibility over these resources and can install and configure any software they need on them. IaaS is suitable for applications that have a unique stack of dependencies that may not be supported by other cloud service models.

NEW QUESTION 94

- (Topic 2)

A private IaaS administrator is receiving reports that all newly provisioned Linux VMs are running an earlier version of the OS than they should be. The administrator reviews the automation scripts to troubleshoot the issue and determines the scripts ran successfully. Which of the following is the MOST likely cause of the issue?

- A. API version incompatibility
- B. Misconfigured script account
- C. Wrong template selection
- D. Incorrect provisioning script indentation

Answer: C

Explanation:

The wrong template selection is the most likely cause of the issue of newly provisioned Linux VMs running an earlier version of OS than they should be in a private IaaS environment. A template is a preconfigured image or blueprint of a VM that contains an OS, applications, settings, etc., that can be used to create new VMs quickly and consistently. A template may have different versions or updates depending on when it was created or modified. If a template is selected incorrectly or not updated properly, it may result in creating VMs with an older or different version of OS than expected.

NEW QUESTION 98

- (Topic 2)

A technician just received the lessons learned from some recent data that was lost due to an on-premises file-server crash. The action point is to change the backup strategy to minimize manual intervention. Which of the following is the BEST approach for the technician to implement?

- A. Backup as a service
- B. RAID 1
- C. Long-term storage
- D. New backup devices

Answer: A

Explanation:

Backup as a service (BaaS) is the best approach for changing the backup strategy to minimize manual intervention after a data loss due to an on-premises file-server crash. BaaS is a cloud-based service that provides backup and recovery solutions for customers' data and systems. BaaS can automate and simplify backup processes by using cloud storage, encryption, deduplication, compression, scheduling, etc., without requiring customers to purchase or maintain backup hardware or software.

NEW QUESTION 101

- (Topic 2)

A cloud administrator is setting up a new coworker for API access to a public cloud environment. The administrator creates a new user and gives the coworker access to a collection of automation scripts. When the coworker attempts to use a deployment script, a 403 error is returned. Which of the following is the MOST likely cause of the error?

- A. Connectivity to the public cloud is down.
- B. User permissions are not correct.
- C. The script has a configuration error.
- D. Oversubscription limits have been exceeded.

Answer: B

Explanation:

User permissions are not correct is the most likely cause of the error 403 (Forbidden) that is returned when a coworker attempts to use a deployment script after being set up for API access to a public cloud environment by an administrator. API (Application Programming Interface) is a set of rules or specifications that defines how different software components or systems can communicate and interact with each other. API access is the ability to use or access an API to perform certain actions or tasks on a software component or system. User permissions are the settings or policies that control and restrict what users can do or access on a software component or system. User permissions can affect API access by determining what actions or tasks users can perform using an API on a software component or system. User permissions are not correct if they do not match or align with the intended or expected actions or tasks that users want to perform using an API on a software component or system. User permissions are not correct can cause error 403 (Forbidden), which means that the user does not have the necessary permission or authorization to perform the requested action or task using an API on a software component or system.

NEW QUESTION 106

- (Topic 2)

A cloud administrator would like to deploy a cloud solution to its provider using automation techniques. Which of the following must be used? (Choose two.)

- A. Auto-scaling
- B. Tagging
- C. Playbook
- D. Templates
- E. Containers
- F. Serverless

Answer: CD

Explanation:

Playbook and templates are two things that must be used to deploy a cloud solution to its provider using automation techniques. A playbook is a file or script that defines a set of tasks or actions to be executed on one or more cloud resources or systems. A playbook can automate and standardize the deployment and configuration of cloud solutions using tools such as Ansible, Chef, Puppet, etc. A template is a preconfigured image or blueprint of a cloud resource or system that contains an OS, applications, settings, etc., that can be used to create new resources or systems quickly and consistently. A template can simplify and speed up the deployment of cloud solutions using tools such as AWS CloudFormation, Azure Resource Manager, Google Cloud Deployment Manager, etc.

NEW QUESTION 107

- (Topic 2)

A systems administrator swapped a failed hard drive on a server with a RAID 5 array. During the RAID resynchronization, a second hard drive failed. Which of the following actions will make the server fully operational?

- A. Restart the RAID resynchronization process
- B. Perform a P2V migration of the server
- C. Swap the failed hard drive with a fresh one
- D. Restore the server from backup

Answer: D

Explanation:

RAID 5 is a disk array configuration that uses parity to provide fault tolerance and data recovery. RAID 5 can tolerate the failure of one disk, but not two or more disks. If a second disk fails during the resynchronization process, the data on the RAID 5 array will be lost and unrecoverable. The only way to make the server fully operational is to restore the data from a backup source.

NEW QUESTION 112

- (Topic 2)

A technician needs to deploy two virtual machines in preparation for the configuration of a financial application next week. Which of the following cloud deployment models should the technician use?

- A. XaaS
- B. IaaS
- C. PaaS
- D. SaaS

Answer: B

Explanation:

IaaS (Infrastructure as a Service) is the cloud deployment model that the technician should use to deploy two virtual machines in preparation for the configuration of a financial application next week. IaaS is a cloud service model that provides basic computing resources such as servers, storage, network, etc., to the customers. The customers have full control and flexibility over these resources and can install and configure any software they need on them. IaaS is suitable for deploying virtual machines, as it allows the customers to choose their preferred OS, applications, settings, etc., and customize them according to their needs.

NEW QUESTION 113

- (Topic 2)

A systems administrator has finished installing monthly updates to servers in a cloud environment. The administrator notices certain portions of the playbooks are no longer functioning. Executing the playbook commands manually on a server does not work as well. There are no other reports of issues. Which of the following is the MOST likely cause of this issue?

- A. Change management failure
- B. Service overload
- C. Patching failure
- D. Job validation issues
- E. Deprecated features

Answer: E

Explanation:

Deprecated features are features that are no longer supported or recommended by the software vendor or provider. They may be removed or replaced by newer features in future updates or versions. If a playbook relies on deprecated features, it may stop functioning after an update or patch is applied to the software. The administrator should check the release notes or documentation of the software to identify and replace any deprecated features in the playbook.

NEW QUESTION 116

- (Topic 2)

A cloud administrator needs to reduce the cost of cloud services by using the company's off-peak period. Which of the following would be the BEST way to achieve this with minimal effort?

- A. Create a separate subscription.
- B. Create tags.
- C. Create an auto-shutdown group.
- D. Create an auto-scaling group.

Answer: C

Explanation:

Creating an auto-shutdown group is the best way to reduce the cost of cloud services by using the company's off-peak period with minimal effort. An auto-shutdown group is a feature that allows customers to automatically turn off or shut down certain cloud resources or services during a specified time period or schedule. An auto-shutdown group can help to reduce the cost of cloud services by minimizing the consumption of resources or services during off-peak periods, when they are not needed or used. An auto-shutdown group can also help to reduce the effort of managing cloud resources or services by automating the shutdown process, without requiring any manual intervention or configuration.

NEW QUESTION 121

- (Topic 2)

A cloud administrator is responsible for managing a cloud-based content management solution. According to the security policy, any data that is hosted in the cloud must be protected against data exfiltration. Which of the following solutions should the administrator implement?

- A. HIDS
- B. FIM
- C. DLP
- D. WAF

Answer: C

Explanation:

DLP (Data Loss Prevention) is what the administrator should implement to protect data against data exfiltration in a cloud-based content management solution. Data exfiltration is a process of transferring or stealing data from a system or network without authorization or permission. Data exfiltration can cause data

breaches, leaks, or losses that may affect confidentiality, integrity, or availability of data. DLP is a tool or service that monitors and controls data movement and usage within a system or network. DLP can help to prevent data exfiltration by detecting and blocking any unauthorized or suspicious data transfers or activities, as well as enforcing policies and rules for data classification, encryption, access, etc.

NEW QUESTION 124

- (Topic 2)

After a few new web servers were deployed, the storage team began receiving incidents in their queue about the web servers. The storage administrator wants to verify the incident tickets that should have gone to the web server team. Which of the following is the MOST likely cause of the issue?

- A. Incorrect assignment group in service management
- B. Incorrect IP address configuration
- C. Incorrect syslog configuration on the web servers
- D. Incorrect SNMP settings

Answer: C

Explanation:

Incorrect syslog configuration on the web servers is the most likely cause of the issue of storage team receiving incidents in their queue about web servers after new web servers were deployed in a cloud environment. Syslog is a standard protocol that allows network devices and systems to send log messages to a centralized server or collector. Syslog can help to consolidate and manage logs from different sources in one place, which can facilitate monitoring, analysis, troubleshooting, auditing, etc. Incorrect syslog configuration on the web servers can cause them to send log messages to the wrong destination or queue, such as the storage team's queue, rather than the web server team's queue.

NEW QUESTION 129

- (Topic 2)

A VDI administrator has received reports from the drafting department that rendering is slower than normal. Which of the following should the administrator check FIRST to optimize the performance of the VDI infrastructure?

- A. GPU
- B. CPU
- C. Storage
- D. Memory

Answer: A

Explanation:

Checking the GPU (Graphics Processing Unit) is the first thing that the VDI administrator should do to optimize the performance of the VDI infrastructure for rendering tasks. GPU is a specialized hardware device that accelerates graphics processing and rendering. GPU can improve the user experience and performance of VDI applications that require intensive graphics processing, such as drafting, gaming, video editing, etc.

NEW QUESTION 131

- (Topic 2)

A technician is trying to delete six decommissioned VMs. Four VMs were deleted without issue. However, two of the VMs cannot be deleted due to an error. Which of the following would MOST likely enable the technician to delete the VMs?

- A. Remove the snapshots
- B. Remove the VMs' IP addresses
- C. Remove the VMs from the resource group
- D. Remove the lock from the two VMs

Answer: D

Explanation:

Removing the lock from the two VMs is what would most likely enable the technician to delete the VMs that cannot be deleted due to an error. A lock is a feature that prevents certain actions or operations from being performed on a resource or service, such as deleting, modifying, moving, etc. A lock can help to protect a resource or service from accidental or unwanted changes or removals. Removing the lock from the two VMs can enable the technician to delete them by allowing the delete action or operation to be performed on them.

NEW QUESTION 132

- (Topic 2)

A systems administrator is working in a globally distributed cloud environment. After a file server VM was moved to another region, all users began reporting slowness when saving files. Which of the following is the FIRST thing the administrator should check while troubleshooting?

- A. Network latency
- B. Network connectivity
- C. Network switch
- D. Network peering

Answer: A

Explanation:

Network latency is the first thing that the administrator should check while troubleshooting slowness when saving files after a file server VM was moved to another region in a globally distributed cloud environment. Network latency is a measure of how long it takes for data to travel from one point to another over a network or connection. Network latency can affect performance and user experience of cloud applications or services by determining how fast data can be transferred or processed between clients and servers or vice versa. Network latency can vary depending on various factors, such as distance, bandwidth, congestion, interference, etc. Network latency can increase when a file server VM is moved to another region in a globally distributed cloud environment, as it may increase the distance and decrease the bandwidth between clients and servers, which may result in delays or errors in data transfer or processing.

NEW QUESTION 136

- (Topic 2)

A systems administrator is troubleshooting performance issues with a VDI environment. The administrator determines the issue is GPU related and then increases the frame buffer on the virtual machines. Testing confirms the issue is solved, and everything is now working correctly. Which of the following should the administrator do NEXT?

- A. Consult corporate policies to ensure the fix is allowed
- B. Conduct internal and external research based on the symptoms
- C. Document the solution and place it in a shared knowledge base
- D. Establish a plan of action to resolve the issue

Answer: C

Explanation:

Documenting the solution and placing it in a shared knowledge base is what the administrator should do next after troubleshooting performance issues with a VDI (Virtual Desktop Infrastructure) environment, determining that the issue is GPU (Graphics Processing Unit) related, increasing the frame buffer on the virtual machines, and testing that confirms that the issue is solved and everything is now working correctly. Documenting the solution is a process of recording and describing what was done to fix or resolve an issue, such as actions, steps, methods, etc., as well as why and how it worked. Placing it in a shared knowledge base is a process of storing and organizing documented solutions in a central location or repository that can be accessed and used by others. Documenting the solution and placing it in a shared knowledge base can provide benefits such as:

? Learning: Documenting the solution and placing it in a shared knowledge base can help to learn from past experiences and improve skills and knowledge.

? Sharing: Documenting the solution and placing it in a shared knowledge base can help to share information and insights with others who may face similar issues or situations.

? Reusing: Documenting the solution and placing it in a shared knowledge base can help to reuse existing solutions for future issues or situations.

NEW QUESTION 140

- (Topic 2)

A cloud administrator is assigned to establish a connection between the on-premises data center and the new CSP infrastructure. The connection between the two locations must be secure at all times and provide service for all users inside the organization. Low latency is also required to improve performance during data transfer operations. Which of the following would BEST meet these requirements?

- A. A VPC peering configuration
- B. An IPSec tunnel
- C. An MPLS connection
- D. A point-to-site VPN

Answer: B

Explanation:

An IPSec tunnel is what would best meet the requirements of establishing a connection between the on-premises data center and the new CSP infrastructure that is secure at all times and provides service for all users inside the organization with low latency. IPSec (Internet Protocol Security) is a protocol that encrypts and secures network traffic over IP networks. IPSec tunnel is a mode of IPSec that creates a virtual private network (VPN) tunnel between two endpoints, such as routers, firewalls, gateways, etc., and encrypts and secures all traffic that passes through it. An IPSec tunnel can meet the requirements by providing:

? Security: An IPSec tunnel can protect network traffic from interception, modification, spoofing, etc., by using encryption, authentication, integrity, etc., mechanisms.

? Service: An IPSec tunnel can provide service for all users inside the organization by allowing them to access and use network resources or services on both ends of the tunnel, regardless of their physical location.

? Low latency: An IPSec tunnel can provide low latency by reducing the number of hops or devices that network traffic has to pass through between the endpoints of the tunnel.

NEW QUESTION 143

- (Topic 2)

A systems administrator is trying to establish an RDP session from a desktop to a server in the cloud. However, the connection appears to be refused even though the VM is responding to ICMP echo requests. Which of the following should the administrator check FIRST?

- A. The firewall
- B. The subnet
- C. The gateway
- D. The services

Answer: A

Explanation:

The firewall is the first thing that the administrator should check if an RDP (Remote Desktop Protocol) session from a desktop to a server in the cloud is refused even though the VM is responding to ICMP echo requests. A firewall is a device or software that controls the incoming and outgoing network traffic based on predefined rules or policies. A firewall may block RDP connections by default or require specific ports or rules to be opened or configured.

NEW QUESTION 146

- (Topic 2)

A systems administrator wants to verify the word "qwerty" has not been used as a password on any of the administrative web consoles in a network. Which of the following will achieve this goal?

- A. A service availability scan
- B. An agent-based vulnerability scan
- C. A default and common credentialed scan
- D. A network port scan

Answer: C

Explanation:

A default and common credentialed scan is what the administrator should use to verify the word “qwerty” has not been used as a password on any of the administrative web consoles in a network. A credentialed scan is a type of vulnerability scan that uses valid credentials or accounts to access and scan target systems or devices. A credentialed scan can provide more accurate and detailed results than a non-credentialed scan, as it can perform more actions and tests on target systems or devices. A default and common credentialed scan is a type of credentialed scan that uses default or common credentials or accounts, such as admin/admin, root/root, etc., to access and scan target systems or devices. A default and common credentialed scan can help to identify weak or insecure passwords on administrative web consoles, such as “qwerty”, and recommend stronger passwords.

NEW QUESTION 151

- (Topic 2)

A company needs a solution to find content in images. Which of the following technologies, when used in conjunction with cloud services, would facilitate the BEST solution?

- A. Internet of Things
- B. Digital transformation
- C. Artificial intelligence
- D. DNS over TLS

Answer: C

Explanation:

Artificial intelligence (AI) is the technology that, when used in conjunction with cloud services, would facilitate the best solution for finding content in images. AI is a branch of computer science that aims to create machines or systems that can perform tasks that normally require human intelligence, such as reasoning, learning, decision making, etc. AI can be used to analyze images and extract information such as objects, faces, text, emotions, etc., using techniques such as computer vision, machine learning, natural language processing, etc. AI can help to find content in images faster, more accurately, and more efficiently than manual methods.

NEW QUESTION 156

- (Topic 2)

A software development manager is looking for a solution that will allow a team of developers to work in isolated environments that can be spun up and torn down quickly.

Which of the following is the MOST appropriate solution?

- A. Containers
- B. File subscriptions
- C. Ballooning
- D. Software-defined storage

Answer: A

Explanation:

Containers are isolated environments that can run applications and their dependencies without interfering with other processes or systems. Containers are lightweight, portable, and scalable, which makes them ideal for development and testing purposes. Containers can be spun up and torn down quickly using tools such as Docker, Kubernetes, etc.

NEW QUESTION 157

- (Topic 2)

A systems administrator is examining a managed hosting agreement and wants to determine how much data would be lost if a server had to be restored from backups. To which of the following metrics should the administrator refer?

- A. RTO
- B. MTBF
- C. RPO
- D. MTTR

Answer: C

Explanation:

RPO (Recovery Point Objective) is the metric that the administrator should refer to determine how much data would be lost if a server had to be restored from backups. RPO is a metric that measures how much data can be lost or how far back in time a recovery point can be without causing significant impact or damage. RPO can help to determine how much data would be lost by comparing the time of the disruption or disaster with the time of the last backup or snapshot. RPO can also help to determine how frequently backups or snapshots should be performed to minimize data loss.

NEW QUESTION 161

- (Topic 2)

An organization suffered a critical failure of its primary datacenter and made the decision to switch to the DR site. After one week of using the DR site, the primary datacenter is now ready to resume operations.

Which of the following is the MOST efficient way to bring the block storage in the primary datacenter up to date with the DR site?

- A. Set up replication.
- B. Copy the data across both sites.
- C. Restore incremental backups.
- D. Restore full backups.

Answer: A

Explanation:

Reference: <https://www.ibm.com/docs/en/cloud-pak-system-w3550/2.3.3?topic=system-administering-block-storage-replication>

Setting up replication is the most efficient way to bring the block storage in the primary datacenter up to date with the DR site after a critical failure. Replication is a process of copying data from one location to another in real-time or near real-time. Replication can be synchronous or asynchronous, depending on the latency

and bandwidth requirements. Replication can ensure data consistency and availability across multiple sites and facilitate faster recovery.

NEW QUESTION 164

- (Topic 2)

A systems administrator is creating a VM and wants to ensure disk space is not allocated to the VM until it is needed. Which of the following techniques should the administrator use to ensure?

- A. Deduplication
- B. Thin provisioning
- C. Software-defined storage
- D. iSCSI storage

Answer: B

Explanation:

Thin provisioning is the technique that ensures disk space is not allocated to the VM until it is needed. Thin provisioning is a storage allocation method that assigns disk space to a VM on demand, rather than in advance. Thin provisioning can improve storage utilization and efficiency by avoiding overprovisioning and wasting disk space. Thin provisioning can also allow for more flexibility and scalability of storage resources.

NEW QUESTION 166

- (Topic 2)

A Chief Information Security Officer (CISO) is evaluating the company's security management program. The CISO needs to locate all the assets with identified deviations and mitigation measures. Which of the following would help the CISO with these requirements?

- A. An SLA document
- B. ADR plan
- C. SOC procedures
- D. A risk register

Answer: D

Explanation:

A risk register is a document that records all the identified risks, their causes, impacts, probabilities, mitigation measures, and status for a project or an organization. A risk register helps to manage and monitor risks throughout their lifecycle and ensure they are addressed appropriately. A risk register would help the CISO to locate all the assets with identified deviations and mitigation measures.

NEW QUESTION 171

- (Topic 2)

Which of the following would be the BEST option for discussion of what individuals should do in an incident response or disaster recovery scenario?

- A. A business continuity plan
- B. Incident response/disaster recovery documentation
- C. A tabletop exercise
- D. A root cause analysis

Answer: C

Explanation:

A tabletop exercise is the best option for discussion of what individuals should do in an incident response or disaster recovery scenario. A tabletop exercise is a simulated scenario that involves key stakeholders and decision-makers who review and discuss their roles and responsibilities in response to an emergency situation or event. A tabletop exercise can help to test and evaluate plans, procedures, policies, training, and communication.

NEW QUESTION 174

- (Topic 2)

A system administrator supports an application in the cloud, which includes a restful API that receives an encrypted message that is passed to a calculator system. The administrator needs to ensure the proper function of the API using a new automation tool. Which of the following techniques would be BEST for the administrator to use to accomplish this requirement?

- A. Functional testing
- B. Performance testing
- C. Integration testing
- D. Unit testing

Answer: C

Explanation:

Integration testing is the best technique to use to ensure the proper function of an API that receives an encrypted message that is passed to a calculator system. Integration testing is a type of testing that verifies and validates the functionality, performance, and reliability of different components or modules of a system or application when they are combined or integrated together. Integration testing can help to ensure the API can communicate and interact with the calculator system correctly and securely, as well as identify any errors or issues that may arise from the integration.

NEW QUESTION 175

- (Topic 2)

A systems administrator is analyzing a report of slow performance in a cloud application. This application is working behind a network load balancer with two VMs, and each VM has its own digital certificate configured. Currently, each VM is consuming 85% CPU on average. Due to cost restrictions, the administrator cannot scale vertically or horizontally in the environment. Which of the following actions should the administrator take to decrease the CPU utilization? (Choose two.)

- A. Configure the communication between the load balancer and the VMs to use a VPN.

- B. Move the digital certificate to the load balancer.
- C. Configure the communication between the load balancer and the VMs to use HTTP.
- D. Reissue digital certificates on the VMs.
- E. Configure the communication between the load balancer and the VMs to use HTTPS.
- F. Keep the digital certificates on the VMs.

Answer: BC

Explanation:

Moving the digital certificate to the load balancer and configuring the communication between the load balancer and the VMs to use HTTP are two actions that will decrease the CPU utilization of the VMs that are running behind a network load balancer with two VMs, each with its own digital certificate configured. Moving the digital certificate to the load balancer will offload the SSL/TLS encryption and decryption tasks from the VMs to the load balancer, which can reduce the CPU overhead and improve performance. Configuring the communication between the load balancer and the VMs to use HTTP will eliminate the need for encryption and decryption between them, which can also reduce CPU consumption. However, this may introduce security risks if sensitive data is transmitted over HTTP.

NEW QUESTION 179

- (Topic 2)

A cloud provider wants to make sure consumers are utilizing its IaaS platform but prevent them from installing a hypervisor on the server. Which of the following will help the cloud provider secure the environment and limit consumers' activity?

- A. Patch management
- B. Hardening
- C. Scaling
- D. Log and event monitoring

Answer: B

Explanation:

Hardening is the best option to help the cloud provider secure the environment and limit consumers' activity on its IaaS platform. Hardening is a process of reducing the attack surface and vulnerabilities of a system or device by applying security configurations, patches, updates, policies, rules, etc. Hardening can prevent consumers from installing unauthorized or unsupported software on their cloud servers, such as hypervisors.

NEW QUESTION 184

- (Topic 2)

An administrator is securing a private cloud environment and wants to ensure only approved systems can connect to switches. Which of the following would be MOST useful to accomplish this task?

- A. VLAN
- B. NIPS
- C. WAF
- D. NAC

Answer: D

Explanation:

Reference: <https://www.cisco.com/c/en/us/products/security/what-is-network-access-control-nac.html>

NAC (Network Access Control) is what the administrator should implement to ensure only approved systems can connect to switches in a private cloud environment. NAC is a security technique that controls and restricts access to network resources based on predefined policies or rules. NAC can verify and authenticate users or devices before granting them access to switches or other network devices. NAC can also enforce compliance and security standards on users or devices before allowing them to connect to switches.

NEW QUESTION 187

- (Topic 2)

A company recently experienced a power outage that lasted 30 minutes. During this time, a whole rack of servers was inaccessible, even though the servers did not lose power.

Which of the following should be investigated FIRST?

- A. Server power
- B. Rack power
- C. Switch power
- D. SAN power

Answer: C

Explanation:

If a whole rack of servers was inaccessible during a power outage, even though the servers did not lose power, it is likely that the switch that connects them to the network lost power. Without network connectivity, the servers would not be able to communicate with other devices or services. The administrator should investigate the switch power source and ensure it has a backup power supply or UPS.

NEW QUESTION 189

- (Topic 2)

A systems administrator is about to deploy a new VM to a cloud environment. Which of the following will the administrator MOST likely use to select an address for the VM?

- A. CDN
- B. DNS
- C. NTP
- D. IPAM

Answer: D

Explanation:

IPAM (IP Address Management) is what the administrator will most likely use to select an address for the new VM that is about to be deployed to a cloud environment. IPAM is a tool or service that allows customers to plan, track, and manage the IP addresses and DNS names of their cloud resources or systems. IPAM can help to select an address for the new VM by providing information such as available IP addresses, IP address ranges, subnets, domains, etc., as well as ensuring that the address is unique and valid.

NEW QUESTION 190

- (Topic 2)

A cloud security analyst needs to ensure the web servers in the public subnet allow only secure communications and must remediate any possible issue. The stateful configuration for the public web servers is as follows:

ID	Direction	Protocol	Port	Source	Action
1	inbound	TCP	80	any	allow
2	inbound	TCP	443	any	allow
3	inbound	TCP	3306	any	allow
4	inbound	TCP	3389	any	allow
5	outbound	UDP	53	any	allow
*	both	any	any	any	deny

Which of the following actions should the analyst take to accomplish the objective?

- A. Remove rules 1, 2, and 5.
- B. Remove rules 1, 3, and 4.
- C. Remove rules 2, 3, and 4.
- D. Remove rules 3, 4, and 5.

Answer: A

Explanation:

To ensure the web servers in the public subnet allow only secure communications and remediate any possible issue, the analyst should remove rules 1, 2, and 5 from the stateful configuration. These rules are allowing insecure or unnecessary traffic to or from the web servers, which may pose security risks or performance issues. The rules are:

? Rule 1: This rule allows inbound traffic on port 80 (HTTP) from any source to any destination. HTTP is an unencrypted and insecure protocol that can expose web traffic to interception, modification, or spoofing. The analyst should remove this rule and use HTTPS (port 443) instead, which encrypts and secures web traffic.

? Rule 2: This rule allows outbound traffic on port 25 (SMTP) from any source to any destination. SMTP is a protocol that is used to send email messages. The web servers in the public subnet do not need to send email messages, as this is not their function. The analyst should remove this rule and block outbound SMTP traffic, which may prevent spamming or phishing attacks from compromised web servers.

? Rule 5: This rule allows inbound traffic on port 22 (SSH) from any source to any destination. SSH is a protocol that allows remote access and management of systems or devices using a command-line interface. The web servers in the public subnet do not need to allow SSH access from any source, as this may expose them to unauthorized or malicious access. The analyst should remove this rule and restrict SSH access to specific sources, such as the administrator's workstation or a bastion host.

NEW QUESTION 192

- (Topic 2)

A cloud engineer is responsible for managing a public cloud environment. There is currently one virtual network that is used to host the servers in the cloud environment. The environment is rapidly growing, and the network does not have any more available IP addresses. Which of the following should the engineer do to accommodate additional servers in this environment?

- A. Create a VPC and peer the networks.
- B. Implement dynamic routing.
- C. Enable DHCP on the networks.
- D. Obtain a new IPAM subscription.

Answer: A

Explanation:

Creating a VPC (Virtual Private Cloud) and peering the networks is the best option to accommodate additional servers in a public cloud environment that has run out of IP addresses. A VPC is a logically isolated section of a cloud provider's network that allows customers to launch and configure their own virtual network resources. Peering is a process of connecting two VPCs together so that they can communicate with each other as if they were in the same network.

NEW QUESTION 193

- (Topic 2)

A cloud administrator set up a link between the private and public cloud through a VPN tunnel. As part of the migration, a large set of files will be copied. Which of the following network ports are required from a security perspective?

- A. 22, 53, 445
- B. 22, 443, 445
- C. 25, 123, 443

D. 137, 139, 445

Answer: B

Explanation:

These are the network ports that are required from a security perspective to copy a large set of files between the private and public cloud through a VPN tunnel. A VPN (Virtual Private Network) tunnel is a secure and encrypted connection that allows data to be transferred between two networks or locations over the public internet. To copy files between the private and public cloud, the following ports are needed:

? Port 22: This is the port used by SSH (Secure Shell) protocol, which is a method of remotely accessing and managing cloud resources or systems using a command-line interface. SSH can also be used to securely transfer files using SCP (Secure Copy Protocol) or SFTP (SSH File Transfer Protocol).

? Port 443: This is the port used by HTTPS (Hypertext Transfer Protocol Secure), which is a protocol that encrypts and secures web traffic. HTTPS can also be used to transfer files using web browsers or tools such as curl or wget.

? Port 445: This is the port used by SMB (Server Message Block) protocol, which is a protocol that allows file sharing and access over a network. SMB can also be used to transfer files using tools such as robocopy or rsync.

NEW QUESTION 194

- (Topic 1)

A web server has been deployed in a public IaaS provider and has been assigned the public IP address of 72.135.10.100. Users are now reporting that when they browse to the website, they receive a message indicating the service is unavailable. The cloud administrator logs into the server, runs a netstat command, and notices the following relevant output:

```
TCP 17.3.130.3:0 72.135.10.100:5500 TIME_WAIT
TCP 17.3.130.3:0 72.135.10.100:5501 TIME_WAIT
TCP 17.3.130.3:0 72.135.10.100:5502 TIME_WAIT
TCP 17.3.130.3:0 72.135.10.100:5503 TIME_WAIT
TCP 17.3.130.3:0 72.135.10.100:5504 TIME_WAIT
```

Which of the following actions should the cloud administrator take to resolve the issue?

- A. Assign a new IP address of 192.168.100.10 to the web server
- B. Modify the firewall on 72.135.10.100 to allow only UDP
- C. Configure the WAF to filter requests from 17.3.130.3
- D. Update the gateway on the web server to use 72.135.10.1

Answer: D

Explanation:

Updating the gateway on the web server to use 72.135.10.1 is the best action to take to resolve the issue of the web server being unavailable after being deployed in a public IaaS provider and assigned the public IP address of 72.135.10.100. Updating the gateway can ensure that the web server can communicate with the Internet and other networks by using the correct router or device that connects the web server's network to other networks. Updating the gateway can also improve performance and reliability, as it can avoid any routing errors or conflicts that may prevent the web server from responding to remote login requests.

References: CompTIA Cloud+ Certification Exam Objectives, page 15, section 2.8

NEW QUESTION 197

- (Topic 1)

Company A has acquired Company B and is in the process of integrating their cloud resources. Company B needs access to Company A's cloud resources while retaining its IAM solution.

Which of the following should be implemented?

- A. Multifactor authentication
- B. Single sign-on
- C. Identity federation
- D. Directory service

Answer: C

Explanation:

Identity federation is a type of authentication mechanism that allows users to access multiple systems or applications across different domains or organizations with a single login credential. Identity federation can help integrate the cloud resources of Company A and Company B after Company A has acquired Company B, as it can enable seamless and secure access to both companies' cloud resources using the same IAM solution. Identity federation can also improve user convenience, productivity, and security, as it can simplify the login process, reduce login errors, and enhance password management. References: CompTIA Cloud+ Certification Exam Objectives, page 14, section 2.7

Reference: <https://medium.com/@dinika.15/identity-federation-a-brief-introduction-f2f823f8795a>

NEW QUESTION 201

SIMULATION - (Topic 1)

A company has decided to scale its e-commerce application from its corporate datacenter to a commercial cloud provider to meet an anticipated increase in demand during an upcoming holiday.

The majority of the application load takes place on the application server under normal conditions. For this reason, the company decides to deploy additional application servers into a commercial cloud provider using the on-premises orchestration engine that installs and configures common software and network configurations.

The remote computing environment is connected to the on-premises datacenter via a site-to-site IPSec tunnel. The external DNS provider has been configured to use weighted round-robin routing to load balance connections from the Internet.

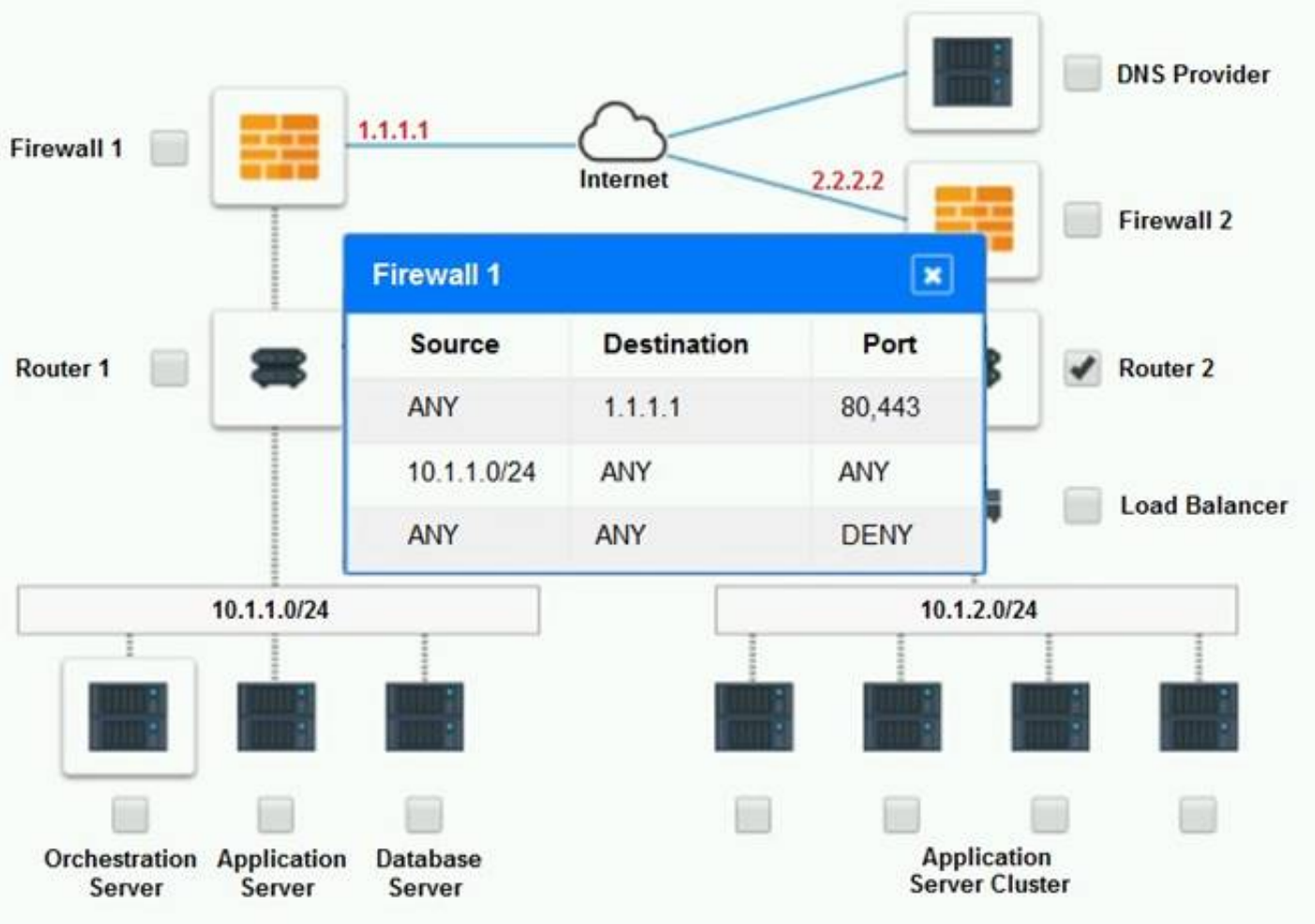
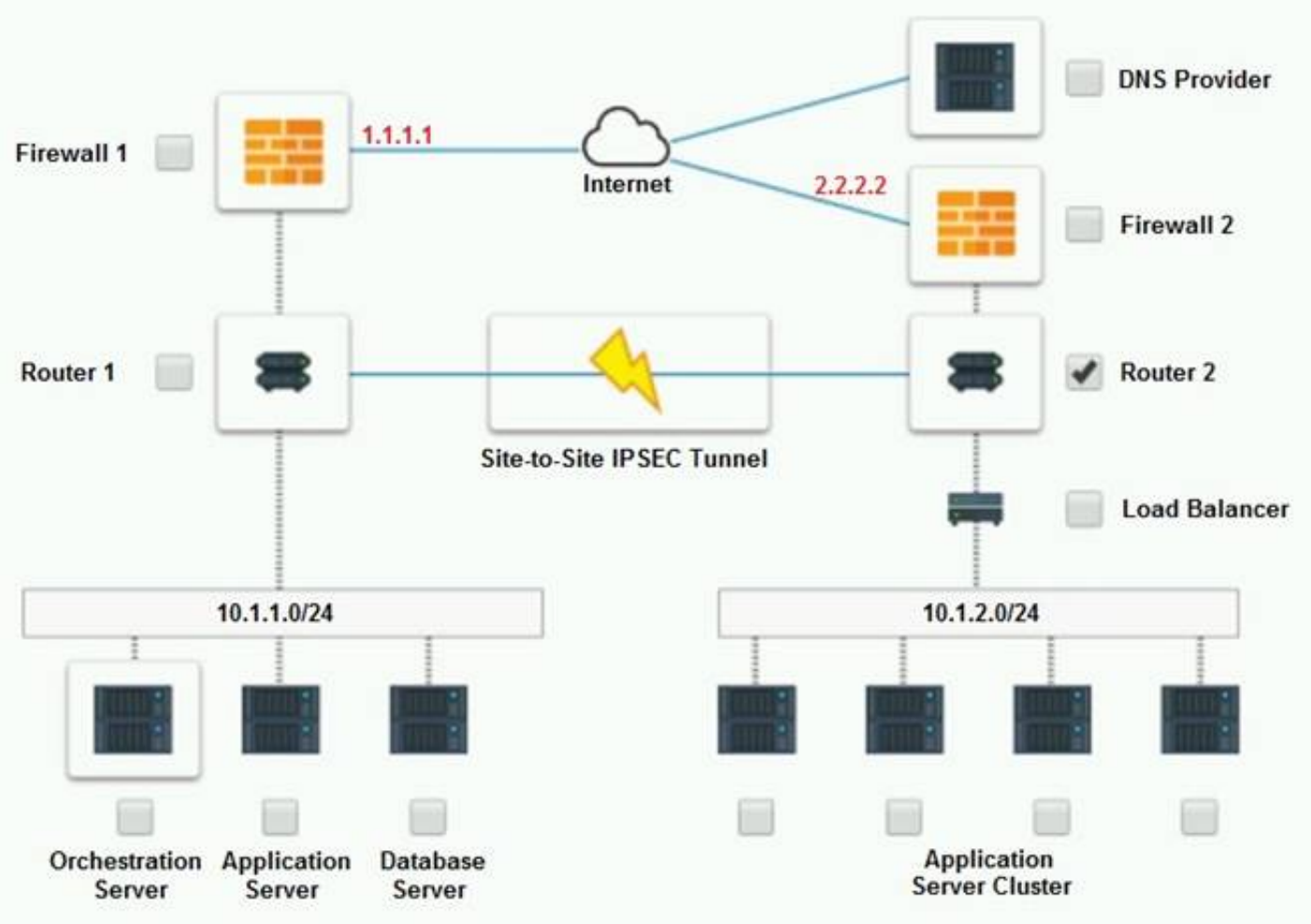
During testing, the company discovers that only 20% of connections completed successfully.

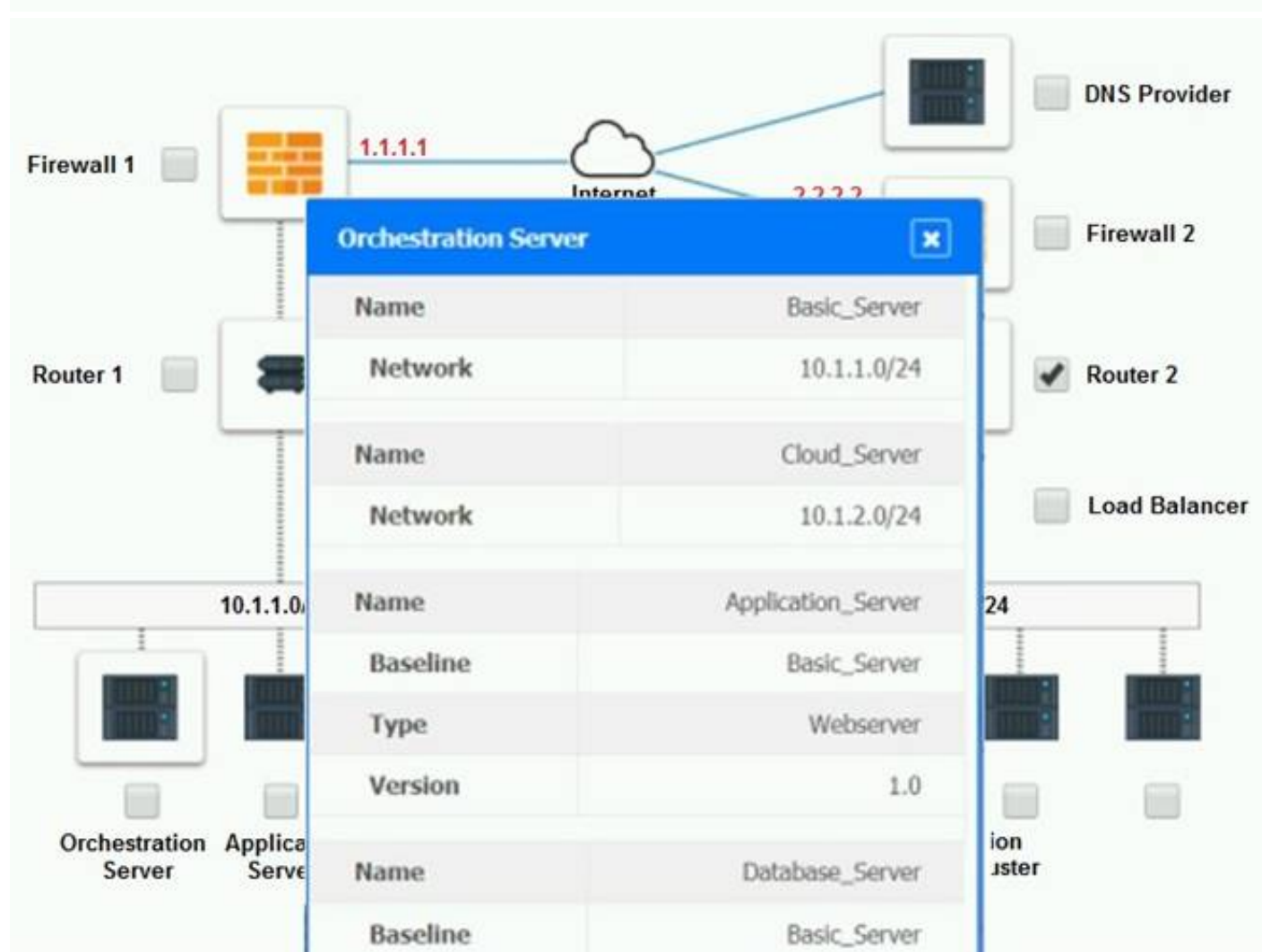
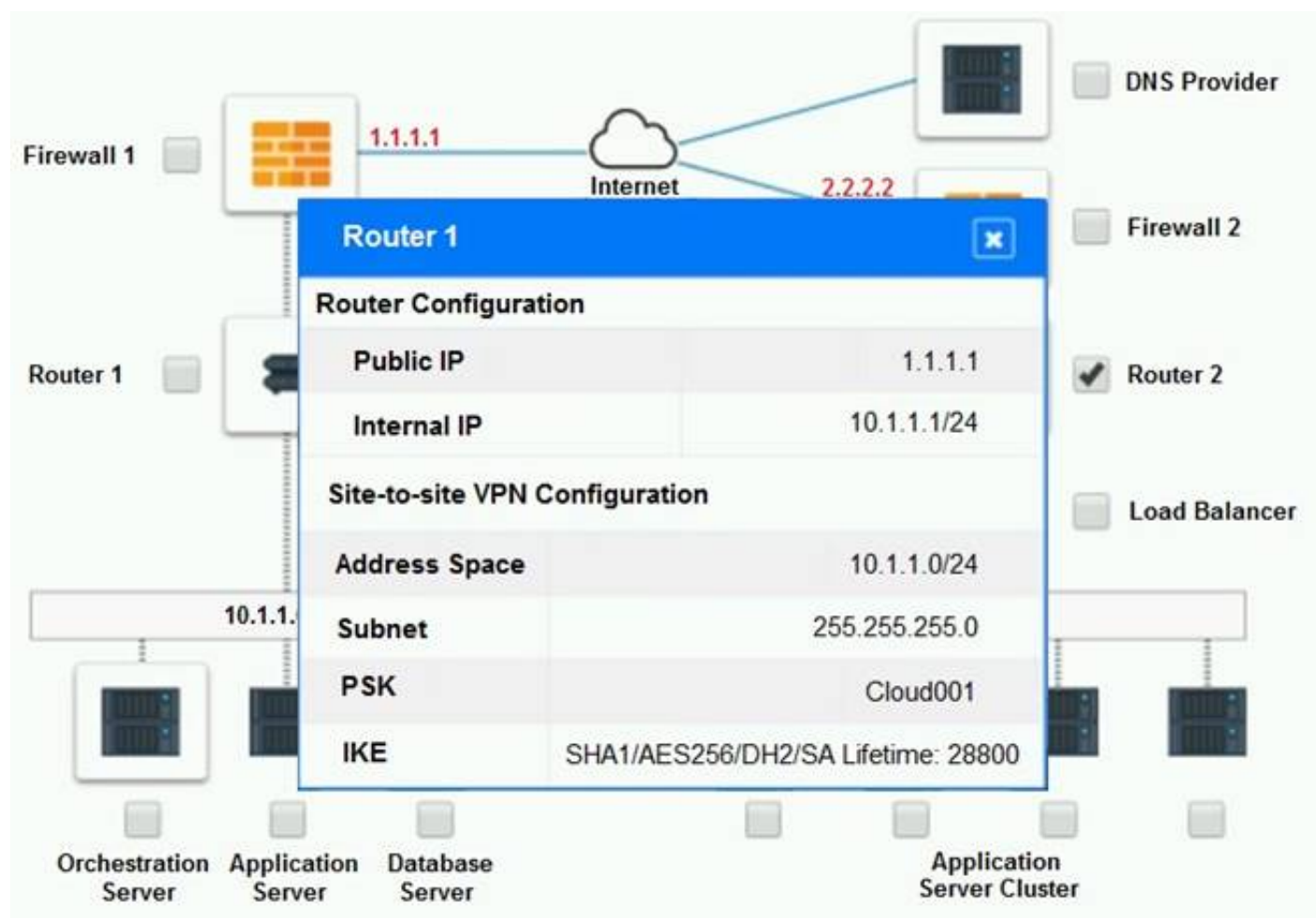
INSTRUCTIONS

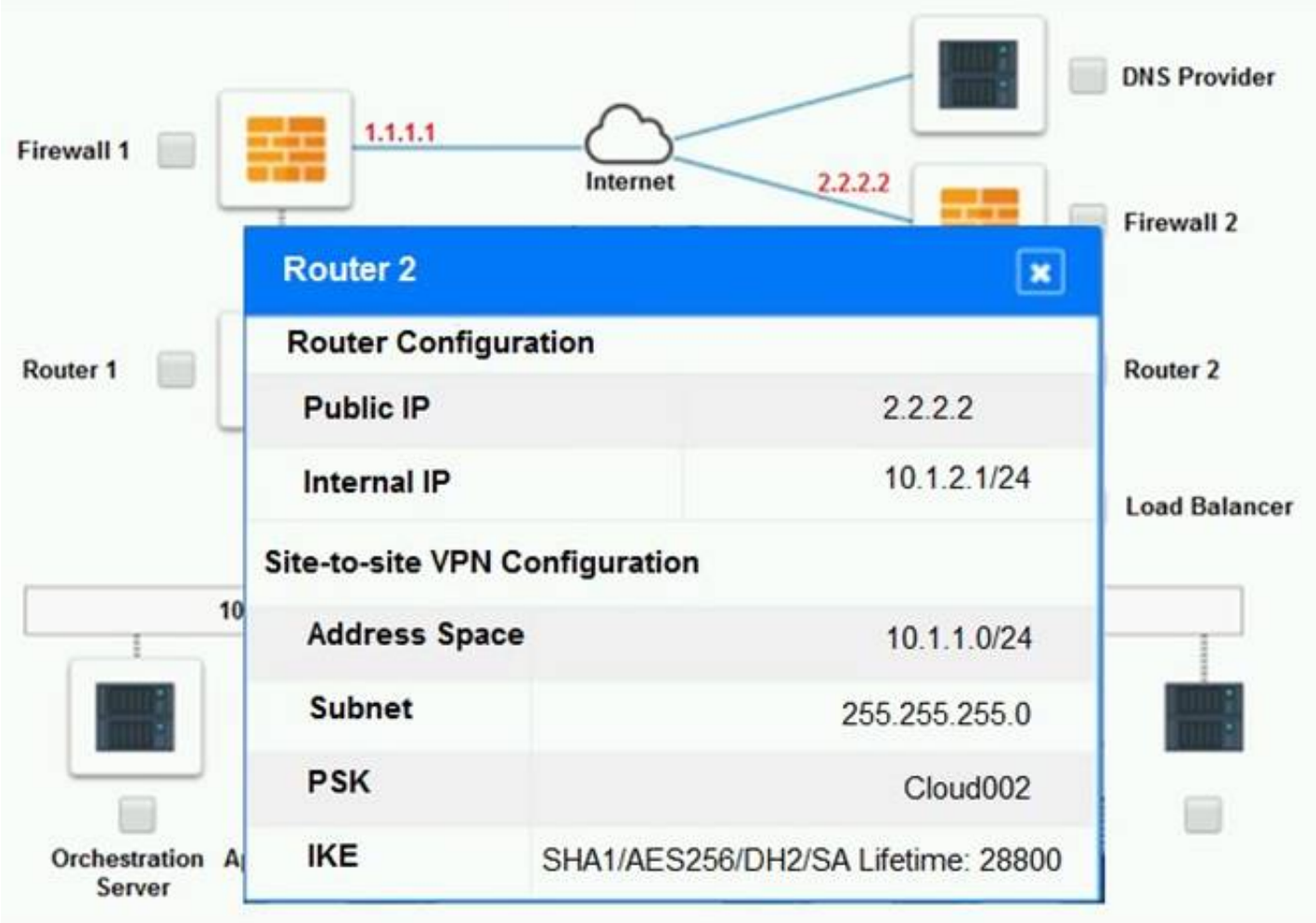
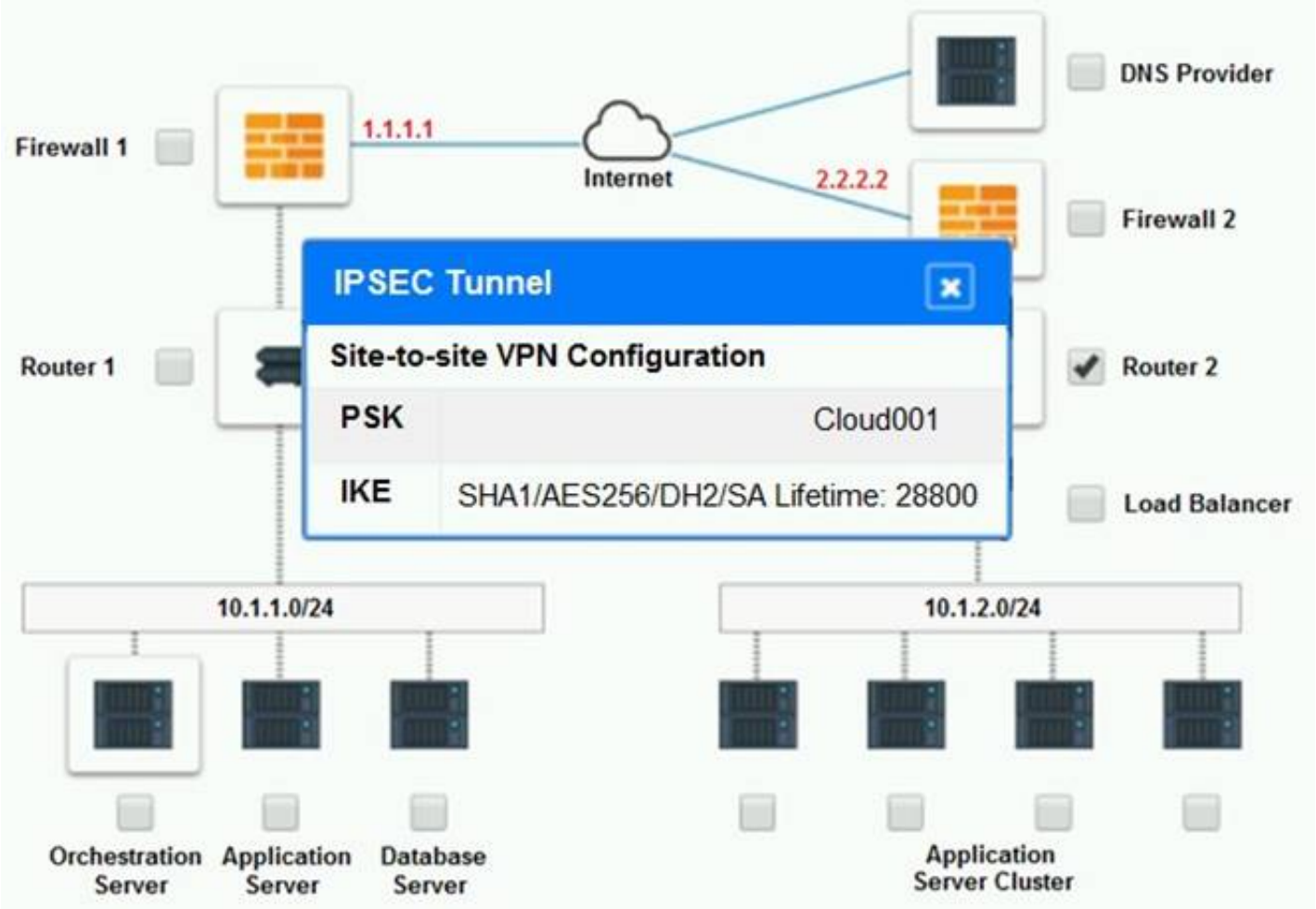
Review the network architecture and supporting documents and fulfill these requirements: Part 1:

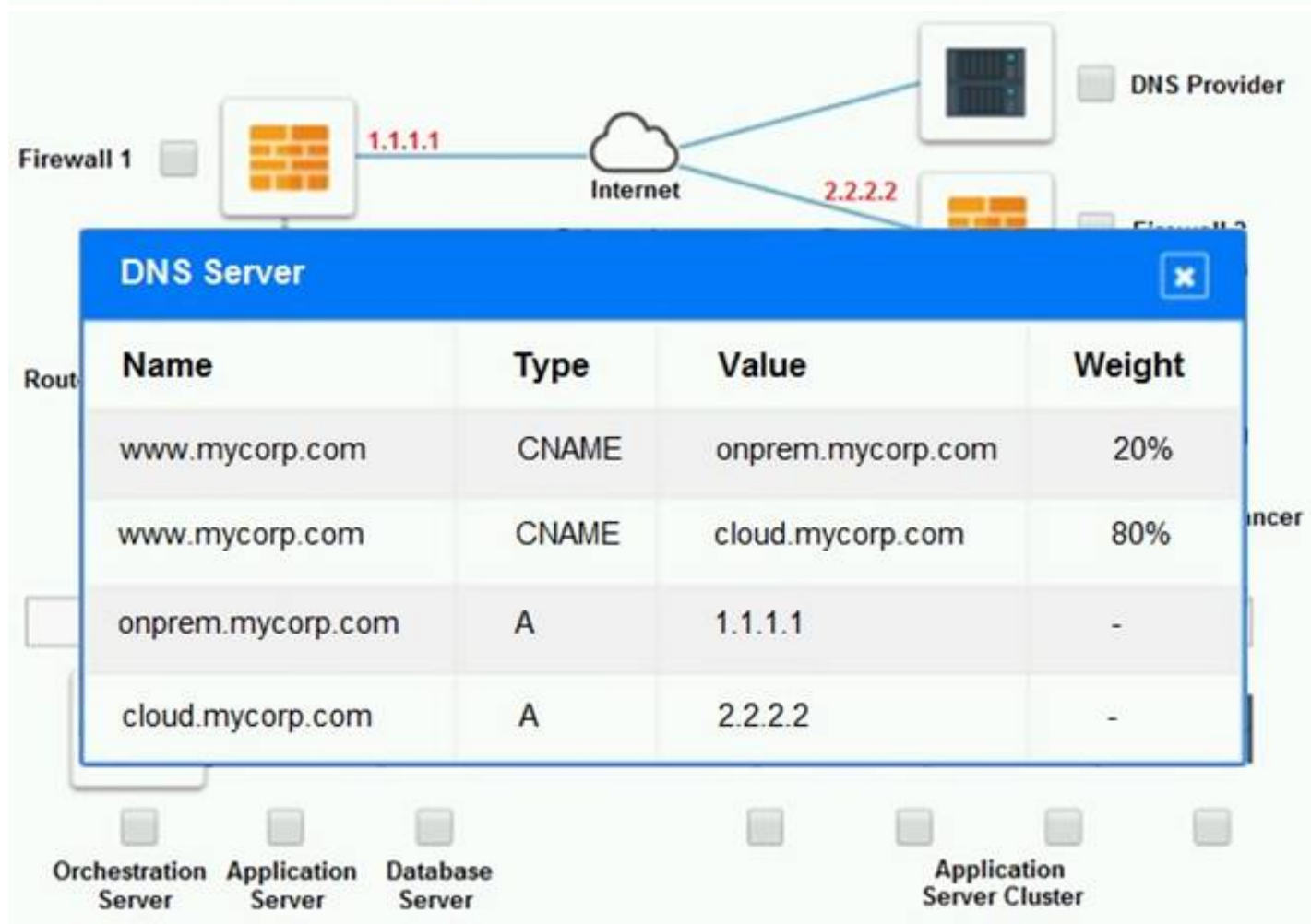
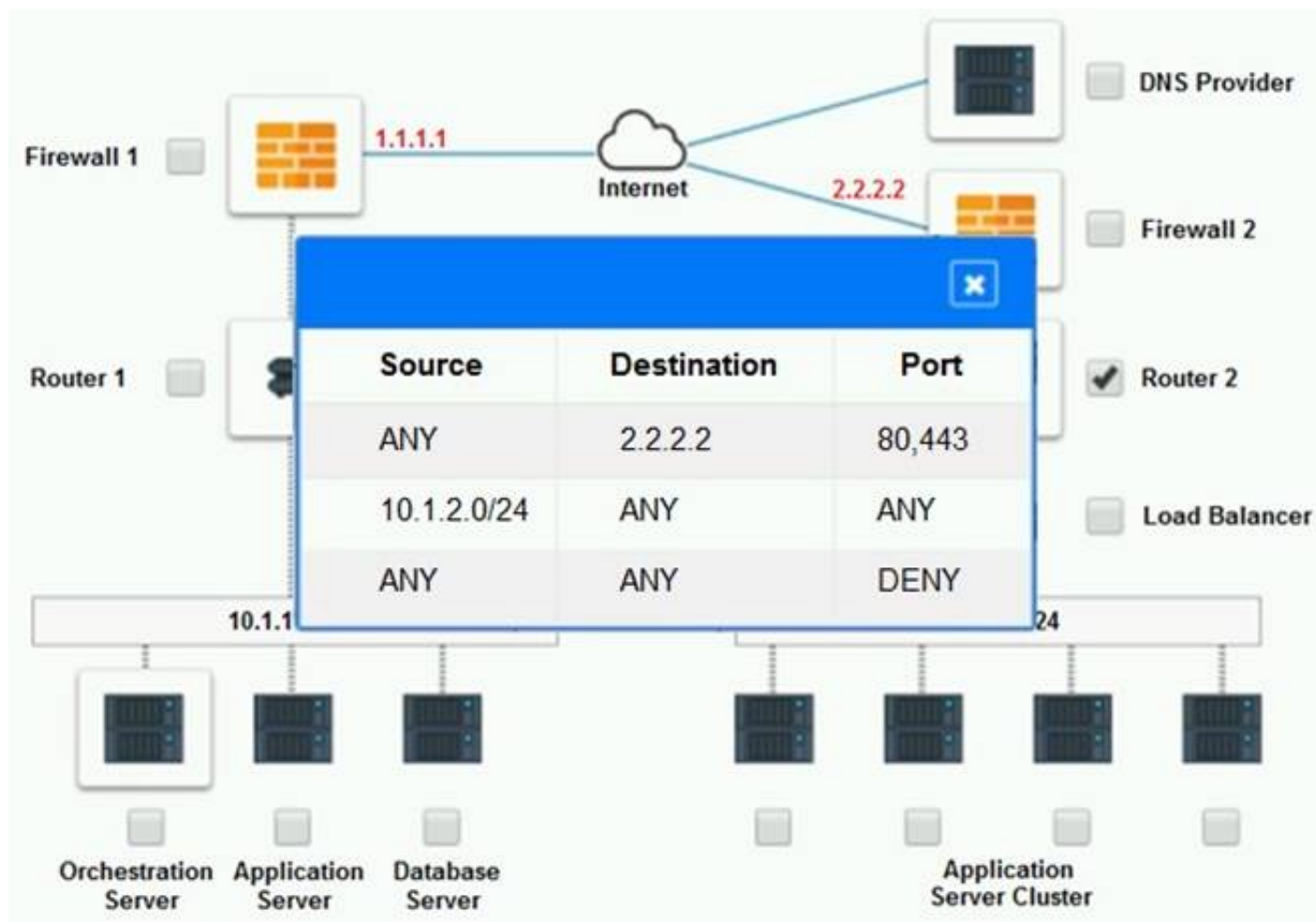
- _ Analyze the configuration of the following components: DNS, Firewall 1, Firewall 2, Router 1, Router 2, VPN and Orchestrator Server.
- _ Identify the problematic device(s).

Part 2:
 _ Identify the correct options to provide adequate configuration for hybrid cloud architecture.
 If at any time you would like to bring back the initial state of the simulation, please click the Reset All button.
 Part 1:
 Cloud Hybrid Network Diagram









Part 2:

Only select a maximum of TWO options from the multiple choice question

- ☐ Deploy a Replica of the Database Server in the Cloud Provider.
- ☐ Update the PSK (Pre-shared key) in Router 2.
- ☐ Update the A record on the DNS from 2.2.2.2 to 1.1.1.1.
- ☐ Promote deny All to allow All in Firewall 1 and Firewall 2.
- ☐ Change the Address Space on Router 2.
- ☐ Change internal IP Address of Router 1.
- ☐ Reverse the Weight property in the two CNAME records on the DNS.
- ☐ Add the Application Server at on-premises to the Load Balancer.

- A. Mastered
- B. Not Mastered

Answer: A

Explanation:

Part 1: Router 2

The problematic device is Router 2, which has an incorrect configuration for the IPSec tunnel. The IPSec tunnel is a secure connection between the on-premises datacenter and the cloud provider, which allows the traffic to flow between the two networks. The IPSec tunnel requires both endpoints to have matching parameters, such as the IP addresses, the pre-shared key (PSK), the encryption and authentication algorithms, and the security associations (SAs) .

According to the network diagram and the configuration files, Router 2 has a different PSK and a different address space than Router 1. Router 2 has a PSK of "1234567890", while Router 1 has a PSK of "0987654321". Router 2 has an address space of 10.0.0.0/8, while Router 1 has an address space of 192.168.0.0/16. These mismatches prevent the IPSec tunnel from establishing and encrypting the traffic between the two networks.

The other devices do not have any obvious errors in their configuration. The DNS provider has two CNAME records that point to the application servers in the cloud provider, with different weights to balance the load. The firewall rules allow the traffic from and to the application servers on port 80 and port 443, as well as the traffic from and to the VPN server on port 500 and port 4500. The orchestration server has a script that installs and configures the application servers in the cloud provider, using the DHCP server to assign IP addresses.

Part 2:

The correct options to provide adequate configuration for hybrid cloud architecture are:

? Update the PSK in Router 2.

? Change the address space on Router 2.

These options will fix the IPSec tunnel configuration and allow the traffic to flow between the on-premises datacenter and the cloud provider. The PSK should match the one on Router 1, which is "0987654321". The address space should also match the one on Router 1, which is 192.168.0.0/16.

* B. Update the PSK (Pre-shared key in Router2)

* E. Change the Address Space on Router2

NEW QUESTION 203

- (Topic 1)

A company is utilizing a private cloud solution that is hosted within its datacenter. The company wants to launch a new business application, which requires the resources below:

Maximum concurrent sessions	Number of nodes required	Required per-node vCPU	Required per-node RAM
1,000	2	4	32
5,000	4	6	64
10,000	6	8	64
25,000	8	8	128

The current private cloud has 30 vCPUs and 512GB RAM available. The company is looking for a quick solution to launch this application, with expected maximum sessions to be close to 24,000 at launch and an average of approximately 5,000 sessions.

Which of the following solutions would help the company accommodate the new workload in the SHORTEST amount of time and with the maximum financial benefits?

- A. Configure auto-scaling within the private cloud
- B. Set up cloud bursting for the additional resources
- C. Migrate all workloads to a public cloud provider
- D. Add more capacity to the private cloud

Answer: B

Explanation:

Cloud Bursting can be used for both compute and storage. This question is about compute capability. "Compute Bursting" unleashes the high-performance compute capabilities of the cloud for processing locally created datasets. (reference: <https://www.ctera.com/it-initiatives/cloud-bursting/>)

<https://azure.microsoft.com/en-us/overview/what-is-cloud-bursting/>

NEW QUESTION 208

- (Topic 1)

A cloud engineer is responsible for managing two cloud environments from different MSPs. The security department would like to inspect all traffic from the two cloud environments.

Which of the following network topology solutions should the cloud engineer implement to reduce long-term maintenance?

- A. Chain
- B. Star
- C. Mesh
- D. Hub and spoke

Answer: D

Explanation:

Hub and spoke is a type of network topology that consists of a central node or device (hub) that connects to multiple peripheral nodes or devices (spokes). Hub and spoke can help reduce long-term maintenance for managing two cloud environments from different MSPs, as it can simplify and centralize the network configuration and management by using the hub as a single point of contact and control for the spokes. Hub and spoke can also improve network performance and security, as it can reduce latency, bandwidth consumption, and network congestion by routing traffic through the hub. References: CompTIA Cloud+ Certification Exam Objectives, page 15, section 2.8

NEW QUESTION 210

- (Topic 1)

A developer is no longer able to access a public cloud API deployment, which was working ten minutes prior.

Which of the following is MOST likely the cause?

- A. API provider rate limiting
- B. Invalid API token
- C. Depleted network bandwidth
- D. Invalid API request

Answer: A

Explanation:

API provider rate limiting is a restriction on the number of requests that can be made to a web service or application programming interface (API) within a certain time period. API provider rate limiting can cause a failure to access a public cloud API deployment, as it can reject or block any requests that exceed the limit. API provider rate limiting can be used by cloud providers to control the usage and traffic of their customers and prevent overloading or abuse of their resources. API provider rate limiting is the most likely cause for the developer being unable to access a public cloud API deployment that was working ten minutes prior.

References: CompTIA Cloud+ Certification Exam Objectives, page 13, section 2.5

NEW QUESTION 212

- (Topic 1)

A storage array that is used exclusively for datastores is being decommissioned, and a new array has been installed. Now the private cloud administrator needs to migrate the data.

Which of the following migration methods would be the BEST to use?

- A. Conduct a V2V migration
- B. Perform a storage live migration
- C. Rsync the data between arrays
- D. Use a storage vendor migration appliance

Answer: B

Explanation:

A storage live migration is a process of moving or transferring data or files from one storage system or device to another without interrupting or affecting the availability or performance of the VMs or applications that use them. Performing a storage live migration can help migrate the data from a SAN that is being decommissioned to a new array, as it can ensure that there is no downtime or disruption for the VMs or applications that rely on the data or files stored on the SAN. Performing a storage live migration can also help maintain consistency and integrity, as it can synchronize and verify the data or files between the source and destination storage systems or devices.

References: CompTIA Cloud+ Certification Exam Objectives, page 10, section 1.5

NEW QUESTION 217

- (Topic 1)

A systems administrator is troubleshooting network throughput issues following a deployment. The network is currently being overwhelmed by the amount of traffic between the database and the web servers in the environment.

Which of the following should the administrator do to resolve this issue?

- A. Set up affinity rules to keep web and database servers on the same hypervisor
- B. Enable jumbo frames on the gateway
- C. Move the web and database servers onto the same VXLAN
- D. Move the servers onto thick-provisioned storage

Answer: C

Explanation:

A virtual extensible local area network (VXLAN) is a type of network virtualization technology that creates logical networks or segments that span across multiple physical networks or locations. Moving the web and database servers onto the same VXLAN can help resolve the network throughput issues following a deployment, as it can reduce the network traffic between the database and the web servers by using a common virtual network identifier (VNI) and encapsulating the traffic within UDP packets. Moving the web and database servers onto the same VXLAN can also improve performance and security, as it can provide higher scalability, isolation, and encryption for the network traffic. References: CompTIA Cloud+ Certification Exam Objectives, page 15, section 2.8

NEW QUESTION 222

- (Topic 1)

A systems administrator wants to have near-real-time information on the volume of data being exchanged between an application server and its clients on the Internet.

Which of the following should the systems administrator implement to achieve this objective?

- A. A stateful firewall
- B. DLP
- C. DNSSEC
- D. Network flows

Answer: D

Explanation:

Network flows are records of network traffic that capture information such as source and destination IP addresses, ports, protocols, timestamps, and byte and packet counts. Network flows can provide near-real-time information on the volume of data being exchanged between a system and its clients on the Internet, as they can measure and monitor the amount and rate of network traffic for each connection or session. Network flows can also help analyze network performance, troubleshoot network issues, and detect network anomalies or security incidents. A systems administrator should implement network flows to achieve the objective of having near-real-time information on the volume of data being exchanged between an application server and its clients on the Internet. References: CompTIA Cloud+ Certification Exam Objectives, page 16, section 3.2

NEW QUESTION 225

- (Topic 1)

A systems administrator is reviewing two CPU models for a cloud deployment. Both CPUs have the same number of cores/threads and run at the same clock speed.

Which of the following will BEST identify the CPU with more computational power?

- A. Simultaneous multithreading
- B. Bus speed
- C. L3 cache
- D. Instructions per cycle

Answer: D

Explanation:

Instructions per cycle (IPC) is a metric that measures how many instructions a CPU can execute in one clock cycle. IPC can help identify the CPU with more computational power when comparing two CPU models that have the same number of cores/threads and run at the same clock speed, as it indicates the efficiency and performance of the CPU architecture and design. A higher IPC means that the CPU can process more instructions in less time, resulting in faster and better performance. References: CompTIA Cloud+ Certification Exam Objectives, page 9, section 1.4

Reference: https://en.wikipedia.org/wiki/Central_processing_unit

NEW QUESTION 226

- (Topic 1)

A systems administrator in a large enterprise needs to alter the configuration of one of the finance department's database servers.

Which of the following should the administrator perform FIRST?

- A. Capacity planning
- B. Change management
- C. Backups
- D. Patching

Answer: B

Explanation:

The SA would do the other three regardless of the need to alter configurations. In this situation, the SA would have to present the change to the CCB in order to do the alteration.

There is no clarification on whether the change management process has been gone

through. Any changes, regardless of how small or big, must go through the change management process. This allows proposals to be heard by end-users, management, and possibly stockholders. From there, it will be reviewed and either approved or denied, with reasons specified. From there, the administrator(s) can do whatever processes are necessary.

Change management is a process or procedure that defines the steps, roles, and responsibilities for implementing, documenting, and communicating any changes or updates to a system or service. Change management can help ensure that any changes or updates are done in a controlled and consistent manner, minimizing any risks or impacts to the system or service. Performing change management is the first thing that a systems administrator should do before altering the configuration of one of the finance department's database servers, as it can ensure that the change request is approved, authorized, tested, and verified before applying it to the database server. References: CompTIA Cloud+ Certification Exam Objectives, page 13, section 2.5

NEW QUESTION 228

- (Topic 1)

An organization's web server farm, which is hosted in the cloud with DNS load balancing, is experiencing a spike in network traffic. This has caused an outage of the organization's web server infrastructure.

Which of the following should be implemented to prevent this in the future as a mitigation method?

- A. Enable DLP
- B. Configure microsegmentation
- C. Enable DNSSEC
- D. Deploy a vADC appliance

Answer: D

Explanation:

A virtual application delivery controller (vADC) is a type of network device or software that provides load balancing, security, and optimization for web applications or services. Deploying a vADC appliance can help prevent an outage of the organization's web server infrastructure due to a spike in network traffic, as it can distribute the traffic across multiple web servers and improve the performance and availability of web applications or services. Deploying a vADC appliance can also provide mitigation methods such as DDoS protection, SSL offloading, and caching to enhance the security and efficiency of web traffic delivery. References: CompTIA Cloud+ Certification Exam Objectives, page 15, section 2.8

NEW QUESTION 232

- (Topic 1)

An OS administrator is reporting slow storage throughput on a few VMs in a private IaaS cloud. Performance graphs on the host show no increase in CPU or memory. However, performance graphs on the storage show a decrease of throughput in both IOPS and MBps but not much increase in latency. There is no increase in workload, and latency is stable on the NFS storage arrays that are used by those VMs.

Which of the following should be verified NEXT?

- A. Application
- B. SAN
- C. VM GPU settings
- D. Network

Answer: D

Explanation:

The network is the set of devices, connections, protocols, and configurations that enable communication and data transfer between different systems and applications. The network can affect the performance of storage throughput by influencing factors such as bandwidth, latency, jitter, packet loss, and congestion.

Poor network performance can result in low storage throughput in both IOPS and MBps, as it can limit the amount and speed of data that can be sent or received by the storage devices. Verifying the network should be the next step for troubleshooting the issue of slow storage throughput on a few VMs in a private IaaS cloud, as it can help identify and resolve any network-related problems that may be causing the issue. References: CompTIA Cloud+ Certification Exam Objectives, page 17, section 3.4

NEW QUESTION 235

- (Topic 1)

A systems administrator recently deployed a VDI solution in a cloud environment; however, users are now experiencing poor rendering performance when trying to display 3-D content on their virtual desktops, especially at peak times. Which of the following actions will MOST likely solve this issue?

- A. Update the quest graphics drivers from the official repository
- B. Add more vGPU licenses to the host
- C. Instruct users to access virtual workstations only on the VLAN
- D. Select vGPU profiles with higher video RAM

Answer: D

Explanation:

A vGPU profile is a configuration option that defines the amount of video RAM (vRAM) and other resources that are allocated to a virtual machine (VM) that uses a virtual graphics processing unit (vGPU). A vGPU profile can affect the rendering performance of a VM, as it determines how much graphics memory and processing power are available for displaying complex graphics content. Selecting vGPU profiles with higher video RAM can most likely solve the issue of poor rendering performance when trying to display 3-D content on virtual desktops, especially at peak times, as it can provide more graphics resources and improve the quality and speed of rendering. References: CompTIA Cloud+ Certification Exam Objectives, page 11, section 1.6

NEW QUESTION 236

- (Topic 1)

A marketing team is using a SaaS-based service to send emails to large groups of potential customers. The internally managed CRM system is configured to generate a list of target customers automatically on a weekly basis, and then use that list to send emails to each customer as part of a marketing campaign. Last week, the first email campaign sent emails successfully to 3,000 potential customers. This week, the email campaign attempted to send out 50,000 emails, but only 10,000 were sent.

Which of the following is the MOST likely reason for not sending all the emails?

- A. API request limit
- B. Incorrect billing account
- C. Misconfigured auto-scaling
- D. Bandwidth limitation

Answer: A

Explanation:

An API request limit is a restriction on the number of requests that can be made to a web service or application programming interface (API) within a certain time period. API request limits are often used by SaaS-based services to control the usage and traffic of their customers and prevent overloading or abuse of their resources. An API request limit can cause a failure to send all the emails if the marketing team exceeds the number of requests allowed by the SaaS-based service in a week. The service may reject or block any requests that go beyond the limit, resulting in fewer emails being sent than expected. References: CompTIA Cloud+ Certification Exam Objectives, page 13, section 2.5

Reference: <https://developers.google.com/analytics/devguides/config/mgmt/v3/limits-quotas>

NEW QUESTION 241

- (Topic 1)

The human resources department was charged for a cloud service that belongs to another department. All other cloud costs seem to be correct.

Which of the following is the MOST likely cause for this error?

- A. Misconfigured templates
- B. Misconfigured chargeback
- C. Incorrect security groups
- D. Misconfigured tags

Answer: D

Explanation:

Tags are metadata or labels that can be assigned to cloud resources or services to identify and organize them based on various criteria, such as name, purpose, owner, or cost center. Tags can help track the costs for each business unit or department that uses cloud services, as they can enable granular and accurate billing and reporting based on the tags. Misconfigured tags can cause the issue of inaccurate cost tracking for different businesses, as they can result in incorrect or missing billing information or reports. The issue can be resolved by configuring the tags properly to reflect the correct business unit or department for each cloud resource or service. References: CompTIA Cloud+ Certification Exam Objectives, page 13, section 2.5

NEW QUESTION 242

- (Topic 1)

A company developed a product using a cloud provider's PaaS platform and many of the platform-based components within the application environment.

Which of the following would the company MOST likely be concerned about when utilizing a multicloud strategy or migrating to another cloud provider?

- A. Licensing
- B. Authentication providers
- C. Service-level agreement
- D. Vendor lock-in

Answer: D

Explanation:

Vendor lock-in is a situation where a customer becomes dependent on a specific vendor for products or services and faces high switching costs or barriers when trying to change vendors. Vendor lock-in is most likely to be a concern for a company that developed a product using a cloud provider's PaaS platform and many of the platform-based components within the application environment when utilizing a multicloud strategy or migrating to another cloud provider, as it can limit the flexibility, scalability, and portability of the product and increase the complexity, risk, and cost of moving or integrating with other cloud platforms or providers.

References: CompTIA Cloud+ Certification Exam Objectives, page 8, section 1.2

NEW QUESTION 244

- (Topic 1)

After accidentally uploading a password for an IAM user in plain text, which of the following should a cloud administrator do FIRST? (Choose two.)

- A. Identify the resources that are accessible to the affected IAM user
- B. Remove the published plain-text password
- C. Notify users that a data breach has occurred
- D. Change the affected IAM user's password
- E. Delete the affected IAM user

Answer: BD

Explanation:

Removing the published plain-text password and changing the affected IAM user's password are the first actions that a cloud administrator should take after accidentally uploading a password for an IAM user in plain text, as they can prevent or limit any unauthorized or malicious access to the cloud resources or services using the compromised password. Removing the published plain-text password can ensure that the password is not exposed or available to anyone who may access or view the uploaded file. Changing the affected IAM user's password can ensure that the password is updated and secured using encryption or hashing techniques. References: CompTIA Cloud+ Certification Exam Objectives, page 14, section 2.7

NEW QUESTION 248

- (Topic 1)

An organization is required to set a custom registry key on the guest operating system. Which of the following should the organization implement to facilitate this requirement?

- A. A configuration management solution
- B. A log and event monitoring solution
- C. A file integrity check solution
- D. An operating system ACL

Answer: A

Explanation:

A configuration management solution is a type of tool or system that automates and standardizes the configuration and deployment of cloud resources or services according to predefined policies or rules. A configuration management solution can help set a custom registry key on the guest operating system in an IaaS instance, as it can apply the desired registry setting to one or more virtual machines (VMs) without manual intervention or scripting. A configuration management solution can also help maintain consistency, compliance, and security of cloud configurations by monitoring and enforcing the desired state. References: CompTIA Cloud+ Certification Exam Objectives, page 13, section 2.5

NEW QUESTION 251

- (Topic 1)

An organization has multiple VLANs configured to segregate the network traffic. Following is the breakdown of the network segmentation:

? Production traffic (10.10.0.0/24)

? Network backup (10.20.0.0/25)

? Virtual IP network (10.20.0.128/25)

The following configuration exists on the server:

Server name	Interface	IP address	Gateway
COMPSRV01	Production	10.10.0.12/24	10.10.0.1
COMPSRV01	Network backup	10.20.0.12/25	10.10.0.1

The backup administrator observes that the weekly backup is failing for this server. Which of the following commands should the administrator run to identify the issue?

- A. ROUTE PRINT
- B. NETSTAT -A
- C. IPCONFIG /ALL
- D. NET SM

Answer: A

Explanation:

ROUTE PRINT is a command that displays the routing table of a system, which shows the destination network, the gateway, the interface, and the metric for each route. ROUTE PRINT can help identify the issue of the weekly backup failing for this server, as it can show if there is a valid route to the network backup segment (10.20.0.0/25) from the production traffic segment (10.10.0.0/24). If there is no route or an incorrect route, the backup will fail to reach the destination. The administrator can use ROUTE PRINT to verify and troubleshoot the routing configuration of the server. References: CompTIA Cloud+ Certification Exam Objectives, page 16, section 3.2

Reference: <https://www.toolbox.com/tech/operating-systems/blogs/using-the-route-print-command-in-windows-7-022310/>

NEW QUESTION 254

- (Topic 1)

A cloud administrator is planning to migrate a globally accessed application to the cloud.

Which of the following should the cloud administrator implement to BEST reduce latency for all users?

- A. Regions
- B. Auto-scaling
- C. Clustering
- D. Cloud bursting

Answer: A

Explanation:

Regions are geographical locations or areas where cloud service providers have data centers or facilities that host their cloud resources or services. Regions can help reduce latency for all users when deploying a globally accessed application to the cloud, as they can enable faster and closer access to the cloud resources or services based on the user's physical location. Regions can also improve performance and availability, as they can provide redundancy and load balancing by distributing the workload across multiple locations. References: CompTIA Cloud+ Certification Exam Objectives, page 15, section 2.8

NEW QUESTION 259

- (Topic 4)

A cloud administrator is evaluating a solution that will limit access to authorized individuals. The solution also needs to ensure the system that connects to the environment meets patching, antivirus, and configuration requirements. Which of the following technologies would BEST meet these requirements?

- A. NAC
- B. EDR
- C. IDS
- D. HIPS

Answer: A

Explanation:

NAC (Network Access Control) is a technology that will limit access to authorized individuals and ensure the system that connects to the environment meets patching, antivirus, and configuration requirements. NAC can enforce policies and rules that define who, what, when, where, and how a device or a user can access a network or a cloud environment. NAC can also inspect and evaluate the security posture and compliance status of a device or a user before granting or denying access. For example, NAC can check if the device has the latest patches, antivirus software, and configuration settings, and if not, it can quarantine, remediate, or reject the device. NAC can also monitor and audit the ongoing network activity and behavior of the devices and users, and take actions if any violations or anomalies are detected.

NEW QUESTION 262

- (Topic 4)

A cloud engineer is deploying a server in a cloud platform. The engineer reviews a security scan report. Which of the following recommended services should be disabled? (Select two).

- A. Telnet
- B. FTP
- C. Remote log-in
- D. DNS
- E. DHCP
- F. LDAP

Answer: AB

Explanation:

Telnet and FTP are recommended services to be disabled when deploying a server in a cloud platform, as they are insecure protocols that transmit data in plain text and expose credentials and sensitive information to potential attackers¹². Remote log-in, DNS, DHCP, and LDAP are not necessarily recommended to be disabled, as they may provide useful functionality for the server and the cloud environment. However, they should be configured properly and secured with encryption, authentication, and authorization mechanisms³⁴.

References: CompTIA Cloud+ CV0-003 Exam Objectives, Objective 4.2: Given a scenario, apply security configurations and compliance controls ; CompTIA Quick Start Guide to Tackling Cloud Security Concerns³

NEW QUESTION 263

.....

Thank You for Trying Our Product

We offer two products:

1st - We have Practice Tests Software with Actual Exam Questions

2nd - Questions and Answers in PDF Format

CV0-003 Practice Exam Features:

- * CV0-003 Questions and Answers Updated Frequently
- * CV0-003 Practice Questions Verified by Expert Senior Certified Staff
- * CV0-003 Most Realistic Questions that Guarantee you a Pass on Your FirstTry
- * CV0-003 Practice Test Questions in Multiple Choice Formats and Updatesfor 1 Year

100% Actual & Verified — Instant Download, Please Click
[Order The CV0-003 Practice Test Here](#)