

# HP

## Exam Questions HPE6-A72

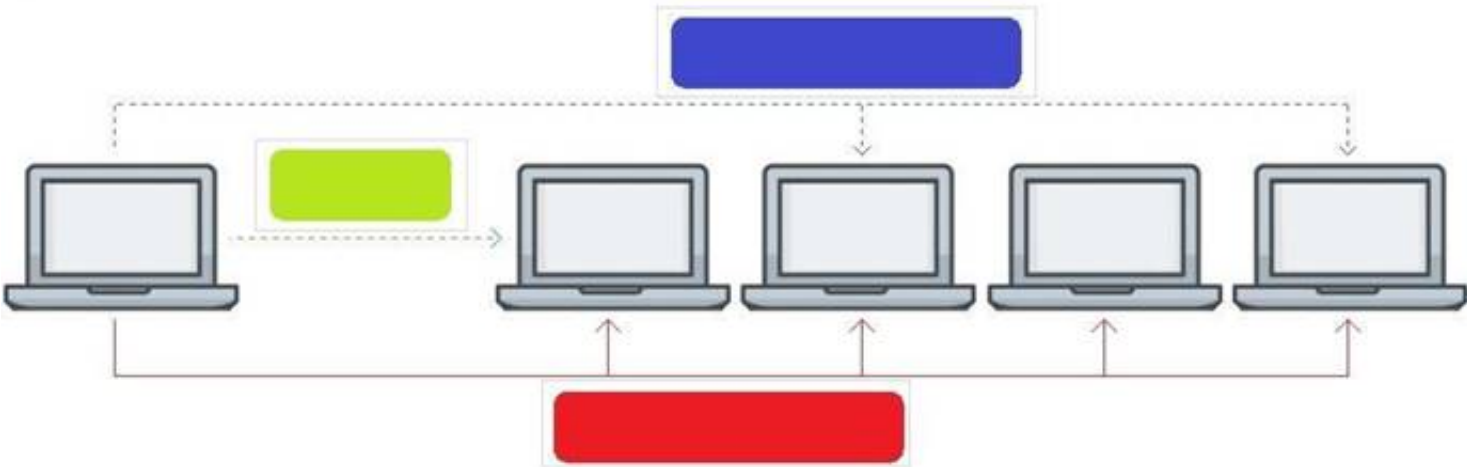
Aruba Certified Switching Associate Exam



NEW QUESTION 1

Click on the colored box that corresponds with the line that best represents Multicast traffic flow.

Answer Area



- A. Mastered
- B. Not Mastered

Answer: A

Explanation:

Diagram Description automatically generated  
Blue Box

NEW QUESTION 2

What is the process where a compute device converts logical data bits into the correct physical representation depending on the media?

- A. Demodulation
- B. Modulation
- C. Propagation
- D. Encapsulation

Answer: D

NEW QUESTION 3

Match the switching term to the correct definition.

Term

- Broadcast Domain
- Collision Domain
- CSMA/CD
- Forwarding Table

Definition

defines the group of devices that are on the same network segment that are capable of receiving and responding to frames destined to FF:FF:FF:FF:FF:FF

the FIB used by switches matching known-source mac-addresses to the layer one port they are learned on

the mechanism used by Compute NICs and Switchports operating in half-duplex to detect and recover from frame collisions

the segment of a network connected by a shared medium, such as a hub, that is affected when two or more frames are sent at the same time

- A. Mastered
- B. Not Mastered

Answer: A

Explanation:

Term		Definition
Broadcast Domain	Broadcast Domain	defines the group of devices that are on the same network segment that are capable of receiving and responding to frames destined to FF:FF:FF:FF:FF:FF
Collision Domain		
CSMA/CD	Forwarding Table	the FIB used by switches matching known-source mac-addresses to the layer one port they are learned on
Forwarding Table		
	CSMA/CD	the mechanism used by Compute NICs and Switchports operating in half-duplex to detect and recover from frame collisions
	Collision Domain	the segment of a network connected by a shared medium, such as a hub, that is affected when two or more frames are sent at the same time

NEW QUESTION 4

Place the OSI Layers in the correct order. Arrange them from least to greatest, starting with Layer 1 on the top, and progressing to Layer 7 on the bottom.

OSI Layer

Application Layer

Data Link Layer

Network Layer

Physical Layer

Presentation Layer

Session Layer

Transport Layer

Order

- A. Mastered
- B. Not Mastered

Answer: A

Explanation:  
Graphical user interface, application Description automatically generated

NEW QUESTION 5

Match each description to the correct term.

Term		Description
ASIC		receives and sends frames by using Application-Specific Integrated Circuits (ASICs)
Control Plane		
Data Plane		switches packets faster than using software
Management Plane		determines packet forwarding using routing, switching, security, and flow optimization
		handles switch monitoring

- A. Mastered
- B. Not Mastered

Answer: A

Term	Description
ASIC	receives and sends frames by using Application-Specific Integrated Circuits (ASICs)
Control Plane	switches packets faster than using software
Data Plane	determines packet forwarding using routing, switching, security, and flow optimization
Management Plane	handles switch monitoring

visit - <https://www.surepassexam.com>



A.

```
SW1# show vlan
```

VLAN	Name	Status	Reason	Type	Interfaces
1	DEFAULT_VLAN_1	up	ok	default	1/1/2
2		up	ok	static	1/1/2
11		up	ok	static	1/1/17
12		up	ok	static	1/1/17
13		up	ok	static	1/1/17
14		up	ok	static	1/1/17
15		up	ok	static	1/1/17
16		up	ok	static	1/1/17
17		up	ok	static	1/1/17

B.

```
SW1# show vlan
```

VLAN	Name	Status	Reason	Type	Interfaces
1	DEFAULT_VLAN_1	up	ok	default	1/1/1-1/1/24
2		up	ok	static	1/1/1-1/1/2
17		up	ok	static	1/1/11-1/1/17

C.

```
SW1# show vlan
```

VLAN	Name	Status	Reason	Type	Interfaces
2	DEFAULT_VLAN_2	up	ok	static	1/1/1-1/1/2
17		up	ok	static	1/1/11-1/1/17

D.

```
SW1# show vlan
```

VLAN	Name	Status	Reason	Type	Interfaces
1	DEFAULT_VLAN_1	up	ok	default	<output omitted>
2		up	ok	static	1/1/1-1/1/2
17		up	ok	static	1/1/11-1/1/17

- A. Option A
- B. Option B
- C. Option C
- D. Option D

Answer: D

#### NEW QUESTION 10

Match the terms to the correct layer of the OSI model.

Layer		Term
Transport Layer		Frames
Network Layer		Packets
Physical Layer		RF Signals
Data Link Layer		Segments

- A. Mastered
- B. Not Mastered

Answer: A

Explanation:

Layer	Term
Transport Layer	Data Link Layer Frames
Network Layer	Network Layer Packets
Physical Layer	Physical Layer RF Signals
Data Link Layer	Transport Layer Segments

#### NEW QUESTION 10

Which switches support Aruba Virtual Switching Extension (VSX)? (Choose two.)

- A. Aruba 6405
- B. Aruba 2930F
- C. Aruba 8400
- D. Aruba 5406R
- E. Aruba 8350

**Answer:** AC

#### NEW QUESTION 14

What are two primary concerns regarding layer two loops in a redundant topology? (Choose two.)

- A. routing loops
- B. costs associated with upgrading from copper to fiber
- C. multiple frame copies leading to instability of the MAC address table
- D. security issues with a redundant loop indicating to hackers that a back-door exists
- E. broadcast storms

**Answer:** CD

#### NEW QUESTION 16

With what other technology does Half Duplex communication closely match?

- A. a pair of fiber optic strands allowing transmit on one and receive on the other at the same time
- B. a mobile phone call
- C. point-to-point connections between two switches allowing concurrent transmit and receive
- D. CB radio using push-to-talk

**Answer:** D

#### NEW QUESTION 17

Core(config)# user admin password

Core(config)# interface mgmt

Core(config-if-mgmt)# ip static 10.254.16.89/22

Core(config-if-mgmt)# default-gateway 10.254.19.129

Core(config)# ssh server vrf mgmt

Core(config)# https-server vrf mgmt

You are tasked with configuring the Core switch to be managed by NetEdit. Currently, the Core switch is at factory-default settings.

Which two steps are missing? (Choose two.)

- A. Core(config)# https-server rest access-mode read-write
- B. Core(config-if-mgmt)# no shutdown
- C. Core(config-if-mgmt)# no tftp-server
- D. Core(config-if-mgmt)# enable
- E. Core(config)# https-server rest access-mode read-only

**Answer:** AB

#### NEW QUESTION 22

Which command will suppress LLDP messages from egressing on a given port while still allowing LLDP to be enabled on the switch?

- A. switch(config-if)# no lldp interface (port) transmit
- B. switch(config-if)# no lldp transmit
- C. switch(config-if)# no lldp receive
- D. switch(config)# no lldp

**Answer:** B

#### NEW QUESTION 24

Your customer has 349 users in a two-story building. What are two benefits of a 2-Tier design? (Choose two.)

- A. Layer 2 and Layer 3 protocols run close to the endpoints to better implement ACL and QoS policy at the edge.
- B. Improved performance by offloading processing from the Access layer to the Core.
- C. Use of layer 2 switches at the access layer can process and route traffic from attached APs.
- D. Support for WAN/MPLS, Internet, and Data Center directly on the Collapsed core.
- E. Provides a more cost effective solution given that no additional switches are required for a third tier.

**Answer:** AE

**NEW QUESTION 27**

Refer to the exhibit.



You are in the process of configuring VSF between Access-1 and Access-2. Access-1 has been configured as the VSF Master. What is a valid configuration for Access-2 to join the VSF stack?

- A. Access-2# configureAccess-2(config)# vsf member 1 Access-2(config)# vsf renumber-to 2 Access-2(vsf-member-1)# link 2 2/1/28 Access-2(vsf-member-1)# exitThis will save the VSF configuration and reboot the switc
- B. Do you want to continue (y/n)? y
- C. Access-2# configureAccess-2(config)# vsf member 2 Access-2(vsf-member-1)# link 2 1/1/28 Access-2(vsf-member-1)# exit This will save the VSF configuration and reboot the switc
- D. Do you want to continue (y/n)? y
- E. Access-2# configureAccess-2(config)# vsf member 2 Access-2(vsf-member-1)# link 1 1/1/28 Access-2(vsf-member-1)# exit This will save the VSF configuration and reboot the switc
- F. Do you want to continue (y/n)? y
- G. Access-2# configureAccess-2(config)# vsf member 1 Access-2(vsf-member-1)# link 1 1/1/28 Access-2(vsf-member-1)# exit Access-2(config)# vsf renumber-to 2This will save the VSF configuration and reboot the switc
- H. Do you want to continue (y/n)? y

**Answer:** C

**NEW QUESTION 30**

What is the Link Layer Discovery Protocol?

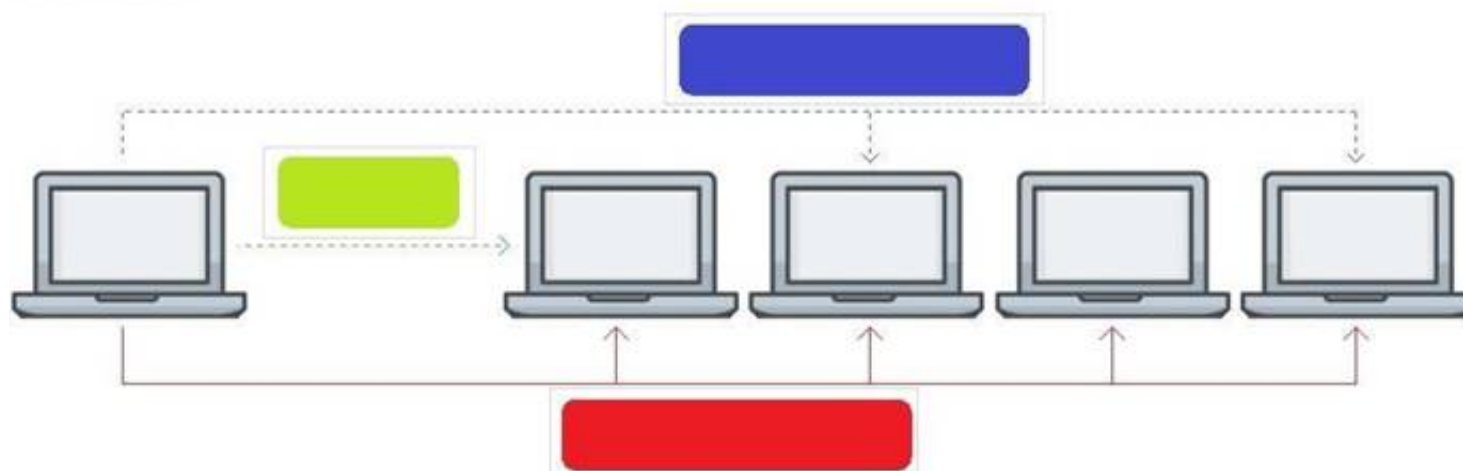
- A. a discovery protocol used between Layer 3 devices to determine routes within a single autonomous system
- B. a standardized IPv6 neighbor discovery protocol used to replace the ARP and broadcast mechanism used in IPv4
- C. a standardized protocol for communicating directly-connected device information and capabilities.
- D. an Aruba proprietary discovery protocol supported in all Aruba switches along with Cisco Discovery Protocol or CDP

**Answer:** C

**NEW QUESTION 33**

Click on the colored box that corresponds with the line that best represents Broadcast traffic flow.

**Answer Area**

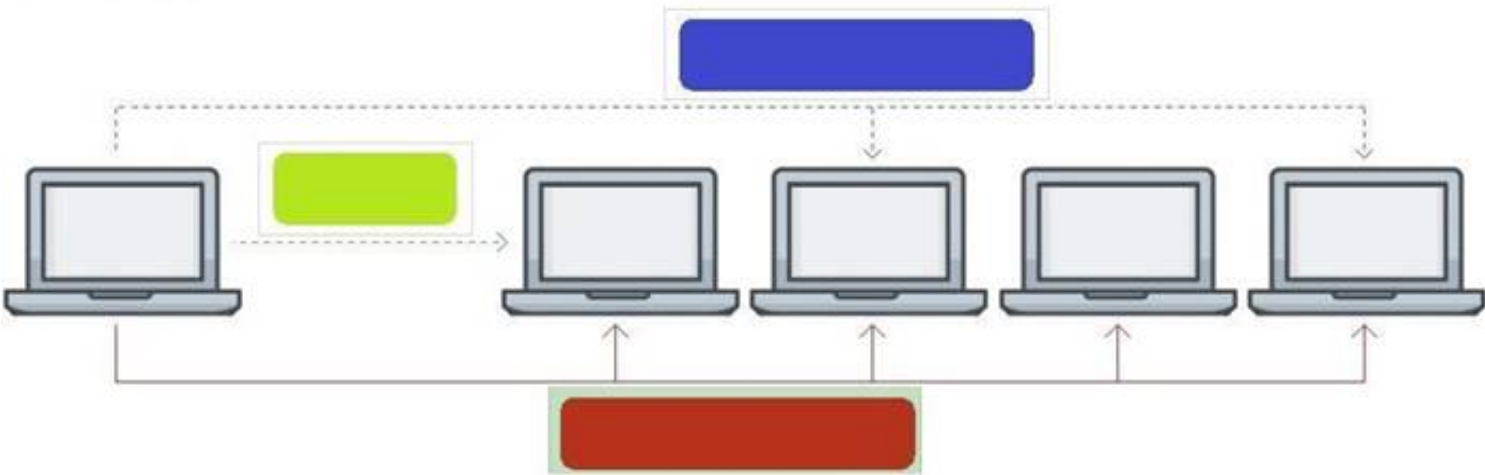


- A. Mastered
- B. Not Mastered

**Answer:** A

**Explanation:**

Answer Area



NEW QUESTION 36

Which two port characteristics must match between LAG interfaces? (Choose two.)

- A. Port number
- B. Duplex
- C. Member ID
- D. Media type
- E. Chassis number

Answer: BD

NEW QUESTION 37

Aruba Access Points tunnel traffic in a campus to the Mobility Controller using which protocol?

- A. Control and Provisioning of Wireless Access Points (CAPWAP)
- B. Generic Routing Encapsulation (GRE)
- C. Lightweight Access Point Protocol (LWAPP)
- D. Process Application Programming Interface (PAPI)

Answer: B

NEW QUESTION 42

Which statement is correct regarding powering an Aruba Access Point?

- A. PoE or PoE+ is only used with Ethernet that is carried over multi-mode fiber cabling.
- B. Using switchports for this reason is unnecessary, because Aruba Access Points typically use an AC to DC power adapter to draw power.
- C. PoE or PoE+ enabled switchports are rarely used given concerns about causing electrical interference, with the data also carried over Ethernet cabling.
- D. Most administrators use PoE or PoE+ enabled switchports to provide both Ethernet connectivity and power to the AP.

Answer: D

NEW QUESTION 46

Refer to the exhibit.

Switch-1(config)# show spanning-tree   exclude Disabled					
←---- output omitted ----→					
Port	Role	State	Cost	Priority	Type
1/1/1	Designated	Forwarding	4000	128	point_to_point
Lag1		Forwarding	2000	64	point_to_point
1/1/2	Designated	Forwarding	10000	128	point_to_point
1/1/3	Designated	Forwarding	20000	128	point_to_point

Switch-1 is not the root bridge. The ports shown are all the connected pointtopoint interfaces. What Role (hidden by the blue rectangle) will be assigned to the Lag 1 interface?

- A. Alternate
- B. Backup
- C. Root
- D. Designated

Answer: C

NEW QUESTION 50

Refer to the exhibit



```
Access-1(config)# show vlan
```

VLAN	Name	Status	Reason	Type	Interfaces
1	DEFAULT_VLAN_1	up	ok	default	1/1/1-1/1/28
50	Engineering	down	no_member_port	static	

What is true regarding VLAN 50 according to the diagram above?

- A. VLAN 50 is part of a switched virtual interface (SVI) that was never routed causing it to be down.
- B. Since VLAN 50 has not been assigned to any enabled physical port, the status is down.
- C. VLAN 50 is assigned only to Trunk ports which is why no ports are listed under interfaces.
- D. VLAN 50 was never added to the vlan-database and therefore is in a down state.

**Answer: B**

#### NEW QUESTION 51

ServiceOS login: admin SVOS> password

Enter password: \*\*\*\*\* Confirm password: \*\*\*\*\*

The login password to access an Aruba AOS-CX was lost. After connecting to the switch console port, a reboot is performed and the Service OS console is accessed as shown above.

What is the default password that is required for the admin account while under the Service OS console?

- A. No password is set for this account.
- B. "password"
- C. "forgetme!"
- D. The same login password that has lost originally.

**Answer: C**

#### NEW QUESTION 52

What command will save your configuration on an Aruba AOS-CX switch so that your changes automatically load on next reboot?

- A. copy running-config checkpoint startup-config
- B. copy startup-config running-config
- C. copy running-config initial-checkpoint
- D. copy running-config default

**Answer: A**

#### NEW QUESTION 54

What is Deep Packet Inspection?

- A. a machine learning method of packet inspection for the purpose of choosing which dynamic routing protocol to automatically assign
- B. a concept that applies to firewalls, when examining packets only up through Layer 4
- C. a function of Policy Based Routing that examines the entire IPv4 header to forward traffic based on factors other than destination address
- D. a firewall process of examining the packet header all the way to Layer 7 in order to determine if the packet should be permitted or denied

**Answer: D**

#### NEW QUESTION 57

Refer to the exhibit.

T11-Access-2# show lldp configuration

#### LLDP Global Configuration

=====

```
LLDP Enabled           : Yes
LLDP Transmit Interval : 30
LLDP Hold Time Multiplier : 4
LLDP Transmit Delay Interval : 2
LLDP Reinit Time Interval : 2
```

#### TLVs Advertised

=====

```
Management Address
Port Description
Port VLAN-ID
System Capabilities
System Description
System Name
OUI
```

#### LLDP Port Configuration

=====

PORT	TX-ENABLED	RX-ENABLED
1/1/1	Yes	Yes
1/1/2	Yes	Yes
<--- output omitted --->		
1/1/27	Yes	Yes
1/1/28	Yes	Yes

What configuration is needed in order for "show LLDP configuration" to show this output?

- A. none; LLDP is enabled by default on Aruba switches
- B. configuring LLDP both globally and on the interfaces
- C. enabling LLDP on the interfaces only
- D. configuring LLDP globally only

**Answer:** A

#### NEW QUESTION 58

What are the benefits of a 3-Tier design over a 2-Tier? (Choose two.)

- A. Offloading processing from the Core without routing at the Access layer.
- B. Can use lower speed links between Core to Aggregation and Aggregation to Access given the use of an Aggregation layer.
- C. Lowering the cost of a deployment due to needing less switches overall.
- D. Better scalability in a campus with a large number of buildings.
- E. Gaining the flexibility to connect the Data-Center to any Access layer switch.

**Answer:** AD

#### NEW QUESTION 63

Which statement is true regarding modern switching requirements?

- A. Most older legacy switches had high port bandwidth utilization and were future proof designed to meet today's power-over-Ethernet needs.
- B. Requirements for PoE are normally addressed using AC to DC power adapter
- C. Concerns for port security for IoT devices are usually addressed using default wired encryption that all 802.3 Ethernet switches provide.
- D. While APs are common, most clients are still docked and only require traditional wired connections with only the occasional dedicated PoE switch to provide power for the low number of devices needed.
- E. Clients tend to prefer wireless connections, raising the need for PoE port acces
- F. There is also a growing amount of IoT devices that require security and port authentication options.

**Answer:** D

#### NEW QUESTION 67

You have completed a successful VSF stack between two switches.

Without manually assigning a backup switch, what is the expected output when issuing a show vsf command?

- A. T1-6300-A# show vsf  
 <omitted>  

Member	Mac Address	type	Status	ID
1	88:3a:30:a3:e5:40	JL660A	Commander	
2	88:3a:30:a6:d9:80	JL660A	Secondary	
- B. T1-6300-A# show vsf  
 <omitted>  

Member	Mac Address	type	Status	ID
1	88:3a:30:a3:e5:40	JL660A	Primary	
2	88:3a:30:a6:d9:80	JL660A	Secondary	
- C. T1-6300-A# show vsf  
 <omitted>  

Member	Mac Address	type	Status	ID
1	88:3a:30:a3:e5:40	JL660A	Master	
2	88:3a:30:a6:d9:80	JL660A	Member	
- D. T1-6300-A# show vsf  
 <omitted>  

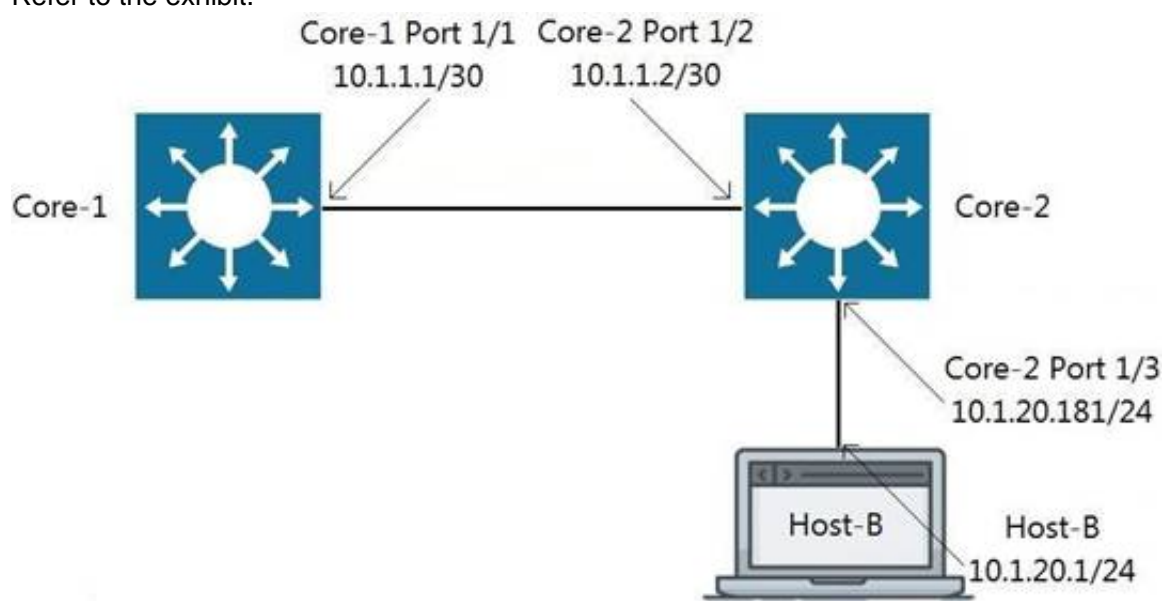
Member	Mac Address	type	Status	ID
1	88:3a:30:a3:e5:40	JL660A	Master	
2	88:3a:30:a6:d9:80	JL660A	Standby	

- A. Option A  
 B. Option B  
 C. Option C  
 D. Option D

**Answer: D**

#### NEW QUESTION 69

Refer to the exhibit.



Traffic is failing between Core-1 and Host-B. IP addressing has correctly been applied, and all interfaces are attached to the vrf GREEN. Which configuration will correct the issue?

- A. Core-2(config)# ip route 0.0.0.0/0 10.1.1.1 vrf GREEN Host-B: assign the default-gateway address 10.1.20.181  
 B. Core-1(config)# ip route 10.1.20.0/24 10.1.1.2 vrf GREEN Host-B: assign the default-gateway address 10.1.20.181  
 C. Core-1(config)# ip route 10.1.20.0/24 10.1.1.2 vrf GREEN Host-B: assign the default-gateway address 10.1.20.1

D. Host-B: assign the default-gateway address 10.1.20.181

**Answer:** B

**NEW QUESTION 74**

.....



## Thank You for Trying Our Product

### We offer two products:

1st - We have Practice Tests Software with Actual Exam Questions

2nd - Questions and Answers in PDF Format

### HPE6-A72 Practice Exam Features:

- \* HPE6-A72 Questions and Answers Updated Frequently
- \* HPE6-A72 Practice Questions Verified by Expert Senior Certified Staff
- \* HPE6-A72 Most Realistic Questions that Guarantee you a Pass on Your FirstTry
- \* HPE6-A72 Practice Test Questions in Multiple Choice Formats and Updatesfor 1 Year

**100% Actual & Verified — Instant Download, Please Click**  
**[Order The HPE6-A72 Practice Test Here](#)**