

# Fortinet

## Exam Questions NSE5\_FMG-7.2

Fortinet NSE 5 - FortiManager 7.2



#### NEW QUESTION 1

- (Topic 1)

When an installation is performed from FortiManager, what is the recovery logic used between FortiManager and FortiGate for an FGFM tunnel?

- A. After 15 minutes, FortiGate will unset all CLI commands that were part of the installation that caused the tunnel to go down.
- B. FortiManager will revert and install a previous configuration revision on the managed FortiGate.
- C. FortiGate will reject the CLI commands that will cause the tunnel to go down.
- D. FortiManager will not push the CLI commands as a part of the installation that will cause the tunnel to go down.

**Answer:** A

#### Explanation:

The configuration change will break the fgfm connection, causing the FortiGate unit to attempt to reconnect for 900 seconds. If the FortiGate cannot reconnect, it will rollback to its previous configuration.

#### NEW QUESTION 2

- (Topic 1)

An administrator would like to review, approve, or reject all the firewall policy changes made by the junior administrators.

How should the Workspace mode be configured on FortiManager?

- A. Set to workflow and use the ADOM locking feature
- B. Set to read/write and use the policy locking feature
- C. Set to normal and use the policy locking feature
- D. Set to disable and use the policy locking feature

**Answer:** A

#### Explanation:

Reference: [https://help.fortinet.com/fmgr/50hlp/52/5-2-0/FMG\\_520\\_Online\\_Help/200\\_What's-New.03.03.html](https://help.fortinet.com/fmgr/50hlp/52/5-2-0/FMG_520_Online_Help/200_What's-New.03.03.html)

#### NEW QUESTION 3

- (Topic 1)

Which configuration setting for FortiGate is part of a device-level database on FortiManager?

- A. VIP and IP Pools
- B. Firewall policies
- C. Security profiles
- D. Routing

**Answer:** C

#### Explanation:

The FortiManager stores the FortiGate configuration details in two distinct databases. The device-level database includes configuration details related to device-level settings, such as interfaces, DNS, routing, and more. The ADOM-level database includes configuration details related to firewall policies, objects, and security profiles.

#### NEW QUESTION 4

- (Topic 1)

In the event that the primary FortiManager fails, which of the following actions must be performed to return the FortiManager HA to a working state?

- A. Secondary device with highest priority will automatically be promoted to the primary role, and manually reconfigure all other secondary devices to point to the new primary device
- B. Reboot one of the secondary devices to promote it automatically to the primary role, and reconfigure all other secondary devices to point to the new primary device.
- C. Manually promote one of the secondary devices to the primary role, and reconfigure all other secondary devices to point to the new primary device.
- D. FortiManager HA state transition is transparent to administrators and does not require any reconfiguration.

**Answer:** C

#### Explanation:

FortiManager\_6.4\_Study\_Guide-Online – page 346

FortiManager HA doesn't support IP takeover where an HA state transition is transparent to administrators. If a failure of the primary occurs, the administrator must take corrective action to resolve the problem that may include invoking the state transition. If the primary device fails, the administrator must do the following in order to return the FortiManager HA to a working state:

- \* 1. Manually reconfigure one of the secondary devices to become the primary device
- \* 2. Reconfigure all other secondary devices to point to the new primary device

#### NEW QUESTION 5

- (Topic 1)

You are moving managed FortiGate devices from one ADOM to a new ADOM. Which statement correctly describes the expected result?

- A. Any pending device settings will be installed automatically
- B. Any unused objects from a previous ADOM are moved to the new ADOM automatically
- C. The shared policy package will not be moved to the new ADOM
- D. Policy packages will be imported into the new ADOM automatically

**Answer:** C

**Explanation:**

Reference:<https://community.fortinet.com/t5/FortiManager/Technical-Note-How-to-move-objects-to-new-ADOM-on-FortiManager/ta-p/198342>

**NEW QUESTION 6**

- (Topic 1)

What are two outcomes of ADOM revisions? (Choose two.)

- A. ADOM revisions can significantly increase the size of the configuration backups.
- B. ADOM revisions can save the current size of the whole ADOM
- C. ADOM revisions can create System Checkpoints for the FortiManager configuration
- D. ADOM revisions can save the current state of all policy packages and objects for an ADOM

**Answer:** AD

**Explanation:**

Reference:<https://docs2.fortinet.com/document/fortimanager/6.0.0/best-practices/101837/adom-revisions>

**NEW QUESTION 7**

- (Topic 1)

An administrator with the Super\_User profile is unable to log in to FortiManager because of an authentication failure message. Which troubleshooting step should you take to resolve the issue?

- A. Make sure FortiManager Access is enabled in the administrator profile
- B. Make sure Offline Mode is disabled
- C. Make sure the administrator IP address is part of the trusted hosts.
- D. Make sure ADOMs are enabled and the administrator has access to the Global ADOM

**Answer:** C

**Explanation:**

Even if a user entered the correct userid/password, the FMG denies access if a user is logging in from an untrusted source IP subnets.

Reference:<https://docs.fortinet.com/document/fortimanager/6.0.3/administration-guide/107347/trusted-hosts>

**NEW QUESTION 8**

- (Topic 1)

View the following exhibit:

```
#diagnose fmupdate view-serverlist fds
Fortiguard Server Comm: Enabled
Server Override Mode: Loose
FDS server list :
```

Index	Address	Port	Timezone	Distance	Source
*0	10.0.1.50	8890	-5	0	CLI
1	96.45.33.89	443	-5	0	FDNI
2	96.45.32.81	443	-5	0	FDNI
....					
38	fds1.fortinet.com	443	-5	0	DEFAULT

How will FortiManager try to get updates for antivirus and IPS?

- A. From the list of configured override servers with ability to fall back to public FDN servers
- B. From the configured override server list only
- C. From the default server fds1.fortinet.com
- D. From public FDNI server with highest index number only

**Answer:** A

**Explanation:**

Reference:<https://community.fortinet.com/t5/Fortinet-Forum/Clarification-of-FortiManager-s-quot-Server-Override-Mode-quot/td-p/89973>

**NEW QUESTION 9**

- (Topic 1)

What will happen if FortiAnalyzer features are enabled on FortiManager?

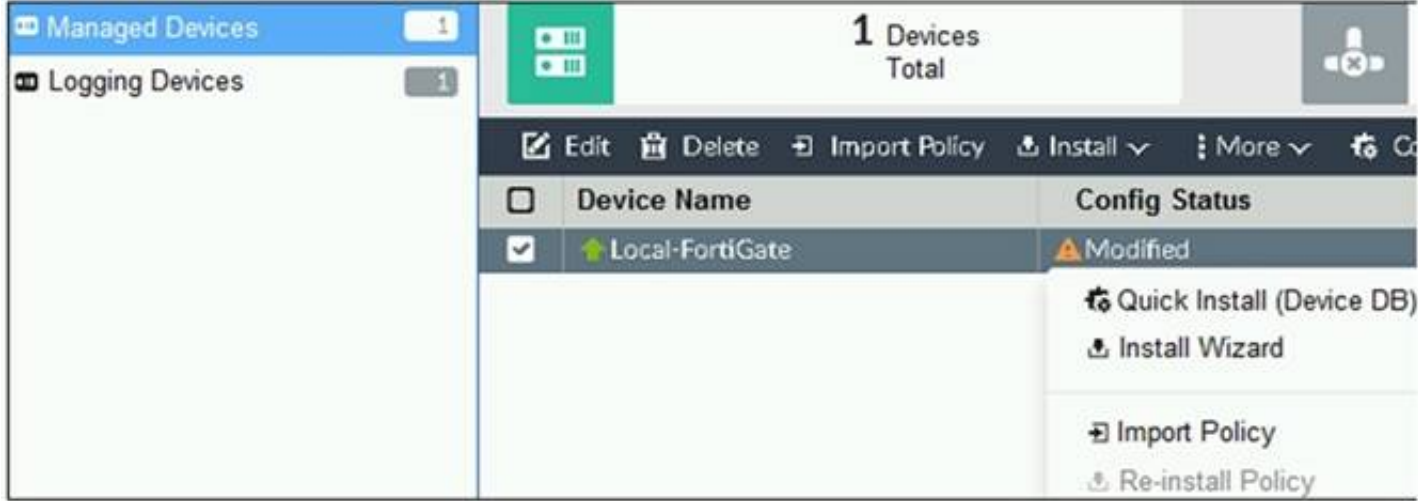
- A. FortiManager will reboot
- B. FortiManager will send the logging configuration to the managed devices so the managed devices will start sending logs to FortiManager
- C. FortiManager will enable ADOMs automatically to collect logs from non-FortiGate devices
- D. FortiManager can be used only as a logging device.

**Answer:** A

**Explanation:**

Reference:[https://help.fortinet.com/fmgr/50hlp/56/5-6-1/FortiManager\\_Admin\\_Guide/1800\\_FAZ%20Features/0200\\_Enable%20FAZ%20Features.htm](https://help.fortinet.com/fmgr/50hlp/56/5-6-1/FortiManager_Admin_Guide/1800_FAZ%20Features/0200_Enable%20FAZ%20Features.htm)

NEW QUESTION 10  
 - (Topic 1)  
 Refer to the exhibit.



You are using the Quick Install option to install configuration changes on the managed FortiGate.  
 Which two statements correctly describe the result? (Choose two.)

- A. It will not create a new revision in the revision history
- B. It installs device-level changes to FortiGate without launching the Install Wizard
- C. It cannot be canceled once initiated and changes will be installed on the managed device
- D. It provides the option to preview configuration changes prior to installing them

Answer: BC

**Explanation:**  
 FortiManager\_6.4\_Study\_Guide-Online – page 164  
 The Install Config option allows you to perform a quick installation of device-level settings without launching the Install Wizard. When you use this option, you cannot preview the changes prior to committing. Administrator should be certain of the changes before using this install option, because the install can't be cancelled after the process is initiated.

NEW QUESTION 10  
 - (Topic 1)  
 Refer to the exhibit.

```
Start to import config from device(Local-FortiGate) vdom(root) to
adom(My_ADOM), package(Local-FortiGate_root)

"firewall service category",SKIPPED,"(name=General, oid=697, DUPLICATE)"

"firewall address",SUCCESS,"(name=LOCAL_SUBNET, oid=684, new object)"

"firewall service custom",SUCCESS,"(name=ALL, oid=863, update previous
object)"

"firewall policy",SUCCESS,"(name=1, oid = 1090, new object)"
```

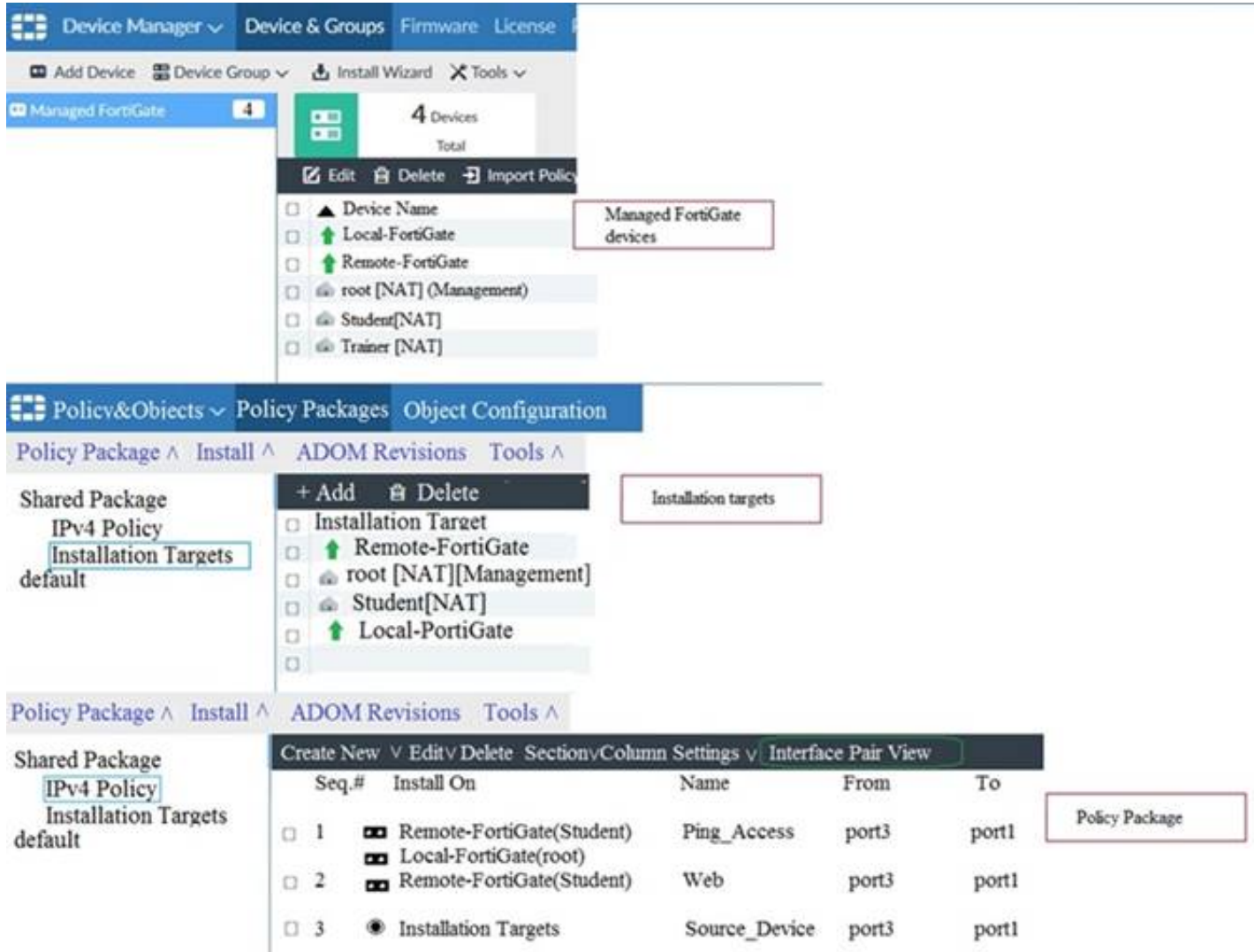
Which statement about the object named ALL is true?

- A. FortiManager updated the object ALL using the FortiGate value in its database.
- B. FortiManager installed the object ALL with the updated value.
- C. FortiManager created the object ALL as a unique entity in its database, which can be only used by this managed FortiGate.
- D. FortiManager updated the object ALL using the FortiManager value in its database.

Answer: A

NEW QUESTION 14  
 - (Topic 1)  
 View the following exhibit.





The screenshot displays the FortiManager web interface. The top navigation bar includes 'Device Manager', 'Device & Groups', 'Firmware', and 'License'. The 'Device Manager' section shows a list of managed FortiGate devices, including 'Local-FortiGate', 'Remote-FortiGate', 'root [NAT] (Management)', 'Student[NAT]', and 'Trainer [NAT]'. The 'Policy Packages' section shows a list of policy packages, including 'IPv4 Policy' and 'Installation Targets'. The 'Installation Targets' table is highlighted, showing the following data:

Seq.#	Install On	Name	From	To
1	Remote-FortiGate(Student) Local-FortiGate(root)	Ping_Access	port3	port1
2	Remote-FortiGate(Student)	Web	port3	port1
3	Installation Targets	Source_Device	port3	port1

Given the configurations shown in the exhibit, what can you conclude from the installation targets in the Install On column?

- A. The Install On column value represents successful installation on the managed devices
- B. Policy seq#3 will be installed on all managed devices and VDOMs that are listed under Installation Targets
- C. Policy seq#3 will be installed on the Trainer[NAT] VDOM only
- D. Policy seq#3 will be not installed on any managed device

Answer: B

NEW QUESTION 15

- (Topic 2)

An administrator configures a new firewall policy on FortiManager and has not yet pushed the changes to the managed FortiGate. In which database will the configuration be saved?

- A. Device-level database
- B. Revision history database
- C. ADOM-level database
- D. Configuration-level database

Answer: C

Explanation:

<https://kb.fortinet.com/kb/documentLink.do?externalID=FD47942>

NEW QUESTION 17

- (Topic 2)

What is the purpose of ADOM revisions?

- A. To createSystem Checkpointsfor the FortiManager configuration.
- B. To save the current state of the whole ADOM.
- C. To save the current state of all policy packages and objects for an ADOM.
- D. To revert individual policy packages and device-level settings for a managed FortiGate by reverting to a specific ADOM revision

Answer: C

Explanation:

Fortimanager 6.4 Study guide page 198

NEW QUESTION 21

- (Topic 2)

Refer to the exhibit.



An administrator logs into the FortiManager GUI and sees the panes shown in the exhibit. Which two reasons can explain why the FortiAnalyzer feature panes do not appear? (Choose two.)

- A. The administrator logged in using the unsecure protocol HTTP, so the view is restricted.
- B. The administrator profile does not have full access privileges like the Super\_User profile.
- C. The administrator IP address is not a part of the trusted hosts configured on FortiManager interfaces.
- D. FortiAnalyzer features are not enabled on FortiManager.

**Answer: BD**

#### NEW QUESTION 26

- (Topic 2)

Which two statements about Security Fabric integration with FortiManager are true? (Choose two.)

- A. The Security Fabric license, group name and password are required for the FortiManager Security Fabric integration
- B. The Fabric View module enables you to generate the Security Fabric ratings for Security Fabric devices
- C. The Security Fabric settings are part of the device level settings
- D. The Fabric View module enables you to view the Security Fabric ratings for Security Fabric devices

**Answer: CD**

#### NEW QUESTION 30

- (Topic 3)

Push updates are failing on a FortiGate device that is located behind a NAT device. Which two settings should the administrator check? (Choose two.)

- A. That the virtual IP address and correct ports are set on the NAT device
- B. That the NAT device IP address and correct ports are configured on FortiManager
- C. That the external IP address on the NAT device is set to DHCP and configured with the virtual IP
- D. That the override server IP address is set on FortiManager and the NAT device

**Answer: BC**

#### NEW QUESTION 31

- (Topic 3)

An administrator is in the process of moving the system template profile between ADOMs by running the following command: `execute import-profile ADOM2 3547 /tmp/myfile`. Where does the administrator import the file from?

- A. File system
- B. ADOM1
- C. ADOM2 object database
- D. ADOM2

**Answer: A**

#### NEW QUESTION 36

- (Topic 3)

An administrator would like to create an SD-WAN using central management. What steps does the administrator need to perform to create an SD-WAN using central management?

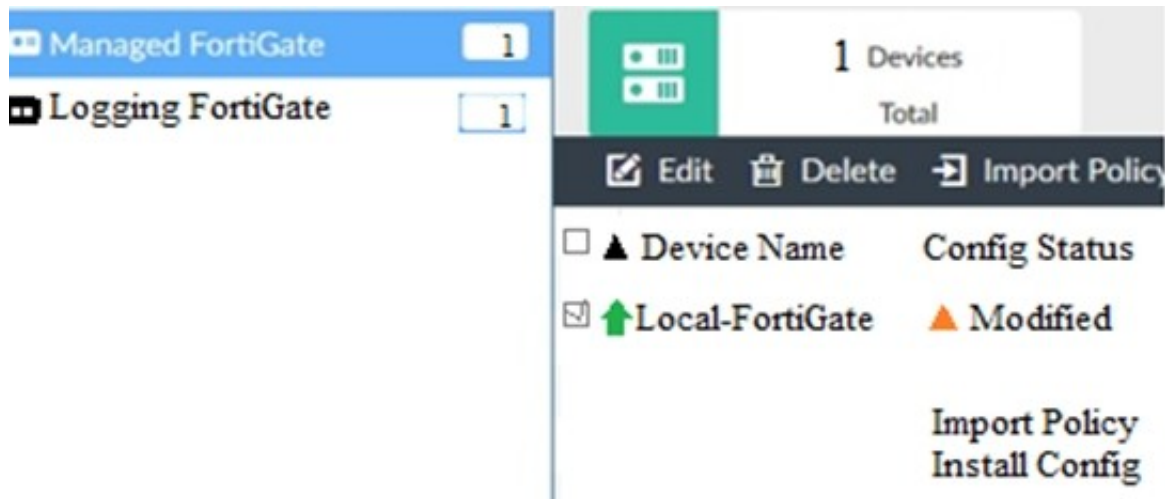
- A. First create an SD-WAN firewall policy, add member interfaces to the SD-WAN template and create a static route
- B. You must specify a gateway address when you create a default static route
- C. Remove all the interface references such as routes or policies
- D. Enable SD-WAN central management in the ADOM, add member interfaces, create a static route and SD-WAN firewall policies.

**Answer: D**

#### NEW QUESTION 38

- (Topic 3)

View the following exhibit.



When using Install Config option to install configuration changes to managed FortiGate, which of the following statements are true? (Choose two.)

- A. Once initiated, the install process cannot be canceled and changes will be installed on the managed device
- B. Will not create new revision in the revision history
- C. Installs device-level changes to FortiGate without launching the Install Wizard
- D. Provides the option to preview configuration changes prior to installing them

**Answer: AC**

#### NEW QUESTION 40

- (Topic 3)

An administrator created a header and footer global policy package and assigned it to an ADOM.

What are two outcomes from this action? (Choose two.)

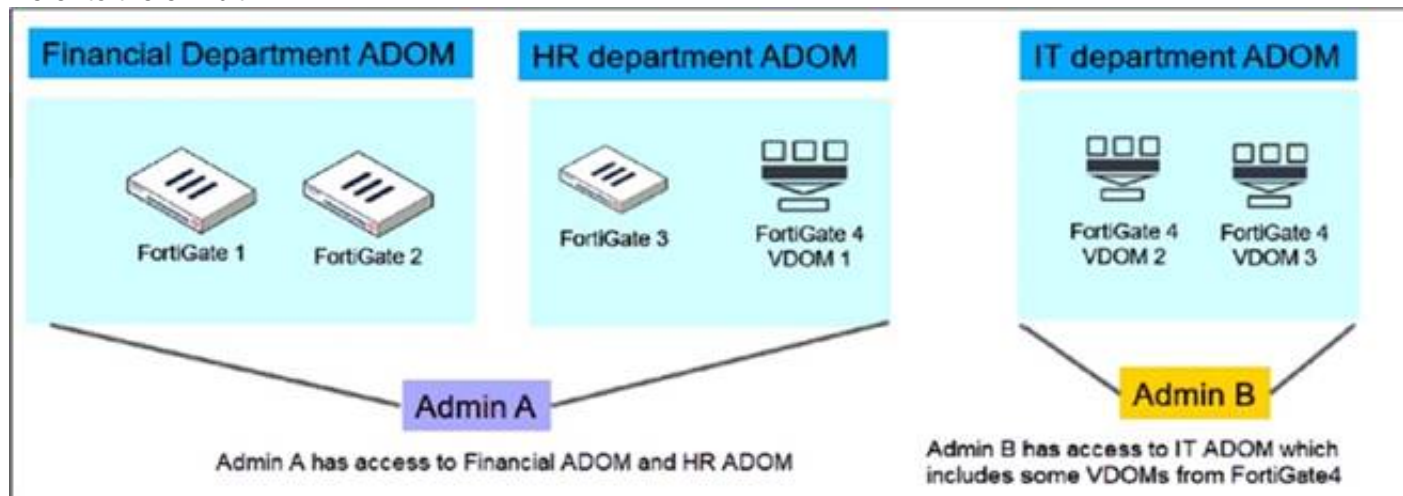
- A. You must manually move the header and footer policies after the policy assignment.
- B. After you assign the global policy package to an ADOM, the policy package is hidden from the ADOM and cannot be viewed.
- C. If you assign an additional global policy package to the same ADOM, FortiManager removes previously assigned policies.
- D. You can edit or delete all the global objects in the global ADOM.

**Answer: AD**

#### NEW QUESTION 44

- (Topic 3)

Refer to the exhibit.



An administrator would like to create three ADOMs on FortiManager with different access levels based on departments. What two conclusions can you draw from the design shown in the exhibit? (Choose two.)

- A. Admin A can access VDOM2 and VDOM3 with the super user profile.
- B. The FortiManager policies and objects database can be shared between the Financial and HR ADOMs.
- C. The administrator must set the FortiManager ADOM mode to Advanced.
- D. The administrator must configure FortiManager in workspace mode.

**Answer: BC**

#### NEW QUESTION 45

- (Topic 3)

View the following exhibit.



Edit Address

Address Name

Training

Type

IP/Netmask

IP/Network

192.168.1.0/255.255.255.255.0

Interface

any

Static Route Configuration

OFF

Comments

0/255

Add to Groups

Click to add

Advanced Options >

Per-Device Mapping

ON

+ Add Edit Delete

<input type="checkbox"/>	Name	VDOM	Details
<input type="checkbox"/>	Local-FortiGate	root	IP/Netmask10.0.10/255.255.255.0

An administrator has created a firewall address object, Training, which is used in the Local- FortiGate policy package. When the install operation is performed, which IP Netmask will be installed on the Local-FortiGate, for the Training firewall address object?

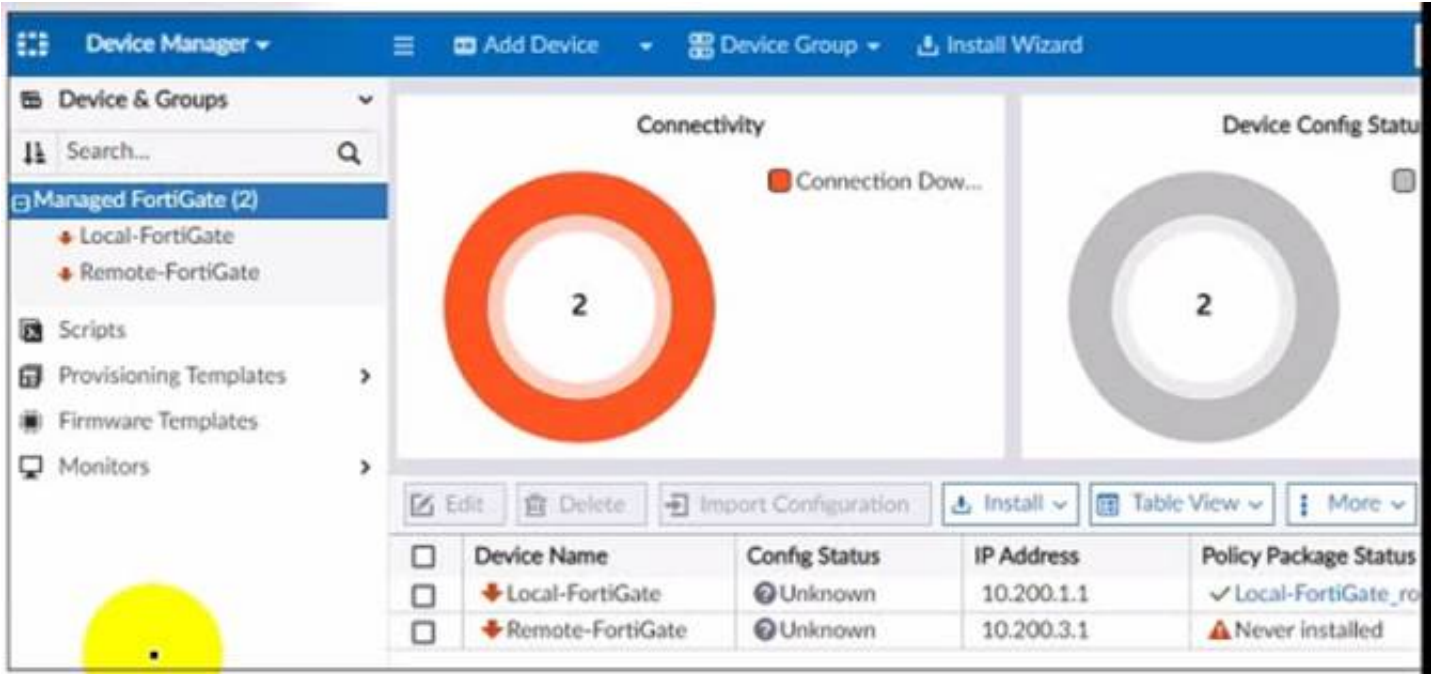
- A. 10.0.1.0/24
- B. It will create firewall address group on Local-FortiGate with 192.168.0.1/24 and 10.0.1.0/24 object values
- C. 192.168.0.1/24
- D. Local-FortiGate will automatically choose an IP Network based on its network interface settings.

Answer: A

NEW QUESTION 46

- (Topic 3)

Refer to the exhibit.



A junior administrator is troubleshooting a FortiManager connectivity issue that rs occurring with managed FortiGate devices Given the FortiManager device manager settings shown in the exhibit what can you conclude from the exhibit?



- A. The administrator had restored the FortiManager configuration file
- B. The administrator must refresh both devices to restore connectivity
- C. FortiManager test internet connectivity therefore, both devices appear to be down
- D. The administrator can reclaim the FGFM tunnel to get both devices online

Answer: C

NEW QUESTION 48

- (Topic 3)

What does the diagnose dvm check-integrity command do? (Choose two.)

- A. Internally upgrades existing ADOMs to the same ADON version in order to clean up and correct the ADOM syntax
- B. Verifies and corrects unregistered, registered, and deleted device states
- C. Verifies and corrects database schemas in all object tables
- D. Verifies and corrects duplicate VDOM entries

Answer: BD

Explanation:

\* 6.2 Study Guide page 305 verify and correct parts of the device manager databases, including:– inconsistent device-to-group and group-to-ADOM memberships– unregistered, registered, and deleted device states– device lock statuses– duplicate VDOM entries

NEW QUESTION 49

- (Topic 3)

Refer to the exhibit.

FortiManager # diagnose fmupdate view-serverlist fds					
Fortiguard Server Comm : Enabled					
Server Override Mode : Strict					
FDS server list :					
Index	Address	Port	Timezone	Distance	Source
*0	10.0.1.50	8890	-5	0	CLI
1	96.45.33.89	443	-5	0	FDNI
2	96.45.32.81	443	-5	0	FDNI
...					
9	fds1.fortinet.com	443	-5	0	DEFAULT

How will FortiManager try to get updates for antivirus and IPS?

- A. From the list of configured override servers or public FDN servers
- B. From the default server fds1.fortinet.com
- C. From the configured override server IP address 10.0.1.50 only
- D. From public FDNI server IP address with the fourth highest octet only

Answer: A

NEW QUESTION 51

- (Topic 3)

An administrator would like to create an SD-WAN default static route for a newly created SD-WAN using the FortiManager GUI. Both port1 and port2 are part of the SD-WAN member interfaces.

Which interface must the administrator select in the static route device drop-down list?

- A. port2
- B. virtual-wan-link
- C. port1
- D. auto-discovery

Answer: B

NEW QUESTION 54

.....

## Thank You for Trying Our Product

### We offer two products:

1st - We have Practice Tests Software with Actual Exam Questions

2nd - Questions and Answers in PDF Format

### NSE5\_FMG-7.2 Practice Exam Features:

- \* NSE5\_FMG-7.2 Questions and Answers Updated Frequently
- \* NSE5\_FMG-7.2 Practice Questions Verified by Expert Senior Certified Staff
- \* NSE5\_FMG-7.2 Most Realistic Questions that Guarantee you a Pass on Your First Try
- \* NSE5\_FMG-7.2 Practice Test Questions in Multiple Choice Formats and Updates for 1 Year

**100% Actual & Verified — Instant Download, Please Click**  
**[Order The NSE5\\_FMG-7.2 Practice Test Here](#)**