

# Fortinet

## Exam Questions NSE5\_FMG-7.2

Fortinet NSE 5 - FortiManager 7.2



#### NEW QUESTION 1

- (Topic 1)

When an installation is performed from FortiManager, what is the recovery logic used between FortiManager and FortiGate for an FGFM tunnel?

- A. After 15 minutes, FortiGate will unset all CLI commands that were part of the installation that caused the tunnel to go down.
- B. FortiManager will revert and install a previous configuration revision on the managed FortiGate.
- C. FortiGate will reject the CLI commands that will cause the tunnel to go down.
- D. FortiManager will not push the CLI commands as a part of the installation that will cause the tunnel to go down.

**Answer:** A

#### Explanation:

The configuration change will break the fgfm connection, causing the FortiGate unit to attempt to reconnect for 900 seconds. If the FortiGate cannot reconnect, it will rollback to its previous configuration.

#### NEW QUESTION 2

- (Topic 1)

An administrator would like to review, approve, or reject all the firewall policy changes made by the junior administrators.

How should the Workspace mode be configured on FortiManager?

- A. Set to workflow and use the ADOM locking feature
- B. Set to read/write and use the policy locking feature
- C. Set to normal and use the policy locking feature
- D. Set to disable and use the policy locking feature

**Answer:** A

#### Explanation:

Reference:[https://help.fortinet.com/fmgr/50hlp/52/5-2-0/FMG\\_520\\_Online\\_Help/200\\_What's-New.03.03.html](https://help.fortinet.com/fmgr/50hlp/52/5-2-0/FMG_520_Online_Help/200_What's-New.03.03.html)

#### NEW QUESTION 3

- (Topic 1)

Which configuration setting for FortiGate is part of a device-level database on FortiManager?

- A. VIP and IP Pools
- B. Firewall policies
- C. Security profiles
- D. Routing

**Answer:** C

#### Explanation:

The FortiManager stores the FortiGate configuration details in two distinct databases. The device-level database includes configuration details related to device-level settings, such as interfaces, DNS, routing, and more. The ADOM-level database includes configuration details related to firewall policies, objects, and security profiles.

#### NEW QUESTION 4

- (Topic 1)

Which two statements about the scheduled backup of FortiManager are true? (Choose two.)

- A. It does not back up firmware images saved on FortiManager.
- B. It can be configured using the CLI and GUI.
- C. It backs up all devices and the FortiGuard database.
- D. It supports FTP, SCP, and SFTP.

**Answer:** AD

#### Explanation:

Reference:[https://docs.ansible.com/ansible/latest/collections/fortinet/fortimanager/fmgr\\_system\\_backup\\_allsettings\\_module.html](https://docs.ansible.com/ansible/latest/collections/fortinet/fortimanager/fmgr_system_backup_allsettings_module.html)

#### NEW QUESTION 5

- (Topic 1)

Which two conditions trigger FortiManager to create a new revision history? (Choose two.)

- A. When configuration revision is reverted to previous revision in the revision history
- B. When FortiManager installs device-level changes to a managed device
- C. When FortiManager is auto-updated with configuration changes made directly on a managed device
- D. When changes to device-level database is made on FortiManager

**Answer:** BC

#### Explanation:

Reference:[https://help.fortinet.com/fmgr/50hlp/56/5-6-1/FortiManager\\_Admin\\_Guide/1000\\_Device%20Manager/1500\\_Manage\\_device\\_configs/0600\\_Manage%20config%20rev%20history.htm](https://help.fortinet.com/fmgr/50hlp/56/5-6-1/FortiManager_Admin_Guide/1000_Device%20Manager/1500_Manage_device_configs/0600_Manage%20config%20rev%20history.htm)

#### NEW QUESTION 6

- (Topic 1)

An administrator run the reload failure command:diagnose test deploymanager reload config <deviceid>on FortiManager. What does this command do?

- A. It downloads the latest configuration from the specified FortiGate and performs a reload operation on the device database.
- B. It installs the latest configuration on the specified FortiGate and update the revision history database.
- C. It compares and provides differences in configuration on FortiManager with the current runningconfiguration of the specified FortiGate.
- D. It installs the provisioning template configuration on the specified FortiGate.

**Answer:** A

#### Explanation:

Reference:<https://community.fortinet.com/t5/FortiManager/Technical-Note-Retrieve-configuration-file-using-CLI-from-a/ta-p/191000?externalID=FD36387>

#### NEW QUESTION 7

- (Topic 1)

You are moving managed FortiGate devices from one ADOM to a new ADOM. Which statement correctly describes the expected result?

- A. Any pending device settings will be installed automatically
- B. Any unused objects from a previous ADOM are moved to the new ADOM automatically
- C. The shared policy package will not be moved to the new ADOM
- D. Policy packages will be imported into the new ADOM automaticallyD

**Answer:** C

#### Explanation:

Reference:<https://community.fortinet.com/t5/FortiManager/Technical-Note-How-to-move-objects-to-new-ADOM-on-FortiManager/ta-p/198342>

#### NEW QUESTION 8

- (Topic 1)

What are two outcomes of ADOM revisions? (Choose two.)

- A. ADOM revisions can significantly increase the size of the configuration backups.
- B. ADOM revisions can save the current size of the whole ADOM
- C. ADOM revisions can create System Checkpoints for the FortiManager configuration
- D. ADOM revisions can save the current state of all policy packages and objects for an ADOM

**Answer:** AD

#### Explanation:

Reference:<https://docs2.fortinet.com/document/fortimanager/6.0.0/best-practices/101837/adom-revisions>

#### NEW QUESTION 9

- (Topic 1)

An administrator with theSuper\_Userprofile is unable to log in to FortiManager because of an authentication failure message. Which troubleshooting step should you take to resolve the issue?

- A. Make sure FortiManager Access is enabled in the administrator profile
- B. Make sure Offline Mode is disabled
- C. Make sure the administrator IP address is part of the trusted hosts.
- D. Make sure ADOMs are enabled and the administrator has access to the Global ADOM

**Answer:** C

#### Explanation:

Even if a user entered the correct userid/password, the FMG denies access if a user is logging in from an untrusted source IP subnets.

Reference:<https://docs.fortinet.com/document/fortimanager/6.0.3/administration-guide/107347/trusted-hosts>

#### NEW QUESTION 10

- (Topic 1)

What is the purpose of thePolicy Checkfeature on FortiManager?

- A. To find and provide recommendation to combine multiple separate policy packages into one commonpolicy package
- B. To find and merge duplicate policies in the policy package
- C. To find and provide recommendation for optimizing policies in a policy package
- D. To find and delete disabled firewall policies in the policy package

**Answer:** C

#### Explanation:

Reference:[https://help.fortinet.com/fmgr/50hlp/56/5-6-2/FortiManager\\_Admin\\_Guide/1200\\_Policy%20and%20Objects/0800\\_Managing%20policy%20packages/2400\\_Perform%20a%20policy%20consistency%20check.htm](https://help.fortinet.com/fmgr/50hlp/56/5-6-2/FortiManager_Admin_Guide/1200_Policy%20and%20Objects/0800_Managing%20policy%20packages/2400_Perform%20a%20policy%20consistency%20check.htm)

#### NEW QUESTION 10

- (Topic 1)

View the following exhibit:

```
#diagnose fmupdate view-serverlist fds
Fortiguard Server Comm: Enabled
Server Override Mode: Loose
FDS server list :
Index Address          Port    TimeZone  Distance  Source
-----
*0    10.0.1.50             8890    -5         0          CLI
1     96.45.33.89           443     -5         0          FDNI
2     96.45.32.81           443     -5         0          FDNI
....
38  fds1.fortinet.com     443     -5         0          DEFAULT
```

How will FortiManager try to get updates for antivirus and IPS?

- A. From the list of configured override servers with ability to fall back to public FDN servers
- B. From the configured override server list only
- C. From the default serverfds1.fortinet.com
- D. From public FDNI server with highest index number only

Answer: A

Explanation:

Reference:https://community.fortinet.com/t5/Fortinet-Forum/Clarification-of-FortiManager-s-quot-Server-Override-Mode-quot/td-p/89973

NEW QUESTION 11

- (Topic 1)

Which two items does an FGFM keepalive message include? (Choose two.)

- A. FortiGate uptime
- B. FortiGate license information
- C. FortiGate IPS version
- D. FortiGate configuration checksum

Answer: CD

Explanation:

Reference:https://docs.fortinet.com/document/fortimanager/6.2.0/fortigate-fortimanager-communications-protocol-guide/579138/keep-alive-messages

NEW QUESTION 16

- (Topic 1)

View the following exhibit.

The screenshot displays the FortiManager web interface. The top navigation bar includes 'Device Manager', 'Device & Groups', 'Firmware', and 'License'. Under 'Device Manager', the 'Managed FortiGate' tab is active, showing a list of 4 devices. A dropdown menu is open, listing various device types: 'Device Name', 'Local-FortiGate', 'Remote-FortiGate', 'root [NAT] (Management)', 'Student[NAT]', and 'Trainer [NAT]'. A red box labeled 'Managed FortiGate devices' highlights the 'Local-FortiGate' and 'Remote-FortiGate' options.

Below this, the 'Policy Packages' tab is active under the 'Policy & Objects' section. The 'Install' sub-tab is selected, showing a list of installation targets. A red box labeled 'Installation targets' highlights the 'Remote-FortiGate' and 'Local-FortiGate' options.

At the bottom, the 'ADOM Revisions' tab is active, showing a table of installation targets. A red box labeled 'Policy Package' highlights the 'Installation Targets' row.

Seq.#	Install On	Name	From	To
1	Remote-FortiGate(Student)	Ping_Access	port3	port1
2	Local-FortiGate(root)	Web	port3	port1
3	Installation Targets	Source_Device	port3	port1

Given the configurations shown in the exhibit, what can you conclude from the installation targets in the Install On column?

- A. The Install On column value represents successful installation on the managed devices
- B. Policy seq#3 will be installed on all managed devices and VDOMs that are listed under Installation Targets
- C. Policy seq#3 will be installed on the Trainer[NAT] VDOM only



D. Policy seq#3 will be not installed on any managed device

**Answer:** B

#### NEW QUESTION 20

- (Topic 1)

In addition to the default ADOMs, an administrator has created a new ADOM named Training for FortiGate devices. The administrator sent a device registration to FortiManager from a remote FortiGate. Which one of the following statements is true?

- A. The FortiGate will be added automatically to the default ADOM named FortiGate.
- B. The FortiGate will be automatically added to the Training ADOM.
- C. By default, the unregistered FortiGate will appear in the root ADOM.
- D. The FortiManager administrator must add the unregistered device manually to the unregistered device manually to the Training ADOM using the Add Device wizard

**Answer:** C

#### Explanation:

Reference: <https://docs.fortinet.com/document/fortimanager/7.0.0/administration-guide/718923/root-adom>

#### NEW QUESTION 23

- (Topic 1)

An administrator wants to delete an address object that is currently referenced in a firewall policy. What can the administrator expect to happen?

- A. FortiManager will not allow the administrator to delete a referenced address object
- B. FortiManager will disable the status of the referenced firewall policy
- C. FortiManager will replace the deleted address object with the none address object in the referenced firewall policy
- D. FortiManager will replace the deleted address object with all address object in the referenced firewall policy

**Answer:** C

#### Explanation:

Reference: [https://help.fortinet.com/fmgr/50hlp/56/5-6-2/FortiManager\\_Admin\\_Guide/1200\\_Policy%20and%20Objects/1200\\_Managing%20objects/0800\\_Remove%20an%20object.htm](https://help.fortinet.com/fmgr/50hlp/56/5-6-2/FortiManager_Admin_Guide/1200_Policy%20and%20Objects/1200_Managing%20objects/0800_Remove%20an%20object.htm)

#### NEW QUESTION 24

- (Topic 1)

Refer to the exhibit.

```
FortiManager # diagnose dvm device list
--- There are currently 1 devices/vdoms managed ---

TYPE      OID    SN      HA    IP      NAME      ADOM    IPS      FIRMWARE
fmg/faz enabled 157    FGVM01.. -    10.200.1.1    Local-FortiGate    My_ADOM    14.00641 (regular) 6.0 MR2 (866)
|- STATUS: dev-db: modified; conf: in sync; cond: pending; dm: retrieved; conn: up

|- vdom:[3]root flags:0 adom:My_ADOM pkg:[imported]Local-FortiGate
```

Which two statements about the output are true? (Choose two.)

- A. The latest revision history for the managed FortiGate does match with the FortiGate running configuration
- B. Configuration changes have been installed to FortiGate and represents FortiGate configuration has been changed
- C. The latest history for the managed FortiGate does not match with the device-level database
- D. Configuration changes directly made on the FortiGate have been automatically updated to device-level database

**Answer:** AC

#### Explanation:

STATUS: dev-db: modified; conf: in sync; cond: pending; dm: retrieved; conn: up – dev-db: modified – This is the device setting status which indicates that configuration changes were made on FortiManager. – conf: in sync – This is the sync status which shows that the latest revision history is in sync with FortiGate's configuration. – cond: pending – This is the configuration status which says that configuration changes need to be installed.

Most probably a retrieve was done in the past (dm: retrieved) updating the revision history DB (conf: in sync) and FortiManager device level DB, now there is a new modification on FortiManager device level DB (dev-db: modified) which wasn't installed to FortiGate (cond: pending), hence; revision history DB is not aware of that modification and doesn't match device DB.

Conclusion: – Revision DB does match FortiGate. – No changes were installed to FortiGate yet. – Device DB doesn't match Revision DB. – No changes were done on FortiGate (auto-update) but configuration was retrieved instead

After an Auto-Update or Retrieve: device database = latest revision = FGT

Then after a manual change on FMG end (but no install yet): latest revision = FGT (still) but now device database has been modified (is different).

After reverting to a previous revision in revision history: device database = reverted revision != FGT

#### NEW QUESTION 29

- (Topic 2)

What does a policy package status of Conflict indicate?

- A. The policy package reports inconsistencies and conflicts during a Policy Consistency Check.
- B. The policy package does not have a FortiGate as the installation target.
- C. The policy package configuration has been changed on both FortiManager and the managed device independently.
- D. The policy configuration has never been imported after a device was registered on FortiManager.

**Answer:** C

#### NEW QUESTION 32

- (Topic 2)

Refer to the exhibit.

```
config system dm
set rollback-allow-reboot enable
end
```

An administrator has configured the command shown in the exhibit on FortiManager. A configuration change has been installed from FortiManager to the managed FortiGate that causes the FGFM tunnel to go down for more than 15 minutes. What is the purpose of this command?

- A. It allows FortiGate to unset central management settings.
- B. It allows FortiGate to reboot and recover the previous configuration from its configuration file.
- C. It allows the FortiManager to revert and install a previous configuration revision on the managed FortiGate.
- D. It allows FortiGate to reboot and restore a previously working firmware image.

**Answer:** B

#### Explanation:

Reference: <https://docs.fortinet.com/document/fortimanager/6.2.0/fortigate-fortimanager-communicationsprotocol-guide/141304/fgfm-recovery-logic>

#### NEW QUESTION 37

- (Topic 2)

Refer to the exhibit.

```
config system global
set workspace-mode normal
end
```

Given the configuration shown in the exhibit, which two statements are true? (Choose two.)

- A. It allows two or more administrators to make configuration changes at the same time, in the same ADOM.
- B. It disables concurrent read-write access to an ADOM.
- C. It allows the same administrator to lock more than one ADOM at the same time.
- D. It is used to validate administrator login attempts through external servers.

**Answer:** BC

#### Explanation:

Reference: <https://docs.fortinet.com/document/fortimanager/6.0.4/administration-guide/86456/concurrentadom-access>

#### NEW QUESTION 40

- (Topic 2)

An administrator has enabled Service Access on FortiManager.

What is the purpose of Service Access on the FortiManager interface?

- A. Allows FortiManager to download IPS packages
- B. Allows FortiManager to respond to request for FortiGuard services from FortiGate devices
- C. Allows FortiManager to run real-time debugs on the managed devices
- D. Allows FortiManager to automatically configure a default route

**Answer:** B

#### Explanation:

FortiManager 6.2 Study guide page 350

#### NEW QUESTION 41

- (Topic 2)

Which two statements regarding device management on FortiManager are true? (Choose two.)

- A. FortiGate devices in HA cluster devices are counted as a single device.
- B. FortiGate in transparent mode configurations are not counted toward the device count on FortiManager.
- C. FortiGate devices in an HA cluster that has five VDOMs are counted as five separate devices.
- D. The maximum number of managed devices for each ADOM is 500.

**Answer:** AC

#### NEW QUESTION 43

- (Topic 2)

An administrator's PC crashes before the administrator can submit a workflow session for approval. After the PC is restarted, the administrator notices that the ADOM was locked from the session before the crash.  
 How can the administrator unlock the ADOM?

- A. Restore the configuration from a previous backup.
- B. Log in asSuper\_Userin order to unlock the ADOM.
- C. Log in using the same administrator account to unlock the ADOM.
- D. Delete the previous admin session manually through the FortiManager GUI or CLI.

**Answer: D**

#### NEW QUESTION 44

- (Topic 3)

What does a policy package status ofModifiedindicate?

- A. FortiManager is unable to determine the policy package status
- B. The policy package was never imported after a device was registered on FortiManager
- C. The Policy configuration has been changed on a managed device and changes have not yet been imported into FortiManager
- D. The Policy package configuration has been changed on FortiManager and changeshave not yet been installed on the managed device.

**Answer: B**

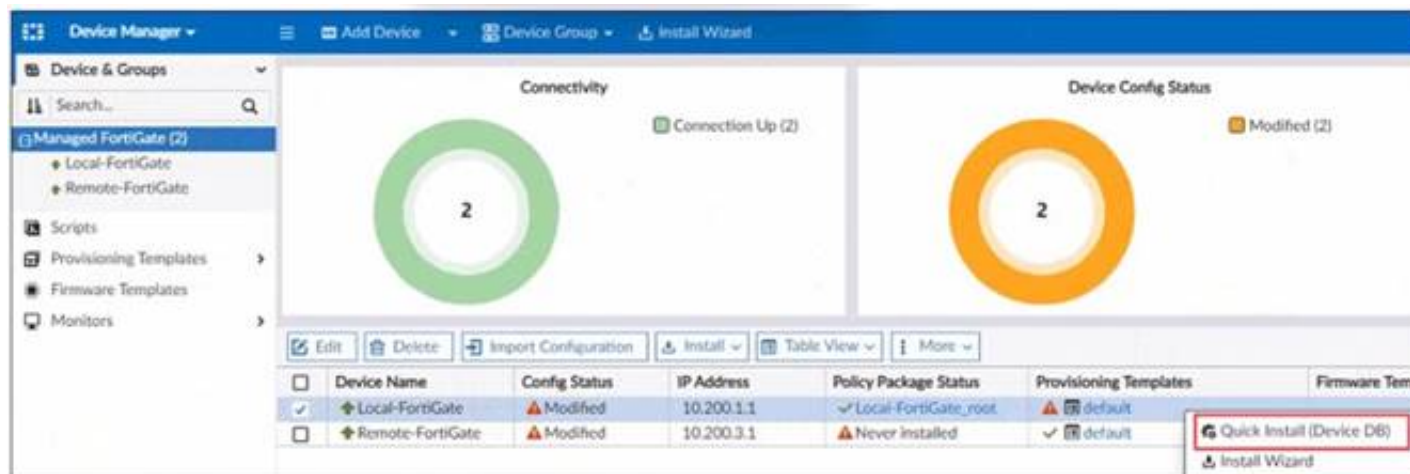
#### Explanation:

Reference:[http://help.fortinet.com/fmgr/50hlp/56/5-6-1/FortiManager\\_Admin\\_Guide/1200\\_Policy%20and%20Objects/0800\\_Managing%20policy%20packages/2200\\_Policy%20Package%20Installation%20targets.htm](http://help.fortinet.com/fmgr/50hlp/56/5-6-1/FortiManager_Admin_Guide/1200_Policy%20and%20Objects/0800_Managing%20policy%20packages/2200_Policy%20Package%20Installation%20targets.htm)

#### NEW QUESTION 46

- (Topic 3)

Refer to the exhibit.



You are using the Quick install option to install configuration changes on the managed FortiGate.  
 Which two statements correctly describe the result? (Choose two)

- A. It installs device-level changes on the FortiGate device without launching the Install Wizard
- B. It installs all the changes in the device database first and the administrator must reinstall the changes on the FortiGate device
- C. It provides the option to preview only the policy package changes before installing them
- D. It install provisioning template changes on the FortiGate device

**Answer: AD**

#### NEW QUESTION 47

- (Topic 3)

Which two conditions trigger FortiManager to create a new revision history? (Choose two.)

- A. When FortiManager is auto-updated with configuration changes made directly on a managed device
- B. When changes to the device-level database are made on FortiManager
- C. When FortiManager installs device-level changes on a managed device
- D. When a configuration revision is reverted to a previous revision in the revision history

**Answer: BC**

#### NEW QUESTION 49

- (Topic 3)

Refer to the exhibit.



An administrator is about to add the FortiGate device to FortiManager using the discovery process. FortiManager is operating behind a NAT device, and the administrator configured the FortiManager NATed IP address under the FortiManager system administration settings. What is the expected result?

- A. During discovery FortiManager sets the FortiManager NATed IP address on FortiGate
- B. During discovery FortiManager sets both the FortiManager NATed IP address and NAT device IP address on FortiGate
- C. During discovery FortiManager sets the NATed device IP address on FortiGate
- D. During discovery FortiManager uses only the FortiGate serial number to establish the connection

**Answer: C**

#### NEW QUESTION 50

- (Topic 3)

Which two settings are required for FortiManager Management Extension Applications (MEA)? (Choose two.)

- A. When you configure MEA, you must open TCP or UDP port 540.
- B. You must open the ports to the Fortinet registry
- C. You must create a MEA special policy on FortiManager using the super user profile
- D. The administrator must have the super user profile.

**Answer: CD**

#### NEW QUESTION 53

- (Topic 3)

An administrator is replacing a failed device on FortiManager by running the following command:  
 execute device replace sn <devname> <serialnum>.

Which device name and serial number must the administrator use?

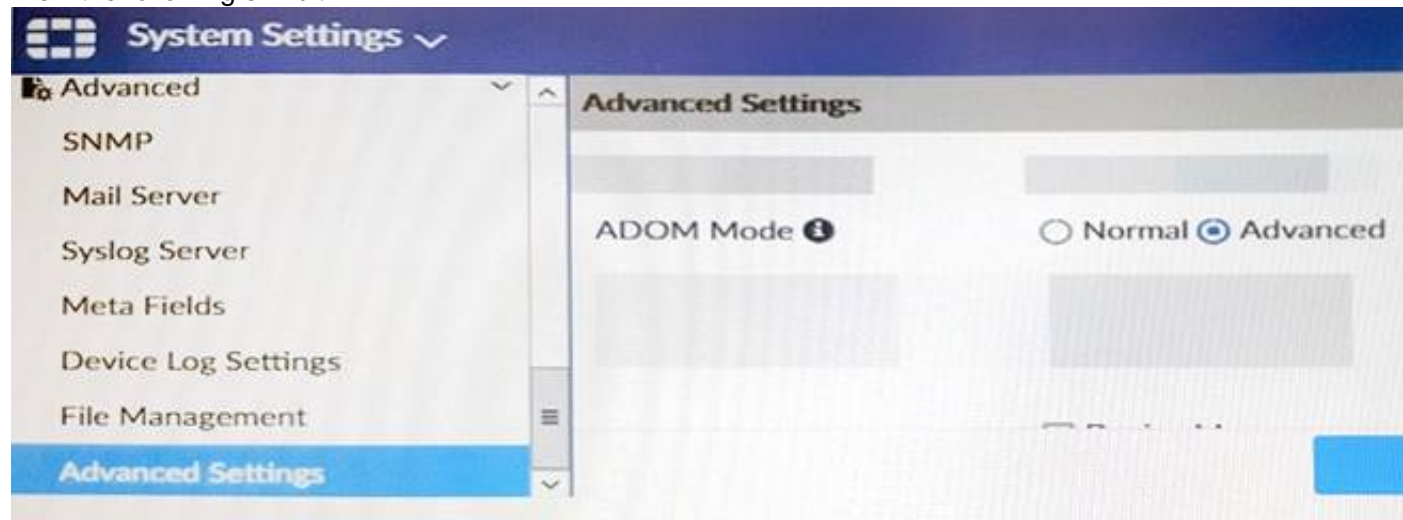
- A. The device name of the new device and serial number of the failed device
- B. The device name and serial number of the failed device
- C. The device name of the failed device and serial number of the new device
- D. The device name and serial number of the new device

**Answer: C**

#### NEW QUESTION 56

- (Topic 3)

View the following exhibit.



Which of the following statements are true based on this configuration setting? (Choose two.)

- A. This setting will enable the ADOMs feature on FortiManager.
- B. This setting is applied globally to all ADOMs.
- C. This setting will allow assigning different VDOMs from the same FortiGate to different ADOMs.
- D. This setting will allow automatic updates to the policy package configuration for a managed device.

**Answer: BC**

#### NEW QUESTION 61

- (Topic 3)

What is the advantage of using FortiManager to manage FortiAnalyzer?

- A. It allows FortiManager to manage all FortiGate devices
- B. It allows FortiManager to run reports based on FortiAnalyzer
- C. It allows FortiManager to store all managed FortiGate device logs
- D. It allows FortiManager to act as a collector and FortiAnalyzer device

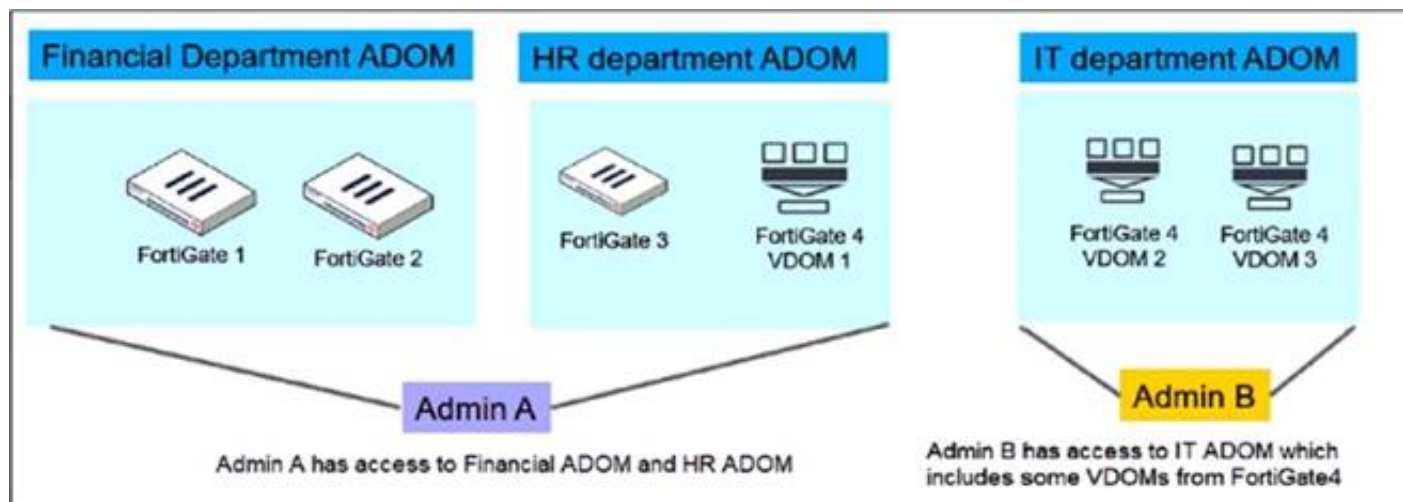
**Answer: D**

#### NEW QUESTION 62

- (Topic 3)

Refer to the exhibit.





An administrator would like to create three ADOMs on FortiManager with different access levels based on departments. What two conclusions can you draw from the design shown in the exhibit? (Choose two.)

- A. Admin A can access VDOM2 and VDOM3 with the super user profile.
- B. The FortiManager policies and objects database can be shared between the Financial and HR ADOMs.
- C. The administrator must set the FortiManager ADOM mode to Advanced.
- D. The administrator must configure FortiManager in workspace mode.

**Answer:** BC

#### NEW QUESTION 63

- (Topic 3)

An administrator has added all the devices in a Security Fabric group to FortiManager. How does the administrator identify the root FortiGate?

- A. By a dollar symbol (\$) at the end of the device name
- B. By an at symbol (@) at the end of the device name
- C. By a QUESTION NO: mark(?) at the end of the device name
- D. By an Asterisk (\*) at the end of the device name

**Answer:** D

#### NEW QUESTION 66

- (Topic 3)

An administrator has assigned a global policy package to custom ADOM1. Then the administrator creates a new policy package Fortinet in the custom ADOM1. What will happen to the Fortinet policy package when it is created?

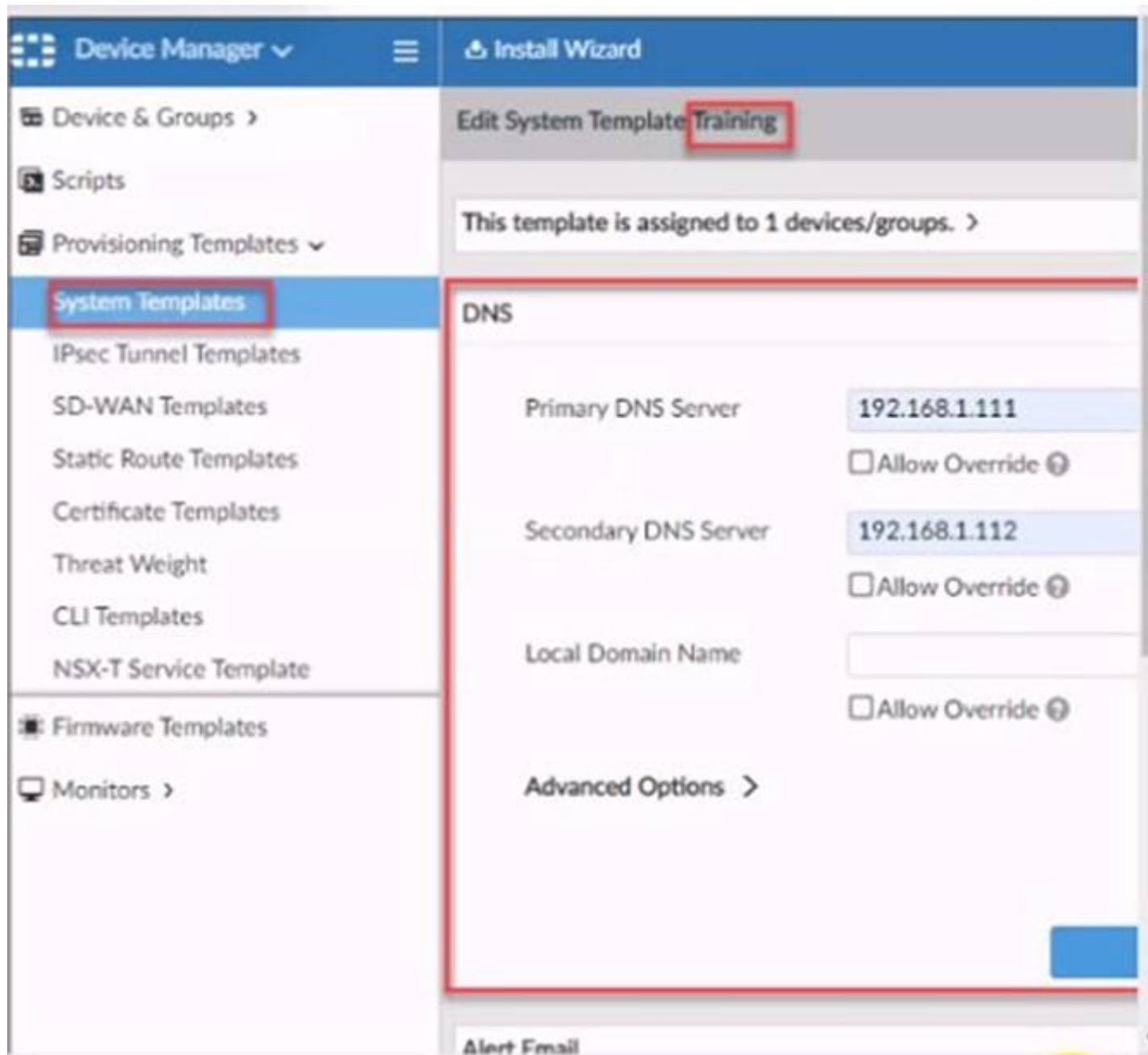
- A. You need to assign the global policy package from the global ADOM
- B. You need to reapply the global policy package to the ADOM
- C. it automatically assigns the global policies
- D. You can select the option to assign the global policies

**Answer:** C

#### NEW QUESTION 68

- (Topic 3)

Refer to the exhibit.



According to the error message why is FortiManager failing to add the FortiAnalyzer device?

- A. The administrator must turn off the Use Legacy Device login and add the FortiAnalyzer device to the same network as Forti-Manager
- B. The administrator must select the Forti-Manager administrative access checkbox on the FortiAnalyzer management interface
- C. The administrator must use the Add Model Device section and discover the FortiAnalyzer device
- D. The administrator must use the correct user name and password of the FortiAnalyzer device

**Answer: A**

#### NEW QUESTION 70

- (Topic 3)

Refer to the exhibit.

```
Start to import config from device(Local-FortiGate) vdom(root) to
adom(My_ADOM), package(Local-FortiGate_root)

"firewall service category",SKIPPED,"(name=General, oid=697, DUPLICATE)"

"firewall address",SUCCESS,"(name=LOCAL_SUBNET, oid=684, new object)"

"firewall service custom",SUCCESS,"(name=ALL, oid=863, update previous
object)"

"firewall policy",SUCCESS,"(name=1, oid=1090, new object)"
```

Given the configuration shown in the exhibit, how did FortiManager handle the service category named General?

- A. FortiManager ignored the firewall service category General but created a new service category in its database.
- B. FortiManager ignored the firewall service category general and deleted the duplicate value In Its database
- C. FortiManager ignored the firewall service category General and updated the FortiGate duplicate value in the FortiGate database.
- D. FortiManager ignored the firewall service category General and did not update Its database with the value

**Answer: D**

#### NEW QUESTION 71

- (Topic 3)

View the following exhibit.

Edit Address

Address Name

Training

Type

IP/Netmask

IP/Network

192.168.1.0/255.255.255.255.0

Interface

any

Static Route Configuration

OFF

Comments

0/255


Add to Groups

Click to add

Advanced Options >

Per-Device Mapping

ON

+ Add  Edit  Delete

<input type="checkbox"/>	Name	VDOM	Details
<input type="checkbox"/>	Local-FortiGate	root	IP/Netmask10.0.10/255.255.255.0

An administrator has created a firewall address object, Training, which is used in the Local- FortiGate policy package. When the install operation is performed, which IP Netmask will be installed on the Local-FortiGate, for the Training firewall address object?

- A. 10.0.1.0/24
- B. It will create firewall address group on Local-FortiGate with 192.168.0.1/24 and 10.0.1.0/24 object values
- C. 192.168.0.1/24
- D. Local-FortiGate will automatically choose an IP Network based on its network interface settings.

Answer: A

NEW QUESTION 74

- (Topic 3)  
Which of the following statements are true regarding VPN Manager? (Choose three.)

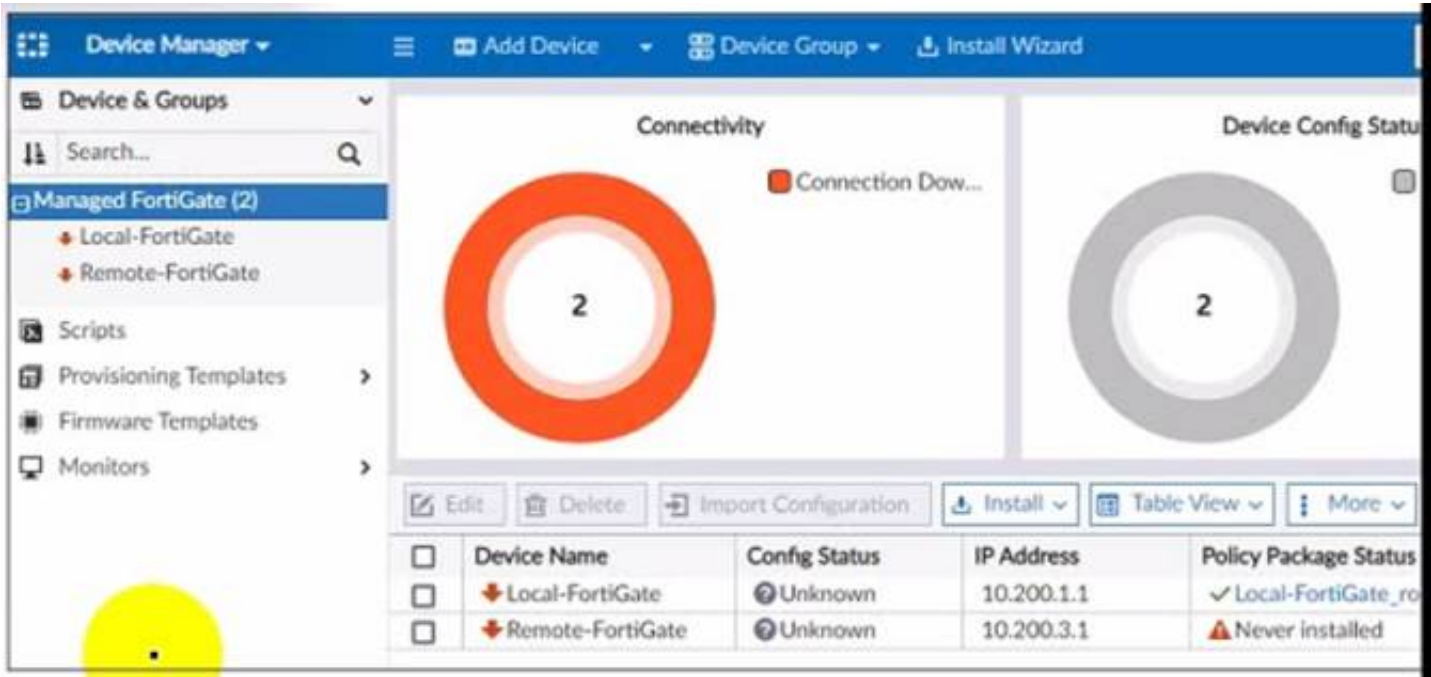
- A. VPN Manager must be enabled on a per ADOM basis.
- B. VPN Manager automatically adds newly-registered devices to a VPN community.
- C. VPN Manager can install common IPsec VPN settings on multiple FortiGate devices at the same time.
- D. Common IPsec settings need to be configured only once in a VPN Community for all managed gateways.
- E. VPN Manager automatically creates all the necessary firewall policies for traffic to be tunneled by IPsec.

Answer: ACD

NEW QUESTION 77

- (Topic 3)  
Refer to the exhibit.





A junior administrator is troubleshooting a FortiManager connectivity issue that is occurring with managed FortiGate devices. Given the FortiManager device manager settings shown in the exhibit, what can you conclude from the exhibit?

- A. The administrator had restored the FortiManager configuration file
- B. The administrator must refresh both devices to restore connectivity
- C. FortiManager test internet connectivity therefore, both devices appear to be down
- D. The administrator can reclaim the FGFM tunnel to get both devices online

Answer: C

NEW QUESTION 80

- (Topic 3)  
What does the `diagnose dvm check-integrity` command do? (Choose two.)

- A. Internally upgrades existing ADOMs to the same ADOM version in order to clean up and correct the ADOM syntax
- B. Verifies and corrects unregistered, registered, and deleted device states
- C. Verifies and corrects database schemas in all object tables
- D. Verifies and corrects duplicate VDOM entries

Answer: BD

Explanation:

\* 6.2 Study Guide page 305 verify and correct parts of the device manager databases, including:– inconsistent device-to-group and group-to-ADOM memberships– unregistered, registered, and deleted device states– device lock statuses– duplicate VDOM entries

NEW QUESTION 85

- (Topic 3)  
Which of the following statements are true regarding VPN Gateway configuration in VPN Manager? (Choose two.)

- A. Managed gateways are devices managed by FortiManager in the same ADOM
- B. External gateways are third-party VPN gateway devices only
- C. Protected subnets are the subnets behind the device that you don't want to allow access to over the IPsec VPN
- D. Managed devices in other ADOMs must be treated as external gateways

Answer: AD

Explanation:

Reference: [http://help.fortinet.com/fmgr/50hlp/56/5-6-1/FMG-FAZ/1300\\_VPN\\_Manager/0800\\_IPsec\\_VPN\\_Gateway/0400\\_Create\\_mngd\\_gateway.htm](http://help.fortinet.com/fmgr/50hlp/56/5-6-1/FMG-FAZ/1300_VPN_Manager/0800_IPsec_VPN_Gateway/0400_Create_mngd_gateway.htm)

NEW QUESTION 87

- (Topic 3)  
Refer to the exhibit.

```
FortiManager # diagnose fmupdate view-serverlist fds
Fortiguard Server Comm : Enabled
Server Override Mode   : Strict
FDS server list       :
Index  Address          Port    TimeZone  Distance  Source
-----
*0     10.0.1.50           8890    -5         0         CLI
1      96.45.33.89         443     -5         0         FDNI
2      96.45.32.81         443     -5         0         FDNI
...
9      fds1.fortinet.com    443     -5         0         DEFAULT
```

How will FortiManager try to get updates for antivirus and IPS?

- A. From the list of configured override servers or public FDN servers
- B. From the default server `fds1.fortinet.com`
- C. From the configured override server IP address `10.0.1.50` only
- D. From public FDNI server IP address with the fourth highest octet only



**Answer:** A

**NEW QUESTION 90**

.....

## Thank You for Trying Our Product

### We offer two products:

1st - We have Practice Tests Software with Actual Exam Questions

2nd - Questions and Answers in PDF Format

### NSE5\_FMG-7.2 Practice Exam Features:

- \* NSE5\_FMG-7.2 Questions and Answers Updated Frequently
- \* NSE5\_FMG-7.2 Practice Questions Verified by Expert Senior Certified Staff
- \* NSE5\_FMG-7.2 Most Realistic Questions that Guarantee you a Pass on Your First Try
- \* NSE5\_FMG-7.2 Practice Test Questions in Multiple Choice Formats and Updates for 1 Year

**100% Actual & Verified — Instant Download, Please Click**  
**[Order The NSE5\\_FMG-7.2 Practice Test Here](#)**