

# Cisco

## Exam Questions 350-501

Implementing and Operating Cisco Service Provider Network Core Technologies



### NEW QUESTION 1

Refer to the exhibit:

```
<data>
<rpc-reply>
```

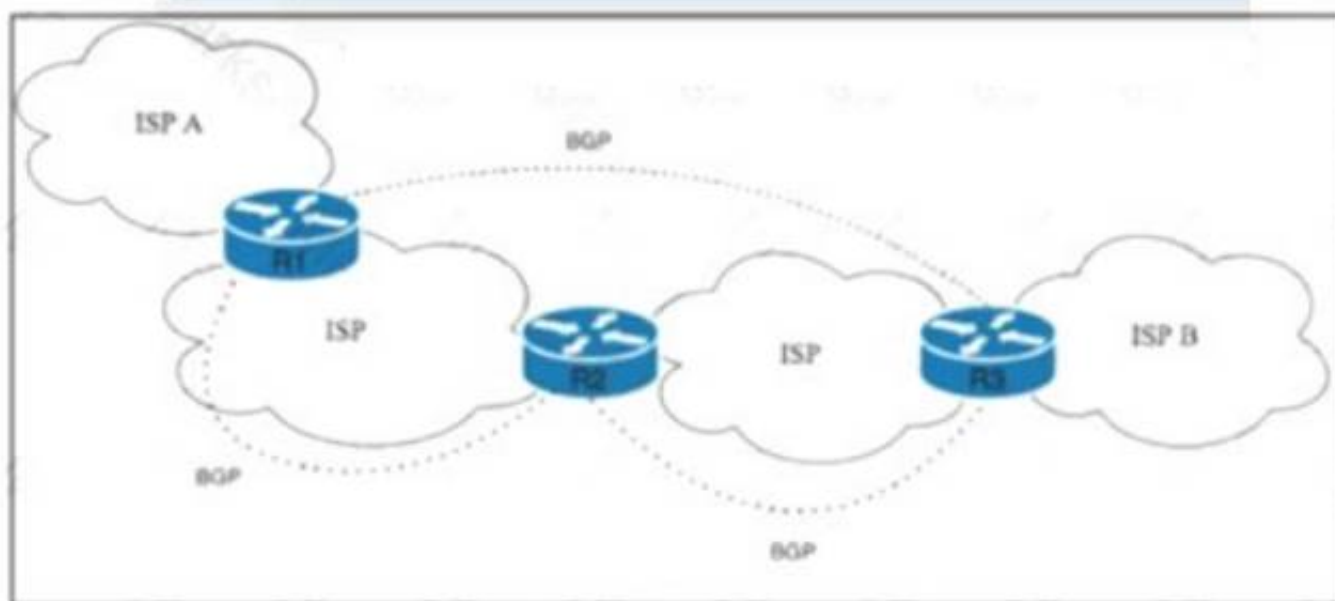
This output is included at the end of an output that was provided by a device using NETCONF. What does the code show?

- A. It shows the hostname of the device as rpc-reply
- B. It shows that the running configuration is blank
- C. It shows NETCONF uses remote procedure calls.
- D. It shows that the full configuration is being modeled by VANG

**Answer: C**

### NEW QUESTION 2

Refer to the exhibit.



Tier 1 ISP A is connected to small Tier 3 ISP B. The EBGP routing protocol is used for route exchange. The networking team at ISP A noticed the flapping of BGP sessions with ISP B. The team decides to improve stability on the network by suppressing the subnet for 30 minutes when a session begins to flap. Which action must the team perform to meet this goal?

- A. Implement a BGP route-penalty timer on ISP A router R1 with the `bgp penalty-timer 30 250 750 15` command.
- B. Implement BGP route dampening on ISP A router R1 with the `bgp dampening 15 700 1500 30` command.
- C. Implement BGP route suppression on ISP A router R2 with the `bgp suppression 30 600 1200 30` command.
- D. Implement a BGP route withdraw-delay timer on ISP B router R3 with the `bgp withdraw-delay 30 15 90 30` command.

**Answer: B**

### NEW QUESTION 3

Which additional configuration is required for NetFlow to provide traceback information?

- A. Cisco Express Forwarding must be configured for traffic that is egressing from the router to be properly reported.
- B. A classification ACL must be configured to identify which type of traffic will be analyzed.
- C. The BGP routing process must be started for any ingress or egress data to be reported when using NetFlow.
- D. Version 5.
- E. LLDP must be configured or the device will be unable to locate a NetFlow analyzer.

**Answer: B**

**Explanation:**

#### Traffic Identification and Traceback

At times, you can need to quickly identify and traceback network traffic, especially during incident response or poor network performance. NetFlow and Classification ACLs are the two primary methods to accomplish this with Cisco IOS software. NetFlow can provide visibility into all traffic on the network. Additionally, NetFlow can be implemented with collectors that can provide long-term trending and automated analysis. Classification ACLs are a component of ACLs and require pre-planning to identify specific traffic and manual intervention during analysis. These sections provide a brief overview of each feature.

### NEW QUESTION 4

Refer to the exhibit.

```
snmp-server community ciscotest ro 2
```

What does the number 2 mean in the configuration?

- A. It dictates the number of sessions that will be open with the SNMP manager
- B. It represents the version of SNMP running.
- C. It indicates two SNMP managers are able to read and write with the agent using community string ciscotest.
- D. It is the numeric name of the ACL that contains the list of SNMP managers with access to the agent.

**Answer: D**

#### NEW QUESTION 5

Exhibit:

```
R1#show ip bgp 35.33.13.0
BGP routing table entry for 35.33.13.0/24, version 24
Paths: (3 available, best #3, table Default-IP-Routing-Table)
...
10
 172.31.1.99 from 172.31.1.99 (1.1.1.1)
   Origin IGP, metric 100, localpref 200, valid, internal
10
 172.26.11.100 from 172.26.11.100 (3.3.3.3)
   Origin IGP, metric 120, localpref 200, valid, external
18293
 172.21.71.1 from 172.21.71.1 (2.2.2.2)
   Origin IGP, metric 150, localpref 200, valid, external, best
```

A network engineer must update the routing toward the web server with IP address 35.22.13.1. The primary path must be configured via the neighbor router with ID 1.1.1.1. However, local-preference configuration is not permitted on R1. Which task must the engineer perform on R1 to complete the implementation?

- A. Configure the device to choose the best MED from the same AS.
- B. Set the device to ignore the conditional MED if the route originated in a different autonomous system.
- C. Enable MED comparison between routes from neighbors in different AS.
- D. Implement deterministic MED to choose the best route from the different AS.

**Answer: C**

#### NEW QUESTION 6

A network operator working for a telecommunication company with an employee Id: 4065 96080 is trying to implement BFD configuration on an existing network of Cisco devices. Which task must the engineer perform to enable BFD on the interfaces?

- A. Disable Cisco Express Forwarding on the interfaces
- B. Disable SSO on the interfaces
- C. Remove any static routes that point to the interfaces
- D. Remove the log option from any ACLs on the interfaces.

**Answer: D**

#### NEW QUESTION 7

Which configuration modifies Local Packet Transport Services hardware policies?

A)

```
configure
!
lpts pifib hardware police
flow ospf unicast default rate 200
flow bgp configured rate 200
flow bgp default rate 100
!
lpts pifib hardware police location 0/2/CPU0
flow ospf unicast default rate 100
flow bgp configured rate 300
flow icmp application rate 100
flow icmp default rate 100
!
```

B)

```
configure
lpts punt police location 0/0/CPU0
exception invalid rate 400
protocol cdp rate 50
protocol arp rate 5000
protocol ipv4 options rate 100
exception icmp rate 200
```

C)

```
configure
lpts pifib police hardware
flow ospf unicast default rate 200
flow bgp configured rate 200
flow bgp default rate 100
!
lpts pifib police hardware location 0/2
flow ospf unicast default rate 100
flow bgp configured rate 300
flow icmp application rate 100
flow icmp default rate 100
!
```

D)

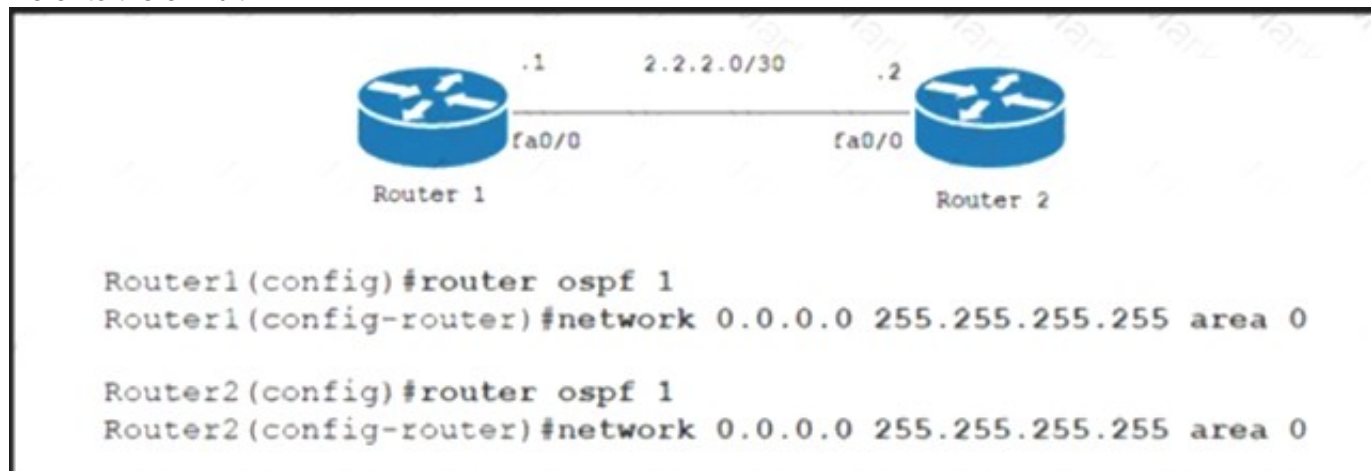
```
configure
lpts police
exception invalid rate 400
protocol cdp rate 50
protocol arp rate 5000
```

- A. Option A
- B. Option B
- C. Option C
- D. Option D

**Answer: C**

#### NEW QUESTION 8

Refer to the exhibit.



A network engineer must configure an LDP neighborship between two newly installed routers that are located in two different offices. Router 1 is the core router in the network and it has already established OSPF adjacency with router 2. On router 1 and router 2, interface fa0/0 is configured for BFD. Which additional configuration must the engineer apply to the two devices to meet the requirement?

- A. Router1(config)#int fa0/0 - Router1(config-if)#mpls ldp autoconfig Router2(config)#router ospf 1 - Router2(config-router)#mpls ip
- B. Router1(config)#int fa0/0 - Router1(config-if)#mpls ip Router1(config-if)#mpls ldp discovery transport-address interface Router2(config)#int fa0/0 Router2(config-if)#mpls ip Router2(config-if)#mpls ldp discovery transport-address interface
- C. Router1(config)#int fa0/0 - Router1(config-if)#mpls ldp autoconfig Router1(config-if)#mpls ldp discovery interface Router2(config)#router ospf 1 Router2(config-router)#mpls ldp autoconfig Router2(config-if)#mpls ldp discovery interface
- D. Router1(config)#int fa0/0 - Router1(config-if)#mpls ip - Router2(config)#router ospf 1 Router2(config-router)#mpls ldp autoconfig



**Answer:** D

#### NEW QUESTION 9

Refer to the exhibit.

Router 1:	Router 2:
Interface gigabitethernet0/1	Interface gigabitethernet0/1
ip address 192.168.1.1 255.255.255.0	ip address 192.168.1.2 255.255.255.0
router ospf 1	Interface loopback 0
network 192.168.1.0 0.0.0.255 area 1	ip address 192.168.2.1 255.255.255.0
	router ospf 2
	network 192.168.1.2 0.0.0.0 area 2
	network 192.168.2.1 0.0.0.0 area 1

Router 1 is missing the route for the router 2 loopback 0. What should the engineer change to fix the problem?

- A. the area numbers on Router 1 and Router 2 to be similar
- B. the wildcard mask network statement in OSPF of Router 2
- C. Router 1 to be an ABR
- D. the hello timers on Router 1 and Router 2 to be different

**Answer:** A

#### NEW QUESTION 10

Which type of attack is an application attack?

- A. ping of death
- B. ICMP (ping) flood
- C. HTTP flood
- D. SYN flood

**Answer:** C

#### NEW QUESTION 10

Refer to the exhibit.

route-map ciscotest permit 10
match ip address 1
set local-preference 200

An engineer is implementing the BGP attribute on the customer's network to select the preferred path. Only BGP's well-known discretionary attribute must be used. FTP prefixes should not be selected as part of this implementation. Which configuration must the engineer implement to complete the task?

- A. router bgp 100neighbor 10.0.0.1 remote-as 500 neighbor 10.0.0.1 route-map ciscotest in
- B. router bgp 100neighbor 10.0.0.1 remote-as 500 neighbor 10.0.0.1 route-map ciscotest
- C. router bgp 100neighbor 10.0.0.1 remote-as 500neighbor 10.0.0.1 route-map ciscotest both
- D. router bgp 100neighbor 10.0.0.1 remote-as 500 neighbor 10.0.0.1 route-map ciscotest out

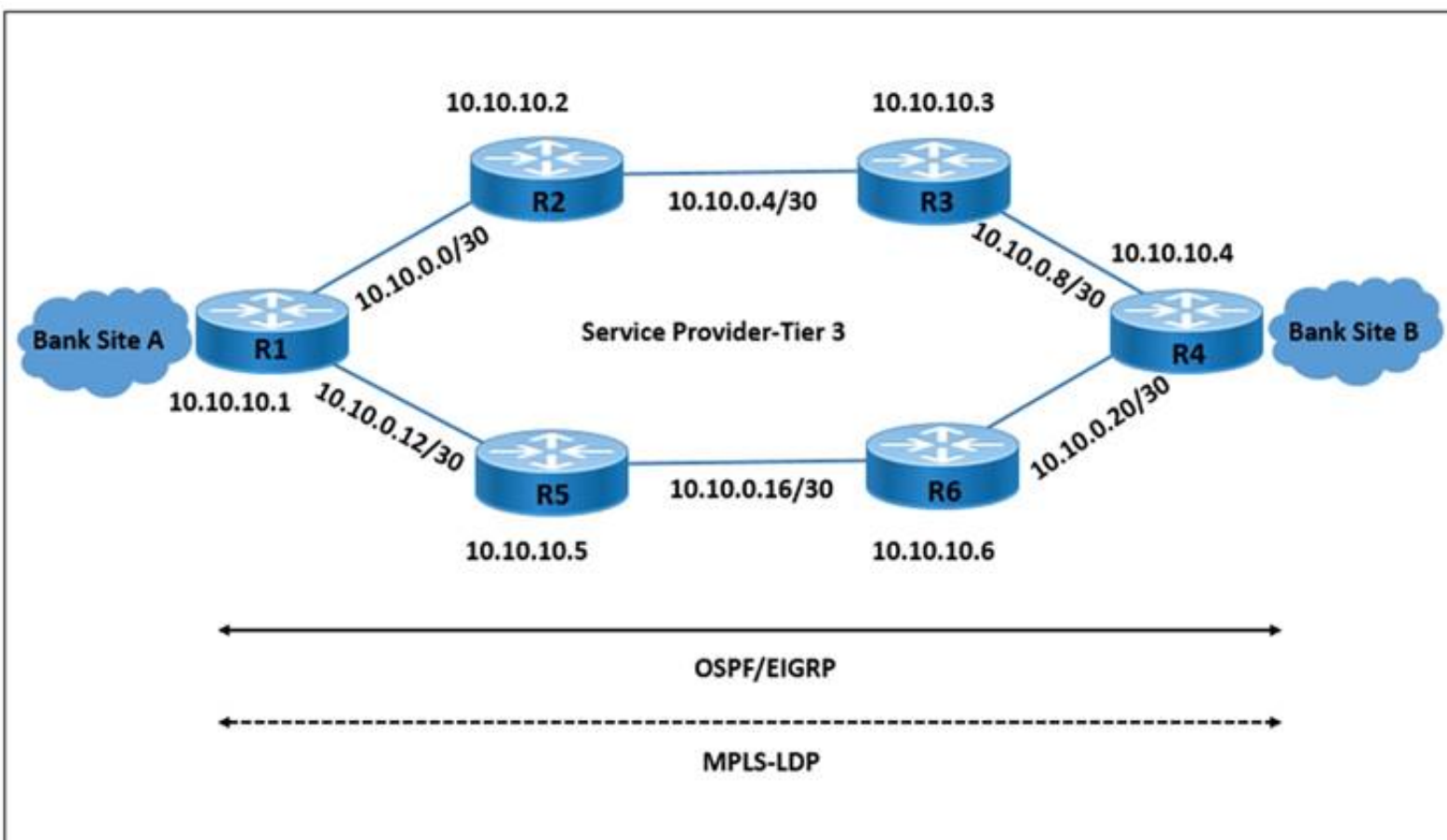
**Answer:** A

#### NEW QUESTION 14

Refer to the exhibit.

```
R2# show mpls ldp neighbor detail
Peer LDP Ident: 10.10.10.1:0; Local LDP Ident 10.10.10.2:0
TCP connection: 10.10.10.1.646 - 10.10.10.2.56531
Password: not required, none, in use
State: Oper; Msgs sent/rcvd: 18/18; Downstream; Last TIB rev sent 28
Up time: 00:01:08; UID: 3; Peer Id 2;
LDP discovery sources:
  GigabitEthernet2/0; Src IP addr: 10.0.0.1
    holdtime: 15000 ms, hello interval: 5000 ms
Addresses bound to peer LDP Ident:
  10.0.0.13 10.10.10.1 10.0.0.1
Peer holdtime: 180000 ms; KA interval: 60000 ms; Peer state: estab
Clients: Dir Adj Client
LDP Session Protection enabled, state: Incomplete
  duration: 86400 seconds

R1# show mpls ldp neighbor detail
Peer LDP Ident: 10.10.10.2:0; Local LDP Ident 10.10.10.1:0
TCP connection: 10.10.10.2.56531 - 10.10.10.1.646
Password: not required, none, in use
State: Oper; Msgs sent/rcvd: 19/19; Downstream; Last TIB rev sent 30
Up time: 00:02:27; UID: 2; Peer Id 1;
LDP discovery sources:
  GigabitEthernet2/0; Src IP addr: 10.0.0.2
    holdtime: 15000 ms, hello interval: 5000 ms
Addresses bound to peer LDP Ident:
  10.10.10.2 10.0.0.5 10.0.0.2 10.0.0.25
Peer holdtime: 180000 ms; KA interval: 60000 ms; Peer state: estab
```



LDP peering between routers R1 and R2 is dropped when the link between R1 and R2 is taken offline. However, LDP peering between R2 and R3 stays up when the link between R2 and R3 is taken offline. Which action allows MPLS traffic forwarding to continue normally if the link between R1 and R2 goes down?

- A. Enable IGP and LDP Synchronization on R1.
- B. Implement LDP Session Protection on R1.
- C. Enable IGP and LDP Synchronization on R2.
- D. Implement LDP Session Protection on R2.

**Answer: B**

#### NEW QUESTION 15

Refer to the exhibit.

```
RP/0/0/CPU0:R2#debug isis adjacencies
RP/0/0/CPU0:Apr 2 20:57:00.421 : isis[1010]: RECV P2P IIH (L2)
from GigabitEthernet0/0/0/0 SNPA fal6.3ebe.a7bc: System ID R2,
Holdtime 30, length 1429
RP/0/0/CPU0:Apr 2 20:57:01.761 : isis[1010]: SEND P2P IIH (L1)
on GigabitEthernet0/0/0/0: Holdtime 30s, Length 41
```

A network operator is attempting to configure an IS-IS adjacency between two routers, but the adjacency cannot be established. To troubleshoot the problem, the operator collects this debugging output. Which interface are misconfigured on these routers?

- ☐ The peer router interface is configured as Level 1 only, and the R2 interface is configured as Level 2 only.
- ☐ The R2 interface is configured as Level 1 only, and the peer router interface is configured as Level 2 only.
- ☐ The R2 interface is configured as point-to-point, and the peer router interface is configured as multipoint.
- ☐ The peer router interface is configured as point-to-point, and the R2 interface is configured as multipoint.

- A. Option A
- B. Option B
- C. Option C
- D. Option D

**Answer:** B

#### NEW QUESTION 16

How is RSVP used with MPLS traffic engineering tunnels?

- A. It assigns a tag to a packet as it travels through the tunnel.
- B. It removes and reassigns an MPLS label when the packet enters the tunnel.
- C. It reduces the CPU burden when a packet travels through the tunnel.
- D. It reserves bandwidth along the path of the tunnel.

**Answer:** C

#### NEW QUESTION 19

Which MPLS design attribute can you use to provide Internet access to a major customer through a separate dedicated VPN?

- A. The customer that needs the Internet access service is assigned to the same RTs as the Internet gateway
- B. The Internet gateway inserts the full Internet BGP routing table into the Internet access VPN
- C. The Internet gateway router is connected as a PE router to the MPLS backbone.
- D. The CE router supports VRF-Ute and the full BGP routing table.

**Answer:** B

#### NEW QUESTION 24

Which OS uses a distributed subsystem architecture?

- A. IOS XE
- B. IOS
- C. IOS XR
- D. CatOS

**Answer:** C

#### NEW QUESTION 27

Refer to the exhibit.

```

R1#show ip ospf int
Loopback2 is up, line protocol is up
  Internet Address 200.0.0.1/24, Area 0, Attached via Interface Enable
  Process ID 1, Router ID 100.0.0.1, Network Type LOOPBACK, Cost: 1
Loopback interface is treated as a stub Host
Loopback0 is up, line protocol is up
  Internet Address 100.0.0.1/24, Area 0, Attached via Interface Enable
  Process ID 1, Router ID 100.0.0.1, Network Type LOOPBACK, Cost: 1
Loopback interface is treated as a stub Host
Serial1/0 is up, line protocol is up
  Interface is unnumbered. Using address of Loopback0 (100.0.0.1), Area 0, Attached via Interface Enable
  Process ID 1, Router ID 100.0.0.1, Network Type POINT_TO_POINT, Cost: 64

R2#show ip ospf database
  OSPF Router with ID (100.0.0.2) (Process ID 1)
    Router Link States (Area 0)

Link ID      ADV Router   Age         Seq#         Checksum     Link count
100.0.0.1    100.0.0.1    22          0x80000005   0x0090D8     3

R2#show ip route
  100.0.0.0/8 is variably subnetted, 2 subnets, 2 masks
C       100.0.0.0/24 is directly connected, Serial1/0
L       100.0.0.2/32 is directly connected, Serial1/0
  
```

While troubleshooting a connectivity issue on router R2, a network engineer with an employee id:3876.13.497 notices that although it detects three OSPF links from R1, the OSPF prefixes are missing from the routing table. What is the reason for the problem?

- A. The serial interfaces have different MTUs
- B. Both loopback interfaces on R1 are configured as stub
- C. The R2 Serial 1/0 interface is configured with an IP address, but the R1 Serial R1 Serial 1/0 interface is unnumbered.
- D. The subnet masks on the serial interfaces are mismatched.

**Answer:** C

#### NEW QUESTION 28

Refer to the exhibit:



```
router bgp 1
network 192.168.1.2 mask 255.255.255.255
neighbor 192.168.1.1 remote-as 64512
neighbor 192.168.1.1 update-source Loopback0
neighbor 192.168.1.1 send-label
```

Which statement about the neighbor statements for 192.168.1.1 is true?

- A. The router must have TDP configured for the send-label command to operate
- B. The neighbor router receives at least four labels from this router
- C. The router sends BGP labels for its prefixes to this peer
- D. The router sends only a label for the prefix for Loopback0.

**Answer: C**

### NEW QUESTION 33

Refer to the exhibit

```
Sep 30 03:12:33: ISIS-Adj: Rec serial IIH from *HDLC* (Serial1/1), cir type L1L2
Sep 30 03:12:33: ISIS-Adj: rcvd state DOWN, old state UP, new state INIT
Sep 30 03:12:33: ISIS-Adj: Action = GOING DOWN
Sep 30 03:12:33: %CLNS-5-ADJCHANGE: ISIS: Adjacency to R1 (Serial1/1) Down, nes
Sep 30 03:12:33: ISIS-Adj: L2 adj count 0
Sep 30 03:12:33: ISIS-Adj: Sending serial IIH on Serial1/1, length 1699
Sep 30 03:12:41: ISIS-Adj: Rec serial IIH from *HDLC* (Serial1/1), cir type L1L2
Sep 30 03:12:41: ISIS-Adj: rcvd state DOWN, old state DOWN, new state INIT
Sep 30 03:12:41: ISIS-Adj: Action = GOING UP, new type = L2
Sep 30 03:12:41: ISIS-Adj: New serial adjacency
Sep 30 03:12:41: ISIS-Adj: Sending serial IIH on Serial1/1, length 1699
Sep 30 03:12:47: ISIS-Adj: Rec serial IIH from *HDLC* (Serial1/1), cir type L1L2
Sep 30 03:12:47: ISIS-Adj: rcvd state DOWN, old state INIT, new state INIT
Sep 30 03:12:47: ISIS-Adj: Action = GOING UP, new type = L2
Sep 30 03:12:47: ISIS-Adj: Sending serial IIH on Serial1/1, length 1699
Sep 30 03:12:47: ISIS-Adj: Sending serial IIH on Serial1/1, length 1699
```

Routers R1 and R2 are connected via a serial link and use the IS-IS routing protocol for route exchange. After a configuration change on R2, IS-IS connectivity is interrupted. A network engineer confirmed that the interfaces are in the UP state and connectivity exists between the two routers. Which two actions must the engineer perform to resolve the problem? (Choose two.)

- A. Disable padding for hello packets under the serial interface on R2 DUMPS
- B. Change the hello interface timer to 10 seconds on R1.
- C. Change the MTU to 1500 bytes on R2.
- D. Enable hello packet padding globally on R1.
- E. Change R2 to an IS-IS Level 1 router.

**Answer: CE**

### NEW QUESTION 37

What are the two uses of the YANG data modeling language? (Choose two.)

- A. It is used to access a device by HTTP.
- B. It is used to model the configuration used by NETCONF operations.
- C. It is used to shape state data of network elements.
- D. It is used to replace RESTCONF as a mechanism to install and manipulate configuration.
- E. It is used to replace the OSI model for troubleshooting.

**Answer: BC**

### NEW QUESTION 38

Which protocol does a Cisco MPLS TE tunnel use to maintain paths within the core?

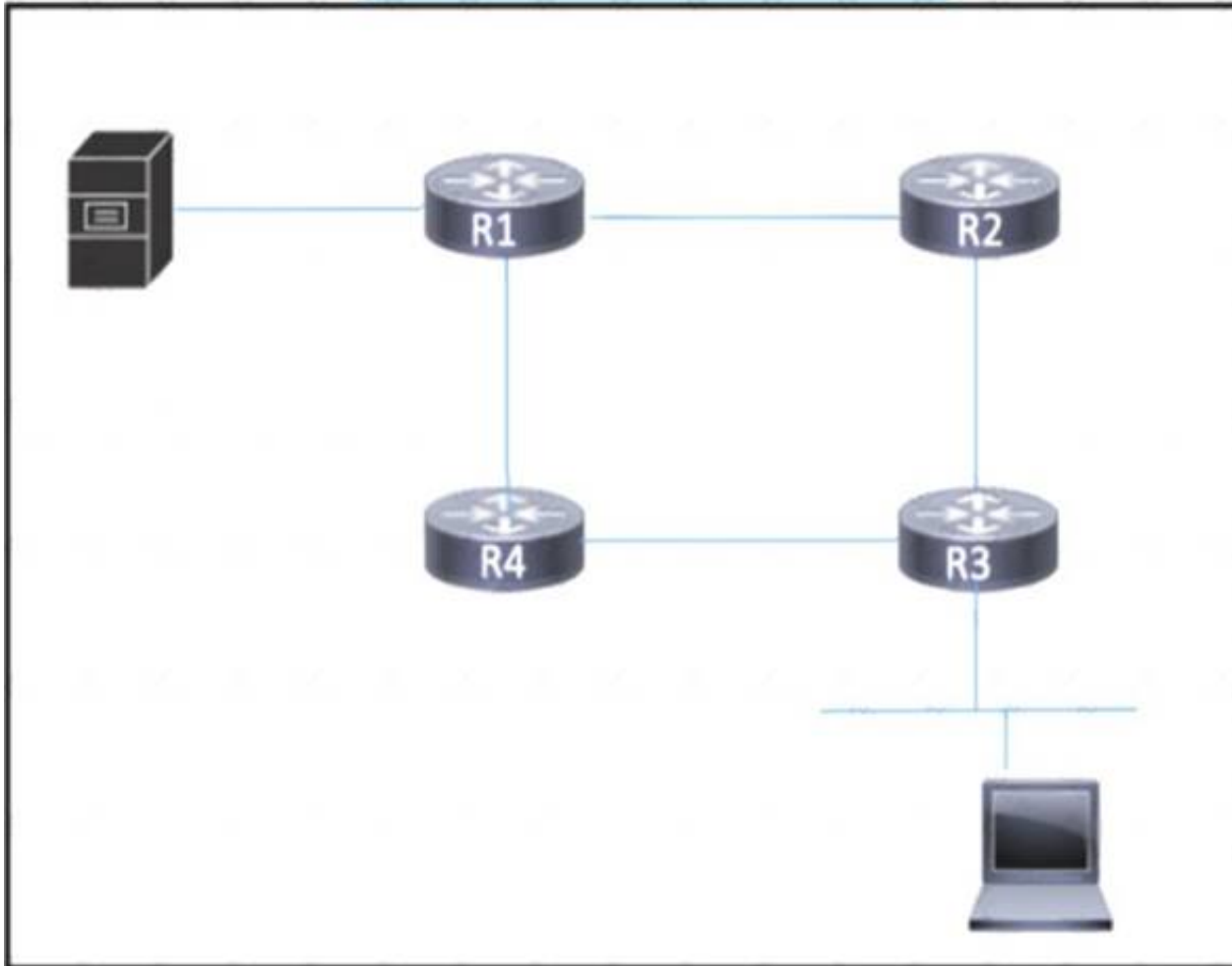
- A. RSVP
- B. VTP
- C. STP
- D. RPF

**Answer: A**

### NEW QUESTION 43

Refer to the exhibit.





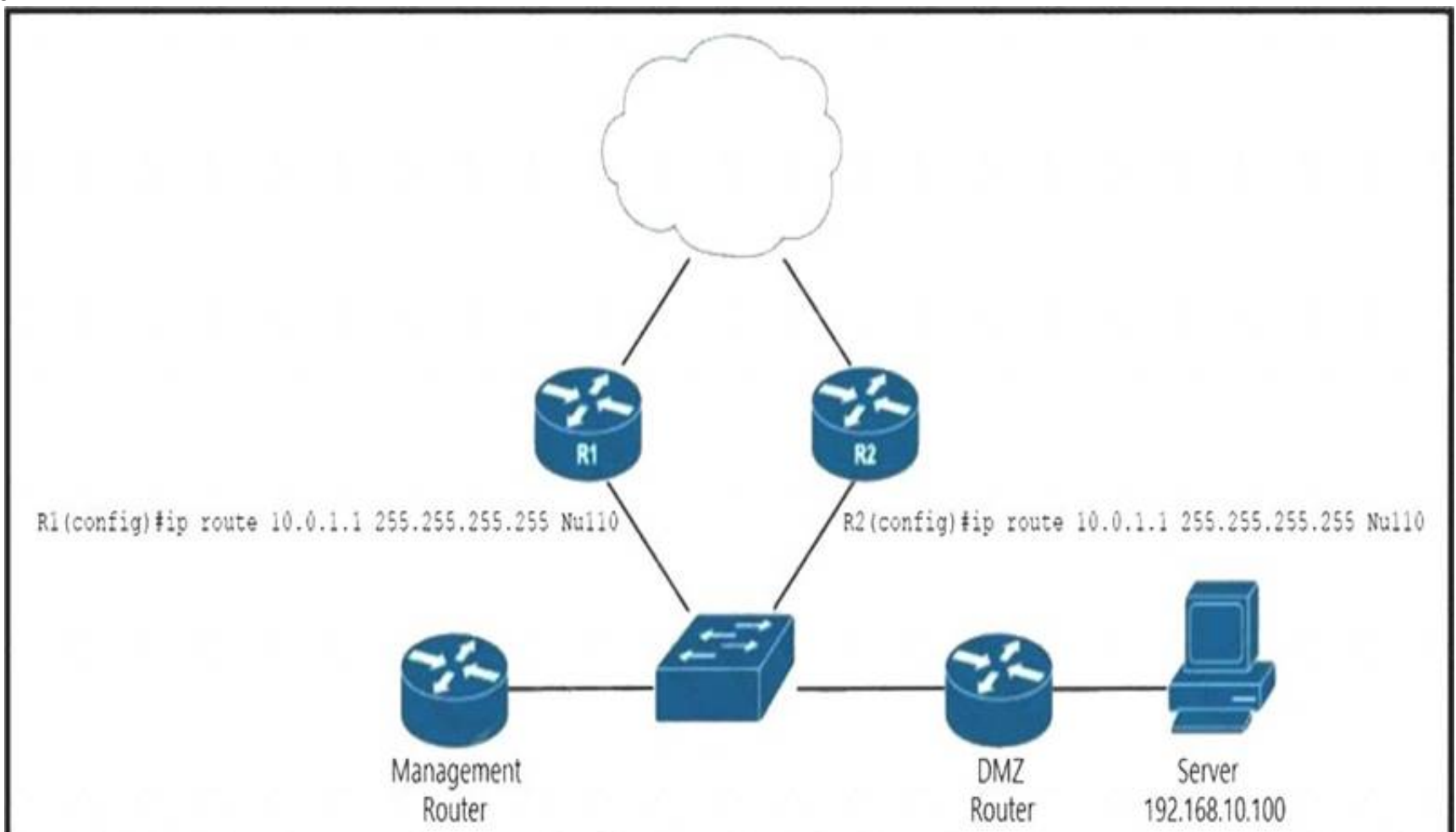
A host connected to R3 must connect with a server on R1 that provides critical, time-sensitive data. Traffic between the host and server must always be given bandwidth to traverse the links when they are congested, with other traffic being dropped. How must the network engineer implement a QoS strategy with classification to ensure that the traffic is given the appropriate bandwidth?

- A. Implement FIFO to guarantee that the server traffic is sent first while other traffic is queued.
- B. Implement policing to rate-limit noncritical traffic that exceeds designated thresholds.
- C. Implement traffic shaping to delay noncritical traffic when the link is congested.
- D. Implement strict priority to guarantee bandwidth for the server traffic.

**Answer: D**

#### NEW QUESTION 45

Refer to the exhibit.



router(config)# route-map blackhole-trigger router(config-route-map)# match tag 777 router(config-route-map)# set ip next-hop 10.0.1.1 router(config-route-map)# set origin igp router(config-route-map)# set community no-export

EIGRP is running across the core to exchange internal routes, and each router maintains iBGP adjacency with the other routers on the network. An operator has configured static routes on the edge routers R1 and R2 for IP address 10.0.1.1, which is used as a black hole route as shown. Which configuration should the operator implement to the management router to create a route map that will redistribute tagged static routes into BGP and create a static route to blackhole traffic with tag 777 that is destined to the server at 192.168.10.100?

- A. router(config)# router bgp 55100router(config-router)# redistribute static route-map blackhole-trigger router(config)# ip route 10.0.1.1 255.255.255.255 Null0 tag 777
- B. router(config)# router bgp 55100router(config-router)# redistribute static route-map blackhole-trigger router(config)# ip route 192.168.10.100 255.255.255.255 Null0 tag 777
- C. router(config)# router bgp 55100 router(config-router)# redistribute connectedrouter(config)# ip route 192.168.10.100 255.255.255.255 tag 777
- D. router(config)# router bgp 55100router(config-router)# redistribute connected route-map blackhole-trigger router(config)# ip route 192.168.10.100

255.255.255.255 Null0 tag 777

Answer: B

NEW QUESTION 50

Drag and drop the LDP features from the left onto their usages on the right.

session protection	It prevents valid routes from being overwritten with new ones until labels are assigned.
IGP synchronization	It allows stale label bindings to be used for a period of time while an LDP neighbor is unreachable.
targeted-hello accept	It uses LDP Targeted hellos to protect LDP sessions.
graceful restart	It uses LDP to form neighborhood between non-directly connected routers.

- A. Mastered
- B. Not Mastered

Answer: A

Explanation:

graceful restart
IGP synchronization
session protection
targeted-hello accept

NEW QUESTION 54

What is a primary benefit of IPoATM or MPLS over ATM backbone service provider networks?

- A. dedicated circuits
- B. variable-length packets
- C. isochronous system
- D. fixed-length cells

Answer: A

NEW QUESTION 59

Refer to the exhibit.

```
R1
ip multicast-routing
ip pim rp-candidate GigabitEthernet1/0/0

interface g1/0/0
  ip pim sparse-mode

R2
ip multicast-routing
ip pim bsr-candidate GigabitEthernet1/0/0

interface g1/0/0
  ip pim sparse-mode
```

An engineer configured multicast routing on client's network. What is the effect of this multicast implementation?

- A. R2 floods information about R1 throughout the multicast domain.
- B. R2 is unable to share information because the ip pirn autorp listener command is missing.
- C. R1 floods information about R2 throughout the multicast domain.
- D. R2 is elected as the RP for this domain.

Answer: B

#### NEW QUESTION 63

Drag and drop the BGP Best Path Algorithm rules from the left into the corresponding order of importance on the right.

Drag and drop the BGP Best Path Algorithm rules from the left into the corresponding order of importance on the right.

	Most important
route with the shortest AS_PATH	
route with the lowest MED	
route with the highest weight	
route with the lowest origin type	
route with the highest local preference	
	Least important

- A. Mastered
- B. Not Mastered

Answer: A

#### Explanation:

Diagram Description automatically generated

#### NEW QUESTION 64

Refer to the exhibit:

```
telemetry model-driven
subscription cisco
sensor-group-id ciscotest sample-interval 60000
commit
```

This configuration is being applied on an IOS XR router. Which statement about this configuration is true?

- A. It is used to set up configuration to poll network data
- B. It is used to enable gRPC
- C. It is used to create a streaming subscription with a 60-second interval



D. It is used to create a streaming subscription with a 600-second interval

**Answer: C**

#### NEW QUESTION 65

Which statement about the Cisco MPLS TE forwarding adjacency feature is true?

- A. It enables the headend and tailend routers to establish a bidirectional tunnel
- B. It enables the tailend router to advertise routes to the headend router over the tunnel
- C. It enables the MPLS core to use EIGRP as the routing protocol
- D. It enables the Cisco MPLS TE tunnel to be advertised into the running IGP.

**Answer: D**

#### NEW QUESTION 70

Refer to the exhibit.

```
router bgp 65515
  bgp router-id 192.168.1.1
  no bgp default ipv4-unicast
  bgp log-neighbor-changes
  neighbor 192.168.1.2 remote-as 65515
  neighbor 192.168.2.2 remote-as 65515
```

A network engineer is configuring a new router for iBGP to improve the capacity of a growing network. The router must establish an iBGP peer relationship with its neighbor. The underlay network is already configured with the correct IP addresses. Which step should the engineer apply to complete this task?

- A. Implement multicast routing on the router to support BGP hellos.
- B. Configure the AS number for the router to share with its iBGP peers.
- C. Configure the new router as an iBGP route reflector to support multiple iBGP peers.
- D. Activate the BGP peers under the correct address family on the router.

**Answer: D**

#### NEW QUESTION 75

Refer to the exhibit.

```
RouterX# show telemetry model-driven subscription SUB11
Sun Jul 11 21:32:25.000 UTC
Subscription: SUB11
-----
State: ACTIVE
Sensor groups:
Id: SGroup1
  Sample Interval: 20000 ms
  Sensor Path: openconfig-interfaces:interfaces/interface
  Sensor Path State: Resolved
Destination Groups:
Group Id: Dialin_1002
  Destination IP: 172.16.10.1
  Destination Port: 22471
  Encoding: self-describing-gpb
  Transport: dialin
  State: Active
  Total bytes sent: 13909
  Total packets sent: 14
  Last Sent time: 2021-07-11 21:32:25.231964501 +0000
Collection Groups:
-----
Id: 2
  Sample Interval: 20000 ms
  Encoding: self-describing-gpb
  Num of collections: 7
  Collection time: Min: 32 ms Max: 39 ms
  Total time: Min: 34 ms Avg: 37 ms Max: 40 ms
  Total DeferredB: 0
  Total Send Errors: 0
  Total Send Drops: 0
  Total Other Errors: 0
  Last Collection Start: 2021-07-11 21:32:25.231930501 +0000
  Last Collection End: 2021-07-11 21:32:25.231969501 +0000
  Sensor Path: openconfig-interfaces:interfaces/interface
```

An engineer ran this show telemetry command to view subscription SUB11 on RouterX. The engineer then decided that RouterY should provide the same output for sensor group SGroup13 as RouterX. The engineer cannot access RouterX to copy its configuration. No access lists on the router block user access. Which configuration must the engineer apply on RouterY to provide the same output from the show telemetry command?

A)

```
RouterY(config)# telemetry model-driven
RouterY(config-model-driven)# subscription SUB11
RouterY(config-model-driven-subs)# sensor-group-id SGroup13 sample-interval 20000
RouterY(config-model-driven-subs)# destination-id DGroup1
```

B)

```
RouterY(config)# telemetry model-driven
RouterY(config-model-driven)# subscription SGroup13
RouterY(config-model-driven-subs)# sensor-group-id SGroup13 sample-interval 20000
```

C)

```
RouterY(config)# telemetry model-driven
RouterY(config-model-driven)# destination-group SUB11
RouterY(config-model-driven-dest)# address family ipv4 172.16.10.1 port 22471
RouterY(config-model-driven-dest-addr)# encoding self-describing-gpb
RouterY(config-model-driven-dest-addr)# protocol tcp
```

D)

```
RouterY(config)# telemetry model-driven
RouterY(config-model-driven)# sensor-group SGroup13
RouterY(config-model-driven-snsr-grp)# sensor-path openconfig-interfaces:interfaces/interface
```

- A. Option A
- B. Option B
- C. Option C
- D. Option D

**Answer: C**

#### NEW QUESTION 76

Refer to the exhibit.

```
CSR1#show flowspec ipv4 detail
AFI: IPv4
Flow      :Dest:10.6.5.0/24,DPort:=80|=443
Actions   :Traffic-rate: 0 bps (bgp.1)
Statistics (packets/bytes)
Matched   :          12/696
Dropped   :          12/696
```

A network operator recently configured BGP FlowSpec for the internal IT network. What will be inferred from the configuration deployed on the network?

- A. The policy is configured locally on CSR1 and drops all traffic for TCP ports 80 and 443
- B. The policy is learned via BGP FlowSpec and drops all traffic for TCP ports 80 and 443
- C. The policy is learned via BGP FlowSpec and has active traffic
- D. The policy is configured locally on CSR1 and currently has no active traffic

**Answer: A**

#### NEW QUESTION 81

Refer to the exhibit.

```
Router 1:

tacacs-server host 192.168.1.2 single-connection
tacacs-server key ciscotest
```

What is the result of this configuration?

- A. Router 1 opens and closes a TCP connection to the TACACS+ server every time a user requires authorization.
- B. Router 1 and the TACACS+ server maintain one open connection between them only when network administrator is accessing the router with password ciscotest.
- C. Router 1 and the TACACS+ server maintain one open connection between them.
- D. Router 1 opens and closes a TCP connection to the TACACS+ server every time a user requires authentication.

**Answer:** C

**Explanation:**

<https://www.ccexpert.us/cisco-secure/configuring-tacacs-on-cisco-ios.html>

single-connection (Optional) Used to specify a single connection. Rather than have the router open and close a TCP connection to the daemon each time it must communicate, the single-connection option maintains a single open connection between the router and the daemon. This is more efficient because it allows the daemon to handle a higher number of TACACS operations.

**NEW QUESTION 83**

What are two factors to consider when implementing NSR High Availability on an MPLS PE router? (Choose two.)

- A. It consumes more memory and CPU resources than NSF
- B. It operates normally without NSR support on the PE peers.
- C. It requires all PE-CE sessions to support NSR
- D. It requires routing protocol extensions
- E. It cannot sync state information across redundant RPs

**Answer:** AB

**NEW QUESTION 87**

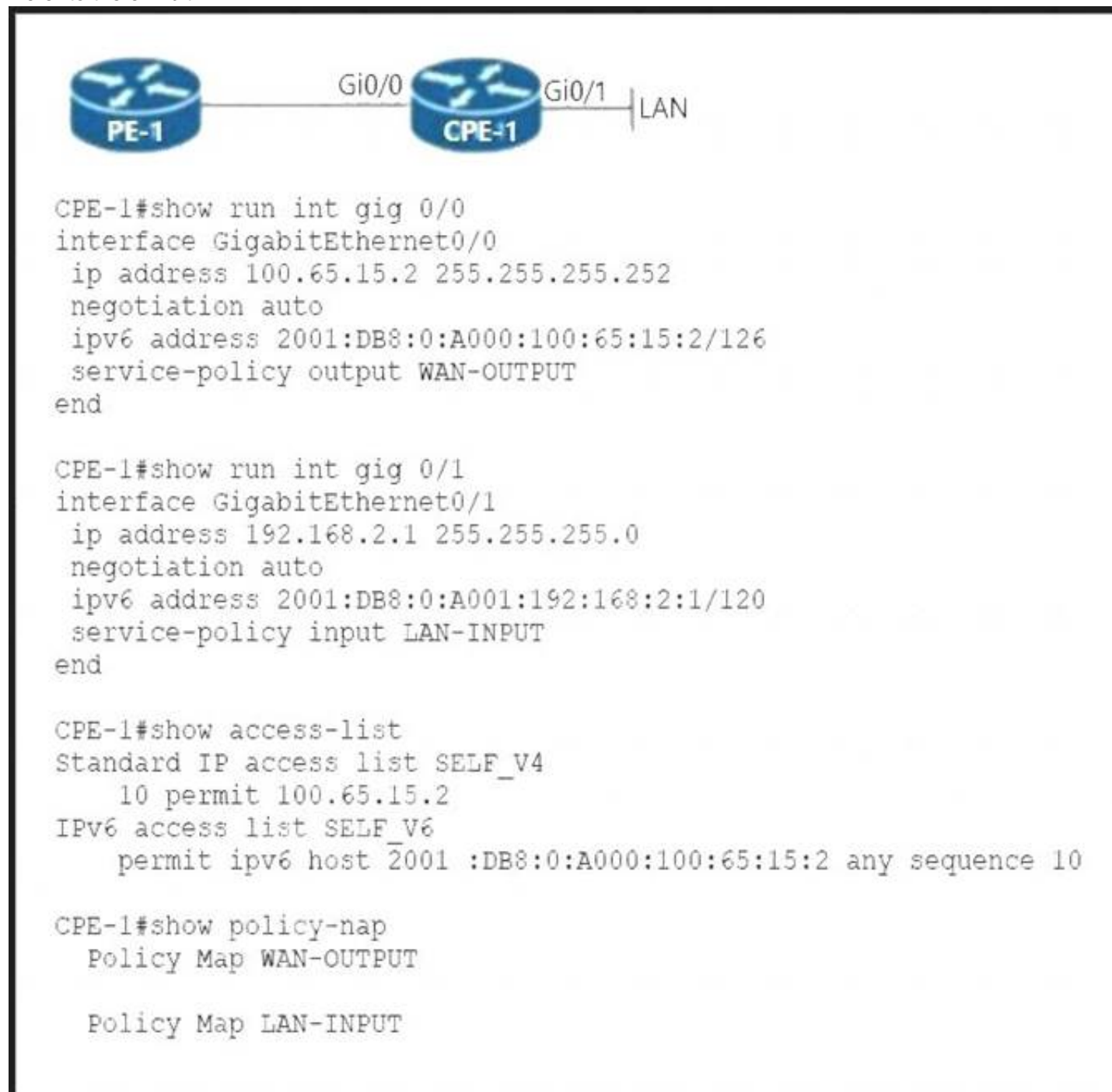
Which service is a VNF role?

- A. Compute
- B. Network
- C. Firewall
- D. Storage

**Answer:** B

**NEW QUESTION 92**

Refer to the exhibit.



```

CPE-1#show run int gig 0/0
interface GigabitEthernet0/0
 ip address 100.65.15.2 255.255.255.252
 negotiation auto
 ipv6 address 2001:DB8:0:A000:100:65:15:2/126
 service-policy output WAN-OUTPUT
end

CPE-1#show run int gig 0/1
interface GigabitEthernet0/1
 ip address 192.168.2.1 255.255.255.0
 negotiation auto
 ipv6 address 2001:DB8:0:A001:192:168:2:1/120
 service-policy input LAN-INPUT
end

CPE-1#show access-list
Standard IP access list SELF_V4
 10 permit 100.65.15.2
IPv6 access list SELF_V6
 permit ipv6 host 2001 :DB8:0:A000:100:65:15:2 any sequence 10

CPE-1#show policy-map
Policy Map WAN-OUTPUT

Policy Map LAN-INPUT
  
```

A network engineer configures CPE-1 for QoS with these requirements: IPv4 and IPv6 traffic originated by the CPE-1 WAN IP address must be marked with DSCP CS3. IPv4 LAN traffic must be marked with DSCP CS1.

IPv6 LAN traffic must be marked with DSCP default.

Which configuration must the engineer implement on CPE-1?

- A. class-map match-any SELF\_TRAFFIC match access-group name SELF\_V4 match access-group name SELF\_V6 class-map match-all V4\_TRAFFIC match protocol ip class-map match-all V6\_TRAFFIC match protocol ipv6 class-map match-all QG\_4 match qos-group 4 class-map match-all QG\_6 match qos-group 6 policy-map LAN-INPUT class V4\_TRAFFIC set qos-group 4 class V6\_TRAFFIC set qos-group 6 policy-map WAN-OUTPUT class SELF\_TRAFFIC set ip dscp cs3



class QG\_4 set ip dscp cs1 class QG\_6 set ip dscp default  
B. class-map match-all SELF\_TRAFFIC match access-group name SELF\_V4 match access-group name SELF\_V6 class-map match-all V4\_TRAFFIC match protocol ip class-map match-all V6\_TRAFFIC match protocol ipv6 class-map match-all QG\_4 match qos-group 4 class-map match-all QG\_6 match qos-group 6! policy-map LAN-INPUT class V4\_TRAFFIC set qos-group 4 class V6\_TRAFFIC set qos-group 6! policy-map WAN-OUTPUT class SELF\_TRAFFIC set dscp cs3 class QG\_4 set ip dscp cs1 class QG\_6 set dscp default  
C. class-map match-all SELF\_TRAFFIC match access-group name SELF\_V4 match access-group name SELF\_V6 class-map match-all V4\_TRAFFIC match protocol ip class-map match-all V6\_TRAFFIC match protocol ipv6 class-map match-all QG\_4 match qos-group 4 class-map match-all QG\_6 match qos-group 6! policy-map LAN-INPUT class V4\_TRAFFIC set qos-group 4 class V6\_TRAFFIC set qos-group 6! policy-map WAN-OUTPUT class SELF\_TRAFFIC set ip dscp cs3 class QG\_4 set ip dscp cs1 class QG\_6 set ip dscp default  
D. class-map match-any SELF\_TRAFFIC match access-group name SELF\_V4 match access-group name SELF\_V6 class-map match-all V4\_TRAFFIC match protocol ip class-map match-all V6\_TRAFFIC match protocol ipv6 class-map match-all QG\_4 match qos-group 4 class-map match-all QG\_6 match qos-group 6! policy-map LAN-INPUT class V4\_TRAFFIC set qos-group 4 class V6\_TRAFFIC set qos-group 6! policy-map WAN-OUTPUT class SELF\_TRAFFIC set dscp cs3 class QG\_4 set ip dscp cs1 class QG\_6 set dscp default

**Answer:** A

#### NEW QUESTION 95

Refer To the exhibit:

```
R2#sh cns neighbors detail
Tag TEST:
System Id   Interface   SNPA        State Holdtime   Type Protocol
R1          Fa0/0       ca01.2178.0008 Up    89           L1L2 IS-IS
Area Address(es): 49
Uptime: 00:03:29
NSF capable
Interface name: FastEthernet0/0
```

On R1, which output does the show isis neighbors command generate?

A)

```
Tag TEST
System Id   Type Interface   IP Address   State Holdtime Circuit Id
R2          L1 Fa0/0          UP    7           R2 01
```

B)

```
Tag TEST
System Id   Type Interface   IP Address   State Holdtime Circuit Id
R2          L2 Fa0/0          UP    9           R2 01
```

C)

```
Tag TEST
System Id   Type Interface   IP Address   State Holdtime Circuit Id
R2          L2 Fa0/0          UP    7           R2 01
R2          L2 Fa0/0          UP    9           R2 01
```

D)

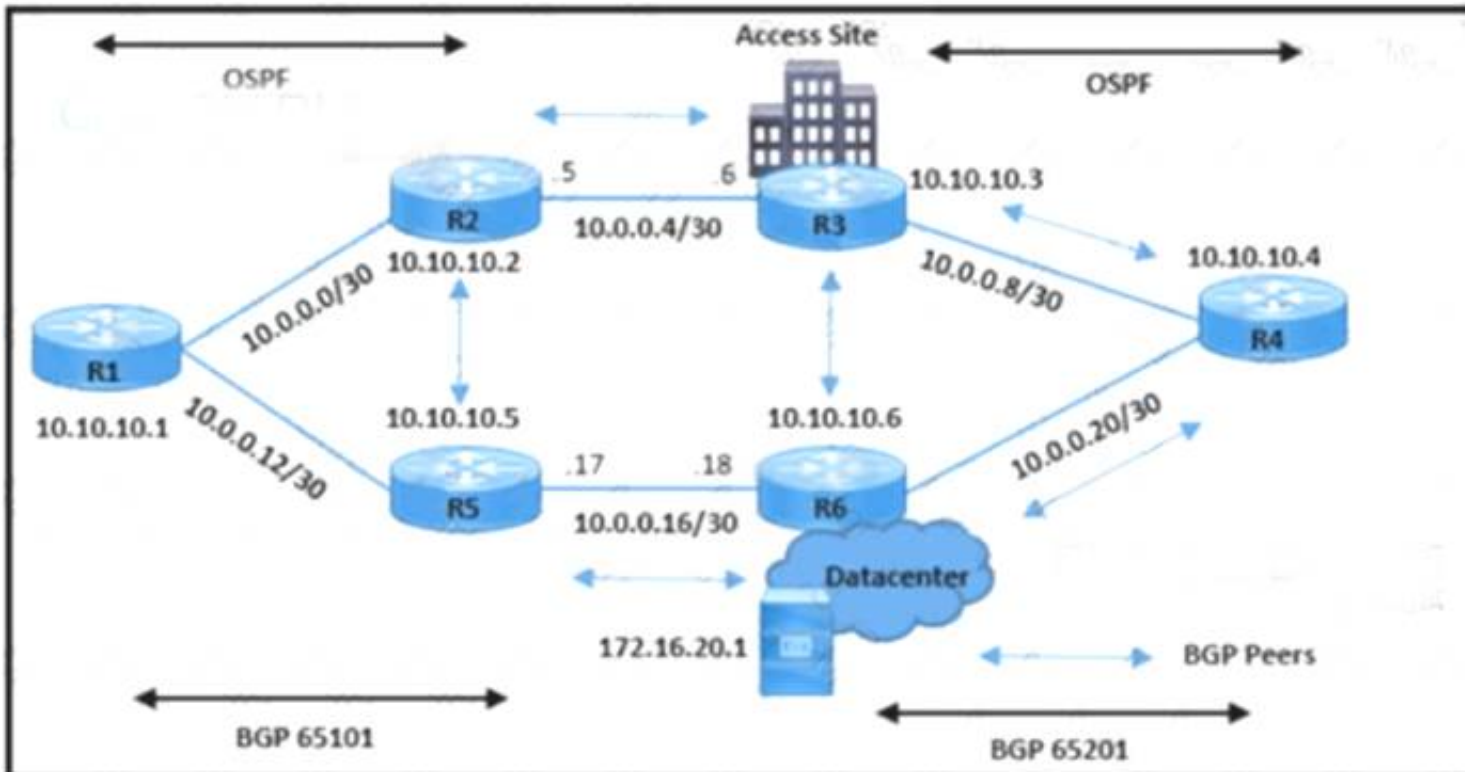
```
Tag TEST
System Id   Type Interface   IP Address   State Holdtime Circuit Id
R2          L1 Fa0/0          UP    7           R2 01
R2          L2 Fa0/0          UP    9           R2 01
```

- A. Option A
- B. Option B
- C. Option C
- D. Option D

**Answer:** D

#### NEW QUESTION 97

Refer to the exhibit.



```
R3#show ip route
 192.168.30.0/32 is subnetted, 1 subnets
B    192.168.30.1 [200/0] via 10.10.10.4, 00:39:23
 172.16.0.0/32 is subnetted, 2 subnets
O    172.16.20.1 [110/3] via 10.0.0.10, 00:05:39, GigabitEthernet2/0
B    172.16.10.10 [200/0] via 10.10.10.1, 00:39:23
 10.0.0.0/8 is variably subnetted, 15 subnets, 3 masks
C    10.0.0.8/30 is directly connected, GigabitEthernet2/0
O    10.0.0.12/30 [110/3] via 10.0.0.5, 00:41:16, FastEthernet0/0
S    10.10.10.2/32 [1/0] via 10.0.0.5
C    10.10.10.3/32 is directly connected, Loopback0
O    10.0.0.0/30 [110/2] via 10.0.0.5, 00:41:16, FastEthernet0/0

O    10.10.10.1/32 [110/3] via 10.0.0.5, 00:41:16, FastEthernet0/0
O    10.10.10.6/32 [110/2] via 10.0.0.29, 00:41:16, FastEthernet1/0
O    10.10.10.4/32 [110/2] via 10.0.0.10, 00:41:16, GigabitEthernet2/0
C    10.0.0.4/30 is directly connected, FastEthernet0/0
```

```
O    10.10.10.1/32 [110/3] via 10.0.0.5, 00:41:16, FastEthernet0/0
O    10.10.10.6/32 [110/2] via 10.0.0.29, 00:41:16, FastEthernet1/0
O    10.10.10.4/32 [110/2] via 10.0.0.10, 00:41:16, GigabitEthernet2/0
C    10.0.0.4/30 is directly connected, FastEthernet0/0
O    10.10.10.5/32 [110/12] via 10.0.0.5, 00:41:16, FastEthernet0/0
O    10.0.0.24/30 [110/11] via 10.0.0.5, 00:41:16, FastEthernet0/0
C    10.0.0.28/30 is directly connected, FastEthernet1/0
B    10.0.0.16/30 [200/0] via 10.10.10.5, 00:39:23
O    10.0.0.20/30 [110/2] via 10.0.0.10, 00:41:16, GigabitEthernet2/0
 192.168.1.0/32 is subnetted, 1 subnets
```

```
R4#show ip route 172.16.20.1
Routing entry for 172.16.20.1/32
  Known via "ospf 10", distance 110, metric 2, type intra area
  Last update from 10.0.0.21 on FastEthernet1/0, 00:06:51 ago
  Routing Descriptor Blocks:
    * 10.0.0.21, from 172.16.20.1, 00:06:51 ago, via FastEthernet1/0
      Route metric is 2, traffic share count is 1
```

The network operations team reported that the access site that is connected to R3 is not connecting to the application server in the data center and that all packets that are sent from the application server to the access site are dropped. The team verified that OSPF and BGP peerings are up in BGP AS 65101 and BGP AS 65201. R4 is expected to receive traffic from the application server route via OSPF. Which action resolves this issue?

- A. Remove the route-map on R4 when advertising 172.16.20.1 in BGP to R3.
- B. Advertise application server 172.16.20.1 in the OSPF routing table on R6.
- C. Allow 172.16.20.1 in the BGP advertisement on R3 in the route-map.
- D. Add the next-hop-self command on R6 to enable R3 iBGP peering.

**Answer: D**

#### NEW QUESTION 98

Refer to the exhibit:

```
RP/0/RSP0/CPU0:JFK-PE#show mpls ldp bindings 192.168.10.10/32
Fri Nov 11 21:02:33.124 UTC
192.168.10.10/32, rev 2
  Local binding: label: ImpNull
  Remote bindings: (2 peers)
    Peer                Label
    -----
    10.10.10.2:0         562656
    10.10.10.5:0         378337
```

After implementing a new design for the network, a technician reviews the pictured CLI output as part of the MOP. Which two statements describe what the technician can ascertain from the ImpNull output? (Choose two.)

- A. Label 0 is used for the prefix displayed but will not be part of the MPLS label stack for packets destined for 192.168.10.10.
- B. Ultimate Hop Popping is in use for the prefix displayed.
- C. Label 0 is used for the prefix displayed and will be part of the MPLS label stack for packets destined for 192.168.10.10
- D. Penultimate Hop Popping is in use for the prefix displayed
- E. Label 3 is in use for the prefix displayed and will be part of the MPLS label stack for packets destined for 192.168.10.10

**Answer:** DE

#### NEW QUESTION 99

A network administrator is planning a new network with a segment-routing architecture using a distributed control plane. How is routing information distributed on such a network?

- A. Each segment is signalled by an SR controller, but each segment makes its own steering decisions based on SR policy.
- B. Each segment is signalled by MPLS, and each segment makes steering decisions based on the routing policy pushed by BGP.
- C. Each segment is signalled by an SR controller that makes the steering decisions for each node.
- D. Each segment is signalled by a compatible routing protocol and each segment makes its own steering decisions based on SR policy.

**Answer:** D

#### Explanation:

<https://www.cisco.com/c/en/us/support/docs/multiprotocol-label-switching-mpls/mpls/215215-segment-routing->

#### NEW QUESTION 104

An engineer must implement QoS to prioritize traffic that requires better service throughout the network. The engineer started by configuring a class map to identify the high-priority traffic. Which additional tasks must the engineer perform to implement the new QoS policy?

- A. Attach the class map to a policy map that sets the minimum bandwidth allocated to the classified traffic and designates the action to be taken on the traffic.
- B. Attach the class map to a policy map that designates the action to be taken on the classified traffic and then attach the policy map to an interface using a service policy.
- C. Attach the class map to a policy map within a VRF to segregate the high-priority traffic and then attach the policy map to an interface in another VRF.
- D. Create a route map to manipulate the routes that are entered into the routing table and then attach the route map to an interface using a service policy.

**Answer:** B

#### NEW QUESTION 107

Which statement about TLS is accurate when using RESTCONF to write configurations on network devices'?

- A. It requires certificates for authentication.
- B. It is provided using NGINX acting as a proxy web server
- C. It is used for HTTP and HTTPS requests.
- D. It is not supported on Cisco devices

**Answer:** A

#### NEW QUESTION 109

A new PE router is configured to run OSPF as an IGP with LDP on all interfaces. The engineer is trying to prevent black holes after convergence when the PERSON device loses an LDP session with other PE routers. Which action must the engineer take to implement LDP session protection on a new PE router?

- A. Configure the mpls ldp session protection and mpls label protocol ldp commands on the interfaces on the new PE router that connect to the CENTER routers.
- B. Configure the mpls ldp discovery targeted-hello accept and mpls ldp session protection commands on the interfaces on the new PE router that connect to the CE routers.
- C. Configure the new PE router with the mpls ldp session protection command and on neighboring routers that connect to this new PE router.
- D. Configure the new PE router with the mpls ldp session protection command on interfaces with directly connected neighbors.

**Answer:** C

#### NEW QUESTION 113

An network engineer is deploying VRF on ASBR router R1. The interface must have connectivity over an MPLS VPN inter-AS Option AB network. Which configuration must the engineer apply on the router to accomplish this task?

- A)
 

```
R1(config)# interface ethernet 1/0
R1(config-if)# ip vrf forwarding CISCO
R1(config-if)# mpls ip
```
- B)



```
R1(config)# interface ethernet 1/0
R1(config-if)# ip address 192.168.1.254 255.255.255.0
R1(config-if)# ip vrf forwarding CISCO
R1(config-if)# shutdown
```

C)

```
R1(config)# interface ethernet 1/0
R1(config-if)# ip vrf forwarding CISCO
R1 (config-if)# ip ospf 1 area 0
```

D)

```
R1(config)# interface ethernet 1/0
R1(config-if)# ip vrf forwarding CISCO
R1(config-if)# mpls bgp forwarding
```

- A. Option A
- B. Option B
- C. Option C
- D. Option D

**Answer: D**

#### NEW QUESTION 116

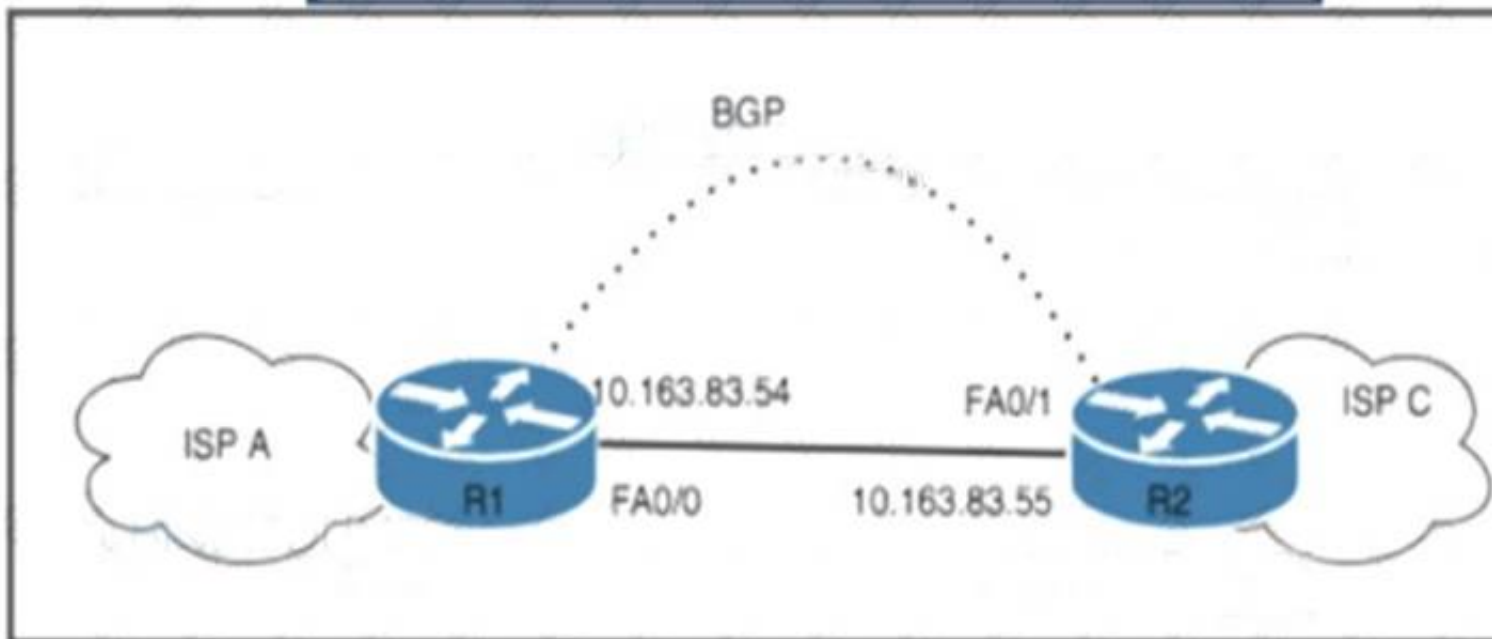
A network administrator must monitor network usage to provide optimal performance to the network end users when the network is under heavy load. The administrator asked the engineer to install a new server to receive SNMP traps at destination 192.168.1.2. Which configuration must the engineer apply so that all traps are sent to the new server?

- A. snmp-server enable traps entity snmp-server host 192.168.1.2 public
- B. snmp-server enable traps bgpsnmp-server host 192.168.1.2 public
- C. snmp-server enable traps isdnsmmp-server host 192.168.1.2 public
- D. snmp-server enable trapssnmp-server host 192.168.1.2 public

**Answer: D**

#### NEW QUESTION 118

Refer to the exhibit.



ISP A has a BGP peering with ISP C with the maximum-prefix 150 configuration on R1. After a recent security breach on the ISP A network, a network engineer has been asked to enable a lightweight security mechanism to protect the R1 CPU and BGP membership from spoofing attacks. Which solution must ISP A implement?

- A. Configure bgp maxas-limit 1 in the IPv4 address family urateUhe global BGP configuration.
- B. Configure neighbor 10.163.83.54 enable-connected-check under the BGP IPv4 address family.
- C. Configure neighbor 10.163.83.55 password Cisco under the global BGP IPv4 address family.
- D. Configure neighbor 10.163.83.55 ttl-stcurity hops 2 under the global BGP configuration.

**Answer: D**

#### NEW QUESTION 123

What is the primary role of a BR router in a 6rd environment?

- A. It provides connectivity between end devices and the IPv4 network.
- B. It embeds the IPv4 address in the 2002::/16 prefix.
- C. It connects the CE routers with the IPv6 network.
- D. It provides IPv4-in-IPv6 encapsulation

**Answer: C**

#### NEW QUESTION 125

What are two features of stateful NAT64? (Choose two.)

- A. It uses address overloading.

- B. It provides 1:N translations, so it supports an unlimited number of endpoints.
- C. It requires IPv4-translatable IPv6 address assignments.
- D. It requires the IPv6 hosts to use either DHCPv6-based address assignments or manual address assignments.
- E. It provides 1:1 translation, so it supports a limited number of endpoints.

**Answer:** AB

#### NEW QUESTION 129

A network operator with an employee ID 4531 26:504 must implement a PIM-SSM multicast configuration on the customer's network so that users in different domains are able to access and stream live traffic. The IGMP version must be enabled to support the SSM implementation. Which action must the engineer perform on R1 to complete the SSM implementation?

- ☐ R1(config)# ip multicast-routing  
R1(config)# ip pim ssm default  
R1(config)# interface ethernet 1/0  
R1(config-if)# ip pim sparse-mode  
R1(config-if)# ip igmp version 3
- ☐ R1(config)# ip routing multicast  
R1(config)# ip pim ssm range 1  
R1(config)# ip pim passive  
R1(config)# ip plm dense-mode  
R1(config-if)# ip igmp version 3
- ☐ R1(config)# ip pim ssm range 1  
R1(config)# interface ethernet 1/0  
R1(config-if)# ip pim sparse-dense-mode  
R1(config-if)# ip igmp version 2
- ☐ R1(config)# ip pim bidir-enable  
R1(config)# ip multicast-routing  
R1(config)# ip pim autorp listener  
R1(config-if)# ip igmp version 2

- A. Option A
- B. Option B
- C. Option C
- D. Option D

**Answer:** A

#### NEW QUESTION 130

Refer to the exhibit.

```
telemetry model-driven
destination-group ciscotest
address family ipv4 192.168.1.1 port 1025
encoding self-describing-gpb
[ ]
```

A Cisco engineer is implementing gRPC dial-out on an ASR. Receiver 192.168 1.1 will be assigned one of the subscriptions, and it will manage the ASR. Which command is needed to complete the router configuration?

- A. protocol grpc
- B. protocol all
- C. protocol tcp
- D. protocol any

**Answer:** C

**Explanation:**

- **Transmission Control Protocol (TCP):** used for only dial-out mode.
- **User Datagram Protocol (UDP):** used for only dial-out mode.

### NEW QUESTION 133

Refer to the exhibit.

```
R1(config)# router isis area1
R1(config-router)# net 49.0001.0000.0000.000b.00

R1(config-router)# interface loopback 0
R1(config-if)# ipv6 address 2001:0000:1001:1000::1/128
R1(config-if)# exit

R1(config)# interface Ethernet 1/2
R1(config-if)# ipv6 address 2001:0000:1001:100A::1/64
R1(config-if)# ipv6 router isis area1
R1(config-if)# exit
```

A network engineer with an employee id: 3812:12:993 has started to configure router R1 for IS-IS as shown. Which additional configuration must be applied to configure the IS-IS instance to advertise only network prefixes associated to passive interfaces?

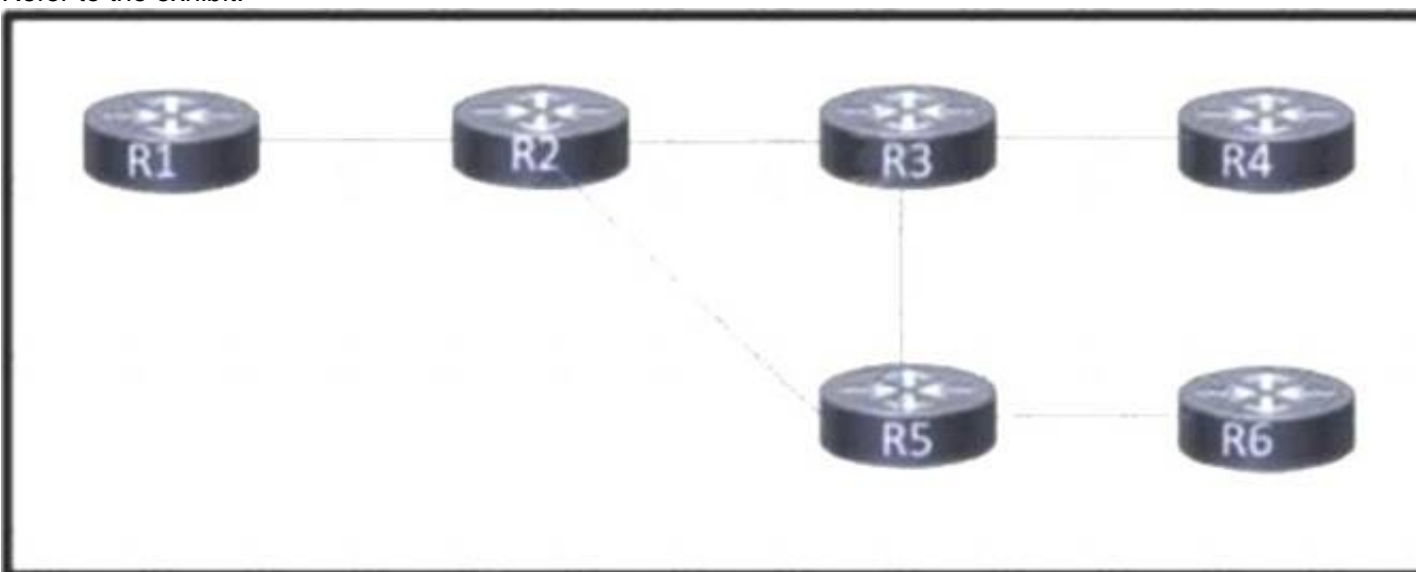
- ☒ R1(config)# router isis area1  
R1(config-router)# passive-interface loopback 0  
R1(config-router)# address-family ipv6  
R1(config-router-af)# advertise passive-only
- ☐ R1(config-router)# address-family ipv6  
R1(config-router-af)# advertise passive-only
- ☐ R1(config)# router isis area1  
R1(config-router)# loopback 0 passive-interface  
R1(config-router)# address-family ipv6  
R1(config-router-af)# prc-interval 20
- ☒ R1(config)# router isis area1  
R1(config-router)# passive-interface loopback 0

- A. Option A
- B. Option B
- C. Option C
- D. Option D

**Answer: A**

### NEW QUESTION 136

Refer to the exhibit.



Customers report occasional forwarding issues from hosts connected to R6 to hosts connected to R1. A network engineer has just updated the MPLS configuration on the network, and a targeted LDP session has been established between R1 and R5. Which additional task must the engineer perform so that the team can identify the path from R6 to R1 in case the forwarding issues continue?

- A. Configure an MPLS TE from R4 to R1 that routes through R5.
- B. Implement MPLS OAM within the network.
- C. Implement MPLS VPLS within the network.
- D. Configure MPLS LDP Sync on each router.

**Answer: B**

### NEW QUESTION 137

Which OoS model allows hosts to report their QoS needs to the network?



- A. DiffServ
- B. CB-WFQ
- C. IntServ
- D. MQC

**Answer: A**

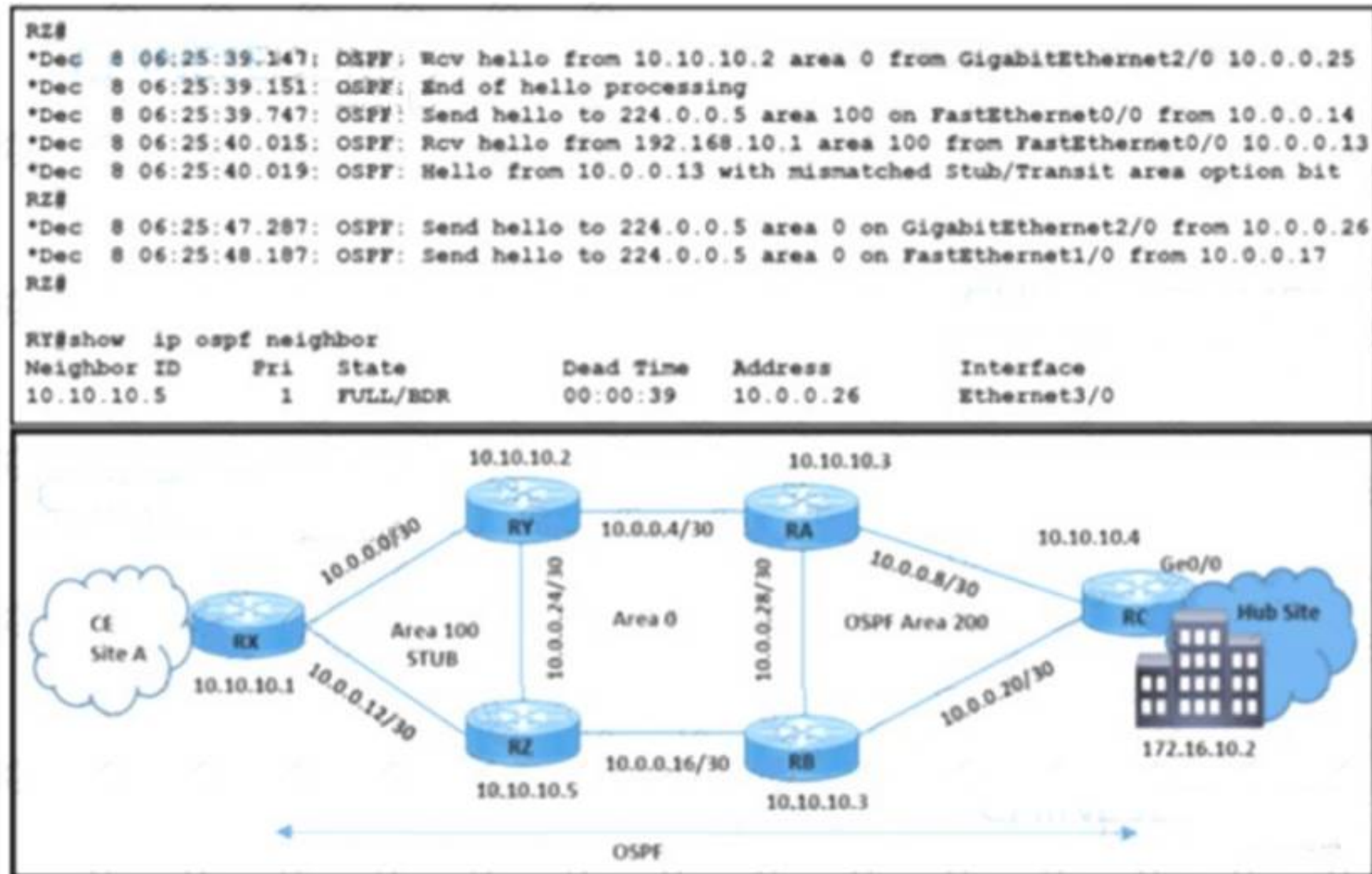
**Explanation:**

Text Description automatically generated with medium confidence

To facilitate true end-to-end QoS on an IP-network, the Internet Engineering Task Force (IETF) has defined two models: Integrated Services (IntServ) and Differentiated Services (DiffServ). IntServ follows the signaled-QoS model, where the end-hosts signal their QoS needs to the network, while DiffServ works on the provisioned-QoS model, where network elements are set up to service

**NEW QUESTION 139**

Refer to the exhibit.



A network engineer received a complaint about these problems in OSPF stub area 100:

- The Ethernet link is down between routers RX and RY because the fiber was cut.
- CE site A traffic to the hub site is being dropped. Which action resolves these issues?

- A. Set the OSPF authentication type to MD5 between RX and RY DUMPS
- B. Change the OSPF area 100 type to stub on RZ.
- C. Change the OSPF priority to 100 on the interfaces that connect RX and RY.
- D. DUMPS Set the OSPF MTU to 1500 on the link between RX and RZ.

**Answer: B**

**NEW QUESTION 140**

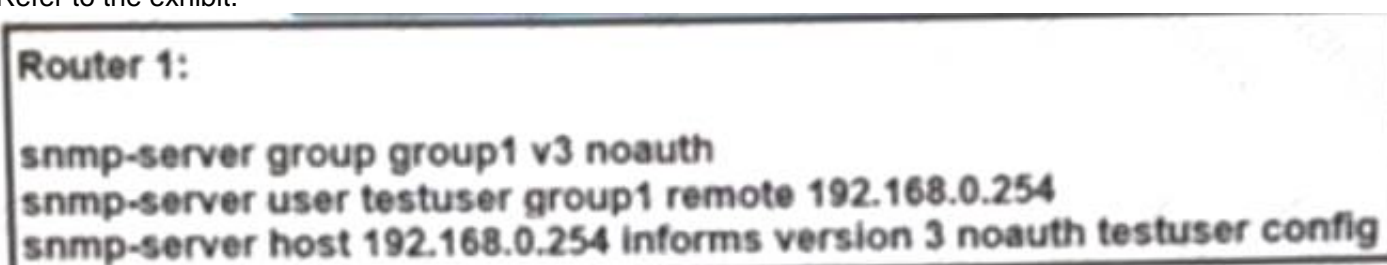
What is the role of NFVI?

- A. domain name service
- B. intrusion detection
- C. monitor
- D. network address translation

**Answer: C**

**NEW QUESTION 145**

Refer to the exhibit.



A network engineer is deploying SNMP configuration on client's routers. Encrypted authentication must be included on router 1 to provide security and protect message confidentially. Which action should the engineer perform on the routers to accomplish this task?

- A. snmp-server host 192.168.0.254 informs version 3 auth testuser config.
- B. snmp-server user testuser group 1 remote 192.168.0.254 v3 auth md5 testpassword
- C. snmp-server group group 1 v3 auth.
- D. snmp-server community public

**Answer:** B

#### NEW QUESTION 149

What is a characteristic of prefix segment identifier?

- A. It contains a router to a neighbor
- B. It contains the interface address of the device per each link
- C. It is globally unique.
- D. It is locally unique.

**Answer:** C

#### NEW QUESTION 151

Drag and drop the characteristics from the left onto the corresponding radio splitting approaches on the right

##### Answer Area

It requires lower RTT delays.	Low-level split
It is also known as the fronthaul network.	
It requires high bandwidth.	High-level split
It is also known as the midhaul network.	

- A. Mastered
- B. Not Mastered

**Answer:** A

#### Explanation:

<https://www.cisco.com/c/en/us/solutions/service-provider/mobile-internet/5g-transport/converged-5g-xhaul-tran>

#### NEW QUESTION 156

Which CLI mode must be used to configure the BGP keychain in Cisco IOS XR software?

- A. global configuration mode
- B. routing configuration mode
- C. BGP neighbor configuration
- D. mode BGP address-family configuration mode

**Answer:** A

#### NEW QUESTION 161

Which benefit is provided by FRR?

- A. It provides fast forwarding path failure detection times for all media.
- B. It provides rapid failure detection between forwarding engines.
- C. It provides performance data for the service provider network.
- D. It protects Cisco MPLS TE LSPs from link and node failures.

**Answer:** D

#### NEW QUESTION 162

Refer to the exhibit.

```
CE1#
interface FastEthernet0/0/1
description **** HUB CE router ****
ip address 10.0.12.1 255.255.255.0

router ospf 100
log-adjacency-changes
network 10.0.12.0 0.0.255.255 area 0

CE2#
interface Serial0/0/9
description **** SPOKE CE router ****
encapsulation ppp
ip address 10.0.12.12 255.255.255.0

router ospf 100
log-adjacency-changes
network 10.0.12.0 0.0.255.255 area 0
```

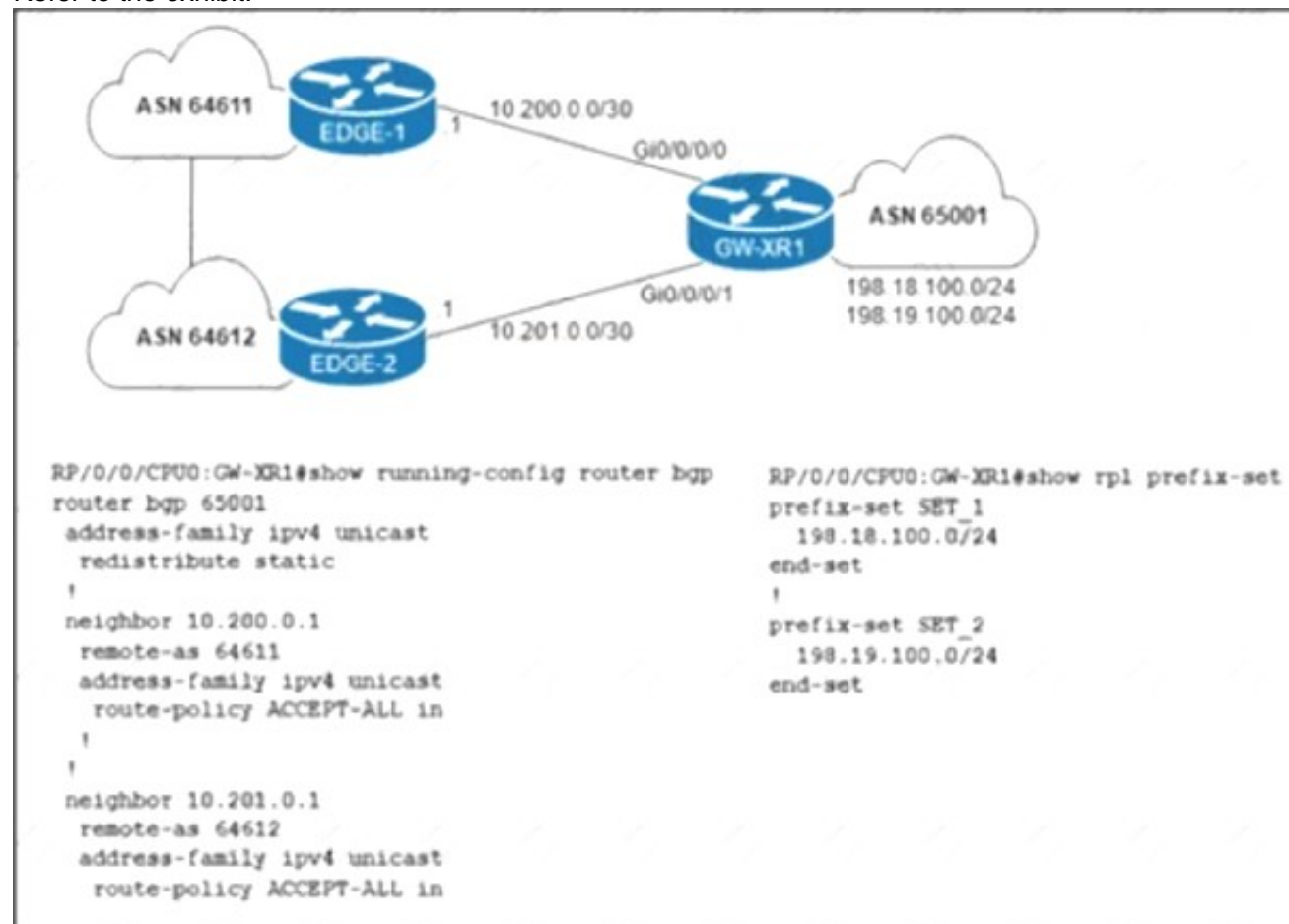
A network engineer is configuring customer edge routers to finalize a L2VPN over MPLS deployment. Assume that the AToM L2VPN service that connects the two CEs is configured correctly on the service provider network. Which action causes the solution to fail?

- A. A loopback with a /32 IP address has not been used
- B. OSPF does not work with L2VPN services
- C. The xconnect statement has not been defined
- D. The routing protocol network types are not compatible

**Answer: D**

#### NEW QUESTION 166

Refer to the exhibit.



The network engineer who manages ASN 65001 must configure a BGP routing policy on GW-XR1 with these requirements:

- Advertise locally-originated routes and /24 prefixes assigned within the 198.18.0.0/15 range. All other prefixes must be dropped.
- Reachability to 198.18.100.0/24 must be preferred via the EDGE-1 connection.
- Reachability to 198.19.100.0/24 must be preferred via the EDGE-2 connection. Which configuration must the network engineer implement on GW-XR1?

- A. Graphical user interface, text, application Description automatically generated



```
configure terminal
route-policy EBGp-STANDARD-OUT($PREFIX_LIST, $PREPEND, $NUM_TIMES)
  if as-path is-local then
    pass
  else
    drop
  endif
  if destination in (198.18.0.0/15 eq 24) then
    pass
  else
    drop
  endif
  if destination in $PREFIX_LIST then
    prepend as-path $PREPEND $NUM_TIMES
  else
    done
  endif
end-policy
!
router bgp 65001
neighbor 10.200.0.1
address-family ipv4 unicast
route-policy EBGp-STANDARD-OUT(SET_1, 64611, 1) out
!
neighbor 10.201.0.1
address-family ipv4 unicast
route-policy EBGp-STANDARD-OUT(SET_2, 64612, 1) out
end
```

B. Text Description automatically generated

```
configure terminal
route-policy EBGp-STANDARD-OUT($PREFIX_LIST, $PREPEND, $NUM_TIMES)
  if as-path is-local then
    pass
  else
    drop
  endif
  if destination in (198.18.0.0/15 eq 24) then
    pass
  else
    drop
  endif
  if destination in $PREFIX_LIST then
    prepend as-path $PREPEND $NUM_TIMES
  else
    done
  endif
end-policy
!
router bgp 65001
neighbor 10.200.0.1
address-family ipv4 unicast
route-policy EBGp-STANDARD-OUT(SET_2, 65001, 2) out
!
neighbor 10.201.0.1
address-family ipv4 unicast
route-policy EBGp-STANDARD-OUT(SET_1, 65001, 2) out
end
```

C. Graphical user interface, text, application, letter, email Description automatically generated

```
configure terminal
route-policy EBGp-STANDARD-OUT($PREFIX_LIST, $PREPEND, $NUM_TIMES)
  if as-path is-local then
    done
  endif
  if destination in (198.18.0.0/15 eq 24) then
    pass
  endif
  if destination in $PREFIX_LIST then
    prepend as-path $PREPEND $NUM_TIMES
  else
    done
  endif
end-policy
!
router bgp 65001
neighbor 10.200.0.1
address-family ipv4 unicast
route-policy EBGp-STANDARD-OUT(SET_2, 65001, 2) out
!
neighbor 10.201.0.1
address-family ipv4 unicast
route-policy EBGp-STANDARD-OUT(SET_1, 65001, 2) out
end
```

D. Text, letter, email Description automatically generated

```
configure terminal
route-policy EBGp-STANDARD-OUT($PREFIX_LIST, $PREPEND, $NUM_TIMES)
  if as-path is-local then
    pass
  else
    drop
  endif
  if destination in (198.18.0.0/15) then
    pass
  else
    drop
  endif
  if destination-prefix in $PREFIX_LIST then
    prepend as-path $PREPEND $NUM_TIMES
  else
    done
  endif
end-policy
!
router bgp 65001
neighbor 10.200.0.1
address-family ipv4 unicast
route-policy EBGp-STANDARD-OUT(SET_2, 65001, 2) out
!
neighbor 10.201.0.1
address-family ipv4 unicast
route-policy EBGp-STANDARD-OUT(SET_1, 65001, 2) out
end
```

**Answer:** B

**Explanation:**

<https://community.cisco.com/t5/mps/cisco-xr-rpl-destination-vs-destination-prefix/td-p/4587693>

**NEW QUESTION 171**

Refer to the exhibit:

**Router 1:**

```
ip route 192.0.2.0 255.255.255.0 null 0
ip route 192.168.1.0 255.255.255.0 null 0 tag 1
```

```
route-map ddos
 match tag 1
 set ip next-hop 192.0.2.1
 set local-preference 150
 set community no export
```

```
route-map ddos permit 20
```

```
router bgp 65513
 redistribute static route-map ddos
```

**Router 2:**

```
ip route 192.0.2.0 255.255.255.0 null 0
```

An engineer is preparing to implement data plane security configuration. Which statement about this configuration is true?

- A. Router 1 drops all traffic with a local-preference set to 150
- B. All traffic is dropped
- C. All traffic to 192.168.1.0/24 is dropped
- D. Router 1 and Router 2 advertise the route to 192.0.2.0/24 to all BGPFD peers.

**Answer: C**

**NEW QUESTION 175**

A regional MPLS VPN provider operates in two regions and wants to provide MPLS L3VPN service for a customer with two sites in these separate locations. The VPN provider approaches another organization to provide backbone carrier services so that the provider can connect to these two locations. Which statement about this scenario is true?

- A. When edge routers at different regional sites are connected over the global carrier backbone, MP-eBGP must run between the routers to exchange the customer VPNv4 routes
- B. When eBGP is used for label exchange using the send label option, MPLS-BGP forwarding is configured under the global ABC CSC PE-to CE interface
- C. When IGP is used for route exchange and LDP for label exchange, MPLS is enabled only on the VRF interface on the backbone-earner PE side.
- D. When BGP is used for both route and label exchange, the neighbor a.b.c.d send-label command is used under the address family VPNv4 command mode.

**Answer: B**

**NEW QUESTION 176**

Which role does the Adjacency-SID sub-TLV extension perform in the IS-IS routing protocol?

- A. It is advertised within a TLV-24 (IS-IS Neighbor Adjacency Attribute) to label a specific adjacency between Level1 routers within one IS-IS area.
- B. It is advertised within TLV-136 (Extended IP Reachability) to label a specific node in the network.
- C. It is advertised within TLV-22 (Extended IS Reachability) to label a specific link in a segment routing domain.
- D. It is advertised within TLV-145 (IS-IS Prefix Reachability Information) to label host prefixes on loopback interfaces on Level 2 routers within one

**Answer: C**

**NEW QUESTION 180**

SIMULATION 4





Guidelines **Topology** Tasks

Configure the BGP routing protocol for R1 and R2 according to the topology to achieve these goals:

1. Configure EBGP neighbor adjacency for the IPv4 and IPv6 address family between R1 and R2 using Loopback0 IPv4 and IPv6 addresses. All BGP updates must come from the Loopback0 interface as the source. Do not use IGP routing protocols to complete this task.
2. Configure MD5 Authentication for the EBGP adjacency between R1 and R2. The password is clear text **C1sc0!**.

[Submit feedback about this item](#)

- A. Mastered  
 B. Not Mastered

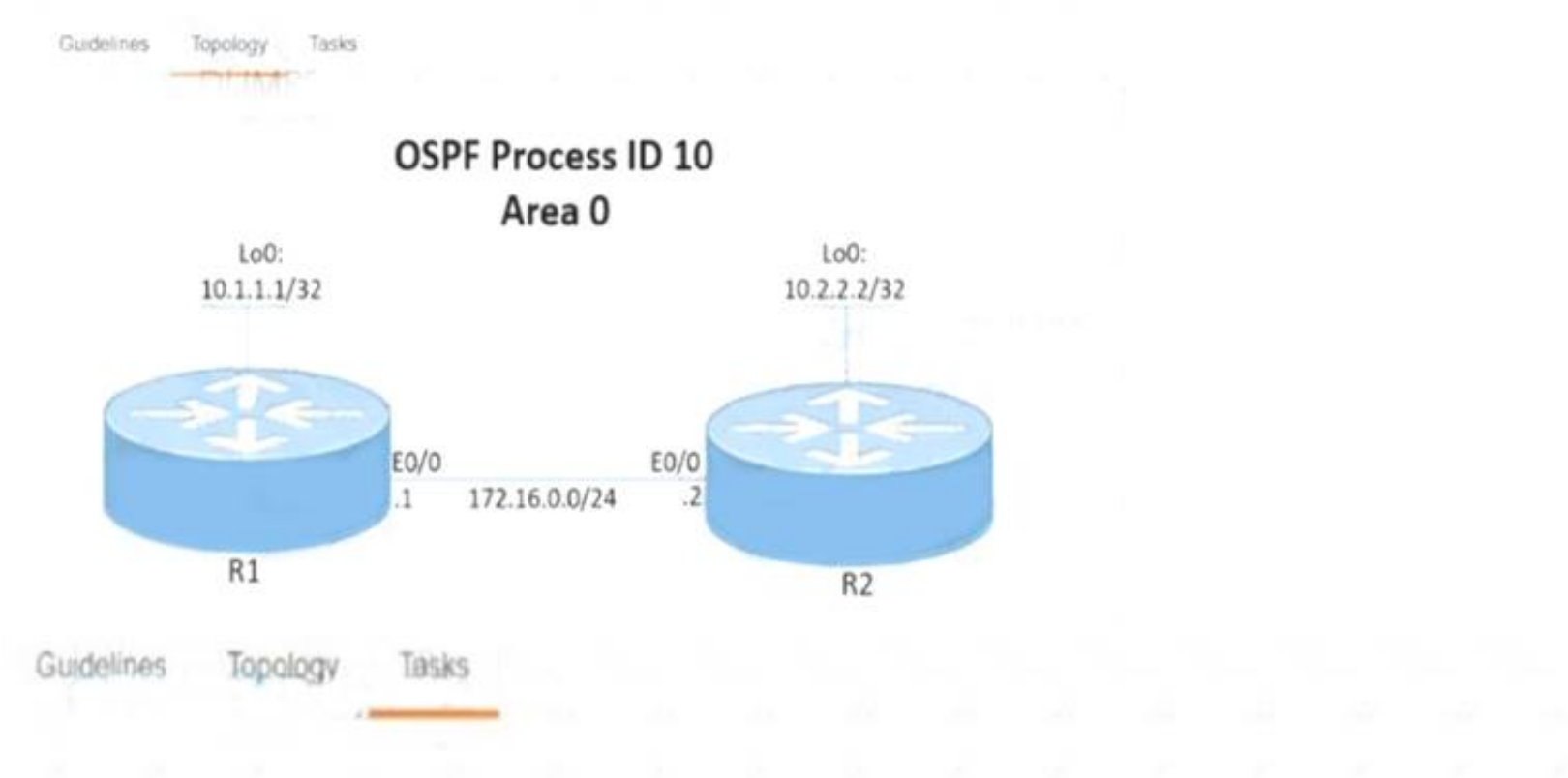
**Answer: A**

**Explanation:**

R1  
 Router bgp 65515  
 No bgp default ipv4-unicast Neig 2.2.2.2 remote-as 65516  
 Nei 2.2.2.2 update-soc loopback0 Nei 2.2.2.2 ebgp-multihop 2 Neig 2.2.2.2 pass C1sc0!  
 Nei 2000:cc13:cc13:2::1 remote-as 65516 Nei 2000:cc13:cc13:2::1 update-so loopback0 Nei 2000:cc13:cc13:2::1 pass C1sc0!  
 Nei 2000:cc13:cc13:2::1 ebgp-multihop 2 Address-family ipv4  
 Neig 2.2.2.2 activate Address-family ipv6  
 Nei 2000:cc13:cc13:2::1 activate  
 Ip route 2.2.2.2 255.255.255.255 192.168.1.2  
 Ipv6 route 2000:cc13:cc13:2::1/128 2000:cc13:cc13:cc13::2 R2  
 Router bgp 65516  
 No bgp default ipv4-unicast Neig 1.1.1.1 remote-as 65515  
 Nei 1.1.1.1 update-soc loopback0 Nei 1.1.1.1 pass C1sc0!

Nei 1.1.1.1 ebgp-multihop 2  
Nei 2000:cc13:cc13:1::1 remote-as 65515 Nei 2000:cc13:cc13:1::1 update-so loopback0 Nei 2000:cc13:cc13:1::1 pass C1sc0!  
Nei 2000:cc13:cc13:1::1 ebgp-multihop 2 Address-family ipv4  
Neig 1.1.1.1 activate Address-family ipv6  
Nei 2000:cc13:cc13:1::1 activate  
Ip route 1.1.1.1 255.255.255.255 192.168.1.1  
Ipv6 route 2000:cc13:cc13:1::1/128 2000:cc13:cc13:cc13::1

NEW QUESTION 185  
Simulation 5



Configure and verify the OSPF neighbor adjacency between R1 and R2 in OSPF area 0 according to the topology to achieve these goals:

- 1. Configure OSPF cost to 15 on R1 and R2.
- 2. Redistribute all the static routes defined in R1 and R2 to the OSPF routing protocol.
- 3. Set the OSPF hello interval to 5 and the OSPF dead interval to 10 between R1 and R2.

 Submit feedback about this item.

- A. Mastered
- B. Not Mastered

Answer: A

Explanation:

R1  
router ospf 10 redistribute static int et0/0  
ip ospf hello-interval 5 ip ospf dead-interval 10 ip ospf cost 15  
ip ospf 10 area 0 copy run start R2  
router ospf 10 redistribute static  
int et0/0  
ip ospf hello-interval 5 ip ospf dead-interval 10 ip ospf cost 15  
ip ospf 10 area 0 copy run start

NEW QUESTION 186  
Refer to the exhibit.

```
restconf_headers["Content-Type"] = "application/ yang-data+json"

loopback = {"name": "Loopback101",
            "description": "Router-1",
            "ip": "192.168.11.11",
            "netmask": "255.255.255.0"}
data = {
    "ietf-interfaces:interface": {
        "name": loopback["name"],
        "description": loopback["description"],
        "type": "iana-if-type:softwareLoopback",
        "enabled": True,
        "ietf-ip:ipv4": {
            "address": {
                {"ip": loopback["ip"],
                "netmask": loopback["netmask"]}
            }
        }
    }
}

url = interface_url.format(ip= corel_ip, int_name= loopback["name"])
r = requests.put(url,
                 headers = restconf_headers,
                 auth=(username, password),
                 json= data,
                 verify=False)
print("Request Status Code: {}".format(r.status_code))
```

An engineer at a new ISP must configure many Cisco devices in the data center. To make the process more efficient, the engineer decides to automate the task with a REST API. Which action does this JSON script automate?

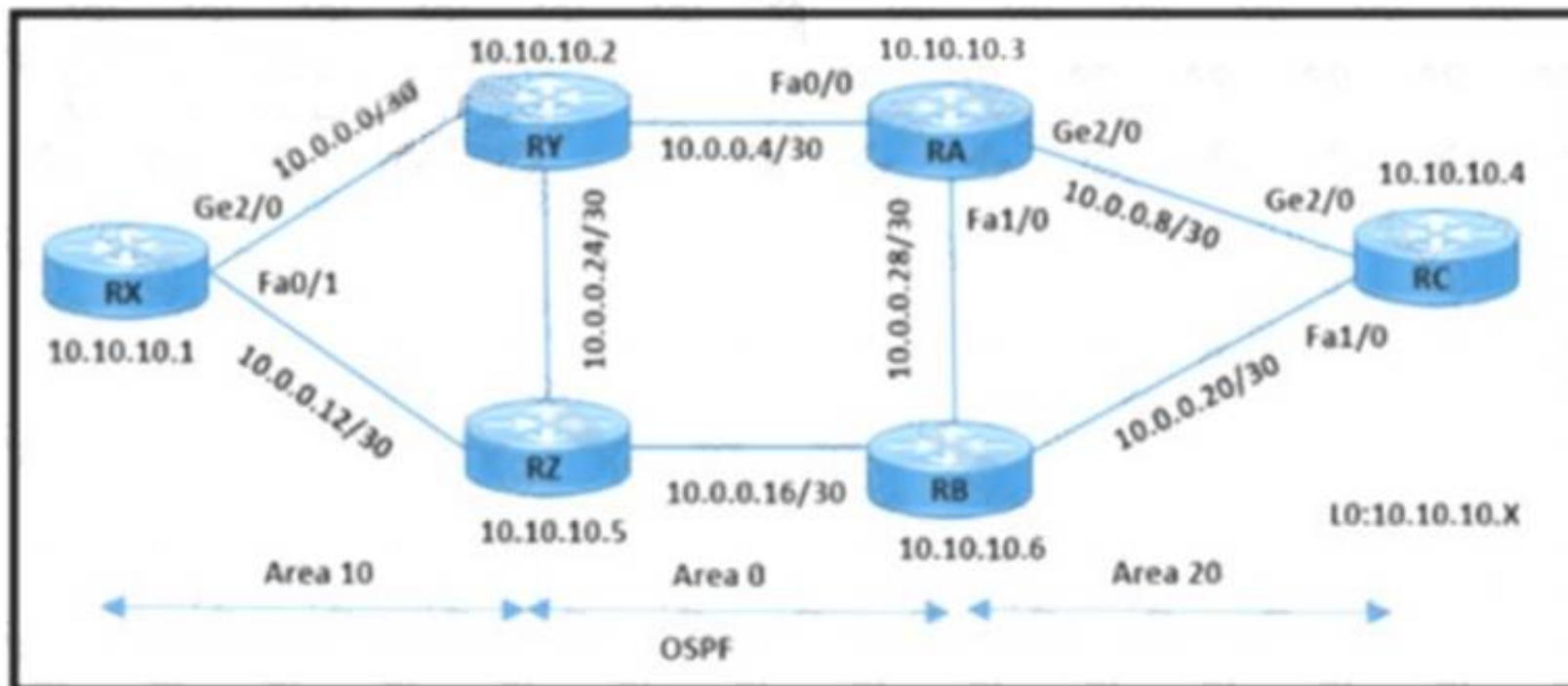
- A. Configure the IP address for the existing loopback interface.
- B. Configure a physical interface on the router with an IP address and then create a loopback interface.
- C. Configure a physical interface on the router with an IP address.
- D. Delete the existing loopback Interface and replace it with a new loopback interface.

**Answer:** A

#### NEW QUESTION 187

Refer to the exhibit.





```

RC#show ip cef
Prefix          Next Hop          Interface
10.0.0.0/30     10.0.0.9          GigabitEthernet2/0
10.0.0.4/30     10.0.0.9          GigabitEthernet2/0
10.0.0.8/30     attached          GigabitEthernet2/0
10.0.0.8/32     receive          GigabitEthernet2/0
10.0.0.9/32     attached          GigabitEthernet2/0
10.0.0.10/32    receive          GigabitEthernet2/0
10.0.0.11/32    receive          GigabitEthernet2/0
10.0.0.16/30    10.0.0.9          GigabitEthernet2/0

RA#
*Mar 29 05:11:36.215: ldp: Rcvd ldp hello: FastEthernet1/0, from 10.0.0.29 (10.10.10.6:0), intf_id 0, opt 0xc
*Mar 29 05:11:37.131: ldp: Send ldp hello: FastEthernet1/0, src/dst 10.0.0.30/224.0.0.2, inst_id 0
RA#
*Mar 29 05:11:37.555: ldp: Send ldp hello: GigabitEthernet2/0, src/dst 10.0.0.9/224.0.0.2, inst_id 0
RA#
*Mar 29 05:11:38.827: ldp: Rcvd ldp hello: FastEthernet0/0, from 10.0.0.5 (10.10.10.2:0), intf_id 0, opt 0xc
*Mar 29 05:11:39.075: ldp: Send ldp hello: FastEthernet0/0, src/dst 10.0.0.6/224.0.0.2, inst_id 0
*Mar 29 05:11:39.731: ldp: Ignore rcvd dir hello to 10.10.10.3 from 10.10.10.6, FastEthernet1/0: no dchb
RA#
*Mar 29 05:11:40.487: ldp: Rcvd ldp hello: FastEthernet1/0, from 10.0.0.29 (10.10.10.6:0), intf_id 0, opt 0xc
*Mar 29 05:11:40.927: ldp: Send ldp hello: FastEthernet1/0, src/dst 10.0.0.30/224.0.0.2, inst_id 0
*Mar 29 05:11:40.979: ldp: Data received
RA#
  
```

The operations team is implementing an LDP-based configuration in the service-provider core network with these requirements:

- RC must establish LDP peering with the loopback IP address as its Router ID
- RA must establish LDP peering with RB, RC, and RY.

How must the team update the network configuration to successfully enable LDP peering between RA and RC?

- A. Enable the mpls ip command on RC interface Gi2/0. DUMPS
- B. Configure the mpls ldp router-id loopback0 command on RA and RC.
- C. Implement LDP session protection on RA.
- D. DUMPS Reset the discover hello hold time and interval to their default values.

**Answer: B**

#### NEW QUESTION 188

A network engineer is adding 10Gbps link to an existing 2X1Gbps LACP-based LAG to augment its capacity. Network standards require a bundle interface to be taken out of service if one of its member links does down, and the new link must be added with minimal impact to the production network. Drag and drop the tasks that the engineer must perform from the left into the sequence on the right. Not all options are used.

Execute the channel-group number mode active command to add the 10Gbps link to the existing bundle.	step 1
Execute the channel-group number mode on command to add the 10Gbps link to the existing bundle.	step 2
Execute the lacp min-bundle 3 command to set the minimum number of ports threshold.	step 3
Validate the network layer of the 10Gbps link.	step 4
Execute the channel-group number mode auto command to add the 10Gbps link to the existing bundle.	
Validate the physical and data link layers of the 10Gbps link.	

- A. Mastered
- B. Not Mastered

**Answer:** A

**Explanation:**

Application, table Description automatically generated with medium confidence

**NEW QUESTION 193**

Refer to the exhibit.

```
line vty 0 4
  access-class 100 in
  transport input ssh
  login local
line vty 5 15
  access-class 100 in
  transport input ssh
  login local
```

An engineer has started to configure a router for secure remote access as shown. All users who require network access need to be authenticated by the SSH Protocol. Which two actions must the engineer implement to complete the SSH configuration? (Choose two.)

- A. Configure an IP domain name.
- B. Configure service password encryption.
- C. Configure crypto keys
- D. Configure ACL 100 to permit access to port 22.
- E. Configure a password under the vty lines.

**Answer:** AC

**NEW QUESTION 197**

Refer to the exhibit.

```
Control Plane Interface
Service policy CoPP-normal
Hardware Counters:
class-map: CoPP-normal (match-all)
Match: access-group 100
police :
6000 bps 1000 limit 1000 extended limit
Earl in slot 3 :
0 bytes
5 minute offered rate 0 bps
aggregate-forwarded 0 bytes action: transmit
exceeded 0 bytes action: drop
aggregate-forward 0 bps exceed 0 bps
Earl in slot 5 :
0 bytes
5 minute offered rate 0 bps
aggregate-forwarded 0 bytes action: transmit
exceeded 0 bytes action: drop
aggregate-forward 0 bps exceed 0 bps
```

Which show command shows statistics for the control plane policy and is used to troubleshoot?

- A. show control-plane CoPP
- B. show control-plane
- C. show policy-map control-plane
- D. show policy control-plane

**Answer:** C

**Explanation:**

```
Router# show policy-map control-plane
```

```
Control Plane
```

```
Service-policy input:TEST
```

```
Class-map:TEST (match-all)
```

```
  20 packets, 11280 bytes
```

```
  5 minute offered rate 0 bps, drop rate 0 bps
```

```
Match:access-group 101
```

```
police:
```

```
  8000 bps, 1500 limit, 1500 extended limit
```

```
  conformed 15 packets, 6210 bytes; action:transmit
```

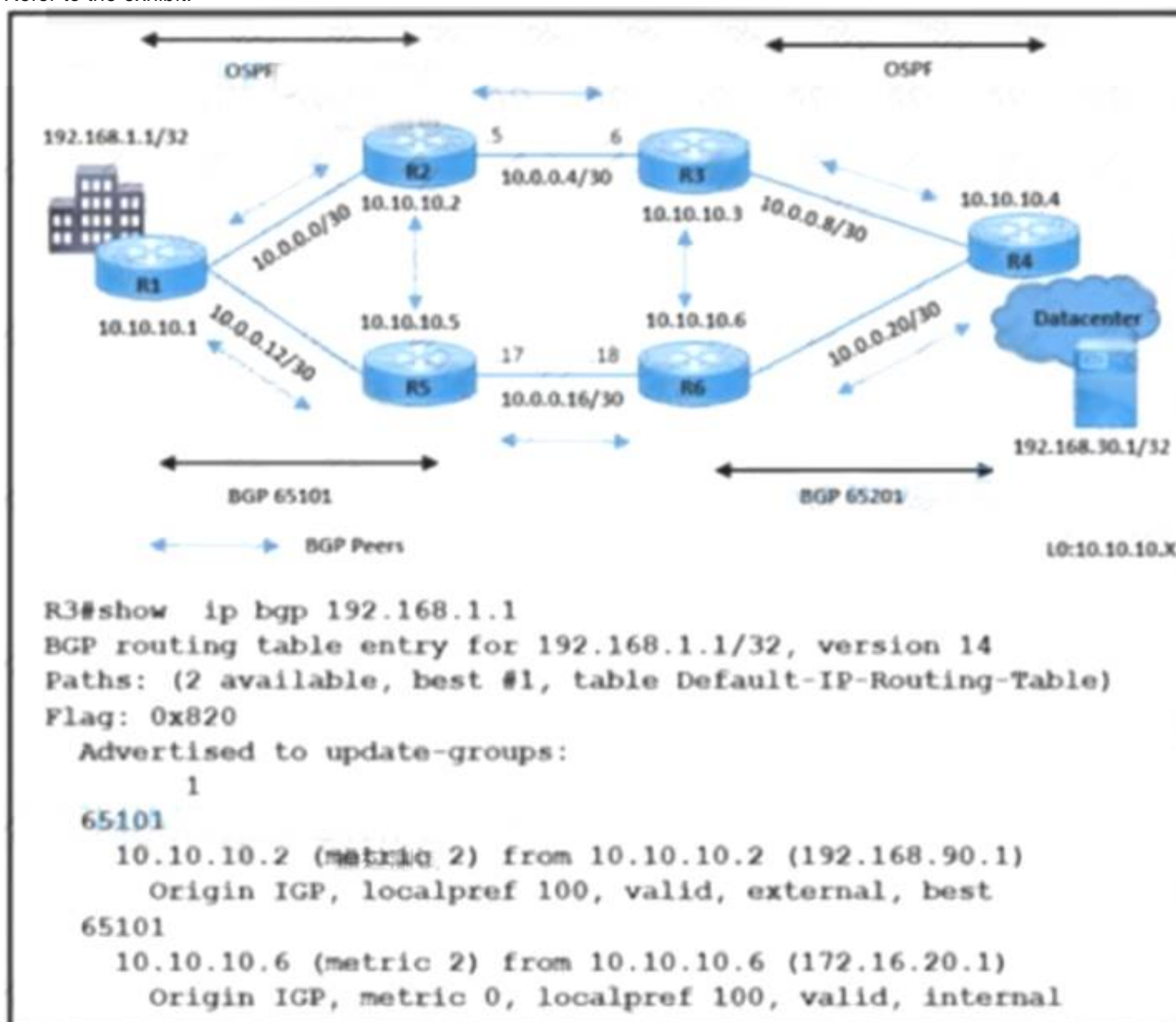
```
  exceeded 5 packets, 5070 bytes; action:drop
```

```
  violated 0 packets, 0 bytes; action:drop
```

```
  conformed 0 bps, exceed 0 bps, violate 0 bps
```

## NEW QUESTION 202

Refer to the exhibit.



A network engineer is implementing BGP in AS 65101 and AS 65201. R3 sends data traffic to 192.168.1.1 /32 via the path R3-R2-R1. The traffic must travel via alternate path R6-R5 for prefix 192.168.1.1/32. Which action must be taken to meet the requirement?

- A. Apply route-map HIGH-MED out on R2 for neighbor R3.
- B. Apply route-map HIGH-LP in on R3 for neighbor R6
- C. Apply route-map LOW-LP out on R2 for neighbor R3.
- D. Apply route-map LOW-MED in on R5 for neighbor R2

**Answer: A**

## NEW QUESTION 207

A router is advertising multiple networks to its BGP neighbor in AS 5200 with peer IP address 1.1.1.1. Which configuration must be applied so that the router permits updates only for networks with a prefix mask length less than or equal to 21?



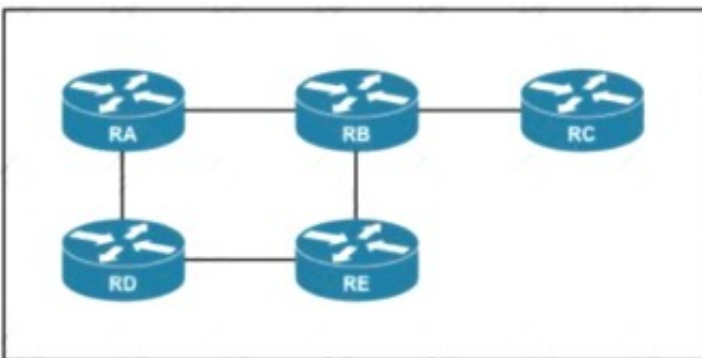
- ☒ router bgp 5100  
neighbor 1.1.1.1 remote-as 5200  
neighbor 1.1.1.1 prefix-list SELECTED in  
  
ip prefix-list SELECTED seq 10 permit 0.0.0.0/0 le 21
- ☐ router bgp 5100  
neighbor 1.1.1.1 remote-as 5200  
neighbor 1.1.1.1 prefix-list SELECTED  
  
ip prefix-list SELECTED seq 10 permit 0.0.0.0/0 ge 8 le 24
- ☐ router bgp 5100  
neighbor 1.1.1.1 remote-as 5200  
neighbor 1.1.1.1 prefix-list SELECTED  
  
ip prefix-list SELECTED seq 10 permit 0.0.0.0/0 ge 21
- ☐ router bgp 5100  
neighbor 1.1.1.1 remote-as 5200  
neighbor 1.1.1.1 prefix-list SELECTED in  
  
ip prefix-list SELECTED seq 10 permit 0.0.0.0/0 ge 21 le 24

- A. Option A  
B. Option B  
C. Option C  
D. Option D

**Answer:** A

#### NEW QUESTION 211

Refer to the exhibit.



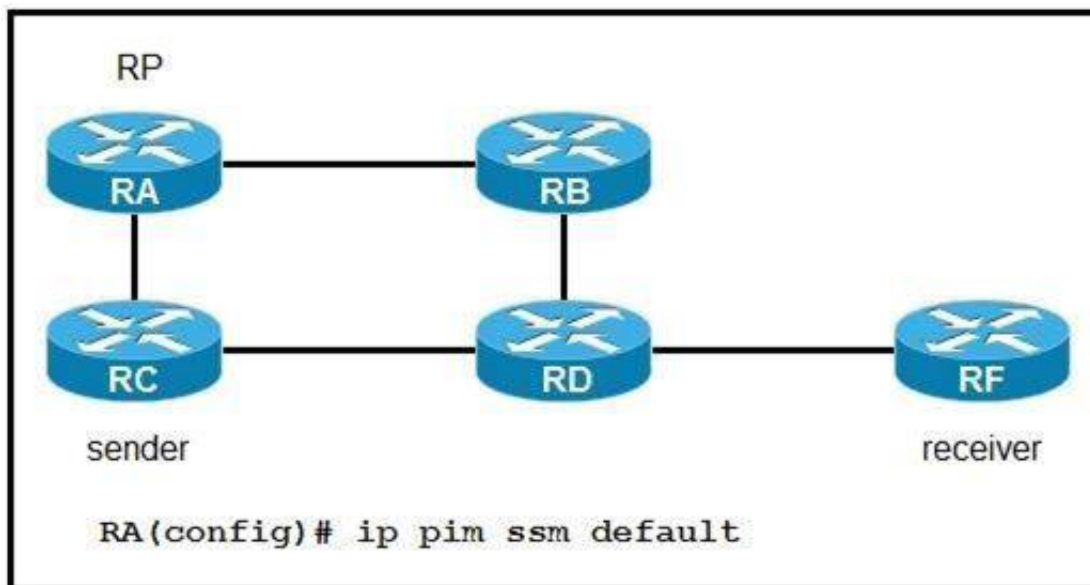
If RC is a stub router, which entry must be injected so that it will send traffic outside the OSPF domain?

- A. virtual link between RB and RC  
B. sham link  
C. more specific route  
D. default route

**Answer:** C

#### NEW QUESTION 214

Refer to the exhibit:



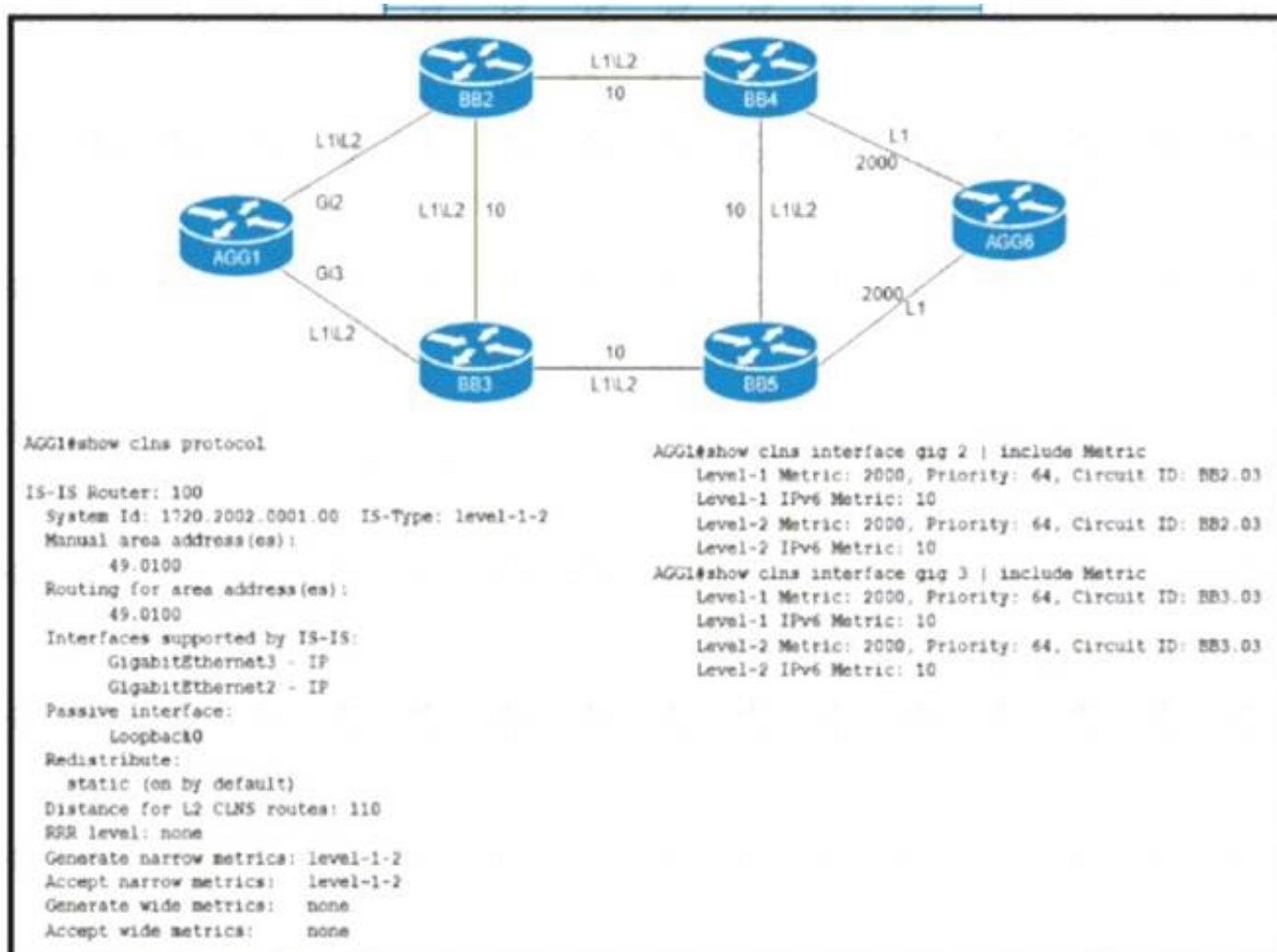
If router RA is configured as shown, which IPv4 multicast address space does it use?

- A. 224.0.0.0/8
- B. 225.0.0.0/8
- C. 232.0.0.0/8
- D. 239.0.0.0/8

**Answer: C**

#### NEW QUESTION 215

Refer to the exhibit.



An engineer is configuring IS-IS on ISP network. Which IS-IS configuration must an engineer implement on router AGG1 so that it establishes connectivity to router AGG6 via the BB3 core router?

- A. router isis 100 metric-style narrowinterface GigabitEthernet 3 isis metric 10 level-2
- B. router isis 100 metric-style wideinterface GigabitEthernet 3 isis metric 1500 level-2
- C. router isis 100 metric-style narrowinterface GigabitEthernet 3 isis metric 10 level-1
- D. router isis 100 metric-style wideinterface GigabitEthernet 3 isis metric 1500 level-1

**Answer: C**

#### NEW QUESTION 220

Which control plane protocol is used between Cisco SD-WAN routers and vSmart controllers?

- A. OTCP
- B. OMP
- C. UDP
- D. BGP

**Answer: B**

#### NEW QUESTION 224

Drag and drop the message types from the left onto the target field of the message originator on the right.

Close

Error

Path Computation Reply

Path Computation Request

Originated by PCC to a PCE

Originated by PCE to PCC

Originated by either PCE or PCC

- A. Mastered
- B. Not Mastered

Answer: A

Explanation:

Close

Error

Path Computation Reply

Path Computation Request

Originated by PCC to a PCE

Path Computation Request

Originated by PCE to PCC

Path Computation Reply

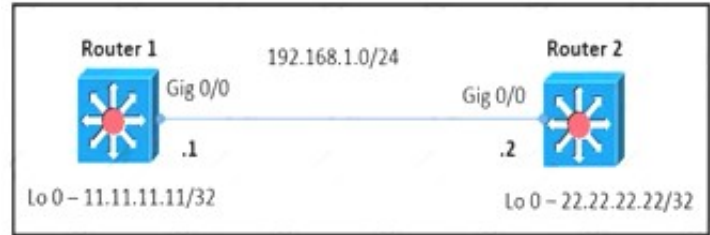
Originated by either PCE or PCC

Close

Error

NEW QUESTION 226

Refer to the exhibit.



Router 1 and router 2 are running OSPF Area 0. The router logs on both routers show that the LDP link has flapped. Which configuration must the engineer apply to the two routers to implement session protection on the link?



```

Router 1(config)#ip cef distributed
Router 1(config)# mpls ldp session protection global

Router 2(config)#ip cef distributed
Router 2(config)# mpls ldp session protection global

Router 1(config)# ip cef distributed
Router 1(config)# interface gigabitethernet 0/0
Router 1(config-if)# ip address 192.168.1.1 255.255.255.0
Router 1(config)# mpls ldp session protection

Router 2(config)# interface gigabitethernet 0/0
Router 2(config-if)# ip address 192.168.1.2 255.255.255.0
Router 2(config)# mpls ldp session protection

Router 1(config)# ip cef distributed
Router 1(config)# interface gigabitethernet 0/0
Router 1(config-if)# ip address 192.168.1.1 255.255.255.255
Router 1(config-if)# exit
Router 1(config)# mpls ldp session protection

Router 2(config)# ip cef distributed
Router 2(config)# interface gigabitethernet 0/0
Router 2(config-if)# ip address 192.168.1.2 255.255.255.255
Router 2(config-if)# exit
Router 2(config)# mpls ldp session protection

Router 1(config)# ip cef distributed
Router 1(config)# interface gigabitethernet 0/0
Router 1(config-if)# ip address 192.168.1.1 255.255.255.0
Router 1(config-if)# mpls label protocol ldp
Router 1(config-if)# mpls ip
Router 1(config-if)# exit
Router 1(config)# mpls ldp session protection

Router 2(config)# ip cef distributed
Router 2(config)# interface gigabitethernet 0/0
Router 2(config-if)# ip address 192.168.1.2 255.255.255.0
Router 2(config-if)# mpls label protocol ldp
Router 2(config-if)# mpls ip
Router 2(config-if)# exit
Router 2(config)# mpls ldp session protection

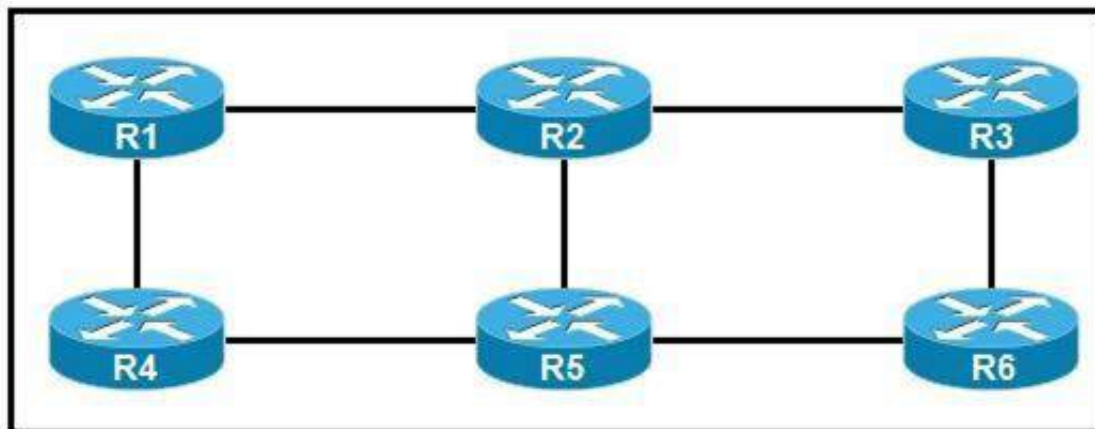
```

- A. Option A
- B. Option B
- C. Option C
- D. Option D

**Answer: D**

#### NEW QUESTION 231

Refer to the exhibit:



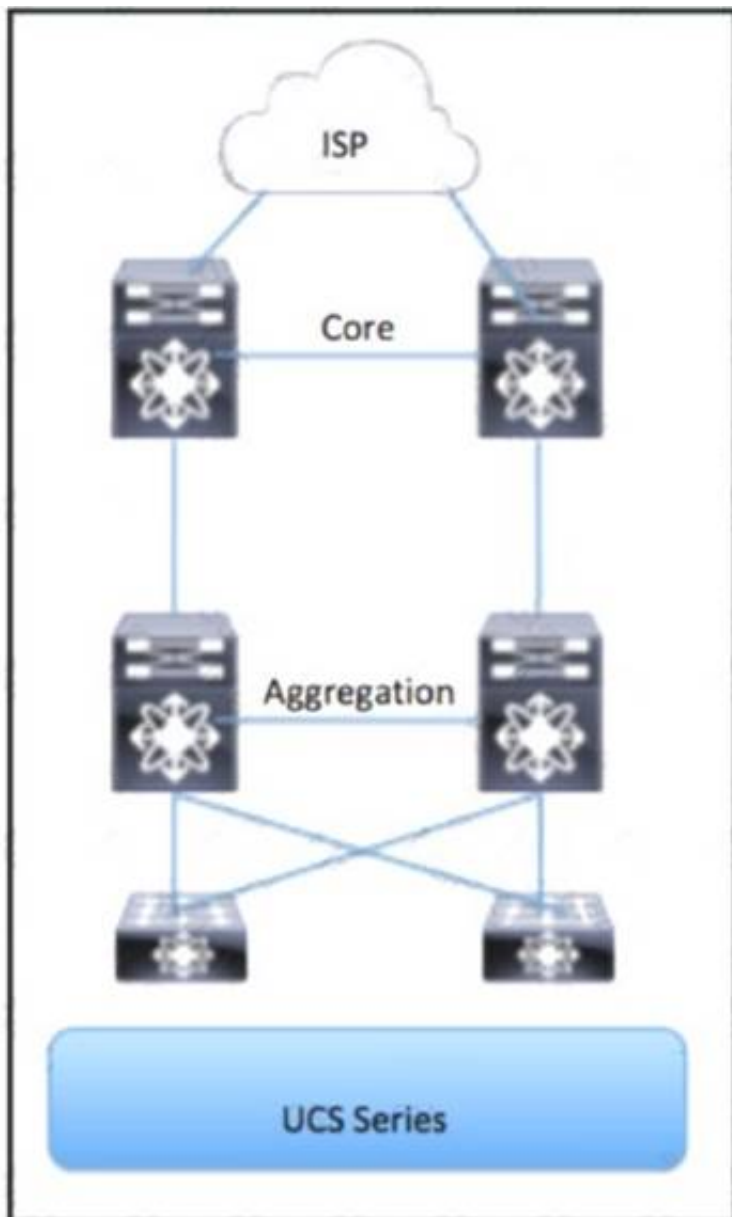
You are configuring an administrative domain implement so that devices can dynamically learn the RP?

- A. SSM
- B. BID1R-PIM
- C. BSR
- D. Auto-RP

**Answer: C**

#### NEW QUESTION 233

Refer to the exhibit.



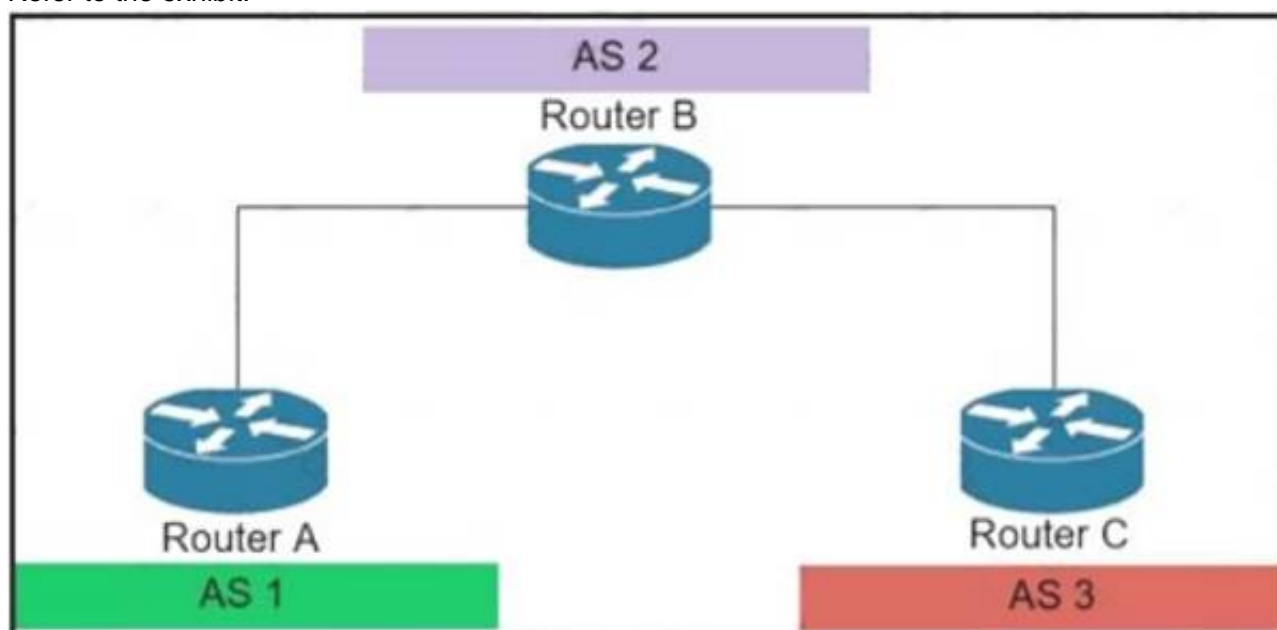
Which part of the diagram will host OpenStack components?

- A. Aggregation
- B. UCS Series
- C. Access
- D. Core

**Answer: C**

#### NEW QUESTION 237

Refer to the exhibit.



An engineer working for private Service Provider with employee id: 3948:11:613 is configuring the BGPsec framework. Which two conditions must the engineer take into account? (Choose two.)

- A. BGPsec uses IPsec tunnel for security.
- B. The BGPsec framework secures the AS path.
- C. In BGPse
- D. all route advertisements are given an expiry time by the originator of the route.
- E. Private keys are part of the router key pair used to sign route updates.
- F. In BGPse
- G. route advertisements are not given an expiration time by the originator of the route.

**Answer: BC**

#### Explanation:

<https://tools.ietf.org/html/rfc8374#section-3.2>

NEW QUESTION 241

Refer to the exhibit:

```
RP/0/0/CPU0:router# show bgp neighbors 192.168.2.2

BGP neighbor is 192.168.2.2, remote AS 1, local AS 140, external link
Remote router ID 0.0.0.0
BGP state = Idle
Last read 00:00:00, hold time is 180, keepalive interval is 60 seconds
Received 0 messages, 0 notifications, 0 in queue
Sent 0 messages, 0 notifications, 0 in queue
Minimum time between advertisement runs is 15 seconds

For Address Family: IPv4 Unicast
BGP neighbor version 0
Update group: 0.1
eBGP neighbor with no inbound or outbound policy; defaults to 'drop'
Route refresh request: received 0, sent 0
0 accepted prefixes
Prefix advertised 0, suppressed 0, withdrawn 0, maximum limit 524288
Threshold for warning message 75%

Connections established 0; dropped 0
Last reset 00:02:03, due to BGP neighbor initialized
External BGP neighbor not directly connected.
```

Based on the show/ command output, which result m true after BGP session is established?

- A. The IOS XR router advertises all routes to the neighbor 192.168.2.2, but it does not accept any routes from 192.168.2.2
- B. The IOS XR router advertises and accepts all routes to and from eBGP neighbor 192.168.2.2
- C. No routes are accepted from the neighbor 192.168.2.2, nor are any routes advertised to it
- D. The IOS XR router does not advertise any routes to the neighbor 192.168.2.2,but it accepts all routes from 192.168.2.2.

Answer: B

NEW QUESTION 246

A network engineer is configuring Flexible NetFlow and enters these commands

```
sampler NetFlow1
mode random one-out-of 100

interface fastethernet 1/0
flow-sampler NetFlow1
```

What are two results of implementing this feature instead of traditional NetFlow? (Choose two.)

- A. CPU and memory utilization are reduced.
- B. Only the flows of top 100 talkers are exported.
- C. The data export flow is more secure
- D. The number of packets to be analyzed are reduced.
- E. The accuracy of the data to be analyzed is improved.

Answer: AD

NEW QUESTION 249

Refer to the exhibit:

RP/0/0/CPU0:iosxrv-1#show mpls ldp discovery brief				
Sat Apr 22 22:43:11.362 UTC				
Local LDP Identifier: 192.168.0.2:0				
Discovery Source	VRF Name	Peer LDP Id	Holdtime	
Session				
-----				
--				
Gi0/0/1	default	192.168.0.3:0	15	Y
Gi0/0/2	default	192.168.0.4:0	15	Y
Gi0/0/3	default	192.168.0.5:0	15	Y
Tgt:192.168.0.1	default	192.168.0.1:0	90	Y
Tgt:192.168.0.3	default	192.168.0.3:0	90	Y
Tgt:192.168.0.5	default	-	-	N

With which router does IOSXRV-1 have LDP session protection capability enabled but session hold up is not active?

- A. 192.168.0.1
- B. 192.168.0.3
- C. 192.168.0.4
- D. 192.168.0.5

Answer: B



**NEW QUESTION 250**

Which Cisco software OS uses monolithic architecture?

- A. NX-OS
- B. IOS XE
- C. IOS XR
- D. IOS

**Answer:** D

**Explanation:**

Cisco Internetwork Operating System (IOS) is the software used on most Cisco Systems routers and current Cisco network switches. IOS is a package of routing, switching, internetworking and telecommunications functions integrated into a multitasking operating system. IOS uses a monolithic architecture, meaning that all processes run in a single address space, making it a single-image system.

**NEW QUESTION 252**

What is a feature of mVPN?

- A. It requires-uncast to be disabled on the multicast domain
- B. It establishes multiple static MDTs for each multicast domain.
- C. It provides the ability to support multicast over a Layer 3 VPN.
- D. It requires the no ip mroute-cache command to be configured on the loopback interface of each BGP peer

**Answer:** C

**NEW QUESTION 253**

Which core component of MDT describes the data that an MDT-capable device streams to a collector?

- A. subscription
- B. encoder
- C. sensor path
- D. transport protocol

**Answer:** C

**NEW QUESTION 255**

Drag and drop the characteristics from the left onto the automation tool on the right.

**Answer Area**

It is the standard transport protocol for communicating with network devices.

It is a standard data modeling language.

It retrieves operational data.

It develops data models.

It shapes state data.

It sets and reads configuration data.

NETCONF

- A. Mastered
- B. Not Mastered

**Answer:** A

**Explanation:**

## Answer Area

- It is the standard transport protocol for communicating with network devices.
- It is a standard data modeling language.
- It retrieves operational data.
- It develops data models.
- It shapes state data.
- It sets and reads configuration data.

**NETCONF**

- It is a standard data modeling language.
- It retrieves operational data.
- It sets and reads configuration data.

### NEW QUESTION 258

How does an untrusted interface at the boundary of an administrative domain handle incoming packets?

- A. It remarks all values to a CoS of 0.
- B. It forwards only traffic with a DSCP value of 48.
- C. It translates the IP precedence value to the corresponding DSCP value.
- D. It drops all traffic ingressing the network.

**Answer: A**

### NEW QUESTION 260

An engineering team must implement Unified MPLS to scale an MPLS network. Devices in the core layer use different IGPs, so the team decided to split the network into different areas. The team plans to keep the MPLS services as they are and introduce greater scalability. Which additional action must the engineers take to implement the Unified MPLS?

- A. Redistribute the IGP prefixes from one IGP into the other routers to ensure end-to-end LSPs.
- B. Configure the ABR routers as route reflectors that redistribute IGP into BGP.
- C. Redistribute the IGP prefixes into another IGP to ensure end-to-end LSPs.
- D. Move the IGP prefixes into IS-IS as the loopback prefixes of the PE routers to distribute the prefixes to other routers to create end-to-end LSPs.

**Answer: B**

### NEW QUESTION 265

An engineer implemented LDP protocol on the ISP network. The engineer must ensure that there are no packet loss issues when IGP and LDP protocols are not synchronized. Which configuring must the engineer implement so that the IGP routing protocol will wait until LDP convergence is completed?

- A. Disable IP CEF routers running LDP and enable LDP protocol.
- B. Configure MPLS LDP IGP synchronization on the network.
- C. Configure LDP sessions protection on the network.
- D. Disable MPLS LDP IGP synchronization on the network.

**Answer: B**

### NEW QUESTION 268

A network architect must implement CSC VPN services for a new backbone carrier. Which two benefits does the architecture provide? (Choose two.)

- A. It maintains a single backbone, which simplifies the VPN implementation to customers.
- B. It eliminates the need to maintain a centralized network-maintenance and operations strategy.
- C. It leverages IPsec to establish connections within the backbone.
- D. It eliminates the need for BGP to distribute routes.
- E. It supports a scalable growth strategy that services multiple customers efficiently.
- F. It relies on IP communications, which simplifies the network design.

**Answer: AD**

### NEW QUESTION 271

Which statement about Network Services Orchestrator (NSO) is true?

- A. It is used only in service provider environments.
- B. It can be used only with XML coding.
- C. It uses YANG modeling language to automate devices.
- D. It must use SDN as an overlay for addressing.

**Answer:** C

**NEW QUESTION 274**

Refer to the exhibit:

```
mpls label protocol ldp
mpls ldp router-id loopback 0
mpls ip
ip cef
```

A network operator working for service provider with an employee id 3715 15:021 applied this configuration to a router. Which additional step should the engineer use to enable LDP?

- A. Disable Cisco Express Forwarding globally
- B. Delete the static router ID
- C. Enable MPLS LDP on the interface
- D. Configure the both keyword to enable LDP globally

**Answer:** C

**NEW QUESTION 276**

Refer to the exhibit:

```
R1:
interface FastEthernet0/0
ip address 10.1.12.1 255.255.255.0
duplex full
end
!
!
!
R1(config)#interface FastEthernet0/0
R1(config-if)#ospfv3 1 area 1 ipv4
% IPv6 routing not enabled
```

A network engineer is implementing an OSPF configuration Based on the output, which statement is true?

- A. In the ospfv3 1 area 1 ipv4 command, area 0 must be configured instead of area 1.
- B. OSPFv3 does not run for IPv4 on FastEthernet0/0 until IPv6 routing is enabled on the router and IPv6 is enabled on interface FastEthernet0/0
- C. OSPFv3 cannot be configured for IPv4; OSPFv3 works only for IPv6.
- D. "IPv6 routing not enabled" is just an informational message and OSPFv3 runs for IPv4 on interface FastEthernet0/0 anyway

**Answer:** B

**NEW QUESTION 281**

What is the function of Cisco NFV infrastructure platform?

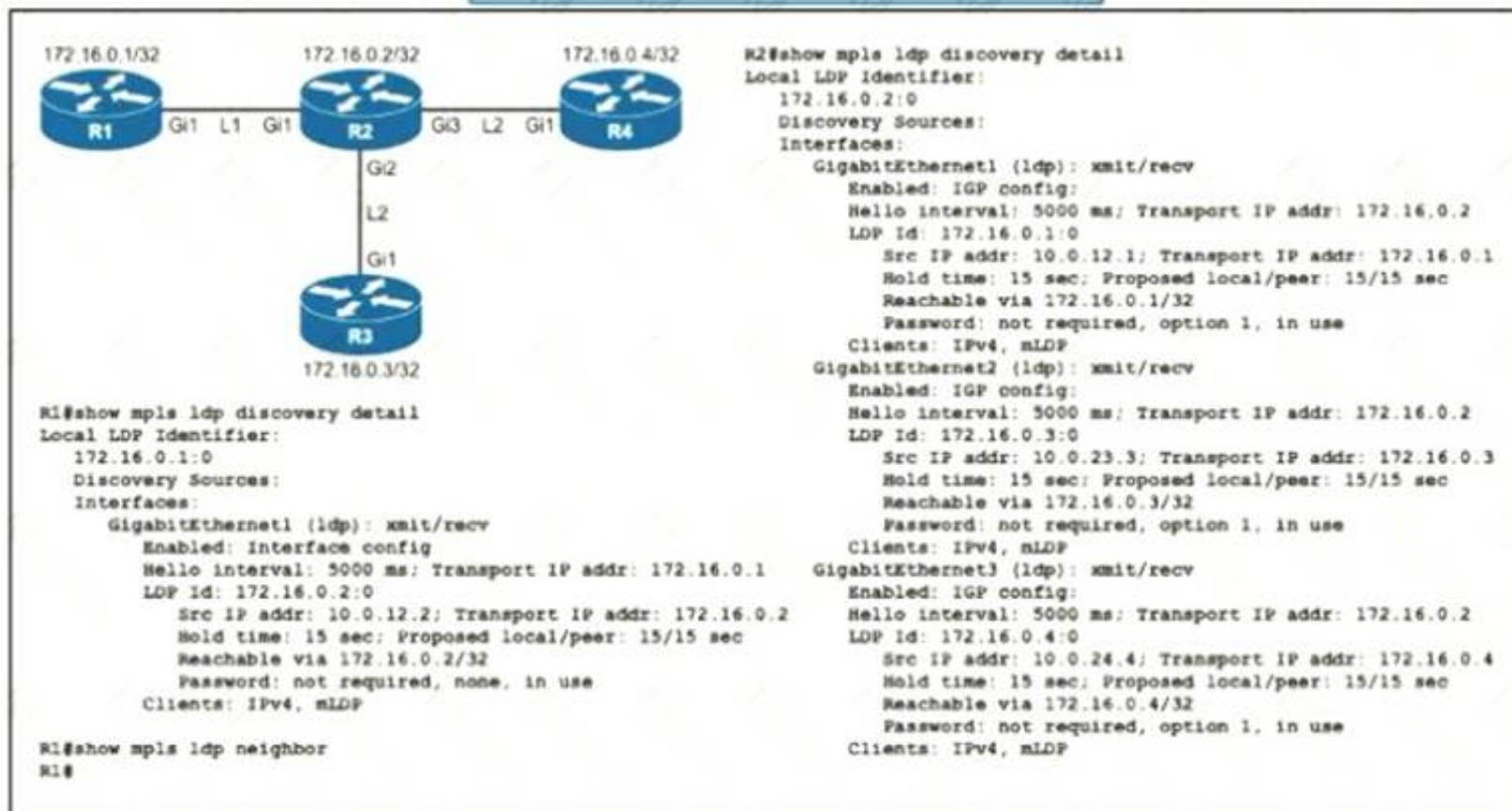
- A. It does not have a security audit feature.
- B. It does not offer high availability.
- C. It offers consistent performance.
- D. It offers decentralized logging.

**Answer:** C

**NEW QUESTION 283**

Refer to the exhibit.





An engineer began to configure LDP between R1 and R2, but R1 and R2 cannot yet establish an LDP TCP connection. Which additional task must be completed to finish the implementation?

- A. Configure the mpls ldp neighbor 172.16.0.1 password command on R1
- B. Configure the mpls ldp neighbor 10.0.12.1 password command on R1
- C. Configure the no mpls ldp password option 1 command on R2
- D. Configure the no mpls ldp password option 1 command on R1

**Answer: A**

#### NEW QUESTION 284

An engineer working for telecommunication company with an employee id: 3715 15 021 needs to secure the LAN network using a prefix list Which best practice should the engineer follow when he implements a prefix list?

- A. An engineer must use non sequential sequence numbers in the prefix list so that he can insert additional entries later.
- B. The final entry in a prefix list must be /32
- C. An engineer must identify the prefix list with a number only
- D. An engineer must include only the prefixes for which he needs to log activity.

**Answer: A**

#### NEW QUESTION 288

You are creating new Cisco MPLS TE tunnels. Which type of RSVP message does the headend router send to reserve bandwidth on the path to the tunnel's router?

- A. error
- B. reservation
- C. path
- D. tear

**Answer: C**

#### NEW QUESTION 289

A network engineer is configuring a BGP route policy for the SUBNET prefix set. Matching traffic must be dropped, and other traffic must have its MED value set to 400 and community 4:400 added to the route. Which configuration must an engineer apply?

- ☒ route-policy CISCO  
if destination in SUBNET then  
drop  
else  
set med 400  
set community (4:400) additive  
endif  
end-policy  
end
- ☐ route-policy CISCO  
if destination in SUBNET then  
drop  
endif  
set med 400  
if community matches-any SUBNET then  
set local-preference 400  
set med 500  
set community (4:400) additive  
endif  
end-policy  
end
- ☐ route-policy SUBNET  
if destination in SUBNET then  
drop  
endif  
set med 400  
set local-preference 400  
if community matches-any SUBNET then  
set community (4:400)  
endif  
end-policy  
end
- ☐ route-policy SUBNET  
if destination in BGP then  
drop  
else  
set med 400  
set community (4:400)  
endif  
end-policy  
end

- A. Option A  
B. Option B  
C. Option C  
D. Option D

**Answer: A**

#### NEW QUESTION 291

What occurs when a high bandwidth multicast stream is sent over an MVPN using Cisco hardware?

- A. The traffic uses the default MDT transmit the data Only if it is a (S, G) multicast route entry.  
B. A data MDT is created if is a Multicast route entries  
C. A data and default MDT are created to flood the multicast stream of all PIM-SM neighbors.  
D. A data MDT is created to allow for the best transmit through the core for multicast route entries.

**Answer: D**

#### NEW QUESTION 293

Which feature will an operator use while implementing MPLS TE on customer's network, to prevent an LSP from using any overseas inks?

- A. bandwidth  
B. affinity  
C. explicit path  
D. SLRG

**Answer: C**

#### NEW QUESTION 295

A company is expanding its existing office space to a new floor of the building, and the networking team is installing a new set of switches. The new switches are running IGMPv2, and the engineers configured them for VLAN10 only. The rest of the existing network includes numerous Layer 2 switches in multiple other VLANs, all running IGMPv3. Which additional task must the team perform when deploying the new switches so that traffic is switched correctly through the entire

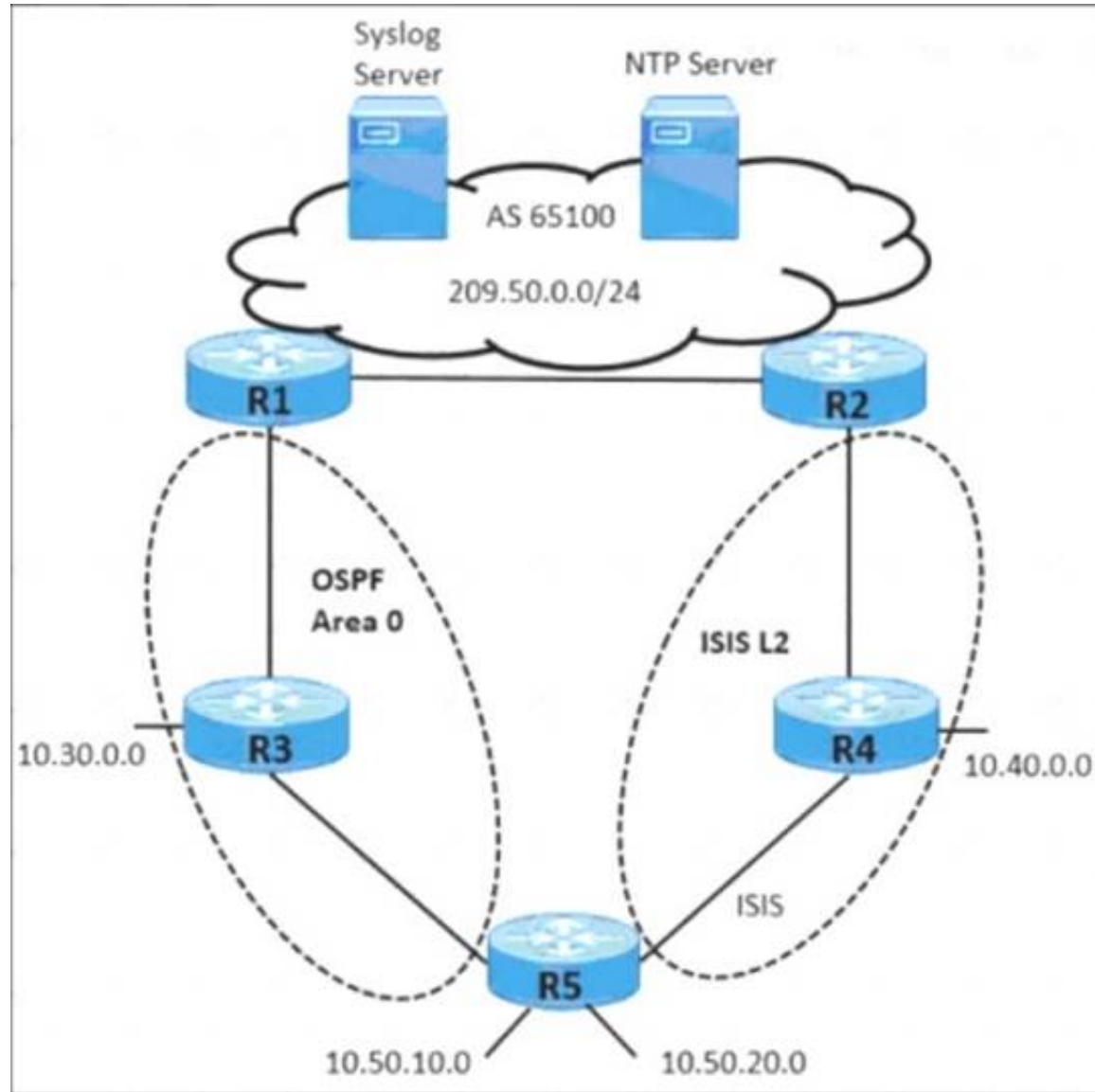
network?

- A. Configure the new switches to use IGMPv3 on all VLANs on the network.
- B. Configure all switches on the network to support IGMPv2 and IGMPv3 on all VLANs on the network.
- C. Configure the new switches to use IGMPv3 on VLAN10 only.
- D. Configure all switches on the network to support IGMPv2 and IGMPv3 on VLAN10 only.

**Answer: C**

#### NEW QUESTION 299

Refer to the exhibit.



A network operator working for a telecommunication company with an employee ID: 4350:47:853 must implement an IGP solution based on these requirements:

- Subnet 10.50.10.0 traffic must exit through the R1 router to connect with the Syslog server.
- Subnet 10.50.20.0 traffic must exit through the R2 router to connect with the NTP server.
- In case of link failure between R2 and R4, traffic must be routed via R1 and R3.

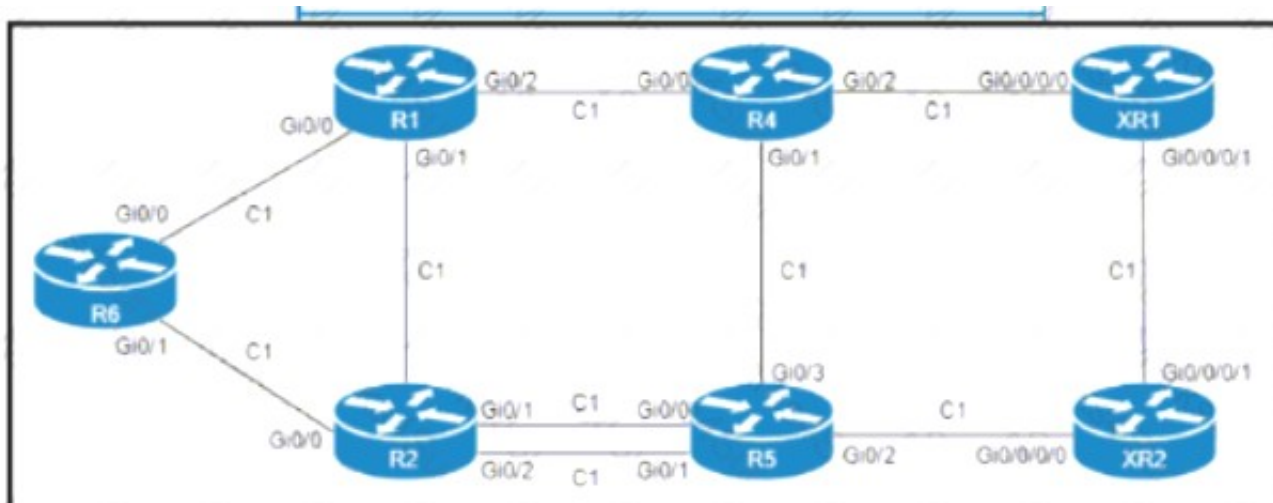
Which two configurations must be implemented on R5 to meet these requirements? (Choose two.)

- A. Apply a route policy to redistribute 10.50.0.0 prefixes in OSPF to ISIS and ISIS to OSPF.
- B. Apply a route policy to redistribute 10.50.20.0 from ISIS-L2 to OSPF Area 0 at a higher cost.
- C. Enable a route policy to advertise 10.50.20.0 in ISIS-L2 at a higher cost.
- D. Apply a route policy to redistribute 10.50.10.0 from OSPF Area 0 to ISIS-L2 at a lower cost.
- E. Enable a route policy to advertise 10.50.10.0 in OSPF Area 0 at a low cost.

**Answer: CE**

#### NEW QUESTION 302

Refer to the exhibit.



An engineer configured R6 as the headend LSR of an RSVP-TE LSP to router XR2, with the dynamic path signaled as R6-R2-R5-XR2. and set the OSPF cost of all links to 1. MPLS autotunnel backup is enabled on all routers to protect the LSP. Which two NNHOP backup tunnels should the engineer use to complete the implementation? (Choose two.)

- A. The R6 backup tunnel path R6-R1-R4-R5.



- B. The R2 backup tunnel path R2-R5 across the alternate link.
- C. The R2 backup tunnel path R2-R1-R4-XR1-XR2.
- D. The R6 backup tunnel path R6-R2-R5
- E. The R6 backup tunnel path R6-R1-R2.

**Answer:** AC

#### NEW QUESTION 307

Refer to the exhibit.

```
R1# show ip ospf neighbor
Neighbor ID Pri State Dead Time Address Interface
192.168.1.1 1 EXCHANGE/ - 00:00:34 192.168.1.1 fastethernet1/0

R2# show ip ospf neighbor
Neighbor ID Pri State Dead Time Address Interface
192.168.1.2 1 EXSTART/ - 00:00:32 192.168.1.2 fastethernet1/0
```

A company recently deployed a new network using OSPF in the core to share routes. The network administrator selected OSPF as the routing protocol because of its ability to maintain a route database. When the new network was started up, all routers booted normally, but the link between routers R1 and R2 failed to come up. The two routers are located in the same rack at the data center. Which task should an engineer perform to correct the problem?

- A. Synchronize the dead timers.
- B. Change one of the OSPF router IDs so that the router IDs are in different subnets
- C. Change the OSPF process ID on one of the devices so that the two IDs match
- D. Configure the MTUs on the interface to match.

**Answer:** D

#### NEW QUESTION 311

Refer to the exhibit.

```
<l3extOut name="l3out1">
  <l3extLNodeP name="ciscoNode1">
    <bgpPeerP addr="192.168.1.2">
      <bgpAsP asn="65514"/>
    </bgpPeerP>
  </l3extLNodeP>
</l3extOut>
```

A global company plans to implement BGP at its newest location to provide connectivity to other offices. The global infrastructure of the company is a multivendor environment. An engineer must review the BGP core configurations at headquarters to determine if they can be repurposed at the new location. The engineer copied this JSON script for review. What is the effect of the script?

- A. It configures BGP with neighbor 192.168.1.2 residing in AS 65514.
- B. It sets the BGP router-ID to 192.168.1.2 and sets the AS of the router to 65514.
- C. It configures BGP on the device and inserts 192.168.1.0/24 into the BGP table using the origin AS 65514.
- D. It configures a VRF named ciscoNode1 and a BGP instance using the VPNv4 address family.

**Answer:** A

#### NEW QUESTION 313

A network engineer is configuring a router to send multicast traffic for the 239.10.10.10 group. Which configuration must an .... forward the traffic?

- A. Cisco(config)# interface ethernet 1/0 Cisco(config-if)# ip igmp max-groups action replace
- B. Cisco(config)# interface ethernet 1/0 Cisco(config-if)# ip igmp filter
- C. Cisco(config)# interface ethernet 1/0 Cisco(config-if)# ip igmp access-group 239.10.10.10
- D. Cisco(config)# interface ethernet 1/0 Cisco(config-if)# ip igmp join-group 239.10.10.10

**Answer:** D

#### NEW QUESTION 314

The service provider is serving hosts with two different multicast streams from source X and source Y. Source X is multicast group 224.0.0.0/8, and source Y is

multicast group 226.0.0.0/8. Multicast source X should send its stream through bidirectional RP address 10.20.1.1, and multicast source Y should send its stream through RP address 10.20.2.1. Which configuration meets these requirements?

- A. Enable ip pim ssm default on RA and RB.
- B. Add ip pim bidir-enable in global mode on RB.
- C. Permit the source X and source Y IP addresses in the access list on RB.
- D. Set PIM sparse mode with a static RP address of 10.20.2.1 on RA and RC.

**Answer: B**

#### NEW QUESTION 317

An engineer is configuring IEEE 802.1ad on the access port on a new Cisco router. The access port handles traffic from multiple customer VLANs, and it is expected to mark all customer traffic to the same VLAN without dropping any traffic. Which configuration must the engineer apply?

A)

```
interface gigabitethernet0/0/1
 ethernet dot1ad uni c-port
```

B)

```
interface gigabitethernet0/0/1
 ethernet dot1ad uni nni
```

C)

```
interface gigabitethernet0/0/1
 encapsulation dot1q 10
```

D)

```
interface gigabitethernet0/0/1
 ethernet dot1ad uni s-port
```

- A. Option A
- B. Option B
- C. Option C
- D. Option D

**Answer: D**

#### NEW QUESTION 321

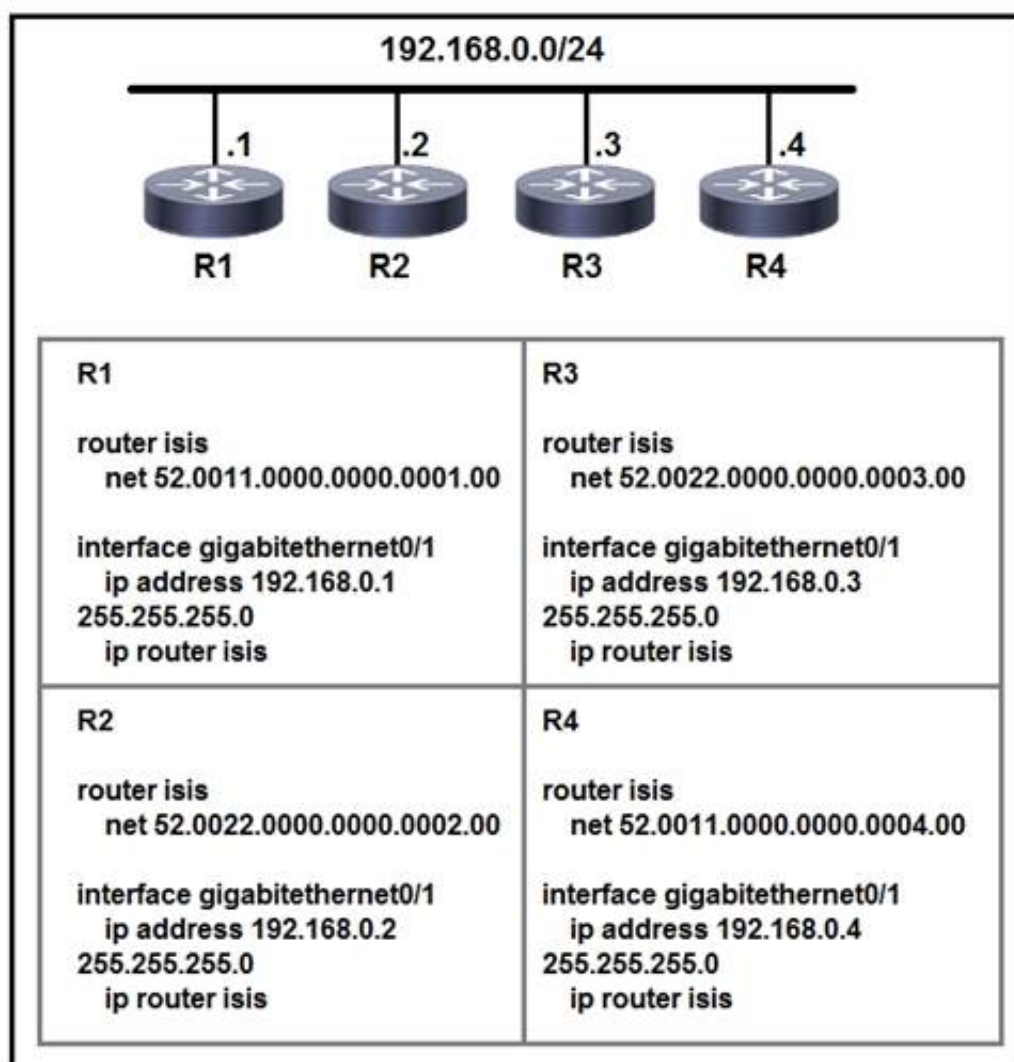
BGP has been implemented on a IOS XR router. Which configuration sends BGP IPv4 labels to build inter-domain LSPs?

- A. router bgp 65515 address-family ipv4 unicast neighbor 172.16.70.23 send-community extended
- B. router bgp 65515 no bgp default ipv4-unicast
- C. router bgp 65515 address-family ipv4 unicast neighbor 172.16.70.23 send-community
- D. router bgp 65515 neighbor 172.16.70.23 address-family ipv4 labeled-unicast

**Answer: D**

#### NEW QUESTION 325

Refer to the exhibit:



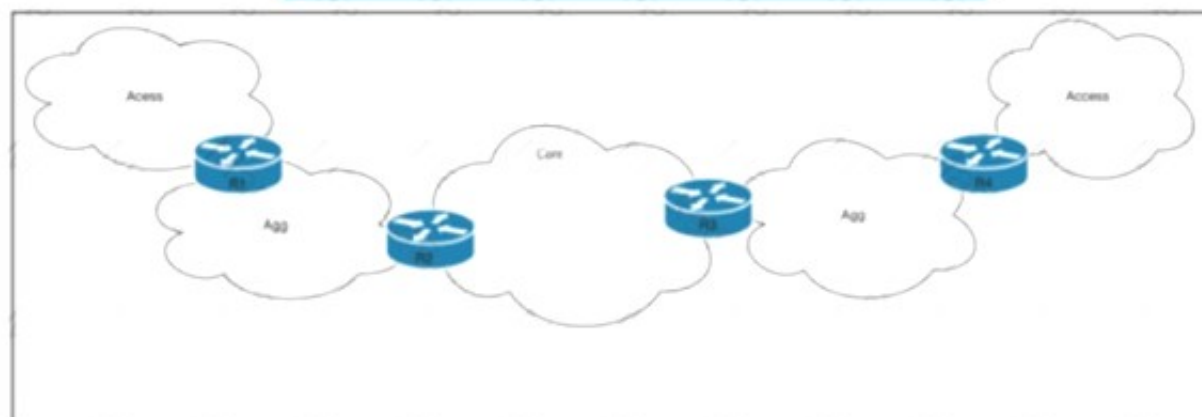
Which two statements about the ISIS topology are true? (Choose two.)

- A. All four routers are operating as Level 1 routers only.
- B. All four routers are operating as Level 2 routers only.
- C. All four routers are operating as Level 1-2 routers.
- D. R1 and R2 are Level 2 neighbors.
- E. R1 and R4 are Level 2 neighbors

**Answer:** CD

#### NEW QUESTION 329

Refer to the exhibit.



Tier 1 ISP A purchased several Tier 2 ISPs to increase their customer base and provide more regional coverage. ISP A plans to implement MPLS services in the access layer, with scalability up to 100.1 devices in one packet network and service recovery up to 50 ms. The network architect decided to use different independent IGP and LDP domains and interconnect LSPs that are based on RFC 3107. Which two actions must the network engineer perform to meet the requirements? (Choose two.)

- A. Implement BGP PIC core functionality on routers R2 and R3.
- B. Configure three OSPF areas, with Area 0 in the core domain, and Areas 2 and 3 in the aggregation domain.
- C. Implement BGP connectivity between routers R1 and R4 with VPNv4 address family enabled.
- D. Implement BGP inline RR functionality with next-hop-self capabilities on routers R2 and R3.
- E. Implement the IS-IS routing protocol on the access domain.

**Answer:** AD

#### NEW QUESTION 332

Which technology enables the addition of new wavelengths in a fiber-optic network?

- A. IPoDWDM
- B. CWDM
- C. DWDM
- D. ROADM

**Answer:** C

#### Explanation:

Wavelength-division multiplexing (WDM) is a technology which multiplexes a number of optical carrier signals onto a single fiber [1], using different wavelengths of



light to carry different signals. This allows for a greater capacity for data transfer and enables the addition of new wavelengths in a fiber-optic network

#### NEW QUESTION 334

Refer to the exhibit.

```
R1
router bgp 65000
router-id 192.168.1.1
no bgp default ipv4-unicast
neighbor 192.168.1.2 remote-as 65001
```

Which task completes the configuration?

- A. Specify the maximum number of prefixes that R1 receives from neighbor 192.168.1.2.
- B. Specify the source interface in the neighbor statement.
- C. Specify the activate neighbor 192.168.1.2 under the IPv4 address family.
- D. Specify the local-as value in the neighbor statement.

**Answer: C**

#### NEW QUESTION 339

What is the function of the FEC field within the OTN signal structure?

- A. It allows the sending devices to apply QoS within the OTN forwarding structure.
- B. It allows source nodes to discard payload errors before transmitting data on the network.
- C. It allows receivers to correct errors upon data arrival.
- D. It allows deep inspection of data payload fields.

**Answer: C**

#### NEW QUESTION 342

An engineer is developing a configuration script to enable dial-out telemetry streams using gRPC on several new devices. TLS must be disabled on the devices. Which configuration must the engineer apply on the network?

A)

```
telemetry model-driven
destination-group ciscotest
address family ipv4 192.168.1.0 port 57500
encoding self-describing-gpb
protocol grpc no-tls
commit
```

B)

```
telemetry model-driven
destination-group ciscotest
address family ipv4 192.168.1.0 port 57500
encoding self-describing-gpb
protocol grpc
commit
```

C)

```
telemetry model-driven
destination-group ciscotest
address family ipv4 192.168.1.0 port 57500
encoding self-describing-gpb
protocol grpc tls-hostname ciscotest.com
commit
```

D)

```
telemetry model-driven
destination-group DGroup1
address family ipv4 172.0.0.0 port 5432
encoding self-describing-gpb
protocol tcp
commit
```

- A. Option A
- B. Option B
- C. Option C
- D. Option D

**Answer: A**

#### NEW QUESTION 345

Refer to the exhibit:

```
POST https://router1:8000/api/mo/uni/Descriptions.xml
```

What does the REST API command do?

- A. It retrieves the information requested by Descriptions xml
- B. It removes the information identified by Descriptions xml
- C. It executes the commands specified in Descriptions xml
- D. It displays the information identified by Descriptions xml

**Answer:** C

**NEW QUESTION 348**

In an EVPN operation, how does the PE determine and advertise Ethernet segment reachability?

- A. The PE discovers the remote PEs in the EVI and builds a flood list linked with the EVI.
- B. The PE discovers and shared routing information for the B-MAC addresses associated with local Ethernet segments.
- C. The PE discovers other PEs in the same Ethernet segment and elects a DF.
- D. The PE discovers remote ESIs and determines their redundancy mode.

**Answer:** A

**NEW QUESTION 349**

.....

## Thank You for Trying Our Product

### We offer two products:

1st - We have Practice Tests Software with Actual Exam Questions

2nd - Questions and Answers in PDF Format

### 350-501 Practice Exam Features:

- \* 350-501 Questions and Answers Updated Frequently
- \* 350-501 Practice Questions Verified by Expert Senior Certified Staff
- \* 350-501 Most Realistic Questions that Guarantee you a Pass on Your First Try
- \* 350-501 Practice Test Questions in Multiple Choice Formats and Updates for 1 Year

**100% Actual & Verified — Instant Download, Please Click**  
**[Order The 350-501 Practice Test Here](#)**