

Cisco

Exam Questions 200-901

Developing Applications and Automating Workflows using Cisco Core Platforms (DEVASC)



NEW QUESTION 1

- (Exam Topic 2)

Refer to the exhibit.

```
1  #!/bin/bash
2  apt install nginx
3  export AVAILABLE_SITES_DIR = '/etc/nginx/sites-available'
4  export ENABLED_SITES_DIR = '/etc/nginx/sites_enabled'
5  cd /opt/nginx
6  cat sites.txt | while read site;
7      do
8          cp template.conf "$AVAILABLE_SITES_DIR/$site";
9          ln -s "$AVAILABLE_SITES_DIR/$site" "$ENABLED_SITES_DIR";
10         chown www-data:www-data "$AVAILABLE_SITES_DIR/$site";
11     done
```

An engineer must configure a load balancer server. The engineer prepares a script to automate workflow by using Bash. The script install the nginx package, moves to the /opt/nginx directory, and reads the sites M We (or further processing Based on the script workflow, which process is being automated within the loop by using the information mi sites txt?

- A. creating a new Me Based on template .conf in the /etc/nginx/sites_enabled directory for each lie in the sites txt fil
- B. and then changing the file execution permission.
- C. creating a Me per each the in sites txt with the information in template con
- D. creating a link for the previously created fil
- E. and then changing the ownership of the created files
- F. using the content of the file to create the template conf fil
- G. creating a link from the created file to the/etc/nginx/files.enable
- H. and then changing the file execution permissions.
- I. using the information in the file to create a set of empty files in the /etchginx/sites_enabled directory and then assigning the owner of the file.

Answer: B

NEW QUESTION 2

- (Exam Topic 2)

What is a capability of the NETCONF protocol?

- A. allows Python scripts to be executed externally from a network device
- B. uses JSON to encode data in its content layer
- C. allows XML messages to be exchanged via the SSH protocol
- D. exposes a web-based interface

Answer: C

NEW QUESTION 3

- (Exam Topic 2)

Devices

Get Device Count

Operation Id: `getDeviceCount`

Description: Returns the count of network devices based on the filter criteria by management IP address, mac address, hostname and location name

GET

/dna/intent/api/v1/network-device/count

Request Parameters

Responses

Status: 200

The request was successful. The result is contained in the response body.

Schema Definition

Example Body

[-]

CountResult

response: integer

version: string

+ -

Refer to the exhibit. Drag and drop the code snippets from the bottom onto the blanks in the code to construct a request to find the Cisco DNA Center switch count. Not all options are used.

```
curl -L --request [ ] \
-- [ ] https://dna/intent/api/v1/network-device/ [ ] \
--header ' [ ] : application/json' \
--header 'Accept: application/json'
```

url	network	count
POST	GET	Content-Type

- A. Mastered
 B. Not Mastered

Answer: A

Explanation:

```
curl -L --request GET \
-- url https://dna/intent/api/v1/network-device/ count \
--header 'Content-Type : application/json' \
--header 'Accept: application/json'
```

url	network	count
POST	GET	Content-Type

NEW QUESTION 4

- (Exam Topic 2)

Drag and drop the code from the bottom onto the box where the code is missing in the Python script to complete a function to return all the clients on a network by using the Cisco Meraki Dashboard API. Not all options are used.

```
import requests
import json
url = 'https://dashboard.meraki.com/api/v0/'
headers = {' ': '0110c4e1b8a1',
           'Content-Type': ' '}
orgs = json.loads(requests.get(url+'organizations', headers=headers).text)

for org in orgs:
    nets = json.loads(requests.get(url+'organizations/'+org['id']+'/networks',
    headers=headers).text)
    for net in nets:
        clients = json.loads(requests.get(
            url+ ' '/'+net['id']+'/',
            headers=headers).text)
        for client in clients:
            print(client['ip'])
```

client	application/json
application/xml	clients
X-Cisco-Meraki-API-Key	networks
Authorization: Bearer	

- A. Mastered
 B. Not Mastered

Answer: A

Explanation:

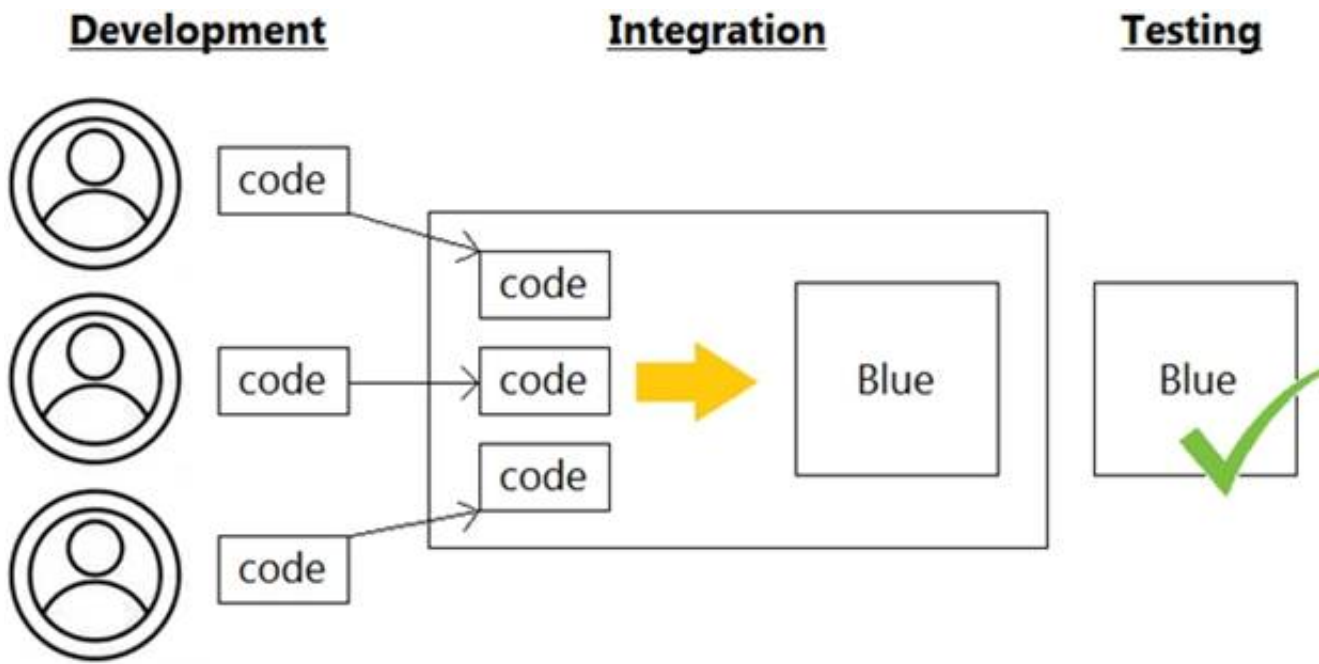
```
import requests
import json
url = 'https://dashboard.meraki.com/api/v0/'
headers = {' X-Cisco-Meraki-API-Key ': '0110c4e1b8a1',
           'Content-Type': ' application/json '}
orgs = json.loads(requests.get(url+'organizations', headers=headers).text)

for org in orgs:
    nets = json.loads(requests.get(url+'organizations/'+org['id']+'/networks',
    headers=headers).text)
    for net in nets:
        clients = json.loads(requests.get(
            url+ ' clients '/'+net['id']+' networks ',
            headers=headers).text)
        for client in clients:
            print(client['ip'])
```

client	
application/xml	
Authorization: Bearer	

NEW QUESTION 5

- (Exam Topic 2)
 Refer to the exhibit.



Which infrastructure automation method is shown?

- A. Waterfall
- B. CI/CD pipeline
- C. Agile
- D. Lean

Answer: C

NEW QUESTION 6

- (Exam Topic 2)

Refer to the exhibit.

```

1 #import dnac sdk
2 from dnacentersdk import DNACenterAPI
3 #connection to dnac
4
5 username = 'user1'
6 password = 'secret'
7 base_url = 'https://192.168.1.1'
8
9 dnac = DNACenterAPI(username=username, password=password, base_url=base_url,
10                      • version='1.3.3', verify=False)
11
12 # Get list of ports on device using get all interfaces API call
13 port_list_1 = [item['portName'] for item in
14                 • dnac.devices.get_all_interfaces()['response']]
15
16 # Sort list items
17 port_list_1.sort()
18 # Check the number of ports on the device
19 print(f'The list of interfaces contains {len(port_list_1)} items.')
20
21 # Output
22 # The list of interfaces contains 38 items.
23
24 # Get list of interfaces using the get interface info by device id api call
25 port_list_2 = [item['portName'] for item in
26                 • dnac.devices.get_interface_info_by_id('da4606c3-63ad-4ed4-8f35-
27                   6bfec7c2df04')['response']]
28
29 # Sort list items
30 port_list_2.sort()
31 # Check the number of ports on the device
32 print(f'The list of interfaces contains {len(port_list_2)} items.')
33
34 # Output
35 # The list of interfaces contains 54 items.

```

An engineer writes a Python script that uses two different API calls to query Cisco DNA Center for the number of interfaces on a device. The engineer notices that the two API calls produce different results. Why are fewer interfaces returned for the same device when the 'get_all_interfaces' API call is used?

- A. times out
- B. rate limit
- C. pagination
- D. invalid password

Answer: C

NEW QUESTION 7

- (Exam Topic 2)

What is the purpose of the first three pairs of digits in a MAC address?

- A. defines a routing identifier for the client
- B. indicates the IP address of the client in Hex
- C. defines packet forwarding priority sent or received by the adapter
- D. indicates vendor of the network card or adapter

Answer: D

NEW QUESTION 8

- (Exam Topic 2)

What are two benefits of model-driven programmability?

- A. model-driven APIs for abstraction and simplification
- B. single choice of transport, protocol, and encoding
- C. model-based, structured, and human friendly
- D. easier to design, deploy, and manage APIs
- E. models decoupled from transport, protocol, and encoding

Answer: DE

NEW QUESTION 9

- (Exam Topic 2)

What is the function of IP address in networking?

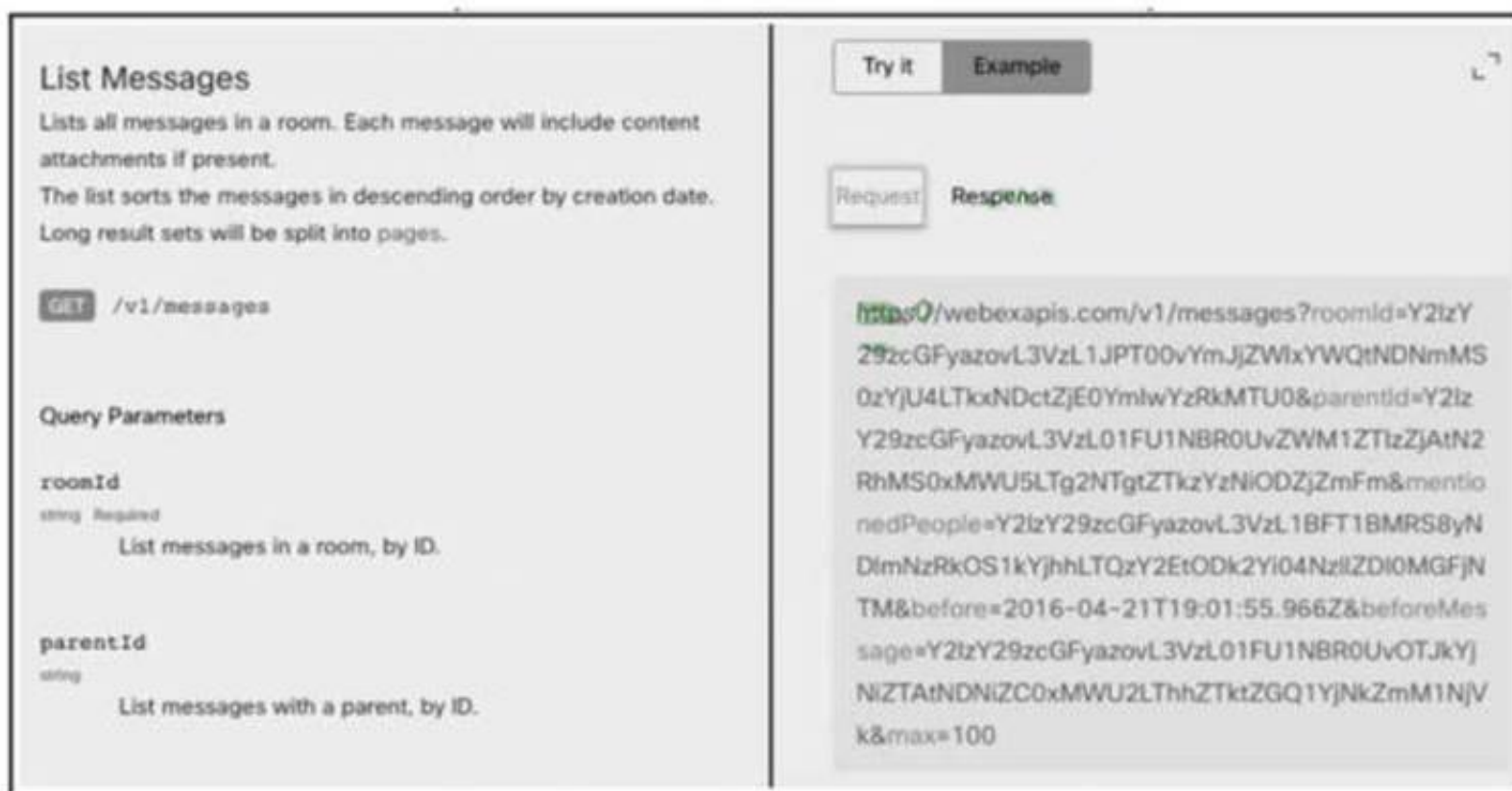
- A. specifies the type of traffic that is allowed to roam on a network
- B. represents the unique ID that is assigned to one host on a network
- C. specifies resource's location and the mechanism to retrieve it
- D. represents a network connection on specific devices

Answer: B

NEW QUESTION 10

- (Exam Topic 2)

Refer to the exhibit.



List Messages
Lists all messages in a room. Each message will include content attachments if present.
The list sorts the messages in descending order by creation date.
Long result sets will be split into pages.

GET /v1/messages

Query Parameters

roomId
string Required
List messages in a room, by ID.

parentId
string
List messages with a parent, by ID.

Try it **Example**

Request **Response**

```
https://webexapis.com/v1/messages?roomId=Y2tzY29zcGFyazovL3VzL1JPT00vYmJjZWlxYWQtdNDNmMS0zYjU4LTlxNDctZjE0YmlwYzRkMTU0&parentId=Y2tzY29zcGFyazovL3VzL01FU1NBR0UvZW1ZTlZjAitN2RhMS0xMWU5LTg2NTgtZTkzYzNiODZjZmFm&mentionedPeople=Y2tzY29zcGFyazovL3VzL1BFT1BMRS8yNDlmNzRkOS1kYjhhLTQxY2EtODk2Yi04NzllZDI0MGFjNTM&before=2016-04-21T19:01:55.966Z&beforeMessage=Y2tzY29zcGFyazovL3VzL01FU1NBR0UvOTJkYjNiZTAitNDNiZC0xMWU2LTlhZTkzZGQ1YjNkZmM1NjVk&max=100
```

A developer needs to automatically retrieve all of the messages of a Webex room with the roomId of HY2I2Y292cGFyazovL3Vz397748444YjU5NjAtNTk0ZJ0xMWVhLTk0Mj". Using the Webex API documentation shown, drag and drop the code snippets from below onto the code to complete the Python script to list all of the messages in the room. Not all options are used.



- A. Mastered
- B. Not Mastered

Answer: A

Explanation:

Graphical user interface Description automatically generated with medium confidence

NEW QUESTION 10

- (Exam Topic 2)

A local Docker alpine image has been created with an image ID of a391665405fe and tagged as "latest". Which command creates a running container based on the tagged image, with the container port 8080 bound to port 80 on the host?

- A. docker build -p 8080:80 alpine:latest
- B. docker exec -p 8080:80 alpine:latest
- C. docker start -p 8080:80 alpine:latest
- D. docker run -p 8080:80 alpine:latest

Answer: D

Explanation:

https://docs.docker.com/get-started/02_our_app/

NEW QUESTION 14

- (Exam Topic 2)

Which platform is used to programmatically create a space and invite users for collaboration?

- A. Cisco Intersight
- B. Cisco Finesse
- C. Cisco Webex
- D. Cisco UCM

Answer: C

NEW QUESTION 17

- (Exam Topic 2)

Refer to the exhibit.

Returns the wireless lan controller info with given device ID:

```
{
  "response": {
    "adminEnabledPorts": [ 0 ],
    "apGroupName": "string",
    "deviceId": "string",
    "ethMacAddress": "string",
    "flexGroupName": "string",
    "id": "string",
    "instanceTenantId": "string",
    "instanceUuid": "string",
    "lagModeEnabled": true,
    "netconfEnabled": true,
    "wirelessLicenseInfo": "ADVANTAGE",
    "wirelessPackageInstalled": true
  },
  "version": "string"
}
```

Drag and drop the code from the bottom onto the blanks in the code to construct a cURL command using the Cisco DNA Center API. which will provide the details of a WLAN controller with Id af397748444. Not at options are used.

Answer Area

```
curl -L --request GET \
--url https://dna/intent/api/v1/ / / \
--header 'Content-Type: application/json' \
--header 'Accept:application/json'
```

network-device

id

wireless

wireless-info

controller

details

- A. Mastered
- B. Not Mastered

Answer: A

Explanation:

Diagram Description automatically generated

NEW QUESTION 18

- (Exam Topic 2)

Which advantage does the agile process offer compared to waterfall software development?

- A. to view the full scope of end-to-end work
- B. to have each phase end before the next begins
- C. to fix any issues at the end of the development cycle
- D. to add or update features with incremental delivery

Answer: D

NEW QUESTION 20

- (Exam Topic 2)

Which HTTP response status code means "Forbidden"?

- A. 500
- B. 401
- C. 403
- D. 502

Answer: C

Explanation:

Reference: <https://developer.mozilla.org/en-US/docs/Web/HTTP/Status/403>

NEW QUESTION 25

- (Exam Topic 2)

What is a requirement when authenticating a RESTCONF API session with a router that runs Cisco IOS XE Software?

- A. No authentication is required.
- B. OAuth must be used.
- C. Basic authentication must be used.
- D. A token must be retrieved and the associated string must be embedded in the X-Auth-Token header.

Answer: C

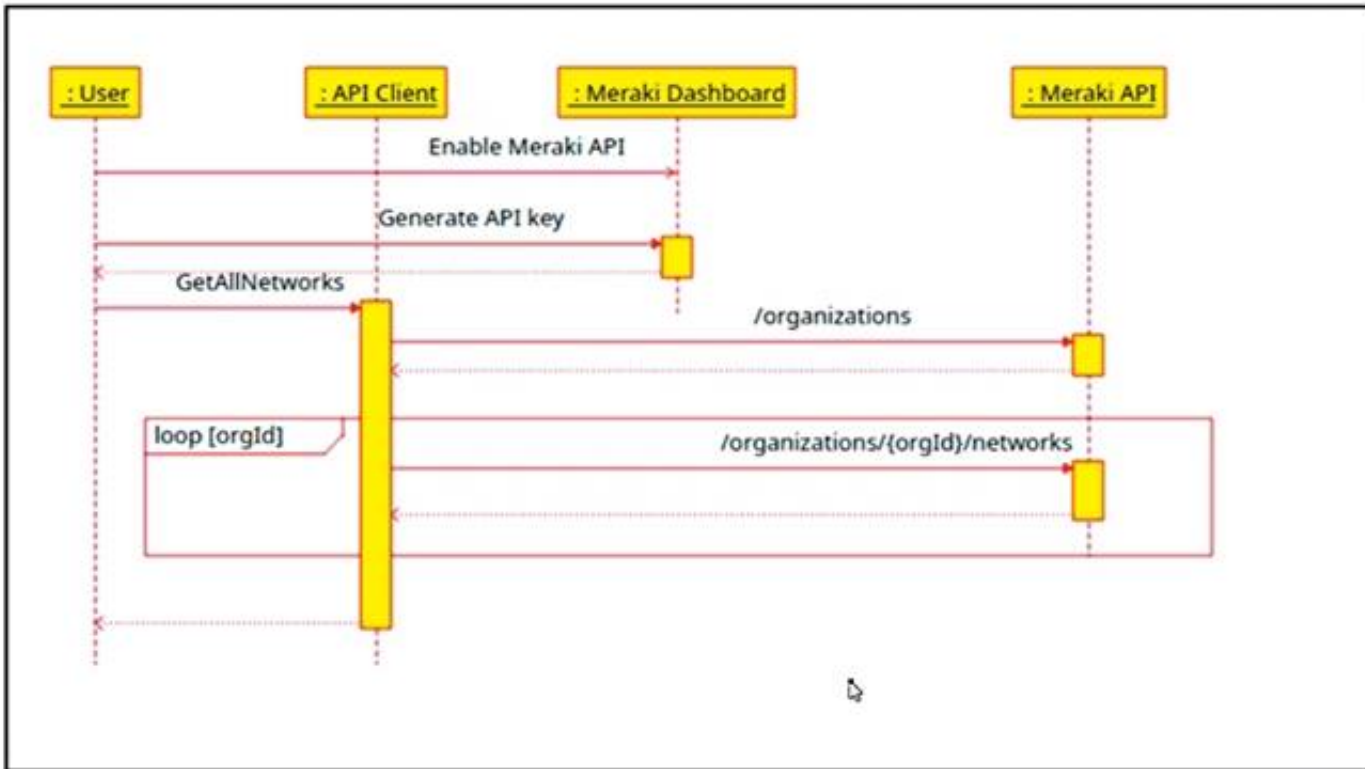
Explanation:

<https://www.cisco.com/c/en/us/td/docs/routers/csr1000/software/restapi/restapi/RESTAPIclient.html>

NEW QUESTION 27

- (Exam Topic 2)

Refer to the exhibit.



The Cisco Meraki API manages two organizations. In each organization, two independent networks are defined. How many calls to the /organizations/{orgId}/networks endpoint will be run parallel by the GetAllNetwork function of the API client?

- A. 1
- B. 2
- C. 4

Answer: C

NEW QUESTION 30

- (Exam Topic 2)

Refer to the exhibit.

```

>>> response_data = requests.get(base_url + request_url, cookies=cookies)
Traceback (most recent call last):
  File "<stdin>", line 1, in <module>
NameError: name 'requests' is not defined
>>>
    
```

A Python code has been written to query a device. The executed code results in the error shown. Which action resolves the problem?

- A. import json
- B. requests("GET", base_url + request_url, cookies=cookies)
- C. pip install requests
- D. import requests

Answer: D

NEW QUESTION 33

- (Exam Topic 2)

Refer to the exhibit.

```
$ sh script.sh
Traceback (most recent call last):
  File "script.py", line 2, in <module>
    api = WebexTeamsAPI()
  File "/opt/.venv/pyvenv35/lib/python3.5/site-packages/webexteamssdk/api/__init__.py", line 112,
in __init__
    "You must provide a Webex Teams access token to interact with "
webexteamssdk.exceptions.AccessTokenError: You must provide a Webex Teams access token to interact
with the Webex Teams APIs, either via a WEBEX_TEAMS_ACCESS_TOKEN environment variable or via the
access_token argument.
$
$
$ cat script.sh
#!/bin/bash

python script.py
$
```

Which line must be included in the Bash script for the Python code to succeed?

- A. define WEBEX_TEAMS_ACCESS_TOKEN=your_access_token_here
- B. export WEBEX_TEAMS_ACCESS_TOKEN=your_access_token_here
- C. set WEBEX_TEAMS_ACCESS_TOKEN=your_access_token_here
- D. WEBEX_TEAMS_ACCESS_TOKEN=your_access_token_here

Answer: B

NEW QUESTION 36

- (Exam Topic 2)

How does a developer create and switch to a new branch called "my-bug-fix" to develop a product fix?

- A. git checkout -b my-bug-fix
- B. git branch -b my-bug-fix
- C. git branch my-bug-fix
- D. git checkout my-bug-fix

Answer: A

Explanation:

<https://www.shellhacks.com/git-create-new-branch-and-checkout/>

NEW QUESTION 41

- (Exam Topic 2)

Which HTTP response code should be returned when the request is completed, but there is no content to send for the request?

- A. A.-100B.204C.302D.402

Answer: B

Explanation:

Reference: https://developer.mozilla.org/en-US/docs/Web/HTTP/Status#successful_responses

NEW QUESTION 46

- (Exam Topic 1)

What should a CI/CD pipeline aim to achieve?

- A. to allow manual testing before deployment
- B. to require minimal manual interaction
- C. to support new deployments on a fixed monthly schedule
- D. to provide a documented process for feedback

Answer: A

NEW QUESTION 51

- (Exam Topic 1)

Refer to the exhibit.

```
class ucsm sdk . ucshandle . Uc sHandle ( ip , username , password , port = None , secure = None , proxy = None )
```

Bases: ucsm sdk . uc ssession . Uc sSession

[\[source\]](#)

Uc sHandle class is the user interface point for any Uc s related communication.

- Parameters:
- **ip** (*str*) – The IP or Hostname of the UCS Server
 - **username** (*str*) – The username as configured on the UCS Server
 - **password** (*str*) – The password as configured on the UCS Server
 - **port** (*int or None*) – The port number to be used during connection
 - **secure** (*bool or None*) – True for secure connection, otherwise False
 - **proxy** (*str*) – The proxy object to be used to connect

Given the API documentation for the UCS SDK python class, Uc sHandle, which code snippet creates a handle instance?

```
#!/usr/bin/env python3
from ucsm sdk . ucshandle import Uc sHandle
handle = Uc sHandle ( " 10.1.2.254 " , " admin " , " password " ,
port = " 443 " , secure = True )
```

```
#!/usr/bin/env python3
import ucsm sdk . ucshandle . Uc sHandle
handle = Uc sHandle ( " 10.1.2.254 " , " admin " , " password " ,
port = 443 , secure = 1 )
```

```
#!/usr/bin/env python3
from ucsm sdk . ucshandle import Uc sHandle
handle = Uc sHandle ( ip = " 10.1.2.254 " , username = " admin " ,
password = " password " , port = 443 , secure = True )
```

```
#!/usr/bin/env python3
from ucsm sdk . ucshandle import Uc sHandle
handle = Uc sHandle ( " 10.1.2.254 " , " admin " , " password " ,
port = " 443 " , secure = 1 )
```

- A. Option A
 B. Option B
 C. Option C
 D. Option D

Answer: C

NEW QUESTION 56

- (Exam Topic 1)

What are two benefit of managing network configuration via APIs? (Choose two.)

- A. configuration on devices becomes less complex
 B. more security due to locking out manual device configuration
 C. increased scalability and consistency of network changes
 D. eliminates the need of legacy management protocols like SNMP
 E. reduction in network changes performed manually

Answer: CE

NEW QUESTION 60

- (Exam Topic 1)

Which device is a system that monitors and controls incoming and outgoing network traffic based on predetermined security rules?

- A. Switch
 B. Router
 C. Firewall
 D. Load balancer

Answer: C

NEW QUESTION 64

- (Exam Topic 1)

A small company has 5 servers and 50 clients. What are two reasons an engineer should spilt this network into separate client and server subnets? (Choose two)

- A. Internet access to the servers will be denied on the router.
- B. A router will limit the traffic types between the clients and servers.
- C. Subnets will split domains to limit failures.
- D. A router will bridge the traffic between clients and servers.
- E. Subnets provide more IP address space for clients and servers.

Answer: AC

NEW QUESTION 67

- (Exam Topic 1)

Drag and drop the functionalities from the left onto correct networking devices on the right.

ports are different broadcast domain by default	Firewall
ports can be in the same broadcast domain	Load Balancer
uses traffic inspection to make routing decisions	Router
blocks networks traffic by default	Switch

- A. Mastered
- B. Not Mastered

Answer: A

Explanation:

1 – D, 2 – C, 3 – A, 4 – B

Reference: <https://geek-university.com/ccna/broadcast-domain-explained/>

NEW QUESTION 68

- (Exam Topic 1)

Refer to the exhibit.


```
[
  {
    "type": "fruit",
    "items": [
      {
        "color": "green",
        "items": [
          "kiwi",
          "grape"
        ]
      },
      {
        "color": "red",
        "items": [
          "strawberry",
          "apple"
        ]
      }
    ]
  },
  {
    "type": "vegs",
    "items": [
      {
        "color": "green",
        "items": [
          "lettuce"
        ]
      },
      {
        "color": "red",
        "items": [
          "pepper"
        ]
      }
    ]
  }
]
```

A REST API return this JSON output for a GET HTTP request, Which has assigned to a variable called "vegetables" Using python, which output is the result of this command?

```
print(filter(lambda l: l['type'] == 'fruit', vegetables)[0]['items'][0]['items'][0])
```

- A. Lettuce
- B. Kiwi
- C. ['kiwi', 'grape']
- D. {'color': 'green', 'items': ['kiwi', 'grape']}

Answer: B

NEW QUESTION 69

- (Exam Topic 1)

When using the Bash shell, how is the output of the devnet command saved to a file named "output.txt"?

- A. devnet & output.txt
- B. devnet > output.txt
- C. devnet < output.txt
- D. devnet | output.txt

Answer: B

Explanation:

Reference: <https://askubuntu.com/questions/420981/how-do-i-save-terminal-output-to-a-file>

NEW QUESTION 73

- (Exam Topic 1)

Refer to the exhibit.

```
$ diff -u5 fish.py cat.py
--- fish.py      2020-01-02 09:41:02.840000000 +0100
+++ cat.py       2020-01-02 09:41:06.8859999800 +0100
@@ -160,11 +160,12 @@

    @single_request_timeout.setter
    def single_request_timeout(self, value):
        """The timeout (seconds) for a single HTTP REST API request."""
        check_type(value, int, optional=True)
-       assert value is None or value > 0
+       if value is not None and value <= 0:
+           raise ValueError("single_request_timeout must be positive integer")
        self._single_request_timeout = value

    @property
    def wait_on_rate_limit(self)
        """Automatic rate-limit handling.
```

The output of a unified diff when comparing two versions of a python script is shown. Which two "single_request_timeout ()"

A.

```
file: cat.py

160
161 @single_request_timeout.setter
162 def single_request_timeout(self, value):
163     """The timeout (seconds) for a single HTTP REST API request."""
164     check_type(value, int, optional=True)
165     assert value is None or value > 0
166     if value is not None and value <= 0:
167         raise ValueError("single_request_timeout must be positive integer")
168     self._single_request_timeout = value
169
```

B.

```
file: fish.py

160
161 @single_request_timeout.setter
162 def single_request_timeout(self, value):
163     """The timeout (seconds) for a single HTTP REST API request."""
164     check_type(value, int, optional=True)
165     assert value is None or value > 0
166     self._single_request_timeout = value
167
```

C.

```
file: cat.py

160
161 @single_request_timeout.setter
162 def single_request_timeout(self, value):
163     """The timeout (seconds) for a single HTTP REST API request."""
164     check_type(value, int, optional=True)
165     if value is not None and value <= 0:
166         raise ValueError("single_request_timeout must be positive integer")
167     self._single_request_timeout = value
168
169
```

D.

```

file: fish.py

160
161 @single_request_timeout.setter
162 def single_request_timeout(self, value):
163     """The timeout (seconds) for a single HTTP REST API request."""
164     check_type(value, int, optional=True)
165     self._single_request_timeout = value

```

E.

```

file: cat.py

172
173 @single_request_timeout.setter
174 def single_request_timeout(self, value):
175     """The timeout (seconds) for a single HTTP REST API request."""
176     check_type(value, int, optional=True)
177     if value is not None and value <= 0:
178         raise ValueError("single_request_timeout must be positive integer")
179     self._single_request_timeout = value
180

```

- F. Option A
- G. Option B
- H. Option C
- I. Option D
- J. Option E

Answer: BC

NEW QUESTION 74

- (Exam Topic 1)
Refer to Exhibit.

```

<books>
  <science>
    <biology>10.00</biology>
    <geology>9.00</geology>
    <chemistry>8.00</chemistry>
  </science>
  <math>
    <calculus>20.00</calculus>
    <algebra>12.00</algebra>
  </math>
</books>

```

Which JSON is equivalent to the XML-encoded data.

A)

```

{
  "books": {
    "science": {
      "biology": "10.00",
      "geology": "9.00",
      "chemistry": "8.00"
    },
    "math": {
      "calculus": "20.00",
      "algebra": "12.00"
    }
  }
}

```

B)


```
[ {  
  "books": {  
    "science": {  
      "biology": "10.00",  
      "geology": "9.00",  
      "chemistry": "8.00"  
    },  
    "math": {  
      "calculus": "20.00",  
      "algebra": "12.00"  
    }  
  }  
}]
```

C)

```
{  
  "books": [  
    "science", {  
      "biology": "10.00",  
      "geology": "9.00",  
      "chemistry": "8.00"  
    },  
    "math", {  
      "calculus": "20.00",  
      "algebra": "12.00"  
    }  
  ]  
}
```

D)

```
{  
  "books": [  
    "science": {  
      "biology": "10.00",  
      "geology": "9.00",  
      "chemistry": "8.00"  
    },  
    "math": {  
      "calculus": "20.00",  
      "algebra": "12.00"  
    }  
  ]  
}
```

- A. Option A
- B. Option B
- C. Option C
- D. Option D

Answer: A

NEW QUESTION 78

- (Exam Topic 1)

Which response status code is used by a RESTful interface to indicate successful execution of a request?

- A. 200
- B. 404
- C. 405
- D. 500

Answer: A

NEW QUESTION 79

- (Exam Topic 1)

What is the purpose of a MAC address?

- A. To uniquely identify a router in a LAN
- B. To uniquely identify a network interface in a LAN
- C. To uniquely identify a device on the internet
- D. To uniquely identify a switch in a LAN

Answer: B

NEW QUESTION 82

- (Exam Topic 1)

Which principle is a value from the manifesto for Agile software development?

- A. adhering to a plan over responding to requirements
- B. detailed documentation over working software
- C. processes and tools over teams and inter actions
- D. customer collaboration over contract negotiation

Answer: D

Explanation:

Reference: https://www.cisco.com/c/dam/global/en_hk/solutions/collaboration/files/agile_product_development.pdf

NEW QUESTION 83

- (Exam Topic 1)

Which type of HTTP method is used by the Meraki nad webex teams APIs to send webhook notifications?

- A. HTTP GET
- B. HTTP PUT
- C. HTTP HEAD
- D. HTTP POST

Answer: D

Explanation:

Reference: <https://meraki.cisco.com/blog/tag/alerts/>

NEW QUESTION 87

- (Exam Topic 1)

Which two statements about JSON and XML are true? (Choose two.)

- A. JSON objects are collection of key value pair.
- B. The syntax of JSON contains tags, elements, and attributes.
- C. JSON arrays are an unordered set of key value pairs.
- D. The syntax of XML contains tags, elements, and attributes.
- E. XML objects are collections of key-value pairs.

Answer: AD

NEW QUESTION 90

- (Exam Topic 1)

What operation is performed with YANG model-driven programmability in NX-OS?

- A. configure a device with native and OpenConfig-based models
- B. send CLI commands to a device and retrieve output in JSON format
- C. run Linux commands natively on the device
- D. bootstrap a device that has a factory-default configuration

Answer: A

Explanation:

Reference:

<https://www.cisco.com/c/en/us/products/collateral/switches/nexus-9000-series-switches/white-paper-c11-74151>

NEW QUESTION 92

- (Exam Topic 1)

What are two advantages of the Model-view-controller software design pattern? (Choose two.)

- A. simplifies network automation
- B. allows for multiple views of the same model
- C. makes code easier to deploy using CI/CD pipelines
- D. reduces need for error handling
- E. separates responsibilities of the code, which makes future modifications easier

Answer: BE

NEW QUESTION 96

- (Exam Topic 1)

Fill in the blanks to complete the Bash script in which each file in a directory is renamed to its SHA256 hash?

```
TARGET_DIR=/usr/local/certs
for f in [ ] [ ] ; do
    [ ] `openssl sha -sha256 -r < $f | cut -f1 -d' '`
done
```

- A. Mastered
- B. Not Mastered

Answer: A

Explanation:

Check below the answer exact.

```
TARGET_DIR=/usr/local/certs
for f in $(ls [ ] $TARGET_DIR) ; do
    mv [ ] `openssl sha -sha256 -r < $f | cut -f1 -d' '`
done
```

NEW QUESTION 97

- (Exam Topic 1)

Which statement about authentication a RESTCONF API session with a router that runs Cisco IOS XE software is true?

- A. OAuth must be used.
- B. A token must be retrieved and the associated string must be embedded in the X-Auth-Token header.
- C. Basic authentication must be used.
- D. No authentication is required.

Answer: C

NEW QUESTION 98

- (Exam Topic 1)

Drag and drop the network automation interfaces from the left onto the transport protocols that they support on the right.

SSH	gRPC
HTTP	
HTTP/2	NETCONF
HTTPS	
	RESTCONF

- A. Mastered
- B. Not Mastered

Answer: A

Explanation:

gRPC = C, NETCONF = A, RESTCONF = B, D OR

NEW QUESTION 99

- (Exam Topic 1)

Which two statements describe the advantages of using a version control system? (Choose two.)

- A. It allows for branching and merging so that different tasks are worked on in isolation before they are merged into a feature or master branch.
- B. It allows multiple engineers to work against the same code and configuration files and manage differences and conflicts.
- C. It provides tooling to automate application builds and infrastructure provisioning.
- D. It allows developers to write effective unit tests.
- E. It provides a system to track User Stories and allocate to backlogs.

Answer: AB

NEW QUESTION 101

- (Exam Topic 1)

Drag and drop the network automation interfaces from the left onto the transport protocols that they support on the right. (Not all Options are used)

SSH	gRPC
HTTP	
HTTP/2	NETCONF
HTTPS	
	RESTCONF

- A. Mastered
- B. Not Mastered

Answer: A

Explanation:

Grpc == http/2 , netconfig == ssh , restconfig == https

NEW QUESTION 104

- (Exam Topic 1)

Drag and drop the Python code from the left onto the correct step on the right to call a REST API.

<pre>response = requests.post(url, data=json.dumps(payload), \ headers=header, verify=False)</pre>	Step 1 – Import the correct libraries.
<pre>ticket = r_json["Token"] print (ticket)</pre>	Step 2 – Declare the necessary variable.
<pre>(_json = response.json() print(r_json)</pre>	Step 3 – Send the HTTP Request.
<pre>import requests import json</pre>	Step 4 – Format and display the response in JSON readable format.
<pre>controller = 'devnetapi.cisco.com/sandbox/dnacenter' url = 'https://' + controller + '/dna/system/api/v1/auth/token' payload = { 'username': 'devnetuser', 'password': 'pa55word' } header = { 'Content-type': 'application/json' }</pre>	Step 5 – Parse the response to display the Service Ticket.

- A. Mastered
- B. Not Mastered

Answer: A

Explanation:

<pre>response = requests.post(url, data=json.dumps(payload), \ headers=header, verify=False)</pre>	<pre>import requests import json</pre>
<pre>ticket = r_json["Token"] print (ticket)</pre>	<pre>controller = 'devnetapi.cisco.com/sandbox/dnacenter' url = 'https://' + controller + '/dna/system/api/v1/auth/token' payload = { 'username': 'devnetuser', 'password': 'pa55word' } header = { 'Content-type': 'application/json' }</pre>
<pre>(_json = response.json() print(r_json)</pre>	<pre>response = requests.post(url, data=json.dumps(payload), \ headers=header, verify=False)</pre>
<pre>import requests import json</pre>	<pre>(_json = response.json() print(r_json)</pre>
<pre>controller = 'devnetapi.cisco.com/sandbox/dnacenter' url = 'https://' + controller + '/dna/system/api/v1/auth/token' payload = { 'username': 'devnetuser', 'password': 'pa55word' } header = { 'Content-type': 'application/json' }</pre>	<pre>ticket = r_json["Token"] print (ticket)</pre>

NEW QUESTION 107

- (Exam Topic 1)

Which product provides network controller-level management features?

- A. Cisco DNA Center
- B. Cisco NX-OS
- C. Cisco UCS Manager
- D. Cisco ISE

Answer: A

Explanation:

Reference: <https://www.cisco.com/c/en/us/products/cloud-systems-management/index.html>

NEW QUESTION 108

- (Exam Topic 1)

On which network plane is routing protocol traffic handled?

- A. data plane
- B. management plane
- C. authentication plane
- D. control plane

Answer: D

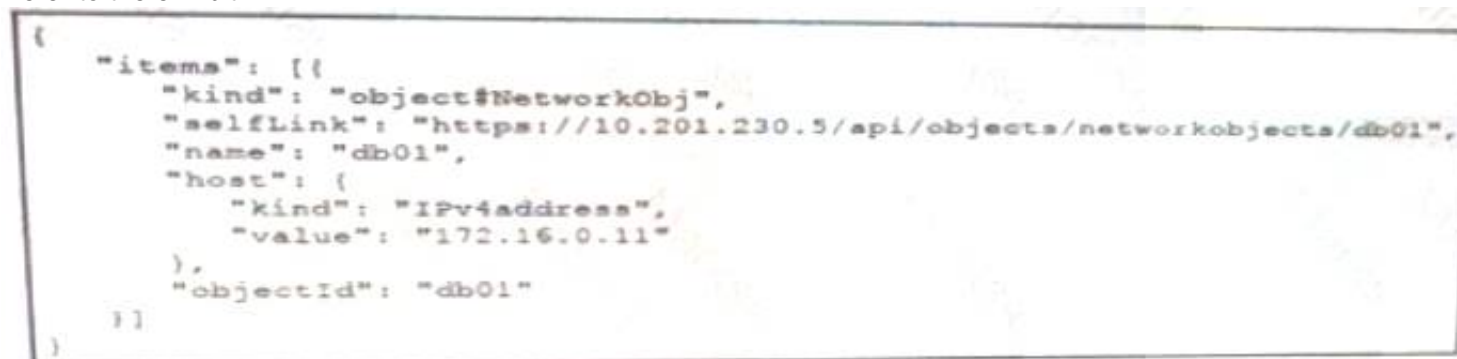
Explanation:

Reference: https://tools.cisco.com/security/center/resources/understanding_cpvr

NEW QUESTION 111

- (Exam Topic 1)

Refer to the exhibit.



```
{
  "items": [
    {
      "kind": "object#NetworkObj",
      "selfLink": "https://10.201.230.5/api/objects/networkobjects/db01",
      "name": "db01",
      "host": {
        "kind": "IPv4address",
        "value": "172.16.0.11"
      },
      "objectId": "db01"
    }
  ]
}
```

The JSON data in the exhibit has been parsed and stored in a variable, "data". What returns the value "172.16.0.11" ?

- A. data['items'][0]['host']['value']
- B. data['items']['1']['host']['value']
- C. data['items']['host'][1]
- D. data['items']['host']['value']

Answer: A

NEW QUESTION 115

- (Exam Topic 1)

Refer to the exhibit.

```
leaf IPPeer {
  type union {
    type inet:ipv4-address;
    type inet:ipv6-address;
  }
}
```

What is the value of the node defined by this YANG structure?

```
{
  "IPPeer": "10.1.1.1"
}

{
  "IPPeer": "10.1.1.1 2001:db::1"
}

{
  "IPPeer": [
    "10.1.1.1",
    "2001:db::1"
  ]
}

{
  "IPPeer": [
    "10.1.1.1"
  ]
}
```

- A. Option A
- B. Option B
- C. Option C
- D. Option D

Answer: D

Explanation:

<https://tools.ietf.org/html/rfc7950#section-9.12>

NEW QUESTION 119

- (Exam Topic 1)

What are two roles of an artifact repository in a CI/CD pipeline? (Choose two.)

- A. is required for CI/CD pipelines executed on a public cloud infrastructure
- B. is required for managing open source software
- C. stores files needed and generated during the build process
- D. allows for comparing and merging changes in the source code
- E. provides traceability, search, and management of binary files

Answer: CE

NEW QUESTION 123

- (Exam Topic 1)

Refer to the exhibit.

```
---
- hosts: switch2960cx
  gather_facts: no

  tasks:
    - ios_l2_interface:
      name: GigabitEthernet0/1
      state: unconfigured

    - ios_l2_interface:
      name: GigabitEthernet0/1
      mode: trunk
      native_vlan: 1
      trunk_allowed_vlans: 6-8
      state: present

    - ios_vlan:
      vlan_id: 6
      name: guest-vlan
      interfaces:
        - GigabitEthernet0/2
        - GigabitEthernet0/3

    - ios_vlan:
      vlan_id: 7
      name: corporate-vlan
      interfaces:
        - GigabitEthernet0/4

    - ios_vlan:
      vlan_id: 8
      name: iot-vlan
      interfaces:
        - GigabitEthernet0/5
```

Which two statements describe the configuration of the Ansible script if run? (Choose two.)

- A. Traffic on port 0/2 and 0/3 is connected to port 0/6.
- B. Traffic from ports 0/2 to 0/5 can flow on port 0/1 due to the trunk.
- C. Traffic can flow between ports 0/2 to 0/5 due to the trunk on port 0/1.
- D. GigabitEthernet0/2 and GigabitEthernet0/3 are access ports for VLAN 6.
- E. GigabitEthernet0/1 is left unconfigured.

Answer: BD

NEW QUESTION 128

- (Exam Topic 3)

When a Cisco IOS XE networking device is configured by using RESTCONF, what is the default data encoding method?

- A. application/yaml-data+json
- B. application/yang-data+json
- C. application/xml-data+json
- D. application/json-data+xml

Answer: D

NEW QUESTION 132

- (Exam Topic 3)

Which HTTP method is used by webhooks and notifies a listener about an event change?

- A. PUT
- B. POST
- C. PATCH
- D. GET

Answer: B

NEW QUESTION 134

- (Exam Topic 3)
What is a characteristic of Waterfall compared to Agile software development method?

- A. Waterfall focuses on continuous improvement, and Agile focuses on the design phase.
- B. Waterfall separates the project development lifecycle into sprints, and Agile does not use cycles.
- C. Waterfall specifies requirements before development begins, and Agile responds flexibly to changes in requirements.
- D. Waterfall uses reviews with step by step approach, and Agile uses a serially phased approach.

Answer: C

NEW QUESTION 135

- (Exam Topic 3)
What is the meaning of the HTTP status code 204?

- A. request completed; new resource created
- B. server successfully processed request; no content returned
- C. standard response for successful requests
- D. invalid query parameters

Answer: B

NEW QUESTION 137

- (Exam Topic 3)

```
user@host1:~/tmp$ cat Dockerfile
# Dockerfile to install traceroute
FROM ubuntu
MAINTAINER User One (userone@cisco.com)
RUN apt-get update && apt-get install traceroute
```

Refer to the exhibit. Drag and drop the Dockerfile contents from the left onto the functions on the right that create a container image to run traceroute to track network path to specific targets. Not all options are used.

document author	FROM ubuntu
command to execute	MAINTAINER User One (userone@cisco.com)
initializes a new build stage	RUN apt-get update && apt-get install traceroute
copies new files or directories	
sets the userid	

- A. Mastered
- B. Not Mastered

Answer: A

Explanation:

document author	initializes a new build stage
command to execute	document author
initializes a new build stage	command to execute
copies new files or directories	
sets the userid	

NEW QUESTION 140

- (Exam Topic 3)
Which technology is responsible for resolving a host name to an IP address?

- A. DNS
- B. SNMP
- C. DHCP
- D. NTP

Answer: A

NEW QUESTION 143

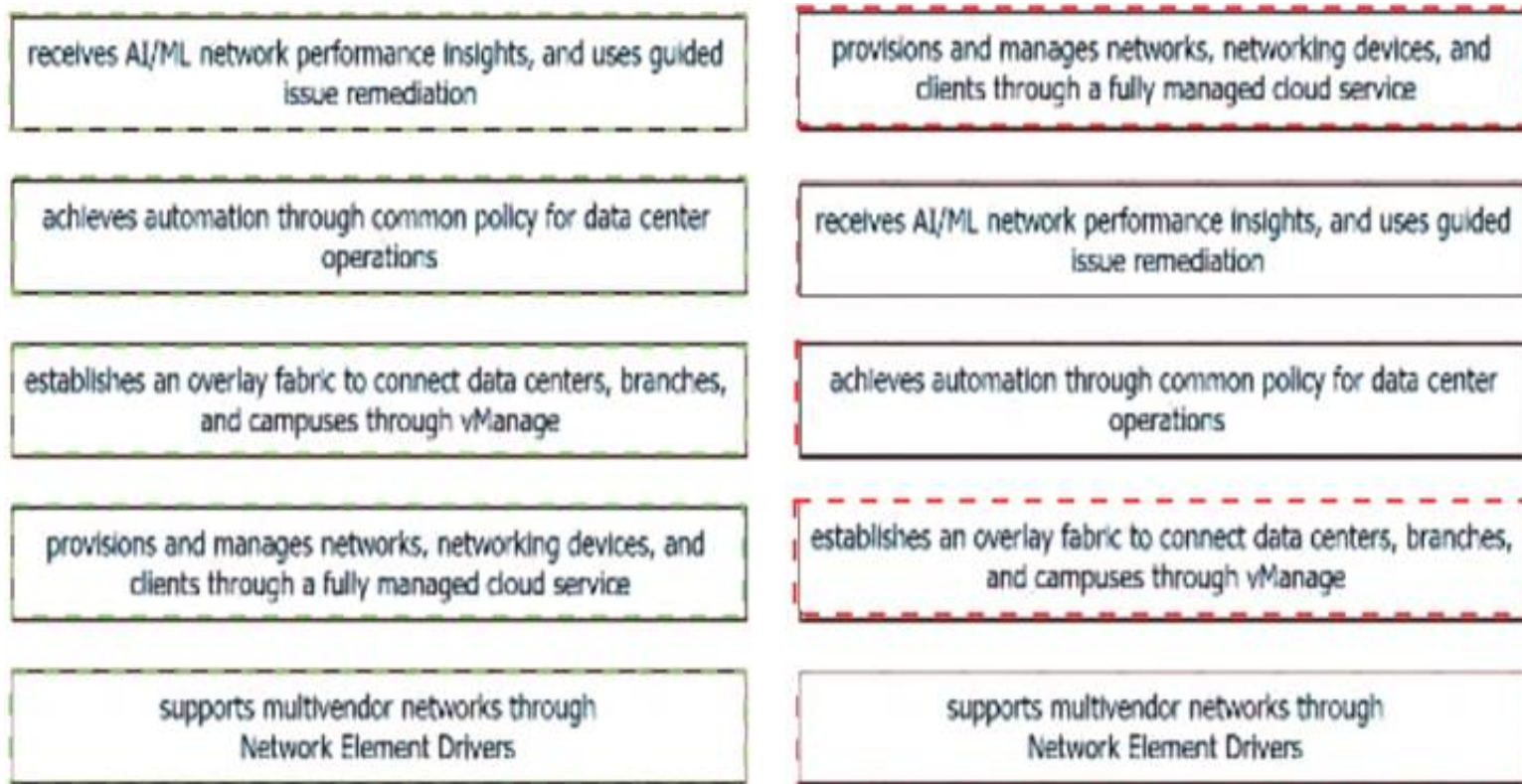
- (Exam Topic 3)
Drag and drop the capabilities from the left onto the Cisco Network Management Platforms that support the capabilities on the right.

receives AI/ML network performance insights, and uses guided issue remediation	Meraki
achieves automation through common policy for data center operations	Cisco DNA Center
establishes an overlay fabric to connect data centers, branches, and campuses through vManage	ACI
provisions and manages networks, networking devices, and clients through a fully managed cloud service	Cisco SD-WAN
supports multivendor networks through Network Element Drivers	NSO

- A. Mastered
- B. Not Mastered

Answer: A

Explanation:



NEW QUESTION 148

- (Exam Topic 3)

What is the purpose of running tests before writing code in test-driven development?

- A. to find unexpected failures in the tests
- B. to demonstrate that the tests fail for expected reasons
- C. to ensure that the tests pass
- D. to provide proof of the work carried out

Answer: D

NEW QUESTION 152

- (Exam Topic 3)

A team of developers is responsible for a network orchestration application in the company. The responsibilities also include: developing and improving the application in a continuous manner deployment of the application and management of CI/CD frameworks monitoring the usage and problems and managing the performance improvements Which principle best describes this DevOps practice?

- A. responsible for IT operations
- B. automation of processes
- C. end-to-end responsibility
- D. quality assurance checks

Answer: C

NEW QUESTION 155

- (Exam Topic 3)

A company deploys an application via containers in its local data center. As soon as the application goes into production, it starts to crash at specific hours of the day. After investigation, it is concluded that the crashes are due to too many users accessing the application simultaneously. The spikes must be addressed and allow for future growth without discarding the investment already made. Which deployment model must be used?

- A. hybrid cloud
- B. edge
- C. private cloud
- D. public cloud

Answer: A

NEW QUESTION 159

- (Exam Topic 3)

What is the function of an Ethernet switch in a networking environment?

- A. to switch a frame from one port to another port based on IP address
- B. to switch a frame from one port to another port based on MAC address
- C. to provide IP addressing to connected hosts
- D. to block unwanted traffic

Answer: B

NEW QUESTION 160

- (Exam Topic 3)

```
---
param0: Workflow1
param1:
  list:
    - name: VLAN_ID
      value: '198'
param2: 0
```

Refer to the exhibit. The YAML shown contains an object "param0" that is equal to "Workflow1", a second object "param1" that contains an object called "list" which contains an array of two objects, "name" (equal to "VLAN_ID") and "value" (equal to a text value "198"), and finally a third object "param2" that is equal to "0". What is the equivalent message in JSON data format?

A. [

```
  "param0"="Workflow1";
  "param1"=
    "list"=
      [ "name"="VLAN_ID";
        "value"="198" ]
  "param2"=0
]
```

B. {

```
  "param0": "Workflow1";
  "param1": {
    "list":
      [
        { "name": "VLAN_ID";
          "value": "198" }
      ]
  },
  "param2": 0
}
```

C. [

```
  "param0": "Workflow1",
  "param1": {
    "list":
      {
        [ "name": "VLAN_ID",
          "value": "198" ]
      }
  },
  "param2": 0
]
```

D. {

```
  "param0": "Workflow1",
  "param1": {
    "list":
      [
        { "name": "VLAN_ID",
          "value": "198" }
      ]
  },
  "param2": 0
}
```

Answer: D

NEW QUESTION 164

- (Exam Topic 3)

```

HTTPS/1.1 201 Created
Date: Tue, 08 Nov 2020 09:37:27 GMT
Server: example-server
Location: https://example.com/restconf/data\
          example-jukebox/library/dogbreed=Australian%20Cattle%20Dog
Last Modified: Tue 08 Nov 2020 09:37:27 GMT
ETag: "s1878124t4c"
  
```

Refer to the exhibit. Which RESTCONF request results in this response?

A.

```

GET /restconf/data/example-jukebox:jukebox/library HTTP/1.1
Host: example.com
Content-Type: application/yang-data-json

{
  "Example-jukebox:dogbreed" : [
    {
      "name" : "Australian Cattle Dog"
    }
  ]
}
  
```

B.

```

CONFIG /restconf/data/example-jukebox:jukebox/library HTTP/1.1
Host: example.com
Content-Type: application/yang-data-json

{
  "Example-jukebox:dogbreed" : [
    {
      "name" : "Australian Cattle Dog"
    }
  ]
}
  
```

C.

```

PUT /restconf/data/example-jukebox:jukebox/library HTTP/1.1
Host: example.com
Content-Type: application/yang-data-json

{
  "Example-jukebox:dogbreed" : [
    {
      "name" : "Australian Cattle Dog"
    }
  ]
}
  
```

D.

```

POST /restconf/data/example-jukebox:jukebox/library HTTP/1.1
Host: example.com
Content-Type: application/yang-data+json

{
  "Example:dogbreed" : [
    {
      "name" : "Australian Cattle Dog"
    }
  ]
}
  
```

Answer: D

NEW QUESTION 169

- (Exam Topic 3)

A developer creates a program in which an object maintains a list of classes based on the observer pattern. The classes are dependent on the object. Whenever the state of the object changes, it notifies the dependent classes directly through callbacks. Which advantage of the observer pattern offers minimum dependencies and maximum flexibility between dependent objects or classes?

- A. tight coupling
- B. cohesion
- C. mediation
- D. loose coupling

Answer: D

NEW QUESTION 173

- (Exam Topic 3)

What is a firehose webhook?

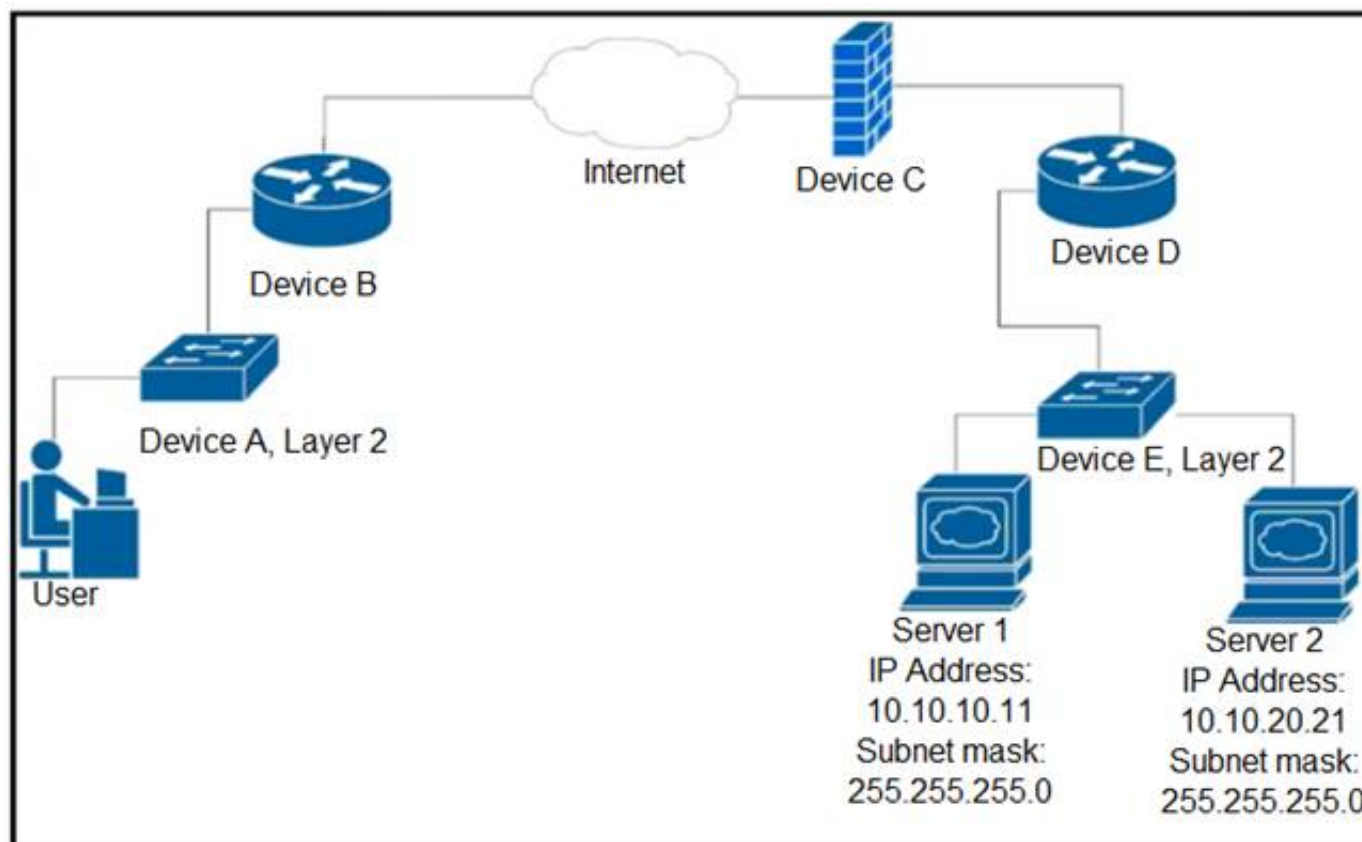
- A. It collects data from third-party cloud APIs for custom applications.
- B. It enables an application to receive real-time data from Cisco Webex.
- C. It enables data to flow from the Cisco Webex API to a user's application.
- D. It sends a notification of any event for commonly used resources.

Answer: D

NEW QUESTION 176

- (Exam Topic 3)

Refer to the exhibit.



Up to which device does the communication server 1 and server 2 go?

- A. device B
- B. device C
- C. device D
- D. device E

Answer: C

NEW QUESTION 181

- (Exam Topic 3)

What is a function of the default gateway in a network?

- A. to drop traffic that is destined to the default gateway
- B. to forward traffic to different subnets
- C. to forward traffic to the same subnet
- D. to drop traffic that is not destined to the default gateway

Answer: B

NEW QUESTION 185

- (Exam Topic 3)

Refer to the exhibit.


```
import requests

base url = f"https://webexapis.com/v1/people"

headers = {
    "Accept": "application/json"
}

person email = 'customer@company.com'
url = f"{base url}?email={person email}"

response = requests.request("GET", url, headers=headers)

if response.status code == 200 :
    print(f"OK - Added {person email}")
else:
    print(f"ERROR CODE {response.status code}")
```

A collaboration engineer has developed a script to automate the gathering of information by providing the email address of the individual. When the engineer tests the script, a 401 error is received. Which command fixes the script?

- A. Add "Authorization": "Bearer <WEBEX_TOKEN>" to the headers
- B. Add "Authentication": "Basic <WEBEX_TOKEN>" in the base_url after "https://".
- C. Add "<Authorization>:<password>@" in the base_url after "https://".
- D. Add "Authentication": "Bearer <WEBEX TOKEN>" to the headers

Answer: A

NEW QUESTION 187

- (Exam Topic 3)

Refer to the exhibit.

```
module ietf-interface {
  namespace "urn:ietf:params:xml:ns:yang:ietf-interfaces";
  prefix if;
  import ietf-yang-types {
    prefix yang;
  }
  container interfaces-state {
    list interface {
      key "name";
      leaf name {
        type string;
      }
      leaf admin-status {
        type enumeration {
          enum up {
            value 1;
          }
          enum down {
            value 2;
          }
          enum testing {
            value 3;
          }
        }
      }
      leaf if-index {
        type int32 {
          range "1..2147483647"
        }
      }
      container statistics {
        leaf in-octets {
          type yang:counter64;
        }
        leaf in-unicast-pkts {
          type yang:counter64;
        }
      }
    }
  }
}
```

Which XML snippet has interface information that conforms to the YANG model?

- A. Text Description automatically generated
- B.

```
<interfaces-state
xmlns="urn:ietf:params:xml:ns:yang:ietf-interfaces"
xmlns:if="urn:ietf:params:xml:ns:yang:ietf-interfaces">
  <interface name="GigabitEthernet1">
    <admin-status>1</admin-status>
    <if-index>1</if-index>
    <statistics>
      <in-octets>408164820</in-octets>
      <in-unicast-pkts>728061</in-unicast-pkts>
    </statistics>
  </interface>
</interfaces-state>
```

Text

Description automatically generated

```
<interfaces-state
xmlns="urn:ietf:params:xml:ns:yang:ietf-interfaces"
xmlns:if="urn:ietf:params:xml:ns:yang:ietf-interfaces">
  <interface>
    <name>GigabitEthernet1</name>
    <admin-status>up</admin-status>
    <if-index>1</if-index>
    <in-octets>408164820</in-octets>
    <in-unicast-pkts>728061</in-unicast-pkts>
  </interface>
</interfaces-state>
```

B. Text Description automatically generated

```
<interfaces-state
xmlns="urn:ietf:params:xml:ns:yang:ietf-interfaces"
xmlns:if="urn:ietf:params:xml:ns:yang:ietf-interfaces">
  <interface>
    <name>GigabitEthernet1</name>
    <admin-status>up</admin-status>
    <if-index>1</if-index>
    <statistics>
      <in-octets>408164820</in-octets>
      <in-unicast-pkts>728061</in-unicast-pkts>
    </statistics>
  </interface>
</interfaces-state>
```

C. Text Description automatically generated

```
<interfaces-state
xmlns="urn:ietf:params:xml:ns:yang:ietf-interfaces"
xmlns:if="urn:ietf:params:xml:ns:yang:ietf-interfaces">
  <interface>
    <name>GigabitEthernet1</name>
    <admin-status>1</admin-status>>
    <if-index>1</if-index>
    <statistics>
      <in-octets>408164820</in-octets>
      <in-unicast-pkts>728061</in-unicast-pkts>
    </statistics>
  </interface>
</interfaces-state>
```

Answer: C

Explanation:

<https://datatracker.ietf.org/doc/id/draft-ietf-netmod-interfaces-cfg-01.txt> <admin-status>up</admin-status>

NEW QUESTION 192

- (Exam Topic 3)

Which tool provides a testing environment to run tests on network devices and perform network automation scenarios?

- A. Visual Studio Code
- B. Cisco VIRL
- C. pyATS
- D. Cisco Packet Tracer

Answer: B

NEW QUESTION 194

- (Exam Topic 3)

What are two benefits of using classes over functions when writing applications? (Choose two.)

- A. improved readability
- B. increased compatibility
- C. variable reusability
- D. increased performance
- E. code organization

Answer: AC

NEW QUESTION 197

- (Exam Topic 3)

Object Lookup

Use the `MoDirectory.lookupByDn` to look up an object within the MIT object tree by its distinguished name (DN). This example looks for an object called 'uni':

```
uniMo = moDir.lookupByDn('uni')
```

A successful lookup operation returns a reference to the object that has the specified DN.

You can also look up an object by class. This example returns a list of all objects of the class 'polUni':

```
uniMo = moDir.lookupByClass('polUni')
```

You can add a filter to a lookup to find specific objects. This example returns an object of class 'fvTenant' whose name is 'Tenant1':

```
tenant1Mo = moDir.lookupByClass("fvTenant", propFilter='and(eq(fvTenant.name, "Tenant1"))')
```

Refer to the exhibit. Drag and drop the code from the bottom onto the box where the code is missing to add a subnet to each bridge domain in the Ten1 tenant. Not all options are used.


```

from cobra.model import fv
from cobra.mit.request import ClassQuery, DnQuery
import cobra.mit.access
import cobra.mit.session

tenname = "Ten1"
ls = cobra.mit.session.LoginSession(
    'https://10.100.1.200', "admin", "Lab123!3")

aci = cobra.mit.access.ModDirectory(ls)
aci.login()
c = cobra.mit.request.ConfigRequest()

qry1 =  (f'uni/tn-{tenname}')
fvTenant = aci.query(qry1)[0]

qry2 =  ("fvBD")
qry2.propFilter = f'and(wcard(fvBD.dn,"{fvTenant.dn}"))'
fvBDs = aci.query(qry2)

i=0
for fvBD in fvBDs:
    fvsubnet = cobra.model.fv.Subnet(  , ip=f'10.114.{i}.1/24')
    c.addMo(fvBD)
    aci.  (c)
    i+=1

```

- A. Mastered
- B. Not Mastered

Answer: A

Explanation:

```

from cobra.model import fv
from cobra.mit.request import ClassQuery, DnQuery
import cobra.mit.access
import cobra.mit.session

tenname = "Ten1"
ls = cobra.mit.session.LoginSession(
    'https://10.100.1.200', "admin", "Lab123!3")

aci = cobra.mit.access.ModDirectory(ls)
aci.login()
c = cobra.mit.request.ConfigRequest()

qry1 =  (f'uni/tn-{tenname}')
fvTenant = aci.query(qry1)[0]

qry2 =  ("fvBD")
qry2.propFilter = f'and(wcard(fvBD.dn,"{fvTenant.dn}"))'
fvBDs = aci.query(qry2)

i=0
for fvBD in fvBDs:
    fvsubnet = cobra.model.fv.Subnet(  , ip=f'10.114.{i}.1/24')
    c.addMo(fvBD)
    aci.  (c)
    i+=1

```

NEW QUESTION 200

- (Exam Topic 2)

What is a benefit of a model-driven approach for infrastructure automation?

- A. enforces the generation of all automation scripts through the modeling environment
- B. provides a small learning curve and helps system administrators with limited coding experience
- C. ensures that system administrators gain a good understanding of coding and expand their experience and capabilities
- D. enables a user to understand a declarative language to translate the model into an actionable script

Answer: A

NEW QUESTION 203

- (Exam Topic 2)

What is a benefit of using edge computing in an IoT implementation?

- A. low cost in network design
- B. low network design complexity
- C. high availability for network components
- D. high speed in data processing

Answer: D

NEW QUESTION 207

- (Exam Topic 2)

Drag and drop the code snippets from the bottom to the blanks in the code to test the API response through the Python unittest library. Not all options are used.

```
import unittest
import json
from apidogs import app

class TestsAPIDogs(unittest.TestCase):

    def setUp(self):
        self.app = app.test_client()

    # Check status response of API
    def test_status(self):
        resp =self.app.get('/dogs/all')
        status_code = response.
        self.assertEqual(status_code, )

    # Check for content type is in application/json
    def test_content_type(self):
        resp =self.app.get('/dogs/all')
        self.assertEqual(resp. , 'application/json')

    def test_item_not_exist(self):
        resp =self.app.get('/dogs?id= ')
        self.assertEqual(response.status code,404)
```

none

status_code

403

content

200

status

content_type

- A. Mastered
- B. Not Mastered

Answer: A

Explanation:

Graphical user interface, text Description automatically generated

NEW QUESTION 212

- (Exam Topic 2)

What is a capability of an agentless configuration management system?

- A. It requires managed hosts to have an interpreter for a high-level language such as Python or Ruby.
- B. It requires managed hosts to connect to a centralized host to receive updated configurations.
- C. It uses compiled languages as the basis of the domain-specific language to interface with managed hosts.
- D. It uses existing protocols to interface with the managed host.

Answer: D

NEW QUESTION 216

- (Exam Topic 3)

Which TCP port is used to connect to a network device by using Telnet?

- A. 23
- B. 69
- C. 400
- D. 830

Answer: A

NEW QUESTION 218

- (Exam Topic 3)

```
import os
import requests

# username and password

API_USER_NAME = "devnetuser"
API_PASSWORD = os.environ['API_PASSWORD']

requests.get('https://api.cisco.com/end-service', auth=(API_USER_NAME, API_PASSWORD))
```

Refer to the exhibit. An engineer must authorize a REST API call. The API password is "Cisco123!". Which Bash command must be placed in the code to authorize the call?

- A. mkdir API_PASSWORD=Cisco123!
- B. set API_PASSWORD=Cisco123!
- C. cp API_PASSWORD=Cisco123!
- D. export API_PASSWORD=Cisco123!

Answer: D

NEW QUESTION 222

- (Exam Topic 3)

A developer pushes an application to production. The application receives a webhook over HTTPS without a secret. The webhook information contains credentials to service in cleartext. When the information is received, it is stored in the database with an SHA-256 hash. Credentials to the database are accessed at runtime through the use of a vault service. While troubleshooting, the developer sets the logging to debug to view the message from the webhook. What is the security issue in this scenario?

- A. Database credentials should be accessed by using environment variables defined at runtime.
- B. During the transport of webhook messages, the credentials could be unencrypted and leaked.
- C. During logging, debugging should be disabled for the webhook message.
- D. Hashing the credentials in the database is not secure enough; the credentials should be encrypted.

Answer: B

NEW QUESTION 227

- (Exam Topic 3)

Which Cisco platform is used to manage data center infrastructure through third-party tools and system integrations?

- A. Cisco DNA Center
- B. Cisco UCS Manager
- C. Cisco Intersight
- D. Cisco UCS Director

Answer: D

NEW QUESTION 231

- (Exam Topic 3)

A developer has addressed a bug that was found in the production code of an application. A separate file named 'bug427896191v_fix' has been created with the changes to the code. Which Git command must be used to incorporate the bug fix into the production code?

- A. git rebase
- B. git cat-file
- C. git merge-file
- D. git bisert

Answer: C

NEW QUESTION 235

- (Exam Topic 3)

A customer's cloud services must:

Migrate services to another data center on demand. Save the operational state of the machine on demand. Support Windows and Linux GUIs.

Maximize hardware utilization.

Which type of deployment meets these requirements?

- A. bare metal
- B. container
- C. virtual machine
- D. Kubernetes

Answer: C

NEW QUESTION 236

- (Exam Topic 3)

```
FROM myImage
VOLUME ["/data"]
ENTRYPOINT ["/bin/sh"]
```

Refer to the exhibit. Drag and drop the actions from the left that the contents of this Dockerfile accomplish onto the right. Not all options are used.

Inject the image myImage.	step 1
Pull the image myImage.	step 2
Execute the "data" script under "/bin/sh".	step 3
Establish a volume whose root is "/data".	
Put the user in a shell inside the container.	

- A. Mastered
- B. Not Mastered

Answer: A

Explanation:

Inject the image myImage.	Pull the image myImage.
Pull the image myImage.	Establish a volume whose root is "/data".
Execute the "data" script under "/bin/sh".	Put the user in a shell inside the container.
Establish a volume whose root is "/data".	
Put the user in a shell inside the container.	

NEW QUESTION 238

- (Exam Topic 3)
To which stage of development do Infrastructure as Code principles relate?

- A. manual configuration
- B. service provisioning
- C. physical deployment
- D. requirement collection

Answer: B

NEW QUESTION 241

- (Exam Topic 3)
What is a benefit of using a code review process in application development?

- A. accelerates the deployment of new features in an existing application
- B. provides version control during code development
- C. enables the quick deployment of new code
- D. eliminates common mistakes during development

Answer: D

NEW QUESTION 245

- (Exam Topic 3)
Which Python function is used to parse a string that contains JSON data into a Python dictionary?

- A. json.dumps()

- B. json.to_json()
- C. json.parse()
- D. json.loads()

Answer: D

Explanation:

loads() function is present in python built-in 'json' module. This function is used to parse the JSON string.

NEW QUESTION 246

- (Exam Topic 3)

A group of software developers wants to improve its collaboration with the operations team. The group wants to deliver release-ready code that merges code changes back to the main branch and runs the automated testing as often as possible. Which DevOps concept does this scenario represent?

- A. continuous delivery
- B. version control
- C. continuous integration
- D. continuous deployment

Answer: C

NEW QUESTION 251

- (Exam Topic 3)

What is a feature of XML compared to other data formats?

- A. It uses tags to define the structure.
- B. It uses parenthesis for key-value pairs.
- C. It uses indentation to define the structure.
- D. It uses namespaces for list representation.

Answer: A

NEW QUESTION 255

- (Exam Topic 3)

Which traffic is handled on the control plane?

- A. BGP
- B. SMB
- C. NTP
- D. NETCONF

Answer: A

NEW QUESTION 258

- (Exam Topic 3)

Which two details are captured from the subnet mask? (Choose two.)

- A. portion of an IP address that refers to the subnet
- B. default gateway of the host
- C. unique number ID assigned to the host
- D. part of an IP address that refers to the host
- E. network connection of a host or interface

Answer: AD

NEW QUESTION 261

- (Exam Topic 3)

An engineer needs to retrieve a list of locally available Firepower Threat Defense upgrade packages by using the Firepower Management Center REST API. The engineer uses a GET request with the URL:

/api/fmc_platform/v1/updates/upgradepackages/f413afeb-e6f6-75f4-9169-6d9bd49s625e

What does "f413afeb-e6f6-75f4-9169-6d9bd49s625e" represent?

- A. container UUID
- B. package UUID
- C. domain UUID
- D. object UUID

Answer: B

Explanation:

"GET upgradepackages Request Type: GET

Description: Retrieves a list of locally available Firepower Threat Defense upgrade packages, including major upgrades, maintenances release upgrades, and hotfixes.

URL: /api/fmc_platform/v1/updates/upgradepackages

URL for GET by ID: /api/fmc_platform/v1/updates/upgradepackages/{package_UUID}" Source:

https://www.cisco.com/c/en/us/td/docs/security/firepower/640/api/REST/Firepower_Management_Center_RES

NEW QUESTION 265

- (Exam Topic 3)

A developer writes an application that refines data in temporary secure file storage hosted on the public cloud. Data will be deleted after processing and does not contain any private information. What is the advantage that a public cloud deployment provides to the developer?

- A. high security with encryption
- B. ease in infrastructure management
- C. flexible development
- D. bespoke services

Answer: B

NEW QUESTION 268

- (Exam Topic 3)

Which protocol runs over TCP port 830?

- A. NETCONF
- B. Telnet
- C. RESTCONF
- D. HTTP

Answer: A

NEW QUESTION 270

- (Exam Topic 3)

Which HTTP error code series relates to redirection?

- A. 400
- B. 500
- C. 200
- D. 300

Answer: D

Explanation:

1xx - Informational: The server has received the request and is continuing the process

2xx - Successful: The request was successful and the browser has received the expected information 3xx (Redirection): You have been redirected and the completion of the request requires further action

4xx (Client Error): The website or the page could not be reached, either the page is unavailable or the request contains bad syntax

5xx (Server Error): While the request appears to be valid, the server could not complete the request

NEW QUESTION 272

- (Exam Topic 3)

Why would a developer compare a current version of code to a previous version?

- A. to provide the single source of truth
- B. to troubleshoot code failures
- C. to track who made a change
- D. to aid in collaboration

Answer: B

NEW QUESTION 275

- (Exam Topic 3)

Refer to the exhibit.

```
cd ~/development/project01
mkdir info
cd info
[REDACTED]
cp ./requirements.txt ~/Documents/backup/requirements.txt
```

A developer just finished testing a Python script and wants to save the list of packages and versions installed on the current machine. The developer must make sure that it will not cause any issues if tested on another device due to different library versions. Which line of code needs to be placed on the snippet where the code is missing?

- A. pip freeze 2> requirements.txt
- B. pip freeze > requirements.txt
- C. pip freeze => requirements.txt
- D. pip freeze | requirements.txt

Answer: B

Explanation:

pip freeze requirements.txt ile ilgili görsel sonucu The most common command is pip freeze > requirements.txt , which records an environment's current package list into requirements.txt. If you want to install the dependencies in a virtual environment, create and activate that environment first, then use the Install from

requirements.

NEW QUESTION 278

.....

Thank You for Trying Our Product

We offer two products:

1st - We have Practice Tests Software with Actual Exam Questions

2nd - Questions and Answers in PDF Format

200-901 Practice Exam Features:

- * 200-901 Questions and Answers Updated Frequently
- * 200-901 Practice Questions Verified by Expert Senior Certified Staff
- * 200-901 Most Realistic Questions that Guarantee you a Pass on Your First Try
- * 200-901 Practice Test Questions in Multiple Choice Formats and Updates for 1 Year

100% Actual & Verified — Instant Download, Please Click
[Order The 200-901 Practice Test Here](#)