



EC-Council

Exam Questions 312-50v12

Certified Ethical Hacker Exam (CEHv12)

NEW QUESTION 1

- (Exam Topic 3)

Juliet, a security researcher in an organization, was tasked with checking for the authenticity of images to be used in the organization's magazines. She used these images as a search query and tracked the original source and details of the images, which included photographs, profile pictures, and memes. Which of the following footprinting techniques did Rachel use to finish her task?

- A. Reverse image search
- B. Meta search engines
- C. Advanced image search
- D. Google advanced search

Answer: C

NEW QUESTION 2

- (Exam Topic 3)

Based on the below log, which of the following sentences are true?

Mar 1, 2016, 7:33:28 AM 10.240.250.23 - 54373 10.249.253.15 - 22 tcp_ip

- A. Application is FTP and 10.240.250.23 is the client and 10.249.253.15 is the server.
- B. Application is SSH and 10.240.250.23 is the server and 10.249.253.15 is the client.
- C. SSH communications are encrypted; it's impossible to know who is the client or the server.
- D. Application is SSH and 10.240.250.23 is the client and 10.249.253.15 is the server.

Answer: D

Explanation:

Mar 1, 2016, 7:33:28 AM 10.240.250.23 - 54373 10.249.253.15 - 22 tcp_ip

Let's just disassemble this entry.

Mar 1, 2016, 7:33:28 AM - time of the request 10.240.250.23 - 54373 - client's IP and port 10.249.253.15 - server IP
- 22 - SSH port

NEW QUESTION 3

- (Exam Topic 3)

Which type of malware spreads from one system to another or from one network to another and causes similar types of damage as viruses do to the infected system?

- A. Rootkit
- B. Trojan
- C. Worm
- D. Adware

Answer: C

NEW QUESTION 4

- (Exam Topic 3)

Shiela is an information security analyst working at HiTech Security Solutions. She is performing service version discovery using Nmap to obtain information about the running services and their versions on a target system.

Which of the following Nmap options must she use to perform service version discovery on the target host?

- A. -SN
- B. -SX
- C. -sV
- D. -SF

Answer: C

NEW QUESTION 5

- (Exam Topic 3)

Harper, a software engineer, is developing an email application. To ensure the confidentiality of email messages. Harper uses a symmetric-key block cipher having a classical 12- or 16-round Feistel network with a block size of 64 bits for encryption, which includes large 8 x 32-bit S-boxes (S1, S2, S3, S4) based on bent functions, modular addition and subtraction, key-dependent rotation, and XOR operations. This cipher also uses a masking key(Km1)and a rotation key (Kr1) for performing its functions. What is the algorithm employed by Harper to secure the email messages?

- A. CAST-128
- B. AES
- C. GOST block cipher
- D. DES

Answer: A

NEW QUESTION 6

- (Exam Topic 3)

Dorian Is sending a digitally signed email to Polly, with which key is Dorian signing this message and how is Poly validating It?

- A. Dorian is signing the message with his public ke
- B. and Poly will verify that the message came from Dorian by using Dorian's private key.

- C. Dorian is signing the message with Polys public ke
- D. and Poly will verify that the message came from Dorian by using Dorian's public key.
- E. Dorian is signing the message with his private ke
- F. and Poly will verify that the message came from Dorian by using Dorian's public key.
- G. Dorian is signing the message with Polys private ke
- H. and Poly will verify mat the message came from Dorian by using Dorian's public key.

Answer: C

Explanation:

<https://blog.mailfence.com/how-do-digital-signatures-work/> https://en.wikipedia.org/wiki/Digital_signature

A digital signature is a mathematical technique used to validate the authenticity and integrity of a message, software, or digital document. It's the digital equivalent of a handwritten signature or stamped seal, but it offers far more inherent security. A digital signature is intended to solve the problem of tampering and impersonation in digital communications.

Digital signatures can provide evidence of origin, identity, and status of electronic documents, transactions, or digital messages. Signers can also use them to acknowledge informed consent.

Digital signatures are based on public-key cryptography, also known as asymmetric cryptography. Two keys are generated using a public key algorithm, such as RSA (Rivest-Shamir-Adleman), mathematically linked pair of keys, one private and one public.

creating a Digital signatures work through public-key cryptography's two mutually authenticating cryptographic keys.

The individual who creates the digital signature uses a private key

only way to decrypt that data is with the signer's public key.

to encrypt signature-related data, while the

NEW QUESTION 7

- (Exam Topic 3)

Alex, a cloud security engineer working in Eyecloud Inc. is tasked with isolating applications from the underlying infrastructure and stimulating communication via well-defined channels. For this purpose, he used an open-source technology that helped him in developing, packaging, and running applications; further, the technology provides PaaS through OS-level visualization, delivers containerized software packages, and promotes fast software delivery. What is the cloud technology employed by Alex in the above scenario?

- A. Virtual machine
- B. Serverless computing
- C. Docker
- D. Zero trust network

Answer: C

NEW QUESTION 8

- (Exam Topic 3)

Stella, a professional hacker, performs an attack on web services by exploiting a vulnerability that provides additional routing information in the SOAP header to support asynchronous communication. This further allows the transmission of web-service requests and response messages using different TCP connections. Which of the following attack techniques is used by Stella to compromise the web services?

- A. XML injection
- B. WS-Address spoofing
- C. SOAPAction spoofing
- D. Web services parsing attacks

Answer: B

Explanation:

WS-Address provides additional routing information in the SOAP header to support asynchronous communication. This technique allows the transmission of web service requests and response messages using different TCP connections

<https://www.google.com/search?client=firefox-b-d&q=WS-Address+spoofing> CEH V11 Module 14 Page 1896

NEW QUESTION 9

- (Exam Topic 3)

You have been authorized to perform a penetration test against a website. You want to use Google dorks to footprint the site but only want results that show file extensions. What Google dork operator would you use?

- A. filetype
- B. ext
- C. inurl
- D. site

Answer: A

Explanation:

Restrict results to those of a certain filetype. E.g., PDF, DOCX, TXT, PPT, etc. Note: The "ext:" operator can also be used—the results are identical.

Example: apple filetype:pdf / apple ext:pdf

NEW QUESTION 10

- (Exam Topic 3)

Calvin, a grey-hat hacker, targets a web application that has design flaws in its authentication mechanism. He enumerates usernames from the login form of the web application, which requests users to feed data and specifies the incorrect field in case of invalid credentials. Later, Calvin uses this information to perform social engineering.

Which of the following design flaws in the authentication mechanism is exploited by Calvin?

- A. Insecure transmission of credentials
- B. Verbose failure messages
- C. User impersonation
- D. Password reset mechanism

Answer: D

NEW QUESTION 10

- (Exam Topic 3)

Heather's company has decided to use a new customer relationship management tool. After performing the appropriate research, they decided to purchase a subscription to a cloud-hosted solution. The only administrative task that Heather will need to perform is the management of user accounts. The provider will take care of the hardware, operating system, and software administration including patching and monitoring. Which of the following is this type of solution?

- A. SaaS
- B. IaaS
- C. CaaS
- D. PasS

Answer: A

Explanation:

Software as a service (SaaS) allows users to attach to and use cloud-based apps over the web. Common examples are email, calendaring and workplace tool (such as Microsoft workplace 365).

SaaS provides a whole software solution that you get on a pay-as-you-go basis from a cloud service provider. You rent the use of an app for your organisation and your users connect with it over the web, typically with an internet browser. All of the underlying infrastructure, middleware, app software system and app knowledge are located within the service provider's knowledge center. The service provider manages the hardware and software system and with the appropriate service agreement, can make sure the availability and also the security of the app and your data as well. SaaS allows your organisation to induce quickly up and running with an app at token upfront cost.

Common SaaS scenarios This tool having used a web-based email service like Outlook, Hotmail or Yahoo! Mail, then you have got already used a form of SaaS. With these services, you log into your account over the web, typically from an internet browser. The e-mail software system is found on the service provider's network and your messages are held on there moreover. You can access your email and hold on messages from an internet browser on any laptop or Internet-connected device.

The previous examples are free services for personal use. For organisational use, you can rent productivity apps, like email, collaboration and calendaring; and sophisticated business applications like client relationship management (CRM), enterprise resource planning (ERP) and document management. You buy the use of those apps by subscription or per the level of use.

Advantages of SaaS Gain access to stylish applications. To supply SaaS apps to users, you don't ought to purchase, install, update or maintain any hardware, middleware or software system. SaaS makes even sophisticated enterprise applications, like ERP and CRM, affordable for organisations that lack the resources to shop for, deploy and manage the specified infrastructure and software system themselves.

Pay just for what you utilize. You furthermore may economize because the SaaS service automatically scales up and down per the level of usage.

Use free shopper software system. Users will run most SaaS apps directly from their web browser without needing to transfer and install any software system, though some apps need plugins. This suggests that you simply don't ought to purchase and install special software system for your users.

Mobilise your hands simply. SaaS makes it simple to "mobilise" your hands as a result of users will access SaaS apps and knowledge from any Internet-connected laptop or mobile device. You don't ought to worry concerning developing apps to run on differing types of computers and devices as a result of the service supplier has already done therefore. Additionally, you don't ought to bring special experience aboard to manage the safety problems inherent in mobile computing. A fastidiously chosen service supplier can make sure the security of your knowledge, no matter the sort of device intense it.

Access app knowledge from anyplace. With knowledge held on within the cloud, users will access their info from any Internet-connected laptop or mobile device. And once app knowledge is held on within the cloud, no knowledge is lost if a user's laptop or device fails.

NEW QUESTION 14

- (Exam Topic 3)

Lewis, a professional hacker, targeted the IoT cameras and devices used by a target venture-capital firm. He used an information-gathering tool to collect information about the IoT devices connected to a network, open ports and services, and the attack surface area. Using this tool, he also generated statistical reports on broad usage patterns and trends. This tool helped Lewis continually monitor every reachable server and device on the Internet, further allowing him to exploit these devices in the network. Which of the following tools was employed by Lewis in the above scenario?

- A. Censys
- B. Wapiti
- C. NeuVector
- D. Lacework

Answer: A

Explanation:

Censys scans help the scientific community accurately study the Internet. The data is sometimes used to detect security problems and to inform operators of vulnerable systems so that they can fix them.

NEW QUESTION 17

- (Exam Topic 3)

Joel, a professional hacker, targeted a company and identified the types of websites frequently visited by its employees. Using this information, he searched for possible loopholes in these websites and injected a malicious script that can redirect users from the web page and download malware onto a victim's machine. Joel waits for the victim to access the infected web application so as to compromise the victim's machine. Which of the following techniques is used by Joel in the above scenario?

- A. DNS rebinding attack
- B. Clickjacking attack
- C. Marionet attack
- D. Watering hole attack

Answer: B

Explanation:

<https://en.wikipedia.org/wiki/Clickjacking>

Clickjacking is an attack that tricks a user into clicking a webpage element which is invisible or disguised as another element. This can cause users to unwittingly download malware, visit malicious web pages, provide credentials or sensitive information, transfer money, or purchase products online.

Typically, clickjacking is performed by displaying an invisible page or HTML element, inside an iframe, on top of the page the user sees. The user believes they are clicking the visible page but in fact they are clicking an invisible element in the additional page transposed on top of it.

NEW QUESTION 21

- (Exam Topic 3)

An attacker changes the profile information of a particular user (victim) on the target website. The attacker uses this string to update the victim's profile to a text file and then submit the data to the attacker's database.

```
<
iframe src=""http://www.vulnweb.com/updateif.php"" style=""display:none""
> < /iframe >
```

What is this type of attack (that can use either HTTP GET or HTTP POST) called?

- A. Browser Hacking
- B. Cross-Site Scripting
- C. SQL Injection
- D. Cross-Site Request Forgery

Answer: D

Explanation:

<https://book.hacktricks.xyz/pentesting-web/csrf-cross-site-request-forgery>

Cross-site request forgery (also known as CSRF) is a web security vulnerability that allows an attacker to induce users to perform actions that they do not intend to perform.

This is done by making a logged in user in the victim platform access an attacker controlled website and from there execute malicious JS code, send forms or retrieve "images" to the victims account.

In order to be able to abuse a CSRF vulnerability you first need to find a relevant action to abuse (change password or email, make the victim follow you on a social network, give you more privileges...). The session must rely only on cookies or HTTP Basic Authentication header, any other header can't be used to handle the session. An finally, there shouldn't be unpredictable parameters on the request.

Several counter-measures could be in place to avoid this vulnerability. Common defenses:

- SameSite cookies: If the session cookie is using this flag, you may not be able to send the cookie from arbitrary web sites.
- Cross-origin resource sharing: Depending on which kind of HTTP request you need to perform to abuse the relevant action, you may take int account the CORS policy of the victim site. Note that the CORS policy won't affect if you just want to send a GET request or a POST request from a form and you don't need to read the response.
- Ask for the password user to authorise the action.
- Resolve a captcha
- Read the Referrer or Origin headers. If a regex is used it could be bypassed form example with:
`http://mal.net?orig=http://example.com` (ends with the url) `http://example.com.mal.net` (starts with the url)
- Modify the name of the parameters of the Post or Get request
- Use a CSRF token in each session. This token has to be send inside the request to confirm the action. This token could be protected with CORS.

Diagram Description automatically generated

NEW QUESTION 22

- (Exam Topic 3)

Louis, a professional hacker, had used specialized tools or search engines to encrypt all his browsing activity and navigate anonymously to obtain sensitive/hidden information about official government or federal databases. After gathering the Information, he successfully performed an attack on the target government organization without being traced. Which of the following techniques is described in the above scenario?

- A. Dark web footprinting
- B. VoIP footpnnting
- C. VPN footprinting
- D. website footprinting

Answer: A

Explanation:

The deep web is the layer of the online cyberspace that consists of web pages and content that are hidden and unindexed.

NEW QUESTION 25

- (Exam Topic 3)

Tony wants to integrate a 128-bit symmetric block cipher with key sizes of 128,192, or 256 bits into a software program, which involves 32 rounds of computational operations that include substitution and permutation operations on four 32-bit word blocks using 8-variable S-boxes with 4-bit entry and 4-bit exit. Which of the following algorithms includes all the above features and can be integrated by Tony into the software program?

- A. TEA
- B. CAST-128
- C. RC5
- D. serpent

Answer: D

NEW QUESTION 29

- (Exam Topic 3)

Harris is attempting to identify the OS running on his target machine. He inspected the initial TTL in the IP header and the related TCP window size and obtained the following results:

TTL: 64 Window Size: 5840

What is the OS running on the target machine?

- A. Solaris OS
- B. Windows OS
- C. Mac OS
- D. Linux OS

Answer: D

NEW QUESTION 34

- (Exam Topic 3)

John, a professional hacker, performs a network attack on a renowned organization and gains unauthorized access to the target network. He remains in the network without being detected for a long time and obtains sensitive information without sabotaging the organization. Which of the following attack techniques is used by John?

- A. Advanced persistent theft
- B. threat Diversion theft
- C. Spear-phishing sites
- D. insider threat

Answer: A

Explanation:

An advanced persistent threat (APT) may be a broad term wont to describe AN attack campaign within which an intruder, or team of intruders, establishes a bootleg, long presence on a network so as to mine sensitive knowledge.

The targets of those assaults, that square measure terribly fastidiously chosen and researched, usually embrace massive enterprises or governmental networks. the implications of such intrusions square measure huge, and include:

- Intellectual property thieving (e.g., trade secrets or patents)
- Compromised sensitive info (e.g., worker and user personal data)
- The sabotaging of essential structure infrastructures (e.g., information deletion)
- Total website takeovers

Executing an APT assault needs additional resources than a regular internet application attack. The perpetrators square measure typically groups of intimate cybercriminals having substantial resource. Some APT attacks square measure government-funded and used as cyber warfare weapons.

APT attacks dissent from ancient internet application threats, in that:

- They're considerably additional advanced.
- They're not hit and run attacks—once a network is infiltrated, the culprit remains so as to realize the maximum amount info as potential.
- They're manually dead (not automated) against a selected mark and indiscriminately launched against an outsized pool of targets.
- They typically aim to infiltrate a complete network, as opposition one specific half.

More common attacks, like remote file inclusion (RFI), SQL injection and cross-site scripting (XSS), square measure oftentimes employed by perpetrators to ascertain a footing in a very targeted network. Next, Trojans and backdoor shells square measure typically wont to expand that foothold and make a persistent presence inside the targeted perimeter.

NEW QUESTION 37

- (Exam Topic 3)

John, a security analyst working for an organization, found a critical vulnerability on the organization's LAN that allows him to view financial and personal information about the rest of the employees. Before reporting the vulnerability, he examines the information shown by the vulnerability for two days without disclosing any information to third parties or other internal employees. He does so out of curiosity about the other employees and may take advantage of this information later. What would John be considered as?

- A. Cybercriminal
- B. Black hat
- C. White hat
- D. Gray hat

Answer: D

NEW QUESTION 38

- (Exam Topic 3)

The network in ABC company is using the network address 192.168.1.64 with mask 255.255.255.192. In the network the servers are in the addresses 192.168.1.122, 192.168.1.123 and 192.168.1.124. An attacker is trying to find those servers but he cannot see them in his scanning. The command he is using is: nmap 192.168.1.64/28.

Why he cannot see the servers?

- A. He needs to add the command ""ip address"" just before the IP address
- B. He needs to change the address to 192.168.1.0 with the same mask
- C. He is scanning from 192.168.1.64 to 192.168.1.78 because of the mask /28 and the servers are not in that range
- D. The network must be dawn and the nmap command and IP address are ok

Answer: C

Explanation:

<https://en.wikipedia.org/wiki/Subnetwork>

This is a fairly simple question. You must to understand what a subnet mask is and how it works.

A subnetwork or subnet is a logical subdivision of an IP network. The practice of dividing a network into two or more networks is called subnetting.

Computers that belong to the same subnet are addressed with an identical most-significant bit-group in their IP addresses. This results in the logical division of an IP address into two fields: the network number or routing prefix and the rest field or host identifier. The rest field is an identifier for a specific host or network

interface.

The routing prefix may be expressed in Classless Inter-Domain Routing (CIDR) notation written as the first address of a network, followed by a slash character (/), and ending with the bit-length of the prefix. For example, 198.51.100.0/24 is the prefix of the Internet Protocol version 4 network starting at the given address, having 24 bits allocated for the network prefix, and the remaining 8 bits reserved for host addressing. Addresses in the range 198.51.100.0 to 198.51.100.255 belong to this network. The IPv6 address specification 2001:db8::/32 is a large address block with 296 addresses, having a 32-bit routing prefix.

For IPv4, a network may also be characterized by its subnet mask or netmask, which is the bitmask that when applied by a bitwise AND operation to any IP address in the network, yields the routing prefix. Subnet masks are also expressed in dot-decimal notation like an address. For example, 255.255.255.0 is the subnet mask for the prefix 198.51.100.0/24.

Table Description automatically generated

IPv4 CIDR				
CIDR	The last IP address on the subnet	Subnet mask	Number of addresses in a subnet	Number of hosts in the subnet
a.b.c.d/32	0.0.0.0	255.255.255.255	1	0
a.b.c.d/31	0.0.0.1	255.255.255.254	2	0
a.b.c.d/30	0.0.0.3	255.255.255.252	4	2
a.b.c.d/29	0.0.0.7	255.255.255.248	8	6
a.b.c.d/28	0.0.0.15	255.255.255.240	16	14
a.b.c.d/27	0.0.0.31	255.255.255.224	32	30
a.b.c.d/26	0.0.0.63	255.255.255.192	64	62
a.b.c.d/25	0.0.0.127	255.255.255.128	128	126
a.b.c.0/24	0.0.0.255	255.255.255.000	256	254
a.b.c.0/23	0.0.1.255	255.255.254.000	512	510
a.b.c.0/22	0.0.3.255	255.255.252.000	1024	1022
a.b.c.0/21	0.0.7.255	255.255.248.000	2048	2046
a.b.c.0/20	0.0.15.255	255.255.240.000	4096	4094
a.b.c.0/19	0.0.31.255	255.255.224.000	8192	8190
a.b.c.0/18	0.0.63.255	255.255.192.000	16384	16382
a.b.c.0/17	0.0.127.255	255.255.128.000	32768	32766
a.b.0.0/16	0.0.255.255	255.255.000.000	65536	65534
a.b.0.0/15	0.1.255.255	255.254.000.000	131072	131070
a.b.0.0/14	0.3.255.255	255.252.000.000	262144	262142
a.b.0.0/13	0.7.255.255	255.248.000.000	524288	524286
a.b.0.0/12	0.15.255.255	255.240.000.000	1048576	1048574
a.b.0.0/11	0.31.255.255	255.224.000.000	2097152	2097150
a.b.0.0/10	0.63.255.255	255.192.000.000	4194304	4194302
a.b.0.0/9	0.127.255.255	255.128.000.000	8388608	8388606
a.0.0.0/8	0.255.255.255	255.000.000.000	16777216	16777214
a.0.0.0/7	1.255.255.255	254.000.000.000	33554432	33554430
a.0.0.0/6	3.255.255.255	252.000.000.000	67108864	67108862
a.0.0.0/5	7.255.255.255	248.000.000.000	134217728	134217726
a.0.0.0/4	15.255.255.255	240.000.000.000	268435456	268435454
a.0.0.0/3	31.255.255.255	224.000.000.000	536870912	536870910
a.0.0.0/2	63.255.255.255	192.000.000.000	1073741824	1073741822
a.0.0.0/1	127.255.255.255	128.000.000.000	2147483648	2147483646
0.0.0.0/0	255.255.255.255	000.000.000.000	4294967296	4294967294

NEW QUESTION 40
- (Exam Topic 3)
Which protocol is used for setting up secure channels between two devices, typically in VPNs?

- A. PEM
- B. ppp
- C. IPSEC
- D. SET

Answer: C

NEW QUESTION 45
- (Exam Topic 3)
Henry is a penetration tester who works for XYZ organization. While performing enumeration on a client organization, he queries the DNS server for a specific cached DNS record. Further, by using this cached record, he determines the sites recently visited by the organization's user. What is the enumeration technique used by Henry on the organization?

- A. DNS zone walking
- B. DNS cache snooping
- C. DNS SEC zone walking
- D. DNS cache poisoning

Answer: B

NEW QUESTION 48
- (Exam Topic 3)
An attacker can employ many methods to perform social engineering against unsuspecting employees, including scareware. What is the best example of a scareware attack?

- A. A pop-up appears to a user stating, "You have won a free cruise! Click here to claim your prize!"
- B. A banner appears to a user stating, "Your account has been locked."
- C. Click here to reset your password and unlock your account."
- D. A banner appears to a user stating, "Your Amazon order has been delayed."
- E. Click here to find out your new delivery date."
- F. A pop-up appears to a user stating, "Your computer may have been infected with spyware."
- G. Click here to install an anti-spyware tool to resolve this issue."

Answer: D

NEW QUESTION 51

- (Exam Topic 3)

Kate dropped her phone and subsequently encountered an issue with the phone's internal speaker. Thus, she is using the phone's loudspeaker for phone calls and other activities. Bob, an attacker, takes advantage of this vulnerability and secretly exploits the hardware of Kate's phone so that he can monitor the loudspeaker's output from data sources such as voice assistants, multimedia messages, and audio files by using a malicious app to breach speech privacy. What is the type of attack Bob performed on Kate in the above scenario?

- A. Man-in-the-disk attack
- B. aLTER attack
- C. SIM card attack
- D. Spearphone attack

Answer: D

NEW QUESTION 54

- (Exam Topic 3)

You want to analyze packets on your wireless network. Which program would you use?

- A. Wireshark with Airpcap
- B. Airtsnort with Airpcap
- C. Wireshark with Winpcap
- D. Ethereal with Winpcap

Answer: A

Explanation:

<https://support.riverbed.com/content/support/software/steelcentral-npm/airpcap.html>

Since this question refers specifically to analyzing a wireless network, it is obvious that we need an option with AirPcap (Riverbed AirPcap USB-based adapters capture 802.11 wireless traffic for analysis). Since it works with two traffic analyzers SteelCentral Packet Analyzer (Cascade Pilot) or Wireshark, the correct option would be "Wireshark with Airpcap."

NOTE: AirPcap adapters no longer available for sale effective January 1, 2018, but a question on this topic may occur on your exam.

NEW QUESTION 58

- (Exam Topic 3)

The security team of Debry Inc. decided to upgrade Wi-Fi security to thwart attacks such as dictionary attacks and key recovery attacks. For this purpose, the security team started implementing cutting-edge technology that uses a modern key establishment protocol called the simultaneous authentication of equals (SAE), also known as dragonfly key exchange, which replaces the PSK concept. What is the Wi-Fi encryption technology implemented by Debry Inc.?

- A. WEP
- B. WPA
- C. WPA2
- D. WPA3

Answer: C

NEW QUESTION 59

- (Exam Topic 3)

Richard, an attacker, targets an MNC. In this process, he uses a footprinting technique to gather as much information as possible. Using this technique, he gathers domain information such as the target domain name, contact details of its owner, expiry date, and creation date. With this information, he creates a map of the organization's network and misleads domain owners with social engineering to obtain internal details of its network. What type of footprinting technique is employed by Richard?

- A. VoIP footprinting
- B. VPN footprinting
- C. Whois footprinting
- D. Email footprinting

Answer: C

Explanation:

WHOIS (pronounced because the phrase who is) may be a query and response protocol and whois footprinting may be a method for gathering information about ownership of a website name as following:• name details• Contact details contain phone no. and email address of the owner• Registration date for the name• Expiry date for the name• name servers

NEW QUESTION 63

- (Exam Topic 3)

An attacker scans a host with the below command. Which three flags are set?

nmap -sX host.domain.com

- A. This is SYN sca
- B. SYN flag is set.
- C. This is Xmas sca
- D. URG, PUSH and FIN are set.
- E. This is ACK sca
- F. ACK flag is set.
- G. This is Xmas sca
- H. SYN and ACK flags are set.

Answer: B

NEW QUESTION 67

- (Exam Topic 3)

What information security law or standard aims at protecting stakeholders and the general public from accounting errors and fraudulent activities within organizations?

- A. PCI-DSS
- B. FISMA
- C. SOX
- D. ISO/I EC 27001:2013

Answer: C

NEW QUESTION 70

- (Exam Topic 3)

_____ is a type of phishing that targets high-profile executives such as CEOs, CFOs, politicians, and celebrities who have access to confidential and highly valuable information.

- A. Spear phishing
- B. Whaling
- C. Vishing
- D. Phishing

Answer: B

NEW QUESTION 75

- (Exam Topic 3)

To hide the file on a Linux system, you have to start the filename with a specific character. What is the character?

- A. Exclamation mark (!)
- B. Underscore (_)
- C. Tilde H
- D. Period (.)

Answer: D

NEW QUESTION 78

- (Exam Topic 3)

Sophia is a shopping enthusiast who spends significant time searching for trendy outfits online. Clark, an attacker, noticed her activities several times and sent a fake email containing a deceptive page link to her social media page displaying all-new and trendy outfits. In excitement, Sophia clicked on the malicious link and logged in to that page using her valid credentials. Which of the following tools is employed by Clark to create the spoofed email?

- A. PyLoris
- B. Slowloris
- C. Evilginx
- D. PLCinject

Answer: C

NEW QUESTION 82

- (Exam Topic 3)

Stephen, an attacker, targeted the industrial control systems of an organization. He generated a fraudulent email with a malicious attachment and sent it to employees of the target organization. An employee who manages the sales software of the operational plant opened the fraudulent email and clicked on the malicious attachment. This resulted in the malicious attachment being downloaded and malware being injected into the sales software maintained in the victim's system. Further, the malware propagated itself to other networked systems, finally damaging the industrial automation components. What is the attack technique used by Stephen to damage the industrial systems?

- A. Spear-phishing attack
- B. SMishing attack
- C. Reconnaissance attack
- D. HMI-based attack

Answer: A

NEW QUESTION 85

- (Exam Topic 3)

Miley, a professional hacker, decided to attack a target organization's network. To perform the attack, she used a tool to send fake ARP messages over the target

network to link her MAC address with the target system's IP address. By performing this, Miley received messages directed to the victim's MAC address and further used the tool to intercept, steal, modify, and block sensitive communication to the target system. What is the tool employed by Miley to perform the above attack?

- A. Gobbler
- B. KDerpNSpoof
- C. BetterCAP
- D. Wireshark

Answer: C

NEW QUESTION 86

- (Exam Topic 3)

You have compromised a server on a network and successfully opened a shell. You aimed to identify all operating systems running on the network. However, as you attempt to fingerprint all machines in the network using the nmap syntax below, it is not going through.

```
invictus@victim_server.~$ nmap -T4 -O 10.10.0.0/24 TCP/IP fingerprinting (for OS scan) xxxxxxxx xxxxxxxx  
xc. QUITTING!
```

What seems to be wrong?

- A. The nmap syntax is wrong.
- B. This is a common behavior for a corrupted nmap application.
- C. The outgoing TCP/IP fingerprinting is blocked by the host firewall.
- D. OS Scan requires root privileges.

Answer: D

NEW QUESTION 87

- (Exam Topic 3)

Which Nmap switch helps evade IDS or firewalls?

- A. -n/-R
- B. -ON/-OX/-OG
- C. -T
- D. -D

Answer: C

NEW QUESTION 91

- (Exam Topic 3)

Which of the following web vulnerabilities would an attacker be attempting to exploit if they delivered the following input?

```
<!DOCTYPE blah [ < IENTITY trustme SYSTEM "file:///etc/passwd" > ] >
```

- A. XXE
- B. SQLi
- C. IDOR
- D. XSS

Answer: A

NEW QUESTION 96

- (Exam Topic 3)

A penetration tester is performing the footprinting process and is reviewing publicly available information about an organization by using the Google search engine.

Which of the following advanced operators would allow the pen tester to restrict the search to the organization's web domain?

- A. [allinurl:]
- B. [location:]
- C. [site:]
- D. [link:]

Answer: C

Explanation:

Google hacking or Google dorking https://en.wikipedia.org/wiki/Google_hacking

It is a hacker technique that uses Google Search and other Google applications to find security holes in the configuration and computer code that websites are using. Google dorking could also be used for OSINT.

Search syntax https://en.wikipedia.org/wiki/Google_Search

Google's search engine has its own built-in query language. The following list of queries can be run to find a list of files, find information about your competition, track people, get information about SEO backlinks, build email lists, and of course, discover web vulnerabilities.

- [site:] - Search within a specific website

NEW QUESTION 100

- (Exam Topic 3)

The security administrator of ABC needs to permit Internet traffic in the host 10.0.0.2 and UDP traffic in the host 10.1.1.3. He also needs to permit all FTP traffic to the rest of the network and deny all other traffic. After he applied his ACL configuration in the router, nobody can access the ftp, and the permitted hosts cannot access the Internet. According to the next configuration, what is happening in the network?

```
access-list 102 deny tcp any any
```

```
access-list 104 permit udp host 10.0.0.3 any
```

```
access-list 110 permit tcp host 10.0.0.2 eq www any
```

access-list 108 permit tcp any eq ftp any

- A. The ACL 104 needs to be first because is UDP
- B. The first ACL is denying all TCP traffic and the other ACLs are being ignored by the router
- C. The ACL for FTP must be before the ACL 110
- D. The ACL 110 needs to be changed to port 80

Answer: B

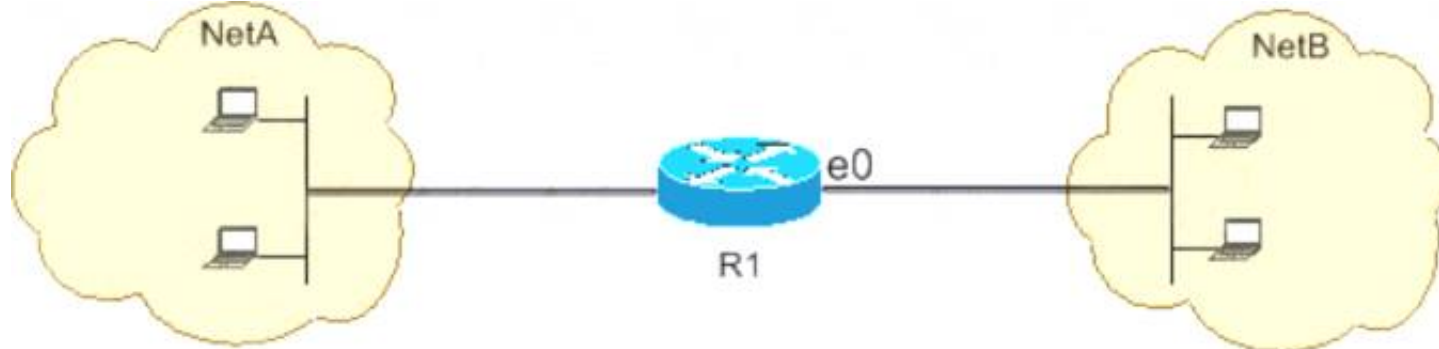
Explanation:

<https://www.cisco.com/c/en/us/support/docs/ip/access-lists/26448-ACLsamples.html>

Since the first line prohibits any TCP traffic (access-list 102 deny tcp any any), the lines below will simply be ignored by the router. Below you will find the example from CISCO documentation.

This figure shows that FTP (TCP, port 21) and FTP data (port 20) traffic sourced from NetB destined to NetA is denied, while all other IP traffic is permitted.

Diagram Description automatically generated



FTP uses port 21 and port 20. TCP traffic destined to port 21 and port 20 is denied and everything else is explicitly permitted.

- > access-list 102 deny tcp any any eq ftp
- > access-list 102 deny tcp any any eq ftp-data
- > access-list 102 permit ip any any

NEW QUESTION 102

- (Exam Topic 3)

Given below are different steps involved in the vulnerability-management life cycle.

- 1) Remediation
- 2) Identify assets and create a baseline
- 3) Verification
- 4) Monitor
- 5) Vulnerability scan
- 6) Risk assessment

Identify the correct sequence of steps involved in vulnerability management.

- A. 2-->5-->6-->1-->3-->4
- B. 2-->1-->5-->6-->4-->3
- C. 2-->4-->5-->3-->6--> 1
- D. 1-->2-->3-->4-->5-->6

Answer: A

NEW QUESTION 103

- (Exam Topic 3)

Attempting an injection attack on a web server based on responses to True/False QUESTION NO:s is called which of the following?

- A. Compound SQLi
- B. Blind SQLi
- C. Classic SQLi
- D. DMS-specific SQLi

Answer: B

Explanation:

https://en.wikipedia.org/wiki/SQL_injection#Blind_SQL_injection

Blind SQL injection is used when a web application is vulnerable to an SQL injection but the results of the injection are not visible to the attacker. The page with the vulnerability may not be one that displays data but will display differently depending on the results of a logical statement injected into the legitimate SQL statement called for that page. This type of attack has traditionally been considered time-intensive because a new statement needed to be crafted for each bit recovered, and depending on its structure, the attack may consist of many unsuccessful requests. Recent advancements have allowed each request to recover multiple bits, with no unsuccessful requests, allowing for more consistent and efficient extraction.

NEW QUESTION 107

- (Exam Topic 3)

An unauthorized individual enters a building following an employee through the employee entrance after the lunch rush. What type of breach has the individual just performed?

- A. Reverse Social Engineering
- B. Tailgating
- C. Piggybacking
- D. Announced

Answer: B

Explanation:

- Identifying operating systems, services, protocols and devices,
- Collecting unencrypted information about usernames and passwords,
- Capturing network traffic for further analysis

are passive network sniffing methods since with the help of them we only receive information and do not make any changes to the target network. When modifying and replaying the captured network traffic, we are already starting to make changes and actively interact with it.

NEW QUESTION 112

- (Exam Topic 3)

Jude, a pen tester, examined a network from a hacker's perspective to identify exploits and vulnerabilities accessible to the outside world by using devices such as firewalls, routers, and servers. In this process, he also estimated the threat of network security attacks and determined the level of security of the corporate network.

What is the type of vulnerability assessment that Jude performed on the organization?

- A. External assessment
- B. Passive assessment
- C. Host-based assessment
- D. Application assessment

Answer: A

NEW QUESTION 113

- (Exam Topic 3)

Gregory, a professional penetration tester working at Sys Security Ltd., is tasked with performing a security test of web applications used in the company. For this purpose, Gregory uses a tool to test for any security loopholes by hijacking a session between a client and server. This tool has a feature of intercepting proxy that can be used to inspect and modify the traffic between the browser and target application. This tool can also perform customized attacks and can be used to test the randomness of session tokens. Which of the following tools is used by Gregory in the above scenario?

- A. Nmap
- B. Burp Suite
- C. CxSAST
- D. Wireshark

Answer: B

NEW QUESTION 117

- (Exam Topic 3)

Which access control mechanism allows for multiple systems to use a central authentication server (CAS) that permits users to authenticate once and gain access to multiple systems?

- A. Role Based Access Control (RBAC)
- B. Discretionary Access Control (DAC)
- C. Single sign-on
- D. Windows authentication

Answer: C

NEW QUESTION 119

- (Exam Topic 3)

Sam is a penetration tester hired by Inception Tech, a security organization. He was asked to perform port scanning on a target host in the network. While performing the given task, Sam sends FIN/ACK probes and determines that an RST packet is sent in response by the target host, indicating that the port is closed. What is the port scanning technique used by Sam to discover open ports?

- A. Xmas scan
- B. IDLE/IPID header scan
- C. TCP Maimon scan
- D. ACK flag probe scan

Answer: C

Explanation:

TCP Maimon scan

This scan technique is very similar to NULL, FIN, and Xmas scan, but the probe used here is FIN/ACK. In most cases, to determine if the port is open or closed, the RST packet should be generated

as a response to a probe request. However, in many BSD systems, the port is open if the packet gets dropped in response to a probe.

<https://nmap.org/book/scan-methods-maimon-scan.html> How Nmap interprets responses to a Maimon scan probe

Probe Response Assigned State

No response received (even after retransmissions) open|filtered TCP RST packet closed

ICMP unreachable error (type 3, code 1, 2, 3, 9, 10, or 13) filtered

NEW QUESTION 121

- (Exam Topic 3)

You are logged in as a local admin on a Windows 7 system and you need to launch the Computer Management Console from command line.

Which command would you use?

- A. c:\compmgmt.msc
- B. c:\services.msc
- C. c:\ncpa.cp
- D. c:\gpedit

Answer: A

Explanation:

To start the Computer Management Console from command line just type compmgmt.msc

/computer:computername in your run box or at the command line and it should automatically open the Computer Management console.

References:

<http://www.waynezim.com/tag/compmgmtmsc/>

NEW QUESTION 124

- (Exam Topic 3)

An attacker utilizes a Wi-Fi Pineapple to run an access point with a legitimate-looking SSID for a nearby business in order to capture the wireless password. What kind of attack is this?

- A. MAC spoofing attack
- B. Evil-twin attack
- C. War driving attack
- D. Phishing attack

Answer: B

NEW QUESTION 125

- (Exam Topic 3)

This type of injection attack does not show any error message. It is difficult to exploit as it returns information when the application is given SQL payloads that elicit a true or false response from the server. By observing the response, an attacker can extract sensitive information. What type of attack is this?

- A. Time-based SQL injection
- B. Union SQL injection
- C. Error-based SQL injection
- D. Blind SQL injection

Answer: D

NEW QUESTION 129

- (Exam Topic 3)

Mason, a professional hacker, targets an organization and spreads Emotet malware through malicious script. After infecting the victim's device. Mason further used Emotet to spread the infection across local networks and beyond to compromise as many machines as possible. In this process, he used a tool, which is a self-extracting RAR file, to retrieve information related to network resources such as writable share drives. What is the tool employed by Mason in the above scenario?

- A. NetPass.exe
- B. Outlook scraper
- C. WebBrowserPassView
- D. Credential enumerator

Answer: D

NEW QUESTION 133

- (Exam Topic 3)

On performing a risk assessment, you need to determine the potential impacts when some of the critical business processes of the company interrupt its service. What is the name of the process by which you can determine those critical businesses?

- A. Emergency Plan Response (EPR)
- B. Business Impact Analysis (BIA)
- C. Risk Mitigation
- D. Disaster Recovery Planning (DRP)

Answer: B

NEW QUESTION 134

- (Exam Topic 3)

When conducting a penetration test, it is crucial to use all means to get all available information about the target network. One of the ways to do that is by sniffing the network. Which of the following cannot be performed by the passive network sniffing?

- A. Identifying operating systems, services, protocols and devices
- B. Modifying and replaying captured network traffic
- C. Collecting unencrypted information about usernames and passwords
- D. Capturing a network traffic for further analysis

Answer: B

NEW QUESTION 139

- (Exam Topic 3)

Which tier in the N-tier application architecture is responsible for moving and processing data between the tiers?

- A. Presentation tier
- B. Application Layer
- C. Logic tier

D. Data tier

Answer: C

NEW QUESTION 140

- (Exam Topic 3)

You are using a public Wi-Fi network inside a coffee shop. Before surfing the web, you use your VPN to prevent intruders from sniffing your traffic. If you did not have a VPN, how would you identify whether someone is performing an ARP spoofing attack on your laptop?

- A. You should check your ARP table and see if there is one IP address with two different MAC addresses.
- B. You should scan the network using Nmap to check the MAC addresses of all the hosts and look for duplicates.
- C. You should use netstat to check for any suspicious connections with another IP address within the LAN.
- D. You cannot identify such an attack and must use a VPN to protect your traffic, r

Answer: A

NEW QUESTION 141

- (Exam Topic 3)

An organization has automated the operation of critical infrastructure from a remote location. For this purpose, all the industrial control systems are connected to the Internet. To empower the manufacturing process, ensure the reliability of industrial networks, and reduce downtime and service disruption, the organization decided to install an OT security tool that further protects against security incidents such as cyber espionage, zero-day attacks, and malware. Which of the following tools must the organization employ to protect its critical infrastructure?

- A. Robotium
- B. BalenaCloud
- C. Flowmon
- D. IntentFuzzer

Answer: C

Explanation:

Source: <https://www.flowmon.com>

Flowmon empowers manufacturers and utility companies to ensure the reliability of their industrial networks confidently to avoid downtime and disruption of service continuity. This can be achieved by continuous monitoring and anomaly detection so that malfunctioning devices or security incidents, such as cyber espionage, zero-days, or malware, can be reported and remedied as quickly as possible.

NEW QUESTION 142

- (Exam Topic 3)

Which of the following is considered an exploit framework and has the ability to perform automated attacks on services, ports, applications and unpatched security flaws in a computer system?

- A. Wireshark
- B. Maltego
- C. Metasploit
- D. Nessus

Answer: C

Explanation:

https://en.wikipedia.org/wiki/Metasploit_Project

The Metasploit Project is a computer security project that provides information about security vulnerabilities and aids in penetration testing and IDS signature development. It is owned by Boston, Massachusetts-based security company Rapid7.

Its best-known sub-project is the open-source Metasploit Framework, a tool for developing and executing exploit code against a remote target machine. Other important sub-projects include the Opcode Database, shellcode archive and related research.

The Metasploit Project includes anti-forensic and evasion tools, some of which are built into the Metasploit Framework. Metasploit is pre-installed in the Kali Linux operating system.

The basic steps for exploiting a system using the Framework include.

- * 1. Optionally checking whether the intended target system is vulnerable to an exploit.
- * 2. Choosing and configuring an exploit (code that enters a target system by taking advantage of one of its bugs; about 900 different exploits for Windows, Unix/Linux and macOS systems are included).
- * 3. Choosing and configuring a payload (code that will be executed on the target system upon successful entry; for instance, a remote shell or a VNC server). Metasploit often recommends a payload that should work.
- * 4. Choosing the encoding technique so that hexadecimal opcodes known as "bad characters" are removed from the payload, these characters will cause the exploit to fail.
- * 5. Executing the exploit.

This modular approach – allowing the combination of any exploit with any payload – is the major advantage of the Framework. It facilitates the tasks of attackers, exploit writers and payload writers.

NEW QUESTION 146

- (Exam Topic 3)

Mary found a high vulnerability during a vulnerability scan and notified her server team. After analysis, they sent her proof that a fix to that issue had already been applied. The vulnerability that Mary found is called what?

- A. False-negative
- B. False-positive
- C. Brute force attack
- D. Backdoor

Answer: B

Explanation:

<https://www.infocycle.com/blog/2019/02/16/cybersecurity-101-what-you-need-to-know-about-false-positives-an>

False positives are mislabeled security alerts, indicating there is a threat when in actuality, there isn't. These false/non-malicious alerts (SIEM events) increase noise for already over-worked security teams and can include software bugs, poorly written software, or unrecognized network traffic.

False negatives are uncaught cyber threats — overlooked by security tooling because they're dormant, highly sophisticated (i.e. file-less or capable of lateral movement) or the security infrastructure in place lacks the technological ability to detect these attacks.

NEW QUESTION 147

- (Exam Topic 3)

in this attack, an adversary tricks a victim into reinstalling an already-in-use key. This is achieved by manipulating and replaying cryptographic handshake messages. When the victim reinstall the key, associated parameters such as the incremental transmit packet number and receive packet number are reset to their initial values. What is this attack called?

- A. Chop chop attack
- B. KRACK
- C. Evil twin
- D. Wardriving

Answer: B

Explanation:

In this attack KRACK is an acronym for Key Reinstallation Attack. KRACK may be a severe replay attack on Wi-Fi Protected Access protocol (WPA2), which secures your Wi-Fi connection. Hackers use KRACK to take advantage of a vulnerability in WPA2. When in close range of a possible victim, attackers can access and skim encrypted data using KRACK.

How KRACK WorksYour Wi-Fi client uses a four-way handshake when attempting to attach to a protected network. The handshake confirms that both the client — your smartphone, laptop, et cetera — and therefore the access point share the right credentials, usually a password for the network. This establishes the Pairwise passkey (PMK), which allows for encoding .Overall, this handshake procedure allows for quick logins and connections and sets up a replacement encryption key with each connection. this is often what keeps data secure on Wi-Fi connections, and every one protected Wi-Fi connections use the four-way handshake for security. This protocol is that the reason users are encouraged to use private or credential-protected Wi-Fi instead of public connections.KRACK affects the third step of the handshake, allowing the attacker to control and replay the WPA2 encryption key to trick it into installing a key already in use. When the key's reinstalled, other parameters related to it — the incremental transmit packet number called the nonce and therefore the replay counter — are set to their original values.Rather than move to the fourth step within the four-way handshake, nonce resets still replay transmissions of the third step. This sets up the encryption protocol for attack, and counting on how the attackers replay the third-step transmissions, they will take down Wi-Fi security.

Why KRACK may be a ThreatThink of all the devices you employ that believe Wi-Fi. it isn't almost laptops and smartphones; numerous smart devices now structure the web of Things (IoT). due to the vulnerability in WPA2, everything connected to Wi-Fi is in danger of being hacked or hijacked.Attackers using KRACK can gain access to usernames and passwords also as data stored on devices. Hackers can read emails and consider photos of transmitted data then use that information to blackmail users or sell it on the Dark Web.Theft of stored data requires more steps, like an HTTP content injection to load malware into the system. Hackers could conceivably take hold of any device used thereon Wi-Fi connection. Because the attacks require hackers to be on the brink of the target, these internet security threats could also cause physical security threats.On the opposite hand, the necessity to be in close proximity is that the only excellent news associated with KRACK, as meaning a widespread attack would be extremely difficult.Victims are specifically targeted. However, there are concerns that a experienced attacker could develop the talents to use HTTP content injection to load malware onto websites to make a more widespread affect.

Everyone is in danger from KRACK vulnerability. Patches are available for Windows and iOS devices, but a released patch for Android devices is currently in question (November 2017). There are issues with the discharge , and lots of question if all versions and devices are covered.The real problem is with routers and IoT devices. These devices aren't updated as regularly as computer operating systems, and for several devices, security flaws got to be addressed on the manufacturing side. New devices should address KRACK, but the devices you have already got in your home probably aren't protected.

The best protection against KRACK is to make sure any device connected to Wi-Fi is patched and updated with the newest firmware. that has checking together with your router's manufacturer periodically to ascertain if patches are available.

The safest connection option may be a private VPN, especially when publicly spaces. If you would like a VPN for private use, avoid free options, as they need their own security problems and there'll even be issues with HTTPs. Use a paid service offered by a trusted vendor like Kaspersky. Also, more modern networks use WPA3 for better security.Avoid using public Wi-Fi, albeit it's password protection. That password is out there to almost anyone, which reduces the safety level considerably.All the widespread implications of KRACK and

therefore the WPA2 vulnerability aren't yet clear. what's certain is that everybody who uses Wi-Fi is in danger and wishes to require precautions to guard their data and devices.

NEW QUESTION 149

- (Exam Topic 3)

After an audit, the auditors Inform you that there is a critical finding that you must tackle Immediately. You read the audit report, and the problem is the service running on port 389. Which service Is this and how can you tackle the problem?

- A. The service is LDA
- B. and you must change it to 636. which is LDPAPS.
- C. The service is NT
- D. and you have to change It from UDP to TCP in order to encrypt it
- E. The findings do not require immediate actions and are only suggestions.
- F. The service is SMTP, and you must change it to SMIM
- G. which is an encrypted way to send emails.

Answer: A

Explanation:

https://en.wikipedia.org/wiki/Lightweight_Directory_Access_Protocol

LDAP, the Lightweight Directory Access Protocol, is a mature, flexible, and well supported standards-based mechanism for interacting with directory servers. It's often used for authentication and storing information about users, groups, and applications, but an LDAP directory server is a fairly general-purpose data store and can be used in a wide variety of applications.

The LDAP protocol can deal in quite a bit of sensitive data: Active Directory usernames, login attempts, failed-login notifications, and more. If attackers get ahold of that data in flight, they might be able to compromise data like legitimate AD credentials and use it to poke around your network in search of valuable assets.

Encrypting LDAP traffic in flight across the network can help prevent credential theft and other malicious activity, but it's not a failsafe—and if traffic is encrypted, your own team might miss the signs of an attempted attack in progress.

While LDAP encryption isn't standard, there is a nonstandard version of LDAP called Secure LDAP, also known as "LDAPS" or "LDAP over SSL" (SSL, or Secure Socket Layer, being the now-deprecated ancestor of Transport Layer Security).

LDAPS uses its own distinct network port to connect clients and servers. The default port for LDAP is port 389, but LDAPS uses port 636 and establishes TLS/SSL

upon connecting with a client.

NEW QUESTION 150

- (Exam Topic 3)

What is the least important information when you analyze a public IP address in a security alert?

- A. DNS
- B. Whois
- C. Geolocation
- D. ARP

Answer: D

NEW QUESTION 151

- (Exam Topic 3)

Which of the following provides a security professional with most information about the system's security posture?

- A. Phishing, spamming, sending trojans
- B. Social engineering, company site browsing tailgating
- C. Wardriving, warchalking, social engineering
- D. Port scanning, banner grabbing service identification

Answer: D

NEW QUESTION 154

- (Exam Topic 3)

Becky has been hired by a client from Dubai to perform a penetration test against one of their remote offices. Working from her location in Columbus, Ohio, Becky runs her usual reconnaissance scans to obtain basic information about their network. When analyzing the results of her Whois search, Becky notices that the IP was allocated to a location in Le Havre, France. Which regional Internet registry should Becky go to for detailed information?

- A. ARIN
- B. APNIC
- C. RIPE
- D. LACNIC

Answer: C

Explanation:

Regional Internet Registries (RIRs):

ARIN (American Registry for Internet Numbers) AFRINIC (African Network Information Center) APNIC (Asia Pacific Network Information Center)

RIPE (Réseaux IP Européens Network Coordination Centre)

LACNIC (Latin American and Caribbean Network Information Center)

NEW QUESTION 156

- (Exam Topic 3)

A computer science student needs to fill some information into a secured Adobe PDF job application that was received from a prospective employer. Instead of requesting a new document that allowed the forms to be completed, the student decides to write a script that pulls passwords from a list of commonly used passwords to try against the secured PDF until the correct password is found or the list is exhausted.

Which cryptography attack is the student attempting?

- A. Man-in-the-middle attack
- B. Brute-force attack
- C. Dictionary attack
- D. Session hijacking

Answer: C

NEW QUESTION 158

- (Exam Topic 3)

A Security Engineer at a medium-sized accounting firm has been tasked with discovering how much information can be obtained from the firm's public facing web servers. The engineer decides to start by using netcat to port 80.

The engineer receives this output: HTTP/1.1 200 OK

Server: Microsoft-IIS/6

Expires: Tue, 17 Jan 2011 01:41:33 GMT

Date: Mon, 16 Jan 2011 01:41:33 GMT

Content-Type: text/html Accept-Ranges: bytes

Last Modified: Wed, 28 Dec 2010 15:32:21 GMT ETag:"b0aac0542e25c31:89d"

Content-Length: 7369

Which of the following is an example of what the engineer performed?

- A. Banner grabbing
- B. SQL injection
- C. Whois database query
- D. Cross-site scripting

Answer: A

NEW QUESTION 163

- (Exam Topic 3)

Which type of attack attempts to overflow the content-addressable memory (CAM) table in an Ethernet switch?

- A. Evil twin attack
- B. DNS cache flooding
- C. MAC flooding
- D. DDoS attack

Answer: C

NEW QUESTION 166

- (Exam Topic 2)

At what stage of the cyber kill chain theory model does data exfiltration occur?

- A. Actions on objectives
- B. Weaponization
- C. installation
- D. Command and control

Answer: A

Explanation:

The longer an adversary has this level of access, the greater the impact. Defenders must detect this stage as quickly as possible and deploy tools which can enable them to gather forensic evidence. One example would come with network packet captures, for damage assessment. Only now, after progressing through the primary six phases, can intruders take actions to realize their original objectives. Typically, the target of knowledge exfiltration involves collecting, encrypting and extracting information from the victim(s) environment; violations of knowledge integrity or availability are potential objectives also. Alternatively, and most ordinarily, the intruder may only desire access to the initial victim box to be used as a hop point to compromise additional systems and move laterally inside the network. Once this stage is identified within an environment, the implementation of prepared reaction plans must be initiated. At a minimum, the plan should include a comprehensive communication plan, detailed evidence must be elevated to the very best ranking official or board, the deployment of end-point security tools to dam data loss and preparation for briefing a CIRT Team. Having these resources well established beforehand may be a “MUST” in today’s quickly evolving landscape of cybersecurity threats

NEW QUESTION 167

- (Exam Topic 2)

Alice, a professional hacker, targeted an organization's cloud services. She infiltrated the targets MSP provider by sending spear-phishing emails and distributed custom-made malware to compromise user accounts and gain remote access to the cloud service. Further, she accessed the target customer profiles with her MSP account, compressed the customer data, and stored them in the MSP. Then, she used this information to launch further attacks on the target organization. Which of the following cloud attacks did Alice perform in the above scenario?

- A. Cloud hopper attack
- B. Cloud cryptojacking
- C. Cloudborne attack
- D. Man-in-the-cloud (MITC) attack

Answer: A

Explanation:

Operation Cloud Hopper was an in depth attack and theft of data in 2017 directed at MSP within the uk (U.K.), us (U.S.), Japan, Canada, Brazil, France, Switzerland, Norway, Finland, Sweden, South Africa, India, Thailand, South Korea and Australia. The group used MSP as intermediaries to accumulate assets and trade secrets from MSP client engineering, MSP industrial manufacturing, retail, energy, pharmaceuticals, telecommunications, and government agencies. Operation Cloud Hopper used over 70 variants of backdoors, malware and trojans. These were delivered through spear-phishing emails. The attacks scheduled tasks or leveraged services/utilities to continue Microsoft Windows systems albeit the pc system was rebooted. It installed malware and hacking tools to access systems and steal data.

NEW QUESTION 169

- (Exam Topic 2)

which of the following information security controls creates an appealing isolated environment for hackers to prevent them from compromising critical targets while simultaneously gathering information about the hacker?

- A. intrusion detection system
- B. Honeypot
- C. BotnetD Firewall

Answer: B

Explanation:

A honeypot may be a trap that an IT pro lays for a malicious hacker, hoping that they will interact with it during a way that gives useful intelligence. It’s one among the oldest security measures in IT, but beware: luring hackers onto your network, even on an isolated system, are often a dangerous game. honeypot may be a good starting place: “A honeypot may be a computer or computing system intended to mimic likely targets of cyberattacks.” Often a honeypot are going to be deliberately configured with known vulnerabilities in situation to form a more tempting or obvious target for attackers. A honeypot won’t contain production data or participate in legitimate traffic on your network — that’s how you’ll tell anything happening within it’s a results of an attack. If someone’s stopping by, they’re up to no good. That definition covers a various array of systems, from bare-bones virtual machines that only offer a couple of vulnerable systems to ornately constructed fake networks spanning multiple servers. and therefore the goals of these who build honeypots can vary widely also, starting from defense thorough to academic research. additionally, there’s now an entire marketing category of deception technology that, while not meeting the strict definition of a honeypot, is certainly within the same family. But we’ll get thereto during a moment. honeypots aim to permit close analysis of how hackers do their dirty work. The team controlling the honeypot can watch the techniques hackers use to infiltrate systems, escalate privileges, and otherwise run amok through target networks. These sorts of honeypots are found out by security companies, academics, and government agencies looking to look at the threat landscape. Their creators could also be curious about learning what kind of attacks are out there, getting details on how specific sorts of attacks work, or maybe trying to lure a specific hackers within the hopes of tracing the attack back to its source. These systems are often inbuilt fully isolated lab environments, which ensures that any breaches don’t end in non-honeypot

machines falling prey to attacks. Production honeypots, on the opposite hand, are usually deployed in proximity to some organization's production infrastructure, though measures are taken to isolate it the maximum amount as possible. These honeypots often serve both as bait to distract hackers who could also be trying to interrupt into that organization's network, keeping them faraway from valuable data or services; they will also function a canary within the coalpit, indicating that attacks are underway and are a minimum of partially succeeding.

NEW QUESTION 170

- (Exam Topic 2)

Bella, a security professional working at an IT firm, finds that a security breach has occurred while transferring important files. Sensitive data, employee usernames, and passwords are shared in plaintext, paving the way for hackers to perform successful session hijacking. To address this situation, Bella implemented a protocol that sends data using encryption and digital certificates. Which of the following protocols is used by Bella?

- A. FTP
- B. HTTPS
- C. FTPS
- D. IP

Answer: C

Explanation:

The File Transfer Protocol (FTP) is a standard organization convention utilized for the exchange of PC records from a worker to a customer on a PC organization. FTP is based on a customer worker model engineering utilizing separate control and information associations between the customer and the server.[1] FTP clients may validate themselves with an unmistakable book sign-in convention, ordinarily as a username and secret key, however can interface namelessly if the worker is designed to permit it. For secure transmission that ensures the username and secret phrase, and scrambles the substance, FTP is frequently made sure about with SSL/TLS (FTPS) or supplanted with SSH File Transfer Protocol (SFTP).

The primary FTP customer applications were order line programs created prior to working frameworks had graphical UIs, are as yet dispatched with most Windows, Unix, and Linux working systems.[2][3] Many FTP customers and mechanization utilities have since been created for working areas, workers, cell phones, and equipment, and FTP has been fused into profitability applications, for example, HTML editors.

NEW QUESTION 172

- (Exam Topic 2)

What does the following command in netcat do? `nc -l -u -p55555 < /etc/passwd`

- A. logs the incoming connections to /etc/passwd file
- B. loads the /etc/passwd file to the UDP port 55555
- C. grabs the /etc/passwd file when connected to UDP port 55555
- D. deletes the /etc/passwd file when connected to the UDP port 55555

Answer: C

NEW QUESTION 174

- (Exam Topic 2)

What piece of hardware on a computer's motherboard generates encryption keys and only releases a part of the key so that decrypting a disk on a new piece of hardware is not possible?

- A. CPU
- B. GPU
- C. UEFI
- D. TPM

Answer: D

Explanation:

The TPM is a chip that's part of your computer's motherboard

— if you bought an off-the-shelf PC, it's soldered onto the motherboard. If you built your own computer, you can buy one as an add-on module if your motherboard supports it. The TPM generates encryption keys, keeping part of the key to itself

NEW QUESTION 177

- (Exam Topic 2)

This TCP flag instructs the sending system to transmit all buffered data immediately.

- A. SYN
- B. RST
- C. PSH
- D. URG
- E. FIN

Answer: C

NEW QUESTION 182

- (Exam Topic 2)

An attacker runs netcat tool to transfer a secret file between two hosts.

```
Machine A: netcat -l -p 1234 < secretfile
Machine B: netcat 192.168.3.4 > 1234
```

He is worried about information being sniffed on the network.

How would the attacker use netcat to encrypt the information before transmitting onto the wire?

- A. Machine A: `netcat -l -p -s password 1234 < testfile` Machine B: `netcat <machine A IP> 1234`

- B. Machine A: netcat -l -e magickey -p 1234 < testfileMachine B: netcat <machine A IP> 1234
C. Machine A: netcat -l -p 1234 < testfile -pw passwordMachine B: netcat <machine A IP> 1234 -pw password
D. Use cryptcat instead of netcat

Answer: D

NEW QUESTION 185

- (Exam Topic 2)

Boney, a professional hacker, targets an organization for financial benefits. He performs an attack by sending his session ID using an MITM attack technique. Boney first obtains a valid session ID by logging into a service and later feeds the same session ID to the target employee. The session ID links the target employee to Boney's account page without disclosing any information to the victim. When the target employee clicks on the link, all the sensitive payment details entered in a form are linked to Boney's account. What is the attack performed by Boney in the above scenario?

- A. Session donation attack
B. Session fixation attack
C. Forbidden attack
D. CRIME attack

Answer: A

Explanation:

In a session donation attack, the attacker donates their own session ID to the target user. In this attack, the attacker first obtains a valid session ID by logging into a service and later feeds the same session ID to the target user. This session ID links a target user to the attacker's account page without disclosing any information to the victim. When the target user clicks on the link and enters the details (username, password, payment details, etc.) in a form, the entered details are linked to the attacker's account. To initiate this attack, the attacker can send their session ID using techniques such as cross-site cooking, an MITM attack, and session fixation. A session donation attack involves the following steps.

NEW QUESTION 190

- (Exam Topic 2)

A pen tester is configuring a Windows laptop for a test. In setting up Wireshark, what driver and library are required to allow the NIC to work in promiscuous mode?

- A. Libpcap
B. Awinpcap
C. Winprom
D. Winpcap

Answer: D

NEW QUESTION 195

- (Exam Topic 2)

Andrew is an Ethical Hacker who was assigned the task of discovering all the active devices hidden by a restrictive firewall in the IPv4 range in a given target network.

Which of the following host discovery techniques must he use to perform the given task?

- A. UDP scan
B. TCP Maimon scan
C. arp ping scan
D. ACK flag probe scan

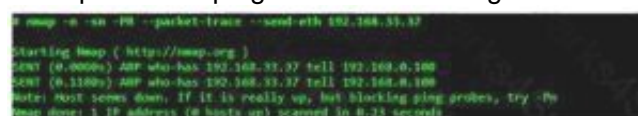
Answer: C

Explanation:

One of the most common Nmap usage scenarios is scanning an Ethernet LAN. Most LANs, especially those that use the private address range granted by RFC 1918, do not always use the overwhelming majority of IP addresses. When Nmap attempts to send a raw IP packet, such as an ICMP echo request, the OS must determine a destination hardware (ARP) address, such as the target IP, so that the Ethernet frame can be properly addressed. .. This is required to issue a series of ARP requests. This is best illustrated by an example where a ping scan is attempted against an Area Ethernet host. The --send-ip option tells Nmap to send IP-level packets (rather than raw Ethernet), even on area networks. The Wireshark output of the three ARP requests and their timing have been pasted into the session.

Raw IP ping scan example for offline targetsThis example took quite a couple of seconds to finish because the (Linux) OS sent three ARP requests at 1 second intervals before abandoning the host. Waiting for a few seconds is excessive, as long as the ARP response usually arrives within a few milliseconds. Reducing this timeout period is not a priority for OS vendors, as the overwhelming majority of packets are sent to the host that actually exists. Nmap, on the other hand, needs to send packets to 16 million IP s given a target like 10.0.0.0/8. Many targets are pinged in parallel, but waiting 2 seconds each is very delayed.

There is another problem with raw IP ping scans on the LAN. If the destination host turns out to be unresponsive, as in the previous example, the source host usually adds an incomplete entry for that destination IP to the kernel ARP table. ARP tables are finite and some operating systems become unresponsive when full. If Nmap is used in rawIP mode (--send-ip), Nmap may have to wait a few minutes for the ARP cache entry to expire before continuing host discovery. ARP scans solve both problems by giving Nmap the highest priority. Nmap issues raw ARP requests and handles retransmissions and timeout periods in its sole discretion. The system ARP cache is bypassed. The example shows the difference. This ARP scan takes just over a tenth of the time it takes for an equivalent IP. Example b ARP ping scan of offline target



```
nmap -s -s -PR -packet-trace --send-eth 192.168.0.100
Starting Nmap ( http://nmap.org )
Nmap (0.00000s) ARP who-has 192.168.0.100 tell 192.168.0.100
Nmap (0.11000s) ARP who-has 192.168.0.100 tell 192.168.0.100
Note: Host seems down: If it is really up, has blocking ping probes, try -Ph
Nmap done: 1 IP address (0 hosts up) scanned in 0.22 seconds
```

In example b, neither the -PR option nor the -send-eth option has any effect. This is often because ARP has a default scan type on the Area Ethernet network when scanning Ethernet hosts that Nmap discovers. This includes traditional wired Ethernet as 802.11 wireless networks. As mentioned above, ARP scanning is not only more efficient, but also more accurate. Hosts frequently block IP-based ping packets, but usually cannot block ARP requests or responses and communicate over the network. Nmap uses ARP instead of all targets on equivalent targets, even if different ping types (such as -PE and -PS) are specified. LAN.. If you do not need to attempt an ARP scan at all, specify --send-ip as shown in Example a "Raw IP Ping Scan for Offline Targets".

If you give Nmap control to send raw Ethernet frames, Nmap can also adjust the source MAC address. If you have the only PowerBook in your security conference room and a large ARP scan is initiated from an Apple-registered MAC address, your head may turn to you. Use the --spoof-mac option to spoof the MAC

address as described in the MAC Address Spoofing section.

NEW QUESTION 198

- (Exam Topic 2)

This form of encryption algorithm is asymmetric key block cipher that is characterized by a 128-bit block size, and its key size can be up to 256 bits. Which among the following is this encryption algorithm?

- A. Twofish encryption algorithm
- B. HMAC encryption algorithm
- C. IDEA
- D. Blowfish encryption algorithm

Answer: A

Explanation:

Twofish is an encryption algorithm designed by Bruce Schneier. It's a symmetric key block cipher with a block size of 128 bits, with keys up to 256 bits. it's associated with AES (Advanced Encryption Standard) and an earlier block cipher called Blowfish. Twofish was actually a finalist to become the industry standard for encryption, but was ultimately beaten out by the present AES. Twofish has some distinctive features that set it aside from most other cryptographic protocols. For one, it uses pre-computed, key-dependent S-boxes. An S- box (substitution-box) may be a basic component of any symmetric key algorithm which performs substitution. within the context of Twofish's block cipher, the S-box works to obscure the connection of the key to the ciphertext. Twofish uses a pre-computed, key-dependent S-box which suggests that the S-box is already provided, but depends on the cipher key to decrypt the knowledge .

How Secure is Twofish? Twofish is seen as a really secure option as far as encryption protocols go. one among the explanation that it wasn't selected because the advanced encryption standard is thanks to its slower speed. Any encryption standard that uses a 128-bit or higher key, is theoretically safe from brute force attacks. Twofish is during this category. Because Twofish uses "pre-computed key-dependent S-boxes", it are often susceptible to side channel attacks. this is often thanks to the tables being pre-computed. However, making these tables key-dependent helps mitigate that risk. There are a couple of attacks on Twofish, but consistent with its creator, Bruce Schneier, it didn't constitute a real cryptanalysis. These attacks didn't constitute a practical break within the cipher.

Products That Use Twofish GnuPG: GnuPG may be a complete and free implementation of the OpenPGP standard as defined by RFC4880 (also referred to as PGP). GnuPG allows you to encrypt and sign your data and communications; it features a flexible key management system, along side access modules for all types of public key directories. KeePass: KeePass may be a password management tool that generates passwords with top-notch security. It's a free, open source, lightweight and easy-to-use password manager with many extensions and plugins. Password Safe: Password Safe uses one master password to stay all of your passwords protected, almost like the functionality of most of the password managers on this list. It allows you to store all of your passwords during a single password database, or multiple databases for various purposes. Creating a database is straightforward , just create the database, set your master password. PGP (Pretty Good Privacy): PGP is employed mostly for email encryption, it encrypts the content of the e-mail . However, Pretty Good Privacy doesn't encrypt the topic and sender of the e-mail , so make certain to never put sensitive information

in these fields when using PGP. TrueCrypt: TrueCrypt may be a software program that encrypts and protects files on your devices. With TrueCrypt the encryption is transparent to the user and is completed locally at the user's computer. this suggests you'll store a TrueCrypt file on a server and TrueCrypt will encrypt that file before it's sent over the network.

NEW QUESTION 202

- (Exam Topic 2)

John is an incident handler at a financial institution. His steps in a recent incident are not up to the standards of the company. John frequently forgets some steps and procedures while handling responses as they are very stressful to perform. Which of the following actions should John take to overcome this problem with the least administrative effort?

- A. Create an incident checklist.
- B. Select someone else to check the procedures.
- C. Increase his technical skills.
- D. Read the incident manual every time it occurs.

Answer: C

NEW QUESTION 207

- (Exam Topic 2)

Which of the following commands checks for valid users on an SMTP server?

- A. RCPT
- B. CHK
- C. VRFY
- D. EXPN

Answer: C

Explanation:

The VRFY commands enables SMTP clients to send an invitation to an SMTP server to verify that mail for a selected user name resides on the server. The VRFY command is defined in RFC 821. The server sends a response indicating whether the user is local or not, whether mail are going to be forwarded, and so on. A response of 250 indicates that the user name is local; a response of 251 indicates that the user name isn't local, but the server can forward the message. The server response includes the mailbox name.

NEW QUESTION 208

- (Exam Topic 2)

Harry, a professional hacker, targets the IT infrastructure of an organization. After preparing for the attack, he attempts to enter the target network using techniques such as sending spear-phishing emails and exploiting vulnerabilities on publicly available servers. Using these techniques, he successfully deployed malware on the target system to establish an outbound connection. What is the APT lifecycle phase that Harry is currently executing?

- A. Preparation
- B. Cleanup
- C. Persistence
- D. initial intrusion

Answer: D

Explanation:

After the attacker completes preparations, subsequent step is an effort to realize an edge within the target's environment. a particularly common entry tactic is that the use of spearphishing emails containing an internet link or attachment. Email links usually cause sites where the target's browser and related software are subjected to varied exploit techniques or where the APT actors plan to social engineer information from the victim which will be used later. If a successful exploit takes place, it installs an initial malware payload on the victim's computer. Figure 2 illustrates an example of a spearphishing email that contains an attachment. Attachments are usually executable malware, a zipper or other archive containing malware, or a malicious Office or Adobe PDF (Portable Document Format) document that exploits vulnerabilities within the victim's applications to ultimately execute malware on the victim's computer. Once the user has opened a malicious file using vulnerable software, malware is executing on the target system. These phishing emails are often very convincing and difficult to differentiate from legitimate email messages. Tactics to extend their believability include modifying legitimate documents from or associated with the organization. Documents are sometimes stolen from the organization or their collaborators during previous exploitation operations. Actors modify the documents by adding exploits and malicious code then send them to the victims. Phishing emails are commonly sent through previously compromised email servers, email accounts at organizations associated with the target or public email services. Emails also can be sent through mail relays with modified email headers to form the messages appear to possess originated from legitimate sources. Exploitation of vulnerabilities on public-facing servers is another favorite technique of some APT groups. Though this will be accomplished using exploits for known vulnerabilities, 0-days are often developed or purchased to be used in intrusions as required . Gaining an edge within the target environment is that the primary goal of the initial intrusion. Once a system is exploited, the attacker usually places malware on the compromised system and uses it as a jump point or proxy for further actions. Malware placed during the initial intrusion phase is usually an easy downloader, basic

Remote Access Trojan or an easy shell. Figure 3 illustrates a newly infected system initiating an outbound connection to notify the APT actor that the initial intrusion attempt was successful which it's able to accept commands.

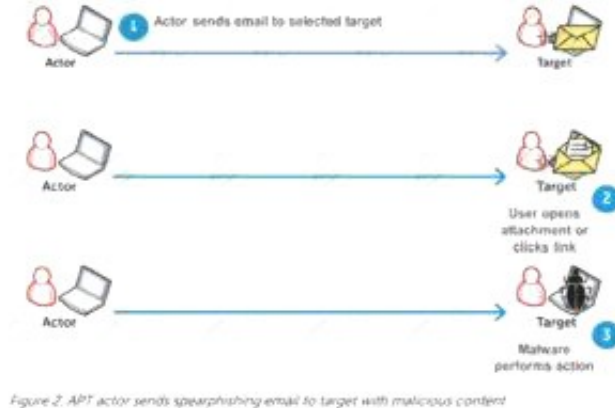


Figure 2: APT actor sends spearphishing email to target with malicious content

NEW QUESTION 209

- (Exam Topic 2)

Which of the following are well known password-cracking programs?

- A. L0phtcrack
- B. NetCat
- C. Jack the Ripper
- D. Netbus
- E. John the Ripper

Answer: AE

NEW QUESTION 212

- (Exam Topic 2)

Robin, a professional hacker, targeted an organization's network to sniff all the traffic. During this process. Robin plugged in a rogue switch to an unused port in the LAN with a priority lower than any other switch in the network so that he could make it a root bridge that will later allow him to sniff all the traffic in the network.

What is the attack performed by Robin in the above scenario?

- A. ARP spoofing attack
- B. VLAN hopping attack
- C. DNS poisoning attack
- D. STP attack

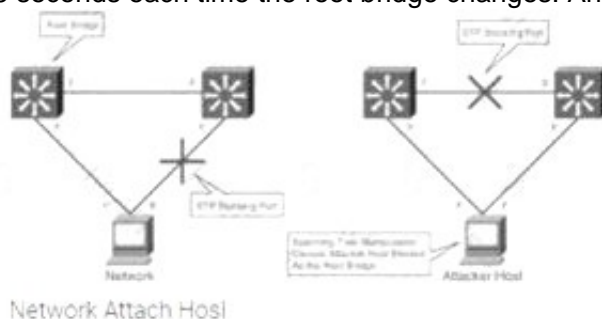
Answer: D

Explanation:

STP prevents bridging loops in a redundant switched network environment. By avoiding loops, you can ensure that broadcast traffic does not become a traffic storm.

STP is a hierarchical tree-like topology with a "root" switch at the top. A switch is elected as root based on the lowest configured priority of any switch (0 through 65,535). When a switch boots up, it begins a process of identifying other switches and determining the root bridge. After a root bridge is elected, the topology is established from its perspective of the connectivity. The switches determine the path to the root bridge, and all redundant paths are blocked. STP sends configuration and topology change notifications and acknowledgments (TCN/TCA) using bridge protocol data units (BPDU).

An STP attack involves an attacker spoofing the root bridge in the topology. The attacker broadcasts out an STP configuration/topology change BPDU in an attempt to force an STP recalculation. The BPDU sent out announces that the attacker's system has a lower bridge priority. The attacker can then see a variety of frames forwarded from other switches to it. STP recalculation may also cause a denial-of-service (DoS) condition on the network by causing an interruption of 30 to 45 seconds each time the root bridge changes. An attacker using STP network topology changes to force its host to be elected as the root bridge.



switch

NEW QUESTION 214

- (Exam Topic 2)

In the field of cryptanalysis, what is meant by a “rubber-hose” attack?

- A. Attempting to decrypt cipher text by making logical assumptions about the contents of the original plain text.
- B. Extraction of cryptographic secrets through coercion or torture.
- C. Forcing the targeted key stream through a hardware-accelerated device such as an ASIC.
- D. A backdoor placed into a cryptographic algorithm by its creator.

Answer: B

NEW QUESTION 215

- (Exam Topic 2)

In the context of Windows Security, what is a 'null' user?

- A. A user that has no skills
- B. An account that has been suspended by the admin
- C. A pseudo account that has no username and password
- D. A pseudo account that was created for security administration purpose

Answer: C

NEW QUESTION 217

- (Exam Topic 2)

Allen, a professional pen tester, was hired by xpertTech solutWns to perform an attack simulation on the organization's network resources. To perform the attack, he took advantage of the NetBIOS API and targeted the NetBIOS service. B/enumerating NetBIOS, he found that port 139 was open and could see the resources that could be accessed or viewed on a remote system. He came across many NetBIOS codes during enumeration. identify the NetBIOS code used for obtaining the messenger service running for the logged-in user?

- A. <1B>
- B. <00>
- C. <03>
- D. <20>

Answer: C

Explanation:

<03>Windows Messenger administrationCourier administration is an organization based framework notice Windows administration by Microsoft that was remembered for some prior forms of Microsoft Windows.

This resigned innovation, despite the fact that it has a comparable name, isn't connected in any capacity to the later, Internet-based Microsoft Messenger administration for texting or to Windows Messenger and Windows Live Messenger (earlier named MSN Messenger) customer programming.

The Messenger Service was initially intended for use by framework managers to tell Windows clients about their networks.[1] It has been utilized malevolently to introduce spring up commercials to clients over the Internet (by utilizing mass-informing frameworks which sent an ideal message to a predetermined scope of IP addresses). Despite the fact that Windows XP incorporates a firewall, it isn't empowered naturally. Along these lines, numerous clients got such messages. Because of this maltreatment, the Messenger Service has been debilitated as a matter of course in Windows XP Service Pack 2.

NEW QUESTION 218

- (Exam Topic 2)

Bobby, an attacker, targeted a user and decided to hijack and intercept all their wireless communications. He installed a fake communication tower between two authentic endpoints to mislead the victim. Bobby used this virtual tower to interrupt the data transmission between the user and real tower, attempting to hijack an active session, upon receiving the users request. Bobby manipulated the traffic with the virtual tower and redirected the victim to a malicious website. What is the attack performed by Bobby in the above scenario?

- A. Wardriving
- B. KRACK attack
- C. jamming signal attack
- D. aLTEr attack

Answer: D

Explanation:

aLTEr attacks are usually performed on LTE devices Attacker installs a virtual (fake) communication tower between two authentic endpoints intending to mislead the victim This virtual tower is used to interrupt the data transmission between the user and real tower attempting to hijack the active session.

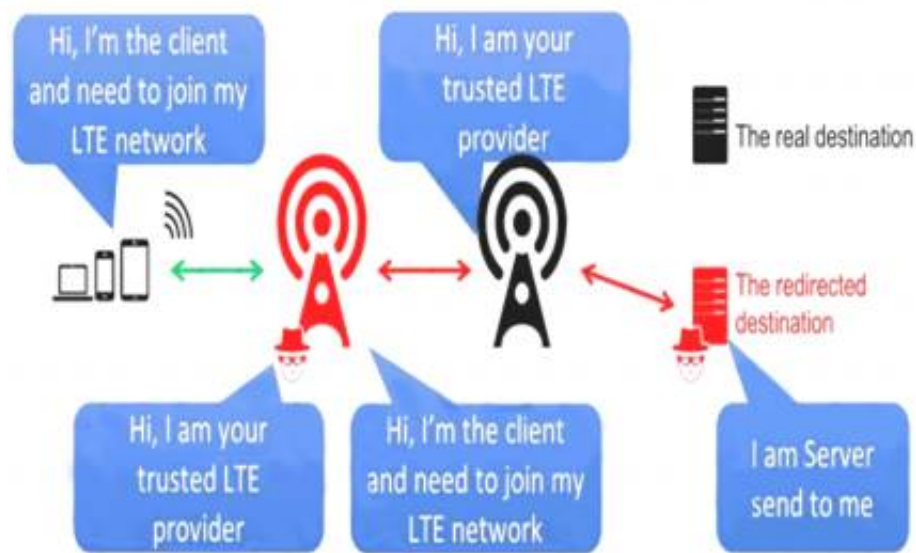
https://alter-attack.net/media/breaking_lte_on_layer_two.pdf

The new aLTEr attack can be used against nearly all LTE connected endpoints by intercepting traffic and redirecting it to malicious websites together with a particular approach for Apple iOS devices.

This attack works by taking advantage of a style flaw among the LTE network — the information link layer (aka: layer-2) of the LTE network is encrypted with AES-CTR however it's not integrity-protected, that is why an offender will modify the payload.

As a result, the offender is acting a classic man-in-the-middle wherever they're movement as a cell tower to the victim.

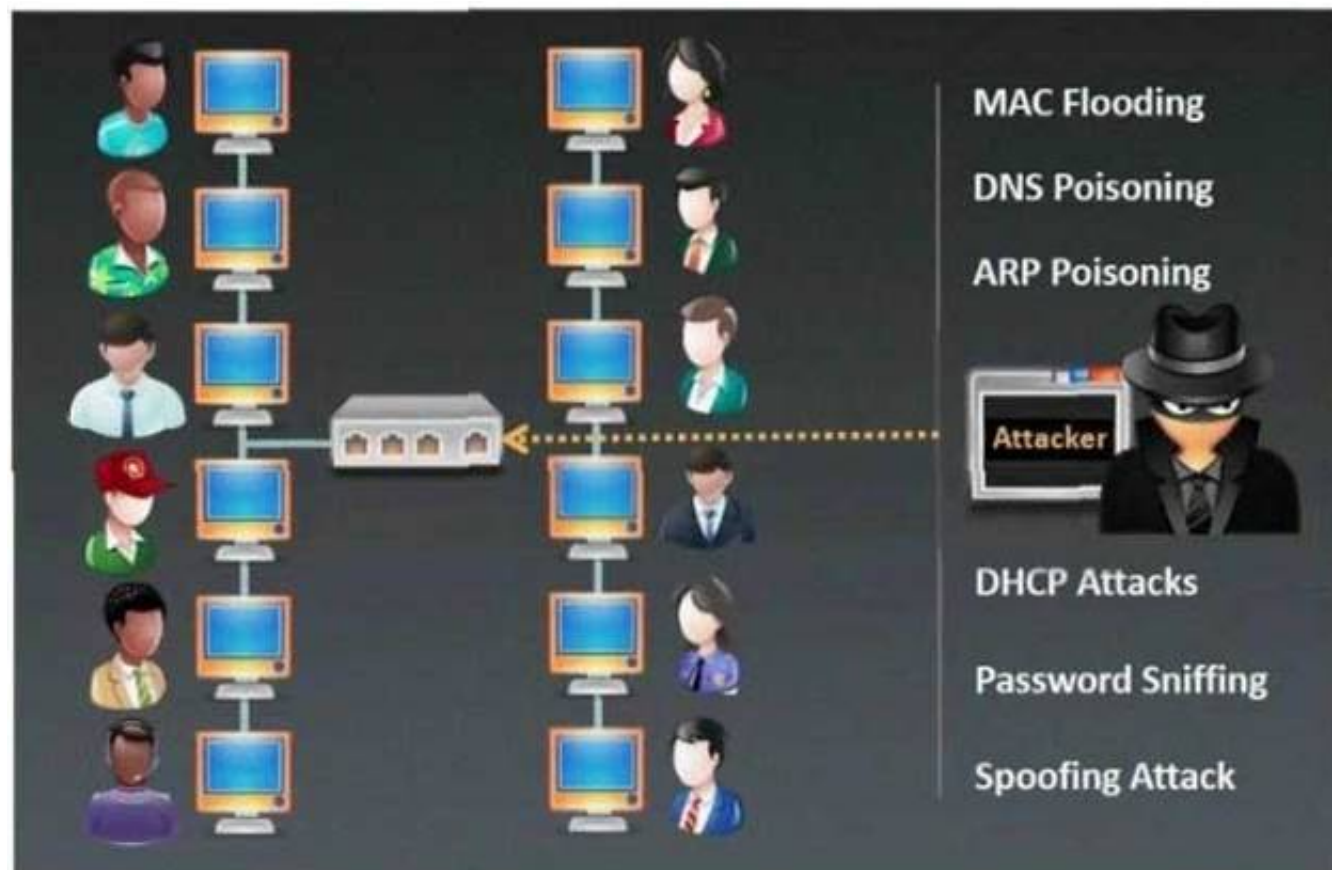
Diagram Description automatically generated



NEW QUESTION 222

- (Exam Topic 2)

Which type of sniffing technique is generally referred as MiTM attack?



- A. Password Sniffing
- B. ARP Poisoning
- C. Mac Flooding
- D. DHCP Sniffing

Answer: B

NEW QUESTION 227

- (Exam Topic 2)

A friend of yours tells you that he downloaded and executed a file that was sent to him by a coworker. Since the file did nothing when executed, he asks you for help because he suspects that he may have installed a trojan on his computer. what tests would you perform to determine whether his computer is infected?

- A. Use ExifTool and check for malicious content.
- B. You do not check; rather, you immediately restore a previous snapshot of the operating system.
- C. Upload the file to VirusTotal.
- D. Use netstat and check for outgoing connections to strange IP addresses or domains.

Answer: D

NEW QUESTION 230

- (Exam Topic 2)

Jason, an attacker, targeted an organization to perform an attack on its Internet-facing web server with the intention of gaining access to backend servers, which are protected by a firewall. In this process, he used a URL `https://xyz.com/feed.php?url:externalsile.com/feed/to` to obtain a remote feed and altered the URL input to the local host to view all the local resources on the target server. What is the type of attack Jason performed in the above scenario?

- A. website defacement
- B. Server-side request forgery (SSRF) attack
- C. Web server misconfiguration
- D. web cache poisoning attack

Answer: B

Explanation:

Server-side request forgery (also called SSRF) is a net security vulnerability that allows an assaulter to induce the server-side application to make http requests to associate arbitrary domain of the attacker's choosing.

In typical SSRF examples, the attacker might cause the server to make a connection back to itself, or to other web-based services among the organization's infrastructure, or to external third-party systems.

Another type of trust relationship that often arises with server-side request forgery is where the application server is able to interact with different back-end systems that aren't directly reachable by users. These systems typically have non-routable private informatics addresses. Since the back-end systems normally ordinarily protected by the topology, they typically have a weaker security posture. In several cases, internal back-end systems contain sensitive functionality that may be accessed while not authentication by anyone who is able to act with the systems.

In the preceding example, suppose there's an body interface at the back-end url <https://192.168.0.68/admin>. Here, an attacker will exploit the SSRF vulnerability to access the executive interface by submitting the following request:

POST /product/stock HTTP/1.0

Content-Type: application/x-www-form-urlencoded Content-Length: 118 stockApi=<http://192.168.0.68/admin>

NEW QUESTION 235

- (Exam Topic 2)

While testing a web application in development, you notice that the web server does not properly ignore the "dot dot slash" (../) character string and instead returns the file listing of a folder structure of the server.

What kind of attack is possible in this scenario?

- A. Cross-site scripting
- B. Denial of service
- C. SQL injection
- D. Directory traversal

Answer: D

Explanation:

Appropriately controlling admittance to web content is significant for running a safe web worker. Index crossing or Path Traversal is a HTTP assault which permits aggressors to get to limited catalogs and execute orders outside of the web worker's root registry.

Web workers give two primary degrees of security instruments

- Access Control Lists (ACLs)
- Root index

An Access Control List is utilized in the approval cycle. It is a rundown which the web worker's manager uses to show which clients or gatherings can get to, change or execute specific records on the worker, just as other access rights.

The root registry is a particular index on the worker record framework in which the clients are kept. Clients can't get to anything over this root.

For instance: the default root registry of IIS on Windows is C:\inetpub\wwwroot and with this arrangement, a client doesn't approach C:\Windows yet approaches C:\inetpub\wwwroot\news and some other indexes and documents under the root catalog (given that the client is confirmed by means of the ACLs).

The root index keeps clients from getting to any documents on the worker, for example, C:\WINDOWS\system32\win.ini on Windows stages and the/and so on/passwd record on Linux/UNIX stages.

This weakness can exist either in the web worker programming itself or in the web application code.

To play out a registry crossing assault, all an assailant requires is an internet browser and some information on where to aimlessly discover any default documents and registries on the framework.

What an assailant can do if your site is defenselessWith a framework defenseless against index crossing, an aggressor can utilize this weakness to venture out of the root catalog and access different pieces of the record framework. This may enable the assailant to see confined documents, which could give the aggressor more data needed to additional trade off the framework.

Contingent upon how the site access is set up, the aggressor will execute orders by mimicking himself as the client which is related with "the site". Along these lines everything relies upon what the site client has been offered admittance to in the framework.

Illustration of a Directory Traversal assault by means of web application codeIn web applications with dynamic pages, input is generally gotten from programs through GET or POST solicitation techniques. Here is an illustration of a HTTP GET demand URL

GET

<http://test.webarticles.com/show.asp?view=oldarchive.html> HTTP/1.1 Host: test.webarticles.com

With this URL, the browser requests the dynamic page show.asp from the server and with it also sends the parameter view with the value of oldarchive.html. When this request is executed on the web

server, show.asp retrieves the file oldarchive.html from the server's file system, renders it and then sends back to the browser which displays it to the user. The attacker would assume that show.asp can retrieve files from the file system and sends the following custom URL.

GET

<http://test.webarticles.com/show.asp?view=../../../../../Windows/system.ini> HTTP/1.1 Host: test.webarticles.com

This will cause the dynamic page to retrieve the file system.ini from the file system and display it to the user The expression ../ instructs the system to go one directory up which is commonly used as an operating system directive. The attacker has to guess how many directories he has to go up to find the Windows folder on the system, but this is easily done by trial and error.

Example of a Directory Traversal attack via web serverApart from vulnerabilities in the code, even the web server itself can be open to directory traversal attacks.

The problem can either be incorporated into the web server software or inside some sample script files left available on the server.

The vulnerability has been fixed in the latest versions of web server software, but there are web servers online which are still using older versions of IIS and Apache which might be open to directory traversal attacks. Even though you might be using a web server software version that has fixed this vulnerability, you might still have some sensitive default script directories exposed which are well known to hackers.

For example, a URL request which makes use of the scripts directory of IIS to traverse directories and execute a command can be

GET

<http://server.com/scripts/..%5c../Windows/System32/cmd.exe?/c+dir+c:\> HTTP/1.1 Host: server.com

The request would return to the user a list of all files in the C:\ directory by executing the cmd.exe comm shell file and run the command dir c:\ in the shell. The %5c expression that is in the URL request is a we server escape code which is used to represent normal characters. In this case %5c represents the character \ Newer versions of modern web server software check for these escape codes and do not let them through. Some older versions however, do not filter out these codes in the root directory enforcer and will let the attackers execute such commands.

NEW QUESTION 237

- (Exam Topic 2)

The tools which receive event logs from servers, network equipment, and applications, and perform analysis and correlation on those logs, and can generate alarms for security relevant issues, are known as what?

- A. network Sniffer
- B. Vulnerability Scanner
- C. Intrusion prevention Server
- D. Security incident and event Monitoring

Answer: D

NEW QUESTION 239

- (Exam Topic 2)

You are performing a penetration test for a client and have gained shell access to a Windows machine on the internal network. You intend to retrieve all DNS records for the internal domain, if the DNS server is at 192.168.10.2 and the domain name is abccorp.local, what command would you type at the nslookup prompt to attempt a zone transfer?

- A. list server=192.168.10.2 type=all
- B. is-d abccorp.local
- C. lserver 192.168.10.2-t all
- D. List domain=Abccorp.local type=zone

Answer: B

NEW QUESTION 240

- (Exam Topic 2)

Which command can be used to show the current TCP/IP connections?

- A. Netsh
- B. Netstat
- C. Net use connection
- D. Net use

Answer: A

NEW QUESTION 244

- (Exam Topic 2)

You work for Acme Corporation as Sales Manager. The company has tight network security restrictions. You are trying to steal data from the company's Sales database (Sales.xls) and transfer them to your home computer. Your company filters and monitors traffic that leaves from the internal network to the Internet. How will you achieve this without raising suspicion?

- A. Encrypt the Sales.xls using PGP and e-mail it to your personal gmail account
- B. Package the Sales.xls using Trojan wrappers and telnet them back your home computer
- C. You can conceal the Sales.xls database in another file like photo.jpg or other files and send it out in an innocent looking email or file transfer using Steganography techniques
- D. Change the extension of Sales.xls to sales.txt and upload them as attachment to your hotmail account

Answer: C

NEW QUESTION 245

- (Exam Topic 2)

What is one of the advantages of using both symmetric and asymmetric cryptography in SSL/TLS?

- A. Symmetric algorithms such as AES provide a failsafe when asymmetric methods fail.
- B. Asymmetric cryptography is computationally expensive in compariso
- C. However, it is well-suited to securely negotiate keys for use with symmetric cryptography.
- D. Symmetric encryption allows the server to securely transmit the session keys out-of-band.
- E. Supporting both types of algorithms allows less-powerful devices such as mobile phones to use symmetric encryption instead.

Answer: D

NEW QUESTION 246

- (Exam Topic 2)

Log monitoring tools performing behavioral analysis have alerted several suspicious logins on a Linux server occurring during non-business hours. After further examination of all login activities, it is noticed that none of the logins have occurred during typical work hours. A Linux administrator who is investigating this problem realizes the system time on the Linux server is wrong by more than twelve hours. What protocol used on Linux servers to synchronize the time has stopped working?

- A. Time Keeper
- B. NTP
- C. PPP
- D. OSPP

Answer: B

NEW QUESTION 247

- (Exam Topic 2)

In this attack, a victim receives an e-mail claiming from PayPal stating that their account has been disabled and confirmation is required before activation. The attackers then scam to collect not one but two credit card numbers, ATM PIN number and other personal details. Ignorant users usually fall prey to this scam. Which of the following statement is incorrect related to this attack?

- A. Do not reply to email messages or popup ads asking for personal or financial information
- B. Do not trust telephone numbers in e-mails or popup ads
- C. Review credit card and bank account statements regularly
- D. Antivirus, anti-spyware, and firewall software can very easily detect these type of attacks
- E. Do not send credit card numbers, and personal or financial information via e-mail

Answer: D

NEW QUESTION 252

- (Exam Topic 2)

Password cracking programs reverse the hashing process to recover passwords. (True/False.)

- A. True
- B. False

Answer: B

NEW QUESTION 255

- (Exam Topic 2)

What is the main security service a cryptographic hash provides?

- A. Integrity and ease of computation
- B. Message authentication and collision resistance
- C. Integrity and collision resistance
- D. Integrity and computational in-feasibility

Answer: D

NEW QUESTION 257

- (Exam Topic 2)

Ralph, a professional hacker, targeted Jane, who had recently bought new systems for her company. After a few days, Ralph contacted Jane while masquerading as a legitimate customer support executive, informing that her systems need to be serviced for proper functioning and that customer support will send a computer technician. Jane promptly replied positively. Ralph entered Jane's company using this opportunity and gathered sensitive information by scanning terminals for passwords, searching for important documents in desks, and rummaging bins. What is the type of attack technique Ralph used on Jane?

- A. Dumpster diving
- B. Eavesdropping
- C. Shoulder surfing
- D. impersonation

Answer: D

NEW QUESTION 259

- (Exam Topic 2)

infecting a system with malware and using phishing to gain credentials to a system or web application are examples of which phase of the ethical hacking methodology?

- A. Reconnaissance
- B. Maintaining access
- C. Scanning
- D. Gaining access

Answer: D

Explanation:

This phase having the hacker uses different techniques and tools to realize maximum data from the system.

they're → Password cracking – Methods like Bruteforce, dictionary attack, rule-based attack, rainbow table are used. Bruteforce is trying all combinations of the password. Dictionary attack is trying an inventory of meaningful words until the password matches. Rainbow table takes the hash value of the password and compares with pre-computed hash values until a match is discovered. • Password attacks – Passive attacks like wire sniffing, replay attack. Active online attack like Trojans, keyloggers, hash injection, phishing. Offline attacks like pre-computed hash, distributed network and rainbow. Non electronic attack like shoulder surfing, social engineering and dumpster diving.

NEW QUESTION 260

- (Exam Topic 2)

Sam is working as a system administrator in an organization. He captured the principal characteristics of a vulnerability and produced a numerical score to reflect its severity using CVSS v3.0 to properly assess and prioritize the organization's vulnerability management processes. The base score that Sam obtained after performing CVSS rating was 4.0. What is the CVSS severity level of the vulnerability discovered by Sam in the above scenario?

- A. Medium
- B. Low
- C. Critical
- D. High

Answer: A

Explanation:

Rating CVSS Score None 0.0

Low 0.1 - 3.9

Medium 4.0 - 6.9

High 7.0 - 8.9

Critical 9.0 - 10.0

<https://www.first.org/cvss/v3.0/specification-document>

The Common Vulnerability Scoring System (CVSS) is an open framework for communicating the characteristics and severity of software vulnerabilities. CVSS consists of three metric groups: Base, Temporal, and Environmental. The Base metrics produce a score ranging from 0 to 10, which can then be modified by scoring the Temporal and Environmental metrics. A CVSS score is also represented as a vector string, a compressed textual representation of the values used to derive the score. Thus, CVSS is well suited as a standard measurement system for industries, organizations, and governments that need accurate and consistent vulnerability severity scores. Two common uses of CVSS are calculating the severity of vulnerabilities discovered on one's systems and as a factor in prioritization of vulnerability remediation activities. The National Vulnerability Database (NVD) provides CVSS scores for almost all known vulnerabilities.

Qualitative Severity Rating Scale

For some purposes, it is useful to have a textual representation of the numeric Base, Temporal and Environmental scores.

Table Description automatically generated

Rating	CVSS Score
None	0.0
Low	0.1 - 3.9
Medium	4.0 - 6.9
High	7.0 - 8.9
Critical	9.0 - 10.0

NEW QUESTION 262

- (Exam Topic 2)

An LDAP directory can be used to store information similar to a SQL database. LDAP uses a database structure instead of SQL's structure. Because of this, LDAP has difficulty representing many-to-one relationships.

- A. Relational, Hierarchical
- B. Strict, Abstract
- C. Hierarchical, Relational
- D. Simple, Complex

Answer: C

NEW QUESTION 266

- (Exam Topic 2)

You are a penetration tester tasked with testing the wireless network of your client Brakeme SA. You are attempting to break into the wireless network with the SSID "Brakeme-Internal." You realize that this network uses WPA3 encryption, which of the following vulnerabilities is the promising to exploit?

- A. Dragonblood
- B. Cross-site request forgery
- C. Key reinstallation attack
- D. AP Myconfiguration

Answer: A

Explanation:

Dragonblood allows an attacker in range of a password-protected Wi-Fi network to get the password and gain access to sensitive information like user credentials, emails and mastercard numbers. consistent with the published report: "The WPA3 certification aims to secure Wi-Fi networks, and provides several advantages over its predecessor WPA2, like protection against offline dictionary attacks and forward secrecy. Unfortunately, we show that WPA3 is suffering from several design flaws, and analyze these flaws both theoretically and practically. Most prominently, we show that WPA3's Simultaneous Authentication of Equals (SAE) handshake, commonly referred to as Dragonfly, is suffering from password partitioning attacks." Our Wi-Fi researchers at WatchGuard are educating businesses globally that WPA3 alone won't stop the Wi-Fi hacks that allow attackers to steal information over the air (learn more in our recent blog post on the topic). These Dragonblood vulnerabilities impact a little amount of devices that were released with WPA3 support, and makers are currently making patches available. one among the most important takeaways for businesses of all sizes is to know that a long-term fix might not be technically feasible for devices with lightweight processing capabilities like IoT and embedded systems. Businesses got to consider adding products that enable a Trusted Wireless Environment for all kinds of devices and users alike. Recognizing that vulnerabilities like KRACK and Dragonblood require attackers to initiate these attacks by bringing an "Evil Twin" Access Point or a Rogue Access Point into a Wi-Fi environment, we've been that specialize in developing Wi-Fi security solutions that neutralize these threats in order that these attacks can never occur. The Trusted Wireless Environment framework protects against the "Evil Twin" Access Point and Rogue Access Point. one among these hacks is required to initiate the 2 downgrade or side-channel attacks referenced in Dragonblood. What's next? WPA3 is an improvement over WPA2 Wi-Fi encryption protocol, however, as we predicted, it still doesn't provide protection from the six known Wi-Fi threat categories. It's highly likely that we'll see more WPA3 vulnerabilities announced within the near future. To help reduce Wi-Fi vulnerabilities, we're asking all of you to hitch the Trusted Wireless Environment movement and advocate for a worldwide security standard for Wi-Fi.

NEW QUESTION 270

- (Exam Topic 2)

Sam, a professional hacker, targeted an organization with intention of compromising AWS IAM credentials. He attempted to lure one of the employees of the organization by initiating fake calls while posing as a legitimate employee. Moreover, he sent phishing emails to steal the AWS IAM credentials and further compromise the employee's account. What is the technique used by Sam to compromise the AWS IAM credentials?

- A. Social engineering
- B. insider threat

- C. Password reuse
- D. Reverse engineering

Answer: A

Explanation:

Just like any other service that accepts usernames and passwords for logging in, AWS users are vulnerable to social engineering attacks from attackers. fake emails, calls, or any other method of social engineering, may find yourself with an AWS users' credentials within the hands of an attacker.

If a user only uses API keys for accessing AWS, general phishing techniques could still use to gain access to other accounts or their pc itself, where the attacker may then pull the API keys for aforementioned AWS user.

With basic opensource intelligence (OSINT), it's usually simple to collect a list of workers of an organization that use AWS on a regular basis. This list will then be targeted with spear phishing to do and gather credentials. an easy technique may include an email that says your bill has spiked 500th within the past 24 hours, "click here for additional information", and when they click the link, they're forwarded to a malicious copy of the AWS login page designed to steal their credentials.

An example of such an email will be seen within the screenshot below. it's exactly like an email that AWS would send to you if you were to exceed the free tier limits, except for a few little changes. If you clicked on any of the highlighted regions within the screenshot, you'd not be taken to the official AWS web site and you'd instead be forwarded to a pretend login page setup to steal your credentials.

These emails will get even more specific by playing a touch bit additional OSINT before causing them out. If an attacker was ready to discover your AWS account ID on-line somewhere, they could use methods we at rhino have free previously to enumerate what users and roles exist in your account with none logs contact on your side. they could use this list to more refine their target list, further as their emails to reference services they will know that you often use.

For reference, the journal post for using AWS account IDs for role enumeration will be found here and the journal post for using AWS account IDs for user enumeration will be found here.

During engagements at rhino, we find that phishing is one in all the fastest ways for us to achieve access to an AWS environment.

NEW QUESTION 271

- (Exam Topic 2)

what is the port to block first in case you are suspicious that an IoT device has been compromised?

- A. 22
- B. 443
- C. 48101
- D. 80

Answer: C

Explanation:

TCP port 48101 uses the Transmission management Protocol. transmission control protocol is one in all the most protocols in TCP/IP networks. transmission control protocol could be a connection-oriented protocol, it needs acknowledgement to line up end-to-end communications. only a association is about up user's knowledge may be sent bi-directionally over the association.

Attention! transmission control protocol guarantees delivery of knowledge packets on port 48101 within the same order during which they were sent. bonded communication over transmission control protocol port 48101 is that the main distinction between transmission control protocol and UDP. UDP port 48101 wouldn't have bonded communication as transmission control protocol.

UDP on port 48101 provides Associate in Nursing unreliable service and datagrams might arrive duplicated, out of order, or missing unexpectedly. UDP on port 48101 thinks that error checking and correction isn't necessary or performed within the application, avoiding the overhead of such process at the network interface level.

UDP (User Datagram Protocol) could be a borderline message-oriented Transport Layer protocol (protocol is documented in IETF RFC 768).

Application examples that always use UDP: vocalisation IP (VoIP), streaming media and period multiplayer games. several internet applications use UDP, e.g. the name System (DNS), the Routing info Protocol (RIP), the Dynamic Host Configuration Protocol (DHCP), the straightforward Network Management Protocol (SNMP).

NEW QUESTION 276

- (Exam Topic 2)

Ethical hacker jane Smith is attempting to perform an SQL injection attach. She wants to test the response time of a true or false response and wants to use a second command to determine whether the database will return true or false results for user IDs. which two SQL Injection types would give her the results she is looking for?

- A. Out of band and boolean-based
- B. Time-based and union-based
- C. union-based and error-based
- D. Time-based and boolean-based

Answer: D

Explanation:

"Boolean based" we mean that it is based on Boolean values, that is, true or false / true and false. AND

Time-based SQL Injection is an inferential SQL Injection technique that relies on sending an SQL query to the database which forces the database to wait for a specified amount of time (in seconds) before responding. The response time will indicate to the attacker whether the result of the query is TRUE or FALSE.

Boolean-based (content-based) Blind SQLi

Boolean-based SQL Injection is an inferential SQL Injection technique that relies on sending an SQL query to the database which forces the application to return a different result depending on whether the query returns a TRUE or FALSE result.

Depending on the result, the content within the HTTP response will change, or remain the same. This allows an attacker to infer if the payload used returned true or false, even though no data from the database is returned. This attack is typically slow (especially on large databases) since an attacker would need to enumerate a database, character by character.

Time-based Blind SQLi

Time-based SQL Injection is an inferential SQL Injection technique that relies on sending an SQL query to the database which forces the database to wait for a specified amount of time (in seconds) before responding. The response time will indicate to the attacker whether the result of the query is TRUE or FALSE.

Depending on the result, an HTTP response will be returned with a delay, or returned immediately. This allows an attacker to infer if the payload used returned true or false, even though no data from the database is returned. This attack is typically slow (especially on large databases) since an attacker would need to enumerate a database character by character.

<https://www.acunetix.com/websitesecurity/sql-injection2/>

NEW QUESTION 281

- (Exam Topic 2)

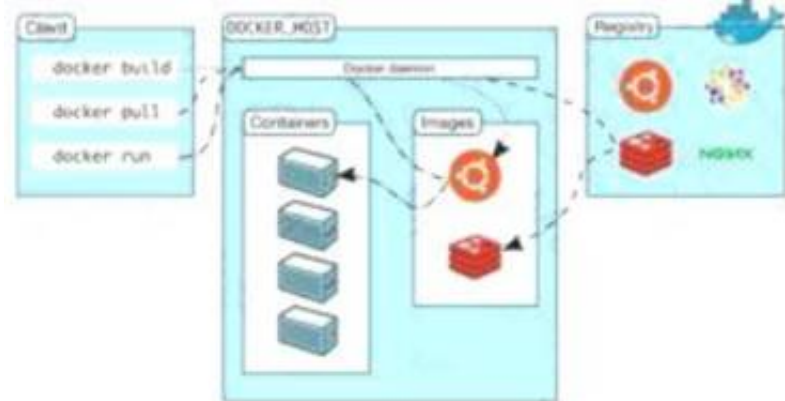
Annie, a cloud security engineer, uses the Docker architecture to employ a client/server model in the application she is working on. She utilizes a component that can process API requests and handle various Docker objects, such as containers, volumes, Images, and networks. What is the component of the Docker architecture used by Annie in the above scenario?

- A. Docker client
- B. Docker objects
- C. Docker daemon
- D. Docker registries

Answer: C

Explanation:

Docker uses a client-server design. The docker client talks to the docker daemon, that will the work of building, running, and distributing your docker containers. The docker client and daemon will run on the same system, otherwise you will connect a docker consumer to a remote docker daemon. The docker consumer and daemon communicate using a REST API, over OS sockets or a network interface.



The docker daemon (dockerd) listens for docker API requests and manages docker objects like pictures, containers, networks, and volumes. A daemon may communicate with other daemons to manage docker services.

NEW QUESTION 282

- (Exam Topic 2)

Security administrator John Smith has noticed abnormal amounts of traffic coming from local computers at night. Upon reviewing, he finds that user data have been exfiltrated by an attacker. AV tools are unable to find any malicious software, and the IDS/IPS has not reported on any non-whitelisted programs, what type of malware did the attacker use to bypass the company's application whitelisting?

- A. Phishing malware
- B. Zero-day malware
- C. File-less malware
- D. Logic bomb malware

Answer: C

Explanation:

<https://www.mcafee.com/enterprise/en-us/security-awareness/ransomware/what-is-fileless-malware.html>

NEW QUESTION 283

- (Exam Topic 2)

You are attempting to crack LM Manager hashed from Windows 2000 SAM file. You will be using LM Brute force hacking tool for decryption. What encryption algorithm will you be decrypting?

- A. MD4
- B. DES
- C. SHA
- D. SSL

Answer: B

NEW QUESTION 285

- (Exam Topic 2)

Clark, a professional hacker, was hired by an organization to gather sensitive Information about its competitors surreptitiously. Clark gathers the server IP address of the target organization using Whole footprinting. Further, he entered the server IP address as an input to an online tool to retrieve information such as the network range of the target organization and to identify the network topology and operating system used in the network. What is the online tool employed by Clark in the above scenario?

- A. AOL
- B. ARIN
- C. DuckDuckGo
- D. Baidu

Answer: B

Explanation:

<https://search.arin.net/rdap/?query=199.43.0.43>

NEW QUESTION 288

- (Exam Topic 2)

During the process of encryption and decryption, what keys are shared?

- A. Private keys
- B. User passwords
- C. Public keys
- D. Public and private keys

Answer: C

Explanation:

https://en.wikipedia.org/wiki/Public-key_cryptography

Public-key cryptography, or asymmetric cryptography, is a cryptographic system that uses pairs of keys: public keys (which may be known to others), and private keys (which may never be known by any except the owner).

The generation of such key pairs depends on cryptographic algorithms which are based on mathematical problems termed one-way functions. Effective security requires keeping the private key private; the public key can be openly distributed without compromising security.

In such a system, any person can encrypt a message using the intended receiver's public key, but that encrypted message can only be decrypted with the receiver's private key. This allows, for instance, a server program to generate a cryptographic key intended for a suitable symmetric-key cryptography, then to use a client's openly-shared public key to encrypt that newly generated symmetric key. The server can then send this encrypted symmetric key over an insecure channel to the client; only the client can decrypt it using the client's private key (which pairs with the public key used by the server to encrypt the message). With the client and server both having the same symmetric key, they can safely use symmetric key encryption (likely much faster) to communicate over otherwise-insecure channels. This scheme has the advantage of not having to manually pre-share symmetric keys (a fundamentally difficult problem) while gaining the higher data throughput advantage of symmetric-key cryptography.

With public-key cryptography, robust authentication is also possible. A sender can combine a message with a private key to create a short digital signature on the message. Anyone with the sender's corresponding public key can combine that message with a claimed digital signature; if the signature matches the message, the origin of the message is verified (i.e., it must have been made by the owner of the corresponding private key).

Public key algorithms are fundamental security primitives in modern cryptosystems, including applications and protocols which offer assurance of the confidentiality, authenticity and non-repudiability of electronic communications and data storage. They underpin numerous Internet standards, such as Transport Layer Security (TLS), S/MIME, PGP, and GPG. Some public key algorithms provide key distribution and secrecy (e.g., Diffie–Hellman key exchange), some provide digital signatures (e.g., Digital Signature Algorithm), and some provide both (e.g., RSA). Compared to symmetric encryption, asymmetric encryption is rather slower than good symmetric encryption, too slow for many purposes. Today's cryptosystems (such as TLS, Secure Shell) use both symmetric encryption and asymmetric encryption.

NEW QUESTION 293

.....

Thank You for Trying Our Product

We offer two products:

1st - We have Practice Tests Software with Actual Exam Questions

2nd - Questions and Answers in PDF Format

312-50v12 Practice Exam Features:

- * 312-50v12 Questions and Answers Updated Frequently
- * 312-50v12 Practice Questions Verified by Expert Senior Certified Staff
- * 312-50v12 Most Realistic Questions that Guarantee you a Pass on Your FirstTry
- * 312-50v12 Practice Test Questions in Multiple Choice Formats and Updatesfor 1 Year

100% Actual & Verified — Instant Download, Please Click
[Order The 312-50v12 Practice Test Here](#)