



**HP**

## **Exam Questions HPE6-A73**

Aruba Certified Switching Professional Exam

## About ExamBible

*[Your Partner of IT Exam](#)*

## Found in 1998

ExamBible is a company specialized on providing high quality IT exam practice study materials, especially Cisco CCNA, CCDA, CCNP, CCIE, Checkpoint CCSE, CompTIA A+, Network+ certification practice exams and so on. We guarantee that the candidates will not only pass any IT exam at the first attempt but also get profound understanding about the certificates they have got. There are so many alike companies in this industry, however, ExamBible has its unique advantages that other companies could not achieve.

## Our Advances

### \* 99.9% Uptime

All examinations will be up to date.

### \* 24/7 Quality Support

We will provide service round the clock.

### \* 100% Pass Rate

Our guarantee that you will pass the exam.

### \* Unique Gurantee

If you do not pass the exam at the first time, we will not only arrange FULL REFUND for you, but also provide you another exam of your claim, ABSOLUTELY FREE!

#### NEW QUESTION 1

An administrator wants to leverage always-on PoE on AOS-CX switches. Which statement is correct regarding this feature?

- A. Provides up to 60W of power per port
- B. Supports all AOS-CX switches
- C. Provides surge protection for PoE and non-PoE ports
- D. Requires NetEdit to implement

**Answer:** A

#### NEW QUESTION 2

What must a network administrator implement in order to run an NAE script on an AOS-CX switch?

- A. Deployment
- B. Schedule
- C. Plan
- D. Agent

**Answer:** D

#### NEW QUESTION 3

A network administrator wants to centralize the management of AOS-CX switches by implementing NetEdit. How should the administrator purchase and/or install the NetEdit solution?

- A. Install as a hardware appliance
- B. Installed on a supported version of RedHat Enterprise Linux
- C. Installed in a virtualized solution by using the Aruba-supplied OVA file
- D. Installed on a supported version of Debian Linux

**Answer:** C

#### NEW QUESTION 4

When an AOS-CX switch uses a temporary copy of the Configuration State database, what kind of analysis does NetEdit perform to ensure that the configuration is correct?

- A. Syntax validation
- B. Semantic validation
- C. Conformance validation
- D. Change validation

**Answer:** D

#### Explanation:

Validation processes

+ Syntax validation

– When: while typing

– What: command syntax including in-line help

+ Semantics validation

– When: VALIDATE button (in multi-editor) or before DEPLOY

– What: configuration consistency

+ Conformance validation

– When: while editing

– What: compliance with conformance rules: corporate policies, minimum connectivity requirements, etc.

+ Change validation

– When: during DEPLOY (before and after configuration deployment)

– What: compares device state before and after changes are applied (using show commands)

#### NEW QUESTION 5

Which protocol does NetEdit use to discover devices in a subnet during the discovery process?

- A. LLDP
- B. ARP
- C. DHCP
- D. ICMP

**Answer:** A

#### NEW QUESTION 6

What is correct regarding policy-based routing?

- A. Policies can only be applied to routed interfaces.
- B. Policies can be applied inbound and outbound.
- C. Monitoring of policy interfaces occurs every 60 seconds.
- D. Policy actions include routing permitting or dropping traffic.

**Answer:** A

#### NEW QUESTION 7

How does PIM build the IP multicast routing table to route traffic between a multicast source and one or more receivers?

- A. It uses the unicast routing table and reverse path forwarding (RPF)
- B. It uses IGMP and calculates a shortest path tree (SPT)
- C. It uses the shortest path first (SPF) algorithm derived from link state protocols
- D. It uses the Bellman-Ford algorithm derived from distance vector protocols

**Answer:** A

#### Explanation:

"PIM also relies on the unicast routing tables to identify the path back to a multicast source. This routing method is known as reverse path forwarding (RPF). The unicast routing protocols create the unicast routing tables. With this information, PIM sets up the distribution tree for the multicast traffic.

#### NEW QUESTION 8

An administrator will be implementing tunneling between AOS-CX switches and Aruba gateways. Which list of protocols must minimally be allowed by an intermediate firewall between two sets of devices?

- A. IP protocol 50 and UDP 8209
- B. UDP 4500 and IP protocol 47
- C. UDP 8211 and IP protocol 47
- D. UDP 4500 and UDP 8209

**Answer:** C

#### Explanation:

ACSP Study Guide Page 788 - Allow the following protocols/ports

- PAPI: UDP 8211
- GRE: Protocol 47

#### NEW QUESTION 9

An administrator is managing a network comprised of AOS-CX switches deployed at the aggregation layer. The switches are paired in a VSX stack and run the OSPF routing protocol. The administrator is concerned about how long it takes for OSPF to converge when one of the VSX switches has to reboot. What should the administrator do to speed up the OSPF convergence of the switch that is rebooting?

- A. Change the VSXISL link from an OSPF broadcast link point-to-point.
- B. Implement graceful restart on the VSX switches and their neighboring OSPF switches.
- C. Decrease the VSX initial synchronization timer on the two VSX switches.
- D. Define non-backbone areas on the VSX switches as totally stubby areas.

**Answer:** B

#### NEW QUESTION 10

A network administrator is managing a network that deploys a multicast service. The administrator has multiple streams successfully being routed by PIM-DM in the network. The administrator then adds a new stream with a destination address of 239.0.0.1. However, clients who have not joined the stream are receiving it. What should the administrator do to fix this problem?

- A. Verify that IGMP is enabled between the switches connecting the multicast source and receivers
- B. Change the destination multicast address to 239.1.1.1
- C. Define the 239.0.0.1 stream on the rendezvous point (RP)
- D. Define the 239.0.0.1 stream on the PIM candidate bootstrap router

**Answer:** B

#### Explanation:

MAC/IP overlap. 239.0.0.1 would be the same MAC for 224.0.0.1. 224.0.0.0/24 is always flooded over every port.

#### NEW QUESTION 10

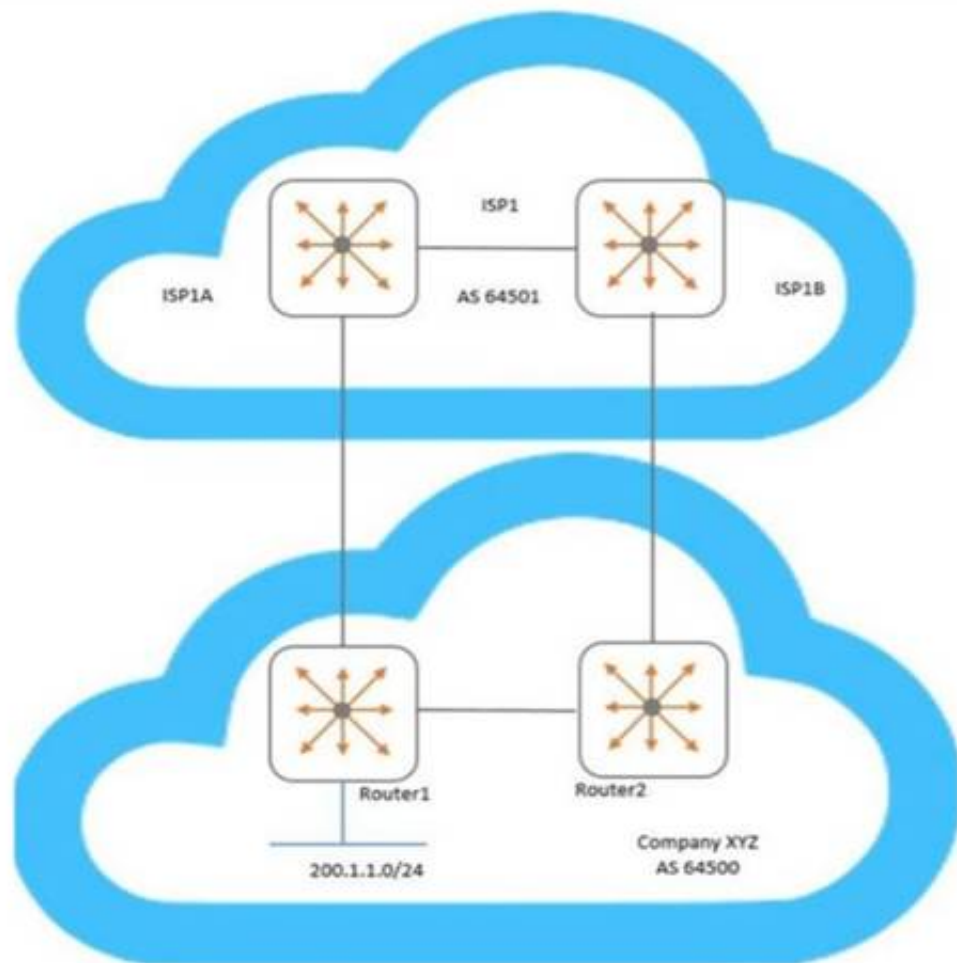
How is voice traffic prioritized correctly on AOS-CX switches?

- A. By defining device profiles with QOS settings
- B. By placing it in the strict priority queue
- C. By implementing voice VLANs
- D. By implementing weighted fair queueing (WFQ)

**Answer:** B

#### NEW QUESTION 15

Examine the network topology.



Company XYZ has two connections to a service provider (ISP1). Here is the configuration of Router1:

```
Router1(config)# ip prefix-list AS64500-routes permit 200.1.1.0/24
Router1(config)# route-map To-AS64501 permit seq 10
Router1(config-route-map)# match ip address prefix-list AS64500-routes
Router1(config-route-map)# set metric 100
Router1(config-route-map)# exit
Router1(config)# router bgp 64500
Router1(config-bgp)# address-family ipv4 unicast
Router1(config-bgp-ipv4-uc)# neighbor 192.168.1.1 route-map To-AS64501 out
```

Here is the configuration of Router2:

```
Router2(config)# ip prefix-list AS64500-routes permit 200.1.1.0/24
Router2(config)# route-map To-AS64501 permit seq 10
Router2(config-route-map)# match ip address prefix-list AS64500-routes
Router2(config-route-map)# set metric 200
Router2(config-route-map)# exit
Router2(config)# router bgp 64500
Router2(config-bgp)# address-family ipv4 unicast
Router2(config-bgp-ipv4-uc)# neighbor 192.168.2.1 route-map To-AS64501 out
```

Based on configuration of Router1 and Router2, which BGP metric is being manipulated?

- A. Weight
- B. Multiple exit discriminator
- C. Local preference
- D. AS path length

**Answer: B**

#### NEW QUESTION 16

Examine the following AOS-CX switch configuration:

```
Access(config)# access-list ip ext
Access(config-acl-ip)# permit ip any 10.0.11.0/255.0.255.0 count
Access(config-acl-ip)# permit ip any 10.0.12.0/255.0.255.0 log
Access(config-acl-ip)# exit
Access(config)# interface 1/1/3
Access(config-if)# apply access-list ip ext in
Access(config-if)# exit
```

Which statement correctly describes what is allowed for traffic entering interface 1/1/3?

- A. IP traffic from 10.1.11.0/24 is allowed to access 10.1.110.0/24
- B. IP traffic from 10.0.11.0/24 is allowed to access 10.1.12.0/24
- C. Traffic from 10.0.12.0/24 will generate a log record when accessing 10.0.11.0/24
- D. IP traffic from 10.1.12.0/24 is allowed to access 172.0.1.0/23



**Answer:** B

**Explanation:**

People seem to be confused by inverted mask/wildcard masks. They would be correct for Cisco switches, but AOS-CX does NOT use wildcard masks; "AOS-CX switches do not support wildcard masks - only prefixes or subnet masks - when created ACEs."

Cisco: 255.0.255.0 = xx.123.xx.123 AOS-CX: 255.0.255.0 = 123.xx.123.xx

**NEW QUESTION 21**

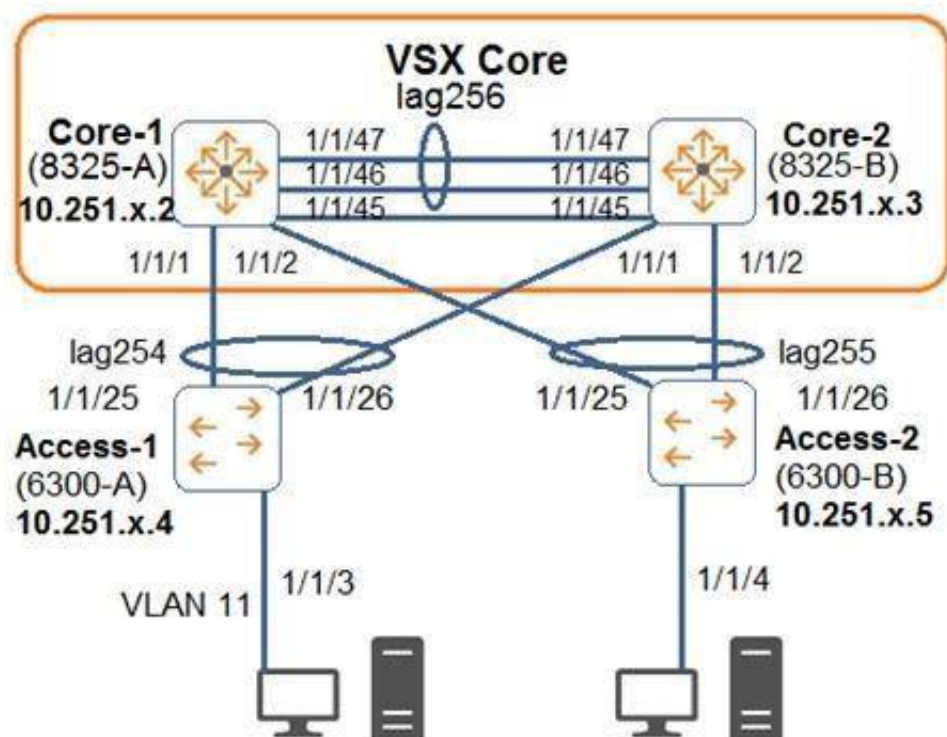
An administrator is concerned about the security of the control plane connection between an AOS-CX switch and an Aruba Mobility Controller (MC) when implementing user-based tunneling. How should the administrator protect this traffic?

- A. IPSec with a digital certificate
- B. GRE with a pre-shared key
- C. PAPI with an MD5 pre-shared key
- D. IPSec with a pre-shared key

**Answer:** C

**NEW QUESTION 26**

Examine the attached diagram.



The two PCs are located in VLAN 11 (10.1.11.0/24). Which example defines how to implement active gateway on the VSX core for VLAN 11?

- A. interface vlan 11 active-gateway ip 10.1.11.1 active-gateway mac 02:02:00:00:01:00
- B. interface lag 254 active-gateway vlan 11 ip 10.1.11.1 active-gateway vlan 11 mac 02:02:00:00:01:00
- C. interface lag 254 active-gateway ip 10.1.11.1 active-gateway mac 02:02:00:00:01:00
- D. vsxvrrp group 1

**Answer:** A

**NEW QUESTION 28**

An administrator wants to drop traffic from VLAN 6 (10.1.6.0/24) to VLAN 5 (10.1.5.0/24), but allow all other traffic. What is correct configuration to accomplish this?

- A.
- ```
class ip VLAN5
  10 match ip 10.1.6.0/24 10.1.5.0/24
  exit
policy VLAN5
  10 class ip VLAN5 action drop
  exit
interface vlan 5
  apply access-list ip VLAN5 in
```
- B.
- ```
access-list ip VLAN5
  10 permit ip 10.1.6.0/0.0.0.255 10.1.5.0/0.0.0.255
  20 permit ip any any
  exit
interface vlan 5
  apply access-list ip
  VLAN5 in
  exit
```
- C.
- ```
access-list ip VLAN5
  10 deny ip 10.1.6.0/24 10.1.5.0/24
  20 permit ip any any
  exit
interface vlan 5
  apply access-list ip VLAN5 in
  exit
```
- D.
- ```
class ip VLAN5
  10 match ip 10.1.6.0/24 10.1.5.0/24
  exit
policy VLAN5
  10 class ip VLAN5 action drop
  exit
vlan 5
  apply policy VLAN5 in
```

- A. Option A  
B. Option B  
C. Option C  
D. Option D

**Answer: C**

#### NEW QUESTION 30

A network has two AOS-CX switches connected to two different service providers. The administrator is concerned about bandwidth consumption on the service provider links and learned that the service providers were using the company as a transit AS. Which feature should the administrator implement to prevent this situation?

- A. Configure route maps and apply them to BGP  
B. Configure the two switches as route reflectors  
C. Configure a classifier policy to disable MED  
D. Configure bi-directional forwarding detection on both switches

**Answer: A**

#### NEW QUESTION 35

An administrator creates an ACL rule with both the "count" and "log" option enabled. What is correct about the action taken by an AOS-CX switch when there is a match on this rule?

- A. By default, a summarized log is created every minute with a count of the number of matches  
B. Logging will not include certificate and TLS events, but counting will  
C. The "count" and "log" options are processed by the AOS-CX switch's hardware ASIC  
D. The total in the "log" record and the count could contain different rule matching statistics

**Answer: D**

#### Explanation:

From the "AOS-CX 10.08 ACLs and Classifier Policies Guide" : "You may see a minor discrepancy between the ACL logging statistics and the hit counts statistics due to the time required to record the log message."

#### NEW QUESTION 37

An administrator is designing an access layer solution in a data center. A key requirement is to dual-home mission-critical server connections to two different switches, ensuring that the servers always have network access, even during switch software upgrades. This feature should support strictly-controlled provisioning. What would best meet the administrator's needs when deploying AOS-CX switches?

- A. VSF
- B. Dynamic segmentation
- C. VSX
- D. NAE

**Answer:** C

#### NEW QUESTION 38

A company is implementing a new wireless design and needs it to support high availability, even during times of switch system upgrades. The solution will involve Aruba Mobility Controller (MC) and Aruba AP connections requiring POE. Which campus AOS-CX switch solution and virtual switching should the company implement at the campus access layer?

- A. AOS-CX 6400 and VSX
- B. AOS-CX 6300 and VSF
- C. AOS-CX 8325 and VSF
- D. AOS-CX 8400 and VSX

**Answer:** A

#### Explanation:

only 6400 support highly available during upgrades

#### NEW QUESTION 40

A company has a few servers in a secure, remote location storing highly-confidential documents connected to two AOS-CX 6400 switches configured in a VSX pair. The AOS-CX switches perform access control with 802.1X and will be implementing user-based tunneling (UBT) so that Aruba gateway application inspection and stateful firewall policies can be applied to the traffic. The gateways are running version 84 and implement the AP, PEF, and RFP licenses. Which licensing is needed for the two AOS-CX switches?

- A. 2 AP and 2 PEF licenses only
- B. 1 AP license only
- C. 2 AP, 2 PEF, and 2 RFP licenses only
- D. 1 AP, 1 PEF, and 1 RFP licenses only

**Answer:** D

#### NEW QUESTION 42

An administrator is implementing a multicast solution in a multi-VLAN network. Which statement is true about the configuration of the switches in the network?

- A. IGMP snooping must be enabled on all interfaces on a switch to intelligently forward traffic
- B. IGMP requires join and leave messages to graft and prune multicast streams between switches
- C. IGMP must be enabled on all routed interfaces where multicast traffic will traverse
- D. IGMP must be enabled on all interfaces where multicast sources and receivers are connected

**Answer:** C

#### NEW QUESTION 45

When implementing user-based tunneling on an AOS-CX switch, which component defines the primary and backup Aruba gateways?

- A. Transit VLAN
- B. Gateway role
- C. Server group
- D. Zone

**Answer:** D

#### NEW QUESTION 49

A company has just purchased AOS-CX switches. The company has a free and open-source AAA solution. The company wants to implement access control on the Ethernet ports of the AOS-CX switches.

Which security features can the company implement given the equipment that they are using?

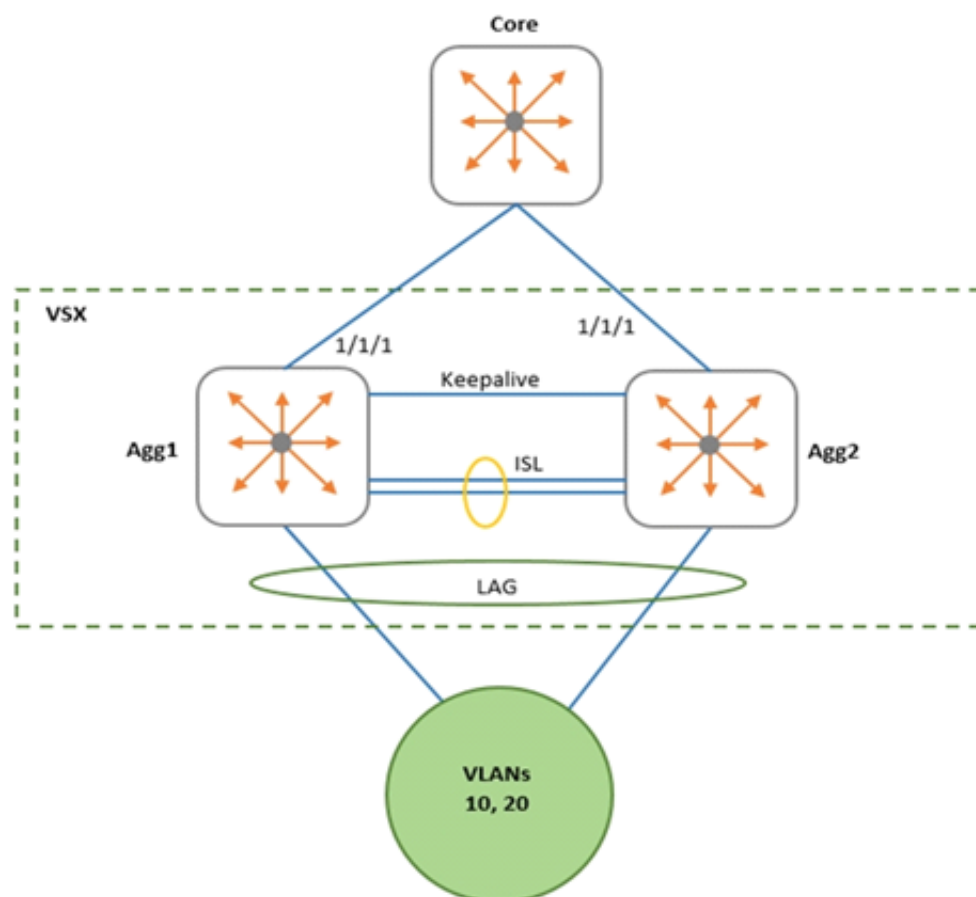
- A. Port-based tunneling
- B. Device fingerprinting
- C. Local user roles
- D. Downloadable user roles

**Answer:** C

#### NEW QUESTION 51

Examine the network exhibit.





A network administrator is implementing OSPF on a VSX pair of aggregation switches: Agg1 and Agg2. VLANs 10 and 20 are connected to layer-2 access switches. Agg-1 and Agg-2 are configured as the default gateway for VLANs 10 and 20, with active gateway enabled. What is the best practice for configuring OSPF on the aggregation switches and their connection to the Core switch?

- A. Define a layer-2 VSX LAG associated with a layer-3 VLAN interface
- B. Enable active gateway for the Layer-3 VLAN.
- C. Define separate layer-3 VLAN interfaces between the aggregation and core switch
- D. Enable active forwarding for the Layer-3 VLAN.
- E. Define separate layer-3 VLAN interfaces between the aggregation and core switch
- F. Enable active gateway for the Layer-3 VLAN.
- G. Define a layer-2 VSX LAG associated with a layer-3 VLAN interface
- H. Enable active forwarding for the Layer-3 VLAN.

**Answer:** A

#### NEW QUESTION 56

A company has recently upgraded their campus switching infrastructure with AOS-CX switches. They have implemented 802.1X authentication on access ports where laptop and IOT devices typically connect. An administrator has noticed that for POE devices, the AOS-CX switch ports are delivering the maximum wattage to the port instead of what the device actually needs. Concerned about this waste of electricity, what should the administrator implement to solve this problem?

- A. Implement a classifier policy with the correct power definitions
- B. Create device profiles with the correct power definitions
- C. Enable AAA authentication to exempt LLDP and/or CDP information
- D. Globally enable the QoS trust setting for LLDP and/or CDP

**Answer:** B

#### NEW QUESTION 60

.....

## Relate Links

**100% Pass Your HPE6-A73 Exam with ExamBible Prep Materials**

<https://www.exambible.com/HPE6-A73-exam/>

## Contact us

We are proud of our high-quality customer service, which serves you around the clock 24/7.

Viste - <https://www.exambible.com/>