



Cisco

Exam Questions 200-901

Developing Applications and Automating Workflows using Cisco Core Platforms (DEVASC)

NEW QUESTION 1

- (Exam Topic 2)

Refer to the exhibit.

```
1  #!/bin/bash
2  apt install nginx
3  export AVAILABLE_SITES_DIR = '/etc/nginx/sites-available'
4  export ENABLED_SITES_DIR = '/etc/nginx/sites_enabled'
5  cd /opt/nginx
6  cat sites.txt | while read site;
7      do
8          cp template.conf "$AVAILABLE_SITES_DIR/$site";
9          ln -s "$AVAILABLE_SITES_DIR/$site" "$ENABLED_SITES_DIR";
10         chown www-data:www-data "$AVAILABLE_SITES_DIR/$site";
11     done
```

An engineer must configure a load balancer server. The engineer prepares a script to automate workflow by using Bash. The script install the nginx package, moves to the /opt/nginx directory, and reads the sites M We (or further processing Based on the script workflow, which process is being automated within the loop by using the information mi sites txt?

- A. creating a new Me Based on template .conf in the /etc/nginx/sites_enabled directory for each lie in the sites txt fil
- B. and then changing the file execution permission.
- C. creating a Me per each the in sites txt with the information in template con
- D. creating a link for the previously created fil
- E. and then changing the ownership of the created files
- F. using the content of the file to create the template conf fil
- G. creating a link from the created file to the/etc/nginx/files.enable
- H. and then changing the file execution permissions.
- I. using the information in the file to create a set of empty files in the /etchginx/sites_enabled directory and then assigning the owner of the file.

Answer: B

NEW QUESTION 2

- (Exam Topic 2)

Refer to the exhibit.

```
1  import requests
2  import json
3
4  BASE_URL = "https://<IP Address>"
5  FIRST_URL = "/dna/intent/api/v1/network-device"
6  SECOND_URL = "/dna/intent/api/v1/network-device-poller/cli/read-request"
7  THIRD_URL = "/dna/intent/api/v1/task/{task_id}"
8  FOURTH_URL = "/dna/intent/api/v1/file/{file_id}"
9
10 headers = {"X-Auth-Token": "TOKEN", "Content-Type": "application/json"}
11
12 params = {"platformId": "C9500-40X"}
13 response = requests.get(BASE_URL + FIRST_URL, headers=headers, params=params)
14 devices = []
15 for device in response.json()["response"]:
16     devices.append(device["id"])
17
18     payload = {
19         "commands": ["show version", "show ip int brief"],
20         "deviceUuids": devices,
21         "timeout": 0,
22     }
23 response = requests.post(BASE_URL + SECOND_URL, data=json.dumps(payload),
24     . headers=headers)
25 task_id = response.json()["response"]["taskId"]
26
27 response = requests.get(BASE_URL + THIRD_URL.format(task_id=task_id),
28     . headers=headers)
29 progress_json = json.loads(response.json()["response"]["progress"])
30 file_id = progress_json("fileId")
31
32 response = requests.get(BASE_URL + FOURTH_URL.format(file_id=file_id),
33     . headers=headers)
34 file_json = response.json()
35
36 for cmd in file_json:
37     print(file_json[cmd]["commandResponses"]["SUCCESS"]["show ip int brief"])
```

A network engineer must collect information from the network using Cisco DNA Center APIs. The script must query for the devices with 'platformId' 'C9540-x' and then send commands to be executed. Which process is automated by the Python script?

- A. results gathering of the show version and show ip int brief commands
- B. output of show ip int brief command on devices of type C9500-40X

- C. execution information of the show version and show ip int brief commands
- D. list of executed commands on C9500-40X and the information of show ip int brief command

Answer: B

NEW QUESTION 3

- (Exam Topic 2)

What are two functions of a routing table on a network device? (Choose two.)

- A. It lists entries more than two hops away.
- B. It lists the routes to a particular destination.
- C. It lists the routes to drop traffic.
- D. It lists hosts that are one hop away.
- E. It lists the static and dynamic entries.

Answer: BE

NEW QUESTION 4

- (Exam Topic 2)

What are two considerations when selecting the "best route" for a network device to reach its destination? (Choose two.)

- A. MAC address
- B. metrics
- C. administrative distance
- D. IP address
- E. subnet mask

Answer: BC

NEW QUESTION 5

- (Exam Topic 2)

How do XML and JSON compare regarding functionality?

- A. JSON natively supports arrays and XML does not natively support arrays.
- B. XML provides support for mapping data structures into host languages than JSON.
- C. XML provides more human readability than JSON.
- D. JSON provides support for data types than XML.

Answer: A

NEW QUESTION 6

- (Exam Topic 2)

What is a benefit of test-driven development?

- A. early customer involvement
- B. increased code quality
- C. faster releases that have minimal features
- D. strict adherence to product requirements

Answer: D

NEW QUESTION 7

- (Exam Topic 2)

Drag and drop the code snippets from the bottom into the Python script to write API output to a csv file. Not all options are used.

```
#!/usr/bin/env python3
import csv
import json
import 
#Create a request to grab info in api
response = requests.  ('http://api.zippopotam.us/us/80301')

try:
    with open('80301.json', 'w') as outfile:
        json.dump(response.json(), outfile)
    print(  .json())
except Exception as e:
    print(e)

with open('80301.csv', 'w') as outfile:
    json.dump(response.json(), outfile)
print(response.  )
```

response	requests	request
get	status_code	status

- A. Mastered
 B. Not Mastered

Answer: A

Explanation:

Graphical user interface, text, application Description automatically generated

NEW QUESTION 8

- (Exam Topic 2)

A developer creates a web application that receives a username and password and uses them to sync the credentials to other services through HTTPS. API keys to services are part of the configuration files of the application, but the credentials to the database that stores the synchronization logs are obtained through an external vault service. What is the security issue in this scenario?

- A. Communication between the application and the services is not encrypted.
 B. The database credentials should be stored in the configuration files so that they are secured on the same server.
 C. The API keys are stored in the configuration files but should be stored in the vault service.
 D. The synchronization logs should be encrypted and not stored in a relational database.

Answer: A

NEW QUESTION 9

- (Exam Topic 2)

A developer is trying to retrieve data over a REST API. The API server responds with an HTTP client error response code. After investigating the response the developer realizes the response has a Retry-After header. What is the root cause of this error?

- A. The REST service is unreachable at the time of the REST request
 B. Too many requests were sent to the REST service in a given amount of time.
 C. An appliance limited the rate of requests to the transport layer.
 D. An appliance limited the rate of requests to the application layer

Answer: B

NEW QUESTION 10

- (Exam Topic 2)

What are two benefits of model-driven programmability?

- A. model-driven APIs for abstraction and simplification
 B. single choice of transport, protocol, and encoding
 C. model-based, structured, and human friendly
 D. easier to design, deploy, and manage APIs
 E. models decoupled from transport, protocol, and encoding

Answer: DE

NEW QUESTION 10

- (Exam Topic 2)

What are two use cause where webhooks are effective? (Choose two.)

- A. Close a session with a web server after a specific amount of time.
- B. Filter out information from a response to an API call
- C. Change the response format or content type of an API call.
- D. Inform a previously defined chat channel after a deployment fate.
- E. Send an email to a customer of an online store after payment is complete

Answer: DE

NEW QUESTION 13

- (Exam Topic 2)

What is the function of IP address in networking?

- A. specifies the type of traffic that is allowed to roam on a network
- B. represents the unique ID that is assigned to one host on a network
- C. specifies resource's location and the mechanism to retrieve it
- D. represents a network connection on specific devices

Answer: B

NEW QUESTION 14

- (Exam Topic 2)

Refer to the exhibit.

```
# base image
FROM alpine

# Install python and pip
RUN apk add --update py2-pip

# Install python modules needed by the python app
COPY requirements.txt /usr/src/app/
RUN pip install --no-cache-dir -r /usr/src/app/requirements.txt

#copy local files for the app to run
COPY app.py /usr/src/app/
COPY templates/index.html /usr/src/app/templates/

EXPOSE 8080

#run the application
CMD ["python", "/usr/src/app/app.py"]
```

Which function does the EXPOSE line perform when building an image from this Dockerfile?

- A. Local port 8080 of the container that launched with this docker image is accessible from co-hosted containers and external clients.
- B. Local port 8080 is not reachable at all because no IP address is specified along with the EXPOSE command of the Dockerfile.
- C. Local port 8080 is accessible from other containers running on the same docker host as the container that launched with this docker image.
- D. Local port 8080 of the container that launched with this docker image is accessible to external clients.

Answer: C

Explanation:

By default, the EXPOSE instruction does not expose the container's ports to be accessible from the host. In other words, it only makes the stated ports available for inter-container interaction.

Whereas publishing a port using either -P or -p exposes it, exposing a port using EXPOSE or --expose does not publish it.

So, while exposed ports can only be accessed internally, published ports can be accessible by external containers and services.

<https://www.whitesourcesoftware.com/free-developer-tools/blog/docker-expose-port/>

NEW QUESTION 17

- (Exam Topic 2)

Which tool is used to block all traffic to the domain by using a single API call?

- A. Cisco ISE
- B. Cisco Firepower
- C. Cisco AMP
- D. Cisco Umbrella

Answer: B

NEW QUESTION 18

- (Exam Topic 2)

Drag and drop the code snippets from the bottom to the blanks in the code to complete the HTTP response. Not all options are used.

Request URL: <http://www.example.com/>

: GET

: 200 OK

Remote Address: [2606:2800:220:1:248:1893:25c8:1946]:80

Referrer Policy: strict-origin-when-cross-origin

Response Headersview source

Accept-Ranges: bytes

Age: 396561

Cache-Control: max-age=604800

: gzip

Content-Length: 648

: text/html; charset=UTF-8

Date: Sat, 20 Nov 2020 20:49:34 GMT

Etag: "3147526947+ident"

Expires: Sat, 21 Nov 2020 20:49:34 GMT

Last-Modified: Thu, 17 Oct 2019 07:18:26 GMT

Server: ECS (dna/63AA)

Vary: Accept-Encoding

X-Cache: HIT

Request Headersview source

Accept: text/html,application/xhtml+xml,application/xml;q=0.9,
image/avif,image/webp,image/apng,*/*;q=0.8,application/signed-exchange;v=b3;q=0.9

Accept-Encoding: gzip, deflate

Accept-Language: en-US,en;q=0.9

Request Type	Request Control
Status Code	Content-Type
Request Method	Content Code
Content-Encoding	

- A. Mastered
B. Not Mastered

Answer: A

Explanation:

Graphical user interface, text, application Description automatically generated

NEW QUESTION 20

- (Exam Topic 2)

A company is adopting DevOps as part of an internal transformation, and is reviewing the success of the first deployments. Developers and engineers are working together to resolve any resulting issues. However, this new way of working has increased overhead, and the team is finding it difficult to complete releases in time. Which area of the CALMS framework must the company target for improvement?

- A. Collaboration
B. Lean
C. Sharing
D. Measurement

Answer: B

Explanation:

Reference: <https://blog.sonatype.com/principle-based-devops-frameworks-calms>

NEW QUESTION 23

- (Exam Topic 2)

Which advantage does the agile process offer compared to waterfall software development?

- A. to view the full scope of end-to-end work
B. to have each phase end before the next begins
C. to fix any issues at the end of the development cycle
D. to add or update features with incremental delivery

Answer: D

NEW QUESTION 27

- (Exam Topic 2)

Why is refactoring done during test-driven development?

- A. to enable larger objects and longer methods
B. to improve maintainability and readability
C. to ensure that the previous uses of the objects are explained
D. to ensure the duplication of essential code

Answer: B

NEW QUESTION 28

- (Exam Topic 2)

Refer to the exhibit.

Local File Attachments

To send local file attachments, simply post a message by including your access token in the Authorization header and the path to your local file with the files parameter. Optionally, you can also include a plain-text message with the attachment by using the text parameter. When uploading files directly from your local filesystem, your request will need to be a multipart/form-data request rather than JSON

```
curl --request POST \  
  --form "files=@/home/desktop/example.png;type=image/png" \  
  --form "roomId=Y21zY2....." \  
  --form "text=example attached" \  
https://webexapis.com/v1/messages
```

A developer needs to upload a local file by using the REST API. The developer gathers information according to the documentation and sends the request by using the cURL command in the exhibit but gets an error code. Which action should be followed to get valid response?

- A. change content type as JSON
- B. add the authorization header with the access token
- C. add a username-password combination to request command
- D. change request method as GET

Answer: B

Explanation:

Reference: <https://developer.webex.com/docs/api/basics>

NEW QUESTION 31

- (Exam Topic 2)

What is a requirement when authenticating a RESTCONF API session with a router that runs Cisco IOS XE Software?

- A. No authentication is required.
- B. OAuth must be used.
- C. Basic authentication must be used.
- D. A token must be retrieved and the associated string must be embedded in the X-Auth-Token header.

Answer: C

Explanation:

<https://www.cisco.com/c/en/us/td/docs/routers/csr1000/software/restapi/restapi/RESTAPIclient.html>

NEW QUESTION 35

- (Exam Topic 2)

A developer is working on a feature for a new application. The changes in the existing branch named 'feat00304' must be integrated into a single commit with the current working primary branch named 'prodapp411926287'. Which git command must be used?

- A. git rebase --merge feat00304
- B. git merge --squash feat00304
- C. git push --rebase feat00304
- D. git checkout --squash feat00304

Answer: B

NEW QUESTION 36

- (Exam Topic 2)

What is used in JSON to represent a Python Tuple?

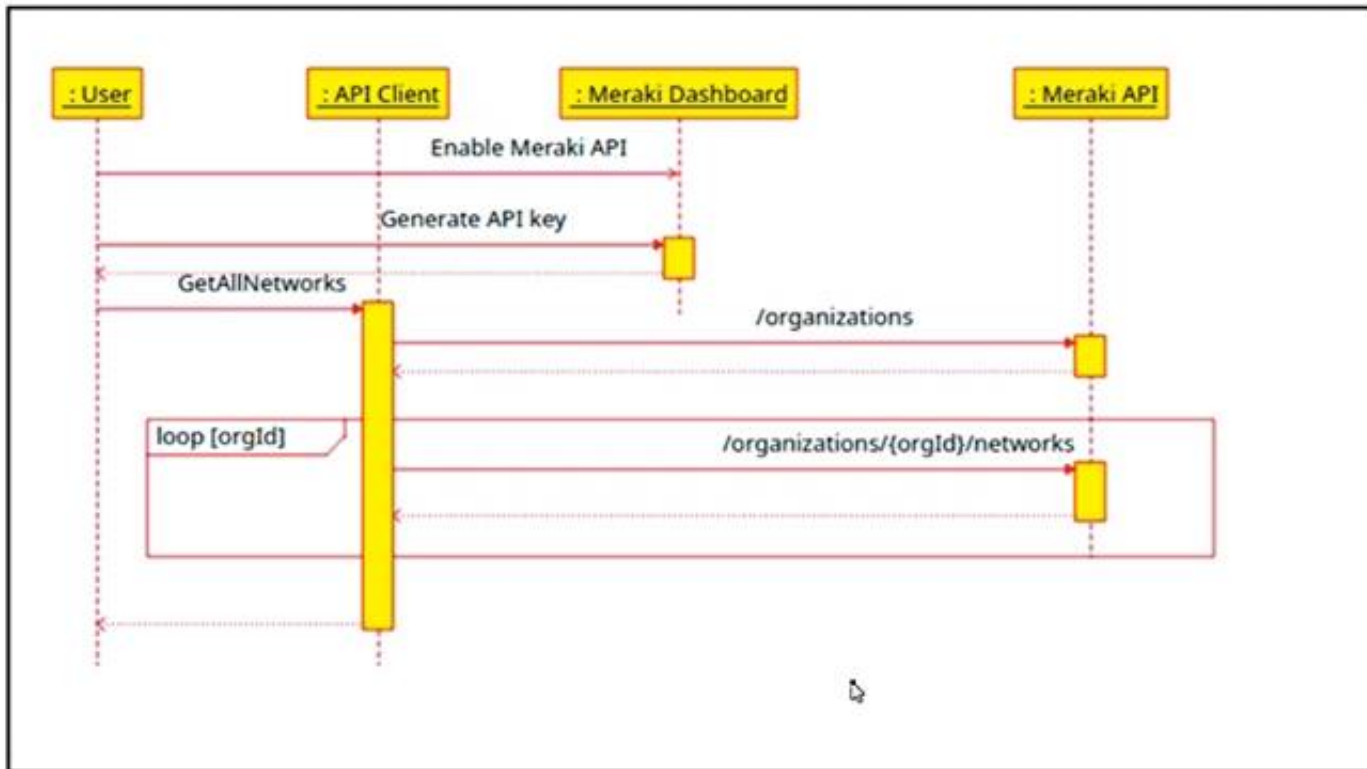
- A. Object
- B. Array
- C. Dict
- D. Collection

Answer: B

NEW QUESTION 41

- (Exam Topic 2)

Refer to the exhibit.



The Cisco Meraki API manages two organizations. In each organization, two independent networks are defined. How many calls to the /organizations/{orgId}/networks endpoint will be run parallel by the GetAllNetwork function of the API client?

- A. 1
- B. 2
- C. 4

Answer: C

NEW QUESTION 45

- (Exam Topic 2)

Which tool allows changes to the configuration management toolset to be tested?

- A. Cisco VIRL
- B. NAPALM
- C. Ansible
- D. pyATS

Answer: D

NEW QUESTION 50

- (Exam Topic 2)

Refer to the exhibit.

```

<rpc message-id="101" xmlns="urn:ietf:params:xml:ns:Netconf:base:1.0">
  <get-conflg>
    <source>
      <running/>
    </source>
    <filter>
      <interfaces xmlns=" urn:ietf:params:xml:ns:yang:ietf-interfaces">
        <interface>
          <name/>
        </interface>
      </interfaces>
    </filter>
  </get-config>
</rpc>

```

A network engineer uses model-driven programmability to monitor and perform changes on the network. The network engineer decides to use the NETCONF RPC message to complete one of their tasks. What is accomplished by sending the RPC message?

- A. The running-config of the device is returned.
- B. The name of each interface is reset to a default name.
- C. All the YANG capabilities supported by the device are returned.
- D. A list of interface names is returned.

Answer: D

NEW QUESTION 55

- (Exam Topic 1)

Refer to the exhibit.

List Messages

Lists all messages in a room. Each message will include content attachments if present.

The list sorts the messages in descending order by creation date.

Long result sets will be split into [pages](#).

GET `/v1/messages`

Query Parameters

roomId
string **Required**
List messages in a room, by ID.

mentionedPeople
array
List messages with these people mentioned, by ID. Use me as a shorthand for the current API user.

before
string
List messages sent before a date and time.

beforeMessage
string
List messages sent before a message, by ID.

max
number
Limit the maximum number of messages in the response.
Default: `50`

Try it

Example

GET

`/v1/messages{?roomId,mentionedPeople,before,beforeMessage`

Header

Authorization ☒ Use personal access token

Bearer `.....`

This limited-duration personal access token is hidden for your security.

Query Parameters

roomId
Required
`e.g. Y2IzY29zcGFyYXovL3VzL1JPT00vYmJj`

mentionedPeople
`e.g. Y2IzY29zcGFyYXovL3VzL1BFT1BMRS6`

before
`e.g. 2016-04-2Tf-9:01:55:966Z`

beforeMessage
`e.g. Y2IzY29zcGFyYXovL3VzL1FU1NBROL`

max
`e.g. 100`

Run

```

bash-3.2$ curl -H "Content-Type: application/json" -H "Authorization: Fj2zzzykEa091ic9GK2j8LtE1HklH6oRHPQdw1Pat60i7ndtHHnWzL2b5pqMg14Kk_B9EI59isacLy7-NarA02n9H-tGgt-SxQ39iDejgcs" -i -X POST -d "{ \"roomId\": \"Y2geK53sjEknosrC7SwQ5ZGL99pHgiuScB7DfNVusr8Xx4wDKLiPORcEkryAnM3QmK9LQZsP0G4\", \"text\": \"test2\" }" https://api.ciscospark.com/v1/messages

HTTP/1.1 401 Unauthorized
Via: 1.1 linkerd
TrackingID: ROUTER_5E0FDC8C-EB6F-01BB-00EF-806BF1BD00EF
Date: Sat, 04 Jan 2020 00:30:04 GMT
Server: Redacted
Content-Length: 267
Content-Type: application/json
Strict-Transport-Security: max-age=63072000; includeSubDomains; preload

{"message": "The request requires a valid access token set in the Authorization request header.", "errors": [{"description": "The request requires a valid access token set in the Authorization request header."}], "trackingId": "ROUTER_5E0FDC8C-EB6F-01BB-00EF-806BF1BD00EF"}

bash-3.2$
  
```

A developer is troubleshooting an API with the given API with the given API documentation and cURL command. What is the cause of this problem?

- A. The user is not allowed to post messages from their account
- B. The request body is missing or incomplete
- C. The API token specified is expired
- D. The authorization header is missing or incomplete

Answer: C

NEW QUESTION 59

- (Exam Topic 1)

Refer to the exhibit.

For CLI commands that support XML, the `clid()` method returns JSON output. An exception is thrown when XML is not used. Executes CLI commands. Takes CLI command string and returns show command output in a JSON form.

“
 Note: The “clid” API can be useful when searching the output of show commands using JSON tools as shown in the example.

PYTHON

```
Example:
>>> import json
>>> from cli import *
>>> jversion = json.loads(clid("show
version"))
>>> jversion['bios_ver_str']
'08.06'
```

Arguments:

- `cmd`: Single CLI command or a batch of CLI commands. Delimiter for multiple CLI commands is a space followed by a semicolon. Configuration commands must be in a fully qualified form.

Returns:

- string: JSON-formatted output of show commands.

```
>>> from cli import *
>>> import json

>>>
>>> cli('configure terminal ; interface loopback 5 ; no shut')
''
>>> intflist=json.loads(clid('show interface brief'))
>>> i=0
>>> while i < len (intflist['TABLE_interface']['ROW_interface']):
...     intf=intflist['TABLE_interface']['ROW_interface'][i]
...     i=i+1
...     if intf['state'] == 'up':
...         print intf['interface']
```

The python interpreter and the Cisco python SDK are available by default in the Cisco NX-OS software. The SDK documentation shows how the `cild()` API can be used when working with working with JSON and XML. What are two effect of running the script? (Choose two.)

- configure interlace loopback 5
- issue shutdown on interface loopback 5
- show only the interfaces In the up status
- show only the interfaces in admin shut status
- show details for the TABLE interface

Answer: AC

Explanation:

Reference:

https://www.cisco.com/c/en/us/td/docs/switches/datacenter/nexus9000/sw/7-x/programmability/guide/b_Cisco_

NEW QUESTION 61

- (Exam Topic 1)

What are two benefit of managing network configuration via APIs? (Choose two.)

- configuration on devices becomes less complex
- more security due to locking out manual device configuration
- increased scalability and consistency of network changes
- eliminates the need of legacy management protocols like SNMP
- reduction in network changes performed manually

Answer: CE

NEW QUESTION 65

- (Exam Topic 1)

A small company has 5 servers and 50 clients. What are two reasons an engineer should split this network into separate client and server subnets? (Choose two)

- A. Internet access to the servers will be denied on the router.
- B. A router will limit the traffic types between the clients and servers.
- C. Subnets will split domains to limit failures.
- D. A router will bridge the traffic between clients and servers.
- E. Subnets provide more IP address space for clients and servers.

Answer: AC

NEW QUESTION 69

- (Exam Topic 1)

Which service provides a directory lookup for IP addresses and host names?

- A. DNS
- B. DHCP
- C. SNMP
- D. NAT

Answer: A

NEW QUESTION 74

- (Exam Topic 1)

Refer to the exhibit.

```
$ diff -u5 fish.py cat.py
--- fish.py      2020-01-02 09:41:02.840000000 +0100
+++ cat.py       2020-01-02 09:41:06.8859999800 +0100
@@ -160,11 +160,12 @@

    @single_request_timeout.setter
    def single_request_timeout(self, value):
        """The timeout (seconds) for a single HTTP REST API request."""
        check_type(value, int, optional=True)
-       assert value is None or value > 0
+       if value is not None and value <= 0:
+           raise ValueError("single_request_timeout must be positive integer")
        self._single_request_timeout = value

    @property
    def wait_on_rate_limit(self):
        """Automatic rate-limit handling.
```

The output of a unified diff when comparing two versions of a python script is shown. Which two “single_request_timeout ()”

A.

```
file: cat.py

160
161     @single_request_timeout.setter
162     def single_request_timeout(self, value):
163         """The timeout (seconds) for a single HTTP REST API request."""
164         check_type(value, int, optional=True)
165         assert value is None or value > 0
166         if value is not None and value <= 0:
167             raise ValueError("single_request_timeout must be positive integer")
168         self._single_request_timeout = value
169
```

B.

```
file: fish.py

160
161     @single_request_timeout.setter
162     def single_request_timeout(self, value):
163         """The timeout (seconds) for a single HTTP REST API request."""
164         check_type(value, int, optional=True)
165         assert value is None or value > 0
166         self._single_request_timeout = value
167
```

C.

file: cat.py

```
160
161 @single_request_timeout.setter
162 def single_request_timeout(self, value):
163     """The timeout (seconds) for a single HTTP REST API request."""
164     check_type(value, int, optional=True)
165     if value is not None and value <= 0:
166         raise ValueError("single_request_timeout must be positive integer")
167     self._single_request_timeout = value
168
169
```

D.

file: fish.py

```
160
161 @single_request_timeout.setter
162 def single_request_timeout(self, value):
163     """The timeout (seconds) for a single HTTP REST API request."""
164     check_type(value, int, optional=True)
165     self._single_request_timeout = value
```

E.

file: cat.py

```
172
173 @single_request_timeout.setter
174 def single_request_timeout(self, value):
175     """The timeout (seconds) for a single HTTP REST API request."""
176     check_type(value, int, optional=True)
177     if value is not None and value <= 0:
178         raise ValueError("single_request_timeout must be positive integer")
179     self._single_request_timeout = value
180
```

- F. Option A
- G. Option B
- H. Option C
- I. Option D
- J. Option E

Answer: BC

NEW QUESTION 77

- (Exam Topic 1)

What are two security benefits of a Docker-based application?

- A. easier to patch because Docker containers include only dependencies that the application requires
- B. prevents information leakage that can occur when unhandled exceptions are returned in HTTP responses
- C. allows for separation of application that traditionally run in the same host
- D. natively secures access to secrets that are used by the running application
- E. guarantees container images are secured and free of vulnerabilities

Answer: AC

NEW QUESTION 82

- (Exam Topic 1)

Refer to the exhibit.

```
docker run -p 3000:5000 f877cbf2ff33
```

A process on the host wants to access the service running inside this Docker container. Which port is used to make a connection?

- A. only outbound connections between 3000 and 5000 are possible
- B. port 3000
- C. any port between 3000 and 5000
- D. port 5000

Answer: B

NEW QUESTION 86

- (Exam Topic 1)

How does requesting a synchronous API operation differ from requesting an asynchronous API operation?

- A. clients poll for the status of the execution of operations
- B. clients subscribe to a webhook for operation results
- C. clients can access the results immediately
- D. clients receive responses with a task id for further processing

Answer: C

NEW QUESTION 89

- (Exam Topic 1)

Which principle is a value from the manifesto for Agile software development?

- A. adhering to a plan over responding to requirements
- B. detailed documentation over working software
- C. processes and tools over teams and inter actions
- D. customer collaboration over contract negotiation

Answer: D

Explanation:

Reference: https://www.cisco.com/c/dam/global/en_hk/solutions/collaboration/files/agile_product_development.pdf

NEW QUESTION 91

- (Exam Topic 1)

Which two concepts describe test-driven development? (Choose two.)

- A. It enables code refactoring.
- B. Write a test before writing code.
- C. Implementation is driven by incremental testing of release candidates.
- D. User acceptance testers development the test requirements.
- E. Tests are created when code is ready for release.

Answer: BC

Explanation:

https://www.tutorialspoint.com/software_testing_dictionary/release_candidate.htm

NEW QUESTION 96

- (Exam Topic 1)

Which type of HTTP method is used by the Meraki nad webex teams APIs to send webhook notifications?

- A. HTTP GET
- B. HTTP PUT
- C. HTTP HEAD
- D. HTTP POST

Answer: D

Explanation:

Reference: <https://meraki.cisco.com/blog/tag/alerts/>

NEW QUESTION 100

- (Exam Topic 1)

The project is migrated to a new codebase, the “old_project” directory must be deleted. The directory has multiple read-only files, and it must be deleted recursively without prompting for confirmation. Which bash command must be used?

- A. `rm -rf old_project`
- B. `rm -r old_project`
- C. `rmdir -p old_project`
- D. `rmdir old_project`

Answer: A

NEW QUESTION 101

- (Exam Topic 1)

what is an advantage of a version control system?

- A. forces the practice of trunk-based development
- B. prevents over-writing code or configuration files
- C. facilitates resolving conflicts when merging code
- D. ensures that unit tests are written

Answer: C

NEW QUESTION 105

- (Exam Topic 1)

Refer to the exhibit.

URL: https://<ASA_IP>/api/access/global/rules

Method: POST

Payload:

```
{
  "destinationAddress": {
    "kind": "IPv4Address",
    "value": "10.1.1.1"
  },
  "remarks": [ ],
  "active": true,
  "permit": true,
  "sourceAddress": {
    "kind": "IPv4Address",
    "value": "192.168.1.1"
  }
}
```

Response Status Code: 400 Bad Request

```
{
  "messages": [
    {
      "level": "Error",
      "code": "JSON-PARSE-ERROR",
      "details": "Unexpected character ('\"' (code 34)):"
    }
  ]
}
```

What caused the error in this API request?

- A. The API resource does not support the POST operation.
- B. The API resource does not support JSON format payloads.
- C. The submitted JSON payload includes a field that is not supported by the API resources.
- D. The submitted JSON payload has a formatting issue.

Answer: D

NEW QUESTION 107

- (Exam Topic 1)

A function my_func() returns True when it executes normally. Which python snippet tests my_func()?

```
def test_func(self):
    self.assertTrue(my_func())
```

```
def test_func(self):
    self.assertRaises(my_func())
```

```
def test_func(self):
    self.assertEqual(my_func(), '{true}')
```

```
def test_func(self):
    self.assertFalse(my_func())
```

- A. Option A
- B. Option B
- C. Option C
- D. Option D

Answer: B

NEW QUESTION 109

- (Exam Topic 1)

Which two statements describe the advantages of using a version control system? (Choose two.)

- A. It allows for branching and merging so that different tasks are worked on in isolation before they are merged into a feature or master branch.
- B. It allows multiple engineers to work against the same code and configuration files and manage differences and conflicts.
- C. It provides tooling to automate application builds and infrastructure provisioning.
- D. It allows developers to write effective unit tests.
- E. It provides a system to track User Stories and allocate to backlogs.

Answer: AB

NEW QUESTION 114

- (Exam Topic 1)

Fill in the blanks to complete the statement.

Cisco DNA provide the capability to send an HTTP _____ request to the API endpoint https://DNA-c_API_ADDRESS/api/vi/network-device/ and receive the network _____ list in _____ format.

- A. Mastered
- B. Not Mastered

Answer: A

Explanation:

Solution below as

Cisco DNA Center provides the capability to send an HTTP GET request to the API endpoint https://DNA-c_API_ADDRESS/api/v1/network-device/ and receive the network device list in JSON format

NEW QUESTION 116

- (Exam Topic 1)

A 401 HTTP response code is returned when calling a REST API. What is the error state identified by this response code?

- A. The server cannot process the request as it has detected an issue in the request syntax or body.
- B. The server accepted the request but the client is not authorized for this content.
- C. The request has not been accepted because it requires authentication.
- D. The server cannot find the requested resource because the path specified is incorrect.

Answer: C

Explanation:

Reference:

<https://blog.restcase.com/rest-api-error-codes-101/#:~:text=A%20401%20error%20response%20indicates,crede>

NEW QUESTION 119

- (Exam Topic 1)

On which port does NETCONF operate by default?

- A. 23
- B. 443
- C. 822
- D. 830

Answer: D

NEW QUESTION 122

- (Exam Topic 1)

Which platform is run directly using a hypervisor?

- A. Virtual
- B. Bare metal systems
- C. Containers
- D. Applications

Answer: C

NEW QUESTION 124

- (Exam Topic 1)

Which mechanism is used to consume a RESTful API design when large amounts of data are returned?

- A. Data sets
- B. Scrolling
- C. Blobs
- D. Pagination

Answer: D

Explanation:

Reference: <https://nordicapis.com/everything-you-need-to-know-about-api-pagination/>

NEW QUESTION 125

- (Exam Topic 1)

A developer is reviewing a code that was written by a colleague. It runs fine, but there are many lines of code to do a seemingly simple task repeatedly. Which action organizes the code?

- A. Refactor the code by removing any unnecessary tests
- B. Using functions, rewrite any pieces of code that are repeated

- C. Reverse engineer and rewrite the code logic
- D. Modify the code to use loops

Answer: B

NEW QUESTION 128

- (Exam Topic 1)

What are two roles of an artifact repository in a CI/CD pipeline? (Choose two.)

- A. is required for CI/CD pipelines executed on a public cloud infrastructure
- B. is required for managing open source software
- C. stores files needed and generated during the build process
- D. allows for comparing and merging changes in the source code
- E. provides traceability, search, and management of binary files

Answer: CE

NEW QUESTION 129

- (Exam Topic 1)

What are the two principles of an infrastructure as code environment? (Choose two)

- A. Complete complex systems must be able to be built from reusable infrastructure definitions.
- B. Environments must be provisioned consistently using the same inputs.
- C. Redeployments cause varying environment definitions.
- D. Service overlap is encouraged to cater for unique environment needs.
- E. Components are coupled, and definitions must be deployed for the environment to function.

Answer: AB

NEW QUESTION 132

- (Exam Topic 3)

When a Cisco IOS XE networking device is configured by using RESTCONF, what is the default data encoding method?

- A. application/yaml-data+json
- B. application/yang-data+json
- C. application/xml-data+json
- D. application/json-data+xml

Answer: D

NEW QUESTION 133

- (Exam Topic 3)

Which HTTP method is used by webhooks and notifies a listener about an event change?

- A. PUT
- B. POST
- C. PATCH
- D. GET

Answer: B

NEW QUESTION 134

- (Exam Topic 3)

Which technology is responsible for matching a name to an IP address of an application running on a host?

- A. firewall
- B. proxy
- C. load balancer
- D. DNS

Answer: D

NEW QUESTION 136

- (Exam Topic 3)

What is a characteristic of Waterfall compared to Agile software development method?

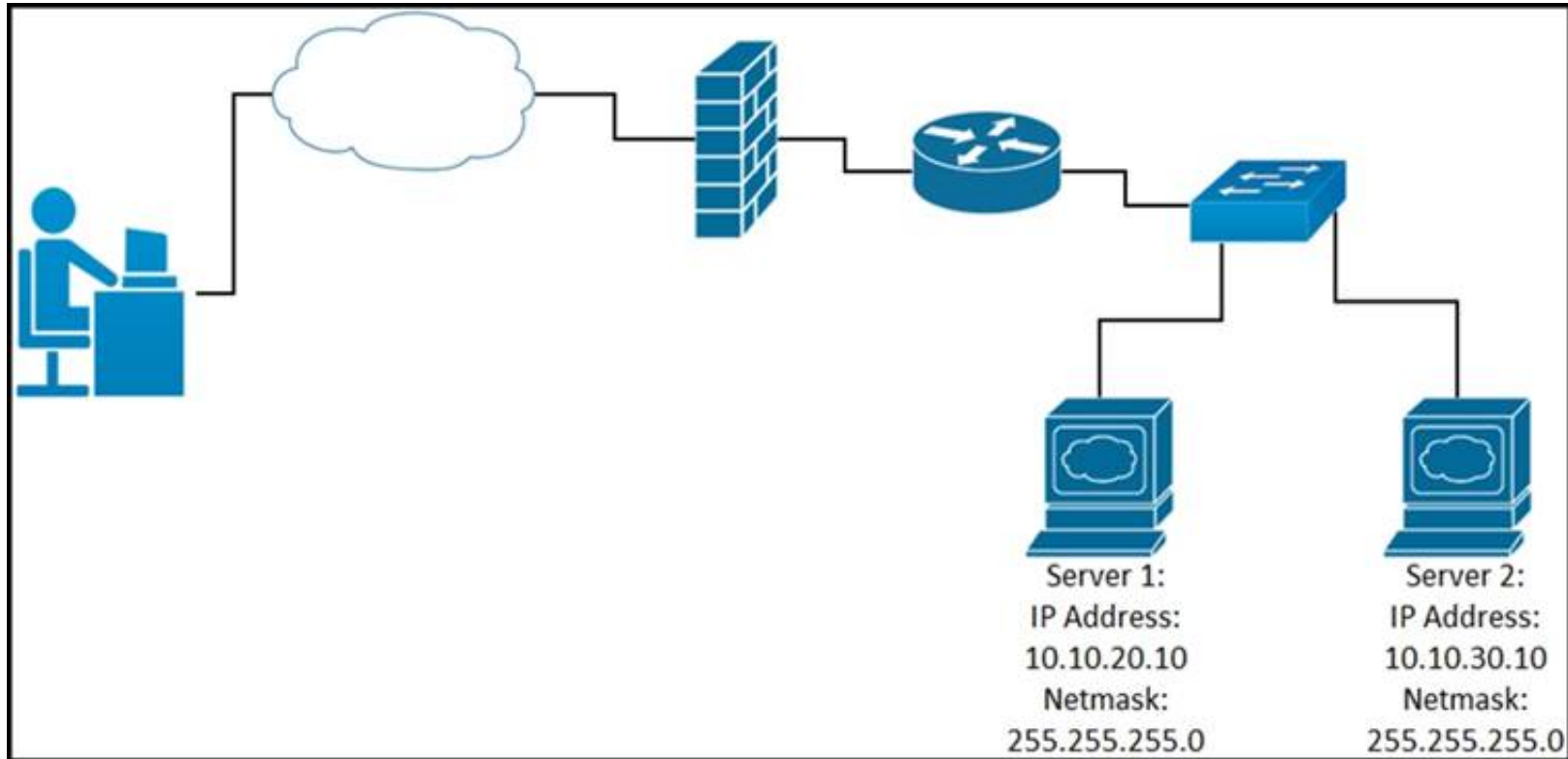
- A. Waterfall focuses on continuous improvement, and Agile focuses on the design phase.
- B. Waterfall separates the project development lifecycle into sprints, and Agile does not use cycles.
- C. Waterfall specifies requirements before development begins, and Agile responds flexibly to changes in requirements.
- D. Waterfall uses reviews with step by step approach, and Agile uses a serially phased approach.

Answer: C

NEW QUESTION 140

- (Exam Topic 3)

Refer to the exhibit.



While developing a Cisco Webex bot, an application reaches the public IP address of the firewall, but traffic is forwarded to the IP address of server 1 instead of the IP address of server 2. What causes this issue?

- A. The proxy server that rewrites traffic is misconfigured.
- B. The router is sending the traffic to server 1 instead of server 2.
- C. The switch is forwarding IP traffic to the wrong VLAN.
- D. NAT is misconfigured on the firewall.

Answer: D

NEW QUESTION 142

- (Exam Topic 3)

What is the purpose of running tests before writing code in test-driven development?

- A. to find unexpected failures in the tests
- B. to demonstrate that the tests fail for expected reasons
- C. to ensure that the tests pass
- D. to provide proof of the work carried out

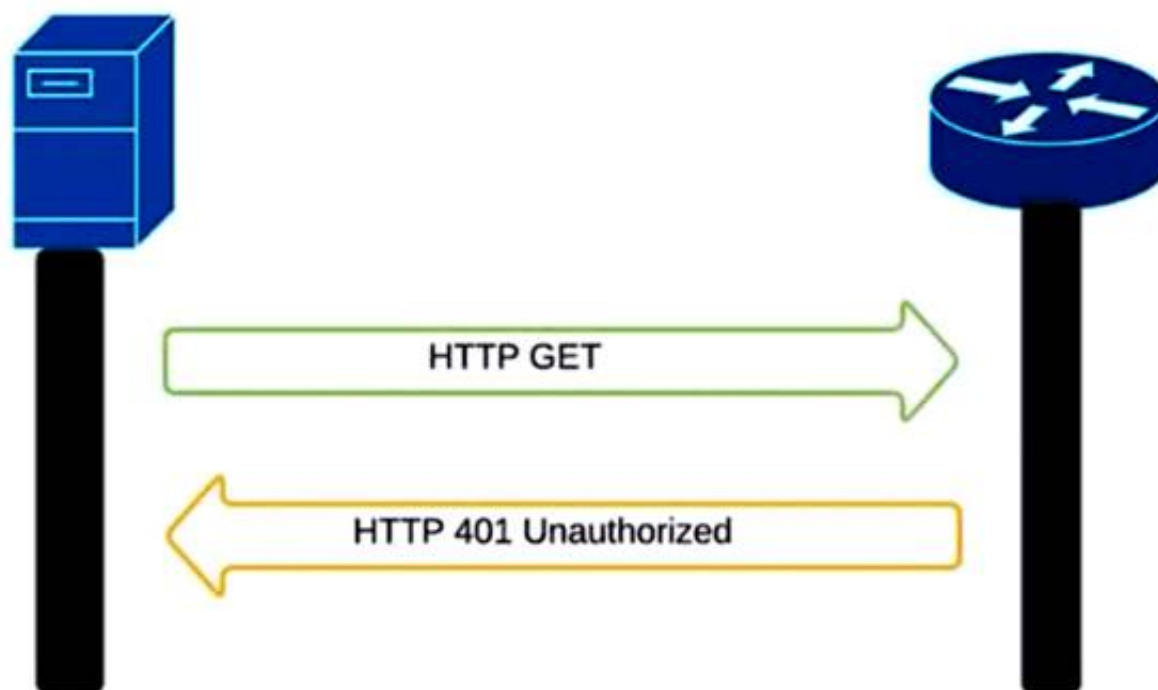
Answer: D

NEW QUESTION 144

- (Exam Topic 3)

Refer to the exhibit.

```
curl -i -k -X 'GET' 'https://172.18.110.64:443/restconf/data/Cisco-IOS-XE-native:native/hostname'
-H 'Accept: application/yang-data+json' \
-u 'cisco:cisco'
```



An administrator attempts to perform a GET operation by using the Cisco IOS XE RESTCONF API to return the hostname of a device. The sequence diagram in the exhibit illustrates the HTTP messages observed. Which change to the API request resolves the issue?

- A. Remove the -H 'Accept: application/yang-data+json' header.
- B. Replace -u cisco:cisco parameter with -u 'cisco:cisco'.

- C. Change the request method from -X 'GET' to -X 'POST'.
- D. Add the -H 'Content-Type: application/yang-data+json' header.

Answer: B

NEW QUESTION 146

- (Exam Topic 3)

A company deploys an application via containers in its local data center. As soon as the application goes into production, it starts to crash at specific hours of the day. After investigation, it is concluded that the crashes are due to too many users accessing the application simultaneously. The spikes must be addressed and allow for future growth without discarding the investment already made. Which deployment model must be used?

- A. hybrid cloud
- B. edge
- C. private cloud
- D. public cloud

Answer: A

NEW QUESTION 151

- (Exam Topic 3)

A business needs to create a simulated environment that mimics a production infrastructure to make changes to the OSPF process and analyze the impact. What should be used?

- A. Cisco VIRL / Cisco CML
- B. Cisco DevNet Sandbox labs
- C. pyATS
- D. Puppet

Answer: A

Explanation:

<https://www.cisco.com/c/en/us/products/cloud-systems-management/modeling-labs/index.html>

NEW QUESTION 156

- (Exam Topic 3)

Which IP service synchronizes the time across devices?

- A. DNS
- B. NTP
- C. SNMP
- D. NAT

Answer: B

NEW QUESTION 161

- (Exam Topic 3)

Which action do webhooks enable an application to perform?

- A. Increase the request rate limit.
- B. Populate the application with restricted data.
- C. Receive real-time data.
- D. Implement a push model.

Answer: D

Explanation:

Simplifying the wording: Webhook enables the app to (push or receive real time) . The clients should receive real time but the app pushes.

NEW QUESTION 165

- (Exam Topic 3)

A developer is attempting to retrieve all the messages from a Cisco Webex space. The server responds by sending the first 1,000 messages. The developer must make additional requests to retrieve the rest of the messages. Which API constraint is described in this scenario?

- A. payload limiting
- B. throttling
- C. pagination
- D. rate limiting

Answer: C

Explanation:

<https://developer.atlassian.com/server/confluence/pagination-in-the-rest-api/>

NEW QUESTION 167

- (Exam Topic 3)

Drag and drop the characteristics from the left onto the corresponding categories on the right to compare RESTful and RPC APIs.

Answer Area

stateless

session-based

must use HTTP

sometimes uses HTTP

RESTful

RPC

- A. Mastered
- B. Not Mastered

Answer: A

Explanation:

stateless

session-based

must use HTTP

sometimes uses HTTP

RESTful

stateless

sometimes uses HTTP

RPC

session-based

must use HTTP

NEW QUESTION 170

- (Exam Topic 3)
Drag and drop the code from the bottom onto the box where the code is missing to obtain a list of network devices by using the Cisco Meraki API. Not all options are used.

```
import requests

url = "https://api.meraki.com/api/v0/ [ ] /{{networkId}}/[ ] "

payload = {}
headers = {
    'Accept': '*/*'
}

response = requests.request("[ ]", url, headers=headers, data=payload)

print(response.text.[ ] ('utf8'))
```

teams

networks

devices

GET

POST

encrypt

encode

- A. Mastered
- B. Not Mastered

Answer: A

Explanation:

```
import requests

url = "https://api.meraki.com/api/v0/[networks]/{{networkId}}/[devices]"

payload = {}
headers = {
    'Accept': '*/*'
}

response = requests.request("[GET]", url, headers=headers, data=payload)

print(response.text.[encode]('utf8'))
```

teams

networks

devices

GET

POST

encrypt

encode

NEW QUESTION 174

- (Exam Topic 3)

```
1 URL: https://example.com/restconf/data/Cisco-IOS-XE-native:native/logging/monitor
2 Method: POST
3
4 Headers: {'Content-type': 'application/yang-data+json', 'Accept': 'application/yang-data+json,
* application/yang-data.errors+json'}
5
6 Body:
7
8 {
9     "severity": "alerts"
10 }
```

Refer to the exhibit. Which HTTP code is returned after the RESTCONF query is executed?

- A. 201
- B. 204
- C. 302
- D. 304

Answer: A**NEW QUESTION 176**

- (Exam Topic 3)

Refer to the exhibit.


```
module ietf-interface {
  namespace "urn:ietf:params:xml:ns:yang:ietf-interfaces";
  prefix if;
  import ietf-yang-types {
    prefix yang;
  }
  container interfaces-state {
    list interface {
      key "name";
      leaf name {
        type string;
      }
      leaf admin-status {
        type enumeration {
          enum up {
            value 1;
          }
          enum down {
            value 2;
          }
          enum testing {
            value 3;
          }
        }
      }
      leaf if-index {
        type int32 {
          range "1..2147483647"
        }
      }
      container statistics {
        leaf in-octets {
          type yang:counter64;
        }
        leaf in-unicast-pkts {
          type yang:counter64;
        }
      }
    }
  }
}
```

Which XML snippet has interface information that conforms to the YANG model?

A. Text Description automatically generatedB.

```
<interfaces-state
xmlns="urn:ietf:params:xml:ns:yang:ietf-interfaces"
xmlns:if="urn:ietf:params:xml:ns:yang:ietf-interfaces">
  <interface name="GigabitEthernet1">
    <admin-status>1</admin-status>
    <if-index>1</if-index>
    <statistics>
      <in-octets>408164820</in-octets>
      <in-unicast-pkts>728061</in-unicast-pkts>
    </statistics>
  </interface>
</interfaces-state>
```

Text

Description automatically generated

```
<interfaces-state
xmlns="urn:ietf:params:xml:ns:yang:ietf-interfaces"
xmlns:if="urn:ietf:params:xml:ns:yang:ietf-interfaces">
  <interface>
    <name>GigabitEthernet1</name>
    <admin-status>up</admin-status>
    <if-index>1</if-index>
    <in-octets>408164820</in-octets>
    <in-unicast-pkts>728061</in-unicast-pkts>
  </interface>
</interfaces-state>
```

B. Text Description automatically generated

```
<interfaces-state
xmlns="urn:ietf:params:xml:ns:yang:ietf-interfaces"
xmlns:if="urn:ietf:params:xml:ns:yang:ietf-interfaces">
  <interface>
    <name>GigabitEthernet1</name>
    <admin-status>up</admin-status>
    <if-index>1</if-index>
    <statistics>
      <in-octets>408164820</in-octets>
      <in-unicast-pkts>728061</in-unicast-pkts>
    </statistics>
  </interface>
</interfaces-state>
```

C. Text Description automatically generated

```
<interfaces-state
xmlns="urn:ietf:params:xml:ns:yang:ietf-interfaces"
xmlns:if="urn:ietf:params:xml:ns:yang:ietf-interfaces">
  <interface>
    <name>GigabitEthernet1</name>
    <admin-status>1</admin-status>>
    <if-index>1</if-index>
    <statistics>
      <in-octets>408164820</in-octets>
      <in-unicast-pkts>728061</in-unicast-pkts>
    </statistics>
  </interface>
</interfaces-state>
```

Answer: C

Explanation:

<https://datatracker.ietf.org/doc/id/draft-ietf-netmod-interfaces-cfg-01.txt> <admin-status>up</admin-status>

NEW QUESTION 180

- (Exam Topic 3)

Which tool provides a testing environment to run tests on network devices and perform network automation scenarios?

- A. Visual Studio Code
- B. Cisco VIRL
- C. pyATS
- D. Cisco Packet Tracer

Answer: B

NEW QUESTION 183

- (Exam Topic 3)

What is a benefit of a distributed version control system?

- A. encourages users to commit small places of work to the system more frequently
- B. ensures that all code meets minimum standards before being committed to the system
- C. allows users to work on the codebase even when not connected to the Internet
- D. ensures that all code is tested before being committed to the system

Answer: C

Explanation:

Reference: <https://about.gitlab.com/topics/version-control/benefits-distributed-version-control-system/>

NEW QUESTION 184

- (Exam Topic 2)

In test-driven development, what are two of the green bar patterns? (Choose two.)

- A. another test
- B. break
- C. triangulate
- D. starter test
- E. fake it

Answer: CE

Explanation:

<https://blog.baudson.de/blog/test-driven-development-green-bar-patterns>

NEW QUESTION 186

- (Exam Topic 3)

Developer is working on a new feature and made changes on a branch named 'branch-413667549a-new'. When merging the branch to production, conflicts occurred. Which Git command must the developer use to recreate the pre-merge state?

- A. git merge -no-edit
- B. git merge -commit
- C. git merge -revert
- D. git merge -abort

Answer: D

Explanation:

<https://www.git-tower.com/learn/git/ebook/en/command-line/advanced-topics/merge-conflicts>

NEW QUESTION 187

- (Exam Topic 3)

What is a comparison of YAML and JSON?

- A. YAML has a more consistent approach to representing data compared to JSON.
- B. JSON does not support comments and YAML does.
- C. YAML is a more verbose data structure compared to JSON.
- D. JSON has more common usage in configuration management tools compared to YAML.

Answer: B

Explanation:

Reference: <https://stackoverflow.com/questions/244777/can-comments-be-used-in-json>

Can I use comments in JSON? No, JSON is a data-only format. Comments in the form //, #, or /* */, which are used in popular programming languages, are not allowed in JSON. You can add comments to JSON as custom JSON elements that will hold your comments, but these elements will still be data.

NEW QUESTION 191

- (Exam Topic 3)

```
import os
import requests

# username and password

API_USER_NAME = "devnetuser"
API_PASSWORD = os.environ['API_PASSWORD']

requests.get('https://api.cisco.com/end-service', auth=(API_USER_NAME, API_PASSWORD))
```

Refer to the exhibit. An engineer must authorize a REST API call. The API password is "Cisco123!". Which Bash command must be placed in the code to authorize the call?

- A. mkdir API_PASSWORD=Cisco123!
- B. set API_PASSWORD=Cisco123!
- C. cp API_PASSWORD=Cisco123!
- D. export API_PASSWORD=Cisco123!

Answer: D

NEW QUESTION 194

- (Exam Topic 3)

`get_interface_info_by_id(device_id, headers=None, **request_parameters)` [\[source\]](#)

Returns list of interfaces by specified device.

Parameters

- `device_id` (*basestring*) – Device ID.
- `headers` (*dict*) – Dictionary of HTTP Headers to send with the Request .
- `**request_parameters` – Additional request parameters (provides support for parameters that may be added in the future).

Returns

JSON response. Access the object's properties by using the dot notation or the bracket notation.

Return type

MyDict

Raises

- `TypeError` – If the parameter types are incorrect.
- `MalformedRequest` – If the request body created is invalid.
- `ApiError` – If the DNA Center cloud returns an error.

Refer to the exhibit. Drag and drop the code from the bottom onto the box where the code is missing to return the number of interfaces on a network device by using the Cisco DNA Center SDK. Not all options are used.

```
from dnacentersdk import DNACenterAPI
base_url = 'https://10.9.11.226'
[ ] = 'da4606c3-63ad-4ed4-8f35-6bfec7c2df04'

dnac = [ ](username='cisco', password='secret',
          base url=base url, version='1.3.3', verify=False)

[ ] = [item['portName'] for item in
      dnac.[ ].get_interface_info_by_id(device_id)['response']]

# Check the number of ports on the device
print(f'The list of interfaces contains {len(port_list)} items.')

# Output
# The list of interfaces contains 54 items.
```

router_id

device_id

DNACenterAPI

DNAC

port_list

routers

devices

- A. Mastered
 B. Not Mastered

Answer: A

Explanation:

```
from dnacentersdk import DNACenterAPI
base_url = 'https://10.9.11.226'
device_id = 'da4606c3-63ad-4ed4-8f35-6bfec7c2df04'

dnac = DNACenterAPI(username='cisco', password='secret',
                    base url=base url, version='1.3.3', verify=False)

port_list = [item['portName'] for item in
            dnac.devices.get_interface_info_by_id(device_id)['response']]

# Check the number of ports on the device
print(f'The list of interfaces contains {len(port_list)} items.')

# Output
# The list of interfaces contains 54 items.
```

router_id

device_id

DNACenterAPI

DNAC

port_list

routers

devices

NEW QUESTION 198
- (Exam Topic 3)

```
FROM myImage
VOLUME ["/data"]
ENTRYPOINT ["/bin/sh"]
```

Refer to the exhibit. Drag and drop the actions from the left that the contents of this Dockerfile accomplish onto the right. Not all options are used.

Inject the image myImage.	step 1
Pull the image myImage.	step 2
Execute the "data" script under "/bin/sh".	step 3
Establish a volume whose root is "/data".	
Put the user in a shell inside the container.	

- A. Mastered
- B. Not Mastered

Answer: A

Explanation:

Inject the image myImage.	Pull the image myImage.
Pull the image myImage.	Establish a volume whose root is "/data".
Execute the "data" script under "/bin/sh".	Put the user in a shell inside the container.
Establish a volume whose root is "/data".	
Put the user in a shell inside the container.	

NEW QUESTION 203
- (Exam Topic 3)

Refer to the exhibit.

```
workstation:Network admin$ ls
PROD TEST
workstation:Network admin$ ls ./TEST
config.txt
workstation:Network admin$
```

A network engineer must copy the "config.txt" file from directory TEST to directory PROD. The copied file must also be renamed into "current.txt". Which command must be used to accomplish these tasks?

- A. cp ./PROD/current.txt ./TEST/config.txt
- B. cp ./TESTi/current.txt ./PROD/config.txt
- C. cp ./PROD/config.txt ./TEST/current.txt
- D. cp ./TEST/config.txt ./PROD/current.txt

Answer: D

NEW QUESTION 207
- (Exam Topic 3)

A developer plans to deploy a new application that will use an API to implement automated data collection from Webex with these requirements:
The application was created by using the request library. Requires HTTP basic authentication.

Provides data in JSON or XML formats.

Which Cisco DevNet resource helps the developer with how to use the API?

- A. DevNet sandbox
- B. API documentation
- C. forums
- D. DevNet code exchange

Answer: B

NEW QUESTION 208

- (Exam Topic 3)

Which OWASP threat occurs when untrusted data is supplied as input to an interpreter as part of a command or query?

- A. broken authentication
- B. data exposure
- C. injection
- D. cross-site scripting

Answer: C

NEW QUESTION 212

- (Exam Topic 3)

A developer creates an application that must provide an encrypted connection or API keys. The keys will be used to communicate with a REST API. Which command must be used for the secure connection?

- A. curl-X PUSH 'http://username.app.com/endpoint/?api_key=12345abcdef'
- B. curl -v 'ftp://username.app.com/endpoint/?api_key=12345abcdef'
- C. curl -X GET 'https://username.app.com/endpoint/?api_key=12345abcdef'
- D. curl-X GET 'http://username.app.com/endpoint/?api_key=12345abcdef'

Answer: C

NEW QUESTION 214

- (Exam Topic 3)

Why would a developer compare a current version of code to a previous version?

- A. to provide the single source of truth
- B. to troubleshoot code failures
- C. to track who made a change
- D. to aid in collaboration

Answer: B

NEW QUESTION 216

- (Exam Topic 3)

What are two benefits of implementing common data structures when working with APIs in remote systems? (Choose two.)

- A. ensures that developers are limited to using one data schema type
- B. prevents multivendor interoperability
- C. improves security in RESTful web services
- D. enforces standardized data structures
- E. leverages code that is easily managed and reused

Answer: BE

NEW QUESTION 218

- (Exam Topic 3)

What is a principle of a code review process?

- A. Changes are made after the code is submitted to source control.
- B. It must not prevent code from getting into production as quickly as possible.
- C. Naming standards must be consistent.
- D. A technical lead must sign off on the review.

Answer: D

NEW QUESTION 221

.....

Thank You for Trying Our Product

We offer two products:

1st - We have Practice Tests Software with Actual Exam Questions

2nd - Questions and Answers in PDF Format

200-901 Practice Exam Features:

- * 200-901 Questions and Answers Updated Frequently
- * 200-901 Practice Questions Verified by Expert Senior Certified Staff
- * 200-901 Most Realistic Questions that Guarantee you a Pass on Your First Try
- * 200-901 Practice Test Questions in Multiple Choice Formats and Updates for 1 Year

100% Actual & Verified — Instant Download, Please Click
[Order The 200-901 Practice Test Here](#)