

# Cisco

## Exam Questions 300-460

Implementing and Troubleshooting the Cisco Cloud Infrastructure (CLDINF)



#### NEW QUESTION 1

A cloud engineer is implementing a new UCS B-series infrastructure and has physically connected the equipment, powered it up, and configured UCSM management connectivity. Which port type must be configured on the fabric interconnects to allow for chassis communication?

- A. appliance
- B. Fibre Channel storage
- C. uplink
- D. server
- E. storage

**Answer:** B

#### NEW QUESTION 2

An engineer is creating WWPN pools to use for vHBAs. Which WWPN must the engineer use?

- A. 20:00:20:25:B5:XX:XX:XX
- B. 20:XX:XX:25:B5:00:00:00
- C. 10:00:00:25:B5:XX:XX:XX
- D. 20:00:00:25:B5:XX:XX:XX

**Answer:** D

#### Explanation:

Reference: [https://www.cisco.com/c/en/us/td/docs/unified\\_computing/ucs/sw/gui/config/guide/1-3-1/b\\_UCSM\\_GUI\\_Configuration\\_Guide\\_1\\_3\\_1/UCSM\\_GUI\\_Configuration\\_Guide\\_1\\_3\\_1\\_chapter22.pdf](https://www.cisco.com/c/en/us/td/docs/unified_computing/ucs/sw/gui/config/guide/1-3-1/b_UCSM_GUI_Configuration_Guide_1_3_1/UCSM_GUI_Configuration_Guide_1_3_1_chapter22.pdf)

#### NEW QUESTION 3

A Cisco USC Director administrator is configuring his pod on the Physical > Compute Tab. Which three tabs are available under this menu? (Choose three.)

- A. UCS Chassis
- B. Datastore Capacity Report
- C. CloudSense
- D. Chargeback
- E. Compute Servers
- F. Compute Accounts

**Answer:** AEF

#### NEW QUESTION 4

Which two statements about management IP pools in Cisco UCS Manager are true? (Choose two.)

- A. The number of IP addresses in the pool is not required when creating management IP pools.
- B. The management IP pool can be created under Physical > Storage in Cisco UCS Director
- C. The management IP pool must contain any IP addresses that have been assigned as static IP addresses for a server or service profile.
- D. All IP addresses in the in the out of band management IP pool must be in the same subnet as the IP address of the fabric interconnect.
- E. IP addresses in the management IP pool are reserved for external access that terminates in the Cisco Integrated Management Controller on a server.

**Answer:** DE

#### NEW QUESTION 5

A private cloud engineer is adding a production FlexPod into a new Cisco UCS Director deployment. Which two operational domains contain Cisco components within this data center pod? (Choose two.)

- A. storage
- B. compute
- C. virtual
- D. network
- E. service delivery

**Answer:** BD

#### NEW QUESTION 6

An engineer needs to install Windows Server 2012 R2 on a Cisco UCS B-Series Blade Server from an operating system image in Cisco UCS Director using PXE boot. Which agent must the engineer use?

- A. Cisco UCS Director Bare Metal Agent
- B. Cisco ISO Agent
- C. Windows Boot Agent
- D. Cisco UCS Boot Agent

**Answer:** A

#### Explanation:

Reference: [https://www.cisco.com/c/en/us/td/docs/unified\\_computing/ucs/ucs-director/bma-install-config/5-2/b\\_ucsd\\_bma\\_install\\_config\\_guide\\_5\\_2/b\\_ucsd\\_bma\\_install\\_config\\_guide\\_5\\_2\\_appendix](https://www.cisco.com/c/en/us/td/docs/unified_computing/ucs/ucs-director/bma-install-config/5-2/b_ucsd_bma_install_config_guide_5_2/b_ucsd_bma_install_config_guide_5_2_appendix)

\_01000.pdf

#### NEW QUESTION 7

An engineer needs to install a hypervisor on a Cisco UCS B-Series Blade Server. The operating system must remain local to the server and must be resilient. Which two hardware components are required to accomplish this? (Choose two.)

- A. onboard flash memory
- B. SD card
- C. external USB
- D. internal USB
- E. Local disk

**Answer:** AE

#### NEW QUESTION 8

Which two statements about context workflow mapping in Cisco UCS Director are true? (Choose two.)

- A. Workflows cannot be mapped in the form of an action, nor can they be executed in the context of a component
- B. You can execute a workflow that contains a set of tasks from within a context of a component.
- C. Workflows cannot be executed at the component level
- D. You have to browse for a required workflow in the workflow list to execute it
- E. You can map a workflow in the form of an action and execute it in the context of the component
- F. Context workflow mapping consists of two stages: Stage 1 – Create the workflow to the content mapper list by giving in an action label Stage 2 – Add a context mapper task to the workflow that must be mapped as an action

**Answer:** BE

#### Explanation:

Reference: [http://www.cisco.com/c/en/us/td/docs/unified\\_computing/ucs/ucs-director/orchestration-guide/5-0/b\\_UCS\\_Director\\_Orchestration\\_Guide\\_5\\_0/b\\_UCS\\_Director\\_Orchestration\\_Guide\\_5\\_0\\_chapter\\_0101.html#concept\\_3BA2EDADF4724218802E5CE3184B27A0](http://www.cisco.com/c/en/us/td/docs/unified_computing/ucs/ucs-director/orchestration-guide/5-0/b_UCS_Director_Orchestration_Guide_5_0/b_UCS_Director_Orchestration_Guide_5_0_chapter_0101.html#concept_3BA2EDADF4724218802E5CE3184B27A0)

#### NEW QUESTION 9

A Cisco UCSM administrator is tasked with modifying the boot order in a service profile. Which option lists the steps required to accomplish this task?

- A. In the Navigation pane, click the Servers tab. On the Servers tab, expand Servers > Service Profiles. Click the service profile for which you want to change boot order
- B. Click Boot Order Wizard to change the existing boot policy.
- C. In the Navigation pane, click the Servers tab. On the Servers tab, expand Servers > Service Profiles. Click the service profile for which you want to change boot order
- D. Click Boot Security. Click Modify Boot Policy to change the existing policy.
- E. In the Navigation pane, click the Servers tab. On the Servers tab, expand Servers > Service Profiles. Click the service profile for which you want to change boot order
- F. Click Modify Boot Policy to change the existing boot policy.
- G. In the Navigation pane, click the Servers tab. On the Servers tab, expand Servers > Service Profiles. Click the service profile for which you want to change boot order
- H. Click Boot Order and the Modify Boot Policy wizard display
- I. Change the existing boot policy.

**Answer:** D

#### NEW QUESTION 10

A Cisco UCS Director administrator is changing the boot order in a boot policy. Which option lists the steps that accomplish this task?

- A. On the menu bar, choose Physical > Storage. In the left pane, expand the pod and then click the Cisco UCS Manager account
- B. In the right pane, click the Organizations tab. Click the organization in which you want to modify a policy and then click View Detail
- C. Click the Manage Boot Order tab. Choose the boot policy that you want to clone and click Manage Boot Order.
- D. On the menu bar, choose Physical > Compute. In the left pane, expand the pod and then click the Cisco UCS Manager account
- E. In the right pane, click the Organizations tab. Click the organization in which you want to modify a policy and then click View Detail
- F. Click the Boot Policies tab. Choose the boot policy that you want to clone and click Manage Boot Devices Order.
- G. On the menu bar, choose Physical > Storage. In the left pane, expand the pod and then click the Cisco UCS Manager account
- H. In the right pane, click the Organizations tab. Click the organization in which you want to modify a policy and then click View Detail
- I. Click the Boot Policies tab. Choose the boot policy that you want to clone and click Manage Boot Devices Order.
- J. On the menu bar, choose Physical > Compute. In the left pane, expand the pod and then click the Cisco UCS Manager account
- K. In the right pane, click the Organizations tab. Click the organization in which you want to modify a policy and then click View Detail
- L. Click the Manage Boot Order tab. Choose the boot policy that you want to clone and click Manage Boot Order.

**Answer:** A

#### NEW QUESTION 10

A Cisco UCS Director administrator is configuring vHBA. Which four fields are needed to configure vHBA? (Choose four.)

- A. vHBA Name
- B. Adapter Policy
- C. Template Type
- D. Organizations
- E. Description

- F. Fabric ID
- G. UCS Organization Name
- H. UCS Account Name

**Answer:** ACEF

**Explanation:**

Reference: [http://www.cisco.com/c/en/us/td/docs/unified\\_computing/ucs/ucs-director/ucs-mgmt-guide/4-0/b\\_Cisco\\_UCS\\_Director\\_UCS\\_Management\\_Guide\\_40/b\\_Cisco\\_UCS\\_Director\\_UCS\\_Management\\_Guide\\_40\\_chapter\\_0101.html#concept\\_930C11B6473846DDA5F7F25E88EC8\\_F33](http://www.cisco.com/c/en/us/td/docs/unified_computing/ucs/ucs-director/ucs-mgmt-guide/4-0/b_Cisco_UCS_Director_UCS_Management_Guide_40/b_Cisco_UCS_Director_UCS_Management_Guide_40_chapter_0101.html#concept_930C11B6473846DDA5F7F25E88EC8_F33)

**NEW QUESTION 15**

An administrator is installing a hypervisor and has provisioned a dedicated LAN connectivity, set the boot order, and is now rebooting the server to start installation. Which method is the administrator using to install the hypervisor?

- A. host image mapping
- B. KVM console
- C. PXE installation
- D. virtual boot

**Answer:** C

**NEW QUESTION 20**

An architect must choose a VXLAN architecture that utilizes hardware-based VXLAN adapters. Which type of architecture must be selected?

- A. Layer 3
- B. NSX
- C. ACI
- D. Layer 2

**Answer:** C

**NEW QUESTION 24**

Which three options describe the correct methods to install the Cisco Nexus 1000V VEM (VIB) software module on the VMware ESXi hypervisor? (Choose three.)

- A. using the “Add Host to vSphere Distributed Switch” dialog on the vSphere Network tab when UpdateManager is installed
- B. esxcli software vib install -n/tmp/Cisco\_bootbank\_cisco-vem -v173-esx\_5.2.1.3.1.4.0- 3.2.1.vib
- C. executing the Deploy-Nexus 1000V-VSEM.ps1 script
- D. esxcli software vib install -v/tmp/Cisco\_bootbank\_cisco-vem -v173-esx\_5.2.1.3.1.4.0- 3.2.1.vib
- E. using the Host Selection dialog box in Cisco Virtual Switch Update Manager
- F. creating a baseline group in VMware Update Manager

**Answer:** ADE

**Explanation:**

Reference: [http://www.cisco.com/c/en/us/td/docs/switches/datacenter/nexus1000/sw/5\\_2\\_1\\_s\\_v\\_3\\_1\\_4/install/guide/b\\_Cisco\\_N1KV\\_VMware\\_Install\\_and\\_Upgrade\\_Guide\\_521SV314/b\\_Cisco\\_N1KV\\_VMware\\_Install\\_and\\_Upgrade\\_Guide\\_521SV314a\\_chapter\\_01.html#task\\_F02BD77701B345D9B34A9332AA7C179F](http://www.cisco.com/c/en/us/td/docs/switches/datacenter/nexus1000/sw/5_2_1_s_v_3_1_4/install/guide/b_Cisco_N1KV_VMware_Install_and_Upgrade_Guide_521SV314/b_Cisco_N1KV_VMware_Install_and_Upgrade_Guide_521SV314a_chapter_01.html#task_F02BD77701B345D9B34A9332AA7C179F)

**NEW QUESTION 25**

An engineer must ensure that all VXLAN and VTEP processes are kept on purpose-built hardware to ensure that all overlay functions are as fast as possible. In which solution is all VXLAN and VTEP decision making moved to the hardware, versus potentially slower software control?

- A. Layer 3
- B. ACI
- C. NSX
- D. Layer 2

**Answer:** A

**NEW QUESTION 26**

After implementing VXLAN VTEPs in a VMware NSX deployment, an engineer discovers that the VXLAN tunnel does not appear to function across the physical network. A pair of Cisco Nexus 5596UP Switches connect the virtual network to the physical network. To permit the VXLAN tunnel to operate correctly, which action must the engineer take?

- A. Upgrade Cisco Nexus to version 7.0 code.
- B. Establish a dynamic routing protocol between the vSphere virtual router and the Cisco Nexus switches.
- C. Remove storm control mechanisms that are blocking the establishment of the VXLAN tunnel.
- D. Configure jumbo frame support on the Cisco Nexus switches.
- E. Build a GRE tunnel to correctly encapsulate VXLAN between the networks.

**Answer:** B

**NEW QUESTION 31**

Which four issues are often detected when validating workflows in Cisco UCS Director? (Choose four.)

- A. Task Handler not found
- B. missing administrator tasks or input tasks after import or upgrade
- C. mapping mismatch
- D. version incompatibilities
- E. debugging logging information
- F. missing optional values for tasks
- G. missing task action value
- H. missing mandatory values for tasks

**Answer:** ABCH

**Explanation:**

Reference: Section Workflow validation of the link: [http://www.cisco.com/c/en/us/td/docs/unified\\_computing/ucs/ucs-director/orchestration-guide/5-4/b\\_UCS\\_Director\\_Orchestration\\_Guide\\_5\\_4/b\\_UCS\\_Director\\_Orchestration\\_Guide\\_5\\_4\\_chapter\\_011.html](http://www.cisco.com/c/en/us/td/docs/unified_computing/ucs/ucs-director/orchestration-guide/5-4/b_UCS_Director_Orchestration_Guide_5_4/b_UCS_Director_Orchestration_Guide_5_4_chapter_011.html)

**NEW QUESTION 33**

A Cisco UCSM administrator has been tasked with deploying a new data center. Which two recommendations aid in the ability to associate a service with a server? (Choose two.)

- A. The host control setting for a QoS policy applies to vNICs onl
- B. It has no effect on a vHBA.
- C. You can assign only a QoS policy to a vHBA if the priority setting for that policy is set to fc, which represents the Fibre Channel system class.
- D. The host control setting for a QoS policy applies to vHBAs only.
- E. Power capping is supported for rack server
- F. If you include a power control policy in aservice profile that is associated with a rack-mount server, the policy is implemented.

**Answer:** BD

**NEW QUESTION 37**

A Cisco UCS Director administrator is attempting to resolve a workflow validation issue. Which option lists the steps that accomplish this task?

- A. On the menu bar, choose Policies > Catalog
- B. Click the Activities tab.Choose the workflow that failed validatio
- C. Click Validate Workflow.In the Workflow Validation dialog box, double click the description under Resolution.In the Validation Errors dialog box, view the summary for the issue detected and complete the wizard to resolve the validation error.
- D. On the menu bar, choose Policies > Orchestratio
- E. Click the Activities tab.Choose the workflow that failed validatio
- F. Click Validate Workflow.In the Workflow Validation dialog box, double click the description under Resolution.In the Validation Errors dialog box, view the summary for the issue detected and complete the wizard to resolve the validation error.
- G. On the menu bar, choose Policies > Orchestratio
- H. Click the Workflows tab.Choose the workflow that failed validatio
- I. Click Validate Workflow.In the Workflow Validation dialog box, double click the description under Resolution.In the Validation Errors dialog box, view the summary for the issue detected and complete the wizard to resolve the validation error.
- J. On the menu bar, choose Policies > Catalog
- K. Click the Workflows tab.Choose the workflow that failed validatio
- L. Click Validate Workflow.In the Workflow Validation dialog box, double click the description under Resolution.In the Validation Errors dialog box, view the summary for the issue detected and complete the wizard to resolve the validation error.

**Answer:** C

**NEW QUESTION 41**

Cisco USB Director provides many tools to help diagnose and resolve common problems. Which option describes the purpose of the Cisco UCS Director Shell tool?

- A. to execute JavaScript functions and to define variables and functions, when using cloupia scripts
- B. to troubleshoot problems related to service request workflow execution
- C. to view product support information
- D. to troubleshoot problems related to various administrative tasks such as connectivity, configuration, and status

**Answer:** D

**Explanation:**

Reference: [https://www.cisco.com/c/en/us/td/docs/unified\\_computing/ucs/ucs-director/shell-guide/6-5/ciscoucs-director-shell-guide-65/cisco-ucs-director-shell-guide-65\\_chapter\\_011.html](https://www.cisco.com/c/en/us/td/docs/unified_computing/ucs/ucs-director/shell-guide/6-5/ciscoucs-director-shell-guide-65/cisco-ucs-director-shell-guide-65_chapter_011.html)

**NEW QUESTION 42**

An enterprise is migrating dozens of Hypervisor hosts to UCS B-Series chassis. What UCS feature would be deployed to allow for making a change to all hosts at once?

- A. VLAN groups
- B. updating templates
- C. port profiles
- D. distributed port groups

**Answer:** B

**NEW QUESTION 45**

An engineer enters the command switchport port-security in configuration mode on a switch. The command fails and displays the output Command rejected:

GigabitEthernet0/1 is a dynamic port. Which reason for this error is most likely true?

- A. The port is in Layer 3 mode.
- B. Port security is not enabled globally.
- C. Sticky MAC addresses are disabled on the port.
- D. The port is not configured as an access port.
- E. The port is part of an existing port channel.

**Answer: D**

#### NEW QUESTION 48

An engineer installs ESXi on a SAN LUN on an active passive storage array. On a server reboot, the server sometimes is unable to locate the boot LUN and fails to boot. Which action is most likely to resolve the problem?

- A. Make the standby path active from the server BIOS.
- B. Set the service profile of the server to multipath SAN boot.
- C. Present two LUNs to the server, one LUN on each path.
- D. Present the LUN to the server only on the active path

**Answer: B**

#### NEW QUESTION 50

An engineer is configuring VEM-to-VSM communication for the Cisco Nexus 1000V Series Switch. Which mode must the engineer use?

- A. distributed
- B. centralized
- C. Layer 3
- D. Layer 2

**Answer: B**

#### NEW QUESTION 52

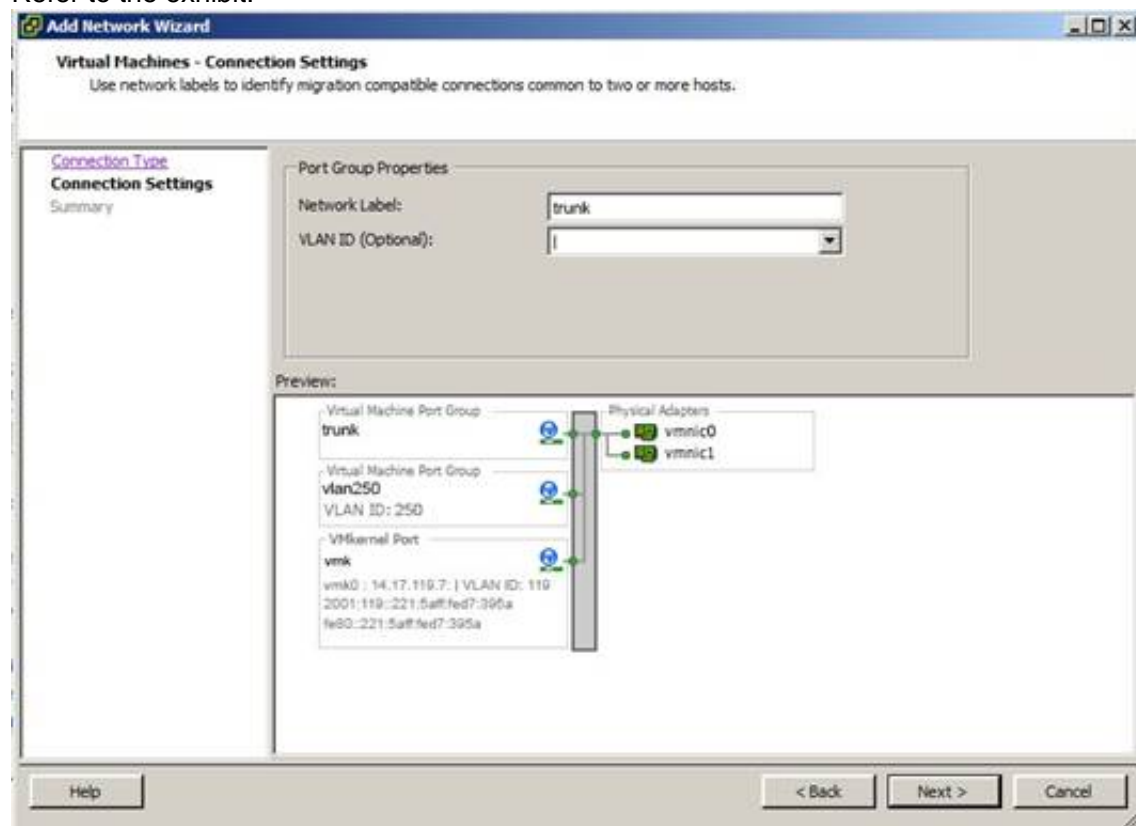
A Cisco UCS Director administrator is viewing the status of his pod on the Virtual > Compute tab. Which three tabs are available under this menu? (Choose three.)

- A. VMs
- B. VM Chargeback
- C. Service Requests
- D. VM Reservations
- E. Resource Pools
- F. vDCs

**Answer: AEF**

#### NEW QUESTION 56

Refer to the exhibit.



You have been asked to create a trunking (802.1 q) port group on a VMware vSwitch. Which number must be assigned as the VLAN ID to trunk all VLANs?

- A. 4095
- B. 1
- C. 1-4095

**Answer: C**

#### NEW QUESTION 60



Refer to the exhibit.

```
CORESW-A# sh vsan membership
vsan 1 interfaces:
```

```
vsan 10 interfaces:
    fc1/23          fc1/24          fc1/25
    fc1/27          fc1/28          fc1/29
    fc1/31          fc1/32
```

```
CORESW-A#
```

A cloud engineer is replicating a FlexPod design. The current design has a Cisco UCS B- Series Chassis with six Cisco B200 M2 blades that connect to a NetApp FAS800 storage array. VSAN 10 is configured on the Cisco Nexus 5000 Series Switch to handle all storage traffic. VMs on the Cisco B200 M2 blades can read and write to NAS on the NetApp FAS8000. The engineer wants to connect a second Cisco UCS B-Series Chassis with four Cisco B200 M4 blades to the NetApp array. The engineer has configured four Fibre Channel uplink ports from the Cisco UCS 6248 UP Fabric Interconnect to the Cisco Nexus Fibre Channel ports fc1/23 and fc 1/24. However, the Fibre Channel ports on the Cisco UCS 6248 fail to initialize after the engineer enables the port. Which reason for the problem is most likely true?

- A. The SFP type is 10 Gigabit Ethernet instead of 4 Gigabit Ethernet.
- B. The port negotiation speed is set to 8 Gbps.
- C. The switch port mode on the Cisco Fabric Extender Fibre Channel port is set to NP.
- D. The Fibre channel port is set to uplink instead of Fibre Channel storage port.
- E. The VSAN under port properties is incorrect.

**Answer: C**

#### NEW QUESTION 63

In Cisco UCSM, which two options describe the purpose of a service profile template? (Choose two.)

- A. With a service profile template, you can quickly create several service profiles with the same basic parameters, such as the number of vNICs and vHBAs, and with identify information drawn from the same pools.
- B. A service profile template parameterizes the UIDs that differentiate one instance of an otherwise identical server from another.
- C. Templates can be categorized into two types: initial and updating.
- D. When using an initial service profile template, changes to the initial template automatically propagate to the bound service profiles.
- E. Service profiles created from an updating service profile template do not inherit all the properties of the template and remain connected to the template.
- F. Any changes to the template must be propagated manually to the service profiles that are created from the template.

**Answer: AB**

#### NEW QUESTION 67

Which mechanism is used to find latent failure in memory modules?

- A. sniffing
- B. swapping
- C. paging
- D. scrubbing

**Answer: D**

#### Explanation:

Reference: <http://www.cisco.com/c/dam/en/us/products/collateral/servers-unified-computing/ucs-manager/whitepaper-c11-736116.pdf>

#### NEW QUESTION 68

An engineer needs to ensure that Windows virtual machines can be automatically provisioned from a template with a customized IP address and hostname. Which two components can enable this at the operating system level? (Choose two.)

- A. IP address management system
- B. DNS server
- C. configuration management agents
- D. System Preparation tool
- E. DHCP server

**Answer: AB**

#### NEW QUESTION 72

Which three operations can a cloud administrator perform when using the vSphere Client configuration tab? (Choose three.)

- A. View the processor and memory configuration of the ESX host
- B. Configure the host as NTP client
- C. Configure datastore backups
- D. Configure zoning

- E. View target initiators and zones
- F. Configure the primary/secondary DNS server
- G. configure masking

**Answer:** ABF

#### NEW QUESTION 75

Refer to the exhibit.

Fabric ID: B								
VIF	VNIC	Link State	Oper State	Prot State	Prot Role	Admin Prio	Oper Prio	Transport
795	eth0	Up	Active	Passive	Backup	0/0	0/0	Ether
798	eth2	Up	Active	Active	Backup	0/0	0/11	Ether
800	eth3	Up	Active	Active	Primary	0/0	0/0	Ether
802	eth3	Up	Active	No protection	Unprotected	0/0	0/1	Ether
804	fel	Up	Active	No protection	Unprotected	0/0	2/1	Fc
8897		Error	Error			0/0	0/0	Ether
9303		Up	Active	No protection	Unprotected	0/0	0/0	Ether

Cisco UCS Fabric interconnect A and B have identical uplink configurations. Which option describes the problem of Fabric interconnect A?

- A. Ethernet0/11 on Fabric interconnect A is down.
- B. The IOM on Fabric interconnect A was rebooted.
- C. FC2/1 on Fabric interconnect A is unplugged or has been replaced with a GLC-T.
- D. Fabric interconnect A is powered off.

**Answer:** C

#### NEW QUESTION 79

An administrator is troubleshooting a virtual switch that does not show up when it is added to the host using the port-profile management snap-in. Which action is the next step?

- A. Enable SR-IOV for the virtual switch inside Hyper-V
- B. Add drivers for the virtual switch
- C. Reboot the server
- D. Enable VMbus for the parent partition and the virtual machine

**Answer:** C

#### Explanation:

Reference: [http://www.cisco.com/c/en/us/td/docs/unified\\_computing/ucs/sw/vm\\_fex/hyperv/gui/config\\_guide/2-1/b\\_GUI\\_Hyper-V\\_VM-FEX\\_UCSM\\_Configuration\\_Guide/b\\_GUI\\_Hyper-V\\_VMFEX\\_UCSM\\_Configuration\\_Guide\\_chapter\\_0101.html#task\\_FD3156BC3C7F48FBB\\_F728E8A824E81CA](http://www.cisco.com/c/en/us/td/docs/unified_computing/ucs/sw/vm_fex/hyperv/gui/config_guide/2-1/b_GUI_Hyper-V_VM-FEX_UCSM_Configuration_Guide/b_GUI_Hyper-V_VMFEX_UCSM_Configuration_Guide_chapter_0101.html#task_FD3156BC3C7F48FBB_F728E8A824E81CA)

#### NEW QUESTION 84

An engineer is installing a new blade server chassis with integrated networking. When connecting a new server chassis to a trunk port on a top-of-rack Cisco Nexus switch, which two precautions must be taken to ensure proper connectivity when enabling new links? (Choose two.)

- A. The SNMP traps on the chassis switch are enabled for Cisco Prime Infrastructure.
- B. The trunk settings match on the chassis switch and the TOR switch.
- C. The spanning tree settings on the chassis switch and TOR switch are consistent.
- D. The SNMP traps on the TOR switch are enabled Cisco Prime Infrastructure.
- E. LLDP is enabled on the chassis switch and TOR switch.
- F. Cisco Discovery Protocol is enabled on the chassis switch and TOR switch.

**Answer:** EF

#### NEW QUESTION 87

Which is the step to associate an application profile EPG to a VMM domain?

- A. The APIC pushes the EPGs as virtual switches to the VM controller.
- B. The VMM administrator creates the port groups in the Tenant window then assigns the EPGs to CPPAs.
- C. The APIC pushes the EPGs as port groups in the VM controller.
- D. The policy administrator assigns the EPG to physical endpoints in the VMM.

**Answer:** C

#### Explanation:

Reference: Provisioning of EPGs in VMM Domain—Associates application profile EPGs to VMM domains as follows:  
The APIC pushes these EPGs as port groups in the VM controller. The compute administrator then places vNICs into these port groups.  
An EPG can span multiple VMM domains, and a VMM domain can contain multiple EPGs.

#### NEW QUESTION 89

Which option lists the default methods that are needed to access a Cisco UCS C-Series via its Lights-Out Management? (Choose two.)

- A. HTTPS
- B. FTP
- C. Telnet
- D. SSH



**Answer:** AD

#### NEW QUESTION 90

Two companies want to integrate their storage infrastructure. Both companies use a single Cisco MDS 9513 Multilayer Director, but they use Fibre Channel storage arrays from different vendors. Physical connectivity between the two Cisco MDS 9513s is already in place. No common VSAN IDs exist between the two companies. Which option is most likely to achieve the goal?

- A. Configure NPV.
- B. Configure static FCIDs.
- C. Change the storage arrays to the same vendor.
- D. Enable FC-NAT.
- E. Configure IVR.

**Answer:** A

#### NEW QUESTION 94

Which two statements about virtual networks in a Cisco-powered private cloud are true? (Choose two.)

- A. After the last VM is shutdown, the associated virtual network is gone for garbage collection.
- B. The last vNIC can be deleted issuing the command no interface virtual.
- C. Virtual networks are abstractions whose state is stored in the orchestration layer.
- D. N1KV supports dynamic routing on virtual networks.
- E. Issue the show module command in virtual supervisor module to view virtual network mapping with VM.

**Answer:** DE

#### NEW QUESTION 96

Which two pieces of information are needed when adding an NFS mount point in Cisco UCS Director? (Choose two.)

- A. the IP address of the NFS server where you plan to store the OS images for Bare Metal Agent to use
- B. the locate and organization where the NFS server is located
- C. the IP address of the IP share storage system
- D. the location of the NFS server where the OS images are stored
- E. the IP address of the main UCS server

**Answer:** AD

#### Explanation:

Reference: [http://www.cisco.com/c/en/us/td/docs/unified\\_computing/ucs/ucs-director/bma-install-config/5-2/b\\_ucsd\\_bma\\_install\\_config\\_guide\\_5\\_2/b\\_ucsd\\_bma\\_install\\_config\\_guide\\_5\\_2\\_chapter\\_0110.html#task\\_FB4A6403CF4F4650B31A8C2C6FF4E69F](http://www.cisco.com/c/en/us/td/docs/unified_computing/ucs/ucs-director/bma-install-config/5-2/b_ucsd_bma_install_config_guide_5_2/b_ucsd_bma_install_config_guide_5_2_chapter_0110.html#task_FB4A6403CF4F4650B31A8C2C6FF4E69F)

#### NEW QUESTION 100

An engineer is configuring a vNIC template. Under which circumstance do they want to disable vNIC fabric failover?

- A. The Cisco UCS domain is running in Ethernet switch mode.
- B. A named VLAN already exists.
- C. The VLAN pin group has been created.
- D. The statistics threshold policy has already been set.

**Answer:** A

#### Explanation:

Reference: [https://www.cisco.com/c/en/us/td/docs/unified\\_computing/ucs/sw/gui/config/guide/2-0/b\\_UCSM\\_GUI\\_Configuration\\_Guide\\_2\\_0/b\\_UCSM\\_GUI\\_Configuration\\_Guide\\_2\\_0\\_chapter\\_010100.html](https://www.cisco.com/c/en/us/td/docs/unified_computing/ucs/sw/gui/config/guide/2-0/b_UCSM_GUI_Configuration_Guide_2_0/b_UCSM_GUI_Configuration_Guide_2_0_chapter_010100.html)

#### NEW QUESTION 102

An engineer needs to make changes to a service profile that is bound to a service profile template. The service profile is associated to a production server that is online. Which statement describes what occurs when the engineer clicks the “unbind” option?

- A. The service profile unbinds from the template, and the server shuts down automatically.
- B. Cisco UCS Manager requests the server to shut down so that the service profile can unbind.
- C. Cisco UCS Manager requests the service profile to be disassociated from the server so that the service profile can unbind.
- D. The service profile unbinds from the template, and the server remains online.

**Answer:** D

#### Explanation:

Reference: <https://supportforums.cisco.com/t5/unified-computing-system/disassociate-service-profile-fromserver/td-p/2785270>

#### NEW QUESTION 107

Which three boot policies can be created for Cisco UCS Manager in Cisco UCS Director? (Choose three.)

- A. VLAN boot
- B. UEFI secure boot
- C. iSCSI boot
- D. NFS boot

- E. SAN boot
- F. FCOE boot

**Answer:** ACE

**Explanation:**

Reference: Various boot options are: SAN Boot  
LAN Boot Local Disk Boot  
Virtual Media Boot iSCSI Boot

**NEW QUESTION 111**

The Cisco UCS usNIC feature improves performance of software applications by bypassing the kernel network stack. Which option lists the steps to configure usNIC capable vNIC in the correct order?

- A. Create a usNIC connection policy, create a vNIC, set vNIC connection policy to usNIC, and install the usNIC RPM driver
- B. Modify the vNIC network control policy to usNIC, modify usNIC Ethernet adapter policy, and install the usNIC RPM driver
- C. Create a usNIC connection policy, create a vNIC, set vNIC adapter policy to Linux, and install the usNIC RPM driver
- D. Create a vNIC, modify usNIC Ethernet adapter policy, set vNIC connection policy to usNIC, and install the usNIC RPM driver

**Answer:** D

**Explanation:**

Reference: [http://www.cisco.com/c/en/us/td/docs/unified\\_computing/ucs/sw/gui/config/guide/2-2/b\\_UCSM\\_GUI\\_Configuration\\_Guide\\_2\\_2/configuring\\_network\\_related\\_policies.pdf](http://www.cisco.com/c/en/us/td/docs/unified_computing/ucs/sw/gui/config/guide/2-2/b_UCSM_GUI_Configuration_Guide_2_2/configuring_network_related_policies.pdf)

**NEW QUESTION 112**

Which four options are required on a DHCP server to enable PXE boot? (Choose four.)

- A. boot server host name (TFTP server hostname or IP address)
- B. subnet mask
- C. DNS server
- D. lease time
- E. domain name
- F. bootfile name
- G. router (Gateway)

**Answer:** ABCG

**Explanation:**

Reference: Refer to table 1 of the link: [http://www.cisco.com/c/en/us/td/docs/unified\\_computing/ucs/ucsdirector/bma-install-config/4-1/b\\_ucsd\\_bma\\_install\\_config\\_guide\\_41/b\\_ucsd\\_bma\\_install\\_config\\_guide\\_41\\_chapter\\_01\\_00.html](http://www.cisco.com/c/en/us/td/docs/unified_computing/ucs/ucsdirector/bma-install-config/4-1/b_ucsd_bma_install_config_guide_41/b_ucsd_bma_install_config_guide_41_chapter_01_00.html)

**NEW QUESTION 116**

In which two ways can a cloud administrator dynamically increase a VMFS datastore? (Choose two.)

- A. Add a new local storage disk on ESXi and restart VMFS service.
- B. Expand the datastore within the extent.
- C. Rescan all hosts to see the current storage and modify the extent.
- D. Add an extent (LUN).

**Answer:** BD

**NEW QUESTION 120**

What does the Auto Deploy function of an ESXi host rely on?

- A. DNS
- B. PXE
- C. DHCP
- D. SCP

**Answer:** B

**Explanation:**

Reference: <http://blogs.vmware.com/vsphere/2013/03/auto-deploy-stateless-caching-stateless-caching-and-network-isolated-hosts.html>

**NEW QUESTION 121**

.....

## Thank You for Trying Our Product

### We offer two products:

1st - We have Practice Tests Software with Actual Exam Questions

2nd - Questions and Answers in PDF Format

### 300-460 Practice Exam Features:

- \* 300-460 Questions and Answers Updated Frequently
- \* 300-460 Practice Questions Verified by Expert Senior Certified Staff
- \* 300-460 Most Realistic Questions that Guarantee you a Pass on Your First Try
- \* 300-460 Practice Test Questions in Multiple Choice Formats and Updates for 1 Year

**100% Actual & Verified — Instant Download, Please Click**  
**[Order The 300-460 Practice Test Here](#)**