



HP

Exam Questions HPE6-A73

Aruba Certified Switching Professional Exam

About ExamBible

Your Partner of IT Exam

Found in 1998

ExamBible is a company specialized on providing high quality IT exam practice study materials, especially Cisco CCNA, CCDA, CCNP, CCIE, Checkpoint CCSE, CompTIA A+, Network+ certification practice exams and so on. We guarantee that the candidates will not only pass any IT exam at the first attempt but also get profound understanding about the certificates they have got. There are so many alike companies in this industry, however, ExamBible has its unique advantages that other companies could not achieve.

Our Advances

* 99.9% Uptime

All examinations will be up to date.

* 24/7 Quality Support

We will provide service round the clock.

* 100% Pass Rate

Our guarantee that you will pass the exam.

* Unique Gurantee

If you do not pass the exam at the first time, we will not only arrange FULL REFUND for you, but also provide you another exam of your claim, ABSOLUTELY FREE!

NEW QUESTION 1

A network engineer is using NetEdit to manage AOS-CX switches. The engineer notices that a lot of thirdparty VoIP phones are showing up in the NetEdit topology. The engineer deletes these, but they are automatically rediscovered by NetEdit and added back in. What should the administrator do to solve this problem?

- A. Change the VoIP phone SNMP community string to something unknown by NetEdit
- B. Disable LLDP globally on the AOS-CX switches where phones are connected
- C. Disable SSH access on all the VoIP phones
- D. Disable the RESTful API on all the VoIP phones

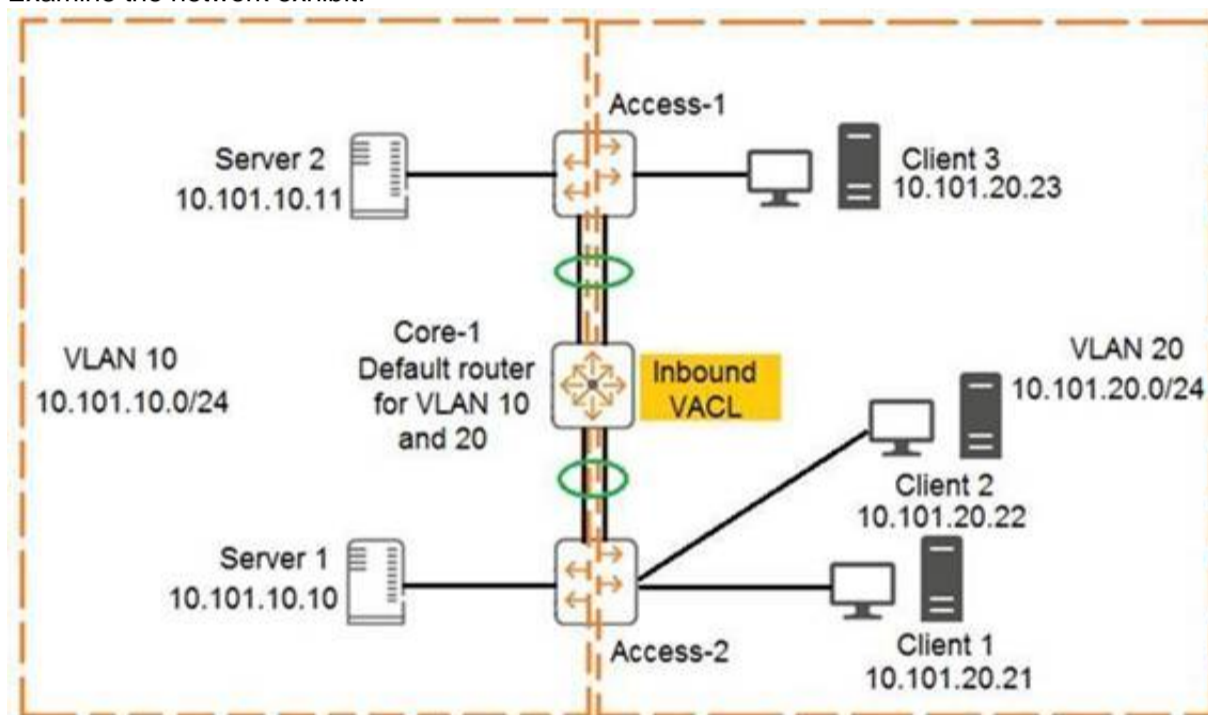
Answer: A

Explanation:

"NetEdit will now also discover and display third-party devices that are using the standard MIB's. Using SNMP with NetEdit, administrators can also enter SSH credentials for third-party devices.

NEW QUESTION 2

Examine the network exhibit:



The ACL configuration defined on Core-1 is as follows:

```
Core-1(config)# access-list ip example
Core-1(config-acl-ip)# permit ip 10.101.20.21/32 any eq 23
Core-1(config-acl-ip)# permit ip 10.101.20.21/32 eq 23 any
Core-1(config-acl-ip)# exit
Core-1(config)# vlan 20
Core-1(config-if)# apply access-list example in
```

The ACL configuration defined on Core-1 is as follows:

If telnet was being used, which device connection would be permitted and functional in both directions? (Choose two.)

- A. Client 3 to Client 2
- B. Client 1 to Client 2
- C. Server 2 to Client 2
- D. Server 1 to Client 1
- E. Client 1 to Client 3

Answer: BD

Explanation:

CL3 - CL2 - drop on forward path by core1 cause match VLAN 20 and CL3 not CL1 as SRC IP CL1 - CL2 - pass - no ACL cause forwarded by Access2
 SR2 - CL2 - pass on forward path by core1 cause match VLAN 10
 Drop on return path by core1 cause match VLAN 20 and no CL1 as SRC IP SR1 - CL1 - pass on forward path by core1 cause match VLAN 10
 pass on return path by core1 cause match VLAN 20 and CL1 as SRC IP
 CL1 - CL3 - pass on forward path by core1 cause match VLAN 20 and CL1 as SRC IP drop on return path by core1 cause match VLAN 20 and not CL1 but CL3 as SRC IP

NEW QUESTION 3

An administrator wants to leverage always-on PoE on AOS-CX switches. Which statement is correct regarding this feature?

- A. Provides up to 60W of power per port
- B. Supports all AOS-CX switches
- C. Provides surge protection for PoE and non-PoE ports
- D. Requires NetEdit to implement

Answer: A

NEW QUESTION 4

What must a network administrator implement in order to run an NAE script on an AOS-CX switch?

- A. Deployment
- B. Schedule
- C. Plan
- D. Agent

Answer: D

NEW QUESTION 5

What is correct regarding rate limiting and egress queue shaping on AOS-CX switches?

- A. Only a traffic rate and burst size can be defined for a queue
- B. Limits can be defined only for broadcast and multicast traffic
- C. Rate limiting and egress queue shaping can be used to restrict inbound traffic
- D. Rate limiting and egress queue shaping can be applied globally

Answer: A

Explanation:

you could apply egress queue shaping to the high priority queues to prevent starvation of low priority queues. Egress queue shaping allows you to apply a maximum bandwidth to a priority queue, as well as a burst size. The port buffers excess traffic up to the burst size and sends the buffered traffic at the max rate, smoothing out bursts while also preventing the high priority queue from exceeding its maximum rate and starving out lower priority queues.

NEW QUESTION 6

An administrator is managing a VSX pair of AOS-CX switches. An administrator configures the following on the primary AOS-CX switch:

```
switch(config)# vlan 100
switch(config-vlan-100)# vsx-sync
```

- A. The primary switch will erase VLAN 200 from the VSX pair
- B. The VLAN is only created on the secondary switch.
- C. The operation is not allowed by the switch and a CLI error is displayed
- D. The VLAN is created on both the primary and secondary switches

Answer: D

NEW QUESTION 7

An administrator is looking for a data center switching solution that will greatly reduce the likelihood of dropped frames when uplink congestion is experienced. Which AOS-CX switch queuing feature meets the administrator's needs?

- A. FIFO
- B. VOQ
- C. WFQ
- D. DWWR

Answer: B

NEW QUESTION 8

What is a concept associated with PIM sparse mode (SM)?

- A. Reverts to forwarding when the pruning state times out.
- B. Requires periodic joins to maintain the shortest path tree (SPT).
- C. Recommended for use when high bandwidth connections exist.
- D. Implements a push content to forward traffic from the multicast source.

Answer: B

Explanation:

<https://www.youtube.com/watch?v=PhzMtUcS6UA>

NEW QUESTION 9

When an AOS-CX switch uses a temporary copy of the Configuration State database, what kind of analysis does NetEdit perform to ensure that the configuration is correct?

- A. Syntax validation
- B. Semantic validation
- C. Conformance validation
- D. Change validation

Answer: D

Explanation:

Validation processes
+ Syntax validation

- When: while typing
- What: command syntax including in-line help
- + Semantics validation
- When: VALIDATE button (in multi-editor) or before DEPLOY
- What: configuration consistency
- + Conformance validation
- When: while editing
- What: compliance with conformance rules: corporate policies, minimum connectivity requirements, etc.
- + Change validation
- When: during DEPLOY (before and after configuration deployment)
- What: compares device state before and after changes are applied (using show commands)

NEW QUESTION 10

An administrator is implementing a downloadable user role solution involving AOS-CX switches. The AAA solution and the AOS-CX switches can successfully authenticate users; however, the role information fails to download to the switches. What policy should be added to an intermediate firewall to allow the downloadable role function to succeed?

- A. Allow TCP 443
- B. Allow UDP 1811
- C. Allow UDP 8211
- D. Allow TCP 22

Answer: A

Explanation:

pg 681 from the Aruba guide - "When using DUR, the ClearPass HPE-CPPM-Role VSA is used in combination with HTTPS to transfer the role to the switch." UDP 8211 (PAPI) is related to dynamic segmentation and the communication to the MC not DUR.

NEW QUESTION 10

An administrator wants to implement a virtual switching technology that implements a single control-plane solution. Which S-CX switches would meet these criteria?

- A. All AOS-CX switching platforms
- B. AOS-CX 6300 and 6400 switches
- C. AOS-CX 6300, 6400, and 83xx switches
- D. AOS-CX 6300 switches

Answer: C

NEW QUESTION 15

An administrator implements interim accounting for guest users so that ClearPass can track the amount of bandwidth that guests upload and download. Guests that abuse bandwidth consumption should be disconnected from the network. The administrator configures the following on the AOS-CX access switches:

```
Access1(config)# ip dns host cppm.arubatraining.com 10.254.1.23 vrf mgmt
Access1(config)# radius-server host cppm.arubatraining.com key plaintext aruba123 vrf mgmt
Access1(config)# aaa group server radius cppm
Access1(config-sg)# server cppm.arubatraining.com vrf mgmt
Access1(config-sg)# exit
Access1(config)# aaa accounting port-access start-stop interim 5 group cppm
Access1(config)# radius dyn-authorization client cppm.arubatraining.com secret-key plaintext aruba123 vrf mgmt replay-
protection disable
```

After performing this configuration, the administrator notices that guest users that have exceeded the guest bandwidth limit are not being disconnected. Upon further investigation, Access Tracker in ClearPass indicates a disconnect CoA message is being sent to the AOS-CX switch. What is causing this issue?

- A. RADIUS change of authorization is not enabled on the AOS-CX switch.
- B. Bandwidth consumption of the guests is not being reported by the AOS-CX switch.
- C. NTP is not configured on the AOS-CX switch.
- D. There is a time discrepancy between the AOS-CX switch and ClearPass.

Answer: A

NEW QUESTION 18

What is correct regarding multicasting and AOS-CX switches?

- A. IGMP snooping is disabled, by default, on Layer-2 VLAN interfaces
- B. IGMP query functions are enabled, by default, on Layer-2 VLAN interfaces
- C. IGMP snooping is enabled, by default, on Layer-3 VLAN interfaces
- D. IGMP-enabled AOS-CX switches flood unknown multicast destinations

Answer: A

NEW QUESTION 19

Which statement is correct regarding ACLs and TCAM usage?

- A. Applying an ACL to a group of ports consumes the same resources as specific ACE entries
- B. Using object groups consumes the same resources as specific ACE entries

- C. Compression is automatically enabled for ASIC TCAMs on AOS-CX switches
- D. Applying an ACL to a group of VLANs consumes the same resources as specific ACE entries

Answer: B

NEW QUESTION 22

What is correct regarding the configuration of ACLs on AOS-CX switches?

- A. Statements with the log keyword are always processed by the switch CPU.
- B. Standard ACLs are used to match on routes when performing route distribution.
- C. Wildcard masks are used to match on a range of IP addresses.
- D. Numbers 100 through 199 and 2000 through 2999 are used when creating extended ACLs.

Answer: C

NEW QUESTION 23

When cutting and pasting configurations into NetEdit, which character is used to enter commands within the context of the previous command?

- A. <ESC>
- B. ">"
- C. Space
- D. Tab

Answer: D

NEW QUESTION 25

The AOS-CX mobile app allows a network engineer or technician to perform which tasks? (Choose two.)

- A. Use NetEdit to manage switch configuration.
- B. Create a stack of AOS-CX switches.
- C. Transfer files between the switch and your mobile device.
- D. Securely access the switch using SSH.
- E. Schedule an operating system upgrade.

Answer: BC

Explanation:

ACSP Study Guide Page 66 - Key Features (Transfer files between the switch and your mobile device)

NEW QUESTION 26

An administrator is managing a network comprised of AOS-CX switches deployed at the aggregation layer. The switches are paired in a VSX stack and run the OSPF routing protocol. The administrator is concerned about how long it takes for OSPF to converge when one of the VSX switches has to reboot. What should the administrator do to speed up the OSPF convergence of the switch that is rebooting?

- A. Change the VSXISL link from an OSPF broadcast link point-to-point.
- B. Implement graceful restart on the VSX switches and their neighboring OSPF switches.
- C. Decrease the VSX initial synchronization timer on the two VSX switches.
- D. Define non-backbone areas on the VSX switches as totally stubby areas.

Answer: B

NEW QUESTION 31

How should a network administrator add NAE scripts and implement NAE agents that will run on an AOS-CX switch?

- A. Use the web interface of the NetEdit server
- B. Use the web interface of the AOS-CX switch
- C. Use the web interface of Aruba Central
- D. Use the CLI of the AOS-CX switch

Answer: B

NEW QUESTION 35

When comparing PIM-DM and PIM-SM, which multicast components are only found with PIM-SM in multicast routing? (Choose two.)

- A. IGMP querier
- B. Rendezvous point
- C. Bootstrap router
- D. Shortest path tree
- E. Designated router

Answer: BD

NEW QUESTION 36

Examine the following AOS-CX switch configuration:

```
Switch(config-addgroup-ip)# object-group ip address servers
Switch(config-addgroup-ip)# 10.1.0.100
Switch(config-addgroup-ip)# 10.1.1.100
Switch(config-addgroup-ip)# exit
```

Which access control entries would allow web traffic to the web servers 10.1.0.100 and 10.1.1.100?

- A. permit tcp servers eq 80
- B. permit tcp any 10.1.0.100 0.0.1.0 eq 80
- C. permit tcp any 10.1.0.100/10.1.1.100 eq 80
- D. permit tcp any 10.1.0.100/255.255.254.255 eq 80

Answer: B

NEW QUESTION 40

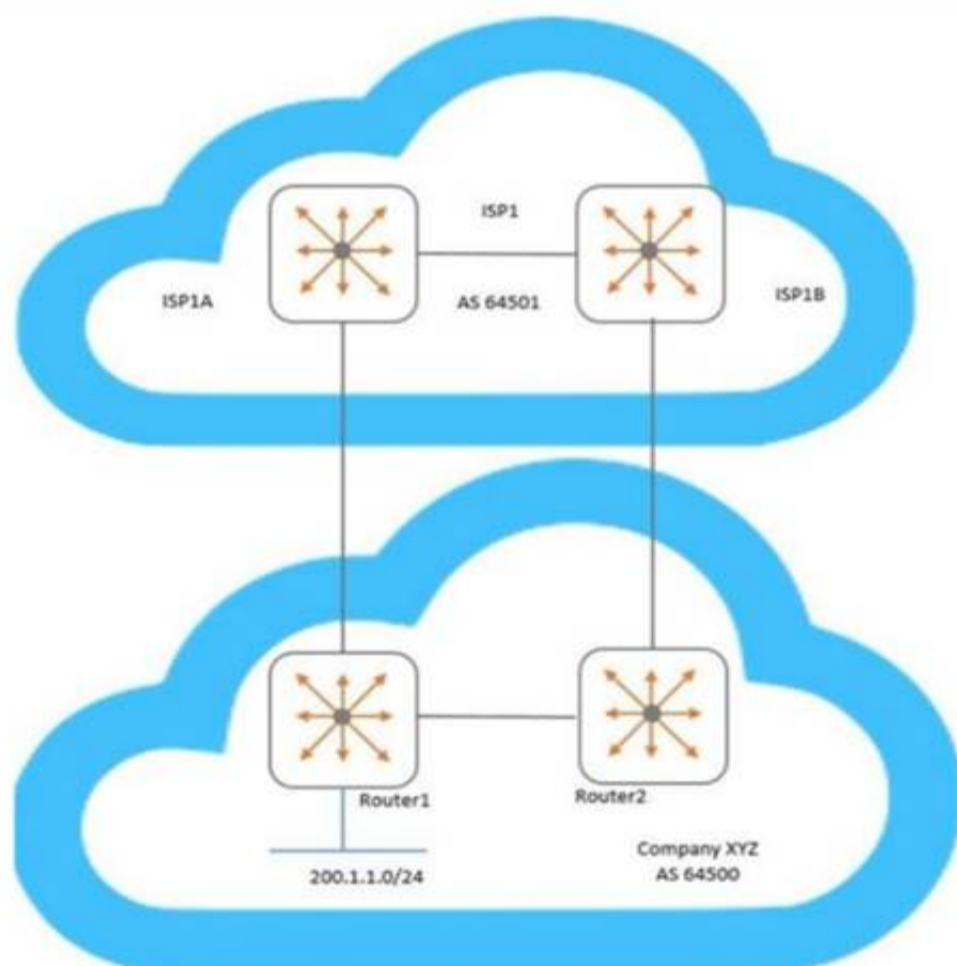
How is voice traffic prioritized correctly on AOS-CX switches?

- A. By defining device profiles with QOS settings
- B. By placing it in the strict priority queue
- C. By implementing voice VLANs
- D. By implementing weighted fair queueing (WFQ)

Answer: B

NEW QUESTION 45

Examine the network topology.



Company XYZ has two connections to a service provider (ISP1). Here is the configuration of Router1:

```
Router1(config)# ip prefix-list AS64500-routes permit 200.1.1.0/24
Router1(config)# route-map To-AS64501 permit seq 10
Router1(config-route-map)# match ip address prefix-list AS64500-routes
Router1(config-route-map)# set metric 100
Router1(config-route-map)# exit
Router1(config)# router bgp 64500
Router1(config-bgp)# address-family ipv4 unicast
Router1(config-bgp-ipv4-uc)# neighbor 192.168.1.1 route-map To-AS64501 out
```

Here is the configuration of Router2:

```
Router2(config)# ip prefix-list AS64500-routes permit 200.1.1.0/24
Router2(config)# route-map To-AS64501 permit seq 10
Router2(config-route-map)# match ip address prefix-list AS64500-routes
Router2(config-route-map)# set metric 200
Router2(config-route-map)# exit
Router2(config)# router bgp 64500
Router2(config-bgp)# address-family ipv4 unicast
Router2(config-bgp-ipv4-uc)# neighbor 192.168.2.1 route-map To-AS64501 out
```

Based on configuration of Router1 and Router2, which BGP metric is being manipulated?

- A. Weight
- B. Multiple exit discriminator
- C. Local preference
- D. AS path length

Answer: B

NEW QUESTION 49

A customer has twenty AOS-CX switches that will be managed by NetEdit and would like support for NetEdit these switches will exist in the network for at least five years.

Which type of licensing should be used by this customer?

- A. 20 Aruba NetEdit permanent licenses
- B. 20 Aruba NetEdit single node subscription licenses
- C. 25 Aruba NetEdit permanent licenses
- D. 1 Aruba NetEdit SMB License

Answer: B

NEW QUESTION 52

Examine the following AOS-CX switch configuration:

```
Access(config)# access-list ip ext
Access(config-acl-ip)# permit ip any 10.0.11.0/255.0.255.0 count
Access(config-acl-ip)# permit ip any 10.0.12.0/255.0.255.0 log
Access(config-acl-ip)# exit
Access(config)# interface 1/1/3
Access(config-if)# apply access-list ip ext in
Access(config-if)# exit
```

Which statement correctly describes what is allowed for traffic entering interface 1/1/3?

- A. IP traffic from 10.1.11.0/24 is allowed to access 10.1.110.0/24
- B. IP traffic from 10.0.11.0/24 is allowed to access 10.1.12.0/24
- C. Traffic from 10.0.12.0/24 will generate a log record when accessing 10.0.11.0/24
- D. IP traffic from 10.1.12.0/24 is allowed to access 172.0.1.0/23

Answer: B

Explanation:

People seem to be confused by inverted mask/wildcard masks. They would be correct for Cisco switches, but AOS-CX does NOT use wildcard masks; "AOS-CX switches do not support wildcard masks - only prefixes or subnet masks - when created ACEs."

Cisco: 255.0.255.0 = xx.123.xx.123 AOS-CX: 255.0.255.0 = 123.xx.123.xx

NEW QUESTION 56

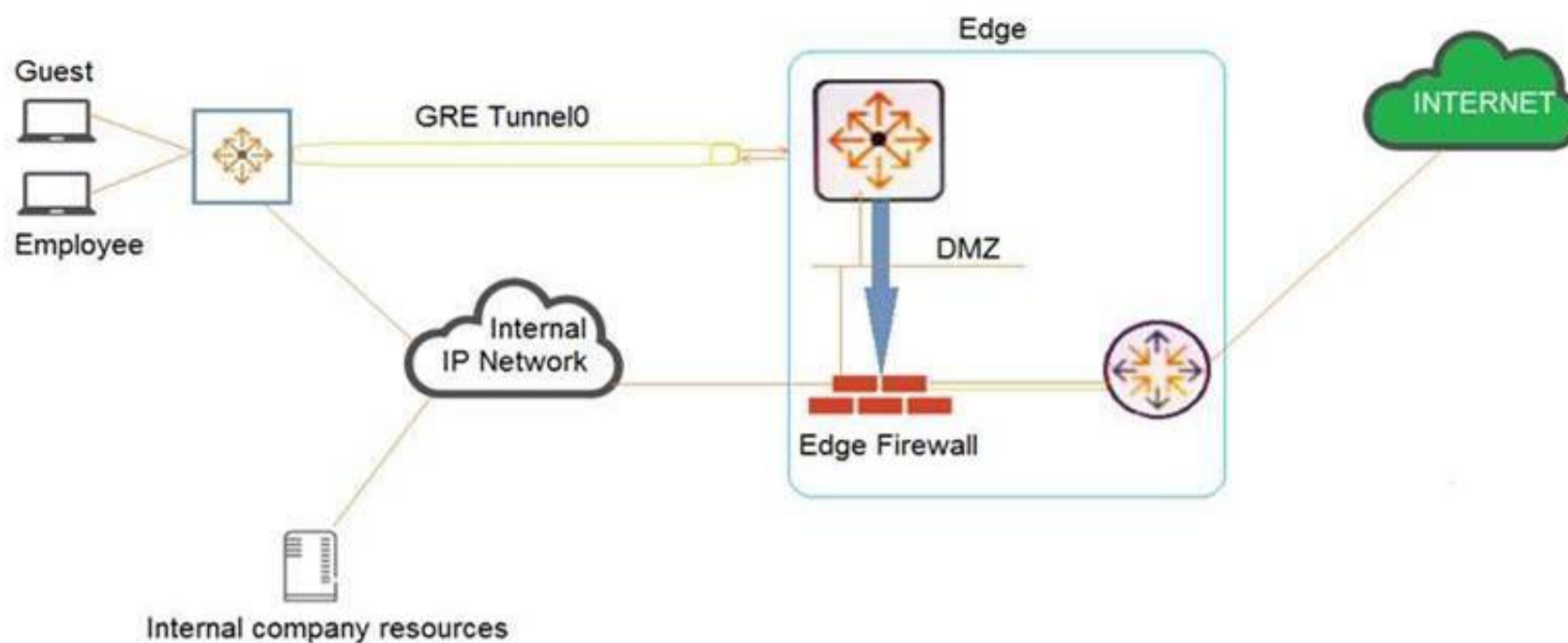
An administrator will be deploying NetEdit to manage an Aruba solution. What does NetEdit support?

- A. Manages AOS-CX switches and Aruba gateways
- B. Support for Aruba-supplied security updates
- C. Tracks configuration and hardware information
- D. Can be purchased as a VM and/or hardware appliance

Answer: A

NEW QUESTION 61

Examine the network exhibit.



A company has a guest implementation for wireless and wired access. Wireless access is implemented through a third-party vendor. The company is concerned about wired guest traffic traversing the same network as the employee traffic. The network administrator has established a GRE tunnel between AOS-CX switches where guests are connected to a routing switch in the DMZ.

Which feature should the administrator implement to ensure that the guest traffic is tunneled to the DMZ while the employee traffic is forwarded using OSPF?

- A. OSPF route maps using the “set metric” command
- B. Policy-based routing (PBR)
- C. User-based tunneling (UBT)
- D. Classifier policies

Answer: B

Explanation:

Guest traffic can be routed with PBR to use GRE tunnels that terminate in the DMZ.

NEW QUESTION 66

What are best practices when implementing VSX on AOS-CX switches? (Choose two.)

- A. The ISL lag should use the default MTU size.
- B. Timers should be left at their default values.
- C. The default system MAC addresses should be used.
- D. The keepalive connection should use a direct layer-3 connection.
- E. The ISL lag should use at least 10GbE links or faster.

Answer: BD

NEW QUESTION 67

What is correct regarding the tunneling of user traffic between AOS-CX switches and Aruba Mobility Controllers (MCs)?

- A. Uses IPSec to protect the management and data traffic
- B. Uses IPSec to protect the management traffic
- C. Supports only port-based tunneling
- D. Uses the same management protocol as Aruba APs

Answer: D

Explanation:

because both AP and Switch use PAPI . Moreover in AOS-CX switch currently not support port based tunnel. AOS-CX switch only support User Based Tunnel (UBT)

NEW QUESTION 72

When implementing deficit weighted round robin queuing, what importance does the weight value have?

- A. Prioritizing latency-sensitive traffic
- B. Queue priority in processing traffic
- C. Strict priority queue
- D. Percentage of interface bandwidth

Answer: B

NEW QUESTION 77

Examine the partial output of the BGP routing table of an AOS-CX switch:

Switch# show bgp

<-output omitted->

Network	Nexthop	Metric	LocPrf	Weight	Path
* e 1.0.0.0/8	192.168.1.5	0	100	0	100 ?
* e 1.0.0.0/8	192.168.2.5	0	100	0	200 100 i
* e 1.0.0.0/8	192.168.3.5	0	200	20	300 400 100 ?
* e 1.0.0.0/8	192.168.4.5	0	50	0	400 200 100 i

The switch is learning about four possible path to reach the 1.0.0.0/8 network. Based on this output, which next-hop route will the AOS-CX select to be placed in the IP routing table?

- A. 192.168.1.5
- B. 192.168.2.5
- C. 192.168.3.5
- D. 192 1684 5

Answer: C

NEW QUESTION 81

A network engineer is examining NAE graphs from the Dashboard but notices that the time shown in the graph does not represent the current time. The engineer verifies that the AOS-CX switch is configured for NTP and is successfully synchronized. What should be done to fix this issue?

- A. Ensure the engineer's web browser is configured for the same timezone as the AOS-CX switch
- B. Ensure the engineer's PC is synchronized to the same NTP server as the AOS-CX switch
- C. Ensure NetEdit and the AOS-CX switch are synchronized to the same NTP server
- D. Enable trust settings for the AOS-CX switch's SSL certificate

Answer: B

Explanation:

https://techhub.hpe.com/eginfolib/Aruba/OS-CX_10.04/5200-6724/index.html#GUID-2048A4D8-5458-4C00-A

NEW QUESTION 86

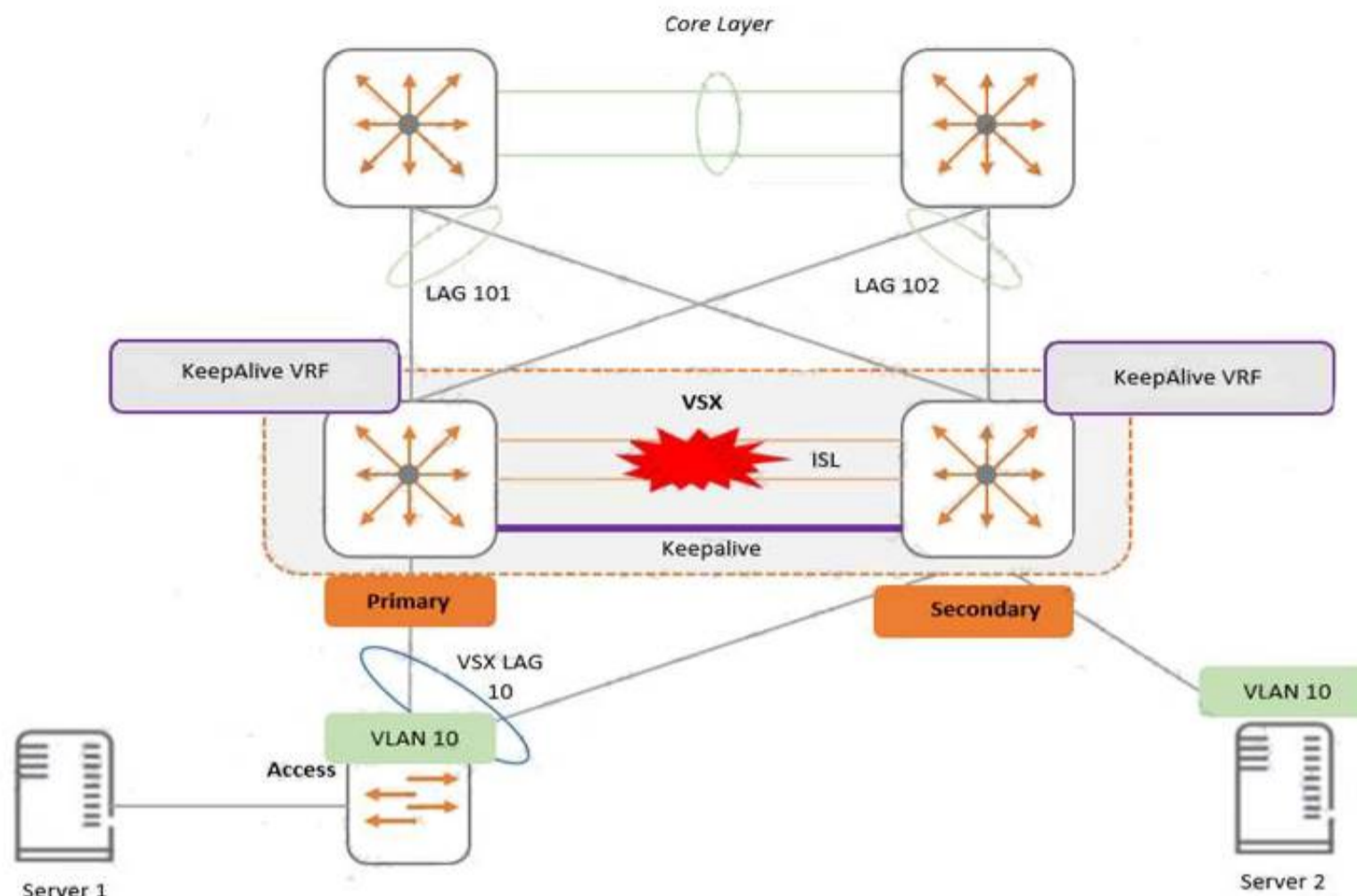
An administrator is implementing a multi-area OSPF network. The network contains a backbone (area 1) and two other areas (1 and 2) connected to ABRs in the backbone. The network has one routing switch connected to a service provider located in area 2. Which network design would minimize the number of routes in the routing switches' link state databases (LSDBs) while still allowing full connectivity?

- A. Area 0: NormalArea 1: Totally stubby Area 2: Totally stubby
- B. Area 0: NormalArea 1: Totally not-so-stubby Area 2: Totally stubby
- C. Area 0: NormalArea 1: Totally stubbyArea 2: Totally not-so-stubby
- D. Area 0: Not-so-stubbyArea 1: Totally not-so-stubby Area 2: Totally not-so-stubby

Answer: D

NEW QUESTION 87

Examine the attached diagram



Two AOS-CX switches are configured for VSX at the access layer, where servers attached to them. An SVI interface is configured for VLAN 10 and serves as the default gateway for VLAN 10. The ISL link between the switches fails, but the keepalive interface functions. Active gateway has been configured on the switches. What is correct about access from the servers to the Core?

- A. Server 2 can successfully access the core layer via the keepalive link.
- B. Server 1 and Server 2 can communicate with each other via the core layer.
- C. Server 2 cannot access the core layer.
- D. Server 1 can access the core layer via both uplinks.

Answer: B

NEW QUESTION 88

Examine the output from an AOS-CX switch implementing a dynamic segmentation solution involving downloadable user roles:

Switch# show port-access role clearpass Role information:

Name : icxarubadur_employee-3044-2 Type : clearpass

Status: failed, parsing_failed Reauthentication Period : Authentication Mode : Session Timeout :

The downloadable user roles are not being downloaded to the AOS-CX switch. Based on the above output, what is the problem?

- A. The certificate that ClearPass uses is invalid
- B. The AOS-CX switch does not have the ClearPass certificate involved
- C. DNS fails to resolve the ClearPass server's FQDN
- D. There is a date/time issue between the ClearPass server and the switch

Answer: C

Explanation:

"The top-right example shows a parsing_failed status, typically indicative of either a DNS or network connectivity issue."

NEW QUESTION 93

A network administrator is tasked to set up BGP in the company's network. The administrator is defining an eBGP peering between an AOS-CX switch and a directly-connected service provider. The administrator has configured the following on the AOS-CX switch:

```
switch(config)# interface loopback 0
switch(config-loopback-if)# ip address 10.1.1.1/32
switch(config-loopback-if)# exit
switch(config)# interface 1/1/1
switch(config-if)# no shutdown
switch(config-if)# routing
switch(config-if)# ip address 192.168.1.2/30
switch(config-if)# exit
switch(config)# router bgp 64500
switch(config-bgp)# neighbor 192.168.1.1 remote-as 64511
switch(config-bgp)# bgp router-id 192.168.1.2
switch(config-bgp)# address-family ipv4 unicast
switch(config-bgp-ipv4-uc)# exit
```

However, when using the "show bgp all summary" command, the state does not display "Established" for the eBGP peer. What must the administrator configure to

fix this issue?

- A. router bgp 64500 neighbor 192.168.1.1 ebgp-multihop
- B. router bgp 64500 enable
- C. router bgp 64500 address-family ipv4 unicast neighbor 192.168.1.1 activate
- D. router bgp 64500 neighbor 192.168.1.1 update-source loopback0

Answer: C

NEW QUESTION 95

A network engineer is setting up BGP on AOS-CX switches. The engineer is establishing two different eBGP peering's to two different service providers. The engineer has dozens of contiguous C-class public networks that need to be advertised to the two service providers. The engineer manually defines the networks to be advertised individually with the "network" command.

How can an administrator advertise only a summarized route to the two service providers?

- A. Create a summarized static route and redistribute this into OSPF
- B. Summarize the networks with the "aggregate-address" BGP command
- C. Enable auto-summarization in the IPv4 address family of the BGP configuration
- D. Create a summarized route in OSPF

Answer: B

NEW QUESTION 99

An administrator creates an ACL rule with both the "count" and "log" option enabled. What is correct about the action taken by an AOS-CX switch when there is a match on this rule?

- A. By default, a summarized log is created every minute with a count of the number of matches
- B. Logging will not include certificate and TLS events, but counting will
- C. The "count" and "log" options are processed by the AOS-CX switch's hardware ASIC
- D. The total in the "log" record and the count could contain different rule matching statistics

Answer: D

Explanation:

From the "AOS-CX 10.08 ACLs and Classifier Policies Guide" : "You may see a minor discrepancy between the ACL logging statistics and the hit counts statistics due to the time required to record the log message."

NEW QUESTION 104

A company has an existing wireless solution involving Aruba APs and Mobility controllers running 8.4 code. The solution leverages a third-party AAA solution. The company is replacing existing access switches with AOS-CX 6300 and 6400 switches. The company wants to leverage the same security and firewall policies for both wired and wireless traffic.

Which solution should the company implement?

- A. RADIUS dynamic authorization
- B. Downloadable user roles
- C. IPSec
- D. User-based tunneling

Answer: D

NEW QUESTION 105

A company is implementing a new wireless design and needs it to support high availability, even during times of switch system upgrades. The solution will involve Aruba Mobility Controller (MC) and Aruba AP connections requiring POE. Which campus AOS-CX switch solution and virtual switching should the company implement at the campus access layer?

- A. AOS-CX 6400 and VSX
- B. AOS-CX 6300 and VSF
- C. AOS-CX 8325 and VSF
- D. AOS-CX 8400 and VSX

Answer: A

Explanation:

only 6400 support highly available during upgrades

NEW QUESTION 110

A company has a few servers in a secure, remote location storing highly-confidential documents connected to two AOS-CX 6400 switches configured in a VSX pair. The AOS-CX switches perform access control with 802.1X and will be implementing user-based tunneling (UBT) so that Aruba gateway application inspection and stateful firewall policies can be applied to the traffic. The gateways are running version 84 and implement the AP, PEF, and RFP licenses

Which licensing is needed for the two AOS-CX switches?

- A. 2 AP and 2 PEF licenses only
- B. 1 AP license only
- C. 2 AP, 2 PEF, and 2 RFP licenses only
- D. 1 AP, 1 PEF, and 1 RFP licenses only

Answer: D

NEW QUESTION 115

Examine the commands entered on an AOS-CX switch:

What is true regarding this configuration for traffic received on interface 100?

- A. The default next-hop address supersedes the two preceding next-hop addresses
- B. The traffic is always dropped if the next-hop addresses are unreachable
- C. The traffic will be routed with the IP routing table entries if the next-hop addresses are unreachable
- D. The next-hop address of 1.1.1.1 is overwritten by the next-hop address of 2.2.2.2

Answer: C

Explanation:

"interface null: equivalent to the policy drop policing action. Any packets matching the class criteria for that policy entry will be dropped and not routed any further."

<https://www.arubanetworks.com/techdocs/AOS-CX/10.05/HTML/5200-7300/index.html#GUID-DC7E5E47-8F>

More than one next hop can be assigned with an ACL and they work by priority (based on the sequence number: lower sequence number -> higher priority). So next-hop 2.2.2.2 will be used if 1.1.1.1 is not reachable. If both are unreachable, then the packet will be routed looking at the default routing table, if no specific entry will be found, then the packet will be routed to the default next hop defined in the ACL.

NEW QUESTION 118

What is true regarding VSX and keepalives on AOS-CX switches?

- A. A separate VLAN on the ISL link is used.
- B. A VSX LAG for the keepalives is a best practice.
- C. The OOBM port must be used.
- D. A 1GbE or faster port is used.

Answer: D

NEW QUESTION 122

A network administrator is installing NetEdit. In order for NetEdit to manage the AOS-CX switches in the network, what must be defined on the AOS-CX switches? (Choose two.)

- A. Enabling telnet
- B. Defining an admin user password
- C. Defining the https user-group
- D. Enabling the RESTful API for read and write access
- E. Enabling SFTP

Answer: BD

NEW QUESTION 126

An administrator wants to leverage the Network Analysis Engine (NAE) feature on AOS-CX switches to perform root cause analysis and to assist in quickly identifying problems. Which two AOS-CX databases does the administrator have access to when implementing scripts? (Select two.)

- A. Time-series
- B. API
- C. VSX
- D. Configuration
- E. Audit

Answer: AC

NEW QUESTION 128

A company has recently purchased a ClearPass AAA solution. Their network consists of AOS-CX switches at the access layer. The company is implementing a rollout of IoT devices for smart building management to control the lighting and HVAC systems. The network administrator is concerned about allowing secure access to these devices since they only support MAC-Auth.

Which ClearPass feature should the administrator leverage to help determine that MAC address spoofing is not occurring for this group of devices?

- A. User-based tunneling
- B. Device fingerprinting
- C. RADIUS change of authorization
- D. Downloadable user roles

Answer: B

NEW QUESTION 131

A network administrator needs to replace an antiquated access layer solution with a modular solution involving AOS-CX switches. The administrator wants to leverage virtual switching technologies. The solution needs to support high-availability with dual-control planes.

Which solution should the administrator implement?

- A. AOS-CX 8325
- B. AOS-CX 6300
- C. AOS-CX 6400
- D. AOS-CX 8400

Answer: C

NEW QUESTION 136

An administrator is replacing the current access switches with AOS-CX switches. The access layer switches must authenticate user and networking devices connecting to them. Some devices support no form of authentication, and some support 802.1X. Some ports have a VoIP phone and a PC connected to the same port, where the PC is connected to the data port of the phone and the phone's LAN port is connected to the switch. Which statement is correct about this situation?

- A. 802.1X must be configured to work in fallback mode
- B. Device fingerprinting is required for authentication
- C. The client-limit setting for port access needs to be changed
- D. Device mode should be implemented

Answer: C

Explanation:

fallback mode if for the radius part; client limit is for multiple authentic on one port (ie phone + pc) From doc :

aaa port-access authenticator <port-list> client-limit <1-32>

Used after executing aaa port-access authenticator <port-list> to convert authentication from port-based to user-based. Specifies user-based 802.1X authentication and the maximum number of 802.1X-authenticated client sessions allowed on each of the ports in <port-list>. If a port currently has no authenticated client sessions, the next authenticated client session the port accepts determines the untagged VLAN membership to which the port is assigned during the session. If another client session begins later on the same port while an earlier session is active, the later session will be on the same untagged VLAN membership as the earlier session.

NEW QUESTION 141

An administrator has an AOS-CX switch configured with: router ospf 1

area 0

area 1 stub no-summary

It is the only ABR for area 1. The switch has the appropriate adjacencies to routing switches in areas 0 and 1. The current routes in each area are:

Area 0: 5 routes (LSA Type 1 and 2)

Area 1: 10 routes (LSA Type 1 and 2)

External routes: 2 (LSA Type 5)

Based on the above configuration, how many OSPF routes will routing switches see in Area 1?

- A. 15
- B. 6
- C. 11
- D. 12

Answer: C

NEW QUESTION 144

The network is configured for OSPF with the following attributes: Core1 and Core2 and ABRs

Area 1 has 20 networks in the 10.1.0.0/16 range Area 0 has 10 networks in the 10.0.0.0/16 range Area 2 has 50 networks in the 10.2.0.0/16 range The ASBR is importing a static route into Area 1

Core2 has a summary for Area 2: area 0.0.0.2 range 10.2.0.0/16 type inter-area Here is the OSPF configuration performed on Core1:

```
Core1(config)# router ospf 1
Core1(config-router)# router-id 10.0.0.1
Core1(config-router)# passive-interface default
Core1(config-router)# area 0.0.0.0
Core1(config-router)# area 0.0.0.1 stub
Core1(config-router)# area 0.0.0.1 range 10.1.0.0/16 type inter-area
Core1(config-router)# area 0.0.0.2
Core1(config-router)# area 0.0.0.0 range 10.0.0.0/16 type inter-area
Core1(config-router)# exit
Core1(config)# interface vlan 10
Core1(config-if)# ip address 10.0.1.1/24
Core1(config-if)# ip ospf 1 area 0
Core1(config-if)# exit
Core1(config)# interface vlan 100
Core1(config-if)# ip address 10.1.1.1/24
Core1(config-if)# ip ospf 1 area 1
Core1(config-if)# exit
```

Based on the above information, what is correct?

- A. Area 0 has 13 routes
- B. Core1 has no OSPF routes
- C. Core1 has received one LSA Type 5 from the ASBR
- D. Area 1 has 23 routes

Answer: D

NEW QUESTION 149

An administrator has configured the following on an AOS-CX switch:

```
object-group ip address web-servers
 10.1.12.2
 10.1.12.3
exit
object-group port web-ports
eq 80
eq 443
```

What is the correct ACL rule configuration that would allow traffic from anywhere to reach the web ports on the two specified servers?

- A. access-list ip server 10 permit tcp any web-servers group web-ports
- B. access-list ip server 10 permit tcp any object-group web-servers object-group web-ports
- C. access-list ip server 10 permit tcp any group web-servers group web-ports
- D. access-list ip server 10 permit tcp any web-servers web-ports

Answer: A

Explanation:

```
Switch1(config-acl-ip)# show run cur access-list ip server
10 permit tcp any web-servers group web-ports
```

NEW QUESTION 153

What is required when implementing captive portal on AOS-CX switches?

- A. Certificate installed on the switch
- B. Web server running on the switch
- C. Device fingerprinting
- D. AAA server

Answer: D

NEW QUESTION 157

Which AOS-CX feature is used to prevent head-on-line (HOL) blocking?

- A. VSF
- B. WFQ
- C. VOQ
- D. VSX

Answer: C

NEW QUESTION 162

A company uses NetEdit to manage a network of 700 AOS-CX switches and approximately 1,000 other SNMP-capable devices.

Which management solution should the company use to monitor all the devices, as well as see a topology picture of how all the devices are connected together?

- A. NetEdit
- B. Aruba AirWave
- C. Aruba Activate
- D. Network Analysis Engine (NAE)

Answer: A

NEW QUESTION 166

Which protocols are used by NetEdit to interact with third-party devices? (Choose two.)

- A. telnet
- B. SNMP
- C. SSH
- D. Restful API
- E. CDP

Answer: BC

NEW QUESTION 171

What is the correct way of associating a VRF instance to either a VLAN or an interface?

- A. Switch(config)# interface <interface-ID>Switch(config-if)# vlan access <VLAN-ID> vrf attach <vrf-name>
- B. Switch(config)# vlan <VLAN-ID> vrf attach < vrf-name >
- C. Switch(config)# vlan <VLAN-ID>Switch(config-vlan-<VLAN-ID># vrf attach < vrf-name >
- D. Switch(config)# vlan <VLAN-ID> vrf < vrf-name >

Answer: C

NEW QUESTION 176

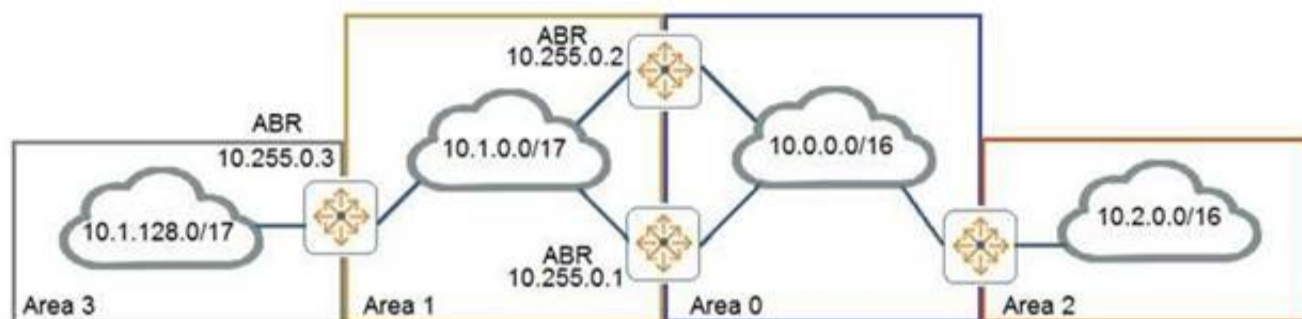
A network engineer for a company with 896 users across a multi-building campus wants to gather statistics on an important switch uplink and create actions based on issues that occur on the uplink. How often does an NAE agent gather information from the current state database in regard to the uplink interfaces?

- A. Once every 60 seconds
- B. Once every 1 second
- C. Once every 30 seconds
- D. Once every 5 seconds

Answer: D

NEW QUESTION 181

Examine the attached exhibit.



The network administrators is trying to add a remote location as area 3 to the network shown in the diagram. Based on current connection restrictions, the administrator cannot connect area 3 directly to area 0. The network is using AOS-CX switches. Which feature should the administrator implement to provide connectivity to the remote location?

- A. Not-so-stubby areas
- B. Bidirectional forward detection (BFD)
- C. OSPFv3
- D. Virtual links

Answer: D

NEW QUESTION 185

A company has recently upgraded their campus switching infrastructure with AOS-CX switches. They have implemented 802.1X authentication on access ports where laptop and IOT devices typically connect. An administrator has noticed that for POE devices, the AOS-CX switch ports are delivering the maximum wattage to the port instead of what the device actually needs. Concerned about this waste of electricity, what should the administrator implement to solve this problem?

- A. Implement a classifier policy with the correct power definitions
- B. Create device profiles with the correct power definitions
- C. Enable AAA authentication to exempt LLDP and/or CDP information
- D. Globally enable the QoS trust setting for LLDP and/or CDP

Answer: B

NEW QUESTION 190

A network administrator wants to replace older access layer switches with AOS-CX 6300 switches. Which virtual switching technology can the administrator implement with this solution?

- A. Both VSF and VSX
- B. Only Backplane stacking
- C. Only VSF
- D. Only VSX

Answer: C

NEW QUESTION 193

.....

Relate Links

100% Pass Your HPE6-A73 Exam with ExamBible Prep Materials

<https://www.exambible.com/HPE6-A73-exam/>

Contact us

We are proud of our high-quality customer service, which serves you around the clock 24/7.

Viste - <https://www.exambible.com/>