



Cisco

Exam Questions 200-901

Developing Applications and Automating Workflows using Cisco Core Platforms (DEVASC)

NEW QUESTION 1

- (Exam Topic 2)

A developer needs a list of clients connected to a specific device in a Meraki network. After making a REST API call, the developer receives an unfamiliar response code. Which Cisco DevNet resource should be used to identify the meaning of the response code?

- A. API documentation
- B. Sandbox
- C. Learning Labs
- D. Code Exchange

Answer: A

NEW QUESTION 2

- (Exam Topic 2)

What is a capability of the NETCONF protocol?

- A. allows Python scripts to be executed externally from a network device
- B. uses JSON to encode data in its content layer
- C. allows XML messages to be exchanged via the SSH protocol
- D. exposes a web-based interface

Answer: C

NEW QUESTION 3

- (Exam Topic 2)

Refer to the exhibit.

```
import requests
from requests.auth import HTTPBasicAuth
headers = {'Content-Type': 'application/json'}
base_url = 'https://10.1.2.3'
auth_url = '/dna/system/api/v1/auth/token'
devices_url = '/dna/intent/api/v1/network-device'

token = requests.post(
    base_url + auth_url, headers=headers,
    auth=HTTPBasicAuth(username="admin", password="DevNet123"))
data = token.json()

query_string_params = {'platformId': 'C9500-40X'}
response = requests.get(
    base_url + devices_url, headers=headers,
    params=query_string_params)
print(f'{response.code}')
```

A network engineer must manage the network devices. The engineer prepares a Python scripts to authenticate to the Cisco to DNA Center API and request a device list. The device request fails and returns errors code 401. Which action solves the problem?

- A. Update the API UR
- B. which matched the API endpoint for device list.
- C. Send the request to another network in case there are reachability Issues.
- D. Send the Authentication header In the request with a valid configuration.
- E. Update the credentials that are already supplied and retry the request

Answer: D

NEW QUESTION 4

- (Exam Topic 2)

Which application should be used to externally access all applications deployed in the same host machine with a single public IP address and port, when each application listens on different local ports?

- A. reverse proxy
- B. load balancer
- C. DNS
- D. firewall

Answer: D

NEW QUESTION 5

- (Exam Topic 2)

Which protocol runs over TCP port 22?

- A. SSH
- B. HTTP
- C. Telnet
- D. NETCONF

Answer: A

NEW QUESTION 6

- (Exam Topic 2)
Refer to the exhibit.

Generating Client ID and API Key:

- Log in to your AMP for Endpoints Console.
- Go to Accounts > Business Settings.
- Click Configure API Credentials under Features to generate the Client ID and secure API Key.

Once you have the API client ID and API key, you can make the API calls as follows:

```
https://<your_client_id>:<your_api_key>@<api_endpoint>
```

Alternatively you can use Basic HTTP Authentication. Base 64 encode the string ":", and send that prefixed with the string "Basic" as the authorization header. For instance, if your client_id was 1234, and your api_key was "atest", then it would be base64 encoded to "MTIzNDphdGVzdA==", and your header would be:

```
Authorization: Basic MTIzNDphdGVzdA==
```

The documentation outlines how to use credentials for the AMP API Which script successfully performs an API call using basic authentication?
A)

```
import requests
amp_client_id = 'a1b2c3d4e5f6g7h8i9j0'
amp_login_password = 'l0g1n_p@ssw0rd'
url = 'https://api.amp.cisco.com/v1/version'
request = requests.get(url,
    auth=(amp_client_id, amp_login_password))
print(request.json())
```

B)

```
import requests
amp_client_id = 'a1b2c3d4e5f6g7h8i9j0'
amp_api_key = 'a1b2c3d4-e5f6-g7h8-i9j0-k1l2m3n4o5p6'
url = 'https://api.amp.cisco.com/v1/version'
request = requests.get(url)
print(request.json())
```

C)

```
import requests
amp_auth_token = 'a1b2c3d4e5f6g7h8i9j0 k1l2m3n4o5p6'
url = 'https://api.amp.cisco.com/v1/version'
request = requests.get(url,
    auth=(amp_auth_token))
print(request.json())
```

D)

```
import requests
amp_client_id = 'a1b2c3d4e5f6g7h8i9j0'
amp_api_key = 'a1b2c3d4-e5f6-g7h8-i9j0-k1l2m3n4o5p6'
url = 'https://api.amp.cisco.com/v1/version'
request = requests.get(url,
    auth=(amp_client_id, amp_api_key))
print(request.json())
```

- A. Option
- B. Option
- C. Option
- D. Option

Answer: D

NEW QUESTION 7

- (Exam Topic 2)

A company wants to accelerate the adoption of technologies that will simplify its operations. Staff have different skill levels and are looking for a single site to find easy-to-consume beginner, intermediate, and advanced multidomain use cases. Which site should be used?

- A. DevNet Ecosystem Exchange
- B. DevNet Automation Exchange
- C. DevNet Creations
- D. DevNet Support Forum

Answer: D

NEW QUESTION 8

- (Exam Topic 2)

What are two properties of private IP addresses? (Choose two.)

- A. They can be used to access the Internet directly.
- B. They are more secure than public IP addresses.
- C. They are not globally unique.
- D. They can be repeated within the same local network.
- E. They are controlled globally by an IP address registry.

Answer: BD

NEW QUESTION 9

- (Exam Topic 2)

While developing a real-Time VoIP application on a Cisco Webex platform, users report that their voice gets chopped or parts of the conversation drop out. Which network constraint is impacting the application?

- A. latency
- B. jitter
- C. capacity
- D. delay

Answer: B

NEW QUESTION 10

- (Exam Topic 2)

Before which process is code review performed when version control is used?

- A. Branching code
- B. Merge of code
- C. Checkout of code
- D. Committing code

Answer: D

NEW QUESTION 10

- (Exam Topic 2)

What are two considerations when selecting the "best route" for a network device to reach its destination? (Choose two.)

- A. MAC address
- B. metrics
- C. administrative distance
- D. IP address
- E. subnet mask

Answer: BC

NEW QUESTION 12

- (Exam Topic 2)

What is a benefit of test-driven development?

- A. early customer involvement
- B. increased code quality
- C. faster releases that have minimal features
- D. strict adherence to product requirements

Answer: D

NEW QUESTION 13

- (Exam Topic 2)

What is a benefit of organizing code into modules?

- A. improves overall performance
- B. reduces the length of code
- C. enables code to be multifunctional
- D. enables the reuse of code

Answer: D

NEW QUESTION 17

- (Exam Topic 2)

What is the difference between YAML and JSON data structure?

- A. YAML uses spaces; JSON uses parentheses
- B. YAML uses indentation; JSON uses brackets and braces
- C. YAML uses brackets and braces; JSON uses indentation
- D. YAML uses parentheses; JSON uses spaces

Answer: A

NEW QUESTION 20

- (Exam Topic 2)

Refer to the exhibit.

```
1 #import dnac sdk
2 from dnacentersdk import DNACenterAPI
3 #connection to dnac
4
5 username = 'user1'
6 password = 'secret'
7 base_url = 'https://192.168.1.1'
8
9 dnac = DNACenterAPI(username=username, password=password, base_url=base_url,
• version='1.3.3', verify=False)
10
11 # Get list of ports on device using get all interfaces API call
12 port_list_1 = [item['portName'] for item in
• dnac.devices.get_all_interfaces()['response']]
13
14
15 # Sort list items
16 port_list_1.sort()
17 # Check the number of ports on the device
18 print(f'The list of interfaces contains {len(port_list_1)} items.')
19
20 # Output
21 # The list of interfaces contains 38 items.
22
23
24 # Get list of interfaces using the get interface info by device id api call
25 port_list_2 = [item['portName'] for item in
26 dnac.devices.get_interface_info_by_id('da4606c3-63ad-4ed4-8f35-
• 6bfec7c2df04')['response']]
27
28 # Sort list items
29 port_list_2.sort()
30 # Check the number of ports on the device
31 print(f'The list of interfaces contains {len(port_list_2)} items.')
32
33 # Output
34 # The list of interfaces contains 54 items.
```

An engineer writes a Python script that uses two different API calls to query Cisco DNA Center for the number of interfaces on a device. The engineer notices that the two API calls produce different results. Why are fewer interfaces returned for the same device when the 'get_all_interfaces' API call is used?

- A. times out
- B. rate limit
- C. pagination
- D. invalid password

Answer: C

NEW QUESTION 24

- (Exam Topic 2)

What is the function of IP address in networking?

- A. specifies the type of traffic that is allowed to roam on a network

- B. represents the unique ID that is assigned to one host on a network
- C. specifies resource's location and the mechanism to retrieve it
- D. represents a network connection on specific devices

Answer: B

NEW QUESTION 28

- (Exam Topic 2)

In the test-driven development model, what is changed after a test fails?

- A. test
- B. schedule
- C. project requirements
- D. code

Answer: D

Explanation:

Reference:

<https://www.guru99.com/test-driven-development.html#:~:text=In%20simple%20terms%2C%20test%20cases,c>

NEW QUESTION 33

- (Exam Topic 2)

Refer to the exhibit.

```
# base image
FROM alpine

# Install python and pip
RUN apk add --update py2-pip

# Install python modules needed by the python app
COPY requirements.txt /usr/src/app/
RUN pip install --no-cache-dir -r /usr/src/app/requirements.txt

#copy local files for the app to run
COPY app.py /usr/src/app/
COPY templates/index.html /usr/src/app/templates/

EXPOSE 8080

#run the application
CMD ["python", "/usr/src/app/app.py"]
```

Which function does the EXPOSE line perform when building an image from this Dockerfile?

- A. Local port 8080 of the container that launched with this docker image is accessible from co-hosted containers and external clients.
- B. Local port 8080 is not reachable at all because no IP address is specified along with the EXPOSE command of the Dockerfile.
- C. Local port 8080 is accessible from other containers running on the same docker host as the container that launched with this docker image.
- D. Local port 8080 of the container that launched with this docker image is accessible to external clients.

Answer: C

Explanation:

By default, the EXPOSE instruction does not expose the container's ports to be accessible from the host. In other words, it only makes the stated ports available for inter-container interaction.

Whereas publishing a port using either -P or -p exposes it, exposing a port using EXPOSE or --expose does not publish it.

So, while exposed ports can only be accessed internally, published ports can be accessible by external containers and services.

<https://www.whitesourcesoftware.com/free-developer-tools/blog/docker-expose-port/>

NEW QUESTION 37

- (Exam Topic 2)

A local Docker alpine image has been created with an image ID of a391665405fe and tagged as "latest". Which command creates a running container based on the tagged image, with the container port 8080 bound to port 80 on the host?

- A. docker build -p 8080:80 alpine:latest
- B. docker exec -p 8080:80 alpine:latest
- C. docker start -p 8080:80 alpine:latest
- D. docker run -p 8080:80 alpine:latest

Answer: D

Explanation:

https://docs.docker.com/get-started/02_our_app/

NEW QUESTION 42

- (Exam Topic 2)

What are two benefits of using VLANs? (Choose two.)

- A. limits the devices that can join the network
- B. segments the broadcast domain
- C. extends the broadcast domain
- D. allows all network devices to be accessible from any host on the network
- E. enables the logical grouping of devices that belong to different Layer 2 devices

Answer: BE

NEW QUESTION 45

- (Exam Topic 2)
Refer to the exhibit.

```
Returns the wireless lan controller info with given device ID:

{
  "response": {
    "adminEnabledPorts": [ 0 ],
    "apGroupName": "string",
    "deviceId": "string",
    "ethMacAddress": "string",
    "flexGroupName": "string",
    "id": "string",
    "instanceTenantId": "string",
    "instanceUuid": "string",
    "lagModeEnabled": true,
    "netconfEnabled": true,
    "wirelessLicenseInfo": "ADVANTAGE",
    "wirelessPackageInstalled": true
  },
  "version": "string"
}
```

Drag and drop the code from the bottom onto the blanks in the code to construct a cURL command using the Cisco DNA Center API. which will provide the details of a WLAN controller with Id af397748444. Not at options are used.

Answer Area

```
curl -L --request GET \
--url https://dna/intent/api/v1/ / / \
--header 'Content-Type: application/json' \
--header 'Accept:application/json'
```

network-deviceidwireless

wireless-infocontrollerdetails

- A. Mastered
- B. Not Mastered

Answer: A

Explanation:
Diagram Description automatically generated

NEW QUESTION 47

- (Exam Topic 2)
Refer to the exhibit.

```
FROM nginx

ARG DELAY="30"
ENV INITIAL_DELAY=${DELAY}

ENTRYPOINT ["/bin/sh"]

CMD ["-c", "/bin/sleep ${INITIAL_DELAY} && nginx -g 'daemon off;']
```

Which command, including arguments, is executed when the container starts?

- A. /bin/sh -c "/bin/sleep 30 && nginx -g 'daemon off;'"
- B. /bin/sh -c "/bin/sleep 10 && nginx -g 'daemon off;'"
- C. /bin/bash -c "/bin/sleep 30 && nginx -g 'daemon off;'"
- D. /bin/sh -c "/bin/sleep 30" && nginx -g 'daemon off;'

Answer: A

NEW QUESTION 48

- (Exam Topic 2)

Refer to the exhibit.



OWASP threat does this example demonstrate?

- A. Broken access control
- B. SQL injection
- C. Man-in-the-middle
- D. Cross-site-scripting

Answer: D

NEW QUESTION 50

- (Exam Topic 2)

Which HTTP code group is issued when a request is received successfully, understood, and processed?

- A. 2xx
- B. 3xx
- C. 4xx
- D. 5xx

Answer: A

Explanation:

[https://www.w3.org/Protocols/rfc2616/rfc2616-sec10.html#:~:text=10.2%20Successful%20xx,received%2C%](https://www.w3.org/Protocols/rfc2616/rfc2616-sec10.html#:~:text=10.2%20Successful%20xx,received%2C%20)

NEW QUESTION 54

- (Exam Topic 2)

Which HTTP response status code means “Forbidden”?

- A. 500
- B. 401
- C. 403
- D. 502

Answer: C

Explanation:

Reference: <https://developer.mozilla.org/en-US/docs/Web/HTTP/Status/403>

NEW QUESTION 58

- (Exam Topic 2)

Refer to the exhibit.


```

module ietf-ip {
  namespace "urn:ietf:params:xml:ns:yang:ietf-ip";
  prefix ip;
  import ietf-interfaces {
    prefix if;
  }
  augment "/if:interfaces/if:interface" {
    container ipv4 {
      leaf enabled {
        type boolean;
        default true;
      }
      list address {
        key "ip";
        leaf ip {
          type inet:ipv4-address-no-zone;
        }
        choice subnet {
          mandatory true;
          leaf prefix-length {
            type uint8 {
              range "0..32";
            }
          }
          leaf netmask {
            type yang:dotted-quad;
          }
        }
      }
    }
  }
}

module ietf-interfaces {
  namespace "urn:ietf:params:xml:ns:yang:ietf-interfaces";
  prefix if;
  typedef interface-ref {
    type leafref {
      path "/if:interfaces/if:interface/if:name";
    }
  }
  container interfaces {
    list interface {
      key "name";
      leaf name {
        type string;
      }
      leaf description {
        type string;
      }
      leaf type {
        type identityref {
          base interface-type;
        }
        mandatory true;
      }
      leaf enabled {
        type boolean;
        default "true";
      }
    }
  }
}

```

Which JSON snippet configures a new interface according to YANG model?

A)

```

{"ietf-interfaces:interface": {
  "name": "Loopback100",
  "enabled": true,
  "ietf-ip:ipv4": {
    "address": [
      {
        "ip": "10.255.254.1",
        "netmask": "255.255.255.0"
      }
    ]
  }
}

```

B)

```

{"ietf-interfaces": {
  interface": {
    "name": "Loopback100",
    "enabled": true,
    "ietf-ip": {
      ipv4": {
        "address": [
          {
            "ip": "10.255.254.1",
            "netmask": "255.255.255.0"
          }
        ]
      }
    }
  }
}

```

C)

```

{
  "interface" {
    "name": "Loopback100",
    "enabled": true,
    "ipv4": {
      "address": [
        {
          "ip": "10.255.254.1",
          "netmask": "255.255.255.0"
        }
      ]
    }
  }
}

```

D)

```

{"ietf-interfaces:interface": {
  "name": "Loopback100",
  "enabled": true,
  "ietf-ip:ipv4:address": [
    {
      "ip": "10.255.254.1",
      "netmask": "255.255.255.0"
    }
  ]
}

```

- A. Option A
 B. Option B

- C. Option C
- D. Option D

Answer: B

NEW QUESTION 60

- (Exam Topic 2)

```
1  import requests
2
3  headers = {"X-Cisco-Meraki-API-Key": "KEY1234"}
4  BASE_URL = "https://api-mp.meraki.com/api/v1"
5  FIRST_URL = "/organizations"
6  SECOND_URL = "/networks"
7  THIRD_URL = "clients"
8
9  def first_loop(info):
10     for item in info:
11         if item["name"] == "ACME":
12             URL = BASE_URL + FIRST_URL + "/" + item["id"] + "/" + SECOND_URL
13             response = requests.request("GET", URL, headers=headers)
14             return second_loop(response.json())
15
16  def second_loop(info):
17     for item in info:
18         if item["name"] == "BLDG21":
19             URL = BASE_URL + SECOND_URL + "/" + item["id"] + "/" + THIRD_URL
20             response = requests.request("GET", URL, headers=headers)
21             return third_loop(response.json())
22
23  def third_loop(info):
24     for item in info:
25         return item
26
27  response = requests.request("GET", BASE_URL + FIRST_URL, headers=headers)
28  info = first_loop(response.json())
29  for item in info:
30     print (item["id"])
```

Refer to the exhibit. A network engineer must collect information from the network. The engineer prepares a script to automate workflow by using Cisco Meraki API. The script must run over nested loops to collect organization and network information and uses the collected data for final collection. Which process is being automated by using the Python script?

- A. Gather the IDs of the ACME organization, the BLDG21 network, and the dents on the network
- B. Provide the BLDG21 network information if it is part of the ACME organization
- C. Collect the IDs of the clients on the BLDG21 network
- D. List the IDs from the ACME organization

Answer: A

NEW QUESTION 63

- (Exam Topic 2)

Refer to the exhibit.

```
<rpc message-id="101" xmlns="urn:ietf:params:xml:ns:Netconf:base:1.0">
  <get-conflg>
    <source>
      <running/>
    </source>
    <filter>
      <interfaces xmlns=" urn:ietf:params:xml:ns:yang:ietf-interfaces">
        <interface>
          <name/>
        </interface>
      </interfaces>
    </filter>
  </get-config>
</rpc>
```

A network engineer uses model-driven programmability to monitor and perform changes on the network. The network engineer decides to use the NETCONF RPC message to complete one of their tasks. What is accomplished by sending the RPC message?

- A. The running-config of the device is returned.
- B. The name of each interface is reset to a default name.
- C. All the YANG capabilities supported by the device are returned.
- D. A list of interface names is returned.

Answer: D

NEW QUESTION 66

- (Exam Topic 2)

What does a load balancer distribute in a network environment?

- A. outgoing connections to the network
- B. incoming traffic across multiple servers
- C. different TCP connections to the routers
- D. traffic in the network by leveraging the switch architecture

Answer: B**NEW QUESTION 67**

- (Exam Topic 2)

A developer created a new secure API and is testing the functionality locally. The API was added to a container for further testing, and other team members and applications need to connect to the API. Which command exposes the API in the container as port 8443 and allows connections external to the host?

- A. docker run -p 127.0.0.1:80:8443/tcp myapiservice
- B. docker run -p 0.0.0.0:443:8443/tcp myapiservice
- C. docker run -p 0.0.0.0:8443:443/tcp myapiservice
- D. docker run -p 127.0.0.1:443:8443/tcp myapiservice

Answer: C**NEW QUESTION 72**

- (Exam Topic 2)

What is a benefit of organizing into modules?

- A. improves collaboration of the development team
- B. makes it easier to deal with large and complex systems
- C. enables the code to be broken down into layers
- D. enables the inclusion of more programming languages in the code

Answer: B**Explanation:**From Wikipedia (https://en.wikipedia.org/wiki/Modular_programming) "Modular programming is closely related to structured programming and object-oriented programming, all having the same goal of facilitating the construction of large software programs and systems by decomposition into smaller pieces."**NEW QUESTION 76**

- (Exam Topic 2)

Refer to the exhibit.

```
diff --git a/ciscoaxl/axl.py b/ciscoaxl/axl.py
index bc7727e..d66ef4d 100644
--- a/ciscoaxl/axl.py
+++ b/ciscoaxl/axl.py
@@ -99,7 +99,7 @@ class axl(object):
     :return: result dictionary
     """
     try:
-        return self.client.executeSQLUpdate(query)
+        return self.client.executeSQLUpdate(query) ['return']
     except Fault as e:
         return e

diff --git a/setup.py b/setup.py
index df79ef4..1470b05 100644
--- a/setup.py
+++ b/setup.py
@@ -5,7 +5,7 @@ with open("README.md", "r") as fh:

    setup(
        name="ciscoaxl",
-        version="0.14",
+        version="0.141",
        author="User 1",
        author_email="user1@example.com",
        description="Cisco CUCM AXL Library. Simple to use.",
```

Which two files are being edited in the unified diff? (Choose two.)

- A. README.md
- B. setup.py
- C. axl.py
- D. ciscoaxl.py
- E. index.py

Answer: BC

NEW QUESTION 81

- (Exam Topic 2)

What are two key capabilities of Cisco Finesse? (Choose two.)

- A. Finesse includes an RPC API that enables the development of custom gadgets.
- B. Agents access Finesse from a browser without needing to install or configure anything on the client machine.
- C. Finesse automatically collects telemetry data
- D. An OpenDNS utility is preconfigured and ready to use on Finesse.
- E. Gadget containers provide a seamless experience in a single user interface.

Answer: BE

NEW QUESTION 83

- (Exam Topic 2)

Which HTTP response code should be returned when the request is completed, but there is no content to send for the request?

- A. A.-100B.204C.302D.402

Answer: B

Explanation:

Reference: https://developer.mozilla.org/en-US/docs/Web/HTTP/Status#successful_responses

NEW QUESTION 84

- (Exam Topic 1)

Fill in the blanks to complete the Python script to update the Webex Teams membership of a room using the Python requests library import requests

```
import requests
url = "https://api.ciscospark.com/v1/memberships/Y2LzY29zcGfYazov371508156INISVAvOTJm2RkOWEiNjc1ZC00YTQxLTljNDEtMmFiZGY4OWY0NGY0QjExNzJkNmYwLTJlY2M0MTFhOS1iOWI3LWNmMjg3MTJhYTgzNw"

payload = '{"isModerator": true}'
headers = {
    'Authorization': 'Bearer ',
    'Content-Type': 'application/json'
}

response = requests. ( "PATCH" url headers= , data = )
print(response.text.encode('utf8'))
```

- A. Mastered
- B. Not Mastered

Answer: A

Explanation:

request, headers , payload

NEW QUESTION 85

- (Exam Topic 1)

Refer to the exhibit.

List Messages

Lists all messages in a room. Each message will include content attachments if present.

The list sorts the messages in descending order by creation date.

Long result sets will be split into [pages](#).

GET `/v1/messages`

Query Parameters

roomId
 string **Required**
 List messages in a room, by ID.

mentionedPeople
 array
 List messages with these people mentioned, by ID. Use me as a shorthand for the current API user.

before
 string
 List messages sent before a date and time.

beforeMessage
 string
 List messages sent before a message, by ID.

max
 number
 Limit the maximum number of messages in the response.
 Default: `50`

[Try it](#) [Example](#)

GET `/v1/messages{?roomId,mentionedPeople,before,beforeMessage}`

Header

Authorization ☒ Use personal access token

Bearer `.....`

This limited-duration personal access token is hidden for your security.

Query Parameters

roomId
 Required `e.g. Y2IzY29zcGFyYXovL3VzL1JPT00vYmJj`

mentionedPeople
`e.g. Y2IzY29zcGFyYXovL3VzL1BFT1BMRS6`

before
`e.g. 2016-04-2Tf-9:01:55:966Z`

beforeMessage
`e.g. Y2IzY29zcGFyYXovL3VzL1FU1NBROL`

max
`e.g. 100`

[Run](#)

```

bash-3.2$ curl -H "Content-Type: application/json" -H "Authorization: Fj2zzzykEa091ic9GK2j8LtE1HklH6oRHPQdw1Pat60i7ndtHHnWzL2b5pqMgl4Kk_B9EI59isacLy7-NarA02n9H-tGgt-SxQ39iDejgcs" -i -X POST -d "{ \"roomId\": \"Y2geK53sjEknosrC7SwQ5ZGL99pHgiuScB7DfNVusr8Xx4wDKLiPORcEkryAnM3QmK9LQZsP0G4\", \"text\": \"test2\" }" https://api.ciscospark.com/v1/messages

HTTP/1.1 401 Unauthorized
Via: 1.1 linkerd
TrackingID: ROUTER_5E0FDC8C-EB6F-01BB-00EF-806BF1BD00EF
Date: Sat, 04 Jan 2020 00:30:04 GMT
Server: Redacted
Content-Length: 267
Content-Type: application/json
Strict-Transport-Security: max-age=63072000; includeSubDomains; preload

{"message": "The request requires a valid access token set in the Authorization request header.", "errors": [{"description": "The request requires a valid access token set in the Authorization request header."}], "trackingId": "ROUTER_5E0FDC8C-EB6F-01BB-00EF-806BF1BD00EF"}

bash-3.2$
  
```

A developer is troubleshooting an API with the given API with the given API documentation and cURL command. What is the cause of this problem?

- A. The user is not allowed to post messages from their account
- B. The request body is missing or incomplete
- C. The API token specified is expired
- D. The authorization header is missing or incomplete

Answer: C

NEW QUESTION 86

- (Exam Topic 1)

Which two statements describe the traits of an asynchronous API call? (Choose two.)

- A. The order in which API calls return can be guaranteed
- B. A call to an API does not block the code, but rather it allows application processing to continue
- C. The end user can experience latency or performance lag while waiting for the API call to return
- D. Code execution blocks or waits for the call to an API to return.
- E. A callback function typically is used to process the response from an API call

Answer: BE

NEW QUESTION 87

- (Exam Topic 1)

Which action resolves a 401 error in response to an HTTP GET that is issued to retrieve statement using RESTCONF on a CSR 1000V?

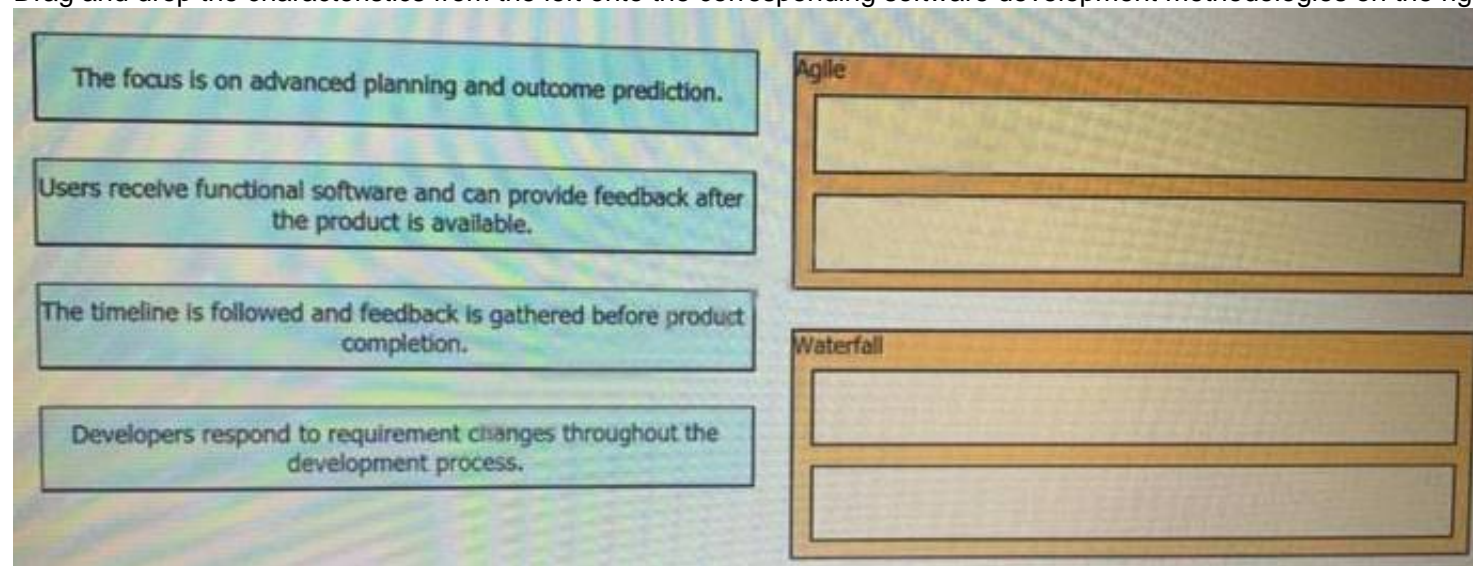
- A. Change the HTTP method to PUT.
- B. Change the transport protocol to HTTPS.
- C. Check the MIMF types in the HTTP headers.
- D. Check the authentication credentials.

Answer: D

NEW QUESTION 89

- (Exam Topic 1)

Drag and drop the characteristics from the left onto the corresponding software development methodologies on the right?



Characteristics (Left):

- The focus is on advanced planning and outcome prediction.
- Users receive functional software and can provide feedback after the product is available.
- The timeline is followed and feedback is gathered before product completion.
- Developers respond to requirement changes throughout the development process.

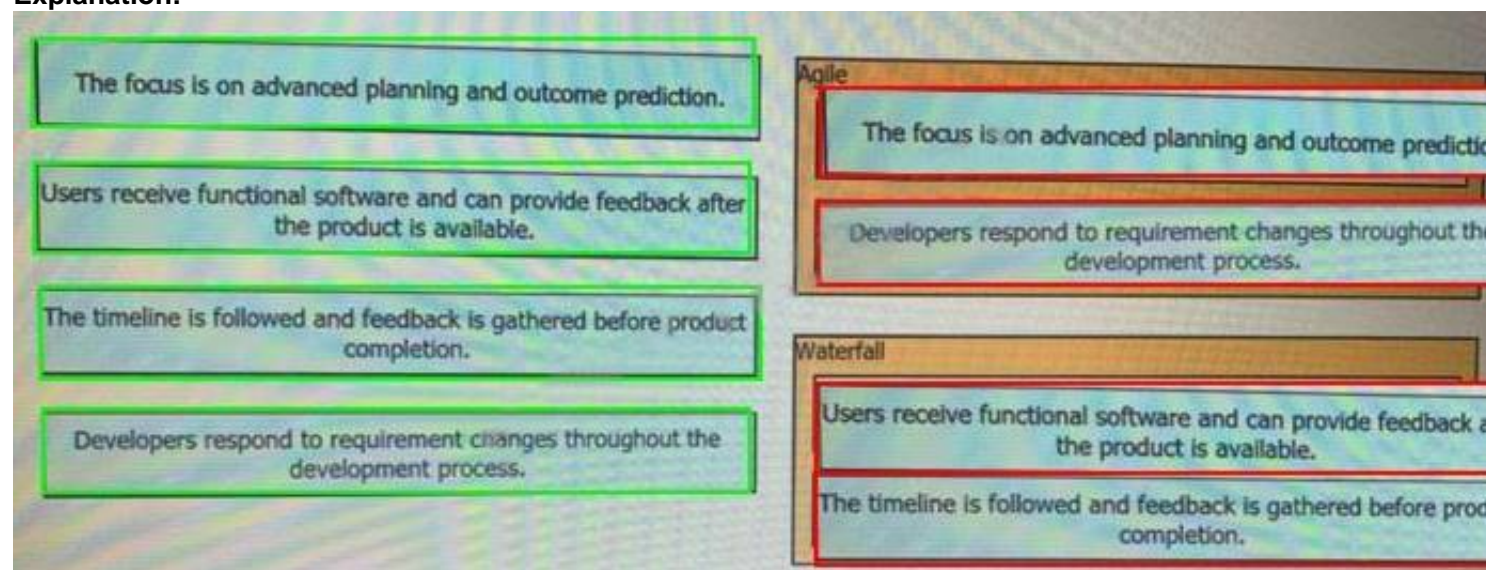
Methodologies (Right):

- Agile
- Waterfall

- A. Mastered
- B. Not Mastered

Answer: A

Explanation:



Characteristics (Left):

- The focus is on advanced planning and outcome prediction.
- Users receive functional software and can provide feedback after the product is available.
- The timeline is followed and feedback is gathered before product completion.
- Developers respond to requirement changes throughout the development process.

Methodologies (Right):

- Agile
 - The focus is on advanced planning and outcome prediction.
 - Developers respond to requirement changes throughout the development process.
- Waterfall
 - Users receive functional software and can provide feedback after the product is available.
 - The timeline is followed and feedback is gathered before product completion.

NEW QUESTION 92

- (Exam Topic 1)

What is a function of the default gateway in a network?

- A. to drop traffic that is destined to the default gateway
- B. to drop traffic that is not destined to the default gateway
- C. to forward traffic to the same subnet
- D. to forward traffic to different subnets

Answer: D

NEW QUESTION 96

- (Exam Topic 1)

What are two benefit of managing network configuration via APIs? (Choose two.)

- A. configuration on devices becomes less complex
- B. more security due to locking out manual device configuration
- C. increased scalability and consistency of network changes
- D. eliminates the need of legacy management protocols like SNMP
- E. reduction in network changes performed manually

Answer: CE

NEW QUESTION 100

- (Exam Topic 1)

A small company has 5 servers and 50 clients. What are two reasons an engineer should spilt this network into separate client and server subnets? (Choose two)

- A. Internet access to the servers will be denied on the router.
- B. A router will limit the traffic types between the clients and servers.
- C. Subnets will split domains to limit failures.
- D. A router will bridge the traffic between clients and servers.
- E. Subnets provide more IP address space for clients and servers.

Answer: AC

NEW QUESTION 104

- (Exam Topic 1)

Drag and drop the functionalities from the left onto correct networking devices on the right.

ports are different broadcast domain by default	Firewall
ports can be in the same broadcast domain	Load Balancer
uses traffic inspection to make routing decisions	Router
blocks networks traffic by default	Switch

- A. Mastered
- B. Not Mastered

Answer: A

Explanation:

1 – D, 2 – C, 3 – A, 4 – B

Reference: <https://geek-university.com/ccna/broadcast-domain-explained/>

NEW QUESTION 109

- (Exam Topic 1)

Refer to the exhibit.

```
[
  {
    "type": "fruit",
    "items": [
      {
        "color": "green",
        "items": [
          "kiwi",
          "grape"
        ]
      },
      {
        "color": "red",
        "items": [
          "strawberry",
          "apple"
        ]
      }
    ]
  },
  {
    "type": "vegs",
    "items": [
      {
        "color": "green",
        "items": [
          "lettuce"
        ]
      },
      {
        "color": "red",
        "items": [
          "pepper"
        ]
      }
    ]
  }
]
```

A REST API return this JSON output for a GET HTTP request, Which has assigned to a variable called "vegetables" Using python, which output is the result of this command?

```
print(filter(lambda l: l['type'] == 'fruit', vegetables)[0]['items'][0]['items'][0])
```

- A. Lettuce
- B. Kiwi
- C. ['kiwi', 'grape']
- D. {'color': 'green', 'items': ['kiwi', 'grape']}

Answer: B

NEW QUESTION 111

- (Exam Topic 1)

In which situation would an edge computing solution be used?

- A. where low latency is needed
- B. where high CPU throughput is needed
- C. where fast memory is needed
- D. where high disk space is needed

Answer: A

NEW QUESTION 116

- (Exam Topic 1)

Refer to the exhibit.

List the clients that have used this network in the timespan

HTTP REQUEST

GET /networks/ {networkId}/clients

PARAMETERS

t0

The beginning of the timespan for the data. The maximum lookback period is 31 days from today.

timespan

The timespan for which the information will be fetched. If specifying timespan, do not specify parameter t0. The value must be in seconds and be less than or equal to 31 days. The default is 1 day.

perPage

The number of entries per page returned. Acceptable range is 3 – 1000. Default is 10.

startingAfter

A token used by the server to indicate the start of the page. Often this is a timestamp or an ID but it is not limited to those. This parameter should not be defined by client applications. The link for the first, last, prev, or next page in the HTTP Link header should define it.

endingBefore

A token used by the server to indicate the end of the page. Often this is a timestamp or an ID but it is not limited to those. This parameter should not be defined by client applications. The link for the first, last, prev, or next page in the HTTP Link header should define it.

```
base_url = "https://api.meraki.com/api/v0"
network_id = "L_12345678910"
api_key = "1098hadpfsiapsf8ahf8ohp"
requests.<item 1> (
    <item 2> + "<item 3>/" + <item 4>, "<item 5>",
    headers = {
        "X-Cisco-Meraki-API-Key": <item 6> ,
        "Content-Type": "<item 7>"
    },
    <item 8>={"<item 9>":<item 10>})
```

Drag and drop the code from the left code from the left onto the item number on the right to complete the Meraki code to obtain a list of client which have used this network.

params	<item 1>
networks	<item 2>
timespan	<item 3>
get	<item 4>
432000	<item 5>
base_url	<item 6>
application/json	<item 7>
network_id	<item 8>
clients	<item 9>
api_key	<item 10>

- A. Mastered
- B. Not Mastered

Answer: A

Explanation:

1 - d, 2 - f, 3 - b, 4 - h, 5 - i, 6 – j, 7 - g, 8 - a, 9 - c, 10 - e

NEW QUESTION 120

- (Exam Topic 1)

A Company is looking for cloud deployment which will use the on-premise infrastructure, is user self-service, and easy to scale. Which cloud solution should be selected for these requirements?

- A. multi
- B. public
- C. private
- D. hybrid

Answer: C

NEW QUESTION 123

- (Exam Topic 1)

Refer to the exhibit.

```
$ diff -u5 fish.py cat.py
--- fish.py      2020-01-02 09:41:02.840000000 +0100
+++ cat.py       2020-01-02 09:41:06.8859999800 +0100
@@ -160,11 +160,12 @@

    @single_request_timeout.setter
    def single_request_timeout(self, value):
        """The timeout (seconds) for a single HTTP REST API request."""
        check_type(value, int, optional=True)
-        assert value is None or value > 0
+        if value is not None and value <= 0:
+            raise ValueError("single_request_timeout must be positive integer")
        self._single_request_timeout = value

    @property
    def wait_on_rate_limit(self)
        """Automatic rate-limit handling.
```

The output of a unified diff when comparing two versions of a python script is shown. Which two “single_request_timeout ()”

- A.
- ```

file: cat.py

160
161 @single_request_timeout.setter
162 def single_request_timeout(self, value):
163 """The timeout (seconds) for a single HTTP REST API request."""
164 check_type(value, int, optional=True)
165 assert value is None or value > 0
166 if value is not None and value <= 0:
167 raise ValueError("single_request_timeout must be positive integer")
168 self._single_request_timeout = value
169

```
- B.
- ```

file: fish.py

160
161 @single_request_timeout.setter
162 def single_request_timeout(self, value):
163     """The timeout (seconds) for a single HTTP REST API request."""
164     check_type(value, int, optional=True)
165     assert value is None or value > 0
166     self._single_request_timeout = value
167

```
- C.
- ```

file: cat.py

160
161 @single_request_timeout.setter
162 def single_request_timeout(self, value):
163 """The timeout (seconds) for a single HTTP REST API request."""
164 check_type(value, int, optional=True)
165 if value is not None and value <= 0:
166 raise ValueError("single_request_timeout must be positive integer")
167 self._single_request_timeout = value
168
169

```
- D.
- ```

file: fish.py

160
161 @single_request_timeout.setter
162 def single_request_timeout(self, value):
163     """The timeout (seconds) for a single HTTP REST API request."""
164     check_type(value, int, optional=True)
165     self._single_request_timeout = value

```
- E.
- ```

file: cat.py

172
173 @single_request_timeout.setter
174 def single_request_timeout(self, value):
175 """The timeout (seconds) for a single HTTP REST API request."""
176 check_type(value, int, optional=True)
177 if value is not None and value <= 0:
178 raise ValueError("single_request_timeout must be positive integer")
179 self._single_request_timeout = value
180

```

- F. Option A  
 G. Option B  
 H. Option C  
 I. Option D  
 J. Option E

Answer: BC

#### NEW QUESTION 125

- (Exam Topic 1)  
 Refer to the exhibit.

```
def process_devices(dnac, token):
 url = "https://{}/api/v1/network-device".format(dnac['host'])
 headers["x-auth-token"] = token
 response = requests.get(url, headers=headers, verify=False)
 data = response.json()
 for item in data['response']:
 print(item["hostname"], " ", item["managementIpAddress"])
```

What is the function of the python script?

- A. Count and print the total number of available devices.
- B. Iterate over a list of network devices and write all device names and management IP addresses to an output file.
- C. Iterate over a list of network devices and write all device type and associated management IP address.
- D. For each device that is returned, display the device and, for each device, print the device name and management IP address.
- E. Loop through the returned list of network devices and, for each device, print the device name management IP address.

**Answer:** E

#### NEW QUESTION 126

- (Exam Topic 1)

How does requesting a synchronous API operation differ from requesting an asynchronous API operation?

- A. clients poll for the status of the execution of operations
- B. clients subscribe to a webhook for operation results
- C. clients can access the results immediately
- D. clients receive responses with a task id for further processing

**Answer:** C

#### NEW QUESTION 131

- (Exam Topic 1)

Drag and Drop the GIT commands from the left onto the right that add modified local files to a remote repository. Not all options are used

|                                 |                   |
|---------------------------------|-------------------|
| git push                        | Git command one   |
| git add .                       | Git command two   |
| git checkout -b "new branch"    | Git command three |
| git commit -m "this is my edit" |                   |
| git pull                        |                   |

- A. Mastered
- B. Not Mastered

**Answer:** A

#### Explanation:

git add .  
 git commit -m "this is my edit" git push

#### NEW QUESTION 136

- (Exam Topic 1)

Which two concepts describe test-driven development? (Choose two.)

- A. It enables code refactoring.
- B. Write a test before writing code.
- C. Implementation is driven by incremental testing of release candidates.
- D. User acceptance testers development the test requirements.
- E. Tests are created when code is ready for release.

**Answer:** BC

#### Explanation:

[https://www.tutorialspoint.com/software\\_testing\\_dictionary/release\\_candidate.htm](https://www.tutorialspoint.com/software_testing_dictionary/release_candidate.htm)

#### NEW QUESTION 140

- (Exam Topic 1)



The project is migrated to a new codebase, the “old\_project” directory must be deleted. The directory has multiple read-only files, and it must be deleted recursively without prompting for confirmation. Which bash command must be used?

- A. `rm -rf old_project`
- B. `rm -r old_project`
- C. `rmdir -p old_project`
- D. `rmdir old_project`

**Answer:** A

#### NEW QUESTION 141

- (Exam Topic 1)

what is an advantage of a version control system?

- A. forces the practice of trunk-based development
- B. prevents over-writing code or configuration files
- C. facilitates resolving conflicts when merging code
- D. ensures that unit tests are written

**Answer:** C

#### NEW QUESTION 146

- (Exam Topic 1)

Refer to the exhibit.

**URL:** `https://<ASA_IP>/api/access/global/rules`

**Method:** POST

**Payload:**

```
{
 "destinationAddress": {
 "kind": "IPv4Address",
 "value": "10.1.1.1"
 },
 "remarks": [],
 "active": true
 "permit": true,
 "sourceAddress": {
 "kind": "IPv4Address",
 "value": "192.168.1.1"
 }
}
```

**Response Status Code:** 400 Bad Request

```
{
 "messages": [
 {
 "level": "Error",
 "code": "JSON-PARSE-ERROR",
 "details": "Unexpected character ('\"' (code 34)):"
 }
]
}
```

What caused the error in this API request?

- A. The API resource does not support the POST operation
- B. The API resource does not support JSON format payloads.
- C. The submitted JSON payload includes a field that is not supported by the API resource.
- D. The submitted JSON payload has a formatting issue

**Answer:** D

#### NEW QUESTION 150

- (Exam Topic 1)

What are two advantages of the Model-view-controller software design pattern? (Choose two.)

- A. simplifies network automation
- B. allows for multiple views of the same model
- C. makes code easier to deploy using CI/CD pipelines
- D. reduces need for error handling
- E. separates responsibilities of the code, which makes future modifications easier

**Answer:** BE

#### NEW QUESTION 153

- (Exam Topic 1)

What is a tenet of test-driven development?

- A. write documentation for tests
- B. write tests after adding new blocks of code
- C. write and run tests before writing new code
- D. run tests after writing new code

Answer: C

#### NEW QUESTION 157

- (Exam Topic 1)

Refer to the exhibit.

### HTTP REQUEST

**POST** /organizations/ {organizationId}/networks

### PARAMETERS

**name**  
The name of the new network.

---

**type**  
The type of the new network. Valid types are wireless, appliance, switch, systemsManager, camera, cellularGateway, or a space-separated list of those for a combined network.

---

**tags**  
A space-separated list of tags to be applied to the network.

---

**timeZone**  
The timezone of the network. For a list of allowed timezones, please see the 'TZ' column in the table in [this article](#).

---

**copyFromNetworkId**  
The ID of the network to copy configuration from. Other provided parameters will override the copied configuration, except type which must match this network's type exactly.

---

**disableMyMerakiCom**  
Disables the local device status pages ([my.meraki.com](#), [ap.meraki.com](#), [switch.meraki.com](#), [wired.meraki.com](#)). Optional (defaults to false).

---

**disableRemoteStatusPage**  
Disables access to the device status page ([http://\[device's LAN IP\]](#)). Optional. Can only be set if disableMyMerakiCom is set to false.

```
base_url = https://api.meraki.com/api/v0
org_id = 123456789
api_key = 1098hadpfsiapsf8ahf8ohp
network_name = "New Network"
requests.<item 1> (
 <item 2> + "/"<item 3>/" + org_id + "/"<item 4>",
 headers = {
 "X-Cisco-Meraki-API-Key": "<item 5>",
 "Content-Type": "<item 6>"
 },
 <item 7>=json.dumps ({ "name": <item 8>,
 "type": "wireless switch"
 })
)
```

Drag and drop the code from the left onto the item numbers on the right to complete to Meraki python script shown in the exhibit.

|                  |          |
|------------------|----------|
| base_url         | <item 1> |
| network_name     | <item 2> |
| data             | <item 3> |
| post             | <item 4> |
| application/json | <item 5> |
| networks         | <item 6> |
| api_key          | <item 7> |
| organizations    | <item 8> |

- A. Mastered  
B. Not Mastered

**Answer:** A

**Explanation:**

1 – D, 2 – A, 3 – H, 4 – F, 5 – G, 6 – E, 7 – C, 8 – B

**NEW QUESTION 159**

- (Exam Topic 1)

Which status code is used by a REST API to indicate that the submitted payload is incorrect?

- A. A.-400B.403C.405D.429

**Answer:** A

**Explanation:**

Reference:

<https://community.cisco.com/t5/application-centric/apic-rest-api-produces-inconsistent-response/td-p/2758230>

**NEW QUESTION 160**

- (Exam Topic 1)

Which two elements are foundational principles of DevOps? (Choose two.)

- A. designing applications as microservices  
B. encouraging containers for the deployment of applications  
C. organizing cross-functional teams over organizational silos  
D. optimizing the cost of infrastructures  
E. automating over documenting

**Answer:** CE

**NEW QUESTION 165**

- (Exam Topic 1)

What is the outcome of executing this command?

```
git clone ssh://john@exmaple.com/path/to/my-project_git
```

- A. Creates a local copy of a repository called “my project”  
B. Creates a copy of a branch called “my project”  
C. Initiates a new Git repository called “my project”  
D. Creates a new branch called “my project”

**Answer:** A

**Explanation:**

Reference: <https://www.atlassian.com/git/tutorials/setting-up-a-repository/git-clone>



NEW QUESTION 170  
- (Exam Topic 1)  
Refer to the exhibit.

HTTP REQUEST

POST

/organizations/{organizationId}/networks

PARAMETERS

name

The name of the new network

type

The type of the new network. Valid types are wireless, appliance, switch, systemsManager, camera, cellularGateway, or a space-separated list of those for a combined network.

tags

A space-separated list of tags to be applied to the network

timeZone

The timezone of the network. For a list of allowed timezones, please see the "TZ" column in the table in [this article](#).

copyFromNetworkId

The ID of the network to copy configuration from. Other provided parameters will override the copied configuration, except type which must match this network's type exactly.

disableMyMerakiCom

Disables the local device status pages ([my.meraki.com](#), [ap.meraki.com](#), [switch.meraki.com](#), [wired.meraki.com](#)). Optional (defaults to false)

disableRemoteStatusPage

Disables access to the device status page ([http://\[device's LAN IP\]](#)). Optional. Can only be set if

Drag and Drop the code from the bottom onto the box where the code is missing on the Meraki Python script to create a new network

```
base_url = "https://api.meraki.com/api/v0"
org_id = "123456789"
api_key = "1098hadpfsiapaf8ahf8ohp"
network_name = "New Network"
requests.post(
 base_url + "/" + [] + "/" + [] + "/networks",
 [] = {
 "X-Cisco-Meraki-API-Key": [],
 "Content-Type": "application/json"
 },
 data=json.dumps({ "[]": network_name,
 "type": "wireless switch"
 })
)
```

organizations

headers

api\_key

org\_id

name

- A. Mastered
- B. Not Mastered

Answer: A

Explanation:



```
base_url = "https://api.meraki.com/api/v0"
org_id = "123456789"
api_key = "1098hadpfsiapsf8ahf8ohp"
network_name = "New Network"
requests.post(
 base_url + "/" + organizations + "/" + org_id + "/networks",
 headers = {
 "X-Cisco-Meraki-API-Key": api_key,
 "Content-Type": "application/json"
 },
 data=json.dumps({
 "name": network_name,
 "type": "wireless switch"
 })
)
```

NEW QUESTION 173

- (Exam Topic 1)

Drag and drop elements of the RESTCONF protocol stack from the left onto the correct description on the right. Not all elements on the left are used.

|                               |            |
|-------------------------------|------------|
| <data>                        | content    |
| XML or JSON                   | operations |
| SSH                           | transport  |
| <rpc>, <rpc-reply>            |            |
| GET, POST, PUT, PATCH, DELETE |            |
| HTTPS                         |            |

- A. Mastered
- B. Not Mastered

Answer: A

Explanation:

1 – B, 2 – E, 3 - F

Reference:

[https://www.cisco.com/c/en/us/td/docs/ios-xml/ios/prog/configuration/169/b\\_169\\_programmability\\_cg/restconf](https://www.cisco.com/c/en/us/td/docs/ios-xml/ios/prog/configuration/169/b_169_programmability_cg/restconf)

NEW QUESTION 177

- (Exam Topic 1)

What is the purpose of a firewall in application deployment?

- A. adds TLS support to an application that does not support it natively
- B. forwards traffic to a pool of instances of the application
- C. provides translation for an application's hostname to its IP address
- D. limits traffic to only ports required by the application

Answer: D

NEW QUESTION 182

- (Exam Topic 1)

Drag and drop the network automation interfaces from the left onto the transport protocols that they support on the right. (Not all Options are used)

|        |          |
|--------|----------|
| SSH    | gRPC     |
| HTTP   |          |
| HTTP/2 | NETCONF  |
| HTTPS  |          |
|        | RESTCONF |
|        |          |

- A. Mastered
- B. Not Mastered

Answer: A

Explanation:  
Grpc == http/2 , netconfig == ssh , restconfig == https

NEW QUESTION 185  
- (Exam Topic 1)  
Refer to the exhibit.

```
#!/bin/bash
<item 1>='date +%b-%d-%y'

<item 2>=/home/usr/path/backup-$BACKUPTIME.tar.gz

<item 3>=/home/usr/path/data_folder

tar -cpzf $DESTINATION $SOURCEFOLDER
```

Drag and drop the variables from the left onto the item numbers on the right that match the missing assignments in the exhibit.

|              |          |
|--------------|----------|
| BACKUPTIME   | <item 1> |
| SOURCEFOLDER | <item 2> |
| DESTINATION  | <item 3> |

- A. Mastered
- B. Not Mastered

Answer: A

Explanation:  
1 – A, 2 – C, 3 – B  
Reference: <https://medium.com/@fotios.floros/linux-backup-script-1722cc9c2bf6> (use tar in order to create your backup file)

NEW QUESTION 189  
- (Exam Topic 1)  
What is the Git command to delete a local branch named “experiment” without a warning?

- A. git branch -n experiment
- B. git branch -rm experiment
- C. git branch -f experiment
- D. git branch -D experiment

Answer: D

Explanation:  
Reference: <https://www.atlassian.com/git/tutorials/using-branches>

#### NEW QUESTION 194

- (Exam Topic 1)

On which network plane is routing protocol traffic handled?

- A. data plane
- B. management plane
- C. authentication plane
- D. control plane

**Answer:** D

**Explanation:**

Reference: [https://tools.cisco.com/security/center/resources/understanding\\_cppr](https://tools.cisco.com/security/center/resources/understanding_cppr)

#### NEW QUESTION 197

- (Exam Topic 1)

Refer to the exhibit.

```
<books>
 <science>
 <biology>10.00</biology>
 <geology>9.00</geology>
 <chemistry>8.00</chemistry>
 </science>
 <math>
 <calculus>20.00</calculus>
 <algebra>12.00</algebra>
 </math>
</books>
```

Which JSON is equivalent to the XML –encoded data?

- A. [ {  
 "books": {  
 "science": {  
 "biology": "10.00",  
 "geology": "9.00",  
 "chemistry": "8.00"  
 },  
 "math": {  
 "calculus": "20.00",  
 "algebra": "12.00"  
 }  
 }  
}]
- B. {  
 "books": [  
 "science": {  
 "biology": "10.00",  
 "geology": "9.00",  
 "chemistry": "8.00"  
 },  
 "math": {  
 "calculus": "20.00",  
 "algebra": "12.00"  
 }  
 ]  
}



```
C. {
 "books": [
 "science": {
 "biology": "10.00",
 "geology": "9.00",
 "chemistry": "8.00"
 },
 "math": {
 "calculus": "20.00",
 "algebra": "12.00"
 }
]
}

D. {
 "books": [
 "science", {
 "biology": "10.00",
 "geology": "9.00",
 "chemistry": "8.00"
 },
 "math", {
 "calculus": "20.00",
 "algebra": "12.00"
 }
]
}
```

- A. Option A
- B. Option B
- C. Option C
- D. Option D

**Answer:** A

#### NEW QUESTION 199

- (Exam Topic 1)

Which platform is run directly using a hypervisor?

- A. bare metal systems
- B. containers
- C. virtual machines
- D. applications

**Answer:** C

#### NEW QUESTION 204

- (Exam Topic 1)

Drag and Drop the Bash commands from the left onto the correct actions on the right.

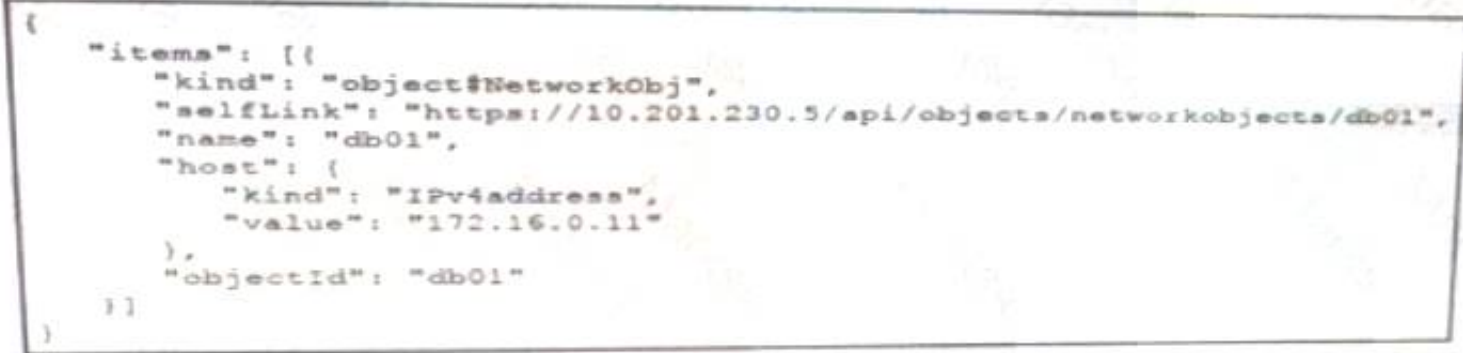
cd~	list files in directory sorted by edited date descending
cd/	create directory
ls -l	copy file
ls -t	change directory to user \$HOME
cp	create environment variable
cp -r	change directory to file system root
mv	move file
touch	create file
mkdir	copy directory
export	list files in directory with details

- A. Mastered
- B. Not Mastered

Answer: A

Explanation:  
1 - d, 2 - i, 3 - e, 4 - a, 5 - j, 6 - b, 7 - g, 8 - h, 9 - c, 10 - f

NEW QUESTION 205  
- (Exam Topic 1)  
Refer to the exhibit.

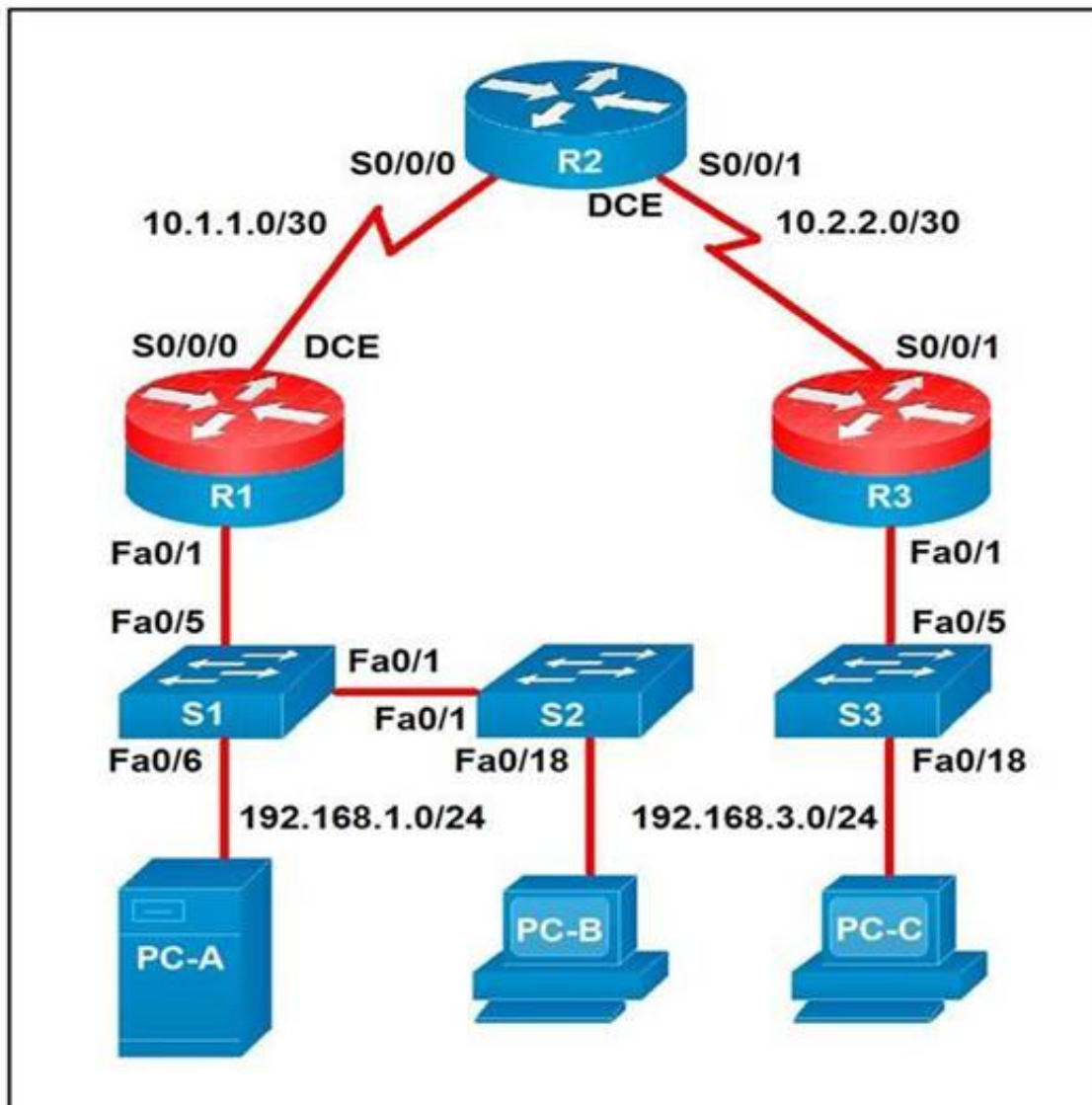


The JSON data in the exhibit has been parsed and stored in a variable, "data". What returns the value "172.16.0.11" ?

- A. data['items'][0]['host']['value']
- B. data['items']['1']['host']['value']
- C. data['items']['host'][1]
- D. data['items']['host']['value']

Answer: A

NEW QUESTION 210  
- (Exam Topic 1)  
Refer to the exhibit.



Which two statements about the network diagram are true? (Choose two.)

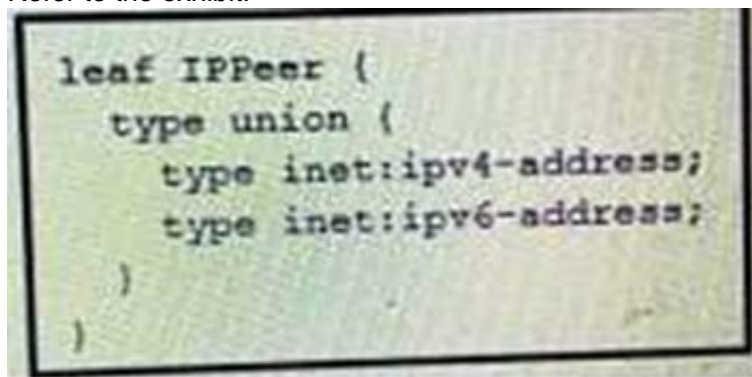
- A. PC-A and PC-B are in the same subnet.
- B. One of the routers has two connected serial interfaces.
- C. The subnet of PC-C can contain 256 hosts.
- D. R1 and R3 are in the same subnet.
- E. The subnet address of PC-B has 18 bits dedicated to the network portion.

**Answer:** BC

#### NEW QUESTION 213

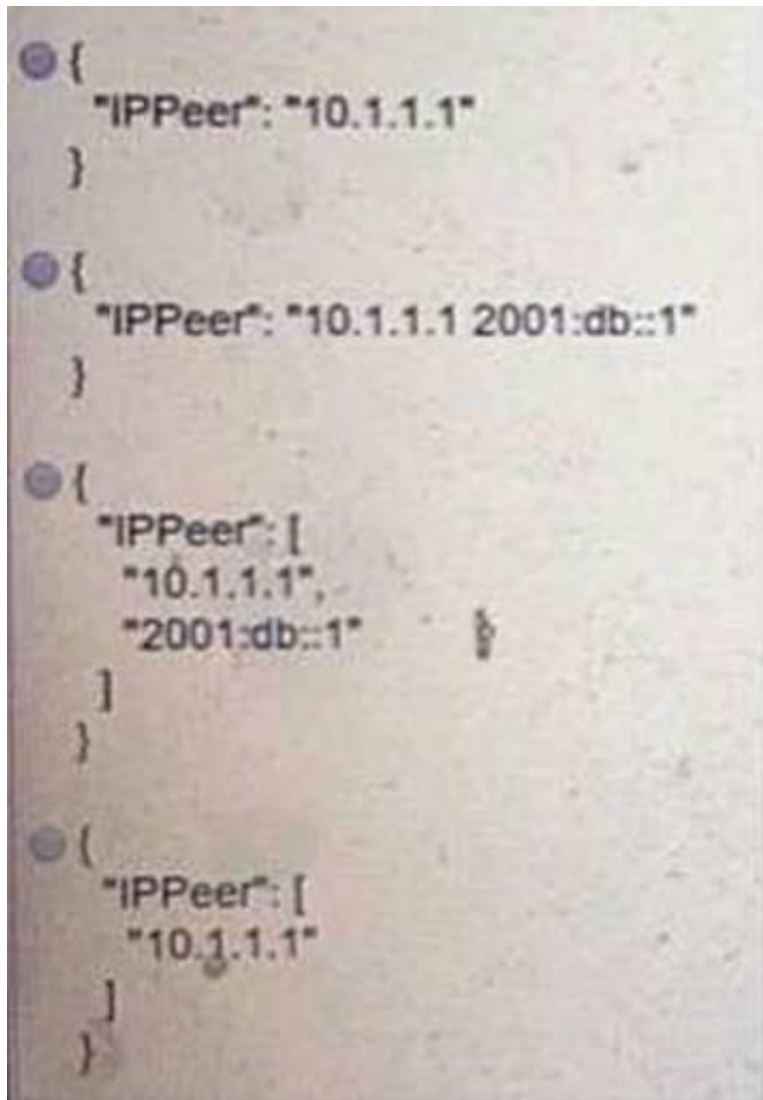
- (Exam Topic 1)

Refer to the exhibit.



What is the value of the node defined by this YANG structure?





- A. Option A
- B. Option B
- C. Option C
- D. Option D

**Answer:** D

**Explanation:**

<https://tools.ietf.org/html/rfc7950#section-9.12>

**NEW QUESTION 217**

- (Exam Topic 1)

Which platform is run directly using a hypervisor?

- A. Virtual
- B. Bare metal systems
- C. Containers
- D. Applications

**Answer:** C

**NEW QUESTION 218**

- (Exam Topic 1)

Which mechanism is used to consume a RESTful API design when large amounts of data are returned?

- A. Data sets
- B. Scrolling
- C. Blobs
- D. Pagination

**Answer:** D

**Explanation:**

Reference: <https://nordicapis.com/everything-you-need-to-know-about-api-pagination/>

**NEW QUESTION 222**

- (Exam Topic 1)

A developer is reviewing a code that was written by a colleague. It runs fine, but there are many lines of code to do a seemingly simple task repeatedly. Which action organizes the code?

- A. Refactor the code by removing any unnecessary tests
- B. Using functions, rewrite any pieces of code that are repeated
- C. Reverse engineer and rewrite the code logic
- D. Modify the code to use loops

**Answer:** B

#### NEW QUESTION 223

- (Exam Topic 1)

Which is an advantage of using network programmability?

- A. It removes CLI access for devices.
- B. It provides for more scalable and replicable network provisioning.
- C. Manual configuration is faster.
- D. No cloud abstraction occurs.

**Answer:** B

#### NEW QUESTION 224

- (Exam Topic 1)

Which REST architectural constraint indicates that no client context should be stored on the server between requests?

- A. stateless
- B. uniform interface
- C. cacheable
- D. client-server

**Answer:** A

#### Explanation:

Reference: <https://developer.cisco.com/docs/nx-os/#!representational-state-transfer-rest>

#### NEW QUESTION 227

- (Exam Topic 1)

Refer to the exhibit.

```
$ pyang -f tree Cisco-IOS-XE-native.yang
module: Cisco-IOS-XE-native
 +--rw native
 +--rw logging
 +--rw monitor|
 +--rw severity? logging-level-type

$ curl --insecure -v -X PATCH \
 "https://ios-xe-mgmt-latest.cisco.com:9443/restconf/data/Cisco-IOS-XE-native:native" \
 -H 'Authorization: Basic ZGV2ZWxvcGVyOkMxc2NvMTIzNDU=' -H 'Accept: application/yang-data+json' \
 -H 'Content-Type: application/yang-data+json' \
 -d '{ "Cisco-IOS-XE-native:native" : { "logging" : { "monitor" : { "severity" : "alerts" }} } }'
> ...
< ...
< HTTP/1.1 204 No Content
```

The definition of the YANG module and a RESTCONF query sent to a Cisco Ioc XE device is shown. Which statement is correct if the RESTCONF interface responds with a 204 status code?

- A. The query failed at retrieving the logging seventy level.
- B. The query failed to set the logging seventy level due to an invalid path.
- C. The query retrieved the logging seventy level.
- D. The query updated the logging seventy level or created it if not present on the device.

**Answer:** D

#### Explanation:

Reference:

[https://www.cisco.com/c/en/us/td/docs/ios-xml/ios/prog/configuration/1611/b\\_1611\\_programmability\\_cg/restco](https://www.cisco.com/c/en/us/td/docs/ios-xml/ios/prog/configuration/1611/b_1611_programmability_cg/restco)

#### NEW QUESTION 232

- (Exam Topic 1)

Refer to the exhibit.

```
json_string = """
{
 "researcher": {
 "name": "Ford Perfect",
 "species": "Betelgeusian",
 "relatives": [
 {
 "name": "Zaphod Beeblebrox",
 "species": "Betelgeusian"
 }
]
 }
}
"""

my_json = json.loads(json_string)
```

Which python data structure does my\_json contain?

- A. List
- B. Json
- C. Map
- D. Dict

**Answer:** D

**Explanation:**

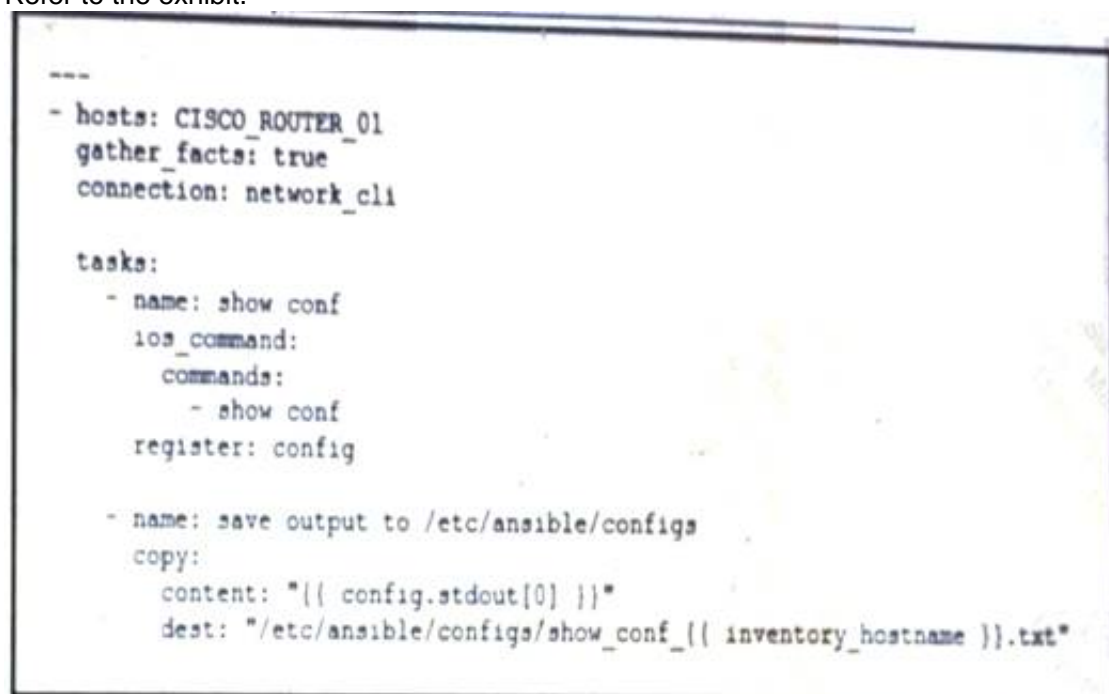
Reference:

<https://stackoverflow.com/questions/34764979/loading-python-string-with-u-as-json?noredirect=1&lq=1>

#### NEW QUESTION 235

- (Exam Topic 1)

Refer to the exhibit.



```

- hosts: CISCO_ROUTER_01
 gather_facts: true
 connection: network_cli

 tasks:
 - name: show conf
 ios_command:
 commands:
 - show conf
 register: config

 - name: save output to /etc/ansible/configs
 copy:
 content: "{{ config.stdout[0] }}"
 dest: "/etc/ansible/configs/show_conf_{{ inventory_hostname }}.txt"
```

What is the result of executing this Ansible playbook?

- A. The playbook copies a new start-up configuration to CISCO\_ROUTER\_01.
- B. The playbook backs up the running configuration of CISCO\_ROUTER\_01.
- C. The playbook backs up the start-up configuration of CISCO\_ROUTER\_01.
- D. The playbook copies a new running configuration to CISCO\_ROUTER\_01.

**Answer:** C

#### NEW QUESTION 236

- (Exam Topic 1)

Refer to the exhibit.



```

- hosts: switch2960cx
 gather_facts: no

 tasks:
 - ios_l2_interface:
 name: GigabitEthernet0/1
 state: unconfigured

 - ios_l2_interface:
 name: GigabitEthernet0/1
 mode: trunk
 native_vlan: 1
 trunk_allowed_vlans: 6-8
 state: present

 - ios_vlan:
 vlan_id: 6
 name: guest-vlan
 interfaces:
 - GigabitEthernet0/2
 - GigabitEthernet0/3

 - ios_vlan:
 vlan_id: 7
 name: corporate-vlan
 interfaces:
 - GigabitEthernet0/4

 - ios_vlan:
 vlan_id: 8
 name: iot-vlan
 interfaces:
 - GigabitEthernet0/5
```

Which two statements describe the configuration of the Ansible script if run? (Choose two.)

- A. Traffic on port 0/2 and 0/3 is connected to port 0/6.
- B. Traffic from ports 0/2 to 0/5 can flow on port 0/1 due to the trunk.
- C. Traffic can flow between ports 0/2 to 0/5 due to the trunk on port 0/1.
- D. GigabitEthernet0/2 and GigabitEthernet0/3 are access ports for VLAN 6.
- E. GigabitEthernet0/1 is left unconfigured.

**Answer:** BD

#### NEW QUESTION 238

- (Exam Topic 1)

What are the two principles of an infrastructure as code environment? (Choose two)

- A. Complete complex systems must be able to be built from reusable infrastructure definitions.
- B. Environments must be provisioned consistently using the same inputs.
- C. Redeployments cause varying environment definitions.
- D. Service overlap is encouraged to cater for unique environment needs.
- E. Components are coupled, and definitions must be deployed for the environment to function.

**Answer:** AB

#### NEW QUESTION 239

- (Exam Topic 1)

A company has written a script that creates a log bundle from the Cisco DNA Center every day. The script runs without error and the bundles are produced. However, when the script is run during business hours, report poor voice quality of phone calls. What explains this behavior?

- A. The application is running in the Voice VLAN and causes delays and jitter in the subnet.
- B. The speed and duplex settings in Cisco DNA Center are set incorrectly, which causes the transfer to be too slow.
- C. The script is written in a low-level programming language where there is no memory safety.
- D. This causes a buffer overflow and disruption on the network.
- E. Generating the logs causes the CPU on the network controller to spike, which causes delays in forwarding the voice IP packets.

**Answer:** D

#### NEW QUESTION 244

- (Exam Topic 3)

Drag and drop the code from the bottom onto the box where the code is missing to authenticate with the Cisco DNA Center REST API by using basic authentication. Then generate a token for later use. Not all options are used.

```
import requests
from requests.auth import HTTPBasicAuth

BASE_URL = 'https://sandboxdnac2.cisco.com'
AUTH_URL = '/dna/system/api/v1/'
USERNAME = 'admin'
PASSWORD = 'qwer1234!'

response = requests. (BASE_URL + AUTH_URL,
 auth=HTTPBasicAuth(,))
token = response.json()['Token']
print(token)
```

auth/basic	/auth/token	post	get
USERNAME	Token	PASSWORD	

- A. Mastered
- B. Not Mastered

Answer: A

Explanation:

```
import requests
from requests.auth import HTTPBasicAuth

BASE_URL = 'https://sandboxdnac2.cisco.com'
AUTH_URL = '/dna/system/api/v1/'
USERNAME = 'admin'
PASSWORD = 'qwer1234!'

response = requests. (BASE_URL + AUTH_URL,
 auth=HTTPBasicAuth(,))
token = response.json()['Token']
print(token)
```

auth/basic	/auth/token	post	get
USERNAME	Token	PASSWORD	

#### NEW QUESTION 246

- (Exam Topic 3)

What is a characteristic of the Cisco Finesse platform?

- A. Applications allow services to be invoked on a network triggered event.
- B. The platform provides a ready-to-go platform for HD video and audio conferencing.
- C. Applications are added to the platform from the desktop remotely.
- D. The platform includes an enterprise-class IM engine.

Answer: A

Explanation:

A characteristic of the Cisco Finesse platform is that applications allow services to be invoked on a network triggered event. Cisco Finesse is a next-generation

agent and supervisor desktop designed to provide a rich, browser-based experience for contact center agents and supervisors. It offers a flexible, open development platform that allows developers to build custom applications and integrations to meet the specific needs of their contact center. One of the key features of Cisco Finesse is the ability to trigger actions based on events within the contact center network, such as an incoming call or a change in the status of a customer's account. This allows developers to build applications that can react to real-time events and provide relevant information or services to agents as they handle customer interactions.

#### NEW QUESTION 251

- (Exam Topic 3)

When a Cisco IOS XE networking device is configured by using RESTCONF, what is the default data encoding method?

- A. application/yaml-data+json
- B. application/yang-data+json
- C. application/xml-data+json
- D. application/json-data+xml

**Answer: D**

#### NEW QUESTION 252

- (Exam Topic 3)

Which HTTP method is used by webhooks and notifies a listener about an event change?

- A. PUT
- B. POST
- C. PATCH
- D. GET

**Answer: B**

#### NEW QUESTION 257

- (Exam Topic 3)

What is a capability of Ansible playbooks?

- A. They execute scheduled tasks regularly.
- B. They define the state for a device configuration.
- C. They collect SNMP logs from networking devices.
- D. They utilize the target device agent to execute.

**Answer: A**

#### NEW QUESTION 261

- (Exam Topic 3)

What is a characteristic of RPC APIs compared to REST APIs?

- A. Authentication is done over provisions for the service caller and vice versa for RPC API, and REST API uses HTTP headers for authentication.
- B. All communications between the client and server must be stateless for RPC API, and REST API is stateful.
- C. The architecture model for RPC API is resource-focused, and REST API is procedure-focused.
- D. The data payload must be in JSON format for RPC API, and REST API allows JSON and XML formats.

**Answer: A**

#### NEW QUESTION 264

- (Exam Topic 3)

```
user@host1:~/tmp$ cat Dockerfile
Dockerfile to install traceroute
FROM ubuntu
MAINTAINER User One (userone@cisco.com)
RUN apt-get update && apt-get install traceroute
```

Refer to the exhibit. Drag and drop the Dockerfile contents from the left onto the functions on the right that create a container image to run traceroute to track network path to specific targets. Not all options are used.



document author	FROM ubuntu
command to execute	MAINTAINER User One (userone@cisco.com)
initializes a new build stage	RUN apt-get update && apt-get install traceroute
copies new files or directories	
sets the userid	

- A. Mastered
- B. Not Mastered

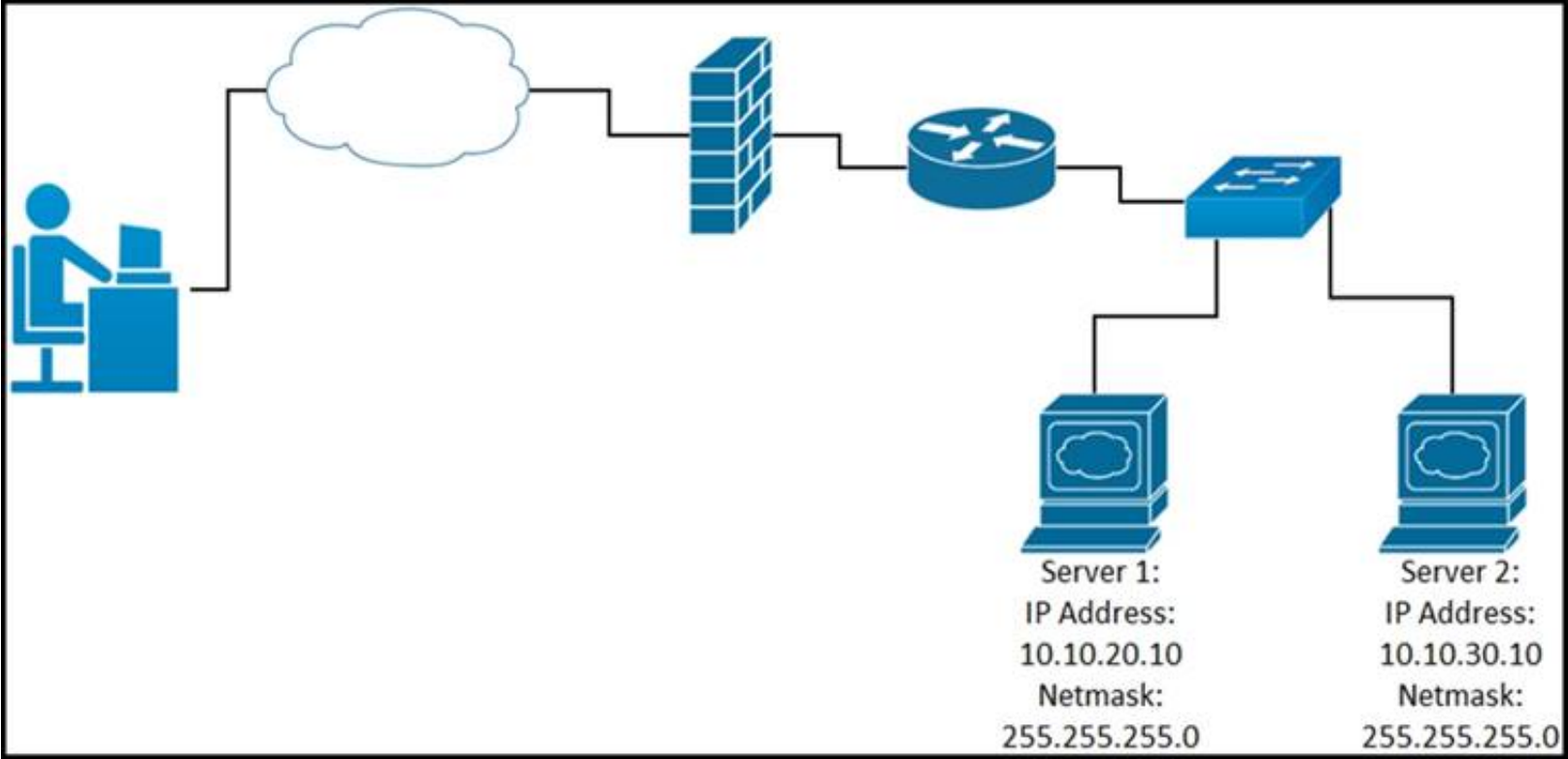
Answer: A

Explanation:

document author	initializes a new build stage
command to execute	document author
initializes a new build stage	command to execute
copies new files or directories	
sets the userid	

NEW QUESTION 269

- (Exam Topic 3)  
Refer to the exhibit.



While developing a Cisco Webex bot, an application reaches the public IP address of the firewall, but traffic is forwarded to the IP address of server 1 instead of the IP address of server 2. What causes this issue?

- A. The proxy server that rewrites traffic is misconfigured.
- B. The router is sending the traffic to server 1 instead of server 2.
- C. The switch is forwarding IP traffic to the wrong VLAN.
- D. NAT is misconfigured on the firewall.

Answer: D

#### NEW QUESTION 274

- (Exam Topic 3)

Refer to the exhibit.

```
1 import requests
2
3 url = "https://api.meraki.com/api/v0/organizations/{{organizationId}}/insight/
* monitoredMediaServers"
4
5 payload = {
6 "name": "Sample VoIP Provider",
7 "address": "123.123.123.1"
8 }
9 headers = {
10 'Accept': '*/*',
11 'Content-Type': 'application/json'
12 }
13
14 response = requests.request("POST", url, headers=headers, data=payload)
15
16 print(response.text.encode('utf8'))
```

Which workflow does the script automate?

- A. retrieves a media server that is being monitored
- B. updates a media server that is being monitored
- C. adds a media server to be monitored
- D. deletes a media server that is being monitored

Answer: C

#### NEW QUESTION 276

- (Exam Topic 3)

Drag and drop the code from the bottom onto the box where the code is missing to enable ports on a switch by using RESTCONF. Not all options are used.

```
def enable_function(if_name, if_status, if_type):
 headers = {'Accept': 'application/yang-data+json',
 'Content-Type': 'application/ ' }
 payload = {
 " ": {
 "name": if_name,
 "enabled": if_status,
 "type": if_type,
 }
 }
 = 'https://192.168.1.1:8443'
 restconf_url = '/restconf/data/ietf-interfaces:interfaces/interface'
 res = requests.put(f'{base_url}{restconf_url}={if_name}',
 headers=headers, json=payload,
 auth=('cisco', 'secret'), verify=False)
 enable_function('Loopback1', true, ' ')
```

yang-data+json	application/xml
ietf-interfaces:interface	iana-if-type:softwareLoopback
base_url	run_function
iana-if-type:ethernetCsmacd	

- A. Mastered
- B. Not Mastered

Answer: A

Explanation:

```
def enable_function(if_name, if_status, if_type):
 headers = {'Accept': 'application/yang-data+json',
 'Content-Type': 'application/ yang-data+json '}
 payload = {
 "ietf-interfaces:interface": {
 "name": if_name,
 "enabled": if_status,
 "type": if_type,
 }
 }
 base_url = 'https://192.168.1.1:8443'
 restconf_url = '/restconf/data/ietf-interfaces:interfaces/interface'
 res = requests.put(f'{base_url}{restconf_url}',
 headers=headers, json=payload,
 auth=('cisco', 'secret'), verify=False)

enable_function('Loopback1', true, 'iana-if-type:ethernetCsmacd')
```

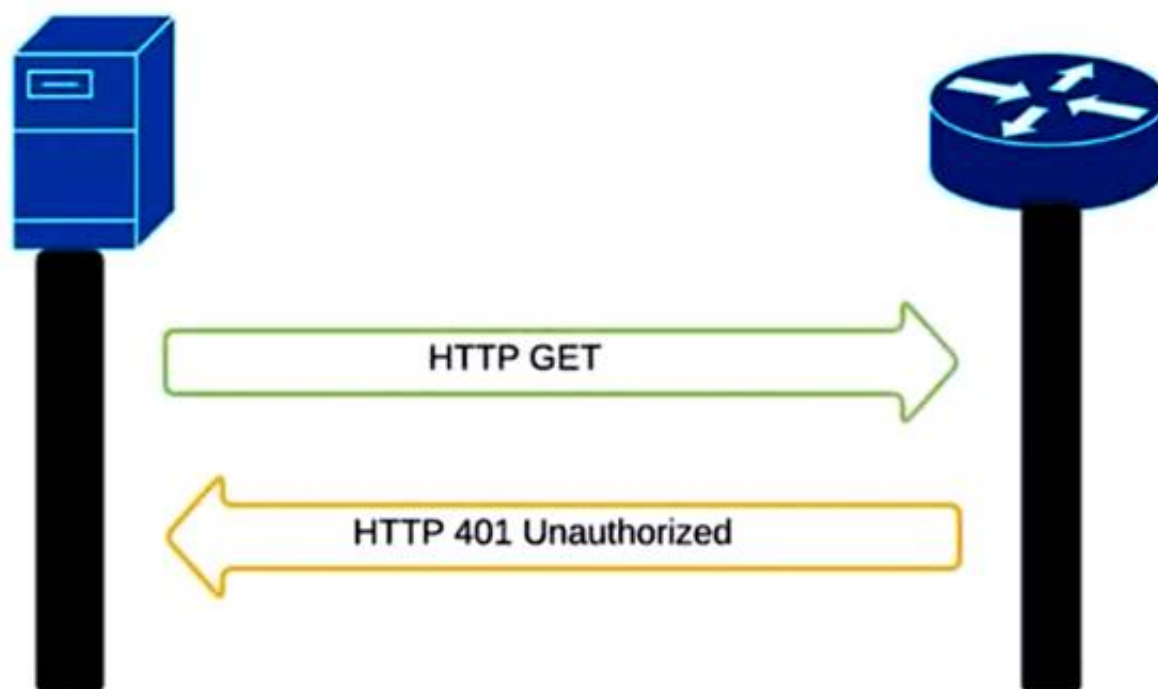
yang-data+json	application/xml
ietf-interfaces:interface	iana-if-type:softwareLoopback
base_url	run_function
iana-if-type:ethernetCsmacd	

#### NEW QUESTION 280

- (Exam Topic 3)

Refer to the exhibit.

```
curl -i -k -X 'GET' 'https://172.18.110.64:443/restconf/data/Cisco-IOS-XE-native:native/hostname'
-H 'Accept: application/yang-data+json' \
-u 'cisco:cisco'
```



An administrator attempts to perform a GET operation by using the Cisco IOS XE RESTCONF API to return the hostname of a device. The sequence diagram in the exhibit illustrates the HTTP messages observed. Which change to the API request resolves the issue?

- A. Remove the -H 'Accept: application/yang-data+json' header.
- B. Replace -u cisco:cisco parameter with -u 'cisco:cisco'.
- C. Change the request method from -X 'GET' to -X 'POST'.
- D. Add the -H 'Content-Type: application/yang-data+json' header.

**Answer: B**

#### NEW QUESTION 285

- (Exam Topic 3)

```
$ find /home/user/backup -mtime +30 -type f -print
$ find /home/user/backup -mtime +30 -type f -delete
```

Refer to the exhibit. An engineer is managing the network of an enterprise. The network is using a distributed deployment model. The enterprise uses database to store logs. The current policy requires logs to be stored if changes are made to the infrastructure in any of the devices on the data centers. Which workflow is



being automated by the Bash script?

- A. returning backup files that are older than 30 days
- B. deleting backup files that are older than 30 days
- C. configuring the directory to delete files automatically
- D. automating deletion of all backup files every 30 days

**Answer:** B

#### NEW QUESTION 290

- (Exam Topic 3)

During which step of the CI/CD pipeline for infrastructure automation is code from multiple developers combined to compile and test different components?

- A. integration
- B. deployment
- C. development
- D. testing

**Answer:** A

#### NEW QUESTION 295

- (Exam Topic 3)

Which IP service synchronizes the time across devices?

- A. DNS
- B. NTP
- C. SNMP
- D. NAT

**Answer:** B

#### NEW QUESTION 300

- (Exam Topic 3)

What is a procedural component of CI/CD pipelines?

- A. Bundled artifacts must be generated.
- B. Every test must pass for the pipeline to continue its execution.
- C. Some tests fail without stopping the pipeline execution.
- D. The release label that identifies the build is optional.

**Answer:** B

#### Explanation:

In a CI/CD (Continuous Integration/Continuous Deployment) pipeline, a procedural component is a specific step or action that is carried out in a specific order as part of the pipeline process. One of the procedural components of a CI/CD pipeline is that every test must pass in order for the pipeline to continue its execution. If any test fails, the pipeline will stop and the issue must be addressed before the pipeline can continue. This is an important procedural component of a CI/CD pipeline because it ensures that the code being deployed is of high quality and meets the necessary standards before it is released.

#### NEW QUESTION 305

- (Exam Topic 3)

Which action do webhooks enable an application to perform?

- A. Increase the request rate limit.
- B. Populate the application with restricted data.
- C. Receive real-time data.
- D. Implement a push model.

**Answer:** D

#### Explanation:

Simplifying the wording: Webhook enables the app to ( push or receive real time) . The clients should receive real time but the app pushes.

#### NEW QUESTION 306

- (Exam Topic 3)

A developer is attempting to retrieve all the messages from a Cisco Webex space. The server responds by sending the first 1,000 messages. The developer must make additional requests to retrieve the rest of the messages. Which API constraint is described in this scenario?

- A. payload limiting
- B. throttling
- C. pagination
- D. rate limiting

**Answer:** C

#### Explanation:

<https://developer.atlassian.com/server/confluence/pagination-in-the-rest-api/>

### NEW QUESTION 311

- (Exam Topic 3)

```

--- functions.py 2020-09-26 14:26:25.000000000 -0600
--- new.py 2020-09-26 14:26:10.000000000 -0600
@@ -21,7 +21,7 @@
def print_devices_info(devices):
 # Print id, hostname and management IP
 for item in devices:
- print(item['id'], item['hostname'], item['managementIpAddress'])
+ print(item['id'], item['hostname'])

 # Get Authentication token
 def get_dnac_jwt_token():
@@ -66,9 +66,15 @@
 response = get_devices_list(headers, {})
 print_devices_info(response)

- # print devices list filtered by hostname
- print('\nPrinting device list filtered by hostname ...')
- query_string_params = {'hostname': 'CSR1Kv-01.devnet.local'}
- response = get_devices_list(headers, query_string_params)
- print_devices_info(response)
-
+ # print devices list filtered by platform Id
+ print('\nPrinting device list filtered by platform id...')
+ query_string_params = {'platformId': 'C9500-40X'}
+ query_string_params = {'platformId': 'AIR-AP1141N-A-K9'}
+ response = get_devices_list(headers, query_string_params)
+ print_devices_info(response)

```

Refer to the exhibit. An engineer is comparing two files by using the unified diff format. Which code snippet belongs to the new.py file?

- A. 

```
77 query_string_params = {'platformId':
'AIR-AP1141N-A-K9'}
```
- B. 

```
21 print(item['id'], item['hostname'])
```
- C. 

```
24 print(item['id'], item['hostname'],
item['managementIpAddress'])
```
- D. 

```
66 # print devices list filtered by
hostname
67 print('\nPrinting device list
filtered by hostname ...')
68 query_string_params = {'hostname':
'CSR1Kv-01.devnet.local'}
69 response = get_devices_list
(headers, query_string_params)
70 print_devices_info(response)
```

Answer: A

### NEW QUESTION 314

- (Exam Topic 3)

**SDK Documentation:**

**OrganizationController:**  
 get\_organizations()  
 get\_network\_device(dict)

**DevicesController:**  
 get\_network\_devices(id)

**NetworksController:**  
 get\_organization\_networks(dict)

Refer to the exhibit. A script must output details of all the Cisco Meraki MS220-BP switches across all organizations and networks. Drag and drop the code snippets from the bottom onto the boxes in the code to complete the script. Not all options are used.

```
from meraki_sdk.meraki_sdk_client import MerakiSdkClient
from meraki_sdk.exceptions.api_exception import APIException

api_key = "API_KEY"
client = MerakiSdkClient(api_key)

for org in []:
 try:
 options = {"organization id": org["id"]}
 networks = []
 for network in networks:
 devices = []
 for device in devices:
 if device["model"] == "MS220-8P":
 options = {"network id": network["id"], "serial": device["serial"]}
 output = []
 print(output)
 except APIException as e:
 pass
```

client.organizations.get\_organizations() :

client.networks.get\_organization\_networks(api\_key)

client.networks.get\_organization\_networks(options)

client.devices.get\_network\_devices(network ["id"])

client.devices.get\_network\_device(options=options)

client\_devices.get\_network\_device(device ["model"])

- A. Mastered  
 B. Not Mastered

Answer: A

Explanation:

```
from meraki_sdk.meraki_sdk_client import MerakiSdkClient
from meraki_sdk.exceptions.api_exception import APIException

api_key = "API_KEY"
client = MerakiSdkClient(api_key)

for org in []:
 try:
 options = {"organization id": org["id"]}
 networks = []
 for network in networks:
 devices = []
 for device in devices:
 if device["model"] == "MS220-8P":
 options = {"network id": network["id"], "serial": device["serial"]}
 output = []
 print(output)
 except APIException as e:
 pass
```

client.organizations.get\_organizations() :

client.networks.get\_organization\_networks(api\_key)

client.networks.get\_organization\_networks(options)

client.devices.get\_network\_devices(network ["id"])

client.devices.get\_network\_device(options=options)

client\_devices.get\_network\_device(device ["model"])

#### NEW QUESTION 316

- (Exam Topic 3)

Which solution reduces costs from MPLS, improves application performance, and simplifies operations?

- A. Cisco NSO  
 B. Cisco SD-WAN  
 C. Cisco ACI  
 D. Cisco DNA Center

Answer: B



### NEW QUESTION 321

- (Exam Topic 3)

```

1 - hosts: nxos_rtr
2 gather_facts: false
3 tasks:
4 - nxos_hsrp:
5 group: "{{ item.group }}"
6 vip: "{{ item.vip }}"
7 priority: 115
8 interface: "{{ item.interface }}"
9 preempt: enabled
10 auth_type: md5
11 auth_string: "s3cuR3"
12 version: 2
13 host: "{{ hostvars['rtr-1a']['ansible_ssh_host'] }}"
14 with_items:
15 - "{{ hsrp_groups }}"
16 delegate_to: "{{ hostvars['srv-1a']['ansible_ssh_host'] }}"

```

Refer to the exhibit. An engineer runs a network that consists of Cisco Nexus devices. The network is distributed between data centers in different locations. The switches are configured using standalone connections and a single point of failure. Which process is being automated by the Ansible playbook?

- A. enabling HSRP on the nxos\_rtr inventory host
- B. enabling HSRP on the rtr-1a inventory host
- C. executing HSRP configuration from the Ansible controller node
- D. executing HSRP configuration from the srv-1a inventory host

**Answer: B**

### NEW QUESTION 322

- (Exam Topic 3)

Refer to the exhibit.

```

HTTP Request

curl http://hello-api.info -v

HTTP Response

* Trying hello-app.info...
* TCP_NODELAY set
* Connected to hello-app.info (hello-app.info) port 80 (#0)
> GET / HTTP/1.1
> Host:hello-app.info
> User-Agent: curl/7.64.1
> Accept: */*
>

< HTTP/1.1 502 Bad Gateway
< Server: nginx/1.14.0 (Ubuntu)
< Date: Sat, 21 Nov 2020 11:09:54 GMT
< Content-Type: text/html
< Content-Length: 182
< Connection: keep-alive

```

A developer cannot reach the web application behind an NGINX load balancer. The developer sends a request to an application FQDN with cURL but gets an HTTP 502 response. Which action solves the problem?

- A. Fix errors in the server configuration, which is behind the load balancer.
- B. Bring up the load balancer to the active state.
- C. Fix errors in the cURL request sent by the client.
- D. Change the default gateway on the load balancer to an active one.

**Answer: A**

#### Explanation:

The HyperText Transfer Protocol (HTTP) 502 Bad Gateway server error response code indicates that the server, while acting as a gateway or proxy, received an invalid response from the upstream server.

<https://developer.mozilla.org/en-US/docs/Web/HTTP/Status/502#:~:text=The%20HyperText%20Transfer%20P>

### NEW QUESTION 327

- (Exam Topic 3)

A developer creates a new application, but the application must be tested before being released to a customer. When a mobile phone that uses 4G is used to access the application, the request fails. Why does the connection to the application fail?

- A. The application is hosted on premises and VPN connectivity is required

- B. The application must be added to the production server before testing.
- C. The application must be moved to the cloud before testing is possible.
- D. The application connectivity is limited to HTTPS protocol.

**Answer:** A

#### NEW QUESTION 332

- (Exam Topic 3)

Refer to the exhibit.

```
import requests

base_url = f"https://webexapis.com/v1/people"

headers = {
 "Accept": "application/json"
}

person_email = 'customer@company.com'
url = f"{base_url}?email={person_email}"

response = requests.request("GET", url, headers=headers)

if response.status_code == 200 :
 print(f"OK - Added {person_email}")
else:
 print(f"ERROR CODE {response.status_code}")
```

A collaboration engineer has developed a script to automate the gathering of information by providing the email address of the individual. When the engineer tests the script, a 401 error is received. Which command fixes the script?

- A. Add "Authorization": "Bearer <WEBEX\_TOKEN>" to the headers
- B. Add "Authentication": "Basic <WEBEX\_TOKEN>" in the base\_url after "https://".
- C. Add "<Authorization>:<password>@" in the base\_url after "https://".
- D. Add "Authentication": "Bearer <WEBEX\_TOKEN>" to the headers

**Answer:** A

#### NEW QUESTION 336

- (Exam Topic 3)

Which platform has an API that has the capability to obtain a list of vulnerable software on user devices?

- A. Cisco Advanced Malware Protection
- B. Cisco Umbrella
- C. Cisco Identity Services Engine
- D. Cisco Firepower

**Answer:** A

#### NEW QUESTION 340

- (Exam Topic 3)

Refer to the exhibit.

```
git clone git://git.kernel.org/.../git.git my.git
cd my.git
git branch -d -r origin/todo origin/html origin/man (1)
git branch -D test (2)
```

What does the command marked (2) do when it is run?

- A. It duplicates the test" branch.
- B. It deletes the "test" branch only if a new branch is created.
- C. It deletes the "test" branch.
- D. It does not delete the branch until it is merged.

**Answer:** C

#### NEW QUESTION 345

- (Exam Topic 3)

Which tool provides a testing environment to run tests on network devices and perform network automation scenarios?

- A. Visual Studio Code
- B. Cisco VIRL
- C. pyATS
- D. Cisco Packet Tracer

**Answer:** B

#### NEW QUESTION 348

- (Exam Topic 3)

```
api_endpoint = f"https://veryusefulapi/v2/authenticate"

headers = {
 "Authorization": "Basic YWRtaW46c3VwZXJzZWNyZXQ="
 "Accept": "application/json"
}

req = requests.get(api_endpoint, headers=headers)
```

Refer to the exhibit. A developer is part of a team that is working on an open-source project in which source code is hosted in a public GitHub repository. While the application was built, security concerns were addressed by encrypting the credentials on the server. After a few months, the developer realized that a hacker managed to gain access to the account. The exhibit contains part of the source code for the login process. Why was the attacker able to access the developer's account?

- A. The encoded credentials were available in the source code.
- B. The application was not encrypting the communication with the server.
- C. The credentials were encrypted in the source code.
- D. An SSL certificate was used instead of the TLS protocol to authenticate.

**Answer:** A

#### NEW QUESTION 350

- (Exam Topic 2)

Which configuration management tool has an agentless capability?

- A. Chef
- B. Puppet
- C. Ansible
- D. CFEngine

**Answer:** C

#### NEW QUESTION 352

- (Exam Topic 2)

Drag and drop the code snippets from the bottom to the blanks in the code to test the API response through the Python unittest library. Not all options are used.

```
import unittest
import json
from apidogs import app

class TestsAPIDogs(unittest.TestCase):

 def setUp(self):
 self.app = app.test_client()

 # Check status response of API
 def test_status(self):
 resp =self.app.get('/dogs/all')
 status_code = response.
 self.assertEqual(status_code,)

 # Check for content type is in application/json
 def test_content_type(self):
 resp =self.app.get('/dogs/all')
 self.assertEqual(resp. , 'application/json')

 def test_item_not_exist(self):
 resp =self.app.get('/dogs?id= ')
 self.assertEqual(response.status code,404)
```

none	content	
status_code	200	content_type
403	status	

- A. Mastered
- B. Not Mastered

**Answer:** A

**Explanation:**



Graphical user interface, text Description automatically generated

#### NEW QUESTION 357

- (Exam Topic 3)

Which IP service is used to monitor the performance of network devices?

- A. SNMP
- B. DHCP
- C. DNS
- D. NTP

**Answer:** A

#### NEW QUESTION 360

- (Exam Topic 3)

What is a comparison of YAML and JSON?

- A. YAML has a more consistent approach to representing data compared to JSON.
- B. JSON does not support comments and YAML does.
- C. YAML is a more verbose data structure compared to JSON.
- D. JSON has more common usage in configuration management tools compared to YAML.

**Answer:** B

#### Explanation:

Reference: <https://stackoverflow.com/questions/244777/can-comments-be-used-in-json>

Can I use comments in JSON? No, JSON is a data-only format. Comments in the form //, #, or /\* \*/, which are used in popular programming languages, are not allowed in JSON. You can add comments to JSON as custom JSON elements that will hold your comments, but these elements will still be data.

#### NEW QUESTION 361

- (Exam Topic 3)

`get_interface_info_by_id(device_id, headers=None, **request_parameters)` [\[source\]](#)

Returns list of interfaces by specified device.

Parameters

- `device_id` (*basestring*) – Device ID.
- `headers` (*dict*) – Dictionary of HTTP Headers to send with the Request .
- `**request_parameters` – Additional request parameters (provides support for parameters that may be added in the future).

Returns

JSON response. Access the object's properties by using the dot notation or the bracket notation.

Return type

`MyDict`

Raises

- `TypeError` – If the parameter types are incorrect.
- `MalformedRequest` – If the request body created is invalid.
- `ApiError` – If the DNA Center cloud returns an error.

Refer to the exhibit. Drag and drop the code from the bottom onto the box where the code is missing to return the number of interfaces on a network device by using the Cisco DNA Center SDK. Not all options are used.

```
from dnacentersdk import DNACenterAPI
base_url = 'https://10.9.11.226'

[] = 'da4606c3-63ad-4ed4-8f35-6bfec7c2df04'

dnac = [](username='cisco', password='secret',
 base_url=base_url, version='1.3.3', verify=False)

[] = [item['portName'] for item in
 dnac.[].get_interface_info_by_id(device_id)['response']]

Check the number of ports on the device
print(f'The list of interfaces contains {len(port_list)} items.')

Output
The list of interfaces contains 54 items.
```

router\_id

device\_id

DNACenterAPI

DNAC

port\_list

routers

devices

- A. Mastered
- B. Not Mastered

**Answer:** A

**Explanation:**

```
from dnacentersdk import DNACenterAPI
base_url = 'https://10.9.11.226'
device_id = 'da4606c3-63ad-4ed4-8f35-6bfec7c2df04'

dnac = DNACenterAPI(username='cisco', password='secret',
 base_url=base_url, version='1.3.3', verify=False)

port_list = [item['portName'] for item in
 dnac.devices.get_interface_info_by_id(device_id)['response']]

Check the number of ports on the device
print(f'The list of interfaces contains {len(port_list)} items.')

Output
The list of interfaces contains 54 items.
```

router\_id

device\_id

DNACenterAPI

DNAC

port\_list

routers

devices

#### NEW QUESTION 364

- (Exam Topic 3)

A developer has addressed a bug that was found in the production code of an application. A separate file named 'bug427896191v\_fix' has been created with the changes to the code. Which Git command must be used to incorporate the bug fix into the production code?

- A. git rebase
- B. git cat-file
- C. git merge-file
- D. git bisect

**Answer:** C

#### NEW QUESTION 368

- (Exam Topic 3)

Which two commands download and execute an Apache web server container in Docker with a port binding 8080 in the container to 80 on the host? (Choose two.)

- A. docker pull apache
- B. docker run -p 8080:80 httpd
- C. docker run -p 80:8080 httpd
- D. docker pull httpd
- E. docker pull https

**Answer:** CD

#### NEW QUESTION 369

- (Exam Topic 3)

Which function does a router provide to a network?

- A. broadcast domain segmentation
- B. unique host on a Layer 3 network
- C. unique hardware address for every node on a LAN
- D. broadcast domain extension

**Answer:** B

#### NEW QUESTION 373

- (Exam Topic 3)

A developer completed the creation of a script using Git. Before delivering it to the customer, the developer wants to be sure about all untracked files, without losing any information. Which command gathers this information?

- A. git clean -n
- B. git rm -f
- C. git clean -r
- D. git rm \*

**Answer:** A

#### NEW QUESTION 376

- (Exam Topic 3)

A customer's cloud services must:

Migrate services to another data center on demand. Save the operational state of the machine on demand. Support Windows and Linux GUIs.

Maximize hardware utilization.

Which type of deployment meets these requirements?

- A. bare metal
- B. container
- C. virtual machine
- D. Kubernetes

**Answer:** C

#### NEW QUESTION 379

- (Exam Topic 3)

```
1 - name: Configure Interfaces
2 with_items: "{{ interfaces }}"
3 netconf_config:
4 <<: *host_info
5 xml: |
6 <config>
7 <interfaces xmlns="urn:ietf:params:xml:ns:yang:ietf-interfaces">
8 <interface>
9 <name>{{ item.interface_type }}{{ item.interface_id }}</name>
10 <description>{{ item.description }}</description>
11 <type xmlns:ianaft="urn:ietf:params:xml:ns:yang:iana-if-type">ianaft:ethernetCsmacd</type>
12 <enabled>true</enabled>
13 <ipv4 xmlns="urn:ietf:params:xml:ns:yang:ietf-ip">
14 <address>
15 <ip>{{ item.ip_address }}</ip>
16 <netmask>{{ item.subnet_mask }}</netmask>
17 </address>
18 </ipv4>
19 </interface>
20 </interfaces>
21 </config>
```

Refer to the exhibit. A network engineer must configure new interfaces on a set of devices and is planning to use an Ansible playbook for the task. All devices support SSH and NETCONF protocol, and the interface variables are unique per device. In which directory are the YAML files including variables hosted to automate the task with the netconf\_config module?

- A. current working directory
- B. host\_vars directory
- C. group\_vars directory
- D. home directory

**Answer:** A

#### NEW QUESTION 383

- (Exam Topic 3)

A developer is developing a web application that uses username and password to authenticate to the next service. The user credentials must be available at any time in the application. The developer must choose and implement a secure method of storing the authentication credentials that are used in the automation code. Which password handling method must be used to minimize the security risk?

- A. Store the username and password in a separate configuration file.
- B. Store the username and password in a vault.



- C. Store the passwords in a dictionary.
- D. Store the username and password in code.

Answer: B

### NEW QUESTION 387

- (Exam Topic 3)

CISCO INTERSIGHT

Introduction

- Create Server Profile and Re...
- POST Create Server VMedia Policy
- GET Retrieve Server VMedia Policy...
- POST Create Server Boot Policy
- GET Retrieve Server Boot Policy by...
- POST Create Server NTP Policy
- GET Retrieve NTP Policy by Moid
- POST Create 'server-01' Server Profi...
- GET Retrieve 'server-01' Server Pr...
- POST Create 'server-02' Server Profi...
- GET Retrieve 'server-02' Server Pr...
- POST Update vmedia/Profiles Profil...
- POST Update Boot/PrecisionPolicie...
- POST Update NTP/Policies Profiles ...
- GET Retrieve Server RackUnit Res...

## Create Server Profile and Resources

### POST Create Server VMedia Policy

<https://www.intersight.com/api/v1/vmedia/Policies>

#### HEADERS

Accept	application/json
Authorization	Signature {{httpsig}}
Digest	{{computed-digest}}
Date	{{current-date}}
Content-Type	application/json

Refer to the exhibit. Drag and drop the code from the bottom onto the box where the code is missing to construct a Python script by using the Cisco SDK. Not all options are used.

```

import sys, json, argparse
from intersight.intersight_api_client import IntersightApiClient
from intersight.apis import asset_device_registration_api, asset_device_claim_api

result = dict(changed=False)

parser = argparse.ArgumentParser()
parser.add_argument('-a', '--api_params', default='intersight_api_params.json')
parser.add_argument('-t', '--target_host', dest='hostname', required=True)
args = parser.parse_args()
with open(args.api_params, 'r') as api_file:
 intersight_api_params = json.load()
api_instance = IntersightApiClient(
 host=intersight_api_params[' '],
 private_key=intersight_api_params['api_private_key_file'],
 api_key_id=intersight_api_params['api_key_id'],
)
api_handle = asset_device_registration_api.AssetDeviceRegistrationApi(api_instance)
kwargs = dict(filter="ConnectionStatus eq 'Connected'")
 = api_handle.asset_device_registrations_get(**)
for device in api_result.results:
 if device.device_ip_address[0] == args.hostname:
 api_handle = asset_device_claim_api.AssetDeviceClaimApi(api_instance)
 api_handle.asset_device_claims_moid_delete(moid=device.device_claim.moid)
 result['changed'] = True
 break

```

kwargs

args

api\_file

api\_key

api\_base\_uri

result

api\_result

- A. Mastered
- B. Not Mastered

Answer: A

Explanation:

```
import sys, json, argparse
from intersight.intersight_api_client import IntersightApiClient
from intersight.apis import asset_device_registration_api, asset_device_claim_api

result = dict(changed=False)

parser = argparse.ArgumentParser()
parser.add_argument('-a', '--api_params', default='intersight_api_params.json')
parser.add_argument('-t', '--target_host', dest='hostname', required=True)
args = parser.parse_args()
with open(args.api_params, 'r') as api_file:
 intersight_api_params = json.load(api_file)
api_instance = IntersightApiClient(
 host=intersight_api_params[api_base_uri],
 private_key=intersight_api_params[api_private_key_file],
 api_key_id=intersight_api_params[api_key_id],
)
api_handle = asset_device_registration_api.AssetDeviceRegistrationApi(api_instance)

kwargs = dict(filter="ConnectionStatus eq 'Connected'")
result = api_handle.asset_device_registrations_get(** kwargs)
for device in api_result.results:
 if device.device_ip_address[0] == args.hostname:
 api_handle = asset_device_claim_api.AssetDeviceClaimApi(api_instance)
 api_handle.asset_device_claims_moid_delete(moid=device.device_claim.moid)
 result['changed'] = True
 break
```

kwargs   args   api\_file   api\_key   api\_base\_uri   result

api\_result

#### NEW QUESTION 391

- (Exam Topic 3)

A group of software developers wants to improve its collaboration with the operations team. The group wants to deliver release-ready code that merges code changes back to the main branch and runs the automated testing as often as possible. Which DevOps concept does this scenario represent?

- A. continuous delivery
- B. version control
- C. continuous integration
- D. continuous deployment

**Answer: C**

#### NEW QUESTION 396

- (Exam Topic 3)

How does edge computing analyze sensitive data in the context of privacy control?

- A. locally instead of sending the data to the cloud for analysis
- B. locally or on the cloud depending on the configuration
- C. all at once by sending the data to the cloud
- D. locally on each node, and then sends the data to the cloud

**Answer: A**

#### NEW QUESTION 398

- (Exam Topic 3)

Which two situations align with infrastructure as code principles? (Choose two.)

- A. nonreplicable snowflake servers
- B. release versions to specific hardware
- C. maximized configuration drift
- D. easily reproducible systems
- E. repeatable processes

**Answer: BD**

#### NEW QUESTION 399

- (Exam Topic 3)

A company wants to automate the orders processed on its website using API. The network device that supports the solution must:

- support XML encoding
- support distributed transactions
- support YANG data models
- be support software redundancy

Which requirement prevents the use of RESTCONF for the solution?

- A. software redundancy
- B. YANG data models
- C. distributed transactions
- D. XML encoding

**Answer:** C

#### NEW QUESTION 404

- (Exam Topic 3)

A developer plans to deploy a new application that will use an API to implement automated data collection from Webex with these requirements:

The application was created by using the request library. Requires HTTP basic authentication.

Provides data in JSON or XML formats.

Which Cisco DevNet resource helps the developer with how to use the API?

- A. DevNet sandbox
- B. API documentation
- C. forums
- D. DevNet code exchange

**Answer:** B

#### NEW QUESTION 406

- (Exam Topic 3)

What is a feature of XML compared to other data formats?

- A. It uses tags to define the structure.
- B. It uses parenthesis for key-value pairs.
- C. It uses indentation to define the structure.
- D. It uses namespaces for list representation.

**Answer:** A

#### NEW QUESTION 411

- (Exam Topic 3)

What is a benefit of using model-driven programmability for infrastructure automation?

- A. connected user tracking
- B. infrastructure resource optimization
- C. multiple device control protocols
- D. device performance monitoring

**Answer:** C

#### NEW QUESTION 414

- (Exam Topic 3)

An engineer needs to collect information about 20,000 Bluetooth clients using the Cisco Meraki API. The API returns only 1,000 results. One of the HTTP response headers has the data:

Link: [https://api.meraki.com/info/api/v0/networks/ABC/bluetoothClients?perPage=1000&startingAfter=1000>;rel="n](https://api.meraki.com/info/api/v0/networks/ABC/bluetoothClients?perPage=1000&startingAfter=1000>;rel=n)

Which RFC is implemented by the API to apply the restriction?

- A. RFC 5988 – Web Linking
- B. RFC 5890 – Response Constraints
- C. RFC 5005 – Feed Paging and Archiving
- D. RFC 5446 – Content Limits

**Answer:** C

#### NEW QUESTION 417

- (Exam Topic 3)

A developer writes an application that refines data in temporary secure file storage hosted on the public cloud. Data will be deleted after processing and does not contain any private information. What is the advantage that a public cloud deployment provides to the developer?

- A. high security with encryption
- B. ease in infrastructure management
- C. flexible development
- D. bespoke services

**Answer:** B

#### NEW QUESTION 422

- (Exam Topic 3)

Which HTTP error code series relates to redirection?

- A. 400
- B. 500
- C. 200
- D. 300



**Answer:** D

**Explanation:**

1xx - Informational: The server has received the request and is continuing the process

2xx - Successful: The request was successful and the browser has received the expected information 3xx (Redirection): You have been redirected and the completion of the request requires further action

4xx (Client Error): The website or the page could not be reached, either the page is unavailable or the request contains bad syntax

5xx (Server Error): While the request appears to be valid, the server could not complete the request

**NEW QUESTION 423**

- (Exam Topic 3)

Why would a developer compare a current version of code to a previous version?

- A. to provide the single source of truth
- B. to troubleshoot code failures
- C. to track who made a change
- D. to aid in collaboration

**Answer:** B

**NEW QUESTION 427**

- (Exam Topic 3)

An engineer prepares a set of Python scripts to interact with network devices. To avoid network performance issues, the engineer wants to run them in a test environment. Which resource must be used to monitor the live execution of code in an always-available environment?

- A. packet tracer
- B. learning labs
- C. sandbox
- D. code exchange

**Answer:** C

**NEW QUESTION 428**

- (Exam Topic 3)

What are two benefits of implementing common data structures when working with APIs in remote systems? (Choose two.)

- A. ensures that developers are limited to using one data schema type
- B. prevents multivendor interoperability
- C. improves security in RESTful web services
- D. enforces standardized data structures
- E. leverages code that is easily managed and reused

**Answer:** BE

**NEW QUESTION 433**

- (Exam Topic 3)

Refer to the exhibit.

```
cd ~/development/project01
mkdir info
cd info
[REDACTED]
cp ./requirements.txt ~/Documents/backup/requirements.txt
```

A developer just finished testing a Python script and wants to save the list of packages and versions installed on the current machine. The developer must make sure that it will not cause any issues if tested on another device due to different library versions. Which line of code needs to be placed on the snippet where the code is missing?

- A. pip freeze 2> requirements.txt
- B. pip freeze > requirements.txt
- C. pip freeze => requirements.txt
- D. pip freeze | requirements.txt

**Answer:** B

**Explanation:**

pip freeze requirements.txt ile ilgili görsel sonucu The most common command is pip freeze > requirements. txt , which records an environment's current package list into requirements. txt. If you want to install the dependencies in a virtual environment, create and activate that environment first, then use the Install from requirements.

**NEW QUESTION 438**

- (Exam Topic 3)

What is the purpose of grouping devices in a VLAN?

- A. Devices communicate as if they are connected on the same wire.

- B. Multicast network traffic is limited to the VLAN connected devices.
- C. Unicast messages are limited to the clients connected on the same VLAN.
- D. Network traffic is load balanced between the devices connected to the VLAN.

**Answer:** B

#### NEW QUESTION 441

- (Exam Topic 3)

What is a principle of a code review process?

- A. Changes are made after the code is submitted to source control.
- B. It must not prevent code from getting into production as quickly as possible.
- C. Naming standards must be consistent.
- D. A technical lead must sign off on the review.

**Answer:** D

#### NEW QUESTION 443

- (Exam Topic 3)

An engineer deploys a Cisco CSR 1000 V instance to a virtual machine. The engineer must output the device configuration in JSON format. Which protocol is used for this task?

- A. YANG
- B. NETCONF
- C. SNMP
- D. RESTCONF

**Answer:** D

#### NEW QUESTION 447

- (Exam Topic 3)

Refer to the exhibit. Drag and drop the code snippets from the bottom onto the blanks in the Python script to retrieve a list of network devices from Cisco DNA Center. Not all options are used.

```
import requests
import json
from urllib3.exceptions import InsecureRequestWarning

requests.packages.urllib3.disable_warnings()

dna_center_url = "My_DNA_Center_URL"
authentication = ("dnacenteruser", "dnacenter_password")

def get_token():
 url = "https:// " + dna_center_url + "/dna/system/api/v1/auth/token"
 response = requests.post(url, auth=authentication, verify=False)
 token = response.json()['Token']
 return token

def get_device_list():
 token =
 url = "https:// " + dna_center_url + "dna/intent/api/v1/"
 header = { : token, 'content-type' : 'application/json' }
 response = requests.get(url, headers=header)
 device_list =
 print(json.dumps(device_list, indent=4))

if __name__ == "__main__":
 get_device_list()
```

get\_token()

network-device

x-auth-token

response.json()

response.xml

Authorization

- A. Mastered
- B. Not Mastered

**Answer:** A

**Explanation:**

```
import requests
import json
from urllib3.exceptions import InsecureRequestWarning

requests.packages.urllib3.disable_warnings()

dna_center_url = "My_DNA_Center_URL"
authentication = ("dnacenteruser", "dnacenter_password")

def get_token():
 url = "https:// " + dna_center_url + "/dna/system/api/v1/auth/token"
 response = requests.post(url, auth=authentication, verify=False)
 token = response.json()['Token']
 return token

def get_device_list():
 token = get_token()
 url = "https:// " + dna_center_url + "dna/intent/api/v1/network-device"
 header = {'x-auth-token': token, 'content-type': 'application/json'}
 response = requests.get(url, headers=header)
 device_list = response.json()
 print(json.dumps(device_list, indent=4))

if __name__ == "__main__":
 get_device_list()
```

get\_token()

network-device

x-auth-token

response.json()

response.xml

Authorization

#### NEW QUESTION 449

- (Exam Topic 3)

POST

/v1/meetings

Body Parameters

title

string Required

Meeting title. The title can be a maximum of 128 characters long.

agenda

string

Meeting agenda. The agenda can be a maximum of 2500 characters long.

password

string

Meeting password. Must conform to the site's password complexity settings. Read [password management](#) for details. If not specified, a random password conforming to the site's password rules will be generated automatically.

start

string Required

Date and time for the start of meeting in any [ISO 8601](#) compliant format. start cannot be before current date and time or after end. Duration between start and end cannot be shorter than 10 minutes or longer than 24 hours.

end

string Required

Date and time for the end of meeting in any [ISO 8601](#) compliant format. end cannot be before current date and time or before start. Duration between start and end cannot be shorter than 10 minutes or longer than 24 hours.

Refer to the exhibit. A bespoke meeting booking system must be integrated with Cisco Webex so that meetings are created automatically. Drag and drop the code from the bottom onto the box where the code is missing to create a sample meeting. Not all options are used.



```
import requests, json

[] = 'eyJhbGc ... yJbN8'

headers = {
 'Authorization': f'Bearer {token}',
 'Content-Type': 'application/json'
}

payload = {
 "title": "DevNet Webex Discussion",
 "password": "AGrtgl234",
 "start": "2020-11-10T15:00:00Z",
 "end": "2020-11-10T17:00:00Z",
 "enabledAutoRecordMeeting": False,
 "allowAnyUserToBeCoHost": False
}

response = requests.request(" [] ", f'{BASE_URL}/ [] ',
 headers=headers, data=json.dumps([]))
print(response.text.encode('utf8'))
```

payload	PUT	token
vl/meeting	vl/meetings	POST

- A. Mastered  
 B. Not Mastered

Answer: A

Explanation:

```
import requests, json

token = 'eyJhbGc ... yJbN8'

headers = {
 'Authorization': f'Bearer {token}',
 'Content-Type': 'application/json'
}

payload = {
 "title": "DevNet Webex Discussion",
 "password": "AGrtgl234",
 "start": "2020-11-10T15:00:00Z",
 "end": "2020-11-10T17:00:00Z",
 "enabledAutoRecordMeeting": False,
 "allowAnyUserToBeCoHost": False
}

response = requests.request(" POST ", f'{BASE_URL}/ vl/meetings ',
 headers=headers, data=json.dumps(payload))
print(response.text.encode('utf8'))
```

payload	PUT	token
vl/meeting	vl/meetings	POST

NEW QUESTION 451

.....

## Thank You for Trying Our Product

### We offer two products:

1st - We have Practice Tests Software with Actual Exam Questions

2nd - Questions and Answers in PDF Format

### 200-901 Practice Exam Features:

- \* 200-901 Questions and Answers Updated Frequently
- \* 200-901 Practice Questions Verified by Expert Senior Certified Staff
- \* 200-901 Most Realistic Questions that Guarantee you a Pass on Your First Try
- \* 200-901 Practice Test Questions in Multiple Choice Formats and Updates for 1 Year

**100% Actual & Verified — Instant Download, Please Click**  
**[Order The 200-901 Practice Test Here](#)**