

Exam Questions NSE5_FMG-7.0

Fortinet NSE 5 - FortiManager 7.0

https://www.2passeasy.com/dumps/NSE5_FMG-7.0/



NEW QUESTION 1

- (Topic 1)

View the following exhibit, which shows the Download Import Report:

```
Start to import config from devices(Remote-FortiGate) vdom (root)to adom (MyADOM),
Package(Remote-FortiGate)
"firewall address", SUCCESS,"(name=REMOTE_SUBNET,oid=580, new object)"
"firewall policy",SUCCESS,"(name=1, oid=990,new object)"
"firewall policy",FAIL,"(name=ID:2(#2), oid=991, reason=interface(interface binding
Contradiction.detail:any<-port6)binding fail)"
```

Why it is failing to import firewall policy ID 2?

- A. The address object used in policy ID 2 already exist in ADON database with any as interface association and conflicts with address object interface association locally on the FortiGate
- B. Policy ID 2 is configured from interface any to port6 FortiManager rejects to import this policy because any interface does not exist on FortiManager
- C. Policy ID 2 does not have ADOM Interface mapping configured on FortiManager
- D. Policy ID 2 for this managed FortiGate already exists on FortiManager in policy package named Remote-FortiGate.

Answer: A

Explanation:

FortiManager_6.4_Study_Guide-Online – page 331 & 332

NEW QUESTION 2

- (Topic 1)

An administrator would like to create an SD-WAN using central management in the Training ADOM.

To create an SD-WAN using central management, which two steps must be completed? (Choose two.)

- A. Specify a gateway address when you create a default SD-WAN static route
- B. Enable SD-WAN central management in the Training ADOM
- C. Configure and install the SD-WAN firewall policy and SD-WAN static route before installing the SD-WANtemplate settings
- D. Remove all the interface references such as routes or policies that will be a part of SD-WAN member interfaces

Answer: BD

Explanation:

Reference: <https://docs.fortinet.com/document/fortigate/6.0.0/cookbook/676493/removing-existing-configuration-references-to-interfaces>

NEW QUESTION 3

- (Topic 1)

An administrator, Trainer, who is assigned the Super_User profile, is trying to approve a workflow session that was submitted by another administrator, Student. However, Trainer is unable to approve the workflow session.

What can prevent an admin account that has Super_User rights over the device from approving a workflow session?

Session List

View Diff					
<input type="checkbox"/>	ID	Name	User	Date Submitt...	Approved/To... Comments
<input checked="" type="checkbox"/>	1	Firewall p..	Student	2017-06-01...	0/1 firewall policies

+ Add Comment

[Student] - 2017-06-01 13:31:35
firewall policies
[Student] - 2017-06-01 16:29:27

- A. Trainer is not a part of workflow approval group
- B. Trainer does not have full rights over this ADOM
- C. Trainer must close Student's workflow session before approving the request
- D. Student, who submitted the workflow session, must first self-approve the request

Answer: A

Explanation:

Reference: https://help.fortinet.com/fmgr/50hlp/56/5-6-1/FMG-FAZ/0800_ADOMs/1800_Workflow/0600_Workflow%20sessions.htm

NEW QUESTION 4

- (Topic 1)

View the following exhibit.

Starting Log (Run the device)

Start installing

```
Local-FortiGate $ config user device
Local-FortiGate (device) $ edit "mydevice"
new entry 'mydevice' added
Local-FortiGate (mydevice) $ next
MAC address can not be 0
Node_check_object fail!for mac 00:00:00:00:00:00
Attribute 'mac' value '00:00:00:00:00:00' checkingfail -33
Command fail. Return code 1
Local-FortiGate (device) $ end
...
Local-FortiGate $ config firewall policy
Local-FortiGate (policy) $ edit 2
New entry '2' added
Local-FortiGate (2) $ set name "Device_policy"
Local-FortiGate (2) $ set uuid 64...
Local-FortiGate (2) $ set srcintf "port3"
Local-FortiGate (2) $ set dstintf "port1"
Local-FortiGate (2) $ set srcaddr "all"
Local-FortiGate (2) $ set dstaddr "all"
Local-FortiGate (2) $ set action accept
Local-FortiGate (2) $ set schedule "always"
Local-FortiGate (2) $ set service "ALL"
Local-FortiGate (2) $ set devices "mydevice"
Entry not found in datasource
Value parse error before 'mydevice'
Command fail. Return code -3
Local-FortiGate (2) $ set nat enable
Local-FortiGate (2) $ next
Local-FortiGate (policy) $ end
...
```

Which statement is true regarding this failed installation log?

- A. Policy ID 2 is installed without a source address
- B. Policy ID 2 will not be installed
- C. Policy ID 2 is installed in disabled state
- D. Policy ID 2 is installed without a source device

Answer: D

NEW QUESTION 5

- (Topic 1)

What are two outcomes of ADOM revisions? (Choose two.)

- A. ADOM revisions can significantly increase the size of the configuration backups.
- B. ADOM revisions can save the current size of the whole ADOM
- C. ADOM revisions can create System Checkpoints for the FortiManager configuration
- D. ADOM revisions can save the current state of all policy packages and objects for an ADOM

Answer: AD

Explanation:

Reference: <https://docs2.fortinet.com/document/fortimanager/6.0.0/best-practices/101837/adom-revisions>

NEW QUESTION 6

- (Topic 1)

Which three settings are the factory default settings on FortiManager? (Choose three.)

- A. Username is admin
- B. Password is fortinet
- C. FortiAnalyzer features are disabled
- D. Reports and Event Monitor panes are enabled
- E. port1 interface IP address is 192.168.1.99/24

Answer: ACE

NEW QUESTION 7

- (Topic 1)

An administrator with the Super_User profile is unable to log in to FortiManager because of an authentication failure message. Which troubleshooting step should you take to resolve the issue?

- A. Make sure FortiManager Access is enabled in the administrator profile
- B. Make sure Offline Mode is disabled
- C. Make sure the administrator IP address is part of the trusted hosts.
- D. Make sure ADOMs are enabled and the administrator has access to the Global ADOM

Answer: C

Explanation:

Even if a user entered the correct userid/password, the FMG denies access if a user is logging in from an untrusted source IP subnets.

Reference: <https://docs.fortinet.com/document/fortimanager/6.0.3/administration-guide/107347/trusted-hosts>

NEW QUESTION 8

- (Topic 1)

An administrator has assigned a global policy package to a new ADOM called ADOM1. What will happen if the administrator tries to create a new policy package in ADOM1?

- A. When creating a new policy package, the administrator can select the option to assign the global policy package to the new policy package
- B. When a new policy package is created, the administrator needs to reapply the global policy package to ADOM1.
- C. When a new policy package is created, the administrator must assign the global policy package from the global ADOM.
- D. When the new policy package is created, FortiManager automatically assigns the global policy package to the new policy package.

Answer: D

Explanation:

Reference: https://help.fortinet.com/fmgr/50hlp/56/5-6-2/FortiManager_Admin_Guide/1200_Policy%20and%20Objects/0800_Managing%20policy%20packages/1200_Assign%20a%20global%20policy%20package.htm

NEW QUESTION 9

- (Topic 1)

Which configuration setting for FortiGate is part of a device-level database on FortiManager?

- A. VIP and IP Pools
- B. Firewall policies
- C. Security profiles
- D. Routing

Answer: D

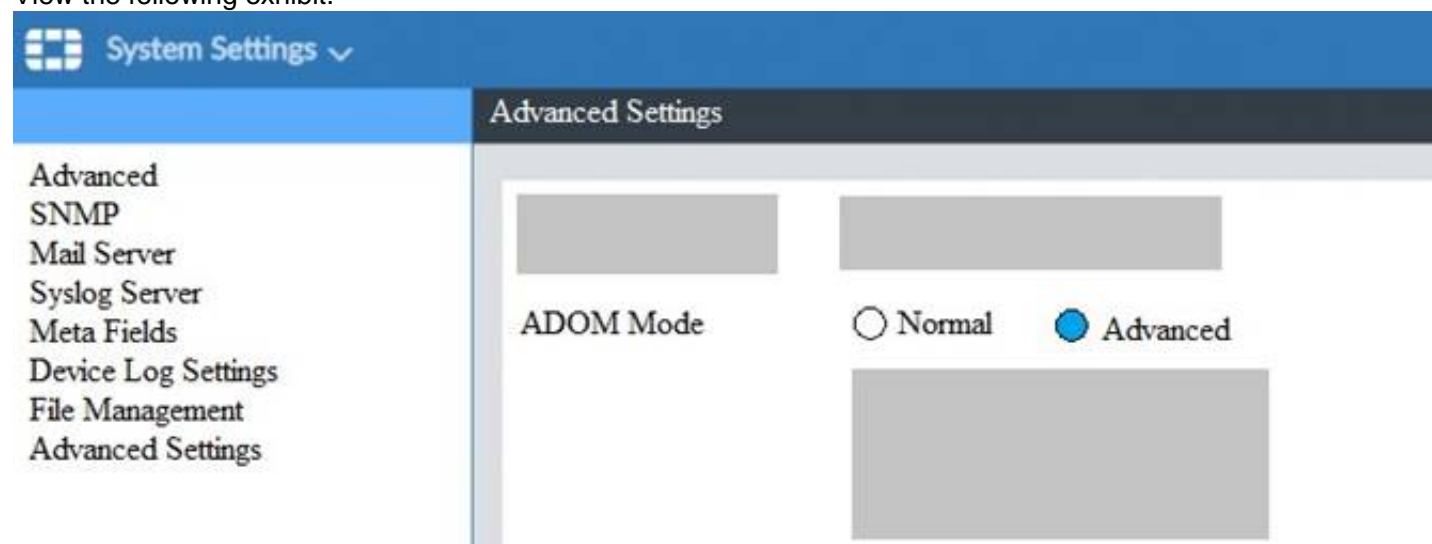
Explanation:

The FortiManager stores the FortiGate configuration details in two distinct databases. The device-level database includes configuration details related to device-level settings, such as interfaces, DNS, routing, and more. The ADOM-level database includes configuration details related to firewall policies, objects, and security profiles.

NEW QUESTION 10

- (Topic 1)

View the following exhibit.



What is the purpose of setting ADOM Mode to Advanced?

- A. The setting allows automatic updates to the policy package configuration for a managed device
- B. The setting enables the ADOMs feature on FortiManager
- C. This setting allows you to assign different VDOMs from the same FortiGate to different ADOMs.
- D. The setting disables concurrent ADOM access and adds ADOM locking

Answer: C

Explanation:

Reference: <https://docs.fortinet.com/document/fortianalyzer/7.0.0/administration-guide/66530/adom-device-modes>

NEW QUESTION 10

- (Topic 2)
Refer to the exhibit.

Edit Address

Address Name

LAN

Type

IP/Netmask

IP/Netmask

192.168.1.0/255.255.255.0

Interface

any

Static Route Configuration

OFF

Comments

Add to Groups

Click to add ...

Advanced Options >

Per-Device Mapping

ON

+ Add

Edit

Delete

	Name	VDOM	Details
<input type="checkbox"/>	Remote-FortiGate	root	IP/Netmask:10.200.1.0/255.255.255.0

An administrator has created a firewall address object, Training which is used in the Local- FortiGate policy package. When the installation operation is performed, which IP/Netmask will be installed on the Local-FortiGate, for the Training firewall address object?

- A. 192.168.0.1/24
- B. 10.200.1.0/24
- C. It will create a firewall address group on Local-FortiGate with 192.168.0.1/24 and 10.0.1.0/24 object values.
- D. Local-FortiGate will automatically choose an IP/Netmask based on its network interface settings.

Answer: A

NEW QUESTION 14

- (Topic 2)
An administrator configures a new firewall policy on FortiManager and has not yet pushed the changes to the managed FortiGate. In which database will the configuration be saved?

- A. Device-level database
- B. Revision history database
- C. ADOM-level database
- D. Configuration-level database

Answer: C

Explanation:
<https://kb.fortinet.com/kb/documentLink.do?externalID=FD47942>

NEW QUESTION 15

- (Topic 2)
Refer to the exhibit.

Create New ADOM

Name

Training

Type

FortiGate

6.2

6.0

5.6

5.4

Comments

Devices

+ Select Device

▲ Name

IP Address

Platform

Click to select devices for this ADOM.

Mode

☒ Normal

☐ Backup

Which two statements about an ADOM set in Normal mode on FortiManager are true? (Choose two.)

- A. It supports the FortiManager script feature
- B. It allows making configuration changes for managed devices on FortiManager panes
- C. FortiManager automatically installs the configuration difference in revisions on the managed FortiGate
- D. You cannot assign the same ADOM to multiple administrators

Answer: AB

Explanation:

"FortiGate units in the ADOM will query their own configuration every 5 seconds. If there has been a configuration change, the FortiGate unit will send a diff revision on the change to the FortiManager using the FGFM protocol."

NEW QUESTION 20

- (Topic 2)

What does a policy package status of Conflict indicate?

- A. The policy package reports inconsistencies and conflicts during a Policy Consistency Check.
- B. The policy package does not have a FortiGate as the installation target.
- C. The policy package configuration has been changed on both FortiManager and the managed device independently.
- D. The policy configuration has never been imported after a device was registered on FortiManager.

Answer: C

NEW QUESTION 25

- (Topic 3)

An administrator would like to authorize a newly-installed AP using AP Manager. What steps does the administrator need to perform to authorize an AP?

- A. Authorize the new AP using AP Manager and wait until the change is updated on the FortiA
- B. Changes to the AP's state do not require installation.
- C. Changes to the AP's state must be performed directly on the managed FortiGate.
- D. Authorize the new AP using AP Manager and install the policy package changes on the managed FortiGate.
- E. Authorize the new AP using AP Manager and install the device level settings on the managed FortiGate.

Answer: D

NEW QUESTION 30

- (Topic 3)

What does a policy package status of Modified indicate?

- A. FortiManager is unable to determine the policy package status
- B. The policy package was never imported after a device was registered on FortiManager
- C. The Policy configuration has been changed on a managed device and changes have not yet been imported into FortiManager
- D. The Policy package configuration has been changed on FortiManager and changes have not yet been installed on the managed device.

Answer: D

Explanation:

Reference: http://help.fortinet.com/fmgr/50hlp/56/5-6-1/FortiManager_Admin_Guide/1200_Policy%20and%20Objects/0800_Managing%20policy%20packages/2200_Policy%20Package%20Installation%20targets.htm

NEW QUESTION 35

- (Topic 3)

Refer to the exhibit.

The screenshot displays the FortiManager configuration interface. The 'Managed FortiGate devices' section shows a connectivity diagram with a green circle labeled '2'. The 'Installation targets' section lists various targets, including 'Local-FortiGate' and 'Remote-FortiGate'. The 'Policy package' section shows a table of policies with columns for 'Install On', 'Name', 'From', and 'To'.

Install On	Name	From	To
1	Ping_Access	port3	port1
2	Web	port3	port1
3	Source_Device	port3	port1
4	Implicit Deny	any	any

Given the configuration shown in the exhibit, what can you conclude from the installation targets in the Install On column? (Choose two)

- A. Policy seq # 2 will not be installed on the Local-FortiGate root VDOM because there is no root VDOM in the Installation Target
- B. Policy seq # 3 will be installed on all managed devices and VDOMs that are listed under Installation Targets
- C. Policy seq # 1 will be installed on the Remote-FortiGate root[NAT] and Student[NAT] VDOMs only
- D. Policy 3 will be installed on all FortiGate devices and vdom belongs to the ADOM
- E. Policy seq # 3 will be skipped because no installation targets are specified

Answer: BC

NEW QUESTION 36

- (Topic 3)
 View the following exhibit:

The screenshot shows the 'Import Device - Local-FortiGate [root]' dialog. It contains a table mapping device interfaces to ADOM interfaces. The 'Device Interface' column lists 'port1' and 'port3'. The 'ADOM Interface' column lists 'WAN' and 'LAN'. There is a checkbox for 'Add mappings for all unused device interfaces' and 'Next >' and 'Cancel' buttons.

Device Interface	ADOM Interface
port1	WAN
port3	LAN

An administrator used the value shown in the exhibit when importing a Local-FortiGate into FortiManager. What name will be used to display the firewall policy for port1?

- A. port1 on FortiGate and WAN on FortiManager
- B. port1 on both FortiGate and FortiManager
- C. WAN zone on FortiGate and WAN zone on FortiManager
- D. WAN zone on FortiGate and WAN interface on FortiManager

Answer: A

NEW QUESTION 40

- (Topic 3)
 Which configuration setting for FortiGate is part of an ADOM-level database on FortiManager?

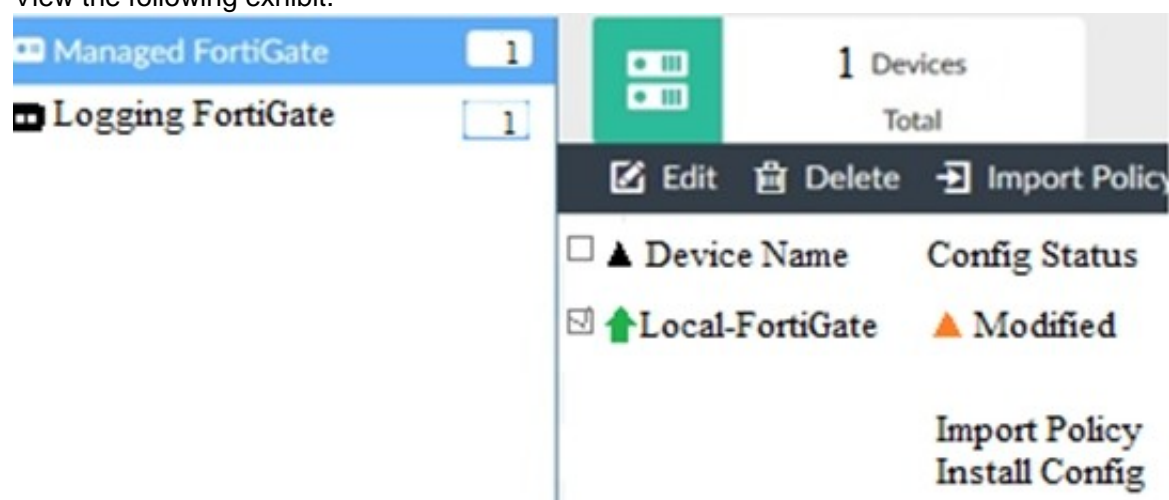
- A. NSX-T Service Template
- B. Security profiles
- C. SNMP
- D. Routing

Answer: D

NEW QUESTION 45

- (Topic 3)

View the following exhibit.



When using Install Config option to install configuration changes to managed FortiGate, which of the following statements are true? (Choose two.)

- A. Once initiated, the install process cannot be canceled and changes will be installed on the managed device
- B. Will not create new revision in the revision history
- C. Installs device-level changes to FortiGate without launching the Install Wizard
- D. Provides the option to preview configuration changes prior to installing them

Answer: AC

NEW QUESTION 46

- (Topic 3)

Which two settings are required for FortiManager Management Extension Applications (MEA)? (Choose two.)

- A. When you configure MEA, you must open TCP or UDP port 540.
- B. You must open the ports to the Fortinet registry
- C. You must create a MEA special policy on FortiManager using the super user profile
- D. The administrator must have the super user profile.

Answer: CD

NEW QUESTION 48

- (Topic 3)

View the following exhibit.

Start to import config from device(Local-FortiGate) vdom(root) to adom(My_ADOM), package(Local-Fortigate_root)

"firewall service category",SKIPPED,"(name=General,oid=697, DUPLICATE)"

"firewall address", SUCCESS,"(name=LOCAL_SUBNET,oid=684,new object)"

"firewall service custom",SUCCESS,"(name=ALL,oid=863,update previous object)"

"firewall policy",SUCCESS,"(name=1,oid-1090, new object)"

Which one of the following statements is true regarding the object named ALL?

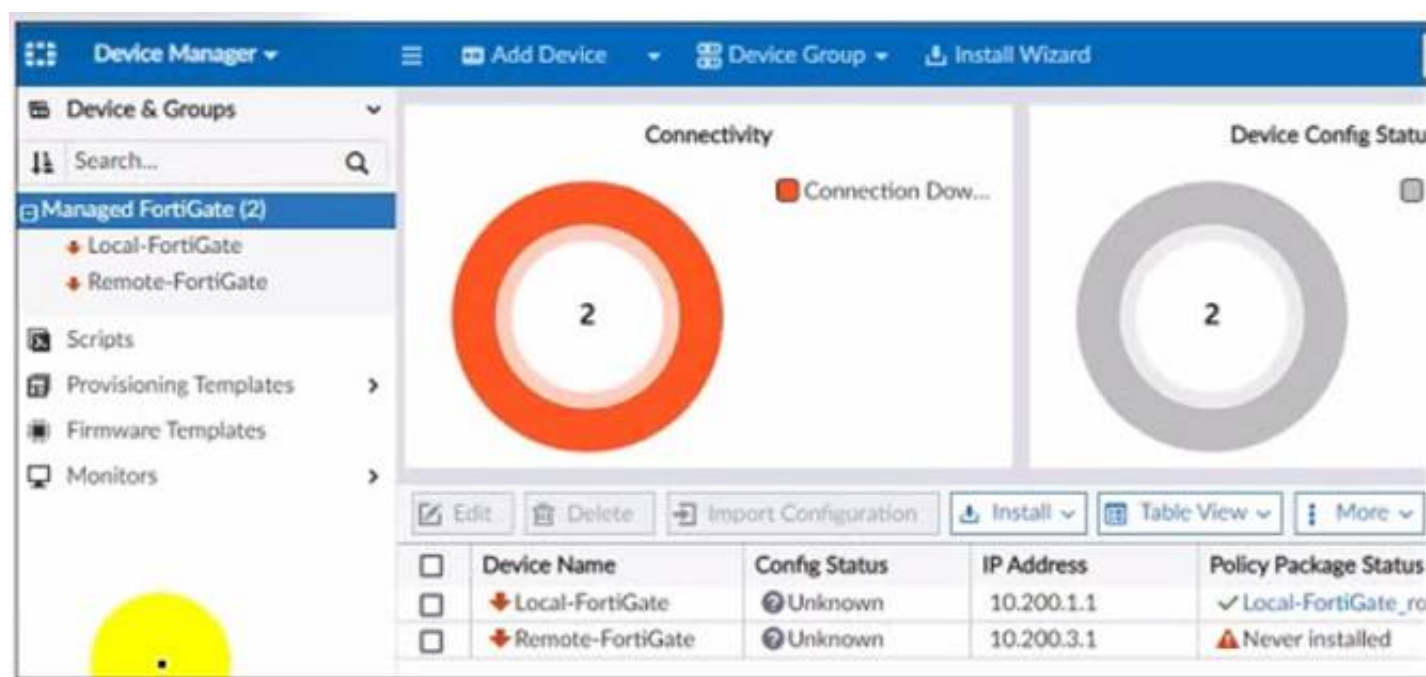
- A. FortiManager updated the object ALL using FortiGate's value in its database
- B. FortiManager updated the object ALL using FortiManager's value in its database
- C. FortiManager created the object ALL as a unique entity in its database, which can be only used by this managed FortiGate.
- D. FortiManager installed the object ALL with the updated value.

Answer: A

NEW QUESTION 51

- (Topic 3)

Refer to the exhibit.



A junior administrator is troubleshooting a FortiManager connectivity issue that is occurring with managed FortiGate devices. Given the FortiManager device manager settings shown in the exhibit, what can you conclude from the exhibit?

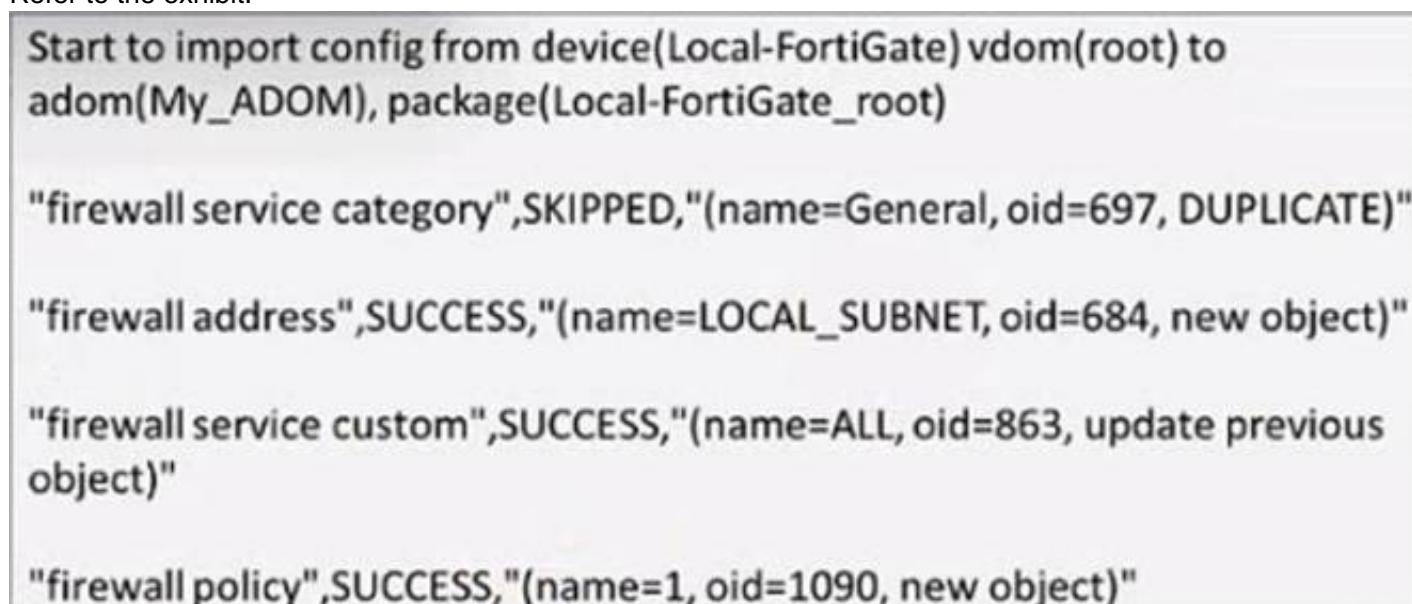
- A. The administrator had restored the FortiManager configuration file
- B. The administrator must refresh both devices to restore connectivity
- C. FortiManager test internet connectivity therefore, both devices appear to be down
- D. The administrator can reclaim the FGFM tunnel to get both devices online

Answer: C

NEW QUESTION 56

- (Topic 3)

Refer to the exhibit.



Given the configuration shown in the exhibit, how did FortiManager handle the service category named General?

- A. FortiManager ignored the firewall service category General but created a new service category in its database.
- B. FortiManager ignored the firewall service category general and deleted the duplicate value in its database
- C. FortiManager ignored the firewall service category General and updated the FortiGate duplicate value in the FortiGate database.
- D. FortiManager ignored the firewall service category General and did not update its database with the value

Answer: C

NEW QUESTION 59

- (Topic 3)

What does the diagnose dvm check-integrity command do? (Choose two.)

- A. Internally upgrades existing ADOMs to the same ADOM version in order to clean up and correct the ADOM syntax
- B. Verifies and corrects unregistered, registered, and deleted device states
- C. Verifies and corrects database schemas in all object tables
- D. Verifies and corrects duplicate VDOM entries

Answer: BD

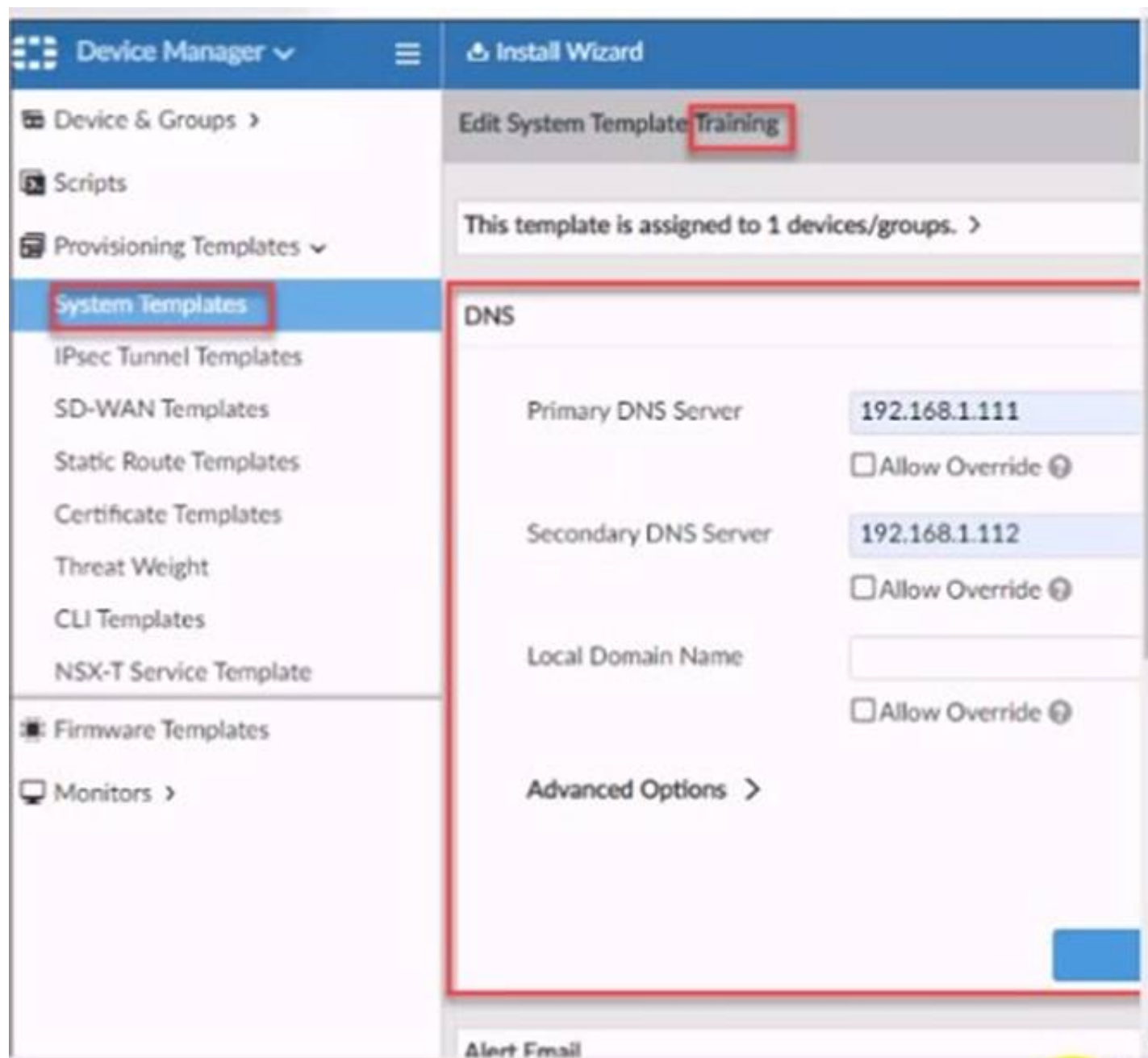
Explanation:

* 6.2 Study Guide page 305 verify and correct parts of the device manager databases, including:– inconsistent device-to-group and group-to-ADOM memberships– unregistered, registered, and deleted device states– device lock statuses– duplicate VDOM entries

NEW QUESTION 63

- (Topic 3)

Refer to the exhibit.



According to the error message why is FortiManager failing to add the FortiAnalyzer device?

- A. The administrator must turn off the Use Legacy Device login and add the FortiAnalyzer device to the same network as Forti-Manager
- B. The administrator must select the Forti-Manager administrative access checkbox on the FortiAnalyzer management interface
- C. The administrator must use the Add Model Device section and discover the FortiAnalyzer device
- D. The administrator must use the correct user name and password of the FortiAnalyzer device

Answer: C

NEW QUESTION 67

- (Topic 3)

Which of the following statements are true regarding schedule backup of FortiManager? (Choose two.)

- A. Backs up all devices and the FortiGuard database.
- B. Does not back up firmware images saved on FortiManager
- C. Supports FTP, SCP, and SFTP
- D. Can be configured from the CLI and GUI

Answer: BC

NEW QUESTION 71

- (Topic 3)

An administrator would like to create an SD-WAN using central management. What steps does the administrator need to perform to create an SD-WAN using central management?

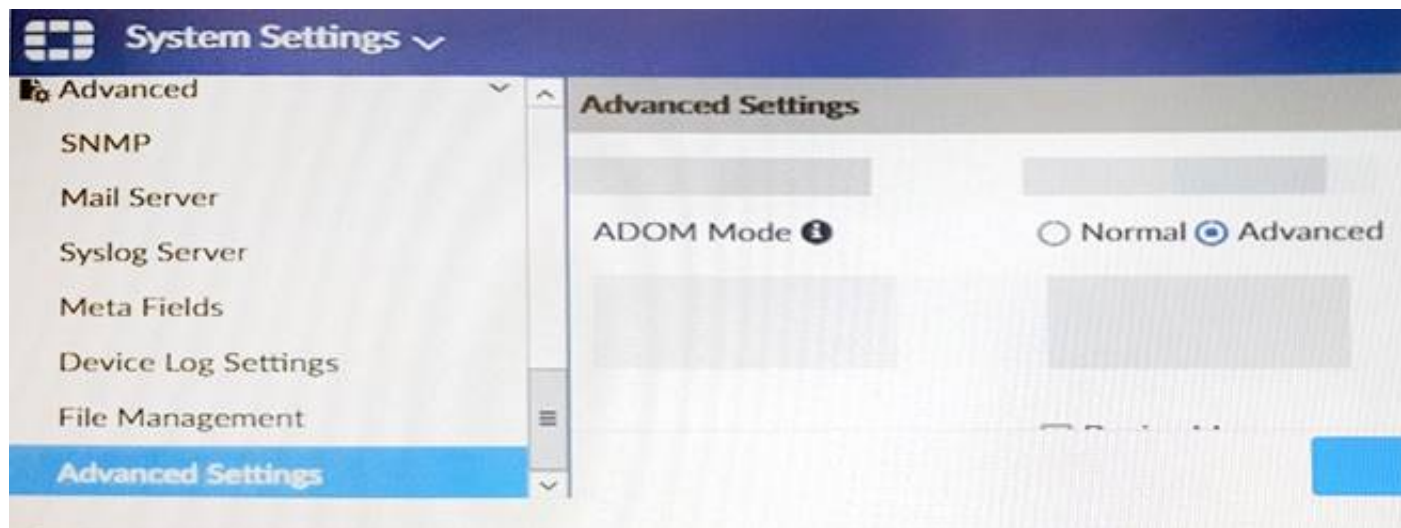
- A. First create an SD-WAN firewall policy, add member interfaces to the SD-WAN template and create a static route
- B. You must specify a gateway address when you create a default static route
- C. Remove all the interface references such as routes or policies
- D. Enable SD-WAN central management in the ADOM, add member interfaces, create a static route and SDWAN firewall policies.

Answer: D

NEW QUESTION 73

- (Topic 3)

View the following exhibit.



Which of the following statements are true based on this configuration setting? (Choose two.)

- A. This setting will enable the ADOMs feature on FortiManager.
- B. This setting is applied globally to all ADOMs.
- C. This setting will allow assigning different VDOMs from the same FortiGate to different ADOMs.
- D. This setting will allow automatic updates to the policy package configuration for a managed device.

Answer: BC

NEW QUESTION 78

.....

THANKS FOR TRYING THE DEMO OF OUR PRODUCT

Visit Our Site to Purchase the Full Set of Actual NSE5_FMG-7.0 Exam Questions With Answers.

We Also Provide Practice Exam Software That Simulates Real Exam Environment And Has Many Self-Assessment Features. Order the NSE5_FMG-7.0 Product From:

https://www.2passeasy.com/dumps/NSE5_FMG-7.0/

Money Back Guarantee

NSE5_FMG-7.0 Practice Exam Features:

- * NSE5_FMG-7.0 Questions and Answers Updated Frequently
- * NSE5_FMG-7.0 Practice Questions Verified by Expert Senior Certified Staff
- * NSE5_FMG-7.0 Most Realistic Questions that Guarantee you a Pass on Your FirstTry
- * NSE5_FMG-7.0 Practice Test Questions in Multiple Choice Formats and Updatesfor 1 Year