

CheckPoint

Exam Questions 156-215.81

Check Point Certified Security Administrator R81



NEW QUESTION 1

Which of the following is NOT an authentication scheme used for accounts created through SmartConsole?

- A. RADIUS
- B. Check Point password
- C. Security questions
- D. SecurID

Answer: C

NEW QUESTION 2

Which of the following are types of VPN communities?

- A. Pentagon, star, and combination
- B. Star, octagon, and combination
- C. Combined and star
- D. Meshed, star, and combination

Answer: D

NEW QUESTION 3

With URL Filtering, what portion of the traffic is sent to the Check Point Online Web Service for analysis?

- A. The complete communication is sent for inspection.
- B. The IP address of the source machine.
- C. The end user credentials.
- D. The host portion of the URL.

Answer: D

Explanation:

"A local cache that gives answers to 99% of URL categorization requests. When the cache does not have an answer, only the host name is sent to the Check Point Online Web Service for categorization. " https://downloads.checkpoint.com/fileserver/SOURCE/direct/ID/24853/FILE/CP_R77_ApplicationControlURL

NEW QUESTION 4

What is the purpose of the Stealth Rule?

- A. To prevent users from directly connecting to a Security Gateway.
- B. To reduce the number of rules in the database.
- C. To reduce the amount of logs for performance issues.
- D. To hide the gateway from the Internet.

Answer: A

NEW QUESTION 5

The default shell of the Gaia CLI is cli.sh. How do you change from the cli.sh shell to the advanced shell to run Linux commands?

- A. Execute the command 'enable' in the cli.sh shell
- B. Execute the 'conf t' command in the cli.sh shell
- C. Execute the command 'expert' in the cli.sh shell
- D. Execute the 'exit' command in the cli.sh shell

Answer: C

NEW QUESTION 6

In a Distributed deployment, the Security Gateway and the Security Management software are installed on what platforms?

- A. Different computers or appliances.
- B. The same computer or appliance.
- C. Both on virtual machines or both on appliances but not mixed.
- D. In Azure and AWS cloud environments.

Answer: A

Explanation:

"The Security Management ServerClosed (1) and the Security GatewayClosed (3) are installed on different computers, with a network connection (2)."
https://sc1.checkpoint.com/documents/R81/WebAdminGuides/EN/CP_R81_Installation_and_Upgrade_Guide/T

NEW QUESTION 7

Which of the following is NOT a component of a Distinguished Name?

- A. Common Name
- B. Country
- C. User container

D. Organizational Unit

Answer: C

NEW QUESTION 8

Due to high CPU workload on the Security Gateway, the security administrator decided to purchase a new multicore CPU to replace the existing single core CPU. After installation, is the administrator required to perform any additional tasks?

- A. Go to clash-Run cpstop | Run cpstart
- B. Go to clash-Run cpconfig | Configure CoreXL to make use of the additional Cores | Exit cpconfig | Reboot Security Gateway
- C. Administrator does not need to perform any tas
- D. Check Point will make use of the newly installed CPU and Cores
- E. Go to clash-Run cpconfig | Configure CoreXL to make use of the additional Cores | Exit cpconfig | Reboot Security Gateway | Install Security Policy

Answer: B

NEW QUESTION 9

The Network Operations Center administrator needs access to Check Point Security devices mostly for troubleshooting purposes. You do not want to give her access to the expert mode, but she still should be able to run tcpdump. How can you achieve this requirement?

- A. Add tcpdump to CLISH using add command.Create a new access role.Add tcpdump to the role.Create new user with any UID and assign role to the user.
- B. Add tcpdump to CLISH using add command.Create a new access role.Add tcpdump to the role.Createnew user with UID 0 and assign role to the user.
- C. Create a new access role.Add expert-mode access to the role.Create new user with UID 0 and assign role to the user.
- D. Create a new access role.Add expert-mode access to the role.Create new user with any UID and assign role to the user.

Answer: A

NEW QUESTION 10

Which statement is NOT TRUE about Delta synchronization?

- A. Using UDP Multicast or Broadcast on port 8161
- B. Using UDP Multicast or Broadcast on port 8116
- C. Quicker than Full sync
- D. Transfers changes in the Kernel tables between cluster members

Answer: A

NEW QUESTION 10

Administrator Dave logs into R80 Management Server to review and makes some rule changes. He notices that there is a padlock sign next to the DNS rule in the Rule Base.

No.	Name	Source	Destination	VPN	Services & Applications	Action	Track	Install On
1	NetBIOS Noise	* Any	* Any	* Any	NBT	Drop	- None	* Policy Targets
2	Management	Net_10.28.0.0	GW-R7730	* Any	https ssh	Accept	Log	* Policy Targets
3	Stealth	* Any	GW-R7730	* Any	* Any	Drop	Log	* Policy Targets
4	 DNS	Net_10.28.0.0	* Any	* Any	* Any	Accept	Log	* Policy Targets
5	Web	Net_10.28.0.0	* Any	* Any	nntp https	Accept	Log	* Policy Targets
6	DMZ Access	Net_10.28.0.0	DMZ_Net_192.0.2.0	* Any	ftp	Accept	Log	* Policy Targets
7	Cleanup rule	* Any	* Any	* Any	* Any	Drop	Log	* Policy Targets

What is the possible explanation for this?

- A. DNS Rule is using one of the new feature of R80 where an administrator can mark a rule with the padlock icon to let other administrators know it is important.
- B. Another administrator is logged into the Management and currently editing the DNS Rule.
- C. DNS Rule is a placeholder rule for a rule that existed in the past but was deleted.
- D. This is normal behavior in R80 when there are duplicate rules in the Rule Base.

Answer: B

NEW QUESTION 15

URL Filtering employs a technology, which educates users on web usage policy in real time. What is the name of that technology?

- A. WebCheck
- B. UserCheck
- C. Harmony Endpoint
- D. URL categorization

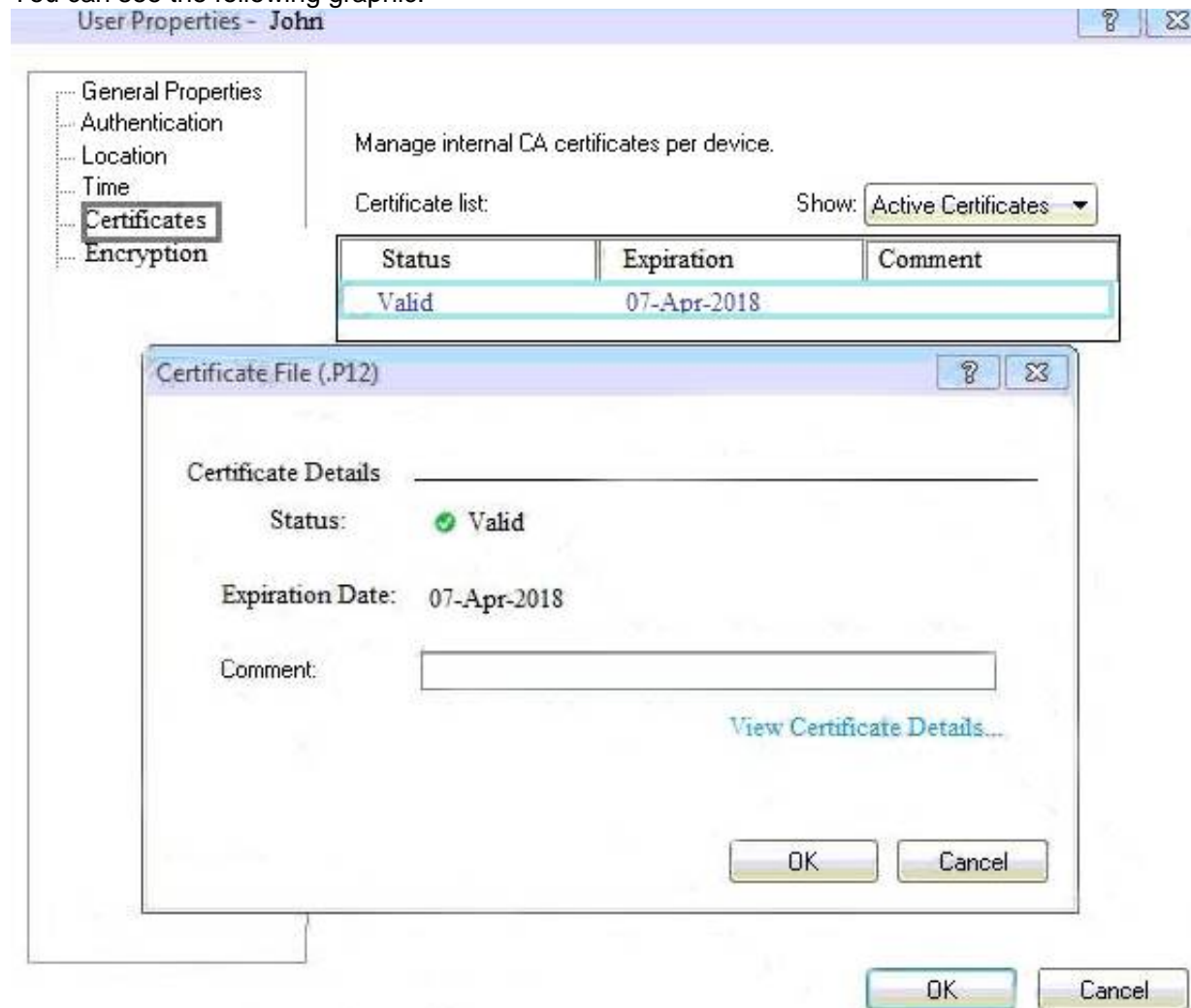
Answer: B

Explanation:

UserCheck alerts users while attempting to browse a suspicious/blocked or otherwise policy-limited website through a message in their web browsers shown before the actual page loads.

NEW QUESTION 20

You can see the following graphic:



What is presented on it?

- A. Properties of personal .p12 certificate file issued for user John.
- B. Shared secret properties of John's password.
- C. VPN certificate properties of the John's gateway.
- D. Expired .p12 certificate properties for user John.

Answer: A

NEW QUESTION 23

Fill in the blank: When LDAP is integrated with Check Point Security Management, it is then referred to as _____.

- A. User Center
- B. User Administration
- C. User Directory
- D. UserCheck

Answer: C

Explanation:

User Directory lets you configure:

High Availability, to duplicate user data across multiple servers for backup. See Account Units and High Availability.

Multiple Account Units, for distributed databases.

Define LDAP Account Units, for encrypted User Directory connections. See Modifying the LDAP Server. Profiles, to support multiple LDAP vendors. See User Directory Profiles. https://sc1.checkpoint.com/documents/R81/WebAdminGuides/EN/CP_R81_SecurityManagement_AdminGuide

NEW QUESTION 28

Which path below is available only when CoreXL is enabled?

- A. Slow path
- B. Firewall path
- C. Medium path
- D. Accelerated path

Answer: C

NEW QUESTION 32

What is the purpose of the Clean-up Rule?

- A. To log all traffic that is not explicitly allowed or denied in the Rule Base
- B. To clean up policies found inconsistent with the compliance blade reports
- C. To remove all rules that could have a conflict with other rules in the database
- D. To eliminate duplicate log entries in the Security Gateway

Answer: A

Explanation:

These are basic access control rules we recommend for all Rule Bases:

There is also an implied rule that drops all traffic, but you can use the Cleanup rule to log the traffic.

NEW QUESTION 34

From the Gaia web interface, which of the following operations CANNOT be performed on a Security Management Server?

- A. Verify a Security Policy
- B. Open a terminal shell
- C. Add a static route
- D. View Security Management GUI Clients

Answer: B

NEW QUESTION 39

Fill in the blank: In Security Gateways R75 and above, SIC uses _____ for encryption.

- A. AES-128
- B. AES-256
- C. DES
- D. 3DES

Answer: A

NEW QUESTION 44

Of all the Check Point components in your network, which one changes most often and should be backed up most frequently?

- A. SmartManager
- B. SmartConsole
- C. Security Gateway
- D. Security Management Server

Answer: D

NEW QUESTION 49

When a SAM rule is required on Security Gateway to quickly block suspicious connections which are not restricted by the Security Policy, what actions does the administrator need to take?

- A. SmartView Monitor should be opened and then the SAM rule/s can be applied immediately
- B. Installing policy is not required.
- C. The policy type SAM must be added to the Policy Package and a new SAM rule must be applied. Simply Publishing the changes applies the SAM rule on the firewall.
- D. The administrator must work on the firewall CLI (for example with SSH and PuTTY) and the command 'sam block' must be used with the right parameters.
- E. The administrator should open the LOGS & MONITOR view and find the relevant log
- F. Right clicking on the log entry will show the Create New SAM rule option.

Answer: A

Explanation:

A Security Gateway Closed with SAM enabled has Firewall rules to block suspicious connections that are not restricted by the security policy Closed. These rules are applied immediately (policy installation is not required).

https://sc1.checkpoint.com/documents/R81/WebAdminGuides/EN/CP_R81_LoggingAndMonitoring_AdminGu

NEW QUESTION 54

Using ClusterXL, what statement is true about the Sticky Decision Function?

- A. Can only be changed for Load Sharing implementations
- B. All connections are processed and synchronized by the pivot
- C. Is configured using cpconfig
- D. Is only relevant when using SecureXL

Answer: A

NEW QUESTION 56

Which is NOT an encryption algorithm that can be used in an IPSEC Security Association (Phase 2)?

- A. AES-GCM-256
- B. AES-CBC-256
- C. AES-GCM-128

Answer: B

NEW QUESTION 57

Which of the following is NOT a tracking option? (Select three)

- A. Partial log
- B. Log
- C. Network log
- D. Full log

Answer: ACD

NEW QUESTION 58

What are the advantages of a “shared policy” in R80?

- A. Allows the administrator to share a policy between all the users identified by the Security Gateway
- B. Allows the administrator to share a policy between all the administrators managing the Security Management Server
- C. Allows the administrator to share a policy so that it is available to use in another Policy Package
- D. Allows the administrator to install a policy on one Security Gateway and it gets installed on another managed Security Gateway

Answer: C

Explanation:

Ref: https://sc1.checkpoint.com/documents/R81/WebAdminGuides/EN/CP_R81_SecurityManagement_AdminGuide

NEW QUESTION 62

Fill in the blank: Service blades must be attached to a _____.

- A. Security Gateway
- B. Management container
- C. Management server
- D. Security Gateway container

Answer: A

NEW QUESTION 66

Session unique identifiers are passed to the web api using which http header option?

- A. X-chkp-sid
- B. Accept-Charset
- C. Proxy-Authorization
- D. Application

Answer: C

NEW QUESTION 70

Which command shows the installed licenses?

- A. cplic print
- B. print cplic
- C. fwlic print
- D. show licenses

Answer: A

NEW QUESTION 74

How do logs change when the "Accounting" tracking option is enabled on a traffic rule?

- A. Involved traffic logs will be forwarded to a log server.
- B. Provides log details view email to the Administrator.
- C. Involved traffic logs are updated every 10 minutes to show how much data has passed on the connection.
- D. Provides additional information to the connected user.

Answer: C

Explanation:

Accounting - Select this to update the log at 10 minutes intervals, to show how much data has passed in the connection: Upload bytes, Download bytes, and browse time. https://sc1.checkpoint.com/documents/R81/WebAdminGuides/EN/CP_R81_LoggingAndMonitoring_AdminGu

NEW QUESTION 77

Fill in the blanks: The _____ collects logs and sends them to the _____.

- A. Log server; Security Gateway
- B. Log server; security management server
- C. Security management server; Security Gateway
- D. Security Gateways; log server

Answer: D

Explanation:

Gateways send their logs to the log server.

NEW QUESTION 79

Which two Identity Awareness daemons are used to support identity sharing?

- A. Policy Activation Point (PAP) and Policy Decision Point (PDP)
- B. Policy Manipulation Point (PMP) and Policy Activation Point (PAP)
- C. Policy Enforcement Point (PEP) and Policy Manipulation Point (PMP)
- D. Policy Decision Point (PDP) and Policy Enforcement Point (PEP)

Answer: D

Explanation:

https://supportcenter.checkpoint.com/supportcenter/portal?eventSubmit_doGoviewsolutiondetails=&solutionid=

NEW QUESTION 83

The _____ software blade package uses CPU-level and OS-level sandboxing in order to detect and block malware.

- A. Next Generation Threat Prevention
- B. Next Generation Threat Emulation
- C. Next Generation Threat Extraction
- D. Next Generation Firewall

Answer: B

NEW QUESTION 86

The Gateway Status view in SmartConsole shows the overall status of Security Gateways and Software Blades. What does the Status Attention mean?

- A. Cannot reach the Security Gateway.
- B. The gateway and all its Software Blades are working properly.
- C. At least one Software Blade has a minor issue, but the gateway works.
- D. Cannot make SIC between the Security Management Server and the Security Gateway

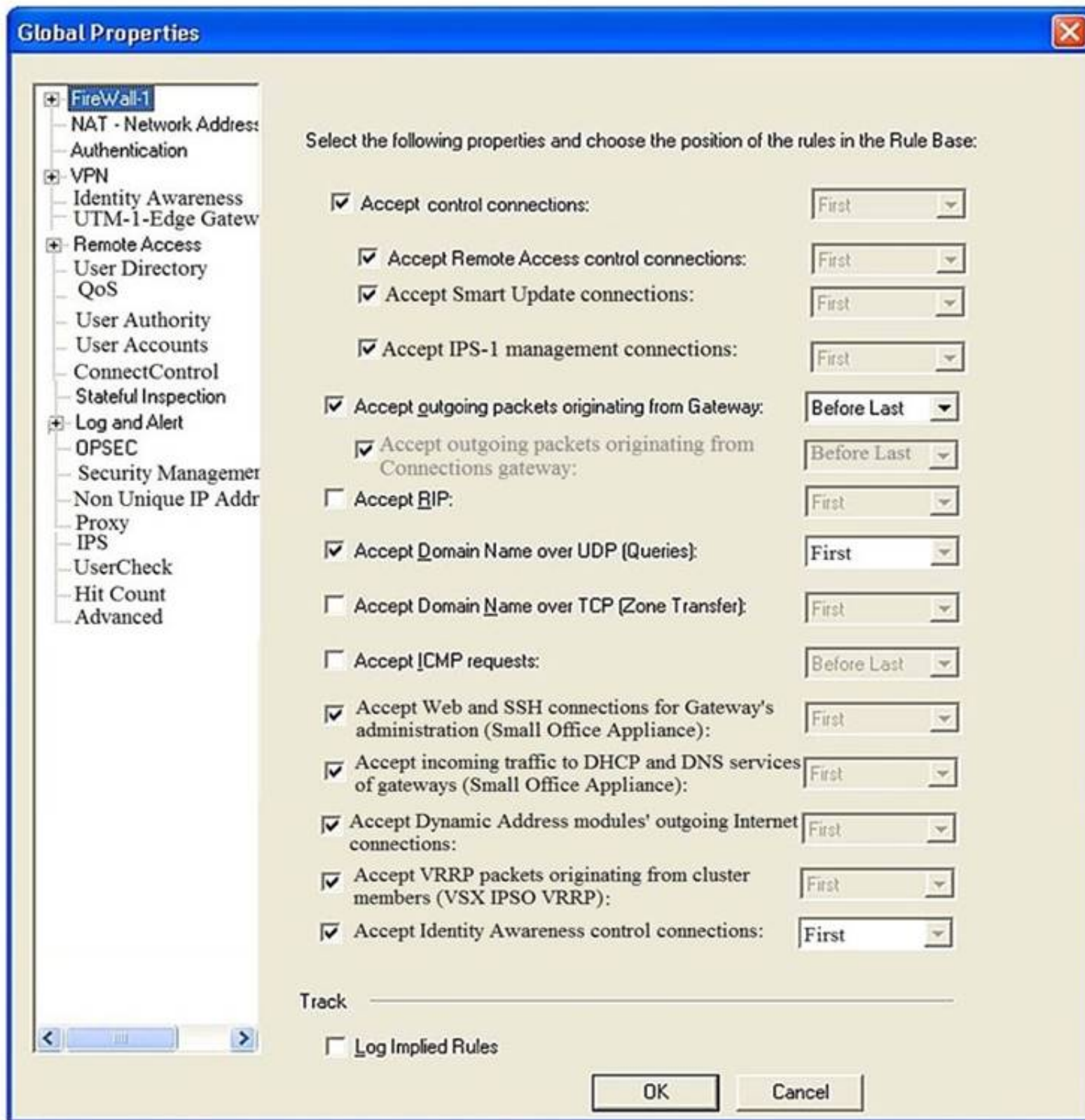
Answer: C

Explanation:

https://sc1.checkpoint.com/documents/R81/WebAdminGuides/EN/CP_R81_LoggingAndMonitoring_AdminGu

NEW QUESTION 88

Consider the Global Properties following settings:



The selected option "Accept Domain Name over UDP (Queries)" means:

- A. UDP Queries will be accepted by the traffic allowed only through interfaces with external anti-spoofing topology and this will be done before first explicit rule written by Administrator in a Security Policy.
- B. All UDP Queries will be accepted by the traffic allowed through all interfaces and this will be done before first explicit rule written by Administrator in a Security Policy.
- C. No UDP Queries will be accepted by the traffic allowed through all interfaces and this will be done before first explicit rule written by Administrator in a Security Policy.
- D. All UDP Queries will be accepted by the traffic allowed by first explicit rule written by Administrator in a Security Policy.

Answer: A

NEW QUESTION 93

Fill in the blank: Back up and restores can be accomplished through _____.

- A. SmartConsole, WebUI, or CLI
- B. WebUI, CLI, or SmartUpdate
- C. CLI, SmartUpdate, or SmartBackup
- D. SmartUpdate, SmartBackup, or SmartConsole

Answer: A

Explanation:

Backup and RestoreThese options let you: To back up a configuration:
 The Backup window opens.

NEW QUESTION 97

In HTTPS Inspection policy, what actions are available in the "Actions" column of a rule?

- A. "Inspect", "Bypass"
- B. "Inspect", "Bypass", "Categorize"
- C. "Inspect", "Bypass", "Block"
- D. "Detect", "Bypass"

Answer: A

Explanation:

https://sc1.checkpoint.com/documents/R81/WebAdminGuides/EN/CP_R81_SecurityManagement_AdminGuide

NEW QUESTION 98

Check Point licenses come in two forms. What are those forms?

- A. Central and Local.
- B. Access Control and Threat Prevention.
- C. On-premise and Public Cloud.
- D. Security Gateway and Security Management.

Answer: A

NEW QUESTION 101

In order to see real-time and historical graph views of Security Gateway statistics in SmartView Monitor, what feature needs to be enabled on the Security Gateway?

- A. Logging & Monitoring
- B. None - the data is available by default
- C. Monitoring Blade
- D. SNMP

Answer: C

Explanation:

https://sc1.checkpoint.com/documents/R81/WebAdminGuides/EN/CP_R81_NextGenSecurityGateway_Guide/T

NEW QUESTION 105

Which information is included in the “Extended Log” tracking option, but is not included in the “Log” tracking option?

- A. file attributes
- B. application information
- C. destination port
- D. data type information

Answer: B

NEW QUESTION 107

A network administrator has informed you that they have identified a malicious host on the network, and instructed you to block it. Corporate policy dictates that firewall policy changes cannot be made at this time. What tool can you use to block this traffic?

- A. Anti-Bot protection
- B. Anti-Malware protection
- C. Policy-based routing
- D. Suspicious Activity Monitoring (SAM) rules

Answer: D

Explanation:

https://sc1.checkpoint.com/documents/R81/WebAdminGuides/EN/CP_R81_LoggingAndMonitoring_AdminGu

NEW QUESTION 110

Which is a suitable command to check whether Drop Templates are activated or not?

- A. fw ctl get int activate_drop_templates
- B. fwaccel stat
- C. fwaccel stats
- D. fw ctl templates -d

Answer: B

NEW QUESTION 112

What data MUST be supplied to the SmartConsole System Restore window to restore a backup?

- A. Server, Username, Password, Path, Version
- B. Username, Password, Path, Version
- C. Server, Protocol, Username, Password, Destination Path
- D. Server, Protocol, Username, Password, Path

Answer: D

Explanation:

References:

NEW QUESTION 114


You noticed that CPU cores on the Security Gateway are usually 100% utilized and many packets were dropped. You don't have a budget to perform a hardware upgrade at this time. To optimize drops you decide to use Priority Queues and fully enable Dynamic Dispatcher. How can you enable them?

- A. fw ctl multik dynamic_dispatching on
- B. fw ctl multik dynamic_dispatching set_mode 9
- C. fw ctl multik set_mode 9
- D. fw ctl multik pq enable

Answer: C

NEW QUESTION 119

View the rule below. What does the pen-symbol in the left column mean?

3		HR can access to social network applications	 HR	 Internet
4		All employees can access YouTube for work purposes	 Corporate LANs  Branch Office LAN  Data Center LAN	 Internet

- A. Those rules have been published in the current session.
- B. Rules have been edited by the logged in administrator, but the policy has not been published yet.
- C. Another user has currently locked the rules for editing.
- D. The configuration lock is present
- E. Click the pen symbol in order to gain the lock.

Answer: B

NEW QUESTION 120

Which Check Point software blade provides Application Security and identity control?

- A. Identity Awareness
- B. Data Loss Prevention
- C. URL Filtering
- D. Application Control

Answer: D

Explanation:

Check Point Application Control provides the industry's strongest application security and identity control to organizations of all sizes.

NEW QUESTION 121

You have discovered suspicious activity in your network. What is the BEST immediate action to take?

- A. Create a policy rule to block the traffic.
- B. Create a suspicious action rule to block that traffic.
- C. Wait until traffic has been identified before making any changes.
- D. Contact ISP to block the traffic.

Answer: B

NEW QUESTION 122

What is a reason for manual creation of a NAT rule?

- A. In R80 all Network Address Translation is done automatically and there is no need for manually defined NAT-rules.
- B. Network Address Translation of RFC1918-compliant networks is needed to access the Internet.
- C. Network Address Translation is desired for some services, but not for others.
- D. The public IP-address is different from the gateway's external IP

Answer: D

NEW QUESTION 125

What is the purpose of Captive Portal?

- A. It manages user permission in SmartConsole
- B. It provides remote access to SmartConsole
- C. It authenticates users, allowing them access to the Internet and corporate resources
- D. It authenticates users, allowing them access to the Gaia OS

Answer: C

Explanation:

Captive Portal is a simple method that authenticates users with a web interface. When users try to access a protected web resource, they enter authentication information in a form that shows in their web browser.

https://sc1.checkpoint.com/documents/R80.30/WebAdminGuides/EN/CP_R80.30_IdentityAwareness_AdminG

NEW QUESTION 129

What SmartEvent component creates events?

- A. Consolidation Policy
- B. Correlation Unit
- C. SmartEvent Policy
- D. SmartEvent GUI

Answer: B

NEW QUESTION 133

You are asked to check the status of several user-mode processes on the management server and gateway. Which of the following processes can only be seen on a Management Server?

- A. fwd
- B. fwm
- C. cpd
- D. cpwd

Answer: B

NEW QUESTION 135

When configuring LDAP User Directory integration, Changes applied to a User Directory template are:

- A. Reflected immediately for all users who are using template.
- B. Not reflected for any users unless the local user template is changed.
- C. Reflected for all users who are using that template and if the local user template is changed as well.
- D. Not reflected for any users who are using that template.

Answer: A

Explanation:

The users and user groups are arranged on the Account Unit in the tree structure of the LDAP server. User management in User Directory is external, not local. You can change the User Directory templates. Users associated with this template get the changes immediately. You can change user definitions manually in SmartDashboard, and the changes are immediate on the server.

NEW QUESTION 136

Which type of Check Point license ties the package license to the IP address of the Security Management Server?

- A. Central
- B. Corporate
- C. Local
- D. Formal

Answer: A

Explanation:

https://supportcenter.checkpoint.com/supportcenter/portal?eventSubmit_doGoviewsolutiondetails=&solutionid=

NEW QUESTION 138

Fill in the blank: The position of an implied rule is manipulated in the _____ window.

- A. NAT
- B. Firewall
- C. Global Properties
- D. Object Explorer

Answer: C

Explanation:

"Note - In addition, users can access the Implied Rules configurations through Global Properties and use the implied policy view below Configuration."

https://supportcenter.checkpoint.com/supportcenter/portal?eventSubmit_doGoviewsolutiondetails=&solutionid=

NEW QUESTION 142

What two ordered layers make up the Access Control Policy Layer?

- A. URL Filtering and Network
- B. Network and Threat Prevention
- C. Application Control and URL Filtering
- D. Network and Application Control

Answer: D

NEW QUESTION 146

If the Active Security Management Server fails or if it becomes necessary to change the Active to Standby, the following steps must be taken to prevent data loss. Providing the Active Security Management Server is responsible, which of these steps should NOT be performed:

- A. Rename the hostname of the Standby member to match exactly the hostname of the Active member.
- B. Change the Standby Security Management Server to Active.
- C. Change the Active Security Management Server to Standby.
- D. Manually synchronize the Active and Standby Security Management Servers.

Answer: A

NEW QUESTION 151

Choose what BEST describes users on Gaia Platform.

- A. There are two default users and neither can be deleted.
- B. There are two default users and one cannot be deleted.
- C. There is one default user that can be deleted.
- D. There is one default user that cannot be deleted.

Answer: A

Explanation:

These users are created by default and cannot be deleted: admin

Has full read/write capabilities for all Gaia features, from the Gaia Portal and the Gaia Clish. This user has a User ID of 0, and therefore has all of the privileges of a root user.

monitor

Has read-only capabilities for all features in the Gaia Portal and the Gaia Clish, and can change its own password.

You must give a password for this user before the account can be used.

https://sc1.checkpoint.com/documents/R81/WebAdminGuides/EN/CP_R81_Gaia_AdminGuide/Topics-GAG/U

NEW QUESTION 152

You are the Check Point administrator for Alpha Corp with an R80 Check Point estate. You have received a call by one of the management users stating that they are unable to browse the Internet with their new tablet connected to the company Wireless. The Wireless system goes through the Check Point Gateway. How do you review the logs to see what the problem may be?

- A. Open SmartLog and connect remotely to the IP of the wireless controller
- B. Open SmartView Tracker and filter the logs for the IP address of the tablet
- C. Open SmartView Tracker and check all the IP logs for the tablet
- D. Open SmartLog and query for the IP address of the Manager's tablet

Answer: B

NEW QUESTION 156

Using R80 Smart Console, what does a "pencil icon" in a rule mean?

- A. I have changed this rule
- B. Someone else has changed this rule
- C. This rule is managed by check point's SOC
- D. This rule can't be changed as it's an implied rule

Answer: A

NEW QUESTION 161

Which back up method uses the command line to create an image of the OS?

- A. System backup
- B. Save Configuration
- C. Migrate
- D. snapshot

Answer: D

NEW QUESTION 164

Which message indicates IKE Phase 2 has completed successfully?

- A. Quick Mode Complete
- B. Aggressive Mode Complete
- C. Main Mode Complete
- D. IKE Mode Complete

Answer: A

NEW QUESTION 165

Which Threat Prevention Profile is not included by default in R80 Management?

- A. Basic – Provides reliable protection on a range of non-HTTP protocols for servers, with minimal impact on network performance
- B. Optimized – Provides excellent protection for common network products and protocols against recent or popular attacks
- C. Strict – Provides a wide coverage for all products and protocols, with impact on network performance
- D. Recommended – Provides all protection for all common network products and servers, with impact on network performance

Answer: D

NEW QUESTION 169

Which of the following commands is used to verify license installation?

- A. Cplic verify license
- B. Cplic print
- C. Cplic show
- D. Cplic license

Answer: B

NEW QUESTION 171

Fill in the blank: When a policy package is installed, _____ are also distributed to the target installation Security Gateways.

- A. User and objects databases
- B. Network databases
- C. SmartConsole databases
- D. User databases

Answer: A

Explanation:

A policy package is a collection of different types of policies. After installation, the Security Gateway enforces all the policies in the package. A policy package can have one or more of these policy types:

The installation process:

If there are verification errors, the policy is not installed. If there are verification warnings (for example, if anti-spoofing is not enabled for a Security Gateway with multiple interfaces), the policy package is installed with a warning.

NEW QUESTION 174

Which Check Point software blade monitors Check Point devices and provides a picture of network and security performance?

- A. Application Control
- B. Threat Emulation
- C. Logging and Status
- D. Monitoring

Answer: D

Explanation:

https://sc1.checkpoint.com/documents/R81/WebAdminGuides/EN/CP_R81_NextGenSecurityGateway_Guide/T

NEW QUESTION 179

Which of these is NOT a feature or benefit of Application Control?

- A. Eliminate unknown and unwanted applications in your network to reduce IT complexity and application risk.
- B. Identify and control which applications are in your IT environment and which to add to the IT environment.
- C. Scans the content of files being downloaded by users in order to make policy decisions.
- D. Automatically identify trusted software that has authorization to run

Answer: C

Explanation:

File scanning is a job for ThreatCloud and it sandboxes/scrubs files.

NEW QUESTION 184

What is the most complete definition of the difference between the Install Policy button on the SmartConsole's tab, and the Install Policy within a specific policy?

- A. The Global one also saves and published the session before installation.
- B. The Global one can install multiple selected policies at the same time.
- C. The local one does not install the Anti-Malware policy along with the Network policy.
- D. The second one pre-select the installation for only the current policy and for the applicable gateways.

Answer: D

NEW QUESTION 185

How can the changes made by an administrator before publishing the session be seen by a superuser administrator?

- A. By impersonating the administrator with the 'Login as...' option
- B. They cannot be seen
- C. From the SmartView Tracker audit log

D. From Manage and Settings > Sessions, right click on the session and click 'View Changes...'

Answer: D

Explanation:

From the Smartconsole, you can possibly view the changes via Manage & setting, Sessions

NEW QUESTION 188

What are the Threat Prevention software components available on the Check Point Security Gateway?

- A. IPS, Threat Emulation and Threat Extraction
- B. IPS, Anti-Bot, Anti-Virus, SandBlast and Macro Extraction
- C. IPS, Anti-Bot, Anti-Virus, Threat Emulation and Threat Extraction
- D. IDS, Forensics, Anti-Virus, Sandboxing

Answer: C

NEW QUESTION 190

Which configuration element determines which traffic should be encrypted into a VPN tunnel vs. sent in the clear?

- A. The firewall topologies
- B. NAT Rules
- C. The Rule Base
- D. The VPN Domains

Answer: C

NEW QUESTION 192

R80.10 management server can manage gateways with which versions installed?

- A. Versions R77 and higher
- B. Versions R76 and higher
- C. Versions R75.20 and higher
- D. Version R75 and higher

Answer: B

NEW QUESTION 193

One of major features in R80.x SmartConsole is concurrent administration. Which of the following is NOT possible considering that AdminA, AdminB, and AdminC are editing the same Security Policy?

- A. AdminC sees a lock icon which indicates that the rule is locked for editing by another administrator.
- B. AdminA and AdminB are editing the same rule at the same time.
- C. AdminB sees a pencil icon next the rule that AdminB is currently editing.
- D. AdminA, AdminB and AdminC are editing three different rules at the same time.

Answer: B

NEW QUESTION 196

Which of the following is used to extract state related information from packets and store that information in state tables?

- A. STATE Engine
- B. TRACK Engine
- C. RECORD Engine
- D. INSPECT Engine

Answer: D

Explanation:

Stateful Inspection, the packet is intercepted at the network layer, but then the INSPECT Engine takes over.

It extracts state-related information required for the security decision from all application layers and maintains this information in dynamic state tables for evaluating subsequent connection attempts.

NEW QUESTION 197

Which one of the following is a way that the objects can be manipulated using the new API integration in R80 Management?

- A. Microsoft Publisher
- B. JSON
- C. Microsoft Word
- D. RC4 Encryption

Answer: B

NEW QUESTION 199

In SmartConsole, on which tab are Permissions and Administrators defined?

- A. Manage and Settings
- B. Logs and Monitor
- C. Security Policies
- D. Gateways and Servers

Answer: A

NEW QUESTION 204

Which of the following is used to enforce changes made to a Rule Base?

- A. Publish database
- B. Save changes
- C. Install policy
- D. Activate policy

Answer: A

NEW QUESTION 207

When configuring Spoof Tracking, which tracking actions can an administrator select to be done when spoofed packets are detected?

- A. Log, send snmp trap, email
- B. Drop packet, alert, none
- C. Log, alert, none
- D. Log, allow packets, email

Answer: C

Explanation:

Configure Spoof Tracking - select the tracking action that is done when spoofed packets are detected:

NEW QUESTION 210

What are the three components for Check Point Capsule?

- A. Capsule Docs, Capsule Cloud, Capsule Connect
- B. Capsule Workspace, Capsule Cloud, Capsule Connect
- C. Capsule Workspace, Capsule Docs, Capsule Connect
- D. Capsule Workspace, Capsule Docs, Capsule Cloud

Answer: D

NEW QUESTION 211

Why is a Central License the preferred and recommended method of licensing?

- A. Central Licensing is actually not supported with Gaia.
- B. Central Licensing is the only option when deploying Gaia
- C. Central Licensing ties to the IP address of a gateway and can be changed to any gateway if needed.
- D. Central Licensing ties to the IP address of the management server and is not dependent on the IP of any gateway in the event it changes.

Answer: D

Explanation:

https://sc1.checkpoint.com/documents/R81/WebAdminGuides/EN/CP_R81_ThreatPrevention_AdminGuide/To

NEW QUESTION 213

Which of the following commands is used to monitor cluster members in CLI?

- A. show cluster state
- B. show active cluster
- C. show clusters
- D. show running cluster

Answer: A

NEW QUESTION 214

What kind of NAT enables Source Port Address Translation by default?

- A. Automatic Static NAT
- B. Manual Hide NAT
- C. Automatic Hide NAT
- D. Manual Static NAT

Answer: C

Explanation:

https://sc1.checkpoint.com/documents/R81/WebAdminGuides/EN/CP_R81_SecurityManagement_AdminGuide

NEW QUESTION 217

Choose what BEST describes the reason why querying logs now are very fast.

- A. The amount of logs being stored is less than previous versions.
- B. New Smart-1 appliances double the physical memory install.
- C. Indexing Engine indexes logs for faster search results.
- D. SmartConsole now queries results directly from the Security Gateway.

Answer: B

NEW QUESTION 222

Which tool is used to enable ClusterXL?

- A. SmartUpdate
- B. cpconfig
- C. SmartConsole
- D. sysconfig

Answer: B

NEW QUESTION 226

Which of the following situations would not require a new license to be generated and installed?

- A. The Security Gateway is upgraded.
- B. The existing license expires.
- C. The license is upgraded.
- D. The IP address of the Security Management or Security Gateway has changed.

Answer: A

NEW QUESTION 231

Which product correlates logs and detects security threats, providing a centralized display of potential attack patterns from all network devices?

- A. SmartDashboard
- B. SmartEvent
- C. SmartView Monitor
- D. SmartUpdate

Answer: B

Explanation:

SmartEvent correlates logs from all Check Point enforcement points, including end-points, to identify suspicious activity from the clutter. Rapid data analysis and custom event logs immediately alert administrators to anomalous behavior such as someone attempting to use the same credential in multiple geographies simultaneously. Ref: <https://www.checkpoint.com/products/smartevent/>

NEW QUESTION 234

Which two of these Check Point Protocols are used by ?

- A. ELA and CPD
- B. FWD and LEA
- C. FWD and CPLOG
- D. ELA and CPLOG

Answer: B

NEW QUESTION 237

When comparing Stateful Inspection and Packet Filtering, what is a benefit that Stateful Inspection offers over Packet Filtering?

- A. Stateful Inspection offers unlimited connections because of virtual memory usage.
- B. Stateful Inspection offers no benefits over Packet Filtering.
- C. Stateful Inspection does not use memory to record the protocol used by the connection.
- D. Only one rule is required for each connection.

Answer: D

NEW QUESTION 240

Which of the following is used to initially create trust between a Gateway and Security Management Server?

- A. Internal Certificate Authority
- B. Token
- C. One-time Password
- D. Certificate

Answer: C

Explanation:

To establish the initial trust, a gateway and a Security Management Server use a one-time password. After the initial trust is established, further communication is based on security certificates.

https://sc1.checkpoint.com/documents/R81/WebAdminGuides/EN/CP_R81_SecurityManagement_AdminGuide

NEW QUESTION 242

What are the three types of UserCheck messages?

- A. inform, ask, and block
- B. block, action, and warn
- C. action, inform, and ask
- D. ask, block, and notify

Answer: A

Explanation:

Inform User Inform

Shows when the action for the ruleClosed is inform. It informs users what the company policy is for that site. Blocked Message

Block

Shows when a request is blocked. Ask User

Ask

Shows when the action for the rule is ask. It informs users what the company policy is for that site and they must click OK to continue to the site.

https://sc1.checkpoint.com/documents/R81/WebAdminGuides/EN/CP_R81_DataLossPrevention_AdminGuide/

NEW QUESTION 243

An administrator can use section titles to more easily navigate between large rule bases. Which of these statements is FALSE?

- A. Section titles are not sent to the gateway side.
- B. These sections are simple visual divisions of the Rule Base and do not hinder the order of rule enforcement.
- C. A Sectional Title can be used to disable multiple rules by disabling only the sectional title.
- D. Sectional Titles do not need to be created in the SmartConsole.

Answer: C

Explanation:

Section titles are only for visual categorization of rules.

NEW QUESTION 245

To view the policy installation history for each gateway, which tool would an administrator use?

- A. Revisions
- B. Gateway installations
- C. Installation history
- D. Gateway history

Answer: C

NEW QUESTION 246

Which Threat Prevention profile uses sanitization technology?

- A. Cloud/data Center
- B. perimeter
- C. Sandbox
- D. Guest Network

Answer: B

Explanation:

Strict Security for Perimeter Profile & Perimeter Profile use sanitization as a technology in Threat prevention profile

NEW QUESTION 247

Which key is created during Phase 2 of a site-to-site VPN?

- A. Pre-shared secret
- B. Diffie-Hellman Public Key
- C. Symmetrical IPSec key
- D. Diffie-Hellman Private Key

Answer: C

NEW QUESTION 250

True or False: In R80, more than one administrator can login to the Security Management Server with write permission at the same time.

- A. False, this feature has to be enabled in the Global Properties.
- B. True, every administrator works in a session that is independent of the other administrators.
- C. True, every administrator works on a different database that is independent of the other administrators.
- D. False, only one administrator can login with write permission.

Answer: B

Explanation:

More than one administrator can connect to the Security Management Server at the same time. Every administrator has their own username, and works in a session that is independent of the other administrators.

NEW QUESTION 251

In the Check Point Security Management Architecture, which component(s) can store logs?

- A. SmartConsole
- B. Security Management Server and Security Gateway
- C. Security Management Server
- D. SmartConsole and Security Management Server

Answer: B

NEW QUESTION 255

Which type of attack can a firewall NOT prevent?

- A. Network Bandwidth Saturation
- B. Buffer Overflow
- C. SYN Flood
- D. SQL Injection

Answer: A

NEW QUESTION 257

Is it possible to have more than one administrator connected to a Security Management Server at once?

- A. Yes, but only if all connected administrators connect with read-only permissions.
- B. Yes, but objects edited by one administrator will be locked for editing by others until the session is published.
- C. No, only one administrator at a time can connect to a Security Management Server
- D. Yes, but only one of those administrators will have write-permission
- E. All others will have read-only permission.

Answer: B

NEW QUESTION 262

When changes are made to a Rule base, it is important to _____ to enforce changes.

- A. Publish database
- B. Activate policy
- C. Install policy
- D. Save changes

Answer: C

NEW QUESTION 265

DLP and Geo Policy are examples of what type of Policy?

- A. Inspection Policies
- B. Shared Policies
- C. Unified Policies
- D. Standard Policies

Answer: B

Explanation:

https://sc1.checkpoint.com/documents/R80.30/WebAdminGuides/EN/CP_R80.30_NextGenSecurityGateway_G

NEW QUESTION 269

Which of the following is NOT a method used by Identity Awareness for acquiring identity?

- A. Remote Access
- B. Cloud IdP (Identity Provider)
- C. Active Directory Query
- D. RADIUS

Answer: B

Explanation:

https://sc1.checkpoint.com/documents/R81/WebAdminGuides/EN/CP_R81_IdentityAwareness_AdminGuide/T

NEW QUESTION 272

Which statement is TRUE of anti-spoofing?

- A. Anti-spoofing is not needed when IPS software blade is enabled
- B. It is more secure to create anti-spoofing groups manually
- C. It is BEST Practice to have anti-spoofing groups in sync with the routing table
- D. With dynamic routing enabled, anti-spoofing groups are updated automatically whenever there is a routing change

Answer: C

NEW QUESTION 273

A security zone is a group of one or more network interfaces from different centrally managed gateways. What is considered part of the zone?

- A. The zone is based on the network topology and determined according to where the interface leads to.
- B. Security Zones are not supported by Check Point firewalls.
- C. The firewall rule can be configured to include one or more subnets in a zone.
- D. The local directly connected subnet defined by the subnet IP and subnet mask.

Answer: A

Explanation:

The Interface window opens. The Topology area of the General pane shows the Security Zone to which the interface is already bound. By default, the Security Zone is calculated according to where the interface Leads To.

https://sc1.checkpoint.com/documents/R81/WebAdminGuides/EN/CP_R81_SecurityManagement_AdminGuide

NEW QUESTION 278

Which of the following technologies extracts detailed information from packets and stores that information in state tables?

- A. INSPECT Engine
- B. Next-Generation Firewall
- C. Packet Filtering
- D. Application Layer Firewall

Answer: A

Explanation:

Check Point FireWall-1's Stateful Inspection overcomes the limitations of the previous two approaches by providing full application-layer awareness without breaking the client/server model. With Stateful Inspection, the packet is intercepted at the network layer, but then the INSPECT Engine takes over. It extracts state-related information required for the security decision from all application layers and maintains this information in dynamic state tables for evaluating subsequent connection attempts. This provides a solution which is highly secure and offers maximum performance, scalability, and extensibility.

NEW QUESTION 283

Gaia includes Check Point Upgrade Service Engine (CPUSE), which can directly receive updates for what components?

- A. The Security Gateway (SG) and Security Management Server (SMS) software and the CPUSE engine.
- B. Licensed Check Point products for the Gaia operating system and the Gaia operating system itself.
- C. The CPUSE engine and the Gaia operating system.
- D. The Gaia operating system only.

Answer: B

Explanation:

https://sc1.checkpoint.com/documents/R81/WebAdminGuides/EN/CP_R81_Gaia_AdminGuide/Topics-GAG/C

NEW QUESTION 286

When using Automatic Hide NAT, what is enabled by default?

- A. Source Port Address Translation (PAT)
- B. Static NAT
- C. Static Route
- D. HTTPS Inspection

Answer: A

Explanation:

Hiding multiple IP addresses behind one, gateway, IP address requires PAT to differentiate between traffic.

NEW QUESTION 290

Which of the following licenses are considered temporary?

- A. Plug-and-play (Trial) and Evaluation
- B. Perpetual and Trial
- C. Evaluation and Subscription
- D. Subscription and Perpetual

Answer: A

NEW QUESTION 295

What default layers are included when creating a new policy layer?

- A. Application Control, URL Filtering and Threat Prevention
- B. Access Control, Threat Prevention and HTTPS Inspection
- C. Firewall, Application Control and IPSec VPN
- D. Firewall, Application Control and IPS

Answer: B

NEW QUESTION 298

Name the pre-defined Roles included in Gaia OS.

- A. AdminRole, and MonitorRole
- B. ReadWriteRole, and ReadyOnly Role
- C. AdminRole, cloningAdminRole, and Monitor Role
- D. AdminRole

Answer: A

NEW QUESTION 299

Full synchronization between cluster members is handled by Firewall Kernel. Which port is used for this?

- A. UDP port 265
- B. TCP port 265
- C. UDP port 256
- D. TCP port 256

Answer: B

NEW QUESTION 304

What object type would you use to grant network access to an LDAP user group?

- A. Access Role
- B. User Group
- C. SmartDirectory Group
- D. Group Template

Answer: B

NEW QUESTION 308

Which of the following Windows Security Events will NOT map a username to an IP address in Identity Awareness?

- A. Kerberos Ticket Renewed
- B. Kerberos Ticket Requested
- C. Account Logon
- D. Kerberos Ticket Timed Out

Answer: D

NEW QUESTION 309

Fill in the blank: When tunnel test packets no longer invoke a response, SmartView Monitor displays _____ for the given VPN tunnel.

- A. Down
- B. No Response
- C. Inactive
- D. Failed

Answer: A

NEW QUESTION 314

Which two Identity Awareness commands are used to support identity sharing?

- A. Policy Decision Point (PDP) and Policy Enforcement Point (PEP)
- B. Policy Enforcement Point (PEP) and Policy Manipulation Point (PMP)
- C. Policy Manipulation Point (PMP) and Policy Activation Point (PAP)
- D. Policy Activation Point (PAP) and Policy Decision Point (PDP)

Answer: A

NEW QUESTION 319

To enforce the Security Policy correctly, a Security Gateway requires:

- A. a routing table
- B. awareness of the network topology
- C. a Demilitarized Zone
- D. a Security Policy install

Answer: B

Explanation:

The network topology represents the internal network (both the LAN and the DMZ) protected by the gateway. The gateway must be aware of the layout of the network topology to:

NEW QUESTION 323

Which default Gaia user has full read/write access?

- A. admin
- B. superuser
- C. monitor
- D. altuser

Answer: A

Explanation:

Has full read/write capabilities for all Gaia features, from the Gaia Portal and the Gaia Clish. This user has a User ID of 0, and therefore has all of the privileges of a root user. monitor Has read-only capabilities for all features in the Gaia Portal and the Gaia Clish, and can change its own password. You must give a password for this user before the account can be used.

NEW QUESTION 327

What key is used to save the current CPView page in a filename format cpview_“cpview process ID”. cap”number of captures”?

- A. S
- B. W
- C. C
- D. Space bar

Answer: C

NEW QUESTION 330

What command from the CLI would be used to view current licensing?

- A. license view
- B. fw ctl tab -t license -s
- C. show license -s
- D. cplic print

Answer: D

NEW QUESTION 331

An administrator is creating an IPsec site-to-site VPN between his corporate office and branch office. Both offices are protected by Check Point Security Gateway managed by the same Security Management Server (SMS). While configuring the VPN community to specify the pre-shared secret, the administrator did not find a box to input the pre-shared secret. Why does it not allow him to specify the pre-shared secret?

- A. The Gateway is an SMB device
- B. The checkbox “Use only Shared Secret for all external members” is not checked
- C. Certificate based Authentication is the only authentication method available between two Security Gateway managed by the same SMS
- D. Pre-shared secret is already configured in Global Properties

Answer: C

NEW QUESTION 332

Fill in the blank: SmartConsole, SmartEvent GUI client, and _____ allow viewing of billions of consolidated logs and shows them as prioritized security events.

- A. SmartView Web Application
- B. SmartTracker
- C. SmartMonitor
- D. SmartReporter

Answer: A

Explanation:

"The SmartEvent Software Blade is a unified security event management and analysis solution that delivers real-time, graphical threat management information. SmartConsole, SmartView Web Application, and the SmartEvent GUI client consolidate billions of logs and show them as prioritized security events so you can immediately respond to security incidents"

https://sc1.checkpoint.com/documents/R80/CP_R80_LoggingAndMonitoring/html_frameset.htm?topic=docume

NEW QUESTION 334

What is the Transport layer of the TCP/IP model responsible for?

- A. It transports packets as datagrams along different routes to reach their destination.
- B. It manages the flow of data between two hosts to ensure that the packets are correctly assembled and delivered to the target application.
- C. It defines the protocols that are used to exchange data between networks and how host programs interact with the Application layer.
- D. It deals with all aspects of the physical components of network connectivity and connects with different network types.

Answer: B

NEW QUESTION 335

Which option, when applied to a rule, allows all encrypted and non-VPN traffic that matches the rule?

- A. All Site-to-Site VPN Communities
- B. Accept all encrypted traffic
- C. All Connections (Clear or Encrypted)
- D. Specific VPN Communities

Answer: B

NEW QUESTION 340

Sticky Decision Function (SDF) is required to prevent which of the following? Assume you set up an Active-Active cluster.

- A. Symmetric routing
- B. Failovers
- C. Asymmetric routing
- D. Anti-Spoofing

Answer: B

NEW QUESTION 342

Which firewall daemon is responsible for the FW CLI commands?

- A. fwd
- B. fwm
- C. cpm
- D. cpd

Answer: A

NEW QUESTION 346

Which Identity Source(s) should be selected in Identity Awareness for when there is a requirement for a higher level of security for sensitive servers?

- A. AD Query
- B. Terminal Servers Endpoint Identity Agent
- C. Endpoint Identity Agent and Browser-Based Authentication
- D. RADIUS and Account Logon

Answer: C

Explanation:

Endpoint Identity Agents and Browser-Based Authentication - When a high level of security is necessary.

Captive Portal is used for distributing the Endpoint Identity Agent. IP Spoofing protection can be set to prevent packets from being IP spoofed.

NEW QUESTION 347

When defining group-based access in an LDAP environment with Identity Awareness, what is the BEST object type to represent an LDAP group in a Security Policy?

- A. Access Role
- B. User Group
- C. SmartDirectory Group
- D. Group Template

Answer: A

NEW QUESTION 352

When logging in for the first time to a Security management Server through SmartConsole, a fingerprint is saved to the:

- A. Security Management Server's /home/.fgpt file and is available for future SmartConsole authentications.
- B. Windows registry is available for future Security Management Server authentications.
- C. There is no memory used for saving a fingerprint anyway.
- D. SmartConsole cache is available for future Security Management Server authentications.

Answer: D

NEW QUESTION 354

In which deployment is the security management server and Security Gateway installed on the same appliance?

- A. Standalone
- B. Remote
- C. Distributed
- D. Bridge Mode

Answer: A

Explanation:

<https://www.youtube.com/watch?v=BFNnBKQz5HA>

NEW QUESTION 359

Security Gateway software blades must be attached to what?

- A. Security Gateway
- B. Security Gateway container
- C. Management server
- D. Management container

Answer: B

Explanation:

Security Management and Security Gateway Software Blades must be attached to a Software Container to be licensed.

<https://downloads.checkpoint.com/dc/download.htm?ID=11608>

NEW QUESTION 360

Which of the following is NOT an identity source used for Identity Awareness?

- A. Remote Access
- B. UserCheck
- C. AD Query
- D. RADIUS

Answer: B

NEW QUESTION 363

Which software blade enables Access Control policies to accept, drop, or limit web site access based on user, group, and/or machine?

- A. Application Control
- B. Data Awareness
- C. Identity Awareness
- D. Threat Emulation

Answer: A

NEW QUESTION 365

Which of the following is NOT an advantage to using multiple LDAP servers?

- A. You achieve a faster access time by placing LDAP servers containing the database at remote sites
- B. You achieve compartmentalization by allowing a large number of users to be distributed across several servers
- C. Information on a user is hidden, yet distributed across several servers.
- D. You gain High Availability by replicating the same information on several servers

Answer: C

NEW QUESTION 369

When connected to the Check Point R80 Management Server using the SmartConsole the first administrator to connect has a lock on:

- A. Only the objects being modified in the Management Database and other administrators can connect to make changes using a special session as long as they all connect from the same LAN network.
- B. The entire Management Database and other administrators can connect to make changes only if the first administrator switches to Read-only.
- C. The entire Management Database and all sessions and other administrators can connect only as Read-only.
- D. Only the objects being modified in his session of the Management Database and other administrators can connect to make changes using different sessions.

Answer: D

NEW QUESTION 374

Access roles allow the firewall administrator to configure network access according to:

- A. remote access clients.
- B. a combination of computer or computer groups and networks.
- C. users and user groups.
- D. All of the above.

Answer: D

Explanation:

To create an access role:

The Access Role window opens.

Your selection is shown in the Networks node in the Role Preview pane.

A window opens. You can search for Active Directory entries or select them from the list. You can search for AD entries or select them from the list.

The access role is added to the Users and Administrators tree.

https://sc1.checkpoint.com/documents/R81/WebAdminGuides/EN/CP_R81_SecurityManagement_AdminGuide

NEW QUESTION 378

What are the three deployment considerations for a secure network?

- A. Distributed, Bridge Mode, and Remote
- B. Bridge Mode, Remote, and Standalone
- C. Remote, Standalone, and Distributed
- D. Standalone, Distributed, and Bridge Mode

Answer: A

NEW QUESTION 382

Which type of Check Point license is tied to the IP address of a specific Security Gateway and cannot be transferred to a gateway that has a different IP address?

- A. Formal
- B. Central
- C. Corporate
- D. Local

Answer: D

Explanation:

Local licensing is associated with the IP address of the Security Gateway, to which the license will be applied. Each time the IP address of the Security Gateway changes, a new license must be generated and installed.
https://supportcenter.checkpoint.com/supportcenter/portal?eventSubmit_doGoviewsolutiondetails=&solutionid=

NEW QUESTION 385

Which SmartConsole tab is used to monitor network and security performance?

- A. Manage & Settings
- B. Security Policies
- C. Gateway & Servers
- D. Logs & Monitor

Answer: D

NEW QUESTION 388

What are the three main components of Check Point security management architecture?

- A. SmartConsole, Security Management, and Security Gateway
- B. Smart Console, Standalone, and Security Management
- C. SmartConsole, Security policy, and Logs & Monitoring
- D. GUI-Client, Security Management, and Security Gateway

Answer: A

NEW QUESTION 390

Which is a main component of the Check Point security management architecture?

- A. Identity Collector
- B. Endpoint VPN client
- C. SmartConsole
- D. Proxy Server

Answer: C

Explanation:

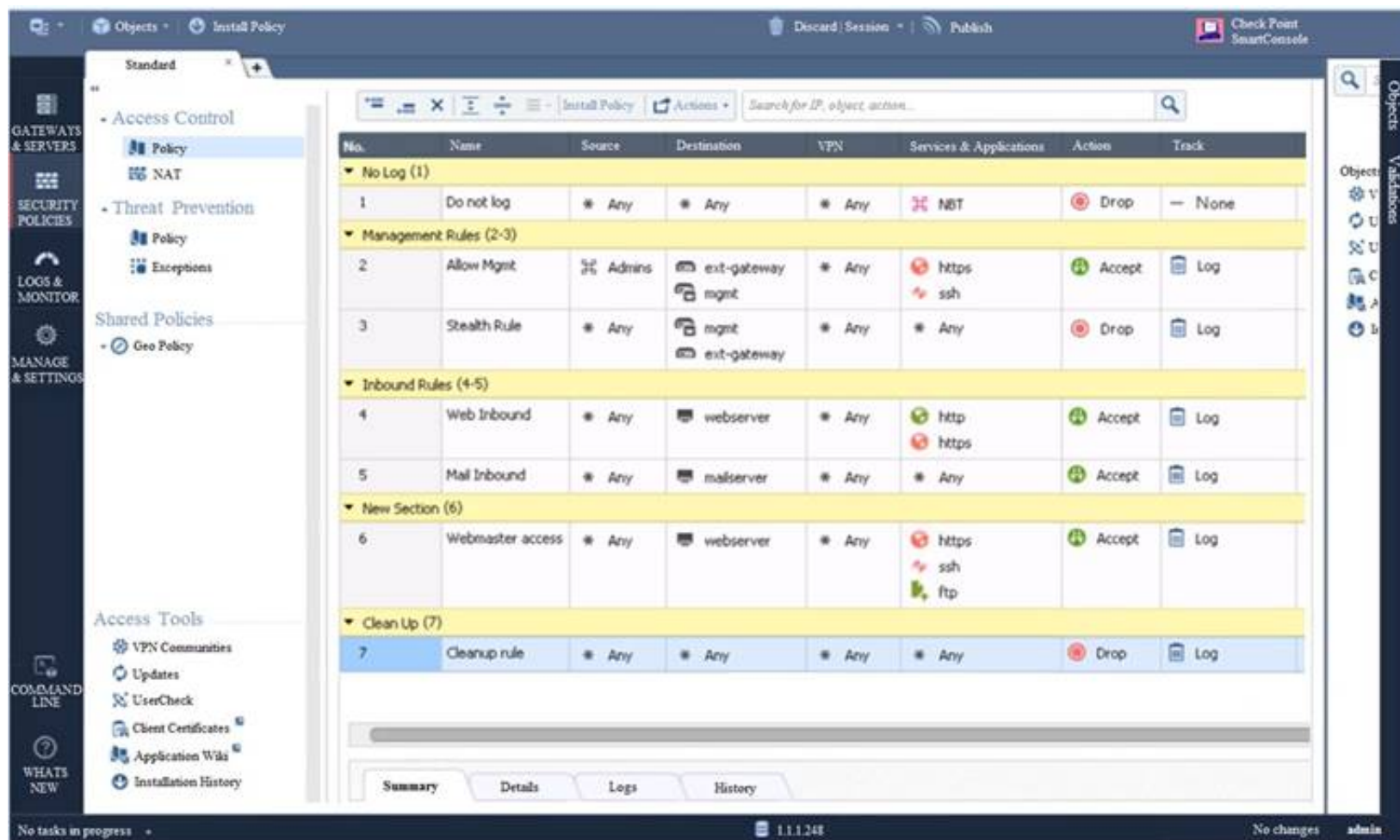
<https://community.checkpoint.com/t5/Check-Point-for-Beginners-2-0/Part-1-The-Architecture/ba-p/88043> Security Gateway (SG) is usually deployed on the perimeter to control and secure traffic with Firewall and Threat Prevention capabilities.

Security Management Server (SMS) defines and controls security policies on the Gateways. It can also be used to as a log server with built-in system of log indexing (SmartLog) and event correlation (SmartEvent – a SIEM-like solution for Check Point products). Usually, SMS is the main element of central management with multiple Security Gateways in operation. Nevertheless, you need an SMS even if your security system has a single gateway only.

SmartConsole is a GUI administration tool to connect to SMS. Through this tool, a security administrator is able to prepare and apply security policies to the Security Gateways.

NEW QUESTION 393

Examine the sample Rule Base.



What will be the result of a verification of the policy from SmartConsole?

- A. No errors or Warnings
- B. Verification Error
- C. Empty Source-List in Rule 5 (Mail Inbound)
- D. Verification Error
- E. Rule 4 (Web Inbound) hides Rule 6 (Webmaster access)
- F. Verification Error
- G. Rule 7 (Clean-Up Rule) hides Implicit Clean-up Rule

Answer: C

NEW QUESTION 394

How Capsule Connect and Capsule Workspace differ?

- A. Capsule Connect provides a Layer3 VP
- B. Capsule Workspace provides a Desktop with usable applications
- C. Capsule Workspace can provide access to any application
- D. Capsule Connect provides Business data isolation
- E. Capsule Connect does not require an installed application at client

Answer: A

NEW QUESTION 397

Which of the following is NOT supported by Bridge Mode Check Point Security Gateway

- A. Antivirus
- B. Data Loss Prevention
- C. NAT
- D. Application Control

Answer: C

NEW QUESTION 402

Log query results can be exported to what file format?

- A. Word Document (docx)
- B. Comma Separated Value (csv)
- C. Portable Document Format (pdf)
- D. Text (txt)

Answer: B

NEW QUESTION 406

In SmartEvent, a correlation unit (CU) is used to do what?

- A. Collect security gateway logs, Index the logs and then compress the logs.
- B. Receive firewall and other software blade logs in a region and forward them to the primary log server.
- C. Analyze log entries and identify events.
- D. Send SAM block rules to the firewalls during a DOS attack.

Answer: C

Explanation:

https://sc1.checkpoint.com/documents/R80.40/WebAdminGuides/EN/CP_R80.40_LoggingAndMonitoring_Ad

NEW QUESTION 408

Fill in the blank: To create policy for traffic to or from a particular location, use the _____ .

- A. DLP shared policy
- B. Geo policy shared policy
- C. Mobile Access software blade
- D. HTTPS inspection

Answer: B

Explanation:

Shared Policies

The Shared Policies section in the Security Policies shows the policies that are not in a Policy package. They are shared between all Policy packages.

Shared policies are installed with the Access Control Policy. Software Blade

Description Mobile Access

Launch Mobile Access policy in a SmartConsole. Configure how your remote users access internal resources, such as their email accounts, when they are mobile.

DLP

Launch Data Loss Prevention policy in a SmartConsole. Configure advanced tools to automatically identify data that must not go outside the network, to block the leak, and to educate users.

Geo Policy

Create a policy for traffic to or from specific geographical or political locations.

NEW QUESTION 413

Which policy type is used to enforce bandwidth and traffic control rules?

- A. Access Control
- B. Threat Emulation
- C. Threat Prevention
- D. QoS

Answer: D

Explanation:

https://sc1.checkpoint.com/documents/R80.30/WebAdminGuides/EN/CP_R80.30_QoS_AdminGuide/html_fram

NEW QUESTION 415

Which of the following is NOT an option to calculate the traffic direction?

- A. Incoming
- B. Internal
- C. External
- D. Outgoing

Answer: D

NEW QUESTION 420

CPU-level of your Security gateway is peaking to 100% causing problems with traffic. You suspect that the problem might be the Threat Prevention settings.

The following Threat Prevention Profile has been created.

Company TP Profile

Provide very wide coverage for all products and protocols, with noticeable performance impact.

General Policy

IPS

Anti-Bot

Anti-Virus

Threat Emulation

Malware DNS Trap

Blades Activation

☒ IPS
 ☒ Anti-Bot
 ☒ Anti-Virus
 ☒ Threat Emulation

Activate Protections

Performance Impact:

Severity:

Activation Mode

High Confidence:

Medium Confidence:

Low Confidence:

How could you tune the profile in order to lower the CPU load still maintaining security at good level? Select the BEST answer.

- A. Set High Confidence to Low and Low Confidence to Inactive.
- B. Set the Performance Impact to Medium or lower.
- C. The problem is not with the Threat Prevention Profil
- D. Consider adding more memory to the appliance.
- E. Set the Performance Impact to Very Low Confidence to Prevent.

Answer: B

NEW QUESTION 425

When using Monitored circuit VRRP, what is a priority delta?

- A. When an interface fails the priority changes to the priority delta
- B. When an interface fails the delta claims the priority
- C. When an interface fails the priority delta is subtracted from the priority
- D. When an interface fails the priority delta decides if the other interfaces takes over

Answer: C

NEW QUESTION 430

What is the difference between SSL VPN and IPSec VPN?

- A. IPSec VPN does not require installation of a resident VPN client
- B. SSL VPN requires installation of a resident VPN client
- C. SSL VPN and IPSec VPN are the same
- D. IPSec VPN requires installation of a resident VPN client and SSL VPN requires only an installed Browser

Answer: D

NEW QUESTION 431

After trust has been established between the Check Point components, what is TRUE about name and IP-address changes?

- A. Security Gateway IP-address cannot be changed without re-establishing the trust
- B. The Security Gateway name cannot be changed in command line without re-establishing trust
- C. The Security Management Server name cannot be changed in SmartConsole without re-establishing trust
- D. The Security Management Server IP-address cannot be changed without re-establishing the trust

Answer: A

NEW QUESTION 436

What is NOT an advantage of Stateful Inspection?

- A. High Performance
- B. Good Security
- C. No Screening above Network layer
- D. Transparency

Answer: A

NEW QUESTION 440

Which repositories are installed on the Security Management Server by SmartUpdate?

- A. License and Update
- B. Package Repository and Licenses
- C. Update and License & Contract
- D. License & Contract and Package Repository

Answer: D

Explanation:

References:

NEW QUESTION 444

True or False: More than one administrator can log into the Security Management Server with SmartConsole with write permission at the same time.

- A. True, every administrator works on a different database that is independent of the other administrators
- B. False, this feature has to be enabled in the Global Properties.
- C. True, every administrator works in a session that is independent of the other administrators
- D. False, only one administrator can login with write permission

Answer: C

Explanation:

Multiple R/W admins can log into SmartConsole and edit rules but they can't edit a rule that is being worked on by another admin.

NEW QUESTION 446

The CDT utility supports which of the following?

- A. Major version upgrades to R77.30
- B. Only Jumbo HFA's and hotfixes
- C. Only major version upgrades to R80.10
- D. All upgrades

Answer: D

NEW QUESTION 449

You have enabled "Extended Log" as a tracking option to a security rule. However, you are still not seeing any data type information. What is the MOST likely reason?

- A. Identity Awareness is not enabled.
- B. Log Trimming is enabled.
- C. Logging has disk space issues
- D. Content Awareness is not enabled.

Answer: D

NEW QUESTION 450

You want to verify if there are unsaved changes in GAIa that will be lost with a reboot. What command can be used?

- A. show unsaved
- B. show save-state
- C. show configuration diff
- D. show config-state

Answer: D

NEW QUESTION 454

You want to store the GAIa configuration in a file for later reference. What command should you use?

- A. write mem <filename>
- B. show config -f <filename>
- C. save config -o <filename>
- D. save configuration <filename>

Answer: D

NEW QUESTION 455

Fill in the blank: With the User Directory Software Blade, you can create user definitions on a(n) _____ Server.

- A. SecurID
- B. LDAP
- C. NT domain
- D. SMTP

Answer: B

Explanation:

https://sc1.checkpoint.com/documents/R81/WebAdminGuides/EN/CP_R81_SecurityManagement_AdminGuide

NEW QUESTION 459

Name the authentication method that requires token authenticator.

- A. SecureID
- B. Radius
- C. DynamicID
- D. TACACS

Answer: A

Explanation:

https://sc1.checkpoint.com/documents/R81/WebAdminGuides/EN/CP_R81_SecurityManagement_AdminGuide

NEW QUESTION 463

What is UserCheck?

- A. Messaging tool user to verify a user's credentials
- B. Communication tool used to inform a user about a website or application they are trying to access
- C. Administrator tool used to monitor users on their network
- D. Communication tool used to notify an administrator when a new user is created

Answer: B

Explanation:

https://sc1.checkpoint.com/documents/R81/WebAdminGuides/EN/CP_R81_NextGenSecurityGateway_Guide/T

NEW QUESTION 467

.....

Thank You for Trying Our Product

We offer two products:

1st - We have Practice Tests Software with Actual Exam Questions

2nd - Questions and Answers in PDF Format

156-215.81 Practice Exam Features:

- * 156-215.81 Questions and Answers Updated Frequently
- * 156-215.81 Practice Questions Verified by Expert Senior Certified Staff
- * 156-215.81 Most Realistic Questions that Guarantee you a Pass on Your FirstTry
- * 156-215.81 Practice Test Questions in Multiple Choice Formats and Updatesfor 1 Year

100% Actual & Verified — Instant Download, Please Click
[Order The 156-215.81 Practice Test Here](#)