

# Cisco

## Exam Questions 350-601

Implementing and Operating Cisco Data Center Core Technologies



### NEW QUESTION 1

Which product includes prebuilt templates that can be used to customize fabric deployments?

- A. Cisco ACI
- B. Cisco UCS Manger
- C. Cisco data Center Network Manger
- D. Cisco Tetration

**Answer: C**

#### Explanation:

<https://www.cisco.com/c/en/us/products/collateral/cloud-systems-management/prime-data-center-networkmanag>

[https://www.cisco.com/c/en/us/td/docs/switches/datacenter/sw/11\\_2\\_1/config\\_guide/lanfabric/b\\_dcnm\\_fabric\\_lan/template\\_usage.html](https://www.cisco.com/c/en/us/td/docs/switches/datacenter/sw/11_2_1/config_guide/lanfabric/b_dcnm_fabric_lan/template_usage.html)

### NEW QUESTION 2

A customer wants to offload some of its order processing to a public cloud environment. The customer environment is based on Cisco ACI and uses Puppet with containenized applications. The operations team requires a solution to orchestrate and optimize the cost of the new solution. Which product must be used to meet these requirements?

- A. Cisco Intersight
- B. Cisco Workload Optimization Manager
- C. Cisco CloudCenter
- D. Cisco Data Center Network Manager

**Answer: C**

#### Explanation:

<https://www.cisco.com/c/dam/en/us/products/collateral/cloud-systems-management/cloudcenter/white-paper-c1>

- Enforce multicloud governance by guiding user decisions to reduce risk
- Securely automate deployment to reduce manual effort and get consistent results
- Increase feature velocity via integration with developer tools to accelerate time to market (CI/CD = Puppet, Chef, and Ansible).
- Optimize cloud consumption to cut pay-per-use cloud costs

<https://www.cisco.com/c/en/us/products/collateral/cloud-systems-management/cloudcenter-suite/datasheet-c78>

### NEW QUESTION 3

A network administrator must configure an extra keyring in Cisco UCS Manager. The key must provide a high level of encryption and secure authentication when users use the web interface. Which configuration command set must be applied to meet these requirements?

☒ `set https keyring kring7984`  
`set https cipher-suite-mode secure`  
`set https ssl-protocol tls1-2`  
`commit-buffer`

☐ `set https keyring kring7984`  
`set https cipher-suite-mode secure`  
`set https tls-protocol tls1-2`  
`commit-buffer`

☐ `set https keyring kring7984`  
`set https cipher-suite-mode high`  
`set https ssl-protocol tls1-2#`  
`commit-buffer`

☐ `set https keyring kring7984`  
`set https cipher-suite-mode high`  
`set https tls-protocol tls1-2`  
`commit-buffer`

- A. Option A
- B. Option B
- C. Option C
- D. Option D

**Answer: C**

#### Explanation:

[https://www.cisco.com/c/en/us/td/docs/unified\\_computing/ucs/ucs-manager/CLI-User-Guides/Admin-Managem](https://www.cisco.com/c/en/us/td/docs/unified_computing/ucs/ucs-manager/CLI-User-Guides/Admin-Managem) “cipher-suite-mode secure” is invalid command.

“Cipher-suite-mode high” is valid command. “tls-protocol tls1-2” is invalid command. “Ssl-protocol tls1-2” is valid command.

```
UCS-A# scope system
UCS-A /system # scope services
UCS-A /system/services # enable https
UCS-A /system/services* # set https port 443
Warning: When committed, this closes all the web sessions.
UCS-A /system/services* # set https keyring kring7984
UCS-A /system/services* # set https cipher-suite-mode high
UCS-A /system/services* # set https ssl-protocol tls1-2
UCS-A /system/services* # commit-buffer
UCS-A /system/services #
```

#### NEW QUESTION 4

Refer to the exhibit

```
#!/bin/bash
### BEGIN INIT INFO
# Provides:          capture
# Required-Start:    $local_fs $network $named $time $syslog
# Required-Stop:     $local_fs $network $named $time $syslog
# Description:       Continuous capture script
### END INIT INFO

start() {
    tcpdump -W 3 -C 100 -i Eth1-42 -w /tmp/capture.pcap &
    RETVAL=$?
}

stop() {
    killall -9 tcpdump
    RETVAL=$?
}

case "$1" in
    start)
        start
        ;;
    stop)
        stop
        ;;
    *)
        echo "Usage: $0 {start|stop}"
        RETVAL=2
esac

exit $RETVAL
```

A network engineer must run a continuous capture on a port A script called "capture"1 is created to start and stop the capture task Which command sequence makes the capture persistent after a reboot?

- ☐ initctl add capture  
initctl init capture
- ☐ chkconfig --add capture  
chkconfig --level 3 capture
- ☐ systemctl enable capture  
systemctl start capture
- ☐ run bash /etc/init.d/capture  
run bash start-stop-daemon

- A. Option A
- B. Option B
- C. Option C
- D. Option D

Answer: C

#### NEW QUESTION 5

Which feature must be enabled to support the use of JSON and XML encoding when a Cisco Nexus 7000 series switch is deployed?

- A. NX-API
- B. LLDP
- C. Open Agent Container
- D. Bash shell

Answer: A

Explanation:

[https://www.cisco.com/c/en/us/td/docs/switches/datacenter/nexus7000/sw/programmability/guide/cisco\\_nexus7000\\_programmability\\_guide\\_8x/b-cisco-nexus7000-programmability-guide-8x\\_chapter\\_011.html](https://www.cisco.com/c/en/us/td/docs/switches/datacenter/nexus7000/sw/programmability/guide/cisco_nexus7000_programmability_guide_8x/b-cisco-nexus7000-programmability-guide-8x_chapter_011.html)

NEW QUESTION 6

Refer to the exhibit.

```
UCS-A# scope eth-traffic-mon
UCS-A /eth-traffic-mon # scope fabric a
UCS-A /eth-traffic-mon/fabric # create eth-mon-session Monitor33
UCS-A /eth-traffic-mon/fabric/eth-mon-session/dest-interface* #
commit-buffer
UCS-A /eth-traffic-mon/fabric/eth-mon-session/dest-interface #

UCS-A# scope service-profile org / serviceprofile1
UCS-A /org/service-profile # scope vnic ether-dynamic-prot-008
UCS-A /org/service-profile/vnic # create mon-src Monitor23
UCS-A /org/service-profile/vnic/mon-src* # commit-buffer
UCS-A /org/service-profile/vnic/mon-src #

UCS-A# scope eth-traffic-mon
UCS-A /eth-traffic-mon # scope fabric a
UCS-A /eth-traffic-mon/fabric # scope eth-mon-session Monitor33
UCS-A /eth-traffic-mon/fabric/eth-mon-session # enable
UCS-A /eth-traffic-mon/fabric/eth-mon-session* # commit-buffer
```

Service degradation is reported on a VM that is deployed on a Cisco UCS blade server. The traffic from the vNIC is required to SPAN in both directions to a packet analyzer that is connected to UCS-A slot 2 port 12. Which two commands are needed to complete the configuration? (Choose two.)

- A. UCS-A /org/service-profile/vnic/mon-src\* # set direction both
- B. UCS-A /eth-traffic-mon/fabric/eth-mon-session' # create dest-interface 2 12
- C. UCS-A /org/service-profile/vnic/mon-src\* # set direction receive transmit
- D. UCS-A /eth-traffic-mon/fabric/eth-mon-session # activate
- E. UCS-A /eth-traffic-mon/fabric/eth-mon-session\* # create eth-mon-session/dest-interface 2 12

Answer: AB

Explanation:

[https://www.cisco.com/en/US/docs/unified\\_computing/ucs/sw/cli/config/guide/1.4.1/CLI\\_Config\\_Guide\\_1\\_4\\_1\\_chapter42.html](https://www.cisco.com/en/US/docs/unified_computing/ucs/sw/cli/config/guide/1.4.1/CLI_Config_Guide_1_4_1_chapter42.html)

NEW QUESTION 7

An engineer deploys a custom Guest Shell rootfs on a Nexus 9000 Series Switch. Drag and drop the steps from the left into the order required to deploy the solution on the right. Not all options are used.

Customize the guest shell rootfs.	Step 1
Export the Guest Shell rootfs.	Step 2
Store it in a file server.	Step 3
Import the Guest Shell rootfs to other switches.	Step 4
Install the specific Guest Shell across devices simultaneously.	Step 5

- A. Mastered
- B. Not Mastered

Answer: A

Explanation:

A picture containing text Description automatically generated  
<https://www.cisco.com/c/en/us/td/docs/switches/datacenter/nexus9000/sw/93x/progammmability/guide/b-cisco-ne>



## Replicating the Guest Shell

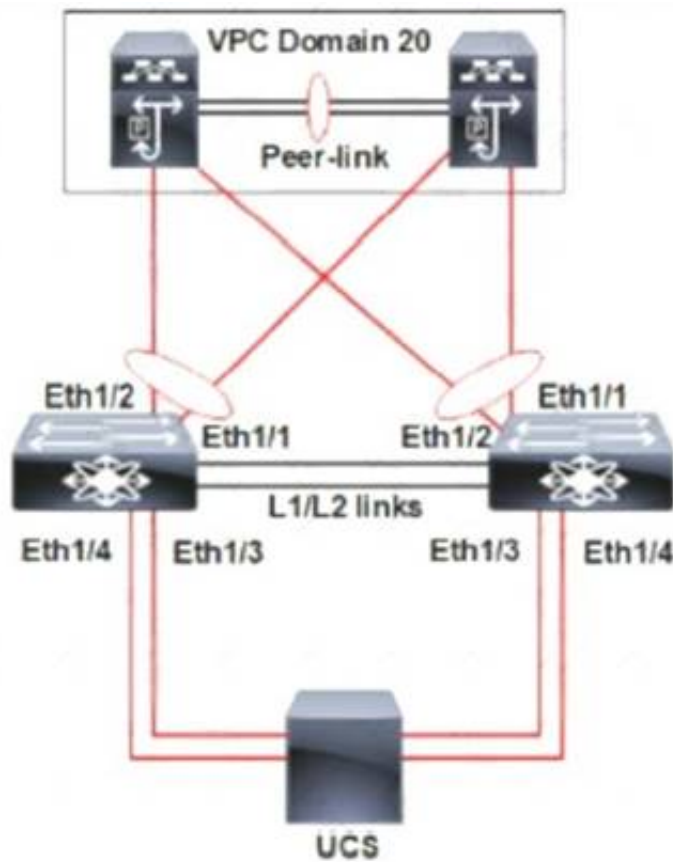
Beginning with Cisco NX-OS release 7.0(3)I7(1), a Guest Shell rootfs that is customized on one switch can be deployed onto multiple switches.

The approach is to <sup>1</sup>customize and then export the Guest Shell rootfs and store it on a file server. <sup>2</sup>A POAP script can <sup>3</sup>download (import) the Guest Shell rootfs to other switches and <sup>4</sup>install the specific Guest Shell across many devices simultaneously.

- Exporting Guest Shell rootfs
- Importing Guest Shell rootfs
- Importing YAML File
- show guestshell Command

### NEW QUESTION 8

Refer to the exhibit.



A pair of Cisco Nexus switches form a vPC. A new chassis is added to the pre-existing Cisco UCS domain. A new chassis must be discovered, and all links from the chassis to the LAN network must be established. Which set of actions accomplishes these requirements?

- ☐ Set the chassis discovery policy action to four links. Configure Eth1/3 and Eth1/4 as server ports. Acknowledge the chassis.
- ☒ Set the chassis discovery policy action to four links. Configure Eth1/1 and Eth1/2 as uplink Fibre Channel ports. Set the link group preference to None.
- ☐ Set the chassis discovery policy action to one link. Configure Eth1/1 and Eth1/2 as uplink Ethernet ports. Set the link group preference to Port Channel.
- ☐ Set the chassis discovery policy action to one link. Configure Eth1/3 and Eth1/4 as server ports. Acknowledge the chassis.

- A. Option A
- B. Option B
- C. Option C
- D. Option D

**Answer: C**

### NEW QUESTION 9

A company is investigating different options for IT automation tools. The IT team has experience with python programming language and scripting using a declarative language. The proposed tool should be easy to set up and should not require installing an agent on target devices. The team will also need to build custom modules based on the python programming language to extend the tools functionality. Which automation tool should be used to meet these requirements?

- A. Puppet
- B. Ansible
- C. NX-API

D. Chef

**Answer:** B

#### NEW QUESTION 10

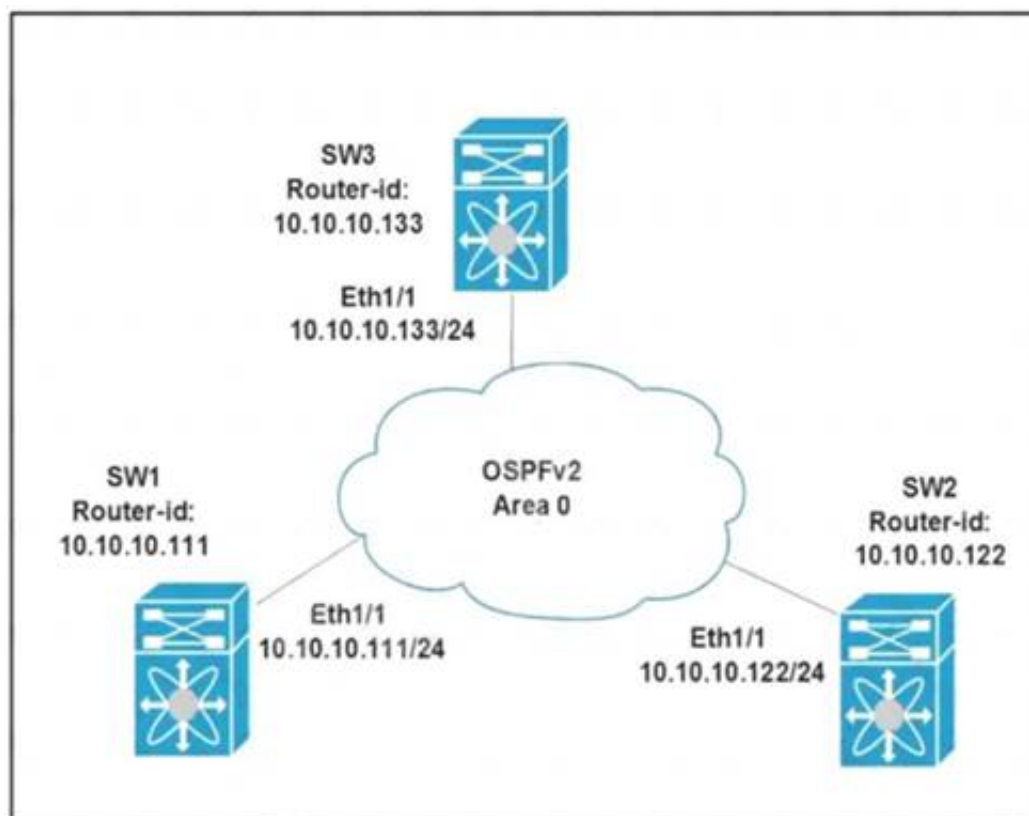
Which solution provides remote and direct file-level access to users and systems?

- A. direct-attached storage
- B. Fibre Channel over Ethernet
- C. storage area network
- D. network-attached storage

**Answer:** D

#### NEW QUESTION 10

Refer to the exhibit.



All switches are configured with the default OSPF priority. Which configuration should be applied to ensure that the SW2 Cisco Nexus switch controls the LSA floods and advertises the network to the remaining nodes in the OSPFv2 area?

- A. SW2# configure terminal SW2 (config)# interface ethernet 1/1 SW2 (config-if)# ip ospf priority 255
- B. SW2# configure terminal SW2 (config)# interface ethernet 1/1 SW2 (config-if)# ip ospf priority 1
- C. SW2# configure terminal SW2 (config)# router ospf 1 SW2 (config-router)# router-id 10.10.10.22
- D. SW2# configure terminal SW2 (config)# interface ethernet 1/1 SW2 (config-if)# ip ospf priority 0

**Answer:** A

#### Explanation:

Priority in OSPF is mainly used to influence/determine a designated router/back-up designated router for a network. By default, the priority is 1 on all routers. A router with a high priority will always win the DR/BDR election process.

#### NEW QUESTION 12

A network administrator is creating a custom Django self-service portal that runs on a Linux server to automate the creation of new VLANs on Cisco UCS Manager. Which feature must be installed and configured on the server?

- A. Cisco UCS PowerTool Suite
- B. Cisco DNA Center API
- C. Cisco AppDynamics
- D. Cisco UCS Python SDK

**Answer:** C

#### NEW QUESTION 17

A storage array must be connected to port ethernet1/10 on a Cisco MDS 9000 Series Switch. In addition, the array must connect using the FCoE protocol and be single-homed. Which configuration meets these requirements?

- ☒ **vlan database**  
vlan 101 fcoe  
vsan 101 enable  
interface vfc 10 vsan 101
- ☐ **interface vfc 10**  
switchport mode fcoe  
switchport access vlan 101  
bind interface ethernet1/10
- ☒ **vlan database**  
vlan 101 vsan  
vsan 101 fcoe  
vsan 101 interface vfc 10
- ☐ **interface ethernet1/10**  
switchport mode trunk  
bind interface vfc 10  
fcoe vsan 101
- ☐ **vsan database**  
vlan 101  
vsan 101  
fcoe vsan 101 interface vfc 10
- ☐ **interface 1/10**  
switchport mode e  
fcoe vfc 10
- ☐ **interface vfc 10**  
switchport mode f  
bind interface ethernet 1/10
- ☐ **vsan database**  
vsan 101  
vlan 101  
fcoe vsan 101  
vsan 101 interface vfc 10

- A. Option A  
B. Option B  
C. Option C  
D. Option D

**Answer:** D

#### NEW QUESTION 19

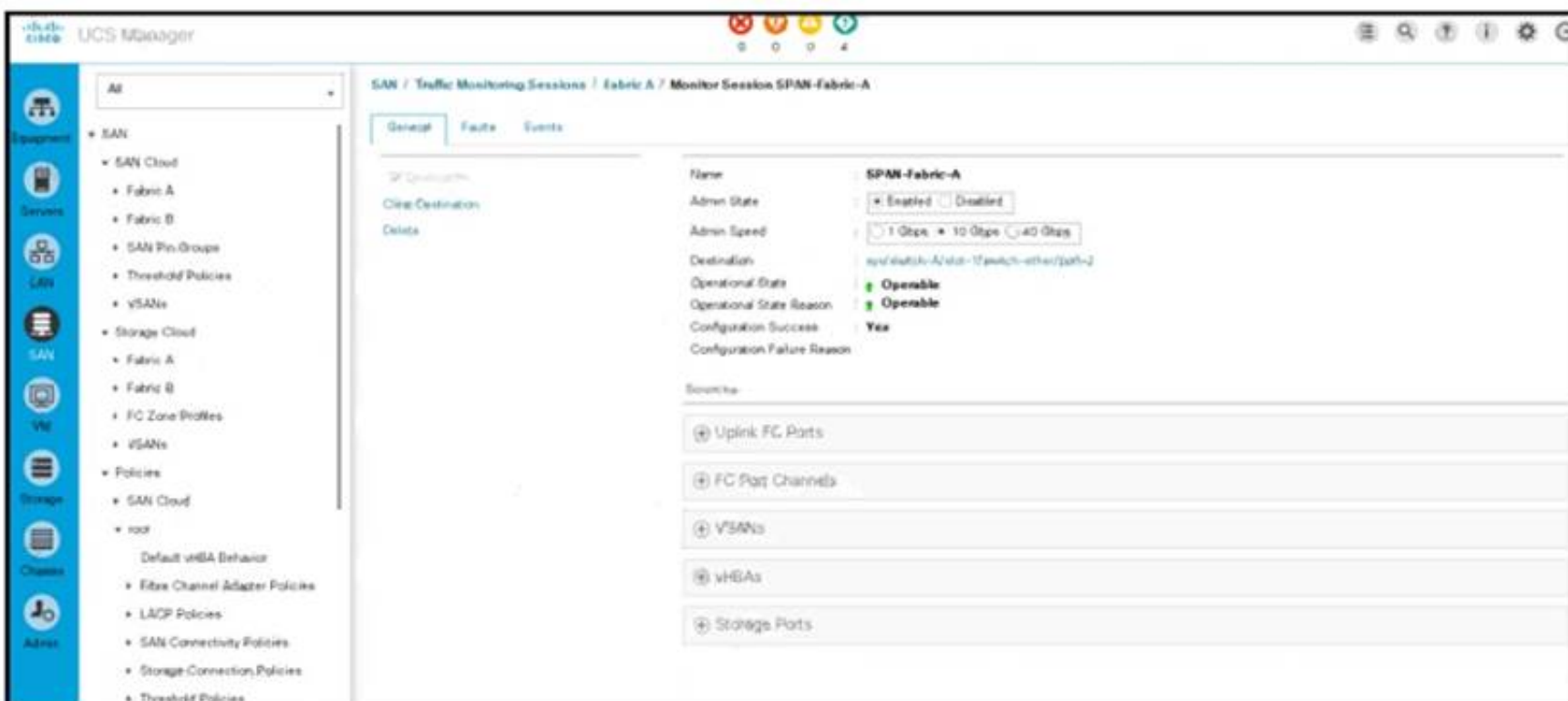
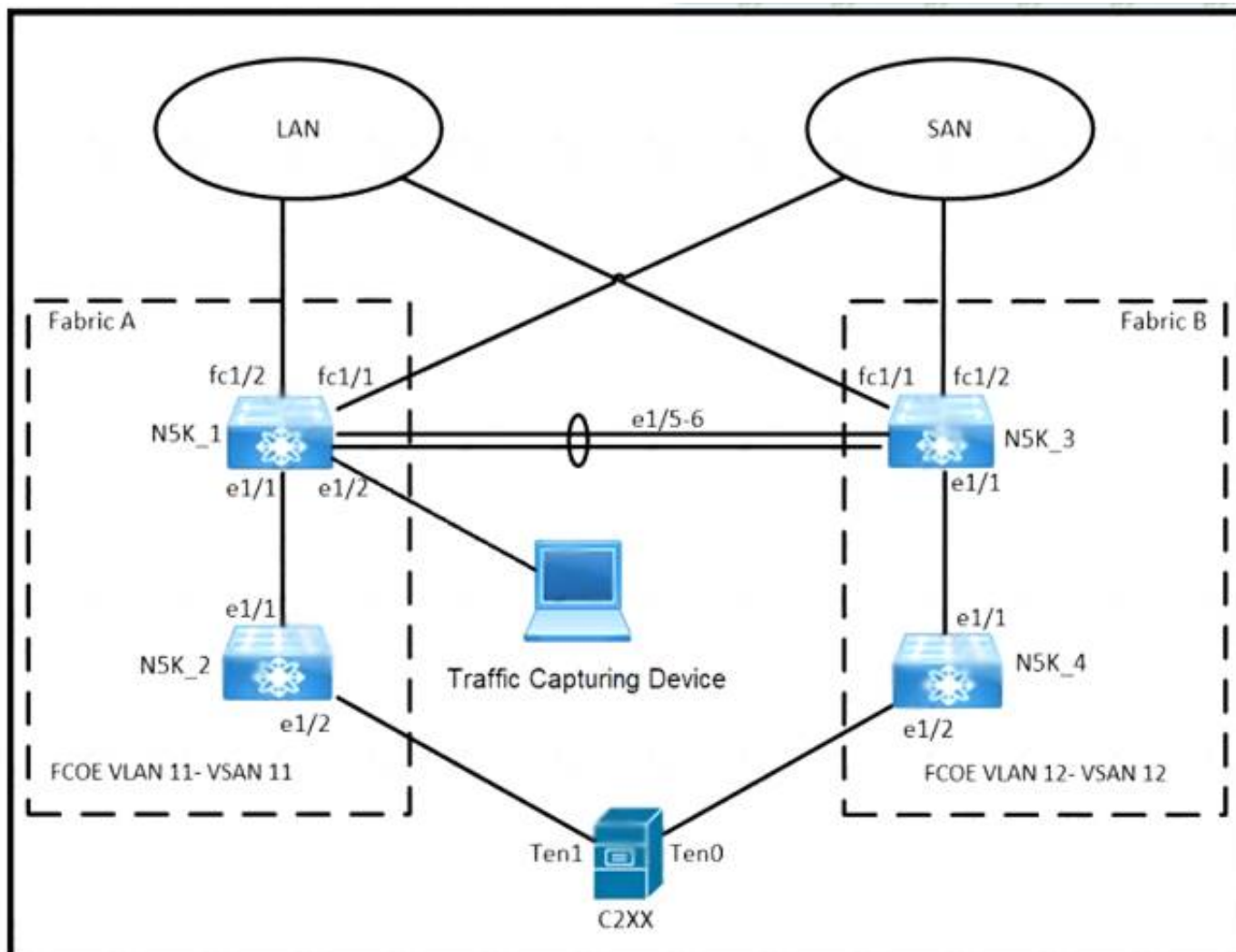
Which component is upgraded by using an EPLD upgrade on a Cisco Nexus 9000 Series Switch?

- A. dual-homed fabric extenders  
B. BIOS  
C. field-programmable gate arrays  
D. ISSU of the NX-OS version

**Answer:** C

#### NEW QUESTION 21

Refer to the exhibits



An engineer must implement a SPAN session that sends a copy of all VLAN 11 traffic on N5K\_1 to the Traffic Capturing Device. The configuration that is presented is already applied to the Cisco UCS Manager. Which additional action meets the objective?

- A. Assign the VLAN to the monitored port.
- B. Choose VLAN 11 under the VSANs section.
- C. Select the Clear Destination feature.
- D. Create a LAN traffic monitoring session.

**Answer: B**

#### NEW QUESTION 22

What is required for using puppet in a Cisco NX-OS environment?

- A. Open Agent Container
- B. XML management interface
- C. NX-API
- D. OpenNP

**Answer: A**

#### NEW QUESTION 25

Which two authentication types does Cisco UCS Manager support when configuration authentication? (Choose two.)

- A. local
- B. LDAP
- C. 802.1X
- D. Kerberos



E. PAM

**Answer:** AB

**Explanation:**

[https://www.cisco.com/c/en/us/td/docs/unified\\_computing/ucs/ucs-manager/GUI-User-Guides/Admin-Management/3-2/b\\_Cisco\\_UCS\\_Admin\\_Mgmt\\_Guide\\_3\\_2/b\\_Cisco\\_UCS\\_Admin\\_Mgmt\\_Guide\\_3\\_2\\_chapter\\_0101.html](https://www.cisco.com/c/en/us/td/docs/unified_computing/ucs/ucs-manager/GUI-User-Guides/Admin-Management/3-2/b_Cisco_UCS_Admin_Mgmt_Guide_3_2/b_Cisco_UCS_Admin_Mgmt_Guide_3_2_chapter_0101.html)

**NEW QUESTION 29**

What happens to the default host firmware policy after a Cisco UCS Manager upgrade?

- A. It is updated to contain the firmware entries of all the components
- B. It is replaced by a new default policy without any firmware entries.
- C. It is assigned to all the service profiles that include a host firmware policy.
- D. It is set to match the host firmware policy.

**Answer:** B

**Explanation:**

[https://www.cisco.com/c/en/us/td/docs/unified\\_computing/ucs/ucs-manager/GUI-User-Guides/Firmware-Mgmt/](https://www.cisco.com/c/en/us/td/docs/unified_computing/ucs/ucs-manager/GUI-User-Guides/Firmware-Mgmt/)

**NEW QUESTION 34**

A network engineer needs to configure system logging on the MDS switch. The messages must be displayed with the severity level of "warning" and above. For security reasons the users must be logged out of the console after 5 minutes of inactivity Which configuration must be applied to meet these requirements?

- ☐ MDS-A(config)# logging console 5  
MDS-A(config-console)# exec-timeout 300
- ☒ MDS-A(config)# line console  
MDS-A(config-console)# speed 38400  
MDS-A(config-console)# exec-timeout 5  
MDS-A(config)# logging console 4
- ☐ MDS-A(config)# console  
MDS-A(config-console)# speed 38400  
MDS-A(config-console)# session-limit 5  
MDS-A(config)# logging console 5
- ☐ MDS-A(config)# logging line 4  
MDS-A(config-console)# session-limit 300

- A. Option A
- B. Option B
- C. Option C
- D. Option D

**Answer:** B

**Explanation:**

**DETAILED STEPS**

	Command or Action	Purpose
Step 1	configure terminal  Example:  switch# configure terminal switch(config)#	Enters global configuration mode.
Step 2	line console  Example:  switch# line console switch(config-console)#	Enters console configuration mode.
Step 3	databits <i>bits</i>  Example:  switch(config-console)# databits 7	Configures the number of data bits per byte. The range is from 5 to 8. The default is 8.
Step 4	exec-timeout <i>minutes</i>  Example:  switch(config-console)# exec-timeout 30	Configures the timeout for an inactive session. The range is from 0 to 525600 minutes (8760 hours). A value of 0 minutes disables the session timeout. The default is 30 minutes.

**NEW QUESTION 36**

Which two protocols are used by the NFSv4 protocol? (Choose two.)

- A. FCP
- B. TCP
- C. UDP
- D. Ethernet
- E. IP

**Answer:** BE

#### NEW QUESTION 38

An engineer must configure a Cisco UCS blade system that is managed by Cisco UCS Manager. All four connected interfaces between the blade system and the fabric interconnects must be used. Additionally, the connectivity must tolerate any link failure between the I/O module and the fabric interconnects. Which action accomplishes these requirements?

- A. Configure port aggregation with LACP policy set to default
- B. Configure Firmware Auto Sync Server policy to Auto Acknowledge
- C. Configure Link Group Preference to Port Channel.
- D. Configure chassis/FEX discovery pokey action to four links

**Answer:** D

#### NEW QUESTION 39

After a Cisco Nexus 7000 Series Switch chassis replacement, the administrator discovers that all vPC-enabled LACP port channels are reinitialized. The administrator wants to prevent this issue the next time the chassis is replaced. Which two actions must be taken to meet this requirement before the isolated device is reloaded? (Choose two)

- A. Set the vPC MAC address to a lower value than the peer
- B. Change the vPC system-priority of the replacement chassis to a higher value than the peer if.
- C. Change the vPC system-priority of the replacement chassis to a lower value than the peer.
- D. Set the vPC MAC address to a higher value than the peer
- E. Configure auto-recovery to the disable state on both peers

**Answer:** BE

#### Explanation:

[https://www.cisco.com/c/en/us/td/docs/switches/datacenter/nexus9000/sw/6-x/interfaces/configuration/guide/b\\_](https://www.cisco.com/c/en/us/td/docs/switches/datacenter/nexus9000/sw/6-x/interfaces/configuration/guide/b_)

-----

<https://community.cisco.com/t5/networking-documents/vpc-auto-recovery-feature-in-nexus-7000/ta-p/3123651>

#### vPC and LACP

The Link Aggregation Control Protocol (LACP) uses the system MAC address of the vPC domain to form the LACP Aggregation Group (LAG) ID for the vPC.

You can use LACP on all the vPC EtherChannels, including those channels from the downstream switch. We recommend that you configure LACP with active mode on the interfaces on each EtherChannel on the vPC peer switches. This configuration allows you to more easily detect compatibility between switches, unidirectional links, and multihop connections, and provides dynamic reaction to run-time changes and link failures.

The vPC peer link supports 16 EtherChannel LACP interfaces. You should manually configure the system priority on the vPC peer-link switches to ensure that the vPC peer-link switches have a **higher LACP priority** than the downstream connected switches. A **lower numerical value system priority means a higher LACP priority**.

#### NEW QUESTION 42

An engineer needs to create a new user in the local user database on Cisco UCS Fabric Interconnect. The user needs permissions to change the following configuration inside UCS Manager version 3.1:

- vNIC and vHBA profiles
- Fan speed and power redundancy profile of UCS Manager

Which two roles must be assigned to a user to achieve this goal? (Choose two.)

- A. server-compute
- B. facility-manager
- C. operations
- D. server-equipment
- E. server-profile

**Answer:** AD

#### NEW QUESTION 46

Which two actions must be taken to directly connect a Fibre Channel storage array to a Cisco UCS domain? (Choose two.)

- A. Configure a new VSAN
- B. Create a new vHBA dedicated to the storage array
- C. Configure a Fibre Channel port channel
- D. Create a Storage Connection Policy
- E. Configure the Fibre Channel poet as a Fibre Channel storage port

**Answer:** AE

#### NEW QUESTION 50

Refer to the exhibit. A network engineer must Improve the convergence time during vPC primary peer device failure and recovery. Which set of actions is required on both vPC switches to accomplish this task?

- A. Option A
- B. Option B
- C. Option C
- D. Option D

**Answer:** D

#### NEW QUESTION 51

An engineer is configuring AAA authentication on an MDS 9000 switch. The LDAP server is located under the IP 10.10.2.2. The data sent to the LDAP server should be encrypted. Which command should be used to meet these requirements?

- A. ldap-server host 10.10.2.2 enable-ssl
- B. ldap-server 10.10.2.2 port 443
- C. ldap server host 10.10.2.2 key SSL\_KEY
- D. ldap-server 10.10.2.2 key SSL\_KEY

**Answer:** A

#### NEW QUESTION 53

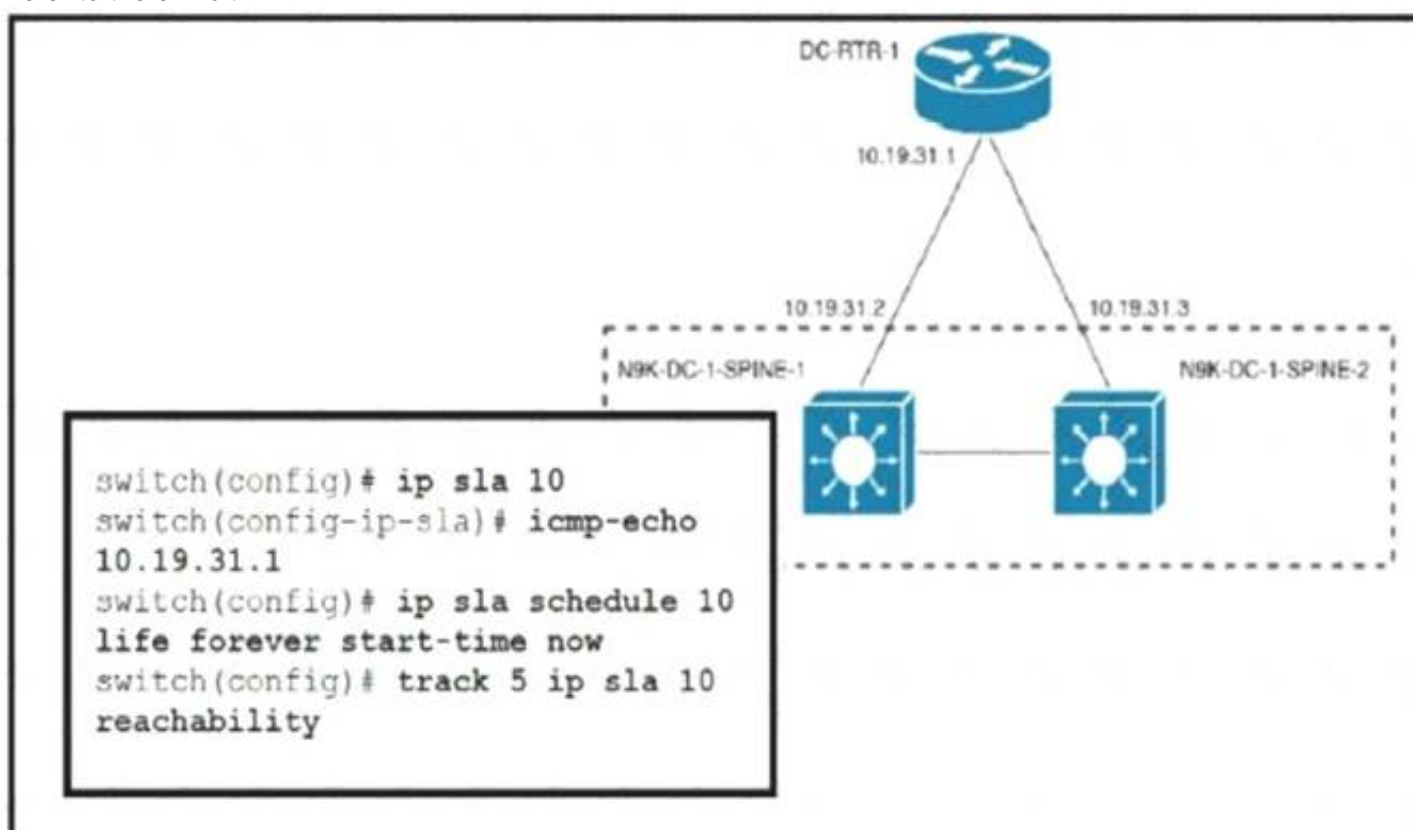
An engineer is implementing the Cisco ACI fabric and wants to reduce the amount of TCAM resources consumed by the fabric The engineer also needs to ensure that all EPGs m a VRF consume the same services Which action should be taken to meet these requirements?

- A. Configure a single contract provided and consumed in all EPGs
- B. Configure preferred groups in the VRF for al EPGs
- C. Implement an unenforced VRF
- D. Implement vzAny feature

**Answer:** A

#### NEW QUESTION 58

Refer to the exhibit.



An engineer must invoke a Python script that alerts the operations team when the router DC-RTR-1 becomes unreachable. Which configuration set accomplishes this task?



```
track 3 ip sla 10 reachability
event name GATEWAY-DOWN
event state down
action cli command routerdown.py

scheduler job name ROUTER-DOWN
job track 9 state down
action 1.0 cli source routerdown.py
schedule 10

event scheduler name DOWN-ROUTER
event track 2 state 1 not up
event action 1.0 command source routerdown.py
event start 0:00 repeat 0:05

event manager applet ROUTER-DOWN-SLA
event track 5 state down
action 1.0 event-default
action 2.0 cli command source routerdown.py
```

- A. Option A
- B. Option B
- C. Option C
- D. Option D

Answer: D

#### NEW QUESTION 60

An engineer upgrades the bash on the Cisco Nexus 9000 Series Switch.

```
guestshell:~$ sudo [MISSING_COMMAND] /bootflash/bash-4.2_8642092948678a-r8x86_64.rpm.rpm
Preparing...
##### [100%]
1:bash ##### [100%]
update-alternatives: Linking //bin/sh to /bin/bash
```

Which command must be used to complete the task?

- A. rpm -qa
- B. rpm -Uhv
- C. upgrade -U
- D. update -vh

Answer: B

#### NEW QUESTION 63

Refer to the exhibit.

```
Enter the configuration method. (console/gui) ? console

Enter the setup mode; setup newly or restore from backup.
(setup/restore) ? restore

NOTE:
  To configure Fabric interconnect using a backup file on
a remote server, you will need to setup management
interface.
  The management interface will be re-configured (if
necessary), based on information stored in the backup file.

Continue to restore this Fabric interconnect from a backup
file (yes/no) ? yes

Physical Switch Mgmt0 IPv4 address : 192.168.10.10
Physical Switch Mgmt0 IPv4 netmask : 255.255.255.0
IPv4 address of the default gateway : 192.168.10.1
Enter the protocol to get backup file (scp/ftp/tftp/sftp)
? scp
Enter the IP address of backup server: 20.10.20.10
Enter fully qualified backup file name: Backup.bak
Enter user ID: user
Enter password:
Retrieved backup configuration file.
Configuration file - Ok
```

Which type of backup is required to restore a Cisco UCS configuration?



- A. system configuration
- B. all configuration
- C. logical configuration
- D. full state

**Answer:** A

**Explanation:**

[https://www.cisco.com/c/en/us/td/docs/unified\\_computing/ucs/sw/cli/config/guide/1-0-2/b\\_CLI\\_Config\\_Guide\\_](https://www.cisco.com/c/en/us/td/docs/unified_computing/ucs/sw/cli/config/guide/1-0-2/b_CLI_Config_Guide_)

The following example restores a system configuration from the Backup.bak file, which was retrieved from the 20.10.20.10 backup server using FTP:

```
Enter the configuration method. (console/gui) ? console

Enter the setup mode; setup newly or restore from backup. (setup/restore) ? restore

NOTE:
  To configure Fabric interconnect using a backup file on a remote server,
  you will need to setup management interface.
  The management interface will be re-configured (if necessary),
  based on information stored in the backup file.

Continue to restore this Fabric interconnect from a backup file (yes/no) ? yes

Physical Switch Mgmt0 IPv4 address : 192.168.10.10

Physical Switch Mgmt0 IPv4 netmask : 255.255.255.0

IPv4 address of the default gateway : 192.168.10.1

Enter the protocol to get backup file (scp/ftp/tftp/sftp) ? scp
Enter the IP address of backup server: 20.10.20.10
Enter fully qualified backup file name: Backup.bak
Enter user ID: user
Enter password:
  Retrieved backup configuration file.
  Configuration file - Ok

Cisco UCS 6100 Series Fabric Interconnect
UCS-A login:
```

**NEW QUESTION 67**

A network engineer must enable port security on all cisco MDS series switches in the fabric. The requirement is to avoid the extensive manual configuration of the switch ports. Which action must be taken to meet these requirements?

- A. Activate CFS distribution and the auto-learning port security feature.
- B. Activate CFS distribution and file auto-learning port security feature on a per-VSAN basis.
- C. Enable the auto-learning port security feature on a per-VSAN basis.
- D. Enable the auto-learning port security feature.

**Answer:** B

**Explanation:**

You can instruct the switch to automatically learn (auto-learn) the port security configurations over a specified period. This feature allows any switch in the Cisco MDS 9000 Family to automatically learn about devices and switches that connect to it. Use this feature when you activate the port security feature for the first time as it saves tedious manual configuration for each port. You must configure auto-learning on a per-VSAN basis.

[https://www.cisco.com/en/US/docs/storage/san\\_switches/mds9000/sw/rel\\_3\\_x/configuration/guides/fm\\_3\\_3\\_1/p](https://www.cisco.com/en/US/docs/storage/san_switches/mds9000/sw/rel_3_x/configuration/guides/fm_3_3_1/p)

**NEW QUESTION 71**

Multiple roles are applied to a user on the Cisco MDS 9000 Series Switch. Which statement is true?

- A. Any commands that have conflicting settings between roles are denied.
- B. Access to a command takes priority over being denied access to a command.
- C. The first role assigned takes precedence over subsequent roles.
- D. The last role assigned takes precedence over previous roles.

**Answer:** B

**Explanation:**

Graphical user interface, text, application Description automatically generated



**Note** If you belong to multiple roles, you can execute a union of all the commands permitted by these roles. Access to a command takes priority over being denied access to a command. For example, suppose you belong to a TechDocs group and you were denied access to configuration commands. However, you also belong to the engineering group and have access to configuration commands. In this case, you will have access to configuration commands.

[https://www.cisco.com/c/en/us/td/docs/switches/datacenter/mds9000/sw/5\\_0/configuration/guides/sec/nxos/sec/clicfgur.html](https://www.cisco.com/c/en/us/td/docs/switches/datacenter/mds9000/sw/5_0/configuration/guides/sec/nxos/sec/clicfgur.html)  
[https://www.cisco.com/c/en/us/td/docs/switches/datacenter/mds9000/sw/8\\_x/config/security/cisco\\_mds9000\\_security\\_config\\_guide\\_8x/configuring\\_users\\_and\\_common\\_roles.html](https://www.cisco.com/c/en/us/td/docs/switches/datacenter/mds9000/sw/8_x/config/security/cisco_mds9000_security_config_guide_8x/configuring_users_and_common_roles.html)

**NEW QUESTION 74**

What occurs when running the command `install deactivate <filename>` while a software maintenance upgrade is performed on a Cisco Nexus 9000 Series switch?

- A. The current set of packages is committed.
- B. The package is removed from the switch.
- C. The package features for the line card are disabled.
- D. The current upgrade stops.

**Answer: C**

**NEW QUESTION 78**

A network engineer connects the CNA interface of a server to a switch. The switch must bring down all of the VLANs on the interface that are not enabled for FCoE, but the VLANs that are enabled for FCoE should continue to carry SAN traffic without interruption. Which configuration should be applied to the switch to achieve this objective?

- A. `switch(config)# interface Ethernet 2/1 switch(config-if)# shutdown lan`
- B. `switch(config)# interface vfc 2 switch(config-if)# shutdown lan`
- C. `switch(config)# Interface Ethernet vfc 2 switch(config-if)# shutdown force`
- D. `switch(config)# interface Ethernet 2/1 switch(config-if)# shutdown force`

**Answer: A**

**NEW QUESTION 83**

Which two actions are needed to configure a single Cisco APIC controller for Cisco ACI fabric for the first time? (Choose two.)

- A. Register the APIC that is connected to the switch.
- B. Configure the first Cisco APIC controller
- C. Configure the leaf switch where the Cisco APIC is connected, using CLI to allow APIC connectivity
- D. Register the switches that are discovered through LLDP.
- E. Register all leaf and spine switches

**Answer: AE**

**NEW QUESTION 84**

Refer to the exhibit.

```
Nexus# show vpc peer-keepalive | i Keepalive
--Keepalive interval : 1000 msec
--Keepalive timeout : 5 seconds
--Keepalive hold timeout : 3 seconds
--Keepalive vrf : management
--Keepalive udp port : 3200
--Keepalive tos : 192

Nexus# ethanalyzer local interface mgmt limit-captured-frames 1000

Capturing on mgmt0
2019-06-15 12:01:51.242597 192.168.254.11 -> 192.168.254.3 ICMP Echo (ping) request
2019-06-15 12:01:51.242860 192.168.254.3 -> 192.168.254.11 ICMP Echo (ping) reply
2019-06-15 11:50:15.975474 192.168.254.1 -> 192.168.254.3 TCP 47540 > bootps [SYN] Seq=0 Win=1024 Len=0 MSS=1460
2019-06-15 11:50:15.975547 192.168.254.3 -> 192.168.254.1 TCP 29 > 47540 [RST, A CK] Seq=1 Ack=1 Win=0 Len=0
2019-06-15 11:50:15.975564 192.168.254.1 -> 192.168.254.3 TCP 47540 > 44 [SYN] Seq=0 Win=1024 Len=0 MSS=1460
2019-06-15 11:50:15.975924 192.168.254.1 -> 192.168.254.3 TCP 47540 > discard [SYN] Seq=0 Win=1024 Len=0 MSS=1460
2019-06-15 11:50:15.976027 192.168.254.1 -> 192.168.254.3 TCP 47540 > 97 [SYN] Seq=0 Win=1024 Len=0 MSS=1460
2019-06-15 11:50:15.976381 192.168.254.1 -> 192.168.254.3 TCP 47540 > 35 [SYN] Seq=0 Win=1024 Len=0 MSS=1460
2019-06-15 11:50:16.661845 192.168.254.3 -> 192.168.254.4 UDP Source port: 3200 Destination port: 3200
2019-06-15 11:50:16.761147 00:8e:73:a2:41:13 -> 01:80:c2:00:00:00 STP Conf. Root = 8192/10/ec:e1:a9:df:6c:80 Cost = 22 Port = 0x8013
2019-06-15 11:50:16.853248 192.168.254.4 -> 192.168.254.3 UDP Source port: 3200 Destination port: 3200
2019-06-15 11:50:17.326253 192.168.254.1 -> 192.168.254.3 SSH Encrypted request packet len=52
2019-06-15 11:50:17.327313 192.168.254.3 -> 192.168.254.1 SSH Encrypted response packet len=1348
2019-06-15 11:50:17.377246 192.168.254.4 -> 239.255.70.83 UDP Source port: 7546 Destination port: 7546
2019-06-15 11:50:17.552215 192.168.254.1 -> 192.168.254.3 TCP 14139 > ssh [ACK] Seq=365 Ack=11277 Win=63546 Len=0
2019-06-15 11:50:17.661764 192.168.254.3 -> 192.168.254.4 UDP Source port: 3200 Destination port: 3200
2019-06-15 11:50:17.653242 192.168.254.4 -> 192.168.254.3 UDP Source port: 3200 Destination port: 3200
2019-06-15 11:50:17.872637 8c:60:4f:aa:c2:e1 -> 01:80:e7:00:00:0e LLDP Chassis : d = 8c:60:41:aa:c2:e1 Port Id = mgmt0 TTL = 120
2019-06-15 11:50:08.173056 192.168.256.3 -> 192.168.254.2 NTP NTP client
2019-06-15 11:50:08.173256 192.168.256.2 -> 192.168.254.3 NTP NTP server
```

A flapping link issue has been reported on the vPC keepalive link. A packet capture has been activated on the Cisco Nexus switch. What is the destination IP address of the vPC keepalive packets that are sent by the switch?

- A. 192.168.254.4
- B. 239.255.70.83

- C. 192.168.254.1
- D. 192.168.254.2

**Answer:** A

**Explanation:**

<https://www.cisco.com/c/en/us/td/docs/switches/datacenter/nexus3000/sw/interfaces/92x/b-cisco-nexus-3000-nx>

**NEW QUESTION 88**

An engineer must configure SAN connectivity in Cisco UCS manager. The requirement is to specify the WWPN of the storage array and set the zoning type to single initiator multiple targets. The engineer must also configure interrupt handling and queues of the vHBA interface. Which two Cisco UCS policies should be used to configure the settings? (Choose two.)

- A. storage connection policy
- B. SAN connectivity policy
- C. vHBA policy
- D. Fibre Channel adaptor policy
- E. boot policy

**Answer:** AD

**NEW QUESTION 89**

An engineer must perform a backup operation of the Cisco UCS system. The backup must be transferred to a secure location using UDP and must contain information about VLANs, VSANs, and other policies. Also, the operations team requires the backup file to be in a human-readable format. Which configuration set meets these requirements?

- A. Type: System configuration Protocol: SCP
- B. Type: Logical configuration Protocol: TFTP
- C. Type: All configuration Protocol: FTP
- D. Type: Full state Protocol: SFTP

**Answer:** B

**NEW QUESTION 93**

A customer has a requirement for an automation solution that supports periodically acquiring configuration from a centralized server and aligning UCS servers to their desired state. Which open-source tool meets these requirements?

- A. SaltStack
- B. Terraform
- C. Puppet
- D. Kubemetes

**Answer:** C

**Explanation:**

"Overview of Puppet architecture: [...] After it receives a catalog, the Puppet agent applies the catalog by checking each resource that the catalog describes. If it finds any resources that are not in their desired state, it makes any changes necessary to correct them."

[https://www.cisco.com/c/dam/en/us/products/collateral/servers-unified-computing/ucs-c-series-rackservers/whitepaper\\_c11-740103.pdf](https://www.cisco.com/c/dam/en/us/products/collateral/servers-unified-computing/ucs-c-series-rackservers/whitepaper_c11-740103.pdf)

<https://www.cisco.com/c/dam/en/us/products/collateral/servers-unified-computing/ucs-devops-integration-sol-br>

from DCCOR book under Puppet section The operation of the Puppet agent involves periodically connecting to the Puppet master, which in turn compiles and sends a configuration manifest to the agent. The agent reconciles this manifest with the current state of the node and updates state that is based on differences.

**NEW QUESTION 97**

When a strict CoPP policy is implemented, which statement describes an event during which packets are dropped?

- A. Fifteen SSH sessions remain connected to the switch.
- B. A large system image is copied to a switch by using the default VRF.
- C. A ping sweep is performed on a network that is connected through a switch.
- D. A web server that is connected to a switch is affected by a DDoS attack.

**Answer:** B

**Explanation:**

A large image upload is more probable to generate that level of traffic.

15 SSH session would mean an average of 200pps per session, and they simply mention that the session remain connected, if there are no inputs in them they have 0pps and even a full config push would probably not require 200 packets total.

class copp-system-p-class-management set cos 2

police cir 3000 pps bc 32 packets conform transmit violate drop

[https://www.cisco.com/c/en/us/td/docs/switches/datacenter/nexus9000/sw/6-x/security/configuration/guide/b\\_Cisco\\_Nexus\\_9000\\_Series\\_NX-OS\\_Security\\_Configuration\\_Guide/b\\_Cisco\\_Nexus\\_9000\\_Series\\_NXOS\\_Security\\_Configuration\\_Guide\\_chapter\\_010001.html](https://www.cisco.com/c/en/us/td/docs/switches/datacenter/nexus9000/sw/6-x/security/configuration/guide/b_Cisco_Nexus_9000_Series_NX-OS_Security_Configuration_Guide/b_Cisco_Nexus_9000_Series_NXOS_Security_Configuration_Guide_chapter_010001.html)

**NEW QUESTION 100**

An engineer must implement an automation solution to allow the backup of the configuration of cisco Nexus series switches to a centralized location. The solution must:

- \* Support the team-developed custom monitoring scripts that are packaged using RPM packaging that the framework must support.
- \* Be developed from the underlying cisco Nexus operating system.
- \* Have no impact on the operating system of the underlying switch if the resource contention occurs.
- \* Use Python to expand the existing automation framework. Which solution meets these requirements?

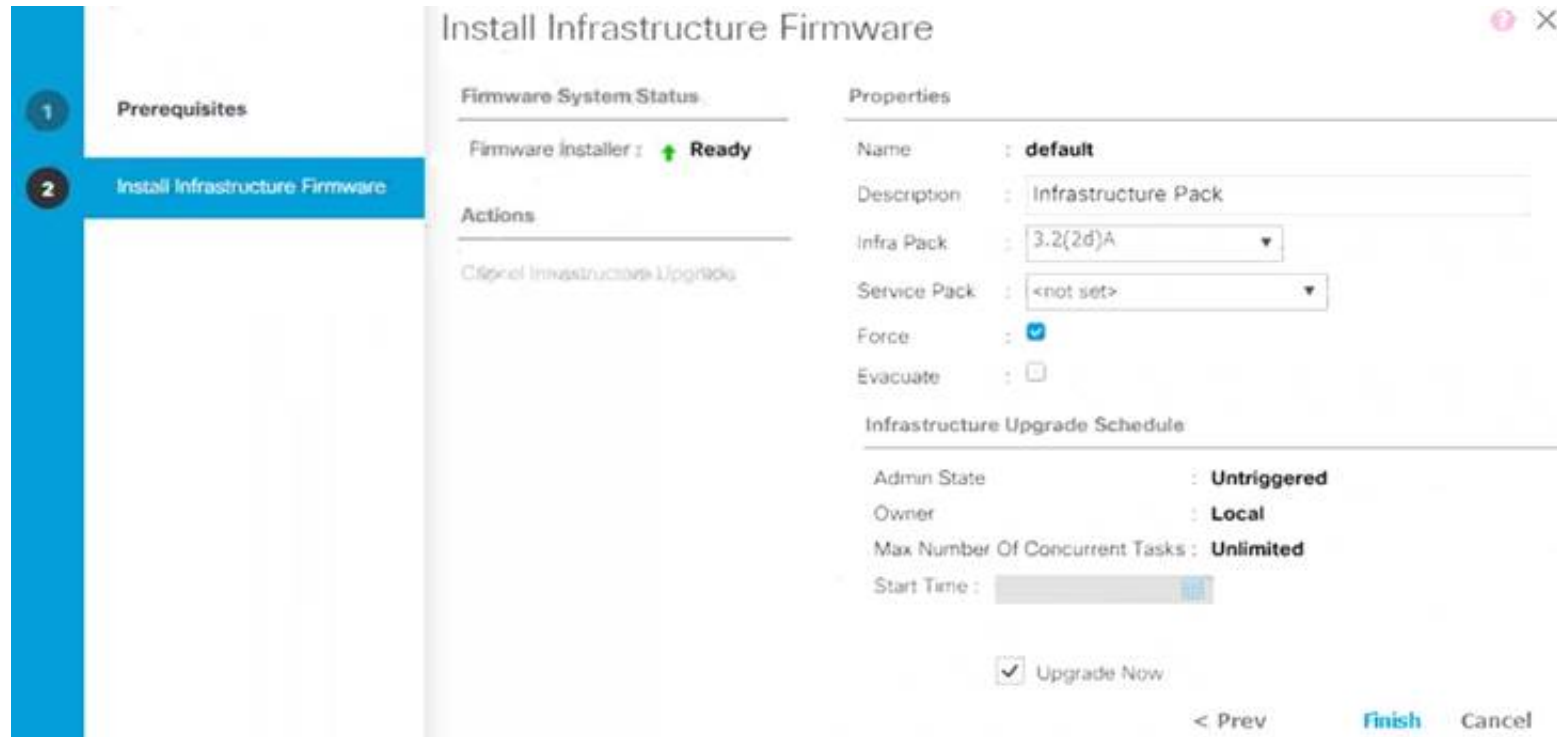


- A. Guest Shell
- B. Bash Shell
- C. TCL Shell
- D. Vegas Shell

**Answer:** A

#### NEW QUESTION 104

Refer to the exhibit.



Which two Cisco UCS components are upgraded as a result of the configuration? (Choose two.)

- A. adapters
- B. board controller
- C. IOMs
- D. BIOS
- E. Cisco UCS Manager

**Answer:** CE

#### Explanation:

[https://www.cisco.com/c/en/us/td/docs/unified\\_computing/ucs/sw/firmware-mgmt/gui/2-2/b\\_GUI\\_Firmware\\_Management\\_22/b\\_GUI\\_Firmware\\_Management\\_22\\_chapter\\_0101.html](https://www.cisco.com/c/en/us/td/docs/unified_computing/ucs/sw/firmware-mgmt/gui/2-2/b_GUI_Firmware_Management_22/b_GUI_Firmware_Management_22_chapter_0101.html)

Infrastructure software bundle—This bundle is also called the A bundle. It contains the firmware images that the fabric interconnects, IO Modules, and Cisco UCS Manager require to function.

Board controller is a server component included in the server bundle not the infrastructure bundle Graphical user interface, text, application, letter Description automatically generated

### Install Infrastructure Firmware

Install Infrastructure Firmware upgrades all infrastructure components in a Cisco UCS domain, including Cisco UCS Manager, and all fabric interconnects and I/O modules. All components are upgraded to the firmware version included in the selected Cisco UCS Infrastructure Software Bundle.

Install Infrastructure Firmware does not support a partial upgrade to only some infrastructure components in a Cisco UCS domain domain.

You can schedule an infrastructure upgrade for a specific time to accommodate a maintenance window. However, if an infrastructure upgrade is already in progress, you cannot schedule another infrastructure upgrade. You must wait until the current upgrade is complete before scheduling the next one.



**Note**

You can cancel an infrastructure firmware upgrade if it is scheduled to occur at a future time. However, you cannot cancel an infrastructure firmware upgrade after the upgrade has begun.

#### NEW QUESTION 109

A network engineer is configuring the Cisco UCS service profile template with Ansible using this code.



```
hostname: 192.168.10.23
username: cisco
password: f718c4329405088301f6247ff982
name: DCE-CTRL
template_type: updating-template
uuid_pool: UUID-POOL
storage_profile: DCE-StgProf
maintenance_policy: default
server_pool: Container-Pool
host_firmware_package: 4.1(1a)
bios_policy: Docker
```

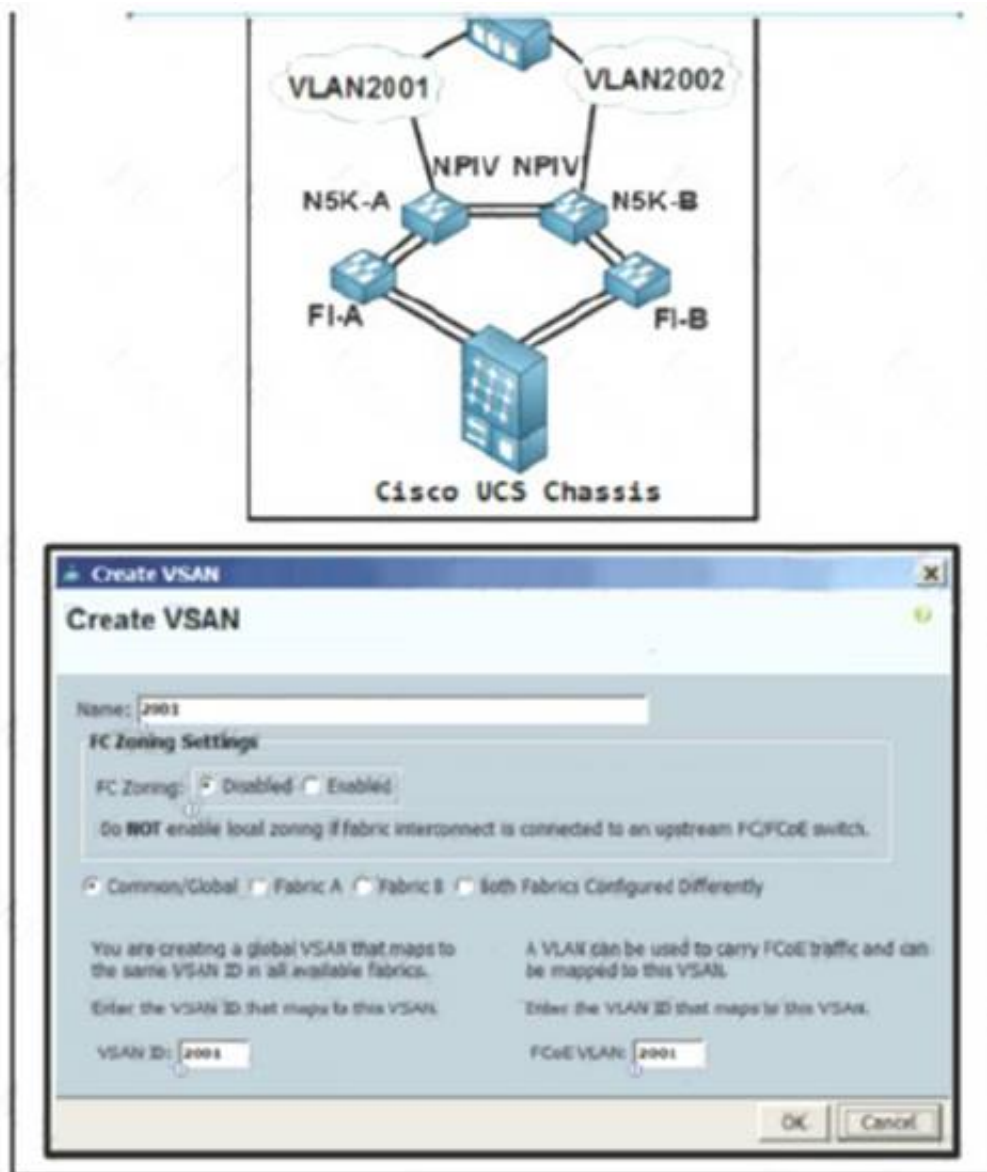
Which attribute must be used to apply the iSCSI initiator identifiers to all iSCSI vNICs for the service profiles derived from the service template?

- A. san\_connectivity\_policy
- B. iqn\_pool
- C. boot\_policy
- D. lan\_connectivrtty\_policy

**Answer: B**

#### NEW QUESTION 110

Refer to the exhibit.



An engineer is configuring a VSAN on the network Which option must be selected to create the VSAN?

- A. Fabric B
- B. FC Zoning Enabled
- C. Fabric A
- D. Common/Global

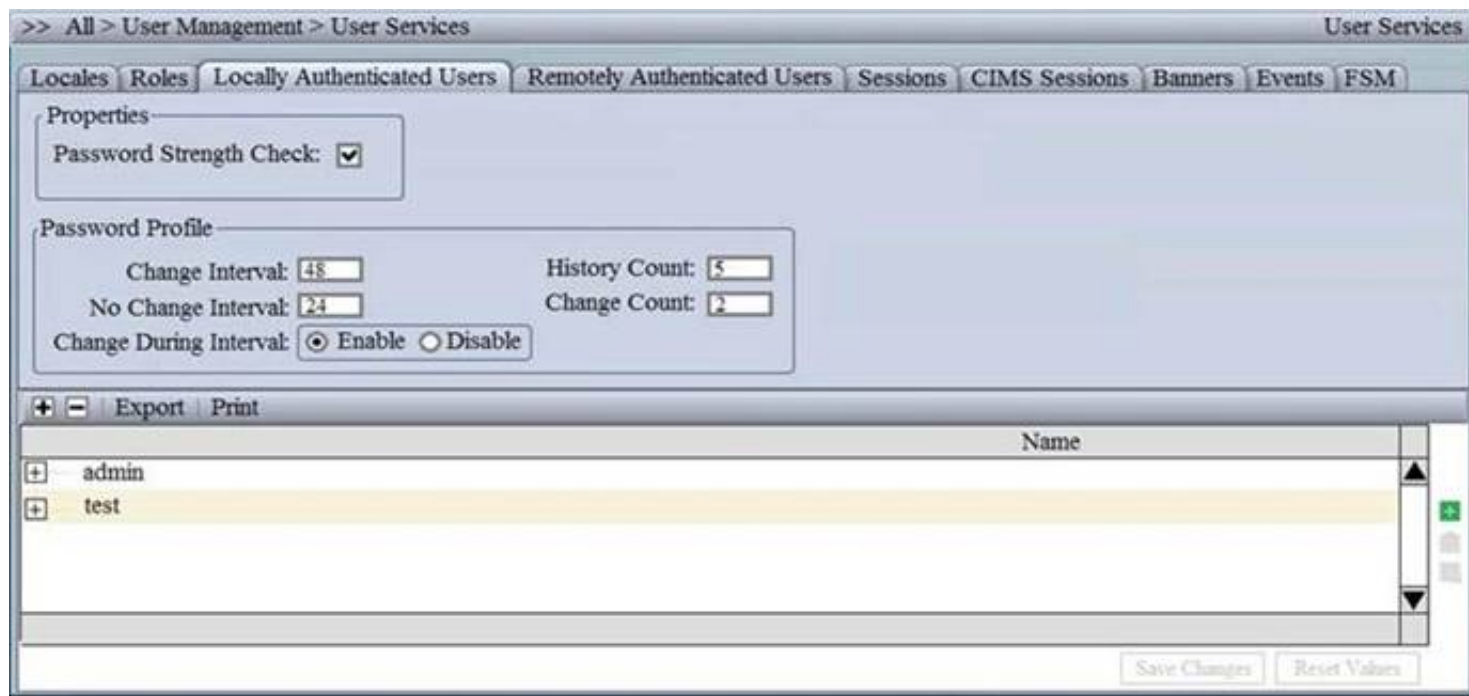
**Answer: C**

#### Explanation:

<https://www.cisco.com/c/en/us/td/docs/switches/datacenter/mds9000/sw/nx-os/configuration/guides/fabric/fabric>  
[https://www.cisco.com/c/en/us/td/docs/unified\\_computing/ucs/ucs-central/GUI-User-Guides/Storage-Mgmt/1-5/](https://www.cisco.com/c/en/us/td/docs/unified_computing/ucs/ucs-central/GUI-User-Guides/Storage-Mgmt/1-5/)

#### NEW QUESTION 115

Refer to the exhibit.



Which setting must be configured to prevent reuse of passwords?

- A. No Change Interval
- B. Change Interval
- C. History Count
- D. Change Count

**Answer: C**

**Explanation:**

[https://www.cisco.com/c/en/us/td/docs/unified\\_computing/ucs/ucs-manager/GUI-User-Guides/Admin-Management/3-1/b\\_Cisco\\_UCS\\_Admin\\_Mgmt\\_Guide\\_3\\_1/b\\_Cisco\\_UCS\\_Admin\\_Mgmt\\_Guide\\_3\\_1\\_chapter\\_011.html](https://www.cisco.com/c/en/us/td/docs/unified_computing/ucs/ucs-manager/GUI-User-Guides/Admin-Management/3-1/b_Cisco_UCS_Admin_Mgmt_Guide_3_1/b_Cisco_UCS_Admin_Mgmt_Guide_3_1_chapter_011.html)

**NEW QUESTION 118**

The FCoE technology is used in a data center and the MDS switches are configured as Fibre Channel Forwarders. What configuration should be applied to an MDS switch in order to be used as the best switch to connect by the CNAs in the fabric?

- A. fcoe fcf-priority 1024
- B. fcoe fcf-priority 512
- C. fcoe fcf-priority 0
- D. no fcoe fcf-priority

**Answer: C**

**Explanation:**

[https://www.cisco.com/c/en/us/td/docs/switches/datacenter/nexus5000/sw/fcoe/521n11/b\\_5k\\_FCoE\\_Config\\_521N11/b\\_5k\\_FCoE\\_Config\\_521N11\\_chapter\\_011.pdf](https://www.cisco.com/c/en/us/td/docs/switches/datacenter/nexus5000/sw/fcoe/521n11/b_5k_FCoE_Config_521N11/b_5k_FCoE_Config_521N11_chapter_011.pdf)

**NEW QUESTION 121**

A network administrator is using the Cisco ESA with Cisco AMP to upload files to the cloud for analysis. The network is congested and is affecting communication. How will the Cisco ESA handle any files which need analysis?

- A. Cisco AMP calculates the SHA-256 fingerprint, caches it, and periodically attempts the upload.
- B. The Cisco ESA immediately makes another attempt to upload the file.
- C. The file is queued for upload when connectivity is restored.
- D. The file upload is abandoned.

**Answer: A**

**NEW QUESTION 123**

An engineer must create a scheduler configuration to create two backup jobs per day. The backup file must be copied to a server in the operations VRF. Which configuration accomplishes this task?

A)

```
scheduler schedule name CNFGBACKUP
  job name BACKUP-JOB
  copy running-config tftp://10.19.11.12/${SWITCHNAME}-${TIMESTAMP}.cfg vrf operations
  time start now repeat 12:00
```

B)

```
scheduler schedule name CNFGBACKUP
  job name BACKUP-JOB
  show tech-support | redirect vrf operations tftp://10.19.11.12/${SWITCHNAME}-${TIMESTAMP}.cfg
  time start daily 12:30 0:30
```

C)

```
scheduler schedule name CNFGBACKUP
  job name BACKUP-JOB
  copy startup-config tftp://10.19.11.12/$(SWITCHNAME)-$(TIMESTAMP).cfg
  time daily 12:30 0:30
```

D)

```
scheduler schedule name CNFGBACKUP
  job name BACKUP-JOB
  copy vrf operations config tftp://10.19.11.12/$(SWITCHNAME)-$(TIMESTAMP).cfg
  time start 12:30 repeat 12
```

- A. Option A
- B. Option B
- C. Option C
- D. Option D

**Answer:** A

#### NEW QUESTION 125

A customer requires a solution to orchestrate the configuration of storage arrays, firewalls, and Cisco ACI networking. Additionally, the orchestration product must support open automation and a service catalog. Which solution meets these requirements?

- A. Cisco UCS Director
- B. Cisco Intersight
- C. Cisco Data Center Network Manager
- D. Cisco Workload Optimization Manager

**Answer:** C

#### NEW QUESTION 129

Which statement describes monitoring Fibre Channel traffic on a Cisco UCS 6332 Fabric Interconnect?

- A. Fibre Channel traffic is monitored only on one vHBA per server.
- B. The destination port for monitoring must be an unassigned Fibre Channel port.
- C. The monitoring of Fibre Channel traffic is limited to the default VSAN.
- D. Fibre Channel traffic is capable to be monitored as it is encapsulated as FCoE.

**Answer:** D

#### Explanation:

You can monitor Fibre Channel traffic using either a Fibre Channel traffic analyzer or an Ethernet traffic analyzer. When Fibre Channel traffic is monitored with an Ethernet traffic monitoring session, at an Ethernet destination port, the destination traffic is FCoE. The Cisco UCS 6300 Fabric Interconnect supports FC SPAN only on the ingress side. A Fibre Channel port on a Cisco UCS 6248 Fabric Interconnect cannot be configured as a source port.

[https://www.cisco.com/c/en/us/td/docs/unified\\_computing/ucs/ucs-manager/GUI-User-Guides/System-Monitoring/3-2/b\\_UCSM\\_GUI\\_System\\_Monitoring\\_Guide\\_3\\_2/b\\_UCSM\\_GUI\\_System\\_Monitoring\\_Guide\\_3\\_2\\_chapter\\_01101.pdf](https://www.cisco.com/c/en/us/td/docs/unified_computing/ucs/ucs-manager/GUI-User-Guides/System-Monitoring/3-2/b_UCSM_GUI_System_Monitoring_Guide_3_2/b_UCSM_GUI_System_Monitoring_Guide_3_2_chapter_01101.pdf)

#### NEW QUESTION 131

What is an advantage of NFS as compared to Fibre Channel?

- A. NFS enable thin provisioning for LUNs.
- B. NFS provides the dynamic allocation of storage capacity.
- C. NFS removes the impact of IP overhead.
- D. NFS provides direct access to the underlying storage hardware.

**Answer:** B

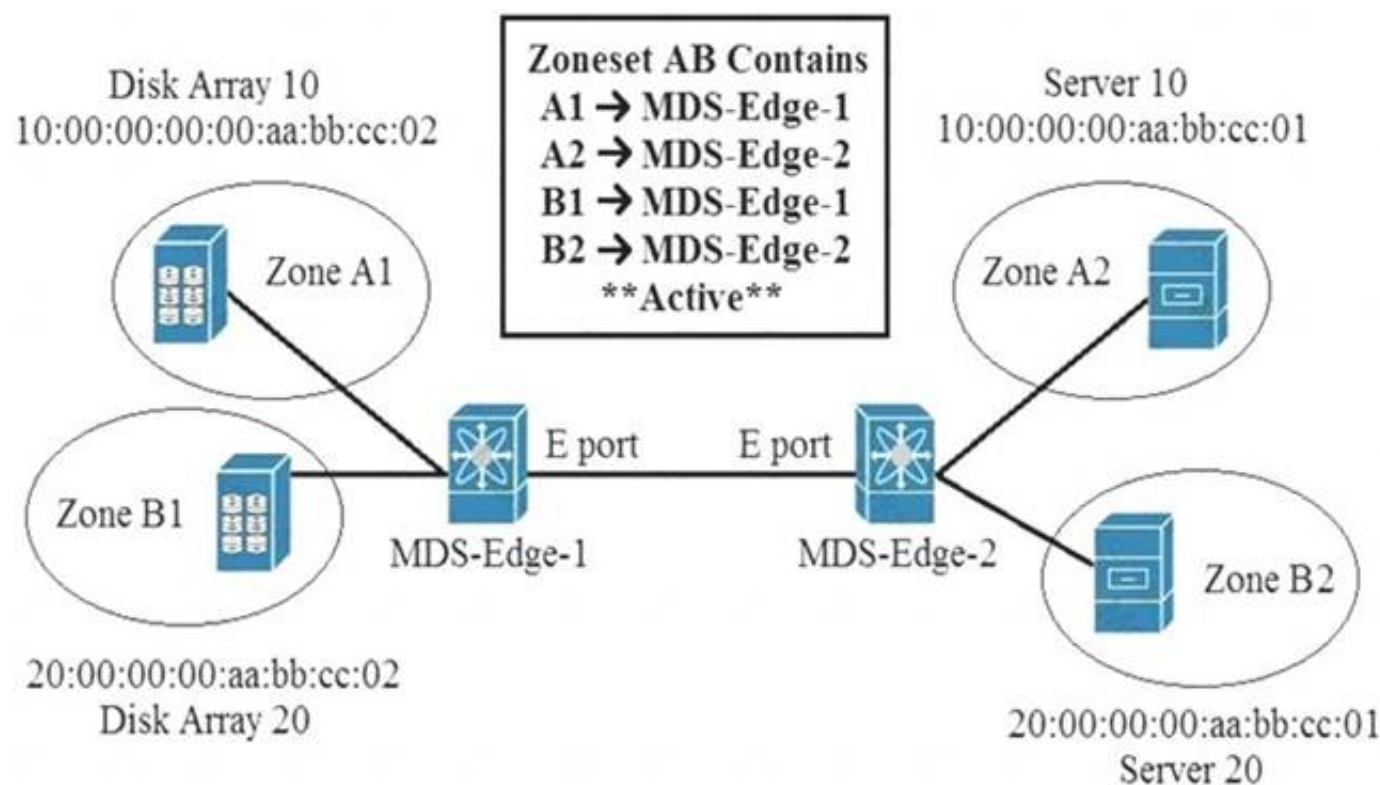
#### Explanation:

<https://www.ciscolive.com/c/dam/r/ciscolive/apjc/docs/2018/pdf/BRKINI-1011.pdf>

#### NEW QUESTION 133

Refer to the exhibit.





An engineer is implementing zoning on two Cisco MDS switches. After the implementation is finished, E Ports that connect the two Cisco MDS switches becomes isolated. What is wrong with the implementation?

- A. E Ports on both MDS switches must be configured as F ports for the zoning to function.
- B. Zones are local to the MDS switch and name service must be used to activate the connection between E ports.
- C. Different zone set names must be configured on both MDS switches.
- D. Zones must have the same name on both MDS switches for the E ports to function.

Answer: D

Explanation:

When two switches in a fabric are merged using a TE or E port, these TE and E ports may become isolated when the active zone set databases are different between the two switches or fabrics." [https://www.cisco.com/c/en/us/td/docs/switches/datacenter/mds9000/sw/6\\_2/configuration/guides/fabric/nxos/n](https://www.cisco.com/c/en/us/td/docs/switches/datacenter/mds9000/sw/6_2/configuration/guides/fabric/nxos/n)

NEW QUESTION 134

Drag and drop the mechanisms to collect data from a network from the left onto their characteristics on the right

CLI-based scripts	Polling can take 5-10 minutes.
SNMP	Unstructured and susceptible to change and scripts failure.
syslog	It sends data from the device to a specific endpoint, for instance, JSON or by using Google protocol buffers.
telemetry	It pushes messages in the format "seq no:timestamp: %facility-severity MNEMONIC:description" and has limits in scale and efficiency.

- A. Mastered
- B. Not Mastered

Answer: A

Explanation:

Table Description automatically generated with low confidence

NEW QUESTION 139

Which two actions should be performed before upgrading the infrastructure and firmware of multiple UCS blades? (Choose two)

- A. Verify if the bootflash on the fabric interconnects in the Cisco UCS has at least 15% available space
- B. Enable Smart Call Home feature during the firmware upgrade process
- C. Verify if the bootflash on the fabric interconnects in the Cisco UCS has at least 10% available space
- D. Run the Check Conformance feature to verify that all your components are running the compatiblefirmware version after the upgrade
- E. Get Full State and All Configuration backup files before beginning the upgrade

Answer: DE

NEW QUESTION 144

A network engineer must create an EEM script that saves a copy of the running configuration on bootflash and writes a message to syslog when a user saves the configuration to a Cisco Nexus switch. Which configuration set should be applied to complete this task?



- Ⓐ event manager applet local- backup  
event cli match "copy running-config startup-config"  
action 1 cli copy running-config bootflash:/current\_config.txt  
action 2 syslog msg Configuration saved and copied to bootflash
- Ⓑ event manager applet local- backup  
event cli match "write memory"  
action 1 cli copy running-config bootflash:/current\_config.txt  
action 2 snmp-trap strdata "Configuration saved and copied to bootflash"
- Ⓒ event manager applet local- backup  
event cli match "copy running-config startup-config"  
action 1 cli copy running-config bootflash:/current\_config.txt  
action 2 syslog msg Configuration saved and copied to bootflash  
action 3 event-default
- Ⓓ event manager applet local- backup  
event cli match "write memory"  
action 1 cli copy running-config bootflash:/current\_config.txt  
action 2 syslog msg Configuration saved and copied to bootflash  
action 3 event-default

- A. Option A
- B. Option B
- C. Option C
- D. Option D

**Answer: C**

**Explanation:**

The command write memory is not valid in NX-OS  
The "event-default"

If you want to allow the triggered event to process any default actions, you must configure the EEM policy to allow the default action. For example, if you match a CLI command in a match statement, you must add the event-default action statement to the EEM policy or EEM will not allow the CLI command to execute.

**NEW QUESTION 149**

Refer to the exhibit.

```
OTV-Site1# show otv
OTV Overlay Information
Site Identifier 0000.0000.0111
Overlay interface Overlay200
VPN name: Overlay200
VPN state: UP
Extended vlans: 178 2500-2563 (Total:65)
Join interface(s): Eth1/2 (20.1.1.1)
Site vlan: 1999 (up)
AED-Capable: Yes
Capability: Unicast-Only
Is Adjacency Server: Yes
Adjacency Server(s): 20.1.1.1/20.2.1.1
```

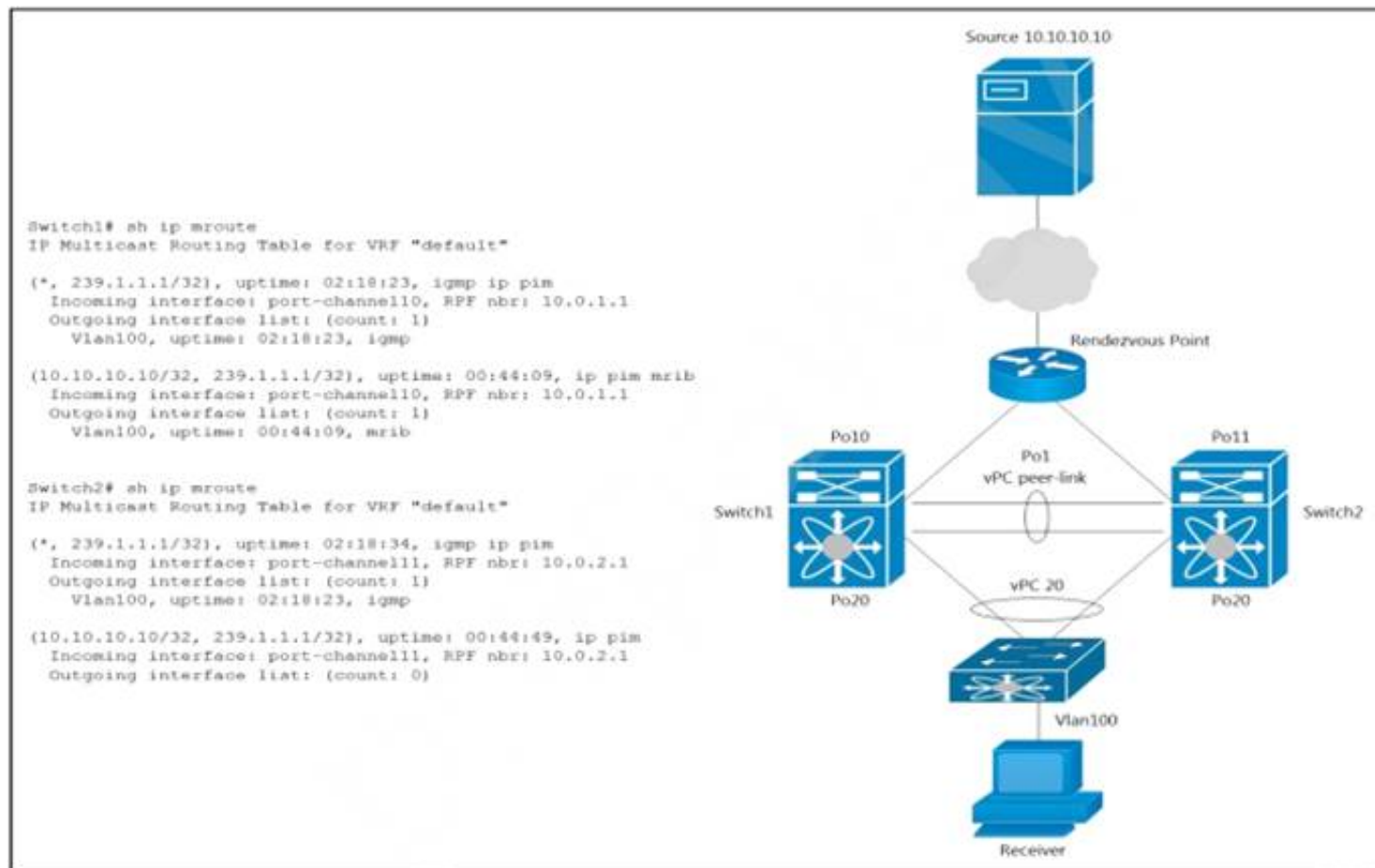
A network engineer is setting up a multihomed OTV network. The first site has been set up with a primary and secondary adjacency server. Which configuration must be added on the remote OTV AEDs site?

- A. interface Overlay200otv join-interface Ethernet1/2 otv extend-vlan 178, 2500-2563otv use-adjacency-server 20.1.1.1 unicast-only
- B. interface Overlay200otv join-interface Ethernet1/2 otv extand-vlan 178, 2500-2563otv adjacency-server unicast-only
- C. interface Overlay200otv join-interface Ethernet1/2 otv extend-vlan 178, 2500-2563
- D. interface Overlay200otv join-interface Ethernet1/2 otv extend-vlan 178, 2500-2563otv use-adjacency-server 20.1.1.1 20.2.1.1 unicast-only

**Answer: D**

**NEW QUESTION 154**

Refer to the exhibit.



A host with a source address 10.10.10.10 sends traffic to multicast group 239.1.1.1. How do the vPC switches forward the multicast traffic?

- A. If multicast traffic is received on Switch1 over the vPC peer-link, the traffic is dropped
- B. If multicast traffic is received on Po10 Switch1, the traffic is forwarded out on Po1 and Po20
- C. If multicast traffic is received on Po11 Switch2, the traffic is forwarded out only on Po20
- D. If multicast traffic is received on Po11 Switch2, the traffic is dropped.

**Answer: D**

**Explanation:**

<https://www.cisco.com/c/en/us/support/docs/ip/multicast/214140-multicast-forwarding-in-vpc-based-on-loc.htm>

#### NEW QUESTION 159

An environment consists of a Cisco MDS 9000 Series Switch that uses port channels. An engineer must ensure that frames between the source and the destination follow the same links for a specific flow. Subsequent flows are allowed to use a different link Which load balancing method should be used to accomplish this goal?

- A. src-id/dst-id
- B. src-dst-oui
- C. src-dst-port
- D. src-id/dst-id/oxid

**Answer: D**

**Explanation:**

Exchange based—The first frame in an exchange picks a link and subsequent frames in the exchange follow the same link. However, subsequent exchanges can use a different link. This provides more granular load balancing while preserving the order of frames for each exchange. Source:

[https://www.cisco.com/c/en/us/td/docs/switches/datacenter/mds9000/sw/5\\_0/configuration/guides/int/nxos/cli\\_i](https://www.cisco.com/c/en/us/td/docs/switches/datacenter/mds9000/sw/5_0/configuration/guides/int/nxos/cli_i) Load balancing attributes indicate the use of the

source-destination ID (src-dst-id) or the originator exchange OX ID (src-dst-ox-id, the default) for load balancing path selection. Source:

[https://www.cisco.com/c/en/us/td/docs/switches/datacenter/mds9000/sw/6\\_2/configuration/guides/fabric/nx-os/n](https://www.cisco.com/c/en/us/td/docs/switches/datacenter/mds9000/sw/6_2/configuration/guides/fabric/nx-os/n)

[https://www.cisco.com/en/US/docs/storage/san\\_switches/mds9000/sw/rel\\_1\\_x/1\\_3/san-os/configuration/guide/P](https://www.cisco.com/en/US/docs/storage/san_switches/mds9000/sw/rel_1_x/1_3/san-os/configuration/guide/P)

#### NEW QUESTION 163

Cisco Nexus 9000 Series Switches are configured with LACP protocol and default aging timers. What is the impact on the LACP peer during an ISSU upgrade?

- A. The LACP peer connection terminates.
- B. The LACP peer session remains up.
- C. The LACP peer renegotiates the adjacency.
- D. The LACP peer connection resets.

**Answer: B**

**Explanation:**

[https://www.cisco.com/c/en/us/td/docs/switches/datacenter/nexus9000/sw/6-x/interfaces/configuration/guide/b\\_](https://www.cisco.com/c/en/us/td/docs/switches/datacenter/nexus9000/sw/6-x/interfaces/configuration/guide/b_) ISSU and ungraceful switchovers are not supported with LACP fast timers.

#### NEW QUESTION 167

An engineer must create an EPG called "Test". The configuration request should succeed if the Tenant called "Tenant" and the application profile called "Test" exist. The firewall policy allows only the HTTP connectivity to APIC from the user's computer. Which action accomplishes this goal?

- ☐ Send <fvAEPg dn="uni/tn-Test/ap-Test/epg-Tenant" status="created"/> to APIC payload using HTTP PUT to the Cisco APIC.
- ☐ Send <fvAEPg dn="uni/tn-Test/ap-Test/epg-Tenant" status="created"/> to APIC payload using HTTP POST to the Cisco APIC.
- ☐ Send <fvAEPg dn="uni/tn-Tenant/ap-Test/epg-Test" status="created"/> to APIC payload using HTTP POST to the Cisco APIC.
- ☐ Send <fvAEPg dn="uni/tn-Tenant/epg-Test/ap-Test" status="created"/> to APIC payload using HTTP PUT to the Cisco APIC.

- A. Option A
- B. Option B
- C. Option C
- D. Option D

**Answer: C**

#### NEW QUESTION 171

Refer to the exhibit.

```
#!/bin/env python
from cli import *

[REDACTED]

x= cli('show running-config | include address')
y= x.find('192.168.101.191/25')
z= x.find('192.168.101.192/25')
if y != -1:
    cli ('copy tftp://192.168.101.253/initdev1.cfg bootflash: vrf management')
    cli ('copy bootflash:initdev1.cfg scheduled-config')
if z != -1:
    cli ('copy tftp://192.168.101.253/initdev2.cfg bootflash: vrf management')
    cli ('copy bootflash:initdev2.cfg scheduled-config')
cli ('copy running-config startup-config')
```

Which information must be added to the script to complete the POAP operation on the Cisco Nexus 9000 Series Switch?

- ☐ API token d41d8cd98f00b40960045298ecf8427e of the Cisco APIC.
- ☐ MD5SUM 41d8cd98f00b204e9800998ecf8427e of the Python code.
- ☐ API token d41d8cd98f00b77986331998ecf8427e of the Cisco Nexus 9000 Series Switch.
- ☐ MD5SUM d41d8cd98f00b20449800998ecf8427e of the script file.

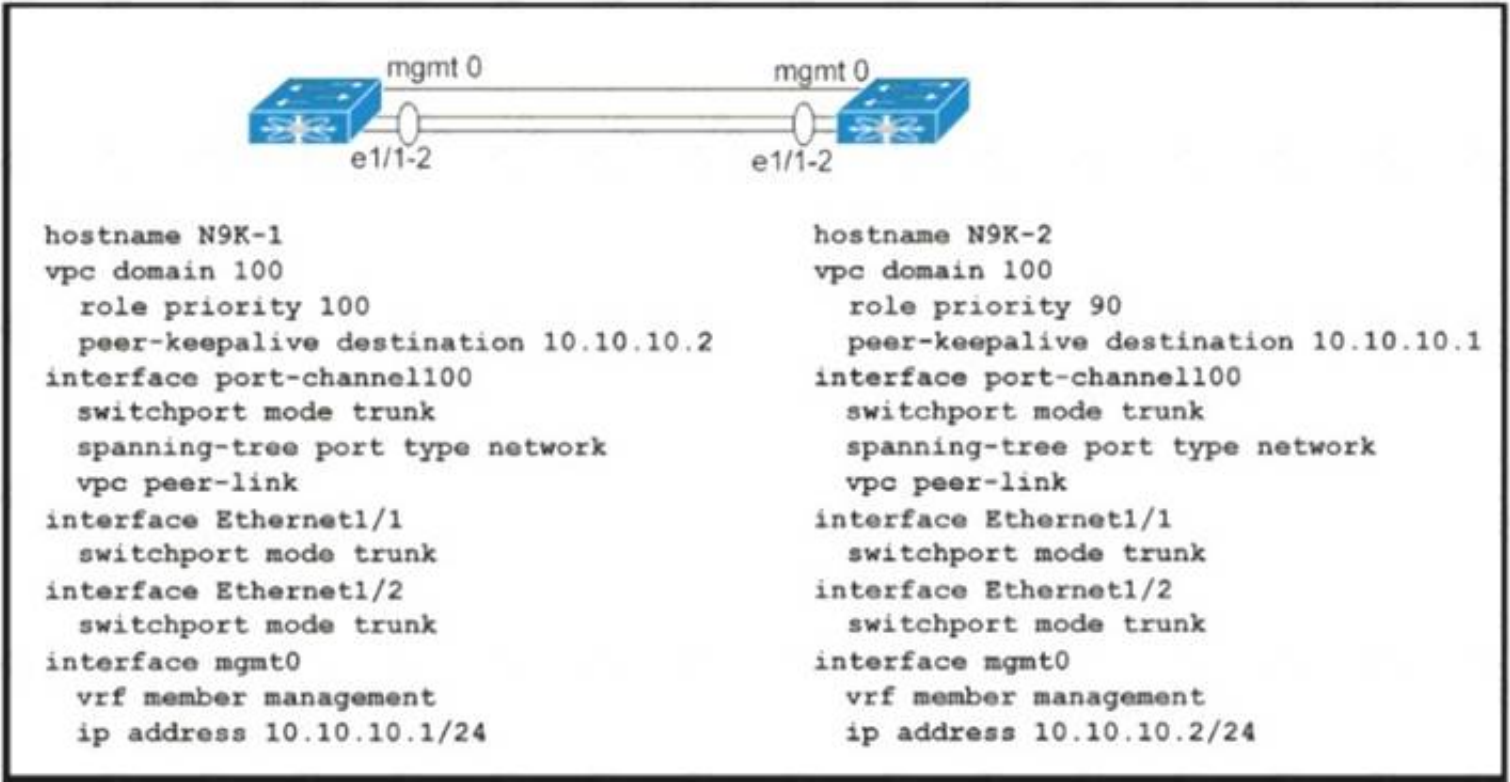
- A. Option A
- B. Option B
- C. Option C
- D. Option D

**Answer: D**

#### NEW QUESTION 176

Refer to the exhibit.





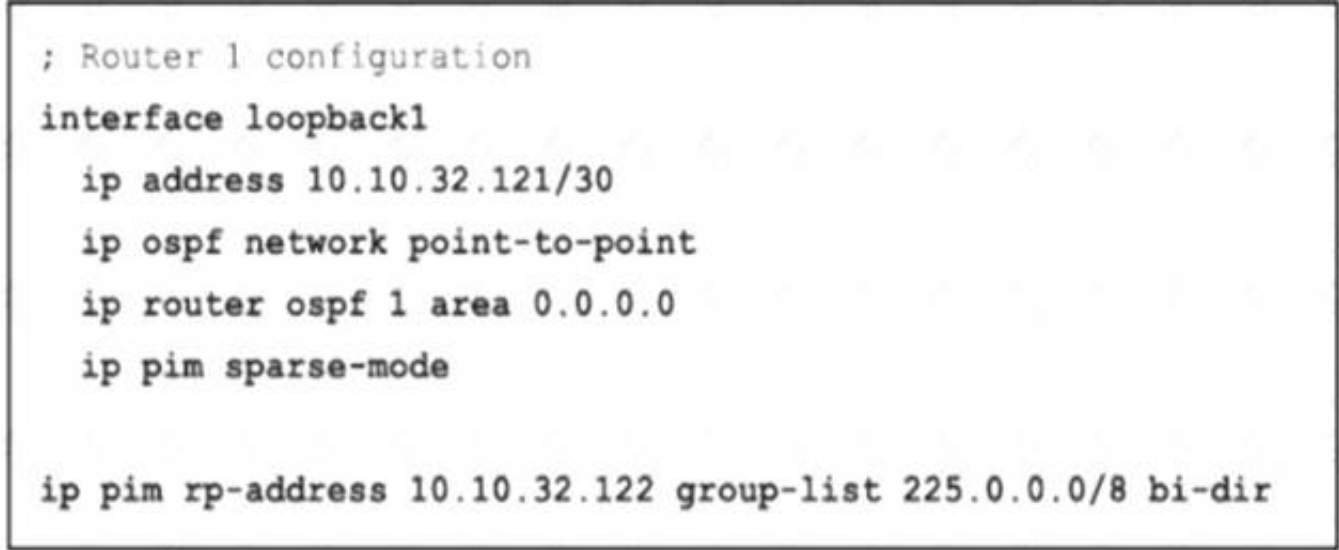
Which action completes the vPC domain implementation?

- A. Allow VLANs on the vPC peer link member interfaces.
- B. Include the VRF management on the vPC domain.
- C. Configure the system MAC on the vPC domain.
- D. Add the vPC member ports to the vPC channel group.

Answer: D

**NEW QUESTION 179**

Refer to the exhibit.



In a bidirectional PIM network using Phantom RP as an RP redundancy mechanism, two Cisco NX-OS routers have these requirements:

- R1 must be the active RP.
- R2 must be the backup RP that is used only if R1 is not reachable

Drag and drop the configuration steps to complete the configuration for Router 2. Not all configuration steps are used.

```

; Router 2 configuration
interface loopback1
  ip address [ ]
  ip ospf network [ ]
  ip router ospf 1 area 0.0.0.0
  ip pim [ ]

ip pim rp-address [ ] group-list 225.0.0.0/8 bi-dir
  
```

10.10.32.121/32

10.10.32.121

point-to-point

broadcast

10.10.32.121/29

10.10.32.122

sparse-mode

dense-mode

- A. Mastered
- B. Not Mastered



**Answer:** A

**Explanation:**

Graphical user interface, text, application Description automatically generated

Answer :

ip address 10.10.32.121/29

ip ospf network point-to-point

router ospf 1 area 0.0.0.0

ip pim sparse-mode

ip pim rp-address 10.10.32.122 group-list 255.0.0.0/8 bi-dir

**NEW QUESTION 182**

Refer to the exhibit.

```
N7Switch# sh run | section callhome
callhome
email-contact admin@acme.com
phone-contact +1-800-123-4567
streetaddress 111 Somestreet st. Sometown, Somewhere
destination-profile full_txt email-addr netadmin@acme.com
transport email smtp-server 192.168.1.25 port 25
transport email from N7Switch@acme.com
enable
alert-group Inventory user-def-cmd show logging last 100
N7Switch#
```

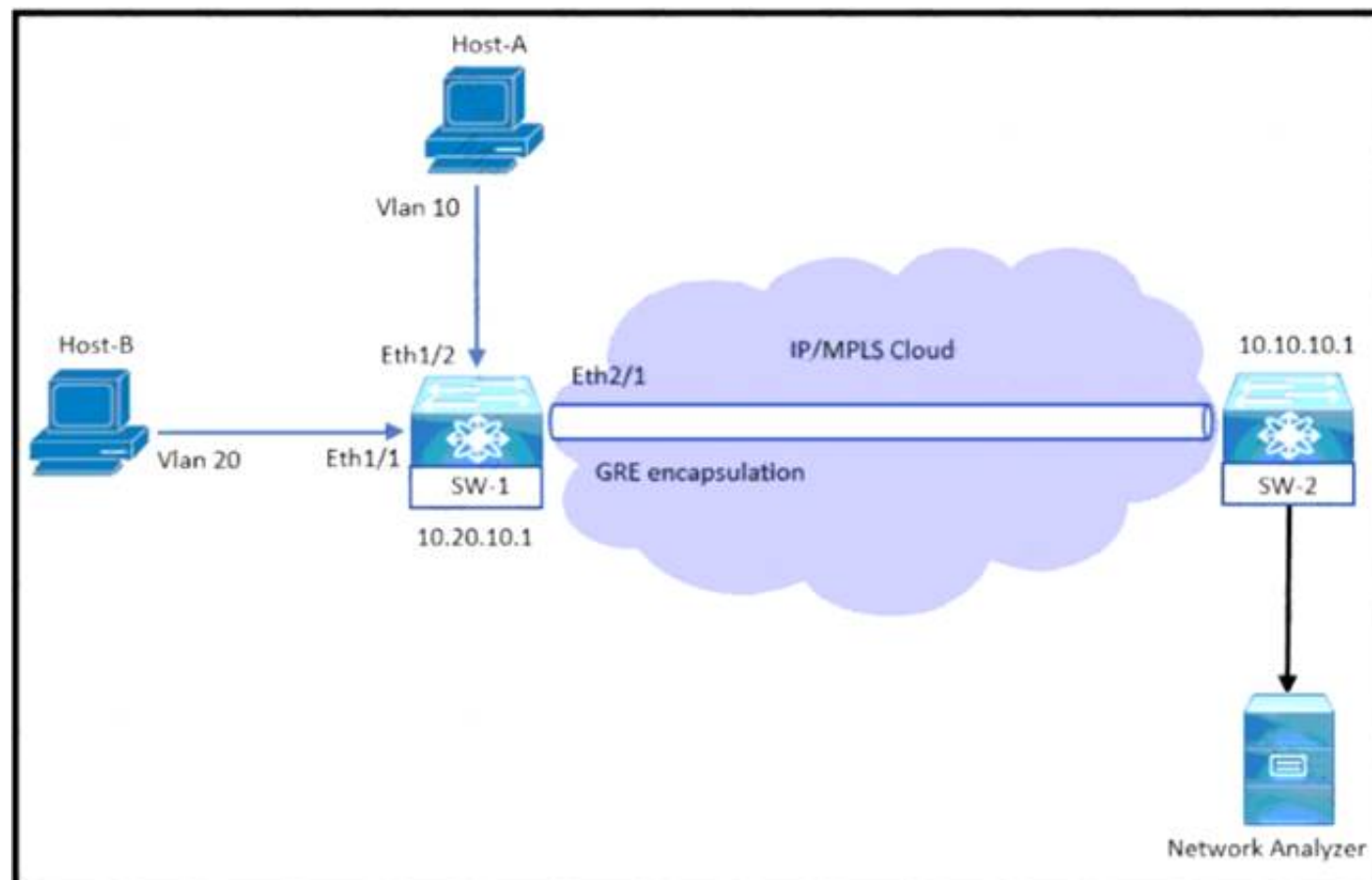
A network engineer is configuring the Smart Call Home feature on a Cisco Nexus Series Switch. An email must be generated that contains the last 100 lines of the log every time a new piece of hardware is inserted into the chassis. Which command must be added to the configuration to receive the email?

- A. alert-group Linecard-Hardware user-def-cmd show logging last 100
- B. destination-profile Operations alert-group Inventory
- C. destination-profile Operations message-level 2
- D. alert-group Operations user-def-cmd show logging last 100

**Answer:** A

**NEW QUESTION 184**

Refer to the exhibit.



An engineer monitors ingress traffic from Host-A and all traffic for VLAN 20 from Host-B. Which configuration must be implemented to monitor and export traffic to Network Analyzer?

- ☐ SW-1(config)# monitor session 5  
 SW-1(config-monitor)# source interface ethernet 1/2 rx  
 SW-1(config-monitor)# source interface ethernet 1/1 tx  
 SW-1(config-monitor)# source vlan 20 both  
 SW-1(config-monitor)# destination ip 10.10.10.1  
 SW-1(config-monitor)# no shut
- ☐ SW-1(config)# monitor session 5 type erspan-source  
 SW-1(config-erspan-src)# source interface ethernet 1/2 rx  
 SW-1(config-erspan-src)# source vlan 20 both  
 SW-1(config-erspan-src)# destination ip 10.10.10.1  
 SW-1(config-erspan-src)# erspan-id 111  
 SW-1(config-erspan-src)# no shut
- ☐ SW-1(config)# monitor session 5 type erspan  
 SW-1(config-erspan-src)# source interface ethernet 1/2 rx  
 SW-1(config-erspan-src)# source interface ethernet 1/1 both  
 SW-1(config-erspan-src)# destination ip 10.10.10.1  
 SW-1(config-erspan-src)# mtu 1000  
 SW-1(config-erspan-src)# no shut
- ☐ SW-1(config)# monitor session 5  
 SW-1(config-monitor)# source interface ethernet 1/2 rx  
 SW-1(config-monitor)# source interface ethernet 1/1 both  
 SW-1(config-monitor)# source vlan 20 both  
 SW-1(config-monitor)# destination interface ethernet 2/1  
 SW-1(config-monitor)# no shut

- A. Option A
- B. Option B
- C. Option C
- D. Option D

Answer: B

#### NEW QUESTION 189

An engineer must configure the HSRP protocol to implement redundancy using two Cisco Nexus Series Switches In addition, the HSRP must meet these requirements

- Switch1 must retain the primary role if switch2 goes offline
- Switch1 must retain the primary role until normal conditions are restored.
- Switch1 and switch2 must ensure that the routing tables are converged before taking the active role
- switch2 must retain the primary role if the default gateway is not reachable Drag and drop the configuration commands from the right to the left to meet the requirements. The commands are used more than once Not all commands are used

```
! switch1
track 100 ip route 0.0.0.0/0 reachability

interface ethernet 1/1
ip 209.165.200.226/27

hsrp 200
ip 209.165.200.225
priority 210
[ ]
[ ]
no shutdown

! switch2
track 100 ip route 0.0.0.0/0 reachability

interface ethernet 1/1
ip 209.165.200.227/27

hsrp 200
ip 209.165.200.225
[ ]
[ ]
no shutdown
```

preempt delay minimum 30

track 100 decrement 200

track 200 decrement200

preempt sync 30

- A. Mastered
- B. Not Mastered

Answer: A

Explanation:

```
! switch1
track 100 ip route 0.0.0.0/0 reachability

interface ethernet 1/1
ip 209.165.200.226/27

hsrp 200
ip 209.165.200.225
priority 210
track 100 decrement 200
preempt delay minimum 30
no shutdown

! switch2
track 100 ip route 0.0.0.0/0 reachability

interface ethernet 1/1
ip 209.165.200.227/27

hsrp 200
ip 209.165.200.225
track 100 decrement 200
preempt delay minimum 30
no shutdown
```

```
preempt delay minimum 30
track 100 decrement 200
track 200 decrement 200
preempt sync 30
```

#### NEW QUESTION 191

An engineer needs to connect Cisco UCS Fabric Interconnect (FI) to an external storage array. Due to budget limitations, the engineer must connect a Cisco UCS FI directly to an FC storage port. Which two actions must be taken to complete this connection? (Choose two.)

- A. Configure the fabric interconnect in FC switch mode.
- B. Set FC zoning to disabled when creating the VSAN
- C. Create a storage connection policy.
- D. Configure the fabric interconnect in end-host mode,
- E. Create the required VSAN in the SAN cloud.

**Answer:** AE

#### NEW QUESTION 194

A Cisco ACI engineer must configure an access port on a Cisco ACI leaf switch. The access policy should be configured so that it supports L3out connectivity concurrently with several EPGs that are mapped to this interface with the static port method. How should the access policy be configured?

- A. by linking the interface policy group to multiple Attachable Access Entity Profiles
- B. with a single Attachable Access Entity Profile that is linked to the corresponding routed domain and physical domain
- C. with two interface policy groups that are linked to the same interface profile port selector
- D. by mapping a single physical domain, mapped to the L3out and EPG interfaces

**Answer:** D

#### NEW QUESTION 195

An engineer must start a software upgrade on a Cisco Nexus 5000 Series Switch during a zone merge. What is the result of this action?

- A. The zone merge stops.
- B. The zone merge pauses until the upgrade completes
- C. The upgrade stops
- D. The zone merge executes and then the upgrade completes.

**Answer:** C

#### Explanation:

[https://www.cisco.com/c/en/us/td/docs/switches/datacenter/nexus5500/sw/upgrade/602\\_N2\\_2/n5500\\_upgrade\\_d](https://www.cisco.com/c/en/us/td/docs/switches/datacenter/nexus5500/sw/upgrade/602_N2_2/n5500_upgrade_d)

The specific requirements for a nondisruptive upgrade (ISSU) are as follows:

- Topology requirements— A Cisco Nexus device on which an ISSU is being initiated should not be in one of the unsupported topologies listed in the previous figure. No interface should be in a spanning-tree designated forwarding state. Also, do not configure Bridge Assurance on any interface of the Cisco Nexus device. vPC peer-link is an exception to these requirements.
- Layer 2 requirement— The ISSU process aborts if the system has any Link Aggregation Control Protocol (LACP) fast timers configured.
- FC/FCoE requirements—Check that the topology is stable for an ISSU to work correctly. You must check the following:
  - Domain Manager—As part of the installation process, domain manager checks if the fabric is in a stable state. If the fabric is not stable, the installation aborts.
  - CFS—As part of the installation process, Cisco Fabric Services (CFS) checks if any application (ntp, fsm, rcsn, fctime) is locked. If any application is holding a CFS lock, the installation aborts.
  - Zone Server— The installation process aborts if a zone merge or zone change request is in progress.
  - FSPF—As part of the upgrade process, Fabric Shortest Path First (FSPF) verifies if the configured interface dead interval is more than 80 seconds; otherwise, the installation aborts.



### NEW QUESTION 197

An engineer must recover the Cisco UCS system. The full backup is available on a backup SCP server. Which set of actions recovers the configuration of the Cisco UCS Manager?

- ☒ Copy the backup file to a USB drive.  
Copy the running-config.
- ☐ Create a scheduled restore job.  
Reboot the UCS Manager.
- ☒ Create an import-config task.  
Set the action to Replace.
- ☐ Factory reset the fabric interconnect.  
Select the Restore feature.

- A. Option A
- B. Option B
- C. Option C
- D. Option D

**Answer: C**

### NEW QUESTION 199

An engineer must configure remote authentication on a Cisco UCS system. The user password must be encrypted before it is sent to the authentication server. The company security policy requires the server to be based on an open standard. Drag and drop the UCS CLI AAA configuration commands from the left into the order in which they must be implemented on the right. Not all commands are used.

commit-buffer	step 1
create server <ip address>	step 2
set key	step 3
scope radius	step 4
scope tacacs+	step 5
scope security	

- A. Mastered
- B. Not Mastered

**Answer: A**

#### Explanation:

```
UCS-A# scope security
UCS-A /security # scope radius
UCS-A /security/radius # create server radiusserv7
UCS-A /security/radius/server* # set key
UCS-A /security/radius/server* # commit-buffer
```

### NEW QUESTION 203

A network architect wants to propose a scalable network monitoring solution in which data is repeatedly acquired from network devices. The solution must use a push model and provide close to realtime access to operational data. Which technology must be used to meet these requirements?

- A. streaming telemetry
- B. logging
- C. SNMPv3
- D. CLI-based scripting

**Answer: A**

#### Explanation:

<https://blogs.cisco.com/developer/its-time-to-move-away-from-snmp-and-cli-and-use-model-driven-telemetry>



## Why Model-Driven Telemetry?

Model-Driven Telemetry is a new approach for network monitoring in which data is streamed from network devices continuously using a push model and provides near real-time access to operational statistics. You can precisely define what data you want to subscribe to using standard YANG models (YANG is a data modeling language used to model configuration and state data manipulated by the NETCONF protocol) with no CLI required. It allows network devices to continuously stream real time configuration and operating state information to subscribers. Structured data is published at a defined cadence, or on-change, based upon the subscription criteria and data type.

### NEW QUESTION 207

Which two configuration settings are available in the in the cisco UCS flmware Auto sync server policy?

- A. User Notification
- B. User Acknowledge
- C. No Action
- D. Delayed Action
- E. Immediate Action

**Answer:** BC

#### Explanation:

[https://www.cisco.com/c/en/us/td/docs/unified\\_computing/ucs/sw/firmware-mgmt/gui/2-2/b\\_GUI\\_Firmware\\_M](https://www.cisco.com/c/en/us/td/docs/unified_computing/ucs/sw/firmware-mgmt/gui/2-2/b_GUI_Firmware_M) Following are the values for the Firmware Auto Sync Server policy: • User Acknowledge—Firmware on the server is not synchronized until the administrator acknowledges the upgrade in the Pending Activities dialog box. • No Action—No firmware upgrade is initiated on the server.

### NEW QUESTION 212

Refer to the exhibit. A network engineer must configure an authentication solution for Cisco UCS with these conditions:

- Two-factor authentication must be enabled for all UCS user authentication.
- All AAA packets must be encrypted and use TCP port 49 to establish communication. Which set of actions needs these requirements?

- A. Create the LDAP provider.Change the LDAP group rule in an LDAP provider.
- B. Create the RADIUS group mapping.Change the RADIUS group rule in a RADIUS provider.
- C. Remove the LDAP provider.Create a TACACS+ provider in user management.
- D. Delete the LDAP group mapping.Create a RADIUS provider in user management.

**Answer:** C

### NEW QUESTION 216

A network engineer must download a firmware image from a remote location to a Cisco UCS Fabric Interconnect. The software bundle is over 232 MB in size. The file transfer must use encryption and authentication Which protocol must be used to accomplish this goal?

- A. RDP
- B. HTTPS
- C. SCP
- D. TFTP

**Answer:** C

### NEW QUESTION 218

An engineer needs to perform a backup of user roles and locales from Cisco UCS Manager to replicate the setting to a different fabric interconnect. The engineer wants to review the file before importing it to a target fabric interconnect. Which backup type must be selected to meet these requirements?

- A. all configuration
- B. system configuration
- C. logical configuration
- D. full state

**Answer:** B

#### Explanation:

[https://www.cisco.com/c/en/us/td/docs/unified\\_computing/ucs/ucs-manager/GUI-User-Guides/Admin-Managem](https://www.cisco.com/c/en/us/td/docs/unified_computing/ucs/ucs-manager/GUI-User-Guides/Admin-Managem)

- **System configuration**—An XML file that includes all system configuration settings such as usernames, roles, and locales. You can use the file generated from this backup to import these configuration settings to the original fabric interconnect or to a different fabric interconnect. You cannot use this file for a system restore.

### NEW QUESTION 219

Which server policy is used to install new Cisco IMC software on a server?

- A. host firmware policy

- B. hypervisor firmware policy
- C. BIOS software policy
- D. Cisco IMC software policy

**Answer:** A

**Explanation:**

[https://www.cisco.com/c/en/us/td/docs/unified\\_computing/ucs/ucs-manager/CLI-User-Guides/Firmware-](https://www.cisco.com/c/en/us/td/docs/unified_computing/ucs/ucs-manager/CLI-User-Guides/Firmware-Mgmt/4-0/b_UCSM_CLI_Firmware_Management_Guide_4-0/b_UCSM_CLI_Firmware_Management_Guide_4-0_chapter_01.html#)

[Mgmt/4-0/b\\_UCSM\\_CLI\\_Firmware\\_Management\\_Guide\\_4-0/ b\\_UCSM\\_CLI\\_Firmware\\_Management\\_Guide\\_4-0\\_chapter\\_01.html#](https://www.cisco.com/c/en/us/td/docs/unified_computing/ucs/ucs-manager/CLI-User-Guides/Firmware-Mgmt/4-0/b_UCSM_CLI_Firmware_Management_Guide_4-0/b_UCSM_CLI_Firmware_Management_Guide_4-0_chapter_01.html#)

You can use host firmware packages by defining a host firmware policy as an attribute of a service profile template, which is an updating template. Any change made to the service profile template is automatically made to its instantiated service profiles. Subsequently, the servers associated with the service profiles are also upgraded in parallel with the firmware version.

Graphical user interface, text, application Description automatically generated

The Cisco UCS domains are categorized into domain groups in Cisco UCS Central for management purposes. You can manage firmware for each domain group separately at the domain group level or for all domain groups from the domain group root. Cisco UCS Central provides you the option to manage the following Cisco UCS domain firmware packages:

- **Capability Catalog**– One capability catalog per domain group. All Cisco UCS domains registered to a particular domain group will use the capability catalog defined in the domain group.
- **Infrastructure Firmware**– One infrastructure firmware policy per domain group . All Cisco UCS domains registered to a particular domain group will use the same Infrastructure firmware version defined in the domain group.
- **Host Firmware**– You can have more than one **host firmware policy** for the different host firmware components in a domain group. The Cisco UCS domains registered in the domain group will be able to choose any defined **host firmware policy** in the group. Cisco UCS Central provides you the option to upgrade the host firmware globally to all Cisco UCS domains in a domain group at the same time.



**Note**

For more information on managing firmware in Cisco UCS Central, see the Firmware Management chapters in the *Cisco UCS Central Administration Guide* and *Cisco UCS Central CLI Reference Manual*.

**NEW QUESTION 220**

An engineer must configure Cisco UCS Manager to accept only HTTPS connections that use TLS 1.2. The cipher security level must be high and the length of the keying key value must be 2048 bits. Drag and drop the code snippets from the right onto the blanks in the code on the left to accomplish these goals. Not all commands are used.

```

scope security
  create keyring ciscokring
  set modulus
  commit-buffer

scope system
  scope services
    enable https
    set https port 8443
    set https
    set https cipher-suite-mode
    set https ssl-protocol
        
```

keyring ciscokring

high-strength

1024 bits

mod2048

tls1-2

secure

- A. Mastered
- B. Not Mastered

**Answer:** A

**Explanation:**

Graphical user interface, application Description automatically generated

**NEW QUESTION 223**

Which communication method does NFS use for requests between servers and clients?

- A. XDR
- B. SSC
- C. PRC
- D. SMB

**Answer:** C

**Explanation:**

<https://www-uxsup.csx.cam.ac.uk/pub/doc/redhat/WS2.1/rhl-rg-en-7.2/ch-nfs.html>

### NEW QUESTION 226

An engineer is implementing NetFlow on a Cisco Nexus 7000 Series Switch. Drag and drop the NetFlow commands from the left into the correct order they must be entered on the right.

N7K-1(config)# interface <interface> N7K-1(config-if)# ip flow monitor NetflowMonitor input	Step 1
N7K-1(config)# feature netflow	Step 2
N7K-1(config)# flow exporter NetflowMonitor N7K-1(config)# flow record NetflowMonitor	Step 3
N7K-1(config)# flow monitor NetflowMonitor	Step 4

- A. Mastered
- B. Not Mastered

**Answer: A**

#### Explanation:

- 1- feature netflow
- 2- flow exporter
- 3- flow monitor
- 4- interface<interface>

### NEW QUESTION 229

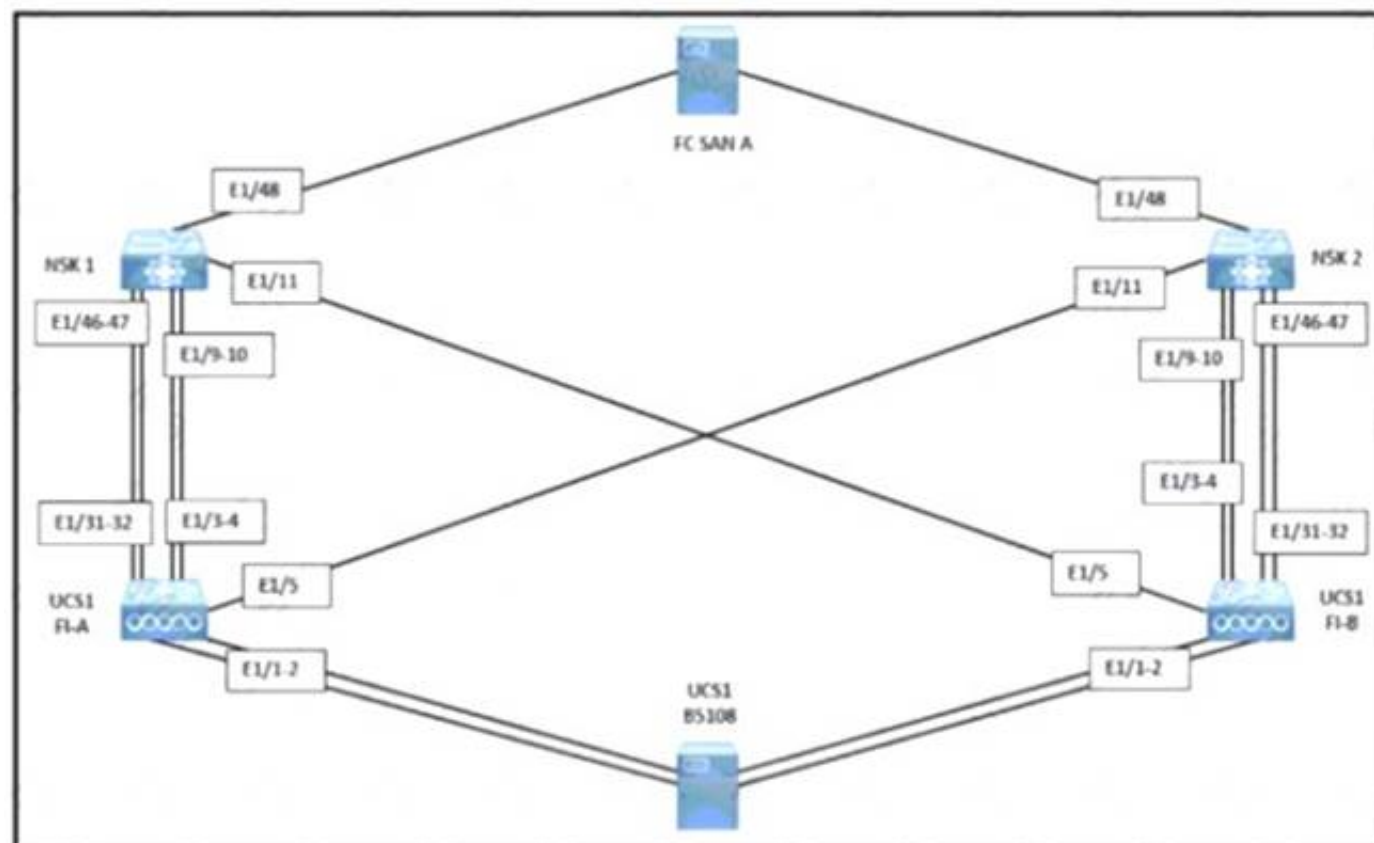
What is a benefit of independent resource scaling in Cisco HyperFlex hybrid architecture?

- A. flexible expansion of compute, caching, and capacity
- B. remote booting of converged servers
- C. multivendor converged node hardware support
- D. support for compute nodes with third-party storage

**Answer: D**

### NEW QUESTION 232

Refer to the exhibit.



A network engineer must configure port E1/31- 32 to forward only storage server traffic of VLAN 200 on Cisco fabric interconnects A and B. Port E1/31- 32 is not reserved for any other traffic. Which port type must be configured to accomplish this goal?

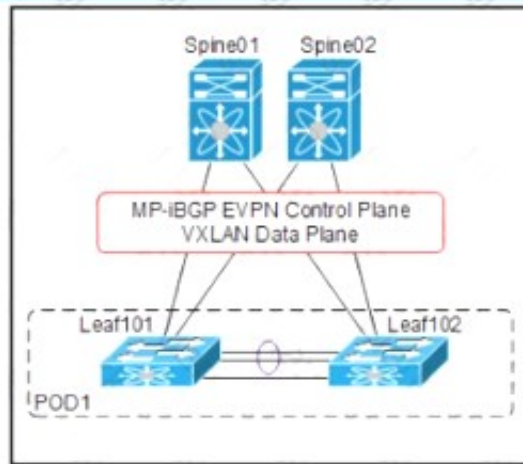
- A. unified uplink
- B. uplink
- C. FCoE uplink
- D. FCoE storage

**Answer: C**

### NEW QUESTION 233

Refer to the exhibit.





```
SPINE-01#show run pim
ip pim rp-address 10.255.0.100 group-list 225.0.0.0/8
ip pim bsr rp-candidate loopback1 group-list 225.0.0.0/8
ip pim ssm range 232.0.0.0/8
ip pim anycast-rp 10.255.0.100 10.10.0.1
ip pim anycast-rp 10.255.0.100 10.10.0.2
!
!
SPINE-01#show run interface loopback1
interface loopback1
ip router ospf 1 area 0.0.0.0
ip pim sparse-mode
```

An engineer must implement VXLAN with anycast gateway. To accomplish this, an engineer must set up PIM Source-Specific Multicast for host reachability. Which IP address must be applied to interface loopback1 to accomplish this goal?

- A. 255.0.0.1/8
- B. 255.0.100
- C. 10.10.0.1/32
- D. 10.10.0.2/32

**Answer: B**

#### NEW QUESTION 237

Which adjacency server configuration makes two OTV edge devices located in the same site bring up the dual-site adjacency?

A)

Nexus-1:

```
interface Ethernet1/2
ip address 20.1.1.1/24
```

```
interface Overlay200
otv use-adjacency-server 20.1.1.2 unicast-only
otv join-interface Ethernet1/2
```

Nexus-2:

```
interface Ethernet1/2
ip address 20.1.1.2/24
```

```
interface Overlay200
otv use-adjacency-server 20.1.1.1 unicast-only
otv join-interface Ethernet1/2
```

B)

Nexus-1:

```
interface Ethernet1/2
ip address 20.1.1.1/24
```

```
interface Overlay200
otv adjacency-server unicast-only
otv join-interface Ethernet1/2
```

Nexus-2:

```
interface Ethernet1/2
ip address 20.1.1.2/24
```

```
interface Overlay200
otv join-interface Ethernet1/2
otv adjacency-server unicast-only
otv use-adjacency-server 20.1.1.1 unicast-only
```

C)

Nexus-1:

```
interface Ethernet1/2
ip address 20.1.1.1/24
```

```
interface Overlay200
otv adjacency-server unicast-only
otv join-interface Ethernet1/2
```

Nexus-2:

```
interface Ethernet1/2
ip address 20.1.1.2/24
```

```
intevrface Overlay200
otv adjacency-server unicast-only
otv join-interface Ethernet1/2
```

D)

Nexus-1:

```
interface Ethernet1/2
ip address 20.1.1.1/24
```

```
interface Overlay200
otv adjacency-server unicast-only
otv join-interface Ethernet1/2
```

Nexus-2:

```
interface Ethernet1/2
ip address 20.1.1.2/24
```

```
intevrface Overlay200
otv adjacency-server unicast-only
otv join-interface Ethernet1/2
```

- A. Option A
- B. Option B
- C. Option C
- D. Option D

**Answer: B**

### NEW QUESTION 238

Refer to the exhibit.

```

1.130599 192.168.254.1 -> 192.168.254.13 TCP 60 29652 > ssh [ACK] Seq=1 Ack=53
Win=32449 Len=0
1.136261 00:8e:73:a2:41:0e -> Spanning-tree-(for-bridges)_00 STP 60 Conf. Root =
8192/10/ec:e1:a9:df:6c:80 Cost = 22 Port = 0x800e
1.373417 192.168.254.13 -> 192.168.254.1 SSH 106 Encrypted response packet len=52
1.570377 192.168.254.1 -> 192.168.254.13 TCP 60 29652 > ssh [ACK] Seq=1 Ack=105
Win=32786 Len=0
1.815558 192.168.254.13 -> 192.168.254.1 SSH 106 Encrypted response packet len=52
2.021840 192.168.254.1 -> 192.168.254.13 TCP 60 29652 > ssh [ACK] Seq=1 Ack=157
Win=32773 Len=0
2.525173 192.168.254.13 -> 192.168.254.1 SSH 106 Encrypted response packet len=52
2.731382 192.168.254.1 -> 192.168.254.13 TCP 60 29652 > ssh [ACK] Seq=1 Ack=209
Win=32760 Len=0
2.947365 192.168.254.13 -> 192.168.254.1 NTP 90 NTP Version 2, client
2.947623 192.168.254.1 -> 192.168.254.13 NTP 90 NTP Version 2, server
3.138157 00:8e:73:a2:41:0e -> Spanning-tree-(for-bridges)_00 STP 60 Conf. Root =
8192/10/ec:e1:a9:df:6c:80 Cost = 22 Port = 0x800e
3.139400 192.168.254.13 -> 192.168.254.1 SSH 106 Encrypted response packet len=52
3.270728 192.168.254.4 -> 239.255.70.83 UDP 166 Source port: cfs Destination port:
cfs
3.341123 192.168.254.1 -> 192.168.254.13 TCP 60 29652 > ssh [ACK] Seq=1 Ack=261
Win=32747 Len=0
3.835409 192.168.254.13 -> 192.168.254.1 SSH 106 Encrypted response packet len=52
4.041411 192.168.254.1 -> 192.168.254.13 TCP 60 29652 > ssh [ACK] Seq=1 Ack=313
Win=32734 Len=0
4.535284 192.168.254.13 -> 192.168.254.1 SSH 106 Encrypted response packet len=52
4.741072 192.168.254.1 -> 192.168.254.13 TCP 60 29652 > ssh [ACK] Seq=1 Ack=365
Win=32721 Len=0
4.947308 192.168.254.13 -> 192.168.254.1 NTP 90 NTP Version 2, client
4.947519 192.168.254.1 -> 192.168.254.13 NTP 90 NTP Version 2, server
5.139627 00:8e:73:a2:41:0e -> Spanning-tree-(for-bridges)_00 STP 60 Conf. Root =
8192/10/ec:e1:a9:df:6c:80 Cost = 22 Port = 0x800e
5.140867 192.168.254.13 -> 192.168.254.1 SSH 106 Encrypted response packet len=52

```

Cisco Fabric Services is enabled in the network. Which type of IP address is used by the Cisco Fabric Services protocol?

- A. IPv4 unicast address
- B. IPv4 multicast address
- C. IPv4 gateway address
- D. IPv4 anycast address

**Answer: B**

### NEW QUESTION 241

An engineer must configure a monitoring solution for a Cisco Nexus 9000 Series Switch based data center. The solution must provide real-time insight into the network health with subscription-based monitoring. The monitoring must be initiated from the client side, and the data must be sent via encryption. Which configuration steps complete the configuration?

- ☐ Set the telemetry feature on the Nexus switch.  
Specify a certificate for telemetry transport.  
Configure a sensor group and destination.
- ☒ Enable GRPC on the Nexus switch.  
Generate a certificate.  
Configure gNMI inputs in Telegraf and output to InfluxDB.
- ☐ Configure Grafana on the Nexus switch.  
Specify the logging certificate.  
Enable syslog level 7 export to Grafana.
- ☐ Activate SNMPv3 on the Nexus switch.  
Set the globalEnforcePriv parameter.  
Configure an SNMP agent to poll information.

- A. Option A
- B. Option B
- C. Option C
- D. Option D

**Answer: A**

### NEW QUESTION 242

A customer asks an engineer to develop a framework that will be used to replace the process of the manual device configuration of Cisco NX-OS devices. The engineer plans to use the programmatic interface that meets these requirements:

- The development team is familiar with Windows-based scripting environment using PowerShell.
- The customer's security requirements mandate the use of HTTPS transport.

Which solution must be used to meet these requirements?

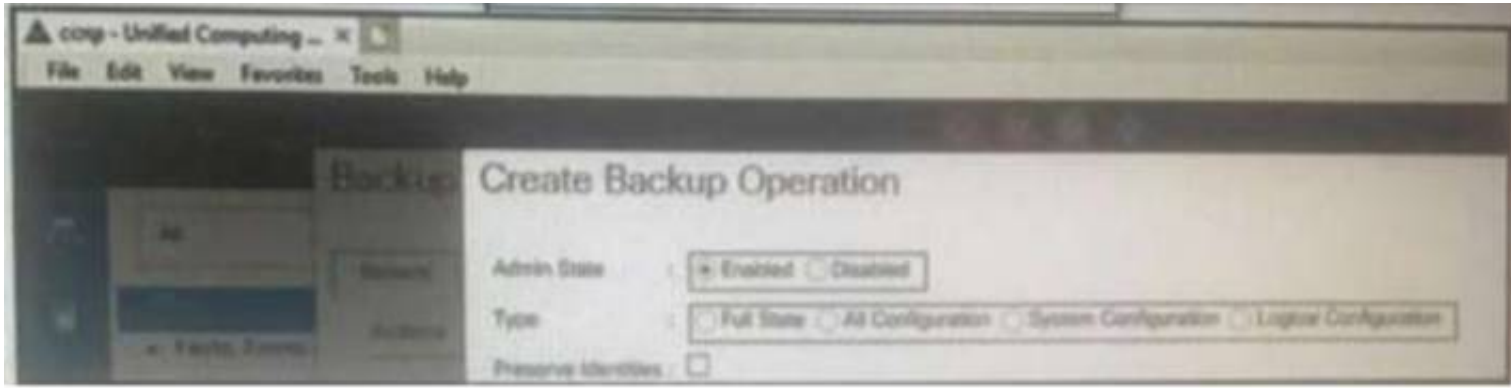
- A. NX-API
- B. VISORE
- C. Open Agent Container
- D. NETCONF-YANG



Answer: A

#### NEW QUESTION 244

Refer to the exhibit.



Which backup operation type not include the preserve identities feature?

- A. Full state
- B. Logical configuration
- C. System configuration
- D. All configuration

Answer: A

#### NEW QUESTION 248

An engineer must allow communication between the APIC controller and an OpenStack OpFlex agent. The agent is running on a compute node directly plugged to a Cisco ACI leaf switch. The engineer must enable and extend Infra VLAN on the port facing the compute and extend the Infra VLAN to the host. Which action must be taken to meet these requirements?

- A. Enable the Infra VLAN on the Interface Profile policy
- B. Enable the Infra VLAN on the Attachable Access Entity Profile.
- C. Add the infra VLAN via the physical domain.
- D. Add the infra VLAN via the VMM domain.

Answer: C

#### NEW QUESTION 253

Refer to the exhibit.

```
int fc1/1-2
switchmode rate dedicated
channel-group 100 force
no shut

int san-port-channel 100
switchport trunk allowed vsan 1
switchport trunk allowed vsan add 100
```

An engineer is connecting a Cisco MDS 9700 Series Multilayer Director to a downstream Cisco Nexus 5672UP switch. Which command set must be used to complete the configuration?

A)

```
int san-port-channel 100
switchport mode te
switchport trunk mode off
channel mode on
```

B)

```
int san-port-channel 100
switchport mode te
switchport trunk mode auto
channel mode on
```

C)

```
int san-port-channel 100
switchport mode e
switchport trunk mode on
channel mode active
```

D)

```
int port-channel 100
switchport mode e
switchport trunk mode on
channel mode active
```

- A. Option A
- B. Option B
- C. Option C
- D. Option D

**Answer:** A

#### NEW QUESTION 258

An engineer is converting a Cisco MDS switch to support NPIV mode. What should be considered when implementing the solution?

- A. It must be enabled on VSAN 1 only.
- B. It must be enabled globally on all VSANs.
- C. It requires mapping of external interface traffic.
- D. It requires the FLOGI database to be disabled.

**Answer:** B

#### Explanation:

[https://www.cisco.com/c/en/us/td/docs/switches/datacenter/mds9000/sw/5\\_0/configuration/guides/int/nxos/cli\\_i](https://www.cisco.com/c/en/us/td/docs/switches/datacenter/mds9000/sw/5_0/configuration/guides/int/nxos/cli_i)

#### NEW QUESTION 261

A customer has a requirement to deploy a cloud service and needs to have full control over the underlying OS, data and application. Which cloud model meets this requirement?

- A. PaaS
- B. MaaS
- C. IaaS
- D. SaaS

**Answer:** C

#### Explanation:

Traditional IT is responsible for Application, Data, Runtime, Middleware, OS, Virtualization, Servers, Storage, Networking. IaaS = Infrastructure as a Service - is responsible for OS, Virtualization, Servers, Storage, Networking. SaaS = Software as a Service - Software deployed by the cloud provider - is responsible for nothing. PaaS = Platform as a Service - Software can be deployed by the customer building their own application | is responsible for Data and Application.

#### NEW QUESTION 263

A network engineer must configure a Fibre Channel interface on the Cisco MDS 9000 Series Switch. The configuration must meet these requirements:

- The interface must be disabled when the bit errors threshold is exceeded
- Buffer-to-buffer credits must be set to the maximum value
- The interface must have full bandwidth allocated for its port group

Which command set configures a Fibre Channel interface that meets these requirements?

- A.

```
interface fc1/1
switchport bit-errors
switchport fcrxbbcredit 220 mode Fx
switchport rate-mode dedicated
```
- B.

```
interface fc1/1
switchport ignore bit-errors
switchport fcrxbbcredit 255 mode Fx
no switchport rate-mode
```
- C.

```
interface fc1/1
no switchport ignore bit-errors
switchport fcrxbcredit 255 mode Fx
switchport rate-mode dedicated
```

D.

```
interface fc1/1
no switchport bit-errors
switchport fcrxbcredit 220 mode Fx
no switchport rate-mode
```

**Answer:** A

#### NEW QUESTION 265

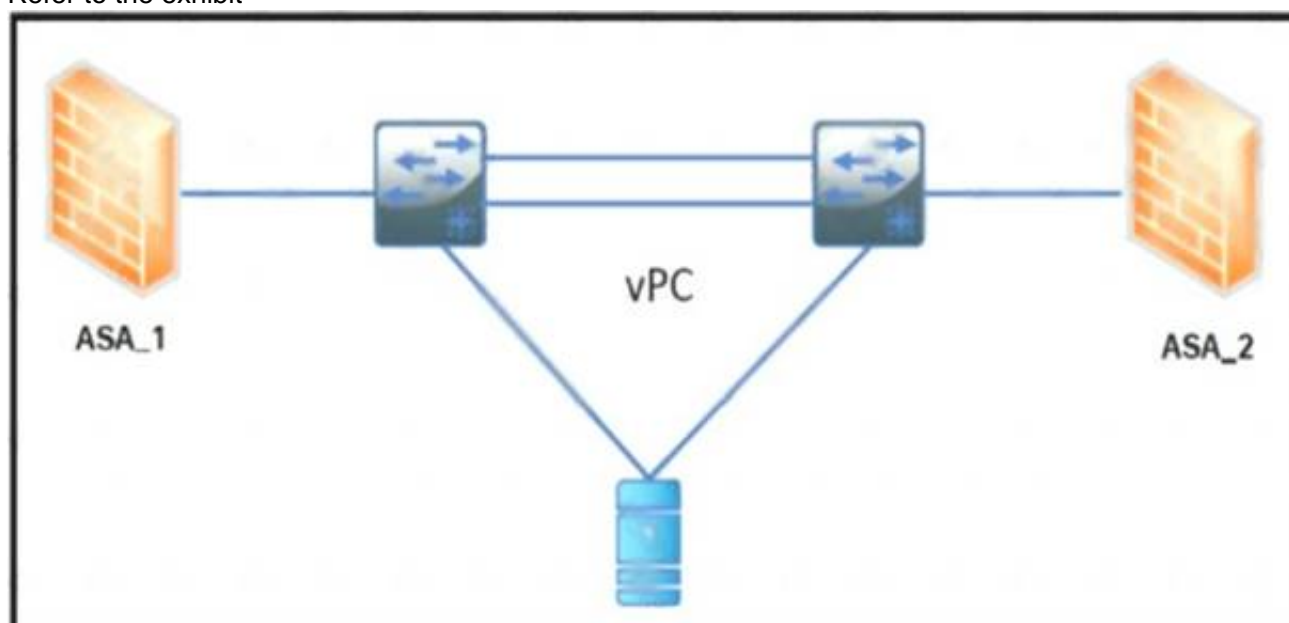
A network administrator must create a Linux container on a Cisco Nexus Series Switch. The container requires 10 percent of the CPU of the switch and 1024 MB of RAM to run successfully. Which task provides the necessary resources?

- A. Edit the container properties with the guestshell run command.
- B. Increase the compute resources with the guestshell resize command.
- C. Enable the Bash shell of the switch with the feature bash command
- D. Modify resource allocation with the virtual-service resize command.

**Answer:** B

#### NEW QUESTION 270

Refer to the exhibit



The ASA 1 acts as a Layer 3 gateway for all servers. The servers lose the gateway connectivity when the vPC peer links go down and the vPC keepalive remains up. Which action improves the high availability in the network?

- A. Create a static port channel with two links from each firewall to the switch
- B. Activate the vPC orphan-port suspend feature on the switch ports connected to the firewall
- C. Implement the IP reoVect feature on the vPC devices
- D. Enable the vPC peer gateway feature on the vPC devices

**Answer:** D

#### NEW QUESTION 273

An engineer is implementing OTV on a transport that supports multicast. The solution needs to meet the following requirements:

- Establish adjacency to the remote peer by using multicast.
- Enable OTV advertisements for VLAN 100 to the other site.

Which two commands should be configured to meet these requirements? (Choose two.)

- A. otv site-vlan 100
- B. otv data-group 232.2.2.0/28
- C. otv use-adjacency-server 172.27.255.94
- D. otv extend-vlan 100
- E. otv control-group 232.1.1.1

**Answer:** DE

#### Explanation:

[https://www.cisco.com/c/dam/en/us/products/collateral/switches/nexus-7000-series-switches/guide\\_c07-728315](https://www.cisco.com/c/dam/en/us/products/collateral/switches/nexus-7000-series-switches/guide_c07-728315)  
[https://www.cisco.com/c/en/us/td/docs/switches/datacenter/sw/nx-os/OTV/config\\_guide/b\\_Cisco\\_Nexus\\_7000\\_](https://www.cisco.com/c/en/us/td/docs/switches/datacenter/sw/nx-os/OTV/config_guide/b_Cisco_Nexus_7000_)

#### NEW QUESTION 278

An administrator is implementing DCNM so that events are triggered when monitored traffic exceeds the configured present utilization threshold. The requirement



is to configuration a maximum limit of 39860437 bytes that applies directly to the statistics collected as a ratio of the total link capacity. Which DCNM performance monitoring configuration parameter must be implemented to achieve this result?

- A. Absolution Values
- B. Baseline
- C. Util%
- D. Per port Monitoring

**Answer:** A

#### NEW QUESTION 282

A company plans to deploy a Cisco HyperFlex solution for data-intensive applications and databases. The proposed solution should offer the highest performance with high consistency and low latency. Which Cisco HyperFlex storage configuration should be used?

- A. All-HDD
- B. All-NVMe
- C. All-Flash
- D. Hybrid

**Answer:** B

#### NEW QUESTION 285

An engineer must configure HTTPS secure management for Cisco UCS Manager using a key ring named kr2016 and a key size of 1024 bits. The environment consists of a primary fabric interconnect named UCS-A and a secondary fabric interconnect named UCS-B. Which command sequence must be used to accomplish this goal?

- ☐ UCS-B# scope security  
UCS-B /security # keyring kr2016  
UCS-B /security/keyring\* # set mod mod1024  
UCS-A /security/keyring\* # commit-buffer
- ☐ UCS-A# scope security  
UCS-A /security # create keyring kr2016  
UCS-A /security/keyring\* # set modulus mod1024  
UCS-A /security/keyring\* # commit-buffer
- ☐ UCS-B# scope security  
UCS-B /security # create keyring kr2016  
UCS-B /security/keyring\* # set size mod1024  
UCS-A /security/keyring\* # commit-buffer
- ☐ UCS-A# scope security  
UCS-A /security # keyring name kr2016  
UCS-A /security/keyring\* # set size 1024  
UCS-A /security/keyring\* # commit-buffer

- A. Option A
- B. Option B
- C. Option C
- D. Option D

**Answer:** B

#### Explanation:

[https://www.cisco.com/en/US/docs/unified\\_computing/ucs/sw/cli/config/guide/1.4.1/CLI\\_Config\\_Guide\\_1\\_4\\_1](https://www.cisco.com/en/US/docs/unified_computing/ucs/sw/cli/config/guide/1.4.1/CLI_Config_Guide_1_4_1)

```
UCS-A# scope security
UCS-A /security # create keyring kr220
UCS-A /security/keyring* # set modulus mod1024
UCS-A /security/keyring* # commit-buffer
UCS-A /security/keyring #
```

#### NEW QUESTION 287

An engineer must implement a new VRF that permits communication between all endpoint groups (EPGs) by default. The new EPGs and bridge domains (BDs) that are created in the new VRF must not require additional configuration to permit traffic between the newly created EPGs or BDs. Which action accomplishes this goal?

- A. Provide and consume a permit any contract on the VRF level
- B. Create a VRF in the common tenant.
- C. Place all EPGs in the preferred group.
- D. Implement a global contract.

**Answer:** C

#### NEW QUESTION 291

Refer to the exhibit.

```
MDSSWITCH# config terminal
MDSSWITCH(config)# fcip profile 1
MDSSWITCH(config-profile)# ip address 192.0.1.10
MDSSWITCH(config-profile)# port 5000
MDSSWITCH(config-profile)# tcp max-bandwidth-mbps 5000
MDSSWITCH(config-profile)# min-available-bandwidth-mbps 4000 round-trip-time-ms 1
MDSSWITCH(config-profile)# exit
MDSSWITCH(config)# interface fcip 1
MDSSWITCH(config-if)# use-profile 1
MDSSWITCH(config-if)# peer-info ipaddr 192.0.1.11
MDSSWITCH(config-if)# tcp-connections 1
MDSSWITCH(config-if)# ip-compression mode2
MDSSWITCH(config-if)# no shutdown
MDSSWITCH(config-if)# exit
MDSSWITCH(config)# interface ipStorage 1/1
MDSSWITCH(config-if)# ip address 192.0.1.10 255.255.255.0
MDSSWITCH(config-if)# switchport mtu 2500
MDSSWITCH(config-if)# no shutdown
MDSSWITCH(config-if)# end
```

An engineer configures FCIP on a Cisco MDS 9000 Series switch. What is the result of implementing the configuration?

- A. The switch attempts to make two TCP connections
- B. Compression is performed by using hardware
- C. Mode2 is enabled by default.
- D. Compression is performed by using software.

**Answer: B**

**Explanation:**

[https://www.cisco.com/c/en/us/td/docs/switches/datacenter/mds9000/sw/8\\_x/config/ip\\_services/ipsvc/cfcip.html](https://www.cisco.com/c/en/us/td/docs/switches/datacenter/mds9000/sw/8_x/config/ip_services/ipsvc/cfcip.html)

#### NEW QUESTION 295

An engineer must perform a POAP deployment of a Cisco Nexus 9000 Series Switch. The switch must automatically receive its software image and configuration file upon power-on. Also, only UDP is permitted between the Nexus 9000 switch and the server that hosts the Cisco NX-OS system images. Which set of actions completes the configuration?

- A. Enable option 67. Define TFTP transfer protocol
- B. Enable option 43. Define HTTP transfer protocol.
- C. Enable option 46. Define TFTP transfer protocol
- D. Enable option 35. Define HTTP transfer protocol.

**Answer: A**

#### NEW QUESTION 299

Which storage protocol reduces file locks by using leasing?

- A. CIFS
- B. NFS 4
- C. NFS 3
- D. SMB

**Answer: D**

**Explanation:**

<https://www.ciscolive.com/c/dam/r/ciscolive/apjc/docs/2016/pdf/BRKCOM-1211.pdf>

- **SMB Directory Leasing**
  - Ability to cache file and directory metadata
  - Branch offices need to make less round trips to the central server

#### NEW QUESTION 301

An engineer must configure an LACP port channel on two Cisco Nexus 7000 Series Switches. The interface e1/2 must be a hot-standby link that initiates negotiation with other ports. Drag and drop the commands from the right onto the blanks in the configuration on the left. Not all commands are used.

```

configure terminal
feature 
interface Ethernet 1/2
switchport
channel-group 2 
interface Ethernet 1/3
switchport
channel-group 2 mode active
lacp port 

```

mode active

lacp

priority 1

mode passive

priority 65534

mode on

- A. Mastered  
 B. Not Mastered

**Answer: A**

**Explanation:**

```

configure terminal
feature  lacp
interface Ethernet 1/2
switchport
channel-group 2  mode active
interface Ethernet 1/3
switchport
channel-group 2 mode active
lacp port  priority 1

```

mode active

lacp

priority 1

mode passive

priority 65534

mode on

#### NEW QUESTION 306

An engineer must configure Cisco Nexus 9000 Series Switches for Cisco UCS Director integration. The configuration must enable automated onboarding of the switches as they come online. For security purposes, the switches must have the bare minimum of connection methods enabled. The connection protocol must allow authentication through credentials. Which protocol must be configured on the switches to allow automated onboarding?

- A. SNMP  
 B. Telnet  
 C. SSH  
 D. HTTPS

**Answer: C**

#### NEW QUESTION 310

What is a benefit of using the Cisco UCS Lightweight upgrade feature?

- A. Security updates are scheduled with the next reboot of the fabric interconnects.  
 B. All servers are rebooted to push the latest updates.  
 C. The firmware version of a component is updated only when it has been modified.  
 D. A soft reboot is available for the fabric interconnects.

**Answer: C**

#### NEW QUESTION 315

An engineer must apply AAA configuration on a Cisco MDS 9000 Series Switch. The solution must meet these conditions:

- It must use a challenge-response authentication protocol that uses MD5 hashing with an incrementally changing identifier
  - The RADIUS configuration must t>e automatically shared with other MDS switches in the environment.
- The RADIUS server is already defined. Which command set completes the configuration?

- ☐ aaa authentication login pap enable  
 distribute radius  
 radius-server host 10.8.8.0 auth-port 1821
- ☒ aaa authentication login mschapv2 enable  
 radius propagate  
 radius authentication port 1821
- ☐ aaa authentication login chap enable  
 radius distribute  
 radius commit
- ☐ aaa authentication login mschap enable  
 radius commit  
 radius-server host 10.8.8.0

- A. Option A  
 B. Option B



- C. Option C
- D. Option D

**Answer:** C

#### NEW QUESTION 320

AN engineer enters these commands while in EEM on a Cisco Nexus 9000 Series Switch. event manager applet Backup-config event timer watchdog time 1800 name timer  
event cli match “copy running-config startup-config” what is the result of applying this configuration?

- A. It saves the running configuration every 1800 seconds.
- B. It generates an error because no action is mentioned.
- C. It executes the copy running-config startup-config command.
- D. It blocks the copy running-config startup-config command.

**Answer:** B

#### Explanation:

<https://www.cisco.com/c/en/us/td/docs/switches/datacenter/nexus9000/sw/93x/system-management/b-cisco-nex>  
Graphical user interface, text, application, email Description automatically generated

### Prerequisites for EEM

EEM has the following prerequisites:

- You must have network-admin user privileges to configure EEM.

### Guidelines and Limitations for EEM

EEM has the following configuration guidelines and limitations:

- The maximum number of configurable EEM policies is 500.
- Action statements within your user policy or overriding policy should not negate each other or adversely affect the associated system policy.
- To allow a triggered event to process any default actions, you must configure the EEM policy to allow the default action. For example, if you match a CLI command in a match statement, you must add the event-default action statement to the EEM policy or EEM will not allow the CLI command to execute.
- When you configure an EEM policy action to collect **show tech** commands, make sure to allocate enough time for the **show tech** commands to complete before the same action is called again.

#### NEW QUESTION 321

An engineer must affirm the identity of the Cisco UCS Manager after a valid CA-signed keyring for HTTPS access is created. Which action completes the configuration?

- A. Set Cipher Suite Mode
- B. Create a trusted point
- C. Implement SSLv3
- D. Enable TLSv1.2

**Answer:** B

#### NEW QUESTION 326

An engineer is configuring a vHBA template in UCS Manager. The engineer needs to specify the logical addresses used by the vHBA and the path through which the SAN traffic flows. Which two resources must be specified in the vHBA template? (Choose two.)

- A. MAC addresses
- B. WWPNPool
- C. WWNN
- D. VLAN ID
- E. Fabric ID

**Answer:** BE

#### Explanation:

vNIC and vHBA Templates

vNIC and vHBA resources are always associated with specific FIs (A-side or B-side fabric interconnect). A typical Service Profile has at least two vNICs and two vHBAs, one bound to each side. vNIC (or vHBA) templates can be used to encapsulate both the MAC address pool (or **WWPN pool**) association as well as the **fabric ID**.

#### Best Practice: vNIC and vHBA Templates

Create reusable vNIC and vHBA templates in which termination is either reflected in the name (e.g., “fc0-A”) or through well-accepted conventions (e.g., even interface to A side, and odd interface to B side).

vNIC templates should be thought of as application-specific network profiles that include important security definitions, such as VLAN mappings, as shown in Figure 6.

[https://www.cisco.com/c/en/us/products/collateral/servers-unified-computing/ucs-manager/whitepaper\\_c11-697](https://www.cisco.com/c/en/us/products/collateral/servers-unified-computing/ucs-manager/whitepaper_c11-697)

#### NEW QUESTION 329

Which mroute state is created when Bidirectional PIM is deployed at a site?

- A. MVPN Type-6
- B. \*,G

- C. MVPN Type-7
- D. S,G

Answer: B

Explanation:

Bidirectional PIM has been invented for networks where we have many sources and receivers talking to each other. PIM Sparse mode RP builds 2 entries \*, G and S, G but when we use PIM bidirectional mode, the RP will never build a S,G entry and, it only allow the \*,G entry.  
[https://www.cisco.com/c/en/us/td/docs/ios-xml/ios/ipmulti\\_pim/configuration/xr-16-5/imc-pim-xr-16-5-book/im](https://www.cisco.com/c/en/us/td/docs/ios-xml/ios/ipmulti_pim/configuration/xr-16-5/imc-pim-xr-16-5-book/im) and <https://networklessons.com/multicast/multicast-bidirectional-pim>

NEW QUESTION 333

Refer to the exhibit.

```
N9K-1# show running-config interface Ethernet1/1
switchport access vlan 10
spanning-tree port type edge
switchport port-security aging time 33
switchport port-security maximum 3
switchport port-security mac-address sticky
switchport port-security

N9K-1# show mac address-table interface ethernet 1/1
Legend:
      * - primary entry, G - Gateway MAC, (R) - Routed MAC, O - Overlay MAC
      age - seconds since last seen,+ - primary entry using vPC Peer-Link,
      (T) - True, (F) - False, C - ControlPlane MAC, ~ - vsan
```

VLAN	MAC Address	Type	age	Secure	NTFY	Ports
* 10	0050.7966.6801	secure	-	T	F	Eth1/1
* 10	0050.7966.6802	secure	-	T	F	Eth1/1
* 10	0050.7966.6803	secure	-	T	F	Eth1/1

An engineer configures port security on a Cisco Nexus 9000 Series Switch. The requirement is to prevent any newly learned MAC addresses from forwarding traffic on the interface. Also, the already learned MAC addresses must not be affected by the changes. Which configuration meets these requirements?

- A. switchport port-security violation shutdown
- B. switchport port-security violation isolate
- C. switchport port-security violation protect
- D. switchport port-security violation restrict

Answer: C

NEW QUESTION 338

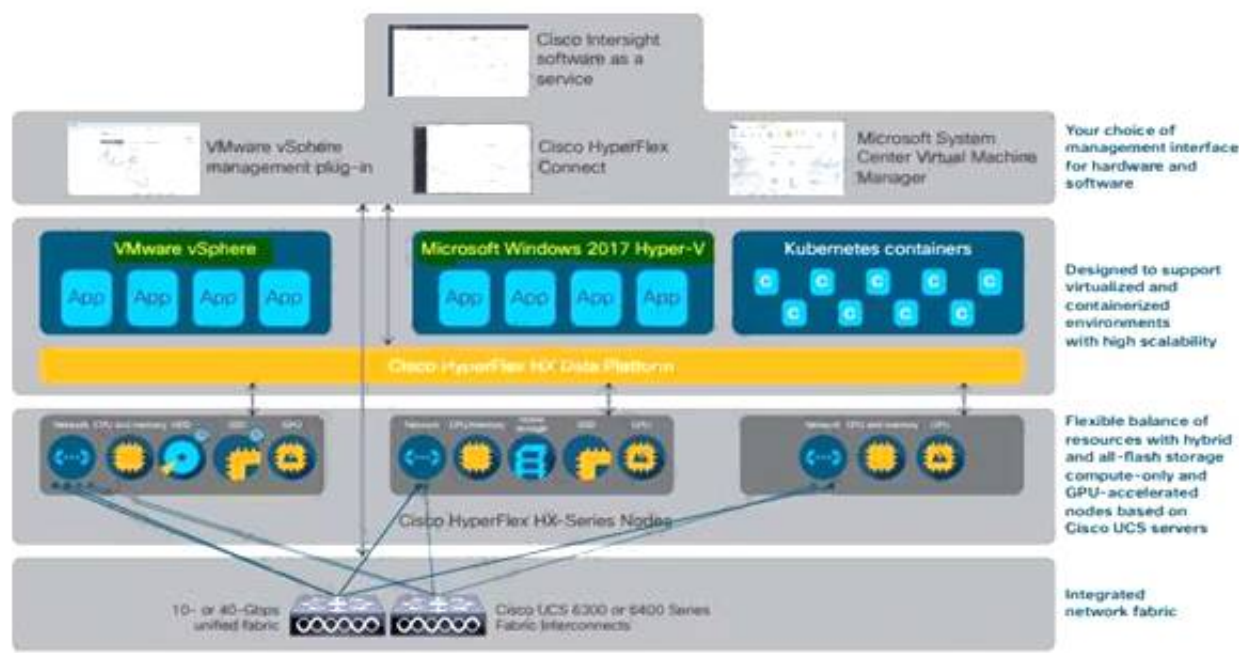
Which two hypervisors does Cisco HyperFlex support? (Choose two.)

- A. VMware vSphere
- B. Microsoft Hyper-V
- C. OpenStack
- D. Citrix XenServer
- E. RedHat KVM

Answer: AB

Explanation:

The Cisco HyperFlex platform is faster to deploy, simpler to manage, easier to scale, and ready to provide a unified pool of resources to power your business applications. You harness these resources with your choice of centralized management tools: Cisco Intersight™ software as a service, Cisco HyperFlex Connect, Microsoft System Center Virtual Machine Manager,



<https://www.cisco.com/c/dam/en/us/products/collateral/hyperconverged-infrastructure/hyperflex-hx-series/solution-overview-c22-736815.pdf>

#### NEW QUESTION 340

Which two components should be checked when a Cisco Nexus 9000 Series Switch fails to boot using POAP? (Choose two.)

- A. image noted in the script file against switch bootflash
- B. DHCP server to bootstrap IP information
- C. script signed with security key
- D. TFTP server that contains the configuration script
- E. POAP feature license

**Answer: BD**

#### Explanation:

[https://www.cisco.com/c/en/us/td/docs/switches/datacenter/nexus9000/sw/7-x/troubleshooting/guide/b\\_Cisco\\_Nexus\\_9000\\_Series\\_NX-OS\\_Troubleshooting\\_Guide\\_7x/b\\_Cisco\\_Nexus\\_9000\\_Series\\_NXOS\\_Troubleshooting\\_Guide\\_7x\\_chapter\\_01100.html](https://www.cisco.com/c/en/us/td/docs/switches/datacenter/nexus9000/sw/7-x/troubleshooting/guide/b_Cisco_Nexus_9000_Series_NX-OS_Troubleshooting_Guide_7x/b_Cisco_Nexus_9000_Series_NXOS_Troubleshooting_Guide_7x_chapter_01100.html)

[https://www.cisco.com/c/en/us/td/docs/switches/datacenter/nexus9000/sw/7-x/fundamentals/configuration/guide/b\\_Cisco\\_Nexus\\_9000\\_Series\\_NX-OS\\_Fundamentals\\_Configuration\\_Guide\\_7x/b\\_Cisco\\_Nexus\\_9000\\_Series\\_NX-OS\\_Fundamentals\\_Configuration\\_Guide\\_7x\\_chapter\\_01100.html](https://www.cisco.com/c/en/us/td/docs/switches/datacenter/nexus9000/sw/7-x/fundamentals/configuration/guide/b_Cisco_Nexus_9000_Series_NX-OS_Fundamentals_Configuration_Guide_7x/b_Cisco_Nexus_9000_Series_NX-OS_Fundamentals_Configuration_Guide_7x_chapter_01100.html)

#### NEW QUESTION 345

An engineer performs a set of configuration changes for the vPC domain using Session Manager. Which two commands are used to verify the configuration and apply the device changes when no errors are returned? (Choose two)

- A. write
- B. verify
- C. commit
- D. checkpoint
- E. apply

**Answer: BC**

#### Explanation:

[https://www.cisco.com/c/en/us/td/docs/switches/datacenter/nexus9000/sw/6-x/system\\_management/configuration](https://www.cisco.com/c/en/us/td/docs/switches/datacenter/nexus9000/sw/6-x/system_management/configuration)



## Verifying a Session

Use the following command in session mode to verify a session:

Command	Purpose
<b>verify</b> [verbose] Example: switch(config-s)# verify	Verifies the configuration as a whole, based on the existing hardware and software configuration and resources. Cisco NX-OS returns an error if the configuration does not pass this verification.

## Committing a Session

Use the following command in session mode to commit a session:

Command	Purpose
<b>commit</b> [verbose] Example: switch(config-s)# commit	Validates the configuration changes made in the current session and applies valid changes to the device. If the validation fails, Cisco NX-OS reverts to the original configuration.

<https://www.cisco.com/c/en/us/td/docs/switches/datacenter/nexus5000/sw/configuration/guide/cli/CLIconfigura>

### NEW QUESTION 350

Which component is excluded by default from the host firmware package?

- A. network interface controller
- B. board controller
- C. storage controller
- D. local disk

**Answer: D**

### NEW QUESTION 355

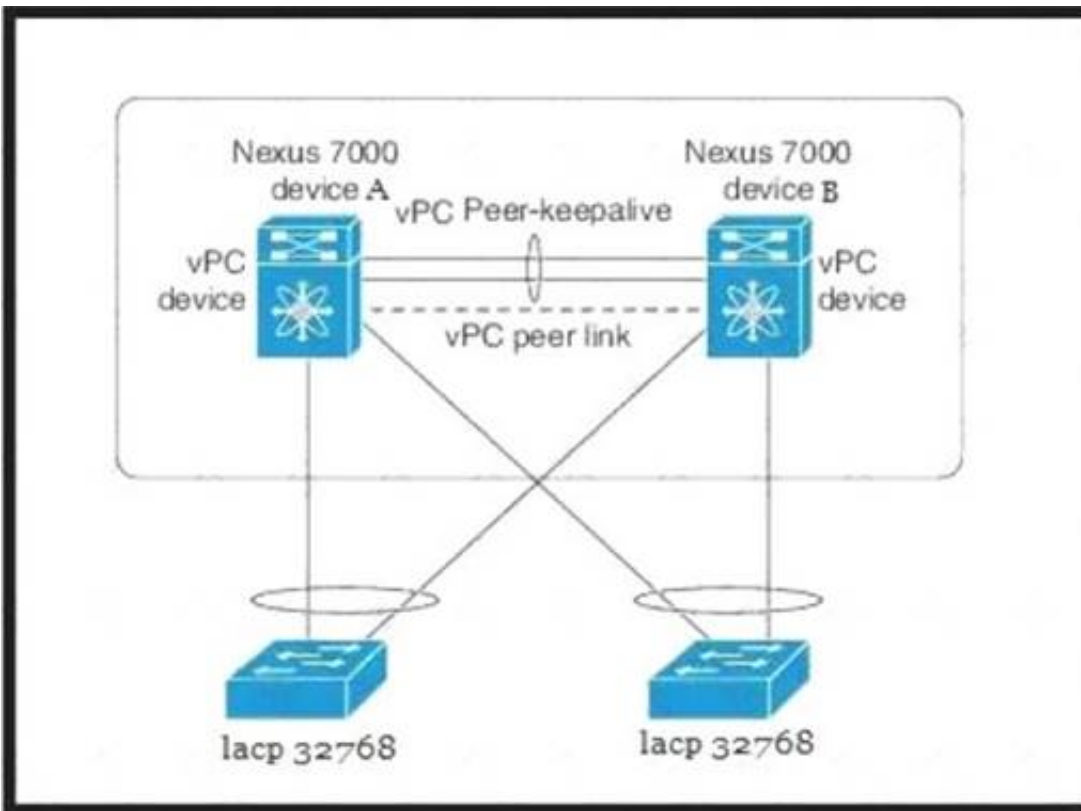
A bridge domain is being extended out of a Cisco ACI fabric. Between which of these components are policies used to identify the connectivity between Endpoint Groups and the external connection?

- A. an external bridge domain and an external routed domain
- B. internal contracts and external contracts
- C. internal EPGs and external EPGs
- D. L2Out and L3Out

**Answer: D**

### NEW QUESTION 356

Refer to the exhibit.



Which configuration ensure that the cisco Nexus 7000 series switches are the primary devices for LACP?

- A. N7K\_A(config-vpc-domain)# role priority 1N7K\_B(config-vpc-domain)# role priority 2
- B. N7K\_A(config-vpc-domain)# system-priority 32768N7K\_B(config-vpc-domain)# system-priority 32768
- C. N7K\_A(config-vpc-domain)# system-priority 100N7K\_B(config-vpc-domain)# system-priority 200
- D. N7K\_A(config-vpc-domain)# system-priority 4000N7K\_B(config-vpc-domain)# system-priority 4000

**Answer: D**

#### NEW QUESTION 360

An engineer wants to create a backup of Cisco UCS Manager for disaster recovery purposes. What are two characteristics of a full state backup of a Cisco UCS Manager database? (Choose two.)

- A. performs a complete binary dump of the database as a .txz file
- B. contains all of the configurations
- C. performs a complete binary dump of the database as a bin file
- D. performs a complete binary dump of the databases as a sql file
- E. contains all of the runtime states and statuses but not the configurations

**Answer: AB**

#### Explanation:

File: compressed file in .tar.gz format

<https://www.virtual-odyssey.com/2019/10/31/its-the-little-stuff-cisco-ucs-backups/> the file extension for bin in a cisco context is usually the OS.

tar files are used for backup. <https://peazip.github.io/tar-file-format.html>

#### NEW QUESTION 362

A network architect is asked to design and manage geographically distributed data centers across cities and decides to use a Multi-Site Orchestrator deployment. How many orchestrators should be deployed?

- A. 3
- B. 5
- C. 4
- D. 2

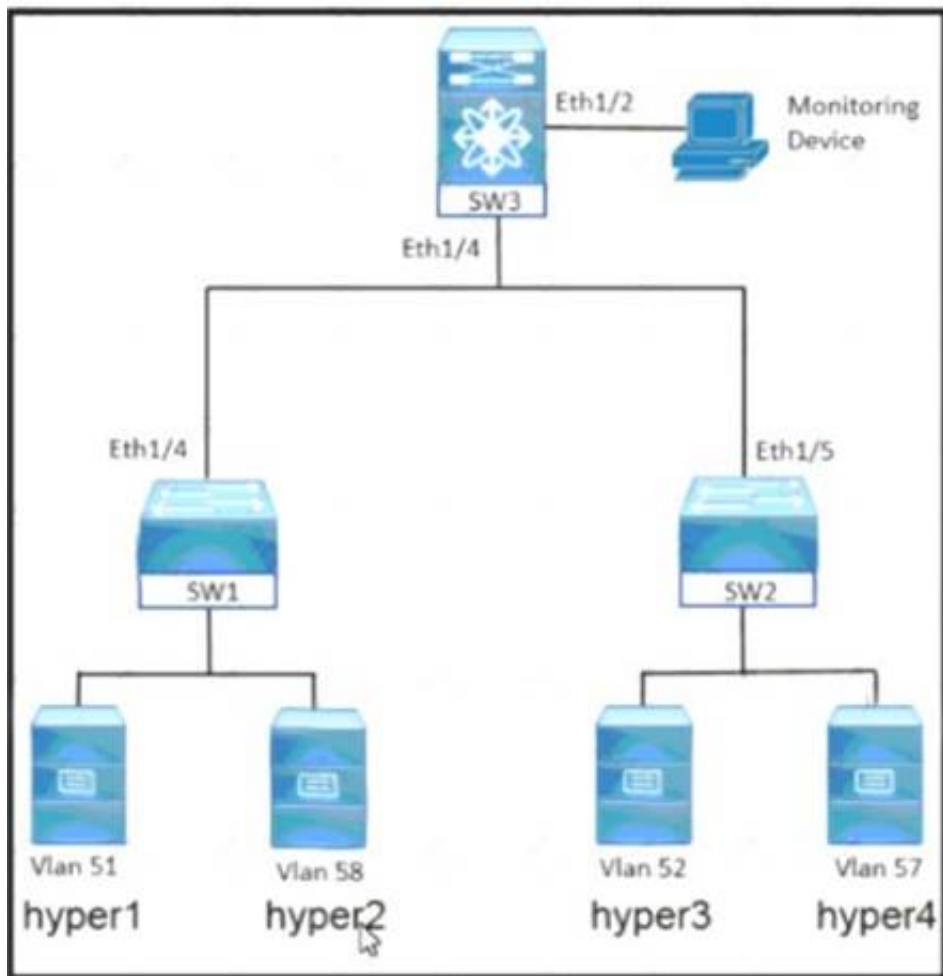
**Answer: A**

#### Explanation:

<https://www.cisco.com/c/en/us/solutions/collateral/data-center-virtualization/application-centricinfrastructure/w>

#### NEW QUESTION 364

Refer to the exhibit.



An engineer must monitor the Ethernet port and the corresponding VLAN traffic for the hyper4 device. The SW3 device is a Cisco Nexus 7000 Series Switch. Drag and drop the code snippets from the right into the boxes in the configuration to meet these requirements.

```
!SW3 configuration

interface ethernet 1/2
  switchport 

monitor session 2
  source interface 
  destination interface 
  source 
```

- 
- 
- 
- 
- 

- A. Mastered
- B. Not Mastered

**Answer:** A

**Explanation:**

Graphical user interface Description automatically generated

**NEW QUESTION 368**

Port security is enabled on a Cisco MDS 9000 series Switch. Which statement is true?

- A. Cisco Fabric Services must be disabled before enabling port security.
- B. Port security can be enabled only globally and affects all VSANs.
- C. Auto-learning is always enabled automatically when port security is enabled.
- D. Any devices currently logged in must be added manually to the device databased.

**Answer:** C

**Explanation:**

[https://www.cisco.com/c/en/us/td/docs/switches/datacenter/mds9000/sw/8\\_x/config/security/cisco\\_mds9000\\_security\\_config\\_guide\\_8x/configuring\\_port\\_security.html](https://www.cisco.com/c/en/us/td/docs/switches/datacenter/mds9000/sw/8_x/config/security/cisco_mds9000_security_config_guide_8x/configuring_port_security.html)



- **Active database:** The database currently enforced by the switch. The port security feature requires all devices connecting to a switch to be part of the port security active database. The software uses this active database to enforce authorization.

## About Auto-Learning

You can instruct the switch to automatically learn (auto-learn) the port security configurations over a specified period. This feature allows any switch in the Cisco MDS 9000 Family to automatically learn about devices and switches that connect to it. Use this feature when you activate the port security feature for the first time as it saves tedious manual configuration for each port. You must configure auto-learning on a per-VSAN basis. If enabled, devices and switches that are allowed to connect to the switch are automatically learned, even if you have not configured any port access.

**When auto-learning is enabled,** learning happens for the devices or interfaces that were already logged into the switch and the new devices or interfaces that need to be logged in. Learned entries on a port are cleaned up after you shut down that port if auto-learning is still enabled.

Learning does not override the existing configured port security policies. So, for example, if an interface is configured to allow a specific pWWN, then auto-learning will not add a new entry to allow any other pWWN on that interface. All other pWWNs will be blocked even in auto-learning mode.

No entries are learned for a port in the shutdown state.

When you activate the port security feature, auto-learning is also automatically enabled.



**Note** If you activate port security feature, auto-learning gets enabled by default. You cannot re-activate port security until auto-learning is disabled or deactivate and activate again.

## Port Security Activation

By default, the port security feature is not activated in any switch in the Cisco MDS 9000 Family.

By activating the port security feature, the following apply:

- Auto-learning is also automatically enabled, which means:
  - From this point, auto-learning happens for the devices or interfaces that were already logged into the switch and also for the new devices will login in future.
  - You cannot activate the database until you disable auto-learning.
- All the devices that are already logged in are learned and are added to the active database.
- All entries in the configured database are copied to the active database.

After the database is activated, subsequent device login is subject to the activated port bound WWN pairs, excluding the auto-learned entries. You must disable auto-learning before the auto-learned entries become activated.

**When you activate the port security feature, auto-learning is also automatically enabled.** You can choose to activate the port security feature and disable auto-learning.

## NEW QUESTION 372

.....

## Thank You for Trying Our Product

### We offer two products:

1st - We have Practice Tests Software with Actual Exam Questions

2nd - Questions and Answers in PDF Format

### 350-601 Practice Exam Features:

- \* 350-601 Questions and Answers Updated Frequently
- \* 350-601 Practice Questions Verified by Expert Senior Certified Staff
- \* 350-601 Most Realistic Questions that Guarantee you a Pass on Your First Try
- \* 350-601 Practice Test Questions in Multiple Choice Formats and Updates for 1 Year

**100% Actual & Verified — Instant Download, Please Click**  
**[Order The 350-601 Practice Test Here](#)**