

HP

Exam Questions HPE6-A72

Aruba Certified Switching Associate Exam



NEW QUESTION 1

Refer to the exhibit.

Internet Protocol Version 4 (TCP/IPv4) Properties

General

You can get IP settings assigned automatically if your network supports this capability. Otherwise, you need to ask your network administrator for the appropriate IP settings.

☐ Obtain an IP address automatically

☒ Use the following IP address:

IP address: 10 . 177 . 213 . 75

Subnet mask: 255 . 255 . 248 . 0

Default gateway: 10 . 177 . 208 . 1

☐ Obtain DNS server address automatically

☒ Use the following DNS server addresses:

Preferred DNS server: . . .

Alternate DNS server: . . .

☐ Validate settings upon exit

Advanced...

OK Cancel

Using the static IP address configured above, what is the converted binary value of the third octet assigned to the local interface?

- A. 11010101
- B. 10110001
- C. 01001011
- D. 11111000

Answer: A

NEW QUESTION 2

What is the binary conversion of the hexadecimal value 0x2001?

- A. 0010 0001
- B. 0002 0000 0000 0001
- C. 0011 0000 0000 0001
- D. 0010 0000 0000 0001

Answer: D

NEW QUESTION 3

Match the switching term to the correct definition.

Term

Broadcast Domain

Collision Domain

CSMA/CD

Forwarding Table

Definition

defines the group of devices that are on the same network segment that are capable of receiving and responding to frames destined to FF:FF:FF:FF:FF:FF

the FIB used by switches matching known-source mac-addresses to the layer one port they are learned on

the mechanism used by Compute NICs and Switchports operating in half-duplex to detect and recover from frame collisions

the segment of a network connected by a shared medium, such as a hub, that is affected when two or more frames are sent at the same time

A. Mastered

B. Not Mastered

Answer: A

Explanation:

Term

Broadcast Domain

Collision Domain

CSMA/CD

Forwarding Table

Broadcast Domain

Forwarding Table

CSMA/CD

Collision Domain

Definition

defines the group of devices that are on the same network segment that are capable of receiving and responding to frames destined to FF:FF:FF:FF:FF:FF

the FIB used by switches matching known-source mac-addresses to the layer one port they are learned on

the mechanism used by Compute NICs and Switchports operating in half-duplex to detect and recover from frame collisions

the segment of a network connected by a shared medium, such as a hub, that is affected when two or more frames are sent at the same time

NEW QUESTION 4

Place the OSI Layers in the correct order. Arrange them from least to greatest, starting with Layer 1 on the top, and progressing to Layer 7 on the bottom.

OSI Layer

Application Layer

Data Link Layer

Network Layer

Physical Layer

Presentation Layer

Session Layer

Transport Layer

Order

A. Mastered
B. Not Mastered

Answer: A

Explanation:

Graphical user interface, application Description automatically generated

NEW QUESTION 5

Which two statements accurately describe the features of NetEdit? (Choose two.)

- A. NetEdit can be used to configure and validate any third-party device that supports SSH and REST access.
- B. NetEdit includes trial licensing for up to 10 nodes.
- C. NetEdit can perform configuration and compliance validation.
- D. NetEdit supports viewing and editing multiple devices using a single deployment plan.
- E. NetEdit can run on a mobile device using Android or Apple IOS.

Answer: CD

NEW QUESTION 6

Refer to the exhibit.

SW1# show vlan

VLAN	Name	Status	Reason	Type	Interfaces
1	DEFAULT_VLAN_1	up	ok	default	<output omitted>
10	Engineering	up	ok	static	1/1/1-1/1/7
20	Guest	up	ok	static	1/1/11-1/1/14

The above command was applied to an Aruba AOS-CX 6300M 24-port switch with 4-port SFP56 uplinks. All ports are set as access switchports. Which ports carry VLAN 1 traffic?

- A. 1/1/8, 1/1/10, 1/1/5-1/1/24
- B. 1/1/1-1/1/28
- C. 1/1/1-1/1/24
- D. 1/1/8-1/1/10, 1/1/5-1/1/28

Answer: D

NEW QUESTION 7

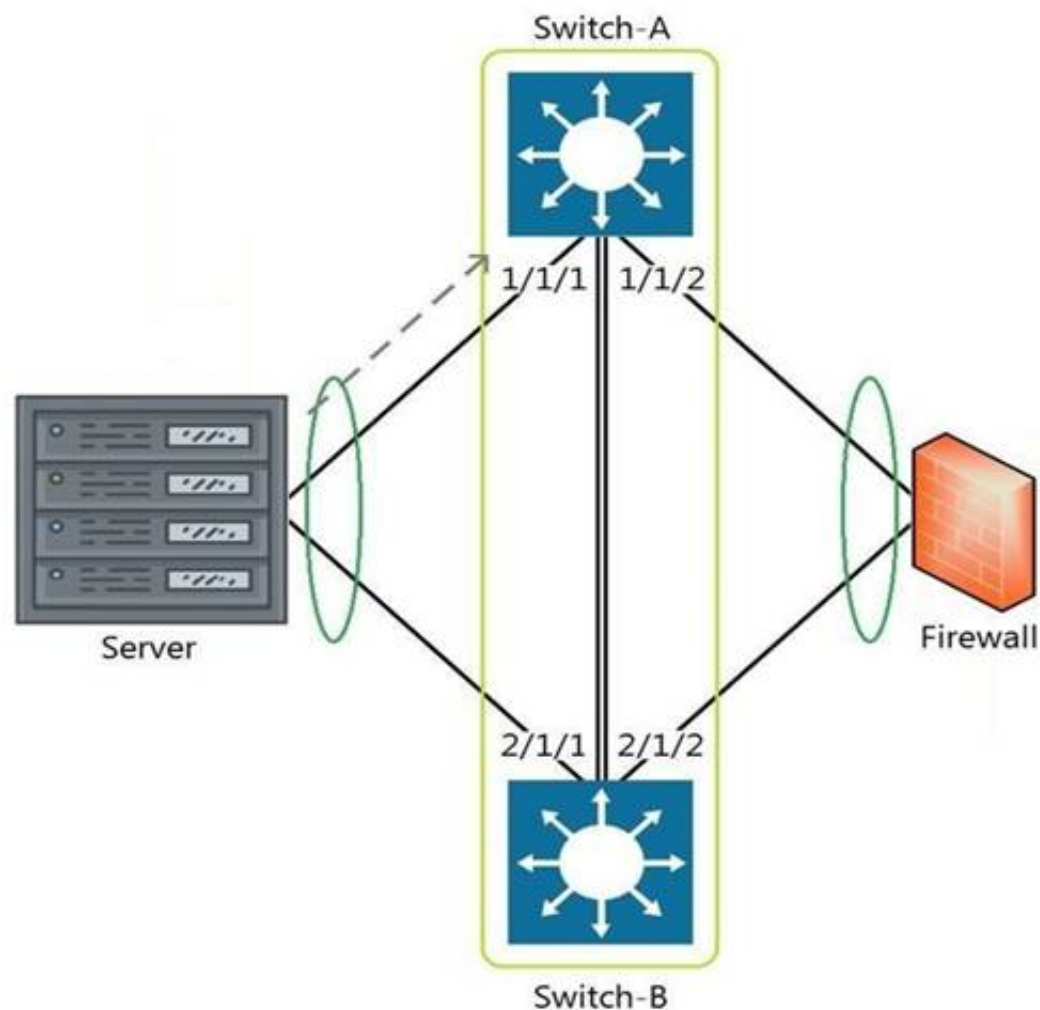
What are two OSPF attributes within the hello messages that must match to successfully establish neighbor relationships? (Choose two.)

- A. Router ID
- B. Priority
- C. Hello and Dead intervals
- D. Area ID
- E. Process ID

Answer: CD

NEW QUESTION 8

Refer to the exhibit.



The above scenario shows a packet from the Server destined for the Firewall. Switch-A and Switch-B are bundled as VSF stack. The LAG between the VSF stack and the firewall indicates a hash function to forward the packet on port 2/1/2.

Which statement is true regarding how Switch-A will forward the packet?

- A. Switch-A will forward the packet on port 1/1/2. VSF will override the typical LAG hash function used for the physical interface selection.
- B. Switch-A will drop the packe
- C. Multi-Chassis lag to multi-chassis lag is not a supported feature of VSF.
- D. Switch-A will encapsulate the packet using GRE to forward to Switch-B in order for the packet to egress on port 2/1/2 per the hash function.
- E. Switch-A will forward the packet along the VSF link to Switch-B so that it will egress on port 2/1/2 per the hash function.

Answer: D

NEW QUESTION 9

Match the terms to the correct layer of the OSI model.

Layer		Term
Transport Layer		Frames
Network Layer		Packets
Physical Layer		RF Signals
Data Link Layer		Segments

- A. Mastered
- B. Not Mastered

Answer: A

Explanation:

Layer		Term
Transport Layer	Data Link Layer	Frames
Network Layer	Network Layer	Packets
Physical Layer	Physical Layer	RF Signals
Data Link Layer	Transport Layer	Segments

NEW QUESTION 10

Which field in the IPv4 header indicates whether the IP packet carries TCP or UDP traffic?

- A. Protocol
- B. IHL
- C. TTL
- D. Identification

Answer: A

NEW QUESTION 10

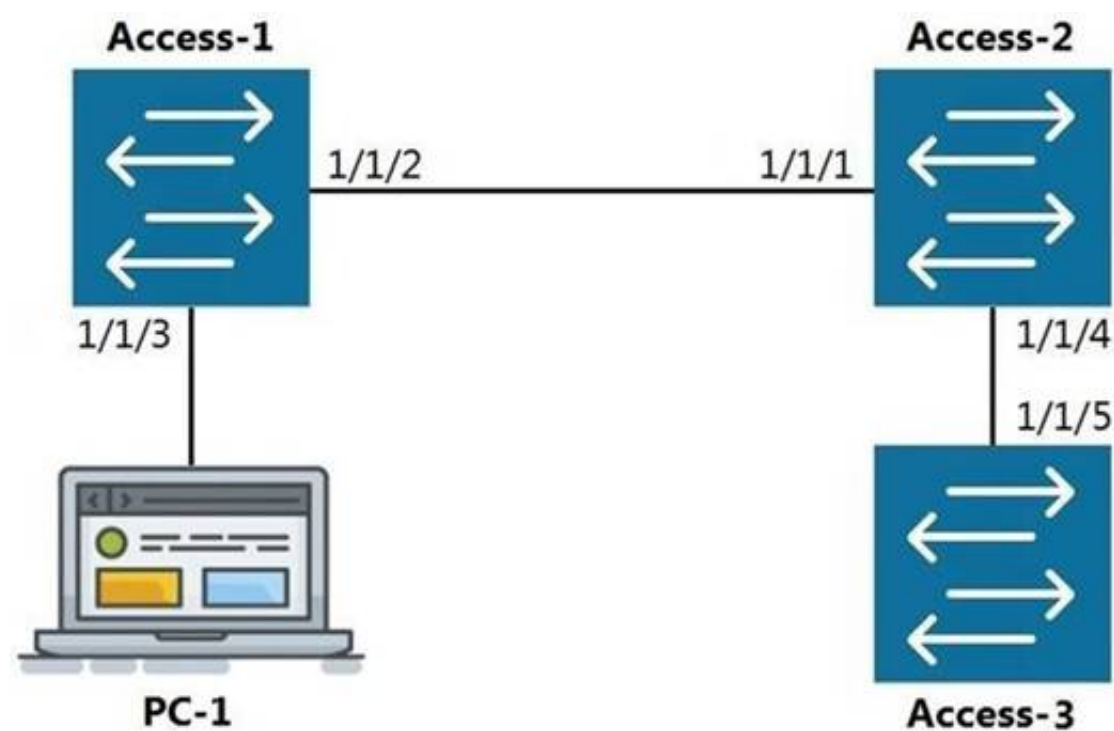
What are two primary concerns regarding layer two loops in a redundant topology? (Choose two.)

- A. routing loops
- B. costs associated with upgrading from copper to fiber
- C. multiple frame copies leading to instability of the MAC address table
- D. security issues with a redundant loop indicating to hackers that a back-door exists
- E. broadcast storms

Answer: CD

NEW QUESTION 12

Refer to the exhibit.



The command show LLDP neighbor-info gets typed into Access-1. All switches are Aruba OS-CX switches. What is the output of this command?

- A.
- | LOCAL-PORT | CHASSIS-ID | PORT-ID | PORT-DESC | TTL | SYS-NAME |
|------------|-------------------|---------|-----------|-----|----------|
| 1/1/1 | 90:20:c2:bc:ed:00 | 1/1/2 | 1/1/2 | 120 | Access-2 |
| 1/1/5 | 90:20:c2:bc:ef:00 | 1/1/2 | 1/1/2 | 120 | Access-3 |
- B.
- | LOCAL-PORT | CHASSIS-ID | PORT-ID | PORT-DESC | TTL | SYS-NAME |
|------------|-------------------|---------|-----------|-----|----------|
| 1/1/1 | 90:20:c2:bc:ed:00 | 1/1/2 | 1/1/2 | 120 | Access-2 |
- C.
- | LOCAL-PORT | CHASSIS-ID | PORT-ID | PORT-DESC | TTL | SYS-NAME |
|------------|-------------------|---------|-----------|-----|----------|
| 1/1/2 | 90:20:c2:bc:ed:00 | 1/1/1 | 1/1/1 | 120 | Access-2 |
| 1/1/2 | 90:20:c2:bc:ef:00 | 1/1/5 | 1/1/5 | 120 | Access-3 |
- D.
- | LOCAL-PORT | CHASSIS-ID | PORT-ID | PORT-DESC | TTL | SYS-NAME |
|------------|-------------------|---------|-----------|-----|----------|
| 1/1/2 | 90:20:c2:bc:ed:00 | 1/1/1 | 1/1/1 | 120 | Access-2 |

- A. Option A
B. Option B
C. Option C
D. Option D

Answer: D

NEW QUESTION 15

Which switch supports a maximum of 8 line-cards, 3 fabric modules, and 2 management cards?

- A. Aruba 8400
B. Aruba 8408
C. Aruba 6410
D. Aruba 5412r

Answer: A

NEW QUESTION 17

Which port or ports should be allowed through a firewall so that an AOS-CX switch can act as an SNMP Agent?

- A. UDP 1812 and UDP 1813
B. UDP 161
C. TCP 443
D. UDP 162

Answer: B

NEW QUESTION 22

What are the commands to disable SSH and HTTPS services from the default VRF?

- A. Core-1(config)# no ssh server Core-1(config)# no https-server
B. Core-1# no ssh server vrf default Core-1# no https-server vrf default
C. Core-1(config)# no ssh server enable Core-1(config)# no https-server enable
D. Core-1(config)# no ssh server vrf default Core-1(config)# no https-server vrf default

Answer: D

NEW QUESTION 24

Core(config)# user admin password

Core(config)# interface mgmt

Core(config-if-mgmt)# ip static 10.254.16.89/22

Core(config-if-mgmt)# default-gateway 10.254.19.129

Core(config)# ssh server vrf mgmt

Core(config)# https-server vrf mgmt

You are tasked with configuring the Core switch to be managed by NetEdit. Currently, the Core switch is at factory-default settings.

Which two steps are missing? (Choose two.)

- A. Core(config)# https-server rest access-mode read-write
- B. Core(config-if-mgmt)# no shutdown
- C. Core(config-if-mgmt)# no tftp-server
- D. Core(config-if-mgmt)# enable
- E. Core(config)# https-server rest access-mode read-only

Answer: AB

NEW QUESTION 26

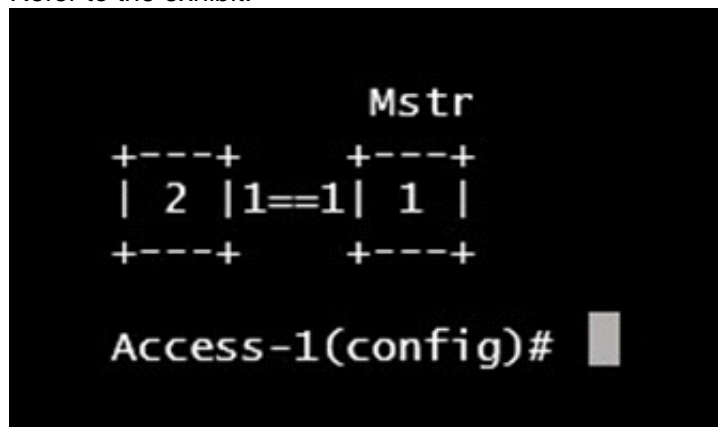
Which command will suppress LLDP messages from egressing on a given port while still allowing LLDP to be enabled on the switch?

- A. switch(config-if)# no lldp interface (port) transmit
- B. switch(config-if)# no lldp transmit
- C. switch(config-if)# no lldp receive
- D. switch(config)# no lldp

Answer: B

NEW QUESTION 31

Refer to the exhibit.



What VSF command produces the above output?

- A. show vsf member
- B. show vsf link
- C. show vsf topology
- D. show vsf detail

Answer: C

NEW QUESTION 32

What command displays information regarding the secondary image installed on an AOS-CX switch?

- A. show secondary
- B. show version detail
- C. show version
- D. show images

Answer: D

NEW QUESTION 35

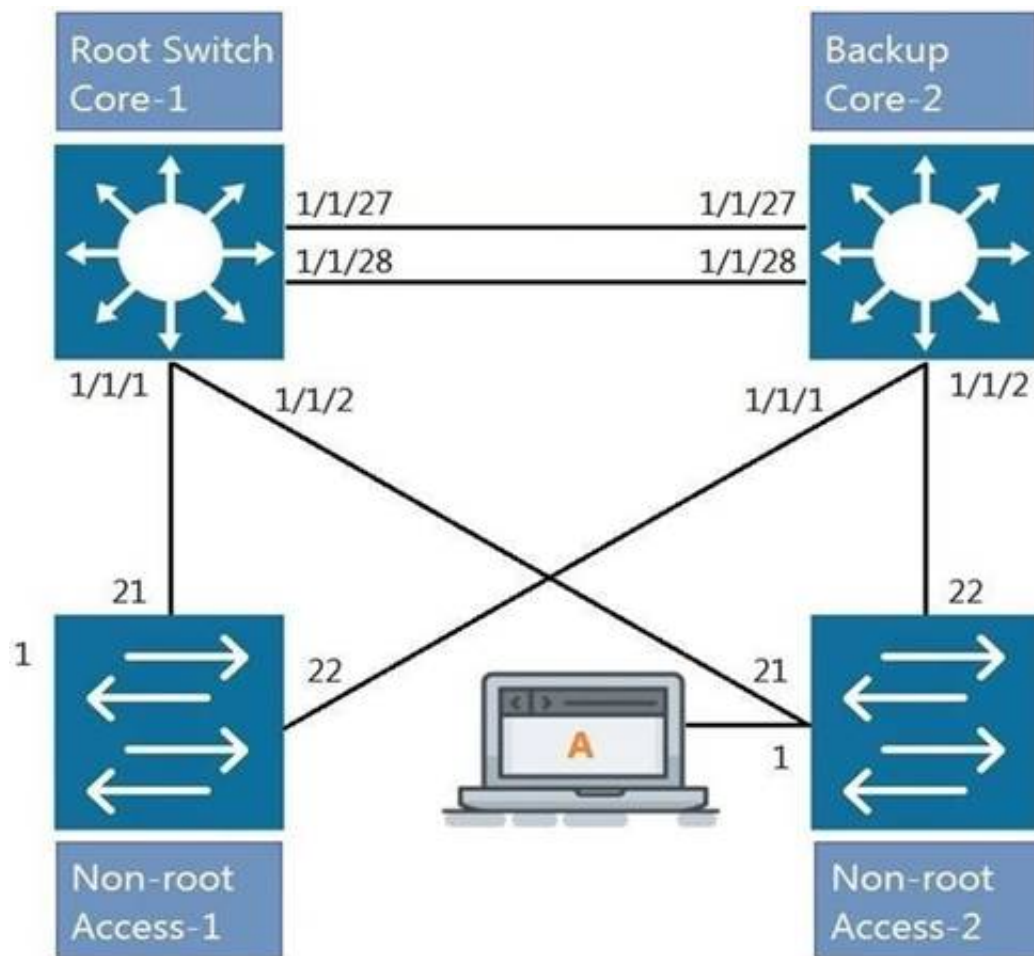
What are two mechanisms supported on AOS-CX 6300 switches used in Multi-active Detection to determine the status of the Primary member? (Choose two.)

- A. Management interface split detection
- B. Peer switch-based detection
- C. Loopback keepalives
- D. ARP-based
- E. BFD

Answer: AD

NEW QUESTION 40

Refer to the exhibit.



All four switches in the diagram have been configured with the region name "Aruba1".
 What two other MSTP configurations must match for switches within the same MST region? (Choose two.)

- A. MST region type
- B. MST Bridge ID
- C. MST version number
- D. MST revision number
- E. MST VLAN to instance mapping

Answer: DE

NEW QUESTION 44

Which two commands will save the running-config so that changes will be loaded automatically on the next reboot? (Choose two.)

- A. write memory
- B. save
- C. copy config config1 config startup-config
- D. copy running-config startup-config
- E. copy running-config checkpoint boot-config

Answer: AD

NEW QUESTION 46

Which security benefit does SNMPv3 offer that SNMPv2 does not offer?

- A. SSL encryption
- B. Scopes
- C. Data confidentiality
- D. RADIUS groups

Answer: C

NEW QUESTION 50

Core# configure terminal Core(config)# vrf Green Core(config-vrf)# exit Core(config)#
 Core(config)# interface vlan 50 Core(config-if-vlan)# ?

Given the configuration on the CORE switch shown above, what command would follow to assign the switched virtual interface (SVI) vlan 50 to the VRF created?

- A. Core(config-if-vlan)# vrf attach Green
- B. Core(config-if-vlan)# ip vpn-instance Green
- C. Core(config-if-vlan)# ip vrf forwarding Green
- D. Core(config-if-vlan)# routing-context Green vrf

Answer: A

NEW QUESTION 52

Which network category applies to a SOHO internal network?

- A. SD-WAN
- B. LAN
- C. WAN
- D. Internet

Answer: D

NEW QUESTION 57

Which two options are the Layer 2 protocols? (Choose two.)

- A. 802.1Q
- B. IPSec
- C. STP
- D. RIP
- E. 802.11af

Answer: AC

NEW QUESTION 60

What command will save your configuration on an Aruba AOS-CX switch so that your changes automatically load on next reboot?

- A. copy running-config checkpoint startup-config
- B. copy startup-config running-config
- C. copy running-config initial-checkpoint
- D. copy running-config default

Answer: A

NEW QUESTION 65

Which Ethernet port combination does the Aruba 5400R ZL2 switch series support?

- A. 10/100 Megabit Ethernet, Gigabit Ethernet, and 100 Gigabit Ethernet
- B. Gigabit Ethernet, 25 Gigabit Ethernet, and 40 Gigabit Ethernet
- C. 10/100 Megabit Ethernet, Gigabit Ethernet, 25 Gigabit Ethernet, and 100 Gigabit Ethernet
- D. 10/100 Megabit Ethernet, Gigabit Ethernet, and 40 Gigabit Ethernet

Answer: D

NEW QUESTION 70

What is Deep Packet Inspection?

- A. a machine learning method of packet inspection for the purpose of choosing which dynamic routing protocol to automatically assign
- B. a concept that applies to firewalls, when examining packets only up through Layer 4
- C. a function of Policy Based Routing that examines the entire IPv4 header to forward traffic based on factors other than destination address
- D. a firewall process of examining the packet header all the way to Layer 7 in order to determine if the packet should be permitted or denied

Answer: D

NEW QUESTION 74

Refer to the exhibit.

T11-Access-2# show lldp configuration

LLDP Global Configuration

=====

LLDP Enabled : Yes
LLDP Transmit Interval : 30
LLDP Hold Time Multiplier : 4
LLDP Transmit Delay Interval : 2
LLDP Reinit Time Interval : 2

TLVs Advertised

=====

Management Address
Port Description
Port VLAN-ID
System Capabilities
System Description
System Name
OUI

LLDP Port Configuration

=====

PORT	TX-ENABLED	RX-ENABLED
1/1/1	Yes	Yes
1/1/2	Yes	Yes
<--- output omitted --->		
1/1/27	Yes	Yes
1/1/28	Yes	Yes

What configuration is needed in order for "show LLDP configuration" to show this output?

- A. none; LLDP is enabled by default on Aruba switches
- B. configuring LLDP both globally and on the interfaces
- C. enabling LLDP on the interfaces only
- D. configuring LLDP globally only

Answer: A

NEW QUESTION 76

Which statement is true regarding modern switching requirements?

- A. Most older legacy switches had high port bandwidth utilization and were future proof designed to meet today's power-over-Ethernet needs.
- B. Requirements for PoE are normally addressed using AC to DC power adapter
- C. Concerns for port security for IoT devices are usually addressed using default wired encryption that all 802.3 Ethernet switches provide.
- D. While APs are common, most clients are still docked and only require traditional wired connections with only the occasional dedicated PoE switch to provide power for the low number of devices needed.
- E. Clients tend to prefer wireless connections, raising the need for PoE port acces
- F. There is also a growing amount of IoT devices that require security and port authentication options.

Answer: D

NEW QUESTION 79

Which two statements accurately describe stacking with Aruba switches? (Choose two.)

- A. A VSF stack is allowed between an AOS-CX 6300M and 6300F switches.
- B. VSF is a core or aggregation layer stacking technology due to the high resiliency of sharing a single control plane.
- C. The VSF feature is not compatible between AOS-CX and AOS platforms.
- D. A VSF stack is allowed between an AOS 5400R and an AOS-CX 6400.
- E. VSF and VSX are stacking option with the AOS-CX 8320. 8325. 8400. and 6400 models.

Answer: BE

NEW QUESTION 84

.....

Thank You for Trying Our Product

We offer two products:

1st - We have Practice Tests Software with Actual Exam Questions

2nd - Questions and Answers in PDF Format

HPE6-A72 Practice Exam Features:

- * HPE6-A72 Questions and Answers Updated Frequently
- * HPE6-A72 Practice Questions Verified by Expert Senior Certified Staff
- * HPE6-A72 Most Realistic Questions that Guarantee you a Pass on Your FirstTry
- * HPE6-A72 Practice Test Questions in Multiple Choice Formats and Updatesfor 1 Year

100% Actual & Verified — Instant Download, Please Click
[Order The HPE6-A72 Practice Test Here](#)