

NSE5_FMG-7.0 Dumps

Fortinet NSE 5 - FortiManager 7.0

https://www.certleader.com/NSE5_FMG-7.0-dumps.html



NEW QUESTION 1

- (Topic 1)

View the following exhibit.

Import Device - Local-FortiGate [root]

Create a new policy package for import.

Policy Package Name

Local-FortiGate

Folder

root

Policy Selection

☒ Import All(3)

☐ Select Policies and Profile Groups to Import

Object Selection

☐ Import only policy dependent objects

☒ Import all objects

An administrator is importing a new device to FortiManager and has selected the shown options. What will happen if the administrator makes the changes and installs the modified policy package on this managed FortiGate?

- A. The unused objects that are not tied to the firewall policies will be installed on FortiGate
- B. The unused objects that are not tied to the firewall policies will remain as read-only locally on FortiGate
- C. The unused objects that are not tied to the firewall policies locally on FortiGate will be deleted
- D. The unused objects that are not tied to the firewall policies in policy package will be deleted from theFortiManager database

Answer: C

Explanation:

Reference: <https://community.fortinet.com/t5/FortiManager/Import-all-objects-Versus-Import-only-policy-dependent-objects/ta-p/193259?externalID=FD40392>

NEW QUESTION 2

- (Topic 1)

An administrator, Trainer, who is assigned the Super_User profile, is trying to approve a workflow session that was submitted by another administrator, Student. However, Trainer is unable to approve the workflow session.

What can prevent an admin account that has Super_User rights over the device from approving a workflow session?

Session List

View Diff					
<input type="checkbox"/>	ID	Name	User	Date Submitt...	Approved/To... Comments
<input checked="" type="checkbox"/>	1	Firewall p..	Student	2017-06-01...	0/1 firewall policies

+ Add Comment

[Student] - 2017-06-01 13:31:35
firewall policies

[Student] - 2017-06-01 16:29:27

- A. Trainer is not a part of workflow approval group
- B. Trainer does not have full rights over this ADOM
- C. Trainer must close Student's workflow session before approving the request
- D. Student, who submitted the workflow session, must first self-approve the request

Answer: A

Explanation:

Reference: https://help.fortinet.com/fmgr/50hlp/56/5-6-1/FMG-FAZ/0800_ADOMs/1800_Workflow/0600_Workflow%20sessions.htm

NEW QUESTION 3

- (Topic 1)

An administrator would like to review, approve, or reject all the firewall policy changes made by the junior administrators.

How should the Workspace mode be configured on FortiManager?

- A. Set to workflow and use the ADOM locking feature
- B. Set to read/write and use the policy locking feature

- C. Set to normal and use the policy locking feature
- D. Set to disable and use the policy locking feature

Answer: A

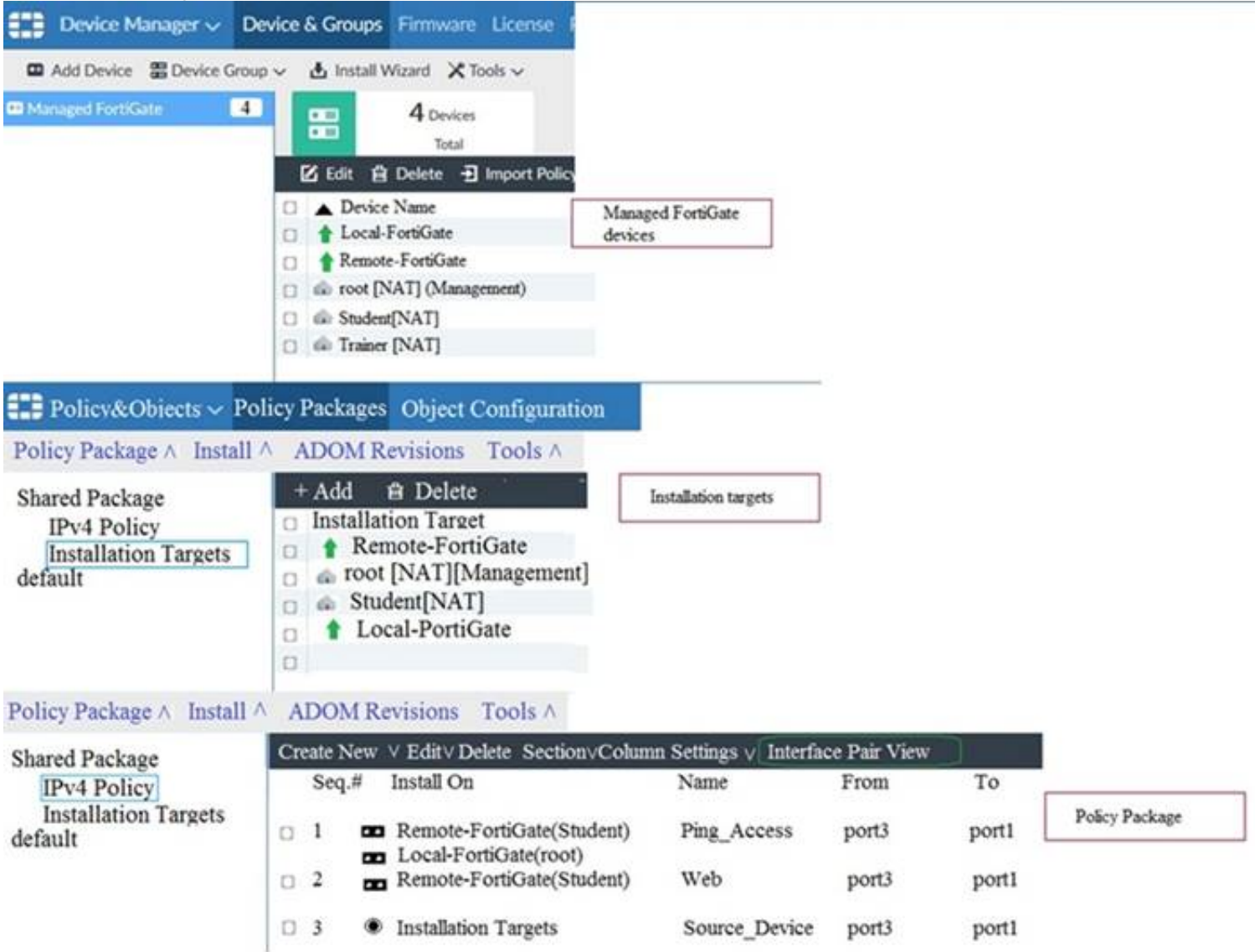
Explanation:

Reference: https://help.fortinet.com/fmgr/50hlp/52/5-2-0/FMG_520_Online_Help/200_What's-New.03.03.html

NEW QUESTION 4

- (Topic 1)

View the following exhibit.



Given the configurations shown in the exhibit, what can you conclude from the installation targets in the Install On column?

- A. The Install On column value represents successful installation on the managed devices
- B. Policy seq#3 will be installed on all managed devices and VDOMs that are listed under Installation Targets
- C. Policy seq#3 will be installed on the Trainer[NAT] VDOM only
- D. Policy seq#3 will be not installed on any managed device

Answer: B

NEW QUESTION 5

- (Topic 1)

Which two statements about the scheduled backup of FortiManager are true? (Choose two.)

- A. It does not back up firmware images saved on FortiManager.
- B. It can be configured using the CLI and GUI.
- C. It backs up all devices and the FortiGuard database.
- D. It supports FTP, SCP, and SFTP.

Answer: AD

Explanation:

Reference: https://docs.ansible.com/ansible/latest/collections/fortinet/fortimanager/fmgr_system_backup_allsettings_module.html

NEW QUESTION 6

- (Topic 1)

What are two outcomes of ADOM revisions? (Choose two.)

- A. ADOM revisions can significantly increase the size of the configuration backups.
- B. ADOM revisions can save the current size of the whole ADOM
- C. ADOM revisions can create System Checkpoints for the FortiManager configuration
- D. ADOM revisions can save the current state of all policy packages and objects for an ADOM

Answer: AD

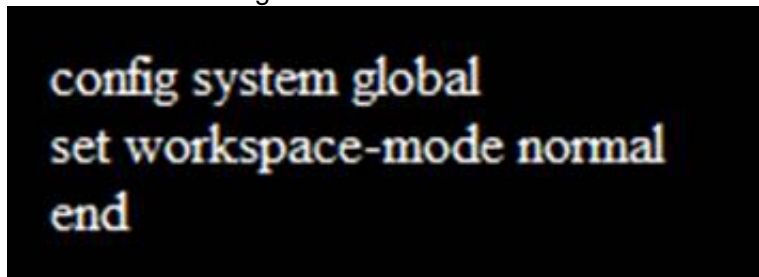
Explanation:

Reference: <https://docs2.fortinet.com/document/fortimanager/6.0.0/best-practices/101837/adom-revisions>

NEW QUESTION 7

- (Topic 1)

Refer to the following exhibit:



```
config system global
set workspace-mode normal
end
```

Which of the following statements are true based on this configuration? (Choose two.)

- A. The same administrator can lock more than one ADOM at the same time
- B. Ungraceful closed sessions will keep the ADOM in a locked state until the administrator session times out
- C. Unlocking an ADOM will submit configuration changes automatically to the approval administrator
- D. Unlocking an ADOM will install configuration automatically on managed devices

Answer: AB

Explanation:

Reference: http://help.fortinet.com/fmgr/cli/5-6-2/Document/0800_ADOMs/200_Configuring+.htm

NEW QUESTION 8

- (Topic 1)

What is the purpose of the Policy Check feature on FortiManager?

- A. To find and provide recommendation to combine multiple separate policy packages into one common policy package
- B. To find and merge duplicate policies in the policy package
- C. To find and provide recommendation for optimizing policies in a policy package
- D. To find and delete disabled firewall policies in the policy package

Answer: C

Explanation:

Reference: https://help.fortinet.com/fmgr/50hlp/56/5-6-2/FortiManager_Admin_Guide/1200_Policy%20and%20Objects/0800_Managing%20policy%20packages/2400_Perform%20a%20policy%20consistency%20check.htm

NEW QUESTION 9

- (Topic 1)

What will happen if FortiAnalyzer features are enabled on FortiManager?

- A. FortiManager will reboot
- B. FortiManager will send the logging configuration to the managed devices so the managed devices will start sending logs to FortiManager
- C. FortiManager will enable ADOMs automatically to collect logs from non-FortiGate devices
- D. FortiManager can be used only as a logging device.

Answer: A

Explanation:

Reference: https://help.fortinet.com/fmgr/50hlp/56/5-6-1/FortiManager_Admin_Guide/1800_FAZ%20Features/0200_Enable%20FAZ%20Features.htm

NEW QUESTION 10

- (Topic 1)

Which three settings are the factory default settings on FortiManager? (Choose three.)

- A. Username is admin
- B. Password is fortinet
- C. FortiAnalyzer features are disabled
- D. Reports and Event Monitor panes are enabled
- E. port1 interface IP address is 192.168.1.99/24

Answer: ACE

NEW QUESTION 10

- (Topic 1)

In addition to the default ADOMs, an administrator has created a new ADOM named Training for FortiGate devices. The administrator sent a device registration to FortiManager from a remote FortiGate. Which one of the following statements is true?

- A. The FortiGate will be added automatically to the default ADOM named FortiGate.
- B. The FortiGate will be automatically added to the Training ADOM.
- C. By default, the unregistered FortiGate will appear in the root ADOM.
- D. The FortiManager administrator must add the unregistered device manually to the unregistered device manually to the Training ADOM using the Add Device wizard

Answer: C

Explanation:

Reference: <https://docs.fortinet.com/document/fortimanager/7.0.0/administration-guide/718923/root-adom>

NEW QUESTION 11

- (Topic 1)

An administrator with the Super_User profile is unable to log in to FortiManager because of an authentication failure message. Which troubleshooting step should you take to resolve the issue?

- A. Make sure FortiManager Access is enabled in the administrator profile
- B. Make sure Offline Mode is disabled
- C. Make sure the administrator IP address is part of the trusted hosts.
- D. Make sure ADOMs are enabled and the administrator has access to the Global ADOM

Answer: C

Explanation:

Even if a user entered the correct userid/password, the FMG denies access if a user is logging in from an untrusted source IP subnets. Reference: <https://docs.fortinet.com/document/fortimanager/6.0.3/administration-guide/107347/trusted-hosts>

NEW QUESTION 15

- (Topic 1)

Which configuration setting for FortiGate is part of a device-level database on FortiManager?

- A. VIP and IP Pools
- B. Firewall policies
- C. Security profiles
- D. Routing

Answer: D

Explanation:

The FortiManager stores the FortiGate configuration details in two distinct databases. The device-level database includes configuration details related to device-level settings, such as interfaces, DNS, routing, and more. The ADOM-level database includes configuration details related to firewall policies, objects, and security profiles.

NEW QUESTION 17

- (Topic 1)

In the event that the primary FortiManager fails, which of the following actions must be performed to return the FortiManager HA to a working state?

- A. Secondary device with highest priority will automatically be promoted to the primary role, and manually reconfigure all other secondary devices to point to the new primary device
- B. Reboot one of the secondary devices to promote it automatically to the primary role, and reconfigure all other secondary devices to point to the new primary device.
- C. Manually promote one of the secondary devices to the primary role, and reconfigure all other secondary devices to point to the new primary device.
- D. FortiManager HA state transition is transparent to administrators and does not require any reconfiguration.

Answer: C

Explanation:

FortiManager_6.4_Study_Guide-Online – page 346

FortiManager HA doesn't support IP takeover where an HA state transition is transparent to administrators. If a failure of the primary occurs, the administrator must take corrective action to resolve the problem that may include invoking the state transition. If the primary device fails, the administrator must do the following in order to return the FortiManager HA to a working state:

- * 1. Manually reconfigure one of the secondary devices to become the primary device
- * 2. Reconfigure all other secondary devices to point to the new primary device

NEW QUESTION 22

- (Topic 1)

Which two settings must be configured for SD-WAN Central Management? (Choose two.)

- A. SD-WAN must be enabled on per-ADOM basis
- B. You can create multiple SD-WAN interfaces per VDOM
- C. When you configure an SD-WAN, you must specify at least two member interfaces.
- D. The first step in creating an SD-WAN using FortiManager is to create two SD-WAN firewall policies.

Answer: AC

NEW QUESTION 25

- (Topic 1)

You are moving managed FortiGate devices from one ADOM to a new ADOM. Which statement correctly describes the expected result?

- A. Any pending device settings will be installed automatically
- B. Any unused objects from a previous ADOM are moved to the new ADOM automatically
- C. The shared policy package will not be moved to the new ADOM
- D. Policy packages will be imported into the new ADOM automatically

Answer: C

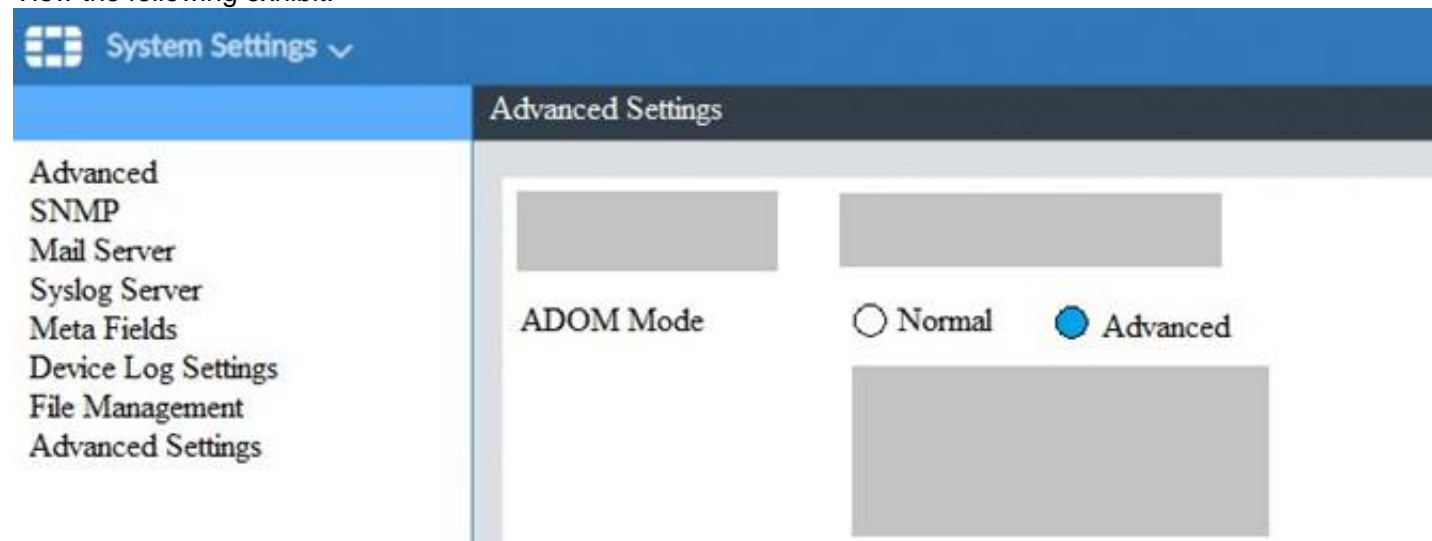
Explanation:

Reference: <https://community.fortinet.com/t5/FortiManager/Technical-Note-How-to-move-objects-to-new-ADOM-on-FortiManager/ta-p/198342>

NEW QUESTION 29

- (Topic 1)

View the following exhibit.



What is the purpose of setting ADOM Mode to Advanced?

- A. The setting allows automatic updates to the policy package configuration for a managed device
- B. The setting enables the ADOMs feature on FortiManager
- C. This setting allows you to assign different VDOMs from the same FortiGate to different ADOMs.
- D. The setting disables concurrent ADOM access and adds ADOM locking

Answer: C

Explanation:

Reference: <https://docs.fortinet.com/document/fortianalyzer/7.0.0/administration-guide/66530/adom-device-modes>

NEW QUESTION 30

- (Topic 1)

Refer to the exhibit.

```
FortiManager # diagnose dvm device list
--- There are currently 1 devices/vdoms managed ---

TYPE      OID    SN      HA    IP      NAME      ADOM    IPS      FIRMWARE
fmq/faz enabled 157    FGV01.. -    10.200.1.1    Local-FortiGate    My_ADOM    14.00641 (regular) 6.0 MR2 (866)
|- STATUS: dev-db: modified; conf: in sync; cond: pending; dm: retrieved; conn: up

|- vdom:[3]root flags:0 adom:My_ADOM pkg:[imported]Local-FortiGate
```

Which two statements about the output are true? (Choose two.)

- A. The latest revision history for the managed FortiGate does match with the FortiGate running configuration
- B. Configuration changes have been installed to FortiGate and represents FortiGate configuration has been changed
- C. The latest history for the managed FortiGate does not match with the device-level database
- D. Configuration changes directly made on the FortiGate have been automatically updated to device-level database

Answer: AC

Explanation:

STATUS: dev-db: modified; conf: in sync; cond: pending; dm: retrieved; conn: up— dev-db: modified – This is the device setting status which indicates that configuration changes were made on FortiManager.— conf: in sync – This is the sync status which shows that the latest revision history is in sync with Fortigate's configuration.— cond: pending – This is the configuration status which says that configuration changes need to be installed.

Most probably a retrieve was done in the past (dm: retrieved) updating the revision history DB (conf: in sync) and FortiManager device level DB, now there is a new modification on FortiManager device level DB (dev-db: modified) which wasn't installed to FortiGate (cond: pending), hence; revision history DB is not aware of that modification and doesn't match device DB.

Conclusion:– Revision DB does match FortiGate.– No changes were installed to FortiGate yet.– Device DB doesn't match Revision DB.– No changes were done on FortiGate (auto-update) but configuration was retrieved instead

After an Auto-Update or Retrieve:device database = latest revision = FGT

Then after a manual change on FMG end (but no install yet):latest revision = FGT (still) but now device database has been modified (is different).

After reverting to a previous revision in revision history:device database = reverted revision != FGT

NEW QUESTION 34

- (Topic 2)

Refer to the exhibit.

```
config system global
set workspace-mode normal
end
```

Given the configuration shown in the exhibit, which two statements are true? (Choose two.)

- A. It allows two or more administrators to make configuration changes at the same time, in the same ADOM.
- B. It disables concurrent read-write access to an ADOM.
- C. It allows the same administrator to lock more than one ADOM at the same time.
- D. It is used to validate administrator login attempts through external servers.

Answer: BC

Explanation:

Reference: <https://docs.fortinet.com/document/fortimanager/6.0.4/administration-guide/86456/concurrentadom-access>

NEW QUESTION 35

- (Topic 2)

An administrator is replacing a device on FortiManager by running the following command: `execute device replace sn <devname> <serialnum>`. What device name and serial number must the administrator use?

- A. Device name and serial number of the original device.
- B. Device name and serial number of the replacement device.
- C. Device name of the replacement device and serial number of the original device.
- D. Device name of the original device and serial number of the replacement device.

Answer: D

NEW QUESTION 37

- (Topic 2)

Refer to the exhibit.

```
config system dm
set rollback-allow-reboot enable
end
```

An administrator has configured the command shown in the exhibit on FortiManager. A configuration change has been installed from FortiManager to the managed FortiGate that causes the FGFM tunnel to go down for more than 15 minutes. What is the purpose of this command?

- A. It allows FortiGate to unset central management settings.
- B. It allows FortiGate to reboot and recover the previous configuration from its configuration file.
- C. It allows the FortiManager to revert and install a previous configuration revision on the managed FortiGate.
- D. It allows FortiGate to reboot and restore a previously working firmware image.

Answer: B

Explanation:

Reference: <https://docs.fortinet.com/document/fortimanager/6.2.0/fortigate-fortimanager-communicationsprotocol-guide/141304/fgfm-recovery-logic>

NEW QUESTION 38

- (Topic 2)

An administrator configures a new firewall policy on FortiManager and has not yet pushed the changes to the managed FortiGate. In which database will the configuration be saved?

- A. Device-level database
- B. Revision history database
- C. ADOM-level database
- D. Configuration-level database

Answer: C

Explanation:

<https://kb.fortinet.com/kb/documentLink.do?externalID=FD47942>

NEW QUESTION 41

- (Topic 2)

Refer to the exhibit.

Create New ADOM

Name

Training

Type

FortiGate

6.2

6.0

5.6

5.4

Comments

Devices

+ Select Device

Name	IP Address	Platform
Click to select devices for this ADOM.		

Mode

☒ Normal
 ☐ Backup

Which two statements about an ADOM set in Normal mode on FortiManager are true? (Choose two.)

- A. It supports the FortiManager script feature
- B. It allows making configuration changes for managed devices on FortiManager panes
- C. FortiManager automatically installs the configuration difference in revisions on the managed FortiGate
- D. You cannot assign the same ADOM to multiple administrators

Answer: AB

Explanation:

"FortiGate units in the ADOM will query their own configuration every 5 seconds. If there has been a configuration change, the FortiGate unit will send a diff revision on the change to the FortiManager using the FGFM protocol."

NEW QUESTION 42

- (Topic 2)

What does a policy package status of Conflict indicate?

- A. The policy package reports inconsistencies and conflicts during a Policy Consistency Check.
- B. The policy package does not have a FortiGate as the installation target.
- C. The policy package configuration has been changed on both FortiManager and the managed device independently.
- D. The policy configuration has never been imported after a device was registered on FortiManager.

Answer: C

NEW QUESTION 43

- (Topic 2)

An administrator's PC crashes before the administrator can submit a workflow session for approval. After the PC is restarted, the administrator notices that the ADOM was locked from the session before the crash.

How can the administrator unlock the ADOM?

- A. Restore the configuration from a previous backup.
- B. Log in as Super_User in order to unlock the ADOM.
- C. Log in using the same administrator account to unlock the ADOM.
- D. Delete the previous admin session manually through the FortiManager GUI or CLI.

Answer: D

NEW QUESTION 44

- (Topic 2)

Which two statements about Security Fabric integration with FortiManager are true? (Choose two.)

- A. The Security Fabric license, group name and password are required for the FortiManager Security Fabric integration
- B. The Fabric View module enables you to generate the Security Fabric ratings for Security Fabric devices
- C. The Security Fabric settings are part of the device level settings
- D. The Fabric View module enables you to view the Security Fabric ratings for Security Fabric devices

Answer: CD

NEW QUESTION 47

- (Topic 2)

Refer to the exhibit.



An administrator logs into the FortiManager GUI and sees the panes shown in the exhibit. Which two reasons can explain why the FortiAnalyzer feature panes do not appear? (Choose two.)

- A. The administrator logged in using the unsecure protocol HTTP, so the view is restricted.
- B. The administrator profile does not have full access privileges like the Super_User profile.
- C. The administrator IP address is not a part of the trusted hosts configured on FortiManager interfaces.
- D. FortiAnalyzer features are not enabled on FortiManager.

Answer: BD

NEW QUESTION 48

- (Topic 2)

What is the purpose of ADOM revisions?

- A. To create System Checkpoints for the FortiManager configuration.
- B. To save the current state of the whole ADOM.
- C. To save the current state of all policy packages and objects for an ADOM.
- D. To revert individual policy packages and device-level settings for a managed FortiGate by reverting to a specific ADOM revision

Answer: C

Explanation:

Fortimanager 6.4 Study guide page 198

NEW QUESTION 52

- (Topic 3)

An administrator would like to authorize a newly-installed AP using AP Manager. What steps does the administrator need to perform to authorize an AP?

- A. Authorize the new AP using AP Manager and wait until the change is updated on the FortiA
- B. Changes to the AP's state do not require installation.
- C. Changes to the AP's state must be performed directly on the managed FortiGate.
- D. Authorize the new AP using AP Manager and install the policy package changes on the managed FortiGate.
- E. Authorize the new AP using AP Manager and install the device level settings on the managed FortiGate.

Answer: D

NEW QUESTION 55

- (Topic 3)

View the following exhibit.

Edit Address

Address Name

Training

Type

IP/Netmask

IP/Network

192.168.1.0/255.255.255.255.0

Interface

any

Static Route Configuration

OFF

Comments

0/255

Add to Groups

Click to add

Advanced Options >

Per-Device Mapping

ON

+ Add Edit Delete

<input type="checkbox"/>	Name	VDOM	Details
<input type="checkbox"/>	Local-FortiGate	root	IP/Netmask10.0.10/255.255.255.0

An administrator has created a firewall address object, Training, which is used in the Local- FortiGate policy package. When the install operation is performed, which IP Netmask will be installed on the Local-FortiGate, for the Training firewall address object?

- A. 10.0.1.0/24
- B. It will create firewall address group on Local-FortiGate with 192.168.0.1/24 and 10.0.1.0/24 object values
- C. 192.168.0.1/24
- D. Local-FortiGate will automatically choose an IP Network based on its network interface settings.

Answer: A

NEW QUESTION 57

- (Topic 3)

Refer to the exhibit.

The screenshot displays the FortiGate GUI configuration for a policy package. The 'Managed FortiGate devices' section shows a connectivity diagram with 2 devices. The 'Installation targets' section lists the following targets: Local-FortiGate_root, Remote-FortiGate, Trainer [NAT], Student [NAT], root [NAT] (Management), and Local-FortiGate. The 'Policy package' section shows a table of policies with columns for Policy Seq #, Install On, Name, From, and To.

Policy Seq #	Install On	Name	From	To
1	Remote-FortiGate (root)	Ping_Access	port3	port1
2	Local-FortiGate (root)	Web	port3	port1
3	Installation Targets	Source_Device	port3	port1
4	Installation Targets	Implicit Deny	any	any

Given the configuration shown in the exhibit, what can you conclude from the installation targets in the Install On column? (Choose two)

- A. Policy seq # 2 will not be installed on the Local-FortiGate root VDOM because there is no root VDOM in the Installation Target
- B. Policy seq # 3 will be installed on all managed devices and VDOMs that are listed under Installation Targets
- C. Policy seq # 1 will be installed on the Remote-FortiGate root[NAT] and Student[NAT] VDOMs only

- D. Policy 3 will be installed on all FortiGate devices and vdom belongs to the ADOM
- E. Policy seq # 3 will be skipped because no installation targets are specified

Answer: BC

NEW QUESTION 62

- (Topic 3)

View the following exhibit:

Import Device - Local-FortiGate [root]

When importing configuration from this device, all enabled interfaces require a mapping to an ADOM Level interface. Note, the same ADOM Level interface can map to different interfaces on the each device.

Device Interface	ADOM Interface
port1	WAN
port3	LAN

☒ Add mappings for all unused device interfaces

Next >Cancel

An administrator used the value shown in the exhibit when importing a Local-FortiGate into FortiManager. What name will be used to display the firewall policy for port1?

- A. port1 on FortiGate and WAN on FortiManager
- B. port1 on both FortiGate and FortiManager
- C. WAN zone on FortiGate and WAN zone on FortiManager
- D. WAN zone on FortiGate and WAN interface on FortiManager

Answer: A

NEW QUESTION 65

- (Topic 3)

An administrator has added all the devices in a Security Fabric group to FortiManager. How does the administrator identify the root FortiGate?

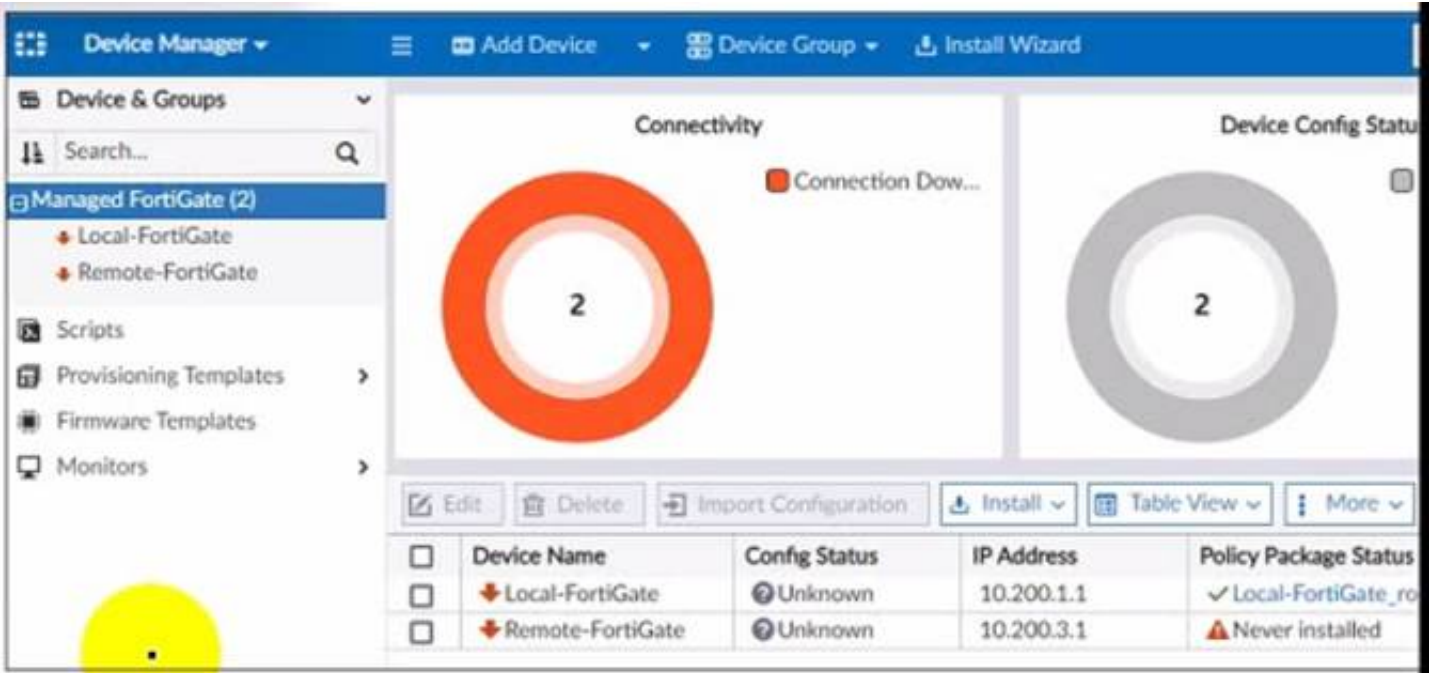
- A. By a dollar symbol (\$) at the end of the device name
- B. By an at symbol (@) at the end of the device name
- C. By a QUESTION NO: mark(?) at the end of the device name
- D. By an Asterisk (*) at the end of the device name

Answer: D

NEW QUESTION 68

- (Topic 3)

Refer to the exhibit.



A junior administrator is troubleshooting a FortiManager connectivity issue that rs occurring with managed FortiGate devices Given the FortiManager device manager settings shown in the exhibit what can you conclude from the exhibit?

- A. The administrator had restored the FortiManager configuration file
- B. The administrator must refresh both devices to restore connectivity
- C. FortiManager test internet connectivity therefore, both devices appear to be down
- D. The administrator can reclaim the FGFM tunnel to get both devices online

Answer: C

NEW QUESTION 72

- (Topic 3)

What will happen if FortiAnalyzer features are enabled on FortiManager?

- A. FortiManager will keep all the logs and reports on the FortiManager.
- B. FortiManager will enable ADOMs to collect logs automatically from non-FortiGate devices.
- C. FortiManager will install the logging configuration to the managed devices
- D. FortiManager can be used only as a logging device.

Answer: C

NEW QUESTION 73

- (Topic 3)

Refer to the exhibit.

```
Start to import config from device(Local-FortiGate) vdom(root) to  
adom(My_ADOM), package(Local-FortiGate_root)  
  
"firewall service category",SKIPPED,"(name=General, oid=697, DUPLICATE)"  
  
"firewall address",SUCCESS,"(name=LOCAL_SUBNET, oid=684, new object)"  
  
"firewall service custom",SUCCESS,"(name=ALL, oid=863, update previous  
object)"  
  
"firewall policy",SUCCESS,"(name=1, oid=1090, new object)"
```

Given the configuration shown in the exhibit, how did FortiManager handle the service category named General?

- A. FortiManager ignored the firewall service category General but created a new service category in its database.
- B. FortiManager ignored the firewall service category general and deleted the duplicate value In Its database
- C. FortiManager ignored the firewall service category General and updated the FortiGate duplicate value in the FortiGate database.
- D. FortiManager ignored the firewall service category General and did not update Its database with the value

Answer: C

NEW QUESTION 76

- (Topic 3)

What does the diagnose dvm check-integrity command do? (Choose two.)

- A. Internally upgrades existing ADOMs to the same ADON version in order to clean up and correct the ADOM syntax
- B. Verifies and corrects unregistered, registered, and deleted device states
- C. Verifies and corrects database schemas in all object tables
- D. Verifies and corrects duplicate VDOM entries

Answer: BD

Explanation:

* 6.2 Study Guide page 305 verify and correct parts of the device manager databases, including:– inconsistent device-to-group and group-to-ADOM memberships– unregistered, registered, and deleted device states– device lock statuses– duplicate VDOM entries

NEW QUESTION 77

- (Topic 3)

An administrator is in the process of moving the system template profile between ADOMs by running the following command:
execute improfile import-profile ADOM2 3547 /tmp/myfile Where does the administrator import the file from?

- A. File system
- B. ADOM1
- C. ADOM2 object database
- D. ADOM2

Answer: C

NEW QUESTION 79

- (Topic 3)

Which of the following statements are true regarding VPN Gateway configuration in VPN Manager? (Choose two.)

- A. Managed gateways are devices managed by FortiManager in the same ADOM
- B. External gateways are third-party VPN gateway devices only
- C. Protected subnets are the subnets behind the device that you don't want to allow access to over the IPsecVPN
- D. Managed devices in other ADOMs must be treated as external gateways

Answer: AD

Explanation:

Reference: http://help.fortinet.com/fmgr/50hlp/56/5-6-1/FMG-FAZ/1300_VPN_Manager/0800_IPsec_VPN_Gateway/0400_Create_mngd_gateway.htm

NEW QUESTION 81

.....

Thank You for Trying Our Product

* 100% Pass or Money Back

All our products come with a 90-day Money Back Guarantee.

* One year free update

You can enjoy free update one year. 24x7 online support.

* Trusted by Millions

We currently serve more than 30,000,000 customers.

* Shop Securely

All transactions are protected by VeriSign!

100% Pass Your NSE5_FMG-7.0 Exam with Our Prep Materials Via below:

https://www.certleader.com/NSE5_FMG-7.0-dumps.html