

# Cisco

## Exam Questions 350-601

Implementing and Operating Cisco Data Center Core Technologies



#### NEW QUESTION 1

A network administrator must configure an extra keyring in Cisco UCS Manager. The key must provide a high level of encryption and secure authentication when users use the web interface. Which configuration command set must be applied to meet these requirements?

- ☒ **set https keyring kring7984**  
**set https cipher-suite-mode secure**  
**set https ssl-protocol tls1-2**  
**commit-buffer**
- ☐ set https keyring kring7984  
set https cipher-suite-mode secure  
set https tls-protocol tls1-2  
commit-buffer
- ☐ set https keyring kring7984  
set https cipher-suite-mode high  
set https ssl-protocol tls1-2#  
commit-buffer
- ☐ set https keyring kring7984  
set https cipher-suite-mode high  
set https tls-protocol tls1-2  
commit-buffer

- A. Option A
- B. Option B
- C. Option C
- D. Option D

**Answer: C**

#### Explanation:

[https://www.cisco.com/c/en/us/td/docs/unified\\_computing/ucs/ucs-manager/CLI-User-Guides/Admin-Managem](https://www.cisco.com/c/en/us/td/docs/unified_computing/ucs/ucs-manager/CLI-User-Guides/Admin-Managem) "cipher-suite-mode secure" is invalid command. "Cipher-suite-mode high" is valid command. "tls-protocol tls1-2" is invalid command. "Ssl-protocol tls1-2" is valid command.

```
UCS-A# scope system
UCS-A /system # scope services
UCS-A /system/services # enable https
UCS-A /system/services* # set https port 443
Warning: When committed, this closes all the web sessions.
UCS-A /system/services* # set https keyring kring7984
UCS-A /system/services* # set https cipher-suite-mode high
UCS-A /system/services* # set https ssl-protocol tls1-2
UCS-A /system/services* # commit-buffer
UCS-A /system/services #
```

#### NEW QUESTION 2

Refer to the exhibit

```
#!/bin/bash
### BEGIN INIT INFO
# Provides:          capture
# Required-Start:    $local_fs $network $named $time $syslog
# Required-Stop:     $local_fs $network $named $time $syslog
# Description:       Continuous capture script
### END INIT INFO

start() {
    tcpdump -W 3 -C 100 -i Eth1-42 -w /tmp/capture.pcap &
    RETVAL=$?
}

stop() {
    killall -9 tcpdump
    RETVAL=$?
}

case "$1" in
    start)
        start
        ;;
    stop)
        stop
        ;;
    *)
        echo "Usage: $0 {start|stop}"
        RETVAL=2
esac

exit $RETVAL
```

A network engineer must run a continuous capture on a port A script called "capture" is created to start and stop the capture task Which command sequence makes the capture persistent after a reboot?

- ☐ initctl add capture  
initctl init capture
- ☐ chkconfig --add capture  
chkconfig --level 3 capture
- ☒ systemctl enable capture  
systemctl start capture
- ☐ run bash /etc/init.d/capture  
run bash start-stop-daemon

- A. Option A
- B. Option B
- C. Option C
- D. Option D

Answer: C

### NEW QUESTION 3

A company plans to migrate some of its services to the cloud. The company does not want to manage or control the underlying cloud infrastructure. It also wants to maintain control over the deployment of its applications and configuration settings of the application-hosting environment. Which cloud service model meets these requirements?

- A. Infrastructure as a Service
- B. Function as a Service
- C. Platform as a Service
- D. Software as a Service

Answer: C

### NEW QUESTION 4

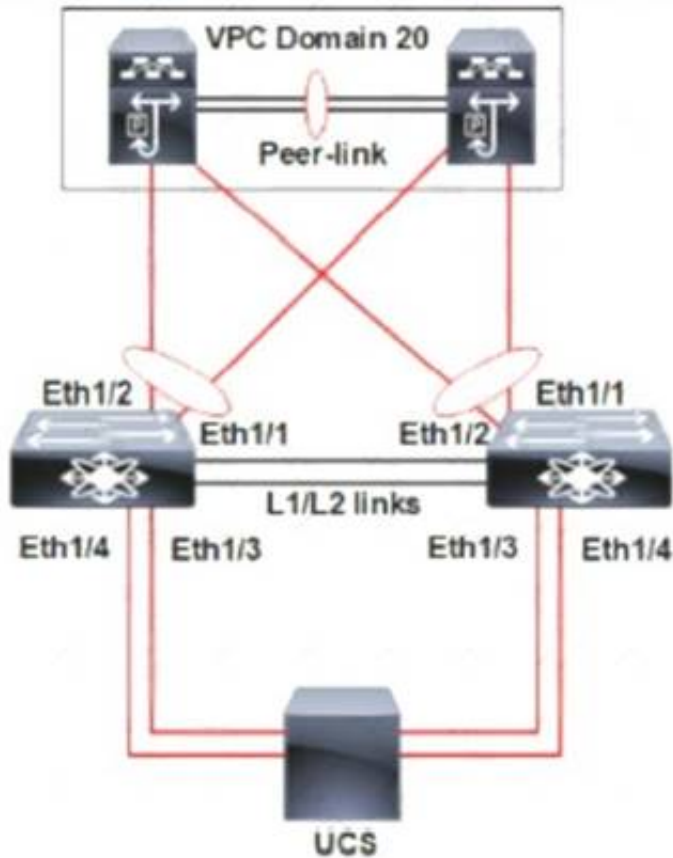
An engineer must configure a Cisco UCS domain for monitoring and management by the Cisco Intersight SaaS platform. After the setup is complete, administrators must have full control to configure the device through Cisco UCS Manager and Intersight. Which set of actions accomplishes this task?

- A. Configure Device Connector Access Mode as Allow Control in Device Console Claim the device on Intersight as UCSM Managed Mode.
- B. Configure Device Connector Access Mode as Allow Control in Cisco UCS Manager Claim the device on intersightc as Intersight Managed Mode
- C. Configure Device Connector Access Moao as Allow Control in Device Consol
- D. Claim the device on intersight as Intersight Managed Mode
- E. Configure Device Connector Access Mode as Allow Control in Cisco UCS Manager Claim the device on intersight as UCSM Managed Mode
- F. Option A
- G. Option B
- H. Option C
- I. Option D

Answer: C

### NEW QUESTION 5

Refer to the exhibit.



A pair of Cisco Nexus switches form a vPC. A new chassis is added to the pre-existing Cisco UCS domain. A new chassis must be discovered, and all links from the chassis to the LAN network must be established. Which set of actions accomplishes these requirements?

- ☐ Set the chassis discovery policy action to four links. Configure Eth1/3 and Eth1/4 as server ports. Acknowledge the chassis.
- ☒ Set the chassis discovery policy action to four links. Configure Eth1/1 and Eth1/2 as uplink Fibre Channel ports. Set the link group preference to None.
- ☐ Set the chassis discovery policy action to one link. Configure Eth1/1 and Eth1/2 as uplink Ethernet ports. Set the link group preference to Port Channel.
- ☐ Set the chassis discovery policy action to one link. Configure Eth1/3 and Eth1/4 as server ports. Acknowledge the chassis.

- A. Option A
- B. Option B
- C. Option C
- D. Option D

**Answer: C**

#### NEW QUESTION 6

What is a recommended design choice in a topology for multipathing iSCSI traffic?

- A. single initiator to dual targets
- B. initiators and targets in separate subnets
- C. dual initiators to a single target with bonded interfaces
- D. two NICs bonded together on the initiator

**Answer: A**

#### Explanation:

[https://www.cisco.com/c/en/us/td/docs/switches/datacenter/nexus1000/sw/4\\_2\\_1\\_s\\_v\\_1\\_5\\_1/system\\_management/configuration/guide/n1000v\\_system/n1000v\\_system\\_13iscsi.html#wp1052813](https://www.cisco.com/c/en/us/td/docs/switches/datacenter/nexus1000/sw/4_2_1_s_v_1_5_1/system_management/configuration/guide/n1000v_system/n1000v_system_13iscsi.html#wp1052813)

#### NEW QUESTION 7

A company is investigating different options for IT automation tools. The IT team has experience with python programming language and scripting using a declarative language. The proposed tool should be easy to set up and should not require installing an agent on target devices. The team will also need to build custom modules based on the python programming language to extend the tools functionality. Which automation tool should be used to meet these requirements?

- A. Puppet
- B. Ansible
- C. NX-API
- D. Chef

**Answer: B**

#### NEW QUESTION 8

A server engineer wants to control power uses on a Cisco UCS C-series rack server down to the component level. Which two components support specific power limits? (Choose two.)

- A. memory
- B. graphic card
- C. processor
- D. network controller
- E. storage controller

**Answer:** AC

#### NEW QUESTION 9

A network administrator is creating a custom Django self-service portal that runs on a Linux server to automate the creation of new VLANs on Cisco UCS Manager. Which feature must be installed and configured on the server?

- A. Cisco ucs Powertool Suite
- B. Cisco DNA Center API
- C. Cisco AppDynamics
- D. Cisco UCS Python SDK

**Answer:** C

#### NEW QUESTION 10

What is a feature of NFS?

- A. role-based access control
- B. Kerberos-based security model
- C. block-based file access
- D. zone-based access control

**Answer:** B

#### Explanation:

<https://www.cisco.com/c/en/us/support/docs/security-vpn/kerberos/16087-1.html#modifiednfs>

#### Kerberos Security Implications of the Modified NFS

This implementation is not completely secure. For starters, user data is still sent across the network in an unencrypted, and therefore interceptable, form. The low-level, per-transaction authentication is based on a <CLIENT-IP-ADDRESS, CLIENT-UID> pair provided unencrypted in the request packet. This information could be forged and thus security compromised. However, it should be noted that only while a user is actively using her/his files (that is, while logged in) are valid mappings in place and therefore this form of attack is limited to when the user in question is logged in. When a user is not logged in, no amount of IP address forgery will permit unauthorized access to her/his files.

#### NEW QUESTION 10

Which two methods are available to Manage an ACI REST API session authentication when a user is unauthenticated?

- A. POST to aaaLogin
- B. POST to aaaUserLogin
- C. GET aaaRefresh
- D. GET to aaaListDomains
- E. DELETE to aaaLogout

**Answer:** AC

#### Explanation:

These API methods enable you to manage session authentication:

**aaaLogin** —Sent as a POST message, this method logs in a user and opens a session. The message body contains an aaa:User object with the name and password attributes, and the response contains a session token and cookie. If multiple AAA login domains are configured, you must prepend the user's name with apic: domain\\ .

**aaaRefresh** —Sent as a GET message with no message body or as a POST message with the aaaLogin message body, this method resets the session timer. The response contains a new session token and cookie.

**aaaLogout** —Sent as a POST message, this method logs out the user and closes the session. The message body contains an aaa:User object with the name attribute. The response contains an empty data structure.

**aaaListDomains** —Sent as a GET message, this method returns a list of valid AAA login domains. You can send this message without logging in.

[https://www.cisco.com/c/en/us/td/docs/switches/datacenter/aci/apic/sw/2-x/rest\\_cfg/2\\_1\\_x/b\\_Cisco\\_APIC\\_REST\\_API\\_Configuration\\_Guide/b\\_Cisco\\_APIC\\_REST\\_API\\_Configuration\\_Guide\\_chapter\\_01.html](https://www.cisco.com/c/en/us/td/docs/switches/datacenter/aci/apic/sw/2-x/rest_cfg/2_1_x/b_Cisco_APIC_REST_API_Configuration_Guide/b_Cisco_APIC_REST_API_Configuration_Guide_chapter_01.html)

#### NEW QUESTION 11

An engineer configures port security on a Cisco MDS 9000 Series Switch. The MDS switch configuration must meet these requirements

- The switch must inmate the VSAN 4 port security database despite any conflicts.
- New devices must be statically added to the switch.
- Configuration changes for VSAN 4 must be applied throughout the fabric with any lodes on the fabric released

Which configuration set meets these requirements?



- ☐ port-security activate vsan 4  
no port-security auto-learn vsan 4  
port-security allocate  
port-security commit vsan 4
- ☐ port-security activate vsan 4  
port-security manual-learn vsan 4  
port-security allocate  
port-security commit
- ☐ port-security activate vsan 4 force  
port-security auto-learn vsan 4  
port-security distribute  
port-security commit
- ☐ port-security activate vsan 4 force  
no port-security auto-learn vsan 4  
port-security distribute  
port-security commit vsan 4

- A. Option A  
B. Option B  
C. Option C  
D. Option D

**Answer:** D

#### NEW QUESTION 16

A storage administrator notices an increasing number of storage targets that unexpectedly reach capacity, causing periodic service interruptions. The administrator must now create and submit a daily report of the environment that shows the status of the storage targets with the highest capacities. Which solution provides this information?

- A. Nagios Core with OpManager  
B. Cisco DCNM with SAN Insight  
C. SolarWinds with Slow Drain Analysis  
D. Cisco Intersight with Slow Drain Analysis

**Answer:** D

#### NEW QUESTION 21

Which component is upgraded by using an EPLD upgrade on a Cisco Nexus 9000 Series Switch?

- A. dual-homed fabric extenders  
B. BIOS  
C. field-programmable gate arrays  
D. ISSU of the NX-OS version

**Answer:** C

#### NEW QUESTION 25

What is required for using puppet in a Cisco NX-OS environment?

- A. Open Agent Container  
B. XML management interface  
C. NX-API  
D. OpenNP

**Answer:** A

#### NEW QUESTION 30

Which configuration generates a syslog message when CPU utilization is higher than 60%?

- A. event manager applet HIGH-CPUevent snmp oid 1.3.6.1.4.1.9.9.109.1.1.1.1.6.1 get-type exact entry-op gt 60 poll-interval 5 action 1.0 syslog priority notifications msg "cpu high"
- B. event manager applet HIGH-CPUevent snmp oid 1.3.6.1.4.1.9.9.109.1.1.1.1.6.1 get-type exact entry-op lt 60 poll-interval 5 action 1.0 syslog priority notifications msg "cpu high"
- C. event manager applet HIGH-CPUevent snmp oid 1.3.6.1.4.1.9.9.109.1.1.1.1.6.1 get-type next entry-op gt 60 poll-interval 5 action 1.0 syslog priority notifications msg "cpu high"
- D. event manager applet HIGH-CPUevent snmp oid 1.3.6.1.4.1.9.9.109.1.1.1.1.6.1 get-type next entry-op lt 60 poll-interval 5 action 1.0 syslog priority notifications msg "cpu high"

**Answer:** A

#### Explanation:

<https://www.cisco.com/c/en/us/support/docs/ip/internet-protocol-ip/200931-EEM-Subsystem-in-Order-to-Monitor-CPU-Tr.pdf>  
<https://blog.ipspace.net/2008/06/generate-snmp-trap-on-high-cpu-load.html>

#### NEW QUESTION 32

An engineer must implement a disaster recovery policy for the Cisco UCS infrastructure. The solution must meet these criteria:

- The Recovery Point Objective must be 48 hours.
- The backup must use encrypted transmission.
- The Recovery Time Objective must be 4 hours.

Which configuration set must be used in the scheduled backup to meet these requirements?

- ☒ Protocol: SFTP  
Schedule: Weekly
- ☐ Protocol: FTP  
Schedule: Bi-Weekly
- ☐ Protocol: TFTP  
Schedule: Bi-Weekly
- ☐ Protocol: SCP  
Schedule: Daily

- A. Option A
- B. Option B
- C. Option C
- D. Option D

**Answer: D**

#### NEW QUESTION 36

A network administrator attempts to automate the provisioning of several new Cisco Nexus switches. The administrator prepares a bootstrap configuration script for the task. Due to the number of switches, a zero-touch provisioning solution is preferred. Additionally, some switches arrive with outdated software and should be automatically upgraded as part of the provisioning workflow. Which solution meets the requirements?

- A. DHCP
- B. Ansible
- C. NX-API
- D. POAP

**Answer: C**

#### NEW QUESTION 37

An engineer must configure a Cisco UCS blade system that is managed by Cisco UCS Manager. All four connected interfaces between the blade system and the fabric interconnects must be used. Additionally, the connectivity must tolerate any link failure between the I/O module and the fabric interconnects. Which action accomplishes these requirements?

- A. Configure port aggregation with LACP policy set to default
- B. Configure Firmware Auto Sync Server policy to Auto Acknowledge
- C. Configure Link Group Preference to Port Channel.
- D. Configure chassis/FEX discovery pokey action to four links

**Answer: D**

#### NEW QUESTION 42

A customer data center is configured for distribution of user roles, call home, and NTP. The data center was split into two geographically separate locations called DC1 and DC2. The requirement is for the user role configurations to be distributed in DC1 and for NTP and call home features to be constrained to DC2. Which two configuration sets must be used to meet these requirements? (Choose two.)

- A. ! On Data Center 1  
configure terminal  
cfs 1  
roles  
aaa
- B. ! On Data Center 1  
configure terminal  
cfs region 1  
ntp  
callhome
- C. ! On Data Center 1  
configure terminal  
cfs 1  
ntp  
callhome
- D. ! On Data Center 2  
configure terminal  
cfs region 2  
roles
- E. ! On Data Center 2  
configure terminal  
cfs 2  
roles  
aaa

- A. Option A
- B. Option B
- C. Option C
- D. Option D
- E. Option E

**Answer:** CD

**Explanation:**

This example shows how to move the Call Home application to CFS region 2:

```
switch# config t
switch(config)# cfs region 2
switch(config-cfs-region)# callhome
switch(config-cfs-region)# show cfs region name callhome
```

[https://www.cisco.com/c/en/us/td/docs/switches/datacenter/sw/4\\_2/nx-os/system\\_management/configuration/guide/sm\\_nx\\_os\\_cli/sm\\_2cfs.html](https://www.cisco.com/c/en/us/td/docs/switches/datacenter/sw/4_2/nx-os/system_management/configuration/guide/sm_nx_os_cli/sm_2cfs.html)

#### NEW QUESTION 43

Which method must a network engineer use to upgrade the BIOS firmware of a Cisco UCS standalone C-Series rack-mount server?

- A. Use the Cisco host upgrade utility.
- B. Use the Cisco hardware upgrade utility.
- C. Use the Cisco host firmware policy.
- D. Use the U-ACPI Interface.

**Answer:** A

#### NEW QUESTION 47

A server engineer wants to control power usage on a Cisco UCS C-Series rack server down to the component level. Which two components support specific power limits? (Choose two.)

- A. storage controller
- B. network controller
- C. processor
- D. graphic card
- E. memory

**Answer:** CE

**Explanation:**

[https://www.cisco.com/c/en/us/td/docs/unified\\_computing/ucs/c/sw/gui/config/guide/4\\_1/b\\_Cisco\\_UCS\\_C-serie](https://www.cisco.com/c/en/us/td/docs/unified_computing/ucs/c/sw/gui/config/guide/4_1/b_Cisco_UCS_C-serie)

#### NEW QUESTION 51



Refer to the exhibit.

LAN / Traffic Monitoring Sessions / Fabric A / Monitor Session test-span

General | Faults | Events

Actions	Properties
Set Destination	Name : <b>test-span</b>
Clear Destination	Admin State : <input checked="" type="radio"/> Enabled <input type="radio"/> Disabled
Delete	Destination : <b>sys/switch-A/slot-1/switch-ether/port-17</b>
	Admin Speed : <input type="radio"/> 1 Gbps <input checked="" type="radio"/> 10 Gbps <input type="radio"/> 40 Gbps
	Operational State : <b>Down</b>
	Operational State Reason : <b>No Sources Configured</b>
	Configuration Success : <b>Yes</b>
	Configuration Failure Reason :

Sources

An engineer must monitor all LAN traffic on Fabric A from a blade server. Which source should be configured in the test-span monitor session to complete this task?

- A. all vHBAs from the service profile that correspond to this server
- B. all uplink FCoE ports
- C. all uplink Ethernet ports
- D. all vNICs from the service profile that correspond to this server

**Answer: D**

**Explanation:**

[https://www.cisco.com/en/US/docs/unified\\_computing/ucs/sw/gui/config/guide/141/UCSM\\_GUI\\_Configuration](https://www.cisco.com/en/US/docs/unified_computing/ucs/sw/gui/config/guide/141/UCSM_GUI_Configuration)

Guidelines and Recommendations for Traffic Monitoring

When configuring or activating traffic monitoring, consider the following guidelines:

- You can create and store up to 16 traffic monitoring sessions, but only two can be active at the same time.
- A traffic monitoring session is disabled by default when created. To begin monitoring traffic, you must activate the session.
- To monitor traffic from a server, add all vNICs from the service profile corresponding to the server.
- To monitor traffic from a VM, you must first determine the identity of the dynamic vNIC assigned to the VM. Follow the procedure in to find the vNIC and view its identity properties, then add the vNIC as a source for the monitoring session. If you later move the VM using VMotion, a new dynamic vNIC is assigned and you must reconfigure the monitoring source.

Viewing Dynamic vNIC Properties in a VM

- You can monitor Fibre Channel traffic using either a Fibre Channel traffic analyzer or an Ethernet traffic analyzer. When Fibre Channel traffic is monitored using an Ethernet traffic monitoring session, with an Ethernet destination port, the destination traffic will be FCoE.
- Because a traffic monitoring destination is a single physical port, a traffic monitoring session can monitor only a single fabric. To monitor uninterrupted vNIC traffic across a fabric failover, you must create two sessions—one per fabric—and connect two analyzers. Add the vNIC as the traffic source for both sessions.
- All traffic sources must be located within the same switch as the destination port.
- A port configured as a destination port cannot also be configured as a source port.
- A member port of a port channel cannot be configured individually as a source. If the port channel is configured as a source, all member ports are source ports.

**NEW QUESTION 56**

Due to a newly announced security advisory, a company has been Informed that they must update the configuration of 500 network devices that ate deployed n their network. The engineering team must assist the operations team to prepare for this update. The operations team does not have direct access to the network devices and must log in via a Linux server. This ls the first time that the team is making a network-wide configuration and must change all devices without first installing additional software on the network devices. The operations team is unfamiliar with automation and scripting technologies. Which automation tool must be used to accomplish this goal?

- A. Chef
- B. Ansible
- C. Puppet
- D. Saltstack

**Answer: B**

**NEW QUESTION 58**

An engineer mus! send JSON encoded telemetry data to an external collector. The transport mechanism must prevent tampenng or forgery of the data. Which protocol accomplishes this goal?

- A. GPB
- B. HTTP

- C. gRPC
- D. DTLS

**Answer:** B

#### NEW QUESTION 61

In an FCoE environment, for which two sets of data must an interface that implements the PAUSE mechanism always provision sufficient ingress buffer? (Choose two)

- A. frames that were sent with high credit
- B. frames that were processed and transmitted by the transmitter before the PAUSE frame left the sender
- C. frames that were sent on the link but not yet received.
- D. frames that were sent on the link and received.
- E. frames that were processed and transmitted by the transmitter after the PAUSE frame left the sender.

**Answer:** BC

#### Explanation:

[https://www.cisco.com/c/en/us/td/docs/switches/datacenter/nexus7000/sw/fcoe/config/cisco\\_nexus7000\\_fcoe\\_config\\_guide\\_8x/configuring\\_fcoe.html](https://www.cisco.com/c/en/us/td/docs/switches/datacenter/nexus7000/sw/fcoe/config/cisco_nexus7000_fcoe_config_guide_8x/configuring_fcoe.html)

#### NEW QUESTION 62

A Cisco MDS 9000 Series Switch is configured for SAN Analytics and SAN Telemetry Streaming. An engineer must enable analytics for NVMe on interfaces in the range of fc1/1-12. Due to a large amount of traffic generated in the SAN environment, the data must be collected at regular intervals of 60 seconds from ports fc 1-12 and then for ports fc13-24 for the next 60 seconds. Ports in the range fc4/13-14 were already enabled for analytics. Which set of commands must be used to meet these requirements?

- ☒ interface fc1/1-12  
port-sampling module 4 size 12 interval 60  
analytics nvme
- ☐ interface fc1/1-12  
port-sampling module 4 size 12 interval 60000  
analytics type fc-scsi
- ☐ analytics port-sampling module 4 size 12 interval 60000
- ☐ interface fc1/1-12  
analytics fc-scsi  
analytics fc-nvme
- ☐ analytics port-sampling module 4 size 12 interval 60  
interface fc1/1-12  
analytics type fc-nvme

- A. Option A
- B. Option B
- C. Option C
- D. Option D

**Answer:** D

#### NEW QUESTION 64

Where is the witness deployed in a two-node Cisco HyperFlex Edge deployment?

- A. to the HyperFlex Edge two-node cluster
- B. to an additional server with network access to HyperFlex Edge
- C. to a third-party cloud provider
- D. to Cisco Intersight

**Answer:** D

#### Explanation:

The Cisco HyperFlex Edge invisible cloud witness is only required for 2-node HX Edge deployments. correct, it has to connect to Intersight as it is a CLOUD invisible witness as per the document shared: The Cisco HyperFlexEdge invisiblecloud witnessis only requiredfor 2-nodeHX Edge deployments. The witness does not require any additional infrastructure, setup, configuration, backup, patching ,or management of any kind. This feature is automatically configured as part of a 2-node Hyper Flex Edge installation. Outbound access at the remote site must be present for connectivity to Intersight (eitherIntersight.com or to the Intersight Virtual Appliance). HyperFlexEdge 2-nodeclusters cannot operate without this connectivity in place  
[https://www.cisco.com/c/en/us/td/docs/hyperconverged\\_systems/HyperFlex\\_HX\\_DataPlatformSoftware/Edge\\_Deployment\\_Guide/b\\_HyperFlex\\_Edge\\_Deployment\\_Guide\\_4\\_0.pdf](https://www.cisco.com/c/en/us/td/docs/hyperconverged_systems/HyperFlex_HX_DataPlatformSoftware/Edge_Deployment_Guide/b_HyperFlex_Edge_Deployment_Guide_4_0.pdf)

#### NEW QUESTION 65

Drag and drop the NAS and NFS concepts from the left onto the definitions on the right.

Data storage and file sharing requests are sent and received.

The protocol is regularly used on Linux and UNIX systems.

Software is deployed on a lightweight OS that is embedded in the hardware.

The vendor-agnostic protocol is supported on any hardware and OS.

NFS

NAS

- A. Mastered
- B. Not Mastered

Answer: A

Explanation:

NFS  
Data storage and file sharing requests are sent and received The protocol is regularly used on Linux segment  
NAS  
Software is deployed on a lightweight OS that is embedded in the hardware The vendor-agnostic protocol is supported on any hardware and OS

NEW QUESTION 69

Refer to the exhibit.

```
CISCO-UCS-A# scope org /
CISCO-UCS-A /org* # create service-profile Cisc01 instance
CISCO-UCS-A /org/service-profile* # set bios-policy bios1
CISCO-UCS-A /org/service-profile* # set boot-policy boot1
CISCO-UCS-A /org/service-profile* # set ext-mgmt-ip-state none
CISCO-UCS-A /org/service-profile* # set host-fw-policy ipmi-user987
CISCO-UCS-A /org/service-profile* # set identity dynamic-uuid derived
CISCO-UCS-A /org/service-profile* # set ipmi-access-profile ipmi1
CISCO-UCS-A /org/service-profile* # set local-disk-policy local1
CISCO-UCS-A /org/service-profile* # set maint-policy maint1
CISCO-UCS-A /org/service-profile* # set mgmt-fw-policy mgmt1
CISCO-UCS-A /org/service-profile* # set power-control-policy power1
CISCO-UCS-A /org/service-profile* # set scrub-policy scrub1
CISCO-UCS-A /org/service-profile* # set sol-policy sol1
CISCO-UCS-A /org/service-profile* # set stats-policy stats1
CISCO-UCS-A /org/service-profile* # set user-label Cisco
CISCO-UCS-A /org/service-profile* # vcon-policy vconnpolicy
CISCO-UCS-A /org/service-profile* # commit-buffer
CISCO-UCS-A /org/service-profile #
```

What is a characteristic presented in the service profile of the UUID?

- A. based on the hardware
- B. vendor assigned
- C. unique system generated
- D. allocated from a UUID pool

Answer: A

Explanation:

there is no parameter for 'set identity dynamic-uuid' to specify a pool name - you can only state "derived" or a 32 hex character string (128-bits, therefore full UUID).  
ucspe /org/service-profile # set identity dynamic-uuid derived Derived  
FFFFFFFF-FFFF-FFFF-FFFF-FFFFFFFFFFFFFF Dynamic UUID  
The documentation, as usual for Cisco, is poor. Shagua references old v1.4.1 documentation but it's the same in 4.1. It's inaccurate as uuid-pool should now read uuid-suffix-pool. You can use UCSPE to check the CLI with contextual help.  
ucspe /org/service-profile # set identity dynamic-uuid Dynamic UUID dynamic-wwnn Dynamic WWNN uuid-suffix-pool UUID Suffix Pool wwnn-pool WWNN Pool  
If set identity dynamic-uuid only gives us the option of a static UUID or the parameter "derived", and set identity uuid-suffix-pool is the option to assign a pool... I would suggest that the most logical answer here is  
- derived from the hardware. [https://www.cisco.com/en/US/docs/unified\\_computing/ucs/sw/cli/config/guide/1.4.1/CLI\\_Config\\_Guide\\_1\\_4\\_1](https://www.cisco.com/en/US/docs/unified_computing/ucs/sw/cli/config/guide/1.4.1/CLI_Config_Guide_1_4_1)

NEW QUESTION 73

Refer to the exhibit.



```
Enter the configuration method. (console/gui) ? console

Enter the setup mode; setup newly or restore from backup.
(setup/restore) ? restore

NOTE:
  To configure Fabric interconnect using a backup file on
a remote server, you will need to setup management
interface.
  The management interface will be re-configured (if
necessary), based on information stored in the backup file.

Continue to restore this Fabric interconnect from a backup
file (yes/no) ? yes

Physical Switch Mgmt0 IPv4 address : 192.168.10.10
Physical Switch Mgmt0 IPv4 netmask : 255.255.255.0
IPv4 address of the default gateway : 192.168.10.1
Enter the protocol to get backup file (scp/ftp/tftp/sftp)
? scp
Enter the IP address of backup server: 20.10.20.10
Enter fully qualified backup file name: Backup.bak
Enter user ID: user
Enter password:
  Retrieved backup configuration file.
Configuration file - Ok
```

Which type of backup is required to restore a Cisco UCS configuration?

- A. system configuration
- B. all configuration
- C. logical configuration
- D. full state

**Answer:** A

**Explanation:**

[https://www.cisco.com/c/en/us/td/docs/unified\\_computing/ucs/sw/cli/config/guide/1-0-2/b\\_CLI\\_Config\\_Guide\\_](https://www.cisco.com/c/en/us/td/docs/unified_computing/ucs/sw/cli/config/guide/1-0-2/b_CLI_Config_Guide_)

The following example restores a system configuration from the Backup.bak file, which was retrieved from the 20.10.20.10 backup server using FTP:

```
Enter the configuration method. (console/gui) ? console

Enter the setup mode; setup newly or restore from backup. (setup/restore) ? restore

NOTE:
  To configure Fabric interconnect using a backup file on a remote server,
you will need to setup management interface.
  The management interface will be re-configured (if necessary),
based on information stored in the backup file.

Continue to restore this Fabric interconnect from a backup file (yes/no) ? yes

Physical Switch Mgmt0 IPv4 address : 192.168.10.10

Physical Switch Mgmt0 IPv4 netmask : 255.255.255.0

IPv4 address of the default gateway : 192.168.10.1

Enter the protocol to get backup file (scp/ftp/tftp/sftp) ? scp
Enter the IP address of backup server: 20.10.20.10
Enter fully qualified backup file name: Backup.bak
Enter user ID: user
Enter password:
  Retrieved backup configuration file.
Configuration file - Ok

Cisco UCS 6100 Series Fabric Interconnect
UCS-A login:
```

#### NEW QUESTION 76

Multiple roles are applied to a user on the Cisco MDS 9000 Series Switch. Which statement is true?

- A. Any commands that have conflicting settings between roles are denied.
- B. Access to a command takes priority over being denied access to a command.
- C. The first role assigned takes precedence over subsequent roles.
- D. The last role assigned takes precedence over previous roles.

**Answer:** B

**Explanation:**

Graphical user interface, text, application Description automatically generated



**Note** If you belong to **multiple roles**, you can execute a union of all the commands permitted by these roles. Access to a command takes priority over being **denied access** to a command. For example, suppose you belong to a TechDocs group and you were denied access to configuration commands. However, you also belong to the engineering group and have access to configuration commands. In this case, you will have access to configuration commands.

[https://www.cisco.com/c/en/us/td/docs/switches/datacenter/mds9000/sw/5\\_0/configuration/guides/sec/nxos/sec/clicfgur.html](https://www.cisco.com/c/en/us/td/docs/switches/datacenter/mds9000/sw/5_0/configuration/guides/sec/nxos/sec/clicfgur.html)

[https://www.cisco.com/c/en/us/td/docs/switches/datacenter/mds9000/sw/8\\_x/config/security/cisco\\_mds9000\\_security\\_config\\_guide\\_8x/configuring\\_users\\_and\\_common\\_roles.html](https://www.cisco.com/c/en/us/td/docs/switches/datacenter/mds9000/sw/8_x/config/security/cisco_mds9000_security_config_guide_8x/configuring_users_and_common_roles.html)

**NEW QUESTION 78**

A network engineer connects the CNA interface of a server to a switch. The switch must bring down all of the VLANs on the interface that are not enabled for FCoE, but the VLANs that are enabled for FCoE should continue to carry SAN traffic without interruption. Which configuration should be applied to the switch to achieve this objective?

- A. switch(config)# interface Ethernet 2/1 switch(config-if)# shutdown lan
- B. switch(config)# interface vfc 2 switch(config-if)# shutdown lan
- C. switch(config)# Interface Ethernet vfc 2 switch(config-if)# shutdown force
- D. switch(config)# interface Ethernet 2/1 switch(config-if)# shutdown force

**Answer:** A

**NEW QUESTION 82**

Which two statements describe modifying Cisco UCS user accounts? (Choose two.)

- A. Disabling a user account maintains all of the data in the Cisco UCS Fabric Interconnect.
- B. The admin account is used only to log on by using SSH.
- C. The password of the user account must contain a minimum of 10 characters.
- D. Local user accounts override the same account on a remote authentication server, such as TACACS, RADIUS, or LDAP.
- E. The password of the user account expires in 30 days.

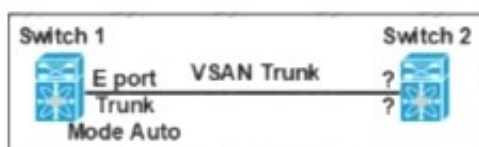
**Answer:** AD

**Explanation:**

[https://www.cisco.com/c/en/us/td/docs/unified\\_computing/ucs/ucs-manager/GUI-User-Guides/Admin-Managem](https://www.cisco.com/c/en/us/td/docs/unified_computing/ucs/ucs-manager/GUI-User-Guides/Admin-Managem)

**NEW QUESTION 85**

Refer to the exhibit.



Which feature must be used to configure on switch 2 to establish a VSAN trunk between switch 1 and switch 2?

- A. F portTrunk Mode Passive
- B. E PortTrunk Mode On
- C. N PortTrunk Mode Active
- D. NP PortTrunk Mode Auto

**Answer:** B

**NEW QUESTION 90**

A network engineer configures a converged network adapter (CNA) and must associate a virtual fiber Channel 7 interface to VSAN 7. The CAN connected to the interface Eth1/7, and VLAN 700 is mapped to the VSNA. Which configuration must be applied to create the virtual Fiber Channel interface and associate it with the Ethernet physical interface?



A)

```
switch(config)# vlan 700  
switch(config-vlan)# fcoe vsan 7
```

B)

```
switch(config)# vsan database  
switch(config-vsan)# vsan 7 interface vfc 7
```

C)

```
switch(config)# interface ethernet 1/7  
switch(config-if)# vfc 7 attach vlan 1,700
```

D)

```
switch(config)# interface vfc 7  
switch(config-if)# bind interface ethernet 1/7
```

- A. Option A
- B. Option B
- C. Option C
- D. Option D

**Answer: D**

#### NEW QUESTION 92

What is an advantage of NAS compared to SAN?

- A. It offers enhanced NFS features.
- B. It offers enhanced security features
- C. It functions in an existing IP environment.
- D. It provides lossless throughput.

**Answer: C**

#### NEW QUESTION 97

An engineer must configure SAN connectivity in Cisco UCS manager. The requirement is to specify the WWPN of the storage array and set the zoning type to single initiator multiple targets. The engineer must also configure interrupt handling and queues of the vHBA interface. Which two Cisco UCS policies should be used to configure the settings? (Choose two.)

- A. storage connection policy
- B. SAN connectivity policy
- C. vHBA policy
- D. Fibre Channel adaptor policy
- E. boot policy

**Answer: AD**

#### NEW QUESTION 102

A cisco Nexus 9000 series switch experiences a startup configuration corruption. The engineer must implement a procedure to recover configuration file from the switch. Which command set must be used?

- A. \* 1. Copy the running-configuration to the startup configuration.\* 2. Clear the current configuration of the switch.\* 3. Restart the device.\* 4. Copy a previously saved configuration file to the running configuration.
- B. \* 1. Clear the current configuration of the switch\* 2. Restart the device.\* 3. Copy the running configuration to the startup configuration\* 4. Copy a previously saved configuration file to the running configuration
- C. \* 1. Clear the current configuration of the switch\* 2. Restart the device.\* 3. Copy a previously saved configuration file to the running-configuration\* 4. Copy the running-configuration to the startup configuration.
- D. \* 1.Restarting device.\* 2. Copy the running-configuration file to a remote server.\* 3. Clear the current configuration of the switch.\* 4. Copy the running configuration to the startup configuration

**Answer: C**

#### Explanation:

Problems, such as memory corruption, can occur that make it necessary for you to recover your configuration from a backed-up version.

Each time that you enter a copy running-config startup-config command, a binary file is created and the ASCII file is updated. A valid binary configuration file reduces the overall boot time significantly. A binary file cannot be uploaded, but its contents can be used to overwrite the existing startup configuration. The write erase command clears the binary file.

#### SUMMARY STEPS

- \* 1. write erase

- \* 2. reload
- \* 3. copy configuration-file running-configuration
- \* 4. copy running-config startup-config <https://www.cisco.com/c/en/us/td/docs/switches/datacenter/nexus9000/sw/93x/fundamentals/configuration/guide>

#### NEW QUESTION 103

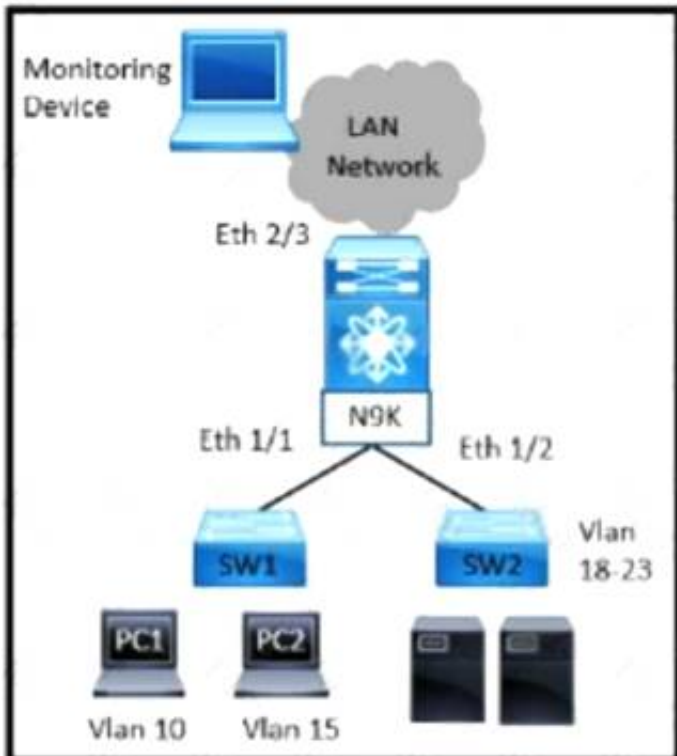
An engineer must perform a backup operation of the Cisco UCS system. The backup must be transferred to a secure location using UDP and must contain information about VLANs, VSANs, and other policies. Also, the operations team requires the backup file to be in a human-readable format. Which configuration set meets these requirements?

- A. Type: System configuration Protocol: SCP
- B. Type: Logical configuration Protocol: TFTP
- C. Type: All configuration Protocol: FTP
- D. Type: Full state Protocol: SFTP

**Answer: B**

#### NEW QUESTION 104

Refer to the exhibit



A network administrator experiences these issues with the network:

- > PC1 is experiencing a buffering problem for video applications
- > The servers that are connected to SW2 are experiencing packet drops when they connect to the Internet

The engineer wants to configure the required traffic capture to investigate the issue further Which configuration must be implemented to monitor the traffic?

- ☐ N9K(config)# monitor session 5 rx  
 N9K(config)# monitor session 5 tx  
 N9K(config-monitor)# description Span\_session\_5  
 N9K(config-monitor)# source interface ethernet 1/1  
 N9K(config-monitor)# source interface ethernet 1/2  
 N9K(config-monitor)# destination interface ethernet 2/3
- ☐ N9K(config)# monitor session 5 tx  
 N9K(config-monitor)# description Span\_session\_5  
 N9K(config-monitor)# source interface ethernet 1/1  
 N9K(config-monitor)# source interface ethernet 1/2  
 N9K(config-monitor)# destination interface ethernet 2/3
- ☐ N9K(config)# monitor session 5 tx  
 N9K(config-monitor)# description Span\_session\_5  
 N9K(config-monitor)# source vlan 10-15 rx  
 N9K(config-monitor)# source interface ethernet 1/2  
 N9K(config-monitor)# destination interface ethernet 2/3
- ☒ N9K(config)# monitor session 5 rx  
 N9K(config-monitor)# description Span\_session\_5  
 N9K(config-monitor)# source vlan 10 rx  
 N9K(config-monitor)# source interface ethernet 1/2  
 N9K(config-monitor)# destination interface ethernet 2/3

- A. Option A
- B. Option B
- C. Option C
- D. Option D

**Answer:** D

#### NEW QUESTION 107

An engineer must implement a VXLAN-based data center interconnect. The long-distance transport provided by a service provider is IP-based, supports a maximum MTU of 1554 bytes, and does not support outbound traffic replication. Which action must be taken to build the data center interconnect?

- A. Configure a route map to associate the IPs of the remote VTEPs.
- B. Create an IP access list and associate it with VNI to replicate traffic to remote VTEPs.
- C. Announce host reachability over BGP.
- D. Implement BGP EVPN ingress replication.

**Answer:** D

#### NEW QUESTION 111

A customer has a requirement for an automation solution that supports periodically acquiring configuration from a centralized server and aligning UCS servers to their desired state. Which open-source tool meets these requirements?

- A. SaltStack
- B. Terraform
- C. Puppet
- D. Kubemetes

**Answer:** C

#### Explanation:

"Overview of Puppet architecture: [...] After it receives a catalog, the Puppet agent applies the catalog by checking each resource that the catalog describes. If it finds any resources that are not in their desired state, it makes any changes necessary to correct them."

[https://www.cisco.com/c/dam/en/us/products/collateral/servers-unified-computing/ucs-c-series-rackservers/whitepaper\\_c11-740103.pdf](https://www.cisco.com/c/dam/en/us/products/collateral/servers-unified-computing/ucs-c-series-rackservers/whitepaper_c11-740103.pdf)

<https://www.cisco.com/c/dam/en/us/products/collateral/servers-unified-computing/ucs-devops-integration-sol-br>

from DCCOR book under Puppet section The operation of the Puppet agent involves periodically connecting to the Puppet master, which in turn compiles and sends a configuration manifest to the agent. The agent reconciles this manifest with the current state of the node and updates state that is based on differences.

#### NEW QUESTION 114

Refer to the exhibit.

```
N5K-1(config)#interface fc2/3
N5K-1(config-if)#switchport mode sd
N5K-1(config-if)# no shutdown
```

What is the result of implementing this configuration?

- A. The Fibre Channel interface is configured for synchronization distribution.
- B. The Fibre Channel interface is configured for SPAN.
- C. The Fibre Channel interface is configuration for source distribution.
- D. The Fibre Channel interface is configured for FSPF.

**Answer:** B

#### Explanation:

[https://www.cisco.com/c/en/us/td/docs/switches/datacenter/nexus5000/sw/san\\_switching/421\\_n1\\_1/](https://www.cisco.com/c/en/us/td/docs/switches/datacenter/nexus5000/sw/san_switching/421_n1_1/)

[b\\_Cisco\\_n5k\\_nxos\\_sanswitching\\_config\\_guide\\_rel421\\_n1\\_1/Cisco\\_n5k\\_nxos\\_sanswitching\\_config\\_guide\\_rel4](#)

[https://www.cisco.com/en/US/docs/switches/datacenter/nexus5000/sw/configuration/guide/cli\\_rel\\_4\\_1/](https://www.cisco.com/en/US/docs/switches/datacenter/nexus5000/sw/configuration/guide/cli_rel_4_1/)

[Cisco\\_Nexus\\_5000\\_Series\\_Switch\\_CLI\\_Software\\_Configuration\\_Guide\\_chapter50.html](#)

#### NEW QUESTION 117

An engineer must implement protection against ICMP DoS attacks on a Cisco Nexus 9000 Series Switch. The requirement is to rate-limit ICMP without denying all other ICMP traffic. The ICMP traffic currently passing through the Cisco Nexus 9000 device must not be affected. Which configuration accomplishes these goals?

- A. Configure SNMP traps to send the ICMP notification if the CPU utilization is more than 90%.
- B. Reconfigure the Layer 3 interfaces to be in the non-default VRF and ICMP broadcast storm control
- C. Create an access list to deny ICMP traffic and apply it to all interfaces in the inside direction.
- D. Apply a control plane service policy that matches all ICMP traffic to drop the traffic if it exceeds the threshold.

**Answer:** D

#### NEW QUESTION 122

Drag and drop the fields for configuring a full state backup file of the Cisco UCS Manager from the left onto the descriptions on the right.

hostname	location where the backup file id stored
protocol	full path to the backup configuration file
remote file	binary file that includes a snapshot of the entire system
type	settings used to transfer the file to the backup server

- A. Mastered
- B. Not Mastered

Answer: A

Explanation:  
Diagram Description automatically generated

NEW QUESTION 127

Which two features are used to allow a nondisruptive upgrade for the ISSU process? (Choose two.)

- A. connectivity management processor
- B. nonstop forwarding
- C. graceful restart
- D. stateful switchover
- E. advanced services license

Answer: BD

NEW QUESTION 131

Which two firmware packages are included in the Cisco UCS C-Series Rack-Mount UCS-Managed Server Software bundle? (Choose two.)

- A. system
- B. third-party
- C. PSU
- D. CIMC
- E. BIOS

Answer: DE

Explanation:  
[https://www.cisco.com/c/en/us/td/docs/unified\\_computing/ucs/ucs-manager/GUI-User-Guides/Firmware-Mgmt/](https://www.cisco.com/c/en/us/td/docs/unified_computing/ucs/ucs-manager/GUI-User-Guides/Firmware-Mgmt/)

Cisco UCS C-Series Rack-Mount UCS-Managed Server Software Bundle

This bundle includes the following firmware images that are required to update components on rack-mount servers that have been integrated with and are managed by Cisco UCS Manager:

- CIMC firmware
- BIOS firmware
- Adapter firmware
- Storage controller firmware

NEW QUESTION 136

Due to a major version change, an engineer must perform a software upgrade on a Cisco Nexus Series switch. Which two technologies can be implemented to reduce disruptions to the network during the upgrade? (Choose two.)

- A. MLAG
- B. HSRP
- C. PAgP
- D. VDC
- E. vPC

Answer: BE



#### NEW QUESTION 141

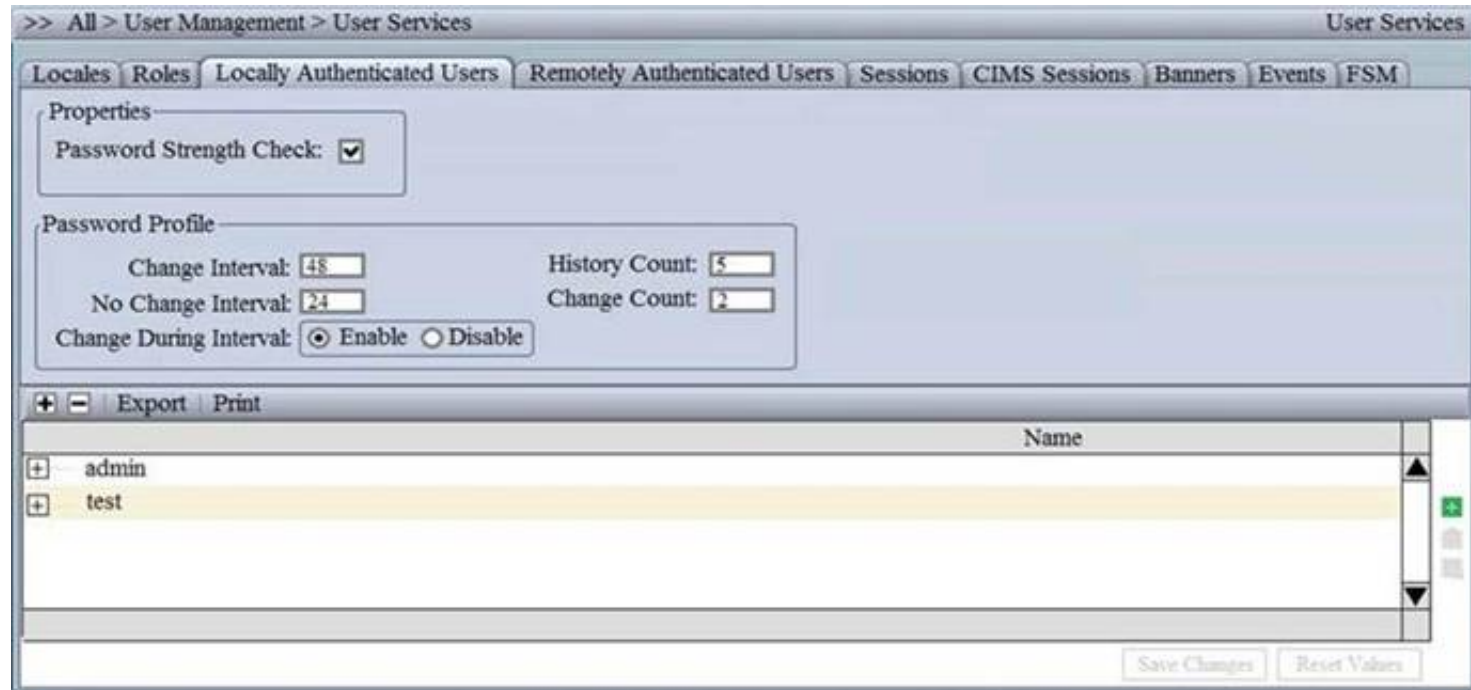
An engineer must configure Cisco Nexus 9000 Series Switches for Cisco UCS Director integration. The configuration must enable automated onboarding of the switches as they come online. For security purposes, the switches must have the bare minimum of connection methods enabled. The connection protocol must allow authentication through credentials. Which protocol must be configured on the switches to allow automated onboarding?

- A. SNMP
- B. Telnet
- C. SSH
- D. HTTPS

**Answer: C**

#### NEW QUESTION 142

Refer to the exhibit.



Which setting must be configured to prevent reuse of passwords?

- A. No Change Interval
- B. Change Interval
- C. History Count
- D. Change Count

**Answer: C**

#### Explanation:

[https://www.cisco.com/c/en/us/td/docs/unified\\_computing/ucs/ucs-manager/GUI-User-Guides/Admin-Management/3-1/b\\_Cisco\\_UCS\\_Admin\\_Mgmt\\_Guide\\_3\\_1/b\\_Cisco\\_UCS\\_Admin\\_Mgmt\\_Guide\\_3\\_1\\_chapter\\_011.html](https://www.cisco.com/c/en/us/td/docs/unified_computing/ucs/ucs-manager/GUI-User-Guides/Admin-Management/3-1/b_Cisco_UCS_Admin_Mgmt_Guide_3_1/b_Cisco_UCS_Admin_Mgmt_Guide_3_1_chapter_011.html)

#### NEW QUESTION 143

The FCoE technology is used in a data center and the MDS switches are configured as Fibre Channel Forwarders. What configuration should be applied to an MDS switch in order to be used as the best switch to connect by the CNAs in the fabric?

- A. fcoe fcf-priority 1024
- B. fcoe fcf-priority 512
- C. fcoe fcf-priority 0
- D. no fcoe fcf-priority

**Answer: C**

#### Explanation:

[https://www.cisco.com/c/en/us/td/docs/switches/datacenter/nexus5000/sw/fcoe/521n11/b\\_5k\\_FCoE\\_Config\\_52 b\\_5k\\_FCoE\\_Config\\_521N11\\_chapter\\_011.pdf](https://www.cisco.com/c/en/us/td/docs/switches/datacenter/nexus5000/sw/fcoe/521n11/b_5k_FCoE_Config_52 b_5k_FCoE_Config_521N11_chapter_011.pdf)

#### NEW QUESTION 147

The EPLD update of the supervisor module has been scheduled for several Cisco MDS 9000 switches. What will be the impact of the update?

- A. All control plane traffic is stopped for the duration of the EPLD update and the switch remains operational for the duration of the upgrade.
- B. The redundant supervisor takes over while the EPLD update is in progress and there is no service disruption.
- C. All traffic is stopped for the duration of the EPLD update and the switch is rebooted after the upgrade is completed.
- D. The redundant supervisor takes over while the EPLD update is in progress and the switch is rebooted after the upgrade is completed.

**Answer: C**

#### Explanation:

An EPLD update of the supervisor module of fabric switches (Cisco MDS 9100, Cisco MDS 9200, and Cisco MDS 9300 Series switches) is disruptive since there is no redundant supervisor to take over while the update is in progress. All traffic through the system is stopped for the duration of the update and the switch is rebooted after the upgrade has completed. The update may take up to 30 minutes to complete.

[https://www.cisco.com/c/en/us/td/docs/switches/datacenter/mds9000/sw/6\\_2/release/notes/epld/epld\\_rn.html#pg](https://www.cisco.com/c/en/us/td/docs/switches/datacenter/mds9000/sw/6_2/release/notes/epld/epld_rn.html#pg)

#### NEW QUESTION 149

What is a characteristic of EPLD updates on Cisco MDS 9000 Series Switches?



- A. EPLD updates are installed only via the Cisco DCNM GUI
- B. EPLD packages update hardware functionality on a device
- C. EPLD bundles are released separately from a Cisco MDS NX-OS release
- D. EPLD updates are nondisruptive to traffic flow

**Answer:** B

**Explanation:**

[https://www.cisco.com/c/en/us/td/docs/switches/datacenter/mds9000/sw/6\\_2/release/notes/epld/epld\\_rn.htm](https://www.cisco.com/c/en/us/td/docs/switches/datacenter/mds9000/sw/6_2/release/notes/epld/epld_rn.htm)

## Introduction

Switches and directors in the Cisco MDS 9000 Series contain several electrical programmable logical devices (EPLDs) that provide hardware functionalities in all of the modules. As of Cisco MDS SAN-OS Release 1.2, EPLD image upgrades are periodically provided to include enhanced hardware functionality or to resolve known issues.

### NEW QUESTION 151

An engineer must configure a Nexus 7000 series switch for HSRP on VLAN 100. When fully functional, the router must be the active master. Which set of commands must be used to implement the scenario?

- ☒ feature hsrp  
interface vlan100  
ip address 10.1.1.2 255.255.255.0  
priority 120  
hsrp version 2  
hsrp 1000  
ip 10.1.1.1
- ☐ feature hsrp  
interface vlan100  
ip address 10.1.1.2 255.255.255.0  
priority 100  
hsrp version 2  
hsrp 1000  
ip 10.1.1.1
- ☐ feature-set hsrp  
interface vlan100  
ip address 10.1.1.2 255.255.255.0  
priority 110  
hsrp version 2  
hsrp 1000  
ip 10.1.1.1
- ☐ feature-set hsrp  
interface vlan100  
ip address 10.1.1.2 255.255.255.0  
priority 80  
hsrp version 2  
hsrp 1000  
ip 10.1.1.1

- A. Option A
- B. Option B
- C. Option C
- D. Option D

**Answer:** A

### NEW QUESTION 155

A Cisco MDS 9000 series storage Switch has reloaded unexpectedly. Where does the engineer look for the latest core dump file?

- A. /mnt/core
- B. /mnt/pss
- C. /mnt/logs
- D. /mnt/recovery

**Answer:** B

**Explanation:**

Graphical user interface, text, application, email Description automatically generated

## Saving Cores

You can save cores (from the active supervisor module, the standby supervisor module, or any switching module) to an external CompactFlash (slot 0) or to a TFTP server in one of two ways:

- On demand—Copies a single file based on the provided process ID.
- Periodically—Copies core files periodically as configured by the user.

A new scheme overwrites any previously issued scheme. For example, if you perform another core log copy task, the cores are periodically saved to the new location or file.

## Saving the Last Core to Bootflash

This last core dump is automatically saved to bootflash in the `/mnt/pss/` partition before the switchover or reboot occurs. Three minutes after the supervisor module reboots, the saved last core is restored from the flash partition (`/mnt/pss`) back to its original RAM location. This restoration is a background process and is not visible to the user.

[https://www.cisco.com/c/en/us/td/docs/switches/datacenter/mds9000/sw/6\\_2/configuration/guides/system\\_management/nx-os/sysmgmt\\_cli\\_6-x/sys.html](https://www.cisco.com/c/en/us/td/docs/switches/datacenter/mds9000/sw/6_2/configuration/guides/system_management/nx-os/sysmgmt_cli_6-x/sys.html)  
[https://www.cisco.com/c/en/us/td/docs/switches/datacenter/mds9000/sw/6\\_2/configuration/guides/system\\_management/nx-os/sysmgmt\\_cli\\_6-x/sys.html#37039](https://www.cisco.com/c/en/us/td/docs/switches/datacenter/mds9000/sw/6_2/configuration/guides/system_management/nx-os/sysmgmt_cli_6-x/sys.html#37039)

### NEW QUESTION 158

An engineer performs a Firmware Auto Install upgrade through the Cisco UCS Manager. Which two Cisco UCS components are upgraded in the Install Server Firmware stage? (Choose two)

- A. Cisco UCS C-Series Rack-Mount Server
- B. I/O Modules
- C. Cisco UCS Manager
- D. Cisco UCS B-Series Blade Server
- E. Fabric Interconnects

**Answer:** BE

### NEW QUESTION 162

Which command reduces the amount of time it takes to complete the ISSU on a Cisco Nexus 7000 series switch that has dual supervisor modules and two I/O modules?

- A. install all kickstart <image>system<image>parallel
- B. install all epld bootflash:<image>
- C. install all epld bootflash:<image>
- D. install all kickstart<image>system<image>

**Answer:** A

#### Explanation:

Graphical user interface, text, application Description automatically generated

##### Parallel Upgrade

##### Parallel Upgrade with I/O Modules

Starting with Cisco NX-OS Release 5.2(1), multiple linecards can be simultaneously upgraded, and the infrastructure support is available. This decreases the ISSU time when compared with an ISSU upgrade that is done serially (one card at a time).

To start a parallel upgrade, use the following command: `install all kickstart image system image parallel`

Up to three linecards can be upgraded in parallel with this command. During the upgrade process, the upgrade of the linecards is displayed in the output as follows:

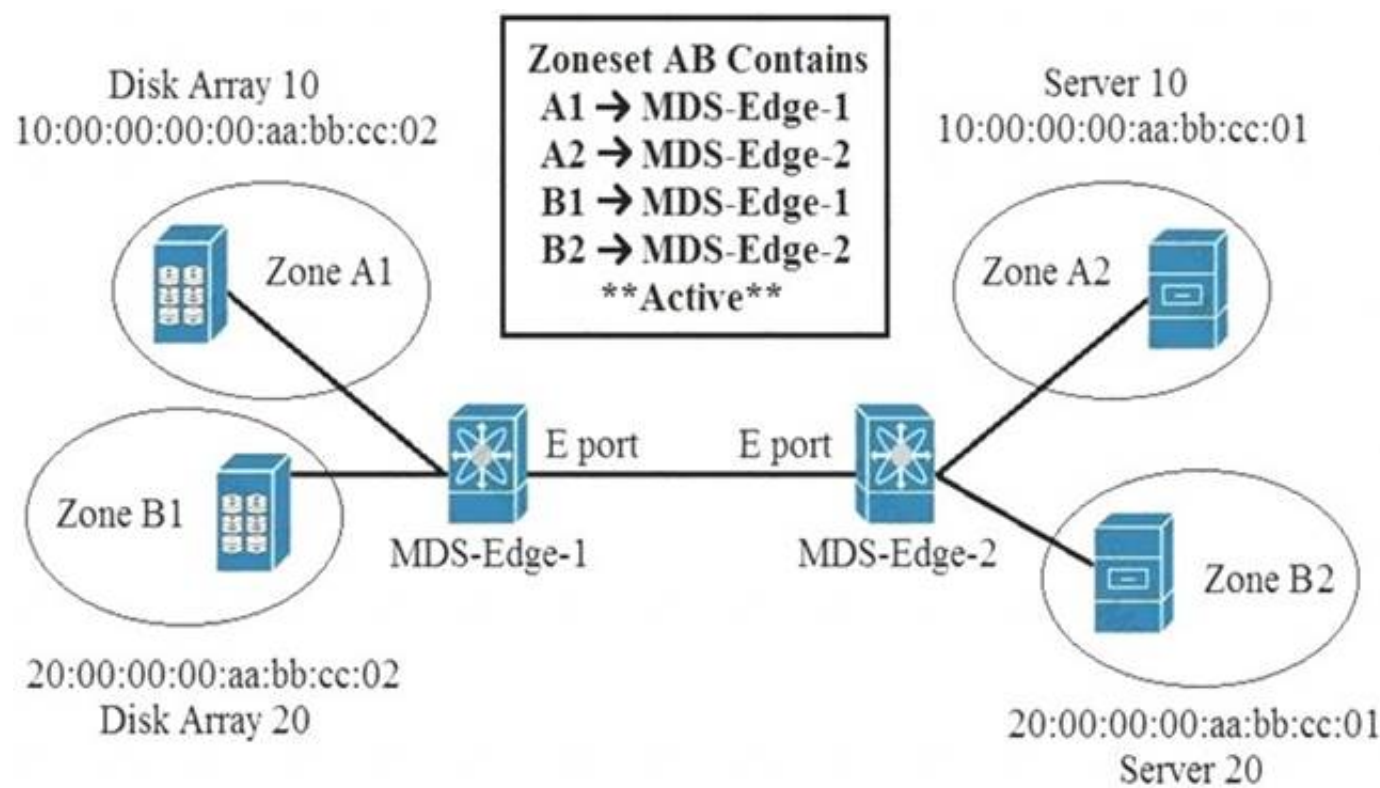
```
Non-disruptive upgrading.
[#          ] 0%
Module 5 upgrade completed successfully.
```

```
Module 3 upgrade completed successfully.
```

[https://www.cisco.com/c/en/us/td/docs/switches/datacenter/nexus7000/sw/upgrade/guide/cisco\\_nexus7000\\_software\\_upgrade\\_and\\_downgrade\\_guide\\_8x.html](https://www.cisco.com/c/en/us/td/docs/switches/datacenter/nexus7000/sw/upgrade/guide/cisco_nexus7000_software_upgrade_and_downgrade_guide_8x.html)  
[https://www.cisco.com/c/en/us/td/docs/switches/datacenter/sw/7\\_x/nx-os/upgrade/guide/b\\_Cisco\\_Nexus\\_7000\\_Series\\_NX-OS\\_Software\\_Upgrade\\_and\\_Downgrade\\_Guide\\_Release\\_7-x.html#d54e307a1635](https://www.cisco.com/c/en/us/td/docs/switches/datacenter/sw/7_x/nx-os/upgrade/guide/b_Cisco_Nexus_7000_Series_NX-OS_Software_Upgrade_and_Downgrade_Guide_Release_7-x.html#d54e307a1635)

### NEW QUESTION 167

Refer to the exhibit.



An engineer is implementing zoning on two Cisco MDS switches. After the implementation is finished, E Ports that connect the two Cisco MDS switches becomes isolated. What is wrong with the implementation?

- A. E Ports on both MDS switches must be configured as F ports for the zoning to function.
- B. Zones are local to the MDS switch and name service must be used to activate the connection between E ports.
- C. Different zone set names must be configured on both MDS switches.
- D. Zones must have the same name on both MDS switches for the E ports to function.

Answer: D

Explanation:

When two switches in a fabric are merged using a TE or E port, these TE and E ports may become isolated when the active zone set databases are different between the two switches or fabrics." [https://www.cisco.com/c/en/us/td/docs/switches/datacenter/mds9000/sw/6\\_2/configuration/guides/fabric/nxos/n](https://www.cisco.com/c/en/us/td/docs/switches/datacenter/mds9000/sw/6_2/configuration/guides/fabric/nxos/n)

NEW QUESTION 172

What is required for using Ansible with HTTP/HTTPS protocol in a Cisco NX-OS environment?

- A. SSH
- B. Open Agent Container
- C. XML management interface
- D. NX-API

Answer: D

Explanation:

[https://docs.ansible.com/ansible/2.5/modules/nxos\\_nxapi\\_module.html](https://docs.ansible.com/ansible/2.5/modules/nxos_nxapi_module.html) [https://docs.ansible.com/ansible/latest/network/user\\_guide/platform\\_nxos.html](https://docs.ansible.com/ansible/latest/network/user_guide/platform_nxos.html)

NEW QUESTION 176

Drag and drop the mechanisms to collect data from a network from the left onto their characteristics on the right

CLI-based scripts	Polling can take 5-10 minutes.
SNMP	Unstructured and susceptible to change and scripts failure.
syslog	It sends data from the device to a specific endpoint, for instance, JSON or by using Google protocol buffers.
telemetry	It pushes messages in the format "seq no:timestamp: %facility-severity MNEMONIC:description" and has limits in scale and efficiency.

- A. Mastered
- B. Not Mastered

Answer: A

Explanation:

Table Description automatically generated with low confidence

NEW QUESTION 181

A DNS server with IP address 192.168.1.1 is deployed in a data center A network engineer must configure a Cisco UCS Fabric Interconnect to use this DNS.



Which configuration should be applied?

- ☒ **fi-cl-mgmt-A# scope system**  
**fi-cl-mgmt-A /system # create dns 192.168.1.1**  
**fi-cl-mgmt-A /system\* # commit-buffer**
- ☐ **fi-cl-mgmt-A# scope fabric-interconnect a**  
**fi-cl-mgmt-A /fabric-interconnect # set name 192.168.1.1**  
**fi-cl-mgmt-A /fabric-interconnect # scope system**  
**fi-cl-mgmt-A /system # commit-buffer**
- ☐ **fi-cl-mgmt-A# scope fabric-interconnect a**  
**fi-cl-mgmt-A /fabric-interconnect # set name 192.168.1.1**  
**fi-cl-mgmt-A /fabric-interconnect\* # commit-buffer**
- ☐ **fi-cl-mgmt-A# scope system**  
**fi-cl-mgmt-A /system # scope services**  
**fi-cl-mgmt-A /system/services # create dns 192.168.1.1**  
**fi-cl-mgmt-A /system/services\* # commit-buffer**

- A. Option A
- B. Option B
- C. Option C
- D. Option D

**Answer:** D

#### NEW QUESTION 183

AN engineer is asked to modify an overridden policy by changing the number of FCNS database entries to 1500 and then generate a message. What configuration will accomplish this task?

- ☐ A. event manager applet fcns\_policyevent fens entries max-per-switch 1500  
action 1.0 syslog priority warnings msg FCNS DB entries have reached the EEM limit  
action 2.0 policy-default
- ☐ B. event manager applet fcns\_policy override \_fcns\_entries\_max\_per\_switch  
action 1.0 syslog priority errors "CNS DB entries have reached the EEM limit"  
action 2.0 policy-default
- ☒ C. event manager applet fcns\_policy override \_fcns\_entries\_max\_per\_switch  
event fens entries max-per-switch 1500  
action 1.0 syslog priority warnings msg FCNS DB entries have reached the EEM limit
- ☐ D. event manager applet fcns\_policy action 1.0 syslog priority warnings msg FCNS DB entries have reached the EEM limit  
action 2.0 event-default

- A. Option A
- B. Option B
- C. Option C
- D. Option D

**Answer:** C

#### Explanation:

The following example modifies an overridden policy by changing the number of FCNS database entries to 1500. It also generates both the configured and the default syslog messages of the default system policy event manager applet fcns\_policy override fcns\_entries\_max\_per\_switch  
event fcns entries max-per-switch 1500 action 1.0 syslog priority warnings msg FCNS DB entries have reached the EEM limit.

#### NEW QUESTION 188

Which two actions should be performed before upgrading the infrastructure and firmware of multiple UCS blades? (Choose two)

- A. Verify if the bootflash on the fabric interconnects in the Cisco UCS has at least 15% available space
- B. Enable Smart Call Home feature during the firmware upgrade process
- C. Verify if the bootflash on the fabric interconnects in the Cisco UCS has at least 10% available space
- D. Run the Check Conformance feature to verify that all your components are running the compatible firmware version after the upgrade
- E. Get Full State and All Configuration backup files before beginning the upgrade

**Answer:** DE

#### NEW QUESTION 189

A company is running a pair of cisco Nexus 7706 series switches as part of a data center segment. All network engineers have restricted read-Write access to the core switches. A network engineer must a new FCoE VLAN to allow traffic from services toward FCoE storage. Which set of actions must be taken to meet these requirements?

- A. \* 1. Create a user defined role and add the required privileges.\* 2. Assign a role to a user.
- B. \* 1. Add the required privilege to the VDC-admin role.
- C. Commit the changes to the active user database.
- D. \* 1. Modify a network-operator role and add the required privileges.\* 2. Assign a VDC-operator role to a user.
- E. \* 1. Assign the network-admin role to a user.\* 2. Commit the role to the switch to the active user database

**Answer: B**

#### NEW QUESTION 190

Refer to the exhibit.

```
N7K-1
spanning-tree vlan 1-10 priority 8192

vpc domain 100
  role priority 100
  peer-keepalive destination 10.1.1.2 source 10.1.1.1
vrf default
  delay restore 60
  peer-switch
  auto-recovery
  ip arp synchronize

N7K-2
spanning-tree vlan 1-10 priority 8192

vpc domain 100
  role priority 200
  peer-keepalive destination 10.1.1.1 source 10.1.1.2
vrf default
  delay restore 60
  peer-switch
  auto-recovery
  ip arp synchronize
```

The STP priority of N7K-1 and N7K-2 are the lowest in the network. Which statement describes STP on the vPC?

- A. N7K-1 appears as the STP root.
- B. N7K-2 appears as the STP root.
- C. N7K-1 and N7K-2 appear as a single STP root.
- D. N7K-1 preempts N7K-2 as the STP root.

**Answer: C**

#### NEW QUESTION 193

Refer to the exhibit.

```
show install all impact epld bootflash:n9000-epld.6.1.2.I3.1.img
```

What is the outcome of this command when the EPLD is updated on a Cisco Nexus 9000 series switch?

- A. displays the compatibility of the EPLD upgrade and the image in the bootflash
- B. shows a simulated upgrade of the EPLD
- C. upgrades the EPLD on the switch disruptively
- D. displays the impact of the upgrade on the operation of the switch

**Answer: D**

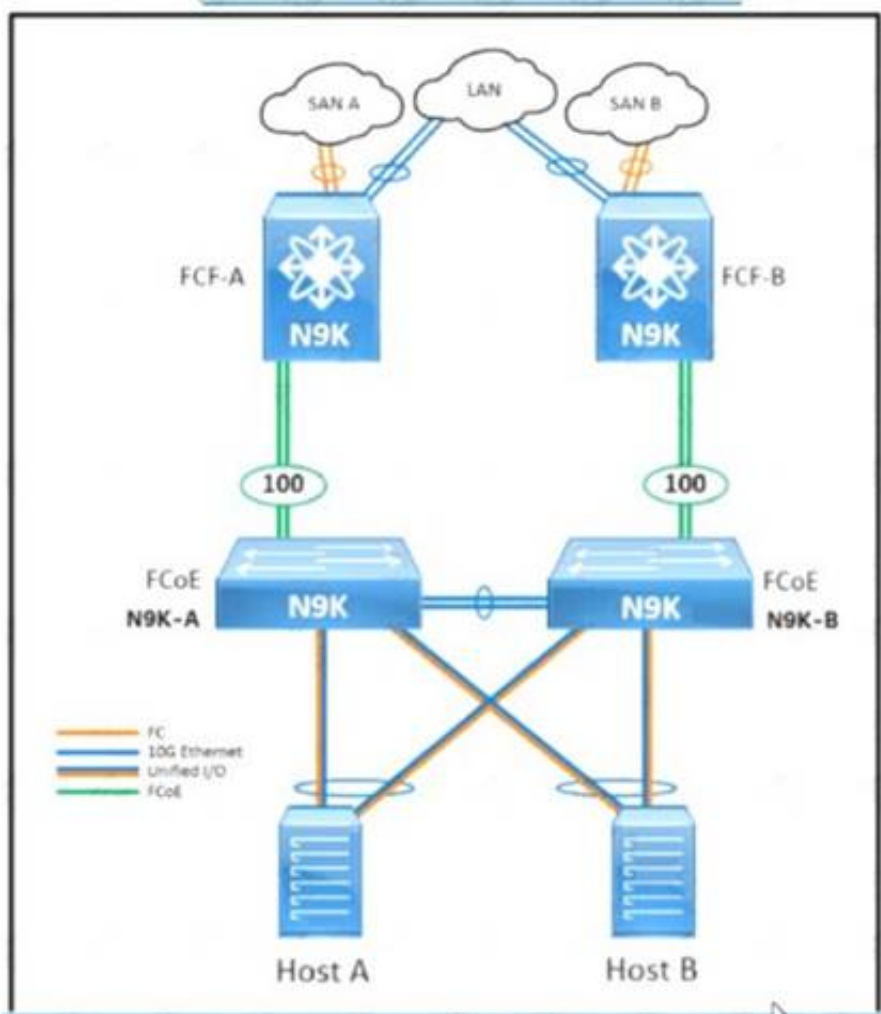
#### Explanation:

You can use the show install impact epld bootflash: command to determine whether the EPLDs can be upgraded for all the modules or for specific modules on a switch. This command indicates the current EPLD images, new EPLD images, and whether the upgrades would be disruptive to switch operations. <https://www.cisco.com/c/en/us/td/docs/switches/datacenter/nexus9000/sw/6-x/epld/n9k-epld-rn-61.html>

#### NEW QUESTION 198

Refer to the exhibit.





An engineer must configure FCoE between the N9K-A switch and the FCF-A Nexus 9000 core switch. The deployment has these characteristics:

- The N9K-A and N9K-B top-of-rack switches share the domain ID of the core switches.
- The hosts are equipped with converged network adapters.
- The only VSAN that is permitted to traverse port-channel 100 is VSAN 20. Which configuration completes the FCoE configuration on the N9K-A device?

- ☐ N9K-A(config)# feature fcoe  
N9K-A(config)# feature npv  
N9K-A(config)# interface vfc 100  
N9K-A(config-if)# bind interface port-channel 100  
N9K-A(config-if)# switchport mode F  
N9K-A(config-if)# switchport trunk allowed vsan 20
- ☐ N9K-A(config)# feature fcoe  
N9K-A(config)# feature npv  
N9K-A(config)# interface vfc 100  
N9K-A(config-if)# bind interface port-channel 100  
N9K-A(config-if)# switchport mode N  
N9K-A(config-if)# switchport trunk allowed vsan 1, 20
- ☐ N9K-A(config)# feature-set fcoe-npv  
N9K-A(config)# interface vfc-port-channel 100  
N9K-A(config-if)# switchport mode NP  
N9K-A(config-if)# switchport trunk allowed vsan 20
- ☐ N9K-A(config)# feature-set fcoe-npv  
N9K-A(config)# interface vfc-port-channel 100  
N9K-A(config-if)# switchport mode E  
N9K-A(config-if)# switchport trunk allowed vsan 1, 20

- A. Option A
- B. Option B
- C. Option C
- D. Option D

**Answer: C**

#### NEW QUESTION 200

Cisco Nexus 9000 Series Switches are configured with LACP protocol and default aging timers. What is the impact on the LACP peer during an ISSU upgrade?

- A. The LACP peer connection terminates.
- B. The LACP peer session remains up.
- C. The LACP peer renegotiates the adjacency.
- D. The LACP peer connection resets.

**Answer: B**

#### Explanation:

[https://www.cisco.com/c/en/us/td/docs/switches/datacenter/nexus9000/sw/6-x/interfaces/configuration/guide/b\\_ISSU\\_and\\_ungraceful\\_switchovers\\_are\\_not\\_supported\\_with\\_LACP\\_fast\\_timers.html](https://www.cisco.com/c/en/us/td/docs/switches/datacenter/nexus9000/sw/6-x/interfaces/configuration/guide/b_ISSU_and_ungraceful_switchovers_are_not_supported_with_LACP_fast_timers.html) ISSU and ungraceful switchovers are not supported with LACP fast timers.

#### NEW QUESTION 201

A customer reports Fibre Channel login requests to a cisco MDS 9000 series Switch from an unauthorized source. The customer requires a feature that will allow all devices already logged in and learned in and learned to be added to the Fibre channel active database. Which two features must be enabled to accomplish this goal?

(Choose two.)

- A. Auto-learning
- B. Port security
- C. Enhanced zoning
- D. Device aliases
- E. Smart aliases

**Answer:** AB

**Explanation:**

[https://www.cisco.com/en/US/docs/storage/san\\_switches/mds9000/sw/rel\\_3\\_x/configuration/guides/fm\\_3\\_3\\_1/p](https://www.cisco.com/en/US/docs/storage/san_switches/mds9000/sw/rel_3_x/configuration/guides/fm_3_3_1/p) Port Security Activation By default, the port security feature is not activated in any switch in the Cisco MDS 9000 Family. By activating the port security feature, the following apply: Auto-learning is also automatically enabled, which means: From this point, auto-learning happens for the devices or interfaces that were already logged into the switch and also for the new devices will login in future. You cannot activate the database until you disable auto-learning. All the devices that are already logged in are learned and are added to the active database. All entries in the configured database are copied to the active database. After the database is activated, subsequent device login is subject to the activated port bound WWN pairs, excluding the auto-learned entries. You must disable auto-learning before the auto-learned entries become activated.

**NEW QUESTION 204**

Which protocol does Cisco Hyperflex use to share data among nodes in a VMware vSphere environment?

- A. CIFS
- B. FCoE
- C. SMB
- D. NFS

**Answer:** D

**NEW QUESTION 207**

A network architect must design an automation solution to initially support networking and also support the server infrastructure in the future. To keep configuration consistency, the network team requires a solution that enforces the desired state of the network and reverts any manual configuration. Which solution meets these goals?

- A. NX-API
- B. Ansible
- C. Terraform
- D. Puppet

**Answer:** D

**NEW QUESTION 209**

Refer to the exhibit.

```
#!/bin/env python
from cli import *

[REDACTED]

x= cli('show running-config | include address')
y= x.find('192.168.101.191/25')
z= x.find('192.168.101.192/25')
if y != -1:
    cli ('copy tftp://192.168.101.253/initdev1.cfg bootflash: vrf management')
    cli ('copy bootflash:initdev1.cfg scheduled-config')
if z != -1:
    cli ('copy tftp://192.168.101.253/initdev2.cfg bootflash: vrf management')
    cli ('copy bootflash:initdev2.cfg scheduled-config')
cli ('copy running-config startup-config')
```

Which information must be added to the script to complete the POAP operation on the Cisco Nexus 9000 Series Switch?

- ☒ API token d41d8cd98f00b40960045298ecf8427e of the Cisco APIC.
- ☐ MD5SUM 41d8cd98f00b204e9800998ecf8427e of the Python code.
- ☒ API token d41d8cd98f00b77986331998ecf8427e of the Cisco Nexus 9000 Series Switch.
- ☐ MD5SUM d41d8cd98f00b20449800998ecf8427e of the script file.

- A. Option A
- B. Option B
- C. Option C
- D. Option D

**Answer:** D

#### NEW QUESTION 214

Refer to the exhibit.

```
restart pim
```

Which result of running the command is true?

- A. The PIM database is deleted.
- B. Multicast traffic forwarding is suspended.
- C. PIM join messages are suspended.
- D. MRIB is flushed

**Answer: A**

#### Explanation:

When you restart PIM, the following tasks are performed: The PIM database is deleted. The MRIB and MFIB are unaffected and forwarding of traffic continues. The multicast route ownership is verified through the MRIB. Periodic PIM join and prune messages from neighbors are used to repopulate the database.  
[https://www.cisco.com/c/en/us/td/docs/switches/datacenter/nexus9000/sw/6-x/multicast/configuration/guide/b\\_C](https://www.cisco.com/c/en/us/td/docs/switches/datacenter/nexus9000/sw/6-x/multicast/configuration/guide/b_C)

#### NEW QUESTION 217

Refer to the exhibit

```
MDS-B# show role
Role: network-admin
Description: Predefined Network Admin group. This role cannot be modified.
Vsan policy: permit (default)
-----
Rule    Type    Command-type    Feature
-----
1       permit  clear           *
2       permit  config          *
3       permit  debug           *
4       permit  exec            *
5       permit  show            *

Role: default-role
Description: This is a system defined role and applies to all users.
Vsan policy: permit (default)
-----
Rule    Type    Command-type    Feature
-----
1       permit  show            system
2       permit  show            snmp
3       permit  show            module
4       permit  show            hardware
5       permit  show            environment

Role: san-users
Description: SAN users
Vsan policy: permit (default)
-----
```

A network engineer created a new role to be assigned to the SAN users. The requirement is for users to have these characteristics:

- permitted to show access to the system, SNMP, module, and hardware information
- permitted to run debug zone and exec fcping commands
- restricted from accessing show feature environment command

Which configuration set meets these requirements?

- A. Option A
- B. Option B
- C. Option C
- D. Option D

**Answer: D**

#### NEW QUESTION 218

Which Cisco UCS Manager XML encoded backup type must be used to back up user names, roles, and service profiles?

- A. Full State Configuration
- B. Logical Configuration
- C. All Configuration
- D. System Configuration

**Answer: C**

#### NEW QUESTION 222

Drag and drop the keywords onto the URL request to collect all the subnets configured under tenant Production using a REST API. Not all options are used.



https://{apic\_ip}}/api/

/uni/tn-Production.json?

=

&

=fvSubenet

target-subtree-class

query-target-filter

query-target

children

subtree

class

mo

- A. Mastered
- B. Not Mastered

**Answer:** A

**Explanation:**

Graphical user interface, text Description automatically generated

**NEW QUESTION 225**

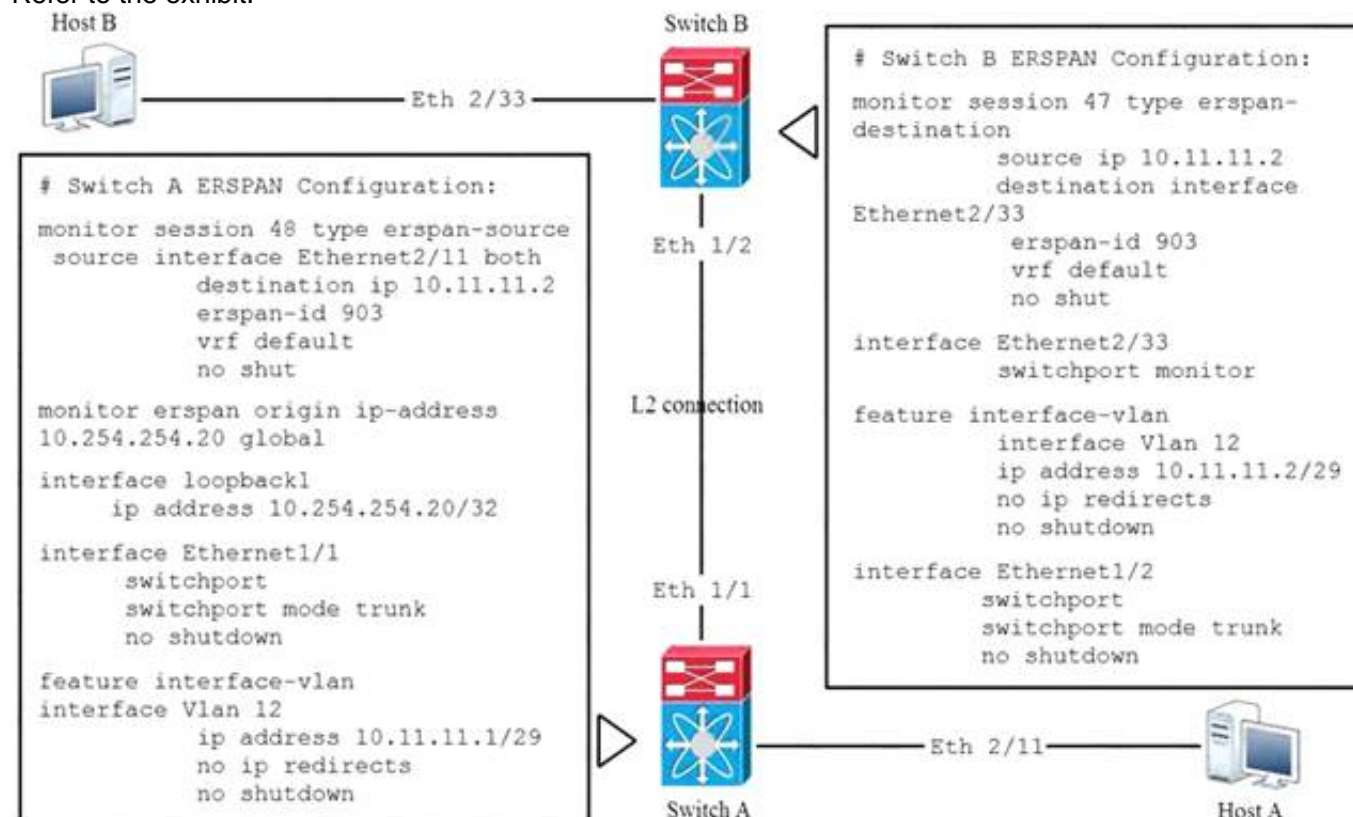
An engineer configures a role for a new user in Cisco UCS Manager. The role should allow the user to configure vHBAs, vNICs, and server port types. Which role should be assigned to allow the engineer to complete this task?

- A. network administrator
- B. operations
- C. server-compute
- D. AAA administrator

**Answer:** A

**NEW QUESTION 229**

Refer to the exhibit.



Which statement about the ERSPAN configuration in this environment is true.

- A. Host A is the source of ERSPAN spanned traffic and host B is the traffic analyzer.
- B. Host B is the source of ERSPAN spanned traffic and host A is the traffic analyzer.
- C. The session number of the source of ERSPAN spanned traffic must have a session ID of 48 for the traffic analyzer to receive the traffic.
- D. The session number of the source of ERSPAN spanned traffic must have a session ID of 47 for the traffic analyzer to receive the traffic.

**Answer:** A

**NEW QUESTION 232**

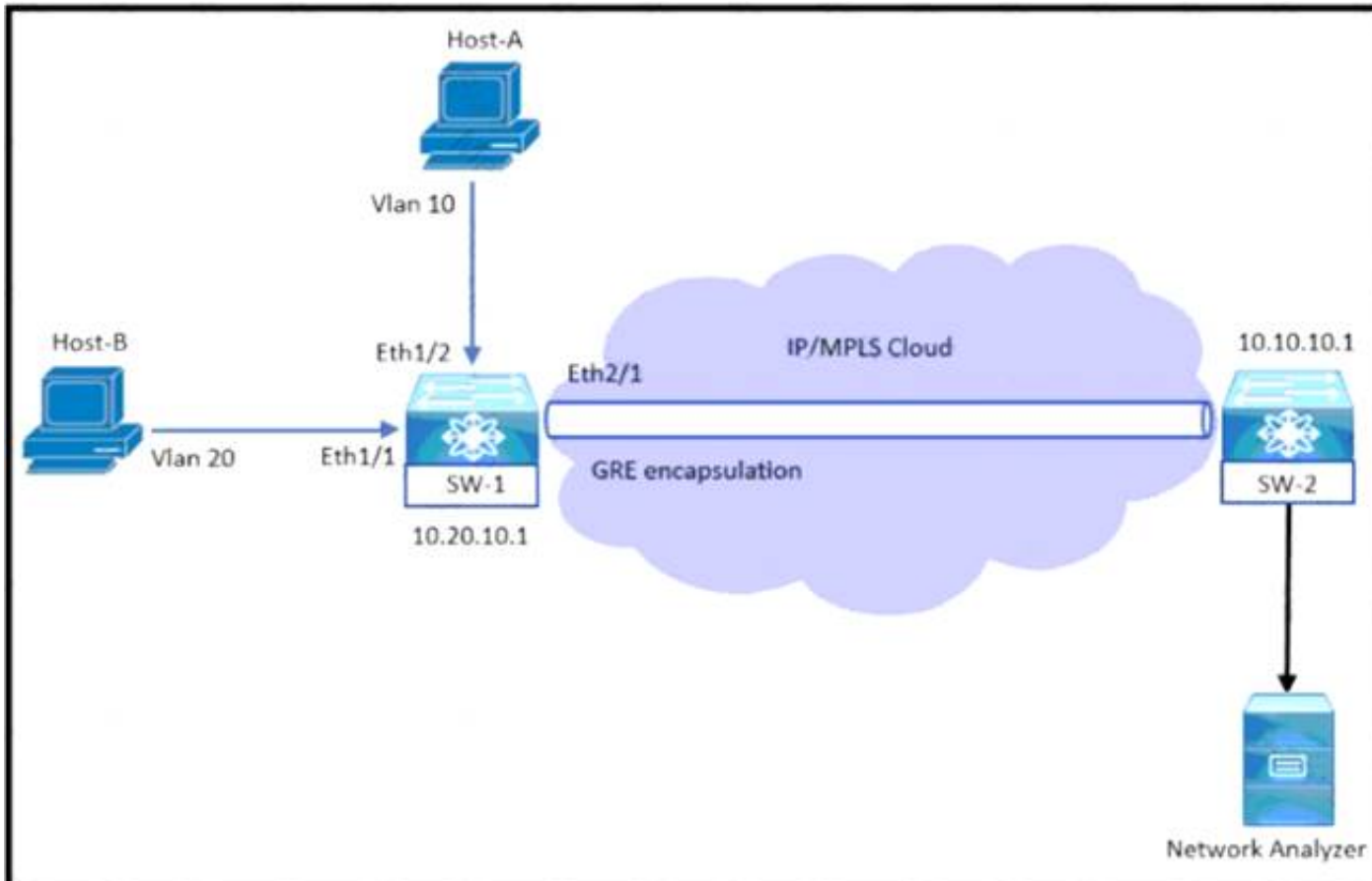
An engineer must export the Cisco UCS Manager configuration for backup purposes. The requirement is to export the configuration that contains the AAA and RBAC configuration. Also the file must be stored in a human-readable format. Which backup type must be selected to meet these requirements?

- A. logical configuration
- B. system configuration
- C. fun state
- D. all configuration

**Answer: B**

#### NEW QUESTION 234

Refer to the exhibit.



An engineer monitors ingress traffic from Host-A and all traffic for VLAN 20 from Host-B Which configuration must be implemented to monitor and export traffic to Network Analyzer?

- ☐ SW-1(config)# monitor session 5  
SW-1(config-monitor)# source interface ethernet 1/2 rx  
SW-1(config-monitor)# source interface ethernet 1/1 tx  
SW-1(config-monitor)# source vlan 20 both  
SW-1(config-monitor)# destination ip 10.10.10.1  
SW-1(config-monitor)# no shut
- ☐ SW-1(config)# monitor session 5 type erspan-source  
SW-1(config-erspan-src)# source interface ethernet 1/2 rx  
SW-1(config-erspan-src)# source vlan 20 both  
SW-1(config-erspan-src)# destination ip 10.10.10.1  
SW-1(config-erspan-src)# erspan-id 111  
SW-1(config-erspan-src)# no shut
- ☐ SW-1(config)# monitor session 5 type erspan  
SW-1(config-erspan-src)# source interface ethernet 1/2 rx  
SW-1(config-erspan-src)# source interface ethernet 1/1 both  
SW-1(config-erspan-src)# destination ip 10.10.10.1  
SW-1(config-erspan-src)# mtu 1000  
SW-1(config-erspan-src)# no shut
- ☐ SW-1(config)# monitor session 5  
SW-1(config-monitor)# source interface ethernet 1/2 rx  
SW-1(config-monitor)# source interface ethernet 1/1 both  
SW-1(config-monitor)# source vlan 20 both  
SW-1(config-monitor)# destination interface ethernet 2/1  
SW-1(config-monitor)# no shut

- A. Option A
- B. Option B
- C. Option C
- D. Option D

**Answer: B**

#### NEW QUESTION 236

An engineer is implementing the Cisco ACI fabric and must create two different vPCs from leaf switches A and B. The vPCs are deployed as follows:

- vPC 1 encompasses ports Eth 1 /1 on leaf A and B and connects to server 1.
- vPC 2 encompasses port Eth1/2 on leaf A and B and connects to server 2.

A leaf switch profile listing leaves A and B is already configured Which ACI object must be created to meet these requirements?

- A. two vPC interface policy groups
- B. one access port interface policy group
- C. two PortChannel interface policy groups



D. one vPC interface policy group

**Answer:** A

#### NEW QUESTION 238

Refer to the exhibit.

```
NEXUS (config)# feature tacacs+
NEXUS (config)# tacacs-server timeout 5
NEXUS (config)# tacacs-server directed-request
NEXUS (config)# tacacs-server deadtime 0
NEXUS (config)# tacacs server host 10.1.50.20 port 49
NEXUS (config)# tacacs-server host 10.1.50.20 key 7 "Flwhg123" timeout 1
NEXUS (config)# aaa group server tacacs+ ISE
NEXUS (config-tacacs+)# server 10.1.50.20
NEXUS (config-tacacs+)# deadtime 10
NEXUS (config-tacacs+)# use-vrf management
NEXUS (config-tacacs+)# source-interface mgmt 0
NEXUS (config)# aaa authentication login default group ISE
```

What is the result of implementing this configuration?

- A. The TACACS+ server uses the type-6 encrypted format.
- B. The switch queries the TACACS+ server by using a clear text PAP login.
- C. The timeout value on the TACACS+ server is 10 seconds.
- D. The switch queries the TACACS+ server by using an encrypted text PAP login.

**Answer:** D

#### Explanation:

tacacs-server key

To configure a global TACACS+ shared secret key, use the tacacs-server key command. To remove a configured shared secret, use the no form of this command.

tacacs-server key [0 | 7] shared-secret Syntax Description

7 (Optional) Configures a preshared key specified in encrypted text to authenticate communication between the TACACS+ client and server.

By default, the Cisco NX-OS device uses Password Authentication Protocol (PAP) authentication between the Cisco NX-OS device and the remote server. If you enable CHAP, you need to configure your RADIUS or TACACS+ server to recognize the CHAP vendor-specific attributes (VSAs).

#### NEW QUESTION 241

An engineer must configure the HSRP protocol to implement redundancy using two Cisco Nexus Series Switches In addition, the HSRP must meet these requirements

- Switch1 must retain the primary role if switch2 goes offline
- Switch1 must retain the primary role until normal conditions are restored.
- Switch1 and switch2 must ensure that the routing tables are converged before taking the active role
- switch2 must retain the primary role if the default gateway is not reachable Drag and drop the configuration commands from the right to the left to meet the requirements. The commands are used more than once Not all commands are used

```
! switch1
track 100 ip route 0.0.0.0/0 reachability

interface ethernet 1/1
ip 209.165.200.226/27

hsrp 200
ip 209.165.200.225
priority 210
[ ]
[ ]
no shutdown

! switch2
track 100 ip route 0.0.0.0/0 reachability

interface ethernet 1/1
ip 209.165.200.227/27

hsrp 200
ip 209.165.200.225
[ ]
[ ]
no shutdown
```

preempt delay minimum 30

track 100 decrement 200

track 200 decrement200

preempt sync 30

- A. Mastered
- B. Not Mastered

**Answer: A**

**Explanation:**

```
! switch1
track 100 ip route 0.0.0.0/0 reachability

interface ethernet 1/1
ip 209.165.200.226/27

hsrp 200
ip 209.165.200.225
priority 210
track 100 decrement 200
preempt delay minimum 30
no shutdown

! switch2
track 100 ip route 0.0.0.0/0 reachability

interface ethernet 1/1
ip 209.165.200.227/27

hsrp 200
ip 209.165.200.225
track 100 decrement 200
preempt delay minimum 30
no shutdown
```

```
preempt delay minimum 30
track 100 decrement 200
track 200 decrement 200
preempt sync 30
```

#### NEW QUESTION 246

An engineer must configure the HSRP protocol between two Cisco Nexus 9000 Series Switches. This configuration is present on Nexus A.

```
! Nexus A
key chain NHRP-KEYS
key 1010
key-string 7 072a43795c1d0c4050883003163b3e2121a720361a021e11
accept-lifetime 00:00:00 Jan 01 2021 23:59:59 Aug 31 2021
send-lifetime 00:00:00 Jan 01 2021 23:59:59 Jul 31 2021
key 1020
key-string 7 086f43cd5c150c1702630203163b3e2221a520261a011a12
accept-lifetime 00:00:00 Jul 01 2021 23:59:59 Dec 31 2021
send-lifetime 00:00:00 Jul 01 2021 23:59:59 Dec 31 2021
interface ethernet 1/1
ip 209.165.200.226/27
hsrp 200
priority 201
ip 209.165.200.225
-- missing output --
no shutdown
```

The final HSRP configuration must meet these requirements:

- > The HSRP communication must be secured on both switches
- > Both switches must support more than 300 groups

Which two commands must be added to the HSRP configuration on Nexus A to complete these requirements? (Choose two)

- A. hsrp version 1
- B. hsrp version 2
- C. authentication text 1020
- D. authenticate md5 key-chain NHRP-KEYS
- E. authentication text 1010

**Answer: BD**

#### NEW QUESTION 251

A Cisco ACI engineer must configure an access port on a Cisco ACI leaf switch. The access policy should be configured so that it supports L3out connectivity concurrently with several EPGs that are mapped to this interface with the static port method. How should the access policy be configured?

- A. by linking the interface policy group to multiple Attachable Access Entity Profiles
- B. with a single Attachable Access Entity Profile that is linked to the corresponding routed domain and physical domain
- C. with two interface policy groups that are linked to the same interface profile port selector
- D. by mapping a single physical domain, mapped to the L3out and EPG interfaces

**Answer: D**

#### NEW QUESTION 255

The VMM domain is integrated between Cisco APICs and vCenter using a distributed vSwitch. The traffic must be blocked between a subset of endpoints in an EPG based on specific VM attributes and the rest of the VMs in that EPG. Which set of actions blocks this traffic?

- ☐ 1. Set Allow Microsegmentation under the EPG VMM Domain Association to "True"  
2. Set Intra-EPG Isolation to "Enforced" for the EPG  
3. Set Intra-EPG Isolation to "Enforced" for the uSeg EPG
- ☐ 1. Set Allow Microsegmentation under the EPG VMM Domain Association to "True"  
2. Set Intra-EPG Isolation to "Unenforced" for the EPG  
3. Set Intra-EPG Isolation to "Unenforced" for the uSeg EPG
- ☐ 1. Set Allow Microsegmentation under the EPG VMM Domain Association to "False"  
2. Set Intra-EPG Isolation to "Unenforced" for the EPG  
3. Set Intra-EPG Isolation to "Enforced" for the uSeg EPG
- ☒ 1. Set Allow Microsegmentation under the EPG VMM Domain Association to "True"  
2. Set Intra-EPG Isolation to "Enforced" for the EPG  
3. Set Intra-EPG Isolation to "Unenforced" for the uSeg EPG

- A. Option A
- B. Option B
- C. Option C
- D. Option D

**Answer: A**

#### NEW QUESTION 259

Refer to the exhibit.

```
<?xml version="1.0" encoding="UTF-8"?><imdata totalCount="1"><error  
code="403" text="Token was invalid (Error: Token timeout)"/></imdata>
```

An engineer configures a new application profile using REST API and receives this error message. Which method can be used before application profile can be configured?

- A. POST to aaaLogin
- B. POST to aaaRefresh
- C. POST to aaaLogout
- D. GET to aaaListDomains

**Answer: A**

#### Explanation:

[https://www.cisco.com/c/en/us/td/docs/switches/datacenter/aci/apic/sw/2-x/rest\\_cfg/2\\_1\\_x/b\\_Cisco\\_APIC\\_REST\\_API\\_Configuration\\_Guide/b\\_Cisco\\_APIC\\_REST\\_API\\_Configuration\\_Guide\\_chapter\\_01.html](https://www.cisco.com/c/en/us/td/docs/switches/datacenter/aci/apic/sw/2-x/rest_cfg/2_1_x/b_Cisco_APIC_REST_API_Configuration_Guide/b_Cisco_APIC_REST_API_Configuration_Guide_chapter_01.html)

#### Authentication

REST API username- and password-based authentication uses a special subset of request Universal Resource Identifiers (URIs), including **aaaLogin**, **aaaLogout**, and **aaaRefresh** as the DN targets of a POST operation. Their payloads contain a simple XML or JSON payload containing the MO representation of an **aaaUser** object with the attribute name and **pwd** defining the username and password: for example, **<aaaUser name='admin' pwd='password'/>**. The response to the POST operation will contain an authentication token as both a Set-Cookie header and an attribute to the **aaaLogin** object in the response named **token**, for which the XPath is **/imdata/aaaLogin/@token** if the encoding is XML. Subsequent operations on the REST API can use this token value as a cookie named **APIC-cookie** to authenticate future requests.

#### Subscription

The REST API supports the subscription to one or more MOs during your active API session. When any MO is created, changed, or deleted because of a user- or system-initiated action, an event is generated. If the event changes the data on any of the active subscribed queries, the APIC will send out a notification to the API client that created the subscription.

#### NEW QUESTION 262

An engineer evaluates a UI-based infrastructure management system capable of monitoring and deploying standardize VXLAN BGP EVPN deployments. The storage administrator else need the solution to manage the cisco MDS 9090 series Switches. Which solution meets these requirements?

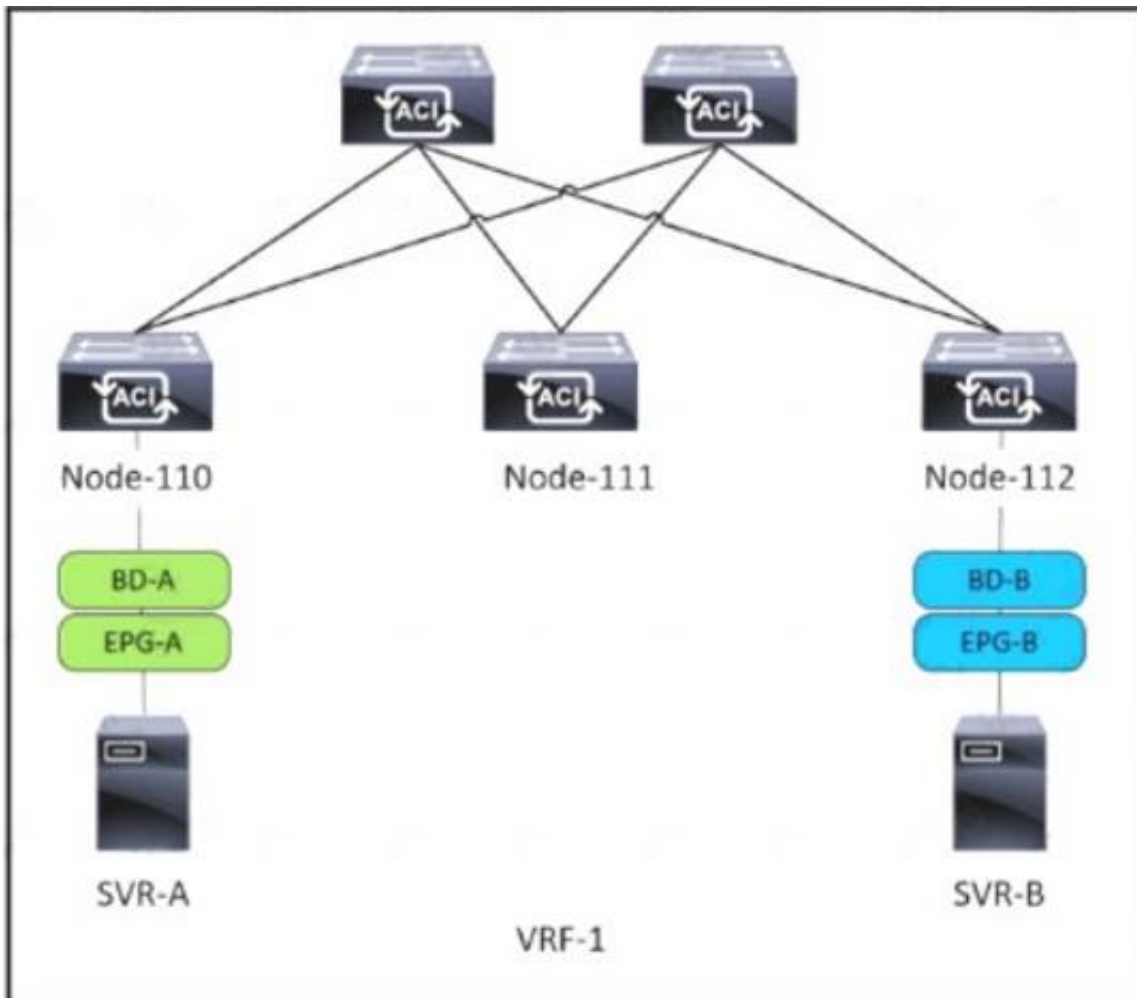
- A. Intersight
- B. UCSD
- C. Tetration
- D. DCNM

**Answer: D**

#### NEW QUESTION 265

Refer to the exhibit.





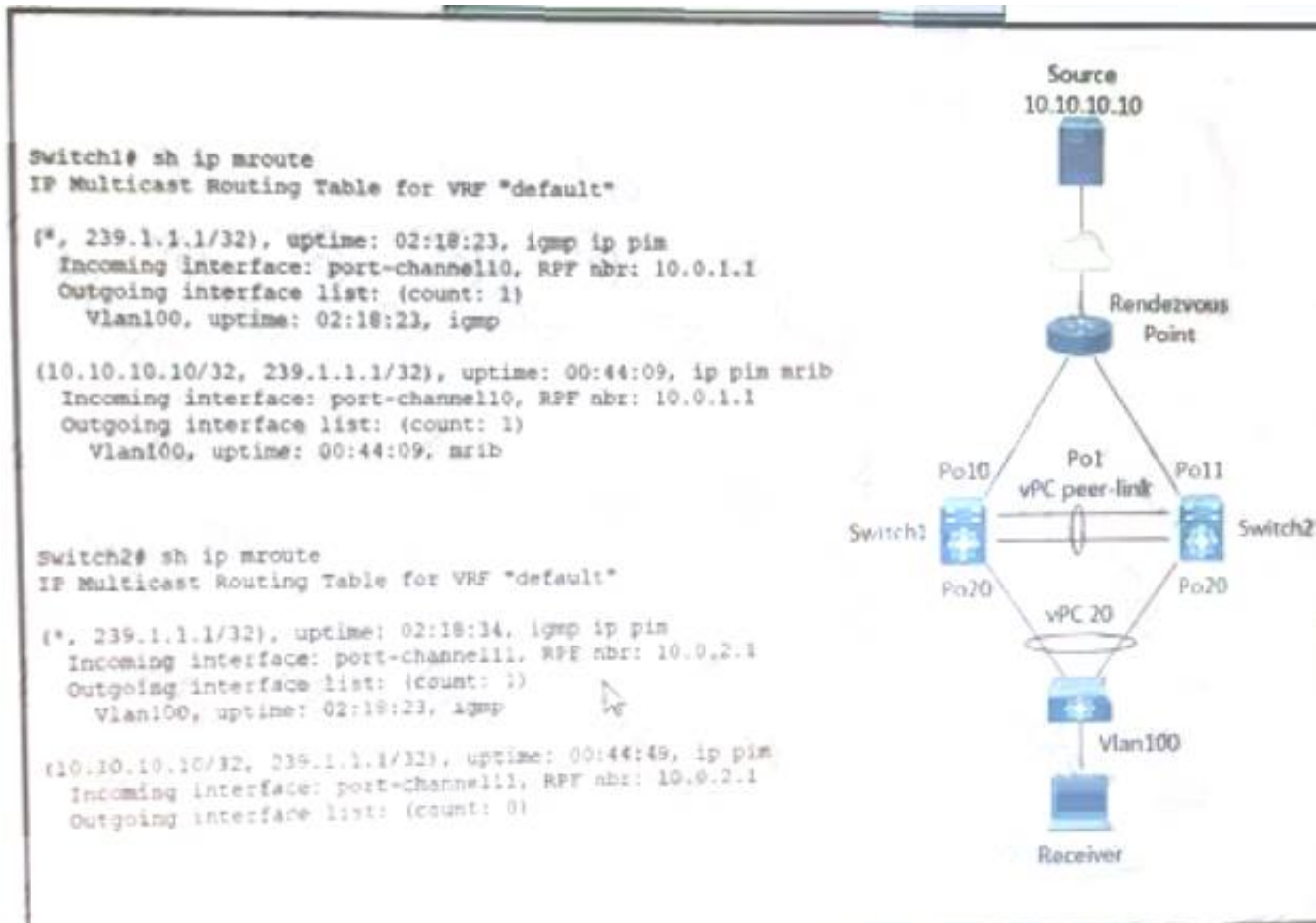
SVR-A in EPG-A/BD-A fails to reach SVR-B in EPG-B/BD-B. Which two conditions should be verified to analyze the traffic between the two EPGs? (Choose two.)

- A. A contract exists between EPG-A and EPG-B and allows the traffic.
- B. Limit Endpoint Learning is disabled on the bridge domain for EPG-B.
- C. SVR-B is learned as an endpoint in EPG-B from Node-112.
- D. EPG-A and EPG-B are excluded from the preferred group.
- E. The bridge domain for EPG-B floods ARP packets.

**Answer: AC**

#### NEW QUESTION 267

Refer to the exhibit.



A host with source address 10.10.10.10. sends traffic to multicast group 239.1.1.1. how do the vPC switches forward the multicast traffic?

- A. If multicast traffic is received on Po11 Switch2, the traffic is forwarded out only one Po20.
- B. If multicast traffic is received on Po10 Switch1, the traffic is forwarded out on Po1 and Po20.
- C. If multicast traffic is received on Po11 and Switch2, the traffic is dropped.
- D. If multicast traffic is received on Switch over the vPC peer-link, the traffic is dropped.

**Answer: C**

#### Explanation:

<https://www.cisco.com/c/en/us/support/docs/ip/multicast/214140-multicast-forwarding-in-vpc-based-on-loc.htm>

#### NEW QUESTION 272



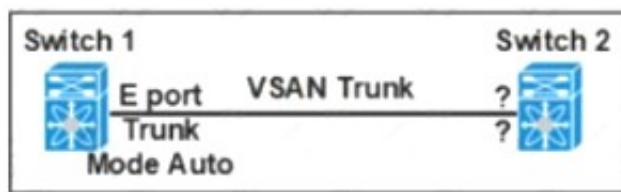
Which MAC address is an HSRP version 2?

- A. 0100.5E7F.FFFF
- B. 3799.9943.3000
- C. 0000.0C9F.F0C8
- D. 0000.0C07.AC1H

**Answer: C**

#### NEW QUESTION 277

Refer to the exhibit.



Which feature set must be used to configure on switch 2 to establish a VSAN trunk between switch 1 and switch 2?

- ☒ • E Port  
• Trunk Mode On
- ☐ • F Port  
• Trunk Mode Passive
- ☐ • N Port  
• Trunk Mode Active
- ☒ • NP Port  
• Trunk Mode Auto

- A. Option A
- B. Option B
- C. Option C
- D. Option D

**Answer: A**

#### NEW QUESTION 278

APIC EPG Resolution Immediacy is set to "Immediate" Which statement is true about the Deployment Immediacy for VMM domains associated to EPGs?

- A. The "Immediate" and "On demand" options require a port group to be created on the VDS.
- B. If "On demand" is selected, the policy is programmed in the hardware only when the APIC detects a VM created in the EPG.
- C. If "On demand" is selected the policy is programmed in the hardware only when the first packet is received through the data path.
- D. If "immediate" is selected the policy is programmed in the hardware as soon as the leaf is booted.

**Answer: C**

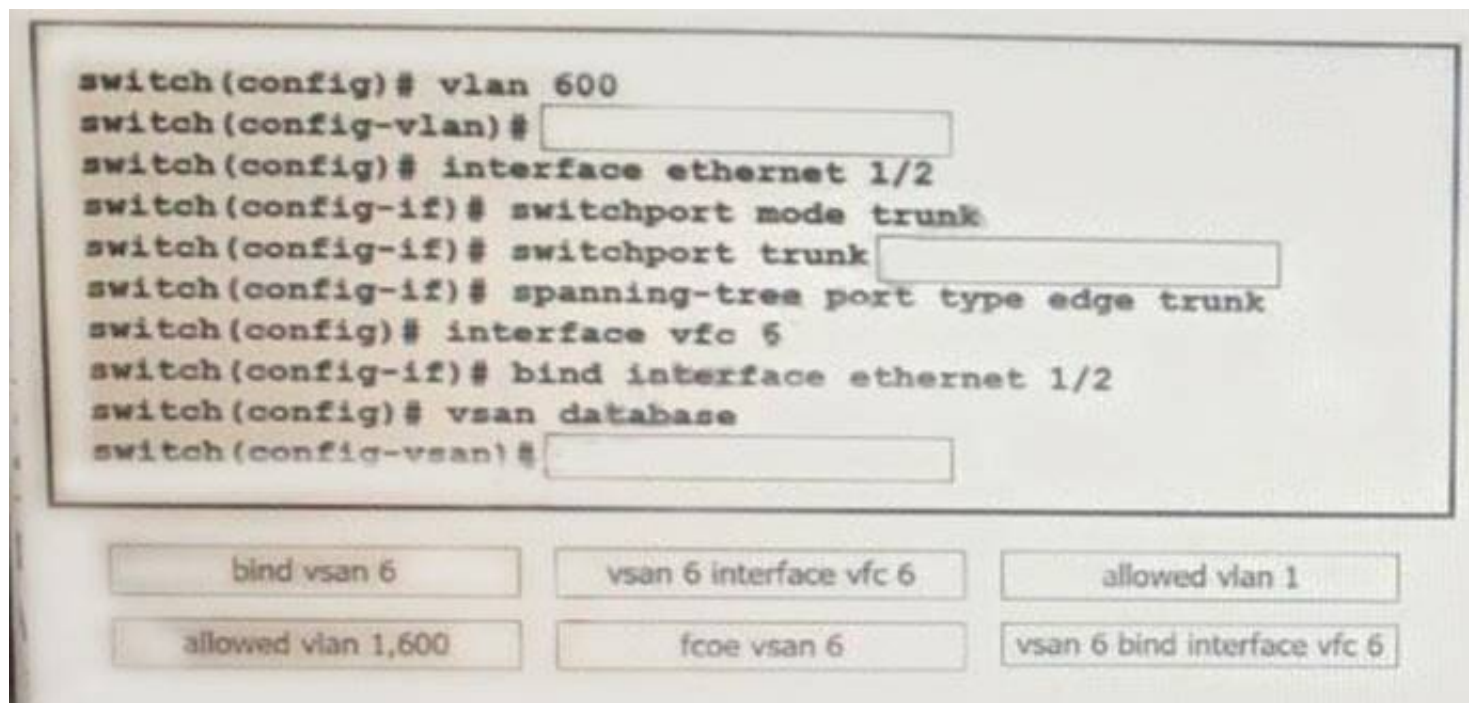
#### Explanation:

"Deployment Immediacy On demand — Specifies that the policy is programmed in the hardware policy CAM only when the first packet is received through the data path."

[https://www.cisco.com/c/en/us/td/docs/switches/datacenter/aci/apic/sw/1-x/aci-fundamentals/b\\_ACI-Fundament](https://www.cisco.com/c/en/us/td/docs/switches/datacenter/aci/apic/sw/1-x/aci-fundamentals/b_ACI-Fundament)

#### NEW QUESTION 283

A network engineer must configure FCoE on an interface of a Cisco MDS 9000 Series Switch. It should be used for mapping between VLAN 600 and VSAN 6. Drag and drop the commands from the bottom into their implementation order in the FCoE configuration. Not all commands are used.



- A. Mastered
- B. Not Mastered

**Answer:** A

**Explanation:**

Graphical user interface, text Description automatically generated

**NEW QUESTION 288**

An engineer needs to make an XML backup of Cisco UCS Manager The backup should be transferred using an authenticated and encrypted tunnel and it should contain all system and service profiles configuration Which command must be implemented to meet these requirements?

- ☐ create file scp://user@host35/backups/all-config9.bak all-configuration
- ☐ copy startup-config scp://user@host35/backups/all-config9.bak all-configuration
- ☒ create backup scp://user@host35/backups/all-config9.bak all-configuration
- ☐ copy running-config scp://user@host35/backups/all-config9.bak all-configuration

- A. Option A
- B. Option B
- C. Option C
- D. Option D

**Answer:** C

**Explanation:**

[https://www.cisco.com/en/US/docs/unified\\_computing/ucs/sw/cli/config/guide/1.4.1/CLI\\_Config\\_Guide\\_1\\_4\\_1](https://www.cisco.com/en/US/docs/unified_computing/ucs/sw/cli/config/guide/1.4.1/CLI_Config_Guide_1_4_1)  
 The following example creates a disabled all-configuration backup operation for hostname host35 and commits the transaction:

```
UCS-A# scope system
UCS-A /system* # create backup scp://user@host35/backups/all-config9.bak all-configuration disabled
Password:
UCS-A /system* # commit-buffer
UCS-A /system #
```

**NEW QUESTION 290**

An engineer must configure remote authentication on a Cisco UCS system. The user password must be encrypted before it is sent to the authentication server. The company security policy requires the server to be based on an open standard. Drag and drop the UCS CLI AAA configuration commands from the left into the order in which they must be implemented on the right. Not all commands are used.

commit-buffer	step 1
create server <ip address>	step 2
set key	step 3
scope radius	step 4
scope tacacs+	step 5
scope security	

- A. Mastered  
B. Not Mastered

**Answer:** A

**Explanation:**

UCS-A# scope security  
UCS-A /security # scope radius  
UCS-A /security/radius # create server radiusserv7  
UCS-A /security/radius/server\* # set key  
UCS-A /security/radius/server\* # commit-buffer

**NEW QUESTION 294**

Which two statements about the process of performing an EPLD upgrade on a Cisco MDS 9000 series Switch are true? (Choose two.)

- A. If an upgrade is interrupted, the upgrade continues after a connection is restored.  
B. The upgrade can be performed from the standby supervisor module.  
C. The active supervisor can be upgraded.  
D. Modules must be online to be upgraded.  
E. The Upgrade process disrupts only the module that is being upgraded.

**Answer:** DE

**Explanation:**

[https://www.cisco.com/c/en/us/td/docs/switches/datacenter/mds9000/sw/8\\_x/release\\_notes/epld/epld\\_rn\\_8x.htm](https://www.cisco.com/c/en/us/td/docs/switches/datacenter/mds9000/sw/8_x/release_notes/epld/epld_rn_8x.htm) Graphical user interface, text, application, email  
Description automatically generated

"On a Cisco Nexus 9500 platform switch that has two supervisor modules, upgrade the EPLDs for the standby supervisor and then switch the active supervisor to the standby mode to upgrade its EPLDs. The supervisor switchover is not disruptive to traffic on Cisco Nexus 9500 platform switches. On a switch that has only one supervisor module, you can upgrade the active supervisor, but this will disrupt its operations during the upgrade."

**Guidelines and Limitations**

When you upgrade or downgrade the EPLDs, observe the following guidelines and limitations:

- You can upgrade each module only when it is online. The EPLD upgrade is only disruptive to the module being upgraded.
- If you interrupt an EPLD upgrade or downgrade, the module must be upgraded again.
- In Cisco MDS 9000 Director Switches, EPLD upgrade or downgrade can only be executed from the active supervisor module. To upgrade the supervisor EPLDs nondisruptively, upgrade the standby supervisor and then switchover. After the new standby supervisor is online its EPLDs can be upgraded.
- In Cisco MDS 9000 Series Fabric Switches, be sure to specify 1 as the module number. The switch must be power cycled for the EPLDs to start running the new code.

Under Installation guidelines. [https://www.cisco.com/c/en/us/td/docs/switches/datacenter/nexus9000/sw/92x/epld-rn/nxos\\_n9K\\_epldRN\\_924.html](https://www.cisco.com/c/en/us/td/docs/switches/datacenter/nexus9000/sw/92x/epld-rn/nxos_n9K_epldRN_924.html)

**NEW QUESTION 296**

Refer to the exhibit.

```
switch# show install all impact epld n9000-epld.9.2.1.img
Compatibility check:
Module      Type      Upgradable      Impact      Reason
-----
1           SUP      YES             disruptive   Module Upgradable

Retrieving EPLD versions... Please wait.

Images will be upgraded according to following table:
Module      Type      EPLD      Running-Version      New-Version      Upg-Required
-----
1           SUP      MI FPGA      0x23                0x23            No
1           SUP      IO FPGA      0x06                0x06            No
1           SUP      MI FPGA2     0x23                0x23            No
```

A network engineer plans to upgrade the current software images of a Cisco Nexus switch. What is the impact of starting the EPLD upgrade?

- A. The switch reboots one time for the new EPLD versions to take effect.
- B. The switch reboots multiple times for the new EPLD versions to take effect.
- C. The switch skips the EPLD upgrade for each EPLD device of the switch.
- D. The switch skips the EPLD upgrade for MIFPGA and proceeds with the other EPLD devices.

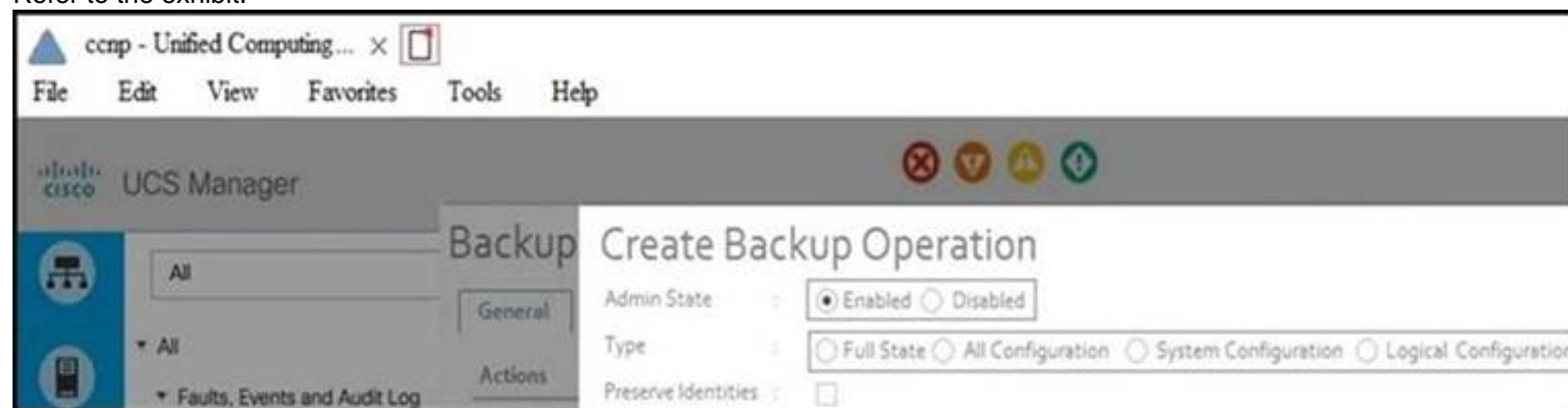
**Answer:** C

**Explanation:**

[https://www.cisco.com/c/en/us/td/docs/switches/datacenter/nexus9000/sw/92x/epld-rn/nxos\\_n9K\\_epldRN\\_924](https://www.cisco.com/c/en/us/td/docs/switches/datacenter/nexus9000/sw/92x/epld-rn/nxos_n9K_epldRN_924).

**NEW QUESTION 298**

Refer to the exhibit.



Which backup operation type does not include the Preserve Identities feature?

- A. logical configuration
- B. system configuration
- C. full state
- D. all configuration

**Answer:** C

**Explanation:**

This checkbox remains selected for All Configuration and System Configuration. Full State backup does not have Preserver Identity feature.

All configs, logical and system backups seem to allow “preserve identities”:

<https://books.google.pt/books?id=5VXUDwAAQBAJ&pg=PT699&lpg=PT699&dq=Preserve+Identities+feature+backup+ucs&source=bl&ots=daWxti4DV&sig=ACfU3U3X8UIPtS8EewzRIqTxqpyNVqOaNQ&hl=es419&sa=X&ved=2ahUKEwiYhtaxyMDqAhXFzIUKHXI8CzoQ6AEwC3oECAoQAQ#v=onepage&q=Preserve%20Identities%20feature%20backup%20ucs&f=false>

**NEW QUESTION 300**

Which two configuration settings are available in the in the cisco UCS flmware Auto sync server policy?

- A. User Notification
- B. User Acknowledge
- C. No Action
- D. Delayed Action
- E. Immediate Action

**Answer:** BC

**Explanation:**

[https://www.cisco.com/c/en/us/td/docs/unified\\_computing/ucs/sw/firmware-mgmt/gui/2-2/b\\_GUI\\_Firmware\\_M](https://www.cisco.com/c/en/us/td/docs/unified_computing/ucs/sw/firmware-mgmt/gui/2-2/b_GUI_Firmware_M) Following are the values for the Firmware Auto Sync Server policy: • User Acknowledge—Firmware on the server is not synchronized until the administrator acknowledges the upgrade in the Pending Activities dialog box. • No Action—No firmware upgrade is initiated on the server.

**NEW QUESTION 301**

Refer to the exhibit. A network engineer must configure an authentication solution for Cisco UCS with these conditions:

- Two-factor authentication must be enabled for all UCS user authentication.



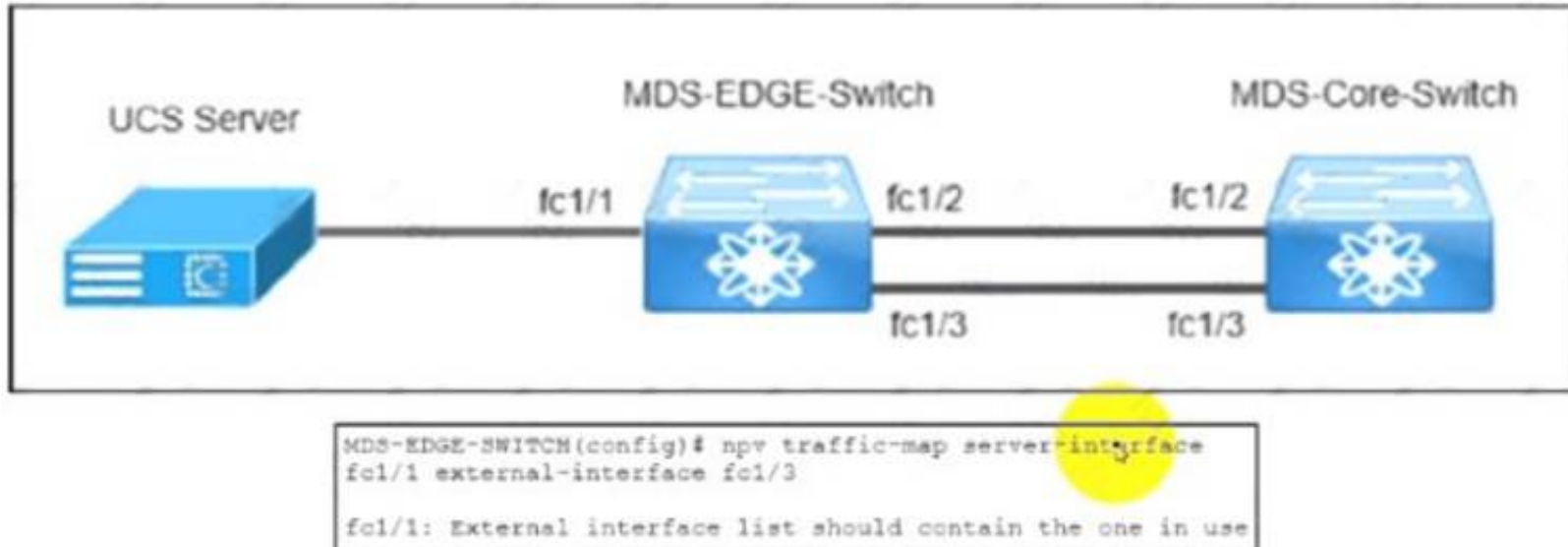
•All AAA packets must be encrypted and use TCP port 49 to establish communication. Which set of actions needs these requirements?

- A. Create the LDAP provider.Change the LDAP group rule in an LDAP provider.
- B. Create the RADIUS group mapping.Change the RADIUS group rule in a RADIUS provider.
- C. Remove the LDAP provider.Create a TACACS+ provider in user management.
- D. Delete the LDAP group mapping.Create a RADIUS provider in user management.

**Answer: C**

#### NEW QUESTION 304

Refer to the exhibit.



The MDS-EDGE-Switch and MDS-Core-Switch are configured with NPV and NPIV features The FLOGI from Cisco UCS is received by the MDS-Core-Switch on interface fc1/2. An engineer tried to move all traffic between the MDS-EDGE-Switch and MOS-Core-Switch from interface fc 1/2 to fc1/3, but the attempt failed. Which set of actions completes the configuration?

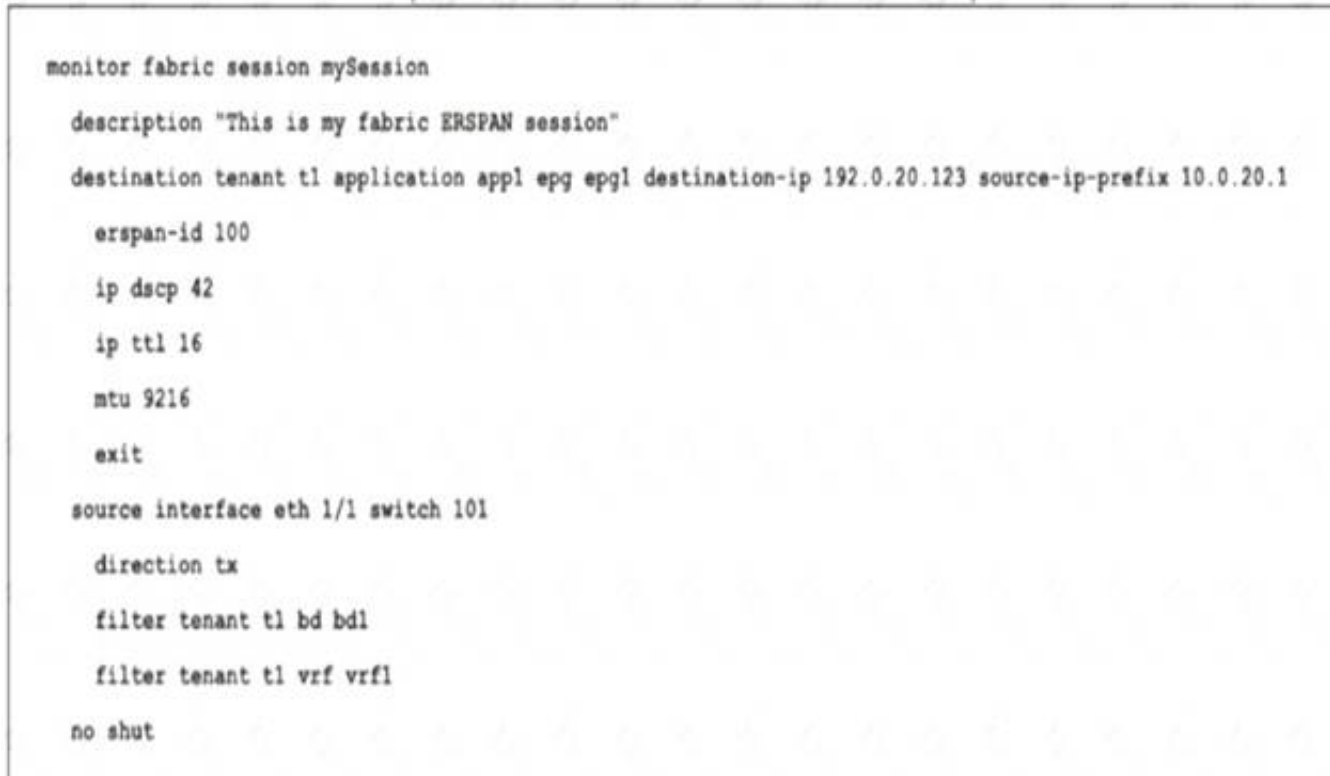
- ☐ Disable the NPV feature in the MDS-EDGE-Switch.  
Re-enable the NPV feature.  
Disable interface fc1/1.
- ☐ Disable the NPIV feature in the MDS-EDGE-Switch.  
Re-enable the NPIV feature.  
Disable interface fc1/3.
- ☐ Shut down fc1/1 in the MDS-EDGE-Switch.  
Re-apply the command.  
Enable interface fc1/1.
- ☒ Shutdown fc1/3 in the MDS-EDGE-Switch.  
Re-apply the command.  
Enable interface fc1/3.

- A. Option A
- B. Option B
- C. Option C
- D. Option D

**Answer: C**

#### NEW QUESTION 308

Refer to the exhibit.



An engineer needs to implement a monitoring session that should meet the following requirements:

- Monitor traffic from leaf to leaf switches on a Cisco ACI network
- Support filtering traffic from Bridge Domain or VRF

Which configuration must be added to meet these requirements?

- A. interface eth 1/2 switch 101
- B. interface eth 1/2 leaf 101
- C. filter tenant t1 application app1 epg epg1
- D. application epg epg1 app1

**Answer: C**

#### NEW QUESTION 309

An engineer needs to perform a backup of user roles and locales from Cisco UCS Manager to replicate the setting to a different fabric interconnect. The engineer wants to review the file before importing it to a target fabric interconnect. Which backup type must be selected to meet these requirements?

- A. all configuration
- B. system configuration
- C. logical configuration
- D. full state

**Answer: B**

#### Explanation:

[https://www.cisco.com/c/en/us/td/docs/unified\\_computing/ucs/ucs-manager/GUI-User-Guides/Admin-Managem](https://www.cisco.com/c/en/us/td/docs/unified_computing/ucs/ucs-manager/GUI-User-Guides/Admin-Managem)

- **System configuration**—An XML file that includes all system configuration settings such as **usernames, roles, and locales**. You can use the file generated from this backup to import these configuration settings to the original fabric interconnect or to a different fabric interconnect. You cannot use this file for a system restore.

#### NEW QUESTION 314

An engineer must configure Cisco UCS Manager to accept only HTTPS connections that use TLS 1.2. The cipher security level must be high and the length of the keying key value must be 2048 bits. Drag and drop the code snippets from the right onto the blanks in the code on the left to accomplish these goals. Not all commands are used.

```

scope security
  create keyring ciscokring
  set modulus
  commit-buffer

scope system
  scope services
    enable https
    set https port 8443
    set https
    set https cipher-suite-mode
    set https ssl-protocol
        
```

keyring ciscokring

high-strength

1024 bits

mod2048

tls1-2

secure

- A. Mastered
- B. Not Mastered

**Answer: A**

#### Explanation:

Graphical user interface, application Description automatically generated

#### NEW QUESTION 318

A network architect must redesign a data center on OSPFv2. The network must perform fast reconvergence between directly connected switches. Which two actions must be taken to meet the requirement? (Choose two)

- A. Configure all links on AREA 0.
- B. Implement a virtual link between the switches.
- C. Use OSPF point-to-point links only.
- D. Set low OSPF hello and DEAD timers.
- E. Enable BFD for failure detection.

**Answer: CD**

#### NEW QUESTION 322

Refer to the exhibit.

```
vlan 10
 fcoe vsan 10

interface ethernet 1/3
 spanning-tree port type edge trunk
 switchport mode trunk
 switchport trunk allowed vlan 1, 10
```

An engineer must configure FCoE on a Cisco Nexus switch. Which two command sets complete this configuration? (Choose two.)

- ☒ interface vfc 10  
bind interface fcoe-vfc 1/3  
no shut
- ☐ vsan database  
vsan 10 interface ethernet 1/3
- ☒ interface fcoe 10  
bind interface ethernet 1/3  
no shut
- ☐ interface vfc 10  
bind interface ethernet 1/3  
no shut
- ☐ vsan database  
vsan 10 interface vfc 10

- A. Option A
- B. Option B
- C. Option C
- D. Option D
- E. Option E

Answer: DE

Explanation:

```
switch# configure terminal
```

```
switch(config)# vsan database
```

```
switch(config-vsan)# vsan 2 interface vfc 4
```

This example shows how to bind a virtual Fibre Channel interface to an Ethernet interface:

```
switch# configure terminal
```

```
switch(config)# interface vfc 4
```

```
switch(config-if)# bind interface ethernet 1/4
```

[https://www.cisco.com/c/en/us/td/docs/switches/datacenter/nexus5000/sw/fcoe/421\\_n1\\_1/b\\_Cisco\\_n5k\\_fcoe\\_config\\_gd\\_re\\_421\\_n1\\_1/Cisco\\_n5k\\_fcoe\\_config\\_gd\\_re\\_421\\_n1\\_1\\_chapter4.html](https://www.cisco.com/c/en/us/td/docs/switches/datacenter/nexus5000/sw/fcoe/421_n1_1/b_Cisco_n5k_fcoe_config_gd_re_421_n1_1/Cisco_n5k_fcoe_config_gd_re_421_n1_1_chapter4.html)

#### NEW QUESTION 326

A customer undergoes an IT security review assessment. The auditor must have read-only access to the Cisco Nexus 9000 Series Switch to perform the configuration review. The customer implements this security role for the auditor:

role name audit

rule 1 permit command \* rule 2 - Output omitted username auditor password C4SAFF0B96EB0045\$c0 role audit Which configuration snippet must complete the configuration?

- A. deny command write\*
- B. permit command enable
- C. permit command show \*
- D. deny command configure terminal

**Answer:** D

#### NEW QUESTION 327

An engineer implements an ACI fabric and must implement microsegmentation of endpoints within the same IP subnet using a network-based attribute. The attribute mapping must allow IP subnet independence. Which attribute must be selected?

- A. MAC address
- B. Custom
- C. Tag
- D. IP

**Answer:** D

#### Explanation:

If you want to use a network-based attribute and classify IP addresses in the same subnet, you must use the MAC-based network attribute. IP-based microsegmented EPGs do not support classification for IP addresses in the same subnet.

[https://www.cisco.com/c/en/us/td/docs/switches/datacenter/aci/apic/sw/3-x/virtualization/b\\_ACI\\_Virtualization\\_](https://www.cisco.com/c/en/us/td/docs/switches/datacenter/aci/apic/sw/3-x/virtualization/b_ACI_Virtualization_)

#### NEW QUESTION 332

An engineer is seeking the most optimal on demand CPU performance while configuring the BIOS settings of a UCS C-series rack mount server. What setting will accomplish this goal?

- A. C0/C1 state
- B. C6 Retention
- C. C2 state
- D. C6 non-Retention

**Answer:** B

#### NEW QUESTION 334

A Cisco UCS C-Series server is installed at a data center. The server should be managed by the Cisco UCS Manager by using a single cable for management and data traffic. Which configuration should be applied after the Physical connection is established?

- A. UCS-A# scope server 1 UCS-A /server# scope cimcUCS-A /server/cimc # scope mgmt-conn sidebandUCS-A /server/cimc # mgmt-conn-state enabled UCS-A /server/cimc/mgmt-conn\* # commit-buffer
- B. UCS-A# scope chassis 1 UCS-A /chassis# scope cimcUCS-A /chassis/cimc # scope mgmt-conn sidebandUCS-A /chassis/cimc/mgmt-conn # mgmt-conn-state enabled UCS-A /chassis/cimc/mgmt-conn\* # commit-buffer
- C. UCS-A# scope chassis 1 UCS-A /chassis# scope cimcUCS-A /chassis /cimc # set mgmt-conn-state enabled UCS-A /chassis /cimc/mgmt-conn\* # commit-buffer
- D. UCS-A# scope server 1 UCS-A /server# scope cimcUCS-A /server/cimc # scope mgmt-conn sidebandUCS-A /server/cimc/mgmt-conn #set mgmt-conn-state enabled UCS-A /server/cimc/mgmt-conn\* # commit-buffer

**Answer:** D

#### Explanation:

Example

UCS-A# scope server 1 UCS-A /server # scope cimc

UCS-A /server/cimc # scope mgm

UCS-A /server/cimc # scope mgmt-conn

UCS-A /server/cimc # scope mgmt-conn sideband

UCS-A /server/cimc/mgmt-conn # set mgmt-conn-state enabled UCS-A /server/cimc/mgmt-conn\* # commit-buffer

UCS-A /server/cimc/mgmt-conn

[https://www.cisco.com/c/en/us/td/docs/unified\\_computing/ucs/c-series\\_integration/ucsm3-1/b\\_C-Series-Integration\\_UCSM3-1/b\\_C-Series-Integration\\_UCSM3-1\\_chapter\\_010.html](https://www.cisco.com/c/en/us/td/docs/unified_computing/ucs/c-series_integration/ucsm3-1/b_C-Series-Integration_UCSM3-1/b_C-Series-Integration_UCSM3-1_chapter_010.html)

#### NEW QUESTION 339

An engineer is asked to use SaaS to manage Cisco computing. Which two items are needed to accomplish the task? (Choose two.)

- A. UCS Manager
- B. Node name/Serial Number
- C. Device/Claim ID
- D. UCS Central
- E. Intersight

**Answer:** AE

#### Explanation:

<https://www.cisco.com/c/en/us/products/collateral/cloud-systems-management/intersight/intersight-ds.html>

#### NEW QUESTION 341

An engineer is configuring a vHBA template in Cisco UCS Manager. The engineer needs to specify the logical addresses used by the vHBA and the path through which the SAU Traffic flows. Which two resources must be specified in the vHBA template? (Choose two)

- A. WWIN
- B. VLAN ID
- C. Fabric ID
- D. MAC addresses
- E. WWVPN Pool



Answer: AE

**NEW QUESTION 345**

Which adjacency server configuration makes two OTV edge devices located in the same site bring up the dual-site adjacency?

A)

Nexus-1:

```
interface Ethernet1/2
ip address 20.1.1.1/24
```

```
interface Overlay200
otv use-adjacency-server 20.1.1.2 unicast-only
otv join-interface Ethernet1/2
```

Nexus-2:

```
interface Ethernet1/2
ip address 20.1.1.2/24
```

```
interface Overlay200
otv use-adjacency-server 20.1.1.1 unicast-only
otv join-interface Ethernet1/2
```

B)

Nexus-1:

```
interface Ethernet1/2
ip address 20.1.1.1/24
```

```
interface Overlay200
otv adjacency-server unicast-only
otv join-interface Ethernet1/2
```

Nexus-2:

```
interface Ethernet1/2
ip address 20.1.1.2/24
```

```
interface Overlay200
otv join-interface Ethernet1/2
otv adjacency-server unicast-only
otv use-adjacency-server 20.1.1.1 unicast-only
```

C)

Nexus-1:

```
interface Ethernet1/2
ip address 20.1.1.1/24
```

```
interface Overlay200
otv adjacency-server unicast-only
otv join-interface Ethernet1/2
```

Nexus-2:

```
interface Ethernet1/2
ip address 20.1.1.2/24
```

```
intevrface Overlay200
otv adjacency-server unicast-only
otv join-interface Ethernet1/2
```

D)

Nexus-1:

```
interface Ethernet1/2
 ip address 20.1.1.1/24
```

```
interface Overlay200
 otv adjacency-server unicast-only
 otv join-interface Ethernet1/2
```

Nexus-2:

```
interface Ethernet1/2
 ip address 20.1.1.2/24
```

```
intevrface Overlay200
 otv adjacency-server unicast-only
 otv join-interface Ethernet1/2
```

- A. Option A
- B. Option B
- C. Option C
- D. Option D

Answer: B

#### NEW QUESTION 349

An engineer is automating a Cisco Nexus 9000 Series Switch using the NX-OS API. Which code snippet creates a local user called "tacuser" with an expiration date of 22 November?

A)

☐ POST http://10.91.12.14/api/mo/sys/userext.json

```
{
  "aaaUserEp": {
    "children": [
      {
        "aaaUser": {
          "attributes": {
            "allowExpired": "no",
            "expiration": "2021-11-22T00:00:00.000+00:00",
            "expires": "yes",
            "name": "tacuser",
            "pwd": "AKw47PS3:g4M410:Fs01",
            "pwdEncryptType": "clear"
          }
        }
      }
    ]
  }
}
```

B)

○ GET http://10.12.14.91/api/mo/sys/userext/user-tacuser.json

```
{
  {
    "aaaUserEp": {
      "attributes": {
        "childAction": "add",
        "dn": "sys/userext",
        "lcOwn": "local",
        "modTs": "2021-11-22T00:00:00.000+00:00",
        "pwdSecureMode": "yes",
        "pwdStrengthCheck": "no",
        "status": "",
        "uid": "0"
      }
    }
  }
}
```

C)

○ HEAD http://10.14.91.12/api/policymgr/mo/uni/userext.json

```
{
  "aaaUser": {
    "name": "tacuser",
    "phone": "",
    "pwd": "H97NW894SDASgQL",
    "expire": "yes",
    "aaaUserDomain": {
      "description": "",
      "name": "all",
      "rn": "userdomain-all"
    }
  }
}
```

○ PUT http://10.91.14.12/api/policymgr/mo/uni/

```
{
  "aaaUser": {
    "email": "tacuser@cisco.com",
    "name": "tacuser",
    "createdAt": "2020-09-11T00:00:00.090210Z",
    "authorizations": {
      "authorizedZone": "VDC1",
      "expiresAt": "2021-11-22T00:00:00.000+00:00",
      "authorizedByName": "OPS",
      "authorizedByEmail": "ops@company.com"
    }
  }
}
```

- A. Option A
- B. Option B
- C. Option C

Answer: A

#### NEW QUESTION 352

A customer asks an engineer to develop a framework that will be used to replace the process of the manual device configuration of Cisco NX-OS devices. The engineer plans to use the programmatic interface that meets these requirements:

- The development team is familiar with Windows-based scripting environment using PowerShell.
- The customer's security requirements mandate the use of HTTPS transport.

Which solution must be used to meet these requirements?

- A. NX-API
- B. VISORE
- C. Open Agent Container
- D. NETCONF-YANG

Answer: A

#### NEW QUESTION 354



A network engineer must create a script to quickly verify IP reachability for multiple hosts using ping from the Cisco NX-OS switches. The script should use the management VRF and exit the shell after execution Which script should be used to achieve this objective?

- ☐ **A**

```
tclsh
foreach address {
  192.168.254.1
  192.168.254.2
  192.168.254.3
  192.168.254.4
} {ping $address source 192.168.254.254}
tclquit
```
- ☐ **B**

```
tclsh
foreach address {
  192.168.254.1
  192.168.254.2
  192.168.254.3
  192.168.254.4
} {ping $address source 192.168.254.254}
}
```
- ☐ **C**

```
tclsh
foreach address {
  192.168.254.1
  192.168.254.2
  192.168.254.3
  192.168.254.4
} {ping $address vrf management source 192.168.254.254}
}
```
- ☒ **D**

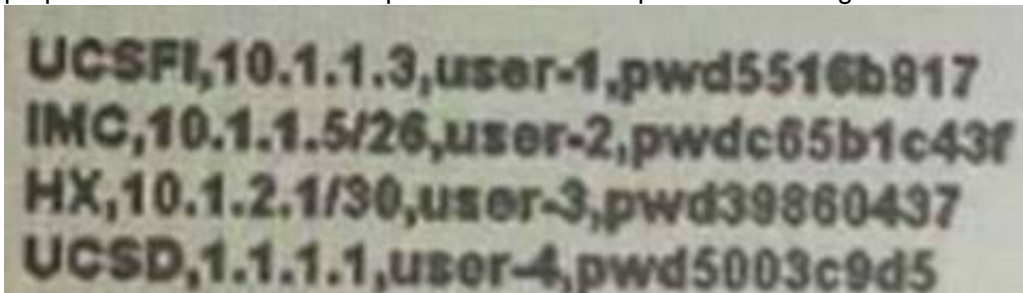
```
tclsh
foreach address {
  192.168.254.1
  192.168.254.2
  192.168.254.3
  192.168.254.4
} {cli ping $address vrf management source 192.168.254.254}
}
tclquit
```

- A. Option A
- B. Option B
- C. Option C
- D. Option D

**Answer: D**

#### NEW QUESTION 359

An engineer configures an intersight virtual application and must claim over 200 targets. The engineer starts the Claim target procedure. The engineer has prepared this initial comma- separated value file to provision the targets:



```
UCSFI,10.1.1.3,user-1,pwd5516b917
IMC,10.1.1.5/26,user-2,pwdc65b1c43f
HX,10.1.2.1/30,user-3,pwd39860437
UCSD,1.1.1.1,user-4,pwd5003c9d5
```

Which Information must be included In the comma-separated value flit to provision the targets?

- A. FQON, AD name, IP address, email
- B. location, address, nam
- C. password
- D. certificate, user name, passwor
- E. email
- F. target type, hostname or P address, user name, password

**Answer: A**

#### NEW QUESTION 362

Refer to the exhibit.

An engineer must configure a Fibre Channel device alias named TEST for a device attached to port fc1/9 of a Cisco Nexus Series Switch. Which command set completes the configuration?

- A) 

```
SITE-A-MDS-Fabric-A# configure terminal
SITE-A-MDS-Fabric-A (config)# device-alias database
SITE-A-MDS-Fabric-A (config-device-alias-db)# device-alias name TEST pwwn 50:00:14:42:d0:0c:f5:20
SITE-A-MDS-Fabric-A (config-device-alias-db)# device-alias commit
```
- B) 

```
SITE-A-MDS-Fabric-A# configure terminal
SITE-A-MDS-Fabric-A (config)# device-alias database
SITE-A-MDS-Fabric-A (config-device-alias-db)# device-alias name TEST pwwn 50:00:14:42:d0:0c:f5:20
SITE-A-MDS-Fabric-A (config-device-alias-db)# exit
```
- C) 

```
SITE-A-MDS-Fabric-A# configure terminal
SITE-A-MDS-Fabric-A (config)# device-alias database
SITE-A-MDS-Fabric-A (config-device-alias-db)# device-alias name TEST pwwn 50:00:14:42:d0:0c:f5:20
SITE-A-MDS-Fabric-A (config-device-alias-db)# exit
```



```
SITE-A-MDS-Fabric-A# configure terminal
SITE-A-MDS-Fabric-A (config)# device-alias database
SITE-A-MDS-Fabric-A (config-device-alias-db)# device-alias name TEST pwwn 50:00:14:40:47:b0:0c:f5
SITE-A-MDS-Fabric-A (config-device-alias-db)# exit
```

D)

```
SITE-A-MDS-Fabric-A# device-alias database
SITE-A-MDS-Fabric-A (device-alias-db)# device-alias name TEST pwwn 50:00:14:40:47:b0:0c:f5
SITE-A-MDS-Fabric-A (config-device-alias-db)# device-alias commit
```

- A. Option A
- B. Option B
- C. Option C
- D. Option D

Answer: B

#### NEW QUESTION 363

Refer to the exhibit.

```
int fcl/1-2
switchmode rate dedicated
channel-group 100 force
no shut

int san-port-channel 100
switchport trunk allowed vsan 1
switchport trunk allowed vsan add 100
```

An engineer is connecting a Cisco MDS 9700 Series Multilayer Director to a downstream Cisco Nexus 5672UP switch. Which command set must be used to complete the configuration?

A)

```
int san-port-channel 100
switchport mode te
switchport trunk mode off
channel mode on
```

B)

```
int san-port-channel 100
switchport mode te
switchport trunk mode auto
channel mode on
```

C)

```
int san-port-channel 100
switchport mode e
switchport trunk mode on
channel mode active
```

D)

```
int port-channel 100
switchport mode e
switchport trunk mode on
channel mode active
```

- A. Option A
- B. Option B
- C. Option C
- D. Option D

**Answer:** A

#### NEW QUESTION 368

An engineer performs a Cisco UCS C480 ML M5 installation from a Cisco UCS Manager. As a part of the design, the server must perform an iSCSI boot from the storage array. Which configuration must be performed in the SAN settings in the root organization to satisfy that condition?

- A. Implement a WWPN pool
- B. Create a virtual iSCSI vNIC
- C. Enable a host SAN pool
- D. Create an IQN suffix pool

**Answer:** D

#### NEW QUESTION 370

An engineer is asked to manage a large-scale data center and collect information from multiple Cisco NX-OS devices using Cisco NX-OS Data Management Engine model. Which technology should be used to accomplish this goal?

- A. NX-API REST
- B. NETCONF
- C. JSON-RPC
- D. NX Yang

**Answer:** A

#### Explanation:

[https://www.cisco.com/c/en/us/td/docs/switches/datacenter/nexus9000/sw/7-x/programmability/guide/b\\_Cisco\\_Nexus\\_9000\\_Series\\_NX-OS\\_Programmability\\_Guide\\_7x/b\\_Cisco\\_Nexus\\_9000\\_Series\\_NXOS\\_Programmability\\_Guide\\_7x\\_chapter\\_010001.pdf](https://www.cisco.com/c/en/us/td/docs/switches/datacenter/nexus9000/sw/7-x/programmability/guide/b_Cisco_Nexus_9000_Series_NX-OS_Programmability_Guide_7x/b_Cisco_Nexus_9000_Series_NXOS_Programmability_Guide_7x_chapter_010001.pdf)

#### NEW QUESTION 373

A customer has a requirement to deploy a cloud service and needs to have full control over the underlying OS, data, and application. Which cloud model meets this requirement?

- A. PaaS
- B. MaaS
- C. IaaS
- D. SaaS

**Answer:** C

#### Explanation:

Traditional IT is responsible for Application, Data, Runtime, Middleware, OS, Virtualization, Servers, Storage, Networking. IaaS = Infrastructure as a Service - is responsible for OS, Virtualization, Servers, Storage, Networking. SaaS = Software as a Service - Software deployed by the cloud provider - is responsible for nothing. PaaS = Platform as a Service - Software can be deployed by the customer building their own application | is responsible for Data and Application.

#### NEW QUESTION 375

A network engineer must configure a Fibre Channel interface on the Cisco MDS 9000 Series Switch. The configuration must meet these requirements:

- The interface must be disabled when the bit error threshold is exceeded
- Buffer-to-buffer credits must be set to the maximum value
- The interface must have full bandwidth allocated for its port group

Which command set configures a Fibre Channel interface that meets these requirements?

- A.

```
interface fc1/1
switchport bit-errors
switchport fcrxbbcredit 220 mode Fx
switchport rate-mode dedicated
```
- B.

```
interface fc1/1
switchport ignore bit-errors
switchport fcrxbbcredit 255 mode Fx
no switchport rate-mode
```

- C.  
interface fc1/1  
no switchport ignore bit-errors  
switchport fcrxbcredit 255 mode Fx  
switchport rate-mode dedicated
- D.  
interface fc1/1  
no switchport bit-errors  
switchport fcrxbcredit 220 mode Fx  
no switchport rate-mode

Answer: A

NEW QUESTION 378

Drag and drop the characteristics from the left onto the NAS protocols on the right. Some characteristics are used more than once

used to boot VHDX files

used to boot VMDK files

uses lease-based model for file locking

used to provide shared storage for hypervisors

NFS

SMB/CIFS

- A. Mastered
- B. Not Mastered

Answer: A

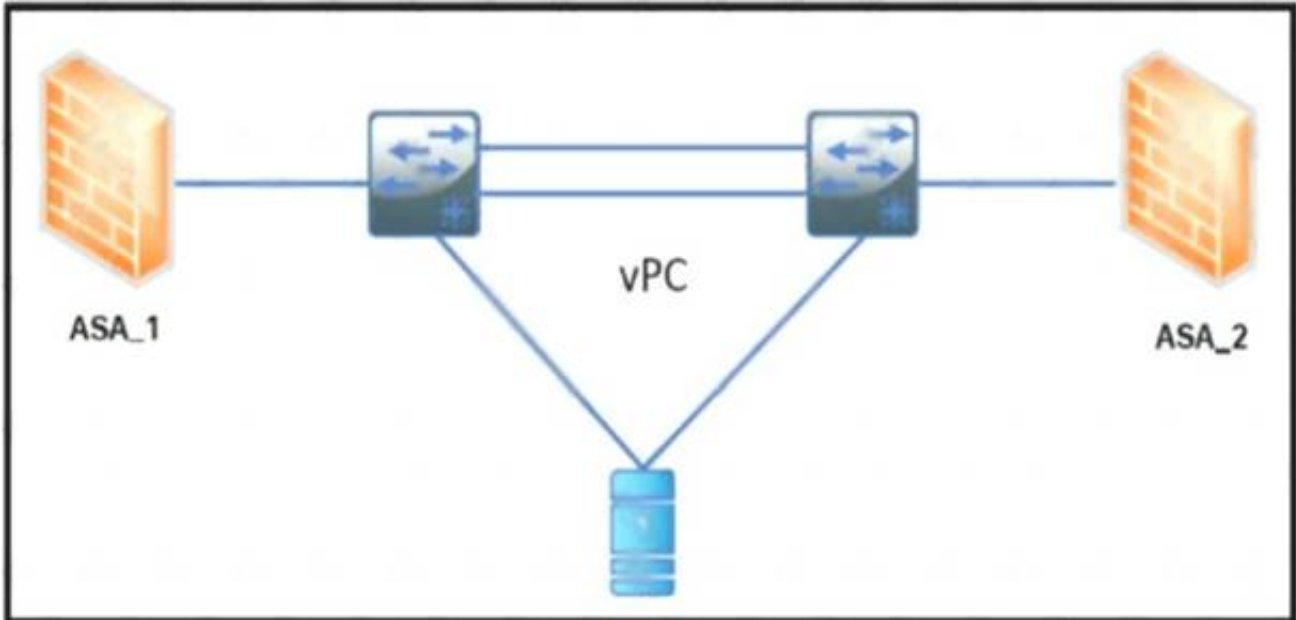
Explanation:

Diagram Description automatically generated

- NFS:
- Used to boot VMDK files
  - Uses lease-based model for file locking
  - Used to provide shared storage for hypervisors
- SMB/CIFS:
- Used to boot VHDX files
  - Used to provide shared storage for hypervisors

NEW QUESTION 382

Refer to the exhibit



The ASA 1 acts as a Layer 3 gateway for all servers. The servers lose the gateway connectivity when the vPC peer links go down and the vPC keepalive remains up. Which action improves the high availability in the network?

- A. Create a static port channel with two links from each firewall to the switch
- B. Activate the vPC orphan-port suspend feature on the switch ports connected to the firewall
- C. Implement the IP reoVect feature on the vPC devices
- D. Enable the vPC peer gateway feature on the vPC devices



**Answer:** D

#### NEW QUESTION 386

An engineer must implement access control for Cisco UCS Manager. The configuration must meet these requirements.

- All users and user groups must be configured using Active Directory.
- User1 must have full access to the storage operations configuration.

Which action must be performed on Cisco UCS to meet the requirements?

- A. Create a custom role for the user and RADIUS for the role-mapping for Active Directory.
- B. Execute a built-in role for the user and LDAP for the role-mapping for Active Directory.
- C. Create a custom role for the user and LDAP for the role-mappings for Active Directory.
- D. Execute a built-in role for the user and RADIUS for the role-mapping for Active Directory.

**Answer:** B

#### NEW QUESTION 389

A company plans to deploy a Cisco HyperFlex solution for data-intensive applications and databases. The proposed solution should offer the highest performance with high consistency and low latency. Which Cisco HyperFlex storage configuration should be used?

- A. All-HDD
- B. All-NVMe
- C. All-Flash
- D. Hybrid

**Answer:** B

#### NEW QUESTION 391

An engineer configures a storage environment for a customer with high-security standards. The secure environment is configured in vSAN 50. The customer wants to maintain a configuration and active databases and prevent unauthorized switches from joining the fabric. Additionally, the switches must prevent rogue devices from connecting to their ports by automatically learning the WWPNs of the ports connected to them for the first time. Which two configuration sets must be used to meet these requirements? (Choose two.)

☒ **port-security enable**  
**port-security activate vSAN 50**

☒ **clear fabric-binding activate vSAN 50**  
**fabric-binding activate vSAN 50**

☐ **fabric-binding activate vSAN 50 force**

☐ **fcsp enable**  
**fcsp auto-active**

☐ **fcsp dhchap hash md5 sha1**

- A. Option A
- B. Option B
- C. Option C
- D. Option D
- E. Option E

**Answer:** AC

#### NEW QUESTION 392

A customer asks an engineer to develop an orchestration solution to automate repetitive tasks. The customer operations team must integrate the tool with its existing automation framework. The customer asks for the tool to support these requirements:

- The customer's security requirements mandate the use of SSH transport.
- No extra software must be installed on the managed systems.
- The support staff has limited knowledge of scripting languages, so the solution must be easy to read and use declarative language.

Which solution meets these requirements?

- A. PowerShell
- B. Ansible
- C. Chef
- D. Puppet

**Answer:** B

#### NEW QUESTION 396

An engineer must implement a new VRF that permits communication between all endpoint groups (EPGs) by default. The new EPGs and bridge domains (BDs) that are created in the new VRF must not require additional configuration to permit traffic between the newly created EPGs or BDs. Which action accomplishes this?

goal'

- A. Provide and consume a permit any contract on the VRF level
- B. Create a VRF in the common tenant.
- C. Place all EPGs in the preferred group.
- D. Implement a global contract.

Answer: C

NEW QUESTION 401

A network engineer must configure a power redundancy policy on a Cisco UCS C-Series Rack Server. The power redundancy must support two power sources being used to power the server. Which configuration should be applied to meet the requirement?

- ☐ server# scope org /  
server /org # scope psu-policy  
server /org/psu-policy # set redundancy N+1  
server /org/psu-policy\* # commit-buffer
- ☐ server# scope org /  
server /org # scope psu-policy  
server /org/psu-policy # set psu-redundancy-policy grid  
server /org/psu-redundancy-policy\* # commit-buffer
- ☐ server# scope org /  
server /org # scope psu-policy  
server /org/psu-policy # set psu-redundancy-policy N+1  
server /org/psu-redundancy-policy\* # commit-buffer
- ☐ server# scope org /  
server /org # scope psu-policy  
server /org/psu-policy # set redundancy grid  
server /org/psu-policy\* # commit-buffer

- A. Option A
- B. Option B
- C. Option C
- D. Option D

Answer: D

Explanation:

[https://www.cisco.com/c/en/us/td/docs/unified\\_computing/ucs/ucs-manager/CLI-User-Guides/Server-Mgmt/3-1](https://www.cisco.com/c/en/us/td/docs/unified_computing/ucs/ucs-manager/CLI-User-Guides/Server-Mgmt/3-1) The command "N+1" is invalid. The command should be "n-plus-1"

	Command or Action	Purpose
Step 1	UCS-A# scope org org-name	Enters organization mode for the specified organization. To enter the root organization mode, type / as the org-name .
Step 2	UCS-A /org # scope psu-policy	Enters PSU policy mode.
Step 3	UCS-A /org/psu-policy # set redundancy (grid   n-plus-1   non-redund )	<p>Specifies one of the following redundancy types:</p> <ul style="list-style-type: none"> <li>• <b>grid</b> –Two power sources are turned on, or the chassis requires greater than N+1 redundancy. If one source fails (which causes a loss of power to one or two PSUs), the surviving PSUs on the other power circuit continue to provide power to the chassis.</li> <li>• <b>n-plus-1</b> –The total number of PSUs to satisfy non-redundancy, plus one additional PSU for redundancy, are turned on and equally share the power load for the chassis. If any additional PSUs are installed, Cisco UCS Manager sets them to a "turned-off" state.</li> <li>• <b>non-redund</b> –All installed power supplies (PSUs) are turned on and the load is evenly balanced. Only smaller configurations (requiring less than 2500W) can be powered by a single PSU.</li> </ul> <p>For more information about power redundancy, see the <i>Cisco UCS 5108 Server Chassis Installation Guide</i>.</p>
Step 4	UCS-A /org/psu-policy # commit-buffer	Commits the transaction to the system configuration.

NEW QUESTION 404

Refer to the exhibit.

```
ACI-Leaf1# show ip route vrf DATACENTER:DC

10.20.1.0/24, ubest/mbest: 1/o, attached, direct, pervasive

    *via 10.0.8.65%overlay-1, [1/o], 4w3d, static

172.16.100.0/24, ubest/mbest: 1/o

    *via 10.1.168.95%overlay-1, [200/5], 3w0d, bgp-132, internal, tag 132 (mpls-vpn)

172.16.99.0/24, ubest/mbest: 1/o

    *via 10.0.1.14, [20/o], 3w0d, bgp-132, external, tag 200
```

Which two statements describe the routing table of the leaf switch? (Choose two.)

- A. The next hop 10.0.8.65 for route 10.20.1.0/24 is the TEP address of a border leaf in ACI.
- B. The next hop 10.0.1.14 for route 172.16.99.0/24 is the TEP address of a border leaf in ACI.
- C. The next hop 10.1.168.95 for route 172.16.100.0/24 is the TEP address of a border leaf in ACI.
- D. 172.16.100.0/24 is a BD subnet in ACI.
- E. 10.20.1.0/24 is a BD subnet in ACI.

Answer: CE

NEW QUESTION 408

Which storage protocol reduces file locks by using leasing?

- A. CIFS
- B. NFS 4
- C. NFS 3
- D. SMB

Answer: D

Explanation:

<https://www.ciscolive.com/c/dam/r/ciscolive/apjc/docs/2016/pdf/BRKCOM-1211.pdf>

- SMB Directory Leasing
  - Ability to cache file and directory metadata
  - Branch offices need to make less round trips to the central server

NEW QUESTION 409

An engineer must recover configuration on a Cisco MDS 9000 Series switch from a previous version that was backed up to bootflash and then verify the restoration.

Drag and drop the commands on the left to the correct order on the right.

copy bootflash:<conrfiguration_file> runring-config	Step 1
copy running-config startup-config	Step 2
show startup-config	Step 3
write erase	Step 4
reload	Step 5

- A. Mastered
- B. Not Mastered

**Answer:** A

**Explanation:**

Graphical user interface, text, application, email Description automatically generated

[https://www.cisco.com/c/en/us/td/docs/switches/datacenter/mds9000/sw/nx-os/configuration/guides/fund/fund\\_nx-os\\_5-x/b\\_Cisco\\_MDS\\_9000\\_Series\\_NX-OS\\_Fundamentals\\_Configuration\\_Guide\\_Release\\_5-x/ b\\_Cisco\\_MDS\\_9000\\_Series\\_NX-OS\\_Fundamentals\\_Configuration\\_Guide\\_Release\\_5-x\\_chapter\\_01000.html](https://www.cisco.com/c/en/us/td/docs/switches/datacenter/mds9000/sw/nx-os/configuration/guides/fund/fund_nx-os_5-x/b_Cisco_MDS_9000_Series_NX-OS_Fundamentals_Configuration_Guide_Release_5-x/b_Cisco_MDS_9000_Series_NX-OS_Fundamentals_Configuration_Guide_Release_5-x_chapter_01000.html)

**NEW QUESTION 410**

An engineer must configure an LACP port channel on two Cisco Nexus 7000 Series Switches. The interface e1/2 must be a hot-standby link that initiates negotiation with other ports Drag and drop the commands from the right onto the blanks in the configuration on the left Not all commands are used

```

configure terminal
feature 
interface Ethernet 1/2
 switchport
 channel-group 2 
interface Ethernet 1/3
 switchport
 channel-group 2 mode active
 lacp port
        
```

mode active

lacp

priority 1

mode passive

priority 65534

mode on

- A. Mastered
- B. Not Mastered

**Answer:** A

**Explanation:**

```

configure terminal
feature lacp
interface Ethernet 1/2
 switchport
 channel-group 2 mode active
interface Ethernet 1/3
 switchport
 channel-group 2 mode active
 lacp port priority 1
        
```

mode active

lacp

priority 1

mode passive

priority 65534

mode on

**NEW QUESTION 413**

Which action must be performed before renumbering a Cisco UCS chassis?

- A. Move the chassis to new ports on fabric interconnect.
- B. Re-acknowledge the chassis.
- C. Decommission the chassis.
- D. Run the shut and no shut command on the connected ports.

**Answer:** C

**NEW QUESTION 415**

Which NFS version uses the TCP protocol and needs only one IP port to run the service?

- A. NFSv1
- B. NFSv2
- C. NFSv3
- D. NFSv4

**Answer:** D

**NEW QUESTION 417**

Refer to the exhibit.



### Create Boot Policy

Name:

Description:

Reboot on Boot Order Change: ☐

Enforce vNIC/vHBA/iSCSI Name: ☒

Boot Mode: ☒ Legacy ☐ UEFI

**WARNINGS:**  
 The type (primary/secondary) does not indicate a boot order presence.  
 The effective order of boot devices within the same device class (LAN/Storage/iSCSI) is determined by PCIe bus scan order.  
 If **Enforce vNIC/vHBA/iSCSI Name** is selected and the vNIC/vHBA/iSCSI does not exist, a config error will be reported.  
 If it is not selected, the vNICs/vHBAs are selected if they exist, otherwise the vNIC/vHBA with the lowest PCIe bus scan order is used.

+ Local Devices

+ CIMC Mounted vMedia

+ vNICs

+ vHBAs

+ iSCSI vNICs

+ EFI Shell

**Boot Order**

+ - % Advanced Filter + Export Print

Name	Order	vNIC/vH	Type	LUN No	WWN	Slot No	Boot No
No data available							

Move Up Move Down Delete

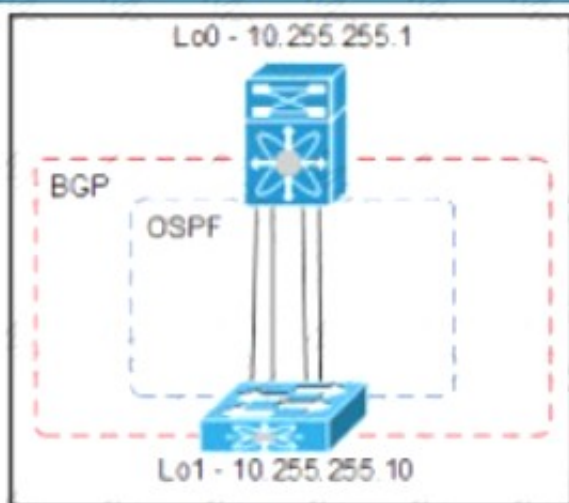
An engineer installs a new Cisco UCS B-Series server. The requirement is to install an operating system on a LUN that is provided by the Fibre Channel storage array. Which two steps must be configured in the boot policy to accomplish this goal? (Choose two.)

- A. Disable Enforce vNIC/vHBA/iSCSI Name
- B. Add Local CD/DVD and SAN Boot.
- C. Configure a SAN Boot Target with a WWPN
- D. Set Boot Order to External USB and LAN Boot
- E. Create (SCSI VNICS and add Local LUN

**Answer:** AD

#### NEW QUESTION 419

Refer to the exhibit



An engineer must provision a VXLAN deployment The OSPF has already been configured as the underlay protocol All BGP configurations will be performed using the template method The deployment must meet these requirements

- > The local update source for leaf switches must be loopback 1
- > The router ID must be the local loopback IP address
- > The external BGP connections must use a template name

Drag and drop the configuration snippets from the bottom to complete the configuration

```

router bgp 65000
  router-id 
  template peer SPINE
  bfd
  remote-as 
  update-source loopback1
  timers 3 9
  address-family  peer
    send-community extended
  neighbor 
    peer SPINE

```

10.255.255.1	inherit	65000
10.255.255.10	12vpn	evpn

- A. Mastered  
 B. Not Mastered

Answer: A

Explanation:

```

router bgp 65000
  router-id 10.255.255.10
  template peer SPINE
  bfd
  remote-as 65000
  update-source loopback1
  timers 3 9
  address-family 12vpn evpn
    send-community extended
  neighbor 10.255.255.1
    inherit peer SPINE

```

10.255.255.1	inherit	65000
10.255.255.10	12vpn	evpn

#### NEW QUESTION 421

What are two requirements when planning a Cisco HyperFlex All Flash standard cluster installation using three HX240c M5 servers? (Choose Two)

- A. If the Jumbo MTU option in the HyperFlex installer is enabled, then jumbo frames do not have to be enabled on the upstream switches.  
 B. The hypervisors must be installed to Cisco FlexFlash SD cards.  
 C. If the Jumbo MTU option in the HyperFlex installer is enabled, then jumbo frames must also be enabled on the upstream switches.  
 D. The cluster deployment type must support a mix of HDD and SSD.  
 E. The servers must be discovered, unassociated, and connected to each fabric interconnect.

Answer: CE

Explanation:

[https://www.cisco.com/c/en/us/td/docs/hyperconverged\\_systems/HyperFlex\\_HX\\_DataPlatformSoftware/AdminGuide/3\\_5/b\\_HyperFlexSystems\\_AdministrationGuide\\_3\\_5/b\\_HyperFlexSystems\\_AdministrationGuide\\_3\\_5\\_chapter\\_011](https://www.cisco.com/c/en/us/td/docs/hyperconverged_systems/HyperFlex_HX_DataPlatformSoftware/AdminGuide/3_5/b_HyperFlexSystems_AdministrationGuide_3_5/b_HyperFlexSystems_AdministrationGuide_3_5_chapter_011)

#### NEW QUESTION 426

An engineer must integrate Cisco ACI with a VMware vSphere environment. The requirement is to use a VMware Distributed Virtual Switch and to assign the

encapsulation VLAN of the EPG from the VLAN pool. Which configuration set accomplishes this goal?

- A. Create a VMM domain association under the EPGs Create a VLAN pool with static allocated VLANs.
- B. Create a physical domain association under the EPGs Create a VLAN pool with static allocated VLANs.
- C. Create a physical domain association under the EPG
- D. Create a VLAN pool with oVnarmc allocated VLANs
- E. Create a VMM domain association under the EPGs Create a VLAN pool with dynamic allocated VLANs.

**Answer:** D

#### NEW QUESTION 431

AN engineer enters these commands while in EEM on a Cisco Nexus 9000 Series Switch. event manager applet Backup-config event timer watchdog time 1800 name timer  
event cli match "copy running-config startup-config" what is the result of applying this configuration?

- A. It saves the running configuration every 1800 seconds.
- B. It generates an error because no action is mentioned.
- C. It executes the copy running-config startup-config command.
- D. It blocks the copy running-config startup-config command.

**Answer:** B

#### Explanation:

<https://www.cisco.com/c/en/us/td/docs/switches/datacenter/nexus9000/sw/93x/system-management/b-cisco-nex-graphical-user-interface-text-application-email-description-automatically-generated>

#### Prerequisites for EEM

EEM has the following prerequisites:

- You must have network-admin user privileges to configure EEM.

#### Guidelines and Limitations for EEM

EEM has the following configuration guidelines and limitations:

- The maximum number of configurable EEM policies is 500.
- Action statements within your user policy or overriding policy should not negate each other or adversely affect the associated system policy.
- To allow a triggered event to process any default actions, you must configure the EEM policy to allow the default action. For example, if you match a CLI command in a match statement, you must add the event-default action statement to the EEM policy or EEM will not allow the CLI command to execute.
- When you configure an EEM policy action to collect **show tech** commands, make sure to allocate enough time for the **show tech** commands to complete before the same action is called again.

#### NEW QUESTION 432

Refer to the exhibit.

```
interface Ethernet1/1
description Server1
interface Ethernet1/2
description Server2
interface Ethernet1/3
description Server3
interface Ethernet1/4
description Server4
interface Ethernet1/5
description Server5
```

Which command is run from the Guest Shell to set the description on the first five interfaces of the Cisco Nexus switch?

- ☐ [guestshell@guestshell ~]\$ for x in (1..5); do dohost "conf t" ; "interface eth1/\$x" ; "description Server\$x" ; done
- ☐ [guestshell@guestshell ~]\$ for x in (1..5); dohost "conf t ; interface eth1/\$x ; description Server\$x";
- ☐ [guestshell@guestshell ~]\$ for x in {1..5}; dohost "conf t ; interface eth1/\$x ; description Server\$x" ;
- ☐ [guestshell@guestshell ~]\$ for x in {1..5}; do dohost "conf t ; interface eth1/\$x ; description Server\$x" ; done

- A. Option A
- B. Option B
- C. Option C
- D. Option D

**Answer:** D

**Explanation:**

NXs1# guestshell

[admin@guestshell ~]\$ for x in {1..5}; do dohost "conf t ; interface eth1/\$x ; description Server\$x" ; done Enter configuration commands, one per line. End with CNTL/Z.

Enter configuration commands, one per line. End with CNTL/Z. Enter configuration commands, one per line. End with CNTL/Z. Enter configuration commands, one per line. End with CNTL/Z. Enter configuration commands, one per line. End with CNTL/Z. [admin@guestshell ~]\$

**NEW QUESTION 436**

An engineer is configuring a vHBA template in UCS Manager. The engineer needs to specify the logical addresses used by the vHBA and the path through which the SAN traffic flows. Which two resources must be specified in the vHBA template? (Choose two.)

- A. MAC addresses
- B. WWPNPool
- C. WWNN
- D. VLAN ID
- E. Fabric ID

**Answer: BE**

**Explanation:**

vNIC and vHBA Templates

vNIC and vHBA resources are always associated with specific FIs (A-side or B-side fabric interconnect). A typical Service Profile has at least two vNICs and two vHBAs, one bound to each side. vNIC (or vHBA) templates can be used to encapsulate both the MAC address pool (or WWPN pool) association as well as the fabric ID.

**Best Practice: vNIC and vHBA Templates**

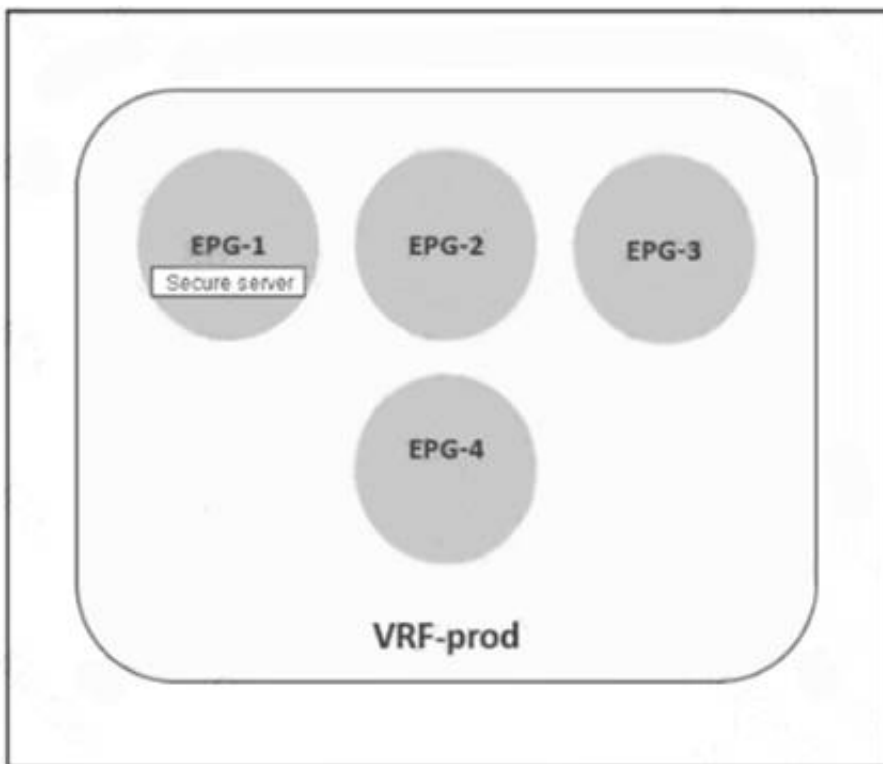
Create reusable vNIC and vHBA templates in which termination is either reflected in the name (e.g., "fc0-A") or through well-accepted conventions (e.g., even interface to A side, and odd interface to B side).

vNIC templates should be thought of as application-specific network profiles that include important security definitions, such as VLAN mappings, as shown in Figure 6.

[https://www.cisco.com/c/en/us/products/collateral/servers-unified-computing/ucs-manager/whitepaper\\_c11-697](https://www.cisco.com/c/en/us/products/collateral/servers-unified-computing/ucs-manager/whitepaper_c11-697)

**NEW QUESTION 438**

Refer to the exhibit.



A secure server that provides services to EPG-2 must be placed in EPG-1. The remaining EPGs—EPG-2, EPG-3, and EPG-4—must communicate without any contracts. Which set of actions accomplishes this goal?

- ☒ Exclude EPG-2, EPG-3, and EPG-4 from the preferred group. Configure a contract between EPG-2 and EPG-3.
- ☐ Include EPG-2, EPG-3, and EPG-4 in the preferred group. Configure a contract between EPG-1 and EPG-2.
- ☐ Include EPG-1 and EPG-2 in the preferred group. Configure a contract between EPG-2 and EPG-3.
- ☐ Exclude EPG-2, EPG-3, and EPG-4 from the preferred group. Configure a contract between EPG-1 and EPG-3.

- A. Option A
- B. Option B
- C. Option C
- D. Option D

**Answer: B**

**NEW QUESTION 439**

A network engineer needs a tool to automate the provisioning of Cisco UCS Service Profiles. The administrator has limited programming knowledge but is skilled with scripting tools. The tool must include existing support for Cisco UCS configuration. Additionally, the administrator will eventually use the solution to manage Cisco UCS C-Series Rack Servers. Which tool meets these requirements?



- A. Cisco DCNM
- B. Python scripts
- C. PowerShell
- D. Bash scripts

**Answer: C**

#### NEW QUESTION 443

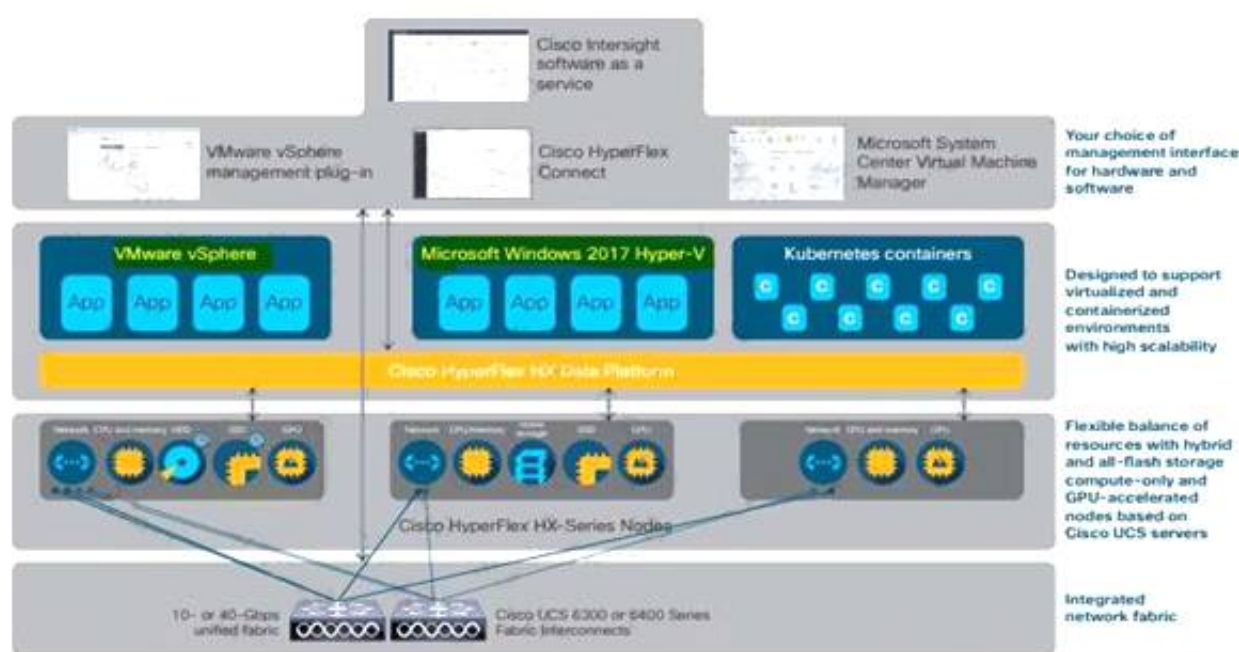
Which two hypervisors does Cisco HyperFlex support? (Choose two.)

- A. VMware vSphere
- B. Microsoft Hyper-V
- C. OpenStack
- D. Citrix XenServer
- E. RedHat KVM

**Answer: AB**

**Explanation:**

The Cisco HyperFlex platform is faster to deploy, simpler to manage, easier to scale, and ready to provide a unified pool of resources to power your business applications. You harness these resources with your choice of centralized management tools: Cisco Intersight™ software as a service, Cisco HyperFlex Connect, Microsoft System Center Virtual Machine Manager,



<https://www.cisco.com/c/dam/en/us/products/collateral/hyperconverged-infrastructure/hyperflex-hx-series/solution-overview-c22-736815.pdf>

#### NEW QUESTION 445

A network engineer must implement a telemetry solution to collect real-time structured data in a large-scale network. Drag and drop the actions from the left into the order on the right to implement the solution. Not all actions are used.

Configure the flow monitor and flow record.	step 1
Set the format and destination to which the data is sent.	step 2
Configure the data to be collected as part of the sensor group.	step 3
Set the subscription between the sensor group and the destination.	

- A. Mastered
- B. Not Mastered

**Answer: A**

**Explanation:**

- \* 1. set the format and destination to which the data is sent.
- \* 2. configure the data to be collected as part of the sensor group.
- \* 3. set the subscription between the sensor-group and the destination.

#### NEW QUESTION 450

Which two components should be checked when a Cisco Nexus 9000 Series Switch fails to boot using POAP? (Choose two.)

- A. image noted in the script file against switch bootflash
- B. DHCP server to bootstrap IP information
- C. script signed with security key

- D. TFTP server that contains the configuration script
- E. POAP feature license

**Answer:** BD

**Explanation:**

[https://www.cisco.com/c/en/us/td/docs/switches/datacenter/nexus9000/sw/7-x/troubleshooting/guide/b\\_Cisco\\_Nexus\\_9000\\_Series\\_NX-OS\\_Troubleshooting\\_Guide\\_7x/b\\_Cisco\\_Nexus\\_9000\\_Series\\_NXOS\\_Troubleshooting\\_Guide\\_7x\\_chapter\\_01100.html](https://www.cisco.com/c/en/us/td/docs/switches/datacenter/nexus9000/sw/7-x/troubleshooting/guide/b_Cisco_Nexus_9000_Series_NX-OS_Troubleshooting_Guide_7x/b_Cisco_Nexus_9000_Series_NXOS_Troubleshooting_Guide_7x_chapter_01100.html)

[https://www.cisco.com/c/en/us/td/docs/switches/datacenter/nexus9000/sw/7-x/fundamentals/configuration/guide/b\\_Cisco\\_Nexus\\_9000\\_Series\\_NX-OS\\_Fundamentals\\_Configuration\\_Guide\\_7x/b\\_Cisco\\_Nexus\\_9000\\_Series\\_NX-OS\\_Fundamentals\\_Configuration\\_Guide\\_7x\\_chapter\\_01100.html](https://www.cisco.com/c/en/us/td/docs/switches/datacenter/nexus9000/sw/7-x/fundamentals/configuration/guide/b_Cisco_Nexus_9000_Series_NX-OS_Fundamentals_Configuration_Guide_7x/b_Cisco_Nexus_9000_Series_NX-OS_Fundamentals_Configuration_Guide_7x_chapter_01100.html)

**NEW QUESTION 454**

Refer to the exhibit.

N7K-1

```
interface Vlan165
  no shutdown
  no ip redirects
  ip address 10.16.165.2/27
  no ipv6 redirects
  hsrp version 2
  hsrp 165
    preempt
    priority 150
    ip 10.16.165.1
```

```
vpc domain 100
  role priority 100
  peer-keepalive destination 10.1.1.2 source 10.1.1.1
vrf default
  delay restore 60
  peer-gateway
  auto-recovery
  ip arp synchronize
```

N7K-2

```
interface Vlan165
  no shutdown
  no ip redirects
  ip address 10.16.165.3/27
  no ipv6 redirects
  hsrp version 2
  hsrp 165
    priority 50
    ip 10.16.165.1
```

```
vpc domain 100
  role priority 200
  peer-keepalive destination 10.1.1.1 source 10.1.1.2
vrf default
  delay restore 60
  peer-gateway
  auto-recovery
  ip arp synchronize
```

Which statement describes the default gateway configuration of the vPC?

- A. N7K-1 acts as the default gateway for all traffic.
- B. N7K-2 forwards traffic that is destined for the default gateway by using the peer link.
- C. N7K-2 acts as the default gateway for all traffic.
- D. Either switch can act as the active default gateway.

**Answer:** D

**Explanation:**

<https://community.cisco.com/t5/networking-documents/peer-gateway-feature-on-the-nexus-7000/ta-p/3113290>

**NEW QUESTION 458**

An engineer performs a set of configuration changes for the vPC domain using Session Manager. Which two commands are used to verify the configuration and apply the device changes when no errors are returned?

(Choose two)

- A. write
- B. verify
- C. commit

- D. checkpoint
- E. apply

Answer: BC

Explanation:

[https://www.cisco.com/c/en/us/td/docs/switches/datacenter/nexus9000/sw/6-x/system\\_management/configuration](https://www.cisco.com/c/en/us/td/docs/switches/datacenter/nexus9000/sw/6-x/system_management/configuration)

## Verifying a Session

Use the following command in session mode to verify a session:

Command	Purpose
<b>verify</b> [verbose] Example: switch(config-s)# verify	Verifies the configuration as a whole, based on the existing hardware and software configuration and resources. Cisco NX-OS returns an error if the configuration does not pass this verification.

## Committing a Session

Use the following command in session mode to commit a session:

Command	Purpose
<b>commit</b> [verbose] Example: switch(config-s)# commit	Validates the configuration changes made in the current session and applies valid changes to the device. If the validation fails, Cisco NX-OS reverts to the original configuration.

<https://www.cisco.com/c/en/us/td/docs/switches/datacenter/nexus5000/sw/configuration/guide/cli/CLIconfigura>

NEW QUESTION 461

A DevOps engineer must implement a bash script to query a REST API and return the available methods. Which code snippet completes the script?

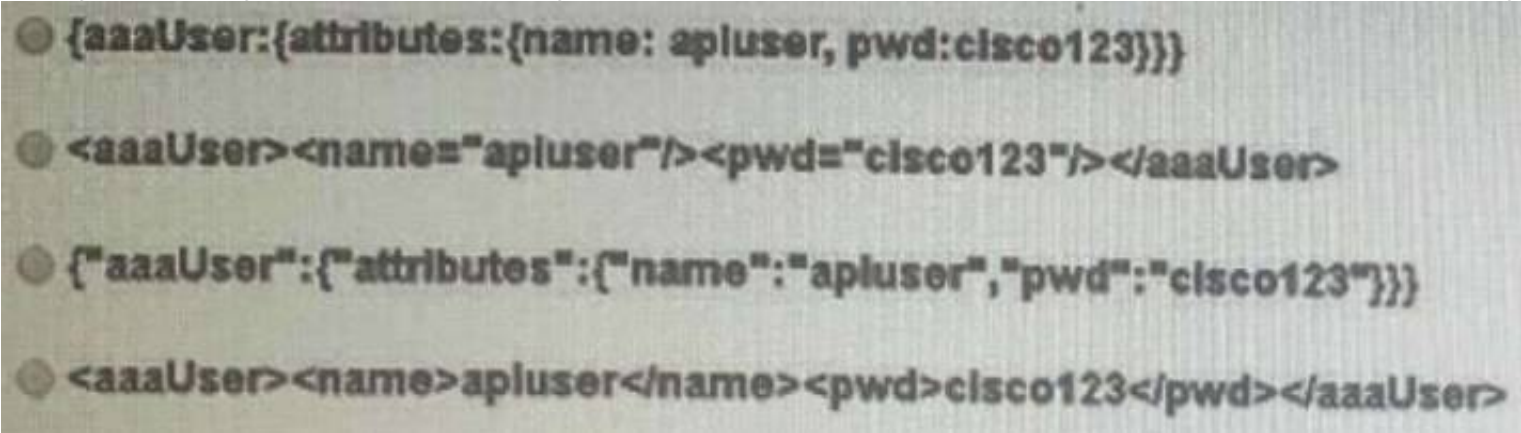
**curl -i -X --missing code-- http://api.cisco.com:8080/api -u admin:xT41M5P3X425VOE71NB5D**

- A. DELETE
- B. TRACE
- C. POST
- D. OPTIONS

Answer: C

NEW QUESTION 464

An engineer is using REST API calls to configure the cisco APIC. Which data structure must be used within a post message to receive a login token?



- A. Option A
- B. Option B
- C. Option C
- D. Option D

Answer: C

Explanation:



- **aaaListDomains** –Sent as a GET message, this method returns a list of valid AAA login domains. You can send this message without logging in.

You can call the authentication methods using this syntax, specifying either JSON or XML data structures:

```
{ http | https } :// host [:port] /api/ methodName . { json | xml }
```

This example shows a user login message that uses a JSON data structure:

```
POST https://apic-ip-address/api/aaaLogin.json
```

```
{
  "aaaUser" : {
    "attributes" : {
      "name" : "georgewa",
      "pwd" : "paSSword1"
    }
  }
}
```

[https://www.cisco.com/c/en/us/td/docs/switches/datacenter/aci/apic/sw/2-x/rest\\_cfg/2\\_1\\_x/b\\_Cisco\\_APIC\\_REST\\_API\\_Configuration\\_Guide/b\\_Cisco\\_APIC\\_REST\\_API\\_Configuration\\_Guide\\_chapter\\_0](https://www.cisco.com/c/en/us/td/docs/switches/datacenter/aci/apic/sw/2-x/rest_cfg/2_1_x/b_Cisco_APIC_REST_API_Configuration_Guide/b_Cisco_APIC_REST_API_Configuration_Guide_chapter_0)

#### NEW QUESTION 465

An engineer implements a Python script inside a Cisco Bash shell The script contains this dictionary object

```
switch_id_list = {
    "N9K-Spine-1": "842534699747",
    "N9K-Leaf-1": "126784690",
    "N9K-Leaf-2": "56556473"
}
```

Which command must be used to add the 'NSK-Spine-2': '1498323434' element to the switch\_id list dictionary?

- ☒ switch\_id\_list = [{"N9K-Spine-2": "1498323434"}]
- ☐ switch\_id\_list.update({"N9K-Spine-2": "1498323434"})
- ☐ switch\_id\_list.append({"N9K-Spine-2": "1498323434"})
- ☐ switch\_id\_list += {"N9K-Spine-2": "1498323434"}

- A. Option A
- B. Option B
- C. Option C
- D. Option D

**Answer: C**

#### NEW QUESTION 468

An engineer is running an ACI fabric, has VMM integration with VMware vCenter, and wants to enable microsegmentation based on vCenter VM attributes. Which statement about microsegmentation is true?

- A. ACI does not support microsegmentation based on vCenter VM attribute
- B. You should use network attributes for microsegmentation.
- C. An ACI microsegmented EPG automatically creates a port group with a private VLAN configured on a VMware vCenter distributed virtual switch.
- D. When enabled, microsegmentation performs distributed switching and routing on the ESXi hosts.
- E. Microsegmentation is supported only using AVE or AVS.

**Answer: B**

#### Explanation:

<https://www.cisco.com/c/en/us/td/docs/switches/datacenter/aci/apic/sw/4-x/virtualization/Cisco-ACIVirtualizati>

#### NEW QUESTION 472

An engineer configured an environment that contains the vPC and non-vPC switches. However, it was noticed that the downstream non-vPC switches do not receive the upstream vPC switch peers. Which vPC feature must be implement to ensure that vPC and non-vPC switches receive same STP bridge ID from the upstream vPC switch peers?

- A. vpc local role-priority 4000
- B. peer-switch
- C. system-mac 0123.4567.89ab
- D. peer-gateway

**Answer: B**

#### Explanation:



Peer-Switch feature allows the vPC peers use the same STP root ID as well as the same bridge ID.

#### NEW QUESTION 475

Which configuration implements static ingress replication?

- ☒ interface nve 1  
member vni 2100980  
ingress-replication protocol static  
peer-ip 10.0.0.4
- ☐ interface nve 1  
member vni 127772151  
ingress-replication protocol bgp
- ☐ interface nve 1  
member vni 3126980  
peer vtep 10.0.0.4  
ingress-replication protocol static  
peer-ip 10.0.0.4
- ☐ interface nve 1  
member vni 384233213  
peer vtep 10.0.0.4

- A. Option A
- B. Option B
- C. Option C
- D. Option D

**Answer:** A

#### Explanation:

"Configuring Static Ingress Replication" section here:

[https://www.cisco.com/c/en/us/td/docs/switches/datacenter/nexus9000/sw/7-x/vxlan/configuration/guide/b\\_Cisc](https://www.cisco.com/c/en/us/td/docs/switches/datacenter/nexus9000/sw/7-x/vxlan/configuration/guide/b_Cisc)

#### NEW QUESTION 479

Refer to the exhibit.

An engineer must set access to Cisco IMC. The access must be allowed by logging onto the https //datacenter local web page The configuration presented is on the Cisco UCS C240 Series Server Which set of commands completes the configuration?

A)

```
Server# scope cimc
Server /cimc # scope network
Server /cimc/network # set vlan-enabled yes
Server /cimc/network # set vlan-id 10
Server /cimc/network # set vlan-priority 32
Server /cimc/network # set dns-use-dhcp-enabled yes
Server /cimc/network # commit
```

B)

```
Server# scope cimc
Server /cimc # scope network
Server /cimc/network # set dhcp-enabled yes
Server /cimc/network # set v4-addr 192.168.1.10
Server /cimc/network # set v4-netmask 255.255.255.0
Server /cimc/network # set v4-gateway 192.168.1.12
Server /cimc/network # commit
```

C)

```
Server# scope cimc
Server /cimc # scope network
Server /cimc/network # set dhcp-enabled yes
Server /cimc/network # set v4-addr 192.168.1.10
Server /cimc/network # set v4-netmask 255.255.255.0
Server /cimc/network # set preferred-dns-server 192.168.3.20
Server /cimc/network # commit
```

D)

```
Server# scope cimg
Server /cimg # scope network
Server /cimg/network # set vlan-enabled yes
Server /cimg/network # set vlan-id 10
Server /cimg/network # set vlan-priority 32
Server /cimg/network # set preferred-dns-server 192.168.3.20
Server /cimg/network # commit
```

- A. Option A
- B. Option B
- C. Option C
- D. Option D

**Answer:** C

#### NEW QUESTION 481

Refer to the exhibit.

```
Nexus(config)# show checkpoint summary
User Checkpoint Summary
-----
1) BeforeL3:
Created by admin
Created at Mon, 15:25:08 31 Dec 2018
Size is 9,345 bytes
Description: None

System Checkpoint Summary
-----
2) system-fm-vrrp:
Created by admin
Created at Fri, 09:57:02 14 Jun 2019
Size is 20,865 bytes
Description: Created by Feature Manager.

3) system-fm-hsrp_engine:
Created by admin
Created at Fri, 09:57:28 14 Jun 2019
Size is 20,852 bytes
Description: Created by Feature Manager.
```

What is the reason the system-fm-vrrp checkpoint was created?

- A. The VRRP service restarted and the checkpoint was automatically created.
- B. The network administrator manually created it.
- C. The VRRP process crashed and the checkpoint was automatically created.
- D. The VRRP-enable feature has been disabled.

**Answer:** D

#### Explanation:

automatically created by the Nexus when the vrrp feature is disabled

#### NEW QUESTION 482

A network architect is asked to design and manage geographically distributed data centers across cities and decides to use a Multi-Site Orchestrator deployment. How many orchestrators should be deployed?

- A. 3
- B. 5
- C. 4
- D. 2

**Answer:** A

#### Explanation:

<https://www.cisco.com/c/en/us/solutions/collateral/data-center-virtualization/application-centricinfrastructure/w>

#### NEW QUESTION 483

An engineer must configure two Cisco Nexus 7000 series switches in the same data center to support OTV. Which command set completes the join interface configuration?

An engineer must configure two Cisco Nexus 7000 Series switches in the same data center to support OTV. Which command set completes the join interface configuration?

```
feature otv
otv site-identifier 256
interface overlay 1
otv control-group 239.1.1.1
otv data-group 239.1.1.0/29
otv join-interface ethernet 2/1
otv extend-vlan 5-10
no shutdown
```

☒ Edge Device 1  
interface ethernet 2/1  
ip address 192.0.2.1/24  
ip igmp version 3

Edge Device 2  
interface ethernet 2/1  
ip address 192.0.2.16/24  
ip igmp version 3

☐ Edge Device 1  
interface ethernet 2/1  
ip address 192.0.2.1/24  
ip igmp version 3  
ip pim sparse-mode

Edge Device 2  
interface ethernet 2/1  
ip address 192.0.2.16/24  
ip igmp version 3  
ip pim sparse-mode

☐ Edge Device 1  
interface ethernet 2/1  
ip address 192.0.2.1/24

Edge Device 2  
interface ethernet 2/1  
ip address 192.0.2.16/24

☐ Edge Device 1  
interface ethernet 2/1  
ip address 192.0.2.1/24  
ip igmp version 3

Edge Device 2  
interface ethernet 2/1  
ip address 192.0.2.1/24  
ip igmp version 3

- A. Option A
- B. Option B
- C. Option C
- D. Option D

**Answer:** A

#### NEW QUESTION 484

An engineer must design an automation solution for the Cisco ACI Fabric to speed up the deployment of logical network elements for tenant provisioning. When creating a solution, the engineer must keep in mind that the tool must support these requirements:

- Allow the rapid creation and removal of logical containers.
- Support the creation of custom modules and data structures.
- Be extensible with external libraries and modules.
- Allow rapid testing of code using an on-demand execution environment.

Which automation tool meets these requirements?

- A. YAML



- B. Chef
- C. SaltStack
- D. Python

**Answer:** B

#### NEW QUESTION 489

An engineer is implementing NPV mode on a Cisco MDS 9000 Series Switch. Which action must be taken?

- A. The FCNS database must be disabled in the fabric.
- B. A port channel must be configured to the upstream switch.
- C. All switches in the fabric must be Cisco MDS switches.
- D. NPIV must be enabled on the upstream switch.

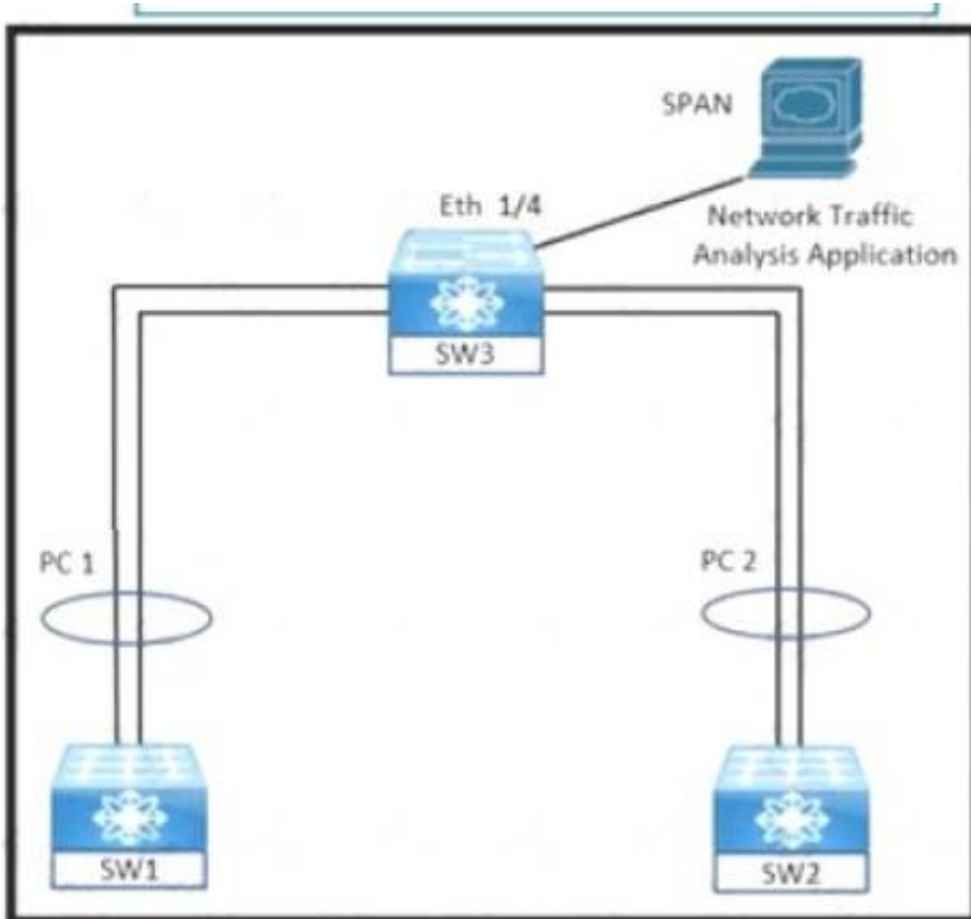
**Answer:** D

#### Explanation:

[https://www.cisco.com/c/en/us/td/docs/switches/datacenter/mds9000/sw/5\\_0/configuration/guides/int/nxos/cli\\_i](https://www.cisco.com/c/en/us/td/docs/switches/datacenter/mds9000/sw/5_0/configuration/guides/int/nxos/cli_i)

#### NEW QUESTION 491

Refer to the exhibit.



An engineer must monitor ingress traffic from SW1 and SW2 port-channel interfaces from SW3. Which configuration must be implemented to accomplish this goal?

A)

```
SW3# configure terminal
SW3(config)# source interface port-channel 1 rx
SW3(config)# source interface port-channel 2 tx
```

```
SW3(config)# interface ethernet 1/4
SW3(config-if)# destination interface ethernet 1/4
SW3(config-if)# exit
```

```
SW3(config)# interface Port-channel 1-2
SW3(config-if)# switchport monitor
SW3(config-if)# exit
```

B)

```
SW3# configure terminal
SW3(config)# monitor session 2
SW3(config-monitor)# source interface port-channel 1 tx
SW3(config-monitor)# source interface port-channel 2 tx
```

```
SW3(config)# interface Port-channel 1
SW3(config-if)# switchport monitor
SW3(config-if)# exit
```

```
SW3(config)# interface Port-channel 2
SW3(config-if)# switchport monitor
SW3(config-if)# exit
```

C)

```
SW3# configure terminal
SW3(config)# monitor session 2
SW3(config-monitor)# source interface port-channel 1 tx
SW3(config-monitor)# source interface port-channel 2 rx
```

```
SW3(config)# interface port-channel 1
SW3(config-if)# switchport monitor
SW3(config-if)# exit
```

```
SW3(config)# interface port-channel 2
SW3(config-if)# switchport monitor
SW3(config-if)# exit
```

D)



```
SW3# configure terminal
SW3(config)# monitor session 2
SW3(config-monitor)# source interface port-channel 1 rx
SW3(config-monitor)# source interface port-channel 2 rx

SW3(config)# interface ethernet 1/4
SW3(config-if)# switchport monitor
SW3(config-if)# exit

SW3(config)# monitor session 2
SW3(config-monitor)# destination interface ethernet 1/4
```

- A. Option A
- B. Option B
- C. Option C
- D. Option D

**Answer:** D

#### NEW QUESTION 495

What is an advantage of NFSv4 over Fibre Channel protocol?

- A. Improved security
- B. Lossless throughout
- C. Congestion management
- D. Uses IP transport

**Answer:** A

#### Explanation:

<https://www.rcannings.com/san-storage-fc-vs-fcoe-vs-iscsi/>

#### NEW QUESTION 499

.....

## Thank You for Trying Our Product

### We offer two products:

1st - We have Practice Tests Software with Actual Exam Questions

2nd - Questions and Answers in PDF Format

### 350-601 Practice Exam Features:

- \* 350-601 Questions and Answers Updated Frequently
- \* 350-601 Practice Questions Verified by Expert Senior Certified Staff
- \* 350-601 Most Realistic Questions that Guarantee you a Pass on Your First Try
- \* 350-601 Practice Test Questions in Multiple Choice Formats and Updates for 1 Year

**100% Actual & Verified — Instant Download, Please Click**  
**[Order The 350-601 Practice Test Here](#)**