

Exam Questions 300-425

Designing Cisco Enterprise Wireless Networks (ENWLSD)

<https://www.2passeasy.com/dumps/300-425/>



NEW QUESTION 1

An engineer has performed a predictive site survey for high-speed data and voice in an indoor office. What is the recommended data rate with -67 dBm signal level for optimal VoWLAN design?

- A. 6 Mbps on 802.11 bgn
- B. 24 Mbps on 802.11 bgn
- C. 12 Mbps on 802.11 an
- D. 24 Mbps on 802.11 an

Answer: B

Explanation:

The -67 dBm measurement has been used for years for 11b phone clients from many vendors. Tests indicate that this same rule of thumb measurement works well for 11g and 11a phone clients.

NEW QUESTION 2

An engineer must ensure that the new wireless LAN deployment can support seamless roaming between access points using a standard based on an amendment to the 802.11 protocol. Which protocol must the engineer select?

- A. 802.11i
- B. 802.11ac
- C. 802.11r
- D. 802.11e

Answer: C

Explanation:

The 802.11r Fast Transition (FT) Roaming is an amendment to the 802.11 IEEE standards.

NEW QUESTION 3

A network engineer is troubleshooting connectivity issues between two WLCs running 8.x code in SSO mode and finds that the redundancy management heartbeat is failing. Which packet type must be filtered for heartbeats when taking a capture to verify communication?

- A. RSTP
- B. UDP
- C. TCP
- D. ICMP

Answer: B

NEW QUESTION 4

A customer requires that two wireless APs be installed in a reception area, in a historic building, the impact of the APs on the appearance of the reception area must be minimized. Which two AP antennas should be used? (Choose two.)

- A. AP with a Yagi antenna
- B. AP with a patch antenna
- C. AP with a monopole antenna
- D. AP with an integrated antenna
- E. AP with a dipole antenna

Answer: AB

NEW QUESTION 5

A rapidly expanding company has tasked their network engineer with wirelessly connecting a new cubicle area with Cisco workgroup bridges until the wired network is complete. Each of 42 new users has a computer and VoIP phone. How many APs for workgroup bridging must be ordered to keep cost at a minimum while connecting all devices?

- A. 4
- B. 5
- C. 6
- D. 7

Answer: A

Explanation:

- Number of 802.11b devices per AP: Cisco recommends that you have no more than 15 to 25

So, each AP will have 25 clients. Minimum 4 APs are sufficient.

NEW QUESTION 6

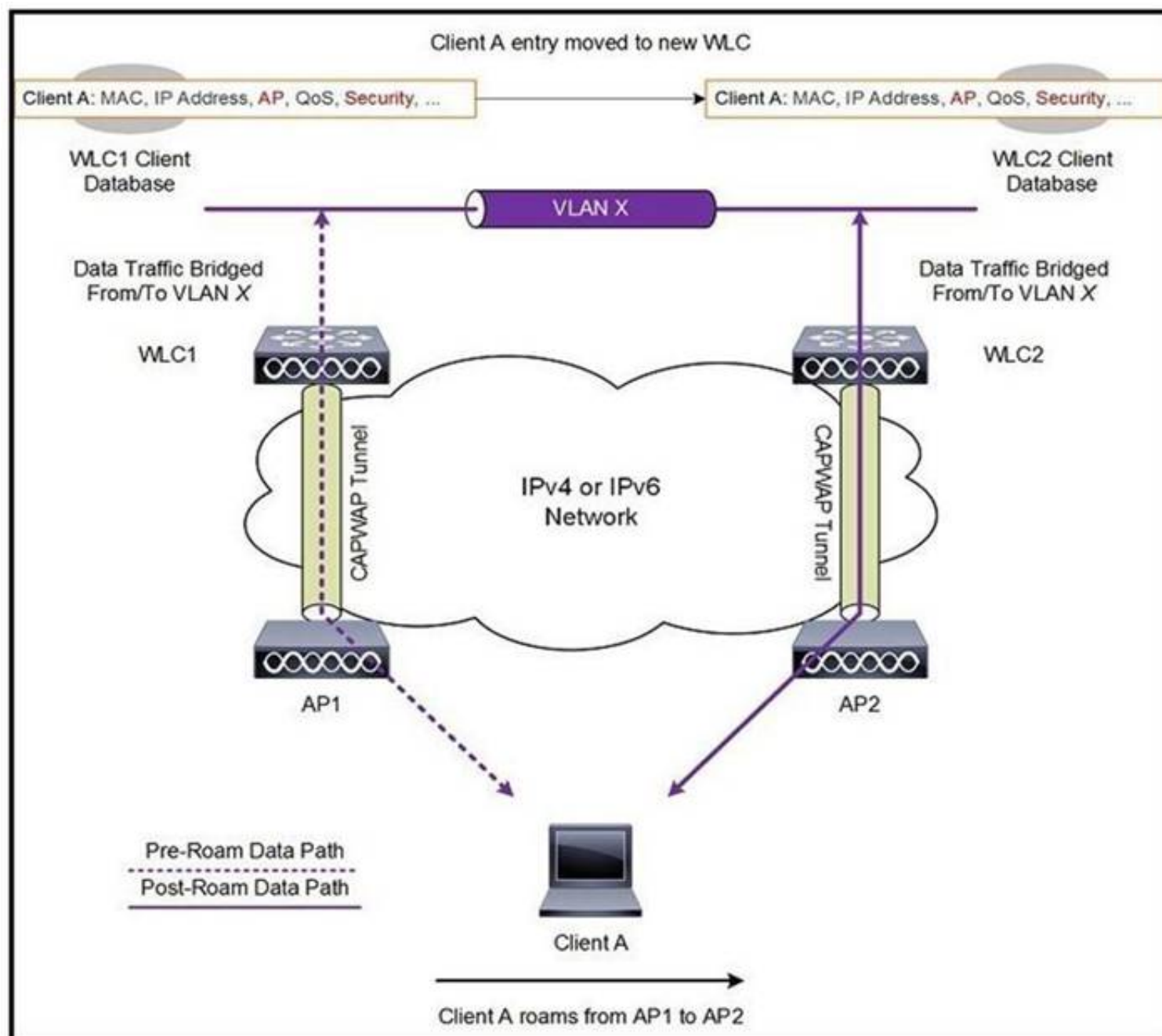
A customer is looking for a network design with Cisco Hyperlocation using AP4800 for location tracking via a custom mobile app. Issues appeared in the past with refresh rates for location updates. What needs to be implemented to meet these requirements?

- A. Cisco CMX SDK in the location app
- B. redundant CMX and fetch location in round-robin fashion.
- C. device Bluetooth via the app
- D. Cisco FastLocate technology

Answer: D

NEW QUESTION 7

Refer to the exhibit.

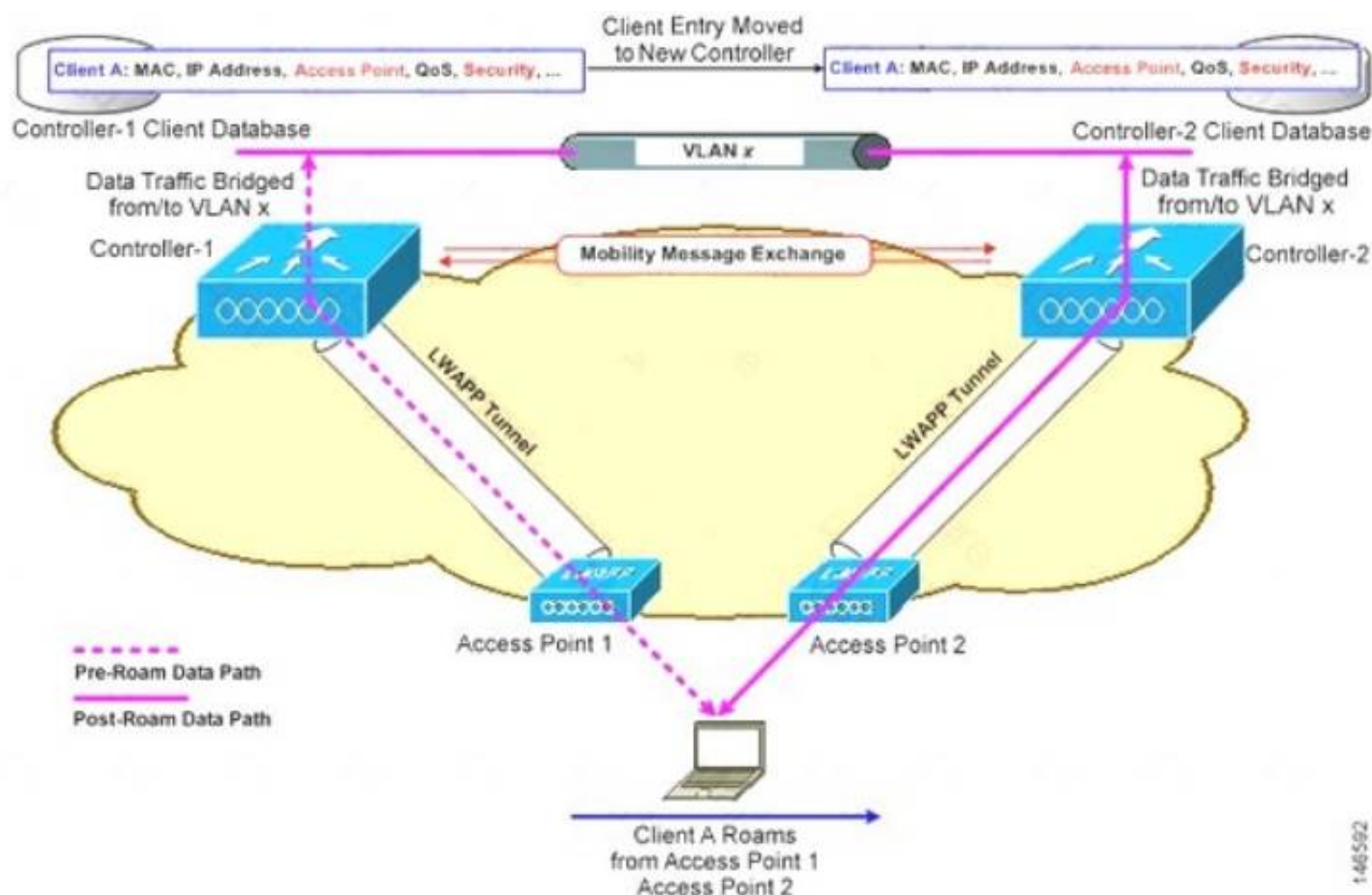


A client roams between two APs that are registered to two different controllers, where each controller has an interface in the client subnet. Both controllers are running AireOS. Which scenario explains the client roaming behavior?

- A. Controllers exchange mobility control messages (over UDP port 16666) and the client database entry is moved from the original controller to the new controller.
- B. Controllers do not exchange mobility control messages (over UDP port 16666) and the client database entry is not moved from the original controller to the new controller.
- C. Controllers exchange mobility control messages (over UDP port 16666) and a new client session is started with the new controller.
- D. Controllers exchange mobility control messages (over UDP port 16666) and the client database entry is tunneled from the original controller to the new controller.

Answer: A

Explanation:



In this instance controllers exchange mobility control messages (over UDP port 16666) and the client database entry is **moved** from the original controller to the new controller.

NEW QUESTION 8

An engineer must speed up the reauthentication delays that are being experienced on the wireless infrastructure by deploying a key-caching mechanism. Which mechanism must be configured?

- A. PEAP
- B. FT
- C. PMF
- D. GTK-randomization

Answer: B

Explanation:

802.11r, which is the IEEE standard for fast roaming, introduces a new concept of roaming where the initial handshake with the new AP is done even before the client roams to the target AP, which is called Fast Transition (FT). The initial handshake allows the client and APs to do the Pairwise Transient Key (PTK) calculation in advance. These PTK keys are applied to the client and AP after the client does the reassociation request or response exchange with new target AP.

NEW QUESTION 9

When conducting a site survey for real-time traffic over wireless, which two design capabilities of smartphones and tablets must be considered? (Choose two.)

- A. no support for 802.11ac
- B. higher data rates than laptops
- C. fewer antennas than laptops
- D. no support for 802.11r
- E. lower data rates than laptops

Answer: BE

Explanation:

Site surveys are one of the basic requirements when you deploy a WLAN, and you must always consider the Wi-Fi capabilities of the client devices or endpoints. Most smartphones and tablets support 802.11. However, generally, the smartphones and tablets have fewer antennas and lower data rates than laptops. In addition, most are not purpose-built for the enterprise WLAN market. Almost all smartphones and tablets support enterprise security policies. However, many of them do not support

NEW QUESTION 10

An engineer must ensure that the wireless network can accomplish fast secure roaming by way of caching keys on the access points. Which key caching mechanism is enabled by default on a Cisco AireOS WLC?

- A. SKC
- B. OKC
- C. 802.11r
- D. CCKM

Answer: B

Explanation:

Step 2 Enable sticky key caching by entering this command:

```
config wlan security wpa wpa2 cache sticky enable wlan_id
```

By default, SKC is disabled and opportunistic key caching (OKC) is enabled.

An extension of this technique is known as OKC (Opportunistic Key Caching), a method not defined in 802.11i but necessary to enable optimized roaming at layer 2 for client devices moving between APs. Using OKC, all APs on the same layer 2 network will receive a copy of a client's PMK ID, enabling client devices authenticated via 802.1X to authenticate with decreased latency whilst roaming. In this fashion, even if a client has not been

NEW QUESTION 10

A university is in the process of designing a wireless network in an auditorium that seats 500 students and supports student laptops. Which design methodology should the university implement in the auditorium?

- A. roaming design model
- B. voice design model
- C. location design model
- D. high-density design model

Answer: B

Explanation:

https://www.cisco.com/c/dam/en_us/solutions/industries/docs/education/cisco_wlan_design_guide.pdf

NEW QUESTION 14

Multiple WLCs are implemented in a high-availability configuration in a mobility group. APs are deployed with only a primary controller assigned. By default, which mobility group member controller do the orphaned APs join in the event of a failed controller?

- A. controller with the most available AP free license capacity
- B. controller with the lowest percent of associated APs per license capacity
- C. controller with the least CPU utilization over the last reporting period
- D. controller with the least number of associated APs

Answer: D

Explanation:

<https://mrncciew.com/2013/04/07/ap-failover/>

NEW QUESTION 17

How does AP failover priority for access points function when configured with priority 1 or 4?

- A. When configured with priority 1, the access point is assigned with the highest priority level and it is marked as critical.
- B. This access point fails over before other access points with the lower priority when there is primary controller failure.
- C. When configured with priority 4, the access point is assigned with the highest priority level and it is marked as critical.
- D. This access point fails over before other access points with the lower priority when there is primary controller failure.
- E. When configured with priority 4, the access point is assigned with the lowest priority level and it is marked as low.
- F. This access point fails over after other access points with the higher priority when there is primary controller failure.
- G. When configured with priority 1, the access point is assigned with the medium priority level and it is marked as medium.
- H. This access point fails over after other access points with the higher priority when there is primary controller failure.

Answer: B

NEW QUESTION 19

An engineer must decide the cell overlap for a wireless voice deployment. Which Cisco measurement recommendation should be considered?

- A. The edge of the cell should be -67 dBm.
- B. The edge of the cell should be below 35 RSSI.
- C. The measurement should be done on the 2.4-GHz band.
- D. One AP should be deployed per 3000 square feet.

Answer: A

Explanation:

- The optimal VoWLAN cell boundary recommendation is -67 dBm

NEW QUESTION 21

As part of a wireless site survey in a hospital, an engineer needs to identify potential Layer 1 interferers. In which two areas is the engineer most likely to find sources of 2.4 GHz and 5 GHz RF noise? (Choose two.)

- A. magnetic resonance imaging
- B. kitchen
- C. Gamma Knife radiation treatment
- D. X-ray radiography
- E. patient room

Answer: BE

Explanation:

<https://www.ciscopress.com/articles/article.asp?p=2351131&seqNum=2>

NEW QUESTION 22

A company has 10 access point licenses available on their backup Cisco WLC and their primary Cisco WLC is at full capacity, 5 access points are set to high failover priority and 7 access points are set to critical failover priority. During a failure, not all critical access points failed over to the backup Cisco WLC. Which configuration is the cause of this issue?

- A. The high priority access point is oversubscribed.
- B. network ap-priority is set to enable.
- C. The critical priority access point count is oversubscribed.
- D. network ap-priority is set to disable.

Answer: D

Explanation:

<https://www.ciscolive.com/c/dam/r/ciscolive/emea/docs/2016/pdf/BRKCOL-2275.pdf>

NEW QUESTION 24

An engineer must create data link redundancy for the company's Cisco Wireless LAN controller. The engineer has decided to configure LAG-based redundancy instead of port-based redundancy. Which three features of LAG-based redundancy influenced this decision? (Choose three.)

- A. Packets are always sent out on the same port they are received on.
- B. All interface traffic passes as long as one port is up.
- C. The same port has multiple untagged dynamic interfaces.
- D. Interface connection to two separate nonstacked switches is available.
- E. Full bandwidth of all links is available.
- F. Ports are grouped into multiple LAGs.

Answer: ABF

Explanation:

<https://community.cisco.com/t5/wireless-mobility-documents/lag-link-aggregation/ta-p/3128669>

NEW QUESTION 25

A network engineer is designing a new wireless network. The network needs to have these characteristics:

- support high client concentration
- optimize client performance
- avoid interference

Which approach should be taken?

- A. Deploy APs near each other for 5 GHz coverage, and disable the 2.4 GHz radios for some Aps.
- B. Deploy APs near each other for 2.4 GHz coverage, and disable the 5 GHz radios for all APs.
- C. Deploy APs near each other for 5 GHz coverage, and enable the 2.4 GHz radios for all Aps.
- D. Deploy APs near each other for 2.4 GHz coverage, and disable the 5 GHz radios for some APs.

Answer: D

Explanation:

https://www.cisco.com/c/en/us/td/docs/wireless/controller/technotes/86/b_Cisco_Wireless_LAN_Controller_Co

NEW QUESTION 28

What is the attenuation value of a human body on a wireless signal?

- A. 3 dB
- B. 4 dB
- C. 6 dB
- D. 12 dB

Answer: A

Explanation:

Signal AttenuationSignal attenuation or signal loss occurs even as the signal passes through air. The loss of signal strength is more pronounced as the signal passes through different objects. A transmit power of 20 mW is equivalent to 13 dBm. Therefore, if the transmitted power at the entry point of a plasterboard wall is at 13 dBm, the signal strength is reduced to 10 dBm when exiting that wall. This table shows the likely loss in signal strength caused by various types of objects.

Signal Attenuation Caused By Various Types of Objects

Object in Signal Path

Signal Attenuation through Object

Plasterboard wall 3 dB

Glass wall with metal frame 6 dB

Cinder block wall 4 dB
Office window 3 dB
Metal door 6 dB
Metal door in brick wall 12 dB
Human body 3 dB

Each site surveyed has different levels of multipath distortion, signal losses, and signal noise. Hospitals are typically the most challenging environment to survey due to high multipath distortion, signal losses and signal noise. Hospitals take longer to survey, require a denser population of access points, and require higher performance standards. Manufacturing and shop floors are the next hardest to survey. These sites generally have metal siding and many metal objects on the floor, which result in reflected signals that recreate multipath distortion. Office buildings and hospitality sites generally have high signal attenuation but a lesser degree of multipath distortion.

<https://www.cisco.com/c/en/us/support/docs/wireless-mobility/wireless-lan-wlan/71642-vocera-deploy-guid>

NEW QUESTION 30

A network engineer is working on a predictive WLAN design, the new wireless network must support access to Internet, email, voice, and the inventory database, to successfully support these services, which configuration must the engineer use for the signal strength levels and SNR on the planning tool?

- A. signal strength of -67 dBm, 25-dB SNR, and maximum 1 percent packet loss.
- B. signal strength of -67 dBm, 20-dB SNR, and maximum 5 percent, packet loss.
- C. signal strength of 67 dBm, 20-dB SNR, and maximum 1 percent packet loss.
- D. signal strength of -70 dBm, 30-dB SN
- E. and maximum 10 percent packet loss.

Answer: A

Explanation:

<https://www.cisco.com/c/en/us/support/docs/wireless/5500-series-wireless-controllers/116057site-survey-gu>

NEW QUESTION 34

Which two considerations must a network engineer have when planning for voice over wireless roaming? (Choose two.)

- A. Full reauthentication introduces gaps in a voice conversation.
- B. Roaming time increases when using 802.1x + Cisco Centralized Key Management.
- C. Roaming occurs when the phone has seen at least four APs.
- D. Roaming occurs when the phone has reached -80 dBs or below.
- E. Roaming with only 802.1x authentication requires full reauthentication.

Answer: AE

Explanation:

https://www.cisco.com/c/en/us/td/docs/solutions/Enterprise/Mobility/vowlan/41dg/vowlan41dg-book/vowlan_c

NEW QUESTION 39

A customer has two Cisco 550B WLCs that manage all the access points in their network and provide N+1 redundancy and load balancing. The primary Cisco WLC has 60 licenses and the secondary Cisco WLC has 40. The customer wants to convert the N+1 model to an HA model and provide SSO. Configuration must be performed during a maintenance window. After performing all the configurations on both controllers, the config redundancy unit secondary command is issued on the secondary Cisco WLC and it fails. Which parameter needs to be in place to complete the configuration?

- A. A cable in the RP port
- B. The secondary Cisco WLC needs a minimum of 50 base licenses
- C. The primary Cisco WLC is already set as the secondary unit.
- D. SSO needs to be enabled

Answer: B

Explanation:

- With Release 7.4, an HA-SKU secondary controller can be configured as a backup controller for N+1 HA. For example, the following can be used as an HA-SKU controller:
 - 5508 Series Standalone controller with 50 AP license

NEW QUESTION 43

An AP is receiving 802.11 packets on its 802.11a radio with an RSSI value of -77 dBm. The current AP is part of an AP group that has been assigned an RF profile with RX-SOP set to Medium for 802.11a. Which action does the AP take with the packets?

- A. All frames are classified as non-Wi-Fi frames and are not decoded by the 5 GHz radio.
- B. Frames are decoded by the 2.4 GHz radio.
- C. All frames are classified as non-Wi-Fi frames and are not decoded by the 2.4 GHz radio.
- D. Frames are decoded by the 5 GHz radio.

Answer: C

NEW QUESTION 45

During a post-deployment site Survey, issues are found with non wi-Fi interference. What should the engineer use to identify the source of the Interference?

- A. Network analysis module
- B. Wireless intrusion prevention
- C. Wireshark
- D. Cisco spectrum expert

Answer: D

NEW QUESTION 47

Refer to the exhibit.

Redundancy Mgmt Ip	172.25.44.4
Peer Redundancy Mgmt Ip	172.25.44.5
Redundancy port Ip	169.254.44.4
Peer Redundancy port Ip	169.254.44.5
Redundant Unit	Primary
Mobility Mac Address	60:73:5C:D1:76:00
Keep Alive Timer (100 - 1000)	100 milliseconds
Keep Alive Retries (3 - 10)	3
Peer Search Timer (60 - 300)	120 seconds
Management Gateway Failover	Enabled
SSO	Disabled

An enterprise is using wireless as the main network connectivity for clients. To ensure service continuity, a pair of controllers will be installed in a datacentre. An engineer is designing SSO on the pair of controllers. What needs to be included in the design to avoid having the secondary controller go into maintenance mode?

- A. The Keep alive timer is too low
- B. which causes synchronization problems.
- C. The connection between the redundancy ports is missing.
- D. The redundancy port must be the same subnet as the redundancy mgmt.
- E. The Global Configuration of SSO is set to Disabled on the controller.

Answer: B

Explanation:

'There are few scenarios where the Standby WLC may go into Maintenance Mode and not be able to communicate with the network and peer: • Non reachability to Gateway via Redundant Management Interface • WLC with HA SKU which had never discovered peer • Redundant Port is down • Software version mismatch (WLC which boots up first goes into active mode and the other WLC in Maintenance Mode)' High Availability (SSO) Deployment Guide – Cisco

NEW QUESTION 48

A wireless engineer is using Ekahau site survey to validate that an existing wireless network is operating as expected, which type of survey should be using to identify the end-to-end network performance?

- A. GPS assisted
- B. Spectrum analysis
- C. Passive
- D. Active ping

Answer: B

Explanation:

<https://support.ekahau.com/hc/en-us/articles/115004973067-Spectrum-Analysis-Surveys>

NEW QUESTION 51

An enterprise has moved most services to the cloud, including email applications and real-time communication. Which feature must be enabled on the wireless network to improve the user experience?

- A. QoS
- B. Radio management
- C. Interference mitigation
- D. Fast secure roaming

Answer: D

Explanation:

<https://community.cisco.com/t5/wireless-mobility-documents/what-is-cckm-and-how-does-it-affect-fast-an>

NEW QUESTION 54

An engineer must perform a pre-deployment site survey for a new building in a high-security area. The design must provide a primary signal RSSI of -65 dBm for the clients. Which two requirements complete This design? (Choose two)

- A. Site access
- B. AP model
- C. WLC model
- D. HAVC access
- E. Number of clients

Answer: BE

Explanation:

<https://www.cisco.com/c/en/us/support/docs/wireless/5500-series-wireless-controllers/116057-site-survey-guide>

NEW QUESTION 56

Clustering Cisco WLCs into a single RF group enables the RRM algorithms to scale beyond the capabilities of a single Cisco WLC. How many WLC and APs in an RF group can the controller software scale up to in WLC release 8.9 depending on the platform?

- A. up to 20 WLCs and 1000 APs
- B. up to 20 WLCs and 3000 APs
- C. up to 20 WLCs and 4000 APs
- D. up to 20 WLCs and 6000 APs

Answer: D

Explanation:

- Controller software supports up to 20 controllers and 6000 access points in an RF group.

https://www.cisco.com/c/en/us/td/docs/wireless/controller/8-9/config-guide/b_cg89/radio_resource_managemen

NEW QUESTION 58

Where must the APs be mounted when used in a high-density wireless network to provide 6 dB to 20 dB of attenuation to a cell?

- A. in the aisle
- B. under the seat
- C. above the stage
- D. under the stage

Answer: B

Explanation:

Under seat or under desk mounting can provide from 6 dB to 20 dB of attenuation to the cell,

NEW QUESTION 60

Which CLI command does an engineer use to validate that the redundancy peer of a Stateful Switchover pair of controllers is up and connected?

- A. rping
- B. ping
- C. eping
- D. mping

Answer: B

Explanation:

Both the WLCs in HA setup keep track of gateway reachability. The Active WLC sends an Internet Control Message Protocol (ICMP) ping to the gateway using the Management IP address as the source,

NEW QUESTION 64

An enterprise is using a Cisco AireOS controller and Wi-Fi 6 APs. The controller is installed in the head office, and the employees primarily use Apple OS devices. The APs broadcast WLAN

ENT-WLAN406558520-1 for the employees and a guest WLAN with similar naming. What needs to be enabled on the controller to optimize roaming?

- A. Aggregated Probe Response Optimization
- B. Fast SSID Changing
- C. Load Balancing Window
- D. Client Timers

Answer: B

NEW QUESTION 66

A customer has noticed that Client Band Select is enabled and no clients are utilizing the 5 GHz band. Which three parameters must be met to ensure that wireless clients use the 5 GHz band? (Choose three.)

- A. Ensure that channel bonding is enabled on the WLAN.
- B. Ensure that the co-channel interference has not exceeded -85 dBm.
- C. Ensure that the UNII-2 extended channels are enabled on the 802.11a radios.
- D. Ensure that the client is receiving RSSI above the minimum band select RSSI threshold.
- E. Ensure that the client is dual-band capable.
- F. Ensure that the WLAN has 802.11a enabled.

Answer: CEF

Explanation:

For 802.11a, countries are moving to open the frequency range 5.250–5.350 GHz (UNII-2).

The 5 GHz band in which 802.11a operates is divided into several different sections.

https://www.cisco.com/c/en/us/td/docs/solutions/Enterprise/Mobility/emob41dg/emob41dg-wrapper/ch3_WLA

NEW QUESTION 69

A customer has multiple WLCs running N+1 redundancy with APs equally distributed. Only one WLC is a designated backup for all other WLCs so the customer must ensure that the most critical APs remain registered or get priority over other APs in case of a WLC failure. However, the customer notices on WLC failure that some critical APs remain unregistered. What needs to be addressed in the design?

- A. AP fallback is not enabled on the backup WLC.
- B. AP failover priority is not enabled globally on the backup WLC.
- C. AP failover priority is not enabled globally on the failed WLC.
- D. AP fallback is not enabled on the failed WLC.

Answer: C

NEW QUESTION 72

A customer called with a requirement that internal clients must be on different subnets depending on the building they are in. All access points are operating in local mode and will not be modified, and this is a single controller solution. Which design approach creates the desired result?

- A. Create an SSID, place it to the desired VLAN under WLANs, and configure 802.1x in ISE to assign the correct VLAN based on the SSID from which the client is authenticating.
- B. Create FlexConnect groups, place the access points in them, and set the correct VLAN to SSID mapping based on location.
- C. and set the correct VLAN to SSID mapping based on location.
- D. Create AP groups for each desired location, map the correct VLANs to the internal SSID, and add the access points for that location.
- E. Create mobility anchors for the SSID, and on the controller under the internal SSID.
- F. create a foreign map to the desired VLAN based on location.

Answer: C

NEW QUESTION 74

A medium-sized hospitality company with 50 hotels needs to upgrade the existing WLAN in each hotel to 802.11n. During the site surveys for each hotel, what needs to be taken into consideration when determining the locations for each AP?

- A. Selecting locations that are easily accessed so maintenance and upgrades can be performed quickly.
- B. Selecting AP locations where power is already available.
- C. Selecting APs that can be hidden in ceiling panels to provide a secure and clean aesthetic look.
- D. Selecting locations that make visual assessment of the AP operation easy.

Answer: B

NEW QUESTION 79

An engineer is using a Cisco AIR-2702i AP to conduct a Layer 1 site Survey, which mode is selected for the AP to discover non-Wi-Fi interference with Metageek Channel Analyzer?

- A. FlexConnect
- B. Sniffer
- C. Monitor
- D. SE-connect

Answer: D

NEW QUESTION 84

APs in a remote office recently have been converted from local mode to FlexConnect to take advantage of the local switching. After the change, remote wireless users report voice quality issues and bad quality on wireless IP phones while roaming. A debug is performed, and it is noticed that the 802.11r Fast Transition is not working as expected, like on local mode AP, though the same WLAN configuration is in place. What is the cause of the issue regarding the FlexConnect APs?

- A. They do not support 802.11r FT.
- B. They must be added into AP groups along with a common RF profile.
- C. They must be in a FlexConnect group to support 802.11r FT.
- D. They must be added to AP groups to support fast roaming methods.

Answer: A

NEW QUESTION 89

An engineer is performing a predictive wireless design for a medical treatment environment, which requires data and voice services. What is the minimum requirement for the design?

- A. overlapping -72 dBm coverage from two access points
- B. continuous -67 dBm coverage from one access point
- C. continuous -72 dBm coverage from one access point
- D. overlapping -67 dBm coverage from two access points

Answer: B

Explanation:

✓ The TX power of 17 dBi is 50mW. What you see on your laptop of a -20 dBm is a good signal. Cisco's recommendation for data is a max of -72 dBm and for voice it is -65dBm. You will notice this when you start walking away from your AP. So if you are planning on adding another ap, you would want your coverage to be bordering either -72 dBm or -65 dBm.

So -67dBm covers both Data & Voice with a single AP

NEW QUESTION 90

Which statement about the 9800 Series Wireless Controller mobility tunnel on a Cisco Catalyst 9800 controller is true?

- A. It is an IPsec tunnel with control path only.
- B. It is a CAPWAP tunnel with data path only.
- C. It is a CAPWAP tunnel with control path and data path.
- D. It is an IPsec tunnel with control path and data path.

Answer: C

Explanation:

The Cisco Catalyst 9800 Series Wireless Controller mobility tunnel is a CAPWAP tunnel with control path (UDP 16666) and data path (UDP 16667). The control path is DTLS encrypted by default. Data path DTLS can be enabled when you add the mobility peer.

https://www.cisco.com/c/en/us/td/docs/wireless/controller/9800/config-guide/b_wl_16_10_cg/mobility.html

NEW QUESTION 95

A customer has restricted the AP and antenna combinations for a design to be limited to one model integrated antenna AP for carpeted spaces and one model external antenna AP with high gain antennas for industrial, maintenance, or storage areas. When moving between a carpeted area to an industrial area, the engineer forgets to change survey devices and surveys several APs. Which strategy will reduce the negative impact of the design?

- A. Resurvey and adjust the design.
- B. Deploy unsurveyed access points to the design.
- C. Deploy the specified access points per area type.
- D. Increase the Tx power on incorrectly surveyed access points.

Answer: A

NEW QUESTION 98

A wireless engineer is utilizing the voice readiness tool in Cisco Prime for a customer that wants to deploy Cisco IP phones. Which dBm range is the network inspected against?

- A. -78 to -65 dBm
- B. -72 to -67 dBm
- C. -85 to -65 dBm
- D. -85 to -67 dBm

Answer: D

Explanation:

Default voice minimum RSSI is -75 dBm. but cisco recommend to get RSSI better than -67 dBm.

https://www.cisco.com/c/en/us/td/docs/net_mgmt/prime/infrastructure/34/user/guide/bk_CiscoPrimeInfrastructu minimum is -90 and maximum is -67 for IP phone

NEW QUESTION 102

A wireless engineer is performing a post verification of a wireless network. Which two metrics does the engineer verify to ensure that the wireless network can support voice services? (Choose two.)

- A. The coverage area must have a noise floor that does not exceed -87 dBm.
- B. The client device must have at least an -67 dBm RSSI.
- C. The rate of retransmitted packets must be 15 percent or below.
- D. The rate of retransmitted packets must be 20 percent or below.
- E. The client device must have at least an -65 dBm RSSI.

Answer: BC

Explanation:

1. The optimal VoWLAN Cell Edge recommendation is -67 dBm.
5. Retransmissions should be kept under 20 percent.

NEW QUESTION 104

A wireless engineer is designing a wireless network to support real-time applications over wireless. Which IEEE protocol must the engineer enable on the WLC so that the number of packets that are exchanged between an access point and client are reduced and fast roaming occurs?

- A. 802.11w
- B. 802.11r
- C. 802.11i
- D. 802.11k

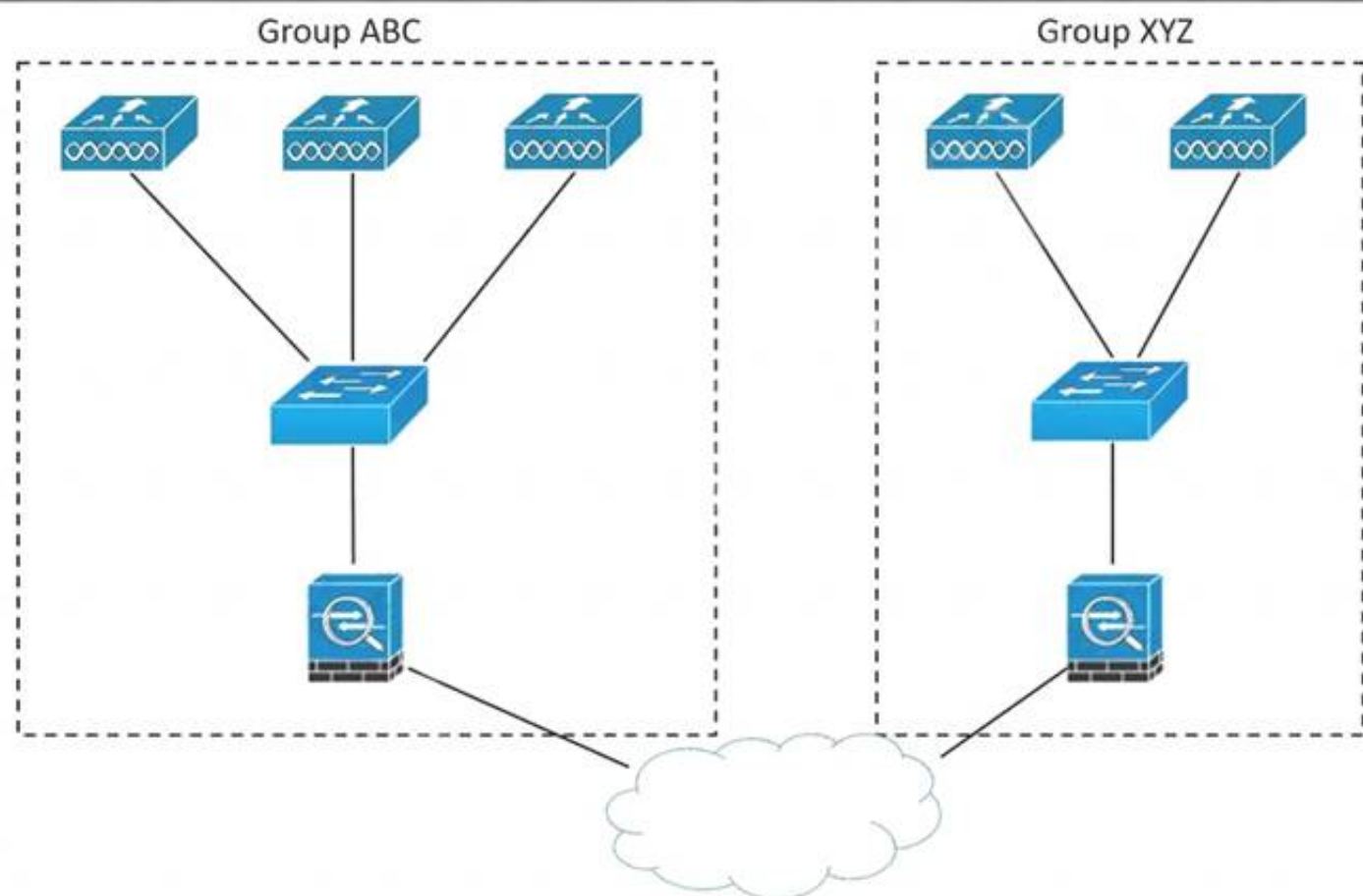
Answer: D

Explanation:

802.11r reduces the number of packets that are exchanged between the client and an AP. The client preauthenticates to the AP it will roam to before actually roaming. This means the roam itself occurs faster because the AP already has the client authentication credentials cached, resulting in fewer packets required between the client and the AP.

NEW QUESTION 108

Refer to the exhibit.



An enterprise has offices spread around the globe. The APs are connected to different controllers installed in separate datacenters. The IT team wants to allow clients to roam from controllers in group ABC to controllers in group XYZ. Which feature must be incorporated in the design to accomplish this task?

- A. switch peer group
- B. workgroup bridge
- C. mDNS gateway
- D. mobility lists

Answer: D

NEW QUESTION 111

Which three pieces of equipment are needed to conduct a fully measured wireless survey? (Choose three.)

- A. PoE battery
- B. spirit level
- C. access point
- D. tall tripod
- E. goggles
- F. ladder

Answer: ACD

Explanation:

https://www.cisco.com/c/en/us/td/docs/wireless/technology/mesh/81/design/guide/b_mesh_81/Site_Preparation_

NEW QUESTION 114

Which non-Wi-Fi interferer can be identified by Metageek Chanalyzer?

- A. PDAs
- B. jammers
- C. smartphones
- D. printers

Answer: B

Explanation:

<https://www.metageek.com/training/resources/wifi-and-non-wifi-interference>

A jamming transmitter creates constant noise across each frequency. These are used in a denial-of-service attack, and will prevent other wireless technologies from fully operating.

NEW QUESTION 119

An engineer changed the TPC Power Threshold for a wireless deployment from the default value to -65 dBm. The engineer conducts a new post-deployment Survey to validate the results. What is the expected outcome?

- A. Increase cell size
- B. Decreased client signal strength
- C. Increased received sensitivity
- D. Decreased channel overlap

Answer: A

NEW QUESTION 124

Why is 802.11a connectivity reduced in an X-ray room?

- A. X-rays create significant non-Wi-Fi interference on the 802.11a band.
- B. X-rays impact the 802.11a UNII-2 channels that cause access points to dynamically change channels.
- C. X-rays within these rooms cause multipath issues.
- D. X-ray rooms exhibit increased signal attenuation.

Answer: A

Explanation:

portable X-ray machines, sending high-resolution images, sometimes in real time, echography machines, and electrocardiography [ECG] machines). These devices may also use the same spectrum as Wi-Fi but with other protocols and, therefore, become sources of interference for your system.

NEW QUESTION 125

Two Cisco 5520 wireless LAN controllers are managing all access points throughout the network. The WLCs are in different locations to provide geographical redundancy. A mobility group has been configured on both WLCs and has a UP status on both controllers. The APs in location A are statically configured to use controller A as the primary and controller B as the secondary. If the WLC in location A goes offline, the APs successfully join the WLC in location B, but they do not fail over to their primary configured controller. Which configuration task fixes the issue?

- A. Configure the WLC in location A as primary using the CAPWAP AP Controller IP Address command on all the location A Access points.
- B. Use DHCP Option 43 and specify WLC in location A as primary.
- C. Enable AP fallback globally on the WLC
- D. Change the AP Failover Priority to critical.

Answer: C

NEW QUESTION 127

A wireless engineer must design mobility between two buildings at a campus site. The engineer has one controller at each site. The engineer is investigating inter-controller CAPWAP data and control traffic. Which two ports must be open? (Choose two.)

- A. 5246
- B. 5247
- C. 8443
- D. 16666
- E. 16667

Answer: CD

NEW QUESTION 132

.....

THANKS FOR TRYING THE DEMO OF OUR PRODUCT

Visit Our Site to Purchase the Full Set of Actual 300-425 Exam Questions With Answers.

We Also Provide Practice Exam Software That Simulates Real Exam Environment And Has Many Self-Assessment Features. Order the 300-425 Product From:

<https://www.2passeasy.com/dumps/300-425/>

Money Back Guarantee

300-425 Practice Exam Features:

- * 300-425 Questions and Answers Updated Frequently
- * 300-425 Practice Questions Verified by Expert Senior Certified Staff
- * 300-425 Most Realistic Questions that Guarantee you a Pass on Your FirstTry
- * 300-425 Practice Test Questions in Multiple Choice Formats and Updatesfor 1 Year