



Cisco

Exam Questions 010-151

Cisco Certified Technician (CCT) for Data Center

About ExamBible

[Your Partner of IT Exam](#)

Found in 1998

ExamBible is a company specialized on providing high quality IT exam practice study materials, especially Cisco CCNA, CCDA, CCNP, CCIE, Checkpoint CCSE, CompTIA A+, Network+ certification practice exams and so on. We guarantee that the candidates will not only pass any IT exam at the first attempt but also get profound understanding about the certificates they have got. There are so many alike companies in this industry, however, ExamBible has its unique advantages that other companies could not achieve.

Our Advances

* 99.9% Uptime

All examinations will be up to date.

* 24/7 Quality Support

We will provide service round the clock.

* 100% Pass Rate

Our guarantee that you will pass the exam.

* Unique Gurantee

If you do not pass the exam at the first time, we will not only arrange FULL REFUND for you, but also provide you another exam of your claim, ABSOLUTELY FREE!

NEW QUESTION 1

Which method does FCIP use to enable connectivity of geographically distributed Fibre Channel SANs over IP?

- A. routing
- B. tunneling
- C. handshaking
- D. transporting

Answer: B

NEW QUESTION 2

The Ethernet specification details several different fiber optic media types. What is the wire transmission speed for 100BASE-FX Ethernet?

- A. 10 Mb/s
- B. 100 Mb/s
- C. 1000 Mb/s
- D. 10000 Mb/s

Answer: B

NEW QUESTION 3

Which type of connection across the network does a SAN allow for multiple servers to access an unlimited amount of storage devices?

- A. any-to-many
- B. many-to-any
- C. any-to-any
- D. any-to-one
- E. one-to-any
- F. one-to-one

Answer: C

NEW QUESTION 4

What is the wire transmission speed for 100GBASE-ER4 Ethernet?

- A. 100 Mb/s
- B. 1 Gb/s
- C. 10 Gb/s
- D. 100 Gb/s

Answer: D

NEW QUESTION 5

Which three statements about FCoE are true? (Choose three.)

- A. Allows Fibre Channel and Ethernet networks to share a single, integrated infrastructure
- B. Encapsulates Fibre Channel frames into Ethernet frames, which allows them to run alongside traditional IP traffic
- C. Increases capital costs due to the difficulty to manage
- D. Consolidates I/O traffic in the data center

Answer: ABD

NEW QUESTION 6

Which cable is used to access the command-line interface of a Cisco UCS 6120XP Fabric Interconnects?

- A. KVM cable
- B. console cable
- C. Ethernet cable
- D. SFP+ Ethernet transceiver cable

Answer: B

NEW QUESTION 7

Where do you find the model number of a Cisco MDS 9200 Series chassis?

- A. on the top front of the chassis next to the serial number
- B. on the bottom front of the chassis next to the Cisco logo
- C. on the top front of the chassis next to the Cisco logo
- D. on the bottom front of the chassis next to the serial number

Answer: C

NEW QUESTION 8

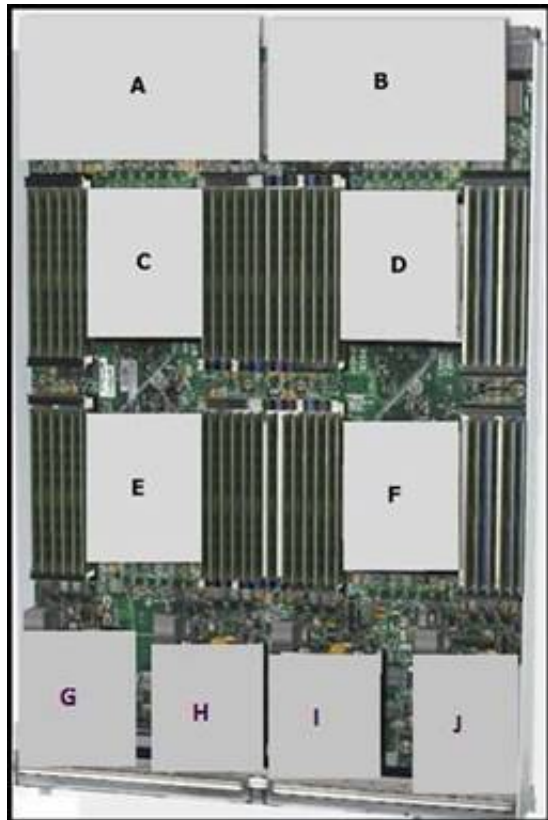
How do you find the serial number of a Cisco UCS 5108 Blade Server chassis?

- A. Use the Cisco UCS Admi
- B. Use the Cisco UCS Applicatio
- C. Use the Cisco UCS Assistan
- D. Use the Cisco UCS Manage

Answer: D

NEW QUESTION 9

Refer to the exhibit.



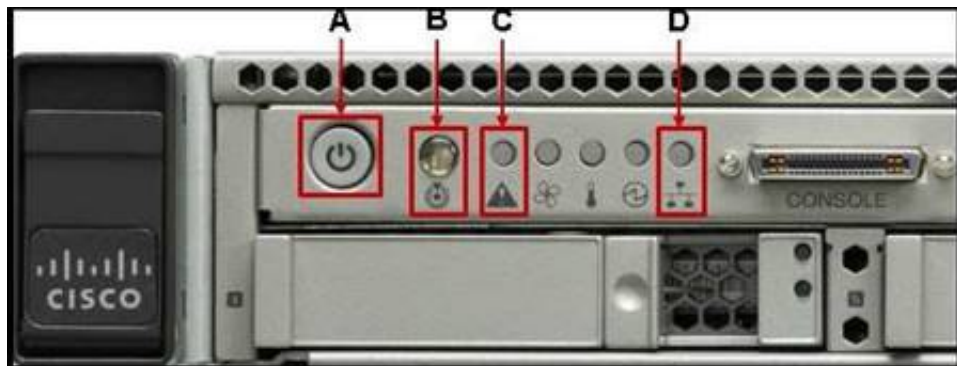
Which item does F represent?

- A. HDD 1
- B. TFP Module
- C. SuperCap Module
- D. CPU 2
- E. CMOS Battery

Answer: D

NEW QUESTION 10

Refer to the exhibit.



Which statement correctly identifies the front panel LEDs on the Cisco UCS C220 Server?

- A. A is power button and power status LED; B is identification button and LED; C is system status LED; D is network link activity LE
- B. A is network link activity LED; B is system status LED; C is power button and power status LED; D is identification button and LE
- C. A is system status LED; B is network link activity LED; C is power button and power status LED; D is identification button and LE
- D. A is network link activity LED; B is system status LED; C is identification button and LED; D is power button and power status LE

Answer: A

NEW QUESTION 10

Which Cisco MDS model supports the most Fibre Channel ports per chassis?

- A. MDS 9513
- B. MDS 9509
- C. MDS 9506
- D. MDS 9250i

Answer: A

NEW QUESTION 15

Refer to the exhibit.



What is the name of this rack-mount server?

- A. Cisco UCS C220 Rack-Mount Server
- B. Cisco UCS C240 Rack-Mount Server
- C. Cisco UCS C420 Rack-Mount Server
- D. Cisco UCS C460 Rack-Mount Server

Answer: C

NEW QUESTION 20

Which supervisor module is supported by a Cisco Nexus 7700 Series Switch?

- A. first-generation supervisor module
- B. second-generation supervisor module (Sup2)
- C. second-generation supervisor enhanced module (Sup2E)
- D. third-generation supervisor enhanced module (Sup3E)

Answer: C

NEW QUESTION 25

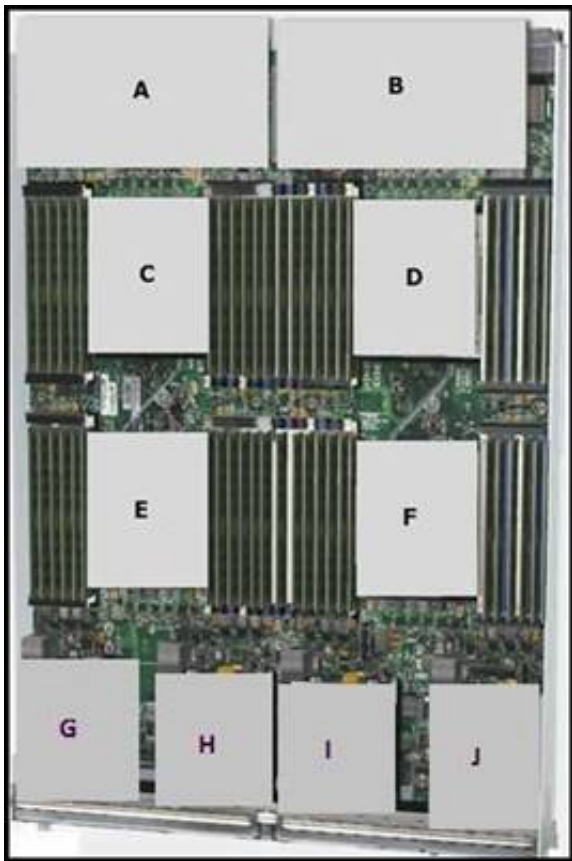
Which type of optics module is supported by a 12-port 100 GE Cisco Nexus 7700 F3 Series I/O module?

- A. CPAK
- B. QSFP+
- C. SFP/SFP+
- D. CFP

Answer: A

NEW QUESTION 29

Refer to the exhibit.



Which item does A represent?

- A. Emulex Adapter Card for Cisco UCS B420 M3 Blade Servers
- B. Virtual Interface Card for Cisco UCS B420 M3 Blade Servers
- C. mLOM for Cisco UCS B420 M3 Blade Servers
- D. Virtual Emulex Adapter Card for Cisco UCS B420 M3 Blade Servers
- E. SuperCap module for Cisco UCS B420 M3 Blade Servers

Answer: C

NEW QUESTION 30

Which command-line interface mode is best described by this prompt?

UCS-switch-A (nxos)#

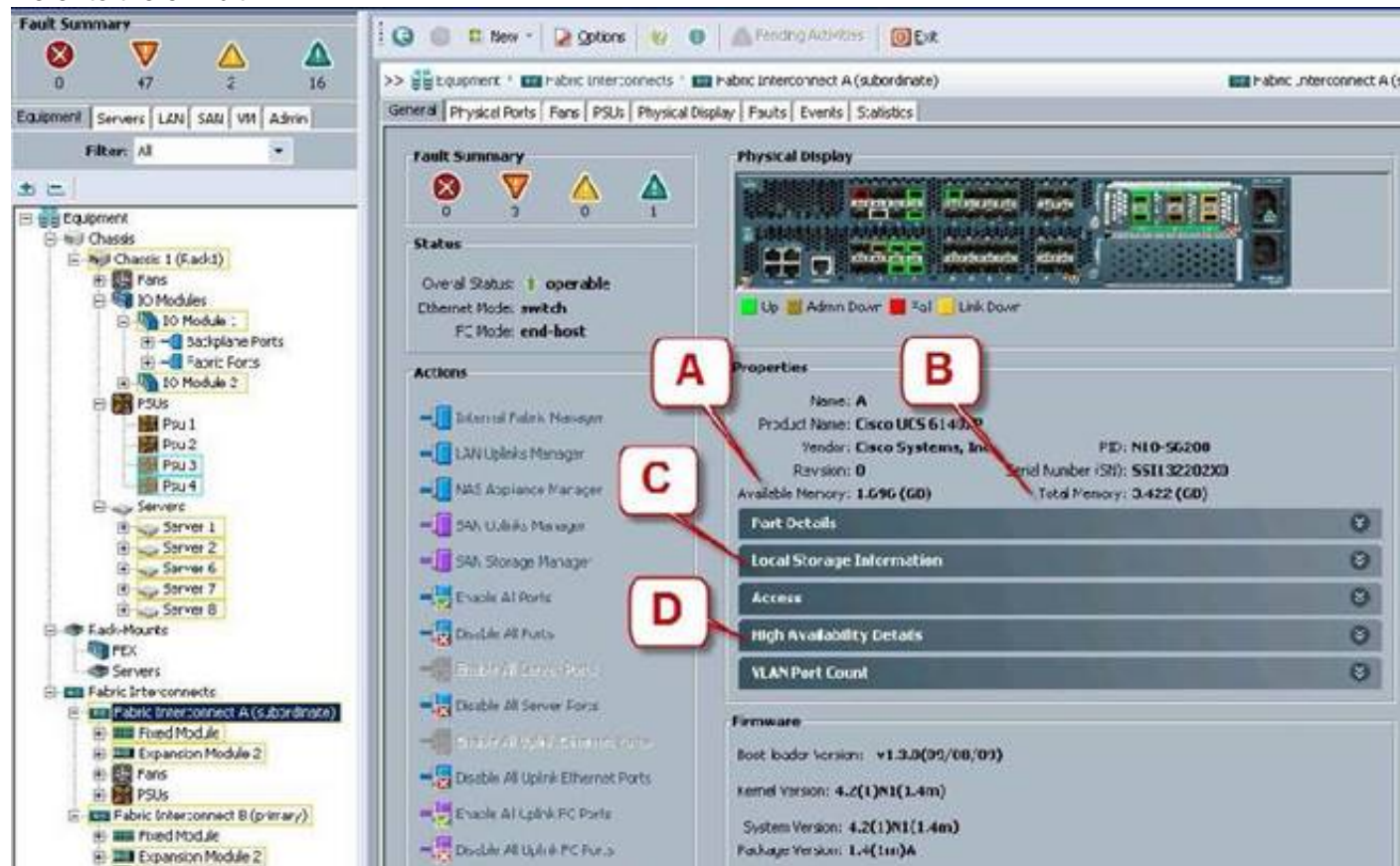
- A. maintenance mode
- B. EXEC mode

- C. local management mode
- D. global configuration mode
- E. Cisco IOS mode

Answer: B

NEW QUESTION 33

Refer to the exhibit.



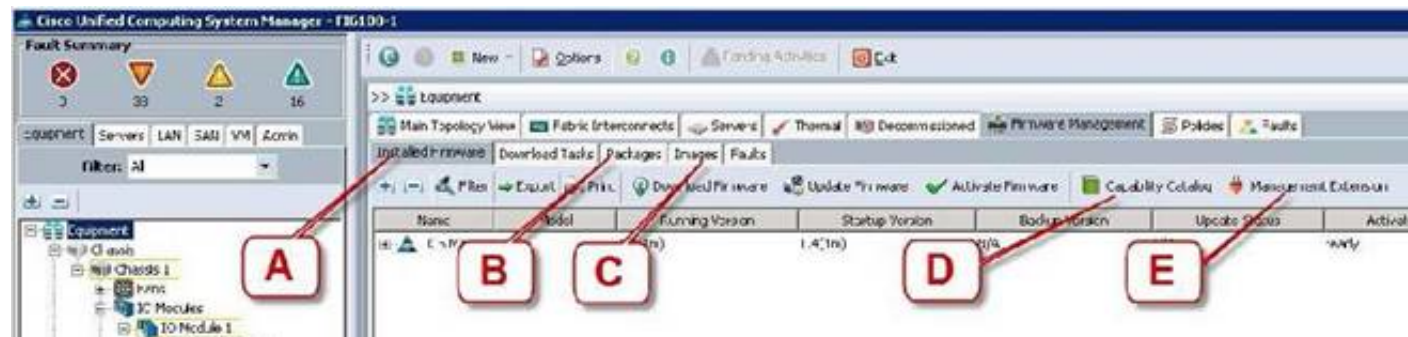
Where is the best place to see bootflash free space?

- A. A - Available Memory
- B. B - Total Memory
- C. C - Local Storage Information
- D. D - High Availability Details

Answer: C

NEW QUESTION 34

Refer to the exhibit.



Where is the best place to find the B200 BIOS version used in a specific Cisco UCS Manager version?

- A. A - Installed Firmware
- B. B - Packages
- C. C - Images
- D. D - Capability Catalog
- E. E - Management Extension

Answer: B

NEW QUESTION 37

Which command syntax is correct to reset the admin password when the switch is in the kickstart prompt "switch(boot) #"?

- A. exec -> admin-password <password>
- B. connect local-mgmt -> admin-password <password>
- C. configure terminal -> admin-password <password>
- D. connect nxos -> admin-password <password>
- E. admin-password <password>

Answer: C

NEW QUESTION 39

On the Sensors page from the CIMC view, which four tabs are displayed to view further information? (Choose four.)

- A. Power Supply

- B. Fan
- C. Memory
- D. CPU
- E. LEDs
- F. Temperature

Answer: ABEF

NEW QUESTION 40

Which tool does a network administrator not need when installing hardware?

- A. cable tester
- B. wrench set
- C. cable wraps
- D. needle-nose pliers
- E. PCMCIA memory
- F. soldering iron with grounded tip

Answer: F

NEW QUESTION 42

When the Cisco UCS Manager is used to verify the B- or C-Series device, which two types of Overall Status are acceptable and do not indicate a failure? (Choose two.)

- A. Online
- B. OK
- C. Unassociated
- D. Active

Answer: BC

NEW QUESTION 46

If the Overall Status for a Cisco UCS B-Series Blade Server indicates a failure in the Cisco UCS Manager, such as discovery-failed, which statement is true?

- A. The server shuts dow
- B. The server automatically reboots reboot in 3 minute
- C. The endpoints on that server cannot be upgrade
- D. The server is online, but the administrator cannot assign a service profile to that blad

Answer: C

NEW QUESTION 49

Which action should the administrator take before physically removing a blade server for maintenance or replacement?

- A. Force the server to shut dow
- B. Disassociate the service profil
- C. Decommission the serve
- D. Perform a graceful shutdown of the serve

Answer: C

NEW QUESTION 52

Which three components are hot swappable in a Cisco UCS Blade Server and Chassis? (Choose three.)

- A. Fabric Extender
- B. Power supply
- C. Heat sink
- D. SAS Hard Drive
- E. 2x8GB Kit DIMMs
- F. Mezzanine card

Answer: ABD

NEW QUESTION 55

Which five things should the administrator verify after performing maintenance or replacing a blade server? (Choose five.)

- A. blade server status
- B. hard drive status
- C. host OS boot status
- D. CPU status
- E. mezzanine card status
- F. memory DIMM status
- G. fan and power status

Answer: ABDEF

NEW QUESTION 60

Which two statements about DIMM replacement in Cisco UCS Servers are true? (Choose two.)

- A. In blade servers, DIMMs can be installed in either 1, 2, 4, or 8 DIMMs per channel
- B. Rack-mount and blade servers have memory fault LEDs that indicate which DIMM requires attention
- C. In servers that require pairs of DIMMs, the pairs must be identical (manufacturer, size, part #, and so on).
- D. If the memory in a server is not fully populated, you can install DIMMs in any open slot

Answer: AC

NEW QUESTION 65

Which three firmware components does the Host Upgrade Utility upgrade? (Choose three.)

- A. Fabric Interconnect firmware
- B. LAN on Motherboard
- C. Cisco UCS Manager
- D. CIMC
- E. System BIOS

Answer: BDE

NEW QUESTION 68

Which two commands allow you to view the state of high availability between the two clustered Fabric Interconnects? (Choose two.)

- A. show cluster state extended
- B. show cluster extended-state
- C. show cluster HA status
- D. show cluster state

Answer: BD

NEW QUESTION 72

On which three devices can the Host Upgrade Utility be performed? (Choose three.)

- A. C420
- B. C230
- C. B230
- D. B210
- E. C210
- F. B460
- G. C240

Answer: AEG

NEW QUESTION 75

Which two Cisco Nexus switches provide the foundation of the Cisco Application Centric Infrastructure? (Choose two.)

- A. Cisco Nexus 7718 switch
- B. Cisco Nexus 9508 switch
- C. Cisco Nexus 7710 switch
- D. Cisco Nexus 93128TX switch
- E. Cisco Nexus 6004 switch

Answer: BD

NEW QUESTION 77

Which type of optics module is supported by a 6-port 40 GE Cisco Nexus 7000 M2 Series I/O module?

- A. CPAK
- B. QSFP+
- C. SFP/SFP+
- D. CFP

Answer: B

NEW QUESTION 80

Refer to the exhibit.



What is the name of this Cisco Nexus 3000 Series Switch?

- A. Cisco Nexus 3132Q

- B. Cisco Nexus 3172PQ
- C. Cisco Nexus 3524
- D. Cisco Nexus 3016

Answer: A

NEW QUESTION 82
DRAG DROP

Drag the cable or connector on the left to the correct interface on the right.

KVM dongle	Fabric Interconnect to Fabric Extender
straight-through Ethernet cable	console port
mini USB cable	MDS
Twinax cable	C-Series Rack Server
Fiber Channel SFP	from laptop to Management Port
rolled RJ-45 cable	
SAS cable	

- A. Mastered
- B. Not Mastered

Answer: A

Explanation:

Drag the cable or connector on the left to the correct interface on the right.

KVM dongle	Twinax cable
straight-through Ethernet cable	rolled RJ-45 cable
mini USB cable	Fiber Channel SFP
Twinax cable	KVM dongle
Fiber Channel SFP	straight-through Ethernet cable
rolled RJ-45 cable	
SAS cable	

NEW QUESTION 86
.....

Relate Links

100% Pass Your 010-151 Exam with ExamBible Prep Materials

<https://www.exambible.com/010-151-exam/>

Contact us

We are proud of our high-quality customer service, which serves you around the clock 24/7.

Viste - <https://www.exambible.com/>