



Cisco

Exam Questions 350-401

Implementing and Operating Cisco Enterprise Network Core Technologies

NEW QUESTION 1

Which function is handled by vManage in the Cisco SD-WAN fabric?

- A. Establishes BFD sessions to test liveness of links and nodes.
- B. Distributes policies that govern data forwarding.
- C. Performs remote software upgrades for WAN Edge vSmart and vBond.
- D. Establishes IPsec tunnels with nodes

Answer: C

NEW QUESTION 2

A customer requests a network design that supports these requirements:

- FHRP redundancy
- multivendor router environment
- IPv4 and IPv6 hosts

Which protocol does the design include?

- A. HSRP version 2
- B. VRRP version 2
- C. GLBP
- D. VRRP version 3

Answer: D

NEW QUESTION 3

What is a characteristic of YANG?

- A. It is a Cisco proprietary language that models NETCONF data
- B. It allows model developers to create custom data types
- C. It structures data in an object-oriented fashion to promote model reuse
- D. It provides loops and conditionals to control flow within models

Answer: C

NEW QUESTION 4

While configuring an IOS router for HSRP with a virtual IP of 10.1.1.1, an engineer sees this log message.

- A. Change the HSRP group configuration on the remote router to 1.
- B. Change the HSRP group configuration on the local router to 1.
- C. Change the HSRP virtual address on the remote router to 10.1.1.1
- D. Change the HSRP virtual address on the local router to 10.1.1.1

Answer: B

NEW QUESTION 5

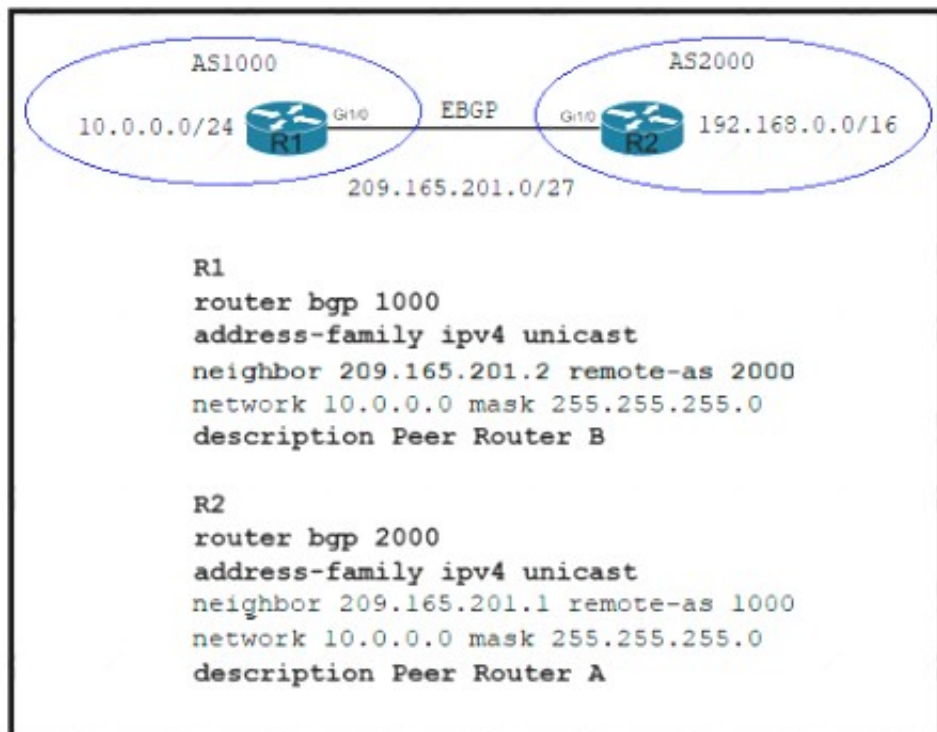
What is one fact about Cisco SD-Access wireless network deployments?

- A. The access point is part of the fabric underlay
- B. The WLC is part of the fabric underlay
- C. The access point is part of the fabric overlay
- D. The wireless client is part of the fabric overlay

Answer: C

NEW QUESTION 6

Refer to the exhibit.



Which two commands are needed to allow for full reachability between AS 1000 and AS 2000? (Choose two)

- A. R1#network 19.168.0.0 mask 255.255.0.0
- B. R2#no network 10.0.0.0 255.255.255.0
- C. R2#network 19.168.0.0 mask 255.255.0.0
- D. R2#network 209.165.201.0 mask 255.255.192.0
- E. R1#no network 10.0.0.0 255.255.255.0

Answer: BC

NEW QUESTION 7

Which algorithms are used to secure REST API from brute attacks and minimize the impact?

- A. SHA-512 and SHA-384
- B. MD5 algorithm-128 and SHA-384
- C. SHA-1, SHA-256, and SHA-512
- D. PBKDF2, BCrypt, and SCrypt

Answer: D

Explanation:

One of the best practices to secure REST APIs is using password hash. Passwords must always be hashed to protect the system (or minimize the damage) even if it is compromised in some hacking attempts. There are many such hashing algorithms which can prove really effective for password security e.g. PBKDF2, bcrypt and scrypt algorithms.

Other ways to secure REST APIs are: Always use HTTPS, Never expose information on URLs (Usernames, passwords, session tokens, and API keys should not appear in the URL),

Adding Timestamp in Request, Using OAuth, Input Parameter Validation.

NEW QUESTION 8

Which encryption hashing algorithm does NTP use for authentication?

- A. SSL
- B. MD5
- C. AES128
- D. AES256

Answer: D

NEW QUESTION 9

Drag and drop the threat defense solutions from the left onto their descriptions on the right.

Umbrella	provides malware protection on endpoints
AMP4E	provides IPS/IDS capabilities
FTD	performs security analytics by collecting network flows
StealthWatch	protects against email threat vector
ESA	provides DNS protection

- A. Mastered
- B. Not Mastered

Answer: A

Explanation:



NEW QUESTION 10

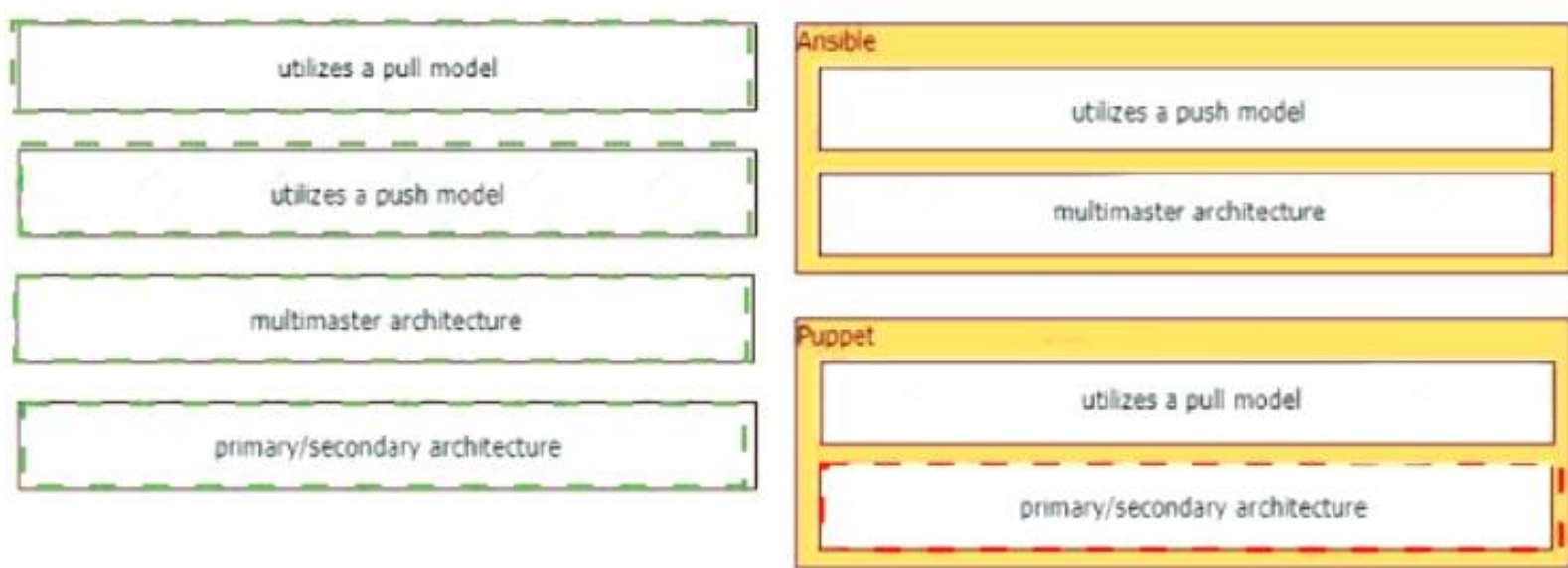
Drag and drop the characteristics from the left onto the orchestration tools they describe on the right.



- A. Mastered
- B. Not Mastered

Answer: A

Explanation:



NEW QUESTION 10

Which technology provides a secure communication channel for all traffic at Layer 2 of the OSI model?

- A. MACsec
- B. IPsec
- C. SSL
- D. Cisco Trustsec

Answer: A

Explanation:

MACsec, defined in 802.1AE, provides MAC-layer encryption over wired networks by using out-ofband methods for encryption keying. The MACsec Key Agreement (MKA) Protocol provides the

NEW QUESTION 11

A company plans to implement intent-based networking in its campus infrastructure. Which design facilitates a migrate from a traditional campus design to a programmer fabric designer?

- A. Layer 2 access
- B. three-tier
- C. two-tier
- D. routed access

Answer: C

NEW QUESTION 12

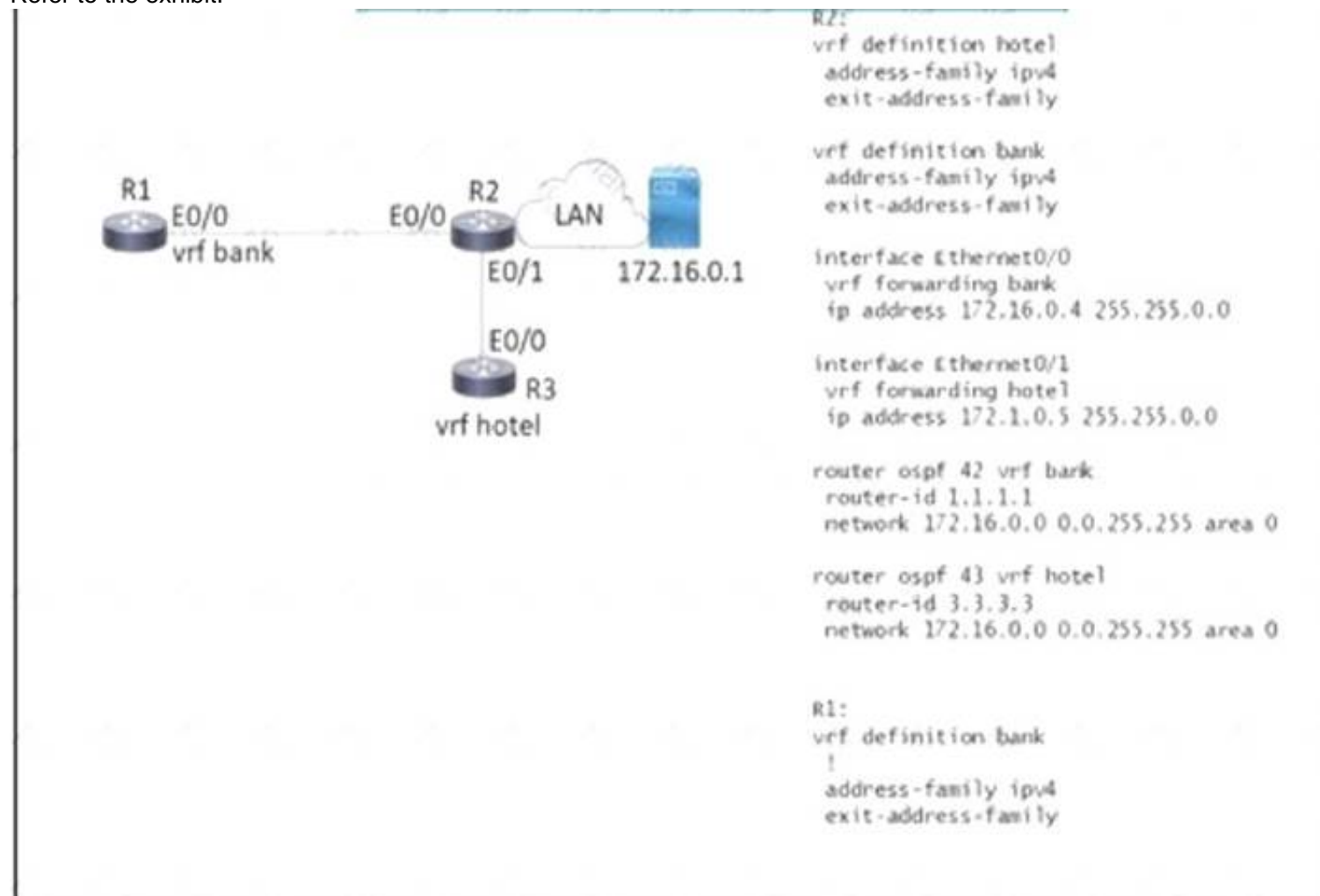
Which measurement is used from a post wireless survey to depict the cell edge of the access points?

- A. SNR
- B. Noise
- C. RSSI
- D. CCI

Answer: A

NEW QUESTION 14

Refer to the exhibit.



Which configuration must be applied to R to enable R to reach the server at 172.16.0.1?

A)

```

interface Ethernet0/0
vrf forwarding hotel
ip address 172.16.0.7 255.255.0.0

router ospf 44 vrf Hotel
network 172.16.0.0 0.0.255.255 area 0
    
```

B)

```

interface Ethernet0/0
ip address 172.16.0.7 255.255.0.0

router ospf 44 vrf hotel
network 172.16.0.0 255.255.0.0
    
```

C)


```
interface Ethernet0/0
ip address 172.16.0.7 255.255.0.0
```

```
router ospf 44 vrf bank
network 172.16.0.0 255.255.0.0
```

D)

```
interface Ethernet0/0
vrf forwarding bank
ip address 172.16.0.7 255.255.0.0
```

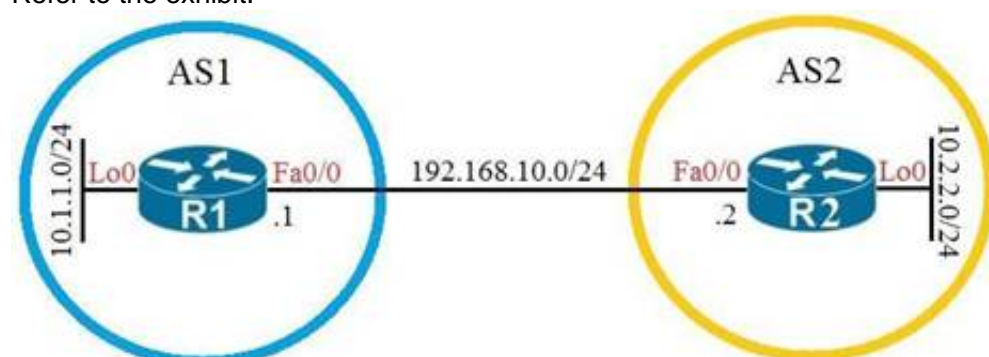
```
router ospf 44 vrf bank
network 172.16.0.0 0.0.255.255 area 0
```

- A. Option A
- B. Option B
- C. Option C
- D. Option D

Answer: D

NEW QUESTION 16

Refer to the exhibit.



Which configuration establishes EBGp neighborhood between these two directly connected neighbors and exchanges the loopback network of the two routers through BGP?

A)

```
R1(config)#router bgp 1
R1(config-router)#neighbor 192.168.10.2 remote-as 2
R1(config-router)#network 10.1.1.0 mask 255.255.255.0
```

```
R2(config)#router bgp 2
R2(config-router)#neighbor 192.168.10.1 remote-as 1
R2(config-router)#network 10.2.2.0 mask 255.255.255.0
```

B)

```
R1(config)#router bgp 1
R1(config-router)#neighbor 10.2.2.2 remote-as 2
R1(config-router)#network 10.1.1.0 mask 255.255.255.0
```

```
R2(config)#router bgp 2
R2(config-router)#neighbor 10.1.1.1 remote-as 1
R2(config-router)#network 10.2.2.0 mask 255.255.255.0
```

C)

```
R1(config)#router bgp 1
R1(config-router)#neighbor 192.168.10.2 remote-as 2
R1(config-router)#network 10.0.0.0 mask 255.0.0.0
```

```
R2(config)#router bgp 2
R2(config-router)#neighbor 192.168.10.1 remote-as 1
R2(config-router)#network 10.0.0.0 mask 255.0.0.0
```

D)

```
R1(config)#router bgp 1
R1(config-router)#neighbor 10.2.2.2 remote-as 2
R1(config-router)#neighbor 10.2.2.2 update-source lo0
R1(config-router)#network 10.1.1.0 mask 255.255.255.0
```

```
R2(config)#router bgp 2
R2(config-router)#neighbor 10.1.1.1 remote-as 1
R2(config-router)#neighbor 10.1.1.1 update-source lo0
R2(config-router)#network 10.2.2.0 mask 255.255.255.0
```

- A. Option A
- B. Option B
- C. Option C
- D. Option D

Answer: A

Explanation:

With BGP, we must advertise the correct network and subnet mask in the “network” command (in this case network 10.1.1.0/24 on R1 and network 10.2.2.0/24 on R2). BGP is very strict in the routing advertisements. In other words, BGP only advertises the network which exists exactly in the routing table. In this case, if you put the command “network x.x.0.0 mask 255.255.0.0” or “network x.0.0.0 mask 255.0.0.0” or “network x.x.x.x mask 255.255.255.255” then BGP will not advertise anything.

It is easy to establish eBGP neighborship via the direct link. But let’s see what are required when we want to establish eBGP neighborship via their loopback interfaces. We will need two commands:

+ the command “neighbor 10.1.1.1 ebgp-multihop 2” on R1 and “neighbor 10.2.2.2 ebgp-multihop 2” on R1. This command increases the TTL value to 2 so that BGP updates can reach the

BGP neighbor which is two hops away.

+ Answer 'R1 (config) #router bgp 1

R1 (config-router) #neighbor 192.168.10.2 remote-as 2

R1 (config-router) #network 10.1.1.0 mask 255.255.255.0 R2 (config) #router bgp 2

R2 (config-router) #neighbor 192.168.10.1 remote-as 1

R2 (config-router) #network 10.2.2.0 mask 255.255.255.0

Quick Wireless Summary

Cisco Access Points (APs) can operate in one of two modes: autonomous or lightweight

+ Autonomous: self-sufficient and standalone. Used for small wireless networks.

+ Lightweight: A Cisco lightweight AP (LAP) has to join a Wireless LAN Controller (WLC) to function. LAP and WLC communicate with each other via a logical pair of CAPWAP tunnels.

– Control and Provisioning for Wireless Access Point (CAPWAP) is an IETF standard for control messaging for setup, authentication and operations between APs and WLCs. CAPWAP is similar to LWAPP except the following differences:

+CAPWAP uses Datagram Transport Layer Security (DTLS) for authentication and encryption to protect traffic between APs and controllers. LWAPP uses AES.

+ CAPWAP has a dynamic maximum transmission unit (MTU) discovery mechanism.

+ CAPWAP runs on UDP ports 5246 (control messages) and 5247 (data messages) An LAP operates in one of six different modes:

+ Local mode (default mode): measures noise floor and interference, and scans for intrusion detection (IDS) events every 180 seconds on unused channels

+ FlexConnect, formerly known as Hybrid Remote Edge AP (H-REAP), mode: allows data traffic

to be switched locally and not go back to the controller. The FlexConnect AP can perform standalone client authentication and switch VLAN traffic locally even when it’s disconnected to the WLC (Local Switched). FlexConnect AP can also tunnel (via CAPWAP) both user wireless data and control traffic to a centralized WLC (Central Switched).

+ Monitor mode: does not handle data traffic between clients and the infrastructure. It acts like a sensor for location-based services (LBS), rogue AP detection, and IDS

+ Rogue detector mode: monitor for rogue APs. It does not handle data at all.

+ Sniffer mode: run as a sniffer and captures and forwards all the packets on a particular channel to a remote machine where you can use protocol analysis tool (Wireshark, Airopeek, etc) to review the packets and diagnose issues. Strictly used for troubleshooting purposes.

+ Bridge mode: bridge together the WLAN and the wired infrastructure together.

Mobility Express is the ability to use an access point (AP) as a controller instead of a real WLAN controller. But this solution is only suitable for small to midsize, or multi-site branch locations where you might not want to invest in a dedicated WLC. A Mobility Express WLC can support up to 100 Aps

NEW QUESTION 21

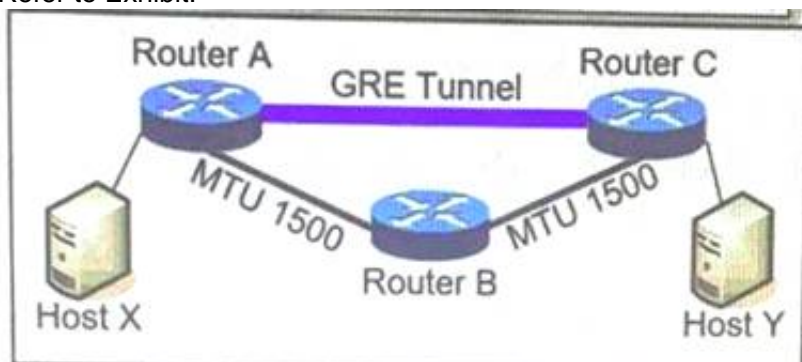
What is YANG used for?

- A. scraping data via CLI
- B. processing SNMP read-only polls
- C. describing data models
- D. providing a transport for network configuration data between client and server

Answer: C

NEW QUESTION 22

Refer to Exhibit.



MTU has been configured on the underlying physical topology, and no MTU command has been configured on the tunnel interfaces. What happens when a 1500-byte IPv4 packet traverses the GRE tunnel from host X to host Y, assuming the DF bit is cleared?

- A. The packet arrives on router C without fragmentation.
- B. The packet is discarded on router A
- C. The packet is discarded on router B
- D. The packet arrives on router C fragmented.

Answer: D

Explanation:

Text Description automatically generated

Like any protocol, using GRE adds a few bytes to the size of data packets. This must be factored into the MSS and MTU settings for packets. If the MTU is 1,500 bytes and the MSS is 1,460 bytes (to account for the size of the necessary IP and TCP headers), the addition of GRE 24-byte headers will cause the packets to exceed the MTU:

$$1,460 \text{ bytes [payload]} + 20 \text{ bytes [TCP header]} + 20 \text{ bytes [IP header]} + 24 \text{ bytes [GRE header + IP header]} = 1,524 \text{ bytes}$$

As a result, the packets will be fragmented. Fragmentation slows down packet delivery times and increases how much compute power is used, because packets that exceed the MTU must be broken down and then reassembled.

NEW QUESTION 27

Which two operations are valid for RESTCONF? (Choose two.)

- A. HEAD
- B. REMOVE
- C. PULL
- D. PATCH
- E. ADD
- F. PUSH

Answer: AD

Explanation:

RESTCONF operations include OPTIONS, HEAD, GET, POST, PATCH, DELETE.

NEW QUESTION 31

Refer to the exhibit.

```
interface Vlan10
 ip vrf forwarding Customer1
 ip address 192.168.1.1 255.255.255.0
!
interface Vlan20
 ip vrf forwarding Customer2
 ip address 172.16.1.1 255.255.255.0
!
interface Vlan30
 ip vrf forwarding Customer3
 ip address 10.1.1.1 255.255.255.0
```

Which configuration allows Customer2 hosts to access the FTP server of Customer1 that has the IP address of 192.168.1.200?

- A. ip route vrf Customer1 172.16.1.0 255.255.255.0 172.16.1.1 globalip route vrf Customer 192.168.1.200 255.255.255.255 192.168.1.1 globalip route 192.168.1.0 255.255.255.0 Vlan10ip route 172.16.1.0 255.255.255.0 Vlan20
- B. ip route vrf Customer1 172.16.1.0 255.255.255.0 172.16.1.1 Customer2ip route vrf Customer 192.168.1.200 255.255.255.255 192.168.1.1 Customer1
- C. ip route vrf Customer1 172.16.1.0 255.255.255.0 172.16.1.1 Customer1ip route vrf Customer 192.168.1.200 255.255.255.255 192.168.1.1 Customer2
- D. ip route vrf Customer1 172.16.1.1 255.255.255.255 172.16.1.1 globalip route vrf Customer 192.168.1.200 255.255.255.0 192.168.1.1 globalip route 192.168.1.0 255.255.255.0 Vlan10ip route 172.16.1.0 255.255.255.0 Vlan20

Answer: A

NEW QUESTION 32

In an SD-Access solution what is the role of a fabric edge node?

- A. to connect external Layer 3- network to the SD-Access fabric
- B. to connect wired endpoint to the SD-Access fabric
- C. to advertise fabric IP address space to external network
- D. to connect the fusion router to the SD-Access fabric

Answer: B

Explanation:

+ Fabric edge node: This fabric device (for example, access or distribution layer device) connects

NEW QUESTION 34

AN engineer is implementing a route map to support redistribution within BGP. The route map must configured to permit all unmatched routes. Which action must the engineer perform to complete this task?

- A. Include a permit statement as the first entry
- B. Include at least one explicit deny statement
- C. Remove the implicit deny entry
- D. Include a permit statement as the last entry

Answer: D

NEW QUESTION 35

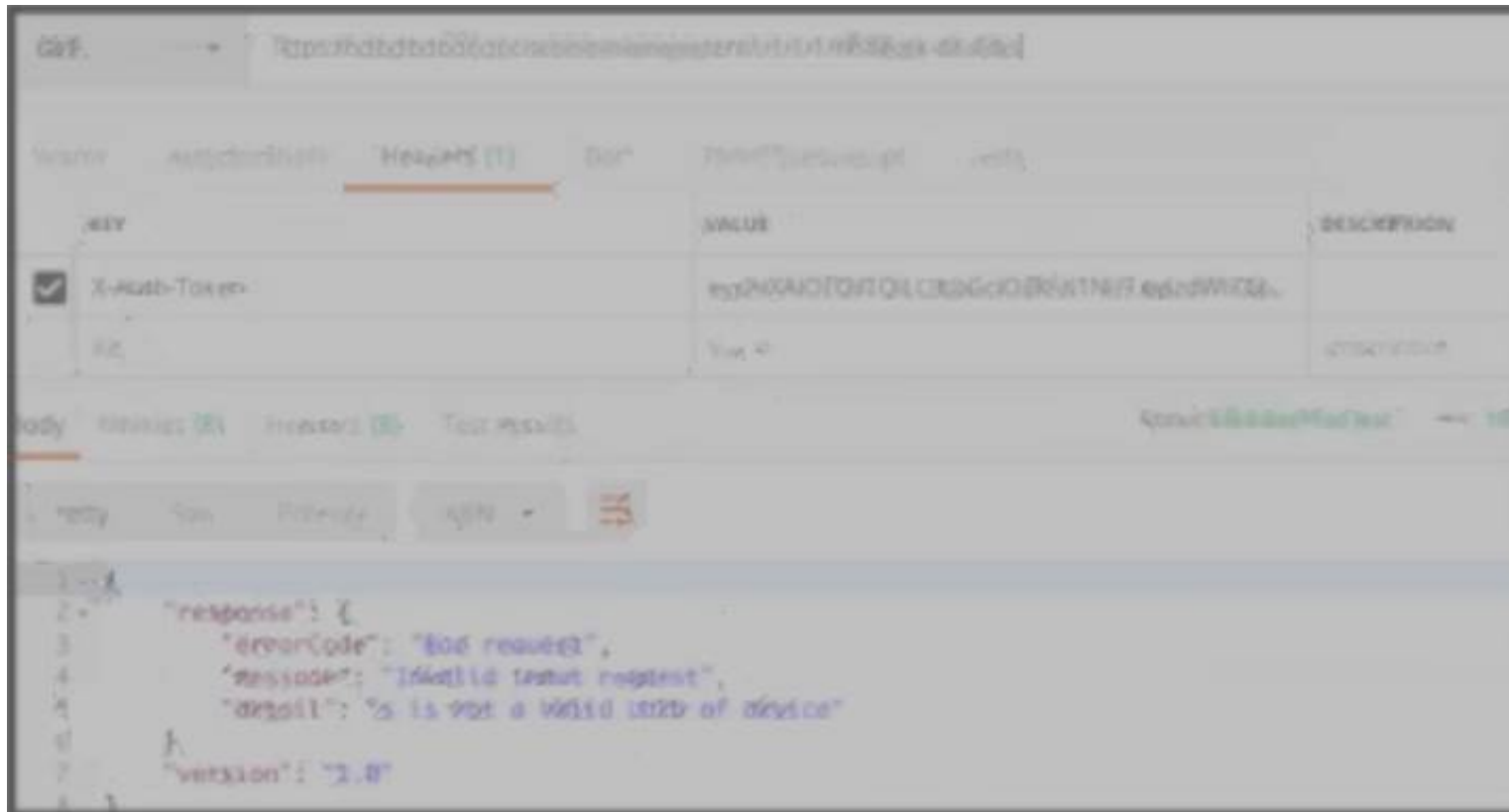
How cloud deployments differ from on-prem deployments?

- A. Cloud deployments require longer implementation times than on-premises deployments
- B. Cloud deployments are more customizable than on-premises deployments.
- C. Cloud deployments require less frequent upgrades than on-premises deployments.
- D. Cloud deployments have lower upfront costs than on-premises deployments.

Answer: C

NEW QUESTION 38

Refer to the exhibit.



POSTMAN is showing an attempt to retrieve network device information from Cisco DNA Center API. What is the issue?

- A. The URI string is incorrect
- B. The token has expired.
- C. Authentication has failed
- D. The JSON payload contains the incorrect UUID

Answer: D

NEW QUESTION 41

A network engineer is adding an additional 10Gps link to an exiting 2x10Gps LACP-based LAG to augment its capacity. Network standards require a bundle interface to be taken out of service if one of its member links goes down, and the new link must be added with minimal impact to the production network. Drag and drop the tasks that the engineer must perform from the left into the sequence on the right. Not all options are used.

Execute the channel-group number mode active command to add the 10Gbps link to the existing bundle.	step 1
Execute the channel-group number mode on command to add the 10Gbps link to the existing bundle.	step 2
Execute the lacp min-bundle 3 command to set the minimum number of ports threshold.	step 3
Validate the network layer of the 10Gbps link.	step 4
Execute the channel-group number mode auto command to add the 10Gbps link to the existing bundle.	
Validate the physical and data link layers of the 10Gbps link.	

- A. Mastered
- B. Not Mastered

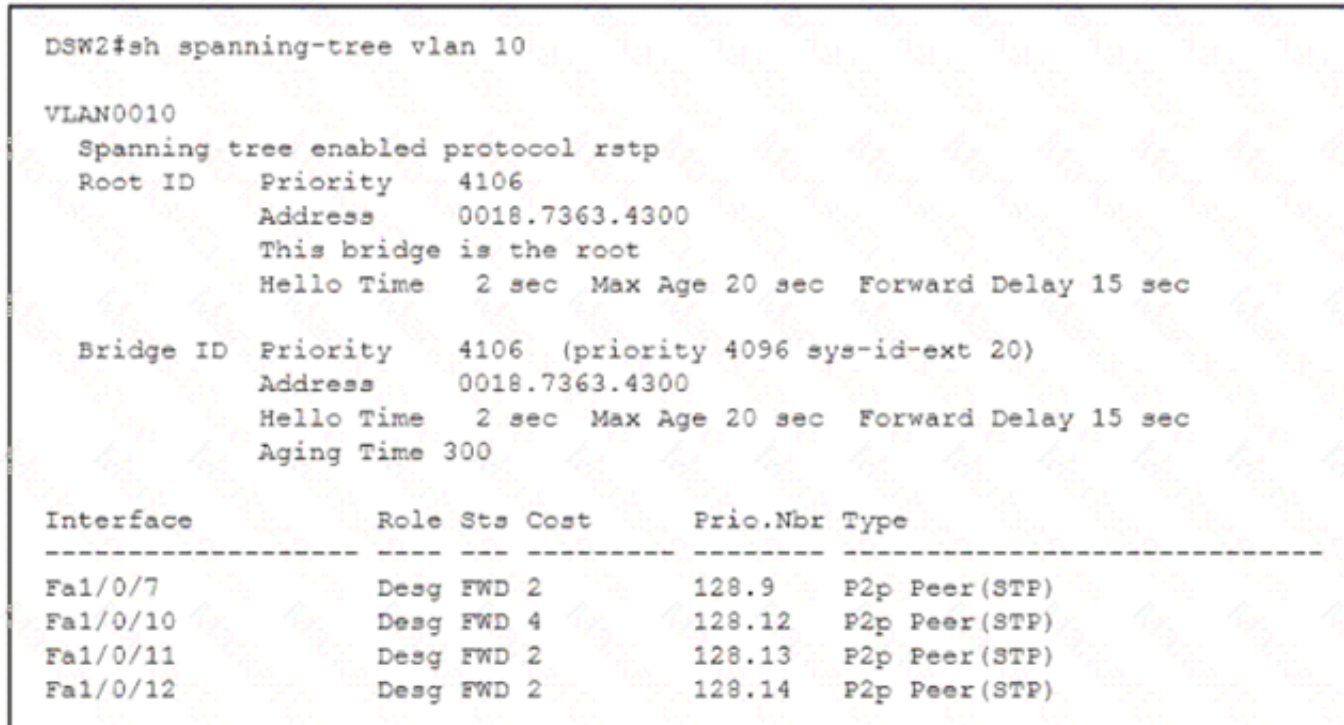
Answer: A

Explanation:

A picture containing diagram Description automatically generated

NEW QUESTION 44

Refer to the exhibit.



```
DSW2#sh spanning-tree vlan 10

VLAN0010
  Spanning tree enabled protocol rstp
  Root ID    Priority    4106
             Address     0018.7363.4300
             This bridge is the root
             Hello Time  2 sec  Max Age 20 sec  Forward Delay 15 sec

  Bridge ID  Priority    4106 (priority 4096 sys-id-ext 20)
             Address     0018.7363.4300
             Hello Time  2 sec  Max Age 20 sec  Forward Delay 15 sec
             Aging Time 300

Interface         Role Sts Cost      Prio.Nbr Type
-----
Fa1/0/7           Desg FWD 2        128.9    P2p Peer (STP)
Fa1/0/10          Desg FWD 4        128.12   P2p Peer (STP)
Fa1/0/11          Desg FWD 2        128.13   P2p Peer (STP)
Fa1/0/12          Desg FWD 2        128.14   P2p Peer (STP)
```

What is the result when a switch that is running PVST+ is added to this network?

- A. DSW2 operates in Rapid PVST+ and the new switch operates in PVST+
- B. Both switches operate in the PVST+ mode
- C. Spanning tree is disabled automatically on the network
- D. Both switches operate in the Rapid PVST+ mode.

Answer: A

Explanation:

From the output we see DSW2 is running in RSTP mode (in fact Rapid PVST+ mode as Cisco does not support RSTP alone). When a new switch running PVST+ mode is added to the topology, they keep running the old STP instances as RSTP (in fact Rapid PVST+) is compatible with PVST+.

NEW QUESTION 49

What is a consideration when designing a Cisco SD-Access underlay network?

- A. End user subnets and endpoints are part of the underlay network.
- B. The underlay switches provide endpoint physical connectivity for users.
- C. Static routing is a requirement,
- D. It must support IPv4 and IPv6 underlay networks

Answer: A

NEW QUESTION 54

Which protocol does REST API rely on to secure the communication channel?

- A. TCP
- B. HTTPS
- C. SSH
- D. HTTP

Answer: B

Explanation:

The REST API accepts and returns HTTP (not enabled by default) or HTTPS messages that contain JavaScript Object Notation (JSON) or Extensible Markup Language (XML) documents. You can use any programming language to generate the messages and the JSON or XML documents that contain the API methods or Managed Object (MO) descriptions.

NEW QUESTION 57

What are two considerations when using SSO as a network redundancy feature? (Choose two)

- A. both supervisors must be configured separately
- B. the multicast state is preserved during switchover
- C. must be combined with NSF to support uninterrupted Layer 2 operations
- D. must be combined with NSF to support uninterrupted Layer 3 operations
- E. requires synchronization between supervisors in order to guarantee continuous connectivity

Answer: DE

Explanation:

Text Description automatically generated

against failure due to the Supervisor or loss of service because of software problems. The access layer typically provides Layer 2 services, with redundant switches making up the distribution layer. The Layer 2 access layer can benefit from SSO deployed without NSF. Some Enterprises have deployed Layer 3 routing at the access layer. In that case, NSF/SSO can be used.

Cisco IOS Nonstop Forwarding(NSF) always runs with stateful switchover (SSO) and provides redundancy for Layer 3 traffic.

NEW QUESTION 60

Which AP mode allows an engineer to scan configured channels for rogue access points?

- A. sniffer
- B. monitor
- C. bridge
- D. local

Answer: B

NEW QUESTION 62

When a wireless client roams between two different wireless controllers, a network connectivity outage is experienced for a period of time. Which configuration issue would cause this problem?

- A. Not all of the controllers in the mobility group are using the same mobility group name.
- B. Not all of the controllers within the mobility group are using the same virtual interface IP address.
- C. All of the controllers within the mobility group are using the same virtual interface IP address.
- D. All of the controllers in the mobility group are using the same mobility group name.

Answer: B

NEW QUESTION 67

Which entity is responsible for maintaining Layer 2 isolation between segments in a VXLAN environment?

- A. switch fabric
- B. VTEP
- C. VNID
- D. host switch

Answer: C

Explanation:

The 24-bit VNID is used to identify Layer 2 segments and to maintain Layer 2 isolation between the segments.

VXLAN uses an 8-byte VXLAN header that consists of a 24-bit VNID and a few reserved bits. The VXLAN header together with the original Ethernet frame goes in the UDP payload. The 24-bit VNID is used to identify Layer 2 segments and to maintain Layer 2 isolation between the segments.

NEW QUESTION 70

What is the function of a fabric border node in a Cisco SD-Access environment?

- A. To collect traffic flow information toward external networks
- B. To connect the Cisco SD-Access fabric to another fabric or external Layer 3 networks
- C. To attach and register clients to the fabric
- D. To handle an ordered list of IP addresses and locations for endpoints in the fabric.

Answer: B

NEW QUESTION 71

Which design principle states that a user has no access by default to any resource, and unless a resource is explicitly granted, it should be denied?

- A. least privilege
- B. fail-safe defaults
- C. economy of mechanism
- D. complete mediation

Answer: B

NEW QUESTION 73

What does the Cisco REST response indicate?

```
{
  "response": [
    {
      "family": "Routers",
      "interfaceCount": "12",
      "lineCardCount": "9",
      "platformId": "ASR1001-X",
      "reachabilityFailureReason": "",
      "reachabilityStatus": "Reachable",
      "hostname": "RouterASR-1",
      "macAddress": "00:c8:8b:80:bb:00",
    },
    {
      "family": "Switches and Hubs",
      "interfaceCount": "41",
      "lineCardCount": "2",
      "platformId": "CS300-24UX",
      "reachabilityFailureReason": "",
      "reachabilityStatus": "Authentication Failed",
      "hostname": "cat9000-1",
      "macAddress": "78:7b:20:67:62:80",
    },
    {
      "family": "Switches and Hubs",
      "interfaceCount": "59",
      "lineCardCount": "2",
      "platformId": "WS-C3850-48U-E",
      "reachabilityFailureReason": "",
      "reachabilityStatus": "Unreachable",
      "hostname": "cat3850-1",
      "macAddress": "cc:d8:c1:15:d2:80",
    }
  ],
  "version": "1.0"
}
```

- A. Cisco DNA Center has the Incorrect credentials for cat3850-1
- B. Cisco DNA Center is unable to communicate with cat9000-1
- C. Cisco DNA Center has the incorrect credentials for cat9000-1
- D. Cisco DNA Center has the Incorrect credentials for RouterASR-1

Answer: C

NEW QUESTION 75

What is a characteristic of a next-generation firewall?

- A. only required at the network perimeter
- B. required in each layer of the network
- C. filters traffic using Layer 3 and Layer 4 information only
- D. provides intrusion prevention

Answer: D

NEW QUESTION 79

Refer to the exhibit.

```
ip nat pool Internet 10.10.10.1 10.10.10.100 netmask 255.255.255.0
ip nat inside source route-map Users pool Internet
!
ip access-list standard Users
10 permit 192.168.1.0 0.0.0.255
!
route-map Users permit 10
match ip address Users
```

Which action completes the configuration to achieve a dynamic continuous mapped NAT for all users?

- A. Configure a match-host type NAT pool
- B. Reconfigure the pool to use the 192.168 1 0 address range
- C. Increase the NAT pool size to support 254 usable addresses
- D. Configure a one-to-one type NAT pool

Answer: C

NEW QUESTION 80

Which method creates an EEM applet policy that is registered with EEM and runs on demand or manually?

- A. event manager applet ondemand event registeraction 1.0 syslog priority critical msg 'This is a message from ondemand'
- B. event manager applet ondemand event manualaction 1.0 syslog priority critical msg 'This is a message from ondemand'
- C. event manager applet ondemand event noneaction 1.0 syslog priority critical msg 'This is a message from ondemand'
- D. event manager applet ondemandaction 1.0 syslog priority critical msg 'This is a message from ondemand'

Answer: C

Explanation:

An EEM policy is an entity that defines an event and the actions to be taken when that event occurs. There are two types of EEM policies: an applet or a script. An

applet is a simple form of policy that is defined within the CLI configuration. answer 'event manager applet ondemand event register

action 1.0 syslog priority critical msg 'This is a message from ondemand'

<="" p="" style="border: 1px solid black; padding: 2px; width: fit-content;"></p>
</div>
<div data-bbox="46 80 933 125" data-label="Text">
<p>There are two ways to manually run an EEM policy. EEM usually schedules and runs policies on the basis of an event specification that is contained within the policy itself. The event none command allows EEM to identify an EEM policy that can be manually triggered. To run the policy, use either the action policy command in applet configuration mode or the event manager run command in privileged EXEC mode.</p>
</div>
<div data-bbox="46 145 167 158" data-label="Section-Header">
<h3>NEW QUESTION 82</h3>
</div>
<div data-bbox="46 157 157 169" data-label="Text">
<p>Refer to the exhibit</p>
</div>
<div data-bbox="52 173 243 344" data-label="Text">
<pre>{
 "Cisco-IOS-XE-native:GigabitEthernet": {
 "name": "1",
 "vrf": {
 "forwarding": "MANAGEMENT"
 },
 "ip": {
 "address": {
 "primary": {
 "address": "10.0.0.151",
 "mask": "255.255.255.0"
 }
 }
 },
 "mop": {
 "enabled": false
 },
 "Cisco-IOS-XE-ethernet:negotiation": {
 "auto": true
 }
 }
}</pre>
</div>
<div data-bbox="46 350 750 363" data-label="Text">
<p>Drag and drop the snippets into the RESTCONF request to form the request that returns this response Not all options are used</p>
</div>
<div data-bbox="46 368 760 583" data-label="Form">
<div>
URL - http://10.10.10.10/restconf/api/running/native/
</div>
<div>
HTTP Verb-
</div>
<div>
Body- N/A
</div>
<div>
Headers- -application/vnd.yang.data+json
</div>
<div>
Authentication-privileged level 15 credentials
</div>
<div>
POST Accept Cisco-IOS-XE
</div>
<div>
interface/GigabitEthernet/1/ GET PUT
</div>
</div>
<div data-bbox="46 609 142 633" data-label="List-Group">

A. Mastered
B. Not Mastered

</div>
<div data-bbox="46 644 113 656" data-label="Text">
<p>Answer: A</p>
</div>
<div data-bbox="46 665 126 678" data-label="Text">
<p>Explanation:</p>
</div>
<div data-bbox="46 677 740 893" data-label="Form">
<div>
URL - http://10.10.10.10/restconf/api/running/native/
</div>
<div>
HTTP Verb-
</div>
<div>
Body- N/A
</div>
<div>
Headers- -application/vnd.yang.data+json
</div>
<div>
Authentication-privileged level 15 credentials
</div>
<div>
POST Cisco-IOS-XE
</div>
<div>
interface/GigabitEthernet/1/ PUT
</div>
</div>
<div data-bbox="46 936 167 950" data-label="Section-Header">
<h3>NEW QUESTION 87</h3>
</div>
<div data-bbox="46 947 430 961" data-label="Text">
<p>Which three elements determine Air Time efficiency? (Choose three)</p>
</div>
<div data-bbox="46 978 279 992" data-label="Page-Footer">
<p>Guaranteed success with Our exam guides</p>
</div>
<div data-bbox="764 978 960 991" data-label="Page-Footer">
<p>visit - https://www.certshared.com</p>
</div>
</div>

- A. evert-driven RRM
- B. data rate (modulation density) or QAM
- C. channel bandwidth
- D. number of spatial streams and spatial reuse
- E. RF group leader
- F. dynamic channel assignment

Answer: ACE

NEW QUESTION 92

Which HTTP code must be returned to prevent the script from exiting?

```
def get_token () :  
    device_uri = "https://192.168.1.1/dna/system/api/v1/auth/token"  
    http_result = requests.post(device_uri, auth = ("test", 'test398810436!'))  
    if http_result.status_code != requests.codes.ok:  
        print ("Call failed! Review get_token () . ")  
        sys.exit ()  
    return (http_result.json () ["Token"])
```

- A. 200
- B. 201
- C. 300
- D. 301

Answer: D

NEW QUESTION 95

Running the script causes the output in the exhibit. Which change to the first line of the script resolves the error?

```
import ncclient
```

```
with ncclient.manager.connect(  
    host = '192.168.1.1',  
    port=830,  
    username = 'root',  
    password = 'test398345152!',  
    allow_agent = False) as m:  
    print(m.get_config('running').data_xml)
```

Output

```
$ python get_config.py
```

```
Traceback (most recent call last) :
```

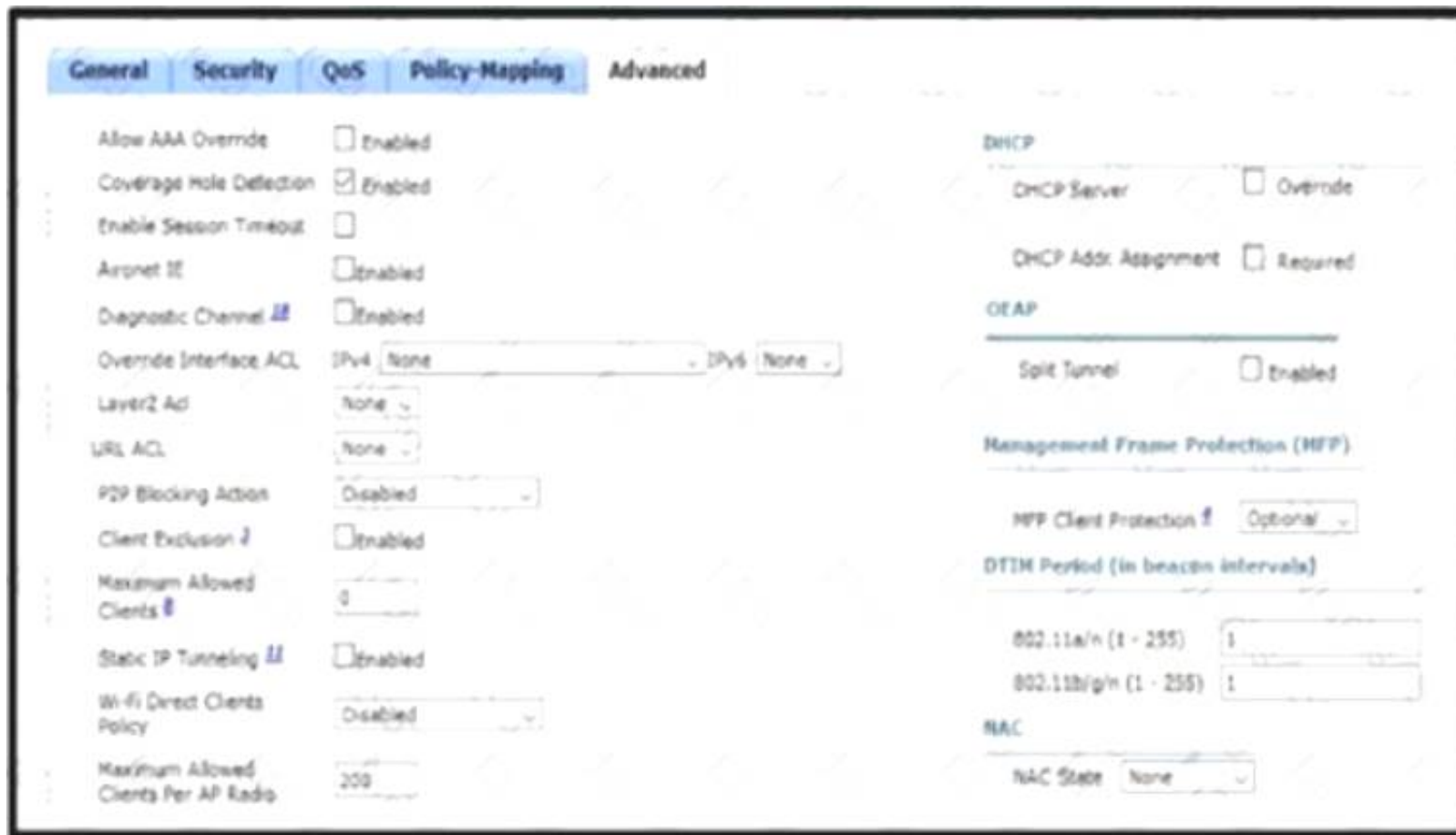
```
File "get_config.py", line 3, in <module>  
    with ncclient.manager.connect (host = '192.168.1.1, port = 830, username = 'root',  
AttributeError: 'module' object has no attribute 'manager'
```

- A. from ncclient import
- B. import manager
- C. from ncclient import*
- D. import ncclient manager

Answer: A

NEW QUESTION 99

Refer to the exhibit.



An engineer has configured Cisco ISE to assign VLANs to clients based on their method of authentication, but this is not working as expected. Which action will resolve this issue?

- A. require a DHCP address assignment
- B. utilize RADIUS profiling
- C. set a NAC state
- D. enable AAA override

Answer: B

NEW QUESTION 101

which entity is a Type 1 hypervisor?

- A. Oracle VM VirtualBox
- B. VMware server
- C. Citrix XenServer
- D. Microsoft Virtual PC

Answer: C

NEW QUESTION 105

In cisco SD_WAN, which protocol is used to measure link quality?

- A. OMP
- B. BFD
- C. RSVP
- D. IPsec

Answer: B

NEW QUESTION 106

Refer to the exhibit.

```
Person#1:
First Name is Johnny
Last Name is Table
Hobbies are:
• Running
• Video games

Person#2:
First Name is Billy
Last Name is Smith
Hobbies are:
• Napping
• Reading
```

Which JSON syntax is derived from this data?

- A)

```
{('First Name': 'Johnny', 'Last Name': 'Table', 'Hobbies': ['Running', 'Video games']), ('First Name': 'Billy', 'Last Name': 'Smith', 'Hobbies': ['Napping', 'Reading'])}
```
- B)

{'Person': [{'First Name': 'Johnny', 'Last Name': 'Table', 'Hobbies': 'Running', 'Video games'}, {'First Name': 'Billy', 'Last Name': 'Smith', 'Hobbies': 'Napping', 'Reading'}]}

C)

{[['First Name': 'Johnny', 'Last Name': 'Table', 'Hobbies': 'Running', 'Hobbies': 'Video games'], {'First Name': 'Billy', 'Last Name': 'Smith', 'Hobbies': 'Napping', 'Hobbies': 'Reading'}]}

D)

{'Person': [{'First Name': 'Johnny', 'Last Name': 'Table', 'Hobbies': ['Running', 'Video games']}, {'First Name': 'Billy', 'Last Name': 'Smith', 'Hobbies': ['Napping', 'Reading']}]}

- A. Option A
- B. Option B
- C. Option C
- D. Option D

Answer: D

NEW QUESTION 107

What is the function of cisco DNA center in a cisco SD-access deployment?

- A. It is responsible for routing decisions inside the fabric
- B. It is responsible for the design, management, deployment, provisioning and assurance of the fabric network devices.
- C. It possesses information about all endpoints, nodes and external networks related to the fabric
- D. It provides integration and automation for all nonfabric nodes and their fabric counterparts.

Answer: B

NEW QUESTION 111

Drag and drop the virtual components from the left onto their deceptions on the right.

VNIC	zip file connecting a virtual machine configuration file and a virtual disk
OVA	file containing a virtual machine disk drive
VMDK	configuration file containing settings for a virtual machine such as guest OS
VMX	component of a virtual machine responsible for sending packets to the hypervisor

- A. Mastered
- B. Not Mastered

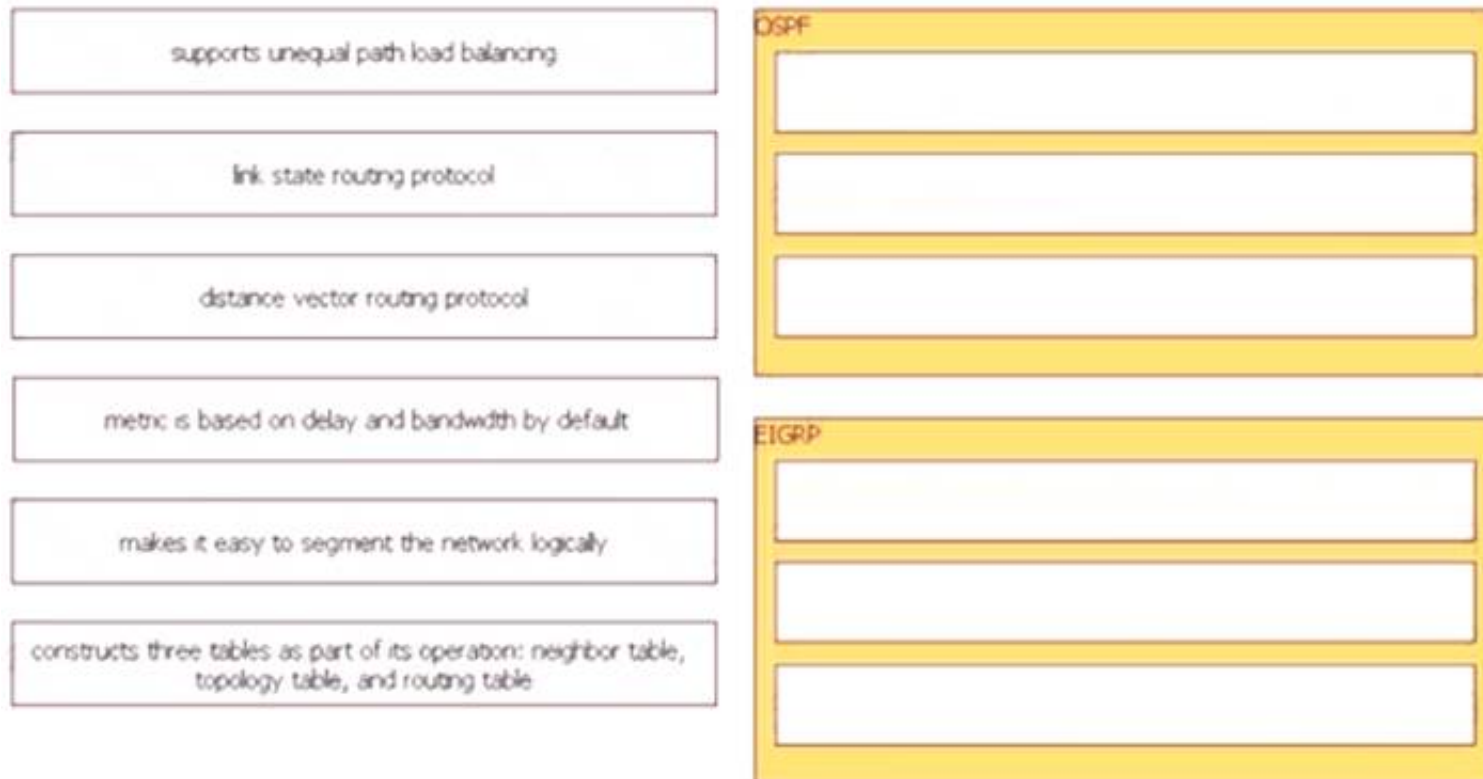
Answer: A

Explanation:

VNIC	zip file connecting a virtual machine configuration file and a virtual disk
OVA	file containing a virtual machine disk drive
VMDK	configuration file containing settings for a virtual machine such as guest OS
VMX	component of a virtual machine responsible for sending packets to the hypervisor

NEW QUESTION 114

Drag and drop the characteristics from the left onto the routing protocols they describe on the right.



- A. Mastered
- B. Not Mastered

Answer: A

Explanation:

Diagram Description automatically generated

NEW QUESTION 115

Refer to the exhibit.

```
aaa new-model
aaa authentication login default local-case enable
aaa authentication login ADMIN local-case
username CCNP secret Str0ngP@ssw0rd!
line 0 4
  login authentication ADMIN
```

An engineer must create a configuration that executes the show run command and then terminates the session when user CCNP logs in. Which configuration change is required"

- A. Add the access-class keyword to the username command
- B. Add the access-class keyword to the aaa authentication command
- C. Add the autocommand keyword to the username command
- D. Add the autocommand keyword to the aaa authentication command

Answer: C

Explanation:

The autocommand causes the specified command to be issued automatically after the user logs in. When the command is complete, the session is terminated. Because the command can be any length and can contain embedded spaces, commands using the autocommand keyword must be the last option on the line. In this specific question, we have to enter this line username CCNP autocommand show running-config.

NEW QUESTION 117

An engineer is implementing a Cisco MPLS TE tunnel to improve the streaming experience for the clients of a video-on-demand server. Which action must the engineer perform to configure extended discovery to support the MPLS LDP session between the headend and tailend routers?

- A. Configure the interface bandwidth to handle TCP and UDP traffic between the LDP peers
- B. Configure a Cisco MPLS TE tunnel on both ends of the session
- C. Configure an access list on the interface to permit TCP and UDP traffic
- D. Configure a targeted neighbor session.

Answer: B

NEW QUESTION 119

Refer to the exhibit.

<pre> R1 key chain cisco123 key 1 key-string cisco123! Ethernet0/0 - Group 10 State is Active 8 state changes, last state change 00:02:49 Virtual IP address is 192.168.0.1 Active virtual MAC address is 0000.0c07.ac0a </pre>	<pre> R2 key chain cisco123 key 1 key-string cisco123! Ethernet0/0 - Group 10 State is Active 17 state changes, last state change 00:02:17 Virtual IP address is 192.168.0.1 Active virtual MAC address is 0000.0c07.ac0a </pre>
--	---

An engineer is installing a new pair of routers in a redundant configuration. Which protocol ensures that traffic is not disrupted in the event of a hardware failure?

- A. HSRPv1
- B. GLBP
- C. VRRP
- D. HSRPv2

Answer: A

Explanation:

The virtual MAC address is 0000.0c07.acXX (XX is the hexadecimal group number) so it is using HSRPv1. Note: HSRP Version 2 uses a new MAC address which ranges from 0000.0C9F.F000 to 0000.0C9F.FFFF.

NEW QUESTION 121

How is MSDP used to interconnect multiple PIM-SM domains?

- A. MSDP depends on BGP or multiprotocol BGP for mterdomam operation
- B. MSDP SA request messages are used to request a list of active sources for a specific group
- C. SDP allows a rendezvous point to dynamically discover active sources outside of its domain
- D. MSDP messages are used to advertise active sources in a domain

Answer: A

NEW QUESTION 123

Refer to the exhibit

```
DSW1#sh spanning-tree int fa1/0/7
```

Vlan	Role	Sts	Cost	Prio.	Nbr	Type
VLAN0001	Desg	FWD	2	128.9	P2p	Edge
VLAN0010	Desg	FWD	2	128.9	P2p	Edge
VLAN0020	Desg	FWD	2	128.9	P2p	Edge
VLAN0030	Desg	FWD	2	128.9	P2p	Edge
VLAN0040	Desg	FWD	2	128.9	P2p	Edge

How was spanning-tree configured on this interface?

- A. By entering the command spanning-tree portfast trunk in the interface configuration mode.
- B. By entering the command spanning-tree portfast in the interface configuration mode
- C. By entering the command spanning-tree mst1 vlan 10,20,30,40 in the global configuration mode
- D. By entering the command spanning-tree vlan 10,20,30,40 root primary in the interface configuration mode

Answer: A

NEW QUESTION 124

Refer to the exhibit.

```
R1#show crypto isakmp sa
```

IPv4 Crypto ISAKMP SA				
dst	src	state	conn-id	status
209.165.201.6	209.165.201.1	QM_IDLE	1001	ACTIVE

After configuring an IPsec VPN, an engineer enters the show command to verify the ISAKMP SA status. What does the status show?

- A. ISAKMP SA is authenticated and can be used for Quick Mode.
- B. Peers have exchanged keys, but ISAKMP SA remains unauthenticated.
- C. VPN peers agreed on parameters for the ISAKMP SA
- D. ISAKMP SA has been created, but it has not continued to form.

Answer: C

NEW QUESTION 125

An engineer must configure HSRP group 300 on a Cisco IOS router. When the router is functional, it must be the must be the active HSRP router. The peer router has been configured using the default priority value. Which command set is required?

A)

standby 300 priority 110
 standby 300 timers 1 110

B)

standby version 2
 standby 300 priority 110
 standby 300 preempt

C)

standby 300 priority 90
 standby 300 preempt

D)

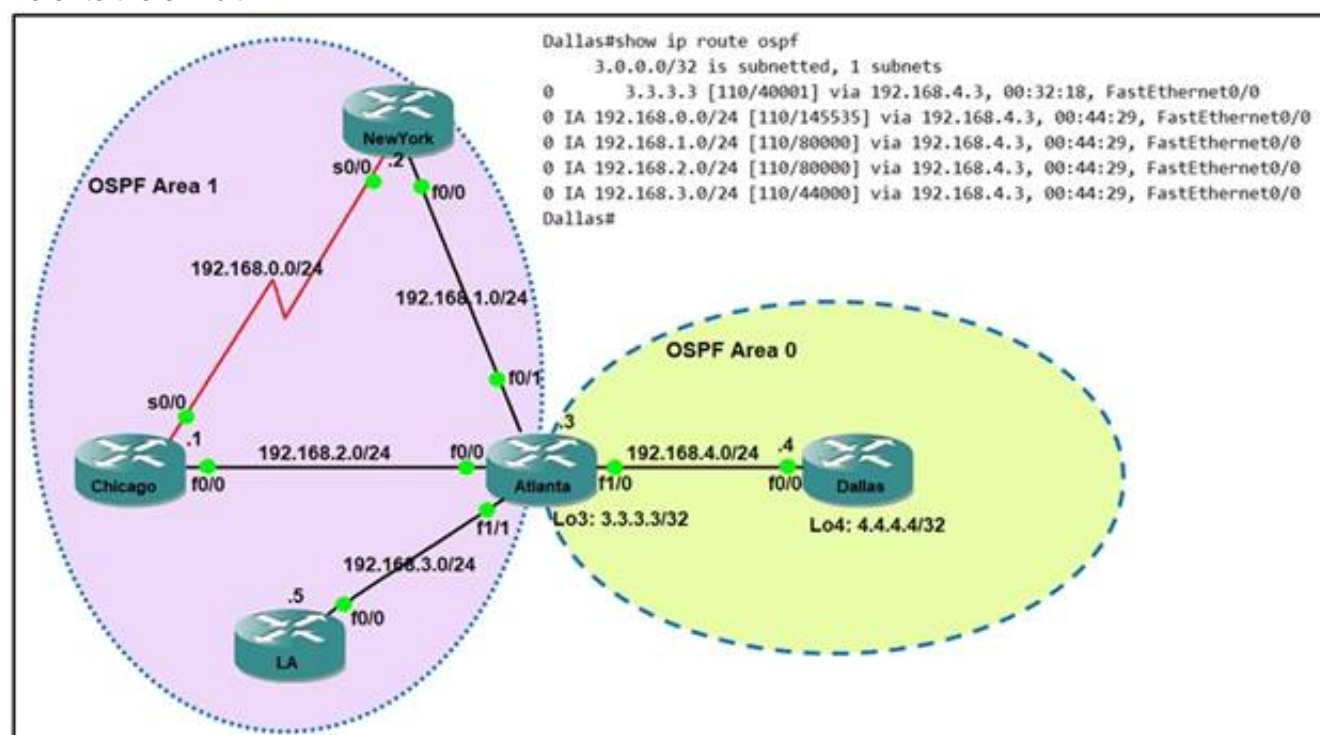
standby version 2
 standby 300 priority 90
 standby 300 preempt

- A. Option A
- B. Option B
- C. Option C
- D. Option D

Answer: B

NEW QUESTION 126

Refer to the exhibit.



Which command when applied to the Atlanta router reduces type 3 LSA flooding into the backbone area and summarizes the inter-area routes on the Dallas router?

- A. Atlanta(config-route)#area 0 range 192.168.0.0 255.255.248.0
- B. Atlanta(config-route)#area 0 range 192.168.0.0 255.255.252.0
- C. Atlanta(config-route)#area 1 range 192.168.0.0 255.255.252.0
- D. Atlanta(config-route)#area 1 range 192.168.0.0 255.255.248.0

Answer: C

NEW QUESTION 130

Which JSON syntax is valid?

A)

```
{ "switch": { "name": "dist1", "interfaces": [ "gig1", "gig2", "gig3" ] }}
```

B)

```
{ 'switch': ( 'name': 'dist1', 'interfaces': [ 'gig1', 'gig2', 'gig3' ] ) }
```

C)

```
{ "switch": { "name": "dist1", "interfaces": [ "gig1", "gig2", "gig3" ] } }
```

D)

```
{ / "switch" / : { / "name" / : "dist1", / "interfaces" / : [ "gig1", "gig2", "gig3" ] } }
```


- A. Option A
- B. Option B
- C. Option C
- D. Option D

Answer: C

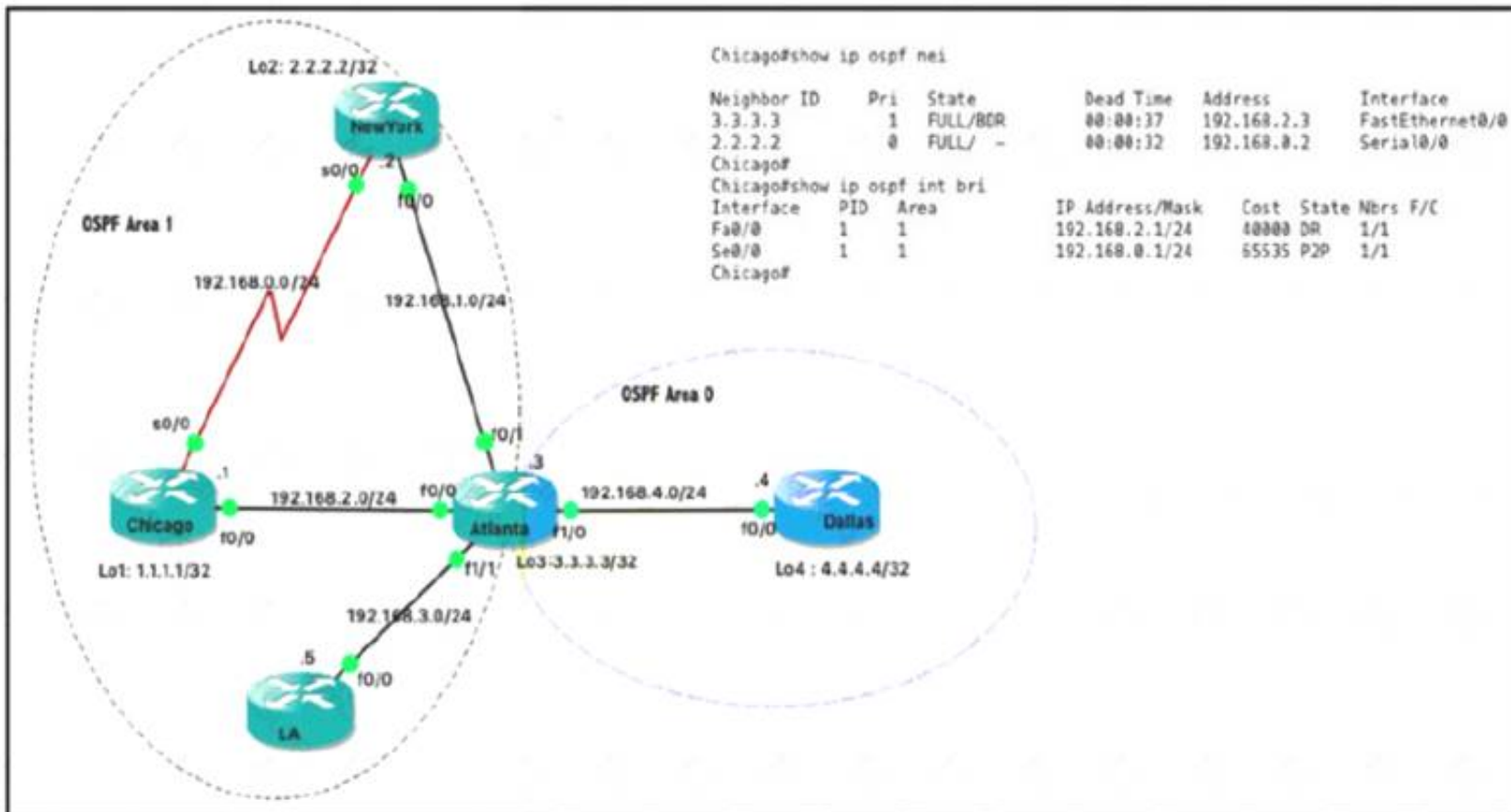
Explanation:

This JSON can be written as follows:

```
{
  'switch': { 'name': 'dist1',
  'interfaces': ['gig1', 'gig2', 'gig3']
}
```

NEW QUESTION 134

Refer the exhibit.



Which router is the designated router on the segment 192.168.0.0/24?

- A. This segment has no designated router because it is a nonbroadcast network type.
- B. This segment has no designated router because it is a p2p network type.
- C. Router Chicago because it has a lower router ID
- D. Router NewYork because it has a higher router ID

Answer: B

NEW QUESTION 138

After a redundant route processor failure occurs on a Layer 3 device, which mechanism allows for packets to be forwarded from a neighboring router based on the most recent tables?

- A. BFD
- B. RPVST+
- C. RP failover
- D. NSF

Answer: D

NEW QUESTION 140

Refer to the exhibit.

```
username admin privilege 15 password 0 Cisco13579!
aaa new-model
!
aaa authentication login default local
aaa authentication enable default none
!
aaa common-criteria policy Administrators
min-length 1
max-length 127
char-changes 4
lifetime month 2
!
```

A network engineer must configure a password expiry mechanism on the gateway router for all local passwords to expire after 60 days. What is required to

complete this task?

- A. The password expiry mechanism is on the AAA server and must be configured there.
- B. Add the aaa authentication enable default Administrators command.
- C. Add the username admin privilege 15 common-criteria*policy Administrators password 0 Cisco13579! command.
- D. No further action is required
- E. The configuration is complete.

Answer: A

NEW QUESTION 142

Which device makes the decision for a wireless client to roam?

- A. wireless client
- B. wireless LAN controller
- C. access point
- D. WCS location server

Answer: A

NEW QUESTION 143

An engineer is working with the Cisco DNA Center API Drag and drop the methods from the left onto the actions that they are used for on the right.

GET	remove an element using the API
POST	update an element
DELETE	extract information from the API
PUT	create an element

- A. Mastered
- B. Not Mastered

Answer: A

Explanation:

	DELETE
	PUT
	GET
	POST

NEW QUESTION 146

Drag and drop the descriptions from the left onto the QoS components on the right.

causes TCP retransmissions when traffic is dropped

buffers excessive traffic

introduces no delay and jitter

introduces delay and jitter

drops excessive traffic

typically delays, rather than drops traffic

Traffic Policing

Traffic Shaping

- A. Mastered
B. Not Mastered

Answer: A

Explanation:

causes TCP retransmissions when traffic is dropped

buffers excessive traffic

introduces no delay and jitter

introduces delay and jitter

drops excessive traffic

typically delays, rather than drops traffic

Traffic Policing

buffers excessive traffic

causes TCP retransmissions when traffic is dropped

introduces delay and jitter

Traffic Shaping

introduces no delay and jitter

drops excessive traffic

typically delays, rather than drops traffic

NEW QUESTION 147
Refer to the exhibit.

```
Tunnel100 is up, line protocol is up
Hardware is Tunnel
Internet address is 192.168.200.1/24
MTU 17912 bytes, BW 100 Kbit/sec, DLY 50000 usec,
  reliability 255/255, txload 1/255, rxload 1/255
Encapsulation TUNNEL, loopback not set
Keepalive set (10 sec), retries 3
Tunnel source 209.165.202.129 (GigabitEthernet0/1)
Tunnel Subblocks:
  src-track:
    Tunnel100 source tracking subblock associated with GigabitEthernet0/1
    Set of tunnels with source GigabitEthernet0/1, 1 members (includes iterators), on interface <OK>
Tunnel protocol/transport GRE/IP
  Key disabled, sequencing disabled
  Checksumming of packets disabled
Tunnel TTL 255, Fast tunneling enabled
Tunnel transport MTU 1476 bytes
```

A network engineer configures a GRE tunnel and enters the show Interface tunnel command. What does the output confirm about the configuration?

- A. The keepalive value is modified from the default value.
- B. Interface tracking is configured.
- C. The tunnel mode is set to the default.
- D. The physical interface MTU is 1476 bytes.

Answer: C

NEW QUESTION 149

Which two mechanisms are available to secure NTP? (Choose two.)

- A. IP prefix list-based
- B. IPsec
- C. TACACS-based authentication
- D. IP access list-based
- E. Encrypted authentication

Answer: DE

NEW QUESTION 153

Refer to the exhibit.

```
R1
interface GigabitEthernet0/0
ip address 192.168.250.2 255.255.255.0
standby 20 ip 192.168.250.1
standby 20 priority 120

R2
interface GigabitEthernet0/0
ip address 192.168.250.3 255.255.255.0
standby 20 ip 192.168.250.1
standby 20 priority 110
```

What are two effects of this configuration? (Choose two.)

- A. R1 becomes the active router.
- B. R1 becomes the standby router.
- C. If R2 goes down, R1 becomes active but reverts to standby when R2 comes back online.
- D. If R1 goes down
- E. R2 becomes active and remains the active device when R1 comes back online.
- F. If R1 goes down, R2 becomes active but reverts to standby when R1 comes back online.

Answer: AD

NEW QUESTION 155

In an SD-WAN deployment, which action in the vSmart controller responsible for?

- A. handle, maintain, and gather configuration and status for nodes within the SD-WAN fabric
- B. distribute policies that govern data forwarding performed within the SD-WAN fabric
- C. gather telemetry data from vEdge routers
- D. onboard vEdge nodes into the SD-WAN fabric

Answer: B

NEW QUESTION 157

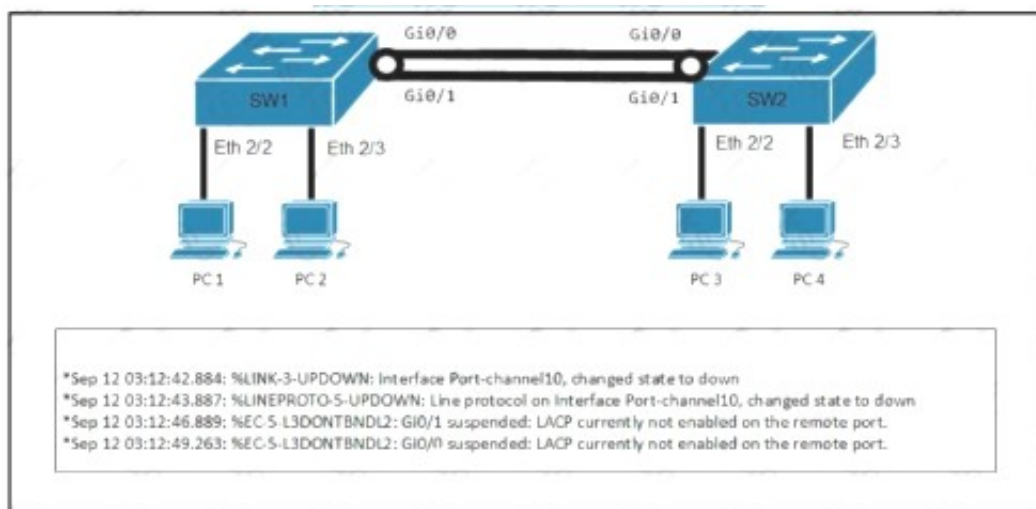
Which component of the Cisco Cyber Threat Defense solution provides user and flow context analysis?

- A. Cisco Firepower and FireSIGHT
- B. Cisco Stealth watch system
- C. Advanced Malware Protection
- D. Cisco Web Security Appliance

Answer: B

NEW QUESTION 160

Refer to the exhibit.



A network engineer troubleshoots an issue with the port channel between SW1 and SW2. which command resolves the issue?

- A)
`SW1(config-if)#channel-group 10 mode desirable`
- B)
`SW1(config-if)#channel-group 10 mode active`
- C)
`SW2(config-if)#switchport mode trunk`
- D)
`SW2(config-if)#channel-group 10 mode on`

- A. Option A
- B. Option B
- C. Option C
- D. Option D

Answer: B

NEW QUESTION 165

What are two differences between the RIB and the FIB? (Choose two.)

- A. The FIB is derived from the data plane, and the RIB is derived from the FIB.
- B. The RIB is a database of routing prefixes, and the FIB is the Information used to choose the egress interface for each packet.
- C. FIB is a database of routing prefixes, and the RIB is the information used to choose the egress interface for each packet.
- D. The FIB is derived from the control plane, and the RIB is derived from the FIB.
- E. The RIB is derived from the control plane, and the FIB is derived from the RIB.

Answer: BE

NEW QUESTION 170

A network is being migrated from IPV4 to IPV6 using a dual-stack approach. Network management is already 100% IPV6 enabled. In a dual-stack network with two dual-stack NetFlow collections, how many flow exporters are needed per network device in the flexible NetFlow configuration?

- A. 1
- B. 2
- C. 4
- D. 8

Answer: B

NEW QUESTION 171

A customer has recently implemented a new wireless infrastructure using WLC-5520 at a site directly next to a large commercial airport. Users report that they intermittently lose WI-FI connectivity, and troubleshooting reveals it is due to frequent channel changes. Which two actions fix this issue? (Choose two)

- A. Remove UNII-2 and Extended UNII-2 channels from the 5 Ghz channel list
- B. Restore the DCA default settings because this automatically avoids channel interference.

- C. Configure channels on the UNIk2 and the Extended UNII-2 sub-bands of the 5 Ghz band only
- D. Enable DFS channels because they are immune to radar interference.
- E. Disable DFS channels to prevent interference with Doppler radar

Answer: AE

NEW QUESTION 175

Drag and drop the solutions that comprise Cisco Cyber Threat Defense from the left onto the objectives they accomplish on the right.

StealthWatch	detects suspicious web activity
Identity Services Engine	analyzes network behavior and detects anomalies
Web Security Appliance	uses pxGrid to remediate security threats

- A. Mastered
- B. Not Mastered

Answer: A

Explanation:

Graphical user interface, application Description automatically generated with medium confidence

NEW QUESTION 180

Refer to the exhibit.

```
aaa new-model
aaa authentication login authorizationlist tacacs+
tacacs-server host 192.168.0.202
tacacs-server key ciscotestkey
line vty 0 4
login authentication authorizationlist
```

What is the effect of this configuration?

- A. When users attempt to connect to vty lines 0 through 4, the device will authenticate them against TACACS+ if local authentication fails
- B. The device will authenticate all users connecting to vty lines 0 through 4 against TACACS+
- C. The device will allow users at 192.168.0.202 to connect to vty lines 0 through 4 using the password ciscotestkey
- D. The device will allow only users at 192.166.0.202 to connect to vty lines 0 through 4

Answer: B

NEW QUESTION 182

Where is radio resource management performed in a cisco SD-access wireless solution?

- A. DNA Center
- B. control plane node
- C. wireless controller
- D. Cisco CMX

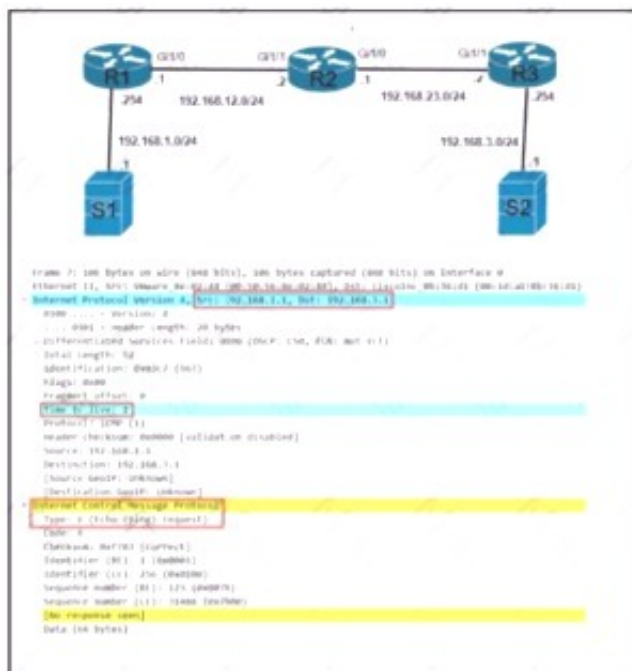
Answer: C

Explanation:

Fabric wireless controllers manage and control the fabric-mode APs using the same general model as the traditional local-mode controllers which offers the same operational advantages such as mobility control and radio resource management. A significant difference is that client traffic from wireless endpoints is not tunneled from the APs to the wireless controller. Instead, communication from wireless clients is encapsulated in VXLAN by the fabric APs which build a tunnel to their first-hop fabric edge node. Wireless traffic is tunneled to the edge nodes as the edge nodes provide fabric services such as the Layer 3 Anycast Gateway, policy, and traffic enforcement. <https://www.cisco.com/c/en/us/td/docs/solutions/CVD/Campus/cisco-sda-design-guide.html>

NEW QUESTION 187

Refer to the exhibit.



Which troubleshooting a routing issue, an engineer issues a ping from S1 to S2. When two actions from the initial value of the TTL? (Choose two.)

- A. The packet reaches R3, and the TTL expires
- B. R2 replies with a TTL exceeded message
- C. R3 replies with a TTL exceeded message.
- D. The packet reaches R2 and the TTL expires
- E. R1 replies with a TTL exceeded message
- F. The packet reaches R1 and the TTL expires.

Answer: AC

NEW QUESTION 192

An engineer is troubleshooting the Ap join process using DNS. Which FQDN must be resolvable on the network for the access points to successfully register to the WLC?

- A. wlcbostrname.domain.com
- B. cisco-capwap-controller.domain.com
- C. ap-manager.domain.com
- D. primary-wlc.domain.com

Answer: B

NEW QUESTION 194

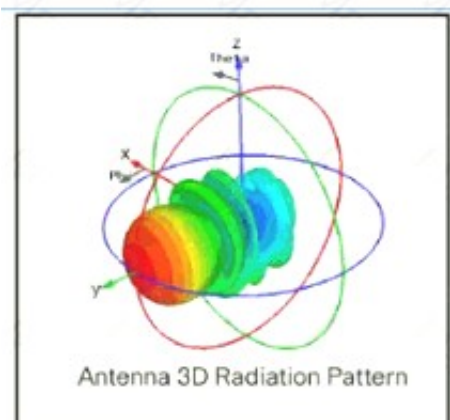
Which cisco DNA center application is responsible for group-based access control permissions?

- A. Design
- B. Provision
- C. Assurance
- D. Policy

Answer: D

NEW QUESTION 197

Refer to the exhibit.



Which type of antenna does the radiation pattern represent?

- A. Yagi
- B. multidirectional
- C. directional patch
- D. omnidirectional

Answer: A

Explanation:

A Yagi antenna is formed by driving a simple antenna, typically a dipole or dipolelike antenna, and shaping the beam using a well-chosen series of non-driven elements whose length and spacing are tightly controlled.



Reference: https://www.cisco.com/c/en/us/products/collateral/wireless/aironetantennas-accessories/prod_white_paper0900aecd806a1a3e.htm

NEW QUESTION 202

Refer to the exhibit.

<pre>SW2# show run interface gigabitethernet 0/0 Building configuration... Current configuration is 101 bytes ! interface GigabitEthernet0/0 switchport trunk encapsulation dot1q switchport mode trunk switchport nonegotiate channel-group 1 mode passive end</pre>	<pre>SW3# show run interface gigabitethernet 0/1 Building configuration... Current configuration is 115 bytes ! interface GigabitEthernet0/1 switchport trunk encapsulation dot1q switchport mode trunk switchport nonegotiate channel-group 1 mode passive end</pre>
---	---

The EtherChannel between SW2 and SW3 is not operational which action resolves this issue?

- A. Configure the channel-group mode on SW2 Gi0/1 and Gi0/1 to on.
- B. Configure the channel-group mode on SW3 Gi0/1 to active
- C. Configure the mode on SW2 Gi0/0 to trunk
- D. Configure the mode on SW2 Gi0/1 to access.

Answer: C

NEW QUESTION 203

How does Cisco Trustsec enable more access controls for dynamic networking environments and data centers?

- A. classifies traffic based on advanced application recognition
- B. uses flexible NetFlow
- C. classifies traffic based on the contextual identity of the endpoint rather than its IP address correct
- D. assigns a VLAN to the endpoint

Answer: C

NEW QUESTION 205

A network engineer configures BGP between R1 and R2. Both routers use BGP peer group CORP and are set up to use MD5 authentication. This message is logged to the console of router R1:

*May 5 39:55:56.070: %TCP-6-BADAUTH: Invalid MD5 digest from 10.10.10.1 (29832) to 10.120.10.1 (179) tebleid -0

Which two configurations allow a peering session to form between R1 and R2? (Choose two.)

Which two configuration allow peering session to from between R1 and R2? Choose two.)

- A)


```
R2(config-router)#neighbor 10.10.10.1 peer-group CORP
R2(config-router)#neighbor PEER password Cisco
```
- B)


```
R2(config-router)#neighbor 10.10.10.1 peer-group CORP
R2(config-router)#neighbor CORP password Cisco
```
- C)


```
R1(config-router)#neighbor 10.10.10.1 peer-group CORP
R1(config-router)#neighbor CORP password Cisco
```
- D)


```
R1(config-router)#neighbor 10.120.10.1 peer-group CORP
R1(config-router)#neighbor CORP password Cisco
```
- E)


```
R2(config-router)#neighbor 10.120.10.1 peer-group CORP
R2(config-router)#neighbor CORP password Cisco
```

- A. Option A
- B. Option B
- C. Option C
- D. Option D
- E. Option E

Answer: BE

NEW QUESTION 206

How is Layer 3 roaming accomplished in a unified wireless deployment?

- A. An EoIP tunnel is created between the client and the anchor controller to provide seamless connectivity as the client is associated with the new AP.
- B. The client entry on the original controller is passed to the database on the new controller.
- C. The new controller assigns an IP address from the new subnet to the client
- D. The client database on the original controller is updated the anchor entry, and the new controller database is updated with the foreign entry.

Answer: A

NEW QUESTION 209

Drag and drop the wireless elements on the left to their definitions on the right.

beamwidth	a graph that shows the relative intensity of the signal strength of an antenna within its space
polarization	the relative increase in signal strength of an antenna in a given direction
radiation patterns	measures the angle of an antenna pattern in which the relative signal strength is half-power below the maximum value
gain	radiated electromagnetic waves that influence the orientation of an antenna within its electromagnetic field

- A. Mastered
- B. Not Mastered

Answer: A

Explanation:

Chart, line chart Description automatically generated

NEW QUESTION 213

Which configuration restricts the amount of SSH that a router accepts 100 kbps?

A)

```
class-map match-all CoPP_SSH
match access-group name CoPP_SSH
!
policy-map CoPP_SSH
class CoPP_SSH
  police cir 100000
  exceed-action drop
!
interface GigabitEthernet0/1
ip address 209.165.200.225 255.255.255.0
ip access-group BRRR out
duplex auto
speed auto
media-type rj45
service-policy input CoPP_SSH
!
ip access-list extended CoPP_SSH
deny tcp any any eq 22
```

B)

```
class-map match-all CoPP_SSH
match access-group name CoPP_SSH
!
policy-map CoPP_SSH
class CoPP_SSH
  police cir 100000
  exceed-action drop
!
interface GigabitEthernet0/1
ip address 209.165.200.225 255.255.255.0
ip access-group BRRR out
duplex auto
speed auto
media-type rj45
service-policy input CoPP_SSH
!
ip access-list extended CoPP_SSH
deny tcp any any eq 22
```

C)


```
class-map match-all CoPP_SSH
  match access-group name CoPP_SSH
  !
policy-map CoPP_SSH
  class CoPP_SSH
    police cir 100000
    exceed-action drop
  !
  !
control-plane
  service-policy input CoPP_SSH
  !
ip access-list extended CoPP_SSH
  permit tcp any any eq 22
  !
  !
  !
```

D)

```
class-map match-all CoPP_SSH
  match access-group name CoPP_SSH
  !
policy-map CoPP_SSH
  class CoPP_SSH
    police cir 100000
    exceed-action drop
  !
  !
control-plane transit
  service-policy input CoPP_SSH
  !
ip access-list extended CoPP_SSH
  permit tcp any any eq 22
  !
  !
  !
```

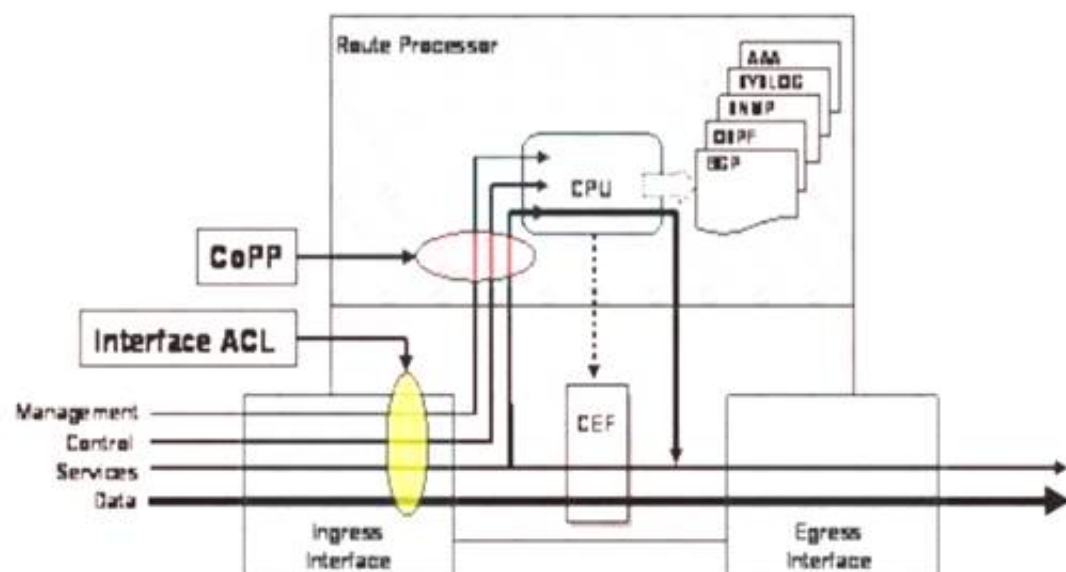
- A. Option A
- B. Option B
- C. Option C
- D. Option D

Answer: C

Explanation:

CoPP protects the route processor on network devices by treating route processor resources as a separate entity with its own ingress interface (and in some implementations, egress also). CoPP is used to police traffic that is destined to the route processor of the router such as:

- + routing protocols like OSPF, EIGRP, or BGP.
- + Gateway redundancy protocols like HSRP, VRRP, or GLBP.
- + Network management protocols like telnet, SSH, SNMP, or RADIUS.



Therefore we must apply the CoPP to deal with SSH because it is in the management plane. CoPP must be put under “control-plane” command.

NEW QUESTION 214

How cloud deployments differ from on-prem deployments?

- A. Cloud deployments require longer implementation times than on-premises deployments
- B. Cloud deployments are more customizable than on-premises deployments.
- C. Cloud deployments require less frequent upgrades than on-premises deployments.
- D. Cloud deployments have lower upfront costs than on-premises deployments.

Answer: B

NEW QUESTION 217

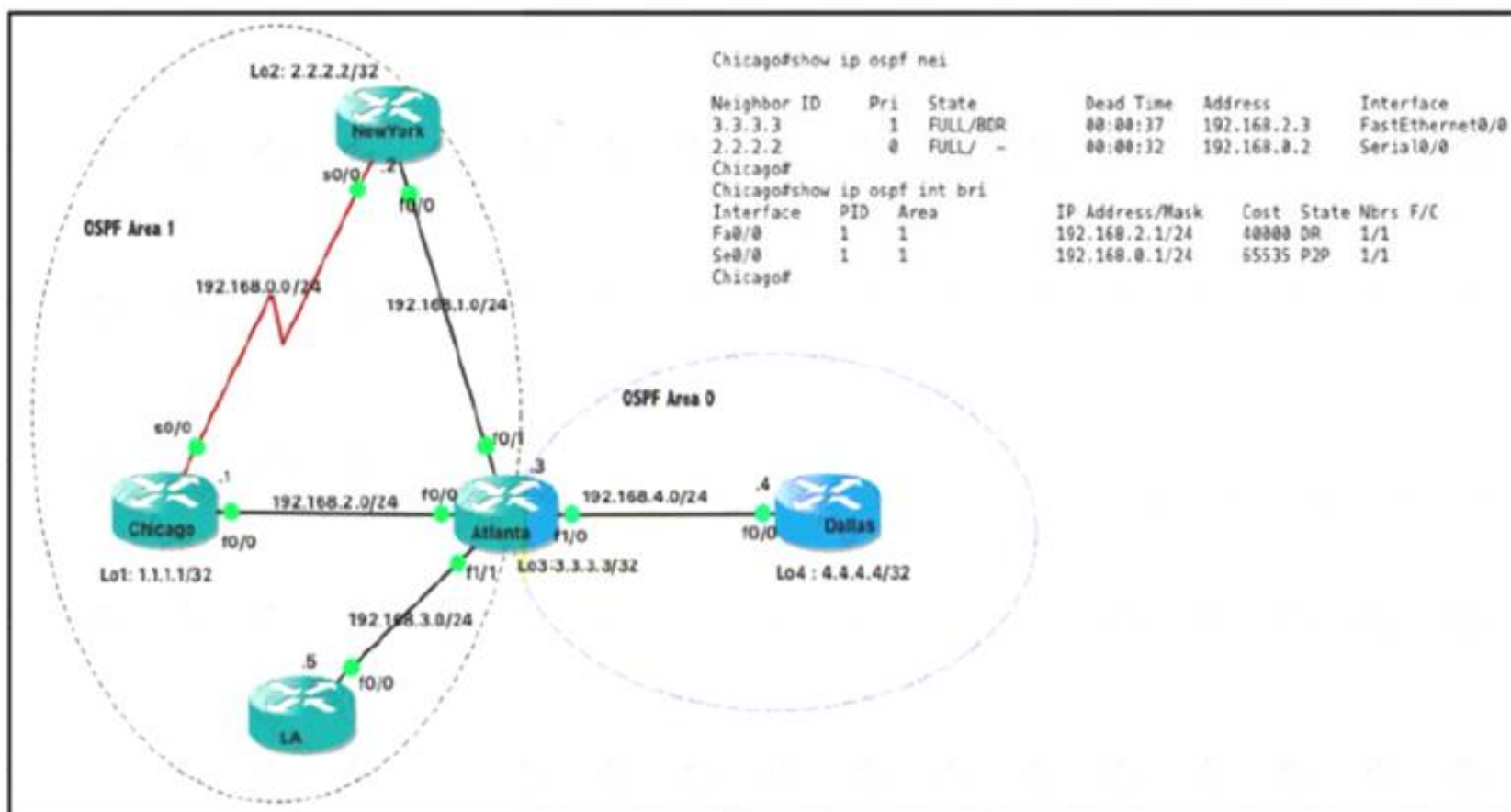
What are two characteristics of VXLAN? (Choose two)

- A. It uses VTEPs to encapsulate and decapsulate frames.
- B. It has a 12-bit network identifier
- C. It allows for up to 16 million VXLAN segments
- D. It lacks support for host mobility
- E. It extends Layer 2 and Layer 3 overlay networks over a Layer 2 underlay.

Answer: AC

NEW QUESTION 221

Refer the exhibit.



Which router is the designated router on the segment 192.168.0.0/24?

- A. This segment has no designated router because it is a nonbroadcast network type.
- B. This segment has no designated router because it is a p2p network type.
- C. Router Chicago because it has a lower router ID
- D. Router NewYork because it has a higher router ID

Answer: B

NEW QUESTION 222

Which two operational models enable an AP to scan one or more wireless channels for rouge access points and at the same time provide wireless services to clients? (Choose two.)

- A. Rouge detector
- B. Sniffer
- C. FlexConnect
- D. Local
- E. Monitor

Answer: DE

NEW QUESTION 226

When configuration WPA2 Enterprise on a WLAN, which additional security component configuration is required?

- A. NTP server
- B. PKI server
- C. RADIUS server
- D. TACACS server

Answer: C

NEW QUESTION 227

Drag and drop the characteristics from the left onto the protocols they apply to on the right?

uses Dijkstra's Shortest Path First algorithm	OSPF
uses Diffused Update Algorithm	
uses bandwidth, delay, reliability, and load for routing metric	EIGRP
uses an election process	

- A. Mastered
- B. Not Mastered

Answer: A

Explanation:

Diagram Description automatically generated

NEW QUESTION 229

Refer to the exhibit.

```
with manager connect(host=192.168.0.1, port=22,
                    username='admin', password='password1', hostkey_verify=True,
                    device_params={'name': 'nexus'}) as m:
```

What does the snippet of code achieve?

- A. It creates a temporary connection to a Cisco Nexus device and retrieves a token to be used for API calls.
- B. It opens a tunnel and encapsulates the login information, if the host key is correct.
- C. It opens an ncclient connection to a Cisco Nexus device and maintains it for the duration of the context.
- D. It creates an SSH connection using the SSH key that is stored, and the password is ignored.

Answer: C

Explanation:

ncclient is a Python library that facilitates client-side scripting and application development around the NETCONF protocol.

The above Python snippet uses the ncclient to connect and establish a NETCONF session to a Nexus device (which is also a NETCONF server).

NEW QUESTION 232

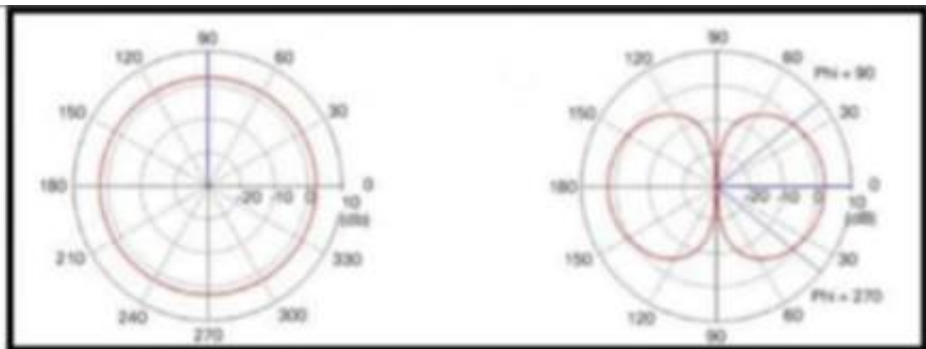
Which new enhancement was implemented in Wi-Fi 6?

- A. Wi-Fi Protected Access 3
- B. 4096 Quadrature Amplitude Modulation Mode
- C. Channel bonding
- D. Uplink and Downlink Orthogonal Frequency Division Multiple Access

Answer: B

NEW QUESTION 237

Refer to the exhibit.



Which type of antenna is show on the radiation patterns?

- A. Dipole
- B. Yagi
- C. Patch
- D. Omnidirectional

Answer: A

NEW QUESTION 240

The login method is configured on the VTY lines of a router with these parameters.

- > The first method for authentication is TACACS
 - > If TACACS is unavailable, login is allowed without any provided credentials
- Which configuration accomplishes this task?

- A. R1#sh run | include aaa aaa new-modelaaa authentication login VTY group tacacs+ none aaa session-id commonR1#sh run | section vty line vty 0 4password 7 0202039485748R1#sh run | include username R1#
- B. R1#sh run | include aaa aaa new-modelaaa authentication login telnet group tacacs+ none aaa session-id commonR1#sh run | section vty line vty 0 4R1#sh run | include username R1#
- C. R1#sh run | include aaa aaa new-modelaaa authentication login default group tacacs+ none aaa session-id commonR1#sh run | section vty line vty 0 4password 7 0202039485748
- D. R1#sh run | include aaa aaa new-modelaaa authentication login default group tacacs+ aaa session-id commonR1#sh run | section vty line vty 0 4transport input none R1#

Answer: C

Explanation:

According to the requirements (first use TACACS+, then allow login with no authentication), we have to use “aaa authentication login ... group tacacs+ none” for AAA command.

The next thing to check is the if the “aaa authentication login default” or “aaa authentication login list-name” is used. The ‘default’ keyword means we want to

apply for all login connections (such as tty, vty, console and aux). If we use this keyword, we don't need to configure anything else under tty, vty and aux lines. If we don't use this keyword then we have to specify which line(s) we want to apply the authentication feature.
 From above information, we can find out answer 'R1#sh run | include aaa aaa new-model
 aaa authentication login default group tacacs+ none aaa session-id common
 R1#sh run | section vty line vty 0 4
 password 7 0202039485748
 If you want to learn more about AAA configuration, please read our AAA TACACS+ and RADIUS Tutorial – Part 2.
 For your information, answer 'R1#sh run | include aaa aaa new-model
 aaa authentication login telnet group tacacs+ none aaa session-id common
 R1#sh run | section vty line vty 0 4
 R1#sh run | include username
 R1# would be correct if we add the following command under vty line ("line vty 0 4"): "login authentication telnet" ("telnet" is the name of the AAA list above)

NEW QUESTION 242

Refer to the exhibit.

```
ip sla 10
icmp-echo 192.168.10.20
timeout 500
frequency 3
ip sla schedule 10 life forever start-time now
track 10 ip sla 10 reachability
```

The IP SLA is configured in a router. An engineer must configure an EEM applet to shut down the interface and bring it back up when there is a problem with the IP SLA. Which configuration should the engineer use?

- A. event manager applet EEM_IP_SLA event track 10 state down
- B. event manager applet EEM_IP_SLA event track 10 state unreachable
- C. event manager applet EEM_IP_SLA event sla 10 state unreachable
- D. event manager applet EEM_IP_SLA event sla 10 state down

Answer: A

Explanation:

The ip sla 10 will ping the IP 192.168.10.20 every 3 seconds to make sure the connection is still up. We can configure an EEM applet if there is any problem with this IP SLA via the command event track 10 state down.

NEW QUESTION 243

How is 802.11 traffic handled in a fabric-enabled SSID?

- A. centrally switched back to WLC where the user traffic is mapped to a VXLAN on the WLC
- B. converted by the AP into 802.3 and encapsulated into VXLAN
- C. centrally switched back to WLC where the user traffic is mapped to a VLAN on the WLC
- D. converted by the AP into 802.3 and encapsulated into a VLAN

Answer: B

NEW QUESTION 244

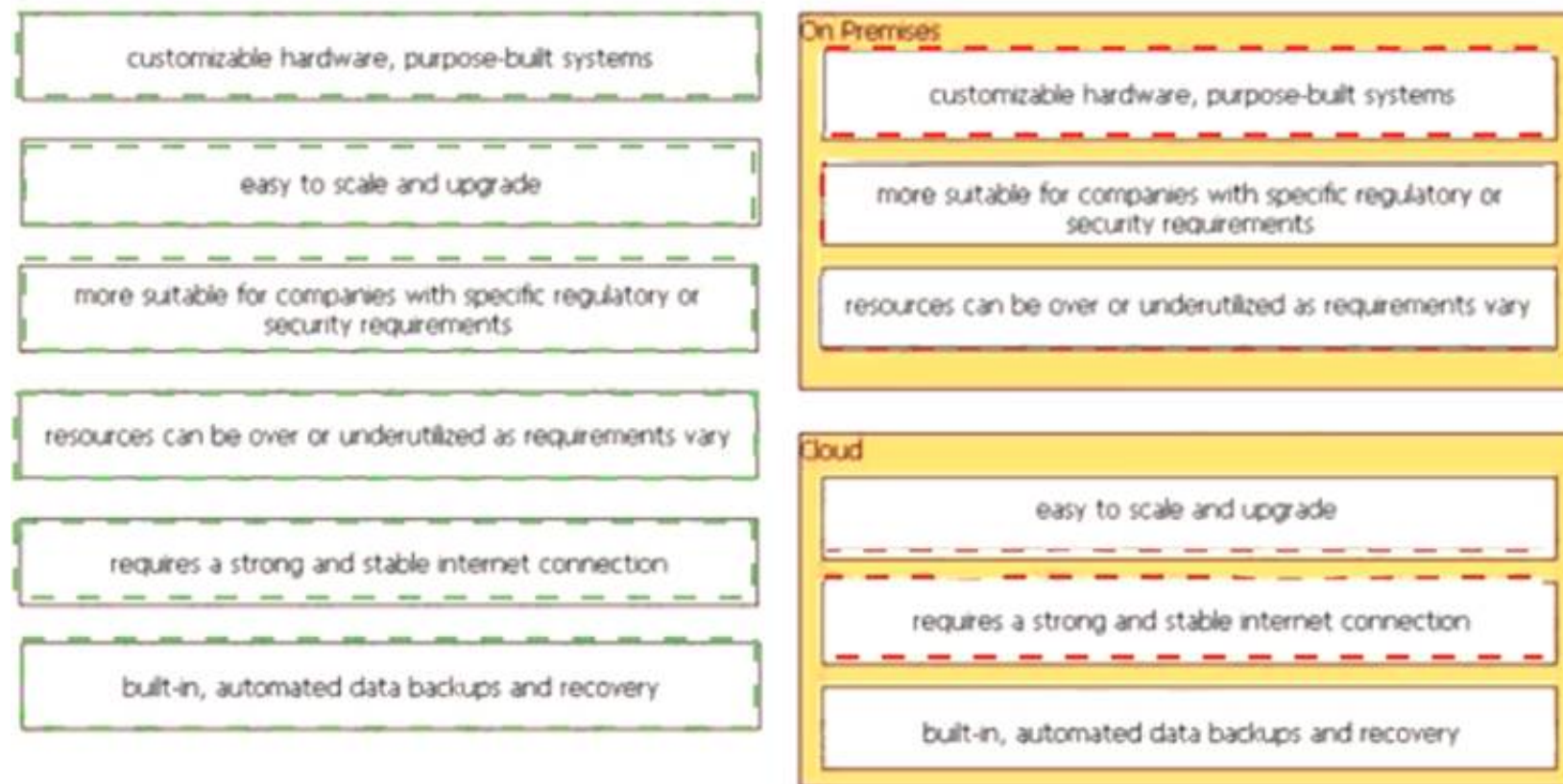
Drag and drop the characteristics from the left onto the appropriate infrastructure deployment types on the right.

customizable hardware, purpose-built systems	On Premises
easy to scale and upgrade	
more suitable for companies with specific regulatory or security requirements	
resources can be over or underutilized as requirements vary	Cloud
requires a strong and stable internet connection	
built-in, automated data backups and recovery	

- A. Mastered
- B. Not Mastered

Answer: A

Explanation:



NEW QUESTION 246

Refer to the exhibit.

```

SW2# show etherchannel summary
Flags: D - down F - bundled in port-channel
I - stand-alone W - suspended
H - Hot-standby (LACP only)
R - Layer3 S - Layer2
U - in use f - failed to allocate aggregator
M - not in use, minimum links not met
u - unsuitable for bundling
w - waiting to be aggregated
d - default port
Number of channel-groups in use: 1
Number of aggregators: 1
Group Port-channel Protocol Ports
-----+-----+-----+-----+
1 Po1(S D) EAqP Gi0/0(1) Gi0/1(1)

SW3# show etherchannel summary
Flags: D - down F - bundled in port-channel
I - stand-alone W - suspended
H - Hot-standby (LACP only)
R - Layer3 S - Layer2
U - in use f - failed to allocate aggregator
M - not in use, minimum links not met
u - unsuitable for bundling
w - waiting to be aggregated
d - default port
Number of channel-groups in use: 1
Number of aggregators: 1
Group Port-channel Protocol Ports
-----+-----+-----+-----+
1 Po1(S D) LACP Gi0/0(1) Gi0/1(1)

```

Which action resolves the EtherChannel issue between SW2 and SW3?

- A. Configure switchport mode trunk on SW2.
- B. Configure switchport nonegotiate on SW3
- C. Configure channel-group 1 mode desirable on both interfaces.
- D. Configure channel-group 1 mode active on both interfaces.

Answer: D

NEW QUESTION 251

Which outbound access list, applied to the WAN interface of a router, permits all traffic except for http traffic sourced from the workstation with IP address 10.10.10.1?

- A)


```

ip access-list extended 100
deny tcp host 10.10.10.1 any eq 80
permit ip any any
      
```

- B)
ip access-list extended 200
deny tcp host 10.10.10.1 eq 80 any
permit ip any any
- C)
ip access-list extended NO_HTTP
deny tcp host 10.10.10.1 any eq 80
- D)
ip access-list extended 10
deny tcp host 10.10.10.1 any eq 80
permit ip any any

- A. Option A
B. Option B
C. Option C
D. Option D

Answer: A

NEW QUESTION 254

Which two threats does AMP4E have the ability to block? (Choose two.)

- A. DDoS
B. ransomware
C. Microsoft Word macro attack
D. SQL injection
E. email phishing

Answer: BE

NEW QUESTION 256

Which characteristic distinguishes Ansible from Chef?

- A. Ansible lacks redundancy support for the master serve
B. Chef runs two masters in an active/active mode.
C. Ansible uses Ruby to manage configuration
D. Chef uses YAML to manage configurations.
E. Ansible pushes the configuration to the clien
F. Chef client pulls the configuration from the server.
G. The Ansible server can run on Linux, Unix or Window
H. The Chef server must run on Linux or Unix.

Answer: C

NEW QUESTION 260

.....

Thank You for Trying Our Product

We offer two products:

1st - We have Practice Tests Software with Actual Exam Questions

2nd - Questions and Answers in PDF Format

350-401 Practice Exam Features:

- * 350-401 Questions and Answers Updated Frequently
- * 350-401 Practice Questions Verified by Expert Senior Certified Staff
- * 350-401 Most Realistic Questions that Guarantee you a Pass on Your First Try
- * 350-401 Practice Test Questions in Multiple Choice Formats and Updates for 1 Year

100% Actual & Verified — Instant Download, Please Click
[Order The 350-401 Practice Test Here](#)