

Exam Questions PMI-100

CAPM (Certified Associate in Project Management) Exam

<https://www.2passeasy.com/dumps/PMI-100/>



NEW QUESTION 1

- (Topic 1)

The process of estimating the type and quantity of material, human resources, equipment, or supplies required to perform each activity is known as:

- A. Collect Requirements.
- B. Conduct Procurements.
- C. Estimate Activity Durations.
- D. Estimate Activity Resources.

Answer: D

NEW QUESTION 2

- (Topic 1)

The process of confirming human resource availability and obtaining the team necessary to complete project activities is known as:

- A. Plan Human Resource Management.
- B. Acquire Project Team.
- C. Manage Project Team.
- D. Develop Project Team.

Answer: B

NEW QUESTION 3

- (Topic 1)

Which type of dependency is established based on knowledge of best practices within a particular application area or some unusual aspect of the project in which a specific sequence is desired, even though there may be other acceptable sequences?

- A. External
- B. Internal
- C. Mandatory
- D. Discretionary

Answer: D

NEW QUESTION 4

- (Topic 1)

When does the project team determine which dependencies are discretionary?

- A. Before the Define Activities process
- B. During the Define Activities process
- C. Before the Sequence Activities process
- D. During the Sequence Activities process

Answer: D

NEW QUESTION 5

- (Topic 1)

The Perform Integrated Change Control process occurs in which Process Group?

- A. Initiating
- B. Executing
- C. Monitoring and Controlling
- D. Planning

Answer: C

NEW QUESTION 6

- (Topic 1)

What is the schedule performance index (SPI) if the planned value (PV) is \$100, the actual cost (AC) is \$150, and the earned value (EV) is \$50?

- A. 0.50
- B. 0.67
- C. 1.50
- D. 2.00

Answer: A

NEW QUESTION 7

- (Topic 1)

The iterative process of increasing the level of detail in a project management plan as greater amounts of information become available is known as:

- A. Continuous improvement.
- B. Predictive planning.
- C. Progressive elaboration.
- D. Quality assurance.

Answer: C

NEW QUESTION 8

- (Topic 1)

A strengths, weaknesses, opportunities, and threats (SWOT) analysis is a tool or technique used in which process?

- A. Identify Risks
- B. Control Risks
- C. Perform Quantitative Risk Analysis
- D. Perform Qualitative Risk Analysis

Answer: A

NEW QUESTION 9

- (Topic 1)

Which process involves developing an approximation of the monetary resources needed to complete project activities?

- A. Estimate Costs
- B. Control Costs
- C. Determine Budget
- D. Plan Cost Management

Answer: A

NEW QUESTION 10

- (Topic 1)

Which quality management and control tool is useful in visualizing parent-to-child relationships in any decomposition hierarchy that uses a systematic set of rules that define a nesting relationship?

- A. Interrelationship digraphs
- B. Tree diagram
- C. Affinity diagram
- D. Network diagram

Answer: B

NEW QUESTION 10

- (Topic 1)

Which earned value management (EVM) metric is a measure of the cost efficiency of budgeted resources expressed as a ratio of earned value (EV) to actual cost (AC) and is considered a critical EVM metric?

- A. Cost variance (CV)
- B. Cost performance index (CPI)
- C. Budget at completion (BAC)
- D. Variance at completion (VAC)

Answer: B

NEW QUESTION 13

- (Topic 1)

Which type of dependency is legally or contractually required or inherent in the nature of work and often involves physical limitations?

- A. Mandatory
- B. Discretionary
- C. Internal
- D. External

Answer: A

NEW QUESTION 14

- (Topic 1)

The review of a sellers progress toward achieving the goals of scope and quality within cost and schedule compared to the contract is known as:

- A. Work performance information.
- B. Inspections and audits.
- C. Payment systems.
- D. Procurement performance reviews.

Answer: D

NEW QUESTION 18

- (Topic 1)

An input to the Plan Cost Management process is:

- A. Cost estimates.

- B. Resource calendars,
- C. The project charter,
- D. The risk register.

Answer: C

NEW QUESTION 21

- (Topic 1)

The planned work contained in the lowest level of work breakdown structure (WBS) components is known as:

- A. Work packages.
- B. Accepted deliverables.
- C. The WBS dictionary.
- D. The scope baseline.

Answer: A

NEW QUESTION 22

- (Topic 1)

Which Control Quality tool is also known as an arrow diagram?

- A. Matrix diagram
- B. Affinity diagram
- C. Tree diagram
- D. Activity network diagram

Answer: D

NEW QUESTION 23

- (Topic 1)

Which Collect Requirements output links the product requirements to the deliverables that satisfy them?

- A. Requirements documentation
- B. Requirements traceability matrix
- C. Project management plan updates
- D. Project documents updates

Answer: B

NEW QUESTION 27

- (Topic 1)

Payback period, return on investment, internal rate of return, discounted cash flow, and net present value are all examples of:

- A. Expert judgment.
- B. Analytical techniques.
- C. Earned value management.
- D. Group decision-making techniques.

Answer: B

NEW QUESTION 29

- (Topic 1)

A reward can only be effective if it is:

- A. Given immediately after the project is completed.
- B. Something that is tangible.
- C. Formally given during project performance appraisals.
- D. Satisfying a need valued by the individual.

Answer: D

NEW QUESTION 33

- (Topic 1)

Which tool or technique is used in the Plan Scope Management process?

- A. Document analysis
- B. Observations
- C. Product analysis
- D. Expert judgment

Answer: D

NEW QUESTION 35

- (Topic 1)

The iterative and interactive nature of the Process Groups creates the need for the processes in which Knowledge Area?

- A. Project Communications Management
- B. Project Integration Management
- C. Project Risk Management
- D. Project Scope Management

Answer: B

NEW QUESTION 38

- (Topic 1)

Which input to Collect Requirements is used to identify stakeholders who can provide information on requirements?

- A. Stakeholder register
- B. Scope management plan
- C. Stakeholder management plan
- D. Project charter

Answer: A

NEW QUESTION 39

- (Topic 1)

An input to the Manage Project Team process is:

- A. Work performance reports.
- B. Change requests.
- C. Activity resource requirements.
- D. Enterprise environmental factors.

Answer: A

NEW QUESTION 41

- (Topic 1)

The definition of when and how often the risk management processes will be performed throughout the project life cycle is included in which risk management plan component?

- A. Timing
- B. Methodology
- C. Risk categories
- D. Budgeting

Answer: A

NEW QUESTION 43

- (Topic 1)

Configuration identification, configuration status accounting, and configuration verification and audit are all activities in which process?

- A. Perform Quality Assurance
- B. Direct and Manage Project Work
- C. Monitor and Control Project Work
- D. Perform Integrated Change Control

Answer: D

NEW QUESTION 44

- (Topic 1)

Which input may influence quality assurance work and should be monitored within the context of a system for configuration management?

- A. Work performance data
- B. Project documents
- C. Scope baseline
- D. Requirements documentation

Answer: B

NEW QUESTION 47

- (Topic 1)

Which tool or technique is used to develop the human resource management plan?

- A. Ground rules
- B. Expert judgment
- C. Team-building activities
- D. Interpersonal skills

Answer: B

NEW QUESTION 48

- (Topic 1)

Sending letters, memos, reports, emails, and faxes to share information is an example of which type of communication?

- A. Direct
- B. Interactive
- C. Pull
- D. Push

Answer: D

NEW QUESTION 49

- (Topic 1)

A project manager providing information to the right audience, in the right format, at the right time is an example of which type of communication?

- A. Efficient
- B. Effective
- C. Push
- D. Pull

Answer: B

NEW QUESTION 53

- (Topic 1)

An output of the Validate Scope process is:

- A. A requirements traceability matrix.
- B. The scope management plan.
- C. Work performance reports.
- D. Change requests.

Answer: D

NEW QUESTION 55

- (Topic 1)

When alternative dispute resolution (ADR) is necessary, which tool or technique should be utilized?

- A. Interactive communication
- B. Claims administration
- C. Conflict management
- D. Performance reporting

Answer: B

NEW QUESTION 57

- (Topic 1)

The organization's perceived balance between risk taking and risk avoidance is reflected in the risk:

- A. Responses
- B. Appetite
- C. Tolerance
- D. Attitude

Answer: A

NEW QUESTION 61

- (Topic 1)

External organizations that have a special relationship with the enterprise and provide specialized expertise are called:

- A. Customers.
- B. Business partners.
- C. Sellers.
- D. Functional managers.

Answer: B

NEW QUESTION 66

- (Topic 1)

What are the Project Procurement Management processes?

- A. Conduct Procurements, Control Procurements, Integrate Procurements, and Close Procurements
- B. Estimate Procurements, Integrate Procurements, Control Procurements, and Validate Procurements
- C. Plan Procurement Management, Conduct Procurements, Control Procurements, and Close Procurements
- D. Plan Procurement Management, Perform Procurements, Control Procurements, and Validate Procurements

Answer: C

NEW QUESTION 70

- (Topic 1)

Processes in the Planning Process Group are typically carried out during which part of the project life cycle?

- A. Only once, at the beginning
- B. At the beginning and the end
- C. Once during each phase
- D. Repeatedly

Answer: D

NEW QUESTION 74

- (Topic 1)

Which process determines the risks that may affect the project and documents their characteristics?

- A. Control Risks
- B. Plan Risk Management
- C. Plan Risk Responses
- D. Identify Risks

Answer: D

NEW QUESTION 76

- (Topic 1)

Status of deliverables, implementation status for change requests, and forecasted estimates to complete are examples of:

- A. Earned value management.
- B. Enterprise environmental factors.
- C. Organizational process assets.
- D. Work performance information.

Answer: D

NEW QUESTION 81

- (Topic 1)

A large portion of a projects budget is typically expended on the processes in which Process Group?

- A. Executing
- B. Planning
- C. Monitoring and Controlling
- D. Closing

Answer: B

NEW QUESTION 85

- (Topic 1)

An example of a group decision-making technique is:

- A. Nominal group technique.
- B. Majority.
- C. Affinity diagram.
- D. Multi-criteria decision analysis.

Answer: B

NEW QUESTION 89

- (Topic 1)

Which Plan Schedule Management tool or technique may involve choosing strategic options to estimate and schedule the project?

- A. Facilitation techniques
- B. Expert judgment
- C. Analytical techniques
- D. Variance analysis

Answer: C

NEW QUESTION 91

- (Topic 1)

The Plan Stakeholder Management process belongs to which Process Group?

- A. Executing
- B. Initiating
- C. Planning
- D. Monitoring and Controlling

Answer: C

NEW QUESTION 92

- (Topic 1)

Which item is an input to the Define Activities process?

- A. Schedule data
- B. Activity list
- C. Risk register
- D. Scope baseline

Answer: D

NEW QUESTION 93

- (Topic 1)

A temporary endeavor that creates a unique product or service is called a:

- A. Project
- B. Plan
- C. Program
- D. Portfolio

Answer: A

NEW QUESTION 97

- (Topic 1)

The Monitoring and Controlling Process Group includes processes that:

- A. Establish the scope, objectives, and course of action of a project,
- B. Define a new project or a new phase of an existing project.
- C. Track, review, and regulate the progress and performance of a project.
- D. Complete the work defined in the project management plan.

Answer: C

NEW QUESTION 102

- (Topic 1)

Which process in Project Time Management includes reserve analysis as a tool or technique?

- A. Estimate Activity Resources
- B. Sequence Activities
- C. Estimate Activity Durations
- D. Develop Schedule

Answer: C

NEW QUESTION 106

- (Topic 1)

Which tool or technique is used in validating the scope of a project?

- A. Facilitated workshops
- B. Interviews
- C. Inspection
- D. Meetings

Answer: C

NEW QUESTION 111

- (Topic 1)

A project manager is appointed full-time to a project and is given full-time administrative staff and full-time project team members. This situation describes which type of organizational structure?

- A. Projectized
- B. Weak matrix
- C. Functional
- D. Balanced matrix

Answer: A

NEW QUESTION 112

- (Topic 1)

A technique used to determine the cause and degree of difference between baseline and actual performance is:

- A. Product analysis.
- B. Variance analysis.
- C. Document analysis,
- D. Decomposition.

Answer: B

NEW QUESTION 117

- (Topic 1)

The number of potential communication channels for a project with 5 stakeholders is:

- A. 10.
- B. 12.
- C. 20.
- D. 24.

Answer: A

NEW QUESTION 122

- (Topic 1)

Which item is a formal proposal to modify any document, deliverable, or baseline?

- A. Change request
- B. Requirements documentation
- C. Scope baseline
- D. Risk urgency assessment

Answer: A

NEW QUESTION 123

- (Topic 1)

Which basic quality tool is most useful when gathering attributes data in an inspection to identify defects?

- A. Control charts
- B. Pareto diagrams
- C. Ishikawa diagrams
- D. Checksheets

Answer: D

NEW QUESTION 124

- (Topic 1)

Plan Schedule Management is a process in which Knowledge Area?

- A. Project Scope Management
- B. Project Human Resource Management
- C. Project Integration Management
- D. Project Time Management

Answer: D

NEW QUESTION 129

- (Topic 1)

Which tool or technique of the Define Activities process allows for work to exist at various levels of detail depending on where it is in the project life cycle?

- A. Historical relationships
- B. Dependency determination
- C. Bottom-up estimating
- D. Rolling wave planning

Answer: D

NEW QUESTION 133

- (Topic 1)

Which risk management strategy seeks to eliminate the uncertainty associated with a particular upside risk by ensuring that the opportunity is realized?

- A. Enhance
- B. Share
- C. Exploit
- D. Accept

Answer: C

NEW QUESTION 134

- (Topic 1)

An output of the Manage Stakeholder Engagement process is:

- A. change requests
- B. enterprise environmental factors
- C. the stakeholder management plan

D. the change log

Answer: A

NEW QUESTION 137

- (Topic 1)

Stakeholder satisfaction should be managed as a key project:

- A. Benefit
- B. Initiative
- C. Objective
- D. Process

Answer: C

NEW QUESTION 139

- (Topic 1)

Which item is an output of Plan Quality Management and an input to Perform Quality Assurance?

- A. Organizational process updates
- B. Quality metrics
- C. Change requests
- D. Quality control measurements

Answer: B

NEW QUESTION 141

- (Topic 2)

Stakeholders can be identified in later stages of the project because the Identify Stakeholders process should be:

- A. Continuous
- B. Discrete
- C. Regulated
- D. Arbitrary

Answer: A

NEW QUESTION 146

- (Topic 2)

Skills necessary for project management such as motivating to provide encouragement; listening actively; persuading a team to perform an action; and summarizing, recapping, and identifying next steps are known as:

- A. organizational skills
- B. technical skills
- C. communication skills
- D. hard skills

Answer: C

NEW QUESTION 147

- (Topic 2)

Which item is a cost of conformance?

- A. Training
- B. Liabilities
- C. Lost business
- D. Scrap

Answer: A

NEW QUESTION 151

- (Topic 2)

Which type of graphic is displayed below?



- A. Work breakdown structure
- B. Context diagram
- C. Control chart
- D. Pareto diagram

Answer: A

NEW QUESTION 155

- (Topic 2)

Which key interpersonal skill of a project manager is defined as the strategy of sharing power and relying on interpersonal skills to convince others to cooperate toward common goals?

- A. Collaboration
- B. Negotiation
- C. Decision making
- D. Influencing

Answer: D

NEW QUESTION 157

- (Topic 2)

Which Control Stakeholder Engagement tool or technique allows the project manager to consolidate and facilitate distribution of reports?

- A. Information management systems
- B. Work performance reports
- C. Stakeholder analysis
- D. Data gathering and representation

Answer: A

NEW QUESTION 160

- (Topic 2)

Which tool or technique is required in order to determine the project budget?

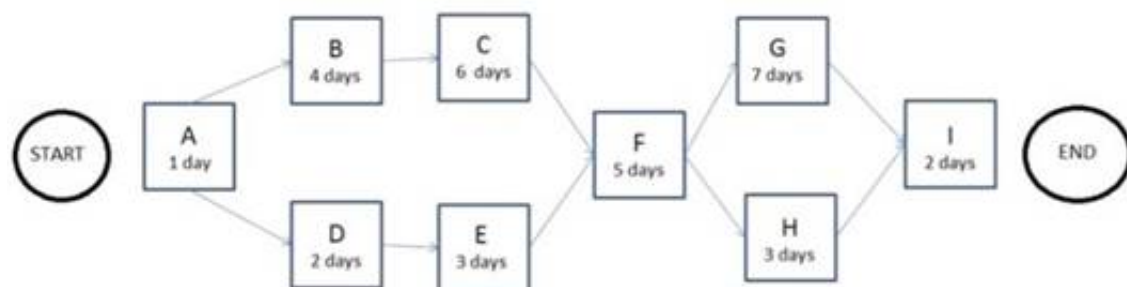
- A. Cost of quality
- B. Historical relationships
- C. Project management software
- D. Forecasting

Answer: B

NEW QUESTION 163

- (Topic 2)

The following is a network diagram for a project.



The free float for Activity H is how many days?

- A. 4
- B. 5
- C. 10
- D. 11

Answer: A

NEW QUESTION 167

- (Topic 2)

When the business objectives of an organization change, project goals need to be:

- A. realigned.
- B. performed.
- C. improved.
- D. controlled.

Answer: A

NEW QUESTION 170

- (Topic 2)

The primary benefit of the Plan Schedule Management process is that it:

- A. provides guidance to identify time or schedule challenges within the project.
- B. tightly links processes to create a seamless project schedule.
- C. guides how the project schedule will be managed throughout the project.
- D. creates an overview of all activities broken down into manageable subsections.

Answer: C

NEW QUESTION 173

- (Topic 2)

Which term describes an assessment of correctness?

- A. Accuracy
- B. Precision
- C. Grade
- D. Quality

Answer: A

NEW QUESTION 174

- (Topic 2)

A benefit of using virtual teams in the Acquire Project Team process is the reduction of the:

- A. cultural differences of team members
- B. possibility of communication misunderstandings
- C. costs associated with travel
- D. costs associated with technology

Answer: C

NEW QUESTION 175

- (Topic 2)

High-level project risks are included in which document?

- A. Business case
- B. Risk breakdown structure
- C. Project charter
- D. Risk register

Answer: C

NEW QUESTION 179

- (Topic 2)

Those who enter into a contractual agreement to provide services necessary for a project are:

- A. buyers
- B. sellers
- C. business partners
- D. product users

Answer: B

NEW QUESTION 182

- (Topic 2)

Job satisfaction, challenging work, and sufficient financial compensation are values related to which interpersonal skill?

- A. Influencing
- B. Motivation
- C. Negotiation
- D. Trust building

Answer: B

NEW QUESTION 185

- (Topic 2)

Tools and techniques used in Direct and Manage Project Work include:

- A. Process analysis and expert judgment
- B. Analytical techniques and a project management information system
- C. Performance reviews and meetings
- D. Expert judgment and meetings

Answer: D

NEW QUESTION 189

- (Topic 2)

Which enterprise environmental factors may influence Plan Schedule Management?

- A. Cultural views regarding time schedules and professional and ethical behaviors
- B. Historical information and change control procedures
- C. Risk control procedures and the probability and impact matrix
- D. Resource availability and organizational culture and structure

Answer: D

NEW QUESTION 194

- (Topic 2)

Every project creates a unique product, service, or result that may be:

- A. tangible
- B. targeted
- C. organized
- D. variable

Answer: A

NEW QUESTION 195

- (Topic 2)

An example of a group decision-making technique is:

- A. nominal group technique
- B. majority
- C. affinity diagram
- D. multi-criteria decision analysis

Answer: B

NEW QUESTION 196

- (Topic 2)

Which type of dependency used in the Sequence Activities process is sometimes referred to as preferred logic, preferential logic, or soft logic?

- A. Internal
- B. External
- C. Discretionary
- D. Mandatory

Answer: C

NEW QUESTION 199

- (Topic 2)

The process of defining how the project scope will be validated and controlled is known as:

- A. Define Scope.
- B. Develop Project Management Plan.
- C. Plan Scope Management.
- D. Plan Quality Management.

Answer: C

NEW QUESTION 200

- (Topic 2)

A risk that arises as a direct result of implementing a risk response is called a:

- A. contingent risk
- B. residual risk
- C. potential risk
- D. secondary risk

Answer: D

NEW QUESTION 202

- (Topic 2)

Which process is conducted from project inception through completion and is ultimately the responsibility of the project manager?

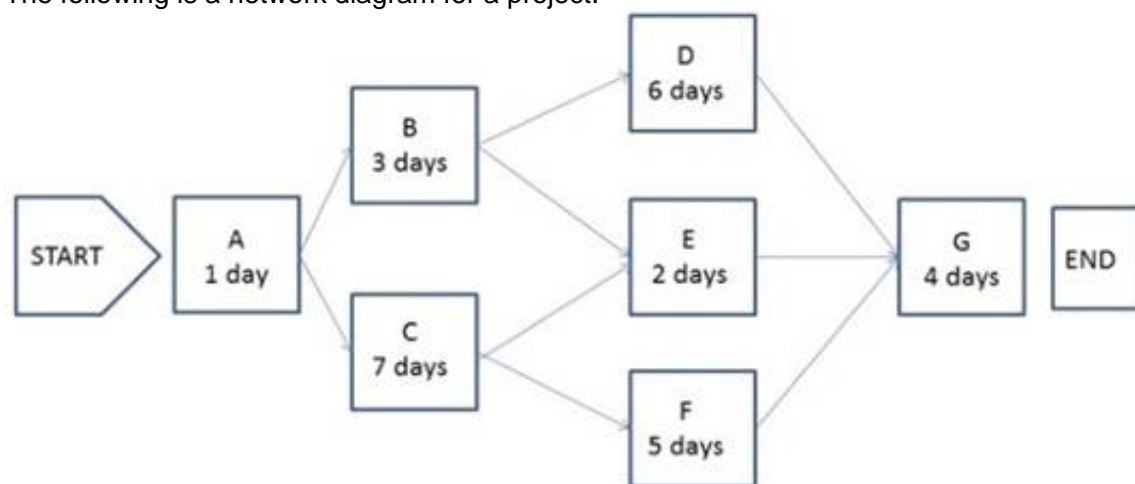
- A. Control Quality
- B. Monitor and Control Project Work
- C. Control Scope
- D. Perform Integrated Change Control

Answer: D

NEW QUESTION 206

- (Topic 2)

The following is a network diagram for a project.



What is the critical path for the project?

- A. A-B-D-G
- B. A-B-E-G
- C. A-C-F-G
- D. A-C-E-G

Answer: C

NEW QUESTION 209

- (Topic 2)

Which tool or technique used in the Control Procurements process can be conducted during the execution of the project to verify compliance with deliverables?

- A. Procurement documents
- B. Inspection and audits
- C. Estimate budget
- D. Risk register

Answer: B

NEW QUESTION 212

- (Topic 2)

A full-time project manager with low to moderate authority and part-time administrative staff is working in an organizational structure with which type of matrix?

- A. Strong
- B. Weak
- C. Managed
- D. Balanced

Answer: D

NEW QUESTION 215

- (Topic 2)

The cost baseline and project funding requirements are outputs of which process in Project Cost Management?

- A. Estimate Costs
- B. Control Costs
- C. Plan Cost Management
- D. Determine Budget

Answer: D

NEW QUESTION 218

- (Topic 2)

Funding limit reconciliation is a tool and technique of which Project Cost Management process?

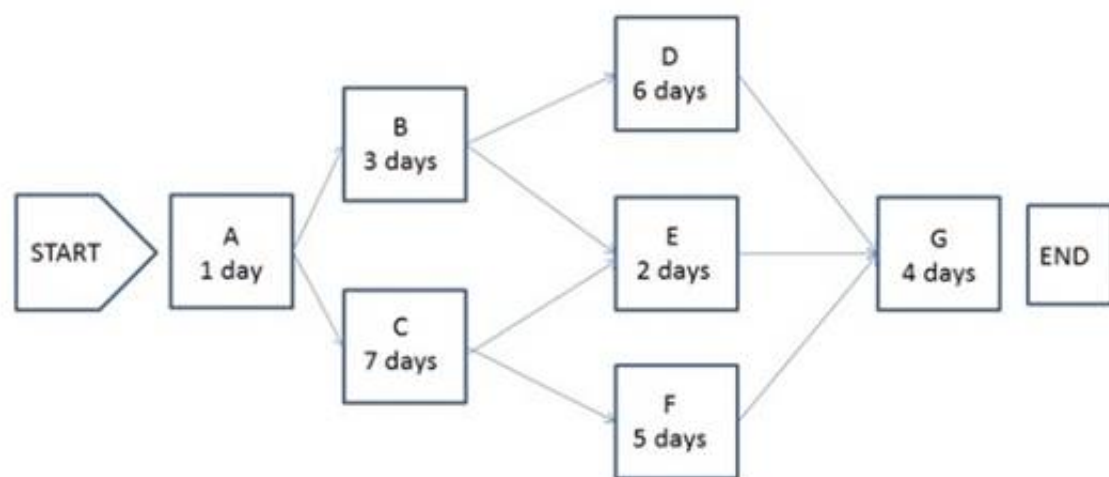
- A. Estimate Costs
- B. Control Costs
- C. Plan Cost Management
- D. Determine Budget

Answer: D

NEW QUESTION 222

- (Topic 2)

The following is a network diagram for a project.



The shortest non-critical path for the project is how many days in duration?

- A. 10
- B. 12
- C. 14
- D. 16

Answer: A

NEW QUESTION 225

- (Topic 2)

In which phase of team building activities do team members begin to work together and adjust their work habits and behavior to support the team?

- A. Performing
- B. Storming
- C. Norming
- D. Forming

Answer: C

NEW QUESTION 228

- (Topic 2)

Which Define Activities tool or technique is used for dividing and subdividing the project scope and project deliverables into smaller, more manageable parts?

- A. Decomposition
- B. Inspection
- C. Project analysis
- D. Document analysis

Answer: A

NEW QUESTION 231

- (Topic 2)

The zero duration of milestones in project planning occurs because milestones:

- A. Are unpredictable and challenge the Plan Schedule Management process.
- B. Occur at random times in the project plans.
- C. Represent a moment in time such as a significant project point or event.
- D. Represent both significant and insignificant points in the project and are difficult to anticipate.

Answer: C

NEW QUESTION 233

- (Topic 2)

The purpose of developing a project scope management plan is to:

- A. Manage the timely completion of the project.
- B. Ensure that the project includes all of the work required.
- C. Make sure the project will satisfy the needs for which it was begun.
- D. Reduce the risk of negative events in the project.

Answer: B

NEW QUESTION 238

- (Topic 2)

Outputs of the Control Communications process include:

- A. expert judgment and change requests.
- B. work performance information and change requests.
- C. organizational process asset updates and an issue log.
- D. project management plan updates and an issue log.

Answer: B

NEW QUESTION 242

- (Topic 2)

Stakeholder communication requirements should be included as a component of:

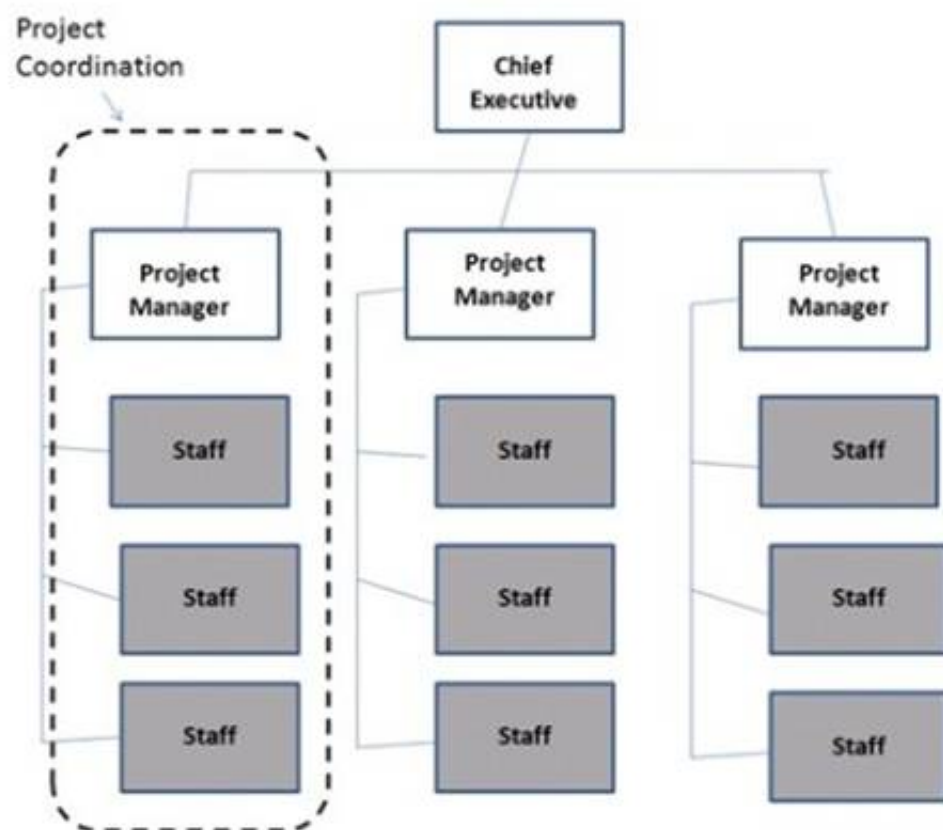
- A. enterprise environmental factors
- B. organizational process assets
- C. the project management plan
- D. the stakeholder register

Answer: C

NEW QUESTION 243

- (Topic 2)

Which type of organizational structure is displayed in the diagram provided?



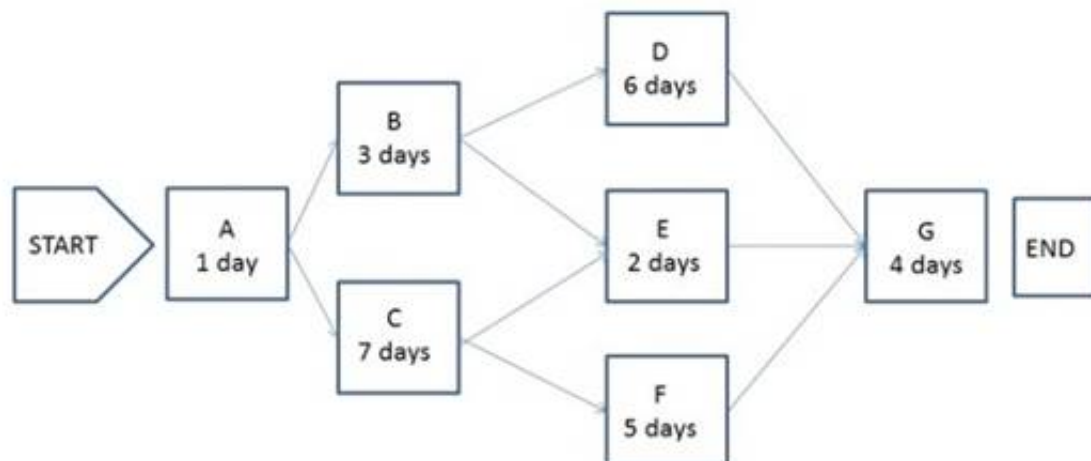
- A. Balanced matrix
- B. Projectized
- C. Strong matrix
- D. Functional

Answer: B

NEW QUESTION 247

- (Topic 2)

The following is a network diagram for a project.



The total float for the project is how many days?

- A. 3
- B. 5
- C. 7
- D. 9

Answer: A

NEW QUESTION 249

- (Topic 2)

A special type of bar chart used in sensitivity analysis for comparing the relative importance of the variables is called a:

- A. triangular distribution

- B. tornado diagram
- C. beta distribution
- D. fishbone diagram

Answer: B

NEW QUESTION 254

- (Topic 2)

Which Process Group includes the Manage Stakeholder Engagement process?

- A. Executing
- B. Planning
- C. Monitoring and Controlling
- D. Initiating

Answer: A

NEW QUESTION 255

- (Topic 2)

The following chart contains information about the tasks in a project.

Task	PV	AC	EV
1	10,000	10,000	10,000
2	10,000	8,000	10,000
3	10,000	8,000	8,000
4	9,000	12,000	10,000
5	10,000	12,000	12,000
6	10,000	10,000	12,000
7	12,000	12,000	10,000
8	10,000	8,000	9,000
9	12,000	10,000	11,000

Based on the chart, what is the schedule performance index (SPI) for Task 4?

- A. 0.83
- B. 0.9
- C. 1.11
- D. 1.33

Answer: C

NEW QUESTION 256

- (Topic 2)

During which process does the project team receive bids and proposals?

- A. Conduct Procurements
- B. Plan Procurements
- C. Estimate Costs
- D. Control Budget

Answer: A

NEW QUESTION 258

- (Topic 2)

The degree of uncertainty an entity is willing to take on in anticipation of a reward is known as its risk:

- A. management
- B. response
- C. tolerance
- D. appetite

Answer: D

NEW QUESTION 260

- (Topic 2)

Project deliverables that have been completed and checked for correctness through the Control Quality process are known as:

- A. Verified deliverables.
- B. Validated deliverables.
- C. Acceptance criteria.
- D. Activity resource requirements.

Answer: A

NEW QUESTION 263

- (Topic 2)

At the start of a typical project life cycle, costs are:

- A. low, peak as work is carried out, and drop as the project nears the end.
- B. low, become steady as work is carried out, and increase as the project nears the end.
- C. high, drop as work is carried out, and increase as the project nears the end.
- D. high, become low as work is carried out, and drop as the project nears the end.

Answer: A

NEW QUESTION 267

- (Topic 3)

The Verify Scope process is primarily concerned with:

- A. formalizing acceptance of the completed project deliverables.
- B. accuracy of the work deliverables.
- C. formalizing approval of the scope statement.
- D. accuracy of the work breakdown structure (WBS).

Answer: A

NEW QUESTION 271

- (Topic 3)

Which process involves documenting the actions necessary to define, prepare, integrate, and coordinate all subsidiary plans?

- A. Collect Requirements
- B. Direct and Manage Project Execution
- C. Monitor and Control Project Work
- D. Develop Project Management Plan

Answer: D

NEW QUESTION 272

- (Topic 3)

Which process includes prioritizing risks for subsequent further analysis or action by assessing and combining their probability of occurrence and impact?

- A. Perform Qualitative Risk Analysis
- B. Perform Quantitative Risk Analysis
- C. Plan Risk Management
- D. Plan Risk Responses

Answer: A

NEW QUESTION 276

- (Topic 3)

Which type of analysis would be used for the Plan Quality process?

- A. Schedule
- B. Checklist
- C. Assumption
- D. Cost-Benefit

Answer: D

NEW QUESTION 277

- (Topic 3)

Which enterprise environmental factors are considered during Estimate Costs?

- A. Market conditions and published commercial information
- B. Company structure and market conditions
- C. Commercial information and company structure
- D. Existing human resources and market conditions

Answer: A

NEW QUESTION 279

- (Topic 3)

An input to the Create WBS process is a:

- A. project charter.
- B. stakeholder register.
- C. project scope statement.
- D. requirements traceability matrix.

Answer:

C

NEW QUESTION 283

- (Topic 3)

Which of the following techniques is used during Control Scope?

- A. Cost-benefit analysis
- B. Variance analysis
- C. Reserve analysis
- D. Stakeholder analysis

Answer: B

NEW QUESTION 286

- (Topic 3)

The project manager notes that stakeholders are aware of the project and potential impacts and are actively engaged in ensuring that the project is a success. The engagement level of the stakeholders should be classified as:

- A. Supportive
- B. Leading
- C. Neutral
- D. Resistant

Answer: B

NEW QUESTION 291

- (Topic 3)

A project management office manages a number of aspects including the:

- A. Project scope, schedule, cost, and quality of the products of the work packages.
- B. Central coordination of communication management across projects.
- C. Assignment of project resources to best meet project objectives.
- D. Overall risk, overall opportunity, and interdependencies among projects at the enterprise level.

Answer: D

NEW QUESTION 292

- (Topic 3)

In an organization with a projectized organizational structure, who controls the project budget?

- A. Functional manager
- B. Project manager
- C. Program manager
- D. Project management office

Answer: B

NEW QUESTION 295

- (Topic 3)

Which type of contract is most commonly used by buying organizations because the price for goods is set at the outset and is not subject to change unless the scope of work changes?

- A. Fixed Price with Economic Price Adjustments Contract (FP-EPA)
- B. Cost-Reimbursable Contract (CR)
- C. Firm-Fixed -Price Contract (FFP)
- D. Fixed-Price-Incentive-Fee Contract (FPIF)

Answer: C

NEW QUESTION 300

- (Topic 3)

As part of a mid-project evaluation, the project sponsor has asked for a forecast of the total project cost. What should be used to calculate the forecast?

- A. BAC
- B. EAC
- C. ETC
- D. WBS

Answer: B

NEW QUESTION 303

- (Topic 3)

Which is an example of Administer Procurements?

- A. Negotiating the contract
- B. Authorizing contractor work

- C. Developing the statement of work
- D. Establishing evaluation criteria

Answer: B

NEW QUESTION 308

- (Topic 3)

The formal and informal interaction with others in an organization industry, or professional environment is known as:

- A. negotiation
- B. organizational theory
- C. meeting
- D. networking

Answer: D

NEW QUESTION 311

- (Topic 3)

Which schedule network analysis technique modifies the project schedule to account for limited resources?

- A. Human resource planning
- B. Fast tracking
- C. Critical chain method
- D. Rolling wave planning

Answer: C

NEW QUESTION 316

- (Topic 3)

Conflict should be best addressed in which manner?

- A. Early, in private, using a direct, collaborative approach
- B. Early, in public, using an indirect, collaborative approach
- C. Early, in private, using an indirect, cooperative approach
- D. As late as possible, in public, using a direct, confrontational approach

Answer: A

NEW QUESTION 319

- (Topic 3)

What tool and technique is used to determine whether work and deliverables meet requirements and product acceptance criteria?

- A. Decomposition
- B. Benchmarking
- C. Inspection
- D. Checklist analysis

Answer: C

NEW QUESTION 321

- (Topic 3)

The stakeholder register is an output of:

- A. Identify Stakeholders.
- B. Plan Stakeholder Management.
- C. Control Stakeholder Engagement.
- D. Manage Stakeholder Engagement.

Answer: A

NEW QUESTION 325

- (Topic 3)

An electronics firm authorizes a new project to develop a faster, cheaper, and smaller laptop after improvements in the industry and electronics technology. With which of the following strategic considerations is this project mainly concerned?

- A. Customer request
- B. Market demand
- C. Technological advance
- D. Strategic opportunity

Answer: C

NEW QUESTION 326

- (Topic 3)

The product scope description is used to:

- A. Gain stakeholders' support for the project.
- B. Progressively elaborate the characteristics of the product, service, or result.
- C. Describe the project in great detail.
- D. Define the process and criteria for accepting a completed product, service, or result.

Answer: B

NEW QUESTION 327

- (Topic 3)

What is the function of a Project Management Office (PMO)?

- A. To focus on the coordinated planning, prioritization, and execution of projects and subprojects that are tied to the parent organizations or the client's overall business objectives.
- B. To coordinate and manage the procurement of projects relevant to the parent organization's business objectives and to administer the project charters accordingly.
- C. To administer performance reviews for the project manager and the project team members and to handle any personnel and payroll issues.
- D. To focus on the specified project objectives and to manage the scope, schedule, cost, and quality of the work packages.

Answer: A

NEW QUESTION 330

- (Topic 3)

Projects are undertaken by an organization to support the:

- A. Product performance.
- B. Budget process.
- C. Collective capabilities.
- D. Organizational strategy.

Answer: D

NEW QUESTION 332

- (Topic 3)

Which is the Define Scope technique used to generate different approaches to execute and perform the work of the project?

- A. Build v
- B. buy
- C. Expert judgment
- D. Alternatives identification
- E. Product analysis

Answer: C

NEW QUESTION 336

- (Topic 3)

What type of planning is used where the work to be accomplished in the near term is planned in detail, while work in the future is planned at a higher level?

- A. Finish-to-start planning
- B. Rolling wave planning
- C. Short term planning
- D. Dependency determination

Answer: B

NEW QUESTION 339

- (Topic 3)

To which process is work performance information an input?

- A. Administer Procurements
- B. Direct and Manage Project Execution
- C. Create WBS
- D. Perform Qualitative Risk Analysis

Answer: A

NEW QUESTION 341

- (Topic 3)

Who selects the appropriate processes for a project?

- A. Project stakeholders
- B. Project sponsor and project stakeholder
- C. Project manager and project team
- D. Project manager and project sponsor

Answer: C

NEW QUESTION 345

- (Topic 3)

Who, along with the project manager, is supposed to direct the performance of the planned project activities and manage the various technical and organizational interfaces that exist within the project?

- A. The customer and functional managers
- B. The risk owners and stakeholders
- C. The sponsors and stakeholders
- D. The project management team

Answer: D

NEW QUESTION 347

- (Topic 3)

During which process group is the quality policy determined?

- A. Initiating
- B. Executing
- C. Planning
- D. Controlling

Answer: C

NEW QUESTION 348

- (Topic 3)

The integrative nature of project management requires which Process Group to interact with the other Process Groups?

- A. Planning
- B. Executing
- C. Monitoring and Controlling
- D. Project Management

Answer: C

NEW QUESTION 350

- (Topic 3)

When does Monitor and Control Risks occur?

- A. At project initiation
- B. During work performance analysis
- C. Throughout the life of the project
- D. At project milestones

Answer: C

NEW QUESTION 354

- (Topic 3)

Organizational planning impacts projects by means of project prioritization based on risk, funding, and an organizations:

- A. Budget plan
- B. Resource plan
- C. Scope plan
- D. Strategic plan

Answer: D

NEW QUESTION 355

- (Topic 3)

When is a Saliency Model used?

- A. In a work breakdown structure (WBS)
- B. During quality assurance
- C. In stakeholder analysis
- D. During quality control (QC)

Answer: C

NEW QUESTION 359

- (Topic 3)

Activity resource requirements and the resource breakdown structure (RBS) are outputs of which Project Time Management process?

- A. Control Schedule
- B. Define Activities
- C. Develop Schedule
- D. Estimate Activity Resources

Answer:

D

NEW QUESTION 360

- (Topic 3)

What is the number of stakeholders, if the project has 28 potential communication channels?

- A. 7
- B. 8
- C. 14
- D. 16

Answer: B

NEW QUESTION 363

- (Topic 3)

Managing ongoing production of goods and services to ensure business continues efficiently describes which type of management?

- A. Portfolio
- B. Project
- C. Program
- D. Operations

Answer: D

NEW QUESTION 367

- (Topic 3)

Which tool and technique identifies inefficient and ineffective policies, processes, and procedures?

- A. Scope audits
- B. Scope reviews
- C. Quality audits
- D. Control chart

Answer: C

NEW QUESTION 371

- (Topic 3)

Which type of manager is assigned by the performing organization to lead the team that is responsible for achieving the project objectives?

- A. Program
- B. Functional
- C. Project
- D. Portfolio

Answer: C

NEW QUESTION 376

- (Topic 3)

Which Project Management Process Group includes Collect Requirements, Define Activities, Sequence Activities, Perform Qualitative Risk Analysis, and Perform Quantitative Risk Analysis?

- A. Initiating
- B. Monitoring and Controlling
- C. Planning
- D. Closing

Answer: C

NEW QUESTION 381

- (Topic 3)

Which type of estimating can produce higher levels of accuracy, depending upon the sophistication and underlying data built into the model?

- A. Bottom-up
- B. Three-point
- C. Parametric
- D. Analogous

Answer: C

NEW QUESTION 382

- (Topic 3)

What type of reward can hurt team cohesiveness?

- A. Sole-sum
- B. Win-lose
- C. Lose-win

D. Partial-sum

Answer: B

NEW QUESTION 386

- (Topic 3)

Which type of analysis systemically gathers and analyzes qualitative and quantitative information to determine which interests should be taken into account throughout the project?

- A. Product
- B. Cost-benefit
- C. Stakeholder
- D. Research

Answer: C

NEW QUESTION 391

- (Topic 3)

What is the total float of the critical path?

- A. Can be any number
- B. Zero or positive
- C. Zero or negative
- D. Depends on the calendar

Answer: C

NEW QUESTION 396

- (Topic 3)

Perform Quality Control is accomplished by:

- A. Identifying quality standards that are relevant to the project and determining how to satisfy them.
- B. Monitoring and recording the results of executing the quality activities to assess performance and recommend necessary changes.
- C. Ensuring that the entire project team has been adequately trained in quality assurance processes.
- D. Applying Monte Carlo, sampling, Pareto analysis, and benchmarking techniques to ensure conformance to quality standards.

Answer: B

NEW QUESTION 398

- (Topic 3)

Which of the following processes are part of the Project Integration Management Knowledge Area?

- A. Develop Project Management Plan, Collect Requirements, Create WBS
- B. Develop Project Management Plan, Control Scope, Develop Schedule
- C. Develop Project Charter, Define Scope, Estimate Costs
- D. Develop Project Charter, Direct and Manage Project Execution, Close Project or Phase

Answer: D

NEW QUESTION 399

- (Topic 3)

Which process documents the business needs of a project and the new product, service, or other result that is intended to satisfy those requirements?

- A. Develop Project Management Plan
- B. Develop Project Charter
- C. Direct and Manage Project Execution
- D. Collect Requirements

Answer: B

NEW QUESTION 403

- (Topic 3)

What is the term assigned to products or services having the same functional use but different technical characteristics?

- A. Scope
- B. Quality
- C. Specification
- D. Grade

Answer: D

NEW QUESTION 406

- (Topic 3)

Cost baseline is an output of which of the following processes?

- A. Control Costs
- B. Determine Budget
- C. Estimate Costs
- D. Estimate Activity Resources

Answer: B

NEW QUESTION 411

- (Topic 3)

What is one of the objectives of Project Risk Management?

- A. Decrease the probability and impact of an event on project objectives.
- B. Distinguish between a project risk and a project issue so that a risk mitigation plan can be put in place.
- C. Increase the probability and impact of positive events.
- D. Removal of project risk.

Answer: C

NEW QUESTION 415

- (Topic 3)

The creation of an internet site to engage stakeholders on a project is an example of which type of communication?

- A. Push
- B. Pull
- C. Interactive
- D. Iterative

Answer: B

NEW QUESTION 418

- (Topic 3)

The Human Resource Management processes are:

- A. Develop Human Resource Plan, Acquire Project Team, Develop Project Team, and Manage Project Team.
- B. Acquire Project Team, Manage Project Team, Manage Stakeholder Expectations, and Develop Project Team.
- C. Acquire Project Team, Develop Human Resource Plan, Conflict Management, and Manage Project Team.
- D. Develop Project Team, Manage Project Team, Estimate Activity Resources, and Acquire Project Team.

Answer: A

NEW QUESTION 421

- (Topic 3)

What name(s) is (are) associated with the Plan-Do-Check-Act cycle?

- A. Pareto
- B. Ishikawa
- C. Shewhart-Deming
- D. Delphi

Answer: C

NEW QUESTION 424

- (Topic 3)

Which of the following statements correctly characterizes pull communication?

- A. It includes letters, memos, reports, emails, and faxes.
- B. It requires recipients to access communication content at their own discretion.
- C. It is the most efficient way to ensure a common understanding among all participants.
- D. It is primarily used when the volume of information to be transferred is minimal.

Answer: B

NEW QUESTION 429

- (Topic 3)

Definitions of probability and impact, revised stakeholder tolerances, and tracking are components of which subsidiary plan?

- A. Cost management plan
- B. Quality management plan
- C. Communications management plan
- D. Risk management plan

Answer: D

NEW QUESTION 432

- (Topic 3)

Which of the seven basic quality tools is especially useful for gathering attributes data while performing inspections to identify defects?

- A. Histograms
- B. Scatter diagrams
- C. Flowcharts
- D. Checksheets

Answer: D

NEW QUESTION 435

- (Topic 3)

Which of the following tools or techniques is used for Estimate Activity Durations?

- A. Critical path method
- B. Rolling wave planning
- C. Precedence diagramming method
- D. Parametric estimating

Answer: D

NEW QUESTION 438

- (Topic 3)

Which defines the portion of work included in a contract for items being purchased or acquired?

- A. Procurement management plan
- B. Evaluation criteria
- C. Work breakdown structure
- D. Procurement statement of work

Answer: D

NEW QUESTION 440

- (Topic 3)

Work performance information and cost forecasts are outputs of which Project Cost Management process?

- A. Estimate Costs
- B. Plan Cost Management
- C. Determine Budget
- D. Control Costs

Answer: D

NEW QUESTION 441

- (Topic 3)

Which activity is an input to the Conduct Procurements process?

- A. Organizational process assets
- B. Resource availability
- C. Perform Integrated Change Control
- D. Team performance assessment

Answer: A

NEW QUESTION 446

- (Topic 3)

What is a hierarchically organized depiction of the identified project risks arranged by risk category?

- A. Risk register
- B. Risk breakdown structure (RBS)
- C. Risk management plan
- D. Risk category

Answer: B

NEW QUESTION 449

- (Topic 3)

Assigned risk ratings are based upon:

- A. Root cause analysis.
- B. Risk probability and impact assessment.
- C. Expert judgment.
- D. Revised stakeholders' tolerances.

Answer: B

NEW QUESTION 452

- (Topic 3)

An input of the Control Schedule process is the:

- A. resource calendar.
- B. activity list.
- C. risk management plan.
- D. organizational process assets.

Answer: D

NEW QUESTION 453

- (Topic 3)

Which of the following consists of the detailed project scope statement and its associated WBS and WBS dictionary?

- A. Scope plan
- B. Product scope
- C. Scope management plan
- D. Scope baseline

Answer: D

NEW QUESTION 458

- (Topic 3)

The individual or group that provides resources and support for a project and is accountable for success is the:

- A. sponsor
- B. customer
- C. business partners
- D. functional managers

Answer: A

NEW QUESTION 460

- (Topic 3)

An output of the Develop Project Team process is:

- A. change requests
- B. team performance assessments
- C. project staff assignments
- D. project documents updates

Answer: B

NEW QUESTION 463

- (Topic 4)

The project scope statement and resource calendars are inputs to which Project Time Management process?

- A. Sequence Activities
- B. Estimate Activity Resources
- C. Develop Schedule
- D. Control Schedule

Answer: C

NEW QUESTION 467

- (Topic 4)

In the Develop Project Team process, which of the following is identified as a critical factor for a project's success?

- A. Team meetings
- B. Subcontracting teams
- C. Virtual teams
- D. Teamwork

Answer: D

NEW QUESTION 470

- (Topic 4)

Which of the following is an example of the simplest fixed-price contract?

- A. Purchase requisition
- B. Purchase order
- C. Verbal agreement
- D. Request for quote

Answer: B

NEW QUESTION 471

- (Topic 4)

An input to the Perform Quantitative Risk Analysis process is the:

- A. quality management plan.
- B. project management plan.
- C. communications management plan.
- D. schedule management plan.

Answer: D

NEW QUESTION 472

- (Topic 4)

How many Project Management Process Groups are there?

- A. 3
- B. 4
- C. 5
- D. 6

Answer: C

NEW QUESTION 474

- (Topic 4)

A required input for Create WBS is a project:

- A. quality plan.
- B. schedule network.
- C. management document update.
- D. scope statement.

Answer: D

NEW QUESTION 479

- (Topic 4)

Which is used to solicit proposals from prospective sellers?

- A. Procurement statement of work
- B. Resource calendars
- C. Procurement document
- D. Independent estimates

Answer: C

NEW QUESTION 484

- (Topic 4)

When calculating the cost of quality (COQ) for a product or service, money spent for cost of conformance would include the areas of:

- A. training, testing, and warranty work.
- B. equipment, rework, and scrap.
- C. training, document processes, and inspections.
- D. inspections, rework, and warranty work.

Answer: C

NEW QUESTION 488

- (Topic 4)

Which type of agreement is legal, contractual, and between two or more entities to form a partnership, joint venture, or some other arrangement as defined by the parties?

- A. Teaming
- B. Collective bargaining
- C. Sharing
- D. Working

Answer: A

NEW QUESTION 491

- (Topic 4)

Testing falls into which of the following categories of cost of quality?

- A. Internal failure costs
- B. Prevention costs
- C. Appraisal costs
- D. External failure costs

Answer:

C

NEW QUESTION 493

- (Topic 4)

Which of the following project documents is an input to the Control Scope process?

- A. Vendor risk assessment diagram
- B. Risk register
- C. Requirements traceability matrix
- D. Area of responsibility summary

Answer: C

NEW QUESTION 498

- (Topic 4)

Which Perform Quality Control tool graphically represents how various elements of a system interrelate?

- A. Control chart
- B. Flowchart
- C. Run chart
- D. Pareto chart

Answer: B

NEW QUESTION 501

- (Topic 4)

When sequencing activities, what does the common acronym FF stand for?

- A. Fixed Fee
- B. Free Float
- C. Fixed Finish
- D. Finish-to-Finish

Answer: D

NEW QUESTION 503

- (Topic 4)

The definition of operations is a/an:

- A. organizational function performing the temporary execution of activities that produce the same product or provide repetitive service.
- B. temporary endeavor undertaken to create a unique product, service, or result.
- C. organization that provides oversight for an administrative area.
- D. organizational function performing the ongoing execution of activities that produce the same product or provide repetitive service.

Answer: D

NEW QUESTION 508

- (Topic 4)

A weighting system is a tool for which area of Conduct Procurements?

- A. Plan contracting
- B. Requesting seller responses
- C. Selecting seller's
- D. Planning purchase and acquisition

Answer: C

NEW QUESTION 513

- (Topic 4)

What is a tool to improve team performance?

- A. Staffing plan
- B. External feedback
- C. Performance reports
- D. Co-location

Answer: D

NEW QUESTION 514

- (Topic 4)

Project contracts generally fall into which of the following three broad categories?

- A. Fixed-price, cost reimbursable, time and materials
- B. Make-or-buy, margin analysis, fixed-price
- C. Time and materials, fixed-price, margin analysis
- D. Make-or-buy, lump-sum, cost-plus-incentive

Answer: A

NEW QUESTION 517

- (Topic 4)

Which of the following statements is true regarding project and product lifecycles?

- A. A single product lifecycle may consist of multiple project lifecycles.
- B. A product lifecycle is always shorter than the project lifecycle.
- C. A single product lifecycle can only have one project lifecycle.
- D. A single project lifecycle may consist of multiple product lifecycles.

Answer: A

NEW QUESTION 518

- (Topic 4)

In Project Cost Management, which input is exclusive to the Determine Budget process?

- A. Scope baseline
- B. Organizational process assets
- C. Project schedule
- D. Resource calendars

Answer: D

NEW QUESTION 523

- (Topic 4)

The process of aggregating the estimated costs of individual activities or work packages to establish an authorized cost baseline is:

- A. Determine Budget.
- B. Baseline Budget.
- C. Control Costs.
- D. Estimate Costs.

Answer: A

NEW QUESTION 525

- (Topic 4)

The Project Management Process Group in which performance is observed and measured regularly from project initiation through completion is:

- A. Executing.
- B. Initiating,
- C. Monitoring and Controlling.
- D. Planning.

Answer: C

NEW QUESTION 528

- (Topic 4)

Which process should be conducted from the project inception through completion?

- A. Monitor and Control Project Work
- B. Perform Quality Control
- C. Perform Integrated Change Control
- D. Monitor and Control Risks

Answer: C

NEW QUESTION 532

- (Topic 4)

Define Activities and Estimate Activity Resources are processes in which project management Knowledge Area?

- A. Project Time Management
- B. Project Cost Management
- C. Project Scope Management
- D. Project Human Resource Management

Answer: A

NEW QUESTION 535

- (Topic 4)

The process of monitoring the status of the project to update project progress and manage changes to the schedule baseline is:

- A. Control Schedule.
- B. Quality Control.
- C. Perform Integrated Change Control.

D. Develop Schedule.

Answer: A

NEW QUESTION 537

- (Topic 4)

Which of the following are outputs of Develop Project Team?

- A. Human resources plan changes and project staff assignment updates
- B. Project management plan updates and enterprise environmental factor updates
- C. Resource calendars and project management plan updates
- D. Team performance assessments and enterprise environmental factor updates

Answer: D

NEW QUESTION 540

- (Topic 4)

Which of the following is an input to the Perform Qualitative Risk Analysis process?

- A. Risk register
- B. Risk data quality assessment
- C. Risk categorization
- D. Risk urgency

Answer: A

NEW QUESTION 543

- (Topic 4)

Which cost estimate technique includes contingencies to account for cost uncertainty?

- A. Vendor bid analysis
- B. Three-point estimates
- C. Parametric estimating
- D. Reserve analysis

Answer: D

NEW QUESTION 544

- (Topic 4)

Which tool within the Perform Quality Control process identifies whether or not a process has a predictable performance?

- A. Cause and effect diagram
- B. Control charts
- C. Pareto chart
- D. Histogram

Answer: B

NEW QUESTION 547

- (Topic 4)

Which of the following outputs from the Control Schedule process aids in the communication of schedule variance (SV), schedule performance index (SPI), or any performance status to stakeholders?

- A. Performance organizations
- B. Schedule baselines
- C. Work performance measurements
- D. Change requests

Answer: C

NEW QUESTION 551

- (Topic 4)

Which of the following documents allows the project manager to assess risks that may require near term action?

- A. Probability and impact matrix
- B. Contingency analysis report
- C. Risk urgency assessment
- D. Rolling wave plan

Answer: C

NEW QUESTION 553

- (Topic 4)

Which standard has interrelationships to other project management disciplines such as program management and portfolio management?

- A. Program Management Body of Knowledge Guide
- B. The Standard for Program Management
- C. Organizational Project Management Maturity Model (OPM3\$)
- D. Guide to the Project Management Body of Knowledge (PMBOK®)

Answer: D

NEW QUESTION 555

- (Topic 4)

Which process determines the risks that might affect the project?

- A. Perform Qualitative Risk Analysis
- B. Identify Risks
- C. Plan Risk Management
- D. Perform Quantitative Risk Analysis

Answer: B

NEW QUESTION 556

- (Topic 4)

Which of the following is an output of the Perform Integrated Change Control process?

- A. Project document updates
- B. Organizational process assets updates
- C. Change requests
- D. Deliverables

Answer: A

NEW QUESTION 557

- (Topic 4)

Analogous cost estimating relies on which of the following techniques?

- A. Expert judgment
- B. Project management software
- C. Vendor bid analysis
- D. Reserve analysis

Answer: A

NEW QUESTION 559

- (Topic 4)

Documented identification of a flaw in a project component together with a recommendation is termed a:

- A. corrective action.
- B. preventive action.
- C. non-conformance report,
- D. defect repair.

Answer: D

NEW QUESTION 563

- (Topic 4)

In which domain of project management would a Pareto chart provide useful information?

- A. Project Scope Management
- B. Project Time Management
- C. Project Communications Management
- D. Project Quality Management

Answer: D

NEW QUESTION 564

- (Topic 4)

What is a deliverable-oriented, hierarchical decomposition of the work to be executed to accomplish the project objectives and create the required deliverables?

- A. Organizational breakdown structure (OBS)
- B. Work performance information
- C. Work package
- D. Work breakdown structure (WBS)

Answer: D

NEW QUESTION 566

- (Topic 4)

Which of the following correctly explains the term "progressive elaboration"?

- A. Changing project specifications continuously
- B. Elaborate tracking of the project progress
- C. Elaborate tracking of the project specifications with a change control system
- D. Project specifications becoming more explicit and detailed as the project progresses

Answer: D

NEW QUESTION 568

- (Topic 4)

One of the tools and techniques of the Manage Project Team process is:

- A. organization charts.
- B. ground rules.
- C. organizational theory,
- D. conflict management.

Answer: D

NEW QUESTION 573

- (Topic 4)

Which of the following is developed from the project scope baseline and defines only that portion of the project scope that is to be included within a related contract?

- A. Product scope description
- B. Procurement statement of work
- C. Project schedule
- D. Work breakdown structure (WBS)

Answer: B

NEW QUESTION 574

- (Topic 4)

Which characteristic do projects and operational work share in common?

- A. Performed by systems
- B. Constrained by limited resources
- C. Repetitiveness
- D. Uniqueness

Answer: B

NEW QUESTION 576

- (Topic 4)

Which of the following is an information gathering technique in Identify Risks?

- A. Influence diagrams
- B. Brainstorming
- C. Assumption analysis
- D. SWOT analysis

Answer: B

NEW QUESTION 580

- (Topic 4)

In which Project Management Process Group is the project charter developed?

- A. Monitoring and Controlling
- B. Executing
- C. Initiating
- D. Planning

Answer: C

NEW QUESTION 581

- (Topic 4)

The milestone list is an input to which process from the Planning Process Group?

- A. Define Activities
- B. Estimate Activity Durations
- C. Estimate Activity Resources
- D. Sequence Activities

Answer: D

NEW QUESTION 584

- (Topic 4)

When large or complex projects are separated into distinct phases or subprojects, all of the Process Groups would normally be:

- A. divided among each of the phases or subprojects.
- B. repeated for each of the phases or subprojects.
- C. linked to specific phases or subprojects.
- D. integrated for specific phases or subprojects.

Answer: B

NEW QUESTION 587

- (Topic 4)

What is the schedule performance index (SPI) using the following data? BAC = \$100,000 PV = \$50,000 AC = \$80,000 EV = \$40,000

- A. 1
- B. 0.4
- C. 0.5
- D. 0.8

Answer: D

NEW QUESTION 592

- (Topic 4)

Which of the following factors is lowest at the start of the project?

- A. Cost of changes
- B. Stakeholder influences
- C. Risk
- D. Uncertainty

Answer: A

NEW QUESTION 594

- (Topic 5)

Inputs to the Plan Risk Management process include the:

- A. cost management plan.
- B. risk management plan,
- C. activity list,
- D. risk register.

Answer: A

NEW QUESTION 598

- (Topic 5)

Which process is responsible for monitoring the status of the project and product scope and managing changes to the scope baseline?

- A. Variance Analysis
- B. Define Scope
- C. Verify Scope
- D. Control Scope

Answer: D

NEW QUESTION 599

- (Topic 5)

At the end of the project, what will be the value of SV?

- A. Positive
- B. Zero
- C. Negative
- D. Greater than one

Answer: B

NEW QUESTION 600

- (Topic 5)

In which type of contract are the performance targets established at the onset and the final contract price determined after completion of all work based on the sellers performance?

- A. Firm-Fixed-Price (FFP)
- B. Fixed Price with Economic Price Adjustments (FP-EPA)
- C. Fixed-Price-Incentive-Fee (FPIF)
- D. Cost Plus Fixed Fee (CPFF)

Answer: C

NEW QUESTION 602

- (Topic 5)

Using the three-point estimating technique, if the most likely duration is four months, the optimistic duration is two months, and the pessimistic duration is one year, how many months is the expected activity duration?

- A. Two
- B. Four
- C. Five
- D. Twelve

Answer: C

NEW QUESTION 605

- (Topic 5)

How should a stakeholder who is classified as high power and low interest be grouped in a power/interest grid during stakeholder analysis?

- A. Keep satisfied
- B. Keep informed
- C. Manage closely
- D. Monitor

Answer: A

NEW QUESTION 606

- (Topic 5)

Under which type of contract does the seller receive reimbursement for all allowable costs for performing contract work, as well as a fixed-fee payment calculated as a percentage of the initial estimated project costs?

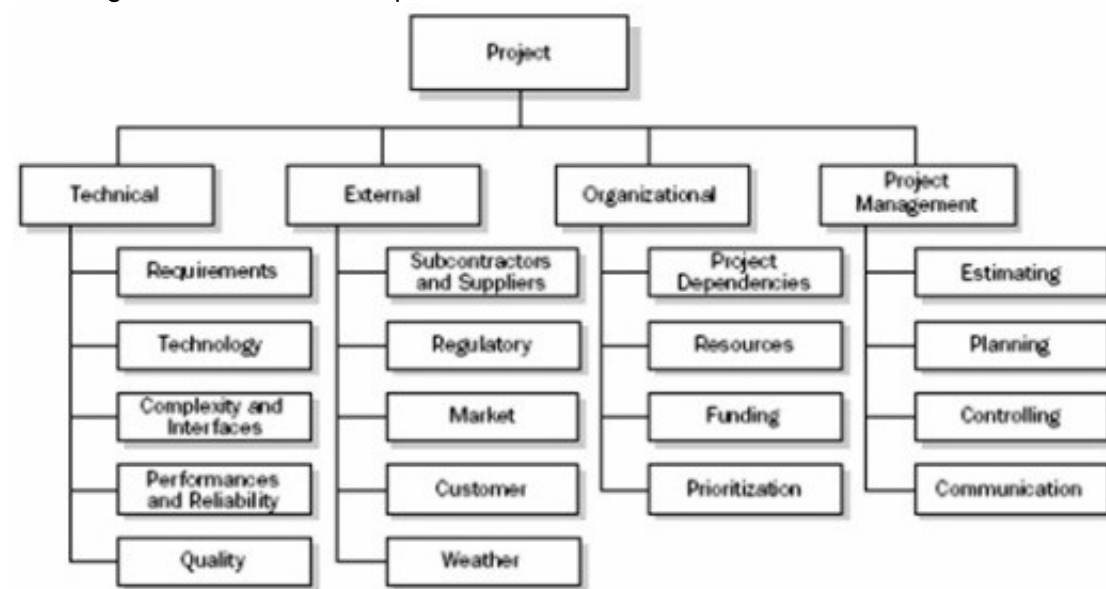
- A. Cost Plus Fixed Fee Contract (CPFF)
- B. Cost Plus Incentive Fee Contract (CPIF)
- C. Firm Fixed Price Contract (FFP)
- D. Fixed Price with Economic Price Adjustment Contract (FP-EPA)

Answer: A

NEW QUESTION 608

- (Topic 5)

The diagram below is an example of a:



- A. Risk breakdown structure (RBS).
- B. Project team.
- C. SWOT Analysis.
- D. Work breakdown structure (WBS).

Answer: A

NEW QUESTION 613

- (Topic 5)

Which activity may occur at project or phase closure?

- A. Acceptance of deliverables
- B. Change requests
- C. Project management plan updates
- D. Benchmarking

Answer: A

NEW QUESTION 616

- (Topic 5)

Expected monetary value (EMV) is computed by which equation?

- A. Value of each possible outcome multiplied by probability of occurrence
- B. Value of each possible outcome multiplied by probability of non-occurrence
- C. Multiplying the value of each possible outcome by the probability of occurrence and adding the products together
- D. Multiplying the value of each possible outcome by the probability of non-occurrence and adding the products together

Answer: C

NEW QUESTION 621

- (Topic 5)

The process to ensure that appropriate quality standards and operational definitions are used is:

- A. Plan Quality.
- B. Perform Quality Assurance.
- C. Perform Quality Control.
- D. Total Quality Management.

Answer: B

NEW QUESTION 626

- (Topic 5)

Which of the following is a tool or technique used in the Determine Budget process?

- A. Variance analysis
- B. Three-point estimating
- C. Bottom-up estimating
- D. Historical relationships

Answer: D

NEW QUESTION 630

- (Topic 5)

When cost variance is negative and schedule variance is positive, the project is:

- A. under budget and behind schedule.
- B. over budget and ahead of schedule.
- C. on schedule.
- D. complete; all planned values have been earned.

Answer: B

NEW QUESTION 631

- (Topic 5)

Which process requires implementation of approved changes?

- A. Direct and Manage Project Execution
- B. Monitor and Control Project Work
- C. Perform Integrated Change Control
- D. Close Project or Phase

Answer: A

NEW QUESTION 635

- (Topic 5)

The process of identifying specific actions to be performed to produce project deliverables is:

- A. Define Activities.
- B. Create WBS.
- C. Define Scope.
- D. Develop Schedule.

Answer: A

NEW QUESTION 640

- (Topic 5)

Which technique is utilized in the Control Schedule process?

- A. Performance measure
- B. Baseline schedule
- C. Schedule network analysis
- D. Variance analysis

Answer: D

NEW QUESTION 644

- (Topic 5)

An input to the Collect Requirements process is the:

- A. stakeholder register.
- B. project management plan.
- C. project scope statement.
- D. requirements management plan.

Answer: A

NEW QUESTION 645

- (Topic 5)

Which of the following is a tool and technique used to monitor risk?

- A. Technical performance measurement
- B. Cost performance baseline
- C. Benchmarking
- D. Cost of quality

Answer: A

NEW QUESTION 646

- (Topic 5)

When a permitting agency takes longer than planned to issue a permit, this can be described as a risk:

- A. event.
- B. response,
- C. perception.
- D. impact.

Answer: A

NEW QUESTION 648

- (Topic 5)

The item that provides more detailed descriptions of the components in the work breakdown structure (WBS) is called a WBS:

- A. dictionary.
- B. chart.
- C. report.
- D. register.

Answer: A

NEW QUESTION 652

- (Topic 5)

The initial development of a Project Scope Management plan uses which technique?

- A. Alternatives identification
- B. Scope decomposition
- C. Expert judgment
- D. Product analysis

Answer: C

NEW QUESTION 656

- (Topic 5)

Risk responses reflect an organization's perceived balance between:

- A. risk taking and risk avoidance.
- B. known risk and unknown risk.
- C. identified risk and analyzed risk.
- D. varying degrees of risk.

Answer: A

NEW QUESTION 657

- (Topic 5)

An input to the Estimate Activity Resources process is:

- A. Activity resource requirements.
- B. Published estimating data.
- C. Resource calendars.
- D. Resource breakdown structure (RBS).

Answer:

C

NEW QUESTION 658

- (Topic 5)

Which of the following change requests can bring expected future performance of the project work in line with the project management plan?

- A. Corrective action
- B. Defect repair
- C. Preventative action
- D. Probable action

Answer: A

NEW QUESTION 660

- (Topic 5)

At which stage of team development do members begin to work together, adjust work habits, and trust each other?

- A. Forming
- B. Storming
- C. Norming
- D. Performing

Answer: C

NEW QUESTION 665

- (Topic 5)

Activity cost estimates are quantitative assessments of the probable costs required to:

- A. Create WBS.
- B. complete project work.
- C. calculate costs.
- D. Develop Project Management Plan.

Answer: B

NEW QUESTION 668

- (Topic 5)

One of the objectives of a quality audit is to:

- A. highlight the need for root cause analysis.
- B. share the process documentation among stakeholders.
- C. offer assistance with non-value-added activities.
- D. identify all of the gaps or shortcomings.

Answer: D

NEW QUESTION 671

- (Topic 5)

Which of the following is an input to the Develop Project Charter process?

- A. Work performance information
- B. Project management plan
- C. Business case
- D. Change requests

Answer: C

NEW QUESTION 674

- (Topic 5)

Which of the following is an estimating technique that uses the values of parameters from previous similar projects for estimating the same parameter or measure for a current project?

- A. Reserve analysis
- B. Three-point estimating
- C. Parametric estimating
- D. Analogous estimating

Answer: D

NEW QUESTION 678

- (Topic 5)

Which of the following is a group decision-making technique?

- A. Brainstorming
- B. Focus groups
- C. Affinity diagram

D. Plurality

Answer: D

NEW QUESTION 683

- (Topic 5)

The group technique that enhances brainstorming with a voting process used to rank the most useful ideas for prioritization is called the:

- A. majority rule technique.
- B. nominal group technique.
- C. Delphi technique,
- D. idea/mind mapping technique.

Answer: B

NEW QUESTION 685

- (Topic 5)

The completion of the project scope is measured against the:

- A. requirements documentation.
- B. project scope statement.
- C. project management plan.
- D. work performance measurements.

Answer: C

NEW QUESTION 688

- (Topic 5)

Exhibit A is an example of which of the following types of Sequence Activities?

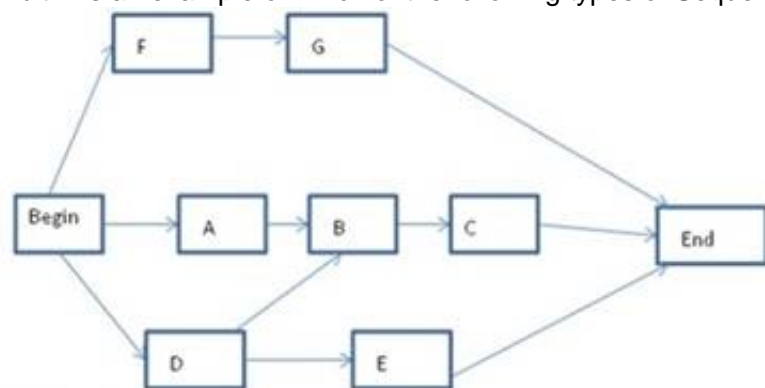


Exhibit A

- A. Activity-on-arrow diagramming
- B. Precedence diagramming
- C. Project schedule network diagramming
- D. Mathematical analysis diagramming

Answer: B

NEW QUESTION 693

- (Topic 5)

What are the identified risks for doing excessive decomposition in a WBS?

- A. Insufficient project funding and disqualification of sellers
- B. Insufficient project funding and ineffective use of resources
- C. Disqualification of sellers and non-productive management efforts
- D. Non-productive management effort and inefficient use of resources

Answer: D

NEW QUESTION 694

- (Topic 5)

The probability and impact matrix is primarily used to:

- A. Quantify risk issues for trends during a quality audit.
- B. Develop a risk register for risk planning.
- C. Evaluate each risk's importance and priority during Perform Qualitative Risk Analysis.
- D. Define risk and compare impacts during Perform Quantitative Risk Analysis.

Answer: C

NEW QUESTION 699

- (Topic 5)

Which is one of the determining factors used to calculate CPI?

- A. EV
- B. SPI
- C. PV
- D. ETC

Answer: A

NEW QUESTION 700

- (Topic 5)

The three processes of Project Cost Management are:

- A. Estimate Costs, Control Schedule, and Control Costs.
- B. Estimate Costs, Determine Budget, and Estimate Activity Resources.
- C. Determine Budget, Control Schedule, and Estimate Activity Resources.
- D. Estimate Costs, Determine Budget, and Control Costs.

Answer: D

NEW QUESTION 705

- (Topic 5)

Which input will be used when tasked with developing the human resource plan?

- A. Project management plan
- B. Activity resource requirements
- C. Resource calendar
- D. Project staff assignments

Answer: B

NEW QUESTION 709

- (Topic 5)

Risk exists the moment that a project is:

- A. planned.
- B. conceived.
- C. chartered.
- D. executed.

Answer: B

NEW QUESTION 712

- (Topic 5)

What is project management?

- A. A logical grouping of project management inputs, outputs, tools, and techniques
- B. Applying knowledge, skills, tools, and techniques to project activities to meet the project requirements
- C. Launching a process that can result in the authorization of a new project
- D. A formal, approved document that defines how the project is executed, monitored, and controlled

Answer: B

NEW QUESTION 715

- (Topic 5)

Which of the following is an input to Direct and Manage Project Execution?

- A. Performance reports
- B. Project charter
- C. Outputs from planning processes
- D. Enterprise environmental factors

Answer: D

NEW QUESTION 716

- (Topic 5)

Which baselines make up the performance measurement baseline?

- A. Scope baseline, cost baseline, and schedule baseline
- B. Scope baseline, project management baseline, and quality baseline
- C. Cost baseline, schedule baseline, and risk baseline
- D. Cost baseline, project management baseline, and schedule baseline

Answer: A

NEW QUESTION 717

- (Topic 5)

Which of the following is a statistical concept that calculates the average outcome when the future includes scenarios that may or may not happen?

- A. Sensitivity analysis
- B. Three-point estimate
- C. Modeling and simulation
- D. Expected monetary value analysis

Answer: D

NEW QUESTION 720

.....

THANKS FOR TRYING THE DEMO OF OUR PRODUCT

Visit Our Site to Purchase the Full Set of Actual PMI-100 Exam Questions With Answers.

We Also Provide Practice Exam Software That Simulates Real Exam Environment And Has Many Self-Assessment Features. Order the PMI-100 Product From:

<https://www.2passeasy.com/dumps/PMI-100/>

Money Back Guarantee

PMI-100 Practice Exam Features:

- * PMI-100 Questions and Answers Updated Frequently
- * PMI-100 Practice Questions Verified by Expert Senior Certified Staff
- * PMI-100 Most Realistic Questions that Guarantee you a Pass on Your FirstTry
- * PMI-100 Practice Test Questions in Multiple Choice Formats and Updatesfor 1 Year