

Fortinet

Exam Questions NSE7_SDW-7.2

Fortinet NSE 7 - SD-WAN 7.2



NEW QUESTION 1

Refer to the exhibits.

Exhibit A

```
config system global
    set snat-route-change enable
end
```

Exhibit B

```
branch1_fgt # get router info routing-table all
Codes: K - kernel, C - connected, S - static, R - RIP, B - BGP
       O - OSPF, IA - OSPF inter area
       N1 - OSPF NSSA external type 1, N2 - OSPF NSSA external type 2
       E1 - OSPF external type 1, E2 - OSPF external type 2
       I - IS-IS, L1 - IS-IS level-1, L2 - IS-IS level-2, ia - IS-IS inter area
       * - candidate default

Routing table for VRF=0
S*    0.0.0.0/0 [1/0] via 192.2.0.2, port2, [1/0]
      [1/0] via 192.2.0.10, port1 [10/0]
...
```

Exhibit A shows the source NAT (SNAT) global setting and exhibit B shows the routing table on FortiGate.

Based on the exhibits, which two actions does FortiGate perform on existing sessions established over port2, if the administrator increases the static route priority on port2 to 20? (Choose two.)

- A. FortiGate flags the sessions as dirty.
- B. FortiGate continues routing the sessions with no SNAT, over port2.
- C. FortiGate performs a route lookup for the original traffic only.
- D. FortiGate updates the gateway information of the sessions with SNAT so that they use port1 instead of port2.

Answer: BD

NEW QUESTION 2

Refer to the exhibit.

```
# get router info routing-table all
...
B    10.0.2.0/24 [200/0] via 10.201.1.2 [3] (recursive via VPN0 tunnel 100.64.1.1), 00:00:54
      [200/0] via 10.202.1.2 [3] (recursive via VPN1 tunnel 100.64.1.9), 00:00:54
      [200/0] via 10.203.1.1 [3] (recursive via VPN2 tunnel 172.16.1.5), 00:00:54
...
```

The device exchanges routes using IBGP.

Which two statements are correct about the IBGP configuration and routing information on the device? (Choose two.)

- A. Each BGP route is three hops away from the destination.
- B. ibgp-multipath is disabled.
- C. additional-path is enabled.
- D. You can run the get router info routing-table database command to display the additional paths.

Answer: CD

NEW QUESTION 3

Refer to the exhibit.

```
session info: proto=6 proto_state=11 duration=242 expire=3349 timeout=3600
flags=00000000 socktype=0 sockport=0 av_idx=0 use=4
origin-shaper=
reply-shaper=
per_ip_shaper=
class_id=0 ha_id=0 policy_dir=0 tunnel=/ vlan_cos=0/255
state=log dirty may_dirty ndr f00 app_valid
statistic(bytes/packets/allow_err): org=3421/20/1 reply=3777/17/1 tuples=3
tx speed(Bps/kbps): 0/0 rx speed(Bps/kbps): 0/0
origin->sink: org pre->post, reply pre->post dev=7->3/3->7 gwy=0.0.0.0/0.0.0.0
hook=post dir=org act=snat 10.0.1.101:34676->128.66.0.1:22(192.2.0.1:34676)
hook=pre dir=reply act=dnat 128.66.0.1:22->192.2.0.1:34676(10.0.1.101:34676)
hook=post dir=reply act=noop 128.66.0.1:22->10.0.1.101:34676(0.0.0.0:0)
pos/(before,after) 0/(0,0), 0/(0,0)
misc=0 policy_id=2 pol_uuid_idx=14721 auth_info=0 chk_client_info=0 vd=0
serial=000032d9 tos=ff/ff app_list=2000 app=16060 url_cat=0
sdwan_mbr_seq=1 sdwan_service_id=2
rpdh_link_id=ff000002 rpdh_svc_id=0 ngfwid=n/a
npu_state=0x001008
```

Which statement explains the output shown in the exhibit?

- A. FortiGate performed standard FIB routing on the session.
- B. FortiGate will not re-evaluate the session following a firewall policy change.
- C. FortiGate used 192.2.0.1 as the gateway for the original direction of the traffic.
- D. FortiGate must re-evaluate the session due to routing change.

Answer: D

Explanation:

The snat-route-change option is enabled by default. This option enables FortiGate to re-evaluate the routing table and select a new egress interface if the next hop IP address changes. This option only applies to sessions in the dirty state. Sessions in the log state are not affected by routing changes.

NEW QUESTION 4

Refer to the exhibit.

```
config system sdwan
  set status enable
  set load-balance source-dest-ip-based
  config zone
    edit "virtual-wan-link"
    next
    edit "SASE"
    next
    edit "underlay"
    next
  end
  config members
    edit 1
      set interface "port1"
      set zone "underlay"
      set gateway 192.2.0.2
    next
    edit 2
      set interface "port2"
      set zone "underlay"
      set gateway 192.2.0.10
    next
  end
  ...
end
```

Which algorithm does SD-WAN use to distribute traffic that does not match any of the SD- WAN rules?

- A. All traffic from a source IP to a destination IP is sent to the same interface.
- B. All traffic from a source IP is sent to the same interface.
- C. All traffic from a source IP is sent to the most used interface.
- D. All traffic from a source IP to a destination IP is sent to the least used interface.

Answer: A

Explanation:

Study Guide 7.2, page 176.

NEW QUESTION 5

What are two reasons why FortiGate would be unable to complete the zero-touch provisioning process? (Choose two.)

- A. The FortiGate cloud key has not been added to the FortiGate cloud portal.
- B. FortiDeploy has connected with FortiGate and provided the initial configuration to contact FortiManager
- C. The zero-touch provisioning process has completed internally, behind FortiGate.
- D. FortiGate has obtained a configuration from the platform template in FortiGate cloud.
- E. A factory reset performed on FortiGate.

Answer: AC

NEW QUESTION 6

Refer to the exhibit.

```
config firewall policy
  edit 1
    set anti-replay disable
  next
end
```

In a dual-hub hub-and-spoke SD-WAN deployment, which is a benefit of disabling the anti- replay setting on the hubs?

- A. It instructs the hub to disable the reordering of TCP packets on behalf of the receiver, to improve performance.
- B. It instructs the hub to disable TCP sequence number check, which is required for TCP sessions originated from spokes to fail over back and forth between the hubs.
- C. It instructs the hub to not check the ESP sequence numbers on IPsec traffic, to improve performance.
- D. It instructs the hub to skip content inspection on TCP traffic, to improve performance.

Answer: B

NEW QUESTION 7

Which two statements about SLA targets and SD-WAN rules are true? (Choose two.)

- A. SD-WAN rules use SLA targets to check if the preferred members meet the SLA requirements
- B. Member metrics are measured only if an SLA target is configured
- C. When configuring an SD-WAN rule you can select multiple SLA targets of the same performance SLA
- D. SLA targets are used only by SD-WAN rules that are configured with Lowest Cost (SLA) or Maximize Bandwidth (SLA) as strategy

Answer: AD

NEW QUESTION 8

What three characteristics apply to provisioning templates available on FortiManager? (Choose three.)

- A. You can apply a system template and a CLI template to the same FortiGate device.
- B. A CLI template can be of type CLI script or Perl script.
- C. A template group can include a system template and an SD-WAN template.
- D. A template group can contain CLI templates of both types.
- E. Templates are applied in order, from top to bottom.

Answer: BDE

Explanation:

According to the FortiManager Administration Guide, provisioning templates are used to configure FortiGate devices in a consistent and efficient way. There are different types of templates, such as system, IPsec, SD-WAN, certificate, and CLI templates. Some characteristics of provisioning templates are:

- ? You can apply a system template and a CLI template to the same FortiGate device, as long as they do not have conflicting settings¹.
- ? A CLI template can be of type CLI script or Perl script. A CLI script template contains FortiOS CLI commands, while a Perl script template contains Perl code that can generate FortiOS CLI commands².
- ? A template group can include a system template and an SD-WAN template, as well as other types of templates. A template group is a collection of templates that can be applied to multiple devices at once³.
- ? A template group can contain CLI templates of both types, as long as they do not have conflicting settings².
- ? Templates are applied in order, from top to bottom. The order of the templates in a template group determines the order in which they are applied to the devices³.

NEW QUESTION 9

What are two common use cases for remote internet access (RIA)? (Choose two.)

- A. Provide direct internet access on spokes
- B. Provide internet access through the hub
- C. Centralize security inspection on the hub
- D. Provide thorough inspection on spokes

Answer: BC

Explanation:

- * B. Provide internet access through the hub: This involves routing branch or remote office internet traffic through a central hub, ensuring consistent security policies and possibly better management of network resources.
- * C. Centralize security inspection on the hub: With this approach, all internet-bound traffic from various spokes is inspected at the hub, leveraging centralized security mechanisms for thorough inspection and policy enforcement.

NEW QUESTION 10

Refer to the exhibit.

```
config system virtual-wan-link
  set status enable
  set load-balance-mode source-ip-based
  config members
    edit 1
      set interface "port1"
      set gateway 100.64.1.254
      set source 100.64.1.1
      set cost 15
    next
    edit 2
      set interface "port2"
      set gateway 100.64.2.254
      set priority 10
    next
  end
end
```

Based on the output shown in the exhibit, which two criteria on the SD-WAN member configuration can be used to select an outgoing interface in an SD-WAN rule? (Choose two.)

- A. Set priority 10.
- B. Set cost 15.
- C. Set load-balance-mode source-ip-ip-based.
- D. Set source 100.64.1.1.

Answer: AB

NEW QUESTION 10

In a hub-and-spoke topology, what are two advantages of enabling ADVPN on the IPsec overlays? (Choose two.)

- A. It provides the benefits of a full-mesh topology in a hub-and-spoke network.
- B. It provides direct connectivity between spokes by creating shortcuts.
- C. It enables spokes to bypass the hub during shortcut negotiation.
- D. It enables spokes to establish shortcuts to third-party gateways.

Answer: AB

NEW QUESTION 13

Which two statements are correct when traffic matches the implicit SD-WAN rule? (Choose two.)

- A. The sdwan_service_id flag in the session information is 0.
- B. All SD-WAN rules have the default setting enabled.
- C. Traffic does not match any of the entries in the policy route table.
- D. Traffic is load balanced using the algorithm set for the v4-ecmp-mode setting.

Answer: AC

Explanation:

sdwan_service_id is 0 = match SD-WAN implicit rule, study guide 7.0 page 120, 7.2 page 149 SD-WAN rules internally are interpreted as a Policy route, so when the traffic doesn't match with any policy route, it will be flowing by implicit policy.

NEW QUESTION 16

Refer to the exhibit.

```
config vpn ipsec phase1-interface
edit "T_INET_0_0"
set type dynamic
set interface "port1"
set keylife 28800
set peertype any
set net-device disable
set proposal aes128-sha256
set add-route enable
set psksecret ENC
2v9n4Urfk0W4jj8vWI+KywxBG42DT7jWHKd8YaL8j4+pRpY0x/N7mSgc7VL0BW22HQXWJ6zvFxNKktiPYntA8aP
i6ly7gDx2lP/OfKexTQQJzgcGRYzLM8eFTonK7K6AuX0bFDCp8BhEIdf+03CYBMLwkFZmdU6RsT+qvybblVX+Ioy
HK5EXakpmz5RiltELg29Gg==
next
end
```

Which configuration change is required if the responder FortiGate uses a dynamic routing protocol to exchange routes over IPsec?

- A. type must be set to static.
- B. mode-cfg must be enabled.
- C. exchange-interface-ip must be enabled.
- D. add-route must be disabled.

Answer: D

NEW QUESTION 20

In the default SD-WAN minimum configuration, which two statements are correct when traffic matches the default implicit SD-WAN rule? (Choose two)

- A. Traffic has matched none of the FortiGate policy routes.
- B. Matched traffic failed RPF and was caught by the rule.
- C. The FIB lookup resolved interface was the SD-WAN interface.
- D. An absolute SD-WAN rule was defined and matched traffic.

Answer: AC

NEW QUESTION 23

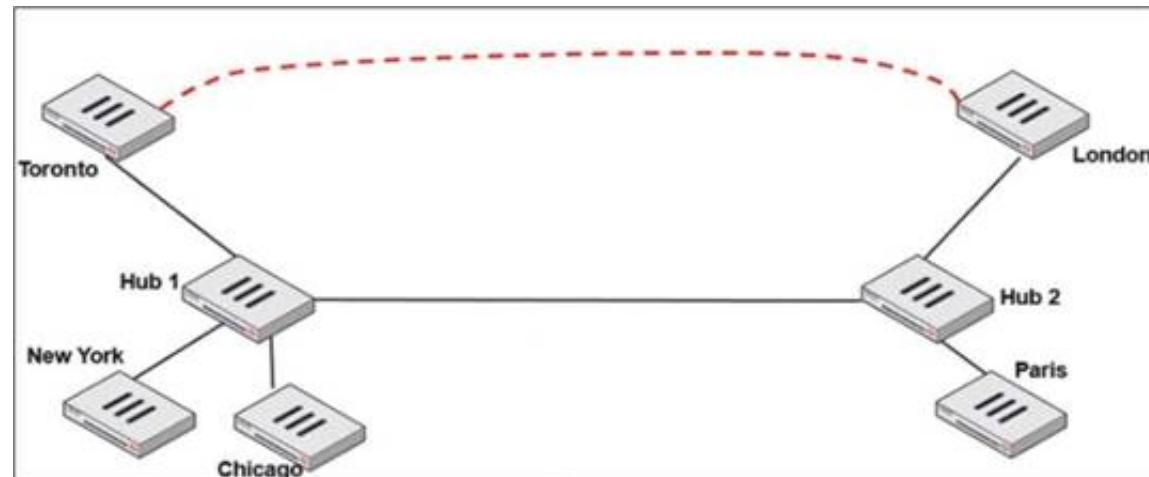
What is the route-tag setting in an SD-WAN rule used for?

- A. To indicate the routes for health check probes.
- B. To indicate the destination of a rule based on learned BGP prefixes.
- C. To indicate the routes that can be used for routing SD-WAN traffic.
- D. To indicate the members that can be used to route SD-WAN traffic.

Answer: B

NEW QUESTION 28

Refer to the exhibit.



Two hub-and-spoke groups are connected through a site-to-site IPsec VPN between Hub 1 and Hub 2.

Which two configuration settings are required for Toronto and London spokes to establish an ADVPN shortcut? (Choose two.)

- A. On the hubs, auto-discovery-sender must be enabled on the IPsec VPNs to spokes.
- B. On the spokes, auto-discovery-receiver must be enabled on the IPsec VPN to the hub.
- C. auto-discovery-forwarder must be enabled on all IPsec VPNs.
- D. On the hubs, net-device must be enabled on all IPsec VPNs.

Answer: AB

NEW QUESTION 29

What are two advantages of using an IPsec recommended template to configure an IPsec tunnel in a hub-and-spoke topology? (Choose two.)

- A. VPN monitor tool provides additional statistics for tunnels defined with an IPsec recommended template.
- B. FortiManager automatically installs IPsec tunnels to every spoke when they are added to the FortiManager ADOM.
- C. IPsec recommended template guides the administrator to use Fortinet recommended settings.
- D. IPsec recommended template ensures consistent settings between phase1 and phase2

Answer: BC

Explanation:

According to the SD-WAN 7.2 Study Guide, IPsec recommended templates are designed to simplify the configuration of IPsec tunnels in a hub-and-spoke topology. They have the following advantages:

? FortiManager automatically installs IPsec tunnels to every spoke when they are added to the FortiManager ADOM. This reduces the manual effort and ensures that all spokes have the same configuration.

? IPsec recommended template guides the administrator to use Fortinet recommended settings, such as encryption algorithms, key lifetimes, and dead peer detection. This ensures optimal performance and security of the IPsec tunnels.

NEW QUESTION 30

Which two interfaces are considered overlay links? (Choose two.)

- A. LAG
- B. IPsec
- C. Physical
- D. GRE

Answer: BD

NEW QUESTION 34

Which are three key routing principles in SD-WAN? (Choose three.)

- A. FortiGate performs route lookups for new sessions only.
- B. Regular policy routes have precedence over SD-WAN rules.
- C. SD-WAN rules have precedence over ISDB routes.
- D. By default, SD-WAN members are skipped if they do not have a valid route to the destination.
- E. By default, SD-WAN rules are skipped if the best route to the destination is not an SD-WAN member.

Answer: BDE

Explanation:

Study Guide 7.2, pages 125, 129, 151

NEW QUESTION 37

.....

Thank You for Trying Our Product

We offer two products:

1st - We have Practice Tests Software with Actual Exam Questions

2nd - Questions and Answers in PDF Format

NSE7_SDW-7.2 Practice Exam Features:

- * NSE7_SDW-7.2 Questions and Answers Updated Frequently
- * NSE7_SDW-7.2 Practice Questions Verified by Expert Senior Certified Staff
- * NSE7_SDW-7.2 Most Realistic Questions that Guarantee you a Pass on Your FirstTry
- * NSE7_SDW-7.2 Practice Test Questions in Multiple Choice Formats and Updatesfor 1 Year

100% Actual & Verified — Instant Download, Please Click
[Order The NSE7_SDW-7.2 Practice Test Here](#)