

## SnowPro-Core Dumps

### SnowPro Core Certification Exam

<https://www.certleader.com/SnowPro-Core-dumps.html>



**NEW QUESTION 1**

- (Exam Topic 1)

True or False: A third-party tool that supports standard JDBC or ODBC but has no Snowflake-specific driver will be unable to connect to Snowflake.

- A. True
- B. False

**Answer:** B

**Explanation:**

<https://docs.snowflake.com/en/user-guide/jdbc.html>

Snowflake provides a JDBC type 4 driver that supports core JDBC functionality. The JDBC driver must be installed in a 64-bit environment and requires Java 1.8 (or higher). The driver can be used with most client tools/applications that support JDBC for connecting to a database server.

**NEW QUESTION 2**

- (Exam Topic 1)

Which of the following are options when creating a Virtual Warehouse?

- A. Auto-suspend
- B. Auto-resume
- C. Local SSD size
- D. User count

**Answer:** AB

**NEW QUESTION 3**

- (Exam Topic 1)

What is the most granular object that the Time Travel retention period can be defined on? Select one.

- A. Account
- B. Database
- C. Schema
- D. Table

**Answer:** D

**Explanation:**

Reference: <https://docs.snowflake.com/en/user-guide/data-time-travel.html#data-retention-period>

**NEW QUESTION 4**

- (Exam Topic 1)

True or False: Snowflake bills for a minimum of five minutes each time a Virtual Warehouse is started.

- A. True
- B. False

**Answer:** B

**Explanation:**

Reference: <https://docs.snowflake.com/en/user-guide/credits.html>

**NEW QUESTION 5**

- (Exam Topic 1)

Data storage for individual tables can be monitored using which commands and/or object(s)? Choose 2 answers

- A. SHOW TABLES;
- B. SHOW STORAGE BY TABLE;
- C. Information Schema -> TABLE\_STORAGE\_METRICS
- D. Information Schema -> TABLE\_HISTORY

**Answer:** AC

**NEW QUESTION 6**

- (Exam Topic 1)

The FLATEEN function is used to query which type of data in Snowflake?

- A. Structured data
- B. Semi-structured data
- C. Both of the above
- D. None of the above

**Answer:** B

**Explanation:**

Reference: <https://docs.snowflake.com/en/user-guide/querying-semistructured.html>

FLATTEN is used to unnest semi-structured data. Don't see an application for structured data as by definition it shouldn't be nested.

**NEW QUESTION 7**

- (Exam Topic 1)

A deterministic query is run at 8am, takes 5 minutes, and the results are cached. Which of the following statements are true?

Choose 2 answers

- A. The exact query will ALWAYS return the precomputed result set for the RESULT\_CACHE\_ACTIVE = time period
- B. The same exact query will return the precomputed results if the underlying data hasn't changed and the results were last accessed within the previous 24 hour period
- C. The same exact query will return the precomputed results even if the underlying data has changed as long as the results were last accessed within the previous 24 hour period
- D. The "24 hour" on the precomputed results gets renewed every time the exact query is executed

**Answer:** BD

**Explanation:**

The results cache will only be used if it's the same query AND the same role executing the query

**NEW QUESTION 8**

- (Exam Topic 1)

True or False: Micro-partition metadata enables some operations to be completed without requiring Compute.

- A. True
- B. False

**Answer:** A

**Explanation:**

Reference: <https://blog.ippon.tech/innovative-snowflake-features-caching/>

**NEW QUESTION 9**

- (Exam Topic 1)

Which of the following statements is true of Snowflake? Select one.

- A. It was built specifically for the cloud
- B. It was built as an on-premises solution and then ported to the cloud
- C. It was designed as a hybrid database to allow customers to store data either on premises or in the cloud
- D. It was built for Hadoop architecture
- E. It's based on an Oracle Architecture

**Answer:** A

**NEW QUESTION 10**

- (Exam Topic 1)

Why would a customer size a Virtual Warehouse from an X-Small to a Medium?

- A. To accommodate more queries
- B. To accommodate more users
- C. To accommodate fluctuations in workload
- D. To accommodate a more complex workload

**Answer:** D

**Explanation:**

Reference: <https://docs.snowflake.com/en/user-guide/warehouses-considerations.html>

**NEW QUESTION 10**

- (Exam Topic 1)

Credit Consumption by the Compute Layer (Virtual Warehouses) is based on: (Choose two.)

- A. Number of users
- B. Warehouse size
- C. Amount of data processed
- D. # of clusters for the Warehouse

**Answer:** BD

**Explanation:**

<https://docs.snowflake.com/en/user-guide/credits.html#virtual-warehouse-credit-usage> "Snowflake credits are charged based on the number of virtual warehouses you use, how long they run, and their size."

**NEW QUESTION 14**

- (Exam Topic 1)

True or False: A customer using SnowSQL / native connectors will be unable to also use the Snowflake Web interface (UI) unless access to the UI is explicitly granted by supported.

- A. True
- B. False

**Answer:** B

**Explanation:**

Reference: <https://docs.snowflake.com/en/user-guide/connecting.html>

#### NEW QUESTION 17

- (Exam Topic 1)

True or False: A single database can exist in more than one Snowflake account.

- A. True
- B. False

**Answer:** B

**Explanation:**

Reference: <https://docs.snowflake.com/en/sql-reference/ddl-database.html>

#### NEW QUESTION 22

- (Exam Topic 1)

Which of the following statements are true of Snowflake data loading? Choose 3 answers

- A. VARIANT "nut" values are not the same as SQL Null values
- B. It is recommended to do frequent, single row DMLS
- C. It is recommended to validate the data before loading into the Snowflake target table
- D. It is recommended to use staging tables to manage MERGE statements

**Answer:** ACD

#### NEW QUESTION 24

- (Exam Topic 1)

Which of the following statements are true of VALIDATION\_MODE in Snowflake? (Choose two.)

- A. The validation\_mode option is used when creating an Internal Stage
- B. validation\_mode=return\_all\_errors is a parameter of the copy command
- C. The validation\_mode option will validate data to be loaded by the copy statement while completing the load and will return the rows that could not be loaded without error
- D. The validation\_mode option will validate data to be loaded by the copy statement without completing the load and will return possible errors

**Answer:** BD

**Explanation:**

Reference: <https://docs.snowflake.com/en/user-guide/data-load-bulk-ts.html>

#### NEW QUESTION 28

- (Exam Topic 1)

Which of the following is true of Snowpipe via REST API? Choose 2 answers

- A. you can only use it on internal Stages
- B. All COPY INTO options are available fluting pipe creation
- C. Snowflake automatically manages the compute required to execute the Pipe's copy into commands
- D. Snowpipe keeps track of which files it has loaded

**Answer:** CD

**Explanation:**

<https://docs.snowflake.com/en/sql-reference/sql/create-pipe.html#usage-notes>

#### NEW QUESTION 33

- (Exam Topic 1)

Which of the following statements are true about Schemas in Snowflake? (Choose two.)

- A. A Schema may contain one or more Databases
- B. A Database may contain one or more Schemas
- C. A Schema is a logical grouping of Database Objects
- D. Each Schema is contained within a Warehouse

**Answer:** BC

**Explanation:**

Reference: <https://docs.snowflake.com/en/user-guide/data-sharing-multiple-db.html>

#### NEW QUESTION 37

- (Exam Topic 1)

A role is created and owns 2 tables. This role is then dropped. Who will now own the two tables?

- A. The tables are now orphaned
- B. The user that deleted the role
- C. SYSADMIN
- D. The assumed role that dropped the role

**Answer:** D

**Explanation:**

Reference: <https://docs.snowflake.com/en/sql-reference/sql/drop-role.html>

#### NEW QUESTION 41

- (Exam Topic 1)

What are the three layers that make up Snowflake's architecture? Choose 3 answer

- A. Compute
- B. Tri-Secret Secure
- C. Storage
- D. Cloud Services

**Answer:** ACD

**Explanation:**

Reference: <https://docs.snowflake.com/en/user-guide/intro-key-concepts.html>

#### NEW QUESTION 45

- (Exam Topic 1)

Which are true of Snowflake roles?

- A. All grants to objects are given to roles, and never to users
- B. In order to do DML/DOL, a user needs to have selected a single role that has that specific access to the object and operation
- C. The public role controls all other roles
- D. Roles are a subset of users and users own objects in Snowflake

**Answer:** AB

#### NEW QUESTION 46

- (Exam Topic 1)

Which of the following are best practices for users with the SYSADMIN/ACCOUNTADMIN roles? Choose 3 answers

- A. Their default role should be set to SYSTEMADMIN (the lower of the two)
- B. They should not set up multi\_Factor Authentication (MFA)—as administrator they may need to change the MFA settings and those enrolled in MFA are unable to do so
- C. They should only access and 'step into' the ACCOUNTADMIN role temporarily, as needed to complete a specific operation
- D. They should ensure all database objects in the account are owned by the ACCOUNTADMIN role
- E. They should use the SYSADMIN role to perform administrative work on database objects

**Answer:** ACE

#### NEW QUESTION 50

- (Exam Topic 1)

True or False: Users are able to see the result sets of queries executed by other users that share their same role.

- A. True
- B. False

**Answer:** B

**Explanation:**

Reference: <https://docs.snowflake.com/en/user-guide/security-access-control-considerations.html>

#### NEW QUESTION 53

- (Exam Topic 1)

Snowflake provides a mechanism for its customers to override its clustering algorithms. This method is:

- A. Micro-partitions
- B. Clustering keys
- C. Key partitions
- D. Clustered partitions

**Answer:** B

**Explanation:**

Reference: <https://community.snowflake.com/s/article/Snowflake-What-the-Cluster>

**NEW QUESTION 56**

- (Exam Topic 1)

True or False: When data share is established between a Data Provider and a data Consumer, the Data Consumer can extend that data share to other Data Consumers.

- A. True
- B. False

**Answer:** B

**Explanation:**

Reference: <https://docs.snowflake.com/en/user-guide/data-sharing-intro.html>

**NEW QUESTION 60**

- (Exam Topic 1)

True or False: You can resize a Virtual Warehouse while queries are running.

- A. True
- B. False

**Answer:** A

**Explanation:**

Reference: <https://docs.snowflake.com/en/user-guide/warehouses-tasks.html>

**NEW QUESTION 63**

- (Exam Topic 1)

True or False: Reader Accounts incur no additional Compute costs to the Data Provider since they are simply reading the shared data without making changes.

- A. True
- B. False

**Answer:** B

**Explanation:**

Reference: <https://interworks.com/blog/bdu/2020/02/05/zero-to-snowflake-secure-data-sharing/>

**NEW QUESTION 64**

- (Exam Topic 1)

Which of the following languages can be used to implement Snowflake User Defined Functions (UDFs)? Choose 2 answers

- A. Java
- B. JavaScript
- C. SQL
- D. Python

**Answer:** BC

**Explanation:**

Reference: <https://docs.snowflake.com/en/sql-reference/user-defined-functions.html>

**NEW QUESTION 65**

- (Exam Topic 1)

Increasing the maximum number of clusters in a Multi-Cluster Warehouse is an example of:

- A. Scaling rhythmically
- B. Scaling max
- C. Scaling out
- D. Scaling Up

**Answer:** C

**Explanation:**

<https://docs.snowflake.com/en/user-guide/warehouses-considerations.html#scaling-up-vs-scaling-out>  
"Scale out by adding warehouses to a multi-cluster warehouse"

**NEW QUESTION 68**

- (Exam Topic 1)

which of the following are valid approaches to loading data into a snowflake table? select all the below that apply.

- A. Bulk copy from an External Stage
- B. Continuous load using Snowpipe REST API
- C. The Snowflake Web Interface (UI) data loading wizard
- D. Bulk copy from an Internal Stage

**Answer:** ABC

**Explanation:**

Reference: <https://docs.snowflake.com/en/user-guide/data-load-overview.html>

**NEW QUESTION 73**

- (Exam Topic 1)

In which layer of its architecture does Snowflake store its metadata statistics? Select one.

- A. Storage Layer
- B. Compute Layer
- C. Database Layer
- D. Cloud Service Layer

**Answer:** D

**Explanation:**

Reference: <https://hevodata.com/blog/snowflake-architecture-cloud-data-warehouse/>

**NEW QUESTION 76**

- (Exam Topic 1)

Snowflake provides two mechanisms to reduce data storage costs for short-lived tables. These mechanisms are:

Choose 2 answers

- A. Temporary Tables
- B. Transient Tables
- C. Provisional Tables
- D. Permanent Tables

**Answer:** AB

**Explanation:**

Reference: <https://docs.snowflake.com/en/user-guide/tables-storage-considerations.html>

**NEW QUESTION 78**

- (Exam Topic 1)

Which of the following statements is true of data loading? Select one.

- A. Resizing the virtual warehouse from x-Small to Small will process a single file twice as fast
- B. The "deal file size for loading is 16MB to match micro-partition size
- C. Marry files in the 10-100MB range tend to land In the 'sweet spot" for load parallelism Once loaded, there is no option to force a reload of an already loaded file

**Answer:** C

**NEW QUESTION 81**

- (Exam Topic 1)

Which of the following terms best describes Snowflake's database architecture?

- A. Columnar shared nothing
- B. Shared disk
- C. Multi-cluster, shared data
- D. Cloud-native shared memory

**Answer:** C

**Explanation:**

<https://www.snowflake.com/product/architecture/>

Built from the ground up for the cloud, Snowflake's unique multi-cluster shared data architecture delivers the performance, scale, elasticity, and concurrency today's organizations require.

**NEW QUESTION 84**

- (Exam Topic 1)

True or False the longer the data retention period, the higher the resulting storage costs.

- A. True
- B. False

**Answer:** A

**NEW QUESTION 85**

- (Exam Topic 1)

True or False: A table in Snowflake can only be queried using the Virtual Warehouse that was used to load the data.

- A. True
- B. False

**Answer:** B



**NEW QUESTION 86**

- (Exam Topic 1)

Query results are stored in the Result Cache for how long after they are last accessed, assuming no data changes have occurred? Select one.

- A. 1 Hour
- B. 3 Hours
- C. 12 hours
- D. 24 hours

**Answer:** D

**Explanation:**

Reference: <https://community.snowflake.com/s/article/Caching-in-Snowflake-Data-Warehouse>

**NEW QUESTION 88**

- (Exam Topic 1)

Which of the following statements are true of Virtual Warehouses? (Choose all that apply.)

- A. Customers can change the size of the Warehouse after creation
- B. A Warehouse can be resized while running
- C. A Warehouse can be configured to suspend after a period of inactivity
- D. A Warehouse can be configured to auto-resume when new queries are submitted

**Answer:** ABCD

**Explanation:**

Reference: <https://docs.snowflake.com/en/user-guide/warehouses-multiclust.html>

**NEW QUESTION 90**

- (Exam Topic 1)

True or false: it is best practice to define a clustering key on every table.

- A. True
- B. False

**Answer:** B

**Explanation:**

Reference: <https://dwgeek.com/how-to-create-snowflake-clustered-tables-examples.html/>

**NEW QUESTION 94**

- (Exam Topic 1)

True or False: When Snowflake is configured to use Single Sign-on (sso), Snowflake receive the usernames and credentials from the sso service and loads them into the customer's Snowflake account.

- A. True
- B. false:

**Answer:** B

**Explanation:**

Reference: <https://docs.snowflake.com/en/user-guide/admin-security-fed-auth-configure-snowflake.html>

**NEW QUESTION 97**

- (Exam Topic 1)

True or False: Multi\_Factor Authentication (MFA) in Snowflake is only supported in conjunction with single Sign-on (sso).

- A. True
- B. False

**Answer:** B

**Explanation:**

Reference: <https://docs.snowflake.com/en/user-guide/admin-security-fed-auth-use.html>

**NEW QUESTION 101**

- (Exam Topic 2)

Where would a Snowflake user find information about query activity from 90 days ago?

- A. Account\_\_\_usage . query history view
- B. account\_\_\_usage.query\_\_\_history\_\_\_archive View
- C. information\_\_\_schema . cruery\_history view
- D. information\_\_\_schema - query history\_by\_ses s i on view

**Answer:** A



**NEW QUESTION 103**

- (Exam Topic 2)

Which of the following Snowflake features provide continuous data protection automatically? (Select TWO).

- A. Internal stages
- B. Incremental backups
- C. Time Travel
- D. Zero-copy clones
- E. Fail-safe

**Answer:** CE

**Explanation:**

Time travel and fail safe are the two continuous data protection features support the recovery of data automatically.

Snowflake provides powerful CDP features for ensuring the maintenance and availability of your historical data (i.e. data that has been changed or deleted):

- Querying, cloning, and restoring historical data in tables, schemas, and databases for up to 90 days through Snowflake Time Travel.
- Disaster recovery of historical data (by Snowflake) through Snowflake Fail-safe. <https://docs.snowflake.com/en/user-guide/data-availability.html>

**NEW QUESTION 108**

- (Exam Topic 2)

A marketing co-worker has requested the ability to change a warehouse size on their medium virtual warehouse called mktg\_\_WH.

Which of the following statements will accommodate this request?

- A. ALLOW RESIZE ON WAREHOUSE MKTG\_\_WH TO USER MKTG\_\_LEAD;
- B. GRANT MODIFY ON WAREHOUSE MKTG WH TO ROLE MARKETING;
- C. GRANT MODIFY ON WAREHOUSE MKTG\_\_WH TO USER MKTG\_\_LEAD;
- D. GRANT OPERATE ON WAREHOUSE MKTG WH TO ROLE MARKETING;

**Answer:** B

**NEW QUESTION 113**

- (Exam Topic 2)

Which of the following are valid methods for authenticating users for access into Snowflake? (Select THREE)

- A. SCIM
- B. Federated authentication
- C. TLS 1.2
- D. Key-pair authentication
- E. OAuth
- F. OCSP authentication

**Answer:** BDE

**NEW QUESTION 118**

- (Exam Topic 2)

What happens when an external or an internal stage is dropped? (Select TWO).

- A. When dropping an external stage, the files are not removed and only the stage is dropped
- B. When dropping an external stage, both the stage and the files within the stage are removed
- C. When dropping an internal stage, the files are deleted with the stage and the files are recoverable
- D. When dropping an internal stage, the files are deleted with the stage and the files are not recoverable
- E. When dropping an internal stage, only selected files are deleted with the stage and are not recoverable

**Answer:** AC

**NEW QUESTION 120**

- (Exam Topic 2)

What is a responsibility of Snowflake's virtual warehouses?

- A. Infrastructure management
- B. Metadata management
- C. Query execution
- D. Query parsing and optimization
- E. Management of the storage layer

**Answer:** C

**NEW QUESTION 121**

- (Exam Topic 2)

True or False: It is possible for a user to run a query against the query result cache without requiring an active Warehouse.

- A. True
- B. False

**Answer:** A

**Explanation:**

Query result cache is all about fetching the data from cloud services layer and saving the cost by not running the virtual warehouse.

**NEW QUESTION 123**

- (Exam Topic 2)

Which semi-structured file formats are supported when unloading data from a table? (Select TWO).

- A. ORC
- B. XML
- C. Avro
- D. Parquet
- E. JSON

**Answer:** DE

**Explanation:**

Semi-structured JSON, Parquet

<https://docs.snowflake.com/en/user-guide/data-unload-prepare.html#:~:text=Supported%20File%20Formats,-Th>

**NEW QUESTION 124**

- (Exam Topic 2)

What data is stored in the Snowflake storage layer? (Select TWO).

- A. Snowflake parameters
- B. Micro-partitions
- C. Query history
- D. Persisted query results
- E. Standard and secure view results

**Answer:** BD

**NEW QUESTION 126**

- (Exam Topic 2)

Which command can be used to stage local files from which Snowflake interface?

- A. SnowSQL
- B. Snowflake classic web interface (UI)
- C. Snowsight
- D. .NET driver

**Answer:** A

**Explanation:**

<https://docs.snowflake.com/en/user-guide/snowsql-use.html>

**NEW QUESTION 129**

- (Exam Topic 2)

The Information Schema and Account Usage Share provide storage information for which of the following objects? (Choose three.)

- A. Users
- B. Tables
- C. Databases
- D. Internal Stages

**Answer:** ABC

**NEW QUESTION 133**

- (Exam Topic 2)

Which of the following compute resources or features are managed by Snowflake? (Select TWO).

- A. Execute a COPY command
- B. Updating data
- C. Snowpipe
- D. AUTOMATIC\_\_CLUSTERING
- E. Scaling up a warehouse

**Answer:** AD

**NEW QUESTION 137**

- (Exam Topic 2)

Which is the MINIMUM required Snowflake edition that a user must have if they want to use AWS/Azure Privatelink or Google Cloud Private Service Connect?

- A. Standard
- B. Premium
- C. Enterprise
- D. Business Critical

**Answer:**

D

**Explanation:**

<https://docs.snowflake.com/en/user-guide/privatelink-azure.html>

**NEW QUESTION 142**

- (Exam Topic 2)

What is a limitation of a Materialized View?

- A. A Materialized View cannot support any aggregate functions
- B. A Materialized View can only reference up to two tables
- C. A Materialized View cannot be joined with other tables
- D. A Materialized View cannot be defined with a JOIN

**Answer:** D

**Explanation:**

There are several limitations to using materialized views:

- A materialized view can query only a single table.
- Joins, including self-joins, are not supported.

**NEW QUESTION 146**

- (Exam Topic 2)

When is the result set cache no longer available? (Select TWO)

- A. When another warehouse is used to execute the query
- B. When another user executes the query
- C. When the underlying data has changed
- D. When the warehouse used to execute the query is suspended
- E. When it has been 24 hours since the last query

**Answer:** CE

**NEW QUESTION 151**

- (Exam Topic 2)

When unloading to a stage, which of the following is a recommended practice or approach?

- A. Set SINGLE: = true for larger files
- B. Use OBJECT\_CONSTRUCT ( \* ) when using Parquet
- C. Avoid the use of the CAST function
- D. Define an individual file format

**Answer:** C

**NEW QUESTION 156**

- (Exam Topic 2)

What are two ways to create and manage Data Shares in Snowflake? (Choose two.)

- A. Via the Snowflake Web Interface (UI)
- B. Via the data\_share=true parameter
- C. Via SQL commands
- D. Via Virtual Warehouses

**Answer:** AC

**Explanation:**

Reference: <https://docs.snowflake.com/en/user-guide/data-sharing-provider.html>

**NEW QUESTION 159**

- (Exam Topic 2)

Which Snowflake feature is used for both querying and restoring data?

- A. Cluster keys
- B. Time Travel
- C. Fail-safe
- D. Cloning

**Answer:** B

**Explanation:**

<https://docs.snowflake.com/en/user-guide/data-availability.html#:~:text=Snowflake%20provides%20powerful%>

**NEW QUESTION 160**

- (Exam Topic 2)

What are ways to create and manage data shares in Snowflake? (Select TWO)

- A. Through the Snowflake web interface (UI)
- B. Through the DATA\_SHARE=TRUE parameter
- C. Through SQL commands
- D. Through the enable share=true parameter
- E. Using the CREATE SHARE AS SELECT \* TABLE command

**Answer:** CD

#### NEW QUESTION 161

- (Exam Topic 2)

What is the recommended file sizing for data loading using Snowpipe?

- A. A compressed file size greater than 100 MB, and up to 250 MB
- B. A compressed file size greater than 100 GB, and up to 250 GB
- C. A compressed file size greater than 10 MB, and up to 100 MB
- D. A compressed file size greater than 1 GB, and up to 2 GB

**Answer:** A

#### Explanation:

<https://www.phdata.io/blog/how-to-optimize-snowpipe-data-load/#:~:text=Snowpipe%20is%20typically%20use>

#### NEW QUESTION 165

- (Exam Topic 3)

A user is preparing to load data from an external stage

Which practice will provide the MOST efficient loading performance?

- A. Organize files into logical paths
- B. Store the files on the external stage to ensure caching is maintained
- C. Use pattern matching for regular expression execution
- D. Load the data in one large file

**Answer:** D

#### NEW QUESTION 166

- (Exam Topic 3)

Which of the following is the Snowflake Account\_Usage.Metering\_History view used for?

- A. Gathering the hourly credit usage for an account
- B. Compiling an account's average cloud services cost over the previous month
- C. Summarizing the throughput of Snowpipe costs for an account
- D. Calculating the funds left on an account's contract

**Answer:** A

#### NEW QUESTION 170

- (Exam Topic 3)

What is the MINIMUM Snowflake edition required to use the periodic rekeying of micro-partitions?

- A. Enterprise
- B. Business Critical
- C. Standard
- D. Virtual Private Snowflake

**Answer:** B

#### Explanation:

Reference: <https://docs.snowflake.com/en/user-guide/intro-editions.html#business-critical-edition>

#### NEW QUESTION 172

- (Exam Topic 3)

The bulk data load history that is available upon completion of the COPY statement is stored where and for how long?

- A. In the metadata of the target table for 14 days
- B. In the metadata of the pipe for 14 days
- C. In the metadata of the target table for 64 days
- D. In the metadata of the pipe for 64 days

**Answer:** A

#### NEW QUESTION 177

- (Exam Topic 3)

How often are the Account and Table master keys automatically rotated by Snowflake?

- A. 30 Days
- B. 60 Days

- C. 90 Days
- D. 365 Days.

**Answer:** D

#### NEW QUESTION 178

- (Exam Topic 3)

The following JSON is stored in a VARIANT column called src of the CAR\_SALES table:

```
{
  "customer": [
    {
      "address": "San Francisco, CA",
      "name": "Jane Doe"
    }
  ],
  "date": "2022-01-28",
  "dealership": "Town Auto Sales",
  "salesperson": {
    "id": "55"
  }
}
```

A user needs to extract the dealership information from the JSON. How can this be accomplished?

- A. select src:dealership from car\_sales;
- B. select src.dealership from car\_sales;
- C. select src:Dealership from car\_sales;
- D. select dealership from car\_sales;

**Answer:** A

#### NEW QUESTION 179

- (Exam Topic 3)

What is the MINIMUM edition of Snowflake that is required to use a SCIM security integration?

- A. Business Critical Edition
- B. Standard Edition
- C. Virtual Private Snowflake (VPS)
- D. Enterprise Edition

**Answer:** D

#### NEW QUESTION 180

- (Exam Topic 3)

Which data type can store more than one type of data structure?

- A. JSON
- B. BINARY
- C. VARCHAR
- D. VARIANT

**Answer:** D

#### NEW QUESTION 185

- (Exam Topic 3)

Which of the following are considerations when using a directory table when working with unstructured data? (Choose two.)

- A. A directory table is a separate database object.
- B. Directory tables store data file metadata.
- C. A directory table will be automatically added to a stage.
- D. Directory tables do not have their own grantable privileges.
- E. Directory table data can not be refreshed manually.

**Answer:** BD

#### NEW QUESTION 189

- (Exam Topic 3)

Credit charges for Snowflake virtual warehouses are calculated based on which of the following considerations? (Choose two.)

- A. The number of queries executed
- B. The number of active users assigned to the warehouse
- C. The size of the virtual warehouse

- D. The length of time the warehouse is running
- E. The duration of the queries that are executed

**Answer:** AD

#### NEW QUESTION 190

- (Exam Topic 3)

How many resource monitors can be assigned at the account level?

- A. 1
- B. 2
- C. 3
- D. 4

**Answer:** A

#### NEW QUESTION 195

- (Exam Topic 3)

Which Snowflake objects can be shared with other Snowflake accounts? (Choose three.)

- A. Schemas
- B. Roles
- C. Secure Views
- D. Stored Procedures
- E. Tables
- F. Secure User-Defined Functions (UDFs)

**Answer:** ABF

#### NEW QUESTION 199

- (Exam Topic 3)

When publishing a Snowflake Data Marketplace listing into a remote region what should be taken into consideration? (Choose two.)

- A. There is no need to have a Snowflake account in the target region, a share will be created for each user.
- B. The listing is replicated into all selected regions automatically, the data is not.
- C. The user must have the ORGADMIN role available in at least one account to link accounts for replication.
- D. Shares attached to listings in remote regions can be viewed from any account in an organization.
- E. For a standard listing the user can wait until the first customer requests the data before replicating it to the target region.

**Answer:** AC

#### NEW QUESTION 201

- (Exam Topic 3)

What actions will prevent leveraging of the ResultSet cache? (Choose two.)

- A. Removing a column from the query SELECT list
- B. Stopping the virtual warehouse that the query is running against
- C. Clustering of the data used by the query
- D. Executing the RESULTS\_SCAN() table function
- E. Changing a column that is not in the cached query

**Answer:** AD

#### NEW QUESTION 202

- (Exam Topic 3)

Which Snowflake SQL statement would be used to determine which users and roles have access to a role called MY\_ROLE?

- A. SHOW GRANTS OF ROLE MY\_ROLE
- B. SHOW GRANTS TO ROLE MY\_ROLE
- C. SHOW GRANTS FOR ROLE MY\_ROLE
- D. SHOW GRANTS ON ROLE MY\_ROLE

**Answer:** B

#### NEW QUESTION 206

- (Exam Topic 3)

What are common issues found by using the Query Profile? (Choose two.)

- A. Identifying queries that will likely run very slowly before executing them
- B. Locating queries that consume a high amount of credits
- C. Identifying logical issues with the queries
- D. Identifying inefficient micro-partition pruning
- E. Data spilling to a local or remote disk

**Answer:** AD



**NEW QUESTION 211**

- (Exam Topic 3)

Which Snowflake feature allows a user to substitute a randomly generated identifier for sensitive data, in order to prevent unauthorized users access to the data, before loading it into Snowflake?

- A. External Tokenization
- B. External Tables
- C. Materialized Views
- D. User-Defined Table Functions (UDTF)

**Answer:** A

**NEW QUESTION 214**

- (Exam Topic 3)

Users are responsible for data storage costs until what occurs?

- A. Data expires from Time Travel
- B. Data expires from Fail-safe
- C. Data is deleted from a table
- D. Data is truncated from a table

**Answer:** B

**NEW QUESTION 215**

- (Exam Topic 3)

Which privilege is required for a role to be able to resume a suspended warehouse if auto-resume is not enabled?

- A. USAGE
- B. OPERATE
- C. MONITOR
- D. MODIFY

**Answer:** B

**Explanation:**

Reference:

<https://community.snowflake.com/s/question/0D50Z00008yHYdqSAG/auto-resume-operate-warehouse-privileg>

**NEW QUESTION 217**

- (Exam Topic 3)

What are best practice recommendations for using the ACCOUNTADMIN system-defined role in Snowflake? (Choose two.)

- A. Ensure all ACCOUNTADMIN roles use Multi-factor Authentication (MFA).
- B. All users granted ACCOUNTADMIN role must be owned by the ACCOUNTADMIN role.
- C. The ACCOUNTADMIN role must be granted to only one user.
- D. Assign the ACCOUNTADMIN role to at least two users, but as few as possible.
- E. All users granted ACCOUNTADMIN role must also be granted SECURITYADMIN role.

**Answer:** AD

**NEW QUESTION 220**

- (Exam Topic 3)

In an auto-scaling multi-cluster virtual warehouse with the setting SCALING\_POLICY = ECONOMY enabled, when is another cluster started?

- A. When the system has enough load for 2 minutes
- B. When the system has enough load for 6 minutes
- C. When the system has enough load for 8 minutes
- D. When the system has enough load for 10 minutes

**Answer:** D

**NEW QUESTION 225**

- (Exam Topic 3)

Which data types are supported by Snowflake when using semi-structured data? (Choose two.)

- A. VARIANT
- B. VARRAY
- C. STRUCT
- D. ARRAY
- E. QUEUE

**Answer:** AD

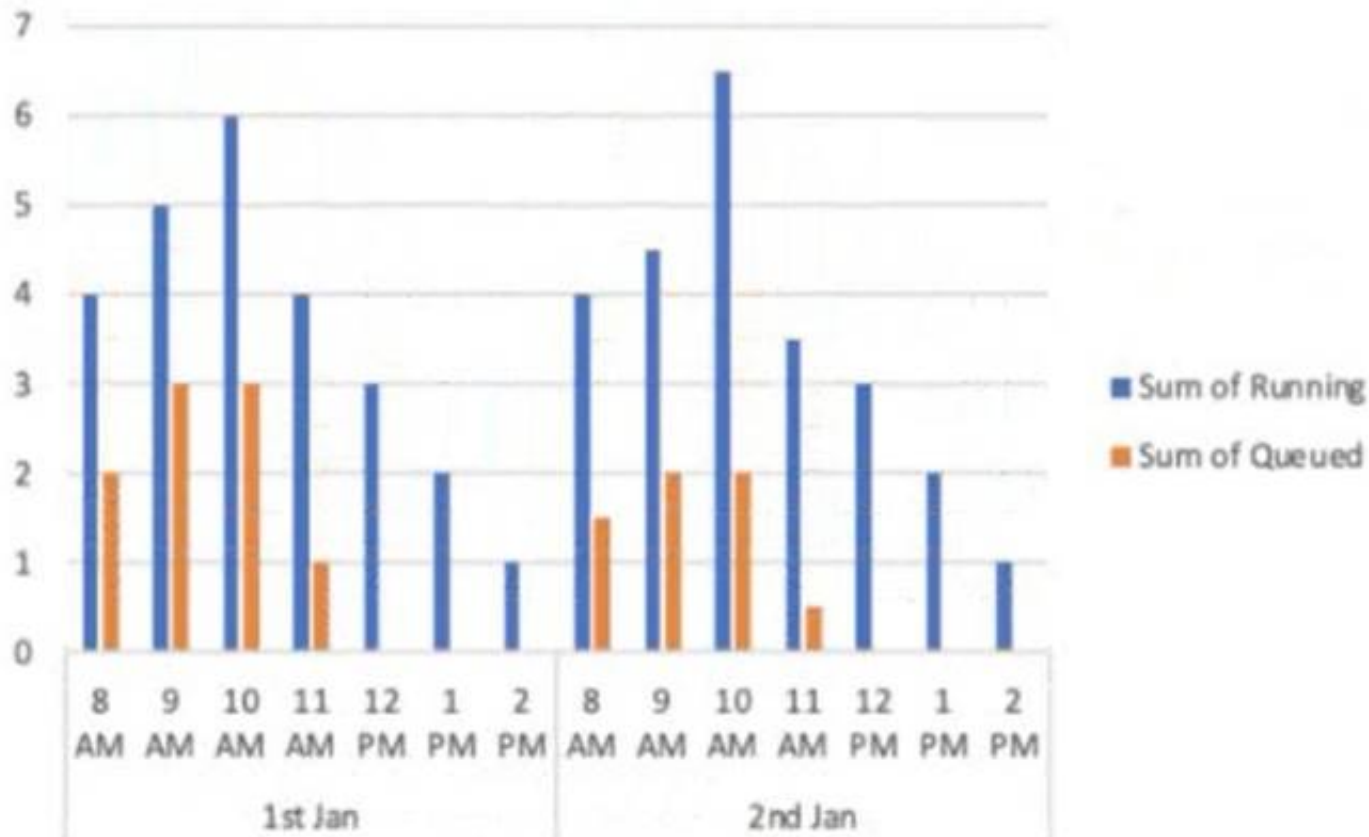
**NEW QUESTION 229**

- (Exam Topic 3)

A virtual warehouse is created using the following command:



Create warehouse my\_WH with warehouse\_size = MEDIUM min\_cluster\_count = 1  
max\_cluster\_count = 1  
auto\_suspend = 60 auto\_resume = true;  
The image below is a graphical representation of the warehouse utilization across two days.



What action should be taken to address this situation?

- A. Increase the warehouse size from Medium to 2XL.
- B. Increase the value for the parameter MAX\_CONCURRENCY\_LEVEL.
- C. Configure the warehouse to a multi-cluster warehouse.
- D. Lower the value of the parameter STATEMENT\_QUEUED\_TIMEOUT\_IN\_SECONDS.

**Answer: B**

#### NEW QUESTION 234

- (Exam Topic 3)

Which of the following significantly improves the performance of selective point lookup queries on a table?

- A. Clustering
- B. Materialized Views
- C. Zero-copy Cloning
- D. Search Optimization Service

**Answer: A**

#### NEW QUESTION 236

- (Exam Topic 3)

Which file formats are supported for unloading data from Snowflake? (Choose two.)

- A. Avro
- B. JSON
- C. ORC
- D. XML
- E. Delimited (CSV, TSV, etc.)

**Answer: CE**

#### Explanation:

Reference:

[https://docs.snowflake.com/en/user-guide/data-unload-prepare.html#:~:text=Supported%20File%20Formats,-Th%20comma%20\(i.e.%20CSV\).&text=File%20format%20options%20specify%20the,the%20format%20of%20th](https://docs.snowflake.com/en/user-guide/data-unload-prepare.html#:~:text=Supported%20File%20Formats,-Th%20comma%20(i.e.%20CSV).&text=File%20format%20options%20specify%20the,the%20format%20of%20th)

#### NEW QUESTION 238

- (Exam Topic 3)

Network policies can be set at which Snowflake levels? (Choose two.)

- A. Role
- B. Schema
- C. User
- D. Database
- E. Account
- F. Tables

**Answer: CE**

**Explanation:**

Reference: <https://docs.snowflake.com/en/user-guide/network-policies.html#creating-network-policies>

**NEW QUESTION 240**

- (Exam Topic 3)

Which of the following are best practices for loading data into Snowflake? (Choose three.)

- A. Aim to produce data files that are between 100 MB and 250 MB in size, compressed.
- B. Load data from files in a cloud storage service in a different region or cloud platform from the service or region containing the Snowflake account, to save on cost.
- C. Enclose fields that contain delimiter characters in single or double quotes.
- D. Split large files into a greater number of smaller files to distribute the load among the compute resources in an active warehouse.
- E. When planning which warehouse(s) to use for data loading, start with the largest warehouse possible.
- F. Partition the staged data into large folders with random paths, allowing Snowflake to determine the bestway to load each file.

**Answer:** BCE

**NEW QUESTION 242**

- (Exam Topic 3)

Which URL type allows users to access unstructured data without authenticating into Snowflake or passing an authorization token?

- A. Pre-signed URL
- B. Scoped URL
- C. Signed URL
- D. File URL

**Answer:** C

**NEW QUESTION 244**

- (Exam Topic 3)

Which parameter can be used to instruct a COPY command to verify data files instead of loading them into a specified table?

- A. STRIP\_NULL\_VALUES
- B. SKIP\_BYTE\_ORDER\_MARK
- C. REPLACE\_INVALID\_CHARACTERS
- D. VALIDATION\_MODE

**Answer:** D

**Explanation:**

<https://docs.snowflake.com/en/sql-reference/sql/copy-into-table.html>

VALIDATION\_MODE = RETURN\_ROWS | RETURN\_ERRORS | RETURN\_ALL\_ERRORS

String (constant) that instructs the COPY command to validate the data files instead of loading them into the

specified table; i.e. the COPY command tests the files for errors but does not load them. The command validates the data to be loaded and returns results based on the validation option specified:

**NEW QUESTION 248**

- (Exam Topic 3)

What is the maximum total Continuous Data Protection (CDP) charges incurred for a temporary table?

- A. 30 days
- B. 7 days
- C. 48 hours
- D. 24 hours

**Answer:** D

**NEW QUESTION 249**

- (Exam Topic 3)

A table needs to be loaded. The input data is in JSON format and is a concatenation of multiple JSON documents. The file size is 3 GB. A warehouse size small is being used. The following COPY INTO command was executed:

COPY INTO SAMPLE FROM @~/SAMPLE.JSON (TYPE=JSON)

The load failed with this error:

Max LOB size (16777216) exceeded, actual size of parsed column is 17894470. How can this issue be resolved?

- A. Compress the file and load the compressed file.
- B. Split the file into multiple files in the recommended size range (100 MB - 250 MB).
- C. Use a larger-sized warehouse.
- D. Set STRIP\_OUTER\_ARRAY=TRUE in the COPY INTO command.

**Answer:** A

**NEW QUESTION 250**

- (Exam Topic 3)

Which formats does Snowflake store unstructured data in? (Choose two.)

- A. GeoJSON
- B. Array
- C. XML
- D. Object
- E. BLOB

**Answer:** DE

**NEW QUESTION 254**

- (Exam Topic 3)

Which columns are part of the result set of the Snowflake LATERAL FLATTEN command? (Choose two.)

- A. CONTENT
- B. PATH
- C. BYTE\_SIZE
- D. INDEX
- E. DATATYPE

**Answer:** BC

**NEW QUESTION 259**

- (Exam Topic 3)

What is the SNOWFLAKE.ACCOUNT\_USAGE view that contains information about which objects were read by queries within the last 365 days (1 year)?

- A. VIEWS\_HISTORY
- B. OBJECT\_HISTORY
- C. ACCESS\_HISTORY
- D. LOGIN\_HISTORY

**Answer:** C

**NEW QUESTION 262**

- (Exam Topic 3)

Which Snowflake architectural layer is responsible for a query execution plan?

- A. Compute
- B. Data storage
- C. Cloud services
- D. Cloud provider

**Answer:** D

**NEW QUESTION 266**

- (Exam Topic 3)

Which Snowflake tool would be BEST to troubleshoot network connectivity?

- A. SnowCLI
- B. SnowUI
- C. SnowSQL
- D. SnowCD

**Answer:** D

**Explanation:**

[https://docs.snowflake.com/en/user-guide/snowcd.html#:~:text=SnowCD%20\(i.e.%20Snowflake%20Connectivi](https://docs.snowflake.com/en/user-guide/snowcd.html#:~:text=SnowCD%20(i.e.%20Snowflake%20Connectivi)

**NEW QUESTION 270**

- (Exam Topic 3)

What file formats does Snowflake support for loading semi-structured data? (Choose three.)

- A. TSV
- B. JSON
- C. PDF
- D. Avro
- E. Parquet
- F. JPEG

**Answer:** BDE

**NEW QUESTION 271**

- (Exam Topic 3)

Which of the following statements describes a schema in Snowflake?

- A. A logical grouping of objects that belongs to a single database
- B. A logical grouping of objects that belongs to multiple databases
- C. A named Snowflake object that includes all the information required to share a database
- D. A uniquely identified Snowflake account within a business entity

**Answer:** A

**NEW QUESTION 272**

- (Exam Topic 3)

How does Snowflake allow a data provider with an Azure account in central Canada to share data with a data consumer on AWS in Australia?

- A. The data provider in Azure Central Canada can create a direct share to AWS Asia Pacific, if they are both in the same organization.
- B. The data consumer and data provider can form a Data Exchange within the same organization to create a share from Azure Central Canada to AWS Asia Pacific.
- C. The data provider uses the GET DATA workflow in the Snowflake Data Marketplace to create a share between Azure Central Canada and AWS Asia Pacific.
- D. The data provider must replicate the database to a secondary account in AWS Asia Pacific within the same organization then create a share to the data consumer's account.

**Answer:** C

**NEW QUESTION 277**

- (Exam Topic 3)

Which of the following features are available with the Snowflake Enterprise edition? (Choose two.)

- A. Database replication and failover
- B. Automated index management
- C. Customer managed keys (Tri-secret secure)
- D. Extended time travel
- E. Native support for geospatial data

**Answer:** AD

**NEW QUESTION 282**

.....

## Thank You for Trying Our Product

\* 100% Pass or Money Back

All our products come with a 90-day Money Back Guarantee.

\* One year free update

You can enjoy free update one year. 24x7 online support.

\* Trusted by Millions

We currently serve more than 30,000,000 customers.

\* Shop Securely

All transactions are protected by VeriSign!

**100% Pass Your SnowPro-Core Exam with Our Prep Materials Via below:**

<https://www.certleader.com/SnowPro-Core-dumps.html>