

## Exam Questions HPE6-A73

Aruba Certified Switching Professional Exam

<https://www.2passeasy.com/dumps/HPE6-A73/>



#### NEW QUESTION 1

What is correct regarding rate limiting and egress queue shaping on AOS-CX switches?

- A. Rate limiting and egress queue shaping can be used to restrict inbound traffic
- B. Limits can be defined only for broadcast and multicast traffic
- C. Rate limiting and egress queue shaping can be applied globally
- D. Traffic rate limit is configured on queue level

**Answer: D**

#### NEW QUESTION 2

How is NetEdit installed at a customer location?

- A. Via an Aruba NetEdit hardware appliance
- B. Via a DVD using a virtualized platform like Microsoft's Hyper-V
- C. Via the Aruba Central cloud solution
- D. Via an OVA file and a virtualized platform like VMware's ESXi

**Answer: D**

#### NEW QUESTION 3

An administrator of a company has concerns about upgrading the access layer switches. The users rely heavily on wireless and VoIP telephony. Which is the best recommendation to ensure a short downtime for the users during upgrading the access layer switches?

- A. Install the in-service software upgrade (ISSU) feature with clustering enabled
- B. Install AOS-CX 6300 or 6400 switches with always-on POE
- C. Implement VSF on the AOS-CX access switches
- D. Implement VSX on the AOS-CX access switches

**Answer: C**

#### NEW QUESTION 4

What must a network administrator implement in order to run an NAE script on an AOS-CX switch?

- A. Deployment
- B. Schedule
- C. Plan
- D. Agent

**Answer: D**

#### NEW QUESTION 5

An administrator is managing a network comprised of AOS-CX switches deployed at the aggregation layer. The switches are paired in a VSX stack and run the OSPF routing protocol. The administrator is concerned about how long it takes for OSPF to converge when one of the VSX switches has to reboot. What should the administrator do to speed up the OSPF convergence of the switch that is rebooting?

- A. Change the VSXISL link from an OSPF broadcast link point-to-point.
- B. Implement graceful restart on the VSX switches and their neighboring OSPF switches.
- C. Decrease the VSX initial synchronization timer on the two VSX switches.
- D. Define non-backbone areas on the VSX switches as totally stubby areas.

**Answer: B**

#### NEW QUESTION 6

Which option correctly defines how to identify a VLAN as a voice VLAN on an AOS-CX switch?

- A. Switch(config)# port-access lldp-group <LLDP-group-name> Switch(config-lldp-group)# vlan <VLAN-ID>
- B. Switch(config)# port-access role <role-name> Switch(config-pa-role)# vlan access <VLAN-ID>
- C. Switch(config)# vlan <VLAN-ID> Switch(config-vlan-<VLAN-ID>)# voice
- D. Switch(config)# vlan <VLAN-ID> voice

**Answer: C**

#### NEW QUESTION 7

Which protocol should be configured to allow NetEdit to discover third-party devices?

- A. SNMP
- B. SSH
- C. HTTPS
- D. HTTP

**Answer: A**

#### NEW QUESTION 8

An administrator wants to track what configuration changes were made on a switch. What should the administrator implement to see the configuration changes on an AOS-CX switch?

- A. AAA authorization
- B. Network Analysis Engine (NAE)
- C. AAA authentication
- D. VSX synchronization logging

**Answer: B**

#### NEW QUESTION 9

An administrator has an aggregation layer of 8325CX switches configured as a VSX pair. The administrator is concerned that when OSPF network changes occur, the aggregation switches will respond to the changes slowly, and this will affect network connectivity, especially VoIP calls, in the connected access layer switches. What should the administrator do on the aggregation layer switches to alleviate this issue?

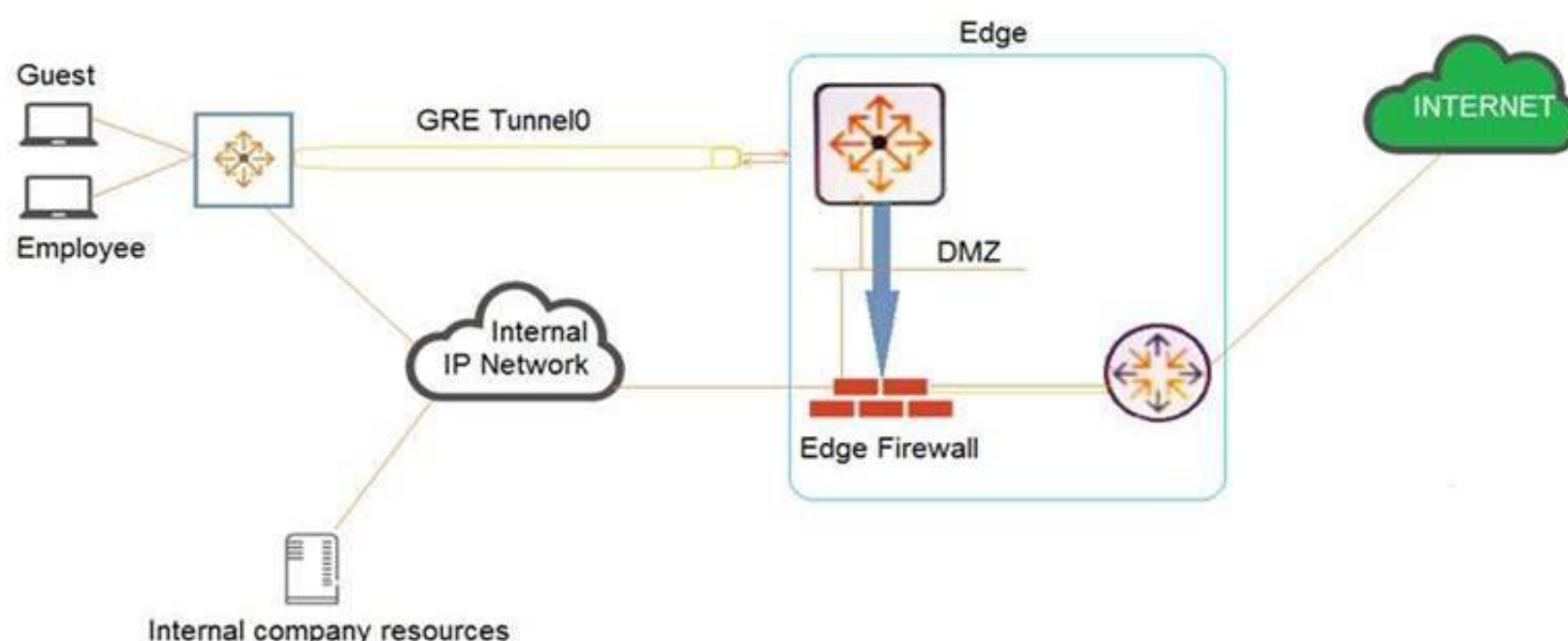
D18912E1457D5D1DDCBD40AB3BF70D5D

- A. Implement route aggregation
- B. Implement bidirectional forwarding detection (BFD)
- C. Reduce the hello and dead interval timers
- D. Implement graceful restart

**Answer: B**

#### NEW QUESTION 10

Examine the network exhibit.



A company has a guest implementation for wireless and wired access. Wireless access is implemented through a third-party vendor. The company is concerned about wired guest traffic traversing the same network as the employee traffic. The network administrator has established a GRE tunnel between AOS-CX switches where guests are connected to a routing switch in the DMZ.

Which feature should the administrator implement to ensure that the guest traffic is tunneled to the DMZ while the employee traffic is forwarded using OSPF?

- A. OSPF route maps using the "set metric" command
- B. Policy-based routing (PBR)
- C. User-based tunneling (UBT)
- D. Classifier policies

**Answer: B**

#### NEW QUESTION 10

When implementing deficit weighted round robin queuing, what importance does the weight value have?

- A. Prioritizing latency-sensitive traffic
- B. Queue priority in processing traffic
- C. Strict priority queue
- D. Percentage of interface bandwidth

**Answer: B**

#### NEW QUESTION 15

Examine the following ACL rule policies:

Permit traffic from 10.2.2.1 through 10.2.2.30 to anywhere

Permit traffic from 10.2.2.40 through 10.2.2.55 to anywhere

Deny all others

Based on this policy, place the following ACL rule statements in the correct order to accomplish the above filtering policy.

- A. deny ip 10.2.2.31 255.255.255.255 any permit ip 10.2.2.40 255.255.255.248 any permit ip 10.2.2.48 255.255.255.248 any deny ip 10.2.2.32 255.255.255.224 any permit ip 10.2.2.0 255.255.255.192 any
- B. permit ip 10.2.2.40 255.255.255.248 any permit ip 10.2.2.48 255.255.255.248 any permit ip 10.2.2.0 255.255.255.192 any deny ip 10.2.2.31 255.255.255.255 any deny ip 10.2.2.32 255.255.255.224 any

C. deny ip 10.2.2.31 255.255.255.255 anydeny ip 10.2.2.32 255.255.255.224 anypermit ip 10.2.2.40 255.255.255.248 anypermit ip 10.2.2.48 255.255.255.248 anypermit ip 10.2.2.0 255.255.255.192 any  
D. deny ip 10.2.2.31 255.255.255.255 anypermit ip 10.2.2.40 255.255.255.248 anydeny ip 10.2.2.32 255.255.255.224 anypermit ip 10.2.2.48 255.255.255.248 anypermit ip 10.2.2.0 255.255.255.192 any

**Answer:** A

#### NEW QUESTION 19

The AOS-CX mobile app allows a network engineer or technician to perform which tasks? (Choose two.)

- A. Use NetEdit to manage switch configuration.
- B. Create a stack of AOS-CX switches.
- C. Transfer files between the switch and your mobile device.
- D. Securely access the switch using SSH.
- E. Schedule an operating system upgrade.

**Answer:** CD

#### NEW QUESTION 22

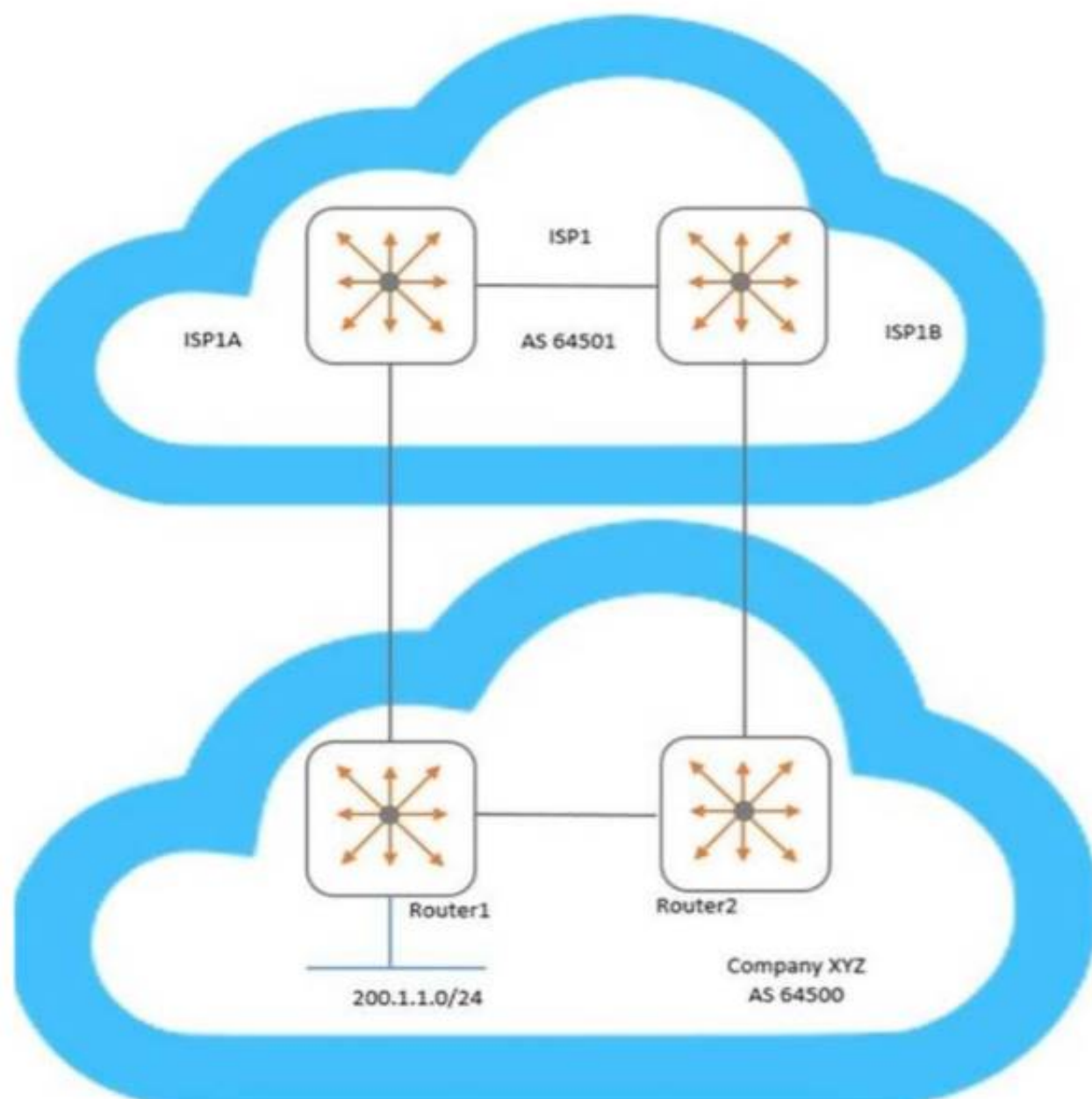
When an AOS-CX switch uses a temporary copy of the Configuration State database, what kind of analysis does NetEdit perform to ensure that the configuration is correct?

- A. Syntax validation
- B. Semantic validation
- C. Conformance validation
- D. Change validation

**Answer:** D

#### NEW QUESTION 24

Examine the network topology.



Company XYZ has two connections to a service provider (ISP1). Here is the configuration of Router1:



```
Router1(config)# ip prefix-list AS64500-routes permit 200.1.1.0/24
Router1(config)# route-map To-AS64501 permit seq 10
Router1(config-route-map)# match ip address prefix-list AS64500-routes
Router1(config-route-map)# set metric 100
Router1(config-route-map)# exit
Router1(config)# router bgp 64500
Router1(config-bgp)# address-family ipv4 unicast
Router1(config-bgp-ipv4-uc)# neighbor 192.168.1.1 route-map To-AS64501 out
```

Here is the configuration of Router2:

```
Router2(config)# ip prefix-list AS64500-routes permit 200.1.1.0/24
Router2(config)# route-map To-AS64501 permit seq 10
Router2(config-route-map)# match ip address prefix-list AS64500-routes
Router2(config-route-map)# set metric 200
Router2(config-route-map)# exit
Router2(config)# router bgp 64500
Router2(config-bgp)# address-family ipv4 unicast
Router2(config-bgp-ipv4-uc)# neighbor 192.168.2.1 route-map To-AS64501 out
```

Based on configuration of Router1 and Router2, which BGP metric is being manipulated?

- A. Weight
- B. Multiple exit discriminator
- C. Local preference
- D. AS path length

**Answer:** B

#### NEW QUESTION 29

A network administrator is implementing OSPF, where there are two exit points. Each exit point has a stateful, application inspection firewall to implement company policies.

What would the best practice be to ensure that one firewall will see both directions of the traffic, preventing asynchronous connections in the network?

- A. Both ASBRs should define External Type 1 routes for the
- B. Both ASBRs should define External Type 1 routes for the
- C. Both ASBRs should define External Type 2 routes for the
- D. Both ASBRs should define External Type 2 routes for the

**Answer:** A

#### NEW QUESTION 33

A network has an ABR that connects area 0 and 1. A network engineer configures a summarized route for area 1. The ABR is a designated router (DR) for the segment it uses to connect to area 1.

Which LSA type is assigned to this route when the summarized route is advertised into area 1 by the ABR?

- A. LSA1
- B. LSA4
- C. LSA3
- D. LSA2

**Answer:** B

#### NEW QUESTION 38

An administrator in a company of 349 users has a pair of AOS-CX switches with connections to external networks. Both switches are configured for OSPF. The administrator wants to import external routes on both switches, but assigns different seed metrics to the routes, as well as imports them as external type-1 routes.

What is the best way for the administrator to accomplish this?D18912E1457D5D1DDCBD40AB3BF70D5D

- A. Create a route map with the correct route type and metrics
- B. Define the route type and metrics in the OSPF process
- C. Create a classifier policy with the correct route type and metrics
- D. Define a class and policy map with the correct route type and metrics

**Answer:** A

#### NEW QUESTION 43

A company has just purchased AOS-CX switches. The company has a free and open-source AAA solution. The company wants to implement access control on the Ethernet ports of the AOS-CX switches.

Which security features can the company implement given the equipment that they are using?

- A. Port-based tunneling
- B. Device fingerprinting
- C. Local user roles
- D. Downloadable user roles

**Answer:** D

#### NEW QUESTION 47

A network administrator is implementing NAE on AOS-CX switches. When attempting to create an agent on a particular switch, the agent appears in the NAE Agents panel with a red triangle error symbol and a status of “Unknown”. What is the cause of this issue?

- A. The administrator does not have the appropriate credentials to interact with NAE
- B. The number of scripts or agents has exceeded the hardware’s capabilities
- C. A connectivity issue exists between NAE and the AOS-CX switch
- D. The RESTful API has not been enabled on the AOS-CX switch

**Answer:** C

#### NEW QUESTION 52

An administrator creates an ACL rule with both the “count” and “log” option enabled. What is correct about the action taken by an AOS-CX switch when there is a match on this rule?

- A. By default, a summarized log is created every minute with a count of the number of matches
- B. Logging will not include certificate and TLS events, but counting will
- C. The “count” and “log” options are processed by the AOS-CX switch’s hardware ASIC
- D. The total in the “log” record and the count could contain different rule matching statistics

**Answer:** D

#### NEW QUESTION 54

An administrator is implementing a downloadable user role solution involving AOS-CX switches. The AAA solution and the AOS-CX switches can successfully authenticate users; however, the role information fails to download to the switches. What policy should be added to an intermediate firewall to allow the downloadable role function to succeed?

- A. Allow TCP 443
- B. Allow UDP 1811
- C. Allow UDP 8211
- D. Allow TCP 22

**Answer:** A

#### NEW QUESTION 59

A company has recently upgraded their campus switching infrastructure with AOS-CX switches. They have implemented 802.1X authentication on access ports where laptop and IOT devices typically connect. An administrator has noticed that for POE devices, the AOS-CX switch ports are delivering the maximum wattage to the port instead of what the device actually needs. Concerned about this waste of electricity, what should the administrator implement to solve this problem?

- A. Implement a classifier policy with the correct power definitions
- B. Create device profiles with the correct power definitions
- C. Enable AAA authentication to exempt LLDP and/or CDP information
- D. Globally enable the QoS trust setting for LLDP and/or CDP

**Answer:** B

#### NEW QUESTION 63

How is voice traffic prioritized correctly on AOS-CX switches?

- A. By defining device profiles with QOS settings
- B. By placing it in the strict priority queue
- C. By implementing voice VLANs
- D. By implementing weighted fair queueing (WFQ)

**Answer:** B

#### NEW QUESTION 66

Which AOS-CX feature is used to prevent head-on-line (HOL) blocking?

- A. VSF
- B. WFQ
- C. VOQ
- D. VSX

**Answer:** C

#### NEW QUESTION 67

In AOS-CX switching, what determines when a frame is forwarded by the switch between the ingress and the egress port?

- A. Egress port
- B. Ingress port

- C. VSX switch tables
- D. Fabric Load Balancer

**Answer:** B

#### NEW QUESTION 70

A network engineer for a company with 896 users across a multi-building campus wants to gather statistics on an important switch uplink and create actions based on issues that occur on the uplink. How often does an NAE agent gather information from the current state database in regard to the uplink interfaces?

- A. Once every 60 seconds
- B. Once every 1 second
- C. Once every 30 seconds
- D. Once every 5 seconds

**Answer:** D

#### NEW QUESTION 74

How should a network administrator add NAE scripts and implement NAE agents that will run on an AOS-CX switch?

- A. Use the web interface of the NetEdit server
- B. Use the web interface of the AOS-CX switch
- C. Use the web interface of Aruba Central
- D. Use the CLI of the AOS-CX switch

**Answer:** B

#### NEW QUESTION 76

A network administrator is installing NetEdit. In order for NetEdit to manage the AOS-CX switches in the network, what must be defined on the AOS-CX switches? (Choose two.)

- A. Enabling telnet
- B. Defining an admin user password
- C. Defining the https user-group
- D. Enabling the RESTful API for read and write access
- E. Enabling SFTP

**Answer:** BD

#### NEW QUESTION 77

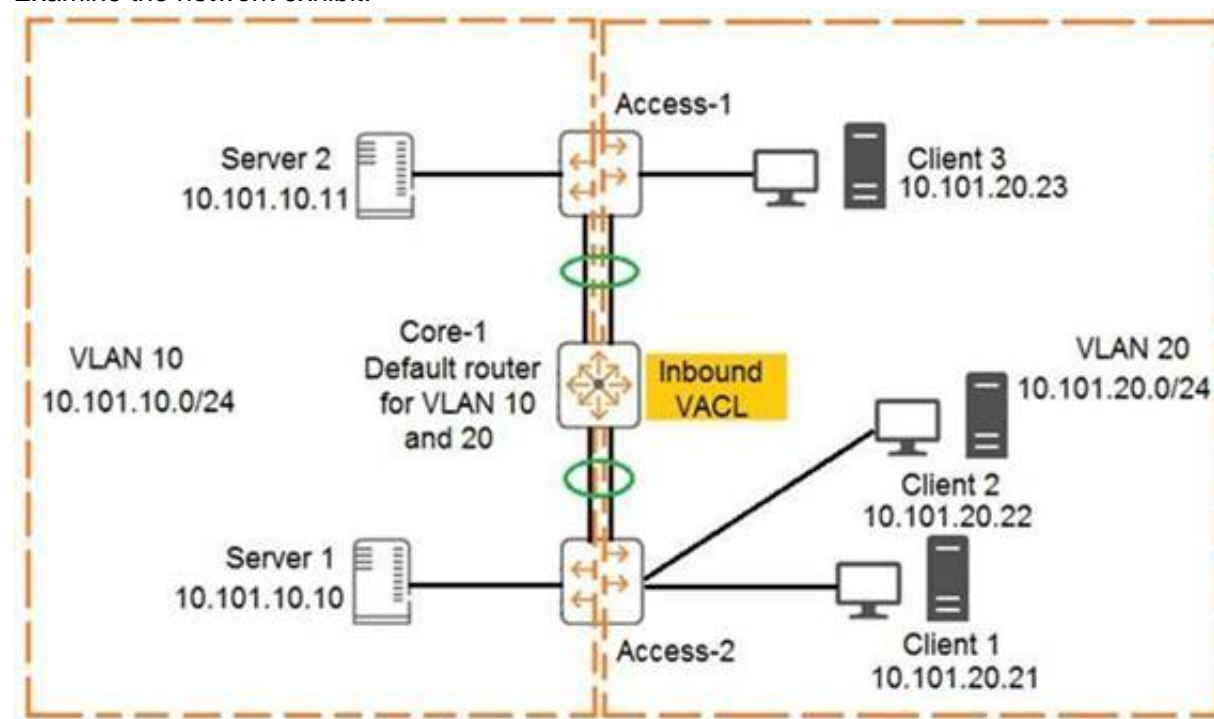
What are best practices when implementing VSX on AOS-CX switches? (Choose two.)

- A. The ISL lag should use the default MTU size.
- B. Timers should be left at their default values.
- C. The default system MAC addresses should be used.
- D. The keepalive connection should use a direct layer-3 connection.
- E. The ISL lag should use at least 10GbE links or faster.

**Answer:** BD

#### NEW QUESTION 82

Examine the network exhibit:



The ACL configuration defined on Core-1 is as follows:



```
Core-1(config)# access-list ip example
Core-1(config-acl-ip)# permit ip 10.101.20.21/32 any eq 23
Core-1(config-acl-ip)# permit ip 10.101.20.21/32 eq 23 any
Core-1(config-acl-ip)# exit
Core-1(config)# vlan 20
Core-1(config-if)# apply access-list example in
```

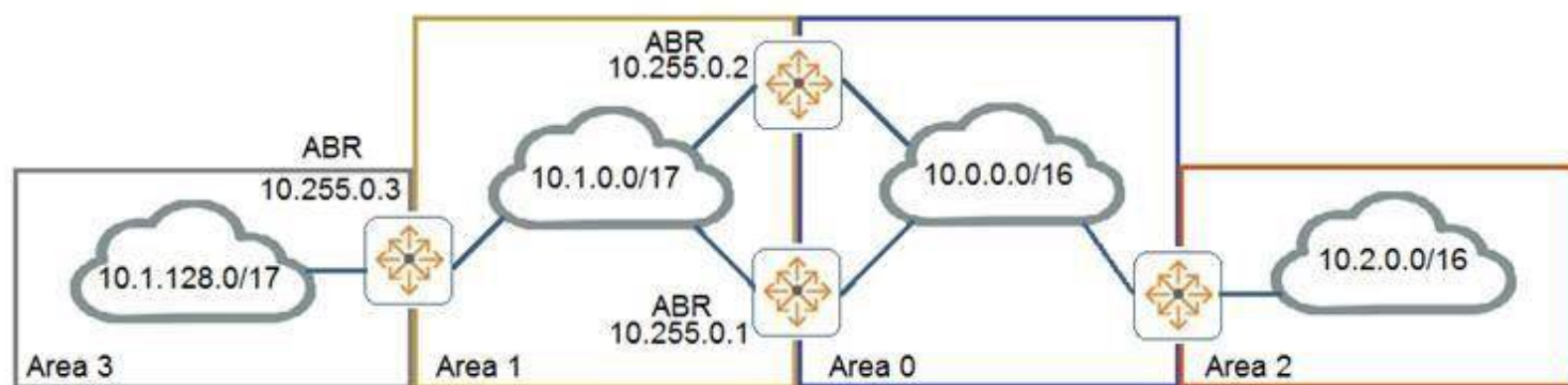
If telnet was being used, which device connection would be permitted and functional in both directions? (Choose two.)

- A. Client 3 to Client 2
- B. Client 1 to Client 2
- C. Server 2 to Client 2
- D. Server 1 to Client 1
- E. Client 1 to Client 3

**Answer:** BD

#### NEW QUESTION 84

Examine the attached exhibit.



The network administrators is trying to add a remote location as area 3 to the network shown in the diagram. Based on current connection restrictions, the administrator cannot connect area 3 directly to area 0. The network is using AOS-CX switches.

Which feature should the administrator implement to provide connectivity to the remote location?

- A. Not-so-stubby areas
- B. Bidirectional forward detection (BFD)
- C. OSPFv3
- D. Virtual links

**Answer:** D

#### NEW QUESTION 85

An AOS-CX switch is configured to implement downloadable user roles. Examine the AOS-CX switch output:

```
Access1(config)# show aaa authentication port-access interface all client-status
```

##### Port Access Client Status Details

```
Client 00:50:56:b1:7a:37
```

```
=====
```

##### Session Details

```
-----
```

```
Port : 1/1/3
```

```
Session Time : 1887s
```

##### Authentication Details

```
-----
```

```
Status : mac-auth Authenticated
```

```
Auth Precedence : dot1x - Not attempted, mac-auth - Authenticated
```

##### Authorization Details

```
-----
```

```
Role :
```

```
Status : Not ready
```

Based on this output, what is the state of the user's access?

- A. No downloadable user role exists
- B. MAC authentication has passed, but 802.1X authentication is in progress
- C. The RADIUS request timed out to the AAA server
- D. The port should be configured for 802.1X

**Answer:** D

#### NEW QUESTION 88



An administrator is concerned about the security of the control plane connection between an AOS-CX switch and an Aruba Mobility Controller (MC) when implementing user-based tunneling. How should the administrator protect this traffic?

- A. IPSec with a digital certificate
- B. GRE with a pre-shared key
- C. PAPI with an MD5 pre-shared key
- D. IPSec with a pre-shared key

**Answer: C**

#### NEW QUESTION 89

A company has implemented 802.1X authentication on AOS-CX access switches, where two ClearPass servers are used to implement AAA. Each switch has the two servers defined. A network engineer notices the following command configured on the AOS-CX switches:  
radius-server tracking user-name monitor password plaintext aruba123  
What is the purpose of this configuration?

- A. Implement replay protection for AAA messages
- B. Define the account to implement downloadable user roles
- C. Speed up the AAA authentication process
- D. Define the account to implement change of authorization

**Answer: D**

#### Explanation:

[https://techhub.hpe.com/eginfolib/networking/docs/switches/K-KA-KB/16-01/5200-0122\\_access\\_security\\_guide/content/ch09s02.html](https://techhub.hpe.com/eginfolib/networking/docs/switches/K-KA-KB/16-01/5200-0122_access_security_guide/content/ch09s02.html)

#### NEW QUESTION 90

What is the correct way of associating a VRF instance to either a VLAN or an interface?

- A. Switch(config)# interface <interface-ID>Switch(config-if)# vlan access <VLAN-ID> vrf attach <vrf-name>
- B. Switch(config)# vlan <VLAN-ID> vrf attach < vrf-name >
- C. Switch(config)# vlan <VLAN-ID>Switch(config-vlan-<VLAN-ID># vrf attach < vrf-name >
- D. Switch(config)# vlan <VLAN-ID> vrf < vrf-name >

**Answer: C**

#### NEW QUESTION 92

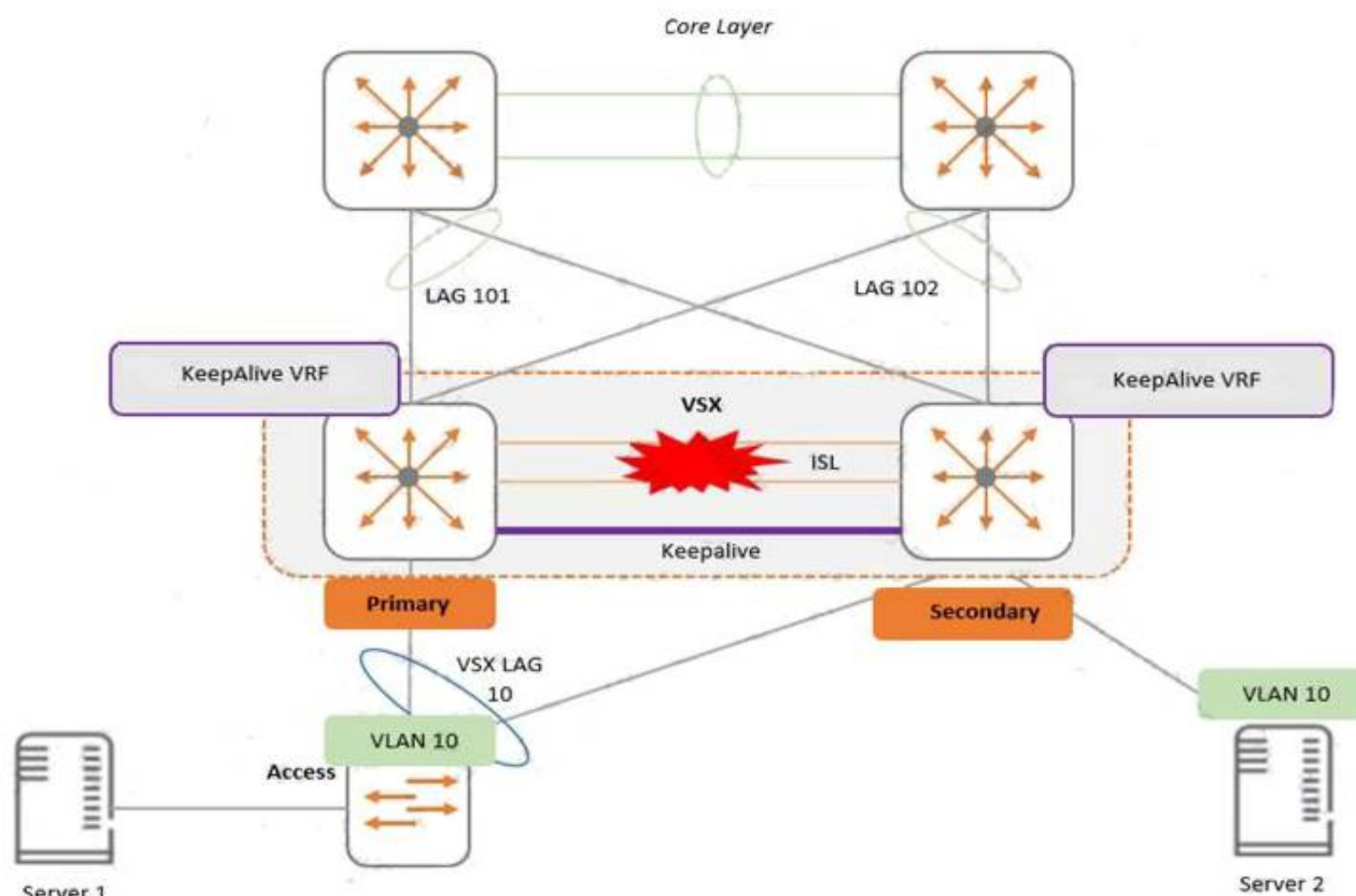
What is correct regarding the configuration of ACLs on AOS-CX switches?

- A. Statements with the log keyword are always processed by the switch CPU.
- B. Standard ACLs are used to match on routes when performing route distribution.
- C. Wildcard masks are used to match on a range of IP addresses.
- D. Numbers 100 through 199 and 2000 through 2999 are used when creating extended ACLs.

**Answer: C**

#### NEW QUESTION 96

Examine the attached diagram



Two AOS-CX switches are configured for VSX at the access layer, where servers attached to them. An SVI interface is configured for VLAN 10 and serves as the default gateway for VLAN 10. The ISL link between the switches fails, but the keepalive interface functions. Active gateway has been configured on the switches. What is correct about access from the servers to the Core?

- A. Server 2 can successfully access the core layer via the keepalive link.
- B. Server 1 and Server 2 can communicate with each other via the core layer.
- C. Server 2 cannot access the core layer.
- D. Server 1 can access the core layer via both uplinks.

**Answer:** D

#### NEW QUESTION 97

A network administrator wants to centralize the management of AOS-CX switches by implementing NetEdit. How should the administrator purchase and/or install the NetEdit solution?

- A. Install as a hardware appliance
- B. Installed on a supported version of RedHat Enterprise Linux
- C. Installed in a virtualized solution by using the Aruba-supplied OVA file
- D. Installed on a supported version of Debian Linux

**Answer:** C

#### NEW QUESTION 100

Examine the following AOS-CX switch configuration:

```
Switch(config-addgroup-ip)# object-group ip address servers
Switch(config-addgroup-ip)# 10.1.0.100
Switch(config-addgroup-ip)# 10.1.1.100
Switch(config-addgroup-ip)# exit
```

Which access control entries would allow web traffic to the web servers 10.1.0.100 and 10.1.1.100?

- A. permit tcp servers eq 80
- B. permit tcp any 10.1.0.100 0.0.1.0 eq 80
- C. permit tcp any 10.1.0.100/10.1.1.100 eq 80
- D. permit tcp any 10.1.0.100/255.255.254.255 eq 80

**Answer:** B

#### NEW QUESTION 103

What is correct regarding rate limiting and egress queue shaping on AOS-CX switches?

- A. Only a traffic rate and burst size can be defined for a queue
- B. Limits can be defined only for broadcast and multicast traffic
- C. Rate limiting and egress queue shaping can be used to restrict inbound traffic
- D. Rate limiting and egress queue shaping can be applied globally

**Answer:** A

#### NEW QUESTION 107

An administrator is implementing a multicast solution in a multi-VLAN network. Which statement is true about the configuration of the switches in the network?

- A. IGMP snooping must be enabled on all interfaces on a switch to intelligently forward traffic
- B. IGMP requires join and leave messages to graft and prune multicast streams between switches
- C. IGMP must be enabled on all routed interfaces where multicast traffic will traverse
- D. IGMP must be enabled on all interfaces where multicast sources and receivers are connected

**Answer:** B

#### NEW QUESTION 108

What is correct regarding the operation of VSX and multicasting with PIM-SM routing configured?

- A. Each VSX peers runs PIM and builds its own group databas
- B. One of the VSX peers is elected as the designated router (DR) to forward multicast streams to a receiver VLAN
- C. Each VSX peers runs PIM and creates a shared group databas
- D. Both VSX peers can forward multicast streams to receivers in a VLAN, achieving load sharing
- E. Each VSX peers runs PIM and builds its own group databas
- F. Both VSX peers can forward multicast streams to receivers in a VLAN, achieving load sharing
- G. Each VSX peers runs PIM and creates a shared group databas
- H. One of the VSX peers is elected as the designated router (DR) to forward multicast streams to a receiver VLAN

**Answer:** A

#### NEW QUESTION 112

A network engineer is using NetEdit to manage AOS-CX switches. The engineer notices that a lot of thirdparty VoIP phones are showing up in the NetEdit topology. The engineer deletes these, but they are automatically rediscovered by NetEdit and added back in. What should the administrator do to solve this problem?

- A. Change the VoIP phone SNMP community string to something unknown by NetEdit
- B. Disable LLDP globally on the AOS-CX switches where phones are connected
- C. Disable SSH access on all the VoIP phones
- D. Disable the RESTful API on all the VoIP phones

**Answer:** A

#### NEW QUESTION 116

When comparing PIM-DM and PIM-SM, which multicast components are only found with PIM-SM in multicast routing? (Choose two.)

- A. IGMP querier
- B. Rendezvous point
- C. Bootstrap router
- D. Shortest path tree
- E. Designated router

**Answer:** BD

#### NEW QUESTION 119

A company is implementing AOS-CX switches at the access layer. The company wants to implement access control for employees and guests. Which security features will require a ClearPass server to be installed and used by the company?

- A. Downloadable user roles
- B. Dynamic segmentation
- C. User-based tunneling (UBT)
- D. Change of authorization (CoA)

**Answer:** B

#### NEW QUESTION 120

Which protocols are used by NetEdit to interact with third-party devices? (Choose two.)

- A. telnet
- B. SNMP
- C. SSH
- D. Restful API
- E. CDP

**Answer:** BC

#### NEW QUESTION 123

Which protocol does NetEdit use to discover devices in a subnet during the discovery process?

- A. LLDP
- B. ARP
- C. DHCP
- D. ICMP

**Answer:** D

#### NEW QUESTION 124

What is required when implementing captive portal on AOS-CX switches?

- A. Certificate installed on the switch
- B. Web server running on the switch
- C. Device fingerprinting
- D. AAA server

**Answer:** D

#### NEW QUESTION 128

.....

## THANKS FOR TRYING THE DEMO OF OUR PRODUCT

Visit Our Site to Purchase the Full Set of Actual HPE6-A73 Exam Questions With Answers.

We Also Provide Practice Exam Software That Simulates Real Exam Environment And Has Many Self-Assessment Features. Order the HPE6-A73 Product From:

<https://www.2passeasy.com/dumps/HPE6-A73/>

## Money Back Guarantee

### HPE6-A73 Practice Exam Features:

- \* HPE6-A73 Questions and Answers Updated Frequently
- \* HPE6-A73 Practice Questions Verified by Expert Senior Certified Staff
- \* HPE6-A73 Most Realistic Questions that Guarantee you a Pass on Your FirstTry
- \* HPE6-A73 Practice Test Questions in Multiple Choice Formats and Updatesfor 1 Year