

Microsoft

Exam Questions MD-100

Windows 10



NEW QUESTION 1

- (Exam Topic 4)

Please wait while the virtual machine loads. Once loaded, you may proceed to the lab section. This may take a few minutes, and the wait time will not be deducted from your overall test time.

When the Next button is available, click it to access the lab section. In this section, you will perform a set of tasks in a live environment. While most functionality will be available to you as it would be in a live environment, some functionality (e.g., copy and paste, ability to navigate to external websites) will not be possible by design.

Scoring is based on the outcome of performing the tasks stated in the lab. In other words, it doesn't matter how you accomplish the task, if you successfully perform it, you will earn credit for that task.

Labs are not timed separately, and this exam may more than one lab that you must complete. You can use as much time as you would like to complete each lab.

But, you should manage your time appropriately to ensure that you are able to complete the lab(s) and all other sections of the exam in the time provided.

Please note that once you submit your work by clicking the Next button within a lab, you will NOT be able to return to the lab.

Username and password



Use the following login credentials as needed:

To enter your password, place your cursor in the Enter password box and click on the password below.

Username: Contoso/Administrator

Password: Passw0rd!

The following information is for technical support purposes only:

Lab Instance: 10921597



You need to create a group named Group2 on Client2. The members of Group2 must be able to change the system time. The solution must use the principle of least privilege.

To complete this task, sign in to the required computer or computers.

- A. Mastered
- B. Not Mastered

Answer: A

Explanation:

See explanation below.

- On Client2, Press Windows+R
- Type lusrmgr.msc
- Right click Groups and click New Group.
- Type in the Group name and a description.
- Click Add to add members to this group. Specify the name of the user or group or computer to be added.
- Click Create and Close.
- Press the Win + R keys to open Run, type secpol.msc into Run, and click/tap on OK to open Local Security Policy.
- Expand open Local Policies in the left pane of Local Security Policy, click/tap on User Rights Assignment, and double click/tap on the Change the system time policy in the right pane.
- Click/tap on the Add User or Group button.
- Click/tap on the Object Types button.
- Check all the boxes for Object types, and click/tap on the OK.
- Click/tap on the Advanced button.
- Click/tap on the Find Now button, select the name of the user or group
- Click/tap on OK.
- Click/tap on OK.
- When finished, you can close Local Users and Groups.

Reference:

<https://www.windows-active-directory.com/local-user-management.html> <https://www.tenforums.com/tutorials/92910-allow-prevent-users-groups-change-time-windows-10-a.html#optio>

NEW QUESTION 2

- (Exam Topic 4)

You have a computer named Computer1 that runs Windows 10. Computer1 connects to multiple wireless networks. You need to view the wireless networks to which Computer1 connects. What should you use?

- A. the System log in Event Viewer
- B. Wi-Fi in the Settings app
- C. the properties of the wireless adapter in Network Connections in Control Panel
- D. the Details tab for the wireless adapter in Device Manager

Answer: B

Explanation:

Reference:

<https://www.windowscentral.com/how-connect-wi-fi-network-windows-10>

NEW QUESTION 3

- (Exam Topic 4)

You have a computer named Computer1 that runs Windows 10 and has Windows Assessment and Deployment Kit (Windows ADK) installed. Computer1 has the drives shown in the following table.

Letter	Description
C	Operating system
D	Data drive
E	DVD drive that contains the Windows 10 installation files

You need to create Windows 10 unattended answer file. What should you do first?

- A. From File Explorer, copy Install.wim from drive E to drive D.
- B. From Windows System Image Manager, select Select Windows Image, and then select Install.wim from drive E.
- C. From Windows System Image Manager, select Select Windows Image, and then select Boot.wim from drive E.
- D. From File Explorer, copy Boot.wim from drive E to drive D.

Answer: A

Explanation:

References:

<https://www.windowscentral.com/how-create-unattended-media-do-automated-installation-windows-10>

NEW QUESTION 4

- (Exam Topic 4)

You have a computer that runs Windows 10. You can start the computer but cannot sign in. You need to start the computer into the Windows Recovery Environment (WinRE). What should you do?

- A. Turn off the compute
- B. Turn on the computer, and then press F8.
- C. Turn off the compute
- D. Turn on the computer, and then press F10.
- E. From the sign-in screen, hold the Shift key, and then click Restart.

F. Hold Alt+Ctrl+Delete for 10 seconds.

Answer: C

Explanation:

References:
<https://docs.microsoft.com/en-us/windows-hardware/manufacture/desktop/windows-recovery-environment--win>

NEW QUESTION 5

- (Exam Topic 4)
Your network contains an Active Directory domain. The domain contains a group named Group1.
All the computers in the domain run Windows 10. Each computer contains a folder named C:\Documents that has the default NTFS permissions set.
You add a folder named C:\Documents\Templates to each computer.
You need to configure the NTFS permissions to meet the following requirements: All domain users must be able to open the files in the Templates folder.
Only the members of Group1 must be allowed to edit the files in the Templates folder.
How should you configure the NTFS settings on the Templates folder? To answer, select the appropriate options in the answer area.
NOTE: Each correct selection is worth one point.

Inheritance:

▼

Enable inheritance.

Disable inheritance and remove permissions.

Disable inheritance and copy explicit permissions.

Permissions for domain users:

▼

Allow Read&Execute

Deny Read&Execute

Allow Modify

Deny Modify

Permissions for Group1:

▼

Allow Read&Execute

Deny Read&Execute

Allow Modify

Deny Modify

- A. Mastered
- B. Not Mastered

Answer: A

Explanation:

Inheritance:

▼

Enable inheritance.

Disable inheritance and remove permissions.

Disable inheritance and copy explicit permissions.

Permissions for domain users:

▼

Allow Read&Execute

Deny Read&Execute

Allow Modify

Deny Modify

Permissions for Group1:

▼

Allow Read&Execute

Deny Read&Execute

Allow Modify

Deny Modify

NEW QUESTION 6

- (Exam Topic 4)
You have a workgroup computer named Computer1 that runs Windows 10 and has the users shown in the following table.

Name	Member of
User1	Administrators
User2	Users

You have a file named File1.reg that contains the following content.

```
Windows Registry Editor Version 5.00
```

```
[HKEY_CURRENT_USER\System\Key1]
```

```
[HKEY_LOCAL_MACHINE\System\Key2]
```

You need to identify what occurs when User1 and User2 double-click File1.reg.
What should you identify? To answer, select the appropriate options in the answer area.
NOTE: Each correct selection is worth one point.

When User1 double-clicks **File1.reg**:

- No change is made to registry.
- Only Key1 is added to the registry.
- Only Key2 is added to the registry.
- Key1 and Key2 are added to the registry.

When User2 double-clicks **File1.reg**:

- No change is made to registry.
- Only Key1 is added to the registry.
- Only Key2 is added to the registry.
- Key1 and Key2 are added to the registry.

- A. Mastered
- B. Not Mastered

Answer: A

Explanation:

Box 1:
User1 is a member of the Administrators group so has permission to add keys to both registry hives.
Box 2:
User2 is a standard user so does not have permission to add a key to the HKEY_LOCAL_MACHINE registry hive so Key2 will not be imported.

NEW QUESTION 7

- (Exam Topic 4)
You plan to deploy Windows 10 Enterprise to company-owned devices. You capture a Windows 10 image file from a reference device.
You need to generate catalog files and answer files for the deployment.
What should you use for each file? To answer, select the appropriate options in the answer area.
NOTE: Each correct selection is worth one point.

Catalog file:

- Deployment Image Servicing and Management (DISM)
- Windows Configuration Designer
- Windows Deployment Services (WDS)
- Windows System Image Manager (Windows SIM)

Answer file:

- Deployment Image Servicing and Management (DISM)
- Windows Configuration Designer
- Windows Deployment Services (WDS)
- Windows System Image Manager (Windows SIM)

- A. Mastered
- B. Not Mastered

Answer: A

Explanation:

Graphical user interface, text, application Description automatically generated

References:

<https://docs.microsoft.com/en-us/windows-hardware/customize/desktop/wsim/open-a-windows-image-or-catalo>

NEW QUESTION 8

- (Exam Topic 2)

You need to meet the quality update requirement for ComputerA. For how long should you defer the updates?

- A. 14 days
- B. 10 years
- C. 5 years
- D. 180 days
- E. 30 days

Answer: E

Explanation:

References:

<https://www.thewindowsclub.com/delay-defer-feature-updates-365-days-windows-10>

NEW QUESTION 9

- (Exam Topic 1)

You need to recommend a solution to monitor update deployments. What should you include in the recommendation?

- A. Windows Server Update (WSUS)
- B. the Update Management solution in Azure Automation
- C. the Update Compliance solution in Azure Log Analytics
- D. the Azure Security Center

Answer: C

Explanation:

References:

<https://docs.microsoft.com/en-us/windows/deployment/update/update-compliance-monitor>

NEW QUESTION 10

- (Exam Topic 1)

You need to implement a solution to configure the contractors' computers.

What should you do? To answer, select the appropriate options in the answer area. NOTE: Each correct selection is worth one point.

Tool to use:

▼
Microsoft Deployment Toolkit (MDT)
Windows AutoPilot
Windows Configuration Designer
Windows Deployment Services (WDS)

File type to create:

▼
CAB
PPKG
WIM
XML

- A. Mastered
- B. Not Mastered

Answer: A

Explanation:

References:

<https://docs.microsoft.com/en-us/windows/configuration/provisioning-packages/provisioning-install-icd>

NEW QUESTION 10

- (Exam Topic 1)

You need to reduce the amount of time it takes to restart Application1 when the application crashes. What should you include in the solution? To answer, select the appropriate options in the answer area. NOTE: Each correct selection is worth one point.

Tool to use:

	▼
Event Viewer	
Performance Monitor	
Windows Memory Diagnostic	
Windows Performance Analyzer	

Task to perform:

	▼
Create a subscription	
Attach a task to an event	
Enable an event trace provider	
Create an alert	

- A. Mastered
- B. Not Mastered

Answer: A

Explanation:

Reference:

<https://www.howto-connect.com/how-to-attach-a-task-to-this-event-in-event-viewer-in-windows-10/>

NEW QUESTION 13

- (Exam Topic 1)

An employee reports that she must perform a BitLocker recovery on her laptop. The employee does not have her BitLocker recovery key but does have a Windows 10 desktop computer.

What should you instruct the employee to do from the desktop computer?

- A. Run the manage-bde.exe –status command
- B. From BitLocker Recovery Password Viewer, view the computer object of the laptop
- C. Go to <https://account.activedirectory.windowsazure.com> and view the user account profile
- D. Run the Enable-BitLockerAutoUnlock cmdlet

Answer: C

Explanation:

References:

<https://celedonpartners.com/blog/storing-recovering-bitlocker-keys-azure-active-directory/>

NEW QUESTION 17

- (Exam Topic 1)

You need to ensure that User10 can activate Computer10. What should you do?

- A. Request that a Windows 10 Enterprise license be assigned to User10, and then activate Computer10.
- B. From the Microsoft Deployment Toolkit (MDT), add a Volume License Key to a task sequence, and then redeploy Computer10.
- C. From System Properties on Computer10, enter a Volume License Key, and then activate Computer10.
- D. Request that User10 perform a local AutoPilot Reset on Computer10, and then activate Computer10.

Answer: D

Explanation:

References:

<https://docs.microsoft.com/en-us/windows/deployment/windows-autopilot/windows-autopilot-requirements-lice>

NEW QUESTION 20

- (Exam Topic 1)

You need to sign in as LocalAdmin on Computer11. What should you do first?

- A. From the LAPS UI tool, view the administrator account password for the computer object of Computer11.
- B. From Local Security Policy, edit the policy password settings on Computer11.
- C. From the LAPS UI tool, reset the administrator account password for the computer object of Computer11.
- D. From Microsoft Intune, edit the policy password settings on Computer11.

Answer: A

Explanation:

References:

<https://technet.microsoft.com/en-us/mt227395.aspx>

NEW QUESTION 22

- (Exam Topic 1)

You need to take remote control of an employee's computer to troubleshoot an issue. What should you send to the employee to initiate a remote session?

- A. a numeric security code
- B. a connection file
- C. an Easy Connect request
- D. a password

Answer: A

Explanation:

References:

<https://support.microsoft.com/en-us/help/4027243/windows-10-solve-pc-problems-with-quick-assist>

NEW QUESTION 26

- (Exam Topic 4)

You have a computer named Computer 1 that runs Windows 10.

You turn on System Protection and create a restore point named Point1. You perform the following changes:

➤ Add four files named File1.txt, File2.dll, File3.sys, and File4.exe to the desktop.

Run a configuration script that adds the following four registry keys:

- Key1 to HKEY_CURRENT_USER
- Key2 to HKEY_CLASSES_ROOT
- Key3 to HKEY_LOCAL_MACHINE\SYSTEM
- Key4 to HKEY_CURRENT_CONFIG

You restore Point1.

Which files and registry keys are removed? To answer, select the appropriate options in the answer area. NOTE: Each correct selection is worth one point.

Removed files:

File2.dll only File2.dll and File3.sys only File2.dll, File3.sys, and File4.exe File1.txt, File2.dll, File3.sys, and File4.exe

Removed keys:

Key1 only Key1 and Key2 only Key2, Key3, and Key4 only Key1, Key2, Key3, and Key4
--

- A. Mastered
- B. Not Mastered

Answer: A

Explanation:

References:

<https://www.maketecheasier.com/what-system-restore-can-and-cannot-do-to-your-windows-system/> <https://superuser.com/questions/343112/what-does-windows-system-restore-exactly-back-up-and-restore>

NEW QUESTION 29

- (Exam Topic 4)

A user has a computer that runs Windows 10.

When the user connects the computer to the corporate network, the user cannot access the internal corporate servers. The user can access servers on the Internet.

You run the ipconfig command and receive the following output.


```
Connection-specific DNS Suffix . . : 
Description . . . . . : Ethernet 1
Physical Address. . . . . : 00-50-B6-7B-E4-81
DHCP Enabled. . . . . : Yes
Autoconfiguration Enabled . . . . : Yes
Link-local IPv6 Address . . . . . : fe80::5d56:3419:e83b:3c46%17(Preferred)
IPv4 Address. . . . . : 192.168.0.121(Preferred)
Subnet Mask . . . . . : 255.255.255.0
Lease Obtained. . . . . : Wednesday, October 31, 2018 8:07:14 AM
Lease Expires . . . . . : Wednesday, October 31, 2018 8:07:14 PM
Default Gateway . . . . . : 192.168.0.1
DHCP Server . . . . . : 192.168.0.2
DHCPv6 IAID . . . . . : 536891574
DHCPv6 Client DUID. . . . . : 00-01-00-01-22-AC-5F-64-00-50-B6-7B-E4-81
DNS Servers . . . . . : 131.107.10.60
                        192.168.0.3
NetBIOS over Tcpip. . . . . : Enabled
```

You send a ping request and successfully ping the default gateway, the DNS servers, and the DHCP server. Which configuration on the computer causes the issue?

- A. the DNS servers
- B. the IPv4 address
- C. the subnet mask
- D. the default gateway address

Answer: A

NEW QUESTION 32

- (Exam Topic 4)
You have a Microsoft 365 Enterprise E3 license.
You have a computer named Computer1 that runs Windows 10.
You need to ensure that you can access the files on Computer1 by using a web browser on another computer. What should you configure?

- A. Sync your settings in the Settings app
- B. the File Explorer desktop app
- C. the Microsoft OneDrive desktop app
- D. Default apps in the Settings app

Answer: C

NEW QUESTION 37

- (Exam Topic 4)
Your network contains an Active Directory domain. The domain contains a computer named Computer1 that runs Windows 10.
You need to ensure that Computer1 will respond to ping requests.
How should you configure Windows Defender Firewall on Computer1? To answer, select the appropriate options in the answer area.
NOTE: Each correct selection is worth one point.

Rule to create:

A server-to-server connection security rule

An authentication exemption connection security rule

An inbound rule

An outbound rule

Protocol type to allow:

ICMPv4

IGMP

PGM

TCP

UDP

- A. Mastered
- B. Not Mastered

Answer: A

Explanation:

Rule to create:

A server-to-server connection security rule
An authentication exemption connection security rule
An inbound rule
An outbound rule

Protocol type to allow:

ICMPv4
IGMP
PGM
TCP
UDP

NEW QUESTION 41

- (Exam Topic 4)

Please wait while the virtual machine loads. Once loaded, you may proceed to the lab section. This may take a few minutes, and the wait time will not be deducted from your overall test time.

When the Next button is available, click it to access the lab section. In this section, you will perform a set of tasks in a live environment. While most functionality will be available to you as it would be in a live environment, some functionality (e.g., copy and paste, ability to navigate to external websites) will not be possible by design.

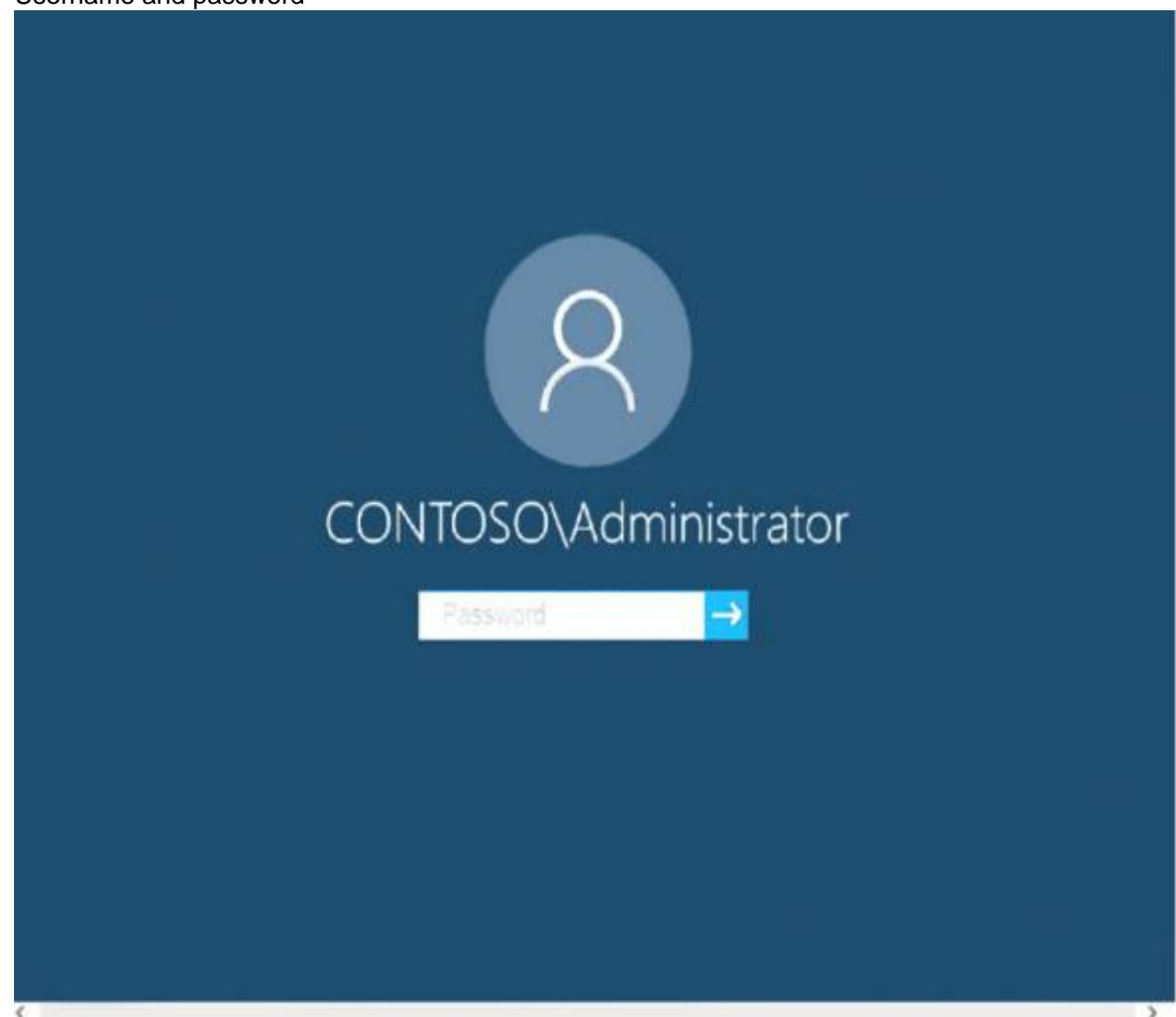
Scoring is based on the outcome of performing the tasks stated in the lab. In other words, it doesn't matter how you accomplish the task, if you successfully perform it, you will earn credit for that task.

Labs are not timed separately, and this exam may more than one lab that you must complete. You can use as much time as you would like to complete each lab.

But, you should manage your time appropriately to ensure that you are able to complete the lab(s) and all other sections of the exam in the time provided.

Please note that once you submit your work by clicking the Next button within a lab, you will NOT be able to return to the lab.

Username and password



Use the following login credentials as needed:

To enter your password, place your cursor in the Enter password box and click on the password below.

Username: Contoso/Administrator

Password: Passw0rd!

The following information is for technical support purposes only: Lab Instance: 11145882

Dashboard

Local Server

All Servers

AD DS

DNS

File and Storage Services >

WELCOME TO SERVER MANAGER

QUICK START

WHAT'S NEW

LEARN MORE

1 Configure this local server

2 Add roles and features

3 Add other servers to manage

4 Create a server group

5 Connect this server to cloud services

Hide

ROLES AND SERVER GROUPS

Roles: 3 | Server groups: 1 | Servers total: 1

AD DS 1

Manageability

Events

Services

Performance

BPA results

DNS 1

Manageability

Events

Services

Performance

BPA results

File and Storage Services 1

Manageability

Events

Services

Performance

BPA results

Local Server 1

Manageability

Events

2 Services

Performance

BPA results

1/23/2020 9:30 PM

All Servers 1

Manageability

Events

2 Services

Performance

BPA results

1/23/2020 9:30 PM

2 Services

Performance

BPA results

1/23/2020 9:30 PM

Tasks

Computers



Administrators report that they cannot use Event Viewer to remotely view the event logs on Client3. You need to ensure that the administrators can access the event logs remotely on Client3. The solution must ensure that Windows Firewall remains enabled. To complete this task, sign in to the required computer or computers.

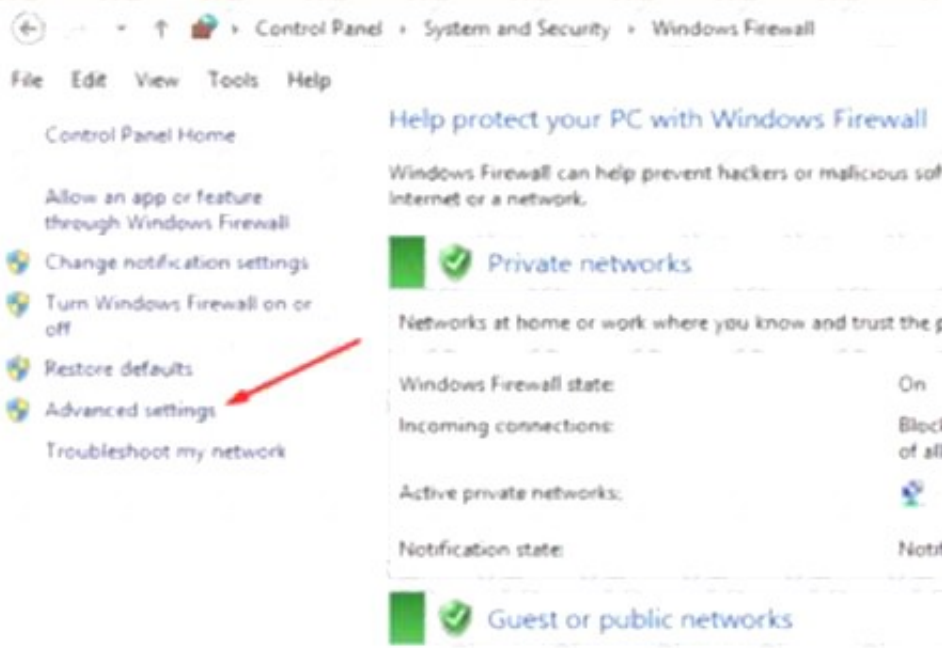
- A. Mastered
- B. Not Mastered

Answer: A

Explanation:

* 1. Go to Control Panel -> System and Security -> Windows Firewall.

* 2. Click on the Advanced settings link in the left-hand side.



* 3. Enable COM+ Network Access (DCOM-In).



* 4. Enable all the rules in the Remote Event Log Management group.



Reference:

<https://www.zubairalexander.com/blog/unable-to-access-event-viewer-on-a-remote-computer/>

NEW QUESTION 43

- (Exam Topic 4)

You have a computer that runs Windows 10 Home.

You need to upgrade the computer to Windows 10 Enterprise as quickly as possible. The solution must retain the user settings.

What should you do first?

- A. Run the scanscafe command.
- B. Perform an in-place upgrade to Windows Pro.
- C. Install the latest feature updates.
- D. Run the sysprep command.

Answer: B

Explanation:

References:

<https://docs.microsoft.com/en-us/windows/deployment/upgrade/windows-10-upgrade-paths>

NEW QUESTION 46

- (Exam Topic 4)

Note: This question is part of a series of questions that present the same scenario. Each question in the series contains a unique solution that might meet the stated goals. Some question sets might have more than one correct solution, while others might not have a correct solution.

After you answer a question in this section, you will NOT be able to return to it. As a result, these questions will not appear in the review screen.

You have two computers named Computer1 and Computer2 that run Windows 10.

You have an Azure Active Directory (Azure AD) user account named admin@contoso.com that is in the local Administrators group on each computer.

You sign in to Computer1 by using admin@contoso.com.

You need to ensure that you can use Event Viewer on Computer1 to connect to the event logs on Computer2. Solution: On Computer2, you enable the Remote Event Log Management inbound rule from Windows

Defender Firewall.

Does this meet the goal?

- A. Yes
- B. No

Answer: A

Explanation:

Reference:

<https://docs.microsoft.com/en-us/previous-versions/windows/it-pro/windows-server-2008-R2-and-2008/cc76643>

NEW QUESTION 50

- (Exam Topic 4)

Note: This question is part of a series of questions that present the same scenario. Each question in the series contains a unique solution that might meet the stated goals. Some question sets might have more than one correct solution, while others might not have a correct solution.

After you answer a question in this section, you will NOT be able to return to it. As a result, these questions will not appear in the review screen.

You have a laptop named Computer1 that runs Windows 10.

When in range, Computer1 connects automatically to a Wi-Fi network named Wireless1. You need to prevent Computer1 from automatically connecting to Wireless1.

Solution: From the properties of the Wi-Fi adapter, you disable Link-Layer Topology Discovery Responder. Does this meet the goal?

- A. Yes
- B. No

Answer: B

NEW QUESTION 53

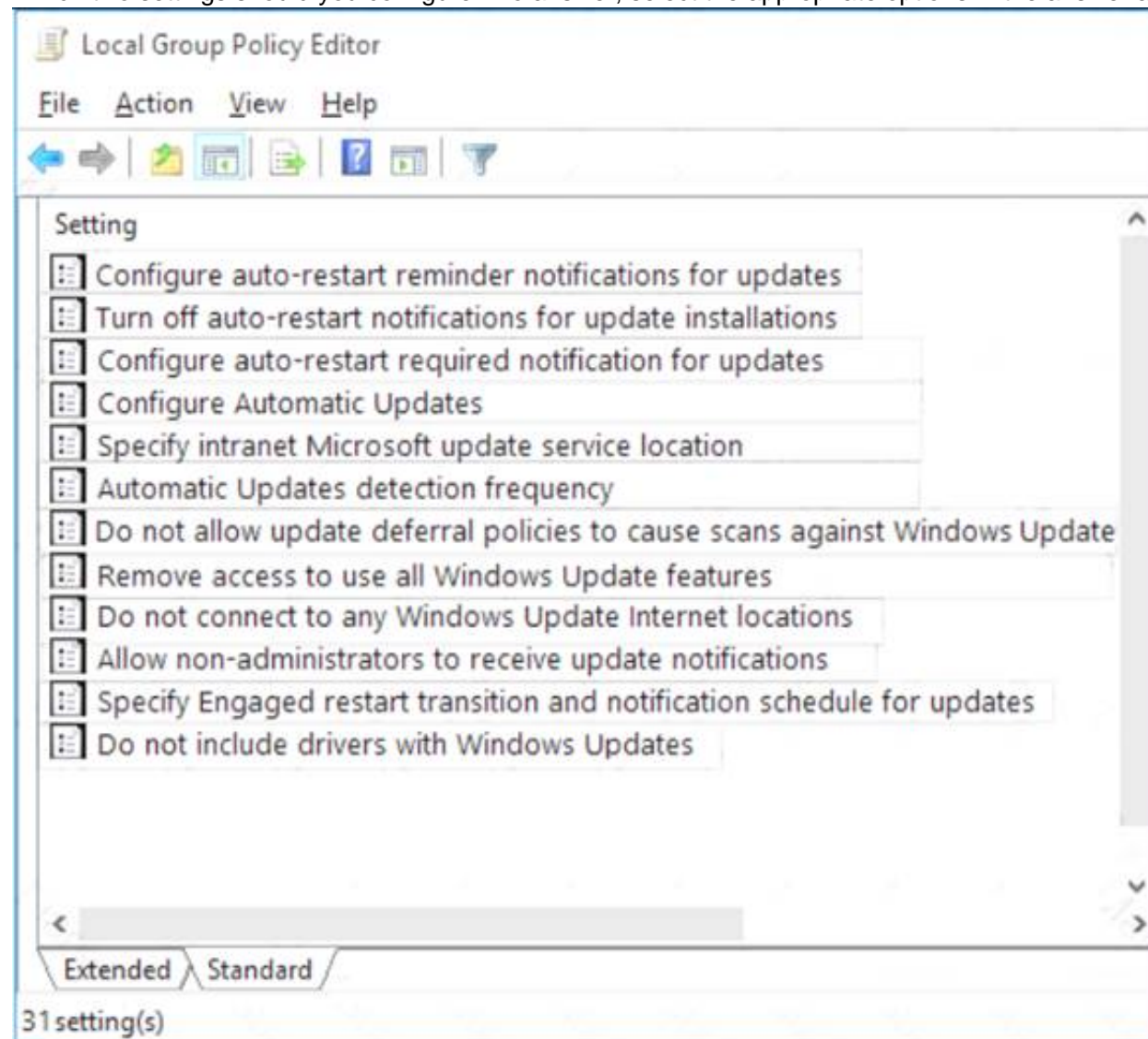
- (Exam Topic 4)

You have 10 computers that run Windows 10.

You have a Windows Server Update Services (WSUS) server.

You need to configure the computers to install updates from WSUS.

Which two settings should you configure? To answer, select the appropriate options in the answer area. NOTE: Each correct selection is worth one point.



- A. Mastered
- B. Not Mastered

Answer: A

Explanation:

References:

<https://docs.microsoft.com/en-us/windows/deployment/update/waas-manage-updates-wsus#configure-automatic>

NEW QUESTION 55

- (Exam Topic 4)

SIMULATION

Please wait while the virtual machine loads. Once loaded, you may proceed to the lab section. This may take a few minutes, and the wait time will not be deducted from your overall test time.

When the Next button is available, click it to access the lab section. In this section, you will perform a set of tasks in a live environment. While most functionality will be available to you as it would be in a live environment, some functionality (e.g., copy and paste, ability to navigate to external websites) will not be possible by design.

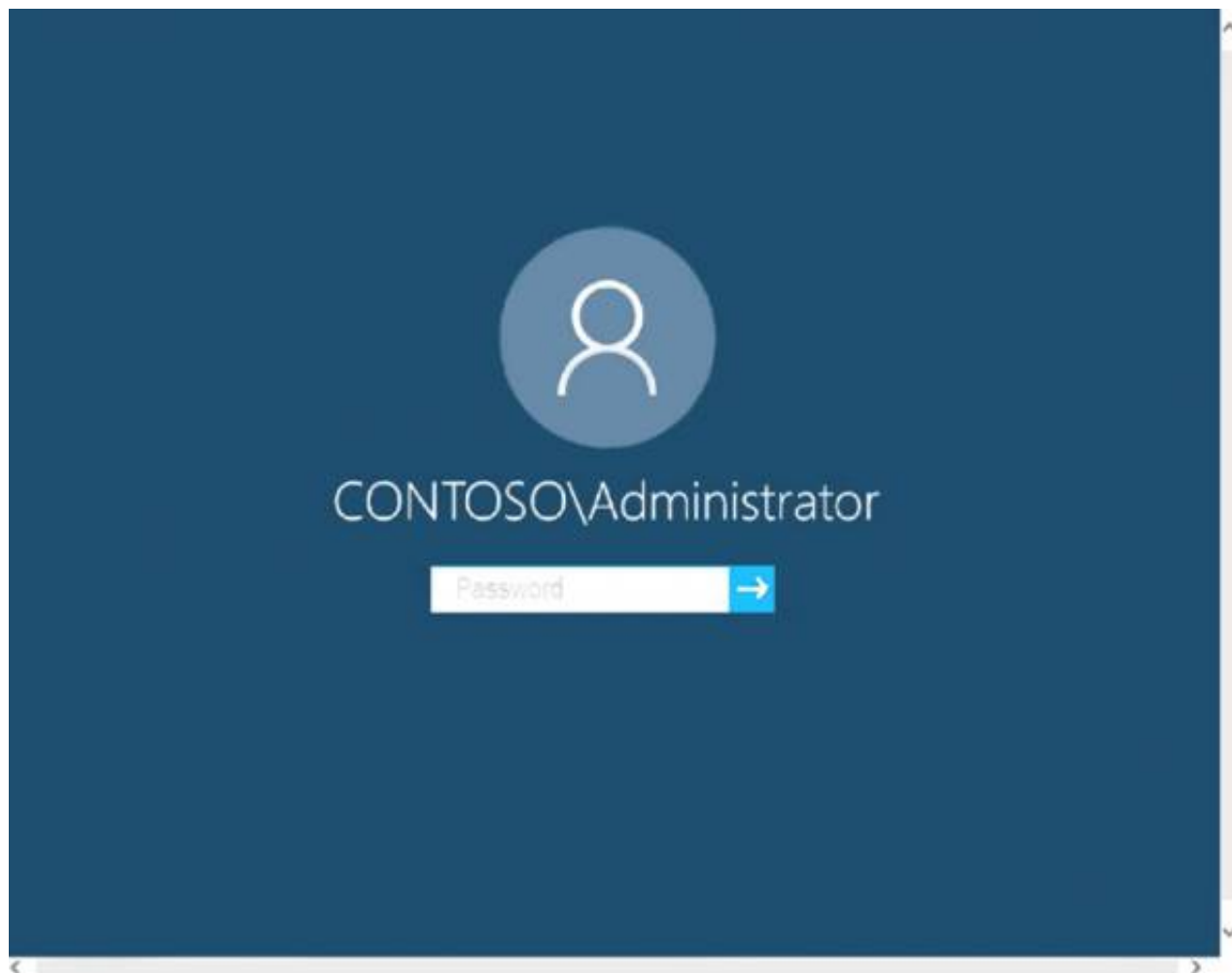
Scoring is based on the outcome of performing the tasks stated in the lab. In other words, it doesn't matter how you accomplish the task, if you successfully perform it, you will earn credit for that task.

Labs are not timed separately, and this exam may more than one lab that you must complete. You can use as much time as you would like to complete each lab.

But, you should manage your time appropriately to ensure that you are able to complete the lab(s) and all other sections of the exam in the time provided.

Please note that once you submit your work by clicking the Next button within a lab, you will NOT be able to return to the lab.

Username and password



Use the following login credentials as needed:

To enter your password, place your cursor in the Enter password box and click on the password below.

Username: Contoso/Administrator

Password: Passw0rd!

The following information is for technical support purposes only:

Lab Instance: 10921597



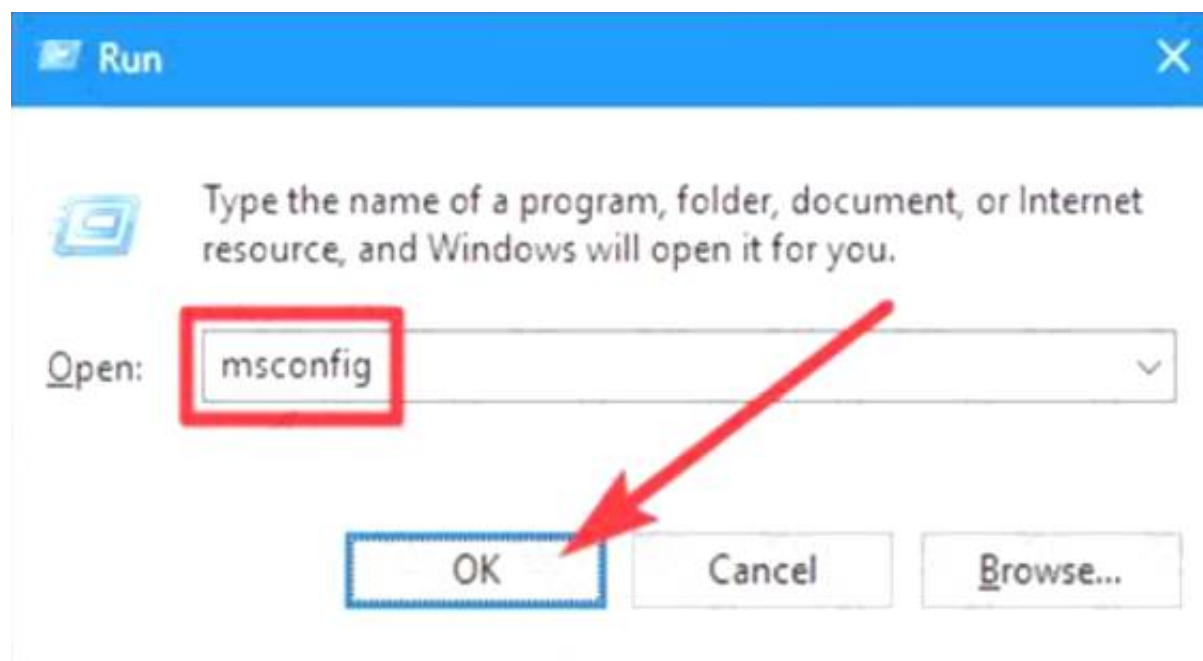
You need to ensure that Client3 starts in safe mode automatically the next time the computer restarts. After completing the task, you must NOT restart Client3. To complete this task, sign in to the required computer or computers.

- A. Mastered
- B. Not Mastered

Answer: A

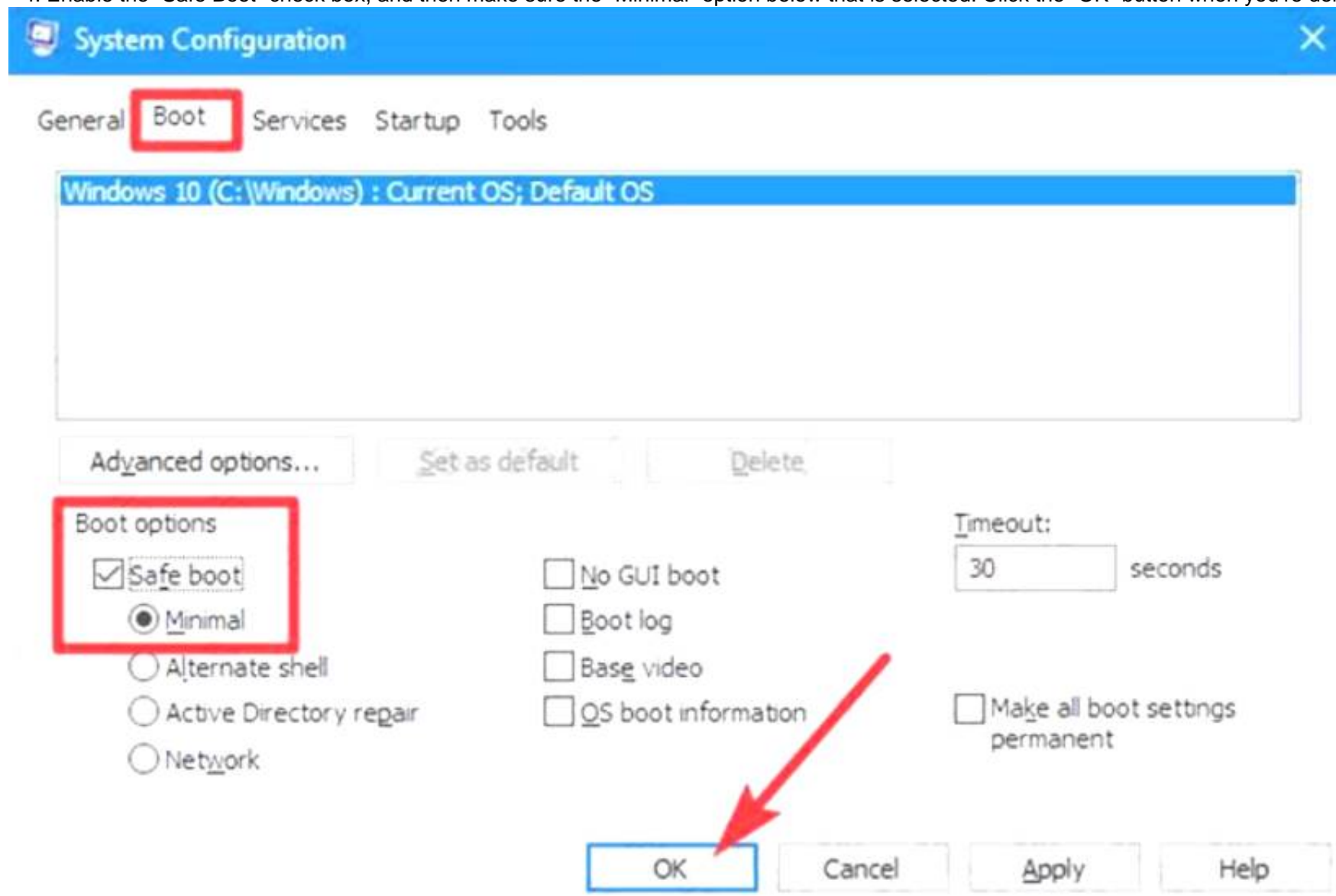
Explanation:

- * 1. From Client3, open the System Configuration utility by pressing the Windows & R keys simultaneously to display the Run box .
- * 2. Type "msconfig" into the box, and then click OK.

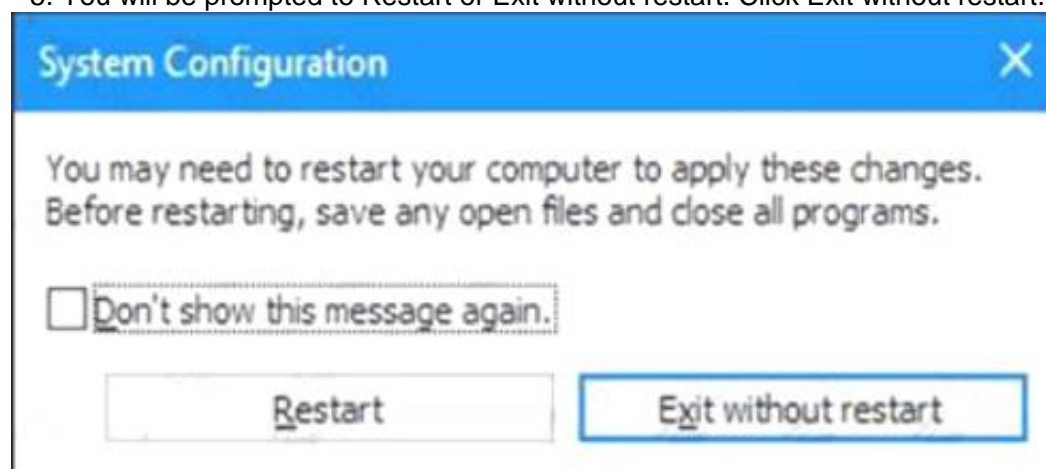


* 3. In the "System Configuration" window, switch to the "Boot" tab.

* 4. Enable the "Safe Boot" check box, and then make sure the "Minimal" option below that is selected. Click the "OK" button when you're done.



* 5. You will be prompted to Restart or Exit without restart. Click Exit without restart.



Reference:

<https://www.howtogeek.com/howto/windows-vista/force-windows-to-boot-into-safe-mode-without-using-the-f8>

NEW QUESTION 60

- (Exam Topic 4)

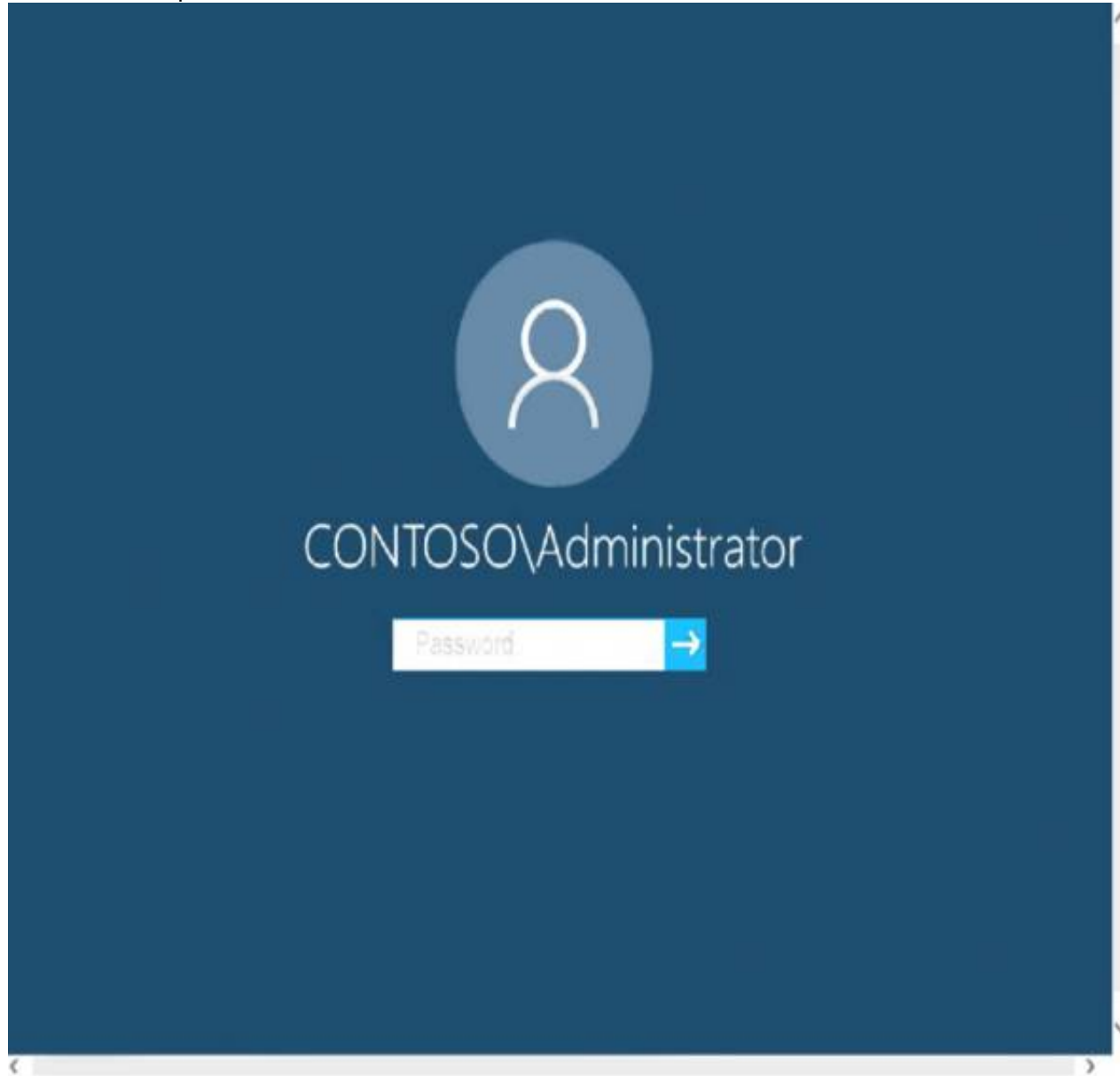
Please wait while the virtual machine loads. Once loaded, you may proceed to the lab section. This may take a few minutes, and the wait time will not be deducted from your overall test time.

When the Next button is available, click it to access the lab section. In this section, you will perform a set of tasks in a live environment. While most functionality will be available to you as it would be in a live environment, some functionality (e.g., copy and paste, ability to navigate to external websites) will not be possible by design.

Scoring is based on the outcome of performing the tasks stated in the lab. In other words, it doesn't matter how you accomplish the task, if you successfully perform it, you will earn credit for that task.

Labs are not timed separately, and this exam may more than one lab that you must complete. You can use as much time as you would like to complete each lab. But, you should manage your time appropriately to ensure that you are able to complete the lab(s) and all other sections of the exam in the time provided. Please note that once you submit your work by clicking the Next button within a lab, you will NOT be able to return to the lab.

Username and password



Use the following login credentials as needed:

To enter your password, place your cursor in the Enter password box and click on the password below.

Username: Contoso/Administrator

Password: Passw0rd!

The following information is for technical support purposes only: Lab Instance: 11145882

Dashboard

Local Server

All Servers

AD DS

DNS

File and Storage Services >

WELCOME TO SERVER MANAGER

QUICK START

WHAT'S NEW

LEARN MORE

1 Configure this local server

2 Add roles and features

3 Add other servers to manage

4 Create a server group

5 Connect this server to cloud services

Hide

ROLES AND SERVER GROUPS

Roles: 3 | Server groups: 1 | Servers total: 1

AD DS 1

Manageability

Events

Services

Performance

BPA results

DNS 1

Manageability

Events

Services

Performance

BPA results

File and Storage Services 1

Manageability

Events

Services

Performance

BPA results

Local Server 1

Manageability

Events

2 Services

Performance

BPA results

1/23/2020 9:30 PM

All Servers 1

Manageability

Events

2 Services

Performance

BPA results

1/23/2020 9:30 PM

2 Services

Performance

BPA results

1/23/2020 9:30 PM

Tasks

Computers



You need to ensure that all the current and future users in the Active Directory domain can establish Remote Desktop connections to Client1. The solution must use the principle of least privilege.
 To complete this task, sign in to the required computer or computers.

- A. Mastered
- B. Not Mastered


Answer: A

Explanation:

Step 1. Add Remote Desktop Users to the Remote Desktop Users Group.

- > Open Server Manager.
- > From Tools menu, select Active Directory Users and Computers
- > Double click at your domain on the left and then select Builtin.
- > Open Remote Desktop Users on the right pane.
- > At Members tab, click Add.
- > Type the AD users that you want to give Remote access to the RDS Server and click OK.
- > After selecting the remote desktop users, click OK again to close the window.

Step 2. Allow the log on through remote desktop Services.

- * 1. Open Group Policy Editor. To do that:
 - * a. Simultaneously press the Windows + R keys to open run command box. 
 - * b. Type gpedit.msc and press Enter.
- * 2. In Group Policy Editor navigate to: Computer Configuration > Windows Settings > Security Settings > Local Policies > User Rights Assignment.
- * 3. At the right Pane: double click at Allow log on through Remote Desktop Services.
- * 4. Click Add User or Group.
- * 5. Type remote and then click Check Names.
- * 6. Select the Remote Desktop Users and click OK.
- * 7. Click OK at 'Select users, computers...' window.
- * 8. Finally click OK again and close Group Policy Editor.

Reference:

<https://www.wintips.org/fix-to-sign-in-remotely-you-need-the-right-to-sign-in-through-remote-desktop-services>

NEW QUESTION 65

- (Exam Topic 4)

Your network contains an Active Directory domain named adatum.com that uses Key Management Service (KMS) for activation.

You deploy a computer that runs Windows 10 to the domain. The computer fails to activate.

You suspect that the activation server has an issue. You need to identify which server hosts KMS.

How should you complete the command? To answer, select the appropriate options in the answer area.

NOTE: Each correct selection is worth one point.



- A. Mastered
- B. Not Mastered

Answer: A

Explanation:

References:

<https://blogs.technet.microsoft.com/odsupport/2011/11/14/how-to-discover-office-and-windows-kms-hosts-via-d>

NEW QUESTION 68

- (Exam Topic 4)

Please wait while the virtual machine loads. Once loaded, you may proceed to the lab section. This may take a few minutes, and the wait time will not be deducted from your overall test time.

When the Next button is available, click it to access the lab section. In this section, you will perform a set of tasks in a live environment. While most functionality will be available to you as it would be in a live environment, some functionality (e.g., copy and paste, ability to navigate to external websites) will not be possible by design.

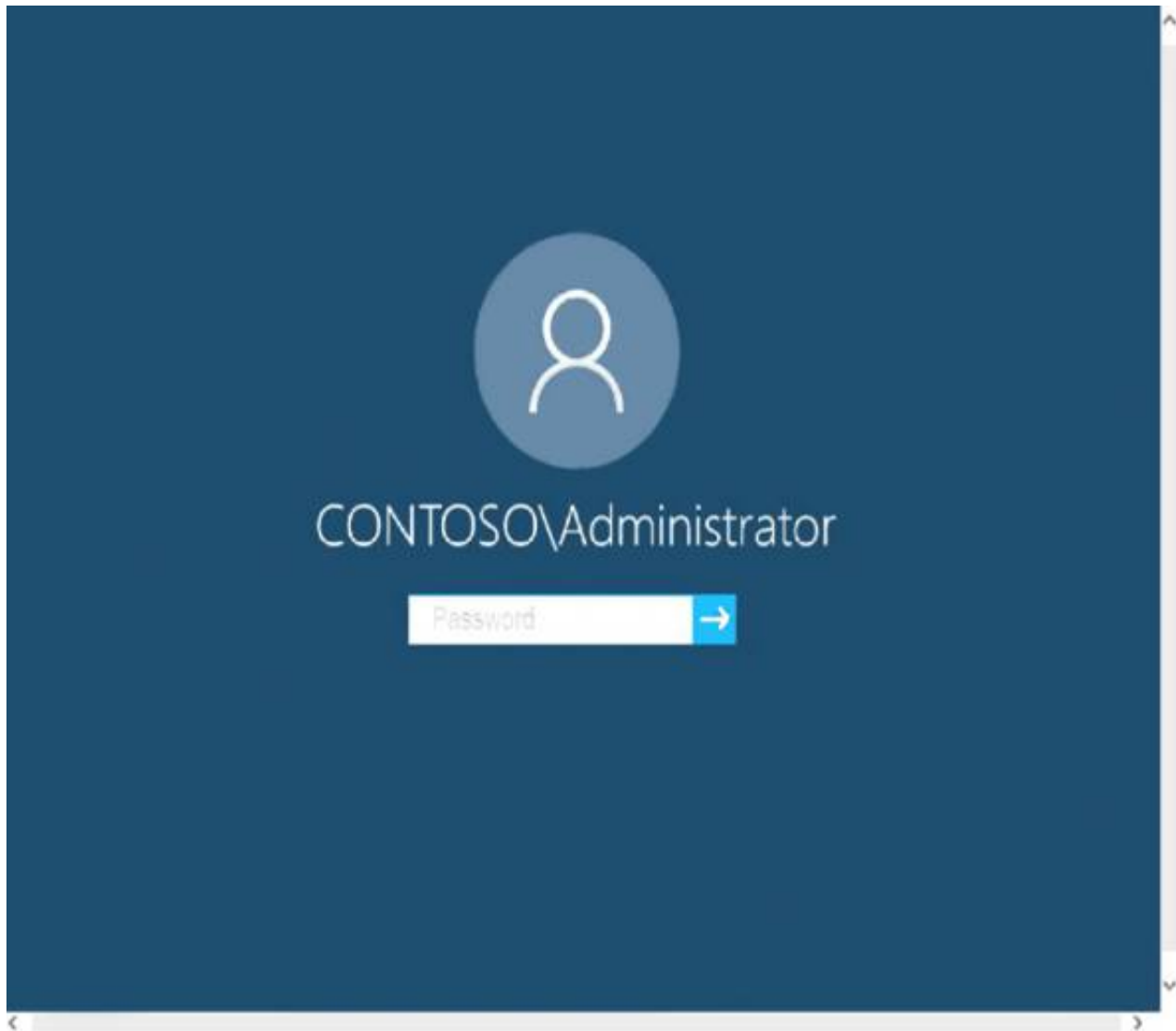
Scoring is based on the outcome of performing the tasks stated in the lab. In other words, it doesn't matter how you accomplish the task, if you successfully perform it, you will earn credit for that task.

Labs are not timed separately, and this exam may more than one lab that you must complete. You can use as much time as you would like to complete each lab.

But, you should manage your time appropriately to ensure that you are able to complete the lab(s) and all other sections of the exam in the time provided.

Please note that once you submit your work by clicking the Next button within a lab, you will NOT be able to return to the lab.

Username and password



Use the following login credentials as needed:

To enter your password, place your cursor in the Enter password box and click on the password below.

Username: Contoso/Administrator

Password: Passw0rd!

The following information is for technical support purposes only: Lab Instance: 11145882

Dashboard
Local Server
All Servers
AD DS
DNS
File and Storage Services >

WELCOME TO SERVER MANAGER

QUICK START

WHAT'S NEW

LEARN MORE

1 **Configure this local server**
2 Add roles and features
3 Add other servers to manage
4 Create a server group
5 Connect this server to cloud services

Hide

ROLES AND SERVER GROUPS
Roles: 3 | Server groups: 1 | Servers total: 1

AD DS 1

Manageability
Events
Services
Performance
BPA results

DNS 1

Manageability
Events
Services
Performance
BPA results

File and Storage Services 1

Manageability
Events
Services
Performance
BPA results

Local Server 1

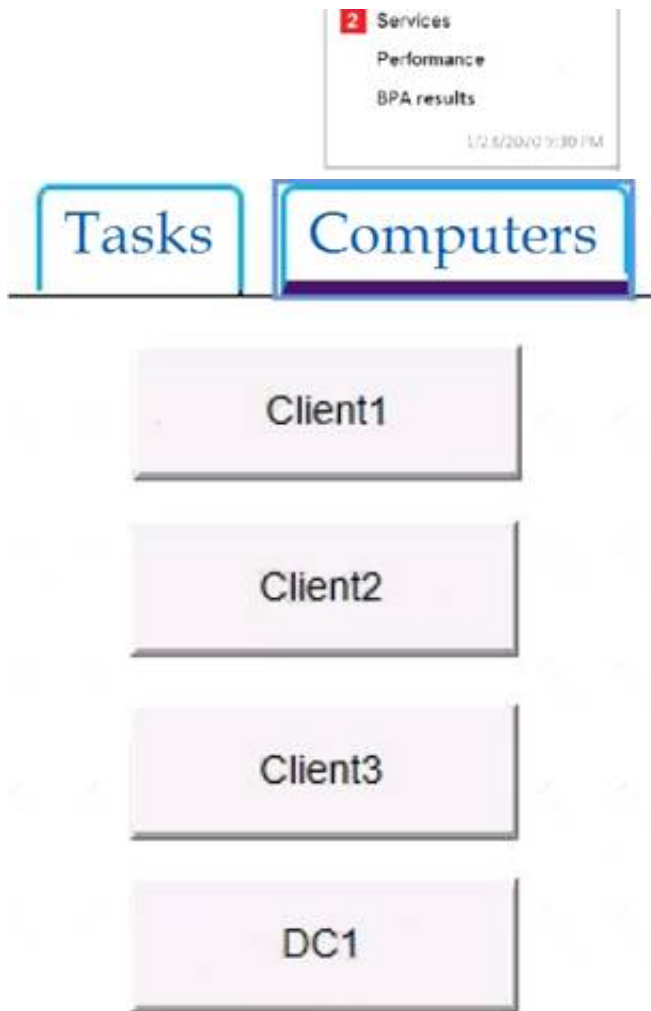
Manageability
Events
2 Services
Performance
BPA results

1/23/2020 9:30 PM

All Servers 1

Manageability
Events
2 Services
Performance
BPA results

1/23/2020 9:30 PM



You have already prepared Client1 for remote management.
 You need to forward all events from the Application event log on Client1 to DC1.
 To complete this task, sign in to the required computer or computers.

- A. Mastered
- B. Not Mastered

Answer: A

Explanation:

Configuring the event source computer

* 1. Run the following command from an elevated privilege command prompt on the Windows Server domain controller to configure Windows Remote Management:

winrm qc -q

* 2. Start group policy by running the following command:

%SYSTEMROOT%\System32\gpedit.msc

* 3. Under the Computer Configuration node, expand the Administrative Templates node, then expand the Windows Components node, then select the Event Forwarding node.

* 4. Right-click the SubscriptionManager setting, and select Properties. Enable the SubscriptionManager setting, and click the Show button to add a server address to the setting. Add at least one setting that specifies the event collector computer. The SubscriptionManager Properties window contains an Explain tab that describes the syntax for the setting.

* 5. After the SubscriptionManager setting has been added, run the following command to ensure the policy is applied: gpupdate /force

Configuring the event collector computer

* 1. Run the following command from an elevated privilege command prompt on the Windows Server domain controller to configure Windows Remote Management:

winrm qc -q

* 2. Run the following command to configure the Event Collector service:

wecutil qc /q

* 3. Create a source initiated subscription. This can either be done programmatically, by using the Event Viewer, or by using Wecutil.exe. If you use Wecutil.exe, you must create an event subscription XML file and use the following command:

wecutil cs configurationFile.xml

Reference:

<https://docs.microsoft.com/en-us/windows/win32/wec/setting-up-a-source-initiated-subscription#forwarding-the>

NEW QUESTION 72

- (Exam Topic 4)

You have a computer named Computer1 that runs Windows 10. Computer1 is in a workgroup. Computer1 contains the local users shown in the following table.

Name	Member of
Administrator	Administrators, Users
User1	Backup Operators, Users
User2	Device Owners, Users
User3	Users

The Users group has Modify permissions to a folder named D:\Folder1. User3 creates a file named File1.docx in Folder1.
 Which users can take ownership of File1.docx?

- A. Administrator and User1 only

- B. Administrator only
- C. Administrator, User1, and User2
- D. Administrator and User2 only

Answer: B

Explanation:

Only a member of the Administrator's group can take ownership of a file or folder.

NEW QUESTION 77

- (Exam Topic 4)

You have 10 computers that run Windows 10 and have BitLocker Drive Encryption (BitLocker) enabled. You plan to update the firmware of the computers. You need to ensure that you are not prompted for the BitLocker recovery key on the next restart. The drive must be protected by BitLocker on subsequent restarts. Which cmdlet should you run?

- A. Unlock-BitLocker
- B. Disable-BitLocker
- C. Add-BitLockerKeyProtector
- D. Suspend-BitLocker

Answer: D

Explanation:

References:

<https://support.microsoft.com/en-us/help/4057282/bitlocker-recovery-key-prompt-after-surface-uefi-tpm-firmwa>

NEW QUESTION 79

- (Exam Topic 4)

Your network contains the segments shown in the following table.

Name	Domain controller connectivity	Internet connectivity
Segment1	Yes	Yes
Segment2	No	Yes

You have computers that run Windows 10 and are configured as shown in the following table.

Name	Shared folder	Share permission	Active Directory joined	Connected to
Computer1	Share1	Everyone Full control	Yes	Segment1
Computer2	Share2	Everyone Full control	Yes	Segment2
Computer3	Share3	Everyone Full control	No	Segment1

Windows Defender Firewall has the File and Printer Sharing allowed apps rule shown in the following table.

Computer	Domain	Private	Public
Computer1	Allowed	Not allowed	Not allowed
Computer2	Allowed	Allowed	Not allowed
Computer3	<i>Not applicable</i>	Allowed	Allowed

For each of the following statements, select Yes if the statement is true. Otherwise, select No.

NOTE: Each correct selection is worth one point.

Statements	Yes	No
You can access Share1 from Computer3.	<input type="radio"/>	<input type="radio"/>
You can access Share2 from Computer3.	<input type="radio"/>	<input type="radio"/>
You can access Share3 from Computer1.	<input type="radio"/>	<input type="radio"/>

- A. Mastered
- B. Not Mastered

Answer: A

Explanation:

Statements	Yes	No
You can access Share1 from Computer3.	<input type="radio"/>	<input checked="" type="radio"/>
You can access Share2 from Computer3.	<input type="radio"/>	<input checked="" type="radio"/>
You can access Share3 from Computer1.	<input checked="" type="radio"/>	<input type="radio"/>

NEW QUESTION 84

- (Exam Topic 4)
Your network contains an Active Directory domain. The domain contains three computers named Computer1, Computer2, and Computer3 that run Windows 10. The computers are on the same network and have network connectivity.
Windows Defender Firewall on Computer1 has the server-to-server connection security rule shown in the following table.

Name	Endpoint 1	Endpoint 2	Authentication mode
Rule1	Any	Any	Require inbound and request outbound

Windows Defender Firewall on Computer2 has the server-to-server connection security rule shown in the following table.

Name	Endpoint 1	Endpoint 2	Authentication mode
Rule1	Any	Any	Do not authenticate

Windows Defender Firewall on Computer3 has the server-to-server connection security rule shown in the following table.

Name	Endpoint 1	Endpoint 2	Authentication mode
Rule1	Any	Any	Require inbound and request outbound

All the connection security rules are enabled and configured to use only the Computer (Kerberos VS) authentication method.
For each of the following statements, select Yes if the statement is true. Otherwise, select No.
NOTE: Each correct selection is worth one point.

Statements	Yes	No
If Computer1 initiates communication to Computer2, network traffic will be encrypted.	<input type="radio"/>	<input type="radio"/>
Computer2 can establish communications to Computer3.	<input type="radio"/>	<input type="radio"/>
If Computer3 initiates communication to Computer1, network traffic will be encrypted.	<input type="radio"/>	<input type="radio"/>

- A. Mastered
B. Not Mastered

Answer: A

Explanation:

Graphical user interface, text, application Description automatically generated
References:
<https://docs.microsoft.com/en-us/windows/security/threat-protection/windows-firewall/create-an-authentication>

NEW QUESTION 87

- (Exam Topic 4)
Note: This question is part of a series of questions that present the same scenario. Each question in the series contains a unique solution that might meet the stated goals. Some question sets might have more than one correct solution, while others might not have a correct solution.
After you answer a question in this section, you will NOT be able to return to it. As a result, these questions will not appear in the review screen.
You have a workgroup computer that runs Windows 10. The computer contains the local user accounts shown in the following table.

Name	Member of
Administrator	Administrators
User1	Administrators
User2	Users
User3	Users

You need to configure the desktop background for User1 and User2 only.

Solution: You create a new local group to which you add User1 and User2. You create a local Group Policy Object (GPO) and configure the Desktop Wallpaper setting in the GPO. At a command prompt, you run the gpupdate.exe/Force command.

Does this meet the goal?

- A. Yes
- B. No

Answer: A

Explanation:

References:

<https://www.windowscentral.com/how-apply-local-group-policy-settings-specific-users-windows-10>

NEW QUESTION 89

- (Exam Topic 4)

Your network contains an Active Directory domain. The domain contains the computers shown in the following table.

Name	Operating system
Computer1	Windows 8.1 Enterprise
Computer2	Windows 10 Pro
Computer3	Windows 10 Pro for Workstation

On which computers can you perform an in-place upgrade to Windows 10 Enterprise?

- A. Computer3 only
- B. Computer2 and Computer3 only
- C. Computer2 only
- D. Computer1
- E. Computer1, and Computer3

Answer: D

Explanation:

References:

<https://docs.microsoft.com/en-us/windows/deployment/upgrade/windows-10-upgrade-paths> <https://docs.microsoft.com/en-us/windows/deployment/upgrade/windows-10-edition-upgrades>

NEW QUESTION 92

- (Exam Topic 4)

Note: This question is part of a series of questions that present the same scenario. Each question in the series contains a unique solution that might meet the stated goals. Some question sets might have more than one correct solution, while others might not have a correct solution.

After you answer a question in this section, you will NOT be able to return to it. As a result, these questions will not appear in the review screen.

You deploy Windows 10 to a computer named Computer1.

Computer1 contains a folder named C:\Folder1. Folder1 contains multiple documents.

You need to ensure that you can recover the files in Folder1 by using the Previous Versions tab. Solution: You enable File History and add Folder1 in the Documents library.

Does this meet the goal?

- A. Yes
- B. No

Answer: A

Explanation:

Reference:

<https://support.microsoft.com/en-za/help/17128/windows-8-file-history>

NEW QUESTION 93

- (Exam Topic 4)

Please wait while the virtual machine loads. Once loaded, you may proceed to the lab section. This may take a few minutes, and the wait time will not be deducted from your overall test time.

When the Next button is available, click it to access the lab section. In this section, you will perform a set of tasks in a live environment. While most functionality will be available to you as it would be in a live environment, some functionality (e.g., copy and paste, ability to navigate to external websites) will not be possible by design.

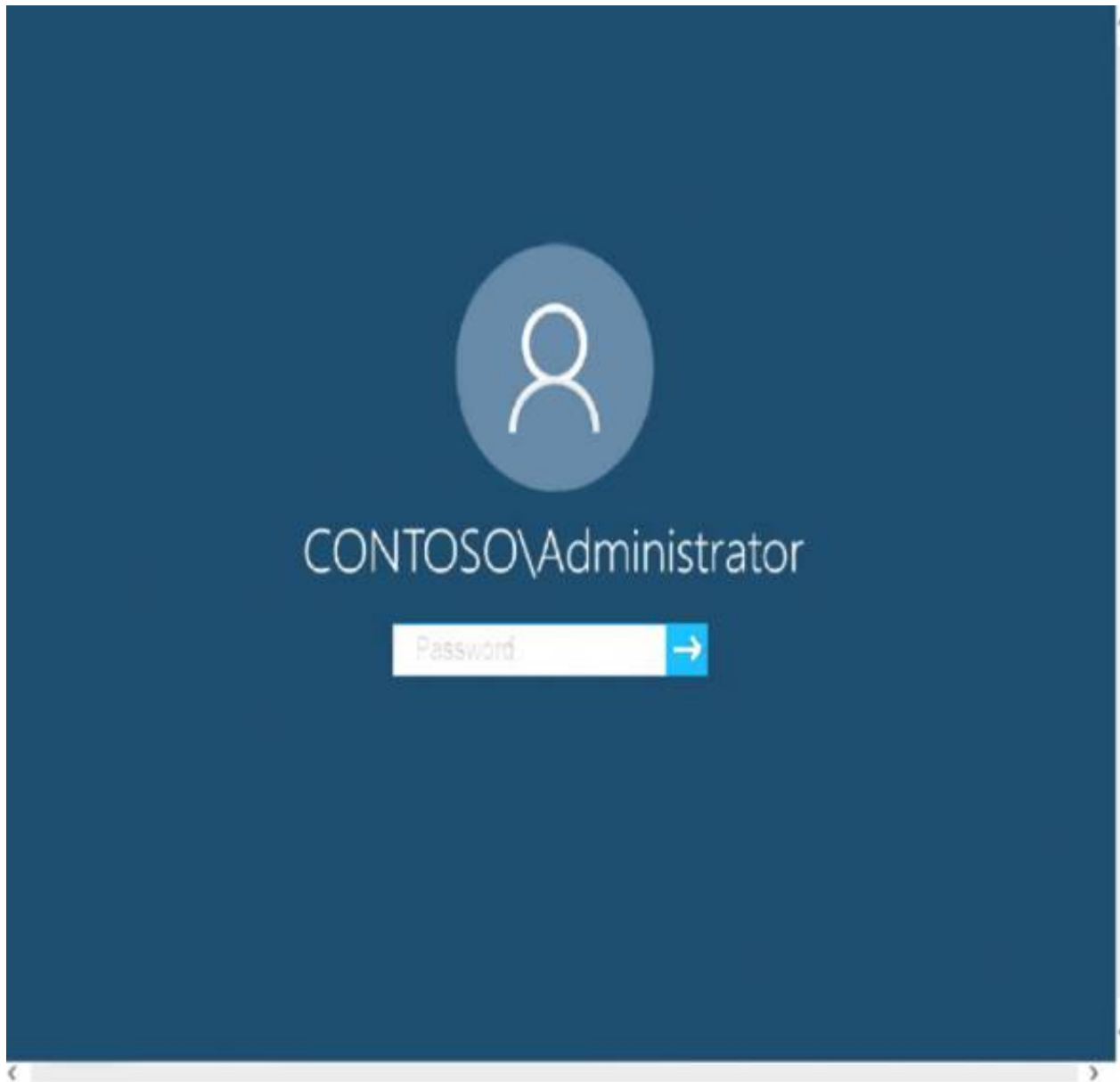
Scoring is based on the outcome of performing the tasks stated in the lab. In other words, it doesn't matter how you accomplish the task, if you successfully perform it, you will earn credit for that task.

Labs are not timed separately, and this exam may have more than one lab that you must complete. You can use as much time as you would like to complete each lab.

But, you should manage your time appropriately to ensure that you are able to complete the lab(s) and all other sections of the exam in the time provided.

Please note that once you submit your work by clicking the Next button within a lab, you will NOT be able to return to the lab.

Username and password



Use the following login credentials as needed:

To enter your password, place your cursor in the Enter password box and click on the password below.

Username: Contoso/Administrator

Password: Passw0rd!

The following information is for technical support purposes only: Lab Instance: 11145882

Dashboard

- Local Server
- All Servers
- AD DS
- DNS
- File and Storage Services

WELCOME TO SERVER MANAGER

QUICK START

- 1 Configure this local server
- 2 Add roles and features
- 3 Add other servers to manage
- 4 Create a server group
- 5 Connect this server to cloud services

Hide

WHAT'S NEW

LEARN MORE

ROLES AND SERVER GROUPS

Roles: 3 | Server groups: 1 | Servers total: 1

<p>AD DS 1</p> <ul style="list-style-type: none"> Manageability Events Services Performance BPA results 	<p>DNS 1</p> <ul style="list-style-type: none"> Manageability Events Services Performance BPA results
<p>File and Storage Services 1</p> <ul style="list-style-type: none"> Manageability Events Services Performance BPA results 	<p>Local Server 1</p> <ul style="list-style-type: none"> Manageability Events 2 Services Performance BPA results <p>1/23/2020 9:30 PM</p>
<p>All Servers 1</p> <ul style="list-style-type: none"> Manageability Events 2 Services Performance BPA results <p>1/23/2020 9:30 PM</p>	

Tasks Computers



Users in the Finance group report that they cannot copy files to Client1\Finance. You need to resolve the issue. To complete this task, sign in to the required computer or computers.

- A. Mastered
- B. Not Mastered

Answer: A

Explanation:

- > Open File Explorer.
- > Browse and find the file or folder you want to have full access.
- > Right-click it, and select Properties.
- > Click the Security tab to access the NTFS permissions.
- > Click the Advanced button.
- > On the "Advanced Security Settings" page, you need to click the Change link, in the Owner's field.
- > Click the Advanced button.
- > On the "Select User or Group" page, click the Find Now button.
- > From the search result, select your user account, and click OK.
- > On the "Select User or Group" page, click OK.
- > Click Apply.
- > Click OK.
- > Click OK again.
- > Click OK one more time to complete this task.

It's important to note that if you're taking ownership of a folder, you can check the Replace ownership on subcontainers and object option in the Advanced Security Settings page to take control of the subfolders inside of the folder.

Now you'll need to grant full access control to your account, to do this use the following steps:

- > Right-click the file or folder and select Properties.
- > Click the Security tab to access the NTFS permissions.
- > Click the Advanced button.
- > Under the Permissions tab, click Add.
- > Click Select a principal to add your user account.
- > On the "Select User or Group" page, click the Find Now button.
- > From the search result, select your user account, and click OK.
- > On the "Select User or Group" page, click OK.
- > On "Permission Entry", check the Full control option.
- > Click OK.
- > Click OK.
- > Click Apply.
- > Click OK.
- > Click OK to close the file or folder properties to complete the task.

You can now assign the necessary permissions to the Finance group.

If you right-click on a file or folder, choose Properties and click on the Security tab, we can now try to edit some permissions. Go ahead and click the Edit button to get started.

At this point, there are a couple of things you can do. Firstly, you'll notice that the Allow column is probably greyed out and can't be edited. This is because of the inheritance I was talking about earlier. However, you can check items on the Deny column.

When you click the Add button, you have to type in the user name or group name into the box and then click on Check Names to make sure it's correct. If you don't remember the user or group name, click on the Advanced button and then just click Find Now. It will show you all the users and groups.

Click OK and the user or group will be added to the access control list. Now you can check the Allow column or Deny column.

Reference:

<https://www.windowscentral.com/how-take-ownership-files-and-folders-windows-10> <https://www.online-tech-tips.com/computer-tips/set-file-folder-permissions-windows/>

NEW QUESTION 98

- (Exam Topic 4)

Note: This question is part of a series of questions that present the same scenario. Each question in the series contains a unique solution that might meet the stated goals. Some question sets might have more than one correct solution, while others might not have a correct solution.

After you answer a question in this section, you will NOT be able to return to it. As a result, these questions will not appear in the review screen.

Your network contains an Active Directory domain. The domain contains a computer named Computer1 that runs Windows 8.1.

Computer1 has apps that are compatible with Windows 10.

You need to perform a Windows 10 in-place upgrade on Computer1.

Solution: You copy the Windows 10 installation media to a Microsoft Deployment Toolkit (MDT) deployment share. You create a task sequence, and then you run the MDT deployment wizard on Computer1.

Does this meet the goal?

- A. Yes
- B. No

Answer: A

Explanation:

Reference:

<https://docs.microsoft.com/en-us/windows/deployment/deploy-windows-mdt/upgrade-to-windows-10-with-the>

NEW QUESTION 99

- (Exam Topic 4)

You have a computer named Computer1 that runs Windows 10.

You need to prevent standard users from changing the wireless network settings on Computer1. The solution must allow administrators to modify the wireless network settings.

What should you use?

- A. Windows Configuration Designer
- B. MSConfig
- C. Local Group Policy Editor
- D. an MMC console that has the Group Policy Object Editor snap-in

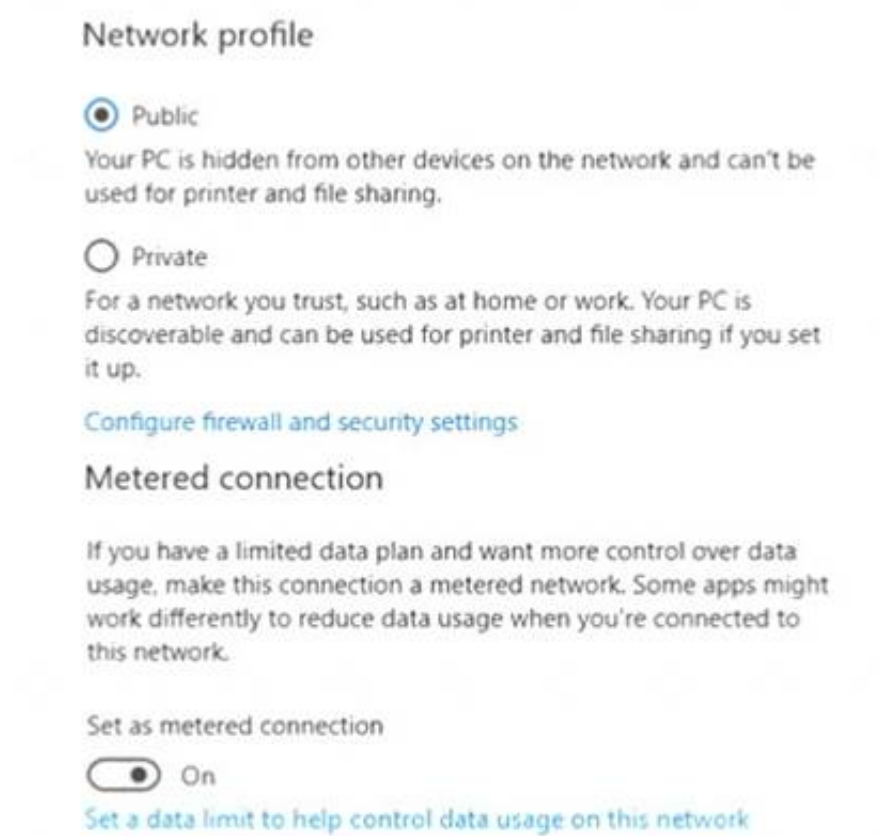
Answer: C

NEW QUESTION 102

- (Exam Topic 4)

You have a computer that runs Windows 10.

From the Settings app, you view the connection properties shown in the following exhibit.



Use the drop-down menus to select the answer choice that completes each statement based on the information presented in the graphic.

NOTE: Each correct selection is worth one point.

To enable Windows Remote Management (WinRM), you must first [answer choice].

▼

set the Network profile to Private

run winrm qc at the command prompt

turn off Metered connection

To ensure that Microsoft OneDrive syncs, you must first [answer choice].

▼

set the Network profile to Private

run winrm qc at the command prompt

turn off Metered connection

- A. Mastered
- B. Not Mastered

Answer: A

Explanation:

To enable Windows Remote Management (WinRM), you must first [answer choice].

▼

set the Network profile to Private

run winrm qc at the command prompt

turn off Metered connection

To ensure that Microsoft OneDrive syncs, you must first [answer choice].

▼

set the Network profile to Private

run winrm qc at the command prompt

turn off Metered connection

NEW QUESTION 106

- (Exam Topic 4)

You have a workgroup computer named Computer1 that runs Windows 10. Computer1 contains five local user accounts. You need to ensure that all users who sign in to Computer1 see a picture named Image1.jpg as the desktop background. What should you do?

- A. From the Settings app, modify the Background settings.
- B. From the Local Group Policy Editor, modify the Desktop settings.
- C. Rename Image1.jpg as Desktop.jpg and copy the picture to the C:\Windows\system32\ folder.
- D. Rename Image1.jpg as Desktop.jpg and copy the picture to the C:\Users\Default\Desktop\ folder.

Answer: B

Explanation:

References:

<https://www.top-password.com/blog/set-a-default-background-wallpaper-for-windows-10-desktop/>

NEW QUESTION 108

- (Exam Topic 4)

Your network contains an Active Directory domain named contoso.com. The domain contains named Computer1 that runs Windows 10. On Computer1, you create an NTFS folder and assign Full control permissions to Everyone. You share the folder as Share1 and assign the permissions shown in the following table.

Name	Permission
User1	Full control
User2	Change

When accessing Share1, which two actions can be performed by User1 but not by User2? Each correct answer presents part of the solution.
 NOTE: Each correct selection is worth one point.

- A. Delete a file created by another user.
- B. Set the permissions for a file.
- C. Rename a file created by another user.
- D. Take ownership of file.
- E. Copy a file created by another user to a subfolder.

Answer: BD

Explanation:

References:

<https://www.varonis.com/blog/ntfs-permissions-vs-share/>

NEW QUESTION 110

- (Exam Topic 4)

You have a workgroup computer named Computer1 that runs Windows 10. Computer1 has the user accounts shown in the following table.

Name	Member of
User1	Users
User2	Guests
User3	Users, Administrators
User4	Users, Guests
Administrator	Administrators

User3, User4, and Administrator sign in and sign out on Computer1. User1 and User2 have never signed in to Computer1.

You are troubleshooting policy issues on Computer1. You sign in to Computer1 as Administrator. You add the Resultant Set of Policy (RsoP) snap-in to an MMC console.

Which users will be able to sign in on Computer1?

- A. User1, User3, and User4 only
- B. Administrator only
- C. User1, User2, User3, User4, and Administrator
- D. User3, User4, and Administrator only

Answer: D

Explanation:

The Interactive logon: Number of previous logons to cache (in case domain controller is not available) policy setting determines whether a user can log on to a Windows domain by using cached account information. Logon information for domain accounts can be cached locally so that, if a domain controller cannot be contacted on subsequent logons, a user can still log on.

References:

<https://docs.microsoft.com/en-us/windows/security/threat-protection/security-policy-settings/interactive-logon-n>

NEW QUESTION 114

- (Exam Topic 4)

You have a VPN server that accepts PPTP and L2TP connections and is configured as shown in the following exhibit.



A user named User1 has a computer that runs Windows 10 and has a VPN connection configured as shown in the following exhibit.


```
Administrator: Windows PowerShell
PS C:\> Get-VpnConnection

Name           : Contoso VPN
ServerAddress   : 192.168.1.2
AllUserConnection : False
Guid           : {3022F8FC - 5222 - 4288 - 8A80 - 7AFB21D11366}
TunnelType      : Automatic
AuthenticationMethod : {MsChapv2}
EncryptionLevel : Optional
L2tpIPsecAuth   : Certificate
UseWinLogonCredential : False
EapConfigXmlStream :
ConnectionStatus : Disconnected
RememberCredential : True
SplitTunneling  : False
DnsSuffix       :
IdleDisconnectSeconds : 0

PS C:\>
```

User1 fails to establish a VPN connection when connected to a home network. You need to identify which VPN client setting must be modified. What should you identify?

- A. ServerAddress
- B. TunnelType
- C. AuthenticationMethod
- D. L2tpIPsecAuth
- E. EncryptionLevel

Answer: A

Explanation:

The server address is a private IP address. This needs to be the public IP address of the VPN server.

NEW QUESTION 117

- (Exam Topic 4)

You have several computers that run Windows 10.

All users have Microsoft OneDrive for Business installed. Users frequently save files to their desktop.

You need to ensure that all the users can recover the files on their desktop from OneDrive for Business. Which two actions should you perform? Each correct answer presents part of the solution.

NOTE: Each correct selection is worth one point.

- A. Copy ADMX and ADML files to C:\Users\Public\Desktop\
- B. From Backup in the Settings app, add a drive
- C. Configure the Silently move Windows known folders to OneDrive settings
- D. Copy ADMX and ADML files to C:\Windows\PolicyDefinitions
- E. Configure the Save documents to OneDrive by default setting

Answer: CD

Explanation:

References:

<https://docs.microsoft.com/en-us/onedrive/plan-onedrive-enterprise> <https://docs.microsoft.com/en-us/onedrive/use-group-policy#KFMOptInNoWizard>

NEW QUESTION 122

- (Exam Topic 4)

HOTSPOT

You have 100 computers that run Windows 10 and are members of an Active Directory domain.

Two support technicians named Tech1 and Tech2 will be responsible for monitoring the performance of the computers.

You need to configure the computers to meet the following requirements:

- > Ensure that Tech1 can create and manage Data Collector Sets (DCSs).
- > Ensure that Tech2 can start and stop the DCSs.
- > Use the principle of least privilege.

To which group should you add each technician? To answer, select the appropriate options in the answer area.

NOTE: Each correct selection is worth one point.

Tech1:

Tech2:

- A. Mastered
- B. Not Mastered

Answer: A

Explanation:

Reference:

<https://docs.microsoft.com/en-us/windows/security/identity-protection/access-control/active-directory-security-g>

NEW QUESTION 125

- (Exam Topic 4)

Note: This question is part of a series of questions that present the same scenario. Each question in the series contains a unique solution that might meet the stated goals. Some question sets might have more than one correct solution, while others might not have a correct solution.

After you answer a question in this section, you will NOT be able to return to it. As a result, these questions will not appear in the review screen.

You have two computers named Computer1 and Computer2 that run Windows 10.

You have an Azure Active Directory (Azure AD) user account named admin@contoso.com that is in the local Administrators group on each computer.

You sign in to Computer1 by using admin@contoso.com.

You need to ensure that you can use Event Viewer on Computer1 to connect to the event logs on Computer2. Solution: On Computer2, you run the Enable-PSRemoting cmdlet.

Does this meet the goal?

- A. Yes
- B. No

Answer: A

Explanation:

The Enable-PSRemoting cmdlet configures the computer to receive PowerShell remote commands that are sent by using the WS-Management technology.

References:

<https://docs.microsoft.com/en-us/powershell/module/microsoft.powershell.core/enable-psremoting?view=power>

NEW QUESTION 130

- (Exam Topic 4)

You install Windows 10 Enterprise on a new computer. You need to force activation on the computer.

Which command should you run?

- A. slmgr /upk
- B. Sec-RDLicenseConfiguration -Force
- C. Sec-MsolLicense -AddLicense
- D. slmgr /ato

Answer: D

Explanation:

References:

<https://docs.microsoft.com/en-us/windows/deployment/volume-activation/activate-using-key-management-servi>

NEW QUESTION 132

- (Exam Topic 4)

You have a computer that runs Windows 10. You view the domain services status as shown in the following exhibit.

```

-----
| Device State |
-----

AzureAdJoined : YES
EnterpriseJoined : NO
DeviceId : 0779e134-8056-482b-8922-f5b1d2bf3b98
Thumbprint : 7463D0D1AB570055738E486ADD9A3A12E94F49AD
KeyContainerId : 847ec2a4-cb0f-48e8-ae5e-e25b10492e7c
KeyProvider : Microsoft Software Key Storage Provider
IpmProtected : NO
KeySignTest : MUST Run elevated to test.
Idp : login.windows.net
TenantId : 2f01a8b6-767b-4303-9797-30aff86e10da
TenantName : Tailspin Toys
AuthCodeUrl : https://login.microsoftonline.com/2f01a8b6-767b-4303-9797-30aff86e10da/oauth2/authorize
AccessTokenUrl : https://login.microsoftonline.com/2f01a8b6-767b-4303-9797-30aff86e10da/oauth2/token
MdmUrl : https://enrollment.manage.microsoft.com/enrollmentserver/discovery.svc
MdmTouUrl : https://portal.manage.microsoft.com/TermsOfUse.aspx
MdmComplianceUrl : https://portal.manage.microsoft.com/?portalAction=Compliance
SettingsUrl :
KeySrvVersion : 1.0
KeySrvUrl : https://enterpriseregistration.windows.net/EnrollmentServer/key/device/
KeySrvId : urn:ms-drs:enterpriseregistration.windows.net
KeySrvVersion : 1.0
KeySrvUrl : https://enterpriseregistration.windows.net/EnrollmentServer/key/
KeySrvId : urn:ms-drs:enterpriseregistration.windows.net
WebAuthNSrvVersion : 1.0
WebAuthNSrvUrl : https://enterpriseregistration.windows.net/webauthn/2f01a8b6-767b-4303-9797-30aff86e10da/
WebAuthNSrvId : urn:ms-drs:enterpriseregistration.windows.net
DeviceManagementSrvVersion : 1.0
DeviceManagementSrvUrl : https://enterpriseregistration.windows.net/manage/2f01a8b6-767b-43039797-30aff86e10da/
DeviceManagementSrvId : urn:ms-drs:enterpriseregistration.windows.net
DomainJoined : NO
-----
| User State |
-----

NgcSet : YES
NgcKeyId : {E8AAE4EB-5580-4CE4-9971-684848BF72FA}
CanReset : DesctructiveOnly
WorkplaceJoined : NO
WamDefaultId : YES
WamDefaultAuthority : organizations
WamDefaultId : https://login.microsoft.com
WamDefaultGUID : {B16898C6-A148-4967-9171-64D755DA8520} (AzureAd)
AzureAdPrt : YES
AzureAdPrtAuthority : https://login.microsoftonline.com/2f01a8b6-767b-4303-9797-30aff86e10da
EnterprisePrt : NO
EnterprisePrtAuthority :

```

Use the drop-down menus to select the answer choice that completes each statement based on the information presented in the graphic.
 NOTE: Each correct selection is worth one point.

Microsoft Edge is configured by using:

▼

a Group Policy object (GPO)
 Microsoft Intune
 the Internet Explorer Administration Kit (IEAK)

The computer is:

▼

enrolled in Microsoft Intune
 managed by using Microsoft System Center Configuration Manager
 joined to an on-premises Active Directory domain

- A. Mastered
- B. Not Mastered

Answer: A

Explanation:

Device is Azure AD joined; not domain joined.
 The MDM URLs in the exhibit indicate the device is enrolled in Intune. References:
<https://docs.microsoft.com/en-us/azure/active-directory/devices/troubleshoot-device-dsregcmd>
<https://github.com/MicrosoftLearning/MD-101T00-ManagingModernDesktops/blob/master/Instructions/Labs/04>

NEW QUESTION 133

- (Exam Topic 4)
 Your company deploys Windows 10 Enterprise to all computers. All the computers are joined to Microsoft Azure Active Directory (Azure AD). The company purchases a new computer for a new user and creates an Azure AD account for the user. The user signs in to the computer by using the Azure AD account. The user discovers the activation error shown in the following exhibit.


Activation

Windows

Edition	Windows 10 Pro
Activation	Windows is not activated
Product ID	XXXXX-XXXXX-XXXXX-XXXXX
Product Key	XXXXX-XXXXX-XXXXX-XXXXX-XXXXX

Windows can't activate at this time. Try activating again later. If that doesn't work, contact your system administrator. Error code: 0x800705B4


If you're having problems with activation, select Troubleshoot to try to fix the problem.


Troubleshoot

Activate Windows now

Running a non-genuine copy of Windows can put you at greater risk from viruses and other security threats.

Go to the Store to buy genuine Windows or enter a product key.


Change product key

You need to activate Windows 10 Enterprise on the computer. What should you do?

- A. In Azure A
- B. assign a Windows 10 Enterprise license to the user.
- C. At the command prompt, run slmgr /ltc.
- D. Reinstall Windows as Windows 10 Enterprise.
- E. At the command prompt, run slmgr /ato.

Answer: A

Explanation:
 Reference:
<https://docs.microsoft.com/en-us/windows/deployment/windows-10-subscription-activation>

NEW QUESTION 137

- (Exam Topic 4)
 Note: This question is part of a series of questions that present the same scenario. Each question in the series contains a unique solution that might meet the stated goals. Some question sets might have more than one correct solution, while others might not have a correct solution.
 After you answer a question in this section, you will NOT be able to return to it. As a result, these questions will not appear in the review screen.
 A user named User2 has a computer named Computer2 that runs Windows 10. User2 joins Computer2 to contoso.com by using user2@contoso.com. Computer1 contains a folder named Folder1. Folder1 is in drive C and is shared as Share1. Share1 has the permission shown in the following table.

Group	Share permission
Everyone	Full control
AzureAD\user1@contoso.com	Owner

A user named User2 has a computer named Computer2 that runs Windows 10. User2 joins Computer2 to contoso.com by using user2@contoso.com. User2 attempts to access Share1 and receives the following error message: "The username or password is incorrect."
 You need to ensure that User2 can connect to Share1.
 Solution: You create a local user account on Computer1 and instruct User2 to use the local account to connect to Share1.

Does this meet the goal?

- A. Yes
- B. No

Answer: B

NEW QUESTION 138

- (Exam Topic 4)

Note: This question is part of a series of questions that present the same scenario. Each question in the series contains a unique solution that might meet the stated goals. Some question sets might have more than one correct solution, while others might not have a correct solution.

After you answer a question in this section, you will NOT be able to return to it. As a result, these questions will not appear in the review screen.

You have two computers named Computer1 and Computer2 that run Windows 10.

You have an Azure Active Directory (Azure AD) user account named admin@contoso.com that is in the local Administrators group on each computer.

You sign in to Computer1 by using admin@contoso.com.

You need to ensure that you can use Event Viewer on Computer1 to connect to the event logs on Computer2. Solution: On Computer2, you run the winrm quickconfig command.

Does this meet the goal?

- A. Yes
- B. No

Answer: B

Explanation:

Windows Remote Management is a component of the Windows Hardware Management features that manage server hardware locally and remotely.

References:

<https://docs.microsoft.com/en-us/windows/win32/winrm/about-windows-remote-management>

NEW QUESTION 143

- (Exam Topic 4)

Your network contains an Active Directory domain. The domain contains a user named User1. User1 creates a Microsoft account.

User1 needs to sign in to cloud resources by using the Microsoft account without being prompted for credentials.

Which settings should User1 configure?

- A. User Accounts in Control Panel
- B. Email & app accounts in the Settings app
- C. Users in Computer Management
- D. Users in Active Directory Users and Computers

Answer: B

Explanation:

References:

<https://support.microsoft.com/en-za/help/4028195/microsoft-account-how-to-sign-in>

NEW QUESTION 148

- (Exam Topic 4)

Your network contains an Active Directory forest. The forest contains a root domain named contoso.com and a child domain named corp.contoso.com.

You have a computer named Computer1 that runs Windows 10. Computer1 is joined to the corp.contoso.com domain.

Computer1 contains a folder named Folder1. In the Security settings of Folder1, Everyone is assigned the Full control permissions.

On Computer1, you share Folder1 as Share1 and assign the Read permissions for Share1 to the Users group. For each of the following statements, select Yes if the statement is true. Otherwise, select No.

NOTE: Each correct selection is worth one point.

Statements	Yes	No
All the local users on Computer1 have Read access to \\Computer1\Share1.	<input type="radio"/>	<input type="radio"/>
All the users in the corp.contoso.com domain have Read access to \\Computer1\Share1.	<input type="radio"/>	<input type="radio"/>
All the users in the contoso.com domain have Read access to \\Computer1\Share1.	<input type="radio"/>	<input type="radio"/>

- A. Mastered
- B. Not Mastered

Answer: A

Explanation:

References:

<https://www.techrepublic.com/article/learn-the-basic-differences-between-share-and-ntfs-permissions/>

NEW QUESTION 151

- (Exam Topic 4)

Your network contains an Active Directory domain. The domain contains 1,000 computers that run Windows 10.

You discover that when users are on their lock screen, they see a different background image every day, along with tips for using different features in Windows 10.

You need to disable the tips and the daily background image for all the Windows 10 computers. Which Group Policy settings should you modify?

- A. Turn off the Windows Welcome Experience
- B. Turn off Windows Spotlight on Settings
- C. Do not suggest third-party content in Windows spotlight
- D. Turn off all Windows spotlight features

Answer: D

Explanation:

References:

<https://docs.microsoft.com/en-us/windows/configuration/windows-spotlight>

NEW QUESTION 153

- (Exam Topic 4)

Your company has a main office and a branch office. The offices connect to each other by using a WAN link. Access to the Internet is provided through the main office.

The branch office contains 25 computers that run Windows 10. The computers contain small hard drives that have very little free disk space.

You need to prevent the computers in the branch office from downloading updates from peers on the network. What should you do?

- A. From the Settings app, modify the Delivery Optimizations settings.
- B. Configure the network connections as metered connections.
- C. Configure the computers to use BranchCache in hosted cache mode.
- D. Configure the updates to use the Semi-Annual Channel (Targeted) channel.

Answer: C

Explanation:

References:

<https://docs.microsoft.com/en-us/windows/deployment/update/waas-branchcache>

NEW QUESTION 157

- (Exam Topic 4)

Note: This question is part of a series of questions that present the same scenario. Each question in the series contains a unique solution that might meet the stated goals. Some question sets might have more than one correct solution, while others might not have a correct solution.

After you answer a question in this section, you will NOT be able to return to it. As a result, these questions will not appear in the review screen.

You have a computer named Computer1 that runs Windows 10.

You test Windows updates on Computer1 before you make the updates available to other users at your company.

You install a quality update that conflicts with a customer device driver. You need to remove the update from Computer1.

Solution: From System Restore, you revert the system state to a restore point that was created before the update was installed.

Does this meet the goal?

- A. Yes
- B. No

Answer: B

Explanation:

References:

<https://support.microsoft.com/en-us/help/934307/description-of-the-windows-update-standalone-installer-in-win>

NEW QUESTION 160

- (Exam Topic 4)

You have a computer that runs Windows 10 and has BitLocker Drive Encryption (BitLocker) enabled on all volumes.

You start the computer from Windows Recovery Environment (WinRE). You need to read the data on the system drive.

What should you do?

- A. Run cipher.exe and specify the /rekey parameter
- B. Run cipher.exe and specify the /adduser parameter
- C. Run manage-bde.exe and specify the -off parameter
- D. Run manage-bde.exe and specify the -unlock parameter

Answer: D

Explanation:

<https://www.repairwin.com/how-to-disable-bitlocker-in-windows-recovery-environment-winre/>

NEW QUESTION 164

- (Exam Topic 4)

Your network contains an Active Directory domain. The domain contains a computer named Computer1 that runs Windows 10.

The domain contains the users shown in the following table.

Name	Member of
User1	Domain Users
User2	Domain Users, Guests
User3	Domain Users, Administrators

Computer1 has the local users shown in the following table.

Name	Member of
User4	Users
User5	Administrators

All users have Microsoft accounts.

Which two users can be configured to sign in by using their Microsoft account? Each correct answer presents part of the solution.

NOTE: Each correct selection is worth one point.

- A. User1
- B. User2
- C. User3
- D. User4
- E. User5

Answer: DE

NEW QUESTION 165

- (Exam Topic 4)

You have the computers shown in the following table.

Name	Windows 10 edition
Computer1	Windows 10 Pro
Computer2	Windows 10 Pro Workstations
Computer3	Windows 10 Enterprise

You need to identify which computers support the features.

- > BitLocker Drive Encryption (BitLocker)
- > Microsoft Application Virtualization (App-V)

Which computers support the features? To answer, select the appropriate options in the answer area.

NOTE: Each correct selection is worth one point.

BitLocker:

Computer1 only

Computer2 only

Computer3 only

Computer1 and Computer3 only

Computer2 and Computer3 only

Computer1, Computer2, and Computer3

App-V:

Computer1 only

Computer2 only

Computer3 only

Computer1 and Computer3 only

Computer2 and Computer3 only

Computer1, Computer2, and Computer3

- A. Mastered
- B. Not Mastered

Answer: A

Explanation:

Graphical user interface, text, application Description automatically generated

References:

<https://www.microsoft.com/en-us/windowsforbusiness/compare>

NEW QUESTION 166

- (Exam Topic 4)

You have a computer named Computer1 that runs Windows 10. You need to enable boot logging on Computer1. What should you do?

- A. At a command prompt, run the bcdboot.exe command and specify the /v parameter.
- B. From the Settings app, configure the Start settings.
- C. From System Properties in Control Panel, configure the Startup and Recovery settings.
- D. From System Configuration configure the Boot settings.

Answer: D

Explanation:

Reference:

<https://www.windowscentral.com/how-enable-boot-log-windows-10>

NEW QUESTION 171

- (Exam Topic 4)

You have a computer that runs Windows 10. The computer contains a folder. The folder contains sensitive data.

You need to log which user reads the contents of the folder and modifies and deletes files in the folder. You need to log which user reads the contents of the folder and modifies and deletes files in the folder.

Solution: from the properties of the folder, you configure the Auditing settings and from the Audit Policy in the local Group Policy, you configure Audit system events.

Does this meet the goal?

- A. Yes
- B. No

Answer: B

Explanation:

Files and folders are objects and are audited through object access, not through system events. References:

https://www.netwrix.com/how_to_detect_who_changed_file_or_folder_owner.html

NEW QUESTION 174

- (Exam Topic 4)

Please wait while the virtual machine loads. Once loaded, you may proceed to the lab section. This may take a few minutes, and the wait time will not be deducted from your overall test time.

When the Next button is available, click it to access the lab section. In this section, you will perform a set of tasks in a live environment. While most functionality will be available to you as it would be in a live environment, some functionality (e.g., copy and paste, ability to navigate to external websites) will not be possible by design.

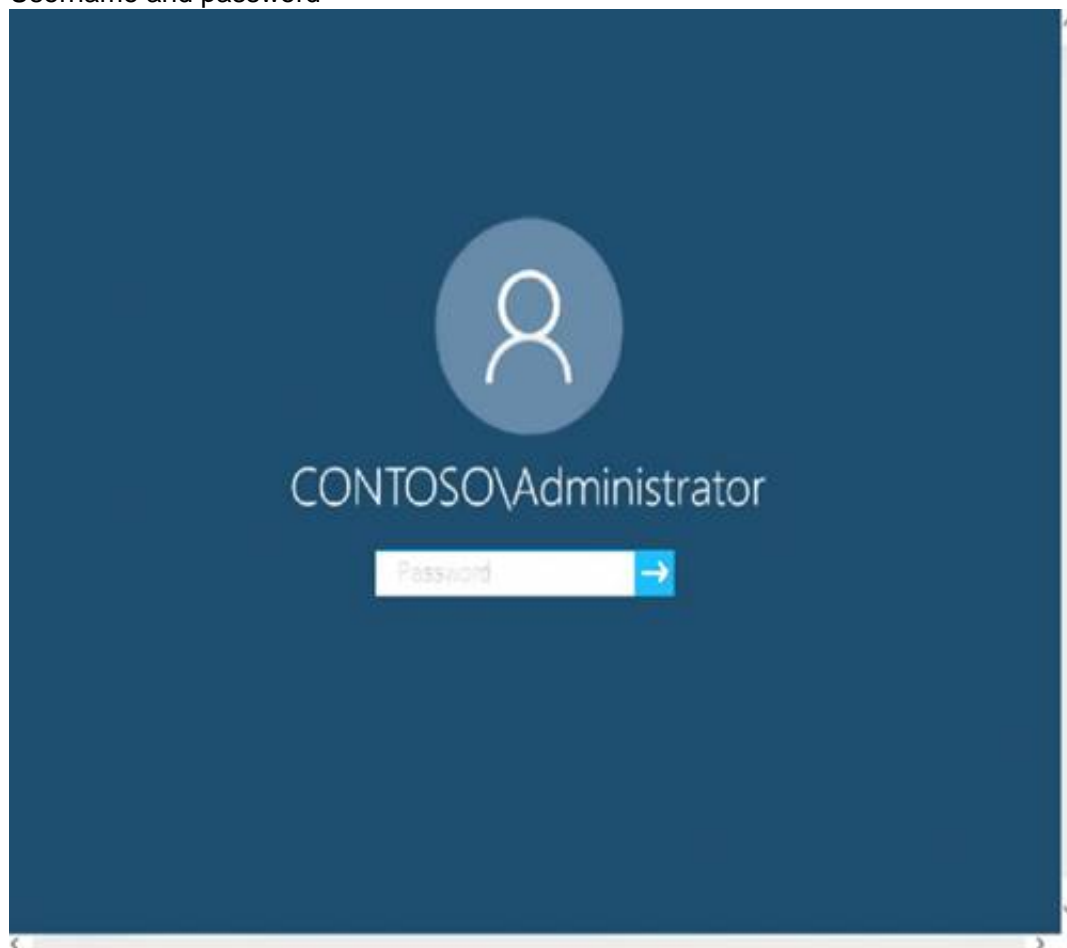
Scoring is based on the outcome of performing the tasks stated in the lab. In other words, it doesn't matter how you accomplish the task, if you successfully perform it, you will earn credit for that task.

Labs are not timed separately, and this exam may more than one lab that you must complete. You can use as much time as you would like to complete each lab.

But, you should manage your time appropriately to ensure that you are able to complete the lab(s) and all other sections of the exam in the time provided.

Please note that once you submit your work by clicking the Next button within a lab, you will NOT be able to return to the lab.

Username and password



Use the following login credentials as needed:

To enter your password, place your cursor in the Enter password box and click on the password below.

Username: Contoso/Administrator

Password: Passw0rd!

The following information is for technical support purposes only: Lab Instance: 11145882

Dashboard

Local Server

All Servers

AD DS

DNS

File and Storage Services >

WELCOME TO SERVER MANAGER

QUICK START

WHAT'S NEW

LEARN MORE

1 Configure this local server

2 Add roles and features

3 Add other servers to manage

4 Create a server group

5 Connect this server to cloud services

Hide

ROLES AND SERVER GROUPS

Roles: 3 | Server groups: 1 | Servers total: 1

AD DS 1

Manageability

Events

Services

Performance

BPA results

DNS 1

Manageability

Events

Services

Performance

BPA results

File and Storage Services 1

Manageability

Events

Services

Performance

BPA results

Local Server 1

Manageability

Events

2 Services

Performance

BPA results

1/23/2020 9:30 PM

All Servers 1

Manageability

Events

2 Services

Performance

BPA results

1/23/2020 9:30 PM

Tasks

Computers



Users who attempt to sign in to the domain from Client3 report that the sign-ins fail. You need to resolve the issue. To complete this task, sign in to the required computer or computers.

- A. Mastered
- B. Not Mastered

Answer: A

Explanation:

See explanation below.

- Use a local administrator account to log on to the computer.
- Select Start, press and hold (or right-click) Computer > Properties.
- Select Change settings next to the computer name.
- On the Computer Name tab, select Change.

- Under the Member of heading, select Workgroup, type a workgroup name, and then select OK.
- When you are prompted to restart the computer, select OK.
- On the Computer Name tab, select Change again.
- Under the Member of heading, select Domain, and then type the domain name.
- Select OK, and then type the credentials of the user who has permissions in the domain.
- When you are prompted to restart the computer, select OK.
- Restart the computer.

Reference:
<https://support.microsoft.com/en-us/help/2771040/the-trust-relationship-between-this-workstation-and-the-prima>

NEW QUESTION 176

- (Exam Topic 4)
 You have a computer named Computer1 that runs Windows 10. Computer1 is in a workgroup. Computer1 contains the local users shown in the following table.

Name	Member of
Administrator	Administrators, Users
User1	Users
User2	Users

Computer1 contains the folders shown in the following table.

Name	Path
Folder1	D:\Folder1
Folder2	D:\Folder2
Folder3	E:\Folder3

The Users group has Full control permissions to Folder1, Folder2, and Folder3. User1 encrypts two files named File1.docx and File2.docx in Folder1 by using EFS.
 Which users can move each file? To answer, select the appropriate options in the answer area.
 NOTE: Each correct selection is worth one point.

Users who can move File1.docx to Folder2:

User1 only

User1 and Administrator only

User1, User2, and Administrator

Users who can move File2.docx to Folder3:

User1 only

User1 and Administrator only

User1, User2, and Administrator

- A. Mastered
- B. Not Mastered

Answer: A

Explanation:
 EFS works by encrypting a file with a bulk symmetric key. The symmetric key that is used to encrypt the file is then encrypted with a public key that is associated with the user who encrypted the file. Because the encryption & decryption operations are performed at a layer below NTFS, it is transparent to the user and all their applications.
 Box 1: User1, User2, and Administrator Box 2: User1, User2, and Administrator
 All three are members of the Users group that has Full control permissions to Folder1, Folder2, and Folder3.

NEW QUESTION 179

- (Exam Topic 4)
 You have the computer shown in the following table.

Name	Windows 10 edition	Servicing channel
Computer1	Windows 10 Pro	Preview Build - Fast
Computer2	Windows 10 Pro	Semi-annual
Computer3	Windows 10 Enterprise	Long-term

You plan to configure deployment rings for Windows 10 quality and feature updates.
 What is the maximum number of days you can defer installing quality updates, and which computers support installing feature updates from Windows Update? To answer, select the appropriate options in the answer area.
 NOTE: Each correct selection is worth one point.

Maximum number of days you can defer installing quality updates:

7 days

30 days

180 days

365 days

Computers that support installing feature updates from Windows Update:

Computer1 only

Computer2 only

Computer3 only

Computer1 and Computer2 only

Computer1, Computer2, and Computer3

- A. Mastered
- B. Not Mastered

Answer: A

Explanation:
Graphical user interface, text, application, email Description automatically generated
Reference:
<https://docs.microsoft.com/en-us/windows/deployment/update/waas-configure-wufb>

NEW QUESTION 182

- (Exam Topic 4)
You have a computer named Computer1 that runs Windows 10.
On Computer1, you create a VPN connection as shown in the following exhibit.

```
Administration: Windows PowerShell
PS C:\> Get-VpnConnection VPN1

Name                : VPN1
ServerAddress       : vpn.contoso.com
AllUserConnection   : False
Guid                : {101AC5F1 - 6269 - 4745 - A3C4 - 48825E3FD83}
TunnelType          : Automatic
AuthenticationMethod : {MsChapv2}
EncryptionLevel     : Optional
L2tpIPsecAuth       : Certificate
UseWinlogonCredential : False
EapConfigXmlStream  :
ConnectionStatus    : Disconnected
RememberCredential  : True
SplitTunneling      : True
DnsSuffix            :
IdleDisconnectSeconds : 0

PS C:\>
```

The corporate network contains a single IP subnet.
Use the drop-down menus to select the answer choice that completes each statement based on the information presented in the graphic.
NOTE: Each correct selection is worth one point.

VPN1 can use protocols [answer choice] to establish a VPN connection.

PPTP and L2TP only

L2TP and SSTP only

L2TP, SSTP, and IKEv2 only

PPTP, L2TP, SSTP, and IKEv2

[Answer choice] will be routed through the VPN connection.

Only traffic for the internet

Only traffic for the corporate network

Traffic the Internet and the corporate network

- A. Mastered
- B. Not Mastered

Answer: A

Explanation:

VPN1 can use protocols [answer choice] to establish a VPN connection.

PPTP and L2TP only
L2TP and SSTP only
L2TP, SSTP, and IKEv2 only
PPTP, L2TP, SSTP, and IKEv2

[Answer choice] will be routed through the VPN connection.

Only traffic for the internet
Only traffic for the corporate network
Traffic the Internet and the corporate network

NEW QUESTION 183

- (Exam Topic 4)

Your network contains an Active Directory domain named adatum.com. The domain contains the users shown in the following table.

Name	Member of
User1	Group1, Group3
User2	Group1, Group2
User3	Group2, Group3

The domain contains a computer named Computer1 that runs Windows10. Computer1 has a file named File1.txt that has the permissions shown in the exhibit.
(Click the Exhibit tab.)

Name: C:\Folder1\File1.txt

Owner: administrator (ADATUM\administrator) Change

Permissions | Share | Auditing | Effective Access

For additional information, double-click a permission entry. To modify a permission entry, select the entry and click Edit (if available).

Permission entries:

Type	Principal	Access	Condition
Allow	Domain Admins (...)	Full control	
Allow	Group1 (ADATUM\...)	Read	Member of each ({Group1 (ADATUM\Group1), Group3 (ADATUM\Group3)})
Allow	Group2 (ADATUM\...)	Full control	Not member of any ({Group3 (ADATUM\Group3)})
Allow	Group3 (ADATUM\...)	Read	Not member of any ({Group1 (ADATUM\Group1), Group2 (ADATUM\Group2)})

Add

Remove

View

Enable inheritance

OK

Cancel

Apply

For each of the following statements, select Yes if the statement is true. Otherwise, select No.
NOTE: Each correct selection is worth one point.

Statements	Yes	No
User1 can modify File1.txt.	<input type="radio"/>	<input type="radio"/>
User2 can modify File1.txt.	<input type="radio"/>	<input type="radio"/>
User3 can read File1.txt.	<input type="radio"/>	<input type="radio"/>

- A. Mastered
- B. Not Mastered

Answer: A

Explanation:

Box 1: No

User1 only has Read access to the file.

Box 2: Yes

User2 is in Group2 which has full control. The condition states that if the user is also a member of Group3, the permission would not apply. However, User2 is not in Group3 so the full control permission does apply.

Box 3: No

User3 is in Group3 which does have Read access. However, the condition states that if the user is also in Group1 or Group2 then the permission does not apply.

User3 is in Group2 so the Read permission granted to Group3 does not apply to User3.

NEW QUESTION 187

- (Exam Topic 4)

You have a computer named Computer1 that runs Windows 10.

Computer1 was off for one year. During that time, two feature updates and 12 quality updates were released. From the Microsoft Update Catalog website, you download the missing updates and save the updates to Computer1.

You need to ensure that Computer1 runs the latest version of Windows 10 and is fully updated. The solution must minimize the amount of time required to update the computer.

What should you do?

- A. Install the last feature update, and then install the last quality update.
- B. Install the last quality update, and then install both feature updates.
- C. Install the last quality update, and then install the last feature update.
- D. Install the last feature update, and then install all the quality updates released after the feature update.
- E. Install all the quality and feature updates in the order in which they were released.

Answer: A

Explanation:

Reference:

<https://docs.microsoft.com/en-us/windows/deployment/update/get-started-updates-channels-tools>

NEW QUESTION 189

- (Exam Topic 4)

Please wait while the virtual machine loads. Once loaded, you may proceed to the lab section. This may take a few minutes, and the wait time will not be deducted from your overall test time.

When the Next button is available, click it to access the lab section. In this section, you will perform a set of tasks in a live environment. While most functionality will be available to you as it would be in a live environment, some functionality (e.g., copy and paste, ability to navigate to external websites) will not be possible by design.

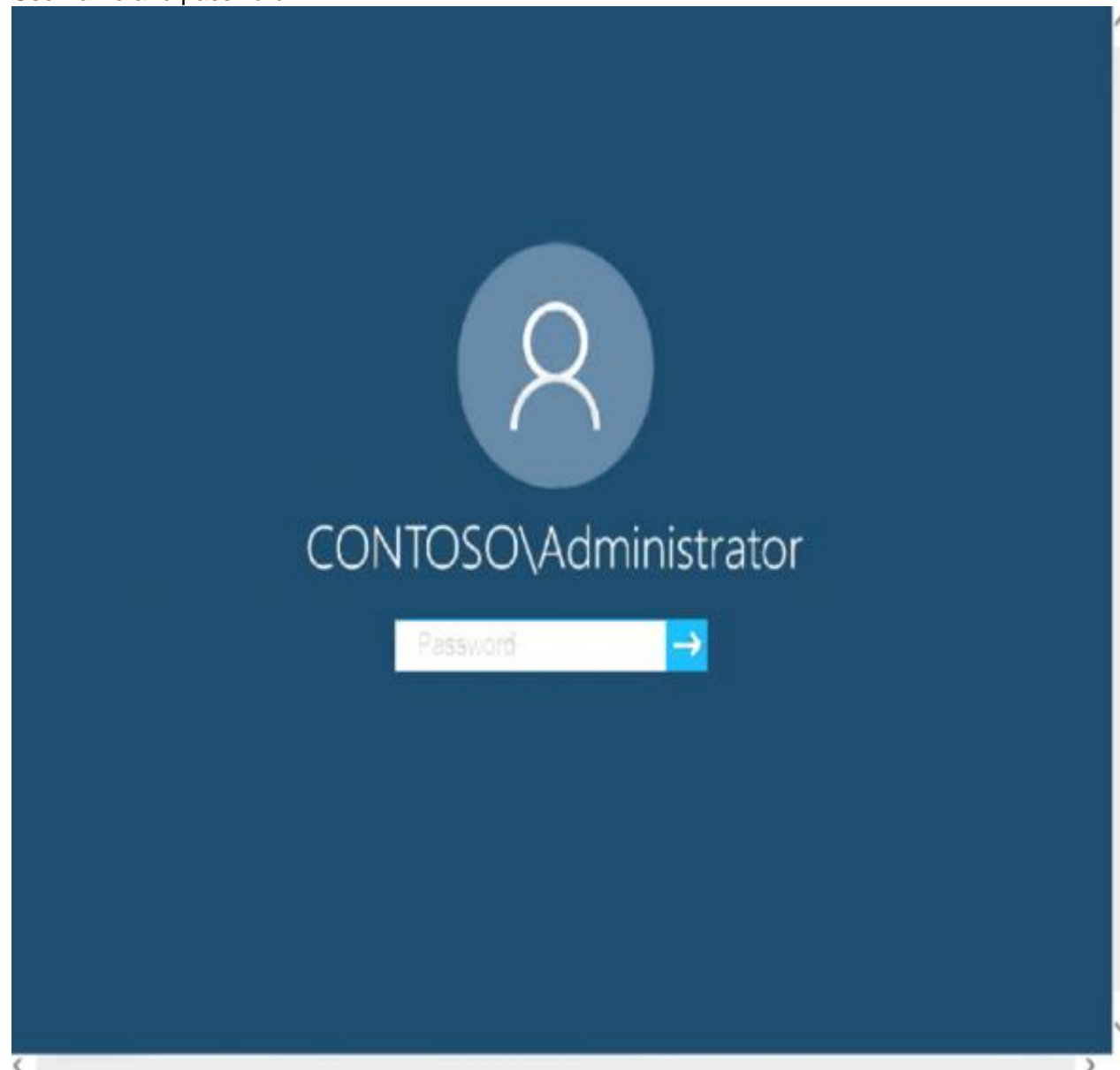
Scoring is based on the outcome of performing the tasks stated in the lab. In other words, it doesn't matter how you accomplish the task, if you successfully perform it, you will earn credit for that task.

Labs are not timed separately, and this exam may more than one lab that you must complete. You can use as much time as you would like to complete each lab.

But, you should manage your time appropriately to ensure that you are able to complete the lab(s) and all other sections of the exam in the time provided.

Please note that once you submit your work by clicking the Next button within a lab, you will NOT be able to return to the lab.

Username and password



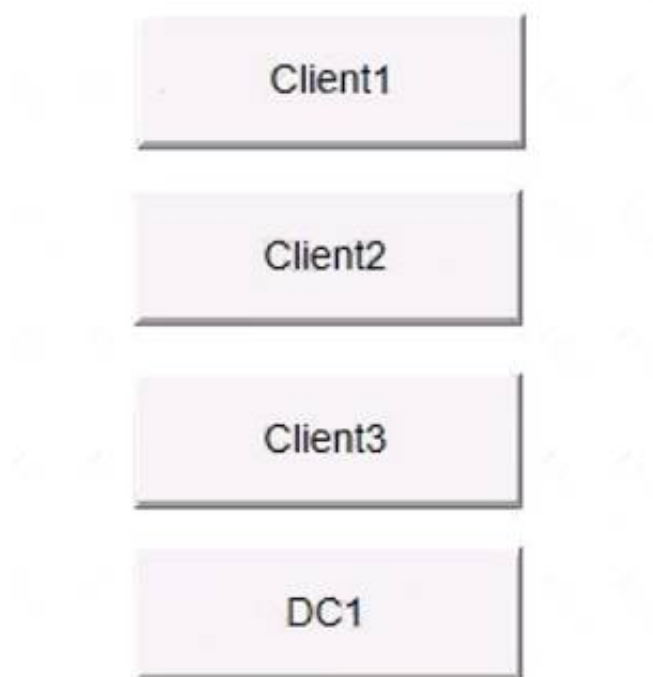
Use the following login credentials as needed:

To enter your password, place your cursor in the Enter password box and click on the password below.

Username: Contoso/Administrator

Password: Passw0rd!

The following information is for technical support purposes only: Lab Instance: 11145882



A web service installed on Client1 is used for testing.
 You discover that users cannot connect to the web service by using HTTP. You need to allow inbound HTTP connections to Client1.
 To complete this task, sign in to the required computer or computers.

- A. Mastered
- B. Not Mastered

Answer: A

Explanation:

To create an inbound port rule

- In the navigation pane, click Inbound Rules.
- Click Action, and then click New rule.

- On the Rule Type page of the New Inbound Rule Wizard, click Custom, and then click Next.
- On the Program page, click All programs, and then click Next.
- On the Protocol and Ports page, select the protocol type that you want to allow. To restrict the rule to a specified port number, you must select either TCP or UDP. Because this is an incoming rule, you typically configure only the local port number. TCP port 80. When you have configured the protocols and ports, click Next.
- On the Scope page, you can specify that the rule applies only to network traffic to or from the IP addresses entered on this page. Configure as appropriate for your design, and then click Next.
- On the Action page, select Allow the connection, and then click Next.
- On the Profile page, select the network location types to which this rule applies, and then click Next.
- On the Name page, type a name and description for your rule, and then click Finish.

Reference:

<https://docs.microsoft.com/en-us/windows/security/threat-protection/windows-firewall/create-an-inbound-port-r>

https://en.wikipedia.org/wiki/List_of_TCP_and_UDP_port_numbers

NEW QUESTION 190

- (Exam Topic 4)

You are preparing to deploy Windows 10.

You download and install the Windows Assessment and Deployment Kit (Windows ADK). You need to create a bootable WinPE USB drive.

What should you do first?

- A. Run the MakeWinPEMedia command.
- B. Download and install Windows Configuration Designer.
- C. Run the WPEUcil command.
- D. Download and install the WinPE add-on.

Answer: D

Explanation:

WinPE used to be included in the Windows ADK. However, it is now provided as an add-on so the first step is to download and install the add-on.

References:

<https://docs.microsoft.com/en-us/windows-hardware/manufacture/desktop/winpe-create-usb-bootable-drive> <https://docs.microsoft.com/en-us/windows-hardware/get-started/adk-install>

NEW QUESTION 195

- (Exam Topic 4)

Note: This question is part of a series of questions that present the same scenario. Each question in the series contains a unique solution that might meet the stated goals. Some question sets might have more than one correct solution, while others might not have a correct solution.

After you answer a question in this section, you will NOT be able to return to it. As a result, these questions will not appear in the review screen.

You have a computer named Computer1 that runs Windows 10. The computer contains a folder. The folder contains sensitive data.

You need to log which user reads the contents of the folder and modifies and deletes files in the folder. Solution: From the properties of the folder, you configure the Auditing settings and from the Audit Policy in

the local Group Policy, you configure Audit directory service access.

Does this meet the goal?

- A. Yes
- B. No

Answer: B

Explanation:

References:

https://www.netwrix.com/how_to_detect_who_changed_file_or_folder_owner.html

NEW QUESTION 198

- (Exam Topic 4)

Your network contains an Active Directory domain. The domain contains 500 computers that run Windows 10. The computers are used as shown in the following table.

Usage	Update note
Manufacturing	Critical computers that must have minimal downtime: Updates must be deferred as long as possible.
Information technology (IT)	Computers for IT staff: Updates must be installed as soon as they are released.
Administration	Computers for general use: Updates must be installed two months after they are released.

You need to apply updates based on the computer usage. What should you configure?

- A. Notifications & actions from System in the Settings apps.
- B. the Windows Update for Business settings by using a Group Policy Object (GPO)
- C. the Windows Installer settings by using a Group Policy Object (GPO)
- D. Delivery Optimization from Update & Security in the Settings apps

Answer: B

Explanation:

Reference:

<https://docs.microsoft.com/en-us/windows/deployment/update/waas-wufb-group-policy>

NEW QUESTION 203

- (Exam Topic 4)

You have 20 computers that run Windows 10. The computers are in a workgroup.

You need to create a local user named Admin1 on all the computers. Admin1 must be a member of the Remote Management Users group.

What should you do?

- A. From Windows Configuration Designer, create a provisioning package, and then run the provisioning package on each computer.
- B. Create a script that runs the New-ADUser cmdlet and the Set-AdGroup cmdlet.
- C. Create a Group Policy object (GPO) that contains the Local User Group Policy preference.
- D. Create a script that runs the New-MsolUser cmdlet and the Add-ADComputerServiceAccount cmdlet.

Answer: A

Explanation:

References:

<https://blogs.technet.microsoft.com/askpfplat/2017/11/06/use-group-policy-preferences-to-manage-the-local-ad>

NEW QUESTION 204

- (Exam Topic 4)

You have a Microsoft Azure Active Directory (Azure AD) tenant.

Some users signs in to that computer by using Windows hello for Business. A user User1 purchases a new computer and joins the computer to Azure AD.

User1 attempts to configure the sign-in options and receives the error message shown in the exhibit. (Click the Exhibit tab.)

Sign-in options

*Some settings are hidden or managed by your organization.



Windows Hello

Sign in to Windows, apps and services by teaching Windows to recognize you.

Windows Hello isn't available on this device.

[See how it works and find compatible devices.](#)

You open device Manager and confirmed that all the hardware works correctly.

You need to ensure that user1 can use Windows Hello for Business facial recognition to sign in to the computer.

What should you do first.

- A. Purchase an infrared (IR) camera.
- B. Install a virtual TPM driver.
- C. Enable UEFI Secure Boot.
- D. Upgrade the computer to windows 10 Enterprise.

Answer: D

NEW QUESTION 207

.....

Thank You for Trying Our Product

We offer two products:

1st - We have Practice Tests Software with Actual Exam Questions

2nd - Questions and Answers in PDF Format

MD-100 Practice Exam Features:

- * MD-100 Questions and Answers Updated Frequently
- * MD-100 Practice Questions Verified by Expert Senior Certified Staff
- * MD-100 Most Realistic Questions that Guarantee you a Pass on Your First Try
- * MD-100 Practice Test Questions in Multiple Choice Formats and Updates for 1 Year

100% Actual & Verified — Instant Download, Please Click
[Order The MD-100 Practice Test Here](#)