

HP

Exam Questions HPE6-A72

Aruba Certified Switching Associate Exam



NEW QUESTION 1

What are two features of the three-tier designs? (Choose two.)

- A. removes the distribution layer in favor of a spine-leaf design used in modern data center deployments
- B. adds a distribution layer to free up resources from the Core for improved performance and routing throughput
- C. a more scalable design over by leveraging a distribution layer to handle Layer 3 routing and access control in large deployments
- D. uses only Layer 2 access on the Access and the Core with Layer 3 routing and access control provided at the distribution layer
- E. is considered legacy by requiring a large flat layer-two broadcast domain from Core to Access and should be avoided

Answer: BC

NEW QUESTION 2

DRAG DROP

Match each description to the correct term.

| Term | | Description |
|------------------|--|--|
| ASIC | | receives and sends frames by using Application-Specific Integrated Circuits (ASICs) |
| Control Plane | | |
| Data Plane | | switches packets faster than using software |
| Management Plane | | determines packet forwarding using routing, switching, security, and flow optimization |
| | | handles switch monitoring |

- A. Mastered
- B. Not Mastered

Answer: A

Explanation:

| Term | | Description |
|------------------|------------------|--|
| ASIC | Data Plane | receives and sends frames by using Application-Specific Integrated Circuits (ASICs) |
| Control Plane | | |
| Data Plane | ASIC | switches packets faster than using software |
| Management Plane | Control Plane | determines packet forwarding using routing, switching, security, and flow optimization |
| | Management Plane | handles switch monitoring |

NEW QUESTION 3

What are two primary concerns regarding layer two loops in a redundant topology? (Choose two.)

- A. routing loops
- B. costs associated with upgrading from copper to fiber
- C. multiple frame copies leading to instability of the MAC address table
- D. security issues with a redundant loop indicating to hackers that a back-door exists
- E. broadcast storms

Answer: CD

NEW QUESTION 4

What connectivity commands are available on AOS-CX switches? (Choose two.)

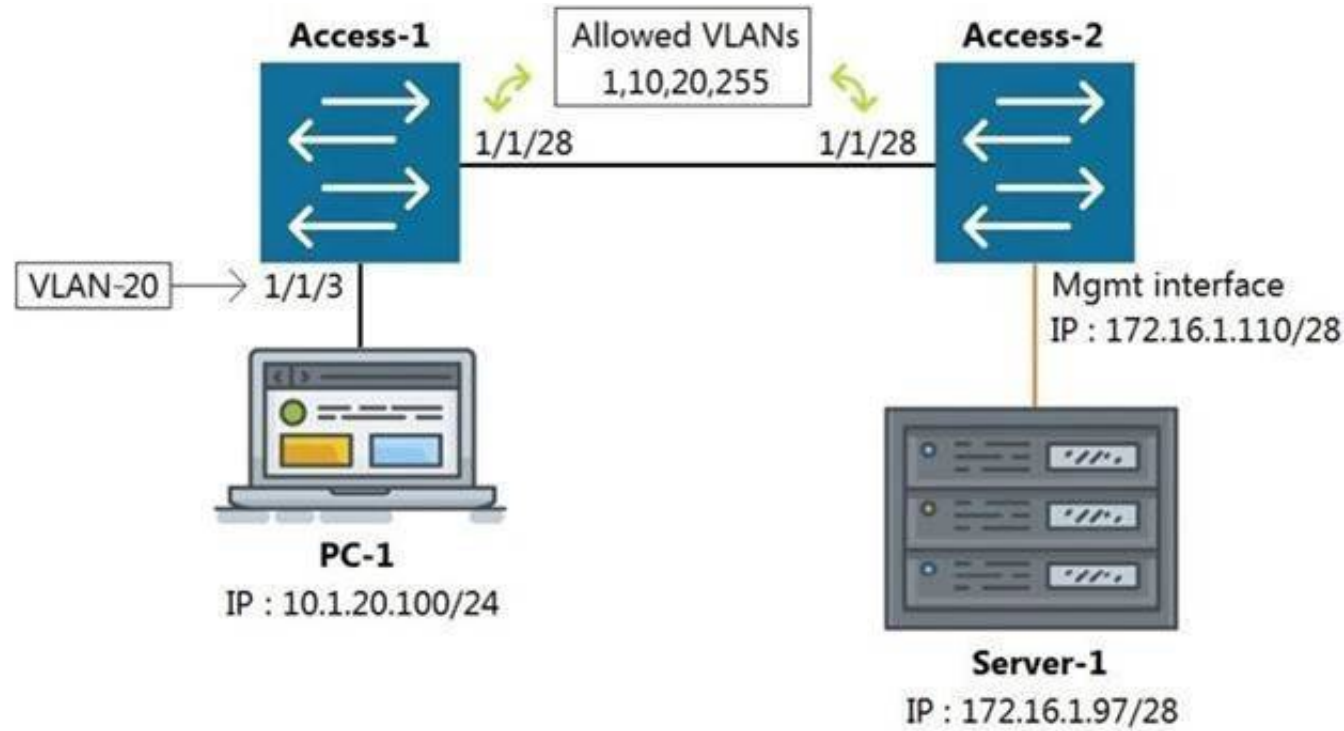
- A. netstatus
- B. traceroute
- C. ping
- D. pathping
- E. tracert

Answer:

BC

NEW QUESTION 5

Refer to the exhibit.



All switches are running Aruba OS-CX. While working in the terminal of Access-2, you are unable to reach Server-1 using SSH. What is the correct command to ping Server-1 from Access-2 to test reachability?

- A. Access-2# ping6 172.16.1.97 vrf mgmt
- B. Access-2# ping 172.16.1.97
- C. Access-2# ping 172.16.1.97 vrf default
- D. Access-2# ping 172.16.1.97 vrf mgmt

Answer: D

NEW QUESTION 6

Which two port characteristics must match between LAG interfaces? (Choose two.)

- A. Port number
- B. Duplex
- C. Member ID
- D. Media type
- E. Chassis number

Answer: BD

NEW QUESTION 7

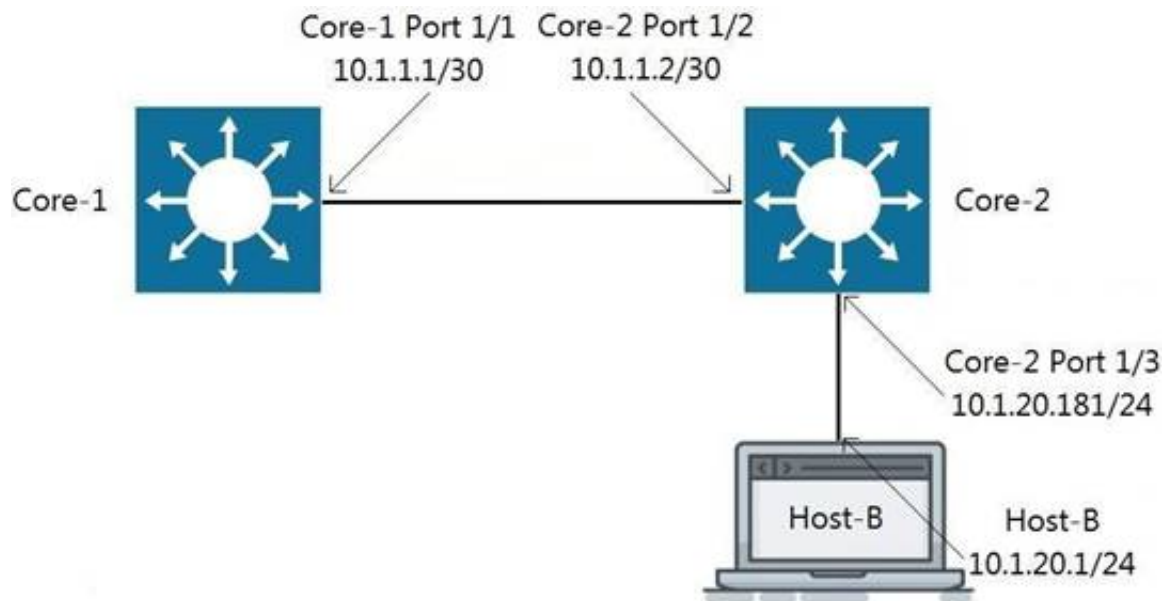
Interface 1/1/1 is up
 Admin state is up
 Link transitions: 1
 Description: TO_PC-1
 Hardware: Ethernet, MAC Address: 00:11:22:33:44:55
 MTU 1500
 Type 1GbT Full-
 duplex qos
 trust none
 Speed 1000 Mb/s
 Auto-negotiation is on
 Flow-control: off
 Error-control: off
 MDI mode: MDIX
 VLAN Mode: access
 Access VLAN: 1111
 Which command will produce the above output?

- A. show interface vlan 1111
- B. show interface 1/1/1
- C. show interface gigabit 1/1/1
- D. show vlan 1111

Answer: B

NEW QUESTION 8

Refer to the exhibit.



Traffic is failing between Core-1 and Host-B. IP addressing has correctly been applied, and all interfaces are attached to the vrf GREEN. Which configuration will correct the issue?

- A. Core-2(config)# ip route 0.0.0.0/0 10.1.1.1 vrf GREEN Host-B: assign the default-gateway address 10.1.20.181
- B. Core-1(config)# ip route 10.1.20.0/24 10.1.1.2 vrf GREEN Host-B: assign the default-gateway address 10.1.20.181
- C. Core-1(config)# ip route 10.1.20.0/24 10.1.1.2 vrf GREEN Host-B: assign the default-gateway address 10.1.20.1
- D. Host-B: assign the default-gateway address 10.1.20.181

Answer: B

NEW QUESTION 9

What is an available command on an Aruba AOS-CX switch that would back up the secondary image to a secure remote repository?

- A. backup secondary sftp://admin@10.1.1.21/GL.10.04.0003.swi
- B. copy secondary sftp://admin@10.1.1.21/GL.10.04.0003.swi
- C. copy sftp://admin@10.1.1.21/GL.10.04.0003.swi secondary
- D. copy secondary tftp://admin@10.1.1.21/GL.10.04.0003.swi

Answer: B

NEW QUESTION 10

Refer to the exhibit.



You are in the process of configuring VSF between Access-1 and Access-2. Access-1 has been configured as the VSF Master. What is a valid configuration for Access-2 to join the VSF stack?

- A. Access-2# configureAccess-2(config)# vsf member 1 Access-2(config)# vsf renumber-to 2 Access-2(vsf-member-1)# link 2 2/1/28 Access-2(vsf-member-1)# exitThis will save the VSF configuration and reboot the switc
- B. Do you want to continue (y/n)? y
- C. Access-2# configureAccess-2(config)# vsf member 2 Access-2(vsf-member-1)# link 2 1/1/28 Access-2(vsf-member-1)# exitThis will save the VSF configuration and reboot the switc
- D. Do you want to continue (y/n)? y
- E. Access-2# configureAccess-2(config)# vsf member 2 Access-2(vsf-member-1)# link 1 1/1/28 Access-2(vsf-member-1)# exitThis will save the VSF configuration and reboot the switch.Do you want to continue (y/n)? y
- F. Access-2# configureAccess-2(config)# vsf member 1 Access-2(vsf-member-1)# link 1 1/1/28 Access-2(vsf-member-1)# exitAccess-2(config)# vsf renumber-to 2This will save the VSF configuration and reboot the switc
- G. Do you want to continue (y/n)? y

Answer: C

NEW QUESTION 10

Which two statements accurately describe the features of NetEdit? (Choose two.)

- A. NetEdit can be used to configure and validate any third-party device that supports SSH and REST access.
- B. NetEdit includes trial licensing for up to 10 nodes.
- C. NetEdit can perform configuration and compliance validation.
- D. NetEdit supports viewing and editing multiple devices using a single deployment plan.
- E. NetEdit can run on a mobile device using Android or Apple IOS.

Answer: CD

NEW QUESTION 15

What are two mechanisms supported on AOS-CX 6300 switches used in Multi-active Detection to determine the status of the Primary member? (Choose two.)

- A. Management interface split detection
- B. Peer switch-based detection
- C. Loopback keepalives
- D. ARP-based
- E. BFD

Answer: AD

NEW QUESTION 18

Which two types of routes can be found in the IP routing table of an Aruba AOS-CX switch? (Choose two.)

- A. Local
- B. EIGRP
- C. BGP
- D. ISIS
- E. RIPvng

Answer: AC

NEW QUESTION 20

DRAG DROP

Match the terms to the correct layer of the OSI model.
Select and Place:

| Layer | | Term |
|-----------------|--|------------|
| Transport Layer | | Frames |
| Network Layer | | Packets |
| Physical Layer | | RF Signals |
| Data Link Layer | | Segments |

- A. Mastered
- B. Not Mastered

Answer: A

Explanation:

| Layer | | Term |
|-----------------|-----------------|------------|
| Transport Layer | Data Link Layer | Frames |
| Network Layer | Network Layer | Packets |
| Physical Layer | Physical Layer | RF Signals |
| Data Link Layer | Transport Layer | Segments |

NEW QUESTION 22

You have completed a successful VSF stack between two switches.
Without manually assigning a backup switch, what is the expected output when issuing a show vsf command?

- A. T1-6300-A# show vsf
- ```
<omitted>
Mbr Mac Address type Status ID

1 88:3a:30:a3:e5:40 JL660A Commander
2 88:3a:30:a6:d9:80 JL660A Secondary
```

- B. T1-6300-A# show vsf  
 <omitted>  

| Member | Mac Address       | type   | Status ID |
|--------|-------------------|--------|-----------|
| 1      | 88:3a:30:a3:e5:40 | JL660A | Primary   |
| 2      | 88:3a:30:a6:d9:80 | JL660A | Secondary |
- C. T1-6300-A# show vsf  
 <omitted>  

| Member | Mac Address       | type   | Status ID |
|--------|-------------------|--------|-----------|
| 1      | 88:3a:30:a3:e5:40 | JL660A | Master    |
| 2      | 88:3a:30:a6:d9:80 | JL660A | Member    |
- D. T1-6300-A# show vsf  
 <omitted>  

| Member | Mac Address       | type   | Status ID |
|--------|-------------------|--------|-----------|
| 1      | 88:3a:30:a3:e5:40 | JL660A | Master    |
| 2      | 88:3a:30:a6:d9:80 | JL660A | Standby   |

**Answer: D**

#### NEW QUESTION 24

Refer to the exhibit.

```
SW1# show vlan
```

| VLAN | Name           | Status | Reason | Type    | Interfaces       |
|------|----------------|--------|--------|---------|------------------|
| 1    | DEFAULT_VLAN_1 | up     | ok     | default | <output omitted> |
| 10   | Engineering    | up     | ok     | static  | 1/1/1-1/1/7      |
| 20   | Guest          | up     | ok     | static  | 1/1/11-1/1/14    |

The above command was applied to an Aruba AOS-CX 6300M 24-port switch with 4-port SFP56 uplinks. All ports are set as access switchports. Which ports carry VLAN 1 traffic?

- A. 1/1/8, 1/1/10, 1/1/5-1/1/24
- B. 1/1/1-1/1/28
- C. 1/1/1-1/1/24
- D. 1/1/8-1/1/10, 1/1/5-1/1/28

**Answer: D**

#### NEW QUESTION 27

.....

## Thank You for Trying Our Product

### We offer two products:

1st - We have Practice Tests Software with Actual Exam Questions

2nd - Questions and Answers in PDF Format

### HPE6-A72 Practice Exam Features:

- \* HPE6-A72 Questions and Answers Updated Frequently
- \* HPE6-A72 Practice Questions Verified by Expert Senior Certified Staff
- \* HPE6-A72 Most Realistic Questions that Guarantee you a Pass on Your FirstTry
- \* HPE6-A72 Practice Test Questions in Multiple Choice Formats and Updatesfor 1 Year

**100% Actual & Verified — Instant Download, Please Click**  
**[Order The HPE6-A72 Practice Test Here](#)**