

Exam Questions 300-410

Implementing Cisco Enterprise Advanced Routing and Services (ENARSI)

<https://www.2passeasy.com/dumps/300-410/>



NEW QUESTION 1

While working with software images, an engineer observes that Cisco DNA Center cannot upload its software image directly from the device. Why is the image not uploading?

- A. The device must be resynced to Cisco DNA Center.
- B. The software image for the device is in install mode.
- C. The device has lost connectivity to Cisco DNA Center.
- D. The software image for the device is in bundle mode

Answer: B

NEW QUESTION 2

An engineer is trying to copy an IOS file from one router to another router by using TFTP. Which two actions are needed to allow the file to copy? (Choose two.)

- A. Copy the file to the destination router with the copy tftp: flash: command
- B. Enable the TFTP server on the source router with the tftp-server flash: <filename> command
- C. TFTP is not supported in recent IOS versions, so an alternative method must be used
- D. Configure a user on the source router with the username tftp password tftp command
- E. Configure the TFTP authentication on the source router with the tftp-server authentication local command

Answer: AB

NEW QUESTION 3

Drag and drop the SNMP attributes in Cisco IOS devices from the left onto the correct SNMPv2c or SNMPV3 categories on the right.

community string

username and password

authentication

no encryption

privileged

read-only

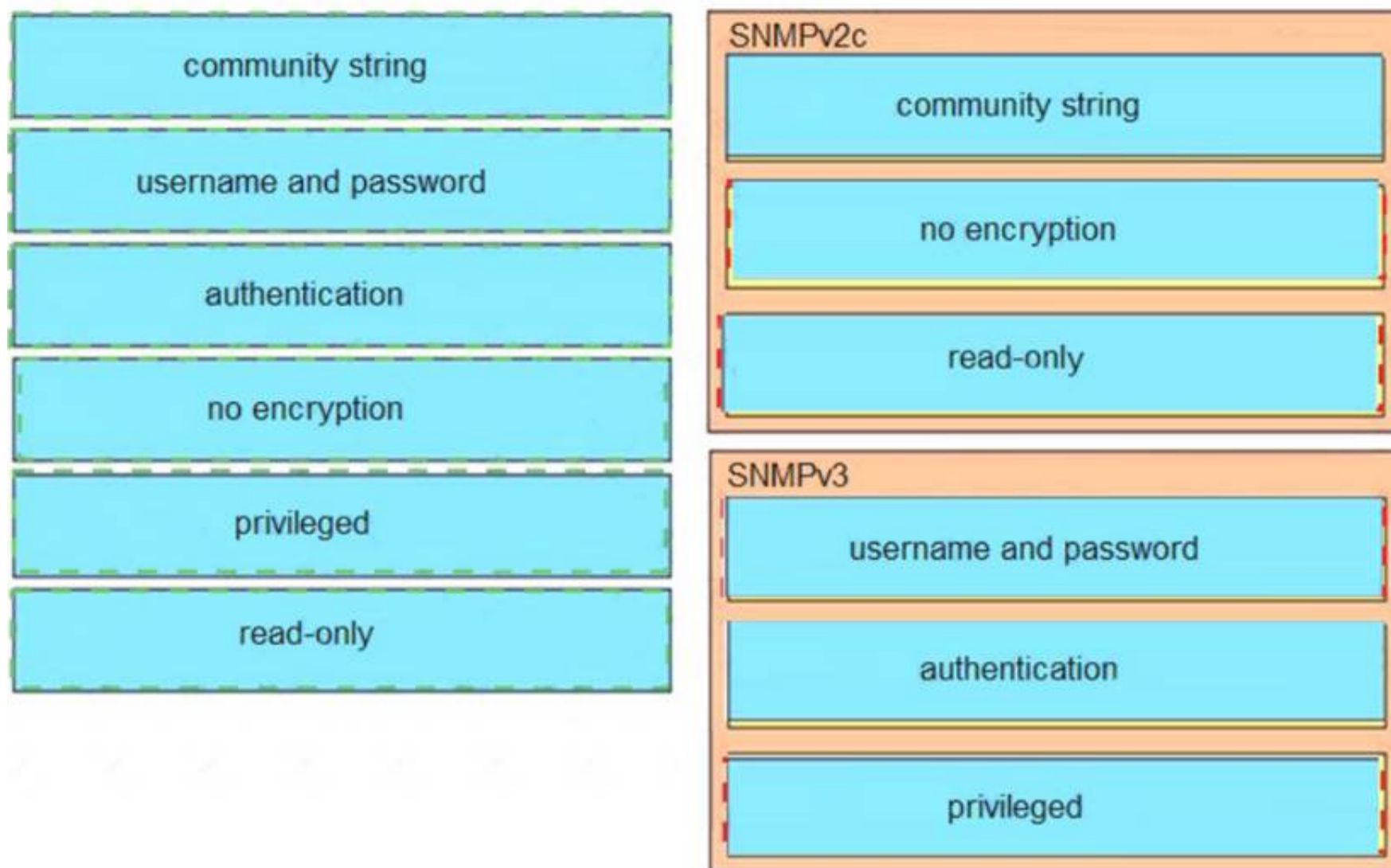
SNMPv2c

SNMPv3

- A. Mastered
- B. Not Mastered

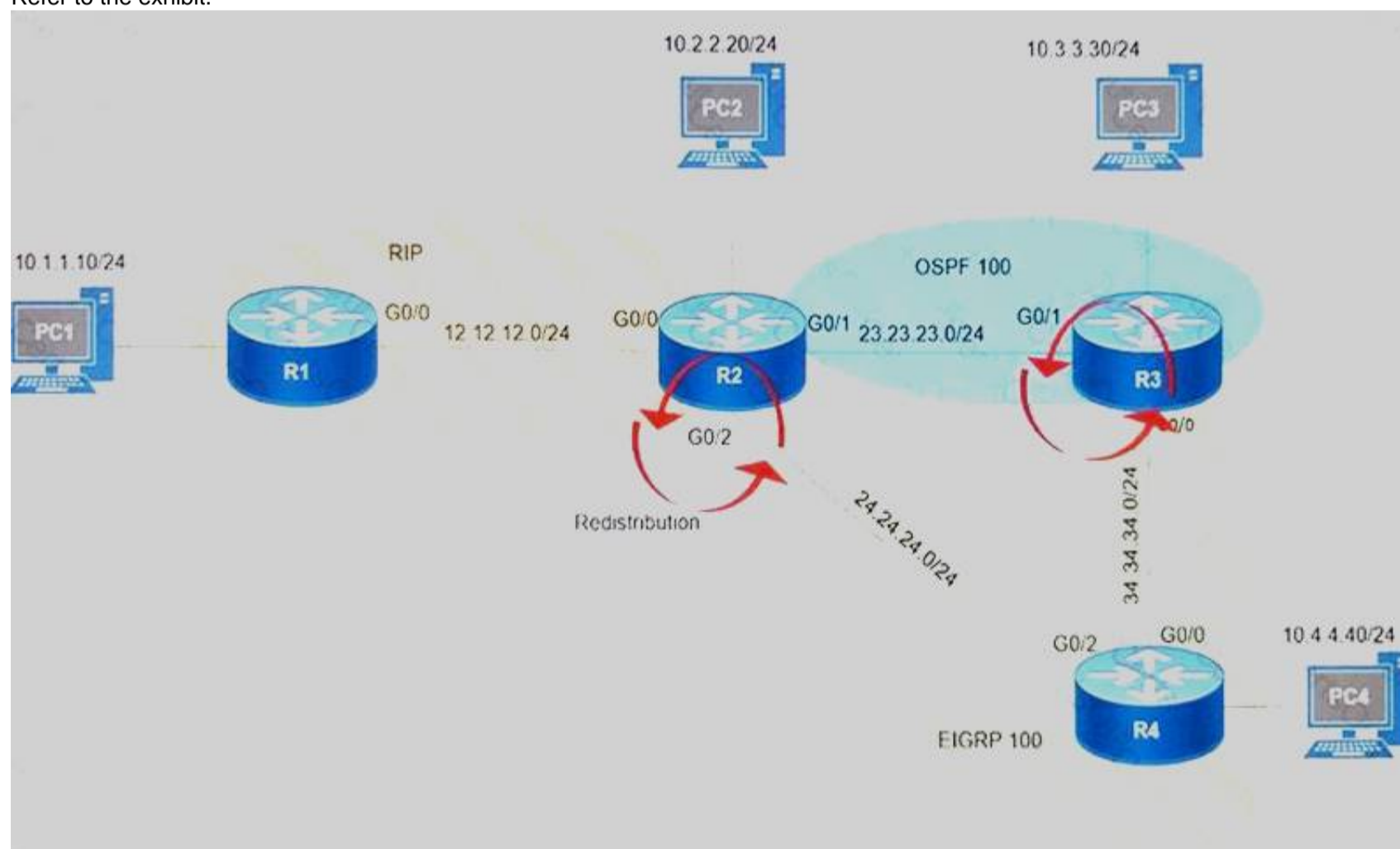
Answer: A

Explanation:



NEW QUESTION 4

Refer to the exhibit.



After redistribution is enabled between the routing protocols; PC2, PC3, and PC4 cannot reach PC1. Which action can the engineer take to solve the issue so that all the PCs are reachable?

- A. Set the administrative distance 100 under the RIP process on R2.
- B. Filter the prefix 10.1.1.0/24 when redistributed from OSPF to EIGRP.
- C. Filter the prefix 10.1.1.0/24 when redistributed from RIP to EIGRP.
- D. Redistribute the directly connected interfaces on R2.

Answer: B

NEW QUESTION 5

When provisioning a device in Cisco DNA Center, the engineer sees the error message "Cannot select the device. Not compatible with template". What is the reason for the error?

- A. The template has an incorrect configuration.

- B. The software version of the template is different from the software version of the device.
- C. The changes to the template were not committed.
- D. The tag that was used to filter the templates does not match the device tag.

Answer: B

NEW QUESTION 6

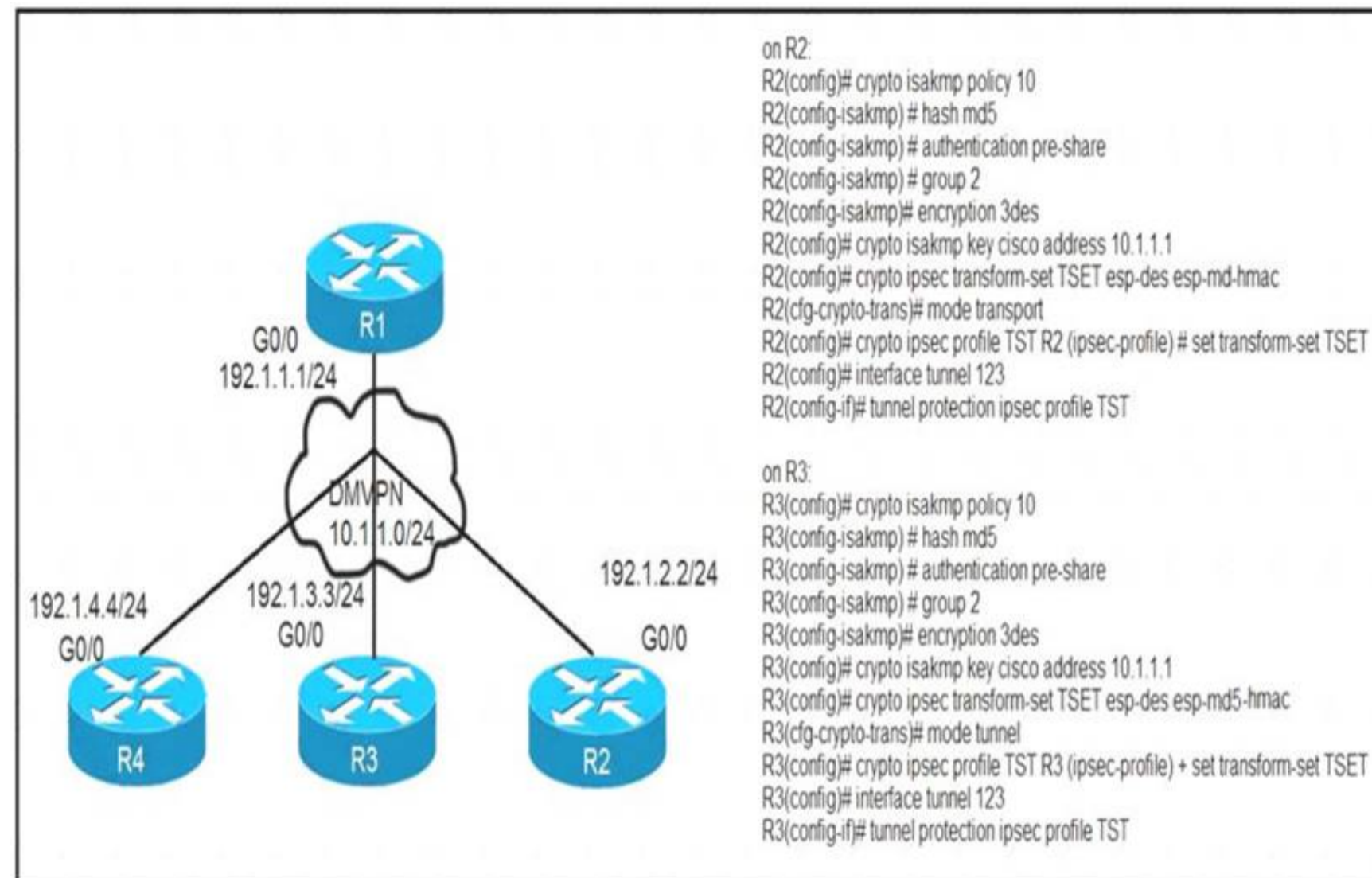
What is a prerequisite for configuring BFD?

- A. Jumbo frame support must be configured on the router that is using BFD.
- B. All routers in the path between two BFD endpoints must have BFD enabled.
- C. Cisco Express Forwarding must be enabled on all participating BFD endpoints.
- D. To use BFD with BGP, the timers 3 9 command must first be configured in the BGP routing process.

Answer: C

NEW QUESTION 7

Refer to the exhibit.



After applying IPsec, the engineer observed that the DMVPN tunnel went down, and both spoke-to-spoke and hub were not establishing. Which two actions resolve the issue? (Choose two.)

- A. Change the mode from mode tunnel to mode transport on R3.
- B. Remove the crypto isakmp key cisco address 10.1.1.1 on R2 and R3.
- C. Configure the crypto isakmp key cisco address 192.1.1.1 on R2 and R3.
- D. Configure the crypto isakmp key cisco address 0.0.0.0 on R2 and R3.
- E. Change the mode from mode transport to mode tunnel on R2.

Answer: AD

NEW QUESTION 8

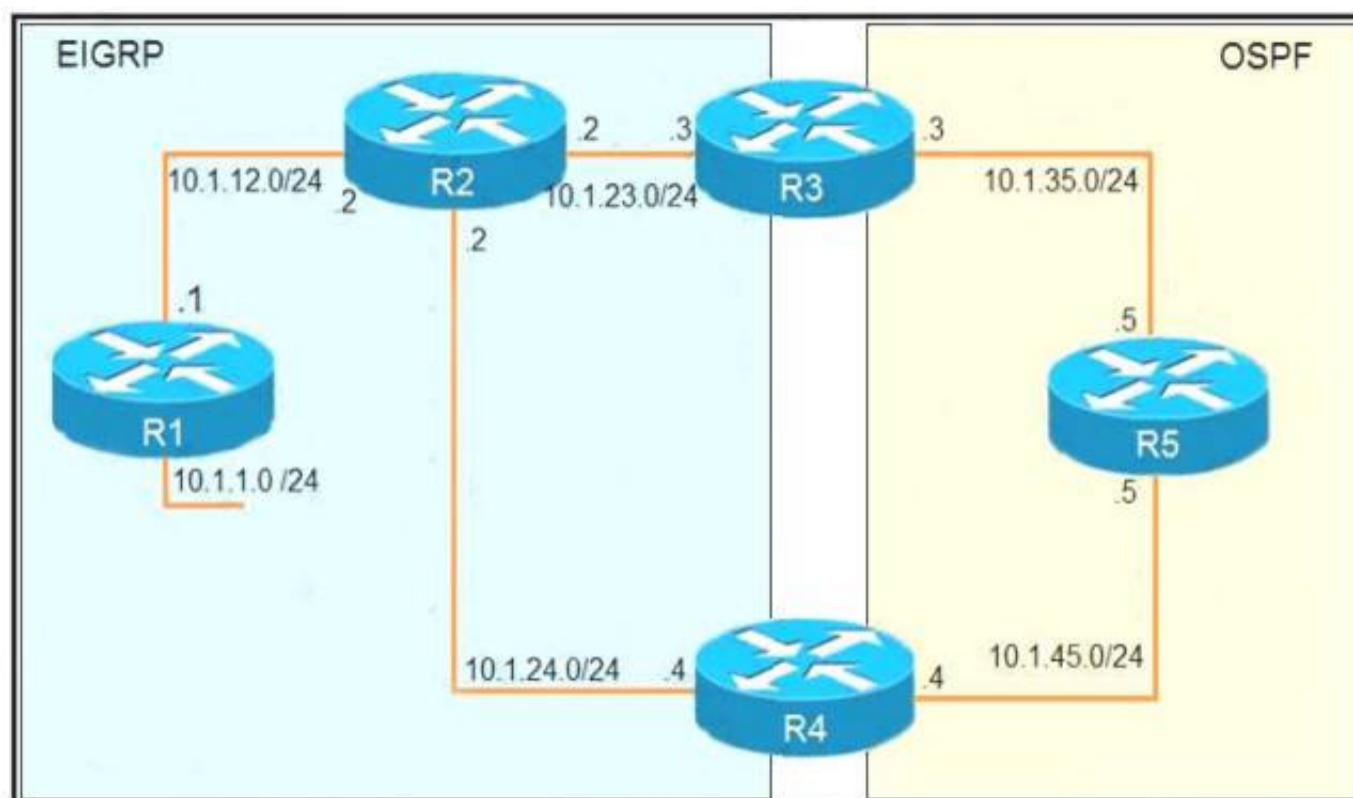
An engineer configured the wrong default gateway for the Cisco DNA Center enterprise interface during the install. Which command must the engineer run to correct the configuration?

- A. sudo maglev-config update
- B. sudo maglev install config update
- C. sudo maglev reinstall
- D. sudo update config install

Answer: A

NEW QUESTION 9

Refer to the exhibit.



```
R1
router eigrp 1
 redistribute connected
 network 10.1.12.0 0.0.0.0

R3
router ospf 1
 redistribute eigrp 1 subnets
 network 10.1.35.3 0.0.0.0 area 0

R4
router eigrp 1
 redistribute ospf 1 metric 2000000 1 255 1 1500
!
router ospf 1
 network 10.1.45.4 0.0.0.0 area 0

R5#traceroute 10.1.1.1

Type escape sequence to abort.
Tracing the route to 10.1.1.1

 0 10.1.35.3 80 msec 44 msec 20 msec
 1 10.1.23.2 44 msec 104 msec 64 msec
 2 10.1.24.4 44 msec 64 msec 40 msec
 3 10.1.45.5 24 msec 40 msec 20 msec
 4 10.1.35.3 92 msec 144 msec 148 msec
 5 10.1.23.2 108 msec 76 msec 80 msec
<output truncated>
```

The output of the trace route from R5 shows a loop in the network. Which configuration prevents this loop?

A)

R3

```
router ospf 1
```

```
 redistribute eigrp 1 subnets route-map SET-TAG
```

```
!
```

```
route-map SET-TAG permit 10
```

```
 set tag 1
```

R4

```
router eigrp 1
```

```
 redistribute ospf 1 metric 2000000 1 255 1 1500 route-map FILTER-TAG
```

```
!
```

```
route-map FILTER-TAG deny 10
```

```
 match tag 1
```

```
!
```

```
route-map FILTER-TAG permit 20
```

B)

```
R3
router eigrp 1
 redistribute OSPF 1 route-map SET-TAG
!
route-map SET-TAG permit 10
 set tag 1
```

```
R4
router eigrp 1
 redistribute ospf 1 metric 2000000 1 255 1 1500 route-map FILTER-TAG
 network 10.1.24.4 0.0.0.0
!
route-map FILTER-TAG deny 10
 match tag 1
!
route-map FILTER-TAG permit 20
```

C)

```
R3
router ospf 1
 redistribute eigrp 1 subnets route-map SET-TAG
!
route-map SET-TAG permit 10
 set tag 1
```

```
R4
router eigrp 1
 redistribute ospf 1 metric 2000000 1 255 1 1500 route-map FILTER-TAG
!
route-map FILTER-TAG permit 10
 match tag 1
```

D)

```
R3
router ospf 1
 redistribute eigrp 1 subnets route-map SET-TAG
!
route-map SET-TAG deny 10
 set tag 1
```

```
R4
router eigrp 1
 redistribute ospf 1 metric 2000000 1 255 1 1500 route-map FILTER-TAG
!
route-map FILTER-TAG deny 10
 match tag 1
```

- A. Option A
- B. Option B
- C. Option C
- D. Option D

Answer: B

NEW QUESTION 10

Which statement about route distinguishers in an MPLS network is true?

- A. Route distinguishers allow multiple instances of a routing table to coexist within the edge router.
- B. Route distinguishers are used for label bindings.
- C. Route distinguishers make a unique VPNv4 address across the MPLS network.
- D. Route distinguishers define which prefixes are imported and exported on the edge router.

Answer: C

NEW QUESTION 10

Refer to the exhibit.

```
snmp-server community ciscotest1
snmp-server host 192.168.1.128 ciscotest
snmp-sever enable traps bgp
```

Network operations cannot read or write any configuration on the device with this configuration from the operations subnet. Which two configurations fix the issue? (Choose two.)

- A. Configure SNMP rw permission in addition to community ciscotest.
- B. Modify access list 1 and allow operations subnet in the access list.
- C. Modify access list 1 and allow SNMP in the access list.
- D. Configure SNMP rw permission in addition to version 1.
- E. Configure SNMP rw permission in addition to community ciscotest 1.

Answer: AB

NEW QUESTION 14

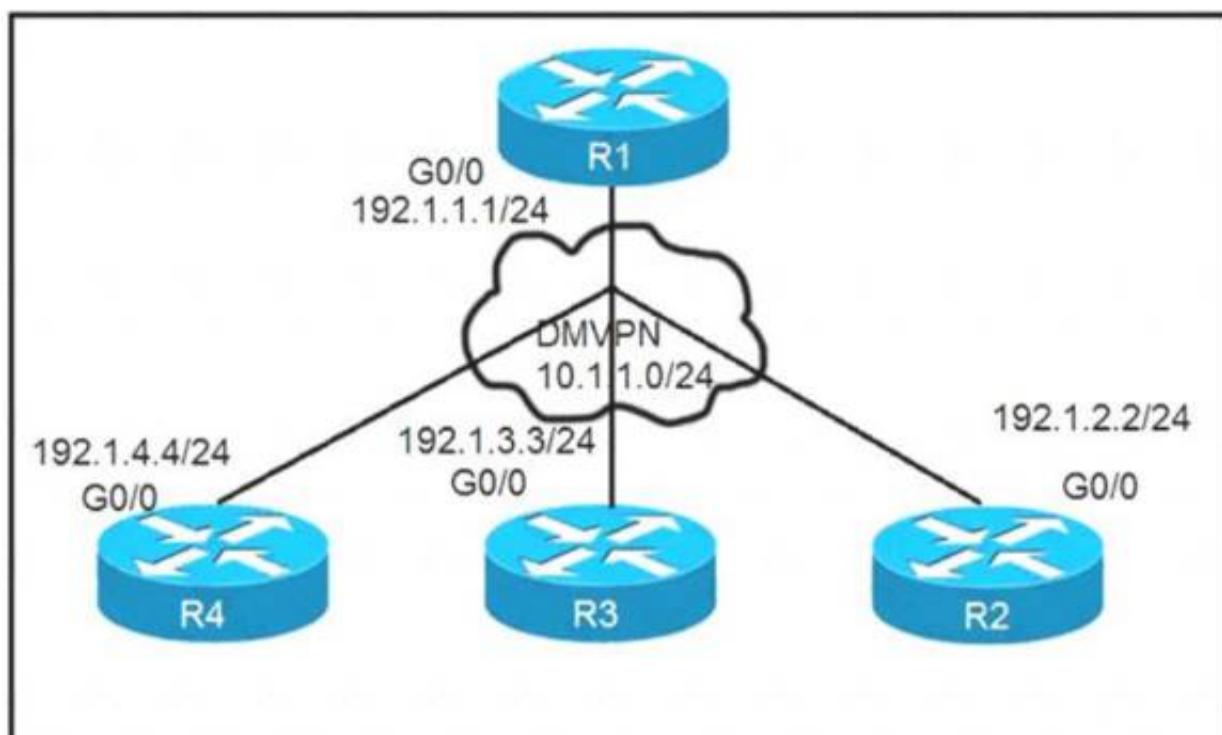
Which method changes the forwarding decision that a router makes without first changing the routing table or influencing the IP data plane?

- A. nonbroadcast multiaccess
- B. packet switching
- C. policy-based routing
- D. forwarding information base

Answer: C

NEW QUESTION 19

Refer to the exhibits.



```

On R1:
R1(config)# interface tunnel 1
R1(config-if)# ip address 10.1.1.1 255.255.255.0
R1(config-if)# tunnel source 192.1.1.1
R1(config-if)# tunnel mode gre multipoint
R1(config-if)# ip nhrp network-id 111

On R2:
R2(config)# interface tunnel 1
R2(config-if)# ip address 10.1.1.2 255.255.255.0
R2(config-if)# tunnel source FastEthernet0/0
R2(config-if)# tunnel mode gre multipoint
R2(config-if)# ip nhrp network-id 222
R2(config-if)# ip nhrp nhs 10.1.1.1
R2(config-if)# ip nhrp map 10.1.1.1 192.1.1.1

On R3:
R3(config)# interface tunnel 1
R3(config-if)# ip address 10.1.1.3 255.255.255.0
R3(config-if)# tunnel source FastEthernet0/0
R3(config-if)# tunnel mode gre multipoint
R3(config-if)# ip nhrp network-id 333 R3(config-if)# ip nhrp nhs 10.1.1.1
R3(config-if)# ip nhrp map 10.1.1.1 192.1.1.1

On R4:
R4(config)# interface tunnel 1
R4(config-if)# ip address 10.1.1.4 255.255.255.0
R4(config-if)# tunnel source FastEthernet0/0
R4(config-if)# tunnel mode gre multipoint
R4(config-if)# ip nhrp network-id 444
R4(config-if)# ip nhrp nhs 10.1.1.1
R4(config-if)# ip nhrp map 10.1.1.1 192.1.1.1
  
```

Phase-3 tunnels cannot be established between spoke-to-spoke in DMVPN. Which two commands are missing? (Choose two.)

- A. The ip nhrp redirect command is missing on the spoke routers.
- B. The ip nhrp shortcut command is missing on the spoke routers.
- C. The ip nhrp redirect command is missing on the hub router.
- D. The ip nhrp shortcut command is missing on the hub router.
- E. The ip nhrp map command is missing on the hub router.

Answer: BC

NEW QUESTION 20

Refer to the exhibit.

```
Router#show access-lists
Standard IP access list 1
    10 permit 192.168.2.2 (1 match)
Router#
Router#show route-map
route-map RM-OSPF-DL, permit, sequence 10
Match clauses:
    ip address (access-lists): 1
Set clauses:
Policy routing matches: 0 packets, 0 bytes
Router#
Router#show running-config | section ospf
router ospf 1
    network 192.168.1.1 0.0.0.0 area 0
    network 192.168.12.0 0.0.0.255 area 0
    distribute-list route-map RM-OSPF-DL in
Router#
```

An engineer is trying to block the route to 192.168.2.2 from the routing table by using the configuration that is shown. The route is still present in the routing table as an OSPF route. Which action blocks the route?

- A. Use an extended access list instead of a standard access list.
- B. Change sequence 10 in the route-map command from permit to deny.
- C. Use a prefix list instead of an access list in the route map.
- D. Add this statement to the route map: route-map RM-OSPF-DL deny 20.

Answer: B

NEW QUESTION 24

Refer to the exhibit.

```
TAC+: TCP/IP open to 171.68.118.101/49 failed --
Destination unreachable; gateway or host down
AAA/AUTHEN (2546660185): status = ERROR
AAA/AUTHEN/START (2546660185): Method=LOCAL
AAA/AUTHEN (2546660185): status = FAIL
As1 CHAP: Unable to validate Response. Username chapuser: Authentication failure
```

Why is user authentication being rejected?

- A. The TACACS+ server expects "user", but the NT client sends "domain/user".
- B. The TACACS+ server refuses the user because the user is set up for CHAP.
- C. The TACACS+ server is down, and the user is in the local database.
- D. The TACACS+ server is down, and the user is not in the local database.

Answer: D

NEW QUESTION 29

Which statement about IPv6 ND inspection is true?

- A. It learns and secures bindings for stateless autoconfiguration addresses in Layer 3 neighbor tables.
- B. It learns and secures bindings for stateless autoconfiguration addresses in Layer 2 neighbor tables.
- C. It learns and secures bindings for stateful autoconfiguration addresses in Layer 3 neighbor tables.
- D. It learns and secures bindings for stateful autoconfiguration addresses in Layer 2 neighbor tables.

Answer: B

NEW QUESTION 30

.....

THANKS FOR TRYING THE DEMO OF OUR PRODUCT

Visit Our Site to Purchase the Full Set of Actual 300-410 Exam Questions With Answers.

We Also Provide Practice Exam Software That Simulates Real Exam Environment And Has Many Self-Assessment Features. Order the 300-410 Product From:

<https://www.2passeasy.com/dumps/300-410/>

Money Back Guarantee

300-410 Practice Exam Features:

- * 300-410 Questions and Answers Updated Frequently
- * 300-410 Practice Questions Verified by Expert Senior Certified Staff
- * 300-410 Most Realistic Questions that Guarantee you a Pass on Your FirstTry
- * 300-410 Practice Test Questions in Multiple Choice Formats and Updatesfor 1 Year