

010-151 Dumps

Cisco Certified Technician (CCT) for Data Center

<https://www.certleader.com/010-151-dumps.html>



NEW QUESTION 1

Which important feature on the front end is provided to the clients by multiple servers that access the same storage devices across the SAN?

- A. recovery
- B. redundancy
- C. resiliency
- D. security
- E. storage

Answer: B

NEW QUESTION 2

Which type of connection across the network does a SAN allow for multiple servers to access an unlimited amount of storage devices?

- A. any-to-many
- B. many-to-any
- C. any-to-any
- D. any-to-one
- E. one-to-any
- F. one-to-one

Answer: C

NEW QUESTION 3

Which two statements about the Ethernet media are true? (Choose two.)

- A. A twisted-pair cable system has each pair of wires twisted together to reduce electromagnetic interference
- B. Compared to multimode fiber, the single-mode fiber is designed for shorter distances with higher cost
- C. 40 Gigabit Ethernet twinax cables deploy Enhanced Quad Small Form Factor Pluggable (QSFP+) connector
- D. The twinax cables can be found in either a shielded twisted-pair or an unshielded twisted-pair variation

Answer: AC

NEW QUESTION 4

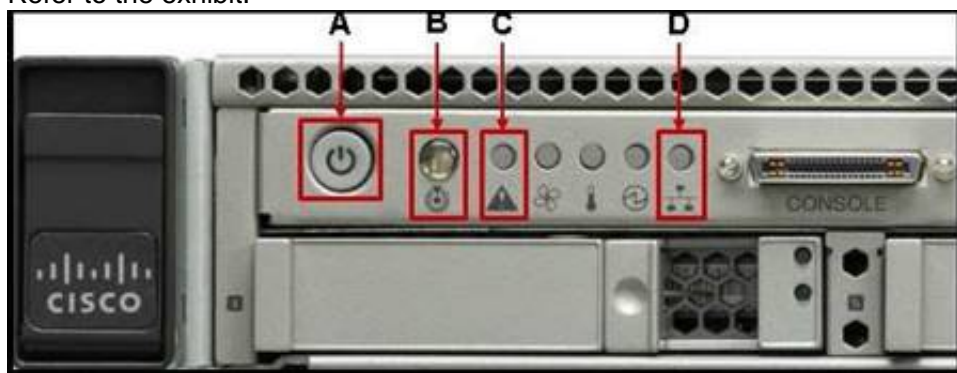
What is the wire transmission speed for 100GBASE-ER4 Ethernet?

- A. 100 Mb/s
- B. 1 Gb/s
- C. 10 Gb/s
- D. 100 Gb/s

Answer: D

NEW QUESTION 5

Refer to the exhibit.



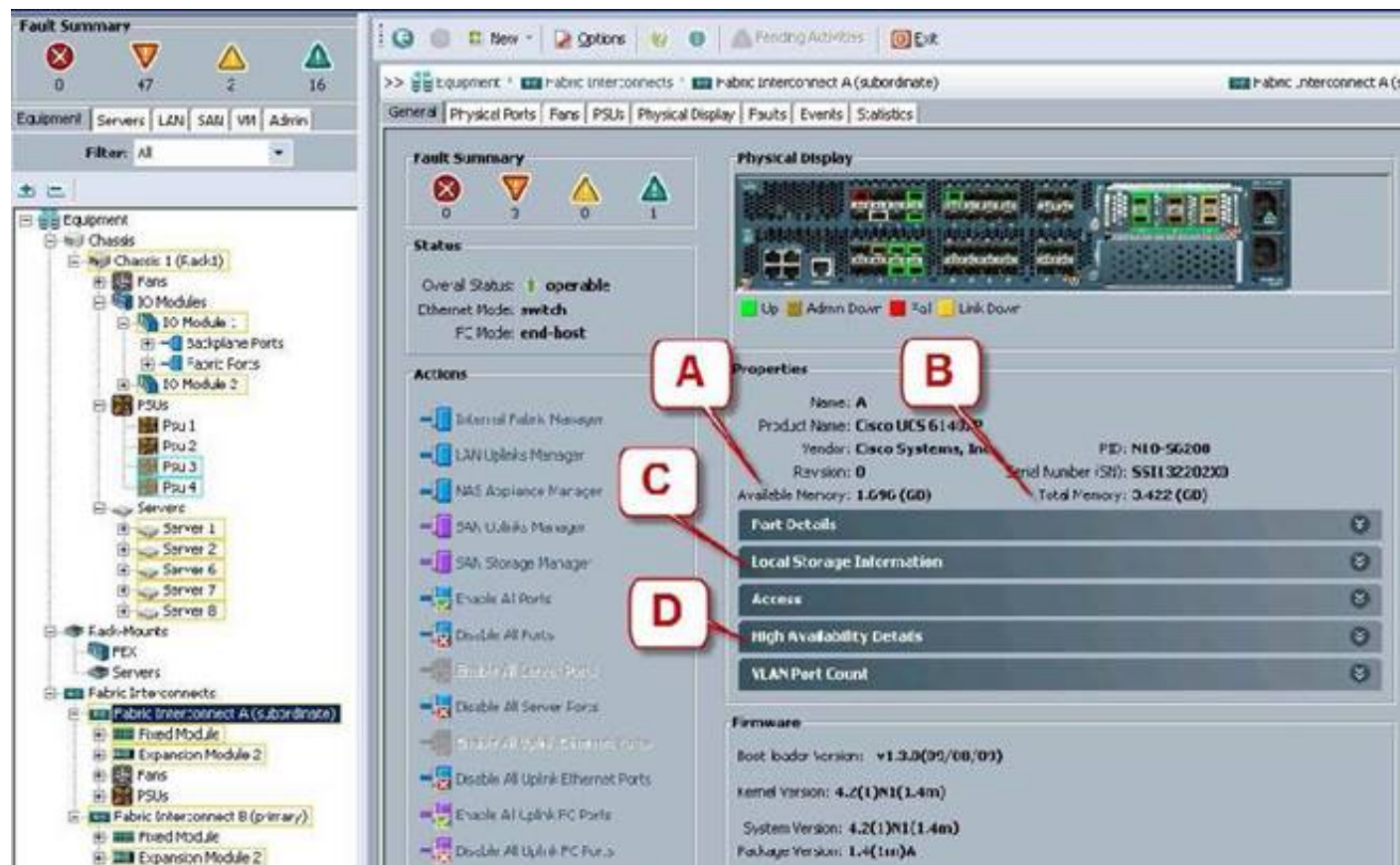
Which statement correctly identifies the front panel LEDs on the Cisco UCS C220 Server?

- A. A is power button and power status LED; B is identification button and LED; C is system status LED; D is network link activity LED
- B. A is network link activity LED; B is system status LED; C is power button and power status LED; D is identification button and LED
- C. A is system status LED; B is network link activity LED; C is power button and power status LED; D is identification button and LED
- D. A is network link activity LED; B is system status LED; C is identification button and LED; D is power button and power status LED

Answer: A

NEW QUESTION 6

Refer to the exhibit.



Where is the best place to see bootflash free space?

- A. A - Available Memory
- B. B - Total Memory
- C. C - Local Storage Information
- D. D - High Availability Details

Answer: C

NEW QUESTION 7

Which three components are hot swappable in a Cisco UCS Blade Server and Chassis? (Choose three.)

- A. Fabric Extender
- B. Power supply
- C. Heat sink
- D. SAS Hard Drive
- E. 2x8GB Kit DIMMs
- F. Mezzanine card

Answer: ABD

NEW QUESTION 8

Which five things should the administrator verify after performing maintenance or replacing a blade server? (Choose five.)

- A. blade server status
- B. hard drive status
- C. host OS boot status
- D. CPU status
- E. mezzanine card status
- F. memory DIMM status
- G. fan and power status

Answer: ABDEF

NEW QUESTION 9

Which two statements about DIMM replacement in Cisco UCS Servers are true? (Choose two.)

- A. In blade servers, DIMMs can be installed in either 1, 2, 4, or 8 DIMMs per channel
- B. Rack-mount and blade servers have memory fault LEDs that indicate which DIMM requires attention
- C. In servers that require pairs of DIMMs, the pairs must be identical (manufacturer, size, part #, and so on).
- D. If the memory in a server is not fully populated, you can install DIMMs in any open slot

Answer: AC

NEW QUESTION 10

Which three firmware components does the Host Upgrade Utility upgrade? (Choose three.)

- A. Fabric Interconnect firmware
- B. LAN on Motherboard
- C. Cisco UCS Manager
- D. CIMC
- E. System BIOS

Answer: BDE

NEW QUESTION 10

Up to what speed can Category 5e UTP cable transmit data?

- A. 10 Mb/s
- B. 100 Mb/s
- C. 1000 Mb/s
- D. 10000 Mb/s

Answer: C

NEW QUESTION 11

Refer to the exhibit.



Which three options are features of the Cisco UCS 6248UP Fabric Interconnect front panel? (Choose three.)

- A. Console port
- B. FCoE port
- C. 10 Gb/s port
- D. Fan module
- E. USB port

Answer: ADE

NEW QUESTION 14

Refer to the exhibit.



What is the name of this Cisco Nexus 3000 Series Switch?

- A. Cisco Nexus 3132Q
- B. Cisco Nexus 3172PQ
- C. Cisco Nexus 3524
- D. Cisco Nexus 3016

Answer: A

NEW QUESTION 16

Which device provides analysis of Fibre Channel traffic without any network disruption?

- A. Cisco MDS 9000 Data Analyzer Adapter
- B. Cisco MDS 9000 Port Analyzer Adapter
- C. Cisco MDS 9000 Channel Analyzer Device
- D. Cisco MDS 9000 Channel Analyzer Adapter

Answer: B

NEW QUESTION 21

.....

Thank You for Trying Our Product

* 100% Pass or Money Back

All our products come with a 90-day Money Back Guarantee.

* One year free update

You can enjoy free update one year. 24x7 online support.

* Trusted by Millions

We currently serve more than 30,000,000 customers.

* Shop Securely

All transactions are protected by VeriSign!

100% Pass Your 010-151 Exam with Our Prep Materials Via below:

<https://www.certleader.com/010-151-dumps.html>