

Cisco

Exam Questions 350-601

Implementing and Operating Cisco Data Center Core Technologies



NEW QUESTION 1

A network administrator must configure an extra keyring in Cisco UCS Manager. The key must provide a high level of encryption and secure authentication when users use the web interface. Which configuration command set must be applied to meet these requirements?

- ☒ **set https keyring kring7984**
set https cipher-suite-mode secure
set https ssl-protocol tls1-2
commit-buffer
- ☐ **set https keyring kring7984**
set https cipher-suite-mode secure
set https tls-protocol tls1-2
commit-buffer
- ☐ **set https keyring kring7984**
set https cipher-suite-mode high
set https ssl-protocol tls1-2#
commit-buffer
- ☐ **set https keyring kring7984**
set https cipher-suite-mode high
set https tls-protocol tls1-2
commit-buffer

- A. Option A
- B. Option B
- C. Option C
- D. Option D

Answer: C

Explanation:

https://www.cisco.com/c/en/us/td/docs/unified_computing/ucs/ucs-manager/CLI-User-Guides/Admin-Managem "cipher-suite-mode secure" is invalid command. "Cipher-suite-mode high" is valid command. "tls-protocol tls1-2" is invalid command. "Ssl-protocol tls1-2" is valid command.

```
UCS-A# scope system
UCS-A /system # scope services
UCS-A /system/services # enable https
UCS-A /system/services* # set https port 443
Warning: When committed, this closes all the web sessions.
UCS-A /system/services* # set https keyring kring7984
UCS-A /system/services* # set https cipher-suite-mode high
UCS-A /system/services* # set https ssl-protocol tls1-2
UCS-A /system/services* # commit-buffer
UCS-A /system/services #
```

NEW QUESTION 2

An engineer deploys a custom Guest Shell rootfs on a Nexus 9000 Series Switch. Drag and drop the steps from the left into the order required to deploy the solution on the right. Not all options are used.

Customize the guest shell rootfs.	Step 1
Export the Guest Shell rootfs.	Step 2
Store it in a file server.	Step 3
Import the Guest Shell rootfs to other switches.	Step 4
Install the specific Guest Shell across devices simultaneously.	Step 5

- A. Mastered
 B. Not Mastered

Answer: A

Explanation:

A picture containing text Description automatically generated

<https://www.cisco.com/c/en/us/td/docs/switches/datacenter/nexus9000/sw/93x/programmability/guide/b-cisco-ne>

Replicating the Guest Shell

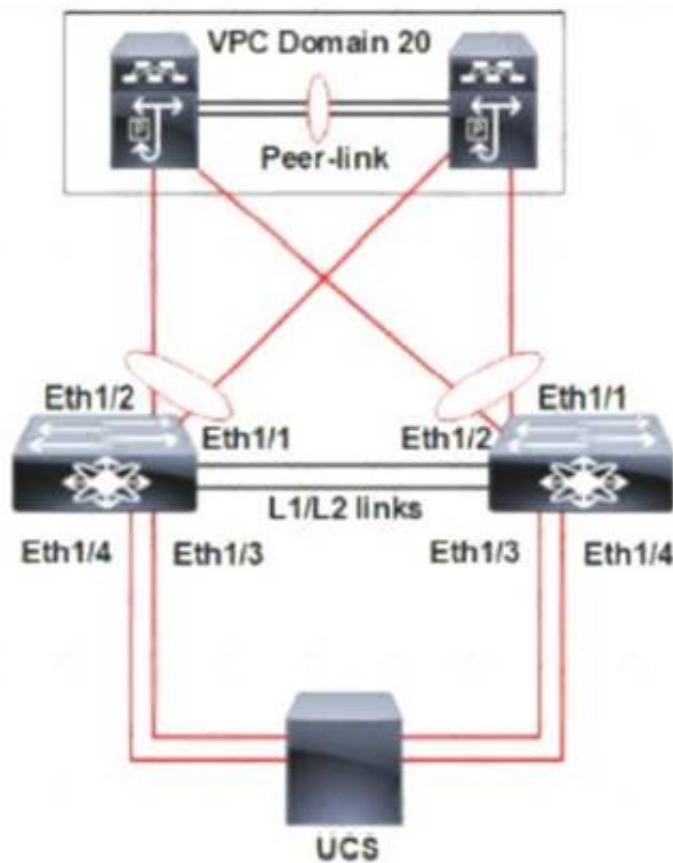
Beginning with Cisco NX-OS release 7.0(3)I7(1), a Guest Shell rootfs that is customized on one switch can be deployed onto multiple switches.

The approach is to ¹customize and then ²export the Guest Shell rootfs and store it on a file server. ³A POAP script can ⁴download (import) the Guest Shell rootfs to other switches and ⁵install the specific Guest Shell across many devices simultaneously.

- Exporting Guest Shell rootfs
- Importing Guest Shell rootfs
- Importing YAML File
- show guestshell Command

NEW QUESTION 3

Refer to the exhibit.



A pair of Cisco Nexus switches form a vPC. A new chassis s added to the pre-existing Cisco UCS domain. A new chassis must be discovered, and all links from the chassis to the LAN network must be established. Which set of actions accomplishes these requirements?

- ☐ Set the chassis discovery policy action to four links.
 Configure Eth1/3 and Eth1/4 as server ports.
 Acknowledge the chassis.
- ☒ Set the chassis discovery policy action to four links.
 Configure Eth1/1 and Eth1/2 as uplink Fibre Channel ports.
 Set the link group preference to None.
- ☐ Set the chassis discovery policy action to one link
 Configure Eth1/1 and Eth1/2 as uplink Ethernet ports.
 Set the link group preference to Port Channel.
- ☐ Set the chassis discovery policy action to one link
 Configure Eth1/3 and Eth1/4 as server ports.
 Acknowledge the chassis.

- A. Option A
 B. Option B
 C. Option C
 D. Option D

Answer: C

NEW QUESTION 4

Which solution provides remote and direct file-level access to users and systems?

- A. direct-attached storage
- B. Fibre Channel over Ethernet
- C. storage area network
- D. network-attached storage

Answer: D

NEW QUESTION 5

An engineer needs to Implement a solution that prevents loops from occurring accidentally by connecting a switch to interface Ethernet1/1. The port is designated to be used for host connectivity. What configuration should be implemented?

- ☒ switch# configure terminal
switch(config)# interface Ethernet1/1
switch(config-if)# spanning-tree guard loop
- ☐ switch# configure terminal
switch(config)# interface Ethernet1/1
switch(config-if)# spanning-tree bpdufilter enable
- ☐ switch# configure terminal
switch(config)# interface Ethernet1/1
switch(config-if)# spanning-tree bpduguard enable
- ☐ switch# configure terminal
switch(config)# interface Ethernet1/1
switch(config-if)# spanning-tree loopguard default

- A. Option A
- B. Option B
- C. Option C
- D. Option D

Answer: C

NEW QUESTION 6

What is a feature of NFS?

- A. role-based access control
- B. Kerberos-based security model
- C. block-based file access
- D. zone-based access control

Answer: B

Explanation:

<https://www.cisco.com/c/en/us/support/docs/security-vpn/kerberos/16087-1.html#modifiednfs>

Kerberos Security Implications of the Modified NFS

This implementation is not completely secure. For starters, user data is still sent across the network in an unencrypted, and therefore interceptable, form. The low-level, per-transaction authentication is based on a <CLIENT-IP-ADDRESS, CLIENT-UID> pair provided unencrypted in the request packet. This information could be forged and thus security compromised. However, it should be noted that only while a user is actively using her/his files (that is, while logged in) are valid mappings in place and therefore this form of attack is limited to when the user in question is logged in. When a user is not logged in, no amount of IP address forgery will permit unauthorized access to her/his files.

NEW QUESTION 7

Which statement about the MAC address that the FCoE Initialization Protocol chooses for use by an E-Node in an FCoE implementation is true?

- A. The FCoE Initialization Protocol uses the burned-in MAC address of the converged network adapter for all FCoE operations.
- B. The FCoE Initialization protocol uses a 24-bit FC-MAP and concatenates a 24-bit Fibre Channel ID to create a fabric-provided MAC address.
- C. The FCoE Initialization Protocol uses 01.00.0C as the first 24 bits of the MAC address and appends a 24-bit Fibre Channel ID to derive a full 48-bit FCoE MAC address.
- D. FCoE does not use a MAC address
- E. The FCoE Initialization Protocol is used to acquire a Fibre Channel ID, and the address is used for all FCoE communications in the same way as Fibre Channel Protocol.

Answer: B

Explanation:

https://www.cisco.com/c/en/us/td/docs/solutions/Enterprise/Data_Center/UF_FCoE_final.html#wp1154912

NEW QUESTION 8

A network engineer is deploying a cisco ALL-flash hyperflex solution. Which local storage configuration is required for the operating system and persistent logging?

- A. Two solid state drives
- B. Two SATA drives
- C. One SATA drive
- D. One solid state drive

Answer: D

NEW QUESTION 9

An engineer must implement a disaster recovery policy for the Cisco UCS infrastructure. The solution must meet these criteria:

- The Recovery Point Objective must be 48 hours.
- The backup must use encrypted transmission.
- The Recovery Time Objective must be 4 hours.

Which configuration set must be used in the scheduled backup to meet these requirements?

- ☒ Protocol: SFTP
Schedule: Weekly
- ☐ Protocol: FTP
Schedule: Bi-Weekly
- ☐ Protocol: TFTP
Schedule: Bi-Weekly
- ☐ Protocol: SCP
Schedule: Daily

- A. Option A
- B. Option B
- C. Option C
- D. Option D

Answer: D

NEW QUESTION 10

The engineer must configure SPAN on a cisco Nexus 5000 Series switch to get a capture of the traffic from these applications for an in-depth packet analysis. Which two characteristics must be considered? (Choose two.)

- A. The Ethernet, FC, vFC, port channel, SAN port channel can be used as SPAN source ports.
- B. The rx/tx option is available for VLAN or VSAN SPAN sessions.
- C. SPAN source port can be monitored in multiple SPAN sessions.
- D. Only Ethernet, FC, vFC, port channel port types can be a destination SPAN port.
- E. A SPAN source port cannot be a destination SPAN port.

Answer: AE

Explanation:

https://www.cisco.com/en/US/docs/switches/datacenter/nexus5000/sw/configuration/guide/cli_rel_4_1/Cisco_N

NEW QUESTION 10

A network engineer must perform a backup and restore of the Cisco Nexus 5000 Series Switch configuration. The backup must be made to an external backup server. The only protocol permitted between the Cisco Nexus switch and the backup server is UDP. The backup must be used when the current working configuration of the switch gets corrupted. Which set of steps must be taken to meet these requirements?

- A. * 1 Perform a startup-config backup to an FTP server.* 2 Copy startup-config in the boot flash to the running-config file
- B. * 1 Perform a running-config backup to an SFTP server* 2 Copy backup-config from the SFTP server to the running-config file
- C. * 1 Perform a running-config backup to an SCP server* 2 Copy running-config in the boot flash to the running-config file
- D. * 1 Perform a startup-config backup to a TFTP server* 2 Copy backup-config from the backup server to the running-config file

Answer: D

Explanation:

TFTP is the only protocol that uses UDP. FTP, SFTP, and SCP use TCP.

NEW QUESTION 15

Which method must a network engineer use to upgrade the BIOS firmware of a Cisco UCS standalone C-Series rack-mount server?

- A. Use the Cisco host upgrade utility.
- B. Use the Cisco hardware upgrade utility.
- C. Use the Cisco host firmware policy.
- D. Use the U-ACPI Interface.

Answer: A

NEW QUESTION 20

Due to a newly announced security advisory, a company has been Informed that they must update the configuration of 500 network devices that are deployed in their network. The engineering team must assist the operations team to prepare for this update. The operations team does not have direct access to the network

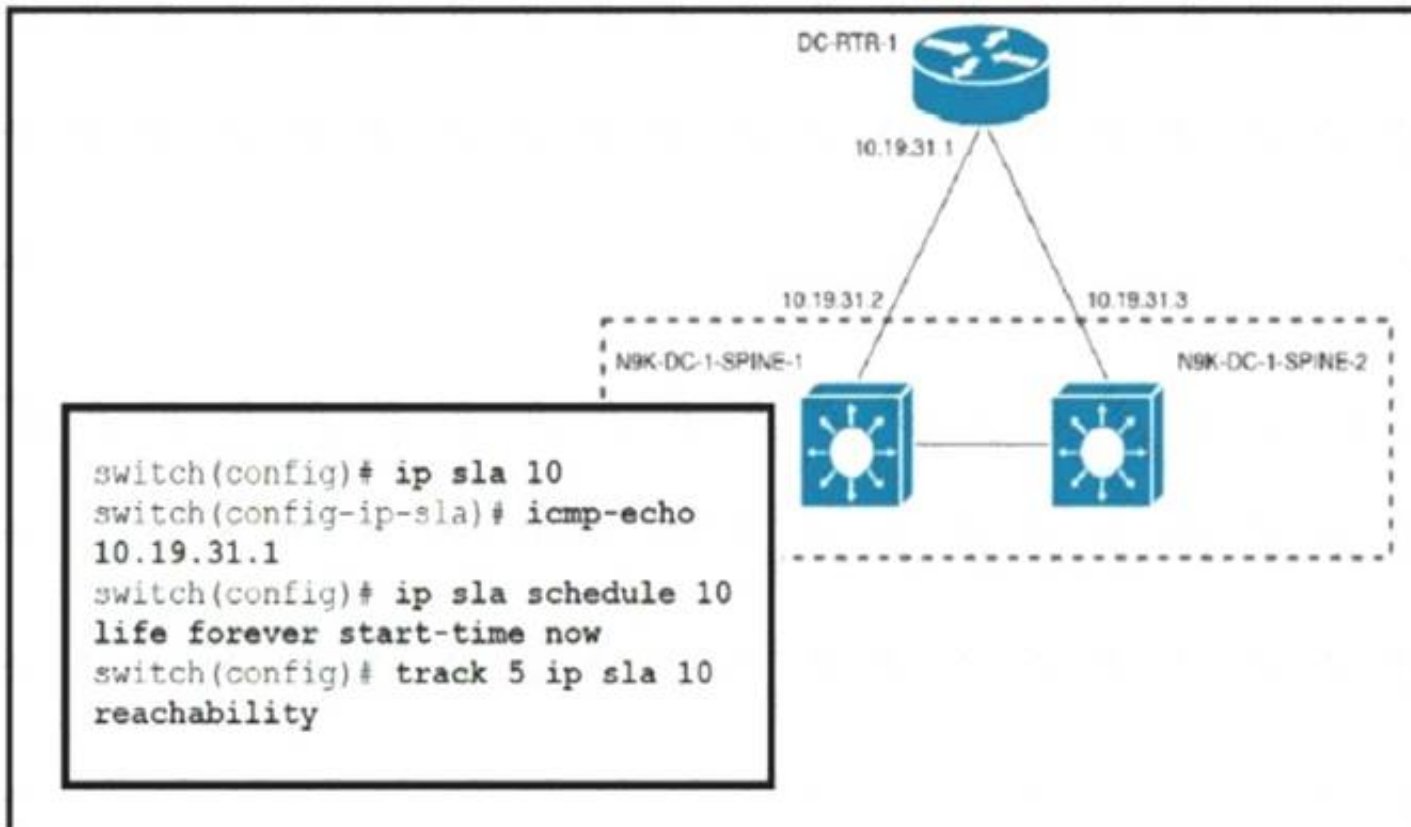
devices and must log in via a Linux server. This is the first time that the team is making a network-wide configuration and must change all devices without first installing additional software on the network devices. The operations team is unfamiliar with automation and scripting technologies. Which automation tool must be used to accomplish this goal?

- A. Chef
- B. Ansible
- C. Puppet
- D. Saltstack

Answer: B

NEW QUESTION 24

Refer to the exhibit.



An engineer must invoke a Python script that alerts the operations team when the router DC-RTR-1 becomes unreachable. Which configuration set accomplishes this task?

- ☐ track 3 ip sla 10 reachability
event name GATEWAY-DOWN
event state down
action cli command routerdown.py
- ☒ scheduler job name ROUTER-DOWN
job track 9 state down
action 1.0 cli source routerdown.py
schedule 10
- ☐ event scheduler name DOWN-ROUTER
event track 2 state 1 not up
event action 1.0 command source routerdown.py
event start 0:00 repeat 0:05
- ☐ event manager applet ROUTER-DOWN-SLA
event track 5 state down
action 1.0 event-default
action 2.0 cli command source routerdown.py

- A. Option A
- B. Option B
- C. Option C
- D. Option D

Answer: D

NEW QUESTION 29

Drag and drop the technologies from the left onto the description on the right.

NFSv2	uses client machine authentication
Kerberos	uses users authentication
NFSv4	authenticates clients and servers in NFSv4
RADIUS	authenticates clients to corporate directory systems

- A. Mastered
 B. Not Mastered

Answer: A

Explanation:

NFSv2 NFSv4
 Kerberos RADIUS

NEW QUESTION 34

Refer to the exhibit.

```
switch(config)# interface Ethernet 2/2
switch(config)# ip address 172.23.231.240/23
switch(config)# ip verify unicast source reachable-via rx
```

What is configured as a result of running these commands?

- A. reverse lookup for outbound packets
 B. strict unicast RPF
 C. loose unicast RPF
 D. IP Source Guard

Answer: B

Explanation:

https://tools.cisco.com/security/center/resources/unicast_reverse_path_forwarding

The ip verify unicast source reachable-via rx command enables Unicast RPF in strict mode. To enable loose mode, administrators can use the any option to enforce the requirement that the source IP address for a packet must appear in the routing table.

NEW QUESTION 36

Refer to the exhibit.

```
CISCO-UCS-A# scope org /
CISCO-UCS-A /org* # create service-profile Cisc01 instance
CISCO-UCS-A /org/service-profile* # set bios-policy bios1
CISCO-UCS-A /org/service-profile* # set boot-policy boot1
CISCO-UCS-A /org/service-profile* # set ext-mgmt-ip-state none
CISCO-UCS-A /org/service-profile* # set host-fw-policy ipmi-user987
CISCO-UCS-A /org/service-profile* # set identity dynamic-uuid derived
CISCO-UCS-A /org/service-profile* # set ipmi-access-profile ipmi1
CISCO-UCS-A /org/service-profile* # set local-disk-policy local1
CISCO-UCS-A /org/service-profile* # set maint-policy maint1
CISCO-UCS-A /org/service-profile* # set mgmt-fw-policy mgmt1
CISCO-UCS-A /org/service-profile* # set power-control-policy power1
CISCO-UCS-A /org/service-profile* # set scrub-policy scrub1
CISCO-UCS-A /org/service-profile* # set sol-policy sol1
CISCO-UCS-A /org/service-profile* # set stats-policy stats1
CISCO-UCS-A /org/service-profile* # set user-label Cisco
CISCO-UCS-A /org/service-profile* # vcon-policy vconnpolicy
CISCO-UCS-A /org/service-profile* # commit-buffer
CISCO-UCS-A /org/service-profile #
```

What is a characteristic presented in the service profile of the UUID?

- A. based on the hardware
 B. vendor assigned
 C. unique system generated
 D. allocated from a UUID pool

Answer: A

Explanation:

there is no parameter for 'set identity dynamic-uuid' to specify a pool name - you can only state "derived" or a 32 hex character string (128-bits, therefore full UUID).

```
ucspe /org/service-profile # set identity dynamic-uuid derived Derived
FFFFFFFF-FFFF-FFFF-FFFF-FFFFFFFFFFFFFF Dynamic UUID
```

The documentation, as usual for Cisco, is poor. Shagua references old v1.4.1 documentation but it's the same in 4.1. It's inaccurate as uuid-pool should now read uuid-suffix-pool. You can use UCSPE to check the CLI with contextual help.

```
ucspe /org/service-profile # set identity dynamic-uuid Dynamic UUID dynamic-wwnn Dynamic WWNN uuid-suffix-pool UUID Suffix Pool wwnn-pool WWNN Pool
```

If set identity dynamic-uuid only gives us the option of a static UUID or the parameter "derived", and set identity uuid-suffix-pool is the option to assign a pool... I would suggest that the most logical answer here is

- derived from the hardware. https://www.cisco.com/en/US/docs/unified_computing/ucs/sw/cli/config/guide/1.4.1/CLI_Config_Guide_1_4_1

NEW QUESTION 37

Which virtual MAC address is the default for HSRP version 2 group 10?

- A. 0000.5E00.0110
- B. 0000.0C9F.F00A
- C. 3716.1350.1C0A
- D. 0000.0C9F.F010

Answer: B

Explanation:

https://www.cisco.com/c/en/us/td/docs/ios-xml/ios/ipapp_fhrp/configuration/xs-3s/fhp-xe-3s-book/fhp-hsrp-v2.h

NEW QUESTION 38

An engineer deploys a new Cisco Nexus 5000 Series Switch in an existing environment with strict security policies. The new device should meet these requirements:

- Secure end-user ports with minimum configuration effort.
- Log security breaches and require manual recovery.
- Retain the switch configuration if the device restarts.

Which configuration must be used?

- A.

```
switchport port-security
switchport port-security max 1
switchport port-security violation shutdown
```
- B.

```
switchport port-security
switchport port-security violation shutdown
switchport port-security mac-address dynamic
```
- C.

```
switchport port-security
switchport port-security max 1
switchport port-security mac-address sticky
```
- D.

```
switchport port-security
switchport port-security violation restrict
switchport port-security mac-address sticky
```

Answer: C

NEW QUESTION 43

Which two statements describe modifying Cisco UCS user accounts? (Choose two.)

- A. Disabling a user account maintains all of the data in the Cisco UCS Fabric Interconnect.
- B. The admin account is used only to log on by using SSH.
- C. The password of the user account must contain a minimum of 10 characters.
- D. Local user accounts override the same account on a remote authentication server, such as TACACS, RADIUS, or LDAP.
- E. The password of the user account expires in 30 days.

Answer: AD

Explanation:

https://www.cisco.com/c/en/us/td/docs/unified_computing/ucs/ucs-manager/GUI-User-Guides/Admin-Managem

NEW QUESTION 44

A network engineer configures a converged network adapter (CNA) and must associate a virtual fiber Channel 7 interface to VSAN 7. The CNA connected to the interface Eth1/7, and VLAN 700 is mapped to the VSNA. Which configuration must be applied to create the virtual Fiber Channel interface and associate it with the Ethernet physical interface?

A)

```
switch(config)# vlan 700
switch(config-vlan)# fcoe vsan 7
```

B)

```
switch(config)# vsan database
switch(config-vsan)# vsan 7 interface vfc 7
```

C)

```
switch(config)# interface ethernet 1/7
switch(config-if)# vfc 7 attach vlan 1,700
```

D)

```
switch(config)# interface vfc 7
switch(config-if)# bind interface ethernet 1/7
```

- A. Option A
- B. Option B
- C. Option C
- D. Option D

Answer: D

NEW QUESTION 45

Refer to the exhibit.

```
Nexus# show vpc peer-keepalive | i Keepalive
--Keepalive interval : 1000 msec
--Keepalive timeout : 5 seconds
--Keepalive hold timeout : 3 seconds
--Keepalive vrf : management
--Keepalive udp port : 3200
--Keepalive tos : 192

Nexus# ethanalyzer local interface mgmt limit-captured-frames 1000

Capturing on mgmt0
2019-06-15 12:01:51.242597 192.168.254.11 -> 192.168.254.3 ICMP Echo (ping) request
2019-06-15 12:01:51.242860 192.168.254.3 -> 192.168.254.11 ICMP Echo (ping) reply
2019-06-15 11:50:15.975474 192.168.254.1 -> 192.168.254.3 TCP 47540 > bootps [SYN] Seq=0 Win=1024 Len=0 MSS=1460
2019-06-15 11:50:15.975547 192.168.254.3 -> 192.168.254.1 TCP 29 > 47540 [RST, A CK] Seq=1 Ack=1 Win=0 Len=0
2019-06-15 11:50:15.975564 192.168.254.1 -> 192.168.254.3 TCP 47540 > 44 [SYN] Seq=0 Win=1024 Len=0 MSS=1460
2019-06-15 11:50:15.975924 192.168.254.1 -> 192.168.254.3 TCP 47540 > discard [SYN] Seq=0 Win=1024 Len=0 MSS=1460
2019-06-15 11:50:15.976027 192.168.254.1 -> 192.168.254.3 TCP 47540 > 97 [SYN] Seq=0 Win=1024 Len=0 MSS=1460
2019-06-15 11:50:15.976381 192.168.254.1 -> 192.168.254.3 TCP 47540 > 35 [SYN] Seq=0 Win=1024 Len=0 MSS=1460
2019-06-15 11:50:16.661845 192.168.254.3 -> 192.168.254.4 UDP Source port: 3200 Destination port: 3200
2019-06-15 11:50:16.761147 00:8e:73:a2:41:13 -> 01:80:c2:00:00:00 STP Conf. Root = 8192/10/ec:e1:a9:df:6c:80 Cost = 22 Port = 0x8013
2019-06-15 11:50:16.853248 192.168.254.4 -> 192.168.254.3 UDP Source port: 3200 Destination port: 3200
2019-06-15 11:50:17.326253 192.168.254.1 -> 192.168.254.3 SSH Encrypted request packet len=52
2019-06-15 11:50:17.327313 192.168.254.3 -> 192.168.254.1 SSH Encrypted response packet len=1348
2019-06-15 11:50:17.377246 192.168.254.4 -> 239.255.70.83 UDP Source port: 7546 Destination port: 7546
2019-06-15 11:50:17.552215 192.168.254.1 -> 192.168.254.3 TCP 14139 > ssh [ACK] Seq=365 Ack=11277 Win=63546 Len=0
2019-06-15 11:50:17.661764 192.168.254.3 -> 192.168.254.4 UDP Source port: 3200 Destination port: 3200
2019-06-15 11:50:17.653242 192.168.254.4 -> 192.168.254.3 UDP Source port: 3200 Destination port: 3200
2019-06-15 11:50:17.872637 8c:60:4f:aa:c2:e1 -> 01:80:e7:00:00:00 LLDP Chassis : d = 8c:60:41:aa:c2:e1 Port Id = mgmt0 TTL = 120
2019-06-15 11:50:08.173056 192.168.256.3 -> 192.168.254.2 NTP NTP client
2019-06-15 11:50:08.173256 192.168.256.2 -> 192.168.254.3 NTP NTP server
```

A flapping link issue has been reported on the vPC keepalive link. A packet capture has been activated on the Cisco Nexus switch. What is the destination IP address of the vPC keepalive packets that are sent by the switch?

- A. 192.168.254.4
- B. 239.255.70.83
- C. 192.168.254.1

D. 192.168.254.2

Answer: A

Explanation:

<https://www.cisco.com/c/en/us/td/docs/switches/datacenter/nexus3000/sw/interfaces/92x/b-cisco-nexus-3000-nx>

NEW QUESTION 48

A customer deploys a media server to distribute streaming videos to network clients. The requirement is to allow the video feed to reach only requesting clients. The shared trees must not propagate the video feed if no clients from that tree request it. To reduce configuration touchpoints, the solution must support the automatic discovery and announcement of RP-set information. Each router in the network is responsible for selecting the RP. Which configuration set meets these requirements?

A)

```
router(config-if)# ip pim bidir-enable
router(config)# ip pim ssm default
router(config)# ip igmp version 3
```

B)

```
router(config-if)# ip pim dense-mode
router(config)# ip pim rp-address 1.1.1.1
router(config)# ip pim rp listener
```

C)

```
router(config-if)# ip pim sparse mode
router(config)# ip pim bsr-candidate Lo0
router(config)# ip pim rp-candidate Lo0
```

D)

```
router(config-if)# ip pim sparse-sense mode
router(config)# ip pim auto-rp
router(config)# ip pim send-rp-announce
```

A. Option A

B. Option B

C. Option C

D. Option D

Answer: D

NEW QUESTION 49

A network engineer must deploy a configuration backup policy to the Cisco UCS Manager. The file generated from this backup must have a snapshot of the entire system that should be used to restore the system during disaster recovery. The backup file must be transferred insecurely by using the TCP protocol. Which configuration backup settings meet these requirements?

A. Type: All Configuration Protocol: SCP

B. Type: Logical Configuration Protocol: SFTP

C. Type: Full State Protocol: FTP

D. Type: System Configuration Protocol: TFTP

Answer: C

NEW QUESTION 52

A customer has a requirement for an automation solution that supports periodically acquiring configuration from a centralized server and aligning UCS servers to their desired state. Which open-source tool meets these requirements?

A. SaltStack

B. Terraform

C. Puppet

D. Kubemetes

Answer: C

Explanation:

"Overview of Puppet architecture: [...] After it receives a catalog, the Puppet agent applies the catalog by checking each resource that the catalog describes. If it finds any resources that are not in their desired state, it makes any changes necessary to correct them."

https://www.cisco.com/c/dam/en/us/products/collateral/servers-unified-computing/ucs-c-series-rackservers/whitepaper_c11-740103.pdf

<https://www.cisco.com/c/dam/en/us/products/collateral/servers-unified-computing/ucs-devops-integration-sol-br>

from DCCOR book under Puppet section The operation of the Puppet agent involves periodically connecting to the Puppet master, which in turn compiles and sends a configuration manifest to the agent. The agent reconciles this manifest with the current state of the node and updates state that is based on differences.

NEW QUESTION 55

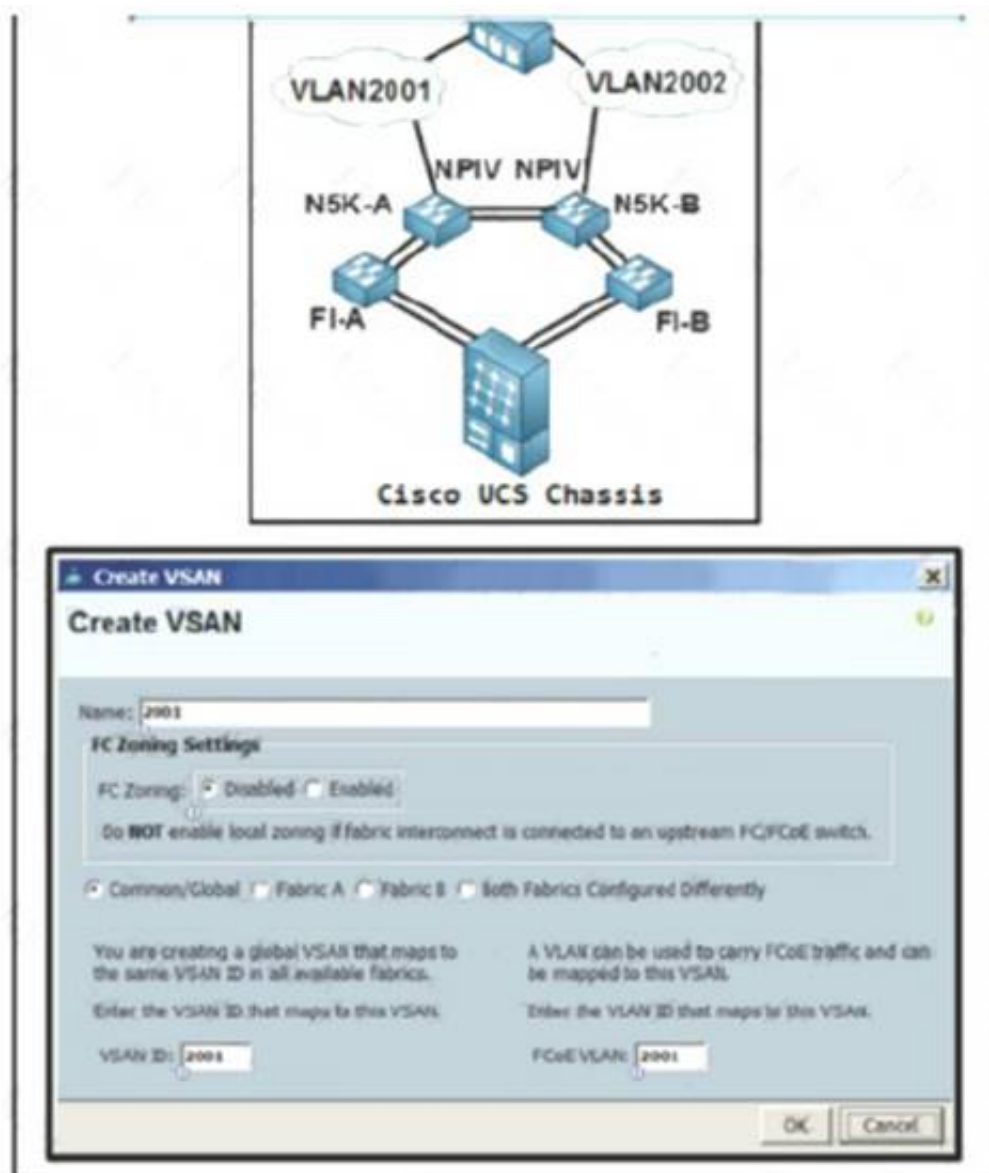
Which two features are used to allow a nondisruptive upgrade for the ISSU process? (Choose two.)

- A. connectivity management processor
- B. nonstop forwarding
- C. graceful restart
- D. stateful switchover
- E. advanced services license

Answer: BD

NEW QUESTION 60

Refer to the exhibit.



An engineer is configuring a VSAN on the network Which option must be selected to create the VSAN?

- A. Fabric B
- B. FC Zoning Enabled
- C. Fabric A
- D. Common/Global

Answer: C

Explanation:

<https://www.cisco.com/c/en/us/td/docs/switches/datacenter/mds9000/sw/nx-os/configuration/guides/fabric/fabric>
https://www.cisco.com/c/en/us/td/docs/unified_computing/ucs/ucs-central/GUI-User-Guides/Storage-Mgmt/1-5/

NEW QUESTION 63

An engineer must configure Cisco Nexus 9000 Series Switches for Cisco UCS Director integration The configuration must enable automated onboarding of the switches as they come online. For security purposes, the switches must have the bare minimum of connection methods enabled. The connection protocol must allow authentication through credentials. Which protocol must be configured on the switches to allow automated onboarding?

- A. SNMP
- B. Telnet
- C. SSH
- D. HTTPS

Answer: C

NEW QUESTION 68

An engineer is implementing traffic monitoring for a server vNIC that is configured with fabric failover enabled. The requirement is for the traffic to be sent to an analyzer, even during a failure of one of the fabric interconnects. The analyzer is connected to unconfigured Ethernet ports on both fabric interconnects. Which configuration accomplishes this task?

- A. Create two traffic monitoring sessions with different names, one per fabricConnect the analyzer connected to FI-B as the destination for both monitoring sessions.

- B. Create two traffic monitoring sessions with the same name, one per fabric. Connect an analyzer on each FI as the destination for the monitoring session local to that FI.
- C. Create two traffic monitoring sessions with the same name, one per fabric. Connect the analyzer connected to FI-A as the destination for both monitoring sessions.
- D. Create two traffic monitoring sessions with different names, one per fabric. Connect an analyzer on each FI as the destination for the monitoring session local to the FI

Answer: A

NEW QUESTION 69

An engineer must create a scheduler configuration to create two backup jobs per day. The backup file must be copied to a server in the operations VRF. Which configuration accomplishes this task?

A)

```
scheduler schedule name CNFGBACKUP
  job name BACKUP-JOB
  copy running-config tftp://10.19.11.12/$(SWITCHNAME)-$(TIMESTAMP).cfg vrf operations
  time start now repeat 12:00
```

B)

```
scheduler schedule name CNFGBACKUP
  job name BACKUP-JOB
  show tech-support | redirect vrf operations tftp://10.19.11.12/$(SWITCHNAME)-$(TIMESTAMP).cfg
  time start daily 12:30 0:30
```

C)

```
scheduler schedule name CNFGBACKUP
  job name BACKUP-JOB
  copy startup-config tftp://10.19.11.12/$(SWITCHNAME)-$(TIMESTAMP).cfg
  time daily 12:30 0:30
```

D)

```
scheduler schedule name CNFGBACKUP
  job name BACKUP-JOB
  copy vrf operations config tftp://10.19.11.12/$(SWITCHNAME)-$(TIMESTAMP).cfg
  time start 12:30 repeat 12
```

- A. Option A
- B. Option B
- C. Option C
- D. Option D

Answer: A

NEW QUESTION 70

Refer to the exhibit.

```
ACI-Leaf1# show ip route vrf DATACENTER:DC
10.20.1.0/24, ubest/mbest: 1/0, attached, direct, pervasive
  *via 10.0.8.65%overlay-1, [1/0], 4w3d, static
172.16.100.0/24, ubest/mbest: 1/0
  *via 10.1.168.95%overlay-1, [200/5], 3wod, bgp-132, internal, tag 132 (mpls-vpn)
172.16.99.0/24, ubest/mbest: 1/0
  *via 10.0.1.14, [20/0], 3wod, bgp-132, external, tag 200
```

Which two statements about the routing table of the leaf switch are true? (Choose two.)

- A. The next hop 10.0.1.14 for route 172.16.99.0/24 is the TEP address of a border leaf in ACI.
- B. 172.16.100.0/24 is a BD subnet in ACI.
- C. The next hop 10.0.8.65 for route 10.20.1.0/24 is the TEP address of a border leaf in ACI.
- D. The next hop 10.1.168.95 for route 172.16.100.0/24 is the TEP address of a border leaf in ACI.
- E. 10.20.1.0/24 is a BD subnet in ACI.

Answer: DE

NEW QUESTION 73

What is required for using Ansible with HTTP/HTTPS protocol in a Cisco NX-OS environment?

- A. SSH

- B. Open Agent Container
- C. XML management interface
- D. NX-API

Answer: D

Explanation:

https://docs.ansible.com/ansible/2.5/modules/nxos_nxapi_module.html https://docs.ansible.com/ansible/latest/network/user_guide/platform_nxos.html

NEW QUESTION 76

A DNS server with IP address 192.168.1.1 is deployed in a data center. A network engineer must configure a Cisco UCS Fabric Interconnect to use this DNS. Which configuration should be applied?

- ☒ **Option A:**
fict-mgmt-A# scope system
fict-mgmt-A /system # create dns 192.168.1.1
fict-mgmt-A /system* # commit-buffer
- ☐ **Option B:**
fict-mgmt-A# scope fabric-interconnect a
fict-mgmt-A /fabric-interconnect # set name 192.168.1.1
fict-mgmt-A /fabric-interconnect # scope system
fict-mgmt-A /system # commit-buffer
- ☐ **Option C:**
fict-mgmt-A# scope fabric-interconnect a
fict-mgmt-A /fabric-interconnect # set name 192.168.1.1
fict-mgmt-A /fabric-interconnect* # commit-buffer
- ☐ **Option D:**
fict-mgmt-A# scope system
fict-mgmt-A /system # scope services
fict-mgmt-A /system/services # create dns 192.168.1.1
fict-mgmt-A /system/services* # commit-buffer

- A. Option A
- B. Option B
- C. Option C
- D. Option D

Answer: D

NEW QUESTION 77

An engineer is asked to modify an overridden policy by changing the number of FCNS database entries to 1500 and then generate a message. What configuration will accomplish this task?

- ☐ **Option A:**
event manager applet fcns_policy
event fcns entries max-per-switch 1500
action 1.0 syslog priority warnings msg FCNS DB entries have reached the EEM limit
action 2.0 policy-default
- ☐ **Option B:**
event manager applet fcns_policy override _fcns_entries_max_per_switch
action 1.0 syslog priority errors "FCNS DB entries have reached the EEM limit"
action 2.0 policy-default
- ☒ **Option C:**
event manager applet fcns_policy override _fcns_entries_max_per_switch
event fcns entries max-per-switch 1500
action 1.0 syslog priority warnings msg FCNS DB entries have reached the EEM limit
- ☐ **Option D:**
event manager applet fcns_policy action 1.0 syslog priority warnings msg FCNS DB entries have reached the EEM limit
action 2.0 event-default

- A. Option A
- B. Option B
- C. Option C
- D. Option D

Answer: C

Explanation:

The following example modifies an overridden policy by changing the number of FCNS database entries to 1500. It also generates both the configured and the default syslog messages of the default system policy event manager applet fcns_policy override fcns_entries_max_per_switch event fcns entries max-per-switch 1500 action 1.0 syslog priority warnings msg FCNS DB entries have reached the EEM limit.

NEW QUESTION 79

A company is running a pair of cisco Nexus 7706 series switches as part of a data center segment. All network engineers have restricted read-Write access to the core switches. A network engineer must a new FCoE VLAN to allow traffic from services toward FCoE storage. Which set of actions must be taken to meet these requirements?

- A. * 1. Create a user defined role and add the required privileges.* 2. Assign a role to a user.
- B. * 1. Add the required privilege to the VDC-admin role.
- C. Commit the changes to the active user database.
- D. * 1. Modify a network-operator role and add the required privileges.* 2. Assign a VDC-operator role to a user.
- E. * 1. Assign the network-admin role to a user.* 2. Commit the role to the switch to the active user database

Answer: B

NEW QUESTION 82

A customer reports Fibre Channel login requests to a cisco MDS 9000 series Switch from an unauthorized source. The customer requires a feature that will allow all devices already logged in and learned in and learned to be added to the Fibre channel active database. Which two features must be enabled to accomplish this goal?

(Choose two.)

- A. Auto-learning
- B. Port security
- C. Enhanced zoning
- D. Device aliases
- E. Smart aliases

Answer: AB

Explanation:

https://www.cisco.com/en/US/docs/storage/san_switches/mds9000/sw/rel_3_x/configuration/guides/fm_3_3_1/p Port Security Activation By default, the port security feature is not activated in any switch in the Cisco MDS 9000 Family. By activating the port security feature, the following apply: Auto-learning is also automatically enabled, which means: From this point, auto-learning happens for the devices or interfaces that were already logged into the switch and also for the new devices will login in future. You cannot activate the database until you disable auto-learning. All the devices that are already logged in are learned and are added to the active database. All entries in the configured database are copied to the active database. After the database is activated, subsequent device login is subject to the activated port bound WWN pairs, excluding the auto-learned entries. You must disable auto-learning before the auto-learned entries become activated.

NEW QUESTION 84

Refer to the exhibit.

```
#!/bin/env python
from cli import *

[REDACTED]

x= cli('show running-config | include address')
y= x.find('192.168.101.191/25')
z= x.find('192.168.101.192/25')
if y != -1:
    cli ('copy tftp://192.168.101.253/initdev1.cfg bootflash: vrf management')
    cli ('copy bootflash:initdev1.cfg scheduled-config')
if z != -1:
    cli ('copy tftp://192.168.101.253/initdev2.cfg bootflash: vrf management')
    cli ('copy bootflash:initdev2.cfg scheduled-config')
cli ('copy running-config startup-config')
```

Which information must be added to the script to complete the POAP operation on the Cisco Nexus 9000 Series Switch?

- ☒ API token d41d8cd98f00b40960045298ecf8427e of the Cisco APIC.
- ☐ MD5SUM 41d8cd98f00b204e9800998ecf8427e of the Python code.
- ☐ API token d41d8cd98f00b77986331998ecf8427e of the Cisco Nexus 9000 Series Switch.
- ☐ MD5SUM d41d8cd98f00b20449800998ecf8427e of the script file.

- A. Option A
- B. Option B
- C. Option C
- D. Option D

Answer: D

NEW QUESTION 87

A network architect considers a Cisco HyperFlex design solution for a company. The proposed solution is for a virtual environment that is not performance-sensitive, but the solution must have high storage capacity and a low cost. Which Cisco HyperFlex storage configuration should be used?

- A. All-Flash
- B. Hybrid
- C. All-SAN
- D. All-NVMe

Answer: B

Explanation:

<https://www.cisco.com/c/en/us/products/collateral/hyperconverged-infrastructure/hyperflex-hx-series/white-pap> Hybrid contains HDD for capacity.

NEW QUESTION 90

What is the impact of an EPLD upgrade on a Cisco MDS 9000 Series Switch?

- A. The active supervisor traffic is disrupted.
- B. The upgrade disrupts the management connectivity to the switch.
- C. The standby supervisor module reloads multiple times.
- D. The upgrade process disrupts only the module that is being upgraded.

Answer: D

NEW QUESTION 91

An engineer must export the Cisco UCS Manager configuration for backup purposes. The requirement is to export the configuration that contains the AAA and RBAC configuration Also the file must be stored a human-readable format 'Much backup type must be selected to meet these requirements?

- A. logical configuration
- B. system configuration
- C. fun state
- D. all configuration

Answer: B

NEW QUESTION 94

Refer to the exhibit.

```
UCS-A# scope adapter 1/1/1
UCS-A# /chassis/server/adapter # show image
Name                               Type      Version    State
-----
ucs-m81kr-vic.2.2.1b.bin  Adapter  2.2(1b)    Active

UCS-A# /chassis/server/adapter # update firmware 2.2(1b)
UCS-A# /chassis/server/adapter* # activate firmware 2.2(1b)
set-startup-only
UCS-A# /chassis/server/adapter* # commit-buffer
UCS-A# /chassis/server/adapter #
```

What is the result of this series of commands?

- A. It reboots the server immediately.
- B. It verifies the firmware update on the server.
- C. It activates the firmware on the next adapter boot.
- D. It updates the firmware on adapter 1/1/1 immediately.

Answer: C

Explanation:

https://www.cisco.com/c/en/us/td/docs/unified_computing/ucs/ucs-manager/CLI-User-Guides/Firmware-Mgmt/ Graphical user interface, text, application, email Description automatically generated

Step 6	UCS-A /chassis/server/adapter # activate firmware version-num [set- startup-only]	Activates the selected firmware version on the adapter. Use the set-startup-only keyword if you want to move the activated firmware into the pending-next-boot state and not immediately reboot the server. The activated firmware does not become the running version of firmware on the adapter until the server is rebooted. You cannot use the set-startup-only keyword for an adapter in the host firmware package.
--------	--	--

NEW QUESTION 96

An engineer must configure the HSRP protocol between two Cisco Nexus 9000 Series Switches This configuration is present on Nexus A.


```
! Nexus A
key chain NHRP-KEYS
key 1010
key-string 7 072a43795c1d0c4050883003163b3e2121a720361a021e11
accept-lifetime 00:00:00 Jan 01 2021 23:59:59 Aug 31 2021
send-lifetime 00:00:00 Jan 01 2021 23:59:59 Jul 31 2021
key 1020
key-string 7 086f43cd5c150c1702630203163b3e2221a520261a011a12
accept-lifetime 00:00:00 Jul 01 2021 23:59:59 Dec 31 2021
send-lifetime 00:00:00 Jul 01 2021 23:59:59 Dec 31 2021
interface ethernet 1/1
ip 209.165.200.226/27
hsrp 200
priority 201
ip 209.165.200.225
-- missing output --
no shutdown
```

The final HSRP configuration must meet these requirements

- The HSRP communication must be secured on both switches
- Both switches must support more than 300 groups

Which two commands must be added to the HSRP configuration on Nexus A to complete these requirements? (Choose two)

- A. hsrp version 1
- B. hsrp version 2
- C. authentication text 1020
- D. authenticate md5 key-chain NHRP-KEYS
- E. authentication text 1010

Answer: BD

NEW QUESTION 101

A network engineer needs to upgrade the EPLDs of the fabric modules for a Cisco MDS director-class switch. In which order are components reloaded during the process?

- A. one fabric module at the time
- B. all fabric modules followed by the entire switching platform
- C. all fabric modules in parallel
- D. one module and one supervisor at the time

Answer: C

Explanation:

https://www.cisco.com/c/en/us/td/docs/switches/datacenter/mds9000/sw/7_3/release_notes/epld/epld_rn_7x.html

Graphical user interface, text, application Description automatically generated

Installing a Fabric Module EPLD Update

The Cisco MDS 9700 series and Cisco MDS 9513 director class switch have dedicated fabric modules. These modules contain EPLDs, which can be upgraded as described in this section. All other Cisco MDS switches do not have these modules, so this process is not applicable for them.

For Cisco MDS 9700 Series of switches, use the `install all epld uri parallel xbar-module slot` command to update EPLD images on the fabric modules. This process reloads the updated module. To ensure that the data traffic performance is not affected while the module is reloading, check the fabric bandwidth utilization by using the `show hardware fabric-utilization detail` command. If there is adequate reserve fabric bandwidth available before the update starts, then the update will be nondisruptive.

NEW QUESTION 103

An engineer must optimize ARP responses and reduce unnecessary ARP broadcasts over the VXLAN/EVPN fabric. Which action accomplishes these tasks?

- A. Configure ip proxy-arp under the VLAN SVI associated with the VXLAN VNI.
- B. Configure ip proxy-arp within the VXLAN VNI configuration under the VTEP NVE interface.
- C. Configure suppress-arp within the VXLAN VNI configuration under the VTEP NVE interface.
- D. Configure suppress-arp under the VLAN SVI associated with the VXLAN VNI.

Answer: C

NEW QUESTION 106

A Cisco UCS user called "Employee1" accidentally changed the boot policy of the Cisco UCS server at the Cisco UCS Manager root level. This change impacted

all service profiles, and their storage connectivity was lost. The system administrator wants to prevent this issue from recurring in the future. The new security policy mandates that access must be restricted up to the organization level and prevent other users from modifying root policies. Which action must be taken to meet these requirements?

- A. Modify the privilege level assigned to the user
- B. Assign users to a specific Cisco UCS locale
- C. Assign the user "Employee1" the network-operator role
- D. Define a custom user role and assign it to users

Answer: B

Explanation:

[https://www.cisco.com/c/en/us/td/docs/unified_computing/ucs/ucs-manager/GUI-User-Guides/Admin-Managem User Locales](https://www.cisco.com/c/en/us/td/docs/unified_computing/ucs/ucs-manager/GUI-User-Guides/Admin-Managem%20User%20Locales%20You%20can%20assign%20a%20user%20to%20one%20or%20more%20locales%20Each%20locale%20defines%20one%20or%20more%20organizations%20(domains)%20to%20which%20a%20user%20can%20access%20Access%20is%20usually%20limited%20to%20the%20organizations%20specified%20in%20the%20locale%20https://www.cisco.com/c/en/us/td/docs/unified_computing/ucs/ucs-manager/GUI-User-Guides/Admin-Management/4-1/b_Cisco_UCS_Admin_Mgmt_Guide_4-1/m_rolebased_access_control_configuration.html#d18994e1993a1635) You can assign a user to one or more locales. Each locale defines one or more organizations (domains) to which a user can access. Access is usually limited to the organizations specified in the locale.

https://www.cisco.com/c/en/us/td/docs/unified_computing/ucs/ucs-manager/GUI-User-Guides/Admin-Management/4-1/b_Cisco_UCS_Admin_Mgmt_Guide_4-1/m_rolebased_access_control_configuration.html#d18994e1993a1635

NEW QUESTION 108

What are two types of FC/FCoE oversubscription ratios? (Choose two.)

- A. server storage to end-node count
- B. port bandwidth to uplink bandwidth
- C. edge ISL bandwidth to core ISL bandwidth
- D. host bandwidth to storage bandwidth
- E. switch processing power to end-node processing power

Answer: CD

Explanation:

<https://www.ciscolive.com/c/dam/r/ciscolive/us/docs/2017/pdf/BRKDCN-1121.pdf>

https://www.cisco.com/c/en/us/td/docs/switches/datacenter/nexus5000/sw/operations/n5k_fcoe_ops.html

NEW QUESTION 110

The VMM domain is integrated between Cisco APICs and vCenter using a distributed vSwitch. The traffic must be blocked between a subset of endpoints in an EPG based on specific VM attributes and the rest of the VMs in that EPG. Which set of actions blocks this traffic?

- ☐ 1. Set Allow Microsegmentation under the EPG VMM Domain Association to "True"
2. Set Intra-EPG Isolation to "Enforced" for the EPG
3. Set Intra-EPG Isolation to "Enforced" for the uSeg EPG
- ☐ 1. Set Allow Microsegmentation under the EPG VMM Domain Association to "True"
2. Set Intra-EPG Isolation to "Unenforced" for the EPG
3. Set Intra-EPG Isolation to "Unenforced" for the uSeg EPG
- ☐ 1. Set Allow Microsegmentation under the EPG VMM Domain Association to "False"
2. Set Intra-EPG Isolation to "Unenforced" for the EPG
3. Set Intra-EPG Isolation to "Enforced" for the uSeg EPG
- ☒ 1. Set Allow Microsegmentation under the EPG VMM Domain Association to "True"
2. Set Intra-EPG Isolation to "Enforced" for the EPG
3. Set Intra-EPG Isolation to "Unenforced" for the uSeg EPG

- A. Option A
- B. Option B
- C. Option C
- D. Option D

Answer: A

NEW QUESTION 114

What are two capabilities of the Cisco Network Assurance Engine? (Choose two.)

- A. It verifies the speed of network packet flows by using telemetry.
- B. It predicts the network load on a data center.
- C. It validates that devices comply with network security policies.
- D. It ensures that network performance meets an SLA.
- E. It predicts the impact of changes to the network.

Answer: CE

Explanation:

- Predict the impact of network changes
- Verify network-wide behavior
- Ensure network security policy and compliance

<https://www.cisco.com/c/en/us/products/collateral/data-center-analytics/network-assurance-engine/at-a-glance-c>

NEW QUESTION 119

Which data structure results from running this Python code?

```
>>> import json
>>> f = open('fname.json', 'r')
>>> var1 = json.load(f)
>>> var1
{'u'bd': u'bd1', u'ap': {'u'epgs': [{'u'name': u'app'}, {'u'name': u'web'}, {'u'name': u'db'}], u'name': u'OnlineStore', u'name': u'39106329', u'pvn': u'pvn1'}}
```

- A. Set
- B. Tuple
- C. Dictionary
- D. List

Answer: A

NEW QUESTION 123

An engineer needs to make an XML backup of Cisco UCS Manager. The backup should be transferred using an authenticated and encrypted tunnel and it should contain all system and service profiles configuration. Which command must be implemented to meet these requirements?

- ☐ create file scp://user@host35/backups/all-config9.bak all-configuration
- ☐ copy startup-config scp://user@host35/backups/all-config9.bak all-configuration
- ☒ create backup scp://user@host35/backups/all-config9.bak all-configuration
- ☐ copy running-config scp://user@host35/backups/all-config9.bak all-configuration

- A. Option A
- B. Option B
- C. Option C
- D. Option D

Answer: C

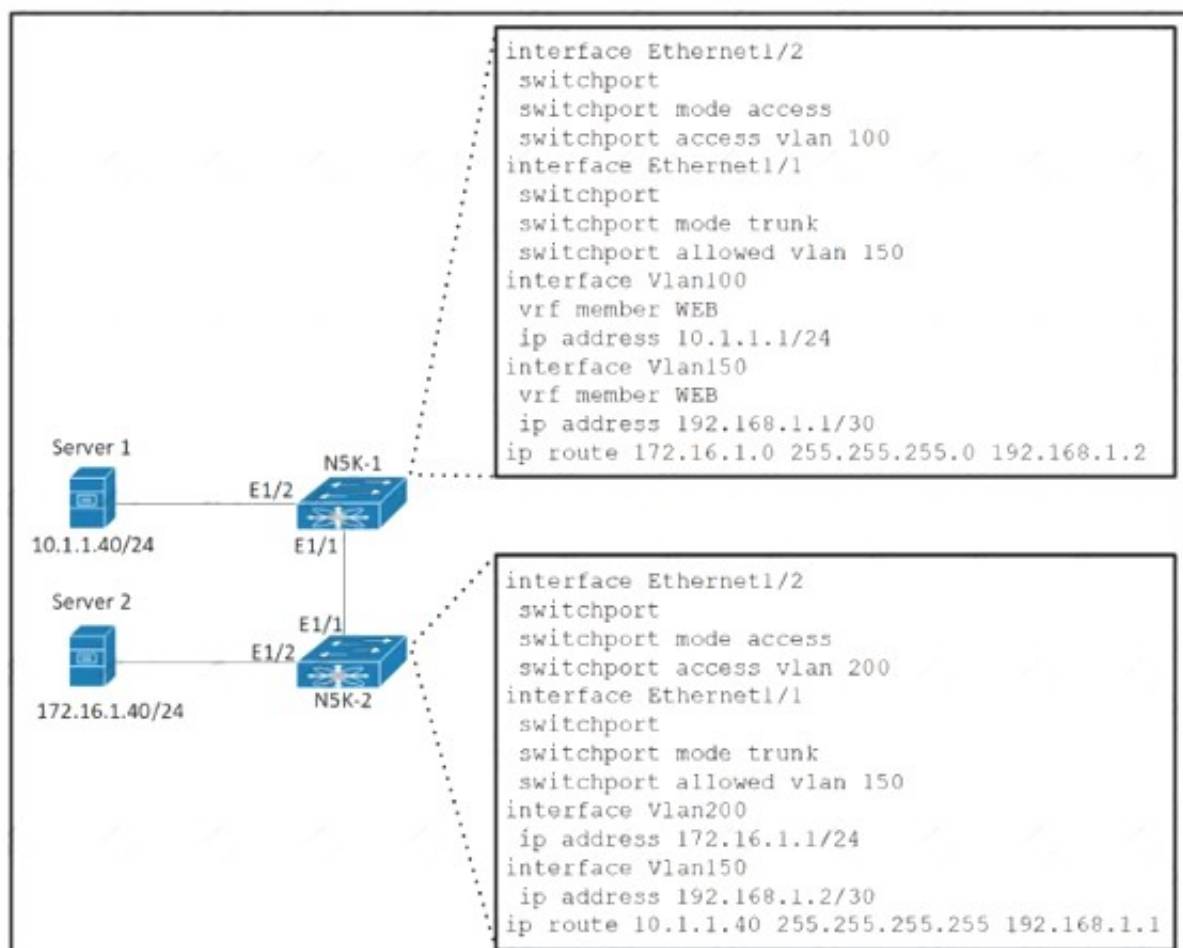
Explanation:

https://www.cisco.com/en/US/docs/unified_computing/ucs/sw/cli/config/guide/1.4.1/CLI_Config_Guide_1_4_1
 The following example creates a disabled all-configuration backup operation for hostname host35 and commits the transaction:

```
UCS-A# scope system
UCS-A /system* # create backup scp://user@host35/backups/all-config9.bak all-configuration disabled
Password:
UCS-A /system* # commit-buffer
UCS-A /system #
```

NEW QUESTION 128

Refer to the exhibit.



The gateway of Server 1 is in the VLAN 100 SVI on N5K-1 and the gateway of Server 2 is in the VLAN 200 SVI on N5K-2. Server 1 must connect to Server 2 using unidirectional traffic. Which action accomplishes this requirement?

- A. Add VLAN 100 and 200 to the allowed VLANs list on the Ethernet 1/1 interface on NK5-1.
- B. Assign VRF WEB membership to interfaces VLAN 150 and 200 on N5K-2.
- C. Configure access VLAN 100 on interface Ethernet 1/2 on N5K-2.
- D. Create a static route in VRF WEB for the subnet of Server 2 on N5K-1

Answer: B

NEW QUESTION 132

Which two configuration settings are available in the in the cisco UCS flmware Auto sync server policy?

- A. User Notification
- B. User Acknowledge
- C. No Action
- D. Delayed Action
- E. Immediate Action

Answer: BC

Explanation:

https://www.cisco.com/c/en/us/td/docs/unified_computing/ucs/sw/firmware-mgmt/gui/2-2/b_GUI_Firmware_M Following are the values for the Firmware Auto Sync Server policy: • User Acknowledge—Firmware on the server is not synchronized until the administrator acknowledges the upgrade in the Pending Activities dialog box. • No Action—No firmware upgrade is initiated on the server.

NEW QUESTION 134

An engineer needs to perform a backup of user roles and locales from Cisco UCS Manager to replicate the setting to a different fabric interconnect. The engineer wants to review the file before importing it to a target fabric interconnect. Which backup type must be selected to meet these requirements?

- A. all configuration
- B. system configuration
- C. logical configuration
- D. full state

Answer: B

Explanation:

https://www.cisco.com/c/en/us/td/docs/unified_computing/ucs/ucs-manager/GUI-User-Guides/Admin-Managem

- **System configuration**—An XML file that includes all system configuration settings such as **usernames, roles, and locales**. You can use the file generated from this backup to import these configuration settings to the original fabric interconnect or to a different fabric interconnect. You cannot use this file for a system restore.

NEW QUESTION 138

Drag and drop the storage technologies from the left onto the correct descriptions on the right.

NFSv2	uses client machine authentication
Kerberos	uses users authentication
NFSv4	authenticates clients and servers in NFSv4
RADIUS	authenticates clients to corporate directory systems

- A. Mastered
- B. Not Mastered

Answer: A

Explanation:

Application Description automatically generated

The release of NFSv4 brought a revolution to authentication and security to NFS exports. NFSv4 mandates the implementation of the RPCSEC_GSS kernel module, the Kerberos version 5 GSS-API mechanism, SPKM-3, and LIPKEY. With NFSv4, the mandatory security mechanisms are oriented towards authenticating individual users, and not client machines as used in NFSv2 and NFSv3. https://web.mit.edu/rhel-doc/5/RHEL-5-manual/Deployment_Guide-en-US/s1-nfs-security.html

NEW QUESTION 140

An engineer must perform an initial configuration of VXLAN Tunnel End-Point functionality on the Cisco Nexus 9000 Series platform All the necessary features are already enabled on the switch Which configuration set must be used to accomplish this goal?

- ☐ NX9K(config)# interface loopback0
NX9K(config-if)# ip address 10.10.10.11/32
- NX9K(config)# interface overlay0
NX9K(config-if-overlay)# source-interface loopback0
- NX9K(config)# interface VLAN10
NX9K(config-if-nve)# source-interface loopback0
- ☐ NX9K(config)# interface loopback0
NX9K(config-if)# ip address 10.10.10.11/32
- NX9K(config)# interface tunnel1
NX9K(config-if)# tunnel source loopback0
- NX9K(config)# interface ethernet1/1
NX9K(config-if)# ip unnumbered loopback0
- ☐ NX9K(config)# interface loopback0
NX9K(config-if)# ip address 10.10.10.11/32
- NX9K(config)# interface nve1
NX9K(config-if-nve)# source-interface loopback0
- NX9K(config)# interface ethernet1/1
NX9K(config-if)# ip unnumbered loopback0
- ☐ NX9K(config)# interface loopback0
NX9K(config-if)# ip address 10.10.10.11/32
- NX9K(config)# interface VLAN10
NX9K(config-if)# ip unnumbered loopback0
- NX9K(config)# interface nve1
NX9K(config-if-nve)# source-interface loopback0

- A. Option A
B. Option B
C. Option C
D. Option D

Answer: D

NEW QUESTION 142

An engineer must ensure fabric redundancy when implementing NPV mode on a Cisco MDS 9000 Series Switch. Which action enables fabric redundancy?

- A. Connect the NPV devices to multiple upstream switches.
B. Add a port channel to upstream switches.
C. Configure the NPV devices to use on external FLOGI database.
D. Use TE ports to connect to upstream switches.

Answer: B

NEW QUESTION 147

An engineer must configuration a backup and restore of Cisco UCS Manager during the weekend maintenance windows. The configuration must be restored to its original state on Monday morning. The end users can make changes only to the Service Profile configuration. Which set of actions meets these requirements?

- A. Schedule a system backup to run at the start of every weekend and manually import the backup on Monday morning.
B. Schedule a system backup to run at the start of every weekend and schedule the import of the backup to run on Monday morning
C. Schedule a logical backup to run at the start of every weekend and manually import the backup on Monday morning.
D. Schedule a logical backup to run at the start of every weekend and schedule the import of the backup to run on Monday morning.

Answer: B

NEW QUESTION 152

An engineer must use the Embedded Event Manager to monitor events that occur on a cisco Nexus 9000 series switch. An environment variable needs to be created so that several policies use the monitored events in in their actions. The external email server is represented by IP address 10.10.10.10. which command sets the environment variable?

- A. N9k2(config)# event manager policy environment mailserver "10.10.10.10"
B. N9k2# event manager environment mailserver "10.10.10.10"
C. N9k2 (config-apple1)# environment mailserver "10.10.10.10"
D. N9k2 (config)# event manager environment mailserver "10.10.10.10"

Answer: D

Explanation:

To set an Embedded Event Manager (EEM) environment variable, use the event manager environment command in global configuration mode. To disable an EEM

environment variable, use the no form of this command. <https://www.cisco.com/c/en/us/td/docs/ios-xml/ios/eem/command/eem-cr-book/eem-cr-e1.html>

NEW QUESTION 156

Refer to the exhibit.

```
show incompatibility-all system bootflash:n7000-s1-dk9.4.2.4.bin
```

Software downgrade is required on a Cisco Nexus 7000 Series Switch. What is displayed when this command is executed?

- A. features and commands that are removed automatically from the configuration
- B. features that are enabled automatically after the downgrade
- C. compatibility of software in the system bootflash file
- D. impact of a software upgrade in ISSU and chassis reload

Answer: A

NEW QUESTION 159

A network engineer is asked to describe the cloud infrastructure models from the perspective of their operation and access to resources. Drag and drop the descriptions from the left onto the appropriate.

Provisioned for open use.	Private cloud
At least two or more separate cloud infrastructures are connected together to facilitate hosted data and application portability.	Community cloud
Owned, managed, and operated by one or more organizations or teams.	Public cloud
Owned, managed, and operated by a single organization.	Hybrid cloud

- A. Mastered
- B. Not Mastered

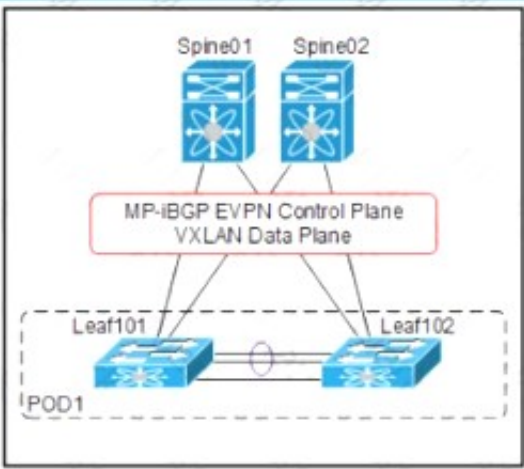
Answer: A

Explanation:

Private Cloud: owned, managed, and operated by a single organization.
 Community Cloud: Owned, managed, and operated by one or more organizations or teams. Public Cloud: Provisioned for open use.
 Hybrid Cloud: At least two or more separate cloud infrastructures are connected together to facilitate hosted data and application portability.

NEW QUESTION 162

Refer to the exhibit.



```
SPINE-01#show run pim
ip pim rp-address 10.255.0.100 group-list 225.0.0.0/8
ip pim bsr rp-candidate loopback1 group-list 225.0.0.0/8
ip pim ssm range 232.0.0.0/8
ip pim anycast-rp 10.255.0.100 10.10.0.1
ip pim anycast-rp 10.255.0.100 10.10.0.2
!
SPINE-01#show run interface loopback1
interface loopback1
 ip router ospf 1 area 0.0.0.0
 ip pim sparse-mode
```

An engineer must implement VXIAN with anycast gateway. To accomplish this, an engineer must set up PIM Source-Specific Multicast for host reachability. Which IP address must be applied to interface loopback1 to accomplish this goal?

- A. 255.0.0.1/8

- B. 255.0.100
- C. 10.10.0.1/32
- D. 10.10.0.2/32

Answer: B

NEW QUESTION 165

Which adjacency server configuration makes two OTV edge devices located in the same site bring up the dual-site adjacency?

A)

Nexus-1:

```
interface Ethernet1/2
ip address 20.1.1.1/24
```

```
interface Overlay200
otv use-adjacency-server 20.1.1.2 unicast-only
otv join-interface Ethernet1/2
```

Nexus-2:

```
interface Ethernet1/2
ip address 20.1.1.2/24
```

```
interface Overlay200
otv use-adjacency-server 20.1.1.1 unicast-only
otv join-interface Ethernet1/2
```

B)

Nexus-1:

```
interface Ethernet1/2
ip address 20.1.1.1/24
```

```
interface Overlay200
otv adjacency-server unicast-only
otv join-interface Ethernet1/2
```

Nexus-2:

```
interface Ethernet1/2
ip address 20.1.1.2/24
```

```
interface Overlay200
otv join-interface Ethernet1/2
otv adjacency-server unicast-only
otv use-adjacency-server 20.1.1.1 unicast-only
```

C)

Nexus-1:

```
interface Ethernet1/2
ip address 20.1.1.1/24
```

```
interface Overlay200
otv adjacency-server unicast-only
otv join-interface Ethernet1/2
```

Nexus-2:

```
interface Ethernet1/2
ip address 20.1.1.2/24
```

```
intevrface Overlay200
otv adjacency-server unicast-only
otv join-interface Ethernet1/2
```

D)
Nexus-1:

```
interface Ethernet1/2
ip address 20.1.1.1/24
```

```
interface Overlay200
otv adjacency-server unicast-only
otv join-interface Ethernet1/2
```

Nexus-2:

```
interface Ethernet1/2
ip address 20.1.1.2/24
```

```
intevrface Overlay200
otv adjacency-server unicast-only
otv join-interface Ethernet1/2
```

- A. Option A
- B. Option B
- C. Option C
- D. Option D

Answer: B

NEW QUESTION 166

An engineer must configure a monitoring solution for a Cisco Nexus 9000 Series Switch based data center. The solution must provide real-time insight into the network health with subscription-based monitoring. The monitoring must be initiated from the client side, and the data must be sent via encryption. Which configuration steps complete the configuration?

- ☐ Set the telemetry feature on the Nexus switch.
Specify a certificate for telemetry transport.
Configure a sensor group and destination.
- ☒ Enable GRPC on the Nexus switch.
Generate a certificate.
Configure gNMI inputs in Telegraf and output to InfluxDB.
- ☐ Configure Grafana on the Nexus switch.
Specify the logging certificate.
Enable syslog level 7 export to Grafana.
- ☐ Activate SNMPv3 on the Nexus switch.
Set the globalEnforcePriv parameter.
Configure an SNMP agent to poll information.

- A. Option A
- B. Option B
- C. Option C
- D. Option D

Answer: A

NEW QUESTION 168

An engineer needs a utility to translate traditional Nexus CLI inputs and generate Python code using XML and JSON message formats. The solution needs to be available on a Nexus 7700 series switch. Which utility should be used?

- A. NX-OS JSON-RPC
- B. NX-API Sandbox
- C. Guest Shell for NX-OS
- D. Open NX-OS

Answer: B

Explanation:

<https://developer.cisco.com/docs/nx-os/#!nx-api-cli-developer-sandbox>

NEW QUESTION 169

Refer to the exhibit.


```
int fc1/1-2
switchmode rate dedicated
channel-group 100 force
no shut

int san-port-channel 100
switchport trunk allowed vsan 1
switchport trunk allowed vsan add 100
```

An engineer is connecting a Cisco MDS 9700 Series Multilayer Director to a downstream Cisco Nexus 5672UP switch. Which command set must be used to complete the configuration?

A)

```
int san-port-channel 100
switchport mode te
switchport trunk mode off
channel mode on
```

B)

```
int san-port-channel 100
switchport mode te
switchport trunk mode auto
channel mode on
```

C)

```
int san-port-channel 100
switchport mode e
switchport trunk mode on
channel mode active
```

D)

```
int port-channel 100
switchport mode e
switchport trunk mode on
channel mode active
```

- A. Option A
- B. Option B
- C. Option C
- D. Option D

Answer: A

NEW QUESTION 170

A network engineer must configure a Fibre Channel interface on the Cisco MDS 9000 Series Switch. The configuration must meet these requirements:

- The interface must be disabled when the bit errors threshold is exceeded
- Buffer-to-buffer credits must be set to the maximum value
- The interface must have full bandwidth allocated for its port group

Which command set configures a Fibre Channel interface that meets these requirements?

A.

- A.

```
interface fc1/1
switchport bit-errors
switchport fcrxbbcredit 220 mode Fx
switchport rate-mode dedicated
```
- B.

```
interface fc1/1
switchport ignore bit-errors
switchport fcrxbbcredit 255 mode Fx
no switchport rate-mode
```
- C.

```
interface fc1/1
no switchport ignore bit-errors
switchport fcrxbbcredit 255 mode Fx
switchport rate-mode dedicated
```
- D.

```
interface fc1/1
no switchport bit-errors
switchport fcrxbbcredit 220 mode Fx
no switchport rate-mode
```

Answer: A

NEW QUESTION 174

Drag and drop the characteristics from the left onto the NAS protocols on the right. Some characteristics are used more than once

used to boot VHDX files

used to boot VMDK files

uses lease-based model for file locking

used to provide shared storage for hypervisors

NFS

SMB/CIFS

- A. Mastered
- B. Not Mastered

Answer: A

Explanation:

Diagram Description automatically generated

NFS:

- Used to boot VMDK files
 - Uses lease-based model for file locking
 - Used to provide shared storage for hypervisors
- SMB/CIFS:
- Used to boot VHDX files
 - Used to provide shared storage for hypervisors

NEW QUESTION 177

An engineer has a primary fabric that is named UCS-A and a secondary fabric that is named UCS-B. A certificate request that has a subject name of sjc2016 for a keyring that is named kr2016 needs to be created. The cluster IP address is 10.68.68.68.

Which command set creates this certificate request?

- A. UCS-A # scope keyring kr2016UCS-A /keyring # create certreq 10.68.68.68 sjc2016UCS-A /keyring* # commit-buffer
- B. UCS-B # scope keyring kr2016UCS-B /keyring # create certreq ip 10.68.68.68 subject-name sjc2016UCS-B /keyring* # commit-both
- C. UCS-B# scope securityUCS-B /security # scope keyring kr2016UCS-B /security/keyring # set certreq 10.68.68.68 sjc2016UCS-B /security/keyring* # commit-both
- D. UCS-A# scope securityUCS-A /security # scope keyring kr2016UCS-A /security/keyring # create certreq ip 10.68.68.68 subject-name sjc2016UCS-A /security/keyring* # commit-buffer

Answer: D

Explanation:

https://www.cisco.com/c/en/us/td/docs/unified_computing/ucs/ucs-manager/CLI-User-Guides/Admin-

Management/4-0/b_Cisco_UCS_Manager_CLI_Administration_Mgmt_Guide_4-0/
b_Cisco_UCS_Manager_CLI_Administration_Mgmt_Guide_4-0_chapter_0110.html

NEW QUESTION 179

What is a characteristic of the NFS protocol?

- A. It is used for booting Cisco UCS B-Series servers.
- B. It is used to access a storage array at a block level.
- C. It uses UDP and HTTP as its transport.
- D. It uses remote procedure calls with TCP/IP for transport.

Answer: D

NEW QUESTION 182

An engineer implements SPAN configuration on an Nexus 5000 series switch. Which two commands are necessary to complete the SPAN session configuration? (Choose two)

```
N5K-Core# configure terminal
Enter configuration commands, one per line. End with CNTL/Z.
N5K-Core(config)# interface fc2/1
N5K-Core(config-if)# switchport speed 4000
N5K-Core(config-if)# no shutdown
N5K-Core(config)# interface fc2/2
N5K-Core(config-if)# no shutdown
N5K-Core(config)# monitor session 1
N5K-Core(config-monitor)# source interface fc2/1
N5K-Core(config-monitor)# destination interface fc2/2
N5K-Core(config-monitor)# no shutdown
```

- A. Configure the switchport monitor under interface fc2/2
- B. Configure the switchport mode SD under interface tc2/1.
- C. Configure switchport speed 4000 under interface fc2/2.
- D. Configure session type fc under monitor session 1.
- E. Configure the switchport mode SD under interface fc2/2.

Answer: CE

Explanation:

<https://www.cisco.com/c/en/us/td/docs/switches/datacenter/nexus5000/sw/configuration/guide/cli/CLIConfigurationGuide/Span.html>

NEW QUESTION 185

A UCS B- Series server located in B5108 chassis 1 slot 1 is currently unavailable. The server needs to be associated with a specific service profile when it becomes available. Which associate service profile option should be selected to accomplish this goal?

- A. server pool
- B. server
- C. custom server
- D. restrict migration

Answer: C

Explanation:

https://www.cisco.com/en/US/docs/unified_computing/ucs/sw/gui/config/guide/141/UCSM_GUI_Configuration_Guide_141_chapter28.html
Text, application Description automatically generated with medium confidence

Associating a Service Profile with a Server or Server Pool

Follow this procedure if you did not associate the service profile with a blade server or server pool when you created it, or to change the blade server or server pool with which a service profile is associated.

Procedure

- Step 1** In the Navigation pane, click the Servers tab.
- Step 2** On the Servers tab, expand Servers > Service Profiles.
- Step 3** Expand the node for the organization that contains the service profile that you want to associate with a new server or server pool.
- If the system does not include multi-tenancy, expand the root node.

Step 4 Right-click the service profile you want to associate with a server and select Change Service Profile Association.

Step 5 In the Associate Service Profile dialog box, select one of the following options:

Option	Description
Server Pool	Select a server pool from the drop-down list. Cisco UCS Manager assigns a server from this pool to the service profile. Continue with Step 7.
Server	Navigate to the desired available server in the navigation tree and select the server which will be assigned to the service profile. Continue with Step 7.
Custom Server	Specifies the chassis and slot that contains the server that will be assigned to the service profile. If the server is not in the slot or is otherwise unavailable, the service profile will be associated with the server when it becomes available. Continue with Step 6.

- Step 6** If you chose Custom Server, do the following:
- In the Chassis Id field, enter the number of the chassis where the selected server is located.
 - In the Server Id field, enter the number of the slot where the selected server is located.

NEW QUESTION 186

An engineer must recover configuration on a Cisco MDS 9000 Series switch from a previous version that was backed up to bootflash and then verify the restoration.

Drag and drop the commands on the left to the correct order on the right.

copy bootflash:<conriguration_file> runring-config	Step 1
copy running-config startup-config	Step 2
show startup-config	Step 3
write erase	Step 4
reload	Step 5

- A. Mastered
 B. Not Mastered

Answer: A

Explanation:

Graphical user interface, text, application, email Description automatically generated
https://www.cisco.com/c/en/us/td/docs/switches/datacenter/mds9000/sw/nx-os/configuration/guides/fund/fund_nx-os_5-x/b_Cisco_MDS_9000_Series_NX-OS_Fundamentals_Configuration_Guide_Release_5-x/b_Cisco_MDS_9000_Series_NX-OS_Fundamentals_Configuration_Guide_Release_5-x_chapter_01000.html

NEW QUESTION 189

An engineer must configure Cisco Nexus 9000 Series Switches for Cisco UCS Director integration. The configuration must enable automated onboarding of the switches as they come online. For security purposes, the switches must have the bare minimum of connection methods enabled. The connection protocol must allow authentication through credentials. Which protocol must be configured on the switches to allow automated onboarding?

- A. SNMP
 B. Telnet
 C. SSH
 D. HTTPS

Answer: C

NEW QUESTION 190

Refer to the exhibit.

Create Boot Policy

Name

Description

Reboot on Boot Order Change

☐

Enforce vNIC/vHBA/iSCSI Name

☒

Boot Mode

Legacy

UEFI

WARNINGS:

The type (primary/secondary) does not indicate a boot order presence.

The effective order of boot devices within the same device class (LAN/Storage/iSCSI) is determined by PCIe bus scan order.

If Enforce vNIC/vHBA/iSCSI Name is selected and the vNIC/vHBA/iSCSI does not exist, a config error will be reported.

If it is not selected, the vNICs/vHBAs are selected if they exist, otherwise the vNIC/vHBA with the lowest PCIe bus scan order is used.

Local Devices

CIMC Mounted vMedia

vNICs

vHBAs

iSCSI vNICs

EFI Shell

Boot Order

+

-

Advanced Filter

Export

Print

Name	Order	vNIC/vHBA	Type	LUN No.	WWN	Slot No.	Boot No.
No data available							

Move Up

Move Down

Delete

An engineer installs a new Cisco UCS B-Series server. The requirement is to install an operating system on a LUN that is provided by the Fibre Channel storage array. Which two steps must be configured in the boot policy to accomplish this goal? (Choose two.)

- A. Disable Enforce vNIC^HBA/iSCSI Name
- B. Add Local CD/DVD and SAN Boot.
- C. Configure a SAN Boot Target with a WWPN
- D. Set Boot Order to External USB and LAN Boot
- E. Create iSCSI VNICs and add Local LUN

Answer: AD

NEW QUESTION 191

Which statement is true about upgrading the firmware on a Cisco MDS storage switch with dual supervisors?

- A. The standby supervisor must be offline before the firmware upgrade begins.
- B. Both supervisors load the new firmware and then the active supervisor reboots.
- C. Supervisors can be upgraded independently to test the new firmware.
- D. The new firmware is load on the standby supervisor first.

Answer: D

Explanation:

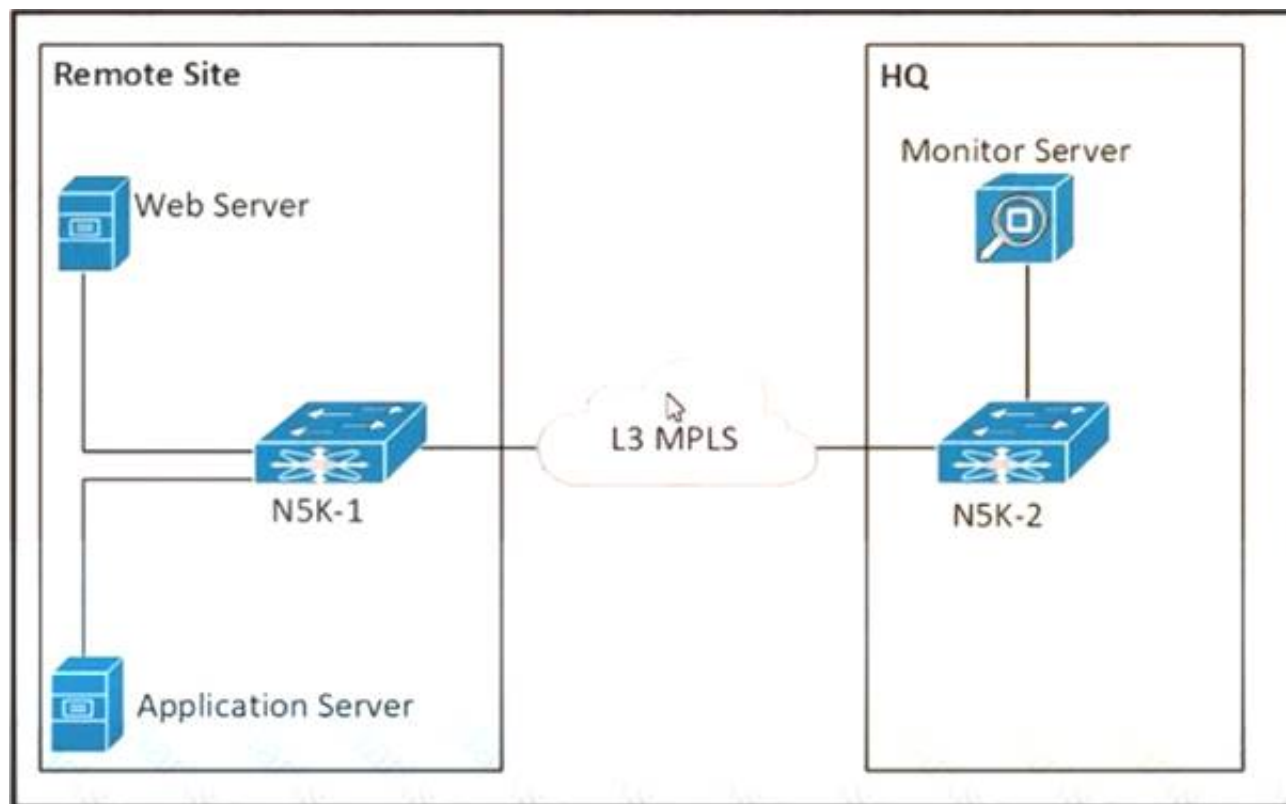
<https://www.cisco.com/c/en/us/support/docs/storage-networking/mds-9000-nx-os-san-os-software/118952-technote-mds9k-00.html#:~:text=On%20a%2095xx%20or%2097xx,becomes%20the%20new%20standby%20supervisor.>

NEW QUESTION 194

Refer to the exhibit

Passing Certification Exams Made Easy

visit - <https://www.surepassexam.com>



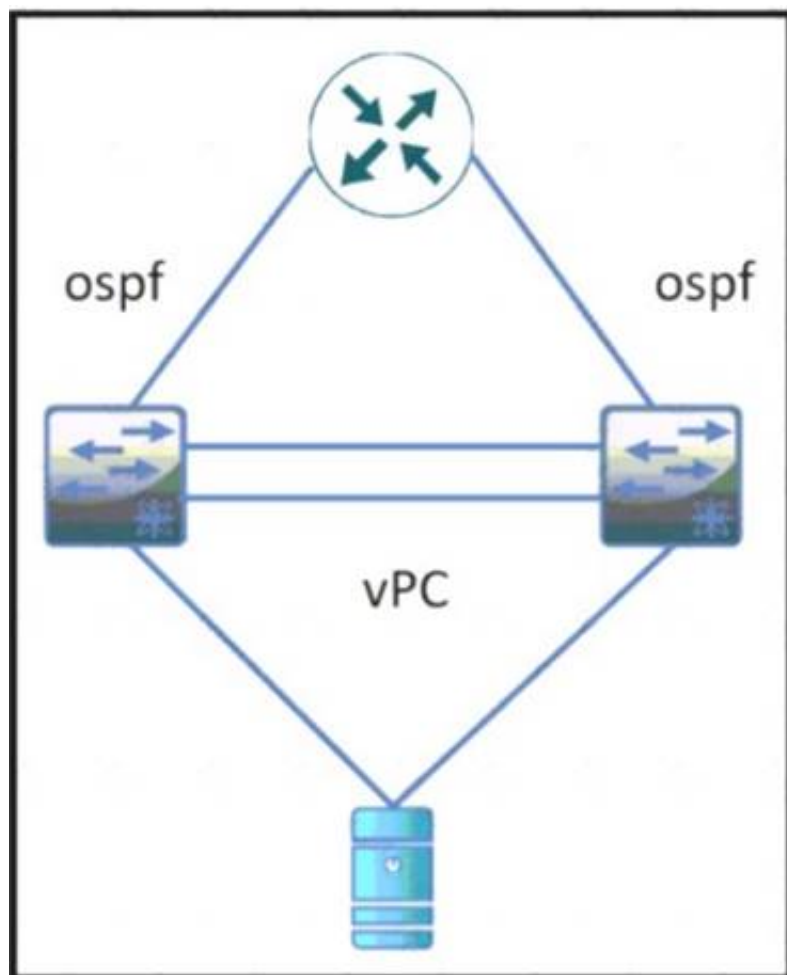
The communication between the web server and the application server experiences poor performance. The network engineer must collect the traffic between the two servers, including the payload for more investigation. The collected data must be sent from the remote site to the headquarters. Which action accomplishes this goal?

- A. Configure an ERSPAN session between N5K-1 and N5K-2.
- B. Configure a SPAN session between N5K-1 and N5K-2.
- C. Configure SNMP on N5K-1 to send the data to the monitor server.
- D. Configure NetFlow on N5K-1 to send the data to the monitor server.

Answer: A

NEW QUESTION 199

Refer to the exhibit



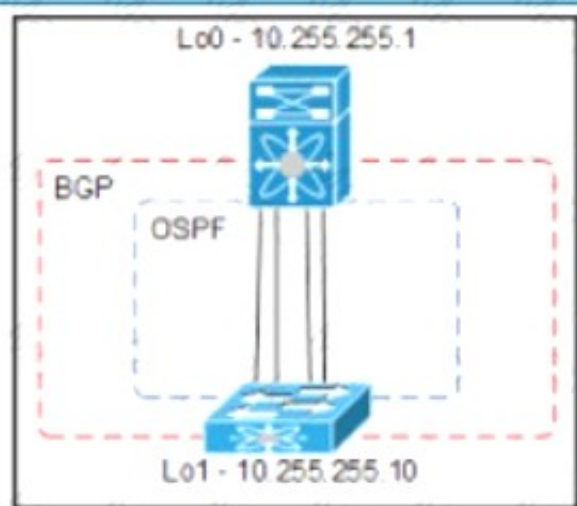
During a vPC peer switch reload, there is packet loss between the server and the router. Which action must be taken to prevent this behavior during future reloads?

- A. Set the routed uplink ports of the Cisco Nexus peers as orphans.
- B. Increase the vPC delay restore timer.
- C. Decrease the OSPF hello and dead interval timers.
- D. Disable vPC ARP synchronize on the vPC peers.

Answer: B

NEW QUESTION 202

Refer to the exhibit



An engineer must provision a VXLAN deployment The OSPF has already been configured as the underlay protocol All BGP configurations will be performed using the template method The deployment must meet these requirements

- > The local update source for leaf switches must be loopback 1
- > The router ID must be the local loopback IP address
- > The external BGP connections must use a template name

Drag and drop the configuration snippets from the bottom to complete the configuration

```

router bgp 65000
  router-id 
  template peer SPINE
  bfd
  remote-as 
  update-source loopback1
  timers 3 9
  address-family  extended
    send-community extended
  neighbor 
    peer SPINE
        
```

10.255.255.1

inherit

65000

10.255.255.10

12vpn

evpn

- A. Mastered
- B. Not Mastered

Answer: A

Explanation:

```

router bgp 65000
  router-id 10.255.255.10
  template peer SPINE
  bfd
  remote-as 65000
  update-source loopback1
  timers 3 9
  address-family 12vpn evpn
    send-community extended
  neighbor 10.255.255.1
    inherit peer SPINE
  
```

10.255.255.1 inherit 65000

10.255.255.10 12vpn evpn

NEW QUESTION 206

Refer to the exhibit.

```

Step 20 Enter no (no is the default) if you are satisfied with the configuration.

The following configuration will be applied:

switchname CiscoMDS
interface mgmt0
  ip address 192.168.10.10
  subnetmask 255.255.255.0
  no shutdown
ip default-gateway 192.168.10.1
telnet server enable
no ssh server enable
no system default switchport shutdown
system default switchport trunk mode on
no zone default-zone permit vsan 1-4093
zoneset distribute full vsan 1-4093
Would you like to edit the configuration? (yes/no) [n]: no

Step 21 Enter yes (yes is default) to use and save this configuration.

Use this configuration and save it? (yes/no) [y]: yes
  
```

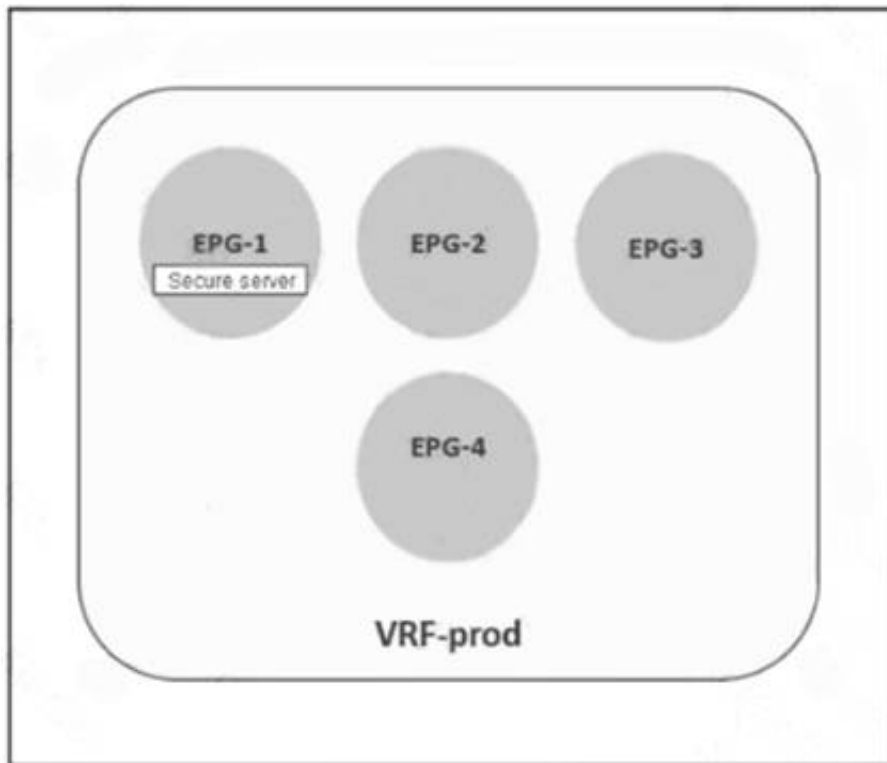
An engineer is configuring a Cisco MDS 9000 Series Switch for the first time. After the initial setup process, the name server at IP 192.168.10.11 is missing from the configuration. Which set of actions completes the configuration?

- A. Enter no at step 21 and reinitialize the install
- B. Press the Esc key to access ROMMON mode.
- C. Enter no at step 21 and reload the switch
- D. Configure the advanced IP options.
- E. Enter yes at step 21 to edit the configuration
- F. Add the line `dns-server 192.168.10.11`.
- G. Enter yes at step 21 and log in
- H. Modify the startup configuration DNS

Answer: B

NEW QUESTION 207

Refer to the exhibit.



A secure server that provides services to EPG-2 must be placed in EPG-1. The remaining EPGs—EPG-2, EPG-3, and EPG-4—must communicate without any contracts. Which set of actions accomplishes this goal?

- ☒ Exclude EPG-2, EPG-3, and EPG-4 from the preferred group.
Configure a contract between EPG-2 and EPG-3.
- ☐ Include EPG-2, EPG-3, and EPG-4 in the preferred group.
Configure a contract between EPG-1 and EPG-2.
- ☐ Include EPG-1 and EPG-2 in the preferred group.
Configure a contract between EPG-2 and EPG-3.
- ☐ Exclude EPG-2, EPG-3, and EPG-4 from the preferred group.
Configure a contract between EPG-1 and EPG-3.

- A. Option A
- B. Option B
- C. Option C
- D. Option D

Answer: B

NEW QUESTION 212

Refer to the exhibit.

```
N9K-1# show running-config interface Ethernet1/1
switchport access vlan 10
spanning-tree port type edge
switchport port-security aging time 33
switchport port-security maximum 3
switchport port-security mac-address sticky
switchport port-security

N9K-1# show mac address-table interface ethernet 1/1
Legend:
* - primary entry, G - Gateway MAC, (R) - Routed MAC, O - Overlay MAC
age - seconds since last seen, + - primary entry using vPC Peer-Link,
(T) - True, (F) - False, C - ControlPlane MAC, ~ - vsan
```

VLAN	MAC Address	Type	age	Secure	NTFY	Ports
* 10	0050.7966.6801	secure	-	T	F	Eth1/1
* 10	0050.7966.6802	secure	-	T	F	Eth1/1
* 10	0050.7966.6803	secure	-	T	F	Eth1/1

An engineer configures port security on a Cisco Nexus 9000 Series Switch. The requirement is to prevent any newly learned MAC addresses from forwarding traffic on the interface. Also, the already learned MAC addresses must not be affected by the changes. Which configuration meets these requirements?

- A. switchport port-security violation shutdown
- B. switchport port-security violation isolate
- C. switchport port-security violation protect
- D. switchport port-security violation restrict

Answer: C

NEW QUESTION 216

A network engineer must implement a telemetry solution to collect real-time structured data in a large-scale network. Drag and drop the actions from the left into

the order on the right to implement the solution. Not all actions are used.

Configure the flow monitor and flow record.	step 1
Set the format and destination to which the data is sent.	step 2
Configure the data to be collected as part of the sensor group.	step 3
Set the subscription between the sensor group and the destination.	

- A. Mastered
- B. Not Mastered

Answer: A

Explanation:

- * 1. set the format and destination to which the data is sent.
- * 2. configure the data to be collected as part of the sensor group.
- * 3. set the subscription between the sensor-group and the destination.

NEW QUESTION 220

A small remote office is set to connect to the regional hub site via NSSA ASBR. Which type of LSA is sent to the remote office OSPF area?

- A. type 7 LSA
- B. type 3 LSA
- C. type 1 LSA
- D. type 5 LSA

Answer: A

NEW QUESTION 223

An engineer performs a set of configuration changes for the vPC domain using Session Manager. Which two commands are used to verify the configuration and apply the device changes when no errors are returned?
(Choose two)

- A. write
- B. verify
- C. commit
- D. checkpoint
- E. apply

Answer: BC

Explanation:

https://www.cisco.com/c/en/us/td/docs/switches/datacenter/nexus9000/sw/6-x/system_management/configuration

Verifying a Session

Use the following command in session mode to verify a session:

Command	Purpose
verify [verbose] Example: switch(config-s)# verify	Verifies the configuration as a whole, based on the existing hardware and software configuration and resources. Cisco NX-OS returns an error if the configuration does not pass this verification.

Committing a Session

Use the following command in session mode to commit a session:

Command	Purpose
commit [verbose] Example: switch(config-s)# commit	Validates the configuration changes made in the current session and applies valid changes to the device. If the validation fails, Cisco NX-OS reverts to the original configuration.

<https://www.cisco.com/c/en/us/td/docs/switches/datacenter/nexus5000/sw/configuration/guide/cli/CLIconfigura>

NEW QUESTION 224

An engineer must configure OSPFv2 connectivity between a pair of Cisco Nexus switches. The connection between the switches must meet these requirements:

- > Use unicast for updates.
- > Use decentralized communication of updates.
- > Full adjacency between switches.

Which configuration is needed to meet these requirements?

- A. interface with a type of p2p network
- B. stub area between the neighbors
- C. filter list between the neighbors
- D. virtual link between the neighbors

Answer: A

NEW QUESTION 228

A DevOps engineer must implement a bash script to query a REST API and return the available methods. Which code snippet completes the script?

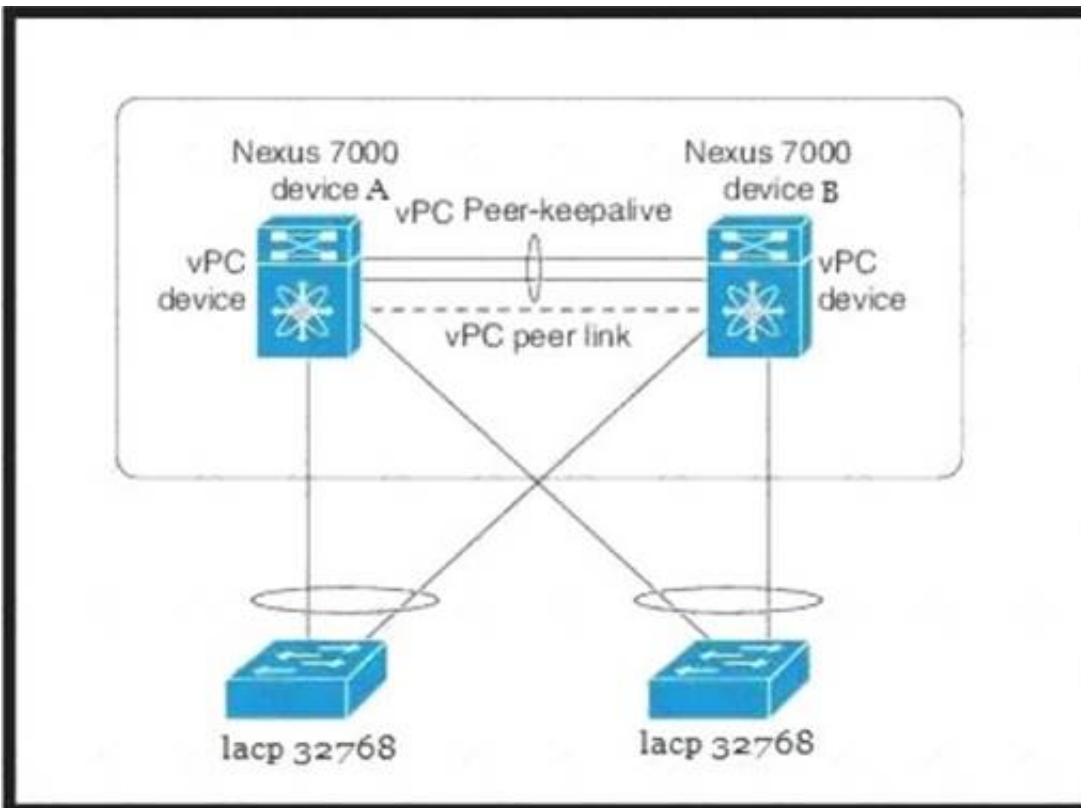
```
curl -i -X --missing code-- http://api.cisco.com:8080/api -u admin:xT41M5P3X425VOE71NB5D
```

- A. DELETE
- B. TRACE
- C. POST
- D. OPTIONS

Answer: C

NEW QUESTION 230

Refer to the exhibit.



Which configuration ensure that the cisco Nexus 7000 series switches are the primary devices for LACP?

- A. N7K_A(config-vpc-domain)# role priority 1N7K_B(config-vpc-domain)# role priority 2
- B. N7K_A(config-vpc-domain)# system-priority 32768N7K_B(config-vpc-domain)# system-priority 32768
- C. N7K_A(config-vpc-domain)# system-priority 100N7K_B(config-vpc-domain)# system-priority 200
- D. N7K_A(config-vpc-domain)# system-priority 4000N7K_B(config-vpc-domain)# system-priority 4000

Answer: D

NEW QUESTION 233

Which configuration implements static ingress replication?

- ☒ interface nve 1
member vni 2100980
ingress-replication protocol static
peer-ip 10.0.0.4
- ☐ interface nve 1
member vni 127772151
ingress-replication protocol bgp
- ☐ interface nve 1
member vni 3126980
peer vtep 10.0.0.4
ingress-replication protocol static
peer-ip 10.0.0.4
- ☐ interface nve 1
member vni 384233213
peer vtep 10.0.0.4

- A. Option A
- B. Option B
- C. Option C
- D. Option D

Answer: A

Explanation:

"Configuring Static Ingress Replication" section here:

https://www.cisco.com/c/en/us/td/docs/switches/datacenter/nexus9000/sw/7-x/vxlan/configuration/guide/b_Cisc

NEW QUESTION 235

.....

Thank You for Trying Our Product

We offer two products:

1st - We have Practice Tests Software with Actual Exam Questions

2nd - Questions and Answers in PDF Format

350-601 Practice Exam Features:

- * 350-601 Questions and Answers Updated Frequently
- * 350-601 Practice Questions Verified by Expert Senior Certified Staff
- * 350-601 Most Realistic Questions that Guarantee you a Pass on Your First Try
- * 350-601 Practice Test Questions in Multiple Choice Formats and Updates for 1 Year

100% Actual & Verified — Instant Download, Please Click
[Order The 350-601 Practice Test Here](#)