

# Cisco

## Exam Questions 300-730

Implementing Secure Solutions with Virtual Private Networks (SVPN)



NEW QUESTION 1

DRAG DROP

Drag and drop the correct commands from the right onto the blanks within the code on the left to implement a design that allow for dynamic spoke-to-spoke communication. Not all commands are used.

Select and Place:

Answer Area

Router A

interface Tunnell

ip address 10.0.0.1 255.255.255.0

ip nhrp mp multicast dynamic

ip nhrp network-id 1

ip nhrp

no ip split-horizon eigrp 10

tunnel source GigabitEthernet1

tunnel mode gre multipoint

interface GigabitEthernet1

ip address 1.1.1.1 255.255.255.0

router eigrp 10

network 10.0.0.0 0.0.0.255

Router B

interface Tunnell

ip address 10.0.0.2 255.255.255.0

ip nhrp nhs  nbma  multicast

ip nhrp network-id 1

ip nhrp

tunnel source GigabitEthernet1

tunnel mode gre multipoint

interface GigabitEthernet1

ip address 2.2.2.2 255.255.255.0

router eigrp 10

network 10.0.0.0 0.0.0.255

1.1.1.1

10.0.0.1

redirect

shortcut

server-only

- A. Mastered
- B. Not Mastered

Answer: A

Explanation:

Reference: [https://www.cisco.com/c/en/us/td/docs/ios-xml/ios/sec\\_conn\\_dmvpn/configuration/xr-16/sec-conn-dmvpn-xr-16-book/sec-conn-dmvpn-summaps.html](https://www.cisco.com/c/en/us/td/docs/ios-xml/ios/sec_conn_dmvpn/configuration/xr-16/sec-conn-dmvpn-xr-16-book/sec-conn-dmvpn-summaps.html)

NEW QUESTION 2

Refer to the exhibit.

Passing Certification Exams Made Easy

visit - <https://www.surepassexam.com>

```
interface: Tunnell
  Crypto map tag: Tunnell-head-0, local addr 192.168.0.1

protected vrf: (none)
local ident (addr/mask/prot/port): (0.0.0.0/0.0.0.0/0/0)
remote ident (addr/mask/prot/port): (0.0.0.0/0.0.0.0/0/0)
current_peer 192.168.0.2 port 500
  PERMIT, flags={origin_is_acl,}
  #pkts encaps: 0, #pkts encrypt: 0, #pkts digest: 0
  #pkts decaps: 0, #pkts decrypt: 0, #pkts verify: 0
  #pkts compressed: 0, #pkts decompressed: 0
  #pkts not compressed: 0, #pkts compr. failed: 0
  #pkts not decompressed: 0, #pkts decompress failed: 0
  #send errors 0, #recv errors 0

local crypto endpt.: 192.168.0.1, remote crypto endpt.: 192.168.0.2
plaintext mtu 1438, path mtu 1500, ip mtu 1500, ip mtu idb GigabitEthernet1
current outbound spi: 0x3D05D003(1023791107)
PFS (Y/N): N, DH group: none
```

Which two tunnel types produce the show crypto ipsec sa output seen in the exhibit? (Choose two.)

- A. crypto map
- B. DMVPN
- C. GRE
- D. FlexVPN
- E. VTI

**Answer:** BE

#### NEW QUESTION 3

Which two parameters help to map a VPN session to a tunnel group without using the tunnel-group list? (Choose two.)

- A. group-alias
- B. certificate map
- C. optimal gateway selection
- D. group-url
- E. AnyConnect client version

**Answer:** BD

#### NEW QUESTION 4

Which method dynamically installs the network routes for remote tunnel endpoints?

- A. policy-based routing
- B. CEF
- C. reverse route injection
- D. route filtering

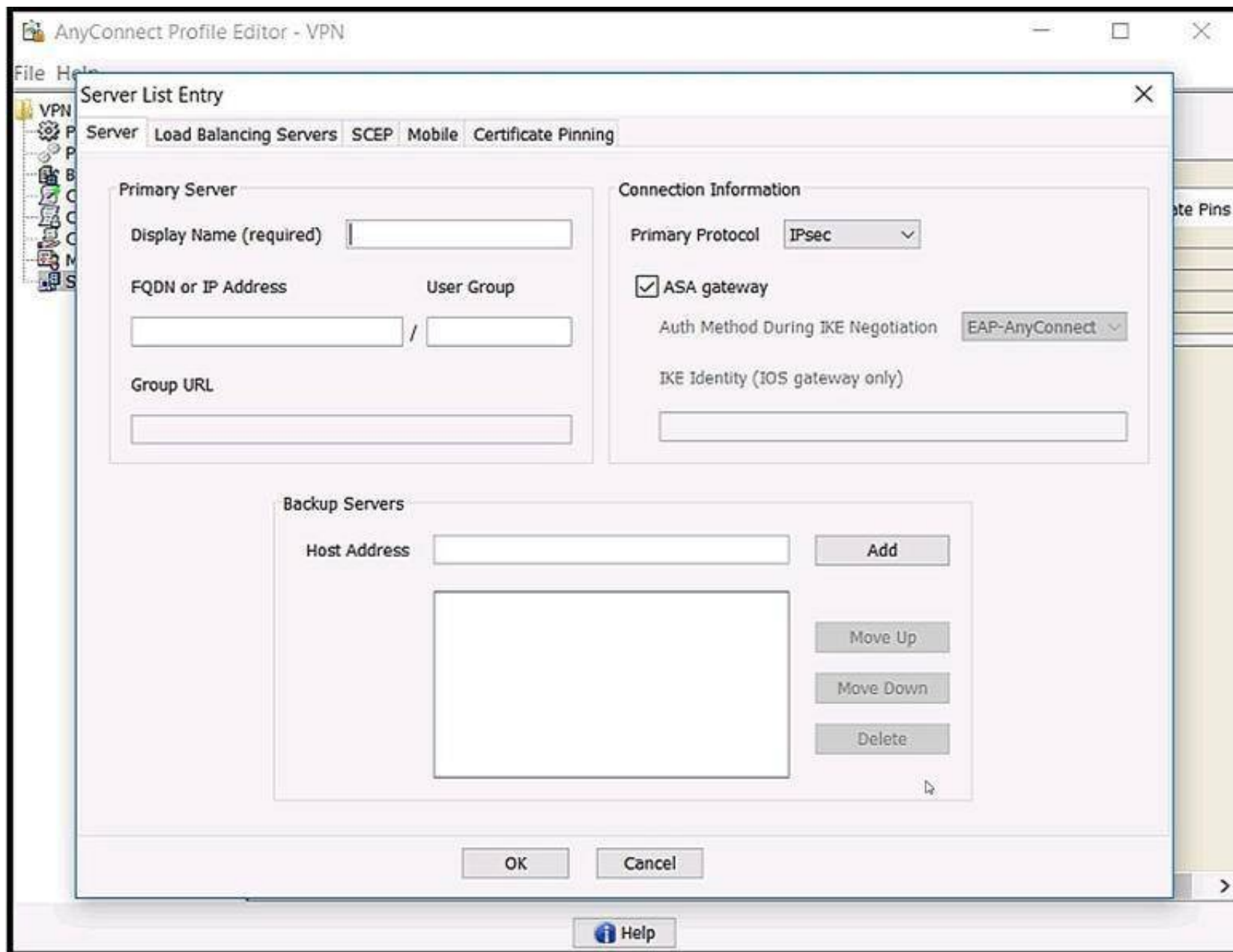
**Answer:** C

#### Explanation:

Reference: [https://www.cisco.com/c/en/us/td/docs/ios-xml/ios/sec\\_conn\\_vpnnav/configuration/12-4t/sec-vpn-availability-12-4t-book/sec-rev-rte-inject.html](https://www.cisco.com/c/en/us/td/docs/ios-xml/ios/sec_conn_vpnnav/configuration/12-4t/sec-vpn-availability-12-4t-book/sec-rev-rte-inject.html)

#### NEW QUESTION 5

Refer to the exhibit.



Which value must be configured in the User Group field when the Cisco AnyConnect Profile is created to connect to an ASA headend with IPsec as the primary protocol?

- A. address-pool
- B. group-alias
- C. group-policy
- D. tunnel-group

**Answer: D**

**Explanation:**

Reference: [https://www.cisco.com/c/en/us/td/docs/security/vpn\\_client/anyconnect/anyconnect41/administration/guide/b\\_AnyConnect\\_Administrator\\_Guide\\_4-1/configure-vpn.html](https://www.cisco.com/c/en/us/td/docs/security/vpn_client/anyconnect/anyconnect41/administration/guide/b_AnyConnect_Administrator_Guide_4-1/configure-vpn.html)

**NEW QUESTION 6**

Which configuration construct must be used in a FlexVPN tunnel?

- A. EAP configuration
- B. multipoint GRE tunnel interface
- C. IKEv1 policy
- D. IKEv2 profile

**Answer: D**

**NEW QUESTION 7**

Which two features provide headend resiliency for Cisco AnyConnect clients? (Choose two.)

- A. AnyConnect Auto Reconnect
- B. AnyConnect Network Access Manager
- C. AnyConnect Backup Servers
- D. ASA failover
- E. AnyConnect Always On

**Answer: CD**

**NEW QUESTION 8**

Cisco AnyConnect Secure Mobility Client has been configured to use IKEv2 for one group of users and SSL for another group. When the administrator configures a new AnyConnect release on the Cisco ASA, the IKEv2 users cannot download it automatically when they connect. What might be the problem?

- A. The XML profile is not configured correctly for the affected users.
- B. The new client image does not use the same major release as the current one.
- C. Client services are not enabled.
- D. Client software updates are not supported with IKEv2.

**Answer:** C

**NEW QUESTION 9**

Under which section must a bookmark or URL list be configured on a Cisco ASA to be available for clientless SSLVPN users?

- A. tunnel-group (general-attributes)
- B. tunnel-group (webvpn-attributes)
- C. webvpn (group-policy)
- D. webvpn (global configuration)

**Answer:** D

**NEW QUESTION 10**

Which two statements about the Cisco ASA Clientless SSL VPN solution are true? (Choose two.)

- A. When a client connects to the Cisco ASA WebVPN portal and tries to access HTTP resources through the URL bar, the client uses the local DNS to perform FQDN resolution.
- B. The rewriter enable command under the global webvpn configuration enables the rewriter functionality because that feature is disabled by default.
- C. A Cisco ASA can simultaneously allow Clientless SSL VPN sessions and AnyConnect client sessions.
- D. When a client connects to the Cisco ASA WebVPN portal and tries to access HTTP resources through the URL bar, the ASA uses its configured DNS servers to perform FQDN resolution.
- E. Clientless SSLVPN provides Layer 3 connectivity into the secured network.

**Answer:** CD

**NEW QUESTION 10**

Which command automatically initiates a smart tunnel when a user logs in to the WebVPN portal page?

- A. auto-upgrade
- B. auto-connect
- C. auto-start
- D. auto-run

**Answer:** C

**Explanation:**

Reference: [https://www.cisco.com/c/en/us/td/docs/security/asa/asa91/configuration/vpn/asa\\_91\\_vpn\\_config/webvpn-configure-policy-group.html](https://www.cisco.com/c/en/us/td/docs/security/asa/asa91/configuration/vpn/asa_91_vpn_config/webvpn-configure-policy-group.html)

**NEW QUESTION 13**

Which requirement is needed to use local authentication for Cisco AnyConnect Secure Mobility Clients that connect to a FlexVPN server?

- A. use of certificates instead of username and password
- B. EAP-AnyConnect
- C. EAP query-identity
- D. AnyConnect profile

**Answer:** D

**Explanation:**

Reference: <https://www.cisco.com/c/en/us/support/docs/security/flexvpn/200555-FlexVPN-AnyConnect-IKEv2-Remote-Access.html>

**NEW QUESTION 14**

Which IKE identity does an IOS/IOS-XE headend expect to receive if an IPsec Cisco AnyConnect client uses default settings?

- A. \*\$SecureMobilityClient\$\*
- B. \*\$AnyConnectClient\$\*
- C. \*\$RemoteAccessVpnClient\$\*
- D. \*\$DfltIkeIdentityS\*

**Answer:** B

**Explanation:**

Reference: <https://www.cisco.com/c/en/us/support/docs/security/flexvpn/200555-FlexVPN-AnyConnect-IKEv2-Remote-Access.html>

**NEW QUESTION 15**

Which command is used to troubleshoot an IPv6 FlexVPN spoke-to-hub connectivity failure?

- A. show crypto ikev2 sa
- B. show crypto isakmp sa
- C. show crypto gkm
- D. show crypto identity

**Answer:** A

**Explanation:**

Reference: <https://www.cisco.com/c/en/us/support/docs/security/flexvpn/116413-configure-flexvpn-00.pdf>



**NEW QUESTION 16**

Refer to the exhibit.

```
ISAKMP: (0):beginning Main Mode exchange
ISAKMP-PAK: (0):sending packet to 192.168.0.8 my_port 500 peer_port 500 (I) MM_NO_STATE
ISAKMP-PAK: (0):received packet from 192.168.0.8 dport 500 sport 500 Global (I) MM_NO_STATE
ISAKMP: (0):Old State = IKE_I_MM1 New State = IKE_I_MM2
ISAKMP: (0):found peer pre-shared key matching 192.168.0.8
ISAKMP: (0):local preshared key found
ISAKMP: (0):Checking ISAKMP transform 1 against priority 10 policy
ISAKMP: (0):      encryption AES-CBC
ISAKMP: (0):      keylength of 256
ISAKMP: (0):      hash SHA256
ISAKMP: (0):      default group 14
ISAKMP: (0):      auth pre-share
ISAKMP: (0):      life type in seconds
ISAKMP: (0):      life duration (basic) of 1200
ISAKMP: (0):atts are acceptable. Next payload is 0
ISAKMP-PAK: (0):sending packet to 192.168.0.8 my_port 500 peer_port 500 (I) MM_SA_SETUP
ISAKMP: (0):Old State = IKE_I_MM2 New State = IKE_I_MM3
ISAKMP-PAK: (0):received packet from 192.168.0.8 dport 500 sport 500 Global (I) MM_SA_SETUP
ISAKMP: (0):Old State = IKE_I_MM3 New State = IKE_I_MM4
ISAKMP: (0):found peer pre-shared key matching 192.168.0.8
ISAKMP: (1005):Old State = IKE_I_MM4 New State = IKE_I_MM4
ISAKMP: (1005):pre-shared key authentication using id type ID_IPV4_ADDR
ISAKMP-PAK: (1005):sending packet to 192.168.0.8 my_port 4500 peer_port 4500 (I) MM_KEY_EXCH
ISAKMP: (1005):Old State = IKE_I_MM4 New State = IKE_I_MM5
ISAKMP-PAK: (1005):received packet from 192.168.0.8 dport 500 sport 500 Global (I) MM_KEY_EXCH
ISAKMP: (1005):phase 1 packet is a duplicate of a previous packet.
ISAKMP: (1005):retransmitting due to retransmit phase 1
ISAKMP: (1005):retransmitting phase 1 MM_KEY_EXCH...
ISAKMP: (1005):: incrementing error counter on sa, attempt 1 of 5: retransmit phase 1
ISAKMP-PAK: (1005):sending packet to 192.168.0.8 my_port 4500 peer_port 4500 (I) MM_KEY_EXCH
ISAKMP-PAK: (1005):received packet from 192.168.0.8 dport 500 sport 500 Global (I) MM_KEY_EXCH
ISAKMP: (1005):phase 1 packet is a duplicate of a previous packet.
ISAKMP: (1005):retransmitting due to retransmit phase 1
```

A site-to-site tunnel between two sites is not coming up. Based on the debugs, what is the cause of this issue?

- A. An authentication failure occurs on the remote peer.
- B. A certificate fragmentation issue occurs between both sides.
- C. UDP 4500 traffic from the peer does not reach the router.
- D. An authentication failure occurs on the router.

**Answer: C****NEW QUESTION 20**

Refer to the exhibit.

```
IKEv2:(SESSION ID = 17,SA ID = 1):Processing IKE_AUTH message
IKEv2:IPSec policy validate request sent for profile CloudOne with psh index 1.

IKEv2:(SESSION ID = 17,SA ID = 1):
IKEv2:(SA ID = 1):[IPsec -> IKEv2] Callback received for the validate proposal - FAILED.

IKEv2-ERROR:(SESSION ID = 17,SA ID = 1):: There was no IPSEC policy found for received TS
IKEv2:(SESSION ID = 17,SA ID = 1):Sending TS unacceptable notify
IKEv2:(SESSION ID = 17,SA ID = 1):Get my authentication method
IKEv2:(SESSION ID = 17,SA ID = 1):My authentication method is 'PSK'
IKEv2:(SESSION ID = 17,SA ID = 1):Get peer's preshared key for 68.72.250.251
IKEv2:(SESSION ID = 17,SA ID = 1):Generate my authentication data
IKEv2:(SESSION ID = 17,SA ID = 1):Use preshared key for id 68.72.250.250, key len 5
IKEv2:[IKEv2 -> Crypto Engine] Generate IKEv2 authentication data
IKEv2:[Crypto Engine -> IKEv2] IKEv2 authentication data generation PASSED
IKEv2:(SESSION ID = 17,SA ID = 1):Get my authentication method
IKEv2:(SESSION ID = 17,SA ID = 1):My authentication method is 'PSK'
IKEv2:(SESSION ID = 17,SA ID = 1):Generating IKE_AUTH message
IKEv2:(SESSION ID = 17,SA ID = 1):Constructing IDr payload: '68.72.250.250' of type 'IPv4 address'
IKEv2:(SESSION ID = 17,SA ID = 1):Building packet for encryption.
Payload contents:
VID IDr AUTH NOTIFY(TS_UNACCEPTABLE)

IKEv2:(SESSION ID = 17,SA ID = 1):Sending Packet [To 68.72.250.251:500/From 68.72.250.250:500/VRF i0:f0]
Initiator SPI : 3D527B1D50DBEEF4 - Responder SPI : 8C693F77F2656636 Message id: 1
IKEv2 IKE_AUTH Exchange RESPONSE
Payload contents:
ENCR
```

Based on the debug output, which type of mismatch is preventing the VPN from coming up?

- A. interesting traffic
- B. lifetime
- C. preshared key
- D. PFS

**Answer:** B

**Explanation:**

If the responder's policy does not allow it to accept any part of the proposed Traffic Selectors, it responds with a TS\_UNACCEPTABLE Notify message.

**NEW QUESTION 25**

Refer to the exhibit.

```
*Jul 16 20:21:25.317: ISAKMP (1004): received packet from 192.168.0.2 dport
500 sport 500 Global (R) MM_KEY_EXCH
*Jul 16 20:21:25.317: ISAKMP: reserved not zero on ID payload!
*Jul 16 20:21:25.317: %CRYPTO-4-IKMP_BAD_MESSAGE: IKE message from 192.168.0.2
failed its sanity check or is malformed
```

Which type of mismatch is causing the problem with the IPsec VPN tunnel?

- A. crypto access list
- B. Phase 1 policy
- C. transform set
- D. preshared key

**Answer:** D

**Explanation:**

Reference: <https://www.cisco.com/c/en/us/support/docs/security-vpn/ipsec-negotiation-ike-protocols/5409-ipsec-debug-00.html#ike>

**NEW QUESTION 28**

Refer to the exhibit.



HUB configuration:

```
crypto ikev2 profile default
match identity remote fqdn domain cisco.com
identity local fqdn hub.cisco.com
authentication local rsa-sig
authentication remote pre-shared-key cisco
pki trustpoint CA
aaa authorization group cert list default default
virtual-template 1
```

---

SPOKE 1 configuration:

```
crypto ikev2 profile default
match identity remote fqdn domain cisco.com
identity local fqdn spoke.cisco.com
authentication local rsa-sig
authentication remote pre-shared-key cisco
pki trustpoint CA
aaa authorization group cert list default default
virtual-template 1
```

---

SPOKE 2 configuration:

```
crypto ikev2 profile default
match identity remote fqdn domain cisco.com
identity local fqdn spoke2.cisco.com
authentication local pre-shared-key flexvpn
authentication remote rsa-sig
pki trustpoint CA
aaa authorization group cert list default default
virtual-template 1
```

What is a result of this configuration?

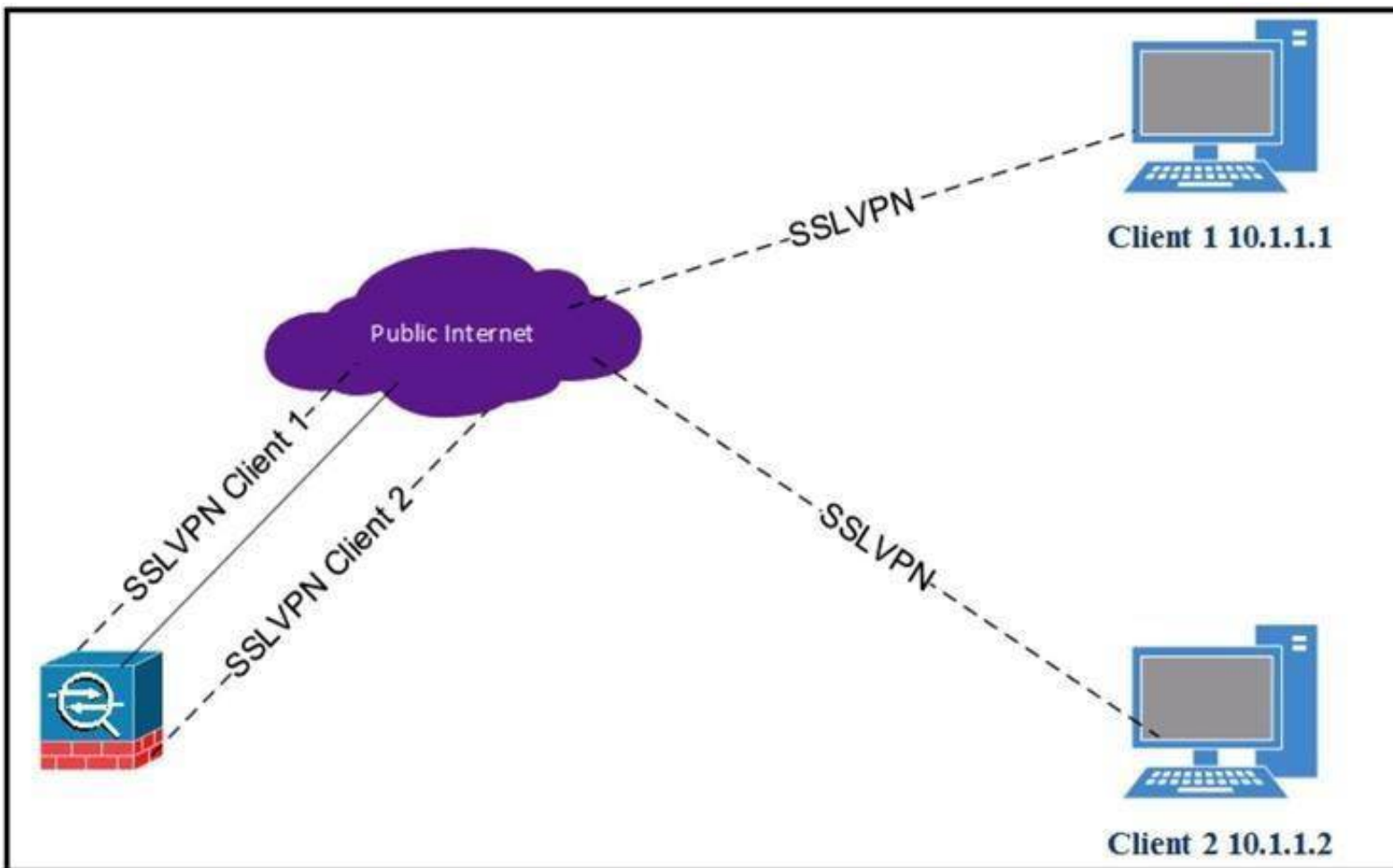
- A. Spoke 1 fails the authentication because the authentication methods are incorrect.
- B. Spoke 2 passes the authentication to the hub and successfully proceeds to phase 2.
- C. Spoke 2 fails the authentication because the remote authentication method is incorrect.
- D. Spoke 1 passes the authentication to the hub and successfully proceeds to phase 2.

Answer: A

#### NEW QUESTION 31

Refer to the exhibit.





Client 1 cannot communicate with client 2. Both clients are using Cisco AnyConnect and have established a successful SSL VPN connection to the hub ASA. Which command on the ASA is missing?

- A. dns-server value 10.1.1.2
- B. same-security-traffic permit intra-interface
- C. same-security-traffic permit inter-interface
- D. dns-server value 10.1.1.3

**Answer: B**

#### NEW QUESTION 32

Refer to the exhibit.

An SSL client is connecting to an ASA headend. The session fails with the message "Connection attempt has timed out. Please verify Internet connectivity." Based on how the packet is processed, which phase is causing the failure?

- A. phase 9: rpf-check
- B. phase 5: NAT
- C. phase 4: ACCESS-LIST
- D. phase 3: UN-NAT

**Answer: D**

#### NEW QUESTION 35

What are two functions of ECDH and ECDSA? (Choose two.)

- A. nonrepudiation
- B. revocation
- C. digital signature
- D. key exchange
- E. encryption

**Answer: CD**

#### Explanation:

Reference: [https://tools.cisco.com/security/center/resources/next\\_generation\\_cryptography](https://tools.cisco.com/security/center/resources/next_generation_cryptography)

#### NEW QUESTION 40

Which VPN solution uses TBAR?

- A. GETVPN
- B. VTI
- C. DMVPN
- D. Cisco AnyConnect

**Answer: A**

#### Explanation:

Reference: [https://www.cisco.com/c/en/us/td/docs/ios-xml/ios/sec\\_conn\\_getvpn/configuration/xs-3s/sec-get-vpn-xe-3s-book/sec-get-vpn.html](https://www.cisco.com/c/en/us/td/docs/ios-xml/ios/sec_conn_getvpn/configuration/xs-3s/sec-get-vpn-xe-3s-book/sec-get-vpn.html)

#### NEW QUESTION 45

Cisco AnyConnect clients need to transfer large files over the VPN sessions. Which protocol provides the best throughput?

- A. SSL/TLS
- B. L2TP
- C. DTLS
- D. IPsec IKEv1

**Answer:** C

#### NEW QUESTION 46

Refer to the exhibit.

```
crypto isakmp policy 10
  encr aes 256
  hash sha256
  authentication pre-share
  group 14

crypto isakmp key cisco address 0.0.0.0

crypto ipsec transform-set TS esp-aes 256 esp-sha256-hmac
  mode transport

crypto ipsec profile CCNP
  set transform-set TS

interface Tunnell
  ip address 10.0.0.1 255.255.255.0
  tunnel source GigabitEthernet1
  tunnel mode ipsec ipv4
  tunnel destination 172.18.10.2
  tunnel protection ipsec profile CCNP
```

Which VPN technology is used in the exhibit?

- A. DVTI
- B. VTI
- C. DMVPN
- D. GRE

**Answer:** B

#### Explanation:

Reference: [https://www.cisco.com/c/en/us/td/docs/ios-xml/ios/sec\\_conn\\_vpnips/configuration/zZ-Archive/IPsec\\_Virtual\\_Tunnel\\_Interface.html#GUID-EB8C433B-2394-42B9-997F-B40803E58A91](https://www.cisco.com/c/en/us/td/docs/ios-xml/ios/sec_conn_vpnips/configuration/zZ-Archive/IPsec_Virtual_Tunnel_Interface.html#GUID-EB8C433B-2394-42B9-997F-B40803E58A91)

#### NEW QUESTION 50

A Cisco ASA is configured in active/standby mode. What is needed to ensure that Cisco AnyConnect users can connect after a failover event?

- A. AnyConnect images must be uploaded to both failover ASA devices.
- B. The vpnsession-db must be cleared manually.
- C. Configure a backup server in the XML profile.
- D. AnyConnect client must point to the standby IP address.

**Answer:** A

#### Explanation:

Reference: [https://www.cisco.com/c/en/us/td/docs/security/asa/asa90/configuration/guide/asa\\_90\\_cli\\_config/ha\\_active\\_standby.html](https://www.cisco.com/c/en/us/td/docs/security/asa/asa90/configuration/guide/asa_90_cli_config/ha_active_standby.html)

#### NEW QUESTION 52

Which technology is used to send multicast traffic over a site-to-site VPN?

- A. GRE over IPsec on IOS router
- B. GRE over IPsec on FTD
- C. IPsec tunnel on FTD
- D. GRE tunnel on ASA

**Answer:** B

#### NEW QUESTION 55

Which feature of GETVPN is a limitation of DMVPN and FlexVPN?

- A. sequence numbers that enable scalable replay checking
- B. enabled use of ESP or AH
- C. design for use over public or private WAN
- D. no requirement for an overlay routing protocol

Answer: D

#### NEW QUESTION 57

Refer to the exhibit.

```
ip access-list extended CCNP
 permit 192.168.0.10
 permit 192.168.0.11

webvpn gateway SSL_Gateway
 ip address 172.16.0.25 port 443
 ssl trustpoint AnyConnect_Cert
 inservice

webvpn context SSL_Context
 gateway SSL_Gateway

 ssl authenticate verify all
 inservice

policy group SSL_Policy
 functions svc-enabled
  svc address-pool "ACPool" netmask 255.255.255.0
  svc dns-server primary 192.168.0.100
  svc default-domain cisco.com
 default-group-policy SSL_Policy
```

Cisco AnyConnect must be set up on a router to allow users to access internal servers 192.168.0.10 and 192.168.0.11. All other traffic should go out of the client's local NIC. Which command accomplishes this configuration?

- A. svc split include 192.168.0.0 255.255.255.0
- B. svc split exclude 192.168.0.0 255.255.255.0
- C. svc split include acl CCNP
- D. svc split exclude acl CCNP

Answer: C

#### NEW QUESTION 61

.....



## Thank You for Trying Our Product

### We offer two products:

1st - We have Practice Tests Software with Actual Exam Questions

2nd - Questions and Answers in PDF Format

### 300-730 Practice Exam Features:

- \* 300-730 Questions and Answers Updated Frequently
- \* 300-730 Practice Questions Verified by Expert Senior Certified Staff
- \* 300-730 Most Realistic Questions that Guarantee you a Pass on Your First Try
- \* 300-730 Practice Test Questions in Multiple Choice Formats and Updates for 1 Year

**100% Actual & Verified — Instant Download, Please Click**  
**[Order The 300-730 Practice Test Here](#)**