

Cisco

Exam Questions 500-220

Engineering Cisco Meraki Solutions



NEW QUESTION 1

Which two actions can extend the video retention of a Cisco Meraki MV Smart Camera? (Choose two.)

- A. enabling audio compression
- B. installing an SSD memory extension
- C. enabling motion-based retention
- D. enabling maximum retention limit
- E. configuring a recording schedule

Answer: CE

NEW QUESTION 2

Refer to the exhibit.



For an AP that displays this alert, which network access control method must be in use?

- A. preshared key
- B. WPA2-enterprise with my RADIUS server
- C. splash page with my RADIUS server
- D. MAC-based access control with RADIUS server

Answer: A

NEW QUESTION 3

What is the best practice Systems Manager enrollment method when deploying corporate-owned iOS devices?

- A. manual
- B. Apple Configurator
- C. Sentry enrollment
- D. DEP

Answer: B

NEW QUESTION 4

Drag and drop the steps from the left into the sequence on the right to manage device control, according to Cisco Meraki best practice.

enroll	1
create profile	2
add settings profile	3
define tags	4
apply profile	5

- A. Mastered
- B. Not Mastered

Answer: A

Explanation:

Table Description automatically generated with medium confidence

NEW QUESTION 5

Drag and drop the settings from the left into the boxes on the right to indicate if the setting will be cloned or not cloned using the Cisco Meraki MS switch cloning feature.

switch management IP	Cloned
switch name	
port name	
interface type	
STP bridge property	

Not Cloned	

- A. Mastered
- B. Not Mastered

Answer: A

Explanation:

switch management IP	Cloned
switch name	
port name	
interface type	
STP bridge property	

Not Cloned	
switch name	
port name	

NEW QUESTION 6
Refer to the exhibit.

License information for Home

License status	OK	
License expiration ⓘ	May 20, 2029 (3593 days from now)	
MX advanced Security	Enabled	
System Manager	Enabled (paid)	
	License limit	Current device count
MS220-8P	1	1
MV	2	0
MX64	1	1
Systems Manager Agent	100	0
Wireless AP	7	1
MV-SEN	10 free	0

[Add another license](#)

This Dashboard organization uses Co-Termination licensing model.

What happens when an additional seven APs are claimed on this network without adding licenses?

- A. All APs immediately stop functioning.
- B. All network devices stop functioning in 30 days.
- C. One AP Immediately stops functioning.
- D. All APs stop functioning in 30 days.

Answer: B

NEW QUESTION 7

What is the role of the Meraki Dashboard as the service provider when using SAML for single sign-on to the Dashboard?

- A. The Dashboard generates the SAML request.
- B. The Dashboard provides user access credentials.
- C. The Dashboard parses the SAML request and authenticates users.
- D. The Dashboard generates the SAML response.

Answer: A

NEW QUESTION 8

How is high-availability supported for Cisco Meraki devices?

- A. Only the MX Security Appliances that use VRRP support high availability.
- B. An active/active high-availability pair is recommended for MX Security Appliances.
- C. The MX Security Appliances and MS Series Switches that use VRRP support an active/passive high-availability pair.
- D. The MX Security Appliances and MS Series Switches that use HSRP support an active/passive high-availability pair.

Answer: A

NEW QUESTION 9

Refer to the exhibit.

Route table

SUBNET	NAME	TYPE	SORT BY «
<input type="text" value="Search by subnet"/>	<input type="text" value="Search by name"/>	<input type="text" value="All"/>	<input type="text" value="Priority"/>

Subnet	Name	Type	Next hop
10.115.32.0/28	Store 1532 – appliance: MGMT	Meraki VPN: VLAN	Peer: Store 1532 – appliance
10.116.32.0/28	Store 1532 – appliance: DATA	Meraki VPN: VLAN	Peer: Store 1532 – appliance
192.39.2.28/32	External	BGP	10.128.124.62
192.168.70.8/29	MSP NOC	IPSec Peer	4.99.111.99
192.168.70.0/29	MSP NOC	IPSec Peer	4.100.99.100
192.39.228.0/24	External	BGP	10.128.124.62
192.168.0.0/16	External	BGP	10.128.124.62

A packet arrives on the VPN concentrator with source IP 10.168.70.3 and destined for IP 10.116.32.4. What is the next hop for the packet, based on this concentrator routing table?

- A. The concentrator gateway (10.128.124.62) is the next hop.
- B. Not enough detail is available to determine the next hop.
- C. The packet is stopped.
- D. The Auto VPN peer “Store 1532 – appliance” is the next hop.

Answer: B

NEW QUESTION 10

Which design requirement is met by implementing syslog versus SNMP?

- A. when automation capabilities are needed
- B. when proactive alerts for critical events must be generated
- C. when organization-wide information must be collected
- D. when information such as flows and client connectivity must be gathered

Answer: D

NEW QUESTION 10

Refer to the exhibit.

Uplink selection

Global preferences

Primary uplink	WAN 1 ▾
Load balancing	<input type="radio"/> Enabled Traffic will be spread across both uplinks in the proportions specified above. Management traffic to the Meraki cloud will use the primary uplink. <input checked="" type="radio"/> Disabled All Internet traffic will use the primary uplink unless overridden by an uplink preference or if the primary uplink fails.
Active-Active AutoVPN	<input checked="" type="radio"/> Enabled Create VPN tunnels over all of the available uplinks (primary and secondary). <input type="radio"/> Disabled Do not create VPN tunnels over the secondary uplink unless the primary uplink fails.

Flow preferences

Internet traffic	There are no uplink preferences for Internet traffic configured on this network. Add a preference
------------------	--

SD-WAN policies

VPN traffic	Uplink selection policy Use the uplink that's best for VoIP traffic. Prefer WAN 2. Fail over if poor performance for "Conf" Add a preference	Traffic filters All VoIP & video conferencing WebEx	Actions + × + ×										
Custom performance classes	<table><thead><tr><th>Name</th><th>Maximum latency (ms)</th><th>Maximum jitter (ms)</th><th>Maximum loss (%)</th><th>Actions</th></tr></thead><tbody><tr><td>Conf</td><td>200</td><td>50</td><td>5</td><td>×</td></tr></tbody></table> Create a new custom performance class	Name	Maximum latency (ms)	Maximum jitter (ms)	Maximum loss (%)	Actions	Conf	200	50	5	×		
Name	Maximum latency (ms)	Maximum jitter (ms)	Maximum loss (%)	Actions									
Conf	200	50	5	×									

Assuming this MX has established a full tunnel with its VPN peer, how will the MX route the WebEx traffic?

- A. WebEx traffic will prefer WAN 2 as long as it meets the thresholds in the "Conf" performance class.
- B. WebEx traffic will prefer WAN 1 as it is the primary uplink.
- C. WebEx traffic will prefer WAN 2 as long as it is up.
- D. WebEx traffic will be load-balanced between both active WAN links.

Answer: B

NEW QUESTION 12

Which type of authentication protocol is used when using OSPF on an MX appliance?

- A. MD5
- B. certificate
- C. plaintext
- D. SHA-1

Answer: A

NEW QUESTION 14

Refer to the exhibit.

Security Center the last 2 weeks -

Search events Filter 158 matching events

Summary **Events**

Time	Type	Source	Destination	Disposition	Action	Details
May 30 21:22:50	IDS Alert	Desktop [redacted] 10	a104-96-113-137 deploy.static.akamaitech nologies.com	Blocked	MALWARE-CNC	Win.Trojan.Cridex variant outbound connection
May 30 21:22:46	IDS Alert	Desktop [redacted] 10	a104-96-113-137 deploy.static.akamaitech nologies.com	Blocked	MALWARE-CNC	Win.Trojan.Cridex variant outbound connection
May 30 21:22:46	IDS Alert	Desktop [redacted] 10	a104-96-113-137 deploy.static.akamaitech nologies.com	Blocked	MALWARE-CNC	Win.Trojan.Cridex variant outbound connection
May 30 21:22:46	IDS Alert	Desktop [redacted] 10	a104-96-113-137 deploy.static.akamaitech nologies.com	Blocked	MALWARE-CNC	Win.Trojan.Cridex variant outbound connection

MALWARE-CNC Win.Trojan.Cridex variant outbound connection

Rule ID 1-31772

Whitelist ☒ On ☐ Off

Links www.virustotal.com

Actions Rule details
Inspect picklist
Show this signature only

Which IDS/IPS mode is the MX Security Appliance configured for?

- A. quarantine
- B. prevention
- C. detection
- D. blocking

Answer: B

NEW QUESTION 16

What are two organization permission types? (Choose two.)

- A. Full
- B. Read-only
- C. Monitor-only
- D. Write
- E. Write-only

Answer: AB

NEW QUESTION 21

Refer to the exhibit.

WAN Health For the last 2 hours

Uplink Status	Network Name	Uplink Type	ISP	Availability	Total Usage	Average Throughput	Loss	Average Latency	Jitter
Ready	Meraki Sydney – appliance	WAN 1	unknown	<div></div>	↓ 4.03 GB, ↑ 1.39 GB	↓ 4.44 Mb/s, ↑ 1.55 Mb/s	0.00%	4.33 ms	0.05 ms
Active	Meraki Sydney – appliance	WAN 2	anticklockwise.net.au	<div></div>	↓ 23.18 GB, ↑ 14.85 GB	↓ 25.00 Mb/s, ↑ 15.39 Mb/s	0.00%	0.79 ms	0.06 ms

What are the Loss and Average Latency statistics based on?

- A. responses that the MX appliance receives on the connectivity-testing hostnames on the Insight > Web App Health page
- B. responses that the MX appliance receives on the connectivity-testing IP addresses on the Security & SD- WAN > Firewall page
- C. responses that the MX appliance receives on the connectivity-testing IP address that is configured on the Security & SD-WAN > SD-WAN & Traffic Shaping page
- D. responses that the MX appliance receives on the connectivity-testing IP addresses on the Help > Firewall info page

Answer: B

NEW QUESTION 22

Which information is used to calculate whether a WAN link has high usage?

- A. data under Security & SD WAN > Appliance Status > Uplink > Live Data
- B. total historical throughput of an uplink
- C. total number of devices that are actively passing traffic
- D. value under Security & SD WAN > SD WAN & Traffic Shaping > Uplink Configuration

Answer: D

NEW QUESTION 27

Refer to the exhibit.

SD-WAN & traffic shaping

Uplink configuration

WAN 1

4 Gbps

[details](#)

WAN 2

4 Gbps

[details](#)

Cellular

Unlimited

[details](#)

Uplink statistics

Test connectivity to

8.8.8.8

[Add a destination](#)

Description

Google

Default

☒

Actions

[×](#)

List update interval ⓘ

WAN 1

Hourly ▾

WAN 2

Hourly ▾

[simple](#)

Cellular

Hourly ▾

Uplink selection

Global preferences

Primary uplink

WAN 1 ▾

Load balancing

☐ Enabled

☒ Disabled

Flow preferences

Internet traffic

There are no uplink preferences for Internet traffic configured on this network.

[Add a preference](#)

- Change the primary uplink to "none".
- Add an internet traffic preference that defines the load-balancing ratio as 4:1.
- Enable load balancing.
- Set the speed of the cellular uplink to zero.
- Change the assigned speeds of WAN 1 and WAN 2 so that the ratio is 4:1.

NEW QUESTION 31

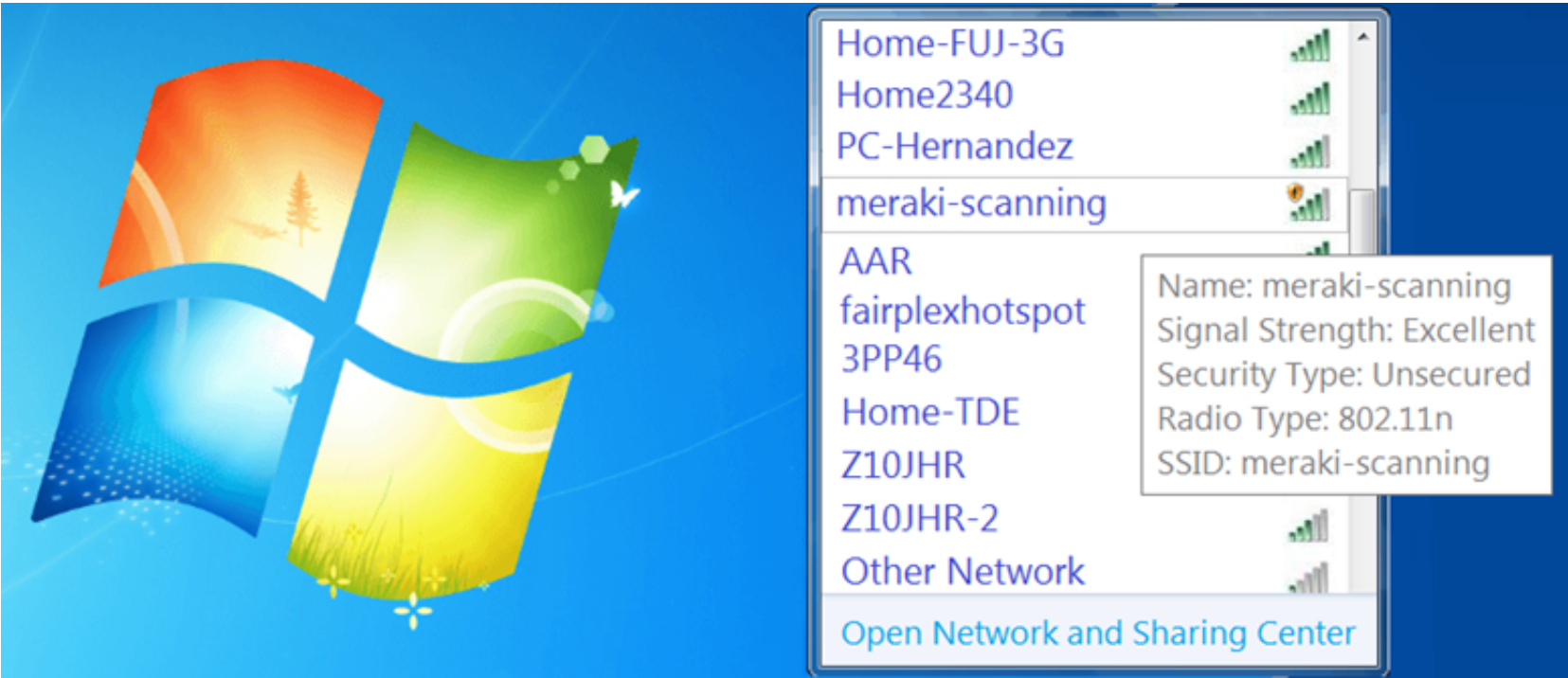
A. highest VLAN ID that is configured and set to NO to use VPN
B. lowest VLAN ID that is configured and set to YES to use VPN
C. highest VLAN ID that is configured and set to YES to use VPN
D. lowest VLAN ID configured and set to NO to use VPN

NEW QUESTION 32

A. The application requires the most recent iOS version.
B. The device is locked with a passcode.
C. The device cannot connect to Apple servers.
D. The device cannot connect to Cisco Meraki servers.

NEW QUESTION 34

visit - <https://www.surepassexam.com>



During a Meraki AP deployment, the default SSID that the exhibit shows is broadcast. What causes this behavior?

- A. An AP does not have a wired connection to the network.
- B. An AP cannot connect to the default gateway.
- C. An AP has never connected to the Meraki Cloud Controller.
- D. An AP has Site Survey mode enabled.

Answer: C

NEW QUESTION 37

When wireless SSIDs are configured in Dashboard, which setting on the Access Control page affects the ability of a 2.4 GHz only client device from associating to the WLAN for the first time?

- A. Content filtering
- B. Bridge mode
- C. 802.11r
- D. Dual band operating with Band Steering

Answer: D

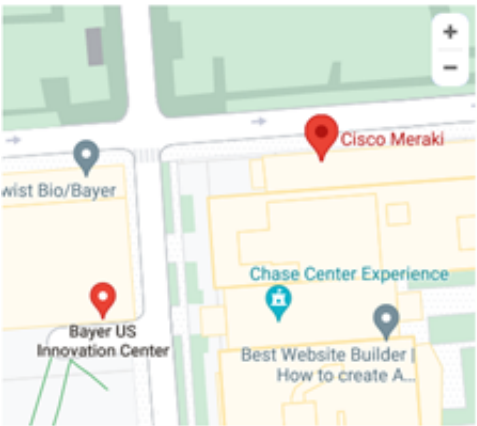
NEW QUESTION 39

The VPN concentrator is experiencing issues. Which action should be taken to ensure a stable environment?

● Corp MX 1

MX450

PRIMARY



ADDRESS

PRIMARY

Current master

Summary Uplink

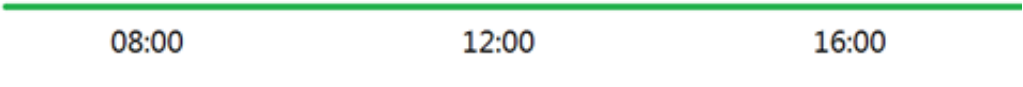
Live data

Ports

	Internet	GbE				SFP				SFP+			
	1	3	5	7	9	11	13	15	17	19	21	23	25
Management													
	2	4	6	8	10	12	14	16	18	20	22	24	26

Historical data for the last day

Connectivity



- A. Add a deny any/any firewall rule to the end of the firewall rules.
- B. Remove the connection from Internet 1.
- C. Physically disconnect all LAN ports.
- D. Configure the MX appliance to Routed mode on the Addressing & VLANs page.

Answer: C

NEW QUESTION 43

What are two ways peers interact with ports that Auto VPN uses? (Choose two.)

- A. For IPsec tunneling, peers use high UDP ports within the 32768 to 61000 range.
- B. Peers contact the VPN registry at UDP port 9350.

- C. For IPsec tunneling, peers use high TCP ports within the 32768 to 61000 range.
- D. Peers contact the VPN registry at TCP port 9350.
- E. For IPsec tunneling, peers use UDP ports 500 and 4500.

Answer: BC

NEW QUESTION 44

Which Cisco Meraki best practice method preserves complete historical network event logs?

- A. Configuring the preserved event number to maximize logging.
- B. Configuring the preserved event period to unlimited.
- C. Configuring a syslog server for the network.
- D. Configuring Dashboard logging to preserve only certain event types.

Answer: A

NEW QUESTION 46

Company iPads are enrolled in Systems Manager without supervision, and profiles are pushed through Systems Manager. Which outcome occurs when a user attempts to remove the “Meraki Management” profile on an iPad?

- A. The “Meraki Management” profile cannot be removed.
- B. The “Meraki Management” profile is removed and then pushed automatically by Systems Manager.
- C. The “Meraki Management” profile is remove
- D. All the profiles that Systems Manager pushed are also removed.
- E. The “Meraki Management” profile is remove
- F. All the profiles Systems Manager pushed remain.

Answer: C

NEW QUESTION 50

Which three verbs of request are available in the Cisco Meraki API? (Choose three.)

- A. SET
- B. PUT
- C. PATCH
- D. ADD
- E. POST
- F. GET

Answer: BEF

NEW QUESTION 55

A customer requires a hub-and-spoke Auto VPN deployment with two NAT-mode hubs with dual uplink connections and 50 remote sites with a single uplink connection.

How many tunnels does each hub need to support?

- A. 52
- B. 54
- C. 100
- D. 104

Answer: C

NEW QUESTION 57

.....

Thank You for Trying Our Product

We offer two products:

1st - We have Practice Tests Software with Actual Exam Questions

2nd - Questions and Answers in PDF Format

500-220 Practice Exam Features:

- * 500-220 Questions and Answers Updated Frequently
- * 500-220 Practice Questions Verified by Expert Senior Certified Staff
- * 500-220 Most Realistic Questions that Guarantee you a Pass on Your First Try
- * 500-220 Practice Test Questions in Multiple Choice Formats and Updates for 1 Year

100% Actual & Verified — Instant Download, Please Click
[Order The 500-220 Practice Test Here](#)