

GIAC

Exam Questions GSEC

GIAC Security Essentials Certification



NEW QUESTION 1

Which of the following SIP methods is used to setup a new session and add a caller?

- A. ACK
- B. BYE
- C. REGISTER
- D. INVITE
- E. CANCEL

Answer: D

NEW QUESTION 2

Which class of IDS events occur when the IDS fails to alert on malicious data?

- A. True Negative
- B. True Positive
- C. False Positive
- D. False Negative

Answer: D

NEW QUESTION 3

Which Defense-in-Depth model involves identifying various means by which threats can become manifest and providing security mechanisms to shut them down?

- A. Vector-oriented
- B. Uniform protection
- C. Information centric defense
- D. Protected enclaves

Answer: A

NEW QUESTION 4

Which of the following should be implemented to protect an organization from spam?

- A. Auditing
- B. System hardening
- C. E-mail filtering
- D. Packet filtering

Answer: C

NEW QUESTION 5

Which of the following works at the network layer and hides the local area network IP address and topology?

- A. Network address translation (NAT)
- B. Hub
- C. MAC address
- D. Network interface card (NIC)

Answer: A

NEW QUESTION 6

Two clients connecting from the same public IP address (for example - behind the same NAT firewall) can connect simultaneously to the same web server on the Internet, provided what condition is TRUE?

- A. The server is not using a well-known port
- B. The server is on a different network
- C. The client-side source ports are different
- D. The clients are on different subnets

Answer: C

NEW QUESTION 7

Which of the below choices should an organization start with when implementing an effective risk management process?

- A. Implement an incident response plan
- B. Define security policy requirements
- C. Conduct periodic reviews
- D. Design controls and develop standards for each technology you plan to deploy

Answer: B

NEW QUESTION 8

Which of the following choices accurately describes how PGP works when encrypting email?

- A. PGP encrypts the message with the recipients public key, then encrypts this key with a random asymmetric ke
- B. PGP creates a random asymmetric key that it uses to encrypt the message, then encrypts this key with the recipient's public key
- C. PGP creates a random symmetric key that it uses to encrypt the message, then encrypts this key with the recipient's public key
- D. PGP encrypts the message with the recipients public key, then encrypts this key with a random symmetric ke

Answer: B

NEW QUESTION 9

Which of the following protocols work at the Session layer of the OSI model? Each correct answer represents a complete solution. Choose all that apply.

- A. Border Gateway Multicast Protocol (BGMP)
- B. Internet Security Association and Key Management Protocol (ISAKMP)
- C. Trivial File Transfer Protocol (TFTP)
- D. User Datagram Protocol (UDP)

Answer: AB

NEW QUESTION 10

Your organization is developing a network protection plan. No single aspect of your network seems more important than any other. You decide to avoid separating your network into segments or categorizing the systems on the network. Each device on the network is essentially protected in the same manner as all other devices.

This style of defense-in-depth protection is best described as which of the following?

- A. Uniform protection
- B. Threat-oriented
- C. Information-centric
- D. Protected enclaves

Answer: A

NEW QUESTION 10

Which of the following fields CANNOT be hashed by Authentication Header (AH) in transport mode?

- A. Length
- B. Source IP
- C. TTL
- D. Destination IP

Answer: C

NEW QUESTION 12

Which of the following protocols is used by a host that knows its own MAC (Media Access Control) address to query a server for its own IP address?

- A. RARP
- B. ARP
- C. DNS
- D. RDNS

Answer: A

NEW QUESTION 16

You are responsible for a Microsoft based network. Your servers are all clustered. Which of the following are the likely reasons for the clustering? Each correct answer represents a complete solution. Choose two.

- A. Reduce power consumption
- B. Ease of maintenance
- C. Load balancing
- D. Failover

Answer: CD

NEW QUESTION 19

You work as a Network Administrator for McNeil Inc. You are installing an application. You want to view the log file whenever a new entry is added to the /var/log/messages log file. Which of the following commands will you use to accomplish this?

- A. TAIL -show /var/log/messages
- B. TAIL -f /var/log/messages
- C. TAIL -50 /var/log/messages
- D. TAIL -view /var/log/messages

Answer: B

NEW QUESTION 21

Which of the following authentication methods are used by Wired Equivalent Privacy (WEP)? Each correct answer represents a complete solution. Choose two.

- A. Anonymous authentication
- B. Mutual authentication
- C. Open system authentication
- D. Shared key authentication

Answer: CD

NEW QUESTION 25

Which of the following statements about Microsoft's VPN client software is FALSE?

- A. The VPN interface can be figured into the route tabl
- B. The VPN interface has the same IP address as the interface to the network it's been specified to protec
- C. The VPN client software is built into the Windows operating syste
- D. The VPN tunnel appears as simply another adapte

Answer: B

NEW QUESTION 30

Which of the following utilities provides an efficient way to give specific users permission to use specific system commands at the root level of a Linux operating system?

- A. Snort
- B. Apache
- C. SSH
- D. SUDO

Answer: D

NEW QUESTION 35

What is the command-line tool for Windows XP and later that allows administrators the ability to get or set configuration data for a very wide variety of computer and user account settings?

- A. IPCONFIG.EXE
- B. NETSTAT.EXE
- C. WMIC.EXE
- D. CONFIG.EXE

Answer: C

NEW QUESTION 40

You are responsible for technical support at a company. One of the employees complains that his new laptop cannot connect to the company wireless network. You have verified that he is entering a valid password/passkey. What is the most likely problem?

- A. A firewall is blocking hi
- B. His laptop is incompatibl
- C. MAC filtering is blocking hi
- D. His operating system is incompatibl

Answer: C

NEW QUESTION 42

In a /24 subnet, which of the following is a valid broadcast address?

- A. 200.11.11.1
- B. 221.10.10.10
- C. 245.20.30.254
- D. 192.10.10.255

Answer: D

NEW QUESTION 45

Why would someone use port 80 for deployment of unauthorized services?

- A. Google will detect the service listing on port 80 and post a link, so that people all over the world will surf to the rogue servic
- B. If someone were to randomly browse to the rogue port 80 service they could be compromise
- C. This is a technique commonly used to perform a denial of service on the local web serve
- D. HTTP traffic is usually allowed outbound to port 80 through the firewall in most environment

Answer: D

NEW QUESTION 50

What does an attacker need to consider when attempting an IP spoofing attack that relies on guessing Initial Sequence Numbers (ISNs)?

- A. These attacks work against relatively idle server
- B. These attacks rely on a modified TCP/IP stack to function
- C. These attacks can be easily traced back to the source
- D. These attacks only work against Linux/Unix host

Answer: A

NEW QUESTION 54

Which of the following applications would be BEST implemented with UDP instead of TCP?

- A. A multicast streaming application
- B. A web browser
- C. A DNS zone transfer
- D. A file transfer application

Answer: A

NEW QUESTION 59

In PKI, when someone wants to verify that the certificate is valid, what do they use to decrypt the signature?

- A. Receiver's digital signature
- B. X.509 certificate CA's private key
- C. Secret passphrase
- D. CA's public key

Answer: D

NEW QUESTION 62

Which of the following is a type of countermeasure that can be deployed to ensure that a threat vector does not meet a vulnerability?

- A. Prevention controls
- B. Detection controls
- C. Monitoring controls
- D. Subversive controls

Answer: A

NEW QUESTION 65

What is the name of the Windows XP/2003 tool that you can use to schedule commands to be executed on remote systems during off-peak hours?

- A. SCHEDULET.SKS.EXE
- B. SCHEDULET.SKS.EXE
- C. SCHEDULEL.R.EXE
- D. SCHEDULE.R.EXE

Answer: A

NEW QUESTION 70

Who is responsible for deciding the appropriate classification level for data within an organization?

- A. Data custodian
- B. Security auditor
- C. End user
- D. Data owner

Answer: B

NEW QUESTION 73

An employee is currently logged into the corporate web server, without permission. You log into the web server as 'admin' and look for the employee's username: 'dmaul' using the 'who' command. This is what you get back:

```
[user@localhost ~]$ who
admin :0 2010-09-11 06:49
dvader pts/3 2010-09-11 08:07 (localhost.localdomain)
hsolo pts/4 2010-09-11 08:14 (192.168.54.3)
cdooku pts/4 2010-09-11 08:14 (192.168.54.5)
```

- A. The contents of the /var/log/messages file has been altered
- B. The contents of the bash history file has been altered
- C. The contents of the utmp file has been altered
- D. The contents of the http logs have been altered

Answer: B

NEW QUESTION 77

Which of the following is a benefit to utilizing Cygwin for Windows?

- A. The ability to install a complete Red Hat operating system Install on Window
- B. The ability to bring much more powerful scripting capabilities to Window
- C. The ability to run a production Apache serve
- D. The ability to install a complete Ubuntu operating system install on Window

Answer: A

NEW QUESTION 79

You work as a Network Administrator for NetTech Inc. The company wants to encrypt its e-mails. Which of the following will you use to accomplish this?

- A. PPTP
- B. IPSec
- C. PGP
- D. NTFS

Answer: C

NEW QUESTION 80

You work as a Network Administrator for Net World Inc. The company has a Linux-based network. You want to mount an SMBFS share from a Linux workstation. Which of the following commands can you use to accomplish the task?

Each correct answer represents a complete solution. Choose two.

- A. smbmount
- B. mount smb
- C. smbfsmount
- D. mount -t smbfs

Answer: AD

NEW QUESTION 81

You are doing some analysis of malware on a Unix computer in a closed test network. The IP address of the computer is 192.168.1.120. From a packet capture, you see the malware is attempting to do a DNS query for a server called iamabadserver.com so that it can connect to it. There is no DNS server on the test network to do name resolution. You have another computer, whose IP is 192.168.1.115, available on the test network that you would like for the malware connect to it instead. How do you get the malware to connect to that computer on the test network?

- A. You modify the HOSTS file on the computer you want the malware to connect to and add an entry that reads: 192.168.1.120 iamabadserver iamabadserver.com
- B. You modify the HOSTS file on the Unix computer your malware is running on and add an entry that reads: 192.168.1.115 iamabadserveriamabadserver.com
- C. You modify the HOSTS file on the Unix computer your malware is running on and add an entry that reads: 192.168.1.120 iamabadserver iamabadserver.com
- D. You modify the HOSTS file on the computer you want the malware to connect to and add an entry that reads: 192.168.1.115 iamabadserver iamabadserver.com

Answer: B

NEW QUESTION 85

Which of the following classes of fire comes under Class C fire?

- A. Paper or wood fire
- B. Oil fire
- C. Combustible metals fire
- D. Electronic or computer fire

Answer: D

NEW QUESTION 89

Which of the following files contains the shadowed password entries in Linux?

- A. /etc/passwd
- B. /etc/shadow
- C. /etc/profile
- D. /etc/shdpwd

Answer: B

NEW QUESTION 91

You have been hired to design a TCP/IP-based network that will contain both Unix and Windows computers. You are planning a name resolution strategy. Which of the following services will best suit the requirements of the network?

- A. APIPA
- B. LMHOSTS
- C. DNS
- D. DHCP
- E. WINS

Answer: C

NEW QUESTION 94

SSL session keys are available in which of the following lengths?

- A. 40-bit and 128-bit
- B. 64-bit and 128-bit
- C. 128-bit and 1,024-bit
- D. 40-bit and 64-bit

Answer: A

NEW QUESTION 99

What is the key difference between Electronic Codebook mode and other block cipher modes like Cipher Block Chaining, Cipher-Feedback and Output-Feedback?

- A. Plaintext patterns are concealed by XOR Ring with previous cipher text block but input to the block cipher is not randomized
- B. Plaintext patterns are concealed and input to the block cipher is randomized by XOR Ring with previous cipher text block
- C. Plaintext patterns encrypted with the same key will always generate the same Cipher text pattern
- D. Plaintext patterns are not concealed but input to the block cipher is randomized by XOR Ring with previous cipher text block

Answer: C

NEW QUESTION 102

When you log into your Windows desktop what information does your Security Access Token (SAT) contain?

- A. The Security ID numbers (SIDs) of all the groups to which you belong
- B. A list of cached authentications
- C. A list of your domain privileges
- D. The Security ID numbers (SIDs) of all authenticated local users

Answer: C

NEW QUESTION 106

John works as a Network Administrator for Perfect Solutions Inc. The company has a Linux-based network. He is working as a root user on the Linux operating system. He wants to delete his private.txt file from his operating system. He knows that the deleted file can be recovered easily. Hence, he wants to delete the file securely. He wants to hide the shredding, and so he desires to add a final overwrite of the file private.txt with zero. Which of the following commands will John use to accomplish his task?

- A. rmdir -v private.txt
- B. shred -vfu private.txt
- C. shred -vfuz private.txt
- D. rm -vf private.txt

Answer: C

NEW QUESTION 107

Your CIO has found out that it is possible for an attacker to clone your company's RFID (Radio Frequency ID) based key cards. The CIO has tasked you with finding a way to ensure that anyone entering the building is an employee. Which of the following authentication types would be the appropriate solution to this problem?

- A. Mandatory Access Controls
- B. Bell-LaPadula
- C. Two-Factor
- D. TACACS

Answer: C

NEW QUESTION 112

How are differences in configuration settings handled between Domain and Local Group Policy Objects (GPOs)?

- A. Local and Domain GPOs control different configuration settings, so there will not be conflict
- B. Settings in the domain-wide GPO override conflicting settings in the local GPO on each computer
- C. Settings in the local GPO override conflicting settings when the domain-wide GPO is applied
- D. Precedence depends on which GPO was updated first

Answer: B

NEW QUESTION 116

Which of the following protocols provides maintenance and error reporting function?

- A. UDP
- B. ICMP
- C. PPP
- D. IGMP

Answer: B

NEW QUESTION 121

Which of the following ports is the default port for Layer 2 Tunneling Protocol (L2TP)?

- A. TCP port 443
- B. UDP port 161
- C. TCP port 110
- D. UDP port 1701

Answer: D

NEW QUESTION 126

Which of the following types of computers is used for attracting potential intruders?

- A. Files pot
- B. Honey pot
- C. Data pot
- D. Bastion host

Answer: B

NEW QUESTION 129

Which of the following TCP dump output lines indicates the first step in the TCP 3-way handshake?

- A. 07:09:43.368615 download.net.39904 > ftp.com.21: S 733381829:733381829(0) win 8760 <mss 1460> (DF)
- B. 07:09:43.370302 ftp.com.21 > download.net.39904: S 1192930639:1192930639(0) ack 733381830 win 1024 <mss 1460> (DF)
- C. 09:09:22.346383 ftp.com.21 > download.net.39904: , rst 1 win 2440(DF)
- D. 07:09:43.370355 download.net.39904 > ftp.com.21: , ack 1 win 8760 (DF)

Answer: A

NEW QUESTION 134

Mark works as a Network Administrator for NetTech Inc. The company has a Windows 2003 domain- based network. The network contains ten Windows 2003 member servers, 150 Windows XP Professional client computers. According to the company's security policy, Mark needs to check whether all the computers in the network have all available security updates and shared folders. He also needs to check the file system type on each computer's hard disk. Mark installs and runs MBSACLI.EXE with the appropriate switches on a server. Which of the following tasks will he accomplish?

- A. None of the tasks will be accomplishe
- B. He will be able to check the file system type on each computer's hard dis
- C. He will be able to accomplish all the task
- D. He will be able to check all available security updates and shared folder

Answer: C

NEW QUESTION 137

Which common firewall feature can be utilized to generate a forensic trail of evidence and to identify attack trends against your network?

- A. NAT
- B. State Table
- C. Logging
- D. Content filtering

Answer: C

NEW QUESTION 140

Which of the following areas of a network contains DNS servers and Web servers for Internet users?

- A. VPN
- B. MMZ
- C. VLAN
- D. DMZ

Answer: D

NEW QUESTION 144

You work as a Network Administrator for Net Perfect Inc. The company has a Linux-based network. You are configuring an application server. An application named Report, which is owned by the root user, is placed on the server. This application requires superuser permission to write to other files. All sales managers of the company will be using the application. Which of the following steps will you take in order to enable the sales managers to run and use the Report application?

- A. Change the Report application to a SUID comman
- B. Make the user accounts of all the sales managers the members of the root grou
- C. Provide password of root user to all the sales manager
- D. Ask each sales manager to run the application as the root use
- E. As the application is owned by the root, no changes are require

Answer:

A

NEW QUESTION 145

Which of the following is the reason of using Faraday cage?

- A. To prevent Denial-of-Service (DoS) attack
- B. To prevent shoulder surfing
- C. To prevent mail bombing
- D. To prevent data emanation

Answer: D

NEW QUESTION 148

Which of the following languages enable programmers to store cookies on client computers? Each correct answer represents a complete solution. Choose two.

- A. DHTML
- B. Perl
- C. HTML
- D. JavaScript

Answer: BD

NEW QUESTION 153

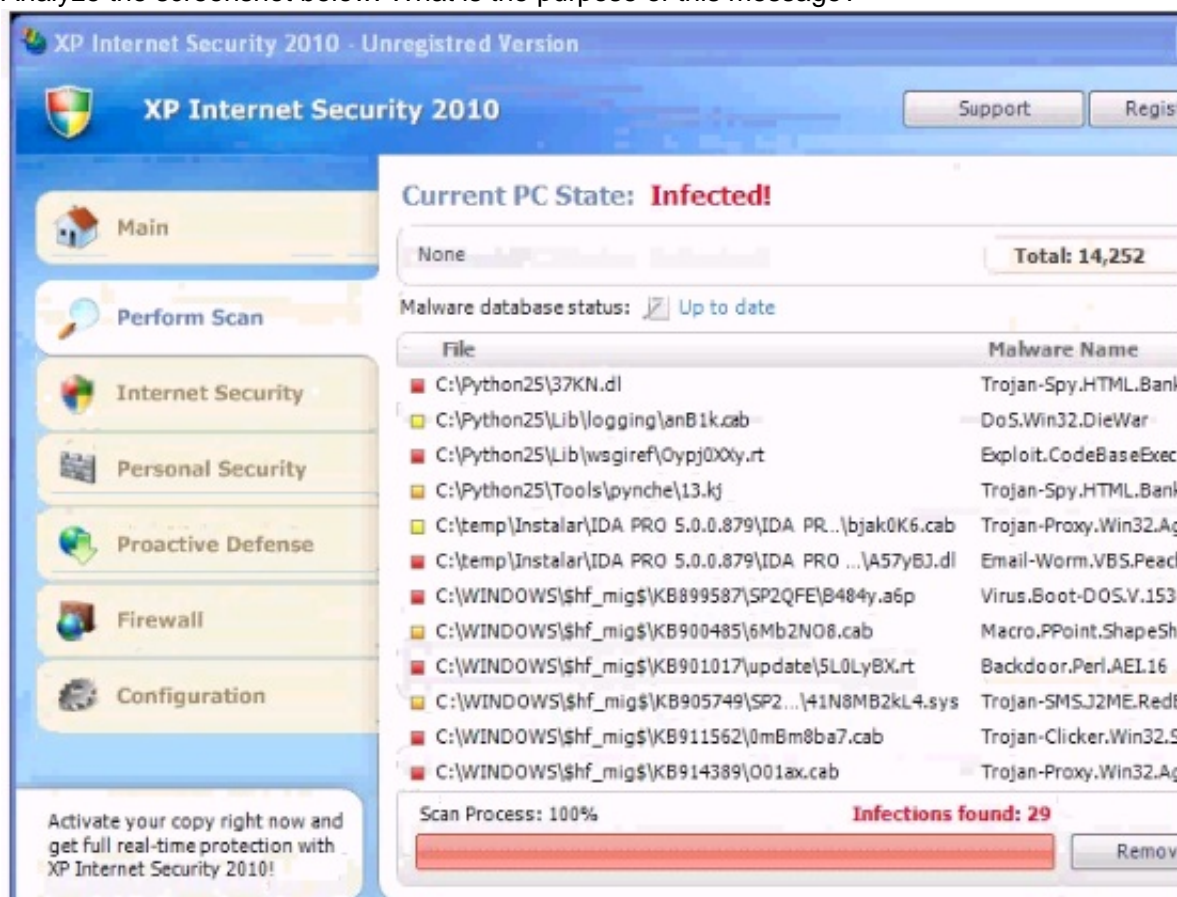
What technical control provides the most critical layer of defense if an intruder is able to bypass all physical security controls and obtain tapes containing critical data?

- A. Camera Recordings
- B. Security guards
- C. Encryption
- D. Shredding
- E. Corrective Controls

Answer: C

NEW QUESTION 156

Analyze the screenshot below. What is the purpose of this message?



- A. To gather non-specific vulnerability information
- B. To get the user to download malicious software
- C. To test the browser plugins for compatibility
- D. To alert the user to infected software on the compute

Answer: D

NEW QUESTION 160

What type of attack can be performed against a wireless network using the tool Kismet?

- A. IP spoofing
- B. Eavesdropping
- C. Masquerading
- D. Denial of Service

Answer: B

NEW QUESTION 164

You work as a Network Administrator for Tech2tech Inc. You have configured a network-based IDS for your company. You have physically installed sensors at all key positions throughout the network such that they all report to the command console.

What will be the key functions of the sensors in such a physical layout?

Each correct answer represents a complete solution. Choose all that apply.

- A. To collect data from operating system logs
- B. To notify the console with an alert if any intrusion is detected
- C. To analyze for known signatures
- D. To collect data from Web servers

Answer: BC

NEW QUESTION 166

How is a Distributed Denial of Service (DDOS) attack distinguished from a regular DOS attack?

- A. DDOS attacks are perpetrated by many distributed host
- B. DDOS affects many distributed target
- C. Regular DOS focuses on a single route
- D. DDOS affects the entire Internet

Answer: A

NEW QUESTION 171

If the NET_ID of the source and destination address in an IP (Internet Protocol) packet match, which answer BEST describes the routing method the sending host will use?

- A. Local (or direct) routing
- B. Circuit switch routing
- C. Dynamic (or changeable) routing
- D. Remote (or indirect) routing

Answer: A

NEW QUESTION 173

Which of the following services resolves host name to IP Address?

- A. Computer Browser
- B. DHCP
- C. DNS
- D. WINS

Answer: C

NEW QUESTION 177

You work as a Network Administrator for McRobert Inc. You want to know the NetBIOS name of your computer. Which of the following commands will you use?

- A. NETSTAT -s
- B. NBTSTAT -s
- C. NBTSTAT -n
- D. NETSTAT -n

Answer: C

NEW QUESTION 180

Many IIS servers connect to Microsoft SQL databases. Which of the following statements about SQL server security is TRUE?

- A. SQL Server patches are part of the operating system patches
- B. SQL Server should be installed on the same box as your IIS web server when they communicate as part of the web application
- C. It is good practice to never use integrated Windows authentication for SQL Server
- D. It is good practice to not allow users to send raw SQL commands to the SQL Server

Answer: D

NEW QUESTION 182

The Linux command to make the /etc/shadow file, already owned by root, readable only by root is which of the following?

- A. chmod 444/etc/shadow
- B. chown root: root/etc/shadow
- C. chmod 400/etc/shadow
- D. chown 400 /etc/shadow

Answer: C

NEW QUESTION 187

Which of the following processes is known as sanitization?

- A. Assessing the risk involved in discarding particular informatio
- B. Verifying the identity of a person, network host, or system proces
- C. Physically destroying the media and the information stored on i
- D. Removing the content from the media so that it is difficult to restor

Answer: D

NEW QUESTION 191

What is the main reason that DES is faster than RSA?

- A. DES is less secur
- B. DES is implemented in hardware and RSA is implemented in softwar
- C. Asymmetric cryptography is generally much faster than symmetri
- D. Symmetric cryptography is generally much faster than asymmetri

Answer: D

NEW QUESTION 194

Which of the following are network connectivity devices?

Each correct answer represents a complete solution. Choose all that apply.

- A. Network analyzer
- B. Bridge
- C. Router
- D. Firewall
- E. Repeater
- F. Hub

Answer: BCEF

NEW QUESTION 195

Your system has been infected by malware. Upon investigation, you discover that the malware propagated primarily via email. The malware attacked known vulnerabilities for which patches are available, but due to problems with your configuration management system you have no way to know which systems have been patched and which haven't, slowing your progress in patching your network. Of the following, which solution would you use to protect against this propagation vector?

- A. Encrypt the emails on the server
- B. Scan and block suspect email attachments at the email server
- C. Install a firewall between the email server and the Internet
- D. Separate the email server from the trusted portions of the network

Answer: B

NEW QUESTION 197

What defensive measure could have been taken that would have protected the confidentiality of files that were divulged by systems that were compromised by malware?

- A. Ingress filtering at the host level
- B. Monitoring for abnormal traffic flow
- C. Installing file integrity monitoring software
- D. Encrypting the files locally when not in use

Answer: D

NEW QUESTION 199

Regarding the UDP header below, what is the length in bytes of the UDP datagram?

04 1a 00 a1 00 55 db 51

- A. 161
- B. 81
- C. 219
- D. 85

Answer: D

NEW QUESTION 204

When should you create the initial database for a Linux file integrity checker?

- A. Before a system is patched
- B. After a system has been compromised
- C. Before a system has been compromised
- D. During an attack

Answer: C

NEW QUESTION 205

Which of the following statements best describes where a border router is normally placed?

- A. Between your firewall and your internal network
- B. Between your firewall and DNS server
- C. Between your ISP and DNS server
- D. Between your ISP and your external firewall

Answer: D

NEW QUESTION 206

You work as a Network Administrator for Tech Perfect Inc. The company has a Linux-based network. You want to kill a process running on a Linux server. Which of the following commands will you use to know the process identification number (PID) of the process?

- A. killall
- B. ps
- C. getpid
- D. kill

Answer: B

NEW QUESTION 211

What is the following sequence of packets demonstrating?

- A. telnet.com.telnet > client.com.38060: F 4289:4289(0) ack 92 win 1024
- B. client.com.38060 > telnet.com.telnet: .ack 4290 win 8760 (DF)
- C. client.com.38060 > telnet.com.telnet: F 92:92(0) ack 4290 win 8760 (DF)
- D. telnet.com.telnet > client.com.38060: .ack 93 win 1024

Answer: C

NEW QUESTION 212

Which of the following books deals with confidentiality?

- A. Purple Book
- B. Orange Book
- C. Red Book
- D. Brown Book

Answer: B

NEW QUESTION 213

The previous system administrator at your company used to rely heavily on email lists, such as vendor lists and Bug Traq to get information about updates and patches. While a useful means of acquiring data, this requires time and effort to read through. In an effort to speed things up, you decide to switch to completely automated updates and patching. You set up your systems to automatically patch your production servers using a cron job and a scripted apt-get upgrade command. Of the following reasons, which explains why you may want to avoid this plan?

- A. The apt-get upgrade command doesn't work with the cron command because of incompatibility
- B. Relying on vendor and 3rd party email lists enables updates via email, for even faster patching
- C. Automated patching of production servers without prior testing may result in unexpected behavior or failures
- D. The command apt-get upgrade is incorrect, you need to run the apt-get update command

Answer: D

NEW QUESTION 215

One of your Linux systems was compromised last night. According to change management history and a recent vulnerability scan, the system's patches were up-to-date at the time of the attack. Which of the following statements is the Most Likely explanation?

- A. It was a zero-day exploi
- B. It was a Trojan Horse exploi
- C. It was a worm exploi
- D. It was a man-in-middle exploi

Answer: A

NEW QUESTION 216

Which of the following statements about the integrity concept of information security management are true?
Each correct answer represents a complete solution. Choose three.

- A. It ensures that unauthorized modifications are not made to data by authorized personnel or processe
- B. It determines the actions and behaviors of a single individual within a system
- C. It ensures that internal information is consistent among all subentities and also consistent with the real-world, external situatio
- D. It ensures that modifications are not made to data by unauthorized personnel or processe

Answer: ACD

NEW QUESTION 220

What are the two actions the receiver of a PGP email message can perform that allows establishment of trust between sender and receiver?

- A. Decode the message by decrypting the asymmetric key with his private key, then using the asymmetric key to decrypt the messag
- B. Decode the message by decrypting the symmetric key with his private key, then using the symmetric key to decrypt the messag
- C. Decode the message by decrypting the symmetric key with his public key, then using the symmetric key to decrypt the messag
- D. Decrypt the message by encrypting the digital signature with his private key, then using the digital signature to decrypt the messag

Answer: A

NEW QUESTION 225

.....

Thank You for Trying Our Product

We offer two products:

1st - We have Practice Tests Software with Actual Exam Questions

2nd - Questions and Answers in PDF Format

GSEC Practice Exam Features:

- * GSEC Questions and Answers Updated Frequently
- * GSEC Practice Questions Verified by Expert Senior Certified Staff
- * GSEC Most Realistic Questions that Guarantee you a Pass on Your FirstTry
- * GSEC Practice Test Questions in Multiple Choice Formats and Updatesfor 1 Year

100% Actual & Verified — Instant Download, Please Click
[Order The GSEC Practice Test Here](#)